



The World's Largest Open Access Agricultural & Applied Economics Digital Library

This document is discoverable and free to researchers across the globe due to the work of AgEcon Search.

Help ensure our sustainability.

Give to AgEcon Search

AgEcon Search

<http://ageconsearch.umn.edu>

aesearch@umn.edu

*Papers downloaded from **AgEcon Search** may be used for non-commercial purposes and personal study only. No other use, including posting to another Internet site, is permitted without permission from the copyright owner (not AgEcon Search), or as allowed under the provisions of Fair Use, U.S. Copyright Act, Title 17 U.S.C.*

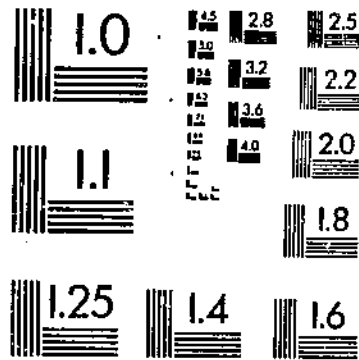
No endorsement of AgEcon Search or its fundraising activities by the author(s) of the following work or their employer(s) is intended or implied.

SB 748 (1966) USDA STATISTICAL BULLETIN
U. S. RICE DISTRIBUTION PATTERNS, 1964/65
HOLDER, SHELBY H. JR.

UPDATA

1 OF 1

START





United States
Department of
Agriculture

Economic
Research
Service

Statistical
Bulletin
Number 748

U.S. Rice Distribution Patterns, 1984/85

Shelby H. Holder, Jr.

ABSTRACT

U.S. rice millers and repackagers distributed 33.7 million hundredweight (cwt) of rice in marketing year 1984/85 for three domestic uses: direct food, processed foods, and beer. This figure represents a 6.5-percent increase over shipments in 1982/83, the previous survey year. About half of U.S. rice production is used domestically; the rest is exported. Rice shipments for use directly in food rose by 2.5 million cwt, shipments for use in processed foods rose by 1.6 million cwt, and although reported rice shipments to the beer industry declined, use remained about the same. The sharp drop in U.S. rice exports in recent years may contribute to further expansion in the domestic rice market. This report, the sole source of detailed information on U.S. domestic rice distribution patterns for the 1984/85 marketing year, assesses proportional market shares and trends.

Keywords: Rice, distribution patterns, domestic rice outlets, market shares, package size, milled rice.

SALES INFORMATION

Additional copies of this report can be purchased from the Superintendent of Documents, U.S. Government Printing Office, Washington, DC 20402. Order by title and series number. Write to the above address for price information, or call the GPO order desk at (202) 783-3238. You may also charge your purchase by telephone to your VISA, MasterCard, Choice, or GPO Deposit Account. Bulk discounts are available. Foreign customers, please add 25 percent extra for postage.

GPO Stock Number 001-019-00481-9

Microfiche copies (\$6.50 each) can be purchased from the National Technical Information Service, 5285 Port Royal Road, Springfield, VA 22161. Order by title and series number. Enclose a check or money order payable to NTIS; add \$3 handling charge for each order. Call NTIS at (703) 487-4650 and charge your purchase to your VISA, MasterCard, American Express, or NTIS Deposit Account. NTIS will RUSH your order within 24 hours for an extra \$10; call (800) 336-4700.

The Economic Research Service has no copies for free distribution.

ACKNOWLEDGMENTS

The author expresses appreciation to the management of rice milling and repackaging firms whose cooperation made this survey possible, and to their staffs who tabulated the requested data and completed the questionnaires. The assistance of the Rice Millers' Association is also gratefully acknowledged. Siew Goh and Barbara McClenathan, Department of Agricultural Economics and Rural Sociology, University of Arkansas, prepared the computerized statistical tables and assisted in data entry and verification, respectively. Carol Mickey typed the review drafts of the manuscript.

CONTENTS

	<u>Page</u>
SUMMARY	iv
INTRODUCTION	1
DISTRIBUTION TO MAJOR DOMESTIC OUTLETS.....	1
Direct Food Use	1
Processed Foods	2
Beer Brewing	2
PER CAPITA CONSUMPTION OF RICE	3
DISTRIBUTION OF RICE BY REGION, PACKAGE SIZE, AND TYPE	4
RICE SHIPMENTS TO TERRITORIES AND FOR EXPORT.....	4
MILL ORIGIN OF RICE SHIPMENTS	5
Arkansas-Mississippi	5
Louisiana-Florida	5
Texas	6
California	7
RELATED REPORTS	8
TABLES	9

SUMMARY

U.S. rice millers and repackagers distributed 33.7 million hundredweight (cwt) of rice in marketing year 1984/85 for three major domestic uses: direct food, processed foods, and beer. This figure represents a 6.5-percent increase over shipments in 1982/83, the previous survey year. Domestic uses account for about half of the U.S. rice; the rest is exported. Rice shipments for food use rose by 2.5 million cwt, shipments for processing rose by 1.6 million cwt, and although reported rice shipments to the beer industry declined, use remained about the same. The sharp drop in U.S. rice exports in recent years may contribute to further expansion in the domestic rice market. This report, the sole source of detailed information on U.S. domestic rice distribution patterns for the 1984/85 marketing year, assesses proportional market shares and trends.

Shipments to the wholesale, retail, and restaurant trade for direct food use totaled 21.7 million cwt in 1984/85. Milled white rice accounted for 77 percent of these shipments; parboiled rice accounted for 17 percent. The Arkansas-Mississippi rice milling area was the major supplier to the direct food use market. The Texas mill area ranked second.

Package sizes of less than 5 pounds accounted for 28 percent of total U.S. direct food use distributions, and package sizes of 25 to 100 pounds accounted for 37 percent. The long-grain rice share of direct food use shipments was 75 percent, medium-grain's was 25 percent, and short-grain's was less than 1 percent.

Breakfast cereal, the largest processed food product made from rice (excluding beer), accounted for 3.6 million cwt of rice shipped in 1984/85. The Arkansas-Mississippi rice milling area was the principal source of rice for cereal manufacturers, accounting for 49 percent of the reported shipments. The amount of rice used for soups and baby foods was up slightly from 1982/83, but these outlets still accounted for only 11 percent of the processed foods.

Rice mills cooperating in the 1984/85 rice distribution survey reported shipments to breweries of 7 million cwt. The Arkansas-Mississippi mill area ranked first in shipments to beer processors; California mills ranked second.

U.S. Rice Distribution Patterns, 1984/85

Shelby H. Holder, Jr.*

INTRODUCTION

The sharp decline in U.S. rice exports in recent years has focused new attention on the domestic rice market, now accounting for about half the rice market. Producers and the industry are interested in finding new uses and in expanding traditional domestic outlets for rice.

The detailed data on domestic rice shipments in this study will be helpful in assessing market shares, changes in market outlets, and trends in distribution patterns. Such information is useful for economic analysis of the rice industry and efforts to expand domestic rice consumption.

Data in this study are based on information reported by 34 rice milling and repackaging firms, which accounted for 95 percent of total 1984/85 U.S. rice shipments. Since no data are available on their flow patterns, none of the 1.1 million hundredweight (cwt) of rice imported by the United States in 1984/85 is included in this study.

DISTRIBUTION TO MAJOR DOMESTIC OUTLETS

The three principal U.S. outlets for rice are direct food use, processed foods, and beer. U.S. rice millers and repackagers distributed 33.7 million cwt of rice to these three major outlets in marketing year 1984/85.

Direct Food Use

In 1984/85, 21.7 million cwt of rice was shipped to the wholesale, retail, and restaurant trade for direct food use (table 1). The proportion of the total distributed to each outlet was 65, 18, and 17 percent, respectively (table 2). Milled white rice accounted for 77 percent of reported direct food use shipments; and parboiled, precooked, and brown rice accounted for 17, 4, and 1 percent, respectively. Other specialty rices, principally aromatic rice, accounted for less than 1 percent. Of the reported 1984/85 specialty rice shipments of 4.9 million cwt, parboiled rice accounted for nearly 74 percent

* The author is an agricultural economist with the National Economics Division, Economic Research Service, U.S. Department of Agriculture, Fayetteville, Arkansas.

and precooked for 20 percent (table 3). Reported 1984/85 brown rice shipments of 270,000 cwt were only about 25 percent of the total domestic brown rice shipments reported by the Rice Millers' Association (RMA). The lower survey number is primarily due to nonresponse to the survey questionnaire and to lack of information on brown rice mill operations. Long-grain rice accounted for 99 percent of total specialty shipments and all of the parboiled and precooked rice shipments.

To replace some of the nutritive value lost by removing the bran layer in the milling process, 79 percent of the direct food use rice shipments in the domestic market were treated with thiamin, niacin, and iron enrichments (table 4). Nineteen percent of the reported shipments received riboflavin treatment.

Processed Foods

Breakfast cereals remain the foremost processed food use (excluding beer) of rice in the United States, accounting for shipments of nearly 3.6 million cwt in 1984/85 (table 5).^{1/} Medium-grain rice remains the most important type of rice used by breakfast cereal manufacturers. Significant quantities of brokens (second heads, screenings, and brewers) are also used.

Soups and baby foods each accounted for relatively minor use, but combined shipments were equivalent to 556,000 cwt in 1984/85. All of the rice used in soups was long grain. Baby food processors used brokens and rice flour.

When viewed only in terms of quantity shipped to food processors, use of rice in package mixes appears to be declining, with only 100,000 cwt reported for 1984/85. However, rice millers also directly ship rice package mixes. Millers were asked what proportion of their 1984/85 direct food use rice shipments were package mixes. Results show the proportions were equivalent to about 466,500 cwt (table 2). When this quantity is combined with reported shipments to food processors for use in package mixes (table 5), the total was 566,900 cwt.

Shipments of rice for other uses, such as pet foods, baked products, and candies, accounted for 738,000 cwt (table 5).

Beer Brewing

Beer brewing has recently accounted for about 25 percent of total annual domestic rice disappearance.^{2/} Use over the 4 marketing years, 1981/82-1984/85, varied from 9.1 million to 9.6 million cwt.

Rice used for brewing totaled 9.6 million cwt in 1984/85, according to the U.S. Department of the Treasury. However, rice millers cooperating in the 1984/85 rice distribution survey reported shipments to breweries of only 7 million cwt. The difference between the two totals is not fully explained by the fact that some rice millers did not cooperate in the study. The few white rice millers that did not cooperate in the 1984/85 survey ship mostly to the export market, not the beer industry.

^{1/} Although use of rice in beer is included in table 5 for convenience, it is treated as a separate outlet in this study.

^{2/} Monthly Statistical Release-Beer, Bureau of Alcohol, Tobacco and Firearms, U.S. Department of the Treasury.

Including beginning stocks plus production, the RMA reported 1984/85 supplies of 11.8 million cwt of brokens. Even if all shipments to both the domestic and export market had been grade #2 with 4-percent brokens (#2-4%), 3.1 million cwt of brokens would have been used for direct food consumption, processed foods, and exports. This plus 0.7 million cwt ending stocks would leave only 8 (11.8 - 3.1 - 0.7) million cwt of brokens available for shipment to beer brewers. Most of the domestic market rice demand is for #2-4%, but exports include some shipments with a higher brokens content such as #3-15% and #5-20%, which would have further reduced the supplies of brokens available to beer processors. Consequently, although the reported rice shipments of 7 million cwt (80 percent of which was brokens) to beer processors may at first appear much too low, the number may be close to actual shipments. Of course, use of rice by beer processors is not necessarily exactly equal to mill-reported shipments.

PER CAPITA CONSUMPTION OF RICE

Rice distribution data help determine changes in per capita direct food use in the nine major geographic regions of the United States. The regional per capita rice consumption data in table 6, however, are only for direct food use and do not show total use. These data are based on distribution of rice for direct food use to States and regions as reported by rice millers. They do not include Government distributions, imports (for which no State and regional destination data are published), or distribution for use by the military, use in processed foods, and use in brewing beer.

However, total per capita rice consumption and consumption by major outlet can be estimated using data from industry and Government sources. In 1984/85, the RMA reported total domestic shipments (excluding territories) of 40.4 million cwt.^{3/} Rice used in beer brewing accounted for 9.6 million cwt, according to the Department of the Treasury, leaving a total for direct food use and processed food use of 30.8 cwt. Using the 1984/85 data from table 1 to make proportional allocations, one can allocate 81 percent of the total, or 24.9 million cwt, to direct food use and the balance of 5.9 million cwt to processed food use. Adding the 1.1 million cwt of rice imported in 1984/85 to direct food use brings that total to 26 million cwt. Dividing these allocated totals by the July 1, 1985, population estimate (238.7 million) yields a total of 17.4 pounds of rice consumed per capita: 10.9 pounds for direct food use, 2.5 pounds for processed foods, and 4 pounds for beer brewing.

The proportion of reported direct food use shipments by rice millers and repackagers to the major U.S. geographic regions in 1984/85 is shown in table 6. The Middle Atlantic region ranked first and accounted for 25 percent. The Pacific, West South Central, and South Atlantic regions ranked second, third, and fourth, respectively, and combined accounted for almost 55 percent of the reported shipments for direct food use in 1984/85. The Middle Atlantic, West South Central, and Pacific regions had the highest per capita consumption of rice for direct food use (table 6). The Middle Atlantic and West South Central regions ranked first with 14 pounds per capita. However, if most of the 1.1 million cwt of rice imported into the United States is consumed in the Pacific region, as customs district import data seem to indicate, per capita consumption of rice for direct food use in that region would be higher than 14 pounds.

^{3/} Statistical Statement July 1985, Rice Millers' Association, Arlington, VA.

DISTRIBUTION OF RICE BY REGION, PACKAGE SIZE, AND TYPE

The Middle Atlantic region received 5.2 million cwt of rice for direct food use in 1984/85, making it the largest outlet for this class of rice (table 7). New York and New Jersey accounted for most of the direct food use rice shipments to the Middle Atlantic region. Three-fourths of the shipments to the Middle Atlantic were shipments of long-grain rice, and virtually all of the remaining shipments were medium-grain rice.

Reported direct food use rice shipments to the Pacific region totaled 4.3 million cwt in 1984/85, ranking it second in importance in rice consumption. California was the most important rice-consuming State in the Pacific region, accounting for 79 percent of that region's direct food use consumption. Consumption by rice type in the Pacific region was about evenly divided between long- and medium-grain rice. However, shipments to Hawaii were over 90-percent medium-grain. Over 50 percent of the rice for direct food use in the Pacific region, was in packages of 25 pounds or larger. No other geographic region has as high a proportion of its rice for direct food use packaged in this size category (25 to 100 pounds).

The West South Central region ranked third in volume of rice consumed for direct food use in 1984/85. Texas, Arkansas, and Louisiana accounted for 98 percent of the receipts. Long-grain rice, with 83 percent of total receipts, was the most popular rice for direct food use in the West South Central region.

Of total U.S. direct food use distributions reported for 1984/85, package sizes of less than 5 pounds accounted for 28 percent (5.8 million cwt) and 25- to 100-pound sizes accounted for 37 percent (7.6 million cwt) (table 7). Package sizes of 5 to 9 pounds and those 10 to 24 pounds accounted for 15 percent (3 million cwt) and 13 percent (2.8 million cwt), respectively, of total direct food use shipments.

Long-grain rice accounted for 75 percent of the total direct food use market in 1984/85 (table 7). However, six of nine geographic regions had a long-grain use proportional share above the U.S. average, ranging from 80 percent in the Mountain region to 91 percent in the South Atlantic region. The Middle Atlantic region ranked first in long-grain receipts, with 3.9 million cwt. Medium-grain captured 25 percent of the total direct food use, market outlet, and short-grain took less than 1 percent. The Pacific and Middle Atlantic regions received the greatest shipments of medium-grain rice for direct food use with about 2.2 million cwt for the Pacific. The West North Central and New England regions had the highest short-grain use.

Distributions of specialty rice (parboiled, precooked, and brown) were highest to the Middle Atlantic, West South Central, and South Atlantic regions, in that order. These three regions accounted for almost 66 percent of the reported 1984/85 specialty rice domestic shipments.

RICE SHIPMENTS TO TERRITORIES AND FOR EXPORT

Reported shipments to U.S. territories totaled 3.6 million cwt for 1984/85 (table 8). Puerto Rico received 92 percent of the shipments, with short-grain rice accounting for 59 percent of the total. For all shipments to territories, long-, medium-, and short-grain shares were 7, 38, and 55 percent, respectively. All reported bulk rice shipments were to Puerto Rico. Packages of less than 5 pounds composed most of the remainder.

Twenty-eight firms owning 43 mills reported 1984/85 exports of 37.4 million cwt (table 9). Rice in 25- to 100-pound bags (mostly 100's) accounted for 64 percent of all shipments, and accounted for 29 percent of bulk shipments. Long- and medium-grain rice shared 74 percent and 26 percent of the market, respectively. Short-grain rice exports were only one-tenth of 1 percent of reported export shipments in 1984/85.

MILL ORIGIN OF RICE SHIPMENTS

Rice distribution data from firms with rice milling facilities in more than one State were tabulated as originating from the State where the major volume was processed. Although only a few firms operate mills in more than one State, results of the origin data may be slightly biased since firms with multi-mill operations do not supply data for each facility separately.

Arkansas-Mississippi 4/

Rice milling firms in the Arkansas-Mississippi area reported distributions of 8.3 million cwt of rice for direct food use in 1984/85 (table 10). The Middle Atlantic and West South Central regions were the most important direct food use markets, accounting for 34 and 20 percent, respectively, of that milling area's direct food use shipments. The South Atlantic and East North Central regions were also important direct food use markets for the Arkansas-Mississippi mill area. Eighty-five percent of this mill area's shipments for direct food use were long-grain. All package size groups were well represented in the total direct food use rice shipments.

U.S. territories are not an important market for the Arkansas-Mississippi mill area. Only 151,900 cwt of rice was reported as shipped to territories in 1984/85, of which 91 percent was medium-grain (table 11). The shipments were composed mostly of smaller packages of less than 5 pounds.

About 23 percent of the exports reported by mills cooperating in the 1984/85 survey originated from the Arkansas-Mississippi rice milling area. Ninety-four percent of the shipments were long-grain (table 9).

The Arkansas-Mississippi mill area was the largest supplier of rice to breakfast cereal manufacturers in 1984/85, with 1.8 million cwt or almost half of the total reported shipments of 3.6 million cwt (table 12). This milling area was also the largest supplier of rice for brewing beer.

Louisiana-Florida

The Middle Atlantic region, accounting for 1.2 million cwt of rice, was the principal market for direct food use rice shipments from the Louisiana-Florida rice milling area in 1984/85 (table 13). Shipments to the region were about evenly split between long- and medium-grain rice packaged mostly in sizes of less than 25 pounds. The South Atlantic and West South Central regions ranked second and third, respectively, in importance as direct food use rice markets for the Louisiana-Florida mill area in 1984/85. Florida was the most important outlet in the South Atlantic region, and Louisiana was the most important outlet in the West South Central region. Long-grain rice

4/ Mississippi mills were included with Arkansas to avoid disclosure of individual mill operations and markets.

shipments to California in smaller sized packages (less than 5 pounds) also constituted an important market for the Louisiana-Florida mill area. Because of freight rate differentials, the shipments probably came from mills in Louisiana.

The total Louisiana-Florida mill area shipments of rice for direct food use were 3.3 million cwt in 1984/85, sharply above the 0.7 million cwt reported in 1982/83. The change is primarily due to a change in the design of the computer program used to summarize the 1984/85 rice distribution survey data and not to a significant change in distribution patterns. The computer program allocates 1984/85 rice shipments of a multi-mill firm to the State in which most of the firm's mill volume is located. Consequently, in 1982/83 shipments from a Louisiana mill were summarized as a part of the Texas mill area shipments rather than Louisiana, as in 1984/85.

The Louisiana-Florida rice milling area reported shipments of 758,000 cwt of rice to U.S. territories in 1984/85. This was equal to about 66 percent of the 1.1 cwt shipped to territories by all mills in the southern rice growing States (table 11). Most of the shipments were medium-grain rice in packages of less than 5 pounds.

About 14 percent of the total exports reported by rice mills cooperating in the 1984/85 rice distribution survey originated from Louisiana-Florida mills. Seventy-five percent was long-grain and 25 percent was medium-grain (table 9). Excluding reported distributions to beer brewers, 79 percent (838,000 cwt) of shipments from the Louisiana-Florida rice milling area to processors was to breakfast cereal manufacturers (table 12). About 66 percent of the shipments for cereal from the Louisiana area was medium-grain rice, and most of the balance was broken.

Texas

Multi-mill firm divestitures of some Texas rice-milling facilities and the allocation procedures of the computer model used to summarize the rice mill distribution data dropped reported total shipments of rice for direct food use from the Texas mill area by 20 percent, from 7.8 million cwt in 1982/83 to 6.2 million cwt in 1984/85 (table 14). The West South Central region was the most important outlet for Texas mill area distributions for direct food use, in 1984/85, followed by the Pacific region (especially California). Most of the shipments to the Pacific region were in package sizes of 25 to 100 pounds, and 56 percent was long-grain rice.

The Texas mill area is not a major supplier of rice to U.S. territories, accounting for only 6 percent of the total reported shipments of 3.6 million cwt in 1984/85 (table 11). Texas' major U.S. territories market was Puerto Rico, and almost all of the shipments were small packages (less than 5 pounds) of long-grain rice.

The Texas mill area was the most important supplier of rice to the U.S. rice export market in 1984/85, with a share of 46 percent of the reported total of 37.4 million cwt. Of the reported 17.2 million cwt the Texas mill area shipped for export, 90 percent was long-grain rice. Of all of the reported 1984/85 U.S. rice export shipments of specialty rice, Texas area mills accounted for 6.8 million cwt or 69 percent of the 9.9 million cwt total (table 15).

The Texas mill area was the largest supplier of rice to soup and baby food processors and the major source of rice flour shipments. This mill area ranked third in the rice shipments to beer brewers with 1.1 million cwt.

California

The principal direct food use rice market for the California area was the Pacific region, which accounted for 77 percent of reported shipments in 1984/85. Of the shipments to this geographic region, California was foremost with 1.4 million cwt or 66 percent of the total (table 15). The California mill area ships very few small packages (less than 5 pounds); most of its shipments are in 25- to 100-pound bags (64 percent) and 10- to 24-pound bags (19 percent). California mills reported direct food use rice shipments to all geographic regions except the East South Central. Distributions of long-grain rice were 21 percent of that State's total direct food use shipments in 1984/85, up from 14 percent in 1982/83. However, medium-grain rice still accounted for 76 percent of the direct food use rice shipments by California mills in 1984/85.

California rice mills are the major suppliers of rice to Puerto Rico, with 67 percent of that market. Eighty-eight percent of California rice mill shipments to Puerto Rico were short-grain rice (table 11). All were bulk shipments. The California mill area ranked first in export shipments of medium-grain rice in 1984/85, and captured 17 percent of all reported U.S. rice exports.

The California area distributed 32 percent of all rice used by processors, including shipments to beer brewers (table 12). California ranked second in rice shipments to cereal manufacturers and first in shipments for other uses such as pet foods and candies.

RELATED REPORTS

Here is a list of Government reports concerning domestic rice distribution patterns. The reports are market-year specific and are in chronological order.

Doty, Harry O., Jr. Patterns of Rice Distribution in the United States and Territories, AMS-305. U.S. Dept. Agr., Agr. Mktg. Serv., May 1959 (for marketing years 1955/56 and 1956/57).

McGrath, Edward J. Domestic Distribution Patterns for Rice, ERS-126. U.S. Dept. Agr., Econ. Res. Serv., May 1963 (for marketing years 1960/61 and 1961/62).

Eiland, J. C. Distribution of Rice in the United States, 1966/67, ERS-408. U.S. Dept. Agr., Econ. Res. Serv., April 1969, (for marketing year 1966/67).

Eiland, J. C., and Theo. F. Moriak. Distribution Patterns for U.S. Rice, 1969/70, ERS-484. U.S. Dept. Agr., Econ. Res. Serv., May 1972 (for marketing year 1969/70).

Eiland, J. C., and Theo. F. Moriak. Market Patterns for U.S. Rice, 1971/72, ERS-528. U.S. Dept. Agr., Econ. Res. Serv., August 1973 (for marketing year 1971/72).

Eiland, J. C. U.S. Rice Distribution Patterns, 1972/73, ERS-567. U.S. Dept. Agr., Econ. Res. Serv., November 1974 (for marketing year 1972/73).

Holder, Shelby H., Alberta Smith, and J. C. Eiland. Distribution Patterns for U.S. Rice, 1973/74, ERS-624. U.S. Dept. Agr., Econ. Res. Serv., March 1976 (for marketing year 1973/74).

Holder, Shelby H., and Alberta Smith. An Analysis of Rice Distribution Patterns, AER-413. U.S. Dept. Agr., Econ., Stat., Coop., Serv., November 1978 (for marketing years 1955/56 through 1974/75).

Holder, Shelby H. and David Martella. U.S. Rice Distribution Update, SB-640. U.S. Dept. Agr., Econ. Res. Serv., July 1980 (for marketing years 1975/76 and 1978/79).

Holder, Shelby H., and Douglass Dorland. U.S. Rice Distribution Patterns, 1980/81, SB-693. U.S. Dept. Agr., Econ. Res. Serv., October 1982 (for marketing year 1980/81).

Holder, Shelby H. U.S. Rice Distribution Patterns, 1982/83, SB-723. U.S. Dept. Agr., Econ. Res. Serv., March 1985 (for marketing year 1982/83).

Table 1--Distribution of milled rice to principal domestic outlets^{1/}

Year ^{2/}	Unit	Directly for food ^{3/}	Processed foods	Beer	Total
1956/57	1,000 cwt	8,707.7	1,560.6	2,776.4	13,044.7
	Percent	66.7	12.0	21.3	100.0
1960/61	1,000 cwt	10,286.3	2,170.5	2,764.6	15,221.4
	Percent	67.6	14.2	18.2	100.0
1961/62	1,000 cwt	11,294.8	2,270.5	2,982.4	16,547.7
	Percent	68.3	13.7	18.0	100.0
1966/67	1,000 cwt	11,087.0	2,961.1	3,147.5	17,195.6
	Percent	64.5	17.2	18.3	100.0
1969/70	1,000 cwt	13,012.8	2,994.9	4,631.2	20,638.9
	Percent	63.1	14.5	22.4	100.0
1971/72	1,000 cwt	12,835.8	3,455.3	4,082.0	20,373.1
	Percent	63.0	17.0	20.0	100.0
1972/73	1,000 cwt	13,325.3	3,174.4	4,553.7	21,053.4
	Percent	63.3	15.1	21.6	100.0
1973/74	1,000 cwt	13,181.5	3,413.8	5,193.8	21,789.1
	Percent	60.5	15.7	23.8	100.0
1974/75	1,000 cwt	12,604.0	2,507.1	6,096.4	21,207.5
	Percent	59.4	11.8	28.8	100.0
1975/76	1,000 cwt	12,958.1	2,849.3	4,642.1	20,449.5
	Percent	63.4	13.9	22.7	100.0
1978/79	1,000 cwt	15,221.0	3,717.1	8,158.7	27,096.8
	Percent	56.2	13.7	30.1	100.0
1980/81	1,000 cwt	18,789.9	4,490.9	7,667.0	30,947.8
	Percent	60.6	14.5	24.8	100.0
1982/83	1,000 cwt	19,173.3	3,342.0	9,095.0	31,610.3
	Percent	60.6	10.6	28.8	100.0
1984/85	1,000 cwt	21,664.44/	4,971.0	7,038.05/	33,673.46/
	Percent	64.3	14.8	20.9	100.0

^{1/} Excludes shipments to territories.

^{2/} Marketing year beginning August 1.

^{3/} Includes Government distribution to schools, institutions, welfare agencies, and purchases for U.S. military mess halls and for overseas commissary resales.

^{4/} Includes 466,550 cwt of rice shipped directly by rice milling firms as packaged rice.

^{5/} See discussion of this number on pages 2-3.

^{6/} Does not include rice imports.

Table 4--Domestic milled rice shipments treated
with enrichments and additives, 1984/85^{1/}

Item	Quantity treated	Proportion of shipments treated
	<u>1,000 cwt</u>	<u>Percent</u>
Total shipments ^{2/}	21,021.3	--
Vitamin enriched: ^{3/}		
Powder	12,947.8	61.6
Rinse resistant premix	3,623.1	17.2
Total	16,570.9	78.8
Other vitamins added: ^{4/}		
Riboflavin	4,027.6	19.2
Vitamin D	237.7	1.1
Calcium	912.9	4.3
Additives:		
Talc-coated ^{5/}	766.6	3.6

-- Not applicable.

^{1/} Marketing year beginning August 1.

^{2/} Total domestic milled rice shipments for direct food use excluding U.S. territories.

^{3/} Enriched rice has thiamin, niacin, and iron added.

^{4/} Rice receiving other vitamins might also have been enriched; therefore, total percentage is greater than 100.

^{5/} A coating that gives rice a polished appearance.

Table 5--Rice distributed to U.S. food processors
by type of rice and product, 1984/85^{1/}

Type and class of rice	Type of product ^{2/}							Percent- age of total
	Cereal	Soup	Baby food	Package mix	Beer	Other	Total ^{3/}	
	1,000 cwt							Percent
Long-grain	472.8	240.6	0	100.4	181.0	260.3	1,254.9	10.5
Medium-grain	2,086.0	0	0	0	1,112.5	0	3,198.5	26.6
Short-grain	81.4	0	0	0	0	45.0	126.4	1.1
Total head rice	2,640.1	240.6	0	100.4	1,293.5	305.3	4,579.8	38.1
Broken	923.5	0	149.4	0	5,636.5	348.3	7,057.7	58.8
Brewers	0	0	0	0	107.9	0	107.9	.9
Mill run	0	0	0	0	0	0	0	0
Rice flour	13.0	0	166.3	0	0	84.0	263.3	2.2
Other	0	0	0	0	0	.3	.3	0
Total ^{4/}	3,576.5	240.6	315.7	100.4	7,038.0	737.9	12,009.0	100.0
Percent	29.8	2.0	2.6	.8	58.6	6.1	100.0	--

-- = Not applicable.

^{1/} Marketing year beginning August 1.

^{2/} Based on main product produced.

^{3/} Totals do not include purchases from Commodity Credit Corporation or imports but do include shipments by repackagers.

^{4/} Totals may not add due to rounding.

Table 6--Proportion of direct food use rice distributed
to major U.S. regions, 1984/85^{1/}

Region ^{2/}	Proportion of total		Amount per capita	
	Percent	Rank	Pounds	Rank
New England	3.3	7	5.3	5
Middle Atlantic	25.5	1	14.1	1
E. N. Central	7.9	5	3.9	7
W. N. Central	4.3	6	5.1	6
S. Atlantic	15.4	4	7.9	4
E. S. Central	2.4	8	3.2	9
W. S. Central	18.0	3	14.0	2
Mountain	2.1	9	3.4	8
Pacific	21.1	2	12.4	3
U.S. total ^{3/}	100.0	--	8.6	--

-- = Not applicable.

^{1/} Marketing year beginning August 1.

^{2/} Includes only distributions for direct food use. Excludes Government distributions, military use, and imports since region and State destinations are not available.

^{3/} Total may not add due to rounding.

Table 7--Distribution of milled rice for direct food use, by State, region,
package size, and type, 1984/851/

Destination	Package size					Total2/	Per- centage of U.S. total	Type			Spe- cialty rice3/
	Under	5 to	10 to	25 to	Bulk			Long-	Medium-	Short-	
	5 pounds	9 pounds	24 pounds	100 pounds				grain	grain	grain	
	1,000 cwt						Percent				1,000 cwt
Maine	9.9	7.6	12.9	1.5	0	31.9	0.2	49.4	11.2	39.4	5.7
New Hampshire	7.7	.8	.4	1.2	3.8	14.0	.1	96.2	3.8	0	3.0
Vermont	11.4	2.0	1.0	21.0	0	35.5	.2	94.7	5.3	0	7.9
Massachusetts	119.4	54.5	49.8	215.1	3.2	442.0	2.1	83.3	16.5	.1	115.9
Rhode Island	9.4	2.1	.9	6.3	1.1	19.8	.1	87.1	12.9	0	6.6
Connecticut	73.4	31.0	14.4	9.8	0	128.5	.6	78.9	21.1	0	58.7
New England	231.2	98.1	79.4	254.8	8.1	671.7	3.3	81.9	16.2	2.0	197.8
New York	468.5	431.0	420.5	948.0	153.4	2,421.3	11.8	81.5	17.1	1.4	417.5
New Jersey	446.6	756.0	653.6	282.8	129.6	2,268.5	11.0	64.3	35.7	0	235.6
Pennsylvania	338.1	42.1	23.8	157.0	0	561.1	2.7	92.1	7.8	.1	281.0
Middle Atlantic	1,253.2	1,229.1	1,097.9	1,387.8	282.9	5,250.9	25.5	75.2	24.2		
Ohio	148.8	25.0	17.9	140.1	3.6	335.4	1.6	87.5	12.5	0	116.8
Indiana	51.5	2.9	4.1	19.6	0	78.1	.4	93.6	6.4	0	29.0
Illinois	281.5	102.1	90.9	292.9	0	767.5	3.7	85.6	14.3	.1	156.1
Michigan	168.5	9.7	9.8	122.5	0	310.6	1.5	91.4	8.6	0	107.1
Wisconsin	69.9	17.1	7.7	48.3	0	143.0	.7	74.3	25.4	.3	25.4
E.N. Central	720.3	156.8	130.4	623.4	3.6	1,634.6	7.9	86.5	13.4	.1	434.4
Minnesota	42.9	7.7	6.2	84.4	3.4	144.6	.7	82.6	17.1	.3	39.5
Iowa	45.1	.2	2.7	10.9	0	58.9	.3	92.6	7.4	0	26.8
Missouri	213.6	36.4	67.1	94.3	73.7	485.1	2.4	49.8	45.9	4.3	31.3
North Dakota	5.2	3.1	.3	27.5	0	36.0	.2	37.5	61.2	1.4	7.5
South Dakota	4.0	2.9	.1	22.4	0	29.4	.1	24.1	74.2	1.7	1.3
Nebraska	17.4	1.5	2.0	10.1	0	31.1	.2	96.4	3.6	0	8.4
Kansas	31.3	2.2	24.6	51.9	0	109.9	.5	86.7	13.3	0	24.9
W.N. Central	359.5	53.9	103.1	301.4	77.1	895.0	4.3	62.7	34.8	2.5	139.7
Delaware	3.7	.3	.5	2.0	0	6.4	0	88.6	11.4	0	2.0
Maryland	86.3	24.2	29.4	77.7	0	217.6	1.1	89.4	10.6	0	81.8
District of Columbia	2.6	1.3	4.5	55.0	0	63.5	.3	96.4	3.6	0	9.8
Virginia	58.4	12.1	8.3	77.4	68.1	224.3	1.1	69.0	30.9	0	50.8
West Virginia	13.9	.1	.6	.8	0	15.4	.1	95.7	4.3	0	4.2
North Carolina	212.4	41.9	21.2	82.3	0	357.9	1.7	92.9	7.1	0	85.3
South Carolina	232.8	80.5	65.0	161.4	0	539.7	2.6	91.8	8.2	0	143.5
Georgia	135.5	28.5	12.6	78.0	0	254.5	1.2	91.3	8.7	0	62.9
Florida	326.6	332.8	423.4	278.4	133.7	1,494.9	7.3	94.3	5.5	.2	425.0
S. Atlantic	1,072.1	521.7	565.5	813.0	201.9	3,174.1	15.4	91.4	8.5	.1	865.3

See footnotes at end of table.

Continued

Table 7--Distribution of milled rice for direct food use, by State, region,
package size, and type, 1984/85^{1/} - Continued

Destination	Package size					Total ^{2/}	Per-centage of U.S. total	Type			Spe- cialty rice ^{3/}
	Under 5 pounds	5 to 9 pounds	10 to 24 pounds	25 to 100 pounds	Bulk			Long- grain	Medium- grain	Short- grain	
	1,000 cwt						Percent			1,000 cwt	
Kentucky	22.6	1.8	1.7	8.7	0	34.8	0.2	94.3	5.7	0	14.4
Tennessee	68.7	5.9	8.2	11.6	46.8	141.2	.7	92.4	7.5	.1	91.9
Alabama	105.8	14.9	5.1	52.2	16.2	194.2	.9	89.2	10.8	0	57.7
Mississippi	82.2	10.3	3.9	19.8	0	116.3	.6	85.0	15.0	0	36.7
E.S. Central	279.3	33.0	19.0	92.2	63.0	486.4	2.4	89.5	10.5	0	200.7
Arkansas	325.1	4.2	6.2	429.7	412.6	1,177.9	5.7	78.5	21.5	0	397.9
Louisiana	186.8	223.9	81.6	500.7	17.5	1,010.5	4.9	76.9	23.1	0	78.1
Oklahoma	33.1	6.0	6.7	29.7	2.0	77.5	.4	83.9	16.0	.2	17.0
Texas	596.1	140.7	55.4	434.2	206.9	1,433.2	7.0	90.8	9.1	0	433.5
W.S. Central	1,141.0	374.8	149.9	1,394.4	639.0	3,699.1	18.0	83.0	17.0	0	926.5
Montana	5.1	.3	.4	2.8	0	8.6	0	84.5	15.5	0	3.1
Idaho	10.0	.8	.3	14.9	0	26.0	.1	58.8	39.3	2.0	2.2
Wyoming	6.0	2.8	0	22.0	0	30.8	.1	27.9	70.5	1.6	.2
Colorado	56.2	9.5	3.5	52.9	21.4	143.5	.7	89.2	10.7	.1	35.9
New Mexico	13.1	1.5	2.5	16.5	0	33.7	.2	79.2	20.6	.2	8.3
Arizona	38.1	10.9	6.3	56.2	0	111.5	.5	76.9	22.5	.7	21.5
Utah	10.8	4.2	5.8	24.0	0	44.8	.2	92.2	7.8	0	12.4
Nevada	18.8	.3	.8	15.3	0	35.1	.2	95.4	4.6	0	14.0
Mountain	158.1	30.2	19.7	204.7	21.4	434.1	2.1	79.8	19.8	.4	97.7
Washington	19.4	15.6	19.3	142.5	1.9	198.8	1.0	48.5	50.9	.6	26.0
Oregon	20.1	10.7	8.5	86.6	0	125.7	.6	52.0	46.9	1.1	18.7
California	505.4	421.1	315.9	2,063.8	145.4	3,451.7	16.8	55.5	43.1	1.4	339.7
Alaska	1.2	4.4	9.0	17.9	0	32.5	.2	65.0	35.0	0	3.1
Hawaii	4.1	61.5	255.6	217.0	0	538.2	2.6	5.7	93.4	.9	6.3
Pacific	550.2	513.3	608.2	2,527.8	147.4	4,346.8	21.1	49.0	49.7	1.3	393.9
U.S. total ^{4/}	5,765.0	3,010.8	2,773.0	7,599.6	1,444.4	20,592.7	100.0	74.6	24.8	.6	4,190.3

^{1/} Marketing year beginning August 1.

^{2/} Excludes shipments to territories and also Government distribution to States and military use because State destination data are not available. Shipments by repackagers are included.

^{3/} Includes parboiled, precooked, and brown rice. Specialty rice is included in total by package size and in proportion by type.

^{4/} Totals may not add due to rounding.

Table 8- Distribution of milled rice for direct food use to U.S. Territories,
package size, and type, 1984/85^{1/}

Destination	Package size					Total ^{2/}	Per-centage of U.S. total	Type			Spe- cialty rice ^{3/}
	Under 5 pounds	5 to 9 pounds	10 to 24 pounds	25 to 100 pounds	Bulk			Long- grain	Medium- grain	Short- grain	
											1,000 cwt
											Percent
Guam	0	10.5	17.8	138.8	0	167.1	4.6	4.1	95.9	0	0
Puerto Rico	1,045.0	35.1	1.6	9.6	2,253.3	3,344.6	92.3	6.8	33.9	59.2	26.0
Samoa	0	0	0	7.1	0	7.1	.2	0	100.0	0	0
Virgin Island	5.4	3.7	9.8	.2	0	19.2	.5	100.0	0	0	14.6
Wake	0	0	0	0	0	0	0	0	0	0	0
Trust Territory	0	1.0	29.5	53.2	0	83.7	2.3	6.4	93.6	0	0
Territory total ^{4/}	1,050.4	50.4	58.7	209.0	2,253.3	3,621.7	100.0	7.2	38.1	54.7	40.6

^{1/} Marketing year beginning August 1.

^{2/} Excludes Government shipments but includes repackagers.

^{3/} Includes parboiled, precooked, and brown rice. Specialty rice is included in package size and proportion by type.

^{4/} Totals may not add due to rounding.

Table 9- U.S. exports by package size and type, 1984/85^{1/}

Destination	Package size					Total ^{2/}	Per-centage of U.S. total	Type			Spe- cialty rice ^{3/}
	Under 5 pounds	5 to 9 pounds	10 to 24 pounds	25 to 100 pounds	Bulk			Long- grain	Medium- grain	Short- grain	
	1,000 cwt					Percent					1,000 cwt
Arkansas											
Mississippi	43.6	44.1	5.9	6,992.1	1,535.5	8,621.0	23.1	94.0	6.0	0	1,466.6
Louisiana											
Florida	100.0	114.8	83.0	2,964.5	2,137.8	5,400.2	14.4	75.5	24.5	0	1,648.4
Texas	1,038.1	132.1	1,171.9	11,265.4	3,551.4	17,158.9	45.9	90.3	9.7	0	6,780.8
Total South	1,181.7	291.0	1,260.7	21,221.9	7,224.7	31,180.1	83.4	88.8	11.2	0	9,895.8
California	1.3	.7	1.8	2,647.4	3,556.8	6,207.9	16.6	0	99.6	.4	0
U. S. total ^{4/}	1,183.0	291.7	1,262.5	23,869.3	10,781.5	37,388.1	100.0	74.0	25.9	.1	9,895.8

^{1/} Marketing year beginning August 1.

^{2/} Excludes Government distribution to States and military use because State destination data are not available. Also excludes shipments to territories but includes repackagers.

^{3/} Includes parboiled, precooked, and brown rice. Specialty rice is included in proportion by type.

^{4/} Totals may not add due to rounding.

Table 10- Distribution of rice by Arkansas-Mississippi mills for direct food use,
by State, region, package size, and type, 1984/851/

Destination	Package size					Total2/	Per- centage of U.S. total	Type			Spe- cialty rice3/ 1,000 cwt
	Under 5 pounds	5 to 9 pounds	10 to 24 pounds	25 to 100 pounds	Bulk			Long- grain	Medium- grain	Short- grain	
	1,000 cwt						Percent				
Maine	2.2	1.8	4.4	0.2	0	8.7	0.1	74.3	25.7	0	0.1
New Hampshire	2.3	0	0	0	3.8	6.2	.1	99.7	.3	0	0
Vermont	1.2	.1	0	20.0	0	21.3	.3	100.0	0	0	.1
Massachusetts	30.2	33.9	25.3	155.3	0	244.7	2.9	91.9	8.1	0	28.2
Rhode Island	1.0	.1	.4	3.0	1.1	5.6	.1	85.6	14.4	0	0
Connecticut	11.0	7.3	7.7	1.4	0	27.4	.3	65.5	34.5	0	6.0
New England	47.9	43.2	37.9	179.8	4.9	313.8	3.8	89.7	10.3	0	34.4
New York	104.6	153.0	283.0	607.1	151.4	1,299.2	15.6	89.9	10.1	0	60.5
New Jersey	226.8	541.6	449.7	102.6	67.6	1,388.3	16.7	76.0	24.0	0	57.0
Pennsylvania	23.7	14.6	14.8	87.4	0	140.5	1.7	92.4	7.1	.5	37.0
Middle Atlantic	355.0	709.3	747.6	797.1	219.0	2,827.9	34.0	83.2	16.8	0	154.5
Ohio	41.9	5.8	11.1	93.8	3.6	156.3	1.9	85.4	14.6	0	9.2
Indiana	20.1	1.7	3.1	7.6	0	32.5	.4	89.7	10.3	0	7.1
Illinois	177.5	89.2	83.0	191.6	0	541.3	6.5	86.2	13.8	0	49.9
Michigan	44.2	1.6	7.4	70.2	0	123.3	1.5	98.6	1.4	0	11.8
Wisconsin	36.1	10.7	6.1	13.3	0	66.2	.8	87.0	13.0	0	3.9
E. N. Central	319.8	109.0	110.7	376.5	3.6	919.7	11.1	87.9	12.1	0	81.8
Minnesota	10.0	1.1	5.5	50.5	3.4	70.4	.8	98.3	1.7	0	12.8
Iowa	7.3	.1	1.9	6.9	0	16.2	.2	98.5	1.5	0	.2
Missouri	186.1	30.6	64.3	40.7	57.9	379.5	4.6	36.9	57.7	5.4	7.4
North Dakota	1.2	.2	.2	5.1	0	6.6	.1	98.3	1.7	0	4.3
Nebraska	3.1	.6	1.6	5.8	0	11.0	.1	98.5	1.5	0	.6
Kansas	9.7	1.5	23.1	33.3	0	67.6	.8	86.0	14.0	0	11.0
W. N. Central	218.5	34.1	96.5	142.4	61.3	552.7	6.6	54.6	41.6	3.7	36.4
Maryland	5.0	1.1	25.3	40.3	0	71.7	.9	98.4	1.6	0	1.2
District of Columbia	.3	.2	3.2	31.8	0	35.5	.4	99.0	1.0	0	0
Virginia	8.2	1.5	3.4	44.0	66.2	123.3	1.5	55.1	44.9	0	2.7
West Virginia	4.2	0	.3	.1	0	4.5	.1	98.9	1.1	0	.2
North Carolina	35.0	13.5	9.2	58.6	0	116.2	1.4	98.2	1.8	0	8.2
South Carolina	32.8	25.8	15.6	79.6	0	153.7	1.8	93.5	6.5	0	72.3
Georgia	27.4	11.4	8.8	39.2	0	86.7	1.0	96.4	3.6	0	8.8
Florida	93.8	190.7	184.2	139.7	133.7	742.2	8.9	94.4	5.6	0	159.6
S. Atlantic	207.9	244.2	249.8	433.8	199.9	1,335.7	16.1	91.5	8.5	0	253.1

See footnotes at end of table.

Continued-

Table 10--Distribution of rice by Arkansas-Mississippi mills for direct food use,
by State, region, package size, and type, 1984/85^{1/} -- Continued

Destination	Package size					Total ^{2/}	Per- centage of U.S. total	Type			Spe- cialty rice ^{3/}
	Under 5 pounds	5 to 9 pounds	10 to 24 pounds	25 to 100 pounds	Bulk			Long- grain	Medium- grain	Short- grain	
	1,000 cwt						Percent				1,000 cwt
Kentucky	5.6	1.1	0.7	4.5	0	11.9	0.1	90.2	9.8	0	1.0
Tennessee	14.0	1.2	2.2	1.1	11.1	29.6	.4	89.1	10.6	.3	2.2
Alabama	25.5	10.8	3.3	8.3	0	48.0	.6	92.7	7.3	0	2.2
Mississippi	33.9	6.6	3.3	2.9	0	46.7	.6	85.6	14.4	0	5.5
E. S. Central	79.1	19.7	9.5	16.8	11.1	136.2	1.6	89.3	10.7	.1	10.9
Arkansas	21.6	3.9	6.0	426.7	383.5	841.7	10.1	70.3	29.7	0	103.8
Louisiana	21.2	82.1	24.2	352.1	8.3	487.9	5.9	95.6	4.4	0	10.6
Oklahoma	9.6	2.6	5.2	17.4	2.0	36.7	.4	94.7	5.3	0	2.9
Texas	50.2	13.0	1.7	24.1	167.7	256.8	3.1	99.0	1.0	0	24.0
W. S. Central	102.5	101.6	37.2	820.3	561.4	1,623.0	19.5	83.0	17.0	0	141.3
Colorado	31.3	3.8	2.0	19.9	11.6	68.8	.8	91.5	8.5	0	1.4
New Mexico	2.3	0	.7	4.6	0	7.7	.1	100.0	0	0	.6
Arizona	5.7	.1	.2	1.4	0	7.4	.1	99.0	.9	0	1.3
Utah	1.6	.1	2.6	7.9	0	12.3	.1	100.0	0	0	3.5
Nevada	5.9	0	.1	.6	0	6.6	.1	100.0	0	0	0
Mountain	51.9	4.1	5.7	36.1	11.6	109.3	1.3	94.2	5.8	0	6.8
Washington	3.7	0	0	12.5	1.9	18.1	.2	97.9	2.1	0	1.6
Oregon	4.0	0	1.2	5.8	0	11.1	.1	100.0	0	0	5.9
California	109.7	45.4	67.2	232.3	19.4	473.9	5.7	99.6	.2	.2	68.9
Pacific	117.4	45.4	68.4	250.6	21.3	503.1	6.0	99.5	.3	.2	76.4
U.S. total ^{4/}	1,499.9	1,310.5	1,363.3	3,053.5	1,094.3	8,321.6	100.0	84.6	15.1	.3	795.6

^{1/} Marketing year beginning August 1.

^{2/} Excludes Government distribution to States and military use because State data are not available. Also excludes shipments to territories but includes repackagers. May include rice reported by a mill that has a facility in another State.

^{3/} Includes parboiled, precooked, and brown rice. Specialty rice is included in total by package size and proportion by type.

^{4/} Totals may not add due to rounding.

Table 11--Rice distributed to U.S. Territories, by mill area,
by package size, and type, 1984/85^{1/}

Destination	Package size					Total ^{2/}	Per- centage of U.S. total	Type			Spe- cialty rice ^{3/}
	Under 5 pounds	5 to 9 pounds	10 to 24 pounds	25 to 100 pounds	Bulk			Long- grain	Medium- grain	Short- grain	
	1,000 cwt						Percent			1,000 cwt	
Arkansas- Mississippi:											
Puerto Rico	146.2	1.7	0	3.9	0	151.9	4.2	8.7	91.3	0	6.8
Louisiana- Florida:											
Puerto Rico	751.9	0	0	.9	0	752.8	20.8	4.0	96.0	0	0
Virgin Island	2.7	1.7	.6	0	0	5.0	.1	100.0	0	0	.4
Territory total	754.5	1.7	.6	.9	0	757.8	20.9	4.7	95.3	0	.4
Texas:											
Puerto Rico	146.9	33.4	1.6	4.8	0	186.6	5.2	98.8	1.2	0	19.3
Virgin Island	2.8	2.0	9.2	.2	0	14.2	.4	100.0	0	0	14.2
Trust Territory	0	.1	13.8	11.4	0	25.2	.7	0	100.0	0	0
Territory total	149.7	35.4	24.6	16.4	0	226.0	6.2	87.8	12.2	0	33.4
Total South:											
Puerto Rico	1,045.0	35.1	1.6	9.6	0	1,091.3	30.1	20.9	79.1	0	26.0
Virgin Island	5.4	3.7	9.8	.2	0	19.2	.5	100.0	0	0	14.6
Trust Territory	0	.1	13.8	11.4	0	25.2	.7	0	100.0	0	0
Territory total	1,050.4	38.9	25.2	21.2	0	1,135.8	31.4	21.8	78.2	0	40.6
California:											
Guam	0	10.5	17.8	138.8	0	167.1	4.6	4.1	95.9	0	0
Puerto Rico	0	0	0	0	2,253.3	2,253.3	62.2	0	12.1	87.9	0
Samoa	0	0	0	7.1	0	7.1	.2	0	100.0	0	0
Trust Territory	0	1.0	15.7	41.8	0	58.4	1.6	9.2	90.8	0	0
Territory total	0	11.5	33.4	187.8	2,253.3	2,486.0	68.6	.5	19.8	79.7	0
U.S. total:											
Guam	0	10.5	17.8	138.8	0	167.1	4.6	4.1	95.9	0	0
Puerto Rico	1,045.0	35.1	1.6	9.6	2,253.3	3,344.6	92.3	6.8	33.9	59.2	26.0
Samoa	0	0	0	7.1	0	7.1	.2	0	100.0	0	0
Virgin Island	5.4	3.7	9.8	.2	0	19.2	.5	100.0	0	0	14.6
Trust Territory	0	1.0	29.5	53.2	0	83.7	2.3	6.4	93.6	0	0
Territory total ^{4/}	1,050.4	50.4	58.7	209.0	2,253.3	3,621.7	100.0	7.2	38.1	54.7	40.6

^{1/} Marketing year beginning August 1.

^{2/} Excludes Government shipments but includes repackagers.

^{3/} Includes parboiled, precooked, and brown rice. Specialty rice is included in total by package size and proportion by type.

^{4/} Totals may not add due to rounding.

Table 12--Rice distributed to processors from specified mill areas,
by type and product, 1984/85^{1/}

Type and class of rice	Type of product ^{2/}							Percent- age of total
	Cereal	Soup	Baby food	Package mix	Beer	Other	Total ^{3/}	
	<u>1,000 cwt</u>							<u>Percent</u>
Long grain:								
Arkansas-								
Mississippi	451.3	57.9	0	19.2	0	179.0	707.4	5.9
Louisiana	21.4	0	0	81.0	64.0	0	166.4	1.4
Texas	.1	182.7	0	.1	117.0	81.3	381.1	3.2
Total South	472.7	240.6	0	100.3	181.0	260.3	1,254.9	10.4
California	0	0	0	0	0	0	.1	0
U.S. total	472.8	240.6	0	100.4	181.0	260.3	1,254.9	10.5
Medium grain:								
Arkansas-								
Mississippi	1,280.8	0	0	0	298.0	0	1,578.8	13.1
Louisiana	569.7	0	0	0	68.0	0	637.7	5.3
Texas	0	0	0	0	325.4	0	325.4	2.7
Total South	1,850.5	0	0	0	691.4	0	2,541.9	21.2
California	235.5	0	0	0	421.1	0	656.6	5.5
U.S. total	2,086.0	0	0	0	1,112.5	0	3,198.5	26.6
Short grain:								
Arkansas-								
Mississippi	0	0	0	0	0	0	0	0
Louisiana	.1	0	0	0	0	0	.1	0
Texas	.4	0	0	0	0	0	.4	0
Total South	.5	0	0	0	0	0	.5	0
California	80.8	0	0	0	0	45.0	125.8	1.0
U.S. total	81.4	0	0	0	0	45.0	126.4	1.1
Broken:								
Arkansas-								
Mississippi	23.0	0	0	0	2,625.0	64.4	2,712.3	22.6
Louisiana	246.6	0	143.0	0	171.6	0	561.2	4.7
Texas	0	0	0	0	631.1	33.1	664.2	5.5
Total South	269.6	0	143.0	0	3,427.6	97.5	3,937.7	32.8
California	653.9	0	6.4	0	2,208.9	250.8	3,120.0	26.0
U.S. total	923.5	0	149.4	0	5,636.5	348.3	7,057.7	58.8

See footnotes at end of table.

Continued-

Table 12- Rice distributed to processors from specified mill areas,
by type and product, 1984/85^{1/} -- Continued

Type and class of rice	Type of product ^{2/}							Percent- age of total
	Cereal	Soup	Baby food	Package mix	Beer	Other	Total ^{3/}	
	<u>1,000 cwt</u>							<u>Percent</u>
Brewers:								
Arkansas								
Mississippi	0	0	0	0	0	0	0	0
Louisiana	0	0	0	0	107.9	0	107.9	.9
Texas	0	0	0	0	0	0	0	0
Total South	0	0	0	0	107.9	0	107.9	.9
California	0	0	0	0	0	0	0	0
U.S. total	0	0	0	0	107.9	0	107.9	.9
Rice flour:								
Arkansas								
Mississippi	0	0	0	0	0	.1	.1	0
Louisiana	0	0	0	0	0	.2	.2	0
Texas	13.0	0	166.3	0	0	83.3	262.6	2.2
Total South	13.0	0	166.3	0	0	83.6	262.8	2.2
California	0	0	0	0	0	.5	.5	0
U.S. total	13.0	0	166.3	0	0	84.0	263.3	2.2
Other:								
Arkansas								
Mississippi	0	0	0	0	0	0	0	0
Louisiana	0	0	0	0	0	0	0	0
Texas	0	0	0	0	0	.2	.2	0
Total South	0	0	0	0	0	.2	.2	0
California	0	0	0	0	0	.1	.1	0
U.S. total	0	0	0	0	0	.3	.3	0
Total all types:								
Arkansas								
Mississippi	1,755.1	57.9	0	19.2	2,923.0	243.4	4,998.6	41.6
Louisiana	837.7	0	143.0	81.0	411.5	.2	1,473.5	12.3
Texas	13.5	182.7	166.3	.1	1,073.5	197.9	1,633.9	13.6
Total South	2,606.3	240.6	309.3	100.3	4,408.0	441.5	8,106.0	67.5
California	970.2	0	6.4	0	2,630.0	296.4	3,903.0	32.5
U.S. total ^{4/}	3,576.5	240.6	315.7	100.4	7,038.0	737.9	12,009.0	100.0

^{1/} Marketing year beginning August 1.

^{2/} Based on main product produced.

^{3/} Totals do not include imports but do include shipments by repackagers.

^{4/} Totals may not add due to rounding.

Table 13- Distribution of rice by Louisiana-Florida mills for direct food use,
by State, region, package size, and type, 1984/85^{1/}

Destination	Package size					Total ^{2/}	Per- centage of U.S. total	Type			Spe- cialty rice ^{3/}
	Under 5 pounds	5 to 9 pounds	10 to 24 pounds	25 to 100 pounds	Bulk			Long- grain	Medium- grain	Short- grain	
											1,000 cwt
Maine	2.3	1.0	0	0	0	3.3	0.1	60.0	40.0	0	0.4
Vermont	3.9	1.4	0	0	0	5.2	.2	64.1	35.9	0	.7
Massachusetts	43.3	5.1	1.9	0	0	50.3	1.5	59.0	41.0	0	6.2
Rhode Island	2.9	1.1	0	0	0	4.0	.1	63.2	36.8	0	.5
Connecticut	33.4	11.7	0	0	0	45.1	1.4	61.0	39.0	0	5.6
New England	86.5	20.8	1.9	0	0	109.2	3.3	60.3	39.7	0	13.6
New York	204.4	140.3	63.5	3.5	0	411.7	12.5	91.3	8.7	0	48.2
New Jersey	131.9	182.9	174.9	133.0	0	622.6	18.8	29.5	70.5	0	21.3
Pennsylvania	110.4	14.5	2.4	.1	0	127.4	3.9	77.0	23.0	0	15.8
Middle Atlantic	446.6	337.7	240.8	136.6	0	1,161.7	35.1	56.6	43.4	0	85.3
Ohio	21.8	14.9	3.6	3.5	0	43.8	1.3	58.0	42.0	0	5.4
Indiana	1.4	.3	.1	0	0	1.7	.1	63.0	36.9	.1	.2
Illinois	27.5	8.4	2.3	0	0	38.2	1.2	83.0	17.0	0	4.8
Michigan	43.1	5.9	0	0	0	49.0	1.5	63.0	37.0	0	6.1
Wisconsin	5.6	2.1	1.1	0	0	8.8	.3	74.0	26.0	0	1.1
E. N. Central	99.4	31.5	7.1	3.6	0	141.6	4.3	67.5	32.5	0	17.6
Minnesota	6.1	2.5	.3	0	0	8.9	.3	91.0	9.0	0	.6
Iowa	10.3	0	.3	0	0	10.6	.3	69.0	31.0	0	1.3
Missouri	4.2	2.2	1.6	0	0	8.0	.2	97.0	3.0	0	1.0
Nebraska	6.0	.4	0	.4	0	6.8	.2	93.0	7.0	0	.9
Kansas	7.0	0	0	0	0	7.0	.2	74.0	26.0	0	.9
W. N. Central	34.0	5.3	2.3	.4	0	42.0	1.3	83.6	16.4	0	4.7
Maryland	34.1	8.9	0	0	0	43.0	1.3	63.0	37.0	0	5.3
Virginia	6.3	1.7	0	0	0	8.0	.2	63.1	36.9	0	1.0
West Virginia	1.7	0	0	0	0	1.7	.1	65.0	35.0	0	.2
North Carolina	51.4	17.6	.7	.7	0	70.4	2.1	68.0	32.0	0	8.7
South Carolina	67.1	21.2	6.9	3.9	0	99.1	3.0	67.9	32.1	0	12.2
Georgia	65.9	12.3	.8	0	0	79.0	2.4	79.5	20.5	0	9.6
Florida	104.0	105.0	184.4	37.4	0	430.7	13.0	97.9	2.1	0	34.5
S. Atlantic	331.3	166.8	192.7	42.0	0	732.9	22.2	86.4	13.6	0	71.8
Kentucky	1.6	.4	0	0	0	2.0	.1	65.0	35.0	0	.3
Tennessee	6.7	3.6	3.6	0	0	14.0	.4	58.0	41.9	.1	1.8
Alabama	32.9	2.9	.4	0	16.2	52.4	1.6	68.6	31.4	0	4.5
Mississippi	24.6	2.8	.3	.3	0	28.0	.8	63.0	37.0	0	3.5
E. S. Central	65.9	9.7	4.3	.3	16.2	96.4	2.9	65.4	34.6	0	10.0

See footnotes at end of table.

Continued

Table 13--Distribution of rice by Louisiana-Florida mills for direct food use,
by State, region, package size, and type, 1984/85^{1/} -- Continued

Destination	Package size					Total ^{2/}	Per- centage of U.S. total	Type			Spe- cialty rice ^{3/}
	Under 5 pounds	5 to 9 pounds	10 to 24 pounds	25 to 100 pounds	Bulk			Long- grain	Medium- grain	Short- grain	
	1,000 cwt							Percent			1,000 cwt
Arkansas	6.9	0.1	0	0.1	0	7.0	0.2	59.0	40.9	0	0.9
Louisiana	151.0	134.7	53.5	100.5	0	439.7	13.3	55.1	44.9	0	34.4
Oklahoma	3.8	.7	0	0	0	4.5	.1	41.2	58.5	.3	.6
Texas	35.9	40.9	5.3	38.0	0	120.1	3.6	75.0	25.0	0	9.2
W. S. Central	197.6	176.5	58.7	138.6	0	571.4	17.3	59.2	40.8	0	45.0
Kentucky	1.6	.4	0	0	0	2.0	.1	65.0	35.0	0	.3
Tennessee	6.7	3.6	3.6	0	0	14.0	.4	58.0	41.9	.1	1.8
Alabama	32.9	2.9	.4	0	16.2	52.4	1.6	68.6	31.4	0	4.5
Mississippi	24.6	2.8	.3	.3	0	28.0	.8	63.0	37.0	0	3.5
E. S. Central	65.9	9.7	4.3	.3	16.2	96.4	2.9	65.4	34.6	0	10.0
Montana	1.0	.3	.2	.6	0	2.1	.1	75.0	25.0	0	.3
Idaho	5.0	0	0	0	0	5.0	.2	80.0	20.0	0	.6
Colorado	5.7	3.6	0	2.8	0	12.0	.4	60.0	39.9	.1	1.5
New Mexico	2.4	0	0	0	0	2.5	.1	59.3	40.7	0	.3
Arizona	18.2	6.3	0	1.9	0	26.3	.8	76.0	23.9	0	3.2
Nevada	2.7	0	0	0	0	2.7	.1	80.0	20.0	0	.3
Mountain	35.5	10.4	.2	5.5	0	51.6	1.6	72.1	27.8	0	6.3
Oregon	5.1	0	0	.7	0	5.8	.2	91.3	8.7	0	1.1
California	212.8	122.6	5.5	47.4	0	388.3	11.7	95.8	4.2	0	40.6
Hawaii	1.3	1.3	.1	.8	0	3.6	.1	100.0	0	0	.5
Pacific	220.3	124.0	5.6	48.9	0	398.9	12.1	95.8	4.2	0	42.2
U.S. total ^{4/}	1,517.1	882.6	513.7	376.0	16.2	3,305.7	100.0	69.8	30.2	0	296.5

^{1/} Marketing year beginning August 1.

^{2/} Excludes Government distribution to States and military use because State destination data are not available. Also excludes shipments to territories but includes repackagers. May include rice reported by a mill that has a facility in another State.

^{3/} Includes parboiled, precooked, and brown rice. Specialty rice is included in total by package size and proportion by type.

^{4/} Totals may not add due to rounding.

Table 14- Distribution of rice by Texas mills for direct food use,
by State, region, package size, and type, 1984/851/

Destination	Package size					Total2/	Per-centage of U.S. total	Type			Spe- cialty rice3/
	Under 5 pounds	5 to 9 pounds	10 to 24 pounds	25 to 100 pounds	Bulk			Long- grain	Medium- grain	Short- grain	
											1,000 cwt
											Percent
Maine	5.2	0.6	0.3	1.3	0	7.3	0.1	99.8	0.2	0	5.2
New Hampshire	4.7	.4	.4	1.2	0	6.6	.1	99.4	.6	0	2.8
Vermont	6.4	.6	1.0	1.0	0	9.0	.1	100.0	0	0	7.1
Massachusetts	45.9	15.5	22.6	59.8	3.2	146.9	2.4	77.4	22.3	.4	81.5
Rhode Island	5.5	.9	.5	3.2	0	10.2	.2	97.2	2.8	0	6.1
Connecticut	29.0	11.9	6.7	8.4	0	56.0	.9	99.9	.1	0	47.1
New England	96.6	29.9	31.4	74.9	3.2	236.0	3.8	85.7	14.0	.2	149.7
New York	157.4	79.2	72.0	118.9	1.9	429.4	6.9	94.3	5.7	0	308.8
New Jersey	87.9	31.2	28.3	38.7	62.0	248.1	4.0	87.6	12.3	0	157.3
Pennsylvania	204.1	12.9	6.4	68.4	0	291.8	4.7	98.9	1.1	0	228.0
Middle Atlantic	449.4	123.3	106.7	225.9	63.9	969.3	15.6	94.0	6.0	0	694.0
Ohio	85.0	4.2	3.0	42.5	0	134.8	2.2	99.7	.3	0	102.2
Indiana	30.0	.9	.9	11.9	0	43.8	.7	97.6	2.3	0	21.6
Illinois	76.3	3.0	3.3	87.0	0	169.7	2.7	93.7	6.0	.3	101.3
Michigan	81.2	2.3	2.4	52.3	0	138.1	2.2	95.1	4.9	0	89.2
Wisconsin	28.0	1.5	.4	13.3	0	43.3	.7	91.6	8.4	0	20.4
E. N. Central	300.6	12.0	10.1	207.1	0	529.7	8.5	95.7	4.2	.1	334.7
Minnesota	26.6	1.3	.5	12.2	0	40.7	.7	97.7	2.3	0	26.1
Iowa	27.6	.1	.5	4.0	0	32.1	.5	97.4	2.6	0	25.3
Missouri	23.3	3.5	1.1	53.5	15.8	97.3	1.6	96.6	3.4	0	22.9
North Dakota	3.4	.1	.1	.7	0	4.2	.1	100.0	0	0	3.2
South Dakota	2.5	0	0	.6	0	3.2	.1	100.0	0	0	1.3
Nebraska	8.3	.5	.5	3.9	0	13.2	.2	96.6	3.4	0	7.0
Kansas	14.6	.2	.8	17.1	0	32.8	.5	97.8	2.2	0	13.0
W. N. Central	106.3	5.7	3.5	92.0	15.8	223.4	3.6	97.2	2.8	0	98.6
Delaware	2.1	.1	.2	1.3	0	3.7	.1	100.0	0	0	1.9
Maryland	47.2	14.0	3.9	35.5	0	100.6	1.6	95.8	4.2	0	75.2
District of Columbia	1.8	1.0	1.2	21.7	0	25.7	.4	100.0	0	0	9.7
Virginia	43.7	8.5	3.9	24.2	1.9	82.2	1.3	99.5	.5	0	47.0
West Virginia	8.0	.1	.3	.7	0	9.1	.1	99.7	.3	0	3.8
North Carolina	126.0	10.8	11.4	23.0	0	171.2	2.7	99.5	.5	0	68.4
South Carolina	132.9	33.5	42.1	77.1	0	285.6	4.6	99.6	.4	0	58.9

See footnotes at end of table.

Continued--

Table 14--Distribution of rice by Texas mills for direct food use,
by State, region, package size, and type, 1984/85^{1/} -- Continued

Destination	Package size					Total ^{2/}	Type				Specialty rice ^{3/}
	Under	5 to	10 to	25 to	Bulk		Per-				
	5	9	24	100			centage:	Long-	Medium-	Short-	
	pounds	pounds	pounds	pounds			of U.S.:	grain	grain	grain	
	1,000 cwt						Percent				1,000 cwt
Georgia	42.2	4.8	3.0	36.9	0	86.9	1.4	98.4	1.6	0	44.6
Florida	128.3	33.6	54.7	74.9	0	291.6	4.7	97.1	2.2	.8	230.6
S. Atlantic	532.3	106.3	120.7	295.4	1.9	1,056.6	17.0	98.4	1.4	.2	540.0
Kentucky	15.4	.3	1.0	4.2	0	20.9	.3	99.4	.6	0	13.2
Tennessee	47.9	1.1	2.4	10.4	35.7	97.5	1.6	98.4	1.6	.1	87.9
Alabama	47.3	1.2	1.3	43.2	0	93.1	1.5	99.6	.4	0	51.0
Mississippi	23.6	.9	.2	16.4	0	41.2	.7	100.0	0	0	27.8
E. S. Central	134.2	3.4	5.0	74.3	35.7	252.7	4.1	99.2	.8	0	179.8
Arkansas	296.6	.2	.1	2.3	29.1	328.3	5.3	100.0	0	0	293.2
Louisiana	14.6	6.8	3.6	45.5	7.3	77.8	1.2	88.3	11.7	0	33.1
Oklahoma	19.6	2.1	.5	7.6	0	29.8	.5	93.5	6.1	.3	13.4
Texas	509.9	85.7	45.5	332.3	27.4	1,000.9	16.1	95.6	4.4	0	400.1
W. S. Central	840.7	94.8	49.7	387.6	63.9	1,436.8	23.1	96.2	3.8	0	739.7
Montana	3.0	.1	.2	1.4	0	4.6	.1	99.7	.3	0	2.9
Idaho	3.2	0	0	7.1	0	10.4	.2	69.7	26.7	3.6	1.6
Wyoming	3.4	0	0	.1	0	3.6	.1	100.0	0	0	.2
Colorado	19.2	2.0	1.4	28.8	9.8	61.2	1.0	92.8	7.1	.1	32.9
New Mexico	8.3	1.1	.1	8.1	0	17.6	.3	99.6	.4	0	7.3
Arizona	13.6	.3	2.9	30.0	0	46.8	.8	99.0	.9	.1	17.0
Utah	8.7	2.5	.5	7.5	0	19.1	.3	94.0	6.0	0	8.8
Nevada	10.2	.1	.6	14.0	0	25.0	.4	99.3	.7	0	13.6
Mountain	69.6	6.1	5.7	97.1	9.8	188.3	3.0	95.0	4.7	.3	84.3
Washington	14.0	1.1	2.6	38.7	0	56.5	.9	75.4	24.6	0	24.4
Oregon	10.2	.5	.7	14.7	0	26.1	.4	89.6	9.6	.8	11.7
California	139.4	62.3	28.1	857.0	100.0	1,186.8	19.1	56.6	41.3	2.1	229.9
Alaska	.9	.3	.8	1.3	0	3.3	.1	97.0	3.0	0	3.1
Hawaii	1.7	2.5	2.7	57.2	0	64.1	1.0	9.2	90.8	0	5.9
Pacific	166.2	66.7	34.9	968.9	100.0	1,336.8	21.5	55.9	42.3	1.9	274.9
U.S. total ^{4/}	2,695.9	448.4	367.7	2,423.2	294.2	6,229.4	100.0	87.3	12.3	.5	3,095.9

^{1/} Marketing year beginning August 1.

^{2/} Excludes Government distribution to States and military use because State destination data are not available. Also excludes shipments to territories but includes repackagers. May include rice reported by a mill that has a facility in another State.

^{3/} Includes parboiled, precooked, and brown rice. Specialty rice is included in total by package size and proportion by type.

^{4/} Totals may not add due to rounding.

Table 15--Distribution of rice by California mills for direct food use,
by State, region, package size, and type, 1984/85^{1/}

Destination	Package size					Total ^{2/}	Type				Spe- cialty rice ^{3/}	
	Under	5 to	10 to	25 to	Bulk		Per- centage: of U.S. total	Long- grain	Medium- grain	Short- grain		
	5	9	24	100								
	pounds	pounds	pounds	pounds								
												1,000 cwt
	1,000 cwt						Percent					
Maine	0.2	4.1	8.3	0	0	12.6	0.5	0	0	100.0	0	
New England	.2	4.1	8.3	.1	0	12.7	.5	.8	0	99.2	.1	
New York	2.1	58.4	1.9	218.6	0	281.0	10.3	9.1	79.3	11.6	0	
New Jersey	.1	.3	.6	8.4	0	9.5	.3	11.3	88.3	.4	.1	
Pennsylvania	0	.1	.2	1.2	0	1.5	.1	7.2	92.7	.1	.2	
Middle Atlantic	2.2	58.8	2.8	228.2	0	292.0	10.7	9.1	79.6	11.2	.3	
Illinois	.2	1.5	2.3	14.3	0	18.3	.7	.5	97.8	1.6	.1	
Wisconsin	.2	2.8	0	21.7	0	24.7	.9	10.0	88.0	2.0	0	
E. N. Central	.5	4.3	2.4	36.3	0	43.5	1.6	6.1	92.1	1.8	.2	
Minnesota	.2	2.8	0	21.7	0	24.7	.9	10.0	88.0	2.0	0	
North Dakota	.2	2.8	0	21.7	0	24.7	.9	10.0	88.0	2.0	0	
South Dakota	.2	2.8	0	21.7	0	24.7	.9	10.0	88.0	2.0	0	
Kansas	0	.4	.8	1.4	0	2.6	.1	0	100.0	0	0	
W. N. Central	.7	8.8	.9	66.6	0	77.0	2.8	9.6	88.4	1.9	0	
Maryland	0	.2	.2	1.9	0	2.3	.1	21.8	78.0	.2	.1	
District of Columbia	0	.1	.2	1.5	0	1.8	.1	2.0	98.0	0	0	
Virginia	.2	.4	1.0	9.1	0	10.7	.4	.6	98.4	1.0	.1	
Georgia	0	0	0	1.9	0	1.9	.1	24.1	75.9	0	0	
Florida	.4	3.4	.2	26.4	0	30.4	1.1	11.5	86.3	2.1	.3	
S. Atlantic	.7	4.3	2.2	41.7	0	48.9	1.8	9.3	89.1	1.6	.4	
Louisiana	0	.2	.3	2.6	2.0	5.1	.2	0	100.0	0	0	
Oklahoma	.1	.6	.9	4.8	0	6.5	.2	8.1	91.3	.6	.1	
Texas	.2	1.0	2.8	39.8	11.7	55.5	2.0	1.1	98.8	.2	.3	
W. S. Central	.3	1.9	4.2	47.9	13.7	67.9	2.5	1.7	98.1	.2	.4	

See footnotes at end of table.

Continued --

Table 15--Distribution of rice by California mills for direct food use,
by State, region, package size, and type, 1984/85^{1/} -- Continued

Destination	Package size					Total ^{2/}	Per- centage: of U.S. total	Type			Spe- cialty rice ^{3/}
	Under 5 pounds	5 to 10 pounds	10 to 25 pounds	25 to 100 pounds	Bulk			Long- grain	Medium- grain	Short- grain	
	1,000 cwt							Percent			1,000 cwt
Idaho	0.1	0.7	0.3	6.4	0	7.4	0.3	17.9	80.4	1.8	0
Wyoming	.2	2.8	0	21.7	0	24.7	.9	10.0	88.0	2.0	0
Colorado	0	.1	.1	1.4	0	1.5	.1	67.0	31.0	2.0	.1
New Mexico	.1	.4	1.7	3.7	0	6.0	.2	.7	98.3	1.0	0
Arizona	.6	4.2	3.2	22.8	0	30.9	1.1	38.6	59.1	2.3	.1
Utah	.1	1.3	2.7	8.5	0	12.6	.5	82.6	17.4	0	0
Mountain	1.1	9.6	8.1	66.0	0	84.8	3.1	32.1	66.2	1.7	.2
Washington	.7	14.5	16.6	91.3	0	123.2	4.5	28.5	70.6	.9	0
Oregon	.7	10.1	6.6	65.3	0	82.7	3.0	31.0	67.6	1.5	0
California	43.6	190.8	215.2	927.1	26.0	1,402.6	51.3	28.5	69.9	1.6	.4
Alaska	.1	4.1	8.2	16.6	0	29.1	1.1	61.2	38.8	0	0
Hawaii	1.1	57.6	252.7	159.0	0	470.4	17.2	4.5	94.4	1.0	0
Pacific	46.3	277.2	499.3	1,259.3	26.0	2,108.0	77.1	23.7	74.9	1.4	.4
U.S. total ^{4/}	52.0	369.3	528.2	1,746.8	39.6	2,735.9	100.0	20.8	76.3	2.9	2.2

^{1/} Marketing year beginning August 1.

^{2/} Excludes Government distribution to States and military use because State data are not available. Also excludes shipments to territories but includes repackagers. May include rice reported by a mill that has a facility in another State.

^{3/} Includes parboiled, precooked, and brown rice. Specialty rice is included in total by package size and proportion by type.

^{4/} Totals may not add due to rounding.

UNITED STATES DEPARTMENT OF AGRICULTURE
ECONOMIC RESEARCH SERVICE
1301 NEW YORK AVENUE, NW
WASHINGTON, D. C. 20005-4708

END