



AgEcon SEARCH
RESEARCH IN AGRICULTURAL & APPLIED ECONOMICS

The World's Largest Open Access Agricultural & Applied Economics Digital Library

This document is discoverable and free to researchers across the globe due to the work of AgEcon Search.

Help ensure our sustainability.

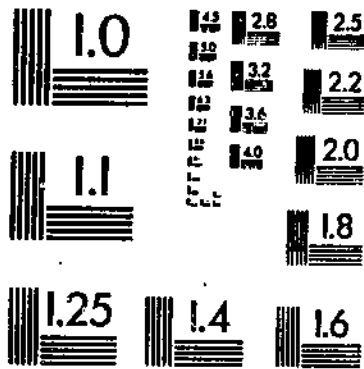
Give to AgEcon Search

AgEcon Search
<http://ageconsearch.umn.edu>
aesearch@umn.edu

*Papers downloaded from **AgEcon Search** may be used for non-commercial purposes and personal study only. No other use, including posting to another Internet site, is permitted without permission from the copyright owner (not AgEcon Search), or as allowed under the provisions of Fair Use, U.S. Copyright Act, Title 17 U.S.C.*

STATISTICS (1979) USDA STATISTICAL BULLETIN UPDATA
CROPS RECEIVED BY FARMERS FIELD CROPS, BY STATE AND UNITED STATES, 1979
CROP REPORTING BOARD, U.S. DEPT. OF AGRICULTURE 1 OF 1

START





**United States
Department of
Agriculture**

**Statistical
Reporting
Service**

**Crop
Reporting
Board**

**Statistical
Bulletin
Number 735**

Prices Received by Farmers

**Field Crops,
by State and United States,
1979-82**

PRICES RECEIVED BY FARMERS: FIELD CROPS, BY STATE AND UNITED STATES, 1979-82. Crop Reporting Board, Statistical Reporting Service, U.S. Department of Agriculture, Statistical Bulletin No. 735.

ABSTRACT

This publication presents final estimates of prices received by farmers for most U.S. field crops by States and United States for 1979-82. Estimates contained in this publication provide a historic record for the period covered. This report continues the monthly price series for wheat, rice, and rye for 1949-78 published in Statistical Bulletin No. 726, issued April 1985.

CONTENTS.		PAGE
	INTRODUCTION	6
	TABLES	7-81
	Corn for Grain: Prices Received by Farmers, monthly and season average, by State and United States, 1979-82	7-11
	Sorghum for Grain: Prices Received by Farmers, monthly and season average, by State and United States, 1979-82	12-14
	Oats: Prices Received by Farmers, monthly and season average, by State and United States, 1979-82	15-19
	All Barley: Prices Received by Farmers, monthly and season average, by State and United States, 1979-82	20-23
	Feed and Malting Barley: Prices Received by Farmers, monthly, United States, 1979-82	24
	All Wheat: Prices Received by Farmers, monthly and season average, by State and United States, 1979-82	25-29
	Winter Wheat: Prices Received by Farmers, monthly and season average, by State and United States, 1979-82	30-34
	Durum Wheat: Prices Received by Farmers monthly and season average, by State and United States, 1979-82	35
	Other Spring Wheat: Prices Received by Farmers, monthly and season average, by State and United States, 1979-82	36-37
	Wheat, by classes: Prices Received by Farmers, monthly, United States, 1981-82	38

TABLES (continued)	PAGE
Rye: Prices Received by Farmers, season average, by State and United States, 1979-82	38
Rice: Prices Received by Farmers, monthly and season average, by State and United States, 1979-82	39
Soybeans for Beans: Prices Received by Farmers, monthly and season average, by State and United States, 1979-82	40-43
Flaxseed: Prices Received by Farmers, monthly and season average, by State and United States, 1979-82	44
Peanuts for Nuts: Prices Received by Farmers, monthly and season average, by State and United States, 1979-82	45-46
All Sunflower: Prices Received by Farmers, monthly and season average, by State and United States, 1979-82	47
Sunflower, by Type : Prices Received by Farmers, season average, by State and United States, 1979-82	47
All Cotton: Prices Received by Farmers, monthly and season average, by State and United States, 1979-82	48-49
Upland Cotton: Prices Received by Farmers, monthly and season average, by State and United season, 1979-82	50-51
Amer-Pima Cotton: Prices Received by Farmers, season average, by State and United States, 1979-82	52
Cottonseed: Prices Received by Farmers, monthly and season average, by State and United States, 1979-82	53-54

	PAGE
TABLES (continued)	
All Hay, Baled: Prices Received by Farmers, monthly and season average, by State and United States, 1979-82	55-60
Alfalfa Hay, Baled: Prices Received by Farmers, monthly, by State and United States, 1979-82	61-64
Other Hay, Baled: Prices Received by Farmers, monthly, by State and United States, 1979-82	65-68
Dry Edible Beans: Prices Received by Farmers, monthly and season average, by State and United States, 1979-82	69-70
Tobacco: Prices Received by Farmers, monthly and season average, by State and United States, 1979-82	71-79
Sugarbeets and Sugarcane: Prices Received by Farmers, season average, by State and United States, 1979-82	80
Mint Oil: Prices Received by Farmers, season average, by State and United States, 1979-82	80
Dry Edible and Wrinkled Seed Peas: Prices Received by Farmers, season average, by State and United States, 1979-81	80
Popcorn and Maple Sirup: Prices Received by Farmers, season average, by State and United States, 1979-81	81
Coffee and Taro: Prices Received by Farmers, season average, by State and United States, 1979-82	81
Hops: Prices Received by Farmers, season average, by State and United States, 1979-82	81
INDEX OF STATE TABLES	82-87

INTRODUCTION

Monthly prices in this report represent averages of prices received by for all marketings and are based on standard moisture content. Allowances for premiums and discounts are included but no adjustments or allowances are made for farm-to-farm sales, Government support payments (deficiency payments), or for quantities under loan taken over by the Commodity Credit Corporation. Prices represent commercial sales. Commodities are priced at the point of first sale, usually the local elevator, mill, or processor. Monthly prices are estimated only for months when 0.5 percent or more of the State's total sales for the crop year occur. Prices are averages of sales made during the entire month except for cottonseed and hay which are based on the 5-day period centered on the 15th of the month. Monthly U.S. average prices are computed by weighting the State average prices by estimated marketings for the month. States included in the monthly estimating program are shifted as production areas change.

Season average prices for States in the monthly price estimating program are calculated by weighting monthly prices for the crop year by the estimated percentage sold each month. For States not in the monthly program, season average prices are estimates of the average prices received during the entire marketing year. Season average prices for Amer-Pima cotton, rice, sugarbeets, sugarcane, mint, coffee, hops, taro, popcorn, and maple sirup are based on quantity received and average prices paid to farmers during the entire marketing year by mills, cooperatives, and other buyers. Season average prices include an allowance for loans outstanding and purchases by the Government valued at the average loan and purchase rates where applicable.

U.S. season average prices are calculated by weighting State season average prices by the estimated quantity sold from the year's production. The total of the State value of sales divided by estimated quantity sold yields the average U.S. price.

Prices in this report are used to calculate value of production, cash receipts, gross farm income, parity prices, and index of prices received by farmers. Monthly prices for wheat, rice, corn, sorghum grain, oats, barley, and upland cotton are used in the calculation of deficiency payments to farmers and, for some items, as part of the determination of call and release levels for the grain reserve program administered by the Agricultural Stabilization and Conservation Service.

CORN FOR GRAIN: PRICES RECEIVED BY FARMERS, MONTHLY AND SEASON AVERAGE,
BY STATE AND UNITED STATES, 1979-82

YEAR	JAN	FEB	MAR	APR	MAY	JUN	JUL	AUG	SEP	OCT	NOV	DEC	SEASON AVERAGE
DOLLARS PER BUSHEL													
UNITED STATES													
1979	2.11	2.18	2.22	2.27	2.35	2.49	2.64	2.54	2.51	2.41	2.27	2.38	2.52
1980	2.45	2.39	2.40	2.36	2.42	2.49	2.73	2.92	3.01	2.99	3.10	3.19	3.11
1981	3.19	3.22	3.25	3.24	3.24	3.17	3.14	2.87	2.55	2.45	2.34	2.39	2.50
1982	2.54	2.44	2.46	2.55	2.60	2.57	2.50	2.30	2.15	1.98	2.13	2.26	2.68
ALABAMA													
1979													2.95
1980													3.60
1981													2.70
1982													2.70
ARIZONA													
1979													3.14
1980													3.90
1981													3.05
1982													3.24
ARKANSAS													
1979													2.70
1980													3.48
1981													2.82
1982													2.63
CALIFORNIA													
1979													3.26
1980													4.05
1981													3.35
1982													3.42
COLORADO													
1979	2.07	2.19	2.21	2.27	2.33	2.51	2.82	2.71	2.77	2.44	2.48	2.49	2.53
1980	2.38	2.40	2.37	2.24	2.36	2.36	2.75	2.95	2.78	2.90	3.00	2.70	3.05
1981	3.24	3.11	3.21	3.11	3.29	3.47	3.12	3.24	3.12	2.59	2.47	2.35	2.52
1982	2.50	2.39	2.44	2.57	2.69	2.79	2.70	2.37	2.19	2.33	2.45	2.54	2.78
DELAWARE													
1979													2.90
1980													3.68
1981													2.65
1982													2.56
FLORIDA													
1979													2.85
1980													3.40
1981													2.85
1982													2.45
GEORGIA													
1979	2.56	2.59	2.63	2.74	2.79	2.88	2.90	2.76	2.84	2.83	2.88	2.96	2.86
1980	2.97	3.00	2.88	2.91	2.96	2.92	3.18	3.27	3.43	3.47	3.61	3.68	3.45
1981	3.72	3.74	3.80	3.81	3.77	3.72	3.14	2.95	2.71	2.69	2.65	2.77	2.84
1982	2.79	2.84	2.88	2.89	2.95	2.95	2.84	2.45	2.31	2.30	2.48	2.69	2.62

CORN FOR GRAIN: PRICES RECEIVED BY FARMERS, MONTHLY AND SEASON AVERAGE,
BY STATE AND UNITED STATES, 1979-82

YEAR	JAN	FEB	MAR	APR	MAY	JUN	JUL	AUG	SEP	OCT	NOV	DEC	SEASON AVERAGE
DOLLARS PER BUSHEL													
IDAHO													
1979													2.90
1980													3.35
1981													3.25
1982													2.75
ILLINOIS													
1979	2.15	2.21	2.25	2.32	2.39	2.54	2.75	2.65	2.62	2.45	2.33	2.54	2.57
1980	2.53	2.48	2.50	2.44	2.52	2.60	2.80	3.04	3.08	3.03	3.09	3.24	3.14
1981	3.20	3.26	3.32	3.28	3.34	3.24	3.22	2.97	2.59	2.49	2.42	2.51	2.53
1982	2.62	2.51	2.52	2.57	2.65	2.60	2.58	2.38	2.20	2.01	2.16	2.35	2.66
INDIANA													
1979	2.15	2.20	2.29	2.40	2.45	2.70	2.88	2.78	2.64	2.40	2.32	2.60	2.55
1980	2.55	2.59	2.52	2.45	2.52	2.57	2.87	3.07	3.16	3.05	3.25	3.30	3.16
1981	3.32	3.35	3.33	3.38	3.31	3.24	3.20	2.91	2.60	2.41	2.27	2.34	2.47
1982	2.56	2.46	2.50	2.63	2.69	2.66	2.55	2.29	2.15	1.89	2.10	2.29	2.47
IOWA													
1979	1.99	2.04	2.08	2.18	2.24	2.38	2.55	2.45	2.36	2.28	2.20	2.22	2.42
1980	2.34	2.23	2.26	2.29	2.31	2.41	2.65	2.85	2.91	2.88	2.98	3.14	2.97
1981	3.10	3.11	3.17	3.21	3.20	3.10	3.08	2.78	2.42	2.33	2.29	2.30	2.41
1982	2.38	2.32	2.35	2.48	2.51	2.49	2.41	2.17	2.09	1.99	2.09	2.15	2.75
KANSAS													
1979	2.25	2.23	2.18	2.40	2.48	2.77	2.79	2.60	2.54	2.52	2.47	2.50	2.51
1980	2.50	2.45	2.47	2.44	2.49	2.59	2.92	3.10	3.22	3.27	3.45	3.37	3.32
1981	3.43	3.38	3.31	3.33	3.28	3.37	3.32	3.05	2.58	2.50	2.52	2.54	2.58
1982	2.54	2.57	2.54	2.64	2.78	2.82	2.74	2.54	2.37	2.34	2.59	2.74	2.76
KENTUCKY													
1979	2.39	2.43	2.45	2.50	2.52	2.81	2.97	2.90	2.75	2.63	2.45	2.70	2.72
1980	2.47	2.72	2.64	2.50	2.61	2.67	2.98	3.28	3.22	3.33	3.71	3.73	3.35
1981	3.60	3.69	3.56	3.56	3.53	3.40	3.28	3.03	2.59	2.50	2.42	2.54	2.57
1982	2.72	2.60	2.62	2.71	2.75	2.82	2.68	2.42	2.28	2.04	2.18	2.40	2.57
LOUISIANA													
1979													2.80
1980													3.50
1981													3.10
1982													2.70
MARYLAND													
1979													2.84
1980													3.66
1981													2.70
1982													2.60
MICHIGAN													
1979	2.13	2.13	2.18	2.25	2.36	2.58	2.67	2.63	2.56	2.27	2.26	2.31	2.46
1980	2.26	2.18	2.41	2.21	2.46	2.48	2.77	2.97	3.07	3.00	3.05	3.09	3.05
1981	3.19	3.20	3.14	3.18	3.14	2.99	3.15	2.84	2.58	2.39	2.28	2.23	2.39
1982	2.32	2.31	2.31	2.49	2.45	2.52	2.48	2.26	2.16	1.86	2.03	2.13	2.55

CORN FOR GRAIN: PRICES RECEIVED BY FARMERS, MONTHLY AND SEASON AVERAGE,
BY STATE AND UNITED STATES, 1979-82

YEAR	JAN	FEB	MAR	APR	MAY	JUN	JUL	AUG	SEP	OCT	NOV	DEC	SEASON AVERAGE
DOLLARS PER BUSHEL													
MINNESOTA													
1979	1.88	1.93	1.97	2.06	2.19	2.31	2.43	2.25	2.24	2.10	1.90	2.03	2.26
1980	2.04	2.04	2.06	2.13	2.21	2.29	2.47	2.68	2.74	2.77	2.86	2.99	2.85
1981	3.04	2.96	3.04	3.09	3.08	3.03	2.98	2.68	2.41	2.24	2.19	2.15	2.33
1982	2.24	2.22	2.26	2.38	2.38	2.42	2.33	2.09	2.00	1.87	1.99	2.07	2.63
MISSISSIPPI													
1979													3.10
1980													3.30
1981													3.20
1982													2.85
MISSOURI													
1979	2.15	2.27	2.31	2.32	2.44	2.59	2.81	2.54	2.54	2.32	2.30	2.43	2.43
1980	2.39	2.38	2.41	2.40	2.46	2.56	2.89	3.05	3.20	3.18	3.45	3.43	3.26
1981	3.47	3.50	3.38	3.37	3.38	3.27	3.19	2.88	2.52	2.35	2.35	2.28	2.48
1982	2.52	2.43	2.46	2.59	2.67	2.74	2.70	2.56	2.16	2.05	2.22	2.37	2.73
MONTANA													
1979													2.38
1980													3.60
1981													3.28
1982													2.36
NEBRASKA													
1979	2.06	2.11	2.13	2.18	2.28	2.50	2.64	2.61	2.45	2.34	2.23	2.33	2.42
1980	2.31	2.32	2.26	2.29	2.35	2.43	2.68	2.84	2.88	2.98	3.12	3.11	3.04
1981	3.13	3.17	3.19	3.19	3.19	3.17	3.17	2.85	2.52	2.43	2.44	2.40	2.51
1982	2.52	2.43	2.45	2.50	2.58	2.62	2.57	2.43	2.35	2.14	2.30	2.36	2.85
NEW JERSEY													
1979													2.89
1980													3.59
1981													2.61
1982													2.69
NEW MEXICO													
1979													2.81
1980													3.60
1981													2.84
1982													2.91
NEW YORK													
1979													2.71
1980													3.43
1981													2.68
1982													3.00
NORTH CAROLINA													
1979	2.49	2.53	2.61	2.70	2.81	3.03	3.05	2.76	2.76	2.79	2.88	2.91	2.84
1980	2.92	2.81	2.84	2.80	2.88	2.91	3.22	3.16	3.25	3.31	3.45	3.70	3.38
1981	3.71	3.71	3.80	3.70	3.65	3.53	3.47	2.82	2.63	2.64	2.65	2.78	2.68
1982	2.77	2.80	2.81	2.83	2.89	2.91	2.86	2.25	2.03	2.11	2.32	2.52	2.37

CORN FOR GRAIN: PRICES RECEIVED BY FARMERS, MONTHLY AND SEASON AVERAGE,
BY STATE AND UNITED STATES, 1979-82

YEAR	JAN	FEB	MAR	APR	MAY	JUN	JUL	AUG	SEP	OCT	NOV	DEC	SEASON AVERAGE
DOLLARS PER BUSHEL													
NORTH DAKOTA													
1979	1.88	1.93	1.97	2.06	2.19	2.31	2.43	2.25	2.24	2.10	1.90	2.03	2.13
1980	2.04	2.04	2.06	2.13	2.21	2.29	2.47	2.68	2.74	2.77	2.86	2.99	2.87
1981	3.04	2.96	3.04	3.09	3.08	3.03	2.98	2.68	2.41	2.24	2.19	2.15	2.39
1982	2.24	2.22	2.26	2.38	2.38	2.42	2.33	2.09	2.00	1.87	1.99	2.07	2.69
OHIO													
1979	2.19	2.24	2.27	2.36	2.48	2.56	2.86	2.78	2.70	2.49	2.33	2.56	2.61
1980	2.49	2.48	2.42	2.42	2.48	2.57	2.87	3.12	3.14	3.02	3.14	3.22	3.13
1981	3.23	3.28	3.34	3.36	3.32	3.24	3.23	2.88	2.60	2.61	2.37	2.36	2.48
1982	2.55	2.45	2.48	2.57	2.68	2.55	2.48	2.39	2.08	1.87	2.07	2.25	2.56
OKLAHOMA													
1979	2.15	2.27	2.31	2.32	2.44	2.59	2.81	2.54	2.54	2.32	2.30	2.43	2.70
1980	2.39	2.38	2.41	2.40	2.46	2.56	2.89	3.05	3.20	3.18	3.45	3.43	3.55
1981	3.47	3.50	3.38	3.37	3.38	3.27	3.19	2.88	2.52	2.35	2.35	2.28	2.99
1982	2.52	2.43	2.46	2.59	2.67	2.74	2.70	2.56	2.16	2.05	2.22	2.37	2.99
OREGON													
1979													3.05
1980													3.80
1981													3.05
1982													3.00
PENNSYLVANIA													
1979	2.48	2.46	2.54	2.74	2.83	3.14	3.41	3.49	3.04	2.88	2.83	2.90	2.97
1980	2.78	2.93	2.88	2.83	2.85	3.04	3.30	3.56	3.75	3.51	3.52	3.84	3.62
1981	3.96	3.87	3.75	3.70	3.79	3.77	3.71	3.32	2.99	2.47	2.56	2.69	2.68
1982	2.71	2.72	2.78	2.82	2.92	2.86	2.83	2.76	2.50	2.18	2.22	2.47	2.73
SOUTH CAROLINA													
1979													2.90
1980													3.12
1981													2.60
1982													2.73
SOUTH DAKOTA													
1979	1.85	1.95	1.91	1.94	2.06	2.21	2.29	2.20	2.03	1.88	1.79	1.90	2.07
1980	1.98	2.01	1.99	2.04	2.12	2.25	2.46	2.55	2.61	2.70	2.94	2.95	2.84
1981	3.06	3.04	3.03	3.06	3.02	3.00	3.00	2.67	2.42	2.13	2.14	2.21	2.30
1982	2.31	2.34	2.35	2.42	2.44	2.44	2.16	2.10	2.08	1.93	1.88	1.93	2.50
TENNESSEE													
1979													2.85
1980													3.49
1981													2.70
1982													2.67
TEXAS													
1979	2.43	2.44	2.54	2.57	2.65	3.08	3.14	2.65	2.73	2.94	2.82	2.88	2.82
1980	2.82	2.70	2.85	2.79	2.75	2.74	3.18	3.30	3.29	3.54	3.62	3.47	3.44
1981	3.58	3.59	3.49	3.53	3.56	3.46	3.14	3.07	3.04	3.27	2.74	2.72	2.88
1982	2.79	2.87	2.99	2.96	3.03	3.09	2.53	2.60	2.71	2.99	2.95	2.94	3.09

CORN FOR GRAIN: PRICES RECEIVED BY FARMERS, MONTHLY AND SEASON AVERAGE,
BY STATE AND UNITED STATES, 1979-82

YEAR	JAN	FEB	MAR	APR	MAY	JUN	JUL	AUG	SEP	OCT	NOV	DEC	SEASON AVERAGE
DOLLARS PER BUSHEL													
UTAH													
1979													2.95
1980													3.75
1981													3.37
1982													3.10
VIRGINIA													
1979													2.83
1980													3.48
1981													2.70
1982													2.55
WASHINGTON													
1979													2.93
1980													3.84
1981													3.05
1982													3.00
WEST VIRGINIA													
1979													2.54
1980													3.30
1981													2.64
1982													2.62
WISCONSIN													
1979	1.98	2.03	2.13	2.19	2.33	2.48	2.57	2.47	2.47	2.38	2.33	2.30	2.43
1980	2.21	2.23	2.24	2.30	2.37	2.39	2.74	2.89	2.86	2.91	2.98	3.01	2.96
1981	3.05	3.05	3.04	3.16	3.13	3.09	3.10	2.90	2.57	2.33	2.19	2.15	2.39
1982	2.30	2.25	2.40	2.48	2.50	2.47	2.40	2.20	2.17	2.12	2.10	2.18	2.74
WYOMING													
1979													2.44
1980													3.10
1981													2.51
1982													2.61

SORGHUM FOR GRAIN: PRICES RECEIVED BY FARMERS, MONTHLY AND SEASON AVERAGE,
BY STATE AND UNITED STATES, 1979-82

YEAR	JAN	FEB	MAR	APR	MAY	JUN	JUL	AUG	SEP	OCT	NOV	DEC	SEASON AVERAGE
DOLLARS PER CWT													
UNITED STATES													
1979	3.54	3.55	3.54	3.58	3.66	4.30	4.46	4.27	4.24	3.90	3.99	3.90	4.20
1980	4.05	3.98	4.05	3.96	4.04	4.49	4.95	5.12	5.12	5.36	5.48	5.49	5.25
1981	5.48	5.33	5.17	5.25	5.16	5.03	4.84	4.55	4.07	3.90	3.87	3.95	4.25
1982	4.09	4.08	4.00	4.10	4.35	4.17	3.96	3.95	3.80	3.70	3.78	3.97	4.50
ALABAMA													
1979													4.65
1980													5.35
1981													4.50
1982													4.20
ARIZONA													
1979	4.71	4.54	5.05	4.77	4.84			5.35	5.16	5.26	5.48	5.69	5.72
1980	5.65	5.62	5.58	5.65	5.65	5.34	7.01	6.90	6.55	6.41	6.76	6.86	6.67
1981						6.25	6.28	5.00	5.02	4.76	4.83	5.53	5.67
1982	4.99	5.80	5.80	5.50					5.29	5.22	5.17	5.39	5.22
ARKANSAS													
1979													3.94
1980													5.14
1981													3.93
1982													3.70
CALIFORNIA													
1979	4.50	4.61	4.86	4.70				5.55	4.98	5.05	5.20	5.10	5.11
1980	4.95	4.90				6.60			6.25	6.40	6.38		6.37
1981				6.50					5.15	5.05	4.91	4.85	4.99
1982	5.20		5.25						4.20	4.30	4.93	4.83	4.82
COLORADO													
1979													3.83
1980													5.18
1981										3.68	3.81	3.86	4.28
1982	3.96	3.95	3.92	3.94	4.21	4.55	4.63	4.30	4.31	3.57	3.91	4.19	4.84
GEORGIA													
1979													4.28
1980													5.32
1981													3.87
1982													3.66
ILLINOIS													
1979													3.70
1980													5.25
1981													3.91
1982													3.83
INDIANA													
1979													3.84
1980													5.00
1981													3.75
1982													3.85

SORGHUM FOR GRAIN: PRICES RECEIVED BY FARMERS, MONTHLY AND SEASON AVERAGE,
BY STATE AND UNITED STATES, 1979-82

YEAR	JAN	FEB	MAR	APR	MAY	JUN	JUL	AUG	SEP	OCT	NOV	DEC	SEASON AVERAGE
DOLLARS PER CWT													
IOWA													
1979													3.59
1980													4.42
1981													3.98
1982													4.56
KANSAS													
1979	3.34	3.35	3.38	3.39	3.50	4.25	4.28	4.06	3.95	3.84	3.89	3.78	3.92
1980	3.85	3.89	3.83	3.86	3.92	4.00	4.86	5.06	5.14	5.27	5.46	5.36	5.19
1981	5.29	5.11	5.05	5.06	5.09	5.07	4.98	4.31	3.94	3.82	3.74	3.75	4.11
1982	3.89	3.83	3.92	4.06	4.16	4.36	4.29	4.20	4.12	3.69	3.82	3.94	4.77
KENTUCKY													
1979													3.85
1980													5.40
1981													3.82
1982													4.02
LOUISIANA													
1979													4.20
1980													5.20
1981													4.40
1982													3.71
MISSISSIPPI													
1979													4.00
1980													4.50
1981													4.00
1982													3.75
MISSOURI													
1979	3.29	3.53	3.52	3.57	3.41	3.86	4.24	4.16	3.80	3.70	3.51	3.94	3.94
1980	4.01	4.07	4.01	3.95	3.92	4.09	4.52	4.80	4.92	4.94	5.30	5.50	5.12
1981	5.60	5.65	5.53	5.54	5.48	5.29	5.19	4.85	4.11	3.98	3.79	3.80	4.06
1982	4.10	4.35	4.11	4.25	4.14	4.13	4.26	3.81	3.73	3.61	3.40	4.05	3.93
NEBRASKA													
1979	3.17	3.18	3.26	3.30	3.37	3.85	4.11	3.90	3.79	3.74	3.65	3.75	3.98
1980	3.77	3.87	3.92	3.82	3.94	4.12	4.60	4.85	4.99	5.24	5.30	5.30	5.02
1981	5.29	5.18	5.16	5.20	4.97	4.85	4.69	4.19	3.76	3.72	3.72	3.77	4.02
1982	3.94	3.89	3.87	3.97	4.02	3.98	3.91	3.60	3.58	3.52	3.65	3.80	4.47
NEW MEXICO													
1979	3.96	3.88	3.80	3.79	3.99	4.51	4.81	4.87	4.75	4.58	4.54	4.40	4.45
1980	4.24	4.11	4.18	4.17	4.31	4.78	5.26	5.65	5.94	6.20	6.37	6.22	6.10
1981	6.21	5.67	5.51	5.37	5.46	5.39	5.38	4.34	4.45	4.46	4.41	4.27	4.41
1982	4.36	4.31	4.39	4.60	4.77	4.93	4.89	4.84	4.35	4.42	4.12	4.30	4.86
NORTH CAROLINA													
1979													4.35
1980													5.40
1981													4.10
1982													3.10

SORGHUM FOR GRAIN: PRICES RECEIVED BY FARMERS, MONTHLY AND SEASON AVERAGE,
BY STATE AND UNITED STATES, 1979-82

YEAR	JAN	FEB	MAR	APR	MAY	JUN	JUL	AUG	SEP	OCT	NOV	DEC	SEASON AVERAGE
DOLLARS PER CWT													
OKLAHOMA													
1979	3.67	3.76	3.62	3.62	3.61	4.28	4.66	4.35	4.28	4.29	4.16	4.08	4.18
1980	3.99	3.91	4.21	3.94	4.07	4.25	5.05	5.15	5.35	5.67	5.75	5.73	5.46
1981	5.68	5.64	5.17	5.30	5.29	5.25	5.24	4.50	3.75	4.14	4.07	4.06	4.34
1982	4.08	4.05	4.08	4.26	4.73	4.70	4.68	4.68	4.39	4.20	4.03	3.92	4.74
PENNSYLVANIA													
1979													4.30
1980													5.57
1981													
1982													
SOUTH CAROLINA													
1979													4.00
1980													4.72
1981													4.01
1982													3.30
SOUTH DAKOTA													
1979													3.21
1980													4.46
1981													3.67
1982													3.86
TENNESSEE													
1979													4.17
1980													5.30
1981													3.95
1982													3.53
TEXAS													
1979	3.85	3.81	3.85	4.04	3.96	4.63	4.77	4.42	4.52	4.46	4.62	4.44	4.56
1980	4.59	4.56	4.51	4.41	4.43	4.81	5.10	5.34	5.72	5.86	5.71	5.90	5.32
1981	5.94	5.94	5.55	5.62	5.49	5.09	4.82	4.66	4.36	4.16	4.32	4.50	4.58
1982	4.44	4.46	4.44	4.33	4.66	4.08	3.93	3.98	3.93	3.85	4.05	4.25	4.51
VIRGINIA													
1979													3.80
1980													5.50
1981													3.77
1982													3.80

OATS: PRICES RECEIVED BY FARMERS, MONTHLY AND SEASON AVERAGE,
BY STATE AND UNITED STATES, 1979-82

YEAR	JAN	FEB	MAR	APR	MAY	JUN	JUL	AUG	SEP	OCT	NOV	DEC	SEASON AVERAGE
DOLLARS PER BUSHEL													
UNITED STATES													
1979	1.22	1.25	1.27	1.29	1.29	1.35	1.33	1.24	1.29	1.31	1.41	1.31	1.36
1980	1.39	1.37	1.34	1.38	1.43	1.48	1.50	1.53	1.63	1.65	1.84	1.92	1.79
1981	1.98	2.01	2.08	2.05	2.05	1.99	1.84	1.72	1.74	1.78	1.88	1.94	1.89
1982	1.97	1.99	2.02	1.99	1.99	1.88	1.57	1.39	1.35	1.32	1.40	1.44	1.49
ALABAMA													
1979													1.65
1980													1.70
1981													2.10
1982													1.95
ALASKA													
1979													2.65
1980													3.10
1981													3.00
1982													5.00
ARKANSAS													
1979						1.80	1.38		1.37			1.53	1.66
1980	1.43					1.60	1.51	1.78	1.95	2.00		2.00	1.67
1981	2.09				2.15	2.13	2.10	2.11	2.15		2.00	2.10	2.13
1982						1.90	2.00	1.90	1.85		1.85	1.85	1.92
CALIFORNIA													
1979	1.64	1.81	1.68	1.75	1.76	1.92	1.89	2.13	2.39	2.30	2.30	1.95	2.06
1980	1.71	1.68	1.85	1.76		2.15		2.10	2.59	2.30	2.70	3.20	2.45
1981								2.37	2.71				2.56
1982							2.53			2.19	2.18		2.23
COLORADO													
1979													1.60
1980													2.30
1981													2.30
1982													1.79
GEORGIA													
1979													1.30
1980													1.67
1981													1.84
1982													1.56
IDAHO													
1979	1.50	1.35	1.26	1.58	1.56	1.61	1.68	1.50	1.73	1.57	1.51	1.65	1.62
1980	1.72	1.76	1.69	1.69	1.68	1.62	2.01	1.92	1.78	1.90	2.00	2.07	2.04
1981	2.15	2.12	2.25	2.10	2.21	2.25	2.12	1.72	1.69	1.69	1.84	1.77	1.87
1982	1.53	1.91	2.08	2.13	2.27	1.94	2.17	1.97	1.49	1.47	1.74	1.58	1.72
ILLINOIS													
1979	1.36	1.51	1.50	1.38	1.46	1.41	1.40	1.30	1.40	1.40	1.44	1.55	1.44
1980	1.53	1.60	1.60	1.45	1.63	1.53	1.50	1.52	1.56	1.54	1.67	1.86	1.82
1981	2.17	2.11	2.03	2.06	2.11	2.09	1.80	1.78	1.82	1.85	1.91	2.17	1.90
1982	2.04	2.19	2.20	2.12	2.20	2.15	1.83	1.70	1.62	1.62	1.60	1.80	1.84

OATS: PRICES RECEIVED BY FARMERS, MONTHLY AND SEASON AVERAGE,
BY STATE AND UNITED STATES, 1979-82

YEAR	JAN	FEB	MAR	APR	MAY	JUN	JUL	AUG	SEP	OCT	NOV	DEC	SEASON AVERAGE
DOLLARS PER BUSHEL													
INDIANA													
1979	1.55	1.60	1.62	1.59	1.56	1.80	1.47	1.51	1.60	1.66	1.60	1.65	1.62
1980	1.55	1.63	1.78	1.85	1.91	1.85	1.72	1.79	1.80	2.00	2.15	2.20	1.98
1981	2.26	2.30	2.35	2.31	2.32	2.34	2.10	2.03	2.11	2.09	2.31	2.29	2.15
1982	2.45	2.42	2.46	2.35	2.41	2.32	1.86	1.74	1.71	1.67	1.60	1.55	1.78
IOWA													
1979	1.30	1.36	1.43	1.39	1.38	1.43	1.42	1.35	1.40	1.29	1.40	1.39	1.41
1980	1.52	1.56	1.46	1.49	1.43	1.55	1.52	1.53	1.64	1.58	1.74	1.98	1.71
1981	1.99	1.96	2.03	2.00	2.09	2.07	1.80	1.79	1.80	1.77	1.94	1.97	1.88
1982	1.96	2.06	2.10	2.04	2.04	2.03	1.66	1.52	1.49	1.44	1.64	1.62	1.59
KANSAS													
1979													1.65
1980													1.95
1981													1.95
1982													1.70
KENTUCKY													
1979													2.20
1980													2.40
1981													3.00
1982													2.90
MAINE													
1979													1.25
1980													1.50
1981													1.40
1982													1.33
MARYLAND													
1979													1.52
1980													1.91
1981													2.10
1982													1.85
MICHIGAN													
1979	1.31	1.33	1.33	1.34	1.37	1.45	1.37	1.32	1.30	1.33	1.33	1.56	1.45
1980	1.61	1.59	1.46	1.62	1.70	1.82	1.57	1.65	1.72	1.88	1.97	2.09	1.85
1981	2.23	2.24	2.30	2.28	2.24	2.23	1.86	1.82	1.80	1.86	2.10	2.17	1.97
1982	2.18	2.23	2.30	2.28	2.29	2.18	1.44	1.40	1.32	1.22	1.47	1.63	1.49
MINNESOTA													
1979	1.20	1.20	1.22	1.23	1.25	1.32	1.33	1.14	1.19	1.26	1.26	1.19	1.26
1980	1.33	1.24	1.24	1.35	1.38	1.40	1.45	1.39	1.57	1.67	1.82	1.83	1.70
1981	1.92	2.00	2.04	2.01	1.94	1.92	1.78	1.65	1.71	1.80	1.92	1.90	1.82
1982	1.97	1.97	1.94	1.98	1.89	1.86	1.61	1.25	1.23	1.20	1.30	1.41	1.36
MISSOURI													
1979													1.50
1980													1.80
1981													2.10
1982													2.10

OATS: PRICES RECEIVED BY FARMERS, MONTHLY AND SEASON AVERAGE,
BY STATE AND UNITED STATES, 1979-82

YEAR	JAN	FEB	MAR	APR	MAY	JUN	JUL	AUG	SEP	OCT	NOV	DEC	SEASON AVERAGE
DOLLARS PER BUSHEL													
MONTANA													
1979	1.16	1.28	1.35	1.35	1.25	1.41	1.36	1.38	1.28	1.41	1.65	1.42	1.49
1980	1.52	1.44	1.51	1.65	1.53	1.74	1.84	1.61	1.66	1.67	1.75	1.97	1.96
1981	2.10	2.03	2.17	2.30	2.25	2.32	2.20	1.83	1.80	1.91	1.81	1.86	1.89
1982	1.91	1.84	2.03	1.75	2.04	1.96	1.91	1.52	1.40	1.46	1.47	1.54	1.51
NEBRASKA													
1979	1.32	1.38	1.33	1.33	1.33	1.35	1.27	1.22	1.27	1.22	1.31	1.40	1.32
1980	1.42	1.36	1.33	1.33	1.44	1.48	1.53	1.60	1.61	1.57	1.87	1.97	1.85
1981	2.04	2.08	2.05	2.10	2.13	2.15	1.86	1.81	1.82	1.85	1.99	2.00	1.91
1982	2.05	2.11	2.01	2.03	1.95	1.85	1.53	1.44	1.32	1.34	1.24	1.40	1.45
NEW JERSEY													
1979													1.50
1980													2.22
1981													2.20
1982													2.04
NEW YORK													
1979	1.48	1.43	1.44	1.47	1.36	1.41	1.39	1.22	1.29	1.29	1.43	1.49	1.47
1980	1.55	1.49	1.62	1.65	1.84	1.86	1.79	1.68	1.85	1.74	1.98	2.26	1.99
1981	2.36	2.37	2.25	2.38	2.39	2.42	1.84	1.73	1.75	1.88	1.89	1.97	1.89
1982	2.06	2.11	2.10	1.99	2.00	1.98	1.92	1.46	1.51	1.53	1.62	1.66	1.57
NORTH CAROLINA													
1979	1.28	1.29	1.36	1.29	1.27	1.21	1.23	1.22	1.12	1.27	1.34	1.61	1.26
1980	1.81	1.70	1.48	1.49	1.36	1.42	1.46	1.53	1.43	1.97	2.21	2.24	1.67
1981			2.87	2.83	1.83	1.86	1.84	1.94	1.86	2.00	2.09	1.99	1.92
1982	2.25	2.07	2.25	2.03	1.67	1.33	1.35	1.44	1.43	1.38	1.52	1.62	1.38
NORTH DAKOTA													
1979	1.03	1.07	1.05	1.05	1.08	1.20	1.16	1.05	1.05	1.07	1.17	1.10	1.16
1980	1.13	1.17	1.13	1.19	1.29	1.33	1.61	1.54	1.56	1.57	1.73	1.79	1.77
1981	1.84	1.89	2.02	2.03	1.96	1.89	1.65	1.50	1.56	1.61	1.68	1.67	1.63
1982	1.73	1.77	1.71	1.75	1.77	1.59	1.35	1.14	1.04	1.04	1.12	1.19	1.20
OHIO													
1979	1.38	1.37	1.45	1.48	1.42	1.45	1.44	1.46	1.42	1.48	1.48	1.46	1.51
1980	1.52	1.66	1.52	1.63	1.74	1.75	1.61	1.62	1.72	1.79	1.83	2.15	1.85
1981	2.25	2.43	2.46	2.42	2.37	2.18	2.02	2.00	2.18	1.99	2.10	2.29	2.12
1982	2.24	2.35	2.35	2.31	2.52	1.97	1.54	1.45	1.43	1.33	1.39	1.45	1.49
OKLAHOMA													
1979	1.51	1.61	1.70	1.62	1.79	1.65	1.75	1.73	1.85	1.80	1.94	2.00	1.80
1980	1.84	2.10	1.88	1.74	1.78	1.85	1.75	1.92	1.93	1.96	2.14	2.41	1.96
1981	2.52	2.56	2.10	2.35	2.49								2.30
1982													2.15
OREGON													
1979	1.41	1.28	1.51	1.49	1.60	1.66	1.67	1.62	1.65	1.56	1.61	1.58	1.64
1980	1.57	1.65	1.65	1.73	1.79	1.91	1.86	1.98	1.90	2.10	2.05	2.17	2.15
1981	2.35	2.33	2.41	2.40	2.42	2.62	2.41	2.05	1.88	1.83	2.06	2.06	2.05
1982	2.14	2.04	1.97	2.09	2.15	2.12	2.00	1.83	1.68	1.63	1.61	1.58	1.65

OATS: PRICES RECEIVED BY FARMERS, MONTHLY AND SEASON AVERAGE,
BY STATE AND UNITED STATES, 1979-82

YEAR	JAN	FEB	MAR	APR	MAY	JUN	JUL	AUG	SEP	OCT	NOV	DEC	SEASON AVERAGE
DOLLARS PER BUSHEL													
PENNSYLVANIA													
1979	1.53	1.48	1.50	1.45	1.48	1.54	1.55	1.34	1.49	1.39	1.34	1.55	1.53
1980	1.53	1.66	1.68	1.80	1.87	1.95	1.85	1.75	2.08	1.90	2.13	2.35	2.13
1981	2.37	2.66	2.65	2.60	2.59	2.62	1.95	1.78	1.95	1.99	2.01	2.19	2.01
1982	2.29	2.22	2.26	2.17	2.18	2.29	1.89	1.59	1.66	1.61	1.75	1.77	1.74
SOUTH CAROLINA													
1979													1.20
1980													1.51
1981													1.79
1982													1.40
SOUTH DAKOTA													
1979	1.16	1.21	1.21	1.22	1.25	1.28	1.18	1.06	1.14	1.15	1.25	1.31	1.23
1980	1.32	1.28	1.24	1.26	1.29	1.36	1.44	1.45	1.47	1.58	1.86	1.92	1.68
1981	1.90	1.97	2.00	2.01	2.01	1.96	1.82	1.70	1.67	1.71	1.91	1.94	1.84
1982	1.91	1.94	1.93	1.96	1.96	1.74	1.40	1.24	1.19	1.18	1.25	1.37	1.37
TENNESSEE													
1979													1.80
1980													2.00
1981													2.40
1982													2.30
TEXAS													
1979	1.54	1.65	1.71	1.42	1.41	1.48	1.61	1.57	1.90	1.69	1.70	1.65	1.55
1980	1.62	1.62		1.60	1.52	1.74	1.78	1.75	1.96		2.15	2.47	1.84
1981	2.52	2.50	2.50		1.88	1.90	1.87	2.39	2.18	2.10	2.25	2.25	1.97
1982	1.95	2.00	1.95	2.20	2.20	2.08	2.00	2.56	2.16	2.49	2.20	2.50	2.12
UTAH													
1979													1.70
1980													1.95
1981													2.28
1982													1.85
VIRGINIA													
1979													1.50
1980													1.90
1981													1.85
1982													1.50
WASHINGTON													
1979													1.70
1980													2.10
1981													2.19
1982													1.87
WEST VIRGINIA													
1979													1.35
1980													1.70
1981													1.90
1982													1.50

OATS: PRICES RECEIVED BY FARMERS, MONTHLY AND SEASON AVERAGE,
BY STATE AND UNITED STATES, 1979-82

YEAR	JAN	FEB	MAR	APR	MAY	JUN	JUL	AUG	SEP	OCT	NOV	DEC	SEASON AVERAGE
DOLLARS PER BUSHEL													
WISCONSIN													
1979	1.17	1.19	1.20	1.21	1.25	1.27	1.24	1.15	1.19	1.21	1.32	1.35	1.30
1980	1.35	1.34	1.40	1.41	1.39	1.46	1.43	1.35	1.40	1.46	1.58	1.57	1.60
1981	1.62	1.73	1.84	1.74	1.83	1.75	1.64	1.57	1.63	1.64	1.72	1.83	1.77
1982	1.88	1.93	1.91	1.90	1.90	1.85	1.74	1.45	1.43	1.51	1.56	1.58	1.62
WYOMING													
1979													1.45
1980													1.95
1981													2.05
1982													1.60

ALL BARLEY: PRICES RECEIVED BY FARMERS, MONTHLY AND SEASON AVERAGE,
BY STATE AND UNITED STATES, 1979-82

YEAR	JAN	FEB	MAR	APR	MAY	JUN	JUL	AUG	SEP	OCT	NOV	DEC	SEASON AVERAGE
DOLLARS PER BUSHEL													
UNITED STATES													
1979	1.95	1.87	1.89	1.96	2.07	2.30	2.22	2.23	2.33	2.32	2.40	2.32	2.29
1980	2.27	2.23	2.18	2.15	2.21	2.36	2.52	2.59	2.65	2.81	2.90	2.97	2.84
1981	3.09	3.05	3.04	3.04	3.00	2.94	2.41	2.37	2.44	2.38	2.49	2.48	2.44
1982	2.50	2.40	2.40	2.42	2.53	2.39	2.16	2.20	2.17	1.98	2.06	2.19	2.22
ALASKA													
1979													3.00
1980													3.00
1981													4.10
1982													3.60
ARIZONA													
1979	2.51		2.40		2.56	2.62	2.63	2.79		3.02	2.77		2.61
1980		3.05		2.47	2.68	2.61	2.56	3.12	3.05		3.74	3.43	2.67
1981				3.30	3.50	3.44	3.35	2.64				3.18	3.42
1982	3.00	2.94		2.64	2.74	2.75	2.66	2.91		2.46	2.19		2.73
CALIFORNIA													
1979	2.49	2.51	2.20	2.24	2.39	2.64	2.47	2.67	2.68	2.80	2.70	2.88	2.65
1980	2.82	2.90	3.00	2.83	2.60	2.79	3.04	3.15	3.27	3.58	3.38	3.74	3.22
1981	3.63	3.66	3.67	3.16	3.10	3.09	2.99	3.13	3.11	3.17	3.16	3.10	3.04
1982	3.06	3.00	2.88	2.91	2.84	2.86	2.81	2.58	2.56	2.54	2.77	2.77	2.81
COLORADO													
1979	2.48	2.47	2.35	2.02	2.14	2.14	2.39	2.10	2.42	2.33	2.49	2.51	2.39
1980	2.42	2.55	2.20	2.05	2.37	2.17	2.33	2.54	2.77	3.06	2.90	2.86	2.85
1981	3.07	3.04	2.98	3.13	3.25	3.26	2.64	2.43	2.78	2.74	3.71	3.25	2.78
1982	3.13	3.18	2.22	2.12	2.10	2.08	2.19	2.77	3.36	2.56	3.08	3.66	2.90
DELAWARE													
1979													1.74
1980													2.32
1981													2.00
1982													1.80
IDAHO													
1979	1.97	2.01	2.11	2.17	2.22	2.22	2.38	2.31	2.38	2.39	2.67	2.49	2.47
1980	2.46	2.46	2.62	2.75	2.73	2.62	2.74	2.71	2.70	2.73	2.88	3.10	2.92
1981	3.10	3.22	3.30	3.29	3.22	3.28	3.01	2.79	2.53	2.62	2.60	2.76	2.65
1982	2.57	2.55	2.89	2.81	2.87	2.52	2.61	2.94	2.52	2.32	2.31	2.27	2.48
ILLINOIS													
1979													2.10
1980													2.60
1981													
1982													
KANSAS													
1979													2.13
1980													2.30
1981													2.35
1982													1.96

ALL BARLEY: PRICES RECEIVED BY FARMERS, MONTHLY AND SEASON AVERAGE,
BY STATE AND UNITED STATES, 1979-82

YEAR	JAN	FEB	MAR	APR	MAY	JUN	JUL	AUG	SEP	OCT	NOV	DEC	SEASON AVERAGE
DOLLARS PER BUSHEL													
KENTUCKY													
1979													1.90
1980													1.85
1981													2.19
1982													1.70
MARYLAND													
1979													1.72
1980													2.25
1981													2.15
1982													1.95
MICHIGAN													
1979													2.65
1980													3.75
1981													2.98
1982													2.39
MINNESOTA													
1979	1.87	1.85	1.92	2.04	2.16	2.21	2.28	2.12	2.32	2.29	2.37	2.24	2.15
1980	2.04	2.11	2.14	2.05	2.10	2.29	2.60	2.56	2.75	2.87	2.98	3.01	2.75
1981	2.88	3.09	3.01	3.11	2.94	2.60	2.27	2.15	2.39	2.19	2.23	2.20	2.21
1982	2.30	2.34	2.40	2.34	2.30	2.26	2.13	1.86	1.63	1.74	1.73	1.71	2.04
MONTANA													
1979	1.69	1.63	1.68	1.70	1.76	1.76	1.88	1.98	2.17	2.27	2.01	2.32	2.13
1980	2.16	2.07	2.03	2.12	2.11	2.14	2.26	2.39	2.42	2.60	2.71	2.83	2.69
1981	2.91	2.91	2.94	2.91	2.96	2.97	2.88	2.19	2.25	2.19	2.21	2.42	2.32
1982	2.38	2.25	2.27	2.28	2.38	2.34	2.16	2.12	1.88	1.70	1.79	2.11	2.08
NEBRASKA													
1979													1.74
1980													2.30
1981													2.19
1982													2.02
NEVADA													
1979													2.70
1980													3.15
1981													2.79
1982													2.43
NEW JERSEY													
1979													1.95
1980													2.23
1981													2.02
1982													1.88
NEW MEXICO													
1979													2.40
1980													2.55
1981													2.81
1982													2.40

ALL BARLEY: PRICES RECEIVED BY FARMERS, MONTHLY AND SEASON AVERAGE,
BY STATE AND UNITED STATES, 1979-82

YEAR	JAN	FEB	MAR	APR	MAY	JUN	JUL	AUG	SEP	OCT	NOV	DEC	SEASON AVERAGE
DOLLARS PER BUSHEL													
NEW YORK													
1979													1.85
1980													2.34
1981													
1982													
NORTH CAROLINA													
1979													1.70
1980													2.10
1981													2.20
1982													1.85
NORTH DAKOTA													
1979	1.83	1.77	1.85	1.93	1.99	2.10	2.11	2.12	2.18	2.30	2.21	2.17	2.06
1980	2.09	2.02	1.92	1.97	1.99	2.14	2.42	2.43	2.43	2.61	2.76	2.74	2.62
1981	2.74	2.80	2.88	2.93	2.84	2.69	2.14	2.16	2.25	2.18	2.28	2.32	2.15
1982	2.26	2.31	2.09	2.14	2.19	2.11	1.91	1.64	1.56	1.61	1.66	1.62	1.90
OHIO													
1979													1.95
1980													2.10
1981													
1982													
OKLAHOMA													
1979	1.95	1.94	1.98	1.93	1.98	1.98	2.46	2.19	2.54	2.19	2.39	2.47	2.30
1980	2.40	2.30	2.26	2.29	2.25	2.21	2.32	2.15	2.59	2.65	2.80	2.81	2.46
1981	2.77	2.50	2.55	2.66	2.94								2.60
1982													2.45
OREGON													
1979	1.96	1.90	1.90	1.90	2.02	2.04	2.57	2.52	2.47	2.43	2.50	2.42	2.47
1980	2.40	2.45	2.47	2.45	2.40	2.49	2.53	2.64	2.78	3.12	3.11	3.29	2.97
1981	3.31	3.35	3.33	3.10	3.16	2.60	2.49	2.40	2.45	2.48	2.78	2.49	2.52
1982	2.63	2.62	2.61	2.56	2.75	2.65	2.25	2.33	2.03	1.98	2.14	2.23	2.22
PENNSYLVANIA													
1979	1.89	1.88	1.86	1.86	1.80	1.86	1.88	2.13	2.35	2.48	2.70	2.74	2.18
1980	2.48	2.69	2.76	2.64	2.66	2.27	2.42	2.61	3.00	3.25	3.55	3.75	2.89
1981	3.79	3.69	3.50	3.55	2.55								2.35
1982													1.95
SOUTH CAROLINA													
1979													1.80
1980													2.07
1981													2.39
1982													1.80
SOUTH DAKOTA													
1979	1.75	1.80	1.85	1.94	1.97	2.06	2.15	1.75	1.86	1.95	2.06	2.02	2.06
1980	2.30	1.94	2.19	2.00	2.14	2.36	2.56	2.55	2.79	2.77	3.10	2.95	2.74
1981	3.06	3.05	3.05	2.91	3.08	2.81	2.13	2.20	2.51	2.38	2.41	2.32	2.23
1982	2.31	2.29	2.29	2.29	2.31	2.26	1.81	1.57	1.56	1.59	1.58	1.54	1.87

ALL BARLEY: PRICES RECEIVED BY FARMERS, MONTHLY AND SEASON AVERAGE,
BY STATE AND UNITED STATES, 1979-82

YEAR	JAN	FEB	MAR	APR	MAY	JUN	JUL	AUG	SEP	OCT	NOV	DEC	SEASON AVERAGE
DOLLARS PER BUSHEL													
TENNESSEE													
1979													2.30
1980													2.40
1981													
1982													
TEXAS													
1979													2.17
1980													2.43
1981													2.51
1982													2.30
UTAH													
1979	2.06	2.08	2.05	2.10	2.03	2.14	2.19	2.16	2.30	2.36	2.49	2.53	2.39
1980	2.49	2.51	2.64	2.58	2.50	2.46	2.53	2.56	2.67	2.89	2.93	2.92	2.88
1981	3.15	3.26	3.18	3.25	3.23	3.08	2.63	2.49	2.65	2.64	2.67	2.51	2.59
1982	2.65	2.63	2.61	2.54	2.63	2.64	2.52	2.29	2.16	2.27	2.23	2.30	2.31
VIRGINIA													
1979													1.80
1980													2.26
1981													2.09
1982													1.90
WASHINGTON													
1979	1.80	1.76	1.84	1.91	1.95	2.18	2.45	2.36	2.57	2.54	2.85	2.52	2.54
1980	2.58	2.52	2.54	2.50	2.36	2.48	2.75	2.64	2.57	3.04	3.13	3.19	2.91
1981	3.34	3.39	3.14	3.09	3.18	3.04	2.63	2.47	2.45	2.28	2.62	2.44	2.50
1982	2.57	2.54	2.63	2.81	2.66	2.64	2.39	2.19	2.00	1.89	2.02	2.55	2.23
WEST VIRGINIA													
1979													2.30
1980													2.60
1981													2.60
1982													2.20
WISCONSIN													
1979													2.05
1980													2.29
1981													2.34
1982													2.12
WYOMING 1/													
1979	2.16	1.90	1.96	1.92	1.70	2.04	2.53	2.58				2.51	2.59
1980													2.99
1981													3.07
1982													3.26

1/ UNPUBLISHED MONTHLY PRICES INCLUDED IN U.S. AVERAGE PRICES.

FEED AND MALTING BARLEY: PRICES RECEIVED BY FARMERS, MONTHLY,
UNITED STATES, 1979-82

YEAR	JAN	FEB	MAR	APR	MAY	JUN	JUL	AUG	SEP	OCT	NOV	DEC	SEASON AVERAGE 1/
DOLLARS PER BUSHEL													
FEED BARLEY													
1979	1.94	1.86	1.77	1.82	2.01	2.38	2.22	2.21	2.29	2.20	2.18	2.23	
1980	2.14	2.24	2.16	2.09	2.21	2.38	2.43	2.46	2.56	2.70	2.75	2.96	
1981	3.09	2.98	2.99	2.90	3.01	2.98	2.36	2.23	2.32	2.30	2.29	2.29	
1982	2.41	2.28	2.29	2.35	2.58	2.52	2.23	1.98	1.91	1.87	1.94	1.98	
MALTING BARLEY													
1979	1.97	1.88	1.97	2.04	2.10	2.18	2.22	2.24	2.40	2.44	2.53	2.39	
1980	2.30	2.23	2.20	2.19	2.21	2.34	2.61	2.72	2.81	2.97	3.04	2.99	
1981	3.08	3.11	3.10	3.14	2.99	2.86	2.48	2.58	2.66	2.49	2.68	2.63	
1982	2.70	2.55	2.50	2.48	2.42	2.26	2.10	2.38	2.58	2.22	2.26	2.39	

1/ NOT AVAILABLE.

ALL WHEAT: PRICES RECEIVED BY FARMERS, MONTHLY AND SEASON AVERAGE,
BY STATE AND UNITED STATES, 1979-82

YEAR	JAN	FEB	MAR	APR	MAY	JUN	JUL	AUG	SEP	OCT	NOV	DEC	SEASON AVERAGE
DOLLARS PER BUSHEL													
UNITED STATES													
1979	2.99	2.99	2.97	3.01	3.20	3.72	3.89	3.74	3.87	3.98	3.94	3.81	3.78
1980	3.74	3.78	3.64	3.58	3.69	3.69	3.81	3.94	3.99	4.19	4.32	4.22	3.91
1981	4.21	4.17	4.09	4.07	3.95	3.70	3.62	3.62	3.65	3.77	3.85	3.80	3.66
1982	3.78	3.70	3.67	3.68	3.64	3.39	3.26	3.34	3.38	3.43	3.48	3.51	3.55
ALABAMA													
1979													3.90
1980													3.85
1981													3.30
1982													3.00
ARIZONA													
1979	3.18		3.01	3.60	3.38	3.63	3.99	4.20	3.90	4.30		3.60	3.66
1980	3.99	3.65	3.41	3.66	3.89	4.13	3.68	3.94	4.22	4.26	4.39	4.03	4.06
1981	4.54	4.96	4.35	4.24	4.80	4.73	4.44	4.05	4.14	3.69	3.68	4.01	4.61
1982	3.85	3.94	3.24	3.66	3.49	3.54	3.27	3.59	4.10	3.93	3.92	3.92	3.60
ARKANSAS													
1979			3.01	3.07	3.27	3.68	3.78	4.06	4.06	3.83	3.60	3.79	3.71
1980			3.80		3.75	3.74	3.87	3.98	4.25	4.30	4.22	4.30	3.78
1981	4.19	3.67	3.52	3.53	3.78	3.60	3.37	3.51	3.49	3.44	3.27	3.76	3.52
1982	3.52	3.39	3.50	3.22	3.30	3.24	3.14	2.92	2.86	2.70	2.85	3.08	3.23
CALIFORNIA													
1979	3.52	3.48	3.34	3.46	3.42	4.04	3.70	4.22	4.38	4.45	4.25	4.29	4.03
1980	4.23	4.16	3.95	3.82	3.82	3.75	4.14	4.89	4.68	4.73	4.72	4.67	4.27
1981	4.60	4.10	4.27	4.30	4.44	4.32	4.49	4.01	4.12	4.32	4.27	4.17	4.25
1982	4.24	4.00	3.94	3.76	3.63	3.63	3.68	3.75	3.88	3.80	4.08	4.12	3.76
COLORADO													
1979	2.74	2.80	2.78	2.82	2.93	3.41	3.55	3.51	3.51	3.56	3.69	3.72	3.49
1980	3.68	3.52	3.32	3.21	3.34	3.41	3.41	3.63	3.61	3.90	3.86	3.87	3.61
1981	3.90	4.03	3.71	3.71	3.66	3.53	3.47	3.43	3.54	3.62	3.68	3.62	3.55
1982	3.68	3.58	3.59	3.60	3.51	3.41	3.26	3.14	3.23	3.26	3.33	3.41	3.47
DELAWARE													
1979													4.20
1980													3.90
1981													3.20
1982													3.00
GEORGIA													
1979													3.75
1980													3.66
1981													3.32
1982													3.05
IDAHO													
1979	3.07	3.08	2.99	3.16	3.17	3.91	3.86	3.82	3.74	3.68	3.69	3.50	3.51
1980	3.38	3.54	3.54	3.50	3.34	3.38	3.49	3.39	3.65	3.75	3.75	3.73	3.66
1981	3.86	3.74	3.84	3.77	3.79	3.90	3.57	3.52	3.63	3.78	3.74	3.54	3.62
1982	3.76	3.67	3.57	3.61	3.52	3.55	3.54	3.54	3.58	3.61	3.67	3.63	3.77

ALL WHEAT: PRICES RECEIVED BY FARMERS, MONTHLY AND SEASON AVERAGE,
BY STATE AND UNITED STATES, 1979-82

YEAR	JAN	FEB	MAR	APR	MAY	JUN	JUL	AUG	SEP	OCT	NOV	DEC	SEASON AVERAGE
DOLLARS PER BUSHEL													
ILLINOIS													
1979	3.45	3.48	3.35	3.45	3.57	3.88	3.97	3.88	3.89	3.94	4.02	4.10	3.97
1980	4.06	4.12	3.90	3.60	3.55	3.26	3.81	4.03	4.17	4.51	4.74	4.47	3.93
1981	4.56	4.41	4.17	4.13	3.67	3.14	3.43	3.43	3.49	3.58	3.78	3.74	3.41
1982	3.88	3.42	3.40	3.51	3.25	3.03	3.10	2.99	2.96	2.88	3.03	3.16	3.11
INDIANA													
1979	3.31	3.56	3.29	3.28	3.56	3.85	4.02	3.85	3.93	4.00	3.70	4.10	3.98
1980	4.08	4.15	3.74	3.52	3.69	3.68	3.79	4.07	4.21	4.43	4.50	4.51	3.85
1981	4.20	4.07	3.84	3.91	3.47	3.08	3.47	3.41	3.57	3.74	3.77	3.63	3.48
1982	3.69	3.30	3.31	3.33	3.35	3.21	3.14	3.08	2.91	2.73	2.99	3.01	3.14
IOWA													
1979													3.30
1980													3.85
1981													3.70
1982													3.31
KANSAS													
1979	2.95	2.96	2.98	3.03	3.22	3.72	3.85	3.67	3.84	3.91	3.93	3.79	3.72
1980	3.71	3.73	3.48	3.42	3.44	3.48	3.62	3.78	3.93	4.14	4.18	4.01	3.78
1981	4.04	3.96	3.83	3.92	3.81	3.71	3.70	3.67	3.74	3.82	3.95	3.91	3.76
1982	3.81	3.81	3.76	3.74	3.74	3.40	3.30	3.29	3.31	3.23	3.38	3.49	3.56
KENTUCKY													
1979													4.00
1980													3.85
1981													3.45
1982													3.19
LOUISIANA													
1979													3.90
1980													3.80
1981													3.70
1982													3.20
MARYLAND													
1979													4.12
1980													4.04
1981													3.25
1982													3.10
MICHIGAN													
1979	3.51	3.43	3.20	3.14	3.23	3.85	3.81	3.86	3.86	3.83	3.75	3.84	3.82
1980	3.92	3.88	3.67	3.28	3.57	3.55	3.83	3.46	3.58	4.16	4.34	3.97	3.60
1981	4.00	3.58	3.24	3.07	2.94	2.96	3.42	3.49	3.60	3.81	3.78	3.59	3.47
1982	3.52	3.27	3.38	3.22	3.20	3.21	3.29	3.30	3.23	2.79	3.00	3.18	3.33
MINNESOTA													
1979	2.84	2.86	2.88	2.97	3.25	3.64	3.92	3.81	3.71	3.88	3.82	3.64	3.71
1980	3.60	3.60	3.60	3.82	3.84	3.89	4.17	4.07	3.95	4.08	4.31	4.24	4.04
1981	4.28	4.38	4.25	4.25	4.20	4.07	3.97	3.76	3.79	3.84	3.80	3.76	3.72
1982	3.75	3.72	3.70	3.76	3.75	3.67	3.65	3.49	3.46	3.47	3.55	3.42	3.75

ALL WHEAT: PRICES RECEIVED BY FARMERS, MONTHLY AND SEASON AVERAGE,
BY STATE AND UNITED STATES, 1979-82

YEAR	JAN	FEB	MAR	APR	MAY	JUN	JUL	AUG	SEP	OCT	NOV	DEC	SEASON AVERAGE
DOLLARS PER BUSHEL													
MISSISSIPPI													
1979													4.10
1980													4.20
1981													3.25
1982													3.00
MISSOURI													
1979	3.16	3.35	3.36	3.50	3.38	3.62	3.91	3.67	3.80	3.90	3.77	3.63	3.80
1980	3.89	4.02	3.86	3.50	3.54	3.67	3.63	3.89	4.12	4.22	4.43	4.48	3.77
1981	4.58	4.35	3.99	3.95	3.57	3.32	3.42	3.19	3.23	3.28	3.52	3.65	3.34
1982	3.47	3.43	3.29	3.38	3.14	3.09	2.80	2.87	2.76	2.63	2.98	3.20	2.99
MONTANA													
1979	2.76	2.78	2.82	2.82	2.84	3.11	3.32	3.43	3.67	3.80	3.74	3.70	3.56
1980	3.63	3.71	3.64	3.66	3.66	3.80	4.11	4.00	4.12	4.24	4.47	4.40	4.14
1981	4.31	4.46	4.30	4.41	4.27	4.16	3.72	3.59	3.55	3.65	3.80	3.75	3.68
1982	3.81	3.76	3.72	3.80	3.73	3.64	3.60	3.44	3.46	3.45	3.50	3.55	3.65
NEBRASKA													
1979	2.78	2.79	2.83	2.88	2.98	3.31	3.70	3.59	3.68	3.73	3.81	3.76	3.64
1980	3.73	3.68	3.50	3.35	3.43	3.45	3.63	3.70	3.78	3.99	4.12	4.01	3.72
1981	4.02	3.92	3.83	3.87	3.79	3.81	3.74	3.63	3.60	3.64	3.85	3.72	3.65
1982	3.68	3.67	3.69	3.65	3.59	3.50	3.30	3.21	3.23	3.22	3.27	3.39	3.45
NEVADA													
1979													4.08
1980													3.80
1981													3.40
1982													3.53
NEW JERSEY													
1979													4.00
1980													3.98
1981													3.27
1982													3.11
NEW MEXICO													
1979													3.91
1980													3.76
1981													3.64
1982													3.62
NEW YORK													
1979													3.77
1980													3.93
1981													3.21
1982													3.33
NORTH CAROLINA													
1979													3.70
1980													3.75
1981													3.40
1982													3.02

ALL WHEAT: PRICES RECEIVED BY FARMERS, MONTHLY AND SEASON AVERAGE,
BY STATE AND UNITED STATES, 1979-82

YEAR	JAN	FEB	MAR	APR	MAY	JUN	JUL	AUG	SEP	OCT	NOV	DEC	SEASON AVERAGE
DOLLARS PER BUSHEL													
NORTH DAKOTA													
1979	2.77	2.78	2.84	2.84	3.07	3.55	3.70	3.66	3.91	4.23	4.03	3.74	3.82
1980	3.69	3.78	3.73	3.73	3.94	4.33	4.83	4.68	4.45	4.60	4.74	4.71	4.40
1981	4.67	4.46	4.41	4.37	4.23	3.99	3.76	3.58	3.49	3.54	3.62	3.50	3.54
1982	3.57	3.59	3.55	3.62	3.62	3.53	3.46	3.34	3.30	3.32	3.40	3.28	3.69
OHIO													
1979	3.55	3.60	3.54	3.51	3.80	4.05	4.13	4.06	4.10	4.17	3.99	4.13	4.08
1980	4.09	4.16	3.79	3.75	3.68	3.69	3.94	4.09	4.25	4.47	4.68	4.54	4.06
1981	4.68	4.31	4.11	4.02	3.64	3.40	3.54	3.52	3.67	3.76	3.87	3.74	3.55
1982	3.73	3.38	3.35	3.39	3.28	3.18	3.20	3.05	2.93	2.73	3.08	3.10	3.16
OKLAHOMA													
1979	3.10	3.15	3.16	3.17	3.26	3.85	3.98	3.95	4.07	4.13	4.15	4.12	3.91
1980	3.98	3.88	3.62	3.39	3.63	3.57	3.77	3.86	4.03	4.22	4.44	4.16	3.83
1981	4.23	4.03	3.94	3.99	3.82	3.82	3.76	3.83	3.87	3.77	4.00	3.92	3.83
1982	3.91	3.84	3.77	3.84	3.76	3.47	3.39	3.33	3.37	3.40	3.43	3.49	3.65
OREGON													
1979	3.45	3.25	3.35	3.35	3.57	4.14	4.09	4.22	4.10	3.93	3.85	3.74	3.79
1980	3.72	3.78	3.71	3.69	3.59	3.50	3.84	3.79	3.84	4.13	4.24	4.16	3.98
1981	4.05	4.15	4.20	4.19	4.11	3.97	3.88	3.89	3.86	3.88	3.91	3.81	3.84
1982	3.96	3.76	3.76	3.86	3.83	3.72	3.80	3.82	3.79	3.93	3.98	4.16	4.02
PENNSYLVANIA													
1979													4.24
1980													4.10
1981													3.50
1982													3.25
SOUTH CAROLINA													
1979													3.90
1980													3.68
1981													3.25
1982													2.92
SOUTH DAKOTA													
1979	2.65	2.85	2.80	2.85	3.11	3.35	3.60	3.50	3.70	3.97	3.83	3.66	3.64
1980	3.52	3.71	3.72	3.73	3.90	4.06	4.20	4.37	4.45	4.50	4.83	4.54	4.24
1981	4.47	4.46	4.25	4.21	4.33	4.18	3.78	3.62	3.57	3.56	3.66	3.59	3.57
1982	3.56	3.48	3.55	3.54	3.56	3.54	3.46	3.37	3.43	3.42	3.50	3.41	3.69
TENNESSEE													
1979													3.80
1980													3.80
1981													3.50
1982													3.02
TEXAS													
1979	3.08	3.08	3.12	3.10	3.21	3.87	3.97	3.90	4.01	3.95	4.07	4.06	3.83
1980	3.97	3.84	3.61	3.45	3.57	3.55	3.71	3.79	3.95	4.25	4.35	4.02	3.71
1981	4.19	4.00	3.84	3.93	3.69	3.64	3.57	3.54	3.73	3.78	3.88	3.83	3.65
1982	3.77	3.63	3.77	3.72	3.55	3.42	3.25	3.29	3.29	3.26	3.49	3.55	3.68

ALL WHEAT: PRICES RECEIVED BY FARMERS, MONTHLY AND SEASON AVERAGE,
BY STATE AND UNITED STATES, 1979-82

YEAR	JAN	FEB	MAR	APR	MAY	JUN	JUL	AUG	SEP	OCT	NOV	DEC	SEASON AVERAGE
DOLLARS PER BUSHEL													
UTAH													
1979													3.60
1980													3.85
1981													3.70
1982													3.36
VIRGINIA													
1979													4.10
1980													3.87
1981													3.34
1982													3.06
WASHINGTON													
1979	3.39	3.30	3.32	3.39	3.53	4.02	3.85	4.21	4.17	4.01	4.02	3.89	3.90
1980	3.86	3.97	3.81	3.80	3.65	3.67	3.78	3.77	3.85	4.11	4.24	4.19	3.98
1981	4.20	4.23	4.19	4.05	4.25	4.09	3.97	3.92	3.89	4.02	4.09	4.20	3.92
1982	3.99	3.94	3.87	3.79	3.84	3.88	3.78	3.83	3.89	3.90	4.05	4.10	4.04
WEST VIRGINIA													
1979													4.00
1980													4.00
1981													3.65
1982													3.35
WISCONSIN													
1979													3.70
1980													3.84
1981													3.49
1982													3.15
WYOMING													
1979													3.48
1980													3.72
1981													3.39
1982													3.34

WINTER WHEAT: PRICES RECEIVED BY FARMERS, MONTHLY AND SEASON AVERAGE,
BY STATE AND UNITED STATES, 1979-82

YEAR	JAN	FEB	MAR	APR	MAY	JUN	JUL	AUG	SEP	OCT	NOV	DEC	SEASON AVERAGE
DOLLARS PER BUSHEL													
UNITED STATES													
1979	3.05	3.03	3.02	3.06	3.25	3.77	3.91	3.76	3.89	3.91	3.94	3.84	3.79
1980	3.78	3.80	3.59	3.48	3.54	3.58	3.73	3.78	3.91	4.11	4.22	4.11	3.83
1981	4.16	4.07	3.98	3.96	3.80	3.59	3.58	3.60	3.67	3.82	3.92	3.88	3.65
1982	3.81	3.71	3.68	3.66	3.63	3.33	3.22	3.31	3.39	3.45	3.48	3.54	3.50
ALABAMA													
1979													3.90
1980													3.85
1981													3.30
1982													3.00
ARIZONA													
1979	3.21		3.21	3.62	3.39	3.48	3.94	3.77	3.90	4.07		3.60	3.45
1980	3.99	3.63	3.41	3.36	3.61	3.62	3.34	3.94	4.20	4.26	4.39	4.03	3.78
1981	4.31	4.45	4.29	4.21	3.93	3.68	3.81	4.00	4.15	3.96	4.22	4.22	3.86
1982	4.18	4.28	3.13	3.82	3.49	3.56	3.43	3.66	4.10	3.59	3.98	3.91	3.68
ARKANSAS													
1979			3.01	3.07	3.27	3.68	3.78	4.06	4.06	3.83	3.60	3.79	3.71
1980			3.80		3.75	3.74	3.87	3.98	4.25	4.30	4.22	4.30	3.78
1981	4.19	3.67	3.52	3.53	3.78	3.60	3.37	3.51	3.49	3.44	3.27	3.76	3.52
1982	3.52	3.39	3.50	3.22	3.30	3.24	3.14	2.92	2.86	2.70	2.85	3.08	3.23
CALIFORNIA													
1979	3.53	3.49	3.34	3.45	3.42	4.09	3.73	4.22	4.34	4.45	4.40	4.29	4.05
1980	4.21	4.16	3.95	3.82	3.76	3.68	3.88	4.07	4.39	4.72	4.72	4.66	4.23
1981	4.60	4.08	4.27	4.30	4.27	3.70	3.98	3.99	4.13	4.32	4.27	4.19	4.15
1982	4.23	3.93	3.90	3.73	3.64	3.63	3.65	3.75	3.88	3.80	4.09	4.12	3.76
COLORADO													
1979	2.74	2.80	2.78	2.83	2.93	3.42	3.55	3.51	3.51	3.55	3.69	3.72	3.49
1980	3.68	3.52	3.34	3.23	3.35	3.42	3.41	3.63	3.62	3.92	3.87	3.88	3.61
1981	3.90	4.03	3.71	3.71	3.66	3.53	3.47	3.43	3.54	3.63	3.69	3.62	3.56
1982	3.68	3.58	3.59	3.60	3.52	3.42	3.26	3.14	3.21	3.22	3.33	3.41	3.46
DELAWARE													
1979													4.20
1980													3.90
1981													3.20
1982													3.00
GEORGIA													
1979													3.75
1980													3.66
1981													3.32
1982													3.05
IDAHO													
1979	3.09	3.07	2.98	3.25	3.20	3.78	3.86	3.92	3.81	3.79	3.79	3.59	3.60
1980	3.45	3.66	3.61	3.50	3.43	3.43	3.50	3.46	3.72	3.84	3.88	3.89	3.72
1981	3.93	3.81	3.94	3.83	3.89	3.90	3.60	3.58	3.67	3.83	3.85	3.58	3.66
1982	3.81	3.70	3.61	3.66	3.57	3.61	3.58	3.63	3.67	3.70	3.77	3.70	3.82

WINTER WHEAT: PRICES RECEIVED BY FARMERS, MONTHLY AND SEASON AVERAGE,
BY STATE AND UNITED STATES, 1979-82

YEAR	JAN	FEB	MAR	APR	MAY	JUN	JUL	AUG	SEP	OCT	NOV	DEC	SEASON AVERAGE
DOLLARS PER BUSHEL													
ILLINOIS													
1979	3.45	3.48	3.35	3.45	3.57	3.88	3.97	3.88	3.89	3.94	4.02	4.10	3.97
1980	4.06	4.12	3.90	3.60	3.55	3.26	3.81	4.03	4.17	4.51	4.74	4.47	3.93
1981	4.56	4.41	4.17	4.13	3.67	3.14	3.43	3.43	3.49	3.58	3.78	3.74	3.41
1982	3.88	3.42	3.40	3.51	3.25	3.03	3.10	2.99	2.96	2.88	3.03	3.16	3.11
INDIANA													
1979	3.31	3.56	3.29	3.28	3.56	3.85	4.02	3.85	3.93	4.00	3.70	4.10	3.98
1980	4.08	4.15	3.74	3.52	3.69	3.68	3.79	4.07	4.21	4.43	4.50	4.51	3.85
1981	4.20	4.07	3.84	3.91	3.47	3.08	3.47	3.41	3.57	3.74	3.77	3.63	3.48
1982	3.69	3.30	3.31	3.33	3.35	3.21	3.14	3.08	2.91	2.73	2.99	3.01	3.14
IOWA													
1979													3.30
1980													3.85
1981													3.70
1982													3.31
KANSAS													
1979	2.95	2.96	2.98	3.03	3.22	3.72	3.85	3.67	3.84	3.91	3.93	3.79	3.72
1980	3.71	3.73	3.48	3.42	3.44	3.48	3.62	3.78	3.93	4.14	4.18	4.01	3.78
1981	4.04	3.96	3.83	3.92	3.81	3.71	3.70	3.67	3.74	3.82	3.95	3.91	3.76
1982	3.81	3.81	3.76	3.74	3.74	3.40	3.30	3.29	3.31	3.23	3.38	3.49	3.56
KENTUCKY													
1979													4.00
1980													3.85
1981													3.45
1982													3.19
LOUISIANA													
1979													3.90
1980													3.80
1981													3.70
1982													3.20
MARYLAND													
1979													4.12
1980													4.04
1981													3.25
1982													3.10
MICHIGAN													
1979	3.51	3.43	3.20	3.14	3.23	3.85	3.81	3.86	3.86	3.83	3.75	3.84	3.82
1980	3.92	3.88	3.67	3.28	3.57	3.55	3.83	3.46	3.58	4.16	4.34	3.97	3.60
1981	4.00	3.58	3.24	3.07	2.94	2.96	3.42	3.49	3.60	3.81	3.78	3.59	3.47
1982	3.52	3.27	3.38	3.22	3.20	3.21	3.29	3.30	3.23	2.79	3.00	3.18	3.33
MINNESOTA													
1979	2.85	2.84	2.84	3.00	3.26	3.71	3.85	3.75	3.69	3.71	3.45	3.60	3.61
1980	3.21	3.27				4.08	4.08	3.99	4.66				3.99
1981	4.31	4.21	4.27	3.75	3.94		3.71	3.57	3.69	3.51	3.85	3.67	3.61
1982	3.65	3.60	3.70	3.57	3.79	3.58	3.41	3.35	3.49	3.19	3.18	3.17	3.64

WINTER WHEAT: PRICES RECEIVED BY FARMERS, MONTHLY AND SEASON AVERAGE,
BY STATE AND UNITED STATES, 1979-82

YEAR	JAN	FEB	MAR	APR	MAY	JUN	JUL	AUG	SEP	OCT	NOV	DEC	SEASON AVERAGE
DOLLARS PER BUSHEL													
MISSISSIPPI													
1979													4.10
1980													4.20
1981													3.25
1982													3.00
MISSOURI													
1979	3.16	3.35	3.36	3.50	3.38	3.62	3.91	3.67	3.80	3.90	3.77	3.63	3.80
1980	3.89	4.02	3.86	3.50	3.54	3.67	3.63	3.89	4.12	4.22	4.43	4.48	3.77
1981	4.58	4.35	3.99	3.95	3.57	3.32	3.42	3.19	3.23	3.28	3.52	3.65	3.34
1982	3.47	3.43	3.29	3.38	3.14	3.09	2.80	2.87	2.76	2.63	2.98	3.20	2.99
MONTANA													
1979	2.76	2.73	2.80	2.81	2.81	3.09	3.34	3.41	3.62	3.66	3.73	3.74	3.49
1980	3.64	3.72	3.41	3.47	3.54	3.54	3.73	3.62	3.74	3.93	4.14	4.10	3.90
1981	4.13	4.22	4.13	4.12	4.08	3.99	3.63	3.52	3.57	3.67	3.85	3.73	3.63
1982	3.74	3.63	3.69	3.65	3.65	3.44	3.41	3.39	3.44	3.50	3.52	3.54	3.65
NEBRASKA													
1979	2.78	2.79	2.83	2.88	2.98	3.31	3.70	3.59	3.68	3.73	3.81	3.76	3.64
1980	3.73	3.68	3.50	3.35	3.43	3.45	3.63	3.70	3.78	3.99	4.12	4.01	3.72
1981	4.02	3.92	3.83	3.87	3.79	3.81	3.74	3.63	3.60	3.64	3.85	3.72	3.65
1982	3.68	3.67	3.69	3.65	3.59	3.50	3.30	3.21	3.23	3.22	3.27	3.39	3.45
NEVADA													
1979													4.15
1980													3.80
1981													3.40
1982													3.53
NEW JERSEY													
1979													4.00
1980													3.98
1981													3.27
1982													3.11
NEW MEXICO													
1979													3.91
1980													3.76
1981													3.64
1982													3.62
NEW YORK													
1979													3.77
1980													3.93
1981													3.21
1982													3.33
NORTH CAROLINA													
1979													3.70
1980													3.75
1981													3.40
1982													3.02

WINTER WHEAT: PRICES RECEIVED BY FARMERS, MONTHLY AND SEASON AVERAGE,
BY STATE AND UNITED STATES, 1979-82

YEAR	JAN	FEB	MAR	APR	MAY	JUN	JUL	AUG	SEP	OCT	NOV	DEC	SEASON AVERAGE
DOLLARS PER BUSHEL													
NORTH DAKOTA													
1979	2.64	2.63	2.40	2.52	2.92	3.44	3.28	3.29	3.30	3.33	3.36	3.31	3.30
1980	3.47	3.10	3.38	3.12		3.80	3.30	3.51	3.74	3.75	3.90	4.13	3.55
1981		3.97		3.64	3.78	3.27	3.53	3.39	3.43	3.40	3.43	3.18	3.41
1982	3.43	3.43	3.50		3.35	3.38	3.19	3.08	3.18	3.20	3.28		3.60
OHIO													
1979	3.55	3.60	3.54	3.51	3.80	4.05	4.13	4.06	4.10	4.17	3.99	4.13	4.08
1980	4.09	4.16	3.79	3.75	3.68	3.69	3.94	4.09	4.25	4.47	4.68	4.54	4.06
1981	4.68	4.31	4.11	4.02	3.64	3.40	3.54	3.52	3.67	3.76	3.87	3.74	3.55
1982	3.73	3.38	3.35	3.39	3.28	3.18	3.20	3.05	2.93	2.73	3.08	3.10	3.16
OKLAHOMA													
1979	3.10	3.15	3.16	3.17	3.26	3.85	3.98	3.95	4.07	4.13	4.15	4.12	3.91
1980	3.98	3.88	3.62	3.39	3.63	3.57	3.77	3.86	4.03	4.22	4.44	4.16	3.83
1981	4.23	4.03	3.94	3.99	3.82	3.82	3.76	3.83	3.87	3.77	4.00	3.92	3.83
1982	3.91	3.84	3.77	3.84	3.76	3.47	3.39	3.33	3.37	3.40	3.43	3.49	3.65
OREGON													
1979	3.45	3.25	3.35	3.35	3.57	4.14	4.09	4.22	4.10	3.93	3.85	3.74	3.79
1980	3.72	3.78	3.71	3.69	3.59	3.50	3.84	3.79	3.84	4.13	4.24	4.16	3.98
1981	4.05	4.15	4.20	4.19	4.11	3.97	3.88	3.89	3.86	3.88	3.91	3.81	3.84
1982	3.96	3.76	3.76	3.86	3.83	3.72	3.80	3.82	3.79	3.93	3.98	4.16	4.02
PENNSYLVANIA													
1979													4.24
1980													4.10
1981													3.50
1982													3.25
SOUTH CAROLINA													
1979													3.90
1980													3.68
1981													3.25
1982													2.92
SOUTH DAKOTA													
1979	2.68	2.74	2.64	2.77	2.78	3.01	3.36	3.31	3.40	3.57	3.47	3.51	3.37
1980	3.43	3.51	3.42	3.29	3.40	3.60	3.80	3.79	3.94	4.00	4.33	4.18	3.92
1981	3.94	4.23	4.02	3.91	3.96	3.95	3.63	3.49	3.41	3.49	3.59	3.54	3.50
1982	3.45	3.33	3.42	3.40	3.40	3.39	3.27	3.11	3.21	3.23	3.25	3.21	3.58
TENNESSEE													
1979													3.80
1980													3.80
1981													3.50
1982													3.02
TEXAS													
1979	3.08	3.08	3.12	3.10	3.21	3.87	3.97	3.90	4.01	3.95	4.07	4.06	3.83
1980	3.97	3.84	3.61	3.45	3.57	3.55	3.71	3.79	3.95	4.25	4.35	4.02	3.71
1981	4.19	4.00	3.84	3.93	3.69	3.64	3.57	3.54	3.73	3.78	3.88	3.83	3.65
1982	3.77	3.63	3.77	3.72	3.55	3.42	3.25	3.29	3.29	3.26	3.49	3.55	3.68

WINTER WHEAT: PRICES RECEIVED BY FARMERS, MONTHLY AND SEASON AVERAGE,
BY STATE AND UNITED STATES, 1979-82

YEAR	JAN	FEB	MAR	APR	MAY	JUN	JUL	AUG	SEP	OCT	NOV	DEC	SEASON AVERAGE
DOLLARS PER BUSHEL													
UTAH													
1979													3.63
1980													3.87
1981													3.70
1982													3.34
VIRGINIA													
1979													4.10
1980													3.87
1981													3.34
1982													3.06
WASHINGTON													
1979	3.39	3.30	3.32	3.39	3.53	4.02	3.85	4.21	4.17	4.01	4.02	3.89	3.90
1980	3.86	3.97	3.81	3.80	3.65	3.67	3.78	3.77	3.85	4.11	4.24	4.19	3.98
1981	4.20	4.23	4.19	4.05	4.25	4.09	3.97	3.92	3.89	4.02	4.09	4.20	3.92
1982	3.99	3.94	3.87	3.79	3.84	3.88	3.78	3.83	3.89	3.90	4.05	4.10	4.04
WEST VIRGINIA													
1979													4.00
1980													4.00
1981													3.65
1982													3.35
WISCONSIN													
1979													3.70
1980													3.84
1981													3.49
1982													3.15
WYOMING													
1979													3.48
1980													3.71
1981													3.39
1982													3.34

DURUM WHEAT: PRICES RECEIVED BY FARMERS, MONTHLY AND SEASON AVERAGE,
BY STATE AND UNITED STATES, 1979-82

YEAR	JAN	FEB	MAR	APR	MAY	JUN	JUL	AUG	SEP	OCT	NOV	DEC	SEASON AVERAGE
DOLLARS PER BUSHEL													
UNITED STATES													
1979													4.35
1980													5.07
1981						4.52	3.91	3.52	3.41	3.51	3.55	3.47	3.72
1982	3.60	3.67	3.52	3.54	3.52	3.50	3.36	3.10	3.09	3.19	3.25	3.16	3.66
ARIZONA													
1979													3.84
1980													4.17
1981						4.79	4.65	4.17	4.10	3.69	3.60	3.62	4.76
1982	3.83	3.89	4.06	3.46	3.49	3.54	3.26	3.52		3.99	3.54	3.94	3.54
CALIFORNIA													
1979													3.75
1980													4.65
1981						4.82	4.92	4.36	3.86			3.90	4.85
1982	4.27	4.24	4.16	4.35		3.61	3.82	3.70		3.92	4.07		3.75
MINNESOTA													
1979													4.36
1980													5.59
1981						3.88	3.95	3.54	3.52	3.59	3.71	3.41	3.63
1982	3.95	3.78	3.79	3.62	3.46	3.72	3.50	3.15	3.28	3.13	3.30	3.18	3.83
MONTANA													
1979													4.26
1980													5.75
1981						4.49	3.74	3.55	3.45	3.51	3.68	3.71	3.60
1982	3.76	3.71	3.83	3.43	3.79	3.38	3.57	3.16	3.20	3.10	3.30	3.13	3.61
NORTH DAKOTA													
1979													4.41
1980													5.10
1981						3.70	3.48	3.50	3.40	3.50	3.54	3.46	3.47
1982	3.53	3.62	3.47	3.53	3.51	3.42	3.26	3.08	3.08	3.16	3.22	3.15	3.66
SOUTH DAKOTA													
1979													4.42
1980													6.30
1981						3.97	4.04	3.54	3.49	3.77	3.38	3.23	3.53
1982	3.79	3.71	3.21	3.45	3.46	3.44	3.16	3.24	3.31	3.26	3.21	3.08	3.68

OTHER SPRING WHEAT: PRICES RECEIVED BY FARMERS, MONTHLY AND SEASON AVERAGE,
BY STATE AND UNITED STATES, 1979-82

YEAR	JAN	FEB	MAR	APR	MAY	JUN	JUL	AUG	SEP	OCT	NOV	DEC	SEASON AVERAGE
DOLLARS PER BUSHEL													
UNITED STATES													
1979	2.81	2.83	2.82	2.85	3.10	3.50	3.69	3.59	3.65	3.74	3.64	3.57	3.59
1980	3.48	3.55	3.53	3.60	3.73	3.82	4.04	3.95	3.96	4.15	4.24	4.18	3.96
1981	4.23	4.19	4.15	4.25	4.24	4.12	3.93	3.70	3.62	3.66	3.74	3.63	3.66
1982	3.69	3.67	3.61	3.73	3.69	3.62	3.59	3.46	3.45	3.44	3.51	3.47	3.72
COLORADO													
1979	2.88		2.65							3.62		3.72	3.45
1980	3.50	3.74			3.00	2.91	3.21	3.63	3.41	3.59	3.71	3.35	3.52
1981	3.82	3.83	3.61	3.78	3.40		3.49	3.44	3.47	3.43	3.42		3.40
1982	3.35	3.35	3.38	3.40	3.33	3.34	3.27	3.33	3.47	3.62	3.43	3.45	3.62
IDAHO													
1979	3.05	3.08	2.99	3.03	3.13	4.08	3.86	3.70	3.68	3.47	3.49	3.40	3.43
1980	3.31	3.42	3.46	3.48	3.26	3.32	3.48	3.35	3.55	3.63	3.66	3.60	3.58
1981	3.81	3.70	3.73	3.71	3.72	3.90	3.55	3.47	3.54	3.63	3.65	3.50	3.56
1982	3.70	3.64	3.54	3.56	3.48	3.49	3.51	3.43	3.46	3.49	3.54	3.55	3.70
MINNESOTA													
1979	2.83	2.85	2.88	2.97	3.25	3.64	3.92	3.81	3.70	3.86	3.80	3.64	3.69
1980	3.57	3.56	3.59	3.79	3.83	3.89	4.13	4.00	3.87	4.08	4.29	4.24	3.99
1981	4.28	4.27	4.22	4.25	4.18	4.08	3.98	3.77	3.79	3.84	3.80	3.79	3.73
1982	3.74	3.71	3.69	3.76	3.76	3.67	3.65	3.50	3.46	3.48	3.55	3.42	3.75
MONTANA													
1979	2.74	2.85	2.82	2.79	2.86	3.14	3.27	3.43	3.64	3.74	3.64	3.61	3.54
1980	3.58	3.67	3.66	3.72	3.71	3.77	3.99	4.06	4.17	4.31	4.34	4.28	4.15
1981	4.28	4.27	4.35	4.51	4.38	4.29	3.81	3.72	3.54	3.63	3.75	3.78	3.76
1982	3.88	3.87	3.75	3.90	3.81	3.79	3.69	3.49	3.48	3.42	3.48	3.57	3.65
NEVADA													
1979													4.00
1980													3.80
1981													3.40
1982													3.53
NORTH DAKOTA													
1979	2.74	2.72	2.78	2.78	3.05	3.47	3.56	3.54	3.61	3.67	3.56	3.53	3.53
1980	3.47	3.52	3.42	3.47	3.66	3.79	4.02	3.90	3.98	4.16	4.26	4.23	3.92
1981	4.24	4.16	4.10	4.22	4.24	4.10	3.97	3.64	3.55	3.57	3.70	3.55	3.59
1982	3.59	3.56	3.57	3.65	3.66	3.58	3.53	3.44	3.42	3.39	3.47	3.35	3.71
OREGON													
1979													3.79
1980													3.98
1981													3.84
1982													4.02
SOUTH DAKOTA													
1979	2.87	2.90	2.88	2.88	3.12	3.36	3.59	3.50	3.70	3.97	3.90	3.67	3.64
1980	3.57	3.73	3.69	3.73	3.91	3.98	4.06	4.01	4.20	4.49	4.63	4.37	4.20
1981	4.48	4.48	4.32	4.39	4.50	4.26	3.91	3.66	3.63	3.60	3.71	3.64	3.62
1982	3.62	3.62	3.62	3.64	3.60	3.57	3.56	3.43	3.50	3.49	3.57	3.47	3.76

OTHER SPRING WHEAT: PRICES RECEIVED BY FARMERS, MONTHLY AND SEASON AVERAGE,
 BY STATE AND UNITED STATES, 1979-82

YEAR	JAN	FEB	MAR	APR	MAY	JUN	JUL	AUG	SEP	OCT	NOV	DEC	SEASON AVERAGE
DOLLARS PER BUSHEL													
UTAH													
1979													3.48
1980													3.74
1981													3.69
1982													3.44
WASHINGTON													
1979													3.90
1980													3.98
1981													3.92
1982													4.04
WISCONSIN													
1979													3.70
1980													3.84
1981													3.49
1982													3.15
WYOMING													
1979													3.43
1980													3.84
1981													3.43
1982													3.30

WHEAT, BY CLASSES: PRICES RECEIVED BY FARMERS, MONTHLY,
UNITED STATES, 1981-82 1/

YEAR	JAN	FEB	MAR	APR	MAY	JUN	JUL	AUG	SEP	OCT	NOV	DEC	SEASON AVERAGE 2/
DOLLARS PER BUSHEL													
HARD RED													
1981						3.77	3.72	3.68	3.69	3.76	3.87	3.82	
1982	3.78	3.74	3.71	3.72	3.66	3.49	3.37	3.34	3.38	3.36	3.43	3.49	
SOFT RED													
1981						3.35	3.46	3.36	3.45	3.56	3.68	3.70	
1982	3.71	3.40	3.36	3.42	3.29	3.18	3.08	2.98	2.89	2.75	3.02	3.13	
WHITE													
1981						3.97	3.69	3.78	3.80	3.94	3.96	3.98	
1982	3.91	3.75	3.68	3.72	3.71	3.71	3.62	3.74	3.76	3.86	3.91	3.98	

1/ MONTHLY ESTIMATES NOT AVAILABLE PRIOR TO JUNE 1981. 2/ NOT AVAILABLE.

RYE: PRICES RECEIVED BY FARMERS, SEASON AVERAGE,
BY STATE AND UNITED STATES, 1979-82

STATE	1979	1980	1981	1982
DOLLARS PER BUSHEL				
COLO	2.35	2.60	3.05	2.25
DEL	2.74	2.84	3.35	3.10
GA	1.75	2.18	3.19	2.34
ILL	2.60	2.50	2.70	2.90
IND	2.80	3.00	3.50	3.20
IOWA	3.10	3.20	3.50	2.60
KANS	1.90	2.40	2.70	1.90
KY	2.15	2.40	3.60	2.90
MD	2.75	2.85	3.35	3.10
MICH	2.75	2.85	2.90	3.00
MINN	2.15	2.80	2.93	2.31
MO	2.45	2.55	3.20	3.00
NEBR	2.05	2.30	2.75	2.20
N J	3.05	3.24	3.89	3.74
N Y	2.50	2.75	4.00	3.70
N C	2.85	3.35	3.50	3.00
N DAK	1.70	2.64	2.77	2.01
OHIO	2.35	2.25	3.60	3.35
OKLA	2.00	2.00	2.00	2.05
OREG	2.20	2.90	3.25	2.60
PA	3.30	3.35	3.70	3.20
S C	3.25	3.22	3.40	2.75
S DAK	1.89	2.70	3.00	2.22
TEX	2.69	2.00	3.30	3.36
VA	2.70	2.80	3.00	2.30
WIS	2.35	2.60	2.60	2.30
WYO	2.05	2.70		
U S	2.07	2.63	3.00	2.39

RICE: PRICES RECEIVED BY FARMERS, MONTHLY AND SEASON AVERAGE,
BY STATE AND UNITED STATES, 1979-82

YEAR	JAN	FEB	MAR	APR	MAY	JUN	JUL	AUG	SEP	OCT	NOV	DEC	SEASON AVERAGE
DOLLARS PER CWT													
UNITED STATES, ALL													
1979	8.07	7.87	8.18	8.52	8.74	8.73	9.10	10.00	9.81	10.30	9.83	9.41	10.50
1980	9.88	11.00	11.70	11.60	11.30	10.20	10.80	10.60	10.20	10.90	11.60	13.10	12.80
1981	13.20	13.00	13.40	13.80	13.30	11.90	12.80	11.80	10.70	10.20	9.86	9.34	9.05
1982	9.34	9.46	8.99	8.54	8.55	8.54	8.25	7.31	7.75	7.73	7.78	8.06	8.11
UNITED STATES, LONG GRAIN													
1979													10.90
1980													12.50
1981													9.70
1982													8.74
UNITED STATES, MEDIUM AND SHORT GRAIN													
1979													1/10.60
1980													13.30
1981													8.06
1982													7.09
ARKANSAS													
1979													10.60
1980	9.95	11.10	11.60	11.50	11.00	10.60	10.50	9.74	9.70	10.30	11.40	12.70	12.30
1981	12.90	12.50	13.20	14.10	13.10	12.40	12.20	11.90	10.30	9.95	9.67	9.34	9.37
1982	9.27	8.82	8.53	8.07	8.51	8.67	8.32						
CALIFORNIA													
1979													9.55
1980													14.10
1981													7.35
1982													6.65
LOUISIANA													
1979													10.60
1980	9.93	11.10	11.90	12.00	11.90	11.30	11.10	9.97	9.77	10.20	10.40	9.71	12.00
1981	13.90	14.00	14.10	14.30	13.90		12.10	11.60	10.80	10.30	9.61	9.24	9.36
1982	8.74	8.29	7.84	7.75	7.90	8.00	7.87						
MISSISSIPPI													
1979													10.30
1980	9.49	11.30	11.30	10.90			10.80	10.50	10.30	10.40	11.60	12.20	12.70
1981	13.70	11.80	13.60	13.70					10.90	11.00	10.80	9.93	9.14
1982	9.10	8.55	8.17	8.13	7.39	8.25	7.97						
MISSOURI													
1979													10.70
1980													12.30
1981													9.50
1982													8.65
TEXAS													
1979													11.60
1980	12.40	12.00	11.90	12.10	11.10	10.50	11.00	11.20	11.50	12.30	13.30	13.90	12.80
1981	13.60	13.90	14.10	14.20	13.80	12.60	13.60	12.80	11.90	10.90	10.10	9.83	10.40
1982	9.27	9.54	9.20	8.98	9.44	9.34	8.66						

1/ MEDIUM GRAIN ONLY.

SOYBEANS FOR BEANS: PRICES RECEIVED BY FARMERS, MONTHLY AND SEASON AVERAGE,
BY STATE AND UNITED STATES, 1979-82

YEAR	JAN	FEB	MAR	APR	MAY	JUN	JUL	AUG	SEP	OCT	NOV	DEC	SEASON AVERAGE
DOLLARS PER BUSHEL													
UNITED STATES													
1979	6.58	6.99	7.16	7.06	7.06	7.36	7.36	7.07	6.81	6.35	6.30	6.27	6.28
1980	6.39	6.20	5.94	5.63	5.76	5.91	6.75	7.18	7.59	7.68	8.18	7.80	7.57
1981	7.80	7.50	7.59	7.60	7.40	7.05	7.13	6.71	6.21	6.06	6.04	6.00	6.04
1982	6.13	6.04	5.99	6.17	6.27	6.12	5.99	5.59	5.22	5.06	5.34	5.46	5.69
ALABAMA													
1979	6.71	7.11	7.45	7.35	7.35	7.49	7.66	7.41	6.76	6.07	6.18	6.12	6.15
1980	6.34	6.26	6.01	5.66	5.90	5.93	6.78	7.32	7.61	7.56	7.90	7.68	7.63
1981	6.97	6.89	7.00	6.99	7.15	6.91	6.91	6.47	6.09	6.07	6.03	6.18	6.08
1982	6.22	6.25	6.12	6.33	6.13	6.12	5.97	5.73	5.33	5.02	5.41	5.51	5.36
ARKANSAS													
1979	6.77	7.19	7.29	6.90	7.21	7.58	7.38	7.55	6.80	6.30	6.37	6.57	6.44
1980	6.52	6.46	6.10	5.90	5.92	6.00	6.98	7.55	7.70	8.19	8.46	8.02	7.91
1981	7.87	7.79	7.63	7.54	7.29	7.10	6.99	7.13	6.30	6.25	6.12	6.08	6.17
1982	6.25	6.25	6.08	6.33	6.33	6.23	5.83	5.65	5.26	5.18	5.55	5.71	5.71
DELAWARE													
1979													6.34
1980													8.00
1981													6.25
1982													5.65
FLORIDA													
1979													6.60
1980													7.90
1981													6.20
1982													5.45
GEORGIA													
1979	6.75	6.92	7.24	7.27	7.22	7.53	7.57	7.22	6.70	6.55	6.26	6.24	6.32
1980	6.31	6.37	5.97	5.70	5.88	5.98	7.00	7.60	7.88	7.68	7.91	7.55	7.58
1981	7.40	7.10	7.23	7.43	7.47	7.17	7.03	6.81	6.46	6.15	6.06	5.96	6.09
1982	6.10	5.92	6.07	6.37	6.22	6.12	6.25	5.85	5.28	5.13	5.31	5.36	5.45
ILLINOIS													
1979	6.52	7.02	7.15	7.19	7.14	7.45	7.57	7.14	6.96	6.56	6.33	6.45	6.46
1980	6.58	6.31	6.21	5.82	5.91	5.97	6.75	7.22	7.69	7.77	8.35	8.19	7.62
1981	7.99	7.67	7.75	7.62	7.43	7.12	7.19	6.84	6.37	6.16	6.05	6.12	6.15
1982	6.25	6.12	6.08	6.26	6.41	6.25	6.10	5.70	5.33	5.10	5.41	5.56	5.89
INDIANA													
1979	6.59	7.02	7.26	7.28	7.13	7.52	7.56	7.23	6.82	6.33	6.20	6.44	6.32
1980	6.50	6.35	6.15	5.69	5.85	5.95	6.71	7.18	7.63	7.64	8.15	8.00	7.58
1981	7.62	7.84	7.43	7.56	7.43	6.98	7.10	6.75	6.31	6.05	6.00	6.03	6.08
1982	6.19	6.00	6.01	6.31	6.30	6.23	6.06	5.60	5.14	5.02	5.37	5.54	5.51
IOWA													
1979	6.42	6.77	6.98	6.86	6.93	7.15	7.18	6.89	6.66	6.38	6.19	6.12	6.17
1980	6.18	5.95	5.73	5.49	5.66	5.82	6.63	7.10	7.47	7.51	8.00	7.76	7.39
1981	7.66	7.44	7.61	7.63	7.42	6.99	7.14	6.53	6.05	5.93	5.90	5.88	5.88
1982	5.95	5.86	5.90	6.05	6.16	6.01	5.94	5.49	5.21	5.04	5.20	5.33	5.82

SOYBEANS FOR BEANS: PRICES RECEIVED BY FARMERS, MONTHLY AND SEASON AVERAGE,
BY STATE AND UNITED STATES, 1979-82

YEAR	JAN	FEB	MAR	APR	MAY	JUN	JUL	AUG	SEP	OCT	NOV	DEC	SEASON AVERAGE
DOLLARS PER BUSHEL													
KANSAS													
1979	6.48	6.96	7.07	7.05	7.00	7.22	7.30	7.05	6.66	5.97	5.86	5.94	5.97
1980	5.92	5.92	5.56	5.36	5.45	5.73	6.69	7.24	7.86	8.00	8.24	7.64	7.55
1981	7.58	7.06	7.13	7.26	7.07	6.70	7.02	6.73	5.98	5.77	5.77	5.73	5.80
1982	5.86	5.98	5.74	5.96	6.14	5.99	5.99	5.46	5.06	4.81	5.15	5.29	5.57
KENTUCKY													
1979	6.67	7.12	7.32	7.40	7.25	7.68	7.81	7.20	7.19	6.23	6.41	6.48	6.42
1980	6.69	6.50	6.30	5.79	5.91	6.08	7.01	7.50	7.93	7.86	8.11	7.65	7.75
1981	7.88	7.50	7.66	7.44	7.46	7.15	7.26	7.02	6.48	6.45	6.28	6.13	6.33
1982	6.46	6.36	6.24	6.27	6.51	6.32	6.12	5.94	5.45	5.16	5.47	5.69	5.74
LOUISIANA													
1979	6.89	7.25	7.54	7.20	7.16	7.62	7.70	7.18	6.92	6.43	6.45	6.17	6.42
1980	6.35	6.25	6.14	5.72	5.99	6.16	7.03	7.71	7.90	7.78	8.35	7.68	7.87
1981	7.83	7.55	7.61	7.85	7.68	7.51	7.44	7.13	6.57	6.43	6.25	6.23	6.37
1982	6.52	6.42	6.34	6.50	6.81	6.36	6.19	5.84	5.30	5.29	5.55	5.67	5.65
MARYLAND													
1979													6.29
1980													7.97
1981													6.15
1982													5.70
MICHIGAN													
1979	6.48	6.98	7.07	7.04	7.01	7.18	7.02	7.07	6.67	6.40	6.25	6.05	6.13
1980	6.05	6.00	5.58	5.50	5.73	5.78	7.06	7.08	7.57	7.75	7.95	7.70	7.47
1981	7.23	6.96	7.34	7.26	7.20	6.90	6.97	6.51	6.26	6.19	5.97	5.89	6.02
1982	6.05	5.90	5.93	6.14	6.24	6.10	5.92	5.38	5.10	4.94	5.20	5.32	5.46
MINNESOTA													
1979	6.42	6.80	6.96	6.86	6.91	7.18	7.16	6.74	6.47	6.14	6.11	5.85	6.00
1980	5.87	5.83	5.41	5.41	5.53	5.80	6.46	6.95	7.24	7.33	8.05	7.44	7.23
1981	7.56	6.94	7.31	7.70	7.38	7.00	7.04	6.59	6.10	5.86	5.91	5.76	5.77
1982	5.79	5.67	5.73	5.99	6.12	5.98	5.80	5.45	5.13	4.94	5.12	5.18	5.81
MISSISSIPPI													
1979	6.75	7.11	7.36	7.20	7.23	7.66	7.40	7.23	6.84	6.17	6.51	6.39	6.37
1980	6.42	6.40	5.94	5.74	5.85	6.20	6.94	7.54	7.82	7.73	8.25	7.62	7.81
1981	7.79	7.28	7.30	7.49	7.66	7.04	7.13	6.74	6.30	6.22	6.20	6.20	6.21
1982	6.31	6.29	6.20	6.30	6.34	6.29		5.83	5.44	5.30	5.41	5.54	5.74
MISSOURI													
1979	6.58	7.00	7.14	6.82	7.08	7.33	7.35	7.15	6.75	6.23	6.08	6.20	6.22
1980	6.24	6.34	5.89	5.59	5.76	5.87	6.71	7.23	7.69	7.65	8.20	7.92	7.59
1981	8.14	7.43	7.33	7.52	7.36	7.01	7.07	6.79	6.13	5.99	5.96	5.90	6.01
1982	6.12	6.11	5.98	6.20	6.32	6.21	5.99	5.77	5.16	5.00	5.15	5.40	5.61
NEBRASKA													
1979	6.38	6.78	6.92	6.83	6.86	7.16	7.17	6.93	6.45	6.21	5.96	5.98	5.93
1980	5.86	5.77	5.44	5.28	5.47	5.48	6.62	6.90	7.29	7.42	7.93	7.54	7.18
1981	7.50	7.32	7.32	7.18	7.15	6.94	6.82	6.53	5.84	5.71	5.73	5.69	5.75
1982	5.77	5.74	5.68	5.92	6.07	6.01	5.89	5.55	5.23	4.87	5.11	5.24	5.50

SOYBEANS FOR BEANS: PRICES RECEIVED BY FARMERS, MONTHLY AND SEASON AVERAGE,
BY STATE AND UNITED STATES, 1979-82

YEAR	JAN	FEB	MAR	APR	MAY	JUN	JUL	AUG	SEP	OCT	NOV	DEC	SEASON AVERAGE
DOLLARS PER BUSHEL													
NEW JERSEY													
1979													6.20
1980													7.77
1981													5.96
1982													5.47
NEW YORK													
1979													5.93
1980													6.92
1981													
1982													
NORTH CAROLINA													
1979	6.70	7.32	7.43	7.33	7.35	7.79	7.44	7.03	7.36	6.62	6.46	6.33	6.45
1980	6.45	6.40	6.10	5.88	6.01	6.26	7.20	7.18	7.44	8.01	8.13	7.76	7.83
1981	7.55	7.92	7.53	7.79	7.51	7.20	7.18	7.00	6.66	6.09	6.03	6.01	6.13
1982	6.31	6.29	6.26	6.44	6.53	6.38	5.77	5.98	5.50	5.22	5.40	5.49	5.58
NORTH DAKOTA													
1979													5.80
1980													7.02
1981													5.66
1982													5.41
OHIO													
1979	6.66	7.10	7.27	7.19	7.25	7.76	7.76	7.26	7.07	6.44	6.27	6.31	6.33
1980	6.39	6.30	6.00	5.70	5.84	5.99	6.97	7.28	7.74	7.79	8.24	7.92	7.66
1981	7.80	7.54	7.59	7.58	7.45	7.13	7.21	6.85	6.36	6.22	6.15	6.08	6.18
1982	6.24	6.11	6.07	6.34	6.40	6.24	6.12	5.64	5.17	4.99	5.32	5.48	5.68
OKLAHOMA													
1979													5.90
1980													7.34
1981													5.70
1982													5.20
PENNSYLVANIA													
1979													6.00
1980													7.60
1981													5.99
1982													5.45
SOUTH CAROLINA													
1979	6.76	7.13	7.48	7.39	7.36	7.69	7.63	7.43		6.60	6.52	6.35	6.51
1980	6.30	6.36	6.04	5.98	6.03	6.28	7.25	7.42	8.05	8.27	8.16	7.74	7.85
1981	7.71	7.36	7.43	7.75	7.50	6.97	7.28	7.04	6.32	6.31	6.07	5.98	6.17
1982	6.25	6.21	6.21	6.42	6.54	6.28	6.43	5.90	5.65	5.22	5.41	5.46	5.75
SOUTH DAKOTA													
1979													5.95
1980													7.13
1981									5.79	5.63	5.80	5.49	5.67
1982	5.75	5.63	5.65	5.90	5.98	5.88	5.57	5.29	4.90	4.86	5.01	5.17	5.57

SOYBEANS FOR BEANS: PRICES RECEIVED BY FARMERS, MONTHLY AND SEASON AVERAGE,
BY STATE AND UNITED STATES, 1979-82

YEAR	JAN	FEB	MAR	APR	MAY	JUN	JUL	AUG	SEP	OCT	NOV	DEC	SEASON AVERAGE
DOLLARS PER BUSHEL													
TENNESSEE													
1979	6.75	7.03	7.20	7.36	7.22	7.43	7.55	7.27	6.80	6.48	6.18	6.36	6.35
1980	6.62	6.35	5.96	5.83	5.66	6.05	6.92	7.51	7.84	7.93	8.28	7.61	7.88
1981	8.02	7.97	7.35	7.13	7.45	7.23	7.24	6.79	6.28	5.97	6.05	6.08	6.06
1982	6.07	6.18	6.18	6.30	6.49	6.22	6.14	5.63	5.06	5.14	5.53	5.64	5.57
TEXAS													
1979													6.00
1980													7.69
1981									5.39	5.64	5.67	5.84	5.69
1982	5.72	5.51	5.84	6.00	5.49	5.56	5.39	5.00	4.80	4.67	4.90	5.10	5.40
VIRGINIA													
1979													6.28
1980													7.89
1981													6.09
1982													5.70
WISCONSIN													
1979													5.97
1980													7.25
1981													5.90
1982													5.61

FLAXSEED: PRICES RECEIVED BY FARMERS, MONTHLY AND SEASON AVERAGE,
BY STATE AND UNITED STATES, 1979-82

YEAR	JAN	FEB	MAR	APR	MAY	JUN	JUL	AUG	SEP	OCT	NOV	DEC	SEASON AVERAGE
DOLLARS PER BUSHEL													
UNITED STATES													
1979	5.67	6.01	6.48	7.06	7.37	7.27	6.90	6.42	6.34	5.56	5.44	5.61	5.97
1980	5.51	5.79	5.85	5.51	6.04	5.88	6.55	7.02	7.17	7.10	7.23	7.59	7.20
1981	7.54	7.48	7.25	7.35	7.65	7.47	7.23	7.08	6.44	6.21	6.64	6.84	6.72
1982	6.90	6.91	6.80	6.69	6.60	6.65	6.25	5.35	5.37	5.11	4.95	4.68	5.19
MINNESOTA													
1979	5.80	6.03	6.77	7.00	6.89	7.24	6.82	6.52	6.42	5.54	5.57	5.57	6.02
1980	5.39	5.83	5.94	5.40	5.94	6.07	6.80	7.10	7.13	6.88	7.14	7.56	7.18
1981	7.40	7.39	7.33	7.56	7.68	7.74		7.18	6.40	6.33	6.61	7.18	6.88
1982	6.85	7.06	6.89	6.81	6.74	6.88	6.46	5.30	5.14	5.26	4.92	4.76	5.20
NORTH DAKOTA													
1979	5.59	6.12	6.28	7.07	7.22	7.19	6.78	6.45	6.18	5.38	5.39	5.48	5.76
1980	5.55	5.76	5.79	5.31	5.60	5.84	6.44	6.59	6.99	7.10	7.18	7.65	7.18
1981	7.63	7.46	7.21	7.31	7.56	7.32	7.25	6.86	6.39	6.18	6.63	6.81	6.57
1982	6.91	6.88	6.76	6.65	6.56	6.68	6.25	5.37	5.37	5.07	4.96	4.64	5.14
SOUTH DAKOTA													
1979	5.85	5.85	6.76	7.12	8.37	7.77	7.34	6.38	6.36	6.16	5.58	6.04	6.25
1980	5.49	5.84	5.96	5.81	6.38	5.90	6.71	7.06	7.24	7.16	7.52	7.40	7.23
1981	7.47	7.57	7.45	7.56	7.80	7.72	7.20	7.07	6.76	6.37	6.88	6.70	6.93
1982	6.90	7.15	6.84	6.65	6.80	6.49	6.12	5.37	5.47	5.15	4.87	4.89	5.29
TEXAS													
1979													5.79
1980													5.01
1981													
1982													

PEANUTS FOR NUTS: PRICES RECEIVED BY FARMERS, MONTHLY AND SEASON AVERAGE,
BY STATE AND UNITED STATES, 1979-82

YEAR	JAN	FEB	MAR	APR	MAY	JUN	JUL	AUG	SEP	OCT	NOV	DEC	SEASON AVERAGE
DOLLARS PER POUND													
UNITED STATES													
1979	.212							.212	.214	.203	.204	.204	.206
1980	.204								.225	.232	.279	.373	.251
1981	.477								.289	.267	.251	.258	.269
1982	.249							.257	.251	.249	.253	.261	.251
ALABAMA													
1979								.215	.215	.201	.194		.205
1980									.228	.236	.266	.243	.238
1981									.275	.251	.235	.205	.254
1982								.262	.240	.253	.250	.209	.247
FLORIDA													
1979								.210	.210	.203	.203		.211
1980									.231	.232	.226	.287	.232
1981									.290	.267	.231	.233	.273
1982	.233								.240	.240	.240		.240
GEORGIA													
1979								.211	.214	.202	.200	.200	.207
1980									.224	.234	.315	.279	.236
1981									.293	.263	.222	.261	.270
1982	.242							.257	.255	.236	.237	.237	.246
MISSISSIPPI													
1979													.210
1980													.200
1981													.230
1982													
NEW MEXICO													
1979													.226
1980													.280
1981													.270
1982													.302
NORTH CAROLINA													
1979										.205	.203	.205	.204
1980	.205								.210	.222	.231	.253	.226
1981	.336								.290	.281	.282	.263	.280
1982	.273								.257	.272	.266	.287	.271
OKLAHOMA													
1979	.221									.200	.200	.200	.200
1980	.200									.210	.255	.320	.258
1981	.320									.259	.260	.228	.247
1982	.230							.221	.225	.238	.225	.225	.234
SOUTH CAROLINA													
1979													.204
1980													.216
1981													.300
1982													.271

PEANUTS FOR NUTS: PRICES RECEIVED BY FARMERS, MONTHLY AND SEASON AVERAGE,
BY STATE AND UNITED STATES, 1979-82

YEAR	JAN	FEB	MAR	APR	MAY	JUN	JUL	AUG	SEP	OCT	NOV	DEC	SEASON AVERAGE
DOLLARS PER POUND													
TEXAS													
1979	.203							.210	.210	.203	.220	.208	.209
1980	.205								.210	.247	.330	.411	.351
1981	.600								.289	.263	.250	.276	.265
1982	.258								.251	.260	.256	.273	.256
VIRGINIA													
1979	.215									.208	.203	.200	.206
1980	.210								.210	.219	.252	.366	.243
1981	.294									.284	.271	.289	.281
1982	.237								.275	.252	.282	.277	.257

ALL SUNFLOWER: PRICES RECEIVED BY FARMERS, MONTHLY AND SEASON AVERAGE,
BY STATE AND UNITED STATES, 1979-82

YEAR	JAN	FEB	MAR	APR	MAY	JUN	JUL	AUG	SEP	OCT	NOV	DEC	SEASON AVERAGE
DOLLARS PER CWT													
UNITED STATES													
1979									10.20	9.45	9.18	9.18	9.05
1980	8.76	8.39	7.45	7.66	8.29	8.40	10.10	10.30	9.97	10.40	10.80	10.90	11.10
1981	11.00	10.70	10.70	11.20	11.80	11.50	11.30	11.20	10.50	10.30	10.50	10.70	10.80
1982	11.00	11.50	11.50	11.80	11.40	11.10	10.10	10.20	10.40	8.75	8.78	8.94	8.88
MINNESOTA													
1979										10.00	9.74	9.89	9.59
1980	8.81	8.34	7.85	7.86	8.19	8.52	10.00	10.60	10.30	10.50	10.90	11.30	11.10
1981	11.00	10.80	10.70	11.20	12.10	12.00	11.20	11.80	10.70	10.60	10.70	11.40	11.00
1982	10.90	11.50	11.20	11.90	11.90	11.70	9.50	9.90	10.20	8.60	8.70	8.30	9.38
NORTH DAKOTA													
1979									10.20	9.19	8.97	8.85	8.89
1980	8.73	8.40	7.42	7.63	8.33	8.37	10.20	10.20	9.80	10.30	10.70	10.80	11.00
1981	11.00	10.70	10.70	11.20	11.70	11.40	11.40	11.10	10.40	10.20	10.40	10.60	10.70
1982	11.00	11.50	11.50	11.80	11.30	11.10	10.30	10.40	10.40	8.80	8.80	9.00	8.84
SOUTH DAKOTA													
1979													8.45
1980													11.10
1981													10.90
1982													8.61
TEXAS													
1979													10.60
1980													13.00
1981													12.90
1982													8.86

SUNFLOWER, BY TYPE: PRICES RECEIVED BY FARMERS, SEASON AVERAGE,
BY STATE AND UNITED STATES, 1979-82

STATE	OIL				NON-OIL			
	1979	1980	1981	1982	1979	1980	1981	1982
	DOLLARS PER CWT							
MINN	9.48	11.00	10.70	9.31	12.20	12.90	13.40	10.70
N DAK	8.76	10.80	10.50	8.60	11.70	13.20	13.20	12.10
S DAK	8.43	11.10	10.90	8.59	11.80	13.20	13.40	12.00
TEX	10.60	13.00	12.00	8.86	13.00		20.00	
U S	8.93	10.90	10.60	8.70	11.80	13.10	13.30	11.90

ALL COTTON: PRICES RECEIVED BY FARMERS, MONTHLY AND SEASON AVERAGE,
BY STATE AND UNITED STATES, 1979-82

YEAR	JAN	FEB	MAR	APR	MAY	JUN	JUL	AUG	SEP	OCT	NOV	DEC	SEASON AVERAGE
DOLLARS PER POUND													
UNITED STATES													
1979	.570	.556	.535	.547	.560	.588	.619	.592	.573	.612	.610	.598	.634
1980	.609	.649	.629	.610	.636	.622	.715	.737	.740	.753	.776	.809	.747
1981	.766	.708	.719	.727	.725	.712	.704	.650	.581	.632	.611	.515	.543
1982	.503	.491	.504	.543	.558	.581	.599	.527	.560	.609	.610	.577	.594
ALABAMA													
1979	.599	.593	.556	.568	.600	.616	.619	.589	.618	.620	.632	.646	.653
1980	.640	.779	.717	.721	.793	.760	.740	.710	.792	.782	.779	.822	.792
1981	.832	.799	.760	.786	.742	.733	.691	.675	.594	.630	.586	.570	.559
1982	.553	.593	.547	.573	.589	.608	.588	.590	.579	.592	.584	.546	.585
ARIZONA													
1979	.592	.570	.474	.515	.590	.607	.602	.538	.645	.639	.642	.687	.697
1980	.688	.731	.702	.636	.750	.770	.790	.810	.919	.732	.749	.804	.759
1981	.790	.785	.762	.692	.718	.708	.702	.629	.594	.639	.643	.546	.573
1982	.532	.499	.536	.561	.603	.599	.638	.583	.560	.610	.617	.595	.619
ARKANSAS													
1979	.589	.588	.563	.577	.598	.609	.598	.587	.611	.619	.622	.635	.653
1980	.669	.760	.823	.792	.784	.657	.751	.683	.737	.762	.771	.795	.767
1981	.798	.786	.753	.766	.764	.746	.733	.625	.641	.616	.597	.531	.568
1982	.536	.583	.583	.612	.663	.641	.631	.663	.605	.605	.570	.572	.580
CALIFORNIA													
1979	.639	.637	.664	.652	.653	.637	.687	.704	.664	.668	.674	.686	.689
1980	.718	.730	.704	.692	.682	.699	.721	.749	.768	.757	.804	.845	.778
1981	.841	.829	.789	.756	.754	.744	.717	.667	.656	.719	.680	.608	.636
1982	.587	.607	.609	.585	.602	.633	.679	.610	.625	.639	.659	.641	.669
FLORIDA													
1979													.650
1980													.850
1981													.558
1982													.575
GEORGIA													
1979	.613	.601	.591	.560	.594	.609	.596	.603	.613	.611	.609	.612	.655
1980	.647	.759	.801	.790	.797	.770	.745	.806	.782	.763	.803	.805	.779
1981	.808	.785	.737	.778	.746	.690	.683		.556	.578	.548	.560	.543
1982	.547	.553	.532	.571	.580	.580	.563	.482	.549	.581	.565	.528	.566
LOUISIANA													
1979	.595	.588	.585	.588	.608	.625	.596	.589	.600	.613	.620	.637	.640
1980	.648	.712	.777						.773	.762	.751	.823	.778
1981	.825	.823	.815	.823	.806				.618	.592	.562	.525	.545
1982	.525	.548	.580	.563	.583	.608	.626	.627	.571	.562	.551	.565	.565
MISSISSIPPI													
1979	.587	.580	.553	.586	.592	.617	.614	.608	.564	.612	.613	.621	.635
1980	.654	.792	.806	.812	.815	.700	.680	.660	.833	.754	.769	.785	.764
1981	.778	.778	.759	.761	.739	.737	.775		.649	.643	.569	.544	.584
1982	.579	.556	.622	.608	.627	.640		.648	.630	.621	.608	.584	.598

ALL COTTON: PRICES RECEIVED BY FARMERS, MONTHLY AND SEASON AVERAGE,
BY STATE AND UNITED STATES, 1979-82

YEAR	JAN	FEB	MAR	APR	MAY	JUN	JUL	AUG	SEP	OCT	NOV	DEC	SEASON AVERAGE
DOLLARS PER POUND													
MISSOURI													
1979	.604	.612	.620	.592	.607	.643			.629	.613	.620	.636	.624
1980	.677	.654	.796	.780					.702	.725	.737	.750	.727
1981	.707												.560
1982													.592
NEVADA													
1979													.680
1980													.800
1981													.600
1982													.721
NEW MEXICO													
1979													.707
1980													.824
1981													.624
1982													.645
NORTH CAROLINA													
1979													.647
1980													.795
1981													.584
1982													.614
OKLAHOMA													
1979	.545	.529	.498	.504	.516	.606	.620	.580	.534	.579	.574	.594	.597
1980	.618	.599	.586	.570	.630	.650	.700		.752	.820	.791	.787	.766
1981	.743	.729	.710	.714	.723	.625	.653			.540	.459	.427	.411
1982	.426	.412	.380	.378	.390	.400	.400			.505	.489	.481	.495
SOUTH CAROLINA													
1979	.634	.608	.589	.576	.616	.632	.599	.588	.630	.638	.629	.641	.662
1980	.698	.764	.755	.680	.715	.720	.740	.715	.767	.778	.799	.841	.796
1981	.846	.742	.783	.800	.764	.760	.728						.577
1982													.597
TENNESSEE													
1979	.598	.581	.548	.553	.600	.599	.611	.570	.598	.632	.630	.610	.629
1980	.665	.780	.771						.785	.773	.798	.791	.783
1981	.793	.788	.785	.756					.598	.585	.520	.514	.531
1982	.495	.507	.571	.589	.561	.584	.557	.571	.578	.588	.589	.557	.577
TEXAS													
1979	.535	.512	.506	.508	.525	.527	.592	.588	.565	.563	.562	.544	.559
1980	.541	.564	.540	.547	.563	.529	.670	.713	.675	.712	.738	.741	.688
1981	.696	.651	.665	.644	.649	.636	.624	.645	.564	.525	.518	.461	.467
1982	.447	.423	.418	.452	.475	.470	.534	.501	.518	.535	.514	.505	.517
VIRGINIA													
1979													.660
1980													.795
1981													.632
1982													.593

UPLAND COTTON: PRICES RECEIVED BY FARMERS, MONTHLY AND SEASON AVERAGE,
BY STATE AND UNITED STATES, 1979-82

YEAR	JAN	FEB	MAR	APR	MAY	JUN	JUL	AUG	SEP	OCT	NOV	DEC	SEASON AVERAGE
DOLLARS PER POUND													
UNITED STATES													
1979	.570	.556	.535	.547	.560	.588	.619	.592	.573	.612	.610	.598	.623
1980	.609	.649	.629	.610	.636	.622	.715	.737	.740	.753	.776	.809	.744
1981	.766	.708	.719	.727	.725	.712	.704	.650	.581	.632	.611	.515	.540
1982	.503	.491	.504	.543	.558	.581	.599	.527	.560	.609	.610	.577	.591
ALABAMA													
1979	.599	.593	.556	.568	.600	.616	.619	.589	.618	.620	.632	.646	.653
1980	.640	.779	.717	.721	.793	.760	.740	.710	.792	.782	.779	.822	.792
1981	.832	.799	.760	.786	.742	.733	.691	.675	.594	.630	.586	.570	.559
1982	.553	.593	.547	.573	.589	.608	.588	.590	.579	.592	.584	.546	.585
ARIZONA													
1979	.592	.570	.474	.515	.590	.607	.602	.538	.645	.639	.642	.687	.681
1980	.688	.731	.702	.636	.750	.770	.790	.810	.919	.732	.749	.804	.742
1981	.790	.785	.762	.692	.718	.708	.702	.629	.594	.639	.643	.546	.560
1982	.532	.499	.536	.561	.603	.599	.638	.583	.560	.610	.617	.595	.605
ARKANSAS													
1979	.589	.588	.563	.577	.598	.609	.598	.587	.611	.619	.622	.635	.653
1980	.669	.760	.823	.792	.784	.657	.751	.683	.737	.762	.771	.795	.767
1981	.798	.786	.753	.766	.764	.746	.733	.625	.641	.616	.597	.531	.568
1982	.536	.583	.583	.612	.663	.641	.631	.663	.605	.605	.570	.572	.580
CALIFORNIA													
1979	.639	.637	.664	.652	.653	.637	.687	.704	.664	.668	.674	.686	.689
1980	.718	.730	.704	.692	.682	.699	.721	.749	.768	.757	.804	.845	.778
1981	.841	.829	.789	.756	.754	.744	.717	.667	.656	.719	.680	.608	.636
1982	.587	.607	.609	.585	.602	.633	.679	.610	.625	.639	.659	.641	.669
FLORIDA													
1979													.650
1980													.850
1981													.558
1982													.575
GEORGIA													
1979	.613	.601	.591	.560	.594	.609	.596	.603	.613	.611	.609	.612	.655
1980	.647	.759	.801	.790	.797	.770	.745	.806	.782	.763	.803	.805	.779
1981	.808	.785	.737	.778	.746	.690	.683		.556	.578	.548	.560	.543
1982	.547	.553	.532	.571	.580	.580	.563	.482	.549	.581	.565	.528	.566
LOUISIANA													
1979	.595	.588	.585	.588	.608	.625	.596	.589	.600	.613	.620	.637	.640
1980	.648	.712	.777						.773	.762	.751	.823	.778
1981	.825	.823	.815	.823	.806				.618	.592	.562	.525	.545
1982	.525	.548	.580	.563	.583	.608	.626	.627	.571	.562	.551	.565	.565
MISSISSIPPI													
1979	.587	.580	.553	.586	.592	.617	.614	.608	.564	.612	.613	.621	.635
1980	.654	.792	.806	.812	.815	.700	.680	.660	.833	.754	.769	.785	.764
1981	.778	.778	.759	.761	.739	.737	.775		.649	.643	.569	.544	.584
1982	.579	.556	.622	.608	.627	.640		.648	.630	.621	.608	.584	.598

UPLAND COTTON: PRICES RECEIVED BY FARMERS, MONTHLY AND SEASON AVERAGE,
BY STATE AND UNITED STATES, 1979-82

YEAR	JAN	FEB	MAR	APR	MAY	JUN	JUL	AUG	SEP	OCT	NOV	DEC	SEASON AVERAGE
DOLLARS PER POUND													
MISSOURI													
1979	.604	.612	.620	.592	.607	.643			.629	.613	.620	.636	.624
1980	.677	.654	.796	.780					.702	.725	.737	.750	.727
1981	.707												.560
1982													.592
NEVADA													
1979													.680
1980													.800
1981													.600
1982													.721
NEW MEXICO													
1979													.685
1980													.810
1981													.600
1982													.597
NORTH CAROLINA													
1979													.647
1980													.795
1981													.584
1982													.614
OKLAHOMA													
1979	.545	.529	.498	.504	.516	.606	.620	.580	.534	.579	.574	.594	.597
1980	.618	.599	.586	.570	.630	.650	.700		.752	.820	.791	.787	.766
1981	.743	.729	.710	.714	.723	.625	.653			.540	.459	.427	.411
1982	.426	.412	.380	.378	.390	.400	.400			.505	.489	.481	.495
SOUTH CAROLINA													
1979	.634	.608	.589	.576	.616	.632	.599	.588	.630	.638	.629	.641	.662
1980	.698	.764	.755	.680	.715	.720	.740	.715	.767	.778	.799	.841	.796
1981	.846	.742	.783	.800	.764	.760	.728						.577
1982													.597
TENNESSEE													
1979	.598	.581	.548	.553	.600	.599	.611	.570	.598	.632	.630	.610	.629
1980	.665	.780	.771						.785	.773	.798	.791	.783
1981	.793	.788	.785	.756					.598	.585	.520	.514	.531
1982	.495	.507	.571	.589	.561	.584	.557	.571	.578	.588	.589	.557	.577
TEXAS													
1979	.535	.512	.506	.508	.525	.527	.592	.588	.565	.563	.562	.544	.557
1980	.541	.564	.540	.547	.563	.529	.670	.713	.675	.712	.738	.741	.685
1981	.696	.651	.665	.644	.649	.636	.624	.645	.564	.525	.518	.461	.465
1982	.447	.423	.418	.452	.475	.470	.534	.501	.518	.535	.514	.505	.513
VIRGINIA													
1979													.660
1980													.795
1981													.632
1982													.593

AMER-PIMA COTTON: PRICES RECEIVED BY FARMERS, SEASON AVERAGE,
BY STATE AND UNITED STATES, 1979-82

YEAR	JAN	FEB	MAR	APR	MAY	JUN	JUL	AUG	SEP	OCT	NOV	DEC	SEASON AVERAGE
DOLLARS PER POUND													
UNITED STATES													
1979													1.01
1980													1.08
1981													.969
1982													.985
ARIZONA													
1979													1.01
1980													1.08
1981													.940
1982													.968
CALIFORNIA													
1979													1.01
1980													1.08
1981													
1982													
NEW MEXICO													
1979													1.01
1980													1.05
1981													1.03
1982													1.02
TEXAS													
1979													1.00
1980													1.08
1981													1.03
1982													1.02

COTTONSEED: PRICES RECEIVED BY FARMERS, MONTHLY AND SEASON AVERAGE,
BY STATE AND UNITED STATES, 1979-82

YEAR	JAN	FEB	MAR	APR	MAY	JUN	JUL	AUG	SEP	OCT	NOV	DEC	SEASON AVERAGE
DOLLARS PER TON													
UNITED STATES													
1979	119.00	118.00						125.00	122.00	127.00	122.00	116.00	121.00
1980	113.00	113.00						110.00	121.00	125.00	135.00	134.00	129.00
1981	127.00	124.00						100.00	95.00	86.00	84.00	85.00	86.00
1982	82.00	83.00						81.00	72.00	71.50	81.00	86.00	77.00
ALABAMA													
1979	104.00								110.00	114.00	118.00	117.00	116.00
1980	106.00	103.00							120.00	118.00	117.00	119.00	118.00
1981	115.00	113.00							100.00	79.00	78.00	85.00	83.00
1982	92.00	89.00							88.00	65.00	62.00	62.00	67.00
ARIZONA													
1979	102.00	102.00											110.00
1980									110.00	110.00	121.00	131.00	122.00
1981	124.00	124.00							85.00	85.00	83.00	82.00	83.00
1982	83.00	83.00											80.00
ARKANSAS													
1979	122.00								130.00	135.00	132.00	127.00	133.00
1980	120.00	125.00							124.00	129.00	130.00	130.00	128.00
1981	130.00	132.00							100.00	90.00	80.00	80.00	87.50
1982	80.00	80.00							70.00	63.00	62.00	65.00	64.50
CALIFORNIA													
1979	121.00	108.00								128.00	126.00	117.00	125.00
1980	118.00	122.00								125.00	149.00	153.00	143.00
1981	150.00	123.00								93.00	90.00	90.00	91.00
1982	87.00	85.00								70.00	100.00	100.00	90.50
FLORIDA													
1979													120.00
1980													125.00
1981													80.00
1982													60.00
GEORGIA													
1979									111.00	113.00	96.00	96.00	105.00
1980	98.00	100.00							127.00	126.00	124.00	122.00	125.00
1981	119.00	122.00							100.00	99.00	100.00	85.00	97.00
1982	90.00	96.00								67.00	66.00	67.00	66.50
LOUISIANA													
1979										136.00	131.00	125.00	133.00
1980	125.00								118.00	127.00	130.00	130.00	125.00
1981									75.00	75.00	77.00	75.00	75.50
1982	80.00	80.00							72.00	67.00	62.00	62.00	63.50
MISSISSIPPI													
1979										137.00	131.00	128.00	133.00
1980	122.00	129.00							130.00	132.00	134.00	134.00	132.00
1981	130.00	130.00							100.00	79.00	80.00	80.00	86.00
1982	80.00	80.00							65.00	65.00	61.00	60.00	64.00

COTTONSEED: PRICES RECEIVED BY FARMERS, MONTHLY AND SEASON AVERAGE,
BY STATE AND UNITED STATES, 1979-82

YEAR	JAN	FEB	MAR	APR	MAY	JUN	JUL	AUG	SEP	OCT	NOV	DEC	SEASON AVERAGE
DOLLARS PER TON													
MISSOURI													
1979									132.00	130.00	126.00	120.00	129.00
1980									120.00	124.00	129.00	124.00	124.00
1981													79.00
1982													62.00
NEVADA													
1979													110.00
1980													128.00
1981													95.00
1982													90.00
NEW MEXICO													
1979													115.00
1980													124.00
1981													87.00
1982													82.00
NORTH CAROLINA													
1979													124.00
1980													117.00
1981													83.00
1982													58.00
OKLAHOMA													
1979	120.00	119.00								120.00	116.00	111.00	114.00
1980	111.00	110.00							120.00	120.00	124.00	129.00	125.00
1981	130.00	130.00								85.00	84.00	85.00	84.50
1982	84.00	83.00									62.00	76.00	71.00
SOUTH CAROLINA													
1979													118.00
1980													120.00
1981													88.50
1982													63.00
TENNESSEE													
1979	115.00									133.00	132.00	126.00	131.00
1980	125.00	125.00							127.00	128.00	128.00	128.00	128.00
1981									80.00	77.00	81.00	76.00	79.00
1982	77.00								75.00	67.00	67.00	65.00	69.00
TEXAS													
1979	122.00	124.00				125.00	124.00	120.00	116.00	114.00	114.00		116.00
1980	112.00	111.00				110.00	112.00	117.00	123.00	123.00	123.00		119.00
1981	119.00	123.00				100.00	100.00	91.00	82.00	84.00	84.00		85.00
1982	80.00	82.00				81.00	81.00	72.00	82.00	83.00	83.00		81.00
VIRGINIA													
1979													128.00
1980													117.00
1981													83.00
1982													55.50

ALL HAY, BALED: PRICES RECEIVED BY FARMERS, MONTHLY AND SEASON AVERAGE,
BY STATE AND UNITED STATES, 1979-82

YEAR	JAN	FEB	MAR	APR	MAY	JUN	JUL	AUG	SEP	OCT	NOV	DEC	SEASON AVERAGE
DOLLARS PER TON													
UNITED STATES													
1979	48.90	50.70	50.20	49.90	65.60	58.00	56.00	57.50	59.00	60.80	58.90	60.10	59.40
1980	59.10	60.00	57.40	60.10	69.30	65.10	67.00	67.20	71.90	77.20	75.00	74.80	71.00
1981	72.80	72.50	69.80	68.20	75.30	66.90	64.00	63.90	62.70	64.80	65.40	65.70	67.30
1982	67.90	69.90	69.50	73.30	77.50	69.60	66.10	65.00	66.80	67.10	63.70	68.60	69.30
ALABAMA													
1979													55.00
1980													56.00
1981													60.50
1982													59.00
ALASKA													
1979													130.00
1980													140.00
1981													160.00
1982													190.00
ARIZONA													
1979	60.50	65.50	67.50	74.00	79.00	80.00	79.00	75.50	81.50	79.50	88.00	90.00	81.00
1980	92.00	95.50	90.50	88.00	83.00	75.50	66.00	72.00	77.50	84.50	88.50	92.00	82.50
1981	95.00	98.00	93.00	88.00	79.00	71.00	70.00	62.00	63.00	69.00	74.00	75.00	74.00
1982	79.00	78.00	76.00	80.00	85.00	70.00	64.00	62.00	66.00	73.00	74.00	77.00	73.50
ARKANSAS													
1979	44.00	44.00	43.00	50.00	44.50	43.50	39.00	41.50	41.50	43.50	42.00	47.50	42.50
1980	44.50	44.00	44.00	40.00	40.00	39.00	42.00	43.00	42.00	52.50	53.50	54.00	46.00
1981	53.00	59.00	60.50	57.50	54.00	56.00	53.50	57.00	47.00	44.00	40.00	44.00	50.50
1982	50.00	48.00	47.00	46.00	47.00	44.00	43.00	43.00	45.00	50.00	45.00	46.00	47.00
CALIFORNIA													
1979	65.50	69.50	74.00	78.00	82.00	85.50	80.00	78.50	80.50	86.00	92.00	97.00	87.00
1980	112.00	111.00	108.00	108.00	96.00	100.00	95.00	87.00	94.00	99.00	96.00	101.00	95.00
1981	98.00	97.00	94.00	81.00	85.00	81.00	71.00	68.00	68.00	70.00	75.00	75.00	76.00
1982	79.00	78.00	84.00	84.00	91.00	86.00	82.00	78.00	80.00	81.00	90.00	95.00	86.50
COLORADO													
1979	51.50	53.50	53.50	54.50	54.00	52.50	53.00	52.00	52.50	52.50	53.50	53.50	53.00
1980	55.50	55.50	55.00	52.00	52.00	52.00	55.50	57.50	62.50	63.00	66.50	71.50	64.50
1981	72.00	69.00	72.00	70.00	71.00	68.00	66.00	66.00	65.00	65.00	64.00	65.00	65.00
1982	64.00	66.00	63.00	65.00	66.00	64.00	68.00	67.00	64.00	65.00	64.00	65.00	66.00
CONNECTICUT													
1979													73.00
1980													75.00
1981													80.50
1982													95.00
DELAWARE													
1979													59.50
1980													73.00
1981													72.50
1982													90.00

ALL HAY, BALED: PRICES RECEIVED BY FARMERS, MONTHLY AND SEASON AVERAGE,
BY STATE AND UNITED STATES, 1979-82

YEAR	JAN	FEB	MAR	APR	MAY	JUN	JUL	AUG	SEP	OCT	NOV	DEC	SEASON AVERAGE
DOLLARS PER TON													
FLORIDA													
1979													60.00
1980													65.00
1981													71.50
1982													69.50
GEORGIA													
1979	57.50	55.50	57.50	55.00	55.00	54.00	53.00	52.00	52.00	51.00	50.00	51.50	52.50
1980	53.00	52.50	53.50	55.00	55.00	53.00	50.00	54.00	59.00	61.00	65.00	71.00	64.50
1981	76.00	78.00	75.00	68.00	64.50								66.00
1982													60.00
IDAHO													
1979	35.50	36.50	38.00	37.50	34.00	41.00	46.00	51.00	51.00	51.50	55.50	57.50	58.50
1980	61.00	72.00	77.00	80.00	75.50	67.50	71.00	65.00	62.50	62.50	60.00	64.00	62.00
1981	61.50	56.50	58.50	50.00	50.50	57.00	55.00	52.00	49.00	51.00	50.00	52.00	54.50
1982	52.00	55.00	57.00	62.00	68.00	67.00	62.00	66.00	65.00	62.00	76.00	70.00	69.50
ILLINOIS													
1979	55.00	56.50	57.50	54.50	50.50	52.50	51.00	52.50	54.00	55.00	57.00	58.50	54.00
1980	57.00	57.50	59.00	55.00	53.50	48.50	47.50	48.00	52.50	50.00	57.00	64.00	55.50
1981	64.00	64.50	65.50	69.00	56.50	49.00	46.00	45.00	44.00	50.00	53.00	53.00	50.50
1982	56.00	56.00	57.00	56.00	54.00	57.00	58.00	61.00	62.00	73.00	72.00	72.00	65.50
INDIANA													
1979	56.50	57.50	56.00	57.50	54.50	55.00	50.00	50.00	52.50	55.50	57.50	55.50	53.50
1980	53.50	56.00	52.50	54.50	52.50	51.50	47.50	45.00	52.50	56.50	58.50	60.50	56.00
1981	60.00	61.00	61.50	60.50	60.00	59.50	57.00	59.00	60.00	64.00	72.00	72.00	69.00
1982	75.00	80.00	85.00	87.00	81.00	63.00	64.00	62.00	65.00	68.00	75.00	78.00	67.50
IOWA													
1979	47.00	51.50	53.50	52.00	52.50	45.00	38.00	39.50	44.50	45.00	49.50	51.50	45.00
1980	55.00	52.00	48.50	42.00	41.00	42.00	48.50	51.50	53.00	56.00	52.50	50.50	48.50
1981	48.50	48.00	48.50	49.50	50.50	46.00	49.00	50.00	50.00	52.00	53.00	54.00	54.00
1982	56.00	60.00	64.00	64.00	59.00	57.00	52.00	49.00	49.00	51.00	52.00	52.00	53.50
KANSAS													
1979	52.50	55.50	54.00	53.00	50.00	48.50	49.00	46.00	46.50	46.50	49.50	51.50	48.50
1980	50.00	48.00	46.00	44.00	42.00	42.00	48.50	55.50	60.50	66.00	72.00	72.00	62.00
1981	71.00	71.50	70.00	70.00	65.00	61.00	58.00	58.00	59.00	57.00	59.00	58.00	58.50
1982	57.00	57.00	57.00	57.00	53.00	53.00	50.00	53.00	54.00	56.00	60.00	59.00	57.00
KENTUCKY													
1979	51.00	48.50	46.00	45.00	46.50	49.00	49.00	49.50	51.00	51.50	52.50	52.50	51.00
1980	51.50	51.50	53.00	52.00	51.00	53.00	53.50	55.00	56.50	59.50	61.00	64.00	59.50
1981	64.00	66.00	65.00	66.00	65.00	62.00	63.00	63.00	62.00	62.00	63.00	61.00	63.50
1982	65.00	65.00	65.00	64.00	63.00	62.00	64.00	63.00	66.00	66.00	64.00	63.00	66.00
LOUISIANA													
1979													46.00
1980													50.00
1981													51.00
1982													50.00

ALL HAY, BALED: PRICES RECEIVED BY FARMERS, MONTHLY AND SEASON AVERAGE,
BY STATE AND UNITED STATES, 1979-82

YEAR	JAN	FEB	MAR	APR	MAY	JUN	JUL	AUG	SEP	OCT	NOV	DEC	SEASON AVERAGE
DOLLARS PER TON													
MAINE													
1979													59.00
1980													62.00
1981													61.50
1982													64.00
MARYLAND													
1979													59.50
1980													73.00
1981													73.00
1982													90.00
MASSACHUSETTS													
1979													72.00
1980													76.00
1981													80.00
1982													89.00
MICHIGAN													
1979	45.50	46.50	43.50	47.00	47.00	39.00	33.50	36.00	33.50	37.50	39.00	39.50	36.00
1980	41.00	31.00	32.50	32.00	33.50	30.50	26.50	31.00	35.00	40.50	52.00	38.50	36.50
1981	38.50	40.50	38.50	38.50	40.00	35.00	33.00	47.00	47.00	56.00	61.00	64.00	56.50
1982	69.00	71.00	76.00	82.00	82.00	51.00	42.00	53.00	53.00	59.00	62.00	60.00	54.50
MINNESOTA													
1979	39.50	39.50	39.50	40.50	42.00	34.50	36.50	33.50	35.50	37.00	37.50	39.50	36.50
1980	36.50	37.00	36.00	36.00	40.00	50.00	46.00	57.00	63.00	60.00	63.00	58.00	56.00
1981	61.00	58.00	53.00	57.00	57.00	63.00	59.00	62.00	64.00	66.00	69.00	66.00	68.00
1982	72.00	82.00	75.00	72.00	75.00	65.00	56.00	61.00	57.00	62.00	70.00	74.00	67.50
MISSISSIPPI													
1979													45.00
1980													50.00
1981													55.00
1982													50.00
MISSOURI													
1979	48.00	47.50	48.50	46.50	45.00	44.00	47.00	46.50	46.50	47.50	48.00	49.50	47.50
1980	51.00	51.00	49.00	45.00	47.00	48.00	51.50	55.50	74.50	70.50	74.50	80.00	71.00
1981	87.00	86.00	84.00	81.00	58.50	65.00	63.50	62.00	62.00	67.00	67.00	67.00	65.00
1982	67.00	68.00	63.00	60.00	62.00	58.00	55.00	55.00	53.00	57.00	59.00	60.00	58.00
MONTANA													
1979	46.00	47.50	47.50	46.50	45.50	49.50	50.50	55.50	55.50	56.50	56.50	57.50	55.50
1980	54.50	53.00	55.00	56.50	55.00	60.00	65.00	66.50	65.00	67.00	67.50	64.50	62.50
1981	60.00	60.00	55.00	53.00	50.00	55.00	51.00	52.00	54.00	54.00	48.00	46.00	48.50
1982	47.00	48.00	46.00	45.00	44.00	47.00	47.00	45.00	48.00	50.00	55.00	52.00	50.00
NEBRASKA													
1979	38.50	43.50	46.50	44.00	41.50	37.00	37.50	40.50	39.00	40.50	43.50	44.00	41.00
1980	44.00	43.50	40.50	40.50	39.00	38.50	44.00	52.00	57.50	58.00	60.00	61.50	55.00
1981	60.00	60.50	60.00	59.50	56.50	59.00	65.00	65.00	60.00	60.00	57.00	58.00	59.50
1982	60.00	60.00	57.00	54.00	55.00	54.00	50.00	48.00	47.00	43.00	42.00	45.00	46.00

ALL HAY, BALED: PRICES RECEIVED BY FARMERS, MONTHLY AND SEASON AVERAGE,
BY STATE AND UNITED STATES, 1979-82

YEAR	JAN	FEB	MAR	APR	MAY	JUN	JUL	AUG	SEP	OCT	NOV	DEC	SEASON AVERAGE
DOLLARS PER TON													
NEVADA													
1979	53.50	54.50	56.50	60.50	65.50	67.00	68.50	73.00	74.00	78.00	81.00	87.00	82.00
1980	89.00	91.00	93.50	96.00	93.00	91.00	93.00	91.00	92.50	91.00	89.00	91.00	90.50
1981	91.00	93.00	87.00	84.00	80.00	79.00	75.00	70.00	65.00	65.00	70.00	70.00	70.00
1982	70.00	70.00	70.00	75.00	80.00	83.00	78.00	86.00	86.00	91.00	90.00	87.00	86.50
NEW HAMPSHIRE													
1979													71.00
1980													73.00
1981													74.00
1982													87.00
NEW JERSEY													
1979													61.00
1980													78.50
1981													94.00
1982													97.50
NEW MEXICO													
1979	68.50	66.50	69.50	70.50	71.00	68.50	65.00	65.00	64.00	66.00	70.00	76.50	69.00
1980	77.50	71.00	71.00	73.50	68.50	68.50	66.50	71.00	78.00	86.00	93.00	109.00	86.50
1981	112.00	114.00	113.00	114.00	87.00	84.00	81.00	75.00	76.00	83.00	84.00	91.00	84.00
1982	96.00	91.00	90.00	84.00	79.00	74.00	67.00	67.00	72.00	77.00	76.00	79.00	75.00
NEW YORK													
1979	55.50	56.00	55.50	57.50	53.00	52.50	50.00	50.00	50.50	52.00	54.00	54.00	52.50
1980	57.50	54.00	52.00	49.50	50.50	48.50	45.00	53.00	57.50	60.00	59.50	62.50	58.00
1981	61.00	68.00	68.00	65.00	63.50	64.00	64.50	64.00	67.00	67.00	66.00	67.00	69.00
1982	71.00	74.00	76.00	78.00	75.00	74.00	74.00	73.00	75.00	78.00	78.00	77.00	77.00
NORTH CAROLINA													
1979													59.00
1980													63.00
1981													65.00
1982													61.00
NORTH DAKOTA													
1979	34.50	36.00	37.50	38.50	34.00	39.50	39.00	42.00	39.50	38.00	37.50	38.50	37.50
1980	39.00	37.00	33.50	33.50	40.00	47.50	72.50	83.00	77.00	77.00	75.00	75.00	75.00
1981	76.00	78.50	82.50	82.50	88.00	78.00	75.00	59.00	55.00	60.00	55.00	59.00	58.00
1982	59.00	58.00	55.00	54.00	57.00	53.00	42.00	46.00	45.00	45.00	41.00	42.00	41.50
OHIO													
1979	53.00	56.50	57.50	58.50	51.00	51.00	50.00	50.00	47.50	50.50	57.50	54.00	50.00
1980	48.00	49.50	47.00	45.00	46.50	49.50	44.50	48.00	54.50	57.50	62.50	64.00	58.50
1981	61.00	63.00	66.00	66.00	80.00	63.00	55.00	88.00	66.00	79.00	105.00	109.00	85.50
1982	93.00	99.00	93.00	117.00	99.00	71.00	67.00	65.00	86.00	110.00	105.00	92.00	89.00
OKLAHOMA													
1979	67.50	66.50	67.50	67.00	60.50	55.00	53.50	51.00	52.00	50.00	56.00	60.50	55.00
1980	58.50	58.50	58.50	56.50	48.50	48.50	56.00	66.00	74.00	82.00	86.00	89.50	72.50
1981	86.50	89.00	86.50	80.00	78.50	71.00	62.00	64.00	65.00	60.00	51.00	64.00	62.50
1982	59.00	59.00	60.00	55.00	52.00	51.00	54.00	51.00	61.00	57.00	65.00	64.00	60.00

ALL HAY, BALED: PRICES RECEIVED BY FARMERS, MONTHLY AND SEASON AVERAGE,
BY STATE AND UNITED STATES, 1979-82

YEAR	JAN	FEB	MAR	APR	MAY	JUN	JUL	AUG	SEP	OCT	NOV	DEC	SEASON AVERAGE
DOLLARS PER TON													
OREGON													
1979	49.50	51.00	50.00	51.00	47.00	49.00	51.00	55.00	59.00	61.00	66.00	70.00	64.00
1980	75.00	78.00	80.00	82.00	84.00	87.00	87.00	77.00	77.00	79.00	77.00	75.00	79.50
1981	75.00	72.00	70.00	56.00	59.00	67.00	61.00	58.00	57.00	58.00	56.00	56.00	60.00
1982	60.00	59.00	64.00	70.00	72.00	74.00	67.00	70.00	70.00	70.00	75.00	80.00	75.00
PENNSYLVANIA													
1979	61.50	60.00	59.50	54.50	53.00	52.50	52.50	52.00	50.50	48.00	53.50	59.00	55.00
1980	54.00	59.50	58.00	58.00	58.00	48.50	48.50	57.00	63.00	66.00	67.00	80.00	75.00
1981	86.00	91.00	92.00	86.00	83.00	85.00	80.00	85.00	90.00	93.00	98.00	85.00	94.50
1982	98.00	100.00	106.00	118.00	108.00	104.00	87.00	79.00	82.00	81.00	80.00	87.00	89.00
RHODE ISLAND													
1979													73.00
1980													76.00
1981													80.50
1982													95.00
SOUTH CAROLINA													
1979													53.50
1980													67.00
1981													73.00
1982													70.00
SOUTH DAKOTA													
1979	28.50	29.00	29.00	30.00	29.50	34.50	34.00	40.00	41.50	40.50	36.50	29.50	35.00
1980	37.00	34.00	31.00	29.50	31.50	45.50	49.00	55.50	67.50	66.00	65.00	69.50	62.00
1981	67.00	66.00	74.00	66.00	85.00	80.00	70.00	68.00	68.00	68.00	68.00	57.00	69.50
1982	80.00	79.00	70.00	57.00	52.00	39.00	44.00	39.00	36.00	35.00	39.00	38.00	38.50
TENNESSEE													
1979													50.50
1980													46.00
1981													49.00
1982													47.50
TEXAS													
1979	63.00	60.00	61.00	60.00	54.50	53.00	51.00	50.50	49.00	53.00	57.00	57.00	53.50
1980	57.50	66.00	61.00	61.50	56.00	51.50	57.50	59.00	64.50	74.00	80.50	83.00	65.50
1981	84.00	78.00	80.00	77.00	79.00	69.00	59.00	62.00	56.00	58.00	58.00	60.00	63.00
1982	62.00	64.00	60.00	58.00	71.00	69.00	69.00	69.00	66.00	69.00	74.00	76.00	72.50
UTAH													
1979	49.00	49.50	51.00	51.00	51.50	52.00	51.00	50.50	51.00	52.50	64.00	67.00	55.00
1980	63.50	62.00	63.00	65.00	60.00	69.50	71.50	67.50	67.00	73.00	72.00	72.00	70.00
1981	72.00	72.00	67.00	67.00	65.00	62.00	59.00	62.00	57.00	61.00	61.00	60.00	59.50
1982	57.00	57.00	55.00	56.00	60.00	61.00	64.00	67.00	62.00	65.00	68.00	69.00	66.00
VERMONT													
1979													63.00
1980													63.00
1981													65.00
1982													84.00

ALL HAY, BALED: PRICES RECEIVED BY FARMERS, MONTHLY AND SEASON AVERAGE,
BY STATE AND UNITED STATES, 1979-82

YEAR	JAN	FEB	MAR	APR	MAY	JUN	JUL	AUG	SEP	OCT	NOV	DEC	SEASON AVERAGE
DOLLARS PER TON													
VIRGINIA													
1979													56.00
1980													68.00
1981													74.50
1982													76.50
WASHINGTON													
1979	49.00	49.00	47.00	45.00	51.50	68.00	64.50	68.50	65.00	71.00	71.00	73.00	73.50
1980	77.00	82.00	85.00	94.50	87.00	91.00	94.00	87.00	82.00	84.00	81.00	85.00	82.50
1981	87.00	83.00	74.00	71.00	64.00	70.00	72.00	71.00	71.00	67.00	61.00	64.00	67.00
1982	65.00	68.00	62.00	66.00	62.00	78.00	67.00	66.00	76.00	75.00	77.00	76.00	77.00
WEST VIRGINIA													
1979													50.50
1980													61.00
1981													63.00
1982													64.00
WISCONSIN													
1979	38.00	39.00	34.00	35.00	34.50	32.50	30.50	29.50	32.50	30.50	29.00	29.00	31.00
1980	30.50	32.00	31.50	32.50	32.50	35.00	37.50	38.00	38.00	40.00	40.00	39.00	41.50
1981	44.00	44.00	43.00	42.00	44.00	45.50	56.50	55.00	55.00	62.00	62.00	72.00	66.00
1982	76.00	84.00	85.00	85.00	77.00	65.00	65.00	60.00	58.00	63.00	64.00	72.00	66.50
WYOMING													
1979	51.50	54.50	55.00	51.50	48.00	49.50	52.00	55.50	59.50	55.50	56.50	56.50	55.50
1980	55.50	55.50	55.50	52.00	46.00	49.00	53.00	61.00	68.00	69.50	73.50	76.50	68.00
1981	72.00	71.50	67.50	65.50	68.00	65.00	65.00	64.00	65.00	64.00	66.00	64.00	64.00
1982	64.00	63.00	65.00	62.00	58.50	55.00	53.00	52.00	54.00	53.00	54.00	58.00	56.00

ALFALFA HAY, BALED: PRICES RECEIVED BY FARMERS, MONTHLY,
BY STATE AND UNITED STATES, 1979-82

YEAR	JAN	FEB	MAR	APR	MAY	JUN	JUL	AUG	SEP	OCT	NOV	DEC	SEASON AVERAGE 1/
DOLLARS PER TON													
UNITED STATES													
1979	51.20	53.60	53.00	52.80	71.70	62.40	60.00	61.70	63.90	65.80	64.20	64.10	
1980	63.70	65.50	62.10	66.00	73.90	71.50	72.70	72.70	77.00	81.50	79.10	78.30	
1981	75.90	75.40	72.40	72.10	78.60	70.10	67.40	67.20	65.70	68.70	68.30	69.00	
1982	71.40	73.50	73.10	76.70	82.30	74.00	70.10	68.20	69.80	70.40	71.80	71.50	
ARIZONA													
1979	61.00	66.00	68.00	75.00	80.00	81.00	80.00	76.00	82.50	80.00	89.00	90.00	
1980	93.00	100.00	95.00	90.00	84.00	77.00	66.50	72.50	77.50	84.50	89.50	94.00	
1981	96.00	98.00	94.00	88.00	79.00	71.00	71.00	62.00	63.00	69.00	75.00	75.00	
1982	79.00	78.00	76.00	82.00	85.00	70.00	64.00	62.00	66.00	74.00	76.00	81.00	
ARKANSAS													
1979	62.00	64.00	70.50	75.00	70.00	71.00	67.00	62.00	55.00	50.00	56.50	64.00	
1980	59.50	55.50	55.50	51.00	51.00	51.00	55.00	56.00	55.00	70.00	75.00	75.00	
1981	75.00	90.00	92.00	91.50	85.00	90.50	85.00	85.00	80.00	70.00	70.00	68.00	
1982	68.00	75.00	80.00	75.00	70.00	70.00	86.00	80.00	80.00	78.00	83.00	75.00	
CALIFORNIA													
1979	70.00	73.00	78.00	82.50	86.50	90.00	83.50	81.50	84.00	89.50	95.00	102.00	
1980	116.00	116.00	112.00	110.00	98.00	105.00	96.00	90.00	96.00	100.00	98.00	102.00	
1981	100.00	97.00	96.00	89.00	86.00	84.00	73.00	65.00	69.00	71.00	76.00	80.00	
1982	80.00	78.00	85.00	86.00	93.00	90.00	83.00	79.00	81.00	82.00	91.00	96.00	
COLORADO													
1979	52.00	54.00	54.50	55.00	54.50	53.00	53.50	53.50	53.00	53.00	54.00	54.00	
1980	54.50	55.00	55.00	52.00	51.50	50.50	55.50	57.50	63.00	62.50	67.50	69.00	
1981	72.00	69.00	73.00	73.00	71.00	67.00	66.00	65.00	65.00	66.00	63.00	64.00	
1982	64.00	66.00	63.00	64.00	66.00	64.00	68.00	67.00	66.00	65.00	64.00	65.00	
IDAHO													
1979	36.50	37.50	39.50	38.50	35.00	42.50	47.00	51.50	51.50	52.50	57.00	59.00	
1980	63.00	74.50	79.50	82.00	78.00	69.00	72.00	66.00	64.00	64.00	62.00	65.50	
1981	62.50	57.50	61.00	51.00	52.00	58.50	56.50	53.00	50.00	52.00	51.00	53.00	
1982	53.00	56.00	58.00	64.00	70.00	68.00	63.00	68.00	66.00	64.00	78.00	72.00	
ILLINOIS													
1979	59.00	61.00	62.00	59.50	55.00	56.00	56.00	57.00	59.00	60.00	63.00	65.00	
1980	63.00	63.00	64.50	62.00	59.00	49.00	49.00	50.00	55.00	54.50	60.00	66.00	
1981	67.00	67.00	67.00	70.00	58.00	50.00	47.00	47.00	46.00	54.00	54.00	55.00	
1982	60.00	61.00	61.00	58.00	56.00	59.00	61.00	66.00	64.00	76.00	75.00	74.00	
INDIANA													
1979	60.50	62.00	60.50	62.00	59.00	59.00	55.50	53.50	56.50	60.50	59.00	57.50	
1980	60.50	64.00	58.50	60.50	59.00	54.00	49.00	47.00	56.00	60.50	63.00	65.00	
1981	65.50	64.50	66.00	65.00	64.00	63.00	61.00	64.00	66.00	71.00	83.00	80.00	
1982	82.00	88.00	94.00	98.00	89.00	70.00	71.00	70.00	72.00	75.00	83.00	86.00	
IOWA													
1979	49.00	53.50	55.50	54.50	54.00	46.00	39.00	41.00	45.50	46.50	52.00	52.50	
1980	56.00	53.50	50.00	43.00	43.50	43.00	50.00	52.00	54.00	56.50	53.00	51.00	
1981	49.00	48.50	49.00	50.50	52.00	47.00	50.00	51.00	51.00	53.00	55.00	56.00	
1982	59.00	62.00	66.00	66.00	60.00	59.00	53.00	50.00	50.00	52.00	53.00	53.00	

1/ NOT AVAILABLE.

ALFALFA HAY, BALED: PRICES RECEIVED BY FARMERS, MONTHLY,
BY STATE AND UNITED STATES, 1979-82

YEAR	JAN	FEB	MAR	APR	MAY	JUN	JUL	AUG	SEP	OCT	NOV	DEC	SEASON AVERAGE 1/
DOLLARS PER TON													
KANSAS													
1979	56.50	60.50	58.50	57.00	52.50	49.50	50.00	49.00	49.00	48.00	53.50	55.50	
1980	54.00	52.00	51.00	48.00	42.00	43.00	50.00	56.50	63.00	68.00	73.00	72.50	
1981	72.50	72.50	71.00	70.00	66.00	62.00	60.00	60.00	61.00	59.00	61.00	59.00	
1982	58.00	58.00	58.00	58.00	54.00	53.00	50.00	54.00	54.00	57.00	60.00	60.00	
KENTUCKY													
1979	60.50	58.00	54.00	52.50	60.00	66.00	64.00	63.00	68.00	71.00	70.00	69.00	
1980	70.00	68.50	70.50	70.50	68.50	69.00	72.50	75.00	76.00	77.00	78.00	85.50	
1981	86.00	89.00	88.00	90.00	87.00	83.00	85.00	85.00	85.00	85.00	86.00	83.00	
1982	88.00	88.00	87.00	87.00	85.00	84.00	85.00	85.00	90.00	90.00	88.00	87.00	
MICHIGAN													
1979	47.50	48.00	45.00	50.00	50.00	40.50	35.00	38.00	35.00	39.00	40.50	40.00	
1980	43.00	32.00	34.00	34.00	35.50	32.00	28.00	33.50	37.00	42.00	55.00	40.00	
1981	40.00	42.00	40.00	40.00	43.00	37.00	35.00	50.00	50.00	60.00	65.00	68.00	
1982	72.00	75.00	80.00	90.00	90.00	55.00	45.00	55.00	55.00	63.00	65.00	63.00	
MINNESOTA													
1979	42.00	42.00	42.00	43.00	44.50	36.00	37.00	34.50	36.50	38.50	40.50	40.50	
1980	38.00	39.00	37.00	38.00	41.50	52.00	47.00	59.00	68.00	62.00	68.00	62.00	
1981	64.00	60.00	54.00	60.00	58.00	65.00	63.00	66.00	71.00	70.00	74.00	74.00	
1982	76.00	85.00	80.00	74.00	80.00	70.00	58.00	64.00	60.00	66.00	77.00	80.00	
MISSOURI													
1979	58.50	59.50	61.00	58.00	52.00	53.50	56.00	55.00	56.50	56.00	58.00	59.00	
1980	62.00	62.00	60.00	49.00	55.00	50.00	55.50	57.00	90.00	90.00	93.00	92.50	
1981	100.00	103.00	92.00	85.50	65.00	70.00	70.00	70.00	70.00	80.00	80.00	80.00	
1982	80.00	82.00	77.00	74.00	74.00	70.00	66.00	66.00	64.00	70.00	73.00	74.00	
MONTANA													
1979	48.00	50.50	50.00	48.50	47.50	50.00	51.00	55.50	56.00	57.50	57.50	57.50	
1980	55.00	64.00	55.00	57.00	56.00	60.00	55.50	67.00	65.00	67.00	68.00	65.00	
1981	60.00	60.00	55.00	53.00	50.00	55.00	51.00	53.00	55.00	54.00	48.00	46.00	
1982	48.00	48.00	46.00	45.00	45.00	47.00	47.00	45.00	48.00	50.00	55.00	52.00	
NEBRASKA													
1979	37.50	43.50	46.50	43.50	42.00	38.00	38.50	41.00	39.50	40.50	43.00	43.00	
1980	44.00	44.00	41.00	41.00	39.00	38.50	44.50	52.50	58.50	58.50	61.00	61.50	
1981	59.50	60.00	59.50	59.00	57.00	59.00	62.50	64.00	58.00	58.00	54.00	56.00	
1982	59.00	58.00	56.00	53.00	55.00	54.00	51.00	48.00	47.00	44.00	44.00	46.00	
NEVADA													
1979	58.00	59.00	61.00	65.00	70.00	72.00	73.00	78.00	79.00	83.00	86.00	92.00	
1980	94.00	96.00	100.00	104.00	100.00	97.00	99.00	97.00	98.00	97.00	98.00	97.00	
1981	97.00	99.00	93.00	90.00	85.00	84.00	80.00	74.00	70.00	70.00	75.00	74.00	
1982	74.00	74.00	74.00	79.00	84.00	86.00	82.00	90.00	90.00	95.00	95.00	92.00	
NEW MEXICO													
1979	70.00	68.00	71.00	72.00	72.50	69.50	66.50	66.50	65.00	67.00	71.50	78.00	
1980	79.00	72.00	72.00	75.00	69.50	69.50	67.00	71.50	79.00	87.00	94.50	111.00	
1981	114.00	117.00	115.00	117.00	89.00	85.00	83.00	77.00	77.00	85.00	86.00	93.00	
1982	98.00	94.00	93.00	86.00	81.00	75.00	68.00	68.00	73.00	78.00	78.00	81.00	

1/ NOT AVAILABLE.

ALFALFA HAY, BALED: PRICES RECEIVED BY FARMERS, MONTHLY,
BY STATE AND UNITED STATES, 1979-82

YE/R	JAN	FEB	MAR	APR	MAY	JUN	JUL	AUG	SEP	OCT	NOV	DEC	SEASON AVERAGE 1/
DOLLARS PER TON													
NEW YORK													
1979	61.00	64.00	63.00	64.00	60.50	60.00	54.50	56.50	55.00	58.50	62.50	62.50	
1980	63.50	57.00	57.50	54.00	53.00	51.50	48.00	57.50	63.00	64.50	65.00	66.50	
1981	66.00	70.00	70.00	68.00	66.50	67.00	67.00	66.00	68.00	70.00	68.00	70.00	
1982	74.00	78.00	81.00	82.00	79.00	78.00	77.00	79.00	81.00	83.00	82.00	81.00	
NORTH DAKOTA													
1979	37.00	38.50	40.00	41.00	37.00	42.50	41.00	44.50	41.50	41.50	40.00	42.50	
1980	41.00	39.00	36.00	37.00	44.50	51.50	78.50	90.00	82.00	83.50	82.00	82.00	
1981	82.00	85.00	88.00	88.00	94.00	90.00	81.00	66.00	64.00	69.00	60.00	64.00	
1982	64.00	64.00	62.00	58.00	63.00	59.00	50.00	55.00	50.00	50.00	45.00	45.00	
OHIO													
1979	54.50	60.00	61.50	62.50	55.00	55.00	54.00	54.00	51.00	54.00	59.50	56.50	
1980	50.00	54.00	51.00	48.00	50.00	54.00	53.00	50.00	56.50	62.00	65.00	66.00	
1981	64.00	70.00	75.00	72.00	85.00	70.00	71.00	105.00	76.00	86.00	115.00	115.00	
1982	109.00	115.00	109.00	130.00	110.00	88.00	90.00	85.00	91.00	120.00	115.00	106.00	
OKLAHOMA													
1979	81.50	80.50	81.00	81.00	69.00	62.00	62.50	58.50	61.50	60.50	67.00	74.50	
1980	73.00	73.50	72.00	68.00	52.00	57.00	68.00	84.50	94.00	107.00	111.00	123.00	
1981	118.00	112.00	109.00	97.50	95.00	95.50	88.00	75.00	73.00	73.00	74.00	77.00	
1982	80.00	78.00	78.00	74.00	74.00	64.00	70.00	56.00	76.00	88.00	77.00	88.00	
OREGON													
1979	54.50	56.00	54.00	56.00	53.00	55.00	56.00	61.00	66.00	70.00	73.00	78.00	
1980	85.00	88.00	89.00	92.00	95.00	97.00	100.00	94.00	94.00	93.00	90.00	89.00	
1981	90.00	90.00	85.00	65.00	70.00	80.00	75.00	70.00	70.00	70.00	65.00	65.00	
1982	70.00	70.00	75.00	85.00	85.00	88.00	80.00	85.00	85.00	89.00	91.00	95.00	
PENNSYLVANIA													
1979	69.50	67.50	67.50	63.00	60.50	61.00	59.50	59.50	56.00	53.50	59.00	60.00	
1980	62.00	67.00	67.00	67.00	65.00	65.00	55.00	63.00	68.00	75.00	78.50	100.00	
1981	105.00	110.00	110.00	105.00	98.00	90.00	85.00	95.00	95.00	100.00	105.00	95.00	
1982	105.00	110.00	115.00	130.00	120.00	115.00	100.00	90.00	95.00	97.00	90.00	105.00	
SOUTH DAKOTA													
1979	31.50	32.00	32.50	33.00	32.00	35.00	32.00	40.00	42.50	40.50	39.50	30.50	
1980	37.00	35.00	31.00	31.50	32.00	46.50	50.00	56.50	67.50	73.00	70.00	70.00	
1981	69.00	72.00	74.00	66.00	85.00	80.00	70.00	70.00	70.00	70.00	70.00	65.00	
1982	85.00	85.00	75.00	65.00	65.00	40.00	38.00	35.00	36.00	35.00	40.00	38.00	
TEXAS													
1979	77.50	75.50	78.00	80.50	72.50	72.50	71.00	69.50	69.00	72.00	77.50	78.00	
1980	81.00	81.50	78.50	75.00	75.50	71.50	73.50	77.50	85.00	99.00	107.00	111.00	
1981	115.00	110.00	115.00	118.00	105.00	92.00	90.00	96.00	93.00	89.00	89.00	87.00	
1982	93.00	102.00	94.00	95.00	90.00	89.00	89.00	90.00	83.00	89.00	96.00	99.00	
UTAH													
1979	50.00	50.50	52.00	52.00	52.50	53.00	52.50	51.50	51.50	53.50	60.00	69.00	
1980	65.00	73.00	71.00	69.00	60.50	71.50	73.50	69.50	70.00	75.00	74.00	76.00	
1981	74.50	73.50	72.00	71.00	68.00	65.00	60.00	67.00	62.00	63.00	64.00	66.00	
1982	63.00	65.00	62.00	61.00	65.00	64.00	68.00	72.00	66.00	69.00	72.00	73.00	

1/ NOT AVAILABLE.

ALFALFA HAY, BALED: PRICES RECEIVED BY FARMERS, MONTHLY,
BY STATE AND UNITED STATES, 1979-82

YEAR	JAN	FEB	MAR	APR	MAY	JUN	JUL	AUG	SEP	OCT	NOV	DEC	SEASON AVERAGE 1/
DOLLARS PER TON													
WASHINGTON													
1979	54.50	54.50	52.50	50.00	56.00	67.00	64.00	67.50	68.00	72.50	75.50	77.50	
1980	82.00	82.50	88.50	95.50	92.50	96.00	98.00	90.00	83.00	85.00	82.00	87.00	
1981	89.00	84.00	75.00	71.00	65.00	70.00	72.00	72.00	72.00	67.00	62.00	64.00	
1982	66.00	69.00	62.00	67.00	62.00	81.00	71.00	73.00	79.00	78.00	80.00	79.00	
WISCONSIN													
1979	39.50	40.50	35.50	36.00	36.00	34.50	32.00	31.00	34.50	32.00	30.00	30.00	
1980	31.50	33.50	33.00	34.00	34.50	37.00	41.00	42.00	40.00	42.00	42.00	41.00	
1981	45.00	47.00	46.50	46.00	46.00	47.50	59.00	60.00	62.00	65.00	65.00	75.00	
1982	80.00	88.00	90.00	90.00	80.00	69.00	69.00	63.00	65.00	68.00	67.00	75.00	
WYOMING													
1979	51.50	55.50	55.50	51.00	46.50	48.00	52.00	56.00	60.00	56.00	56.00	56.00	
1980	55.00	54.00	54.00	50.00	41.50	45.00	51.50	62.50	66.00	67.50	69.50	72.00	
1981	69.50	68.50	64.50	63.50	67.50	63.50	63.50	63.00	65.00	63.00	65.00	62.00	
1982	62.00	61.00	63.00	62.00	56.00	55.00	51.00	50.00	53.00	51.00	52.00	55.00	

1/ NOT AVAILABLE.

OTHER HAY, BALED: PRICES RECEIVED BY FARMERS, MONTHLY,
BY STATE AND UNITED STATES, 1979-82

YEAR	JAN	FEB	MAR	APR	MAY	JUN	JUL	AUG	SEP	OCT	NOV	DEC	SEASON AVERAGE 1/
DOLLARS PER TON													
UNITED STATES													
1979	44.30	44.60	44.20	43.30	48.10	45.90	46.50	47.10	47.00	48.50	49.00	49.70	
1980	49.20	49.30	47.30	48.30	51.90	48.20	52.50	54.90	59.40	63.00	63.10	67.20	
1981	66.20	65.70	63.50	60.70	63.80	57.40	54.70	56.10	54.10	56.30	57.60	58.90	
1982	60.70	61.40	62.20	65.50	57.90	54.00	52.40	52.10	54.70	54.70	56.50	59.80	
ARIZONA													
1979	54.00	59.00	61.00	62.00	65.00	68.00	66.00	64.00	67.00	68.00	76.00	85.00	
1980	88.00	81.00	75.00	64.00	66.00	55.00	52.50	58.00	62.50	65.50	57.50	47.00	
1981	78.00	80.00	56.00		61.00	60.00	59.00	61.00	58.00	60.00	56.00	66.00	
1982	60.00	55.00	40.00	61.00			51.00	52.00	53.00	55.00	48.00	49.00	
ARKANSAS													
1979	42.00	41.00	39.50	46.50	41.00	39.50	35.00	38.50	39.50	42.50	40.00	45.00	
1980	42.50	42.50	42.50	38.50	38.50	37.50	40.50	41.50	40.50	50.00	50.50	51.00	
1981	50.00	55.00	56.00	53.00	49.50	51.50	49.00	53.00	42.00	40.00	36.00	41.00	
1982	47.00	44.00	42.00	42.00	44.00	40.00	38.00	38.00	40.00	46.00	40.00	42.00	
CALIFORNIA													
1979	40.50	49.00	51.00	53.00	57.00	61.00	61.00	60.50	60.50	66.00	74.00	72.50	
1980	89.50	78.00	83.50	95.50	69.00	68.00	69.00	65.00	72.00	73.00	75.00	88.00	
1981	90.00	84.00	81.00	63.00	65.00	50.00	52.00	52.00	51.00	50.00	50.00	58.00	
1982	61.00	68.00	64.00	64.00	62.00	62.00	68.00	65.00	57.00	63.00	70.00	73.00	
COLORADO													
1979	50.00	51.50	51.00	53.00	52.00	50.50	52.50	51.00	51.50	51.50	52.00	52.00	
1980	56.50	56.00	56.00	51.50	52.50	55.50	55.00	57.50	60.50	66.00	62.50	73.00	
1981	68.00	70.00	66.00	63.00	69.00	72.00	65.00	68.00	66.00	65.00	67.00	68.00	
1982	66.00	65.00	65.00	68.00	69.00	72.00	67.00	65.00	66.00	65.00	63.00	65.00	
GEORGIA													
1979	57.50	55.50	57.50	55.00	55.00	54.00	53.00	52.00	52.00	51.00	50.00	51.50	
1980	53.00	52.50	53.50	55.00	55.00	53.00	50.00	54.00	59.00	61.00	65.00	71.00	
1981	76.00	78.00	75.00	68.00									
1982													
IDAHO													
1979	30.00	30.00	30.50	31.50	29.00	30.00	40.00	46.50	46.50	47.00	48.00	48.50	
1980	50.00	58.00	63.00	66.00	59.50	59.00	63.50	60.00	54.00	54.50	47.50	53.50	
1981	55.00	51.50	44.50	43.00	43.00	47.50	47.50	43.00	40.00	48.00	44.00	44.00	
1982	48.00	47.00	52.00	52.00	56.00	58.00	54.00	52.00	62.00	49.00	61.00	60.00	
ILLINOIS													
1979	48.00	49.00	50.00	46.50	43.50	47.00	45.50	45.50	45.50	47.00	47.00	48.50	
1980	47.00	48.00	49.50	48.00	45.00	32.00	32.00	33.00	38.00	40.00	47.00	55.00	
1981	54.00	56.00	56.00	60.00	46.00	37.00	37.00	34.00	33.00	38.00	48.00	48.00	
1982	43.00	38.00	37.00	36.00	35.00	47.00	45.00	43.00	55.00	65.00	63.00	64.00	
INDIANA													
1979	51.00	51.50	50.50	51.50	49.00	50.00	43.50	45.00	47.00	49.00	55.50	53.50	
1980	44.50	45.00	45.00	47.00	44.00	47.00	44.50	42.50	46.50	50.00	52.00	53.50	
1981	53.00	55.50	54.50	54.00	53.50	54.00	50.00	50.00	51.00	52.00	54.00	62.00	
1982	64.00	68.00	70.00	71.00	69.00	52.00	53.00	49.00	54.00	57.00	62.00	67.00	

1/ NOT AVAILABLE.

OTHER HAY, BALED: PRICES RECEIVED BY FARMERS, MONTHLY,
BY STATE AND UNITED STATES, 1979-82

YEAR	JAN	FEB	MAR	APR	MAY	JUN	JUL	AUG	SEP	OCT	NOV	DEC	SEASON AVERAGE 1/
DOLLARS PER TON													
IOWA													
1979	40.00	46.00	48.00	45.00	48.00	41.00	35.00	35.00	40.50	41.00	42.50	47.50	
1980	53.00	47.50	42.00	37.00	35.50	40.00	44.00	47.50	50.00	53.50	50.50	47.50	
1981	46.50	44.00	44.00	43.00	43.00	39.00	42.00	43.00	43.00	43.00	43.00	45.00	
1982	48.00	50.00	52.00	52.00	48.00	48.00	43.00	42.00	41.00	43.00	43.00	44.00	
KANSAS													
1979	46.50	47.50	47.00	47.50	45.50	47.00	47.00	42.00	43.00	44.00	43.50	45.00	
1980	42.50	41.50	38.00	38.50	41.50	41.00	46.00	54.00	57.00	63.00	69.00	71.00	
1981	68.00	68.00	69.00	69.00	60.00	56.00	49.00	46.00	45.00	44.00	42.00	41.00	
1982	44.00	46.00	47.00	54.00	42.00	40.00	45.00	38.00	40.00	45.00	47.00	49.00	
KENTUCKY													
1979	48.50	46.00	44.00	43.00	43.00	44.50	45.00	46.00	46.50	46.50	48.00	48.00	
1980	47.00	47.00	48.50	47.50	46.50	49.00	49.00	50.00	51.50	53.50	56.50	58.50	
1981	58.00	60.00	59.00	60.00	59.00	57.00	58.00	57.00	56.00	56.00	57.00	55.00	
1982	59.00	59.00	60.00	60.00	57.00	57.00	59.00	57.00	60.00	60.00	58.00	57.00	
MICHIGAN													
1979	36.50	38.50	36.50	34.00	34.00	33.00	27.00	27.00	27.00	31.00	33.50	36.00	
1980	30.50	24.50	24.50	22.50	24.00	23.00	18.00	16.50	24.00	31.50	37.50	30.00	
1981	30.00	34.00	30.00	30.00	25.00	26.00	24.00	35.00	30.00	35.00	40.00	45.00	
1982	50.00	50.00	55.00	60.00	60.00	30.00	25.00	40.00	40.00	40.00	45.00	45.00	
MINNESOTA													
1979	30.00	31.00	30.00	31.50	32.00	26.00	31.50	28.00	27.00	27.50	28.00	31.50	
1980	30.00	28.00	29.00	26.00	32.00	30.00	34.00	50.00	44.00	54.00	46.00	45.00	
1981	53.00	51.00	48.00	48.00	52.00	54.00	44.00	45.00	45.00	56.00	53.00	52.00	
1982	57.00	70.00	58.00	62.00	51.00	45.00	48.00	47.00	44.00	45.00	53.00	55.00	
MISSOURI													
1979	42.50	41.00	42.00	40.50	41.50	39.00	42.00	42.00	41.00	43.00	43.00	44.00	
1980	45.00	45.00	43.00	43.00	42.50	47.00	49.00	55.00	66.00	60.00	64.50	73.00	
1981	80.00	77.00	79.50	78.50	55.00	62.00	60.00	58.00	58.00	60.00	60.00	60.00	
1982	60.00	60.00	55.00	53.00	55.00	52.00	49.00	49.00	47.00	50.00	52.00	52.00	
MONTANA													
1979	42.50	43.00	43.00	43.50	41.50	45.00	45.50	49.50	50.00	50.00	50.00	52.50	
1980	51.00	49.00	50.00	52.00	50.00	55.00	60.00	60.00	60.00	62.00	63.00	60.00	
1981	60.00	55.00	50.00	48.00	46.00	50.00	47.00	47.00	50.00	49.00	45.00	41.00	
1982	42.00	44.00	42.00	43.00	40.00	40.00	40.00	40.00	42.00	45.00	50.00	50.00	
NEBRASKA													
1979	40.00	44.00	47.00	44.50	41.00	35.50	36.00	39.50	38.50	40.50	44.00	46.00	
1980	44.00	42.00	40.00	40.00	39.00	39.00	42.50	51.00	56.00	57.00	58.00	61.50	
1981	60.50	61.50	61.50	60.00	56.00	59.00	72.50	68.00	65.00	66.00	64.00	62.00	
1982	62.00	64.00	60.00	59.00	54.00	53.00	49.00	48.00	46.00	42.00	38.00	42.00	
NEVADA													
1979	43.00	45.00	47.00	51.00	56.00	56.00	58.00	62.00	62.00	66.00	69.00	75.00	
1980	77.00	79.00	79.00	79.00	78.00	78.00	80.00	78.00	80.00	78.00	75.00	78.00	
1981	78.00	80.00	74.00	71.00	68.00	67.00	65.00	60.00	55.00	55.00	60.00	60.00	
1982	60.00	60.00	60.00	65.00	70.00	75.00	70.00	78.00	78.00	83.00	80.00	77.00	

1/ NOT AVAILABLE.

OTHER HAY, BALED: PRICES RECEIVED BY FARMERS, MONTHLY,
BY STATE AND UNITED STATES, 1979-82

YEAR	JAN	FEB	MAR	APR	MAY	JUN	JUL	AUG	SEP	OCT	NOV	DEC	SEASON AVERAGE 1/
DOLLARS PER TON													
NEW MEXICO													
1979	55.00	53.00	57.00	58.00	60.00	57.00	54.00	54.00	53.00	55.00	58.00	62.00	
1980	63.00	60.00	60.00	62.00	60.00	60.00	60.00	65.00	70.00	75.00	80.00	90.00	
1981	90.00	90.00	90.00	90.00	70.00	70.00	65.00	60.00	65.00	70.00	70.00	75.00	
1982	75.00	66.00	65.00	65.00	60.00	60.00	55.00	55.00	60.00	65.00	60.00	60.00	
NEW YORK													
1979	50.00	47.00	47.00	50.00	45.00	44.00	45.50	43.00	46.00	45.00	44.50	44.50	
1980	44.50	49.50	46.50	45.00	42.50	36.50	41.00	47.00	52.50	55.00	54.00	57.00	
1981	56.00	63.50	62.00	61.00	60.50	61.00	62.00	60.00	64.00	63.00	63.00	64.00	
1982	68.00	70.00	72.00	73.00	71.00	70.00	70.00	67.00	70.00	73.00	72.00	72.00	
NORTH DAKOTA													
1979	30.00	31.00	32.50	33.50	29.00	33.50	35.00	37.00	36.00	32.00	33.50	31.50	
1980	35.00	33.50	29.50	27.50	31.50	39.50	62.00	70.00	67.00	65.00	65.50	65.50	
1981	67.50	69.00	74.00	74.00	79.50	61.00	65.00	48.00	43.00	48.00	48.00	52.00	
1982	52.00	49.00	47.00	50.00	49.00	47.00	33.00	36.00	39.00	40.00	37.00	37.00	
OHIO													
1979	50.50	49.00	49.00	50.00	43.00	43.00	43.00	43.00	40.50	43.50	50.00	46.50	
1980	42.00	41.00	38.50	40.00	40.00	38.00	36.00	38.00	48.00	50.00	55.00	59.00	
1981	51.00	54.00	57.00	52.00	65.00	53.00	45.00	62.00	50.00	58.00	83.00	83.00	
1982	76.00	80.00	80.00	100.00	85.00	53.00	44.00	44.00	68.00	87.00	82.00	75.00	
OKLAHOMA													
1979	56.50	56.00	57.50	56.00	54.50	50.00	47.00	45.00	44.50	42.00	48.00	50.00	
1980	47.50	47.50	48.00	48.00	45.50	42.50	47.00	52.50	59.00	65.00	68.50	64.00	
1981	63.00	71.50	69.50	67.00	66.00	62.50	53.00	60.00	62.00	55.00	43.00	57.00	
1982	48.00	49.00	51.00	45.00	41.00	44.00	46.00	49.00	54.00	41.00	59.00	51.00	
OREGON													
1979	43.50	45.00	45.00	45.00	40.00	40.00	45.00	47.00	49.00	50.00	56.00	59.00	
1980	62.00	65.00	68.00	68.00	70.00	74.00	70.00	53.00	55.00	60.00	60.00	57.00	
1981	55.00	48.00	50.00	45.00	45.00	50.00	43.00	43.00	40.00	43.00	45.00	45.00	
1982	45.00	45.00	50.00	50.00	55.00	55.00	50.00	50.00	50.00	45.00	54.00	60.00	
PENNSYLVANIA													
1979	53.00	52.00	51.00	48.00	45.50	44.00	45.00	44.00	45.00	42.00	47.50	50.00	
1980	45.00	51.00	49.50	49.00	49.50	49.50	42.00	50.50	54.00	57.00	57.00	75.00	
1981	80.00	85.00	85.00	80.00	78.00	80.00	75.00	80.00	85.00	90.00	95.00	80.00	
1982	95.00	95.00	100.00	110.00	100.00	95.00	80.00	73.00	75.00	73.00	73.00	80.00	
SOUTH DAKOTA													
1979	22.50	23.50	22.00	24.00	24.50	33.00	44.00	41.00	37.50	33.00	29.00	27.00	
1980	36.00	30.00	26.50	25.50	27.50	38.00	45.00	50.00	67.50	50.50	47.00	64.00	
1981	55.00	50.00	50.00	60.00	70.00	70.00	65.00	55.00	50.00	50.00	50.00	50.00	
1982	55.00	55.00	60.00	50.00	50.00	30.00	30.00	30.00	30.00	30.00	30.00	30.00	
TEXAS													
1979	60.00	57.00	54.50	56.00	51.00	49.00	47.00	47.00	45.50	49.50	53.00	53.00	
1980	54.00	63.50	58.00	59.50	52.00	47.50	55.00	56.00	61.00	70.00	75.50	77.50	
1981	79.00	73.00	74.00	70.00	74.00	65.00	54.00	56.00	51.00	53.00	53.00	56.00	
1982	57.00	58.00	54.00	52.00	55.00	52.00	53.00	52.00	52.00	53.00	56.00	57.00	

1/ NOT AVAILABLE.

OTHER HAY, BALED: PRICES RECEIVED BY FARMERS, MONTHLY,
BY STATE AND UNITED STATES, 1979-82

YEAR	JAN	FEB	MAR	APR	MAY	JUN	JUL	AUG	SEP	OCT	NOV	DEC	SEASON AVERAGE 1/
DOLLARS PER TON													
UTAH													
1979	41.00	42.50	44.50	43.50	45.50	45.50	42.00	43.50	46.00	47.50	44.00	54.50	
1980	56.50	58.50	54.00	57.00	54.50	57.00	57.50	53.00	55.50	61.00	58.00	60.50	
1981	60.00	61.00	58.50	58.00	55.00	52.00	50.00	50.00	45.00	46.00	47.00	46.00	
1982	47.00	45.00	45.00	48.00	49.00	46.00	49.00	48.00	52.00	53.00	54.00	55.00	
WASHINGTON													
1979	34.50	34.50	32.00	33.50	40.00	71.50	66.50	70.50	57.00	67.00	59.00	60.00	
1980	63.50	71.00	70.50	87.50	82.50	71.00	81.00	74.00	79.00	80.00	78.00	79.00	
1981	81.00	81.00	72.00	69.50	59.00	69.00	70.00	68.00	68.00	65.00	60.00	63.00	
1982	64.00	62.00	60.00	63.00	61.00	59.00	58.00	55.00	66.00	64.00	68.00	69.00	
WISCONSIN													
1979	32.50	32.50	29.00	31.00	28.00	25.00	25.00	23.50	24.50	23.50	25.50	25.00	
1980	26.00	26.00	26.00	26.00	25.50	27.50	31.00	31.00	30.00	32.00	31.00	30.00	
1981	34.00	34.50	35.50	35.00	35.00	36.50	45.00	46.00	48.00	48.00	50.00	60.00	
1982	60.00	67.00	67.00	67.00	63.00	50.00	50.00	50.00	46.00	50.00	54.00	59.00	
WYOMING													
1979	51.00	53.00	54.50	52.50	50.00	51.50	52.50	55.00	59.00	55.00	57.50	57.50	
1980	56.00	57.50	58.50	55.00	53.00	55.50	56.00	59.00	70.50	72.50	79.50	83.50	
1981	75.50	75.50	72.50	68.00	68.50	67.00	67.00	66.00	66.00	66.00	68.00	68.00	
1982	68.00	65.00	67.00	62.00	60.00	55.00	55.00	55.00	56.00	56.00	58.00	63.00	

1/ NOT AVAILABLE.

DRY EDIBLE BEANS: PRICES RECEIVED BY FARMERS, MONTHLY AND SEASON AVERAGE,
BY STATE AND UNITED STATES, 1979-82

YEAR	JAN	FEB	MAR	APR	MAY	JUN	JUL	AUG	SEP	OCT	NOV	DEC	SEASON AVERAGE
DOLLARS PER CWT													
UNITED STATES													
1979	16.50	18.10	17.30	17.20	19.00	20.00	22.20	20.80	19.20	20.40	20.80	23.30	22.80
1980	24.50	25.00	24.80	22.60	22.90	23.60	25.80	26.30	24.50	25.30	26.30	26.40	27.60
1981	27.50	28.30	30.00	31.30	34.50	36.80	35.40	26.70	22.90	23.70	23.90	22.10	21.00
1982	20.50	19.80	18.70	18.00	19.20	17.30	15.90	16.60	14.50	13.90	14.20	13.10	14.20
CALIFORNIA													
1979	23.90	24.20	24.40	24.80	25.40	26.00	26.50	27.30	27.10	26.50	24.60	27.40	27.50
1980	27.80	27.50	28.50	28.30	27.10	28.30	29.70	30.20	30.50	30.50	29.70	29.50	32.70
1981	30.00	32.90	34.00	35.80	36.40	37.50	37.60	37.60	32.80	32.20	30.30	29.10	28.70
1982	27.40	27.60	27.20	26.20	27.10	29.00	28.00	26.40	23.40	22.90	22.10	22.10	23.30
COLORADO													
1979	16.30	16.20	16.20	16.10	18.60	21.10	21.00	20.40	21.20	21.00	23.50	27.10	26.60
1980	28.00	28.50	29.10	26.00	26.90	29.20	29.50	29.50	26.40	25.60	27.80	27.40	28.70
1981	27.90	29.10	29.30	30.00	32.90	36.70	35.40	24.30	19.60	18.40	18.20	15.80	14.80
1982	14.00	13.90	11.70	11.40	11.80	11.70	11.60	10.50	10.40	12.40	11.20	10.60	11.70
IDAHO													
1979	16.00	16.10	17.50	16.70	18.00	19.80	21.10	20.10	20.30	20.10	21.90	26.00	24.40
1980	26.40	26.80	26.90	25.90	25.50	26.30	27.40	27.20	25.90	25.90	26.60	26.50	28.30
1981	28.90	29.30	29.40	30.00	31.30	33.50	31.40		19.80	18.30	18.10	16.60	15.30
1982	15.00	14.50	12.10	11.40	12.40	12.30	11.70	11.10	10.90	12.30	10.90	10.30	11.70
KANSAS													
1979													26.70
1980													28.90
1981													17.60
1982													11.20
MICHIGAN													
1979	13.20	13.10	14.00	14.70	15.40	16.50	19.90	19.10	17.20	18.20	17.50	18.30	18.50
1980	18.10	19.60	19.40	17.10	17.80	18.30	20.90	23.20	24.00	24.80	24.80	25.10	26.40
1981	24.80	26.10	29.70	30.60	38.80	40.20	37.10	25.00	24.40	26.90	27.50	26.40	25.90
1982	29.60	27.70	25.40	24.00	23.20	20.10	17.80	16.80	14.50	12.90	10.60	10.70	13.70
MINNESOTA													
1979	14.10	14.10	14.20	14.20	15.90	18.40	19.20		18.20	18.30	20.00	20.70	19.30
1980	24.20	26.80	19.20	16.80	17.50				21.10	22.30	22.60	23.20	22.50
1981	25.40	25.60	24.70	26.70	30.20				21.90	22.50	23.90	22.80	21.90
1982	20.70	14.90	15.50	24.00	21.30	16.30	20.40		13.20	12.50	11.30	12.00	12.40
MONTANA													
1979													24.00
1980													25.00
1981													16.50
1982													11.00
NEBRASKA													
1979	16.00	16.70	18.00	19.20	20.80	22.70	22.70	21.70	20.50	20.20	21.30	23.50	22.40
1980	23.70	22.50	23.00	21.40	22.60	23.60	26.20	25.30	25.30	25.00	26.00	26.30	26.90
1981	26.80	27.70	28.30	31.30	32.00	34.40	32.40		22.70	23.80	22.80	20.80	19.90
1982	20.90	18.60	16.20	15.30	15.70	15.40	14.20	13.30	13.20	13.40	11.80	11.70	13.70

DRY EDIBLE BEANS: PRICES RECEIVED BY FARMERS, MONTHLY AND SEASON AVERAGE,
BY STATE AND UNITED STATES, 1979-82

YEAR	JAN	FEB	MAR	APR	MAY	JUN	JUL	AUG	SEP	OCT	NOV	DEC	SEASON AVERAGE
DOLLARS PER CWT													
NEW YORK													
1979	17.80	18.50	18.50	18.50	18.50	18.30	18.60	18.70	19.20	19.50	19.80	21.20	23.10
1980	23.30	24.80	24.70	24.50	24.70	24.80	25.00	25.00	25.00	25.30	25.10	25.60	26.50
1981													17.50
1982													11.50
NORTH DAKOTA													
1979	14.00	14.00	14.00	14.30	16.50	19.50			18.00	19.30	22.40	25.40	22.50
1980	28.50	28.00	28.10	27.50	26.80	28.00	28.00		23.40	24.30	25.70	24.50	24.70
1981	25.60	27.00	26.50	26.00	32.00				21.50	23.00	20.50	19.50	19.80
1982	17.50	14.00	14.00	10.60	11.40	9.70	9.20	15.50	13.90	11.70	9.70	9.10	11.30
UTAH													
1979													29.20
1980													28.00
1981													12.40
1982													11.70
WASHINGTON													
1979	18.40	18.90	18.70	18.00	19.00	21.90	22.90	22.00	21.70	20.50	22.20	24.10	24.00
1980	27.50	28.50	27.70	28.20	26.30	24.70	28.40	25.40	24.30	25.60	27.00	27.10	27.50
1981	29.10	28.70	28.90	29.30	32.50	35.50	35.00	23.50	24.30	20.40	21.70	20.10	18.50
1982	21.00	14.80	13.00	12.70	16.70	15.30	12.80	15.30	14.70	15.10	12.40	12.30	13.50
WYOMING													
1979	16.00	16.20	16.50	16.80	19.00	20.40	21.30	20.80	20.00	20.30	21.90	26.10	24.60
1980	28.20	28.40	28.10	24.00	25.80	27.50	28.50	27.20	24.90	23.90	26.00	26.60	27.70
1981	28.40	28.40	28.10	28.40	32.60	36.20	29.90		23.00	21.30	19.40	16.00	17.40
1982	17.90	16.20	11.60	10.30	11.40	11.50	10.50	9.70	11.00	11.30	10.40	9.80	11.60

TOBACCO: PRICES RECEIVED BY FARMERS, MONTHLY AND SEASON AVERAGE,
BY STATE AND UNITED STATES, 1979-82

YEAR	JUL	AUG	SEP	OCT	NOV	DEC	JAN	FEB	MAR	APR	MAY	JUN	SEASON AVERAGE
DOLLARS PER POUND													
ALL TOBACCO													
UNITED STATES													
1979	1.292	1.393	1.451	1.387	1.439	1.463	1.396	1.185	1.020	1.400	1.395		1.411
1980	1.250	1.390	1.540	1.455	1.555	1.650	1.620	1.505	1.435	1.710	1.650		1.523
1981	1.600	1.635	1.720	1.675	1.755	1.790	1.785	1.680	1.520	1.750	1.693		1.706
1982	1.547	1.780	1.844	1.806	1.813	1.776	1.784	1.660	1.515	1.566	1.390		1.764
ALABAMA													
1979	1.335												1.335
1980	1.170	1.315	1.465	1.170	1.358								1.358
1981													
1982													
CONNECTICUT													
1979													5.739
1980													6.610
1981													5.803
1982													5.153
FLORIDA													
1979	1.235	1.385	1.420										1.350
1980	1.315	1.490	1.545										1.450
1981	1.640	1.755	1.610										1.672
1982	1.565	1.887	1.772										1.780
GEORGIA													
1979	1.330	1.439	1.435										1.410
1980	1.300	1.410	1.460	1.295									1.395
1981	1.605	1.705	1.580	1.385									1.625
1982	1.641	1.889	1.794										1.796
INDIANA													
1979					1.450	1.478	1.430						1.450
1980					1.665	1.660	1.660	1.670					1.660
1981					1.795	1.800	1.825	1.805					1.807
1982					1.833	1.795	1.833	1.797					1.820
KENTUCKY													
1979					1.449	1.472	1.400	1.177	1.002				1.427
1980					1.660	1.650	1.623	1.537	1.388				1.637
1981					1.795	1.795	1.790	1.703	1.508				1.791
1982					1.835	1.800	1.801	1.701	1.391				1.802
LOUISIANA													
1979													1.750
1980													2.000
1981													2.356
1982													
MARYLAND													
1979										1.400	1.395		1.397
1980										1.710	1.650		1.687
1981										1.750	1.693		1.749
1982									1.550	1.566	1.390		1.528

TOBACCO: PRICES RECEIVED BY FARMERS, MONTHLY AND SEASON AVERAGE,
BY STATE AND UNITED STATES, 1979-82

YEAR	JUL	AUG	SEP	OCT	NOV	DEC	JAN	FEB	MAR	APR	MAY	JUN	SEASON AVERAGE
DOLLARS PER POUND													
ALL TOBACCO													
MASSACHUSETTS													
1979													6.499
1980													7.551
1981													7.590
1982													5.276
MISSOURI													
1979					1.425	1.450	1.391						1.415
1980					1.640	1.620	1.615						1.620
1981					1.765	1.800	1.810						1.792
1982					1.813	1.794	1.772						1.795
NORTH CAROLINA													
1979	1.259	1.379	1.449	1.377	1.391	1.440	1.450						1.396
1980	1.202	1.395	1.564	1.480	1.368	1.660	1.665						1.467
1981	1.606	1.628	1.741	1.685	1.643	1.785	1.785						1.670
1982	1.472	1.755	1.852	1.801	1.745	1.722	1.762						1.783
OHIO													
1979					1.460	1.490	1.442						1.378
1980					1.660	1.660	1.660	1.660					1.590
1981					1.770	1.765	1.820	1.780					1.713
1982					1.843	1.819	1.842	1.788					1.728
PENNSYLVANIA													
1979													.720
1980													.870
1981													.800
1982													.791
SOUTH CAROLINA													
1979	1.330	1.440	1.440	1.300									1.415
1980	1.215	1.370	1.480	1.360									1.395
1981	1.560	1.675	1.715	1.600									1.649
1982	1.519	1.805	1.806	1.750									1.765
TENNESSEE													
1979					1.429	1.461	1.370	1.212	1.029				1.376
1980					1.650	1.657	1.556	1.421	1.460				1.610
1981					1.795	1.798	1.737	1.671	1.528				1.776
1982					1.783	1.740	1.687	1.583	1.366				1.723
VIRGINIA													
1979		1.330	1.495	1.415	1.397	1.270	1.256	.720					1.396
1980		1.295	1.515	1.440	1.480	1.598	1.462	1.060					1.458
1981		1.515	1.770	1.700	1.676	1.725	1.690	1.095					1.672
1982		1.656	1.874	1.851	1.738	1.648	1.624	.939					1.762
WEST VIRGINIA													
1979					1.370	1.454	1.440						1.420
1980					1.645	1.655	1.660						1.655
1981					1.750	1.785	1.800						1.780
1982					1.798	1.745	1.734						1.760

TOBACCO: PRICES RECEIVED BY FARMERS, MONTHLY AND SEASON AVERAGE,
BY STATE AND UNITED STATES, 1979-82

YEAR	JUL	AUG	SEP	OCT	NOV	DEC	JAN	FEB	MAR	APR	MAY	JUN	SEASON AVERAGE
DOLLARS PER POUND													
ALL TOBACCO													
WISCONSIN													
1979													1.170
1980													1.250
1981													1.106
1982													1.037
FLUE-CURED, TYPE 11													
UNITED STATES													
1979	1.210	1.323	1.469	1.406	1.225								1.398
1980	1.225	1.325	1.540	1.440	1.285								1.435
1981	1.580	1.530	1.730	1.685	1.650								1.643
1982	1.445	1.656	1.858	1.821	1.724								1.784
NORTH CAROLINA													
1979	1.210	1.321	1.460	1.400									1.393
1980	1.225	1.335	1.540	1.440	1.280								1.439
1981	1.580	1.535	1.715	1.680	1.595								1.637
1982	1.445	1.656	1.852	1.807	1.681								1.776
VIRGINIA													
1979		1.330	1.495	1.415	1.225								1.412
1980		1.295	1.515	1.440	1.295								1.423
1981		1.515	1.770	1.700	1.625								1.659
1982		1.656	1.874	1.851	1.754								1.805
FLUE-CURED, TYPE 12													
NORTH CAROLINA AND UNITED STATES													
1979	1.250	1.400	1.440	1.350									1.393
1980	1.180	1.425	1.575	1.515	1.355								1.476
1981	1.610	1.680	1.760	1.700	1.560								1.700
1982	1.483	1.799	1.866	1.802									1.801
FLUE-CURED, TYPE 13													
UNITED STATES													
1979	1.315	1.440	1.444	1.322									1.413
1980	1.230	1.390	1.515	1.405									1.428
1981	1.580	1.685	1.730	1.605									1.669
1982	1.496	1.796	1.805	1.740									1.757
NORTH CAROLINA													
1979	1.290	1.440	1.450	1.330									1.411
1980	1.255	1.430	1.430	1.570									1.470
1981	1.615	1.700	1.755	1.620									1.690
1982	1.463	1.783	1.804	1.724									1.745
SOUTH CAROLINA													
1979	1.330	1.440	1.440	1.300									1.415
1980	1.215	1.370	1.480	1.360									1.395
1981	1.560	1.675	1.715	1.600									1.655
1982	1.519	1.805	1.806	1.750									1.765

TOBACCO: PRICES RECEIVED BY FARMERS, MONTHLY AND SEASON AVERAGE,
BY STATE AND UNITED STATES, 1979-82

YEAR	JUL	AUG	SEP	OCT	NOV	DEC	JAN	FEB	MAR	APR	MAY	JUN	SEASON AVERAGE
DOLLARS PER POUND													
FLUE-CURED, TYPE 14													
UNITED STATES													
1979	1.312	1.429	1.433										1.398
1980	1.305	1.425	1.470	1.295									1.403
1981	1.615	1.715	1.585	1.385									1.632
1982	1.629	1.889	1.792										1.793
ALABAMA													
1979	1.335												1.335
1980	1.170	1.315	1.465	1.170	1.358								1.358
1981													
1982													
FLORIDA													
1979	1.235	1.385	1.420										1.350
1980	1.315	1.490	1.545										1.450
1981	1.640	1.755	1.610										1.672
1982	1.565	1.887	1.775										1.780
GEORGIA													
1979	1.330	1.439	1.435										1.410
1980	1.300	1.410	1.460	1.295									1.395
1981	1.605	1.705	1.580	1.385									1.625
1982	1.641	1.889	1.794										1.796
TOTAL FLUE-CURED, TYPE 11-14													
UNITED STATES													
1979	1.292	1.393	1.451	1.387	1.225								1.400
1980	1.250	1.390	1.540	1.455	1.335								1.445
1981	1.600	1.635	1.720	1.675	1.605								1.664
1982	1.547	1.780	1.844	1.806	1.724								1.785
FIRE-CURED, TYPE 21													
VIRGINIA AND UNITED STATES													
1979					1.180	1.130	1.070	.720					1.079
1980						1.345	1.185	1.060					1.281
1981					1.350	1.310	1.350	1.095					1.312
1982					1.279	1.182	1.143	.939					1.176
FIRE-CURED, TYPE 22													
UNITED STATES													
1979						1.264	1.211	1.024					1.160
1980						1.205	1.418	1.450					1.422
1981						1.590	1.690	1.520					1.641
1982						1.545	1.589	1.405					1.566
KENTUCKY													
1979						1.240	1.189	1.010					1.145
1980						1.225	1.380	1.395					1.384
1981						1.570	1.735	1.510					1.631
1982						1.576	1.583	1.446					1.560

TOBACCO: PRICES RECEIVED BY FARMERS, MONTHLY AND SEASON AVERAGE,
BY STATE AND UNITED STATES, 1979-82

YEAR	JUL	AUG	SEP	OCT	NOV	DEC	JAN	FEB	MAR	APR	MAY	JUN	SEASON AVERAGE
DOLLARS PER POUND													
FIRE-CURED, TYPE 22 (CONTINUED)													
TENNESSEE													
1979							1.285	1.219	1.030				1.167
1980							1.200	1.430	1.475				1.436
1981							1.600	1.680	1.530				1.645
1982							1.535	1.592	1.371				1.568
FIRE-CURED, TYPE 23													
UNITED STATES													
1979							1.189	1.075	.915				1.124
1980							1.270	1.320	1.225				1.294
1981							1.490	1.570	1.470				1.523
1982							1.541	1.550	1.241				1.544
KENTUCKY													
1979							1.189	1.075	.915				1.124
1980							1.275	1.335	1.295				1.311
1981							1.500	1.580	1.480				1.531
1982							1.562	1.571	1.255				1.565
TENNESSEE													
1979							1.189	1.075	.915				1.124
1980							1.145	1.205	1.165				1.181
1981							1.440	1.510	1.415				1.466
1982							1.409	1.416	1.154				1.411
TOTAL FIRE-CURED, TYPE 21-23													
UNITED STATES													
1979							1.180	1.130	1.208	1.170	1.020		1.143
1980							1.345	1.230	1.385	1.435			1.383
1981							1.350	1.310	1.520	1.660	1.520		1.570
1982							1.279	1.182	1.450	1.573	1.398		1.520
LIGHT AIR-CURED, TYPE 31													
UNITED STATES													
1979							1.441	1.478	1.443	1.395			1.452
1980							1.655	1.660	1.660	1.655			1.659
1981							1.795	1.805	1.820	1.805			1.807
1982							1.816	1.795	1.824	1.805			1.810
INDIANA													
1979							1.450	1.478	1.430				1.450
1980							1.665	1.660	1.660	1.670			1.660
1981							1.795	1.800	1.825	1.805			1.807
1982							1.833	1.795	1.833	1.797			1.820
KENTUCKY													
1979							1.450	1.482	1.445	1.395			1.458
1980							1.660	1.660	1.660	1.655			1.660
1981							1.795	1.810	1.825	1.805			1.810
1982							1.835	1.819	1.838	1.808			1.829

TOBACCO: PRICES RECEIVED BY FARMERS, MONTHLY AND SEASON AVERAGE,
BY STATE AND UNITED STATES, 1979-82

YEAR	JUL	AUG	SEP	OCT	NOV	DEC	JAN	FEB	MAR	APR	MAY	JUN	SEASON AVERAGE
DOLLARS PER POUND													
LIGHT AIR-CURED, TYPE 31 (CONTINUED)													
MISSOURI													
1979					1.425	1.450	1.391						1.415
1980					1.640	1.620	1.615						1.620
1981					1.765	1.800	1.810						1.792
1982					1.813	1.794	1.772						1.795
NORTH CAROLINA													
1979					1.391	1.440	1.450						1.406
1980					1.650	1.660	1.665						1.658
1981					1.800	1.785	1.785						1.791
1982					1.748	1.722	1.762						1.739
OHIO													
1979					1.460	1.490	1.442						1.460
1980					1.660	1.660	1.660	1.660					1.660
1981					1.770	1.765	1.820	1.780					1.792
1982					1.843	1.819	1.842	1.788					1.830
TENNESSEE													
1979					1.429	1.465	1.440						1.440
1980					1.650	1.660	1.655	1.645					1.658
1981					1.795	1.805	1.815						1.802
1982					1.783	1.747	1.740	1.760					1.761
VIRGINIA													
1979					1.428	1.460	1.445						1.466
1980					1.650	1.660	1.655						1.656
1981					1.805	1.800	1.810						1.803
1982					1.783	1.745	1.762						1.762
WEST VIRGINIA													
1979					1.370	1.454	1.440						1.420
1980					1.645	1.655	1.660						1.655
1981					1.750	1.785	1.800						1.780
1982					1.798	1.743	1.734						1.760
LIGHT AIR-CURED, TYPE 32													
UNITED STATES													
1979										1.400	1.395		1.397
1980										1.710	1.650		1.679
1981										1.750	1.693		1.573
1982									1.550	1.566	1.390		1.480
MARYLAND													
1979										1.400	1.395		1.397
1980										1.710	1.650		1.687
1981										1.750	1.693		1.749
1982									1.550	1.566	1.390		1.528
NORTH CAROLINA													
1979													1.444
1980													1.183
1981													1.183
1982													1.555

TOBACCO: PRICES RECEIVED BY FARMERS, MONTHLY AND SEASON AVERAGE,
BY STATE AND UNITED STATES, 1979-82

YEAR	JUL	AUG	SEP	OCT	NOV	DEC	JAN	FEB	MAR	APR	MAY	JUN	SEASON AVERAGE
DOLLARS PER POUND													
LIGHT AIR-CURED, TYPE 32 (CONTINUED)													
PENNSYLVANIA													
1979													
1980													
1981													
1982													1.080
SOUTH CAROLINA													
1979													
1980													
1981													
1982													.702
VIRGINIA													
1979													
1980													
1981													1.370
1982													1.060
TOTAL LIGHT AIR-CURED, TYPE 31-32													
UNITED STATES													
1979				1.816	1.795	1.824	1.805			1.566	1.390		1.450
1980				1.795	1.805	1.820	1.805			1.750	1.693		1.660
1981				1.655	1.660	1.660	1.655			1.710	1.650		1.793
1982				1.441	1.478	1.443	1.395	1.550		1.400	1.395		1.794
DARK AIR-CURED, TYPE 35													
UNITED STATES													
1979					1.166	1.136							1.141
1980					1.295	1.320	1.105						1.265
1981					1.320	1.395	1.335						1.360
1982					1.228	1.234	1.108						1.224
KENTUCKY													
1979					1.140	1.122							1.125
1980					1.255	1.295	1.065						1.235
1981					1.290	1.395	1.320						1.345
1982					1.205	1.222	1.103						1.210
TENNESSEE													
1979					1.265	1.185							1.197
1980					1.430	1.415	1.195						1.367
1981					1.140	1.410	1.420						1.411
1982					1.312	1.285	1.117						1.276
DARK AIR-CURED, TYPE 36													
KENTUCKY AND UNITED STATES													
1979					1.065	1.070	1.045						1.053
1980						1.310	1.200						1.265
1981						1.230	1.235						1.231
1982						1.251	1.236						1.243

TOBACCO: PRICES RECEIVED BY FARMERS, MONTHLY AND SEASON AVERAGE,
BY STATE AND UNITED STATES, 1979-82

YEAR	JUL	AUG	SEP	OCT	NOV	DEC	JAN	FEB	MAR	APR	MAY	JUN	SEASON AVERAGE
DOLLARS PER POUND													
TOTAL DARK AIR-CURED, TYPE 35-36													
UNITED STATES													
1979					1.065	1.236	1.235	1.108					1.117
1980						1.295	1.360	1.335					1.265
1981						1.300	1.290	1.105					1.330
1982						1.130	1.115						1.229
SUN-CURED BELT, TYPES 37													
VIRGINIA AND UNITED STATES													
1979						.931	.880						.908
1980						1.280	1.250						1.271
1981						1.295	1.350						1.317
1982						1.084	1.024						1.064
TOTAL TYPES 35-37													
UNITED STATES													
1979					1.065	1.110	1.111						1.110
1980						1.300	1.285	1.105					1.265
1981						1.295	1.360	1.335					1.330
1982						1.227	1.230	1.108					1.223

TOBACCO: PRICES RECEIVED BY FARMERS, SEASON AVERAGE,
BY STATE AND UNITED STATES, 1979-82

STATE	1979	1980	1981	1982	STATE	1979	1980	1981	1982
DOLLARS PER POUND					DOLLARS PER POUND				
CIGAR FILLER, TYPE 41					CIGAR BINDER, TYPE 55				
PA	.720	.870	.800	.730	WISC	1.170	1.250	1.080	1.010
U. S.	.720	.870	.800	.730	U. S.	1.170	1.250	1.080	1.010
CIGAR FILLER, TYPES 42-44					CIGAR BINDER, TYPES 54-55				
OHIO	.870	1.070	1.050	.900	U. S.	1.170	1.250	1.106	1.037
U. S.	.870	1.070	1.050	.900					
CIGAR FILLER, TYPES 41-44					CIGAR BINDER, TYPES 51-55				
U. S.	.735	.888	.821	.754	U. S.	1.209	1.299	1.189	1.151
CIGAR BINDER, TYPE 51					CIGAR FILLER AND BINDER, TYPES 42-44 AND 54-55				
CONN	1.700	1.900	1.900	1.900	U. S.	1.148	1.235	1.101	1.016
U. S.	1.700	1.900	1.900	1.900					
CIGAR BINDER, TYPE 52					CIGAR WRAPPER, TYPE 61				
MASS	1.200	1.310	1.400	1.350	CONN	8.500	9.800	10.000	12.500
U. S.	1.200	1.310	1.400	1.350	MASS	8.500	9.800	10.000	12.500
CIGAR BINDER, TYPES 51-52					ALL CIGAR TYPES 41-61				
U. S.	1.615	1.788	1.821	1.812	U. S.	1.598	1.753	1.590	1.314
CIGAR BINDER, TYPE 54					1/ MISC DOMESTIC, TYPE 72				
WISC	1.170	1.250	1.130	1.060	LA	1.750	2.000	2.350	
U. S.	1.170	1.250	1.130	1.060	U. S.	1.750	2.000	2.350	

1/ESTIMATES DISCONTINUED AFTER 1981 CROP.

SUGARBEETS AND SUGARCANE: PRICES RECEIVED BY FARMERS, SEASON AVERAGE,
BY STATE AND UNITED STATES, 1979-82

STATE	SUGARBEETS				SUGARCANE			
	1979	1980	1981	1982	1979	1980	1981	1982
	DOLLARS PER TON				DOLLARS PER TON			
ARIZ	27.90	53.30	33.70	34.70				
CALIF	31.10	51.20	32.00	33.00				
COLO	34.10	47.50	33.80	35.00				
FLA					30.30	39.40	28.60	28.20
HAW					22.60	41.80	23.50	26.20
IDAHO	37.60	46.20	32.50	37.20				
KANS	31.40	41.70	30.50	31.40				
LA					24.20	33.20	22.90	25.10
MICH	38.90	40.70	26.50	35.50				
MINN	31.80	44.10	20.00	34.30				
MONT	37.30	51.40	37.20	42.40				
NEBR	34.00	47.00	33.70	34.90				
N MEX	34.20	47.30	32.60	36.10				
N DAK	34.10	46.30	20.50	35.70				
OHIO	32.80	46.20	28.90					
OREG	33.00	42.30	30.00	36.30				
TEX	34.20	42.70	30.60	36.70	25.20	27.10	15.90	19.50
UTAH 1/	38.80	47.10						
WYO	38.00	50.90	38.00	38.80				
U. S.	33.90	47.20	29.20	35.40	26.00	38.50	24.90	26.50

1/ ESTIMATES DISCONTINUED AFTER 1980 CROP.

MINT OIL: PRICES RECEIVED BY FARMERS, SEASON AVERAGE,
BY STATE AND UNITED STATES, 1979-82

STATE	PEPPERMINT				SPEARMINT			
	1979	1980	1981	1982	1979	1980	1981	1982
	DOLLARS PER POUND				DOLLARS PER POUND			
IDAHO	8.65	8.15	8.00	8.70	8.00	10.20	11.20	14.70
IND	14.00	14.00	14.20	12.50	11.50	12.60	14.60	13.70
MICH					13.00	13.70	15.50	14.30
OREG	9.50	9.00	8.80	8.70			11.50	14.80
WASH	9.10	8.50	8.50	8.20	8.00	8.70	7.70	11.20
WISC	13.80	14.00	13.80	12.50	8.80	12.00	12.80	12.80
U. S.	9.91	9.40	9.39	9.24	8.72	9.61	9.42	12.60

DRY EDIBLE AND WRINKLED SEED PEAS: PRICES RECEIVED BY FARMERS, SEASON AVERAGE,
BY STATE AND UNITED STATES, 1979-81 1/

STATE	DRY EDIBLE PEAS				WRINKLED SEED PEAS			
	1979	1980	1981	1982	1979	1980	1981	1982
	DOLLARS PER CWT				DOLLARS PER CWT			
IDAHO	10.50	9.60	10.00		11.40	13.00	13.70	
WASH	10.40	9.80	9.80		11.20	13.00	12.00	
U. S.	10.40	9.71	9.88		11.30	13.00	13.30	

1/ ESTIMATES DISCONTINUED AFTER 1981 CROP.

POPCORN AND MAPLE SIRUP: PRICES RECEIVED BY FARMERS, SEASON AVERAGE,
BY STATE AND UNITED STATES, 1979-81 1/

STATE	POPCORN				MAPLE SIRUP			
	1979	1980	1981	1982	1979	1980	1981	1982
	DOLLARS PER CWT				DOLLARS PER GALLON			
ILL	8.80	9.75	12.40					
IND	10.90	11.50	14.50					
IOWA	8.30	9.40	12.60					
KANS	8.80	9.90	12.60					
KY	8.90	9.80	13.00					
MAINE					17.90	19.80	23.00	
MASS					15.90	18.40	18.70	
MICH	9.00	9.60	12.80		16.00	17.10	19.40	
MO	8.90	9.80	14.20					
NEBR	8.30	10.80	13.00					
N H					16.80	19.80	21.50	
N Y					13.10	15.30	17.60	
OHIO								
PA	8.50	9.80	12.60		14.50	16.60	18.10	
VT					13.50	15.30	16.80	
WISC					14.20	16.40	17.20	
					12.60	14.90	17.50	
OTHER STATES 2/	8.84	11.70	13.20					
U. S.	9.17	10.50	13.30		14.10	16.20	17.90	

1/ ESTIMATES DISCONTINUED AFTER 1981 CROP. 2/ 1979: ALA, COLO, TENN; 1980 AND 1981: ALA, CALIF, COLO, FLA, GA, MINN, N C, PA, S DAK, TENN, TEX.

COFFEE AND TARO: PRICES RECEIVED BY FARMERS, SEASON AVERAGE,
BY STATE AND UNITED STATES, 1979-82

STATE	COFFEE				TARO			
	1979	1980	1981	1982	1979	1980	1981	1982
	DOLLARS PER POUND				DOLLARS PER POUND			
HAW	1.430	1.600	2.000	2.150	.164	.200	.214	.224
U. S.	1.430	1.600	2.000	2.150	.164	.200	.214	.224

HOPS: PRICES RECEIVED BY FARMERS, SEASON AVERAGE,
BY STATE AND UNITED STATES, 1979-82

STATE	1979	1980	1981	1982
	DOLLARS PER POUND			
CALIF	.957	1.39	1.52	2.42
IDAHO	.964	1.42	1.65	2.48
OREG	1.07	1.44	1.47	1.97
WASH	.958	1.54	1.50	1.60
U. S.	.976	1.51	1.51	1.74

INDEX OF STATE
AND U S TABLES

STATE	CORN	SORGHUM	OATS	BARLEY		
				ALL	FEED	MALTING
				PAGE		
ALA	7	12	15			
ALAS			15	20		
ARIZ	7	12		20		
ARK	7	12	15			
CALIF	7	12	15	20		
COLO	7	12	15	20		
DEL	7			20		
FLA	7					
GA	7	12	15			
IDAHO	8		15	20		
ILL	8	12	15	20		
IND	8	12	16			
IOWA	8	13	16			
KANS	8	13	16	20		
KY	8	13	16	21		
LA	8	13				
MAINE			16			
MD	8		16	21		
MICH	8		16	21		
MINN	9		16	21		
MISS	9	13				
MO	9	13	16			
MONT	9		17	21		
NEBR	9	13	17	21		
NEV				21		
N J	9		17	21		
N MEX	9	13		21		
N Y	9		17	22		
N C	9	13	17	22		
N DAK	10		17	22		
OHIO	10		17	22		
OKLA	10	14	17	22		
OREG	10		17	22		
PA	10	14	18	22		
S C	10	14	18	22		
S DAK	10	14	18	22		
TENN	10	14	18	23		
TEX	10	14	18	23		
UTAH	11		18	23		
VA	11	14	18	23		
WASH	11		18	23		
W VA	11		18	23		
WIS	11		19	23		
WYO	11		19	23		
U. S.	7	12	15	20	24	24

STATE	WHEAT					RYE	RICE
	ALL	WINTER	DURUM	OTH SPR	CLASSES		
	PAGE						
ALA	25	30					
ARIZ	25	30	35				
ARK	25	30					39
CALIF	25	30	35				39
COLO	25	30		36		38	
DEL	25	30				38	
GA	25	30				38	
IDAHO	25	30		36			
ILL	26	31				38	
IND	26	31				38	
IOWA	26	31				38	
KANS	26	31				38	
KY	26	31				38	
LA	26	31					39
MD	26	31				38	
MICH	26	31				38	
MINN	26	31	35	36		38	
MISS	27	32					39
MO	27	32				38	39
MONT	27	32	35	36			
NEBR	27	32				38	
NEV	27	32		36			
N J	27	32				38	
N MEX	27	32					
N Y	27	32				38	
N C	27	32				38	
N DAK	28	33	35	36		38	
OHIO	28	33				38	
OKLA	28	33				38	
OREG	28	33		36		38	
PA	28	33				38	
S C	28	33				38	
S DAK	28	33	35	36		38	
TENN	28	33					
TEX	28	33				38	39
UTAH	29	34		37			
VA	29	34				38	
WASH	29	34		37			
W VA	29	34					
WIS	29	34		37		38	
WYO	29	34		37		38	
U. S.	25	30	35	36	38	38	39

STATE	SOYBEANS	FLAXSEED	PEANUTS	SUNFLOWER		
				ALL	OIL	NON-OIL
				PAGE		
ALA	40		45			
ARK	40					
DEL	40					
FLA	40		45			
GA	40		45			
ILL	40					
IND	40					
IOWA	40					
KANS	41					
KY	41					
LA	41					
MD	41					
MICH	41					
MINN	41	44		47	47	47
MISS	41		45			
MO	41					
NEBR	41					
N J	42					
N MEX			45			
N Y	42					
N C	42		45			
N DAK	42	44		47	47	47
OHIO	42					
OKLA	42		45			
PA	42					
S C	42		45			
S DAK	42	44		47	47	47
TENN	43					
TEX	43	44	46	47	47	47
VA	43		46			
WIS	43					
U. S.	40	44	45	47	47	47

STATE	COTTON			HAY			
	ALL	UPLAND	PIMA	SEED	ALL	ALFALFA	OTHER
	PAGE						
ALA	48	50		53	55		
ALAS					55		
ARIZ	48	50	52	53	55	51	65
ARK	48	50		53	55	61	65
CALIF	48	50	52	53	55	61	65
COLO					55	61	65
CONN					55		
DEL					55		
FLA	48	50		53	56		
GA	48	50		53	56		65
IDAHO					56	61	65
ILL					56	61	65
IND					56	61	65
IOWA					56	61	66
KANS					56	62	66
KY					56	62	66
LA	48	50		53	56		
MAINE					57		
MD					57		
MASS					57		
MICH					57	62	66
MINN					57	62	66
MISS	48	50		53	57		
MO	49	51		54	57	62	66
MONT					57	62	66
NEBR					57	62	66
NEV	49	51		54	58	62	66
N H					58		
N J					58		
N MEX	49	51	52	54	58	62	67
N Y					58	63	67
N C	49	51		54	58		
N DAK					58	63	67
OHIO					58	63	67
OKLA	49	51		54	58	63	67
OREG					59	63	67
PA					59	63	67
R I					59		
S C	49	51		54	59		
S DAK					59	63	67
TENN	49	51		54	59		
TEX	49	51	52	54	59	63	67
UTAH					59	63	68
VT					59		
VA	49	51		54	60		
WASH					60	64	68
W VA					60		
WIS					60	64	68
WYO					60	64	68
U. S.	48	50	52	53	55	61	65

	:	DRY	:	WRINKLE:	:	:	:	:	:
STATE	:	EDIBLE:	:	SEED	:	POPCORN:	:	MAPLE	:
	:	PEAS	:	PEAS	:	:	:	SIRUP	:
	:		:		:		:		:
	:		:		:		:		:

					PAGE			
CALIF	:							81
HAW	:					81	81	
IDAHO	:	80	80					81
ILL	:			81				
IND	:			81				
IOWA	:			81				
KANS	:			81				
KY	:			81				
MAINE	:				81			
MASS	:				81			
MICH	:			81	81			
MO	:			81				
NEBR	:			81				
N H	:				81			
N Y	:				81			
OHIO	:			81	81			
OREG	:							81
PA	:				81			
VT	:				81			
WASH	:	80	80					81
WIS	:				81			
.	:							
U. S.	:	80	80	81	81	81	81	81

**United States
Department of Agriculture**

Washington, D.C.
20250

OFFICIAL BUSINESS
Penalty for Private Use, \$300



Postage and Fees Paid
U.S. Department of Agriculture
AGR-101



THIRD CLASS BULK RATE

END