



AgEcon SEARCH
RESEARCH IN AGRICULTURAL & APPLIED ECONOMICS

The World's Largest Open Access Agricultural & Applied Economics Digital Library

This document is discoverable and free to researchers across the globe due to the work of AgEcon Search.

Help ensure our sustainability.

Give to AgEcon Search

AgEcon Search

<http://ageconsearch.umn.edu>

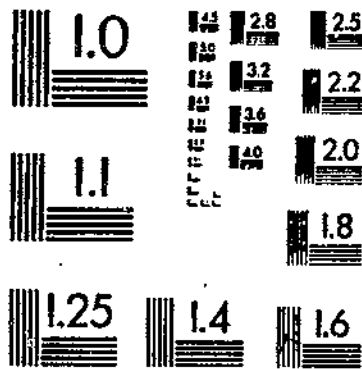
aesearch@umn.edu

*Papers downloaded from **AgEcon Search** may be used for non-commercial purposes and personal study only. No other use, including posting to another Internet site, is permitted without permission from the copyright owner (not AgEcon Search), or as allowed under the provisions of Fair Use, U.S. Copyright Act, Title 17 U.S.C.*

EGYPTIAN AGRICULTURAL STATISTICAL BULLETIN
AGRICULTURAL STATISTICS OF EGYPT, 1970-84
GARDNER, GEORGE R. ET AL.

UPDATA
1 OF 2

START





United States
Department of
Agriculture

Economic
Research
Service

Statistical
Bulletin
Number 732

Agricultural Statistics of Egypt, 1970-84

George R. Gardner
John B. Parker



AGRICULTURAL STATISTICS OF EGYPT, 1970-84. By George R. Gardner and John B. Parker, International Economics Division, Economic Research Service, U.S. Department of Agriculture. Statistical Bulletin No. 732.

ABSTRACT

Egypt is one of the world's largest food importers, annually consuming over \$4 billion worth of imported agricultural commodities to feed a population of 48 million. The import bill is growing rapidly as population and consumption growth rates exceed that of agricultural production. Egypt was the 10th largest market for U.S. agricultural exports in 1984. The U.S. market share is about 25 percent, with wheat, wheat flour, and corn making up the bulk of the shipments. This report consists of 90 data tables documenting the Egyptian market. The areas covered include population and labor force, economic indicators, farm characteristics, land use and cropping patterns, commodities, agricultural inputs, per capita consumption, food imports and agricultural trade, agricultural exports, agricultural prices, and other topics. This report is intended as an English-language reference source of use to commodity exporters dealing with the Egyptian market, Government agency planners working with Egypt, and researchers studying the Egyptian economy.

Keywords: Egypt, agricultural production, agricultural imports, agricultural exports, consumption, economic indicators, agricultural inputs, agricultural prices.

CONTENTS

	<u>Page</u>
MAP OF EGYPT	iii
LIST OF TABLES	iv
CONVERSIONS	vii
INTRODUCTION	1
ORGANIZATION OF TABLES	1
RECENT TRENDS	1
DATA SOURCES	3
BIBLIOGRAPHY	4
TABLES	6

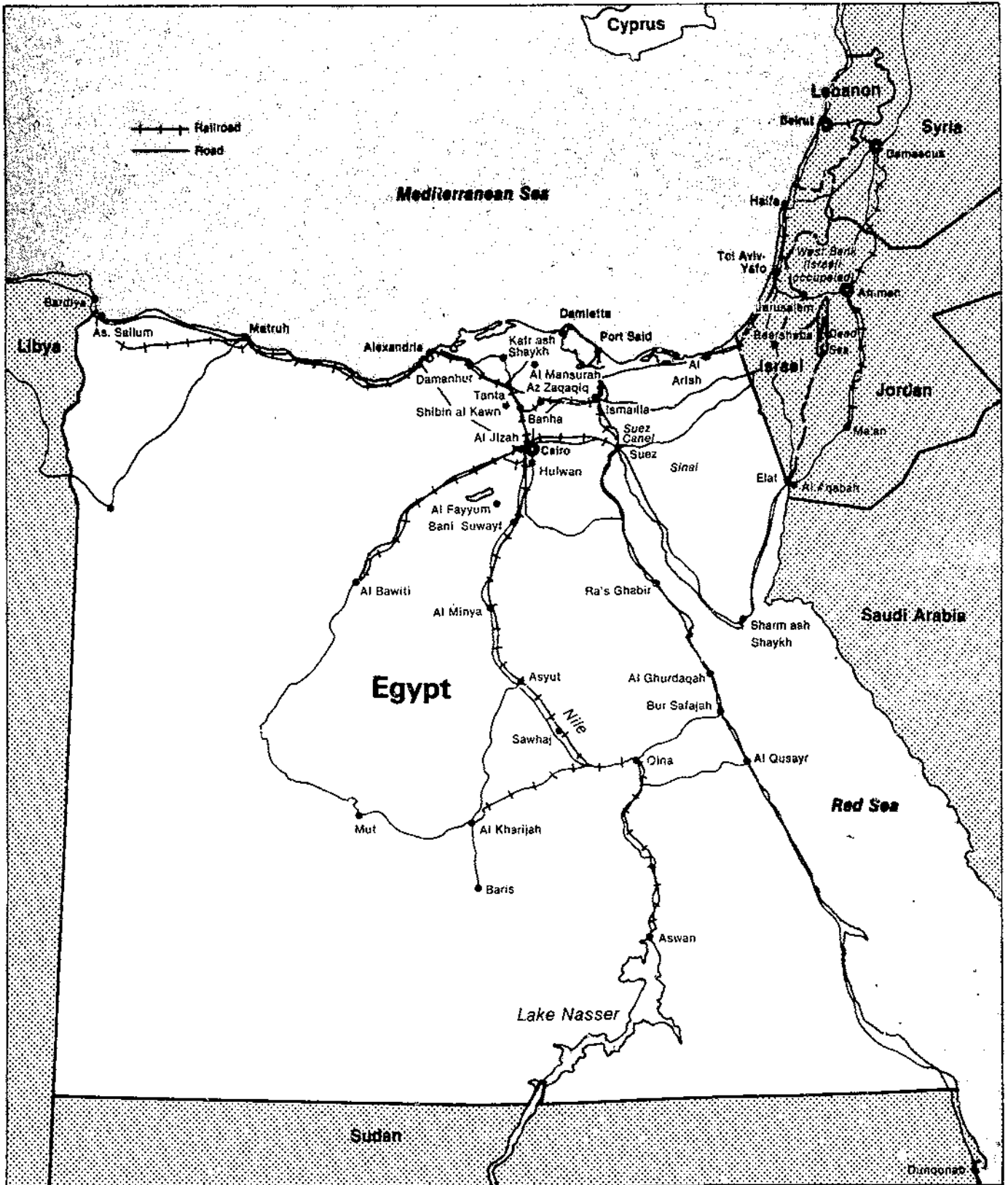
Additional Copies of this Report ...

can be purchased from the Superintendent of Documents, U.S. Government Printing Office, Washington, DC 20402. Ask for Agricultural Statistics of Egypt, 1970-84 (SB-732). Write to the above address for price and ordering instructions. For faster service, call the GPO order desk at (202) 783-3238 and charge your purchase to your VISA, MasterCard, or GPO Deposit Account. A 25-percent bulk discount is available on orders of 100 or more copies shipped to a single address. Please add 25 percent for postage for shipments to foreign addresses.

Microfiche copies (\$4.50 each) can be purchased from the Identification Section, National Technical Information Service, 5285 Port Royal Road, Springfield, VA 22161. Ask for Agricultural Statistics of Egypt, 1970-84 (SB-732). Enclose check or money order, payable to NTIS. For faster service, call NTIS at (703) 487-4780 and charge your purchases to your VISA, MasterCard, American Express, or NTIS Deposit Account.

The Economic Research Service has no copies for free mailing.

Egypt



LIST OF TABLES

POPULATION AND LABOR FORCE

1. Population and vital statistics, Egypt, 1952-83
2. Employment by economic sector, Egypt, 1975-79 and fiscal years 1980/81-81/82

ECONOMIC INDICATORS

3. Estimates of gross domestic product by sector, Egypt, 1981/82-1983/84
4. Gross domestic product growth by sector, Egypt, 1977-82
5. Composition of gross domestic product at current factor cost, Egypt, 1960-80
6. Foreign debt, Egypt, 1977-83
7. Exports of petroleum and petroleum products to major markets, by value, Egypt, 1977-82

LAND USE, PRINCIPAL CULTIVATIONS, AND CROPPING PATTERNS

8. Area planted to selected crops, Egypt, 1950-83
9. Harvested area by season and crop, Egypt, 1976-78
10. Distribution of agricultural landownership, Egypt, 1979
11. Changes in cropland area and estimated conversion to other uses, Egypt, 1952-84

COMMODITIES: AREA CULTIVATED, PRODUCTION, AND YIELD

A. Grains and Oilseeds

12. Grain supply, share imported, and per capita availability, Egypt, 1960-84
13. Summer and nili sorghum: Area, production, and yield, Egypt, 1960-81
14. Corn: Area, production, and yield, Egypt, 1950-84
15. Soybeans: Area, production, and yield, Egypt, 1966-84
16. Barley: Area, production, and yield, Egypt, 1960-84
17. Wheat: Area, production, and yield, Egypt, 1950-84
18. Paddy rice: Area, production, and yield, Egypt, 1950-84
19. Supply of vegetable oils, by quantity, Egypt, 1973-82

B. Livestock, Meat, Dairy Products, and Eggs

20. Numbers of major livestock, Egypt, 1952-83
21. Domestic meat production (official slaughterhouses), Egypt, 1964-81
22. Number of poultry and rabbits on farms, Egypt, 1975-81
23. Production and imports of meat by type and quantity, Egypt, 1978-84
24. Production of milk in selected years, Egypt, 1960-83

C. Horticultural Crops

25. Production of vegetables, Egypt, 1972-83
26. Fenugreek, chickpeas, and lupines: Area, production, and yield, Egypt, 1978-81
27. Tomatoes: Area, production, and yield, Egypt, 1970-84
28. Garlic: Area, production, and yield, Egypt, 1960-81
29. Peanuts: Area, production, and yield, Egypt, 1960-83
30. Sesame: Area, production, and yield, Egypt, 1960-84
31. Broad beans: Area, production, and yield, Egypt, 1960-84
32. Lentils: Area, production, and yield, Egypt, 1960-84

33. Summer and nili potatoes: Area, production, and yield, Egypt, 1970-81
34. Area and production of all fruits, Egypt, 1960-82
35. Citrus: Area and production, Egypt, 1960-83
36. Grapes: Area, production, and yield, Egypt, 1960-84
37. Mangoes: Area, production, and yield, Egypt, 1960-83
38. Bananas: Area, production, and yield, Egypt, 1960-84

D. Other Crops

39. Cotton: Area, production, and yield, Egypt, 1950-83
40. Cotton: Area, yield, supply, and utilization, Egypt, 1970-85
41. Sugarcane: Area, production, and yield, Egypt, 1960-83

E. General and Summary Production Tables

42. Production, trade, and supply for domestic use of selected commodities, Egypt, 1970-82
43. Indices of agriculture and food production, Egypt, 1975-84
44. Average annual yield of principal crops, Egypt, 1975-81

MAJOR AGRICULTURAL INPUTS

45. Total fertilizer supply, use, and stock changes, Egypt, 1970/71-81/82
46. Chemical fertilizers and insecticides applied to agriculture, Egypt, 1975-81

PER CAPITA CONSUMPTION DATA

47. Total and per capita requirements of major foodstuffs, Egypt, selected years, 1960-80
48. Production, consumption, and trade of major commodities, Egypt, selected years, 1970-83
49. Daily per capita caloric intake, Egypt, 1975-77 average

FOOD IMPORTS AND AGRICULTURAL TRADE

A. Grains and Oilseeds

50. Wheat imports by country of origin, quantity, and value, Egypt, 1975-84
51. Wheat flour imports by country of origin and quantity, Egypt, 1973-83
52. Supply of soybean products, Egypt, 1974-83
53. Vegetable oil imports by quantity and value, Egypt, 1973-83

B. Livestock, Meat, Dairy Products, and Eggs

54. Imports of live animals and meat, Egypt, 1964-81
55. Meat imports by quantity and value, Egypt, 1973-83
56. Poultry imports by major suppliers, Egypt, 1970-83
57. Red meat imports by major suppliers, Egypt, 1971-81
58. Frozen poultry imports by country of origin, quantity, and value, Egypt, 1976-82
59. Dairy product and egg imports by quantity and value, Egypt, 1973-83
60. Preserved milk imports by country of origin and quantity, Egypt, 1971-82
61. Cheese imports by country of origin, quantity, and value, Egypt, 1976-82
62. Butter and butteroil imports by quantity and value, Egypt, 1976-82
63. Tallow imports by major suppliers and quantity, Egypt, 1975-83

C. Horticultural Products

64. Canned vegetable imports by country of origin, quantity, and value, Egypt, 1977-82
65. Pulse production, trade, and supply for domestic consumption, Egypt, 1976-82
66. Pulse imports by quantity and country of origin, Egypt, 1980-82

D. Miscellaneous Products

67. Sugar: Production, imports, exports, consumption, and stocks, Egypt, 1976-83
68. Forest product imports by country of origin and value, Egypt, 1978-81
69. Unmanufactured tobacco imports by country of origin, Egypt, 1977-83
70. Unmanufactured tobacco imports and U.S. market share, Egypt, 1976-84
71. Imports of selected high-value foods and consumer-ready items, by value, Egypt, 1976-82
72. Preserved fruit imports by country of origin, quantity, and value, Egypt, 1977-82
73. Bakery product imports by country of origin, quantity, and value, Egypt, 1978-82

E. General and Summary Trade Tables

74. European Communities' agricultural exports to Egypt, by quantity, 1976-83
75. European Communities' agricultural exports to Egypt, by value, 1976-83
76. U.S. agricultural exports to Egypt, by quantity, 1973-84
77. U.S. agricultural exports to Egypt, by value, 1973-84
78. U.S. agricultural exports to Egypt by method of financing, fiscal years 1955-85

AGRICULTURAL EXPORTS

79. Agricultural exports, by quantity, Egypt, 1974-83
80. Agricultural exports, by value, Egypt, 1974-83
81. Cotton exports to major markets, by quantity, Egypt, 1970-82
82. Cotton exports to major markets, by value, Egypt, 1970-82
83. Refined sugar exports, by quantity, Egypt, 1973-82
84. Refined sugar exports, by value, Egypt, 1973-82
85. Milled rice exports, by quantity, value, and unit value, Egypt, 1971-82

AGRICULTURAL PRICES

86. Rationed quantities and prices of basic food items sold through Government foodstores, Egypt, 1981
87. Fixed and farmgate producer prices, Egypt, 1980-81
88. Announced cooperative purchase prices for selected agricultural crops, Egypt, 1973/74-81/82

MISCELLANEOUS TABLES

89. Principal importers of agricultural commodities in Egypt
90. Major changes in agricultural trade policy, Egypt, 1952-82

CONVERSIONS

Areas:

Feddan	= 1.038 acres = 4,201 square meters
Acre	= 4,047 square meters
Hectare	= 2.471 acres = 10,000 square meters

Measures:

American barrel	= 42 gallons = 0.15899 cubic meter
Crude oil, metric ton	= 6.6 to 8 barrels, according to density

Cereals:

Ardeb	= 5.6 American bushels
-------	------------------------

Weights:

Metric ton	= 1,000 kilograms (kg) = 2,204.6 pounds
Metric cantar	= 50 kg

Weights equivalents for main commodities:

Dariba:

Rice in husk	= 954 kg
Bleached rice	= 630 kg

Ardeb:

Wheat	= 150 kg
Millet	= 140 kg
Barley	= 120 kg
Beans	= 155 kg
Lentils	= 160 kg

Currency:

Egyptian pound (LE)	= \$1.21 (official rate)
	= \$1.43 (Central Bank rate)
	= \$0.72 (free market rate, mid-1985)
	= 100 piasters

Agricultural Statistics of Egypt, 1970-84

George R. Gardner
John B. Parker *

INTRODUCTION

Egypt is one of the world's largest food importers, annually consuming over \$4 billion worth of imported agricultural commodities. The import bill is growing rapidly as population and consumption growth rates exceed that of agricultural production. Egypt is highly dependent on imported foodstuffs, which constitute about 50 percent of the total food supply needed for its population of 48 million.

Egypt was the 10th largest market for U.S. agricultural exports in 1984. The U.S. share of the Egyptian agricultural imports market is about 25 percent, with wheat, wheat flour, and corn making up the bulk of the shipments. Egypt is now the world's third largest importer of wheat and wheat flour (after the Soviet Union and the People's Republic of China).

This report presents 90 statistical tables which summarize the performance of Egypt's agricultural sector with emphasis on production, consumption, and imports. This is the first attempt to bring together such a large volume of data on the important Egypt market in one readily available English-language reference document.

ORGANIZATION OF TABLES

The specific areas which these tables record historically include population and labor force, economic indicators, farm characteristics, land use and cropping patterns, commodities (area, production, and yield), agricultural inputs, per capita consumption, food imports and agricultural trade, agricultural exports, agricultural prices, and other topics. The tables were derived from a variety of sources, including several international agencies and various ministries of the Egyptian Government. The timespan covered by individual data series varies, with some going back as far as 1950, and some ending as recently as 1985. But most of the tables cover the most recent 10 years for which the data are available. Greater emphasis is placed on Egyptian production and trade data series, including market share data for major trading partners, because more detailed macroeconomic data on Egypt are generally available from other sources.

RECENT TRENDS

During the last 10 years, Egypt's population has grown rapidly from 36 million to 48 million, and continues to increase by nearly 3 percent annually. The services sector is the most rapidly expanding segment of the economically active population. The agricultural work force has remained relatively

* The authors are agricultural economists assigned to the International Economics Division, Economic Research Service, U.S. Department of Agriculture, Washington, DC.

constant, but has declined as a portion of the total work force (tables 1 and 2). The gross domestic product (GDP) has grown to \$38 billion, while Egypt has gone from a position of a modest foreign exchange surplus to a growing deficit. Foreign exchange earnings are highly dependent on petroleum, Suez Canal fees, workers' remittances, and tourism (tables 3-7).

Egypt produces a great diversity of agricultural commodities, with virtually all available land irrigated and cropped intensively. Landholdings are predominantly small (tables 8-11). However, agricultural production has not generally maintained pace with population growth and per capita consumption increases. Egypt now imports about 50 percent of its total food needs. The degree of domestic self-sufficiency varies depending upon the commodity, but Egypt's food gap between production and consumption is widest for basic commodities such as wheat, corn, vegetable oils, sugar, meats, and dairy products (tables 12-44). The vegetable crops least subjected to Government regulation have generally shown the greatest recent increases. Though virtually self-sufficient in fertilizers, Egypt still imports such agricultural inputs as tractors and chemicals (tables 45-46).

As production of many basic commodities has stagnated, per capita consumption of these same commodities has increased greatly, especially consumption of wheat, sugar, and corn (tables 47-48). These consumption patterns are reflected in the caloric composition of the average Egyptian diet (table 49). The combination of rapid population growth, lagging agricultural production, and increasing per capita consumption of many basic foodstuffs has led Egypt to increasingly larger agricultural imports (tables 50-78). Imports of wheat, corn, vegetable oils, sugar, and meat have grown steadily during the past decade.

Meanwhile, Egypt's traditional agricultural exports, including cotton, rice, and sugar, have generally declined (tables 79-85). Cotton's traditional role as an important source of foreign exchange earnings has greatly diminished. Egypt still relies on bilateral barter agreements with several East European trading partners to market much of its agricultural exports. The Government is extensively involved in the procurement of a number of commodities; official procurement prices are often below world market prices. Some of the domestically produced commodities are then sold to consumers through Government food stores at subsidized prices (tables 86-88).

The Government is the principal buyer of imported foodstuffs also sold at subsidized prices. Several different ministries and agencies are involved in this procurement (table 89). There have been important changes in Egypt's agricultural trade policy during the last two decades (table 90). These changes have had differing effects on U.S. agricultural exports to Egypt, depending on which agencies or commodities were involved.

DATA SOURCES

This statistical report is a byproduct of a large research project documenting Egypt's agricultural production system, consumption patterns, food self-sufficiency levels by commodity groups, agricultural trade, and projections of imported commodity needs. Most of these tables have not been previously published. Although some of the Egyptian agricultural production data can be obtained from various Egyptian Government agencies (generally published in Arabic only), most of the trade data presented herein were compiled by the Economic Research Service.

Data on Egyptian agriculture must be used with caution for several reasons; this is especially true for data on agricultural imports. First, the Government generally undercounts food imports because of a variety of factors. This underreporting is especially problematic for certain basic commodities such as grains and oilseeds; the actual quantities are often substantially higher than officially reported. Furthermore, values of imported commodities are sometimes distorted because Egypt uses multiple exchange rates for international trade. This problem is especially true for certain commodities where longstanding bilateral barter agreements are used for both imports and exports. Further exacerbating the problem is the fact that some commodities transhipped through intermediate ports are frequently not attributed to the originating country in official Egyptian trade statistics.

The authors used the matrix method to supplement incomplete Egyptian trade data for certain commodities. In such cases where import data are believed to be incomplete, export data from a given country's trading partners are used to derive total imports for the importing country. This method also permits researchers to verify the accuracy of the importing country's trade data. However, data derived by the matrix method should be regarded as an estimate of a given nation's actual trade data because certain assumptions and conversions must be made. For example, the conversion of import values from free-on-board (f.o.b.) to cost-insurance-freight (c.i.f.) values by using standard conversion tables provides approximations.

Furthermore, because all trading partners may not have been identified, and because some partner countries may also not report trade data for the same years for which the importer has not reported data, overall trade data derived by this method are low estimates of actual trade. The low bias in imports especially applies to trade estimates for the most recent years because export data are not yet available for some trade partners. Nevertheless, the Egyptian trade data presented in this report were derived from many data sources and verified independently wherever possible, and are thus believed to be the best Egyptian trade data available.

BIBLIOGRAPHY

- (1) Arab Republic of Egypt, Central Agency for Public Mobilization and Statistics. Statistical Yearbook. Cairo, various years.
- (2) _____. Unpublished data. Cairo, various years.
- (3) _____, Investments and Free Zones Authority. The Processing and Distribution of Egyptian Food Crops. Cairo, 1983.
- (4) _____, Ministry of Agriculture. Statistical Tables for Horticultural Crops in the Arab Republic of Egypt. Cairo, Sept. 1984.
- (5) _____, Ministry of Agriculture, Economics Unit. Unpublished data. Cairo, various years.
- (6) _____, Ministry of Agriculture, Department of Statistics. Bulletin of Agricultural Economics. Cairo, various years.
- (7) _____, Ministry of Finance. Unpublished data. Cairo, 1981.
- (8) _____, Ministry of Land Reclamation. Unpublished data. Cairo, various years.
- (9) _____, Ministry of Planning. Unpublished data. Cairo, various years.
- (10) _____, Ministry of Supply and Home Trade. Unpublished data. Cairo, various years.
- (11) El-Tobgy, H. A. Contemporary Egyptian Agriculture. Beirut: The Ford Foundation, 1974.
- (12) Food and Agriculture Organization of the United Nations. Food Balance and Per Caput Food Supplies. Rome, 1980.
- (13) International Monetary Fund. Unpublished data. Washington, DC, 1984.
- (14) International Sugar Organization. Sugar Year Book. London, various years.
- (15) National Bank of Egypt. Economic Bulletin. Vol. 36, No. 1. Cairo, 1983.
- (16) Shapouri, Shala, and Ibrahim Soliman. The Egyptian Meat Market: Policy Issues in Trade, Prices, and Expected Future Performance. Staff Report No. AGES 841217, U. S. Dept. Agr., Econ. Res. Serv., Feb. 1985.
- (17) U.S. Agency for International Development. Unpublished data. Cairo, various years.

(18) U. S. Department of Agriculture, Economic Research Service. "Trade matrix tables for Egypt." Unpublished computer run. 1984.

(19) _____. World Indices of Agricultural and Food Production, 1975-84. SB-730. July 1985.

(20) _____, Foreign Agricultural Service. Agricultural counselor reports from Egypt. Various years.

(21) U. S. Department of Commerce, Bureau of the Census. Unpublished computer run. 1984.

(22) Wally, Youssef, and others. Strategy for Agricultural Development in the Eighties for the Arab Republic of Egypt. Ames, Iowa: Center for Agricultural and Rural Development, Iowa State Univ., 1982.

(23) World Bank. Unpublished data. Washington, DC, 1984.

(24) _____. World Tables. Third edition. Washington, DC, Jan. 1984.

Population and Labor Force

Table 1--Population and vital statistics, Egypt, 1952-83

Year	Population <u>1/</u>	Birth rate	Death rate	Rate of natural increase	Growth rate <u>2/</u>
	Thousands	Per thousand			Percent
1952	21,437	45.2	17.8	27.4	—
1953	21,943	42.6	19.6	23.0	2.36
1954	22,460	42.6	17.9	24.7	2.35
1955	22,990	40.3	17.6	22.7	2.36
1956	23,532	40.7	16.4	24.3	2.36
1957	24,087	38.0	17.8	20.2	2.36
1958	24,655	41.1	16.6	24.5	2.36
1959	25,237	42.8	16.3	26.5	2.36
1960	25,832	43.1	16.9	26.2	2.36
1961	26,474	44.1	15.8	28.3	2.48
1962	27,147	41.5	17.9	23.6	2.54
1963	27,832	43.0	15.5	27.5	2.52
1964	28,538	42.3	15.7	26.6	2.53
1965	29,263	41.7	14.1	27.6	2.54
1966	30,007	41.2	15.9	25.3	2.54
1967	31,101	38.9	14.2	24.7	3.64
1968	31,826	37.9	16.0	21.9	2.66
1969	32,555	36.8	14.4	22.4	2.29
1970	33,260	35.0	15.1	19.9	2.16
1971	33,967	35.0	13.1	21.9	2.12
1972	34,692	34.3	14.4	19.9	2.13
1973	35,421	35.7	13.0	22.7	2.10
1974	36,282	35.6	12.6	23.0	2.43
1975	37,120	36.0	12.1	23.9	2.31
1976	38,020	36.4	11.7	24.7	2.42
1977	38,950	37.3	11.8	25.5	2.44
1978	39,917	37.3	10.4	26.9	2.48
1979	41,033	40.0	10.8	29.2	2.79
1980	42,289	37.4	10.0	27.4	3.06
1981 <u>3/</u>	43,465	38.3	10.2	28.1	2.78
1982 <u>3/</u>	44,673	37.2	10.3	26.9	2.78
1983 <u>3/</u>	45,915	36.9	10.1	26.8	2.78

1/ Includes Egyptians living abroad, estimated in the 1976 census at 1.425 million; before 1970 the number of Egyptians living abroad was negligible.

2/ Compound annual growth rate derived by the authors from data in the original table.

3/ Preliminary.

Source: (1) as reported in (13). Underlined numbers in parentheses identify literature cited in the reference section of this report.

Table 2—Employment by economic sector, Egypt,
1975-79 and fiscal years 1980/81-81/82

Sector	1975	1976	1977	1978	1979	1980/81	1981/82 ^{1/}
	<u>1,000 persons</u>						
Commodity sector	5,931	5,848	5,911	6,082	6,262	6,457	6,565
Agriculture	4,218	4,068	4,104	4,135	4,165	4,200	4,248
Industry, petroleum, and mining	1,175	1,200	1,247	1,297	1,351	1,450	1,487
Electricity	41	47	48	52	53	63	64
Public utilities	50	53	55	60	64	64	66
Construction	447	480	457	538	629	680	700
Distribution sector	1,371	1,429	1,495	1,543	1,578	1,677	1,749
Transportation, communications, and storage	404	415	444	449	452	460	483
Trade and finance	967	1,014	1,051	1,094	1,126	1,217	1,226
Services sector	2,131	2,228	2,481	2,705	2,872	3,046	3,198
Housing	143	144	145	147	155	166	174
Other ^{2/}	1,988	2,084	2,336	2,558	2,717	2,880	3,024
Total	9,433	9,505	9,887	10,330	10,712	11,180	11,512

^{1/} Ministry of Planning estimates for 1981/82 were adjusted to retain comparability with earlier years.

^{2/} For 1978-1981/82, estimates assume annual growth rates of 9.5, 6.2, 6.0, and 5.0 percent, respectively.

Source: (9, 23).

Economic Indicators

Table 3—Estimates of gross domestic product
by sector, Egypt, 1981/82–1983/84 1/

Sector	1981/82	1982/83	1983/84 <u>2/</u>
	<u>Million Egyptian pounds</u>		
Commodity-producing sectors	10,118	10,891	11,798
Agriculture	3,742	3,855	3,965
Industry and mining	2,670	2,863	3,130
Petroleum	2,668	3,056	3,500
Electricity	128	144	158
Construction	909	973	1,045
Production services sectors	5,569	5,927	6,289
Transportation, communications, and storage	1,161	1,233	1,313
Suez Canal	630	640	656
Trade	2,430	2,600	2,790
Finance and insurance	1,119	1,209	1,265
Hotels and restaurants	228	245	265
Social services sectors	3,634	3,845	4,073
Real estate property (housing)	373	399	430
Public utilities	54	59	64
Social and personal services	810	851	892
Social security	28	30	32
Government services	2,370	2,507	2,655
Gross domestic product (GDP) at factor cost	19,320	20,663	22,160
		<u>Percent</u>	
Growth rate	<u>3/</u> 8.6	7.0	7.2

1/ In 1981/82 prices.

2/ Projected.

3/ Compound annual rate from 1977 to 1981/82.

Source: (9).

Table 4--Gross domestic product growth by sector, Egypt, 1977-82 1/

Sector	1977	1978	1979	1980/81 <u>2/</u>	1981/82 <u>2/</u>
	Percent change from previous year				
Agriculture	-2.9	5.6	4.2	5.2	2.9
Industry and mining	6.7	5.5	7.8	13.4	9.0
Petroleum	54.8	22.0	10.3	29.7	6.0
Electricity and public utilities	11.3	15.7	1.6	6.3	-5.2
Construction	12.9	30.0	10.2	7.9	5.9
Transportation, communications, and storage	17.9	15.2	46.2	15.4	6.9
Suez Canal	20.4	17.5	16.9	19.6	9.9
Trade, finance, and insurance	10.4	15.8	18.1	16.9	11.0
Services <u>3/</u>	20.5	-3.0	1.6	14.1	9.8
GDP at market prices	12.7	5.8	9.6	13.0	8.5

1/ At constant 1975 prices.

2/ The fiscal year in Egypt is July 1 through June 30.

3/ Includes tourism.

Source: Derived from data reported in (23) by (9).

Table 5--Composition of gross domestic product at current factor cost, Egypt, 1960-80

Sector	1960	1965	1970	1971	1972	1973	1974
<u>Millions of Egyptian pounds</u>							
Agriculture	404	595	773	814	933	1,062	1,280
Manufacturing and mining	271	442	577	624	641	689	857
Construction	46	94	123	119	118	118	129
Electricity, gas, and water	11	24	41	44	45	45	65
Transport and communications	98	186	137	146	151	159	179
Trade and finance	137	175	234	251	279	349	630
Other branches ^{1/}	384	565	742	794	835	1,042	1,057
GDP at factor cost	1,350	2,081	2,627	2,792	3,002	3,464	4,197
Net indirect taxes	93	259	432	449	388	342	142
GDP at market prices	1,443	2,340	3,058	3,241	3,390	3,806	4,339
<u>Millions of Egyptian pounds</u>							
	1975	1976	1977	1978	1979	1980	
Agriculture	1,468	1,744	2,038	2,286	2,530	3,427	
Manufacturing and mining	1,029	1,240	1,588	1,945	3,588	5,249	
Construction	243	279	357	517	647	761	
Electricity, gas, and water	88	96	106	121	132	157	
Transport and communications	260	401	491	689	992	1,311	
Trade and finance	772	954	1,188	1,544	2,067	2,498	
Other branches ^{1/}	1,196	1,451	1,766	1,919	2,175	2,775	
GDP at factor cost	5,056	6,165	7,534	9,021	12,101	16,178	
Net indirect taxes	162	562	810	774	604	768	
GDP at market prices	5,218	6,727	8,344	9,795	12,705	16,946	

^{1/} Includes public administration and defense.

Source: (24).

Table 6--Foreign debt, Egypt, 1977-83 1/

Creditor	1977	1978	1979	1980	1981	1982	1983
	<u>Billion dollars</u>						
Organization for Arab Cooperation	1.63	2.50	3.29	4.54	5.35	6.36	7.27
U.S. Government	1.11	1.78	2.28	3.74	4.22	5.11	5.74
Organization of Petroleum Exporting Countries	2.93	3.01	3.06	2.82	2.81	2.80	2.73
Gulf Organization for the Development of Egypt	1.23	1.73	1.73	1.73	1.73	1.73	1.73
International Bank for Reconstruction and Development	.09	.14	.26	.49	.58	.66	.77
International Development Association	.17	.21	.27	.36	.45	.61	.75
Suppliers' credit	.63	.66	1.09	1.95	2.27	2.38	2.44
Total	8.98	10.82	12.68	15.07	16.65	17.74	18.80

1/ Excludes military debts.

Source: (13).

Table 7--Exports of petroleum and petroleum products
to major markets, by value, Egypt, 1977-82

Destination	1977	1978	1979	1980	1981	1982
Crude petroleum:						
	<u>Million dollars</u>					
United States	152.0	88.3	373.8	396.0	291.0	515.0
Israel	—	—	—	182.3	549.2	442.9
Italy	112.2	112.1	313.1	711.4	645.4	564.8
Greece	80.9	57.4	45.5	71.5	145.5	57.0
Turkey	—	4.9	—	—	13.1	—
Japan	—	—	—	—	65.6	12.7
Spain	—	—	—	29.1	57.4	50.6
Singapore	—	—	—	10.3	57.4	—
Romania	—	—	—	49.3	42.6	134.0
Switzerland	27.8	9.2	4.8	106.3	24.5	—
France	23.9	28.3	15.9	—	—	84.9
Netherlands	—	—	—	44.1	23.7	84.9
United Kingdom	—	—	—	43.3	10.3	20.2
Yugoslavia	21.2	23.3	16.9	22.6	—	25.7
German Democratic Republic	13.9	15.1	—	—	—	—
South Yemen	—	14.6	2.4	248.9	12.6	—
Other	5.6	13.0	38.7	46.3	15.8	280.0
Total	437.6	365.4	1,015.1	1,961.4	1,952.9	2,225.3
Petroleum products:						
	<u>Million dollars</u>					
United States	2.2	—	5.5	—	—	—
Israel	—	—	—	—	—	—
Italy	230.0	44.6	48.7	40.6	113.6	65.0
Greece	10.1	2.2	5.6	3.9	—	—
Turkey	—	—	—	—	—	—
Japan	—	—	—	—	—	—
Spain	—	—	—	—	—	—
Singapore	—	—	—	—	—	—
Romania	—	—	—	—	—	—
Switzerland	—	—	10.4	—	—	—
France	—	—	—	15.2	57.5	72.6
Netherlands	21.4	35.6	83.5	54.7	11.7	21.8
United Kingdom	26.7	30.2	33.3	4.0	—	12.5
Yugoslavia	—	1.5	—	—	3.4	—
German Democratic Republic	—	—	—	—	—	—
South Yemen	—	—	—	—	—	—
Other	25.6	8.1	8.9	25.8	138.1	164.3
Total	109.0	122.2	196.9	194.2	324.3	335.2

— = Negligible.

1/ Does not include some payments-in-kind to petroleum companies.

Source: (2).

Land Use, Principal Cultivations, and Cropping Patterns

Table 8--Area planted to selected crops, Egypt, 1950-83

Year	Wheat	Corn	Rice	Sorghum	Barley	Total cereals
	<u>1,000 hectares</u>					
1950	576	610	294	165	49	1,694
1951	629	695	205	178	50	1,757
1952	589	716	157	182	57	1,701
1953	752	897	178	204	49	2,080
1954	754	800	256	192	51	2,053
1955	640	777	252	184	57	1,910
1956	660	771	290	201	55	1,977
1957	636	743	307	189	56	1,931
1958	599	821	318	178	57	1,873
1959	620	781	306	196	59	1,962
1960	612	765	297	190	62	1,926
1961	581	673	226	192	51	1,723
1962	611	769	349	191	55	1,975
1963	565	723	403	203	51	1,945
1964	544	698	404	208	53	1,907
1965	481	526	356	210	53	1,626
1966	542	662	355	217	41	1,817
1967	530	628	452	220	65	1,895
1968	602	655	507	225	65	2,054
1969	531	626	502	199	62	1,920
1970	551	633	480	210	37	1,911
1971	567	639	478	207	30	1,921
1972	523	646	481	203	41	1,894
1973	525	696	419	205	36	1,881
1974	576	665	490	212	32	1,975
1975	586	769	442	205	42	2,044
1976	586	794	453	206	44	2,083
1977	507	777	437	205	40	1,966
1978	580	839	436	182	48	2,085
1979	584	791	433	171	45	2,024
1980	557	802	408	172	40	1,979
1981	588	808	402	173	38	2,009
1982	577	813	431	161	46	2,027
1983	570	814	423	155	45	1,949

See footnotes at end of table.

Continued—

Table 8—Area planted to selected crops, Egypt, 1950-83—Continued

Year	Cotton	Sugar- cane	Onions	Tomatoes	Potatoes	Grapes
1,000 hectares						
1950	829	34	30	26	10	8
1951	832	36	33	25	11	8
1952	826	39	33	33	10	8
1953	556	44	30	35	11	8
1954	663	48	43	37	14	8
1955	763	47	48	40	12	8
1956	694	46	468	42	14	8
1957	764	46	56	43	15	8
1958	800	47	49	48	14	8
1959	739	47	66	54	22	9
1960	787	47	60	57	23	9
1961	834	47	60	61	23	9
1962	696	51	65	67	24	8
1963	684	56	69	72	25	8
1964	677	56	68	78	23	8
1965	677	49	24	80	23	9
1966	781	56	27	86	22	10
1967	683	58	23	88	17	11
1968	615	66	21	98	28	10
1969	681	71	29	101	30	11
1970	685	75	21	100	30	16
1971	641	78	24	104	28	14
1972	652	85	23	108	35	17
1973	672	80	20	116	45	18
1974	610	87	28	117	40	19
1975	565	92	21	137	41	18
1976	524	102	59	129	54	19
1977	598	105	61	130	60	21
1978	499	104	52	131	54	21
1979	502	105	49	139	59	22
1980	523	105	48	143	61	22
1981	495	105	50	136	67	25
1982	448	107	49	135	64	27
1983	425	110	48	140	66	28

Source: (5).

Table 9--Harvested area by season and crop, Egypt, 1976-78

Crop	1976	1977	1978
	<u>1,000 feddan</u>		
Cumulative area harvested, ^{1/} all crops	11,198	11,111	11,142
Winter crops	5,041	4,958	5,029
Wheat	1,396	1,207	1,381
Dry beans	298	325	272
Barley	104	95	114
Fenugreek	33	24	26
Lentils	64	48	35
Flax	47	59	60
Onions	28	31	27
Lupines	10	9	6
Chickpeas	8	14	14
Permanent berseem	1,710	1,697	1,789
Cash crop berseem	1,046	1,158	993
Garlic	12	15	13
Vegetables	215	214	225
Others	70	62	74
Summer crops	5,111	5,082	4,968
Cotton	1,248	1,423	1,189
Rice	1,074	1,037	1,025
Maize	1,490	1,323	1,405
Sorghum	446	393	413
Sugarcane	242	250	247
Peanuts	32	36	31
Sesame	31	40	23
Cucurbit	175	165	176
Vegetables	267	288	285
Others	106	127	174
Nili crops	733	750	813
Maize	401	442	494
Sorghum	28	15	20
Rice	5	3	6
Vegetables	260	248	251
Others	39	42	42

Note: This table accounts for double- and triple-cropped area, and should not to be confused with total physical area.
^{1/} Excludes orchard crops.

Source: (5).

Table 10--Distribution of agricultural landownership, Egypt, 1979

Size category	Land-owners	Area owned	Land-owners	Area owned
	Thousands	1,000 feddan	Percent	Percent
Less than 5 feddan	3,223	2,834	95.0	51.3
5-10	93	609	2.7	11.0
10-20	44	569	1.3	10.3
20-50	23	663	.7	12.0
50-100	7	482	.2	8.7
Over 100 feddan <u>1/</u>	1	373	.1	6.7
Total	3,391	5,530	100.0	100.0

1/ Includes organizations, companies, and individuals.

Source: (1).

Table 11—Changes in cropland area and estimated conversion to other uses, Egypt, 1952-84

Year	Cumulative harvested area	Land area	Multiple cropping index ^{1/}	Net change	New land added	Estimated cropland loss	Estimated abandonment	Other loss ^{2/}
	— 1,000 acres —		Index		— 1,000 acres —			
1952	9,617	5,918	163	NA	NA	NA	NA	NA
1953	9,723	5,933	164	15	17	2	0	2
1954	10,275	5,963	172	30	31	1	0	1
1955	10,507	5,964	176	1	3	2	0	2
1956	10,320	5,991	172	27	28	1	0	1
1957	10,704	6,053	177	62	64	2	1	1
1958	10,742	6,065	177	12	15	1	1	1
1959	10,687	6,088	176	23	24	1	0	1
1960	10,792	6,115	176	27	28	1	0	2
1961	10,381	6,142	169	27	29	2	0	2
1962	10,787	6,172	175	30	92	62	42	20
1963	10,804	6,264	172	92	137	45	23	22
1964	10,833	6,401	169	137	165	28	8	20
1965	10,869	6,342	171	-59	142	201	177	24
1966	10,887	6,231	175	-111	120	231	202	29
1967	10,860	6,193	175	-38	35	93	70	23
1968	11,153	6,186	180	-7	35	42	21	21
1969	11,140	6,158	181	-28	47	75	57	18
1970	11,138	6,155	181	-3	22	25	5	20
1971	11,151	6,146	181	-9	12	21	3	18
1972	11,249	6,128	184	-18	4	22	2	20
1973	11,359	6,074	187	-34	3	57	19	38
1974	11,440	6,065	189	-9	3	12	1	11
1975	11,585	6,046	192	-19	14	33	3	30
1976	11,637	6,021	193	-25	15	40	4	36
1977	11,533	5,988	193	-33	13	46	2	44
1978	11,916	5,963	200	-25	16	41	1	40
1979	11,980	5,947	201	-16	19	35	1	34
1980	12,020	5,933	203	-14	15	29	1	28
1981	12,075	5,993	201	60	82	22	1	21
1982	12,121	6,081	199	88	111	23	1	24
1983	12,143	6,133	198	52	73	25	1	26
1984	12,162	6,184	197	51	78	27	1	26

NA = Not applicable.

^{1/} The multiple cropping index is derived by dividing cumulative harvested area by physical area and multiplying by 100. In addition to the normal practice of double-cropping, some land is triple-cropped in Egypt.

^{2/} Conversion to urban and other human uses.

Source: Derived from (5, 8, 20).

Table 12—Grain supply, share imported, and per capita availability, Egypt, 1960-84

Year	Total domestic grain	Imports :wheat and flour	Other : grain imports	Total imports	Total supply	Share : imported	Per capita availability		
							Production	Imports	Total
	1,000 tons			Percent			Kilograms		
1960	4,677	1,104	50	1,154	5,831	19.8	180.4	44.5	224.9
1961	4,603	1,093	104	1,197	5,800	20.6	173.2	45.0	218.2
1962	5,225	1,370	264	1,634	6,859	23.8	191.7	59.9	251.6
1963	5,167	1,681	188	1,869	7,036	26.6	184.9	66.9	251.8
1964	5,650	1,922	433	2,355	8,005	29.4	197.1	82.2	279.3
1965	5,489	2,078	150	2,228	7,717	28.9	186.8	75.8	262.6
1966	5,784	2,277	168	2,445	8,229	29.7	191.9	81.1	273.0
1967	5,292	2,688	201	2,889	8,181	35.3	171.2	93.5	264.7
1968	5,886	2,285	132	2,417	8,303	29.1	185.7	76.3	262.0
1969	5,475	1,517	43	1,560	7,035	22.2	168.5	48.0	216.5
1970	5,877	1,233	73	1,306	7,183	18.1	176.3	39.2	215.5
1971	6,079	2,409	39	2,448	8,527	28.7	178.4	71.8	250.2
1972	6,271	2,086	88	2,174	8,445	25.7	180.0	62.4	242.4
1973	6,756	2,505	67	2,572	9,328	27.6	189.7	72.2	261.9
1974	6,826	2,609	388	2,997	9,823	30.5	187.4	82.3	269.7
1975	7,106	3,406	418	3,824	10,931	35.0	190.9	102.7	293.6
1976	7,301	3,527	517	4,044	11,345	35.6	191.8	106.7	298.5
1977	6,498	4,354	591	4,945	11,443	43.2	167.0	127.0	294.0
1978	7,438	5,120	740	5,860	13,298	44.1	186.0	146.5	332.5
1979	7,233	4,906	494	5,400	12,633	42.8	176.4	131.7	308.1
1980	7,374	5,421	944	6,365	13,739	46.5	174.3	150.5	324.8
1981	7,500	5,998	1,415	7,413	14,657	51.2	172.2	170.7	342.9
1982	7,716	5,806	1,214	7,020	14,752	47.6	172.5	157.2	328.2
1983	7,879	6,600	1,720	8,234	16,025	51.4	171.3	179.4	350.3
1984	7,990	7,040	1,787	8,827	16,817	52.5	168.9	186.6	355.5

Sources: Derived from (2, 5, 20).

 Commodities:
 Area Cultivated, Production, and Yield

Table 13--Summer and nili sorghum: Area, production, and yield, Egypt, 1960-81

Year	Summer			Nili		
	Area	Production	Yield	Area	Production	Yield
	1,000 feddan	1,000 tons	Tons/ feddan	1,000 feddan	1,000 tons	Tons/ feddan
1960	387	547	1.4	67	56	0.8
1961	418	596	1.4	39	35	.9
1962	398	612	1.5	57	47	.8
1963	433	681	1.6	50	48	.9
1964	432	677	1.6	62	63	1.0
1965	441	739	1.7	59	67	1.1
1966	463	795	1.7	55	64	1.2
1967	482	835	1.7	40	46	1.1
1968	486	851	1.8	46	55	1.2
1969	438	774	1.8	36	39	1.1
1970	465	834	1.8	36	40	1.1
1971	462	815	1.8	32	38	1.2
1972	456	797	1.8	28	34	1.2
1973	463	823	1.8	24	30	1.2
1974	474	793	1.7	25	31	1.2
1975	469	750	1.6	20	25	1.2
1976	446	718	1.6	28	41	1.4
1977	393	629	1.6	15	18	1.2
1978	413	656	1.6	21	26	1.2
1979	394	619	1.6	13	17	1.3
1980	398	619	1.5	12	16	1.3
1981	400	636	1.6	13	17	1.3

Source: (5).

Table 14--Corn: Area, production, and yield, Egypt, 1950-84

Year	Area	Production	Yield	Year	Area	Production	Yield
	1,000 feddan	1,000 tons	Tons/ feddan		1,000 feddan	1,000 tons	Tons/ feddan
1950	1,451	1,306	0.900	1970	1,504	2,393	1.592
1951	1,655	1,421	.859	1971	1,522	2,342	1.539
1952	1,704	1,506	.884	1972	1,531	2,417	1.579
1953	2,015	1,853	.920	1973	1,654	2,507	1.595
1954	1,904	1,753	.920	1974	1,755	2,640	1.505
1955	1,834	1,714	.935	1975	1,830	2,781	1.520
1956	1,836	1,652	.900	1976	1,891	3,047	1.611
1957	1,769	1,495	.845	1977	1,765	2,724	1.543
1958	1,955	1,758	.899	1978	1,898	3,117	1.642
1959	1,859	1,500	.807	1979	1,885	2,939	1.559
1960	1,821	1,691	.929	1980	1,906	3,231	1.695
1961	1,603	1,617	1.009	1981	1,923	3,308	1.720
1962	1,832	2,004	1.094	1982	1,935	3,347	1.723
1963	1,721	1,867	1.085	1983	1,939	3,507	1.809
1964	1,660	1,934	1.165	1984 ^{1/}	2,000	3,900	1.950
1965	1,450	2,141	1.476				
1966	1,575	2,376	1.509				
1967	1,485	2,163	1.456				
1968	1,554	2,297	1.478				
1969	1,484	2,366	1.594				

^{1/} Preliminary.

Source: (6).

Table 15--Soybeans: Area, production, and yield, Egypt, 1966-84

Year	Area	Production	Yield
	1,000 feddan	1,000 tons	Tons/feddan
1966	600	359	0.598
1967	1,000	482	.482
1968	1,300	626	.482
1969	2,600	971	.373
1970	3,300	1,016	.373
1971	2,000	911	.456
1972	2,800	1,356	.484
1973	6,300	2,498	.397
1974	4,300	2,063	.480
1975	8,500	4,808	.566
1976	17,000	11,407	.671
1977	33,000	26,496	.803
1978	82,000	78,828	.961
1979	100,000	106,033	1.060
1980	82,000	92,000	1.100
1981	109,000	130,000	1.193
1982	153,900	166,000	1.079
1983	148,770	162,000	1.089
1984	130,815	144,000	1.101

Source: (6).

Table 16--Barley: Area, production, and yield, Egypt, 1960-84

Year	Area	Production	Yield
	1,000 feddan	1,000 tons	Tons/feddan
1960	148	155	1.05
1961	121	133	1.10
1962	131	146	1.12
1963	121	146	1.12
1964	121	141	1.17
1965	125	130	1.04
1966	98	102	1.04
1967	107	100	.93
1968	117	121	1.04
1969	103	105	1.01
1970	83	83	1.00
1971	70	76	1.08
1972	91	107	1.17
1973	84	96	1.14
1974	77	89	1.15
1975	100	118	1.19
1976	104	123	1.19
1977	95	111	1.17
1978	114	132	1.16
1979	107	122	1.14
1980	96	107	1.11
1981	91	103	1.13
1982	118	121	1.02
1983	115	120	1.04
1984	128	144	1.12

Source: 1960-79, (5); 1980-81, (20).

Table 17--Wheat: Area, production, and yield, Egypt, 1950-84

Year	Area	Production	Yield
	1,000 feddan	1,000 tons	Tons/ feddan
1950-54	1,571	1,318	0.839
1955-59	1,501	1,464	.975
1960-64	1,387	1,504	1.084
1965-69	1,268	1,362	1.074
1970-74	1,302	1,716	1.318
1975	1,394	2,023	1.451
1976	1,396	1,960	1.404
1977	1,207	1,697	1.406
1978	1,381	1,933	1.400
1979	1,391	1,856	1.334
1980	1,326	1,796	1.355
1981	1,400	1,938	1.380
1982	1,373	2,017	1.469
1983	1,357	1,996	1.471
1984	1,423	1,815	1.275

Source: 1950-74, (11); 1975-84, (20).

Table 18--Paddy rice: Area, production, and yield, Egypt, 1950-84

Year	Area	Production	Yield
	1,000 feddan	1,000 tons	Tons/ feddan
1950-54	519	830	1.60
1955-59	654	1,385	2.12
1960-64	799	1,784	2.23
1965-69	1,033	2,177	2.11
1970-74	1,095	2,432	2.22
1975	1,047	2,418	2.30
1976	1,074	2,295	2.13
1977	1,037	2,270	2.18
1978	1,031	2,351	2.28
1979	1,037	2,510	2.42
1980	972	2,384	2.45
1981	956	2,236	2.34
1982	1,026	2,441	2.38
1983	1,007	2,440	2.42
1984	1,064	2,330	2.19

Source: 1950-74, (11); 1975-77, (4); 1978-84, (20).

Table 20—Numbers of major livestock, Egypt, 1952-83 ^{1/}

Item	1952	1960	1968	1970	1973	1977
	<u>1,000 head</u>					
Cattle	1,356	1,588	2,058	2,115	2,127	2,048
Buffaloes	1,212	1,524	1,943	2,009	2,135	2,266
Sheep	1,254	1,578	1,935	2,006	1,994	1,821
Goats	703	833	1,125	1,155	1,264	1,375
Camels	165	188	127	127	113	97
Swine	27	17	13	15	14	15
Donkeys	816	1,010	1,291	1,362	1,400	1,603
Horses	39	47	35	35	32	18
Mules	10	10	7	6	5	1
Total	5,582	6,795	8,534	8,890	9,084	9,244
	1978	1979	1980	1981	1982	1983
					3/	
	<u>1,000 head</u>					
Cattle	2,010	1,954	1,912	1,852	1,852	1,826
Buffaloes	2,295	2,321	2,347	2,370	2,370	2,393
Sheep	1,755	1,679	1,593	1,498	1,498	1,394
Goats	1,401	1,427	1,451	1,475	1,475	1,498
Camels	93	88	84	80	76	80
Swine	15	15	15	15	15	15
Donkeys	1,637	1,672	1,702	1,741	1,741	1,775
Horses	15	12	12	9	9	9
Mules	1	1	1	1	1	1
Total	9,222	9,916	9,199	9,033	9,037	8,991

^{1/} Data for 1960, 1968, and 1970 are from actual livestock counts in Egypt. Data for 1977-81 are beginning inventories.

^{2/} Data for 1980 and 1981 are Foreign Agricultural Service estimates.

^{3/} Subject to final adjustment by the Ministry of Agriculture.

Sources: 1952-73, (11); 1975-83, (2).

Table 21--Domestic meat production (official slaughterhouses), Egypt, 1964-81

Year	Culled	Fed beef	Sheep and goats	Veal	Pork	Total
Tons						
1964	29,270	36,970	8,890	8,120	1,320	84,570
1965	26,440	35,840	7,220	8,980	1,170	79,650
1966	32,000	40,890	8,720	11,720	1,280	94,610
1967	33,570	59,920	11,440	10,650	1,530	117,110
1968	37,140	60,280	11,170	10,610	1,540	120,740
1969	36,580	58,450	9,140	9,760	1,570	115,500
1970	29,270	58,270	8,350	7,940	1,670	110,500
1971	26,040	61,010	8,290	7,240	1,500	104,080
1972	26,290	68,050	8,050	7,070	1,620	111,080
1973	28,370	75,130	7,870	7,390	2,020	120,780
1974	33,320	83,990	7,270	7,870	2,120	134,570
1975	32,000	77,470	7,940	7,490	2,230	127,130
1976	30,010	67,960	7,690	7,270	2,430	115,460
1977	27,810	75,400	8,260	7,650	2,290	121,410
1978	37,800	86,140	9,130	9,180	2,250	144,500
1979	44,860	98,810	8,990	8,960	2,780	164,400
1980	37,840	85,420	7,740	8,500	2,880	142,380
1981	50,810	86,440	4,030	7,240	2,930	156,450

Source: (6).

Note: Many animals are not processed at official slaughterhouses. These data represent meat production at official Government slaughterhouses only, and thus represent only a fraction of total meat production.

Table 22--Number of poultry and rabbits on farms, Egypt, 1975-81 ^{1/}

Variety	1975	1976	1977	1978	1979	1980	1981
Thousands							
Chickens, local	26,069	26,375	26,680	26,986	27,292	27,597	27,903
Turkeys	696	705	715	724	733	742	751
Ducks	3,246	3,294	3,343	3,392	3,440	3,489	3,538
Geese	2,613	2,637	2,661	2,685	2,725	2,734	2,758
Pigeons (pairs)	1,551	1,440	1,325	1,207	1,084	1,107	1,126
Rabbits	2,053	2,043	2,032	2,020	2,012	1,994	1,983

^{1/} Agricultural years ending October 31.

Source: (1).

Table 23--Production and imports of meat by type and quantity, Egypt, 1978-84

Supply and commodity	1978	1979	1980	1981	1982	1983 ^{1/}	1984 ^{1/}
	<u>1,000 tons</u>						
Production:							
Beef, from cattle	125	127	131	132	133	142	165
Beef, water buffalo	134	139	140	143	146	148	155
Total beef	259	266	271	275	279	290	320
Mutton	38	39	40	42	43	44	46
Goat meat	17	18	18	21	23	18	19
Pork	2	3	3	3	3	3	3
Camel	5	5	5	4	5	5	5
Rabbit, other	10	10	12	13	12	12	12
Subtotal	331	341	349	358	365	372	405
Poultry	115	119	136	140	148	158	165
Total production	446	460	485	498	513	530	570
Imports:							
Beef	87	101	123	130	130	152	164
Mutton	4	14	17	8	4	6	18
Other	3	4	5	8	4	6	8
Canned meat	4	4	6	11	6	11	10
Frozen poultry	9	27	76	118	38	120	140
Beef liver	2	2	10	15	7	19	21
Total imports	109	152	237	290	189	314	361
Total supply	555	612	722	788	702	844	931
	<u>Percent</u>						
Import share of supply	19.6	24.8	32.8	36.8	26.9	37.2	38.7
	<u>Kilograms</u>						
Apparent consumption per capita ^{2/}	14.0	14.9	17.1	18.2	15.7	18.4	19.8

^{1/} Estimated.

^{2/} Not adjusted for stock draw-downs which were negligible in all years except 1982.

Source: Derived from (2, 5, 18).

Table 24--Production of milk in selected years, Egypt, 1960-83

Milk source	1960-64 1/	1965-69 1/	1970-74	1975	1976	1977
	<u>1,000 tons</u>					
Cattle	508	550	591	626	633	655
Buffaloes	889	961	1,043	1,136	1,160	1,188
Sheep	10	10	17	19	19	19
Goats	5	6	6	7	8	8
Total	1,412	1,527	1,657	1,788	1,820	1,780
	1978	1979	1980	1981	1982	1983
	<u>1,000 tons</u>					
Cattle	643	646	672	965	950	950
Buffaloes	1,204	1,227	1,267	1,269	1,250	1,300
Sheep	20	20	21	20	21	21
Goats	8	8	8	8	9	9
Total	1,875	1,901	1,968	2,262	2,230	2,280

1/ Annual averages.

Sources: 1960-74, (11); 1975-80, (12); 1981-83, (2).

Table 25--Production of vegetables, Egypt, 1972-83

Crop	1972	1973	1974	1975	1976	1977
	<u>1,000 tons</u>					
Tomatoes	1,665	1,575	1,729	2,107	2,066	1,967
Potatoes	595	796	709	720	893	1,010
Cabbage	278	283	299	305	321	340
Eggplant	205	200	214	218	230	234
Squash	322	297	319	350	378	393
Onions	487	529	730	572	652	723
Garlic	120	206	181	127	135	206
Carrots	50	69	90	89	95	80
Leeks	21	26	24	24	21	27
Turnips	42	35	43	46	46	42
Cauliflower	75	70	59	70	83	88
Spinach	29	28	24	28	32	34
Lettuce	58	57	69	68	86	94
Parsley	17	18	21	19	22	17
Garden rocket	22	23	25	27	26	23
Green beans	36	40	44	47	63	83
Kidney beans	11	9	17	17	13	12
Green peas	29	28	27	30	33	30
Green peppers	117	102	115	126	138	123
Artichokes	12	16	15	14	21	9
Radish	30	30	26	26	24	22
Okra	72	77	65	66	61	65
Sweetpotatoes	86	60	60	85	69	68
Taro	41	38	61	63	77	72
Lima beans	1	6	1	5	4	4
Watermelons	1,009	1,148	1,211	1,212	1,362	1,187
Other melons	151	162	152	171	150	131
Cucumbers	160	181	195	226	224	215
Sweet melons	200	89	111	120	111	88
Other	97	88	79	87	91	80
Total	5,878	6,286	6,713	7,072	7,410	7,529

See footnotes at end of table.

Continued--

Table 25--Production of vegetables, Egypt, 1972-83 ---Continued

Crop	1978	1979	1980	1981	1982	1983
	1,000 tons					
Tomatoes	2,197	2,421	2,468	2,454	2,657	2,625
Potatoes	772	1,019	1,214	1,195	1,184	1,150
Cabbage	348	360	353	374	389	400
Eggplant	282	312	284	296	306	309
Squash	427	455	439	444	456	449
Onions	599	560	611	654	631	619
Garlic	155	161	199	162	151	187
Carrots	108	136	122	142	116	150
Leeks	136	36	35	31	36	36
Turnips	52	59	61	62	75	66
Cauliflower	85	97	97	100	92	99
Spinach	37	42	45	48	41	47
Lettuce	105	128	125	128	107	125
Parsley	19	35	39	38	37	36
Garden rocket	40	45	53	43	41	44
Green beans	90	110	109	107	118	132
Kidney beans	4	13	13	11	19	20
Green peas	35	45	49	49	59	60
Green peppers	150	175	165	173	167	181
Artichokes	29	30	36	36	37	40
Radish	29	30	33	24	23	33
Okra	65	69	66	57	61	77
Sweetpotatoes	63	104	86	86	125	87
Taro	83	99	94	95	91	90
Lima beans	4	1	2	1	1	2
Watermelons	1,312	1,219	1,157	1,211	1,082	1,212
Other melons	141	179	185	221	275	283
Cucumbers	231	272	294	302	292	330
Sweet melons	124	155	175	150	155	180
Other	107	156	119	102	104	110
Total	7,829	8,523	8,728	8,704	8,931	9,179

Source: (5).

Table 26--Fenugreek, chickpeas, and lupines: Area, production, and yield, Egypt, 1978-81

Crop/year	Area	Production	Yield
	1,000 feddan	1,000 tons	Tons/feddan
Fenugreek:			
1978	26	16	0.76
1979	31	22	.73
1980	28	17	.61
1981	25	13	.52
Chickpeas:			
1978	14	10	.71
1979	15	9	.60
1980	17	11	.65
1981	19	13	.68
Lupines:			
1978	6	4	.67
1979	7	5	.71
1980	11	8	.73
1981	9	7	.78

Source: (6).

Table 27--Tomatoes: Area, production, and yield, Egypt, 1970-84

Year	Area	Production	Yield
	1,000 feddan	1,000 tons	Tons/feddan
1970	237	1,553	6.54
1971	247	1,637	6.62
1972	256	1,665	6.51
1973	276	1,575	5.71
1974	280	1,729	6.19
1975	325	2,107	6.49
1976	308	2,066	6.71
1977	293	1,967	6.70
1978	311	2,197	7.07
1979	329	2,421	7.37
1980	332	2,468	7.44
1981	325	2,453	7.56
1982	322	2,657	8.25
1983	359	2,625	7.31
1984	370	2,780	7.51

Source: (4).

Table 28--Garlic: Area, production, and yield, Egypt, 1960-81

Year	Single cropped			Intercropped 1/		
	Area	Production	Yield	Area	Production	Yield
	1,000 feddan	1,000 tons	Tons/feddan	1,000 feddan	1,000 tons	Tons/ feddan
1960	13	63	4.7	na	na	na
1961	12	61	5.1	na	na	na
1962	14	71	5.0	na	na	na
1963	20	119	5.9	na	na	na
1964	13	66	5.3	na	na	na
1965	15	80	5.5	na	na	na
1966	19	118	6.3	na	na	na
1967	13	76	5.7	na	na	na
1968	12	73	6.1	na	na	na
1969	7	41	5.7	16	69	4.3
1970	7	52	7.3	20	95	4.7
1971	10	62	7.5	10	47	4.6
1972	9	62	7.3	12	57	4.6
1973	14	116	8.4	20	90	4.6
1974	13	106	8.1	17	75	4.6
1975	12	84	6.9	11	43	4.0
1976	12	90	7.5	14	55	4.0
1977	15	117	7.7	22	89	4.1
1978	13	101	7.9	13	55	4.1
1979	13	106	8.0	13	55	4.1
1980	15	136	9.0	14	63	4.5
1981	13	107	8.2	13	55	4.2

na = Not available.

1/ Grown in the same field with other crop(s).

Source: (4).

Table 29--Peanuts: Area, production, and yield, Egypt, 1960-83

Year	Area	Production	Yield
	1,000 feddan	1,000 tons	Tons/feddan
1960	41	35	0.85
1961	33	24	.75
1962	53	49	.94
1963	53	45	.85
1964	50	46	.92
1965	54	50	.93
1966	49	40	.83
1967	41	32	.78
1968	42	36	.85
1969	49	43	.87
1970	43	38	.90
1971	38	33	.89
1972	34	30	.87
1973	29	26	.88
1974	29	25	.87
1975	32	28	.87
1976	32	28	.89
1977	36	36	.83
1978	31	31	.83
1979	31	31	.87
1980	31	32	1.03
1981	31	26	.84
1982	31	24	.77
1983	31	23	.74

1/ In shell.

Source: (5).

Table 30--Sesame: Area, production, and yield, Egypt, 1960-84

Year	Area	Production	Yield
	1,000 feddan	1,000 tons	Tons/feddan
1960	42	15	0.36
1961	27	10	.39
1962	42	17	.41
1963	59	26	.43
1964	55	23	.42
1965	52	22	.43
1966	29	11	.37
1967	22	7	.35
1968	24	10	.41
1969	35	16	.45
1970	41	20	.49
1971	41	21	.50
1972	42	24	.51
1973	36	21	.59
1974	27	14	.49
1975	33	17	.53
1976	31	13	.42
1977	40	18	.44
1978	23	9	.40
1979	37	13	.34
1980	39	16	.41
1981	40	17	.42
1982	51	20	.39
1983	51	21	.41
1984	51	22	.43

Source: (5).

Table 31--Broad beans: Area, production, and yield, Egypt, 1960-84

Year	Area	Production	Yield
	1,000 feddan	1,000 tons	Tons/feddan
1960	362	290	0.80
1961	328	161	.49
1962	369	328	.89
1963	360	263	.73
1964	408	366	.90
1965	402	344	.86
1966	398	381	.96
1967	300	188	.63
1968	306	282	.92
1969	338	297	.88
1970	302	277	.92
1971	261	256	.98
1972	336	361	1.07
1973	270	273	1.18
1974	244	234	.96
1975	246	234	.95
1976	260	254	.98
1977	292	270	.92
1978	239	231	.97
1979	250	236	.95
1980	245	213	.87
1981	256	208	.81
1982	295	260	.88
1983	328	295	.89
1984	334	305	.92

Source: (5).

Table 32--Lentils: Area, production, and yield, Egypt, 1960-84

Year	Area	Production	Yield
	1,000 feddan	1,000 tons	Tons/feddan
1960	85	50	0.59
1961	63	34	.54
1962	79	56	.71
1963	78	47	.60
1964	79	52	.66
1965	89	61	.69
1966	75	44	.59
1967	66	34	.52
1968	51	35	.69
1969	46	24	.52
1970	47	33	.70
1971	65	50	.76
1972	67	54	.81
1973	74	62	.83
1974	66	51	.77
1975	58	39	.67
1976	64	38	.60
1977	48	24	.50
1978	36	16	.44
1979	22	9	.41
1980	15	7	.47
1981	12	5	.42
1982	13	6	.46
1983	13	6	.46
1984	14	7	.50

Source: (5).

Table 33--Summer and nili potatoes: Area, production, and yield, Egypt, 1970-81

Year	Summer			Nili		
	Area	Production	Yield	Area	Production	Yield
	1,000 feddan	1,000 tons	Tons/ feddan	1,000 feddan	1,000 tons	Tons/ feddan
1970	33	260	7.8	44	244	6.5
1971	32	234	7.3	34	217	6.4
1972	35	283	8.1	49	312	6.3
1973	44	378	8.6	62	418	6.8
1974	46	366	7.7	49	343	7.1
1975	44	318	7.2	54	402	7.4
1976	54	394	7.3	74	479	6.7
1977	74	527	7.1	78	484	6.7
1978	64	420	6.5	63	353	5.6
1979	69	533	7.7	73	486	6.6
1980	84	631	7.5	83	583	7.0
1981	74	595	8.0	85	600	7.1

Source: (5).

Table 34—Area and production of all fruits, Egypt, 1960-82

Year	Area 1/	Production 1/	Production 2/
	1,000 feddan	1,000 tons	1,000 tons
1960	131	635	1,059
1961	138	544	1,022
1962	145	753	1,153
1963	152	776	1,216
1964	167	817	1,144
1965	178	835	1,221
1966	195	1,031	1,348
1967	207	1,069	1,388
1968	225	1,001	1,265
1969	232	1,167	1,523
1970	277	1,090	1,384
1971	249	1,324	1,665
1972	253	1,347	1,744
1973	258	1,438	1,818
1974	273	1,575	1,972
1975	285	1,653	2,068
1976	313	1,594	2,011
1977	321	1,440	1,901
1978	332	1,707	2,084
1979	340	1,967	2,373
1980	361	1,836	2,282
1981	368	1,883	2,273
1982	390	2,422	2,862

1/ Excluding dates.

2/ Including dates.

Source: (4).

Table 35—Citrus: Area and production, Egypt, 1960-83

Year	Oranges		Total citrus	
	Area	Production	Area	Production
	1,000 feddan	1,000 tons	1,000 feddan	1,000 tons
1960	46	210	68	315
1961	51	157	72	240
1962	60	280	81	402
1963	65	337	86	441
1964	76	329	97	475
1965	84	340	105	485
1966	97	487	118	631
1967	106	530	127	699
1968	112	494	136	623
1969	113	625	137	785
1970	118	567	141	706
1971	119	707	143	883
1972	121	683	144	825
1973	122	767	145	923
1974	130	819	155	963
1975	136	856	162	1,013
1976	152	755	178	889
1977	155	671	183	797
1978	159	843	188	990
1979	160	1,050	190	1,216
1980	162	921	198	1,067
1981	162	895	198	1,033
1982	168	1,201	210	1,379
1983	173	1,250	219	1,429

1/ Subject to final revision.

Source: (5).

Table 36--Grapes: Area, production, and yield, Egypt, 1960-84

Year	Area	Production	Yield
	1,000 feddan	1,000 tons	Tons/feddan
1960	21	102	4.86
1961	21	106	5.05
1962	20	120	6.00
1963	20	105	5.25
1964	20	91	4.55
1965	21	90	4.29
1966	21	117	5.57
1967	22	117	5.32
1968	23	111	4.83
1969	27	104	3.85
1970	32	100	3.13
1971	34	122	3.59
1972	34	158	4.65
1973	37	162	4.38
1974	39	221	5.67
1975	42	225	5.36
1976	46	279	6.07
1977	48	248	5.17
1978	50	273	5.46
1979	52	242	4.65
1980	57	299	5.25
1981	60	298	4.97
1982	64	306	4.78
1983	69	310	4.49
1984	71	315	4.44

Source: (4, 5).

Table 37--Mangoes: Area, production, and yield, Egypt, 1960-83

Year	Area	Production	Yield
	1,000 feddan	1,000 tons	Tons/feddan
1960	16	63	3.94
1961	17	48	2.82
1962	19	86	4.53
1963	19	90	4.74
1964	21	97	4.62
1965	22	78	3.55
1966	23	104	4.52
1967	23	75	3.26
1968	24	55	2.29
1969	25	62	2.48
1970	25	51	2.04
1971	25	58	2.32
1972	24	74	3.08
1973	24	78	3.25
1974	23	86	3.74
1975	23	92	4.00
1976	25	84	3.36
1977	25	57	2.28
1978	27	90	3.33
1979	27	115	4.26
1980	28	98	3.50
1981	29	123	4.24
1982	30	131	4.37
1983	30	105	3.50

Source: (4).

Table 38—Bananas: Area, production, and yield, Egypt, 1960-84

Year	Area	Production	Yield
	1,000 feddan	1,000 tons	Tons/feddan
1960	8	66	8.25
1961	8	66	8.25
1962	7	57	8.14
1963	7	56	8.00
1964	8	50	6.25
1965	8	64	8.00
1966	9	85	9.44
1967	9	66	7.33
1968	9	86	9.56
1969	9	91	10.11
1970	9	82	9.11
1971	10	95	9.50
1972	11	108	9.82
1973	11	101	9.18
1974	11	110	10.00
1975	12	112	9.33
1976	12	112	9.33
1977	13	127	9.77
1978	13	113	8.69
1979	14	113	8.07
1980	15	133	8.87
1981	16	137	8.56
1982	17	165	9.70
1983	18	144	8.00
1984	18	147	8.16

Source: (4).

Table 39—Cotton: Area, production, and yield, Egypt, 1950-83

Year	Area	Production	Yield
	1,000 feddan	1,000 tons	Tons/feddan
1950-54	1,765	371	0.2104
1955-59	1,791	393	.2197
1960-64	1,751	443	.2532
1965-69	1,694	478	.2822
1970-74	1,551	492	.3175
1975	1,346	382	.2839
1976	1,248	396	.3175
1977	1,423	399	.2802
1978	1,189	438	.3687
1979	1,196	484	.4043
1980	1,246	530	.4258
1981	1,179	499	.3932
1982	1,067	461	.4012
1983	1,012	421	.3862

Source: 1950-74, (11); 1975-80, (5).

Table 40--Cotton: Area, yield, supply, and utilization, Egypt, 1970-85

Year	Area	Yield	Beginning stocks	Production	Imports	Total supply
	1,000 ha	Kg/ha		1,000 bales	1/	
1970	684	744	448	2,336	0	2,784
1971	641	795	418	2,341	0	2,759
1972	652	788	408	2,359	0	2,767
1973	672	729	383	2,249	0	2,632
1974	610	717	398	2,010	0	2,408
1975	565	676	508	1,755	18	2,281
1976	524	756	416	1,820	110	2,346
1977	598	667	570	1,831	72	2,473
1978	499	878	482	2,013	134	2,629
1979	502	963	589	2,221	0	2,810
1980	523	1,011	634	2,428	0	3,062
1981	495	1,008	977	2,292	0	3,269
1982	447	945	302	2,117	0	2,419
1983	425	1,089	251	1,934	0	2,185
1984	415	1,090	95	1,791	0	2,186
1985 <u>2/</u>	420	1,100	100	1,900	200	2,275
Consumption	Textile exports	Loss	Domestic use	Exports	Ending stocks	
				1,000 bales	1/	
1970	931	307	38	624	1,397	418
1971	966	293	19	673	1,366	408
1972	996	309	1	685	1,387	383
1973	1,026	307	9	719	1,199	398
1974	1,016	289	6	727	878	508
1975	1,066	187	24	879	775	416
1976	1,145	234	25	911	606	570
1977	1,295	220	10	1,075	686	482
1978	1,310	210	40	1,100	690	589
1979	1,300	202	0	1,098	876	634
1980	1,336	171	710	1,161	749	977
1981	1,370	162	0	1,216	898	1,001
1982	1,220	141	0	1,237	920	251
1983	1,340	102	0	1,274	750	95
1984	1,486	110	0	1,310	600	100
1985 <u>2/</u>	1,550	150	0	1,375	700	125

1/ Bales of 480 pounds each.

2/ Projection.

Source: Derived from (4, 7, 39).

Table 41--Sugarcane: Area, production, and yield, Egypt, 1960-83

Year	Area	Production	Yield
	1,000 feddan	1,000 tons	Tons/feddan
1960	111	4,555	40.9
1961	112	4,195	37.6
1962	121	4,819	39.7
1963	133	5,164	38.8
1964	134	4,898	36.5
1965	129	4,747	36.8
1966	133	5,200	39.1
1967	137	5,269	38.5
1968	156	6,083	38.9
1969	170	6,878	40.5
1970	186	6,945	37.3
1971	193	7,498	38.9
1972	202	7,713	38.2
1973	198	7,349	37.1
1974	208	7,081	33.7
1975	218	7,902	36.3
1976	243	8,446	34.8
1977	250	8,379	33.6
1978	248	8,296	33.5
1979	249	8,791	35.4
1980	253	8,618	34.1
1981	251	8,805	35.1
1982	274	8,603	31.4
1983	282	9,000	31.9

Source: (5).

Table 42—Production, trade, and supply for domestic use of selected commodities, Egypt, 1970-82

Commodity/ supply	Units	1970	1971	1972	1973	1974	1975	1976
Wheat and flour:								
Production	:1,000 tons:	1,519	1,732	1,618	1,838	1,884	2,034	1,970
Imports	: do.	1,232	2,409	2,086	2,502	2,609	3,405	3,527
Supply	: do.	2,751	4,141	3,304	4,343	4,493	5,439	5,497
Import share	: Percent	45	58	63	58	58	63	64
Corn:								
Production	:1,000 tons:	2,397	2,342	2,421	2,508	2,641	2,782	3,047
Imports	: do.	73	39	88	67	388	417	459
Supply	: do.	2,470	2,381	2,509	2,575	3,029	3,199	3,506
Import share	: Percent	3	2	4	3	13	13	13
Vegetable oils:								
Production	:1,000 tons:	135	135	164	174	167	134	162
Imports	: do.	93	99	181	85	131	338	274
Supply	: do.	228	234	345	259	298	472	436
Import share	: Percent	41	42	53	33	44	72	63
Meat:								
Production	:1,000 tons:	320	320	335	345	360	387	411
Imports	: do.	6	16	13	13	10	33	75
Supply	: do.	326	346	348	358	370	420	486
Import share	: Percent	2	5	4	4	3	8	15
Sugar, refined:								
Production	:1,000 tons:	547	633	604	633	577	550	626
Imports	: do.	—	—	—	—	123	172	204
Exports	: do.	85	120	20	39	51	44	39
Supply	: do.	462	513	584	594	649	678	791
Self-sufficiency:	Percent	118	123	103	107	89	81	79
Rice, milled:								
Production	:1,000 tons:	1,713	1,745	1,698	1,680	1,524	1,501	1,623
Imports	: do.	0	—	5	—	—	—	1
Exports	: do.	654	514	456	298	136	104	211
Supply	: do.	2,367	1,231	1,247	1,382	1,388	1,397	1,413
Self-sufficiency:	Percent	138	142	136	122	110	107	115
Pulses:								
Production	:1,000 tons:	383	390	393	411	359	368	398
Imports	: do.	20	10	33	8	17	151	131
Exports	: do.	7	1	4	2	1	1	—
Supply	: do.	396	399	422	417	375	518	529
Self-sufficiency:	Percent	97	98	93	99	96	71	75

See footnotes at end of table.

Continued--

Table 42—Production, trade, and supply for domestic use of selected commodities, Egypt, 1970-82—Continued

Commodity/ supply	Units	1977	1978	1979	1980	1981	1982 ^{1/}
Wheat and flour:							
Production	:1,000 tons:	1,696	1,933	1,856	1,796	1,938	2,017
Imports	: do. :	4,354	5,120	4,906	5,423	5,998	5,807
Supply	: do. :	6,050	7,053	6,762	7,219	7,936	7,824
Import share	: Percent :	72	73	73	75	76	74
Corn:							
Production	:1,000 tons:	2,724	3,117	2,938	3,230	3,308	3,347
Imports	: do. :	591	808	494	944	1,384	1,214
Supply	: do. :	3,315	3,925	3,432	4,174	4,692	4,428
Import share	: Percent :	18	21	14	23	29	27
Vegetable oils:							
Production	:1,000 tons:	178	153	169	179	198	205
Imports	: do. :	242	290	301	276	355	364
Supply	: do. :	420	443	470	455	553	569
Import share	: Percent :	58	65	64	61	64	64
Meat:							
Production	:1,000 tons:	427	446	460	485	498	513
Imports	: do. :	83	109	152	237	290	189
Supply	: do. :	510	553	610	712	788	702
Import share	: Percent :	16	19	25	32	36	26
Sugar, refined:							
Production	:1,000 tons:	662	635	668	662	658	725
Imports	: do. :	278	396	285	460	637	696
Exports	: do. :	58	45	28	20	24	22
Supply	: do. :	862	986	916	1,102	1,271	1,399
Self-sufficiency	: Percent :	77	64	73	58	50	50
Rice, milled:							
Production	:1,000 tons:	1,541	1,522	1,575	1,682	1,597	1,635
Imports	: do. :	2	3	2	7	1	8
Exports	: do. :	223	153	123	178	135	23
Supply	: do. :	1,320	1,373	1,454	1,511	1,463	1,616
Self-sufficiency	: Percent :	117	111	109	113	109	101
Pulses:							
Production	:1,000 tons:	349	301	304	289	266	315
Imports	: do. :	68	110	94	106	196	115
Exports	: do. :	—	—	—	—	—	2
Supply	: do. :	417	411	398	395	462	425
Self-sufficiency	: Percent :	84	73	76	73	58	73

^{1/} Estimate.

-- = Negligible.

n.a. = Not available.

Source: Derived from (2, 18, 20).

Table 43--Indices of agriculture and food production, Egypt, 1975-84

Year	Crops	Total agriculture	Total food	Per capita agriculture	Per capita food
Index (1976-78 = 100)					
1975	97	97	97	102	102
1976	100	99	100	102	103
1977	98	99	99	99	99
1978	102	102	101	99	99
1979	108	107	105	101	100
1980	112	111	109	102	100
1981	111	112	111	100	99
1982	113	114	115	99	100
1983	114	116	118	98	100
1984	115	119	123	98	101

Source: (19).

Table 44--Average annual yield of principal crops, Egypt, 1975-81 ^{1/}

Crop	Unit ^{2/}	1975	1976	1977	1978	1979	1980 ^{3/}	1981 ^{3/}
Cotton, raw	Metric cantar	4.98	5.52	4.90	6.35	6.25	7.18	7.14
Cotton, ginned	do.	5.68	6.18	5.60	7.36	7.91	8.50	8.46
Cotton seed	Ardeb	4.10	4.53	4.04	5.20	5.55	5.74	5.68
Rice	Dariba	2.44	2.26	2.19	2.41	2.55	2.59	2.49
Millet	Ardeb	11.32	11.42	11.44	11.22	11.16	11.19	11.29
Maize	do.	10.85	11.51	11.85	11.73	11.14	12.10	12.28
Sugarcane	cantar	805.44	774.00	746.84	744.60	785.60	751.80	762.00
Peanuts	Ardeb	11.60	11.81	11.00	11.00	11.58	11.97	11.99
Sesame	do.	4.42	3.52	3.69	3.29	2.84	3.43	3.43
Wheat	do.	9.72	9.36	9.37	9.33	8.90	9.00	9.23
Beans	do.	6.14	6.32	5.96	6.24	6.10	5.61	5.64
Barley	do.	9.89	9.89	9.75	9.65	9.49	9.33	9.44
Fenugreek	do.	4.84	4.46	4.32	4.76	4.81	4.79	4.82
Lentils	do.	4.20	3.74	3.11	2.77	2.56	2.68	2.69
Linen seed	do.	4.03	4.17	4.14	4.26	4.12	4.13	4.22
Lupine	do.	4.37	4.45	4.70	4.47	4.65	4.72	4.83
Chickpeas	do.	4.86	4.85	4.79	4.67	4.23	4.25	4.44
Clover seed	do.	1.53	1.56	1.58	1.60	1.56	1.52	1.56

^{1/} Yields are units stated per feddan of land (1 feddan = 1.038 acres).

^{2/} One metric cantar equals 50 kilograms; 1 ardeb equals 5.6 bushels; 1 dariba of unhulled rice equals 954 kilograms.

^{3/} Estimated.

Source: (1).

Major Agricultural Inputs

Table 45--Total fertilizer supply, use, and stock changes, Egypt, 1970/71-81/82

Year <u>1/</u>	Production	Imports	Supply	Use	Stock changes
	<u>1,000 nutrient tons</u>				
1970/71	226	212	438	437	1
1971/72	234	281	515	430	85
1973/74	158	225	383	445	-62
1974/75	268	187	455	488	-33
1975/76	318	263	581	535	46
1976/77	390	178	568	564	4
1977/78	467	87	554	579	-25
1978/79	600	27	627	620	7
1979/80	605	51	656	653	3
1980/81	645	96	741	706	-5
1981/82 <u>2/</u>	709	118	825	820	+5

1/ Year ending March 31.

2/ Estimated.

Source: (5, 20).

Table 46--Chemical fertilizers and insecticides applied to agriculture, Egypt, 1975-81 1/

Item	1975	1976	1977	1978	1979	1980	1981
	<u>1,000 tons</u>						
Nitrogen and ammonium fertilizers	2,578	2,646	2,797	3,135	3,224	3,764	3,684
Phosphate fertilizers	303	382	441	606	644	783	696
	<u>Tons</u>						
Potassium fertilizers	3,935	6,179	5,621	7,397	11,546	23,024	19,626
Insecticides (total)	27,055	25,593	28,344	26,074	22,715	20,192	19,046

1/ Time periods are agricultural years ending October 31.

Source: (1).

Table 48--Production, consumption, and trade of major commodities,
Egypt, selected years, 1970-83

Commodity	Unit	1970-75 average	1976-81 average	1982	1983 ^{1/}
Wheat and flour:					
Production	1,000 tons	1,770	1,864	2,017	1,996
Consumption ^{2/}	do.	3,962	6,739	7,824	8,596
Net trade	do.	-2,307	-4,874	-5,807	-6,600
Per capita consumption	Kilograms	112.6	165.6	175.3	187.3
Corn:					
Production	1,000 tons	2,515	3,061	3,347	3,509
Consumption	do.	2,694	3,841	4,428	5,189
Net trade	do.	-178	-780	-1,214	-1,680
Per capita consumption	Kilograms	76.7	94.4	99.5	113.5
Rice:					
Production	1,000 tons	1,643	1,590	1,635	1,641
Consumption	do.	1,393	1,421	1,618	1,627
Net trade	do.	250	168	17	14
Per capita consumption	Kilograms	37.4	35.0	36.3	35.6
Vegetable oils:					
Production	1,000 tons	148	129	205	198
Consumption	do.	302	407	569	528
Net trade	do.	-154	-278	-364	-330
Per capita consumption	Kilograms	8.5	9.9	12.7	11.8
Meat:					
Production	1,000 tons	344	445	513	530
Consumption	do.	361	601	702	844
Net trade	do.	-16	-156	-189	-314
Per capita consumption	Kilograms	10.2	14.7	15.7	18.4

^{1/} Estimate.

^{2/} Domestic disappearance--includes food, feed, seed, stocks, and waste.

Source: Derived from (5, 18).

Table 49--Daily per capita caloric intake, Egypt, 1975-77 average

Commodity	Calories		Protein		Fat	
	Number	Percent	Grams	Percent	Grams	Percent
Cereals	1,851	66.6	49.9	66.2	12.6	25
Roots, tubers	37	1.3	.7	.9	.1	-
Sugar, honey	236	8.5	.2	.3	.1	-
Pulses	102	3.7	7.7	10.2	1.0	2
Nuts, oilseeds	22	.8	.9	1.2	1.9	3
Vegetables	84	3.0	3.8	.5	.6	1
Fruit	91	3.3	1.2	1.6	.5	-
Meat, offals	61	2.2	5.2	6.9	4.3	8
Eggs	6	.2	.5	.7	.4	-
Milk	41	1.5	4.2	5.6	1.6	3
Oils, fats	230	8.3	.1	.1	25.9	52
Others	18	.6	.1	1.3	.5	-
Total	2,779	100.0	75.4	100.0	49.5	100

- = Less than 1 percent.

Note: Totals may not exactly agree with sum of items due to rounding.

Source: (12) as reported in (16).

Food Imports and Agricultural Trade

Table 50--Wheat imports by country of origin, quantity, and value, Egypt, 1975-84

Country of origin	1975	1976	1977	1978	1979	1980	1981	1982	1983	1984
	<u>1,000 tons</u>									
United States	935	1,161	1,363	1,436	1,338	1,279	2,030	1,842	1,954	1,543
Australia	772	717	1,214	1,016	1,552	1,549	1,612	1,910	1,104	2,197
Canada	10	38	38	524	94	52	216	147	118	616
France	647	562	167	253	421	1,573	91	10	689	121
Germany, Fed. Republic of	38	51	22	—	50	—	—	13	24	30
Romania	60	—	—	243	152	196	25	24	56	—
Bulgaria	—	77	45	134	85	56	16	—	—	—
Greece	24	9	79	26	100	73	—	37	67	—
Turkey	—	—	48	34	617	28	—	—	—	—
Other	194	350	8	93	—	—	101	104	382	392
Total quantity	2,681	2,966	3,394	3,759	4,257	4,417	4,176	3,904	4,327	4,900
	<u>Million dollars</u>									
Total value	516.7	459.6	437.4	471.0	543.0	850.0	722.0	685.0	708.0	790.0

Sources: Derived from (2, 18, 20).

Table 51--Wheat flour imports by country of origin and quantity, Egypt, 1973-83

Country of origin	1973	1974	1975	1976	1977	1978
<u>1,000 tons</u>						
United States	8	0	73	231	301	365
France	168	213	364	227	327	469
Germany, Fed. Rep.	0	31	97	24	0	8
Italy	131	8	142	19	48	40
Netherlands	0	0	38	4	24	14
Belgium	0	0	12	7	9	0
Greece	0	0	0	26	13	128
Romania	0	3	0	0	0	0
Spain	23	0	0	0	0	0
Canada	0	0	0	27	17	50
Other	0	25	0	0	7	0
Total	330	280	726	565	746	1,074
<u>1,000 tons</u>						
	1979	1980	1981	1982	1983	
United States	432	335	384	473	1,385	
France	640	501	930	568	134	
Germany, Fed. Rep.	11	9	7	61	23	
Italy	12	4	75	22	115	
Netherlands	16	11	0	40	23	
Belgium	1	1	0	41	11	
Greece	0	0	0	0	9	
Romania	23	0	1	0	0	
Spain	0	0	0	35	114	
Canada	11	10	0	0	0	
Other	2	11	3	4	25	
Total	1,148	882	1,400	1,244	1,829	

Source: (20).

Note: These data are based on public sector imports reported by the General Authority for Supply of Commodities, and are generally lower than aggregated shipments to Egypt as reported by major suppliers.

Table 52--Supply of soybean products, Egypt, 1974-83

Year	Area	Yield	Production	Imports	Crush
	1,000 ha	Kg per ha	1,000 tons		
1974	2	1,000	2	1	—
1975	4	1,250	5	35	—
1976	7	1,571	11	21	40
1977	14	1,929	27	41	31
1978	34	2,324	79	38	67
1979	42	2,524	106	18	104
1980	35	2,629	92	18	93
1981	46	2,826	130	50	88
1982	65	2,767	166	60	155
1983	62	2,612	162	65	200

	Soybean meal		Soybean oil	
	Output	Imports	Output	Imports
	1,000 tons			
1974	—	—	—	—
1975	—	—	—	—
1976	32	—	7	40
1977	25	30	5	47
1978	54	58	12	28
1979	83	7	18	25
1980	73	—	16	37
1981	70	20	15	108
1982	123	50	26	38
1983	159	60	34	75

— = Negligible.

1/ Beginning in 1981, soybeans imported for processing in duty-free zones are probably excluded from Central Agency for Mobilization and Public Statistics data.

Source: (20).

Table 53--Vegetable oil imports by quantity and value,
Egypt, 1973-83

Year	Cotton- seed oil	Soybean oil	Sun- flower oil	Palm oil	Other oil	Total
	<u>Tons</u>					
1973	73,077	3,834	3,800	1,659	2,557	84,907
1974	60,076	22,024	36,200	3,488	9,008	130,796
1975	279,623	39,988	4,000	4,443	9,589	337,643
1976	196,000	47,000	18,000	5,000	8,000	274,000
1977	216,300	9,000	1,000	6,000	10,322	242,422
1978	192,000	36,295	43,500	7,000	11,191	289,986
1979	167,000	23,650	94,900	8,000	8,000	301,550
1980	175,000	37,000	45,000	4,900	15,100	276,000
1981	173,337	108,442	47,373	9,312	15,364	354,828
1982	252,800	37,780	38,064	12,201	14,424	364,269
1983	128,000	50,000	94,000	23,300	12,000	307,300
	<u>1,000 dollars</u>					
1973	40,600	1,600	1,500	487	2,600	46,787
1974	25,896	19,936	29,000	2,253	5,796	82,881
1975	245,655	39,562	3,200	4,000	17,420	409,837
1976	167,857	24,000	14,000	3,000	8,156	217,013
1977	136,808	5,500	700	3,000	8,420	154,428
1978	163,946	30,319	31,244	5,000	9,341	239,850
1979	105,544	27,477	77,438	6,000	27,000	233,459
1980	143,332	25,937	31,815	5,00	9,150	215,234
1981	126,500	22,987	2,000	8,857	14,414	174,758
1982	152,000	18,518	10,405	7,127	8,091	196,341
1983	79,000	32,000	63,000	22,000	9,000	205,000

Source: (2, 18, 20).

Table 54--Imports of live animals and meat, Egypt, 1964-81

Year	Live animals 1/			Frozen meat	Total red meat	White meat	Total meat
	Beef	Sheep and goats	Camels				
				Tons			
1964	8,058	686	11,850	8,410	29,005	2,284	31,289
1965	4,046	72	11,033	18,493	33,645	3,104	36,749
1966	3,299	0	11,566	12,754	27,619	474	28,093
1967	1,384	0	10,629	5,403	17,416	88	17,504
1968	337	0	11,276	3,513	15,126	—	15,126
1969	266	0	12,483	2,479	15,228	—	15,228
1970	1,905	462	13,613	7,264	23,244	567	23,811
1971	4,693	245	16,841	10,316	32,095	3,550	35,645
1972	1,827	205	14,421	8,013	24,466	8,078	32,544
1973	2,520	105	13,194	5,700	21,519	3,272	24,791
1974	888	457	16,036	13,000	30,382	2,000	32,382
1975	5	408	12,622	40,000	53,036	3,026	56,062
1976	0	52	12,844	54,713	67,609	504	68,113
1977	0	59	14,135	74,000	88,194	7,476	95,670
1978	662	77	13,084	65,202	74,252	15,000	94,025
1979	135	4	11,209	71,986	83,335	28,000	111,335
1980	0	0	8,834	78,562	87,396	76,000	163,396
1981	29,475	0	11,800	87,925	129,200	81,000	210,200

— = Negligible.

1/ Converted to carcass weight basis.

Source: (10).

Note: These data apparently exclude most private sector meat imports; therefore, these data are substantially lower than total meat imports as reported from other sources elsewhere in this report.

Table 55--Meat imports by quantity and value, Egypt, 1973-83

Year	Beef	Mutton	Poultry meat	Canned meat	Other
<u>Tons</u>					
1973	5,933	3,380	2,415	1,038	100
1974	4,116	1,049	1,154	2,175	100
1975	7,205	1,005	3,026	7,749	100
1976	35,575	900	3,054	10,980	200
1977	63,735	5,990	121,000	3,557	600
1978	86,597	3,508	8,582	3,640	2,432
1979	101,883	14,231	27,453	4,235	5,169
1980	122,530	17,024	76,000	6,030	13,529
1981	130,318	7,872	125,000	11,240	22,672
1982	129,755	3,842	37,580	6,245	11,615
1983	151,731	6,490	119,600	11,000	25,604
<u>1,000 dollars</u>					
1973	5,983	1,747	1,518	1,534	200
1974	3,700	1,370	822	3,334	200
1975	7,185	1,200	3,005	9,554	200
1976	34,280	481	2,400	14,634	400
1977	72,000	1,971	7,504	67,210	1,100
1978	72,611	3,900	14,436	8,642	4,891
1979	123,000	27,000	23,247	8,196	6,375
1980	165,000	15,568	87,000	12,330	16,329
1981	195,843	12,487	141,000	23,373	32,116
1982	231,427	4,536	52,092	12,909	11,435
1983	251,000	8,300	119,700	19,000	47,300

Source: Derived from (2, 18, 20).

Table 56--Poultry imports by major suppliers, Egypt, 1970-83

Year	United States	EC ^{1/}	Greece	Brazil	China, People's Republic	Total
<u>Tons</u>						
1970	0	1,055	0	0	514	1,569
1971	0	2,240	0	0	1,206	3,446
1972	0	2,578	0	0	1,069	3,658
1973	0	463	0	0	1,704	2,415
1974	1,154	0	0	0	0	1,154
1975	1	1,064	0	0	1,062	3,026
1976	54	86	0	0	0	3,054
1977	5,604	1,093	0	0	0	8,192
1978	3,156	2,044	0	0	0	8,582
1979	16,007	1,378	777	3,170	0	27,453
1980	20,393	10,297	1,412	6,350	0	76,333
1981	63,426	9,238	380	45,016	0	118,758
1982	12,055	3,387	38	34,165	0	37,580
1983	10,260	17,967	0	46,978	0	119,600

^{1/} Except Greece.^{2/} Total includes other suppliers not shown.

Source: (18).

Table 57--Red wheat imports by major suppliers, Egypt, 1971-81 ^{1/}

Year	China, People's Republic	Argentina	Australia	Uruguay	EC	Other	Total
<u>Tons</u>							
1971	4,900	0	0	0	4,100	1,200	10,200
1972	5,900	0	0	0	0	5,900	11,800
1973	5,200	0	0	0	1,700	3,500	10,400
1974	1,400	0	0	0	1,500	4,400	7,300
1975	1,400	0	162	4,200	7,000	1,800	30,600
1976	0	10,600	103	16,000	7,300	24,000	46,600
1977	0	4,600	213	10,600	3,400	4,100	44,000
1978	0	4,900	314	7,300	4,300	31,000	51,000
1979	0	13,200	94	36,000	16,400	0	75,000
1980	0	16,800	121	6,000	58,900	1,200	95,000
1981	0	52,336	0	32,176	16,654	11,742	112,908

^{1/} Egyptian Government reported purchases only.

Source: (18).

Table 58--Frozen poultry imports by country of origin, quantity, and value, Egypt, 1976-82

Country	1976	1977	1978	1979	1980	1981	1982
	<u>Tons</u>						
Argentina	2,500	0	0	107	0	0	45
Australia	0	0	1,955	0	0	0	5
Canada	0	0	0	28	151	99	10
Brazil	0	0	0	0	6,350	45,016	21,680
Sweden	0	0	75	52	832	100	0
United States	44	5,880	5,787	13,522	45,049	52,650	12,055
EC:	10	742	63	12,332	7,002	9,238	3,425
Belgium	0	00	0	22	212	0	0
Denmark	10	742	10	621	0	3,969	40
France	0	0	0	749	622	5,121	3,278
Germany, Fed. Rep.	0	0	0	21	0	1	8
Italy	0	0	0	22	0	147	61
Netherlands	0	0	00	10,468	1,038	0	0
United Kingdom	0	0	0	429	3,168	0	0
Total <u>1/</u>	2,554	6,622	8,582	27,453	76,003	125,000	37,580
	<u>1,000 dollars</u>						
Argentina	300	0	0	109	0	0	50
Australia	0	0	2,327	0	0	0	10
Canada	0	0	0	0	57	40	20
Brazil	0	0	0	0	7,836	50,925	31,440
Sweden	0	0	0	48	1,030	0	0
United States	199	7,099	10,963	18,048	4,838	74,056	15,159
EC:	13	405	110	3,584	8,598	10,180	4,999
Belgium	0	26	0	26	439	50	0
Denmark	13	405	29	429	0	1,200	49
France	0	0	0	898	689	850	4,772
Germany, Fed. Rep.	0	0	0	23	0	30	105
Italy	0	00	0	25	0	0	73
Netherlands	0	0	0	544	3,970	8,000	0
United Kingdom	0	0	33	544	3,970	8,000	0
Total <u>1/</u>	3,212	7,504	14,436	23,247	81,129	141,361	52,092

1/ Includes other suppliers not shown.

Sources: (2, 18, 20).

Table 59--Dairy product and egg imports by quantity and value, Egypt, 1973-83

Year	: Butteroil:				: Butteroil:			
	Milk	and	Cheese	Eggs	Milk	and	Cheese	Eggs
	: butter :				: butter :			
	----- Tons -----				----- 1,000 dollars -----			
1973	2,456	12	733	0	2,676	24	689	0
1974	4,868	4,088	1,480	0	4,941	3,587	1,530	0
1975	13,681	2,097	3,382	0	17,174	2,773	4,787	0
1976	11,152	23,564	8,857	0	10,059	31,936	23,257	0
1977	17,858	17,646	6,345	7	24,636	26,716	15,409	2
1978	38,726	27,174	12,207	91	33,791	65,912	29,869	181
1979	27,800	35,904	15,067	1,092	38,500	75,325	19,320	1,291
1980	32,000	39,217	14,146	3,500	42,000	83,994	25,189	4,500
1981	64,000	44,041	16,693	6,000	55,000	96,126	28,341	8,000
1982	58,813	24,119	22,373	18,821	82,500	71,740	33,242	16,439
1983	44,500	23,000	38,000	15,000	89,260	62,00	57,000	13,500

Sources: Derived from (2, 18, 20).

Table 61--Cheese imports by country of origin, quantity, and value, Egypt, 1976-82

Country of origin	1976	1977	1978	1979	1980	1981	1982
				<u>Tons</u>			
Australia	1,058	8	33	50	0	64	0
Austria	62	142	109	55	11	37	120
Bulgaria	0	0	19	0	14	0	0
EC:	2,927	5,238	8,747	9,312	10,216	12,957	21,354
Belgium-Luxembourg	0	15	20	22	478	335	525
Denmark	255	502	459	707	494	767	10,423
France	1,088	2,383	3,528	2,678	2,678	4,192	3,577
Germany, Fed. Rep.	864	714	558	343	346	427	317
Italy	211	42	134	83	27	186	15
Netherlands	504	1,571	3,398	5,467	4,764	6,328	4,959
United Kingdom	5	11	660	12	1,068	621	1,418
Finland	28	18	656	4,560	3,388	2,698	354
Greece	0	3	13	24	25	5	0
Lebanon	0	23	0	0	67	0	0
New Zealand	726	729	1,536	29	27	480	0
Norway	441	0	0	87	0	0	0
Poland	580	6	18	0	0	219	0
Portugal	0	0	0	80	14	30	0
Romania	0	0	1,015	739	260	0	0
Spain	0	21	29	30	72	0	0
Sweden	0	0	26	28	0	0	0
Switzerland	23	135	8	30	29	54	55
United States	174	6	0	6	22	101	386
Yugoslavia	2,813	0	0	0	0	0	124
Other	0	217	0	37	0	149	100
Total	8,857	6,345	12,207	15,067	14,146	16,693	22,373

See footnotes at end of table.

Continued--

Table 61--Cheese imports by country of origin, quantity,
and value, Egypt, 1976-82--Continued

Country of origin	1976	1977	1978	1979	1980	1981	1982
	1,000 dollars						
Australia	1,286	21	96	78	0	118	0
Austria	117	310	233	96	29	59	407
Bulgaria	0	0	116	0	58	0	0
EC:	16,424	13,392	24,144	15,285	19,282	23,433	31,807
Belgium-Luxembourg	0	22	65	18	826	335	879
Denmark	721	1,665	1,715	1,434	1,119	1,827	10,423
France	1,844	5,393	9,241	4,214	5,680	8,313	6,545
Germany, Fed. Rep.	1,516	2,109	1,290	569	730	615	823
Italy	74	93	290	180	74	114	5
Netherlands	860	3,744	9,304	8,667	8,830	10,760	10,291
United Kingdom	6	35	1,794	29	1,936	1,292	2,434
Finland	57	34	1,313	2,828	5,055	3,076	394
Greece	0	18	89	72	70	25	0
Lebanon	0	48	0	0	50	0	0
New Zealand	661	1,249	2,339	64	72	664	0
Norway	460	0	0	129	0	0	0
Poland	1,150	10	54	0	0	452	0
Portugal	0	0	0	72	38	32	0
Romania	0	0	1,770	605	377	0	0
Spain	0	46	55	37	109	0	0
Sweden	0	0	61	38	0	0	0
Switzerland	104	552	39	118	94	186	179
United States	179	20	0	4	34	220	481
Yugoslavia	4,157	0	0	0	0	0	0
Other	0	20	88	72	71	253	200
Total	23,192	15,409	29,863	19,314	25,182	28,341	33,142

-- = Negligible.

Source: Derived from (2, 18).

Table 62—Butter and butteroil imports by quantity and value, Egypt, 1976-82

Country of origin	1976	1977	1978	1979	1980	1981	1982
	<u>Tons</u>						
Australia	7	0	0	87	0	0	0
Austria	0	39	10	56	0	1,041	0
Finland	34	265	406	388	476	343	0
German Dem. Rep.	900	0	0	0	0	0	0
Greece	0	0	0	0	15	0	0
Lebanon	0	0	31	62	0	0	14
New Zealand	6,675	352	16	0	20	537	120
Switzerland	27	142	218	64	274	243	0
United States	0	98	0	0	689	0	0
Other	24	53	2,318	22	372	486	81
EC:	17,798	14,749	24,175	35,225	37,586	41,393	24,044
Belgium-Luxembourg	13,324	7,566	12,222	9,633	14,009	13,371	361
Denmark	26	324	734	635	467	846	8,379
France	108	2,884	2,020	11,458	15,400	10,866	15,900
Germany, Fed. Rep.	2,666	0	1,802	1,464	528	5,315	112
Ireland	0	1,472	0	2,000	2,165	17	0
Italy	537	0	0	50	0	88	7
Netherlands	1,137	2,503	6,887	9,289	4,817	10,469	10,583
United Kingdom	0	0	510	696	200	421	16
Total 1/	23,564	17,646	27,174	35,904	39,217	44,041	24,119

See footnotes at end of table.

Continued—

Table 62--Butter and butteroil imports by quantity and value, Egypt, 1976-82--Continued

Country of origin	1976	1977	1978	1979	1980	1981	1982
	<u>1,000 dollars</u>						
Australia	14	0	0	181	0	0	0
Austria	0	108	29	0	0	1,615	0
Finland	90	546	1,065	444	865	1,052	0
German Dem. Rep.	1,003	0	0	0	0	0	0
Greece	0	0	0	0	0	0	0
Lebanon	0	0	80	0	0	0	0
New Zealand	5,397	268	43	0	23	928	35
Switzerland	69	346	433	0	659	591	0
United States	0	179	0	0	1,209	0	2,974
Other	350	126	4,744	625	753	637	731
EC:	25,372	25,412	59,507	74,700	80,485	91,303	68,000
Belgium-Luxembourg	18,083	13,543	28,688	37,307	41,751	27,714	17,275
Denmark	70	600	1,839	847	853	2,158	959
France	259	5,216	5,188	15,878	27,348	23,648	21,095
Germany, Fed. Rep.	3,550		3,972	3,235	312	12,076	303
Ireland	0	2,802	0	2,477	3,360	46	0
Italy	0	0	0	0	0	228	21
Netherlands	2,655	3,311	18,615	14,096	6,861	24,484	28,291
United Kingdom	0	0	1,205	860	0	949	56
Total ^{1/}	31,983	26,985	65,901	75,325	83,994	96,126	71,740

-- = Negligible.

^{1/} These totals apparently exclude considerable shipments from transit zones in European ports which are not reflected in the data sources.

Source: (2, 18).

Table 63—Tallow imports by major suppliers and quantity,
Egypt, 1975-83

Country of origin	1975	1976	1977	1978	1979
	<u>1,000 tons</u>				
United States	122.0	127.1	128.3	134.0	140.3
EC	9.1	23.9	24.1	13.3	15.8
Soviet Union	22.0	18.4	4.6	4.1	4.9
Other	.8	.4	.1	.1	2.2
Total	153.9	168.4	157.1	151.5	163.2
	1980	1981	1982	1983	
	<u>1,000 tons</u>				
United States	187.5	205.8	182.8	226.9	
EC	10.3	10.1	1.9	9.5	
Soviet Union	—	0	48.6	0	
Other	9.3	18.8	10.0	21.6	
Total	207.1	234.7	233.3	258.0	

-- = Negligible.

Source: (18).

Table 64—Canned vegetable imports by country of origin, quantity, and value, Egypt, 1977-82

Country of origin	1977	1978	1979	1980	1981	1982
<u>Tons</u>						
Greece	206	1,611	4,356	8,275	13,710	9,575
Italy	1,021	1,343	470	996	7,092	224
Spain	15	134	275	1,647	2,906	863
Bulgaria	33	210	435	889	474	54
France	20	14	116	129	111	388
United States	7	52	18	14	42	49
Turkey	—	—	—	—	120	0
Tunisia	—	11	22	207	97	0
Total <u>1/</u>	1,422	3,506	5,786	12,632	25,203	11,239
<u>1,000 dollars</u>						
Greece	201	3,624	3,625	8,878	9,694	8,491
Italy	1,170	1,790	398	638	6,798	208
Spain	15	167	237	1,470	2,358	731
Bulgaria	13	197	263	581	500	51
France	29	28	117	177	100	334
United States	4	83	28	16	48	66
Turkey	—	—	—	—	63	0
Tunisia	—	12	17	232	101	0
Total <u>1/</u>	1,818	6,175	4,818	12,372	20,349	10,027

— = Negligible.

1/ Total includes other countries not shown.

Source: (2, 18).

Table 65--Pulse production, trade, and supply for domestic consumption, Egypt, 1976-82

Item	1976	1977	1978	1979	1980	1981	1982
	<u>1,000 tons</u>						
Production	398	349	301	304	289	266	315
Imports	131	68	110	94	106	196	115
Supply for domestic consumption:	529	417	411	398	395	462	430
	<u>Percent</u>						
Imports as portion of consumption:	25	16	27	24	27	42	27

Source: Derived from (2, 18).

Table 66--Pulse imports by quantity and country of origin, Egypt, 1980-82

Commodity and country of origin	1980	1981	1982 ^{1/}
	<u>Tons</u>		
Lentils:			
Turkey	57,556	67,848	78,000
Syria	5,050	17,999	10,000
United States	5,493	10,968	--
Ethiopia	--	2,952	4,000
Other	525	1,200	4,000
Subtotal	68,624	100,967	97,000
Dry beans:			
Netherlands	--	53,143	2,000
Belgium	6,830	--	2,000
Ethiopia	6,800	6,922	4,000
United Kingdom	--	19,240	1,000
Canada	11,567	6,228	4,000
Poland	11,459	5,954	1,000
Other	180	1,100	1,000
Subtotal	36,836	92,657	15,000
Dry peas	500	^{2/} 2,800	8,000
Total	105,950	196,424	111,000

-- = Negligible.

^{1/} Preliminary.

^{2/} Includes 1,398 tons from United States.

Source: (20).

Table 67—Sugar: Production, imports, exports, consumption, and stocks, Egypt, 1976-83

Calendar year	Production ^{1/}	Imports	Exports	Net imports	Consumption	Stocks at year end ^{2/}
				Tons ^{3/}		
1976	576,000	245,150	0	245,150	804,000	109,150
1977	657,479	221,306	72,584	148,722	817,167	98,184
1978	589,443	530,698	12,000	518,698	966,226	240,099
1979	667,962	332,191	0	332,191	1,102,617	137,635
1980	661,614	468,557	0	468,557	1,121,374	146,432
1981	658,369	690,651	123	690,528	1,341,747	153,582
1982	744,915	647,982	24,853	623,129	1,262,428	106,259
1983	722,828	628,028	0	628,028	1,258,403	160,909

^{1/} Includes cane and beet sugar.

^{2/} Calculated.

^{3/} Raw sugar basis.

Source: (14).

Table 68--Forest product imports by country of origin and value, Egypt, 1978-81

Country of origin	Wood				Pulp and waste paper			
	1978	1979	1980	1981	1978	1979	1980	1981
<u>Million dollars</u>								
Soviet Union	33.0	21.8	5.3	79.7	0.8	0.4	3.8	3.3
Finland	41.2	37.2	64.8	76.6	1.2	1.9	1.3	.1
Sweden	27.1	25.1	44.5	51.9	2.3	1.6	--	2.2
Yugoslavia	76.1	17.3	39.5	30.0	--	--	--	--
United States	4.8	--	5.8	37.2	15.4	1.1	3.8	3.3
Romania	5.1	1.6	6.7	23.3	--	.6	--	--
Canada	--	1.6	34.3	20.7	--	1.2	--	.8
EC	13.4	1.7	10.5	7.2	.1	--	2.6	.9
Korea, Rep.	--	--	--	--	--	--	--	--
Singapore	--	--	--	--	--	--	--	--
Total	248.0	124.5	231.9	340.6	19.8	8.7	14.1	21.8
<u>Million dollars</u>								
	Plywood				Paper			
	1978	1979	1980	1981	1978	1979	1980	1981
<u>Million dollars</u>								
Soviet Union	11.1	5.9	5.3	4.6	10.9	1.5	5.3	12.4
Finland	7.1	2.0	2.9	5.2	18.5	7.7	9.9	22.6
Sweden	.3	.2	.3	.6	4.6	2.1	4.4	4.6
Yugoslavia	4.5	2.0	3.1	3.7	7.2	2.4	4.4	4.7
United States	.1	.1	.4	.9	4.6	2.8	6.6	21.8
Romania	3.5	3.0	4.8	6.9	5.5	4.9	7.7	6.9
Canada	--	--	.1	--	8.3	.1	.5	1.0
EC	5.3	4.1	6.7	10.4	30.8	16.4	23.9	39.2
Korea, Rep.	3.1	1.5	4.3	3.2	--	--	.9	.1
Singapore	1.2	1.6	9.8	2.9	--	--	.1	.1
Total	45.1	24.3	56.4	60.1	128.4	62.3	104.9	182.3

-- = Negligible.

Source: (2).

Table 69—Unmanufactured tobacco imports by country of origin, Egypt, 1977-83

Country of origin:	1977	1978	1979	1980	1981	1982	1983
	<u>Tons</u>						
United States	6,949	9,055	8,495	5,188	9,261	6,730	10,403
Albania	22	135	424	230	387	646	NA
Greece	6,045	6,566	6,048	5,265	7,967	6,060	10,585
Bulgaria	242	641	573	313	0	0	NA
Poland	192	533	481	205	260	56	NA
Turkey	2,236	1,679	1,689	1,610	2,830	5,018	1,482
Pakistan	145	20	408	493	35	110	NA
Yugoslavia	1,915	1,846	2,486	2,313	1,377	2,068	1,161
Spain	1	20	60	1,825	139	211	NA
Italy	3,531	2,360	2,145	1,825	2,237	5,967	5,139
Ghana	87	46	26	9	19	6	NA
China, People's Republic	3,769	3,183	2,699	2,222	3,260	5,155	3,275
Philippines	105	60	84	52	76	56	NA
India	361	161	152	127	187	881	3,567
Soviet Union	1	14	27	0	0	0	NA
Syria	74	64	103	132	59	41	NA
Tunisia	0	0	108	43	242	41	NA
Zimbabwe	0	0	0	6,000	6,006	6,808	NA
Thailand	0	92	701	1,818	1,172	2,718	NA
Hong Kong	282	294	258	114	237	296	NA
Brazil	252	955	1,605	1,706	1,089	571	NA
Zambia	1,672	462	493	246	283	903	NA
Malawi	779	536	575	393	634	628	NA
Argentina	197	113	136	192	178	208	1,563
Romania	44	368	232	84	456	1,185	NA
Other	112	202	158	110	836	894	<u>1/</u> 11,853
Total	29,038	29,453	30,260	34,694	42,636	47,638	49,028

NA = Not available.

1/ Includes 2,582 tons from Canada.

Source: (2).

Table 70--Unmanufactured tobacco imports and U.S. market share, Egypt, 1976-84

Item	1976	1977	1978	1979	1980	1981	1982	1983	1984
	<u>Tons</u>								
Total imports	22,966	29,038	29,453	30,260	34,694	42,636	47,638	49,028	53,400
Imports from									
United States	4,374	6,949	9,055	8,495	5,188	9,261	6,730	10,403	16,920
	<u>Percent</u>								
U.S. market share as a portion of total	19	24	31	28	15	22	14	21	32

Source: Derived from (2, 20).

Table 71--Imports of selected high-value foods and consumer-ready items, by value, Egypt, 1976-82

Commodity	1976	1977	1978	1979	1980	1981	1982 ^{1/}
	<u>1,000 dollars</u>						
Apples	4,451	3,795	5,802	7,454	11,859	16,776	14,961
Bananas	2	0	350	1,197	1,166	5,665	8,915
Nuts and preparations	5,186	6,499	10,273	7,676	8,003	10,547	9,009
Fruit preparations	5,424	3,821	7,864	6,233	2,413	7,261	4,819
Dried fruit	401	2,290	1,563	5,714	3,231	3,847	7,222
Sugar preparations	600	310	17,344	4,776	4,968	4,422	4,201
Chocolates	639	924	1,714	2,511	3,517	3,744	3,107
Cocoa	2,853	3,312	15,259	1,499	2,006	2,173	3,824
Tea and mate	37,612	67,150	123,986	66,147	47,166	58,624	87,734
Coffee	12,827	14,390	3,058	4,756	17,036	9,287	16,100
Spices	3,717	2,280	7,273	3,037	3,861	6,036	3,375
Margarine	922	1,173	10,713	2,853	1,078	41,816	8,951
Soup	729	1,631	3,248	2,115	2,880	3,089	7,936
Sauces	248	302	1,380	425	301	662	255
Nonalcoholic beverages	2,768	2,573	1,995	3,656	2,784	4,523	2,512
Beer	2,183	1,000	1,512	1,311	597	575	733
Wine	1,278	330	1,291	1,198	648	631	540
Jam	2,697	2,844	3,368	3,908	784	2,488	1,769

^{1/} Estimate.

Source: Derived from (18, 20).

Table 72—Preserved fruit imports by country of origin, quantity, and value, Egypt, 1977-82--Continued

Item and country	1977	1978	1979	1980	1981	1982
	<u>1,000 dollars</u>					
Fruit juices:						
Turkey	0	0	0	0	258	157
Greece	9	0	49	9	0	104
Italy	9	0	24	31	26	56
United States	200	16	15	79	105	37
Other	132	296	264	451	107	30
Total	350	312	539	171	496	384
Canned fruit:						
Australia	0	86	64	102	91	35
Bulgaria	0	13	2	82	65	31
Kenya	0	18	142	42	93	25
Singapore	0	16	126	35	107	73
Italy	56	60	32	116	41	275
Spain	0	9	225	332	18	132
United States	0	30	138	263	434	535
Greece	0	0	68	41	312	275
Other	136	146	110	419	1,131	1,372
Total	192	378	907	1,432	2,292	2,753
Jam, jelly:						
Lebanon	59	0	3	911	4,630	3,456
Hungary	361	894	370	9	0	0
Switzerland	29	21	25	32	40	24
Bulgaria	11	0	13	0	0	0
Syria	2,907	5,874	4,262	381	0	0
United States	30	82	2	12	21	115
Other	135	243	566	212	1,590	1,066
Total	3,532	7,114	5,241	1,572	6,260	4,661
Dried figs:						
Turkey	4	8	33	326	561	596
Syria	76	265	256	0	0	0
Lebanon	0	3	0	99	979	728
Other	3	53	169	17	385	614
Total	83	329	458	442	1,925	1,938
Raisins:						
Greece	12	0	784	387	638	550
Turkey	79	959	0	17	419	1,697
Lebanon	53	137	114	1,896	2,264	177
United States	0	0	0	0	141	0
Syria	454	1,870	796	0	0	0
Other	184	648	508	13	711	65
Total	782	3,614	2,202	2,313	4,173	1,972

Source: (18).

Table 73--Bakery products imports by country of origin, quantity,
and value, Egypt, 1978-82--Continued

Item and country	1978	1979	1980	1981	1982
	<u>1,000 dollars</u>				
Fine bakery products,					
biscuits, cookies, cakes:					
United States	8	17	5	38	3
Cyprus	3	4	4	26	135
Other	60	77	56	62	34
EC:	528	686	772	799	556
Belgium-Luxembourg	160	686	772	799	556
Denmark	17	12	39	84	96
France	84	123	86	88	52
Germany, Federal Republic	7	35	29	59	16
Greece	2	64	111	66	33
Ireland	0	0	0	13	0
Italy	44	23	99	121	78
Netherlands	11	21	23	48	13
United Kingdom	203	229	226	142	216
Total	599	783	837	925	741
Pasta:					
Italy	1,407	1,740	526	177	24
Greece	49	143	190	0	38
Turkey	32	0	12	32	32
United States	0	0	24	0	1
Other	8	14	20	19	1
Total	1,496	1,897	772	228	124
Prepared cereals:					
United States	857	1,642	299	487	617
Netherlands	16	35	37	50	14
Other	80	65	24	75	36
Total	953	1,742	360	612	667

Source: Derived from (2, 18).

Table 74--European Communities' agricultural exports to Egypt,
by quantity, 1976-83

Item	1976	1977	1978	1979
			<u>Tons</u>	
Wheat	440,614	78,876	289,288	483,066
Wheat flour	282,194	397,931	530,265	678,953
Sugar	10,542	13,463	104,572	2,977
Preserved milk	10,000	19,059	21,439	26,914
Butter	10,699	17,183	19,839	35,174
Cheese	3,397	4,460	7,769	10,903
Eggs	6	10	125	1,178
Live animals	27	498	404	980
Vegetable oils	6,874	4,956	7,429	1,191
Tallow	13,044	6,049	10,877	15,787
Tobacco	3,503	1,277	2,172	2,261
Pulses	14,531	1,267	9	70
Beef	13	9	5	59
Mutton	1	23	—	14
Poultry meat	86	1,094	7,044	1,378
Canned meat	8,791	1,733	1,877	2,370
Barley	—	—	2,957	—
Bakery products	1,218	2,835	3,915	6,298
Apples	2,445	3,646	2,436	3,197
Tree nuts	607	1,070	472	1,015
Canned fruit	401	404	497	254
Canned vegetables	700	1,389	2,347	1,041
Sugar products	645	496	729	641
Chocolates	158	247	335	427
Animal feed	601	2,127	7,824	1,298

Continued--

Table 74—European Communities' agricultural exports to Egypt,
by quantity, 1976-83--Continued

Item	1980	1981	1982	1983
			<u>Tons</u>	
Wheat	1,459,626	165,932	33,647	1,021,286
Wheat flour	517,862	1,013,645	824,320	278,287
Sugar	132,615	178,666	132,093	54,597
Preserved milk	26,564	43,452	25,349	32,198
Butter	33,961	26,548	24,044	19,467
Cheese	10,493	11,814	20,499	35,599
Eggs	769	3,119	9,497	6,045
Live animals	6,031	52,692	68,889	76,498
Vegetable oils	9,002	18,517	10,081	17,811
Tallow	10,016	10,061	1,877	9,459
Tobacco	5,083	6,814	7,569	1,566
Pulses	1,268	17,082	1,167	79
Beef	53,216	40,841	12,171	28,657
Mutton	14	2	5	93
Poultry meat	12,188	5,666	3,540	17,967
Canned meat	4,084	8,671	2,295	7,406
Barley	10	—	1	—
Bakery products	2,597	1,658	1,254	3,675
Apples	3,260	3,469	2,256	949
Tree nuts	283	876	1,021	803
Canned fruit	1,078	1,043	956	1,263
Canned vegetables	9,013	20,540	8,096	23,977
Sugar products	1,275	1,159	1,152	1,172
Chocolates	668	804	723	812
Animal feed	9,908	30,416	49,544	113,407

— = Negligible.

Source: (18).

Table 75—European Communities' agricultural exports to Egypt,
by value, 1976-83

Item	1976	1977	1978	1979
	<u>1,000 dollars</u>			
Wheat	60,713	13,906	46,606	68,504
Wheat flour	51,761	64,171	101,536	149,402
Sugar	3,526	4,301	23,063	662
Preserved milk	10,209	23,016	21,116	37,509
Butter	21,289	25,103	48,511	74,700
Cheese	4,226	6,956	13,058	19,037
Eggs	9	20	120	1,136
Live animals	87	198	702	827
Vegetable oils	4,502	3,501	6,091	2,183
Tallow	5,914	3,083	6,721	12,541
Tobacco	3,673	1,347	2,180	1,945
Pulses	2,981	321	12	40
Beef	23	15	171	179
Mutton	1	91	—	36
Poultry meat	121	1,406	1,598	1,674
Canned meat	7,040	2,912	4,606	4,857
Barley	—	—	414	—
Bakery products	1,030	1,797	2,345	3,213
Apples	1,024	2,219	1,647	1,792
Tree nuts	624	1,216	732	1,776
Canned fruit	279	317	367	337
Canned vegetables	386	902	1,712	906
Sugar products	1,034	1,019	1,567	1,692
Chocolates	355	596	1,081	1,631
Animal feed	472	1,302	4,009	2,231
Total	206,166	202,717	347,645	456,221

Continued—

Table 75--European Communities' agricultural exports to Egypt,
by value, 1976-83--Continued

Item	1980	1981	1982	1983 ^{1/}
	<u>1,000 dollars</u>			
Wheat	263,094	29,943	6,127	158,752
Wheat flour	153,110	259,537	170,671	56,779
Sugar	80,455	91,242	37,016	15,646
Preserved milk	39,722	55,154	32,031	42,830
Butter	80,485	66,307	68,000	47,789
Cheese	20,340	22,921	29,572	50,739
Eggs	1,105	4,832	11,130	8,574
Live animals	14,306	92,254	80,655	88,729
Vegetable oils	9,998	18,136	10,131	17,527
Tallow	6,798	6,416	1,147	6,893
Tobacco	23,394	14,781	25,531	33,171
Pulses	564	4,987	474	81
Beef	90,617	67,971	14,923	35,311
Mutton	80	4	44	462
Poultry meat	16,431	7,261	3,887	13,921
Canned meat	8,536	13,948	4,149	11,129
Barley	--	--	1	--
Bakery products	2,798	2,911	2,886	4,919
Apples	2,010	1,931	1,285	441
Tree nuts	555	1,920	1,363	1,020
Canned fruit	807	849	989	1,125
Canned vegetables	9,676	16,560	7,903	22,086
Sugar products	2,787	3,081	2,985	2,284
Chocolates	2,737	2,877	2,474	2,711
Animal feed	7,120	20,305	23,951	47,122
Total ^{2/}	885,246	855,567	619,277	743,833

-- Negligible.

^{1/} Preliminary.

^{2/} Includes other commodities not shown separately.

Source: (18).

Table 76--U.S. agricultural exports to Egypt, by quantity, 1973-84

Item	1973	1974	1975	1976	1977	1978
	<u>Tons</u>					
Wheat	425,791	724,647	935,114	1,133,803	1,335,208	1,115,872
Wheat flour	39,145	28,259	100,016	316,000	300,550	382,257
Corn	180,197	465,506	511,021	644,170	533,240	806,050
Rice	0	213	0	220	221	89
Sunflower oil	0	0	0	0	0	25,250
Cottonseed oil:	92,437	129,940	199,429	123,309	201,611	180,005
Soybean oil	871	2,806	1,888	1,147	4,689	3,903
Tallow	64,613	96,409	105,200	127,534	113,394	129,480
Tobacco	1,068	5,586	4,732	5,044	12,119	11,115
Animal feed	3,629	307	5,427	15,422	25,000	49,500
Vegetables and: preparations	0	211	219	197	5,024	286
Dairy products:	0	104	954	497	1,250	2,354
Frozen poultry:	0	0	2	52	5,604	3,366
Beef	0	0	0	30	6	5
Cotton	0	0	4,350	0	25,148	13,550
	<u>Tons</u>					
	1979	1980	1981	1982	1983	1984
Wheat:	1,298,665	1,212,246	1,940,757	1,814,381	1,954,324	1,542,748
Wheat flour	445,972	338,030	546,199	616,716	1,385,358	509,265
Corn	465,902	984,188	1,343,762	1,180,716	1,586,165	1,537,484
Rice	1,150	0	1	34	6	33
Sunflower oil	0	30,735	25,376	0	48,794	18,245
Cottonseed oil:	116,324	168,217	74,434	158,058	44,252	50,312
Soybean oil	13,336	5,846	8,021	9,818	3,502	3,489
Tallow	132,215	187,510	205,050	182,808	226,891	242,676
Tobacco	1,727	7,825	7,301	9,959	9,818	16,920
Animal feed	0	75	1,999	10,922	22,641	8,066
Vegetables and: preparations	186	7,420	10,355	2,634	1,124	501
Dairy products:	1	11	8,056	17,770	16,824	42,777
Frozen poultry:	16,099	47,947	65,095	3,441	19,260	6,269
Beef	26	71	127	200	39	18
Cotton	22,150	0	0	0	0	0

Source: (21).

Table 77--U.S. agricultural exports to Egypt, by value, 1973-84

Item	1973	1974	1975	1976	1977	1978
	<u>1,000 dollars</u>					
Wheat	43,085	134,163	154,746	168,853	132,720	135,763
Wheat flour	7,342	1,733	13,771	46,938	46,786	66,886
Corn	15,927	60,584	68,543	74,081	51,187	86,427
Rice	0	164	0	96	155	32
Sunflower oil	0	0	0	0	0	14,945
Cottonseed oil	40,542	75,245	114,449	72,975	120,940	98,790
Soybean oil	451	2,898	2,202	814	2,891	3,113
Tallow	20,509	45,829	42,647	51,158	54,315	55,863
Tobacco	2,358	14,647	14,647	17,609	43,800	38,826
Animal feed	1,016	260	1,721	5,542	9,309	10,166
Nuts and preparations	0	0	67	40	50	125
Vegetables and preparations	0	216	217	213	867	841
Cattle hides	200	663	543	1,021	963	843
Dairy products	0	211	2,040	1,076	2,292	1,380
Frozen poultry	0	0	5	102	6,185	3,033
Eggs	0	0	0	1	2	316
Variety meats	0	0	0	15	201	1,460
Fruits and preparations	0	19	33	367	329	430
Beef	0	0	26	160	15	20
Cotton	0	0	4,421	0	46,514	19,711
Other	1,434	6,241	4,392	9,862	29,501	13,872
Total	122,969	342,956	424,692	453,691	540,297	554,229

Continued--

Table 77--U.S. agricultural exports to Egypt, by value, 1973-84--Continued

Item	1979	1980	1981	1982	1983	1984
	1,000 dollars					
Wheat	191,791	208,773	324,285	278,247	298,065	212,296
Wheat flour	105,228	87,089	106,689	113,139	190,952	116,517
Corn	56,827	130,976	189,324	136,157	205,844	222,898
Rice	515	0	1	29	6	38
Sunflower oil	0	19,196	15,698	0	28,848	12,293
Cottonseed oil	173,471	107,929	46,788	92,097	24,909	34,652
Soybean oil	11,876	4,946	3,167	4,739	2,877	3,086
Tallow	71,786	95,087	98,512	79,485	89,682	124,048
Tobacco	6,492	30,466	28,825	41,472	40,615	72,862
Animal feed	0	15	680	2,882	5,838	4,732
Nuts and preparations:	348	279	209	2,000	508	443
Vegetables and preparations	592	7,397	7,512	600	895	310
Cattle hides	341	0	326	4,000	18	0
Dairy products	60	72	3,409	9,000	15,067	49,143
Frozen poultry	16,527	47,500	75,634	2,919	10,129	4,857
Eggs	85	904	5,482	518	392	72
Variety meats	2,000	6,621	10,427	3,840	20,548	24,244
Fruits and preparations	1,208	1,357	2,859	2,200	1,016	685
Beef	154	316	532	900	298	132
Cotton	35,644	0	0	0	0	0
Other	21,228	18,747	47,265	28,121	37,786	25,881
Total	600,589	770,205	967,266	799,968	969,783	909,151

Source: (21).

Table 78--U.S. agricultural exports to Egypt
by method of financing, fiscal years 1955-85

Year	P. L. 480				
	Title I		Title II	Title III	
	Local currency	Dollar credit	famine relief	Voluntary agencies	Barter & WFP
	<u>Million dollars</u>				
1955	—	—	—	15.6	0.2
1956	71.1	—	—	11.8	7.3
1957	—	—	—	.2	.5
1958	—	—	—	.3	.5
1959	20.9	—	—	4.7	.2
1960	77.0	—	—	6.2	.3
1961	67.5	—	—	17.6	—
1962	129.2	—	9.9	14.8	2.1
1963	111.6	—	.7	11.6	—
1964	153.2	—	—	4.8	—
1965	105.2	—	.3	8.8	1.1
1966	75.0	12.7	.9	8.5	—
1967	1.0	—	.5	7.6	—
1968	—	—	.1	—	—
1969	—	—	.1	—	—
1970	—	—	—	—	—
1971	—	—	—	—	—
1972	—	—	—	—	—
1973	—	—	.8	—	—
1974	—	2.6	.3	—	—
1975	—	84.6	3.1	—	—
1976	—	141.7	2.0	—	—
1977	—	186.7	6.4	13.3	—
1978	—	177.8	3.3	9.1	—
1979	—	229.3	5.4	15.6	—
1980	—	285.4	5.0	13.1	—
1981	—	287.5	6.4	15.5	—
1982	—	274.4	0	9.4	15.7
1983	—	247.2	0	6.2	3.5
1984	—	250.0	0	8.1	2.0
1985	6/	225.0	0	18.7	5.0

Continued—

See footnotes at end of table.

Agricultural Exports

Table 79--Agricultural exports, by quantity, Egypt, 1974-83

Item	1974	1975	1976	1977	1978
	<u>Tons</u>				
Cotton <u>1/</u>	241,947	202,500	180,751	158,786	153,961
Rice	136,257	104,310	211,040	223,000	145,140
Potatoes	99,838	47,565	15,673	166,121	97,830
Onions	103,857	70,042	71,279	87,756	67,010
Oranges	162,494	210,317	170,107	170,547	132,815
Sugar, refined	46,689	40,393	39,253	58,428	44,654
Cottonseed cake	23,466	38,237	27,081	13,339	21,268
Peanuts	7,470	7,979	8,947	14,270	13,158
Flax	5,889	12,453	22,126	16,292	11,688
Tomatoes	1,976	2,188	2,475	3,845	2,061
Pulses	618	405	3	1,405	0
Lemons	97	97	557	95	258
Grapes	182	142	133	57	30
Dates	352	657	680	700	810
Beer	2,531	3,767	714	120	0
Wine	1,318	2,712	1,600	1,922	3
Honey	51	89	90	100	116
	1979	1980	1981	1982	1983 <u>2/</u>
	<u>Tons</u>				
Cotton <u>1/</u>	161,039	179,661	193,005	209,837	208,892
Rice	94,878	178,062	134,900	22,914	24,200
Potatoes	113,072	143,860	96,165	151,465	139,815
Onions	23,928	48,340	19,738	12,745	35,269
Oranges	74,592	109,513	113,720	182,000	147,805
Sugar, refined	28,185	8,883	22,327	4,000	1,800
Cottonseed cake	11,122	6,371	0	0	0
Peanuts	5,280	10,976	10,155	3,738	8,000
Flax	10,598	8,041	8,872	8,951	8,700
Tomatoes	4,172	2,057	3,294	8,576	12,400
Pulses	457	149	7	1,967	1,300
Lemons	491	519	357	708	900
Grapes	76	84	107	93	200
Dates	900	800	203	508	0
Beer	0	20	30	20	20
Wine	1,000	900	1,200	1,100	1,200
Honey	13	10	49	81	100

1/ Includes linters.

2/ Preliminary.

Source: (2, 18).

Table 80--Agricultural exports, by value, Egypt, 1974-83

Item	1974	1975	1976	1977	1978
	1,000 dollars				
Cotton <u>1/</u>	720,137	523,992	407,410	479,292	354,867
Rice	101,573	62,548	79,144	59,755	50,810
Potatoes	15,976	8,220	43,848	41,929	15,013
Onions	19,402	17,808	26,158	28,320	12,979
Oranges	28,534	47,636	48,888	54,974	53,014
Sugar, refined	24,978	36,180	25,560	26,196	18,482
Cottonseed cake	3,174	4,363	3,364	2,497	3,857
Peanuts	6,496	6,992	5,319	9,739	9,935
Flax	4,577	5,100	13,204	20,259	9,009
Tomatoes	646	856	1,160	1,697	1,350
Pulses	292	312	3	739	0
Lemons	21	22	181	243	176
Grapes	77	72	89	69	24
Dates	207	483	480	500	560
Beer	561	923	355	58	0
Wine	400	1,360	1,132	2,645	3
Honey	58	112	120	150	463
Total <u>2/</u>	983,347	799,682	742,834	810,647	622,258
	1979	1980	1981	1982	1983 <u>3/</u>
	1,000 dollars				
Cotton <u>1/</u>	396,856	443,451	477,393	419,456	441,546
Rice	31,531	68,000	53,000	11,613	10,200
Potatoes	26,901	32,501	25,548	41,100	30,653
Onions	4,725	11,646	6,771	5,287	11,723
Oranges	22,351	38,940	47,157	82,816	72,444
Sugar, refined	12,705	4,307	18,874	12,427	700
Cottonseed cake	2,015	1,340	0	0	0
Peanuts	5,800	10,434	8,089	10,145	19,670
Flax	8,940	6,739	5,310	3,483	3,600
Tomatoes	1,548	986	1,623	4,254	6,000
Pulses	334	103	6	639	400
Lemons	168	157	266	486	650
Grapes	58	67	49	91	200
Dates	700	1,000	205	525	0
Beer	0	30	40	40	50
Wine	1,011	1,200	1,500	1,400	1,400
Honey	48	40	178	236	300
Total <u>2/</u>	601,907	709,378	723,566	640,090	680,000

1/ Includes linters.

2/ Includes other minor commodities such as jasmine paste, spearmint oil, and essential oils.

3/ Preliminary.

Source: (2, 18).

Table 81--Cotton exports to major markets, by quantity, Egypt, 1970-82 ^{1/}

Country	1970	1971	1972	1973	1974	1975	1976
	<u>1,000 tons</u>						
Japan	22.5	30.7	33.2	39.1	55.7	5.5	25.0
China, People's Republic of	10.8	--	--	11.9	8.9	18.0	19.3
Germany, Federal Republic of	6.8	14.2	14.9	14.3	3.7	.8	5.3
Italy	14.5	15.1	11.6	22.3	11.1	4.6	7.6
Romania	13.2	14.2	14.7	15.0	11.2	22.8	9.5
Yugoslavia	11.2	2.7	5.4	3.9	2.4	4.9	3.6
Poland	8.1	10.7	7.6	8.6	6.7	10.2	5.0
France	9.1	8.4	10.8	10.7	9.5	5.2	7.6
Hungary	6.1	4.3	6.5	5.9	4.7	2.1	1.9
Korea, Republic of	--	--	--	.9	1.6	.6	.9
Korea, People's Dem. Rep. of	--	--	--	1.6	.6	1.5	1.4
Bulgaria	2.6	4.8	2.4	4.4	4.4	4.4	2.7
Spain	5.6	6.0	8.5	14.0	4.1	3.1	4.6
German Democratic Republic	4.4	3.7	3.1	3.3	7.7	6.5	3.6
Czechoslovakia	16.3	21.6	23.3	19.2	18.1	23.8	16.9
United States	1.1	2.1	1.8	.9	.8	.1	1.0
Soviet Union	99.6	110.3	77.4	63.0	61.3	64.2	30.8
Total ^{2/}	292.1	333.4	294.9	300.6	241.9	202.5	180.8
	1977	1978	1979	1980	1981	1982	
	<u>1,000 tons</u>						
Japan	19.9	19.4	24.9	24.7	27.7	31.0	
China, People's Republic of	8.6	19.9	15.2	29.1	33.6	26.0	
Germany, Federal Republic of	7.6	11.2	17.0	12.6	14.0	21.1	
Italy	5.3	9.1	8.5	12.6	16.6	18.0	
Romania	4.5	10.1	16.4	21.5	13.1	18.0	
Yugoslavia	2.7	11.0	6.9	10.8	11.4	17.0	
Poland	8.0	5.0	6.9	6.8	6.9	7.0	
France	5.9	8.7	3.5	5.3	9.0	5.3	
Hungary	2.7	5.6	3.6	1.2	4.6	5.0	
Korea, Republic of	.7	2.4	1.4	2.3	3.4	4.5	
Korea, People's Dem. Rep. of	1.4	1.9	--	5.2	8.8	11.9	
Bulgaria	3.8	1.4	2.7	4.3	3.1	3.7	
Spain	3.9	2.8	4.0	4.6	3.3	3.5	
German Democratic Republic	3.3	2.8	6.4	.0	2.4	3.0	
Czechoslovakia	21.7	.9	7.8	7.1	2.3	2.8	
United States	.6	.4	.2	.4	.1	.8	
Soviet Union	28.9	--	--	--	--	--	
Total ^{2/}	158.8	154.0	161.0	179.7	193.0	209.9	

-- = Negligible.

^{1/} Includes linters.

^{2/} Includes other countries not shown.

Source: (2, 18).

Table 82—Cotton exports to major markets, by value, Egypt, 1970-82 ^{1/}

Country	1970	1971	1972	1973	1974	1975	1976
	Million dollars						
Japan	22.4	29.1	33.1	53.2	145.5	10.2	49.2
China, People's Republic of	13.8	—	—	16.4	27.4	49.5	38.2
Germany, Federal Republic of	7.0	12.9	14.8	19.9	11.9	1.6	11.1
Italy	15.3	14.1	12.0	27.9	28.2	10.7	14.6
Romania	15.7	16.4	19.3	26.2	35.0	62.3	25.3
Yugoslavia	13.2	3.2	6.9	7.6	6.9	11.7	7.1
Poland	10.2	14.2	10.3	12.3	21.5	29.9	11.2
France	9.9	8.9	12.8	18.1	26.7	13.8	15.7
Hungary	7.8	5.0	8.7	8.2	14.0	5.9	1.8
Korea, Republic of	.5	.7	1.1	1.0	4.5	—	1.8
Korea, People's Dem. Rep. of	1.2	1.0	1.2	3.1	1.9	—	3.7
Bulgaria	3.2	6.5	3.2	7.5	14.6	12.7	6.9
Spain	5.0	5.0	8.8	18.0	10.6	7.5	8.7
German Democratic Republic	5.7	4.7	4.3	6.6	20.1	18.1	10.4
Czechoslovakia	21.5	28.9	32.2	39.0	58.4	60.1	46.4
United States	1.1	2.0	1.9	1.7	2.2	.2	1.9
Soviet Union	127.6	163.1	111.9	140.2	194.3	188.3	88.1
Total ^{2/}	343.5	402.5	372.5	493.4	720.1	524.0	407.4
	Million dollars						
	1977	1978	1979	1980	1981	1982	
Japan	56.5	46.6	68.2	68.8	75.3	82.0	
China, People's Republic of	31.9	58.6	29.2	51.5	62.2	51.6	
Germany, Federal Republic of	21.1	26.0	47.1	35.2	36.3	43.0	
Italy	15.2	21.2	23.6	39.6	46.8	51.0	
Romania	14.0	25.6	47.5	57.7	36.4	42.0	
Yugoslavia	7.1	25.4	18.0	28.7	30.7	38.0	
Poland	23.0	12.3	18.1	20.2	21.8	20.0	
France	17.7	21.2	10.0	16.1	26.4	42.0	
Hungary	7.5	14.0	10.6	3.3	12.4	11.0	
Korea, Republic of	1.7	5.5	3.0	6.1	9.3	.1	
Korea, People's Dem. Rep. of	1.7	5.5	3.9	6.1	9.3	9.0	
Bulgaria	13.9	4.1	5.9	12.1	8.8	9.7	
Spain	11.3	6.6	11.1	13.9	10.2	10.0	
German Democratic Republic	12.1	8.8	12.5	—	5.8	6.5	
Czechoslovakia	75.7	2.7	19.9	20.6	4.5	5.0	
United States	1.7	.9	.5	1.3	.3	1.9	
Soviet Union	110.1	—	—	—	—	—	
Total ^{2/}	479.3	354.9	396.9	443.5	477.4	419.5	

-- = Negligible.

^{1/} Includes linters.

^{2/} Includes other countries not shown.

Source: (2, 18).

Table 83--Refined sugar exports, by quantity, Egypt, 1973-82

Country	1973	1974	1975	1976	1977
	Tons				
Mauritania	4,370	4,968	2,000	7,925	4,166
Saudi Arabia	1,275	7,838	11,750	2,503	8,851
Yemen Arab Republic	6,302	10	4	3	3,208
Algeria	18,437	28,815	22,294	18,640	33,901
Syria	—	—	—	2,599	2,100
Jordan	26	—	—	731	—
Kuwait	—	—	4	300	2
Canada	—	—	—	—	—
Total <u>1/</u>	36,134	46,689	40,393	39,253	58,428
	Tons				
	1978	1979	1980	1981	1982
Mauritania	—	11,524	8,835	2,200	18,006
Saudi Arabia	1,500	—	—	14,474	—
Yemen Arab Republic	4,400	—	—	—	—
Algeria	16,203	2,230	—	—	—
Syria	—	—	—	—	—
Jordan	1,078	—	—	—	—
Kuwait	—	—	—	—	—
Canada	—	—	—	5,598	2,420
Total <u>1/</u>	44,654	28,185	8,883	22,327	20,432

-- = Negligible.

1/ Includes other countries not shown.

Source: (2).

Table 84--Refined sugar exports, by value, Egypt, 1973-82

Country	1973	1974	1975	1976	1977
<u>1,000 dollars</u>					
Mauritania	1,129	1,544	2,367	6,223	2,313
Saudi Arabia	354	4,995	9,858	886	2,422
Yemen Arab Republic	1,455	17	7	3	1,506
Algeria	6,370	14,548	22,033	11,974	16,677
Syria	—	—	—	992	868
Jordan	10	—	—	344	—
Kuwait	—	—	2	167	2
Canada	—	—	—	—	—
Total <u>1/</u>	10,450	24,027	36,175	25,557	26,194
<u>1,000 dollars</u>					
	1978	1979	1980	1981	1982
Mauritania	—	5,717	4,282	1,660	10,315
Saudi Arabia	323	—	—	11,533	—
Yemen Arab Republic	1,065	—	—	—	—
Algeria	6,457	563	—	—	—
Syria	—	—	—	—	—
Jordan	513	—	—	—	—
Kuwait	—	—	—	—	—
Canada	—	—	—	5,644	2,110
Total <u>1/</u>	18,479	12,718	4,305	18,874	12,427

— = Negligible.

1/ Includes other countries not shown.

Source: (2).

Table 85--Milled rice exports, by quantity, value, and unit value, Egypt, 1971-82

Country	1971	1972	1973	1974	1975	1976
	<u>Tons</u>					
Soviet Union	184,528	157,121	64,818	39,928	33,482	60,000
German Dem. Republic	11,749	8,514	5,850	4,499	6,024	22,506
Czechoslovakia	32,953	30,673	18,800	18,000	16,020	20,140
Hungary	3,011	4,500	2,800	--	3,000	2,100
Poland	36,780	37,774	14,033	--	3,010	15,250
Bulgaria	--	--	2,700	5,500	3,999	5,870
Yugoslavia	2,661	3,000	--	--	--	--
Germany, Federal Rep.	999	6,501	5,850	4,500	--	3,134
Netherlands	600	--	2,000	--	--	--
Finland	4,012	3,000	15,610	--	1,500	4,512
Italy	2,075	11,292	8,237	--	--	17,762
Oman	70	--	150	250	--	420
Libya	720	9,000	22,527	20,173	20,020	--
Sudan	10,441	6,489	3,000	3,500	--	--
Lebanon	5,969	6,274	14,606	8,026	3,700	2,729
Syria	36,739	36,249	26,998	5,112	--	7,247
Jordan	14,899	10,010	7,100	9,775	4,072	18,987
Qatar	78	--	126	100	--	80
Saudi Arabia	100	1,250	950	600	3,500	2,408
Turkey	--	--	1,500	5,000	4,980	--
India	46,382	70,022	--	--	--	10,000
Tunisia	1,500	2,998	2,000	--	--	--
Other	118,334	51,768	78,799	9,294	1,003	18,415
Total quantity	514,598	456,435	297,804	136,257	104,310	211,040
	<u>1,000 dollars</u>					
Total value	56,357	50,733	65,971	101,363	62,537	79,144
	<u>Dollars per ton</u>					
Unit value (average)	110	111	222	744	600	374

See footnote at end of table.

Continued--

Table 85--Milled rice exports, by quantity, value, and unit value,
Egypt, 1971-82--Continued

Country	1977	1978	1979	1980	1981	1982
	<u>Tons</u>					
Soviet Union	35,990	3,974	10,500	20,000	10,000	4,000
German Dem. Republic	6,999	1,000	9,990	7,500	25,500	499
Czechoslovakia	24,859	25,017	13,350	16,680	5,400	--
Hungary	--	--	--	--	5,000	--
Poland	--	--	10,004	12,500	2,000	--
Bulgaria	130	--	--	3,000	--	--
Yugoslavia	--	--	--	--	--	--
Germany, Federal Rep.	1,373	--	--	--	--	--
Netherlands	--	--	242	--	--	--
Finland	2,141	15,003	7,000	9,114	30,519	--
Italy	31,959	3,300	25	--	--	2,000
Oman	650	600	1,702	1,050	1,350	1,777
Libya	34,000	10,000	--	--	--	--
Sudan	1,100	3,003	3,321	7,548	5,469	5,350
Lebanon	6,882	8,343	3,217	5,900	8,240	1,458
Syria	39,779	24,731	1,300	--	--	125
Jordan	22,878	15,222	23,443	--	--	--
Qatar	1,200	200	805	--	--	98
Saudi Arabia	3,587	3,505	2,878	4,000	5,360	3,280
Turkey	--	200	--	--	--	--
India	--	--	--	--	--	--
Tunisia	--	2,500	--	--	--	--
Other	12,473	19,764	17,321	90,062	58,340	4,327
Total quantity	223,000	149,641	94,878	178,062	134,328	22,914
	<u>1,000 dollars</u>					
Total value	59,744	50,810	31,531	68,000	53,000	11,613
	<u>Dollars per ton</u>					
Unit value (average)	268	350	332	382	395	506

-- = Negligible.

Source: (2, 18).

USDA STATISTICAL BULLETIN
AGRICULTURAL STATISTICS OF EGYPT, 1970-84
GARDNER, GEORGE R. ET AL

UPDATE
2 OF 2

Agricultural Prices

Table 86--Rationed quantities and prices of basic food items
sold through Government foodstores, Egypt, 1981

Food item	Monthly ration		Price <u>3/</u>
	When supplies are low <u>1/</u>	When supplies are normal <u>2/</u>	
	--- Kilograms per family ---		Piasters/kilogram
Cooking oil <u>4/</u>	4	No limit	34
Rice:			
Unbagged	5	No limit	4
Bagged	5	No limit	14
Sugar:			
Unbagged	4	No limit	30
Bagged	4	No limit	32
Cubed	4	No limit	35
Tea <u>5/</u>	No limit	No limit	12
Red meat:			
Beef	1-8	8	68
Mutton	No limit	No limit	85
Flour:			
Domestic	No limit	No limit	8
Imported	No limit	No limit	10
Fava beans	1-4	4	12
Lentils	1-4	4	12
	----Number per family-----		
Chicken:			
Domestic	1	1	86
Imported	1-2	3	105

1/ Ration cards are used at Government food stores when supplies are low; purchases are limited, and the cards are marked.

2/ Ration cards usually are not used when supplies are adequate.

3/ 100 piastres (Pt) = 1 Egyptian pound (LE)

4/ Plastic bottles.

5/ Leaves. Price of tea is piasters per 25 grams.

Source: (10) as reported in (20).

Table 87—Fixed and farmgate producer prices, Egypt, 1980-81

Crop	1980			1981		
	Fixed 1/	Farmgate 2/	Difference	Fixed 1/	Farmgate 2/	Difference
	Egyptian pounds/ton		Percent	Egyptian pounds/ton		Percent
Paddy rice	75.00	81.20	8	85.00	98.90	16
Sugarcane	13.00	15.27	17	16.00	18.10	13
Onions	50.00	42.07	-16	52.00	47.23	-9
Fava beans	161.30	199.10	23	225.81	234.71	4
Lentils	250.00	295.63	18	375.00	421.06	12
Soybeans	210.00	207.00	-1	230.00	285.00	24
Peanuts	266.66	316.27	19	333.33	404.12	21
Sesame	541.66	604.00	12	625.00	619.06	-1
Wheat, local variety	76.70	88.00	15	76.70	93.00	21

1/ Official Government procurement price.

2/ Average free market prices received at the farmgate.

Source: (5) as reported in (20).

Table 88--Announced cooperative purchase prices for selected agricultural crops, Egypt, 1973/74-81/82 1/

Crop	1973/74	1974/75	1975/76	1976/77	1977/78
<u>Egyptian pounds per ton</u>					
Seed cotton, unginne <u>d</u> <u>2/</u>	150.00	161.00	206.00	219.00	219.00
Wheat:					
Giza 155	46.70	46.70	46.70	46.70	46.70
Mexican HYV	53.30	53.30	53.30	53.30	53.30
Rice	32.00	40.00	50.00	50.00	65.00
Sugarcane	6.00	7.00	8.00	8.00	9.00
Horsebeans	58.10	83.90	83.90	96.80	96.80
Winter onions	22.00	27.00	33.00	33.00	38.00
Peanuts	93.30	160.00	160.00	186.70	240.00
Sesame	158.30	183.30	208.30	208.30	208.30
Lentils	NA	106.30	137.50	156.25	156.25
	1978/79	1979/80	1980/81	1981/82	
<u>Egyptian pounds per ton</u>					
Seed cotton, unginne <u>d</u> <u>2/</u>	289.00	292.00	NA	NA	
Wheat:					
Giza 155	63.00	76.70	76.70	76.70	
Mexican HYV	70.00	83.30	83.30	83.30	
Rice	65.00	75.00	85.00	95.00	
Sugarcane	12.50	15.50	16.00	16.00	
Horsebeans	129.00	161.30	225.80	238.70	
Winter onions	43.00	45.00	52.00	72.00	
Peanuts	240.00	240.00	333.30	333.30	
	to 266.70	to 266.70			
Sesame	416.70	541.70	625.00	625.00	
Lentils	218.75	250.00	375.00	375.00	

NA = Not available.

1/ Covers the major crops marketed cooperatively (or under contracts with mills) in whole or in part; prices are for first-grade quality. Prices are for agricultural years ending October 31.

2/ Average paid price.

Source: (5).

Table 89—Principal importers of agricultural commodities in Egypt

Importer	Commodities handled	Government policy	Share of trade:	
			1981	1982
General Authority for Supply of Commodities (GASC) of the Ministry of Supply and public sector companies authorized to handle their tenders.	Wheat, wheat flour, corn, vegetable oils, dairy products, beef, poultry meat, tea, fish, coffee, sugar, mutton, sesame, canned meat, soybean products, lentils, dry beans, peas.	Waiver for import duties. Top priority for foreign exchange allocations. Plenty of funds for travel to locate bargain purchases. A major part of the subsidy system.	78 to 80	<u>Percent</u> 79 to 80
Ministry of Economy through public sector companies, Misr Company, Eastern Tobacco, Nasr Tobacco, and others.	Unmanufactured tobacco, cigarettes, tallow, hides and skins, and other items used in industry. Cotton occasionally imported.	Import duty of \$23 per kilogram of tobacco paid as traditional method of collecting revenue.	9	11 to 12
Ministry of Agriculture	Live animals for breeding and for slaughter, animal feed, seed, nursery stock, fertilizer, pesticides, and various inputs used for agriculture.	High priority given for allocation of foreign exchange. Duty-free entry.	2 to 3	4
Ministry of Defense	Selected food items for areas or items not always purchased by GASC.	Duty-free entry.	1	1
Relief agencies (such as CARE and Catholic Relief Service)	Dry milk, butter, bulgur, corn soybean blend, flour.	Duty-free imports because most items are donated.	1	1
International hotels, foreign bank or corporation personnel, diplomats	Processed foods, beverages.	When they use their own foreign exchange, import license granted more quickly, but they must pay the listed import duty, except for diplomats with duty-free entry.	5 to 7	2
Private firms	Snack food items, soft drinks, beer, wine, distilled beverages, apples, bananas, other fresh fruit and vegetables, canned food, meat.	Must pay import duties. Now must buy foreign exchange from own exchange depositors and prepay.	5 to 7	2

Source: Derived from (2, 3, and 20).

Table 90--Major changes in agricultural trade policy, Egypt, 1952-82

Item	1952-61	1962-66	1967-72	1973-76	1977-81	1982
Government role	Grain imports were relatively small. Ministry of Supply took over grain imports from private firms. Private firms were taken over by public companies, often as shares purchased with bonds.	Great rise in food imports by Ministry of Supply. PL 480 aid from the United States rose to a peak in 1965 of \$165 million and fell in 1966. Most major industries and trade were nationalized.	Public food imports fell as PL 480 and foreign exchange dwindled. As the 1967 Six Day War caused a break in U.S.-Egyptian relations, more trade with Communist countries through trade agreements was arranged.	Sharp increase in food imports by GASC. The renewal of relations with the United States in 1975 led to a striking rise in food aid in 1975 and 1976. CIP financing was expanded to cover items not financed by PL 480.	Following Jan. 1977 riots, public food imports soared. Food subsidy costs rose from \$1.3 billion in 1977 to about \$2 billion in 1981. Government bakeries supplied more subsidized bread at half plaster per loaf through Jan. 1981. Then the price doubled as the size of the loaf was increased 25 percent.	Concern about rising dependence on food imports, over 50 percent of consumption, and slower growth in foreign exchange prompted formation of the Import Rationalization Committee. Temporary bans for poultry, eggs, apples, bananas, and other items followed.
Private firms	Traditional exports of onions and potatoes handled by private firms. Lebanese, Greeks, and Jews owned many trade firms and Pres. Abdul Gamel Nasser made them a target for nationalization.	Government firms given a monopoly for export of 20 crops. Private importers fled the country. Expansion of public firms and subsidies ended profit opportunity for private firms.	Strict laws on foreign exchange and lack of credit crushed remaining private traders. Individuals harassed for any mail order imports of food or household items.	President Anwar Sadat announced the "Open Door" policy. Many new private firms established, but the subsidy system and GASC imports limited food trade. Private firms did better in autos, medicine, and durables.	Private firms expanded. Profits rose as a real estate boom encouraged more Malian investment in Egyptian banking. New laws allowed Egyptians to keep foreign currency accounts in local banks. Purchases of poultry, fruit, and processed foods rose.	New rules forcing private importers to deposit cash for letters of credit reduced trade opportunities. IRC upset private traders. Bans on food imports crippled private imports of semiluxury foods.
U.S. agricultural exports	Initially small sales of wheat, corn, cottonseed oil, and tobacco began to rise.	Over 80 percent of the peak value of \$80 million in 1965 financed under PL 480.	Exports dwindled to a low of \$9 million in 1971. Small corn and tobacco sales remained, but no wheat.	Credit from grain firms brought a rebound for wheat and corn. Increases spurred by Arab oil money.	Imports' value rose to about \$1 billion in 1981, double 1977; more PL 480, CIP loans.	Imports of poultry, eggs, apples sharply set back but greater wheat sales kept the value steady.

Source: Derived from (2 and 20).

UNITED STATES DEPARTMENT OF AGRICULTURE
ECONOMIC RESEARCH SERVICE
1311 NEW YORK AVENUE N.W.
WASHINGTON, D.C. 20005-4786

OFFICIAL BUSINESS
PENALTY FOR PRIVATE USE \$300

BULK RATE
POSTAGE & FEES PAID
USDA
PERMIT NO. G 145

IP 585
Sclar, H
Updata Publications Inc
1746 Westwood Blvd
Los Angeles CA 90024

Up-to-Date Ag Trade Statistics from the Source



If you need to know about agricultural trade, you need **Foreign Agricultural Trade of the United States (FATUS)**, USDA's bimonthly statistical report on farm exports and imports.

Every other month, FATUS brings you articles and detailed statistics on:

- Ag exports and imports of over 100 commodities
- Price developments in ag trade
- The most current information available on the farm trade situation

In addition, FATUS periodically presents feature articles and statistics on:

- Ag trade with selected countries
- Farm export estimates by State
- Government ag export programs

Every year, you will receive two comprehensive volumes of annual statistics: calendar year and fiscal year, on quantity and value of exports and imports by commodity and country.

If these are the statistics you need, you need FATUS.

Subscriptions may be purchased from

Superintendent of Documents
U.S. Government Printing Office
Washington, D.C. 20402

Include your name, address, ZIP code, and a check or money order for \$26 (\$32.50 for foreign subscribers) payable to Superintendent of Documents. Or charge your subscription to your VISA, MasterCard, or GPO deposit account (include account number and expiration date). For faster service, phone in charge orders to GPO by calling (202) 783-7338.

END