



AgEcon SEARCH
RESEARCH IN AGRICULTURAL & APPLIED ECONOMICS

The World's Largest Open Access Agricultural & Applied Economics Digital Library

This document is discoverable and free to researchers across the globe due to the work of AgEcon Search.

Help ensure our sustainability.

Give to AgEcon Search

AgEcon Search

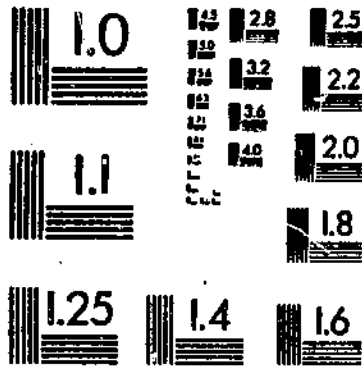
<http://ageconsearch.umn.edu>

aesearch@umn.edu

*Papers downloaded from **AgEcon Search** may be used for non-commercial purposes and personal study only. No other use, including posting to another Internet site, is permitted without permission from the copyright owner (not AgEcon Search), or as allowed under the provisions of Fair Use, U.S. Copyright Act, Title 17 U.S.C.*

5572-1 USDA STATISTICAL BULLETIN 1964-65 CATTLE AND GOAT DATA
MEAT ANIMALS: PRODUCTION, DISPOSITION, AND INCOME, FINAL ESTIMATES FOR
CROP REPORTING BOARD U.S. DEPT. OF AGRICULTURE 1 OF 1

START





**United States
Department of
Agriculture**

**Statistical
Reporting
Service**

**Crop
Reporting
Board**

**Statistical
Bulletin
Number 724**

Meat Animals

**Production, Disposition,
and Income, Final Estimates
for 1979-82**

MEAT ANIMALS: PRODUCTION, DISPOSITION, AND INCOME, FINAL ESTIMATES FOR 1979-82. Crop Reporting Board, Statistical Reporting Service, U.S. Department of Agriculture, Statistical Bulletin No. 724.

Abstract

This publication presents final estimates for farm production, disposition, and income from meat animals for the period 1979-82. Some estimates are slightly revised. This report continues the official series published in Statistical Bulletin No. 660 issued April 1981. Estimates contained in this publication provide a historic record and a benchmark for current estimates.

Washington, D.C. 20250

April 1985

CONTENTS

	<u>PAGE</u>
INTRODUCTION	4
DEFINITIONS	5
TABLES	
UNITED STATES:	
Meat animals: Production, marketings, and income	6
Cattle and calves: Inventory, supply, and disposition	6
Hogs and pigs: Inventory, supply, and disposition	6
Sheep and lambs: Inventory, supply, and disposition	6
Meat animals: Production and marketings (Metric Units)	7
Cattle and calves: Production and income	7
Hogs and pigs: Production and income	7
Sheep and lambs: Production and income	7
BY STATES:	
Cattle and calves: Inventory, supply, disposition, production, and income	8-15
Hogs and pigs: Inventory, supply, disposition, production, and income	16-23
Sheep and lambs: Inventory, supply, disposition, production, and income	24-31

INTRODUCTION

Meat animal estimates are published on a current basis for each year. Final estimates for the State and U.S. series resulted from a thorough review of the original survey indications and estimates as well as new data, including the 1982 Census of Agriculture. Records relating to market receipts and estimates of commercial and farm slaughter are also considered. Inventory estimates relate to January 1 of each year for cattle and sheep and to December 1 for hogs.

Final estimates of inventory numbers and births were released in Statistical Bulletins No. 716 (hogs), No. 719 (sheep), and No. 720 (cattle). Because production estimates take into account the differences in inventory numbers and weights at the beginning and at the end of the year, as well as pounds sold during the year, a revision of the inventory numbers, births, or disposition items generally requires adjustments in production and income estimates.

Procedures for calculating the average live weights used in deriving pounds of production, marketings, and custom slaughter were changed in 1981. Minor changes in this publication for 1979 and 1980 cattle estimates, previously published using the old basis, reflect the new average live weight computations.

DEFINITIONS

INVENTORY, SUPPLY, AND DISPOSITION: Balance sheet estimates; the sum of inventory on hand at the beginning of the year, births, and inshipments equal the sum of marketings, farm slaughter, deaths, and inventory on hand at the end of the year.

INSHIPMENTS: Livestock shipped into States for feeding or breeding. Excludes livestock for immediate slaughter.

MARKETINGS: Includes animals for slaughter market as well as younger animals shipped to other States for feeding or breeding purposes. Excludes interfarm sales within the State and farm slaughter. Number of head marketed includes all custom slaughter, but live weight marketings shown in pounds exclude custom slaughter consumed on farms where produced.

FARM SLAUGHTER: Animals slaughtered on farms, primarily for home consumption. Excludes custom slaughter for farmers at commercial establishments.

PRODUCTION: Includes total live weight of livestock marketed, farm slaughter and custom slaughter consumed on farms where produced, minus the live weight of inshipments, and any increase or decrease in live weight of inventory.

PRICE: State prices are annual prices computed by weighting monthly estimated prices received by farmers by monthly marketings. U.S. prices are derived by weighting State prices by respective marketings.

CASH RECEIPTS: Receipts from marketings and any sale of farm slaughtered meats. Includes allowance for feeder pig outshipments.

VALUE OF HOME CONSUMPTION: Total value of slaughter on the farm and custom slaughter consumed on farms where produced.

GROSS INCOME: Sum of cash receipts and value of home consumption.

MEAT ANIMALS: PRODUCTION, MARKETINGS AND INCOME, UNITED STATES, 1979-82 1/

YEAR	PRODUCTION	MARKETINGS	VALUE OF PRODUCTION	CASH RECEIPTS	VALUE OF HOME CONSUMPTION	GROSS INCOME
	MILLION POUNDS		MILLION DOLLARS			
1979	62,125	74,167	36,077	44,535	961	45,496
1980	64,432	74,503	34,735	41,241	850	42,091
1981	63,764	74,041	33,573	39,748	819	40,568
1982	61,158	74,448	33,276	40,917	768	41,685

SEE FOOTNOTES AT BOTTOM OF PAGE.

CATTLE AND CALVES
INVENTORY, SUPPLY AND DISPOSITION, UNITED STATES, 1979-82 2/

YEAR	INVENTORY JAN. 1	CALF CROP	INSHIPMENTS	MARKETINGS 3/ CATTLE	MARKETINGS 3/ CALVES	FARM SLAUGHTER 4/	DEATHS CATTLE	DEATHS CALVES
	1,000 HEAD							
1979	110,864	42,596	22,322	48,358	10,151	430	1,900	3,700
1980	111,242	44,938	20,513	46,026	10,502	401	1,795	3,618
1981	114,351	44,666	18,914	46,647	10,383	398	1,700	3,359
1982	115,444	44,200	21,289	49,549	10,560	395	1,843	3,586
1983	115,001							

SEE FOOTNOTES AT BOTTOM OF PAGE.

HOGS AND PIGS
INVENTORY, SUPPLY AND DISPOSITION, UNITED STATES, 1979-82 2/

YEAR	INVENTORY DEC. 1 PREVIOUS YEAR	PIG CROP	INSHIPMENTS	MARKETINGS 3/	FARM SLAUGHTER 4/	DEATHS
	1,000 HEAD					
1979	60,356	102,792	5,003	92,499	1,070	7,265
1980	67,318	101,720	4,668	100,651	1,100	7,494
1981	64,462	93,853	4,147	95,986	895	6,883
1982	58,698	85,189	3,827	86,972	655	5,552
1983	54,534					

SEE FOOTNOTES AT BOTTOM OF PAGE.

SHEEP AND LAMBS
INVENTORY, SUPPLY AND DISPOSITION, UNITED STATES, 1979-82 2/

YEAR	INVENTORY JAN. 1	LAMB CROP	INSHIPMENTS	MARKETINGS 3/ SHEEP	MARKETINGS 3/ LAMBS	FARM SLAUGHTER 4/	DEATHS SHEEP	DEATHS LAMBS
	1,000 HEAD							
1979	12,365	7,974	2,143	1,347	6,336	172	867	1,063
1980	12,699	8,257	2,216	1,395	6,743	166	894	1,026
1981	12,947	8,820	1,885	1,510	7,103	189	818	1,035
1982	12,997	8,580	2,115	2,124	7,358	195	815	1,060
1983	12,140							

1/ INCLUDES CATTLE AND CALVES, HOGS, SHEEP AND LAMBS. 2/ BALANCE SHEET ESTIMATES; THE SUM OF INVENTORY BEGINNING OF YEAR, BIRTHS, AND INSHIPMENTS IS EQUAL TO THE SUM OF MARKETINGS, FARM SLAUGHTER, DEATHS AND INVENTORY END OF YEAR FOR INDIVIDUAL STATES. 3/ INCLUDES CUSTOM SLAUGHTER FOR USE ON FARMS WHERE PRODUCTS PRODUCED, STATE OUTSHIPMENTS, BUT EXCLUDES INTERFARM SALES WITHIN THE STATE. 4/ EXCLUDES CUSTOM SLAUGHTER FOR FARMERS AT COMMERCIAL ESTABLISHMENTS.

MEAT ANIMALS: PRODUCTION AND MARKETINGS, UNITED STATES, 1979-82 (METRIC UNITS)

YEAR	CATTLE & CALVES		HOGS & PIGS		SHEEP & LAMBS		MEAT ANIMALS 1/	
	PRODUCTION	MARKETINGS	PRODUCTION	MARKETINGS	PRODUCTION	MARKETINGS	PRODUCTION	MARKETINGS
	THOUSAND METRIC TONS							
1979	17,601	23,530	10,259	9,746	320	366	28,180	33,642
1980	18,272	22,775	10,615	10,631	339	388	29,226	33,794
1981	18,678	23,086	9,894	10,097	350	402	28,922	33,585
1982	18,468	24,165	8,917	9,142	356	462	27,741	33,769

SEE FOOTNOTES AT BOTTOM OF PAGE.

CATTLE AND CALVES
PRODUCTION AND INCOME, UNITED STATES, 1979-82

YEAR	PRODUCTION		MARKETINGS		AVERAGE PRICE PER	CASH	VALUE OF	GROSS
	2/	3/	CATTLE	CALVES	100 POUNDS			
	MILLION POUNDS		DOLLARS			MILLION DOLLARS		
1979	38,803	51,875	66.10	88.70	26,247	35,025	694	35,719
1980	40,284	50,211	62.40	76.80	25,469	31,828	624	32,452
1981	41,178	50,897	58.60	64.00	23,682	29,538	601	30,139
1982	40,715	53,275	56.70	59.80	22,623	29,813	577	30,390

SEE FOOTNOTES AT BOTTOM OF PAGE.

HOGS AND PIGS
PRODUCTION AND INCOME, UNITED STATES, 1979-82

YEAR	PRODUCTION		MARKETINGS		AVERAGE PRICE PER	CASH	VALUE OF	GROSS
	2/	3/	100 POUNDS	PRODUCTION				
	MILLION POUNDS		DOLLARS			MILLION DOLLARS		
1979	22,617	21,486	41.80	9,424	9,040	255	9,295	
1980	23,402	23,438	38.00	8,864	8,943	215	9,157	
1981	21,813	22,259	43.90	9,532	9,794	206	10,001	
1982	19,658	20,155	52.30	10,297	10,659	178	10,837	

SEE FOOTNOTES AT BOTTOM OF PAGE.

SHEEP AND LAMBS
PRODUCTION AND INCOME, UNITED STATES, 1979-82

YEAR	PRODUCTION		MARKETINGS		AVERAGE PRICE PER	CASH	VALUE OF	GROSS
	2/	3/	SHEEP	LAMBS	100 POUNDS			
	MILLION POUNDS		DOLLARS			MILLION DOLLARS		
1979	705	807	25.70	66.70	407	470	12	482
1980	746	855	21.30	63.60	403	471	12	482
1981	772	886	21.20	54.90	359	416	12	428
1982	785	1,018	19.50	53.10	356	445	13	458

1/ INCLUDES CATTLE AND CALVES, HOGS, SHEEP AND LAMBS. 2/ ADJUSTMENTS MADE FOR CHANGES IN INVENTORY AND FOR INSHIPMENTS. 3/ EXCLUDES CUSTOM SLAUGHTER FOR USE ON FARMS WHERE PRODUCED AND INTERFARM SALES WITHIN THE STATE. 4/ RECEIPTS FROM MARKETINGS AND ANY SALE OF FARM SLAUGHTER. 5/ INCLUDES ALLOWANCE FOR FEEDER PIG OUTSHIPMENTS.

CATTLE AND CALVES
INVENTORY, SUPPLY AND DISPOSITION, 1979 1/

STATE	INVENTORY		CALF CROP	INSHIP- MENTS	MARKETINGS 2/		FARM SLAUGHTER 3/	DEATHS		INVENTORY JAN 1 1980
	JAN 1 1979				CATTLE	CALVES		CATTLE	CALVES	
	1000 HD	1000 HD	1000 HD	1000 HD	1000 HD	1000 HD	1000 HD	1000 HD	1000 HD	
ALA	1,820	850	10	620	243	7	30	50	1,730	
ALAS	8.7	2.8	0	0.5	0.1	1.1	0.9	0.5	8.4	
ARIZ	1,200	265	690	955	89	2	32	27	1,050	
ARK	2,000	980	5	537	282	11	60	65	2,050	
CALIF	4,700	1,530	1,509	2,619	261	19	85	205	4,550	
COLO	3,090	790	2,307	2,933	129	5	60	85	2,975	
CONN	102	54	4	25	22	2	2	5	104	
DEL	30	13	0	6	3	1	1	2	30	
FLA	2,180	1,060	76	298	623	3	42	50	2,300	
GA	1,650	780	19	367	347	5	26	54	1,650	
HAW	215	66	1	56	4	1	3	5	213	
IDAHO	1,900	710	385	836	181	11	32	75	1,860	
ILL	2,850	870	625	1,383	111	8	43	100	2,700	
IND	1,750	640	210	633	13	6	23	75	1,850	
IOWA	7,200	1,950	2,300	3,829	140	11	100	220	7,150	
KANS	6,200	1,680	2,864	4,248	56	6	94	140	6,200	
KY	2,600	1,180	58	626	363	7	42	100	2,700	
LA	1,350	620	1	281	317	10	30	33	1,300	
MAINE	133	55	5	31	22	1	2	6	131	
MD	345	179	9	66	65	3	5	13	380	
MASS	102	47	1	19	18	1	2	6	104	
MICH	1,250	470	91	307	82	10	25	77	1,310	
MINN	3,650	1,290	647	1,428	136	15	68	190	3,750	
MISS	1,790	870	35	389	397	6	38	55	1,810	
MO	5,550	2,430	40	1,679	760	16	65	160	5,400	
MONT	2,607	1,490	167	802	652	10	46	109	2,645	
NEBR	6,450	1,860	3,200	4,762	105	3	80	160	6,400	
NEV	575	260	40	151	102	5	8	14	595	
N H	71	33	1	16	14	1	1	3	70	
N J	104	46	4	23	23	1	2	5	100	
N MEX	1,500	580	900	1,218	91	6	30	35	1,600	
N Y	1,711	920	20	194	543	10	31	93	1,780	
N C	1,030	470	5	187	175	8	20	35	1,080	
N DAK	1,967	1,040	53	587	349	9	25	90	2,000	
OHIO	1,750	683	165	567	100	9	25	72	1,825	
OKLA	5,300	2,000	1,400	2,695	217	8	100	180	5,500	
OREG	1,540	636	213	483	230	25	26	50	1,575	
PA	1,840	760	95	345	264	21	30	85	1,950	
R I	9	4	0.3	2.8	1.6	0.3	0.2	0.4	8	
S C	575	270	12	105	99	5	7	16	625	
S DAK	3,830	1,650	470	1,518	243	4	45	130	4,010	
TENN	2,350	1,030	64	680	331	3	40	90	2,300	
TEX	13,900	4,900	2,700	7,267	464	19	300	250	13,200	
UTAH	820	328	50	199	104	7	16	32	840	
VT	329	184	5	79	76	2	5	15	340	
VA	1,550	745	15	284	182	11	26	67	1,750	
WASH	1,375	510	348	431	77	58	29	59	1,579	
W VA	535	250	3	104	92	13	9	25	545	
WIS	4,100	1,985	95	637	916	22	80	245	4,280	
WYO	1,380	580	405	850	95	2	28	50	1,340	
U S	110,864	42,596	22,322	48,358	10,151	430	1,900	3,700	111,242	

1/ BALANCE SHEET ESTIMATES BY STATES; THE SUM OF INVENTORY JANUARY 1, 1979, CALF CROP AND INSHIPMENTS IS EQUAL TO THE SUM OF MARKETINGS, FARM SLAUGHTER, DEATHS AND INVENTORY JANUARY 1, 1980.

2/ INCLUDES CUSTOM SLAUGHTER FOR USE ON FARMS WHERE PRODUCED AND STATE OUTSHIPMENTS, BUT EXCLUDES INTERFARM SALES WITHIN THE STATE.

3/ EXCLUDES CUSTOM SLAUGHTER FOR FARMERS AT COMMERCIAL ESTABLISHMENTS.

CATTLE AND CALVES
PRODUCTION AND INCOME, 1979

STATE	PRODUCTION	MARKETINGS	AVERAGE PRICE		VALUE	CASH	VALUE OF	GROSS
	1/ 1000 LBS	2/ 1000 LBS	PER 100 POUNDS	PER 100 POUNDS	OF PRODUCTION	RECEIPTS 3/ 1000 DOLS	HOME CONSUMPTION 1000 DOLS	INCOME 1000 DOLS
			CATTLE	CALVES				
ALA	630,435	669,150	62.90	81.30	411,538	436,710	13,854	450,564
ALAS	1,104	400	53.00	46.80	585	212	563	755
ARIZ	545,315	1,021,040	65.70	87.50	364,856	679,563	3,481	683,044
ARK	613,620	559,820	66.30	96.80	430,710	390,614	22,208	412,822
CALIF	1,632,680	2,848,220	65.80	76.70	1,082,864	1,880,647	22,179	1,902,826
COLO	1,651,300	3,151,560	67.90	93.60	1,127,036	2,153,628	10,901	2,164,529
CONN	29,915	30,260	57.00	74.00	17,678	17,734	1,824	19,558
DEL	8,575	6,575	56.60	88.80	5,070	3,938	1,132	5,070
FLA	579,840	537,550	65.50	95.30	456,492	424,286	3,977	428,263
GA	459,490	426,820	60.70	85.80	306,805	287,528	9,010	296,538
HAW	56,710	55,015	51.20	63.00	28,984	28,356	653	29,009
IDAHO	788,920	977,530	66.90	89.30	535,088	669,139	13,676	682,815
ILL	954,355	1,442,985	64.30	79.30	618,419	931,145	27,999	959,144
IND	557,170	622,190	63.80	82.80	361,406	397,501	17,026	414,527
IOWA	2,451,730	4,120,980	65.80	84.60	1,633,016	2,715,489	31,327	2,746,816
KANS	2,710,550	4,574,280	70.10	92.60	1,908,463	3,209,756	25,228	3,234,984
KY	713,595	672,155	65.10	83.00	485,703	454,942	17,302	472,244
LA	335,080	357,350	59.90	88.10	235,816	246,415	13,320	259,735
MAINE	30,420	32,810	53.00	71.00	16,632	17,844	1,823	19,667
MD	102,405	77,200	56.10	87.00	63,585	47,870	4,977	52,847
MASS	22,058	21,858	57.00	76.00	13,186	12,787	1,471	14,258
MICH	359,735	348,980	58.20	86.60	217,401	208,292	17,593	225,885
MINN	1,262,565	1,559,660	58.90	81.90	749,664	924,007	20,918	944,925
MISS	446,780	459,770	60.20	88.00	311,738	315,013	12,261	327,274
MO	1,706,235	1,779,770	66.60	84.30	1,185,533	1,234,271	28,063	1,262,334
MONT	893,025	966,260	67.10	89.80	653,869	699,980	11,502	711,482
NEBR	3,039,790	5,175,060	66.30	88.40	2,027,007	3,440,810	9,945	3,450,755
NEV	184,905	190,190	63.60	84.20	125,655	128,348	4,100	132,448
N H	18,496	17,356	52.00	74.00	10,000	9,407	1,544	10,951
N J	25,670	30,315	52.00	94.70	16,636	18,661	2,662	21,323
N MEX	616,680	1,091,480	69.20	87.60	430,817	761,843	6,655	768,498
N Y	339,850	279,700	51.50	88.80	206,087	172,237	10,339	182,576
N C	275,640	209,855	57.20	82.10	173,162	132,698	22,421	155,119
N DAK	742,590	739,440	67.70	88.60	530,482	526,130	12,611	538,741
OHIO	592,970	600,150	61.90	85.70	372,130	375,991	21,682	397,673
OKLA	2,062,760	2,578,320	69.90	87.30	1,455,739	1,818,735	23,274	1,842,009
OREG	555,020	621,120	62.60	76.00	360,309	401,037	22,254	423,291
PA	451,970	407,950	59.50	97.90	289,420	257,387	27,730	285,117
R I	1,629	1,946	56.00	75.00	950	1,128	604	1,732
S C	147,115	134,545	60.20	87.50	101,952	93,075	5,264	98,339
S DAK	1,573,810	1,722,080	68.10	91.90	1,109,193	1,195,870	12,748	1,208,618
TENN	603,170	676,730	58.50	85.30	365,260	409,000	10,212	419,212
TEX	5,088,630	7,148,020	68.20	88.30	3,486,013	4,913,992	42,091	4,956,083
UTAH	241,130	242,050	64.80	88.70	164,584	164,836	9,616	174,452
VT	94,758	91,048	57.00	76.00	55,577	53,168	1,642	54,810
VA	513,950	337,580	58.70	86.30	322,875	215,018	12,417	227,435
WASH	455,110	497,030	65.90	78.60	307,103	330,232	50,196	380,428
W VA	137,800	114,080	55.70	79.50	83,016	68,150	10,645	78,795
WIS	1,012,000	884,010	54.70	113.00	679,469	595,583	35,351	630,934
WYO	484,285	764,515	71.40	93.50	351,190	553,947	3,641	557,588
U S	38,803,335	51,874,758			26,246,763	35,024,950	693,892	35,718,842

1/ ADJUSTMENTS MADE FOR CHANGES IN INVENTORY AND FOR INSHIPMENTS.

2/ EXCLUDES CUSTOM SLAUGHTER FOR USE ON FARMS WHERE PRODUCED AND INTERFARM SALES WITHIN THE STATE.

3/ RECEIPTS FROM MARKETINGS AND SALE OF FARM SLAUGHTER.

CATTLE AND CALVES
INVENTORY, SUPPLY AND DISPOSITION, 1980 1/

STATE	INVENTORY	CALF	INSHIP-	MARKETINGS		FARM SLAUGHTER	DEATHS		INVENTORY
	JAN 1 1980	CROP	MENTS	2/		3/	CATTLE	CALVES	JAN 1 1981
	1000 HD	1000 HD	1000 HD	1000 HD	1000 HD	1000 HD	1000 HD	1000 HD	1000 HD
ALA	1,730	880	50	407	244	5	30	48	1,925
ALAS	8.4	2.8	0.5	0.4	0.2	1.2	0.8	0.7	8.4
ARIZ	1,050	300	714	872	66	3	24	24	1,075
ARK	2,050	1,030	5	501	266	13	40	65	2,200
CALIF	4,550	1,630	1,065	1,940	254	21	85	185	4,760
COLO	2,975	910	2,235	2,638	182	10	65	100	3,125
CONN	104	53	2	22	27	1	2	4	103
DEL	30	13	0	4	3	1	1	2	32
FLA	2,300	1,140	59	304	611	8	46	50	2,480
GA	1,650	810	21	250	229	7	35	60	1,900
HAW	213	72	0	55	0	1	3	6	220
IDAHO	1,860	770	390	752	171	5	30	72	1,990
ILL	2,700	840	690	1,303	152	8	32	85	2,650
IND	1,850	660	230	753	84	5	23	75	1,800
IOWA	7,150	2,000	2,350	3,739	155	6	85	165	7,350
KANS	6,200	1,850	2,712	4,021	52	6	88	145	6,450
KY	2,700	1,240	60	789	453	8	45	105	2,600
LA	1,300	640	1	194	317	4	26	40	1,360
MAINE	131	55	6	26	22	2	4	7	131
MD	380	190	12	81	92	3	3	13	390
MASS	104	45	1	21	14	1	3	7	104
MICH	1,310	475	100	374	56	5	32	77	1,340
MINN	3,750	1,350	762	1,705	131	14	52	160	3,800
MISS	1,810	880	35	435	398	4	38	50	1,800
MO	5,400	2,420	40	1,415	661	10	60	154	5,550
MONT	2,645	1,520	116	868	621	7	28	82	2,675
NEBR	6,400	1,970	3,300	4,477	120	3	70	150	6,850
NEV	595	280	45	149	102	5	9	15	640
N H	70	32	1	16	14	1	1	3	68
N J	100	49	4	16	26	1	2	4	104
N MEX	1,600	600	700	1,313	117	5	30	35	1,400
N Y	1,780	950	22	226	537	4	33	116	1,831
N C	1,080	490	6	185	165	6	20	40	1,160
N DAK	2,000	1,060	50	760	411	10	19	60	1,850
OHIO	1,825	690	165	618	138	9	30	70	1,815
OKLA	5,500	2,150	1,200	2,980	228	10	92	140	5,400
OREG	1,575	705	140	343	210	34	28	55	1,750
PA	1,950	800	120	435	286	24	35	90	2,000
R I	8	4	0.3	1.8	1.6	0.3	0.2	0.4	8
S C	625	280	14	126	129	5	13	21	625
S DAK	4,010	1,750	475	1,685	295	5	40	110	4,100
TENN	2,300	1,060	84	595	338	5	46	110	2,350
TEX	13,200	5,500	1,950	6,006	402	12	250	280	13,700
UTAH	840	358	50	205	106	5	16	41	875
VT	340	180	5	58	99	4	7	20	337
VA	1,750	800	13	439	271	9	29	65	1,750
WASH	1,579	520	64	454	131	53	25	50	1,450
W VA	545	264	3	93	98	5	14	32	570
WIS	4,280	2,030	120	611	897	17	80	275	4,550
WYO	1,340	640	325	765	119	2	25	44	1,350
U S	111,242	44,938	20,513	46,026	10,502	401	1,795	3,618	114,351

1/ BALANCE SHEET ESTIMATES BY STATES; THE SUM OF INVENTORY JANUARY 1, 1980, CALF CROP AND INSHIPMENTS IS EQUAL TO THE SUM OF MARKETINGS, FARM SLAUGHTER, DEATHS AND INVENTORY JANUARY 1, 1981.

2/ INCLUDES CUSTOM SLAUGHTER FOR USE ON FARMS WHERE PRODUCED AND STATE OUTSHIPMENTS, BUT EXCLUDES INTERFARM SALES WITHIN THE STATE.

3/ EXCLUDES CUSTOM SLAUGHTER FOR FARMERS AT COMMERCIAL ESTABLISHMENTS.

CATTLE AND CALVES
PRODUCTION AND INCOME, 1980

STATE	PRODUCTION	MARKETINGS	AVERAGE PRICE		VALUE	CASH	VALUE OF	GROSS
	1/	2/	PER 100 POUNDS		OF	RECEIPTS	HOME	INCOME
	1000 LBS	1000 LBS	CATTLE	CALVES	PRODUCTION	3/	CONSUMPTION	1000 DOLS
ALA	584,765	476,080	55.30	69.10	340,807	276,376	9,510	285,886
ALAS	966	470	56.00	55.00	540	263	562	825
ARIZ	621,015	920,945	65.10	74.60	408,539	602,298	6,541	608,839
ARK	639,280	519,820	51.80	72.70	358,347	288,691	20,311	309,002
CALIF	1,545,370	2,144,665	63.60	71.60	991,346	1,368,156	28,024	1,396,180
COLO	1,575,530	2,850,480	65.60	80.20	1,047,272	1,880,193	17,647	1,897,840
CONN	26,310	27,430	55.00	73.00	15,102	15,718	1,320	17,038
DEL	7,405	4,275	54.00	84.80	4,206	2,516	1,080	3,596
FLA	610,000	516,390	59.90	76.70	406,141	347,173	10,555	357,728
GA	442,200	285,130	52.20	67.40	247,714	160,546	12,234	172,780
HAW	55,130	52,475	53.50	63.00	29,785	28,074	682	28,756
IDAHO	749,170	884,860	62.90	74.30	479,587	563,902	7,721	571,623
ILL	990,389	1,413,910	62.30	72.20	620,349	884,332	25,486	909,818
IND	603,225	777,575	61.00	72.70	371,684	477,423	14,228	491,651
IOWA	2,753,980	4,071,520	65.30	78.20	1,802,460	2,662,058	24,544	2,686,602
KANS	2,745,930	4,371,250	65.30	76.50	1,798,729	2,855,945	21,891	2,877,836
KY	791,750	882,690	59.30	72.40	489,778	544,033	14,243	558,276
LA	326,335	277,225	50.60	70.80	190,869	164,161	6,972	171,133
MAINE	25,650	25,270	56.00	68.00	14,703	14,454	3,371	17,925
MD	111,615	96,730	54.00	84.80	66,717	58,585	6,330	64,915
MASS	24,650	22,830	55.00	71.00	13,760	12,759	1,892	14,651
MICH	392,860	429,570	55.90	82.50	226,336	243,689	11,756	255,445
MINN	1,453,370	1,875,220	55.70	78.30	819,291	1,049,684	21,526	1,071,210
MISS	498,840	508,240	50.40	72.90	283,138	286,931	8,171	295,102
MO	1,628,485	1,541,600	62.80	75.30	1,056,926	1,000,740	20,960	1,021,700
MONT	999,435	1,033,150	58.00	76.80	620,760	639,938	8,769	648,707
NEBR	3,069,350	4,963,100	64.80	78.70	1,999,802	3,223,095	9,720	3,232,815
NEV	198,185	190,050	61.40	72.90	126,602	120,864	3,464	124,328
N H	16,486	15,886	53.00	69.00	9,016	8,698	2,099	10,797
N J	30,820	24,900	48.20	92.80	18,624	15,771	2,487	18,258
N MEX	673,370	1,199,520	64.30	77.60	435,917	777,401	4,325	781,726
N Y	365,040	322,230	47.40	78.00	200,088	177,116	12,027	189,143
N C	277,750	205,100	51.40	66.70	152,419	112,551	17,140	129,691
N DAK	823,080	929,250	61.10	78.20	527,914	592,370	13,023	605,393
OHIO	564,525	660,850	56.40	72.30	323,793	376,661	19,619	396,280
OKLA	2,364,445	2,911,610	62.70	74.60	1,490,474	1,837,546	20,975	1,858,521
OREG	523,005	461,190	57.50	66.90	312,105	273,594	23,817	297,411
PA	515,690	517,380	56.10	93.20	306,661	304,868	25,232	330,100
R I	1,827	1,607	55.00	72.00	1,028	918	274	1,192
S C	142,220	168,210	53.80	71.30	86,733	100,065	4,999	105,064
S DAK	1,761,550	1,904,500	66.00	82.90	1,175,751	1,273,921	13,728	1,287,649
TENN	587,060	605,990	52.00	70.40	321,113	326,815	11,515	338,330
TEX	5,208,230	6,029,350	65.20	73.60	3,419,542	3,944,752	30,173	3,974,925
UTAH	257,490	251,370	60.30	75.50	161,267	156,938	7,518	164,456
VT	66,063	68,173	58.00	72.00	39,566	40,746	3,341	44,087
VA	528,430	544,120	52.50	75.50	300,812	308,951	9,355	318,306
WASH	487,910	537,400	62.40	74.00	307,939	339,664	45,328	384,992
W VA	136,605	108,520	52.80	79.30	79,968	64,400	5,777	70,177
WIS	976,355	881,095	50.80	106.00	634,831	558,783	27,458	586,241
WYO	504,645	699,635	65.00	82.50	338,016	462,780	3,978	466,758
U S	40,283,777	50,210,836			25,468,867	31,827,906	623,698	32,451,604

1/ ADJUSTMENTS MADE FOR CHANGES IN INVENTORY AND FOR INSHIPMENTS.
2/ EXCLUDES CUSTOM SLAUGHTER FOR USE ON FARMS WHERE PRODUCED AND INTERFARM SALES WITHIN THE STATE.
3/ RECEIPTS FROM MARKETINGS AND SALE OF FARM SLAUGHTER.

CATTLE AND CALVES
INVENTORY, SUPPLY AND DISPOSITION, 1981 1/

STATE	INVENTORY		INSHIP- MENTS	MARKETINGS 2/		FARM SLAUGHTER 3/	DEATHS		INVENTORY JAN 1 1982
	JAN 1 1981	CALF CROP		CATTLE	CALVES		CATTLE	CALVES	
	1000 HD	1000 HD		1000 HD	1000 HD		1000 HD	1000 HD	
ALA	1,925	870	75	594	236	6	32	52	1,960
ALAS	8.4	3.2	0.3	0.4	0.1	1.2	0.5	0.5	9.2
ARIZ	1,075	280	567	773	85	2	24	38	1,000
ARK	2,200	980	1	644	318	13	38	68	2,100
CALIF	4,760	1,710	1,013	1,938	265	20	80	180	5,000
COLO	3,125	900	1,807	2,578	95	4	55	75	3,025
CONN	103	50	2	18	22	1	2	5	107
DEL	32	12	0	3	3	1	1	1	35
FLA	2,480	1,150	62	400	831	6	52	53	2,350
GA	1,900	820	25	368	332	5	35	65	1,940
HAW	220	72	0	56	0	1	3	4	228
IDAHO	1,990	750	340	921	200	9	28	72	1,850
ILL	2,650	890	600	1,042	180	8	35	75	2,800
IND	1,800	600	200	668	92	6	25	59	1,750
IOWA	7,350	1,950	1,900	3,932	171	7	80	160	6,850
KANS	6,450	1,770	2,398	4,368	44	6	80	120	6,000
KY	2,600	1,210	68	760	370	9	44	95	2,600
LA	1,360	600	2	222	232	2	21	35	1,450
MAINE	131	56	7	20	15	2	4	7	146
MD	390	180	10	69	88	3	3	12	405
MASS	104	47	1	20	23	1	3	7	98
MICH	1,340	500	110	332	40	8	30	90	1,450
MINN	3,800	1,370	700	1,636	129	15	50	160	3,880
MISS	1,800	880	39	356	322	5	36	50	1,950
MO	5,550	2,370	40	1,707	653	10	60	130	5,400
MONT	2,675	1,580	109	779	575	10	30	70	2,900
NEBR	6,850	1,970	3,000	4,267	110	3	70	120	7,250
NEV	640	290	30	134	92	5	11	18	700
N H	68	32	1	10	13	1	1	2	74
N J	104	45	5	18	27	3	2	4	100
N MEX	1,400	600	600	909	127	5	29	30	1,500
N Y	1,831	930	21	225	481	11	38	98	1,929
N C	1,160	480	5	246	185	6	16	32	1,160
N DAK	1,850	1,050	52	573	305	6	18	50	2,000
OHIO	1,815	660	175	595	103	7	30	65	1,850
OKLA	5,400	2,160	1,300	2,647	188	10	85	130	5,800
OREG	1,750	750	110	464	220	34	32	60	1,800
PA	2,000	850	125	455	295	15	30	80	2,100
R I	8	4	0.3	1.9	1.6	0.2	0.2	0.4	8
S C	625	280	15	99	87	4	10	20	700
S DAK	4,100	1,720	425	1,813	403	4	35	90	3,900
TENN	2,350	1,080	97	532	348	7	40	100	2,500
TEX	13,700	5,400	2,050	6,580	378	22	210	260	13,700
UTAH	875	375	57	235	98	3	16	35	920
VT	337	180	14	46	93	3	9	20	360
VA	1,750	750	11	345	215	9	25	67	1,850
WASH	1,450	530	326	565	100	50	27	54	1,510
W VA	570	260	3	84	80	7	13	29	620
WIS	4,550	2,020	115	849	1,001	20	85	280	4,450
WYO	1,350	650	300	750	111	2	16	31	1,390
U S	114,351	44,666	18,914	46,647	10,383	398	1,700	3,359	115,444

1/ BALANCE SHEET ESTIMATES BY STATES; THE SUM OF INVENTORY JANUARY 1, 1981, CALF CROP AND INSHIPMENTS IS EQUAL TO THE SUM OF MARKETINGS, FARM SLAUGHTER, DEATHS AND INVENTORY JANUARY 1, 1982.

2/ INCLUDES CUSTOM SLAUGHTER FOR USE ON FARMS WHERE PRODUCED AND STATE OUTSHIPMENTS, BUT EXCLUDES INTERFARM SALES WITHIN THE STATE.

3/ EXCLUDES CUSTOM SLAUGHTER FOR FARMERS AT COMMERCIAL ESTABLISHMENTS.

CATTLE AND CALVES
PRODUCTION AND INCOME, 1981

STATE	PRODUCTION	MARKETINGS	AVERAGE PRICE		VALUE OF PRODUCTION	CASH RECEIPTS	VALUE OF HOME CONSUMPTION	GROSS INCOME
	1/	2/	PER 100 POUNDS					
	1000 LBS	1000 LBS	CATTLE	CALVES				
ALA	639,930	655,200	47.80	58.30	316,242	322,827	9,654	332,481
ALAS	1,653	435	66.00	65.00	1,089	287	662	949
ARIZ	553,165	844,975	61.80	63.70	342,331	522,914	3,878	526,792
ARK	634,700	665,380	48.40	60.70	323,107	337,254	22,715	359,969
CALIF	1,735,435	2,178,880	57.90	60.20	1,005,620	1,262,907	18,735	1,281,642
COLO	1,466,140	2,705,870	62.40	67.50	918,709	1,690,138	7,279	1,697,417
CONN	24,745	22,140	49.00	63.00	12,641	11,249	1,176	12,425
DEL	6,680	3,565	51.20	80.90	3,714	2,026	768	2,794
FLA	565,700	672,250	50.40	61.40	314,034	370,730	7,903	378,633
GA	470,020	436,930	46.80	56.00	229,815	215,138	4,930	220,068
HAW	60,710	52,215	54.40	63.00	32,997	28,405	694	29,099
IDAHO	781,340	1,079,200	57.20	62.40	450,068	621,254	10,921	632,175
ILL	910,240	1,093,120	58.30	60.60	532,134	638,217	32,269	670,486
IND	570,665	681,340	56.20	61.20	321,551	384,412	20,665	405,077
IOWA	2,840,550	4,277,150	58.20	63.40	1,650,313	2,490,803	26,721	2,517,524
KANS	2,924,380	4,752,880	59.00	65.90	1,722,643	2,805,080	16,028	2,821,108
KY	823,770	835,880	51.00	57.70	430,962	436,126	17,207	453,333
LA	322,520	271,680	46.90	59.80	166,124	139,756	5,157	144,913
MAINE	31,170	18,150	50.00	58.00	15,765	9,207	3,010	12,217
MD	101,830	82,210	51.20	80.90	57,979	47,936	6,633	54,569
MASS	21,650	21,610	50.00	63.00	10,959	11,134	1,290	12,424
MICH	415,130	367,260	49.50	65.20	208,720	183,207	16,338	199,545
MINN	1,484,440	1,863,600	50.80	67.40	761,200	950,493	20,310	970,803
MISS	487,730	410,040	45.10	62.20	243,882	203,519	9,794	213,313
MO	1,708,760	1,831,750	58.30	62.80	1,009,620	1,081,055	23,940	1,104,995
MONT	1,098,045	933,300	51.90	62.70	591,401	506,118	8,806	514,924
NEBR	3,083,270	4,724,900	62.30	67.50	1,923,029	2,946,015	11,214	2,957,229
NEV	197,965	168,010	51.30	63.10	105,697	89,395	2,932	92,327
N H	17,150	10,280	48.00	56.00	8,380	5,060	1,426	6,486
N J	27,410	29,850	43.30	54.20	15,181	16,238	2,234	18,472
N MEX	530,450	818,050	51.00	67.10	280,238	425,385	4,708	430,093
N Y	380,460	316,780	42.40	66.20	181,828	151,439	10,726	162,165
N C	299,395	266,395	44.90	55.20	140,732	125,719	15,499	141,218
N DAK	797,980	698,920	55.30	63.10	451,229	394,791	8,072	402,863
OHIO	563,900	636,400	52.00	56.50	293,504	332,051	16,945	348,996
OKLA	2,184,220	2,570,210	57.40	62.70	1,261,741	1,479,655	22,698	1,502,353
OREG	607,365	596,840	51.80	61.00	323,219	317,425	20,904	338,329
PA	576,565	541,660	51.20	86.70	312,136	292,240	18,518	310,758
R I	1,786	1,774	49.00	63.00	906	896	163	1,059
S C	171,265	125,205	47.20	56.90	85,196	62,606	4,978	67,584
S DAK	1,773,260	2,120,410	59.10	68.90	1,058,902	1,268,960	12,529	1,281,489
TENN	617,040	530,250	46.20	57.10	292,477	252,423	15,221	267,644
TEX	5,416,970	6,567,410	62.40	62.50	3,380,325	4,098,218	40,430	4,138,648
UTAH	318,600	289,000	52.30	63.30	173,241	155,910	7,462	163,372
VT	66,800	53,320	53.00	57.00	35,776	28,557	3,053	31,610
VA	499,670	428,740	50.30	56.10	257,265	220,561	9,777	230,338
WASH	534,850	659,500	62.90	60.00	335,151	414,147	35,108	449,255
W VA	137,860	94,590	47.50	66.90	72,220	49,089	6,485	55,574
WIS	1,159,080	1,213,430	50.70	103.00	700,742	735,410	28,709	764,119
WYO	536,800	677,820	59.00	67.00	319,359	403,466	3,611	407,077
U S	41,178,209	50,896,754			23,682,144	29,537,848	600,885	30,138,733

1/ ADJUSTMENTS MADE FOR CHANGES IN INVENTORY AND FOR INSHIPMENTS.
2/ EXCLUDES CUSTOM SLAUGHTER FOR USE ON FARMS WHERE PRODUCED AND INTERFARM SALES WITHIN THE STATE.
3/ RECEIPTS FROM MARKETINGS AND SALE OF FARM SLAUGHTER.

CATTLE AND CALVES
INVENTORY, SUPPLY AND DISPOSITION, 1982 1/

STATE	INVENTORY	CALF	INSHIP-	MARKETINGS		FARM SLAUGHTER	DEATHS		INVENTORY
	JAN 1 1982	CROP	MENTS	2/			CATTLE	CALVES	JAN 1 198
	1000 HD	1000 HD	1000 HD	1000 HD	1000 HD				1000 HD
ALA	1,950	900	68	643	272	5	34	54	1,910
ALAS	9.2	3	0	0.4	0.1	1.3	0.8	0.6	9
ARIZ	1,000	285	564	721	67	3	26	32	1,000
ARK	2,100	880	1	644	309	15	40	73	1,900
CALIF	5,000	1,700	1,207	2,439	275	28	85	180	4,900
COLO	3,025	850	1,960	2,563	95	5	62	70	3,040
CONN	107	54	7	26	25	1	3	7	106
DEL	35	13	4	4	8	1	1	2	36
FLA	2,350	1,150	77	408	643	5	46	50	2,425
GA	1,940	840	29	431	398	5	38	62	1,875
HAW	228	71	0	56	0	2	4	7	230
IDAHO	1,850	735	350	738	121	8	32	86	1,950
ILL	2,800	830	620	1,104	205	8	43	90	2,800
IND	1,750	585	180	635	87	7	28	58	1,700
IOWA	6,850	1,800	1,800	3,708	141	6	80	165	6,350
KANS	6,000	1,545	2,811	4,307	16	5	85	118	5,825
KY	2,600	1,200	58	691	321	8	43	95	2,700
LA	1,450	590	2	317	307	3	27	38	1,350
MAINE	146	62	16	43	24	2	4	7	144
MD	405	180	10	76	108	2	4	15	390
MASS	98	48	1	10	23	1	3	7	103
MICH	1,450	550	135	444	56	11	34	90	1,500
MINN	3,880	1,300	670	1,842	170	15	58	155	3,610
MISS	1,950	840	30	492	435	3	38	52	1,800
MO	5,400	2,340	40	1,530	508	10	72	160	5,500
MONT	2,900	1,570	125	999	475	11	34	86	2,990
NEBR	7,250	1,930	3,400	5,062	110	3	80	125	7,200
NEV	700	290	20	193	131	5	11	20	650
N H	74	32	1	18	13	1	1	3	71
N J	100	43	4	12	26	3	2	4	100
N MEX	1,500	580	660	1,078	146	6	28	32	1,450
N Y	1,929	930	16	235	505	11	36	93	1,995
N C	1,160	460	5	286	171	6	22	40	1,100
N DAK	2,000	1,020	64	612	322	6	22	72	2,050
OHIO	1,850	665	145	603	102	6	34	65	1,850
OKLA	5,800	2,100	1,200	3,280	210	10	95	155	5,350
OREG	1,800	720	100	560	288	30	32	60	1,650
PA	2,100	840	120	558	367	20	35	80	2,000
R I	8	4	0.3	1.5	2	0.2	0.2	0.4	8
S C	700	275	15	142	144	4	14	26	660
S DAK	3,900	1,780	417	1,486	390	4	42	115	4,060
TENN	2,500	1,180	120	609	380	6	40	90	2,675
TEX	13,700	5,650	3,490	6,928	386	16	210	300	15,000
UTAH	920	385	54	248	87	2	26	46	950
VT	360	190	27	63	87	3	10	30	39
VA	1,850	730	11	510	280	8	28	65	1,700
WASH	1,510	550	270	585	118	45	27	50	1,505
W VA	620	250	5	112	131	8	14	30	580
WIS	4,450	2,000	100	796	959	18	87	290	4,400
WYO	1,390	675	280	695	116	2	22	35	1,475
U S	115,444	44,200	21,289	49,549	10,560	395	1,843	3,586	115,001

1/ BALANCE SHEET ESTIMATES BY STATES; THE SUM OF INVENTORY JANUARY 1, 1982, CALF CROP AND INSHIPMENTS IS EQUAL TO THE SUM OF MARKETINGS, FARM SLAUGHTER, DEATHS AND INVENTORY JANUARY 1, 1983.

2/ INCLUDES CUSTOM SLAUGHTER FOR USE ON FARMS WHERE PRODUCED AND STATE OUTSHIPMENTS, BUT EXCLUDES INTERFARM SALES WITHIN THE STATE.

3/ EXCLUDES CUSTOM SLAUGHTER FOR FARMERS AT COMMERCIAL ESTABLISHMENTS.

CATTLE AND CALVES
PRODUCTION AND INCOME, 1982

STATE	PRODUCTION	MARKETINGS	AVERAGE PRICE		VALUE OF PRODUCTION	CASH RECEIPTS 3/	VALUE OF HOME CONSUMPTION	GROSS INCOME
	1/	2/	PER 100 POUNDS					
	1000 LBS	1000 LBS	CATTLE	CALVES				
ALA	678,870	738,620	46.30	55.00	323,313	351,146	7,242	358,388
ALAS	1,551	435	71.00	70.00	1,100	309	784	1,093
ARIZ	504,865	767,855	60.10	61.70	304,132	461,956	4,310	466,266
ARK	549,710	659,780	46.30	57.60	268,015	319,426	17,604	337,030
CALIF	1,850,875	2,721,850	54.40	55.70	1,007,303	1,481,400	25,001	1,506,401
COLO	1,497,345	2,710,325	61.90	64.60	925,606	1,678,525	9,729	1,688,254
CONN	32,725	33,280	45.00	57.00	15,108	15,456	1,107	16,563
DEL	4,800	4,630	50.30	70.30	2,750	2,615	1,182	3,797
FLA	585,895	595,035	48.40	59.40	308,222	310,907	6,722	317,629
GA	441,680	499,130	46.00	53.10	212,955	239,474	4,788	244,262
HAW	55,640	52,910	52.20	47.00	28,991	27,619	1,331	28,950
IDAHO	726,800	846,780	54.70	58.90	399,921	465,120	10,441	475,561
ILL	833,020	1,153,520	57.40	56.40	477,744	661,642	25,250	686,892
IND	515,255	627,955	54.80	54.90	282,380	344,147	23,539	367,686
IOWA	2,562,390	3,998,460	57.20	60.40	1,464,910	2,287,862	21,088	2,308,950
KANS	2,669,765	4,624,295	58.40	61.90	1,559,480	2,700,724	21,026	2,721,750
KY	813,725	729,035	47.50	55.00	394,539	355,248	15,757	371,005
LA	309,570	373,650	43.50	57.80	152,197	179,764	5,167	184,931
MAINE	40,230	46,270	47.00	52.00	18,998	21,857	2,266	24,123
MD	82,795	90,640	50.30	70.30	46,378	50,124	6,627	56,751
MASS	17,310	9,390	45.00	57.00	8,038	4,474	1,548	6,022
MICH	461,780	486,330	48.00	57.20	223,558	234,484	18,835	253,319
MINN	1,450,865	2,068,290	48.60	60.30	705,302	1,008,875	20,122	1,028,997
MISS	481,220	562,140	43.70	58.70	230,623	267,390	10,003	277,393
MO	1,581,030	2,522,485	56.50	58.80	898,831	865,003	24,406	889,409
MONT	1,024,395	1,081,170	48.20	60.30	520,454	540,617	9,640	550,257
NEBR	3,215,010	5,493,610	61.70	63.50	1,984,153	3,390,343	12,562	3,402,905
NEV	209,305	262,015	44.40	59.60	100,572	124,001	2,154	126,155
N H	19,180	19,890	45.00	52.00	8,939	9,266	985	10,251
N J	22,290	21,400	42.70	70.80	11,636	11,186	1,902	13,088
N MEX	545,360	957,060	46.80	62.60	264,241	456,900	4,750	461,650
N Y	384,470	322,830	40.30	58.80	169,594	143,058	9,997	153,055
N C	276,460	299,160	46.00	53.10	131,061	141,385	13,425	154,810
N DAK	759,610	744,940	52.30	60.10	406,249	398,105	6,551	404,656
OHIO	577,650	632,240	51.50	53.00	297,765	325,913	17,453	343,366
OKLA	2,297,110	3,185,300	54.10	58.90	1,244,267	1,727,956	22,891	1,750,847
OREG	572,330	724,595	47.50	56.10	280,281	353,560	18,645	372,205
PA	586,210	664,435	50.50	69.60	305,055	345,227	22,406	367,633
R I	2,011	1,471	45.00	57.00	923	691	230	921
S C	160,180	185,000	41.90	53.40	73,454	83,752	5,254	89,006
S DAK	1,644,610	1,754,290	58.60	64.10	973,137	1,036,165	10,460	1,046,625
TENN	656,670	611,010	45.00	54.20	305,494	281,581	13,697	295,278
TEX	5,824,210	6,833,410	60.40	59.40	3,515,171	4,125,911	34,736	4,160,647
UTAH	300,220	290,130	49.10	59.70	150,512	146,511	5,131	151,642
VT	85,200	81,210	46.00	54.00	39,898	37,889	2,853	40,742
VA	526,500	618,780	48.80	52.60	260,510	306,102	9,216	315,318
WASH	542,690	683,000	61.80	53.80	335,024	419,858	29,876	449,734
W VA	121,675	126,050	43.10	61.10	56,887	60,522	8,348	68,870
WIS	1,094,405	1,140,145	48.90	92.50	629,525	655,633	24,735	680,368
WYO	517,260	619,060	56.90	64.40	298,153	355,639	2,873	358,512
U S	40,714,722	53,275,291			22,623,349	29,813,318	576,645	30,389,963

1/ ADJUSTMENTS MADE FOR CHANGES IN INVENTORY AND FOR INSHIPMENTS.

2/ EXCLUDES CUSTOM SLAUGHTER FOR USE ON FARMS WHERE PRODUCED AND INTERFARM SALES WITHIN THE STATE.

3/ RECEIPTS FROM MARKETINGS AND SALE OF FARM SLAUGHTER.

HOGS AND PIGS
INVENTORY, SUPPLY AND DISPOSITION, 1979 1/

STATE	INVENTORY	PIG CROP		INSHIP-	MARKETINGS	FARM	DEATHS	INVENTORY
	DEC 1 1978	DEC - MAY	JUN - NOV	MENTS	2/	SLAUGHTER		DEC 1 1979
	1000 HD	1000 HD	1000 HD	1000 HD	1000 HD	1000 HD	1000 HD	1000 HD
ALA	700	755	700	40	1,155	40	120	880
ALAS	1.1	0.9	1	0	1.2	0.5	0.2	1.1
ARIZ	144	125	117	24	241	1	19	149
ARK	550	468	576	22	908	28	80	600
CALIF	190	149	150	22	301	15	15	180
COLD	330	323	364	19	551	10	45	430
CONN	9	7.8	9.8	0	14.4	0.7	0.5	11
DEL	50	47	35	7	80	1	8	52
FLA	360	357	342	4	590	10	38	425
GA	1,800	1,599	1,732	109	2,527	88	265	2,360
HAW	54	34	37	0	63	3	6	53
IDAHO	95	72	84	4	107	2	11	135
ILL	6,550	5,420	5,374	593	10,222	15	750	6,950
IND	4,250	3,316	3,373	550	6,317	17	305	4,850
IOWA	15,100	11,672	11,542	1,700	21,759	55	2,000	16,200
KANS	2,000	1,604	1,648	325	3,305	12	170	2,090
KY	1,190	1,034	1,234	30	1,789	49	180	1,470
LA	120	87	105	3	135	23	17	140
MAINE	9	9.9	7.6	0	11.5	1.2	0.8	13
MD	215	149	186	20	298	9	28	235
MASS	60	39	42	0	76	1	4	60
MICH	925	728	794	55	1,312	20	130	1,040
MINN	4,100	3,905	4,102	254	6,889	42	530	4,900
MISS	380	284	281	4	439	30	75	405
MO	4,100	3,861	4,198	8	6,988	49	480	4,650
MONT	222	155	153	4	299	5	21	209
NEBR	3,650	3,419	3,300	425	6,282	22	340	4,150
NEV	10	9.8	8.4	0.1	15.3	1	1	11
N H	9.9	9.2	12	0	19.6	0.6	1	9.9
N J	67	28	20	47	82	4	7	69
N MEX	50	38	37	5	67	4	7	52
N Y	140	88	113	3	177	10	18	139
N C	2,350	1,968	2,077	43	3,383	105	300	2,650
N DAK	335	256	291	16	457	16	45	370
OHIO	2,160	1,580	1,789	254	3,344	19	300	2,120
OKLA	315	211	285	63	456	8	40	370
OREG	110	85	101	1	160	7	10	120
PA	820	600	533	0	876	57	150	870
R I	9.9	4.5	6.8	0	10.6	0.1	0.6	9.9
S C	525	390	449	0	636	28	50	650
S DAK	1,620	1,664	1,624	93	2,841	10	150	2,000
TENN	1,300	1,172	1,278	62	2,137	95	180	1,400
TEX	850	666	684	13	1,191	25	87	910
UTAH	49	27	44	2	57	1	9	55
VT	6.3	7	7.5	0	10.9	1	0.4	8.5
VA	670	504	587	130	886	60	95	850
WASH	75	66	88	0	111	11	7	100
W VA	50	40	40	10	61	18	5	56
WIS	1,650	1,499	1,668	30	2,819	38	160	1,830
WYO	30	18	21	9	41	2	3	32
U S	60,356	50,551	52,241	5,003	92,499	1,070	7,265	67,318

1/ BALANCE SHEET ESTIMATES BY STATES; THE SUM OF INVENTORY DECEMBER 1, 1978, PIG CROP AND INSHIPMENTS IS EQUAL TO THE SUM OF MARKETINGS, FARM SLAUGHTER, DEATHS AND INVENTORY DECEMBER 1, 1979.

2/ INCLUDES CUSTOM SLAUGHTER FOR USE ON FARMS WHERE PRODUCED AND STATE OUTSHIPMENTS, BUT EXCLUDES INTERFARM SALES WITHIN THE STATE.

3/ EXCLUDES CUSTOM SLAUGHTER FOR FARMERS AT COMMERCIAL ESTABLISHMENTS.

HOGS AND PIGS
PRODUCTION AND INCOME, 1979

STATE	PRODUCTION 1/ 1000 LBS	MARKETINGS 2/ 1000 LBS	AVERAGE PRICE PER 100 POUNDS	VALUE OF PRODUCTION 3/ 1000 DOLS	CASH RECEIPTS 4/ 1000 DOLS	VALUE OF HOME CONSUMPTION 1000 DOLS	GROSS INCOME 1000 DOLS
ALA	309,869	272,024	43.50	137,578	121,971	8,185	130,156
ALAS	284	285	77.00	218	219	7	226
ARIZ	53,441	54,580	44.10	23,102	24,070	194	24,264
ARK	192,405	176,961	41.70	81,049	74,745	4,005	78,750
CALIF	66,826	65,037	45.90	30,626	29,909	1,966	31,875
COLO	147,430	124,670	42.30	62,527	53,290	4,076	57,366
CONN	3,790	3,110	44.00	1,667	1,368	163	1,531
DEL	16,333	16,640	43.60	7,236	7,533	185	7,718
FLA	137,824	127,390	40.60	56,060	51,838	1,876	53,714
GA	620,482	553,264	39.10	240,952	216,501	10,288	226,789
HAW	11,154	10,380	67.70	7,551	7,027	548	7,575
IDAHO	30,750	24,190	37.80	11,614	9,175	741	9,916
ILL	2,606,928	2,579,021	42.10	1,088,123	1,086,806	6,062	1,092,868
IND	1,610,003	1,549,956	41.90	667,756	651,112	3,997	655,109
IOWA	5,423,526	5,349,210	41.60	2,223,451	2,228,439	30,202	2,258,641
KANS	795,985	794,080	41.90	329,537	332,995	6,159	339,154
KY	434,130	383,840	41.50	184,368	163,815	9,964	173,779
LA	37,237	26,556	42.90	15,992	11,429	3,712	15,141
MAINE	4,176	2,675	44.00	1,837	1,177	462	1,639
MD	61,576	57,981	43.60	27,892	26,788	1,768	28,556
MASS	18,640	17,820	44.00	8,202	7,841	297	8,138
MICH	306,997	286,470	42.90	132,030	124,490	5,847	130,337
MINN	1,693,237	1,552,494	42.00	715,219	660,475	18,800	679,275
MISS	109,829	92,800	42.40	46,768	39,609	5,953	45,562
MO	1,619,092	1,520,836	40.90	681,682	641,682	14,750	656,432
MONT	73,031	72,095	39.50	28,809	28,491	835	29,326
NEBR	1,498,042	1,439,612	41.90	622,195	604,537	12,131	616,668
NEV	3,888	3,346	41.30	1,613	1,391	142	1,533
N H	5,268	4,770	44.00	2,318	2,099	240	2,339
N J	15,287	17,100	41.30	5,367	7,062	727	7,789
N MEX	15,553	14,112	42.80	6,657	6,096	663	6,759
N Y	45,432	41,390	43.20	19,600	17,894	1,987	19,881
N C	772,847	701,819	42.30	329,015	300,290	18,876	319,166
N DAK	109,581	95,605	40.80	45,274	39,801	3,835	43,636
OHIO	783,080	778,181	43.00	332,933	334,890	4,549	339,439
OKLA	113,185	99,000	41.20	46,589	40,864	3,873	44,737
OREG	41,241	36,945	42.80	17,652	15,828	1,483	17,311
PA	227,179	190,926	43.00	97,701	82,113	10,833	92,946
R I	2,998	2,884	44.00	1,319	1,269	25	1,294
S C	168,424	145,428	41.80	70,393	60,789	4,181	64,970
S DAK	690,251	643,063	41.30	287,505	269,705	2,833	272,538
TENN	509,223	450,589	41.70	212,895	188,532	15,450	203,982
TEX	320,790	306,304	39.70	127,329	120,948	4,235	125,183
UTAH	13,255	12,864	40.30	5,324	5,184	212	5,396
VT	4,019	2,784	44.00	1,768	1,225	400	1,625
VA	221,991	178,064	42.50	93,935	76,313	11,934	88,247
WASH	28,933	23,198	43.80	12,742	10,230	1,823	12,053
W VA	26,888	14,743	38.70	10,348	5,712	4,608	10,320
WIS	605,190	561,584	41.40	257,814	240,308	8,684	248,992
WYO	9,629	9,200	39.40	3,651	3,803	370	4,173
U S	22,617,129	21,485,876		9,423,783	9,039,678	255,136	9,294,814

- 1/ ADJUSTMENTS MADE FOR CHANGES IN INVENTORY AND FOR INSHIPMENTS.
2/ EXCLUDES CUSTOM SLAUGHTER FOR USE ON FARMS WHERE PRODUCED AND INTERFARM SALES WITHIN THE STATE.
3/ INCLUDES ALLOWANCE FOR HIGHER AVERAGE PRICE OF STATE INSHIPMENTS AND OUTSHIPMENTS OF FEEDER PIGS.
4/ RECEIPTS FROM MARKETINGS AND SALE OF FARM SLAUGHTER. INCLUDES ALLOWANCE FOR HIGHER AVERAGE PRICE OF STATE OUTSHIPMENTS OF FEEDER PIGS.

HOGS AND PIGS
INVENTORY, SUPPLY AND DISPOSITION, 1980 1/

STATE	INVENTORY	PIG CROP		INSHIP-	MARKETINGS	FARM	DEATHS	INVENTORY
	DEC 1 1979	DEC - MAY	JUN - NOV	MENTS	2/	SLAUGHTER		DEC 1 1980
	1000 HD	1000 HD	1000 HD	1000 HD	1000 HD	1000 HD	1000 HD	1000 HD
ALA	880	707	715	10	1,357	35	120	800
ALAS	1.1	1.2	1.4	0.2	1.1	0.8	0.2	1.8
ARIZ	149	137	144	13	241	1	21	180
ARK	600	540	594	22	1,002	41	93	720
CALIF	180	161	151	39	309	20	22	180
COLO	430	418	238	6	727	10	45	310
CONN	11	14	14	0	25	1	1	12
DEL	50	39	39	6	68	2	8	56
FLA	425	409	267	6	684	8	45	370
GA	2,360	1,681	1,592	62	3,038	82	325	2,250
HAW	53	39	37	0	63	3	6	57
IDAHO	135	101	112	2	156	4	15	175
ILL	6,950	5,460	5,002	510	10,655	17	650	6,600
IND	4,850	3,194	3,230	549	6,874	16	333	4,600
IOWA	16,200	12,026	11,613	1,740	23,409	50	2,020	16,100
KANS	2,090	1,646	1,426	225	3,300	12	175	1,900
KY	1,470	1,071	1,011	30	2,107	35	220	1,220
LA	140	90	117	2	151	21	17	160
MAINE	13	13	14	0	21	2	1	16
MD	235	183	175	20	343	9	26	235
MASS	60	30	35	0	71	2	3	49
MICH	1,040	773	646	63	1,523	19	150	830
MINN	4,900	4,613	4,324	226	8,362	51	550	5,100
MISS	405	298	281	4	468	30	80	410
MO	4,650	3,715	3,360	8	7,273	50	430	3,980
MONT	209	185	185	7	302	10	24	250
NEBR	4,150	3,310	2,980	430	6,602	28	340	3,900
NEV	11	9.1	9	0.1	15.2	1	1	12
N H	9.9	7.7	7.7	0	13.4	1.5	0.5	9.9
N J	69	20	22	47	78	3	9	68
N MEX	52	42	68	4	81	4	7	74
N Y	139	100	120	2	156	10	20	175
N C	2,650	2,131	1,926	45	3,872	100	320	2,460
N DAK	370	245	210	15	510	15	50	265
OHIO	2,120	1,533	1,646	234	3,045	18	320	2,150
OKLA	370	277	270	40	547	10	50	350
OREG	120	107	118	1	206	9	11	120
PA	870	653	629	0	948	64	160	980
R I	9.9	3	5.4	0	10.3	0.2	0.5	7.3
S C	650	449	511	0	818	27	65	700
S DAK	2,000	1,607	1,426	149	3,157	10	155	1,860
TENN	1,400	1,088	1,015	63	2,116	90	220	1,140
TEX	910	640	690	8	1,189	25	104	930
UTAH	55	35	48	2	73	2	7	58
VT	8.5	18	18	0	32.1	3	1.4	8
VA	850	644	587	29	1,217	60	83	750
WASH	100	117	88	0	179	14	12	100
W VA	56	61	52	9	75	22	8	73
WIS	1,830	1,625	1,543	32	3,136	49	165	1,680
WYO	32	22	19	8	45	2	4	30
U S	67,318	52,288	49,432	4,668	100,651	1,100	7,494	64,462

1/ BALANCE SHEET ESTIMATES BY STATES; THE SUM OF INVENTORY DECEMBER 1, 1979, PIG CROP AND INSHIPMENTS IS EQUAL TO THE SUM OF MARKETINGS, FARM SLAUGHTER, DEATHS AND INVENTORY DECEMBER 1, 1980.

2/ INCLUDES CUSTOM SLAUGHTER FOR USE ON FARMS WHERE PRODUCED AND STATE OUTSHIPMENTS, BUT EXCLUDES INTERFARM SALES WITHIN THE STATE.

3/ EXCLUDES CUSTOM SLAUGHTER FOR FARMERS AT COMMERCIAL ESTABLISHMENTS.

HOGS AND PIGS
PRODUCTION AND INCOME, 1980

STATE	PRODUCTION 1/ 1000 LBS	MARKETINGS 2/ 1000 LBS	AVERAGE PRICE PER 100 POUNDS	VALUE OF PRODUCTION 3/ 1000 DOLS	CASH RECEIPTS 4/ 1000 DOLS	VALUE OF HOME CONSUMPTION 1000 DOLS	GROSS INCOME 1000 DOLS
ALA	342,190	334,774	37.00	127,407	124,724	7,265	131,989
ALAS	360	295	75.00	299	221	11	232
ARIZ	59,735	54,485	41.20	24,401	22,448	272	22,720
ARK	221,587	196,589	37.50	84,927	75,787	4,945	80,732
CALIF	70,952	67,566	40.90	28,752	27,754	2,552	30,306
COLO	161,155	158,166	38.50	58,438	61,198	3,592	64,790
CONN	5,843	5,462	37.00	2,162	2,021	195	2,216
DEL	14,308	12,775	40.10	5,761	5,170	341	5,511
FLA	138,520	143,203	37.00	51,317	53,076	1,492	54,568
GA	688,949	673,235	36.10	248,278	243,097	9,736	252,833
HAW	12,268	10,683	69.80	8,563	7,457	584	8,041
IDAHO	42,700	33,216	36.00	15,392	11,997	1,607	13,604
ILL	2,641,425	2,688,057	38.50	1,011,176	1,035,501	7,069	1,042,570
IND	1,636,827	1,685,888	38.20	618,404	645,822	3,576	649,398
IOWA	5,722,089	5,776,440	38.00	2,149,597	2,196,559	25,080	2,221,639
KANS	776,443	794,388	36.90	283,878	293,488	4,339	297,827
KY	443,682	458,148	38.50	173,935	179,827	5,626	185,453
LA	40,182	31,082	37.00	14,869	11,505	2,756	14,261
MAINE	7,656	4,630	37.00	2,833	1,713	925	2,638
MD	72,572	69,161	40.10	29,264	27,975	1,626	29,601
MASS	16,412	16,185	37.00	6,072	5,988	500	6,488
MICH	331,304	347,775	38.80	128,138	135,678	5,308	140,986
MINN	1,935,160	1,896,476	38.30	744,641	732,690	8,673	741,363
MISS	121,464	103,252	38.70	47,121	40,127	5,735	45,862
MO	1,547,209	1,590,160	37.40	588,138	604,340	13,333	617,673
MONT	76,685	70,850	37.20	28,506	26,433	1,136	27,569
NEBR	1,462,925	1,491,263	38.10	551,852	569,305	8,812	578,117
NEV	3,578	3,322	38.70	1,404	1,307	134	1,441
N H	3,907	2,469	37.00	1,446	914	505	1,419
N J	14,290	15,820	35.70	4,159	5,648	675	6,323
N MEX	20,334	17,367	39.10	7,951	6,864	437	7,301
N Y	41,144	32,580	39.00	16,037	12,716	2,063	14,779
N C	849,196	839,922	37.60	319,829	316,834	14,100	330,934
N DAK	96,859	105,518	35.00	34,684	37,989	2,591	40,580
OHIO	692,279	692,895	38.10	261,642	264,138	4,115	268,253
OKLA	126,554	118,395	37.20	47,117	44,238	4,371	48,609
OREG	48,314	43,750	36.30	17,538	15,901	1,617	17,518
PA	238,866	204,970	38.90	92,942	79,757	9,709	89,466
R I	2,535	2,729	37.00	939	1,010	58	1,068
S C	206,822	190,268	37.30	77,216	71,041	3,787	74,828
S DAK	718,576	731,108	37.90	272,628	279,900	2,729	282,629
TENN	423,796	431,725	38.20	163,981	167,330	13,408	180,738
TEX	315,827	299,596	35.90	113,374	107,609	4,091	111,700
UTAH	18,483	16,125	36.70	6,762	5,918	488	6,406
VT	10,939	9,025	37.00	4,047	3,339	664	4,003
VA	271,179	261,924	38.70	105,624	102,393	8,301	110,694
WASH	44,598	37,859	40.60	18,214	15,478	2,004	17,482
W VA	34,210	20,555	37.80	12,833	7,782	4,241	12,023
WIS	627,629	634,714	38.00	244,973	248,374	7,495	255,869
WYO	11,191	10,935	37.00	4,074	4,158	261	4,419
U S	23,401,728	23,437,775		8,863,535	8,942,539	214,930	9,157,469

- 1/ ADJUSTMENTS MADE FOR CHANGES IN INVENTORY AND FOR INSHIPMENTS.
2/ EXCLUDES CUSTOM SLAUGHTER FOR USE ON FARMS WHERE PRODUCED AND INTERFARM SALES WITHIN THE STATE.
3/ INCLUDES ALLOWANCE FOR HIGHER AVERAGE PRICE OF STATE INSHIPMENTS AND OUTSHIPMENTS OF FEEDER PIGS.
4/ RECEIPTS FROM MARKETINGS AND SALE OF FARM SLAUGHTER. INCLUDES ALLOWANCE FOR HIGHER AVERAGE PRICE OF STATE OUTSHIPMENTS OF FEEDER PIGS.

HOGS AND PIGS
INVENTORY, SUPPLY AND DISPOSITION, 1981 1/

STATE	INVENTORY	PIG CROP		INSHIP-	MARKETINGS	FARM	DEATHS	INVENTORY
	DEC 1 1980	DEC - MAY	JUN - NOV	MENTS	2/	SLAUGHTER		DEC 1 1981
	1000 HD	1000 HD	1000 HD	1000 HD	1000 HD	1000 HD	1000 HD	1000 HD
ALA	800	495	515	10	1,160	35	85	540
ALAS	1.8	1.6	2	0.1	1	1.2	0.5	2.8
ARIZ	180	148	137	7	281	1	20	170
ARK	720	448	585	16	1,082	14	88	585
CALIF	180	142	126	30	280	18	20	160
COLO	310	294	240	5	465	7	47	330
CONN	12	9.5	11	0	20.5	1	1	10
DEL	56	35	29	6	76	1	9	40
FLA	370	295	234	4	602	12	32	257
GA	2,250	1,359	1,192	66	2,987	60	300	1,520
HAW	57	38	40	0	69	4	7	55
IDAHO	175	99	112	5	225	5	11	150
ILL	6,600	5,114	5,129	405	10,083	15	700	6,450
IND	4,600	3,146	3,104	540	6,918	22	350	4,100
IOWA	16,100	11,915	12,069	1,550	23,524	60	1,950	16,300
KANS	1,900	1,507	1,431	146	3,069	10	135	1,770
KY	1,220	842	905	35	1,777	25	160	1,040
LA	160	84	88	2	166	20	18	130
MAINE	16	14	7	0	24	2	1	10
MD	235	217	219	12	401	7	25	250
MASS	49	26	32	0	55	1	2	49
MICH	830	662	563	64	1,291	18	120	690
MINN	5,100	3,978	3,623	215	8,116	30	470	4,300
MISS	410	268	256	4	463	30	75	370
MO	3,980	3,242	3,172	8	6,577	35	390	3,400
MONT	250	180	154	6	362	8	20	200
NEBR	3,900	3,097	3,172	400	6,143	16	310	4,100
NEV	12	9.1	9.1	0	15.2	1	1	13
N H	9.9	7	7.5	0	13.4	1	0.6	9.4
N J	68	15	15	50	95	2	6	45
N MEX	74	48	42	3	96	3	6	62
N Y	175	79	123	1	190	8	15	165
N C	2,460	1,800	1,636	48	3,634	70	260	1,980
N DAK	265	238	237	10	408	12	50	280
OHIO	2,150	1,451	1,523	204	2,941	17	320	2,050
OKLA	350	240	175	45	520	10	35	245
OREG	120	84	88	1	179	7	7	100
PA	980	664	491	0	1,215	40	130	750
R I	7.3	3.1	3.6	0	7.7	0.2	0.5	5.6
S C	700	390	343	0	851	25	67	490
S DAK	1,860	1,414	1,243	103	2,760	10	140	1,710
TENN	1,140	828	740	77	1,620	90	175	900
TEX	930	543	426	8	1,115	22	70	700
UTAH	58	30	32	2	76.5	1	4.5	40
VT	8	15	11	0	21	3	1	9
VA	750	562	497	18	1,060	52	75	640
WASH	100	48	57	0	134	6	5	60
W VA	73	50	30	5	78	20	8	52
WIS	1,680	1,408	1,349	28	2,893	35	157	1,380
WYO	30	23	23	8	46	2	3	33
U S	64,462	47,605	46,248	4,147	95,986	895	6,883	58,698

1/ BALANCE SHEET ESTIMATES BY STATES; THE SUM OF INVENTORY DECEMBER 1, 1980, PIG CROP AND INSHIPMENTS IS EQUAL TO THE SUM OF MARKETINGS, FARM SLAUGHTER, DEATHS AND INVENTORY DECEMBER 1, 1981.

2/ INCLUDES CUSTOM SLAUGHTER FOR USE ON FARMS WHERE PRODUCED AND STATE OUTSHIPMENTS, BUT EXCLUDES INTERFARM SALES WITHIN THE STATE.

3/ EXCLUDES CUSTOM SLAUGHTER FOR FARMERS AT COMMERCIAL ESTABLISHMENTS.

HOGS AND PIGS
PRODUCTION AND INCOME, 1981

STATE	PRODUCTION 1/ 1000 LBS	MARKETINGS 2/ 1000 LBS	AVERAGE PRICE PER 100 POUNDS DOLS	VALUE OF PRODUCTION 3/ 1000 DOLS	CASH RECEIPTS 4/ 1000 DOLS	VALUE OF HOME CONSUMPTION 1000 DOLS	GROSS INCOME 1000 DOLS
ALA	242,161	254,351	43.00	105,038	110,416	7,379	117,795
ALAS	497	366	75.00	378	275	18	293
ARIZ	59,222	61,812	46.50	27,425	28,743	340	29,083
ARK	209,227	221,277	43.30	92,823	98,278	2,619	100,897
CALIF	61,076	61,549	48.00	29,191	29,627	2,365	31,992
COLO	111,035	101,490	44.10	49,007	44,817	2,902	47,719
CONN	4,915	4,331	43.00	2,113	1,862	268	2,130
DEL	14,115	15,680	45.50	6,432	7,203	216	7,419
FLA	120,425	128,632	43.60	52,554	56,125	1,813	57,938
GA	593,464	675,960	43.10	255,119	291,426	8,728	300,154
HAW	12,348	11,610	72.20	8,915	8,382	819	9,201
IDAHO	50,441	51,655	40.60	20,454	20,988	877	21,865
ILL	2,564,976	2,591,013	44.10	1,126,252	1,143,806	5,557	1,149,363
IND	1,543,975	1,630,200	44.10	673,739	721,000	4,657	725,657
IOWA	5,667,090	5,644,620	43.80	2,456,043	2,474,050	28,146	2,502,196
KANS	722,735	737,069	42.80	307,765	316,017	4,194	320,211
KY	354,528	360,500	44.50	162,951	166,142	7,743	173,885
LA	39,627	35,075	41.70	16,528	14,636	3,048	17,684
MAINE	6,722	5,625	43.00	2,891	2,419	860	3,279
MD	90,071	83,913	45.50	41,450	38,765	1,266	40,031
MASS	13,267	12,825	43.00	5,705	5,515	290	5,805
MICH	288,235	293,625	43.70	125,441	129,020	5,664	134,684
MINN	1,694,340	1,798,028	43.60	743,865	792,788	8,453	801,241
MISS	105,801	102,367	44.40	47,047	45,612	4,795	50,407
MO	1,380,913	1,433,185	43.20	607,242	629,982	10,433	640,415
MONT	82,039	84,585	41.40	33,974	35,090	1,167	36,257
NEBR	1,411,200	1,379,806	43.70	611,286	604,576	9,817	614,393
NEV	3,979	3,322	32.30	1,303	1,091	111	1,202
N H	3,526	2,948	43.00	1,516	1,268	335	1,603
N J	12,784	19,560	43.10	4,820	8,430	569	8,999
N MEX	19,828	20,058	42.30	8,468	8,609	371	8,980
N Y	44,232	41,028	44.10	19,506	18,104	1,866	19,970
N C	782,723	810,826	44.00	344,568	357,638	13,090	370,728
N DAK	91,425	85,100	40.80	38,175	35,785	2,301	38,086
OHIO	668,813	683,327	44.60	295,792	305,044	3,548	308,592
OKLA	111,134	121,150	42.70	47,579	52,345	3,010	55,355
OREG	39,609	39,488	44.20	17,495	17,454	1,044	18,498
PA	259,194	274,250	46.80	121,342	128,389	6,458	134,847
R I	1,930	2,066	43.00	830	888	45	933
S C	188,045	200,325	41.30	77,663	82,734	4,853	87,587
S DAK	631,140	648,333	43.80	277,737	287,246	3,088	290,334
TENN	354,592	341,127	43.80	158,058	152,981	15,204	168,185
TEX	264,693	280,677	41.70	110,418	117,164	3,890	121,054
UTAH	15,718	17,172	40.60	6,364	6,972	349	7,321
VT	7,096	4,965	43.00	3,052	2,135	839	2,974
VA	232,918	227,556	44.20	103,328	101,089	8,067	109,156
WASH	26,446	27,483	45.50	12,087	12,559	1,714	14,273
W VA	28,781	22,270	44.60	12,808	9,939	4,549	14,488
WIS	568,668	594,079	43.10	252,670	264,122	6,072	270,194
WYO	11,247	10,720	43.40	4,830	4,739	408	5,147
U S	21,812,966	22,258,979		9,532,037	9,794,285	206,215	10,000,500

1/ ADJUSTMENTS MADE FOR CHANGES IN INVENTORY AND FOR INSHIPMENTS.

2/ EXCLUDES CUSTOM SLAUGHTER FOR USE ON FARMS WHERE PRODUCED AND INTERFARM SALES WITHIN THE STATE.

3/ INCLUDES ALLOWANCE FOR HIGHER AVERAGE PRICE OF STATE INSHIPMENTS AND OUTSHIPMENTS OF FEEDER PIGS.

4/ RECEIPTS FROM MARKETINGS AND SALE OF FARM SLAUGHTER. INCLUDES ALLOWANCE FOR HIGHER AVERAGE PRICE OF STATE OUTSHIPMENTS OF FEEDER PIGS.

HOGS AND PIGS
INVENTORY, SUPPLY AND DISPOSITION, 1982 1/

STATE	INVENTORY	PIG CROP		INSHIP-	MARKETINGS	FARM	DEATHS	INVENTORY
	DEC 1 1981	DEC - MAY	JUN - NOV	MENTS	2/	SLAUGHTER 3/		DEC 1 1982
	1000 HD	1000 HD	1000 HD	1000 HD	1000 HD	1000 HD	1000 HD	1000 HD
ALA	540	392	392	6	790	10	50	480
ALAS	2.8	2.9	2.7	0	1.9	2.6	0.4	3.5
ARIZ	170	139	144	4	273	1	13	170
ARK	585	350	413	15	613	7	53	490
CALIF	160	100	115	32	219	15	13	160
COLO	330	295	226	8	534	5	30	290
CONN	10	6.8	5.3	0	12.1	1	1	8
DEL	40	34	22	6	62.5	0.5	6	33
FLA	257	225	277	7	445	12	19	290
GA	1,520	1,066	1,122	106	2,154	40	170	1,450
HAW	55	35	36	0	67	4	6	49
IDAHO	150	71	73	5	182	3	9	105
ILL	6,450	4,419	4,736	423	9,768	10	650	5,600
IND	4,100	3,030	3,322	440	6,212	10	270	4,400
IOWA	16,300	10,772	10,917	1,300	23,349	40	1,500	14,400
KANS	1,770	1,357	1,306	128	2,754	12	125	1,570
KY	1,040	675	756	36	1,387	30	130	960
LA	130	74	95	2	127	19	20	135
MAINE	10	4.9	9	0	12.5	1	1	9.4
MD	250	218	185	7	435	5	20	200
MASS	49	28	34	0	61	1	3	46
MICH	690	638	740	53	1,081	15	125	960
MINN	4,300	3,345	3,588	217	7,030	20	400	4,000
MISS	370	225	236	4	440	25	70	300
MO	3,400	2,612	3,053	8	5,228	25	320	3,500
MONT	200	152	104	6	295	3	10	154
NEBR	4,100	2,785	2,946	300	6,017	14	300	3,800
NEV	13	9.1	10	0	16.8	0.6	0.8	14
N H	9.4	4.6	4.6	0	8.4	1.3	0.5	8.4
N J	45	16	16	40	55	2	10	50
N MEX	62	30	28	1.6	77.5	2.1	4	38
N Y	165	77	100	1	193	7	14	129
N C	1,980	1,687	1,771	65	3,068	45	240	2,150
N DAK	280	199	170	16	403	7	45	210
OHIO	2,050	1,461	1,502	192	3,075	10	200	1,920
OKLA	245	130	128	40	308	7	28	200
OREG	100	104	105	1	189	6	5	110
PA	750	379	567	0	666	40	120	870
R I	5.6	4.4	3	0	8.2	0.2	0.3	4.3
S C	490	292	336	0	589	25	64	440
S DAK	1,710	1,162	1,170	81	2,413	5	125	1,580
TENN	900	730	665	153	1,518	70	110	750
TEX	700	396	421	7	869	20	60	575
UTAH	40	23	21	2	50	1	3	32
VT	9	13	11	0	22.9	1.2	1	7.9
VA	640	481	391	69	982	34	65	500
WASH	60	36	42	0	77	6	4	51
W VA	52	36	29	6	63	13	5	42
WIS	1,380	1,232	1,248	34	2,524	20	130	1,220
WYO	33	21	20	5	46	1	3	29
U S	58,698	41,575	43,614	3,827	86,972	655	5,552	54,534

1/ BALANCE SHEET ESTIMATES BY STATES; THE SUM OF INVENTORY DECEMBER 1, 1981, PIG CROP AND INSHIPMENTS IS EQUAL TO THE SUM OF MARKETINGS, FARM SLAUGHTER, DEATHS AND INVENTORY DECEMBER 1, 1982.

2/ INCLUDES CUSTOM SLAUGHTER FOR USE ON FARMS WHERE PRODUCED AND STATE OUTSHIPMENTS, BUT EXCLUDES INTERFARM SALES WITHIN THE STATE.

3/ EXCLUDES CUSTOM SLAUGHTER FOR FARMERS AT COMMERCIAL ESTABLISHMENTS.

HOGS AND PIGS
PRODUCTION AND INCOME, 1982

STATE	PRODUCTION 1/ 1000 LBS	MARKETINGS 2/ 1000 LBS	AVERAGE PRICE PER 100 POUNDS DOLS	VALUE OF PRODUCTION 3/ 1000 DOLS	CASH RECEIPTS 4/ 1000 DOLS	VALUE OF HOME CONSUMPTION 1000 DOLS	GROSS INCOME 1000 DOLS
ALA	159,888	163,255	52.90	88,530	90,290	2,761	93,051
ALAS	941	753	83.00	781	625	43	668
ARIZ	61,668	61,315	57.10	35,124	35,011	410	35,421
ARK	170,363	177,385	50.50	88,441	92,388	1,591	93,979
CALIF	50,289	47,961	58.20	28,841	28,169	2,209	30,378
COLO	113,430	114,980	53.80	61,275	62,275	2,846	65,121
CONN	2,761	2,303	54.00	1,491	1,244	369	1,633
DEL	11,306	12,766	54.70	6,211	7,160	82	7,242
FLA	99,204	92,396	51.20	51,043	47,624	2,193	49,817
GA	488,816	488,850	51.90	251,241	253,809	7,640	261,449
HAW	11,421	11,409	74.20	8,474	8,465	620	9,085
IDAHO	37,654	42,008	49.20	18,444	20,723	567	21,290
ILL	2,291,183	2,413,216	52.90	1,202,883	1,278,859	5,290	1,284,149
IND	1,475,190	1,460,910	53.50	782,495	784,244	3,659	787,903
IOWA	5,328,964	5,620,813	51.90	2,727,985	2,920,381	22,234	2,942,615
KANS	662,165	671,983	51.50	338,741	346,961	6,180	353,141
KY	281,551	278,000	53.50	161,111	160,588	8,844	169,432
LA	33,029	27,208	55.00	18,181	15,008	3,370	18,378
MAINE	3,627	2,850	54.00	1,959	1,539	527	2,066
MD	82,488	88,970	54.70	46,455	50,176	881	51,057
MASS	14,547	14,380	54.00	7,855	7,765	316	8,081
MICH	287,905	250,757	52.50	150,753	132,554	3,780	136,334
MINN	1,539,700	1,582,145	52.60	815,991	844,522	7,069	851,591
MISS	97,183	98,721	54.70	53,405	54,383	4,355	58,738
MO	1,142,165	1,124,620	52.50	617,796	608,826	9,056	617,882
MONT	64,016	69,429	46.80	29,937	32,614	526	33,140
NEBR	1,299,512	1,353,210	52.60	679,468	714,314	8,469	722,783
NEV	3,813	3,596	42.40	1,669	1,577	75	1,652
N H	2,520	1,871	54.00	1,360	1,010	333	1,343
N J	10,435	11,220	54.40	4,063	6,104	718	6,822
N MEX	13,896	16,090	51.90	7,280	8,435	336	8,771
N Y	40,795	42,178	52.70	21,520	22,265	1,743	24,008
N C	728,277	697,438	52.70	383,715	369,359	9,486	378,845
N DAK	75,483	80,875	48.60	37,588	40,680	1,565	42,245
OHIO	691,394	717,024	53.90	367,848	386,917	2,523	389,440
OKLA	78,543	81,938	50.80	39,941	42,609	3,049	45,658
OREG	45,326	42,075	53.70	24,320	22,594	1,450	24,044
PA	170,876	147,680	55.60	95,112	82,215	7,673	89,888
R I	2,170	2,203	54.00	1,172	1,190	56	1,246
S C	139,951	133,205	51.00	71,376	67,935	5,993	73,928
S DAK	543,597	561,642	51.40	282,171	293,819	2,273	296,092
TENN	322,370	331,575	51.40	170,182	178,948	13,564	192,512
TEX	205,656	218,775	49.60	101,978	108,679	4,047	112,726
UTAH	10,722	11,224	49.20	5,234	5,522	408	5,930
VT	6,945	6,413	54.00	3,750	3,463	539	4,002
VA	205,943	213,592	53.10	109,016	114,249	6,824	121,073
WASH	17,285	17,090	54.60	9,477	9,370	1,057	10,427
W VA	24,643	19,125	53.40	13,077	10,230	3,540	13,770
WIS	496,180	514,660	51.00	264,829	275,177	4,692	279,869
WYO	10,135	10,880	53.60	5,432	5,977	258	6,235
U S	19,657,921	20,154,962		10,297,021	10,658,841	178,109	10,836,950

- 1/ ADJUSTMENTS MADE FOR CHANGES IN INVENTORY AND FOR INSHIPMENTS.
2/ EXCLUDES CUSTOM SLAUGHTER FOR USE ON FARMS WHERE PRODUCED AND INTERFARM SALES WITHIN THE STATE.
3/ INCLUDES ALLOWANCE FOR HIGHER AVERAGE PRICE OF STATE INSHIPMENTS AND OUTSHIPMENTS OF FEEDER PIGS.
4/ RECEIPTS FROM MARKETINGS AND SALE OF FARM SLAUGHTER. INCLUDES ALLOWANCE FOR HIGHER AVERAGE PRICE OF STATE OUTSHIPMENTS OF FEEDER PIGS.

SHEEP AND LAMBS
INVENTORY, SUPPLY AND DISPOSITION, 1979 1/

STATE	INVENTORY	LAMB	INSHIP-	MARKETING		FARM	DEATHS		INVENTORY
	JAN 1 1979	CROP	MENTS	2/		SLAUGHTER			JAN 1 1980
	1000 HD	1000 HD	1000 HD	SHEEP	LAMBS	1000 HD	SHEEP	LAMBS	1000 HD
ALAS	5	0.7	0	0	0	0.4	1	0	4.3
ARIZ	425	215	70	53	178	52	24	18	385
CALIF	1,150	721	266	53	736	14	73	86	1,175
COLO	795	400	645	69	769	6	46	80	870
CONN	5.1	4.5	0	0	2.4	0.4	0.2	0.6	6
IDAHO	466	432	63	57	359	3	33	41	468
ILL	167	129	11	15	83	2	11	23	173
IND	125	102	7	21	60	1	7	19	120
IOWA	380	273	59	24	198	2	35	45	408
KANS	220	134	114	20	188	1	9	15	235
KY	22	20	2	3	13	1	2	4	21
LA	13	8	0	2	2	2	1	2	12
MAINE	12	9	2	1	3	1	1	1	16
MD	19	16	0	2	8	1	1	3	20
MASS	6.7	5.5	2	0.8	2	0.5	0.4	0.5	10
MICH	121	90	1	3	61	1	5	10	132
MINN	255	198	38	31	153	2	14	27	264
MO	126	107	3	13	67	2	12	19	123
MONT	540	360	33	52	188	3	60	56	574
NEBR	175	90	108	21	110	1	13	18	210
NEV	125	94	68	12	124	3	10	16	122
N H	6.9	5.5	1	0.5	2.5	0.6	0.3	0.6	8.9
N J	2.6	7.8	0.6	1.9	4.1	0.8	0.7	1.2	9.3
N MEX	604	363	153	69	231	35	70	55	660
N Y	63	50	4	11	23	3	7	8	65
N C	7	6.1	0	0.5	3.2	0.4	0.5	.1	7.5
N DAK	198	143	22	7	80	1	19	20	236
OHIO	350	267	13	57	270	2	11	30	320
OKLA	89	62	12	11	45	0	5	9	93
OREG	490	300	24	51	179	5	38	46	495
PA	95	77	0	3	44	3	9	8	105
S DAK	740	650	90	98	461	3	35	100	783
TENN	13	10	2	4	6	0	1	2	12
TEX	2,415	1,190	190	335	788	2	150	120	2,400
UTAH	594	430	30	26	309	6	38	50	625
VT	8	7	2	1.1	2.4	0.5	0.4	0.6	12
VA	165	162	5	23	110	1	16	22	160
WASH	75	62	6	6	32	4	8	10	83
W VA	115	101	1	16	60	1	9	18	113
WIS	95	92	11	3	59	1	10	12	113
WYO	1,080	580	90	170	382	3	80	65	1,050
U S	12,365	7,974	2,143	1,347	6,336	172	867	1,063	12,699

1/ BALANCE SHEET ESTIMATES BY STATES; THE SUM OF INVENTORY JANUARY 1, 1979, LAMB CROP AND INSHIPMENTS IS EQUAL TO THE SUM OF MARKETINGS, FARM SLAUGHTER, DEATHS AND INVENTORY JANUARY 1, 1980.

2/ INCLUDES CUSTOM SLAUGHTER FOR USE ON FARMS WHERE PRODUCED AND STATE OUTSHIPMENTS, BUT EXCLUDES INTERFARM SALES WITHIN THE STATE.

3/ EXCLUDES CUSTOM SLAUGHTER FOR FARMERS AT COMMERCIAL ESTABLISHMENTS.

SHEEP AND LAMBS
PRODUCTION AND INCOME, 1979

STATE	PRODUCTION	MARKETINGS	AVERAGE PRICE		VALUE	CASH	VALUE OF	GROSS
	1/ 1000 LBS	2/ 1000 LBS	PER 100 POUNDS	PER 100 POUNDS	OF PRODUCTION	RECEIPTS 3/ 1000 DOLS	HOME CONSUMPTION 1000 DOLS	INCOME 1000 DOLS
			SHEEP	LAMBS				
ALAS	4/	24	30.00	55.00		7	7	14
ARIZ	20,145	24,556	20.50	65.90	11,587	13,472	2,261	15,733
CALIF	72,919	86,930	21.20	66.60	46,855	55,008	1,151	56,159
COLO	61,901	100,341	23.30	66.70	38,825	63,040	467	63,507
CONN	334	151	38.00	85.00	231	129	52	181
IDAHO	39,337	43,120	18.30	63.50	22,079	24,032	265	24,297
ILL	10,979	10,355	21.80	61.80	5,757	5,589	371	5,960
IND	7,095	7,673	22.80	61.10	3,799	3,727	203	3,930
IOWA	23,317	23,433	22.90	65.30	12,509	14,050	323	14,373
KANS	13,538	19,355	31.00	65.40	8,310	11,832	88	11,920
KY	1,551	1,695	18.30	57.30	836	825	95	920
LA	431	266	29.00	65.00	206	117	117	234
MAINE	770	284	34.00	81.00	455	164	143	307
MD	1,197	925	20.30	60.50	577	467	82	549
MASS	474	210	39.00	85.00	328	133	82	215
MICH	7,905	6,394	28.00	66.60	4,651	4,116	114	4,230
MINN	18,534	19,695	24.60	66.90	10,650	11,602	194	11,796
MO	7,955	8,184	24.10	64.80	4,512	4,642	194	4,836
MONT	26,219	24,041	24.40	68.20	13,667	13,243	247	13,490
NEBR	9,818	14,114	25.30	66.70	5,793	8,327	99	8,426
NEV	6,230	12,495	18.10	61.50	3,495	7,112	132	7,244
N H	463	199	36.00	84.00	285	136	89	225
N J	551	491	37.00	60.00	297	247	92	339
N MEX	20,643	26,147	27.80	71.90	13,452	16,323	1,635	16,958
N Y	3,397	3,038	20.90	68.20	1,678	1,499	261	1,760
N C	421	308	26.80	55.00	202	154	28	182
N DAK	11,694	8,387	24.50	68.20	6,503	5,338	143	5,481
OHIO	20,939	25,372	27.50	65.30	12,364	14,099	142	14,241
OKLA	5,301	5,826	20.80	69.40	3,091	3,402	0	3,402
OREG	25,388	25,993	17.70	62.70	13,121	13,314	537	13,851
PA	5,689	4,185	29.30	74.40	3,678	2,965	253	3,218
S DAK	61,980	63,268	23.80	70.10	36,707	38,464	311	38,775
TENN	678	980	18.00	54.10	287	371	0	371
TEX	111,085	126,478	29.40	69.10	61,864	71,439	167	71,606
UTAH	34,187	31,010	19.20	63.80	18,201	18,335	380	18,715
VT	666	258	36.00	81.00	409	142	114	256
VA	12,137	13,235	23.00	63.00	7,004	7,188	132	7,320
WASH	5,345	4,021	13.80	64.30	2,587	2,207	274	2,481
W VA	6,754	7,015	23.70	61.60	3,680	3,683	99	3,782
WIS	7,583	5,886	19.80	62.50	4,132	3,531	188	3,719
WYO	39,093	50,429	32.00	69.60	22,121	26,916	242	27,158
U S	704,593	806,765			406,766	470,387	11,774	482,161

- 1/ ADJUSTMENTS MADE FOR CHANGES IN INVENTORY AND FOR INSHIPMENTS.
2/ EXCLUDES CUSTOM SLAUGHTER FOR USE ON FARMS WHERE PRODUCED AND INTERFARM SALES WITHIN THE STATE.
3/ RECEIPTS FROM MARKETINGS AND SALE OF FARM SLAUGHTER.
4/ DECREASE IN INVENTORY AND THE DEATH LOSS OF SHEEP RESULTED IN A DEFICIT NUMBER OF POUNDS PRODUCED.

SHEEP AND LAMBS
INVENTORY, SUPPLY AND DISPOSITION, 1980 1/

STATE	INVENTORY	LAMB	INSHIP-	MARKETING		FARM	DEATHS		INVENTORY
	JAN 1 1980	CROP	MENTS	2/		SLAUGHTER	SHEEP	LAMBS	JAN 1 1981
	1000 HD	1000 HD	1000 HD	SHEEP	LAMBS	3/	1000 HD	1000 HD	1000 HD
ALAS	4.3	0.6	0	0	0	0.3	0.7	0	3.9
ARIZ	385	200	55	61	136	41	15	15	372
CALIF	1,175	725	258	65	689	19	90	90	1,205
COLO	870	435	609	136	846	6	40	76	810
CONN	6	5.2	0	1	2.4	0.7	0.3	0.7	6.2
IDAHO	468	450	91	37	389	3	35	33	512
ILL	173	134	55	24	120	2	10	22	184
IND	120	100	2	6	56	1	7	17	135
IOWA	408	300	119	37	276	2	30	45	437
KANS	235	145	94	31	195	1	8	19	220
KY	21	23	6	2	15	1	2	4	26
LA	12	7	0	2	2	2	1	1	11
MAINE	16	12	0	3	6	1	1	1	16
MD	20	16	0	4	8	1	1	3	19
MASS	10	7.2	0	2.6	3.8	0.6	0.4	0.8	9
MICH	132	100	3	18	77	1	5	10	124
MINN	264	205	63	19	175	2	14	27	295
MO	123	108	3	3	64	2	10	17	138
MONT	574	390	25	87	184	2	62	59	595
NEBR	210	112	114	20	130	1	15	20	250
NEV	122	93	68	6	110	3	9	21	134
N H	8.9	7.3	0	1.5	3.7	0.5	0.4	1	9.1
N J	9.3	7.8	0.6	1.7	4.3	0.4	0.5	1.3	9.5
N MEX	660	356	132	106	220	30	74	68	650
N Y	65	52	6	12	26	3	6	7	69
N C	7.5	6.4	0	0.9	3.2	0.4	0.7	1.2	7.5
N DAK	236	173	14	14	96	1	20	20	272
OHIO	320	253	4	32	185	2	16	32	310
OKLA	93	62	11	10	46	1	6	8	95
OREG	495	305	18	20	194	5	43	36	520
PA	105	83	0	10	47	5	11	10	105
S DAK	783	690	76	77	569	3	36	85	780
TENN	12	10	3	4	6	1	1	2	11
TEX	2,400	1,120	245	305	839	1	160	100	2,360
UTAH	625	476	30	20	346	9	56	50	650
VT	12	10	0	3.2	4.7	0.7	0.4	1	12
VA	160	169	4	18	108	1	15	21	160
WASH	83	64	0	15	34	4	7	7	80
W VA	113	104	1	18	67	1	8	16	108
WIS	113	110	11	3	77	1	13	13	127
WYO	1,050	640	95	159	383	3	65	65	1,110
U S	12,699	8,257	2,216	1,395	6,743	166	894	1,026	12,947

1/ BALANCE SHEET ESTIMATES BY STATES; THE SUM OF INVENTORY JANUARY 1, 1980, LAMB CROP AND INSHIPMENTS IS EQUAL TO THE SUM OF MARKETINGS, FARM SLAUGHTER, DEATHS AND INVENTORY JANUARY 1, 1981.

2/ INCLUDES CUSTOM SLAUGHTER FOR USE ON FARMS WHERE PRODUCED AND STATE OUTSHIPMENTS, BUT EXCLUDES INTERFARM SALES WITHIN THE STATE.

3/ EXCLUDES CUSTOM SLAUGHTER FOR FARMERS AT COMMERCIAL ESTABLISHMENTS.

SHEEP AND LAMBS
PRODUCTION AND INCOME, 1980

STATE	PRODUCTION	MARKETINGS	AVERAGE PRICE		VALUE	CASH	VALUE OF	GROSS
	1/	2/	PER 100 POUNDS		OF	RECEIPTS	HOME	INCOME
	1000 LBS	1000 LBS	SHEEP	LAMBS	PRODUCTION	3/	CONSUMPTION	1000 DOLS
ALAS	4/	18	30.00	55.00		5	5	10
ARIZ	19,560	21,285	18.80	64.50	9,822	10,525	1,822	12,347
CALIF	71,202	83,050	16.10	63.00	41,780	48,663	1,494	50,157
COLO	65,459	115,682	18.00	64.90	39,834	66,791	448	67,239
CONN	380	254	42.00	83.00	271	155	96	251
IDAHO	42,837	43,512	17.20	62.60	23,697	25,055	349	25,404
ILL	12,714	15,135	24.10	58.80	6,366	7,775	412	8,187
IND	7,900	5,685	24.50	59.20	3,874	3,098	225	3,323
IOWA	28,305	33,296	27.20	62.80	15,506	19,263	311	19,574
KANS	13,744	21,319	22.00	63.50	7,943	11,994	86	12,080
KY	2,113	1,820	18.10	60.30	1,138	987	131	1,118
LA	426	283	23.00	62.00	182	107	98	205
MAINE	984	800	42.00	74.00	594	458	136	594
MD	1,143	1,145	20.90	59.70	553	501	81	582
MASS	586	673	42.00	77.00	358	327	89	416
MICH	8,955	9,849	27.90	63.20	5,058	5,439	108	5,547
MINN	19,833	19,650	17.00	63.20	10,273	11,365	215	11,580
MO	8,565	6,576	25.70	61.90	4,706	3,935	248	4,183
MONT	29,124	28,564	17.70	61.70	12,478	12,307	158	12,465
NEBR	11,143	15,099	24.50	64.30	6,121	8,658	99	8,757
NEV	7,730	12,210	16.90	60.70	4,151	7,122	129	7,251
N H	537	422	39.00	81.00	359	260	81	341
N J	513	449	32.00	58.00	261	212	69	281
N MEX	17,886	29,506	22.60	61.90	9,984	13,514	1,166	14,680
N Y	3,873	3,403	22.30	67.00	1,880	1,690	256	1,946
N C	376	334	22.00	54.00	178	150	28	178
N DAK	14,353	15,782	24.60	61.90	7,288	6,021	129	6,150
OHIO	20,986	22,087	25.30	62.60	12,000	12,463	135	12,599
OKLA	5,351	5,702	15.00	62.00	2,669	2,971	124	3,095
OREG	26,166	22,708	13.70	60.40	12,467	12,501	476	12,977
PA	5,764	5,162	25.00	62.60	3,145	2,818	351	3,169
S DAK	69,322	72,423	30.90	64.40	39,451	43,296	300	43,596
TENN	621	980	19.50	62.10	351	421	39	460
TEX	109,720	128,380	22.70	66.70	56,674	69,528	110	69,638
UTAH	35,234	33,530	16.50	61.60	19,751	19,527	542	20,069
VT	868	709	43.00	76.00	523	397	127	524
VA	12,378	12,404	20.00	61.00	6,609	6,644	146	6,790
WASH	5,568	5,335	10.00	63.00	2,456	2,367	283	2,650
W VA	7,478	7,974	20.70	61.60	3,974	4,065	133	4,198
WIS	9,092	7,635	16.20	63.60	4,845	4,692	191	4,883
WYO	47,571	49,104	20.20	64.70	23,121	22,713	213	22,926
U S	746,343	854,830			402,689	470,782	11,636	482,418

1/ ADJUSTMENTS MADE FOR CHANGES IN INVENTORY AND FOR INSHIPMENTS.

2/ EXCLUDES CUSTOM SLAUGHTER FOR USE ON FARMS WHERE PRODUCED AND INTERFARM SALES WITHIN THE STATE.

3/ RECEIPTS FROM MARKETINGS AND SALE OF FARM SLAUGHTER.

4/ DECREASE IN INVENTORY AND THE DEATH LOSS OF SHEEP RESULTS IN A DEFICIT NUMBER OF POUNDS PRODUCED.

SHEEP AND LAMBS
INVENTORY, SUPPLY AND DISPOSITION, 1981 1/

STATE	INVENTORY	LAMB	INSHIP-	MARKETING		FARM	DEATHS		INVENTORY
	JAN 1 1981	CROP	MENTS	2/		SLAUGHTER			JAN 1 1982
	1000 HD	1000 HD	1000 HD	SHEEP	LAMBS	3/	SHEEP	LAMBS	1000 HD
ALAS	3.9	0.8	0	0	0	0.3	0.5	0	3.9
ARIZ	372	210	56	49	133	45	17	17	377
CALIF	1,205	765	206	92	685	24	80	85	1,210
COLO	810	440	436	101	744	5	48	78	710
CONN	6.2	5.8	1	0.4	2.1	0.6	0.3	0.7	8.9
IDAHO	512	483	56	69	419	6	30	29	498
ILL	184	143	77	28	142	4	11	24	195
IND	135	114	1	18	66	2	8	18	138
IOWA	437	315	87	28	244	2	35	45	485
KANS	220	140	72	14	172	1	8	17	220
KY	26	23	4	6	15	1	2	4	25
LA	11	6.9	0	1.5	2.5	2	1	1	9.9
MAINE	16	13	0	1	6	1	1	1	19
MD	19	16	0	2	9	1	1	3	19
MASS	9	7.5	0	0.1	3.2	0.9	0.5	0.8	11
MICH	124	95	1	15	61	2	6	11	125
MINN	295	245	65	31	192	3	15	29	335
MO	138	120	3	13	74	2	11	23	138
MONT	595	420	25	73	233	3	60	55	616
NEBR	250	143	86	46	176	1	10	21	225
NEV	134	97	140	13	199	3	10	17	129
N H	9.1	8	0	0.7	3.6	0.6	0.4	0.8	11
N J	9.5	7.6	0.5	1.9	3.5	0.4	0.6	1.5	9.7
N MEX	650	407	116	99	318	35	54	52	615
N Y	69	58	6	11	34	3	7	8	70
N C	7.5	5.6	0	0.7	2.4	0.3	0.4	0.9	8.4
N DAK	272	196	13	21	139	1	20	20	280
OHIO	310	255	4	29	173	2	16	36	313
OKLA	95	71	9	5	51	1	5	8	105
OREG	520	360	5	15	245	7	38	40	540
PA	105	87	7	3	46	5	9	11	125
S DAK	780	690	57	116	538	3	35	85	750
TENN	11	9	2	4	4	1	1	2	10
TEX	2,360	1,250	228	322	879	2	125	110	2,400
UTAH	650	481	30	44	360	7	54	60	636
VT	12	10	2.2	1.6	4	0.8	0.6	1.2	16
VA	160	150	5	20	94	1	16	22	162
WASH	80	68	6	13	40	4	7	7	83
W VA	108	100	1	14	61	1	7	16	110
WIS	127	119	7	13	90	1	12	12	125
WYO	1,110	685	70	175	440	3	55	62	1,130
U S	12,947	8,820	1,885	1,510	7,103	189	818	1,035	12,997

1/ BALANCE SHEET ESTIMATES BY STATES; THE SUM OF INVENTORY JANUARY 1, 1981, LAMB CROP AND INSHIPMENTS IS EQUAL TO THE SUM OF MARKETINGS, FARM SLAUGHTER, DEATHS AND INVENTORY JANUARY 1, 1982.

2/ INCLUDES CUSTOM SLAUGHTER FOR USE ON FARMS WHERE PRODUCED AND STATE OUTSHIPMENTS, BUT EXCLUDES INTERFARM SALES WITHIN THE STATE.

3/ EXCLUDES CUSTOM SLAUGHTER FOR FARMERS AT COMMERCIAL ESTABLISHMENTS.

SHEEP AND LAMBS
PRODUCTION AND INCOME, 1981

STATE	PRODUCTION	MARKETINGS	AVERAGE PRICE		VALUE	CASH	VALUE OF	GROSS
	1/	2/	PER 100 POUNDS		OF	RECEIPTS	HOME	INCOME
			SHEEP	LAMBS	PRODUCTION	3/	CONSUMPTION	
	1000 LBS	1000 LBS	DOLS	DOLS	1000 DOLS	1000 DOLS	1000 DOLS	1000 DOLS
ALAS	57	18	35.00	60.00	25	9	9	18
ARIZ	20,550	19,590	18.70	54.60	8,865	8,675	1,708	10,383
CALIF	64,675	74,965	17.00	56.30	32,947	37,867	1,963	39,830
COLO	52,506	94,859	18.40	57.20	27,102	49,169	324	49,493
CONN	434	122	41.00	100.00	316	90	82	172
IDAH0	50,450	54,752	15.70	54.80	24,552	26,767	575	27,342
ILL	14,490	17,960	19.80	49.30	5,948	7,739	493	8,232
IND	8,840	7,930	20.00	48.30	3,537	3,143	319	3,462
IOWA	27,888	28,273	23.90	53.30	12,873	14,057	259	14,316
KANS	13,262	16,985	22.30	56.30	6,893	8,991	217	9,208
KY	1,938	2,340	16.60	55.30	940	992	60	1,052
LA	436	304	25.00	55.00	176	125	87	212
MAINE	960	422	37.00	85.00	614	292	143	435
MD	1,237	1,005	21.30	55.00	535	472	74	546
MASS	479	170	45.00	100.00	381	163	89	252
MICH	8,060	7,803	19.80	51.90	3,678	3,454	170	3,632
MINN	24,393	23,655	16.40	52.90	10,814	11,156	278	11,434
MO	8,911	8,700	24.60	51.30	4,127	4,019	211	4,230
MONT	36,494	35,311	17.40	47.20	13,365	13,469	185	13,654
NEBR	14,396	23,238	22.10	53.30	6,684	10,448	84	10,532
NEV	9,395	22,325	18.00	53.80	4,688	11,499	118	11,617
N H	597	256	38.00	90.00	410	183	86	269
N J	471	420	32.10	46.10	198	165	49	214
N MEX	25,414	36,518	22.70	51.00	11,494	15,428	1,235	16,663
N Y	4,268	3,922	22.40	60.50	1,908	1,912	262	2,174
N C	404	255	21.50	52.00	165	110	19	129
N DAK	16,522	15,742	16.80	48.90	6,755	6,855	102	6,957
OHIO	19,514	19,538	22.40	53.00	9,521	9,386	114	9,500
OKLA	6,311	5,602	17.30	56.30	3,093	2,920	112	3,032
OREG	32,528	27,674	15.70	54.40	14,630	14,381	680	15,061
PA	6,554	4,287	22.10	66.80	3,669	2,716	435	3,151
S DAK	65,782	73,509	22.10	53.40	31,813	34,723	242	34,965
TENN	513	800	17.30	60.50	301	294	54	348
TEX	106,985	124,645	23.20	56.80	52,188	58,358	170	58,528
UTAH	38,990	41,555	17.30	51.80	17,963	19,628	370	19,998
VT	884	415	32.00	78.00	457	225	110	335
VA	11,134	11,341	18.00	55.00	5,398	5,313	110	5,423
WASH	6,250	6,015	13.00	53.20	2,716	2,581	262	2,843
W VA	7,252	7,003	17.90	54.30	3,405	3,216	115	3,331
WIS	9,605	9,985	17.00	54.00	4,689	4,839	189	5,028
WYO	52,554	55,427	19.50	48.10	19,263	20,254	164	20,418
U S	772,382	885,634			359,085	416,081	12,334	428,415

1/ ADJUSTMENTS MADE FOR CHANGES IN INVENTORY AND FOR INSHIPMENTS.

2/ EXCLUDES CUSTOM SLAUGHTER FOR USE ON FARMS WHERE PRODUCED AND INTERFARM SALES WITHIN THE STATE.

3/ RECEIPTS FROM MARKETINGS AND SALE OF FARM SLAUGHTER.

SHEEP AND LAMBS
INVENTORY, SUPPLY AND DISPOSITION, 1982 1/

STATE	INVENTORY	LAMB	INSHIP-	MARKETING		FARM	DEATHS		INVENTORY
	JAN 1 1982	CROP	MENTS	2/		SLAUGHTER	SHEEP	LAMBS	JAN 1 1983
	1000 HD	1000 HD	1000 HD	SHEEP	LAMBS	3/	1000 HD	1000 HD	1000 HD
ALAS	3.9	0.7	0	0	0	0.7	0.6	0	3.3
ARIZ	377	180	99	94	129	45	25	20	343
CALIF	1,210	750	295	120	820	25	80	95	1,115
COLO	710	440	548	109	725	3	43	68	750
CONN	8.9	7	0	2.8	3.7	0.7	0.3	0.8	7.6
IDAHO	498	480	24	77	427	7	31	31	429
ILL	195	133	88	55	165	4	12	25	155
IND	138	105	1	30	63	3	10	20	118
IOWA	485	340	93	79	291	2	37	52	457
KANS	220	162	86	20	177	1	10	18	242
KY	25	20	4	7	14	1	1	3	23
LA	9.9	6.6	0	1.2	2.5	0.9	0.7	1.5	9.7
MAINE	19	16	0	4.4	9.7	0.7	0.6	1.6	18
MD	19	15	3	3	12	1	1	2	18
MASS	11	9.1	0	3.3	5.2	0.3	0.3	1	10
MICH	125	90	2	16	70	2	6	13	110
MINN	335	245	83	65	240	3	19	36	300
MO	138	120	3	9	83	1	11	23	134
MONT	616	470	21	94	309	2	50	52	600
NEBR	225	125	111	51	171	1	11	22	205
NEV	129	92	159	18	221	3	10	18	110
N H	11	9	0	2.1	4.7	0.7	0.5	1	11
N J	9.7	7.8	0.3	1.3	2.9	1	0.5	1.1	11
N MEX	615	375	82	93	228	35	50	56	610
N Y	70	54	3	16	27	3	6	9	66
N C	8.4	6	0	0.9	2.5	0.5	0.5	0.9	9.1
N DAK	280	190	14	74	145	1	17	25	222
OHIO	313	230	2	29	162	5	20	34	295
OKLA	105	70	13	6	47	1	7	10	117
OREG	540	380	15	64	246	10	40	45	530
PA	125	80	0	37	47	3	8	12	98
S DAK	750	640	47	127	472	3	40	95	700
TENN	10	7.5	0.5	3.3	4.4	0.2	0.6	1.5	8
TEX	2,409	1,200	215	412	955	3	120	100	2,225
UTAH	636	446	30	69	340	8	50	55	590
VT	16	13	0	4.5	7.8	0.8	0.5	1.4	14
VA	162	134	1	28	83	1	15	18	152
WASH	83	66	1	26	41	4	7	7	65
W VA	110	100	1	21	66	1	7	16	100
WIS	125	105	4	25	82	1	13	14	99
WYO	1,130	660	66	226	457	5	53	55	1,060
U S	12,997	8,580	2,115	2,124	7,358	195	815	1,060	12,140

1/ BALANCE SHEET ESTIMATES BY STATES; THE SUM OF INVENTORY JANUARY 1, 1982, LAMB CROP AND INSHIPMENTS IS EQUAL TO THE SUM OF MARKETINGS, FARM SLAUGHTER, DEATHS AND INVENTORY JANUARY 1, 1983.

2/ INCLUDES CUSTOM SLAUGHTER FOR USE ON FARMS WHERE PRODUCED AND STATE OUTSHIPMENTS, BUT EXCLUDES INTERFARM SALES WITHIN THE STATE.

3/ EXCLUDES CUSTOM SLAUGHTER FOR FARMERS AT COMMERCIAL ESTABLISHMENTS.

SHEEP AND LAMBS
PRODUCTION AND INCOME, 1982

STATE	PRODUCTION	MARKETINGS	AVERAGE PRICE		VALUE	CASH	VALUE OF	GROSS
	1/	2/	PER 100 POUNDS		OF	RECEIPTS	HOME	INCOME
			SHEEP	LAMBS	PRODUCTION	3/	CONSUMPTION	
	1000 LBS	1000 LBS	DOLS	DOLS	1000 DOLS	1000 DOLS	1000 DOLS	1000 DOLS
ALAS	28	53	35.00	65.00	13	20	20	40
ARIZ	17,170	24,350	19.20	56.00	7,394	9,660	1,752	11,412
CALIF	79,151	105,890	18.60	54.50	40,984	52,541	2,099	54,640
COLO	59,594	96,755	17.40	53.90	30,439	46,983	164	47,147
CONN	464	542	41.00	94.00	290	309	75	384
IDAHO	45,962	55,012	13.80	51.30	22,067	24,756	573	25,329
ILL	14,020	24,280	17.30	51.60	5,789	9,982	619	10,601
IND	7,575	9,433	17.30	48.30	2,916	3,321	248	3,569
IOWA	29,786	39,387	20.90	52.90	13,236	17,726	257	17,983
KANS	15,106	18,175	23.20	57.10	7,905	9,564	220	9,784
KY	1,878	2,222	15.70	57.60	891	905	144	1,049
LA	411	317	25.00	55.00	171	134	43	177
MAINE	1,203	1,131	36.00	84.00	715	654	136	790
MD	1,203	1,436	20.50	54.70	578	659	79	738
MASS	602	654	41.00	94.00	414	397	68	465
MICH	7,580	8,686	18.50	54.50	3,516	4,017	269	4,286
MINN	23,693	32,550	15.10	54.70	10,742	14,716	410	15,126
MO	9,016	9,170	20.00	49.50	3,961	4,199	109	4,308
MONT	43,293	46,576	15.00	48.10	16,721	17,815	94	17,909
NEBR	13,190	23,597	22.10	54.70	6,121	10,663	86	10,749
NEV	8,925	25,185	13.80	42.90	3,615	10,228	93	10,321
N H	570	504	37.00	88.00	352	304	76	380
N J	609	277	27.80	41.50	222	95	88	183
N MEX	23,412	28,576	18.20	48.60	9,687	10,680	1,090	11,770
N Y	3,474	3,589	21.30	54.80	1,455	1,377	321	1,698
N C	431	280	20.30	55.00	175	121	31	152
N DAK	14,871	22,941	13.80	48.00	5,629	7,848	100	7,948
OHIO	16,828	18,142	20.40	53.80	8,271	8,777	308	9,085
OKLA	5,879	5,310	17.00	56.10	2,811	2,697	117	2,814
OREG	30,044	33,535	13.20	51.90	14,412	14,432	884	15,316
PA	5,587	8,380	20.90	60.80	2,877	3,530	276	3,806
S DAK	57,543	67,644	17.10	53.70	27,583	30,515	231	30,746
TENN	482	759	17.20	53.80	216	275	7	282
TEX	124,060	153,880	22.40	53.60	53,008	67,058	241	67,299
UTAH	35,386	42,366	16.70	49.90	16,240	18,277	535	18,812
VT	809	817	35.00	77.00	477	427	155	582
VA	10,195	11,390	15.90	54.20	4,521	4,833	54	4,887
WASH	5,519	7,358	12.10	53.00	2,295	2,690	288	2,978
W VA	7,215	8,200	16.80	52.60	3,215	3,449	142	3,591
WIS	7,601	10,848	13.70	54.00	3,761	4,657	189	4,846
WYO	55,061	67,722	15.90	49.60	20,038	23,841	305	24,147
U S	785,425	1,017,918			355,703	445,134	13,000	458,134

1/ ADJUSTMENTS MADE FOR CHANGES IN INVENTORY AND FOR INSHIPMENTS.

2/ EXCLUDES CUSTOM SLAUGHTER FOR USE ON FARMS WHERE PRODUCED AND INTERFARM SALES WITHIN THE STATE.

3/ RECEIPTS FROM MARKETINGS AND SALE OF FARM SLAUGHTER.

United States
Department of Agriculture

Washington, D.C.
20250

OFFICIAL BUSINESS
Penalty for Private Use, \$300



Postage and Fees Paid
United States
Department of Agriculture
AGR-101

THIRD CLASS BULK RATE

END