



AgEcon SEARCH
RESEARCH IN AGRICULTURAL & APPLIED ECONOMICS

The World's Largest Open Access Agricultural & Applied Economics Digital Library

This document is discoverable and free to researchers across the globe due to the work of AgEcon Search.

Help ensure our sustainability.

Give to AgEcon Search

AgEcon Search

<http://ageconsearch.umn.edu>

aesearch@umn.edu

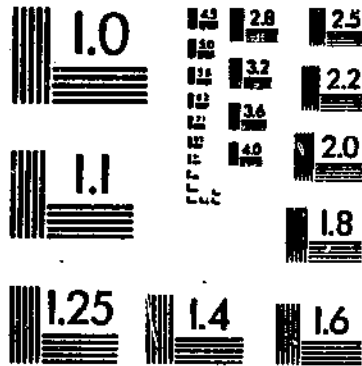
*Papers downloaded from **AgEcon Search** may be used for non-commercial purposes and personal study only. No other use, including posting to another Internet site, is permitted without permission from the copyright owner (not AgEcon Search), or as allowed under the provisions of Fair Use, U.S. Copyright Act, Title 17 U.S.C.*

SEVEN MONTHS - USDA STATISTICAL BULLETIN
MILK FINAL ESTIMATES FOR 1975
CROP REPORTING BOARD - U.S. DEPT. OF AGRICULTURE

UPDATA

1 OF 1

START





**United States
Department of
Agriculture**

**Statistical
Reporting
Service**

**Crop
Reporting
Board**

**Statistical
Bulletin
Number 722**

Milk

Final Estimates for 1979-82

MILK: FINAL ESTIMATES FOR 1979-82. Crop Reporting Board, Economics and Statistics Service, U.S. Department of Agriculture, Statistical Bulletin No. 722.

Abstract

This publication contains final milk production estimates, including revisions, for 1979-82; data cover monthly estimates of milk cows, production per cow, and total milk production, as well as number of operations with milk cows, disposition, and income. The report continues the official series published in Statistical Bulletin No. 651, issued February 1981. Estimates contained in this publication provide a historic record and a benchmark for current estimates.

Washington, D.C. 20250

February 1985

CONTENTS

	<u>PAGE</u>
INTRODUCTION	4
 <u>TABLES</u>	
Number of milk cows, milk per cow, and milk production, United States, by months, 1979-82	5
Milk cows, production of milk and milkfat, United States, 1979-82	5
Milk used and marketed by producers, United States, 1979-82	6
Milk and cream marketed by producers: Quantity, price, and cash receipts, United States, 1979-82	6
Marketings, income, and value of milk production, United States, 1979-82	6
Milk cows: Number, by months, by States, 1979-82	7-10
Milk: Produced per cow, by months, by States, 1979-82	11-14
Milk production: Total milk produced, by months, by States, 1979-82	15-18
Milk production: Total milk produced, by quarters, by States, 1979-82	19-22
Milk cows: Annual production, disposition, and income by States:	
1979	23-26
1980	27-30
1981	31-34
1982	35-38
Number of operations with milk cows, by States, 1979-82	39
Supply and utilization of milk, United States, 1979-82	40

INTRODUCTION

This publication revises estimates for milk which were published on a current basis in monthly reports during 1979-82. The current estimates were based on sample surveys of producers drawn from lists of all known milk cow operations in each State.

Revisions were made only after a thorough review of the original estimates and a consideration of new data, including the 1982 Census of Agriculture. Other series of check data used included Federal Milk Market Order information and receipts of milk by plants and dairy product manufacturers. Terms used in this report are defined below:

Milk cows means cows kept mainly for milk production, but not those kept to nurse calves. The estimates include dry milk cows between periods of lactation. Heifers were not included as milk cows until they had calved for the first time.

Milk production estimates for each State were the product of the estimated number of cows multiplied by the rate per cow. Rate per cow (monthly and annual) was based on all milk cows, in milk and dry.

Milk marketed means whole milk and milk equivalent of farm-separated cream sold to plants according to receipts reported in surveys of all dairy plants. Adjustments were made for milk received directly from out-of-State producers. Milk sold directly to consumers included sales by producer-distributors who marketed milk from their own herds, milk sold to neighbors, and milk produced in herds kept by institutions.

Prices received by farmers for milk were based on sales to dairy plants. These data provided monthly average prices to producers for each State. A sample of producer-distributors was used each month for the prices received for all milk sold directly to consumers.

Farm income from milk and cream was determined from cash receipts for the sale of whole milk to plants, cream to plants, and milk to consumers. An average price per unit was computed by dividing total cash receipts by the equivalent quantity of whole milk sold. This average price was applied to milk used in farm households to measure farm-use value which, in turn, was added to cash receipts to determine gross farm income. The same average price was applied to total milk production to compute farm value.

Supply and utilization of milk: All data are based on whole milk equivalent using the milkfat content of ingredients and products. An estimate of total supply is derived by taking total milk production plus the milk equivalent of net imports of ingredients and net out-of-storage movement of cream. Utilization of milk in manufactured products is based on the total milkfat required to produce the products and includes the milk equivalent of any imported ingredients used.

MILK: NUMBER OF MILK COWS, MILK PER COW AND MILK PRODUCTION, UNITED STATES,
BY MONTHS, 1979-82

MONTH	NUMBER OF MILK COWS 1/				MILK PRODUCTION PER COW 2/			
	1979	1980	1981	1982	1979	1980	1981	1982
	1,000 HEAD				POUNDS			
JAN	10,788	10,748	10,844	10,997	923	959	996	1,010
FEB	10,759	10,753	10,855	10,993	862	927	935	943
MAR	10,738	10,755	10,853	10,996	980	1,016	1,061	1,064
APR	10,717	10,759	10,860	3/	989	1,024	1,062	3/
MAY	10,712	10,776	10,873	3/	1,049	1,085	1,111	3/
JUN	10,701	10,779	10,880	3/	1,023	1,051	1,062	3/
JUL	10,704	10,788	10,881	3/	997	1,025	1,044	3/
AUG	10,716	10,818	10,909	3/	971	997	1,018	3/
SEP	10,736	10,828	10,928	3/	930	955	972	3/
OCT	10,734	10,841	10,944	3/	937	964	983	3/
NOV	10,739	10,847	10,965	3/	896	926	948	3/
DEC	10,751	10,850	10,984	3/	937	966	991	3/
YEAR 1/	10,734	10,799	10,898	11,011	11,492	11,891	12,183	12,306

TOTAL MILK PRODUCTION 2/

	1979	1980	1981	1982
	MILLION POUNDS			
JAN	9,954	10,311	10,803	11,106
FEB	9,274	9,965	10,149	10,361
MAR	10,528	10,931	11,519	11,700
APR	10,598	11,015	11,531	3/
MAY	11,240	11,688	12,078	3/
JUN	10,945	11,325	11,552	3/
JUL	10,677	11,063	11,361	3/
AUG	10,404	10,784	11,106	3/
SEP	9,981	10,344	10,625	3/
OCT	10,060	10,451	10,763	3/
NOV	9,619	10,044	10,393	3/
DEC	10,070	10,485	10,890	3/
YEAR	123,350	128,406	132,770	135,505

1/ NUMBER OF MILK COWS IS AVERAGE NUMBER DURING YEAR, EXCLUDING HEIFERS NOT YET FRESH.
2/ EXCLUDES MILK SUCKED BY CALVES. 3/ MONTHLY AVERAGES NOT AVAILABLE APR THRU DEC. SEE PAGE 10 FOR QUARTERLY COWS, PAGE 14 FOR QUARTERLY RATES AND PAGE 18 FOR QUARTERLY PRODUCTION.

MILK COWS, PRODUCTION OF MILK AND MILKFAT, UNITED STATES, 1979-82

YEAR	PRODUCTION OF MILK AND MILKFAT 2/					
	NUMBER OF MILK COWS 1/		PER MILK COW		PERCENTAGE OF FAT IN ALL MILK PRODUCED	
	THOUSANDS	POUNDS	MILK	MILKFAT	MILK	MILKFAT
					PERCENT	MILLION POUNDS
1979	10,734	11,492	420	3.66	123,350	4,511.8
1980	10,799	11,891	435	3.65	128,406	4,692.4
1981	10,898	12,183	444	3.64	132,770	4,835.9
1982	11,011	12,306	450	3.65	135,505	4,949.5

1/ AVERAGE NUMBER DURING YEAR, EXCLUDING HEIFERS NOT YET FRESH.
2/ EXCLUDES MILK SUCKED BY CALVES.

MILK USED AND MARKETED BY PRODUCERS, UNITED STATES, 1979-82

YEAR	MILK USED WHERE PRODUCED			MILK MARKETED BY PRODUCERS		
	FED TO CALVES 1/	USED FOR MILK, CREAM AND BUTTER	TOTAL	SOLD TO PLANTS AND DEALERS AS WHOLE MILK 2/	SOLD DIRECTLY TO CONSUMERS 3/	TOTAL
MILLION POUNDS						
1979	1,442	1,040	2,483	119,379	1,489	120,869
1980	1,395	943	2,338	124,598	1,470	126,067
1981	1,418	886	2,304	128,994	1,472	130,467
1982	1,521	839	2,361	131,859	1,285	133,144

1/ EXCLUDES MILK SUCKED BY CALVES. 2/ INCLUDES MILK PRODUCED BY DEALERS' OWN HERDS. 3/ SALES DIRECTLY TO CONSUMERS BY PRODUCERS WHO SELL ONLY MILK FROM THEIR OWN HERDS. ALSO INCLUDES MILK PRODUCED BY INSTITUTIONAL HERDS.

MILK AND CREAM MARKETED BY PRODUCERS: QUANTITY, PRICE, AND CASH RECEIPTS, UNITED STATES 1979-82

YEAR	MILK USED WHERE PRODUCED			MILK MARKETED BY PRODUCERS		
	QUANTITY	PRICE PER 100 LB	CASH RECEIPTS	QUANTITY	PRICE PER QUART	CASH RECEIPTS
	MILLION POUNDS	DOLLARS	1,000 DOLLARS	1,000 QUART	CENTS	1,000 DOLLARS
1979	119,379	12.02	14,347,397	692,698	42	293,347
1980	124,598	13.05	16,259,004	683,488	45	309,484
1981	128,994	13.77	17,764,463	684,744	48	330,763
1982	131,859	13.61	17,945,778	597,767	48	287,693

MARKETING, INCOME, AND VALUE OF MILK PRODUCTION, UNITED STATES, 1979-82

YEAR	COMBINED MARKETINGS OF MILK AND CREAM				USED FOR MILK, CREAM AND BUTTER WHERE PRODUCED		GROSS INCOME 3/	VALUE OF ALL MILK PRODUCED 2/ 4/
	MILK UTILIZED	AVERAGE RETURNS 1/ PER 100 POUNDS OF MILK	PER POUND OF MILKFAT	CASH RECEIPTS FROM MARKETINGS	MILK UTILIZED	VALUE 2/		
	MIL LBS	DOLLARS	1,000 DOL	MIL LBS	1,000 DOLLARS			
1979	120,869	12.11	3.31	14,640,744	1,040	127,038	14,767,781	14,941,518
1980	126,067	13.14	3.60	16,568,488	943	124,815	16,693,303	16,875,623
1981	130,467	13.87	3.81	18,095,225	886	124,050	18,219,275	18,415,052
1982	133,144	13.69	3.75	18,233,471	839	115,809	18,349,280	18,559,413

1/ CASH RECEIPTS DIVIDED BY MILK OR MILKFAT REPRESENTED IN COMBINED MARKETINGS.
 2/ VALUE AT AVERAGE RETURNS PER 100 POUNDS OF MILK IN COMBINED MARKETINGS OF MILK AND CREAM.
 3/ CASH RECEIPTS FROM MARKETINGS OF MILK AND CREAM PLUS VALUE OF MILK USED FOR HOME CONSUMPTION AND PRODUCER-CHURNED BUTTER.
 4/ INCLUDES VALUE OF MILK FED TO CALVES.

MILK COWS: NUMBER, BY MONTHS, BY STATES, 1979 1/

STATE	JAN	FEB	MAR	APR	MAY	JUN	JUL	AUG	SEP	OCT	NOV	DEC	ANNUAL AVERAGE
THOUSANDS													
ALA	70	70	69	69	68	68	68	68	68	67	67	67	68
ALAS			1.3			1.2			1.2			1.2	1.2
ARIZ			72			72			71			72	72
ARK	83	83	83	83	82	82	81	79	77	75	73	70	79
CALIF	862	964	867	869	870	871	873	874	875	876	877	878	871
COLD	72	71	72	72	72	72	72	72	71	72	72	72	72
CONN			49			48			48			49	49
DEL			10.8			10.6			10.6			10.6	10.7
FLA	189	189	189	190	191	191	190	189	187	186	185	184	188
GA	130	130	131	130	130	130	129	131	129	129	130	130	130
HAW			12.8			12.5			12.8			12.9	12.8
IDAHO	141	142	143	142	142	144	143	142	146	146	146	148	144
ILL	230	230	231	229	229	230	231	232	233	232	234	235	231
IND	197	198	197	196	196	198	197	198	199	197	198	198	197
IOWA	374	370	370	372	372	371	371	369	368	367	367	367	370
KANS	125	124	124	124	124	124	124	123	122	122	121	120	123
KY	263	262	256	257	256	257	255	257	255	252	248	244	255
LA	127	125	123	123	122	121	121	119	117	117	116	116	121
MAINE			56			55			55			56	56
MD	129	127	126	126	126	125	125	125	125	125	125	125	126
MASS			49			48			47			46	48
MICH	402	400	395	394	394	394	395	396	399	399	400	400	397
MINN	850	845	840	833	833	830	835	840	845	850	855	860	843
MISS	103	103	102	101	100	100	98	98	99	99	99	99	100
MO	269	267	265	263	266	264	264	264	265	264	262	263	265
MONT			28			28			28			28	28
NEBR	120	119	120	119	120	118	119	120	119	120	120	120	120
NEV			15.0			15.0			15.0			15.0	15.0
N H			31			30			30			30	30
N J			42			41			40			41	41
N MEX			38			38			38			39	38
N Y	903	903	903	902	899	900	901	901	912	912	911	911	905
N C	131	131	131	131	131	131	131	132	132	132	132	133	132
N DAK	97	96	96	95	95	95	94	94	93	93	93	93	95
OHIO	375	375	375	374	374	372	370	371	372	373	374	375	373
OKLA	112	111	111	111	110	110	109	109	109	109	109	109	110
OREG	93	93	93	93	93	93	94	94	94	94	94	94	94
PA	705	702	698	698	697	696	696	701	705	703	706	710	701
R I			4.7			4.5			4.3			4.1	4.4
S C			50			49			49			50	50
S DAK			159			158			157			156	158
TENN	209	208	208	208	209	210	212	212	212	213	213	213	211
TEX	310	310	311	311	311	310	310	310	311	312	313	314	311
UTAH	78	77	77	76	76	76	76	76	76	75	75	75	76
VT	188	186	184	182	180	180	181	182	183	184	185	186	183
VA	172	171	170	170	169	168	169	171	172	171	170	170	170
WASH	197	195	196	196	198	197	198	196	197	197	197	199	197
W VA			37			37			37			37	37
WIS	1,811	1,811	1,812	1,812	1,813	1,813	1,813	1,813	1,813	1,813	1,813	1,813	1,813
WYO			12.0			12.0			11.9			11.9	12.0
OTH 17 STS 3/	671	671		666	664		659	658		658	659		
U S	10,788	10,759	10,738	10,717	10,712	10,701	10,704	10,716	10,736	10,734	10,739	10,751	10,734

SEE FOOTNOTES ON PAGE 10.

MILK COWS: NUMBER, BY MONTHS, BY STATES, 1980 1/

STATE	JAN	FEB	MAR	APR	MAY	JUN	JUL	AUG	SEP	OCT	NOV	DEC	ANNUAL AVERAGE 2/
THOUSANDS													
ALA	67	65	65	66	66	65	65	65	65	64	64	63	65
ALAS			1.1			1.0			1.0			1.1	1.1
ARIZ			74			76			75			75	75
ARK	72	71	73	73	72	73	74	76	76	77	76	74	74
CALIF	880	884	887	890	894	898	900	901	903	904	906	909	896
COLO	71	71	70	70	69	70	70	71	72	71	71	71	71
CONN			49			48			47			48	48
DEL			10.6			10.4			10.3			10.2	10.4
FLA	184	185	185	187	187	188	187	187	187	187	187	187	187
GA	130	130	130	130	130	130	130	130	131	131	131	130	130
HAW			13.0			12.9			13.0			13.1	13.0
IDAHO	149	150	153	155	154	154	154	156	156	156	158	158	154
ILL	233	233	232	233	235	233	233	234	233	233	232	230	233
IND	198	197	199	199	201	201	200	200	202	204	205	207	201
IOWA	361	365	363	365	369	367	368	369	371	371	372	370	368
KANS	121	122	122	122	122	123	123	123	123	123	123	123	123
KY	241	240	240	240	241	241	242	243	243	243	242	243	242
LA	116	116	115	114	115	115	114	113	113	112	112	112	114
MAINE			57			57			56			55	56
MD	126	126	126	126	126	126	126	127	127	127	127	127	126
MASS			46			46			46			46	46
MICH	400	397	397	395	396	398	395	394	394	392	390	390	395
MINN	655	850	850	850	855	855	860	865	870	875	880	880	862
MISS	99	99	99	99	98	98	98	98	98	98	98	98	98
MO	262	262	260	259	258	257	256	255	254	253	251	251	257
MONT			28			29			29			29	29
NEBR	119	119	119	120	121	121	121	122	122	121	121	121	121
NEV			15.0			15.0			15.0			15.0	15.0
N H			31			30			28			28	30
N J			41			41			41			42	41
N MEX			41			44			45			48	45
N Y	910	910	909	908	908	907	908	914	914	915	914	915	911
N C	133	133	133	132	131	132	133	134	135	136	135	135	134
N DAK	93	93	93	93	93	93	93	93	93	93	93	93	93
OHIO	374	375	376	376	376	375	374	373	373	374	374	374	375
OKLA	109	109	110	110	110	111	111	111	111	112	112	112	111
OREG	94	94	95	95	95	95	96	96	96	96	96	96	95
PA	712	713	710	705	705	705	707	712	714	718	718	718	711
R I			4.2			4.2			4.1			3.9	4.1
S C			49			48			48			48	48
S DAK			159			161			160			157	159
TENN	214	214	213	213	213	213	213	214	214	214	215	215	214
TEX	315	315	315	315	315	315	317	319	319	319	320	320	317
UTAH	75	76	76	77	78	78	79	80	79	79	78	79	78
VT	187	186	186	185	185	185	185	186	187	188	188	188	186
VA	171	170	169	170	169	169	170	171	172	172	172	172	171
WASH	202	203	203	204	204	202	201	201	197	198	199	200	201
W VA			37			36			37			37	37
WIS	1,813	1,813	1,813	1,813	1,814	1,814	1,815	1,816	1,816	1,817	1,818	1,819	1,815
WYO			12.0			12.0			12.0			12.0	12.0
OTH 17 STS 3/	662	666		670	671		670	669		668	669		
U S	10,748	10,753	10,755	10,759	10,776	10,779	10,788	10,818	10,826	10,841	10,847	10,850	10,799

SEE FOOTNOTES ON PAGE 10.

MILK COWS: NUMBER, BY MONTHS, BY STATES, 1981 1/

STATE	JAN	FEB	MAR	APR	MAY	JUN	JUL	AUG	SEP	OCT	NOV	DEC	ANNUAL AVERAGE 2/
THOUSANDS													
ALA	64	64	63	63	62	62	61	61	61	61	61	61	62
ALAS			1.1			1.1			1.1			1.1	1.1
ARIZ			76			77			77			79	77
ARK	72	71	71	73	74	75	76	77	77	75	75	74	74
CALIF	910	913	916	917	919	920	921	924	928	932	936	940	923
COLO	71	71	71	71	73	74	74	74	74	74	75	75	73
CONN			49			49			48			49	49
DEL			10.0			10.1			10.0			10.2	10.1
FLA	187	187	187	187	187	190	190	190	190	189	189	190	189
GA	130	130	130	130	130	130	130	131	131	131	131	131	130
HAW			12.9			12.7			12.5			12.7	12.7
IDAHO	160	162	165	167	168	167	165	167	169	168	169	168	166
ILL	231	230	233	232	233	233	233	235	235	235	236	234	233
IND	208	208	207	205	205	205	206	206	206	206	207	207	206
IOWA	357	359	358	360	360	361	362	363	365	368	366	370	362
KANS	123	123	124	124	125	125	125	125	124	124	124	124	124
KY	243	242	240	240	241	241	242	242	242	242	242	241	242
LA	112	112	111	110	109	108	107	106	105	104	103	102	107
MAINE			56			57			57			59	57
MD	126	125	125	124	124	123	123	124	124	124	125	126	124
MASS			45			46			47			47	46
MICH	390	391	391	391	391	392	393	394	395	396	396	396	393
MINN	880	880	880	880	880	880	880	885	890	895	900	905	886
MISS	97	97	97	97	98	99	97	97	96	96	96	96	97
MO	250	250	250	250	250	249	248	248	248	247	247	246	249
MONT			29			29			29			29	29
NEBR	121	122	123	123	124	124	124	123	122	122	122	122	123
NEV			15.3			15.5			15.7			15.9	15.6
N H			29			29			29			30	29
N J			42			41			41			41	41
N MEX			49			50			52			54	51
N Y	915	917	910	908	905	907	906	908	913	913	914	921	912
N C	135	135	134	134	134	133	132	133	134	135	134	134	134
N DAK	94	94	94	94	95	95	95	94	93	92	92	92	94
OHIO	377	377	379	380	381	380	380	380	380	380	381	382	380
OKLA	111	111	110	110	110	110	109	109	110	110	110	110	110
OREG	96	96	96	97	97	97	97	97	97	97	97	97	97
PA	718	718	717	715	715	715	718	723	725	727	728	730	721
R I			4.0			3.9			3.7			3.8	3.9
S C			48			48			48			48	48
S DAK			157			161			160			159	159
TENN	215	215	213	213	213	213	213	214	214	214	214	214	214
TEX	320	321	322	322	323	324	325	325	325	325	325	325	324
UTAH	80	80	81	82	83	84	84	85	85	85	85	86	83
VT	188	188	186	186	185	185	185	186	186	188	190	190	187
VA	172	172	172	172	172	172	172	172	172	172	172	172	172
WASH	201	201	203	205	205	205	205	206	206	206	207	207	205
W VA			36			36			36			36	36
WIS	1,820	1,822	1,823	1,823	1,824	1,824	1,824	1,825	1,827	1,827	1,828	1,829	1,825
WYO			12.0			12.0			12.0			12.0	12.0
OTH 17 STS 3/	670	671		675	678		679	679		684	687		
U S	10,844	10,855	10,853	10,860	10,873	10,880	10,881	10,909	10,928	10,944	10,955	10,984	10,898

SEE FOOTNOTES ON PAGE 10.

MILK COWS: NUMBER, BY MONTHS/QUARTERS, BY STATES, 1982 1/

STATE	JAN	FEB	MAR	APR-JUN	JUL-SEP	OCT-DEC	ANNUAL AVERAGE 2/
THOUSANDS							
ALA	60	60	59	59	58	57	59
ALAS			1.1	1.1	1.1	1.0	1.1
ARIZ			81	81	81	82	81
ARK	75	77	78	79	80	80	78
CALIF	941	946	944	939	937	939	940
COLO	75	75	74	75	75	75	75
CONN			49	49	47	48	48
DEL			10.1	10.3	10.2	10.1	10.2
FLA	190	190	189	189	190	190	190
GA	131	130	131	131	130	130	130
HAW			12.6	12.4	12.4	12.4	12.5
IDAHO	170	171	172	174	175	175	174
ILL	236	235	233	231	231	230	232
IND	207	207	205	205	205	204	205
IOWA	364	361	361	358	360	362	361
KANS	124	125	126	126	127	127	126
KY	240	239	239	241	242	242	241
LA	102	101	101	102	102	102	102
MAINE			59	58	57	57	58
MD	126	126	127	128	128	126	127
MASS			47	47	46	47	47
MICH	395	393	392	393	397	397	395
MINN	910	910	910	910	900	890	903
MISS	97	97	97	96	96	96	96
MO	245	245	245	246	248	250	247
MONT			29	28	29	29	29
NEBR	122	122	122	122	122	122	122
NEV			16.0	16.0	16.0	16.0	16.0
N H			30	29	29	30	30
N J			41	40	40	40	40
N MEX			56	56	58	58	57
N Y	918	915	917	913	915	931	919
N C	132	131	131	131	131	132	131
N DAK	94	94	94	95	95	95	95
OHIO	383	384	386	385	390	392	388
OKLA	109	110	111	111	111	111	111
OREG	97	97	98	99	100	100	99
PA	734	730	729	723	729	736	730
R I			3.8	3.9	3.8	3.8	3.8
S C			48	48	48	48	48
S DAK			161	164	164	163	163
TENN	215	215	215	215	217	217	216
TEX	325	325	325	325	329	335	329
UTAH	86	86	86	86	85	85	86
VT	192	193	193	190	191	194	192
VA	171	171	171	171	172	172	172
WASH	208	209	210	212	213	213	212
W VA			36	35	35	36	36
WIS	1,830	1,830	1,832	1,834	1,836	1,839	1,835
WYO			12.0	12.0	12.0	11.9	12.0
OTH 17 STS 3/	693	693					
U S	10,997	10,993	10,996	10,985	11,007	11,040	11,011

1/ INCLUDES DRY COWS, EXCLUDES HEIFERS NOT YET FRESH. INDIVIDUAL STATE ESTIMATES NOT AVAILABLE FOR PERIODS BLANK.

2/ NUMBER OF MILK COWS IS AVERAGE NUMBER ON FARMS DURING YEAR.

3/ INCLUDES STATES FOR WHICH INDIVIDUAL ESTIMATES ARE NOT AVAILABLE.

MILK : PRODUCED PER COW, BY MONTHS, BY STATES, 1979 1/

STATE	JAN	FEB	MAR	APR	MAY	JUN	JUL	AUG	SEP	OCT	NOV	DEC	ANNUAL AVERAGE 2/
POUNDS													
ALA	760	715	780	750	760	720	735	680	735	760	700	775	8,912
ARK	675	625	710	770	805	795	800	810	790	815	765	830	9,203
CALIF	1,105	1,015	1,165	1,180	1,260	1,245	1,285	1,300	1,225	1,255	1,180	1,200	14,424
COLO	950	880	990	1,000	1,055	1,060	1,080	1,065	1,005	990	935	940	11,903
FLA	945	885	1,005	945	950	850	805	795	775	835	865	945	10,617
GA	925	840	940	905	875	800	785	795	815	835	860	925	10,292
IDAHO	935	850	965	965	1,030	1,065	1,060	1,065	1,060	1,005	965	1,000	11,951
ILL	835	810	875	880	930	905	895	880	845	850	805	830	10,351
IND	880	830	930	920	1,000	965	970	935	905	910	865	920	11,041
IOWA	845	810	855	875	945	945	915	890	870	850	810	820	10,427
KANS	875	775	880	910	965	945	940	925	900	915	885	880	10,813
KY	610	585	710	760	830	800	815	795	755	730	655	655	8,706
LA	675	625	775	815	770	695	690	690	670	680	660	730	8,446
MD	1,010	930	1,025	1,025	1,075	1,040	1,000	990	1,000	1,010	975	1,015	12,063
MICH	985	910	1,020	1,020	1,060	1,040	1,040	1,040	1,020	1,025	975	1,020	12,166
MINN	925	900	1,020	995	1,050	1,040	910	820	755	790	780	870	10,848
MISS	640	610	730	750	760	720	710	700	635	640	610	630	8,140
MO	770	740	815	865	980	955	945	905	855	825	800	800	10,242
NEBR	820	780	860	880	930	950	950	920	910	870	850	830	10,500
N Y	975	890	1,025	1,035	1,105	1,045	990	970	930	935	900	950	11,746
N C	1,010	930	1,050	1,040	1,010	960	940	950	960	1,010	990	1,020	11,856
N DAK	715	690	780	810	900	950	910	815	670	650	635	710	9,200
OHIO	925	850	970	975	1,060	1,020	1,010	975	925	925	880	910	11,434
OKLA	785	740	830	850	890	830	830	820	790	800	775	815	9,727
OREG	880	825	965	1,020	1,105	1,070	1,080	1,050	975	965	900	925	11,734
PA	910	860	970	980	1,040	1,005	985	970	965	960	930	950	11,532
TENN	760	720	845	910	930	855	840	830	810	850	790	780	9,910
TEX	915	830	950	950	965	900	895	885	880	900	870	920	10,859
UTAH	950	895	1,030	1,040	1,120	1,105	1,130	1,100	1,030	1,050	980	1,030	12,474
VT	930	870	980	1,020	1,100	1,080	1,010	990	980	990	950	990	11,907
VA	940	850	950	960	1,000	970	960	960	945	960	930	950	11,394
WASH	1,125	1,050	1,200	1,200	1,290	1,250	1,270	1,250	1,180	1,200	1,125	1,170	14,299
WIS	965	900	1,040	1,045	1,120	1,125	1,080	1,025	955	955	895	950	12,052
OTH 17 STS 3/:	909	849	958	961	1,018	973	964	956	927	932	895	939	11,271
U S	923	862	980	989	1,049	1,023	997	971	930	937	896	937	11,492

SEE FOOTNOTES ON PAGE 14.

MILK: MILK PRODUCED PER COW, BY MONTHS, BY STATES, 1980 1/

STATE	JAN	FEB *	MAR	APR	MAY	JUN	JUL	AUG	SEP	OCT	NOV	DEC	ANNUAL AVERAGE 2/
POUNDS													
ALA	780	770	820	820	790	755	740	755	755	800	780	810	9,385
ARK	850	820	820	920	950	880	840	805	775	795	765	820	10,000
CALIF	1,195	1,130	1,235	1,260	1,335	1,305	1,340	1,340	1,285	1,285	1,210	1,225	15,153
COLO	955	900	1,005	985	1,025	1,040	1,110	1,100	1,015	1,025	975	1,010	12,085
FLA	995	960	1,040	975	965	865	820	800	785	850	865	955	10,845
GA	945	875	935	935	905	870	790	815	800	880	860	930	10,515
IDAHO	1,000	940	1,020	1,020	1,130	1,110	1,140	1,130	1,060	1,045	1,005	1,005	12,543
ILL	850	875	950	950	980	950	945	925	885	895	845	865	10,901
IND	920	860	925	925	990	960	960	925	890	885	860	895	10,995
IOWA	865	855	915	910	975	960	955	930	885	885	860	875	10,853
KANS	870	810	885	930	985	930	910	920	905	920	890	920	10,813
KY	695	670	765	815	875	820	810	805	780	760	700	685	9,169
LA	775	750	840	835	800	705	685	700	655	685	675	765	8,877
MD	1,010	950	1,025	1,025	1,070	1,000	990	1,000	970	1,000	970	1,015	12,063
MICH	1,025	980	1,060	1,050	1,095	1,065	1,080	1,070	1,045	1,050	1,010	1,050	12,582
MINN	905	900	1,010	1,010	1,060	1,040	940	870	815	815	805	900	11,061
MISS	665	655	750	760	760	700	680	690	650	660	630	690	8,337
MO	840	810	900	960	1,040	990	960	950	900	905	875	890	10,996
NEBR	830	810	880	910	970	960	970	960	930	920	900	880	10,868
N Y	995	945	1,050	1,060	1,115	1,075	1,015	980	945	960	925	985	12,046
N C	1,040	990	1,070	1,080	1,110	1,000	970	970	960	1,000	990	1,040	12,172
N DAK	770	750	850	910	990	980	970	860	760	770	710	760	10,097
OHIO	930	890	975	990	1,070	1,035	1,010	965	920	925	880	915	11,493
OKLA	790	780	870	870	915	860	840	830	810	810	810	840	10,000
OREG	935	900	1,010	1,060	1,145	1,105	1,110	1,070	1,010	1,010	935	945	12,305
PA	965	960	995	985	1,065	1,030	1,000	985	980	990	990	1,000	11,949
TENN	800	800	880	960	1,000	940	880	870	860	880	810	820	10,472
TEXAS	950	900	1,010	1,000	1,030	940	920	930	910	960	920	970	11,435
UTAH	1,080	1,010	1,120	1,115	1,195	1,150	1,190	1,140	1,075	1,075	1,015	1,040	13,179
VT	985	940	1,045	1,060	1,125	1,110	1,065	1,040	1,000	1,005	940	980	12,306
VA	955	895	970	975	1,025	990	960	965	955	985	940	965	11,544
WASH	1,170	1,110	1,215	1,230	1,310	1,260	1,290	1,270	1,210	1,220	1,140	1,200	14,637
WIS	980	955	1,060	1,060	1,150	1,145	1,105	1,040	975	970	920	970	12,331
OTH 17 STS 3/	964	925	1,015	1,003	1,058	1,025	1,006	984	948	966	931	967	11,783
U S	959	927	1,016	1,024	1,085	1,051	1,025	997	955	964	926	966	11,891

SEE FOOTNOTES ON PAGE 14.

MILK: PRODUCED PER CON, BY MONTHS, BY STATES, 1981 1/

STATE	JAN	FEB	MAR	APR	MAY	JUN	JUL	AUG	SEP	OCT	NOV	DEC	ANNUAL AVERAGE 2/
POUNDS													
ALA	830	810	920	890	870	775	770	805	785	835	805	900	10,000
ARK	880	880	1,035	1,000	1,000	875	815	830	830	850	815	895	10,703
CALIF	1,245	1,140	1,295	1,290	1,350	1,305	1,370	1,350	1,290	1,310	1,235	1,255	15,437
COLO	1,015	940	1,075	1,065	1,110	1,080	1,130	1,110	1,040	1,060	1,010	1,050	12,712
FLA	980	935	1,065	1,010	1,000	860	830	810	790	880	900	990	11,016
GA	950	885	1,010	970	925	800	785	825	810	885	895	960	10,738
IDAHO	1,005	920	1,050	1,060	1,135	1,130	1,190	1,160	1,100	1,105	1,055	1,085	13,024
ILL	885	895	975	985	1,020	970	950	935	900	910	855	875	11,176
IND	900	830	930	935	1,005	975	960	925	905	910	880	905	11,078
IOWA	885	870	930	935	990	975	965	950	935	940	900	920	11,204
KANS	920	855	975	1,000	1,015	935	930	930	920	945	905	930	11,266
KY	730	685	820	850	870	805	820	830	790	770	730	745	9,426
LA	820	770	935	900	835	705	700	690	675	685	720	825	9,308
MD	1,030	970	1,080	1,090	1,130	1,035	1,035	1,050	1,010	1,030	1,010	1,050	12,548
MICH	1,070	975	1,095	1,090	1,130	1,105	1,110	1,120	1,085	1,085	1,040	1,080	12,985
MINN	975	930	1,070	1,055	1,100	1,035	950	870	805	825	835	910	11,956
MISS	710	690	800	810	810	760	730	730	690	700	690	750	8,866
MO	935	850	1,000	1,050	1,075	985	990	975	925	935	910	935	11,554
NEBR	880	830	930	960	1,020	1,010	1,020	1,000	970	960	940	910	11,382
N Y	1,005	930	1,080	1,080	1,135	1,080	1,025	1,000	950	955	925	980	12,137
N C	1,045	1,000	1,090	1,100	1,080	980	970	985	990	1,020	1,020	1,070	12,343
N DAK	850	790	910	980	1,060	1,060	1,030	870	760	750	820	820	10,585
OHIO	935	870	985	1,000	1,060	1,020	995	975	930	940	890	930	11,539
OKLA	850	820	940	900	920	880	880	870	835	830	835	900	10,455
OREG	975	905	1,050	1,080	1,150	1,120	1,130	1,110	1,040	1,040	975	995	12,577
PA	1,015	970	1,055	1,050	1,130	1,080	1,050	1,030	1,020	1,030	1,000	1,010	12,434
TENN	810	790	910	980	990	940	930	920	890	900	830	870	10,748
TEXAS	1,000	920	1,065	1,035	1,010	920	880	880	860	900	895	955	11,312
UTAH	1,065	975	1,145	1,140	1,195	1,170	1,200	1,165	1,095	1,085	1,030	1,045	13,370
VT	995	920	1,060	1,070	1,145	1,105	1,060	1,045	1,010	985	930	980	12,289
VA	970	890	990	995	1,025	985	960	970	960	1,000	970	1,005	11,715
WASH	1,205	1,100	1,235	1,235	1,310	1,260	1,305	1,280	1,220	1,220	1,155	1,210	14,717
WIS	1,025	960	1,100	1,100	1,175	1,150	1,120	1,070	995	985	935	990	12,603
OTH 17 STS 3/	984	948	1,043	1,036	1,087	1,056	1,032	1,007	968	1,003	964	997	12,150
U S	996	935	1,061	1,062	1,111	1,062	1,044	1,018	972	983	948	991	12,183

SEE FOOTNOTES ON PAGE 14.

MILK: PRODUCED PER COW, BY MONTHS/QUARTERS, BY STATES, 1982 1/

STATE	JAN	*FEB	MAR	APR-JUN	JUL-SEP	OCT-DEC	ANNUAL AVERAGE 2/
POUNDS							
ALA	850	815	930	2,510	2,345	2,480	9,831
ARK	895	800	935	2,820	2,540	2,500	10,615
CALIF	1,245	1,150	1,305	3,905	4,035	3,820	15,455
COLO	1,040	960	1,120	3,390	3,330	3,130	12,960
FLA	1,030	985	1,090	2,860	2,400	2,750	11,100
GA	955	930	1,030	2,690	2,515	2,710	10,862
IDAHO	1,050	950	1,060	3,385	3,440	3,080	12,948
ILL	895	890	985	3,000	2,940	2,760	11,453
IND	905	840	935	2,950	2,900	2,850	11,385
IOWA	935	890	935	2,895	2,805	2,650	11,091
KANS	910	840	920	2,780	2,630	2,660	10,762
KY	740	715	840	2,630	2,530	2,347	9,809
LA	845	810	960	2,550	2,190	2,230	9,559
MD	1,050	960	1,065	3,165	3,065	3,145	12,449
MICH	1,095	1,000	1,120	3,370	3,400	3,310	13,299
MINN	980	915	1,045	3,126	2,705	2,680	11,452
MISS	760	730	870	2,550	2,270	2,170	9,375
MO	945	840	1,000	3,110	3,000	2,850	11,761
NEBR	850	830	890	2,850	2,860	2,695	10,984
N Y	1,000	930	1,060	3,246	2,950	2,893	12,075
N C	1,090	1,030	1,115	3,236	3,110	3,257	12,870
N DAK	870	810	950	3,110	2,720	2,320	10,737
OHIO	935	875	995	3,110	2,960	2,860	11,727
OKLA	875	820	930	2,770	2,580	2,560	10,495
OREG	1,020	935	1,080	3,470	3,450	3,160	13,141
PA	1,030	995	1,075	3,317	3,166	3,114	12,690
TENN	850	790	890	2,940	2,700	2,600	10,769
TEXAS	985	910	1,055	3,015	2,736	2,809	11,489
UTAH	1,047	965	1,116	3,565	3,588	3,267	13,512
VT	1,010	910	1,050	3,275	3,110	3,070	12,422
VA	1,010	925	1,030	3,020	3,000	3,025	11,970
WASH	1,210	1,120	1,260	3,910	3,960	3,750	15,198
WIS	1,030	960	1,090	3,410	3,220	2,950	12,659
OTH 17 STS 3/:	1,020	944	1,072	3,220	3,070	3,059	12,379
U S	1,010	943	1,064	3,239	3,082	2,974	12,306

1/ EXCLUDES MILK SUCKED BY CALVES.

2/ AVERAGE PER COW FOR YEAR.

3/ STATE ESTIMATES NOT AVAILABLE.

* THE EXTRA DAY IN 1980 ADDED 3.6 PERCENT TO MONTHLY OUTPUT.

MILK PRODUCTION: TOTAL MILK PRODUCED, BY MONTHS, BY STATES, 1979 1/

STATE	JAN	FEB	MAR	APR	MAY	JUN	JUL	AUG	SEPT	OCT	NOV	DEC	ANNUAL TOTAL 2/
MILLION POUNDS													
ALA	53	50	54	52	52	50	50	46	50	51	47	52	606
ARK	56	52	59	64	66	65	65	54	61	61	56	58	727
CALIF	953	877	1,070	1,025	1,096	1,064	1,122	1,136	1,072	1,099	1,035	1,054	12,563
COLO	68	62	71	72	76	76	78	77	71	71	67	68	857
FLA	179	167	190	180	181	162	153	150	145	155	160	174	1,996
GA	120	109	123	118	114	104	101	104	105	108	112	120	1,338
IDAHO	132	121	138	137	146	153	152	151	155	147	141	148	1,721
ILL	192	186	202	202	213	208	207	204	197	197	188	195	2,391
IND	173	164	183	180	196	191	191	185	180	179	171	182	2,175
IOWA	316	300	316	326	352	351	339	328	320	312	297	301	3,858
KANS	109	96	109	113	120	117	117	114	10	112	107	106	1,330
KY	106	153	183	195	212	206	208	204	193	184	162	160	2,220
LA	86	78	95	100	94	84	83	82	78	80	77	85	1,022
MD	130	118	129	129	135	130	125	124	125	126	122	127	1,520
MICH	396	364	403	402	418	410	411	412	407	409	390	408	4,830
MINN	786	761	857	829	875	863	760	589	638	672	667	748	9,145
MISS	66	63	74	76	76	72	70	69	63	63	60	62	814
MO	207	198	216	227	261	252	249	239	227	218	210	210	2,714
NEBR	98	83	103	105	112	112	113	110	108	104	102	100	1,260
N Y	880	804	926	934	993	941	892	874	848	853	820	865	10,630
N C	132	122	138	136	136	126	123	125	127	133	131	136	1,565
N DAK	69	66	75	77	86	90	86	77	62	61	59	66	874
OHIO	347	319	364	365	396	379	374	362	344	345	329	341	4,265
OKLA	88	82	92	94	98	91	90	89	86	87	84	89	1,070
OREG	82	77	90	95	103	100	102	99	92	91	85	87	1,103
PA	642	604	677	684	725	699	686	680	680	675	657	675	8,084
TENN	159	150	176	189	194	182	178	176	172	181	168	166	2,091
TEXAS	284	257	295	295	300	279	277	274	274	281	272	289	3,377
UTAH	74	69	79	79	85	84	86	84	78	79	74	77	948
VT	175	162	180	186	198	194	183	180	179	182	176	184	2,179
VA	162	145	162	163	159	163	162	164	163	164	158	162	1,937
WASH	222	205	235	235	255	246	251	245	232	236	222	233	2,817
WIS	1,748	1,630	1,884	1,894	2,031	2,040	1,958	1,858	1,731	1,731	1,623	1,722	21,850
OTH 17 STS 3/:	610	570	640	640	676	642	635	629	608	613	590	620	7,473
U S	9,954	9,274	10,528	10,598	11,240	10,945	10,677	10,404	9,981	10,060	9,619	10,070	123,350

SEE FOOTNOTES ON PAGE 18

MILK PRODUCTION: TOTAL MILK PRODUCED, BY MONTHS, BY STATES, 1980 1/

STATE	JAN	*FEB	MAR	APR	MAY	JUN	JUL	AUG	SEP	OCT	NOV	DEC	ANNUAL TOTAL 2/
MILLION POUNDS													
ALA	52	51	54	54	52	49	48	49	49	51	50	51	610
ARK	61	58	60	67	68	64	62	61	59	61	58	61	740
CALIF	1,052	999	1,095	1,121	1,193	1,172	1,206	1,207	1,160	1,162	1,096	1,114	13,577
COLO	68	64	70	69	71	73	78	78	73	73	69	72	858
FLA	183	178	192	182	180	163	153	150	147	159	162	179	2,028
GA	123	114	122	122	118	105	103	106	105	115	113	121	1,367
IDAHO	149	141	156	158	174	171	176	176	165	163	159	159	1,947
ILL	198	204	220	221	230	221	220	216	206	209	196	193	2,540
IND	182	169	184	184	199	193	192	185	180	181	176	185	2,210
IOWA	312	312	332	332	360	352	351	343	328	328	320	324	3,994
KANS	105	99	108	113	120	114	112	113	111	113	109	113	1,330
KY	167	161	184	196	211	198	196	196	190	185	169	166	2,219
LA	90	87	97	95	92	81	78	79	74	77	76	86	1,012
MD	127	120	129	129	135	126	125	127	123	127	123	129	1,520
MICH	410	389	421	415	434	424	427	422	412	412	394	410	4,970
MINN	774	765	859	859	906	889	808	753	709	713	708	792	9,535
MISS	66	65	74	75	74	69	67	68	64	65	62	68	817
MO	220	212	234	249	268	254	246	242	229	229	220	223	2,826
NEBR	99	96	105	109	117	116	117	117	113	111	109	106	1,315
N Y	905	860	954	962	1,012	975	922	896	864	878	845	901	10,974
N C	138	132	142	143	145	132	129	130	130	136	134	140	1,631
N DAK	72	70	79	85	92	91	90	80	71	72	66	71	939
OHIO	348	334	367	372	402	388	378	360	343	346	329	343	4,310
OKLA	86	85	96	96	101	95	93	92	90	91	91	94	1,110
OREG	88	85	96	101	109	105	107	103	97	97	90	91	1,169
PA	687	684	706	694	751	726	707	701	700	711	711	718	8,496
TENN	171	171	187	204	213	200	187	186	184	188	174	176	2,241
TEXAS	299	284	318	315	324	296	292	297	290	306	294	310	3,625
UTAH	81	77	85	86	93	90	94	91	85	85	79	82	1,028
VT	184	175	194	196	208	205	197	193	187	189	177	184	2,289
VA	163	152	164	166	173	167	163	165	164	169	162	166	1,974
WASH	236	225	247	251	267	255	259	255	238	242	227	240	2,942
WIS	1,777	1,731	1,922	1,922	2,086	2,077	2,006	1,889	1,771	1,762	1,673	1,764	22,380
OTH 17 STS 3/:	638	616	678	672	710	689	674	658	633	645	623	647	7,883
U S	10,311	9,965	10,931	11,015	11,688	11,325	11,063	10,784	10,344	10,451	10,044	10,485	128,406

SEE FOOTNOTES ON PAGE 18.

MILK PRODUCTION: TOTAL MILK PRODUCED, BY MONTHS, BY STATES, 1981 1/

STATE	JAN	FEB	MAR	APR	MAY	JUN	JUL	AUG	SEP	OCT	NOV	DEC	ANNUAL TOTAL
MILLION POUNDS													
ALA	53	52	58	56	54	48	47	49	48	51	49	55	620
ARK	63	62	73	73	74	66	62	64	64	64	61	66	792
CALIF	1,133	1,041	1,186	1,183	1,241	1,201	1,262	1,247	1,197	1,221	1,156	1,180	14,248
COLO	72	67	76	76	81	80	84	82	77	78	76	79	928
FLA	183	175	199	189	187	163	158	154	150	166	170	188	2,082
GA	126	115	131	126	120	104	102	108	106	116	117	126	1,396
IDAHO	161	149	173	177	191	189	196	194	186	186	178	182	2,162
ILL	204	206	227	229	238	226	221	220	212	214	202	205	2,604
IND	187	173	193	192	206	200	198	191	186	187	182	187	2,282
IOWA	316	312	333	337	356	352	349	345	341	346	329	340	4,056
KANS	113	105	121	124	127	117	116	116	114	117	112	115	1,397
KY	177	166	197	204	210	194	198	201	191	186	177	180	2,281
LA	92	86	104	99	91	76	75	73	71	71	74	84	996
MD	130	121	135	135	140	127	127	130	125	128	126	132	1,556
MICH	417	381	428	426	442	433	436	441	429	430	412	428	5,103
MINN	858	818	942	928	968	911	836	770	716	738	752	824	10,061
MISS	69	67	78	79	79	75	71	71	66	67	66	72	860
MO	234	213	250	263	269	245	246	242	229	231	225	230	2,877
NEBR	106	101	114	118	126	125	126	123	118	117	115	111	1,400
N Y	920	853	983	981	1,027	980	929	909	867	872	845	903	11,069
N C	141	135	146	147	145	130	128	131	133	138	137	143	1,654
N DAK	80	74	86	92	101	101	98	82	71	69	66	75	995
OHIO	352	328	373	380	411	388	378	371	353	357	339	355	4,385
OKLA	94	91	103	99	101	97	96	95	92	91	92	99	1,150
OREG	94	87	101	105	112	109	110	108	101	101	95	97	1,220
PA	729	696	756	751	808	772	754	745	740	749	728	737	8,965
TENN	174	170	194	209	211	200	198	197	190	193	178	186	2,300
TEXAS	320	295	343	333	326	298	286	286	280	293	291	314	3,665
UTAH	85	78	93	93	99	98	101	99	93	92	89	90	1,110
VT	187	173	197	199	212	204	196	194	188	185	177	186	2,298
VA	167	153	170	171	176	169	165	167	165	172	167	173	2,015
WASH	242	221	251	253	269	258	268	264	251	251	239	250	3,017
WIS	1,866	1,749	2,005	2,005	2,143	2,098	2,043	1,953	1,818	1,800	1,709	1,811	23,000
OTH 17 STS 3/	659	636	700	699	737	718	701	684	657	686	662	687	8,226
U S	10,803	10,149	11,519	11,531	12,078	11,552	11,361	11,106	10,625	10,763	10,393	10,890	132,770

SEE FOOTNOTES ON PAGE 18.

MILK PRODUCTION: TOTAL MILK PRODUCED, BY MONTHS/QUARTERS, BY STATES, 1982 1/

STATE	JAN	*FEB	MAR	APR-JUN	JUL-SEP	OCT-DEC	ANNUAL TOTAL 2/
MILLION POUNDS							
ALA	51	49	55	148	136	141	580
ARK	67	62	73	223	203	200	828
CALIF	1,172	1,088	1,232	3,668	3,781	3,587	14,528
COLO	78	72	83	254	250	235	972
FLA	196	187	206	541	456	523	2,109
GA	125	121	135	352	327	352	1,412
IDAHO	179	162	182	589	602	539	2,253
ILL	211	209	230	693	679	635	2,657
IND	187	174	192	605	595	581	2,334
IOWA	340	321	338	1,036	1,010	959	4,004
KANS	113	105	116	350	334	338	1,356
KY	178	171	201	634	612	568	2,364
LA	86	82	97	260	223	227	975
MD	132	121	135	405	392	396	1,581
MICH	433	393	439	1,324	1,350	1,314	5,253
MINN	892	833	951	2,845	2,435	2,385	10,341
MISS	74	71	84	245	218	208	900
MO	232	206	245	765	744	713	2,905
NEBR	104	101	109	348	349	329	1,340
N Y	918	851	972	2,964	2,699	2,693	11,097
N C	144	135	146	424	407	430	1,686
N DAK	82	76	89	295	258	220	1,020
OHIO	358	336	384	1,197	1,154	1,121	4,550
OKLA	95	90	103	307	286	284	1,165
OREG	99	91	106	344	345	316	1,301
PA	756	726	784	2,398	2,308	2,292	9,264
TENN	183	170	191	632	586	564	2,326
TEXAS	320	296	343	980	900	941	3,780
UTAH	90	83	96	307	305	281	1,162
VT	194	176	203	622	594	596	2,385
VA	173	158	176	516	516	520	2,059
WASH	252	234	265	829	843	799	3,222
WIS	1,885	1,757	1,997	6,254	5,912	5,425	23,230
OTH 17 STS 3/:	707	654	742	2,225	2,118	2,120	8,566
U S	11,106	10,361	11,700	35,579	33,927	32,832	135,505

1/ EXCLUDES MILK SUCKED BY CALVES.

2/ TOTAL MILK PRODUCTION FOR YEAR.

3/ STATE ESTIMATES NOT AVAILABLE.

* THE EXTRA DAY IN 1980 ADDED 3.6 PERCENT TO MONTHLY OUTPUT.

MILK PRODUCTION: TOTAL MILK PRODUCED, BY QUARTERS, BY STATES, 1979 1/

STATE	JAN-MAR	APR-JUN	JUL-SEP	OCT-DEC	ANNUAL TOTAL
MILLION POUNDS					
ALA	157	153	146	150	606
ALAS	3.13	3.25	3.44	3.18	13.0
ARIZ	225	243	232	241	941
ARK	167	195	190	175	727
CALIF	2,840	3,205	3,330	3,188	12,563
COLO	201	224	226	206	857
CONN	153	155	148	150	606
DEL	32.4	32.1	31.8	30.7	127.0
FLA	536	523	448	489	1,996
GA	352	336	310	340	1,338
HAW	37.3	38.7	37.6	36.4	150.0
IDAHO	391	436	458	436	1,721
ILL	580	623	608	580	2,391
IND	520	567	556	532	2,175
IOWA	932	1,029	987	910	3,858
KANS	314	350	341	325	1,330
KY	496	613	605	506	2,220
LA	259	278	243	242	1,022
MAINE	154	167	165	155	641
MD	377	394	374	375	1,520
MASS	143	148	138	137	566
MICH	1,163	1,230	1,230	1,207	4,830
MINN	2,404	2,567	2,087	2,087	9,145
MISS	203	224	202	185	814
MO	621	740	715	638	2,714
MONT	68	77	78	74	297
NEBR	294	329	331	306	1,260
NEV	43.9	52.1	53.1	49.9	199.0
N H	86	89	84	82	341
N J	123	130	123	118	494
N MEX	115	129	133	130	507
N Y	2,610	2,868	2,614	2,538	10,630
N C	392	398	375	400	1,565
N DAK	210	253	225	186	874
OHIO	1,030	1,140	1,080	1,015	4,265
OKLA	262	283	265	260	1,070
OREG	249	298	293	263	1,103
PA	1,923	2,108	2,046	2,007	8,084
R I	12.7	13.8	12.1	11.4	50.0
S C	135	134	124	131	524
S DAK	374	426	392	357	1,549
TENN	485	565	526	515	2,091
TEX	836	874	825	842	3,377
UTAH	222	248	248	230	948
VT	517	578	542	542	2,179
VA	469	495	489	484	1,937
WASH	662	736	728	691	2,817
W VA	87	90	86	87	350
WIS	5,262	5,965	5,547	5,076	21,850
WYO	27.8	30.2	31.2	29.8	119.0
U S	29,756	32,783	31,062	29,749	2/123,350

1/ EXCLUDES MILK SUCKED BY CALVES.
 2/ WILL NOT ADD DUE TO ROUNDING.

MILK PRODUCTION: TOTAL MILK PRODUCED, BY QUARTERS, BY STATES, 1980 1/

STATE	JAN-MAR	APR-JUN	JUL-SEP	OCT-DEC	ANNUAL TOTAL
MILLION POUNDS					
ALA	157	155	146	152	610
ALAS	3.03	3.08	3.28	3.11	12.5
ARIZ	257	271	245	258	1,031
ARK	179	199	182	180	740
CALIF	3,146	3,486	3,573	3,372	13,577
COLO	202	213	229	214	858
CONN	158	158	150	146	612
DEL	32.3	32.2	30.9	29.6	125.0
FLA	553	525	450	500	2,028
GA	359	345	314	349	1,367
HAW	38.6	40.4	37.0	36.0	152.0
IDAHO	446	503	517	481	1,947
ILL	622	672	642	604	2,540
IND	535	576	557	542	2,210
IOWA	956	1,044	1,022	972	3,994
KANS	312	347	336	335	1,330
KY	512	605	582	520	2,219
LA	274	268	231	239	1,012
MAINE	157	174	173	161	665
MD	376	390	375	379	1,520
MASS	143	149	138	140	570
MICH	1,220	1,273	1,261	1,216	4,970
MINN	2,398	2,654	2,270	2,213	9,535
MISS	205	218	199	195	817
MO	666	771	717	672	2,826
MONT	72	81	82	79	314
NEBR	300	342	347	326	1,315
NEV	50.0	56.4	57.9	54.7	219.0
N H	88	93	83	83	347
N J	123	130	122	119	494
N MEX	140	153	158	151	602
N Y	2,719	2,949	2,682	2,624	10,974
N C	412	420	389	410	1,631
N DAK	221	268	241	209	939
OHIO	1,049	1,162	1,081	1,018	4,310
OKLA	267	292	275	276	1,110
OREG	269	315	307	278	1,169
PA	2,077	2,171	2,108	2,140	8,496
R I	12.3	12.5	11.4	10.8	47.0
S C	140	138	127	136	541
S DAK	399	455	425	390	1,669
TENN	529	617	557	538	2,241
TEX	901	935	879	910	3,625
UTAH	243	269	270	246	1,028
VT	553	609	577	550	2,289
VA	479	506	492	497	1,974
WASH	708	773	752	709	2,942
W VA	87	90	88	85	350
WIS	5,430	6,085	5,666	5,199	22,380
WYO	31.8	34.2	33.6	32.4	132.0
U S	31,207	34,028	32,191	30,980	128,406

1/ EXCLUDES MILK SUCKED BY CALVES.

MILK PRODUCTION: TOTAL MILK PRODUCED, BY QUARTERS, BY STATES, 1981 1/

STATE	JAN-MAR	APR-JUN	JUL-SEP	OCT-DEC	ANNUAL TOTAL
MILLION POUNDS					
ALA	163	158	144	155	620
ALAS	3.26	3.39	3.36	3.39	13.4
ARIZ	280	295	263	295	1,133
ARK	198	213	190	191	792
CALIF	3,360	3,625	3,706	3,557	14,248
COLO	215	237	243	233	928
CONN	155	159	155	155	624
DEL	30.2	31.8	30.2	31.8	124.0
FLA	557	539	462	524	2,082
GA	371	350	316	359	1,396
HAW	37.4	39.4	37.0	36.2	150.0
IDAHO	483	557	576	546	2,162
ILL	637	693	653	621	2,604
IND	553	598	575	556	2,282
IOWA	961	1,045	1,035	1,015	4,056
KANS	339	368	346	344	1,397
KY	540	608	590	543	2,281
LA	282	266	219	229	996
MAINE	164	179	182	173	698
MD	386	402	382	386	1,556
MASS	143	152	142	141	578
MICH	1,226	1,301	1,306	1,270	5,103
MINN	2,618	2,807	2,322	2,314	10,061
MISS	214	233	208	205	860
MO	697	777	717	686	2,877
MONT	78	85	85	83	331
NEBR	321	369	367	343	1,400
NEV	54.0	57.8	56.2	55.0	223.0
N H	86	90	84	86	346
N J	124	129	123	118	494
N MEX	152	170	176	173	671
N Y	2,756	2,988	2,705	2,620	11,069
N C	422	422	392	418	1,654
N DAK	240	294	251	210	995
OHIO	1,053	1,179	1,102	1,051	4,385
OKLA	288	297	283	282	1,150
OREG	282	326	319	293	1,220
PA	2,181	2,331	2,239	2,214	8,965
R I	11.7	12.3	10.9	11.1	46.0
S C	142	140	129	141	552
S DAK	415	483	447	412	1,757
TENN	538	620	585	557	2,300
TEX	958	957	852	898	3,665
UTAH	256	290	293	271	1,110
VT	557	615	578	548	2,298
VA	490	516	497	512	2,015
WASH	714	780	783	740	3,017
W VA	87	92	84	87	350
WIS	5,620	6,246	5,814	5,320	23,000
WYO	32.4	35.1	34.8	33.7	136.0
U S	32,471	35,161	33,092	32,046	132,770

1/ EXCLUDES MILK SUCKED BY CALVES.

MILK PRODUCTION: TOTAL MILK PRODUCED, BY QUARTERS, BY STATES, 1982 1/

STATE	JAN-MAR	APR-JUN	JUL-SEP	OCT-DEC	ANNUAL TOTAL
MILLION POUNDS					
ALA	155	148	136	141	580
ALAS	3.45	3.50	3.68	3.17	13.8
ARIZ	310	312	274	306	1,202
ARK	202	223	203	200	828
CALIF	3,492	3,668	3,781	3,587	14,528
COLO	233	254	250	235	972
CONN	162	163	156	163	644
DEL	33.6	35.7	33.2	34.5	137.0
FLA	589	541	456	523	2,109
GA	381	352	327	352	1,412
HAW	36.4	37.5	35.3	34.8	144.0
IDAHO	523	589	602	539	2,253
ILL	650	693	679	635	2,657
IND	553	605	595	581	2,334
IOWA	999	1,036	1,010	959	4,004
KANS	334	350	334	338	1,356
KY	550	634	612	568	2,364
LA	265	260	223	227	975
MAINE	172	187	190	178	727
MD	388	405	392	396	1,581
MASS	150	156	146	150	602
MICH	1,265	1,324	1,350	1,314	5,253
MINN	2,676	2,845	2,435	2,385	10,341
MISS	229	245	218	208	900
MO	683	765	744	713	2,905
MONT	83	86	88	84	341
NEBR	314	348	349	329	1,340
NEV	52.7	58.5	58.1	55.7	225.0
N H	92	93	88	92	365
N J	122	128	122	120	492
N MEX	181	204	215	212	812
N Y	2,741	2,964	2,699	2,693	11,097
N C	425	424	407	430	1,686
N DAK	247	295	258	220	1,020
OHIO	1,078	1,197	1,154	1,121	4,550
OKLA	288	307	286	284	1,165
OREG	296	344	345	316	1,301
PA	2,266	2,398	2,308	2,292	9,264
R I	11.7	12.0	10.9	11.4	46.0
S C	150	141	132	144	567
S DAK	423	481	446	412	1,762
TENN	544	632	586	564	2,326
TEX	959	980	900	941	3,780
UTAH	269	307	305	281	1,162
VT	573	622	594	596	2,385
VA	507	516	516	520	2,059
WASH	751	829	843	799	3,222
W VA	87	91	84	87	349
WIS	5,639	6,254	5,912	5,425	23,230
WYO	33.0	35.8	35.5	32.7	137.0
U S	33,167	35,579	33,927	32,832	135,505

1/ EXCLUDES MILK SUCKED BY CALVES.

MILK COWS AND PRODUCTION OF MILK AND MILKFAT, BY STATES, 1979

STATE	PRODUCTION OF MILK AND MILKFAT 2/					
	NUMBER OF MILK COWS 1/	PER MILK COW MILK	MILKFAT	PERCENTAGE OF FAT IN ALL MILK PRODUCED	TOTAL MILK : MILKFAT	
	THOUSANDS	POUNDS		PERCENT	MIL LBS	
ALA	68	8912	324	3.63	606	22.0
ALAS	1.2	10833	388	3.58	13.0	0.5
ARIZ	72	13069	469	3.59	941	33.8
ARK	79	9203	329	3.57	727	26.0
CALIF	871	14424	512	3.55	12563	446.0
COLO	72	11903	426	3.58	857	30.7
CONN	49	12367	451	3.65	606	22.1
DEL	10.7	11869	436	3.67	127	4.7
FLA	188	10617	366	3.45	1996	68.9
GA	130	10292	375	3.64	1338	48.7
HAW	12.8	11719	398	3.40	150	5.1
IDAHO	144	11951	429	3.59	1721	61.8
ILL	231	10351	385	3.72	2391	88.9
IND	197	11041	412	3.73	2175	81.1
IOWA	370	10427	385	3.69	3858	142.4
KANS	123	10813	395	3.65	1330	48.5
KY	255	8706	320	3.67	2220	81.5
LA	121	8446	307	3.63	1022	37.1
MAINE	56	11446	415	3.63	641	23.3
MD	126	12063	443	3.67	1520	55.8
MASS	48	11792	429	3.64	566	20.6
MICH	397	12166	446	3.67	4830	177.3
MINN	843	10848	396	3.65	9145	333.8
MISS	100	8140	300	3.68	814	30.0
MO	265	10242	372	3.63	2714	98.5
MONT	28	10607	380	3.58	297	10.6
NEBR	120	10500	386	3.68	1260	46.4
NEV	15.0	13267	456	3.44	199	6.8
N H	30	11367	418	3.68	341	12.5
N J	41	12049	443	3.68	494	18.2
N MEX	38	13342	463	3.47	507	17.6
N Y	905	11746	425	3.62	10630	384.8
N C	132	11856	430	3.63	1565	56.8
N DAK	95	9200	329	3.58	874	31.3
OHIO	373	11434	423	3.70	4265	157.8
OKLA	110	9727	347	3.57	1070	38.2
OREG	94	11734	442	3.77	1103	41.6
PA	701	11532	429	3.72	8084	300.7
R I	4.4	11364	411	3.62	50	1.8
S C	50	10480	401	3.83	524	20.1
S DAK	158	9804	355	3.62	1549	56.1
TENN	211	9910	368	3.71	2091	77.6
TEX	311	10859	385	3.55	3377	119.9
UTAH	76	12474	442	3.54	948	33.6
VT	183	11907	437	3.67	2179	80.0
VA	170	11394	416	3.65	1937	70.7
WASH	197	14299	525	3.67	2817	103.4
W VA	37	9459	348	3.68	350	12.9
WIS	1813	12052	452	3.75	21850	819.4
WYO	12.0	9917	356	3.59	119	4.3
U S	10734	11492	420	3.66	123350	4511.8

1/ AVERAGE NUMBER DURING YEAR, EXCLUDING HEIFERS NOT YET FRESH. U.S. TOTAL WILL NOT ADD DUE TO ROUNDING. 2/ EXCLUDES MILK SUCKED BY CALVES.

MILK USED AND MARKETED BY PRODUCERS, BY STATES, 1979

STATE	MILK USED WHERE PRODUCED			MILK MARKETED BY PRODUCERS		
	FED TO CALVES	USED FOR MILK	TOTAL	SOLD TO PLANTS AND DEALERS	SOLD DIRECTLY TO CONSUMERS	TOTAL
	1/	CREAM AND BUTTER		2/	3/ 4/	
M I L L I O N P O U N D S						
ALA	4	14	18	570	18	588
ALAS	0.4	0.4	0.8	11.9	0.3	12.2
ARIZ	9	1	10	885	46	931
ARK	9	24	33	694		694
CALIF	64	10	74	12145	344	12489
COLO	32	16	48	770	39	809
CONN	6	4	10	580	16	596
DEL	1	2	3	123	1	124
FLA	8	12	20	1970	6	1976
GA	8	9	17	1315	6	1321
HAW	1.7	1.0	2.7	147.3		147.3
IDAHO	40	15	55	1645	21	1666
ILL	22	12	34	2355	2	2357
IND	18	14	32	2135	8	2143
IOWA	81	51	132	3726		3726
KANS	18	10	28	1295	7	1302
KY	30	90	120	2090	10	2100
LA	4	21	25	985	12	997
MAINE	8	6	14	620	7	627
MD	11	16	27	1485	8	1493
MASS	6	4	10	525	31	556
MICH	65	25	90	4715	25	4740
MINN	53	27	80	9065		9065
MISS	2	14	16	790	8	798
MO	24	14	38	2665	11	2676
MONT	8	11	19	275	3	278
NEBR	19	19	38	1215	7	1222
NEV	3	2	5	194		194
N H	5	3	8	325	8	333
N J	6	4	10	463	21	484
N MEX	5	9	14	479	14	493
N Y	150	90	240	10305	85	10390
N C	15	56	71	1480	14	1494
N DAK	26	14	40	830	4	834
OHIO	40	40	80	4170	15	4185
OKLA	17	23	40	1015	15	1030
OREG	20	8	28	1025	50	1075
PA	60	40	100	7610	374	7984
R I	1	1	2	46	2	48
S C	7	8	15	495	14	509
S DAK	22	17	39	1505	5	1510
TENN	48	47	95	1990	6	1996
TEX	22	10	32	3310	35	3345
UTAH	10	5	15	895	38	933
VT	26	19	45	2130	4	2134
VA	12	17	29	1900	8	1908
WASH	28	8	36	2660	121	2781
W VA	6	14	20	323	7	330
WIS	358	159	517	21320	13	21333
WYO	3	4	7	112		112
U S 5/	1442	1040	2483	119379	1489	120869

1/ EXCLUDES MILK SUCKED BY CALVES. 2/ INCLUDES THE EQUIVALENT AMOUNTS OF MILK FOR CREAM SOLD TO PLANTS AND DEALERS AND MILK PRODUCED BY DEALER'S OWN HERDS (EXCEPT FOR N Y AND CALIF, WHERE SUCH MILK IS INCLUDED AS SOLD DIRECTLY TO CONSUMERS). 3/ SALES DIRECTLY TO CONSUMERS BY PRODUCERS WHO SELL ONLY MILK FROM THEIR OWN HERDS. ALSO INCLUDES MILK PRODUCED BY INSTITUTIONAL HERDS. 4/ FOR STATES NOT PUBLISHED, SALES ARE NOMINAL. INCLUDED IN MILK SOLD TO PLANTS 5/ SUM OF PARTS MAY NOT EQUAL SUM OF TOTAL DUE TO ROUNDING.

MILK MARKETED BY PRODUCERS: QUANTITY, PRICE AND CASH RECEIPTS, BY STATES, 1979

STATE	MILK SOLD TO PLANTS AND DEALERS 1/				MILK SOLD DIRECTLY TO CONSUMERS 5/		
	QUANTITY	PERCENT : FLUID : GRADE 2/:	PRICE : PER : 100 LBS:	CASH : RECEIPTS :	QUANTITY	PRICE : PER : QUART :	CASH : RECEIPTS
	MIL LBS	PCT	DOLLARS	1000 DOL	1000 QTS	CT	1000 DOL
ALA	570	98	13.30	75810	8372	50	4186
ALAS	11.9	100	17.50	2083	140	55	77
ARIZ	885	100	12.50	110625	21395	39	8344
ARK	694	82	12.50	86750			
CALIF	12145	96	11.40	1384530	160000	43	68800
COLO	770	3/	12.80	98560	18140	45	8163
CONN	580	100	12.80	74240	7442	50	3721
DEL	123	100	12.60	15498	465	47	219
FLA	1970	100	14.50	285650	2791	42	1172
GA	1315	100	12.90	169635	2791	55	1535
HAW	147.3	100	16.90	4/24894			
IDAHO	1645	39	11.40	187530	9767	47	4591
ILL	2355	81	11.90	280245	930	48	447
IND	2135	90	12.30	262605	3721	50	1860
IOWA	3726	57	11.60	432216			
KANS	1295	82	12.00	155400	3256	45	1465
KY	2090	80	11.80	246620	4651	49	2279
LA	985	100	13.20	130020	5581	47	2623
MAINE	620	100	13.00	80600	3256	47	1530
MD	1485	100	12.60	187110	3721	47	1749
MASS	525	100	12.80	67200	14419	46	6633
MICH	4715	95	12.00	565800	11628	50	5814
MINN	9065	55	11.32	1026158			
MISS	790	95	12.60	99540	3721	47	1749
MO	2665	73	11.70	311805	5116	51	2609
MONT	275	92	11.90	32725	1395	44	614
NEBR	1215	56	11.90	144585	3256	48	1563
NEV	194	100	11.50	22310			
N H	325	100	12.80	41600	3721	46	1712
N J	463	100	12.50	57875	9767	41	4005
N MEX	479	100	13.00	62270	6512	50	3256
N Y	10305	100	11.90	1226295	39535	43	17000
N C	1480	96	12.70	187960	6512	48	3126
N DAK	830	42	11.00	91300	1860	52	967
OHIO	4170	92	12.10	504570	6977	46	3209
OKLA	1015	89	12.60	127890	6977	52	3628
OREG	1025	88	12.10	124025	23256	40	9302
PA	7610	98	12.70	966470	173953	37	64363
R I	46	100	12.80	5888	930	50	465
S C	495	100	13.20	65340	6512	53	3451
S DAK	1505	33	11.30	170065	2326	45	1047
TENN	1990	88	12.20	242780	2791	46	1284
TEX	3310	100	13.10	433610	16279	54	8791
UTAH	895	73	11.70	104715	17674	35	6186
VT	2130	100	12.50	266250	1860	44	819
VA	1900	93	12.30	233700	3721	50	1860
WASH	2660	100	11.90	316540	56279	41	23074
W VA	323	3/	12.10	39083	3256	56	1823
WIS	21320	69	11.75	2505100	6047	37	2237
WYO	112	3/	11.90	13328			
U S	119379	83	12.02	14347397	692698	42	293347

1/ INCLUDES THE EQUIVALENT AMOUNTS OF MILK FOR CREAM SOLD TO PLANTS AND DEALERS. 2/ PERCENTAGE OF MILK SOLD TO PLANTS AND DEALERS THAT IS ELIGIBLE FOR FLUID USE (GRADE A IN MOST STATES). INCLUDES FLUID-GRADE MILK USED IN MANUFACTURING DAIRY PRODUCTS. 3/ NOT PUBLISHED TO AVOID DISCLOSING INDIVIDUAL OPERATIONS. 4/ BASED ON UNROUNDED VALUE. INCLUDES MILK SOLD DIRECT TO CONSUMERS. 5/ ALSO INCLUDES MILK PRODUCED BY INSTITUTIONAL HERDS.

MARKETINGS, INCOME, AND VALUE OF MILK PRODUCTION, BY STATES, 1979

STATE	COMBINED MARKETINGS OF MILK AND CREAM		USED FOR MILK		CREAM AND BUTTER WHERE PRODUCED		GROSS PRODUCER INCOME	VALUE OF MILK PRODUCED
	MILK UTILIZED	AVERAGE RETURNS 1/	CASH RECEIPTS FROM MARKETINGS	MILK VALUE UTILIZED	MIL LBS	1000 DOLLARS	3/	2/ 4/
	PER 100 POUNDS MILK	PER POUND MILKFAT	1000 DOL	MIL LBS	1000 DOLLARS			
ALA	588	13.60	3.75	79996	14	1905	81901	82445
ALAS	12.2	17.70	4.94	2159	0.4	71	2230	2301
ARIZ	931	12.78	3.56	118969	1	128	119097	120247
ARK	694	12.50	3.50	86750	24	3000	89750	90875
CALIF	12489	11.64	3.28	1453330	10	1164	1454494	1461941
COLO	809	13.19	3.68	106723	16	2111	108834	113055
CONN	596	13.08	3.58	77961	4	523	78484	79269
DEL	124	12.67	3.45	15717	2	253	15970	16097
FLA	1976	14.52	4.21	286822	12	1742	288564	289725
GA	1321	12.96	3.56	171170	9	1166	172336	173373
HAW	147.3	16.90	4.97	24894	1.0	169	25063	25350
IDAHO	1666	11.53	3.21	192121	15	1730	193850	198463
ILL	2357	11.91	3.20	280692	12	1429	282121	284741
IND	2143	12.34	3.31	264465	14	1728	266193	268415
IOWA	3726	11.60	3.14	432216	51	5916	438132	447528
KANS	1302	12.05	3.30	156865	10	1205	158070	160239
KY	2100	11.85	3.23	248899	90	10667	259566	263122
LA	997	13.30	3.67	132643	21	2794	135437	135969
MAINE	627	13.10	3.61	82130	6	786	82916	83964
MD	1493	12.65	3.45	188859	16	2024	190883	192274
MASS	556	13.28	3.65	73833	4	531	74364	75160
MICH	4740	12.06	3.29	571614	25	3015	574629	582467
MINN	9065	11.32	3.10	1026158	27	3056	1029214	1035214
MISS	798	12.69	3.45	101289	14	1777	103066	103320
MO	2676	11.75	3.24	314414	14	1645	316059	318879
MONT	278	11.99	3.35	33339	11	1319	34658	35618
NEBR	1222	11.96	3.25	146148	19	2272	148420	150692
NEV	194	11.50	3.34	22310	2	230	22540	22885
N H	333	13.01	3.53	43312	3	390	43702	44352
N J	484	12.79	3.47	61880	4	511	62391	63158
N MEX	493	13.29	3.83	65526	9	1196	66722	67387
N Y	10390	11.97	3.31	1243295	90	10770	1254065	1272014
N C	1494	12.79	3.52	191086	56	7163	198248	200167
N DAK	834	11.06	3.09	92267	14	1549	93816	96693
OHIO	4185	12.13	3.28	507779	40	4853	512633	517486
OKLA	1030	12.77	3.58	131518	23	2937	134455	136625
OREG	1075	12.40	3.29	133327	8	992	134320	136800
PA	7984	12.91	3.47	1030833	40	5164	1035997	1043744
R I	48	13.24	3.66	6353	1	132	6485	6618
S C	509	13.51	3.53	68791	8	1081	69872	70818
S DAK	1510	11.33	3.13	171112	17	1926	173038	175531
TENN	1996	12.23	3.30	244064	47	5747	249811	255680
TEX	3345	13.23	3.73	442401	10	1323	443723	446633
UTAH	933	11.89	3.36	110901	5	594	111495	112684
VT	2134	12.51	3.41	267069	19	2378	269446	272700
VA	1908	12.35	3.38	235560	17	2099	237659	239141
WASH	2781	12.21	3.33	339614	8	977	340591	344011
W VA	330	12.40	3.37	40906	14	1735	42642	43385
WIS	21333	11.75	3.13	2507337	159	18688	2526025	2568102
WYO	112	11.90	3.31	13328	4	476	13804	14161
U S	120869	12.11	3.31	14640744	1040	127038	14767781	14941518

1/ CASH RECEIPTS DIVIDED BY MILK FOR MILKFAT REPRESENTED IN COMBINED MARKETINGS. 2/ VALUED AT AVERAGED RETURNS PER 100 POUNDS OF MILK IN COMBINED MARKETINGS OF MILK AND CREAM. 3/ CASH RECEIPTS FROM MARKETINGS OF MILK AND CREAM PLUS VALUE OF MILK USED FOR HOME CONSUMPTION AND PRODUCER-CHURNED BUTTER. 4/ INCLUDES VALUE OF MILK FED TO CALVES.

*

MILK COWS AND PRODUCTION OF MILK AND MILKFAT, BY STATES, 1980

STATE	PRODUCTION OF MILK AND MILKFAT 2/					
	NUMBER OF MILK COWS 1/	PER MILK COW MILK	PER MILK COW MILKFAT	PERCENTAGE OF FAT IN ALL MILK PRODUCED	TOTAL	
	THOUSANDS	POUNDS	POUNDS	PERCENT	MIL LBS	MIL LBS
ALA	65	9385	342	3.64	610	22.2
ALAS	1.1	11364	407	3.58	12.5	0.4
ARIZ	75	13747	496	3.61	1031	37.2
ARK	74	10000	357	3.57	740	26.4
CALIF	896	15153	547	3.61	13577	490.1
COLO	71	12085	434	3.59	858	30.8
CONN	48	12750	458	3.59	612	22.0
DEL	10.4	12019	442	3.68	125	4.6
FLA	187	10845	373	3.44	2028	69.8
GA	130	10515	381	3.62	1367	49.5
HAW	13.0	11692	402	3.44	152	5.2
IDAHO	154	12643	453	3.58	1947	69.7
ILL	233	10901	404	3.71	2540	94.2
IND	201	10995	410	3.73	2210	82.4
IOWA	368	10853	398	3.67	3994	146.6
KANS	123	10813	391	3.62	1330	48.1
KY	242	9169	337	3.68	2219	81.7
LA	114	8877	318	3.58	1012	36.2
MAINE	56	11875	430	3.62	665	24.1
MD	126	12063	449	3.72	1520	56.5
MASS	46	12391	447	3.61	570	20.6
MICH	395	12582	462	3.67	4970	182.4
MINN	862	11061	403	3.64	9535	347.1
MISS	98	8337	306	3.67	817	30.0
MO	257	10996	399	3.63	2826	102.6
MONT	29	10828	383	3.54	314	11.1
NEBR	121	10868	397	3.65	1315	48.0
NEV	15.0	14593	512	3.51	219	7.7
N H	30	11567	425	3.67	347	12.7
N J	41	12049	441	3.66	494	18.1
N MEX	45	13378	470	3.51	602	21.1
N Y	911	12046	435	3.61	10974	396.2
N C	134	12172	442	3.63	1631	59.2
N DAK	93	10097	360	3.57	939	33.5
OHIO	375	11493	424	3.69	4310	159.0
OKLA	111	10000	359	3.59	1110	39.8
OREG	95	12305	466	3.79	1169	44.3
PA	711	11949	443	3.71	8496	315.2
R I	4.1	11463	412	3.59	47	1.7
S C	48	11271	431	3.82	541	20.7
S DAK	159	10497	379	3.61	1669	60.3
TENN	214	10472	390	3.72	2241	83.4
TEX	317	11435	405	3.54	3625	128.3
UTAH	78	13179	468	3.55	1028	36.5
VT	186	12306	449	3.65	2289	83.5
VA	171	11544	418	3.62	1974	71.5
WASH	201	14637	536	3.66	2942	107.7
W VA	37	9459	348	3.68	350	12.9
WIS	1815	12331	460	3.73	22380	834.8
WYO	12.0	11000	394	3.58	132	4.7
U S	10799	11891	435	3.65	128406	4692.4

1/ AVERAGE NUMBER DURING YEAR, EXCLUDING HEIFERS NOT YET FRESH. U.S. TOTAL WILL NOT ADD DUE TO ROUNDING. 2/ EXCLUDES MILK SUCKED BY CALVES.

MILK USED AND MARKETED BY PRODUCERS, BY STATES, 1980

STATE	MILK USED WHERE PRODUCED			MILK MARKETED BY PRODUCERS		
	FED TO CALVES 1/	USED FOR MILK FOR CREAM AND BUTTER	TOTAL	SOLD TO PLANTS AND DEALERS 2/	SOLD DIRECTLY TO CONSUMERS 3/ 4/	TOTAL
M I L L I O N P O U N D S						
ALA	5	12	17	575	18	593
ALAS	0.3	0.4	0.7	11.3	0.5	11.8
ARIZ	5	1	6	1020	5	1025
ARK	9	24	33	707		707
CALIF	53	8	61	13170	346	13516
COLO	35	14	49	775	34	809
CONN	6	4	10	585	17	602
DEL	1	1	2	122	1	123
FLA	8	11	19	2009		2009
GA	11	10	21	1346		1346
HAW	1.6	1.0	2.6	149.4		149.4
IDAHO	43	11	54	1875	18	1893
ILL	21	12	33	2507		2507
IND	19	13	32	2178		2178
IOWA	59	49	108	3886		3886
KANS	18	9	27	1300	3	1303
KY	25	64	89	2130		2130
LA	4	20	24	975	13	988
MAINE	8	4	12	645	8	653
MD	9	8	17	1455	8	1503
MASS	6	4	10	530	30	560
MICH	55	25	80	4870	20	4890
MINN	47	23	70	9465		9465
MISS	1	13	14	795	8	803
MO	24	12	36	2780	10	2790
MONT	7	9	16	295	3	298
NEBR	17	17	34	1281		1281
NEV	3	2	5	214		214
N H	6	3	9	330	8	338
N J	6	4	10	466	18	484
N MEX	5	9	14	575	13	588
N Y	143	82	225	10670	79	10749
N C	16	55	71	1540	20	1560
N DAK	23	12	35	904		904
OHIO	40	35	75	4220	15	4235
OKLA	14	17	31	1065	14	1079
OREG	32	13	45	1070	54	1124
PA	60	42	102	7930	464	8394
R I	1	1	2	43	2	45
S C	5	7	12	515	14	529
S DAK	16	13	29	1635	5	1640
TENN	40	45	85	2150	6	2156
TEX	34	11	45	3540	40	3580
UTAH	9	9	18	985	25	1010
VT	27	17	44	2240	5	2245
VA	11	11	22	1952		1952
WASH	29	6	35	2785	122	2907
W VA	8	10	18	322	10	332
WIS	365	157	522	21845	13	21858
WYO	4	3	7	125		125
U S 5/	1395	943	2338	124598	1470	126067

1/ EXCLUDES MILK SUCKED BY CALVES. 2/ INCLUDES THE EQUIVALENT AMOUNTS OF MILK FOR CREAM SOLD TO PLANTS AND DEALERS AND MILK PRODUCED BY DEALER'S OWN HERDS (EXCEPT FOR N Y AND CALIF, WHERE SUCH MILK IS INCLUDED AS SOLD DIRECTLY TO CONSUMERS). 3/ SALES DIRECTLY TO CONSUMERS BY PRODUCERS WHO SELL ONLY MILK FROM THEIR OWN HERDS. ALSO INCLUDES MILK PRODUCED BY INSTITUTIONAL HERDS. 4/ FOR STATES NOT PUBLISHED, SALES ARE NOMINAL. INCLUDED IN MILK SOLD TO PLANTS 5/ SUM OF PARTS MAY NOT EQUAL SUM OF TOTAL DUE TO ROUNDING.

MILK MARKETED BY PRODUCERS: QUANTITY, PRICE AND CASH RECEIPTS, BY STATES, 1980

STATE	MILK SOLD TO PLANTS AND DEALERS 1/				MILK SOLD DIRECTLY TO CONSUMERS 5/		
	QUANTITY	PERCENT FLUID GRADE 2/	PRICE PER 100 LBS	CASH RECEIPTS	QUANTITY	PRICE PER QUART	CASH RECEIPTS
	MIL LBS	PCT	DOLLARS	1000 DOL	1000 QTS	CT	1000 DOL
ALA	575	98	14.40	82800	8372	50	4186
ALAS	11.3	100	17.50	1978	233	60	140
ARIZ	1020	100	13.40	136680	2326	41	953
ARK	707	87	13.50	95445			
CALIF	13170	96	12.88	1696296	160930	46	74028
COLO	775	3/	14.00	108500	15814	50	7907
CONN	585	100	13.60	79560	7907	52	4112
DEL	122	100	13.60	16592	465	50	233
FLA	2009	100	15.80	317422			
GA	1346	100	14.00	188440			
HAW	149.4	100	18.12	4/27071			
IDAHO	1875	42	12.20	228750	8372	60	5023
ILL	2507	80	12.90	323403			
IND	2178	90	13.00	283140			
IOWA	3886	59	12.60	489636			
KANS	1300	83	13.10	170300	1395	50	698
KY	2130	82	12.80	272640			
LA	975	100	14.10	137475	6047	51	3084
MAINE	645	100	13.90	89655	3721	51	1898
MD	1495	100	13.60	203320	3721	50	1860
MASS	530	100	13.70	72610	13953	51	7116
MICH	4870	95	13.20	642840	9302	50	4651
MINN	9465	59	12.40	1173660			
MISS	795	96	13.80	109710	3721	52	1935
MO	2780	75	12.60	350280	4651	51	2372
MONT	295	93	12.80	37760	1395	47	656
NEBR	1281	58	12.70	162687			
NEV	214	100	12.70	27178			
N H	330	100	13.60	44880	3721	52	1935
N J	466	100	13.38	62351	8372	43	3600
N MEX	575	100	14.10	81075	6047	53	3205
N Y	10670	100	13.00	1387100	36744	46	16902
N C	1540	96	14.00	215600	9302	55	5116
N DAK	904	43	11.80	106672			
OHIO	4220	92	13.00	548600	6977	57	3977
OKLA	1065	89	13.60	144840	6512	58	3777
OREG	1070	89	13.10	140170	25116	45	11302
PA	7930	99	13.60	1078480	215814	40	86326
R I	43	100	13.70	5891	930	52	484
S C	515	100	14.50	74675	6512	53	3451
S DAK	1635	32	12.40	202740	2326	50	1163
TENN	2150	89	13.30	285950	2791	47	1312
TEX	3540	100	13.90	492060	18605	59	10977
UTAH	985	70	12.50	123125	11628	38	4419
VT	2240	100	13.40	300160	2326	51	1186
VA	1952	93	13.30	259616			
WASH	2785	100	12.70	353695	56744	43	24400
W VA	322	3/	13.00	41860	4651	59	2744
WIS	21845	71	12.67	2767762	6047	39	2358
WYO	125	3/	12.70	15875			
U S	124598	84	13.05	16259004	683488	45	309484

1/ INCLUDES THE EQUIVALENT AMOUNTS OF MILK FOR CREAM SOLD TO PLANTS AND DEALERS. 2/ PERCENTAGE OF MILK SOLD TO PLANTS AND DEALERS THAT IS ELIGIBLE FOR FLUID USE (GRADE A IN MOST STATES). INCLUDES FLUID-GRADE MILK USED IN MANUFACTURING DAIRY PRODUCTS. 3/ NOT PUBLISHED TO AVOID DISCLOSING INDIVIDUAL OPERATIONS. 4/ BASED ON UNROUNDED VALUE. INCLUDES MILK SOLD DIRECT TO CONSUMERS. 5/ ALSO INCLUDES MILK PRODUCED BY INSTITUTIONAL HERDS.

MARKETINGS, INCOME, AND VALUE OF MILK PRODUCTION, BY STATES, 1980

STATE	COMBINED MARKETINGS OF MILK AND CREAM : USED FOR MILK:				CREAM AND : GROSS : VALUE OF			
	MILK	AVERAGE RETURNS 1/:	CASH	RECEIPTS	BUTTER WHERE	PRODUCER:	MILK	PRODUCED
	UTILIZED:	PER 100 :	PER :	FROM :	PRODUCED :	INCOME :	3/ :	2/ 4/
	POUNDS :	POUND :	MARKETINGS:	MILK :	VALUE :			
	MILK :	MILKFAT :		UTILIZED:	2/ :			
	MIL LBS	DOLLARS	1000 DOL	MIL LBS	1000 DOLLARS			
ALA	593	14.67	4.03	86986	12	1760	88746	89480
ALAS	11.8	17.94	5.01	2117	0.4	72	2189	2243
ARIZ	1025	13.43	3.72	137633	1	134	137768	138439
ARK	707	13.50	3.78	95445	24	3240	98685	99900
CALIF	13516	13.10	3.63	1770324	8	1048	1771372	1778314
COLO	809	14.39	4.01	116407	14	2014	118421	123458
CONN	602	13.90	3.87	83672	4	556	84228	85062
DEL	123	13.68	3.72	16825	1	137	16961	17098
FLA	2009	15.80	4.59	317422	11	1738	319160	320424
GA	1346	14.00	3.87	188440	10	1400	189840	191380
HAW	149.4	18.12	5.27	27071	1.0	181	27252	27542
IDAHO	1893	12.35	3.45	233773	11	1358	235132	240442
ILL	2507	12.90	3.48	323403	12	1548	324951	327660
IND	2178	13.00	3.49	283140	13	1690	284830	287300
IOWA	3886	12.60	3.43	489636	49	6174	495810	503244
KANS	1303	13.12	3.63	170998	9	1181	172179	174541
KY	2130	12.80	3.48	272640	64	8192	280832	284032
LA	988	14.23	3.97	140559	20	2845	143404	143973
MAINE	653	14.02	3.87	91553	4	561	92113	93235
MD	1503	13.65	3.67	205180	8	1092	206273	207501
MASS	560	14.24	3.94	79726	4	569	80296	81150
MICH	4890	13.24	3.61	647491	25	3310	650801	658084
MINN	9465	12.40	3.41	1173660	23	2852	1176512	1182340
MISS	803	13.90	3.79	111645	13	1807	113452	113591
MO	2790	12.64	3.48	352652	12	1517	354169	357202
MONT	298	12.89	3.64	38416	9	1160	39576	40478
NEBR	1281	12.70	3.48	162687	17	2159	164846	167005
NEV	214	12.70	3.62	27178	2	254	27432	27813
N H	338	13.85	3.77	46815	3	416	47230	48061
N J	484	13.63	3.72	65951	4	545	66496	67313
N MEX	588	14.33	4.08	84280	9	1290	85570	86286
N Y	10749	13.06	3.62	1404002	82	10711	1414713	1433391
N C	1560	14.15	3.90	220716	55	7782	228498	230762
N DAK	904	11.80	3.31	106672	12	1416	108088	110802
OHIO	4235	13.05	3.54	552577	35	4567	557143	562363
OKLA	1079	13.77	3.84	148617	17	2342	150958	152887
OREG	1124	13.48	3.56	151472	13	1752	153224	157537
PA	8394	13.88	3.74	1164806	42	5828	1170634	1178960
R I	45	14.17	3.95	6375	1	142	6516	6658
S C	529	14.77	3.87	78126	7	1034	79160	79898
S DAK	1640	12.43	3.44	203903	13	1616	205519	207508
TENN	2156	13.32	3.58	287262	45	5996	293257	298587
TEX	3580	14.05	3.97	503037	11	1546	504582	509360
UTAH	1010	12.63	3.56	127544	9	1137	128680	129817
VT	2245	13.42	3.68	301346	17	2282	303628	307252
VA	1952	13.30	3.67	259616	11	1463	261079	262542
WASH	2907	13.01	3.55	378095	6	780	378875	382647
W VA	332	13.43	3.65	44604	10	1343	45948	47022
WIS	21858	12.67	3.40	2770120	157	19897	2790017	2836274
WYO	125	12.70	3.55	15875	3	381	16256	16764
U S	126067	13.14	3.60	16568488	943	124815	16693303	16875623

1/ CASH RECEIPTS DIVIDED BY MILK FOR MILKFAT REPRESENTED IN COMBINED MARKETINGS. 2/ VALUED AT AVERAGED RETURNS PER 100 POUNDS OF MILK IN COMBINED MARKETINGS OF MILK AND CREAM. 3/ CASH RECEIPTS FROM MARKETINGS OF MILK AND CREAM PLUS VALUE OF MILK USED FOR HOME CONSUMPTION AND PRODUCER-CHURNED BUTTER. 4/ INCLUDES VALUE OF MILK FED TO CALVES.

MILK COWS AND PRODUCTION OF MILK AND MILKFAT, BY STATES, 1981

STATE	PRODUCTION OF MILK AND MILKFAT 2/					
	NUMBER OF MILK COWS 1/	PER MILK COW		PERCENTAGE	TOTAL	
		MILK	MILKFAT	OF FAT IN ALL MILK PRODUCED	MILK	MILKFAT
	THOUSANDS	POUNDS		PERCENT	MIL LBS	
ALA	62	10000	362	3.62	620	22.4
ALAS	1.1	12182	436	3.58	13.4	0.5
ARIZ	77	14714	530	3.60	1133	40.8
ARK	74	10703	381	3.56	792	28.2
CALIF	923	15437	554	3.59	14248	511.5
COLO	73	12712	451	3.55	928	32.9
CONN	49	12735	461	3.62	624	22.6
DEL	10.1	12277	453	3.69	124	4.6
FLA	189	11016	382	3.47	2082	72.2
GA	130	10738	390	3.63	1396	50.7
HAW	12.7	11811	412	3.49	150	5.2
IDAHO	166	13024	466	3.58	2162	77.4
ILL	233	11176	411	3.68	2604	95.8
IND	206	11078	412	3.72	2282	84.9
IOWA	362	11204	410	3.66	4056	148.4
KANS	124	11266	410	3.64	1397	50.9
KY	242	9426	347	3.68	2281	83.9
LA	107	9308	332	3.57	996	35.6
MAINE	57	12246	447	3.65	698	25.5
MD	124	12548	462	3.68	1556	57.3
MASS	46	12565	456	3.63	578	21.0
MICH	393	12985	473	3.64	5103	185.7
MINN	886	11356	412	3.63	10061	365.2
MISS	97	8866	324	3.65	860	31.4
MO	249	11554	419	3.63	2877	104.4
MONT	29	11414	403	3.53	331	11.7
NEBR	123	11382	414	3.64	1400	51.0
NEV	15.6	14295	506	3.54	223	7.9
N H	29	11931	440	3.69	346	12.8
N J	41	12049	442	3.67	494	18.1
N MEX	51	13157	462	3.51	671	23.6
N Y	912	12137	438	3.61	11069	399.6
N C	134	12343	451	3.65	1654	60.4
N DAK	94	10585	379	3.58	995	35.6
OHIO	380	11539	425	3.68	4385	161.4
OKLA	110	10455	376	3.60	1150	41.4
OREG	97	12577	470	3.74	1220	45.6
PA	721	12434	456	3.67	8965	329.0
R I	3.9	11795	423	3.59	46	1.7
S C	48	11500	445	3.87	552	21.4
S DAK	159	11050	399	3.61	1757	63.4
TENN	214	10748	399	3.71	2300	85.3
TEX	324	11312	399	3.53	3665	129.4
UTAH	83	13370	471	3.52	1110	39.1
VT	187	12289	450	3.66	2298	84.1
VA	172	11715	426	3.64	2015	73.3
WASH	205	14717	537	3.65	3017	110.1
W VA	36	9722	358	3.68	350	12.9
WIS	1825	12603	468	3.71	23000	853.3
WYO	12.0	11333	402	3.55	136	4.8
U S	10898	12183	444	3.64	132770	4835.9

1/ AVERAGE NUMBER DURING YEAR, EXCLUDING HEIFERS NOT YET FRESH. U.S. TOTAL WILL NOT ADD DUE TO ROUNDING. 2/ EXCLUDES MILK SUCKED BY CALVES.

MILK USED AND MARKETED BY PRODUCERS, BY STATES, 1981

STATE	MILK USED WHERE PRODUCED			MILK MARKETED BY PRODUCERS		
	FED TO CALVES	USED FOR MILK	TOTAL	SOLD TO PLANTS AND DEALERS	SOLD DIRECTLY TO CONSUMERS	TOTAL
	1/	CREAM AND BUTTER		2/	3/ 4/	
M I L L I O N P O U N D S						
ALA	5	11	16	595	9	604
ALAS	0.3	0.4	0.7	12.5	0.2	12.7
ARIZ	7	1	8	1120	5	1125
ARK	11	25	36	756		756
CALIF	53	10	63	13830	355	14185
COLO	37	12	49	845	34	879
CONN	6	4	10	600	14	614
DEL	1	1	2	122		122
FLA	5	8	13	2069		2069
GA	11	9	20	1376		1376
HAW	1.3	0.8	2.1	147.9		147.9
IDAHO	45	7	52	2090	20	2110
ILL	25	10	35	2569		2569
IND	20	13	33	2249		2249
IOWA	53	40	93	3963		3963
KANS	18	10	28	1365	4	1369
KY	31	59	90	2191		2191
LA	4	19	23	960	13	973
MAINE	8	3	11	680	7	687
MD	6	6	12	1544		1544
MASS	5	4	9	540	29	569
MICH	63	25	88	4995	20	5015
MINN	50	21	71	9990		9990
MISS	1	11	12	840	8	848
MO	25	12	37	2840		2840
MONT	8	9	17	311	3	314
NEBR	15	15	30	1370		1370
NEV	3	2	5	218		218
N H	6	2	8	330	8	338
N J	6	4	10	467	17	484
N MEX	5	6	11	645	15	660
N Y	157	80	237	10755	77	10832
N C	15	59	74	1560	20	1580
N DAK	23	12	35	960		960
OHIO	34	27	61	4310	14	4324
OKLA	12	17	29	1105	16	1121
OREG	32	13	45	1125	50	1175
PA	70	45	115	8365	485	8850
R I	1	1	2	42	2	44
S C	5	7	12	525	15	540
S DAK	6	7	13	1740	4	1744
TENN	40	44	84	2210	6	2216
TEX	36	11	47	3575	43	3618
UTAH	12	10	22	1060	28	1088
VT	29	14	43	2250	5	2255
VA	12	10	22	1993		1993
WASH	18	3	21	2870	126	2996
W VA	6	7	13	330	7	337
WIS	371	156	527	22460	13	22473
WYO	4	3	7	129		129
U S 5/	1418	886	2304	128994	1472	130467

1/ EXCLUDES MILK SUCKED BY CALVES. 2/ INCLUDES THE EQUIVALENT AMOUNTS OF MILK FOR CREAM SOLD TO PLANTS AND DEALERS AND MILK PRODUCED BY DEALER'S OWN HERDS (EXCEPT FOR N Y AND CALIF, WHERE SUCH MILK IS INCLUDED AS SOLD DIRECTLY TO CONSUMERS). 3/ SALES DIRECTLY TO CONSUMERS BY PRODUCERS WHO SELL ONLY MILK FROM THEIR OWN HERDS. ALSO INCLUDES MILK PRODUCED BY INSTITUTIONAL HERDS. 4/ FOR STATES NOT PUBLISHED, SALES ARE NOMINAL. INCLUDED IN MILK SOLD TO PLANTS 5/ SUM OF PARTS MAY NOT EQUAL SUM OF TOTAL DUE TO ROUNDING.

MILK MARKETED BY PRODUCERS: QUANTITY, PRICE AND CASH RECEIPTS, BY STATES, 1981

STATE	MILK SOLD TO PLANTS AND DEALERS 1/				MILK SOLD DIRECTLY TO CONSUMERS 5/		
	QUANTITY	PERCENT	PRICE	CASH	QUANTITY	PRICE	CASH
	MIL LBS	PCT	DOLLARS	1000 DOL	1000 QTS	CT	1000 DOL
ALA	595	98	14.70	87465	4186	57	2386
ALAS	12.5	100	19.20	2400	93	70	65
ARIZ	1120	100	14.10	157920	2326	43	1000
ARK	756	88	14.50	109620			
CALIF	13830	96	13.43	1857369	165116	52	85860
COLO	845	3/	14.90	125905	15814	53	8381
CONN	600	100	14.50	87000	6512	54	3516
DEL	122	100	14.30	17446			
FLA	2069	100	16.80	347592			
GA	1376	100	14.70	202272			
HAW	147.9	100	20.50	4/30320			
IDAHO	2090	44	12.80	267520	9302	64	5953
ILL	2569	80	13.80	354522			
IND	2249	90	13.80	310362			
IOWA	3963	62	13.30	527079			
KANS	1365	84	14.00	191100	1860	59	1098
KY	2191	83	13.60	297976			
LA	960	100	14.90	143040	6047	54	3265
MAINE	680	100	14.80	100640	3256	53	1726
MD	1544	100	14.30	220792			
MASS	540	100	14.60	78840	13488	53	7149
MICH	4995	96	13.80	689310	9302	50	4651
MINN	9990	61	13.08	1306692			
MISS	840	96	14.40	120960	3721	55	2047
MO	2840	77	13.40	380560			
MONT	311	93	13.40	41674	1395	50	698
NEBR	1370	60	13.40	183580			
NEV	218	100	13.40	29212			
N H	330	100	14.50	47850	3721	52	1935
N J	467	100	14.10	65847	7907	46	3637
N MEX	645	100	15.30	98685	6977	57	3977
N Y	10755	100	13.80	1484190	35814	50	17907
N C	1560	96	15.00	234000	9302	60	5581
N DAK	960	43	12.60	120960			
OHIO	4310	92	13.80	594780	6512	58	3777
OKLA	1105	90	14.40	159120	7442	62	4614
OREG	1125	90	13.90	156375	23256	45	10465
PA	8365	99	14.20	1187830	225581	42	94744
R I	42	100	14.50	6090	930	54	502
S C	525	100	15.60	81900	6977	66	4605
S DAK	1740	36	12.90	224460	1860	50	930
TENN	2210	88	13.90	307190	2791	48	1340
TEX	3575	100	14.80	529100	20000	59	11800
UTAH	1060	68	13.10	138860	13023	40	5209
VT	2250	100	14.30	321750	2326	53	1233
VA	1993	93	14.10	281013			
WASH	2870	100	13.50	387450	58605	45	26372
W VA	330	3/	13.80	45540	3256	59	1921
WIS	22460	72	13.38	3005148	6047	40	2419
WYO	129	3/	13.30	17157			
U S	128994	85	13.77	17764463	684744	48	330763

1/ INCLUDES THE EQUIVALENT AMOUNTS OF MILK FOR CREAM SOLD TO PLANTS AND DEALERS. 2/ PERCENTAGE OF MILK SOLD TO PLANTS AND DEALERS THAT IS ELIGIBLE FOR FLUID USE (GRADE A IN MOST STATES). INCLUDES FLUID-GRADE MILK USED IN MANUFACTURING DAIRY PRODUCTS. 3/ NOT PUBLISHED TO AVOID DISCLOSING INDIVIDUAL OPERATIONS. 4/ BASED ON UNROUNDED VALUE. INCLUDES MILK SOLD DIRECT TO CONSUMERS. 5/ ALSO INCLUDES MILK PRODUCED BY INSTITUTIONAL HERDS.

MARKETINGS, INCOME, AND VALUE OF MILK PRODUCTION, BY STATES, 1981

STATE	COMBINED MARKETINGS OF MILK AND CREAM		USED FOR MILK		CREAM AND BUTTER WHERE PRODUCED		GROSS INCOME	VALUE OF MILK PRODUCED
	MILK UTILIZED PER 100 POUNDS OF MILK	AVERAGE RETURNS PER POUND MILKFAT	CASH RECEIPTS FROM MARKETINGS	1000 DOLLARS	MIL LBS	1000 DOLLARS	3/	2/ 4/
	MIL LBS	DOLLARS	1000 DOL	MIL LBS	1000 DOLLARS			
ALA	604	14.88	4.11	89851	11	1636	91487	92231
ALAS	12.7	19.41	5.42	2465	0.4	78	2543	2601
ARIZ	1125	14.13	3.92	158920	1	141	159061	160050
ARK	756	14.50	4.07	109620	25	3625	113245	114840
CALIF	14185	13.70	3.82	1943229	10	1370	1944599	1951860
COLO	879	15.28	4.30	134286	12	1833	136120	141772
CONN	614	14.74	4.07	90516	4	590	91106	91990
DEL	122	14.30	3.88	17446	1	143	17589	17732
FLA	2069	16.80	4.84	347592	8	1344	348936	349776
GA	1376	14.70	4.05	202272	9	1323	203595	205212
HAW	147.9	20.50	5.87	30320	0.8	164	30484	30750
IDAHO	2110	12.96	3.62	273473	7	907	274381	280213
ILL	2569	13.80	3.75	354522	10	1380	355902	359352
IND	2249	13.80	3.71	310362	13	1794	312156	314916
IOWA	3963	13.30	3.63	527079	40	5320	532399	539448
KANS	1369	14.04	3.86	192198	10	1404	193602	196129
KY	2191	13.60	3.70	297976	59	8024	306000	310216
LA	973	15.04	4.21	146305	19	2857	149162	149764
MAINE	687	14.90	4.08	102366	3	447	102813	104005
MD	1544	14.30	3.89	220792	6	858	221650	222508
MASS	569	15.11	4.16	85989	4	604	86593	87349
MICH	5015	13.84	3.80	693961	25	3459	697421	706138
MINN	9990	13.08	3.60	1306692	21	2747	1309439	1315979
MISS	848	14.51	3.97	123007	11	1596	124602	124747
MO	2840	13.40	3.69	380560	12	1608	382168	385518
MONT	314	13.49	3.82	42372	9	1214	43586	44666
NEBR	1370	13.40	3.68	183580	15	2010	185590	187500
NEV	218	13.40	3.79	29212	2	268	29480	29882
N H	338	14.73	3.99	49785	2	295	50079	50963
N J	484	14.36	3.91	69484	4	574	70058	70920
N MEX	660	15.55	4.43	102662	6	933	103595	104373
N Y	10832	13.87	3.84	1502097	80	11094	1513191	1534962
N C	1580	15.16	4.15	239581	59	8946	248528	250802
N DAK	960	12.60	3.52	120960	12	1512	122472	125370
OHIO	4324	13.84	3.76	598557	27	3738	602294	607001
OKLA	1121	14.61	4.06	163734	17	2483	166217	167970
OREG	1175	14.20	3.80	166840	13	1846	168686	173230
PA	8850	14.49	3.95	1282574	45	6522	1289096	1299240
R I	44	14.98	4.17	6592	1	150	6742	6892
S C	540	16.02	4.14	86505	7	1121	87626	88427
S DAK	1744	12.92	3.58	225390	7	905	226295	227070
TENN	2216	13.92	3.75	308530	44	6126	314656	320225
TEX	3618	14.95	4.24	540900	11	1645	542545	547927
UTAH	1088	13.24	3.76	144069	10	1324	145393	146922
VT	2255	14.32	3.91	322983	14	2005	324988	329141
VA	1993	14.10	3.87	281013	10	1410	282423	284115
WASH	2996	13.81	3.78	413822	3	414	414236	416723
W VA	337	14.08	3.83	47461	7	986	48447	49292
WIS	22473	13.38	3.61	3007567	156	20878	3028444	3078095
WYO	129	13.30	3.75	17157	3	399	17556	18088
U S	130467	13.87	3.81	18095225	886	124050	18219275	18415052

1/ CASH RECEIPTS DIVIDED BY MILK FOR MILKFAT REPRESENTED IN COMBINED MARKETINGS. 2/ VALUED AT AVERAGED RETURNS PER 100 POUNDS OF MILK IN COMBINED MARKETINGS OF MILK AND CREAM. 3/ CASH RECEIPTS FROM MARKETINGS OF MILK AND CREAM PLUS VALUE OF MILK USED FOR HOME CONSUMPTION AND PRODUCER-CHURNED BUTTER. 4/ INCLUDES VALUE OF MILK FED TO CALVES.

MILK COWS AND PRODUCTION OF MILK AND MILKFAT, BY STATES, 1982

STATE	PRODUCTION OF MILK AND MILKFAT 2/					
	NUMBER OF MILK COWS 1/	PER MILK COW MILK	MILKFAT	PERCENTAGE OF FAT IN ALL MILK PRODUCED	TOTAL MILK MILKFAT	
	THOUSANDS	POUNDS		PERCENT	MIL	LBS
ALA	59	9831	354	3.60	580	20.9
ALAS	1.1	12545	450	3.59	13.8	0.5
ARIZ	81	14840	542	3.65	1202	43.9
ARK	78	10615	377	3.55	828	29.4
CALIF	940	15455	561	3.63	14528	527.4
COLO	75	12960	463	3.57	972	34.7
CONN	48	13417	486	3.62	644	23.3
DEL	10.2	13431	484	3.60	137	4.9
FLA	190	11100	387	3.49	2109	73.6
GA	130	10862	392	3.61	1412	51.0
HAW	12.5	11520	402	3.49	144	5.0
IDAHO	174	12948	471	3.64	2253	82.0
ILL	232	11453	421	3.68	2657	97.8
IND	205	11385	421	3.70	2334	86.4
IOWA	361	11091	409	3.69	4004	147.7
KANS	126	10762	393	3.65	1356	49.5
KY	241	9809	359	3.66	2364	86.5
LA	102	9559	339	3.55	975	34.6
MAINE	58	12534	460	3.67	727	26.7
MD	127	12449	454	3.65	1581	57.7
MASS	47	12809	466	3.64	602	21.9
MICH	395	13299	484	3.64	5253	191.2
MINN	903	11452	418	3.65	10341	377.4
MISS	96	9375	339	3.62	900	32.6
MO	247	11761	427	3.63	2905	105.5
MONT	29	11759	420	3.57	341	12.2
NEBR	122	10984	403	3.67	1340	49.2
NEV	16.0	14063	502	3.57	225	8.0
N H	30	12167	451	3.71	365	13.5
N J	40	12300	445	3.62	492	17.8
N MEX	57	14246	507	3.56	812	28.9
N Y	919	12075	437	3.62	11097	401.7
N C	131	12870	465	3.61	1686	60.9
N DAK	95	10737	390	3.63	1020	37.0
OHIO	388	11727	429	3.66	4550	166.5
OKLA	111	10495	379	3.61	1165	42.1
OREG	99	13141	494	3.76	1301	48.9
PA	730	12690	462	3.64	9264	337.2
R I	3.8	12105	441	3.64	46	1.7
S C	48	11813	455	3.85	567	21.8
S DAK	163	10810	395	3.65	1762	64.3
TENN	216	10769	393	3.65	2326	84.9
TEX	329	11489	409	3.56	3780	134.6
UTAH	86	13512	478	3.54	1162	41.1
VT	192	12422	456	3.67	2385	87.5
VA	172	11970	433	3.62	2059	74.5
WASH	212	15198	561	3.69	3222	118.9
W VA	36	9694	354	3.65	349	12.7
WIS	1835	12659	472	3.73	23230	866.5
WYO	12.0	11417	406	3.56	137	4.9
U S	11011	12306	450	3.65	135505	4949.5

1/ AVERAGE NUMBER DURING YEAR, EXCLUDING HEIFERS NOT YET FRESH. U.S. TOTAL WILL NOT ADD DUE TO ROUNDING. 2/ EXCLUDES MILK SUCKED BY CALVES.

MILK USED AND MARKETED BY PRODUCERS, BY STATES, 1982

STATE	MILK USED WHERE PRODUCED			MILK MARKETED BY PRODUCERS		
	FED TO CALVES 1/	USED FOR MILK FOR MILK CREAM AND BUTTER	TOTAL	SOLD TO PLANTS AND DEALERS 2/	SOLD DIRECTLY TO CONSUMERS 3/ 4/	TOTAL
M I L L I O N P O U N D S						
ALA	2	6	8	572		572
ALAS	0.4	0.4	0.8	12.8	0.2	13.0
ARIZ	6	1	7	1190	5	1195
ARK	14	17	31	797		797
CALIF	52	10	62	14165	301	14466
COLO	44	13	57	880	35	915
CONN	7	3	10	620	14	634
DEL	1	1	2	135		135
FLA	6	9	15	2094		2094
GA	10	7	17	1395		1395
HAW	37.0	1.0	38.0	106.0		106.0
IDAHO	42	6	48	2185	20	2205
ILL	31	10	41	2616		2616
IND	20	14	34	2300		2300
IOWA	74	42	116	3888		3888
KANS	17	9	26	1326	4	1330
KY	29	55	84	2280		2280
LA	4	18	22	940	13	953
MAINE	8	3	11	710	6	716
MD	7	6	13	1568		1568
MASS	5	3	8	565		594
MICH	65	25	90	5145	18	5163
MINN	50	21	71	10270		10270
MISS	1	10	11	880	9	889
MO	29	12	41	2864		2864
MONT	12	7	19	319	3	322
NEBR	15	15	30	1310		1310
NEV	3	2	5	220		220
N H	6	3	9	348	8	356
N J	7	2	9	468	15	483
N MEX	7	8	15	780	17	797
N Y	161	78	239	10790	68	10858
N C	10	40	50	1636		1636
N DAK	23	12	35	985		985
OHIO	31	25	56	4480	14	4494
OKLA	13	17	30	1120	15	1135
OREG	27	13	40	1205	56	1261
PA	74	46	120	8755	389	9144
R I	1	1	2	42	2	44
S C	5	7	12	540	15	555
S DAK	9	8	17	1740	5	1745
TENN	44	46	90	2230	6	2236
TEX	37	11	48	3690	42	3732
UTAH	14	9	23	1110	29	1139
VT	32	13	45	2335	5	2340
VA	16	8	24	2035		2035
WASH	23	3	26	3070	126	3196
W VA	5	4	9	337	3	340
WIS	381	156	537	22680	13	22693
WYO	4	3	7	130		130
U S 5/	1521	839	2361	131859	1285	133144

1/ EXCLUDES MILK SUCKED BY CALVES. 2/ INCLUDES THE EQUIVALENT AMOUNTS OF MILK FOR CREAM SOLD TO PLANTS AND DEALERS AND MILK PRODUCED BY DEALER'S OWN HERDS (EXCEPT FOR N Y AND CALIF, WHERE SUCH MILK IS INCLUDED AS SOLD DIRECTLY TO CONSUMERS). 3/ SALES DIRECTLY TO CONSUMERS BY PRODUCERS WHO SELL ONLY MILK FROM THEIR OWN HERDS. ALSO INCLUDES MILK PRODUCED BY INSTITUTIONAL HERDS. 4/ FOR STATES NOT PUBLISHED, SALES ARE NOMINAL. INCLUDED IN MILK SOLD TO PLANTS 5/ SUM OF PARTS MAY NOT EQUAL SUM OF TOTAL DUE TO ROUNDING.

MILK MARKETED BY PRODUCERS: QUANTITY, PRICE AND CASH RECEIPTS, BY STATES, 1982

STATE	MILK SOLD TO PLANTS AND DEALERS 1/				MILK SOLD DIRECTLY TO CONSUMERS 5/		
	QUANTITY	PERCENT FLUID GRADE 2/	PRICE PER 100 LBS	CASH RECEIPTS	QUANTITY	PRICE PER QUART	CASH RECEIPTS
	MIL LBS	PCT	DOLLARS	1000 DOL	1000 QTS	CT	1000 DOL
ALA	572	98	14.60	83512			
ALAS	12.8	100	21.30	2726	93	70	65
ARIZ	1190	100	13.90	165410	2326	42	977
ARK	797	91	14.40	114768			
CALIF	14165	96	13.21	1871197	140000	50	70000
COLO	880	3/	14.80	130240	16279	52	8465
CONN	620	100	14.40	89280	6512	54	3516
DEL	135	100	13.90	18765			
FLA	2094	100	16.40	343416			
GA	1395	100	14.40	200880			
HAW	106.0	100	20.59	4/21825			
IDAHO	2185	44	12.70	277495	9302	65	6047
ILL	2616	80	13.50	353160			
IND	2300	90	13.60	312800			
IOWA	3888	60	13.20	513216			
KANS	1326	84	14.00	185640	1860	56	1042
KY	2280	83	13.50	307800			
LA	940	100	14.70	138180	6047	54	3266
MAINE	710	100	14.70	104370	2791	52	1451
MD	1568	100	14.00	219520			
MASS	565	100	14.50	81925	13488	53	7149
MICH	5145	97	13.60	699720	8372	50	4186
MINN	10270	63	12.98	1333046			
MISS	880	95	14.20	124960	4186	55	2302
MO	2864	80	13.30	380912			
MONT	319	97	13.20	42108	1395	52	726
NEBR	1310	61	13.30	174230			
NEV	220	100	13.30	29260			
N H	348	100	14.50	50460	3721	52	1935
N J	468	100	13.90	65052	6977	47	3279
N MEX	780	100	15.30	119340	7907	57	4507
N Y	10790	100	13.70	1478230	31628	50	15814
N C	1636	96	14.70	240492			
N DAK	985	47	12.50	123125			
OHIO	4480	92	13.70	613760	6512	58	3777
OKLA	1120	92	14.40	161280	6977	62	4326
OREG	1205	89	13.80	166290	26047	47	12242
PA	8755	99	14.00	1225700	180930	42	75991
R I	42	100	14.50	6090	930	54	502
S C	540	100	15.30	82620	6977	61	4256
S DAK	1740	37	13.00	226200	2326	50	1163
TENN	2230	87	13.60	303280	2791	48	1340
TEX	3690	100	14.60	538740	19535	58	11330
UTAH	1110	67	12.90	143190	13488	41	5530
VT	2335	100	14.10	329235	2326	52	1209
VA	2035	93	13.90	282865			
WASH	3070	100	13.30	408310	58605	48	28130
W VA	337	3/	13.60	45832	1395	54	753
WIS	22680	73	13.22	2998296	6047	40	2419
WYO	130	3/	13.10	17030			
U S	131859	85	13.61	17945778	597767	48	287693

1/ INCLUDES THE EQUIVALENT AMOUNTS OF MILK FOR CREAM SOLD TO PLANTS AND DEALERS. 2/ PERCENTAGE OF MILK SOLD TO PLANTS AND DEALERS THAT IS ELIGIBLE FOR FLUID USE (GRADE A IN MOST STATES). INCLUDES FLUID-GRADE MILK USED IN MANUFACTURING DAIRY PRODUCTS. 3/ NOT PUBLISHED TO AVOID DISCLOSING INDIVIDUAL OPERATIONS. 4/ BASED ON UNROUNDED VALUE. INCLUDES MILK SOLD DIRECT TO CONSUMERS. 5/ ALSO INCLUDES MILK PRODUCED BY INSTITUTIONAL HERDS.

MARKETINGS, INCOME, AND VALUE OF MILK PRODUCTION, BY STATES, 1982

STATE	COMBINED MARKETINGS OF MILK AND CREAM				USED FOR MILK:			
	MILK UTILIZED	AVERAGE RETURNS PER 100 POUNDS	PER 100 POUNDS	CASH RECEIPTS FROM MARKETINGS	MILK PRODUCED	CREAM AND BUTTER WHERE PRODUCED	GROSS INCOME	VALUE OF MILK PRODUCED
	MIL LBS	DOLLARS	1000 DOL	MIL LBS	1000 DOLLARS			
ALA	572	14.60	4.06	83512	6	876	84388	84680
ALAS	13.0	21.47	5.98	2792	0.4	86	2877	2963
ARIZ	1195	13.92	3.81	166387	1	139	166526	167361
ARK	797	14.40	4.06	114768	17	2448	117216	119232
CALIF	14466	13.42	3.70	1941197	10	1342	1942538	1949516
COLO	915	15.16	4.25	138705	13	1971	140676	147346
CONN	634	14.64	4.04	92796	3	439	93235	94260
DEL	135	13.90	3.86	18765	1	139	18904	19043
FLA	2094	16.40	4.70	343416	9	1476	344892	345876
GA	1395	14.40	3.99	200880	7	1008	201888	203328
HAW	106.0	20.59	5.90	21825	1.0	206	22031	29650
IDAHO	2205	12.86	3.53	283542	6	772	284313	289714
ILL	2616	13.50	3.67	353160	10	1350	354510	358695
IND	2300	13.60	3.68	312800	14	1904	314704	317424
IOWA	3888	13.20	3.58	513216	42	5544	518760	528528
KANS	1330	14.04	3.85	186682	9	1263	187945	190331
KY	2280	13.50	3.69	307800	55	7425	315225	319140
LA	953	14.84	4.18	141445	18	2672	144117	144710
MAINE	716	14.78	4.03	105821	3	443	106265	107447
MD	1568	14.00	3.84	219520	6	840	220360	221340
MASS	594	15.00	4.12	89074	3	450	89524	90273
MICH	5163	13.63	3.75	703906	25	3408	707314	716176
MINN	10270	12.98	3.56	1333046	21	2726	1335772	1342262
MISS	889	14.32	3.95	127262	10	1432	128694	128837
MO	2864	13.30	3.66	380912	12	1596	382508	386365
MONT	322	13.30	3.73	42834	7	931	43765	45361
NEBR	1310	13.30	3.62	174230	15	1995	176225	178220
NEV	220	13.30	3.73	29260	2	266	29526	29925
N H	356	14.72	3.97	52395	3	442	52836	53719
N J	483	14.15	3.91	68331	2	283	68614	69604
N MEX	797	15.54	4.36	123847	8	1243	125090	126178
N Y	10958	13.76	3.80	1494044	78	10733	1504777	1526930
N C	1636	14.70	4.07	240492	40	5880	246372	247842
N DAK	985	12.50	3.44	123125	12	1500	124625	127500
OHIO	4494	13.74	3.75	617537	25	3435	620972	625232
OKLA	1135	14.59	4.04	165606	17	2480	168086	169983
OREG	1261	14.16	3.77	178532	13	1841	180372	184195
PA	9144	14.24	3.91	1301691	46	6548	1308239	1318773
R I	44	14.98	4.12	6592	1	150	6742	6892
S C	555	15.65	4.07	86876	7	1096	87972	88754
S DAK	1745	13.03	3.57	227363	8	1042	228405	229578
TENN	2236	13.62	3.73	304620	46	6267	310886	316881
TEX	3732	14.74	4.14	550070	11	1621	551692	557145
UTAH	1139	13.06	3.69	148720	9	1175	149895	151723
VT	2340	14.12	3.85	330444	13	1836	332280	336799
VA	2035	13.90	3.84	282865	8	1112	283977	286201
WASH	3196	13.66	3.70	436440	3	410	436850	439991
W VA	340	13.70	3.75	46585	4	548	47134	47819
WIS	22693	13.22	3.55	3000715	156	20628	3021343	3071723
WYO	130	13.10	3.68	17030	3	393	17423	17947
U S	133144	13.69	3.75	18233471	839	115809	18349280	18559413

1/ CASH RECEIPTS DIVIDED BY MILK FOR MILKFAT REPRESENTED IN COMBINED MARKETINGS. 2/ VALUED AT AVERAGED RETURNS PER 100 POUNDS OF MILK IN COMBINED MARKETINGS OF MILK AND CREAM. 3/ CASH RECEIPTS FROM MARKETINGS OF MILK AND CREAM PLUS VALUE OF MILK USED FOR HOME CONSUMPTION AND PRODUCER-CHURNED BUTTER. 4/ INCLUDES VALUE OF MILK FED TO CALVES.

NUMBER OF OPERATIONS WITH MILK COWS, BY STATES, 1979-82 1/

STATE	1979	1980	1981	1982
	NUMBER			
ALA	5,000	4,500	3,700	3,300
ALAS	60	60	60	70
ARIZ	850	800	800	770
ARK	6,500	5,500	4,500	3,500
CALIF	5,700	5,600	5,600	5,500
COLO	4,200	4,100	4,200	4,100
CONN	1,100	1,100	1,000	1,000
DEL	280	280	270	260
FLA	2,800	2,600	2,000	2,000
GA	3,400	3,300	3,100	2,900
HAW	70	80	80	90
IDAHO	4,600	4,400	4,500	4,600
ILL	7,000	6,500	6,200	6,200
IND	8,400	8,300	8,200	8,100
IOWA	15,000	14,000	14,000	13,000
KANS	6,000	5,900	5,400	5,200
KY	13,000	11,000	10,000	9,500
LA	4,500	4,000	4,000	3,800
MAINE	2,100	2,100	2,000	1,900
MD	2,800	2,700	2,600	2,500
MASS	1,400	1,400	1,200	1,100
MICH	10,000	9,500	9,500	9,000
MINN	27,000	27,000	26,000	26,000
MISS	5,000	4,000	3,800	3,500
MO	15,000	14,000	13,000	12,000
MONT	3,500	3,400	3,200	3,000
NEBR	6,000	6,000	5,500	5,000
NEV	400	400	400	400
N H	1,000	900	900	800
N J	950	900	900	900
N MEX	1,700	1,800	1,800	1,700
N Y	19,500	19,000	18,500	18,000
N C	8,800	8,700	7,500	6,000
N DAK	4,800	4,200	4,200	4,000
OHIO	13,000	12,600	12,300	12,000
OKLA	6,000	5,700	6,000	6,000
OREG	4,600	4,400	4,200	4,000
PA	22,000	22,000	21,000	21,000
R I	160	160	150	130
S C	2,800	2,600	2,400	2,100
S DAK	7,000	6,800	6,800	6,400
TENN	11,000	10,000	9,400	8,500
TEX	13,000	12,000	11,000	10,000
UTAH	2,700	2,600	2,600	2,600
VT	3,900	3,900	3,900	3,800
VA	9,500	9,000	8,500	8,500
WASH	4,000	4,000	4,000	4,000
W VA	3,900	4,000	4,000	3,900
WIS	46,000	45,000	44,000	44,000
WYO	1,500	1,400	1,300	1,300
U S	349,470	334,180	320,160	307,920

1/ AN OPERATION IS ANY PLACE HAVING ONE OR MORE MILK COWS, EXCLUDING COWS USED TO NURSE CALVES, ON HAND AT ANY TIME DURING THE YEAR.

SUPPLY AND UTILIZATION OF MILK, UNITED STATES, 1979-82 1/

ITEM	1979	1980	1981	1982
MILLION POUNDS				
MILK PRODUCTION	123,350	128,406	132,770	135,505
NET IMPORTS OF INGREDIENTS (M.E.) 2/	237	203	192	273
NET CHANGE IN STORAGE CREAM (M.E.) 3/	24	-3	11	7
TOTAL SUPPLY	123,611	128,606	132,973	135,785
UTILIZATION (MILK EQUIVALENT)				
USED IN MANUFACTURED PRODUCTS--				
CREAMERY BUTTER, TOTAL M.E.	22,191	25,824	27,806	28,352
M.E. OF BUTTER FROM WHEY CREAM	2,810	2,998	3,192	3,365
NET MILK EQUIVALENT	19,381	22,826	24,614	24,987
CHEESE:				
AMERICAN	21,856	23,765	26,215	27,540
OTHER	9,701	10,160	10,331	11,363
COTTAGE CHEESE, CREAMED	1,028	1,016	977	950
CANNED MILK:				
EVAPORATED, SWEETENED CONDENSED	1,752	1,594	1,669	1,490
BULK CONDENSED WHOLE MILK:				
UNSWEETENED	381	377	475	543
SWEETENED	187	147	164	161
DRY WHOLE MILK	627	607	686	758
ICE CREAM AND OTHER FROZEN DAIRY PRODUCTS, TOTAL M.E.				
M.E. OF BUTTER AND CONDENSED MILK USED IN ICE CREAM	2,088	2,084	2,116	2,133
NET MILK EQUIVALENT	11,679	11,926	11,964	12,135
OTHER MANUFACTURED PRODUCTS 4/	912	909	821	656
TOTAL MANUFACTURED PRODUCTS	67,504	73,327	77,916	80,583
AVAILABLE FOR USE IN FLUID PRODUCTS--				
SOLD BY DEALERS	49,884	49,385	48,743	48,061
SOLD BY PRODUCERS				
DIRECTLY TO CONSUMERS 5/	1,489	1,470	1,472	1,285
TOTAL FLUID SALES	51,373	50,855	50,215	49,346
USED ON FARMS WHERE PRODUCED--				
FED TO CALVES	1,442	1,395	1,418	1,521
CONSUMED AS FLUID MILK, CREAM AND FARM-CHURNED BUTTER	1,040	943	886	839
TOTAL USED ON FARMS	2,483	2,338	2,304	2,361
RESIDUAL 6/	2,251	2,086	2,538	3,495
TOTAL UTILIZATION	123,611	128,606	132,973	135,785

1/ MILK PRODUCTION PLUS THE MILK EQUIVALENT OF NET IMPORTS OF DAIRY MANUFACTURING INGREDIENTS AND NET OUT-OF-STORAGE MOVEMENT OF CREAM EQUALS TOTAL SUPPLY. DATA ON MILK USED IN MANUFACTURING PRODUCTS ARE BASED ON TOTAL MILKFAT REQUIRED TO PRODUCE THE PRODUCTS AND INCLUDE THE MILK EQUIVALENT OF ANY IMPORTED INGREDIENTS USED. 2/ WHOLE MILK EQUIVALENT (MILKFAT BASIS) OF NET IMPORTS OF DAIRY MANUFACTURING INGREDIENTS SUCH AS FROZEN CREAM AND BUTTERFAT-SUGAR MIXTURES. 3/ WHOLE MILK EQUIVALENT OF NET OUT-OF-STORAGE MOVEMENT OF FLUID AND PLASTIC CREAM DURING THE YEAR. A NEGATIVE FIGURE REPRESENTS A NET MOVEMENT OF CREAM INTO STORAGE. 4/ WHOLE MILK EQUIVALENT OF DRY CREAM, MALTED MILK POWDER, PART-SKIM DRY MILK, DRY OR CONCENTRATED ICE CREAM MIX, DEHYDRATED BUTTERFAT AND OTHER MISCELLANEOUS PRODUCTS USING MILKFAT. 5/ SALES DIRECTLY TO CONSUMERS BY PRODUCERS WHO SELL ONLY MILK FROM THEIR OWN HERDS. ALSO INCLUDES MILK PRODUCED BY INSTITUTIONAL HERDS. 6/ RESIDUAL, INCLUDES MINOR MISCELLANEOUS USES AND ANY INACCURACIES IN PRODUCTION AND UTILIZATION ESTIMATES.

**UNITED STATES DEPARTMENT OF AGRICULTURE
WASHINGTON, D.C. 20250**

**OFFICIAL BUSINESS
PENALTY FOR PRIVATE USE, \$300**

To stop mailing or to change your
address send this sheet with label
stuck, showing new address, to Crop
Reporting Board Publications, SRS, U.S.
Dept. of Agriculture, Rm 5829 South
Building, 14th & Independence Ave. S.W.,
Wash., D.C. 20250.



Postage and Fees Paid
United States
Department of Agriculture
AGR-101

THIRD CLASS BULK RATE

END