



AgEcon SEARCH
RESEARCH IN AGRICULTURAL & APPLIED ECONOMICS

The World's Largest Open Access Agricultural & Applied Economics Digital Library

This document is discoverable and free to researchers across the globe due to the work of AgEcon Search.

Help ensure our sustainability.

Give to AgEcon Search

AgEcon Search
<http://ageconsearch.umn.edu>
aesearch@umn.edu

*Papers downloaded from **AgEcon Search** may be used for non-commercial purposes and personal study only. No other use, including posting to another Internet site, is permitted without permission from the copyright owner (not AgEcon Search), or as allowed under the provisions of Fair Use, U.S. Copyright Act, Title 17 U.S.C.*

STATISTICS 1985 - USDA STATISTICAL BULLETINS
SHEEP AND GOATS - FINAL ESTIMATES FOR 1980-83

UP DATA

1 OF 4

A1.34: 719



United States
Department of
Agriculture

21

Sheep and Goats

Final Estimates for 1980-83

Statistical
Reporting
Service

Crop
Reporting
Board

Statistical
Bulletin
Number 719

ORIGINAL

BEST COPY AVAILABLE

SHEEP AND GOATS: FINAL ESTIMATES FOR 1980-83. Crop Reporting Board, Statistical Reporting Service, U.S. Department of Agriculture, Statistical Bulletin No. 719.

Abstract

This publication presents final sheep and goat estimates, including some revisions, for 1980-83. Data cover estimates for the inventory of sheep and goats as of January 1, as well as annual wool and mohair production, and sheep and lambs on feed. This report continues the official series published in Statistical Bulletin No. 653, issued January 1981.

Washington, D.C. 20250

January 1985

CONTENTS

| | <u>PAGE</u> | |
|--|-------------|----|
| INTRODUCTION | | 4 |
| TABLES | | |
| <u>SHEEP AND LAMBS:</u> | | |
| Number and Value Per Head, United States, January 1, 1980-83 | | 6 |
| Number and Total Value, by States, January 1, 1980-83 | | 8 |
| Number by Class and by States, January 1, 1980-83 | | 9 |
| Value Per Head, by States, January 1, 1980-83 | | 12 |
| Placements, Number on Feed, Marketings, Specified Dates, Selected States, 1979-82 .. | | 13 |
| Number on Feed by Weight Groups, Selected States, November 1, 1979-81 | | 14 |
| Number on Feed by Weight Groups, Selected States, January 1, 1980-82 | | 14 |
| Number on Feed by Weight Groups, Selected States, March 1, 1980-82 | | 15 |
| Operations with Sheep, 1979-82 | | 21 |
| <u>LAMB CROP:</u> | | |
| Lamb Crop, United States, 1979-82 | | 6 |
| Early Lamb Crop, Selected States, March 1, 1979-82 | | 7 |
| New Crop Lambs, Selected States, January 1, 1980-83 | | 15 |
| Lamb Crop as a Percentage of Ewes 1 Year Old and Older, January 1, by States, 1979-82 ... | | 16 |
| Lamb Crop, by States, 1979-82 | | 17 |
| <u>WOOL:</u> | | |
| Production and Value, United States, 1979-82 .. | | 6 |
| Sheep and Lambs Shorn, Weight Per Fleece, by States, 1979-82 | | 18 |
| Production, by States, 1979-82 | | 19 |
| Price Per Pound and Value, by States, 1979-82 . | | 20 |
| <u>GOATS:</u> | | |
| Number, Value Per Head and Total Value, Texas January 1, 1980-83 | | 7 |
| <u>MOHAIR:</u> | | |
| Production and Value, Texas, 1979-82 | | 7 |

INTRODUCTION

Sheep, lamb, and goat estimates were published on a current basis during 1980-83. Primary data used in establishing estimates were obtained from producer surveys including all known large producers and a sample of smaller producers. Producers lists used for sampling were updated annually from various sources, including Agricultural Stabilization and Conservation Service (ASCS) wool incentive payment filings. Survey data were collected by mail, telephone, and personal interviews. Since all operations with sheep were not included in the sample, survey estimates are subject to sampling variability. This variability, as measured by the relative standard error, is about 2 percent at the U.S. level for the sheep inventory. This indicates that chances are approximately 95 out of 100 that a survey estimate will be within 4 percent of the complete coverage value if the same procedures are used to survey all producers. Survey estimates are also subject to non-sampling errors such as omissions, duplications, errors in recording and processing data, and mistakes in reporting. These problems cannot be measured directly, but are minimized through rigid quality controls during the data collection process, and a careful review of all reported data for consistency and reasonableness.

The Crop Reporting Board (CRB) also constructs a U.S. balance sheet for an additional check on inventory estimates. The balance sheet uses the prior inventory estimates adjusted for survey estimates of births and deaths, and reliable check data from other sources on slaughter, imports, and exports.

Revisions were made only after a thorough review of the original data, with consideration given to all additional data now available, including the 1982 Census of Agriculture. The 1982 Census totals published for all sheep and lambs included "new crop lambs" born between October 1 and December 31, 1982. Because the CRB inventory estimates exclude "new crop lambs," it was necessary to adjust for these lambs in order to make valid comparisons with Census data. When revisions were made for the inventory numbers, corresponding adjustments were usually necessary for lamb crop, wool, or mohair estimates.

The estimates were rounded to the nearest 100 head for States with less than 10,000 sheep and lambs. All other estimates were rounded to the nearest 1,000 head.

Average value per head estimates were based on CRB crop and livestock reporters' estimates of average price per head in their localities, about January 1 of each year. These farm and ranch operators reported the value per head by age and sex. Values per head, by classes for each State, were weighted together by the estimated number in each class. This weighted average was the basis for the estimated value per head. The total value for the United States was the sum of the State estimates; and value per head was derived by dividing the total U.S. value by the number of head.

Estimates by States of the number of sheep and lambs on feed for the slaughter market on January 1, 1980-83, are presented here. Data showing number on feed on November 1, 1979-81, and March 1, 1980-81, are shown for seven States. Also, included for these seven States are data for number on feed by weight groups, placements, and marketings. Estimates of sheep and lambs on feed pertain to the animals being fattened for the slaughter market on grain, other concentrates, or succulent pastures, and which are expected to produce a carcass that will grade good or better.

The lamb crop is defined as the number of lambs docked or branded in the 13 western sheep States (11 Western States, South Dakota, and Texas) for October 1 through September 30. In other States, the lamb crop is the number born. The estimated lamb crop percentage is the number of lambs saved per 100 ewes 1 year old and older on farms and ranches at the beginning of the year.

Wool and mohair production estimates were based on survey returns from sheep and goat producers and check data from ASCS incentive payment programs. These estimates include shearing at commercial feeding yards. Mohair estimates were made only for Texas.

The following program changes in the data series took place during 1980-83 period:

1. The seven-State Sheep and Lambs on Feed report for November 1, January 1, and March 1 was discontinued following the March 1, 1982 publication. Inventories of sheep and lambs on feed continue to be published for 24 States in the January Sheep and Goat report.

2. The July Lamb Crop and Wool Production report was discontinued in 1982.

3. Early lamb crop estimates for three States were discontinued following the March 1982 publication.

4. Pulled wool estimates were discontinued beginning in 1982.

ALL SHEEP AND LAMBS: NUMBER, VALUE PER HEAD, TOTAL VALUE, AND CLASS, UNITED STATES, JANUARY 1, 1980-83 1/

| YEAR | ALL SHEEP AND LAMBS | | | STOCK SHEEP & LAMBS | | | | | |
|------|---------------------|-----------------|-----------------|-------------------------|----------------------|----------------------|------------------|-------|------------------|
| | NUMBER | VALUE PER HEAD | TOTAL VALUE | SHEEP AND LAMBS ON FEED | TOTAL STOCK SHEEP 2/ | 1 YEAR OLD AND OLDER | WETHERS AND RAMS | LAMBS | WETHERS AND RAMS |
| | : 1,000 HEAD | : 1,000 DOLLARS | : 1,000 DOLLARS | | | 1,000 HEAD | | | |
| 1980 | 12,699 | 78.20 | 993,093 | 1,622 | 11,077 | 8,533 | 366 | 1,810 | 368 |
| 1981 | 12,947 | 69.90 | 904,303 | 1,649 | 11,298 | 8,780 | 371 | 1,790 | 358 |
| 1982 | 12,997 | 57.10 | 742,139 | 1,564 | 11,433 | 8,811 | 389 | 1,810 | 423 |
| 1983 | 12,140 | 51.80 | 628,599 | 1,661 | 10,479 | 8,343 | 374 | 1,420 | 343 |

1/ ALA, ARK, DEL, FLA, GA, HAWAII, MISS, R I, AND S C ARE NOT INCLUDED IN SHEEP & WOOL ESTIMATING PROGRAMS. 2/ SUM OF CLASSES MAY NOT ADD DUE TO ROUNDING.

LAMB CROP: UNITED STATES, 1979-82

| YEAR | BREEDING EWES 1 YEAR OLD AND OLDER ON JANUARY 1 | LAMB CROP PER 100 EWES 1+ ON JANUARY 1 1/ | LAMB CROP 1/ |
|------|---|---|--------------|
| | : 1,000 HEAD | PERCENT | 1,000 HEAD |
| 1979 | 8366 | 95 | 7974 |
| 1980 | 8533 | 97 | 8257 |
| 1981 | 8780 | 100 | 8820 |
| 1982 | 8811 | 97 | 8580 |

1/ LAMB CROP: LAMBS BORN IN THE NATIVE STATES, PLUS LAMBS DOCKED OR BRANDED IN THE WESTERN STATES FOR THE PERIOD OCT 1 - SEP 30.

WOOL PRODUCTION : UNITED STATES, 1979-82

| YEAR | SHORN WOOL | | | PULLED WOOL 3/ | | | TOTAL | |
|------|----------------|-------------------|--------------------|-----------------|-----------------|----------------|----------------------------------|---------|
| | SHEEP SHORN 1/ | WEIGHT PER FLEECE | PRICE PER POUND 2/ | WEIGHT PER SKIN | PRICE PER POUND | PRODUCTION | SHORN AND PULLED WOOL PRODUCTION | |
| | : 1,000 HEAD | : 1,000 POUNDS | : 1,000 CENTS | : 1,000 POUNDS | : 1,000 DOLLARS | : 1,000 POUNDS | | |
| 1979 | 13,069 | 8.02 | 104,867 | 86.3 | 90,536 | 3.20 | 900 | 105,767 |
| 1980 | 13,263 | 7.95 | 105,419 | 88.1 | 92,846 | 3.10 | 1,050 | 106,469 |
| 1981 | 13,493 | 8.14 | 109,787 | 94.4 | 103,665 | 3.05 | 1,150 | 110,937 |
| 1982 | 13,199 | 8.04 | 106,129 | 68.6 | 72,782 | | | |

1/ INCLUDES SHEARING AT COMMERCIAL FEEDING YARDS. 2/ COMPUTED BY WEIGHTING STATE AVERAGE PRICES FOR ALL WOOL SOLD DURING THE YEAR BY SALES OF SHORN WOOL. 3/ PULLED WOOL ESTIMATES DISCONTINUED BEGINNING 1982.

ALL GOATS: NUMBER, VALUE PER HEAD, AND TOTAL VALUE,
TEXAS, JANUARY 1, 1980-83

| YEAR | NUMBER | VALUE | |
|------|--------|----------|---------------|
| | | PER HEAD | TOTAL |
| | | DOLLARS | 1,000 DOLLARS |
| 1980 | 1,400 | 46.00 | 64,400 |
| 1981 | 1,380 | 38.50 | 53,130 |
| 1982 | 1,410 | 41.00 | 57,810 |
| 1983 | 1,420 | 37.50 | 53,250 |

MOHAIR PRODUCTION AND VALUE, TEXAS 1979-82 1/

| YEAR | GOATS CLIPPED 1/ | AVERAGE CLIP PER GOAT | PRODUCTION | PRICE PER POUND | VALUE |
|------|------------------------|--------------------------------|------------|-----------------------|---------------|
| | | | | | 1,000 DOLLARS |
| | | | | | 1,000 POUNDS |
| 1979 | 1,275 | 7.3 | 9,300 | 5.10 | 47,430 |
| 1980 | 1,240 | 7.1 | 8,800 | 3.50 | 30,800 |
| 1981 | 1,300 | 7.8 | 10,100 | 3.50 | 35,350 |
| 1982 | 1,330 | 7.5 | 10,000 | 2.55 | 25,500 |

1/ THE NUMBER CLIPPED IS THE SUM OF GOATS AND KIDS CLIPPED IN THE SPRING AND KIDS CLIPPED IN THE FALL.

EARLY LAMB CROP: NUMBER OF EARLY LAMBS, 3 STATES, MARCH 1, 1979-82 1/

| YEAR | CALIFORNIA | KANSAS | TEXAS | 3-STATE TOTAL |
|------------|------------|--------|-------|---------------|
| 1,000 HEAD | | | | |
| 1979 | 663 | 115 | 645 | 1423 |
| 1980 | 667 | 114 | 640 | 1421 |
| 1981 | 673 | 108 | 660 | 1441 |
| 1982 | 673 | 121 | 650 | 1444 |

1/ IN KANSAS AND TEXAS, EARLY LAMBS LIVING MARCH 1 WHICH WERE BORN BETWEEN OCTOBER 1 AND MARCH 1. IN CALIFORNIA, EARLY LAMBS ARE LAMBS LIVING MARCH 1 WHICH WERE BORN BETWEEN SEPTEMBER 1 AND MARCH 1. ESTIMATES DISCONTINUED AFTER 1982

ALL SHEEP AND LAMBS: NUMBER AND TOTAL VALUE, BY STATES,
JANUARY 1, 1980-83

| STATE | ALL SHEEP AND LAMBS 1/ | | | | TOTAL VALUE | | | |
|-------|------------------------|---------|---------|---------|---------------|---------|---------|---------|
| | 1980 | 1981 | 1982 | 1983 | 1980 | 1981 | 1982 | 1983 |
| | 1,000 HEAD | | | | 1,000 DOLLARS | | | |
| ALAS | 4.3 | 3.9 | 3.9 | 3.3 | 335 | 341 | 369 | 337 |
| ARIZ | 385 | 372 | 377 | 343 | 26,373 | 20,274 | 25,636 | 22,124 |
| CALIF | 1,175 | 1205 | 1210 | 1115 | 116,913 | 115,078 | 85,305 | 66,343 |
| COLO | 870 | 810 | 710 | 750 | 74,385 | 63,585 | 44,730 | 40,125 |
| CONN | 6.0 | 6.2 | 8.9 | 7.6 | 450 | 567 | 979 | 790 |
| IDAHO | 468 | 512 | 498 | 429 | 45,630 | 44,800 | 32,868 | 23,166 |
| ILL | 173 | 184 | 195 | 155 | 13,148 | 13,248 | 11,700 | 8,758 |
| IND | 120 | 135 | 138 | 118 | 7,320 | 8,640 | 7,521 | 6,667 |
| IOWA | 408 | 437 | 485 | 457 | 29,172 | 29,935 | 25,705 | 22,850 |
| KANS | 235 | 220 | 220 | 242 | 16,450 | 13,530 | 11,880 | 13,794 |
| KY | 21 | 26 | 25 | 23 | 1,512 | 1,911 | 1,588 | 1,541 |
| LA | 12 | 11 | 9.9 | 9.7 | 492 | 484 | 436 | 543 |
| MAINE | 16 | 16 | 19 | 18 | 1,296 | 1,336 | 1,796 | 1,998 |
| MD | 20 | 19 | 19 | 18 | 1,240 | 1,264 | 1,473 | 1,278 |
| MASS | 10 | 9.0 | 11 | 10 | 780 | 792 | 1,199 | 1,040 |
| MICH | 132 | 124 | 125 | 110 | 8,976 | 9,300 | 7,938 | 6,435 |
| MINN | 264 | 295 | 335 | 300 | 18,348 | 18,733 | 17,420 | 15,600 |
| MO | 123 | 138 | 138 | 134 | 7,811 | 8,832 | 8,004 | 6,834 |
| MONT | 574 | 595 | 616 | 600 | 52,521 | 41,353 | 33,880 | 30,300 |
| NEBR | 210 | 250 | 225 | 205 | 14,595 | 16,375 | 12,263 | 10,865 |
| NEV | 122 | 134 | 129 | 110 | 10,736 | 11,658 | 8,321 | 6,215 |
| N H | 8.9 | 9.1 | 11 | 11 | 739 | 783 | 1,056 | 1,067 |
| N J | 9.3 | 9.5 | 9.7 | 11 | 777 | 760 | 907 | 1,232 |
| N MEX | 660 | 650 | 615 | 610 | 50,820 | 40,625 | 30,750 | 28,975 |
| N Y | 65 | 69 | 70 | 66 | 4,583 | 5,037 | 4,935 | 4,686 |
| N C | 7.5 | 7.5 | 8.4 | 9.1 | 420 | 458 | 470 | 592 |
| N DAK | 236 | 272 | 280 | 222 | 22,538 | 19,040 | 15,260 | 10,434 |
| OHIO | 320 | 310 | 313 | 295 | 20,960 | 20,925 | 17,841 | 17,553 |
| OKLA | 93 | 95 | 105 | 117 | 6,836 | 6,555 | 6,720 | 7,547 |
| OREG | 495 | 520 | 540 | 530 | 35,393 | 34,060 | 28,890 | 26,235 |
| PA | 105 | 105 | 125 | 98 | 6,405 | 6,720 | 7,500 | 6,223 |
| S DAK | 783 | 780 | 750 | 700 | 65,381 | 56,550 | 40,875 | 33,600 |
| TENN | 12 | 11 | 10 | 8.0 | 504 | 583 | 560 | 508 |
| TEX | 2,400 | 2360 | 2400 | 2225 | 138,000 | 116,820 | 100,800 | 86,775 |
| UTAH | 625 | 650 | 636 | 590 | 62,813 | 55,900 | 44,838 | 34,220 |
| VT | 12 | 12 | 16 | 14 | 906 | 1,068 | 1,544 | 1,309 |
| VA | 160 | 160 | 162 | 152 | 10,080 | 11,120 | 9,477 | 9,196 |
| WASH | 83 | 80 | 83 | 65 | 6,101 | 6,280 | 5,105 | 3,738 |
| W VA | 113 | 108 | 110 | 100 | 6,837 | 6,048 | 6,105 | 5,050 |
| WIS | 113 | 127 | 125 | 99 | 9,492 | 10,795 | 8,000 | 5,346 |
| WYO | 1,050 | 1110 | 1130 | 1060 | 95,025 | 82,140 | 69,495 | 56,710 |
| U S | 12,699.0 | 12947.2 | 12996.8 | 12139.7 | 993,093 | 904,303 | 742,139 | 628,599 |

1/ NEW CROP LAMBS ARE NOT INCLUDED IN THE INVENTORY ESTIMATES OF ALL SHEEP AND LAMBS.

SHEEP AND LAMBS: NUMBER BY CLASS, BY STATES, JANUARY 1, 1980-83

| STATE | SHEEP AND LAMBS ON FEED | | | | TOTAL STOCK SHEEP | | | |
|-------|-------------------------|------|------|------|-------------------|---------|---------|---------|
| | 1980 | 1981 | 1982 | 1983 | 1980 | 1981 | 1982 | 1983 |
| | 1,000 HEAD | | | | | | | |
| ALAS | | | | | 4.3 | 3.9 | 3.9 | 3.3 |
| ARIZ | 60 | 47 | 57 | 50 | 325 | 325 | 320 | 293 |
| CALIF | 175 | 175 | 200 | 195 | 1000 | 1030 | 1010 | 920 |
| COLO | 360 | 300 | 230 | 300 | 510 | 510 | 480 | 450 |
| CONN | | | | | 6.0 | 6.2 | 8.9 | 7.6 |
| IDAHO | 12 | 22 | 28 | 19 | 456 | 490 | 470 | 410 |
| ILL | 15 | 18 | 20 | 15 | 158 | 166 | 175 | 140 |
| IND | 10 | 8.0 | 9.0 | 8.0 | 110 | 127 | 129 | 110 |
| IOWA | 68 | 77 | 85 | 117 | 340 | 360 | 400 | 340 |
| KANS | 80 | 80 | 60 | 60 | 155 | 140 | 160 | 182 |
| KY | | | | | 21 | 26 | 25 | 23 |
| LA | | | | | 12 | 11 | 9.9 | 9.7 |
| MAINE | | | | | 16 | 16 | 19 | 18 |
| MD | | | | | 20 | 19 | 19 | 18 |
| MASS | | | | | 10 | 9.0 | 11 | 10 |
| MICH | 28 | 22 | 24 | 15 | 104 | 102 | 101 | 95 |
| MINN | 47 | 45 | 60 | 65 | 217 | 250 | 275 | 235 |
| MO | 14 | 18 | 18 | 16 | 109 | 120 | 120 | 118 |
| MONT | 14 | 15 | 16 | 20 | 560 | 580 | 600 | 580 |
| NEBR | 90 | 100 | 85 | 85 | 120 | 150 | 140 | 120 |
| NEV | 7.0 | 14 | 13 | 8.0 | 115 | 120 | 116 | 102 |
| N H | | | | | 8.9 | 9.1 | 11 | 11 |
| N J | | | | | 9.3 | 9.5 | 9.7 | 11 |
| N MEX | 65 | 55 | 20 | 45 | 595 | 595 | 595 | 565 |
| N Y | | | | | 65 | 69 | 70 | 66 |
| N C | | | | | 7.5 | 7.5 | 8.4 | 9.1 |
| N DAK | 46 | 62 | 50 | 47 | 190 | 210 | 230 | 175 |
| OHIO | 55 | 50 | 53 | 45 | 265 | 260 | 260 | 250 |
| OKLA | 15 | 15 | 15 | 22 | 78 | 80 | 90 | 95 |
| OREG | 110 | 100 | 100 | 130 | 385 | 420 | 440 | 400 |
| PA | | | | | 105 | 105 | 125 | 98 |
| S DAK | 68 | 50 | 50 | 70 | 715 | 730 | 700 | 630 |
| TENN | | | | | 12 | 11 | 10 | 8.0 |
| TEX | 150 | 210 | 200 | 175 | 2250 | 2150 | 2200 | 2050 |
| UTAH | 30 | 30 | 26 | 30 | 595 | 620 | 610 | 560 |
| VT | | | | | 12 | 12 | 16 | 14 |
| VA | | | | | 160 | 160 | 162 | 152 |
| WASH | | | | | 83 | 80 | 83 | 65 |
| W VA | | | | | 113 | 108 | 110 | 100 |
| WIS | 13 | 16 | 15 | 14 | 100 | 111 | 110 | 85 |
| WYO | 90 | 120 | 130 | 110 | 960 | 990 | 1000 | 950 |
| U S | 1622 | 1649 | 1564 | 1661 | 11077.0 | 11298.2 | 11432.8 | 10478.7 |

CONTINUED--

SHEEP AND LAMBS: NUMBER BY CLASS, BY STATES, JANUARY 1, 1980-83 CONTINUED

| STATE | STOCK SHEEP ONE YEAR OLD AND OLDER | | | | | | | |
|-------|------------------------------------|--------|--------|--------|------------------|-------|-------|-------|
| | EWES | | | | RAMS AND WETHERS | | | |
| | 1980 | 1981 | 1982 | 1983 | 1980 | 1981 | 1982 | 1983 |
| | 1,000 HEAD | | | | | | | |
| ALAS | 2.3 | 2.0 | 1.9 | 1.6 | 1.3 | 1.3 | 1.4 | 1.1 |
| ARIZ | 246 | 240 | 235 | 201 | 10 | 9.0 | 8.0 | 16 |
| CALIF | 839 | 850 | 854 | 800 | 25 | 28 | 23 | 27 |
| COLO | 425 | 400 | 394 | 365 | 13 | 13 | 14 | 12 |
| CONN | 4.5 | 4.3 | 6.0 | 5.5 | .4 | .4 | .5 | .3 |
| IDAHO | 361 | 386 | 389 | 357 | 12 | 10 | 10 | 10 |
| ILL | 117 | 120 | 124 | 106 | 8.0 | 7.0 | 8.0 | 8.0 |
| IND | 83 | 95 | 96 | 84 | 4.0 | 5.0 | 5.0 | 5.0 |
| IOWA | 250 | 260 | 283 | 270 | 11 | 13 | 13 | 11 |
| KANS | 125 | 120 | 134 | 153 | 6.0 | 4.0 | 6.0 | 7.0 |
| KY | 17 | 21 | 20 | 19 | 1.0 | 1.0 | 1.0 | 1.0 |
| LA | 8.0 | 7.0 | 6.7 | 6.6 | 1.0 | 1.0 | .8 | .9 |
| MAINE | 11 | 11 | 13 | 13 | 1.0 | 1.0 | 1.0 | 1.0 |
| MD | 15 | 14 | 14 | 13 | 1.0 | 1.0 | 2.0 | 2.0 |
| MASS | 7.0 | 6.4 | 8.0 | 7.0 | .5 | .6 | .4 | .4 |
| MICH | 82 | 80 | 78 | 76 | 3.0 | 3.0 | 3.0 | 3.0 |
| MINN | 164 | 187 | 199 | 186 | 5.0 | 5.0 | 7.0 | 6.0 |
| MO | 84 | 92 | 92 | 96 | 3.0 | 4.0 | 4.0 | 4.0 |
| MONT | 400 | 420 | 455 | 459 | 13 | 15 | 15 | 16 |
| NEBR | 90 | 115 | 105 | 95 | 4.0 | 5.0 | 4.0 | 5.0 |
| NEV | 94 | 98 | 95 | 86 | 2.0 | 2.0 | 2.0 | 2.0 |
| N H | 6.6 | 6.5 | 7.0 | 8.0 | .5 | .5 | 1.0 | .4 |
| N J | 6.8 | 6.9 | 6.8 | 7.4 | .6 | .6 | .5 | .6 |
| N MEX | 468 | 468 | 468 | 452 | 23 | 23 | 23 | 23 |
| N Y | 43 | 45 | 49 | 46 | 2.0 | 2.0 | 2.0 | 2.0 |
| N C | 5.5 | 5.5 | 5.9 | 6.5 | .5 | .4 | .5 | .5 |
| N DAK | 135 | 153 | 165 | 138 | 6.0 | 7.0 | 7.0 | 5.0 |
| OHIO | 215 | 212 | 207 | 205 | 7.0 | 7.0 | 8.0 | 6.0 |
| OKLA | 58 | 64 | 70 | 73 | 3.0 | 3.0 | 4.0 | 5.0 |
| OREG | 280 | 310 | 350 | 322 | 12 | 15 | 17 | 14 |
| PA | 78 | 79 | 95 | 75 | 5.0 | 5.0 | 5.0 | 5.0 |
| S DAK | 550 | 590 | 565 | 520 | 16 | 16 | 15 | 14 |
| TENN | 9.0 | 9.0 | 7.5 | 6.0 | 1.0 | .5 | .5 | .5 |
| TEX | 1675 | 1700 | 1605 | 1580 | 105 | 100 | 113 | 100 |
| UTAH | 491 | 500 | 505 | 476 | 15 | 15 | 15 | 13 |
| VT | 8.0 | 8.0 | 11 | 10 | .5 | .4 | 1.0 | 1.0 |
| VA | 122 | 123 | 120 | 114 | 5.0 | 5.0 | 5.0 | 5.0 |
| WASH | 55 | 55 | 55 | 46 | 5.0 | 5.0 | 4.0 | 3.0 |
| W VA | 87 | 84 | 85 | 80 | 4.0 | 4.0 | 3.0 | 3.0 |
| WIS | 70 | 82 | 81 | 68 | 4.0 | 5.0 | 5.0 | 4.0 |
| WYO | 745 | 750 | 750 | 710 | 26 | 27 | 30 | 30 |
| U S | 8532.7 | 8779.6 | 8810.8 | 8342.6 | 366.3 | 370.7 | 388.6 | 373.7 |

CONTINUED--

SHEEP AND LAMBS: NUMBER BY CLASS, BY STATES, JANUARY 1, 1980-83 CONTINUED

| STATE | STOCK SHEEP - LAMBS | | | | | | | |
|-------|---------------------|--------|--------|--------|----------------------|-------|-------|-------|
| | EWE LAMBS | | | | RAM AND WETHER LAMBS | | | |
| | 1980 | 1981 | 1982 | 1983 | 1980 | 1981 | 1982 | 1983 |
| | 1,000 HEAD | | | | | | | |
| ALAS | .4 | .3 | .3 | .3 | .3 | .3 | .3 | .3 |
| ARIZ | 49 | 56 | 54 | 51 | 20 | 20 | 23 | 25 |
| CALIF | 115 | 129 | 106 | 77 | 21 | 23 | 27 | 16 |
| COLO | 66 | 86 | 58 | 58 | 6.0 | 11 | 14 | 15 |
| CONN | .9 | 1.1 | 1.8 | 1.4 | .2 | .4 | .6 | .4 |
| IDAHO | 77 | 83 | 62 | 38 | 6.0 | 11 | 9.0 | 5.0 |
| ILL | 26 | 32 | 34 | 20 | 7.0 | 7.0 | 9.0 | 6.0 |
| IND | 19 | 23 | 24 | 18 | 4.0 | 4.0 | 4.0 | 3.0 |
| IOWA | 60 | 65 | 80 | 47 | 19 | 22 | 24 | 12 |
| KANS | 16 | 12 | 16 | 17 | 8.0 | 4.0 | 4.0 | 5.0 |
| KY | 2.0 | 3.0 | 3.0 | 2.0 | 1.0 | 1.0 | 1.0 | 1.0 |
| LA | 2.0 | 2.0 | 1.6 | 1.4 | 1.0 | 1.0 | .8 | .8 |
| MAINE | 3.0 | 3.0 | 4.0 | 3.0 | 1.0 | 1.0 | 1.0 | 1.0 |
| MD | 3.0 | 3.0 | 2.0 | 2.0 | 1.0 | 1.0 | 1.0 | 1.0 |
| MASS | 2.0 | 1.6 | 2.0 | 2.0 | .5 | .4 | .6 | .6 |
| MICH | 16 | 15 | 16 | 13 | 3.0 | 4.0 | 4.0 | 3.0 |
| MINN | 39 | 48 | 58 | 36 | 9.0 | 10 | 11 | 7.0 |
| MO | 18 | 19 | 19 | 14 | 4.0 | 5.0 | 5.0 | 4.0 |
| MONT | 136 | 130 | 117 | 90 | 11 | 15 | 13 | 15 |
| NEBR | 21 | 23 | 24 | 16 | 5.0 | 7.0 | 7.0 | 4.0 |
| NEV | 18 | 19 | 18 | 13 | 1.0 | 1.0 | 1.0 | 1.0 |
| N H | 1.6 | 1.8 | 2.0 | 2.0 | .2 | .3 | 1.0 | .6 |
| N J | 1.3 | 1.4 | 1.6 | 2.0 | .6 | .6 | .8 | 1.0 |
| N MEX | 96 | 96 | 96 | 81 | 8.0 | 8.0 | 8.0 | 9.0 |
| N Y | 12 | 14 | 12 | 12 | 8.0 | 8.0 | 7.0 | 6.0 |
| N C | 1.0 | 1.2 | 1.5 | 1.6 | .5 | .4 | .5 | .5 |
| N DAK | 39 | 39 | 46 | 25 | 10 | 11 | 12 | 7.0 |
| OHIO | 34 | 33 | 36 | 32 | 9.0 | 8.0 | 9.0 | 7.0 |
| OKLA | 13 | 10 | 11 | 10 | 4.0 | 3.0 | 5.0 | 7.0 |
| OREG | 80 | 82 | 60 | 52 | 13 | 13 | 13 | 12 |
| PA | 18 | 17 | 19 | 14 | 4.0 | 4.0 | 6.0 | 4.0 |
| S DAK | 127 | 105 | 102 | 82 | 22 | 19 | 18 | 14 |
| TENN | 1.0 | 1.0 | 1.3 | 1.0 | 1.0 | .5 | .7 | .5 |
| TEX | 365 | 270 | 348 | 265 | 105 | 80 | 134 | 105 |
| UTAH | 80 | 96 | 84 | 66 | 9.0 | 9.0 | 6.0 | 5.0 |
| VT | 3.0 | 3.0 | 3.0 | 2.0 | .5 | .6 | 1.0 | 1.0 |
| VA | 22 | 22 | 26 | 22 | 11 | 10 | 11 | 11 |
| WASH | 17 | 14 | 17 | 11 | 6.0 | 6.0 | 7.0 | 5.0 |
| W VA | 17 | 16 | 18 | 13 | 5.0 | 4.0 | 4.0 | 4.0 |
| WIS | 23 | 21 | 20 | 11 | 3.0 | 3.0 | 4.0 | 2.0 |
| WYO | 170 | 193 | 205 | 195 | 19 | 20 | 15 | 15 |
| U S | 1810.2 | 1790.4 | 1810.1 | 1419.7 | 367.8 | 357.5 | 423.3 | 342.7 |

ALL SHEEP AND LAMBS: VALUE PER HEAD, BY STATES,
JANUARY 1, 1980-83

| STATE | VALUE PER HEAD | | | |
|-------|----------------|-------|--------|--------|
| | 1980 | 1981 | 1982 | 1983 |
| | DOLLARS | | | |
| ALAS | 78.00 | 87.50 | 94.50 | 102.00 |
| ARIZ | 68.50 | 54.50 | 68.00 | 64.50 |
| CALIF | 99.50 | 95.50 | 70.50 | 59.50 |
| COLO | 85.50 | 78.50 | 63.00 | 53.50 |
| CONN | 75.00 | 91.50 | 110.00 | 104.00 |
| IDAHO | 97.50 | 87.50 | 66.00 | 54.00 |
| ILL | 76.00 | 72.00 | 60.00 | 56.50 |
| IND | 61.00 | 64.00 | 54.50 | 56.50 |
| IOWA | 71.50 | 68.50 | 53.00 | 50.00 |
| KANS | 70.00 | 61.50 | 54.00 | 57.00 |
| KY | 72.00 | 73.50 | 63.50 | 67.00 |
| LA | 41.00 | 44.00 | 44.00 | 56.00 |
| MAINE | 81.00 | 83.50 | 94.50 | 111.00 |
| MD | 62.00 | 66.50 | 77.50 | 71.00 |
| MASS | 78.00 | 88.00 | 109.00 | 104.00 |
| MICH | 68.00 | 75.00 | 63.50 | 58.50 |
| MINN | 69.50 | 63.50 | 52.00 | 52.00 |
| MO | 63.50 | 64.00 | 58.00 | 51.00 |
| MONT | 91.50 | 69.50 | 55.00 | 50.50 |
| NEBR | 69.50 | 65.50 | 54.50 | 53.00 |
| NEV | 88.00 | 87.00 | 64.50 | 56.50 |
| N H | 83.00 | 86.00 | 96.00 | 97.00 |
| N J | 83.50 | 80.00 | 93.50 | 112.00 |
| N MEX | 77.00 | 62.50 | 50.00 | 47.50 |
| N Y | 70.50 | 73.00 | 70.50 | 71.00 |
| N C | 56.00 | 61.00 | 56.00 | 65.00 |
| N DAK | 95.50 | 70.00 | 54.50 | 47.00 |
| OHIO | 65.50 | 67.50 | 57.00 | 59.50 |
| OKLA | 73.50 | 69.00 | 64.00 | 64.50 |
| OREG | 71.50 | 65.50 | 53.50 | 49.50 |
| PA | 61.00 | 64.00 | 60.00 | 63.50 |
| S DAK | 83.50 | 72.50 | 54.50 | 48.00 |
| TENN | 42.00 | 53.00 | 56.00 | 63.50 |
| TEX | 57.50 | 49.50 | 42.00 | 39.00 |
| UTAH | 100.50 | 86.00 | 70.50 | 58.00 |
| VT | 75.50 | 89.00 | 96.50 | 93.50 |
| VA | 63.00 | 69.50 | 58.50 | 60.50 |
| WASH | 73.50 | 78.50 | 61.50 | 57.50 |
| W VA | 60.50 | 56.00 | 55.50 | 50.50 |
| WIS | 84.00 | 85.00 | 64.00 | 54.00 |
| WYO | 90.50 | 74.00 | 61.50 | 53.50 |
| U S | 78.20 | 69.90 | 57.10 | 51.80 |

SHEEP AND LAMBS ON FEED: PLACEMENTS, NUMBER ON FEED, AND MARKETINGS,
SPECIFIED DATES, SELECTED STATES, 1979-82 1/

| STATE | 1979 | | | | | 1980 | | | |
|------------------|---------------------------------------|----------------------------------|-------------------------------|-------------------------------------|------------------------------------|-------------------------------|-------------------------------------|------------------------------------|-------------------------------|
| | PLACED ON FEED: BEFORE SEP 1 | PLACED DURING SEP & OCT | NUMBER ON FEED NOV 1 | PLACED DURING NOV & DEC 2/ | MKTD. DURING NOV & DEC 2/ | NUMBER ON FEED JAN 1 | PLACED DURING JAN & FEB 3/ | MKTD. DURING JAN & FEB 3/ | NUMBER ON FEED MAR 1 |
| | 1,000 HEAD | | | | | | | | |
| ARIZ | 1 | 45 | 46 | 19 | 5 | 60 | 0 | 20 | 40 |
| CALIF | 30 | 155 | 185 | 30 | 40 | 175 | 5 | 100 | 80 |
| COLO | 30 | 390 | 420 | 120 | 180 | 360 | 100 | 270 | 190 |
| IOWA | 37 | 43 | 80 | 35 | 47 | 68 | 44 | 40 | 72 |
| NEBR | 15 | 80 | 95 | 50 | 55 | 90 | 25 | 60 | 55 |
| TEX | 15 | 105 | 120 | 140 | 110 | 150 | 90 | 130 | 110 |
| WYO | 6 | 84 | 90 | 28 | 28 | 90 | 23 | 63 | 50 |
| 7 STATE TOTAL | 134 | 902 | 1036 | 422 | 465 | 993 | 287 | 683 | 597 |
| | 1980 | | | | | 1981 | | | |
| ARIZ | 1 | 38 | 39 | 12 | 4 | 47 | 4 | 11 | 40 |
| CALIF | 17 | 153 | 170 | 55 | 50 | 175 | 5 | 85 | 95 |
| COLO | 20 | 390 | 410 | 160 | 270 | 300 | 120 | 260 | 160 |
| IOWA | 34 | 50 | 84 | 40 | 47 | 77 | 40 | 48 | 69 |
| NEBR | 20 | 90 | 110 | 55 | 65 | 100 | 30 | 65 | 65 |
| TEX | 40 | 120 | 160 | 160 | 110 | 210 | 135 | 170 | 175 |
| WYO | 20 | 100 | 120 | 35 | 35 | 120 | 15 | 75 | 60 |
| 7 STATE TOTAL | 152 | 941 | 1093 | 517 | 581 | 1029 | 349 | 714 | 664 |
| | 1981 | | | | | 1982 | | | |
| ARIZ | 6 | 35 | 41 | 20 | 4 | 57 | 4 | 15 | 46 |
| CALIF | 35 | 195 | 230 | 30 | 60 | 200 | 5 | 135 | 70 |
| COLO | 15 | 235 | 250 | 165 | 185 | 230 | 160 | 195 | 195 |
| IOWA | 45 | 60 | 105 | 45 | 65 | 85 | 50 | 50 | 85 |
| NEBR | 15 | 75 | 90 | 50 | 55 | 85 | 35 | 55 | 65 |
| TEX | 40 | 120 | 160 | 140 | 100 | 200 | 105 | 125 | 180 |
| WYO | 11 | 114 | 125 | 95 | 90 | 130 | 12 | 78 | 64 |
| 7 STATE TOTAL | 167 | 834 | 1001 | 545 | 559 | 987 | 371 | 653 | 705 |

1/ ESTIMATES DISCONTINUED FOLLOWING MAR 1, 1982 REPORT. 2/ INCLUDES SHEEP AND LAMBS PLACED ON FEED AFTER NOV 1 AND MARKETED BEFORE JAN 1. 3/ INCLUDES SHEEP AND LAMBS PLACED ON FEED AFTER JAN 1 AND MARKETED BEFORE MAR 1.

SHEEP AND LAMBS ON FEED: NUMBER BY WEIGHT GROUPS, SELECTED STATES,
NOVEMBER 1, 1979-81 1/

| STATE | 1979 | | | | | 1980 | | | | |
|---------------|-------|-------|-------|-------|----------|-------|-------|-------|-------|----------|
| | UNDER | 70-79 | 80-89 | 90-99 | 100 LB | UNDER | 70-79 | 80-89 | 90-99 | 100 LB |
| | 70 LB | LB | LB | LB | AND OVER | 70 LB | LB | LB | LB | AND OVER |
| 1,000 HEAD | | | | | | | | | | |
| ARIZ | 29 | 72 | 1 | 1 | 3 | 16 | 20 | 1 | 1 | 1 |
| CALIF | 6 | 54 | 54 | 38 | 33 | 17 | 49 | 46 | 29 | 29 |
| COLO | 21 | 72 | 109 | 92 | 126 | 25 | 57 | 82 | 107 | 139 |
| IOWA | 12 | 18 | 19 | 23 | 8 | 13 | 16 | 18 | 21 | 16 |
| NEBR | 10 | 28 | 22 | 23 | 12 | 13 | 18 | 41 | 22 | 16 |
| TEX | 18 | 30 | 34 | 25 | 13 | 26 | 32 | 42 | 43 | 17 |
| WYO | 11 | 19 | 47 | 8 | 5 | 17 | 42 | 53 | 7 | 1 |
| 7 STATE TOTAL | 107 | 233 | 286 | 210 | 200 | 127 | 234 | 283 | 230 | 219 |

| STATE | 1981 | | | | |
|---------------|-------|-------|-------|-------|----------|
| | UNDER | 70-79 | 80-89 | 90-99 | 100 LB |
| | 70 LB | LB | LB | LB | AND OVER |
| ARIZ | 14 | 15 | 6 | 2 | 4 |
| CALIF | 23 | 63 | 64 | 48 | 32 |
| COLO | 3 | 30 | 80 | 80 | 57 |
| IOWA | 12 | 23 | 27 | 25 | 18 |
| NEBR | 5 | 16 | 24 | 32 | 13 |
| TEX | 21 | 39 | 56 | 35 | 18 |
| WYO | 10 | 29 | 63 | 13 | 10 |
| 7 STATE TOTAL | 88 | 206 | 320 | 235 | 152 |

1/ ESTIMATES DISCONTINUED FOLLOWING NOVEMBER 1, 1981.

SHEEP AND LAMBS ON FEED: NUMBER BY WEIGHT GROUPS, SELECTED STATES,
JANUARY 1, 1980-82 1/

| STATE | 1980 | | | | | 1981 | | | | |
|---------------|-------|-------|-------|-------|----------|-------|-------|-------|-------|----------|
| | UNDER | 70-79 | 80-89 | 90-99 | 100 LB | UNDER | 70-79 | 80-89 | 90-99 | 100 LB |
| | 70 LB | LB | LB | LB | AND OVER | 70 LB | LB | LB | LB | AND OVER |
| 1,000 HEAD | | | | | | | | | | |
| ARIZ | 3 | 4 | 3 | 48 | 2 | 3 | 5 | 15 | 21 | 3 |
| CALIF | 2 | 12 | 47 | 56 | 58 | 1 | 10 | 45 | 71 | 48 |
| COLO | 11 | 45 | 79 | 113 | 112 | 3 | 15 | 72 | 78 | 132 |
| IOWA | 4 | 7 | 20 | 21 | 16 | 7 | 10 | 12 | 24 | 24 |
| NEBR | 8 | 7 | 18 | 25 | 32 | 3 | 19 | 27 | 25 | 26 |
| TEX | 15 | 33 | 42 | 39 | 21 | 26 | 48 | 50 | 46 | 40 |
| WYO | 2 | 4 | 22 | 24 | 38 | 8 | 10 | 64 | 18 | 20 |
| 7 STATE TOTAL | 45 | 112 | 231 | 326 | 279 | 51 | 117 | 285 | 283 | 293 |

| STATE | 1982 | | | | |
|---------------|-------|-------|-------|-------|----------|
| | UNDER | 70-79 | 80-89 | 90-99 | 100 LB |
| | 70 LB | LB | LB | LB | AND OVER |
| ARIZ | 5 | 8 | 20 | 19 | 5 |
| CALIF | 1 | 2 | 72 | 76 | 49 |
| COLO | 5 | 18 | 46 | 78 | 83 |
| IOWA | 7 | 16 | 19 | 22 | 21 |
| NEBR | 3 | 6 | 16 | 27 | 33 |
| TEX | 22 | 48 | 68 | 42 | 20 |
| WYO | 5 | 13 | 39 | 25 | 48 |
| 7 STATE TOTAL | 48 | 111 | 280 | 289 | 259 |

1/ ESTIMATES DISCONTINUED FOLLOWING JANUARY 1, 1982.

SHEEP AND LAMBS ON FEED: NUMBER BY WEIGHT GROUPS, SELECTED STATES,
MARCH 1, 1980-82 1/

| STATE | 1980 | | | | | 1981 | | | | |
|---------------|-------|-------|-------|-------|----------|-------|-------|-------|-------|----------|
| | UNDER | 70-79 | 80-89 | 90-99 | 100 LB | UNDER | 70-79 | 80-89 | 90-99 | 100 LB |
| | 70 LB | LB | LB | LB | AND OVER | 70 LB | LB | LB | LB | AND OVER |
| 1,000 HEAD | | | | | | | | | | |
| ARIZ | 0 | 0 | 0 | 10 | 30 | 0 | 8 | 3 | 20 | 9 |
| CALIF | 0 | 0 | 8 | 15 | 57 | 0 | 0 | 3 | 27 | 65 |
| COLO | 2 | 9 | 24 | 64 | 91 | 3 | 6 | 32 | 43 | 76 |
| IOWA | 27 | 5 | 7 | 13 | 20 | 34 | 5 | 7 | 9 | 14 |
| NEBR | 13 | 7 | 8 | 10 | 17 | 18 | 4 | 3 | 23 | 17 |
| TEX | 12 | 17 | 30 | 36 | 15 | 14 | 35 | 31 | 51 | 44 |
| WYO | 2 | 1 | 4 | 9 | 34 | 1 | 1 | 2 | 24 | 32 |
| 7 STATE TOTAL | 56 | 39 | 81 | 157 | 264 | 70 | 59 | 81 | 197 | 257 |
| 1982 | | | | | | | | | | |
| | UNDER | 70-79 | 80-89 | 90-99 | 100 LB | | | | | |
| | 70 LB | LB | LB | LB | AND OVER | | | | | |
| ARIZ | 4 | 6 | 7 | 8 | 21 | | | | | |
| CALIF | 0 | 0 | 1 | 15 | 54 | | | | | |
| COLO | 0 | 4 | 23 | 47 | 121 | | | | | |
| IOWA | 35 | 5 | 11 | 16 | 18 | | | | | |
| NEBR | 19 | 5 | 7 | 11 | 23 | | | | | |
| TEX | 20 | 43 | 40 | 43 | 34 | | | | | |
| WYO | 1 | 1 | 2 | 12 | 48 | | | | | |
| 7 STATE TOTAL | 79 | 64 | 91 | 152 | 319 | | | | | |

1/ ESTIMATES DISCONTINUED FOLLOWING MARCH 1, 1982.

NEW CROP LAMBS: NUMBER, SELECTED STATES, JANUARY 1, 1980-83. 1/

| STATE | 1980 | 1981 | 1982 | 1983 |
|------------|-------|-------|---------|-------|
| 1,000 HEAD | | | | |
| ARIZ | 54 | 60 | 60 | 46 |
| CALIF | 462 | 520 | 499 | 515 |
| COLO | 7 | 8 | 7 | 3 |
| KANS | 50 | 40 | 50 | 46 |
| KY | 5 | 5 | 5 | 5 |
| MO | 10 | 8 | 8 | 4 |
| NEBR | 12 | 11 | 12 | 10 |
| OHIO | 12 | 11 | 12 | 10 |
| OKLA | 21 | 22 | 28 | 23 |
| PA | 7 | 6 | 13 | 7 |
| S DAK | 8 | 8 | 15 | 10 |
| TEX | 200 | 140 | 189 | 158 |
| VA | 27 | 25 | 30 | 24 |
| OTH STS | 88.3 | 93.1 | 93.7 | 70.5 |
| U S TOTAL: | 963.3 | 957.1 | 1,021.7 | 931.5 |

1/ NEW CROP LAMB INVENTORY INCLUDES ALL LAMBS BORN AFTER SEP 30 THE PREVIOUS YEAR THAT ARE ON HAND JAN 1. NEW CROP LAMBS ARE NOT INCLUDED IN THE INVENTORY ESTIMATES OF ALL SHEEP AND LAMBS ON PAGES 8-11 OF THIS PUBLICATION.

LAMB CROP: BREEDING EWES 1 YEAR OLD AND OLDER JANUARY 1, AND LAMB CROP AS PERCENTAGE OF EWES 1 YEAR OLD AND OLDER, JANUARY 1, BY STATES, 1979-82

| STATE | BREEDING EWES 1 YEAR OLD AND OLDER ON JANUARY 1 | | | | LAMB CROP PER 100 EWES 1+ ON JANUARY 1 | | | |
|-------|---|--------|--------|--------|--|------|------|------|
| | 1979 | 1980 | 1981 | 1982 | 1979 | 1980 | 1981 | 1982 |
| | 1000 HEAD | | | | PERCENT | | | |
| ALAS | 2.7 | 2.3 | 2.0 | 1.9 | 26 | 26 | 40 | 37 |
| ARIZ | 270 | 246 | 240 | 235 | 80 | 81 | 88 | 77 |
| CALIF | 838 | 830 | 850 | 854 | 66 | 86 | 90 | 88 |
| COLO | 393 | 425 | 400 | 394 | 102 | 102 | 110 | 112 |
| CONN | 3.8 | 4.5 | 4.3 | 6.0 | 118 | 118 | 135 | 117 |
| IDAHO | 369 | 361 | 386 | 389 | 117 | 125 | 125 | 123 |
| ILL | 115 | 117 | 120 | 124 | 112 | 115 | 119 | 107 |
| IND | 89 | 83 | 95 | 96 | 115 | 120 | 120 | 109 |
| IOWA | 220 | 250 | 260 | 283 | 124 | 120 | 121 | 120 |
| KANS | 125 | 125 | 120 | 134 | 107 | 116 | 117 | 121 |
| KY | 18 | 17 | 21 | 20 | 111 | 135 | 110 | 100 |
| LA | 9.0 | 8.0 | 7.0 | 6.7 | 89 | 88 | 99 | 99 |
| MAINE | 8.0 | 11 | 11 | 13 | 113 | 109 | 118 | 123 |
| MD | 14 | 15 | 14 | 14 | 114 | 107 | 114 | 107 |
| MASS | 4.9 | 7.0 | 6.4 | 8.0 | 112 | 103 | 117 | 114 |
| MICH | 75 | 82 | 80 | 78 | 120 | 122 | 119 | 115 |
| MINN | 160 | 164 | 187 | 199 | 124 | 125 | 131 | 123 |
| MO | 83 | 84 | 92 | 92 | 129 | 129 | 130 | 130 |
| MONT | 380 | 400 | 420 | 455 | 95 | 98 | 100 | 103 |
| NEBR | 76 | 90 | 115 | 105 | 118 | 124 | 124 | 119 |
| NEV | 98 | 94 | 98 | 95 | 96 | 99 | 99 | 97 |
| N H | 4.8 | 6.6 | 6.5 | 7.0 | 115 | 111 | 123 | 129 |
| N J | 6.9 | 6.8 | 6.9 | 6.8 | 113 | 115 | 110 | 115 |
| N MEX | 432 | 468 | 468 | 468 | 84 | 76 | 87 | 80 |
| N Y | 42 | 43 | 45 | 49 | 119 | 121 | 129 | 110 |
| N C | 5.0 | 5.5 | 5.5 | 5.9 | 122 | 116 | 102 | 102 |
| N DAK | 116 | 135 | 153 | 165 | 124 | 128 | 128 | 115 |
| OHIO | 236 | 215 | 212 | 207 | 113 | 118 | 120 | 111 |
| OKLA | 57 | 58 | 64 | 70 | 109 | 107 | 111 | 100 |
| OREG | 282 | 280 | 310 | 350 | 106 | 109 | 116 | 109 |
| PA | 70 | 78 | 79 | 95 | 110 | 106 | 110 | 84 |
| S DAK | 534 | 550 | 590 | 565 | 122 | 125 | 117 | 113 |
| TENN | 9.0 | 9.0 | 9.0 | 7.5 | 111 | 111 | 100 | 100 |
| TEX | 1667 | 1675 | 1700 | 1605 | 71 | 67 | 74 | 75 |
| UTAH | 460 | 491 | 500 | 505 | 93 | 97 | 96 | 88 |
| VT | 5.6 | 8.0 | 8.0 | 11 | 125 | 125 | 125 | 118 |
| VA | 130 | 122 | 123 | 120 | 125 | 130 | 122 | 112 |
| WASH | 52 | 55 | 55 | 55 | 119 | 116 | 124 | 120 |
| W VA | 88 | 87 | 84 | 85 | 115 | 120 | 119 | 118 |
| WIS | 63 | 70 | 82 | 81 | 146 | 157 | 145 | 130 |
| WYO | 755 | 745 | 750 | 750 | 77 | 86 | 91 | 88 |
| U S | 8365.7 | 8532.7 | 8779.6 | 8810.8 | 95 | 97 | 100 | 97 |

LAMB CROP: BY STATES, 1979-82 1/

| | 1979 | 1980 | 1981 | 1982 |
|-------|------------|--------|--------|--------|
| | 1,000 HEAD | | | |
| ALAS | .7 | .6 | .8 | .7 |
| ARIZ | 215 | 200 | 210 | 180 |
| CALIF | 721 | 725 | 765 | 750 |
| COLO | 400 | 435 | 440 | 440 |
| CONN | 4.5 | 5.3 | 5.8 | 7.0 |
| IDAHO | 432 | 450 | 483 | 480 |
| ILL | 129 | 134 | 143 | 133 |
| IND | 102 | 100 | 114 | 105 |
| IOWA | 273 | 300 | 315 | 340 |
| KANS | 134 | 145 | 140 | 162 |
| KY | 20 | 23 | 23 | 20 |
| LA | 8.0 | 7.0 | 6.9 | 6.6 |
| MAINE | 9.0 | 12 | 13 | 16 |
| MD | 16 | 16 | 16 | 15 |
| MASS | 5.5 | 7.2 | 7.5 | 9.1 |
| MICH | 90 | 100 | 95 | 90 |
| MINN | 198 | 205 | 245 | 245 |
| MO | 107 | 108 | 120 | 120 |
| MONT | 360 | 390 | 420 | 470 |
| NEBR | 90 | 112 | 143 | 125 |
| NEV | 94 | 93 | 97 | 92 |
| N H | 5.5 | 7.3 | 8.0 | 9.0 |
| N J | 7.8 | 7.8 | 7.6 | 7.8 |
| N MEX | 363 | 356 | 407 | 375 |
| N Y | 50 | 52 | 58 | 54 |
| N C | 6.1 | 6.4 | 5.6 | 6.0 |
| N DAK | 143 | 173 | 196 | 190 |
| OHIO | 267 | 253 | 255 | 230 |
| OKLA | 62 | 62 | 71 | 70 |
| OREG | 300 | 305 | 360 | 380 |
| PA | 77 | 83 | 87 | 80 |
| S DAK | 650 | 690 | 690 | 640 |
| TENN | 10 | 10 | 9.0 | 7.5 |
| TEX | 1190 | 1120 | 1250 | 1200 |
| UTAH | 430 | 476 | 481 | 446 |
| VT | 7.0 | 10 | 10 | 13 |
| VA | 162 | 159 | 150 | 134 |
| WASH | 62 | 64 | 68 | 66 |
| W VA | 101 | 104 | 100 | 100 |
| WIS | 92 | 110 | 119 | 105 |
| WYO | 580 | 640 | 685 | 660 |
| U S | 7974.1 | 8256.6 | 8820.2 | 8579.7 |

1/ LAMB CROP DEFINED AS BORN IN THE NATIVE STATES, PLUS LAMBS DOCKED OR BRANDED IN THE WESTERN STATES FOR THE PERIOD OCT 1 THROUGH SEP 30.

WOOL: NUMBER OF SHEEP AND LAMBS SHORN AND WEIGHT PER FLEECE,
BY STATES, 1979-82

| STATE | SHEEP AND LAMBS SHORN 1/ | | | | WEIGHT PER FLEECE 2/ | | | |
|-------|--------------------------|---------|---------|---------|----------------------|------|------|------|
| | 1979 | 1980 | 1981 | 1982 | 1979 | 1980 | 1981 | 1982 |
| | 1,000 HEAD | | | | POUNDS | | | |
| ALAS | 3.0 | 3.3 | 1.5 | 2.3 | 10.7 | 10.6 | 10.7 | 12.2 |
| ARIZ | 350 | 326 | 325 | 320 | 7.2 | 7.1 | 7.4 | 7.4 |
| CALIF | 1364 | 1402 | 1415 | 1390 | 7.7 | 7.5 | 7.5 | 7.4 |
| COLO | 1130 | 1100 | 980 | 1070 | 7.6 | 7.6 | 7.8 | 7.5 |
| CONN | 5.5 | 6.4 | 6.8 | 9.0 | 6.9 | 6.9 | 6.8 | 6.8 |
| IDAHO | 473 | 477 | 493 | 456 | 10.5 | 10.1 | 10.0 | 10.1 |
| ILL | 181 | 189 | 192 | 208 | 7.1 | 7.0 | 6.8 | 6.7 |
| IND | 121 | 117 | 128 | 124 | 7.3 | 7.2 | 7.1 | 6.9 |
| IOWA | 453 | 475 | 510 | 530 | 7.3 | 7.2 | 7.3 | 7.2 |
| KANS | 245 | 251 | 230 | 233 | 7.3 | 7.1 | 7.3 | 7.0 |
| KY | 21 | 24 | 25 | 24 | 7.2 | 7.0 | 6.8 | 6.9 |
| LA | 12 | 10 | 10 | 9.0 | 6.2 | 6.1 | 6.4 | 6.1 |
| MAINE | 11 | 13 | 16 | 17 | 6.8 | 6.9 | 6.6 | 6.7 |
| MD | 18 | 18 | 18 | 17 | 7.1 | 6.9 | 7.0 | 7.2 |
| MASS | 7.0 | 9.0 | 10 | 10 | 6.9 | 6.9 | 6.9 | 6.8 |
| MICH | 118 | 122 | 125 | 111 | 7.9 | 7.8 | 7.6 | 7.8 |
| MINN | 252 | 275 | 308 | 310 | 7.7 | 7.2 | 7.3 | 7.3 |
| MO | 127 | 133 | 154 | 140 | 7.3 | 7.1 | 7.1 | 7.1 |
| MONT | 510 | 539 | 565 | 575 | 9.7 | 9.9 | 10.0 | 10.3 |
| NEBR | 235 | 230 | 240 | 235 | 6.7 | 7.0 | 7.2 | 7.0 |
| NEV | 109 | 108 | 112 | 104 | 10.3 | 10.0 | 10.0 | 9.8 |
| N H | 7.0 | 8.9 | 10 | 10 | 6.7 | 6.9 | 6.9 | 7.1 |
| N J | 8.5 | 8.7 | 8.9 | 8.7 | 6.8 | 6.9 | 6.9 | 6.9 |
| N MEX | 545 | 555 | 555 | 515 | 9.1 | 9.2 | 9.5 | 9.6 |
| N Y | 55 | 56 | 57 | 60 | 7.2 | 7.4 | 7.4 | 7.3 |
| N C | 6.0 | 6.5 | 7.5 | 8.5 | 6.8 | 7.1 | 6.5 | 6.6 |
| N DAK | 175 | 212 | 215 | 180 | 9.7 | 9.4 | 9.4 | 9.5 |
| OHIO | 345 | 313 | 316 | 299 | 7.4 | 7.3 | 7.2 | 7.2 |
| OKLA | 86 | 93 | 95 | 110 | 7.5 | 7.2 | 7.6 | 7.0 |
| OREG | 565 | 555 | 600 | 540 | 6.7 | 7.0 | 6.9 | 6.7 |
| PA | 93 | 98 | 100 | 90 | 7.1 | 6.9 | 6.7 | 6.8 |
| S DAK | 765 | 755 | 783 | 746 | 8.9 | 9.2 | 9.4 | 9.3 |
| TENN | 11 | 10 | 9.0 | 7.8 | 5.9 | 5.7 | 6.0 | 5.9 |
| TEX | 2720 | 2700 | 2750 | 2650 | 7.0 | 6.8 | 7.5 | 7.3 |
| UTAH | 563 | 575 | 617 | 608 | 10.2 | 9.9 | 10.0 | 10.0 |
| VT | 7.5 | 9.0 | 14 | 14 | 7.2 | 6.9 | 7.4 | 6.9 |
| VA | 145 | 146 | 143 | 141 | 6.3 | 6.5 | 6.4 | 6.3 |
| WASH | 76 | 74 | 80 | 70 | 9.0 | 9.0 | 9.0 | 9.0 |
| W VA | 105 | 107 | 102 | 105 | 5.9 | 5.8 | 5.8 | 5.6 |
| WIS | 93 | 113 | 118 | 101 | 7.8 | 7.5 | 7.5 | 7.5 |
| WYO | 952 | 1040 | 1048 | 1041 | 10.0 | 9.8 | 9.7 | 9.7 |
| U S | 13068.5 | 13262.8 | 13492.7 | 13199.3 | 8.02 | 7.95 | 8.14 | 8.04 |

1/ INCLUDES SHEARING AT COMMERCIAL FEEDING YARDS. 2/ FOR TEXAS AND CALIFORNIA, THE WEIGHT PER FLEECE IS THE AMOUNT OF WOOL SHORN PER SHEEP AND LAMB DURING THE YEAR.

WOOL: SHORN WOOL PRODUCTION, BY STATES, 1979-82

| STATE : | 1979 | 1980 | 1981 | 1982 |
|--------------|--------|--------|--------|--------|
| 1,000 POUNDS | | | | |
| ALAS : | 32 | 35 | 16 | 28 |
| ARIZ : | 2511 | 2329 | 2417 | 2368 |
| CALIF : | 10503 | 10478 | 10645 | 10303 |
| COLO : | 8533 | 8338 | 7656 | 8054 |
| CONN : | 38 | 44 | 46 | 61 |
| IDAHO : | 4971 | 4835 | 4926 | 4592 |
| ILL : | 1286 | 1327 | 1307 | 1385 |
| IND : | 883 | 846 | 908 | 852 |
| IOWA : | 3328 | 3427 | 3711 | 3822 |
| KANS : | 1784 | 1794 | 1684 | 1637 |
| KY : | 151 | 168 | 170 | 166 |
| LA : | 74 | 61 | 64 | 55 |
| MAINE : | 75 | 90 | 106 | 114 |
| MD : | 128 | 124 | 126 | 122 |
| MASS : | 48 | 62 | 69 | 68 |
| MICH : | 934 | 950 | 945 | 865 |
| MINN : | 1933 | 1990 | 2242 | 2264 |
| MO : | 928 | 942 | 1096 | 989 |
| MONT : | 4970 | 5359 | 5670 | 5903 |
| NEBR : | 1586 | 1610 | 1728 | 1635 |
| NEV : | 1123 | 1080 | 1120 | 1019 |
| N H : | 47 | 61 | 69 | 71 |
| N J : | 58 | 60 | 61 | 60 |
| N MEX : | 4978 | 5080 | 5280 | 4922 |
| N Y : | 396 | 414 | 422 | 438 |
| N C : | 41 | 46 | 49 | 56 |
| N DAK : | 1704 | 1989 | 2025 | 1701 |
| OHIO : | 2552 | 2290 | 2272 | 2142 |
| OKLA : | 649 | 674 | 721 | 770 |
| OREG : | 3777 | 3880 | 4154 | 3632 |
| PA : | 560 | 676 | 670 | 612 |
| S DAK : | 6818 | 6982 | 7325 | 6906 |
| TENN : | 65 | 57 | 54 | 46 |
| TEX : | 19075 | 18300 | 20500 | 19300 |
| UTAH : | 5717 | 5670 | 6172 | 6090 |
| VT : | 54 | 62 | 104 | 97 |
| VA : | 914 | 949 | 915 | 888 |
| WASH : | 683 | 666 | 720 | 630 |
| W VA : | 620 | 621 | 592 | 588 |
| WIS : | 724 | 848 | 880 | 760 |
| WYO : | 9516 | 10205 | 10150 | 10118 |
| U S : | 104867 | 105419 | 109787 | 106129 |

WOOL: PRICE PER POUND AND VALUE, BY STATES 1979-1982

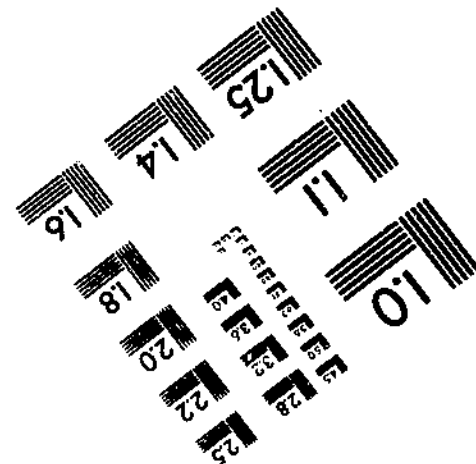
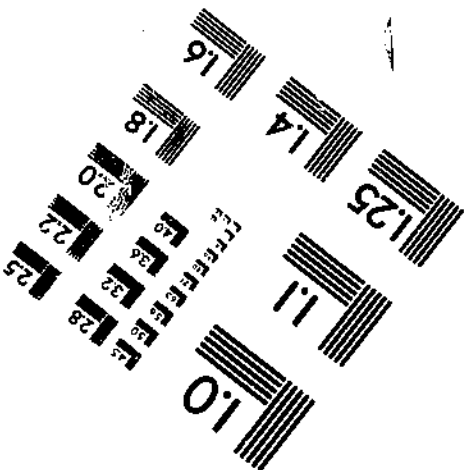
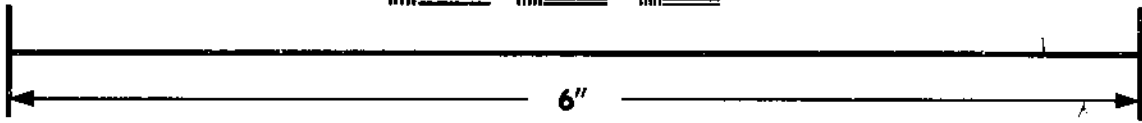
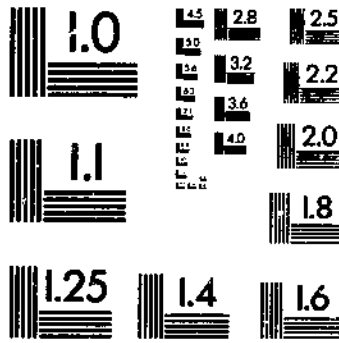
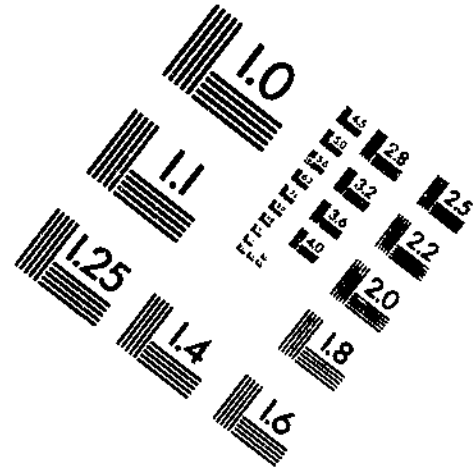
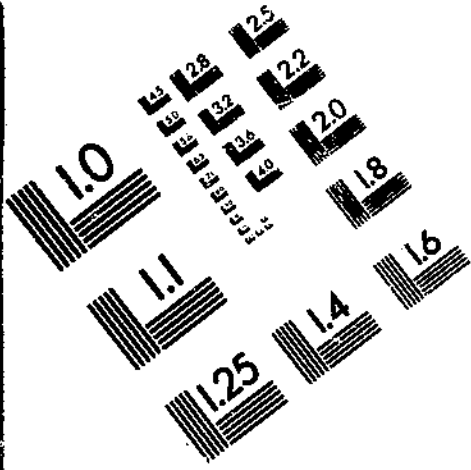
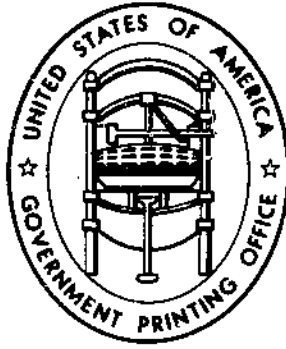
| STATE | PRICE PER POUND | | | | VALUE 1/ | | | |
|-------|-----------------|------|------|------|---------------|-------|--------|-------|
| | 1979 | 1980 | 1981 | 1982 | 1979 | 1980 | 1981 | 1982 |
| | CENTS | | | | 1,000 DOLLARS | | | |
| ALAS | 91 | 70 | 51 | 65 | 29 | 25 | 8 | 18 |
| ARIZ | 69 | 77 | 78 | 56 | 1733 | 1793 | 1885 | 1326 |
| CALIF | 85 | 88 | 94 | 71 | 8928 | 9221 | 10006 | 7315 |
| COLO | 86 | 89 | 89 | 67 | 7338 | 7421 | 6814 | 5396 |
| CONN | 82 | 85 | 78 | 44 | 31 | 37 | 36 | 27 |
| IDAHO | 84 | 90 | 88 | 65 | 4176 | 4352 | 4335 | 2985 |
| ILL | 73 | 69 | 70 | 34 | 939 | 916 | 915 | 471 |
| IND | 68 | 67 | 67 | 39 | 600 | 567 | 608 | 332 |
| IOWA | 74 | 70 | 71 | 44 | 2463 | 2399 | 2635 | 1682 |
| KANS | 78 | 77 | 80 | 51 | 1392 | 1381 | 1347 | 835 |
| KY | 71 | 70 | 64 | 38 | 107 | 118 | 109 | 63 |
| LA | 68 | 80 | 68 | 40 | 50 | 49 | 44 | 22 |
| MAINE | 80 | 85 | 77 | 67 | 60 | 77 | 82 | 76 |
| MD | 82 | 75 | 82 | 44 | 105 | 93 | 103 | 54 |
| MASS | 84 | 88 | 90 | 66 | 40 | 55 | 62 | 45 |
| MICH | 73 | 74 | 70 | 44 | 682 | 703 | 662 | 381 |
| MINN | 71 | 73 | 70 | 48 | 1372 | 1453 | 1569 | 1087 |
| MO | 75 | 70 | 72 | 42 | 696 | 659 | 789 | 415 |
| MONT | 94 | 99 | 102 | 79 | 4672 | 5305 | 5783 | 4663 |
| NEBR | 75 | 74 | 74 | 48 | 1190 | 1191 | 1279 | 785 |
| NEV | 84 | 88 | 97 | 67 | 943 | 950 | 1086 | 683 |
| N H | 82 | 93 | 83 | 75 | 39 | 57 | 57 | 53 |
| N J | 82 | 73 | 79 | 40 | 48 | 44 | 48 | 24 |
| N MEX | 92 | 90 | 106 | 88 | 4580 | 4572 | 5597 | 4331 |
| N Y | 85 | 80 | 84 | 53 | 337 | 331 | 354 | 232 |
| N C | 80 | 76 | 80 | 43 | 33 | 35 | 39 | 24 |
| N DAK | 82 | 84 | 79 | 61 | 1397 | 1671 | 1604 | 1038 |
| OHIO | 72 | 75 | 72 | 41 | 1837 | 1718 | 1636 | 878 |
| OKLA | 75 | 75 | 78 | 46 | 487 | 506 | 562 | 354 |
| OREG | 85 | 83 | 82 | 50 | 3210 | 3220 | 3406 | 1816 |
| PA | 85 | 78 | 80 | 37 | 561 | 527 | 536 | 226 |
| S DAK | 84 | 88 | 88 | 73 | 5727 | 6144 | 6446 | 5041 |
| TENN | 79 | 73 | 77 | 43 | 51 | 42 | 42 | 20 |
| TEX | 97 | 97 | 120 | 84 | 18503 | 17751 | 24600 | 16212 |
| UTAH | 88 | 90 | 92 | 68 | 5031 | 5103 | 5678 | 4141 |
| VT | 85 | 82 | 84 | 68 | 46 | 51 | 87 | 66 |
| VA | 90 | 81 | 86 | 46 | 823 | 769 | 787 | 408 |
| WASH | 81 | 82 | 77 | 62 | 553 | 546 | 554 | 391 |
| W VA | 88 | 78 | 87 | 40 | 546 | 484 | 515 | 235 |
| WIS | 72 | 72 | 69 | 44 | 521 | 611 | 607 | 334 |
| WYO | 91 | 97 | 102 | 82 | 8660 | 9899 | 10353 | 8297 |
| U S | 86.3 | 88.1 | 94.4 | 68.6 | 90536 | 92846 | 103665 | 72782 |

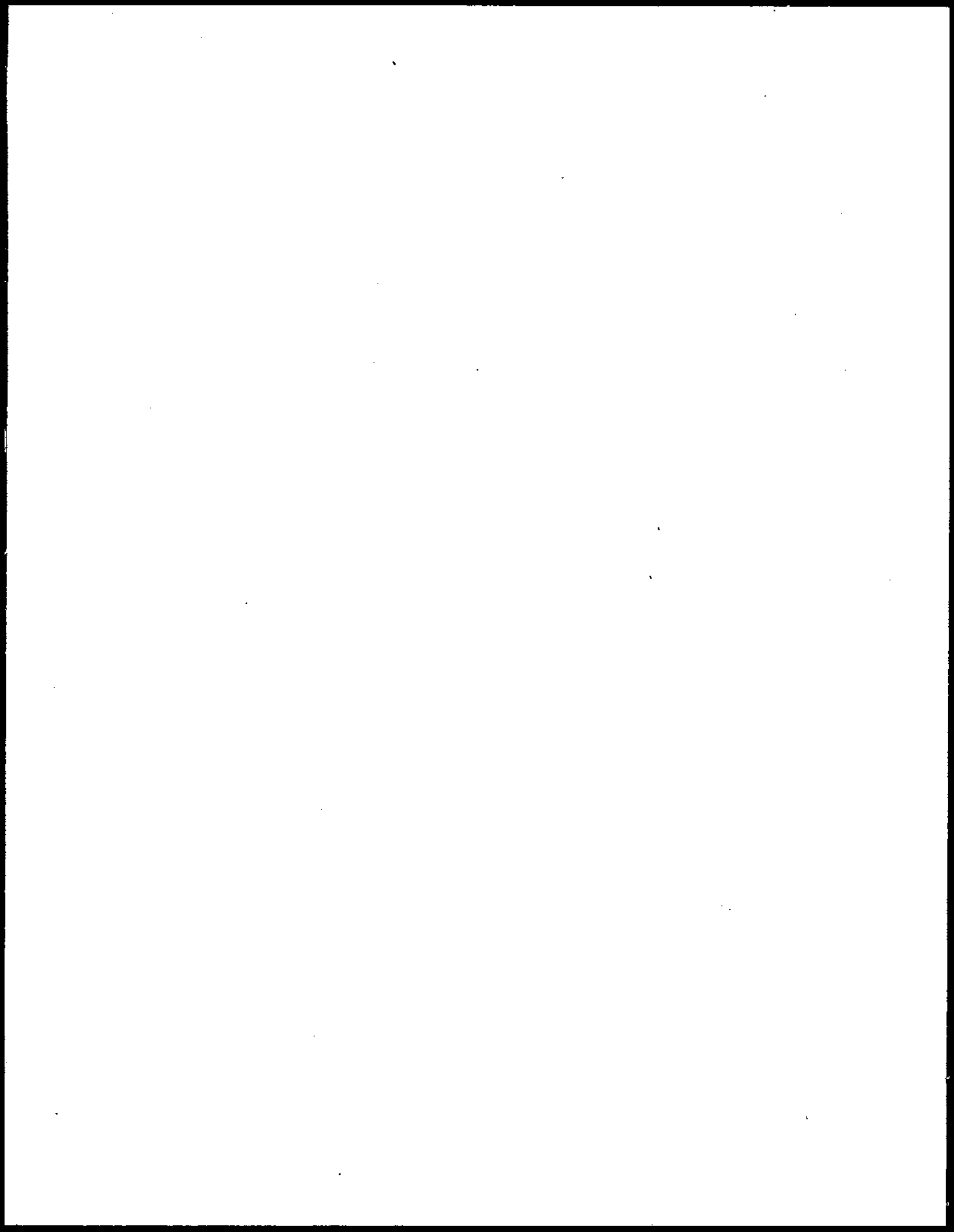
1/ PRODUCTION MULTIPLIED BY ANNUAL AVERAGE PRICE.

SHEEP OPERATIONS: NUMBER OF OPERATIONS WITH SHEEP, BY STATES, 1979-82 1/

| STATE : | 1979 | : | 1980 | : | 1981 | : | 1982 |
|---------|--------|---|--------|---|--------|---|--------|
| NUMBER | | | | | | | |
| ALAS : | 20 | : | 20 | : | 20 | : | 20 |
| ARIZ : | 390 | : | 450 | : | 500 | : | 450 |
| CALIF : | 5200 | : | 6000 | : | 6600 | : | 7200 |
| COLO : | 2400 | : | 2600 | : | 2500 | : | 2300 |
| CONN : | 310 | : | 340 | : | 380 | : | 380 |
| IDAHO : | 1900 | : | 2000 | : | 2200 | : | 2400 |
| ILL : | 6800 | : | 7000 | : | 7400 | : | 7500 |
| IND : | 4800 | : | 4800 | : | 5400 | : | 5600 |
| IOWA : | 12000 | : | 12500 | : | 14000 | : | 14000 |
| KANS : | 2200 | : | 2500 | : | 2700 | : | 2900 |
| KY : | 600 | : | 700 | : | 800 | : | 800 |
| LA : | 700 | : | 700 | : | 700 | : | 700 |
| MAINE : | 590 | : | 620 | : | 650 | : | 650 |
| MD : | 770 | : | 770 | : | 850 | : | 950 |
| MASS : | 470 | : | 480 | : | 500 | : | 450 |
| MICH : | 2600 | : | 2700 | : | 2700 | : | 2800 |
| MINN : | 8000 | : | 8000 | : | 8000 | : | 8500 |
| MO : | 3200 | : | 3300 | : | 3500 | : | 3700 |
| MONT : | 2100 | : | 2300 | : | 2400 | : | 2500 |
| NEBR : | 2700 | : | 3000 | : | 3200 | : | 3000 |
| NEV : | 290 | : | 300 | : | 320 | : | 350 |
| N H : | 400 | : | 410 | : | 430 | : | 380 |
| N J : | 650 | : | 750 | : | 750 | : | 700 |
| N MEX : | 1400 | : | 1500 | : | 1600 | : | 1600 |
| N Y : | 2100 | : | 2300 | : | 2400 | : | 2400 |
| N C : | 400 | : | 400 | : | 400 | : | 400 |
| N DAK : | 1800 | : | 2100 | : | 2100 | : | 2200 |
| OHIO : | 8500 | : | 8000 | : | 7900 | : | 8000 |
| OKLA : | 2100 | : | 2100 | : | 2300 | : | 2500 |
| OREG : | 4600 | : | 4900 | : | 5200 | : | 5400 |
| PA : | 4900 | : | 4900 | : | 4900 | : | 4900 |
| S DAK : | 5600 | : | 5600 | : | 5600 | : | 5600 |
| TENN : | 500 | : | 450 | : | 450 | : | 400 |
| TEX : | 9500 | : | 9300 | : | 9500 | : | 9500 |
| UTAH : | 2300 | : | 2400 | : | 2500 | : | 2600 |
| VT : | 480 | : | 520 | : | 550 | : | 540 |
| VA : | 3000 | : | 2900 | : | 2800 | : | 2800 |
| WASH : | 1700 | : | 2000 | : | 2200 | : | 2200 |
| W VA : | 3400 | : | 3500 | : | 3700 | : | 3500 |
| WIS : | 3400 | : | 3600 | : | 3800 | : | 3800 |
| WYO : | 1400 | : | 1400 | : | 1500 | : | 1500 |
| U S : | 116170 | : | 120110 | : | 125900 | : | 128170 |

1/ OPERATIONS WITH ONE OR MORE SHEEP AND LAMBS.





END

2-14-85