



AgEcon SEARCH
RESEARCH IN AGRICULTURAL & APPLIED ECONOMICS

The World's Largest Open Access Agricultural & Applied Economics Digital Library

This document is discoverable and free to researchers across the globe due to the work of AgEcon Search.

Help ensure our sustainability.

Give to AgEcon Search

AgEcon Search

<http://ageconsearch.umn.edu>

aesearch@umn.edu

*Papers downloaded from **AgEcon Search** may be used for non-commercial purposes and personal study only. No other use, including posting to another Internet site, is permitted without permission from the copyright owner (not AgEcon Search), or as allowed under the provisions of Fair Use, U.S. Copyright Act, Title 17 U.S.C.*

5624011505 USDA STATISTICAL PUBLICATIONS UPDATA
NONCITRUS FRUITS AND NUTS: PRODUCTION, USE, AND VALUE ESTIMATES BY 1 OF 1

460-9739
2/70

15

A1134: 718



United States
Department of
Agriculture

Statistical
Reporting
Service

Crop
Reporting
Board

Statistical
Bulletin
Number 718

Noncitrus Fruits and Nuts

Production, Use, and Value Estimates by States, 1978-82

354

COMPLETED

2/6

ORIGINAL

BEST COPY AVAILABLE

NONCITRUS FRUITS AND NUTS: PRODUCTION, USE, AND VALUE ESTIMATES BY STATES, 1978-82. Crop Reporting Board, Statistical Reporting Service, U.S. Department of Agriculture, Statistical Bulletin 718.

Abstract

This publication presents revised statistics by States on production, utilization, price, and value of all noncitrus fruits and tree nuts for 1978-82. Estimates contained in this report provide a historic record and a benchmark for current estimates. Some of these estimates have been revised since they first appeared in Crop Reporting Board releases. Revisions have been made where necessary by reviewing marketing agreement records, recorded truck and rail movement, quantities inspected, quantities used by processors, and the 1982 Census of Agriculture. These statistics continue the historical series which began in 1889 for noncitrus fruits and in 1909 for tree nuts. A complete listing of all historic publications is shown below.

Statistical Bulletin 647, Noncitrus Fruits and Nuts, 1974-78,
Revised Issue February 1981

Statistical Bulletin 593, Noncitrus Fruits and Nuts, 1969-74,
Issued December 1977

Statistical Bulletin 505, Noncitrus Fruits, 1964-70,
Issued January 1973

Statistical Bulletin 504, Tree Nuts, 1964-70,
Issued December 1972

Statistical Bulletin 43, Tree Nuts, 1909-65,
Issued June 1971

Statistical Bulletin 407, Noncitrus Fruits, 1959-64,
Issued June 1967

Statistical Bulletin 292, Noncitrus Fruits, 1954-59,
Issued August 1961

Statistical Bulletin 192, Noncitrus Fruits, 1949-55,
Issued September 1956

Statistical Bulletin 114, Noncitrus Fruits, 1944-49,
Issued October 1952

Statistical Bulletin CS-27, Noncitrus Fruits, 1889-1944,
Issued May 1948

CONTENTS

	<u>Page</u>
NONCITRUS FRUITS:	
Production and value by kinds	8
Production, value, and utilization combined	9
Apples, commercial:	
Production, price, and value	10-14
Total Production by variety	15-19
Utilization	20-25, 45
Apricots	40, 43-45
Avocados	40
Bananas	34
Berries	26, 27
Cherries, Sweet	28, 29, 31, 32
Cherries, Tart	30-32
Cranberries	33
Dates	41
Figs	41, 43-45
Grapes	35-39, 45
Kiwifruit	41
Nectarines	41
Olives	41, 43, 44
Papayas	34
Peaches	45-54
Pears	45, 55-58
Pineapples	34
Pomegranates	41
Prunes and Plums	42-45
California dry fruits	45
Unutilized production	59-62
NUTS:	
Production and value by kinds	9
Almonds	63
Filberts	63
Macadamia nuts	64
Pecans	64, 65
Pistachios	64
Walnuts	64
Definitions of terms	5
Marketing seasons	6, 7

INTRODUCTION

This publication presents revised statistics by States on production, utilization, price, and value of all noncitrus fruits and tree nuts for 1978-82.

NONCITRUS FRUITS AND NUTS PRODUCTION, USE AND VALUE ESTIMATES BY STATES, 1978-82

For most fruits, production is estimated at two levels--total and utilized. Total production is the quantity actually harvested plus quantities acceptable for fresh market or processing but not harvested, or harvested but not sold. Utilized production is the amount sold plus the quantities used at home or held in storage. The difference between total and utilized production is the quantity of mature fruit not harvested for economic or natural reasons or fruit harvested but not sold.

The Fruit Estimates Program was reduced in 1982, and apple by variety and bushberry estimates were discontinued. Data from these series for 1978-81 are carried forward and are shown at the end of this publication.

Historically, apples and peaches have been reported in bushels. However, because of the wide variety of containers used for marketing and the varying weights per container, bushels were converted to pounds in establishing official estimates. Apple estimates relate to the commercial apple crop produced in orchards of 100 or more bearing-age trees. Peach production estimates relate to peaches produced in all orchards regardless of size.

Statistics on utilization of fruit by commercial processors refer to first utilization, not necessarily final utilization. For example, frozen fruit includes fruit which may later be used for preserves.

The price shown for each crop is a season average price for all methods of sales.

Prices for fresh fruit, except as noted below, are the average prices producers received at the point of first sale, commonly referred to as the average price as sold. Since the point of first sale is not the same for all producers, prices for the various methods of sale are weighted by the proportionate quantity sold. For example, in a given State, if part of the fruit crop is sold f.o.b., packed by growers, part sold as bulk fruit at the packinghouse-door, and part sold retail at roadside stands, the fresh fruit average price as sold is a weighted average of the average price for each method of sale.

Prices for fruit sold for processing are expressed as equivalent returns for fruit delivered to the processing plant door.

When a crop is sold for both fresh and processing, the season average price is a weighted average of the fresh and processing prices. It is the sum of the fresh market and processing values divided by utilized production.

Exceptions to the above price definitions are:

- (1) Fresh fruit sales in Washington and Oregon are equivalent returns at the packinghouse-door. F.o.b. packed prices are adjusted to an equivalent incoming packinghouse-door price by subtracting all costs that accumulate between the incoming packinghouse-door and the f.o.b. price, such as grading, packing, inspection fees, selling, and other costs.
- (2) Prices shown for California represent returns at the first delivery point by the producer. The first delivery point price is an equivalent price received by growers for fruit delivered at the local market, packinghouse, receiving shed, or any other first delivery point.

Value estimates in this report cover the marketing season or crop year and should not be confused with cash receipts from these crops for a calendar year. Value of utilized production for each State is the sum of the fresh market and processing values. The average price shown for the United States is obtained by dividing U.S. value of production by U.S. quantity utilized.

DEFINITIONS OF TERMS

Total Production - is the quantity actually harvested plus quantities which would have been acceptable for fresh market or processing but were not harvested because of economic or natural reasons.

Utilized Production - is the amount sold plus the quantities used at home or held in storage.

Unutilized Production - is the difference between total and utilized production which is fruit not harvested for economic or natural reasons and harvested fruit not sold or utilized.

Utilization - refers to first utilization, not necessarily final utilization. For example, frozen fruit includes some fruit that may be later used for making preserves. Grade-outs for fresh market fruit which are processed are included in the processing quantity. Fruit graded-out from canning or freezing and utilized for juice is included with juice.

Apples, Commercial Crop - orchards of 100 or more bearing age trees.

Prices - are a season average for all methods of sale. For a crop sold for both fresh market and processing, the season average price is a weighted average of the fresh and processing price.

Prices for fresh fruit are the average prices producers receive at the point of first sale. This is commonly referred to as the average price as sold. Since the point of first sale is not the same for all producers, prices for the various methods of sale are weighted by the proportionate quantity sold. For example, if in a given State part of the fruit is sold f.o.b. packed by growers, part is sold as bulk fruit at the packinghouse door, and some is sold retail at roadside stands, the fresh fruit average price as sold is a weighted average of the average price for each method of sale. The exception is fresh fruit sales in California, Washington and Oregon which are equivalent returns at packinghouse door. The equivalent packinghouse returns represent adjusted prices.

F.o.b. packed prices are adjusted to an equivalent incoming packinghouse door price by subtracting all costs that accumulate between the incoming packinghouse door and the f.o.b. price. These costs include grading, packing, inspecting fees, selling, and other costs.

Prices for fruit sold for processing are equivalent returns for fruit delivered to the processing plant door except for cranberries and California olives and clingstone peaches which are priced at the first delivery point.

Crop value estimates in this report cover the marketing season or crop year and should not be confused with cash receipts from these crops which are on a calendar year. The following procedure is used to compute State values for all commodity groups:

State Value Computation Procedure

Fresh Market Value	=	Fresh Market SAP	x	Fresh Market Utilization
Process Market Value	=	Process Market SAP	x	Process Market Utilization
"All" Sales Value	=	Fresh Market Value	+	Process Market Value
"All" Sales SAP	=	$\frac{\text{"All" Sales Value}}{\text{"All" Sales Utilization}}$		

For commodities with components not identified by market channel, substitute breakdown name for fresh/processing market and use the same procedure. The procedure used for computation of U.S. season average prices follows:

U.S. SAP Computation Procedure

Fresh Market SAP	=	$\frac{\text{Fresh Market Value for all States}}{\text{Fresh Market Utilization for all States}}$
Process Market SAP	=	$\frac{\text{Process Market Value for all States}}{\text{Process Market Utilization for all States}}$
"All" Sales SAP	=	$\frac{\text{Sales Value for all States}}{\text{Sales Utilization for all States}}$

FRUITS (NONCITRUS): MARKETING SEASONS FOR SPECIFIED CROPS 1/

- Apples: All South Atlantic States, Kentucky, Tennessee, Indiana, Illinois, Missouri, Arkansas, New Mexico, and California, June 1 to May 31; all other States, July 1 to June 30, except Washington and Oregon where the bulk of the crop is marketed August 1 to July 31.
- Apricots: Fresh fruit--May 25 to August 20.
Canning--June 15 to August 15.
Dried--California, June 20 to August 20.
- Avocados: California--November 1 to November 30, (following year.)
Florida--June 20 to April 30.
- Bananas: January 1 to December 31.
- Blueberries: May 20 to September 30.
- Berries, misc.: May 1 to November 30.
- Cherries: Fresh fruit--Sweet varieties, May 1 to August 15; Tart varieties, June 15 to August 20.
- Cranberries: September 5 to December 20.
- Dates: August 15 to March 15.
- Figs: Fresh fruit--June 5 to October 15.
Canning--August 1 to October 15.
Dried--California, June 20 to October 31.
- Grapes: Fresh fruit--California, May 25 to April 30; Arizona, June 5 to July 15; All other States, July 10 to October 31.
Crushed for juice, wine, and brandy--August 1 to December 15.
Dried for raisins--California, September 1 to May 30.
- Nectarines: California, June 10 to August 31.
- Olives: September 25 to March 15.
- Papayas: January 1 to December 31. (Peak harvest May 15 to July 15 and September 15 to December 31).
- Peaches: Fresh fruit--Georgia and South Carolina, May 20 to August 31; Other South Atlantic States, South Central States, and California, June 1 to September 30; New England States, New York, Michigan, and Idaho, August 1 to September 30; all other States, July 1 to September 30.
Canning--California, July 1 to September 10.
Dried--California, August 1 to October 10.

FRUITS (NONCITRUS): MARKETING SEASONS FOR SPECIFIED CROPS 1/--CONTINUED

- Pears: Fresh fruit--California, July 1 to April 30; Washington and Oregon, August 10 to May 31; Other States, July 1 to December 15.
Canning and dried--California, Washington and Oregon, August 1 to November 30.
- Pineapples: January 1 to December 31. (Peak harvest March 1 to July 31).
- Pomegranates: September 15 to November 10.
- Plums: Fresh fruit--May 25 to September 30.
Canning--June 1 to September 30.
- Prunes: Dried--August 1 to April 31.
- Prunes and plums: Fresh fruit and canning--August 10 to October 20.

TREE NUTS 1/

- Almonds: August 5 to November 15.
- Filberts: October 1 to September 30.
- Macadamia nuts: January 1 to December 31 (Peak harvest August 1 to December 31).
- Pecans: September 30 to March 15.
- Pistachios: September 1 to October 31.
- Walnuts: September 15 to December 30.

1/ For detail by States, see Agricultural Handbook No. 186, Fruits and Tree Nuts, Blooming, Harvesting, and Marketing Dates, Dec 1975.

UTILIZED PRODUCTION AND VALUE OF NONCITRUS FRUITS
BY KIND, UNITED STATES, 1978-82

CROP	UTILIZED PRODUCTION				
	1978	1979	1980	1981	1982
	1,000 TONS FRESH EQUIVALENT				
APPLES	3,772.0	4,050.6	4,400.2	3,846.5	4,055.1
APRICOTS	126.2	144.2	129.0	89.4	118.1
AVOCADOS	146.1	102.3	268.8	182.8	236.7
BANANAS	2.9	2.8	2.3	3.0	2.9
BUSHBERRIES 1/	66.5	68.0	82.1	84.9	
CHERRIES, SWEET	156.8	184.0	168.3	147.5	134.6
CHERRIES, TART	90.6	85.2	108.1	66.4	122.4
CRANBERRIES	122.9	123.8	134.9	129.6	151.9
DATES	21.6	21.3	22.4	22.3	23.9
FIGS	31.6	38.7	45.5	38.2	37.7
GRAPES	4,317.8	4,988.7	5,594.9	4,457.6	5,864.9
KIWIFRUIT 2/			4.2	5.5	11.5
NECTARINES	148.0	172.0	191.0	182.0	178.0
OLIVES	126.0	62.0	109.0	44.9	146.5
PAPAYAS	32.0	20.5	24.5	33.2	26.4
PEACHES 3/	1,257.9	1,417.1	1,477.0	1,319.9	1,051.0
PEARS	723.3	854.2	896.4	894.0	802.7
PINEAPPLES	675.0	681.0	657.0	636.0	670.0
POMEGRANATES	9.5	11.0	16.0	14.8	14.4
PRUNES AND PLUMS	633.7	661.2	821.2	762.5	568.7
TOTAL NONCITRUS FRUITS	12,460.4	13,688.6	15,152.8	12,961.0	14,217.4

CROP	VALUE OF UTILIZED PRODUCTION				
	1978	1979	1980	1981	1982
	1,000 DOLLARS				
APPLES	781,350	887,237	761,335	851,132	809,004
APRICOTS	31,364	38,718	37,505	27,765	35,933
AVOCADOS	94,233	128,498	101,259	121,099	109,576
BANANAS	1,055	1,138	1,099	1,542	1,645
BUSHBERRIES 1/	83,222	74,489	66,335	83,149	
CHERRIES, SWEET	107,828	111,182	93,230	100,994	94,120
CHERRIES, TART	79,334	80,505	43,725	59,060	34,645
CRANBERRIES	52,903	66,039	89,462	707,494	142,050
DATES	10,452	10,948	14,204	14,250	17,590
FIGS	10,049	15,444	13,910	12,579	10,499
GRAPES	1,005,794	1,179,238	1,341,092	1,323,513	1,361,210
KIWIFRUIT 2/			10,080	11,000	10,580
NECTARINES	45,436	33,884	44,045	41,610	44,254
OLIVES	38,178	25,296	40,137	31,222	75,795
PAPAYAS	8,304	9,513	9,964	12,412	11,485
PEACHES 3/	301,143	329,536	367,170	351,610	302,550
PEARS	158,724	174,295	175,832	167,321	147,179
PINEAPPLES	63,090	69,409	76,596	89,745	99,484
POMEGRANATES	2,214	3,564	4,144	4,114	3,341
PRUNES AND PLUMS	159,649	171,289	200,295	175,129	171,447
TOTAL NONCITRUS FRUITS	3,034,322	3,404,222	3,491,419	3,586,740	3,482,387

1/ ESTIMATES DISCONTINUED IN 1981.

2/ ESTIMATES BEGINNING 1980.

3/ UTILIZED PRODUCTION INCLUDES COLLIS AND CANNERY DIVERSIONS FOR CALIF CLINGSTONE PEACHES, BUT ARE EXCLUDED FROM VALUE.

CONTINUED

UTILIZED PRODUCTION AND VALUE OF NUTS
BY KIND, UNITED STATES, 1978-82

CROP	UTILIZED PRODUCTION				
	1978	1979	1980	1981	1982
	1,000 TONS				
ALMONDS 1/	142.7	303.7	264.4	334.4	283.5
FILBERTS	14.1	13.0	15.4	14.7	18.8
MACADAMIA NUTS	10.5	13.3	16.7	16.7	18.4
PECANS	125.0	105.3	91.8	169.6	109.3
PISTACHIOS	1.3	6.6	13.5	7.3	21.7
WALNUTS	160.0	208.0	197.0	225.0	234.0
TOTAL NUTS	453.6	651.9	598.8	767.7	685.7
	VALUE OF UTILIZED PRODUCTION 1,000 DOLLARS				
ALMONDS 1/	262,450	575,280	473,340	299,520	311,140
FILBERTS	11,321	12,369	17,740	11,550	12,783
MACADAMIA NUTS	11,287	16,769	24,174	26,454	27,136
PECANS	151,250	116,663	143,269	184,842	147,491
PISTACHIOS	3,100	27,520	55,145	19,759	63,068
WALNUTS	208,320	176,176	184,392	228,150	238,680
TOTAL NUTS	647,728	924,777	898,060	770,275	800,298

1/ PRODUCTION CONVERTED TO IN-SHELL EQUIVALENT TONS, USING INDUSTRY SHELLED RATIOS. VALUE ON SHELLLED BASIS.

FRUITS AND PLANTED NUTS BEARING AREA, UNITED STATES, 1978-82

YEAR	CITRUS FRUITS 1/	MAJOR		MISCELLANEOUS		PLANTED NUTS 4/	TOTAL
		DECIDUOUS FRUITS 2/	NONCITRUS FRUITS 3/	NONCITRUS	FRUITS 3/		
	1,000 ACRES						
1978	1,142,000	1,619,490	222,470	520,660	3,504,620		
1979	1,130,500	1,591,170	231,690	557,530	3,510,890		
1980	1,143,000	1,607,470	242,420	563,100	3,555,990		
1981	1,129,800	1,599,320	248,950	559,320	3,537,390		
1982	1,116,100	1,621,560	199,420	577,620	3,514,700		

1/ GRAPEFRUIT, LEMONS, LIMES, ORANGES, TANGELOS, TANGERINES, AND TEMPLERS. ACREAGE IS FOR THE YEAR OF HARVEST. 2/ COMMERCIAL APPLES, APRICOTS, CHERRIES, GRAPES, NECTARINES, PEACHES, PEARS, PLUMS, AND PRUNES. 3/ AVOCADOS, BANANAS, BERRIES, DATES, FIGS, KIWIFRUIT, OLIVES, PAPAYAS, PINEAPPLES, AND POMEGRANATES. 4/ ALMONDS, FILBERTS, MACADAMIA NUTS, PISTACHIOS, AND WALNUTS.

UTILIZATION OF PRODUCTION OF NONCITRUS
FRUITS, AND VALUE, UNITED STATES, 1978-82 - CONTINUED

YEAR	UTILIZED PRODUCTION 1/	FRESH	PROCESSED					WINE	OTHER	VALUE OF UTILIZED PRODUCTION 2/
			CANNED	DRIED	JUICE	FROZEN	WINE			
	1,000 TONS								1,000 DOLLARS	
1978	12,460.4	4,166.5	2,548.7	1,364.9	1,140.4	257.1	2,671.5	311.3	3,034,322	
1979	13,688.6	4,358.2	2,758.1	2,043.6	1,284.9	226.1	2,713.1	304.6	3,404,222	
1980	15,152.8	5,009.9	2,747.1	2,408.2	1,417.7	251.3	2,996.3	322.3	3,491,419	
1981	12,961.0	4,708.8	2,262.5	1,722.0	1,235.2	231.0	2,521.5	280.0	3,586,740	
1982	14,217.4	4,695.9	2,331.8	2,163.3	1,255.3	226.8	3,227.3	317.0	3,482,387	

1/ INCLUDES CULLS AND CANNERY DIVERSIONS FOR CALIF CLINGSTONE PEACHES (TONS): 1978-137.0; 1979-104.5; 1980-114.5; 1981-130.8; 1982-183.7. 2/ EXCLUDES CULLS AND CANNERY DIVERSIONS FOR CALIF CLINGSTONE PEACHES.

APPLES, COMMERCIAL CROP

YEAR AND STATE	PRODUCTION		PRICE PER POUND	VALUE OF UTILIZED PRODUCTION
	POUNDS			
	TOTAL	UTILIZED		
	MILLION UNITS		CENTS	1,000 DOLLARS
1978:				
ARK	13.0	13.0	10.9	1,417
CALIF	500.0	500.0	9.2	46,000
COLO	41.0	36.0	10.6	3,816
CONN	50.0	50.0	13.6	6,800
DEL	14.0	14.0	9.1	1,274
GA	22.0	22.0	11.5	2,530
IDAHO	130.0	130.0	14.7	19,110
ILL	89.0	89.0	12.8	11,392
IND	60.0	56.1	13.6	7,630
IDWA	8.9	8.9	13.8	1,228
KANS	10.0	10.0	11.1	1,110
KY	15.0	14.2	12.6	1,789
MAINE	75.0	75.0	13.2	9,900
MD	85.0	83.7	10.4	8,705
MASS	105.0	105.0	13.8	14,490
MICH	920.0	890.0	7.6	67,640
MINN	28.0	28.0	15.1	4,228
MO	40.0	40.0	15.3	6,120
N H	60.0	60.0	13.4	8,040
N J	90.0	90.0	11.3	10,170
N MEX	17.0	17.0	9.7	1,649
N Y	1,080.0	1,080.0	8.5	91,800
N C	324.0	322.0	7.9	25,438
OHIO	130.0	125.4	14.3	17,932
OREG	142.0	142.0	11.1	15,762
PA	400.0	400.0	8.9	35,600
R I	6.0	6.0	14.1	846
S C	26.0	26.0	12.0	3,120
TENN	8.0	7.7	14.2	1,093
UTAH	35.0	35.0	11.0	3,850
VT	49.0	49.0	12.8	6,272
VA	515.0	515.0	8.0	41,200
WASH	2,148.0	2,148.0	12.6	270,648
W VA	295.0	295.0	8.6	25,370
WIS	66.0	61.0	12.1	7,381
U. S	7,596.9	7,544.0	10.4	781,350

APPLES, COMMERCIAL CROP CONTINUED

YEAR AND STATE	PRODUCTION		PRICE PER POUND	VALUE OF UTILIZED PRODUCTION
	POUNDS			
	TOTAL	UTILIZED		
	MILLION UNITS		CENTS	1,000 DOLLARS
1979:				
ARK	13.0	17.0	11.5	1,955
CALIF	600.0	600.0	10.1	60,600
COLO	100.0	91.0	8.0	7,280
CONN	42.0	42.0	14.7	6,174
DEL	13.0	13.0	9.4	1,222
GA	35.0	35.0	11.2	3,920
IDAHO	125.0	125.0	15.0	18,750
ILL	110.0	110.0	12.4	13,640
IND	70.0	66.2	14.5	9,599
IOWA	12.1	11.6	13.5	1,566
KANS	15.0	14.1	9.5	1,340
KY	21.0	20.4	11.5	2,346
MAINE	86.0	86.0	14.6	12,556
MD	85.0	83.9	11.7	9,816
MASS	95.0	95.0	15.5	14,725
MICH	680.0	680.0	7.8	53,040
MINN	15.0	15.0	18.0	2,700
MO	70.0	70.0	13.1	9,170
N H	50.0	50.0	12.7	6,350
N J	110.0	110.0	10.6	11,660
N MEX	14.0	14.0	13.0	1,820
N Y	1,035.0	1,035.0	10.0	103,500
N C	362.0	361.0	7.2	25,992
OHIO	105.0	105.0	15.7	16,485
OREG	170.0	170.0	11.0	18,700
PA	535.0	535.0	8.7	46,545
R I	5.0	5.0	13.2	660
S C	35.0	33.0	13.8	4,554
TENN	10.0	10.0	14.7	1,470
UTAH	51.0	51.0	12.8	6,528
VT	49.0	49.0	12.1	5,929
VA	470.0	470.0	8.5	39,950
WASH	2,619.0	2,619.0	12.7	332,613
W VA	260.0	260.0	8.2	21,320
WIS	54.0	49.0	13.8	6,762
U S	8,126.1	8,101.2	10.9	881,237

CONTINUED

APPLES, COMMERCIAL CROP CONTINUED

YEAR AND STATE	PRODUCTION		PRICE PER POUND	VALUE OF UTILIZED PRODUCTION
	POUNDS			
	TOTAL	UTILIZED		
	MILLION UNITS		CENTS	1,000 DOLLARS
1980:				
ARK	7.0	7.0	9.0	630
CALIF	520.0	520.0	7.0	36,520
COLO	70.0	63.0	8.0	5,411
CONN	38.0	38.0	15.2	5,776
DEL	13.5	13.5	8.7	1,177
GA	36.0	36.0	12.3	4,442
IDAHO	165.0	165.0	13.5	22,298
ILL	101.0	101.0	12.1	12,176
IND	71.0	68.4	12.2	8,370
IOWA	8.4	8.3	13.8	1,146
KANS	11.0	10.4	10.3	1,066
KY	19.0	17.1	14.3	2,437
MAINE	85.0	85.0	14.0	11,933
MD	90.0	89.0	9.7	8,612
MASS	100.0	100.0	14.6	14,550
MICH	900.0	900.0	6.2	55,600
MINN	23.0	23.0	17.1	3,934
MO	56.0	56.0	12.0	6,728
N H	55.0	55.0	11.3	6,215
N J	110.0	110.0	9.6	10,572
N MEX	12.0	12.0	12.4	1,493
N Y	1,100.0	1,100.0	9.4	103,470
N C	410.0	406.0	6.7	27,400
OHIO	170.0	170.0	14.7	24,975
OREG	195.0	195.0	7.6	14,802
PA	570.0	570.0	7.5	42,743
R I	5.5	5.5	15.1	832
S C	32.0	32.0	11.3	3,608
TENN	8.0	7.2	16.4	1,181
UTAH	52.0	50.0	10.9	5,472
VT	50.0	50.0	15.4	7,682
VA	420.0	420.0	7.8	32,868
WASH	3,005.0	3,005.0	8.2	247,695
W VA	245.0	245.0	7.8	19,176
WIS	65.0	62.0	13.5	8,345
U S	3,819.4	3,800.4	8.7	761,335

CONTINUED

APPLES, COMMERCIAL CROP CONTINUED

YEAR AND STATE	PRODUCTION		PRICE PER POUND	VALUE OF UTILIZED PRODUCTION
	POUNDS			
	TOTAL	UTILIZED		
	MILLION UNITS		CENTS	1,000 DOLLARS
1981:				
ARK	16.0	14.5	9.6	1,392
CALIF	626.0	606.0	7.1	42,924
COLO	75.0	75.0	10.0	7,515
CONN	34.0	34.0	17.7	6,018
DEL	13.1	13.1	14.1	1,841
GA	45.0	40.0	9.3	3,729
IDAHO	135.0	130.0	16.0	20,740
ILL	103.0	103.0	12.9	13,247
IND	68.0	67.0	13.8	9,242
IOWA	11.0	11.0	15.6	1,715
KANS	14.0	11.9	10.3	1,230
KY	21.0	20.4	13.0	2,651
MAINE	80.0	80.0	17.4	13,916
MD	70.0	70.0	13.8	9,642
MASS	83.0	83.0	19.9	16,501
MICH	660.0	660.0	9.1	59,760
MINN	22.0	21.0	19.3	4,057
MO	62.0	62.0	16.4	10,170
N H	42.0	42.0	19.0	7,980
N J	95.0	95.0	13.0	12,330
N MEX	17.0	17.0	12.6	2,142
N Y	800.0	800.0	12.8	102,300
N C	375.0	372.0	7.5	28,004
OHIO	100.0	100.0	20.6	20,578
OREG	155.0	155.0	11.4	17,682
PA	400.0	400.0	9.5	37,981
R I	4.5	4.5	18.5	832
S C	36.0	35.0	8.0	2,801
TENN	11.0	9.5	12.9	1,230
UTAH	54.0	53.0	10.7	5,678
VT	28.0	28.0	17.3	4,852
VA	465.0	465.0	10.4	48,314
WASH	2,760.0	2,760.0	10.9	301,530
W VA	200.0	200.0	11.5	22,925
WIS	59.0	55.0	14.0	7,683
U S	7,739.6	7,692.9	11.1	851,132

APPLES, COMMERCIAL CROP CONTINUED

YEAR AND STATE	PRODUCTION		PRICE PER POUND	VALUE OF UTILIZED PRODUCTION
	POUNDS			
	TOTAL	UTILIZED		
	MILLION UNITS		CENTS	1,000 DOLLARS
1982:				
ARK	8.0	8.0	15.1	1,208
CALIF	480.0	480.0	11.2	53,847
COLO	40.0	40.0	10.3	4,109
CONN	50.0	50.0	16.1	8,050
DEL	14.5	14.5	9.8	1,423
GA	15.0	14.0	10.8	1,516
IDAHO	126.0	126.0	16.1	20,328
ILL	88.0	88.0	13.3	11,682
IND	77.0	75.0	13.8	10,363
IOWA	11.5	10.8	14.5	1,568
KANS	12.5	11.3	13.5	1,528
KY	12.0	11.4	15.4	1,759
MAINE	92.0	92.0	14.5	13,340
MD	80.0	80.0	13.7	10,976
MASS	100.0	100.0	17.3	17,290
MICH	980.0	980.0	6.9	68,000
MINN	25.0	24.0	19.0	4,559
MO	45.0	45.0	15.0	6,771
N H	50.0	50.0	15.5	7,750
N J	140.0	140.0	10.3	14,448
N MEX	12.0	12.0	12.4	1,484
N Y	1,130.0	1,130.0	8.9	100,490
N C	170.0	170.0	8.1	13,770
OHIO	150.0	150.0	13.5	20,254
OREG	150.0	150.0	10.0	15,045
PA	525.0	525.0	9.3	48,903
R I	6.0	6.0	16.0	960
S C	7.0	7.0	11.4	798
TENN	4.5	4.2	17.7	742
UTAH	54.0	54.0	12.9	6,948
VT	52.0	52.0	14.7	7,644
VA	500.0	500.0	9.7	48,388
WASH	2,615.0	2,615.0	9.7	252,895
W VA	240.0	240.0	9.4	22,597
WIS	60.0	55.0	13.8	7,566
U S	8,122.0	8,110.2	10.0	809,004

APPLES, COMMERCIAL CROP BY VARIETY 1/

VARIETY AND STATE	TOTAL PRODUCTION			
	1978	1979	1980	1981
	MILLION POUNDS			
CORTLAND				
CONN	3.8	3.2	4.0	3.8
IND	1.2	1.4	1.1	.7
MAINE	6.6	7.5	6.5	6.5
MASS	7.2	7.6	8.0	7.7
MICH	19.0	12.0	16.0	11.0
MINN	.8	.6	.6	2/
N H	4.5	5.3	5.0	4.4
N J	1.1	1.2	1.0	.7
N Y	91.0	86.0	90.0	61.0
OHIO	5.0	4.0	5.0	3.0
PA	7.5	6.4	7.7	4.0
R I	.3	.2	.2	.1
VT	2.0	2.0	2.0	1.2
WIS	9.0	8.0	11.1	8.8
U.S.	159.0	145.4	158.2	112.9
DELICIOUS				
ARK	3.5	4.3	1.2	4.6
CALIF	125.0	119.0	149.0	155.0
COLO	8.0	40.0	20.0	30.0
CONN	10.8	9.7	7.4	5.7
DEL	3.7	4.2	3.9	3.6
GA	13.0	21.7	22.0	28.5
IDAHO	81.1	77.5	102.3	92.5
ILL	22.0	26.0	24.0	25.0
IND	14.4	17.0	17.5	17.9
IOWA	2.4	3.1	2.3	2.8
KANS	2.3	3.5	2.2	3.2
KY	6.6	7.8	8.8	9.3
MAINE	8.6	10.5	10.2	8.6
MD	18.0	19.0	20.7	16.5
MASS	13.9	13.8	13.6	8.0
MICH	190.0	109.0	185.0	125.0
MINN	7.1	1.1	3.7	4.0
MO	16.6	23.2	15.7	21.8
N H	7.8	8.5	8.0	5.4
N J	30.3	37.6	41.0	32.3
N MEX	9.5	9.1	7.3	10.0
N Y	120.0	133.0	146.0	89.0
N C	157.2	162.0	194.0	172.0
OHIO	27.0	19.0	34.0	19.0
OREG	80.0	97.0	125.0	83.0
PA	54.0	82.4	83.2	52.0
R I	.9	.8	1.0	.7
S C	20.0	24.9	23.8	28.3
TENN	3.0	3.3	2.8	4.3
UTAH	19.0	30.0	33.3	35.6
VT	5.3	5.1	5.5	2.4
VA	141.6	131.6	126.0	125.6
WASH	1,368.3	1,681.4	2,011.0	1,828.0
W VA	39.5	43.9	39.0	28.0
WIS	12.0	7.5	11.3	10.1
U.S.	2,642.4	2,987.5	3,501.7	3,087.7

SEE FOOTNOTES ON PAGE 19.

CONTINUED

APPLES, COMMERCIAL CROP BY VARIETY CONTINUED

VARIETY AND STATE	TOTAL PRODUCTION			
	1978	1979	1980	1981
	MILLION POUNDS			
GOLDEN DELICIOUS				
ARK	1.8	3.1	.7	3.2
CALIF	70.0	79.0	88.0	93.0
COLO	8.0	15.0	13.0	13.0
CONN	1.3	1.6	1.7	1.5
DEL	2.4	1.5	2.0	2.1
GA	4.6	7.0	7.2	7.5
IDAHO	10.4	10.0	10.7	12.8
ILL	20.0	36.0	33.0	32.5
IND	11.1	12.8	13.6	11.9
IOWA	1.5	1.6	1.5	1.7
KANS	2.1	2.6	2.1	2.4
KY	2.7	4.0	3.3	5.9
MAINE	4.0	5.3	4.6	4.6
MD	13.5	14.5	14.7	11.4
MASS	1.6	1.7	1.5	1.5
MICH	46.0	39.0	55.0	50.0
MINN	.3	2/	.1	2/
MO	7.9	10.1	10.1	8.4
N H	.5	1.1	1.0	.9
N J	6.6	7.4	7.5	5.5
N MEX	2.2	2.8	2.3	3.0
N Y	60.0	64.0	54.0	50.0
N C	69.3	78.0	86.0	81.0
OHIO	17.0	20.0	27.0	16.0
OREG	21.5	23.0	17.0	20.0
PA	82.0	96.3	96.9	78.0
S C	4.1	6.3	5.4	5.7
TENN	2.1	2.8	2.4	3.1
UTAH	2.5	4.5	6.2	5.9
VT	.5	.6	.5	2/
VA	100.4	89.3	84.0	111.6
WASH	599.3	767.4	796.0	756.0
W VA	52.8	45.7	44.0	39.0
WIS	1.8	1.7	1.5	2.2
U.S.	1,240.8	1,455.7	1,494.5	1,441.3
GRANNY SMITH				
WASH	3/			16.0
GRAVENSTEIN				
CALIF	65.0	74.0	43.0	86.0
IDA RED				
MICH	3/			40.0
N Y	3/			51.0
OHIO	3/			1.0
PA	3/			2.0
U.S.	3/			94.0
JONATHAN				
ARK	4.7	6.5	2.6	5.3
CALIF	20.0	39.0	22.0	31.0
COLO	9.5	20.0	18.0	15.0
IDAHO	12.4	9.4	11.6	8.1
ILL	25.0	33.0	30.0	31.0
IND	11.5	13.6	13.9	12.9
IOWA	3.8	5.4	3.7	4.4
KANS	2.4	6.0	4.3	5.1
KY	1.2	2.3	2.2	1.9
MD	3.0	2.5	3.3	3.3
MICH	224.0	176.0	210.0	160.0
MINN	1.6	.4	.8	2/
MO	12.8	31.6	26.3	27.3

SEE FOOTNOTES ON PAGE 19.

CONTINUED

2025 RELEASE UNDER E.O. 14176

APPLES, COMMERCIAL CROP BY VARIETY CONTINUED

VARIETY AND STATE	TOTAL PRODUCTION			
	1978	1979	1980	1981
	MILLION POUNDS			
JONATHAN CONT'D				
N MEX	.9	.3	1.1	2/
OHIO	21.0	21.0	26.0	15.0
PA	16.5	20.3	21.7	16.0
TENN	.3	.4	.3	2/
UTAH	5.0	6.0	5.7	7.0
VA	10.3	9.4	8.4	9.3
WASH	12.9	13.1	15.0	11.0
W VA	5.9	6.0	7.0	6.5
WIS	2.3	2.2	2.1	2.2
U.S.	407.0	424.4	436.0	372.3
MC INTOSH				
CONN	22.4	18.5	15.6	15.5
IND	2.4	1.8	2.7	1.4
IOWA	.1	.1	.1	2/
MAINE	50.5	55.0	57.0	56.0
MD	2.0	1.5	1.4	1.5
MASS	64.6	59.0	63.0	54.0
MICH	161.0	105.0	150.0	95.0
MINN	3.5	3.2	3.7	3.7
N H	40.4	31.0	37.0	27.5
N J	6.0	6.4	5.0	6.5
N Y	317.0	308.0	359.0	239.0
OHIO	7.0	5.0	10.0	6.0
PA	18.0	18.2	18.0	14.0
R I	3.9	3.5	3.7	3.0
VT	37.0	37.0	37.5	21.5
WIS	25.0	21.5	24.0	23.0
U.S.	760.8	674.7	787.7	567.6
NORTHERN SPY				
MAINE	.8	1.2	1.2	1.0
MASS	.9	.6	.8	2/
MICH	79.0	93.0	80.0	65.0
N Y	27.0	26.0	28.0	20.0
PA 3/				2.0
VT	1.9	2.0	2.0	1.4
U.S.	109.6	122.8	112.0	89.4
R I GREENING				
MICH	17.0	13.0	16.0	10.0
N Y	156.0	126.0	133.0	86.0
PA 3/				1.0
U.S.	173.0	139.0	149.0	97.0
ROME BEAUTY				
CALIF	50.0	55.0	58.0	87.0
COLO	12.0	14.0	14.0	12.0
CONN	2.4	1.8	2.0	1.4
DEL	5.5	5.0	5.4	5.4
GA	.5	2.1	2.2	4.0
IDAHO	25.4	27.5	39.6	20.3
ILL	3.5	4.5	5.0	4.5
IND	6.6	7.6	6.9	7.7
KANS	.2	.4	2/	2/
KY	1.1	2.3	1.2	.8
MD	10.0	11.5	11.3	7.8
MASS	1.3	1.3	1.5	1.0
MICH	42.0	29.0	45.0	31.0
MO	.8	.6	.4	2/

SEE FOOTNOTES ON PAGE 19.

CONTINUED

APPLES, COMMERCIAL CROP BY VARIETY CONTINUED

VARIETY AND STATE	TOTAL PRODUCTION			
	1978	1979	1980	1981
	MILLION POUNDS			
ROME BEAUTY CONT'D				
N J	16.5	18.4	20.0	18.0
N MEX	3.4	1.4	1.0	2.4
N Y	121.0	116.0	114.0	97.0
N C	65.8	90.0	91.0	75.0
OHIO	26.0	17.0	32.0	19.0
OREG	1.8	2.0	3.0	2.0
PA	58.0	78.6	73.5	52.0
TENN	.3	.9	.4	2/
UTAH	7.0	8.0	5.7	4.3
VA	41.2	38.5	35.7	23.2
WASH	38.6	34.0	45.0	38.0
W VA	28.9	26.0	27.0	19.5
U.S.	569.8	593.4	640.8	533.3
STAYMAN				
DEL	1.1	1.1	1.1	1.1
GA	.2	1.0	1.4	1.5
IND	3.4	4.2	3.6	3.7
KANS	.2	.1	2/	2/
KY	1.3	1.6	1.2	.8
MD	12.0	12.0	12.8	10.4
MICH	26.0	20.0	26.0	21.0
N J	13.5	19.7	16.0	15.0
N MEX	.7	.1	.2	2/
N C	20.7	22.0	27.0	28.0
OHIO	11.0	8.0	19.0	11.0
PA	52.0	71.2	79.0	56.0
S C	.5	.7	.6	2/
TENN	1.3	1.5	1.1	1.5
VA	56.7	46.1	42.0	46.5
W VA	27.2	25.0	22.0	16.0
U.S.	227.8	234.3	253.0	212.5
WINESAP				
CALIF	5.0	5.0	3.0	2/
COLO	1.0	4.0	3.0	2/
DEL	.1	.2	.1	2/
IND	1.2	2.6	1.6	1.6
KANS	1.4	1.7	1.2	1.8
KY	.9	.4	.8	2/
MD	4.0	2.0	1.8	1.4
MO	1.2	2.5	2.1	2.0
N C	2.3	.4	2/	2/
PA	3/			2.0
S C	.5	.3	.2	2/
TENN	.3	.3	.4	2/
UTAH	.5	1.0	2/	2/
VA	30.9	27.3	23.1	26.0
WASH	107.4	91.7	105.0	92.0
W VA	5.0	4.7	6.0	2.5
U.S.	161.7	142.1	148.3	129.3
YELLOW NEWTOWN				
CALIF	130.0	175.0	113.0	124.0
OREG	35.0	44.0	45.0	45.0
U.S.	165.0	219.0	158.0	169.0
YORK IMPERIAL				
DEL	.3	.2	.2	2/
KANS	.2	.2	.1	2/
MD	17.5	16.0	17.8	12.7
PA	95.5	130.0	155.0	105.0
VA	123.6	119.9	94.5	118.2
W VA	112.4	87.9	82.0	73.5
U.S.	349.5	354.2	349.6	309.4

SEE FOOTNOTES ON PAGE 19.

CONTINUED

APPLES, COMMERCIAL CROP BY VARIETY CONTINUED

VARIETY AND STATE	TOTAL PRODUCTION			
	1978	1979	1980	1981
	MILLION POUNDS			
OTHER VARIETIES				
ARK	3.0	4.1	2.5	2.9
CALIF	35.0	56.0	44.0	50.0
COLO	2.5	7.0	2.0	5.0
CONN	9.3	7.2	7.3	6.1
DEL	.9	.8	.8	.9
GA	3.7	3.2	3.2	3.5
IDAHO	.7	.6	.8	1.3
ILL	9.5	10.5	9.0	10.0
IND	8.2	9.0	10.1	10.2
IOWA	1.1	1.9	.8	2.1
KANS	1.2	.5	1.1	1.5
KY	1.2	2.6	1.5	2.3
MAINE	4.5	6.5	5.5	3.3
MD	5.0	6.0	6.2	5.0
MASS	15.5	11.0	11.6	10.8
MICH	116.0	84.0	117.0	52.0
MINN	14.7	9.7	14.1	14.3
MO	.7	2.0	1.4	2.5
N H	6.8	4.1	4.0	3.8
N J	16.0	19.3	19.5	17.0
N MEX	.3	.3	.1	1.6
N Y	188.0	176.0	176.0	107.0
N C	8.7	9.6	12.0	19.0
OHIO	16.0	11.0	17.0	10.0
OREG	3.7	4.0	5.0	5.0
PA	16.5	31.6	35.0	16.0
R I	.9	.5	.6	.7
S C	.9	2.8	2.0	2.0
TENN	.7	.8	.6	2.1
UTAH	1.0	1.5	1.1	1.2
VT	2.3	2.3	2.5	1.5
VA	10.3	7.9	6.3	4.6
WASH	21.5	31.4	33.0	19.0
W VA	23.5	20.8	18.0	15.0
WIS	15.9	13.1	15.0	12.7
U.S.	565.5	559.6	586.6	421.9

TOTAL PRODUCTION BY VARIETIES

VARIETY	1978	1979	1980	1981
	MILLION POUNDS			
CORTLAND	159.0	145.4	158.2	112.9
DELICIOUS	2,642.4	2,987.5	3,501.7	3,087.7
GOLDEN DELICIOUS	1,240.8	1,455.7	1,494.5	1,441.3
GRANNY SMITH 3/				16.0
GRAVENSTEIN	65.0	74.0	43.0	86.0
IDA RED 3/				94.0
JONATHAN	407.0	424.4	436.0	372.3
MC INTOSH	760.8	674.7	787.7	567.5
NORTHERN SPY	109.6	122.8	112.0	89.4
R I GREENING	173.0	139.0	149.0	97.0
ROME BEAUTY	569.8	593.4	640.8	533.3
STAYMAN	227.8	234.3	253.0	212.5
WINESAP	161.7	142.1	148.3	129.3
YELLOW NEWTOWN	165.0	219.0	158.0	169.0
YORK IMPERIAL	349.5	354.2	349.6	309.4
OTHER VARIETIES	565.5	559.6	586.6	421.9
TOTAL	7,596.9	8,126.1	8,818.4	7,739.6

1/ ESTIMATES DISCONTINUED AFTER 1981 CROP.

2/ INCLUDED IN OTHER VARIETIES.

3/ VARIETY ESTIMATE BEGINS WITH THE 1981 CROP YEAR.

CONTINUED

APPLES, COMMERCIAL CROP

USE AND STATE	FRESH AND PROCESSED UTILIZATION 1/				
	QUANTITY				
	1978	1979	1980	1981	1982
	MILLION POUNDS				
FRESH:					
CALIF	140.0	130.0	160.0	144.0	147.0
COLO	23.4	42.0	43.0	41.0	23.0
CONN	43.5	35.0	32.0	28.0	41.0
IDAHO	84.0	79.0	112.0	85.0	92.0
ILL	73.0	81.0	72.4	72.5	63.0
IND	46.3	53.2	53.8	52.4	56.2
KANS	7.1	10.1		9.2	8.9
KY	13.6	18.9	15.6	18.9	11.1
MAINE	62.2	72.0	71.0	69.0	78.0
MD	40.2	47.1	40.9	41.2	48.0
MASS	84.3	80.0	75.0	70.5	83.5
MICH	350.0	235.0	325.0	240.0	365.0
MINN	22.9				
MO	36.9	52.0	45.0	49.1	35.5
N H	50.8	42.5	33.0	32.5	40.0
N J	54.0	58.0	52.0	55.0	56.0
N MEX	16.0	12.6			
N Y	425.0	405.0	410.0	350.0	410.0
N C	150.0	139.0	186.0	163.0	60.0
OHIO	106.4	92.0	745.0	91.0	122.0
OREG	112.0	115.0	139.0	119.0	121.0
PA	158.9	187.7	207.8	152.2	183.8
S C	16.0	20.0		22.0	
UTAH	28.0	43.0	42.0	40.5	43.0
VT	42.8	38.7	43.0	22.5	45.0
VA	146.0	140.0	132.0	173.0	172.0
WASH	1,680.0	1,859.7	2,250.0	2,070.0	2,030.0
W VA	102.1	88.4	88.6	97.4	87.2
WIS	48.0	36.0	47.6	40.5	39.8
OTH STS	47.0	75.7	112.4	92.8	74.7
U S	4,210.4	4,288.6	4,934.1	4,442.2	4,536.7
PROCESSED:					
CALIF	360.0	470.0	360.0	462.0	333.0
COLO	12.6	49.0	25.0	34.0	17.0
CONN	6.5	7.0	6.0	6.0	9.0
IDAHO	46.0	46.0	53.0	45.0	34.0
ILL	16.0	29.0	28.6	30.5	25.0
IND	9.8	13.0	14.6	14.6	18.8
KANS	2.9	4.0		2.7	2.4
KY	.6	1.5	1.5	1.5	.3
MAINE	12.8	14.0	14.0	11.0	14.0
MD	43.5	36.8	48.1	28.8	32.0
MASS	20.7	15.0	25.0	12.5	16.5
MICH	540.0	445.0	575.0	420.0	615.0
MINN	5.1				
MO	3.1	78.0	11.0	12.9	9.5
N H	9.2	7.5	22.0	9.5	10.0
N J	36.0	52.0	58.0	40.0	84.0
N MEX	1.0	1.4			
N Y	655.0	630.0	690.0	450.0	720.0
N C	172.0	222.0	220.0	209.0	110.0
OHIO	19.0	13.0	25.0	9.0	28.0
OREG	30.0	55.0	56.0	36.0	29.0
PA	241.7	347.3	362.2	247.8	341.2
S C	10.0	13.0		13.0	
UTAH	7.0	8.0	8.0	12.5	11.0
VT	6.2	10.3	7.0	5.5	7.0
VA	369.0	330.0	288.0	292.0	328.0
WASH	468.0	759.3	755.0	690.0	585.0
W VA	192.9	171.6	156.4	102.6	152.8
WIS	13.0	13.0	14.4	14.5	15.2
OTH STS	24.6	30.9	42.5	37.8	25.8
U S	3,333.6	3,812.6	3,866.3	3,250.7	3,573.5

SEE FOOTNOTES ON PAGE 25.

CONTINUED

APPLES, COMMERCIAL CROP CONTINUED

USE AND STATE	FRESH AND PROCESSED UTILIZATION 1/				
	PRICE PER UNIT				
	1978	1979	1980	1981	1982
	CENTS PER POUND				
FRESH:					
CALIF	13.0	16.9	13.6	18.9	21.0
COLO	13.4	11.1	10.2	14.1	13.8
CONN	15.0	16.4	17.3	20.1	18.4
IDAHO	18.9	20.8	18.3	22.6	20.1
ILL	14.5	15.0	15.0	16.0	16.4
IND	15.3	16.9	14.5	16.3	16.9
KANS	13.5	11.4		11.9	15.2
KY	13.0	12.1	15.2	13.6	15.7
MAINE	15.0	16.4	15.9	19.1	16.1
MD	16.1	16.7	16.0	19.0	18.8
MASS	16.0	17.4	17.9	22.2	19.6
MICH	11.0	11.5	9.5	13.0	9.7
MINN	17.6				
MO	16.1	14.0	13.9	19.4	17.6
N H	15.0	13.9	15.7	22.6	18.0
N J	15.7	15.5	15.2	18.2	17.1
N MEX	10.0	13.8			
N Y	13.5	17.5	18.0	21.0	14.5
N C	11.0	11.0	10.0	10.0	12.5
OHIO	16.0	17.1	16.5	22.0	15.5
OREG	12.7	14.0	9.4	13.8	10.9
PA	14.5	14.8	12.9	16.0	15.1
S C	16.2	19.4		9.6	
UTAH	12.4	14.0	12.0	13.0	14.7
VT	14.0	13.9	17.1	20.0	16.2
VA	16.4	16.7	15.3	17.8	16.5
WASH	13.7	15.5	9.7	13.4	10.7
W VA	15.6	13.9	13.7	16.9	14.7
WIS	14.2	17.0	16.2	17.0	17.1
OTH STS	15.3	15.4	15.6	15.6	17.1
U S	13.9	15.4	12.1	15.4	13.2
	DOLLARS PER TON				
PROCESSED:					
CALIF	153.00	163.00	81.00	68.00	138.00
COLO	110.00	108.00	82.00	102.00	110.00
CONN	83.10	106.00	88.00	139.00	115.00
IDAHO	142.00	99.00	68.00	68.00	108.00
ILL	101.00	100.00	92.00	108.00	108.00
IND	111.00	95.00	78.00	96.00	92.00
KANS	108.00	93.00		99.00	146.00
KY	88.00	76.00	88.00	108.00	108.00
MAINE	88.80	102.00	92.00	134.00	106.00
MD	102.00	107.00	86.00	126.00	122.00
MASS	94.50	112.00	90.00	136.00	112.00
MICH	108.00	118.00	85.00	136.00	105.00
MINN	72.00				
MO	105.00	82.00	86.00	99.00	109.00
N H	93.00	114.00	90.00	129.00	106.00
N J	94.90	103.00	92.00	116.00	116.00
N MEX	110.00	118.00			
N Y	103.00	103.00	86.00	127.00	114.00
N C	104.00	98.00	80.00	112.00	114.00
OHIO	102.00	112.00	84.00	123.00	95.00
OREG	106.00	93.00	62.00	70.00	128.00
PA	103.00	108.00	88.00	109.00	123.00
S C	105.00	103.00		106.00	
UTAH	103.00	130.00	108.00	65.00	114.00
VT	94.20	110.00	94.00	128.00	107.00
VA	93.40	99.00	88.00	119.00	122.00
WASH	170.00	114.00	77.00	70.00	121.00
W VA	97.40	103.00	90.00	125.00	127.00
WIS	83.90	96.00	88.00	110.00	99.00
OTH STS	96.00	102.00	86.00	108.00	113.00
U S	117.00	114.00	84.00	102.00	118.00

SEE FOOTNOTES ON PAGE 25.

APPLES, COMMERCIAL CROP

USE AND STATE	CANNED, JUICE AND FROZEN UTILIZATION 1/				
	QUANTITY				
	1978	1979	1980	1981	1982
	MILLION POUNDS				
CANNED:					
CALIF		134.0	124.0	120.0	70.0
MD	24.5	20.6	18.7	10.5	15.9
MICH	148.0	163.0	119.0	103.0	143.0
N J	12.7	17.2	21.7		
N Y	293.0	232.0	257.0	180.0	310.0
N C	52.3		56.7	74.0	22.0
OREG	11.3	17.0	16.7	10.1	6.4
PA	151.8	218.8	193.1	145.7	215.8
S C	5.3	7.3			
VA	194.5	193.0	163.9	150.8	191.0
WASH	78.9	100.0	89.0	97.0	80.0
W VA	111.2	101.5	84.1	47.2	94.7
OTH STS	140.7	132.3	58.5	64.1	99.8
U S	1,224.2	1,336.7	1,202.4	1,002.4	1,248.6
JUICE:					
CALIF	165.0	244.0	200.0	314.0	246.0
IDAHO	31.0	33.0			
ILL	6.4	11.6			
IND	8.2				
KY	.6	1.5	1.5	1.5	.3
MAINE	10.0	11.0			
MD	15.2	13.8	24.3	16.5	14.0
MASS	13.2	9.9	21.4	9.4	13.4
MICH	237.0	218.0	331.0	216.0	367.0
N J	21.3	32.2	35.0	20.1	33.7
N Y	250.0	289.0	335.0	214.0	303.0
N C	112.0	151.8	157.0	133.4	63.0
OHIO	12.0	11.0	17.5	7.8	23.0
OREG	14.2	33.5	34.1	20.9	13.5
PA	70.3	123.0	161.9	97.4	118.4
S C	4.7	5.7		9.4	
UTAH	7.0				
VT	4.0	8.1			
VA	132.7	111.6	91.4	105.8	109.0
WASH	265.0	491.2	505.0	430.0	331.0
W VA	63.8	56.7	56.2	35.0	41.2
WIS	8.7	8.5	7.3		
OTH STS	42.3	88.7	158.3	167.2	131.3
U S	1,494.6	1,953.8	2,136.9	1,798.4	1,807.8

SEE FOOTNOTE ON PAGE 25.

CONTINUED

APPLES, COMMERCIAL CROP CONTINUED

USE AND STATE	CANNED, JUICE AND FROZEN UTILIZATION 1/				
	PRICE PER TON				
	1978	1979	1980	1981	1982
	DOLLARS				
CANNED:					
CALIF		177.00	97.00	89.00	155.00
MD	105.00	117.00	106.00	130.00	134.00
MICH	124.00	134.00	102.00	145.00	127.00
N J	111.00	108.00	97.00		
N Y	111.00	118.00	94.00	138.00	124.00
N C	124.00		104.00	126.00	133.00
OREG	132.00	116.00	84.00	84.00	140.00
PA	111.00	117.00	106.00	119.00	135.00
S C	112.00	120.00			
VA	99.30	110.00	96.00	129.00	131.00
WASH	164.00	132.00	70.00	87.00	145.00
W VA	165.00	108.00	103.00	128.00	134.00
OTH STS	153.00	119.00	107.00	124.00	127.00
U S	119.00	125.00	97.40	121.00	132.00
JUICE:					
CALIF	143.00	155.00	69.00	59.00	133.00
IDAHO	140.00	98.00			
ILL	86.00	90.00			
IND	110.00				
KY	88.00	76.00	88.00	108.00	108.00
MAINE	80.00	100.00			
MD	97.00	89.00	76.00	119.00	104.00
MASS	80.00	90.00	84.00	128.00	102.00
MICH	90.00	102.00	72.00	120.00	86.00
N H		90.00	86.00	124.00	103.00
N J	86.00	100.00	86.00	110.00	102.00
N Y	86.60	82.00	76.00	110.00	95.00
N C	94.00	90.00	80.00	104.00	98.00
OHIO	94.00	110.00	82.00	121.00	90.00
OREG	88.00	82.00	52.00	60.00	120.00
PA	88.00	91.00	64.00	93.00	102.00
S C	98.00	82.00		108.00	
UTAH	103.00				
VT	80.00	100.00			
VA	86.00	80.00	72.00	104.00	101.00
WASH	170.00	108.00	76.00	65.00	112.00
W VA	85.00	90.00	65.00	100.00	102.00
WIS	76.00	82.00	74.00		
OTH STS	87.30	101.00	76.00	92.90	100.00
U S	110.00	103.00	73.70	87.90	103.00

SEE FOOTNOTE ON PAGE 25.

CONTINUED

APPLES, COMMERCIAL CROP CONTINUED

USE AND STATE	DRIED AND OTHER UTILIZATION 1/				
	QUANTITY				
	1978	1979	1980	1981	1982
	MILLION POUNDS				
FROZEN:					
MD	1.6	1.9	4.2	1.6	1.8
MICH	122.0	57.0	80.0	98.0	96.0
N J		1.6			
N Y	44.0	46.0	45.0	25.0	43.0
PA	3.2	2.6	5.3	2.4	1.1
W VA	9.4	10.7	13.5	17.5	16.4
OTH STS	27.2	16.8	19.5	28.2	32.5
U S	207.4	136.6	167.5	172.7	190.8
DRIED:					
CALIF	64.0	92.0	36.0	28.0	17.0
N Y	47.0	47.0	34.0	19.0	32.0
WASH	97.5				
OTH STS	12.5	116.7	124.7	143.0	160.9
U S	221.0	255.7	194.7	190.0	209.9
OTHER (INCLUDES VINEGAR, WINE, JAM, FRESH SLICES FOR PIE MAKING):					
MD	2.2	.5	.9	.2	.3
MICH	33.0	7.0	45.0	3.0	9.0
N J		1.0			
N MEX	1.0	1.4			
N Y	21.0	16.0	19.0	12.0	32.0
N C	7.7				
PA		2.9	1.9	2.3	5.9
VA			18.3	12.0	2.5
WASH	26.6	60.1	44.0	27.0	25.0
W VA	8.5	2.7	2.6	2.9	.5
OTH STS	86.4	38.2	33.1	27.8	41.2
U S	186.4	129.8	164.8	87.2	116.4

SEE FOOTNOTES ON PAGE 25.

CONTINUED

APPLES, COMMERCIAL CROP CONTINUED

USE AND STATE	DRIED AND OTHER UTILIZATION 1/				
	PRICE PER TON				
	1978	1979	1980	1981	1982
	DOLLARS				
FROZEN:					
MD	124.00	128.00	92.00	173.00	152.00
MICH	128.00	130.00	106.00	162.00	144.00
N J		138.00			
N Y	125.00	142.00	124.00	178.00	134.00
PA	126.00	136.00	118.00	154.00	150.00
W VA	110.00	127.00	120.00	150.00	148.00
OTH STS	126.00	124.00	107.00	142.00	148.00
U S	126.00	133.00	112.00	160.00	143.00
DRIED:					
CALIF	156.00	165.00	94.00	80.00	134.00
N Y	111.00	110.00	90.00	134.00	118.00
OTH STS	171.00	122.00	71.30	69.00	135.00
U S	154.00	135.00	78.70	77.10	132.00
OTHER (INCLUDES VINEGAR, WINE, JAM, FRESH SLICES FOR PIE MAKING):					
MD	87.00	99.00	67.00	127.00	127.00
MICH	95.90	122.00	92.00	160.00	120.00
N J		82.00			
N MEX	110.00	118.00			
N Y	123.00	140.00	88.00	164.00	159.00
N C	96.20				
PA		87.00	64.00	91.00	112.00
VA			70.00	87.00	87.00
WASH	169.00	117.00	107.00	96.00	76.00
W VA	82.00	98.00	65.00	138.00	106.00
OTH STS	108.00	89.00	85.80	100.00	127.00
U S	115.00	110.00	91.00	109.00	122.00

1/ MISSING DATA INCLUDED IN OTHER STATES TO AVOID DISCLOSURE OF INDIVIDUAL OPERATIONS.

BERRIES

CROP, STATE AND YEAR	AREA HARVESTED ACRES	YIELD PER ACRE POUNDS	PRODUCTION		UTILIZATION		PRICE PER POUND			VALUE OF UTILIZED PRODUCT 1,000 DOLLARS
			TOTAL	UTILIZED	FRESH	PROCESSED	FRESH	PROCESSED	ALL	
					1,000 POUNDS		CENTS			
CULTIVATED BLACKBERRIES: 1/										
OREGON										
1978	3,000	6,700	20,100	20,100	400	19,700	55.5	50.7	50.8	10,211
1979	2,500	5,600	14,000	14,000	550	13,450	65.2	59.0	59.3	9,166
1980	3,400	8,470	32,000	28,800	400	28,400	41.2	20.1	20.4	5,973
1981	3,000	6,000	19,750	18,000	450	17,550	39.5	17.2	17.5	3,156
WASH										
1978	200	5,300	1,120	1,060	45	1,015	52.5	43.9	49.1	520
1979	200	2,540	508	508	21	487	50.0	55.4	55.2	200
1980	240	3,500	974	840	37	803	55.0	14.0	15.8	133
1981	220	3,750	1,025	825	250	575	55.0	8.3	22.5	186
TOTAL										
1978	3,200	6,613	21,220	21,160	445	20,715	55.2	50.6	50.7	10,731
1979	2,700	5,373	14,508	14,508	571	13,937	65.6	57.9	58.2	9,445
1980	3,640	8,143	32,974	29,640	437	29,203	42.4	19.9	20.3	6,006
1981	3,220	5,846	20,775	18,825	700	18,125	39.3	16.9	17.8	3,342
BLUEBERRIES: 1/										
MAINE										
1978	14,800	1,220	18,100	18,100		18,100		51.0	51.0	9,231
1979	14,800	1,190	17,600	17,600		17,600		36.0	36.0	6,335
1980	14,800	1,430	21,200	21,200		21,200		33.0	38.0	8,056
1981	17,300	1,260	21,800	21,800		21,800		42.0	42.0	9,155
MICH										
1978	9,000	3,000	27,000	27,000	12,500	14,500	64.4	67.4	66.0	17,820
1979	9,500	3,790	36,000	36,000	10,800	25,200	55.4	40.4	44.9	16,164
1980	9,400	4,360	41,000	41,000	14,500	26,500	56.5	31.0	40.0	16,403
1981	9,800	5,310	52,000	52,000	14,000	38,000	67.9	44.9	51.1	26,568
N J										
1978	7,800	2,860	22,308	22,308	11,418	10,890	75.0	63.6	69.4	15,482
1979	7,800	3,000	23,400	23,400	17,400	6,000	64.0	44.5	59.0	13,806
1980	8,100	3,210	26,000	26,000	20,000	6,000	69.0	34.5	61.0	15,879
1981	7,800	3,590	28,000	28,000	20,700	7,300	71.0	48.0	65.0	18,291
N C										
1978	3,400	2,310	7,850	7,850	3,825	4,025	71.4	46.8	58.8	4,615
1979	3,300	2,330	7,980	7,700	5,130	2,570	71.2	44.0	62.1	4,783
1980	3,000	1,990	6,000	5,970	5,520	450	85.1	41.6	81.8	4,885
1981	3,200	2,230	7,150	7,150	5,880	1,270	84.6	37.0	76.1	5,444
OREG										
1978	450	5,000	2,250	2,250	750	1,500	64.0	67.0	66.0	1,485
1979	500	5,800	2,900	2,900	1,000	1,900	66.5	46.6	53.5	1,550
1980	550	5,450	3,200	3,000	1,400	1,600	67.2	29.3	47.0	1,410
1981	580	6,030	3,500	3,500	1,900	1,600	72.0	49.9	61.9	2,166
WASH										
1978	800	6,030	5,031	4,824	928	3,896	68.4	63.1	64.1	3,092
1979	800	5,990	5,002	4,792	1,373	3,419	67.3	49.8	54.8	2,627
1980	800	6,380	5,335	5,100	1,765	3,335	61.6	51.0	54.7	2,798
1981	800	5,750	4,670	4,600	2,036	2,564	69.4	53.4	60.5	2,782
TOTAL										
1978	36,250	2,271	82,539	82,332	29,421	52,911	67.4	59.1	62.8	51,726
1979	36,700	2,517	92,882	92,392	35,703	56,689	62.6	40.4	49.0	45,266
1980	36,650	2,790	102,735	102,270	43,185	59,085	66.5	35.0	43.3	49,417
1981	39,480	2,965	117,120	117,050	44,516	72,534	71.8	44.6	54.9	64,317

SEE FOOTNOTE ON PAGE 27.

CONTINUED

BERRIES CONTINUED

CROP, STATE AND YEAR	AREA HARVESTED	YIELD PER ACRE	PRODUCTION		UTILIZATION		PRICE PER POUND			VALUE OF UTILIZED PRODUCTION
			TOTAL	UTILIZED	FRESH	PROCESSED	FRESH	PROCESSED	ALL	
	ACRES	POUNDS	1,000 POUNDS				CENTS			1,000 DOLLARS
BOYSENBERRIES & YOUNGBERRIES: 1/										
OREGON										
1978	750	2,670	2,000	2,000	100	1,900	80.0	81.5	81.4	1,628
1979	500	2,940	2,350	2,350	100	2,250	80.0	79.7	79.7	1,873
1980	1,000	3,500	3,800	3,500	100	3,400	45.8	30.6	31.0	1,086
1981	950	3,000	2,390	2,850	100	2,750	43.4	23.4	28.9	824
CURRENTS: 1/										
WASH										
1978	30	1,950	150	156	?	154	37.9	30.0	30.1	47
1979	80	1,390	115	111	2	109	37.8	42.4	42.3	47
1980	60	1,620	97	97	2	95	47.5	45.0	45.1	44
1981	50	1,200	60	60	?	58	40.0	42.8	42.7	26
LOGANBERRIES: 1/										
OREG										
1978	470	5,320	2,500	2,500	50	2,450	45.0	41.3	41.4	1,035
1979	400	2,900	1,160	1,160	30	1,130	60.0	60.9	60.9	706
1980	420	5,360	2,250	2,250	30	2,220	44.6	24.5	24.8	557
1981	450	3,420	1,680	1,540	40	1,500	23.0	18.8	18.9	291
BLACK RASPBERRIES: 1/										
OREG										
1978	1,200	1,580	1,900	1,900	40	1,860	75.0	75.0	75.0	1,425
1979	1,300	1,850	2,400	2,400	30	2,370	90.0	93.0	93.0	2,231
1980	1,700	1,820	3,100	3,100	30	3,070	58.8	45.4	45.5	1,411
1981	1,600	2,010	3,270	3,220	20	3,200	50.0	24.1	24.3	791
WASH										
1978	130	1,360	177	177	3	174	75.0	75.0	75.0	133
1979	130	2,200	286	286	2	284	86.7	86.7	86.7	248
1980	120	1,460	175	175	2	173	41.0	41.0	41.0	72
1981	120	670	140	80	4	76	47.5	25.0	26.1	21
TOTAL										
1978	1,330	1,562	2,077	2,077	43	2,034	75.0	75.0	75.0	1,558
1979	1,430	1,878	2,686	2,686	32	2,654	89.8	92.3	92.3	2,479
1980	1,820	1,799	3,275	3,275	32	3,243	57.7	45.2	45.3	1,483
1981	1,720	1,919	3,410	3,300	24	3,276	49.6	24.1	24.3	802
RED RASPBERRIES: 1/										
OREG										
1978	1,900	5,050	9,600	9,600	400	9,200	71.0	74.8	74.6	7,162
1979	2,000	5,000	10,000	10,000	700	9,300	60.4	68.8	68.2	6,821
1980	2,100	5,050	11,000	10,600	600	10,000	50.7	27.4	28.7	3,044
1981	2,000	6,080	12,000	12,000	600	11,400	54.2	51.0	51.2	6,139
WASH										
1978	2,600	5,100	13,460	13,260	1,017	12,243	66.7	70.7	70.4	9,335
1979	2,600	4,900	13,013	12,740	1,790	10,950	75.5	69.5	69.5	8,852
1980	2,800	4,500	14,800	12,500	2,240	10,360	69.6	30.3	37.3	4,698
1981	3,000	4,750	14,250	14,250	2,350	11,900	68.1	48.8	52.0	7,408
TOTAL										
1978	4,500	5,080	23,060	22,860	1,417	21,443	67.9	72.5	72.2	16,497
1979	4,600	4,943	23,013	22,740	2,490	20,250	71.3	68.6	68.9	15,673
1980	4,900	4,735	25,800	23,200	2,840	20,360	65.6	28.9	33.4	7,742
1981	5,000	5,250	26,250	26,250	2,950	23,300	65.3	49.9	51.6	13,547

1/ ESTIMATES DISCONTINUED 1981.

SWEET CHERRIES

STATE AND YEAR	PRODUCTION		UTILIZATION 1/		PRICE PER POUND			VALUE OF UTILIZED PRODUCTION
	TOTAL	UTILIZED	FRESH	PROCESSED 2/	FRESH	PROCESSED	ALL	
	TONS				DOLLARS			1,000 DOLLARS
CALIF:								
1978	14,000	14,000	11,000	3,000	1,070.00	797.00	1,012.00	14,168
1979	36,500	36,500	20,200	16,300	890.00	714.00	811.00	29,616
1980	46,000	46,000	32,400	13,600	720.00	424.00	632.00	29,094
1981	34,250	34,250	25,500	8,750	801.00	492.00	722.00	24,731
1982	12,300	12,300	9,700	2,600	1,536.00	707.00	1,361.00	16,737
COLO: 3/								
1978	150	150	150		1,048.00		1,048.00	157
IDAHO:								
1978	2,500	2,500	1,000	1,500	618.00	740.00	691.00	1,728
1979	3,000	3,000	1,100	1,900	600.00	520.00	549.00	1,647
1980	3,100	3,100	1,900	1,200	864.00	380.00	677.00	2,099
1981	3,100	1,900	1,600	300	764.00	470.00	717.00	1,363
1982	2,700	2,060	1,300	760	728.00	480.00	636.00	1,311
MICH:								
1978	37,500	37,500	2,000	35,500	490.00	456.00	458.00	17,175
1979	27,000	27,000	1,500	25,500	590.00	396.00	407.00	10,989
1980	29,000	29,000	2,000	27,000	1,200.00	291.00	354.00	10,266
1981	23,000	23,000	1,500	21,500	582.00	361.00	375.00	8,635
1982	31,000	25,500	2,000	23,500	850.00	360.00	398.00	10,160
MONT:								
1978	1,850	1,850	1,640	210	768.00	175.00	701.00	1,297
1979	2,950	2,950	2,500	450			682.00	2,012
1980	700	700	520	180			621.00	435
1981	1,240	1,240	1,110	130			711.00	882
1982	3,400	3,100					624.00	1,934
N Y:								
1978	3,500	3,500	800	2,700	818.00	461.00	543.00	1,901
1979	4,200	4,050	950	3,100	608.00	398.00	447.00	1,810
1980	5,100	4,600	870	3,730	802.00	368.00	450.00	2,070
1981	1,750	1,050	450	600	950.00	375.00	622.00	653
1982	3,500	3,200	1,570	1,630	882.00	344.00	608.00	1,946

SEE FOOTNOTES ON PAGE 29.

CONTINUED

SWEET CHERRIES CONTINUED

STATE AND YEAR	PRODUCTION		UTILIZATION 1/		PRICE PER TON			VALUE OF UTILIZED PRODUCTION 1,000 DOLLARS
	TOTAL	UTILIZED	FRESH	PROCESSED 2/	FRESH	PROCESSED	ALL	
	TONS				DOLLARS			
OREG:								
1978	35,000	35,000	8,900	26,100	700.00	607.00	630.00	22,050
1979	38,000	38,000	8,600	29,400	570.00	537.00	544.00	20,677
1980	33,000	31,800	7,400	24,400	610.00	466.00	500.00	15,900
1981	40,000	37,000	6,600	30,400	732.00	503.00	544.00	20,122
1982	35,000	35,000	11,500	23,500	890.00	483.00	617.00	21,586
PA:								
1978	580	580	580		948.00		948.00	550
1979	730	730	730		1,122.00		1,122.00	819
1980	700	700	670				1,090.00	763
1981	300	300	298				1,147.00	344
1982	600	580					1,372.00	796
UTAH:								
1978	2,400	2,400	1,200	1,200	800.00	729.00	765.00	1,836
1979	4,200	4,200	2,950	1,250			599.00	2,516
1980	4,100	4,100	3,500	600			601.00	2,464
1981	4,500	4,380	2,880	1,500			636.00	2,785
1982	2,100	2,070	1,920	150			851.00	1,762
WASH:								
1978	59,300	59,300	39,400	19,900	879.00	620.00	792.00	46,966
1979	67,600	67,600	47,500	20,100	670.00	463.00	608.00	41,101
1980	52,000	48,300	37,200	11,100	715.00	319.00	624.00	30,139
1981	46,400	44,400	31,800	12,600	1,134.00	430.00	934.00	41,479
1982	66,000	50,800	36,100	14,700	885.00	404.00	746.00	37,888
U S:								
1978	156,780	156,780	66,670	90,110	867.00	555.00	688.00	107,828
1979	184,180	184,030	86,030	98,000	713.00	509.00	604.00	111,182
1980	173,700	168,300	86,460	81,840	723.00	375.00	554.00	93,230
1981	154,540	147,520	71,738	75,782	936.00	447.00	685.00	100,994
1982	156,600	134,610	67,610	67,000	968.00	427.00	699.00	94,120

1/ DATA NOT PUBLISHED FOR SOME STATES TO AVOID DISCLOSURE OF INDIVIDUAL OPERATIONS BUT INCLUDED IN U.S.
 2/ CANNED, BRINED, AND OTHER ITEMS ON PAGE 31 AND 32. 3/ ESTIMATES DISCONTINUED AFTER 1978 CROP.

TART CHERRIES

STATE AND YEAR	PRODUCTION		UTILIZATION 1/		PRICE PER POUND			VALUE OF UTILIZED PRODUCTION
	TOTAL	UTILIZED	FRESH	PROCESSED 2/	FRESH	PROCESSED	ALL	
	MILLION POUNDS				CENTS			1,000 DOLLARS
COLO:								
1978	1.3	1.3	.1	1.2	33.0	42.3	41.6	541
1979	1.7	1.7	.1	1.6	45.0	44.1	44.2	751
1980	2.0	1.8	.2	1.6	35.0	20.0	21.7	391
1981	1.6	1.6	.1	1.5	32.0	30.1	30.3	484
1982	.4	.4	.1		21.0		18.8	75
MICH:								
1978	128.0	128.0	3.0	125.0	40.5	44.5	44.4	55,832
1979	100.0	100.0	2.0	98.0	45.2	48.6	48.5	48,500
1980	150.0	149.0	4.0	145.0	27.7	20.2	20.4	30,396
1981	88.0	88.0	2.0	86.0	44.2	46.4	46.4	40,788
1982	260.0	195.0	5.0	190.0	23.1	13.5	13.7	26,805
N Y:								
1978	18.9	18.9	.2	18.7	39.2	42.9	42.9	8,108
1979	27.3	27.3	.2	27.1	41.8	46.2	46.2	12,613
1980	30.4	30.4	.1	30.3	38.3	19.0	19.1	5,806
1981	7.0	7.0	.1	6.9	51.4	45.0	45.1	3,156
1982	21.0	21.0	.2	20.8	48.1		14.8	3,112
OHIO: 3/								
1978	.2	.2	.2		60.0		60.0	120
OREG:								
1978	3.8	3.8	.5	3.3	22.6	42.0	39.4	1,497
1979	3.5	3.5	.6	2.9	25.1	47.2	43.4	1,519
1980	5.0	5.0	.7	4.3	24.6	19.6	20.3	1,015
1981	5.0	5.0	.5	4.5	33.4	32.1	32.2	1,612
1982	5.0	5.0	.6	4.4	30.0	14.3	16.2	809
PA:								
1978	6.2	6.2	.8	5.4	36.0	42.6	41.7	2,585
1979	6.3	6.3	.8	5.5	41.3	50.8	49.6	3,125
1980	5.6	5.6	.8	4.8	45.0	24.6	27.5	1,540
1981	8.0	8.0	.5	7.5	55.0	45.0	45.6	3,650
1982	5.5	5.5	.8	4.7	54.0	15.0	20.7	1,137
UTAH:								
1978	11.3	11.3	.1	11.2	40.0	39.0	39.0	4,407
1979	17.0	17.0	.4	16.6	30.0	43.9	43.6	7,412
1980	13.0	12.9	.3	12.6	21.0	18.8	18.9	2,438
1981	14.0	13.6	.6	13.0	36.0	37.3	37.2	5,065
1982	9.0	9.0	.3	8.7	19.0	17.0	17.1	1,536
WIS:								
1978	11.5	11.5	.1	11.4	41.0	45.6	45.6	5,244
1979	14.6	14.6	.2	14.4	30.2	45.3	45.1	6,585
1980	12.1	11.5	.2	11.3	24.4	18.5	18.6	2,139
1981	9.6	9.6	.2	9.4	42.0	44.9	44.8	4,305
1982	10.0	9.0	.4	8.6	26.2	12.4	13.0	1,171
U S:								
1978	181.2	181.2	5.0	176.2	38.6	43.9	43.8	79,334
1979	170.4	170.4	4.3	166.1	39.4	47.5	47.2	80,505
1980	218.1	216.2	6.3	209.9	29.5	19.9	20.2	43,725
1981	133.2	132.8	4.0	128.8	42.7	44.5	44.5	59,060
1982	310.9	244.9	7.4	237.5	27.6	13.7	14.1	34,645

1/ DATA NOT PUBLISHED FOR SOME STATES TO AVOID DISCLOSURE OF INDIVIDUAL OPERATIONS BUT INCLUDED IN U.S. 2/ CANNED, FROZEN, AND OTHER PROCESSED ITEMS ON PAGE 31 AND 32. 3/ ESTIMATES DISCONTINUED AFTER 1978 CROP.

CHERRIES

CROP, USE AND STATE	PROCESSED UTILIZATION 1/				
	CANNED, FROZEN, JUICE, BRINED AND OTHER				
	QUANTITY				
	1978	1979	1980	1981	1982
MILLION UNITS					
TART CHERRIES:					
CANNED					
MICH	34.0	29.0	52.0	27.0	55.0
N Y	4.7	5.3	10.5	2.4	10.0
PA	4.5	5.0	4.7	7.5	4.7
OTH STS	4.3	5.6	3.9	2.3	1.6
U S	47.5	45.9	71.1	39.2	71.3
FROZEN					
MICH	90.0	68.0	91.0	58.0	132.0
N Y	13.6	20.2	19.3	4.3	10.1
OREG			3.2	3.6	3.4
UTAH	11.2	15.2	12.3	13.0	8.7
WIS	8.1	10.2	8.6	7.3	6.5
OTH STS	3.4	2.7	1.0	1.3	.1
U S	126.3	116.3	135.4	87.5	160.8
OTHER (JUICE, WINE, BRINED)					
MICH	1.0	1.0	2.0	1.0	3.0
OTH STS	1.4	2.9	1.4	1.1	2.4
U S	2.4	3.9	3.4	2.1	5.4
SWEET CHERRIES:					
CANNED					
MICH	5,500	5,100	8,500	5,500	3,300
OREG	4,400	5,800	3,700	3,100	4,900
WASH	2,400	3,600	2,200	1,700	2,500
OTH STS	500	350			
U S	12,800	14,850	14,400	10,300	10,700
BRINED:					
CALIF		15,500	13,600		
IDAHO	1,500	1,900	1,200	300	760
MICH	22,800	19,300	17,100	12,000	15,900
N Y	2,400	2,700	2,650		
OREG	18,850	21,300	18,850	24,800	17,800
UTAH	1,100	1,200		1,500	
WASH	12,900	12,800	5,300	7,200	7,100
OTH STS	2,500		800	9,217	4,240
U S	62,050	74,700	59,500	55,017	45,800
OTHER (FROZEN, JUICE, ETC.)					
MICH			1,400	4,000	4,300
MONT	110	450			
OREG	2,850	2,300	1,850	2,500	800
WASH	4,600	3,700	3,600	3,700	5,100
OTH STS	7,600	2,000	1,090	265	300
U S	15,160	8,450	7,940	10,465	10,500

SEE FOOTNOTES ON PAGE 59.

CONTINUED

CHERRIES CONTINUED

CROP, USE AND STATE	PROCESSED UTILIZATION 1/				
	CANNED, FROZEN, JUICE, BRINED AND OTHER				
	PRICE PER UNIT				
	1978	1979	1980	1981	1982
	CENTS PER POUND				
TART CHERRIES:					
CANNED					
MICH	34.0	43.6	19.1	46.4	13.4
NY		52.8	19.5		
PA	42.6	50.9	25.0	45.0	15.0
OTH STS	44.6	45.0	44.4	41.7	14.5
U S	44.4	49.0	19.5	45.6	13.7
FROZEN					
MICH	44.6	48.6	20.8	46.4	13.5
N Y	43.0	45.0	19.0	45.0	
OREG			19.6	32.1	16.7
UTAH	39.0	43.9	18.8	37.3	17.0
WIS	45.7	45.8	18.5	45.3	13.4
OTH STS	42.1	47.2	20.0	30.0	14.2
U S	43.9	47.1	20.2	44.1	13.8
OTHER (JUICE, WINE, BRINED)					
MICH	28.6	47.8	19.8	46.0	13.0
N Y		19.0	8.0		
UTAH		43.9	18.8		
OTH STS	35.6	43.0	17.4	43.0	8.6
U S	32.7	40.9	17.0	44.4	11.0
SWEET CHERRIES:					
CANNED					
MICH	466.00	392.00	340.00	380.00	356.00
OREG	791.00	700.00	554.00	641.00	704.00
WASH	753.00	572.00	499.00	645.00	703.00
OTH STS	754.00	638.00			
U S	643.00	562.00	419.00	502.00	590.00
BRINED					
CALIF		729.00	424.00		
IDAHO	740.00	520.00	380.00	470.00	430.00
MICH	444.00	398.00	260.00	352.00	358.00
N Y	462.00	390.00	370.00		
OREG	590.00	510.00	463.00	497.00	433.00
WASH	659.00	466.00	318.00	418.00	361.00
OTH STS	783.00	471.00	360.00	479.00	562.00
U S	561.00	514.00	376.00	451.00	407.00
OTHER (FROZEN, JUICE, ETC.)					
MICH	484.00	377.00	366.00	364.00	371.00
MONT	175.00				
OREG	429.00	350.00	322.00	388.00	253.00
WASH	442.00	347.00	212.00	353.00	316.00
OTH STS	510.00	337.00	362.00	487.00	468.00
U S	458.00	351.00	285.00	369.00	338.00

1/ MISSING DATA INCLUDED IN OTHER STATES TO AVOID DISCLOSURE OF INDIVIDUAL OPERATIONS.

CRANBERRIES

YEAR AND STATE	AREA HARVESTED	YIELD PER ACRE	PRODUCTION		UTILIZATION			PRICE PER BARREL 2/	VALUE OF UTILIZED PRODUCTION
			TOTAL	UTILIZED	FRESH	PROCESSED	SHRINKAGE 1/		
	ACRES				BARRELS			DOLLARS	1,000 DOLLARS
1978:									
MASS	11,200	105.4	1,180,000	1,180,000	247,000	833,000	100,000	21.60	25,488
N J	3,000	74.3	223,000	223,000		218,500	4,500	21.70	4,839
OREG	820	115.2	94,500	94,500		94,500		21.70	2,051
WASH	1,100	126.4	139,000	139,000	15,000	119,700	4,300	21.70	3,016
WIS	7,000	117.4	822,000	822,000	142,000	652,000	28,000	21.30	17,509
U S	23,120	106.3	2,458,500	2,458,500	404,000	1,917,700	136,800	21.50	52,903
1979:									
MASS	11,200	96.4	1,080,000	1,080,000	130,000	880,000	70,000	26.60	28,728
N J	3,000	84.3	253,000	253,000		248,000	5,000	26.90	6,806
OREG	800	118.1	94,500	94,500	500	93,600	400	26.70	2,523
WASH	1,100	133.6	147,000	147,000	18,500	125,400	3,100	26.70	3,925
WIS	7,100	126.9	901,000	901,000	153,000	720,000	28,000	26.70	24,057
U S	23,200	106.7	2,475,500	2,475,500	302,000	2,067,000	106,500	26.70	66,039
1980:									
MASS	11,200	105.8	1,185,000	1,185,000	110,000	1,016,000	59,000	33.50	39,698
N J	2,900	84.5	245,000	245,000		240,100	4,900	33.20	8,134
OREG	790	105.7	83,500	83,500	100	81,700	1,700	33.10	2,764
WASH	1,100	94.5	104,000	104,000		100,800	3,200	33.10	3,442
WIS	7,200	150.0	1,080,000	1,080,000	216,000	821,000	43,000	32.80	35,424
U S	23,190	116.3	2,697,500	2,697,500	326,100	2,259,600	111,800	33.20	89,462
1981:									
MASS	11,200	104.6	1,172,000	1,172,000	205,000	875,000	92,000	41.50	48,639
N J	2,900	78.6	228,000	228,000		223,500	4,500	41.60	9,485
OREG	850	112.9	96,000	96,000	100	95,700	200	41.70	4,003
WASH	1,100	117.3	129,000	129,000	9,500	117,900	1,600	41.70	5,379
WIS	7,100	136.3	968,000	968,000	265,000	665,000	38,000	41.30	39,988
U S	23,150	112.0	2,593,000	2,593,000	479,600	1,977,100	136,300	41.50	107,494
1982:									
MASS	11,200	114.9	1,287,000	1,287,000	169,000	998,000	120,000	46.30	59,588
N J	3,000	98.3	295,000	295,000		289,000	6,000	46.80	13,806
OREG	810	80.2	65,000	65,000	100	64,800	100	47.10	3,062
WASH	1,100	83.6	92,000	92,000	11,000	76,000	5,000	47.10	4,333
WIS	7,200	180.6	1,300,000	1,300,000	314,000	953,000	33,000	47.10	61,261
U S	23,310	130.4	3,039,000	3,039,000	494,100	2,380,800	164,100	46.70	142,050

1/ BERRIES PAID FOR BY PROCESSORS AND LOST BECAUSE OF DEHYDRATION AND BERRY BREAKDOWN AFTER DELIVERY.
 2/ EQUIVALENT RETURNS AT FIRST DELIVERY POINT, SCREENED BASIS OF UTILIZED PRODUCTION.

HAWAII BANANAS AND PAPAYAS

CROP AND YEAR	ACREAGE HARVESTED	YIELD PER ACRE	UTILIZATION			PRICE PER POUND		VALUE OF UTILIZED PRODUCTION	
			PRODUCTION	FRESH	PROCESSED	FRESH	PROCESSED		ALL
	ACRES		1,000 POUNDS			CENTS		1,000 DOLLARS	
BANANAS:									
1978	580	9.8	5,700	5,700		18.5	18.5	1,055	
1979	630	8.8	5,550	5,550		20.5	20.5	1,138	
1980	580	7.9	4,600	4,600		23.9	23.9	1,099	
1981	650	9.2	6,000	6,000		25.7	25.7	1,542	
1982	720	8.0	5,750	5,750		28.6	28.6	1,645	
PAPAYAS: 1/ 2/:									
1978	2,190	40.6	64,000	54,624	9,376	14.4	4.6	13.0	8,304
1979	2,210	26.7	41,015	36,446	4,569	25.6	4.0	23.2	9,513
1980	1,950	37.9	48,916	45,360	3,556	21.7	3.4	20.4	9,964
1981	2,110	44.5	66,390	58,170	8,200	20.9	3.1	18.7	12,412
1982	2,170	38.7	52,750	44,770	7,980	25.1	3.1	21.8	11,485

1/ ACREAGE HARVESTED IS AVERAGE OF MONTHLY ESTIMATES.
 2/ YIELD IS BASED ON TOTAL PRODUCTION.

HAWAII PINEAPPLES

YEAR	ACREAGE USED FOR CROP	UTILIZED PRODUCTION (FRESH WEIGHT)	UTILIZATION			PRICE PER TON		VALUE OF UTILIZED PRODUCTION (FRESH WEIGHT)
			FRESH MARKET	PROCESSED (FRESH WEIGHT)	FRESH MARKET 1/	PROCESSED 2/	ALL	
	ACRES		TONS			DOLLARS		1,000 DOLLARS
1978	43,000	675,000	95,000	580,000	310.00	58.00	93.50	63,090
1979	44,000	681,000	94,000	587,000	320.00	67.00	102.00	69,409
1980	43,000	657,000	101,000	556,000	340.00	76.00	117.00	76,596
1981	41,000	636,000	117,000	519,000	390.00	85.00	141.00	89,745
1982	36,000	670,000	128,000	542,000	430.00	82.00	148.00	99,484

1/ ESTIMATE TO REFLECT VALUE AT WHOLESALE ESTABLISHMENTS FOR LOCAL SALES AND SHIPPER DOCK FOR MAINLAND AND FOREIGN SALES.
 2/ ESTIMATE TO REFLECT VALUE OF FRESH FRUIT DELIVERED PROCESSING PLANT DOOR.

GRAPES

YEAR, STATE AND TYPE	PRODUCTION		UTILIZATION		PRICE PER TON		VALUE OF
	TOTAL	UTILIZED	FRESH	PROCESSED	FRESH	PROCESSED	UTILIZED PRODUCTION
	TONS				DOLLARS		1,000 DOLLARS
1978:							
ARIZ	14,300	14,300	14,300		943.00		13,485
ARK	8,200	8,200	400	7,800	320.00	212.00	1,779
CALIF							
ALL VARIETIES 1/	4,017,000	3,769,000	412,000	3,357,000	483.00	201.00	874,307
WINE VARIETIES	1,706,000	1,706,000	65,000	1,641,000	240.00	209.00	358,260
TABLE VARIETIES	393,000	393,000	192,000	201,000	552.00	142.00	134,406
RAISIN VARIETIES 2/	1,918,000	1,670,000	155,000	1,515,000	500.00	201.00	381,641
DRIED 3/	228,500	172,200					183,737
NOT DRIED	912,000	912,000					197,904
MICH	67,500	67,500	2,100	65,400	400.00	217.00	15,053
MO	3,300	3,300	200	3,100	400.00	220.00	762
N Y	188,000	188,000	2,700	185,300	466.00	241.00	45,872
N C	6,800	5,900	1,550	4,350	595.00	195.00	1,770
OHIO	12,000	12,000	500	11,500	400.00	204.00	2,544
PA	57,500	57,500	1,300	56,200	254.00	232.00	13,340
WASH	187,000	187,000	600	186,400	258.00	191.00	35,717
OTH STS 4/	5,100	5,100	1,600	3,500	313.00	190.00	1,165
U S	4,566,700	4,317,800	437,250	3,880,550	496.00	203.00	1,005,794
1979							
ARIZ	13,500	13,500	13,500		930.00		12,555
ARK	8,200	8,200	150	8,050	400.00	157.00	1,320
CALIF							
ALL VARIETIES 1/	4,558,000	4,558,000	500,000	4,058,000	402.00	215.00	1,073,647
WINE VARIETIES	1,821,000	1,821,000	88,000	1,733,000	184.00	215.00	389,694
TABLE VARIETIES	417,000	417,000	228,000	189,000	436.00	158.00	129,270
RAISIN VARIETIES 2/	2,320,000	2,320,000	184,000	2,136,000	464.00	220.00	554,683
DRIED 3/	302,300	302,300					347,947
NOT DRIED	944,000	944,000					206,736
MICH	58,500	58,500	2,000	56,500	435.00	230.00	13,865
MO	4,500	4,500	600	3,900	600.00	265.00	1,395
N Y	165,000	165,000	3,000	162,000	490.00	225.00	37,950
N C	5,800	5,500	1,200	4,300	485.00	195.00	1,419
OHIO	12,000	12,000	400	11,600	450.00	199.00	2,484
PA	55,500	55,500	1,500	54,000	370.00	214.00	12,099
WASH	102,800	102,800	300	102,500	308.00	204.00	20,971
OTH STS 4/	5,200	5,200	1,450	3,750	535.00	202.00	1,533
U S	4,989,000	4,988,700	524,100	4,464,600	417.00	215.00	1,179,238

SEE FOOTNOTES ON PAGE 37.

CONTINUED

GRAPES CONTINUED

YEAR, STATE AND TYPE	PRODUCTION		UTILIZATION		PRICE PER TON			VALUE OF
	TOTAL	UTILIZED	FRESH	PROCESSED	FRESH	PROCESSED	ALL	UTILIZED PRODUCTION
	TONS				DOLLARS			1,000 DOLLARS
1980:								
ARIZ	12,400	12,400	12,400		1,170.00		1,170.00	14,508
ARK	6,600	6,600	40	6,560	400.00	169.00	170.00	1,125
CALIF								
ALL VARIETIES 1/ WINE VARIETIES	5,124,000	5,124,000	545,000	4,579,000	548.00	204.00	241.00	1,232,511
TABLE VARIETIES	2,004,000	2,004,000	82,000	1,922,000	203.00	210.00	210.00	420,236
RAISIN VARIETIES 2/ DRIED 3/ NOT DRIED	428,000	428,000	224,000	204,000	649.00	147.00	410.00	175,364
	2,692,000	2,692,000	239,000	2,453,000	571.00	204.00	237.00	636,881
	309,000	309,000					1,205.00	372,281
	1,080,000	1,080,000					245.00	264,600
MICH	49,500	49,500	1,700	47,800	480.00	231.00	240.00	11,858
MO	4,300	4,300	200	4,100	400.00	254.00	261.00	1,121
N Y	175,000	175,000	4,000	171,000	446.00	220.00	225.00	39,404
N C	5,800	5,500	1,100	4,400	618.00	191.00	276.00	1,520
OHIO	12,000	12,000	300	11,700	400.00	167.00	173.00	2,074
PA	56,000	56,000	2,000	54,000	360.00	160.00	167.00	9,360
WASH	145,100	145,100	400	144,700	269.00	178.00	178.00	25,865
OTH STS 4/	4,500	4,500	1,950	2,550	611.00	217.00	388.00	1,746
U S	5,595,200	5,594,900	569,090	5,025,810	560.00	203.00	240.00	1,341,092
1981:								
ARIZ	12,400	12,400	12,400		1,240.00		1,240.00	15,376
ARK	6,000	6,000	40	5,960	400.00	226.00	227.00	1,363
CALIF								
ALL VARIETIES 1/ WINE VARIETIES	3,993,000	3,993,000	503,000	3,490,000	513.00	272.00	302.00	1,207,145
TABLE VARIETIES	1,794,000	1,794,000	69,000	1,725,000	228.00	268.00	266.00	478,032
RAISIN VARIETIES 2/ DRIED 3/ NOT DRIED	420,000	420,000	230,000	190,000	639.00	200.00	440.00	184,970
	1,779,000	1,779,000	204,000	1,575,000	467.00	285.00	306.00	544,143
	256,000	256,000					1,315.00	336,518
	755,000	755,000					275.00	207,625
MICH	53,000	53,000	1,600	51,400	550.00	243.00	252.00	13,370
MO	2,800	2,800	300	2,500	400.00	307.00	317.00	888
N Y	150,000	150,000	3,500	146,500	478.00	249.00	254.00	38,152
N C	5,100	4,900	1,000	3,900	740.00	210.00	318.00	1,559
OHIO	10,300	10,300	200	10,100	500.00	192.00	198.00	2,039
PA	61,000	61,000	1,800	59,200	410.00	179.00	186.00	11,335
WASH	159,000	159,000	500	158,500	289.00	189.00	189.00	30,102
OTH STS 4/	5,600	5,200	2,150	3,050	695.00	226.00	420.00	2,184
U S	4,458,200	4,457,600	526,490	3,931,110	530.00	266.00	297.00	1,323,513

SEE FOOTNOTES ON PAGE 37.

CONTINUED

BEST COPY AVAILABLE

GRAPES CONTINUED

YEAR, STATE AND TYPE	PRODUCTION		UTILIZATION		PRICE PER TON		VALUE OF
	TOTAL	UTILIZED	FRESH	PROCESSED	FRESH	PROCESSED	UTILIZED
	TONS				DOLLARS		1,000 DOLLARS
1982:							
ARIZ	15,100	15,100	15,100		991.00	991.00	14,964
ARK	10,500	10,500	200	10,300	414.00	235.00	2,504
CALIF							
ALL VARIETIES 1/	6,076,000	5,386,000	680,200	4,705,800	442.00	201.00	1,246,827
WINE VARIETIES	2,402,000	2,152,000	66,000	2,086,000	144.00	220.00	468,424
TABLE VARIETIES	612,000	592,000	311,200	280,800	515.00	154.00	203,613
RAISIN VARIETIES 2/	3,062,000	2,642,000	303,000	2,339,000	431.00	190.00	574,790
DRIED 3/	292,000	292,000					336,600
NOT DRIED	1,112,000	1,112,000				1,153.00	238,190
GA	2,800	2,600	1,280	1,320	750.00	205.00	1,231
MICH	58,500	58,500	2,000	56,500	455.00	192.00	11,758
MO	3,400	3,400	400	3,000	380.00	312.00	1,088
N Y	157,000	157,000	3,000	154,000	401.00	231.00	36,777
N C	4,500	4,500	900	3,600	760.00	211.00	1,444
OHIO	9,000	9,000	300	8,700	450.00	227.00	2,040
PA	47,000	47,000	1,900	45,100	610.00	209.00	10,585
S C	2,400	2,400	400	2,000	528.00	241.00	693
WASH	168,900	168,900	700	168,200	500.00	184.00	31,299
U S	6,555,100	5,864,900	706,380	5,158,520	455.00	202.00	1,361,210

CONCORD GRAPES, MAJOR STATES

STATE	TOTAL PRODUCTION				
	1978	1979	1980	1981	1982
	TONS				
ARK	6,400	6,200	4,900	4,000	7,500
GA					200
MICH	61,000	53,000	44,000	47,000	52,300
MO	1,800	1,800	2,150	1,800	1,900
N Y	129,500	124,500	125,500	108,500	110,000
N C 5/	60	40	20		
OHIO	10,200	10,800	10,400	8,600	7,400
PA	52,200	48,600	52,000	57,000	43,000
S C					900
WASH	170,900	95,300	134,700	145,100	150,200
OTH STS 4/	1,150	1,800	1,200	1,350	
U S	433,210	342,040	374,870	373,350	373,400

1/ PRICE DERIVED FROM UNROUNDED DATA FOR CALIF ALL VARIETIES AND RAISIN VARIETIES.

2/ FRESH EQUIVALENT OF DRIED AND NOT DRIED.

3/ DRIED BASIS: 1 TON OF RAISINS EQUIVALENT TO 4.40 TONS FRESH BASIS FOR 1978; 4.55 TONS FOR 1979; 5.22 TONS FOR 1980; 4.00 TONS FOR 1981 AND 5.24 TONS FOR 1982.

4/ GA AND S C THROUGH 1981.

5/ DISCONTINUED IN 1981.

GRAPES

USE AND STATE	PROCESSED UTILIZATION 1/				
	QUANTITY				
	1978	1979	1980	1981	1982
	TONS				
TOTAL PROCESSED:					
ARK	7,800	8,050	6,560	5,960	10,300
CALIF					
ALL VARIETIES	3,357,000	4,058,000	4,579,000	3,490,000	4,705,800
WINE VARIETIES	1,641,000	1,733,000	1,922,000	1,725,000	2,086,000
TABLE VARIETIES	201,000	189,000	204,000	190,000	280,800
RAISIN VARIETIES	1,515,000	2,136,000	2,453,000	1,575,000	2,339,000
GA					1,320
MICH	65,400	56,500	47,800	51,400	56,500
MO	3,100	3,900	4,100	2,500	3,000
N Y	185,300	162,000	171,000	146,500	154,000
N C	4,350	4,300	4,400	3,900	3,600
OHIO	11,500	11,600	11,700	10,100	8,700
PA	56,200	54,000	54,000	59,200	45,100
SC					2,000
WASH	186,400	102,500	144,700	158,500	168,200
OTH STS	3,500	3,750	2,550	3,050	
U S	3,880,550	4,464,600	5,025,810	3,931,110	5,158,520
CANNED:					
CALIF					
RAISIN VARIETIES	55,000	60,000	63,000	42,000	35,000
U S	55,000	60,000	63,000	42,000	35,000
JUICE:					
ARK					7,300
MICH	60,300	53,600	44,000	48,400	53,400
MO		2,700	1,900	1,700	1,700
N Y	92,500	90,500	99,500	75,800	86,000
OHIO	9,200	9,700	9,800	8,600	6,650
PA	42,300	43,600	44,500	45,600	37,800
WASH	177,000	99,900	139,800	150,000	155,200
OTH STS	8,450	6,350	5,210	3,960	
U S	389,750	306,350	344,710	334,060	348,050
WINE:					
ARK					3,000
CALIF					
ALL VARIETIES	2,543,000	2,617,100	2,896,000	2,416,000	3,123,300
WINE VARIETIES	1,641,000	1,733,000	1,922,000	1,725,000	2,086,000
TABLE VARIETIES	200,000	184,100	196,000	182,000	263,300
RAISIN VARIETIES	702,000	700,000	778,000	509,000	774,000
MO		1,200	2,200	800	1,300
N Y	88,600	68,500	70,250	69,450	67,450
N C	4,350	4,300	4,400	3,900	3,600
OHIO					2,050
PA	13,900	10,400	9,500	13,600	7,300
WASH	9,400	2,600	4,900	8,500	13,000
OTH STS	12,200	9,000	9,050	9,300	6,300
U S	2,671,450	2,713,100	2,996,300	2,521,550	3,227,300
DRIED (FRESH BASIS):					
CALIF					
ALL VARIETIES	759,000	1,380,900	1,620,000	1,032,000	1,547,500
TABLE VARIETIES	1,000	4,900	8,000	8,000	17,500
RAISIN VARIETIES	758,000	1,376,000	1,612,000	1,024,000	1,530,000
U S	759,000	1,380,900	1,620,000	1,032,000	1,547,500
OTHER (JAM, JELLY, ETC):					
N Y	4,200	3,000	1,250	1,250	
OTH STS	1,150	1,250	550	250	670
U S	5,350	4,250	1,800	1,500	670

SEE FOOTNOTE ON PAGE 39.

CONTINUED

GRAPES CONTINUED

USE AND STATE	PROCESSED UTILIZATION 1/				
	PRICE PER TON				
	1978	1979	1980	1981	1982
	DOLLARS				
TOTAL PROCESSED:					
ARK	212.00	157.00	169.00	226.00	235.00
CALIF					
ALL VARIETIES	201.00	215.00	204.00	272.00	201.00
WINE VARIETIES	209.00	215.00	210.00	268.00	220.00
TABLE VARIETIES	142.00	158.00	147.00	200.00	154.00
RAISIN VARIETIES	201.00	220.00	204.00	285.00	190.00
GA					205.00
MICH	217.00	230.00	231.00	243.00	192.00
MO	220.00	265.00	254.00	307.00	312.00
N Y	241.00	225.00	220.00	249.00	231.00
N C	195.00	195.00	191.00	210.00	211.00
OHIO	204.00	199.00	167.00	192.00	227.00
PA	232.00	214.00	160.00	179.00	209.00
SC					241.00
WASH	191.00	204.00	178.00	189.00	184.00
OTH STS	190.00	202.00	217.00	226.00	
U S	203.00	215.00	203.00	266.00	202.00
CANNED:					
CALIF					
RAISIN VARIETIES	241.00	256.00	262.00	260.00	255.00
U S	241.00	256.00	262.00	260.00	255.00
JUICE:					
ARK					225.00
MICH	215.00	230.00	230.00	241.00	190.00
MO		260.00	233.00	300.00	285.00
N Y	219.00	202.00	194.00	199.00	199.00
OHIO	191.00	184.00	167.00	174.00	215.00
PA	205.00	200.00	150.00	170.00	180.00
WASH	176.00	195.00	167.00	170.00	145.00
OTH STS	209.00	144.00	153.00	220.00	
U S	196.00	203.00	181.00	188.00	173.00
WINE:					
ARK					259.00
CALIF					
ALL VARIETIES	188.00	194.00	188.00	248.00	191.00
WINE VARIETIES	209.00	215.00	210.00	268.00	220.00
TABLE VARIETIES	140.00	155.00	144.00	195.00	149.00
RAISIN VARIETIES	153.00	151.00	144.00	199.00	127.00
MO		275.00	272.00	320.00	330.00
N Y	266.00	255.00	257.00	305.00	272.00
N C	195.00	195.00	191.00	210.00	211.00
OHIO					230.00
PA	314.00	274.00	205.00	210.00	360.00
WASH	467.00	532.00	480.00	533.00	650.00
OTH STS	220.00	225.00	225.00	254.00	232.00
U S	192.00	196.00	190.00	250.00	195.00
DRIED (FRESH BASIS):					
CALIF					
ALL VARIETIES	243.00	253.00	230.00	329.00	220.00
TABLE VARIETIES	481.00	267.00	224.00	322.00	235.00
RAISIN VARIETIES	243.00	253.00	230.00	329.00	220.00
U S	243.00	253.00	230.00	329.00	220.00
OTHER (JAM, JELLY, ETC):					
N Y	196.00	208.00	196.00	200.00	
OTH STS	250.00	232.00	240.00	179.00	149.00
U S	208.00	215.00	210.00	196.00	149.00

1/ MISSING DATA INCLUDED IN OTHER STATES TO AVOID DISCLOSURE OF INDIVIDUAL OPERATIONS.

APRICOTS AND AVOCADOS

CROP, STATE AND SEASON	PRODUCTION		UTILIZATION		PRICE PER TON			VALUE OF UTILIZED PRODUCTION
	TOTAL	UTILIZED	FRESH	PROCESSED	FRESH	PROCESSED 1/	ALL	
	TONS				DOLLARS			1,000 DOLLARS
APRICOTS: 2/								
CALIF								
1978	123,000	123,000	6,500	116,500	558.00	229.00	247.00	30,381
1979	140,000	140,000	7,000	133,000	370.00	259.00	265.00	37,037
1980	125,000	125,000	9,500	115,500	634.00	262.00	288.00	36,000
1981	86,500	86,500	9,500	77,000	524.00	279.00	308.00	26,615
1982	115,000	115,000	8,000	107,000	507.00	283.00	299.00	34,337
UTAH								
1978	500	500					460.00	230
1979	1,700	1,700					480.00	816
1980	1,500	1,500					360.00	540
1981	1,500	1,580					240.00	379
1982	200	160					420.00	67
WASH								
1978	2,700	2,700					279.00	753
1979	2,500	2,500					346.00	865
1980	2,500	2,500					386.00	965
1981	1,300	1,300					593.00	771
1982	3,000	2,900					531.00	1,540
TOTAL								
1978	126,200	126,200	9,200	117,000	498.00	228.00	249.00	31,364
1979	144,200	144,200	10,890	133,310	390.00	264.00	269.00	38,718
1980	129,000	129,000	13,130	115,870	571.00	261.00	291.00	37,505
1981	89,400	89,380	12,230	77,150	500.00	279.00	311.00	27,765
1982	118,200	118,060	10,810	107,250	522.00	282.00	304.00	35,933
AVOCADOS: 2/ 3/								
CALIF								
1978-79	123,000	123,000	123,000		691.00		691.00	84,993
1979-80	75,000	75,000	75,000		1,496.00		1,496.00	112,200
1980-81	238,000	238,000	238,000		357.00		357.00	84,966
1981-82	157,000	157,000	157,000		689.00		689.00	108,173
1982-83	202,000	202,000	202,000		460.00		460.00	92,920
FLA								
1978-79	23,100	23,100	23,100		400.00		400.00	9,240
1979-80	27,300	27,300	27,300		597.00		597.00	16,298
1980-81	30,800	30,800	30,800		529.00		529.00	16,293
1981-82	25,800	25,800	25,800		501.00		501.00	12,926
1982-83	34,700	34,700	34,700		480.00		480.00	16,656
TOTAL								
1978-79	146,100	146,100	146,100		645.00		645.00	94,233
1979-80	102,300	102,300	102,300		1,256.00		1,256.00	128,498
1980-81	268,800	268,800	268,800		377.00		377.00	101,259
1981-82	182,800	182,800	182,800		662.00		662.00	121,099
1982-83	236,700	236,700	236,700		463.00		463.00	109,576

1/ ALL PROCESSING EXCLUDING THE DRIED PORTION FOR APRICOTS.

2/ MISSING DATA FOR SOME STATES NOT PUBLISHED TO AVOID DISCLOSURE OF INDIVIDUAL OPERATIONS.

3/ SMALL QUANTITIES PROCESSED ARE INCLUDED IN FRESH QUANTITIES TO AVOID DISCLOSURE OF INDIVIDUAL OPERATIONS.

BEST COPY AVAILABLE

DATES, FIGS, KIWIFRUIT, NECTARINES, OLIVES, AND POMEGRANATES

CROP, STATE AND YEAR	PRODUCTION		UTILIZATION		PRICE PER TON		VALUE OF	
	TOTAL	UTILIZED	FRESH	PROCESSED	FRESH	PROCESSED	ALL	UTILIZED PRODUCTION
	TONS				DOLLARS		1,000 DOLLARS	
DATES:								
CALIF								
1978	21,550	21,550	21,550		485.00		485.00	10,452
1979	21,300	21,300	21,300		514.00		514.00	10,948
1980	22,400	22,400	22,400		634.00		634.00	14,204
1981	22,300	22,300	22,300		639.00		639.00	14,250
1982	23,900	23,900	23,900		736.00		736.00	17,590
FIGS: 1/								
CALIF								
1978	31,600	31,600	3,700	27,900	352.00	313.00	318.00	10,049
1979	38,720	38,720	3,800	34,920	416.00	397.00	399.00	15,444
1980	45,450	45,450	2,100	43,350	493.00	297.00	306.00	13,910
1981	38,200	38,200	1,600	36,600	542.00	320.00	329.00	12,579
1982	37,700	37,700	1,100	36,600	461.00	273.00	278.00	10,499
KIWIFRUIT: 2/								
CALIF								
1980	5,300	4,200	4,200		2,400.00		2,400.00	10,080
1981	6,900	5,500	5,500		2,000.00		2,000.00	11,000
1982	15,500	11,500	11,500		920.00		920.00	10,580
NECTARINES:								
CALIF								
1978	148,000	148,000	144,700	3,300	313.00	44.10	307.00	45,436
1979	172,000	172,000	171,000	1,000	198.00	69.00	197.00	33,884
1980	191,000	191,000	190,500	500	231.00	78.00	231.00	44,045
1981	182,000	182,000	181,500	500	229.00	91.00	229.00	41,610
1982	178,000	178,000	175,900	2,100	251.00	49.00	249.00	44,254
OLIVES:								
CALIF								
1978	126,000	126,000	800	125,200	245.00	303.00	303.00	38,178
1979	62,000	62,000	500	61,500	420.00	408.00	408.00	25,296
1980	109,000	109,000	300	108,700	450.00	368.00	368.00	40,137
1981	44,900	44,900	300	44,600	600.00	696.00	695.00	31,222
1982	146,500	146,500	500	146,000	625.00	517.00	517.00	75,795
POMEGRANATES: 1/								
CALIF								
1978	9,500	9,500	9,500				233.00	2,214
1979	13,000	11,000	11,000				324.00	3,564
1980	17,000	16,000	16,000				259.00	4,144
1981	16,500	14,800	14,800				278.00	4,114
1982	16,000	14,400	14,400				232.00	3,341

1/ SMALL QUANTITIES OF CANNED FIGS AND JUICE POMEGRANATES ARE INCLUDED IN FRESH QUANTITIES TO AVOID DISCLOSURE OF INDIVIDUAL OPERATIONS; HOWEVER FOR FIGS, THE PROCESSING PRICE REFLECTS THE QUANTITY ACTUALLY PROCESSED.

2/ ESTIMATES BEGINNING 1980.

PRUNES AND PLUMS

CROP, STATE AND YEAR	PRODUCTION		UTILIZATION		PRICE PER TON			VALUE OF UTILIZED PRODUCTION
	TOTAL	UTILIZED	FRESH	PROCESSED	FRESH	PROCESSED	ALL	
	TONS				DOLLARS			1,000 DOLLARS
PRUNES AND PLUMS: 1/								
IDAHO								
1978	7,500	6,900						
1979	7,500	7,500				206.00		1,421
1980	8,000	8,000				324.00		2,430
1981	7,500	7,000				344.00		2,753
1982	7,000	7,000				272.00		1,904
						460.00		3,220
MICH								
1978	24,000	24,000	9,400	14,600	208.00	93.40	138.00	3,312
1979	14,000	14,000	7,400	6,600	280.00	125.00	207.00	2,898
1980	12,500	12,500	5,600	6,900	249.00	175.00	208.00	2,602
1981	16,000	16,000	7,400	8,600	178.00	107.00	140.00	2,237
1982	10,000	10,000	5,900	4,100	343.00	132.00	256.00	2,565
OREG								
1978 1/	17,000	17,000						
1979	23,000	23,000				170.00		2,890
1980	33,000	33,000				184.00		4,232
1981	27,000	25,000				150.00		4,950
1982	23,000	19,000				157.00		3,925
						185.00		3,515
WASH								
1978	21,300	21,300	15,300	6,000	172.00	89.10	149.00	3,174
1979	14,700	14,700	12,100	2,600	219.00	69.10	192.00	2,822
1980	23,100	23,100	18,000	5,100	170.00	73.80	149.00	3,436
1981	14,600	14,600	11,200	3,400	133.00	58.20	116.00	1,688
1982	11,500	11,500	10,050	1,450	340.00	25.30	300.00	3,454
TOTAL 4 STATES:								
1978	69,800	69,200	40,950	28,250	188.00	110.00	156.00	10,797
1979	59,200	59,200	34,100	25,100	237.00	136.00	209.00	12,382
1980	76,600	76,600	40,500	36,100	196.00	137.00	179.00	13,741
1981	65,100	62,600	32,900	29,700	167.00	126.00	156.00	9,754
1982	51,500	47,500	26,550	20,950	362.00	134.00	269.00	12,754
PLUMS:								
CALIF								
1978	154,000	154,000	151,000	3,000	377.00	29.30	370.00	56,980
1979	175,000	175,000	173,000	2,000			277.00	48,475
1980	160,000	160,000	157,400	2,600	456.00	14.00	449.00	71,810
1981	197,500	197,500	194,300	3,200	314.00	16.20	309.00	61,062
1982	118,000	118,000	116,600	1,400	627.00	22.00	620.00	73,139
PRUNES (DRIED BASIS):								
CALIF								
1978	132,000	132,000		132,000		696.00	696.00	91,872
1979	136,000	136,000		136,000		812.00	812.00	110,432
1980	168,000	168,000		168,000		683.00	683.00	114,744
1981	159,500	159,500		159,500		654.00	654.00	104,313
1982	126,000	126,000		126,000		679.00	679.00	85,554

1/ MISSING DATA NOT PUBLISHED TO AVOID DISCLOSURE OF INDIVIDUAL OPERATIONS.

APRICOTS, FIGS, OLIVES, PRUNES AND PLUMS

CROP, USE AND STATE	PROCESSED UTILIZATION				
	QUANTITY				
	1978	1979	1980	1981	1982
	TONS				
APRICOTS: 1/ CANNED CALIF	78,000	84,000	80,500	43,500	62,000
FROZEN CALIF	8,500	10,000	7,900	8,500	12,000
DRIED (FRESH BASIS): CALIF	30,000	39,000	27,100	25,000	33,000
FIGS: 2/ CANNED CALIF					
DRIED (FRESH BASIS): CALIF	27,900	34,920	43,350	36,600	36,600
OLIVES: CANNED CALIF	99,100	52,300	76,800	37,900	98,000
CRUSHED FOR OIL CALIF	7,300	1,600	3,500	2,000	2,500
CHOPPED, MINCE, BRINED AND OTHER CURES CALIF	18,800	7,600	28,400	4,700	45,500
PLUMS: 2/ CANNED CALIF	300	200			
FROZEN CALIF	2,700	1,400	2,600	3,150	1,400
PRUNES AND PLUMS: 2/ CANNED MICH	12,300	6,000	6,900	8,000	3,500
OREG 1/ WASH 1/					
4-STATE TOTAL	16,100	11,800	18,500	16,900	8,250
FROZEN 4-STATE TOTAL	3,000	1,900	2,200	1,500	1,400
DRIED AND OTHER 4-STATE TOTAL	9,150	11,400	6,400	11,300	11,300

SEE FOOTNOTES ON PAGE 44.

CONTINUED

APRICOTS, FIGS, OLIVES, PRUNES AND PLUMS CONTINUED

CROP, USE AND STATE	PROCESSED UTILIZATION				
	PRICE PER TON				
	1978	1979	1980	1981	1982
	DOLLARS				
APRICOTS: 1/ CANNED CALIF	229.00	267.00	267.00	276.00	283.00
FROZEN CALIF	226.00	244.00	215.00	295.00	285.00
DRIED (FRESH BASIS) CALIF	234.00	275.00	252.00	286.00	353.00
FIGS: 2/ CANNED CALIF					
DRIED (FRESH BASIS) CALIF	313.00	406.00	296.00	320.00	273.00
OLIVES: CANNED CALIF	350.00	442.00	455.00	755.00	575.00
CRUSHED FOR OIL CALIF	57.00	150.00	17.00	8.00	11.00
CHOPPED, MINCED, BRINED AND OTHER CURES CALIF	152.00	232.00	176.00	507.00	420.00
PRUNES AND PLUMS: 2/ CANNED					
MICH	94.00	127.00	175.00	108.00	132.00
OREG 1/ WASH 1/					
4-STATE TOTAL	116.00	131.00	146.00	99.30	103.00
FROZEN 4-STATE TOTAL	114.00	119.00	90.00	93.30	91.50
DRIED AND OTHER 4-STATE TOTAL	98.00	145.00	134.00	163.00	158.00

1/ SMALL QUANTITIES USED FOR JUICE ARE INCLUDED IN CANNED TO AVOID DISCLOSURE OF INDIVIDUAL OPERATIONS.
 2/ MISSING DATA NOT PUBLISHED TO AVOID DISCLOSURE OF INDIVIDUAL OPERATIONS.

BEAT 500/10/11

CALIFORNIA DRY FRUITS

CROP	QUANTITY				
	1978	1979	1980	1981	1982
TONS					
FRESH BASIS:					
APPLES	32,000	46,000	18,000	14,000	8,500
APRICOTS	30,000	39,000	27,100	25,000	33,000
FIGS	27,900	34,920	43,350	36,600	36,600
GRAPES					
RAISIN	758,000	1,376,000	1,612,000	1,024,000	1,530,000
TABLE	1,000	4,900	8,000	8,000	17,500
PEACHES					
FREESTONE	17,500	16,500	17,000	17,400	22,500
PEARS					
BARTLETT	5,300	10,100	8,100	7,200	7,200
PRUNES	410,520	427,040	584,640	502,400	403,200
DRIED BASIS:					
APPLES	3,700	5,200	2,140	1,400	1,000
APRICOTS	3,600	5,300	3,600	3,800	4,800
FIGS					
STANDARD	6,930	10,240	11,400	10,150	9,650
SUB-STANDARD	2,730	1,400	3,050	2,050	2,550
GRAPES					
RAISIN 1/	228,500	302,300	309,000	256,000	292,000
TABLE	275	1,090	1,550	2,000	3,300
PEACHES					
FREESTONE	2,000	1,800	2,200	2,050	2,600
PEARS					
BARTLETT	855	1,530	1,500	1,440	1,200
PRUNES	132,000	136,000	168,000	159,500	135,000
PRICE PER TON DOLLARS					
FRESH BASIS:					
APPLES 2/	156.00	165.00	94.00	80.00	134.00
APRICOTS	234.00	275.00	252.00	286.00	353.00
FIGS	313.00	406.00	296.00	320.00	273.00
GRAPES					
RAISIN	243.00	253.00	230.00	329.00	220.00
TABLE	481.00	267.00	224.00	322.00	235.00
PEACHES					
FREESTONE	185.00	136.00	115.00	112.00	120.00
PEARS					
BARTLETT	323.00	141.00	109.00	114.00	97.00
PRUNES	218.00	259.00	196.00	208.00	226.00
DRIED BASIS:					
APPLES 2/	1,349.00	1,468.00	790.00	800.00	1,139.00
APRICOTS	1,950.00	2,035.00	1,897.00	1,882.00	2,427.00
FIGS					
STANDARD	1,200.00	1,374.00	1,102.00	1,140.00	1,019.00
SUB-STANDARD	70.00	70.00	90.00	72.00	65.00
GRAPES					
RAISIN 1/	1,067.00	1,151.00	1,205.00	1,315.00	1,153.00
TABLE	1,750.00	1,200.00	1,120.00	1,286.00	1,246.00
PEACHES					
FREESTONE	1,619.00	1,210.00	920.00	952.00	1,044.00
PEARS					
BARTLETT	2,000.00	930.00	589.00	570.00	582.00
PRUNES	696.00	812.00	683.00	654.00	679.00

1/ INCLUDES SUBSTANDARD RAISINS DIVERTED TO OTHER USES.
 2/ MISSING DATA NOT PUBLISHED TO AVOID DISCLOSURE OF INDIVIDUAL OPERATIONS.

PEACHES

YEAR AND STATE	PRODUCTION		PRICE PER POUND	VALUE OF UTILIZED PRODUCTION
	POUNDS			
	TOTAL	UTILIZED		
1978:	MILLION UNITS		CENTS	1,000 DOLLARS
ALA	16.0	16.0	16.6	2,656
ARK	37.0	36.0	12.5	4,500
CALIF				
FREESTONE	394.0	394.0	11.5	45,310
COLO	7.2	7.2	17.7	1,274
CONN	3.3	3.3	29.0	957
DEL	2.5	2.5	10.5	263
GA	120.0	120.0	15.6	18,720
IDAHO	11.0	11.0	12.5	1,375
ILL	16.0	16.0	21.9	3,504
IND	5.0	5.0	22.0	1,100
KANS	5.0	5.0	17.6	880
KY	9.0	9.0	20.0	1,800
LA	6.5	6.5	20.0	1,300
MD	23.0	23.0	13.2	3,036
MASS	1.8	1.8	29.0	522
MICH	60.0	60.0	16.0	9,600
MISS	4.0	4.0	20.0	800
MO	15.0	15.0	16.0	2,400
N J	70.0	70.0	23.6	16,520
N Y	16.0	16.0	18.5	2,960
N C	45.0	45.0	16.0	7,200
OHIO	6.0	6.0	23.7	1,422
OKLA	7.0	7.0	14.1	987
OREG	13.0	13.0	17.9	2,327
PA	70.0	70.0	15.5	10,850
S C	315.0	300.0	15.5	46,500
TENN	8.4	8.4	16.0	1,344
TEX	25.0	24.0	17.0	4,080
UTAH	11.0	11.0	17.0	1,870
VA	37.0	37.0	14.2	5,254
WASH	38.0	38.0	14.4	5,472
W VA	25.0	25.0	17.8	4,450
TOTAL ABOVE	1,422.7	1,405.7	15.0	211,233
CALIF				
CLINGSTONE	1,230.0	1,110.0	8.1	89,910
U S	2,652.7	2,515.7	12.0	301,143

CONTINUED

PEACHES CONTINUED

YEAR AND STATE	PRODUCTION		PRICE PER POUND	VALUE OF UTILIZED PRODUCTION
	POUNDS			
	TOTAL	UTILIZED		
	MILLION UNITS		CENTS	1,000 DOLLARS
1979:				
ALA	20.0	20.0	18.5	3,700
ARK	25.0	24.0	13.8	3,312
CALIF				
FREESTONE	468.0	468.0	10.9	51,012
COLO	14.0	13.0	20.8	2,704
CONN	2.5	2.5	32.0	800
DEL	2.0	2.0	13.0	260
GA	135.0	135.0	11.3	15,255
IDAHO	10.5	10.5	15.0	1,575
ILL	15.0	15.0	18.5	2,775
IND	4.2	4.2	22.0	924
KANS	5.0	5.0	25.0	1,250
KY	15.0	15.0	21.0	3,150
LA	7.0	7.0	23.0	1,610
MD	22.0	22.0	14.3	3,146
MASS	1.8	1.8	32.0	576
MICH	35.0	35.0	19.4	6,790
MISS	3.0	3.0	20.0	600
MO	12.0	12.0	21.0	2,520
N J	95.0	90.0	16.9	15,210
N Y	6.7	6.7	22.2	1,487
N C	50.0	50.0	16.3	8,150
OHIO	4.0	4.0	26.0	1,040
OKLA	9.5	9.5	15.2	1,444
OREG	16.0	16.0	19.2	3,072
PA	80.0	80.0	14.7	11,760
S C	350.0	343.0	13.9	47,677
TENN	8.5	8.5	16.0	1,360
TEX	23.0	22.5	20.0	4,500
UTAH	12.0	12.0	17.0	2,040
VA	32.0	32.0	13.2	4,224
WASH	31.0	31.0	16.1	4,991
W VA	24.0	24.0	16.8	4,032
TOTAL ABOVE	1,538.7	1,524.2	14.0	212,946
CALIF				
CLINGSTONE	1,400.0	1,310.0	8.9	116,590
U S	2,938.7	2,834.2	11.6	329,536

CONTINUED

PEACHES CONTINUED

YEAR AND STATE	PRODUCTION		PRICE PER POUND	VALUE OF UTILIZED PRODUCTION
	POUNDS			
	TOTAL	UTILIZED		
1980:	MILLION UNITS		CENTS	1,000 DOLLARS
ALA	14.0	14.0	22.5	3,150
ARK	17.0	16.0	13.5	2,160
CALIF				
FREESTONE	476.0	476.0	9.9	47,124
COLO	18.0	18.0	17.9	3,222
CONN	2.8	2.8	30.0	840
DEL	1.4	1.4	11.8	165
GA	120.0	120.0	14.1	16,920
IDAHO	13.0	13.0	12.5	1,625
ILL	24.0	24.0	18.5	4,440
IND	8.0	8.0	25.0	2,000
KANS	6.5	6.5	20.0	1,300
KY	15.5	15.5	18.6	2,883
LA	4.0	4.0	32.0	1,280
MD	19.0	19.0	13.3	2,527
MASS	2.0	2.0	30.0	600
MICH	40.0	40.0	19.2	7,680
MISS	2.5	2.5	24.5	613
MO	12.0	12.0	14.5	1,740
N J	110.0	110.0	20.8	22,880
N Y	14.0	14.0	23.5	3,290
N C	45.0	45.0	12.8	5,760
OHIO	12.0	12.0	24.9	2,988
OKLA	7.0	7.0	17.8	1,246
DREG	13.0	13.0	22.3	2,899
PA	105.0	105.0	14.5	15,225
S C	355.0	355.0	17.6	62,480
TENN	8.4	8.4	17.8	1,495
TEX	12.5	12.0	28.0	3,360
UTAH	11.0	11.0	17.5	1,925
VA	32.0	32.0	15.6	4,992
WASH	31.0	31.0	17.9	5,549
W VA	22.0	22.0	13.2	2,904
TOTAL ABOVE	1,573.6	1,572.1	15.1	237,262
CALIF				
CLINGSTONE	1,495.0	1,382.0	9.4	129,908
U S	3,068.6	2,954.1	12.4	367,170

CONTINUED

PEACHES CONTINUED

YEAR AND STATE	PRODUCTION		PRICE PER POUND	VALUE OF UTILIZED PRODUCTION
	POUNDS			
	TOTAL	UTILIZED		
	MILLION UNITS		CENTS	1,000 DOLLARS
1981:				
ALA	22.0	20.6	18.1	3,729
ARK	25.0	23.0	13.9	3,197
CALIF FREESTONE	434.0	434.0	12.3	53,556
COLO	20.0	20.0	16.5	3,300
CONN	.3	.3	35.0	105
DEL	1.6	1.6	18.8	301
GA	140.0	125.0	11.8	14,805
IDAHO	12.0	11.7	16.7	1,954
ILL	22.0	22.0	21.4	4,710
IND	7.0	7.0	26.1	1,827
KANS	6.5	6.3	33.0	2,079
KY	16.0	16.0	21.0	3,360
LA	6.0	5.8	25.0	1,450
MD	17.0	16.8	16.3	2,737
MASS	.2	.2	35.0	70
MICH	35.0	35.0	19.2	6,734
MISS	3.0	3.0	19.0	570
MO	15.0	15.0	15.0	2,250
N J	90.0	90.0	23.9	21,488
N Y	9.0	9.0	23.6	2,121
N C	40.0	40.0	13.2	5,269
OHIO	2.0	2.0	31.0	620
OKLA	11.0	11.0	16.7	1,837
OREG	13.0	12.5	24.0	3,005
PA	65.0	65.0	17.6	11,420
S C	430.0	420.0	14.8	62,090
TENN	10.0	9.5	18.5	1,758
TEX	34.0	29.5	21.0	6,195
UTAH	12.0	12.0	18.6	2,232
VA	30.0	30.0	13.3	3,990
WASH	20.0	20.0	23.6	4,719
W VA	20.0	20.0	15.3	3,060
TOTAL ABOVE	1,568.6	1,533.8	15.4	236,538
CALIF CLINGSTONE	1,202.0	1,106.0	10.4	115,072
U S	2,770.6	2,639.8	13.3	351,610

CONTINUED

PEACHES CONTINUED

YEAR AND STATE	PRODUCTION		PRICE PER POUND	VALUE OF UTILIZED PRODUCTION
	POUNDS			
	TOTAL	UTILIZED		
	MILLION UNITS		CENTS	1,000 DOLLARS
1982:				
ALA	15.0	15.0	23.8	3,570
ARK	18.0	16.0	15.8	2,533
CALIF				
FREESTONE	415.0	415.0	10.6	43,861
COLO	11.0	11.0	26.3	2,893
CONN	2.4	2.4	45.0	1,080
DEL	1.7	1.7	21.5	366
GA	120.0	110.0	20.4	22,460
IDAHO	7.0	6.5	23.2	1,508
ILL	1/	1/	1/	1/
IND	1/	1/	1/	1/
KANS	1.8	1.6	21.9	350
KY	1/	1/	1/	1/
LA	5.0	5.0	32.0	1,600
MD	17.0	17.0	22.6	3,845
MASS	1.5	1.5	45.0	675
MICH	50.0	50.0	20.9	10,459
MISS	4.0	4.0	26.3	1,052
MO	4.5	4.5	29.0	1,305
N J	80.0	80.0	27.6	22,084
N Y	14.5	14.5	27.1	3,930
N C	2.0	2.0	13.4	268
OHIO	.7	.7	32.0	224
OKLA	7.5	7.5	26.4	1,980
OREG	13.0	13.0	29.0	3,772
PA	90.0	90.0	21.4	19,252
S C	210.0	200.0	23.2	46,318
TENN	1.5	1.5	25.0	375
TEX	16.0	14.0	30.0	4,200
UTAH	3.5	3.5	25.1	879
VA	27.0	27.0	18.2	4,909
WASH	27.0	27.0	22.3	6,021
W VA	17.0	17.0	23.3	3,961
TOTAL ABOVE	1,183.6	1,158.9	18.6	215,730
CALIF				
CLINGSTONE	1,102.0	943.0	9.2	86,820
U S	2,285.6	2,101.9	14.4	302,550

1/ NO SIGNIFICANT COMMERCIAL PRODUCTION DUE TO FROST.

CONTINUED

PEACHES CONTINUED

USE AND STATE	FRESH AND PROCESSED UTILIZATION 1/				
	QUANTITY				
	1978	1979	1980	1981	1992
MILLION POUNDS					
FRESH:					
ALA	16.0	20.0	14.0	20.6	15.0
ARK					11.0
CALIF					
CLINGSTONE	4.6	2.4	2.2	3.0	2.0
FREESTONE	224.0	274.0	290.0	286.0	266.0
COLO	7.2	13.0	13.0	20.0	11.0
CONN	3.3	2.5	2.8	.3	2.4
DEL	2.5	2.0	1.4	1.6	1.7
GA	98.9	116.8			
IDAHO	11.0	10.5	13.0	11.7	6.5
IND	5.0	4.2	8.0	7.0	
KANS	5.0	5.0	6.5	6.3	1.6
KY	9.0	15.0	15.5	16.0	
LA	6.5	7.0	4.0	5.8	5.0
MD	19.0	20.0			
MASS	1.8	1.8	2.0	.2	1.5
MICH	51.0				
MISS	4.0	3.0	2.5	3.0	4.0
MO	15.0	12.0	12.0	15.0	4.5
N C					2.0
OHIO		4.0		2.0	.7
OKLA			7.0	11.0	7.5
PA	55.4	71.3	94.9	60.0	83.2
S C	270.0	315.0	337.0	395.0	194.0
TENN	8.4	8.5	8.4	9.5	1.5
TEX	24.0	22.5	12.0	29.5	14.0
UTAH	11.0	12.0	11.0	12.0	3.5
VA	31.8				24.2
W VA		22.8			16.8
OTH STS	251.4	285.2	461.9	415.5	297.3
U S	1,135.8	1,250.5	1,324.1	1,331.0	976.9
PROCESSED:					
ARK					5.0
CALIF					
CLINGSTONE	1,105.4	1,307.6	1,379.8	1,103.0	941.0
FREESTONE	170.0	194.0	186.0	148.0	149.0
GA	21.1	18.2			
MD	4.0	2.0			
MICH	9.0				
PA	14.6	8.7	10.1	5.0	6.8
S C	30.0	28.0	18.0	25.0	6.0
VA	5.2				2.8
W VA		1.2			.2
OTH STS	20.6	24.0	36.1	27.8	14.2
U S	1,379.9	1,583.7	1,630.0	1,308.8	1,125.0

SEE FOOTNOTES ON PAGE 52.

CONTINUED

PEACHES CONTINUED

USE AND STATE	FRESH AND PROCESSED UTILIZATION 1/				
	PRICE PER UNIT				
	1978	1979	1980	1981	1982
	CENTS PER POUND				
FRESH:					
ALA	16.6	18.5	22.5	18.1	23.8
ARK					18.8
CALIF					
CLINGSTONE	10.0	10.0	11.0	12.0	12.4
FREESTONE	15.0	13.2	11.9	15.0	12.4
COLO	17.7	20.8	17.9	16.5	26.3
CONN	29.0	32.0	30.0	35.0	45.0
DEL	10.5	13.0	11.8	18.8	21.5
GA	18.2	12.5			
IDAHO	12.5	15.0	12.5	16.7	23.2
IND	22.0	22.0	25.0	26.1	2/
KANS	17.6	25.0	20.0	33.0	21.9
KY	20.0	21.0	18.6	21.0	2/
LA	20.0	23.0	32.0	25.0	32.0
MO	15.0	15.1			
MASS	29.0	32.0	30.0	35.0	45.0
MICH	17.3				
MISS	20.0	20.0	24.5	19.0	26.3
MO	16.0	21.0	14.5	15.0	29.0
N J		17.4			
N C					13.4
OHIO		26.0		31.0	32.0
OKLA			17.8	16.7	26.4
PA	17.3	15.4	15.2	18.2	22.2
S C	16.5	14.5	18.1	15.2	23.6
TENN	16.0	16.0	17.8	18.5	25.0
TEX	17.0	20.0	28.0	21.0	30.0
UTAH	17.0	17.0	17.5	18.6	25.1
VA	15.5				19.3
W VA		17.3			23.5
OTH STS	19.1	17.2	17.8	17.7	24.0
U S	17.0	15.3	16.6	16.6	20.6
	DOLLARS PER TON 3/				
PROCESSED:					
ARK					185.00
CALIF					
CLINGSTONE	162.00	178.00	188.00	207.00	184.00
FREESTONE	122.00	157.00	142.00	152.00	157.00
GA	66.30	67.50			
MD	97.00	144.00			
MICH	172.00				
N J		160.00			
PA	176.00	177.00	158.00	199.00	229.00
S C	131.00	134.00	166.00	164.00	178.00
VA	124.00				170.00
WASH					
W VA		146.00			126.00
OTH STS	119.00	154.00	112.00	151.00	165.00
U S	155.00	173.00	181.00	200.00	181.00

1/ MISSING DATA INCLUDED IN OTHER STATES TO AVOID DISCLOSURE OF INDIVIDUAL OPERATIONS.

2/ NO SIGNIFICANT COMMERCIAL PRODUCTION DUE TO FROST.

3/ EXCLUDING DRIED PEACHES.

PEACHES

USE AND STATE	PROCESSED UTILIZATION 1/				
	CANNED, FROZEN, DRIED AND OTHER				
	QUANTITY				
	1978	1979	1980	1981	1982
MILLION POUNDS					
CANNED:					
ARK					5.0
CALIF					
CLINGSTONE	1,094.0	1,299.2	1,376.1	1,086.3	920.0
FREESTONE	65.0	74.0	78.0	42.2	40.0
PA		8.4	9.4		6.5
S C	23.4	22.4	14.7		
OTH STS	48.4	23.6	20.1	45.2	12.4
U S	1,230.8	1,427.6	1,498.3	1,173.7	983.9
FROZEN:					
CALIF					
FREESTONE					64.0
MD		2.0		71.0	
PA		.3			.3
W VA		1.2			.2
OTH STS	69.8	90.0	77.1	7.3	6.0
U S	69.8	93.5	77.1	78.3	70.5
DRIED:					
CALIF					
FREESTONE	35.0	33.0	34.0	34.8	45.0
U S	35.0	33.0	34.0	34.8	45.0
OTHER (PICKLES, WINE AND BRANDY):					
CALIF					
CLINGSTONE	11.4	8.4			
OTH STS	32.9	21.2	20.6	22.0	25.6
U S	44.3	29.6	20.6	22.0	25.6

SEE FOOTNOTE ON PAGE 54.

CONTINUED

PEACHES CONTINUED

USE AND STATE	PROCESSED UTILIZATION 1/				
	CANNED, FROZEN, DRIED AND OTHER				
	PRICE PER TON				
	1978	1979	1980	1981	1982
	DOLLARS				
CANNED:					
ARK					185.00
CALIF					
CLINGSTONE	163.00	179.00	188.00	208.00	185.00
FREESTONE	137.00	158.00	153.00	155.00	165.00
MD					
PA		178.00	158.00		232.00
S C	150.00	140.00	170.00		
VA					
OTH STS	155.0	167.00	156.00	171.00	207.00
U S	161.0	177.00	185.00	205.00	185.00
FROZEN:					
CALIF					
FREESTONE				151.00	152.00
MD		144.00			
PA		140.00			160.00
W VA		146.00			126.00
OTH STS	122.00	156.00	131.00	165.00	170.00
U S	122.00	155.00	131.00	152.00	153.00
DRIED:					
CALIF					
FREESTONE	185.0	136.00	115.00	112.00	120.00
U S	185.0	136.00	115.00	112.00	120.00
OTHER (PICKLES, WINE AND BRANDY):					
CALIF					
CLINGSTONE	76.30	77.20			
OTH STS	28.60	55.60	82.10	121.00	122.00
U S	40.90	61.70	82.10	121.00	122.00

1/ MISSING DATA INCLUDED IN OTHER STATES TO AVOID DISCLOSURE OF INDIVIDUAL OPERATIONS.

ALL PEARS

STATE AND YEAR	PRODUCTION		UTILIZATION 1/		PRICE PER TON 1/			VALUE OF UTILIZED PRODUCTION
	TOTAL	UTILIZED	FRESH	PROCESSED 2/	FRESH	PROCESSED: EXCEPT DRIED	ALL	
	TONS				DOLLARS			1,000 DOLLARS
CALIF:								
1978	288,300	288,300				220.00		63,568
1979	364,800	364,800				197.00		71,973
1980	397,700	397,700				184.00		73,195
1981	376,000	376,000				176.00		66,286
1982	321,500	321,500				150.00		48,164
COLO:								
1978	1,950	1,950				212.00		413
1979	4,600	4,400				209.00		920
1980	4,600	4,600				183.00		840
1981	7,000	7,000				174.00		1,217
1982	2,700	2,700				243.00		655
CONN:								
1978	1,600	1,600	1,600		410.00	410.00		656
1979	1,500	1,500	1,500		450.00	450.00		675
1980	1,550	1,550	1,550		470.00	470.00		729
1981	1,600	1,600	1,600		480.00	480.00		768
1982	1,550	1,550	1,550		500.00	500.00		775
MICH:								
1978	10,000	10,000				201.00		2,010
1979	9,000	9,000				198.00		1,782
1980	10,000	10,000				223.00		2,225
1981	9,000	9,000				224.00		2,016
1982	12,000	11,000				220.00		2,418
N Y:								
1978	18,500	18,500				205.00		3,793
1979	18,000	17,700				182.00		3,221
1980	21,000	20,000				222.00		4,434
1981	17,000	17,000				219.00		3,730
1982	19,000	19,000				201.00		3,828

SEE FOOTNOTES ON PAGE 56.

CONTINUED

ALL PEARS CONTINUED

STATE AND YEAR	PRODUCTION		UTILIZATION 1/		PRICE PER TON 1/			VALUE OF UTILIZED PRODUCTION
	TOTAL	UTILIZED	FRESH	PROCESSED 2/	FRESH	PROCESSED EXCEPT DRIED	ALL	
	TONS				DOLLARS			1,000 DOLLARS
OREG:								
1978	151,500	151,500				222.00		33,575
1979	205,000	205,000				202.00		41,500
1980	200,000	200,000				189.00		37,892
1981	205,000	202,000				178.00		36,033
1982	175,000	175,000				213.00		37,246
PA:								
1978	3,700	3,700				287.00		1,062
1979	3,100	3,100				294.00		911
1980	3,500	3,500				299.00		1,046
1981	3,000	3,000			304.00	304.00		912
1982	4,600	4,580			310.00	310.00		1,420
UTAH:								
1978	1,700	1,700	1,700		350.00	350.00		595
1979	2,700	2,700	2,700		280.00	280.00		756
1980	3,000	3,000	3,000		300.00	300.00		900
1981	3,100	3,050	3,050		330.00	330.00		1,007
1982	2,800	2,600	2,600		257.00	257.00		668
WASH:								
1978	246,000	246,000				216.00		53,052
1979	246,000	246,000				214.00		52,557
1980	256,000	256,000				213.00		54,571
1981	275,300	275,300				201.00		55,352
1982	264,800	264,800				196.00		52,005
U S: 2/								
1978	723,250	723,250	297,070	426,180	267.00	187.00	219.00	158,724
1979	854,700	854,200	300,100	554,100	276.00	166.00	204.00	174,295
1980	897,350	896,350	345,060	551,290	244.00	167.00	196.00	175,832
1981	897,000	893,950	377,950	516,000	249.00	142.00	187.00	167,321
1982	803,950	802,730	368,130	434,600	255.00	123.00	183.00	147,179

1/ DATA NOT PUBLISHED FOR SOME STATES TO AVOID DISCLOSURE OF INDIVIDUAL OPERATIONS BUT INCLUDED IN U S.

2/ PROCESSED MOSTLY CANNED, BUT INCLUDES SMALL QUANTITIES DRIED AND OTHER USES NOT PUBLISHED BY STATES TO AVOID DISCLOSURE OF INDIVIDUAL OPERATIONS.

BARTLETT PEARS, CALIFORNIA, OREGON AND WASHINGTON

CROP, STATE AND YEAR	PRODUCTION		UTILIZATION			PRICE PER TON			VALUE OF UTILIZED PRODUCTION
	TOTAL	UTILIZED	FRESH	PROCESSED 1/	FRESH	CANNED	PROCESSED: EXCEPT DRIED	ALL	
	TONS				DOLLARS			1,000 DOLLARS	
BARTLETT:									
CALIF:									
1978	281,000	281,000	43,000	238,000	285.00	216.00	204.00	219.00	61,539
1979	355,000	355,000	51,000	304,000	275.00	201.00	185.00	197.00	69,935
1980	387,000	387,000	72,000	315,000	188.00	210.00	186.00	185.00	71,496
1981	366,000	366,000	70,000	296,000	207.00	205.00	170.00	176.00	64,514
1982	314,000	314,000	81,000	233,000	176.00	168.00	139.00	148.00	46,410
OREG:									
1978	55,500	55,500	13,000	42,500	236.00	188.00	182.00	195.00	10,823
1979	85,000	85,000	16,100	68,900	207.00	173.00	164.00	172.00	14,620
1980	80,000	80,000	13,000	67,000	160.00	180.00	172.00	170.00	13,604
1981	85,000	85,000	23,800	61,200	124.00	117.00	112.00	115.00	9,805
1982	70,000	70,000	24,500	45,500	158.00	125.00	115.00	130.00	9,104
WASH:									
1978	132,000	132,000	39,900	92,100	277.00	178.00	174.00	205.00	27,060
1979	153,000	153,000	36,300	116,700	230.00	170.00	165.00	180.00	27,540
1980	143,000	143,000	32,900	110,100	242.00	175.00	169.00	185.00	26,459
1981	144,500	144,500	42,400	102,100	199.00	131.00	126.00	147.00	21,303
1982	141,300	141,300	44,600	96,700	199.00	139.00	133.00	154.00	21,736
TOTAL:									
1978	468,500	468,500	95,900	372,600	275.00	203.00	194.00	212.00	99,422
1979	593,000	593,000	103,400	489,600	249.00	188.00	177.00	189.00	112,095
1980	610,000	610,000	117,900	492,100	200.00	197.00	180.00	183.00	111,559
1981	595,500	595,500	136,200	459,300	190.00	171.00	152.00	161.00	95,622
1982	525,300	525,300	150,100	375,200	180.00	153.00	135.00	147.00	77,250

1/ PROCESSED MOSTLY CANNED, BUT INCLUDES SMALL QUANTITIES DRIED AND OTHER USES NOT PUBLISHED BY STATES TO AVOID DISCLOSURE OF INDIVIDUAL OPERATIONS. SEE PAGE 45 FOR CALIF DRIED.

OTHER PEARS, CALIFORNIA, OREGON AND WASHINGTON

CROP, STATE AND YEAR	PRODUCTION		UTILIZATION 1/		PRICE PER TON			VALUE OF
	TOTAL	UTILIZED	FRESH	PROCESSED 2/	FRESH 1/	PROCESSED EXCEPT DRIED 1/	ALL	UTILIZED PRODUCTION
	TONS				DOLLARS			1,000 DOLLARS
OTHER:								
CALIF:								
1978	7,390	7,300				278.00		2,029
1979	9,800	9,800				208.00		2,038
1980	10,700	10,700				159.00		1,699
1981	10,000	10,000				177.00		1,772
1982	7,500	7,500				234.00		1,754
OREG:								
1978	96,000	96,000				237.00		22,752
1979	120,000	120,000				224.00		26,880
1980	120,000	120,000				202.00		24,288
1981	120,000	117,000				224.00		26,228
1982	105,000	105,000				268.00		28,142
WASH:								
1978	114,000	114,000				228.00		25,992
1979	93,000	93,000				269.00		25,017
1980	113,000	113,000				249.00		28,112
1981	130,800	130,800				260.00		34,049
1982	123,500	123,500				245.00		30,269
TOTAL:								
1978	217,300	217,300	176,500	40,800	263.00	108.00	234.00	50,773
1979	222,800	222,800	173,200	49,600	294.00	60.70	242.00	53,935
1980	243,700	243,700	197,000	46,700	265.00	40.80	222.00	54,099
1981	260,800	257,800	213,800	44,000	283.00	33.60	241.00	62,049
1982	236,000	236,000	189,700	46,300	311.00	25.60	255.00	60,165

1/ DATA NOT PUBLISHED BY STATES TO AVOID DISCLOSURE OF INDIVIDUAL OPERATIONS.

2/ PROCESSED MOSTLY JUICE, BUT INCLUDES SMALL QUANTITIES CANNED AND OTHER USES NOT PUBLISHED SEPARATELY TO AVOID DISCLOSURE OF INDIVIDUAL OPERATIONS.

UNUTILIZED PRODUCTION 1/

CROP AND STATE	UNHARVESTED PRODUCTION				
	1978	1979	1980	1981	1982
	MILLION POUNDS				
APPLES:					
ARK		1.0		1.5	
CALIF				20.0	
COLO	5.0	9.0	2.0		
GA				5.0	1.0
IND	2.3	3.2	1.6	1.0	2.0
IOWA		.3			.6
KANS		.9	.6	1.6	.8
KY	.8		1.9	.6	.6
MD	1.0	.7	.7		
MICH	30.0				
MINN				1.0	1.0
OHIO	4.4				
S C		2.0		1.0	
TENN			.5	1.0	.3
WIS	5.0	5.0	3.0	4.0	5.0
TOTAL	48.5	22.1	10.3	36.7	11.3
PEACHES:					
ARK		1.0		2.0	2.0
CALIF					
CLINGSTONE					51.0
GA				3.0	
IDAHO				.3	.5
KANS				.2	.1
LA				.2	
MD				.2	
OREG				.5	
S C					6.0
TENN				.5	
TEX				4.0	1.6
TOTAL		1.0		10.9	61.2
CHERRIES (TART):					
COLO			.2		
MICH			1.0		35.0
UTAH			.1		
WIS			.6		1.0
TOTAL			1.9		36.0
			TONS		
CHERRIES (SWEET):					
IDAHO				1,200	530
MICH					4,000
N Y		150	500	700	300
OREG				3,000	
PA					20
WASH				2,000	14,000
TOTAL		150	500	6,900	18,850

1/ SEE FOOTNOTE ON PAGE 62.

CONTINUED

UNUTILIZED PRODUCTION 1/--CONTINUED

CROP AND STATE	UNHARVESTED PRODUCTION				
	1978	1979	1980	1981	1982
	TONS				
APRICOTS:					
UTAH				20	40
TOTAL				20	40
GRAPES:					
CALIF					280,000
GA					200
N C	700	300	200	200	
OTH STS				400	
TOTAL	700	300	200	600	280,200
PEARS:					
CALIF					
BARTLETT		200			
MICH					1,000
N Y		300	1,000		
TOTAL		500	1,000		1,000
PRUNES AND PLUMS:					
OREG				2,000	4,000
TOTAL				2,000	4,000
BUSHBERRIES:			1,000 POUNDS		
CULTIVATED BLACKBERRIES:					
OREG			3,200	1,750	
WASH	60		134	200	
TOTAL	60		3,334	1,950	
BLUEBERRIES:					
N C		180			
OREG			200		
WASH	207	210	235	70	
TOTAL	207	390	435	70	
BOYSENBERRIES:					
OREG			300	40	
CURRANTS:					
WASH	4	4			
LOGANBERRIES:					
OREG				140	
BLACK RASPBERRIES:					
OREG				50	
WASH				60	
TOTAL				110	
RED RASPBERRIES:					
OREG			400		
WASH	200	273	2,200		
TOTAL	200	273	2,600		
PAPAYAS:					
HAW	14,000	10,000	14,000	9,000	17,000

1/ SEE FOOTNOTE ON PAGE 62.

CONTINUED

UNUTILIZED PRODUCTION 1/--CONTINUED

CROP AND STATE	HARVESTED NOT SOLD				
	1978	1979	1980	1981	1982
	MILLION POUNDS				
APPLES:					
IDAHO				5.0	
IND	1.6	.6	1.0		
IOWA		.2	.1		.1
KANS				.5	.4
KY		.6			
MD	.3	.4	.3		
N C	2.0	1.0	4.0	3.0	
OHIO	.2				
TENN	.3		.3	.5	
UTAH			2.0	1.0	
TOTAL	4.4	2.8	7.7	10.0	.5
PEACHES:					
ALA				1.4	
ARK	1.0		1.0		
CALIF					
CLINGSTONE	120.0	90.0	113.0	96.0	108.0
COLO		1.0			
GA				12.0	10.0
KANS					.1
N J		5.0			
S C	15.0	7.0		10.0	4.0
TEXAS	1.0	.5	.5	.5	.4
TOTAL	137.0	103.5	114.5	119.9	122.5
CHERRIES (TART):					
MICH					30.0
UTAH				.4	
TOTAL				.4	30.0
			1,000 POUND		
PAPAYAS:					
HAW	11,000	7,985	11,084	18,610	14,250
			TONS		
APRICOTS:					
WASH					100
CHERRIES (SWEET):					
IDAHO					110
MICH					1,500
MONT					300
OREG			1,200		
UTAH				120	30
WASH			3,700		1,200
TOTAL			4,900	120	3,140
GRAPES:					
CALIF	248,000				410,000
N C	200		100		
TOTAL	248,200		100		410,000
POMEGRANATES:					
CALIF		2,000	1,000	1,700	1,600

1/ SEE FOOTNOTE ON PAGE 62.

CONTINUED

UNUTILIZED PRODUCTION 1/--CONTINUED

CROP AND STATE	HARVESTED NOT SOLD				
	1978	1979	1980	1981	1982
	TONS				
KIWIFRUIT					
HAW			1,100	1,400	4,000
PEARS:					
OREG					
OTHER				3,000	
PA					20
UTAH				50	200
TOTAL				3,050	220
PRUNES AND PLUMS:					
IDAHO	600			500	
TOTAL	600			500	
	1,000 POUNDS				
BUSHBERRIES:					
BLUEBERRIES					
NC		100	30		

1/ ESTIMATES BEGINNING WITH 1981 CROPS INCLUDE QUANTITIES LOST BECAUSE OF ECONOMIC OR NATURAL REASONS. ESTIMATES OF LOSSES PRIOR TO 1981 WERE FOR ECONOMIC REASONS ONLY.

ALMONDS AND FILBERTS

CROP, STATE AND YEAR	UTILIZED PRODUCTION	PRICE PER UNIT	VALUE OF UTILIZED PRODUCTION	PRODUCTION		MEAT PRODUCTION OF NUTS SOLD SHELL
				SOLD IN SHELL	SOLD SHELLED	
	1,000 POUNDS (SHELLED BASIS)	CENTS PER POUND	1,000 DOLLARS		1,000 POUNDS (SHELLED BASIS)	
ALMONDS: 1/ 2/						
CALIF						
1978	181,000	145.0	262,450		181,000	
1979	376,000	153.0	575,280		376,000	
1980	322,000	147.0	473,340		322,000	
1981	408,000	78.0	299,520		408,000	
1982	347,000	94.0	311,140		347,000	
	TONS (IN- SHELL BASIS)	DOLLARS PER TON			TONS (IN-SHELL BASIS)	
FILBERTS:						
OREG						
1978	13,700	805.00	11,029	9,400	4,300	3,300
1979	12,700	951.00	12,078	7,300	5,400	4,290
1980	15,100	1,151.00	17,386	8,600	6,500	5,200
1981	14,400	786.00	11,319	8,200	6,200	5,000
1982	18,400	680.00	12,512	9,800	8,600	7,000
WASH						
1978	350	835.00	292	250	100	80
1979	300	970.00	291	230	70	60
1980	300	1,181.00	354	199	101	84
1981	300	770.00	231	200	100	80
1982	400	677.00	271	170	230	140
TOTAL						
1978	14,050	806.00	11,321	9,650	4,400	3,380
1979	13,000	951.00	12,369	7,530	5,470	4,350
1980	15,400	1,152.00	17,740	8,799	6,601	5,284
1981	14,700	786.00	11,550	8,400	6,300	5,080
1982	18,800	680.00	12,783	9,970	8,830	7,140

1/ CALIFORNIA ALMONDS SOLD IN THE SHELL ARE INCLUDED IN "SOLD SHELLED."

2/ PRICE AND VALUE BASED ON THE EDIBLE PORTION OF THE CROP.

WALNUTS, PECANS, MACADAMIA NUTS, AND PISTACHIOS

CROP, STATE AND YEAR	UTILIZED PRODUCTION	PRICE PER UNIT	VALUE OF UTILIZED PRODUCTION	PRODUCTION		MEAT PRODUCTION OF NUTS SOLD SHELLED
				SOLD IN SHELL	SOLD SHELLED	
	TONS (IN- SHELL BASIS)	DOLLARS PER TON	1,000 DOLLARS	TONS (IN-SHELL BASIS)		
WALNUTS (ENGLISH):						
CALIF						
1978	160,000	1,302.00	208,320	53,085	106,915	38,413
1979	208,000	847.00	176,176	67,000	141,000	55,000
1980	197,000	936.00	184,392	75,000	122,000	46,000
1981	225,000	1,014.00	228,150	84,000	141,000	55,000
1982	234,000	1,020.00	238,680	78,000	156,000	61,000
: 1,000 POUNDS						
: (IN-SHELL						
: BASIS)						
		CENTS		1,000 POUNDS (IN-SHELL BASIS)		
		PER POUND				
PECANS:						
U S						
1978	249,900	60.5	151,250	47,900	202,000	1/
1979	210,600	55.4	116,663	48,600	162,000	1/
1980	183,500	78.1	143,269	40,500	143,000	1/
1981	339,100	54.5	184,842	69,100	270,000	1/
1982	218,600	67.5	147,491	63,100	155,500	1/
MACADAMIA NUTS:						
HAW						
1978	20,980	53.8	11,287	20,980		1/
1979	26,660	62.9	16,769	26,660		1/
1980	33,390	72.4	24,174	33,390		1/
1981	33,360	79.3	26,454	33,360		1/
1982	36,720	73.9	27,136	36,720		1/
PISTACHIOS: 2/						
CALIF						
1978	2,500	124.00	3,100	2,500	2/	2/
1979	17,200	160.00	27,520	17,200	2/	2/
1980	26,900	205.00	55,145	18,600	8,300	3,600
1981	14,500	136.00	19,759	11,300	3,200	1,300
1982	43,400	145.00	63,068	37,500	5,900	2,400

1/ NOT AVAILABLE.

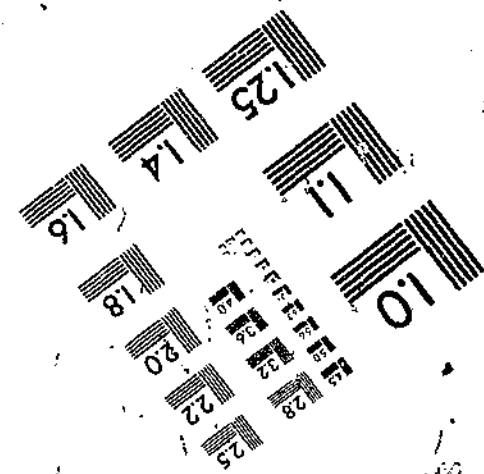
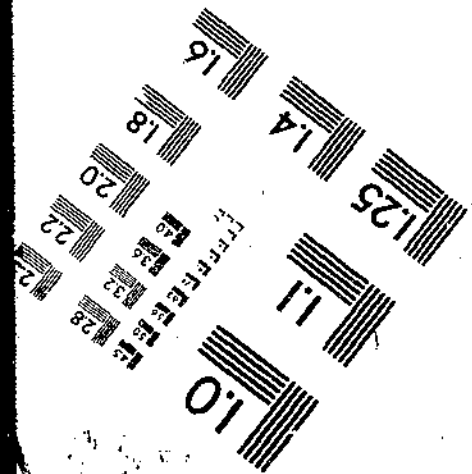
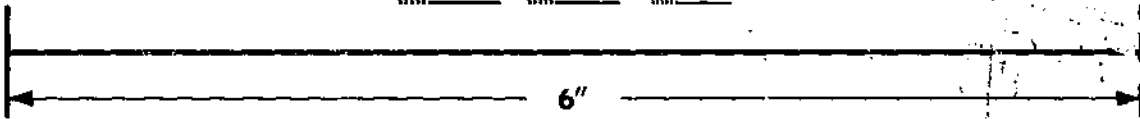
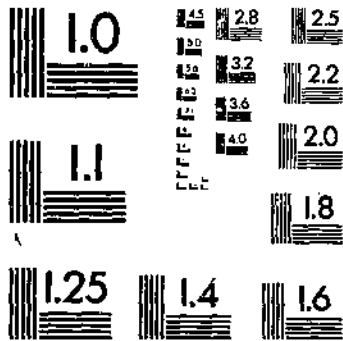
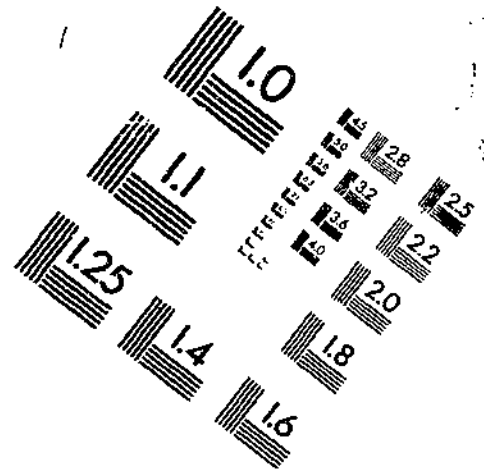
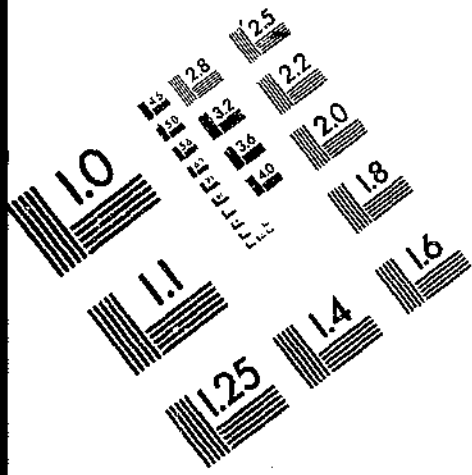
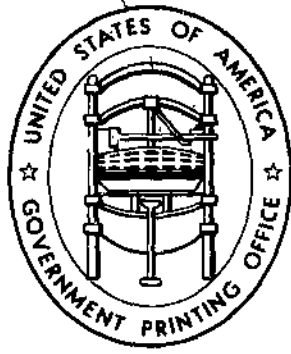
2/ DATA NOT AVAILABLE PRIOR TO 1980.

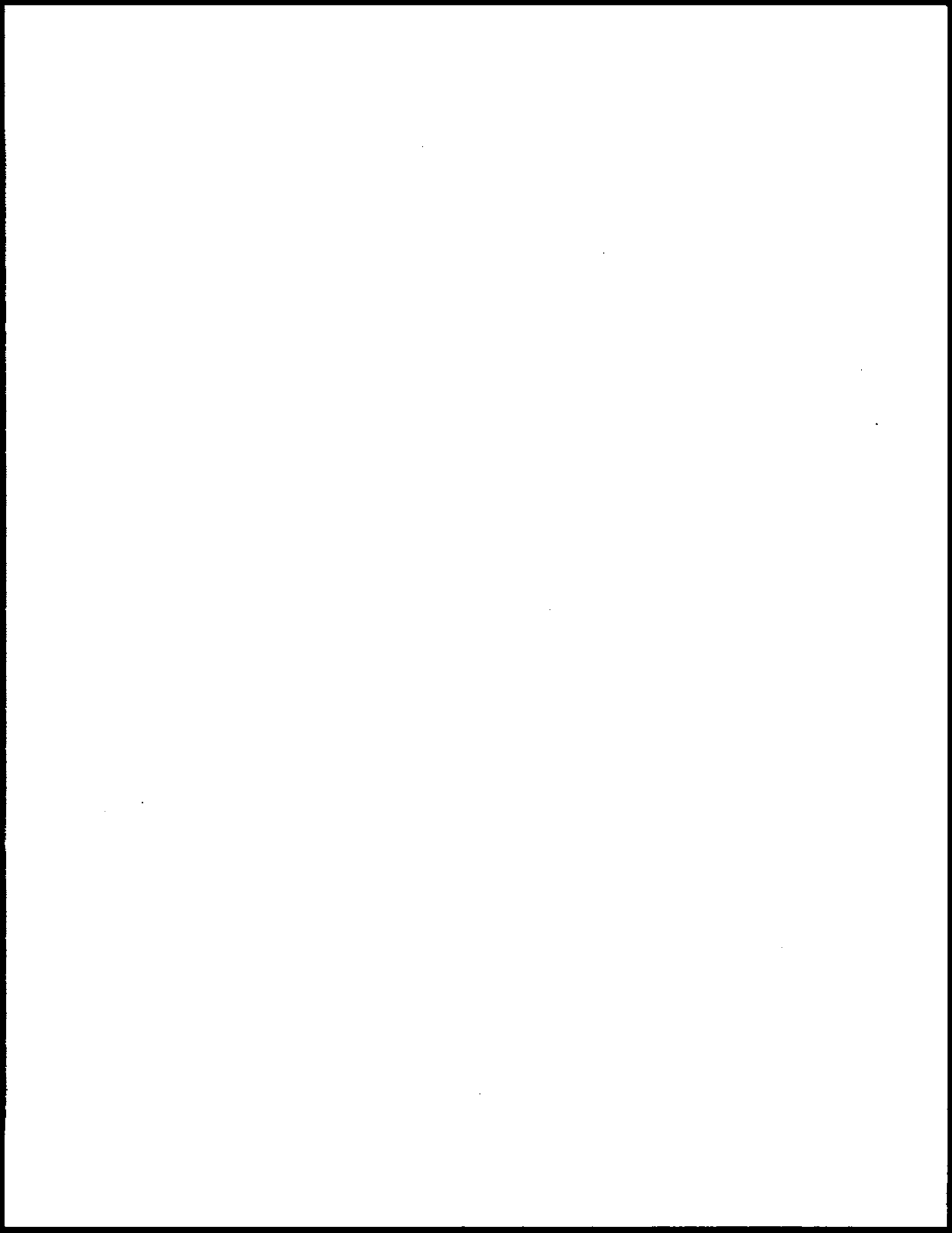
PECANS

VARIETY AND STATE	UTILIZED PRODUCTION					PRICE PER POUND					VALUE OF UTILIZED PRODUCTION				
	1978	1979	1980	1981	1982	1978	1979	1980	1981	1982	1978	1979	1980	1981	1982
	1,000 POUNDS					CENTS					1,000 DOLLARS				
IMPROVED VARIETIES: 1/:															
ALA	13,000	2,800	10,400	21,000	14,000	60.8	66.0	80.9	64.0	71.3	7,904	1,848	8,414	13,440	9,982
ARK	1,000	400	200	1,250	600	81.0	68.0	101.0	58.7	108.0	810	272	202	734	648
FLA	1,600	1,100	2,500	2,000	2,000	65.0	70.0	75.0	67.0	61.0	1,040	770	1,875	1,340	1,220
GA	105,000	54,000	84,000	96,000	105,000	60.0	70.0	83.0	59.0	66.5	63,000	37,800	69,720	56,640	69,825
LA	2,500	2,500	2,000	4,500	2,500	90.0	70.0	90.0	65.0	70.0	2,250	1,750	1,800	2,925	1,750
MISS	6,000	1,500	3,500	5,500	3,000	67.0	76.0	90.0	60.0	87.0	4,020	1,140	3,150	3,300	2,610
N MEX	15,000	14,700	14,700	20,000	25,000	75.0	69.0	88.0	86.0	83.0	11,250	10,143	12,936	17,200	20,750
N C	2,800	900	1,100	2,000	900	58.0	65.0	85.0	60.0	65.0	1,624	585	935	1,200	585
OKLA	2,000	1,000	500	2,500	800	89.0	81.0	115.0	66.5	137.0	1,780	810	575	1,663	1,096
S C	3,600	1,200	1,600	4,800	1,200	77.0	77.0	88.0	62.4	79.5	2,772	924	1,408	2,995	954
TEX	12,000	21,000	8,000	15,000	14,000	81.0	70.0	100.0	77.0	95.4	9,720	14,700	8,000	11,550	13,356
U S	164,500	101,100	128,500	174,550	169,000	64.5	70.0	84.8	64.7	72.6	106,170	70,742	109,015	112,987	122,776
NATIVE AND SEEDLING:															
ALA	9,000	1,200	9,600	13,000	9,000	46.1	43.0	64.4	46.0	49.1	4,149	516	6,182	5,980	4,419
ARK	2,200	1,100	700	4,250	400	60.0	44.0	75.7	44.5	46.0	1,320	484	530	1,891	184
FLA	2,600	1,500	3,500	3,000	2,500	51.0	50.0	60.0	45.0	51.0	1,326	750	2,100	1,350	1,275
GA	30,000	11,000	21,000	24,000	20,000	50.0	45.0	60.0	43.0	49.0	15,000	4,950	12,600	10,320	9,800
LA	6,500	13,500	12,000	19,500	7,500	60.0	37.0	63.0	39.0	46.0	3,900	4,995	7,560	7,605	3,450
MISS	4,000	1,000	1,000	3,000	1,000	48.0	50.0	65.0	45.0	42.0	1,920	500	650	1,350	420
N C	1,200	400	600	2,200	1,000	42.0	45.0	55.0	45.0	50.0	504	180	390	990	500
OKLA	13,500	9,000	3,000	44,500	4,200	56.0	41.0	68.0	44.5	57.0	7,560	3,690	2,040	19,803	2,394
S C	2,400	800	600	4,100	1,000	59.2	57.0	62.0	46.0	60.2	1,421	456	372	1,886	602
TEX	14,000	70,000	3,000	47,000	3,000	57.0	42.0	61.0	44.0	55.7	7,980	29,400	1,830	20,680	1,671
U S	85,400	109,500	55,000	164,550	49,600	52.8	41.9	62.3	43.7	49.8	45,080	45,921	34,254	71,855	24,715
ALL PECANS:															
ALA	22,000	4,000	20,000	34,000	23,000	54.8	59.1	73.0	57.1	62.6	12,053	2,364	14,596	19,420	14,401
ARK	3,200	1,500	900	5,500	1,000	66.6	50.4	81.3	47.7	83.2	2,130	756	732	2,625	832
FLA	4,200	2,600	6,000	5,000	4,500	56.3	58.5	66.3	53.8	55.4	2,366	1,520	3,975	2,690	2,495
GA	135,000	65,000	105,000	120,000	125,000	57.8	65.8	78.4	55.8	63.7	78,000	42,750	82,320	66,960	79,625
LA	9,000	16,000	14,000	24,000	10,000	68.3	42.2	66.9	43.9	52.0	6,150	6,745	9,360	10,530	5,200
MISS	10,000	2,500	4,500	8,500	4,000	59.4	65.6	84.4	54.7	75.8	5,940	1,640	3,800	4,650	3,030
N MEX	15,000	14,700	14,700	20,000	25,000	75.0	69.0	88.0	86.0	83.0	11,250	10,143	12,936	17,200	20,750
N C	4,000	1,300	1,700	4,200	1,900	53.2	58.8	77.9	52.1	57.1	2,128	765	1,325	2,190	1,085
OKLA	15,500	10,000	3,500	47,000	5,000	60.3	45.0	74.7	45.7	69.0	9,340	4,500	2,615	21,466	3,490
S C	6,000	2,000	2,200	8,900	2,200	69.9	69.0	80.9	54.8	70.7	4,193	1,380	1,780	4,881	1,556
TEX	26,000	91,000	11,000	62,000	17,000	68.1	48.5	89.4	52.0	88.4	17,700	44,100	9,830	32,230	15,027
U S	249,900	210,600	183,500	339,100	218,600	60.5	55.4	78.1	54.5	67.5	151,250	116,663	143,269	184,842	147,491

1/ BUDDED, GRAFTED, OR TOPWORKED VARIETIES.

65





END

03-13-85