



AgEcon SEARCH
RESEARCH IN AGRICULTURAL & APPLIED ECONOMICS

The World's Largest Open Access Agricultural & Applied Economics Digital Library

This document is discoverable and free to researchers across the globe due to the work of AgEcon Search.

Help ensure our sustainability.

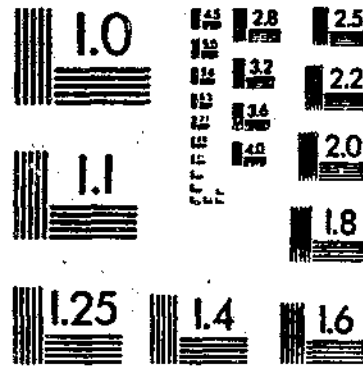
Give to AgEcon Search

AgEcon Search
<http://ageconsearch.umn.edu>
aesearch@umn.edu

*Papers downloaded from **AgEcon Search** may be used for non-commercial purposes and personal study only. No other use, including posting to another Internet site, is permitted without permission from the copyright owner (not AgEcon Search), or as allowed under the provisions of Fair Use, U.S. Copyright Act, Title 17 U.S.C.*

STATISTICS 1983 U.S.D.A. STATISTICAL BULLETIN 1983-10 UPD. DATA
POTATOES AND SWEET POTATOES FINAL ESTIMATES 1978-82, PRELIMINARY 1983
CROP REPORTING BOARD, U.S. DEPT. OF AGRICULTURE 1 OF 1

START





**United States
Department of
Agriculture**

**Statistical
Reporting
Service**

**Crop
Reporting
Board**

**Statistical
Bulletin
Number 709**

Potatoes and Sweetpotatoes

**Final Estimates 1978-82,
Preliminary 1983**

POTATOES AND SWEETPOTATOES: FINAL ESTIMATES 1978-82, PRELIMINARY 1983. Crop Reporting Board, Statistical Reporting Service, U.S. Department of Agriculture, Statistical Bulletin 709.

ABSTRACT

This publication contains final potato and sweetpotato data on acreage, yield, production, disposition, price, value, stocks, and utilization for 1978-82 and preliminary 1983 estimates for acreage, yield, and production. It continues the Statistical Reporting Service historic series of publications showing final estimates. Data for 1974-78 are published in Statistical Bulletin 645. Estimates contained in this publication provide a historic record and a benchmark for current estimates.

Washington, D.C. 20250

June 1984

CONTENTS

	<u>PAGE</u>
Comments	4
 <u>POTATOES:</u>	
Area, yield, production, farm disposition, price and value, United States, 1964-82	5
Area, yield, and production by seasonal groups, 1978-83	6
Production, farm disposition, price and value by seasonal groups, 1978-82	9
Area, yield, and production, by States, 1978-83	14
Production, farm disposition, price and value by States, 1978-82	17
Total stocks held by growers and local dealers, 1978-82	22
Utilization, United States, 1978-82	25
Number of potato chip plants and quantity used for chips, by area and United States, 1978-82	26
Area, yield, production, farm disposition, price, value and stocks, Alaska, 1978-82	27
Prices received by farmers, monthly and season average, by State and United States, 1978-82	32
 <u>SWEETPOTATOES:</u>	
Area, yield, production, farm disposition, price and value, United States, 1964-82	28
Area, yield, and production, by States, 1978-83	29
Production, farm disposition, price and value by States, 1978-82	30
Prices received by farmers, monthly and season average, by State and United States, 1978-82	36

INTRODUCTION

This publication presents final estimates of acreage, yield per acre, production, farm disposition, season average price, utilization of sales, and stocks for the crops of 1978 through 1982; also preliminary 1983 estimates of acreage, yield, and production. Estimates are based on information from crop reporters, State farm censuses, rail and truck shipments and unloads, and Federal-State inspection data. Estimates also reflect a review of the 1982 Census of Agriculture.

Price estimates represent average returns to growers for all uses and methods of sale. These prices are applied to production to compute value of production and to the quantity sold to compute value of sales. The difference between value of production and value of sales is accounted for by a value placed on that amount used for seed, feed, home use, shrinkage, and loss. The U.S. season average price is derived by weighting State prices by quantities sold.

Potato production data for each State have been classified by seasonal groups according to the period or periods when the largest supplies are usually harvested. State estimates of acreage, yield per acre, production, farm disposition, price, and value are the combined seasonal estimates. Utilization estimates by States are not provided. No seasonal classification is made for Alaska. The four seasonal groups used in this report are:

<u>Season</u>	<u>Usual Time of Harvest</u>
Winter	January, February, March
Spring	April, May, June
Summer	July, August, September
Fall	October, November, December

These seasons are not fixed dates but are approximations since some harvest may occur before or after the specified season. Generally, the marketing season closely follows the harvesting season, except for the fall crop which has a marketing season that extends at least through August of the following year.

Earlier data on potatoes and sweetpotatoes may be found in the following reports: "Potatoes," Statistical Bulletin No. 251 for 1866-1953; "Sweetpotatoes," Statistical Bulletin No. 237 for 1868-1953; and "Potatoes and Sweetpotatoes," Statistical Bulletin No. 291 for 1954-58; Statistical Bulletin No. 409 for 1964-68; Statistical Bulletin No. 583 for 1969-75, and Statistical Bulletin No. 645 for 1974-78.

Earlier potato and sweetpotato prices are in the following Statistical Bulletins: No. 140, "Potato Prices, Monthly and Season Average Prices Received by Farmers, by States and United States, 1909-52"; No. 163, "Sweetpotato Prices, Monthly and Season Average Prices Received by Farmers, by States and United States, 1909-53"; No. 699, "Prices Received by Farmers, Potatoes and Sweetpotatoes, by States and United States, 1949-78".

POTATOES: AREA, YIELD, PRODUCTION, FARM DISPOSITION,
SEASON AVERAGE PRICE RECEIVED BY FARMERS, AND VALUE, UNITED STATES 1964-82

YEAR	ACREAGE		YIELD PER HARVESTED ACRE	PRODUCTION	FARM DISPOSITION					PRICE PER CWT	VALUE OF --		
	PLANTED	HARVESTED			USED ON FARMS WHERE GROWN:						SOLD 1/	PRODUCTION	SALES
					FOR SEED	FEED, AND LOSS	FOR HOUSEHOLD USE	SHRINKAGE	AND				
	1,000 ACRES		CWT		1,000 CWT				DOLLARS	1,000 DOLLARS			
1964	1,311.3	1,271.9	190	241,076	7,249	12,205	2,776	218,846	3.50	846,017	765,592		
1965	1,418.4	1,383.1	210	291,109	6,398	19,608	2,512	262,591	2.53	730,527	665,268		
1966	1,497.6	1,462.6	210	2/307,242	7,952	31,128	2,202	265,960	2.04	622,581	541,564		
1967	1,499.1	1,459.9	209	2/305,766	7,301	25,315	2,005	271,145	1.87	567,557	506,187		
1968	1,414.5	1,383.3	214	295,401	6,851	21,039	1,768	265,743	2.23	657,202	593,897		

YEAR	AREA		YIELD PER ACRE	PRODUCTION	TOTAL USED FOR SEED 3/	FARM DISPOSITION					PRICE PER CWT	VALUE OF --		
	PLANTED	HARVESTED				USED ON FARMS WHERE GROWN:						SOLD 1/	PRODUCTION	SALES
						FOR SEED	FEED, AND HOUSEHOLD USE	FOR HOUSEHOLD AND LOSS	SHRINKAGE	AND				
	ACRES		CWT		1,000 CWT				DOLLARS	1,000 DOLLARS				
1969	1,457.6	1,415.5	221	312,578	24,492	9,959	22,657	279,962	2.24	697,845	626,657			
1970	1,449.5	1,421.0	229	325,716	24,555	9,957	23,850	291,909	2.21	715,123	645,748			
1971	1,432.1	1,391.0	230	319,329	22,290	8,927	27,909	282,493	1.90	602,907	537,208			
1972	1,301.1	1,255.6	236	296,359	23,556	7,973	19,996	268,450	3.02	895,903	809,718			
1973	1,329.8	1,306.6	230	300,013	25,257	6,516	18,376	275,121	4.90	1,471,942	1,347,913			
1974	1,421.6	1,391.6	246	342,395	23,795	6,472	32,496	303,427	4.01	1,354,928	1,215,435			
1975	1,298.5	1,259.5	256	321,978	25,615	6,560	22,177	293,241	4.48	1,442,741	1,313,201			
1976	1,404.2	1,371.4	261	357,666	25,566	6,760	26,246	324,660	3.59	1,282,521	1,166,539			
1977	1,398.9	1,360.2	261	355,334	25,989	6,718	31,119	317,497	3.55	1,255,047	1,127,531			
1978	1,401.0	1,374.5	267	366,314	24,331	6,302	34,439	325,573	3.38	1,224,478	1,098,936			
1979	1,295.4	1,258.3	272	342,447	22,316	5,904	30,128	306,415	3.44	1,172,108	1,052,542			
1980	1,175.4	1,147.8	265	303,905	24,063	6,380	23,237	274,288	6.55	1,985,814	1,795,482			
1981	1,255.3	1,232.4	276	340,623	24,931	6,004	26,339	308,280	5.42	1,831,474	1,670,955			
1982	1,302.8	1,266.9	280	355,131	24,120	7,242	31,045	316,844	4.45	1,562,639	1,411,309			

1/ CONSISTS OF POTATOES SOLD FOR ALL PURPOSES INCLUDING FOOD, SEED, PROCESSING AND LIVESTOCK FEED.

2/ DOES NOT INCLUDE THE FOLLOWING QUANTITIES NOT HARVESTED BECAUSE OF ECONOMIC CONDITIONS (1,000 CWT): ALA, 1966, 310; 1967, 78.

3/ INCLUDES SEED PURCHASED AND SEED USED ON FARMS WHERE GROWN.

POTATOES - AREA, YIELD, AND PRODUCTION BY SEASONAL GROUPS, 1978 AND 1979 CROPS

SEASONAL GROUP AND STATE	CROP OF 1978				CROP OF 1979			
	AREA		YIELD	PRODUCTION	AREA		YIELD	PRODUCTION
	PLANTED	HARVESTED			PLANTED	HARVESTED		
	1,000 ACRES	CNT	1,000 CNT	1,000 ACRES	CNT	1,000 CNT		
WINTER								
CALIF	3.0	3.0	230	690	3.3	3.3	240	792
FLA	10.0	9.9	195	1,931	9.7	8.6	185	1,591
TOTAL	13.0	12.9	203	2,621	13.0	11.9	200	2,383
SPRING								
ALA	11.0	9.5	100	950	8.0	7.3	140	1,022
ARIZ	6.0	6.0	265	1,590	6.2	6.2	210	1,302
CALIF	29.0	29.0	205	8,265	30.0	28.0	395	11,060
FLA-HASTINGS	20.8	20.6	170	3,502	20.0	18.5	230	4,255
-OTHER	2.0	1.4	125	225	1.0	.9	180	162
LA	2.1	1.9	90	171	2.3	2.0	75	190
MISS 1/	1.3	1.2	90	100				
N C	13.1	13.0	145	1,865	13.8	13.7	165	2,261
TEX	7.6	7.5	160	1,200	7.5	7.1	160	1,136
TOTAL	92.9	90.5	198	17,896	89.8	83.7	255	21,348
SUMMER								
ALA	8.0	8.0	150	1,200	10.0	9.0	170	1,530
CALIF	7.9	7.9	360	2,844	7.7	7.7	390	2,697
COLO	7.0	6.8	255	1,734	7.1	6.9	275	1,898
DEL	5.7	5.6	210	1,176	5.6	5.4	220	1,188
ILL	2.0	1.9	190	361	2.1	2.0	235	470
IND	2.1	2.0	170	340	1.9	1.8	160	288
IOWA	1.7	1.5	200	300	1.5	1.1	210	251
MD	1.8	1.8	175	315	1.7	1.7	165	281
MICH	8.5	8.3	175	1,455	8.9	8.6	180	1,548
MINN	7.1	7.0	280	1,960	6.4	6.3	285	1,796
NEBR	2.0	1.8	160	288	1.7	1.5	180	270
N J	8.5	8.2	255	2,091	8.8	8.5	250	2,125
N MEX	3.8	3.8	205	779	4.5	4.4	275	1,210
N C	4.2	4.0	125	500	4.1	3.9	120	468
OHIO	1.7	1.6	190	304	1.5	1.4	260	364
TENN	3.2	3.2	105	336	3.3	3.3	105	347
TEX	11.2	11.0	210	2,310	11.1	10.9	240	2,616
VA	22.0	21.2	125	2,650	20.0	19.2	135	2,592
TOTAL	108.4	105.6	198	20,941	107.9	103.6	212	21,917
FALL								
CALIF	17.3	17.3	350	6,055	17.4	17.2	370	6,364
COLO	41.5	41.0	275	11,275	40.0	39.5	290	11,455
CONN	2.5	2.5	205	513	2.1	2.1	220	462
IDAHO-10 SW CO	32.0	32.0	325	10,400	30.0	30.0	335	10,050
-OTHER	338.0	333.0	270	89,910	290.0	288.0	260	74,880
IND	4.0	3.9	240	936	4.3	4.2	255	1,071
MAINE	119.0	118.0	220	25,960	116.0	113.0	245	27,685
MASS	3.6	3.6	225	810	3.5	3.4	220	748
MICH	35.0	34.0	250	8,500	33.0	32.0	250	8,000
MINN	73.0	71.0	210	14,910	70.0	68.0	190	12,920
MONT	8.8	8.7	240	2,088	7.5	7.5	240	1,800
NEBR	7.3	7.2	250	1,800	6.0	5.7	260	1,482
NEV	17.0	17.0	320	5,440	15.0	15.0	330	4,950
N Y-LONG IS	23.5	23.3	265	6,175	22.0	21.8	295	6,451
-UPSTATE	26.0	25.0	260	6,900	25.5	25.5	275	6,465
N DAK	137.0	135.0	175	23,625	121.0	114.0	160	18,240
OHIO	10.7	10.3	215	2,215	10.4	10.0	240	2,400
OREG-MALHEUR	11.0	10.8	350	3,780	13.5	13.0	370	4,810
-OTHER	58.5	56.8	435	24,708	52.0	50.0	410	20,500
PA	26.0	25.0	250	6,250	25.0	24.0	250	6,000
R I	3.6	3.6	255	918	3.4	3.3	250	759
S DAK	7.5	7.0	170	1,190	7.3	6.5	185	1,203
UTAH	6.0	5.9	245	1,446	5.6	5.5	250	1,375
VT	.8	.8	200	160	.7	.7	210	147
WASH	111.0	111.0	455	50,505	102.0	102.0	475	48,450
WIS	59.0	59.0	315	17,325	57.0	54.0	315	17,010
WYO	7.1	6.8	215	1,462	5.5	5.2	220	1,144
TOTAL	1,186.7	1,165.5	279	324,856	1,085.7	1,059.1	280	296,799
U S	1,401.0	1,374.5	267	366,314	1,295.4	1,258.3	272	362,447

1/ ESTIMATE DISCONTINUED AFTER 1976 CROP.

POTATOES - AREA, YIELD, AND PRODUCTION BY SEASONAL GROUPS, 1980 AND 1981 CROPS

SEASONAL GROUP AND STATE	CROP OF 1980				CROP OF 1981			
	AREA		YIELD	PRODUCTION	AREA		YIELD	PRODUCTION
	PLANTED	HARVESTED	1,000 CMT	1,000 CMT	PLANTED	HARVESTED	1,000 CMT	1,000 CMT
	1,000 ACRES	CMT	1,000 CMT	1,000 CMT	1,000 ACRES	CMT	1,000 CMT	1,000 CMT
WINTER								
CALIF	3.0	3.0	235	705	3.2	3.2	280	896
FLA	8.6	8.3	195	1,658	8.4	8.4	155	1,302
TOTAL	11.6	11.3	205	2,363	11.6	11.6	189	2,198
SPRING								
ALA	5.5	5.0	125	625	4.0	4.0	180	720
ARIZ	4.4	4.4	290	1,276	5.2	5.2	280	1,456
CALIF	22.5	22.5	390	8,775	26.4	26.4	390	10,296
FLA-HASTINGS	20.0	18.0	195	3,510	21.0	20.5	245	5,023
-OTHER	1.0	.8	170	136	1.1	1.0	240	240
LA	2.1	1.7	70	119	1.7	1.6	80	128
N C	13.2	13.0	140	1,820	14.2	14.0	150	2,100
TEX	6.5	6.2	130	806	6.2	6.0	140	840
TOTAL	75.2	71.6	238	17,067	79.8	78.7	264	20,803
SUMMER								
ALA	9.5	9.5	50	475	9.2	9.1	150	1,365
CALIF	7.6	7.6	365	2,774	8.0	8.0	370	2,960
COLO	6.0	5.8	275	1,595	7.0	6.8	280	1,904
DEL	5.3	5.1	190	969	5.3	5.2	240	1,248
ILL	1.9	1.8	230	414	2.2	2.1	250	525
IND	1.6	1.5	160	240	1.8	1.6	170	272
IOWA	1.6	1.4	230	322	1.5	1.5	180	270
ND	1.8	1.8	170	306	1.6	1.6	195	312
NICH	9.5	9.3	200	1,860	10.0	9.8	200	1,960
MINN	5.5	5.4	290	1,566	6.2	6.1	270	1,647
NEBR	1.4	1.3	200	260	1.2	1.1	200	220
N J	8.5	8.2	240	1,968	8.3	8.1	255	2,066
N MEX	3.5	3.0	180	340	4.5	4.5	210	945
N C	3.9	3.7	110	407	4.1	4.0	120	480
OHIO	1.5	1.4	220	308	1.3	1.2	190	228
TENN	2.8	2.8	70	196	3.1	3.1	90	279
TEX	8.0	7.5	200	1,500	6.8	6.7	230	1,541
VA	14.0	14.0	110	1,540	16.0	16.0	145	2,320
TOTAL	93.9	91.1	189	17,240	98.1	96.5	213	20,542
FALL								
CALIF	17.4	17.4	370	6,438	18.7	18.7	370	6,919
COLO	37.0	36.5	300	10,950	40.5	40.0	290	11,600
CONN	1.8	1.8	225	405	1.8	1.8	270	486
IDAHO-10 SW CO	23.0	23.0	340	7,820	24.0	24.0	355	8,040
-OTHER	272.0	267.0	270	72,090	255.0	294.0	260	76,440
IND	3.6	3.3	220	726	3.3	3.0	205	615
MAINE	108.0	104.0	240	24,960	106.0	104.0	255	26,520
MASS	3.4	3.4	220	748	3.3	3.3	225	743
NICH	35.0	34.0	240	8,160	37.0	35.0	245	8,575
MINN	65.0	64.0	155	9,920	73.0	70.0	190	13,300
MONT	7.0	6.9	230	1,725	7.5	7.4	235	1,739
NEBR	6.9	6.7	280	1,876	8.0	7.9	285	2,252
NEV	13.0	13.0	340	4,420	12.0	12.0	290	3,480
N Y-LONG IS	19.0	18.8	255	4,794	18.5	18.5	290	5,365
-UPSTATE	26.0	25.0	250	6,250	26.5	25.0	275	6,875
N DAK	114.0	112.0	140	19,680	119.0	115.0	175	20,125
OHIO	10.0	9.5	210	1,995	9.8	9.0	210	1,890
OREG-MALHEUR	10.5	10.0	365	3,650	10.3	10.0	345	3,450
-OTHER	37.5	37.0	435	16,095	44.7	44.0	415	18,260
PA	23.0	22.0	190	4,180	22.0	21.0	250	5,250
R I	3.2	3.2	230	736	3.2	3.2	260	832
S DAK	7.3	6.7	160	1,072	5.5	5.4	150	702
UTAH	5.3	5.2	225	1,170	6.2	6.1	220	1,342
VT	.5	.5	200	100	.5	.5	220	110
WASH	87.0	87.0	505	43,935	108.0	108.0	490	52,920
WIS	52.5	50.0	320	16,000	35.0	33.5	340	18,190
WYO	5.8	5.7	235	1,340	5.5	5.3	200	1,060
TOTAL	994.7	973.6	274	267,235	1,065.8	1,045.6	284	297,080
U S	1,175.4	1,147.8	265	303,905	1,255.3	1,232.4	276	340,623

POTATOES - AREA, YIELD, AND PRODUCTION BY SEASONAL GROUPS, 1982 AND 1983 CROPS

SEASONAL GROUP AND STATE	CROP OF 1982				CROP OF 1983 1/			
	AREA		YIELD	PRODUCTION	AREA		YIELD	PRODUCTION
	PLANTED	HARVESTED			PLANTED	HARVESTED		
	1,000 ACRES	CWT	1,000 CWT	1,000 ACRES	CWT	1,000 CWT		
WINTER								
CALIF	3.8	3.8	245	931	4.7	4.7	270	1,269
FLA	7.5	7.2	185	1,332	6.8	6.6	140	924
TOTAL	11.3	11.0	206	2,263	11.5	11.3	194	2,193
SPRING								
ALA	4.2	4.2	170	714	4.5	4.1	125	513
ARIZ	4.7	4.7	305	1,434	4.9	4.9	260	1,274
CALIF	25.5	25.5	375	9,563	25.5	24.5	340	8,330
FLA-HASTINGS	24.0	23.5	230	5,405	24.0	23.5	210	4,935
-OTHER	1.3	1.2	210	252	1.3	1.2	155	186
LA	1.2	1.1	80	88	1.1	1.0	50	50
N C	13.0	14.8	160	2,368	14.7	14.5	135	1,958
TEX	6.2	6.0	190	1,140	6.1	5.9	185	1,092
TOTAL	82.1	81.0	259	20,964	82.1	79.6	230	18,338
SUMMER								
ALA	9.0	8.6	150	1,290	9.5	9.3	110	1,023
CALIF	8.4	8.4	365	3,066	8.0	8.0	320	2,560
COLO	7.0	6.9	260	1,794	7.0	6.8	275	1,870
DEL	5.4	5.4	290	1,566	5.4	5.4	185	999
ILL	2.3	2.2	265	583	2.4	2.3	240	552
IND	2.0	1.9	220	412	1.8	1.5	125	188
IOWA	1.6	1.5	205	308	1.7	1.6	110	176
MD	1.9	1.9	215	409	1.8	1.8	190	342
MICH	10.5	10.3	220	2,266	12.0	11.8	185	2,183
MINN	6.7	6.6	285	1,881	5.2	5.1	260	1,326
NEBR	1.2	1.0	160	180	1.1	1.0	210	210
N J	8.6	8.5	260	2,210	8.8	8.5	190	1,615
N MEX	5.0	4.9	260	1,274	5.7	5.7	285	1,625
N C	4.0	3.9	115	449	4.0	3.9	100	390
OHIO	1.3	1.2	230	276	1.3	1.2	175	210
TENN	2.7	2.7	95	257	2.5	2.5	70	175
TEX	8.8	8.7	240	2,088	9.4	9.3	240	2,232
VA	17.0	16.5	150	2,475	16.5	14.3	70	1,001
TOTAL	103.4	101.1	225	22,770	100.1	100.0	187	18,677
FALL								
CALIF	18.5	18.5	410	7,585	19.0	19.0	410	7,790
COLO	45.5	45.0	285	12,825	44.5	44.0	300	13,200
CONN	1.8	1.8	205	369	1.4	1.4	190	266
IDAHO-10 SW CO	25.0	25.0	345	8,625	25.0	25.0	340	8,500
-OTHER	305.0	297.0	280	83,160	290.0	287.0	262	75,194
IND	3.4	3.3	280	924	3.2	3.0	200	600
MAINE	107.0	106.0	235	27,030	95.0	94.0	235	22,090
MASS	3.8	3.8	205	779	3.4	3.4	190	646
MICH	41.0	39.0	270	10,530	43.0	41.0	240	9,840
MINN	71.0	64.0	180	11,520	70.5	62.5	165	10,313
MONT	7.5	7.4	260	1,924	7.3	7.2	250	1,800
NEBR	8.9	8.8	265	2,332	7.6	7.5	270	2,025
NEV	13.0	13.0	315	4,095	12.0	12.0	310	3,720
N Y-LONG IS	19.3	19.0	270	5,130	16.5	16.3	250	4,075
-UPSTATE	26.0	25.0	260	6,500	25.5	24.5	230	5,635
N DAK	122.0	115.0	150	17,250	132.0	128.0	160	20,480
OHIO	9.5	9.0	245	2,205	9.5	9.2	205	1,886
OREG-MALHEUR	10.7	10.5	370	3,885	9.2	9.0	370	3,330
-OTHER	42.8	42.0	410	17,220	40.0	39.5	440	17,380
PA	22.0	21.0	235	4,935	22.0	21.5	200	4,300
R I	3.0	3.0	240	720	2.8	2.8	230	644
S DAK	11.0	10.0	155	1,550	15.5	15.4	135	2,079
UTAH	6.4	6.4	225	1,440	6.0	5.9	230	1,357
VT	.4	.4	230	92	.4	.4	220	88
WASH	110.0	110.0	480	52,800	103.0	103.0	520	53,560
WIS	66.0	64.5	330	22,575	63.0	62.0	305	18,910
WYO	5.5	5.4	210	1,134	5.4	5.3	180	954
TOTAL	1,106.0	1,073.8	288	309,134	1,072.7	1,049.8	277	290,662
U S	1,302.8	1,266.9	280	355,131	1,270.4	1,240.7	266	329,870

1/ PRELIMINARY.

POTATOES: PRODUCTION, FARM DISPOSITION, SEASON AVERAGE PRICE RECEIVED BY FARMERS,
AND VALUE, BY SEASONAL GROUPS, 1978 CROP

SEASON AND STATE	PRODUCTION	FARM DISPOSITION				PRICE PER CWT 1/	VALUE OF -- 1/	
		TOTAL USED FOR SEED	USED ON FARMS WHERE GROWN:		SOLD		PRODUCTION	SALES
			FOR SEED, AND HOUSEHOLD USE	FEED: SHRINKAGE AND LOSS				
	1,000 CWT				DOLLARS	1,000 DOLLARS		
WINTER:								
CALIF	690	56		35	655	8.00	5,520	5,240
FLA	1,931	261		12	1,919	7.75	14,855	14,872
TOTAL WINTER	2,621	337		47	2,574	7.81	20,485	20,112
SPRING:								
ALA	950	120	1	14	935	12.00	11,400	11,220
ARIZ	1,590	93	4	32	1,554	8.15	12,959	12,665
CALIF	8,265	510	18	165	8,082	7.45	61,574	60,211
FLA - HASTINGS	3,502	400	1	11	3,490	5.24	18,350	18,288
- OTHER	225	20		2	223	8.25	1,856	1,840
LA	171	18	6	9	156	5.70	975	889
MISS 2/	108	12	25	2	81	7.00	756	567
N C	1,885	186	62	57	1,766	5.65	10,650	9,978
TEX	1,200	92	27	18	1,155	6.65	7,980	7,681
TOTAL SPRING	17,896	1,451	144	310	17,442	7.07	126,500	123,339
SUMMER:								
ALA	1,200	135	16	48	1,136	11.80	14,160	13,405
CALIF	2,844	142	14	57	2,773	7.05	20,050	19,550
COLO	1,734	149	23	92	1,619	3.50	6,069	5,667
DEL	1,176	84	4	47	1,125	4.81	5,657	5,411
ILL	361	34	12	9	340	3.30	1,191	1,122
IND	340	29	7	20	313	4.50	1,530	1,409
IOWA	300	21	15	15	270	4.00	1,200	1,080
MD	315	24	6	8	301	4.83	1,521	1,454
MICH	1,453	178	75	73	1,305	4.80	6,974	6,264
MINN	1,960	102	5	95	1,860	4.62	9,055	8,593
NEBR	288	20	16	26	246	4.15	1,195	1,021
N J	2,091	158	8	73	2,010	3.85	8,050	7,739
N-MEX	779	72	8	47	724	5.00	3,895	3,620
N C	500	45	83	18	399	9.02	4,510	3,599
OHIO	304	25	5	9	290	5.15	1,566	1,494
TENN	336	36	33	12	291	7.25	2,436	2,110
TEX	2,310	144	4	81	2,225	8.56	19,774	19,046
VA	2,650	250	53	93	2,504	5.90	15,635	14,774
TOTAL SUMMER	20,941	1,648	387	823	19,731	5.95	124,468	117,358
FALL:								
CALIF	6,055	344	60	606	5,389	5.20	31,486	28,023
COLO	11,275	860	573	911	9,791	2.15	24,241	21,051
CONN	513	40	6	20	487	6.30	3,232	3,068
IDAHO	100,310	6,240	1,446	10,395	88,469	2.25	225,698	199,055
IND	936	97	6	62	868	3.90	3,650	3,385
MAINE	25,960	2,668	1,250	3,067	21,643	3.86	100,206	83,542
MASS	810	72	9	60	741	6.30	5,103	4,668
MICH	8,500	614	193	913	7,394	4.53	38,505	33,495
MINN	14,910	1,029	270	1,566	13,074	2.71	40,406	35,431
MONT	2,088	135	169	169	1,750	4.00	8,352	7,000
NEBR	1,800	110	130	293	1,377	3.90	7,020	5,370
NEV	5,440	300		653	4,787	2.40	13,056	11,489
N Y - LONG ISLAND	6,175	429	11	494	5,670	3.99	24,638	22,623
- UPSTATE	6,500	612	145	650	5,705	4.99	32,435	28,468
N DAK	23,625	1,755	473	3,544	19,608	2.60	61,425	50,981
OHIO	2,215	182	13	117	2,085	4.45	9,857	9,278
OREG - MALHEUR CO	3,780	257	10	363	3,407	2.82	10,660	9,608
- OTHER	24,708	1,014	38	2,792	21,878	2.75	67,947	60,165
PA	6,250	455	181	406	5,663	4.85	30,313	27,466
R I	918	65	4	68	846	4.50	4,131	3,807
S DAK	1,190	88	15	95	1,080	3.03	3,606	3,272
UTAH	1,416	123	19	137	1,290	4.10	5,929	5,289
VT	160	14	6	14	140	6.80	1,088	952
WASH	50,505	2,142	450	4,100	45,955	2.45	123,737	112,590
WIS	17,325	1,134	219	1,559	15,547	4.13	71,552	64,209
WYO	1,462	116	75	205	1,182	3.25	4,752	3,842
TOTAL FALL	324,856	20,895	5,771	33,259	285,826	2.93	953,025	836,127
U S	366,314	24,331	6,302	34,439	325,573	3.38	1,224,478	1,098,936

SEE FOOTNOTES ON PAGE 10.

POTATOES: PRODUCTION, FARM DISPOSITION, SEASON AVERAGE PRICE RECEIVED BY FARMERS,
AND VALUE, BY SEASONAL GROUPS, 1979 CROP

SEASON AND STATE	PRODUCTION	FARM DISPOSITION					VALUE OF -- 1/	
		TOTAL	USED ON FARMS WHERE GROWN:			PRICE	PRODUCTION	SALES
		SEED	FOR SEED AND HOUSEHOLD USE	FEED AND LOSS	SHRINKAGE AND LOSS	SOLD		
	1,000 CNT					DOLLARS	1,000 DOLLARS	
WINTER:								
CALIF	792	51		40	752	9.80	7,762	7,370
FLA	1,591	249		10	1,581	7.15	11,376	11,304
TOTAL WINTER	2,383	300		50	2,333	8.00	19,138	18,674
SPRING:								
ALA	1,022	83	1	15	1,006	5.50	5,621	5,533
ARIZ	1,302	66	4	26	1,272	4.40	5,729	5,597
CALIF	11,060	473	20	221	10,819	4.50	49,770	48,686
FLA - HASTINGS	4,255	400	1	13	4,241	4.15	17,658	17,600
- OTHER	162	20		1	161	8.65	1,401	1,393
LA	150	17	5	8	137	6.00	900	822
N C	2,261	178	61	68	2,132	4.35	9,835	9,274
TEX	1,136	80	28	17	1,091	5.30	6,021	5,782
TOTAL SPRING	21,348	1,317	120	369	20,859	4.54	96,935	94,687
SUMMER:								
ALA	1,530	128	16	61	1,453	3.90	5,967	5,667
CALIF	2,695	141	14	81	2,600	4.75	12,801	12,350
COLO	1,898	132	10	142	1,746	2.95	5,599	5,151
DEL	1,188	80	3	48	1,137	6.70	7,960	7,618
ILL	470	30	11	12	447	2.80	1,316	1,252
IND	288	22	5	9	274	4.00	1,152	1,096
IOWA	231	22	12	12	207	3.80	878	787
MO	281	25	6	6	269	6.40	1,798	1,722
MICH	1,548	200	66	38	1,444	4.40	6,811	6,354
MINN	1,796	77	4	136	1,656	3.55	6,376	5,879
NEBR	270	20	20	24	226	4.45	1,202	1,006
N J	2,125	153	9	74	2,042	4.00	8,500	8,168
N MEX	1,210	56	7	73	1,130	3.25	3,933	3,673
N C	468	43	83	16	369	5.20	2,434	1,919
OHIO	364	39	6	18	340	4.85	1,765	1,649
TENN	347	31	31	12	304	7.95	2,759	2,417
TEX	2,616	104	3	92	2,521	5.20	13,603	13,109
VA	2,592	175	16	194	2,382	3.85	9,979	9,171
TOTAL SUMMER	21,917	1,478	322	1,048	20,547	4.33	94,833	88,988
FALL:								
CALIF	6,364	365	64	700	5,600	5.45	34,684	30,520
COLO	11,455	814	580	916	9,959	2.90	33,220	28,881
CONN	462	36	5	93	364	5.60	2,587	2,038
IDAHO	84,930	5,900	1,505	7,368	76,057	2.95	250,544	224,368
IND	1,071	76	2	96	973	4.30	4,605	4,184
MAINE	27,685	2,322	1,052	3,184	23,449	3.25	89,976	76,209
MASS	748	65	13	90	645	5.60	4,189	3,612
MICH	8,000	665	227	752	7,021	4.45	35,600	31,243
MINN	12,920	995	233	1,408	11,279	3.05	39,406	34,401
MONT	1,800	133	115	145	1,540	3.60	6,480	5,544
NEBR	1,482	124	99	193	1,190	4.25	6,299	5,058
NEV	4,950	260		594	4,356	2.75	13,613	11,979
N Y - LONG ISLAND	6,431	380	13	450	5,968	3.65	23,473	21,783
- UPSTATE	6,463	650	207	530	5,726	4.65	30,053	26,626
N DAK	18,240	1,710	320	2,500	15,420	3.25	59,280	50,115
OHIO	2,400	175	7	228	2,165	4.35	10,440	9,418
OREG - MALHEUR CD	4,810	200	10	385	4,415	2.95	14,190	13,024
- OTHER	20,500	780	68	2,287	18,145	2.80	57,400	50,806
PA	6,000	437	162	570	5,268	5.00	30,000	26,340
R I	759	70	4	61	694	4.05	3,074	2,811
S DAK	1,203	88	21	82	1,100	3.05	3,669	3,355
UTAH	1,375	117	37	95	1,243	4.30	5,913	5,345
VT	147	9	4	14	129	6.10	897	787
WASH	48,450	1,871	450	4,500	43,500	2.55	123,548	110,925
WIS	17,010	893	204	1,157	15,649	4.30	73,143	67,291
WYO	1,144	116	60	263	821	4.30	4,919	3,530
TOTAL FALL	296,799	19,221	5,462	28,661	262,676	3.24	961,202	850,193
U S	342,447	22,316	5,904	30,128	306,415	3.44	1,172,108	1,052,542

1/ EXCLUDES USDA DIVERSION PROGRAM PAYMENTS; QUANTITIES DIVERTED ARE PRICED AT PREVAILING LIVESTOCK FEED AND STARCH LEVELS. 2/ ESTIMATES DISCONTINUED AFTER 1978 CROP.

POTATOES: PRODUCTION, FARM DISPOSITION, SEASON AVERAGE PRICE RECEIVED BY FARMERS,
AND VALUE, BY SEASONAL GROUPS, 1980 CROP

SEASON AND STATE	PRODUCTION	FARM DISPOSITION				PRICE PER CWT	VALUE OF --	
		TOTAL USED FOR SEED	USED ON FARMS WHERE GROWN:		SOLD		PRODUCTION	SALES
			FOR SEED, AND HOUSEHOLD USE	FEED: AND LOSS				
		1,000 CWT				DOLLARS	1,000 DOLLARS	
WINTER:								
CALIF	705	54		35	670	7.20	5,076	4,824
FLA	1,658	244		10	1,648	10.30	17,077	16,974
TOTAL WINTER	2,363	298		45	2,318	9.40	22,153	21,798
SPRING:								
ALA	625	57	1	9	615	6.50	4,063	3,998
ARIZ	1,276	78	4	26	1,246	5.25	6,699	6,542
CALIF	8,775	568	21	176	8,578	7.30	64,058	62,619
FLA - HASTINGS	3,510	420	1	13	3,496	5.05	17,726	17,655
- OTHER	136	22		1	135	10.40	1,414	1,404
LA	119	14	4	7	108	8.40	1,000	907
N C	1,820	192	61	55	1,704	5.55	10,101	9,457
TEX	806	76	28	12	766	6.45	5,199	4,941
TOTAL SPRING	17,067	1,427	120	299	16,648	6.46	110,260	107,523
SUMMER:								
ALA	475	131	16	19	440	9.10	4,323	4,004
CALIF	2,774	148	15	55	2,704	10.90	30,237	29,474
COLO	1,595	147	10	80	1,505	4.45	7,098	6,697
DEL	969	80	3	39	927	8.85	8,576	8,204
ILL	414	35	12	10	392	6.20	2,567	2,430
IND	240	18	2	5	233	11.00	2,640	2,563
IOWA	322	21	16	16	290	7.70	2,479	2,233
MD	306	22	6	6	294	8.90	2,723	2,617
MICH	1,860	220	102	55	1,703	6.75	12,555	11,495
MINN	1,566	96	3	8	1,555	9.80	15,347	15,239
NEBR	260	19	16	29	215	8.90	2,314	1,914
N J	1,968	149	8	59	1,901	8.30	16,334	15,778
N MEX	540	72	7	32	501	6.85	3,699	3,432
N C	407	53	84	14	309	7.80	3,175	2,410
OHIO	308	22	2	9	297	6.15	1,894	1,827
TENN	196	34	20	7	169	7.60	1,490	1,284
TEX	1,500	88	3	53	1,444	15.10	22,650	21,804
VA	1,540	200	12	54	1,474	8.60	13,244	12,676
TOTAL SUMMER	17,240	1,555	337	550	16,353	8.93	153,345	146,081
FALL:								
CALIF	6,438	411	64	580	5,794	10.80	69,530	62,575
COLO	10,950	932	690	830	9,430	7.05	77,198	66,482
CONN	405	41	2	45	358	8.20	3,321	2,936
IDAH0	79,910	6,400	1,510	6,454	71,946	5.65	451,492	406,495
IND	726	69	4	29	693	8.00	5,808	5,544
MAINE	24,960	2,438	1,125	2,200	21,635	7.25	180,960	156,854
MASS	748	69	30	38	680	7.50	5,610	5,100
MICH	8,160	703	194	800	7,166	6.60	53,856	47,296
MINN	9,920	1,108	348	694	8,878	7.70	76,384	68,361
MONT	1,725	143	120	120	1,485	8.50	14,663	12,623
NEBR	1,876	160	130	188	1,558	6.45	12,100	10,049
NEV	4,420	240		530	3,890	5.20	22,984	20,228
N. Y - LONG ISLAND:	4,794	361	9	288	4,497	10.00	47,940	44,970
- UPSTATE		6,250	663	171	469	7.95	49,688	44,600
N. DAK	15,680	1,726	400	1,250	14,030	6.85	107,408	96,106
OHIO	1,995	176	10	100	1,885	7.90	15,761	14,892
OREG - MALHEUR CO	3,650	206	11	250	3,389	3.70	13,505	12,539
- OTHER	16,095	939	50	1,725	14,320	4.80	77,256	68,736
PA	4,180	396	135	272	3,773	7.90	33,022	29,807
R. I	736	67	3	22	711	6.40	4,710	4,550
S. DAK	1,072	66	18	47	1,007	3.85	4,127	3,877
UTAH	1,170	149	31	119	1,020	5.15	6,026	5,253
VT	100	11	5	4	91	8.05	805	733
WASH	43,935	2,214	425	4,000	39,510	4.40	193,314	173,844
WIS	16,000	950	304	1,168	14,528	10.10	161,600	146,733
WYO	1,340	105	134	121	1,085	8.20	10,988	8,897
TOTAL FALL	267,235	20,783	5,923	22,343	238,969	6.36	1,700,056	1,520,880
U S	303,905	24,063	6,380	23,237	274,288	6.55	1,985,814	1,795,482

POTATOES: PRODUCTION, FARM DISPOSITION, SEASON AVERAGE PRICE RECEIVED
BY FARMERS AND VALUE, BY SEASONAL GROUPS, 1981 CROP

SEASON AND STATE	FARM DISPOSITION					PRICE PER CWT	VALUE OF --		
	PRODUCTION	TOTAL USED FOR:	USED ON FARMS WHERE GROWN:				SOLD	PRODUCTION	SALES
			SEED	FOR SEED, FEED: AND HOUSEHOLD USE	SHRINKAGE AND LOSS				
WINTER:									
CALIF	896	65		45	851	12.80	11,469	10,893	
FLA	1,302	218		8	1,294	20.40	26,561	26,398	
TOTAL WINTER	2,198	283		53	2,145	17.40	38,030	37,291	
SPRING:									
ALA	720	60	1	11	708	12.60	9,072	8,921	
ARIZ	1,456	71	4	29	1,423	7.55	10,993	10,744	
CALIF	10,296	561	21	206	10,069	11.90	122,522	119,821	
FLA - HASTINGS	5,023	480	1	20	5,002	8.50	42,696	42,517	
- OTHER	240	26		2	238	15.60	3,744	3,713	
LA	128	10	4	6	118	11.70	1,498	1,381	
N C	2,100	203	61	63	1,976	6.75	13,919	13,088	
TEX	840	76	28	13	799	8.90	7,476	7,111	
TOTAL SPRING	20,803	1,487	120	350	20,333	10.20	212,176	207,546	
SUMMER:									
ALA	1,365	128	16	55	1,294	10.10	13,787	13,069	
CALIF	2,960	155	16	59	2,885	11.70	34,632	33,755	
COLO	1,904	130	3	115	1,786	5.30	10,091	9,466	
DEL	1,248	81	3	50	1,195	9.30	11,606	11,114	
ILL	525	37	11	13	501	4.85	2,546	2,430	
IND	272	30	2	11	259	7.50	2,040	1,943	
IOWA	270	22	7	14	249	5.60	1,512	1,394	
MD	312	27	6	6	300	9.10	2,839	2,730	
MICH	1,960	210	67	204	1,689	7.05	10,244	8,813	
MINN	1,647	107	2	20	1,625	7.50	12,353	12,188	
NEBR	220	22	14	14	192	6.40	1,408	1,229	
N J	2,066	155	8	62	1,996	7.00	14,462	13,972	
N MEX	945	80	8	56	881	6.50	6,143	5,727	
N C	480	52	84	17	379	9.40	4,512	3,563	
OHIO	228	23	1	7	220	6.35	1,448	1,397	
TENN	279	30	27	10	242	9.80	2,734	2,372	
TEX	1,541	114	3	54	1,484	10.00	15,410	14,840	
VA	2,320	213	34	59	2,227	9.65	22,388	21,491	
TOTAL SUMMER	20,542	1,616	312	826	19,404	8.48	173,729	164,587	
FALL:									
CALIF	6,919	407	69	553	6,297	7.05	48,779	44,394	
COLO	11,600	1,001	660	940	10,000	4.60	53,360	46,000	
CONN	486	39	2	49	435	5.90	2,867	2,567	
IDAHO	84,480	6,600	1,271	7,021	76,188	4.75	401,565	361,893	
IND	615	63	7	35	573	5.95	3,659	3,409	
MAINE	26,520	2,504	1,125	1,990	23,405	4.50	119,340	105,323	
MASS	743	72	10	46	687	5.40	4,012	3,710	
MICH	8,575	800	202	1,098	7,275	6.15	43,358	36,716	
MINN	13,300	1,086	200	1,064	12,036	4.55	60,515	54,764	
MONT	1,739	135	104	155	1,480	8.00	13,912	11,840	
NEBR	2,252	196	167	236	1,849	5.75	12,949	10,701	
NEV	3,480	260		418	3,052	4.90	17,052	15,004	
N Y - LONG ISLAND	5,365	386	11	274	5,080	6.05	32,458	30,734	
- UPSTATE	6,875	650	196	619	6,060	6.20	42,625	37,572	
N DAK	20,125	1,784	405	2,610	17,110	4.05	81,506	69,296	
OHIO	1,890	171	5	215	1,670	6.15	11,624	10,271	
OREG - MALHEUR CO	3,450	214	10	200	3,240	4.10	14,145	13,284	
- OTHER	18,260	855	60	1,970	16,230	4.55	83,083	73,847	
PA	5,250	418	126	346	4,778	7.05	37,013	33,685	
R I	832	60	2	33	797	4.60	3,827	3,666	
S DAK	702	143	13	24	665	3.65	2,562	2,427	
UTAH	1,342	154	35	99	1,208	5.00	6,380	5,740	
VT	110	8	4	6	100	5.80	893	812	
WASH	52,920	2,310	425	4,200	48,295	3.95	209,034	190,765	
WIS	18,190	1,122	346	782	17,062	4.70	85,493	80,191	
WYO	1,060	105	117	127	816	6.00	6,360	4,896	
TOTAL FALL	297,080	21,545	5,572	25,110	266,398	4.74	1,407,539	1,261,531	
U S	340,623	24,931	6,004	26,339	308,280	5.42	1,831,474	1,670,955	

POTATOES: PRODUCTION, FARM DISPOSITION, SEASON AVERAGE PRICE RECEIVED
BY FARMERS AND VALUE, BY SEASONAL GROUPS, 1982 CROP

SEASON AND STATE	PRODUCTION:	FARM DISPOSITION				PRICE PER CWT	VALUE OF --	
		USED FOR:	USED ON FARMS WHERE GROWN:		SOLD		PRODUCTION:	SALES
			SEED	FOR SEED, FEED: AND HOUSEHOLD USE				
			1,000 CWT		DOLLARS	1,000 DOLLARS		
WINTER:								
CALIF	931	80		47	884	9.70	9,031	8,575
FLA	1,332	197		8	1,324	13.80	18,382	18,271
TOTAL WINTER	2,263	277		55	2,208	12.20	27,413	26,846
SPRING:								
ALA	714	64	1	11	702	9.00	6,426	6,318
ARIZ	1,434	74	4	29	1,401	6.55	9,393	9,177
CALIF	9,563	561	21	191	9,351	10.60	101,368	99,121
FLA - HASTINGS	5,405	480	1	21	5,383	7.50	40,538	40,373
- OTHER	252	26		2	250	13.30	3,352	3,325
LA	88	9	4	4	80	13.50	1,188	1,080
N C	2,368	198	61	79	2,228	5.90	13,971	13,145
TEX	1,140	75	28	17	1,095	7.70	8,778	8,432
TOTAL SPRING	20,964	1,487	120	354	20,490	8.83	185,014	180,971
SUMMER:								
ALA	1,290	135	16	52	1,222	8.70	11,223	10,631
CALIF	3,066	148	15	61	2,990	9.25	28,361	27,658
COLO	1,794	140	14	100	1,680	4.70	8,432	7,896
DEL	1,566	81	3	63	1,500	4.80	7,517	7,200
ILL	583	38	11	15	557	4.10	2,390	2,284
IND	418	22	6	25	387	5.80	2,424	2,245
IOWA	308	24	7	25	276	4.80	1,478	1,325
MO	409	25	8	8	393	4.60	1,881	1,808
MICH	2,266	240	86	104	2,076	4.45	10,084	9,238
MINN	1,881	94	2	91	1,788	4.70	8,841	8,404
NEBR	160	24	10	11	139	4.50	720	626
N J	2,210	158	8	66	2,136	5.10	11,271	10,894
N MEX	1,274	72	8	76	1,190	5.25	6,689	6,248
N C	449	52	83	16	350	7.30	3,278	2,555
OHIO	276	27	3	8	265	4.40	1,214	1,166
TENN	257	28	25	9	223	8.50	2,185	1,896
TEX	2,088	122	3	73	2,012	9.90	20,671	19,919
VA	2,475	206	37	87	2,351	5.80	14,355	13,636
TOTAL SUMMER	22,770	1,636	345	890	21,535	6.30	143,014	135,629
FALL:								
CALIF	7,585	418	76	531	6,978	6.30	47,786	43,961
COLO	12,825	1,001	618	1,057	11,150	3.50	44,888	39,025
CONN	369	31	7	44	318	4.20	1,550	1,336
IDAHO	91,785	6,300	2,749	10,848	78,188	3.50	321,248	273,658
IND	924	67	8	30	886	4.05	3,742	3,588
MAINE	27,030	2,043	900	3,600	22,530	3.35	90,551	75,476
MASS	779	68	11	106	662	3.90	3,038	2,582
MICH	10,530	817	150	780	9,560	4.70	49,491	44,932
MINN	11,520	1,149	210	1,060	10,250	3.80	43,776	38,950
MONT	1,924	131	105	159	1,660	7.50	14,430	12,450
NEBR	2,332	167	174	222	1,936	5.75	13,409	11,132
NEV	4,095	240		491	3,604	2.60	10,647	9,370
N Y - LONG ISLAND	5,130	330	10	290	4,830	4.20	21,546	20,286
- UPSTATE	6,500	625	201	474	5,825	5.45	35,425	31,746
N DAK	17,250	1,914	360	1,725	15,165	4.35	75,038	65,968
OHIO	2,205	209	11	99	2,095	5.10	11,246	10,685
OREG - MALHEUR CO	3,885	184	20	220	3,645	3.90	15,152	14,216
- OTHER	17,220	840	105	2,050	15,065	3.90	67,158	58,754
PA	4,935	429	118	217	4,600	5.50	27,143	25,300
R I	720	57	5	45	670	4.30	3,096	2,881
S DAK	1,550	215	15	47	1,488	3.55	5,503	5,282
UTAH	1,440	138	52	140	1,248	4.00	5,760	4,992
VT	92	10	4	6	82	4.00	368	328
WASH	52,800	2,163	425	4,500	47,875	3.75	198,000	179,531
WIS	22,575	1,071	294	880	21,401	4.10	92,558	87,744
WYO	1,134	103	109	125	900	4.10	4,649	3,690
TOTAL FALL	309,134	20,720	6,777	29,746	272,611	3.92	1,207,198	1,067,863
U S	355,131	24,120	7,242	31,045	316,844	4.45	1,562,639	1,411,309

POTATOES - AREA, YIELD AND PRODUCTION BY STATES, 1978 AND 1979 CROPS

STATE	CROP OF 1978				CROP OF 1979			
	AREA		YIELD	PRODUCTION	AREA		YIELD	PRODUCTION
	PLANTED	HARVESTED	1/		PLANTED	HARVESTED	1/	
	1,000 ACRES		CWT	1,000 CWT	1,000 ACRES		CWT	1,000 CWT
ALA	19.0	17.5	123	2,150	18.0	16.3	157	2,352
ARIZ	6.0	6.0	265	1,590	6.2	6.2	210	1,302
CALIF	57.2	57.2	312	17,854	58.4	56.2	372	20,911
COLO	48.5	47.8	272	13,009	47.1	46.4	288	13,353
CONN	2.5	2.5	205	513	2.1	2.1	220	462
DEL	5.7	5.6	210	1,176	5.6	5.6	220	1,188
FLA	32.8	32.3	175	5,658	30.7	28.0	215	6,008
IDAHO	370.0	365.0	275	100,310	320.0	318.0	267	84,930
ILL	2.0	1.9	190	361	2.1	2.0	235	470
IND	6.1	5.9	216	1,276	6.2	6.0	227	1,359
IOWA	1.7	1.5	200	300	1.5	1.1	210	231
LA	2.1	1.9	90	171	2.3	2.0	75	150
MAINE	119.0	118.0	220	25,960	116.0	113.0	245	27,685
MD	1.8	1.8	175	315	1.7	1.7	165	281
MASS	3.6	3.6	225	810	3.5	3.4	220	748
MICH	43.5	42.3	235	9,933	41.9	40.6	235	9,548
MINN	80.1	78.0	216	16,870	76.4	74.3	198	14,716
MISS 2/	1.3	1.2	90	108				
MONT	8.8	8.7	240	2,088	7.5	7.5	240	1,800
NEBR	9.3	9.0	232	2,088	7.7	7.2	245	1,752
NEV	17.0	17.0	320	5,440	15.0	15.0	330	4,950
N J	8.5	8.2	255	2,091	8.8	8.5	250	2,125
N MEX	3.8	3.8	205	779	4.5	4.4	275	1,210
N Y	49.5	48.3	262	12,675	47.5	45.3	285	12,894
N C	17.3	17.0	140	2,385	17.9	17.6	155	2,729
N DAK	137.0	135.0	175	23,625	121.0	114.0	160	18,240
OHIO	12.4	11.9	212	2,519	11.9	11.4	242	2,754
OREG	69.5	67.6	421	28,488	65.5	63.0	402	25,310
PA	26.0	25.0	250	6,250	25.0	24.0	250	6,000
R I	5.6	5.6	255	918	5.4	5.3	230	759
S DAK	7.5	7.0	170	1,190	7.3	6.5	185	1,203
TENN	3.2	3.2	105	336	3.3	3.3	105	347
TEX	18.8	18.5	190	3,510	18.6	18.0	208	3,752
UTAH	6.0	5.9	245	1,446	5.6	5.5	250	1,375
VT	.8	.8	200	160	.7	.7	210	147
VA	22.0	21.2	125	2,650	20.0	19.2	135	2,592
WASH	111.0	111.0	455	50,505	102.0	102.0	475	48,450
WIS	59.0	55.0	315	17,325	57.0	54.0	315	17,010
WYO	7.1	6.8	215	1,462	5.5	5.2	220	1,144
U S	1,401.0	1,374.5	267	366,314	1,295.4	1,258.3	272	342,447

SEE FOOTNOTES ON PAGE 16.

POTATOES - AREA, YIELD AND PRODUCTION BY STATES, 1980 AND 1981 CROPS

STATE	CROP OF 1980				CROP OF 1981			
	AREA		YIELD	PRODUCTION	AREA		YIELD	PRODUCTION
	PLANTED	HARVESTED			PLANTED	HARVESTED		
	1,000 ACRES	CWT	1,000 CWT	1,000 ACRES	CWT	1,000 CWT		
ALA	15.0	14.5	76	1,100	13.2	13.1	159	2,085
ARIZ	4.4	4.4	290	1,276	5.2	5.2	280	1,456
CALIF	50.5	50.5	370	18,692	56.3	56.3	374	21,071
COLO	43.0	42.3	297	12,545	47.5	46.8	289	13,504
CONN	1.8	1.8	225	405	1.8	1.8	270	486
DEL	5.3	5.1	190	969	5.3	5.2	240	1,248
FLA	29.6	27.3	194	5,304	30.5	29.9	220	6,565
IDAHO	295.0	290.0	276	79,910	320.0	318.0	266	84,480
ILL	1.9	1.8	230	414	2.2	2.1	250	525
IND	5.2	4.8	201	966	5.1	4.6	193	887
IOWA	1.6	1.4	230	322	1.5	1.5	180	270
LA	2.1	1.7	70	119	1.7	1.6	80	128
MAINE	108.0	104.0	240	24,960	106.0	104.0	255	26,520
MD	1.8	1.8	170	306	1.6	1.6	195	312
MASS	3.4	3.4	220	748	3.3	3.3	225	743
MICH	44.5	43.5	231	10,020	47.0	44.8	235	10,535
MINN	70.5	69.4	166	11,486	79.2	76.1	196	14,947
MONT	7.0	6.9	250	1,725	7.5	7.4	235	1,739
NEBR	8.3	8.0	267	2,136	9.2	9.0	275	2,472
NEV	13.0	13.0	340	4,420	12.0	12.0	290	3,480
N J	8.5	8.2	240	1,968	8.3	8.1	255	2,066
N MEX	3.5	3.0	180	540	4.5	4.5	210	945
N Y	45.0	43.8	252	11,044	45.0	43.5	281	12,240
N C	17.1	16.7	133	2,227	18.3	18.0	143	2,580
N DAK	114.0	112.0	140	15,680	119.0	115.0	175	20,125
OHIO	11.5	10.9	211	2,303	11.1	10.2	208	2,118
OREG	48.0	47.0	420	19,745	55.0	54.0	402	21,710
PA	25.0	22.0	190	4,180	22.0	21.0	250	5,250
R I	3.2	3.2	230	736	3.2	3.2	260	832
S DAK	7.3	6.7	160	1,072	5.5	5.4	130	702
TENN	2.8	2.8	70	196	3.1	3.1	90	279
TEX	14.5	13.7	168	2,306	13.0	12.7	187	2,381
UTAH	5.3	5.2	225	1,170	6.2	6.1	220	1,342
VT	.5	.5	200	100	.5	.5	220	110
VA	14.0	14.0	110	1,540	16.0	16.0	145	2,320
WASH	87.0	87.0	505	43,935	108.0	108.0	490	52,920
WIS	52.5	50.0	320	16,000	55.0	53.5	340	18,190
WYO	5.8	5.7	235	1,340	5.5	5.3	200	1,060
U S	1,175.4	1,147.8	265	303,905	1,255.3	1,232.4	276	340,623

SEE FOOTNOTES ON PAGE 16.

POTATOES - AREA, YIELD AND PRODUCTION BY STATES, 1982 AND 1983 CROPS

STATE	CROP OF 1982				CROP OF 1983 3/			
	AREA		YIELD 1/	PRODUCTION	AREA		YIELD 1/	PRODUCTION
	PLANTED	HARVESTED			PLANTED	HARVESTED		
	1,000 ACRES		CWT	1,000 CWT	1,000 ACRES		CWT	1,000 CWT
ALA	13.2	12.8	157	2,004	14.0	13.4	115	1,536
ARIZ	4.7	4.7	305	1,434	4.9	4.9	260	1,274
CALIF	56.2	56.2	376	21,145	57.2	56.2	355	19,949
COLO	52.5	51.9	282	14,619	51.5	50.8	297	15,070
CONN	1.8	1.8	205	369	1.4	1.4	190	266
DEL	5.4	5.4	290	1,566	5.4	5.4	185	999
FLA	32.8	31.9	219	6,989	32.1	31.3	193	6,045
IDAHO	330.0	322.0	285	91,785	315.0	312.0	268	83,694
ILL	2.3	2.2	265	583	2.4	2.3	240	552
IND	5.4	5.2	258	1,342	5.0	4.5	175	788
IOWA	1.6	1.5	205	308	1.7	1.6	110	176
LA	1.2	1.1	80	88	1.1	1.0	50	50
MAINE	107.0	106.0	255	27,030	95.0	94.0	235	22,090
MD	1.9	1.9	215	409	1.8	1.8	190	342
MASS	3.8	3.8	205	779	3.4	3.4	190	646
MICH	51.5	49.3	260	12,796	55.0	52.8	228	12,023
MINN	77.7	70.6	190	13,401	75.7	67.6	172	11,639
MONT	7.5	7.4	260	1,924	7.3	7.2	250	1,800
NEBR	10.1	9.8	254	2,492	8.7	8.5	263	2,235
NEV	13.0	13.0	315	4,095	12.0	12.0	310	3,720
N J	8.6	8.5	260	2,210	8.8	8.5	190	1,615
N MEX	5.0	4.9	260	1,274	5.7	5.7	285	1,625
N Y	45.3	44.0	284	11,630	42.0	40.8	238	9,710
N C	19.0	18.7	151	2,817	18.7	18.4	128	2,348
N DAK	122.0	115.0	150	17,250	132.0	128.0	160	20,480
OHIO	10.8	10.2	243	2,481	10.8	10.4	202	2,096
OREG	53.5	52.5	402	21,105	49.2	48.5	427	20,710
PA	22.0	21.0	235	4,935	22.0	21.5	200	4,300
R I	3.0	3.0	240	720	2.8	2.8	230	644
S DAK	11.0	10.0	155	1,550	15.5	15.4	135	2,079
TENN	2.7	2.7	95	257	2.5	2.5	70	175
TEX	15.0	14.7	220	3,228	15.5	15.2	219	3,324
UTAH	6.4	6.4	225	1,440	6.0	5.9	230	1,357
VT	.4	.4	230	92	.4	.4	220	88
VA	17.0	16.5	150	2,475	16.5	14.3	70	1,001
WASH	110.0	110.0	480	52,800	103.0	103.0	520	53,560
WIS	66.0	64.5	350	22,575	63.0	62.0	305	18,910
WYO	5.5	5.4	210	1,134	5.4	5.3	180	954
U S	1,302.8	1,266.9	280	355,131	1,270.4	1,240.7	266	329,870

1/ YIELD IN STATES HAVING TWO OR MORE SEASONAL GROUPS IS DERIVED.

2/ ESTIMATES DISCONTINUED AFTER 1978 CROP.

3/ PRELIMINARY.

ALL POTATOES: PRODUCTION, FARM DISPOSITION, SEASON AVERAGE PRICE
RECEIVED BY FARMERS, AND VALUE, BY STATES, 1978 CROP

STATE	PRODUCTION	FARM DISPOSITION				PRICE PER CWT 1/	VALUE OF -- 1/	
		USED FOR: SEED	TOTAL	USED ON FARMS WHERE GROWN:			PRODUCTION	SALES
				FOR SEED, FEED: AND HOUSEHOLD USE	SHRINKAGE AND LOSS		1,000 CWT	1,000 DOLLARS
ALA	2,150	255	17	62	2,071	11.90	25,560	24,625
ARIZ	1,590	93	4	32	1,554	8.15	12,959	12,665
CALIF	17,854	1,052	92	863	16,899	6.69	118,630	113,024
COLO	13,009	1,009	596	1,003	11,410	2.34	30,310	26,718
CONN	513	40	6	20	487	6.30	3,232	3,068
DEL	1,176	84	4	47	1,125	4.81	5,657	5,411
FLA	5,658	701	1	25	5,632	6.21	35,171	35,000
IDAHO	100,310	6,240	1,446	10,395	88,469	2.25	225,698	199,055
ILL	361	34	12	9	340	3.30	1,191	1,122
IND	1,276	126	13	82	1,181	4.06	5,180	4,794
IOWA	300	21	15	15	270	4.00	1,200	1,080
LA	171	18	6	9	156	5.70	975	889
MAINE	25,960	2,668	1,250	3,067	21,643	3.86	100,206	83,542
MD	315	24	6	8	301	4.83	1,521	1,454
MASS	810	72	9	60	741	6.30	5,103	4,668
MICH	9,953	792	268	986	8,699	4.57	45,479	39,759
MINN	16,870	1,131	275	1,661	14,934	2.95	49,461	44,024
MISS 2/	108	12	25	2	81	7.00	756	567
MONT	2,088	135	169	169	1,750	4.00	8,352	7,000
NEBR	2,088	130	146	319	1,623	3.94	8,215	6,391
NEV	5,440	300		653	4,787	2.40	13,056	11,489
N J	2,091	158	8	73	2,010	3.85	8,050	7,739
N MEX	779	72	8	47	724	5.00	3,895	3,620
N Y	12,675	1,041	156	1,144	11,375	4.49	57,073	51,091
N C	2,385	231	145	75	2,165	6.27	15,160	13,577
N DAK	23,625	1,755	473	3,544	19,608	2.60	61,425	50,981
OHIO	2,519	207	18	126	2,375	4.54	11,423	10,772
OREG	28,488	1,271	48	3,155	25,285	2.76	78,607	69,773
PA	6,250	455	181	406	5,663	4.85	30,313	27,466
R I	918	65	4	68	846	4.50	4,131	3,807
S DAK	1,190	88	15	95	1,080	3.03	3,606	3,272
TENN	336	36	33	12	291	7.25	2,436	2,110
TEX	3,510	236	31	99	3,380	7.91	27,754	26,727
UTAH	1,446	123	19	137	1,290	4.10	5,929	5,289
VT	160	14	6	14	140	6.80	1,088	952
VA	2,650	250	53	93	2,504	5.90	15,635	14,774
WASH	50,505	2,142	450	4,100	45,955	2.45	123,737	112,590
WIS	17,325	1,134	219	1,559	15,547	4.13	71,552	64,209
WYO	1,462	116	75	205	1,182	3.25	4,752	3,842
U S	366,314	24,331	6,302	34,439	325,573	3.38	1,224,478	1,098,936

SEE FOOTNOTES ON PAGE 18.

POTATOES: PRODUCTION, FARM DISPOSITION, SEASON AVERAGE PRICE RECEIVED BY FARMERS,
AND VALUE, BY SEASONAL GROUPS, 1979 CROP

STATE	PRODUCTION	FARM DISPOSITION				PRICE PER CWT 1/	VALUE OF -- 1/	
		TOTAL USED FOR:	USED ON FARMS WHERE GROWN:		SOLD		PRODUCTION	SALES
		SEED	FOR SEED, FEED: AND HOUSEHOLD USE	SHRINKAGE AND LOSS			1,000 CWT	1,000 DOLLARS
ALA	2,552	211	17	76	2,459	4.55	11,588	71,200
ARIZ	1,302	66	4	26	1,272	4.40	5,729	5,597
CALIF	20,911	1,030	98	1,042	19,771	5.00	105,017	98,926
COLO	13,353	946	590	1,058	11,705	2.91	38,819	34,032
CONN	462	36	5	93	364	5.60	2,587	2,038
DEL	1,188	80	3	48	1,137	6.70	7,960	7,618
FLA	6,008	669	1	24	5,983	5.06	30,435	30,297
IDAHO	84,930	5,900	1,505	7,368	76,057	2.95	250,544	224,368
ILL	470	30	11	12	447	2.80	1,316	1,252
IND	1,359	98	7	105	1,247	4.23	5,757	5,280
IOWA	231	22	12	12	207	3.80	878	787
LA	150	17	5	8	137	6.00	900	822
MAINE	27,685	2,322	1,052	3,184	23,449	3.25	89,976	76,209
MD	281	25	6	6	269	6.40	1,798	1,722
MASS	748	65	13	90	645	5.60	4,189	3,612
MICH	9,548	865	293	790	8,465	4.44	42,411	37,597
MINN	14,716	1,072	237	1,544	12,935	3.11	45,782	40,280
MONT	1,800	133	115	145	1,540	3.60	6,480	5,544
NEBR	1,752	144	119	217	1,416	4.28	7,501	6,064
NEV	4,950	260		594	4,356	2.75	13,613	11,979
N J	2,125	153	9	74	2,042	4.00	8,500	8,168
N MEX	1,210	56	7	73	1,130	3.25	3,933	3,673
N Y	12,894	1,030	220	980	11,694	4.14	53,526	48,409
N C	2,729	221	144	84	2,501	4.48	12,269	11,193
N DAK	18,240	1,710	320	2,500	15,420	3.25	59,280	50,115
OHIO	2,764	214	13	246	2,505	4.42	12,205	11,067
GREG	25,310	950	78	2,672	22,560	2.83	71,590	63,830
PA	6,000	437	162	570	5,268	5.00	30,000	26,340
R I	759	70	4	61	694	4.05	3,074	2,811
S DAK	1,203	88	21	82	1,100	3.05	3,669	3,355
TENN	347	31	31	12	304	7.95	2,759	2,417
TEX	3,752	184	31	109	3,612	5.23	19,624	18,891
UTAH	1,375	117	37	95	1,243	4.30	5,913	5,345
VT	147	9	4	14	129	6.10	897	787
VA	2,592	175	16	194	2,382	3.85	9,979	9,171
WASH	48,450	1,871	450	4,500	43,500	2.55	123,548	110,925
WIS	17,010	893	204	1,157	15,649	4.30	73,143	67,291
WYO	1,144	116	60	263	821	4.30	4,919	3,530
U S	342,447	22,316	5,904	30,128	306,415	3.44	1,172,108	1,052,542

1/ EXCLUDES USDA DIVERSION PROGRAM PAYMENTS; QUANTITIES DIVERTED ARE PRICED AT PREVAILING LIVESTOCK FEED AND STARCH LEVELS. 2/ ESTIMATES DISCONTINUED AFTER 1978 CROP.

POTATOES: PRODUCTION, FARM DISPOSITION, SEASON AVERAGE PRICE RECEIVED BY FARMERS,
AND VALUE, BY STATES, 1980

STATE	PRODUCTION	FARM DISPOSITION				PRICE PER CWT	VALUE OF --	
		TOTAL USED FOR SEED	USED ON FARMS WHERE GROWN:		SOLD		PRODUCTION	SALES
			FOR SEED, FEED: AND HOUSEHOLD USE	SHRINKAGE AND LOSS				
		1,000 CWT				DOLLARS	1,000 DOLLARS	
ALA	1,100	188	17	28	1,055	7.60	8,386	8,002
ARIZ	1,276	78	4	26	1,246	5.25	6,699	6,542
CALIF	18,692	1,181	100	846	17,746	9.00	168,901	159,492
COLO	12,545	1,079	700	910	10,935	6.70	84,296	73,179
CONN	405	41	2	45	358	8.20	3,321	2,936
DEL	969	80	3	39	927	8.85	8,576	8,204
FLA	5,304	686	1	24	5,279	6.85	36,217	36,033
IDAHO	79,910	6,400	1,570	6,454	71,946	5.65	451,492	406,495
ILL	414	35	12	10	392	6.20	2,567	2,430
IND	966	87	6	34	926	8.75	8,448	8,107
IOWA	322	21	16	16	290	7.70	2,479	2,233
LA	119	14	4	7	108	8.40	1,000	907
MAINE	24,960	2,438	1,125	2,200	21,635	7.25	180,960	156,854
MD	306	22	6	6	294	8.90	2,723	2,617
MASS	748	69	30	38	680	7.50	5,610	5,100
MICH	10,020	923	296	855	8,869	6.65	66,411	58,791
MINN	11,486	1,204	351	702	10,433	8.00	91,731	83,600
MONT	1,725	143	120	120	1,485	8.50	14,663	12,623
NEBR	2,136	179	146	217	1,773	6.75	14,414	11,963
NEV	4,420	240		530	3,890	5.20	22,984	20,228
N J	1,968	149	8	59	1,901	8.30	16,334	15,778
N MEX	540	72	7	32	501	6.85	3,699	3,432
N Y	11,044	1,024	180	757	10,107	8.85	97,628	89,570
N C	2,227	245	145	69	2,013	5.90	13,276	11,867
N DAK	15,680	1,726	400	1,250	14,030	6.85	107,408	96,106
OHIO	2,303	198	12	109	2,182	7.65	17,655	16,719
OREG	19,745	1,145	61	1,975	17,709	4.60	90,761	81,275
PA	4,180	396	135	272	3,773	7.90	33,022	29,807
R I	736	67	3	22	711	6.40	4,710	4,550
S DAK	1,072	66	18	47	1,007	3.85	4,127	3,877
TENN	196	34	20	7	169	7.60	1,490	1,284
TEX	2,306	164	31	65	2,210	12.10	27,849	26,745
UTAH	1,170	149	31	119	1,020	5.15	6,026	5,253
VT	100	11	5	4	91	8.05	805	733
VA	1,540	200	12	54	1,474	8.60	13,244	12,676
WASH	43,935	2,214	425	4,000	39,510	4.40	193,314	173,844
WIS	16,000	990	304	1,168	14,528	10.10	161,600	146,733
WYO	1,340	105	134	121	1,085	8.20	10,988	8,897
U S	303,905	24,063	6,380	23,237	274,288	6.55	1,985,814	1,795,482

POTATOES: PRODUCTION, FARM DISPOSITION, SEASON AVERAGE PRICE RECEIVED
BY FARMERS AND VALUE, BY STATES, 1981

STATE	PRODUCTION	FARM DISPOSITION				PRICE PER CWT 1/	VALUE OF -- 1/	
		TOTAL USED FOR:	USED ON FARMS WHERE GROWN:		SOLD		PRODUCTION	SALES
		SEED	FOR SEED, FEED: AND HOUSEHOLD USE	SHRINKAGE AND LOSS				
		1,000 CWT			DOLLARS	1,000 DOLLARS		
ALA	2,085	188	17	66	2,002	11.00	22,859	21,990
ARIZ	1,456	71	4	29	1,423	7.55	10,993	10,744
CALIF	21,071	1,188	106	863	20,102	10.40	217,402	208,863
COLO	13,504	1,131	663	1,055	11,786	4.70	63,451	55,466
CONN	486	39	2	49	435	5.90	2,867	2,567
DEL	1,248	81	3	50	1,195	9.30	11,606	11,114
FLA	6,565	724	1	30	6,524	11.10	73,001	72,628
IDAHO	84,480	6,600	1,271	7,021	76,188	4.75	401,280	361,893
ILL	525	37	11	13	501	4.85	2,546	2,430
IND	887	95	9	46	832	6.45	5,699	5,352
IOWA	270	22	7	14	249	5.60	1,512	1,394
LA	128	10	4	6	118	11.70	1,498	1,381
MAINE	26,520	2,504	1,125	1,990	23,405	4.50	119,340	105,323
MD	312	27	6	6	300	9.10	2,839	2,730
MASS	743	72	10	46	687	5.40	4,012	3,710
MICH	10,535	1,010	269	1,302	8,964	6.30	66,554	56,648
MINN	14,947	1,193	202	1,084	13,661	4.90	72,868	66,952
MONT	1,739	135	104	155	1,480	8.00	13,912	11,840
NEBR	2,472	218	181	250	2,041	5.80	14,357	11,861
NEV	3,480	260		418	3,062	4.90	17,052	15,004
N J	2,066	155	8	62	1,996	7.00	14,462	13,972
N MEX	945	80	8	56	881	6.50	6,143	5,727
N Y	12,240	1,036	207	893	11,140	6.15	75,083	68,306
N C	2,580	255	145	80	2,355	7.20	18,687	16,901
N DAK	20,125	1,784	405	2,610	17,110	4.05	81,506	69,296
OHIO	2,118	194	6	222	1,890	6.15	13,072	11,668
OREG	21,710	1,069	70	2,170	19,470	4.50	97,228	87,131
PA	5,250	418	126	346	4,778	7.05	37,013	33,685
R I	832	60	2	33	797	4.60	3,827	3,666
S DAK	702	143	13	24	665	3.65	2,562	2,427
TENN	279	30	27	10	242	9.80	2,734	2,372
TEX	2,381	190	31	67	2,283	9.60	22,886	21,951
UTAH	1,342	154	35	99	1,208	5.00	6,710	6,040
VT	110	8	4	6	100	5.80	638	580
VA	2,320	213	34	59	2,227	9.65	22,388	21,491
WASH	52,920	2,310	425	4,200	48,295	3.95	209,034	190,765
WIS	18,190	1,122	346	782	17,062	4.70	85,493	80,191
WYO	1,060	105	117	127	816	6.00	6,360	4,896
U S	340,623	24,931	6,004	26,339	308,280	5.42	1,831,474	1,670,955

POTATOES: PRODUCTION, FARM DISPOSITION, SEASON AVERAGE PRICE RECEIVED
BY FARMERS AND VALUE, BY STATES, 1982

STATE	PRODUCTION	TOTAL USED FOR SEED	FARM DISPOSITION USED ON FARMS WHERE GROWN:			PRICE PER CWT	VALUE OF --	
			FOR SEED, AND HOUSEHOLD USE	FEED AND LOSS	SHRINKAGE AND LOSS		SOLD	PRODUCTION
			1,000 CWT			DOLLARS	1,000 DOLLARS	
ALA	2,004	199	17	63	1,924	8.80	17,649	16,949
ARIZ	1,434	74	4	29	1,401	6.55	9,393	9,177
CALIF	21,145	1,207	112	830	20,203	8.90	186,546	179,315
COLO	14,619	1,141	632	1,157	12,830	3.65	53,320	46,921
CONN	369	31	7	44	318	4.20	1,550	1,336
DEL	1,566	81	3	63	1,500	4.80	7,517	7,200
FLA	6,989	703	1	31	6,957	8.90	62,272	61,969
IDAMO	91,785	6,300	2,749	10,848	78,188	3.50	321,248	273,658
ILL	583	38	11	15	557	4.10	2,390	2,284
IND	1,342	89	14	55	1,273	4.60	6,166	5,833
IOWA	308	24	7	25	276	4.80	1,478	1,325
LA	88	9	4	4	80	13.50	1,188	1,080
MAINE	27,030	2,043	900	3,600	22,530	3.35	90,551	75,476
MD	409	25	8	8	393	4.60	1,881	1,808
MASS	779	68	11	106	662	3.90	3,038	2,582
MICH	12,796	1,057	276	884	11,636	4.65	59,575	54,170
MINN	13,401	1,243	212	1,151	12,038	3.95	52,617	47,354
MONT	1,924	131	105	159	1,660	7.50	14,430	12,450
NEBR	2,492	191	184	233	2,075	5.65	14,129	11,758
NEV	4,095	240		491	3,604	2.60	10,647	9,370
N J	2,210	158	8	66	2,136	5.10	11,271	10,894
N MEX	1,274	72	8	76	1,190	5.25	6,689	6,248
N Y	11,630	955	211	764	10,655	4.90	56,971	52,032
N C	2,817	250	144	95	2,578	6.10	17,249	15,700
N DAK	17,250	1,914	360	1,725	15,165	4.35	75,038	65,968
OHIO	2,481	236	14	107	2,360	5.00	12,460	11,851
OREG	21,105	1,024	125	2,270	18,710	3.90	82,310	72,970
PA	4,935	429	118	217	4,600	5.50	27,143	25,300
R I	720	57	5	45	670	4.30	3,096	2,881
S DAK	1,550	215	15	47	1,488	3.55	5,503	5,282
TENN	257	28	25	9	223	8.50	2,185	1,896
TEX	3,228	197	31	90	3,107	9.10	29,449	28,351
UTAH	1,440	138	52	140	1,248	4.00	5,760	4,992
VT	92	10	4	6	82	4.00	368	328
VA	2,475	206	37	87	2,351	5.80	14,355	13,636
WASH	52,800	2,163	425	4,500	47,875	3.75	198,000	179,531
WIS	22,575	1,071	294	880	21,401	4.10	92,558	87,744
WYO	1,134	103	109	125	900	4.10	4,649	3,690
U S	355,131	24,120	7,242	31,045	316,844	4.45	1,562,639	1,411,309

POTATOES: TOTAL STOCKS HELD BY GROWERS AND LOCAL DEALERS,
FALL STATES, CROPS OF 1978 AND 1979

STATE	CROP OF 1978					
	DEC 1 1978	JAN 1 1979	FEB 1 1979	MAR 1 1979	APR 1 1979	MAY 1 1979
	1,000 CWT					
CALIF	4,000	3,300	2,500	1,900	1,400	900
COLO	8,300	7,150	5,750	4,650	3,350	2,150
CONN	1/	1/	1/	1/	1/	1/
IDAHO	78,000	71,000	63,000	53,000	44,000	32,500
IND	275	165	95	50	1/	1/
MAINE	19,700	17,300	14,600	12,100	8,800	4,400
MASS	440	360	235	145	1/	1/
MICH	5,900	5,000	4,000	3,000	2,100	1,200
MINN	12,000	10,700	9,400	7,600	4,800	2,700
MONT	1,900	1,870	1,830	1,750	1,100	200
NEBR	1,300	1,100	950	770	500	250
N Y - LONG ISLAND	3,000	2,250	1,200	600	200	80
- UPSTATE	3,300	2,400	1,800	1,200	700	300
N DAK	17,200	14,900	12,300	10,200	6,100	3,200
OHIO	950	700	500	300	150	1/
OREG	17,700	15,400	12,500	9,900	7,700	5,650
PA	4,500	3,750	2,950	2,200	1,550	900
R I	1/	1/	1/	1/	1/	1/
S DAK	870	710	410	180	150	100
UTAH	1,000	900	700	400	200	1/
VT	120	1/	1/	1/	1/	1/
WASH	32,000	28,800	24,000	19,300	14,500	9,500
WIS	10,100	7,900	5,700	4,100	2,300	880
WYO	790	560	390	260	150	1/
OTH STS	385	275	115	47	110	211
TOTAL 15 STATES	219,850	193,520	162,980	132,570	99,250	64,810
TOTAL 23 STATES	223,730	196,510	164,925	133,652	99,860	65,121
	CROP OF 1979					
	DEC 1 1979	JAN 1 1980	FEB 1 1980	MAR 1 1980	APR 1 1980	MAY 1 1980
	1,000 CWT					
CALIF	4,200	3,700	2,900	2,300	1,700	1,100
COLO	8,200	7,100	5,700	4,400	3,200	2,000
CONN 2/	260	1/	1/	1/	1/	1/
IDAHO	65,000	58,500	51,500	44,500	37,000	26,000
IND 2/	285	185	145	70	1/	1/
MAINE	23,300	21,200	18,500	15,800	12,000	7,700
MASS 2/	530	330	250	165	1/	1/
MICH	5,400	4,400	3,400	2,400	1,500	700
MINN	10,500	9,500	8,100	6,800	4,600	2,600
MONT	1,720	1,690	1,660	1,620	1,380	450
NEBR	1,100	930	800	650	450	160
N Y - LONG ISLAND	3,300	2,400	1,500	1,000	450	85
- UPSTATE	3,200	2,500	1,400	800	400	120
N DAK	12,500	10,700	8,600	6,900	4,500	2,000
OHIO	1,250	800	600	400	220	80
OREG	16,900	14,600	12,400	9,800	7,200	4,700
PA	4,200	3,300	2,350	1,750	1,250	600
R I 2/	70	1/	1/	1/	1/	1/
S DAK 2/	870	600	540	240	180	140
UTAH 2/	1,100	1,000	800	525	320	105
VT 2/	90	1/	1/	1/	1/	1/
WASH	30,600	27,300	23,000	18,900	14,200	10,100
WIS	9,450	7,400	5,300	3,700	2,500	1,140
WYO 2/	710	470	350	230	100	60
OTH STS		200	115	59	92	53
TOTAL 15 STATES	200,820	176,020	147,910	121,720	92,550	59,535
TOTAL 23 STATES	204,735	178,805	150,110	123,009	93,242	59,893

SEE FOOTNOTES ON PAGE 24.

POTATOES: TOTAL STOCKS HELD BY GROWERS AND LOCAL DEALERS,
FALL STATES, CROPS OF 1980 AND 1981

STATE	CROP OF 1980					
	DEC 1 1980	JAN 1 1981	FEB 1 1981	MAR 1 1981	APR 1 1981	MAY 1 1981
	1,000 CWT					
CALIF	4,200	3,400	2,600	2,000	1,300	800
COLO	7,850	6,700	5,300	4,250	3,100	2,050
IDAHO	59,000	53,000	46,500	40,000	33,000	21,500
MAINE	18,900	16,300	13,900	11,300	8,200	4,800
MICH	4,800	3,700	2,700	1,800	1,000	500
MINN	8,400	7,000	5,600	4,000	2,300	1,400
MONT	1,630	1,610	1,580	1,300	720	50
NEBR	1,400	1,250	1,100	900	480	200
N Y - LONG ISLAND	1,850	1,400	900	500	3/220	3/91
- UPSTATE	3,100	2,150	1,300	800	290	155
N DAK	10,700	8,900	6,500	4,600	2,400	850
OHIO	500	300	185	80	3/	3/
OREG	13,300	11,300	9,600	7,500	5,800	3,600
PA	3,300	2,600	1,900	1,250	900	200
WASH	24,500	22,000	18,600	14,600	11,000	7,300
WIS	8,600	5,400	3,800	2,800	1,950	1,050
TOTAL 15 STATES	172,030	147,010	122,065	97,680	72,660	44,546
	CROP OF 1981					
	DEC 1 1981	JAN 1 1982	FEB 1 1982	MAR 1 1982	APR 1 1982	MAY 1 1982
	1,000 CWT					
CALIF	4,800	3,900	3,000	2,200	1,500	1,000
COLO	8,350	7,100	5,650	4,450	3,100	1,900
IDAHO	62,000	55,500	49,000	42,500	34,500	23,500
MAINE	21,300	18,000	15,100	12,400	8,600	5,100
MICH	5,800	4,600	3,500	2,500	1,600	800
MINN	9,100	8,100	7,000	5,400	3,900	1,900
MONT	1,650	1,630	1,600	1,450	900	30
NEBR	1,850	1,600	1,400	1,200	700	200
N Y - LONG ISLAND	1,860	1,250	750	350	3/120	3/30
- UPSTATE	3,900	2,550	1,650	1,100	650	300
N DAK	13,800	11,400	9,400	7,200	4,600	1,900
OHIO	700	350	170	80	3/	3/
OREG	15,200	12,700	10,500	8,300	5,800	4,000
PA	3,700	2,800	2,100	1,500	1,050	330
WASH	29,200	25,100	21,200	17,000	12,600	8,300
WIS	10,400	7,800	5,800	4,150	2,650	1,470
TOTAL 15 STATES	193,610	164,380	137,820	111,780	82,270	50,760

SEE FOOTNOTES ON PAGE 24.

POTATOES: TOTAL STOCKS HELD BY GROWERS AND LOCAL DEALERS,
FALL STATES, CROP OF 1982

STATE	CROP OF 1982					
	DEC 1 1982	JAN 1 1983	FEB 1 1983	MAR 1 1983	APR 1 1983	MAY 1 1983
	1,000 CWT					
CALIF	5,400	4,200	3,200	2,200	1,600	1,100
COLO	9,550	8,250	6,750	5,500	4,000	2,750
IDAHO	69,000	61,000	53,000	45,500	36,500	25,000
MAINE	22,000	19,600	16,200	13,400	9,400	6,000
MICH	7,600	6,400	5,400	4,200	2,800	1,600
MINN	9,000	8,100	7,000	5,300	3,400	1,700
MONT	1,875	1,780	1,750	1,650	1,220	200
NEBR	1,700	1,350	1,150	850	550	230
N Y - LONG ISLAND	2,600	1,800	1,000	550	280	3/150
- UPSTATE	3,800	3,000	2,250	1,750	1,050	500
N DAK	13,400	11,500	9,400	7,700	4,900	2,100
OHIO	800	400	200	70	25	3/
OREG	15,100	13,200	11,300	9,400	6,700	4,600
PA	4,000	3,300	2,500	1,900	1,050	695
WASH	29,200	25,700	21,600	17,100	13,200	8,600
WIS	11,500	9,400	7,500	5,430	3,430	2,080
TOTAL 15 STATES	206,525	178,980	150,200	122,500	90,105	57,305

1/ STOCKS INCLUDED IN OTHER STATE TOTAL. 2/ ESTIMATES DISCONTINUED AFTER 1979 CROP. 3/ OHIO COMBINED WITH LONG ISLAND TO AVOID POSSIBLE DISCLOSURE OF INDIVIDUAL OPERATIONS.

POTATOES: UTILIZATION OF THE 1978-82 CROPS, UNITED STATES

UTILIZATION ITEMS	1978 CROP	1979 CROP	1980 CROP	1981 CROP	1982 CROP
	1,000 CNT				
SALES					
TABLE STOCK	112,336	115,109	98,066	111,976	120,320
PROCESSING					
CHIPS	37,839	38,275	37,894	39,344	40,776
DEHYDRATION	33,243	30,784	28,222	29,875	28,133
FROZEN FRENCH FRIES	79,539	74,320	67,208	79,829	76,089
OTHER FROZEN PRODUCTS	15,406	14,420	13,673	16,812	16,949
CANNED POTATOES	2,660	2,479	2,054	2,469	2,724
OTHER CANNED PRODUCTS (HASH, STEMS, SOUPS)	2,127	2,251	1,993	1,700	1,770
STARCH AND FLOUR	3,460	3,574	2,186	2,299	4,075
TOTAL	174,274	166,104	153,230	172,328	170,516
OTHER SALES					
LIVESTOCK FEED	7,173	6,636	3,903	3,583	6,552
SEED	19,750	18,075	19,089	20,393	19,456
DIVERTED 1/	12,040	491	0	0	0
TOTAL	38,963	25,202	22,992	23,976	26,008
TOTAL SALES	325,573	306,415	274,288	308,280	316,844
NON-SALES					
SEED USED ON FARMS WHERE GROWN	4,581	4,241	4,974	4,538	4,664
HOUSEHOLD USE AND USED FOR FEED ON FARMS WHERE GROWN	1,721	1,663	1,406	1,466	2,578
SHRINKAGE AND LOSS	34,439	30,128	23,237	26,339	31,045
TOTAL NON-SALES	40,741	36,032	29,617	32,343	38,287
TOTAL PRODUCTION	366,314	342,447	303,905	340,623	355,131

1/ QUANTITY OF POTATOES SOLD FOR LIVESTOCK FEED AND STARCH UNDER THE USDA DIVERSION PROGRAM.

POTATOES: NUMBER OF POTATO CHIP PLANTS AND QUANTITY USED FOR CHIPPING BY AREAS AND UNITED STATES
AND QUANTITY USED FOR SHOESTRING POTATOES, UNITED STATES, 1978-1982 CROPS

AREA	1978		1979		1980		1981		1982	
	PLANTS	QUANTITY	PLANTS	QUANTITY	PLANTS	QUANTITY	PLANTS	QUANTITY	PLANTS	QUANTITY
	NUMBER	1,000 CWT	NUMBER	1,000 CWT	NUMBER	1,000 CWT	NUMBER	1,000 CWT	NUMBER	1,000 CWT
NEW ENGLAND: CONN, MAINE, MASS, N H, R I, VT	18	1,683	13	1,778	14	1,937	12	1,981	12	2,600
EASTERN: DEL, D C, MD, N J, N Y, PA, VA,	51	8,694	38	8,821	36	7,862	35	8,689	35	8,427
NORTH CENTRAL: MICH, OHIO, W VA	36	4,040	29	5,237	28	4,414	27	3,889	28	4,494
MID-CENTRAL: KANS, MO, NEBR	15	2,231	13	1,911	12	1,892	9	1,896	10	1,792
MIDWEST: ILL, IND, IOWA, MINN, N DAK, S DAK, WIS	33	6,096	29	4,761	30	5,051	28	5,397	28	5,433
SOUTHEAST: ALA, FLA, GA, KY, LA, MISS, N C, TENN	29	5,943	22	5,757	20	6,305	20	6,718	19	6,638
SOUTHWEST: ARK, OKLA, TEX	11	2,491	9	2,423	8	2,424	9	2,607	10	3,259
ROCKY MOUNTAINS: COLO, IDAHO, MONT, N MEX, UTAH, WYO	12	1,192	7	1,380	8	1,540	7	1,347	7	1,523
WEST COAST: ARIZ, CALIF, NEV, OREG, WASH, HAW	23	4,963	21	5,480	19	5,706	20	6,063	19	5,953
TOTAL	228	37,333	181	37,548	175	37,131	167	38,587	168	40,119
SHOESTRINGS		506		728		763		757		657
TOTAL USED FOR CHIPS AND SHOESTRINGS		37,839		38,276		37,894		39,344		40,776

POTATOES, ALASKA: AREA, YIELD, PRODUCTION, FARM DISPOSITION, SEASON AVERAGE PRICE RECEIVED BY FARMERS, AND VALUE, 1978-82 CROPS

CROP YEAR	AREA		YIELD PER ACRE	PRODUCTION	FARM DISPOSITION					VALUE OF --	
	PLANTED	HARVESTED			TOTAL USED FOR SEED 1/	USED ON FARMS WHERE GROWN:			PRICE PER CWT	PRODUCTION	SALES
						FOR SEED AND HOUSEHOLD USE	FEED	SHRINKAGE AND LOSS			
	ACRES	ACRES	CWT	1,000 CWT	1,000 CWT	1,000 CWT	1,000 CWT	DOLLARS	1,000 DOLLARS	1,000 DOLLARS	
1978	460	450	180	81.0	5.7	8.0	9.0	64.0	11.50	932	736
1979	480	460	185	85.0	5.8	7.0	15.0	63.0	12.30	1,046	775
1980	490	460	167	77.0	8.4	10.5	10.5	56.0	20.30	1,563	1,137
1981	590	500	190	95.0	6.4	8.5	15.0	71.5	21.00	1,995	1,502
1982	530	480	213	102.0	7.0	8.0	10.5	83.5	16.00	1,632	1,336

POTATOES, ALASKA: TOTAL STOCKS HELD BY GROWERS AND LOCAL DEALERS ON DEC 1, JAN 1, FEB 1, MAR 1, APR 1, MAY 1, AND JUNE 1, 1978-82 CROPS

CROP YEAR	DEC 1	JAN 1	FEB 1	MAR 1	APR 1	MAY 1	JUN 1
	CURRENT YEAR	FOLLOWING YEAR	FOLLOWING YEAR	FOLLOWING YEAR	FOLLOWING YEAR	FOLLOWING YEAR	FOLLOWING YEAR
	1,000 CWT						
1978	56.0	47.5	38.5	33.5	30.0	26.0	13.5
1979	61.5	52.0	43.0	36.5	26.5	17.5	7.5
1980	59.0	52.0	41.5	33.5	26.0	18.5	7.5
1981	67.5	57.0	50.5	40.0	33.5	24.0	11.5
1982	77.0	64.5	53.0	41.0	32.0	23.5	5.5

1/ INCLUDES SEED PURCHASED AND SEED USED ON FARMS WHERE GROWN.

2/ CONSISTS OF POTATOES SOLD FOR ALL PURPOSES INCLUDING FOOD, SEED, PROCESSING AND LIVESTOCK FEED.

**SWEETPOTATOES: AREA, YIELD, PRODUCTION, FARM DISPOSITION,
SEASON AVERAGE PRICE RECEIVED BY FARMERS, AND VALUE, UNITED STATES, 1964-82**

YEAR	ACREAGE		YIELD PER ACRE	PRODUCTION	FARM DISPOSITION				PRICE PER CWT	VALUE OF--	
	PLANTED	HARVESTED			USED ON FARMS WHERE GROWN:			SOLD		PRODUCTION	SALES
			FOR SEED	FEED, SHRINKAGE AND LOSS	FOR HOUSEHOLD USE						
	1,000 ACRES		CMT		1,000 CMT			DOLLARS		1,000 DOLLARS	
1964	155.6	151.2	86	12,969	579	1,386	843	10,161	5.09	65,980	51,711
1965	171.8	168.1	92	15,469	598	1,969	738	12,164	4.22	65,472	51,308
1966	158.6	154.4	89	13,699	541	1,570	632	10,926	4.56	62,554	49,831
1967	144.1	139.5	97	13,486	574	1,312	572	11,028	4.48	60,412	49,436
1968	142.5	135.2	99	13,378	624	1,236	489	11,029	4.89	65,562	53,934

	ACREAGE		YIELD PER ACRE	PRODUCTION	TOTAL USED FOR:	FARM DISPOSITION			PRICE PER CWT	VALUE OF--	
	PLANTED	HARVESTED				SEED 1/	FOR SEED, FEED AND HOUSEHOLD USE	SHRINKAGE AND LOSS		SOLD	PRODUCTION
	1,000 ACRES		CMT		1,000 CMT			DOLLARS		1,000 DOLLARS	
1969	141.7	136.4	103	14,070	771	1,642	821	11,607	4.18	59,346	48,568
1970	132.5	127.3	103	13,164	685	1,520	701	10,943	4.38	57,760	47,947
1971	118.6	112.6	102	11,494	680	1,309	562	9,623	5.22	60,127	50,245
1972	115.7	113.3	107	12,170	707	1,223	546	10,401	5.73	69,969	59,631
1973	116.0	111.6	109	12,156	805	1,323	648	10,185	7.32	89,163	74,548
1974	121.9	118.1	113	13,339	792	1,285	696	11,358	7.34	98,228	83,348
1975	117.8	114.3	113	12,891	876	1,244	625	11,022	8.59	110,758	94,670
1976	119.8	114.8	116	13,273	769	1,244	976	11,053	7.50	99,054	82,877
1977	111.8	107.1	111	11,885	916	1,176	548	10,161	10.50	124,859	106,948
1978	115.7	112.2	117	13,115	1,017	1,286	627	11,202	10.60	139,226	118,892
1979	117.9	114.2	117	13,370	925	1,242	711	11,417	8.92	119,093	101,856
1980	107.8	102.2	107	10,953	924	1,092	534	9,327	13.60	148,359	126,560
1981	113.2	109.8	117	12,799	1,108	1,373	532	10,894	13.60	174,748	148,547
1982	118.7	115.4	129	14,833	989	1,693	772	12,366	8.03	118,864	99,376

1/ INCLUDES SEED PURCHASED AND SEED USED ON FARMS WHERE GROWN.

SWEETPOTATOES - AREA, YIELD AND PRODUCTION BY STATES, 1978-1983 CROPS

STATE	1978				1979			
	AREA PLANTED 1,000 ACRES	AREA HARVESTED 1,000 ACRES	YIELD CWT	PRODUCTION 1,000 CWT	AREA PLANTED 1,000 ACRES	AREA HARVESTED 1,000 ACRES	YIELD CWT	PRODUCTION 1,000 CWT
ALA	5.5	5.5	100	550	5.7	5.7	110	627
ARK	.8	.8	80	64	.7	.7	75	53
CALIF	8.7	8.7	160	1,392	9.6	9.6	170	1,632
GA	6.0	5.5	110	605	6.0	5.5	115	635
LA	29.0	28.0	95	2,660	28.0	27.0	95	2,565
MD	1.4	1.4	160	224	1.4	1.4	155	217
MISS	5.0	4.7	95	447	5.2	4.7	95	447
N J	2.6	2.6	110	286	2.7	2.7	115	311
N C	38.0	37.0	130	4,810	41.0	40.0	120	4,800
S C	2.8	2.8	120	336	3.1	3.1	110	341
TENN	1.5	1.5	100	150	2.0	2.0	105	210
TEX	10.0	9.5	110	1,045	8.5	7.9	130	1,027
VA	4.4	4.2	130	546	4.0	3.9	130	507
U S	115.7	112.2	117	13,115	117.9	114.2	117	13,370
	1980				1981			
ALA	5.3	5.3	100	530	5.6	5.4	115	621
ARK	.7	.6	60	36				
CALIF	8.4	8.4	180	1,512	8.9	8.9	185	1,647
GA	5.5	4.5	100	450	6.0	5.6	115	644
LA	26.0	25.0	85	2,125	27.0	26.0	100	2,600
MD	1.3	1.3	150	195	1.3	1.3	175	228
MISS	5.0	4.6	90	414	5.5	5.2	95	494
N J	2.4	2.4	115	276	2.5	2.5	110	275
N C	38.0	37.0	115	4,255	40.0	39.0	120	4,680
S C	2.8	2.5	95	238	4.0	4.0	95	380
TENN	2.0	2.0	80	160	1.8	1.8	80	144
TEX	8.0	6.5	80	520	8.2	7.8	95	741
VA	2.2	2.1	115	242	2.4	2.3	150	345
U S	107.8	102.2	107	10,953	113.2	109.8	117	12,799
	1982				1983			
ALA	5.7	5.5	120	660	5.0	4.9	105	515
CALIF	9.2	9.2	190	1,748	8.8	8.8	195	1,716
GA	6.5	6.3	130	819	6.0	5.8	125	725
LA	26.0	25.0	100	2,500	25.0	24.0	95	2,280
MD	1.3	1.3	195	254	1.1	1.1	165	182
MISS	5.2	5.0	100	500	4.8	4.7	95	447
N J	2.9	2.9	110	319	2.5	2.4	90	216
N C	45.0	44.0	135	5,940	38.0	37.0	120	4,440
S C	5.5	5.3	125	663	4.0	4.0	115	460
TENN	1.5	1.5	85	128	1.4	1.4	80	112
TEX	7.6	7.2	135	972	7.4	7.1	120	852
VA	2.3	2.2	150	330	1.3	1.2	115	138
U S	118.7	115.4	129	14,833	105.3	102.4	118	12,083

1/ ESTIMATES DISCONTINUED IN 1981.

SWEETPOTATOES: PRODUCTION, FARM DISPOSITION, SEASON AVERAGE PRICE RECEIVED
BY FARMERS, AND VALUE, BY STATES, 1978-1980 CROPS

STATE	PRODUCTION	TOTAL USED	FARM DISPOSITION			PRICE PER CWT	VALUE OF --	
			FOR SEED	USED ON FARM WHERE GROWN FOR SEED, FEED AND HOUSEHOLD USE	SHRINKAGE AND LOSS		SOLD	PRODUCTION
			1,000 CWT			DOLLARS	1,000 DOLLARS	
1978								
ALA	550	23	92	36	422	14.80	8,140	6,246
ARK	64	3	17	3	44	14.70	941	647
CALIF	1,392	48	48	70	1,274	14.50	20,184	18,473
GA	605	15	42	42	521	12.90	7,805	6,721
LA	2,650	196	216	106	2,338	7.72	20,535	18,049
MO	224	8	10	9	205	8.15	1,826	1,671
MISS	447	29	55	25	367	10.50	4,894	3,854
N J	286	16	11	27	248	14.00	4,004	3,472
N C	4,810	533	592	207	4,011	9.57	48,032	38,385
S C	336	16	38	9	289	12.00	4,032	3,468
TENN	150	11	27	7	116	9.65	1,448	1,119
TEX	1,045	85	96	58	891	14.30	14,944	12,741
VA	546	34	42	28	476	8.50	4,641	4,046
U S	13,115	1,017	1,286	627	11,202	10.60	139,226	118,892
1979								
ALA	627	22	110	57	460	12.10	7,587	5,566
ARK	53	3	14	3	36	9.00	477	324
CALIF	1,632	42	49	82	1,501	14.20	23,174	21,314
GA	633	19	42	38	553	10.30	6,520	5,696
LA	2,565	208	228	110	2,227	5.00	12,825	11,135
MO	217	8	10	9	198	8.30	1,801	1,643
MISS	447	28	46	25	376	8.55	3,822	3,215
N J	311	8	9	19	283	13.50	4,199	3,821
N C	4,800	456	552	216	4,032	7.60	36,480	30,643
S C	341	14	34	22	285	12.20	4,180	3,477
TENN	210	16	34	13	163	11.10	2,331	1,809
TEX	1,027	80	88	98	841	11.70	12,016	9,840
VA	507	21	26	19	462	7.30	3,701	3,373
U S	13,370	925	1,242	711	11,417	8.92	119,093	101,856
1980								
ALA	530	22	104	34	392	16.50	8,745	6,468
ARK	36	3	9	3	24	10.00	360	240
CALIF	1,512	45	45	76	1,391	19.20	29,030	26,707
GA	450	24	56	23	371	15.20	6,840	5,639
LA	2,125	216	202	81	1,842	7.60	16,150	13,999
MO	195	8	10	8	177	14.40	2,808	2,549
MISS	414	33	46	25	343	11.60	4,802	3,979
N J	276	11	10	26	240	16.40	4,526	3,936
N C	4,255	440	468	213	3,574	13.40	57,017	47,892
S C	238	24	33	11	194	14.30	3,403	2,774
TENN	160	21	32	10	118	14.80	2,368	1,746
TEX	520	57	58	17	445	18.60	9,672	8,277
VA	242	20	19	7	216	10.90	2,638	2,354
U S	10,953	924	1,092	534	9,327	13.60	148,359	126,560

**SWEETPOTATOES: PRODUCTION, FARM DISPOSITION, SEASON AVERAGE PRICE RECEIVED
BY FARMERS, AND VALUE, BY STATES, 1981 AND 1982 CROPS**

STATE	FARM DISPOSITION					PRICE PER CWT	VALUE OF --	
	PRODUCTION	TOTAL USED FOR	USED ON FARMS WHERE GROWN:				PRODUCTION	SALES
			SEED	FOR SEED, FEED: AND HOUSEHOLD USE	SHRINKAGE AND LOSS			
	1,000 CWT					DOLLARS	1,000 DOLLARS	
1981								
ALA	621	23	50	20	551	17.30	10,743	9,532
CALIF	1,647	46	49	99	1,499	15.70	25,858	23,534
GA	644	33	89	30	525	13.30	8,565	6,983
LA	2,600	195	247	78	2,275	8.30	21,580	18,883
MD	228	8	10	9	209	15.80	3,602	3,302
MISS	494	42	79	15	400	13.60	6,718	5,440
N J	275	19	17	21	237	16.10	4,428	3,816
N C	4,680	585	639	187	3,854	14.00	65,520	53,956
S C	380	50	57	16	307	17.80	6,764	5,465
TENN	144	11	29	7	108	15.20	2,189	1,642
TEX	741	76	82	37	622	19.20	14,227	11,942
VA	345	20	25	13	307	13.20	4,554	4,052
U S	12,799	1,108	1,373	532	10,894	13.60	174,748	148,547
1982								
ALA	660	20	98	26	536	7.65	5,049	4,100
CALIF	1,748	44	52	122	1,574	11.00	19,228	17,314
GA	819	36	229	75	515	7.95	6,511	4,094
LA	2,500	188	207	88	2,205	4.50	11,250	9,923
MD	254	7	11	10	233	7.50	1,905	1,748
MISS	500	48	79	35	386	7.80	3,900	3,011
N J	319	17	16	30	273	9.80	3,126	2,675
N C	5,940	494	802	267	4,871	6.95	41,283	33,853
S C	663	36	66	66	531	11.70	7,757	6,213
TENN	128	10	23	6	99	10.20	1,306	1,010
TEX	972	74	88	29	855	16.00	15,552	13,680
VA	330	15	22	18	290	6.05	1,997	1,755
U S	14,833	989	1,693	772	12,368	8.03	118,864	99,376

POTATOES: PRICES RECEIVED BY FARMERS, MONTHLY AND SEASON AVERAGE,
BY STATE AND UNITED STATES, 1978-82

YEAR	JAN	FEB	MAR	APR	MAY	JUN	JUL	AUG	SEP	OCT	NOV	DEC	SEASON AVERAGE
DOLLARS PER CWT													
UNITED STATES													
1978	3.24	3.20	3.25	3.30	3.84	5.32	6.71	4.92	3.49	3.07	3.08	3.07	3.38
1979	3.09	2.77	2.94	2.82	3.08	3.00	3.41	3.61	3.23	3.14	3.35	3.51	3.44
1980	3.44	3.37	3.23	3.21	3.75	4.35	6.19	7.77	6.02	4.42	5.47	6.53	6.55
1981	7.38	7.51	8.12	8.41	8.22	9.13	9.67	7.06	4.84	4.01	4.44	4.65	5.42
1982	4.71	4.78	5.03	5.59	6.21	7.11	6.52	5.80	4.25	3.78	3.73	3.71	4.45
ALABAMA													
1978					7.40	12.50	11.80	12.00					11.90
1979					6.95	5.30	3.95	3.90	3.85				4.55
1980					6.50	6.50	9.00	9.00	11.80				7.60
1981					13.00	11.80	10.00	10.00	10.00				11.00
1982					9.00	8.95	9.00	8.30	8.30				8.80
ARIZONA													
1978					7.70	8.30							8.15
1979					5.50	4.15	3.95						4.40
1980					5.70	4.90							5.25
1981				12.40	9.15	6.20	5.90						7.55
1982				8.10	8.20	5.60	4.85						6.55
CALIFORNIA - ALL													
1978	5.73	5.67	5.92	6.00	6.62	7.65	7.83	7.09	6.15	5.79	5.71	5.99	6.69
1979	6.39	6.16	5.98	5.68	5.22	4.29	4.26	5.12	4.70	4.42	5.55	5.22	5.00
1980	5.35	5.55	5.45	6.60	6.40	7.30	8.05	9.60	13.40	10.80	9.45	9.60	9.00
1981	10.90	12.00	11.80	13.40	12.20	11.60	11.70	11.60	10.20	9.00	7.15	7.00	10.40
1982	7.20	7.35	7.15	7.80	11.20	10.80	8.85	10.40	7.80	7.30	7.25	6.20	8.90
CALIFORNIA - WINTER													
1978	8.80	9.30	9.30	9.30							8.60	10.00	8.00
1979	10.30	9.95	9.85	9.75							6.55	7.10	9.80
1980	7.20	7.35	7.70	7.70							11.00	12.40	7.20
1981	12.50	13.80	15.20	16.40							9.40	9.40	12.80
1982	9.30	10.60	10.10	10.00							7.00	7.80	9.70
CALIFORNIA - SPRING													
1978					6.55	7.70	7.95						7.45
1979				6.00	5.25	4.25	4.25	4.55					4.50
1980				9.60	6.50	7.35	7.75						7.30
1981				15.90	12.30	11.50	12.00						11.90
1982				9.20	11.90	10.90	8.70						10.60
CALIFORNIA - SUMMER													
1978						7.50	7.20	6.70	6.50				7.05
1979						3.85	5.30	4.70	4.30				4.75
1980						7.75	9.35	13.10	12.40				10.90
1981						11.00	11.60	12.20	13.40				11.70
1982						9.35	10.40	8.30	7.55				9.25
CALIFORNIA - FALL													
1978	5.10	5.10	5.50	5.95	7.00	6.85		6.00	5.40	5.25	5.15	5.20	5.20
1979	5.20	5.10	5.20	5.10	5.05	5.00	4.90	4.50	4.70	4.55	5.35	4.95	5.45
1980	4.90	5.10	5.00	5.00	5.90	6.90	10.60	12.20	13.80	9.40	9.10	8.90	10.80
1981	10.60	11.20	11.40	11.70	11.70	12.90	12.30		8.10	7.00	6.60	6.45	7.05
1982	6.70	6.70	6.50	7.40	7.95	8.50	8.85		6.90	7.20	7.30	5.85	6.30

POTATOES: PRICES RECEIVED BY FARMERS, MONTHLY AND SEASON AVERAGE,
BY STATE AND UNITED STATES, 1978-82

YEAR	JAN	FEB	MAR	APR	MAY	JUN	JUL	AUG	SEP	OCT	NOV	DEC	SEASON AVERAGE
DOLLARS PER CWT													
COLORADO													
1978	2.70	2.65	2.85	2.75	2.85	2.60	2.85	3.45	3.45	2.70	2.33	2.17	2.34
1979	2.58	2.10	2.00	1.70	1.90	2.20	4.00	3.45	2.72	2.69	2.97	2.85	2.91
1980	2.75	3.30	3.20	3.00	2.65	2.85		6.15	5.80	4.85	5.50	5.75	6.70
1981	6.05	8.10	8.20	8.65	8.30	7.90	4.60	6.65	5.00	4.15	5.05	4.85	4.70
1982	3.95	4.70	4.30	4.65	5.40	5.10	5.25	4.75	3.10	3.85	3.80	3.45	3.65
FLORIDA													
1978	11.70	10.10	6.75	8.15	5.24	5.85							6.21
1979	11.70	8.20	6.50	6.94	4.60	3.77							5.06
1980	12.00	11.20	10.20	9.85	5.65	4.95							6.85
1981		22.20	25.40	16.80	8.70	7.80							11.10
1982	17.00	16.80	13.40	11.40	6.90	7.85							8.90
IDAHO													
1978	2.85	2.90	3.20	2.90	2.75	3.00	3.45		3.15	2.90	2.85	2.40	2.25
1979	1.95	1.65	1.85	2.05	1.65	1.55	1.30	2.35	3.15	3.15	3.05	3.00	2.95
1980	2.85	2.65	2.15	2.60	2.90	3.10	4.20	4.90	3.90	3.70	4.35	5.55	5.65
1981	6.50	6.40	7.15	7.30	7.45	8.55	9.20	5.00	4.15	3.90	4.30	4.60	4.75
1982	4.70	4.65	5.35	5.70	5.60	5.45	5.35	4.40	4.10	3.65	3.30	2.65	3.50
MAINE													
1978	3.20	3.15	2.95	3.55	4.05	4.45			3.25	3.60	2.90	2.80	3.86
1979	3.85	3.95	4.15	4.00	4.55	3.80		5.00	3.00	3.55	3.55	3.45	3.25
1980	3.40	3.10	3.00	2.70	3.95	2.70			5.70	5.40	5.30	6.80	7.25
1981	7.70	7.70	8.65	8.25	8.55				4.35	4.15	3.75	3.85	4.50
1982	4.35	4.55	4.65	5.25	4.85	5.25			4.35	3.60	2.80	2.70	3.35
MICHIGAN													
1978	4.25	4.30	4.50	4.50	4.41		7.00	5.15	3.93	3.86	4.30	4.40	4.57
1979	4.75	4.90	5.00	5.25	5.35		6.05	3.83	3.63	3.80	4.25	4.31	4.44
1980	4.50	4.80	5.35	5.55	5.70		5.15	5.40	6.45	5.60	6.50	6.60	6.65
1981	7.35	7.90	8.85	9.00	7.90		8.65	7.90	6.30	6.10	5.60	5.40	6.30
1982	5.75	6.25	6.60	6.75	7.10		7.45	4.05	4.10	4.65	4.50	4.30	4.65
MINNESOTA													
1978	2.65	2.75	2.75	2.90	2.95	2.90	9.00	4.97	3.42	2.48	2.66	2.83	2.95
1979	2.93	2.81	2.70	2.75	3.00	3.00	5.00	3.53	2.78	2.82	2.65	2.84	3.11
1980	3.50	3.30	3.15	3.00	3.30	3.50	3.60	9.90	6.95	4.90	4.90	6.55	8.00
1981	7.80	8.10	9.50	10.70	10.70		9.20	7.15	6.20	4.90	4.60	4.80	4.90
1982	4.50	4.10	4.50	4.40	3.70	3.50	4.75	5.20	3.60	3.45	3.60	4.00	3.95
NEW JERSEY													
1978							5.50	3.40	3.55	4.10	4.70	4.60	3.85
1979							4.95	3.65	3.90	4.20	4.30	4.35	4.00
1980							9.80	6.95	8.90	9.30	9.35		8.30
1981							8.30	6.70	6.40	6.50	6.90	6.95	7.00
1982							5.35	5.10	5.10	5.10	4.70		5.10
NEW YORK - ALL													
1978	3.99	4.01	4.14	4.61	4.49	3.50	5.50	4.86	4.00	4.18	4.28	4.33	4.49
1979	4.76	4.80	5.08	4.72	5.67		4.37	4.81	4.10	4.20	4.05	4.24	4.14
1980	4.30	3.85	3.85	4.10	4.20			8.15	7.45	7.55	8.70	8.90	8.85
1981	11.30	11.20	11.10	11.10	10.70		10.40	7.55	6.50	5.85	5.60	5.70	6.15
1982	5.50	6.00	6.20	6.55	6.65		9.00	5.85	5.30	4.90	4.50	4.10	4.90

POTATOES: PRICES RECEIVED BY FARMERS, MONTHLY AND SEASON AVERAGE,
BY STATE AND UNITED STATES, 1978-82

YEAR	JAN	FEB	MAR	APR	MAY	JUN	JUL	AUG	SEP	OCT	NOV	DEC	SEASON AVERAGE
DOLLARS PER CWT													
NEW YORK - LONG ISLAND													
1978	3.20	3.25	3.10	3.15	3.50	3.50	4.50	4.15	3.35	3.70	3.85	3.85	3.99
1979	4.40	4.40	4.60	4.60	5.00		4.00	3.95	3.65	3.85	3.80	3.80	3.65
1980	3.80	3.30	3.30	3.20	3.65			8.85	8.65	8.70	9.85	9.85	10.00
1981	13.00	12.00	12.00	12.20			8.65	7.10	6.05	6.00	5.65	5.50	6.05
1982	5.60	5.85	5.95	6.00	6.00			5.50	5.25	4.50	4.00	3.50	4.20
NEW YORK - UPSTATE													
1978	5.10	5.05	5.20	5.50	5.50		6.50	6.00	4.60	4.65	4.90	4.80	4.99
1979	5.15	5.20	5.50	4.75	6.00		4.75	6.30	4.50	4.60	4.30	4.70	4.65
1980	4.75	4.60	4.60	4.75	5.40			6.80	6.80	6.70	7.70	8.25	7.95
1981	9.45	10.50	10.50	10.40	10.70		11.90	9.00	7.00	5.70	5.50	5.85	6.20
1982	5.45	6.05	6.25	6.60	7.20		9.00	6.40	5.30	5.30	5.00	4.75	5.45
NORTH CAROLINA													
1978						6.10	5.40	9.40	8.90	7.35	8.10		6.27
1979						4.50	4.30	5.30	4.90	4.80	4.80	4.80	4.48
1980						5.75	5.50	7.00	8.90	8.70	10.00	12.00	5.90
1981						7.30	5.80	9.30	9.75	10.10	10.90		7.20
1982						7.60	5.25	7.30	7.40	6.10	10.00		6.10
NORTH DAKOTA													
1978	2.65	2.75	2.75	2.85	2.85	3.00			2.70	2.10	2.40	2.65	2.60
1979	2.70	2.65	2.65	2.75	2.90	3.00			2.40	3.00	3.35	3.40	3.25
1980	3.65	3.55	3.25	3.05	3.25	3.15	3.15	5.00	5.00	4.50	5.20	6.25	6.85
1981	6.50	7.50	9.00	9.50	7.50	7.50			3.75	3.40	4.25	4.25	4.05
1982	4.30	4.50	4.20	3.60	3.50	3.50			3.60	3.75	4.10	4.20	4.35
OHIO													
1978	4.20	4.40	4.50	4.10			8.00	4.80	4.49	4.48	4.60	4.45	4.54
1979	4.10	4.00	4.15	5.30	5.40		5.40	4.69	3.76	3.98	4.40	4.35	4.42
1980	4.70	5.00	5.00	5.35	5.60		11.20	8.70	5.60	6.20	6.70	9.40	7.65
1981	10.70	12.10	14.00				8.10	7.00	5.50	5.55	6.80	6.00	6.15
1982	6.40	6.40	5.90	8.00			6.80	3.70	3.60	5.20	6.20	6.30	5.00
OREGON													
1978	2.42	2.95	2.99	2.83	2.81	2.61	4.60	3.58	3.02	2.56	2.51	2.79	2.76
1979	2.94	2.86	2.75	2.56	2.36	2.20	4.80	3.02	2.41	2.57	2.94	3.00	2.83
1980	2.60	3.10	2.75	2.65	3.20	3.20	3.40	6.30	4.35	3.70	4.55	4.40	4.60
1981	5.65	5.00	4.85	5.00	4.90	4.60	4.60	6.50	4.80	3.85	3.95	4.15	4.50
1982	4.25	4.10	4.10	4.50	4.95	4.80	5.95	6.65	4.30	3.40	3.10	3.40	3.90
PENNSYLVANIA													
1978	5.00	4.90	4.70	4.50	4.50		5.25	5.15	4.30	4.45	4.70	4.80	4.85
1979	4.95	5.00	5.25	5.35	6.75	6.75	6.75	4.45	4.70	4.75	5.10	4.95	5.00
1980	5.15	5.10	5.25	5.70	6.00	6.00	7.10	6.70	6.00	6.50	7.50	8.00	7.90
1981	9.50	9.70	10.50	11.50	10.50	10.50	7.00	6.70	6.00	6.00	6.70	7.40	7.05
1982	7.50	7.70	7.80	8.40	8.50		6.60	4.70	4.80	5.20	5.75	5.55	5.50
TEXAS													
1978				6.40	5.40	7.00	10.90	8.10	6.00	6.40			7.91
1979				6.00	5.80	4.80	5.90	4.80	5.00	4.90			5.23
1980				6.10	6.10	6.90	15.00	15.40	14.90				12.10
1981					9.10	8.50	10.80	9.20	8.70				9.60
1982				7.50	7.70	8.00	10.10	10.40	7.90				9.10

POTATOES: PRICES RECEIVED BY FARMERS, MONTHLY AND SEASON AVERAGE,
BY STATE AND UNITED STATES, 1978-82

YEAR	JAN	FEB	MAR	APR	MAY	JUN	JUL	AUG	SEP	OCT	NOV	DEC	SEASON AVERAGE
DOLLARS PER CWT													
VIRGINIA													
1978						9.15	5.80	4.50	4.05				5.90
1979						4.85	3.70	3.45	4.00				3.85
1980						10.50	8.50	8.00	7.00				8.60
1981						10.10	9.50	8.50					9.65
1982						14.00	5.00	5.00					5.80
WASHINGTON													
1978	2.75	2.60	2.65	2.80	3.05	3.05	4.19	3.95	2.65	2.60	2.30	2.35	2.45
1979	2.00	1.60	2.45	2.20	2.20	2.10	2.10	2.50	2.25	2.70	2.55	2.75	2.55
1980	2.45	2.30	2.30	2.20	2.30	2.90	3.40	7.35	4.70	3.35	3.95	4.60	4.40
1981	4.80	4.30	4.20	4.35	4.70	4.30		7.40	3.95	3.00	3.10	3.45	3.95
1982	3.50	3.45	3.65	3.85	4.15	3.90	3.15	5.00	3.60	3.30	3.10	3.55	3.75
WISCONSIN													
1978	4.20	4.20	4.05	4.10	3.90	3.90	4.00	4.40	4.50	4.30	4.10	4.15	4.13
1979	3.80	3.90	3.80	4.00	3.85		3.90	3.70	4.00	3.95	4.25	4.45	4.30
1980	4.85	4.70	4.50	4.40	4.70	5.50	5.80	8.35	8.90	8.65	9.20	8.45	10.10
1981	11.50	13.00	13.20	13.50	13.50	13.50	6.00	4.00	3.75	4.05	4.50	4.70	4.70
1982	5.50	5.40	5.55	5.90	6.15	6.30	7.10	4.00	3.95	3.85	3.75	4.00	4.10

SWEETPOTATOES: PRICES RECEIVED BY FARMERS, MONTHLY AND SEASON AVERAGE,
BY STATE AND UNITED STATES, 1978-82

YEAR	JAN	FEB	MAR	APR	MAY	JUN	JUL	AUG	SEP	OCT	NOV	DEC	SEASON AVERAGE
DOLLARS PER CWT													
UNITED STATES													
1978	12.00	13.10	12.80	13.40	14.40	22.50	17.50	14.00	9.54	7.37	9.41	11.20	10.60
1979	12.00	12.60	12.80	13.10	14.20	21.60	19.20	9.28	7.69	6.73	8.55	10.20	8.92
1980	10.20	10.20	10.40	10.60	11.20	16.70	16.30	14.70	9.38	9.18	13.30	16.50	13.60
1981	16.90	18.30	19.90	22.80	24.00	23.30	20.40	15.70	10.80	10.50	11.90	13.80	13.60
1982	16.50	16.80	18.30	18.90	18.10	17.80	13.50	10.20	7.25	6.00	6.93	8.05	8.03
ALABAMA													
1978	13.20	13.10	14.50	15.80	13.00	17.70	16.40	16.80	16.80	13.70	15.40	13.40	14.80
1979	14.90	15.40	14.40	12.50	13.60	12.50	13.50	12.80	13.30	10.30	10.30	13.80	12.10
1980	12.30	12.20	12.40	10.70	10.30			15.00	14.50	14.50	15.00	15.40	16.50
1981	16.00	18.00	19.50	22.00	23.00		18.30	21.00	18.00	16.10	16.00	17.20	17.30
1982	16.00	16.30	17.30	16.80	16.40		14.00	10.40	6.90	5.70	5.90	6.50	7.65
CALIFORNIA													
1978	18.60	19.70	20.30	20.50	22.50	23.00	27.30	19.30	15.80	9.55	11.80	13.40	14.50
1979	16.90	18.80	17.40	15.90	21.00	23.00	21.20	15.90	13.50	10.40	13.60	13.90	14.20
1980	14.90	15.00	14.30	14.30	15.90	16.70	16.70	18.20	14.50	13.00	18.20	19.00	19.20
1981	19.70	21.00	21.10	23.30	23.30	23.30	25.30	19.70	18.00	13.20	14.40	14.80	15.70
1982	15.50	15.50	15.80	17.60	17.60	17.80		13.60	13.50	11.30	10.10	10.10	11.00
GEORGIA													
1978	14.10	15.70	15.30				23.50	23.50	14.60	11.00	10.60	12.00	12.90
1979	11.10	11.10	10.20	11.90			22.40	10.70	11.30	10.00	9.70	9.90	10.30
1980	11.80	10.00	10.90	10.80	9.90		15.00	16.20	13.00	13.40	14.30	17.30	15.20
1981	20.70	22.70	23.10				22.80	16.50	13.20	10.80	10.40	14.30	13.30
1982	17.80	17.50	18.60				15.50	10.00	8.00	7.00	6.20	6.85	7.95
LOUISIANA													
1978	10.15	12.90	14.20	15.65			15.65	11.30	7.20	5.25	5.65	6.70	7.72
1979	8.40	10.40	12.30	13.30	14.50			6.50	4.80	4.00	4.30	5.10	5.00
1980	5.90	7.40	9.20	12.10				8.95	6.15	6.25	7.75	10.00	7.60
1981	13.20	16.00	19.90	26.60			19.60	11.80	6.70	6.90	7.15	8.25	8.30
1982	11.40	15.80	18.60	21.20	23.00		11.70	6.45	4.60	3.55	3.30	4.35	4.50
MARYLAND 1/													
1978	11.90	12.10	11.25	11.25	12.70				9.80	8.05	5.80	7.85	8.15
1979	8.65	8.65	8.65	8.70	9.05				8.40	6.70	7.80	9.30	8.30
1980	9.50	8.40	9.30	8.90	8.90				11.10	10.70	11.60	13.50	14.40
1981	15.50	16.10	17.00	20.50	24.60								15.80
1982													7.50
MISSISSIPPI													
1978	9.55	9.90	9.90	9.00	9.75			9.90	9.15	9.10	10.90	11.55	10.50
1979	11.70	11.70	14.10	14.00	15.00			11.30	8.50	8.00	8.70	8.80	8.55
1980	9.00	9.00	8.70	8.40	7.80			9.10	9.80	10.70	11.30	11.90	11.60
1981	13.20	15.00	17.00	20.00				16.00	13.00	12.70	10.70	12.60	13.60
1982	18.00	15.30	15.50	15.50	18.60			10.50	7.40	6.00	5.70	8.40	7.80
NORTH CAROLINA													
1978	10.20	10.40	11.10	11.60	12.60			12.50	8.00	5.50	9.00	11.10	9.57
1979	11.60	11.50	11.70	12.10	12.10			8.70	7.30	6.50	7.80	8.00	7.60
1980	8.50	8.00	8.20	8.30	9.10			16.10	8.20	8.90	14.40	16.00	13.40
1981	16.50	17.60	19.90	22.70	24.90			12.00	9.80	10.60	13.50	15.40	14.00
1982	17.40	17.30	20.30	20.20	18.00			8.00	6.40	5.90	7.30	7.90	6.95

1/ MONTHLY PRICE ESTIMATES DISCONTINUED STARTING JULY 1981.

SWEETPOTATOES: PRICES RECEIVED BY FARMERS, MONTHLY AND SEASON AVERAGE,
BY STATE AND UNITED STATES, 1978-82

YEAR	JAN	FEB	MAR	APR	MAY	JUN	JUL	AUG	SEP	OCT	NOV	DEC	SEASON AVERAGE
DOLLARS PER CWT													
TENNESSEE 1/													
1978	9.95	10.60	11.40	11.60	10.20			9.45	10.00	9.50	9.30	9.60	9.65
1979	10.00	9.80	10.30	10.30	10.80			10.90	11.60	10.80	11.00	11.70	11.10
1980	10.90	10.90	10.60	11.40				13.00	14.30	13.70	13.30	15.40	14.80
1981	15.90	17.10	18.60	19.50	21.00								15.20
1982													10.20
TEXAS													
1978	15.60	18.20	15.60					18.50	18.50	15.50	12.50	12.80	14.30
1979	12.80	12.80	13.00	13.80				14.50	13.00	11.70	11.00	11.60	11.70
1980	11.90	11.20	10.50	10.60	11.20			24.90	17.60	18.10	17.50	16.50	18.60
1981	18.60	19.00	19.00					24.10	20.00	18.30	16.70	16.10	19.20
1982	20.20	22.10	24.40	24.80				21.30	19.00	15.60	14.70	14.60	16.00
VIRGINIA													
1978	10.60	11.10	11.50	11.50	12.50			11.30	9.50	6.80	6.90	11.40	8.50
1979	11.40	10.70	11.30	11.90	12.00			7.70	7.30	6.20	6.10	10.00	7.30
1980	11.00	11.00	11.00	10.00				10.60	10.20	8.10	12.00	16.90	10.90
1981	18.00	18.50	19.00	21.50				10.70	9.50	9.70	15.40	20.60	13.20
1982	19.60	20.00	19.10	18.00	18.00			10.00	6.20	5.30	6.20	6.00	6.05

1/ MONTHLY PRICE ESTIMATES DISCONTINUED STARTING JULY 1981.

**United States
Department of Agriculture**

**Washington, D.C.
20250**

**OFFICIAL BUSINESS
Penalty for Private Use, \$300**

**POSTAGE AND FEES PAID
U. S. DEPARTMENT OF AGRICULTURE
AGR - 181**



THIRD CLASS BULK RATE

END