



AgEcon SEARCH
RESEARCH IN AGRICULTURAL & APPLIED ECONOMICS

The World's Largest Open Access Agricultural & Applied Economics Digital Library

This document is discoverable and free to researchers across the globe due to the work of AgEcon Search.

Help ensure our sustainability.

Give to AgEcon Search

AgEcon Search

<http://ageconsearch.umn.edu>

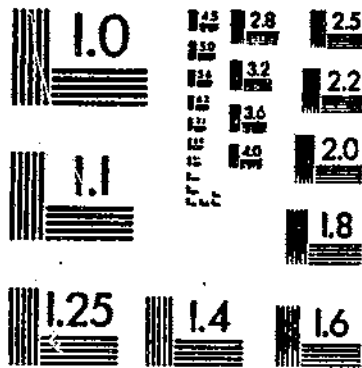
aesearch@umn.edu

*Papers downloaded from **AgEcon Search** may be used for non-commercial purposes and personal study only. No other use, including posting to another Internet site, is permitted without permission from the copyright owner (not AgEcon Search), or as allowed under the provisions of Fair Use, U.S. Copyright Act, Title 17 U.S.C.*

5B-703-01903-05 US DNE STATISTICAL BULLETIN
66 GRAINS, OILSEEDS AND LIVESTOCK-SELECTED STATISTICS, 1968-80
HERBERT M. SPECTAL

UPDATA
1 OF 2

START





United States
Department of
Agriculture

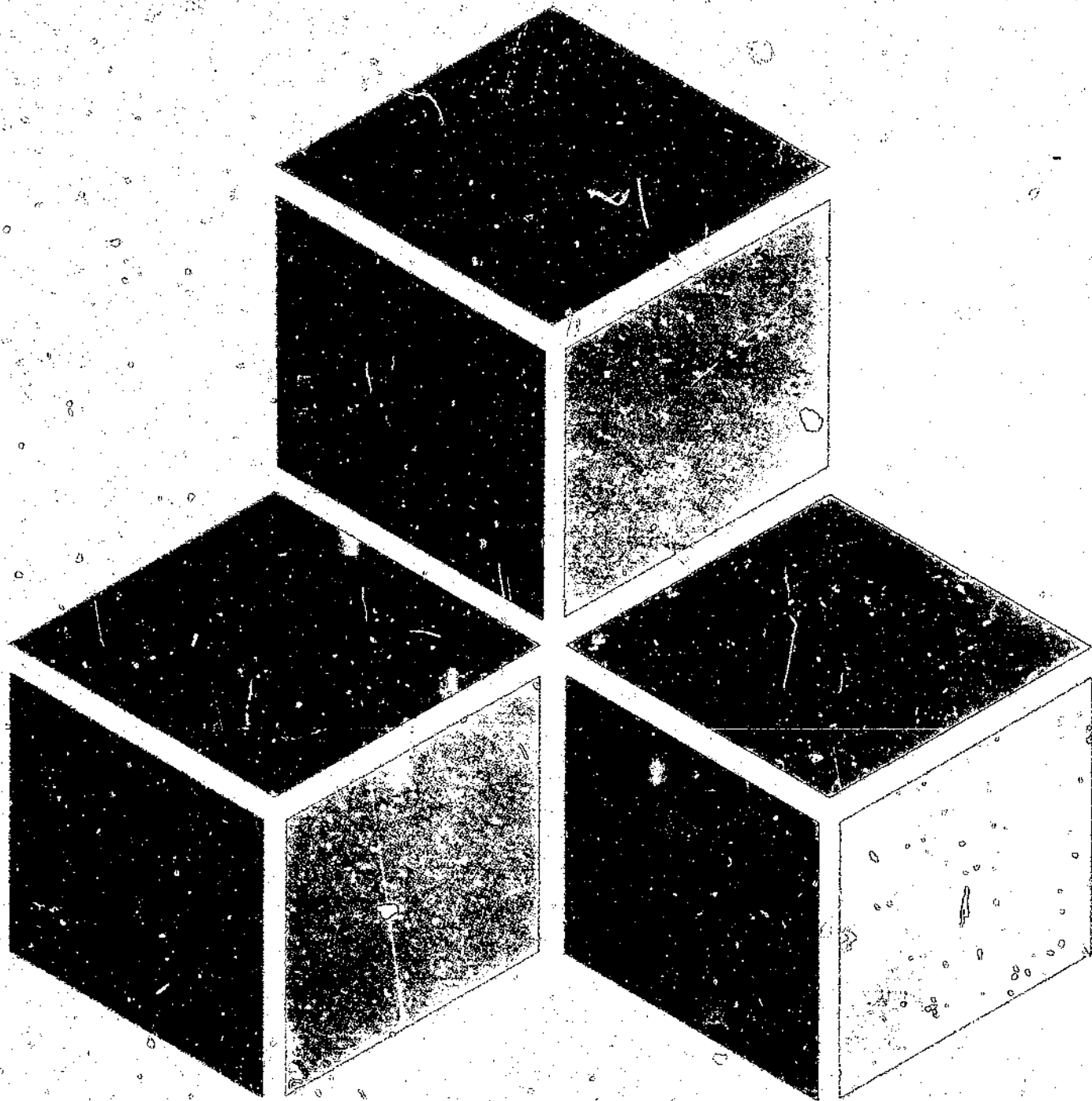
Economic
Research
Service

Statistical
Bulletin
Number 703

EC Grains, Oilseeds, and Livestock:

Selected Statistics, 1960-80

M. Harlhy, S. Magiera, G. Hasha, and D. Kelch



SALES INFORMATION: Additional copies of this report may be ordered from:

National Technical Information Service
Identification Section
5285 Port Royal Road
Springfield, VA 22161

Ask for EC Grains, Oilseeds, and Livestock: Selected Statistics, 1960-80, SB-703, and indicate whether you want paper copies or microfiche. Cost per paper copy is \$11.50; cost per microfiche copy is \$4.50 (prices subject to change). Enclose check or money order, payable to NTIS. For faster service, call (703) 487-4780 and charge your purchase to your VISA, MasterCard, American Express, or NTIS Deposit Account.

The Economic Research Service has no copies for free mailing.

EC GRAINS, OILSEEDS, AND LIVESTOCK: SELECTED STATISTICS, 1960-80. By M. Herlihy, S. Magiera, G. Hasha, and D. Kelch, International Economics Division, Economic Research Service, U.S. Department of Agriculture. Statistical Bulletin No. 703.

ABSTRACT

This report provides time-series data (1960 to 1980) on prices and the supply/utilization of agricultural commodities for nine countries of the European Community. The commodities covered include the major grains, oilseeds, livestock, and dairy products. Prices are provided at various stages of the marketing chain and include those set institutionally by the Community's Council of Ministers. Some macroeconomic data--population, exchange rates, and gross domestic product--are also included.

Keywords: European Community, data, grains, oilseeds, livestock products, dairy products, prices, macroeconomic data.

ACKNOWLEDGMENTS

Reed Friend, William Kost, and David Stallings for technical advice; Alan Laverson for programing support; and Deborah Hood for clerical support.

PREFACE

This report presents the European Community (EC-9) data base developed for use in estimating the EC sector of the International Economics Division's world grains-oilseed-livestock (GOL) model. The contents of the EC-9 data base are tailored to the needs of that modeling effort and are constantly expanding as the modeling effort progresses. Data for Greece are not included because Greece is part of the Southern Europe region of the GOL model. The Southern Europe region also includes Spain and Portugal, which are due to join the Community in the mid-eighties.

The data base is heavily oriented towards the domestic product markets. It consists primarily of supply/utilization data on commodities in the grains, oilseed, livestock, and dairy sectors; price data at various stages of marketing for these commodities; and macroeconomic data on population, gross domestic product (GDP), and exchange rates. Other data which may eventually be incorporated into the data base include costs of production, import levies and export refunds, structural data on EC agriculture, and Government expenditures on agriculture.

Because the GOL model treats the EC-9 as a single regional entity, EC-9 aggregates are provided for most data series. Supply/utilization data are provided only for the EC-9 although in a few instances--grain area and yield--disaggregated country information is also included. Producer, wholesale, and retail prices are included for each member country in national currency units. Producer prices, which are a key variable in the GOL, are then aggregated to the EC-9 level in both nominal and real terms. However, care should be taken in interpreting these price series and in comparing prices across countries because of differing product mixes. Policy prices set by the EC Council of Ministers are given in the standard EC unit of account, although work is underway to translate these into national currency units.

Fairly lengthy time series are needed for analyzing changes in EC agriculture and for statistical estimation of the GOL. Therefore, the data base generally covers the period 1960 to 1980. In order to make the time-series data as consistent as possible, a variety of sources was used. These include: the International Monetary Fund (IMF) for population and macroeconomic data; the Statistical Office of the European Community (Eurostat) and the IMF for exchange rates; the Foreign Agricultural Service (FAS), the Organization for Economic Cooperation and Development (OECD), and Eurostat for supply/utilization data; the Food and Agriculture Organization of the United Nations (FAO) and Eurostat for farmgate and wholesale prices; the International Labor Organization (ILO) for retail prices; and the Commission of the European Communities and Eurostat for policy prices.

Despite the wealth of readily available information on the EC, some series were spliced together from different sources—especially price data for the newest member countries and price data for all countries in the early sixties. Notes on construction of the data and sources are listed under each table. It is also suggested that users consult the original sources for more detailed information on definitions and other methodological notes.

The authors welcome suggestions and comments from users of the data base.

TERMS, ABBREVIATIONS, WEIGHTS AND MEASURES, AND NATIONAL CURRENCIES	vi
TABLES	1

LIST OF TABLES

Macroeconomic Data

1. Population (Millions)	1
2. GDP (Billions of National Currency)	2
3. GDP (Billions of ECU's)	3
4. Real GDP (Billions of National Currency, 1975 Prices)	4
5. Real GDP (Billions of 1975 ECU's)	5
6. Real GDP Shares	6
7. GDP Deflators (1975=100)	7
8. National Currency/ECU Exchange Rates (Calendar Year)	8
9. National Currency/ECU Exchange Rates (August/July Year)	9
10. National Currency/ECU Exchange Rates (April/March Year)	10
11. National Currency/ECU Exchange Rates (November/October Year)	11
12. National Currency/U.S. Dollar Exchange Rates (Calendar Year)	12

Supply/Utilization Data

13. EC-9 Supply/Utilization of Total Wheat (1000 MT)	13
14. EC-9 Common Wheat Area by Country (1000 HA)	14
15. EC-9 Durum Wheat Area by Country (1000 HA)	15
16. EC-9 Common Wheat Yield by Country (MT/HA)	16
17. EC-9 Durum Wheat Yield by Country (MT/HA)	17
18. EC-9 Supply/Utilization of Barley (1000 MT)	18
19. EC-9 Barley Area by Country (1000 HA)	19
20. EC-9 Barley Yield by Country (MT/HA)	20
21. EC-9 Supply/Utilization of Corn (1000 MT)	21
22. EC-9 Corn Area by Country (1000 HA)	22
23. EC-9 Corn Yield by Country (MT/HA)	23
24. EC-9 Supply/Utilization of Other Coarse Grains (1000 MT)	24
25. EC-9 Other Coarse Grains Area by Country (1000 HA)	25
26. EC-9 Other Coarse Grains Yield by Country (MT/HA)	26
27. EC-9 Supply/Utilization of Total Coarse Grains (1000 MT)	27
28. EC-9 Total Coarse Grains Area by Country (1000 HA)	28
29. EC-9 Total Coarse Grains Yield by Country (MT/HA)	29
30. EC-9 Supply/Utilization of Total Grains (1000 MT)	30
31. EC-9 Total Grains Area by Country (1000 HA)	31
32. EC-9 Total Grains Yield by Country (MT/HA)	32
33. EC-9 Supply/Utilization of Rice (1000 MT)	33
34. EC-9 Supply/Utilization of Oilseed Meal (1000 MT)	34
35. EC-9 Supply/Utilization of Edible Oil (1000 MT)	35
36. EC-9 Oilseed Conversion Factors	36
37. EC-9 Supply/Utilization of Beef and Veal (1000 MT)	37

LIST OF TABLES

Page

38.	EC-9 Supply/Utilization of Pork (1000 MT)	38
39.	EC-9 Supply/Utilization of Sheep and Goats (1000 MT)	39
40.	EC-9 Supply/Utilization of Poultry (1000 MT)	40
41.	EC-9 Supply/Utilization of Eggs (Million Pieces)	41
42.	EC-9 Supply/Utilization of Whole Milk (1000 MT)	42
43.	EC-9 Supply/Utilization of Skimmed-Milk Powder (1000 MT)	43
44.	EC-9 Supply/Utilization of Butter (1000 MT)	44
45.	EC-9 Supply/Utilization of Cheese (1000 MT)	45
46.	EC-9 Fertilizer Price Indices (1975=100)	46

Input Prices

Producer and Wholesale Prices

47.	EC-9 Wheat Producer Prices	47
48.	EC-9 Barley Producer Prices	48
49.	EC-9 Corn Producer Prices	49
50.	EC-9 Oats Producer Prices	50
51.	EC-9 Rye Producer Prices	51
52.	EC-9 Rice Producer Prices	52
53.	EC-9 Cattle Producer Prices	53
54.	EC-9 Pig Producer Prices	54
55.	EC-9 Poultry Producer Prices	55
56.	EC-9 Egg Producer Prices	56
57.	EC-9 Milk Producer Prices	57
58.	EC-9 Butter Producer Prices	58
59.	EC-9 Cheese Producer Prices	59
60.	EC-9 Agricultural Production Shares, 1976	60
61.	EC-9 Corn Wholesale Prices (National Currency/100 KG)	61

Retail Prices

62.	EC-9 Bread Retail Prices (National Currency/KG)	62
63.	EC-9 Rice Retail Prices (National Currency/KG)	63
64.	EC-9 Butter Retail Prices (National Currency/KG)	64
65.	EC-9 Milk Retail Prices (National Currency/Liter)	65
66.	EC-9 Cheese Retail Prices (National Currency/KG)	66
67.	EC-9 Egg Retail Prices (National Currency/Egg)	67
68.	EC-9 Margarine Retail Prices (National Currency/KG)	68
69.	EC-9 Beer Retail Prices (National Currency/Liter)	69
70.	EC-9 Sugar Retail Prices (National Currency/KG)	70

Policy Prices

71.	EC Cereal Target Prices	71
72.	EC Cereal Intervention Prices	72
73.	EC Cereal Threshold Prices	73
74.	EC Rice Policy Prices	74
75.	EC Oilseed Policy Prices	75
76.	EC Meat Policy Prices	76
77.	EC Dairy Policy Prices	77

**TERMS, ABBREVIATIONS,
WEIGHTS AND MEASURES,
AND NATIONAL
CURRENCIES**

EC--European Community, also referred to as EC-9, is an economic and customs union consisting of the six original members--Belgium, Luxembourg, France, Italy, the Netherlands, and West Germany--and the three new members--Denmark, Ireland, and the United Kingdom. Greece became the tenth member in January 1981, but is not included in this data base. Data for Luxembourg, where available, are generally included with Belgium.

CAP--Common Agricultural Policy of the European Community.

Unit of Account (UA)--Prior to April 9, 1979, the standard currency unit used by the EC in the agricultural sector.

European Currency Unit (ECU)--On April 9, 1979, the ECU became the standard unit for expressing common agricultural prices. Its value is based on a weighted basket of all nine member country currencies. Common agricultural prices expressed in UA's on April 9, 1979, were converted to ECU's by applying a fixed conversion coefficient of 1.208953, the difference in value between the two currency units existing on that date.

Livestock Unit (LU)--A standard unit used by Eurostat to aggregate various animal species on the basis of the barley feed requirements of one in-calf dairy heifer. The following coefficients of conversion are used:

<u>Categories</u>	<u>Coefficient</u>
Cattle under the age of 1	0.4
Cattle aged between 1 and 2	.7
Males aged 2 years and over	1.0
Heifers aged 2 years and over	.8
Dairy cows	$1 + (\text{Yield}-300)/100 \times .013$
Other cows	.8
Piglets less than 20 kg	.027
Other pigs	.3
Sows 50 kg and over	.5
Sheep	.1
Goats	.1

Unit Value--A weighted average price calculated by dividing total sales value by total quantity sold.

CRONOS--An on-line data base maintained by the Statistical Office of the European Community. CRONOS contains statistics on national income, industry and services, agriculture and fisheries, and foreign trade for the EC.

HA--Hectare.

MT--Metric ton.

KG--Kilogram.

Weights and Measures--The metric system of weights and measures is used in this report. The following are conversions to the U.S. system of weights and measures:

1 hectare = 2.471 acres
1 metric ton = 2,204.6 pounds
1 liter = 1.0567 quarts

National Currencies

Belgium--Franc
Denmark--Krone
France--Franc
Ireland--Irish Pound
Italy--Lira
Luxembourg--Franc
Netherlands--Guilder
United Kingdom--Pound Sterling
West Germany--Mark

TABLE 1 POPULATION (MILLIONS)

YEAR	BELGIUM/LUX.	DENMARK	FRANCE	IRELAND	ITALY	NETHERLANDS	U. KINGDOM	W. GERMANY	EC-9
1960	9.46	4.58	45.68	2.83	49.64	11.48	52.35	55.43	231.45
1961	9.50	4.61	46.16	2.82	49.90	11.64	52.81	56.18	233.62
1962	9.54	4.65	47.00	2.83	50.24	11.80	53.27	56.94	236.27
1963	9.61	4.68	47.82	2.85	51.18	11.97	53.54	57.59	239.24
1964	9.71	4.72	48.31	2.86	51.57	12.12	53.85	58.27	241.41
1965	9.79	4.76	48.76	2.88	51.99	12.29	54.18	59.01	243.66
1966	9.86	4.80	49.16	2.88	52.33	12.45	54.50	59.50	245.48
1967	9.92	4.84	49.55	2.90	52.67	12.60	54.80	59.87	247.15
1968	9.96	4.86	49.91	2.91	52.99	12.72	55.05	60.17	248.57
1969	9.99	4.89	50.32	2.93	53.32	12.87	55.27	60.44	250.03
1970	10.00	4.93	50.77	2.95	53.66	13.03	55.42	60.71	251.47
1971	10.01	4.96	51.25	2.98	54.01	13.19	55.61	61.29	253.30
1972	10.06	4.99	51.70	3.02	54.41	13.33	55.79	61.67	254.97
1973	10.09	5.02	52.13	3.07	54.91	13.44	55.91	61.97	256.54
1974	10.13	5.05	52.49	3.12	55.41	13.54	55.93	62.04	257.71
1975	10.16	5.06	52.79	3.18	55.83	13.65	55.90	61.83	258.40
1976	10.18	5.07	52.89	3.23	56.17	13.77	55.89	61.51	258.71
1977	10.19	5.09	53.08	3.27	56.46	13.85	55.85	61.40	259.19
1978	10.20	5.10	53.28	3.31	56.71	13.94	55.84	61.31	259.69
1979	10.21	5.12	53.48	3.37	56.91	14.03	55.88	61.44	260.43
1980	10.22	5.12	53.71	3.40	57.07	14.14	55.95	61.56	261.17

MID-YEAR ESTIMATES.

SOURCE: IMF, INTERNATIONAL FINANCIAL STATISTICS, SEVERAL ISSUES.

TABLE 2 GDP (BILLIONS OF NATIONAL CURRENCY)

YEAR	BELGIUM/LUX.	DENMARK	FRANCE	IRELAND	ITALY	NETHERLANDS	U. KINGDOM	W. GERMANY
1960	597.93	40.79	296.50	.631	23,207	42.73	25.50	303.00
1961	633.15	45.26	323.50	.679	25,810	44.82	27.24	331.40
1962	675.22	50.99	361.20	.736	28,998	48.00	28.52	360.50
1963	725.27	54.28	404.90	.791	33,215	52.26	30.34	382.10
1964	811.23	62.05	449.20	.901	36,360	61.47	33.13	419.60
1965	883.88	69.70	483.50	.958	39,124	68.56	35.61	458.20
1966	948.50	76.80	523.40	1.011	42,391	74.43	37.98	487.40
1967	1,014.43	84.60	565.40	1.103	46,695	81.85	40.12	493.70
1968	1,087.04	94.10	614.50	1.245	50,614	90.40	43.32	535.20
1969	1,207.21	107.39	700.70	1.439	55,876	102.48	46.56	597.70
1970	1,355.49	119.07	782.50	1.620	62,883	115.10	51.06	679.00
1971	1,467.46	131.63	872.50	1.853	68,510	130.04	57.29	756.00
1972	1,643.40	151.48	981.10	2.227	75,124	147.43	63.40	827.20
1973	1,866.50	174.63	1,114.20	2.678	89,746	169.41	72.94	920.10
1974	2,193.41	194.74	1,278.30	2.946	110,719	191.75	82.88	986.90
1975	2,412.58	216.26	1,452.30	3.728	125,378	209.08	104.91	1,034.90
1976	2,743.43	251.21	1,678.00	4.572	156,657	240.46	124.66	1,125.00
1977	2,957.76	278.68	1,884.60	5.486	190,083	275.34	143.91	1,200.60
1978	3,178.89	311.59	2,140.70	6.471	222,254	296.66	164.90	1,290.70
1979	3,382.46	345.92	2,439.10	7.465	269,657	314.14	192.33	1,398.20
1980	3,598.80	374.10	2,756.20	8.677	337,402	332.34	225.21	1,491.90

THE DATA FOR BELGIUM, THE NETHERLANDS, AND W.GERMANY ARE GNP.
SOURCE: IMF, INTERNATIONAL FINANCIAL STATISTICS, SEVERAL ISSUES.

TABLE 3 GDP (BILLIONS OF ECU'S)

YEAR	BELGIUM/LUX.	DENMARK	FRANCE	IRELAND	ITALY	NETHERLANDS	U. KINGDOM	W. GERMANY	EC-9
1960	11.32	5.59	56.86	1.673	35.16	10.65	67.60	68.30	257.15
1961	11.86	6.14	61.39	1.781	38.69	11.50	71.46	76.94	279.76
1962	12.62	6.90	68.39	1.926	43.37	12.39	74.65	84.24	304.49
1963	13.56	7.35	76.66	2.070	49.68	13.49	79.41	89.29	331.51
1964	15.17	8.40	85.05	2.358	54.38	15.87	86.71	98.06	365.99
1965	16.52	9.43	91.54	2.507	58.51	17.70	93.20	107.08	396.50
1966	17.73	10.39	99.10	2.646	63.40	19.22	99.41	113.90	425.79
1967	19.05	11.40	107.55	2.845	70.16	21.23	103.49	115.91	451.65
1968	21.13	12.19	120.97	2.904	78.71	24.27	101.05	130.04	491.27
1969	23.62	14.01	132.45	3.379	87.46	27.69	109.32	148.45	546.38
1970	26.52	15.53	137.82	3.803	98.42	31.10	119.88	181.48	616.57
1971	28.85	16.98	151.16	4.324	105.82	35.55	133.67	207.37	683.73
1972	33.29	19.45	173.43	4.961	114.82	40.95	141.22	231.27	759.39
1973	39.05	23.55	203.78	5.331	125.26	49.41	145.21	280.82	872.41
1974	47.27	26.83	222.94	5.779	142.73	59.88	162.57	320.06	988.05
1975	52.94	30.36	272.52	6.657	154.87	66.69	187.33	339.38	1,110.76
1976	63.56	37.15	313.95	7.355	168.42	81.37	200.55	399.58	1,271.94
1977	72.35	40.65	336.17	8.392	188.80	98.33	220.15	453.35	1,418.19
1978	79.35	44.39	372.96	9.747	205.75	107.72	248.38	504.95	1,573.24
1979	84.21	47.98	418.41	11.150	236.85	114.29	297.54	556.86	1,767.30
1980	88.64	47.79	469.62	12.836	283.72	120.40	376.30	591.04	1,990.36

GDP IN NATIONAL CURRENCY IS CONVERTED TO ECU'S USING CALENDAR YEAR MARKET EXCHANGE RATES (TABLE 8).
 THE DATA FOR BELGIUM, THE NETHERLANDS, AND W.GERMANY ARE GNP.
 SOURCE: IMF, INTERNATIONAL FINANCIAL STATISTICS, SEVERAL ISSUES.

TABLE 4 REAL GDP (BILLIONS OF NATIONAL CURRENCY, 1975 PRICES)

YEAR	BELGIUM/LUX.	DENMARK	FRANCE	IRELAND	ITALY	NETHERLANDS	U. KINGDOM	W. GERMANY
1960	1,245.11	123.78	694.50	2.086	64,891	108.66	71.47	590.80
1961	1,306.43	131.25	732.80	2.183	70,202	112.34	73.89	619.60
1962	1,378.07	138.40	781.80	2.239	74,526	116.60	74.52	647.00
1963	1,435.41	139.28	823.40	2.329	78,665	120.94	77.46	666.20
1964	1,533.75	151.77	877.10	2.463	80,736	131.34	81.57	710.40
1965	1,591.63	159.12	919.10	2.494	83,288	138.13	83.64	749.70
1966	1,635.60	162.66	967.00	2.524	88,095	141.74	85.44	768.70
1967	1,698.56	170.25	1,012.30	2.648	94,277	149.53	87.67	767.70
1968	1,772.33	177.38	1,055.50	2.818	100,235	158.52	90.83	817.70
1969	1,888.58	189.61	1,129.20	2.955	105,919	168.92	91.91	882.20
1970	2,028.67	194.57	1,193.80	3.042	111,278	179.77	94.57	934.10
1971	2,104.93	199.30	1,258.50	3.146	113,106	187.26	97.09	965.30
1972	2,219.11	210.09	1,332.70	3.335	116,728	193.96	98.96	1,000.50
1973	2,355.59	221.10	1,404.20	3.474	124,936	205.72	106.42	1,049.60
1974	2,462.35	219.16	1,449.70	3.602	130,110	213.19	105.17	1,053.30
1975	2,412.58	216.26	1,452.30	3.728	125,378	209.08	104.91	1,034.90
1976	2,542.97	231.10	1,527.50	3.806	132,739	220.83	108.73	1,089.50
1977	2,564.71	235.54	1,574.00	4.070	135,259	237.81	110.11	1,120.50
1978	2,647.77	238.71	1,632.50	4.343	138,890	243.51	113.76	1,161.30
1979	2,699.65	245.98	1,688.90	4.449	145,650	247.84	115.36	1,211.70
1980	2,751.23	245.44	1,715.50	4.532	151,419	249.56	113.40	1,233.50

REAL GDP IS NOT AVAILABLE FOR BELGIUM, THE NETHERLANDS, AND W.GERMANY. FOR THESE THREE COUNTRIES, REAL GNP IS REPORTED INSTEAD.

SOURCE: IMF, INTERNATIONAL FINANCIAL STATISTICS, SEVERAL ISSUES.

TABLE 5 REAL GDP (BILLIONS OF 1975 ECU'S)

YEAR	BELGIUM/LUX.	DENMARK	FRANCE	IRELAND	ITALY	NETHERLANDS	U. KINGDOM	W. GERMANY	EC-9
1960	27.324	17.378	130.32	3.7248	80.16	34.661	127.62	193.74	614.9
1961	28.669	18.427	137.51	3.8980	86.72	35.835	131.94	203.19	646.2
1962	30.241	19.431	146.70	3.9980	92.06	37.194	133.07	212.17	674.9
1963	31.500	19.554	154.51	4.1587	97.17	38.579	138.32	218.47	702.3
1964	33.658	21.308	164.58	4.3980	99.73	41.896	145.65	232.96	744.2
1965	34.928	22.340	172.46	4.4534	102.88	44.062	149.35	245.85	776.3
1966	35.893	22.837	181.45	4.5069	108.82	45.214	152.56	252.08	803.4
1967	37.274	23.903	189.95	4.7284	116.46	47.698	156.55	251.76	828.3
1968	38.893	24.904	198.06	5.0319	123.82	50.566	162.19	268.15	871.6
1969	41.444	26.621	211.89	5.2765	130.84	53.884	164.12	289.30	923.4
1970	44.519	27.317	224.01	5.4319	137.46	57.345	168.87	306.32	971.3
1971	46.192	27.981	236.15	5.6176	139.72	59.734	173.37	316.56	1,005.3
1972	48.698	29.496	250.07	5.9551	144.19	61.871	176.71	328.10	1,045.1
1973	51.693	31.042	263.49	6.2033	154.33	65.623	190.03	344.20	1,106.6
1974	54.036	30.769	272.03	6.4318	160.72	68.005	187.79	345.41	1,125.2
1975	52.943	30.362	272.52	6.6568	154.87	66.694	187.33	339.38	1,110.8
1976	55.805	32.446	286.63	6.7961	163.97	70.442	194.15	357.28	1,167.5
1977	56.282	33.069	295.35	7.2675	167.08	75.859	196.62	367.45	1,199.0
1978	58.105	33.514	306.33	7.7550	171.57	77.677	203.13	380.83	1,238.9
1979	59.243	34.535	316.91	7.9443	179.92	79.058	205.99	397.36	1,281.0
1980	60.375	34.459	321.90	8.0925	187.04	79.607	202.49	404.51	1,298.5

REAL GDP (TABLE 4) IS CONVERTED TO ECU'S USING 1975 CALENDAR YEAR MARKET EXCHANGE RATES (TABLE 8).
SOURCE: DERIVED FROM IMF, INTERNATIONAL FINANCIAL STATISTICS, SEVERAL ISSUES.

TABLE 6 REAL GDP SHARES

YEAR	BELGIUM/LUX.	DENMARK	FRANCE	IRELAND	ITALY	NETHERLANDS	U. KINGDOM	W. GERMANY
1960	.04443	.02826	.21193	.00606	.13035	.05637	.20754	.31507
1961	.04437	.02852	.21280	.00603	.13420	.05546	.20418	.31444
1962	.04481	.02879	.21738	.00592	.13641	.05511	.19717	.31440
1963	.04486	.02785	.22001	.00592	.13837	.05494	.19696	.31110
1964	.04523	.02863	.22116	.00591	.13401	.05630	.19572	.31304
1965	.04499	.02878	.22215	.00574	.13252	.05676	.19238	.31668
1966	.04468	.02843	.22586	.00561	.13545	.05628	.18991	.31378
1967	.04500	.02886	.22932	.00571	.14059	.05758	.18899	.30394
1968	.04462	.02857	.22723	.00577	.14205	.05801	.18608	.30765
1969	.04488	.02883	.22947	.00571	.14170	.05836	.17774	.31331
1970	.04584	.02813	.23064	.00559	.14152	.05904	.17386	.31538
1971	.04595	.02783	.23490	.00559	.13898	.05942	.17245	.31488
1972	.04660	.02822	.23928	.00570	.13797	.05920	.16908	.31394
1973	.04671	.02805	.23811	.00561	.13946	.05930	.17172	.31104
1974	.04802	.02735	.24176	.00572	.14284	.06044	.16690	.30698
1975	.04766	.02733	.24534	.00599	.13943	.06004	.16865	.30554
1976	.04780	.02779	.24550	.00582	.14044	.06034	.16629	.30602
1977	.04694	.02758	.24634	.00606	.13935	.06327	.16399	.30647
1978	.04690	.02705	.24726	.00626	.13848	.06270	.16396	.30739
1979	.04625	.02696	.24740	.00620	.14045	.06172	.16081	.31020
1980	.04650	.02654	.24791	.00623	.14405	.06131	.15594	.31152

REAL GDP SHARES ARE CALCULATED AS THE RATIO OF NATIONAL TO AGGREGATE EC-9 REAL GDP (SEE TABLE 5).
 SOURCE: DERIVED FROM IMF, INTERNATIONAL FINANCIAL STATISTICS, SEVERAL ISSUES.

TABLE 7 GDP DEFLATORS (1975=100)

YEAR	BELGIUM/LUX.	DENMARK	FRANCE	IRELAND	ITALY	NETHERLANDS	U. KINGDOM	W. GERMANY	EC-9
1960	48.022	32.954	42.693	30.249	35.763	39.324	35.679	51.286	42.738
1961	48.464	34.484	44.146	31.104	36.765	39.897	36.866	53.486	44.208
1962	48.998	36.842	46.201	32.872	38.910	41.166	38.272	55.719	46.135
1963	50.527	38.972	49.174	33.963	42.223	43.212	39.169	57.355	48.146
1964	52.892	40.884	51.214	36.581	45.036	46.802	40.615	59.065	50.215
1965	55.533	43.803	52.606	38.412	46.974	49.634	42.575	61.118	52.254
1966	57.991	47.215	54.126	40.055	48.120	52.512	44.452	63.406	54.194
1967	59.723	49.692	55.853	41.654	49.530	54.738	45.763	64.309	55.478
1968	61.334	53.050	58.219	44.180	50.495	57.028	47.693	65.452	57.230
1969	63.922	56.637	62.053	48.697	52.754	60.668	50.658	67.751	60.266
1970	66.817	61.196	65.547	53.254	56.510	64.026	53.992	72.690	64.289
1971	69.715	66.046	69.329	58.900	60.571	69.444	59.007	78.318	69.037
1972	74.057	72.102	73.617	66.777	64.358	76.011	64.066	82.679	73.650
1973	79.237	78.982	79.348	77.087	71.834	82.350	68.540	87.662	79.180
1974	89.078	88.857	88.177	81.788	85.096	89.943	78.806	93.696	87.999
1975	100.000	100.000	100.000	100.000	100.000	100.000	100.000	100.000	100.000
1976	107.883	108.702	109.853	120.126	118.019	108.889	114.651	103.258	109.655
1977	115.325	118.315	119.733	134.791	140.533	115.782	130.697	107.149	120.168
1978	120.059	130.531	131.130	148.998	160.022	121.827	144.954	111.143	130.247
1979	125.293	140.629	144.419	167.791	185.140	126.751	166.722	115.392	142.788
1980	130.807	152.420	160.665	191.461	222.827	133.170	198.598	120.949	160.061

SINCE REAL GDP IS UNAVAILABLE FOR BELGIUM, THE NETHERLANDS, AND W. GERMANY, GNP DEFLATORS ARE USED FOR THESE THREE COUNTRIES.

THE EC-9 DEFLATOR IS CALCULATED AS THE WEIGHTED SUM OF INDIVIDUAL COUNTRY DEFLATORS, USING REAL GDP SHARES AS WEIGHTS (TABLE 6).

SOURCE: DERIVED FROM IMF, INTERNATIONAL FINANCIAL STATISTICS, SEVERAL ISSUES.

TABLE 8 NATIONAL CURRENCY/ECU EXCHANGE RATES (CALENDAR YEAR)

YEAR	BELGIUM/LUX.	DENMARK	FRANCE	IRELAND	ITALY	NETHERLANDS	U. KINGDOM	W. GERMANY	U.S.
1960	52.810	7.2954	5.2145	.37722	660.13	4.0136	.37722	4.4361	1.0562
1961	53.367	7.3722	5.2695	.38119	667.08	3.8985	.38119	4.3074	1.0673
1962	53.490	7.3893	5.2817	.38207	668.63	3.8727	.38207	4.2792	1.0698
1963	53.490	7.3893	5.2817	.38207	668.63	3.8727	.38207	4.2792	1.0698
1964	53.490	7.3893	5.2817	.38207	668.63	3.8727	.38207	4.2792	1.0698
1965	53.490	7.3893	5.2817	.38207	668.63	3.8727	.38207	4.2792	1.0698
1966	53.490	7.3893	5.2817	.38207	668.63	3.8727	.38207	4.2792	1.0698
1967	53.240	7.4229	5.2570	.38765	665.51	3.8546	.38765	4.2592	1.0648
1968	51.444	7.7166	5.0797	.42870	643.05	3.7246	.42870	4.1155	1.0289
1969	51.109	7.6664	5.2903	.42591	638.87	3.7003	.42591	4.0262	1.0222
1970	51.112	7.6668	5.6777	.42593	638.90	3.7005	.42593	3.7414	1.0222
1971	50.866	7.7526	5.7721	.42858	647.41	3.6575	.42858	3.6457	1.0478
1972	49.361	7.7891	5.6572	.44894	654.26	3.5999	.44894	3.5768	1.1218
1973	47.801	7.4160	5.4678	.50232	716.46	3.4285	.50232	3.2764	1.2317
1974	46.399	7.2593	5.7339	.50980	775.74	3.2022	.50980	3.0835	1.1927
1975	45.569	7.1227	5.3292	.56003	809.55	3.1349	.56003	3.0494	1.2408
1976	43.165	6.7618	5.3449	.62158	930.15	2.9552	.62158	2.8155	1.1181
1977	40.883	6.8557	5.6061	.65370	1,006.79	2.8001	.65370	2.6483	1.1411
1978	40.061	7.0195	5.7398	.66389	1,080.22	2.7541	.66391	2.5561	1.2743
1979	40.165	7.2091	5.8295	.66948	1,138.50	2.7486	.64639	2.5109	1.3707
1980	40.598	7.8274	5.8690	.67600	1,189.21	2.7603	.59849	2.5242	1.3923

1 ECU = ___ NATIONAL CURRENCY.
 AVERAGE MARKET RATES PER CALENDAR YEAR.
 SOURCE: EUROSTAT, SELLING PRICES OF CROP PRODUCTS, 1981.

TABLE 9 NATIONAL CURRENCY/ECU EXCHANGE RATES (AUGUST/JULY YEAR)

YEAR	BELGIUM/LUX.	DENMARK	FRANCE	IRELAND	ITALY	NETHERLANDS	U. KINGDOM	W. GERMANY	U.S.
1960/61	53.135	7.3402	5.2466	.37953	664.18	3.9465	.37953	4.3610	1.0627
1961/62	53.439	7.3822	5.2766	.38171	667.98	3.8835	.38171	4.2910	1.0688
1962/63	53.490	7.3893	5.2817	.38207	668.63	3.8727	.38207	4.2792	1.0698
1963/64	53.490	7.3893	5.2817	.38207	668.63	3.8727	.38207	4.2792	1.0698
1964/65	53.490	7.3893	5.2817	.38207	668.63	3.8727	.38207	4.2792	1.0698
1965/66	53.490	7.3893	5.2817	.38207	668.63	3.8727	.38207	4.2792	1.0698
1966/67	53.344	7.4089	5.2673	.38533	666.81	3.8621	.38533	4.2676	1.0669
1967/68	52.193	7.5943	5.1536	.41160	652.41	3.7787	.41160	4.1754	1.0439
1968/69	51.249	7.6873	5.2025	.42707	640.61	3.7104	.42707	4.0634	1.0250
1969/70	51.111	7.6666	5.5163	.42592	638.88	3.7004	.42592	3.8601	1.0222
1970/71	50.969	7.7169	5.7328	.42748	643.86	3.6754	.42748	3.6855	1.0371
1971/72	49.988	7.7739	5.7051	.44046	651.41	3.6239	.44046	3.6055	1.0909
1972/73	48.451	7.5714	5.5467	.48008	690.55	3.4999	.48008	3.4016	1.1859
1973/74	46.983	7.3246	5.6230	.50669	751.04	3.2965	.50669	3.1639	1.2090
1974/75	45.915	7.1796	5.4978	.53910	795.46	3.1630	.53910	3.0636	1.2207
1975/76	44.167	6.9121	5.3383	.59593	879.90	3.0300	.59593	2.9129	1.1692
1976/77	41.834	6.8165	5.4972	.64032	974.85	2.8647	.64032	2.7180	1.1315
1977/78	40.403	6.9512	5.6841	.65964	1,049.62	2.7733	.65966	2.5945	1.2188
1978/79	40.122	7.1301	5.7921	.66715	1,114.21	2.7509	.65369	2.5297	1.3305
1979/80	40.418	7.5698	5.8525	.67328	1,168.08	2.7554	.61845	2.5187	1.3833
1980/81	41.004	7.8853	5.9687	.68476	1,232.36	2.7689	.57202	2.5182	1.2314

1 ECU = ___ NATIONAL CURRENCY.

AVERAGE MARKET RATES PER AUGUST/JULY YEAR.

AUGUST/JULY YEAR EXCHANGE RATES ARE CALCULATED FROM CALENDAR YEAR EXCHANGE RATES (TABLE 8) BY TAKING A WEIGHTED SUM USING THE PROPORTION OF MONTHS INCLUDED IN EACH YEAR OF THE SPLIT YEAR AS WEIGHTS.

SOURCE: DERIVED FROM EUROSTAT, SELLING PRICES OF CROP PRODUCTS, 1981.

TABLE 10 NATIONAL CURRENCY/ECU EXCHANGE RATES (APRIL/MARCH YEAR)

YEAR	BELGIUM/LUX.	DENMARK	FRANCE	IRELAND	ITALY	NETHERLANDS	U. KINGDOM	W. GERMANY	U.S.
1960/61	52.949	7.3146	5.2283	.37821	661.87	3.9848	.37821	4.4039	1.0590
1961/62	53.398	7.3765	5.2725	.38141	667.47	3.8921	.38141	4.3004	1.0680
1962/63	53.490	7.3893	5.2817	.38207	668.63	3.8727	.38207	4.2792	1.0698
1963/64	53.490	7.3893	5.2817	.38207	668.63	3.8727	.38207	4.2792	1.0698
1964/65	53.490	7.3893	5.2817	.38207	668.63	3.8727	.38207	4.2792	1.0698
1965/66	53.490	7.3893	5.2817	.38207	668.63	3.8727	.38207	4.2792	1.0698
1966/67	53.428	7.3977	5.2755	.38347	667.85	3.8682	.38347	4.2742	1.0686
1967/68	52.791	7.4964	5.2127	.39791	659.89	3.8221	.39791	4.2233	1.0558
1968/69	51.360	7.7041	5.1323	.42800	642.01	3.7185	.42800	4.0932	1.0272
1969/70	51.110	7.6665	5.3871	.42592	638.87	3.7004	.42592	3.9550	1.0222
1970/71	51.050	7.6882	5.7013	.42659	641.02	3.6897	.42659	3.7175	1.0286
1971/72	50.490	7.7618	5.7434	.43367	649.13	3.6431	.43367	3.6284	1.0663
1972/73	48.971	7.6958	5.6098	.46229	669.81	3.5571	.46229	3.5017	1.1493
1973/74	47.451	7.3768	5.5343	.50419	731.28	3.3720	.50419	3.2282	1.2220
1974/75	46.192	7.2251	5.6327	.52236	784.19	3.1854	.52236	3.0750	1.2047
1975/76	44.968	7.0324	5.3331	.57541	839.70	3.0900	.57541	2.9909	1.2101
1976/77	42.595	6.7852	5.4102	.62951	949.31	2.9164	.62961	2.7737	1.1238
1977/78	40.677	6.8966	5.6395	.65625	1025.14	2.7886	.65625	2.6253	1.1744
1978/79	40.087	7.0669	5.7622	.66529	1094.79	2.7527	.65953	2.5448	1.2984
1979/80	40.273	7.3637	5.8393	.67111	1151.17	2.7515	.63442	2.5142	1.3761
1980/81	40.772	7.8522	5.9117	.67975	1207.70	2.7640	.58714	2.5216	1.3234

1 ECU = _____ NATIONAL CURRENCY.
 AVERAGE MARKET RATES PER APRIL/MARCH YEAR.
 APRIL/MARCH YEAR EXCHANGE RATES ARE CALCULATED FROM CALENDAR YEAR EXCHANGE RATES (TABLE 8) BY
 TAKING A WEIGHTED SUM USING THE PROPORTION OF MONTHS INCLUDED IN EACH YEAR OF THE SPLIT YEAR AS WEIGHTS.
 SOURCE: DERIVED FROM EUROSTAT, SELLING PRICES OF CROP PRODUCTS, 1981.

TABLE 11 NATIONAL CURRENCY/ECU EXCHANGE RATES (NOVEMBER/OCTOBER YEAR)

YEAR	BELGIUM/LUX.	DENMARK	FRANCE	IRELAND	ITALY	NETHERLANDS	U. KINGDOM	W. GERMANY	U.S.
1960/61	53.274	7.3594	5.2603	.38053	665.92	3.9177	.38053	4.3289	1.0655
1961/62	53.470	7.3864	5.2797	.38193	668.37	3.8770	.38193	4.2839	1.0694
1962/63	53.490	7.3893	5.2817	.38207	668.63	3.8727	.38207	4.2792	1.0698
1963/64	53.490	7.3893	5.2817	.38207	668.63	3.8727	.38207	4.2792	1.0698
1964/65	53.490	7.3893	5.2817	.38207	668.63	3.8727	.38207	4.2792	1.0698
1965/66	53.490	7.3893	5.2817	.38207	668.63	3.8727	.38207	4.2792	1.0698
1966/67	53.282	7.4173	5.2611	.38672	666.03	3.8576	.38672	4.2626	1.0657
1967/68	51.744	7.6677	5.1092	.42186	646.79	3.7462	.42186	4.1395	1.0349
1968/69	51.165	7.6748	5.2552	.42638	639.56	3.7044	.42638	4.0411	1.0233
1969/70	51.111	7.6667	5.6131	.42593	638.89	3.7005	.42593	3.7889	1.0222
1970/71	50.907	7.7383	5.7564	.42814	645.99	3.6647	.42814	3.6616	1.0435
1971/72	49.612	7.7830	5.6763	.44555	653.12	3.6095	.44555	3.5883	1.1094
1972/73	48.061	7.4782	5.4993	.49342	706.09	3.4571	.49342	3.3265	1.2134
1973/74	46.633	7.2854	5.6895	.50856	765.86	3.2400	.50856	3.1157	1.1992
1974/75	45.707	7.1454	5.3967	.55166	803.91	3.1461	.55166	3.0551	1.2328
1975/76	43.566	6.8219	5.3423	.61132	910.05	2.9851	.61132	2.8544	1.1385
1976/77	41.263	6.8400	5.5625	.64835	994.01	2.8259	.64835	2.6762	1.1373
1977/78	40.198	6.9922	5.7175	.66219	1067.98	2.7618	.66221	2.5714	1.2521
1978/79	40.148	7.1775	5.8145	.66855	1128.78	2.7495	.64931	2.5184	1.3546
1979/80	40.526	7.7243	5.8624	.67491	1180.75	2.7583	.60647	2.5220	1.3887
1980/81	41.178	7.9101	6.0114	.68852	1250.85	2.7726	.56067	2.5156	1.1624

1 ECU = ___ NATIONAL CURRENCY.

AVERAGE MARKET RATES PER NOVEMBER/OCTOBER YEAR.

NOVEMBER/OCTOBER YEAR EXCHANGE RATES ARE CALCULATED FROM CALENDAR YEAR EXCHANGE RATES (TABLE 8) BY TAKING A WEIGHTED SUM USING THE PROPORTION OF MONTHS INCLUDED IN EACH YEAR OF THE SPLIT YEAR AS WEIGHTS.

SOURCE: DERIVED FROM EUROSTAT, SELLING PRICES OF CROP PRODUCTS, 1981.

TABLE 12 NATIONAL CURRENCY/U.S. DOLLAR EXCHANGE RATES (CALENDAR YEAR)

YEAR	BELGIUM	DENMARK	FRANCE	IRELAND	ITALY	LUXEMBOURG	NETHERLANDS	U. KINGDOM	W. GERMANY
1960	50.000	6.9071	4.9371	.35714	623.99	50.000	3.8000	.35714	4.2000
1961	50.000	6.9071	4.9371	.35714	625.00	50.000	3.6500	.35714	4.0333
1962	50.000	6.9071	4.9371	.35714	625.00	50.000	3.6200	.35714	4.0000
1963	50.000	6.9071	4.9371	.35714	625.00	50.000	3.6200	.35714	4.0000
1964	50.000	6.9071	4.9371	.35714	625.00	50.000	3.6200	.35714	4.0000
1965	50.000	6.9071	4.9371	.35714	625.00	50.000	3.6200	.35714	4.0000
1966	50.000	6.9071	4.9371	.35714	625.00	50.000	3.6200	.35714	4.0000
1967	50.000	6.9565	4.9371	.36145	625.00	50.000	3.6200	.35714	4.0000
1968	50.000	7.5000	4.9371	.41667	625.00	50.000	3.6200	.36145	4.0000
1969	50.000	7.5000	5.1942	.41667	625.00	50.000	3.6200	.41667	4.0000
1970	50.000	7.5000	5.5542	.41667	625.00	50.000	3.6200	.41667	3.9433
1971	48.870	7.4169	5.5426	.41078	619.93	48.870	3.5024	.41078	3.6600
1972	44.015	6.9493	5.0443	.39971	583.22	44.015	3.2095	.39971	3.4908
1973	38.977	6.0495	4.4540	.40780	583.00	38.977	2.7956	.40780	3.1886
1974	38.952	6.0949	4.8099	.42753	650.34	38.952	2.6884	.42753	2.6726
1975	36.779	5.7462	4.2864	.45008	652.85	36.779	2.5290	.45008	2.5878
1976	38.605	6.0450	4.7796	.55365	832.28	38.605	2.6439	.55365	2.4603
1977	35.843	6.0032	4.9134	.57290	882.39	35.843	2.4543	.57290	2.5180
1978	31.492	5.5146	4.5128	.52097	848.66	31.492	2.1636	.52097	2.3222
1979	29.319	5.2610	4.2545	.48839	830.86	29.319	2.0060	.47135	2.0086
1980	29.243	5.6359	4.2260	.48591	856.45	29.243	1.9881	.42987	1.8329
									1.8177

1 U.S. DOLLAR = ___ NATIONAL CURRENCY.
 AVERAGE MARKET RATES.

SOURCE: IMF, INTERNATIONAL FINANCIAL STATISTICS, 1981 YEARBOOK.

TABLE 13 EC-9 SUPPLY/UTILIZATION OF TOTAL WHEAT (1000 MT)

YEAR	AREA HARVESTED (1000 HA)	YIELD (MT PER HA)	PRODUCTION	BEGINNING STOCKS	IMPORTS	EXPORTS	NET EXPORTS	DOMESTIC UTILIZATION	FEED USE	NON-FEED USE
1960/61.	11,744	2.39	28,030	6,347	11,555.	2,599.	-8,956	35,849	7,458	28,391
1961/62.	11,076	2.41	26,694	7,484	11,712.	3,280.	-8,432	35,298	6,904	28,394
1962/63.	12,001	2.89	34,688	7,312	8,306.	4,291.	-4,015	36,810	7,903	28,907
1963/64.	10,982	2.59	28,424	9,205	9,610.	4,396.	-5,214	35,648	7,260	28,388
1964/65.	11,740	2.89	33,920	7,195	8,683.	6,174.	-2,509	37,097	8,345	28,752
1965/66.	11,852	2.99	35,453	6,527	10,100.	6,357.	-3,743	37,815	8,725	29,090
1966/67.	11,081	2.75	30,500	7,908	9,322.	4,770.	-4,552	36,530	8,168	28,362
1967/68.	10,826	3.32	35,985	6,430	9,132.	5,942.	-3,190	36,848	8,574	28,274
1968/69.	11,374	3.23	36,762	6,533	11,725.	8,297.	-3,428	38,117	9,790	28,327
1969/70.	11,129	3.21	35,703	8,606	11,358.	9,771.	-1,587	40,790	12,124	28,666
1970/71.	10,936	3.18	34,746	5,106	12,174.	5,717.	-6,457	40,820	12,353	28,467
1971/72.	11,137	3.60	40,134	5,489	11,234.	8,739.	-2,495	41,021	11,883	29,138
1972/73.	11,097	3.74	41,454	7,001	12,045.	11,877.	-168	42,805	14,336	28,469
1973/74.	10,827	3.82	41,393	5,818	11,722.	11,657.	-65	39,990	11,543	28,447
1974/75.	11,224	4.04	45,391	7,286	9,903.	12,172.	2,269	40,677	11,894	28,783
1975/76.	10,471	3.64	38,105	9,731	11,951.	14,286.	2,335	37,967	9,141	28,826
1976/77.	11,200	3.49	39,114	7,534	9,649.	10,659.	1,010	38,595	9,689	28,906
1977/78.	10,070	3.82	38,489	7,043	12,510.	12,380.	-130	39,515	10,582	28,933
1978/79.	11,002	4.33	47,601	6,147	10,641.	14,501.	3,860	40,890	11,736	29,159
1979/80.	11,036	4.21	46,445	8,998	10,857.	16,907.	6,050	41,619	12,121	29,498
1980/81.	11,610	4.49	52,143	7,774	10,313.	19,810.	9,497	42,131	12,657	29,474

TOTAL WHEAT INCLUDES COMMON AND DURUM WHEAT.
AUGUST/JULY MARKETING YEAR.
IMPORTS AND EXPORTS INCLUDE INTRA-EC TRADE.
SOURCE: FAS.

TABLE 14 EC-9 COMMON WHEAT AREA BY COUNTRY (1000 HA)

YEAR	BELGIUM/LUX.	DENMARK	FRANCE	IRELAND	ITALY	NETHERLANDS	U. KINGDOM	W. GERMANY	EC-9
1960/61	228	82	4,312	148	3,168	128	851	1,396	10,313
1961/62	230	105	3,949	140	2,965	123	739	1,397	9,648
1962/63	229	154	4,522	127	3,166	133	913	1,319	10,563
1963/64	220	135	3,813	94	3,033	127	780	1,382	9,584
1964/65	238	128	4,353	87	3,082	151	893	1,447	10,379
1965/66	248	126	4,481	74	3,019	158	1,026	1,412	10,544
1966/67	233	94	3,932	53	3,001	140	906	1,389	9,748
1967/68	218	90	3,847	76	2,651	154	933	1,414	9,383
1968/69	222	97	3,983	90	2,811	153	978	1,464	9,798
1969/70	216	97	3,908	82	2,692	155	833	1,494	9,477
1970/71	198	114	3,585	95	2,551	142	1,010	1,493	9,188
1971/72	213	121	3,800	91	2,356	142	1,097	1,544	9,364
1972/73	223	135	3,798	68	2,210	156	1,127	1,626	9,343
1973/74	211	123	3,807	58	2,065	138	1,146	1,603	9,151
1974/75	209	110	3,966	55	2,150	130	1,233	1,631	9,484
1975/76	190	102	3,593	48	1,993	107	1,034	1,569	8,636
1976/77	212	127	4,067	50	1,873	130	1,231	1,632	9,322
1977/78	194	116	4,025	48	1,514	126	1,076	1,599	8,698
1978/79	196	122	4,072	49	1,800	121	1,257	1,619	9,236
1979/80	199	110	3,987	49	1,790	141	1,371	1,627	9,274
1980/81	194	139	4,466	47	1,695	142	1,441	1,660	9,784
1981/82	180	150	4,629	44	1,573	132	1,491	1,632	9,831

AUGUST/JULY MARKETING YEAR.

EUROSTAT DATA FOR ITALY IN 1971, FRANCE IN 1972, AND FRANCE AND ITALY IN 1977 HAVE BEEN ADJUSTED IN ORDER THAT AREA OF COMMON WHEAT PLUS AREA OF DURUM WHEAT EQUALS FAS DATA ON TOTAL WHEAT AREA.

SOURCES:

EXCEPT AS OTHERWISE NOTED - FAS.

FRANCE AND ITALY - EUROSTAT, CROP PRODUCTION, SEVERAL ISSUES.

TABLE 15 EC-9 DURUM WHEAT AREA BY COUNTRY (1000 HA)								
YEAR	FRANCE	ITALY	EC-9	YEAR	FRANCE	ITALY	EC-9	
1960/61	46	1,386	1,432	1971/72	178	1,596	1,774	
1961/62	48	1,380	1,428	1972/73	160	1,594	1,754	
1962/63	48	1,390	1,438	1973/74	151	1,525	1,676	
1963/64	37	1,361	1,398	1974/75	177	1,563	1,740	
1964/65	35	1,326	1,361	1975/76	283	1,552	1,835	
1965/66	39	1,269	1,308	1976/77	208	1,671	1,879	
1966/67	61	1,273	1,334	1977/78	100	1,272	1,372	
1967/68	82	1,360	1,442	1978/79	94	1,672	1,766	
1968/69	106	1,469	1,575	1979/80	100	1,662	1,762	
1969/70	126	1,526	1,652	1980/81	116	1,710	1,826	
1970/71	162	1,587	1,749	1981/82	124	1,688	1,812	

AUGUST/JULY MARKETING YEAR.

FRANCE AND ITALY ARE THE ONLY PRODUCERS OF DURUM WHEAT IN THE EC-9.

SOURCE: EUROSTAT, CROP PRODUCTION, SEVERAL ISSUES.

TABLE 16 EC-9 COMMON WHEAT YIELD BY COUNTRY (MT/HA)

YEAR	BELGIUM/LUX.	DENMARK	FRANCE	IRELAND	ITALY	NETHERLANDS	U. KINGDOM	W. GERMANY	EC-9
1960/61	3.67	3.90	2.54	3.16	1.80	4.60	3.57	3.55	2.60
1961/62	3.40	4.13	2.41	3.35	2.23	3.91	3.53	2.89	2.59
1962/63	3.87	4.18	3.09	3.45	2.47	4.53	4.35	3.48	3.12
1963/64	3.72	3.66	2.67	3.20	2.07	4.17	3.90	3.51	2.76
1964/65	3.99	4.22	3.16	3.12	2.31	4.88	4.24	3.59	3.12
1965/66	3.66	4.47	3.27	3.14	2.59	4.37	4.06	3.07	3.16
1966/67	2.63	4.25	2.84	3.49	2.57	4.26	3.83	3.26	2.94
1967/68	4.23	4.67	3.66	3.92	2.65	4.79	4.18	4.11	3.54
1968/69	4.05	4.78	3.69	4.57	2.68	4.43	3.54	4.23	3.50
1969/70	3.82	4.42	3.61	4.42	2.56	4.36	4.03	4.01	3.44
1970/71	3.85	4.49	3.48	4.01	2.75	4.50	4.19	3.79	3.45
1971/72	4.47	4.83	3.94	4.17	2.88	4.97	4.38	4.62	3.88
1972/73	4.41	4.38	4.65	3.97	2.87	4.33	4.24	4.06	4.06
1973/74	4.97	4.40	4.57	3.94	3.04	5.24	4.36	4.45	4.19
1974/75	5.15	5.38	4.69	4.45	3.14	5.73	4.97	4.75	4.42
1975/76	3.81	5.09	3.95	4.31	3.05	4.93	4.34	4.47	3.91
1976/77	4.42	4.66	3.83	4.00	3.26	5.46	3.85	4.10	3.81
1977/78	4.09	5.22	4.26	5.20	2.79	5.24	4.90	4.52	4.16
1978/79	5.21	5.26	5.07	5.16	3.18	6.54	5.26	5.01	4.74
1979/80	5.10	5.35	4.82	5.00	3.13	5.92	5.23	4.95	4.61
1980/81	4.67	4.69	5.21	5.14	3.24	6.21	5.87	4.91	4.91
1981/82	5.14	5.56	4.85	5.22	3.44	6.68	5.84	5.09	4.83

AUGUST/JULY MARKETING YEAR.

THE ITALIAN YIELD IN 1971 IS ADJUSTED IN ORDER THAT THE WEIGHTED AVERAGE OF DURUM AND COMMON WHEAT YIELD EQUALS FAS DATA ON TOTAL WHEAT YIELD.

SOURCES:

EXCEPT AS OTHERWISE NOTED - FAS.

FRANCE AND ITALY - EUROSTAT, CROP PRODUCTION, SEVERAL ISSUES.

TABLE 17 EC-9 DURUM WHEAT YIELD BY COUNTRY (MT/HA)

YEAR	FRANCE	ITALY	EC-9	YEAR	FRANCE	ITALY	EC-9
1960/61	1.52	.78	.80	1971/72	2.82	2.06	2.14
1961/62	1.48	1.22	1.23	1972/73	2.78	1.93	2.01
1962/63	1.77	1.20	1.22	1973/74	3.00	1.73	1.84
1963/64	1.76	1.36	1.37	1974/75	3.10	1.81	1.94
1964/65	1.77	1.10	1.12	1975/76	2.88	2.19	2.30
1965/66	2.36	1.54	1.56	1976/77	2.61	1.79	1.88
1966/67	2.08	1.32	1.35	1977/78	2.62	1.56	1.64
1967/68	2.70	1.89	1.94	1978/79	3.25	2.08	2.14
1968/69	2.86	1.45	1.54	1979/80	3.42	2.04	2.12
1969/70	2.71	1.76	1.83	1980/81	3.67	2.14	2.24
1970/71	2.81	1.69	1.79	1981/82	3.23	2.02	2.10

AUGUST/JULY MARKETING YEAR.

FRANCE AND ITALY ARE THE ONLY PRODUCERS OF DURUM WHEAT IN THE EC-9.

SOURCE: EUROSTAT, CROP PRODUCTION, SEVERAL ISSUES.

TABLE 18 EC-9 SUPPLY/UTILIZATION OF BARLEY (1000 MT)

YEAR	AREA HARVESTED. (1000 HA)	YIELD (MT PER HA)	PRODUCTION	BEGINNING STOCKS	IMPORTS	EXPORTS	NET EXPORTS	DOMESTIC UTILIZATION	FEED USE	NON-FEED USE
1960/61.	5,720	3.04	17,412	1,782	3,266	1,448	-1,818	18,724	13,863	4,861
1961/62.	6,322	2.78	17,604	2,288	4,206	2,535	-1,671	19,961	14,802	5,159
1962/63.	6,368	3.26	20,752	1,602	2,970	1,696	-1,274	21,314	16,017	5,297
1963/64.	7,148	3.19	22,811	2,314	3,007	2,765	-242	22,700	17,283	5,417
1964/65.	7,104	3.36	23,841	2,667	3,068	2,927	-141	24,478	18,387	6,091
1965/66.	7,476	3.33	24,882	2,171	4,164	3,205	-959	25,292	18,846	6,446
1966/67.	8,181	3.18	26,003	2,720	3,512	3,544	32	26,524	20,121	6,403
1967/68.	8,373	3.62	30,293	2,167	3,640	3,916	276	28,944	22,402	6,542
1968/69.	8,399	3.51	29,452	2,420	3,743	4,175	432	28,325	22,124	6,201
1969/70.	8,607	3.55	30,579	3,115	4,370	4,790	420	31,032	24,183	6,849
1970/71.	8,709	3.13	27,223	2,242	6,146	2,927	-3,219	30,390	23,461	6,929
1971/72.	8,512	3.65	31,101	2,294	5,065	5,434	369	30,789	23,507	7,282
1972/73.	8,603	3.91	33,642	1,920	4,467	5,277	810	32,676	24,420	8,256
1973/74.	8,904	3.88	34,504	2,076	5,461	5,674	213	34,475	25,871	8,604
1974/75.	8,738	3.99	34,851	1,892	4,474	4,733	259	33,929	24,642	9,287
1975/76.	9,024	3.59	32,431	2,555	5,203	5,557	354	33,219	24,180	9,039
1976/77.	8,926	3.36	30,021	1,413	6,554	3,691	-2,863	32,944	24,338	8,606
1977/78.	9,462	3.98	37,687	1,353	5,683	7,970	2,287	35,185	25,934	9,251
1978/79.	9,528	4.14	39,491	1,568	4,498	7,187	2,689	36,084	26,886	9,198
1979/80.	9,634	4.05	39,031	2,286	4,574	6,837	2,263	36,504	27,173	9,331
1980/81.	9,447	4.28	40,440	2,551	4,716	8,692	3,976	36,838	27,813	9,025

AUGUST/JULY MARKETING YEAR.
 IMPORTS AND EXPORTS INCLUDE INTRA-EC TRADE.
 SOURCE: FAS.

TABLE 19 EC-9 BARLEY AREA BY COUNTRY (1000 HA)

YEAR	BELGIUM/LUX.	DENMARK	FRANCE	IRELAND	ITALY	NETHERLANDS	U. KINGDOM	W. GERMANY
1960/61	112	756	2,089	133	216	69	1,365	980
1961/62	127	799	2,259	146	220	102	1,549	1,120
1962/63	136	830	2,176	164	210	100	1,614	1,138
1963/64	142	938	2,538	174	204	101	1,907	1,144
1964/65	137	950	2,360	184	197	87	2,036	1,153
1965/66	156	1,041	2,430	188	186	99	2,183	1,193
1966/67	172	1,112	2,642	187	179	120	2,481	1,288
1967/68	166	1,170	2,818	183	181	108	2,439	1,308
1968/69	167	1,254	2,781	184	175	107	2,401	1,330
1969/70	171	1,305	2,859	198	175	99	2,413	1,387
1970/71	188	1,352	2,953	214	179	105	2,243	1,475
1971/72	162	1,370	2,668	235	185	98	2,289	1,505
1972/73	166	1,406	2,673	252	186	83	2,288	1,549
1973/74	173	1,468	2,788	243	203	90	2,268	1,671
1974/75	166	1,437	2,713	246	224	73	2,214	1,665
1975/76	141	1,443	2,770	237	249	83	2,345	1,756
1976/77	156	1,478	2,780	259	274	62	2,182	1,735
1977/78	170	1,527	2,909	289	290	66	2,400	1,811
1978/79	174	1,570	2,813	307	294	71	2,348	1,951
1979/80	176	1,629	2,802	324	308	63	2,343	1,989
1980/81	173	1,577	2,650	332	330	53	2,330	2,002
1981/82	172	1,541	2,679	330	338	53	2,327	2,044

AUGUST/JULY MARKETING YEAR.
SOURCE: FAS.

TABLE 20 EC-9 BARLEY YIELD BY COUNTRY (MT/HA)

YEAR	BELGIUM/LUX.	DENMARK	FRANCE	IRELAND	ITALY	NETHERLANDS	U. KINGDOM	W. GERMANY
1960/61	3.57	3.70	2.73	3.32	1.07	4.21	3.15	2.38
1961/62	3.37	3.51	2.39	3.52	1.26	3.77	3.26	2.43
1962/63	3.83	3.97	2.75	3.67	1.35	4.31	3.63	3.28
1963/64	3.55	3.62	2.90	3.38	1.37	3.83	3.51	3.11
1964/65	3.89	4.10	2.87	2.99	1.27	4.32	3.69	3.39
1965/66	3.52	3.96	3.03	3.27	1.53	3.76	3.75	2.81
1966/67	3.04	3.74	2.80	3.41	1.41	3.46	3.51	3.00
1967/68	4.03	3.74	3.50	3.69	1.62	4.13	3.77	3.61
1968/69	3.71	4.02	3.28	4.08	1.47	3.64	3.44	3.73
1969/70	3.56	4.02	3.30	3.97	1.66	3.92	3.59	3.69
1970/71	3.03	3.55	2.75	3.64	1.75	3.18	3.35	3.22
1971/72	3.96	3.98	3.34	4.22	2.01	3.80	3.73	3.83
1972/73	4.17	3.96	3.90	3.89	2.09	4.09	4.04	3.87
1973/74	4.48	3.75	3.88	3.72	2.25	4.27	3.97	3.96
1974/75	4.53	4.15	3.69	4.21	2.50	4.31	4.12	4.23
1975/76	3.37	3.57	3.37	4.16	2.60	4.04	3.63	3.96
1976/77	4.13	3.24	3.06	3.55	2.64	4.24	3.50	3.73
1977/78	4.31	4.02	3.53	5.02	2.30	4.34	4.38	4.18
1978/79	4.83	4.01	4.02	4.54	2.78	5.00	4.19	4.41
1979/80	4.78	4.08	3.99	4.43	2.63	4.57	4.10	4.11
1980/81	5.00	3.83	4.43	4.26	2.86	4.86	4.43	4.40
1981/82	4.79	3.92	3.81	4.00	2.90	4.69	4.39	4.25

AUGUST/JULY MARKETING YEAR.
SOURCE: FAS.

TABLE 21 EC-9 SUPPLY/UTILIZATION OF CORN (1000 MT)

YEAR	AREA HARVESTED. (1000 HA)	YIELD (MT PER HA)	PRODUCTION	BEGINNING STOCKS	IMPORTS	EXPORTS	NET EXPORTS	DOMESTIC UTILIZATION	FEED USE	NON-FEED USE
1960/61.	2,020	3.29	6,649	1,865	7,951	697	-7,254	14,242	11,745	2,497
1961/62.	2,182	2.95	6,432	1,526	10,348	450	-9,898	15,761	13,106	2,655
1962/63.	2,000	2.59	5,173	2,095	11,256	535	-10,721	16,287	13,565	2,722
1963/64.	2,087	3.65	7,613	1,702	12,874	1,285	-11,589	18,958	15,798	3,160
1964/65.	1,984	3.08	6,120	1,946	12,686	1,467	-11,219	17,961	14,978	2,983
1965/66.	1,925	3.55	6,835	1,324	15,239	1,958	-13,281	19,762	16,487	3,275
1966/67.	1,984	4.02	7,979	1,678	15,056	2,178	-12,878	20,199	16,700	3,499
1967/68.	2,073	3.97	8,221	2,336	15,478	1,666	-13,812	21,933	18,266	3,667
1968/69.	2,048	4.72	9,660	2,108	14,116	2,950	-11,166	21,240	17,334	3,906
1969/70.	2,265	4.70	10,647	1,694	14,074	3,212	-10,862	21,064	16,993	4,071
1970/71.	2,609	4.92	12,827	2,139	14,857	4,867	-9,990	22,862	18,199	4,663
1971/72.	2,743	5.08	13,937	2,094	16,099	4,729	-11,370	25,321	19,258	6,063
1972/73.	2,896	4.68	13,565	2,088	17,037	4,515	-12,522	25,506	19,829	5,677
1973/74.	2,956	5.54	16,376	2,669	18,592	6,985	-11,607	27,452	21,419	6,033
1974/75.	2,913	4.91	14,301	3,200	18,051	5,487	-12,564	26,542	20,586	5,956
1975/76.	2,961	4.76	14,099	3,523	17,416	5,392	-12,024	27,152	21,327	5,825
1976/77.	2,394	4.72	11,316	2,494	22,044	4,772	-17,272	28,577	22,185	6,392
1977/78.	2,718	5.75	15,626	2,505	16,593	4,399	-12,194	27,705	21,518	6,187
1978/79.	2,854	5.73	16,349	2,620	17,238	4,793	-12,445	28,488	21,371	7,117
1979/80.	3,055	5.70	17,404	2,926	15,621	5,455	-10,166	28,187	21,090	7,097
1980/81.	2,819	5.78	16,307	2,309	14,035	4,641	-9,394	25,370	18,517	6,853

AUGUST/JULY MARKETING YEAR.
 IMPORTS AND EXPORTS INCLUDE INTRA-EC TRADE.
 SOURCE: FAS.

TABLE 22 EC-9 CORN AREA BY COUNTRY (1000 HA)

YEAR	FRANCE	ITALY	W. GERMANY	YEAR	FRANCE	ITALY	W. GERMANY
1960/61	824	1,188	6	1971/72	1,685	936	116
1961/62	975	1,197	8	1972/73	1,877	891	118
1962/63	886	1,120	13	1973/74	1,952	891	106
1963/64	952	1,121	13	1974/75	1,907	890	108
1964/65	893	1,072	18	1975/76	1,960	897	96
1965/66	869	1,028	27	1976/77	1,394	889	103
1966/67	964	988	31	1977/78	1,627	983	100
1967/68	1,013	1,017	42	1978/79	1,803	928	116
1968/69	1,022	967	58	1979/80	1,997	936	115
1969/70	1,184	999	81	1980/81	1,757	936	119
1970/71	1,483	1,026	99	1981/82	1,571	998	129

AUGUST/JULY MARKETING YEAR.

FRANCE, ITALY, AND W. GERMANY ARE THE ONLY MAJOR PRODUCERS OF CORN IN THE EC-9.

SOURCE: FAS.

TABLE 23 EC-9 CORN YIELD BY COUNTRY (MT/HA)

YEAR	FRANCE	ITALY	W. GERMANY	YEAR	FRANCE	ITALY	W. GERMANY
1960/61	3.41	3.20	3.33	1971/72	5.24	4.77	5.12
1961/62	2.53	3.28	2.87	1972/73	4.35	5.37	4.77
1962/63	2.15	2.91	3.30	1973/74	5.46	5.71	5.40
1963/64	4.06	3.29	3.69	1974/75	4.56	5.66	4.82
1964/65	2.35	3.68	3.50	1975/76	4.18	5.93	5.53
1965/66	3.93	3.22	3.55	1976/77	4.01	5.84	4.66
1966/67	4.50	3.55	4.09	1977/78	5.29	6.50	5.79
1967/68	4.10	3.79	4.69	1978/79	5.28	6.64	5.31
1968/69	5.26	4.12	4.94	1979/80	5.22	6.62	6.44
1969/70	4.83	4.52	4.93	1980/81	5.24	6.81	5.63
1970/71	5.11	4.60	5.12	1981/82	5.70	7.21	6.44

AUGUST/JULY MARKETING YEAR.

FRANCE, ITALY, AND W. GERMANY ARE THE ONLY MAJOR PRODUCERS OF CORN IN THE EC-9.

SOURCE: FAS.

TABLE 24 EC-9 SUPPLY/UTILIZATION OF OTHER COARSE GRAINS (1000 MT)

YEAR	AREA HARVESTED (1000 HA)	YIELD (MT PER HA)	PRODUCTION	BEGINNING STOCKS	IMPORTS	EXPORTS	NET EXPORTS	DOMESTIC UTILIZATION	FEED USE	NON-FEED USE
1960/61.	7,044	2.49	17,547	2,690	3,193	468	-2,725	20,442	16,748	3,694
1961/62.	6,739	2.28	15,352	2,520	3,750	288	-3,462	19,456	15,875	3,581
1962/63.	6,444	2.56	16,517	1,878	4,078	457	-3,621	19,558	16,019	3,539
1963/64.	6,218	2.63	16,349	2,458	3,266	330	-2,936	19,404	15,093	4,311
1964/65.	5,841	2.76	16,117	2,339	3,404	367	-3,037	19,012	15,822	3,190
1965/66.	5,566	2.60	14,461	2,481	3,994	449	-3,545	18,320	15,144	3,176
1966/67.	5,412	2.65	14,365	2,167	3,666	482	-3,184	17,681	14,644	3,037
1967/68.	5,350	3.02	16,175	2,035	2,635	594	-2,041	17,883	14,760	3,123
1968/69.	5,119	3.07	15,715	1,754	1,912	531	-1,381	16,755	13,950	2,805
1969/70.	4,905	3.10	15,215	2,095	1,626	543	-1,083	16,326	13,573	2,753
1970/71.	4,665	2.85	13,279	2,067	3,056	715	-2,341	16,004	13,289	2,715
1971/72.	4,592	3.34	15,325	1,683	1,568	675	-893	16,014	13,121	2,893
1972/73.	4,338	3.37	14,626	1,855	1,688	1,136	-552	15,651	12,595	3,056
1973/74.	3,993	3.39	13,533	1,382	2,731	1,121	-1,610	15,310	12,504	2,806
1974/75.	3,869	3.53	13,644	1,215	2,487	865	-1,622	14,999	12,347	2,652
1975/76.	3,848	3.30	12,693	1,482	3,320	1,464	-1,856	15,023	12,513	2,510
1976/77.	3,732	2.75	10,252	1,008	3,181	1,040	-2,141	12,303	9,824	2,479
1977/78.	3,602	3.28	11,817	1,098	1,555	942	-613	12,171	9,695	2,476
1978/79.	3,405	3.71	12,641	1,357	1,425	1,172	-253	12,530	10,043	2,487
1979/80.	3,043	3.62	11,030	1,721	1,150	1,024	-126	11,601	9,352	2,249
1980/81.	2,946	3.62	10,673	1,275	1,074	918	-156	10,836	8,572	2,264

OTHER COARSE GRAINS INCLUDE RYE, OATS, SORGHUM, MILLET, AND MIXED GRAIN.
AUGUST/JULY MARKETING YEAR.
IMPORTS AND EXPORTS INCLUDE INTRA-EC TRADE.
SOURCE: FAS.

TABLE 25 EC-9 OTHER COARSE GRAINS AREA BY COUNTRY (1000 HA)

YEAR	BELGIUM/LUX.	DENMARK	FRANCE	IRELAND	ITALY	NETHERLANDS	U. KINGDOM	W. GERMANY
1960/61	231	607	1,829	172	487	311	890	2,517
1961/62	212	632	1,810	149	492	296	769	2,379
1962/63	190	559	1,709	140	473	274	673	2,426
1963/64	181	497	1,727	134	458	260	572	2,389
1964/65	171	490	1,504	117	441	243	495	2,380
1965/66	159	421	1,484	115	421	227	447	2,292
1966/67	145	399	1,533	98	411	194	401	2,231
1967/68	150	377	1,484	96	410	175	450	2,208
1968/69	139	334	1,363	88	371	160	431	2,233
1969/70	132	301	1,249	77	356	151	449	2,190
1970/71	119	272	1,172	68	343	116	459	2,116
1971/72	121	267	1,219	60	309	107	425	2,084
1972/73	122	237	1,175	52	270	88	383	2,011
1973/74	103	197	1,080	50	259	62	337	1,905
1974/75	98	186	1,035	44	257	55	299	1,895
1975/76	107	175	1,060	50	259	53	273	1,871
1976/77	87	182	1,045	40	256	46	271	1,805
1977/78	77	178	1,020	34	250	42	230	1,771
1978/79	64	153	1,007	31	253	42	208	1,647
1979/80	58	114	901	28	248	33	159	1,502
1980/81	57	100	890	26	255	28	167	1,423
1981/82	52	96	836	24	254	28	162	1,325

OTHER COARSE GRAINS INCLUDE RYE, OATS, SORGHUM, MILLET, AND MIXED GRAIN.
AUGUST/JULY MARKETING YEAR.
SOURCE: FAS.

TABLE 26 EC-9 OTHER COARSE GRAINS YIELD BY COUNTRY (MT/HA)

YEAR	BELGIUM/LUX.	DENMARK	FRANCE	IRELAND	ITALY	NETHERLANDS	U. KINGDOM	W. GERMANY
1960/61	3.06	3.07	1.83	2.48	1.16	3.16	2.62	2.91
1961/62	2.99	3.10	1.72	2.56	1.41	3.02	2.66	2.37
1962/63	3.24	3.29	1.87	2.83	1.50	3.54	2.89	2.82
1963/64	3.31	3.24	2.13	2.75	1.42	3.39	2.80	2.92
1964/65	3.37	3.62	2.08	2.68	1.31	3.71	2.98	3.10
1965/66	3.01	3.62	2.28	2.82	1.50	3.09	3.01	2.65
1966/67	3.03	3.51	2.30	2.89	1.42	3.13	3.05	2.82
1967/68	3.69	3.58	2.61	3.06	1.60	3.74	3.37	3.30
1968/69	3.53	3.81	2.64	3.25	1.30	3.66	3.22	3.41
1969/70	3.41	3.62	2.68	3.26	1.64	3.64	3.43	3.38
1970/71	2.78	3.33	2.58	3.03	1.66	3.27	3.24	3.01
1971/72	3.77	3.68	3.02	3.45	1.79	3.94	3.74	3.57
1972/73	3.59	3.81	3.21	3.44	1.80	3.35	3.88	3.52
1973/74	3.90	3.38	3.20	3.24	1.80	3.89	3.82	3.59
1974/75	3.70	3.77	3.12	3.57	2.00	4.42	3.72	3.86
1975/76	3.14	3.29	2.98	3.36	2.14	4.16	3.41	3.60
1976/77	2.58	2.79	2.31	3.25	1.78	3.65	3.22	3.02
1977/78	3.05	3.53	3.02	4.02	1.70	4.00	4.00	3.50
1978/79	4.00	3.58	3.54	3.80	2.15	4.95	3.85	4.00
1979/80	3.94	3.84	3.41	3.75	2.10	4.78	3.88	3.91
1980/81	3.57	3.75	3.59	3.88	2.14	4.75	4.10	3.81
1981/82	3.96	4.13	3.49	3.91	2.19	5.14	4.22	3.76

OTHER COARSE GRAINS INCLUDE RYE, OATS, SORGHUM, MILLET, AND MIXED GRAINS.
 AUGUST/JULY MARKETING YEAR.
 SOURCE: FAS.

TABLE 27 EC-9 SUPPLY/UTILIZATION OF TOTAL COARSE GRAINS (1000 MT)

YEAR	AREA HARVESTED. (1000 HA)	YIELD (MT PER HA)	PRODUCTION	BEGINNING STOCKS	IMPORTS	EXPORTS	NET EXPORTS	DOMESTIC UTILIZATION	FEED USE	NON-FEED USE
1960/61.	14,784	2.81	41,608	6,337	14,410.	2,613.	-11,797	53,408	42,356	11,052
1961/62.	15,243	2.58	39,388	6,334	18,304.	3,273.	-15,031	55,178	43,783	11,395
1962/63.	14,812	2.87	42,442	5,575	18,304.	2,688.	-15,616	57,159	45,601	11,558
1963/64.	15,453	3.03	46,773	6,474	19,147.	4,380.	-14,767	61,062	48,174	12,888
1964/65.	14,929	3.09	46,078	6,952	19,158.	4,761.	-14,397	61,451	49,187	12,264
1965/66.	14,967	3.09	46,178	5,976	23,397.	5,612.	-17,785	63,374	50,477	12,897
1966/67.	15,577	3.10	48,347	6,565	22,234.	6,204.	-16,030	64,404	51,465	12,939
1967/68.	15,796	3.46	54,689	6,538	21,753.	6,176.	-15,577	68,760	55,428	13,332
1968/69.	15,566	3.52	54,827	6,282	19,771.	7,656.	-12,115	66,320	53,408	12,912
1969/70.	15,777	3.58	56,441	6,904	20,070.	8,545.	-11,525	68,422	54,749	13,673
1970/71.	15,983	3.34	53,329	6,448	24,059.	8,509.	-15,550	69,256	54,949	14,307
1971/72.	15,847	3.81	60,363	6,071	22,732.	10,838.	-11,894	72,124	55,886	16,238
1972/73.	15,837	3.90	61,833	5,863	23,192.	10,928.	-12,264	73,833	56,844	16,989
1973/74.	15,853	4.06	64,413	6,127	26,784.	13,780.	-13,004	77,237	59,794	17,443
1974/75.	15,520	4.05	62,796	6,307	25,012.	11,085.	-13,927	75,470	57,575	17,895
1975/76.	15,833	3.74	59,223	7,560	25,939.	12,413.	-13,526	75,394	58,020	17,374
1976/77.	15,052	3.43	51,589	4,915	31,779.	9,503.	-22,276	73,824	56,347	17,477
1977/78.	15,782	4.13	65,130	4,956	23,831.	13,311.	-10,520	75,061	57,147	17,914
1978/79.	15,787	4.34	68,481	5,545	23,161.	13,152.	-10,009	77,102	58,300	18,802
1979/80.	15,732	4.29	67,465	6,933	21,345.	13,316.	-8,029	76,292	57,615	18,677
1980/81.	15,212	4.43	67,420	6,135	19,825.	14,251.	-5,574	73,044	54,902	18,142

TOTAL COARSE GRAINS INCLUDE BARLEY, CORN, RYE, OATS, SORGHUM, MILLET, AND MIXED GRAIN.
 AUGUST/JULY MARKETING YEAR.
 IMPORTS AND EXPORTS INCLUDE INTRA-EC TRADE.
 SOURCE: FAS.

TABLE 28 EC-9 TOTAL COARSE GRAINS AREA BY COUNTRY (1000 HA)

YEAR	BELGIUM/LUX.	DENMARK	FRANCE	IRELAND	ITALY	NETHERLANDS	U. KINGDOM	W. GERMANY
1960/61	344	1,363	4,742	305	1,891	381	2,255	3,503
1961/62	340	1,431	5,044	295	1,909	399	2,318	3,507
1962/63	327	1,389	4,751	304	1,803	374	2,287	3,577
1963/64	324	1,435	5,217	308	1,783	361	2,479	3,546
1964/65	309	1,440	4,757	301	1,710	330	2,531	3,551
1965/66	316	1,462	4,783	303	1,635	326	2,630	3,512
1966/67	318	1,511	5,139	285	1,578	314	2,882	3,550
1967/68	317	1,547	5,315	279	1,608	283	2,889	3,558
1968/69	307	1,588	5,166	272	1,513	267	2,832	3,621
1969/70	304	1,606	5,292	275	1,530	250	2,862	3,658
1970/71	308	1,624	5,608	282	1,548	221	2,702	3,690
1971/72	286	1,637	5,572	295	1,430	207	2,715	3,705
1972/73	293	1,643	5,725	304	1,347	174	2,673	3,678
1973/74	280	1,665	5,820	293	1,353	154	2,606	3,682
1974/75	269	1,623	5,655	290	1,371	130	2,514	3,668
1975/76	254	1,618	5,790	287	1,405	137	2,619	3,723
1976/77	249	1,660	5,219	299	1,419	109	2,454	3,643
1977/78	253	1,705	5,556	323	1,523	109	2,631	3,682
1978/79	244	1,723	5,623	338	1,475	113	2,557	3,714
1979/80	240	1,743	5,700	352	1,492	97	2,502	3,606
1980/81	236	1,677	5,297	358	1,521	82	2,497	3,544
1981/82	230	1,637	5,086	354	1,590	82	2,489	3,498

TOTAL COARSE GRAINS INCLUDE BARLEY, CORN, RYE, OATS, SORGHUM, MILLET, AND MIXED GRAIN.
AUGUST/JULY MARKETING YEAR.
SOURCE: FAS.

TABLE 29 EC-9 TOTAL COARSE GRAINS YIELD BY COUNTRY (MT/HA)

YEAR	BELGIUM/LUX.	DENMARK	FRANCE	IRELAND	ITALY	NETHERLANDS	U. KINGDOM	W. GERMANY
1960/61	3.22	3.42	2.50	2.84	2.43	3.34	2.94	3.01
1961/62	3.12	3.32	2.18	3.03	2.57	3.20	3.06	2.38
1962/63	3.48	3.70	2.32	3.28	2.36	3.74	3.41	2.97
1963/64	3.41	3.48	2.86	3.10	2.59	3.51	3.35	2.98
1964/65	3.59	3.93	2.52	2.87	2.79	3.86	3.55	3.19
1965/66	3.25	3.86	2.96	3.10	2.58	3.29	3.62	2.71
1966/67	3.03	3.67	2.97	3.23	2.75	3.26	3.45	2.89
1967/68	3.86	3.70	3.36	3.48	2.99	3.89	3.71	3.43
1968/69	3.63	3.98	3.50	3.81	3.12	3.65	3.41	3.55
1969/70	3.50	3.95	3.50	3.77	3.52	3.75	3.56	3.53
1970/71	2.96	3.52	3.33	3.50	3.62	3.22	3.33	3.15
1971/72	3.90	3.93	3.84	4.06	3.77	3.89	3.73	3.72
1972/73	3.92	3.94	3.90	3.81	4.20	3.70	4.01	3.70
1973/74	4.30	3.70	4.29	3.64	4.44	4.13	3.95	3.81
1974/75	4.24	4.10	3.88	4.12	4.46	4.36	4.07	4.05
1975/76	3.34	3.54	3.57	4.02	4.64	4.11	3.60	3.82
1976/77	3.61	3.19	3.17	3.51	4.49	4.00	3.47	3.41
1977/78	3.94	3.97	3.95	4.91	4.91	4.22	4.35	3.90
1978/79	4.64	3.97	4.34	4.47	5.10	4.98	4.16	4.26
1979/80	4.61	4.07	4.33	4.38	5.04	4.61	4.08	4.10
1980/81	4.69	3.82	4.56	4.23	5.17	4.78	4.40	4.21
1981/82	4.64	3.93	4.34	3.99	5.49	4.80	4.38	4.14

TOTAL COARSE GRAINS INCLUDE BARLEY, CORN, RYE, OATS, SORGHUM, MILLET, AND MIXED GRAIN.
AUGUST/JULY MARKETING YEAR.
SOURCE: FAS.

TABLE 30 EC-9 SUPPLY/UTILIZATION OF TOTAL GRAINS (1000 MT)

YEAR	AREA HARVESTED. (1000 HA)	YIELD (MT PER HA)	PRODUCTION	BEGINNING STOCKS	IMPORTS	EXPORTS	NET EXPORTS	DOMESTIC UTILIZATION	FEED USE	NON-FEED USE
1960/61.	26,528	2.63	69,638	12,684	25,965	5,212	-20,753	89,257	49,814	39,443
1961/62.	26,319	2.51	66,082	13,818	30,016	6,553	-23,463	90,476	50,687	39,789
1962/63.	26,813	2.88	77,130	12,887	26,610	6,979	-19,631	93,969	53,504	40,465
1963/64.	26,435	2.84	75,197	15,679	28,757	8,776	-19,981	96,710	55,434	41,276
1964/65.	26,669	3.00	79,998	14,147	27,841	10,935	-16,906	98,548	57,532	41,016
1965/66.	26,819	3.04	81,631	12,503	33,497	11,969	-21,528	101,189	59,202	41,987
1966/67.	26,658	2.96	78,847	14,473	31,556	10,974	-20,582	100,934	59,633	41,301
1967/68.	26,622	3.41	90,674	12,963	30,885	12,118	-18,767	105,608	64,002	41,606
1968/69.	26,940	3.40	91,589	12,815	31,496	15,953	-15,543	104,437	63,198	41,239
1969/70.	26,906	3.42	92,144	15,510	31,428	18,316	-13,112	109,212	66,873	42,339
1970/71.	26,919	3.27	88,075	11,554	36,233	14,226	-22,007	110,076	67,302	42,774
1971/72.	26,984	3.72	100,497	11,560	33,966	19,577	-14,389	113,145	67,769	45,376
1972/73.	26,934	3.83	103,287	12,864	35,237	22,805	-12,432	116,638	71,180	45,458
1973/74.	26,680	3.97	105,806	11,945	38,506	25,437	-13,069	117,227	71,337	45,890
1974/75.	26,744	4.05	108,187	13,593	34,915	23,257	-11,658	116,147	69,469	46,678
1975/76.	26,304	3.70	97,328	17,291	37,890	26,699	-11,191	113,361	67,161	46,200
1976/77.	26,252	3.46	90,703	12,449	41,428	20,162	-21,266	112,419	66,036	46,383
1977/78.	25,852	4.01	103,619	11,999	36,341	25,691	-10,650	114,576	67,729	46,847
1978/79.	26,789	4.33	116,082	11,692	33,802	27,653	-6,149	117,992	70,036	47,956
1979/80.	26,768	4.26	113,910	15,931	32,202	30,223	-1,979	117,911	69,736	48,175
1980/81.	26,822	4.46	119,563	13,909	30,138	34,061	3,923	115,175	67,559	47,616

TOTAL GRAINS INCLUDE COMMON AND DURUM WHEAT, BARLEY, CORN, RYE, OATS, SORGHUM, MILLET, AND MIXED GRAIN.
AUGUST/JULY MARKETING YEAR.
IMPORTS AND EXPORTS INCLUDE INTRA-EC TRADE.
SOURCE: FAS.

TABLE 31 EC-9 TOTAL GRAINS AREA BY COUNTRY (1000 HA)

YEAR	BELGIUM/LUX.	DENMARK	FRANCE	IRELAND	ITALY	NETHERLANDS	U. KINGDOM	W. GERMANY
1960/61	572	1,445	9,100	453	6,444	509	3,106	4,899
1961/62	570	1,536	9,041	435	6,254	522	3,057	4,904
1962/63	556	1,543	9,321	431	6,359	507	3,200	4,896
1963/64	544	1,570	9,067	402	6,177	488	3,259	4,928
1964/65	547	1,568	9,145	388	6,118	481	3,424	4,998
1965/66	564	1,588	9,303	377	5,923	484	3,656	4,924
1966/67	551	1,605	9,131	338	5,852	454	3,788	4,939
1967/68	535	1,637	9,244	355	5,620	437	3,822	4,972
1968/69	529	1,685	9,256	362	5,793	420	3,810	5,085
1969/70	520	1,703	9,326	357	5,748	405	3,695	5,152
1970/71	506	1,738	9,354	377	5,686	363	3,712	5,183
1971/72	499	1,758	9,549	386	5,382	349	3,812	5,249
1972/73	516	1,778	9,683	372	5,151	330	3,800	5,304
1973/74	491	1,788	9,778	351	4,943	292	3,752	5,285
1974/75	478	1,733	9,798	345	5,084	260	3,747	5,299
1975/76	444	1,720	9,666	335	4,950	244	3,653	5,292
1976/77	461	1,787	9,493	349	4,963	239	3,685	5,275
1977/78	447	1,821	9,681	371	4,309	235	3,707	5,281
1978/79	440	1,845	9,789	387	4,947	234	3,814	5,333
1979/80	439	1,853	9,787	401	4,944	238	3,873	5,233
1980/81	430	1,816	9,879	405	4,926	224	3,938	5,204
1981/82	410	1,787	9,839	398	4,848	213	3,980	5,130

TOTAL GRAINS INCLUDE COMMON AND DURUM WHEAT, BARLEY, CORN, RYE, OATS, SORGHUM, MILLET, AND MIXED GRAIN.

AUGUST/JULY MARKETING YEAR.

SOURCE: FAS.

TABLE 32 EC-9 TOTAL GRAINS YIELD BY COUNTRY (MT/HA)

YEAR	BELGIUM/LUX.	DENMARK	FRANCE	IRELAND	ITALY	NETHERLANDS	U. KINGDOM	W. GERMANY
1960/61	3.40	3.44	2.51	2.95	1.76	3.66	3.11	3.16
1961/62	3.23	3.38	2.27	3.14	2.11	3.37	3.17	2.53
1962/63	3.64	3.74	2.69	3.33	2.16	3.95	3.68	3.11
1963/64	3.54	3.50	2.77	3.12	2.06	3.68	3.48	3.13
1964/65	3.76	3.96	2.82	2.92	2.18	4.18	3.73	3.31
1965/66	3.43	3.91	3.11	3.11	2.36	3.64	3.74	2.82
1966/67	2.86	3.71	2.91	3.27	2.34	3.57	3.54	3.00
1967/68	4.01	3.75	3.48	3.57	2.56	4.21	3.82	3.62
1968/69	3.80	4.02	3.57	4.00	2.48	3.93	3.44	3.74
1969/70	3.63	3.97	3.53	3.92	2.60	3.98	3.67	3.67
1970/71	3.31	3.58	3.38	3.62	2.68	3.72	3.57	3.33
1971/72	4.15	3.99	3.86	4.09	2.87	4.33	3.92	3.99
1972/73	4.13	3.97	4.18	3.84	2.92	4.00	4.08	3.81
1973/74	4.59	3.75	4.37	3.69	3.02	4.66	4.07	4.00
1974/75	4.64	4.18	4.19	4.17	3.11	5.05	4.37	4.27
1975/76	3.54	3.63	3.69	4.06	3.26	4.47	3.81	4.01
1976/77	3.98	3.30	3.44	3.58	3.11	4.79	3.59	3.62
1977/78	4.00	4.05	4.07	4.95	3.18	4.77	4.51	4.09
1978/79	4.90	4.06	4.63	4.56	3.37	5.79	4.52	4.48
1979/80	4.83	4.14	4.52	4.45	3.33	5.39	4.49	4.37
1980/81	4.68	3.89	4.84	4.34	3.45	5.68	4.94	4.43
1981/82	4.86	4.07	4.57	4.13	3.62	5.99	4.93	4.44

TOTAL GRAINS INCLUDE COMMON AND DURUM WHEAT, BARLEY, CORN, RYE, OATS, SORGHUM, MILLET, AND MIXED GRAIN.

AUGUST/JULY MARKETING YEAR.

SOURCE: FAS.

TABLE 33 EC-9 SUPPLY/UTILIZATION OF RICE (1000 MT)

YEAR	AREA HARVESTED (1000 HA)	YIELD (MT PER HA)	PRODUCTION	BEGINNING STOCKS	IMPORTS	EXPORTS	NET EXPORTS	DOMESTIC UTILIZATION
1960/61	162	3.12	505	104	419	214	-205	709
1961/62	156	3.72	581	105	466	235	-231	792
1962/63	149	3.71	552	125	433	212	-221	776
1963/64	145	3.28	475	122	423	136	-287	735
1964/65	150	3.47	520	149	436	176	-260	804
1965/66	156	2.71	423	125	479	102	-377	792
1966/67	160	3.14	503	133	480	202	-278	766
1967/68	171	3.52	602	148	451	309	-142	747
1968/69	181	2.78	503	145	477	221	-256	740
1969/70	191	3.49	666	164	447	359	-88	723
1970/71	194	3.26	633	195	511	375	-136	738
1971/72	195	3.47	676	226	539	503	-36	785
1972/73	203	2.76	561	153	589	334	-255	785
1973/74	207	3.73	773	184	587	398	-189	835
1974/75	202	3.78	763	311	543	722	179	753
1975/76	184	3.97	732	142	624	533	-91	827
1976/77	190	3.44	654	138	894	472	-422	1,076
1977/78	196	2.62	515	138	1,051	599	-452	922
1978/79	202	3.43	694	183	979	746	-233	930
1979/80	190	4.25	809	180	898	886	-12	903
1980/81	183	3.79	694	98	942	717	-225	855

MARKETING YEARS FOR INDIVIDUAL COUNTRIES VARY.
 IMPORTS AND EXPORTS INCLUDE INTRA-EC TRADE.
 SOURCE: FAS.

.....
 TABLE 34 EC-9 SUPPLY/UTILIZATION OF OILSEED MEAL (1000 MT)

YEAR	PRODUCTION	IMPORTS	EXPORTS	NET EXPORTS	DOMESTIC UTILIZATION
1961	105	5,904	794	-5,110	5,215
1962	124	7,585	778	-6,807	6,931
1963	179	7,317	969	-6,348	6,527
1964	160	7,927	947	-6,980	7,140
1965	210	8,614	982	-7,632	7,842
1966	234	9,260	975	-8,285	8,519
1967	222	9,349	972	-8,377	8,599
1968	281	9,439	1,015	-8,424	8,705
1969	299	10,339	1,158	-9,181	9,480
1970	306	11,269	1,370	-9,899	10,205
1971	352	12,525	1,616	-10,909	11,261
1972	446	13,879	1,943	-11,936	12,382
1973	368	13,985	2,469	-11,516	11,884
1974	457	15,430	2,620	-12,810	13,267
1975	518	13,838	1,930	-11,908	12,426
1976	432	17,072	3,627	-13,445	13,877
1977	461	17,211	2,200	-15,011	15,472
1978	444	21,193	3,225	-17,968	18,412
1979	538	23,365	3,773	-19,592	20,130
1980	578	24,171	4,220	-19,951	20,529

.....

ALL VALUES ARE EXPRESSED IN 44% SOYMEAL EQUIVALENT.

IMPORTS AND EXPORTS INCLUDE INTRA-EC TRADE.

OILSEED MEAL PRODUCTION IS CALCULATED FROM DOMESTICALLY PRODUCED SEEDS AFTER MULTIPLYING BY THE CORRESPONDING CRUSHING FACTOR AND MEAL YIELD FACTOR (TABLE 36).

MEAL PRODUCTION IS ASSIGNED TO THE YEAR FOLLOWING HARVEST.

IMPORTS ARE CALCULATED BY SUMMING MEAL IMPORTS AND THE MEAL EQUIVALENT OF SEED IMPORTS. THE SAME IS TRUE FOR EXPORTS.

SOURCE: DERIVED FROM FAO PRODUCTION AND TRADE YEARBOOKS, SEVERAL ISSUES.

TABLE 35 EC-9 SUPPLY/UTILIZATION OF EDIBLE OIL (1000 MT)

YEAR	PRODUCTION	IMPORTS	EXPORTS	NET EXPORTS	DOMESTIC UTILIZATION
1961	461	2,814	214	-2,600	3,061
1962	398	2,562	305	-2,257	2,655
1963	670	2,617	318	-2,299	2,969
1964	418	2,944	336	-2,608	3,026
1965	579	3,084	360	-2,724	3,303
1966	507	3,340	435	-2,905	3,412
1967	712	3,242	425	-2,817	3,529
1968	618	3,429	530	-2,899	3,517
1969	726	3,667	672	-2,995	3,721
1970	689	3,651	751	-2,900	3,589
1971	929	4,305	986	-3,319	4,248
1972	765	4,631	1,204	-3,427	4,192
1973	927	4,751	1,231	-3,520	4,447
1974	916	4,608	1,443	-3,165	4,081
1975	1,063	4,651	1,442	-3,209	4,272
1976	847	5,313	1,587	-3,726	4,573
1977	987	5,125	1,592	-3,533	4,520
1978	847	5,470	1,738	-3,732	4,579
1979	991	6,082	1,892	-4,190	5,181
1980	1,237	6,270	2,084	-4,186	5,423

IMPORTS AND EXPORTS INCLUDE INTRA-EC TRADE.

OIL PRODUCTION IS CALCULATED FROM DOMESTICALLY PRODUCED SEEDS AFTER MULTIPLYING BY THE CORRESPONDING CRUSHING FACTOR AND OIL YIELD FACTOR (TABLE 36).

OIL PRODUCTION IS ASSIGNED TO THE YEAR FOLLOWING HARVEST.

IMPORTS ARE CALCULATED BY SUMMING OIL IMPORTS AND THE OIL EQUIVALENT OF SEED IMPORTS. THE SAME IS TRUE FOR EXPORTS.

SOURCE: DERIVED FROM FAO PRODUCTION AND TRADE YEARBOOKS, SEVERAL ISSUES.

TABLE 36 EC-9 OILSEED CONVERSION FACTORS

	PEANUTS	COTTONSEED	SOYBEANS	SUNFLOWER SEED	RAPESEED	COPRA	PALM KERNELS	LINSEED	SESAME SEED
OILSEED CRUSHING FACTORS	0.1500	0.9000	0.9000	0.9000	0.9000	1.0000	1.0000	0.8500	0.9000
MEAL YIELD FACTORS	.5300	.4650	.8150	.4750	.5900	.3500	.5100	.6500	.4870
OIL YIELD FACTORS	.4600	.1700	.1750	.4100	.3900	.6400	.4700	.3400	.4900
44% SOYMEAL EQUIVALENT FACTORS	1.1240	.8103	1.0000	.9442	.7115	.4515	.3557	.7609	.9622

OILSEED CRUSHING FACTORS SPECIFY THE PORTION OF THE AVAILABLE SUPPLY OF OILSEEDS ASSUMED TO BE CRUSHED. MEAL YIELD FACTORS SPECIFY THE PORTION OF CRUSHED OILSEEDS RESULTING IN MEAL. OIL YIELD FACTORS SPECIFY THE PORTION OF CRUSHED OILSEEDS RESULTING IN OIL. THE REMAINING PORTION OF CRUSHED OILSEEDS CONSISTS OF HULLS AND OTHER RESIDUES. THE 44% SOYMEAL EQUIVALENT FACTORS CONVERT OILSEED MEALS TO A 44% PROTEIN SOYMEAL BASE. SOURCE: FAO.

TABLE 37 EC-9 SUPPLY/UTILIZATION OF BEEF AND VEAL (1000 MT)

YEAR.	LIVESTOCK UNITS (1000 LU)	HERD SIZE (1000 HEAD DECEMBER)	GROSS INDIGENOUS PRODUCTION	NET TRADE IN LIVE ANIMALS	ANIMALS SLAUGHTERED (1000 HEAD)	NET PRODUCTION	YIELD (MT/HEAD)	IMPORTS	EXPORTS	NET TRADE	CHANGE IN STOCKS	CONSUMPTION
1960.	51,816	67,557	4,377	-80	24,392	4,457	0.183	760	320	-440	38	4,858
1961.	52,898	68,967	4,810	-46	26,170	4,856	.186	587	331	-256	47	5,065
1962.	52,865	68,533	5,032	-71	27,475	5,103	.186	721	431	-290	0	5,393
1963.	51,073	66,568	5,061	-107	27,991	5,168	.185	926	454	-472	-64	5,705
1964.	52,243	67,762	4,731	-86	24,888	4,817	.194	1,022	349	-673	17	5,472
1965.	53,511	69,477	4,686	-97	24,136	4,783	.198	946	321	-625	1	5,407
1966.	54,582	70,739	5,065	-124	26,007	5,189	.200	910	376	-534	-5	5,728
1967.	55,421	71,608	5,404	-163	27,623	5,567	.202	974	536	-438	16	5,989
1968.	56,039	72,751	5,495	-196	27,736	5,691	.205	934	591	-343	9	6,025
1969.	55,949	72,811	5,474	-195	27,231	5,669	.208	1,120	572	-548	-35	6,253
1970.	55,423	71,918	5,759	-214	28,057	5,973	.213	1,027	613	-414	2	6,384
1971.	55,863	71,693	5,866	-195	27,924	6,061	.217	1,023	682	-341	1	6,402
1972.	57,817	74,823	5,313	-234	24,728	5,547	.224	1,323	655	-668	-1	6,216
1973.	60,181	78,987	5,397	-193	23,989	5,590	.233	1,480	759	-721	47	6,264
1974.	60,782	79,545	6,502	-129	28,670	6,631	.231	1,097	1,041	-56	191	6,496
1975.	61,371	77,537	6,608	-11	29,127	6,619	.227	1,152	1,278	126	-38	6,531
1976.	61,331	77,130	6,461	-85	28,106	6,546	.233	1,244	1,152	-92	110	6,528
1977.	61,950	77,261	6,338	-44	27,359	6,382	.233	1,386	1,220	-166	-52	6,600
1978.	62,456	77,841	6,385	-38	27,053	6,423	.237	1,462	1,290	-172	-102	6,697
1979.	62,672	78,014	6,790	-40	28,311	6,830	.241	1,458	1,436	-22	64	6,790
1980.	62,116	77,496	7,070	-6	28,850	7,076	.245	1,413	1,743	330	-15	6,761

IMPORTS AND EXPORTS INCLUDE INTRA-EC TRADE.

LIVESTOCK UNITS FOR THE YEARS 1960-1962 ARE CALCULATED BY MULTIPLYING HERD SIZE FIGURES FOR 1960-1962 BY AN AVERAGE CONVERSION FACTOR OF 0.767, THE RATIO OF LIVESTOCK UNITS TO HERD SIZE IN 1963.

SOURCES:

LIVESTOCK UNITS (1960-1962) - CALCULATED FROM FAS DATA.

(1963-1980) - EUROSTAT, CRONOS DATA BASE AND YEARBOOK OF AGRICULTURAL STATISTICS, 1983.

HERD SIZE (1960-1962) - FAS.

(1963-1980) - EUROSTAT, CRONOS DATA BASE AND YEARBOOK OF AGRICULTURAL STATISTICS, 1983.

GROSS INDIGENOUS PRODUCTION, NET TRADE IN LIVE ANIMALS, NET PRODUCTION, IMPORTS, EXPORTS, CHANGE IN STOCKS, AND CONSUMPTION

(1960-1976) - EUROSTAT, STATISTICS OF MEAT, 1978.

(1977-1980) - EUROSTAT, ANIMAL PRODUCTION, 1982.

ANIMALS SLAUGHTERED (1960-1964) - FAS.

(1965-1967) - EUROSTAT, STATISTICS OF ANIMAL PRODUCTION 1965-1975, 1976.

(1968-1977) - EUROSTAT, ANIMAL PRODUCTION 1968-1977, 1978.

(1978-1980) - EUROSTAT, ANIMAL PRODUCTION, 1982.

TABLE 38 EC-9 SUPPLY/UTILIZATION OF PORK (1000 MT)

YEAR	LIVESTOCK UNITS (1000 LU)	HERD SIZE (1000 HEAD DECEMBER)	GROSS INDIGENOUS PRODUCTION	NET TRADE IN LIVE ANIMALS	ANIMALS SLAUGHTERED (1000 HEAD)	NET PRODUCTION (MT/HEAD)	YIELD	IMPORTS	EXPORTS	NET TRADE	CHANGE IN STOCKS	CONSUMPTION
1960.	12,154	46,566	5,512	-32	64,200	5,544	0.086	746	683	-60	-22	5,626
1961.	13,263	50,817	5,596	-34	68,820	5,630	.082	722	686	-36	-6	5,672
1962.	13,350	51,148	5,949	-21	73,415	5,970	.081	724	733	9	1	5,960
1963.	13,420	51,418	5,889	-5	72,202	5,894	.082	782	767	-16	-8	5,916
1964.	14,471	55,443	6,208	-3	75,565	6,211	.082	804	798	-6	15	6,202
1965.	14,484	55,496	6,626	-13	82,599	6,639	.080	878	926	48	3	6,588
1966.	14,466	55,424	6,506	-14	80,428	6,520	.081	929	904	-25	-10	6,555
1967.	15,606	59,794	6,686	-8	81,939	6,694	.082	942	916	-26	16	6,704
1968.	15,580	59,713	7,148	-9	87,765	7,157	.082	969	992	23	-2	7,136
1969.	16,891	64,497	7,104	-3	87,517	7,107	.081	1,036	1,035	-1	-11	7,119
1970.	17,069	69,584	7,501	-2	93,673	7,503	.080	1,095	1,187	92	11	7,400
1971.	17,003	68,135	8,061	-8	101,232	8,069	.080	1,214	1,370	156	-1	7,914
1972.	17,297	68,637	8,174	-18	101,513	8,192	.081	1,276	1,309	33	3	8,156
1973.	17,533	70,567	8,193	-14	100,985	8,207	.081	1,304	1,390	86	5	8,116
1974.	17,135	69,793	8,433	-36	103,726	8,469	.082	1,339	1,400	61	2	8,406
1975.	17,410	68,554	8,302	-70	102,215	8,372	.082	1,351	1,354	3	-20	8,389
1976.	17,827	70,126	8,464	-60	103,820	8,524	.082	1,377	1,353	-24	8	8,540
1977.	18,582	72,131	8,822	-29	108,770	8,851	.081	1,418	1,444	26	13	8,812
1978.	18,846	75,008	9,282	-40	114,049	9,322	.082	1,529	1,543	14	20	9,288
1979.	19,310	76,125	9,654	-43	120,214	9,697	.081	1,601	1,731	130	-3	9,570
1980.	18,857	77,294	9,970	-38	122,385	10,008	.082	1,717	1,803	86	8	9,914

IMPORTS AND EXPORTS INCLUDE INTRA-EC TRADE.

LIVESTOCK UNITS FOR THE YEARS 1960-1967 ARE CALCULATED BY MULTIPLYING HERD SIZE FIGURES FOR 1960-1967 BY AN AVERAGE CONVERSION FACTOR OF 0.261, THE RATIO OF LIVESTOCK UNITS TO HERD SIZE IN 1968.

SOURCES:

LIVESTOCK UNITS (1960-1967) - CALCULATED FROM FAS DATA.

(1968-1980) - EUROSTAT, CRONOS DATA BASE AND YEARBOOK OF AGRICULTURAL STATISTICS, 1983.

HERD SIZE (1960-1967) - FAS.

(1968-1980) - EUROSTAT, CRONOS DATA BASE AND YEARBOOK OF AGRICULTURAL STATISTICS, 1983.

GROSS INDIGENOUS PRODUCTION, NET TRADE IN LIVE ANIMALS, NET PRODUCTION, IMPORTS, EXPORTS, CHANGE IN STOCKS, AND CONSUMPTION

(1960-1976) - EUROSTAT, STATISTICS OF MEAT, 1978.

(1977-1980) - EUROSTAT, ANIMAL PRODUCTION, 1982.

ANIMALS SLAUGHTERED (1960-1967) - FAS.

(1968-1972) - EUROSTAT, STATISTICS OF ANIMAL PRODUCTION 1965-1975, 1976.

(1973-1977) - EUROSTAT, ANIMAL PRODUCTION 1968-1977, 1978.

(1978-1980) - EUROSTAT, ANIMAL PRODUCTION, 1982.

TABLE 39 EC-9 SUPPLY/UTILIZATION OF SHEEP AND GOATS (1000 MT)

YEAR	LIVESTOCK UNITS (1000 LU)	HERD SIZE (1000 HEAD DECEMBER)	GROSS INDIGENOUS PRODUCTION	NET TRADE IN LIVE ANIMALS	ANIMALS SLAUGHTERED (1000 HEAD)	NET PRODUCTION	YIELD (MT/HEAD)	IMPORTS	EXPORTS	NET TRADE	CHANGE IN STOCKS	CONSUMPTION
1960.	4,492.2	44,922	456	5	25,654	451	0.018	391	19	-372	3	820
1961.	4,497.7	44,977	490	8	22,369	482	.018	362	16	-346	-8	836
1962.	4,518.6	45,186	484	6	27,052	478	.018	370	23	-347	-2	833
1963.	4,482.1	44,821	462	4	29,767	458	.018	368	28	-340	-1	799
1964.	4,531.6	45,316	474	2	26,569	472	.018	367	27	-340	-5	817
1965.	4,615.0	46,150	467	-2	26,289	469	.018	376	31	-345	9	805
1966.	4,530.6	45,306	503	-3	28,464	506	.018	350	32	-318	-9	833
1967.	4,488.6	44,886	494	-5	28,335	499	.018	373	29	-344	-5	848
1968.	4,365.8	43,658	478	-5	27,507	483	.018	385	29	-356	1	838
1969.	4,352.0	43,520	436	-12	25,807	448	.017	413	33	-380	11	817
1970.	4,287.7	42,877	454	-19	27,269	473	.017	383	34	-349	3	819
1971.	4,285.4	42,854	471	-18	28,216	489	.017	414	43	-371	-6	866
1972.	4,366.7	43,667	454	-25	27,885	479	.017	400	48	-352	-1	832
1973.	4,448.1	44,481	466	-20	28,098	486	.017	350	50	-300	1	785
1974.	4,509.7	45,097	499	-17	29,304	516	.018	284	53	-231	-2	749
1975.	4,510.0	45,100	515	-22	30,196	537	.018	338	67	-271	-5	813
1976.	4,600.0	46,000	507	-28	30,125	535	.018	323	65	-258	1	792
1977.	4,710.0	47,100	500	-25	29,937	525	.018	323	75	-248	-3	776
1978.	4,899.0	48,990	516	-24	30,684	540	.018	340	79	-261	10	790
1979.	4,931.0	49,931	526	-32	32,040	558	.017	323	80	-243	-6	807
1980.	5,052.0	50,520	600	-31	35,757	631	.018	293	77	-216	-1	848

IMPORTS AND EXPORTS INCLUDE INTRA-EC TRADE.

LIVESTOCK UNITS FOR THE YEARS 1960-1967 ARE CALCULATED BY MULTIPLYING HERD SIZE FIGURES FOR 1960-1967 BY 0.10, THE EUROSTAT LIVESTOCK UNITS CONVERSION FACTOR FOR SHEEP AND GOATS.

SOURCES:

LIVESTOCK UNITS (1960-1967) - CALCULATED FROM FAS DATA.

(1968-1980) - EUROSTAT, CRONOS DATA BASE AND YEARBOOK OF AGRICULTURAL STATISTICS, 1983.

HERD SIZE (1960-1967) - FAS.

(1968-1980) - EUROSTAT, CRONOS DATA BASE AND YEARBOOK OF AGRICULTURAL STATISTICS, 1983.

GROSS INDIGENOUS PRODUCTION, NET TRADE IN LIVE ANIMALS, NET PRODUCTION, IMPORTS, EXPORTS, CHANGE IN STOCKS, AND CONSUMPTION

(1960-1976) - EUROSTAT, STATISTICS OF MEAT, 1978.

(1977-1980) - EUROSTAT, ANIMAL PRODUCTION, 1982.

ANIMALS SLAUGHTERED (1960-1969) - FAS.

(1970-1974) - EUROSTAT, STATISTICS OF ANIMAL PRODUCTION 1965-1975, 1976.

(1975-1976) - EUROSTAT, ANIMAL PRODUCTION 1968-1977, 1978.

(1977-1980) - EUROSTAT, ANIMAL PRODUCTION, 1982.

TABLE 40 EC-9 SUPPLY/UTILIZATION OF POULTRY (1000 MT)

YEAR	GROSS INDIGENOUS PRODUCTION	NET EXPORTS OF LIVE ANIMALS	NET PRODUCTION	IMPORTS	EXPORTS	NET EXPORTS	CHANGE IN STOCKS	CONSUMPTION
1960	1,234	-1	1,235	140	95	-45	0	1,280
1961	1,385	-1	1,386	186	120	-66	0	1,452
1962	1,494	-1	1,495	216	135	-81	4	1,572
1963	1,602	-1	1,603	186	155	-31	-7	1,641
1964	1,795	0	1,795	209	174	-35	9	1,821
1965	1,951	1	1,950	239	209	-30	-13	1,993
1966	2,091	1	2,090	226	218	-8	12	2,086
1967	2,179	0	2,179	228	239	11	2	2,166
1968	2,254	1	2,253	240	255	15	-10	2,248
1969	2,427	0	2,427	243	274	31	4	2,392
1970	2,645	1	2,644	270	330	60	6	2,578
1971	2,718	-3	2,721	295	366	71	11	2,639
1972	2,944	-5	2,949	329	393	64	-16	2,901
1973	3,134	-7	3,141	330	409	79	38	3,024
1974	3,142	-10	3,152	328	426	98	-2	3,056
1975	3,162	-5	3,167	340	412	72	-26	3,121
1976	3,303	-7	3,310	327	441	114	21	3,175
1977	3,419	-5	3,424	326	491	165	13	3,246
1978	3,588	-5	3,593	345	469	124	-12	3,481
1979	3,739	3	3,736	356	541	185	4	3,546
1980	3,901	1	3,900	357	614	257	10	3,632

IMPORTS AND EXPORTS INCLUDE INTRA-EC TRADE.

SOURCES:

(1960-1976) - EUROSTAT, MONTHLY STATISTICS OF MEAT, 1978.

(1977-1980) - EUROSTAT, ANIMAL PRODUCTION, 1982.

TABLE 41 EC-9 SUPPLY/UTILIZATION OF EGGS (MILLION PIECES)

YEAR	NUMBER OF LAYERS (MILLION HEAD)	PRODUCTION	IMPORTS	EXPORTS	NET EXPORTS	FOR HATCHING	IN SHELL	OTHER USES	CHANGE IN STOCKS	CONSUMPTION
1964.	315	55,839	4,284	3,581	-703	2,276	51,565	1,912	0	56,542
1965.	306	54,897	4,339	2,842	-1,497	2,347	51,384	1,891	-20	56,414
1966.	305	56,428	3,816	3,238	-578	2,458	51,813	1,864	100	56,906
1967.	310	57,707	3,522	2,892	-630	2,556	52,878	2,090	40	58,297
1968.	310	58,204	3,762	3,420	-342	2,616	53,093	2,114	-30	58,576
1969.	307	60,580	4,214	4,049	-165	2,827	54,981	2,166	27	60,718
1970.	306	63,287	4,257	4,790	533	2,883	56,767	2,317	50	62,704
1971.	292	62,674	4,558	4,422	-136	3,004	56,938	2,173	-44	62,854
1972.	293	64,194	4,968	4,221	-747	3,079	58,739	2,468	-65	65,006
1973.	289	64,411	5,607	4,844	-763	3,120	59,025	2,345	-66	65,240
1974.	290	63,673	6,238	5,809	-429	3,100	58,445	2,482	75	64,027
1975.	281	64,111	5,632	5,902	270	3,294	57,583	2,982	-18	63,859
1976.	276	63,755	5,735	5,847	112	3,426	57,206	3,031	-20	63,663
1977.	274	64,945	6,247	6,259	12	3,459	58,357	3,127	-10	64,943
1978.	280	65,814	6,777	7,060	283	3,552	58,646	3,261	72	65,459
1979.	279	66,749	7,426	8,214	788	3,575	60,598	1,759	29	65,932
1980.	281	66,947	8,111	9,062	951	3,896	60,007	2,098	-5	66,001

IMPORTS AND EXPORTS INCLUDE INTRA-EC TRADE.
 THE STATISTICS FOR OTHER USES, IN SHELL, AND FOR HATCHING DURING THE PERIOD 1964-1973 EXCLUDE IRELAND AND THUS DO NOT
 SUM TO CONSUMPTION.
 SOURCE: FAS.

TABLE 42 EC-9 SUPPLY/UTILIZATION OF WHOLE MILK (1000 MT)

YEAR	PRODUCTION	IMPORTS	EXPORTS	NET EXPORTS	DOMESTIC UTILIZATION	FEED USE	PROCESSED INTO BUTTER	PROCESSED INTO CHEESE	PROCESSED INTO DRIED AND CONDENSED MILK	USED FOR FRESH FOOD PRODUCTS	OTHER USES	STATISTICAL DIFFERENCES
1960.	82,053	66	150	84	81,969	10,930	29,783	11,019	3,708	25,110	271	1,148
1961.	84,370	79	167	88	84,282	11,182	30,778	11,510	3,879	25,445	303	1,185
1962.	85,375	67	173	106	85,269	10,832	31,466	11,780	4,174	25,586	303	1,128
1963.	85,106	66	168	102	85,004	11,315	30,800	11,372	4,454	25,619	327	1,117
1964.	85,295	68	191	123	85,172	10,970	30,231	12,200	4,634	25,596	362	1,179
1965.	88,669	74	227	153	88,516	10,957	32,817	12,956	4,732	25,744	329	981
1966.	90,566	174	324	150	90,416	11,277	33,123	13,682	4,652	26,371	404	907
1967.	92,788	144	295	151	92,637	11,148	34,632	14,238	4,861	26,475	414	869
1968.	94,919	70	247	177	94,742	11,340	37,281	14,189	4,752	26,561	469	150
1969.	94,420	118	199	81	94,339	10,979	35,928	14,514	4,834	26,804	558	722
1970.	93,485	114	293	179	93,306	10,571	34,638	15,088	4,830	26,965	591	623
1971.	93,453	214	526	312	93,141	10,191	33,622	16,087	5,054	26,930	564	693
1972.	97,471	379	508	129	97,342	10,002	37,524	17,262	4,916	26,756	400	482
1973.	98,461	443	473	30	98,431	9,890	38,669	17,557	4,866	26,312	620	517
1974.	98,978	566	975	409	98,569	9,912	37,042	19,248	5,106	26,173	648	440
1975.	99,769	500	706	206	99,563	10,002	38,219	19,349	4,680	26,649	429	235
1976.	101,549	716	652	-64	101,613	9,961	39,695	19,602	4,972	26,675	554	154
1977.	104,285	880	818	-62	104,347	9,793	40,389	20,920	5,800	26,736	408	301
1978.	108,341	1,172	850	-322	108,663	10,177	43,446	21,741	5,696	26,545	703	355
1979.	110,583	1,168	913	-255	110,838	10,076	44,260	22,962	5,944	26,693	499	404
1980.	112,238	1,032	801	-231	112,469	9,633	44,180	23,451	7,384	27,106	527	188

WHOLE MILK PRODUCTION INCLUDES ALL MILK OBTAINED THROUGH HUMAN MILKING (MANUAL OR MECHANICAL) OF MILK ANIMALS. THIS INCLUDES MILK FED TO YOUNG ANIMALS. DATA FOR FRANCE, ITALY, AND W. GERMANY ALSO INCLUDE MILK SUCKED BY YOUNG ANIMALS.

IMPORTS AND EXPORTS REFER TO TRADE IN LIQUID WHOLE MILK (EXCLUDING ALL TRADE IN PROCESSED PRODUCTS).

IMPORTS AND EXPORTS INCLUDE INTRA-EC TRADE.

FEED USE REFERS TO THE QUANTITY OF WHOLE MILK FED TO YOUNG ANIMALS. DATA FOR FRANCE, ITALY, AND W. GERMANY ALSO INCLUDE MILK SUCKED BY YOUNG ANIMALS.

FRESH FOOD PRODUCTS INCLUDE WHOLE MILK USED FOR HUMAN CONSUMPTION IN THE FORM OF LIQUID MILK (BEFORE ANY ADDITION OF SKIMMED MILK) AND WHOLE MILK USED TO PRODUCE CREAM AND OTHER FRESH FOOD PRODUCTS.

OTHER USES INCLUDE WHOLE MILK USED TO PRODUCE CHOCOLATE CRUMB AND OTHER SPECIAL PRODUCTS.

FRENCH WHOLE MILK PRODUCTION STATISTICS FOR THE YEARS 1960-1969 HAVE BEEN REVISED. PRODUCTION FIGURES FOR THE YEARS 1964-1968 ARE OECD ESTIMATES. PRODUCTION FIGURES FOR THE YEARS 1960-1963 ARE ESTIMATED BY DIVIDING THE ORIGINAL FIGURES BY AN ADJUSTMENT COEFFICIENT OF 1.0876, THE RATIO OF THE ORIGINAL 1964 FRENCH PRODUCTION FIGURE TO THE NEW OECD ESTIMATE.

SOURCE: MILK AND MILK PRODUCTS BALANCES IN OECD MEMBER COUNTRIES, SEVERAL ISSUES.

EUROSTAT, AGRICULTURAL STATISTICS, SEVERAL ISSUES.

.....
 TABLE 43 EC-9 SUPPLY/UTILIZATION OF SKIMMED-MILK POWDER (1000 MT)

YEAR	PRODUCTION	IMPORTS	EXPORTS	NET EXPORTS	CHANGE IN STOCKS	DOMESTIC UTILIZATION	FEED USE
1960.	333	93	54	-39	26	346	NA
1961.	384	81	85	4	-9	389	NA
1962.	454	97	100	3	-32	483	NA
1963.	523	145	99	-46	9	560	NA
1964.	563	301	129	-172	-4	739	589
1965.	792	251	258	7	43	742	599
1966.	970	286	387	101	-11	880	711
1967.	1,228	301	459	158	120	950	785
1968.	1,526	393	585	192	115	1,219	1,021
1969.	1,455	481	537	56	74	1,325	1,131
1970.	1,378	384	618	234	-186	1,330	1,154
1971.	1,356	339	583	244	-107	1,219	1,041
1972.	1,683	435	551	116	224	1,343	1,134
1973.	1,794	531	835	304	66	1,424	1,260
1974.	1,761	408	724	316	137	1,308	1,119
1975.	1,978	419	555	136	651	1,191	993
1976.	2,055	640	810	170	9	1,876	1,673
1977.	2,024	550	969	419	-160	1,765	1,556
1978.	2,184	807	1,217	410	-243	2,017	1,774
1979.	2,116	744	1,411	667	-494	1,943	1,664
1980.	2,108	585	1,192	607	-35	1,536	1,341

.....

NA=NOT AVAILABLE.

IMPORTS AND EXPORTS REFER TO TOTAL TRADE IN SKIMMED-MILK POWDER, INCLUDING THE QUANTITIES CONTAINED IN PROCESSED ANIMAL FEED.

IMPORTS AND EXPORTS INCLUDE INTRA-EC TRADE.

ITALIAN SKIMMED-MILK POWDER FIGURES FOR THE YEARS 1960-1975 INCLUDE DRIED WHOLE MILK.

GERMAN SKIMMED-MILK POWDER FIGURES FOR THE YEARS 1960-1969 INCLUDE OTHER WHOLE DRIED MILK PRODUCTS.

SOURCES:

EXCEPT AS OTHERWISE NOTED - MILK AND MILK PRODUCTS BALANCES IN OECD MEMBER COUNTRIES, SEVERAL ISSUES.

GERMANY

IMPORTS, EXPORTS, AND CHANGE IN STOCKS (1960-1963) - EUROSTAT, STATISTIQUE AGRICOLE, SEVERAL ISSUES.

NETHERLANDS

CHANGE IN STOCKS (1960-1967) - EUROSTAT, STATISTIQUE AGRICOLE, SEVERAL ISSUES.

TABLE 44 EC-9 SUPPLY/UTILIZATION OF BUTTER (1000 MT)

YEAR	PRODUCTION	IMPORTS	EXPORTS	NET EXPORTS	CHANGE IN STOCKS	DOMESTIC UTILIZATION
1960	1,293	465	196	-269	41	1,521
1961	1,356	471	231	-240	16	1,580
1962	1,388	489	199	-290	-2	1,680
1963	1,361	502	209	-293	-4	1,658
1964	1,346	543	188	-355	41	1,660
1965	1,455	522	227	-295	59	1,691
1966	1,462	530	257	-273	29	1,706
1967	1,533	573	296	-277	65	1,745
1968	1,657	541	323	-218	130	1,745
1969	1,595	504	308	-196	5	1,786
1970	1,543	558	491	-67	-184	1,794
1971	1,498	526	403	-123	-55	1,676
1972	1,698	495	331	-164	265	1,587
1973	1,737	567	771	204	-136	1,669
1974	1,664	690	664	-26	-63	1,753
1975	1,719	716	637	-79	53	1,745
1976	1,796	642	640	-2	119	1,679
1977	1,823	564	711	147	8	1,668
1978	1,970	635	754	119	200	1,651
1979	2,011	607	997	390	-66	1,687
1980	2,000	622	1,104	482	-102	1,620

IMPORTS AND EXPORTS REFER TO TOTAL TRADE IN BUTTER, INCLUDING THE QUANTITIES CONTAINED IN DERIVED PRODUCTS SUCH AS BUTTER OIL. THE QUANTITIES CONTAINED IN IMPORTED OR EXPORTED DERIVED PRODUCTS ARE EXPRESSED IN BUTTER EQUIVALENT. IMPORTS AND EXPORTS INCLUDE INTRA-EC TRADE.

FRENCH BUTTER PRODUCTION STATISTICS FOR THE YEARS 1960-1968 HAVE BEEN REVISED. PRODUCTION FIGURES FOR THE YEARS 1964-1968 ARE OECD ESTIMATES. PRODUCTION FIGURES FOR THE YEARS 1960-1963 ARE ESTIMATED BY DIVIDING THE ORIGINAL FIGURES BY AN ADJUSTMENT COEFFICIENT OF 1.1448, THE RATIO OF THE ORIGINAL 1964 FRENCH PRODUCTION FIGURE TO THE NEW OECD ESTIMATE.

SOURCES:

EXCEPT AS OTHERWISE NOTED - MILK AND MILK PRODUCTS BALANCES IN OECD MEMBER COUNTRIES, SEVERAL ISSUES.

GERMANY

IMPORTS, EXPORTS, AND CHANGE IN STOCKS (1960-1963) - EUROSTAT, STATISTIQUE AGRICOLE, SEVERAL ISSUES.

FIELD CROPS BY USDA STATISTICAL BULLETIN 1949-50 UPDATE
EG GRAINS, OILSEEDS, AND LIVESTOCK SELECTED STATISTICS, 1949-50
HERLIHY, M., ET AL 2 OF 2

TABLE 45 EC-9 SUPPLY/UTILIZATION OF CHEESE (1000 MT)

YEAR	PRODUCTION	IMPORTS	EXPORTS	NET EXPORTS	CHANGE IN STOCKS	STATISTICAL DIFFERENCES	DOMESTIC UTILIZATION
1960.	1,628	326	258	-68	21	NA	1,675
1961.	1,704	339	269	-70	26	NA	1,748
1962.	1,756	362	285	-77	13	NA	1,820
1963.	1,720	387	299	-88	-25	NA	1,833
1964.	1,826	396	309	-87	32	25	1,906
1965.	1,942	414	327	-87	78	19	1,970
1966.	2,054	431	372	-59	69	21	2,065
1967.	2,148	435	377	-58	74	18	2,150
1968.	2,157	452	408	-44	14	27	2,214
1969.	2,234	450	418	-32	-16	28	2,310
1970.	2,331	485	450	-35	-9	29	2,404
1971.	2,482	529	503	-26	38	29	2,499
1972.	2,649	544	535	-9	97	30	2,591
1973.	2,677	572	608	36	-20	33	2,694
1974.	2,877	579	688	109	46	37	2,759
1975.	2,925	618	677	59	76	36	2,826
1976.	2,990	679	775	96	-12	39	2,945
1977.	3,165	690	821	131	40	39	3,033
1978.	3,272	708	859	151	32	40	3,129
1979.	3,407	786	991	205	34	49	3,217
1980.	3,525	765	1,025	260	36	56	3,285

NA = NOT AVAILABLE.

IMPORTS AND EXPORTS INCLUDE INTRA-EC TRADE.

DATA REFER IN PRINCIPLE TO PRODUCTION OF NATURAL CHEESE. STATISTICAL DIFFERENCES ARISE BECAUSE PRODUCTS OTHER THAN CHEESE ARE ADDED DURING PROCESSING.

SOURCES:

EXCEPT AS OTHERWISE NOTED - MILK AND MILK PRODUCTS BALANCES IN DECD MEMBER COUNTRIES, SEVERAL ISSUES.

GERMANY

IMPORTS, EXPORTS, AND CHANGE IN STOCKS (1960-1963) - EUROSTAT, STATISTIQUE AGRICOLE, SEVERAL ISSUES.

TABLE 46 EC-9 FERTILIZER PRICE INDICES (1975=100)

YEAR	BELGIUM/LUX.	DENMARK	FRANCE	IRELAND	ITALY	NETHERLANDS	U. KINGDOM	W. GERMANY	EC-9 NOMINAL	EC-9 REAL
1960	64.70	40.30	47.50	26.00	48.90	63.20	34.90	67.00	51.25	119.72
1961	62.60	40.30	48.20	25.70	49.30	62.60	34.50	67.60	51.55	116.37
1962	63.00	39.90	48.40	25.60	49.40	63.80	34.30	68.30	51.83	111.93
1963	62.90	40.50	50.00	25.70	49.90	68.60	34.40	72.00	53.66	110.25
1964	62.80	41.60	51.00	26.20	50.90	70.00	35.10	74.40	54.95	108.08
1965	63.10	42.00	51.90	26.90	52.70	71.40	36.10	73.50	55.47	105.25
1966	64.40	41.80	51.90	28.00	54.20	71.40	37.60	73.80	55.94	102.44
1967	64.10	41.80	50.70	30.20	54.30	70.70	40.50	72.50	55.57	99.26
1968	62.20	43.20	50.70	32.20	54.30	70.70	43.20	68.20	54.90	95.26
1969	61.50	44.30	52.30	32.70	53.80	69.30	43.80	65.90	54.92	90.49
1970	61.20	45.60	51.70	34.40	53.30	68.70	41.80	64.80	54.19	83.84
1971	63.00	46.00	54.80	36.70	53.40	72.30	51.00	68.90	57.87	83.69
1972	68.40	46.80	57.50	40.10	53.10	76.60	58.20	71.30	60.88	82.55
1973	69.10	48.70	61.10	45.70	51.50	78.90	68.40	73.00	64.18	80.95
1974	86.30	69.80	85.10	76.80	85.70	87.60	88.30	88.70	85.63	97.50
1975	100.00	100.00	100.00	100.00	100.00	100.00	100.00	100.00	100.00	100.00
1976	108.00	88.80	99.00	102.80	113.80	106.20	105.20	101.60	102.05	93.12
1977	107.40	83.10	102.50	112.40	127.10	107.50	118.10	99.60	105.75	88.27
1978	104.20	85.50	112.60	119.10	139.50	109.00	137.00	99.60	113.34	87.05
1979	109.70	89.80	124.20	130.50	159.10	109.70	147.20	101.60	122.00	85.54
1980	122.90	109.90	154.10	154.50	196.50	122.20	173.50	110.50	144.84	91.08

FERTILIZER INCLUDES ALL FERTILIZERS AND SOIL IMPROVERS.

THE EC-9 NOMINAL INDEX IS A WEIGHTED AVERAGE OF NATIONAL INDICES WHERE THE WEIGHTS ARE AS FOLLOWS:

BELGIUM/LUX.	---.0321	ITALY	---.0930
DENMARK	---.0500	NETHERLANDS	---.0473
FRANCE	---.3700	U. KINGDOM	---.1277
IRELAND	---.0283	W. GERMANY	---.2516

THE EC-9 REAL PRICE INDEX IS DERIVED BY FIRST DEFLATING EACH NATIONAL INDEX BY ITS GDP DEFLATOR AND THEN AGGREGATING USING THE WEIGHTING SCHEME ABOVE.

THE PRICE INDEX FOR BELGIUM/LUX. IS THAT FOR BELGIUM.

THE 1960 INDEX FOR DENMARK IS ASSUMED TO BE THE SAME AS THAT IN 1961.

PRICE INDICES FOR IRELAND IN THE YEARS 1960-1967 WERE UNAVAILABLE. THE IRISH INDEX FOR THESE YEARS IS ASSUMED TO BE THE SAME AS THAT IN THE U. KINGDOM (CONVERTED TO AN IRISH BASE) IN ORDER THAT AN EC-9 INDEX CAN BE CONSTRUCTED.

FOR THE YEARS PRIOR TO 1970, PRICE INDICES FOR MOST COUNTRIES ARE AVAILABLE ON A CROP YEAR BASIS ONLY. ANNUAL INDICES FOR THOSE COUNTRIES ARE SIMPLE AVERAGES OF CROP YEAR INDICES.

THE WEIGHTS USED IN CALCULATING EC-9 PRICE INDICES ARE THOSE USED BY EUROSTAT AS OF JANUARY 1982. OUR WEIGHTS INCLUDE AN UPWARD ADJUSTMENT OF 2.104 PERCENT SINCE GREECE IS NOT INCLUDED IN THE DATA BASE.

NATIONAL INDICES IN THE 1970'S REFLECT EC EFFORTS TO CONSTRUCT INDICES WHICH ARE COMPARABLE ACROSS COUNTRIES. CARE SHOULD BE TAKEN IN COMPARING INDICES PRIOR TO 1970 SINCE THEY HAVE BEEN OBTAINED INDEPENDENTLY FROM VARIOUS EC AND NATIONAL SOURCES.

SOURCES:

1960-1967 - EUROSTAT, AGRICULTURAL STATISTICS, VARIOUS ISSUES FOR THE ORIGINAL EC-6, MONTHLY DIGEST OF STATISTICS FOR THE U. KINGDOM, AND STATISTISK ARBOG FOR DENMARK.

1968-1972 - EUROSTAT, EC-INDICES OF PURCHASE PRICES OF THE MEANS OF AGRICULTURAL PRODUCTION, 1978.

1973-1980 - EUROSTAT, EC AGRICULTURAL PRICE INDICES (OUTPUT AND INPUT), JANUARY 1982.

TABLE 47 EC-9 WHEAT PRODUCER PRICES

YEAR	BELGIUM/LUX.	DENMARK	FRANCE	IRELAND	ITALY	NETHERLANDS	U. KINGDOM	W. GERMANY	EC-9 NOMINAL	EC-9 REAL
1960/61	455	50.18	37.81	2.54	6,797	30.63	2.619	40.70	8.12	19.28
1961/62	460	51.27	39.90	2.59	6,605	30.11	2.613	41.70	8.29	19.05
1962/63	460	51.23	42.08	2.49	6,826	30.98	2.667	42.20	8.57	18.82
1963/64	464	50.74	41.92	2.67	6,991	33.47	2.609	42.15	8.59	17.92
1964/65	486	48.37	39.26	2.84	6,924	35.71	2.540	42.80	8.38	16.79
1965/66	455	49.53	40.00	2.60	6,896	35.91	2.402	42.15	8.34	16.13
1966/67	483	52.63	43.55	3.32	6,806	35.91	2.478	43.00	8.72	16.29
1967/68	478	50.72	46.04	3.17	6,663	35.81	2.531	38.60	8.81	15.73
1968/69	475	48.18	43.24	3.33	6,288	35.15	2.765	39.05	8.58	14.84
1969/70	471	54.05	43.73	3.17	6,591	35.15	2.931	39.50	8.68	14.40
1970/71	497	54.33	48.22	3.13	7,033	36.75	3.070	38.70	9.11	14.27
1971/72	476	54.22	49.04	3.16	6,981	35.70	3.168	38.50	9.18	13.43
1972/73	500	66.21	51.02	3.40	7,329	37.75	3.493	39.15	9.66	13.19
1973/74	514	80.37	53.11	5.54	9,910	37.75	5.854	40.78	11.13	14.11
1974/75	563	80.35	59.59	4.80	10,237	38.65	5.982	42.60	11.86	13.46
1975/76	619	91.88	65.42	6.79	12,633	42.20	5.575	47.20	13.07	13.07
1976/77	674	96.43	71.37	8.04	15,715	45.60	7.224	51.70	14.59	13.50
1977/78	680	109.83	74.57	9.04	18,509	44.70	8.334	49.10	15.13	12.96
1978/79	683	107.96	79.59	9.48	20,409	45.00	8.564	48.75	15.65	12.47
1979/80	675	116.79	82.40	9.42	22,120	44.95	9.582	48.90	16.24	11.85
1980/81	684	127.08	87.85	9.00	25,392	46.50	9.888	49.50	17.11	11.26

COMMON WHEAT.

AUGUST/JULY MARKETING YEAR.

NATIONAL PRODUCER PRICES ARE UNIT VALUES IN NATIONAL CURRENCY PER 100 KG.

THE EC-9 NOMINAL PRICE IS CALCULATED BY CONVERTING NATIONAL PRICES TO ECU'S USING 1960/61-1980/81 AUGUST/JULY YEAR EXCHANGE RATES (TABLE 9) AND THEN TAKING A WEIGHTED SUM USING 1976/77 COMMON WHEAT PRODUCTION SHARES AS WEIGHTS (TABLE 60).

THE EC-9 REAL PRICE IS CALCULATED BY CONVERTING DEFLATED NATIONAL PRICES (SEE TABLE 7 FOR GDP DEFLATORS) TO ECU'S USING 1975/76 AUGUST/JULY YEAR EXCHANGE RATES (TABLE 9) AND THEN TAKING A WEIGHTED SUM USING 1976/77 COMMON WHEAT PRODUCTION SHARES AS WEIGHTS (TABLE 60).

SOURCES:

EC COMMISSION, AGRICULTURAL MARKETS, PRICES RECEIVED BY FARMERS, 1980.

FAO, PRICES OF AGRICULTURAL PRODUCTS AND SELECTED INPUTS IN EUROPE AND NORTH AMERICA, SEVERAL ISSUES.

TABLE 48 EC-9 BARLEY PRODUCER PRICES

YEAR	BELGIUM/LUX.	DENMARK	FRANCE	IRELAND	ITALY	NETHERLANDS	U. KINGDOM	W. GERMANY	EC-9 NOMINAL	EC-9 REAL
1960/61	340	40.24	31.00	2.15	4,955	26.77	2,703	42.80	7.04	17.41
1961/62	429	45.08	31.90	2.12	4,616	29.05	2,649	42.80	7.19	17.22
1962/63	398	45.24	34.50	2.00	5,017	28.55	2,539	42.39	7.23	16.56
1963/64	394	49.72	33.00	2.00	4,908	28.98	2,554	41.83	7.23	15.92
1964/65	401	43.93	32.89	2.18	5,320	31.26	2,536	42.63	7.16	15.12
1965/66	411	47.95	34.69	2.31	5,390	33.95	2,421	42.52	7.29	14.82
1966/67	420	50.14	38.00	2.36	5,374	32.84	2,423	42.27	7.50	14.61
1967/68	414	48.68	38.71	2.34	5,400	31.97	2,360	36.02	7.10	13.41
1968/69	415	40.50	39.20	2.36	5,990	32.25	2,583	36.96	7.14	12.95
1969/70	421	45.95	40.38	2.53	5,900	30.40	2,640	37.04	7.35	12.66
1970/71	477	47.23	46.20	2.52	6,040	32.95	2,813	38.05	7.86	12.68
1971/72	447	47.01	50.38	2.71	6,170	32.60	2,766	38.90	8.10	12.17
1972/73	456	58.61	46.40	2.84	6,250	34.25	3,072	38.80	8.40	11.68
1973/74	467	72.82	47.26	4.53	8,000	34.95	5,221	38.30	10.06	12.82
1974/75	541	75.83	59.51	5.00	10,200	37.45	5,762	40.40	11.29	12.95
1975/76	590	86.70	61.35	5.95	10,850	40.15	5,744	45.65	12.12	12.12
1976/77	644	101.83	68.69	7.25	13,200	45.90	7,243	49.75	13.92	12.80
1977/78	591	99.89	67.32	8.79	15,900	41.95	7,795	46.80	13.79	11.74
1978/79	589	101.77	69.92	8.56	16,900	43.05	7,835	46.20	13.93	10.96
1979/80	616	108.26	75.33	8.88	18,900	43.45	8,960	45.60	14.81	10.68
1980/81	612	118.21	78.14	8.58	20,500	43.85	9,268	45.40	15.39	9.97

AUGUST/JULY MARKETING YEAR.

NATIONAL PRODUCER PRICES ARE UNIT VALUES IN NATIONAL CURRENCY PER 100 KG.

THE EC-9 NOMINAL PRICE IS CALCULATED BY CONVERTING NATIONAL PRICES TO ECU'S USING 1960/61-1980/81 AUGUST/JULY YEAR EXCHANGE RATES (TABLE 9) AND THEN TAKING A WEIGHTED SUM USING 1976/77 BARLEY PRODUCTION SHARES AS WEIGHTS (TABLE 60).

THE EC-9 REAL PRICE IS CALCULATED BY CONVERTING DEFLATED NATIONAL PRICES (SEE TABLE 7 FOR GDP DEFLATORS) TO ECU'S USING 1975/76 AUGUST/JULY YEAR EXCHANGE RATES (TABLE 9) AND THEN TAKING A WEIGHTED SUM USING 1976/77 BARLEY PRODUCTION SHARES AS WEIGHTS (TABLE 60).

SOURCES:

EC COMMISSION, AGRICULTURAL MARKETS, PRICES RECEIVED BY FARMERS, 1980.

FAO, PRICES OF AGRICULTURAL PRODUCTS AND SELECTED INPUTS IN EUROPE AND NORTH AMERICA, SEVERAL ISSUES.

TABLE 49 EC-9 CORN PRODUCER PRICES

YEAR	FRANCE	ITALY	EC-9 NOMINAL	EC-9 REAL	YEAR	FRANCE	ITALY	EC-9 NOMINAL	EC-9 REAL
1960/61	35.55	4,164	6.53	14.46	1971/72	44.23	5,760	8.28	11.40
1961/62	36.20	4,234	6.61	14.27	1972/73	47.25	6,167	8.72	11.48
1962/63	41.15	4,699	7.42	15.26	1973/74	50.70	7,247	9.32	11.73
1963/64	39.78	4,831	7.38	14.12	1974/75	64.45	9,677	11.94	13.32
1964/65	43.07	5,080	7.89	14.34	1975/76	63.15	10,435	11.84	11.84
1965/66	42.25	4,704	7.54	13.28	1976/77	67.46	13,416	12.99	12.18
1966/67	40.80	4,856	7.52	12.84	1977/78	72.61	15,128	13.56	11.78
1967/68	40.28	5,436	8.06	13.01	1978/79	75.83	17,009	14.14	11.43
1968/69	41.70	5,755	8.48	13.19	1979/80	77.67	18,922	14.68	10.82
1969/70	42.41	5,929	8.45	12.79	1980/81	82.46	21,324	15.49	10.22
1970/71	43.00	5,904	8.30	12.09					

AUGUST/JULY MARKETING YEAR.

NATIONAL PRODUCER PRICES ARE UNIT VALUES IN NATIONAL CURRENCY PER 100 KG.

THE EC-9 NOMINAL PRICE IS CALCULATED BY CONVERTING NATIONAL PRICES TO ECU'S USING 1960/61-1980/81 AUGUST/JULY YEAR EXCHANGE RATES (TABLE 9) AND THEN TAKING A WEIGHTED SUM USING 1976/77 CORN PRODUCTION SHARES AS WEIGHTS (TABLE 60).

THE EC-9 REAL PRICE IS CALCULATED BY CONVERTING DEFLATED NATIONAL PRICES (SEE TABLE 7 FOR GDP DEFLATORS) TO ECU'S USING 1975/76 AUGUST/JULY YEAR EXCHANGE RATES (TABLE 9) AND THEN TAKING A WEIGHTED SUM USING 1976/77 CORN PRODUCTION SHARES AS WEIGHTS (TABLE 60).

SOURCES:

EC COMMISSION, AGRICULTURAL MARKETS, PRICES RECEIVED BY FARMERS, 1980.

FAO, PRICES OF AGRICULTURAL PRODUCTS AND SELECTED INPUTS IN EUROPE AND NORTH AMERICA, SEVERAL ISSUES.

TABLE 50 EC-9 OATS PRODUCER PRICES

YEAR	BELGIUM/LUX.	DENMARK	FRANCE	IRELAND	ITALY	NETHERLANDS	U. KINGDOM	W. GERMANY	EC-9 NOMINAL	EC-9 REAL
1960/61	323	39.47	27.90	2.11	4,878	26.19	2.437	33.80	6.73	17.51
1961/62	344	39.58	29.90	2.11	3,960	29.60	2.538	34.50	6.92	17.25
1962/63	362	46.56	36.30	2.02	4,709	29.98	2.507	36.30	7.54	17.96
1963/64	344	44.16	25.60	1.98	4,927	28.24	2.542	35.93	6.96	16.07
1964/65	364	39.39	30.20	2.09	5,065	31.85	2.575	37.64	7.40	16.43
1965/66	382	45.44	35.24	2.23	5,210	32.93	2.577	37.85	7.74	16.51
1966/67	379	46.37	32.08	2.20	5,150	31.39	2.569	37.04	7.49	15.40
1967/68	369	43.45	33.37	2.14	5,050	30.47	2.528	33.56	7.21	14.25
1968/69	375	37.52	34.31	2.23	5,600	30.25	2.770	33.91	7.45	14.14
1969/70	398	46.74	37.19	2.26	5,670	28.05	2.746	33.56	7.71	13.77
1970/71	441	46.47	43.47	2.40	5,800	30.00	2.785	35.16	8.36	13.79
1971/72	380	45.95	38.01	2.60	5,920	28.65	2.682	33.75	7.96	12.11
1972/73	409	55.10	39.85	2.98	6,100	32.20	3.016	35.05	8.64	12.03
1973/74	468	75.77	48.18	4.12	8,100	34.90	4.777	38.04	10.61	13.26
1974/75	526	74.85	55.93	4.65	10,300	36.10	5.608	39.75	11.68	13.25
1975/76	531	82.11	56.30	4.92	10,250	37.35	5.579	42.75	12.43	12.43
1976/77	659	101.79	65.13	6.40	12,700	43.25	6.768	48.80	14.80	13.53
1977/78	576	101.72	67.45	8.39	17,200	43.10	7.484	45.40	14.89	12.58
1978/79	581	100.52	63.57	9.06	17,300	39.10	7.459	43.10	14.38	11.33
1979/80	584	111.33	63.74	9.06	18,300	39.65	8.947	41.80	14.56	10.67
1980/81	612	121.14	74.17	8.80	21,400	43.65	9.835	43.20	15.70	10.58

AUGUST/JULY MARKETING YEAR.

NATIONAL PRODUCER PRICES ARE UNIT VALUES IN NATIONAL CURRENCY PER 100 KG.

THE EC-9 NOMINAL PRICE IS CALCULATED BY CONVERTING NATIONAL PRICES TO ECU'S USING 1960/61-1980/81 AUGUST/JULY YEAR EXCHANGE RATES (TABLE 9) AND THEN TAKING A WEIGHTED SUM USING 1976/77 OATS PRODUCTION SHARES AS WEIGHTS (TABLE 60).

THE EC-9 REAL PRICE IS CALCULATED BY CONVERTING DEFLATED NATIONAL PRICES (SEE TABLE 7 FOR GDP DEFLATORS) TO ECU'S USING 1975/76 AUGUST/JULY YEAR EXCHANGE RATES (TABLE 9) AND THEN TAKING A WEIGHTED SUM USING 1976/77 OATS PRODUCTION SHARES AS WEIGHTS (TABLE 60).

SOURCES:

EC COMMISSION, AGRICULTURAL MARKETS, PRICES RECEIVED BY FARMERS, 1980.

FAO, PRICES OF AGRICULTURAL PRODUCTS AND SELECTED INPUTS IN EUROPE AND NORTH AMERICA, SEVERAL ISSUES.

TABLE 51 EC-9 RYE PRODUCER PRICES

YEAR	BELGIUM/LUX.	DENMARK	FRANCE	ITALY	NETHERLANDS	U. KINGDOM	W. GERMANY	EC-9 NOMINAL	EC-9 REAL
1960/61	302	47.99	30.00	5,204	26.18	2.124	36.20	7.77	22.34
1961/62	407	47.87	29.70	5,155	31.20	2.124	37.50	8.15	22.25
1962/63	365	47.97	35.20	6,190	30.29	2.124	38.90	8.53	22.21
1963/64	357	47.91	35.84	6,356	30.45	2.217	38.60	8.50	21.36
1964/65	368	45.50	32.84	6,103	31.69	2.137	38.95	8.47	20.65
1965/66	386	47.62	35.66	6,240	34.56	2.124	38.60	8.52	19.99
1966/67	408	50.99	37.51	6,105	34.60	2.252	38.60	8.62	19.39
1967/68	410	50.88	39.47	6,051	33.66	2.288	35.25	8.21	17.74
1968/69	413	47.80	40.81	5,831	34.45	2.432	36.40	8.60	17.78
1969/70	408	54.08	39.52	6,016	30.65	2.450	36.85	9.01	17.29
1970/71	434	54.44	42.96	6,150	31.35	2.447	35.55	9.14	15.82
1971/72	425	53.43	44.88	6,150	31.15	2.554	35.80	9.38	14.83
1972/73	448	64.43	44.08	6,300	32.20	2.604	36.25	10.08	14.31
1973/74	486	75.56	49.20	7,300	35.30	4.252	37.66	11.33	14.23
1974/75	538	80.23	57.63	9,500	37.45	4.900	39.90	12.51	14.15
1975/76	566	85.48	61.03	10,400	39.85	6.180	46.30	14.93	14.93
1976/77	640	95.44	67.06	12,700	44.65	7.500	50.55	17.30	15.67
1977/78	590	93.12	61.43	15,700	41.45	7.042	46.30	16.52	13.80
1978/79	579	94.99	63.79	18,738	42.80	7.618	46.42	16.96	13.30
1979/80	603	106.23	69.46	18,200	43.80	8.900	45.30	16.85	12.64
1980/81	640	118.33	78.98	20,300	45.10	10.178	46.30	17.44	12.41

AUGUST/JULY MARKETING YEAR.

NATIONAL PRODUCER PRICES ARE UNIT VALUES IN NATIONAL CURRENCY PER 100 KG.

THE EC-9 NOMINAL PRICE IS CALCULATED BY CONVERTING NATIONAL PRICES TO ECU'S USING 1960/61-1980/81 AUGUST/JULY YEAR EXCHANGE RATES (TABLE 9) AND THEN TAKING A WEIGHTED SUM USING 1976/77 RYE PRODUCTION SHARES AS WEIGHTS (TABLE 60).

THE EC-9 REAL PRICE IS CALCULATED BY CONVERTING DEFLATED NATIONAL PRICES (SEE TABLE 7 FOR GDP DEFLATORS) TO ECU'S USING 1975/76 AUGUST/JULY YEAR EXCHANGE RATES (TABLE 9) AND THEN TAKING A WEIGHTED SUM USING 1976/77 RYE PRODUCTION SHARES AS WEIGHTS (TABLE 60).

SOURCES:

EC COMMISSION, AGRICULTURAL MARKETS, PRICES RECEIVED BY FARMERS, 1980.

FAO, PRICES OF AGRICULTURAL PRODUCTS AND SELECTED INPUTS IN EUROPE AND NORTH AMERICA, SEVERAL ISSUES.

TABLE 52 EC-9 RICE PRODUCER PRICES

YEAR	ITALY	EC-9 NOMINAL	EC-9 REAL	YEAR	ITALY	EC-9 NOMINAL	EC-9 REAL
1960	6,035	9.14	20.84	1971	8,142	12.58	16.60
1961	6,105	9.15	20.51	1972	8,976	13.72	17.23
1962	6,124	9.16	19.44	1973	11,875	16.57	20.42
1963	6,241	9.33	18.26	1974	12,406	15.99	18.01
1964	6,543	9.79	17.95	1975	15,337	18.95	18.95
1965	6,941	10.38	18.25	1976	19,262	20.71	20.16
1966	7,219	10.80	18.53	1977	25,750	25.58	22.63
1967	7,495	11.26	18.69	1978	29,160	26.99	22.51
1968	8,484	13.19	20.75	1979	28,470	25.01	19.00
1969	7,846	12.28	18.37	1980	30,310	25.49	16.80
1970	7,866	12.31	17.19				

ITALIAN PRODUCER PRICES ARE LIRE PER 100 KG.

THE EC-9 NOMINAL PRICE IS CALCULATED BY CONVERTING THE ITALIAN PRICE TO ECU'S USING 1960-1980 CALENDAR YEAR EXCHANGE RATES (TABLE 8).

THE EC-9 REAL PRICE IS CALCULATED BY CONVERTING THE DEFLATED ITALIAN PRICE (SEE TABLE 7 FOR GDP DEFLATORS) TO ECU'S USING 1975 CALENDAR YEAR EXCHANGE RATES (TABLE 8).

SOURCES:

EUROSTAT, STATISTIQUE AGRICOLE, SEVERAL ISSUES.

EUROSTAT, AGRICULTURAL PRICE STATISTICS, 1981.

TABLE 53 EC-9 CATTLE PRODUCER PRICES

YEAR	BELGIUM/LUX.	DENMARK	FRANCE	IRELAND	ITALY	NETHERLANDS	U. KINGDOM	W. GERMANY	EC-9 NOMINAL	EC-9 REAL
1960/61.	2,123	241	198.00.	11.98	34,151.	172	13.853	200.40	40.86	100.18
1961/62.	2,333	220	209.00.	12.15	32,478.	176	14.337	202.40	41.71	98.70
1962/63.	2,210	221	254.70.	11.87	33,572.	161	14.296	192.20	43.57	98.03
1963/64.	2,741	268	277.10.	13.33	36,648.	204	14.846	216.70	48.47	104.69
1964/65.	3,029	317	301.85.	13.73	42,351.	229	16.183	247.03	53.95	111.61
1965/66.	3,011	300	304.90.	14.70	43,015.	229	16.396	243.65	54.21	107.63
1966/67.	3,063	276	308.50.	13.44	42,420.	231	16.338	231.10	53.40	102.00
1967/68.	3,114	264	302.60.	14.15	43,240.	237	17.314	232.50	54.04	99.93
1968/69.	3,335	293	325.10.	16.74	44,050.	263	18.422	251.50	58.44	104.06
1969/70.	3,281	337	356.30.	17.88	45,800.	256	19.302	247.20	60.50	102.32
1970/71.	3,356	350	374.30.	19.03	48,500.	261	21.084	244.40	62.58	99.53
1971/72.	3,838	418	407.00.	21.18	49,600.	303	23.519	273.60	68.91	102.45
1972/73.	4,331	554	495.60.	26.77	59,500.	331	31.109	323.85	83.82	115.76
1973/74.	4,197	556	475.40.	33.94	67,700.	303	33.392	291.80	83.40	105.74
1974/75.	4,426	559	504.00.	30.00	74,100.	310	33.857	313.50	87.29	99.77
1975/76.	4,515	670	535.80.	40.25	99,500.	349	39.881	348.30	99.94	99.94
1976/77.	4,933	717	559.15.	52.21	117,000.	354	49.996	345.75	107.15	98.28
1977/78.	5,205	770	620.63.	63.03	126,900.	381	54.800	355.40	114.71	97.17
1978/79.	5,272	836	729.06.	72.95	147,100.	375	63.929	346.10	124.34	98.23
1979/80.	5,071	840	700.66.	76.28	159,100.	370	69.898	351.00	125.49	91.04
1980/81.	5,464	924	751.54.	73.51	184,100.	384	73.900	350.30	132.09	86.59

BEEF CATTLE, LIVE WEIGHT.

APRIL/MARCH MARKETING YEAR.

NATIONAL PRODUCER PRICES ARE UNIT VALUES IN NATIONAL CURRENCY PER 100 KG.

THE EC-9 NOMINAL PRICE IS CALCULATED BY CONVERTING NATIONAL PRICES TO ECU'S USING 1960/61-1980/81 APRIL/MARCH YEAR EXCHANGE RATES (TABLE 10) AND THEN TAKING A WEIGHTED SUM USING 1976 BEEF AND VEAL PRODUCTION SHARES AS WEIGHTS (TABLE 60).

THE EC-9 REAL PRICE IS CALCULATED BY CONVERTING DEFLATED NATIONAL PRICES (SEE TABLE 7 FOR GDP DEFLATORS) TO ECU'S USING 1975/76 APRIL/MARCH YEAR EXCHANGE RATES (TABLE 10) AND THEN TAKING A WEIGHTED SUM USING 1976 BEEF AND VEAL PRODUCTION SHARES AS WEIGHTS (TABLE 60).

SOURCES:

EC COMMISSION, AGRICULTURAL MARKETS, PRICES RECEIVED BY FARMERS, 1980.

FAO, PRICES OF AGRICULTURAL PRODUCTS AND SELECTED INPUTS IN EUROPE AND NORTH AMERICA, SEVERAL ISSUES.

TABLE 54 EC-9 PIG PRODUCER PRICES

YEAR	BELGIUM/LUX.	DENMARK.	FRANCE.	IRELAND.	ITALY	NETHERLANDS.	U. KINGDOM.	W. GERMANY.	EC-9 NOMINAL.	EC-9 REAL.
1960/61.	2,523	322	274.06	17.03	29,430.	178	17.637	240.80	49.99	133.51
1961/62.	2,353	303	271.50	16.76	35,434.	169	18.096	234.80	49.76	127.22
1962/63.	2,515	320	271.00	16.85	37,142.	176	18.050	238.30	50.89	124.98
1963/64.	3,280	361	344.80	16.99	40,160.	217	17.132	259.70	58.13	137.34
1964/65.	2,852	344	284.30	17.66	37,550.	198	17.362	235.38	52.48	118.49
1965/66.	3,045	346	326.83	17.90	37,680.	196	17.268	272.51	57.06	123.89
1966/67.	3,196	376	335.90	19.19	45,520.	218	18.418	267.50	59.75	123.64
1967/68.	2,809	366	288.30	19.60	43,700.	206	18.785	226.10	54.40	107.50
1968/69.	3,491	378	362.43	20.39	38,800.	239	18.795	250.10	60.82	116.45
1969/70.	3,544	433	355.00	20.35	45,680.	258	20.095	277.10	66.05	119.32
1970/71.	2,999	417	318.30	21.43	49,500.	218	21.440	238.37	60.47	100.76
1971/72.	3,229	414	318.50	22.05	47,500.	230	21.649	253.50	62.86	97.09
1972/73.	3,815	508	401.03	23.24	49,500.	278	26.301	289.64	75.93	106.90
1973/74.	4,110	607	462.98	32.53	61,700.	298	32.718	309.20	87.16	111.38
1974/75.	3,497	572	408.68	37.49	68,500.	249	38.566	277.80	81.70	93.30
1975/76.	4,697	627	509.25	47.97	79,400.	321	44.282	342.80	102.32	102.32
1976/77.	4,282	727	514.61	52.59	105,000.	296	48.311	316.25	103.63	94.45
1977/78.	4,529	717	534.44	61.65	106,500.	303	51.948	320.10	106.88	89.91
1978/79.	4,024	756	531.00	66.73	110,000.	267	57.414	278.20	100.56	79.11
1979/80.	4,396	720	568.50	66.84	127,000.	289	58.277	302.40	106.87	78.96
1980/81.	4,264	788	590.25	69.72	144,500.	279	62.723	293.20	107.99	73.67

SLAUGHTER PIGS, LIVE WEIGHT.

NOVEMBER/OCTOBER MARKETING YEAR.

NATIONAL PRODUCER PRICES ARE UNIT VALUES IN NATIONAL CURRENCY PER 100 KG.

THE EC-9 NOMINAL PRICE IS CALCULATED BY CONVERTING NATIONAL PRICES TO ECU'S USING 1960/61-1980/81 NOVEMBER/OCTOBER YEAR EXCHANGE RATES (TABLE 11) AND THEN TAKING A WEIGHTED SUM USING 1976 PORK PRODUCTION SHARES AS WEIGHTS (TABLE 60).

THE EC-9 REAL PRICE IS CALCULATED BY CONVERTING DEFLATED NATIONAL PRICES (SEE TABLE 7 FOR GDP DEFLATORS) TO ECU'S USING 1975/76 NOVEMBER/OCTOBER YEAR EXCHANGE RATES (TABLE 11) AND THEN TAKING A WEIGHTED SUM USING 1976 PORK PRODUCTION SHARES AS WEIGHTS (TABLE 60).

SOURCES:

EC COMMISSION, AGRICULTURAL MARKETS, PRICES RECEIVED BY FARMERS, 1980.

FAO, PRICES OF AGRICULTURAL PRODUCTS AND SELECTED INPUTS IN EUROPE AND NORTH AMERICA, SEVERAL ISSUES.

TABLE 55 EC-9 POULTRY PRODUCER PRICES

YEAR	BELGIUM/LUX.	DENMARK	FRANCE	IRELAND	ITALY	NETHERLANDS	U. KINGDOM	W. GERMANY	EC-9 NOMINAL	EC-9 REAL
1960	2,366	377	347	25.33	57,372	175	18.602	239.0	64.07	150.77
1961	2,398	322	325	23.27	57,598	166	16.535	231.8	61.02	140.18
1962	2,466	308	339	20.21	61,064	167	17.684	213.4	63.21	138.21
1963	2,366	320	330	19.29	62,350	167	16.765	230.8	63.12	130.30
1964	2,181	333	275	19.29	63,854	164	17.684	222.7	61.16	119.53
1965	2,514	342	261	18.55	61,903	169	16.765	234.4	59.77	112.58
1966	2,095	326	258	18.00	61,398	162	16.994	229.2	58.91	107.02
1967	2,343	319	269	17.45	61,643	154	16.305	196.8	58.52	102.75
1968	2,454	322	268	18.00	62,855	156	15.917	198.0	59.75	100.43
1969	2,470	327	278	19.29	61,925	160	16.074	200.0	59.96	96.07
1970	2,399	320	280	19.84	55,850	154	17.137	166.1	56.33	85.66
1971	2,345	310	293	19.84	57,883	151	16.588	172.6	57.09	81.59
1972	2,522	373	306	20.72	59,950	163	17.273	184.8	59.70	80.18
1973	2,890	461	338	29.43	66,971	199	24.239	209.0	67.44	85.64
1974	2,745	425	336	32.72	69,017	173	30.948	184.2	67.02	77.14
1975	3,102	437	357	34.17	78,250	184	31.684	196.8	71.72	71.72
1976	3,107	488	374	43.00	91,033	199	34.807	210.6	75.05	70.15
1977	3,103	528	416	47.84	88,667	198	43.281	208.0	76.53	65.94
1978	3,039	532	441	50.93	91,008	192	43.490	198.1	75.85	60.99
1979	3,307	553	454	54.23	92,333	206	47.126	223.0	78.57	57.49
1980	3,261	610	479	55.34	120,033	212	49.344	238.8	87.55	56.67

NATIONAL PRODUCER PRICES ARE IN NATIONAL CURRENCY PER 100 KG.

THE IRISH PRICE IN 1960 IS ESTIMATED FROM MOVEMENTS IN THE U. KINGDOM PRICE FOR THAT YEAR.

THE EC-9 NOMINAL PRICE IS CALCULATED BY CONVERTING NATIONAL PRICES TO ECU'S USING 1960-1980 CALENDAR YEAR

EXCHANGE RATES (TABLE 8) AND THEN TAKING A WEIGHTED SUM USING 1976 POULTRY PRODUCTION SHARES AS WEIGHTS (TABLE 60).

THE EC-9 REAL PRICE IS CALCULATED BY CONVERTING DEFLATED NATIONAL PRICES (SEE TABLE 7 FOR GDP DEFLATORS) TO ECU'S USING 1975 CALENDAR YEAR EXCHANGE RATES (TABLE 8) AND THEN TAKING A WEIGHTED SUM USING 1976 POULTRY PRODUCTION SHARES AS WEIGHTS (TABLE 60).

SOURCES:

EUROSTAT, STATISTIQUE AGRICOLE, SEVERAL ISSUES.

EUROSTAT, AGRICULTURAL PRICE STATISTICS, 1980.

FAO, PRICES OF AGRICULTURAL PRODUCTS AND SELECTED INPUTS IN EUROPE AND NORTH AMERICA, SEVERAL ISSUES.

TABLE 56 EC-9 EGG PRODUCER PRICES

YEAR	BELGIUM/LUX.	DENMARK.	FRANCE.	IRELAND.	ITALY	NETHERLANDS.	U. KINGDOM.	W. GERMANY.	EC-9 NOMINAL.	EC-9 REAL.
1960/61.	3,006	360	279.00.	20.48	49,072.	208	28.234	325.80	66.52	158.19
1961/62.	2,736	299	286.00.	22.90	49,220.	165	25.646	302.00	62.82	143.61
1962/63.	2,970	362	321.00.	22.64	48,136.	192	26.690	328.60	66.88	147.74
1963/64.	2,340	341	274.00.	22.02	50,135.	168	24.234	311.80	62.06	130.62
1964/65.	2,538	362	276.36.	23.29	44,491.	183	22.528	309.90	60.18	122.49
1965/66.	3,080	394	325.15.	24.04	51,182.	215	25.380	332.30	68.06	132.67
1966/67.	2,575	383	298.50.	21.09	42,739.	188	23.537	310.20	61.30	115.43
1967/68.	2,645	392	273.50.	25.19	42,321.	196	23.261	294.50	59.78	109.26
1968/69.	3,010	392	291.60.	26.78	43,929.	209	24.790	303.00	63.10	111.52
1969/70.	2,314	359	278.60.	26.72	46,429.	163	23.801	274.50	59.65	98.49
1970/71.	2,105	371	288.00.	26.31	41,786.	154	24.480	270.00	58.48	90.49
1971/72.	2,697	407	346.00.	30.41	48,214.	195	23.609	293.10	65.14	94.35
1972/73.	2,558	402	361.72.	35.87	48,571.	190	24.653	287.00	65.67	88.99
1973/74.	3,376	517	426.55.	47.03	60,000.	236	42.457	334.10	84.49	105.92
1974/75.	3,045	429	393.45.	41.15	64,286.	187	37.271	305.30	77.33	87.22
1975/76.	2,592	451	444.31.	44.09	71,071.	201	37.178	310.33	79.96	79.96
1976/77.	3,323	577	589.66.	55.85	85,714.	230	44.761	318.70	93.08	85.49
1977/78.	3,463	651	681.03.	57.32	94,107.	215	50.465	304.50	97.66	82.63
1978/79.	2,714	626	694.83.	53.20	105,714.	181	47.877	275.40	93.88	73.75
1979/80.	2,645	628	728.37.	64.82	109,643.	212	55.528	296.30	101.34	72.56
1980/81.	3,289	720	792.11.	73.19	130,000.	236	62.936	320.60	113.46	72.90

NOVEMBER/OCTOBER MARKETING YEAR.

NATIONAL PRODUCER PRICES ARE UNIT VALUES IN NATIONAL CURRENCY PER 100 KG.

THE EC-9 NOMINAL PRICE IS CALCULATED BY CONVERTING NATIONAL PRICES TO ECU'S USING 1960/61-1980/81 NOVEMBER/OCTOBER YEAR EXCHANGE RATES (TABLE 11) AND THEN TAKING A WEIGHTED SUM USING 1976 EGG PRODUCTION SHARES AS WEIGHTS (TABLE 60).

THE EC-9 REAL PRICE IS CALCULATED BY CONVERTING DEFLATED NATIONAL PRICES (SEE TABLE 7 FOR GDP DEFLATORS) TO ECU'S USING 1975/76 NOVEMBER/OCTOBER YEAR EXCHANGE RATES (TABLE 11) AND THEN TAKING A WEIGHTED SUM USING 1976 EGG PRODUCTION SHARES AS WEIGHTS (TABLE 60).

SOURCES:

EC COMMISSION, AGRICULTURAL MARKETS, PRICES RECEIVED BY FARMERS, 1980.

FAO, PRICES OF AGRICULTURAL PRODUCTS AND SELECTED INPUTS IN EUROPE AND NORTH AMERICA, SEVERAL ISSUES.

TABLE 57 EC-9 MILK PRODUCER PRICES

YEAR	BELGIUM/LUX.	DENMARK	FRANCE	IRELAND	ITALY	NETHERLANDS	U. KINGDOM	W. GERMANY	EC-9 NOMINAL	EC-9 REAL
1960/61.	331	33.60	33.70	1.97	4,570	26.50	3.071	32.22	6.82	16.90
1961/62.	331	37.97	35.10	1.97	4,675	25.80	3.043	33.84	6.98	16.71
1962/63.	354	64.78	37.70	1.97	4,894	27.95	3.042	35.36	7.37	16.95
1963/64.	396	46.54	38.90	2.04	5,435	29.00	3.217	37.46	7.77	17.05
1964/65.	438	46.55	39.70	2.20	6,421	32.72	3.422	38.22	8.22	17.23
1965/66.	440	49.72	39.42	2.25	6,489	33.08	3.465	38.60	8.29	16.69
1966/67.	441	49.94	41.25	2.39	6,506	34.58	3.554	38.31	8.48	16.40
1967/68.	437	52.75	41.63	2.51	6,486	34.16	3.580	38.31	8.54	16.01
1968/69.	418	52.07	41.58	2.53	6,544	34.43	3.606	38.50	8.60	15.51
1969/70.	420	60.30	44.19	2.53	6,680	34.63	3.612	38.00	8.78	15.04
1970/71.	429	64.93	49.03	2.64	7,435	35.01	3.965	38.30	9.34	15.00
1971/72.	439	74.90	59.66	2.91	8,325	39.09	4.377	42.00	10.62	15.89
1972/73.	478	82.80	64.12	3.50	8,906	40.24	4.533	43.60	11.33	15.74
1973/74.	505	99.02	66.81	4.39	9,100	40.95	5.384	44.70	12.17	15.50
1974/75.	550	106.10	74.67	5.26	11,520	43.07	6.758	49.80	13.90	15.90
1975/76.	611	117.10	82.64	6.76	14,782	47.51	7.735	54.40	15.81	15.81
1976/77.	660	129.56	83.21	7.63	18,193	50.37	9.077	56.30	16.94	15.49
1977/78.	685	146.70	88.66	10.24	24,315	53.80	9.860	57.40	18.45	15.58
1978/79.	703	152.22	96.98	11.06	25,208	54.58	10.273	58.75	19.20	15.10
1979/80.	696	163.09	105.44	11.42	28,850	54.37	11.150	58.83	20.17	14.65
1980/81.	708	179.78	113.39	11.31	30,699	56.99	12.298	59.82	21.20	13.99

57

COV MILK, ACTUAL FAT CONTENT.

APRIL/MARCH MARKETING YEAR.

NATIONAL PRODUCER PRICES ARE UNIT VALUES IN NATIONAL CURRENCY PER 100 KG.

THE EC-9 NOMINAL PRICE IS CALCULATED BY CONVERTING NATIONAL PRICES TO ECU'S USING 1960/61-1980/81 APRIL/MARCH YEAR EXCHANGE RATES (TABLE 10) AND THEN TAKING A WEIGHTED SUM USING 1976 MILK PRODUCTION SHARES AS WEIGHTS (TABLE 60).

THE EC-9 REAL PRICE IS CALCULATED BY CONVERTING DEFLATED NATIONAL PRICES (SEE TABLE 7 FOR GDP DEFLATORS), TO ECU'S USING 1975/76 APRIL/MARCH YEAR EXCHANGE RATES (TABLE 10) AND THEN TAKING A WEIGHTED SUM USING 1976 MILK PRODUCTION SHARES AS WEIGHTS (TABLE 60).

SOURCES:

EC COMMISSION, AGRICULTURAL MARKETS, PRICES RECEIVED BY FARMERS, 1980.

FAO, PRICES OF AGRICULTURAL PRODUCTS AND SELECTED INPUTS IN EUROPE AND NORTH AMERICA, SEVERAL ISSUES.

TABLE 58 EC-9 BUTTER PRODUCER PRICES

YEAR	BELGIUM/LUX.	DENMARK	FRANCE	ITALY	NETHERLANDS	U. KINGDOM	W. GERMANY	EC-9 NOMINAL	EC-9 REAL
1960	8,235	574	802	73,581	368	34.10	574.0	127.47	329.67
1961	8,217	544	806	77,329	355	31.45	608.9	130.20	323.81
1962	8,390	578	827	85,459	353	34.23	641.5	135.52	322.70
1963	8,819	696	906	86,080	367	39.09	653.1	144.20	327.42
1964	9,528	727	926	88,160	433	40.73	670.1	150.21	328.03
1965	9,718	711	927	89,721	470	38.78	681.2	152.09	320.39
1966	9,718	712	922	89,887	508	38.21	682.0	152.96	310.51
1967	9,742	737	939	93,340	568	39.00	682.0	157.03	309.39
1968	9,380	731	931	106,073	610	36.27	664.1	160.63	298.42
1969	8,797	754	977	114,456	607	35.56	663.5	162.43	287.86
1970	8,854	845	1,013	114,830	616	38.50	642.6	164.32	273.93
1971	8,921	940	1,090	123,945	638	52.20	663.3	175.12	271.65
1972	9,087	999	1,128	127,028	653	58.36	672.2	182.96	262.16
1973	8,989	1,287	1,138	123,257	639	58.32	661.8	193.24	246.66
1974	8,970	1,327	1,179	141,821	618	57.61	657.3	198.09	227.10
1975	9,937	1,517	1,337	172,659	684	88.32	719.0	230.69	230.69
1976	10,810	1,618	1,437	215,169	737	104.05	768.4	257.46	231.76
1977	11,295	1,801	1,529	230,254	769	120.30	788.6	273.93	227.84
1978	11,543	1,915	1,651	276,817	786	144.40	799.6	289.29	224.57
1979	11,630	1,951	1,783	295,459	792	169.60	805.7	300.58	218.27
1980	11,799	2,213	1,945	335,339	808	192.60	811.6	314.80	212.76

NATIONAL PRODUCER PRICES ARE IN NATIONAL CURRENCY PER 100 KG.

THE EC-9 NOMINAL PRICE IS CALCULATED BY CONVERTING NATIONAL PRICES TO ECU'S USING 1960-1980 CALENDAR YEAR EXCHANGE RATES (TABLE 8) AND THEN TAKING A WEIGHTED SUM USING 1976 BUTTER PRODUCTION SHARES AS WEIGHTS (TABLE 60).
 THE EC-9 REAL PRICE IS CALCULATED BY CONVERTING DEFLATED NATIONAL PRICES (SEE TABLE 7 FOR GDP DEFLATORS) TO ECU'S USING 1975 CALENDAR YEAR EXCHANGE RATES (TABLE 8) AND THEN TAKING A WEIGHTED SUM USING 1976 BUTTER PRODUCTION SHARES AS WEIGHTS (TABLE 60).

SOURCES:

- EUROSTAT, STATISTICS AGRICOLE, SEVERAL ISSUES.
- EUROSTAT, AGRICULTURAL PRICE STATISTICS, 1981.
- FAO, MONTHLY BULLETIN OF STATISTICS, SEVERAL ISSUES.
- FAO, PRODUCTION YEARBOOK, SEVERAL ISSUES.
- LANDBRUGSSTATISTIK, SEVERAL ISSUES.

TABLE 59 EC-9 CHEESE PRODUCER PRICES

YEAR	BELGIUM/LUX.	DENMARK	FRANCE	ITALY	NETHERLANDS	U. KINGDOM	W. GERMANY	EC-9 NOMINAL	EC-9 REAL
1960	2,840	335	327	77,730	181	24.11	306	70.92	176.52
1961	2,912	322	340	74,233	189	23.82	294	70.40	169.50
1962	3,269	311	402	71,400	197	24.11	287	73.51	168.56
1963	3,865	375	442	84,025	217	25.20	296	81.43	176.29
1964	4,720	369	460	108,500	252	27.46	319	92.19	189.29
1965	4,680	383	430	129,858	258	27.36	317	96.30	189.16
1966	4,827	393	449	148,433	284	28.84	346	105.30	199.69
1967	5,369	385	475	136,000	316	29.23	379	106.84	197.67
1968	5,165	370	469	114,642	322	29.43	378	103.26	181.76
1969	4,939	398	460	131,271	326	29.47	387	107.80	180.50
1970	5,145	433	537	165,049	339	30.44	378	121.97	190.85
1971	5,478	507	630	202,940	372	37.91	420	143.03	208.98
1972	5,667	570	699	223,945	377	48.94	437	156.92	213.83
1973	5,798	832	743	231,364	388	49.21	451	163.37	206.43
1974	6,522	972	791	240,770	416	61.91	513	173.34	198.34
1975	7,286	1,056	887	237,420	465	83.00	562	188.86	188.86
1976	7,731	1,135	904	433,550	482	96.38	569	228.95	212.49
1977	8,378	1,291	957	606,556	521	110.02	584	263.79	225.78
1978	8,473	1,395	1,050	721,889	516	121.17	577	282.80	227.00
1979	8,447	1,447	1,164	684,193	514	143.26	582	280.12	207.00
1980	8,982	1,626	1,249	597,092	575	165.46	614	276.03	183.64

TYPES OF CHEESE:

- BELGIUM/LUX. — GOUDA, 48% FAT
- DENMARK — HARD AND SEMIHARD, 45% FAT
- FRANCE — ST. PAULIN, 45% FAT
- ITALY — GRANA, 32% FAT, EXCEPT FOR 1960 WHICH IS BASED ON MOVEMENTS IN THE PRICE OF PARMESAN
- NETHERLANDS — GOUDA
- U. KINGDOM — CHEDDAR, 48% FAT
- W. GERMANY — GOUDA, 45% FAT

NATIONAL PRODUCER PRICES ARE IN NATIONAL CURRENCY PER 100 KG.

THE EC-9 NOMINAL PRICE IS CALCULATED BY CONVERTING NATIONAL PRICES TO ECU'S USING 1960-1980 CALENDAR YEAR EXCHANGE RATES (TABLE 8) AND THEN TAKING A WEIGHTED SUM USING 1976 CHEESE PRODUCTION SHARES AS WEIGHTS (TABLE 60).

THE EC-9 REAL PRICE IS CALCULATED BY CONVERTING DEFLATED NATIONAL PRICES (SEE TABLE 7 FOR GDP DEFLATORS) TO ECU'S USING 1975 CALENDAR YEAR EXCHANGE RATES (TABLE 8) AND THEN TAKING A WEIGHTED SUM USING 1976 CHEESE PRODUCTION SHARES AS WEIGHTS (TABLE 60).

SOURCES:

- EUROSTAT, STATISTIQUE AGRICOLE, SEVERAL ISSUES.
- EUROSTAT, AGRICULTURAL PRICE STATISTICS, 1981.
- FAO, PRODUCTION YEARBOOK, SEVERAL ISSUES.
- LANDBOUWCIJFERS, 1982.
- LANDBRUGSSTATISTIK, SEVERAL ISSUES.

.....
 TABLE 60 EC-9 AGRICULTURAL PRODUCTION SHARES, 1976

COMMODITY	BELGIUM/LUX.	DENMARK	FRANCE	IRELAND	ITALY	NETHERLANDS	U. KINGDOM	W. GERMANY
COMMON WHEAT	0.0264	0.0166	0.4380	0.0056	0.1718	0.0200	0.1332	0.1884
BARLEY	.0215	.1599	.2841	.0307	.0241	.0088	.2548	.2161
CORN	.0000	.0000	.5188	.0000	.4812	.0000	.0000	.0000
OATS	.0250	.0426	.2629	.0187	.0584	.0148	.1206	.4570
RYE	.0188	.0756	.1100	.0000	.0124	.0231	.0071	.7531
BEEF AND VEAL	.0427	.0381	.2973	.0597	.1192	.0633	.1593	.2204
PORK	.0760	.0855	.1857	.0149	.0890	.1207	.1002	.3280
POULTRY	.0321	.0294	.2637	.0124	.2725	.1017	.2004	.0878
EGGS	.0553	.0191	.2022	.0108	.1807	.0881	.2188	.2251
MILK	.0378	.0497	.3033	.0446	.1008	.1033	.1420	.2185
BUTTER	.0579	.0821	.3272	.0000	.0396	.1193	.0532	.3207
CHEESE	.0143	.0534	.3298	.0000	.1826	.1299	.0694	.2207

.....

1976/77 MARKETING YEAR FOR COMMON WHEAT, BARLEY, CORN, OATS, AND RYE.

SOURCES:

COMMON WHEAT, BARLEY, CORN, AND EGGS - DERIVED FROM FAS.

OATS AND RYE - DERIVED FROM EUROSTAT, CROP PRODUCTION, 1981.

BEEF AND VEAL, PORK, AND POULTRY - DERIVED FROM EUROSTAT, MONTHLY STATISTICS OF MEAT, 1978.

MILK, BUTTER, AND CHEESE - DERIVED FROM MILK AND MILK PRODUCTS BALANCES IN OECD MEMBER COUNTRIES, 1981.

TABLE 61 EC-9 CORN WHOLESALe PRICES (NATIONAL CURRENCY/100 KG)

YEAR	BELGIUM/LUX.	FRANCE	ITALY	NETHERLANDS	U. KINGDOM	W. GERMANY
1960/61	NA	NA	3,994	23.90	NA	44.03
1961/62	NA	40.39	4,089	26.30	NA	45.41
1962/63	438.2	44.39	4,305	26.80	NA	47.13
1963/64	426.8	43.55	4,619	27.10	2.35	46.40
1964/65	430.8	46.03	4,724	30.40	2.45	46.19
1965/66	435.5	44.72	4,502	32.10	2.46	47.00
1966/67	439.7	43.84	4,734	32.70	2.41	44.71
1967/68	490.8	42.87	5,598	33.48	2.46	39.03
1968/69	515.4	44.83	5,793	35.61	2.72	39.85
1969/70	524.9	45.91	5,895	35.93	3.10	39.99
1970/71	522.6	46.97	5,916	35.16	3.02	37.24
1971/72	525.8	49.59	5,913	35.37	3.12	37.12
1972/73	560.9	53.68	6,872	38.15	5.01	40.20
1973/74	598.0	51.12	8,624	38.75	6.83	41.57
1974/75	654.6	66.96	10,736	42.00	5.94	46.08
1975/76	700.4	71.32	12,219	45.29	7.24	48.33
1976/77	767.0	81.73	15,117	48.19	8.70	50.62
1977/78	783.2	88.59	16,272	51.08	10.30	52.43
1978/79	792.4	92.10	18,189	51.87	11.34	53.33
1979/80	810.5	97.95	19,667	52.53	11.94	52.46
1980/81	877.3	111.46	23,695	55.71	NA	55.93

NA = NOT AVAILABLE.
 AUGUST/JULY MARKETING YEAR.
 SOURCES:

EUROSTAT, STATISTIQUE AGRICOLE, 1972.
 EC COMMISSION, AGRICULTURAL MARKETS 1967/68-1972/73, 1974.
 EC COMMISSION, AGRICULTURAL MARKETS 1973-1981, 1982.
 MAFF, AGRICULTURAL MARKET REPORT, SEVERAL ISSUES.

TABLE 62 EC-9 BREAD RETAIL PRICES (NATIONAL CURRENCY/KG)

YEAR	BELGIUM/LUX.	DENMARK	FRANCE	IRELAND	ITALY	NETHERLANDS	U. KINGDOM	W. GERMANY
1961	8.00	2.10	1.05	0.07	132.8	0.56	0.07	1.27
1962	8.75	2.33	.95	.08	143.8	.60	.07	1.30
1963	8.75	2.33	1.08	.08	154.8	.65	.07	1.41
1964	9.50	2.43	1.09	.08	163.2	.69	.08	1.36
1965	10.25	2.81	1.09	.08	165.8	.72	.08	1.44
1966	10.25	2.97	1.18	.09	172.8	.84	.08	1.55
1967	11.75	3.53	1.24	.09	172.8	.85	.09	1.56
1968	12.25	3.73	1.47	.10	175.8	.92	.10	1.56
1969	12.75	4.05	1.50	.11	204.6	.96	.10	1.59
1970	13.25	4.37	2.00	.13	208.8	1.01	.11	1.72
1971	14.50	4.73	2.10	.14	232.0	1.13	.12	1.88
1972	15.50	4.97	2.50	.15	239.0	1.16	.13	2.01
1973	16.50	5.70	2.60	.15	280.0	1.27	.14	2.20
1974	19.00	6.67	3.16	.24	335.0	1.44	.18	2.46
1975	22.00	6.93	3.30	.21	414.0	1.65	.21	2.62
1976	25.00	7.60	3.88	.26	485.0	1.74	.25	2.72
1977	28.44	8.53	3.97	.30	583.0	1.83	.29	2.86
1978	30.43	9.30	5.11	.34	706.0	2.00	.35	3.12
1979	31.44	10.30	5.72	.40	NA	2.09	.39	3.36
1980	32.50	11.37	6.82	.48	NA	2.21	.45	3.56

WHITE WHEAT BREAD.

NA = NOT AVAILABLE.

RETAIL PRICES ARE FOR THE MONTH OF OCTOBER.

THE PRICE FOR DENMARK IN 1969 IS ESTIMATED BY AVERAGING 1968 AND 1970 PRICES.

SOURCE: ILO, BULLETIN OF LABOR STATISTICS, SEVERAL ISSUES.

TABLE 63 EC-9 RICE RETAIL PRICES (NATIONAL CURRENCY/KG)

YEAR	BELGIUM/LUX.	FRANCE	ITALY	NETHERLANDS	U. KINGDOM	W. GERMANY
1961	16.53	1.89	204	0.94	0.10	0.99
1962	17.84	1.89	201	.98	.11	1.06
1963	19.61	2.14	203	1.00	.11	1.10
1964	20.70	2.14	251	1.04	.11	1.20
1965	25.67	2.06	258	1.16	.18	1.25
1966	27.25	2.08	283	1.22	.18	1.71
1967	20.75	1.86	276	1.42	.19	1.77
1968	33.00	2.03	276	1.55	.27	1.93
1969	32.73	2.14	279	1.60	.28	2.00
1970	35.50	2.04	284	1.86	.28	2.17
1971	37.00	1.94	284	2.13	.19	2.42
1972	38.00	2.14	297	2.30	.19	2.52
1973	39.30	2.82	456	2.24	.27	2.70
1974	60.00	2.99	458	2.88	.49	3.46
1975	58.50	4.99	474	2.56	.43	3.28
1976	60.00	4.89	656	2.45	.48	3.14
1977	52.00	5.36	884	2.53	.53	3.20
1978	54.50	6.04	1,072	2.78	.58	3.38
1979	53.00	5.34	NA	2.73	.62	3.44
1980	53.50	5.49	NA	2.87	.64	3.50

WHOLE GRAIN, POLISHED RICE.

NA = NOT AVAILABLE.

RETAIL PRICES ARE FOR THE MONTH OF OCTOBER.

SOURCE: ILO, BULLETIN OF LABOR STATISTICS, SEVERAL ISSUES.

TABLE 64 EC-9 BUTTER RETAIL PRICES (NATIONAL CURRENCY/KG)

YEAR	BELGIUM/LUX.	DENMARK	FRANCE	IRELAND	ITALY	NETHERLANDS	U. KINGDOM	W. GERMANY
1961	92.9	8.20	9.27	0.50	1,218	4.08	0.31	7.19
1962	98.9	8.75	9.44	.50	1,305	4.08	.38	7.46
1963	101.0	9.25	9.89	.52	1,417	4.47	.42	7.74
1964	110.6	9.34	10.23	.52	1,435	5.24	.43	7.55
1965	111.1	10.42	9.99	.52	1,480	5.28	.40	7.80
1966	111.3	10.91	10.49	.54	1,456	5.76	.40	7.82
1967	111.9	11.56	10.54	.54	1,441	6.32	.40	7.81
1968	104.2	11.83	10.97	.54	1,532	6.85	.39	7.75
1969	104.1	12.65	10.89	.53	1,638	7.18	.40	7.72
1970	104.4	13.47	11.95	.55	1,680	7.40	.41	7.54
1971	110.8	14.40	13.72	.56	1,802	7.64	.63	8.04
1972	115.8	14.40	14.31	.61	1,843	7.96	.54	8.12
1973	113.5	17.23	14.14	.62	1,885	7.52	.49	7.80
1974	118.0	16.67	14.89	.82	2,333	7.76	.54	7.84
1975	137.5	20.15	16.86	.89	2,636	8.56	.73	8.60
1976	144.8	22.01	17.67	1.17	3,302	9.12	1.08	8.96
1977	149.3	20.69	18.28	1.16	3,699	9.34	1.19	9.04
1978	152.0	21.43	20.55	1.33	3,933	9.50	1.47	9.20
1979	152.5	20.91	22.56	1.40	NA	9.54	1.59	9.24
1980	156.5	25.00	23.96	1.45	NA	9.90	1.76	9.44

NA = NOT AVAILABLE.

RETAIL PRICES ARE FOR THE MONTH OF OCTOBER.

THE PRICE FOR DENMARK IN 1969 IS ESTIMATED BY AVERAGING 1968 AND 1970 PRICES.

SOURCE: ILO, BULLETIN OF LABOR STATISTICS, SEVERAL ISSUES.

TABLE 65 EC-9 MILK RETAIL PRICES (NATIONAL CURRENCY/LITER)

YEAR	BELGIUM/LUX.	DENMARK	FRANCE	IRELAND	ITALY	NETHERLANDS	U. KINGDOM	W. GERMANY
1961	7.08	0.85	0.64	0.05	87.2	0.41	0.06	0.56
1962	7.25	.93	.68	.05	88.2	.42	.06	.45
1963	7.22	.91	.71	.05	99.6	.49	.06	.60
1964	7.89	.93	.73	.05	115.0	.55	.07	.50
1965	8.35	1.04	.74	.05	115.0	.56	.07	.50
1966	8.34	1.13	.76	.05	120.8	.58	.07	.34
1967	8.31	1.17	.79	.06	126.0	.58	.08	.70
1968	8.26	1.17	.87	.06	128.0	.60	.08	.70
1969	8.20	1.25	.90	.07	130.8	.62	.08	.74
1970	8.22	1.33	.98	.07	141.0	.64	.09	.76
1971	9.00	1.52	1.08	.08	151.0	.71	.10	.82
1972	10.90	1.58	1.17	.08	157.0	.77	.10	.87
1973	10.38	2.07	1.23	.10	161.0	.79	.10	.87
1974	12.19	2.05	1.40	.13	240.0	.90	.08	.93
1975	13.59	2.19	1.58	.11	252.0	.98	.12	1.00
1976	14.44	2.69	1.76	.14	314.0	1.02	.17	1.01
1977	15.50	2.95	1.89	.14	390.0	1.10	.20	1.02
1978	15.63	3.11	2.08	.16	412.0	1.14	.22	1.11
1979	16.19	3.27	2.31	.22	NA	1.13	.26	1.13
1980	16.44	3.77	2.58	NA	NA	1.22	.30	1.15

WHOLE MILK.

NA = NOT AVAILABLE.

RETAIL PRICES ARE FOR THE MONTH OF OCTOBER.

PRICES FOR DENMARK IN 1969 AND W. GERMANY IN 1979 ARE ESTIMATED BY AVERAGING 1968 AND 1970 PRICES FOR DENMARK AND 1978 AND 1980 PRICES FOR W. GERMANY.

SOURCE: ILO, BULLETIN OF LABOR STATISTICS, SEVERAL ISSUES.

TABLE 66 EC-9 CHEESE RETAIL PRICES (NATIONAL CURRENCY/KG)

YEAR	BELGIUM/LUX.	DENMARK	FRANCE	IRELAND	ITALY	NETHERLANDS	U. KINGDOM	W. GERMANY
1961	62.9	6.77	NA	0.35	1,172	3.34	0.31	6.34
1962	70.3	6.93	NA	.37	1,175	3.34	.32	6.33
1963	70.9	7.62	NA	.38	1,374	3.54	.33	6.49
1964	79.3	7.98	NA	.38	1,597	4.02	.36	6.32
1965	79.9	8.40	NA	.39	1,861	4.23	.37	6.73
1966	82.4	8.86	NA	.39	2,055	4.82	.38	7.37
1967	89.4	9.46	NA	.39	2,055	5.02	.38	7.86
1968	91.1	9.91	NA	.40	2,001	5.19	.38	8.14
1969	92.5	10.75	NA	.42	2,062	5.68	.39	8.40
1970	94.4	11.59	12.23	.45	2,320	5.94	.43	8.82
1971	101.5	13.22	13.22	.46	2,884	6.78	.57	9.42
1972	108.0	13.96	15.06	.57	3,163	7.14	.71	9.92
1973	111.0	19.22	15.75	.73	3,273	7.42	.72	10.25
1974	126.0	19.22	17.08	.86	3,521	8.22	.87	11.35
1975	139.8	23.20	19.48	1.16	3,640	8.96	1.01	12.33
1976	141.5	27.13	22.13	1.44	7,240	9.42	1.14	12.97
1977	156.5	31.57	22.66	1.58	8,325	10.11	1.48	13.29
1978	166.5	33.71	24.45	1.98	11,080	10.40	1.59	13.78
1979	170.5	36.27	27.54	2.15	NA	9.05	1.92	14.10
1980	176.0	41.89	28.73	2.35	NA	10.86	2.17	14.42

NATURAL CHEESE, MADE FROM WHOLE MILK.

NA = NOT AVAILABLE.

RETAIL PRICES ARE FOR THE MONTH OF OCTOBER.

THE PRICE FOR DENMARK IN 1969 IS ESTIMATED BY AVERAGING 1968 AND 1970 PRICES.

SOURCE: ILO, BULLETIN OF LABOR STATISTICS, SEVERAL ISSUES.

TABLE 67 EC-9 EGG RETAIL PRICES (NATIONAL CURRENCY/EGG)

YEAR	BELGIUM/LUX.	DENMARK	FRANCE	IRELAND	ITALY	NETHERLANDS	U. KINGDOM	W. GERMANY
1961	2.49	0.33	0.28	0.025	38.6	0.14	0.016	0.21
1962	2.18	.34	.27	.022	39.8	.13	.015	.23
1963	2.70	.38	.30	.022	42.6	.16	.017	.26
1964	2.40	.38	.27	.024	43.6	.14	.013	.26
1965	2.90	.42	.33	.025	44.8	.17	.017	.25
1966	2.50	.44	.29	.017	42.2	.14	.021	.23
1967	2.70	.50	.29	.025	42.4	.15	.017	.23
1968	2.80	.52	.34	.021	42.2	.16	.017	.22
1969	2.60	.54	.32	.021	43.0	.15	.017	.21
1970	2.40	.56	.31	.021	42.6	.14	.016	.18
1971	3.00	.60	.39	.020	46.3	.20	.015	.22
1972	3.00	.60	.36	.024	45.0	.16	.015	.21
1973	3.60	.60	.45	.040	52.8	.22	.035	.26
1974	3.80	.61	.46	.040	62.6	.20	.031	.25
1975	3.95	.57	.45	.040	66.2	.18	.031	.22
1976	4.23	.69	.51	.045	79.5	.22	.038	.25
1977	4.31	.80	.57	.048	90.8	.22	.038	.25
1978	4.00	.84	.56	.049	96.2	.20	.037	.23
1979	4.19	.89	.58	.056	NA	.22	.048	.23
1980	4.13	1.03	.61	.060	NA	.23	.053	.25

NA = NOT AVAILABLE.

RETAIL PRICES ARE FOR THE MONTH OF OCTOBER.

PRICES FOR DENMARK AND THE U. KINGDOM IN 1969 ARE ESTIMATED BY AVERAGING 1968 AND 1970 PRICES.

SOURCE: ILO, BULLETIN OF LABOR STATISTICS, SEVERAL ISSUES.

TABLE 68 EC-9 MARGARINE RETAIL PRICES (NATIONAL CURRENCY/KG)

YEAR	BELGIUM/LUX.	DENMARK	FRANCE	IRELAND	ITALY	NETHERLANDS	U. KINGDOM	W. GERMANY
1961	24.99	3.09	3.17	0.18	700	1.44	0.20	2.32
1962	24.99	3.09	3.15	.19	698	1.36	.20	2.20
1963	24.00	3.24	3.24	.19	748	1.44	.20	2.20
1964	25.00	3.50	3.24	.20	750	1.60	.20	2.78
1965	28.00	3.77	3.60	.22	800	1.64	.23	2.52
1966	28.00	3.72	3.57	.22	803	1.64	.23	2.66
1967	28.00	3.86	3.56	.22	771	1.63	.19	2.64
1968	27.75	4.02	3.63	.22	739	1.72	.21	2.55
1969	27.63	4.63	3.62	.22	747	1.56	.21	2.52
1970	33.56	5.23	4.56	.27	777	1.92	.25	2.73
1971	33.25	5.26	4.92	.31	832	1.99	.28	3.44
1972	33.50	4.69	4.76	.31	886	1.81	.26	3.40
1973	33.50	6.22	5.40	.37	901	2.11	.31	3.52
1974	56.25	9.55	9.08	.59	1,248	3.21	.47	4.56
1975	57.50	7.30	7.24	.57	1,400	2.80	.52	4.56
1976	57.50	7.93	7.32	.63	1,550	2.97	.53	4.24
1977	63.25	7.95	8.24	.77	1,614	2.97	.69	4.60
1978	61.50	8.33	9.16	.72	1,668	3.15	.64	4.44
1979	63.75	8.67	10.00	.77	NA	3.26	.64	3.46
1980	68.25	8.72	10.20	.81	NA	3.12	.65	4.64

NA = NOT AVAILABLE.

RETAIL PRICES ARE FOR THE MONTH OF OCTOBER.

PRICES FOR DENMARK IN 1969 AND FRANCE IN 1977 ARE ESTIMATED BY AVERAGING 1968 AND 1970 PRICES FOR DENMARK AND 1976 AND 1978 PRICES FOR FRANCE. PRICES FOR THE NETHERLANDS IN THE YEARS 1971-1974 ARE ESTIMATED FROM MARGARINE WHOLESALE PRICE MOVEMENTS.

SOURCE: ILO, BULLETIN OF LABOR STATISTICS, SEVERAL ISSUES.

TABLE 69 EC-9 BEER RETAIL PRICES (NATIONAL CURRENCY/LITER)

YEAR	BELGIUM/LUX.	DENMARK	FRANCE	ITALY	NETHERLANDS	U. KINGDOM	W. GERMANY
1961	6.13	0.96	.60	205	1.02	0.18	1.20
1962	6.13	.97	.58	205	1.02	.18	1.20
1963	6.13	1.03	.67	234	1.04	.19	1.20
1964	6.47	1.09	.63	235	1.11	.20	1.27
1965	6.89	3.36	.66	235	1.11	.21	1.26
1966	7.13	3.71	.70	241	1.18	.22	1.31
1967	7.65	4.16	.72	238	1.18	.22	1.29
1968	8.47	4.24	.77	238	1.23	.22	1.27
1969	8.20	4.35	.84	238	1.20	.25	1.24
1970	9.07	4.45	.88	263	1.20	.26	1.29
1971	10.67	4.61	.99	264	1.26	.27	1.39
1972	12.00	4.75	1.02	273	1.32	.28	1.39
1973	12.00	5.17	1.07	304	1.38	.33	1.46
1974	14.00	6.11	1.19	421	1.44	.39	1.53
1975	17.07	6.05	1.41	485	1.48	.49	1.56
1976	17.00	7.09	1.49	520	1.51	.57	1.54
1977	17.67	7.76	1.66	665	1.54	.66	1.58
1978	18.00	8.19	1.82	488	1.59	.70	1.60
1979	18.00	8.51	2.02	NA	1.60	.83	1.62
1980	18.33	9.12	2.38	NA	1.63	.97	1.64

BOTTLED BEER.

NA = NOT AVAILABLE.

RETAIL PRICES ARE FOR THE MONTH OF OCTOBER.

PRICES FOR DENMARK IN 1969 AND FRANCE IN 1977 ARE ESTIMATED BY AVERAGING 1968 AND 1970 PRICES FOR DENMARK AND 1976 AND 1978 PRICES FOR FRANCE. PRICES FOR THE NETHERLANDS IN THE YEARS 1971-1974 ARE ESTIMATED BY APPLYING A LINEAR TREND.

SOURCE: ILO, BULLETIN OF LABOR STATISTICS, SEVERAL ISSUES.

TABLE 70 EC-9 SUGAR RETAIL PRICES (NATIONAL CURRENCY/KG)

YEAR	BELGIUM/LUX.	DENMARK	FRANCE	IRELAND	ITALY	NETHERLANDS	U. KINGDOM	W. GERMANY
1961	13.25	1.28	0.91	0.070	210	0.56	0.072	1.23
1962	12.93	1.47	1.18	.076	211	.97	.073	1.23
1963	12.93	1.34	1.21	.080	220	1.02	.099	1.23
1964	15.82	1.33	1.21	.088	229	1.11	.088	1.23
1965	14.85	1.66	1.21	.092	245	1.14	.079	1.23
1966	15.25	2.09	1.21	.088	245	1.17	.075	1.25
1967	18.75	2.31	1.27	.088	245	1.23	.079	1.25
1968	18.70	2.37	1.38	.100	244	1.27	.079	1.22
1969	18.66	2.47	1.39	.092	245	1.12	.083	1.21
1970	18.78	2.56	1.45	.092	247	1.15	.083	1.18
1971	18.00	2.61	1.63	.106	257	1.23	.090	1.23
1972	22.00	2.62	1.67	.120	261	1.26	.100	1.28
1973	20.75	2.72	1.72	.117	265	1.22	.112	1.31
1974	24.00	3.16	1.98	.138	375	1.39	.163	1.43
1975	27.50	3.51	2.51	.256	450	1.61	.249	1.70
1976	23.75	5.51	2.63	.265	541	1.66	.556	1.64
1977	26.00	8.53	2.86	.305	601	1.70	.266	1.66
1978	25.75	8.94	3.08	.330	661	1.76	.296	1.66
1979	25.75	9.29	3.34	.331	NA	1.79	.331	1.55
1980	26.00	10.17	3.81	.420	NA	1.89	.372	1.75

WHITE GRANULATED SUGAR.

NA = NOT AVAILABLE.

RETAIL PRICES ARE FOR THE MONTH OF OCTOBER.

PRICES FOR DENMARK IN 1969 AND FRANCE IN 1977 ARE ESTIMATED BY AVERAGING 1968 AND 1970 PRICES FOR DENMARK AND 1976 AND 1978 PRICES FOR FRANCE.

SOURCE: ILO, BULLETIN OF LABOR STATISTICS, SEVERAL ISSUES.

TABLE 71 EC CEREAL TARGET PRICES					
YEAR	DURUM WHEAT	SOFT WHEAT	BARLEY	RYE	CORN
(UA/MT)					
1967/68	125.00	106.25	91.25	93.75	90.63
1968/69	125.00	106.25	94.44	97.50	94.94
1969/70	125.00	106.25	95.44	97.50	95.94
1970/71	125.00	106.25	95.44	97.50	95.94
1971/72	127.50	109.44	100.21	100.42	96.90
1972/73	132.60	113.80	104.25	105.45	101.75
1973/74	133.93	114.94	105.29	112.30	102.77
1974/75	182.83	121.84	110.55	119.04	109.45
1975/76	207.33	139.44	126.99	138.74	126.41
1976/77	218.80	152.00	137.80	149.15	137.80
1977/78	224.27	158.08	144.97	155.12	144.97
1978/79	224.27	162.39	147.23	155.12	147.23
(ECU/MT)					
1979/80	277.37	201.42	182.89	192.50	182.89
1980/81	294.71	214.01	194.32	197.31	194.32
1981/82	311.48	230.55	210.00	210.00	210.00
1982/83	339.20	250.61	228.27	228.27	228.27

AUGUST/JULY MARKETING YEAR.

SOURCES:

EC COMMISSION, THE AGRICULTURAL SITUATION IN THE COMMUNITY, SEVERAL ISSUES.

EUROSTAT, YEARBOOK OF AGRICULTURAL STATISTICS, SEVERAL ISSUES.

EUROSTAT, AGRICULTURAL MARKETS, SEVERAL ISSUES.

TABLE 72 EC CEREAL INTERVENTION PRICES

YEAR	DURUM WHEAT	SOFT WHEAT	BREAD WHEAT	BARLEY	RYE	CORN
(UA/MT)						
1967/68	117.50	98.75	--	85.00	87.50	77.00
1968/69	117.50	98.75	--	87.98	91.00	79.31
1969/70	117.50	98.75	--	88.48	91.00	79.31
1970/71	117.50	98.75	--	88.48	91.00	79.31
1971/72	119.85	100.72	--	92.02	92.82	79.31
1972/73	116.93	104.75	--	95.70	97.45	83.25
1973/74	118.10	105.80	--	96.66	97.92	84.08
1974/75	166.83	110.03	--	96.60	101.84	89.55
1975/76	190.53	125.93	--	110.96	119.76	103.43
1976/77	202.00	116.00	131.00	116.00	124.00	112.20
1977/78	203.01	120.06	135.59	120.06	128.96	118.03
1978/79	203.01	121.57	136.96	121.57	130.25	121.57
(ECU/MT)						
1979/80	249.12	149.17	168.06	149.17	159.82	149.17
1980/81	260.33	155.88	175.20	155.88	163.82	155.88
1981/82	274.99	165.23	192.72	165.23	169.20	165.23
1982/83	298.36	179.27	209.10	179.27	179.27	179.27

-- = NOT APPLICABLE.

AUGUST/JULY MARKETING YEAR.

PRICES IN EFFECT AT THE BEGINNING OF THE MARKETING YEAR.

THE MAJORITY OF SOFT WHEAT PRODUCED IN THE EC IS OF BREADMAKING QUALITY. IN 1976/77 THE EC ESTABLISHED A SEPARATE REFERENCE PRICE FOR BREAD WHEAT AND FIXED THE INTERVENTION PRICE FOR SOFT WHEAT NOT OF BREADMAKING QUALITY (FEED WHEAT) EQUAL TO THE INTERVENTION PRICE FOR BARLEY.

SOURCES:

EC COMMISSION, THE AGRICULTURAL SITUATION IN THE COMMUNITY, SEVERAL ISSUES.

EUROSTAT, YEARBOOK OF AGRICULTURAL STATISTICS, SEVERAL ISSUES.

EUROSTAT, AGRICULTURAL MARKETS, SEVERAL ISSUES.

TABLE 73 EC CEREAL THRESHOLD PRICES

YEAR	DURUM WHEAT	SOFT WHEAT	BARLEY	RYE	CORN	OATS
(UA/MT)						
1967/68	123.13	104.38	89.00	91.88	88.38	83.66
1968/69	123.13	104.38	92.19	95.63	92.69	86.66
1969/70	123.13	104.38	93.19	95.63	93.69	87.60
1970/71	123.13	104.38	93.19	95.63	93.69	87.60
1971/72	125.25	107.25	97.85	98.30	94.55	91.98
1972/73	130.40	111.60	102.00	103.25	99.55	95.88
1973/74	131.80	112.80	103.10	110.20	100.65	96.91
1974/75	180.00	119.00	107.70	116.20	106.60	101.24
1975/76	204.35	136.45	124.00	135.75	123.40	119.00
1976/77	216.10	149.30	135.10	146.45	135.10	130.00
1977/78	221.30	155.15	142.00	152.15	142.00	136.60
1978/79	221.30	159.40	144.25	152.15	144.25	138.75
(ECU/MT)						
1979/80	273.40	197.45	178.90	188.50	178.90	172.10
1980/81	289.90	209.20	189.50	192.50	189.50	182.30
1981/82	306.48	225.55	205.00	205.00	205.00	197.20
1982/83	334.20	245.61	223.27	223.27	223.27	214.79

AUGUST/JULY MARKETING YEAR.

SOURCES:

EC COMMISSION, THE AGRICULTURAL SITUATION IN THE COMMUNITY,
SEVERAL ISSUES.

EUROSTAT, YEARBOOK OF AGRICULTURAL STATISTICS, SEVERAL ISSUES.

EUROSTAT, AGRICULTURAL MARKETS, SEVERAL ISSUES.

TABLE 74 EC RICE POLICY PRICES

YEAR	TARGET (HUSKED)	THRESHOLD (HUSKED) ROUND GRAIN	THRESHOLD (HUSKED) LONG GRAIN	INTERVENTION (PADDY)
(UA/MT)				
1967/68	181.20	177.60	--	120.00
1968/69	189.70	185.80	--	125.00
1969/70	189.70	185.80	--	125.00
1970/71	189.70	185.80	--	125.00
1971/72	202.00	197.90	217.90	125.00
1972/73	211.50	207.60	227.60	130.00
1973/74	213.25	209.00	229.00	131.30
1974/75	237.30	233.80	253.80	143.40
1975/76	261.03	257.20	277.20	154.87
1976/77	284.52	280.60	300.60	164.16
1977/78	295.71	291.53	311.53	171.55
1978/79	301.26	296.75	316.75	174.98
(ECU/MT)				
1979/80	382.28	376.58	388.67	218.58
1980/81	408.16	401.07	401.07	233.71
1981/82	450.50	443.71	443.71	259.42
1982/83	496.69	490.50	490.50	290.55

-- = NOT APPLICABLE.

SEPTEMBER/AUGUST MARKETING YEAR.

SOURCES:

EC COMMISSION, THE AGRICULTURAL SITUATION IN THE COMMUNITY, SEVERAL ISSUES.

EUROSTAT, YEARBOOK OF AGRICULTURAL STATISTICS, SEVERAL ISSUES.

EUROSTAT, AGRICULTURAL MARKETS, SEVERAL ISSUES.

TABLE 75 EC OILSEED POLICY PRICES

YEAR	TARGET	INTERVENTION	TARGET	INTERVENTION	TARGET
	COLZA/RAPESEED	COLZA/RAPESEED	SUNFLOWER	SUNFLOWER	SOYBEANS
	(UA/100 KG)				
1967/68	20.25	19.65	20.25	19.65	--
1968/69	20.25	19.65	20.25	19.65	--
1969/70	20.25	19.65	20.25	19.65	--
1970/71	20.25	19.65	20.25	19.65	--
1971/72	20.25	19.65	20.25	19.65	--
1972/73	20.85	20.25	21.05	20.45	--
1973/74	21.06	20.45	21.26	20.65	--
1974/75	21.90	21.27	22.54	21.89	23.31
1975/76	25.53	24.79	26.51	25.74	26.11
1976/77	27.57	26.77	28.63	27.80	28.50
1977/78	28.53	27.71	30.78	29.89	30.64
1978/79	29.67	28.82	32.32	31.38	32.17
	(ECU/100 KG)				
1979/80	36.41	35.36	39.66	38.51	39.48
1980/81	38.69	36.77	42.63	40.05	42.05
1981/82	42.56	39.71	47.75	44.06	46.26
1982/83	46.39	42.13	54.44	49.73	52.74

-- = NOT APPLICABLE.

MARKETING YEARS:

COLZA/RAPESEED - JULY/JUNE.

SUNFLOWER - OCTOBER/SEPTEMBER FOR 1967/68 TO 1971/72, SEPTEMBER/AUGUST FOR 1972/73 ON.

SOYBEANS - NOVEMBER/OCTOBER.

SOURCES:

EC COMMISSION, THE AGRICULTURAL SITUATION IN THE COMMUNITY, SEVERAL ISSUES.

EUROSTAT, YEARBOOK OF AGRICULTURAL STATISTICS, SEVERAL ISSUES.

EUROSTAT, AGRICULTURAL MARKETS, SEVERAL ISSUES.

TABLE 76 EC MEAT POLICY PRICES

YEAR	GUIDE	GUIDE	INTERVENTION	BASIC	SLUICEGATE
	BEEF (LIVE WEIGHT)	VEAL (LIVE WEIGHT)	BEEF AND VEAL (LIVE WEIGHT)	PIGMEAT (CARCASSES)	PIGMEAT (CARCASSES)
	(UA/100 KG)				
1967/68	--	--	--	73.50	58.114
1968/69	68.000	91.50	--	75.00	58.505
1969/70	68.000	91.50	--	75.00	51.620
1970/71	68.000	91.50	--	77.25	53.872
1971/72	72.000	94.25	--	80.00	58.620
1972/73	76.625	95.47	--	82.50	55.466
1973/74	86.200	103.75	--	86.00	73.843
1974/75	98.412	115.24	--	97.65	94.500
1975/76	109.940	128.74	99.42	106.00	79.890
1976/77	118.740	139.04	106.87	114.48	91.640
1977/78	122.900	--	110.61	120.20	69.660
1978/79	125.970	--	113.37	122.60	68.060
	(ECU/100 KG)				
1979/80	154.580	--	139.12	150.45	107.690
1980/81	160.760	--	144.68	158.72	114.370
1981/82	172.820	--	155.54	176.18	136.440
1982/83	191.870	--	172.68	194.68	127.190

-- = NOT APPLICABLE.

MARKETING YEARS:

BEEF AND VEAL - APRIL/MARCH.

PIGMEAT - NOVEMBER/OCTOBER.

SOURCES:

EC COMMISSION, THE AGRICULTURAL SITUATION IN THE COMMUNITY, SEVERAL ISSUES.

EUROSTAT, YEARBOOK OF AGRICULTURAL STATISTICS, SEVERAL ISSUES.

EUROSTAT, AGRICULTURAL MARKETS, SEVERAL ISSUES.

TABLE 77 EC DAIRY POLICY PRICES

YEAR	TARGET MILK (3.7% FAT)	INTERVENTION BUTTER	INTERVENTION SKIM MILK POWDER	THRESHOLD BUTTER	THRESHOLD SKIM MILK POWDER	THRESHOLD CHEDDAR CHEESE	THRESHOLD WHEY POWDER	AID FOR FEED SKIM MILK POWDER
(UA/100 KG)								
1968/69.	10.30	173.50	41.25	191.25	54.00	139.00	21.50	8.25
1969/70.	10.30	173.50	41.25	191.25	54.00	139.00	21.50	8.25
1970/71.	10.30	173.50	41.25	191.25	54.00	139.00	21.50	8.25
1971/72.	10.90	178.00	47.00	195.80	54.00	146.70	21.50	13.00
1972/73.	11.77	183.25	54.00	201.15	67.00	156.05	21.50	17.62
1973/74.	12.34	177.21	64.55	192.36	77.55	162.47	21.50	25.02
1974/75.	13.80	180.48	81.25	195.64	94.26	178.24	23.71	34.13
1975/76.	15.31	203.07	88.76	218.47	101.89	194.31	25.29	36.57
1976/77.	16.54	221.17	90.81	241.74	106.35	208.70	26.27	38.00
1977/78.	17.30	230.34	93.86	251.36	110.11	216.67	26.96	38.92
1978/79.	17.65	235.04	95.54	255.72	111.86	220.38	27.00	42.43
(ECU/100 KG)								
1979/80.	21.40	284.97	115.79	309.90	135.54	267.07	37.15	54.68
1980/81.	22.12	290.48	120.55	319.59	139.00	274.61	39.10	54.27
1981/82.	24.23	317.48	132.30	350.08	152.09	308.72	42.66	55.97
1982/83.	26.47	345.51	144.42	379.93	165.73	335.21	51.26	61.21

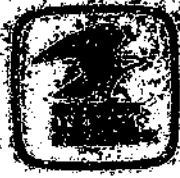
APRIL/MARCH MARKETING YEAR.

DAIRY POLICY PRICES ARE SET AT VARIOUS TIMES DURING THE YEAR. THE POLICY PRICES ABOVE ARE WEIGHTED MARKETING YEAR AVERAGES WHERE THE WEIGHTS ARE DETERMINED BY THE NUMBER OF DAYS EACH POLICY PRICE IS IN EFFECT.

SOURCES:

DERIVED FROM EC COMMISSION, THE AGRICULTURAL SITUATION IN THE COMMUNITY, SEVERAL ISSUES AND EUROSTAT, YEARBOOK OF AGRICULTURAL STATISTICS AND AGRICULTURAL MARKETS, SEVERAL ISSUES.

U.S. Department of Agriculture
Washington, D.C.
Official Business
Penalty for Private Use, \$300



Postage and Fees Paid
U.S. Department of Agriculture
AGP 134

THIRD CLASS BULK RATE

1,054 IP
Sclar, H
Update Publications Inc
1746 Westwood Blvd
Los Angeles CA 90024

New Edition

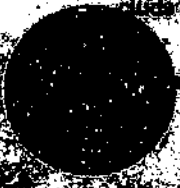
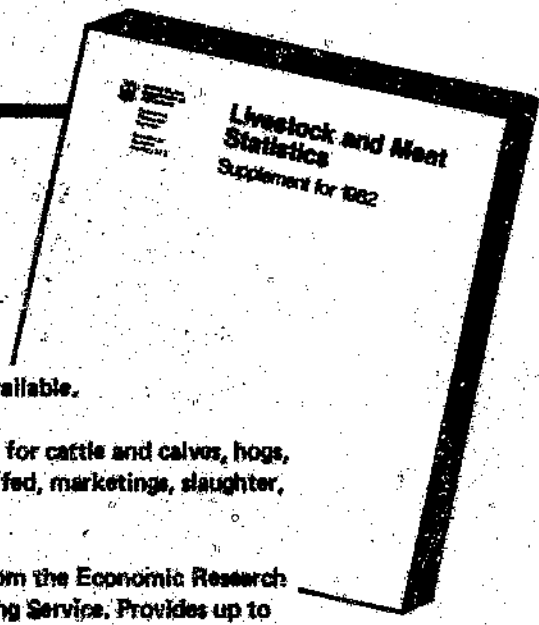
The 1982 Livestock Numbers You Need Are Here

USDA's indispensable yearbook of livestock numbers is now available.

Livestock and Meat Statistics. Your comprehensive data source for cattle and calves, hogs, sheep and lambs. Includes production and inventories, number fed, marketings, slaughter, meat production, prices, per capita consumption, and trade.

Puts under one cover the latest annual or monthly estimates from the Economic Research Service, Statistical Reporting Service, and Agricultural Marketing Service. Provides up to a decade of historical data as well. 156 pages; 200 tables; \$5.50.

Order *Livestock and Meat Statistics, Supplement for 1982 to SB-522* from the Superintendent of Documents, Government Printing Office, Washington, D.C. 20402. Enclose check, money order, GPO deposit account number. Or charge to Visa or Mastercard (include credit card number and expiration date).



END