



**AgEcon** SEARCH  
RESEARCH IN AGRICULTURAL & APPLIED ECONOMICS

*The World's Largest Open Access Agricultural & Applied Economics Digital Library*

**This document is discoverable and free to researchers across the globe due to the work of AgEcon Search.**

**Help ensure our sustainability.**

Give to AgEcon Search

AgEcon Search

<http://ageconsearch.umn.edu>

[aesearch@umn.edu](mailto:aesearch@umn.edu)

*Papers downloaded from **AgEcon Search** may be used for non-commercial purposes and personal study only. No other use, including posting to another Internet site, is permitted without permission from the copyright owner (not AgEcon Search), or as allowed under the provisions of Fair Use, U.S. Copyright Act, Title 17 U.S.C.*

SB 877 (1981)

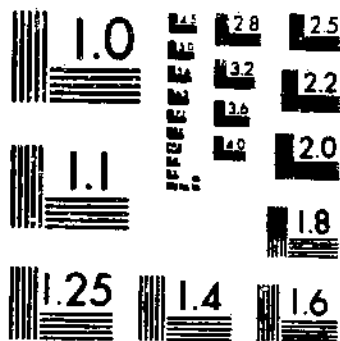
USDA STATISTICAL BULLETINS

UPDATA

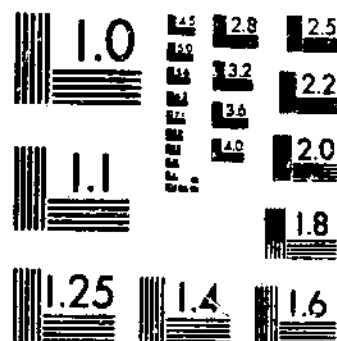
POULTRY PRODUCTION, DISPOSITION, AND INCOME: FINAL ESTIMATES FOR 1976-79

1 OF 1

# START



MICROCOPY RESOLUTION TEST CHART  
NATIONAL BUREAU OF STANDARDS-1963-A



MICROCOPY RESOLUTION TEST CHART  
NATIONAL BUREAU OF STANDARDS-1963-A

---

**POULTRY PRODUCTION,  
DISPOSITION, AND INCOME:**  
Final Estimates for 1976-79

POULTRY PRODUCTION, DISPOSITION, AND INCOME: FINAL ESTIMATES for 1976-79.  
Crop Reporting Board, Estimates Division, Statistical Reporting Service, U.S.  
Department of Agriculture. Statistical Bulletin No. 677.

#### ABSTRACT

This publication presents final estimates for production, disposition, and income from chickens, eggs, and broilers, 1976-79. This report continues the official series published in Statistical Bulletin No. 602, issued April 1978.

Washington, D.C. 20250

October 1981

# CONTENTS

	<u>PAGE</u>
INTRODUCTION .....	4
TABLES	
CHICKENS, EGGS, AND BROILERS: Number on hand, production, sales, home consumption, prices, values and income, United States, 1976-79 .....	5
CHICKENS: Inventory numbers, number raised, and disposition, by States, 1976-79 .....	6
CHICKENS: Disposition, cash receipts, and gross income, by States, 1976-79 .....	10
EGGS: Production, disposition, and income, by States, 1976-79 .....	14
BROILERS: Production, and gross income, by States, 1976-79 .....	18
CHICKENS: Total sales of chickens and broilers, by States, 1976-79 .....	20

## INTRODUCTION

Production, disposition, and income estimates for chickens, eggs, and broilers are published annually. This publication presents the final estimates, including some revisions, for 1976-79. Revisions were made only after a thorough review of the original data, with consideration given to all additional data now available, including the 1978 Census of Agriculture. When inventory numbers were revised, corresponding adjustments were necessary in other items. The various items in this report are described as follows:

ON HAND DECEMBER 1: Chickens on hand December 1 each year are considered as the annual inventory number.

DEATH LOSS OF LAYERS: Losses are estimated from monthly producers' reports showing number of layers that died during the preceding month.

CHICKENS RAISED: Estimates of chickens raised are primarily based on the number of egg-type chicks produced by commercial hatcheries, including male breeding stock.

CHICKENS AND POUNDS PRODUCED: The estimate is the net annual production of chickens raised during the year less death losses and deaths of young chickens from the current year's hatch. Pounds produced equal the pounds sold and consumed on chicken operations, plus or minus the change in the inventory live weight during the year.

EGGS PRODUCED: Annual estimates of egg production cover the 12-month period from December 1 through November 30.

HOME CONSUMPTION OF CHICKENS AND EGGS: This refers to chickens and eggs consumed on the production units.

SALES OF CHICKENS AND EGGS: These sales are computed by subtracting home consumption from estimated production adjusted for change in inventory during the year. Estimates of chickens sold are checked against data on commercial slaughter of mature chickens.

BROILERS: Broilers include all young chickens of the heavy or cross breeds raised for meat, from which pullets and cockerels are sold as broilers, but do not include egg-type chickens.

PRICES: Average annual prices per pound of chickens and broilers and per dozen eggs are computed from monthly prices received by producers weighted by the estimated quantities sold each month. Egg prices are for all sales, including hatching eggs and those sold at retail by producers.

INCOME: Cash receipts from marketings of chickens and eggs are computed by multiplying quantities sold by the annual average price. Gross income is the total of cash receipts plus the value consumed in producer households. Gross income from broilers is derived by multiplying pounds produced by price per pound. It includes consumption in households of broiler producers.

CHICKENS, EGGS, AND BROILERS: NUMBERS ON HAND, PRODUCTION, SALES, HOME CONSUMPTION, PRICES, VALUES AND INCOME, UNITED STATES, 1976-79

YEAR	CHICKENS 1/												
	ON HAND			LOST 2/		RAISED		PRODUCTION 3/		SALES		HOME CONSUMPTION	
	DEC 1			NUMBER	POUNDS	NUMBER	POUNDS	NUMBER	POUNDS	NUMBER	POUNDS	NUMBER	POUNDS
		1,000 HEAD	1,000 POUNDS	1,000 HEAD	1,000 POUNDS	1,000 HEAD	1,000 POUNDS	1,000 HEAD	1,000 POUNDS	1,000 HEAD	1,000 POUNDS	1,000 HEAD	1,000 POUNDS
1976	378,361	42,077	270,678	228,601	1,108,914	217,219	1,046,091	12,775	49,595				
1977	386,518	42,775	288,162	245,387	1,171,656	225,066	1,082,313	12,164	47,491				
1978	396,933	41,371	283,066	241,695	1,136,231	219,860	1,050,474	11,420	44,606				
1979	400,585	42,545	293,260	250,715	1,216,156	235,856	1,147,638	11,207	43,802				

YEAR	CHICKENS					EGGS				
	VALUE OF		CASH	GROSS		HOME		PRICE	CASH	
	PER	HOME	RECEIPTS	INCOME	PRODUCTION	CONSUMPTION 4/	SALES	PER	RECEIPTS	
	POUND	PRODUCTION	CONSUMPTION					DOZEN		
	CENTS	1,000 DOLLARS			MILLIONS		CENTS	1,000 DOLLARS		
1976	13.0	144,981	6,279	135,539	141,818	64,511	514	63,997	58.3	3,109,304
1977	12.3	145,429	5,706	132,675	138,381	64,602	485	64,117	55.6	2,973,176
1978	12.4	141,840	5,476	130,048	135,524	67,157	468	66,689	52.2	2,901,020
1979	13.9	170,593	6,084	160,088	166,172	69,209	454	68,755	58.3	3,338,438

YEAR	EGGS		BROILERS			CHICKENS AND BROILERS				
	VALUE OF		PRODUCTION		PRICE	GROSS		POUNDS	PRICE	CASH
	HOME	GROSS	NUMBER	POUNDS	PER	INCOME 6/	SOLD	PER	RECEIPTS	
	CONSUMPTION	INCOME			POUND 5/			POUND 7/		
	1,000 DOLLARS	1,000 HEAD	1,000 POUNDS	CENTS	1,000 DOLLARS	1,000 POUNDS	CENTS	1,000 DOLLARS		
1976	24,060	3,133,364	3,273,556	12,481,136	23.6	2,945,058	13,527,227	22.8	3,080,597	
1977	21,781	2,994,957	3,393,897	12,961,942	23.6	3,059,497	14,044,255	22.7	3,192,172	
1978	19,768	2,920,788	3,613,647	13,999,702	26.3	3,675,628	15,050,176	25.3	3,805,676	
1979	21,434	3,359,872	3,951,297	15,521,728	26.0	4,031,945	16,669,366	25.1	4,192,033	

1/ EXCLUDES BROILERS. INCLUDED IN 1979 ARE LAYERS AND EGGS DESTROYED BECAUSE OF POSSIBLE PCB CONTAMINATION.

2/ LOSS DURING YEAR.

3/ PRODUCTION IS THE QUANTITY AVAILABLE FOR UTILIZATION DURING THE YEAR, I.E., SALES PLUS HOME CONSUMPTION PLUS OR MINUS THE CHANGE IN INVENTORY.

4/ CONSUMED ON PRODUCTION UNITS.

5/ LIVE WEIGHT EQUIVALENT PRICE.

6/ GROSS INCOME INCLUDING HOME CONSUMPTION.

7/ PRICE OBTAINED BY DIVIDING VALUE OF SALES BY POUNDS SOLD.



CHICKENS: INVENTORY NUMBERS, NUMBER RAISED, AND DISPOSITION, BY STATES, DEC 1, 1975 - NOV 30, 1976 1/

STATE	ALL CHICKENS ON HAND DEC. 1, 1975	LOST 2/	RAISED	HOME CONSUMPTION	SOLO	ALL CHICKENS ON HAND DEC. 1, 1976	PRODUCED 3/	
							NUMBER	WEIGHT
			1000 HEAD				1000 LBS.	
ALA	18700	1900	15560	660	11400	20300	13660	67372
ALAS	26	14	68	36	12	32	54	240
ARIZ	765	115	563	13	405	795	448	1908
ARK	23998	2396	18800	600	15882	23920	16404	112104
CALIF	48071	6168	21962	245	17429	46191	15794	65237
COLO	2615	240	2205	130	1725	2725	1965	7246
CONN	4496	331	3900	8	2667	5390	3569	15477
DEL	865	106	673	22	450	950	567	3155
FLA	17005	2000	11350	105	8746	17504	9350	42002
GA	34328	2800	20613	525	17600	34016	17813	82341
HAW	1243	196	588	5	376	1254	392	1414
IDAHO	1070	115	970	88	756	1089	855	3221
ILL	8100	865	5205	270	4370	7800	4340	15830
IND	19480	1550	12690	500	11500	18620	11140	40293
IOWA	11200	1250	9800	470	7200	12080	8550	30435
KANS	3139	385	2869	330	2124	3169	2484	12198
KY	3000	525	3800	625	2350	3300	3275	12701
LA	4047	540	3200	350	2507	3850	2660	14234
MAINE	10688	740	7344	15	6300	10977	6604	41485
MD	1910	250	1815	65	1310	2100	1565	7660
MASS	2091	140	1230	11	1300	1870	1090	6186
MICH	8142	800	5600	365	4665	7912	4800	22370
MINN	13140	1500	8496	459	7997	11688	6996	28921
MISS	11312	1100	9967	720	8500	10959	8867	49265
MO	7020	970	6800	400	5350	7100	5830	35690
MDNT	1020	195	1080	170	730	1005	885	3399
NEBR	4250	500	2230	400	1750	3830	1730	6343
NEV	24	10	25	4	4	31	15	60
N H	1403	100	1046	5	1000	1344	946	5845
N J	3054	283	1700	24	1900	2547	1417	6259
N MEX	1470	124	1151	27	1020	1450	1027	4012
N Y	10650	1570	8400	245	7235	10000	6830	37743
N C	18000	1600	13500	1000	10100	18800	11900	77438
N DAK	682	147	750	310	335	640	603	2447
OHIO	11940	1750	6100	260	7530	11500	7350	36918
OKLA	3000	340	1960	150	1570	2900	1620	7702
OREG	2850	300	1600	70	1280	2800	1300	5310
PA	13850	1100	12306	250	10294	14512	11206	53430
R I	240	20	208	1	203	224	188	1074
S C	8488	2250	5140	462	4000	7113	2890	13582
S DAK	3818	600	2820	280	2497	3261	2220	8816
TENN	5200	600	3800	400	2500	5500	3200	15142
TEX	12100	900	12000	600	8000	14600	11100	40960
UTAH	1734	126	927	13	701	1821	801	3050
VT	613	46	443	9	377	624	397	2018
VA	5090	715	4360	500	2950	5285	3645	20737
WASH	5447	850	4650	71	3555	5621	3800	15215
W VA	1196	160	1034	140	800	1130	874	3979
WIS	6879	760	4300	360	3929	6130	3540	18241
WYO	118	35	80	15	38	110	45	208
U S	379754	42077	270678	12775	217219	378351	228601	1108914

1/ EXCLUDES BROILERS. 2/ LOSS DURING YEAR. 3/ THE QUANTITY AVAILABLE FOR UTILIZATION DURING THE YEAR, I.E., SALES PLUS HOME CONSUMPTION PLUS OR MINUS THE CHANGE IN INVENTORY.

CHICKENS: INVENTORY NUMBERS, NUMBER RAISED, AND DISPOSITION, BY STATES, DEC 1, 1976 - NOV 30, 1977 1/

STATE	ALL CHICKENS ON HAND DEC. 1, 1976	LDST 2/	RAISED	HOME CONSUMPTION	SOLD	ALL CHICKENS ON HAND DEC. 1, 1977	PRODUCED 3/	
							NUMBER	WEIGHT
			1000 HEAD			1000 LBS.		
ALA	20300	2000	15200	600	12000	20900	13200	64538
ALAS	32	10	46	29	11	28	36	165
ARIZ	795	140	374	14	450	565	234	952
ARK	23920	2855	22510	600	17351	25624	19655	124142
CALIF	46191	5942	24626	245	19014	45616	18684	73722
COLO	2725	260	2000	130	1485	2850	1740	6159
CONN	5390	420	3560	8	3242	5280	3140	13696
DEL	950	106	600	22	472	950	494	3040
FLA	17504	2100	12500	105	10757	17042	10400	39275
GA	34016	3900	24200	500	18678	35138	20300	86310
HAW	1254	192	652	2	411	1301	460	1529
IDAHO	1089	130	1384	80	1076	1167	1254	4978
ILL.	7800	850	5900	270	4080	7700	5050	18153
IND	18620	1600	15400	500	12110	19810	13800	51182
IOWA	12080	1180	8800	330	8300	11070	7620	24867
KANS	3169	360	2350	330	2229	2600	1990	10830
KY	3300	620	3750	680	2250	3500	3130	11079
LA	3850	540	3200	330	2390	3790	2660	16040
MAINE	10977	870	6525	15	6532	10085	5655	37609
MD	2100	270	1740	70	1600	1900	1470	7461
MASS	1870	170	1501	11	1200	1990	1331	7475
MICH	7912	840	5400	313	4200	7959	4560	20851
MINN	11680	1500	9877	400	7247	12410	8377	32869
MISS	10959	1000	10000	600	7818	11541	9000	43239
MO	7100	1020	7100	390	5090	7700	6080	35217
MONT	1005	170	860	165	515	1015	690	2761
NEBR	3830	520	2790	360	1650	4090	2270	8388
NEV	31	7	14	4	20	14	7	30
N H	1344	135	1071	5	850	1425	936	5451
N J	2547	270	1504	23	1700	2058	1234	5107
N MEX	1450	194	1670	27	929	1970	1476	5370
N Y	10000	1200	8200	235	6665	10100	7000	32251
N C	18800	1700	14600	1000	11300	19400	12900	91943
N DAK	640	145	750	320	325	600	605	2407
OHIO	11500	1700	9800	250	6850	12500	8100	42547
OKLA	2900	320	2120	110	1490	3100	1800	8759
OREG	2800	350	1900	100	1450	2800	1550	6251
PA	14512	1000	13300	250	9342	17220	12300	77306
R I	224	28	190	1	135	250	162	919
S C	7113	700	5658	313	4000	7758	4958	14861
S DAK	3261	425	2300	280	1873	2983	1875	7629
TENN	5500	800	3900	400	2600	5600	3100	15156
TEX	14600	1500	12500	700	10600	14300	11000	45204
UTAH	1821	183	963	13	494	2094	780	2828
VT	624	45	428	9	400	588	383	2076
VA	5285	663	4200	475	2825	5522	3537	20387
WASH	5621	930	5300	71	4146	5774	4370	18779
W VA	1130	150	870	135	735	980	720	3138
WIS	6130	725	4010	330	3344	5741	3285	16594
WYO	110	40	69	14	35	90	29	146
U S	378361	42775	288162	12164	225066	385518	245387	1171666

1/ EXCLUDES BROTLERS. 2/ LOSS DURING YEAR. 3/ THE QUANTITY AVAILABLE FOR UTILIZATION DURING THE YEAR, I.E., SALES PLUS HOME CONSUMPTION PLUS OR MINUS THE CHANGE IN INVENTORY.

CHICKENS: INVENTORY NUMBERS, NUMBER RAISED, AND DISPOSITION, BY STATES, DEC 1, 1977 - NOV 30, 1978 1/

STATE	ALL CHICKENS ON HAND DEC. 1, 1977	LOST 2/	RAISED	HOME CONSUMPTION	SOLD	ALL CHICKENS ON HAND DEC. 1, 1978	PRODUCED 3/		
							NUMBER	WEIGHT	
			1000 HEAD						1000 LBS.
ALA	20900	2200	15300	600	12800	20600	13100	66582	
ALAS	28	18	74	45	10	29	56	251	
ARIZ	565	120	552	17	330	650	432	1686	
ARK	29624	2998	22100	600	18401	25725	19102	112370	
CALIF	45616	5534	25559	245	19376	46020	20025	78389	
COLU	2850	265	1765	130	1250	2970	1500	5412	
CONN	5280	395	4063	8	3000	5940	3668	16041	
DEL	950	107	632	22	473	980	525	3164	
FLA	17042	1900	11600	102	9438	17302	9800	31768	
GA	35134	3500	25552	460	19908	36822	22052	108426	
MAV	1301	212	642	2	396	1333	430	1476	
IDAHO	1187	120	733	80	509	1211	613	2332	
ILL	7700	950	5450	250	4350	7600	4500	16742	
IND	19810	1600	15700	500	12510	20900	14100	51437	
IOWA	11070	900	7800	400	6870	10700	6900	25313	
KANS	2600	360	2300	300	1640	2600	1940	9549	
KY	3500	600	3320	620	2100	3500	2720	7733	
LA	3790	580	3300	300	2330	3880	2720	15559	
MAINE	19065	940	8980	15	6000	12110	8040	45437	
MD	1900	270	1840	70	1400	2000	1570	7804	
MASS	1990	130	1031	11	1300	1580	901	5134	
MICH	7959	650	5600	209	4560	8140	4950	22338	
MINN	12410	1375	9069	380	7824	11920	7714	31335	
MISS	11541	1150	8436	500	7500	10827	7286	38275	
MO	7700	990	6500	380	4830	8000	5510	32601	
MONT	1015	190	810	160	545	930	620	2607	
NEBR	4090	590	2400	330	1380	4200	1820	6766	
NEV	14	4	11	4	4	13	7	28	
N H	1425	110	900	5	850	1360	790	5315	
N J	2058	295	1385	20	1400	1728	1090	4660	
N MEX	1970	192	1238	27	879	2110	1046	4051	
N Y	18100	1200	8200	225	7025	9850	7000	32029	
N C	19400	1800	13800	1000	9700	20700	12000	77375	
N DAK	600	130	700	300	310	560	570	2302	
OHIO	12500	1800	8900	250	7100	12250	7100	38686	
OKLA	3100	390	2645	125	1530	3700	2255	9569	
OREG	2800	330	2005	100	1350	3025	1675	6777	
PA	17220	1200	13500	250	10245	19025	12300	65672	
R I	250	23	237	1	190	273	214	1155	
S C	7758	800	5392	300	4000	8050	4592	19173	
S DAK	2983	410	2000	260	1553	2760	1590	6290	
TENN	5600	500	3300	350	2700	5350	2500	13065	
TEX	14300	900	11500	500	7600	16800	10600	39757	
UTAH	2094	180	1000	20	744	2150	820	2998	
VT	598	48	366	9	395	512	318	1753	
VA	5522	750	4000	450	2781	5541	3250	18383	
WASH	5774	960	5700	64	4233	6217	4740	19050	
W VA	980	130	900	130	600	1020	770	3485	
WIS	5741	650	4200	280	3611	5400	3550	18010	
WYO	20	35	59	14	30	70	24	121	
U S	346518	41371	243066	11420	219860	396933	241695	1136231	

1/ EXCLUDES BROILERS. 2/ LOSS DURING YEAR. 3/ THE QUANTITY AVAILABLE FOR UTILIZATION DURING THE YEAR, I.E., SALES PLUS HOME CONSUMPTION PLUS OR MINUS THE CHANGE IN INVENTORY.

CHICKENS: INVENTORY NUMBERS, NUMBER RAISED, AND DISPOSITION, BY STATES, DEC 1, 1978 - NOV 30, 1979

STATE	ALL CHICKENS ON HAND DEC. 1, 1978	LUST 2/ 1000 HEAD	RAISED 1000 HEAD	HOME CONSUMPTION	SOLD	ALL CHICKENS ON HAND DEC. 1, 1979	PRODUCED 3/ 1000 LBS.	
							NUMBER	WEIGHT
ALA	20600	2000	17400	600	13400	22000	15400	73242
ALAS	29	23	84	53	11	26	61	250
ARIZ	650	130	485	19	406	580	355	1375
ARK	25725	3125	24400	600	19400	27000	21275	122025
CALIF	46020	5179	25907	235	21003	45510	20728	83681
COLU	2970	260	1395	120	1670	2315	1135	4443
CONN	5940	480	3919	8	3500	5871	3439	14325
DEL	980	108	610	22	610	850	502	3190
FLA	17302	1650	12700	101	9708	18543	11050	42932
GA	35822	4000	28538	460	24000	36900	24538	130905
HAW	1333	193	649	4	479	1306	456	1714
IDAHO	1211	713	867	80	262	1023	154	334
ILL	7600	850	4850	240	4410	6950	4000	15113
IND	20900	1750	14500	500	12650	20500	12750	47877
IOA	10700	920	7510	390	7300	9600	6590	23228
KANS	2600	470	2100	280	1480	2470	1630	8136
KY	3500	600	3100	600	1900	3500	2500	8537
LA	3880	580	3000	300	2500	3500	2420	14775
MAINE	12110	700	6795	15	7000	11190	6095	41081
MD	2000	260	2000	70	1520	2150	1740	6457
MASS	1580	100	1157	11	900	1726	1057	5835
MICH	2140	600	5000	160	4380	8000	4400	20284
MINN	11920	1575	10061	350	7556	12500	8486	33178
MISS	10827	1050	8000	500	6727	10550	6950	38542
MO	8000	1150	6580	360	5350	7720	5430	35223
MONT	930	430	840	155	295	890	410	1444
NEBR	4200	500	2150	300	1620	3930	1650	6087
NEV	13	4	12	4	4	13	8	32
N H	1360	100	750	5	728	1277	650	4265
N J	1728	160	1217	30	1200	1555	1057	4488
N MEX	2110	225	1043	27	711	2190	818	3124
N Y	9850	1200	8300	220	6530	10200	7100	31494
N C	20700	1600	13500	1000	10800	20800	11900	80410
N DAK	560	150	800	300	390	520	650	2598
OHIO	12250	1750	8850	260	7140	11950	7100	39562
OKLA	3700	350	2600	120	1430	4400	2250	9484
OREG	3025	350	2400	100	1700	3275	2050	8448
PA	19025	1400	16000	260	12435	20930	14600	80151
R I	273	25	275	1	190	332	250	1367
S C	4050	850	7870	300	5000	9770	7020	29071
S DAK	2750	450	1880	210	1310	2662	1422	5480
TENN	5350	490	4040	400	3200	5300	3550	17233
TEX	16800	1300	12500	500	10000	17500	11200	43835
UTAH	2150	210	930	20	650	2000	720	3299
VT	512	32	390	9	355	506	358	1803
VA	5541	750	4500	450	2959	5882	3750	22507
WASH	6217	1010	5810	64	4920	6033	4800	20169
W VA	1020	150	900	130	700	940	750	3564
WIS	5400	545	4040	250	3245	5400	3495	17415
WYO	70	40	56	14	22	50	16	84
U S	396933	42545	293260	11207	235856	400595	250715	1214156

1/ EXCLUDES BROILERS. 2/ LOSS DURING YEAR. 3/ THE QUANTITY AVAILABLE FOR UTILIZATION DURING THE YEAR, I.E., SALES PLUS HOME CONSUMPTION PLUS OR MINUS THE CHANGE IN INVENTORY. 4/ INCLUDED ARE LAYERS DESTROYED BECAUSE OF POSSIBLE PCB CONTAMINATION.

## CHICKENS: DISPOSITION, CASH RECEIPTS, AND GROSS INCOME, BY STATES, DEC 1, 1975 - NOV 30, 1976 1/

STATE	SOLD	HOME CONSUMPTION	PRICE PER POUND	VALUE OF PRODUCTION	CASH RECEIPTS	VALUE OF HOME CONSUMPTION	GROSS INCOME
	1000 POUNDS	1000 POUNDS	CENTS	1000 DOLLARS	1000 DOLLARS	1000 DOLLARS	1000 DOLLARS
ALA	57000	2508	13.1	8826	7467	329	7796
ALAS	54	162	20.0	48	11	32	43
ARIZ	1620	44	8.0	153	130	4	134
ARK	103233	2400	12.9	14461	13317	310	13627
CALIF	69716	980	8.7	5676	6066	85	6150
COLO	6210	507	11.0	797	683	56	739
CONN	11735	42	13.3	2058	1561	6	1567
DEL	2745	101	15.9	502	436	16	452
FLA	39357	368	10.0	4200	3936	37	3973
GA	79200	1943	14.0	11528	11088	272	11360
HAW	1316	18	15.5	219	204	3	207
IDAHO	2948	320	8.5	274	251	27	278
ILL	16169	1080	8.9	1409	1439	96	1535
IND	41400	2050	11.5	4634	4761	236	4997
IOWA	25200	1974	9.3	2831	2344	184	2528
KANS	11045	1155	10.0	1220	1105	116	1221
KY	9400	2000	11.8	1499	1109	236	1345
LA	13789	1190	13.3	1893	1834	158	1992
MAINE	39690	69	13.3	5518	5279	9	5288
MD	6550	260	15.2	1164	996	40	1036
MASS	7150	51	13.3	823	951	7	958
MICH	21459	1643	12.0	2684	2575	197	2772
MINN	31988	1974	3.9	1128	1248	77	1325
MISS	43350	2304	16.3	8030	7066	376	7442
MO	34240	1320	14.5	5175	4965	191	5156
MONT	2920	680	8.0	272	234	54	288
NEBR	6475	1440	6.2	393	401	89	490
NEV	16	16	8.2	5	1	1	2
N H	6300	25	13.3	777	838	3	841
N J	8170	120	13.2	826	1078	16	1094
N MEX	3876	86	8.5	341	329	7	336
N Y	39069	1225	10.2	3850	3985	125	4110
N C	70700	4500	19.8	15333	13999	891	14890
N DAK	1407	1178	10.0	245	141	118	259
OHIO	33885	1170	11.0	4061	3727	129	3856
OKLA	7536	480	11.5	886	867	55	922
OREG	5120	280	8.5	451	435	24	459
PA	50441	950	23.5	12556	11854	223	12077
R I	1117	6	13.3	143	149	1	150
S C	17600	1709	12.7	1725	2235	217	2452
S DAK	9988	1092	7.0	617	699	76	775
TENN	12500	1400	15.4	2332	1925	216	2141
TEX	32000	2100	13.3	5448	4256	279	4535
UTAH	2664	51	7.0	214	186	4	190
VT	1960	43	13.3	268	261	6	267
VA	17700	2000	15.3	3173	2708	306	3014
WASH	14576	291	8.0	1217	1166	23	1189
W VA	3680	574	14.5	577	534	83	617
WIS	19645	1656	13.7	2499	2691	227	2818
WYO	182	60	10.4	22	19	6	25
U S	1046091	49595	13.0	144981	135539	6279	141818

1/ EXCLUDES BROILERS.

CHICKENS: DISPOSITION, CASH RECEIPTS, AND GROSS INCOME, BY STATES, DEC 1, 1976 - NOV 30, 1977 1/

STATE	SOLD	HOME CONSUMPTION	PRICE PER POUND	VALUE OF PRODUCTION	CASH RECEIPTS	VALUE OF HOME CONSUMPTION	GROSS INCOME
	1000 POUNDS		CENTS		1000 DOLLARS		
ALA	60000	2280	12.2	7874	7320	278	7598.
ALAS	50	131	21.0	35	11	28	39.
ARIZ	1800	48	8.4	80	151	4	155.
ARK	112782	2400	12.8	15890	14436	307	14743
CALIF	76056	980	8.1	5971	6161	79	6240
COLD	5346	507	10.0	616	535	51	586.
CONN	14265	42	11.3	1548	1612	5	1617
DEL	2879	101	14.0	426	403	14	417
FLA	39801	368	9.5	3731	3781	35	3816.
GA	82103	1850	13.5	11652	11095	250	11345.
HAW	1397	7	16.0	245	224	1	225.
IDAHO	4198	320	8.5	423	357	27	384.
ILL	18056	1080	9.0	1634	1625	97	1722.
IND	44807	2050	9.5	4862	4257	195	4452.
IOWA	29050	1353	9.2	2288	2673	124	2797
KANS	11591	1155	10.6	1148	1229	122	1351
KY	8550	2176	12.0	1329	1025	261	1287
LA	15296	1122	11.8	1893	1805	132	1937
MAINE	41152	69	11.3	4250	4650	8	4658.
MD	8000	280	13.6	1015	1088	38	1125.
MASS	6600	51	11.3	845	746	6	752.
MICH	19320	1409	10.0	2085	1932	141	2073.
MINN	28988	1720	3.7	1216	1073	64	1137
MISS	39872	1920	15.2	6572	6061	292	6359.
MO	32067	1287	15.0	5283	4810	193	5003.
MONT	2060	660	8.0	221	165	53	218.
NEBR	6185	1296	6.8	570	415	88	503
NEV	82	16	8.2	2	7	1	8.
N H	5355	25	11.3	616	605	3	608.
N J	7140	115	11.6	592	828	13	841
N MEX	3530	86	8.5	456	300	7	307
NI Y	31326	1175	8.6	2774	2694	101	2795.
N C	84750	4500	19.5	17929	16526	878	17404.
N DAK	1365	1216	4.0	96	55	49	104.
OHIO	33565	1225	9.8	4170	3289	120	3409.
OKLA	7152	352	13.0	1139	930	46	976.
OREG	5800	400	8.5	531	493	34	527
PA	53249	1200	19.9	15384	10597	239	10836.
R I	743	6	11.3	104	84	1	85.
S C	14400	1150	12.2	1812	1757	141	1898.
S DAK	7492	1092	5.0	381	375	55	430
TENN	13520	1400	16.8	2546	2271	235	2506.
TEX	42400	2450	13.1	5922	5554	321	5875.
UTAH	1877	51	7.5	212	141	4	145.
VT	2080	43	11.3	235	235	5	240
VA	16950	1900	13.1	2671	2220	249	2469.
WASH	16999	291	7.5	1408	1275	22	1297.
W VA	3381	554	12.5	392	423	69	492
WIS	16720	1518	14.1	2340	2358	214	2572.
WYO	168	56	10.0	15	17	6	23.
U S	1082313	47491	12.3	145429	132675	5706	138381

1/ EXCLUDES BROILERS.

CHICKENS: DISPOSITION, CASH RECEIPTS, AND GROSS INCOME, BY STATES, DEC 1, 1977 - NOV 30, 1978 1/

STATE	SOLD	HOME CONSUMPTION	PRICE PER POUND	VALUE OF PRODUCTION	CASH RECEIPTS	VALUE OF HOME CONSUMPTION	GROSS INCOME
	1000 POUNDS		CENTS		1000 DOLLARS		
ALA	64000	2280	12.8	8523	8192	292	8484
ALAS	45	203	21.0	53	9	43	52
ARIZ	1320	58	7.4	125	98	4	192
ARK	110406	2400	12.2	13709	13470	293	13763
CALIF	75566	956	7.0	5487	5290	67	5357
COLO	4500	507	10.0	541	450	51	501
CONN	13200	42	12.3	1973	1624	5	1629
DEL	2933	101	14.9	471	437	15	452
FLA	34921	347	9.0	2859	3143	31	3174
GA	93568	1702	14.4	15613	13474	245	13719
HAW	1386	7	14.0	207	194	1	195
IDAHO	1985	320	8.5	198	169	27	196
ILL	16095	1000	8.0	1339	1288	80	1368
IND	45036	2050	9.3	4784	4188	191	4379
IOWA	24045	1640	8.3	2101	1996	136	2132
KANS	8528	1050	15.0	1432	1279	158	1437
KY	5930	1984	11.0	851	762	218	980
LA	13980	1020	12.3	1914	1720	125	1845
MAINE	37800	69	12.3	5589	4649	8	4657
MD	7000	280	13.9	1085	973	39	1012
MASS	7150	51	12.3	631	879	6	885
MICH	20976	941	11.0	2457	2307	104	2411
MINN	31296	1634	3.3	1034	1033	54	1087
MISS	39000	1600	15.4	5894	6006	246	6252
MO	30429	1254	14.5	4727	4412	182	4594
MONT	2180	640	7.0	182	153	45	198
NEBR	5106	1188	6.7	453	342	80	422
NEV	16	16	9.2	3	1	1	2
N H	5355	25	12.3	654	659	3	662
N J	5880	100	10.9	508	641	11	652
N MEX	3340	86	7.0	284	234	6	240
N Y	31613	1125	7.4	2370	2339	83	2422
N C	67900	4500	20.5	15862	13920	923	14843
N DAK	1302	1140	3.6	83	47	41	88
OHIO	36920	1125	9.0	3482	3323	101	3424
OKLA	6732	400	16.0	1531	1077	64	1141
OREG	5400	400	8.5	576	459	34	493
PA	58397	1200	20.8	13660	12147	250	12397
R I	1045	6	12.3	142	129	1	130
S C	17200	1110	16.3	3125	2604	181	2965
S DAK	6212	1014	5.0	315	311	51	362
TENN	19500	1225	15.2	1986	2052	106	2238
TEX	30400	1750	13.1	5208	3982	229	4211
UTAH	2927	78	6.6	198	187	5	192
VT	2054	43	12.3	216	253	5	258
VA	15686	1800	14.1	2592	2353	254	2607
WASH	17355	262	7.8	1486	1354	20	1374
W VA	2760	533	13.5	470	373	72	445
WIS	14055	1288	15.8	2846	2653	204	3057
WYO	144	56	9.3	11	13	5	18
U S	1050474	44606	12.4	141840	130048	5476	135524

1/ EXCLUDES BROILERS.

CHICKENS: DISPOSITION, CASH RECEIPTS, AND GROSS INCOME, BY STATES, DEC 1, 1978 - NOV 30, 1979

STATE	SOLD	HOME CONSUMPTION	PRICE PER POUND	VALUE OF PRODUCTION	CASH RECEIPTS	VALUE OF HOME CONSUMPTION	GROSS INCOME
	1000 POUNDS		CENTS		1000 DOLLARS		
ALA	67000	2280	13.7	10034	9179	312	9491
ALAS	50	212	30.0	75	15	64	79
ARIZ	1624	65	10.1	139	164	7	171
ARK	116400	2400	11.8	14399	13735	283	14018
CALIF	84012	940	10.4	8703	8737	98	8835
COLOR	6012	488	15.0	666	902	70	972
CONN	15400	42	13.2	1891	2033	6	2039
DEL	3782	101	14.1	450	533	14	547
FLA	37861	343	11.9	5109	4505	41	4546
GA	120000	1748	16.0	20945	19200	280	19400
HAW	1772	15	15.5	266	275	2	277
IDAHO	1022	320	9.0	30	92	29	121
ILL	16317	950	11.3	1708	1844	108	1952
IND	46005	2050	11.6	5649	5523	242	5765
IOWA	25550	1599	11.4	2648	2913	182	3095
KANS	7696	980	20.0	1627	1539	196	1735
KY	6840	1920	13.0	1110	889	250	1139
LA	15000	1020	13.8	2039	2070	141	2211
MAINE	44100	69	13.2	5423	5821	9	5830
MD	7600	280	16.6	1404	1262	46	1308
MASS	4950	51	13.2	770	653	7	660
MICH	20144	720	12.0	2434	2418	86	2504
MINN	39224	1505	3.6	1194	1088	54	1142
MISS	39599	1600	17.0	6552	6747	272	7019
MO	33705	1148	16.0	5636	5393	190	5583
MONT	1140	620	7.0	101	83	43	126
NEBH	5974	1080	11.6	706	695	125	820
NEV	16	16	9.9	3	2	2	4
N H	4536	25	13.2	563	605	3	608
N J	5040	150	13.7	615	690	21	711
N MEX	2702	86	8.4	262	227	7	234
N Y	29385	1100	9.2	2897	2703	101	2804
N C	75600	4500	20.5	16484	15498	923	16421
N DAK	1538	1140	4.0	104	66	46	112
OHIO	37128	1170	12.0	4750	4455	140	4595
OKLA	8292	344	20.0	1897	1258	77	1335
OREG	6870	400	9.0	760	612	36	648
PA	70880	1248	20.6	16511	14601	257	14858
R I	1045	6	13.2	180	138	1	139
S C	22000	1110	16.0	4651	3520	178	3698
S DAK	3240	819	6.0	329	314	49	363
TENN	16050	1400	15.7	2706	2512	220	2732
TEX	40000	1750	15.3	6707	6120	268	6388
UTAH	3230	78	8.0	264	258	6	264
VT	1844	43	13.2	238	244	6	250
VA	17754	1800	15.7	3540	2787	283	3070
WASH	20172	262	9.1	1835	1836	24	1860
W VA	3220	533	12.5	446	403	67	470
WIS	15225	1150	18.0	3135	2921	207	3128
WYO	106	56	9.1	8	10	5	15
U S	1147838	43802	13.9	170593	160088	6084	166172

1/ EXCLUDES BROILERS. 2/ LOSS DURING YEAR. 3/ THE QUANTITY AVAILABLE FOR UTILIZATION DURING THE YEAR, I.E., SALES PLUS HOME CONSUMPTION PLUS OR MINUS THE CHANGE IN INVENTORY.



## EGGS: PRODUCTION, DISPOSITION, AND INCOME, BY STATES, DEC 1, 1975 - NOV 30, 1976

STATE	EGGS PRODUCED	HOME CONSUMPTION	EGGS SOLD	PRICE PER DOZEN CENTS	CASH RECEIPTS	VALUE OF HOME CONSUMPTION 1/	GROSS INCOME
		MILLION				1000 DOLLARS	
ALA	2919	14	2905	62.1	150334	725	151059
ALAS	6.0	2/	6	114.0	570	2/	570
ARIZ	146	.7	145.3	51.1	6187	30	6217
ARK	3752	12	3740	24.5	201025	645	201670
CALIF	8635	10	8625	53.5	384531	446	384977
COLU	502	6	496	56.0	23147	280	23427
CGNN	803	1	802	77.0	51462	64	51526
DEL	129	.6	128.4	72.2	7725	36	7761
FLA	2846	4	2842	50.7	120075	169	120244
GA	5591	9	5582	65.6	305149	492	305641
HAW	218	2/	218	65.0	11808	2/	11808
IDAHO	192	4	188	55.8	8742	186	8928
ILL	1398	17	1381	55.2	63526	782	64308
IND	3091	14	3077	53.5	137183	624	137807
IOWA	2040	30	2010	46.3	77553	1158	78711
KANS	564	14	550	45.2	20717	527	21244
KY	541	25	516	54.2	23306	1129	24435
LA	671	10	661	64.4	35474	537	36011
MAINE	1791	1	1790	69.2	103223	58	103201
MD	331	4	327	72.2	19675	241	19916
MASS	343	1	342	72.1	20549	60	20609
MICH	1520	16	1504	53.4	66928	712	67640
MINN	2238	24	2214	43.7	80627	874	81501
MISS	1719	11	1708	68.7	97783	630	98413
MO	1193	22	1171	55.1	53768	1010	54778
MONT	185	8	177	59.0	8703	393	9096
NEBR	737	19	718	42.1	25190	667	25857
NEV	4.8	.8	4	52.2	174	35	209
N H	238	1	237	70.0	13825	58	13883
N J	548	1	547	64.9	29584	54	29638
N MEX	270	1	269	65.0	14571	54	14625
N Y	1903	13	1890	59.0	92925	639	93564
N C	2756	21	2735	67.1	152932	1174	154106
N DAK	124	10	114	38.0	3610	317	3927
OHIO	1994	19	1975	53.7	88381	850	89231
OKLA	458	15	443	61.0	22519	763	23282
OREG	532	10	522	58.3	24491	469	24960
PA	2701	18	2683	58.8	126995	852	127847
R I	45.1	2/	45.1	71.0	2668	2/	2668
S C	1282	8	1274	61.0	64762	407	65169
S DAK	620	15	605	40.3	20318	504	20822
TENN	974	16	958	59.0	47102	787	47889
TEX	2357	41	2316	66.6	128538	2276	130814
UTAH	283	1.5	281.5	50.0	11729	63	11792
VT	115	1	114	78.1	7420	66	7485
VA	800	15	785	69.9	45726	874	46600
WASH	1058	3	1055	53.7	47211	134	47345
W VA	230	7	223	64.9	12061	379	12440
WIS	1094	15	1078	51.0	45815	680	46495
WYO	22.6	3	19.6	60.4	987	151	1138
U S	64511	514	63997	58.3	3109304	24060	3133364

1/ VALUED AT SAME PRICE AS EGGS SOLD. 2/ LESS THAN ONE-HALF MILLION EGGS.  
 3/ SUM OF STATES WILL NOT ADD TO U S TOTAL DUE TO ROUNDING.

## EGGS: PRODUCTION, DISPOSITION, AND INCOME, BY STATES, DEC 1, 1976 - NOV 30, 1977

STATE	EGGS PRODUCED	HOME CONSUMPTION MILLION	EGGS SOLD	PRICE PER DOZEN CENTS	CASH RECEIPTS	VALUE OF HOME CONSUMPTION 1/ 1000 DOLLARS	GROSS INCOME
ALA	3183	14	3169	60.6	160035	707	150742
ALAS	6.2	2/	6.2	120.0	620	2/	620
ARIZ	140	.8	139.2	48.3	5603	32	5635
ARK	3812	12	3800	57.0	180500	570	181070
CALIF	8345	10	8335	50.8	352848	423	353271
COLO	508	6	502	53.0	22172	265	22437
CONN	863	1	862	72.3	51936	60	51996
DEL	128	.6	127.4	66.3	7251	34	7285
FLA	2998	4	2994	45.9	114521	153	114674
GA	5468	8	5460	63.0	286650	420	287070
HAW	218	2/	218	68.3	12408	2/	12408
IDAH0	192	4	188	50.0	7833	167	8000
ILL	1389	13	1376	56.5	64787	612	65399
IND	3128	14	3114	54.8	142206	639	142845
IOWA	2004	26	1978	42.2	69560	914	70474
KANS	548	14	534	44.1	19625	515	20140
KY	566	23	543	50.6	22897	970	23967
LA	598	9	589	65.7	32248	493	32741
MAINE	1849	1	1848	66.0	101640	55	101695
MD	324	4	320	66.1	18160	227	18387
MASS	355	1	354	69.9	20621	58	20679
MICH	1530	15	1515	49.6	62620	620	63240
MINN	2120	20	2100	44.4	77700	740	78440
MISS	1775	10	1766	66.4	97663	553	98215
MO	1199	20	1179	50.1	49223	835	50058
MONT	179	8	171	57.0	8123	380	8503
NEBR	739	17	722	41.5	24969	588	25557
NEV	3.1	.7	2.4	52.1	104	30	134
N H	210	1	209	69.5	12105	58	12163
N J	446	1	445	60.6	22473	51	22524
N MEX	288	1	287	59.0	14111	49	14160
N Y	1805	12	1793	53.4	79789	534	80323
N C	2846	19	2827	66.3	156192	1050	157242
N DAK	110	10	100	37.0	3083	308	3391
OHIO	1941	18	1923	48.8	78202	732	78934
OKLA	487	15	472	62.0	24387	775	25162
OREG	525	12	513	54.5	23299	545	23844
PA	2960	18	2942	53.7	131655	986	132461
R I	50.7	2/	50.7	70.1	2962	2/	2962
S C	1249	9	1241	56.7	58637	378	59015
S DAK	561	15	546	39.4	17927	493	18420
TENN	993	14	979	57.8	47155	674	47829
TEX	2436	39	2397	62.3	124444	2025	126469
UTAH	335	2	333	48.2	13376	80	13456
VT	117	2	115	75.1	7197	125	7322
VA	819	14	805	65.3	43805	762	44567
WASH	1063	6	1057	50.6	44570	253	44823
W VA	192	6	186	62.5	9668	313	10001
WIS	981	14	967	53.1	42790	620	43410
WYO	19.9	2	17.9	54.0	806	90	996
U S	64602	485	64117	55.6	2973176	21781	2994957

1/ VALUED AT SAME PRICE AS EGGS SOLD. 2/ LESS THAN ONE-HALF MILLION EGGS.

## EGGS: PRODUCTION, DISPOSITION, AND INCOME, BY STATES, DEC 1, 1977 - NOV 30, 1978

STATE	EGGS PRODUCED	HOME CONSUMPTION	EGGS SOLD	PRICE PER DOZEN	CASH RECEIPTS	VALUE OF HOME CONSUMPTION 1/	GROSS INCOME
		MILLION		CENTS		1000 DOLLARS	
ALA	3329	14	3315	62.8	173485	733	174218
ALAS	4.7	2/	4.7	125.0	490	2/	490
ARIZ	135	.9	134.1	42.0	4694	32	4726
ARK	4002	12	3990	52.0	172900	520	173420
CALIF	8412	10	8402	46.0	322077	383	322460
COLD	534	6	528	50.0	22000	250	22250
CONN	897	1	896	68.7	51296	57	51353
DEL	129	.6	128.4	67.9	7265	34	7299
FLA	2954	4	2950	42.7	104971	142	105113
GA	5662	7	5655	60.1	283221	351	283572
HAW	218	2/	218	69.9	12699	2/	12699
IDAHO	206	4	202	46.0	7743	153	7896
ILL	1380	12	1368	53.0	60420	530	60950
IND	3447	13	3434	52.1	149093	564	149657
IOWA	1914	23	1891	38.8	61142	744	61886
KANS	511	13	498	41.8	17347	453	17800
KY	553	22	531	47.7	21107	875	21982
LA	603	9	594	62.8	31086	471	31557
MAINE	1912	2	1910	62.3	99161	104	99265
MD	344	5	339	67.9	19182	283	19465
MASS	341	1	340	66.2	18757	55	18812
MICH	1497	15	1482	46.5	57428	591	58009
MENN	2189	20	2169	41.5	75011	692	75703
MISS	1696	8	1688	61.1	85947	407	86354
MO	1320	19	1301	46.1	49980	730	50710
MDNT	193	6	187	54.3	8462	272	8734
NEBR	780	16	764	38.1	24257	508	24765
NEV	2.3	.8	1.5	44.5	56	30	86
N H	222	1	221	65.5	12063	55	12118
N J	375	1	374	56.8	17703	47	17750
N MEX	359	1	358	57.0	17005	48	17053
N Y	1845	12	1833	46.5	71029	465	71494
N C	3081	19	3062	61.8	157693	979	158672
N DAK	115	10	105	34.0	2975	283	3258
OHIO	2140	18	2122	44.9	79398	674	80072
OKLA	612	14	598	59.0	29402	688	30090
OREG	563	15	548	50.8	23199	635	23834
PA	3436	18	3418	49.3	140423	740	141163
R I	51.0	2/	51.0	65.6	2788	2/	2788
S C	1411	7	1404	53.2	62244	310	62554
S DAK	526	13	513	35.6	15219	386	15605
TENN	974	16	958	53.4	42631	712	43343
TEX	2630	38	2592	60.8	131328	1925	133253
UTAH	395	2	393	44.0	14410	73	14483
VT	110	2	108	75.9	6831	127	6958
VA	885	12	873	64.3	46778	643	47421
WASH	1121	5	1116	46.8	43524	195	43719
W VA	154	6	148	61.5	7585	308	7893
WIS	973	12	961	43.7	34996	437	35433
WYD	14.4	2	12.4	50.2	519	84	603
U S	57157	468	66689	52.2	2901020	19768	2920788

1/ VALUED AT SAME PRICE AS EGGS SOLD. 2/ LESS THAN ONE-HALF MILLION EGGS.

EGGS: PRODUCTION, DISPOSITION, AND INCOME, BY STATES, DEC 1, 1978 - NOV 30, 1979

STATE	EGGS PRODUCED	PER CENTAGE	EGGS SOLD	PRICE PER DOZEN	CASH RECEIPTS	VALUE OF HOME CON- SUMPTION 1/	GROSS INCOME
	MILLION			CENTS		1000 DOLLARS	
ALA	3207	14	3206	65.7	179909	767	180676
ALAS	6.7	2/	6.7	125.0	698	2/	698
ARIZ	132	1	132	48.0	5520	40	5560
ARK	4123	12	4111	63.5	217540	635	218175
CALIF	6712	11	4783	50.8	368427	423	368850
COLO	444	1	478	55.0	21908	275	22183
CONN	432	1	437	77.2	60280	64	60344
DEL	132	.5	131.5	73.2	8022	31	8053
FLA	3147	4	3185	49.0	130054	163	130217
GA	6167	7	6060	66.5	335825	388	336213
HAW	227	2/	229	73.4	14007	2/	14007
IDAHO 3/	122	5	187	50.0	7792	208	8000
ILL	1347	11	1336	57.2	63683	524	64207
IND	3530	12	3524	58.1	170620	581	171201
IOWA	1147	19	1430	44.0	67100	697	67797
KANS	411	13	470	49.0	19192	531	19723
KY	443	20	563	55.0	25804	917	26721
LA	511	7	592	70.2	34632	527	35159
MAINE	1213	2	1211	68.7	109405	115	109520
MD	454	5	751	72.9	21323	304	21627
MASS	329	1	338	73.8	20787	62	20849
MICH	1441	15	1476	50.0	61500	625	62125
MINN	2193	14	2165	49.3	88945	740	89685
MISS	1453	7	1646	68.3	93685	398	94083
MO	1375	17	1359	54.0	61155	765	61920
MONTE 3/	172	3	173	62.5	9010	260	9270
NEBR	422	15	787	43.2	28332	540	28872
NEV	1.8	.8	1	51.5	43	34	77
NH	217	1	217	70.6	12767	59	12826
NJ	347	2	340	63.0	17850	105	17955
N MEX	364	1	367	61.0	18456	51	18707
NY	1747	12	1755	54.4	79560	544	80104
NC	3155	14	3137	66.1	172796	992	173888
N DAK	111	12	101	38.0	3196	317	3515
OHIO	2257	15	2235	52.4	97595	786	98381
OKLA	754	14	740	63.5	39158	741	39899
OREG	136	15	592	53.8	26810	607	27617
PA	3436	13	3614	55.7	177219	836	178055
RI	59.2	2/	59.2	72.5	3577	2/	3577
SC	1451	4	1553	59.7	77262	398	77660
S DAK	474	12	464	38.0	14693	380	15073
TEHH	222	15	964	58.6	49052	733	48785
TEX	2723	16	2759	65.9	151515	1977	153492
UTAH	345	6	343	45.0	14363	75	14438
VT	75	2	97	83.1	6717	139	6856
VA	432	14	925	66.3	51106	774	51880
WASH	1172	5	1167	50.9	49500	212	49712
W VA	172	6	172	69.4	9947	347	10294
WIS	411	11	901	53.9	40470	449	40919
WYO	10.8	2	8.8	58.5	429	98	527
U S	41,822.2	454	64,755	58.3	3,338,438	21,434	3,359,872

1/ VALUED AT SAME PRICE AS EGGS SOLD. 2/ LESS THAN ONE-HALF MILLION EGGS.  
 3/ INCLUDED ARE EGGS DESTROYED BECAUSE OF POSSIBLE PCB CONTAMINATION.  
 4/ SUM OF STATES WILL NOT ADD TO U S TOTAL DUE TO ROUNDING.

BROILERS: PRODUCTION AND GROSS INCOME, BY STATES, 1976-77 1/

STATE	DEC 1, 1975 - NOV 30, 1976				DEC 1, 1976 - NOV 30, 1977			
	NUMBER PRODUCED	POUNDS PRODUCED	PRICE POUND 2/	GROSS INCOME 3/	NUMBER PRODUCED	POUNDS PRODUCED	PRICE POUND 2/	GROSS INCOME 3/
	THOUSANDS		CENTS	1000 DOLLARS	THOUSANDS		CENTS	1000 DOLLARS
ALA	430225	1591823	22.3	354979	428099	1583966	22.0	348473
ARK	540428	1945541	23.2	451366	569558	2050409	23.3	477745
CALIF	104950	451285	26.3	118688	112500	495000	26.7	132165
CONN	1041	4372	23.3	1019	1083	4549	23.1	1051
DEL	160046	640184	23.0	147242	156081	624324	23.0	143595
FLA	65022	253586	22.7	57564	69125	269588	22.4	60388
GA	451531	1670665	24.0	400960	485879	1797752	23.7	426067
IA	2039	6933	40.0	2773	2158	6906	42.0	2901
IND	13905	51449	24.6	12656	13624	50409	23.4	11796
IOWA	3835	28763	40.0	11505	3494	24458	30.5	7460
KY	6716	23506	22.0	5171	3600	12600	22.0	2772
LA	57578	218796	23.7	51855	63634	235446	23.8	56036
MAINE	86659	355302	23.3	82785	86938	365140	23.1	84347
MD	199008	796032	23.0	183087	198509	794036	23.0	182628
MICH	756	3856	26.0	1003	910	3913	26.0	1017
MINN	15200	65360	26.8	17516	14200	61060	27.1	16547
MISS	257442	978280	22.6	221091	255846	972215	24.3	236248
MO	25256	98498	23.6	23246	24054	93811	22.7	21295
NEBR	1820	7280	35.0	2548	1680	6720	35.0	2352
N Y	700	3150	25.9	816	500	2150	26.0	559
N C	315589	1262356	23.6	297916	339271	1357084	23.4	317558
OHIO	17499	64746	24.0	15539	19400	71780	23.1	16581
OKLA	31425	116273	23.8	27673	29294	105458	23.5	24783
OREG	15150	59085	28.0	16544	15600	62400	28.5	17784
PA	75108	307943	26.7	82221	88140	352560	25.2	88845
S C	33404	113574	22.5	25554	34481	120684	22.3	26913
TENN	38310	137916	22.3	30755	48884	180871	22.0	39792
TEX	190703	724671	25.0	181168	185322	722756	25.3	182857
VA	88921	337900	22.4	75690	98024	372491	22.8	84928
WASH	15876	63504	29.0	18416	16846	67384	29.2	19876
* VA	15129	46900	27.1	12710	16256	50394	27.0	13606
WIS	12285	51597	25.2	13002	10907	43628	24.6	10732
TOTAL 4/	3273556	12481136	23.6	2945058	3393897	12961942	23.6	3059497
21 WKLY STS 5/	2923554	11130876	23.6	2626405	3051735	11650418	23.5	2737511

1/ BROILER PRODUCTION INCLUDING OTHER MEAT-TYPE BREEDS. 2/ LIVELWEIGHT EQUIVALENT PRICE. 3/ GROSS INCOME INCLUDING HOME CONSUMPTION. 4/ EXCLUDES STATES PRODUCING LESS THAN 500,000 BIRDS. 5/ 21 STATES IN THE WEEKLY ESTIMATING PROGRAM: ALA, ARK, CALIF, DEL, FLA, GA, IND, LA, MAINE, MD, MICH, MO, N C, OREG, PA, S C, TENN, TEX, VA, WASH, AND W VA.

BROILERS: PRODUCTION AND GROSS INCOME, BY STATES 1978-79 1/

STATE	DEC 1, 1977 - NOV 30, 1978				DEC 1, 1978 - NOV 30, 1979			
	NUMBER PRODUCED	POUNDS PRODUCED	PRICE POUND 2/	GROSS INCOME 3/	NUMBER PRODUCED	POUNDS PRODUCED	PRICE POUND 2/	GROSS INCOME 3/
	THOUSANDS		CENTS	1000 DOLLARS	THOUSANDS		CENTS	1000 DOLLARS
ALA	441599	1634286	25.0	408572	493060	1873628	24.5	459039
ARK	412102	2203567	26.2	577335	678206	2509370	25.5	639889
CALIF	122400	550800	28.3	155876	137600	605440	29.5	178605
DEL	166936	634643	26.0	178007	175056	756181	26.0	196607
FLA	74999	292496	24.8	72539	78683	314732	25.0	78683
GA	531469	2021178	26.0	525506	561268	2132818	26.0	554533
MAH	2251	7755	40.5	3141	2246	7861	43.0	3380
IND	14609	54754	26.5	14510	15785	59983	25.5	15296
IOWA	3425	22263	44.0	9796	3000	15000	39.0	5850
KY	3200	10580	25.0	2640	3285	11498	25.0	2875
LA	75736	287797	26.7	76842	91311	356113	26.5	94370
MAINE	67495	359159	25.0	92290	67816	368827	25.0	92207
MO	220332	905616	26.0	235460	244783	1003610	26.0	260939
MICH	1130	5355	29.2	1544	2570	10794	28.0	3022
MINN	15100	64930	30.2	19609	17000	76500	30.0	22950
MISS	269373	1050555	27.0	283650	276858	1079746	27.0	291531
MO	22164	36440	26.7	23079	25297	101188	26.0	26309
NEBR	1530	5508	45.0	2479	1950	7800	45.0	3510
N Y	520	2250	29.0	653	520	2340	28.0	655
N C	353610	1413920	25.9	366205	376580	1543978	25.0	385995
OHIO	20400	77520	25.8	20000	19100	78670	25.0	17668
OKLA	35334	134246	26.0	34914	40285	149055	26.0	38754
OREG	13580	63550	31.0	19791	17300	72660	32.0	23251
PA	99300	397200	27.3	108436	109206	467745	27.5	123130
S C	39045	140562	24.9	35000	43687	166011	24.5	40673
TENN	44177	174255	25.0	44564	57733	213612	25.0	53403
TEX	193353	773577	28.0	216602	228400	890760	27.5	244959
VA	91562	333717	28.9	98036	111564	479725	24.5	117533
WASH	17345	71115	30.8	21903	19847	83357	30.0	25007
W VA	14137	50211	29.0	14561	18743	63726	28.5	18162
WIS	11140	45479	26.5	12156	11750	47000	28.0	13160
TOTAL 4/	3613647	14999702	26.3	3675628	3951291	15521728	26.0	4031945
21 WKLY STS	3251310	12578198	26.1	3286588	3575297	14054258	25.8	3631612

1/ BROILER PRODUCTION INCLUDING OTHER MEAT-TYPE BREEDS. 2/ LIVELWEIGHT EQUIVALENT PRICE. 3/ GROSS INCOME INCLUDING HOME CONSUMPTION. 4/ EXCLUDES STATES PRODUCING LESS THAN 500,000 BIRDS. 5/ 21 STATES IN THE WEEKLY ESTIMATING PROGRAM: ALA, ARK, CALIF, DEL, FLA, GA, IND, LA, MAINE, MD, MICH, MO, N C, OREG, PA, S C, TENN, TEX, VA, WASH, AND W VA.

CHICKENS: TOTAL SALES OF CHICKENS AND BROILERS, BY STATES, 1976-77

STATE	DEC 1, 1975 - NOV 30, 1976			DEC 1, 1976 - NOV 30, 1977		
	POUNDS SOLD	PRICE PER POUND 1/	VALUE OF SALES	POUNDS SOLD	PRICE PER POUND 1/	VALUE OF SALES
	THOUSANDS	CENTS	1000 DOLLARS	THOUSANDS	CENTS	1000 DOLLARS
ALA	1648833	22.0	362446	1643966	21.6	355793
ALAS	54	20.4	11	50	22.0	11
ARIZ	1620	8.0	130	1800	8.4	151
ARK	2048774	22.7	464683	2163191	22.8	492181
CALIF	521001	23.9	124753	571056	24.2	138326
COLO	6210	11.0	683	5346	10.0	535
CONN	16107	16.0	2580	18814	14.2	2663
DEL	642929	23.0	147678	627203	23.0	143998
FLA	292943	21.0	61500	309389	20.7	64169
GA	1749865	23.5	412048	1879935	23.3	437162
HAW	8249	36.1	2977	8303	37.6	3125
IDAHO	2948	8.5	251	4196	8.5	357
ILL	16169	8.9	1439	18056	9.0	1625
IND	92849	18.8	17417	95216	16.9	16059
IOWA	53963	25.7	13849	53508	18.9	10133
KANS	11045	10.0	1105	11591	10.6	1229
KY	32906	19.1	6280	21150	18.0	3798
LA	232585	23.1	53689	250742	23.1	57841
MAINE	394992	22.3	88064	406292	21.9	88997
MD	802582	22.9	184083	802036	22.9	183716
MASS	7150	13.3	951	6600	11.3	746
MICH	25315	14.1	3578	23233	12.7	2949
MINN	97348	19.3	18764	90048	19.6	17620
MISS	1021630	22.3	228157	1012087	23.9	242300
MO	132738	21.3	28211	125878	20.7	26105
MONT	2920	8.0	234	2060	8.0	165
NEBR	13755	21.4	2949	12825	21.6	2767
NEV	16	6.3	1	82	8.5	7
N. H.	6300	13.3	838	5355	11.3	605
N. J.	8170	13.2	1078	7140	11.6	828
N. MEX	3876	8.5	329	3530	8.5	300
N. Y.	42219	11.4	4801	33476	9.7	3253
N. C.	1333056	23.4	311915	1441834	23.2	334084
N. DAK	1407	10.0	141	1365	4.0	55
OHIO	98631	19.5	19266	105345	18.9	19870
OKLA	123809	23.1	28540	112610	22.8	25713
OREG	64205	26.4	16979	68200	26.8	18277
PA	358384	26.2	94075	405809	24.5	99442
R. I.	1117	13.3	149	743	11.3	84
S. C.	131174	21.2	27789	135084	21.2	28670
S. DAK	9988	7.0	699	7492	5.0	375
TENN	150416	21.7	32680	194391	21.6	42063
TEX	756671	24.5	185424	765156	24.6	188411
UTAH	2664	7.0	186	1877	7.5	141
VT	1960	13.3	261	2080	11.3	235
VA	355600	22.0	78398	389441	22.4	87148
WASH	78080	25.1	19582	84383	24.8	20951
W. VA	50580	26.2	13244	53775	26.1	14029
WIS	71242	22.0	15693	60348	21.7	13098
WYO	182	10.4	19	168	10.1	17
U. S.	13527227	22.8	3080597	14044255	22.7	3192172

1/ PRICE OBTAINED BY DIVIDING VALUE OF SALES BY POUNDS SOLD.

CHICKENS: TOTAL SALES OF CHICKENS AND BROILERS, BY STATES, 1978-79

STATE	DEC 1, 1977 - NOV 30, 1978			DEC 1, 1978 - NOV 30, 1979		
	POUNDS SOLD	PRICE PER POUND 1/	VALUE OF SALES	POUNDS SOLD	PRICE PER POUND 1/	VALUE OF SALES
	THOUSANDS	CENTS	1000 DOLLARS	THOUSANDS	CENTS	1000 DOLLARS
ALA	1694286	24.5	416764	1940628	24.1	468218
ALAS	45	20.0	9	50	30.0	15
ARIZ	1323	7.4	98	1624	10.1	164
ARK	2313373	25.5	590805	2625770	24.9	653624
CALIF	626346	25.7	161166	669452	27.2	187342
COLO	4590	10.0	450	6012	15.0	902
CONN	13244	12.3	1624	15400	13.2	2033
DEL	647576	26.0	178444	759963	25.9	197140
FLA	327417	23.1	75682	352593	23.6	83188
GA	2116746	25.5	536980	2252818	25.5	573733
HAW	9141	36.5	3335	9633	37.9	3655
IDAH0	1785	5.5	169	1022	9.0	92
ILL	15795	3.0	1268	16317	11.3	1644
IND	49790	18.7	18698	106788	19.5	20819
IOWA	46703	25.5	11792	40550	21.6	8763
KANS	1524	15.0	1279	7596	20.0	1534
KY	17490	19.5	3402	18338	20.5	3764
LA	401777	26.0	74562	371113	26.0	96440
MAINE	406959	23.8	96939	412927	23.7	98028
MD	912615	25.7	236433	1011210	25.9	262201
MASS	7150	12.3	874	4950	13.2	653
MICH	26331	14.7	3671	30942	17.6	5440
MINN	96226	21.5	20642	106724	22.5	24039
MISS	1089555	26.6	289656	1119435	25.6	296278
MO	176369	23.5	77491	134893	23.5	31702
MONT	2131	7.0	153	1180	7.0	83
NEBR	17614	26.6	2821	13794	30.5	4205
NEV	16	6.3	1	16	12.5	2
N H	5355	12.3	659	4546	13.2	605
N J	5140	19.9	641	5940	13.7	690
N MEX	3746	7.0	234	2702	4.4	227
N Y	33663	6.3	2992	31725	10.6	3358
N C	1681423	25.7	360125	1619578	24.6	401493
N DAK	1302	3.6	47	1638	4.0	66
OHIO	114440	20.4	23323	107798	20.5	22123
OKLA	141716	25.5	35991	155347	25.8	40012
OREG	68950	29.2	20160	79460	30.0	23863
PA	655597	26.5	120583	518625	26.6	137731
R I	1045	12.3	129	1045	13.2	138
S C	157762	24.0	37404	188011	23.5	44193
S DAK	6212	5.0	311	5240	6.0	314
TENN	191755	24.3	46616	229612	24.4	55915
TEX	803977	27.4	220584	930760	27.0	251079
UTAH	2427	6.6	187	3230	4.0	258
VT	2054	12.3	253	1846	13.2	244
VA	410403	24.5	100389	497479	24.2	120320
WASH	88470	26.3	23257	103529	25.9	26843
W VA	92971	28.2	14934	66946	27.7	18565
WIS	63934	23.5	15011	63225	25.4	16061
WYO	144	9.0	13	106	9.4	10
U S	15050176	25.3	3805676	16669366	25.1	4192033

1/ PRICE OBTAINED BY DIVIDING VALUE OF SALES BY POUNDS SOLD.



**END**