



AgEcon SEARCH
RESEARCH IN AGRICULTURAL & APPLIED ECONOMICS

The World's Largest Open Access Agricultural & Applied Economics Digital Library

This document is discoverable and free to researchers across the globe due to the work of AgEcon Search.

Help ensure our sustainability.

Give to AgEcon Search

AgEcon Search
<http://ageconsearch.umn.edu>
aesearch@umn.edu

*Papers downloaded from **AgEcon Search** may be used for non-commercial purposes and personal study only. No other use, including posting to another Internet site, is permitted without permission from the copyright owner (not AgEcon Search), or as allowed under the provisions of Fair Use, U.S. Copyright Act, Title 17 U.S.C.*

SB 673 (1981)

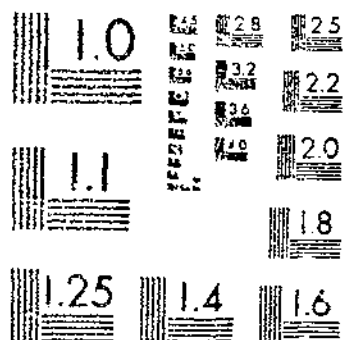
USDA STATISTICAL BULLETINS

UPDATA

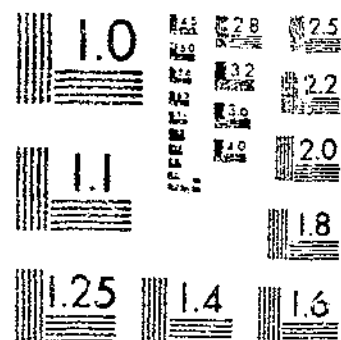
HONEY PRODUCTION: FINAL ESTIMATES FOR 1976-79

1 OF 1

START



MICROCOPY RESOLUTION TEST CHART
NATIONAL BUREAU OF STANDARDS 1963-A



MICROCOPY RESOLUTION TEST CHART
NATIONAL BUREAU OF STANDARDS-1963-A

HONEY PRODUCTION

Final Estimates for 1976-79

HONEY PRODUCTION: FINAL ESTIMATES FOR 1976-79. Crop Reporting Board, Estimates Division, Statistical Reporting Service, U.S. Department of Agriculture, Statistical Bulletin No. 673.

ABSTRACT

This publication presents final honey production estimates, including revisions, for 1976-79. Data relates to the number of colonies, honey production and value, honey stocks, and beeswax production and value. The report continues the official series published in Statistical Bulletin No. 614, issued December 1978.

Washington, D.C. 20250

September 1981

CONTENTS

	<u>PAGE</u>
Introduction	4
Honey and beeswax: Number of colonies; honey production, value, and stocks; beeswax production and value; United States, 1970-79	5
Honey: Number of colonies and yield of honey per colony by States, 1976-79	6
Honey: Production and price per pound by States, 1976-79	7
Honey: Value of production by States, 1976-79	8
Honey and beeswax: Stocks of honey on hand for sale, December 15, and production of beeswax by States, 1976-79	9
Beeswax: Price per pound and value of production by States, 1976-79	10

INTRODUCTION

This publication presents final honey production estimates, including some revisions, made by the Crop Reporting Board (CRB) for the period 1976-79.

Estimates were published on a current basis during 1976-79 based primarily on results of producer surveys. Survey samples included all known large producers and a sample of smaller producers. Lists of producers were updated annually.

Revisions were made only after a thorough review of the original estimates and consideration of new data, including that from the 1978 Census of Agriculture, State inspection records, estimates by State apiary inspectors and entomologists, and reports from commercial honey buyers and packers.

Number of Colonies: Estimates of the number of bee colonies represents all colonies that are on hand during the year. They include colonies that were lost during the year, as well as new colonies. Small operations of one or more colonies are included as well as commercial operations.

Yield per Colony: Yield per colony is based mainly on mail reports from producers giving both number of colonies and total pounds of honey taken from the hives. Estimates of total production for a State are the product of estimated number of colonies times average yield per colony.

Stocks on Hand: Stocks of honey on hand on December 15 represent stocks of honey for sale that are in producers' hands on that date. The estimates are based on reports which give both production of honey and supplies on hand for the particular date.

Beeswax: Production of beeswax is determined by the same procedure as total honey production.

Price per Pound: The price of honey and beeswax is the price received by producers for all honey sold. Prices are based on mailed reports from producers giving prices by various sizes of container. They include retail sales as well as wholesale.

**HONEY AND BEESWAX: NUMBER OF COLONIES; HONEY PRODUCTION, VALUE, AND STOCKS;
BEESWAX PRODUCTION AND VALUE; UNITED STATES, 1970-79**

YEAR	COLONIES	HONEY			
		YIELD PER	PRODUCTION	PRICE PER	VALUE
		COLONY		POUND	
	THOUSANDS	POUNDS	1,000 POUNDS	DOLLARS	1,000 DOLLARS
1970	4,285	51.7	221,712	0.174	38,514
1971	4,107	48.2	197,826	.218	43,125
1972	4,085	52.8	215,607	.302	65,049
1973	4,124	58.0	239,089	.444	106,108
1974	4,210	44.6	187,855	.510	95,766
1975	4,206	47.4	199,179	.505	100,575
1976	4,269	46.4	198,000	.499	98,827
1977	4,323	41.2	178,091	.529	94,274
1978	4,090	56.6	231,457	.546	126,471
1979	4,163	57.3	238,690	.593	141,498
HONEY STOCKS ON		BEESWAX			
HAND FOR SALE ^{1/}					
	DEC	PRODUCTION	PRICE PER	POUND	VALUE
	15				
		1,000 POUNDS	DOLLARS	1,000 DOLLARS	
1970	50,554	4,374	0.602	2,634	
1971	32,262	3,597	.613	2,204	
1972	30,114	3,997	.621	2,482	
1973	37,417	4,251	.744	3,161	
1974	34,427	3,450	1.14	3,937	
1975	33,155	3,405	1.03	3,495	
1976	34,310	3,346	1.12	3,764	
1977	30,043	3,091	1.58	4,869	
1978	32,238	3,965	1.74	6,890	
1979	37,997	3,788	1.75	6,643	

^{1/} STOCKS IN HANDS OF PRODUCERS.

HONEY: NUMBER OF COLONIES AND YIELD OF HONEY PER COLONY BY STATES, 1976-79

STATE	COLONIES				YIELD PER COLONY			
	1976	1977	1978	1979	1976	1977	1978	1979
	THOUSANDS				POUNDS			
ALA	45	49	45	45	22	23	22	20
ARIZ	59	60	60	65	57	47	45	58
ARK	55	52	45	30	42	37	32	45
CALIF	525	525	504	504	26	26	62	34
COLO	41	41	41	39	61	67	67	67
CONN	8	8	8	8	23	28	26	36
DEL	1	3	4	4	33	26	30	27
FLA	360	360	345	350	76	40	67	78
GA	153	160	150	156	20	25	23	39
HAW	7	7	7	7	102	97	116	130
IDAHO	109	95	102	101	39	46	45	54
ILL	45	44	38	36	42	40	43	59
IND	80	79	76	75	27	39	51	36
IOWA	80	82	86	83	83	74	50	80
KANS	50	52	43	40	52	46	60	50
KY	60	53	46	52	20	22	23	33
LA	36	38	31	31	37	35	50	40
MAINE	5	5	5	5	22	18	36	36
MD	13	13	13	14	29	22	43	35
MASS	12	12	12	12	19	22	35	33
MICH	110	105	103	106	50	54	58	61
MINN	155	157	155	160	92	80	96	99
MISS	59	59	52	49	18	20	25	38
MO	110	116	112	124	50	48	56	64
MONT	85	96	99	103	112	57	89	128
NEBR	138	144	127	140	50	50	65	40
NEV	9	10	9	12	55	55	40	35
N H	4	4	4	4	29	28	40	28
N J	37	37	35	34	28	29	30	40
N MEX	16	17	13	14	59	33	33	45
N Y	120	120	110	113	40	31	56	62
N C	210	205	190	180	20	25	32	30
N DAK	125	136	160	190	120	88	128	120
OHIO	107	97	89	83	24	26	35	31
OKLA	67	65	60	55	40	34	38	50
OREG	48	58	60	57	29	37	32	37
PA	93	93	78	74	31	31	31	41
R I	1	1	1	1	26	30	32	34
S C	56	60	56	59	19	18	21	20
S DAK	155	165	171	204	58	58	120	85
TENN	156	160	140	135	24	22	30	23
TEX	190	200	185	190	47	43	47	60
UTAH	47	48	47	46	29	50	30	48
VT	7	8	9	9	43	24	42	50
VA	78	80	77	78	22	20	33	32
WASH	95	89	90	87	25	46	35	38
W VA	94	89	93	104	19	20	35	25
WIS	117	125	124	135	88	77	51	65
WYO	36	41	41	39	100	64	55	85
U S	4,269	4,323	1/4,090	1/4,163	46.4	41.2	56.6	57.3

1/ SUM OF STATE TOTALS EXCEEDS THE U.S. TOTAL BECAUSE OF DUPLICATION OF COLONIES BETWEEN STATES.

HONEY: PRODUCTION AND PRICE PER POUND BY STATES, 1976-79

STATE	PRODUCTION				PRICE PER POUND			
	1976	1977	1978	1979	1976	1977	1978	1979
	1,000 POUNDS				DOLLARS			
ALA	990	1,127	990	900	.596	.616	.702	.615
ARIZ	3,363	2,820	2,700	3,770	.418	.421	.446	.497
ARK	2,310	1,924	1,440	1,350	.471	.466	.473	.515
CALIF	13,650	13,650	31,248	17,136	.407	.425	.448	.481
COLO	2,501	2,747	2,747	2,613	.485	.523	.558	.606
CONN	184	224	208	288	.981	1.06	1.09	1.10
DEL	33	78	120	108	.794	.897	.935	.742
FLA	27,360	14,400	23,115	27,300	.424	.442	.494	.528
GA	3,060	4,000	3,450	6,084	.491	.513	.587	.508
HAW	714	679	812	910	.505	.454	.476	.472
IDAHO	4,251	4,370	4,590	5,454	.476	.480	.485	.543
ILL	1,890	1,760	1,634	2,124	.647	.644	.679	.767
IND	2,160	3,081	3,876	2,700	.695	.756	.742	.846
IOWA	6,640	6,068	4,300	6,640	.499	.512	.509	.564
KANS	2,600	2,392	2,580	2,000	.466	.485	.584	.672
KY	1,200	1,166	1,058	1,716	.751	.826	.891	.915
LA	1,332	1,330	1,550	1,240	.461	.443	.474	.511
MAINE	110	90	180	180	.910	.858	.982	.689
MD	377	286	559	490	.695	.772	.795	.857
MASS	228	264	420	396	1.01	1.03	1.03	.831
MICH	5,500	5,670	5,974	6,466	.507	.498	.512	.635
MINN	14,260	12,560	14,880	15,840	.476	.470	.495	.543
MISS	1,062	1,180	1,300	1,862	.598	.588	.636	.676
MO	5,500	5,568	6,272	7,936	.599	.640	.749	.909
MONT	9,520	5,472	8,811	13,184	.469	.539	.538	.577
NEBR	6,900	7,200	8,255	5,600	.440	.458	.472	.482
NEV	495	550	360	420	.533	.572	.602	.603
N H	116	112	160	112	1.02	1.04	1.14	.906
N J	1,036	1,073	1,050	1,360	.763	.825	.947	.776
N MEX	944	561	429	630	.484	.448	.564	.616
N Y	4,800	3,720	6,160	7,006	.532	.558	.543	.551
N C	4,200	5,125	6,080	5,400	.713	.793	.899	.853
N DAK	15,000	11,968	20,480	22,800	.492	.490	.471	.519
OHIO	2,568	2,522	3,115	2,573	.574	.635	.642	.672
OKLA	2,680	2,210	2,280	2,750	.593	.632	.716	.908
OREG	1,392	2,146	1,920	2,109	.481	.509	.510	.584
PA	2,883	2,883	2,418	3,034	.615	.656	.653	.643
R I	26	30	32	34	.975	1.08	1.07	1.06
S C	1,064	1,080	1,176	1,180	.767	.805	.845	.838
S DAK	8,990	9,570	20,520	17,340	.458	.450	.458	.528
TENN	3,744	3,520	4,200	3,105	.667	.802	.889	1.04
TEX	8,930	8,600	8,695	11,400	.458	.450	.476	.508
UTAH	1,363	2,400	1,410	2,208	.502	.532	.570	.585
VT	301	192	378	450	.843	.886	.936	1.17
VA	1,716	1,600	2,541	2,496	.586	.657	.716	.740
WASH	2,375	4,094	3,150	3,306	.460	.530	.549	.540
W VA	1,786	1,780	3,255	2,600	.787	.939	.984	1.05
WIS	10,296	9,625	6,324	8,775	.508	.513	.526	.576
WYO	3,600	2,624	2,255	3,315	.454	.501	.506	.528
U S	198,000	178,091	231,457	238,690	.499	.529	.546	.593

HONEY: VALUE OF PRODUCTION BY STATES, 1976-79

STATE	1976	1977	1978	1979
1,000 DOLLARS				
ALA	590	694	695	554
ARIZ	1,406	1,187	1,204	1,874
ARK	1,088	897	681	695
CALIF	5,556	5,801	13,999	8,242
COLO	1,213	1,437	1,533	1,583
CONN	181	237	227	317
DEL	26	70	112	80
FLA	11,601	6,365	11,419	14,414
GA	1,502	2,052	2,025	3,091
HAW	361	308	387	430
IDAHO	2,023	2,098	2,226	2,962
ILL	1,223	1,133	1,109	1,629
IND	1,501	2,329	2,876	2,284
IOWA	3,313	3,107	2,189	3,745
KANS	1,212	1,160	1,514	1,344
KY	901	963	943	1,570
LA	614	589	735	634
MAINE	100	77	177	124
MD	262	221	444	420
MASS	230	272	433	329
MICH	2,789	2,824	3,059	4,106
MINN	6,788	5,903	7,366	8,601
MISS	635	694	827	1,259
MO	3,295	3,564	4,698	7,214
MONT	4,465	2,949	4,740	7,607
NEBR	3,036	3,298	3,896	2,699
NEV	264	315	217	253
N H	118	116	182	101
N J	790	885	994	1,055
N MEX	457	251	242	388
N Y	2,554	2,076	3,345	3,860
N C	2,995	4,064	5,466	4,606
N DAK	7,380	5,864	9,646	11,833
OHIO	1,474	1,601	2,000	1,729
OKLA	1,589	1,397	1,632	2,497
OREG	670	1,092	979	1,232
PA	1,773	1,891	1,579	1,951
R I	25	32	34	36
S C	816	869	994	989
S DAK	4,117	4,307	9,398	9,156
TENN	2,497	2,823	3,734	3,229
TEX	4,090	3,870	4,139	5,791
UTAH	684	1,277	804	1,292
VT	254	170	354	527
VA	1,006	1,051	1,819	1,847
WASH	1,093	2,170	1,729	1,785
W VA	1,406	1,671	3,203	2,730
WIS	5,230	4,938	3,326	5,054
WYO	1,634	1,315	1,141	1,750
U S	98,827	94,274	126,471	141,498

**HONEY AND BEESWAX: STOCKS OF HONEY ON HAND FOR SALE, DECEMBER 15, AND PRODUCTION OF BEESWAX
BY STATES, 1976-79**

STATE	STOCKS OF HONEY ON HAND FOR SALE DECEMBER 15				BEESWAX PRODUCTION			
	1976	1977	1978	1979	1976	1977	1978	1979
	1,000 POUNDS							
ALA	109	169	89	126	27	29	27	23
ARIZ	303	282	405	377	50	45	46	38
ARK	554	443	245	392	39	33	27	23
CALIF	819	1,775	2,812	2,570	314	205	562	291
COLO	450	769	604	523	48	55	58	52
CONN	88	87	54	78	6	4	5	7
DEL	5	12	16	15	1	2	3	3
FLA	3,557	1,440	2,080	3,003	465	216	324	328
GA	275	360	138	304	40	52	69	61
HAW	536	122	447	692	9	11	11	15
IDAHO	765	787	1,148	2,018	72	70	83	82
ILL	662	581	327	595	32	30	36	32
IND	475	955	891	540	48	59	78	54
IOWA	1,926	1,699	688	1,262	100	97	82	126
KANS	702	359	335	340	55	48	39	40
KY	192	152	169	257	20	21	20	31
LA	293	186	434	186	24	25	25	19
MAINE	12	39	45	40	2	2	2	3
MD	64	49	134	118	8	8	12	11
MASS	57	40	105	87	4	5	6	6
MICH	1,815	1,871	2,031	1,746	88	85	96	84
MINN	1,854	1,507	2,232	2,218	228	239	268	285
MISS	266	153	195	223	21	30	31	43
MO	605	223	251	397	33	139	144	63
MONT	1,047	383	793	923	162	104	159	224
NEBR	897	1,152	578	840	131	144	149	112
NEV	20	193	108	105	7	9	6	6
N H	13	9	22	20	3	2	5	3
N J	259	322	326	476	18	17	21	27
N MEX	274	67	129	195	11	10	8	9
N Y	1,056	930	1,540	1,962	77	67	99	119
N C	924	974	1,034	918	59	97	122	113
N DAK	2,400	1,077	2,662	3,648	225	168	348	365
OHIO	539	731	623	618	36	43	53	46
OKLA	536	508	547	688	56	42	43	47
OREG	181	515	346	422	25	36	35	34
PA	923	865	725	1,001	46	46	46	58
R I	5	7	7	9	1	1	1	1
S C	138	184	153	153	22	22	26	24
S DAK	1,169	670	1,436	1,040	153	163	226	277
TENN	487	845	882	590	75	84	84	68
TEX	1,429	860	870	1,140	143	155	148	194
UTAH	218	792	423	508	20	38	25	38
VT	65	19	98	122	4	2	5	6
VA	343	336	432	474	24	22	38	45
WASH	499	819	630	364	48	70	60	43
W VA	375	409	684	676	25	25	52	26
WIS	3,912	3,080	1,202	2,633	165	164	114	123
WYO	216	236	113	365	76	50	38	60
U S	34,310	30,043	32,238	37,997	3,346	3,091	3,965	3,788

**BEESWAX: PRICE PER POUND AND VALUE OF PRODUCTION
BY STATES, 1976-79**

STATE	PRICE PER POUND				VALUE OF PRODUCTION			
	1976	1977	1978	1979	1976	1977	1978	1979
	DOLLARS				1,000 DOLLARS			
ALA	1.06	1.44	1.67	1.73	29	42	45	40
ARIZ	.99	1.37	1.57	1.70	54	62	72	65
ARK	1.05	1.53	1.67	1.84	41	50	45	42
CALIF	1.19	1.65	1.77	1.87	374	338	995	544
COLO	1.18	1.66	1.71	1.73	57	91	99	90
CONN	1.15	1.50	1.60	1.60	7	6	8	11
DEL	1.20	1.68	1.76	2.04	1	3	5	6
FLA	1.11	1.61	1.73	1.70	516	348	561	558
GA	1.04	1.50	1.61	1.86	42	78	111	113
HAW	1.30	1.26	1.83	1.80	12	14	20	27
IDAHO	1.16	1.46	1.79	1.79	84	102	149	147
ILL	1.10	1.55	1.75	1.79	35	47	63	57
IND	1.18	1.52	1.75	1.87	57	90	137	101
IOWA	1.03	1.50	1.69	1.64	103	146	139	207
KANS	1.07	1.66	1.68	1.80	59	80	66	72
KY	1.00	1.41	1.66	1.71	20	30	33	53
LA	1.09	1.66	1.65	1.89	26	42	41	36
MAINE	1.05	1.40	1.60	1.60	2	3	3	5
MD	1.20	1.68	1.76	2.04	10	13	21	22
MASS	1.10	1.50	1.60	1.60	4	8	10	10
MICH	1.10	1.65	1.75	1.84	97	140	168	155
MINN	1.15	1.55	1.82	1.89	262	370	488	539
MISS	1.15	1.62	1.61	1.75	24	49	50	75
MO	1.05	1.55	1.60	1.50	35	215	230	95
MONT	1.08	1.72	1.78	1.64	175	179	283	367
NEBR	1.20	1.56	1.75	1.74	157	225	261	195
NEV	1.15	1.75	1.85	1.89	8	16	11	11
N H	1.10	1.50	1.60	1.60	3	3	8	5
N J	1.06	1.70	1.57	1.57	19	29	33	42
N MEX	1.02	1.47	1.52	1.35	11	15	12	12
N Y	1.14	1.61	1.74	1.74	88	108	172	207
N C	1.00	1.39	1.53	1.42	59	135	187	160
N DAK	1.15	1.63	1.81	1.83	259	274	630	668
OHIO	1.04	1.62	1.67	1.62	37	70	89	75
OKLA	1.08	1.60	1.67	1.52	60	67	72	71
OREG	1.10	1.65	1.77	1.65	28	59	62	56
PA	1.05	1.58	1.72	1.91	48	73	79	111
R I	1.10	1.50	1.60	1.60	1	2	2	2
S C	1.16	1.53	1.48	1.66	26	34	38	40
S DAK	1.17	1.49	1.74	1.72	179	243	393	476
TENN	1.00	1.54	1.58	1.41	75	129	133	96
TEX	1.13	1.55	1.70	1.86	162	240	252	361
UTAH	.97	1.61	1.72	1.77	19	61	43	67
VT	1.05	1.50	1.60	1.60	4	3	8	10
VA	1.18	1.50	1.70	1.79	28	33	65	81
WASH	1.07	1.62	1.96	1.68	51	113	118	72
W VA	1.10	1.70	2.10	2.00	28	43	109	52
WIS	1.21	1.65	1.79	1.81	200	271	204	223
WYO	1.16	1.53	1.76	1.88	88	77	67	113
U S	1.12	1.58	1.74	1.75	3,764	4,869	6,890	6,643

END