



AgEcon SEARCH
RESEARCH IN AGRICULTURAL & APPLIED ECONOMICS

The World's Largest Open Access Agricultural & Applied Economics Digital Library

This document is discoverable and free to researchers across the globe due to the work of AgEcon Search.

Help ensure our sustainability.

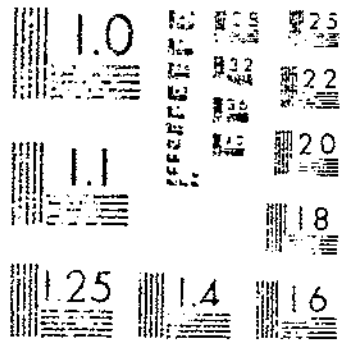
Give to AgEcon Search

AgEcon Search
<http://ageconsearch.umn.edu>
aesearch@umn.edu

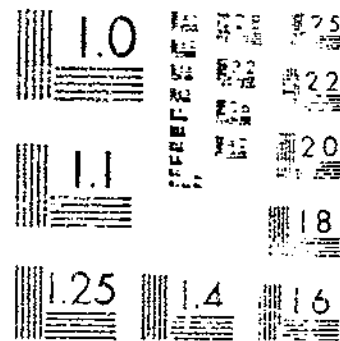
*Papers downloaded from **AgEcon Search** may be used for non-commercial purposes and personal study only. No other use, including posting to another Internet site, is permitted without permission from the copyright owner (not AgEcon Search), or as allowed under the provisions of Fair Use, U.S. Copyright Act, Title 17 U.S.C.*

SEP 67 AUG 69 311 - USDA STATISTICAL BULLETINS - URBAN
TURNERS - FINAL ESTIMATES FOR 1976-79
1 OF 1

SMART



MICROCOPY RESOLUTION TEST CHART
NATIONAL BUREAU OF STANDARDS-1963-A



MICROCOPY RESOLUTION TEST CHART
NATIONAL BUREAU OF STANDARDS-1963-A

TURKEYS:

Final Estimates for 1976-79

TURKEYS: FINAL ESTIMATES FOR 1976-79. Crop Reporting Board, Estimates Division, Statistical Reporting Service, U.S. Department of Agriculture, Statistical Bulletin No. 671.

ABSTRACT

This publication presents final turkey production estimates, including revisions, for 1976-79. Data covers turkeys raised, breeder hens, inventory and value, production, and income. The report continues the official series published in Statistical Bulletin No. 497, issued August 1978.

Washington, D.C. 20250

August 1981

C O N T E N T S

	PAGE
Introduction	4
Turkey Breeder Hens: Number and Value - United States - December 1, 1976-79	5
Turkeys: Production and Gross Income - United States - 1976-79	5
Death Loss of Turkeys, By Regions, 1976-79	5
Turkeys: Production By Breeds, Pounds Produced, Price Per Pound and Gross Income, 1976-79.....	6-9
Turkey Breeder Hens: Heavy Breeds By Age Groups: Selected States, December 1, 1976-79	10
Turkey Breeder Hens: Light Breeds By Age Groups: Selected States, December 1, 1976-79	10
Turkey Breeder Hens: All Breeds By Age Groups, Selected States, December 1, 1976-79	11
Turkey Breeder Hens: By Class, Selected States, December 1, 1976-79	11
Turkey Breeder Hens: Number and Value, Selected States, December 1, 1976-79	12

INTRODUCTION

This publication presents final turkey estimates, including some revisions, made by the Crop Reporting Board (CRB) for the 1976-79 period and continues the official series published in Statistical Bulletin No. 497, issued August 1978. This series includes estimates for December 1 inventory and value of breeder hens.

Estimates were published currently during 1976-79 based primarily on results of producer surveys. Surveys included all known large producers and a sample of smaller producers. Lists were updated annually.

Revisions have been made after a thorough review of original data with consideration given to all additional data now available, including the 1978 Census of Agriculture. Data for the 1978 Census were collected by mail with inventories reported as of December 31, 1978. Other check data included information on turkey poults hatched, Pullorum-typhoid disease testings and turkey slaughter. The general level and trends of all indicators collected during the 1976-79 period also were considered. Revisions were less than 1 percent at the national level.

Estimates of average value per head were based on reporters' estimates of average price per head in their localities about December 1 each year.

For the United States, the total value is the sum of State estimates. Value per head is derived by dividing the total value by the number of turkeys or breeder hens for the United States.

TURKEY BREEDER HENS: NUMBER AND VALUE - UNITED STATES - DECEMBER 1, 1976-79

YEAR	NUMBER	AVERAGE VALUE PER HEAD	TOTAL VALUE
	1,000 HEAD	DOLLARS	1,000 DOLLARS
1976	3,069	11.13	34,168
1977	3,038	11.39	34,617
1978	3,370	12.53	42,222
1979	3,705	13.57	50,288

TURKEYS: PRODUCTION AND GROSS INCOME - UNITED STATES - 1976-79

	HEAVY BREEDS	LIGHT BREEDS	TOTAL	POUNDS PRODUCED	PRICE PER POUND	GROSS INCOME
	1,000 HEAD	1,000 HEAD	1,000 HEAD	1,000 POUNDS	CENTS	1,000 DOLLARS
1976	123,748	16,273	140,021	2,606,265	31.7	825,095
1977	124,319	12,071	136,390	2,562,825	35.5	910,396
1978	130,830	8,009	138,939	2,654,788	43.6	1,157,200
1979	145,133	11,324	156,457	2,957,612	41.1	1,214,357

DEATH LOSS OF TURKEYS, BY REGIONS, 1976-79

GEOGRAPHIC DIVISION	YOUNG TURKEYS LOST AS A PERCENT OF TOTAL NUMBERS BOUGHT AND HOME HATCHED:				BREEDER HENS LOST AS A PERCENT OF BREEDERS ON HAND DECEMBER 1			
	1976	1977	1978	1979	1976 1/	1977 1/	1978 1/	1979 2/
NORTH ATLANTIC	6	6	7	7				
EAST NORTH CENTRAL	7	8	8	8				
WEST NORTH CENTRAL	7	7	7	9				
SOUTH ATLANTIC	7	8	8	8				
SOUTH CENTRAL	8	9	9	9				
WEST	11	9	9	10				
UNITED STATES	7.9	8.1	8.0	8.8	5.2	5.2	5.5	5.3

1/ 27 STATES FOR WHICH BREEDER HEN INVENTORY ESTIMATES ARE AVAILABLE DURING 1977 AND 1978.

2/ 26 STATES FOR WHICH BREEDER HEN INVENTORY ESTIMATES ARE AVAILABLE DURING 1979.

TURKEYS: PRODUCTION BY BREEDS, POUNDS PRODUCED,
PRICE PER POUND AND GROSS INCOME, 1976

STATE	NUMBER RAISED			POUNDS PRODUCED 1/	PRICE PER POUND 2/	GROSS INCOME
	HEAVY BREEDS	LIGHT BREEDS	TOTAL			
	1,000 HEAD			1,000 POUNDS	CENTS	1,000 DOLLARS
ARK 3/			10,138	209,857	32.5	68,204
CALIF	16,402	1,112	17,514	332,766	29.3	97,500
COLO 3/			3,695	90,897	35.0	31,814
CONN	30	3	33	693	60.0	416
GA	1,844	9	1,853	33,910	30.7	10,410
ILL	436	5	441	9,041	33.0	2,984
IND	4,765	423	5,188	93,903	31.3	29,392
IOWA	6,473	39	6,512	130,240	28.6	37,249
KANS	108		108	3,024	32.0	968
LA	2		2	38	33.0	13
MAINE	2	2	4	76	58.0	44
MD	63	7	70	1,372	33.0	453
MASS	122	21	143	2,860	58.0	1,659
MICH 3/			1,170	26,910	30.5	8,208
MINN	17,207	7,163	24,370	397,231	29.5	117,183
MO 3/			9,725	186,720	29.0	54,149
NEBR	473		473	9,886	28.7	2,837
N H	19	7	26	520	63.0	328
N J	66	15	81	1,717	56.0	962
N Y 3/			150	3,345	37.0	1,238
N C 3/			16,700	283,900	35.0	99,365
N DAK	666	374	1,040	17,368	29.2	5,071
OHIO	2,300	460	2,760	52,164	32.0	16,692
OKLA 3/			1,800	28,080	31.0	8,705
OREG 3/			1,300	22,880	34.0	7,779
PA	2,969	726	3,695	70,205	38.0	26,678
R I	10		10	210	58.0	122
S C	2,147	471	2,618	60,738	33.0	20,044
S DAK	630	375	1,005	21,708	29.3	6,360
TENN	4		4	76	34.5	26
TEX	9,300		9,300	186,000	32.8	61,008
UTAH	3,417	23	3,440	76,024	33.0	25,088
VT	7		7	147	61.0	90
VA 3/			7,297	120,401	32.2	38,769
W VA	763	1,030	1,793	29,585	30.9	9,142
WIS	5,059	19	5,078	91,912	33.4	30,699
OTH STS 4/	414	64	478	9,861	34.9	3,446
U S	123,748	16,273	140,021	2,606,265	31.7	825,095

1/ SEE FOOTNOTES AT END OF TABLE.

TURKEYS: PRODUCTION BY BREEDS, POUNDS PRODUCED,
PRICE PER POUND AND GROSS INCOME, 1977

STATE	NUMBER RAISED			POUNDS PRODUCED 1/	PRICE PER POUND 2/	GROSS INCOME 1,000 DOLLARS
	HEAVY BREEDS	LIGHT BREEDS	TOTAL			
ARK 3/			10,800	208,440	34.5	71,912
CALIF	16,630	735	17,365	347,300	35.3	122,597
COLO 3/			3,500	92,400	41.0	37,884
CONN	30	3	33	677	59.0	399
GA	1,633		1,633	30,374	35.6	10,813
ILL	636	2	638	13,334	38.4	5,120
IND	3,964	222	4,186	77,860	34.8	27,095
IOWA	5,980	29	6,009	126,189	32.9	41,516
KANS	113		113	2,938	34.0	999
MAINE	3	1	4	79	56.0	44
MD	65	5	70	1,267	39.2	497
MASS	110	15	125	2,600	58.0	1,508
MICH 3/			1,210	29,040	34.9	10,135
MINN	16,896	5,843	22,739	375,194	33.4	125,315
MO 3/			9,846	181,166	32.7	59,241
NEBR	471		471	9,656	36.4	3,515
N H	21	4	25	505	60.0	303
N J	43	15	58	1,183	57.0	674
N Y 3/			138	2,884	42.0	1,211
N C 3/			16,500	290,400	37.9	110,062
N DAK	730	120	850	15,045	35.0	5,266
OHIO	2,100	350	2,450	49,980	41.2	20,592
OKLA 3/			1,300	20,280	33.0	6,692
OREG 3/			1,350	24,030	35.8	8,603
PA	2,979	588	3,567	67,773	40.2	27,245
R I	10		10	210	58.0	122
S C	2,410		2,410	55,912	34.2	19,122
S DAK	707	405	1,112	23,352	34.4	8,033
TENN	3		3	57	34.5	20
TEX	8,600		8,600	163,400	34.8	56,863
UTAH	2,664		2,664	61,805	37.1	22,930
VT	6	2	8	154	57.0	88
VA 3/			8,694	140,843	35.7	50,281
W VA	1,375	690	2,065	33,453	33.5	11,207
WIS	5,536	8	5,544	107,554	37.5	40,333
OTH STS 4/	292	8	300	5,491	39.3	2,159
U S	124,319	12,071	136,390	2,562,825	35.5	910,396

SEE FOOTNOTES AT END OF TABLE.

TURKEYS: PRODUCTION BY BREEDS, POUNDS PRODUCED,
PRICE PER POUND AND GROSS INCOME, 1978

STATE	NUMBER RAISED			POUNDS PRODUCED 1/	PRICE PER POUND 2/	GROSS INCOME 1,000 DOLLARS
	HEAVY BREEDS	LIGHT BREEDS	TOTAL			
		1,000 HEAD		1,000 POUNDS	CENTS	
ARK 3/			12,500	235,000	45.0	105,750
CALIF	16,760	20	16,780	335,600	43.6	146,322
COLO 3/			3,580	91,648	46.0	42,158
CONN	39	2	41	804	70.0	563
GA	1,799		1,799	41,197	39.6	16,314
ILL	431	3	434	8,723	46.0	4,013
IND	4,624	31	4,655	86,583	37.2	32,209
IOWA	6,214	45	6,259	134,569	43.8	58,941
KANS	129		129	2,838	44.0	1,249
MAINE	3	3	6	118	62.0	73
MD	63	7	70	1,379	45.7	630
MASS	128	18	146	2,993	68.0	2,035
MICH 3/			1,210	30,250	48.0	14,520
MINN	17,319	3,919	21,238	365,294	42.4	154,885
MO 3/			10,500	202,650	43.5	88,153
NEBR	490		490	9,849	47.2	4,649
N H	17	6	23	485	69.0	335
N J	43	15	58	1,270	60.0	762
N Y 3/			186	3,869	43.0	1,664
N C 3/			18,854	324,289	43.0	139,444
N DAK 3/			900	14,040	45.0	6,318
OHIO 3/			2,565	64,638	45.4	29,346
OKLA 3/			1,450	22,620	45.0	10,179
OREG 3/			1,375	26,675	46.7	12,457
PA	3,280	170	3,450	62,100	47.4	29,435
R I	10		10	210	68.0	143
S C	2,527		2,527	59,132	40.7	24,067
S DAK 3/			979	19,972	41.4	8,268
TENN	3		3	57	42.0	24
TEX	7,300		7,300	146,000	43.9	64,094
UTAH	2,794		2,794	63,983	49.0	31,352
VT	11	2	13	260	66.0	172
VA 3/			8,546	143,573	41.6	59,726
W VA	1,685	420	2,105	34,101	40.0	13,640
WIS	5,680	26	5,706	112,979	45.0	50,841
OTH STS 4/	258		258	5,040	49.0	2,469
U S	130,830	8,009	138,939	2,654,788	43.6	1,157,200

SEE FOOTNOTES AT END OF TABLE.

TURKEYS: PRODUCTION BY BREEDS, POUNDS PRODUCED,
PRICE PER POUND AND GROSS INCOME, 1979

STATE	NUMBER RAISED			POUNDS PRODUCED 1/	PRICE PER POUND 2/	GROSS INCOME 1,000 DOLLARS
	HEAVY BREEDS	LIGHT BREEDS	TOTAL			
ARK 3/			13,340	234,784	39.0	91,566
CALIF	18,781	74	18,855	377,100	41.0	154,611
COLO	3,885		3,885	98,679	41.0	40,458
CONN	46		46	929	65.0	604
DEL	168	180	348	6,786	42.0	2,850
GA	2,516		2,516	61,894	40.0	24,758
ILL	515	1	516	10,423	44.0	4,586
IND	5,631	9	5,640	101,520	42.0	42,638
IOWA	6,113	47	6,160	133,056	41.0	54,553
KANS	184		184	4,048	40.0	1,619
MD	90	7	97	1,892	42.0	795
MASS	133	7	140	2,800	65.0	1,820
MICH	1,200		1,200	31,200	45.0	14,040
MINN	18,994	5,672	24,666	414,389	40.0	165,756
MO	10,950		10,950	211,335	42.0	88,761
NEBR	654		654	12,164	42.0	5,109
N H	14	11	25	528	65.0	343
N J	44	15	59	1,298	57.0	740
N Y 3/			227	4,427	42.0	1,859
N C 3/			23,100	397,320	41.0	162,901
N DAK 3/			950	15,200	43.0	6,536
OHIO 3/			2,350	53,345	41.0	21,871
OKLA	1,890		1,890	35,910	42.0	15,082
OREG 3/			1,295	25,123	42.0	10,552
PA	4,070	670	4,740	85,320	46.0	39,247
S C	2,998		2,998	74,051	39.0	28,880
S DAK 3/			1,253	24,559	40.0	9,824
TEX 3/			8,000	152,000	40.0	60,800
UTAH	2,921		2,921	68,644	47.0	32,263
VA 3/			9,174	160,545	40.0	64,218
W VA	2,064	569	2,633	47,394	40.0	18,958
WIS	5,640	5	5,645	108,949	42.0	45,759
U S	145,133	11,324	156,457	2,957,612	41.1	1,214,357

1/ INCLUDES HOME CONSUMPTION.

2/ LIVE WEIGHT EQUIVALENT PRICE.

3/ BREAK DOWN BY BREEDS COMBINED TO AVOID DISCLOSING INDIVIDUAL OPERATION.

4/ ALA, ARIZ, DEL, FLA, KY, MONT, N MEX, WASH AND WYO COMBINED TO AVOID DISCLOSING INDIVIDUAL OPERATIONS. THESE STATES DISCONTINUED ESTIMATES AFTER 1978 EXCEPT FOR DEL.

TURKEY BREEDER HENS: HEAVY BREEDS BY AGE GROUPS, SELECTED STATES, DECEMBER 1, 1976-79 1/

STATE	LESS THAN 5 MONTHS				5 TO 10 MONTHS				OVER 10 MONTHS			
	1976	1977	1978	1979	1976	1977	1978	1979	1976	1977	1978	1979
1,000 HEAD												
ARK 2/	10	8			34	49						
CALIF	136	135	152	1/	336	273	322	1/	48	82	56	1/
GA	13	17	8	2/	11	22	22	2/	15	7	17	1/
ILL 2/					40	50	43				16	
IOWA	20	12	19	27	77	49	41	40	34	21	30	8
MICH		7			55	42	34	44		3	6	
MINN	55	115	61	71	275	280	333	342	30	15	66	47
MO	1/	16	113	87	1/	159	85	138	1/	45	32	75
NEBR 2/	4	6			5	2						
N C 1/												
OHIO	1/	1/	1/	45	1/	1/	1/	50	1/	1/	1/	35
OREG 1/												
PA		1/	1/	1/	11	1/	1/	1/	5	1/	1/	1/
TEX	148	205	223	1/	230	160	189	1/	62	95	63	1/
UTAH 2/					3				34			
VA	32	62	1/	1/	52	42	1/	1/	22	23	1/	1/
W VA 1/												
WIS 2/	42				31							
TOTAL	682	858	974	948	1,652	1,500	1,637	1,814	449	523	510	600

TURKEY BREEDER HENS: LIGHT BREEDS BY AGE GROUPS, SELECTED STATES, DECEMBER 1, 1976-79 1/

STATE	LESS THAN 5 MONTHS				5 TO 10 MONTHS				OVER 10 MONTHS			
	1976	1977	1978	1979	1976	1977	1978	1979	1976	1977	1978	1979
1,000 HEAD												
CALIF	6	1	9	1/	27	8	9	1/	7	1	2	1/
IOWA	4		6			3	2	1/				
MINN	25	25	41	38	60	50	70	66	35	15	22	69
MO	1/				1/				1/			
OHIO	1/				1/				1/			
OREG 1/												
PA		1/	1/	1/	8	1/	1/	1/		1/	1/	1/
TEX				1/				1/				1/
VA	26	14	1/	1/	14	4	1/	1/	16	4	1/	1/
W VA 1/												
TOTAL	78	55	97	99	128	55	110	97	80	25	42	97

SEE FOOTNOTES AT BOTTOM OF PAGE 11.

TURKEY BREEDER HENS: ALL BREEDS BY AGE GROUPS, SELECTED STATES, DECEMBER 1, 1976-79

STATE	LESS THAN 5 MONTHS				5 TO 10 MONTHS				OVER 10 MONTHS			
	1976	1977	1978	1979	1976	1977	1978	1979	1976	1977	1978	1979
	1,000 HEAD											
ARK 2/	10	8		34	49							
CALIF	142	136	161	190	363	281	331	266	55	83	58	97
GA	13	17	8	21	11	22	22	24	15	7	17	16
ILL 2/					40	50	43				16	
IOWA	24	12	25	27	77	52	43	41	34	21	30	8
MICH		7			55	42	34	44		3	6	
MINN	80	140	102	109	335	310	403	408	65	30	88	116
MO	4	16	113	87	216	159	85	138		45	32	75
NEBR 2/	4	6			5	2						
N C	133	173	199	216	107	129	165	252	125	118	131	152
OHIO	34	1/	1/	45	37	1/	1/	50	38	1/	1/	35
OREG	20	1/	1/	1/	28	1/	1/	1/	12	1/	1/	1/
PA		1	1	7	19	12	31	54	5	4	16	
TEX	148	205	223	151	230	160	189	291	62	95	63	91
UTAH 2/					3				34			
VA	58	76	77	70	66	46	71	47	38	27	20	51
W VA	3	9	4		7	15	8	11	4	4	3	3
WIS 2/	42				31							
OTH STS 2/	45	89	114	79	116	175	231	308	42	53	24	51
TOTAL	760	913	1,071	1,047	1,780	1,577	1,747	1,961	529	548	552	697

TURKEY BREEDER HENS: BY CLASS, SELECTED STATES, DECEMBER 1, 1976-79

STATE	1976			1977			1978			1979		
	HEAVY	LIGHT	TOTAL	HEAVY	LIGHT	TOTAL	HEAVY	LIGHT	TOTAL	HEAVY	LIGHT	TOTAL
	1,000 HEAD											
ARK	44		44	57		57			2/			2/
CALIF	520	40	560	490	10	500	530	20	550	1/	1/	553
GA	39		39	46		46	47		47	61		61
ILL	40		40	50		50	59		59			2/
IOWA	131	4	135	82	3	85	90	8	98	75	1	76
MICH	55		55	52		52	40		40	44		44
MINN	360	120	480	390	90	480	460	133	593	460	173	633
MO	1/	1/	220	220		220	230		230	300		300
NEBR	9		9	8		8			2/			2/
N C 1/			365			420			495			620
OHIO	1/	1/	109	104		104	120		120	130		130
OREG 1/			60			45			63			74
PA	16	8	24	14	3	17	47	1	48	1/	1/	61
TEX	440		440	460		460	475		475	1/	1/	533
UTAH	37		37			2/			2/			2/
VA	106	56	162	127	22	149	1/	1/	168	1/	1/	168
W VA 1/			14			28			15			14
WIS	73		73			2/			2/			2/
OTH STS 2/			203			317			369			438
U S	2,783	286	3,069	2,881	157	3,038	3,121	249	3,370	3,362	343	3,705

1/ BREAKDOWN BY BREEDS OR AGE GROUPS NOT PUBLISHED TO AVOID DISCLOSING INDIVIDUAL OPERATIONS.
 2/ COLO, IND, KANS, N Y, N DAK, OKLA, S C, S DAK AND WASH COMBINED TO AVOID DISCLOSING INDIVIDUAL OPERATIONS. UTAH AND WIS NOT PUBLISHED FOR 1977, 1978 AND 1979. ARK AND NEBR NOT PUBLISHED FOR 1978 AND 1979. ILL NOT PUBLISHED FOR 1979. WASH ESTIMATE DISCONTINUED JAN 1, 1979.

TURKEY BREEDER HENS: NUMBER AND VALUE, SELECTED STATES, DECEMBER 1, 1976-79,

STATE	NUMBER				AVERAGE VALUE HEAD				TOTAL VALUE			
	1976	1977	1978	1979	1976	1977	1978	1979	1976	1977	1978	1979
	1,000 HEAD				DOLLARS				1,000 DOLLARS			
ARK	44	57	1/	1/	14.00	14.00			616	798		
CALIF	560	500	550	553	11.60	9.00	10.60	12.40	6,496	4,500	5,830	6,857
GA	39	46	47	61	8.80	9.10	10.70	13.00	343	419	503	793
ILL	40	50	59	1/	15.50	14.00	18.00		620	700	1,062	
IOWA	135	85	98	76	12.90	11.00	11.90	13.00	1,742	935	1,166	988
MICH	55	52	40	44	9.00	10.80	16.00	13.00	495	562	640	572
MINN	480	480	593	633	7.70	10.70	13.50	12.80	3,696	5,136	8,006	8,102
MO	220	220	230	300	14.00	12.00	12.00	16.60	3,080	2,640	2,760	4,980
NEBR	9	8	1/	1/	8.50	8.50			77	68		
N C	365	420	495	620	10.60	13.60	11.90	10.90	3,869	5,712	5,891	6,758
OHIO	109	104	120	130	10.50	13.50	14.00	15.60	1,145	1,404	1,680	2,028
OREG	60	45	63	74	7.70	9.50	14.10	15.30	462	428	888	1,132
PA	24	17	48	61	10.10	13.50	15.50	15.50	242	230	744	946
TEX	440	460	475	533	12.00	11.00	13.00	15.50	5,280	5,060	6,175	8,262
UTAH	37	1/	1/	1/	14.00				518			
VA	162	149	168	168	12.30	13.70	13.10	13.20	1,993	2,047	2,201	2,218
W VA	14	28	15	14	8.10	9.50	13.50	13.30	113	266	203	186
WIS	73	1/	1/	1/	9.80				715			
OTH STS 1/	203	317	369	438	13.10	11.70	12.10	14.80	2,666	3,718	4,473	6,466
TOTAL	3,069	3,038	3,370	3,705	11.13	11.39	12.53	13.57	34,168	34,617	42,222	50,288

1/ COLO, IND, KANS, N Y, N DAK, OKLA, S C, S DAK AND WASH COMBINED TO AVOID DISCLOSING INDIVIDUAL OPERATIONS. UTAH AND WIS NOT PUBLISHED FOR 1977, 1978 AND 1979. ARK AND NEBR NOT PUBLISHED FOR 1978 AND 1979. ILL NOT PUBLISHED FOR 1979. WASH ESTIMATE DISCONTINUED JAN 1, 1979.

END