



**AgEcon** SEARCH  
RESEARCH IN AGRICULTURAL & APPLIED ECONOMICS

*The World's Largest Open Access Agricultural & Applied Economics Digital Library*

**This document is discoverable and free to researchers across the globe due to the work of AgEcon Search.**

**Help ensure our sustainability.**

Give to AgEcon Search

AgEcon Search  
<http://ageconsearch.umn.edu>  
[aesearch@umn.edu](mailto:aesearch@umn.edu)

*Papers downloaded from **AgEcon Search** may be used for non-commercial purposes and personal study only. No other use, including posting to another Internet site, is permitted without permission from the copyright owner (not AgEcon Search), or as allowed under the provisions of Fair Use, U.S. Copyright Act, Title 17 U.S.C.*

SS 655 (1981)

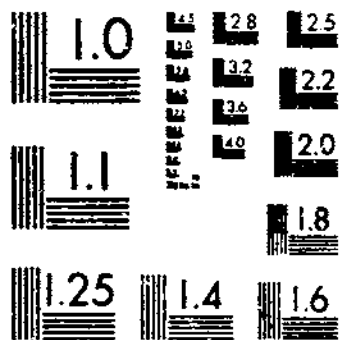
USDA STATISTICAL BULLETINS

USDATA

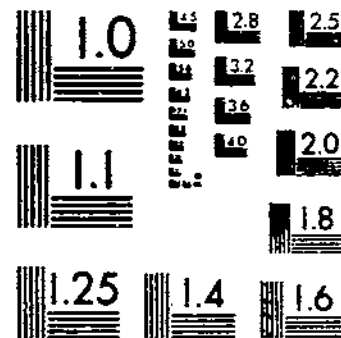
CHAPTER - FINAL ESTIMATES FOR 1975

1 OF 1

# START



MICROCOPY RESOLUTION TEST CHART  
NATIONAL BUREAU OF STANDARDS-1963-A



MICROCOPY RESOLUTION TEST CHART  
NATIONAL BUREAU OF STANDARDS-1963-A

---

# **CATTLE:**

**Final Estimates for 1976-79**

CATTLE: FINAL ESTIMATES FOR 1976-79. Crop Reporting Board, Economics and Statistics Service, U.S. Department of Agriculture, Statistical Bulletin No. 655.

#### ABSTRACT

This publication contains final cattle estimates, including revisions for 1976-79. Data covered include annual and semi-annual inventory estimates by classes, value of the inventory on January 1, annual calf crop and number of cattle operations, final estimates of cattle on feed for all States as of January 1, quarterly estimates for 23 major feeding States, and monthly data for 7 States. This report continues the official series published in Statistical Bulletin No. 589, issued January 1978.

Washington, D.C. 20250

January 1981

# C O N T E N T S

	<u>PAGE</u>
INTRODUCTION .....	4
TABLES	
<u>CATTLE AND CALVES:</u> Total and Number by Class, January 1, 1976-79, July 1, 1976-79; Calf Crop and Operations with Cattle; Calf Crop, Number and Percent by Time Period; United States, 1975-78 .....	5
Total and Number by Class, by States, January 1, 1976-79 .....	6
Calf Crop, by States, 1975-78 .....	11
Number of Operations with Cattle, by States, 1975-78 .....	12
Value Per Head and Total Value, by States, January 1, 1976-79 .	13
Total and Number by Class, 34 States, 16 Other States, July 1, 1976-79 .....	14
 <u>CATTLE ON FEED:</u>	
Number on Feed, United States, January 1, 1976-79 .....	19
Number on Feed, Placements, Marketed, Other Disappearance, by Quarters, 23 States, 1976-79 .....	20
Number on Feed, by Quarters, by States, 1976-79 .....	21
Number Placed on Feed, by Quarters, by States, 1976-79 .....	22
Number Marketed, by Quarters, by States, 1976-79 .....	23
Other Disappearance, by Quarters, by States, 1976-79 .....	24
Steers and Steer Calves, by Quarters, by States, 1976-79 .....	25
Heifers and Heifer Calves, by Quarters, by States, 1976-79 ....	26
Cows and Others, by Quarters, by States, 1976-79 .....	27
Steers and Steer Calves by Weight Groups, by States, 1976-79 ..	28
Number of Heifers and Heifer Calves by Weight Groups, by States, 1976-79 .....	32
Number on Feed, Placements, Marketed and Other Disappearance, Monthly, by States, 1976-79 .....	36
Number of Feedlots and Number of Fed Cattle Marketed by Feedlot Capacity, by States, 1976-79 .....	40

## INTRODUCTION

Estimates were published on a current basis in monthly, quarterly, and annual reports during 1976-79. Primary data used in current cattle estimates were obtained from producers by probability surveys. Information was collected by mail, telephone, and personal interviews. As all cattle operations were not included in the sample, the resulting estimates are subject to sampling variability. This variability, as measured by the relative standard error, is about 1 percent at the National level for the cattle inventory. This means that chances are approximately 95 out of 100 that a survey estimate will be within 2 percent of the complete coverage value if the same procedures are used to survey all producers. Survey estimates are also subject to such nonsampling errors as omissions, duplications, errors in recording and processing data, and mistakes in reporting. These problems cannot be measured directly, but they are minimized through rigid quality controls during the data collection process for consistency and reasonableness.

The Crop Reporting Board (CRB) also constructs a U.S. balance sheet for an additional check on inventory estimates. The balance sheet uses the prior inventory estimate adjusted for survey estimates of births and deaths, and reliable check data from other sources on slaughter, imports, and exports.

Cattle feeders provided the primary data for cattle on feed and related estimates. Survey procedures were designed to obtain reports from all large feeders and a sample of smaller feeders. Of the total number of cattle estimated on feed for each monthly or quarterly summary, from 60 to 75 percent were actually reported in the survey.

Revisions were made only after a thorough review of the original data, with consideration given to all additional data now available, including the 1978 Census of Agriculture. At the National level, revisions were less than 1 percent for all cattle and calves. There were few revisions for the major cattle-producing States. For the less important cattle States, some changes were necessary in the individual class estimates as far back as 1976. However, these changes had no significant effect on the National totals.

The estimates of average value per head were based on CRB crop and livestock reporters' estimates of average price per head in their localities, about January 1 each year. Values per head by classes for each State were weighted together by the estimated number in each class. This weighted average was the basis for the estimated value per head. For the United States, the total value is the sum of the State estimates; and value per head is derived by dividing the total value by the number of head for the United States.

The following change in the data series occurred during the 1976-79 period.

The preliminary (July 1) estimate of the annual calf crop was estimated for the first half and last half of the year starting in 1977.

CATTLE AND CALVES: NUMBER BY CLASS AND CALF CROP, UNITED STATES  
JANUARY 1, 1976-79

CLASS	1976	1977	1978	1979
	1000 HEAD			
CATTLE AND CALVES	127980	122810	116375	110864
COWS AND HEIFERS THAT HAVE CALVED	54971	52441	49635	47852
BEEF COWS	43901	41443	38738	37062
MILK COWS	11071	10998	10896	10790
HEIFERS 500 POUNDS AND OVER	18538	18461	17692	16903
FOR BEEF COW REPLACEMENT	7192	6527	5858	5527
FOR MILK COW REPLACEMENT	3956	3887	3886	3932
OTHER HEIFERS	7391	8048	7949	7445
STEERS 500 POUNDS AND OVER	17094	16884	16868	16442
BULLS 500 POUNDS AND OVER	2845	2664	2538	2403
HEIFERS, STEERS, AND BULLS UNDER 500 POUNDS	34531	32360	29643	27263
	1975			
	1975	1976	1977	1978
CALF CROP	50183	47384	45931	43818
OPERATIONS WITH CATTLE	1865970	1825820	1771930	1699040

CATTLE AND CALVES: NUMBER BY CLASS, UNITED STATES  
JULY 1, 1976-79

CLASS	1976	1977	1978	1979
	1000 HEAD			
CATTLE AND CALVES	133659	130255	121695	118437
COWS AND HEIFERS THAT HAVE CALVED	53938	52190	48413	47815
BEEF COWS	42915	41244	37652	37115
MILK COWS	11023	10946	10761	10700
HEIFERS 500 POUNDS AND OVER	18929	18360	18149	17612
FOR BEEF COW REPLACEMENT	6527	5842	5385	5770
FOR MILK COW REPLACEMENT	3948	4004	3955	4115
OTHER HEIFERS	8454	8514	8809	7727
STEERS 500 POUNDS AND OVER	18671	18689	17867	16793
BULLS 500 POUNDS AND OVER	2760	2687	2459	2456
HEIFERS, STEERS, AND BULLS UNDER 500 POUNDS	39361	38329	34807	33758

CALF CROP: NUMBER AND PERCENT BY TIME PERIOD, UNITED STATES,  
1977-78

YEAR	JANUARY 1 - JUNE 30		JULY 1 - DECEMBER 31		TOTAL (000)
	NUMBER (000)	% OF TOTAL	NUMBER (000)	% OF TOTAL	
1977	33,500	72.9	12,431	27.1	45,931
1978	31,023	70.6	12,795	29.2	43,818



CATTLE AND CALVES: TOTAL AND NUMBER BY CLASS  
JANUARY 1, 1976-79

STATE	ALL CATTLE AND CALVES				ALL COWS THAT HAVE CALVED			
	1976	1977	1978	1979	1976	1977	1978	1979
	1000 HEAD							
ALA	2850	2360	2130	1820	1400	1180	1100	985
ALAS	8.8	8.0	8.3	8.7	4.2	3.9	3.8	3.8
ARIZ	1280	1065	1135	1200	380	387	365	357
ARK	2385	2500	2120	2000	1271	1300	1164	1123
CALIF	5000	4750	4430	4700	1820	1800	1812	1790
COLO	3250	3030	3180	3090	1115	960	929	915
CONN	110	110	108	102	60	60	60	58
DEL	33	31	30	30	18	15	16	15
FLA	2920	2800	2350	2180	1615	1579	1410	1338
GA	2370	2300	1975	1650	1166	1090	968	860
HAW	245	240	234	215	103	98	93	91
IDAHO	1875	1900	1870	1900	780	750	700	725
ILL	3400	3200	2950	2850	1086	1034	973	983
IND	2225	2125	2025	1750	830	810	780	684
IOWA	7500	7650	7800	7200	2323	2295	2180	2058
KANS	6450	6400	6000	6200	1900	1831	1700	1800
KY	3450	3300	3120	2600	1650	1617	1530	1335
LA	1880	1700	1425	1350	1090	991	856	830
MAINE	140	133	132	133	71	68	68	69
MD	440	360	350	345	217	179	173	181
MASS	107	104	99	102	64	62	59	59
MICH	1550	1570	1470	1250	615	644	600	540
MINN	4430	4000	3700	3650	1641	1520	1400	1380
MISS	2723	2670	2130	1790	1434	1440	1210	1053
MO	6600	6400	6000	5550	3000	2925	2700	2560
MONT	3150	2980	2680	2607	1640	1576	1436	1480
NEBR	6550	6450	6500	6450	2290	2220	2160	2100
NEV	651	611	585	575	350	318	310	305
N H	72	72	74	71	38	37	37	37
N J	110	114	113	104	59	62	60	57
N MEX	1650	1500	1550	1500	675	675	651	635
N Y	1915	1860	1760	1711	1046	1025	1000	979
N C	1170	1080	1050	1030	610	545	536	520
N DAK	2380	2235	2050	1967	1269	1173	1080	1058
OHIO	2305	2250	2025	1750	890	910	853	730
OKLA	6400	5650	5900	5300	2790	2375	2300	2250
OREG	1500	1520	1490	1540	730	720	715	725
PA	1960	1960	1900	1840	914	902	902	874
R I	12	10	10.0	9.0	7	6	6.0	6.0
S C	725	750	690	575	368	390	362	305
S DAK	4500	3650	3925	3830	2061	1550	1638	1640
TENN	3100	3000	2700	2350	1550	1510	1360	1260
TEX	15600	15800	14500	13900	6800	6800	6550	6200
UTAH	927	880	864	820	441	414	397	389
VT	346	338	336	329	208	206	207	199
VA	1675	1620	1620	1550	805	720	750	760
WASH	1375	1350	1275	1375	572	536	540	570
W VA	555	549	550	535	283	278	280	270
WIS	4550	4275	4100	4100	2162	2099	2030	2038
WYO	1580	1600	1357	1380	760	755	625	662
U.S.	127980	122810	116375	110864	54971	52441	49635	47852

CONTINUED--

CATTLE AND CALVES: NUMBER BY CLASS  
 JANUARY 1, 1976-79--CONTINUED

STATE	BEEF COWS THAT HAVE CALVED				MILK COWS THAT HAVE CALVED			
	1976	1977	1978	1979	1976	1977	1978	1979
	1000 HEAD							
ALA	1314	1096	1021	911	86	84	79	74
ALAS	2.6	2.4	2.4	2.5	1.6	1.5	1.4	1.3
ARIZ	312	319	297	287	68	68	68	70
ARK	1185	1215	1080	1040	86	85	84	83
CALIF	1010	991	966	930	810	809	846	860
COLO	1040	889	857	843	75	71	72	72
CONN	7	7	9	8	53	53	51	50
DEL	7	4	5	4	11	11	11	11
FLA	1417	1378	1213	1149	198	201	197	189
GA	1037	961	839	731	129	129	129	129
HAW	90	85	80	78	13	13	13	13
IDAHO	636	608	561	584	144	142	139	141
ILL	846	800	740	753	240	234	233	230
IND	618	602	574	486	212	208	206	198
IOWA	1928	1903	1800	1684	395	392	380	374
KANS	1763	1696	1568	1675	137	135	132	125
KY	1365	1337	1253	1070	285	280	277	265
LA	952	856	727	703	138	135	129	127
MAINE	11	10	10	12	60	58	58	57
MD	82	48	43	52	135	131	130	129
MASS	9	9	8	10	55	53	51	49
MICH	208	239	196	138	407	405	404	402
MINN	751	640	550	530	890	880	850	850
MISS	1317	1325	1100	950	117	115	110	103
MO	2700	2615	2420	2291	300	310	280	269
MONT	1614	1551	1409	1452	26	25	27	28
NEBR	2142	2087	2032	1988	148	138	128	120
NEV	336	304	296	290	14	14	14	15
N H	6	6	6	6	32	31	31	31
N J	14	15	14	14	45	47	46	43
N MEX	644	642	617	597	31	33	34	38
N Y	130	112	85	75	916	913	915	904
N C	467	404	400	389	143	141	136	131
N DAK	1156	1065	976	962	113	108	104	96
OHIO	500	512	455	355	390	398	398	375
OKLA	2673	2259	2186	2138	117	116	114	112
OREG	638	627	622	632	92	93	93	93
PA	208	197	199	171	706	705	703	703
R I	1	1	1.0	1.3	6	5	5.0	4.7
S C	312	336	310	254	56	54	52	51
S DAK	1889	1783	1475	1481	172	167	163	159
TENN	1338	1300	1155	1051	217	210	205	209
TEX	6480	6482	6236	5890	320	318	314	310
UTAH	362	335	321	321	79	79	76	78
VT	14	13	13	11	194	193	194	188
VA	634	546	580	588	171	174	170	172
WASH	393	355	355	372	179	181	185	198
W VA	244	239	243	235	39	39	37	37
WIS	350	299	220	227	1812	1800	1810	1811
WYO	748	743	613	650	12	12	12	12
U.S.	43901	41443	38738	37062	11071	10998	10896	10790

CONTINUED--

CATTLE AND CALVES: NUMBER BY CLASS  
 JANUARY 1, 1976-79--CONTINUED

STATE	HEIFERS 500 POUNDS AND OVER							
	BEEF COW REPLACEMENT				MILK COW REPLACEMENT			
	1976	1977	1978	1979	1976	1977	1978	1979
	1000 HEAD							
ALA	199	182	138	118	23	21	17	15
ALAS	.6	.5	.6	.8	.5	.5	.5	.5
ARIZ	45	45	40	60	15	10	10	15
ARK	222	225	189	176	24	27	21	26
CALIF	240	210	190	234	320	315	310	391
COLO	180	136	127	133	40	21	25	28
CONN	2	2	2	1	19	20	18	18
DEL	1	1	1	1	3	4	3	3
FLA	258	232	181	146	44	42	37	38
GA	180	164	128	104	42	39	44	33
HAW	15	15	17	15	5	7	8	8
IDAHO	101	92	95	118	62	56	66	87
ILL	139	115	127	100	91	80	89	100
IND	96	94	101	70	87	91	83	84
IOWA	225	199	187	163	135	137	164	126
KANS	238	218	198	229	39	38	42	40
KY	228	201	180	156	93	99	97	81
LA	152	136	106	108	34	31	29	33
MAINE	4	3	4	4	26	26	23	23
MD	22	13	14	9	46	46	47	43
MASS	2	2	2	3	17	17	16	16
MICH	31	39	29	19	202	157	184	149
MINN	152	120	93	93	356	400	329	333
MISS	231	246	184	125	35	40	28	26
MO	421	381	360	297	86	102	96	100
MONT	274	238	217	257	10	9	8	8
NEBR	275	284	260	277	41	32	26	32
NEV	50	48	46	47	5	6	7	8
N H	1	2	2	1	13	13	13	12
N J	6	6	6	4	12	13	13	15
N MEX	106	99	87	75	9	6	12	8
N Y	38	37	30	17	345	354	341	339
N C	99	82	78	87	42	39	37	36
N DAK	140	139	127	121	24	24	23	22
OHIO	97	92	79	72	145	154	149	150
OKLA	400	328	288	245	45	34	30	20
OREG	95	92	95	114	29	29	30	32
PA	53	51	48	42	221	221	237	230
R I	0	0	0.	0.	2	2	2.0	1.0
S C	65	59	53	46	14	14	14	13
S DAK	225	161	204	191	45	40	47	38
TENN	257	206	199	165	62	54	59	66
TEX	1060	1000	900	840	100	90	90	90
UTAH	65	53	44	43	37	39	41	37
VT	5	4	3	3	63	63	61	62
VA	114	104	110	85	50	52	84	77
WASH	92	97	64	76	67	68	64	90
W VA	61	60	59	58	13	13	12	13
WIS	91	81	45	62	714	688	696	713
WYO	138	132	120	116	3	3	3	3
U.S.	7192	6527	5858	5527	3956	3887	3886	3932

CONTINUED--

CATTLE AND CALVES: NUMBER BY CLASS  
 JANUARY 1, 1976-79--CONTINUED

STATE	OTHER HEIFERS 500 POUNDS AND OVER				STEERS 500 POUNDS AND OVER			
	1976	1977	1978	1979	1976	1977	1978	1979
	1000 HEAD							
ALA	80	71	49	42	214	179	151	102
ALAS	0.	0.	.1	.1	.4	.3	.5	.4
ARIZ	55	37	42	17	500	350	380	504
ARK	39	53	53	42	89	105	92	87
CALIF	190	164	159	170	1180	1120	997	1085
COLO	475	516	579	578	705	712	766	735
CONN	2	2	3	2	2	2	3	2
DEL	1	1	1	2	4	3	3	3
FLA	69	70	59	41	151	148	134	100
GA	62	85	85	64	160	186	140	99
HAW	21	22	19	17	31	33	31	25
IDAMO	174	142	155	123	244	295	320	275
ILL	383	429	395	388	807	717	640	547
IND	167	189	205	185	378	340	369	282
IOWA	773	1071	1170	1110	1575	1599	1778	1872
KANS	689	870	840	663	1830	1824	1758	1806
KY	135	122	125	88	269	314	307	213
LA	28	34	24	30	53	54	64	57
MAINE	2	2	2	1	3	3	4	4
MD	15	8	8	10	41	40	37	33
MASS	1	1	1	1	3	2	2	2
MICH	46	71	56	55	270	251	244	187
MINN	286	320	302	260	712	640	629	637
MISS	46	35	30	21	99	101	63	50
MO	304	277	270	252	667	664	643	633
MONT	101	105	94	91	165	187	145	135
NERR	786	884	824	909	1160	1250	1417	1452
NEV	15	14	15	16	49	46	34	36
N H	1	1	2	1	2	2	3	3
N J	4	3	3	3	7	7	6	6
N MEX	88	84	105	78	223	165	172	184
N Y	46	37	33	41	50	47	39	22
N C	38	36	35	30	63	63	60	62
N DAK	93	83	72	81	166	168	123	142
OHIO	115	86	92	65	409	405	339	285
OKLA	255	248	300	265	825	865	1100	800
OREG	63	76	70	93	135	160	145	177
PA	69	69	67	59	245	294	247	230
R I	0	0	0.	0.	0	0	0.	0.
S C	14	15	13	12	44	45	40	35
S DAK	225	219	220	211	405	347	471	429
TENN	71	72	81	54	174	219	172	132
TEX	1030	1020	920	960	1950	1940	1840	2050
UTAH	35	44	40	33	82	77	79	79
VT	4	4	3	3	3	3	3	3
VA	54	57	49	48	214	210	170	155
WASH	88	101	82	81	231	217	268	240
W VA	14	14	13	12	49	47	46	45
WIS	132	128	115	87	350	304	308	291
WYO	57	56	69	55	106	134	105	114
U.S.	7391	8048	7949	7445	17094	16884	16868	16442

CONTINUED--

CATTLE AND CALVES: NUMBER BY CLASS  
JANUARY 1, 1976-79--CONTINUED

STATE	BULLS 500 POUNDS AND OVER				STEERS, HEIFERS AND BULLS UNDER 500 POUNDS			
	1976	1977	1978	1979	1976	1977	1978	1979
	1000 HEAD							
ALA	63	71	68	58	871	656	607	500
ALAS	1.1	1.1	1.0	1.1	2.0	1.7	1.8	2.0
ARIZ	28	24	27	25	257	212	271	222
ARK	74	75	70	66	666	715	531	480
CALIF	85	71	66	69	1165	1070	896	961
COLO	60	49	51	46	675	636	703	655
CONN	2	2	2	2	23	22	20	19
DEL	1	1	1	1	5	6	5	5
FLA	99	90	82	76	684	639	447	441
GA	68	62	55	43	692	674	555	447
HAW	7	7	7	7	63	58	59	52
IDAHO	39	40	40	37	525	525	494	535
ILL	68	51	47	48	826	774	679	684
IND	33	34	34	37	634	567	453	408
IOWA	105	92	92	89	2364	2257	2229	1782
KANS	90	83	82	99	1664	1536	1380	1563
KY	93	89	81	73	982	858	800	654
LA	61	56	47	43	462	398	319	254
MAINE	3	3	2	2	31	28	29	30
MD	11	8	8	7	88	66	63	62
MASS	2	2	2	2	18	18	17	19
MICH	26	28	28	19	360	380	329	281
MINN	65	60	48	44	1218	940	899	903
MISS	82	80	67	59	796	728	548	456
MO	152	140	126	123	1970	1911	1805	1585
MONT	95	90	86	86	865	775	694	550
NEBR	112	110	110	103	1886	1670	1703	1577
NEV	17	17	16	16	165	162	157	147
N H	1	1	1	1	16	16	16	16
N J	3	3	3	3	19	20	22	16
N MEX	40	45	43	40	509	426	480	480
N Y	34	28	28	22	356	332	289	291
N C	36	34	33	32	282	281	271	263
N DAK	40	56	51	49	628	592	574	494
OHIO	51	45	42	33	598	558	471	415
OKLA	130	113	134	120	1955	1687	1748	1600
OREG	40	38	40	37	408	405	395	362
PA	47	51	38	41	411	372	361	364
R I	0	0	0	0	3	2	2	2
S C	24	24	22	20	196	203	186	144
S DAK	99	66	75	72	1440	1267	1270	1249
TENN	70	69	59	57	916	870	770	616
TEX	470	460	440	410	4190	4490	3760	3350
UTAH	19	18	18	18	248	235	245	211
VT	5	5	5	4	58	53	54	55
VA	33	33	36	35	405	444	421	390
WASH	28	27	23	28	297	304	234	290
W VA	18	18	18	19	117	119	122	118
WIS	50	47	41	41	1051	928	865	873
WYO	45	47	42	40	471	473	393	390
U.S.	2845	2664	2538	2403	34531	32360	29643	27263

CALF CROP, 1975-78

STATE	1975	1976	1977	1978
	1000 HEAD			
ALA	1230	1050	1020	920
ALAS	3.5	3.3	3.2	3.2
ARIZ	316	315	285	285
ARK	1135	1110	1070	1070
CALIF	1620	1610	1600	1570
COLO	1020	880	865	780
CONN	53	53	51	49
DEL	16	14	14	13
FLA	1250	1170	1135	1060
GA	1010	910	850	760
HAW	73	74	74	64
IDAHO	770	730	720	710
ILL	1020	950	910	900
IND	780	740	720	655
IOWA	2150	2180	2140	2030
KANS	1880	1670	1550	1650
KY	1500	1450	1400	1270
LA	890	810	730	689
MAINE	65	62	58	58
MD	200	165	165	180
MASS	56	55	52	50
MICH	590	595	570	510
MINN	1596	1450	1390	1280
MISS	1220	1230	1150	1010
MO	2800	2700	2600	2450
MONT	1680	1570	1530	1443
NEBR	2190	2020	2000	1960
NEV	285	260	250	245
N H	36	34	34	34
N J	54	52	52	50
N MEX	590	590	565	560
N Y	975	945	930	910
N C	525	490	477	468
N DAK	1300	1190	1130	1050
OHIO	780	780	790	729
OKLA	24.3	2150	2100	2000
OREG	665	650	650	630
PA	800	790	775	770
R I	6	5	5.0	5.0
S C	313	329	306	260
S DAK	2030	1800	1670	1640
TENN	1350	1238	1230	1160
TEX	6000	5800	5700	5300
UTAH	390	374	373	355
VT	187	183	184	175
VA	700	635	660	685
WASH	527	500	460	491
W VA	253	253	258	250
WIS	2100	2065	2010	1990
WYO	760	705	670	642
U.S.	50183	47384	45931	43818

CATTLE AND CALVES: NUMBER OF OPERATIONS WITH CATTLE 1975-78

STATE	1975	1976	1977	1978
	NUMBER			
ALA	54000	53000	52000	48000
ALAS	140	140	140	140
ARIZ	3500	3800	3900	4000
ARK	52000	54000	52000	51000
CALIF	27000	28000	29000	30000
COLO	19500	20000	19000	18500
CONN	2200	2200	2200	2200
DEL	1000	1000	900	800
FLA	22000	21000	21000	21000
GA	46000	44000	42000	40000
HAW	930	900	900	800
IDAHO	19000	18500	19000	18000
ILL	62000	60000	58000	56000
IND	56000	55000	53000	51000
IOWA	96000	92000	85000	80000
KANS	57000	54000	53000	53000
KY	90000	87000	82000	72000
LA	37000	35000	33000	32000
MAINE	3900	3900	3900	3800
MD	8200	8100	8000	7900
MASS	2300	2500	2500	2500
MICH	36000	35000	34000	33000
MINN	75000	73000	70000	66000
MISS	62000	60000	58000	50000
MO	115000	113000	111000	107000
MONT	18000	18000	17800	17500
NEBR	56000	53000	50000	47000
NEV	1500	1600	1700	1800
N H	1700	1900	1900	1900
N J	2600	2700	2800	2800
N MEX	8500	8500	8500	8300
N Y	37000	36000	35000	34000
N C	53000	52000	51000	51000
N DAK	26000	24500	24000	22000
OHIO	62000	60000	58000	54000
OKLA	73000	73000	71000	68000
OREG	23000	24000	25000	27000
PA	52000	52000	52000	50000
R I	300	380	390	400
S C	22000	22000	22000	21000
S DAK	35000	34000	33000	31000
TENN	88000	85000	84000	82000
TEX	165000	165000	160000	155000
UTAH	10000	10000	10000	10000
VT	5300	5400	5400	5400
VA	42000	40000	39000	39000
WASH	22500	22000	21500	21000
W VA	20000	20000	19800	18800
WIS	87000	83000	78000	75000
WYO	6900	6800	6700	6500
U.S.	1865970	1825820	1771930	1699040

ALL CATTLE AND CALVES: VALUE PER HEAD AND TOTAL VALUE  
JANUARY 1, 1976-79

STATE	VALUE PER HEAD				TOTAL VALUE			
	1976	1977	1978	1979	1976	1977	1978	1979
	DOLLARS				1000 DOLLARS			
ALA	125	150	160	300	356250	354000	340800	546000
ALAS	380	400	400	390	3344	3200	3320	3393
ARIZ	195	215	240	385	249600	228975	272400	462000
ARK	145	160	185	345	345825	400000	392200	690000
CALIF	240	245	285	510	1200000	1163750	1262550	2397000
COLO	200	210	235	415	650000	636300	747300	1282350
CONN	325	365	385	560	35750	40150	41580	57120
DEL	280	285	315	460	9240	8835	9450	13800
FLA	150	175	205	335	438000	490000	481750	730300
GA	140	160	180	305	331800	368000	355500	503250
HAW	260	250	250	290	63700	60000	58500	62350
IDAHO	195	215	240	425	365625	408500	448800	807500
ILL	205	210	235	380	697000	672000	693250	1083000
IND	200	220	240	395	445000	467500	486000	691250
IOWA	195	210	235	410	1462500	1406500	1833000	2952000
KANS	185	190	220	365	1193250	1216000	1320000	2263000
KY	165	195	210	370	569250	643500	655200	962000
LA	145	170	185	325	272600	289000	263625	438750
MAINE	285	310	325	490	39900	41230	42900	65170
MD	270	285	315	460	118800	102600	110250	158700
MASS	345	380	415	560	36915	39520	41085	57120
MICH	270	290	325	500	418500	455300	477750	625000
MINN	215	235	280	465	952450	940000	1036000	1697250
MISS	130	155	170	315	353990	413850	362100	563850
MO	170	185	210	375	1122000	1184000	1260000	2081250
MONT	205	220	240	455	645750	656600	643200	1186185
NEBR	190	205	240	410	1244500	1322250	1560000	2644500
NEV	215	200	220	400	139965	122200	128700	230000
N H	305	355	355	480	21960	25560	26270	34080
N J	340	375	365	545	37400	42750	41245	56680
N MEX	165	175	195	345	272250	262500	302250	517500
N Y	325	365	390	600	622375	678900	696400	1026600
N C	160	175	185	305	187200	189000	194250	314150
N DAK	205	210	245	470	487900	469350	502250	924490
OHIO	225	240	265	450	518625	540000	536625	787500
OKLA	160	170	200	355	1024000	960500	1180000	1881500
OREG	195	200	230	405	292500	304000	342700	623700
PA	310	335	350	530	607600	656600	665000	975200
R I	325	375	405	575	3900	3750	4050	5175
S C	150	160	170	315	108750	120000	117300	181125
S DAK	195	200	240	440	877500	730000	942000	1685200
TENN	150	170	185	340	465000	510000	499500	799000
TEX	155	170	185	345	2418000	2686000	2682500	4795500
UTAH	200	210	230	405	185400	184800	198720	332100
VT	345	390	400	590	119370	131820	134400	194110
VA	175	195	200	355	293125	315900	324000	550250
WASH	215	230	260	445	295625	310500	331500	611875
W VA	165	175	185	330	91575	96075	101750	176550
WIS	290	315	380	580	1319500	1346625	1558000	2378000
WYO	205	220	245	430	323900	352000	332465	593400
U.S.	190	206	232	403	74334959	25249390	27030385	44697773



CATTLE AND CALVES: TOTAL AND NUMBER BY CLASS  
JULY 1, 1976-79

STATE	ALL CATTLE AND CALVES				ALL COWS THAT HAVE CALVED			
	1976	1977	1978	1979	1976	1977	1978	1979
	1000 HEAD							
ALA	2600	2560	2000	1850	1300	1236	1610	929
ARIZ	1200	1095	1200	1100	420	365	387	345
ARK	2750	2640	2200	2200	1323	1279	1104	1123
CALIF	4730	4300	4500	4580	1769	1711	1690	1755
COLO	3440	3375	3340	3220	980	940	840	855
FLA	2910	2850	2550	2500	1510	1496	1357	1380
GA	2295	2075	1850	1800	1080	990	898	927
IDAHO	2100	2000	2105	1950	800	750	735	735
ILL	3200	3115	2950	2800	1037	1042	994	986
IND	2240	2100	1800	1800	855	820	711	670
IOWA	7700	7800	7650	7000	2272	2200	2088	2000
KANS	6400	6462	6500	6400	1900	1850	1730	1940
KY	3600	3500	2950	2700	1609	1561	1350	1260
LA	2000	1600	1600	1400	1070	854	880	790
MICH	1580	1500	1350	1300	645	606	570	540
MINN	4300	4100	3700	3800	1570	1505	1380	1400
MISS	2900	2680	2280	1980	1460	1345	1179	1010
MO	6750	6900	6200	5850	2860	2920	2640	2550
MONT	4180	3900	3630	3750	1700	1606	1535	1580
NEBR	7100	7000	6800	6750	2150	2190	2080	2040
N MEX	1800	1860	1800	1800	675	651	630	670
N Y	1900	1795	1744	1770	1020	1000	981	970
N DAK	2990	2790	2545	2460	1286	1235	1127	1109
OHIO	2300	2230	1880	1840	900	880	760	760
OKLA	6450	6800	6200	6000	2600	2660	2300	2300
OREG	1900	1850	1800	1850	800	775	740	755
PA	1950	1900	1810	1850	904	885	869	877
S DAK	4950	4400	4450	4800	1900	1672	1669	1793
TENN	3240	3240	2670	2550	1513	1525	1330	1250
TEX	16300	16600	15000	14000	7000	6850	6200	5800
VA	1850	1850	1820	1900	797	775	815	847
WASH	1650	1550	1600	1500	610	587	557	562
WIS	4600	4400	4200	4250	2157	2055	2030	2027
WYO	2060	2000	1790	1810	770	730	655	640
34 STATES	127915	124817	116464	113110	51242	49546	45821	45175
16 OTHER								
STATES 1/	5744	5438	5231	5327	2696	2644	2592	2640
U.S.	133659	130255	121695	118437	53938	52190	48413	47815

1/ STATE ESTIMATES NOT AVAILABLE IN JULY

CONTINUED--

CATTLE AND CALVES: NUMBER BY CLASS  
JULY 1, 1976-79--CONTINUED

STATE	BEEF COWS THAT HAVE CALVED				MILK COWS THAT HAVE CALVED			
	1976	1977	1978	1979	1976	1977	1978	1979
	1000 HEAD							
ALA	1215	1156	934	856	85	80	76	73
ARIZ	350	293	318	275	70	72	69	70
ARK	1238	1195	1021	1041	85	84	83	82
CALIF	954	883	851	884	815	828	839	871
COLO	908	869	767	793	72	71	73	72
FLA	1309	1298	1164	1190	201	198	193	190
GA	950	861	769	798	130	129	129	129
IDAMO	658	609	594	592	142	141	141	143
ILL	801	809	764	755	236	233	230	231
IND	647	613	510	472	208	207	201	198
IOWA	1881	1815	1711	1629	391	385	377	371
KANS	1764	1715	1600	1816	136	135	130	124
KY	1328	1283	1081	1003	281	278	269	257
LA	933	722	752	669	137	132	128	121
MICH	241	203	166	146	404	403	404	394
MINN	700	635	555	570	870	870	825	830
MISS	1344	1233	1072	912	116	112	107	98
MO	2550	2625	2370	2286	310	295	270	264
MONT	1676	1580	1508	1552	24	26	27	28
NEBR	2006	2057	1955	1922	144	133	125	118
N MEX	643	618	594	632	32	33	36	38
N Y	111	88	78	70	909	912	903	900
N DAK	1175	1128	1027	1014	111	107	100	95
OHIO	503	480	382	390	397	400	378	370
OKLA	2483	2544	2187	2190	117	116	113	110
OREG	708	682	647	661	92	93	93	94
PA	203	182	173	181	701	703	696	696
S DAK	1730	1507	1508	1635	170	165	161	158
TENN	1304	1317	1121	1038	209	208	209	212
TEX	6678	6536	5890	5490	322	314	310	310
VA	623	603	646	679	174	172	169	168
WASH	428	398	363	364	182	189	194	198
WIS	347	253	219	214	1810	1802	1811	1813
WYO	758	718	643	628	12	12	12	12
34 STATES	41147	39508	35940	35337	10095	10038	9881	9838
16 OTHER STATES 1/	1768	1736	1712	1778	928	908	880	862
U.S.	42915	41244	37652	37115	11023	10946	10761	10700

1/ STATE ESTIMATES NOT AVAILABLE IN JULY

CONTINUED--

CATTLE AND CALVES: NUMBER BY CLASS  
 JULY 1, 1976-79--CONTINUED

STATE	HEIFERS 500 POUNDS AND OVER							
	REF COW REPLACEMENT				MILK COW REPLACEMENT			
	1976	1977	1978	1979	1976	1977	1978	1979
	1000 HEAD							
ALA	164	143	112	120	22	23	14	15
ARIZ	46	40	54	48	18	12	15	15
ARK	229	190	155	143	22	24	15	20
CALIF	175	172	178	293	317	318	384	321
COLO	155	125	115	160	30	30	27	35
FLA	204	191	186	182	35	37	41	40
GA	135	102	109	97	41	33	33	36
IDAHO	101	94	116	115	63	58	57	66
ILL	109	96	97	92	83	93	95	90
IND	93	76	70	76	84	84	84	79
IOWA	192	170	191	195	154	149	145	140
KANS	250	194	215	205	45	45	52	51
KY	195	168	142	115	104	95	77	90
LA	150	112	91	91	30	34	32	22
MICH	50	33	31	26	158	171	175	170
MINN	138	104	89	91	387	348	333	342
MISS	246	182	148	129	29	38	30	27
MO	378	345	291	284	108	104	89	116
MONT	284	261	247	307	13	12	12	11
NEBR	241	252	252	304	36	28	27	31
N MEX	90	84	82	88	8	9	11	9
N Y	36	29	21	25	380	355	347	380
N DAK	155	146	135	155	24	22	21	22
OHIO	101	96	57	64	151	158	132	165
OKLA	315	295	280	300	30	26	25	25
OREG	105	94	110	124	30	37	29	35
PA	58	57	45	41	241	243	254	277
S DAK	208	198	200	267	45	44	45	38
TENN	218	196	141	147	74	74	64	95
TEX	950	979	795	830	80	83	75	80
VA	102	102	106	101	57	74	76	89
WASH	81	62	64	75	53	62	80	75
WIS	97	66	59	55	713	789	746	765
WYO	151	133	136	150	3	3	3	3
34 STATES	6202	5587	5120	5495	3668	3714	3645	3775
16 OTHER STATES 1/1	325	255	265	275	280	290	310	340
U.S.	6527	5842	5385	5770	3948	4004	3955	4115

1/ STATE ESTIMATES NOT AVAILABLE IN JULY

CONTINUED--

CATTLE AND CALVES: NUMBER BY CLASS  
 JULY 1, 1976-79--CONTINUED

STATE	OTHER HEIFERS 500 POUNDS AND OVER				STEERS 500 POUNDS AND OVER			
	1976	1977	1978	1979	1976	1977	1978	1979
	1000 HEAD							
ALA	45	54	30	33	144	152	92	76
ARIZ	36	33	19	22	378	345	391	439
ARK	53	51	44	38	102	116	92	79
CALIF	213	159	142	165	1173	985	1112	978
COLO	535	537	468	562	735	810	765	780
FLA	73	51	46	28	146	140	112	72
GA	66	66	65	47	142	120	115	67
IDAMO	151	145	181	111	330	310	378	306
ILL	429	421	481	392	726	588	501	532
IND	208	193	148	137	340	323	248	248
IOWA	1132	1303	1500	1200	1948	2090	2004	1749
KANS	640	806	961	776	1696	1793	1677	1700
KY	122	109	97	85	335	350	280	200
LA	30	35	31	14	60	54	42	21
MICH	63	61	50	57	248	246	203	169
MINN	378	387	318	342	774	636	629	674
MISS	32	40	27	18	87	91	59	57
MO	297	318	304	226	716	759	719	572
MONT	192	164	130	100	385	316	254	259
NEBR	1022	882	986	873	1549	1555	1517	1498
N MEX	109	112	105	122	288	344	270	297
N Y	38	34	30	30	48	34	30	25
N DAK	129	71	76	47	239	164	155	138
OHIO	116	118	99	81	406	365	310	270
OKLA	320	325	340	330	928	1081	1150	1055
OREG	108	98	117	93	220	209	209	207
PA	52	51	49	50	240	213	199	166
S DAK	327	330	316	324	589	581	668	692
TENN	82	83	55	46	208	234	179	145
TEX	900	913	930	910	1760	2092	1980	1880
VA	52	74	40	48	226	259	201	218
WASH	89	101	91	90	350	295	374	255
WIS	147	123	113	88	382	330	294	298
WYO	115	144	115	127	301	310	279	294
34 STATES	8301	8394	8704	7612	18219	18290	17488	16418
16 OTHER STATES 1/	153	120	105	115	452	399	379	378
U.S.	8454	8514	8809	7727	18671	18689	17867	16796

1/ STATE ESTIMATES NOT AVAILABLE IN JULY

CONTINUED--

CATTLE AND CALVES: NUMBER BY CLASS  
JULY 1, 1976-79--CONTINUED

STATE	BULLS 500 POUNDS AND OVER				STEERS, HEIFERS AND BULLS UNDER 500 POUND			
	1976	1977	1978	1979	1976	1977	1978	1979
	1000 HEAD							
ALA	62	72	62	59	863	880	680	618
ARIZ	28	25	26	23	274	275	308	208
ARK	73	69	64	62	948	911	726	735
CALIF	76	65	67	72	1007	890	927	996
COLO	55	48	45	43	950	885	880	785
FLA	87	86	76	80	835	849	732	718
GA	62	54	54	52	769	710	576	574
IDAH0	38	41	40	39	617	602	598	578
ILL	48	53	44	48	768	822	738	640
IND	42	42	40	38	618	562	499	552
IOWA	92	94	92	91	1910	1794	1630	1625
KANS	90	84	84	88	1779	1690	1781	1640
KY	94	84	74	68	1141	1133	930	882
LA	62	50	46	42	598	461	478	420
MICH	32	27	24	23	384	356	297	315
MINN	60	62	52	52	993	1058	899	897
MISS	67	86	71	61	959	898	766	678
MO	129	138	124	128	2262	2316	2033	1974
MONT	92	94	83	85	1514	1447	1369	1408
NEBR	114	112	102	100	1988	1981	1836	1904
N MEX	65	45	40	42	585	615	662	572
N Y	28	25	23	25	350	316	312	315
N DAK	51	54	46	49	1106	1098	985	940
OHIO	51	51	41	45	575	562	481	455
OKLA	122	129	130	130	2135	2284	1975	1860
OREG	46	41	41	42	591	596	554	594
PA	45	46	36	41	410	405	358	398
S DAK	99	79	80	86	1782	1496	1472	1600
TENN	73	75	61	66	1072	1053	840	801
TEX	460	465	420	400	5150	5218	4600	4100
VA	40	39	36	38	576	527	546	559
WASH	28	28	26	28	439	415	408	415
WIS	51	48	42	42	1053	990	916	975
WYO	51	42	39	40	669	638	563	556
34 STATES	2613	2553	2331	2328	37670	36733	33355	32307
16 OTHER								
STATES 1/1	147	134	128	128	1691	1596	1452	1451
U.S.	2760	2687	2459	2456	39361	38329	34807	33758

1/ STATE ESTIMATES NOT AVAILABLE IN JULY

CATTLE AND CALVES - NUMBER ON FEED,  
JANUARY 1, 1976-79 1/

STATE	1976	1977	1978	1979
	1,000 HEAD			
ARIZ	510	361	422	490
CALIF	960	812	845	796
COLO	925	915	1,020	1,080
IDAHO	203	248	249	224
ILL	630	620	650	510
IND	285	290	315	280
IOWA	1,530	1,520	1,690	1,620
KANS	1,340	1,315	1,400	1,440
MICH	210	215	200	180
MINN	430	340	400	400
MO	260	255	220	180
MONT	80	83	81	80
NEBR	1,390	1,580	1,700	1,800
N MEX	212	163	206	202
N DAK	36	35	33	34
OHIO	320	325	295	225
OKLA	286	305	360	345
OREG	80	88	98	75
PA	90	92	98	86
S DAK	365	370	365	340
TEX	1,882	1,710	1,850	2,000
WASH	168	176	184	188
WIS	136	130	130	106
23 STATES	12,328	11,948	12,811	12,681
ALA	45	44	40	33
ARK	21	24	25	19
FLA	81	73	72	65
GA	80	84	101	80
HAW	16	15	14	11
KY	35	40	50	45
LA	12	15	14	13
MD	23	22	24	19
MISS	14	14	12	13
NEV	25	19	18	17
N J	3	3	4	4
N Y	9	10	11	11
N C	46	50	40	40
S C	34	30	31	25
TENN	16	18	20	27
UTAH	60	60	62	55
VA	40	45	50	43
W VA	11	9	10	10
WYO	39	55	60	60
OTHER STATES	3	2	3	3
U S	12,941	12,580	13,472	13,274

1/ CATTLE AND CALVES ON FEED ARE ANIMALS FOR SLAUGHTER MARKET BEING FED A FULL RATION OF GRAIN OR OTHER CONCENTRATES AND ARE EXPECTED TO PRODUCE A CARCASS THAT WILL GRADE GOOD OR BETTER. CATTLE AND CALVES ON FEED ARE INCLUDED IN THE CATTLE AND CALF INVENTORY ESTIMATES BY CLASSES.

CATTLE ON FEED: NUMBER, PLACEMENTS, MARKETED, OTHER DISAPPEARANCE,  
23 STATES, 1976-79 1/

YEAR	NUMBER ON FEED	PLACED ON FEED 2/	FED CATTLE MARKETED 2/	OTHER DISAPPEARANCE
1000 HEAD				
	JANUARY 1	JAN 1-MAR 31	JAN 1-MAR 31	JAN 1-MAR 31
1976	12328	5430	6345	513
1977	11948	5614	6462	481
1978	12811	6500	6781	789
1979	12681	5853	6747	713
	APRIL 1	APR 1-JUN 30	APR 1-JUN 30	APR 1-JUN 30
1976	10900	5614	5941	519
1977	10619	6007	6147	714
1978	11741	6558	6621	754
1979	11074	6149	6146	768
	JULY 1	JUL 1-SEP 30	JUL 1-SEP 30	JUL 1-SEP 30
1976	10054	5702	6200	274
1977	9765	6479	6159	292
1978	10924	7352	6523	406
1979	10309	5957	5976	352
	OCTOBER 1	OCT 1-DEC 31	OCT 1-DEC 31	OCT 1-DEC 31
1976	9282	8762	5684	412
1977	9793	9551	6085	448
1978	11347	8683	6740	609
1979	9938	8102	5756	571

1/ CATTLE AND CALVES ON FEED ARE ANIMALS FOR SLAUGHTER BEING FED A FULL RATION OF GRAIN OR OTHER CONCENTRATES AND ARE EXPECTED TO PRODUCE A CARCASS THAT WILL GRADE GOOD OR BETTER.

2/ INCLUDES CATTLE PLACED ON FEED AFTER BEGINNING OF QUARTER AND MARKETED BEFORE END OF QUARTER.

CATTLE ON FEED: NUMBER ON FEED, BY QUARTERS, 1976-79

STATE	JANUARY 1				APRIL 1			
	1976	1977	1978	1979	1976	1977	1978	1979
1000 HEAD								
ARIZ	510	361	422	490	422	320	352	380
CALIF	960	812	845	796	756	641	535	623
COLO	925	915	1020	1080	845	810	940	925
IDAHO	203	248	249	224	150	195	242	245
ILL	630	620	650	510	590	600	610	480
IND	285	290	315	280	245	265	265	270
IOWA	1530	1520	1690	1620	1420	1400	1560	1430
KANS	1340	1315	1400	1440	1200	1180	1365	1260
MICH	210	215	200	180	205	200	190	165
MINN	430	340	400	400	390	360	400	340
MO	260	255	220	180	210	195	185	140
MONT	80	63	81	80	63	75	60	58
NEBR	1390	1580	1700	1800	1210	1450	1700	1590
N MEX	212	163	206	202	163	152	191	186
N DAK	36	35	33	34	29	30	28	22
OHIO	320	325	295	225	270	270	250	195
OKLA	286	305	360	345	304	277	335	290
OREG	80	88	98	75	72	80	76	67
PA	90	92	98	86	80	82	82	72
S DAK	365	370	365	340	320	275	260	315
TEX	1882	1710	1850	2000	1675	1480	1810	1740
WASH	168	176	184	188	159	160	183	179
WIS	136	130	130	106	122	122	122	102
23 STATES	112328	11948	12811	12681	10900	10619	11741	11074

STATE	JULY 1				OCTOBER 1			
	1976	1977	1978	1979	1976	1977	1978	1979
1000 HEAD								
ARIZ	312	321	376	363	246	320	442	340
CALIF	797	658	686	709	782	668	844	765
COLO	810	810	910	880	750	790	935	840
IDAHO	202	202	228	218	187	183	219	217
ILL	480	450	460	400	410	450	400	340
IND	195	200	205	210	190	205	190	180
IOWA	1230	1160	1300	1180	980	1150	1250	1100
KANS	1190	1195	1390	1290	1210	1200	1400	1190
MICH	180	165	160	145	175	170	155	130
MINN	345	340	330	320	285	300	280	265
MO	155	140	135	95	170	150	125	85
MONT	52	62	52	48	42	40	30	32
NEBR	1170	1200	1450	1380	1150	1260	1640	1400
N MEX	152	140	157	159	103	149	193	187
N DAK	32	27	38	33	31	23	27	30
OHIO	190	200	170	150	180	195	155	125
OKLA	297	310	337	270	264	300	355	298
OREG	71	82	70	65	80	80	68	59
PA	62	62	55	57	58	66	58	50
S DAK	290	240	265	300	260	260	250	265
TEX	1570	1530	1870	1760	1460	1570	2030	1780
WASH	170	165	174	178	174	166	201	165
WIS	102	106	106	99	95	98	100	95
23 STATES	110054	9765	10924	10309	9282	9793	11347	9938

1/ CATTLE AND CALVES ON FEED ARE ANIMALS FOR SLAUGHTER BEING FED A FULL RATION OF GRAIN OR OTHER CONCENTRATES AND ARE EXPECTED TO PRODUCE A CARCASS THAT WILL GRADE GOOD OR BETTER.



CATTLE ON FEED: NUMBER PLACED ON FEED, BY QUARTERS, 1976-79 1/

STATE	JANUARY - MARCH				APRIL - JUNE			
	1976	1977	1978	1979	1976	1977	1978	1979
	1000 HEAD							
ARIZ	167	157	139	127	154	205	212	199
CALIF	409	356	302	327	558	486	563	478
COLO	537	565	665	555	506	611	632	625
IDAH0	52	75	116	158	142	125	103	120
ILL	205	215	225	210	135	130	110	170
IND	65	75	80	87	60	60	75	61
IOWA	639	610	707	585	607	540	635	520
KANS	710	785	900	777	725	872	937	878
MICH	46	43	47	45	60	45	48	40
MINN	170	210	220	164	170	160	140	165
MO	65	50	60	50	50	50	45	30
MONT	31	28	36	14	18	27	15	15
NEBR	721	905	1090	975	848	855	1020	995
N MEX	52	69	91	82	65	82	64	89
N DAK	13	13	11	12	23	12	24	22
OHIO	51	65	65	50	50	59	44	46
OKLA	193	183	210	160	169	215	218	150
GREG	42	39	36	32	36	45	42	31
PA	19	18	15	15	18	20	14	19
S DAK	140	115	110	150	150	135	140	140
TEX	980	899	1232	1135	934	1136	1345	1210
WASH	86	100	100	100	99	98	97	101
WIS	37	39	43	43	37	39	33	45
23 STATES	5430	5614	6500	5853	5614	6007	6558	6149

STATE	JULY - SEPTEMBER				OCTOBER - DECEMBER			
	1976	1977	1978	1979	1976	1977	1978	1979
	1000 HEAD							
ARIZ	138	165	255	161	275	267	232	244
CALIF	465	477	494	419	553	609	470	420
COLO	505	582	649	510	669	761	756	679
IDAH0	73	92	126	117	153	183	143	175
ILL	230	275	210	200	420	410	350	330
IND	106	105	100	86	194	190	185	145
IOWA	550	700	850	700	1290	1382	1275	1120
KANS	857	802	939	714	865	1112	929	874
MICH	75	87	67	45	108	97	98	81
MINN	150	180	148	126	262	300	300	295
MO	107	90	60	50	170	150	145	85
MONT	23	25	16	11	63	59	72	52
NEBR	815	1000	1190	1025	1395	1455	1340	1210
N MEX	34	89	127	112	139	139	94	150
N DAK	22	16	10	18	23	26	30	26
OHIO	100	119	84	60	230	166	145	120
OKLA	167	181	235	205	193	255	214	227
OREG	43	50	43	36	55	61	47	48
PA	32	37	29	25	62	61	50	50
S DAK	149	160	130	125	275	265	245	250
TEX	921	1108	1425	1080	1183	1405	1410	1360
WASH	96	98	123	87	102	115	102	96
WIS	44	41	42	45	83	83	51	65
23 STATES	5702	6479	7352	5957	8762	9551	8683	8102

1/ INCLUDES CATTLE PLACED ON FEED AFTER BEGINNING OF QUARTER AND MARKETED BEFORE END OF QUARTER.

CATTLE ON FEED: FED CATTLE MARKETED, BY QUARTERS, 1976-79 1/

STATE	JANUARY - MARCH				APRIL - JUNE			
	1976	1977	1978	1979	1976	1977	1978	1979
1000 HEAD								
ARIZ	225	171	158	178	226	172	161	195
CALIF	519	438	395	382	434	391	321	304
COLO	576	649	695	660	514	556	590	587
IDAHO	98	120	118	127	75	106	112	141
ILL	230	220	250	230	215	260	240	240
IND	85	83	105	82	95	105	115	105
IOWA	705	685	772	690	725	690	790	680
KANS	820	874	875	900	715	765	859	789
MICH	49	55	55	58	79	77	75	57
MINN	201	184	211	210	200	170	190	165
MO	100	97	80	75	91	91	80	60
MONT	24	35	43	21	26	38	20	15
NEBR	885	980	1015	1105	855	960	1100	1050
N MEX	90	73	94	91	71	81	96	93
N DAK	18	16	15	23	15	12	13	10
OHIO	93	110	100	76	115	113	114	82
OKLA	170	197	215	185	169	172	201	150
OREG	44	44	52	38	33	38	42	32
PA	27	25	28	26	30	34	38	29
S DAK	149	170	170	150	140	135	110	130
TEX	1102	1082	1194	1295	981	1045	1210	1090
WASH	91	111	96	106	87	89	102	98
WIS	44	43	45	39	50	47	42	44
23 STATES	6345	6462	6781	6747	5941	6147	6621	6146

STATE	JULY - SEPTEMBER				OCTOBER - DECEMBER			
	1976	1977	1978	1979	1976	1977	1978	1979
1000 HEAD								
ARIZ	198	157	158	174	146	146	156	121
CALIF	444	430	281	321	447	353	418	355
COLO	555	584	592	509	489	502	574	508
IDAHO	82	100	132	116	85	112	133	127
ILL	290	260	260	250	200	200	230	200
IND	99	90	107	110	86	74	89	70
IOWA	770	680	840	735	705	807	840	785
KANS	812	774	892	781	737	874	845	744
MICH	78	80	70	59	65	65	71	45
MINN	203	215	190	170	200	189	164	155
MO	85	70	60	55	70	65	75	40
MONT	33	45	36	25	21	16	19	18
NEBR	808	905	950	955	910	940	1105	865
N MEX	80	69	75	78	65	71	72	81
N DAK	22	19	20	20	16	16	22	17
OHIO	102	120	97	81	77	60	71	61
OKLA	194	178	210	169	145	185	207	165
OREG	33	50	44	40	47	40	37	33
PA	32	30	25	30	25	26	19	19
S DAK	145	125	135	150	145	142	140	145
TEX	1001	1040	1211	1005	863	1060	1300	1055
WASH	89	95	95	99	97	96	113	103
WIS	45	43	43	44	43	46	40	44
23 STATES	6200	6159	6523	5976	5684	6085	6740	5756

1/ INCLUDES CATTLE PLACED ON FEED AFTER BEGINNING OF QUARTER AND MARKETED BEFORE END OF QUARTER.

CATTLE ON FEED: OTHER DISAPPEARANCE, BY QUARTERS, 1976-79 1/

STATE	JANUARY 1				APRIL 1			
	1976	1977	1978	1979	1976	1977	1978	1979
	1000 HEAD							
ARIZ	30	27	51	59	38	32	27	21
CALIF	94	89	217	118	83	78	91	88
COLO	41	21	50	50	27	55	72	83
IDAHO	7	8	5	10	15	12	5	6
ILL	15	15	15	10	30	20	20	10
IND	20	17	25	15	15	20	20	16
IOWA	44	45	65	85	72	90	105	90
KANS	30	46	60	57	20	92	53	59
MICH	2	3	2	2	6	3	3	3
MINN	9	6	9	14	15	10	20	20
MO	15	13	15	15	14	14	15	15
MONT	24	1	14	15	3	2	3	10
NEBR	16	55	75	80	33	145	170	155
N MEX	11	7	12	7	5	13	2	23
N DAK	2	2	1	1	5	3	1	1
OHIO	8	10	10	4	15	16	10	9
OKLA	5	14	20	30	7	10	15	20
OREG	6	3	6	2	4	5	6	1
PA	2	3	3	3	6	6	5	5
S DAK	36	40	45	25	40	35	25	25
TEX	85	47	78	100	58	41	75	100
WASH	4	5	5	3	1	4	4	4
WIS	7	4	6	8	7	8	7	4
23 STATES	513	481	789	713	519	714	754	768

STATE	JULY 1				OCTOBER 1			
	1976	1977	1978	1979	1976	1977	1978	1979
	1000 HEAD							
ARIZ	6	9	31	10	14	19	28	43
CALIF	36	37	55	42	76	79	100	66
COLO	10	18	32	41	15	29	37	51
IDAHO	6	11	3	2	7	5	5	5
ILL	10	15	10	10	10	10	10	10
IND	12	10	8	6	8	6	6	5
IOWA	30	30	60	45	45	35	65	45
KANS	25	23	37	33	23	38	44	50
MICH	2	2	2	1	3	2	2	1
MINN	7	5	8	11	7	11	16	15
MO	7	10	10	5	15	15	15	10
MONT	0	2	2	2	1	2	3	9
NEBR	27	35	50	50	55	75	75	65
N MEX	3	11	16	6	14	11	13	17
N DAK	1	1	1	1	3	0	1	0
OHIO	8	4	2	4	8	6	4	4
OKLA	6	13	7	8	7	10	17	30
OREG	1	2	1	2	0	3	3	1
PA	4	3	1	2	3	3	3	2
S DAK	34	15	10	10	20	18	15	20
TEX	30	28	54	55	70	65	140	115
WASH	3	2	1	1	3	1	2	3
WIS	6	6	5	5	5	5	5	4
23 STATES	274	292	406	352	412	448	609	571

1/ INCLUDES DEATH LOSSES, MOVEMENT FROM FEEDLOTS TO PASTURES AND SHIPMENTS TO OTHER FEEDLOTS FOR FURTHER FEEDING.

CATTLE ON FEED: STEERS AND STEER CALVES, BY QUARTERS, 1976-79

STATE	JANUARY 1				APRIL 1			
	1976	1977	1978	1979	1976	1977	1978	1979
1000 HEAD								
ARIZ	454	332	397	466	383	302	334	369
CALIF	814	728	752	716	683	570	476	548
COLO	520	489	551	594	451	444	477	504
IDAHO	118	158	172	159	100	134	163	172
ILL	410	377	384	281	384	360	354	283
IND	188	186	189	162	159	154	154	149
IOWA	1070	973	1080	1045	966	910	965	943
KANS	895	867	868	1051	779	790	915	832
MICH	181	189	173	154	182	180	161	139
MINN	267	211	248	256	250	238	244	228
MO	169	176	145	126	143	136	118	94
MONT	40	51	40	38	30	35	24	28
NEBR	834	964	1054	1110	774	867	1015	986
N MEX	127	94	101	125	95	86	105	119
N DAK	19	24	18	18	19	17	16	13
OHIO	259	257	233	176	216	211	185	151
OKLA	206	201	238	248	192	194	211	206
OREG	51	62	65	55	44	56	57	50
PA	81	82	87	76	76	73	71	61
S DAK	223	215	226	202	202	165	156	203
TEX	1127	958	1091	1220	988	918	995	1044
WASH	118	121	132	139	110	110	124	129
WIS	105	103	99	90	97	97	94	82
23 STATES	8276	7813	8343	8507	7325	7047	7414	7333

STATE	JULY 1				OCTOBER 1			
	1976	1977	1978	1979	1976	1977	1978	1979
1000 HEAD								
ARIZ	284	297	353	347	221	294	428	329
CALIF	697	562	604	648	697	590	772	688
COLO	380	450	449	486	382	426	493	458
IDAHO	147	141	157	161	131	122	160	171
ILL	302	292	248	236	254	260	208	204
IND	119	120	113	120	116	118	106	115
IOWA	861	753	829	790	657	702	848	704
KANS	750	749	846	890	690	816	924	845
MICH	159	146	139	124	160	148	136	115
MINN	214	204	211	208	185	189	190	186
MO	105	86	91	62	122	96	84	57
MONT	22	28	22	23	22	16	11	14
NEBR	663	705	833	769	655	677	932	767
N MEX	93	81	87	106	60	83	114	122
N DAK	20	18	23	22	18	13	15	21
OHIO	144	150	126	115	140	152	123	102
OKLA	205	208	219	194	182	204	252	209
OREG	48	57	48	48	55	59	48	45
PA	56	55	47	46	49	58	51	41
S DAK	174	134	159	173	156	156	147	167
TEX	970	949	1047	1038	765	942	1218	1120
WASH	119	111	124	135	122	123	149	139
WIS	79	82	83	77	75	75	77	77
23 STATES	6607	6378	6458	6818	5914	6319	7486	6696

CATTLE ON FEED: HEIFERS AND HEIFER CALVES, BY QUARTERS, 1976-79

STATE	JANUARY 1				APRIL 1			
	1976	1977	1978	1979	1976	1977	1978	1979
1000 HEAD								
ARIZ	54	28	22	22	35	17	17	10
CALIF	143	78	85	72	69	69	54	69
COLO	386	414	464	481	379	355	456	416
IDAHO	71	82	75	63	47	59	77	71
ILL	220	248	266	229	206	240	256	197
IND	96	103	123	115	86	110	110	120
IOWA	457	547	605	567	451	487	591	485
KANS	441	447	532	389	419	389	450	428
MICH	27	24	25	25	21	18	28	24
MINN	159	126	148	140	140	122	156	112
MO	88	76	73	52	65	57	65	45
MONT	39	31	38	41	32	38	35	29
NEBR	555	611	643	684	426	580	680	601
N MEX	83	66	103	75	66	64	85	65
N DAK	16	10	14	15	9	12	12	8
OHIO	58	65	59	47	51	55	63	43
OKLA	50	104	122	97	112	83	124	84
OREG	24	21	30	17	18	19	18	15
PA	7	7	9	8	3	7	8	8
S DAK	139	148	135	133	115	107	101	108
TEX	753	752	757	760	687	562	813	690
WASH	49	55	52	47	48	50	57	48
WIS	30	26	30	16	24	24	27	19
23 STATES	3975	4069	4410	4095	3509	3524	4283	3695

STATE	JULY 1				OCTOBER 1			
	1976	1977	1978	1979	1976	1977	1978	1979
1000 HEAD								
ARIZ	27	23	15	15	25	26	13	9
CALIF	98	91	80	57	79	70	69	73
COLO	419	355	454	391	359	361	438	379
IDAHO	55	59	69	57	50	59	57	44
ILL	178	158	212	164	156	190	192	136
IND	74	79	90	90	72	86	82	65
IOWA	369	406	466	389	323	448	399	385
KANS	434	442	541	400	520	384	472	345
MICH	20	19	20	20	15	21	17	14
MINN	131	135	119	112	100	108	90	79
MO	48	53	43	32	46	52	40	27
MONT	29	33	29	24	19	23	18	17
NEBR	503	492	609	607	494	580	705	630
N MEX	57	57	69	51	42	65	77	64
N DAK	11	9	15	10	12	10	12	8
OHIO	42	48	42	33	36	42	30	22
OKLA	92	102	118	76	82	96	103	89
OREG	18	21	19	14	20	18	18	13
PA	4	5	6	8	7	5	4	6
S DAK	113	103	101	125	104	101	103	96
TEX	597	581	623	710	695	628	812	658
WASH	49	52	50	41	52	43	52	26
WIS	22	23	22	22	19	22	22	18
23 STATES	3390	3346	4012	3448	3327	3438	3825	3203

CATTLE ON FEED: COWS AND OTHERS, BY QUARTERS, 1976-79

STATE	JANUARY - MARCH				APRIL - JUNE			
	1976	1977	1978	1979	1976	1977	1978	1979
	1000 HEAD							
ARIZ	2	1	3	2	4	1	1	1
CALIF	3	6	8	8	4	2	5	6
COLO	19	12	5	5	15	11	7	5
IDAHO	14	8	2	2	3	2	2	2
ILL	0	0	0	0	0	0	0	0
IND	1	1	3	3	0	1	1	1
IOWA	3	0	5	8	3	3	4	2
KANS	4	1	0	0	2	1	0	0
MICH	2	2	2	1	2	2	1	2
MINN	4	3	4	4	0	0	0	0
MO	3	3	2	2	2	2	2	1
MONT	1	1	3	1	1	2	1	1
NEBR	1	5	3	6	10	3	5	3
N MEX	2	3	2	2	2	2	1	2
N DAK	1	1	1	1	1	1	0	1
OHIO	3	3	3	2	3	4	2	1
OKLA	0	0	0	0	0	0	0	0
OREG	5	5	3	3	8	5	1	2
PA	2	3	2	2	1	2	3	3
S DAK	3	7	4	5	3	3	3	4
TEX	2	0	2	20	0	0	2	6
WASH	1	0	0	2	1	0	2	2
WIS	1	1	1	0	1	1	1	1
23 STATES	77	66	54	79	66	48	44	46

STATE	JULY - SEPTEMBER				OCTOBER - DECEMBER			
	1976	1977	1978	1979	1976	1977	1978	1979
	1000 HEAD							
ARIZ	1	1	8	1	0	0	1	2
CALIF	2	5	2	4	6	8	3	4
COLO	11	5	7	3	9	3	4	3
IDAHO	4	2	2	0	6	2	2	2
ILL	0	0	0	0	0	0	0	0
IND	2	1	2	0	2	1	2	0
IOWA	0	1	5	1	0	0	3	11
KANS	6	4	3	0	0	0	4	0
MICH	1	0	1	1	0	1	2	1
MINN	0	1	0	0	0	3	0	0
MO	2	1	1	1	2	2	1	1
MONT	1	1	1	1	1	1	1	1
NEBR	4	3	8	4	1	3	3	3
N MEX	2	2	1	2	1	1	2	1
N DAK	1	0	0	1	1	0	0	1
OHIO	4	2	2	2	4	1	2	1
OKLA	0	0	0	0	0	0	0	0
OREG	5	4	3	3	5	3	2	1
PA	2	2	2	3	2	3	3	3
S DAK	3	3	5	2	0	3	0	2
TEX	3	0	0	12	0	0	0	2
WASH	2	2	0	2	0	0	0	0
WIS	1	1	1	0	1	1	1	0
23 STATES	57	41	54	43	41	36	36	39

CATTLE ON FEED: NUMBER OF STEERS AND STEER CALVES ON FEED BY WEIGHT GROUPS, BY QUARTERS, 1976

STATE	JANUARY 1					APRIL 1				
	UNDER 500	500-699	700-899	900-1099	1100 AND OVER	UNDER 500	500-699	700-899	900-1099	1100 AND OVER
	POUNDS	POUNDS	POUNDS	POUNDS	POUNDS	POUNDS	POUNDS	POUNDS	POUNDS	POUNDS
	1000 HEAD									
ARIZ	51	117	194	91	1	43	82	146	111	1
CALIF	114	187	261	228	24	41	185	259	178	20
COLO	14	53	143	251	59	9	54	132	178	78
IDAHO	5	22	30	39	22	2	24	32	34	8
ILL	49	107	135	98	21	15	96	135	119	19
IND	27	48	64	43	6	13	41	54	41	10
IOWA	86	246	364	299	75	19	300	271	299	77
KANS	10	201	407	245	32	7	176	319	222	55
MICH	14	60	60	40	7	4	31	69	63	15
MINN	37	54	80	80	16	10	75	75	70	20
MO	17	52	61	36	3	6	38	53	40	6
MONT	3	12	11	13	1	0	6	18	5	1
NEBR	33	117	275	342	67	8	147	263	294	62
N MEX	15	36	47	28	1	4	24	35	31	1
N DAK	3	5	5	5	1	1	8	5	4	1
OHIO	34	80	85	57	3	9	58	84	61	4
OKLA	10	50	74	66	6	13	52	56	69	2
OREG	2	20	10	16	3	5	13	18	8	2
PA	6	18	28	23	6	2	9	23	30	12
S DAK	38	40	51	74	20	6	89	40	57	10
TEX	56	259	452	349	11	20	287	336	287	58
WASH	1	14	40	50	13	2	17	47	38	6
WIS	10	21	32	33	9	9	17	27	31	13
23 STATES	635	1819	2909	2506	407	248	1829	2497	2270	481

STATE	JULY 1					OCTOBER 1				
	UNDER 500	500-699	700-899	900-1099	1100 AND OVER	UNDER 500	500-699	700-899	900-1099	1100 AND OVER
	POUNDS	POUNDS	POUNDS	POUNDS	POUNDS	POUNDS	POUNDS	POUNDS	POUNDS	POUNDS
	1000 HEAD									
ARIZ	22	61	94	105	2	14	49	81	70	7
CALIF	35	114	292	239	17	50	140	235	209	63
COLO	2	32	124	166	56	1	38	133	171	39
IDAHO	3	14	59	51	16	0	16	46	55	14
ILL	10	45	109	109	29	8	41	89	101	15
IND	3	25	48	37	6	3	21	53	29	10
IOWA	26	95	343	276	121	13	79	236	263	66
KANS	18	177	259	220	76	14	117	283	214	62
MICH	4	28	56	53	18	4	37	46	59	14
MINN	6	28	88	64	28	9	20	53	82	21
MO	3	21	44	32	5	6	31	51	32	2
MONT	0	5	6	10	1	0	3	7	10	2
NEBR	2	73	265	250	73	7	85	236	275	52
N MEX	8	26	29	27	3	3	17	17	21	2
N DAK	0	2	8	9	1	2	2	9	5	0
OHIO	4	20	62	53	5	6	45	50	34	5
OKLA	8	43	76	68	10	2	40	60	60	20
OREG	3	18	16	10	1	6	12	18	13	6
PA	2	5	11	26	12	2	8	16	16	7
S DAK	3	30	73	54	14	3	20	61	62	10
TEX	29	185	370	331	55	23	145	283	260	54
WASH	1	19	43	48	8	2	21	45	44	10
WIS	5	13	27	25	9	3	18	21	23	10
23 STATES	197	1079	2502	2263	566	181	1005	2129	2108	491

CONTINUED--

CATTLE ON FEED: NUMBER OF STEERS AND STEER CALVES ON FEED BY WEIGHT GROUPS, BY QUARTERS, 1977--CONTINUED

STATE	JANUARY 1					APRIL 1				
	UNDER 500	500-699	700-899	900-1099	1100 POUNDS AND OVER	UNDER 500	500-699	700-899	900-1099	1100 POUNDS AND OVER
	POUNDS	POUNDS	POUNDS	POUNDS	POUNDS	POUNDS	POUNDS	POUNDS	POUNDS	POUNDS
	1000 HEAD									
ARIZ	43	91	118	74	6	17	97	116	66	6
CALIF	91	138	238	213	48	53	141	173	174	29
COLO	10	51	161	215	52	6	66	133	177	62
IDAHO	10	23	47	58	20	3	19	53	48	11
ILL	48	108	123	82	11	18	112	126	90	14
IND	29	58	58	38	3	12	51	50	39	2
IOWA	127	204	331	253	58	27	291	228	291	73
KANS	17	191	356	251	52	32	150	324	245	39
MICH	11	53	68	47	10	4	36	70	56	14
MINN	36	61	53	48	13	12	81	64	67	14
MO	27	53	58	33	5	8	45	37	42	4
MONT	0	14	15	17	5	0	10	14	10	1
NEBR	77	125	396	289	77	17	191	295	260	104
N MEX	10	30	32	21	1	10	25	24	25	2
N DAK	1	8	6	8	1	0	9	3	4	1
OHIO	20	80	80	72	5	11	46	91	57	6
OKLA	2	50	69	72	8	6	50	70	54	14
OREG	1	19	18	21	3	3	18	21	13	1
PA	5	16	33	22	6	3	8	21	30	11
S DAK	31	65	52	52	15	8	63	51	31	12
TEX	29	192	421	287	29	28	211	303	275	101
WASH	0	12	38	54	17	1	8	41	47	13
WIS	9	23	33	31	7	7	22	24	31	13
23 STATES	634	1665	2804	2258	452	286	1750	2332	2132	547

STATE	JULY 1					OCTOBER 1				
	UNDER 500	500-699	700-899	900-1099	1100 POUNDS AND OVER	UNDER 500	500-699	700-899	900-1099	1100 POUNDS AND OVER
	POUNDS	POUNDS	POUNDS	POUNDS	POUNDS	POUNDS	POUNDS	POUNDS	POUNDS	POUNDS
	1000 HEAD									
ARIZ	66	83	73	70	5	100	53	76	59	6
CALIF	61	107	194	178	22	63	174	188	140	25
COLO	1	30	158	217	44	3	43	140	130	60
IDAHO	0	8	55	65	13	3	12	50	47	10
ILL	6	44	114	108	20	10	42	104	94	10
IND	4	19	55	35	7	7	22	44	41	4
IOWA	23	105	279	286	60	14	98	239	295	56
KANS	16	141	317	246	29	24	172	335	228	57
MICH	3	25	54	48	16	8	32	53	43	12
MINN	8	27	86	69	14	9	32	61	68	19
MO	4	18	36	24	4	9	22	36	26	3
MONT	0	2	7	17	2	0	1	9	5	1
NEBR	4	85	254	285	77	7	47	291	285	47
N MEX	6	17	28	28	2	11	19	26	23	4
N DAK	0	2	9	7	0	0	1	3	8	1
OHIO	3	19	60	62	6	9	38	64	38	3
OKLA	2	37	90	67	12	6	47	86	57	8
OREG	1	7	21	25	3	5	16	26	10	2
PA	2	5	11	25	12	2	11	19	20	6
S DAK	3	20	64	36	11	11	14	51	69	11
TEX	66	218	323	304	38	36	207	424	254	19
WASH	0	10	54	39	8	0	8	56	43	16
WIS	5	13	28	26	10	4	12	23	27	9
23 STATES	284	1042	2370	2267	415	343	1123	2404	2060	389

CONTINUED--



CATTLE ON FEED; NUMBER OF STEERS AND STEER CALVES ON FEED BY WEIGHT GROUPS, BY QUARTERS, 1978--CONTINUED

STATE	JANUARY 1					APRIL 1				
	UNDER 500	500-699	700-899	900-1099	1100 AND OVER	UNDER 500	500-699	700-899	900-1099	1100 AND OVER
	POUNDS	POUNDS	POUNDS	POUNDS	POUNDS	POUNDS	POUNDS	POUNDS	POUNDS	POUNDS
1000 HEAD										
ARIZ	105	106	121	63	2	81	81	110	55	7
CALIF	128	196	248	158	22	62	95	190	119	10
COLO	26	68	195	213	49	21	90	144	159	63
IDAHO	14	34	65	51	8	2	28	54	60	19
ILL	38	112	119	96	19	14	110	113	103	14
IND	24	64	57	40	4	15	40	51	43	5
IOWA	108	335	324	238	75	29	270	309	289	68
KANS	69	122	347	295	35	18	210	348	293	46
MICH	15	45	48	52	13	7	30	60	52	12
MINN	50	74	55	54	15	20	80	73	54	17
MO	19	42	43	38	3	10	40	39	27	2
MONT	3	17	10	9	1	0	7	12	4	1
NEBR	42	148	453	348	63	40	132	244	477	122
N MEX	12	25	40	23	1	19	19	43	23	1
N DAK	2	5	5	5	1	0	9	1	3	1
OHIO	21	74	84	49	5	11	52	67	48	7
OKLA	7	33	81	100	17	6	44	70	72	19
OREG	3	24	21	14	3	2	22	19	11	3
PA	3	15	36	27	6	1	6	20	33	11
S DAK	14	52	67	66	27	2	65	44	36	9
TEX	65	251	425	328	22	60	209	378	328	20
WASH	3	9	58	51	11	0	24	42	46	12
WIS	10	18	34	26	11	9	21	26	26	12
23 STATES	781	1869	2936	2344	413	429	1684	2459	2361	481

STATE	JULY 1					OCTOBER 1				
	UNDER 500	500-699	700-899	900-1099	1100 AND OVER	UNDER 500	500-699	700-899	900-1099	1100 AND OVER
	POUNDS	POUNDS	POUNDS	POUNDS	POUNDS	POUNDS	POUNDS	POUNDS	POUNDS	POUNDS
1000 HEAD										
ARIZ	78	71	108	92	4	188	86	81	60	13
CALIF	68	170	221	141	4	167	128	222	234	21
COLO	11	53	152	201	32	12	51	169	188	73
IDAHO	2	13	64	61	17	2	10	57	56	35
ILL	5	49	102	77	15	8	27	73	85	15
IND	5	20	42	37	9	9	24	34	36	3
IOWA	16	91	340	307	75	8	110	263	365	102
KANS	59	144	398	236	9	46	203	370	240	65
MICH	4	28	46	47	14	4	25	48	45	14
MINN	6	30	101	61	13	9	25	61	87	8
MO	3	19	42	24	3	4	16	36	24	4
MONT	0	2	9	11	0	0	1	3	6	1
NEBR	2	100	314	317	100	9	103	391	345	84
N MEX	18	10	37	19	3	34	41	22	16	1
N DAK	0	3	16	4	0	0	0	4	11	0
OHIO	3	14	54	48	7	5	19	43	49	7
OKLA	0	22	96	90	11	15	50	73	96	18
OREG	0	8	19	19	2	1	10	19	16	2
PA	1	5	10	20	11	1	7	18	19	6
S DAK	2	25	73	48	11	1	7	46	73	20
TEX	32	272	429	304	10	49	280	475	378	36
WASH	0	6	63	41	14	0	4	63	69	13
WIS	4	13	24	33	9	5	9	22	31	10
23 STATES	319	1168	2760	2238	373	577	1236	2593	2529	551

CONTINUED--

CATTLE ON FEED: NUMBER OF STEERS AND STEER CALVES ON FEED BY WEIGHT GROUPS, BY QUARTERS, 1979--CONTINUED

STATE	JANUARY 1					APRIL 1				
	UNDER 500	500-699	700-899	900-1099	1100 AND OVER	UNDER 500	500-699	700-899	900-1099	1100 AND OVER
	POUNDS	POUNDS	POUNDS	POUNDS	POUNDS	POUNDS	POUNDS	POUNDS	POUNDS	POUNDS
	1000 HEAD									
ARIZ	107	114	130	97	18	83	83	115	84	4
CALIF	129	200	186	172	29	93	110	186	148	11
COLO	18	55	148	307	66	16	67	135	188	103
IDAHO	3	22	53	62	19	3	36	64	53	16
ILL	17	62	93	90	19	6	62	88	107	20
IND	15	44	58	40	5	9	44	47	45	4
IOWA	115	251	313	293	73	19	255	273	311	85
KANS	52	126	431	368	74	33	158	300	283	58
MICH	6	33	51	50	14	5	25	48	45	16
MINN	23	69	74	67	23	11	78	64	59	16
MO	17	32	39	33	5	9	26	29	25	5
MONT	1	14	12	11	0	0	8	11	8	1
NEBR	11	100	366	500	133	30	189	286	335	146
N MEX	22	26	54	20	3	26	29	36	23	5
N DAK	0	5	6	6	1	0	3	4	4	2
OHIO	7	42	62	58	7	5	26	64	49	7
OKLA	5	57	84	89	13	6	31	74	68	27
OREG	2	19	16	16	2	2	13	19	12	4
PA	3	11	24	29	9	0	6	16	24	15
S DAK	21	39	63	63	16	6	68	56	47	26
TEX	110	220	476	378	36	47	209	324	417	52
WASH	1	7	38	76	17	0	18	44	50	17
WIS	5	14	24	26	21	2	14	19	30	17
23 STATES	690	1562	2801	2851	603	406	1553	2302	2415	657

STATE	JULY 1					OCTOBER 1				
	UNDER 500	500-699	700-899	900-1099	1100 AND OVER	UNDER 500	500-699	700-899	900-1099	1100 AND OVER
	POUNDS	POUNDS	POUNDS	POUNDS	POUNDS	POUNDS	POUNDS	POUNDS	POUNDS	POUNDS
	1000 HEAD									
ARIZ	54	98	78	111	6	79	102	87	59	2
CALIF	110	130	201	201	6	131	138	199	183	37
COLO	2	45	166	216	57	6	32	119	208	93
IDAHO	0	15	62	69	15	2	20	51	79	19
ILL	2	33	83	97	21	4	27	69	86	18
IND	7	21	37	46	9	9	17	42	41	6
IOWA	5	69	317	308	91	35	63	218	324	64
KANS	12	170	356	312	40	17	93	397	270	68
MICH	3	12	50	43	16	2	16	36	45	16
MINN	4	21	98	62	23	2	13	47	95	29
MO	2	10	22	24	4	2	9	23	22	1
MONT	0	1	9	12	1	0	0	3	10	1
NEBR	8	69	292	308	92	8	70	299	290	100
N MEX	27	16	41	19	3	38	15	40	24	5
N DAK	0	1	10	10	1	0	1	7	11	2
OHIO	4	12	41	49	9	8	14	35	38	7
OKLA	4	25	54	76	35	6	42	82	67	12
OREG	1	3	17	20	7	1	13	11	16	4
PA	1	3	11	18	13	2	6	10	15	8
S DAK	0	13	72	61	27	4	9	64	61	29
TEX	73	236	384	293	52	134	191	347	392	56
WASH	0	12	58	49	16	1	6	47	63	22
WIS	2	10	24	25	16	2	8	16	36	15
23 STATES	321	1025	2483	2429	560	493	905	2249	2435	614

CATTLE ON FEED: NUMBER OF HEIFERS AND HEIFER CALVES ON FEED BY WEIGHT GROUPS,  
BY QUARTERS, 1976

STATE	JANUARY 1				APRIL 1			
	UNDER 500	500-699	700-899	900 AND OVER	UNDER 500	500-699	700-899	900 AND OVER
	1000 HEAD							
ARIZ	16	21	16	1	3	13	16	3
CALIF	14	47	61	21	5	23	30	11
COLO	26	88	170	102	16	123	143	97
IDAHO	6	16	31	18	4	21	15	7
ILL	44	86	66	24	21	97	72	16
IND	19	49	22	6	16	41	26	3
IOWA	92	123	169	73	31	203	140	77
KANS	15	157	197	77	18	172	153	76
MICH	7	10	9	1	2	8	10	1
MINN	35	53	54	17	8	70	45	17
MO	19	34	29	6	6	31	22	6
MONT	2	10	12	15	0	16	11	5
NEBR	50	155	233	117	25	141	175	85
N MEX	18	28	33	4	8	25	28	5
N DAK	3	6	5	2	2	4	1	2
OHIO	20	25	12	1	6	27	17	1
OKLA	10	27	34	9	17	36	40	19
OREG	1	8	8	7	3	9	5	1
PA	2	2	3	0	1	1	1	0
S DAK	29	29	57	24	13	54	38	10
TEX	188	279	241	45	172	282	185	48
WASH	2	13	23	11	1	16	22	9
WIS	6	8	13	3	4	9	8	3
23 STATES	624	1274	1498	579	382	1422	1203	502

STATE	JULY 1				OCTOBER 1			
	UNDER 500	500-699	700-899	900 AND OVER	UNDER 500	500-699	700-899	900 AND OVER
	1000 HEAD							
ARIZ	4	9	13	1	7	6	11	1
CALIF	4	24	51	19	6	19	30	24
COLO	10	100	194	115	8	103	149	99
IDAHO	3	16	26	10	0	12	28	10
ILL	9	61	92	16	15	58	69	14
IND	4	26	40	4	5	30	31	6
IOWA	15	92	199	63	16	84	155	68
KANS	11	173	181	69	11	161	161	187
MICH	0	10	8	2	0	5	9	1
MINN	4	34	75	18	5	40	39	16
MO	1	19	24	4	4	15	21	6
MONT	0	5	16	8	0	4	7	8
NEBR	15	131	272	85	5	123	287	79
N MEX	13	17	19	8	7	13	19	3
N DAK	0	3	5	3	1	3	6	2
OHIO	3	19	17	3	3	17	14	2
OKLA	12	26	42	12	4	28	34	16
OREG	2	7	8	1	3	7	9	1
PA	1	1	2	0	1	3	2	1
S DAK	10	39	45	19	2	22	44	16
TEX	101	257	191	48	208	271	195	21
WASH	0	14	25	10	2	15	21	14
WIS	2	8	8	4	2	7	6	4
23 STATES	224	1091	1553	522	315	1046	1367	599

CONTINUED--

CATTLE ON FEED: NUMBER OF HEIFERS AND HEIFER CALVES ON FEED BY WEIGHT GROUPS,  
BY QUARTERS, 1977--CONTINUED

STATE	JANUARY 1				APRIL 1			
	UNDER 500	500-699	700-899	900 AND OVER	UNDER 500	500-699	700-899	900 AND OVER
	POUNDS	POUNDS	POUNDS	POUNDS	POUNDS	POUNDS	POUNDS	POUNDS
	1000 HEAD							
ARIZ	11	8	8	1	2	7	7	1
CALIF	6	26	31	15	7	23	24	15
COLO	27	96	177	114	25	131	128	71
IDAMO	7	20	31	24	3	19	26	11
ILL	57	97	77	17	26	116	79	19
IND	21	47	30	5	15	38	50	7
IOWA	120	159	170	98	34	264	131	58
KANS	18	138	206	85	19	149	132	89
MICH	4	12	7	1	2	7	7	2
MINN	36	38	38	14	13	67	28	14
MO	17	29	26	4	7	28	17	5
MONT	0	11	11	9	0	13	17	8
NEBR	61	153	263	134	17	226	233	104
N MEX	19	23	21	3	17	22	22	3
N DAK	1	4	3	2	1	7	3	1
OHIO	12	29	20	4	9	27	16	3
OKLA	21	37	32	14	9	36	30	8
OREG	2	10	8	1	3	6	6	4
PA	2	3	2	0	1	4	2	0
S DAK	40	38	49	21	5	61	30	11
TEX	165	293	234	60	129	191	202	40
WASH	0	14	33	8	1	15	25	9
WIS	6	10	7	3	4	11	7	2
23 STATES	653	1295	1484	637	349	1468	1222	485

STATE	JULY 1				OCTOBER 1			
	UNDER 500	500-699	700-899	900 AND OVER	UNDER 500	500-699	700-899	900 AND OVER
	POUNDS	POUNDS	POUNDS	POUNDS	POUNDS	POUNDS	POUNDS	POUNDS
	1000 HEAD							
ARIZ	3	10	8	2	3	6	13	4
CALIF	3	23	49	16	8	18	31	13
COLO	11	94	187	63	16	106	152	87
IDAMO	1	11	35	12	3	15	29	12
ILL	6	51	81	20	17	76	80	17
IND	3	30	40	6	15	36	32	3
IOWA	8	118	211	69	13	139	215	81
KANS	17	136	213	76	15	162	154	53
MICH	1	7	9	2	6	5	8	2
MINN	8	51	65	11	9	37	48	14
MO	3	20	26	4	6	21	21	4
MONT	0	3	21	9	1	8	9	5
NEBR	3	108	283	98	6	139	342	93
N MEX	10	22	21	4	25	17	19	4
N DAK	0	1	7	1	0	6	3	1
OHIO	3	13	29	3	3	15	19	5
OKLA	4	42	44	12	15	31	35	15
OREG	1	4	10	6	2	9	6	1
PA	1	1	3	0	1	1	2	1
S DAK	2	40	47	14	14	22	50	15
TEX	134	226	198	23	170	239	188	31
WASH	0	12	28	12	0	9	25	9
WIS	2	8	9	4	2	7	11	2
23 STATES	224	1031	1624	467	350	1124	1492	472

CONTINUED--

CATTLE ON FEED: NUMBER OF HEIFERS AND HEIFER CALVES ON FEED BY WEIGHT GROUPS,  
BY QUARTERS, 1978--CONTINUED

STATE	JANUARY 1				APRIL 1			
	UNDER 500	500- 699	700- 899	900 AND OVER	UNDER 500	500- 699	700- 899	900 AND OVER
	1000 HEAD							
ARIZ	8	8	6	0	2	9	5	1
CALIF	17	22	30	16	9	12	27	6
COLO	43	129	174	118	31	169	162	94
IDAHO	10	26	30	9	3	28	30	16
ILL	53	99	90	24	23	125	87	21
IND	32	54	34	3	15	62	30	3
IOWA	133	194	187	91	35	266	207	83
KANS	48	197	229	58	23	171	193	63
NICH	4	12	7	2	3	14	9	2
MINN	49	46	38	15	11	89	48	8
MO	17	29	20	7	8	28	24	5
MONT	3	17	10	8	1	19	11	4
NEBR	45	174	276	148	20	258	252	150
N MEX	31	45	26	1	19	34	28	4
N DAK	3	3	6	2	1	8	2	1
OHIO	14	26	16	3	8	32	18	5
OKLA	12	46	48	16	7	54	42	21
OREG	1	8	15	6	1	6	10	1
PA	1	4	3	1	1	3	3	1
S DAK	19	39	54	23	6	64	25	8
TEX	204	326	204	23	260	317	212	24
WASH	1	10	29	12	0	15	27	15
WIS	7	8	11	4	3	12	8	4
23 STATES	755	1522	1543	590	488	1795	1460	540

STATE	JULY 1				OCTOBER 1			
	UNDER 500	500- 699	700- 899	900 AND OVER	UNDER 500	500- 699	700- 899	900 AND OVER
	1000 HEAD							
ARIZ	3	5	6	1	4	4	4	1
CALIF	2	28	40	10	9	15	28	17
COLO	22	116	215	101	18	113	194	113
IDAHO	2	15	44	8	1	9	27	20
ILL	4	66	121	21	12	69	90	21
IND	3	32	45	10	10	32	33	7
IOWA	14	98	256	98	12	84	187	116
KANS	27	195	248	71	28	184	161	99
NICH	1	7	10	2	1	4	8	4
MINN	3	36	69	11	7	23	38	22
MO	4	18	18	3	4	15	16	5
MONT	0	3	20	6	0	1	6	11
NEBR	10	195	276	128	14	141	338	212
N MEX	15	23	25	6	33	22	14	8
N DAK	0	3	10	2	0	1	8	3
OHIO	2	13	21	6	4	9	12	5
OKLA	4	38	62	14	16	34	40	13
OREG	0	7	10	2	0	8	9	1
PA	1	2	3	0	1	1	1	1
S DAK	3	47	46	5	3	24	58	18
TEX	214	321	247	41	195	317	268	32
WASH	0	3	29	18	1	7	23	21
WIS	1	8	10	3	2	7	10	3
23 STATES	335	1279	1831	567	375	1124	1573	753

CONTINUED--

CATTLE ON FEED: NUMBER OF HEIFERS AND HEIFER CALVES ON FEED BY WEIGHT GROUPS,  
BY QUARTERS, 1979--CONTINUED

STATE	JANUARY 1				APRIL 1			
	UNDER 500	500- 699	700- 899	900 POUNDS AND OVER	UNDER 500	500- 699	700- 899	900 POUNDS AND OVER
	1000 HEAD							
ARIZ	10	5	6	1	2	2	5	1
CALIF	8	16	38	10	12	17	28	12
COLO	18	138	214	111	9	128	178	101
IDAHO	3	14	23	23	6	28	27	10
ILL	21	82	94	32	6	85	83	23
IND	18	52	36	9	13	59	42	6
IOWA	119	170	176	102	19	214	170	82
KANS	27	128	164	70	43	209	120	56
MICH	5	10	8	2	2	10	9	3
MINN	22	55	45	18	9	65	27	11
MO	11	18	18	5	7	19	15	4
MONT	1	20	15	5	0	13	10	6
NEBR	34	144	294	212	15	212	241	133
N MEX	20	32	19	4	12	26	22	5
N DAK	1	5	6	3	0	5	3	0
OHIO	6	23	15	3	5	19	16	3
OKLA	12	41	32	12	12	30	29	13
OREG	2	6	7	2	1	5	6	3
PA	2	3	2	1	0	3	4	1
S DAK	20	32	51	30	6	56	33	13
TEX	213	334	190	23	172	283	207	28
WASH	1	7	29	10	2	12	23	11
WIS	2	4	7	3	1	5	9	4
23 STATES	576	1339	1489	691	354	1505	1307	529

STATE	JULY 1				OCTOBER 1			
	UNDER 500	500- 699	700- 899	900 POUNDS AND OVER	UNDER 500	500- 699	700- 899	900 POUNDS AND OVER
	1000 HEAD							
ARIZ	1	8	5	1	2	1	5	1
CALIF	10	10	27	10	16	16	26	15
COLO	12	111	188	80	11	95	143	130
IDAHO	1	10	30	16	1	9	18	16
ILL	2	47	90	25	5	41	63	27
IND	2	31	47	10	8	19	30	8
IOWA	6	100	206	77	27	96	162	100
KANS	14	144	154	83	14	100	141	90
MICH	1	7	9	3	1	3	6	4
MINN	2	28	67	15	5	11	42	21
MO	1	10	17	4	2	6	14	5
MONT	0	1	13	10	0	1	4	12
NEBR	12	152	322	121	19	144	277	190
N MEX	9	17	17	8	17	19	21	7
N DAK	0	2	4	4	0	0	5	3
OHIO	2	7	19	5	2	7	11	2
OKLA	7	25	33	11	6	31	39	13
OREG	2	3	6	3	1	4	5	3
PA	0	2	4	2	1	1	3	1
S DAK	0	45	70	10	3	15	46	32
TEX	149	278	240	43	145	239	224	50
WASH	0	12	21	8	0	3	15	8
WIS	0	7	8	7	0	4	8	6
23 STATES	233	1057	1597	561	286	865	1308	744

CATTLE AND CALVES: NUMBER ON FEED, PLACEMENTS, MARKETED, AND OTHER DISAPPEARANCE,  
MONTHLY, BY STATES, JANUARY-JUNE, 1976-77

STATE	NUMBER ON FEED			PLACED			MARKETED			OTHER DISAPPEARANCE		
	1976	1977	1977-76	1976	1977	1977-76	1976	1977	1977-76	1976	1977	1977-76
	1,000 HEAD	PERCENT		1,000 HEAD	PERCENT		1,000 HEAD	PERCENT		1,000 HEAD	PERCENT	
	<u>JAN 1</u>			<u>DURING JAN</u>			<u>DURING JAN</u>			<u>DURING JAN</u>		
ARIZ	510	361	71	57	51	89	63	45	71	5	8	160
CALIF	960	812	85	139	90	65	171	171	100	22	37	168
COLO	925	915	99	125	170	136	166	209	126	19	6	32
IOWA	1,530	1,520	99	272	210	77	230	240	104	12	10	83
KANS	1,340	1,315	98	235	255	109	245	277	113	10	13	130
NEBR	1,390	1,580	114	220	280	127	295	310	105	5	20	400
TEX	1,882	1,710	91	324	313	97	292	350	120	17	13	76
7 STATES	8,537	8,213	96	1,372	1,369	100	1,462	1,602	110	90	107	119
	<u>FEB 1</u>			<u>DURING FEB</u>			<u>DURING FEB</u>			<u>DURING FEB</u>		
ARIZ	499	359	72	52	52	100	68	57	84	15	16	107
CALIF	906	694	77	161	109	68	172	137	80	37	33	89
COLO	865	870	101	213	190	89	190	209	110	13	6	66
IOWA	1,560	1,480	95	218	210	96	220	215	98	8	15	188
KANS	1,320	1,280	97	210	270	129	275	277	101	5	13	260
NEBR	1,310	1,530	117	264	305	116	260	320	123	4	15	375
TEX	1,897	1,660	88	293	226	77	344	352	102	36	14	39
7 STATES	8,357	7,873	94	1,411	1,362	97	1,529	1,567	102	118	112	95
	<u>MAR 1</u>			<u>DURING MAR</u>			<u>DURING MAR</u>			<u>DURING MAR</u>		
ARIZ	468	338	72	58	54	93	94	69	73	10	3	30
CALIF	858	633	74	109	157	144	176	130	74	35	19	54
COLO	875	845	97	199	205	103	220	231	105	9	9	100
IOWA	1,550	1,460	94	149	190	128	255	230	90	24	20	83
KANS	1,250	1,260	101	265	260	98	300	320	107	15	20	133
NEBR	1,310	1,500	115	237	320	135	330	350	106	7	20	286
TEX	1,810	1,520	84	363	360	99	466	380	82	32	20	63
7 STATES	8,121	7,556	93	1,380	1,546	112	1,641	1,710	93	132	111	84
	<u>APR 1</u>			<u>DURING APR</u>			<u>DURING APR</u>			<u>DURING APR</u>		
ARIZ	422	320	76	78	89	114	78	57	73	14	6	57
CALIF	756	641	85	160	197	123	134	117	87	35	23	66
COLO	845	810	96	198	228	115	190	190	100	3	13	163
IOWA	1,420	1,400	99	230	180	78	230	230	100	20	40	200
KANS	1,200	1,180	98	290	310	107	280	270	96	10	30	300
NEBR	1,210	1,450	120	377	300	80	270	320	119	7	50	714
TEX	1,675	1,480	88	285	344	121	330	370	112	27	14	52
7 STATES	7,528	7,281	97	1,618	1,648	102	1,512	1,554	103	121	178	147
	<u>MAY 1</u>			<u>DURING MAY</u>			<u>DURING MAY</u>			<u>DURING MAY</u>		
ARIZ	408	344	84	39	65	167	80	55	69	13	17	131
CALIF	747	698	93	225	176	78	146	133	91	26	40	154
COLO	845	835	99	141	203	144	149	177	119	12	31	258
IOWA	1,400	1,310	94	167	190	114	250	240	96	17	40	235
KANS	1,200	1,190	99	200	290	145	205	230	112	5	45	900
NEBR	1,310	1,380	105	248	285	115	320	320	100	8	65	813
TEX	1,603	1,440	90	306	380	124	320	324	101	19	16	84
7 STATES	7,513	7,197	96	1,326	1,589	120	1,470	1,479	101	100	254	254
	<u>JUN 1</u>			<u>DURING JUN</u>			<u>DURING JUN</u>			<u>DURING JUN</u>		
ARIZ	354	337	95	37	51	138	68	60	88	11	7	64
CALIF	800	701	88	173	113	65	154	141	92	22	15	68
COLO	825	830	101	167	180	108	175	189	108	7	11	157
IOWA	1,300	1,220	94	210	170	81	245	220	90	35	10	29
KANS	1,190	1,205	101	235	272	116	230	265	115	5	17	340
NEBR	1,230	1,280	104	223	270	121	265	320	121	18	30	167
TEX	1,570	1,480	94	343	412	120	331	351	106	12	11	92
7 STATES	7,269	7,053	97	1,388	1,468	106	1,468	1,546	105	110	101	92

CONTINUED--

CATTLE AND CALVES: NUMBER ON FEED, PLACEMENTS, MARKETED, AND OTHER DISAPPEARANCE,  
MONTHLY, BY STATES, JULY-DECEMBER, 1976-77--CONTINUED

STATE	NUMBER ON FEED			PLACED			MARKETED			OTHER DISAPPEARANCE		
	1976	1977	1977-76	1976	1977	1977-76	1976	1977	1977-76	1976	1977	1977-76
	1,000 HEAD	PERCENT		1,000 HEAD	PERCENT		1,000 HEAD	PERCENT		1,000 HEAD	PERCENT	
	JUL 1			DURING JUL			DURING JUL			DURING JUL		
ARIZ	312	321	103	34	73	215	74	55	74	3	3	100
CALIF	797	658	83	116	152	131	128	130	107	13	8	62
COLO	810	810	100	135	169	125	180	190	106	5	4	80
IOWA	1,230	1,160	94	130	190	146	250	210	84	10	10	100
KANS	1,190	1,195	100	272	243	89	277	232	84	5	8	160
NEBR	1,170	1,200	103	220	305	139	278	310	112	12	15	125
TEX	1,570	1,530	97	262	362	138	334	315	94	8	7	88
7 STATES	7,079	6,874	97	1,169	1,494	128	1,521	1,442	95	56	55	98
	AUG 1			DURING AUG			DURING AUG			DURING AUG		
ARIZ	269	336	125	52	33	63	60	52	87	1	2	200
CALIF	772	672	87	191	169	88	164	151	92	11	9	82
COLO	760	785	103	118	159	135	185	206	111	3	8	267
IOWA	1,100	1,130	103	180	200	111	260	240	92	10	10	100
KANS	1,180	1,198	102	275	269	98	285	272	95	10	5	50
NEBR	1,100	1,180	107	255	315	124	290	300	103	5	15	300
TEX	1,490	1,570	105	337	366	109	345	377	109	12	9	75
7 STATES	6,671	6,871	103	1,408	1,511	107	1,589	1,598	101	52	58	112
	SEP 1			DURING SEP			DURING SEP			DURING SEP		
ARIZ	260	315	121	52	59	113	64	50	78	2	4	200
CALIF	788	681	86	158	156	99	152	149	98	12	20	167
COLO	690	730	106	252	254	101	190	188	99	2	6	300
IOWA	1,010	1,080	107	240	310	129	260	230	88	10	10	100
KANS	1,160	1,190	103	310	290	94	250	270	108	10	10	100
NEBR	1,060	1,180	111	340	380	112	240	295	123	10	5	50
TEX	1,470	1,550	105	322	380	118	322	348	108	10	12	120
7 STATES	6,438	6,726	104	1,674	1,829	109	1,478	1,530	104	56	67	120
	OCT 1			DURING OCT			DURING OCT			DURING OCT		
ARIZ	246	320	130	103	103	100	55	53	96	1	4	400
CALIF	782	668	85	182	279	153	159	120	75	21	20	95
COLO	750	790	105	293	355	121	185	187	101	3	8	267
IOWA	980	1,150	117	360	400	111	245	280	114	25	10	40
KANS	1,210	1,200	99	350	424	121	275	314	114	5	13	260
NEBR	1,150	1,260	110	490	670	137	270	285	106	10	35	350
TEX	1,480	1,570	106	523	655	125	302	350	116	21	25	119
7 STATES	6,578	6,958	106	2,301	2,886	125	1,491	1,589	107	86	115	134
	NOV 1			DURING NOV			DURING NOV			DURING NOV		
ARIZ	293	366	125	90	92	102	45	50	111	8	8	100
CALIF	784	807	103	198	178	90	155	103	66	32	30	94
COLO	855	950	111	204	205	100	148	150	101	6	10	167
IOWA	1,070	1,260	118	510	500	98	270	230	105	10	10	100
KANS	1,280	1,297	101	267	298	112	204	300	147	8	15	188
NEBR	1,360	1,610	118	500	365	73	240	275	98	20	30	150
TEX	1,660	1,850	111	380	400	105	281	380	135	34	20	59
7 STATES	7,302	8,140	111	2,149	2,038	95	1,333	1,488	112	118	123	104
	DEC 1			DURING DEC			DURING DEC			DURING DEC		
ARIZ	330	400	121	82	72	88	46	43	93	5	7	140
CALIF	795	852	107	173	152	88	133	130	98	23	29	126
COLO	905	995	110	172	201	117	156	165	106	6	11	183
IOWA	1,350	1,520	113	420	482	115	240	297	124	10	15	150
KANS	1,335	1,280	96	248	390	157	258	260	101	10	10	100
NEBR	1,560	1,670	107	405	420	104	360	380	106	25	10	40
TEX	1,725	1,850	107	280	350	125	280	330	118	15	20	133
7 STATES	8,000	8,567	107	1,780	2,067	116	1,473	1,605	109	94	102	109

CONTINUED--



CATTLE AND CALVES: NUMBER ON FEED, PLACEMENTS, MARKETED, AND OTHER DISAPPEARANCE,  
MONTHLY, BY STATES, JANUARY-JUNE, 1978-79--CONTINUED

STATE	NUMBER ON FEED			PLACED			MARKETED			OTHER DISAPPEARANCE		
	1978	1979	1979-78	1978	1979	1979-78	1978	1979	1979-78	1978	1979	1979-78
	1,000 HEAD	PERCENT		1,000 HEAD	PERCENT		1,000 HEAD	PERCENT		1,000 HEAD	PERCENT	
	<u>JAN 1</u>			<u>DURING JAN</u>			<u>DURING JAN</u>			<u>DURING JAN</u>		
ARIZ	422	490	116	39	53	136	54	56	104	11	34	309
CALIF	845	796	94	90	120	133	152	165	109	115	50	43
COLO	1,020	1,080	106	183	198	108	205	225	110	18	18	100
IOWA	1,690	1,620	96	252	245	97	272	260	96	20	25	125
KANS	1,400	1,440	103	280	250	89	285	319	112	15	11	73
NEBR	1,700	1,800	106	385	315	82	345	380	104	20	35	175
TEX	1,850	2,000	108	420	395	94	417	470	113	13	25	192
7 STATES	8,927	9,226	103	1,649	1,576	96	1,750	1,875	107	212	198	93
	<u>FEB 1</u>			<u>DURING FEB</u>			<u>DURING FEB</u>			<u>DURING FEB</u>		
ARIZ	396	453	114	47	39	83	52	50	96	21	14	67
CALIF	668	701	105	100	92	92	127	119	94	65	29	43
COLO	980	1,035	106	225	162	72	250	215	86	10	12	120
IOWA	1,650	1,580	96	225	160	71	225	220	98	20	40	200
KANS	1,380	1,360	99	270	247	91	295	291	99	20	26	130
NEBR	1,700	1,700	100	305	320	105	350	325	93	15	25	167
TEX	1,840	1,900	103	347	285	82	377	430	114	30	25	83
7 STATES	8,614	8,729	101	1,519	1,305	86	1,676	1,650	98	181	170	94
	<u>MAR 1</u>			<u>DURING MAR</u>			<u>DURING MAR</u>			<u>DURING MAR</u>		
ARIZ	370	428	116	53	35	66	52	72	138	19	11	58
CALIF	576	646	112	112	115	103	116	98	84	37	40	108
COLO	945	970	103	257	195	76	240	220	92	22	20	91
IOWA	1,610	1,480	91	230	180	78	275	210	76	25	20	80
KANS	1,335	1,290	97	350	280	80	295	290	98	25	20	80
NEBR	1,640	1,670	102	400	340	85	300	400	133	40	20	50
TEX	1,780	1,730	97	465	455	98	400	395	99	35	50	143
7 STATES	8,276	8,214	99	1,867	1,600	86	1,678	1,685	100	203	181	89
	<u>APR 1</u>			<u>DURING APR</u>			<u>DURING APR</u>			<u>DURING APR</u>		
ARIZ	352	380	108	62	40	65	49	53	108	15	6	40
CALIF	535	623	116	106	96	91	183	92	89	27	30	111
COLO	940	925	98	186	160	86	200	175	88	16	25	156
IOWA	1,560	1,430	92	220	210	95	240	210	88	40	30	75
KANS	1,365	1,260	92	272	279	103	314	265	84	23	19	83
NEBR	1,700	1,590	94	340	350	103	370	340	92	70	60	86
TEX	1,810	1,740	96	349	340	97	425	400	94	44	50	114
7 STATES	8,262	7,948	96	1,535	1,475	96	1,701	1,535	90	235	220	94
	<u>MAY 1</u>			<u>DURING MAY</u>			<u>DURING MAY</u>			<u>DURING MAY</u>		
ARIZ	350	361	103	80	91	114	54	72	133	6	10	167
CALIF	511	597	117	190	203	107	108	101	94	25	31	124
COLO	910	885	97	261	237	91	190	200	105	36	32	89
IOWA	1,500	1,400	93	215	170	79	260	220	85	35	30	86
KANS	1,300	1,255	97	400	300	75	286	285	100	14	20	143
NEBR	1,600	1,540	96	380	400	105	340	355	104	70	65	93
TEX	1,690	1,630	96	504	450	89	435	370	85	19	30	158
7 STATES	7,861	7,668	98	2,030	1,851	91	1,673	1,603	96	205	218	106
	<u>JUN 1</u>			<u>DURING JUN</u>			<u>DURING JUN</u>			<u>DURING JUN</u>		
ARIZ	370	370	100	70	68	97	58	70	121	6	5	83
CALIF	568	668	118	267	179	67	110	111	101	39	27	69
COLO	945	890	94	185	228	123	200	212	106	20	26	130
IOWA	1,420	1,320	93	200	140	70	290	250	86	30	30	100
KANS	1,400	1,250	89	265	299	113	259	239	92	16	20	125
NEBR	1,570	1,520	97	300	245	82	390	355	91	30	30	100
TEX	1,740	1,680	97	492	420	85	350	320	91	12	20	167
7 STATES	8,013	7,698	96	1,779	1,579	89	1,657	1,557	94	153	158	103

CONTINUED--

CATTLE AND CALVES: NUMBER ON FEED, PLACEMENTS, MARKETED, AND OTHER DISAPPEARANCE,  
MONTHLY, BY STATES, JULY-DECEMBER, 1978-79--CONTINUED

STATE	NUMBER ON FEED			PLACED			MARKETED			OTHER DISAPPEARANCE		
	1978	1979	1979-78	1978	1979	1979-78	1978	1979	1979-78	1978	1979	1979-78
	1,000 HEAD	PERCENT		1,000 HEAD	PERCENT		1,000 HEAD	PERCENT		1,000 HEAD	PERCENT	
	<u>JUL 1</u>			<u>DURING JUL</u>			<u>DURING JUL</u>			<u>DURING JUL</u>		
ARIZ	376	363	97	75	49	65	56	73	130	6	2	33
CALIF	686	709	103	141	117	83	89	106	119	10	14	140
COLO	910	880	97	167	95	57	190	157	83	7	13	186
IOWA	1,300	1,180	91	240	240	100	280	260	93	20	20	100
KANS	1,390	1,290	93	284	200	76	284	256	90	10	9	90
NEBR	1,450	1,380	95	230	250	109	295	310	105	15	30	200
TEX	1,870	1,760	94	450	260	58	410	300	73	10	20	200
7 STATES	7,962	7,562	95	1,567	1,211	77	1,604	1,462	91	78	108	138
	<u>AUG 1</u>			<u>DURING AUG</u>			<u>DURING AUG</u>			<u>DURING AUG</u>		
ARIZ	389	337	87	78	43	55	57	61	107	7	3	43
CALIF	728	706	97	148	131	89	96	111	116	18	10	56
COLO	880	805	91	191	135	71	218	187	86	13	18	138
IOWA	1,240	1,140	92	260	195	75	280	260	93	20	15	75
KANS	1,360	1,225	90	295	216	73	308	290	94	17	11	65
NEBR	1,370	1,290	94	360	290	81	310	340	110	20	10	50
TEX	1,900	1,700	89	425	340	80	405	385	95	20	15	75
7 STATES	7,867	7,203	92	1,757	1,350	77	1,674	1,634	98	115	82	71
	<u>SEP 1</u>			<u>DURING SEP</u>			<u>DURING SEP</u>			<u>DURING SEP</u>		
ARIZ	403	316	78	102	69	68	45	40	89	18	5	28
CALIF	762	716	94	205	171	83	96	104	108	27	18	67
COLO	840	735	88	291	240	96	184	165	90	12	10	83
IOWA	1,200	1,060	88	350	265	76	280	215	77	20	10	50
KANS	1,330	1,140	86	380	298	78	300	235	78	10	13	130
NEBR	1,400	1,230	88	600	485	81	345	305	88	15	10	67
TEX	1,900	1,640	86	550	480	87	396	320	81	24	20	83
7 STATES	7,835	6,837	87	2,478	2,048	83	1,646	1,384	84	126	86	68
	<u>OCT 1</u>			<u>DURING OCT</u>			<u>DURING OCT</u>			<u>DURING OCT</u>		
ARIZ	442	340	77	110	82	75	46	37	80	2	18	900
CALIF	844	765	91	169	168	99	152	140	92	23	28	122
COLO	935	840	90	360	325	90	217	218	100	13	17	131
IOWA	1,250	1,100	88	410	345	84	300	255	85	20	10	50
KANS	1,400	1,190	85	410	370	90	320	294	89	15	11	73
NEBR	1,640	1,400	85	590	450	76	380	310	82	40	20	50
TEX	2,030	1,780	88	730	645	88	450	395	88	40	40	100
7 STATES	8,541	7,415	87	2,779	2,385	86	1,865	1,639	88	153	144	94
	<u>NOV 1</u>			<u>DURING NOV</u>			<u>DURING NOV</u>			<u>DURING NOV</u>		
ARIZ	504	367	73	59	62	105	51	38	75	5	6	120
CALIF	836	765	91	157	144	92	159	110	69	33	20	61
COLO	1,065	930	87	230	192	83	187	140	75	13	17	131
IOWA	1,340	1,180	88	475	410	86	250	270	104	15	20	133
KANS	1,475	1,265	86	239	275	115	275	250	91	9	20	222
NEBR	1,810	1,520	84	360	360	100	325	275	85	25	25	100
TEX	2,270	1,990	88	370	405	109	460	355	77	60	50	83
7 STATES	9,302	8,017	86	1,890	1,848	98	1,717	1,438	84	160	158	99
	<u>DEC 1</u>			<u>DURING DEC</u>			<u>DURING DEC</u>			<u>DURING DEC</u>		
ARIZ	507	385	76	63	100	159	59	46	78	21	19	90
CALIF	803	779	97	144	108	75	107	105	98	44	18	41
COLO	1,095	965	88	166	162	98	170	150	88	11	17	155
IOWA	1,540	1,300	84	390	365	94	280	260	93	30	15	50
KANS	1,430	1,270	89	280	229	82	250	210	84	20	19	95
NEBR	1,820	1,580	87	390	400	103	400	280	70	10	20	200
TEX	2,120	1,990	94	310	310	100	390	305	78	40	25	63
7 STATES	9,315	8,269	89	1,743	1,674	96	1,654	1,356	82	176	133	76

NUMBER OF CATTLE FEEDLOTS AND FED CATTLE MARKETED--BY SIZE OF FEEDLOT CAPACITY,  
BY STATES - 1976 AND 1977

STATE AND YEAR	1,000 HEAD AND OVER FEEDLOT CAPACITY									
	UNDER 1,000 HEAD FEEDLOT CAPACITY		1,000-1,999		2,000-3,999		4,000-7,999		8,000-15,999	
	LOTS	CATTLE MARKETED	LOTS	CATTLE MARKETED	LOTS	CATTLE MARKETED	LOTS	CATTLE MARKETED	LOTS	CATTLE MARKETED
(NO.)	1,000 HD.	(NO.)	1,000 HD.	(NO.)	1,000 HD.	(NO.)	1,000 HD.	(NO.)	1,000 HD.	
<u>1976</u>										
ARIZ	3	2	8	5	7	10	5	25	7	60
CALIF	24	6	19	19	13	35	26	151	36	426
COLO	318	144	59	112	58	242	29	215	18	274
IDAHO	504	11	13	16	19	38	13	45	8	100
ILL	13,930	815	57	70	10	30	3	20		
IND	10,483	343	12	11	*5	*11				
IOWA	32,784	2,506	94	87	88	135	24	92	10	85
KANS	5,880	522	9	8	15	72	38	399	24	506
MICH	1,561	210	29	35	*10	*26				
MINN	11,132	734	40	39	25	20	3	11		
MO	7,966	300	22	20	8	12	4	14		
MONT	70	4	15	14	16	15	13	48	*5	*23
NEBR	14,200	1,263	160	345	100	340	47	340	30	580
N MEX	3				*10	*8	8	43	15	148
N DAK	886	47	11	12			*3	*12		
OHIO	7,775	322	22	33	*3	*32				
OKLA	312	23	9	13	12	42	7	62	8	106
OREG	481	35	4	2	8	16	3	25	*4	*79
PA	*6,000	*114								
S DAK	7,936	286	40	43	16	32	6	47	*6	*171
TEX	912	60	25	33	24	62	26	170	35	583
WASH	199	24	*3	*7			8	58	6	79
WIS	6,786	158	11	13	3	11				
23 STATES 2/	130,139	7,926	664	935	446	1,158	267	1,781	209	3,087
<u>1977</u>										
ARIZ	3	1	5	8	8	15	4	25	5	53
CALIF	26	10	14	19	12	26	22	127	31	410
COLO	276	143	72	133	60	248	26	219	19	278
IDAHO	485	43	16	15	19	45	9	49	8	107
ILL	13,925	813	60	77	*15	*50				
IND	10,480	311	15	27	5	14				
IOWA	32,711	2,305	205	226	58	139	17	86	9	106
KANS	5,841	374	41	37	21	105	24	215	44	944
MICH	1,508	210	33	40	*9	*27				
MINN	11,142	693	40	38	15	17	3	10		
MO	6,459	282	21	17	16	14	4	10		
MONT	61	6	8	5	13	21	15	65	*4	*37
NEBR	14,000	1,525	180	390	90	330	48	355	29	550
N MEX	3				*9	*17	9	35	16	168
N DAK	886	*29	*12	*34						
OHIO	7,775	347	*25	*56						
OKLA	321	28	4	5	10	39	9	68	9	152
OREG	482	33	*3	*4	8	13	3	30	*4	*92
PA	*6,000	*115								
S DAK	7,634	323	38	40	16	33	7	53	*5	*123
TEX	1,044	146	18	22	14	38	25	206	35	604
WASH	72	28	*8	*13			9	65	6	88
WIS	6,485	154	11	13	*4	*12				
23 STATES 2/	127,618	7,917	824	1,177	401	1,186	239	1,654	221	3,583

SEE FOOTNOTES ON PAGE 43.

CONTINUED--

NUMBER OF CATTLE FEEDLOTS AND FED CATTLE MARKETED--BY SIZE OF FEEDLOT CAPACITY,  
BY STATES - 1976 AND 1977--CONTINUED

STATE AND YEAR	1,000 HEAD AND OVER FEEDLOT CAPACITY						TOTAL ALL FEEDLOTS	
	16,000-31,999		32,000 AND OVER		TOTAL		TOTAL ALL FEEDLOTS	CATTLE MARKETED
	LOTS	CATTLE MARKETED	LOTS	CATTLE MARKETED	LOTS	CATTLE MARKETED		
(NO.)	1,000 HD.	(NO.)	1,000 HD.	(NO.)	1,000 HD.	(NO.)	1,000 HD.	
<u>1976</u>								
ARIZ	9	185	9	508	45	793	48	795
CALIF	25	681	7	526	126	1,838	150	1,844
COLO	15	513	5	634	184	1,990	502	2,134
IDAHO	6	130			59	329	563	340
ILL					70	120	14,000	935
IND					17	22	10,500	365
IOWA					216	399	33,000	2,905
KANS	26	969	8	608	120	2,562	6,000	3,084
MICH					39	61	1,600	271
MINN					68	70	11,200	804
MO					34	46	8,000	346
MONT					49	100	119	104
NEBR	9	300	4	290	350	2,195	14,550	3,458
N MEX	4	107			37	306	40	306
N DAK					14	24	900	71
OHIO					25	65	7,800	387
OKLA	*7	*432			43	655	355	678
OREG					19	122	500	157
PA							*6,000	*114
S DAK					68	293	8,000	579
TEX	43	1,521	24	1,518	177	3,887	1,089	3,947
WASH	*3	*196			20	340	219	364
WIS					14	24	6,800	182
23 STATES <u>2/</u>	149	4,911	61	4,372	1,796	16,244	181,935	24,170
<u>1977</u>								
ARIZ	7	139	9	405	38	645	41	646
CALIF	26	578	6	442	111	1,602	137	1,612
COLO	16	576	6	694	199	2,148	475	2,291
IDAHO	7	179			59	395	544	438
ILL					75	127	14,000	940
IND					20	41	10,500	352
IOWA					289	557	33,000	2,862
KANS	21	940	8	672	159	2,913	6,000	3,287
MICH					42	67	1,550	277
MINN					58	65	11,200	758
MO					41	41	6,500	323
MONT					40	128	101	134
NEBR	9	340	4	295	360	2,260	14,360	3,785
N MEX	3	74			37	294	40	294
N DAK					12	34	898	63
OHIO					25	56	7,800	403
OKLA	*7	*440			39	704	360	732
OREG					18	139	500	172
PA							*6,000	*115
S DAK					66	249	7,700	572
TEX	40	1,555	24	1,656	156	4,081	1,200	4,227
WASH	*3	*197			26	363	98	391
WIS					15	25	6,500	179
23 STATES <u>2/</u>	140	4,846	61	4,490	1,886	16,936	129,504	24,853

SEE FOOTNOTES ON PAGE 43.

CONTINUED--

NUMBER OF CATTLE FEEDLOTS AND FED CATTLE MARKETED--BY SIZE OF FEEDLOT CAPACITY,  
BY STATES - 1978 AND 1979 1/--CONTINUED

STATE AND YEAR	UNDER 1,000 HEAD		1,000 HEAD AND OVER FEEDLOT CAPACITY							
	FEEDLOT CAPACITY		1,000-1,999		2,000-3,999		4,000-7,999		8,000-15,999	
	LOTS	CATTLE MARKETED	LOTS	CATTLE MARKETED	LOTS	CATTLE MARKETED	LOTS	CATTLE MARKETED	LOTS	CATTLE MARKETED
	(NO.) 1,000 HD.	(NO.) 1,000 HD.	(NO.) 1,000 HD.	(NO.) 1,000 HD.	(NO.) 1,000 HD.	(NO.) 1,000 HD.	(NO.) 1,000 HD.	(NO.) 1,000 HD.	(NO.) 1,000 HD.	(NO.) 1,000 HD.
<u>1978</u>										
ARIZ		*5	*57	*8	*25				6	82
CALIF	23	8	12	9	19	34	20	82	28	345
COLO	217	158	76	135	60	258	23	196	22	327
IDAHO	284	24	16	29	23	60	14	48	6	76
ILL	13,925	860	60	80	15	40				
IND	10,078	370	16	29	6	17				
IOWA	32,701	2,565	205	267	65	174	20	98	9	138
KANS	5,331	617	44	54	26	85	25	198	44	887
MICH	1,453	195	38	46	*9	*30				
MINN	10,850	691	35	36	12	18	3	10		
MO	5,964	253	20	18	13	12	3	12		
MONT	51	4	13	10	13	16	*18	*88		
NEBR	13,500	1,630	200	460	90	380	47	415	29	565
N MEX					*6	*7	10	38	13	167
N DAK	1,488	41	9	12	*3	*17				
OHIO	6,975	332	22	35	*3	*15				
OKLA	320	31	5	7	12	45	6	50	10	150
OREG	480	35	4	3	9	20	3	23	*4	*94
PA	*6,000	*110								
S DAK	7,153	404	34	44	9	34	*4	*73		
TEX	959	80	19	20	13	50	26	242	36	697
WASH	56	11	6	9	3	5	7	49	7	109
WIS	4,484	150	12	13	4	7				
23 STATES 2/	122,293	8,562	851	1,374	412	1,300	230	1,568	217	3,626
<u>1979</u>										
ARIZ					*8	*24			5	36
CALIF	21	5	12	9	11	25	19	87	27	279
COLO	197	135	67	125	63	256	20	175	21	265
IDAHO	281	9	16	12	23	48	15	50	7	102
ILL	13,418	802	65	74	17	44				
IND	9,877	316	20	24	*3	*27				
IOWA	31,518	1,820	334	440	106	280	34	195	4	60
KANS	4,846	398	22	39	29	105	30	247	41	791
MICH	1,445	143	45	45	7	15	3	16		
MINN	10,849	633	32	32	15	20	*4	*15		
MO	4,960	190	25	18	12	14	3	8		
MONT	29	2	12	5	14	12	*18	*60		
NEBR	13,000	1,520	200	400	91	330	46	410	28	549
N MEX					*8	*8	9	36	12	126
N DAK	1,481	32	*16	*15			*3	*23		
OHIO	6,275	253	22	30	*3	*17				
OKLA	300	28	4	3	10	32	7	54	11	118
OREG	484	29			*12	*22			*4	*92
PA	*6,000	*104								
S DAK	6,635	378	41	53	17	60	4	18	*3	*66
TEX	886	54	20	19	15	46	26	227	35	556
WASH	48	21	4	3	3	4	7	47	7	99
WIS	5,481	141	13	13	*6	*17				
23 STATES 2/	118,031	7,006	975	1,361	462	1,368	248	1,656	208	3,071

SEE FOOTNOTES ON PAGE 43.

CONTINUED--

NUMBER OF CATTLE FEEDLOTS AND FED CATTLE MARKETED--BY SIZE OF FEEDLOT CAPACITY,  
BY STATES - 1978 AND 1979 1/--CONTINUED

STATE AND YEAR	1,000 HEAD AND OVER FEEDLOT CAPACITY						TOTAL ALL FEEDLOTS	
	16,000-31,999		32,000 AND OVER		TOTAL		TOTAL	
	LOTS	CATTLE MARKETED	LOTS	CATTLE MARKETED	LOTS	CATTLE MARKETED	LOTS	CATTLE MARKETED
	(NO.)	1,000 HD.	(NO.)	1,000 HD.	(NO.)	1,000 HD.	(NO.)	1,000 HD.
<u>1978</u>								
ARIZ	3	70	9	399	30	633	31	633
CALIF	21	476	7	461	107	1,407	130	1,415
COLO	15	567	7	810	203	2,293	420	2,451
IDAHO	7	258			66	471	350	495
ILL					75	120	14,000	980
IND					22	46	10,100	416
IOWA					299	677	33,000	3,242
KANS	22	898	8	732	169	2,854	5,500	3,471
MICH					47	76	1,500	271
MINN					50	64	10,900	755
MO					36	42	6,000	295
MONT					44	114	95	118
NEBR	9	390	4	330	379	2,540	13,879	4,170
N MEX	5	125			33	337	34	337
N DAK					12	29	1,500	70
OHIO					25	50	7,000	382
OKLA	*7	*550			40	802	360	833
OREG					20	140	500	175
PA							*6,000	*110
S DAK					47	151	7,200	555
TEX	41	1,846	26	1,980	161	4,835	1,120	4,915
WASH	*3	*223			26	395	82	406
WIS					16	20	4,500	170
23 STATES 2/	133	5,081	65	5,154	1,908	18,103	124,201	26,665
<u>1979</u>								
ARIZ	5	101	10	507	28	668	29	668
CALIF	20	466	7	491	96	1,357	17	1,362
COLO	15	542	7	766	193	2,129	390	2,264
IDAHO	8	290			69	502	350	511
ILL					82	118	13,500	920
IND					23	51	9,900	367
IOWA	4	95			482	1,070	32,000	2,890
KANS	22	776	10	858	154	2,816	5,000	3,214
MICH					55	76	1,500	219
MINN					51	67	10,900	700
MO					40	40	5,000	230
MONT					44	77	73	79
NEBR	11	448	4	318	380	2,455	13,380	3,975
N MEX	*6	*173			35	343	35	343
N DAK					19	38	1,500	70
OHIO					25	47	6,300	300
OKLA	*8	*434			40	641	340	669
OREG					16	114	500	143
PA							*6,000	*104
S DAK					65	197	6,700	575
TEX	42	1,683	26	1,860	164	4,391	1,050	4,445
WASH	*3	*232			24	385	72	406
WIS					19	30	5,500	171
23 STATES 2/	144	5,031	68	5,132	2,105	17,619	120,136	24,625

1/ NUMBER OF FEEDLOTS WITH 1,000 HEAD OR MORE CAPACITY IS NUMBER OF LOTS OPERATING ANYTIME DURING YEAR. NUMBER UNDER 1,000 HEAD CAPACITY IS NUMBER AT END OF YEAR. 2/ THE 23 STATE TOTALS SHOW ACTUAL NUMBER OF FEEDLOTS AND NUMBER OF ANIMALS MARKETED IN EACH SIZE GROUP. THE SUM OF NUMBERS SHOWN BY STATES UNDER A SPECIFIED SIZE GROUP MAY NOT ADD TO 23 STATE TOTAL FOR THAT SIZE GROUP, SINCE FOR SOME STATES SIZE GROUPS ARE COMBINED TO AVOID DISCLOSING INDIVIDUAL OPERATIONS. \*LOTS AND MARKETINGS FROM OTHER SIZE GROUPS ARE INCLUDED TO AVOID DISCLOSING INDIVIDUAL OPERATIONS.

**END**