



**AgEcon** SEARCH  
RESEARCH IN AGRICULTURAL & APPLIED ECONOMICS

*The World's Largest Open Access Agricultural & Applied Economics Digital Library*

**This document is discoverable and free to researchers across the globe due to the work of AgEcon Search.**

**Help ensure our sustainability.**

Give to AgEcon Search

AgEcon Search

<http://ageconsearch.umn.edu>

[aesearch@umn.edu](mailto:aesearch@umn.edu)

*Papers downloaded from **AgEcon Search** may be used for non-commercial purposes and personal study only. No other use, including posting to another Internet site, is permitted without permission from the copyright owner (not AgEcon Search), or as allowed under the provisions of Fair Use, U.S. Copyright Act, Title 17 U.S.C.*

SR-54 (1981)

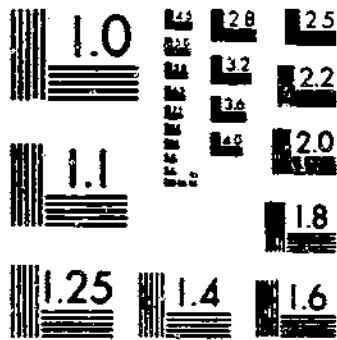
USDA-STATISTICAL-BULLETINS

UPONLINE

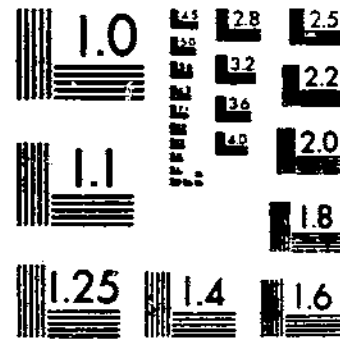
MILK-FINAL-ESTIMATES-1975-78

1 OF 1

# START



MICROCOPY RESOLUTION TEST CHART  
NATIONAL BUREAU OF STANDARDS-1963-A



MICROCOPY RESOLUTION TEST CHART  
NATIONAL BUREAU OF STANDARDS-1963-A

---

# **MILK:**

## **Final Estimates, 1975-78**

MILK: FINAL ESTIMATES, 1975-78. Crop Reporting Board, Economics and Statistics Service, U.S. Department of Agriculture, Statistical Bulletin No. 651.

#### ABSTRACT

This publication contains final milk production estimates, including revisions, for 1975-78; data cover monthly estimates of milk cows, production per cow, and total milk production, as well as number of operations with milk cows, disposition, and income. The report continues the official series published in Statistical Bulletin No. 591, issued February 1978.

Washington, D.C. 20250

February 1981

## CONTENTS

	<u>PAGE</u>
INTRODUCTION .....	4
 <u>TABLES</u>	
Number of milk cows, milk per cow, and milk production, United States, by months, 1975-78 .....	5
Milk cows, production of milk and milkfat, United States, 1975-78 .....	5
Milk used and marketed by producers, United States, 1975-78 .....	6
Milk and cream marketed by producers: Quantity, price, and cash receipts, United States, 1975-78 .....	6
Marketings, income, and value of milk production, United States, 1975-78 .....	6
Milk cows: Number, by months, by States, 1975-78 .....	7-10
Milk: Produced per cow, by months, by States, 1975-78 .....	11-14
Milk production: Total milk produced, by months, by States, 1975-78 .....	15-18
Milk production: Total milk produced, by quarters, by States, 1975-78 .....	19-22
Milk cows: Annual production, disposition, and income by States:	
1975 .....	23-26
1976 .....	27-30
1977 .....	31-34
1978 .....	35-38
Number of operations with milk cows, by States, 1975-78 .....	39
Supply and utilization of milk, United States, 1975-78 .....	40

## INTRODUCTION

This publication revises estimates for milk which were published on a current basis in monthly reports during 1975-78. The current estimates were based on sample surveys of producers drawn from lists of all known milk cow operations in each State.

Revisions were made only after a thorough review of the original estimates and consideration of new data, including the 1978 Census of Agriculture. Among the other series of check data used were Federal Milk Market Order information and receipts of milk by plants and dairy product manufacturers. Terms used in this report are defined below:

Milk cows means cows kept mainly for milk production, but not those kept to nurse calves. The estimates included dry milk cows between periods of lactation. Heifers were not included as milk cows until they had calved for the first time.

Milk production estimates for each State were the product of the estimated number of cows times the rate per cow. Rate per cow (monthly and annual) was based on all milk cows, in milk and dry.

Milk marketed means whole milk and farm-separated cream sold to plants according to receipts reported in surveys of all dairy plants. Adjustments were made for milk received directly from out-of-State producers. Milk sold directly to consumers included sales by producer-distributors who marketed milk from their own herds, milk sold to neighbors, and milk produced in herds kept by institutions.

Prices received by farmers for milk and cream were based on sales to dairy plants. These data provided monthly average prices to producers for each State. A sample of producer-distributors was used each month for the prices received for all milk sold directly to consumers.

Farm income from milk and cream was determined from cash receipts for the sale of whole milk to plants, cream to plants, and milk to consumers. An average price per unit was computed by dividing total cash receipts by the equivalent quantity of whole milk sold. This average price was applied to milk used in farm households to measure farm-use value and was added to cash receipts to determine gross farm income. The same average price was applied to total milk production to compute farm value.

Supply and utilization of milk: All data are based on whole milk equivalent using the milkfat content of ingredients and products. An estimate of total supply is derived by taking total milk production plus the milk equivalent of net imports of ingredients and net out-of-storage movement of cream. Utilization of milk in manufactured products is based on the total milkfat required to produce the products and includes the milk equivalent of any imported ingredients used.

MILK: NUMBER OF MILK COWS, MILK PER COW AND MILK PRODUCTION, UNITED STATES,  
BY MONTHS, 1975-78

MONTH	NUMBER OF MILK COWS <u>1/</u>				MILK PRODUCTION PER COW <u>2/</u>			
	1975	1976	1977	1978	1975	1976	1977	1978
	1,000 HEAD				POUNDS			
JAN	11,206	11,074	10,995	10,887	835	867	899	915
FEB	11,200	11,061	10,983	10,860	783	840	845	851
MAR	11,185	11,046	10,971	10,834	894	931	964	968
APR	11,179	11,042	10,962	10,801	905	949	979	982
MAY	11,161	11,028	10,953	10,783	966	1,007	1,037	1,034
JUN	11,147	11,023	10,938	10,768	937	978	1,003	1,005
JUL	11,135	11,027	10,937	10,768	896	946	976	975
AUG	11,119	11,026	10,936	10,779	858	918	948	945
SEP	11,099	11,017	10,938	10,790	815	870	897	897
OCT	11,090	11,016	10,913	10,793	826	872	900	906
NOV	11,073	11,013	10,910	10,788	798	836	860	864
DEC	11,074	11,003	10,899	10,792	845	880	899	901
YEAR <u>1/</u>	11,139	11,032	10,945	10,803	10,360	10,894	11,206	11,243
	TOTAL MILK PRODUCTION <u>2/</u>							
	1975	1976	1977	1978				
	MILLION POUNDS							
JAN	9,358		9,597		9,888		9,958	
FEB	8,773		9,289		9,285		9,242	
MAR	9,999		10,285		10,579		10,491	
APR	10,116		10,475		10,732		10,610	
MAY	10,787		11,107		11,358		11,151	
JUN	10,445		10,786		10,968		10,817	
JUL	9,975		10,435		10,671		10,503	
AUG	9,544		10,117		10,362		10,182	
SEP	9,050		9,590		9,810		9,683	
OCT	9,162		9,603		9,824		9,780	
NOV	8,832		9,210		9,380		9,320	
DEC	9,357		9,686		9,797		9,724	
YEAR	115,398		120,180		122,654		121,461	

1/ NUMBER OF MILK COWS IS AVERAGE NUMBER DURING YEAR, EXCLUDING HEIFERS NOT YET FRESH.  
2/ EXCLUDES MILK SUCKED BY CALVES.

MILK COWS, PRODUCTION OF MILK AND MILKFAT, UNITED STATES, 1975-78

YEAR	PRODUCTION OF MILK AND MILKFAT <u>2/</u>					
	NUMBER OF MILK COWS <u>1/</u>	PER MILK COW		PERCENTAGE OF FAT IN ALL MILK PRODUCED	TOTAL	
		MILK	MILKFAT		MILK	MILKFAT
	THOUSANDS	POUNDS	POUNDS	PERCENT	MILLION POUNDS	
1975	11,139	10,360	381	3.68	115,398	4,240
1976	11,032	10,894	399	3.66	120,180	4,402
1977	10,945	11,206	410	3.65	122,654	4,481
1978	10,803	11,243	412	3.67	121,461	4,455

1/ AVERAGE NUMBER DURING YEAR, EXCLUDING HEIFERS NOT YET FRESH.  
2/ EXCLUDES MILK SUCKED BY CALVES.



MILK USED AND MARKETED BY PRODUCERS, UNITED STATES, 1975-78

YEAR	MILK USED WHERE PRODUCED			MILK MARKETED BY PRODUCERS			
	FED TO CALVES <u>1/</u>	USED FOR MILK, CREAM AND BUTTER	TOTAL	SOLD TO PLANTS AND DEALERS <u>2/</u>		SOLD DIRECTLY TO CONSUMERS <u>3/</u>	TOTAL
				AS WHOLE MILK	AS FARM SEPARATED CREAM		
MILLION POUNDS							
1975	1,566	1,495	3,061	110,460	314	1,563	112,337
1976	1,567	1,392	2,959	115,479	230	1,512	117,221
1977	1,541	1,283	2,824	118,154	182	1,495	119,831
1978	1,497	1,168	2,665	117,203	102	1,490	118,795

1/ EXCLUDES MILK SUCKED BY CALVES. 2/ INCLUDES MILK PRODUCED BY DEALERS' OWN HERDS. 3/ SALES DIRECTLY TO CONSUMERS BY PRODUCERS WHO SELL ONLY MILK FROM THEIR OWN HERDS. ALSO INCLUDES MILK PRODUCED BY INSTITUTIONAL HERDS.

MILK AND CREAM MARKETED BY PRODUCERS: QUANTITY, PRICE, AND CASH RECEIPTS, UNITED STATES 1975-78

YEAR	MILK SOLD TO PLANTS AND DEALERS			CREAM SOLD TO PLANTS AND DEALERS			MILK SOLD DIRECTLY TO CONSUMERS		
	QUANTITY	PRICE PER:	CASH	QUANTITY	PRICE PER:	CASH	QUANTITY	PRICE PER:	CASH
		100 LB	RECEIPTS		1,000 DOL	1,000 LBS		CT	1,000 DOL
1975	110,460	8.75	9,664,349	11,437	70.3	8,039	726,837	35.4	257,362
1976	115,479	9.66	11,158,050	8,350	83.4	6,966	703,114	36.4	255,651
1977	118,154	9.72	11,488,120	6,586	92.0	6,058	695,162	36.7	255,314
1978	117,203	10.60	12,400,075	3,679	102	3,762	693,210	38.8	268,990

MARKETING, INCOME, AND VALUE OF MILK PRODUCTION, UNITED STATES, 1975-78

YEAR	COMBINED MARKETINGS OF MILK AND CREAM				USED FOR MILK, CREAM AND BUTTER WHERE PRODUCED		GROSS PRODUCERS INCOME <u>3/</u>	VALUE OF MILK PRODUCED <u>2/ 4/</u>
	MILK UTILIZED	AVERAGE RETURNS <u>1/</u>	PER POUND	CASH RECEIPTS	MILK UTILIZED	VALUE <u>2/</u>		
		PER 100 POUNDS OF MILK	OF MILKFAT	FROM MARKETINGS				
MIL LBS                      DOLLARS                      1,000 DOL                      MIL LBS                      1,000 DOLLARS								
1975	112,337	8.84	2.41	9,929,750	1,495	133,026	10,062,776	10,198,831
1976	117,221	9.74	2.66	11,420,667	1,392	136,765	11,557,432	11,706,043
1977	119,831	9.81	2.68	11,749,492	1,283	126,448	11,875,940	12,023,440
1978	118,795	10.67	2.91	12,672,827	1,168	125,155	12,797,982	12,956,601

1/ CASH RECEIPTS DIVIDED BY MILK OR MILKFAT REPRESENTED IN COMBINED MARKETINGS.

2/ VALUE AT AVERAGE RETURNS PER 100 POUNDS OF MILK IN COMBINED MARKETINGS OF MILK AND CREAM.

3/ CASH RECEIPTS FROM MARKETINGS OF MILK AND CREAM PLUS VALUE OF MILK USED FOR HOME CONSUMPTION AND PRODUCER-CHURNED BUTTER.

4/ INCLUDES VALUE OF MILK FED TO CALVES.

MTLK COWS: NUMBER, BY MONTHS, BY STATES, 1975 1/

STATE	JAN	FEB	MAR	APR	MAY	JUN	JUL	AUG	SEP	OCT	NOV	DEC	ANNUAL AVERAGE 2/
THOUSANDS													
ALA	92	92	92	92	91	91	91	90	89	88	87	86	90
ALAS			1.6			1.6			1.6			1.6	1.6
ARIZ			65			67			68			68	67
ARK	90	90	89	89	90	90	89	88	87	87	86	86	88
CALIF	800	800	798	798	798	798	798	798	798	802	806	806	800
COLO	75	75	75	74	73	74	74	74	75	74	74	75	74
CONN			55			55			54			53	54
DEL			12.3			11.7			11.4			11.3	11.7
FLA	200	199	198	198	197	197	197	196	196	196	196	197	197
GA	129	129	130	130	130	129	129	129	129	129	129	130	129
HAW			13.0			13.0			13.1			13.3	13.1
IDAHO	148	147	147	147	147	147	146	146	146	146	146	145	147
ILL	248	247	246	245	244	243	242	242	242	241	240	240	243
IND	216	216	216	216	216	215	215	215	214	214	214	213	215
IOWA	405	405	404	404	403	402	401	401	399	397	396	395	401
KANS	146	146	145	144	143	144	143	142	140	138	138	137	142
KY	294	291	287	287	287	286	286	286	285	285	285	285	287
LA	134	135	135	135	135	136	136	136	137	137	138	138	136
MAINE			60			61			61			60	61
MD	144	143	142	142	142	142	142	140	139	138	137	136	141
MASS			55			54			54			55	55
MICH	415	414	413	412	411	411	410	411	410	409	408	408	411
MINN	886	885	883	881	879	878	880	882	884	886	888	890	884
MISS	125	126	125	123	122	121	121	120	120	119	118	118	122
MO	310	308	306	304	302	304	302	298	296	300	298	300	302
MONT			27			26			26			26	26
NEBR	155	155	155	154	152	151	152	152	151	151	150	148	152
NEV			14.0			14.0			14.0			14.0	14.0
N H			33			33			32			32	33
N J			48			47			47			46	47
N MEX			31			32			32			32	32
N Y	923	920	920	921	917	914	914	915	917	917	915	916	917
N C	145	146	146	146	146	146	145	144	143	143	143	143	145
N DAK	116	116	116	116	116	115	115	115	114	114	113	113	115
OHIO	404	404	404	404	404	403	403	400	398	395	392	390	400
OKLA	122	121	121	121	121	120	119	118	118	117	117	117	119
OREG	91	91	91	91	91	91	91	91	91	91	91	91	91
PA	688	695	700	705	703	700	697	703	701	699	698	704	699
R I			6.1			6.0			5.9			5.8	6.0
S C			59			58			57			56	58
S DAK			174			174			173			173	174
TENN	216	216	215	215	214	216	216	215	215	214	213	212	215
TEX	345	344	343	340	338	336	334	329	324	322	321	321	333
UTAH	79	79	78	78	79	79	80	80	79	80	79	79	79
VT	192	192	192	193	193	193	194	194	194	194	194	194	193
VA	174	174	173	174	174	174	172	172	171	172	171	171	173
WASH	181	181	181	180	182	181	181	180	181	181	180	179	181
W VA			42			42			41			40	41
WIS	1,810	1,810	1,811	1,812	1,813	1,813	1,814	1,813	1,813	1,812	1,812	1,812	1,812
WYO			12.4			11.8			11.6			11.5	11.8
OTH 17 STS 3/	708	708		708	706		706	704		702	700		
U S	11,206	11,200	11,185	11,179	11,161	11,147	11,135	11,119	11,099	11,090	11,073	11,074	11,139

SEE FOOTNOTES ON PAGE 10.

MILK COWS: NUMBER, BY MONTHS, BY STATES, 1976 1/

STATE	JAN	FEB	MAR	APR	MAY	JUN	JUL	AUG	SEP	OCT	NOV	DEC	ANNUAL AVERAGE 2/
THOUSANDS													
ALA	86	86	86	85	85	85	84	83	83	84	84	84	85
ALAS			1.6			1.5			1.5			1.5	1.5
ARIZ			69			70			70			69	70
ARK	86	86	86	86	86	85	85	85	85	85	85	85	85
CALIF	810	810	805	808	812	815	818	818	810	807	806	809	811
COLO	74	73	72	72	72	72	71	71	72	71	71	71	72
CONN			54			54			53			53	54
DEL			11.3			11.3			11.2			11.2	11.3
FLA	198	199	199	200	200	201	201	202	202	202	202	201	201
GA	129	129	129	128	128	129	130	130	129	129	129	129	129
HAW			13.4			13.2			13.0			13.0	13.2
IDAHO	144	143	143	143	142	142	142	142	142	142	143	143	143
ILL	240	240	239	238	237	235	236	236	235	236	235	234	237
IND	212	210	210	210	210	209	208	208	209	210	209	208	209
IOWA	395	394	393	392	391	391	391	392	392	392	392	392	392
KANS	138	138	138	138	137	136	136	136	136	135	135	135	137
KY	283	282	282	282	282	281	281	281	281	281	281	280	281
LA	138	137	137	137	137	137	137	137	137	137	136	135	137
MAINE			60			59			59			59	59
MD	135	134	134	134	134	134	134	133	133	133	132	131	133
MASS			55			54			53			53	54
MICH	407	406	406	406	405	405	404	405	405	404	404	405	405
MINN	890	886	882	878	874	870	870	872	874	876	878	880	878
MISS	117	116	117	116	117	116	116	117	116	115	115	115	116
MO	300	301	302	304	306	308	310	308	307	307	308	310	306
MONT			25			25			24			25	25
NEBR	146	146	145	145	144	144	143	141	139	139	139	138	142
NEV			14.1			14.2			14.2			14.3	14.2
N H			32			31			31			31	31
N J			45			45			46			47	46
N MEX			31			32			32			32	32
N Y	916	915	914	913	911	909	910	910	912	912	913	913	912
N C	143	143	143	142	142	142	142	142	142	142	141	141	142
N DAK	113	113	113	113	112	112	111	110	110	109	109	108	111
OHIO	392	394	396	396	396	397	399	400	400	400	399	398	397
OKLA	117	117	117	117	117	117	117	117	117	115	116	116	117
OREG	92	92	92	92	92	92	92	92	92	93	93	93	92
PA	709	709	704	704	699	699	703	707	707	711	711	705	706
R I			5.7			5.6			5.4			5.3	5.5
S C			56			56			56			55	56
S DAK			172			171			169			168	170
TENN	212	211	211	211	209	209	209	210	210	211	211	211	210
TEX	320	320	320	320	321	322	322	320	319	318	318	318	320
UTAH	78	78	78	78	78	78	79	79	79	79	79	79	79
VT	194	194	194	194	194	193	192	193	194	194	194	194	194
VA	171	172	173	174	173	173	174	174	175	174	174	174	173
WASH	179	178	176	180	181	181	181	181	181	182	182	181	180
W VA			40			39			38			38	39
WIS	1,811	1,811	1,810	1,810	1,810	1,810	1,808	1,805	1,804	1,803	1,801	1,800	1,807
WYO			11.5			11.5			11.5			11.5	11.5
OTH 17 STS 3/	699	698		696	694		691	689		688	688		
U S	11,074	11,061	11,046	11,042	11,028	11,023	11,027	11,026	11,017	11,016	11,013	11,003	11,032

SEE FOOTNOTES ON PAGE 10.

MILK COWS: NUMBER, BY MONTHS, BY STATES, 1977 1/

STATE	JAN	FEB	MAR	APR	MAY	JUN	JUL	AUG	SEP	OCT	NOV	DEC	ANNUAL AVERAGE 2/
THOUSANDS													
ALA	84	83	82	81	80	80	79	78	78	78	79	79	80
ALAS			1.5			1.5			1.5			1.5	1.5
ARIZ			68			70			70			69	69
ARK	85	85	85	85	84	84	84	84	84	84	84	84	84
CALIF	812	814	817	821	824	825	828	831	834	836	839	842	827
COLO	71	71	71	70	71	71	71	70	70	71	72	72	71
CONN			52			52			51			51	52
DEL			11.2			11.2			11.2			11.2	11.2
FLA	200	201	200	199	198	198	198	198	197	197	197	197	196
GA	129	129	129	129	129	129	129	129	129	129	129	129	129
HAW			13.1			13.0			12.8			12.9	13.0
IDAHO	142	142	142	141	141	141	141	141	140	139	139	139	141
ILL	234	234	234	235	235	233	235	237	236	232	234	233	234
IND	207	208	209	208	208	207	207	208	208	208	207	206	208
IOWA	392	390	387	387	387	385	385	385	383	383	383	380	386
KANS	135	134	133	134	135	135	134	134	134	132	131	132	134
KY	280	279	279	279	279	279	278	278	278	277	277	277	278
LA	135	134	134	134	133	132	132	132	131	131	131	130	132
MAINE			58			58			58			58	58
MD	131	131	131	131	131	131	130	130	130	130	130	130	131
MASS			52			51			51			51	51
MICH	403	403	401	402	402	401	403	402	405	403	404	404	403
MINN	880	878	876	874	872	870	865	862	859	856	853	850	866
MISS	116	116	114	113	111	111	112	112	111	111	111	110	112
MO	308	307	305	303	300	297	295	293	292	289	286	287	296
MONT			26			26			26			27	26
NEBR	137	136	136	135	134	133	133	132	131	130	129	128	133
NEV			14.3			14.3			14.3			14.3	14.3
N H			31			31			31			31	31
N J			47			47			47			47	47
N MEX			33			33			33			34	33
N Y	913	915	915	914	913	912	913	914	916	916	914	915	914
N C	140	138	139	138	138	137	136	138	137	137	138	137	138
N DAK	108	108	108	108	108	107	107	107	106	105	105	104	107
OHIO	400	399	401	399	401	400	397	400	400	400	398	400	400
OKLA	116	116	116	116	116	116	116	116	116	116	115	114	116
OREG	93	93	93	93	93	93	93	93	93	93	93	93	93
PA	705	705	703	703	700	700	699	703	707	703	703	703	703
R I			5.1			5.0			4.9			4.9	5.0
S C			54			53			53			53	53
S DAK			167			166			165			164	166
TENN	210	210	209	210	209	208	208	208	207	205	205	204	208
TEX	317	317	317	316	315	314	314	314	314	314	314	314	315
UTAH	79	78	78	78	79	79	79	78	78	77	76	76	78
VT	193	192	190	188	188	188	190	192	193	193	193	194	191
VA	173	173	174	173	172	172	171	171	172	171	170	170	172
WASH	181	182	181	182	183	187	191	183	185	183	185	185	184
W VA			39			39			38			37	38
WIS	1,800	1,799	1,798	1,799	1,800	1,800	1,802	1,803	1,805	1,806	1,808	1,809	1,802
WYO			11.6			11.7			11.6			11.5	11.6
OTH 17 STS 3/	686	685		684	684		682	680		678	678		
U S	10,995	10,983	10,971	10,962	10,953	10,938	10,937	10,936	10,938	10,913	10,910	10,899	10,945

SEE FOOTNOTES ON PAGE 10.

MILK COWS: NUMBER, BY MONTHS, BY STATES, 1978 1/

STATE	JAN	FEB	MAR	APR	MAY	JUN	JUL	AUG	SEP	OCT	NOV	DEC	ANNUAL AVERAGE 2/
THOUSANDS													
ALA	79	79	78	77	77	76	76	75	75	75	74	74	76
ALAS			1.4			1.4			1.4			1.3	1.4
ARIZ			68			69			68			69	69
ARK	84	84	84	84	84	83	83	83	83	83	83	83	83
CALIF	846	842	844	837	836	839	842	846	849	853	857	860	846
COLO	72	71	71	72	73	73	73	73	72	72	72	72	72
CONN			50			50			50			50	50
DEL			71.1			71.0			70.9			70.9	71.0
FLA	197	196	195	195	194	194	193	193	192	191	190	189	193
GA	129	129	129	129	129	129	129	129	129	129	129	129	129
HAW			13.0			12.9			12.8			13.0	12.9
IDAHO	139	139	139	140	140	140	141	141	141	141	141	141	140
ILL	231	229	228	228	228	230	231	233	233	234	232	230	231
IND	205	204	202	202	202	202	200	200	199	198	197	198	201
IOWA	380	379	379	379	377	377	377	376	376	376	374	374	377
KANS	132	131	132	131	131	130	130	129	128	127	126	125	129
KY	276	274	273	271	270	269	267	267	266	265	265	265	269
LA	129	129	129	129	128	128	128	128	128	128	127	127	128
MAINE			58			58			57			57	58
MD	130	129	129	129	129	129	129	129	129	129	129	129	129
MASS			50			48			48			49	49
MICH	402	402	400	402	405	403	404	404	408	406	403	402	403
MINN	850	845	839	830	825	825	825	830	835	840	845	850	837
MISS	109	109	110	109	108	107	106	105	104	103	103	103	106
MO	280	278	275	273	271	270	270	269	270	270	271	271	272
MONT			27			27			28			28	28
NEBR	127	126	126	127	126	125	125	124	123	122	121	120	124
NEV			14.3			14.5			14.8			15.0	14.7
N H			31			30			31			31	31
N J			46			45			44			44	45
N MEX			35			36			36			37	36
N Y	914	914	909	904	907	903	903	904	904	904	903	904	906
N C	136	136	135	133	133	132	132	131	132	133	133	132	133
N DAK	103	102	101	100	100	100	100	99	98	98	97	96	100
OHIO	397	394	391	387	384	381	378	377	376	376	376	375	383
OKLA	114	114	113	114	114	113	113	113	113	113	113	112	113
OREG	93	93	93	93	93	93	93	93	93	93	93	93	93
PA	703	703	699	699	696	696	696	700	703	700	700	703	700
R I			4.8			4.7			4.7			4.7	4.7
S C			52			52			52			51	52
S DAK			163			162			161			160	162
TENN	206	207	208	208	209	209	209	210	210	210	210	209	209
TEX	314	313	313	312	312	311	310	310	310	310	310	310	311
UTAH	76	76	76	76	76	77	78	78	78	78	78	78	77
VT	194	190	189	185	182	182	182	185	185	185	187	188	186
VA	170	170	170	171	171	169	169	170	171	172	171	171	170
WASH	184	188	191	192	191	192	196	196	197	198	198	198	193
W VA			38			37			37			37	37
WIS	1,810	1,810	1,811	1,811	1,811	1,811	1,811	1,811	1,812	1,812	1,811	1,811	1,811
WYO			11.5			11.5			11.7			11.8	11.6
OTH 17 STS 3/	676	675		672	671		669	668		668	669		
U S	10,887	10,860	10,834	10,801	10,783	10,768	10,768	10,779	10,790	10,793	10,788	10,792	10,803

1/ INCLUDES DRY COWS, EXCLUDES HEIFERS NOT YET FRESH. INDIVIDUAL STATE ESTIMATES NOT AVAILABLE FOR PERIODS BLANK.

2/ NUMBER OF MILK COWS IS AVERAGE NUMBER ON FARMS DURING YEAR.

3/ INCLUDES STATES FOR WHICH INDIVIDUAL ESTIMATES ARE NOT AVAILABLE.

MILK: PRODUCED PER COW, BY MONTHS, BY STATES, 1975 1/

STATE	JAN	FEB	MAR	APR	MAY	JUN	JUL	AUG	SEP	OCT	NOV	DEC	ANNUAL AVERAGE
POUNDS													
ALA	640	585	660	650	660	615	620	600	625	635	640	670	7,622
ARK	590	570	675	720	745	740	720	700	660	660	620	610	8,034
CALIF	1,060	975	1,115	1,130	1,210	1,185	1,220	1,210	1,140	1,145	1,075	1,100	13,566
COLO	935	865	960	960	1,010	990	1,020	975	910	930	905	925	11,419
FLA	815	780	905	875	910	850	815	780	765	790	785	850	9,929
GA	830	765	845	830	815	750	760	735	735	765	765	830	9,465
IDAHO	785	710	810	825	920	965	950	985	980	910	875	895	10,578
ILL	795	755	850	850	915	900	895	870	820	840	775	790	10,066
IND	830	790	850	860	960	930	905	865	830	825	785	840	10,279
IOWA	770	745	835	850	920	900	855	815	775	755	720	765	9,708
KANS	780	725	820	850	895	835	820	825	795	820	815	825	9,803
KY	590	580	670	700	810	760	740	720	660	635	610	610	8,080
LA	670	645	740	740	705	630	640	610	585	575	580	630	7,750
MD	925	875	925	945	995	930	900	890	890	900	900	955	10,993
MICH	895	820	910	900	940	925	905	895	880	895	865	905	10,732
MINN	890	875	1,000	980	1,015	960	830	710	660	695	705	810	10,120
MISS	550	530	615	660	675	640	635	640	585	575	550	560	7,180
MO	730	650	755	790	915	370	865	805	765	760	750	745	9,404
NEBR	745	685	780	800	870	870	860	815	775	755	715	745	9,414
N Y	880	815	950	955	1,015	995	910	875	845	865	840	915	10,866
N C	880	815	895	895	905	835	840	840	825	865	860	890	10,331
N DAK	610	595	705	740	800	880	825	685	545	500	505	575	7,974
OHIO	875	805	900	900	1,005	945	895	870	850	870	840	885	10,648
OKLA	730	680	755	800	840	775	765	740	690	710	685	715	8,908
OREG	790	750	890	940	1,070	1,050	1,030	955	880	860	835	825	10,879
PA	825	775	875	885	955	910	855	845	825	825	795	835	10,215
TENN	690	665	785	855	880	855	835	825	810	785	735	735	9,447
TEX	785	730	825	840	875	820	825	800	770	780	765	810	9,634
UTAH	950	875	975	980	1,040	1,060	1,070	1,000	940	960	875	900	11,633
VT	805	735	860	880	960	990	900	870	830	845	820	875	10,409
VA	820	740	840	860	920	865	865	870	840	850	835	850	10,145
WASH	1,000	930	1,050	1,065	1,180	1,150	1,150	1,130	1,050	1,060	1,030	1,060	12,829
WIS	835	790	915	930	995	990	910	850	785	815	775	840	10,430
OTH 17 STS 3/:	840	775	886	895	945	901	881	864	824	821	791	837	10,262
U S	835	783	894	905	966	937	896	858	815	826	798	845	10,360

SEE FOOTNOTES ON PAGE 14.

MILK: PRODUCED PER COW, BY MONTHS, BY STATES, 1976 1/

STATE	JAN	FEB *	MAR	APR	MAY	JUN	JUL	AUG	SEP	OCT	NOV	DEC	ANNUAL AVERAGE 2/
POUNDS													
ALA	665	650	710	700	690	650	665	665	670	665	645	675	8,024
ARK	615	585	695	745	770	750	740	735	695	690	640	655	8,353
CALIF	1,120	1,070	1,195	1,205	1,275	1,240	1,275	1,260	1,180	1,190	1,130	1,145	14,282
COLO	925	890	990	990	1,030	1,020	1,040	1,020	945	960	920	935	11,597
FLA	885	825	925	885	920	840	805	765	755	805	800	870	10,065
GA	845	820	925	880	880	805	785	800	805	835	830	885	10,101
IDAHO	870	820	875	860	915	980	985	980	930	910	870	915	10,867
ILL	820	810	885	910	950	940	925	900	855	860	810	830	10,485
IND	825	795	885	890	980	950	945	905	895	885	850	885	10,718
IOWA	790	765	845	860	940	930	910	855	805	785	770	825	10,087
KANS	845	795	880	895	940	930	930	910	870	875	855	885	10,562
KY	605	605	705	750	820	790	775	760	710	700	605	635	8,480
LA	640	650	750	745	720	640	655	640	625	610	605	660	7,942
MD	940	900	960	1,000	1,045	940	980	975	970	960	930	1,000	11,647
MICH	915	875	955	945	995	975	970	980	955	965	920	950	11,407
MINN	870	885	1,000	990	1,030	1,005	900	790	710	730	760	860	10,523
MISS	570	570	650	680	690	655	655	650	595	585	560	565	7,431
MO	725	675	760	840	930	905	880	840	770	745	735	730	9,539
NEBR	755	725	810	860	910	900	890	865	820	800	765	800	9,923
N Y	935	895	995	1,010	1,065	1,015	920	895	870	880	825	875	11,182
N C	890	870	960	950	970	910	910	910	900	960	930	970	11,127
N DAK	630	630	725	750	855	875	845	735	620	595	585	675	8,541
OHIO	905	860	955	950	1,035	985	965	940	910	910	870	880	11,171
OKLA	725	730	790	830	860	840	840	805	770	775	740	750	9,419
OREG	815	780	890	935	1,065	1,045	1,045	990	915	890	870	860	11,130
PA	825	815	870	900	985	945	905	905	890	890	840	870	10,633
TENN	710	725	835	910	935	900	865	875	850	835	770	755	9,981
TEXAS	845	825	910	910	920	870	875	850	825	850	815	855	10,341
UTAH	950	900	975	990	1,025	1,060	1,060	1,025	960	960	925	935	11,696
VT	860	825	925	980	1,025	995	945	890	865	865	790	845	10,789
VA	860	810	900	915	965	905	920	920	900	925	885	915	10,850
WASH	1,070	1,020	1,110	1,120	1,220	1,170	1,200	1,160	1,100	1,110	1,060	1,105	13,489
WIS	890	860	955	985	1,060	1,055	985	955	880	670	835	900	11,232
OTH 17 STS 3/	870	837	904	918	965	941	936	925	888	879	844	892	10,806
U S	867	840	931	949	1,007	978	946	918	870	872	836	880	10,894

SEE FOOTNOTES ON PAGE 14.

MILK: PRODUCED PER COW, BY MONTHS, BY STATES, 1977 1/

STATE	JAN	FEB	MAR	APR	MAY	JUN	JUL	AUG	SEP	OCT	NOV	DEC	ANNUAL AVERAGE 2/
POUNDS													
ALA	700	665	740	750	750	690	705	705	710	715	685	720	8,550
ARK	650	600	710	760	790	770	775	765	750	735	640	660	8,631
CALIF	1,135	1,060	1,210	1,220	1,290	1,250	1,300	1,270	1,200	1,210	1,150	1,175	14,472
COLO	960	875	990	1,030	1,070	1,055	1,070	1,075	985	970	940	945	11,944
FLA	880	810	940	920	915	805	795	780	745	800	795	865	10,066
GA	890	820	930	900	860	785	775	800	785	830	820	890	10,085
IDAHO	880	815	895	895	950	1,030	1,035	1,035	1,000	970	940	935	11,348
ILL	850	845	915	950	985	950	935	910	875	870	810	825	10,748
IND	860	820	905	905	990	965	950	910	900	890	855	875	10,808
IOWA	840	820	890	900	945	935	925	900	840	830	800	825	10,440
KANS	885	815	945	970	990	935	925	905	860	860	840	865	10,761
KY	625	600	715	785	855	820	825	820	745	705	615	610	8,727
LA	660	635	775	775	760	670	675	675	645	630	625	700	8,250
MD	1,010	930	1,030	1,020	1,085	1,000	1,025	1,030	985	990	970	990	12,023
MICH	970	890	985	975	1,030	1,010	1,010	1,020	995	1,010	960	970	11,814
MINN	930	925	1,050	1,025	1,070	1,050	940	825	745	760	760	855	10,950
MISS	580	570	665	700	720	685	680	670	610	595	575	590	7,661
MO	725	690	795	870	945	930	890	865	815	785	770	765	9,858
NEBR	780	750	820	880	920	920	910	880	840	840	790	790	10,105
N Y	890	830	960	960	1,040	1,015	945	925	905	915	875	925	11,186
N C	980	870	990	1,000	1,000	940	930	940	940	980	940	980	11,471
N DAK	690	670	780	805	915	945	890	760	635	605	585	655	8,916
OHIO	905	835	950	970	1,035	980	975	965	900	900	855	880	11,138
OKLA	770	760	840	870	900	825	820	820	795	775	745	760	9,655
OREG	840	800	900	990	1,080	1,045	1,045	1,000	940	930	880	880	11,312
PA	880	820	920	945	1,020	975	955	950	920	920	880	900	11,083
TENN	770	720	850	935	985	930	910	920	910	910	830	835	10,486
TEXAS	865	800	930	950	965	910	905	890	860	880	850	900	10,705
UTAH	975	920	1,020	1,015	1,060	1,040	1,060	1,050	960	975	950	975	12,000
VT	850	785	920	945	1,035	1,040	960	915	900	890	850	890	10,995
VA	890	815	915	935	970	930	935	950	925	935	900	925	11,012
WASH	1,105	1,020	1,160	1,190	1,280	1,200	1,200	1,210	1,100	1,170	1,090	1,125	13,853
WIS	950	885	1,025	1,040	1,115	1,090	1,030	985	905	900	845	905	11,676
OTH 17 STS 3/:	913	842	963	966	1,019	969	956	935	894	901	867	914	11,136
U S	899	845	964	979	1,037	1,003	976	948	897	900	860	899	11,206

SEE FOOTNOTES ON PAGE 14.



MILK: PRODUCED PER COW, BY MONTHS, BY STATES, 1978 1/

STATE	JAN	FEB	MAR	APR	MAY	JUN	JUL	AUG	SEP	OCT	NOV	DEC	ANNUAL AVERAGE 2/
POUNDS													
ALA	710	660	720	725	715	670	670	670	680	695	660	700	8,303
ARK	660	605	700	755	800	780	795	790	745	735	675	700	8,783
CALIF	1,145	1,040	1,175	1,175	1,230	1,205	1,250	1,235	1,175	1,180	1,105	1,105	14,018
COLO	555	890	1,030	1,025	1,055	1,040	1,065	1,070	1,015	1,005	970	960	12,111
FLA	885	830	945	900	905	825	800	780	755	825	835	910	10,218
GA	885	815	915	900	870	785	770	775	790	860	860	920	10,140
IDAHO	940	850	935	930	980	1,035	1,060	1,055	1,005	980	935	935	11,664
ILL	835	810	880	890	940	920	905	885	845	850	815	830	10,385
IND	855	830	915	910	970	940	950	925	900	905	860	895	10,836
IOWA	835	810	875	890	955	940	935	915	855	840	820	825	10,504
KANS	840	765	880	920	945	910	910	905	875	895	870	890	10,636
KY	610	590	680	750	815	785	795	795	725	688	615	610	8,454
LA	705	635	765	805	760	675	675	665	640	650	640	685	8,305
MD	1,015	915	1,025	1,025	1,085	1,030	990	985	975	975	930	975	11,938
MICH	980	900	1,010	990	1,030	1,010	1,020	1,010	980	1,005	965	980	11,893
MINN	920	895	1,020	1,025	1,065	1,050	940	820	750	775	760	850	10,859
MISS	615	590	690	720	730	700	685	680	625	620	590	610	7,887
MO	745	715	775	860	980	945	920	895	835	780	780	760	9,996
NEBR	780	730	840	860	920	910	920	890	850	850	820	830	10,234
N Y	955	870	1,020	1,030	1,065	1,025	960	930	900	910	880	940	11,488
N C	980	910	1,010	1,000	1,010	950	930	950	940	970	950	1,010	11,609
N DAK	685	660	760	790	940	960	920	780	645	625	620	690	9,030
OHIO	905	825	940	950	1,030	990	975	955	910	920	870	900	11,162
OKLA	780	710	815	840	890	835	815	810	780	795	770	785	9,646
OREG	880	820	945	1,000	1,075	1,045	1,045	1,010	945	935	870	880	11,452
PA	895	840	955	960	1,025	990	975	955	930	935	890	910	11,259
TENN	780	720	840	920	940	860	825	845	840	850	760	750	9,919
TEXAS	910	820	940	970	990	930	925	910	885	940	890	920	11,039
UTAH	985	925	1,040	1,040	1,090	1,075	1,100	1,065	1,000	1,000	925	950	12,208
VT	890	820	980	1,010	1,080	1,070	1,010	970	930	930	870	925	11,484
VA	925	825	930	930	960	935	930	930	905	925	890	915	11,018
WASH	1,150	1,050	1,150	1,170	1,275	1,230	1,210	1,190	1,110	1,130	1,065	1,095	13,660
WIS	955	890	1,035	1,050	1,115	1,105	1,025	975	905	910	855	915	11,735
OTH 17 STS 3/:	922	856	939	952	1,006	957	951	930	886	894	858	904	11,052
U S	915	851	968	982	1,034	1,005	975	945	897	906	864	901	11,243

1/ EXCLUDES MILK SUCKED BY CALVES.

2/ AVERAGE PER COW FOR YEAR.

3/ STATE ESTIMATES NOT AVAILABLE.

\* THE EXTRA DAY IN 1976 ADDED 3.6 PERCENT TO MONTHLY OUTPUT.

MILK PRODUCTION: TOTAL MILK PRODUCED, BY MONTHS, BY STATES, 1975 1/

STATE	JAN	FEB	MAR	APR	MAY	JUN	JUL	AUG	SEP	OCT	NOV	DEC	ANNUAL TOTAL 2/
MILLION POUNDS													
ALA	59	54	61	60	60	56	56	54	56	56	56	58	686
ARK	53	51	60	64	67	67	64	62	57	57	53	52	707
CALIF	848	780	890	902	966	946	974	966	910	918	866	887	10,853
COLO	70	65	72	71	74	73	75	72	68	69	67	69	845
FLA	163	155	179	173	179	167	161	153	150	155	154	167	1,956
GA	107	99	110	108	106	97	98	95	95	99	99	108	1,221
IDAHO	116	104	119	121	135	142	140	144	143	133	128	130	1,555
ILL	197	186	209	208	223	219	217	211	198	202	186	190	2,446
IND	179	171	184	186	207	200	195	186	178	177	168	179	2,210
IOWA	312	302	337	343	371	362	343	327	309	300	285	302	3,893
KANS	114	106	119	122	128	120	117	117	111	113	112	113	1,392
KY	173	169	192	201	232	217	212	206	188	181	174	174	2,319
LA	90	87	100	100	95	86	87	83	80	79	80	87	1,054
MD	133	125	131	134	141	132	128	125	124	124	123	130	1,550
MICH	371	339	376	371	386	380	371	368	361	366	353	369	4,411
MINN	789	774	883	863	892	843	730	626	583	616	626	721	8,946
MISS	59	67	77	81	82	77	77	77	70	68	65	66	876
MO	226	200	231	240	276	264	261	240	226	228	224	224	2,840
NEBR	115	106	121	123	132	131	131	124	117	114	107	110	1,431
N Y	812	750	874	880	931	909	832	801	775	793	769	838	9,964
N C	128	119	131	131	132	122	122	121	118	124	123	127	1,498
N DAK	71	69	82	86	93	101	95	79	62	57	57	65	917
OHIO	354	325	364	364	406	381	361	348	338	344	329	345	4,259
OKLA	89	82	91	97	102	93	91	87	81	83	80	84	1,060
OREG	72	68	81	86	97	96	94	87	80	78	76	75	990
PA	568	539	613	624	671	637	596	594	578	577	555	588	7,140
TENN	149	144	169	184	188	185	180	177	174	168	157	156	2,031
TEXAS	271	251	283	286	296	276	276	263	249	251	246	260	3,208
UTAH	75	69	76	76	82	84	86	80	74	77	69	71	919
VT	155	141	165	170	189	191	175	169	161	164	159	170	2,009
VA	143	129	145	150	160	151	149	150	144	146	143	145	1,755
WASH	181	168	190	192	215	208	208	203	190	192	185	190	2,322
WIS	1,511	1,430	1,657	1,685	1,804	1,795	1,651	1,541	1,423	1,477	1,404	1,522	18,900
OTH 17 STS 3/	595	549	627	634	669	637	622	608	579	576	554	585	7,235
U S	9,358	8,773	9,999	10,116	10,787	10,445	9,975	9,544	9,050	9,162	8,832	9,357	115,398

SEE FOOTNOTES ON PAGE 18.

MILK PRODUCTION: TOTAL MILK PRODUCED, BY MONTHS, BY STATES, 1976 1/

STATE	JAN	FEB *	MAR	APR	MAY	JUN	JUL	AUG	SEP	OCT	NOV	DEC	ANNUAL TOTAL 2/
MILLION POUNDS													
ALA	57	56	61	60	59	55	56	55	56	56	54	57	682
ARK	53	50	60	64	66	64	63	62	59	59	54	56	710
CALIF	907	867	962	974	1,035	1,011	1,043	1,031	956	960	911	926	11,583
COLO	68	65	71	71	74	73	74	72	68	68	65	66	835
FLA	175	164	184	177	184	169	162	155	153	163	162	175	2,023
GA	109	106	119	113	113	104	102	104	104	108	107	114	1,303
IDAHO	125	117	125	123	130	139	140	139	132	129	124	131	1,554
ILL	197	194	212	217	225	222	218	212	201	203	190	194	2,485
IND	175	167	186	187	206	199	197	188	187	186	178	184	2,240
IOWA	312	301	332	337	368	364	356	335	316	308	302	323	3,954
KANS	117	110	121	124	129	126	126	124	118	118	115	119	1,447
KY	171	171	199	212	231	222	218	214	200	197	170	178	2,383
LA	88	89	103	102	99	88	90	88	86	84	82	89	1,088
MD	127	121	129	134	140	126	131	130	129	128	123	131	1,549
MICH	372	355	388	384	403	395	392	397	387	390	372	385	4,620
MINN	774	784	882	869	900	874	783	689	621	639	667	757	9,239
MISS	67	66	76	79	81	76	76	76	69	67	64	65	862
MO	218	203	230	255	285	279	273	259	236	229	226	226	2,919
NEBR	110	106	117	125	131	130	127	122	114	111	106	110	1,409
N Y	856	819	909	922	970	923	837	814	793	803	753	799	10,198
N C	127	124	137	135	138	129	129	129	128	136	131	137	1,580
N DAK	71	71	82	85	96	98	94	81	68	65	64	73	948
OHIO	355	339	378	376	410	391	385	376	364	364	347	350	4,435
OKLA	85	85	92	97	101	98	98	94	90	89	86	87	1,102
OREG	75	72	82	86	98	96	96	91	84	83	81	80	1,024
PA	585	578	612	634	689	661	636	640	629	633	597	613	7,507
TENN	151	153	176	192	195	188	181	184	179	176	162	159	2,096
TEXAS	270	264	291	291	295	280	282	272	263	270	259	272	3,309
UTAH	74	70	76	77	80	83	84	81	76	76	73	74	924
VT	167	160	179	190	199	192	181	172	168	168	153	164	2,093
VA	147	139	156	159	167	157	160	160	158	161	154	159	1,877
WASH	192	182	198	202	221	212	217	210	199	202	193	200	2,428
WIS	1,612	1,557	1,729	1,783	1,919	1,910	1,781	1,724	1,588	1,569	1,504	1,620	20,296
DTH 17 STS 3/:	608	584	631	639	670	652	647	637	611	605	581	613	7,478
U S	9,597	9,289	10,285	10,475	11,107	10,786	10,435	10,117	9,590	9,603	9,210	9,686	120,180

SEE FOOTNOTES ON PAGE 18.

MILK PRODUCTION: TOTAL MILK PRODUCED, BY MONTHS, BY STATES, 1977 1/

STATE	JAN	FEB	MAR	APR	MAY	JUN	JUL	AUG	SEP	OCT	NOV	DEC	ANNUAL TOTAL 2/
MILLION POUNDS													
ALA	59	55	61	61	60	55	56	55	55	56	54	57	684
ARK	55	51	60	65	66	65	65	64	63	62	54	55	725
CALIF	922	863	989	1,002	1,063	1,031	1,076	1,055	1,001	1,012	965	989	11,968
COLO	68	62	70	72	76	75	76	75	69	69	68	68	848
FLA	176	163	188	183	181	159	157	154	147	158	157	170	1,993
GA	115	106	120	116	111	101	100	103	101	107	106	115	1,301
IDAHO	125	116	126	126	134	145	146	146	140	135	131	130	1,600
ILL	199	198	216	223	231	221	220	216	207	202	190	192	2,515
IND	178	171	189	189	206	200	197	189	187	185	177	180	2,248
IOWA	329	320	344	348	366	360	356	347	322	318	306	314	4,030
KANS	119	109	126	130	134	126	124	121	115	114	110	114	1,442
KY	175	167	199	219	239	229	229	228	207	195	170	169	2,426
LA	89	85	104	104	101	88	89	89	84	83	82	91	1,089
MO	132	122	135	134	142	131	133	134	128	129	126	129	1,575
MICH	391	357	395	392	414	405	407	410	403	407	388	392	4,761
MINN	818	812	920	896	933	914	813	711	640	651	648	727	9,483
MISS	67	66	76	79	80	76	76	75	68	66	64	65	858
MO	223	212	242	264	284	276	263	253	238	227	220	216	2,918
NEBR	107	102	112	119	123	122	121	116	110	109	102	101	1,344
N Y	813	759	878	877	950	926	863	845	829	838	800	846	10,224
N C	137	120	138	138	138	129	126	130	129	134	130	134	1,583
N DAK	75	72	84	87	99	101	95	81	67	64	61	68	954
OHIO	362	333	381	387	415	392	387	386	360	360	340	352	4,455
OKLA	89	88	97	101	104	96	95	95	92	90	86	87	1,120
OREG	78	74	84	92	100	97	97	93	87	86	82	82	1,052
PA	620	578	647	664	714	683	668	668	650	647	619	633	7,791
TEMN	162	151	178	196	206	193	189	191	188	187	170	170	2,181
TEXAS	274	254	295	300	304	286	284	279	270	276	267	283	3,372
UTAH	77	72	80	79	84	82	84	82	75	75	72	74	936
VT	164	151	175	178	195	196	182	176	174	172	164	173	2,100
VA	154	141	159	162	167	160	160	162	159	160	153	157	1,894
WASH	200	186	210	217	234	224	229	221	204	214	202	208	2,549
WIS	1,710	1,592	1,843	1,871	2,007	1,962	1,856	1,776	1,634	1,625	1,528	1,637	21,041
OTH 17 STS 3/	626	577	659	661	697	662	652	636	607	611	588	619	7,595
U S	9,888	9,285	10,580	10,732	11,358	10,968	10,671	10,362	9,810	9,824	9,380	9,797	122,654

SEE FOOTNOTES ON PAGE 18.

MILK PRODUCTION: TOTAL MILK PRODUCED, BY MONTHS, BY STATES, 1978 1/

STATE	JAN	FEB	MAR	APR	MAY	JUN	JUL	AUG	SEP	OCT	NOV	DEC	ANNUAL TOTAL 2/
MILLION POUNDS													
ALA	56	52	56	56	55	51	51	50	51	52	49	52	631
ARK	55	51	59	63	67	65	66	66	62	61	56	58	729
CALIF	969	876	992	983	1,028	1,011	1,053	1,045	998	1,007	947	950	11,859
COLO	69	63	73	74	77	76	78	78	73	72	70	69	872
FLA	174	163	184	176	176	160	154	151	145	158	159	172	1,972
GA	114	105	118	116	112	101	99	100	102	111	111	119	1,308
IDAHO	131	118	130	130	137	145	149	149	142	138	132	132	1,633
ILL	193	185	201	203	214	212	209	205	197	199	189	191	2,399
IND	175	169	185	184	196	190	190	185	179	179	169	177	2,178
IOWA	317	307	332	337	360	354	352	344	321	320	307	309	3,960
KANS	111	100	116	121	124	118	118	117	112	114	110	111	1,372
KY	168	162	186	203	220	211	212	212	193	182	163	162	2,274
LA	91	82	99	104	97	86	86	85	82	83	81	87	1,063
MD	132	118	132	132	140	133	128	127	126	126	120	126	1,540
MICH	394	362	404	398	417	407	412	408	400	408	389	394	4,793
MINN	782	756	856	851	879	866	776	681	626	651	642	723	9,089
MISS	67	64	76	78	79	75	73	71	65	64	61	63	836
MO	209	199	213	235	266	255	248	241	225	211	211	206	2,719
NEBR	99	92	106	109	116	114	115	110	105	104	99	100	1,269
N Y	873	795	927	931	966	926	867	841	814	823	795	850	10,408
N C	133	124	136	133	134	125	123	124	124	129	126	133	1,544
N DAK	71	67	77	79	94	96	92	77	63	61	60	66	903
OHIO	359	325	368	368	396	377	369	360	342	346	327	338	4,275
OKLA	89	81	92	96	101	94	92	92	88	90	87	88	1,090
OREG	82	76	88	93	100	97	97	94	88	87	81	82	1,065
PA	629	591	668	671	713	689	679	669	654	655	623	640	7,881
TENN	161	149	175	191	196	180	172	177	176	179	160	157	2,073
TEX	286	257	294	303	309	289	287	282	274	291	276	285	3,433
UTAH	75	70	79	79	83	83	86	83	78	78	72	74	940
VT	173	156	184	187	197	195	184	179	172	172	163	174	2,136
VA	157	140	158	159	164	158	157	158	155	159	152	156	1,873
WASH	212	197	220	225	244	236	237	233	219	224	211	217	2,675
WIS	1,729	1,611	1,874	1,902	2,019	2,001	1,856	1,766	1,640	1,649	1,548	1,657	21,252
OTH 17 STS 3/:	623	578	633	640	675	641	636	621	592	597	574	606	7,416
U S	9,958	9,241	10,491	10,610	11,151	10,817	10,503	10,182	9,683	9,780	9,320	9,724	121,461

1/ EXCLUDES MILK SUCKED BY CALVES.

2/ TOTAL MILK PRODUCTION FOR YEAR.

3/ STATE ESTIMATES NOT AVAILABLE.

\* THE EXTRA DAY IN 1976 ADDED 3.6 PERCENT TO MONTHLY OUTPUT.

MILK PRODUCTION: TOTAL MILK PRODUCED, BY QUARTERS, BY STATES, 1975 1/

STATE	JAN-MAR	APR-JUN	JUL-SEP	OCT-DEC	ANNUAL TOTAL
MILLION POUNDS					
ALA	174	176	166	170	686
ALAS	4.10	4.45	4.35	3.90	16.8
ARIZ	203	214	211	212	840
ARK	164	198	183	162	707
CALIF	2,518	2,814	2,850	2,671	10,853
COLO	207	218	215	205	845
CONN	154	160	149	145	608
DEL	32.2	32.5	31.6	30.7	127.0
FLA	497	519	464	476	1,956
GA	316	311	288	306	1,221
HAW	35.4	38.2	36.6	35.8	146.0
IDAHO	339	398	427	391	1,555
ILL	592	650	626	578	2,446
IND	534	593	559	524	2,210
IOWA	951	1,076	979	887	3,893
KANS	339	370	345	338	1,392
KY	534	650	606	529	2,319
LA	277	281	250	246	1,054
MAINE	143	171	165	150	629
MD	389	407	377	377	1,550
MASS	150	160	147	144	601
MICH	1,086	1,137	1,100	1,088	4,411
MINN	2,446	2,598	1,939	1,963	8,946
MISS	213	240	224	199	876
MO	657	780	727	676	2,840
MONT	67	73	71	67	278
NEBR	342	386	372	331	1,431
NEV	40.3	44.0	43.6	40.1	168.0
N H	82	91	83	80	336
N J	136	142	126	124	528
N MEX	82	98	97	89	366
N Y	2,436	2,720	2,408	2,400	9,964
N C	378	385	361	374	1,498
N DAK	222	280	236	179	917
OHIO	1,043	1,151	1,047	1,018	4,259
OKLA	262	292	259	247	1,060
OREG	221	279	261	229	990
PA	1,720	1,932	1,768	1,720	7,140
R I	15.6	17.1	15.7	14.6	63.0
S C	132	131	123	126	512
S DAK	378	443	390	345	1,556
TENN	462	557	531	481	2,031
TEX	805	858	788	757	3,208
UTAH	220	242	240	217	919
VT	461	550	505	493	2,009
VA	417	461	443	434	1,755
WASH	539	615	601	567	2,322
W VA	88	92	87	83	350
WIS	4,598	5,284	4,615	4,403	18,900
WYO	27.9	28.6	28.3	25.2	110.0
U S	28,130	31,348	28,569	27,351	115,398

1/ EXCLUDES MILK SUCKED BY CALVES.

## MILK PRODUCTION: TOTAL MILK PRODUCED, BY QUARTERS, BY STATES, 1976 1/

STATE	JAN-MAR	APR-JUN	JUL-SEP	OCT-DEC	ANNUAL TOTAL
MILLION POUNDS					
ALA	174	174	167	167	682
ALAS	3.98	4.15	4.07	3.80	16.0
ARIZ	221	227	217	217	882
ARK	163	194	184	169	710
CALIF	2,736	3,020	3,030	2,797	11,583
COLO	204	218	214	199	835
CONN	153	160	152	151	616
DEL	31.6	34.9	34.1	34.4	135.0
FLA	523	530	470	500	2,023
GA	334	330	310	329	1,303
HAW	37.8	38.9	36.4	34.9	148.0
IDAHO	367	392	411	384	1,554
ILL	603	664	631	587	2,485
IND	528	592	572	548	2,240
IOWA	945	1,069	1,007	933	3,954
KANS	348	379	368	352	1,447
KY	541	665	632	545	2,383
LA	280	289	264	255	1,088
MAINE	148	170	166	144	628
MD	377	400	390	382	1,549
MASS	150	159	146	143	598
MICH	1,115	1,182	1,176	1,147	4,620
MINN	2,440	2,643	2,093	2,063	9,239
MISS	209	236	221	196	862
MO	651	819	768	681	2,919
MONT	64	73	71	67	275
NEBR	333	386	363	327	1,409
NEV	44.4	49.3	50.7	46.6	191.0
N H	84	89	82	80	335
N J	133	142	137	133	545
N MEX	94	105	106	100	405
N Y	2,584	2,815	2,444	2,355	10,198
N C	388	402	386	404	1,580
N DAK	224	279	243	202	948
OHIO	1,072	1,177	1,125	1,061	4,435
OKLA	262	296	282	262	1,102
OREG	229	280	271	244	1,024
PA	1,775	1,984	1,905	1,843	7,507
R I	15.1	16.5	14.7	13.7	60.0
S C	133	133	127	132	525
S DAK	392	439	434	385	1,650
TENN	480	575	544	497	2,096
TEX	825	866	817	801	3,309
UTAH	220	240	241	223	924
VT	506	581	521	485	2,093
VA	442	483	478	474	1,877
WASH	572	635	626	595	2,428
W VA	92	91	87	86	356
WIS	4,898	5,612	5,093	4,693	20,296
WYO	26.2	29.4	29.7	27.7	113.0
U S	29,171	32,368	30,142	28,499	120,180

1/ EXCLUDES MILK SUCKED BY CALVES.

## MILK PRODUCTION: TOTAL MILK PRODUCED, BY QUARTERS, BY STATES, 1977 1/

STATE	JAN-MAR	APR-JUN	JUL-SEP	OCT-DEC	ANNUAL TOTAL
MILLION POUNDS					
ALA	175	176	166	167	684
ALAS	3.99	4.22	4.43	3.76	16.4
ARIZ	225	242	220	227	914
ARK	166	196	192	171	725
CALIF	2,774	3,096	3,132	2,966	11,968
COLO	200	223	220	205	848
CONN	157	161	153	153	624
DEL	34.3	34.9	35.5	34.3	139.0
FLA	527	523	458	485	1,993
GA	341	328	304	328	1,301
HAW	37.2	39.3	37.5	36.0	150.0
IDAHO	367	405	432	396	1,600
ILL	613	675	643	584	2,515
IND	538	595	573	542	2,248
IOWA	993	1,074	1,025	938	4,030
KANS	354	390	360	338	1,442
KY	541	687	664	534	2,426
LA	278	293	262	256	1,089
MAINE	146	172	167	153	638
MD	389	407	395	384	1,575
MASS	148	156	147	146	597
MICH	1,143	1,211	1,220	1,187	4,761
MINN	2,550	2,743	2,164	2,026	9,483
MISS	209	235	219	195	858
MO	677	824	754	663	2,918
MONT	69	77	78	72	296
NEBR	321	364	347	312	1,344
NEV	47.5	51.6	50.6	48.3	198.0
N H	83	90	84	82	339
N J	136	145	137	131	549
N MEX	101	109	107	109	426
N Y	2,450	2,753	2,537	2,484	10,224
N C	395	405	385	398	1,583
N DAK	231	287	243	193	954
OHIO	1,076	1,194	1,133	1,052	4,455
OKLA	274	301	282	263	1,120
OREG	236	289	277	250	1,052
PA	1,845	2,061	1,986	1,899	7,791
R I	13.7	15.3	14.7	13.3	57.0
S C	135	135	126	129	525
S DAK	406	465	413	368	1,652
TENN	491	595	568	527	2,181
TEX	823	890	833	826	3,372
UTAH	229	245	241	221	936
VT	490	569	532	509	2,100
VA	454	489	481	470	1,894
WASH	596	675	654	624	2,549
W VA	89	90	88	83	350
WIS	5,145	5,840	5,266	4,790	21,041
WYO	29.9	32.8	32.0	29.3	124.0
U S	29,753	33,058	30,843	29,001	122,654

1/ EXCLUDES MILK SUCKED BY CALVES.



MILK PRODUCTION: TOTAL MILK PRODUCED, BY QUARTERS, BY STATES, 1978 1/

STATE	JAN-MAR	APR-JUN	JUL-SEP	OCT-DEC	ANNUAL TOTAL
MILLION POUNDS					
ALA	164	162	152	153	631
ALAS	3.58	4.12	3.79	3.31	14.8
ARIZ	228	238	217	223	906
ARK	165	195	194	175	729
CALIF	2,837	3,022	3,096	2,904	11,859
COLO	205	227	229	211	872
CONN	156	159	151	148	614
DEL	33.6	32.4	31.2	31.8	129.0
FLA	521	512	450	489	1,972
GA	337	329	301	341	1,308
HAW	37.5	38.9	37.5	36.1	150.0
IDAHO	379	412	440	402	1,633
ILL	579	629	612	579	2,399
IND	529	570	554	525	2,178
IOWA	956	1,051	1,017	936	3,960
KANS	327	363	347	335	1,372
KY	516	634	617	507	2,274
LA	272	287	253	251	1,063
MAINE	147	172	168	154	641
MD	382	405	381	372	1,540
MASS	145	149	140	138	572
MICH	1,160	1,222	1,220	1,191	4,793
MINN	2,394	2,596	2,083	2,016	9,089
MISS	207	232	209	188	836
MO	621	756	714	628	2,719
MONT	71	81	81	73	306
NEBR	297	339	330	303	1,269
NEV	45.3	48.7	48.2	44.8	187.0
N H	86	89	84	82	341
N J	136	139	128	122	525
N MEX	108	117	120	113	458
N Y	2,595	2,823	2,522	2,468	10,408
N C	393	392	371	388	1,544
N DAK	215	269	232	187	903
OHIO	1,052	1,141	1,071	1,011	4,275
OKLA	262	291	272	265	1,090
OREG	246	290	279	250	1,065
PA	1,888	2,073	2,002	1,918	7,881
R I	13.9	14.5	13.5	13.1	55.0
S C	130	130	123	130	513
S DAK	379	423	385	353	1,540
TENN	485	567	525	496	2,073
TEX	837	901	843	852	3,433
UTAH	224	245	247	224	940
VT	513	579	535	509	2,136
VA	455	481	470	467	1,873
WASH	629	705	689	652	2,675
W VA	86	90	87	82	345
WIS	5,214	5,922	5,262	4,854	21,252
WYO	28.5	30.5	30.8	30.2	120.0
U S	29,690	32,578	30,368	28,824	121,461

1/ EXCLUDES MILK SUCKED BY CALVES.

MILK COWS AND PRODUCTION OF MILK AND MILKFAT, BY STATES, 1975

STATE	NUMBER OF MILK COWS 1/	PRODUCTION OF MILK AND MILKFAT 2/				
		PER MILK COW		PERCENTAGE OF FAT IN ALL MILK PRODUCED	TOTAL	
		MILK	MILKFAT		MILK	MILKFAT
	THOUSANDS	POUNDS	PERCENT	MIL. LBS.		
ALA	90	7622	280	3.68	686	25
ALAS	1.6	10500	362	3.45	16.8	0.6
ARIZ	67	12537	445	3.55	840	30
ARK	88	8034	287	3.57	707	25
CALIF	800	13966	492	3.63	10853	394
COLO	74	11419	416	3.64	845	31
CONN	54	11259	419	3.72	608	23
DEL	11.7	10855	398	3.67	127	4.7
FLA	197	9929	350	3.53	1956	69
GA	129	9465	344	3.63	1221	44
HAW	13.1	11145	380	3.41	146	5
IDAHO	147	10578	390	3.69	1555	57
ILL	243	10066	372	3.70	2446	91
IND	215	10279	388	3.77	2210	83
IANA	401	9708	358	3.69	3893	144
KANS	142	9803	358	3.61	1392	50
KY	287	8080	297	3.67	2319	85
LA	136	7750	285	3.68	1054	39
MAINE	61	10311	378	3.67	629	23
MD	141	10993	403	3.67	1550	57
MASS	55	10927	397	3.63	601	22
MICH	411	10732	398	3.71	4411	164
MINN	884	10120	367	3.63	8946	325
MISS	122	7180	265	3.69	876	32
MO	302	9404	340	3.62	2840	103
MONT	26	10692	389	3.64	278	10
NEBR	152	9414	346	3.68	1431	53
NEV	14	12000	433	3.61	168	6.1
N H	33	10182	381	3.74	336	13
N J	47	11234	415	3.69	528	19
N MEX	32	11438	396	3.46	366	13
N Y	917	10866	392	3.61	9964	360
N C	145	10331	378	3.66	1498	55
N DAK	115	7974	285	3.57	917	33
OHIO	400	10648	397	3.73	4259	159
OKLA	119	8908	317	3.56	1060	38
OREG	91	10879	424	3.90	990	39
PA	699	10215	379	3.71	7140	265
R I	6	10500	375	3.57	63	2.2
S C	58	8828	343	3.89	512	20
S DAK	174	8943	313	3.50	1556	54
TENN	215	9447	350	3.71	2031	75
TEX	333	9634	339	3.52	3208	113
UTAH	79	11633	427	3.67	919	34
VT	193	10409	383	3.68	2009	74
VA	173	10145	370	3.65	1755	64
WASH	181	12829	484	3.77	2322	88
W VA	41	8537	317	3.71	350	13
WIS	1812	10430	391	3.75	18900	709
WYO	11.8	9322	339	3.64	110	4
U.S.	11139	10360	381	3.68	115398	4240

1/ AVERAGE NUMBER DURING YEAR, EXCLUDING HEIFERS NOT YET FRESH. U.S. TOTAL WILL NOT ADD DUE TO ROUNDING.

2/ EXCLUDES MILK SUCKED BY CALVES.

MILK USED AND MARKETED BY PRODUCERS, BY STATES, 1975

STATE	MILK USED WHERE PRODUCED			MILK MARKETED BY PRODUCERS			TOTAL
	FED TO CALVES 1/	USED FOR MILK CREAM AND BUTTER	TOTAL	SOLD TO PLANTS AND DEALERS 2/		SOLD DIRECTLY TO CONSUMERS 3/	
				AS WHOLE MILK	AS SEPARATED CREAM		
- - - - - M I L L I O N P O U N D S - - - - -							
ALA	6	26	32	635		19	654
ALAB	0.2	0.5	0.7	15.3		0.6	16.1
ARIZ	7	2	9	780		51	831
ARK	8	32	40	655		12	667
CALIF	82	14	96	10405		352	10757
COLO	25	17	42	765	5	33	803
CONN	6	6	12	575		21	596
DEL	1	2	3	123		1	124
FLA	6	13	19	1880		57	1937
GA	6	11	17	1200		4	1204
HAW	1.5	0.8	2.3	143.7		4/	143.7
IDAH0	32	17	49	1490	2	14	1506
ILL	24	19	43	2400	1	2	2403
IND	18	18	36	2160	5	9	2174
IOWA	80	75	155	3700	25	13	3738
KANS	22	23	45	1320	12	15	1347
KY	30	124	154	2150		15	2165
LA	4	27	31	1010		13	1023
MAINE	6	7	13	605		11	616
MD	11	16	27	1515		8	1523
MASS	5	7	12	555		34	589
MICH	50	26	76	4280	30	25	4335
MINN	147	80	227	8705	11	3	8719
MISS	3	28	31	840		5	845
MO	28	51	79	2725	17	19	2761
MONT	8	14	22	239	13	4	256
NEBR	24	27	51	1330	46	4	1380
NEV	3	2	5	162	0.1	0.9	163
N H	4	5	9	320		7	327
N J	5	4	9	498		21	519
N MEX	4	7	11	335		20	355
N Y	139	69	228	9645		91	9736
N C	10	73	83	1395		20	1415
N DAK	27	25	52	805	56	4	865
OHIO	58	53	111	4130	1	17	4148
OKLA	16	28	44	995	6	15	1016
OREG	26	9	35	910	3	42	955
PA	41	90	131	6705	15	289	7009
R I	1	1	2	60		1	61
S C	8	14	22	481		9	490
S DAK	25	26	51	1445	55	5	1505
TENN	54	60	114	1905		12	1917
TEX	32	47	79	3090		39	3129
UTAH	8	14	22	860		37	897
VT	30	16	46	1955		8	1963
VA	17	35	52	1695	2	6	1703
WASH	34	13	47	2120	5	150	2275
W VA	6	24	30	311	2	7	320
WIS	373	172	545	18340		15	18355
WYO	4	5	9	97	2	2	101
U.S. 5/	1566	1495	3061	110460	314	1563	112337

1/ EXCLUDES MILK SUCKED BY CALVES.

2/ INCLUDES MILK PRODUCED BY DEALERS' OWN HERDS (EXCEPT FOR N Y AND CALIF, WHERE SUCH MILK IS INCLUDED AS SOLD DIRECTLY TO CONSUMERS).

3/ SALES DIRECTLY TO CONSUMERS BY PRODUCERS WHO SELL ONLY MILK FROM THEIR OWN HERDS. ALSO INCLUDES MILK PRODUCED BY INSTITUTIONAL HERDS.

4/ NOT PUBLISHED TO AVOID DISCLOSING INDIVIDUAL OPERATIONS. INCLUDED IN MILK SOLD TO PLANTS.

5/ TOTAL MILK SOLD PLUS USED ON FARMS DOES NOT EQUAL TOTAL MILK PRODUCED DUE TO ROUNDING.

MILK AND CREAM MARKETED BY PRODUCERS: QUANTITY, PRICE AND CASH RECEIPTS, BY STATE, 1975

STATE	MILK SOLD TO PLANTS AND DEALERS				CREAM SOLD TO PLANTS AND DEALERS			MILK SOLD DIRECTLY TO CONSUMERS 2/		
	QUANTITY	PERCENT FLUID GRADE 1/	PRICE PER 100 LBS	CASH RECEIPTS	QUANTITY MILK/PAT	PRICE PER LB FAT	CASH RECEIPTS	QUANTITY	PRICE PER QUANT	CASH RECEIPTS
	MIL. LBS.	PERC.	DOLLARS	1000 DOL.	1000 LBS.	CT.	1000 DOL.	1000 QTS.	CT.	1000 DOL.
ALA	635	98	10.40	66840				6637	40.0	3955
ALAB	15.3	100	16.70	2553				372	39.0	146
ARIZ	780	100	9.00	70200				23721	33.0	7820
ARK	655	89	8.60	56330				2981	42.0	2300
CALIF	10405	93	9.03	939572				163721	39.2	57639
COLD	765	2/	9.10	69615	100	70	132.	13309.	37.0	5670
CONN	575	100	9.60	56190				9767	45.0	4399
DEL	123	100	9.45	11624				665	36.5	170
FLA	1000	100	11.30	212400				26312.	19.2	10393
GA	1200	100	9.80	117600				1600.	42.0	701
HAW	143.7	100	14.30	3/ 20549						
IDAHO	1490	37	8.10	120690	74	66	49	4512	30.0	2475
ILL	2400	79	8.30	199200	37	61	23.	930	32.0	290
IND	2160	89	8.65	186840	193	77	149.	4186	30.0	1591
INDA	3700	47	8.15	301950	890	83	739.	6667	32.0	1955
IOWA	1320	88.	8.75	115800	430	55	230.	6977	30.0	2721
KANS	2190	76	8.45	181675				6977	30.0	2651
KY	1010	100	10.30	104030				6047	39.0	2350
LA	605	100	9.75	58980				5114	42.0	2149
MAINE	1515	100	9.45	143160				3721	36.5	1350
MD	595	100	9.65	57350				19814	40.0	6326
MASS	4200	95	8.65	376220	1137	96	1092	11620	43.0	5000
MICH	8708	45	7.75	674630	397	74	296	1395	28.0	391
MINN	840	96	9.50	79800				2320	35.0	614
MISS	2725	62	8.20	223450	636	76.	483.	6637.	37.0	3270
MO	239	94.	8.90	21271	401	71	342	1800.	34.0	632
MONT	1330	51	8.10	107730	1670	53	867	1000	39.0	725
NEBR	162	100	8.85	14337	4	63	3	419	35.0	167
NEV	320	100	9.60	30720				3256	39.0	1270.
N H	498	100	9.15	45567				9767	32.6	3104
N J	335	100	9.75	32663				9382	48.0	4445
N MEX	9645	100	8.75	843930				42320	37.0	13661.
N Y	1395	88	10.30	143675				9502	37.0	3622
N C	805	34	7.55	60770	2095.	71	1420.	1660	39.0	725
N DAK	4130	92	8.90	368222	30	67	25.	7497	33.0	2767
OHIO	995	90	9.10	90545	221	65	144	6977	39.0	2721
OKLA	910	84	9.00	81900	125	76	95	19530	36.0	6642
OREG	6705	96	9.25	620213	550.	60	332.	134019	31.0	41070
PA	60	100	9.50	5700				605	45.0	209
R I	481	100	10.60	50980				4100	42.5	1779
S C	1445	20	7.60	109820	1914	69.	1321	2326	33.0	760
S DAK	1905	83	8.75	166600				9501	30.0	2121
TENN	3090	100	9.45	292095				10140	40.0	7266
TEX	860	75	8.90	73100				17209	20.0	4619
UTAH	1455	100	9.40	136770				3721.	36.0	1340
VT	1695	90	9.50	161025	70	40	37	2791.	43.0	1200
VA	2120	100	8.70	184440	203	68	130	69767.	30.0	23721
WASH	311	2/	9.15	28457	79	48	38	3256.	41.0	1355
W VA	10340	64	8.17	1098370				6977.	31.0	2163
WIS	97	2/	8.70	8430	74	72	55	930.	30.0	303
WYO	110460	80	8.75	9664360	11437	70.3	8830.	726437	33.0	257362
U.S.										

1/ PERCENTAGE OF MILK SOLD TO PLANTS AND DEALERS THAT IS ELIGIBLE FOR FLUID USE (GRADE A IN MOST STATES).  
 INCLUDES FLUID-GRADE MILK USED IN MANUFACTURED DAIRY PRODUCTS.  
 2/ NOT PUBLISHED TO AVOID DISCLOSING INDIVIDUAL OPERATIONS.  
 3/ BASED ON UNROUNDED VALUE. INCLUDES MILK SOLD DIRECT TO CONSUMERS.  
 4/ ALSO INCLUDES MILK PRODUCED BY INSTITUTIONAL HERDS.

MARKETINGS, INCOME, AND VALUE OF DAIRY PRODUCTS, BY STATES, 1975

STATE	COMBINED MARKETINGS OF MILK AND CREAM			USED FOR MILK CREAM AND BUTTER WHERE PRODUCED		GROSS PRODUCER INCOME FROM DAIRY PRODUCTS 3/	VALUE OF MILK PRODUCED 2/ 4/	
	MILK UTILIZED	AVERAGE RETURNS 1/		CASH RECEIPTS FROM MARKETINGS	MILK VALUE 2/			
		MIL. LBS.	PER 100 POUNDS MILK		PER POUND MILKFAT	MIL. LBS. UTILIZED	1000 DOLLARS	1000 DOLLARS
ALA	654	10.64	2.89	69575	26	2766	72341	72990
ALAB	16	16.77	4.86	2700	0.5	84	2784	2817
ARIZ	631	9.39	2.65	78028	2	188	78216	78876
ARK	667	8.80	2.46	58674	32	2816	61490	62216
CALIF	10757	9.27	2.55	997202	14	1298	998500	1006073
COLO	803	9.39	2.58	75426	17	1596	77022	79346
CONN	596	10.19	2.74	60745	6	611	61356	61955
DEL	124	9.51	2.59	11794	2	190	11984	12078
FLA	1937	11.50	3.26	222833	13	1495	224328	224940
GA	1204	9.83	2.71	118381	11	1081	119462	120024
IAHW	144	14.30	4.19	20549	0.8	114	20663	20878
IDAHO	1504	8.18	2.22	123214	17	1391	124605	127199
ILL	2403	8.30	2.24	199521	19	1577	201098	203018
IND	2174	8.67	2.30	188580	18	1561	190141	191607
IOWA	3738	8.14	2.21	304224	75	6105	310329	316890
KANS	1347	8.79	2.43	118460	23	2022	120482	122357
KY	2165	8.51	2.32	184326	124	10552	196878	197347
LA	1023	10.40	2.83	106388	27	2808	109196	109616
MAINE	616	9.92	2.70	61137	7	694	61831	62397
MD	1523	9.49	2.59	144524	16	1516	146044	147095
MASS	589	10.17	2.80	59884	7	712	60596	61122
MICH	4335	8.68	2.34	376312	26	2257	378569	382875
MINN	8719	7.75	2.13	675323	80	6200	681523	693315
MISS	845	9.54	2.59	80614	28	2671	83285	83570
MO	2761	8.23	2.27	227203	51	4197	231400	233732
MONT	256	8.69	2.39	22245	14	1217	23462	24158
NEBR	1380	7.92	2.15	109342	27	2138	111480	113335
NEV	163	8.89	2.46	14487	2	178	14665	14935
N H	327	9.78	2.61	31990	5	489	32479	32861
N J	519	9.39	2.54	48751	4	376	49127	49579
N MEX	355	10.46	3.02	37128	7	732	37860	38284
N Y	9736	8.83	2.45	859597	89	7859	867458	879821
N C	1415	10.59	2.89	149917	73	7731	157648	158638
N DAN	865	7.27	2.04	62927	25	1818	64745	66666
OHIO	4148	8.97	2.40	372014	53	4754	376768	382032
OKLA	1016	9.19	2.58	93410	28	2573	95983	97414
OREG	955	9.28	2.38	88637	9	835	89472	91872
PA	7009	9.45	2.55	662215	90	8505	670720	674730
R I	61	9.69	2.71	5909	1	97	6006	6105
S C	490	10.77	2.77	52765	14	1508	54273	55142
S DAK	1505	7.44	2.13	111909	26	1934	113843	115766
TEHN	1917	8.81	2.37	168809	60	5286	174095	178931
TEX	3129	9.56	2.72	299261	47	4493	303754	306685
UTAH	897	8.69	2.37	77919	14	1217	79136	79861
VT	1963	9.43	2.56	185110	16	1509	186619	189449
VA	1703	9.53	2.61	162242	35	3336	165598	167252
WASH	2275	9.16	2.43	208299	13	1191	209490	212695
W VA	320	9.32	2.51	29830	24	2237	32067	32620
WIS	18355	8.18	2.18	1500541	172	14070	1514611	1546020
WYO	101	8.77	2.41	8855	5	439	9294	9647
U.S.	112337	8.84	2.41	9929750	1495	133026	10062776	10198831

- 1/ CASH RECEIPTS DIVIDED BY MILK FOR MILKFAT REPRESENTED IN COMBINED MARKETINGS.
- 2/ VALUED AT AVERAGE RETURNS PER 100 POUNDS OF MILK IN COMBINED MARKETINGS OF MILK AND CREAM.
- 3/ CASH RECEIPTS FROM MARKETINGS OF MILK AND CREAM PLUS VALUE OF MILK USED FOR HOME CONSUMPTION AND PRODUCER-CHURNED BUTTER.
- 4/ INCLUDES VALUE OF MILK FED TO CALVES.

MILK COWS AND PRODUCTION OF MILK AND MILKFAT, BY STATES, 1976

STATE	NUMBER OF MILK COWS 1/	PRODUCTION OF MILK AND MILKFAT 2/				
		PER MILK COW		PERCENTAGE OF FAT IN ALL MILK PRODUCED	T O T A L	
		MILK	MILKFAT		MILK	MILKFAT
	THOUSANDS	POUNDS	PERCENT		MIL. LBS.	
ALA	85	8024	294	3.66	682	25
ALAS	1.5	10667	369	3.46	16	0.6
ARIZ	70	12600	449	3.56	882	31
ARK	85	8353	297	3.56	710	25
CALIF	811	14282	514	3.60	11583	417
COLO	72	11597	416	3.59	835	30
CONN	54	11407	422	3.70	614	23
DEL	11.3	11947	440	3.68	135	5
FLA	201	10065	347	3.45	2023	70
GA	129	10101	372	3.68	1303	48
HAW	13.2	11212	386	3.44	148	5.1
IDAMD	143	10667	398	3.64	1554	57
ILL	237	10485	367	3.69	2085	92
IND	209	10718	403	3.76	2240	84
IOWA	392	10087	370	3.67	3954	145
KANS	137	10562	383	3.63	1447	53
KY	281	8480	314	3.70	2383	88
LA	137	7942	294	3.70	1088	40
MAINE	59	10644	392	3.68	628	23
MD	133	11647	429	3.68	1549	57
MASS	54	11074	405	3.66	598	22
MICH	405	11407	421	3.69	4620	170
MINN	878	10523	379	3.60	9239	333
MISS	116	7431	276	3.71	862	32
MO	306	9539	346	3.63	2919	106
MONT	25	11000	395	3.59	275	10
NEBR	142	9923	362	3.65	1409	51
NEV	14.2	13451	475	3.53	191	6.7
N H	31	10806	404	3.74	335	13
N J	46	11848	437	3.69	545	20
N MEX	32	12656	438	3.46	405	14
N Y	912	11182	406	3.63	10198	370
N C	142	11127	412	3.70	1580	58
N DAK	111	8541	303	3.55	948	34
OHIO	397	11171	416	3.72	4435	165
OKLA	117	9419	334	3.55	1102	39
OREG	92	11130	432	3.88	1024	40
PA	706	10633	394	3.71	7507	279
R I	5.5	10909	398	3.65	60	2.2
S C	56	9375	366	3.90	525	20
S DAK	170	9706	345	3.55	1650	59
TENN	210	9981	373	3.74	2096	78
TEX	320	10341	367	3.55	3309	117
UTAH	79	11696	423	3.62	924	33
VT	194	10789	399	3.70	2093	77
VA	173	10850	400	3.69	1877	69
WASH	180	13489	504	3.74	2428	91
W VA	39	9128	340	3.72	356	13
WIS	1807	11232	419	3.73	20294	757
WYO	11.5	9826	357	3.63	113	4.1
U.S.	11032	10894	399	3.66	120180	4402

1/ AVERAGE NUMBER DURING YEAR, EXCLUDING HEIFERS NOT YET FRESH. U.S. TOTAL WILL NOT ADD DUE TO ROUNDING.

2/ EXCLUDES MILK SUCKED BY CALVES.

MILK USED AND MARKETED BY PRODUCERS, BY STATES, 1976

STATE	MILK USED WHERE PRODUCED			MILK MARKETED BY PRODUCERS			
	FED TO CALVES 1/	USED FOR MILK CREAM AND BUTTER	TOTAL	SOLD TO PLANTS AND DEALERS 2/		SOLD DIRECTLY TO CONSUMERS 3/	TOTAL
				AS WHOLE MILK	AS SEPARATED CREAM		
- - - - - MILLION POUNDS - - - - -							
ALA	6	26	32	630		20	650
ALAS	0.4	0.5	0.9	14.6		0.7	15.1
ARIZ	8	2	10	840		32	872
ARK	8	30	38	660		12	672
CALIF	81	13	94	11145		344	11489
COLD	28	15	43	750	5	37	792
CONN	6	6	12	585		19	603
DEL	1	2	3	131		1	132
FLA	6	13	19	1975		29	2004
GA	9	10	19	1280		4	1284
HAW	1.4	0.8	2.2	145.8		4/	145.8
IDAH0	34	15	49	1490	2	13	1505
ILL	25	17	42	2440	1	2	2443
IND	19	15	34	2190	6	10	2206
IOWA	72	64	136	3780	25	13	3816
KANS	23	21	44	1385	8	10	1403
KY	29	119	148	2215		20	2235
LA	4	26	30	1045		13	1058
MAINE	6	7	13	610		5	615
MD	11	16	27	1515		7	1522
MASS	5	7	12	550		36	586
MICH	62	28	90	4485	20	25	4530
MINN	146	74	220	9010	9		9019
MISS	3	25	28	830		4	834
MO	30	48	78	2820	5	16	2841
MONT	7	13	20	242	10	3	255
NEBR	27	27	54	1325	26	4	1355
NEV	3	2	5	185		1	186
N H	3	4	7	319		9	328
N J	5	3	8	515		22	537
N MEX	4	7	11	375		19	394
N Y	141	90	231	9875		92	9967
N C	10	65	75	1485		20	1505
N DAK	26	20	46	860	38	4	902
OHIO	54	49	103	4315	1	16	4332
OKLA	14	24	38	1045	4	15	1064
OREG	23	8	31	945	1	47	993
PA	50	80	130	7060	15	302	7377
R I	1	1	2	56		2	58
S C	8	13	21	496		8	504
S DAK	26	24	50	1550	45	5	1600
TENN	51	58	109	1975		12	1987
TEX	30	35	65	3215		29	3244
UTAH	10	15	25	855		44	899
VT	29	16	45	2040		8	2048
VA	14	32	46	1825		6	1831
WASH	26	10	36	2240	6	146	2392
W VA	6	21	27	320	2	7	329
WIS	371	170	541	19740		15	19755
WYD	4	5	9	100		3	104
U.S. 5/	1567	1392	2959	115479	230	1512	117221

1/ EXCLUDES MILK SUCKED BY CALVES.

2/ INCLUDES MILK PRODUCED BY DEALERS' OWN HERDS (EXCEPT FOR N Y AND CALIF, WHERE SUCH MILK IS INCLUDED AS SOLD DIRECTLY TO CONSUMERS).

3/ SALES DIRECTLY TO CONSUMERS BY PRODUCERS WHO SELL ONLY MILK FROM THEIR OWN HERDS. ALSO INCLUDES MILK PRODUCED BY INSTITUTIONAL HERDS.

4/ NOT PUBLISHED TO AVOID DISCLOSING INDIVIDUAL OPERATIONS. INCLUDED IN MILK SOLD TO PLANTS.

5/ TOTAL MILK SOLD PLUS USED ON FARMS DOES NOT EQUAL TOTAL MILK PRODUCED DUE TO ROUNDING.

MILK AND CREAM MARKETED BY PRODUCERS: QUANTITY, PRICE AND CASH RECEIPTS, BY STATES, 1976

STATE	MILK SOLD TO PLANTS AND DEALERS				CREAM SOLD TO PLANTS AND DEALERS			MILK SOLD DIRECTLY TO CONSUMERS 4/		
	QUANTITY	PERCENT FLUID GRADE 1/	PRICE PER 100 LBS.	CASH RECEIPTS	QUANTITY MILK FAT	PRICE PER LB FAT	CASH RECEIPTS	QUANTITY	PRICE PER QUART	CASH RECEIPTS
	MIL. LBS.	PCY.	DOLLARS	1000 DOL.	1000 LBS.	CT.	1000 DOL.	1000 QTS.	CT.	1000 DOL.
ALA	630	98	10.88	68040				9302	45.0	4186
ALAB	14.4	100	17.90	2578				326	45.0	147
ARIZ	860	100	10.10	86840				14684	34.0	5061
ARK	660	73	10.00	66000				5581	41.0	2258
CALIF	11145	95	9.27	1033142				160000	35.0	56000
COLO	750	2/	10.50	78750	184	84	140	17209	39.0	6712
CONN	585	100	10.70	62595				8837	46.8	4065
DEL	131	100	10.40	13624				465	40.0	184
FLA	1975	100	11.90	235025				13488	38.0	5125
GA	1280	100	10.70	136960				1860	49.0	911
HAW	145.8	100	15.05	3/21943						
IDAH0	1490	39	9.05	134845	74	80	99	6047	38.0	2298
ILL	2640	82	9.35	228140	37	7	24	930	33.0	307
IND	2190	89	9.85	213715	230	88	202	4651	41.0	1907
IOWA	3780	31	9.05	342090	665	98	847	6047	33.0	1996
KANS	1385	83	9.35	129498	291	70	204	4651	41.0	1907
KY	2215	81	9.45	209318				9502	38.0	3535
LA	1045	100	11.00	114950				6047	39.0	2358
MAINE	410	100	10.80	44080				2326	42.0	977
MD	1315	100	10.30	136085				3254	40.0	1302
MASS	550	100	10.70	58850				16744	42.0	7032
MICH	4485	95	9.85	441773	754	100	754	11628	41.0	4747
MINN	9010	46	8.71	784771	322	91	293			
MISS	830	96	10.30	85490				1860	38.0	707
MO	2820	72	9.35	263470	168	72	135	7442	40.0	2977
MONT	242	95	9.45	22869	345	81	296	1395	35.0	488
NEBR	1325	92	9.20	121900	939	70	657	1860	44.0	818
NEV	185	100	9.50	17575				465	35.0	163
N H	319	100	10.60	33814				4184	42.0	1758
N J	915	100	10.30	94245				10235	35.0	3582
N MEX	375	100	10.70	40125				8837	48.0	4242
N Y	9875	100	9.85	970713				42791	39.0	16688
N C	1485	97	10.60	157410				9302	37.0	3442
N DAK	860	35	8.55	73530	1353	84	1137	1860	44.0	818
OHIO	4315	91	9.90	427185	38	83	32	7442	36.0	2679
OKLA	1045	90	9.90	103455	147	80	118	6977	40.0	2791
OREG	945	84	9.90	93555	41	82	34	21860	34.0	7432
PA	7860	98	10.40	736240	558	75	416	140465	32.0	44949
R I	56	100	10.70	5992				930	46.0	428
S C	456	100	11.30	51408				3721	45.0	1678
S DAK	1858	28	8.65	16075	1569	82	1303	2324	45.0	1047
TENN	1975	82	9.70	191575				5581	40.0	2232
TEX	3315	100	10.60	350790				13488	45.0	6070
UTAH	895	73	9.45	84798				20465	34.0	6958
VT	2046	100	10.40	212140				3721	40.0	1888
VA	1825	91	10.20	186150				2791	49.0	1116
WASH	2240	100	9.85	210140	241	77	184	67907	35.0	23767
W VA	320	2/	10.10	32320	79	75	99	3254	45.0	1465
WIS	19740	85	9.16	1808184				6977	32.0	2233
WYO	100	2/	9.85	9850	37	77	28	1395	41.0	572
U.S.	115870	81	9.66	1118088	8350	83.4	4966	703114	36.4	255451

1/ PERCENTAGE OF MILK SOLD TO PLANTS AND DEALERS THAT IS ELIGIBLE FOR FLUID USE (GRADE A IN MOST STATES). INCLUDES FLUID-GRADE MILK USED IN MANUFACTURED DAIRY PRODUCTS.  
 2/ NOT PUBLISHED TO AVOID DISCLOSING INDIVIDUAL OPERATIONS.  
 3/ BASED ON UNROUNDED VALUE. INCLUDES MILK SOLD DIRECT TO CONSUMERS.  
 4/ ALSO INCLUDES MILK PRODUCED BY INSTITUTIONAL HERDS.



MARKETINGS, INCOME, AND VALUE OF DAIRY PRODUCTS, BY STATES, 1976

STATE	COMBINED MARKETINGS OF MILK AND CREAM				USED FOR MILK CREAM AND BUTTER WHERE PRODUCED		GROSS PRODUCER INCOME FROM DAIRY PRODUCTS 3/	VALUE OF MILK PRODUCED 2/ 4/
	MILK UTILIZED	AVERAGE RETURNS 1/		CASH RECEIPTS FROM MARKETINGS	MILK UTILIZED			
		PER 100 POUNDS MILK	PER POUND MILKFAT		MIL. LBS.	VALUE 2/		
	MIL. LBS	DOLLARS		1000 DOL.	MIL. LBS.		1000 DOLLARS	
ALA	650	11.11	3.04	72226	26	2889	75115	75770
ALAS	15	18.05	5.22	2725	0.5	90	2815	2888
ARIZ	872	10.31	2.90	89901	2.	206	90107	90934
ARK	672	10.16	2.85	68288	30	3048	71336	72136
CALIF	11489	9.48	2.63	1089142	13	1232	1090374	1098068
COLO	792	10.81	3.01	85622	15.	1622	87244	90264
CONN	604	11.04	2.98	66660	6	662	67322	68006
DEL	132.	10.46	2.84	13810	2	209	14019	14121
FLA	2004	11.98	3.47	240150	13	1557	241707	242355
GA	1284	10.74	2.92	137871	10.	1074	138945	139942
HAW	146	15.05	4.38	21943	0.8	120	22043	22274
IDAHO	1505	9.12	2.49	137202	15	1368	138570	141725
ILL	2443	9.35	2.53	228473	17	1590	230043	232348
IND	2206	9.87	2.63	217824	15	1481	219305	221088
IOWA	3818	9.03	2.46	344953	64	3779	350732	357046
KANS	1403	9.38	2.58	131609	21	1970	133579	135729
KY	2235	9.52	2.57	212893	119	11329	224182	226882
LA	1058	11.09	3.00	117308	26	2883	120191	120659
MAINE	615	10.87	2.95	66857	7	761	67618	68264
MO	1522.	10.34	2.81	157347	16	1654	159001	160167
MASS	586	11.24	3.07	65882	7.	787	66669	67215
MICH	4530	9.87	2.67	447294	28	2744	450058	455994
MINN	9019	8.70	2.42	785064	74	6438	791502	803793
MISS	834	10.34	2.79	86197	25	2585	88782	89131
MO	2841	9.39	2.59	266782	48	4507	271289	274094
MONT	255	9.28	2.58	23653	13.	1206	24859	25520
NEBR	1355.	9.11	2.50	123375	27	2460	125835	128360
NEV	186.	9.54	2.70	17738	2.	191	17929	18221
N H	328	10.85	2.90	35572	4	434	36006	36348
N J	537.	10.55	2.86	56627	3	317	56944	57498
N MEX	394	11.26	3.25	44367	7	788	45155	45603
N Y	9967	9.91	2.73	987401	90	8919	996320	1010422
N C	1505	10.69	2.89	160852	65	6949	167801	168902
N DAK	902	8.37	2.36	75485	20	1674	77159	79348
OHIO	4332	9.92	2.67	429896	49	4861	434757	439952
OKLA	1064.	10.00	2.82	106364	24	2400	108764	110200
OREG	993	10.17	2.62	101021	8.	814	101835	104141
PA	7377	10.57	2.85	779605	80.	8456	788061	793490
R I	58.	11.07	3.03	6420	1.	111	6531	6642
S C	504.	11.45	2.94	57722	13	1489	59211	60113
S DAK	1600	8.53	2.40	136425	24	2047	138472	146745
TENN	1987	9.75	2.61	193807	58	5655	199462	204360
TEX	3244	10.69	3.01	346840	35	3742	350602	353732
UTAH	899.	9.76	2.70	87756	15	1464	89220	90182
VT	2048.	10.43	2.82	213648	16	1649	215317	218300
VA	1831.	10.23	2.77	187266	32.	3274	190540	192017
WASH	2392.	10.04	2.68	240113	18	1804	241117	243771
W VA	329	10.29	2.77	33844	21.	2161	36005	36432
WIS	19755.	9.16	2.46	1810417	170	15572	1825989	1859114
WYO	104	10.85	2.77	10450.	5	503	10953	11357
U.S.	117221	9.74	2.66	11420667	1392	136745	11557432	11786043

1/ CASH RECEIPTS DIVIDED BY MILK FOR MILKFAT REPRESENTED IN COMBINED MARKETINGS.

2/ VALUED AT AVERAGE RETURNS PER 100 POUNDS OF MILK IN COMBINED MARKETINGS OF MILK AND CREAM.

3/ CASH RECEIPTS FROM MARKETINGS OF MILK AND CREAM PLUS VALUE OF MILK USED FOR HOME CONSUMPTION AND PRODUCER-CHURNED BUTTER.

4/ INCLUDES VALUE OF MILK FED TO CALVES.

## MILK COWS AND PRODUCTION OF MILK AND MILKFAT, BY STATES, 1977

STATE	NUMBER OF MILK COWS 1/	PRODUCTION OF MILK AND MILKFAT 2/				
		PER MILK COW		PERCENTAGE OF FAT IN ALL MILK PRODUCED	T O T A L	
		MILK	MILKFAT		MILK	MILKFAT
	THOUSANDS	POUNDS	PERCENT		MIL. LBS.	
ALA	80	8550	311	3.64	684	25
ALAS	1.5	10933	375	3.43	16.4	0.6
ARIZ	69	13246	473	3.57	914	33
ARK	84	8631	303	3.51	725	25
CALIF	827	14472	517	3.57	11968	427
COLD	71	11940	424	3.55	848	30
CONN	52	12000	444	3.70	624	23
DEL	11.2	12411	458	3.69	139	5.1
FLA	198	10066	353	3.51	1993	70
GA	129	10085	371	3.68	1301	48
HAW	13	11538	396	3.43	150	5.1
IDAHO	141	11348	407	3.59	1600	57
ILL	234	10748	397	3.69	2515	93
IND	208	10808	405	3.75	2248	84
IOWA	386	10440	382	3.66	4030	147
KANS	134	10761	391	3.63	1442	52
KY	278	8727	322	3.69	2426	90
LA	132	8250	302	3.66	1089	40
MAINE	58	11000	403	3.66	638	23
MD	131	12023	444	3.69	1575	58
MASS	51	11706	431	3.68	597	22
MICH	403	11814	436	3.69	4761	176
MINN	866	10950	393	3.59	9483	340
MISS	112	7661	282	3.68	858	32
MO	296	9858	357	3.62	2918	106
MONT	26	11385	411	3.61	296	11
NEBR	133	10105	369	3.65	1344	49
NEV	14.3	13846	479	3.46	198	6.9
N H	31	10935	408	3.73	339	13
N J	47	11681	432	3.70	549	20
N MEX	33	12909	443	3.43	426	15
N Y	914	11186	402	3.59	10224	367
N C	138	11471	421	3.67	1583	58
N DAK	107	8916	317	3.55	954	34
OHIO	400	11138	412	3.70	4455	165
OKLA	116	9655	342	3.54	1120	40
OREG	93	11312	432	3.82	1052	40
PA	703	11083	412	3.72	7791	290
R I	5	11400	416	3.65	57	2.1
S C	53	9906	383	3.87	525	20
S DAK	166	9952	355	3.57	1652	59
TENN	208	10486	392	3.74	2181	82
TEX	315	10705	377	3.52	3372	119
UTAH	78	12000	427	3.56	936	33
VT	191	10995	405	3.68	2100	77
VA	172	11012	403	3.66	1894	69
WASH	184	13853	515	3.72	2549	95
W VA	38	9211	341	3.70	350	13
WIS	1802	11676	437	3.74	21041	787
WYO	11.6	10690	388	3.63	124	4.5
U.S.	10945	11206	410	3.65	122654	4481

1/ AVERAGE NUMBER DURING YEAR, EXCLUDING HEIFERS NOT YET FRESH. U.S. TOTAL WILL NOT ADD DUE TO ROUNDING.

2/ EXCLUDES MILK SUCKED BY CALVES.

MILK USED AND MARKETED BY PRODUCERS, BY STATES, 1977

STATE	MILK USED WHERE PRODUCED			MILK MARKETED BY PRODUCERS			
	FED TO CALVES 1/	USED FOR MILK CREAM AND BUTTER	TOTAL	SOLD TO PLANTS AND DEALERS 2/		SOLD DIRECTLY TO CONSUMERS 3/	TOTAL
				AS WHOLE MILK	AS SEPARATED CREAM		
- - - - - M I L L I O N P O U N D S - - - - -							
ALA	5	23	28	635		21	656
ALAB	0.3	0.4	0.7	15.1		0.6	15.7
ARIZ	7	2	9	860		45	905
ARK	9	28	37	675		13	688
CALIF	72	11	83	11540		345	11885
COLO	28	15	43	760	5	40	805
CONN	6	6	12	595		17	612
DEL	1	2	3	135		1	136
FLA	6	12	18	1945		30	1975
GA	5	8	13	1280		8	1288
HAW	1.5	1	2.5	147.5		4/	147.5
IAHO	35	14	49	1535	2	14	1551
ILL	24	14	38	2475		2	2477
IND	19	16	34	2200	6	8	2214
IOWA	72	57	129	3870	19	12	3901
KANS	24	19	43	1385	6	8	1399
KY	30	116	146	2255		25	2280
LA	4	23	27	1050		12	1062
MAINE	8	7	15	615		8	623
MD	11	16	27	1540		8	1548
MASS	5	6	11	550		36	586
MICH	62	29	91	4625	19	26	4670
MINN	138	67	205	9270	8		9278
MISS	3	19	22	830		6	836
MO	29	30	59	2845	2	12	2859
MONT	7	12	19	266	9	2	277
NEBR	25	26	51	1270	18	5	1293
NEV	3	2	5	192		1	193
N H	3	4	7	322		10	332
N J	6	3	9	520		20	540
N MEX	4	7	11	398		17	415
N Y	145	91	236	9895		93	9988
N C	10	60	70	1495		18	1513
N DAK	28	16	44	880	27	3	910
OHIO	54	49	103	4335		17	4352
OKLA	13	24	37	1065	3	15	1083
OREG	24	8	32	975		45	1020
PA	55	70	125	7370	15	281	7666
R I	1	1	2	53		2	55
S C	7	11	18	498		9	507
S DAK	23	22	45	1560	42	5	1607
TENN	49	55	104	2065		12	2077
TEX	35	25	60	3280		32	3312
UTAH	9	12	21	875		40	915
VT	30	17	47	2045		8	2053
VA	14	28	42	1845		7	1852
WASH	25	9	34	2385		130	2515
W VA	5	18	23	320		7	327
WIS	358	168	526	20500		15	20515
WYO	4	4	8	112	1	3	116
U.S. 5/	1541	1283	2824	118154	182	1495	119831

1/ EXCLUDES MILK SUCKED BY CALVES.

2/ INCLUDES MILK PRODUCED BY DEALERS' OWN HERDS (EXCEPT FOR N Y AND CALIF, WHERE SUCH MILK IS INCLUDED AS SOLD DIRECTLY TO CONSUMERS).

3/ SALES DIRECTLY TO CONSUMERS BY PRODUCERS WHO SELL ONLY MILK FROM THEIR OWN HERDS. ALSO INCLUDES MILK PRODUCED BY INSTITUTIONAL HERDS.

4/ NOT PUBLISHED TO AVOID DISCLOSING INDIVIDUAL OPERATIONS. INCLUDED IN MILK SOLD TO PLANTS.

5/ TOTAL MILK SOLD PLUS USED ON FARMS DOES NOT EQUAL TOTAL MILK PRODUCED DUE TO ROUNDING.

MILK AND CREAM MARKETED BY PRODUCERS: QUANTITY, PRICE AND CASH RECEIPTS, BY STATES, 1977

STATE	MILK SOLD TO PLANTS AND DEALERS				CREAM SOLD TO PLANTS AND DEALERS			MILK SOLD DIRECTLY TO CONSUMERS 4/		
	QUANTITY	PERCENT FLUID GRADE 1/	PRICE PER 100 LBS.	CASH RECEIPTS	QUANTITY MILKFAT	PRICE PER LB FAT	CASH RECEIPTS	QUANTITY	PRICE PER QUART	CASH RECEIPTS
	MIL. LBS.	PCY.	DOLLARS	1000 DOL.	1000 LBS.	CT.	1000 DOL.	1000 QTS.	CT.	1000 DOL.
ALA	435	98	10.90	49215				9767	35.0	3418
ALAS	15.1	100	17.80	2588				279	45.0	126
ARIZ	860	100	10.10	86860				20930	35.0	7326
ARK	875	81	10.00	87500				4047	35.0	2116
CALIF	11540	96	9.76	1126304				160445	35.0	56183
COLO	760	2/	10.40	79040	184	100	184	18605	40.0	7442
CONN	595	100	10.60	63070				7907	46.0	3637
DEL	135	100	10.40	14040				465	40.0	186
FLA	1945	100	12.20	237290				13453	40.0	5581
GA	1280	100	10.50	134400				3721	55.0	1972
HAW	147.5	100	15.70	3/23158						
IDAHO	1535	38	9.00	138150	72	75	53	6812	39.0	2540
ILL	2475	81	9.45	233888				930	35.0	326
IND	2200	90	9.95	218900	230	91	209	3721	42.0	1563
IOWA	3870	55	9.05	350235	671	110	738	5581	45.0	2511
KANS	1385	84	9.60	132960	218	65	142	3721	36.0	1340
KY	2255	76	9.45	213098				11628	41.0	4767
LA	1050	100	10.70	112350				5581	39.0	2177
MAINE	615	100	10.80	66420				3721	42.0	1563
MD	1540	100	10.40	160160				3721	40.0	1488
MASS	550	100	10.70	58850				16744	42.0	7032
MICH	4625	95	9.65	446313	716	105	752	12093	43.0	5200
MINN	9270	50	8.81	816687	286	100	286			
MISS	830	95	10.20	84660				2791	39.0	1088
MO	2845	72	9.30	264585	75	74	57	5581	46.0	2567
MONT	266	93	9.95	26467	330	88	290	930	36.0	335
NEBR	1270	56	9.20	116840	650	65	423	2324	44.0	1023
NEV	192	100	9.75	18720				465	40.0	186
N H	322	100	10.60	34132				4651	42.0	1953
N J	520	100	10.20	53040				9302	36.0	3349
N MEX	398	100	10.80	42984				7907	51.0	4033
N Y	9895	100	9.75	964763				43256	38.0	16437
N C	1495	97	10.90	162955				8372	35.0	2930
N DAK	860	37	8.60	75680	961	84	807	1395	43.0	600
OHIO	4335	91	9.80	424830				7907	42.0	3321
OKLA	1065	89	10.00	106500	110	73	80	6977	42.0	2930
OREG	975	85	9.90	96525				20930	34.0	7116
PA	7370	98	10.40	766480	555	90	500	130698	32.0	41823
R I	53	100	10.70	5671				930	46.0	428
S C	498	100	11.40	56772				4186	47.0	1967
S DAK	1560	30	8.85	138066	1491	101	1506	2326	40.0	930
TENN	2045	82	9.75	201338				5581	39.0	2177
TEX	3280	100	10.70	350960				14854	50.0	7442
UTAH	875	74	9.35	81813				18605	31.0	5768
VT	2045	100	10.30	210635				3721	40.0	1488
VA	1845	92	10.30	190035				3256	41.0	1335
WASH	2385	100	9.70	231345				60465	35.0	21163
* VA	320	2/	9.95	31840				3256	48.0	1563
WIS	20500	66	9.21	1888050				6977	35.0	2302
WYO	112	2/	9.70	10864	37	85	31	1395	42.0	586
U.S.	116154	82	9.72	11468120	4386	92.0	6050	695162	36.7	255314

- 1/ PERCENTAGE OF MILK SOLD TO PLANTS AND DEALERS THAT IS ELIGIBLE FOR FLUID USE (GRADE A IN MOST STATES). INCLUDES FLUID-GRADE MILK USED IN MANUFACTURED DAIRY PRODUCTS.
- 2/ NOT PUBLISHED TO AVOID DISCLOSING INDIVIDUAL OPERATIONS.
- 3/ BASED ON UNROUNDED VALUE. INCLUDES MILK SOLD DIRECT TO CONSUMERS.
- 4/ ALSO INCLUDES MILK PRODUCED BY INSTITUTIONAL HERDS.

MARKETINGS, INCOME, AND VALUE OF DAIRY PRODUCTS, BY STATES, 1977

STATE	COMBINED MARKETINGS OF MILK AND CREAM				USED FOR MILK CREAM AND BUTTER WHERE PRODUCED		GROSS PRODUCER INCOME FROM DAIRY PRODUCTS 3/	VALUE OF MILK PRODUCED 2/ 4/
	MILK UTILIZED	AVERAGE RETURNS 1/		CASH RECEIPTS FROM MARKETINGS	MILK UTILIZED			
		PER 100 POUNDS MILK	PER POUND MILKFAT		MIL. LBS.	VALUE 2/		
	MIL. LBS.	DOLLARS		1000 DOL.	MIL. LBS.	1000 DOLLARS		
ALA	656	11.07	3.04	72633	23	2546	75179	75719
ALAB	16	17.92	3.22	2814	0.4	72	2886	2939
ARIZ	905	10.41	2.92	94166	2	209	94394	95147
ARK	688	10.12	2.88	69616	28	2834	72450	73370
CALIF	11885	9.95	2.79	1182467	11	1095	1183562	1190816
COLOR	805	10.77	3.03	86666	15	1616	88282	91330
CONN	612	10.90	2.95	66707	6	654	67361	68016
DEL	136	10.46	2.83	14226	2	209	14435	14539
FLA	1975	12.30	3.50	242871	12	1476	244347	245139
GA	1288	10.59	2.88	136372	8	847	137219	137776
HAW	148	15.70	4.58	23158	1	157	23315	23550
IDAHO	1551	9.07	2.53	140743	14	1270	142013	145120
ILL	2477	9.46	2.56	234214	14	1324	235538	237919
IND	2214	9.97	2.66	220672	16	1595	222267	224126
IOWA	3901	9.06	2.48	353484	57	5164	358648	365118
KANS	1399	9.61	2.65	134442	19	1826	136268	138576
KY	2280	9.56	2.59	217865	118	11090	228955	231926
LA	1062	10.78	2.95	114527	23	2479	117006	117394
MAINE	623	10.91	2.98	67983	7	764	68747	69606
MD	1548	10.44	2.83	161648	16	1670	163318	164430
MASS	586	11.24	3.05	65882	6	674	66556	67103
MICH	4670	9.68	2.62	452265	29	2807	455072	460865
MINN	9278	8.81	2.45	816973	67	5903	822876	835452
MISS	836	10.26	2.79	85748	19	1949	87697	88031
MO	2859	9.35	2.58	267209	30	2805	270014	272833
MONT	277	9.78	2.71	27092	12	1174	28266	28909
NEBR	1293	9.15	2.51	118286	26	2379	120665	122976
NEV	193	9.80	2.83	18906	2	196	19102	19404
N H	332	10.87	2.91	36085	4	435	36520	36849
N J	540	10.44	2.82	56389	3	313	56702	57316
N MEX	415	11.33	3.30	47017	7	793	47810	48266
N Y	9988	9.82	2.74	981200	91	8936	990136	1003997
N C	1513	10.96	2.99	165885	60	6576	172461	173497
N DAK	910	8.47	2.39	77087	16	1355	78442	80804
OHIO	4352	9.84	2.66	428151	49	4822	432973	438372
OKLA	1083	10.11	2.86	109510	24	2426	111936	113232
OREG	1020	10.16	2.64	103641	8	813	104454	106883
PA	7666	10.55	2.84	808803	70	7385	816188	821951
R I	55	11.09	3.04	6099	1	111	6210	6321
S C	507	11.59	2.99	58739	11	1275	60014	60848
S DAK	1607	8.74	2.45	140496	22	1923	142419	144385
TENN	2077	9.80	2.62	203515	55	5390	208905	213738
TEX	3312	10.82	3.07	358402	25	2705	361107	364850
UTAH	915	9.57	2.69	87581	12	1148	88729	89575
VT	2053	10.33	2.81	212123	17	1756	213879	216930
VA	1852	10.33	2.82	191370	28	2892	194262	195650
WASH	2515	10.04	2.70	252508	9	904	253412	255920
W VA	327	10.21	2.76	33403	18	1838	35241	35735
WIS	20515	9.21	2.46	1890352	168	15473	1905825	1937876
WYO	116	9.90	2.73	11481	4	396	11877	12276
U.S.	119831	9.81	2.68	11749492	1283	126448	11875940	12023440

- 1/ CASH RECEIPTS DIVIDED BY MILK FOR MILKFAT REPRESENTED IN COMBINED MARKETINGS.
- 2/ VALUED AT AVERAGE RETURNS PER 100 POUNDS OF MILK IN COMBINED MARKETINGS OF MILK AND CREAM.
- 3/ CASH RECEIPTS FROM MARKETINGS OF MILK AND CREAM PLUS VALUE OF MILK USED FOR HOME CONSUMPTION AND PRODUCER-CHURNED BUTTER.
- 4/ INCLUDES VALUE OF MILK FED TO CALVES.

MILK COWS AND PRODUCTION OF MILK AND MILKFAT, BY STATES, 1978

STATE	NUMBER OF MILK COWS 1/		PRODUCTION OF MILK AND MILKFAT 2/				
	THOUSANDS		PER MILK COW		PERCENTAGE OF FAT IN ALL MILK PRODUCED	T O T A L	
			MILK	MILKFAT		MILK	MILKFAT
			POUNDS	POUNDS	PERCENT	MIL. LBS.	
ALA	76	8303	300	3.61	631	23	
ALAS	1.4	10571	354	3.35	14.8	0.5	
ARIZ	69	13130	473	3.60	906	33	
ARK	83	8783	314	3.57	729	26	
CALIF	846	14018	506	3.61	11859	428	
COLO	72	12111	432	3.57	872	31	
CONN	50	12280	454	3.70	614	23	
DEL	11	11727	434	3.70	129	4.8	
FLA	193	10218	355	3.47	1972	68	
GA	129	10140	370	3.65	1308	48	
HAW	12.9	11628	403	3.47	150	5.2	
IDAHO	140	11664	419	3.59	1633	59	
ILL	231	10385	384	3.70	2399	89	
IND	201	10836	404	3.75	2178	82	
IOWA	377	10504	387	3.68	3960	146	
KANS	129	10636	388	3.65	1372	50	
KY	269	8454	311	3.68	2274	84	
LA	128	8305	303	3.65	1063	39	
MAINE	58	11052	405	3.66	641	23	
MD	129	11938	441	3.69	1540	57	
MASS	89	11673	428	3.67	572	21	
MICH	403	11893	439	3.69	4793	177	
MINN	837	10859	392	3.61	9089	328	
MISS	106	7887	291	3.69	836	31	
MO	272	9996	364	3.64	2719	99	
MONT	28	10929	392	3.59	306	11	
NEBR	124	10234	376	3.67	1269	47	
NEV	14.7	12721	447	3.51	187	6.6	
N H	31	11000	411	3.74	341	13	
N J	45	11667	431	3.69	525	19	
N MEX	36	12722	441	3.47	458	16	
N Y	906	11488	419	3.61	10408	376	
N C	133	11609	424	3.65	1544	56	
N DAK	100	9030	324	3.59	903	32	
OHIO	383	11162	414	3.71	4275	159	
OKLA	113	9646	344	3.57	1090	39	
OREG	93	11452	439	3.83	1065	41	
PA	700	11259	421	3.78	7881	295	
R I	4.7	11702	428	3.66	55	2	
S C	52	9865	381	3.86	513	20	
S DAK	162	9506	340	3.58	1540	55	
TENN	209	9919	370	3.73	2073	77	
TEX	311	11039	392	3.55	3433	122	
UTAH	77	12208	432	3.54	940	33	
VT	186	11484	424	3.69	2136	79	
VA	170	11018	402	3.65	1873	68	
WASH	193	13860	513	3.70	2675	99	
W VA	37	9324	345	3.70	345	13	
WIS	1811	11735	440	3.75	21252	797	
WYO	11.6	10345	371	3.59	120	4.3	
U.S.	10803	11243	412	3.67	121461	4455	

1/ AVERAGE NUMBER DURING YEAR, EXCLUDING HEIFERS NOT YET FRESH. U.S. TOTAL WILL NOT ADD DUE TO ROUNDING.

2/ EXCLUDES MILK SUCKED BY CALVES.

MILK USED AND MARKETED BY PRODUCERS, BY STATES, 1978

STATE	MILK USED WHERE PRODUCED			MILK MARKETED BY PRODUCERS			
	FED TO CALVES 1/	USED FOR MILK CREAM AND BUTTER	TOTAL	SOLD TO PLANTS AND DEALERS 2/		SOLD DIRECTLY TO CONSUMERS 3/	TOTAL
				AS WHOLE MILK	AS SEPARATED CREAM		
- - - - - M I L L I O N P O U N D S - - - - -							
ALA	5	18	23	590		18	608
ALAS	0.3	0.4	0.7	13.7		0.4	14.1
ARIZ	8	1	9	855		42	897
ARK	9	25	34	685		10	695
CALIF	73	11	84	11420		355	11775
COLO	30	16	46	785		41	826
CONN	7	5	12	585		17	602
DEL	1	2	3	125		1	126
FLA	8	12	20	1945		7	1952
GA	6	9	15	1285		8	1293
HAW	1.7	1	2.7	147.3		4/	147.3
IDAHO	39	16	55	1560	1	17	1578
ILL	24	13	37	2360		2	2362
IND	18	16	34	2130	6	8	2144
IOWA	78	55	133	3805	9	13	3827
KANS	16	14	30	1335		7	1342
KY	28	111	139	2115		20	2135
LA	4	22	26	1025		12	1037
MAINE	8	6	14	620		7	627
MD	11	16	27	1505		8	1513
MASS	5	5	10	530		32	562
MICH	62	27	89	4675	3	26	4704
MINN	110	47	157	8925	7		8932
MISS	3	16	19	810		7	817
MO	23	21	44	2665		10	2675
MONT	8	12	20	274	9	3	286
NEBR	22	22	44	1210	10	5	1225
NEV	3	2	5	181		1	182
N H	4	3	7	325		9	334
N J	7	4	11	490		24	514
N MEX	5	9	14	430		14	444
N Y	149	91	240	10075		93	10168
N C	12	52	64	1465		15	1480
N DAK	28	15	43	840	16	4	860
OHIO	46	48	94	4165		16	4181
OKLA	13	22	35	1040		15	1055
OREG	20	9	29	990		46	1036
PA	55	55	110	7450		321	7771
R I	1	1	2	51		2	53
S C	6	8	14	490		9	499
S DAK	26	19	45	1450	40	5	1495
TENN	48	49	97	1970		6	1976
TEX	22	11	33	3370		30	3400
UTAH	9	11	20	880		40	920
VT	24	18	42	2090		4	2094
VA	13	26	39	1825		9	1834
WASH	28	10	38	2510		127	2637
W VA	6	18	24	314		7	321
WIS	360	163	523	20715		14	20729
WYO	4	5	9	107	1	3	111
U.S. 5/	1497	1168	2665	117203	102	1490	118795

1/ EXCLUDES MILK SUCKED BY CALVES.

2/ INCLUDES MILK PRODUCED BY DEALERS' OWN HERDS (EXCEPT FOR N Y AND CALIF, WHERE SUCH MILK IS INCLUDED AS SOLD DIRECTLY TO CONSUMERS).

3/ SALES DIRECTLY TO CONSUMERS BY PRODUCERS WHO SELL ONLY MILK FROM THEIR OWN HERDS. ALSO INCLUDES MILK PRODUCED BY INSTITUTIONAL HERDS.

4/ NOT PUBLISHED TO AVOID DISCLOSING INDIVIDUAL OPERATIONS. INCLUDED IN MILK SOLD TO PLANTS.

5/ TOTAL MILK SOLD PLUS USED ON FARMS DOES NOT EQUAL TOTAL MILK PRODUCED DUE TO ROUNDING.

MILK AND CREAM MARKETED BY PRODUCERS: QUANTITY, PRICE AND CASH RECEIPTS, BY STATES, 1970

STATE	MILK SOLD TO PLANTS AND DEALERS				CREAM SOLD TO PLANTS AND DEALERS			MILK SOLD DIRECTLY TO CONSUMERS 2/		
	QUANTITY	PERCENT FLUID GRADE 1/	PRICE PER 100 LBS.	CASH RECEIPTS	QUANTITY MILKFAT	PRICE PER LB FAT	CASH RECEIPTS	QUANTITY	PRICE PER QUART	CASH RECEIPTS
	MIL. LBS.	PCY.	DOLLARS	1000 DOL.	1000 LBS.	CT.	1000 DOL.	1000 QTS.	CT.	1000 DOL.
ALA	590	98	11.60	68440				6372	40.0	3349
ALAS	13.7	100	17.30	2370				186	50.0	93
ARIZ	855	100	11.10	94905				19535	37.0	7228
ARK	485	81	11.00	75350				4651	31.0	1442
CALIF	11420	96	10.20	1164640				165116	38.0	62744
COLO	785	2/	11.20	87920				19070	44.0	8391
CONN	585	100	11.50	67275				7907	47.0	3716
DEL	125	100	11.30	14125				465	43.0	200
FLA	1945	100	12.80	248960				3256	37.0	1205
GA	1285	100	11.40	146490				3721	55.0	2047
HAW	147.5	100	16.10	3/23715						
IDAHO	1580	39	9.95	155220	56	70	25	7907	40.0	3163
ILL	2360	81	10.40	245440				930	45.0	419
IND	2130	90	10.70	227910	230	103	237	3721	45.0	1674
IOWA	3805	58	10.10	384305	320	118	378	6047	34.0	2056
KANS	1335	82	10.70	142845				3256	40.0	1302
KY	2115	79	10.20	215730				9302	44.0	4093
LA	1025	100	11.50	117875				5581	44.0	2456
MAINE	620	100	11.60	71920				3256	43.0	1400
MO	1905	100	11.30	170065				3721	43.0	1600
MASS	530	100	11.50	60950				18884	43.0	6400
MICH	4675	95	10.50	490875	113	90	102	12093	47.0	5684
MINN	8925	54	9.86	880005	251	115	289			
MISS	810	95	11.10	89910				3256	42.0	1368
MO	2465	72	10.20	271830				4651	50.0	2324
MONT	274	93	10.70	29318	329	91	299	1395	40.0	558
NEBR	1210	56	10.50	124430	363	70	254	2326	44.0	1023
NEV	181	100	10.40	18824				465	45.0	209
N H	325	100	11.50	37375				4186	43.0	1800
N J	490	100	11.10	54390				11163	41.0	4577
N MEX	430	100	11.50	49450				6512	50.0	3256
N Y	10075	100	10.50	1057875				43256	41.0	17735
N C	1465	96	11.40	167010				6977	40.0	2791
N DAK	840	39	9.55	80220	576	91	524	1860	46.0	854
OHIO	4165	92	10.70	445655				7442	45.0	3349
OKLA	1040	89	11.00	114400				6977	51.0	3558
OREG	990	87	10.80	106920				21395	36.0	7702
PA	7450	98	11.10	826950				149302	34.0	50763
R I	51	100	11.40	5816				930	47.0	437
S C	490	100	11.90	58310				4186	49.0	2051
S DAK	1450	31	9.80	142100	1424	114	1623	2326	40.0	930
TENN	1970	85	10.60	208820				2791	41.0	1144
TEX	3370	100	11.60	390920				13953	52.0	7256
UTAH	880	74	10.30	90640				18605	33.0	6140
VT	2090	100	11.20	234080				1860	41.0	763
VA	1825	93	11.00	200750				4186	46.0	1926
WASH	2510	100	10.60	266060				59070	36.0	21265
W VA	314	2/	10.70	33598				3256	51.0	1641
WIS	20715	67	10.24	2125359				6512	34.0	2214
WYO	107	2/	10.50	11235	37	83	31	1395	46.0	670
U.S.	117203	83	10.59	12400075	3679	102.0	3762	693210	38.8	268990

1/ PERCENTAGE OF MILK SOLD TO PLANTS AND DEALERS THAT IS ELIGIBLE FOR FLUID USE (GRADE A IN MOST STATES). INCLUDES FLUID-GRADE MILK USED IN MANUFACTURED DAIRY PRODUCTS.  
 2/ NOT PUBLISHED TO AVOID DISCLOSING INDIVIDUAL OPERATIONS.  
 3/ BASED ON UNROUNDED VALUE. INCLUDES MILK SOLD DIRECT TO CONSUMERS.  
 4/ ALSO INCLUDES MILK PRODUCED BY INSTITUTIONAL HERDS.



MARKETINGS, INCOME, AND VALUE OF DAIRY PRODUCTS, BY STATES, 1978

STATE	COMBINED MARKETINGS OF MILK AND CREAM				USED FOR MILK CREAM AND BUTTER WHERE PRODUCED		GROSS PRODUCER INCOME FROM DAIRY PRODUCTS 3/	VALUE OF MILK PRODUCED 2/ 4/
	MILK UTILIZED	AVERAGE RETURNS 1/		CASH RECEIPTS FROM MARKETINGS	MILK UTILIZED	VALUE 2/		
		PER 100 POUNDS MILK	PER POUND MILKFAT				1000 DOL.	MIL. LBS.
ALA	608	11.81	3.27	71789	18	2126	73915	74521
ALAS	14.1	17.47	5.21	2463	0.4	70	2533	2586
ARIZ	897	11.39	3.16	102133	1	114	102247	103193
ARK	695	11.05	3.10	76792	25	2743	79555	80555
CALIF	11775	10.43	2.89	1227584	11	1147	1228731	1236894
COLO	826	11.66	3.27	96311	16	1866	98177	101675
CONN	602	11.79	3.19	70991	5	590	71581	72391
DEL	126	11.37	3.07	14325	2	227	14552	14667
FLA	1952	12.82	3.69	250165	12	1538	251703	252810
GA	1293	11.49	3.15	148537	9	1034	149571	150289
HAW	147.3	16.10	4.64	23715	1	161	23876	24150
IDAHO	1578	10.04	2.80	158408	16	1606	160014	163953
ILL	2362	10.41	2.81	245859	13	1353	247212	249736
IND	2144	10.72	2.86	229821	16	1715	231536	233482
IOWA	3827	10.11	2.75	386739	55	5561	392300	400356
KANS	1342	10.74	2.94	144147	14	1504	145651	147353
KY	2135	10.30	2.80	219823	111	11433	231256	234222
LA	1037	11.60	3.18	120331	22	2552	122883	123308
MAINE	627	11.69	3.19	73320	6	701	74021	74933
MD	1513	11.35	3.08	171665	16	1816	173481	174790
MASS	562	11.98	3.26	67350	5	599	67949	68526
MICH	4704	10.56	2.86	496661	27	2851	499512	506141
MINN	8932	9.86	2.73	880294	47	4634	884928	896175
MISS	817	11.17	3.03	91278	16	1787	93065	93381
MO	2675	10.25	2.82	274156	21	2153	276309	278698
MONT	286	10.55	2.94	30175	12	1266	31441	32283
NEBR	1225	10.28	2.80	125907	22	2262	128149	130453
NEV	182	10.46	2.98	19033	2	209	19242	19560
N H	334	11.73	3.14	39175	3	352	39527	39999
N J	514	11.47	3.11	58967	4	459	59426	60218
N MEX	444	11.87	3.42	52706	9	1068	53774	54365
N Y	10168	10.58	2.93	1075610	91	9628	1085238	1101166
N C	1480	11.47	3.14	169801	52	5964	175745	177097
N DAK	860	9.49	2.64	81600	15	1424	83024	85695
OHIO	4181	10.74	2.89	449004	48	5155	454139	459135
OKLA	1055	11.18	3.13	117958	22	2460	120418	121862
OREG	1036	11.06	2.89	114622	9	995	115617	117789
PA	7771	11.29	3.02	877713	55	6210	883923	889765
R I	53	11.99	3.28	6353	1	120	6473	6595
S C	499	12.10	3.13	60361	8	968	61329	62073
S DAK	1495	9.68	2.70	144653	19	1839	146492	149072
TENN	1976	10.63	2.85	209964	49	5209	215173	220360
TEX	3400	11.71	3.30	398176	11	1288	399464	402004
UTAH	920	10.52	2.97	96780	11	1157	97937	98888
VT	2094	11.22	3.04	234843	18	2020	236863	239659
VA	1834	11.05	3.03	202676	26	2873	205549	206967
WASH	2637	10.90	2.95	287325	10	1090	288415	291575
W VA	321	10.98	2.97	35259	18	1976	37235	37881
WIS	20729	10.26	2.74	2127573	163	16724	2144297	2180455
WYO	111	10.75	2.99	11936	5	538	12474	12900
U.S.	118795	10.67	2.91	12672822	1168	125155	12797982	12954601

1/ CASH RECEIPTS DIVIDED BY MILK FOR MILKFAT REPRESENTED IN COMBINED MARKETINGS.  
 2/ VALUED AT AVERAGE RETURNS PER 100 POUNDS OF MILK IN COMBINED MARKETINGS OF MILK AND CREAM.  
 3/ CASH RECEIPTS FROM MARKETINGS OF MILK AND CREAM PLUS VALUE OF MILK USED FOR HOME CONSUMPTION AND PRODUCER-CHURNED BUTTER.  
 4/ INCLUDES VALUE OF MILK FED TO CALVES.

NUMBER OF OPERATIONS WITH MILK COWS, BY STATES, 1975-78 1/

STATE	1975	1976	1977	1978
	NUMBER			
ALA	7,000	7,000	6,500	6,000
ALAS	60	60	60	60
ARIZ	950	1,000	970	970
ARK	8,000	8,000	8,000	7,500
CALIF	6,000	6,000	5,900	5,800
COLO	4,700	4,600	4,500	4,300
CONN	1,200	1,200	1,200	1,200
DEL	400	350	330	300
FLA	3,200	3,200	3,100	2,800
GA	5,000	4,000	4,000	3,600
HAW	100	80	80	70
IDAHO	5,800	5,400	5,200	4,900
ILL	10,000	9,000	9,000	8,000
IND	10,500	10,000	9,200	8,900
IOWA	19,000	19,000	17,500	17,000
KANS	8,000	7,200	6,500	6,000
KY	22,000	20,000	18,000	14,000
LA	8,000	7,500	6,500	5,000
MAINE	2,200	2,200	2,200	2,100
MD	4,200	3,700	3,300	2,900
MASS	1,400	1,400	1,400	1,400
MICH	12,000	11,000	10,500	10,000
MINN	34,000	31,000	29,000	28,000
MISS	8,500	8,000	7,300	6,300
MO	21,000	19,000	17,000	16,000
MONT	4,400	4,300	4,100	3,700
NEBR	8,500	7,500	7,000	6,500
NEV	430	400	400	400
N H	1,000	1,000	1,000	1,000
N J	1,100	1,100	1,000	950
N MEX	1,800	1,800	1,800	1,700
N Y	21,500	21,000	20,500	20,000
N C	11,000	10,000	9,400	9,000
N DAK	7,000	6,000	5,500	5,100
OHIO	14,800	14,100	13,600	13,200
OKLA	8,000	7,500	7,000	6,500
OREG	4,800	4,800	4,800	4,800
PA	25,000	24,000	24,000	23,000
R I	170	170	170	160
S C	3,700	3,600	3,300	3,000
S DAK	8,600	7,800	7,600	7,400
TENN	18,000	15,000	13,000	12,000
TEX	15,000	14,500	14,000	13,500
UTAH	2,800	2,700	2,700	2,700
VT	4,400	4,200	4,000	3,900
VA	12,800	11,700	10,800	10,000
WASH	5,000	4,700	4,500	4,300
W VA	5,600	5,500	5,200	4,600
WIS	53,000	51,000	49,000	47,000
WYO	2,000	1,900	1,900	1,700
U S	443,610	416,160	393,510	369,210

1/ AN OPERATION IS ANY PLACE HAVING ONE OR MORE MILK COWS, EXCLUDING COWS USED TO NURSE CALVES, ON HAND AT ANY TIME DURING THE YEAR.

## SUPPLY AND UTILIZATION OF MILK, UNITED STATES, 1975-78 1/

ITEM	1975	1976	1977	1978
	MILLION POUNDS			
MILK PRODUCTION	115,398	120,180	122,654	121,641
NET IMPORTS OF INGREDIENTS (M.E.) 2/	181	219	228	232
NET CHANGE IN STORAGE CREAM (M.E.) 3/	-17	39	-16	-11
TOTAL SUPPLY	115,562	120,438	122,866	121,862
UTILIZATION (MILK EQUIVALENT)				
USED IN MANUFACTURED PRODUCTS--				
CREAMERY BUTTER, TOTAL M.E.	21,992	21,947	24,396	22,372
M.E. OF BUTTER FROM WHEY CREAM	2,119	2,543	2,543	2,660
NET MILK EQUIVALENT	19,873	19,404	21,853	19,712
CHEESE:				
AMERICAN	16,452	20,581	20,480	20,737
OTHER	7,431	8,182	8,385	9,180
COTTAGE CHEESE, CREAMED	1,028	1,050	1,056	1,056
CANNED MILK:				
EVAPORATED, SWEETENED CONDENSED	2,020	1,892	1,809	1,725
BULK CONDENSED WHOLE MILK:				
UNSWEETENED	510	435	398	348
SWEETENED	176	208	182	186
DRY WHOLE MILK	464	554	514	549
ICE CREAM AND OTHER FROZEN DAIRY PRODUCTS, TOTAL M.E.	14,046	13,722	13,805	13,859
M.E. OF BUTTER AND CONDENSED MILK USED IN ICE CREAM	2,148	2,099	2,098	2,115
NET MILK EQUIVALENT	11,898	11,623	11,707	11,744
OTHER MANUFACTURED PRODUCTS 4/	672	744	684	707
TOTAL MANUFACTURED PRODUCTS	60,524	64,673	67,068	65,944
USED IN FLUID PRODUCTS--				
SOLD BY DEALERS	49,560	49,990	49,885	49,685
SOLD BY PRODUCERS				
DIRECTLY TO CONSUMERS 5/	1,563	1,512	1,495	1,490
TOTAL FLUID SALES	51,123	51,502	51,380	51,175
USED ON FARMS WHERE PRODUCED--				
FED TO CALVES	1,566	1,567	1,541	1,497
CONSUMED AS FLUID MILK, CREAM AND FARM-CHURNED BUTTER	1,495	1,392	1,283	1,168
TOTAL USED ON FARMS	3,061	2,959	2,824	2,665
RESIDUAL 6/	854	1,304	1,594	2,078
TOTAL UTILIZATION	115,562	120,438	122,866	121,862

1/ MILK PRODUCTION PLUS THE MILK EQUIVALENT OF NET IMPORTS OF DAIRY MANUFACTURING INGREDIENTS AND NET OUT-OF-STORAGE MOVEMENT OF CREAM EQUALS TOTAL SUPPLY. DATA ON MILK USED IN MANUFACTURING PRODUCTS ARE BASED ON TOTAL MILKFAT REQUIRED TO PRODUCE THE PRODUCTS AND INCLUDE THE MILK EQUIVALENT OF ANY IMPORTED INGREDIENTS USED. 2/ WHOLE MILK EQUIVALENT (MILKFAT BASIS) OF NET IMPORTS OF DAIRY MANUFACTURING INGREDIENTS SUCH AS FROZEN CREAM AND BUTTERFAT-SUGAR MIXTURES. 3/ WHOLE MILK EQUIVALENT OF NET OUT-OF-STORAGE MOVEMENT OF FLUID AND PLASTIC CREAM DURING THE YEAR. A NEGATIVE FIGURE REPRESENTS A NET MOVEMENT OF CREAM INTO STORAGE. 4/ WHOLE MILK EQUIVALENT OF DRY CREAM, MALTED MILK POWDER, PART-SKIM DRY MILK, DRY OR CONCENTRATED ICE CREAM MIX, DEHYDRATED BUTTERFAT AND OTHER MISCELLANEOUS PRODUCTS USING MILKFAT. 5/ SALES DIRECTLY TO CONSUMERS BY PRODUCERS WHO SELL ONLY MILK FROM THEIR OWN HERDS. ALSO INCLUDES MILK PRODUCED BY INSTITUTIONAL HERDS. 6/ RESIDUAL, INCLUDES MINOR MISCELLANEOUS USES AND ANY INACCURACIES IN PRODUCTION AND UTILIZATION ESTIMATES.

**END**