



AgEcon SEARCH
RESEARCH IN AGRICULTURAL & APPLIED ECONOMICS

The World's Largest Open Access Agricultural & Applied Economics Digital Library

This document is discoverable and free to researchers across the globe due to the work of AgEcon Search.

Help ensure our sustainability.

Give to AgEcon Search

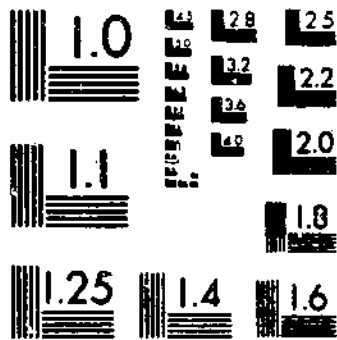
AgEcon Search
<http://ageconsearch.umn.edu>
aesearch@umn.edu

*Papers downloaded from **AgEcon Search** may be used for non-commercial purposes and personal study only. No other use, including posting to another Internet site, is permitted without permission from the copyright owner (not AgEcon Search), or as allowed under the provisions of Fair Use, U.S. Copyright Act, Title 17 U.S.C.*

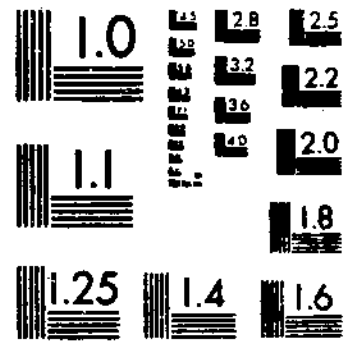
5B-249 (1981) USDA STATISTICAL BULLETINS [UPDATE](#)
STOCKS OF GRAINS AND FEEDS AND FINAL ESTIMATES BY STATES

1 OF 1

START



MICROCOPY RESOLUTION TEST CHART
NATIONAL BUREAU OF STANDARDS-1963-A



MICROCOPY RESOLUTION TEST CHART
NATIONAL BUREAU OF STANDARDS-1963-A

STOCKS OF GRAINS, OILSEEDS, AND HAY:

Final Estimates By States, 1974-79

STOCKS OF GRAINS, OILSEEDS, AND HAY: FINAL ESTIMATES BY STATES, 1974-79. Crop Reporting Board, Economics and Statistics Service, U.S. Department of Agriculture. Statistical Bulletin No. 649.

ABSTRACT

This publication presents final estimates of stocks of grains, oilseeds, and hay during the years 1974-79. Some estimates are slightly revised.

Washington, D.C. 20250

January 1981

CONTENTS

INTRODUCTION 4

UNITED STATES

	<u>PAGE</u>
CORN	6
SORGHUM	6
OATS	7
BARLEY	7
ALL WHEAT	8
DURUM WHEAT	8
RYE	9
SOYBEANS	9
FLAXSEED	10
ALL HAY	10

BY STATES

	<u>PAGE</u>
OFF-FARM STORAGE CAPACITY	5
CORN	11
SORGHUM	19
OATS	27
BARLEY	35
ALL WHEAT	43
DURUM WHEAT	51
RYE	53
SOYBEANS	61
FLAXSEED	69
ALL HAY	71

STOCKS OF GRAINS, OILSEEDS, AND HAY:

Final Estimates by States, 1974-79

This bulletin presents final estimates of stocks of grains, oilseeds, and hay in the United States during the years 1974-79. Preliminary estimates were published currently during that period in quarterly and other periodic Crop Reporting Board releases. Estimates of June 1 stocks began in 1976. Prior to that time, the midyear estimate was made as of July 1.

Estimates of farm stocks are made in the form of percentages of production, i.e., the amount of each commodity on farms expressed as a percentage of the previous year's production. These percentages are then converted to actual quantities by applying the adopted percentages of each crop to the estimated production. The farm stocks revisions published herein result primarily from 1974-78 production revisions as published December 1980 in Statistical Bulletin 646.

Estimates of off-farm stocks, which are based on quarterly surveys of mills, elevators, and warehouses, are largely a re-issue of the latest quarterly tables, although a few revisions were made on the basis of data that became available since the previous issuances.

In general, the level of U.S. stocks estimates changed less than 2 percent. However, there were larger revisions for several individual States.

Estimates of stocks in earlier years are available in Statistical Bulletin No. 592 for 1969-75, No. 508 for 1964-70, No. 395 for 1959-65, No. 304 for 1954-60, and No. 203 for 1949-55. Statistical Bulletin No. 203 also presents U.S. estimates back to October 1, 1935.

NUMBER AND CAPACITY OF OFF-FARM STORAGE FACILITIES, BY STATES
JANUARY 1, 1975-79

STATE	NUMBER OF FACILITIES			RATED OFF-FARM STORAGE CAPACITY				
	1977	1978	1979	1975	1976	1977	1978	1979
	1,000 BUSHELS							
ALA	174	178	178	25,900	32,400	35,370	37,290	37,290
ARIZ	65	76	74	28,910	30,580	29,760	34,330	35,010
ARK	240	283	270	155,480	162,880	171,660	192,180	205,470
CALIF	227	226	209	103,680	119,790	109,220	115,710	129,720
COLO	200	209	198	81,100	85,600	92,600	91,500	93,010
DEL	28	27	28	16,640	17,240	17,060	17,200	17,820
FLA	26	27	52	5,420	5,560	6,000	6,070	7,450
GA	303	364	376	36,400	42,400	49,800	61,100	63,210
IDAHO	236	231	249	51,860	55,170	59,350	64,070	75,130
ILL	1,199	1,177	1,213	627,800	664,600	725,900	775,260	815,630
IND	786	783	777	186,410	201,050	216,770	245,550	288,770
IOWA	1,184	1,150	1,120	524,000	557,000	587,900	635,000	677,500
KANS	1,109	1,086	1,069	782,000	780,000	780,000	830,000	846,000
KY	195	202	209	38,230	40,440	44,490	48,690	50,100
LA	116	131	138	76,870	78,200	83,500	87,010	91,620
MD	67	64	71	36,790	36,490	37,100	36,940	45,060
MICH	360	355	380	65,640	67,250	81,682	90,240	98,110
MINN	900	895	900	357,270	352,130	366,440	367,910	382,550
MISS	178	183	182	62,580	66,320	70,960	72,180	74,750
MO	616	611	615	192,730	193,270	202,100	204,140	217,510
MONT	304	298	282	47,920	49,260	51,220	54,000	52,000
NEBR	735	740	736	452,660	453,560	469,820	484,600	505,940
NEV	4	4	4	300	300	300	300	300
N J	24	24	26	2,370	2,350	2,370	2,200	2,480
N MEX	27	27	26	16,870	17,360	17,100	18,220	17,660
N Y	250	243	239	67,510	68,030	68,760	70,270	64,680
N C	471	492	501	52,730	54,990	58,520	70,240	73,100
N DAK	605	580	562	144,550	141,200	137,785	140,070	143,430
OHIO	693	713	719	193,000	208,000	222,000	228,800	260,600
OKLA	400	400	397	191,790	190,200	190,780	203,520	207,330
OREG	237	238	238	58,700	60,330	64,070	65,530	65,910
PA	340	337	349	26,030	25,740	25,970	28,500	31,020
S C	184	177	171	27,760	28,310	31,580	33,470	34,120
S DAK	391	386	384	83,440	83,280	83,430	83,820	85,560
TENN	133	146	141	42,390	42,750	43,300	49,670	51,340
TEX	890	896	923	719,040	737,050	723,140	720,350	759,000
UTAH	60	55	59	16,750	16,960	16,780	17,170	17,190
VA	233	241	243	26,500	27,600	29,200	29,920	30,830
WASH	298	324	324	164,090	165,850	175,500	186,370	190,050
W VA	10	9	10	270	390	430	530	480
WIS	452	628	632	118,060	118,900	118,720	124,000	128,000
WYO	51	50	50	5,040	6,650	7,060	6,330	6,800
OTH STS 1/	36	39	39	4,750	4,980	4,810	5,170	5,430
U S	15,037	15,305	15,363	5,918,230	6,092,410	6,310,307	6,635,420	6,984,960

1/ CONN, MAINE, MASS, N H, R I, VT.

UNITED STATES GRAIN STOCKS

CORN - STOCKS BY POSITIONS, UNITED STATES, QUARTERLY 1975-79

YEAR	QUARTER	DOMESTIC UNITS			METRIC UNITS		
		ON FARMS	OFF FARMS <u>1/</u>	TOTAL ALL POSITIONS	ON FARMS	OFF FARMS <u>1/</u>	TOTAL ALL POSITIONS
		1,000 BUSHEL			METRIC TONS		
1975	JAN 1	2,560,883	1,080,024	3,640,907	65 049 420	27 433 870	92 483 290
	APR 1	1,522,900	704,911	2,227,811	38 683 440	17 905 560	56 589 000
	JUN 1	NA	NA	<u>2/1,492,000</u>	NA	NA	<u>2/37 898 550</u>
	OCT 1	193,194	168,193	361,387	4 907 350	4 272 300	9 179 650
1976	JAN 1	3,203,242	1,270,300	4,473,542	81 366 090	32 267 110	113 633 200
	APR 1	1,923,759	912,996	2,836,755	48 865 730	23 191 170	72 056 900
	JUN 1	1,292,185	576,640	1,868,825	32 823 010	14 647 330	47 470 340
	OCT 1	233,193	166,459	399,652	5 923 380	4 228 250	10 151 630
1977	JAN 1	3,357,995	1,544,023	4,902,018	85 297 000	39 219 990	124 516 990
	APR 1	2,141,623	1,159,329	3,300,952	54 399 730	29 448 310	83 848 040
	JUN 1	1,582,768	787,263	2,370,031	40 204 160	19 997 400	60 201 560
	OCT 1	447,846	438,019	885,865	11 375 810	11 126 200	22 502 010
1978	JAN 1	3,873,623	1,678,678	5,552,301	98 394 560	42 640 390	141 034 950
	APR 1	2,549,170	1,360,245	3,909,415	64 751 900	34 551 810	99 303 710
	JUN 1	1,872,359	988,779	2,861,138	47 560 110	25 116 140	72 676 250
	OCT 1	666,727	444,708	1,111,435	16 935 650	11 296 100	28 231 750
1979	JAN 1	4,637,665	1,681,483	6,319,148	117 802 120	42 711 640	160 513 760
	APR 1	3,177,893	1,322,484	4,500,377	80 722 200	33 592 640	114 314 840
	JUN 1	2,318,006	969,208	3,287,214	58 880 060	24 619 020	83 499 080
	OCT 1	794,465	509,460	1,303,925	20 180 340	12 940 880	33 121 220
SORGHUM							
1975	JAN 1	121,041	257,843	378,884	3 074 580	6 549 510	9 624 090
	APR 1	63,193	145,278	208,471	1 605 180	3 690 230	5 295 410
	JUN 1	NA	NA	<u>2/131,000</u>	NA	NA	<u>2/3 327 550</u>
	OCT 1	7,849	27,188	35,037	199 370	690 610	889 980
1976	JAN 1	164,509	309,600	474,109	4 178 720	7 864 200	12 042 920
	APR 1	84,107	164,221	248,328	2 136 420	4 171 410	6 307 830
	JUN 1	49,951	104,090	154,041	1 268 810	2 644 010	3 912 820
	OCT 1	14,008	37,486	51,494	355 820	952 190	1 308 010
1977	JAN 1	158,699	331,631	490,330	4 031 140	8 423 820	12 454 960
	APR 1	87,333	208,250	295,583	2 218 360	5 289 790	7 508 150
	JUN 1	60,563	135,182	195,745	1 538 370	3 433 780	4 972 150
	OCT 1	21,396	69,646	91,042	543 480	1 769 090	2 312 570
1978	JAN 1	218,292	398,245	616,537	5 544 870	10 115 890	15 660 760
	APR 1	139,450	273,525	412,975	3 542 190	6 947 860	10 490 050
	JUN 1	108,316	210,749	319,065	2 751 350	5 353 270	8 104 620
	OCT 1	56,056	134,477	190,533	1 423 890	3 415 870	4 839 760
1979	JAN 1	235,515	401,484	636,999	5 982 360	10 198 160	16 180 520
	APR 1	140,606	276,684	417,290	3 571 560	7 028 100	10 599 660
	JUN 1	99,216	222,988	322,204	2 520 200	5 664 160	8 184 360
	OCT 1	40,847	118,683	159,530	1 037 560	3 014 690	4 052 250

SEE FOOTNOTES ON PAGE 10.

UNITED STATES GRAIN STOCKS

OATS - STOCKS BY POSITIONS, UNITED STATES, QUARTERLY 1974-79

YEAR	QUARTER	DOMESTIC UNITS			METRIC UNITS		
		ON FARMS	OFF FARMS 1/	TOTAL ALL POSITIONS	ON FARMS	OFF FARMS 1/	TOTAL ALL POSITIONS
		1,000 BUSHELS			METRIC TONS		
1974	OCT 1	497,668	155,720	653,388	7 223 630	2 260 270	9 483 900
1975	JAN 1	380,064	122,512	502,576	5 516 610	1 778 260	7 294 870
	APR 1	233,313	89,865	323,178	3 386 530	1 304 390	4 690 920
	JUN 1	NA	NA	2/224,000	NA	NA	2/3 251 350
	OCT 1	485,856	130,775	616,631	7 052 180	1 898 190	8 950 370
1976	JAN 1	398,688	94,092	492,780	5 786 940	1 365 740	7 152 680
	APR 1	247,174	70,101	317,275	3 587 720	1 017 510	4 605 230
	JUN 1	158,541	46,277	204,818	2 301 220	671 710	2 972 930
	OCT 1	417,306	112,445	529,751	6 057 180	1 632 130	7 689 310
1977	JAN 1	337,132	73,477	410,609	4 893 460	1 066 520	5 959 980
	APR 1	210,649	47,459	258,108	3 057 560	688 870	3 746 430
	JUN 1	128,692	35,603	164,295	1 867 960	516 780	2 384 740
	OCT 1	564,095	115,459	679,554	8 187 820	1 675 880	9 863 700
1978	JAN 1	485,267	82,707	567,974	7 043 630	1 200 490	8 244 120
	APR 1	360,516	61,317	421,833	5 232 880	890 010	6 122 890
	JUN 1	259,548	53,556	313,104	3 767 330	777 360	4 544 690
	OCT 1	530,881	115,008	645,889	7 705 720	1 669 340	9 375 060
1979	JAN 1	465,769	80,570	546,339	6 760 620	1 169 470	7 930 090
	APR 1	317,307	64,291	381,598	4 605 700	933 180	5 538 880
	JUN 1	229,267	50,703	279,970	3 327 800	735 950	4 063 750
BARLEY							
1974	OCT 1	176,641	126,165	302,806	3 845 900	2 746 920	6 592 820
1975	JAN 1	125,032	102,728	227,760	2 722 250	2 236 640	4 958 890
	APR 1	62,975	71,227	134,202	1 371 120	1 550 780	2 921 900
	JUN 1	NA	NA	2/92,000	NA	NA	2/2 003 060
	OCT 1	214,939	126,963	341,902	4 679 740	2 764 290	7 444 030
1976	JAN 1	161,797	113,508	275,305	3 522 710	2 471 340	5 994 050
	APR 1	98,652	86,360	185,012	2 147 890	1 880 270	4 028 160
	JUN 1	63,693	64,666	128,359	1 386 750	1 407 940	2 794 690
	OCT 1	213,370	152,354	365,724	4 645 580	3 317 120	7 962 700
1977	JAN 1	157,605	117,511	275,116	3 431 440	2 558 500	5 989 940
	APR 1	92,152	97,316	189,468	2 006 370	2 118 810	4 125 180
	JUN 1	52,959	73,448	126,407	1 153 050	1 599 140	2 752 190
	OCT 1	270,105	139,334	409,439	5 880 840	3 033 640	8 914 480
1978	JAN 1	221,954	110,266	332,220	4 832 480	2 400 760	7 233 240
	APR 1	150,128	89,043	239,171	3 268 650	1 938 680	5 207 330
	JUN 1	105,682	67,377	173,059	2 300 950	1 466 960	3 767 910
	OCT 1	342,521	129,611	472,132	7 457 510	2 821 950	10 279 460
1979	JAN 1	277,020	114,164	391,184	6 031 400	2 485 630	8 517 030
	APR 1	198,700	97,753	296,453	4 326 180	2 128 320	6 454 500
	JUN 1	149,428	78,615	228,043	3 253 410	1 711 640	4 965 050

SEE FOOTNOTES ON PAGE 10.

UNITED STATES GRAIN STOCKS

ALL WHEAT - STOCKS BY POSITIONS, UNITED STATES, QUARTERLY 1974-79

YEAR	QUARTER	DOMESTIC UNITS			METRIC UNITS		
		ON FARMS	OFF FARMS <u>1/</u>	TOTAL ALL POSITIONS	ON FARMS	OFF FARMS <u>1/</u>	TOTAL ALL POSITIONS
		1,000 BUSHELS			METRIC TONS		
1974	OCT 1	680,469	881,665	1,562,134	18 519 330	23 994 990	42 514 320
1975	JAN 1	446,289	661,171	1,107,460	12 146 000	17 994 130	30 140 130
	APR 1	274,106	387,982	662,088	7 459 940	10 559 140	18 019 080
	JUN 1	NA	NA	2/435,000	NA	NA	2/11 838 760
	OCT 1	756,805	1,129,044	1,885,849	20 596 860	30 727 540	51 324 400
1976	JAN 1	548,600	838,028	1,386,628	14 930 450	22 807 380	37 737 830
	APR 1	343,212	594,151	937,363	9 340 700	16 170 140	25 510 840
	JUN 1	235,861	429,768	665,629	6 419 080	11 696 370	18 115 450
	OCT 1	835,437	1,354,946	2,190,383	22 736 870	36 875 590	59 612 460
1977	JAN 1	667,210	1,116,376	1,783,586	18 158 480	30 382 780	48 541 260
	APR 1	512,360	878,534	1,390,894	13 944 150	23 909 780	37 853 930
	JUN 1	427,337	685,912	1,113,249	11 630 210	18 667 470	30 297 680
	OCT 1	1,039,227	1,365,322	2,404,549	28 283 120	37 157 980	65 441 100
1978	JAN 1	834,577	1,162,459	1,997,036	22 713 460	31 636 950	54 350 410
	APR 1	642,106	887,832	1,529,938	17 475 260	24 162 830	41 638 090
	JUN 1	494,018	683,790	1,177,808	13 444 970	18 609 710	32 054 680
	OCT 1	1,029,681	1,104,169	2,133,850	28 023 320	30 050 560	58 073 880
1979	JAN 1	814,400	816,364	1,630,764	22 164 340	22 217 790	44 382 130
	APR 1	633,254	596,172	1,229,426	17 234 350	16 225 140	33 459 490
	JUN 1	484,320	439,777	924,097	13 181 030	11 968 770	25 149 800
DURUM WHEAT <u>3/</u>							
1974	OCT 1	70,196	21,377	91,573	1 910 420	581 790	2 492 210
1975	JAN 1	51,832	18,727	70,559	1 410 640	509 670	1 920 310
	APR 1	37,836	11,498	49,334	1 029 730	312 920	1 342 650
	JUN 1	NA	NA	2/ NA	NA	NA	2/ NA
	OCT 1	87,406	27,657	115,063	2 378 800	752 700	3 131 500
1976	JAN 1	65,412	20,528	85,940	1 780 220	558 680	2 338 900
	APR 1	53,033	18,065	71,098	1 443 320	491 650	1 934 970
	JUN 1	38,906	14,550	53,456	1 058 850	395 990	1 454 840
	OCT 1	110,544	39,571	150,115	3 008 510	1 076 950	4 085 460
1977	JAN 1	94,999	32,631	127,630	2 585 450	888 070	3 473 520
	APR 1	79,347	28,895	108,242	2 159 470	786 390	2 945 860
	JUN 1	70,643	21,120	91,763	1 922 590	574 790	2 497 380
	OCT 1	103,462	36,338	139,800	2 815 770	988 960	3 804 730
1978	JAN 1	81,891	26,524	108,415	2 228 710	721 860	2 950 570
	APR 1	61,635	29,754	91,389	1 677 430	809 770	2 487 200
	JUN 1	49,626	17,265	66,891	1 350 600	469 880	1 820 480
	OCT 1	120,309	30,012	150,321	3 274 270	816 790	4 091 060
1979	JAN 1	98,694	18,312	117,006	2 686 010	498 370	3 184 380
	APR 1	82,966	21,519	104,485	2 257 960	585 650	2 843 610
	JUN 1	69,685	16,084	85,769	1 896 510	437 730	2 334 240

SEE FOOTNOTES ON PAGE 10.

UNITED STATES GRAIN STOCKS

RYE - STOCKS BY POSITIONS, UNITED STATES, QUARTERLY 1974-79

YEAR	QUARTER	DOMESTIC UNITS			METRIC UNITS		
		ON FARMS	OFF FARMS 1/	TOTAL ALL POSITIONS	ON FARMS	OFF FARMS 1/	TOTAL ALL POSITIONS
		1,000 BUSHELS			METRIC TONS		
1974	OCT 1	10,935	8,881	19,816	277 760	225 590	503 350
1975	JAN 1	6,082	5,509	11,591	154 490	139 940	294 430
	APR 1	3,861	4,080	7,941	98 070	103 640	201 710
	JUN 1	N/A	N/A	2/6,622	N/A	N/A	2/168 210
	OCT 1	8,997	5,654	14,651	228 530	143 620	372 150
1976	JAN 1	5,299	3,777	9,076	134 600	95 940	230 540
	APR 1	2,924	2,830	5,754	74 270	71 890	146 160
	JUN 1	2,032	2,371	4,403	51 620	60 230	111 850
	OCT 1	7,908	6,120	14,028	200 870	155 460	356 330
1977	JAN 1	4,727	4,151	8,878	120 070	105 440	225 510
	APR 1	2,836	3,367	6,203	72 040	85 530	157 570
	JUN 1	1,949	2,465	4,414	49 510	62 610	112 120
	OCT 1	10,070	4,074	14,144	255 790	103 480	359 270
1978	JAN 1	5,879	2,910	8,789	149 330	73 920	223 250
	APR 1	3,986	1,963	5,849	98 710	49 860	148 570
	JUN 1	2,538	1,431	3,969	64 470	36 350	100 820
	OCT 1	15,666	6,877	22,543	397 930	174 680	572 610
1979	JAN 1	9,990	5,178	15,168	253 760	131 530	385 290
	APR 1	7,769	3,895	11,664	197 340	98 940	296 280
	JUN 1	6,026	2,947	8,973	153 070	74 860	227 930

SOYBEANS - STOCKS BY POSITIONS, UNITED STATES, QUARTERLY 1975-79

YEAR	QUARTER	DOMESTIC UNITS			METRIC UNITS		
		ON FARMS	OFF FARMS 1/	TOTAL ALL POSITIONS	ON FARMS	OFF FARMS 1/	TOTAL ALL POSITIONS
		1975	JAN 1	484,978	505,392	990,370	13 198 940
1975	APR 1	332,096	323,317	655,413	9 038 170	8 799 250	17 837 420
	JUN 1	N/A	N/A	2/424,000	N/A	N/A	2/11 539 390
	SEP 1	78,229	109,922	188,151	2 129 040	2 991 590	5 120 630
	1976	JAN 1	590,926	665,689	1,256,615	16 082 370	18 117 090
APR 1		411,535	456,283	867,818	11 200 150	12 417 990	23 618 140
JUN 1		254,029	300,938	554,967	6 913 540	8 190 190	15 103 730
SEP 1		86,159	158,781	244,940	2 344 860	4 321 310	6 666 170
1977	JAN 1	473,405	559,045	1,032,450	12 883 970	15 214 710	28 098 680
	APR 1	227,794	390,214	618,008	6 199 540	10 619 880	16 819 420
	JUN 1	92,400	243,335	335,735	2 514 720	6 622 490	9 137 210
	SEP 1	32,756	70,168	102,924	891 470	1 909 660	2 801 130
1978	JAN 1	674,550	652,400	1,326,950	18 358 240	17 755 420	36 113 660
	APR 1	394,405	455,448	849,853	10 733 950	12 395 260	23 129 210
	JUN 1	207,541	298,815	506,356	5 648 340	8 132 410	13 780 750
	SEP 1	59,132	102,044	161,176	1 609 310	2 777 180	4 386 490
1979	JAN 1	699,556	692,534	1,392,090	19 038 790	18 847 690	37 886 480
	APR 1	412,570	467,646	880,216	11 228 320	12 727 240	23 955 560
	JUN 1	241,255	284,850	526,105	6 565 890	7 752 350	14 318 240
	SEP 1	61,509	112,579	174,088	1 674 000	3 063 900	4 737 900

SEE FOOTNOTES ON PAGE 10.

UNITED STATES GRAIN STOCKS

FLAXSEED - STOCKS BY POSITIONS, UNITED STATES, QUARTERLY 1974-79

YEAR	QUARTER	DOMESTIC UNITS			METRIC UNITS		
		ON FARMS	OFF FARMS 1/	TOTAL ALL POSITIONS	ON FARMS	OFF FARMS 1/	TOTAL ALL POSITIONS
1974	OCT 1	7,984	4,599	12,583	202 800	116 820	319 620
1975	JAN 1	4,022	3,745	7,767	102 160	95 130	197 290
	APR 1	2,751	1,907	4,658	69 880	48 440	118 320
	JUN 1	N/A	N/A	2/3,031	N/A	N/A	2/76 990
	OCT 1	7,552	6,228	13,780	191 830	158 200	350 030
1976	JAN 1	4,220	5,533	9,753	107 190	140 540	247 730
	APR 1	3,009	4,164	7,173	76 430	105 770	182 200
	JUN 1	1,830	3,060	4,890	46 480	77 730	124 210
	OCT 1	3,948	4,971	8,919	100 280	126 270	226 550
1977	JAN 1	2,745	4,375	7,120	69 730	111 130	180 860
	APR 1	1,998	2,879	4,877	50 750	73 130	123 880
	JUN 1	1,027	1,934	2,961	26 090	49 130	75 220
	OCT 1	8,787	4,307	13,094	223 200	109 400	332 600
1978	JAN 1	5,461	5,168	10,629	138 720	131 270	269 990
	APR 1	4,241	3,905	8,146	107 730	99 190	206 920
	JUN 1	2,709	2,606	5,315	68 810	66 200	135 010
	OCT 1	5,171	3,390	8,561	131 350	86 110	217 460
1979	JAN 1	3,446	4,027	7,473	87 530	102 290	189 820
	APR 1	2,349	3,039	5,388	59 670	77 190	136 860
	JUN 1	977	1,609	2,586	24 820	40 870	65 690

ALL HAY - STOCKS ON FARMS, UNITED STATES, 1975-79

DATE	DOMESTIC UNITS				
	1975	1976	1977	1978	1979
	1,000 TONS				
JAN 1	84,687	86,411	77,651	92,136	99,024
MAY 1	18,505	25,541	19,540	24,184	30,108
	METRIC UNITS				
	METRIC TONS				
JAN 1	76 826 750	78 390 740	70 443 800	83 584 370	89 833 060
MAY 1	16 787 450	23 170 410	17 726 390	21 939 360	27 313 520

N/A - NOT AVAILABLE. 1/ INCLUDES STOCKS AT MILLS, ELEVATORS, WAREHOUSES, TERMINALS, AND PROCESSORS. 2/ THE DATE OF THE MID-YEAR REPORT WAS CHANGED FROM JULY 1 TO JUNE 1 IN 1976. U.S. DATA FOR JUNE 1, 1975 WERE DERIVED FROM JULY 1, 1975 STOCKS BY ADJUSTING FOR DISAPPEARANCE. STATE AND NATIONAL TOTALS FOR JULY 1, 1975 ARE SHOWN IN THE STATE TABLES IN THIS BULLETIN. JUNE 1, 1975 DATA BY STATES IS NOT AVAILABLE. 3/ INCLUDED IN ALL WHEAT.

CORN - STOCKS BY POSITIONS, BY STATES, QUARTERLY, JANUARY 1, 1975-79

STATE	ON	OFF	TOTAL ALL	ON	OFF	TOTAL ALL	ON	OFF	TOTAL ALL
	FARMS	FARMS	POSITIONS	FARMS	FARMS	POSITIONS	FARMS	FARMS	POSITIONS
	1975			1976			1977		
1,000 BUSHELS									
ALA	13,545	3,251	16,796	13,860	2,712	16,572	19,680	4,402	24,082
ARIZ	170	*	*	198	*	*	840	1,025	1,865
ARK	729	189	918	950	199	1,149	1,638	87	1,725
CALIF	2,408	8,525	10,933	4,153	12,984	17,137	3,828	12,995	16,823
COLO	20,110	12,100	32,210	20,093	12,724	32,817	25,704	17,778	43,482
CONN		*	*		*	*		*	*
DEL	5,670	7,363	13,033	4,692	6,002	10,694	4,290	7,363	11,653
FLA	2,707	847	3,554	3,713	739	4,452	4,320	1,174	5,494
GA	53,693	8,439	62,132	54,802	8,734	63,536	56,246	16,227	72,473
IDAHO	1,686	232	1,918	1,260	270	1,530	1,952	310	2,262
ILL	414,018	255,000	669,018	639,520	312,667	952,187	632,466	379,875	1,012,341
IND	201,568	70,247	271,815	281,387	88,022	369,409	374,220	104,150	478,370
IOWA	590,480	207,346	797,826	726,570	232,653	959,223	751,296	298,795	1,050,091
KANS	43,537	73,146	116,683	43,722	75,818	119,540	51,552	70,392	121,944
KY	54,653	11,797	66,450	53,546	13,618	67,164	88,781	18,788	107,569
LA	1,135	11,824	12,959	833	17,340	18,173	1,500	13,280	14,780
MAINE		*	*		*	*		*	*
MD	15,183	17,102	32,285	19,228	18,853	38,081	24,343	20,603	44,946
MASS		*	*		*	*		*	*
MICH	73,470	20,586	94,056	102,080	24,345	126,425	80,730	22,769	103,499
MINN	237,770	59,139	296,909	281,106	75,426	356,532	224,672	79,362	304,034
MISS	3,483	289	3,772	3,389	1,263	4,652	3,961	1,117	5,078
MO	84,877	34,251	119,128	91,854	31,876	123,730	92,141	37,596	129,737
MONT	423	*	*	358	*	*	495	*	*
NEBR	215,460	93,893	309,353	291,856	115,159	407,015	295,545	137,424	432,969
NEV		*	*		*	*		*	*
N H		*	*		*	*		*	*
N J	4,188	249	4,437	4,374	148	4,522	4,846	679	5,525
N MEX	1,698	*	*	3,000	1,521	4,521	3,528	2,650	6,178
N Y	28,665	*	*	30,820	*	*	34,810	*	*
N C	54,165	17,533	71,698	45,808	18,750	64,558	52,640	24,400	77,040
N DAK	5,712	820	6,532	5,355	954	6,309	5,059	808	5,867
OHIO	132,750	66,537	199,287	149,098	71,919	221,017	188,861	98,343	287,204
OKLA	915	1,458	2,373	1,238	1,576	2,814	1,611	2,664	4,275
OREG	783	331	1,114	340	193	533	475	279	754
PA	62,370	5,202	67,572	63,763	5,953	69,716	73,278	5,347	78,625
R I		*	*		*	*		*	*
S C	15,038	4,912	19,950	14,212	4,910	19,122	16,648	8,782	25,430
S DAK	49,210	7,403	56,613	45,788	8,370	54,158	33,480	5,160	38,640
TENN	19,054	2,647	21,701	20,664	2,349	23,013	30,488	3,536	34,024
TEX	4,048	4,775	8,823	8,292	69,667	77,959	24,180	102,724	126,904
UTAH	437	380	817	542	255	797	608	479	1,087
VT		*	*		*	*		*	*
VA	24,624	8,815	33,439	25,357	8,886	34,243	29,180	9,656	38,836
WASH	1,361	583	1,944	1,414	918	2,332	1,648	1,134	2,782
W VA	3,762	*	*	3,868	*	*	3,597	*	*
WIS	114,431	12,626	127,057	138,859	15,822	154,681	131,710	22,064	133,774
WYO	1,297	101	1,398	1,280	76	1,356	1,148	*	*
UNALL*		7,086	41,804		6,629	41,873		9,806	49,856
U S	2,560,883	1,080,024	3,640,907	3,203,242	1,270,300	4,473,542	3,357,995	1,544,023	4,902,018

CORN - STOCKS BY POSITIONS, BY STATES, QUARTERLY, JANUARY 1, 1975-79

STATE	ON	OFF	TOTAL ALL	ON	OFF	TOTAL ALL
	FARMS	FARMS 1/	POSITIONS	FARMS	FARMS 1/	POSITIONS
	1978			1979		
1,000 BUSHELS						
ALA	6,416	3,928	10,344	11,696	4,356	16,052
ARIZ	2,500	1,766	4,266	2,875	1,910	4,785
ARK	1,504	512	2,016	900	204	1,104
CALIF	5,157	11,553	16,710	8,143	16,031	24,174
COLO	38,698	16,341	55,039	37,741	14,840	52,581
CONN	*	*	*	*	*	*
DEL	2,519	5,756	8,275	4,220	5,664	9,884
FLA	3,349	465	3,814	6,047	1,403	7,450
GA	17,520	7,192	24,712	54,750	11,926	66,676
IDAHO	1,720	233	1,953	2,725	290	3,015
ILL	663,264	389,700	1,052,964	694,327	371,030	1,065,357
IND	342,047	117,299	459,346	348,192	128,994	477,186
IOWA	797,306	331,136	1,128,442	1,078,758	334,909	1,413,667
KANS	46,771	78,929	125,700	48,960	67,593	116,553
KY	79,380	17,115	96,495	77,903	15,926	94,829
LA	1,014	14,626	15,640	776	12,861	13,637
MAINE	*	*	*	*	*	*
MD	12,528	18,810	31,338	24,609	19,166	43,775
MASS	*	*	*	*	*	*
MICH	118,524	33,665	152,189	128,304	35,485	163,789
MINN	438,000	118,762	556,762	560,071	124,130	684,201
MISS	2,650	1,273	3,923	2,646	1,007	3,653
MO	108,756	42,481	151,237	116,058	45,044	161,102
MONT	486	*	*	540	*	*
NEBR	421,493	172,395	593,888	564,435	178,849	743,284
NEV	*	*	*	*	*	*
N H	*	*	*	*	*	*
N J	4,782	518	5,300	5,436	392	5,828
N MEX	3,591	2,514	6,105	1,908	1,104	3,012
N Y	37,306	3,325	40,631	32,508	*	*
N C	31,059	20,332	51,391	44,992	22,037	67,029
N DAK	15,184	1,321	16,505	21,330	1,755	23,085
OHIO	197,652	95,456	293,108	204,687	101,756	306,443
OKLA	2,649	2,290	4,939	845	1,293	2,138
OREG	570	290	860	679	138	817
PA	71,245	6,046	77,291	81,130	6,316	87,446
R I	*	*	*	*	*	*
S C	13,455	6,977	20,432	13,794	5,279	19,073
S DAK	81,184	11,679	92,863	145,591	18,717	164,308
TENN	29,784	4,010	33,794	26,413	3,904	30,317
TEX	27,489	99,209	126,698	18,720	69,005	87,725
UTAH	451	287	738	648	346	994
VT	*	*	*	*	*	*
VA	17,636	7,159	24,795	26,145	8,984	35,129
WASH	4,189	2,515	6,704	2,964	4,148	7,112
W VA	3,397	*	*	3,841	*	*
WIS	218,868	28,323	247,191	229,320	32,449	261,769
WYO	1,530	125	1,655	2,038	176	2,214
UNALL*		2,365	6,248		11,066	47,955
U S	3,873,623	1,678,678	5,552,301	4,637,665	1,681,483	6,319,148

SEE FOOTNOTES ON PAGE 71.

CORN - STOCKS BY POSITIONS, BY STATES, QUARTERLY, APRIL 1, 1975-79

STATE	ON	OFF	TOTAL ALL	ON	OFF	TOTAL ALL	ON	OFF	TOTAL ALL
	FARMS	FARMS 1/	POSITIONS	FARMS	FARMS 1/	POSITIONS	FARMS	FARMS 1/	POSITIONS
	1975			1976			1977		
1,000 BUSHELS									
ALA	7,043	2,407	9,450	8,580	2,439	11,019	11,040	2,585	13,625
ARIZ	68	80	148	79	126	205	151	780	931
ARK	233	193	426	418	*	*	630	176	806
CALIF	1,445	5,479	6,924	1,384	7,110	8,494	1,276	5,269	6,545
COLO	8,467	6,126	14,593	7,213	8,169	15,382	12,852	10,503	23,355
CONN		*	*		*	*		*	*
DEL	2,520	5,558	8,078	1,564	4,168	5,732	1,544	5,195	6,739
FLA	1,805	392	2,197	2,194	557	2,751	2,016	508	2,524
GA	36,848	5,083	41,931	29,986	5,497	35,483	34,819	9,671	44,490
IDAHO	993	202	1,195	822	120	942	732	180	912
ILL	202,950	166,180	369,130	338,569	227,798	566,367	396,842	308,950	705,792
IND	96,908	46,600	143,508	143,452	74,105	217,557	207,900	86,723	294,623
IOWA	406,560	123,344	529,904	514,188	162,710	676,898	563,472	227,787	791,259
KANS	22,428	43,721	66,149	22,566	49,534	72,100	27,494	48,632	76,126
KY	32,616	8,343	40,959	29,845	7,924	37,769	41,616	14,646	56,262
LA	581	7,468	8,049	338	15,609	15,947	562	10,168	10,730
MAINE		*	*		*	*		*	*
MD	9,202	11,758	20,960	8,096	14,945	23,041	9,853	14,729	24,582
MASS		*	*		*	*		*	*
MICH	40,290	14,924	55,214	54,560	15,191	69,751	56,511	19,841	76,352
MINN	153,636	52,187	205,823	175,182	61,964	237,146	145,376	69,638	215,014
MISS	1,653	341	1,994	1,427	669	2,096	1,536	998	2,534
MO	48,292	21,990	70,282	52,731	24,655	77,386	57,371	29,747	87,118
MONT	85	*	*	146	*	*	248	*	*
NEBR	135,660	51,990	187,650	176,120	76,708	252,828	181,475	90,611	272,086
NEV		*	*		*	*		*	*
N H		*	*		*	*		*	*
N J	2,527	160	2,687	1,823	196	2,019	3,462	*	*
N MEX	755	*	*	1,125	*	*	1,310	1,688	2,998
N Y	18,428	1,156	19,584	18,492	*	*	20,886	1,610	22,496
N C	28,260	9,826	38,086	24,502	13,196	37,698	37,600	14,390	51,990
N DAK	3,427	459	3,886	3,570	648	4,218	3,509	519	4,028
OHIO	71,685	50,963	122,648	99,398	51,119	150,517	121,973	68,689	190,662
OKLA	366	1,167	1,533	510	1,025	1,535	403	1,803	2,206
OREG	184	257	441	170	137	307	266	162	428
PA	40,986	4,864	45,850	40,738	4,672	45,410	49,914	5,336	55,250
R I		*	*		*	*		*	*
S C	7,686	3,571	11,257	6,358	2,526	8,884	8,324	5,506	13,830
S DAK	32,294	3,785	36,079	33,300	5,030	38,330	19,716	3,850	23,566
TENN	11,366	1,918	13,284	11,808	2,548	14,356	18,175	3,097	21,272
TEX	1,214	33,254	34,468	3,554	41,297	44,851	13,020	65,817	78,837
UTAH	224	315	539	284	265	549	311	248	559
VT		*	*		*	*		*	*
VA	14,136	6,492	20,628	13,922	8,225	22,147	16,099	6,419	22,518
WASH	248	440	688	424	933	1,357	471	538	1,009
W VA	2,257	*	*	2,431	*	*	2,362	*	*
WIS	75,750	10,373	86,123	91,250	16,227	107,477	67,932	19,147	87,079
WYO	824	55	879	640	27	667	574	42	616
UNALL*		1,490	4,587		4,927	27,539		3,131	9,203
U S	1,522,900	704,911	2,227,811	1,923,759	912,996	2,836,755	2,141,623	1,159,329	3,300,952

CORN - STOCKS BY POSITIONS, BY STATES, QUARTERLY, APRIL 1, 1975-79

STATE	ON	OFF	TOTAL ALL	ON	OFF	TOTAL ALL
	FARMS	FARMS 1/	POSITIONS	FARMS	FARMS 1/	POSITIONS
	1978			1979		
	1,000 BUSHEL					
ALA	2,936	3,942	6,878	5,168	3,568	8,736
ARIZ	600	*	*	863	1,427	2,290
ARK	638	478	1,116	270	475	745
CALIF	2,292	6,897	9,189	4,957	8,917	13,874
COLO	16,930	9,995	26,925	24,090	8,240	32,330
CONN		*	*		*	*
DEL	484	5,088	5,572	904	4,093	4,997
FLA	1,570	543	2,113	2,668	857	3,525
GA	13,200	6,170	19,370	22,500	6,594	29,094
IDAHO	585	212	797	1,009	159	1,168
ILL	402,696	317,300	719,996	446,353	304,700	751,053
IND	196,360	99,929	296,289	187,488	93,872	281,360
IOWA	589,788	269,947	859,735	812,763	274,622	1,087,385
KANS	32,256	58,694	90,950	33,660	45,831	79,491
KY	42,336	12,425	54,761	43,146	11,090	54,236
LA	338	10,806	11,144	250	8,416	8,666
MAINE		*	*		*	*
MD	6,048	13,712	19,760	10,301	12,704	23,005
MASS		*	*		*	*
MICH	74,078	27,014	101,092	83,592	23,736	107,328
MINN	318,000	109,200	427,200	457,070	114,069	571,139
MISS	749	*	*	1,210	1,209	2,419
MO	74,518	32,945	107,463	78,039	32,477	110,516
MONT	224	*	*	216	*	*
NEBR	298,287	129,955	428,242	389,003	152,244	541,247
NEV		*	*		*	*
N H		*	*		*	*
N J	2,356	*	*	3,187	307	3,494
N MEX	1,847	1,571	3,418	1,145	593	1,738
N Y	23,942	*	*	19,092	3,910	23,002
N C	14,198	13,627	27,825	27,968	14,253	42,221
N DAK	11,008	1,121	12,129	13,746	1,807	15,553
OHIO	121,632	82,131	203,763	128,877	81,872	210,749
OKLA	1,091	2,373	3,464	169	706	875
OREG	285	159	444	332	103	435
PA	52,320	5,498	57,818	55,632	6,708	62,340
R I					*	*
S C	5,920	4,062	9,982	7,524	3,610	11,134
S DAK	45,666	8,286	53,952	104,755	12,765	117,520
TENN	15,885	3,425	19,310	15,484	3,377	18,861
TEX	8,085	73,002	81,087	10,080	40,328	50,408
UTAH	220	289	509	245	224	469
VT		*	*		*	*
VA	6,988	6,693	13,681	14,641	6,434	21,075
WASH	1,523	2,645	4,168	1,112	3,747	4,859
W VA	1,798	*	*	2,367	*	*
WIS	158,600	30,367	188,967	164,640	30,620	195,260
WYO	893	66	959	1,377	108	1,485
UNALL*		9,678	39,347		1,712	4,295
U S	2,549,170	1,360,245	3,909,415	3,177,893	1,322,484	4,500,377

SEE FOOTNOTES ON PAGE 71.

CORN - STOCKS BY POSITIONS, BY STATES, QUARTERLY, JULY 1, 1975 AND JUNE 1, 1976-79

STATE	ON	OFF	TOTAL ALL	ON	OFF	TOTAL ALL	ON	OFF	TOTAL ALL
	FARMS	FARMS 1/	POSITIONS	FARMS	FARMS 1/	POSITIONS	FARMS	FARMS 1/	POSITIONS
	JULY 1, 1975			JUNE 1, 1976			JUNE 1, 1977		
1,000 BUSHELS									
ALA	3,793	1,089	4,882	5,280	1,857	7,137	6,720	1,732	8,452
ARIZ	34	*	*	40	14	54	67	352	419
ARK	71	122	193	247	140	387	302	121	423
CALIF	241	1,635	1,876	831	3,771	4,602	638	5,025	5,663
COLO	3,704	3,189	6,893	5,667	4,041	9,708	7,069	8,595	15,664
CONN		*	*		*	*		*	*
DEL	1,260	3,132	4,392	626	2,844	3,470	1,030	3,882	4,912
FLA	902	349	1,251	1,688	510	2,198	1,008	353	1,361
GA	20,003	3,321	23,324	22,748	3,145	25,893	28,123	5,384	33,507
IDAHO	452	107	559	438	274	712	523	95	618
ILL	97,416	75,740	173,156	225,713	135,562	361,275	297,631	205,400	503,031
IND	58,145	22,001	80,146	93,796	49,290	143,086	159,390	55,272	214,662
IOWA	222,640	69,362	292,002	368,874	113,523	482,397	422,604	164,283	586,887
KANS	10,554	21,655	32,209	15,514	33,650	49,164	20,621	34,239	54,860
KY	18,512	3,386	21,898	12,289	3,545	15,834	31,906	8,782	40,688
LA	264	7,751	8,015	180	6,214	6,394	281	9,872	10,153
MAINE		*	*		*	*		*	*
MD	5,981	5,469	11,450	3,542	10,214	13,756	6,955	10,186	17,141
MASS		*	*		*	*		*	*
MICH	17,775	5,672	23,447	29,920	6,631	36,551	38,750	10,773	49,523
MINN	80,476	20,726	101,202	122,220	43,311	165,531	112,336	48,088	160,424
MISS	886	413	1,299	832	1,093	1,925	1,132	685	1,817
MO	21,951	10,612	32,563	34,020	17,529	51,549	39,986	20,946	60,932
MONT	34	*	*	110	*	*	165	*	*
NEBR	79,800	26,533	106,333	115,736	50,847	166,583	129,625	60,265	189,890
NEV		*	*		*	*		*	*
N H		*	*		*	*		*	*
N J	1,300	*	*	1,094	149	1,243	1,780	*	*
N MEX	340	111	451	450	518	968	605	1,125	1,730
N Y	9,419	707	10,126	9,483	467	9,950	13,460	*	*
N C	17,663	5,108	22,771	15,980	6,648	22,628	21,056	9,350	30,406
N DAK	1,387	296	1,683	2,071	365	2,336	1,795	566	2,361
OHIO	34,515	26,966	61,481	62,124	33,943	96,067	94,430	43,721	138,151
OKLA	92	618	710	255	719	974	151	1,266	1,417
OREG	88	148	236	102	169	271	114	179	293
PA	25,839	2,326	28,165	26,568	3,089	29,657	37,170	4,881	42,051
R I									
S C	3,342	1,470	4,812	2,618	1,366	3,984	5,203	2,531	7,734
S DAK	19,223	2,470	21,693	27,473	2,790	30,263	14,880	2,745	17,625
TENN	6,686	1,178	7,864	7,749	1,920	9,669	12,899	1,800	14,699
TEX	405	12,163	12,568	1,185	23,006	24,191	5,580	42,925	48,505
UTAH	112	174	286	168	222	390	135	206	341
VT		*	*		*	*		*	*
VA	8,208	3,490	11,698	8,452	4,327	12,779	10,062	4,831	14,893
WASH	74	188	262	212	332	544	235	268	503
W VA	1,455	*	*	2,044	*	*	1,718	*	*
WIS	35,457	4,597	40,054	63,478	7,665	71,143	54,346	12,168	66,514
WYO	515	36	551	368	17	385	287	16	303
UNALL*		1,348	4,171		1,023	3,177		4,355	21,478
U S	811,014	345,658	1,156,672	1,292,185	576,640	1,868,825	1,582,768	787,263	2,370,031

CORN - STOCKS BY POSITIONS, BY STATES, QUARTERLY, JULY 1, 1975 AND JUNE 1, 1976-79

STATE	ON	OFF	TOTAL ALL	ON	OFF	TOTAL ALL
	FARMS	FARMS <u>1/</u>	POSITIONS	FARMS	FARMS <u>1/</u>	POSITIONS
	JUNE 1, 1978			JUNE 1, 1979		
	1,000 BUSHEL					
ALA	1,523	2,423	3,946	3,808	2,941	6,749
ARIZ	300	556	856	403	964	1,367
ARK	194	254	448	180	167	347
CALIF	573	3,333	3,906	708	4,395	5,103
COLD	14,512	7,710	22,222	16,060	6,215	22,275
CONN		*	*		*	*
DEL	291	3,991	4,282	603	2,353	2,956
FLA	523	624	1,147	1,778	559	2,337
GA	9,120	4,269	13,389	11,250	4,427	15,677
IDAHO	172	171	343	606	47	653
ILL	272,412	235,600	508,012	272,771	204,645	477,416
IND	114,016	75,987	190,003	107,136	53,917	161,053
IOWA	458,724	190,991	649,715	650,210	212,393	862,603
KANS	22,579	41,637	64,216	26,010	33,433	59,443
KY	23,814	10,357	34,171	25,169	6,622	31,791
LA	135	7,714	7,849	111	12,081	12,192
MAINE		*	*		*	*
MD	3,456	11,229	14,685	4,006	13,877	17,883
MASS		*	*		*	*
MICH	52,913	19,744	72,657	46,656	16,904	63,560
MINN	246,000	79,152	325,152	366,943	89,636	456,579
MISS	461	1,353	1,814	718	1,697	2,415
MO	58,406	23,472	81,878	52,026	26,380	78,406
MONT	187	*	*	108	17	125
NEBR	233,442	95,691	329,133	305,100	126,934	432,034
NEV		*	*		*	*
N H		*	*		*	*
N J	1,386	*	*	1,406	*	*
N MEX	1,026	1,294	2,320	763	323	1,086
N Y	17,261	*	*	14,448	*	*
N C	8,430	7,068	15,498	15,808	9,595	25,403
N DAK	7,592	898	8,490	11,850	1,172	13,022
OHIO	91,224	59,861	151,085	90,972	46,200	137,172
OKLA	234	1,673	1,907	85	586	671
OREG	114	129	243	133	116	249
PA	41,188	3,026	44,214	42,883	4,695	47,578
R I						
S C	2,691	1,816	4,507	3,449	2,054	5,503
S DAK	36,787	6,788	43,575	88,775	8,973	97,748
TENN	11,417	2,429	13,846	11,385	2,725	14,110
TEX	4,851	51,575	56,426	2,880	30,209	33,089
UTAH	93	215	308	115	120	235
VT		*	*		*	*
VA	4,659	3,774	8,433	8,366	6,153	14,519
WASH	762	4,944	5,706	593	3,536	4,129
W VA	1,399	90	1,489	1,384	*	*
WIS	126,880	21,750	148,630	129,360	24,393	153,753
WYO	612	43	655	991	55	1,046
UNALL*		5,148	23,982		7,699	24,937
U S	1,872,359	988,779	2,861,138	2,318,006	969,208	3,287,214

SEE FOOTNOTES ON PAGE 71.

CORN - STOCKS BY POSITIONS, BY STATES, QUARTERLY, OCTOBER 1, 1975-79

STATE	DN	OFF	TOTAL ALL	DN	OFF	TOTAL ALL	ON	OFF	TOTAL ALL
	FARMS	FARMS 1/	POSITIONS	FARMS	FARMS 1/	POSITIONS	FARMS	FARMS 1/	POSITIONS
	1975			1976			1977		
1,000 BUSHELS									
ALA	1,084	195	1,279	825	45	870	2,880	461	3,341
ARIZ	7	22	29	8	16	24		94	94
ARK	30	37	67	95	1	96	151	75	226
CALIF		876	876		787	787	128	1,583	1,711
COLO	794	1,128	1,922	515	862	1,377	1,285	3,278	4,563
CONN		*	*		*	*		*	*
DEL	252	*	*	313	5	318	686	385	1,071
FLA	541	*	*	675		675	576	399	975
GA	6,317	286	6,603	5,170	102	5,272	14,731	2,318	17,049
IDAHO	241	61	302	274	53	327	244	114	358
ILL	8,118	23,606	31,724	31,349	32,940	64,289	49,605	90,800	140,405
IND	7,753	6,926	14,679	8,276	10,650	18,926	24,255	25,833	50,088
IOWA	53,240	56,745	109,985	61,479	51,630	113,109	152,607	131,751	284,358
KANS	2,639	10,659	13,298	2,821	10,729	13,550	6,874	16,983	23,857
KY	4,408	620	5,028	2,195	449	2,644	12,485	2,457	14,942
LA	53	7,646	7,699	23	2,761	2,784	94	10,803	10,897
MAINE		*	*		*	*		*	*
MD	920	*	*	759	155	914	1,739	2,785	4,524
MASS		*	*		*	*		*	*
MICH	4,148	1,200	5,348	7,040	1,414	8,454	12,917	4,115	17,032
MINN	21,948	17,504	39,452	26,481	16,349	42,830	29,736	33,392	63,128
MISS	443	186	629	297	262	559	525	301	826
MO	5,854	3,681	9,535	6,804	3,070	9,874	12,170	8,385	20,555
MONT	17	*	*	22	*	*	25	*	*
NEBR	17,955	12,809	30,764	17,612	12,734	30,346	31,110	47,626	78,736
NEV		*	*		*	*		*	*
N H		*	*		*	*		*	*
N J	289	27	316	292	31	323	495	250	745
N MEX	151	*	*	150	*	*	252	443	695
N Y	2,457	420	2,877	4,267	362	4,629	4,641	507	5,148
N C	2,944	740	3,684	2,663	245	2,908	5,264	825	6,089
N DAK	816	154	970	428	423	851	816	336	1,152
OHIO	9,293	8,253	17,546	9,319	8,856	18,175	27,542	23,669	51,211
OKLA	46	329	375	109	116	225	60	409	469
OREG	22	158	180	34	200	234	48	139	187
PA	9,801	1,233	11,034	6,199	2,134	8,333	11,682	2,703	14,385
R I									
S C	668	140	808	748	23	771	780	619	1,399
S DAK	13,840	1,405	15,245	14,985	1,355	16,340	9,300	1,225	10,525
TENN	2,507	281	2,788	2,583	184	2,767	5,277	302	5,579
TEX	152	5,008	5,170	592	5,023	5,615	1,860	13,470	15,330
UTAH	56	137	193	90	150	240	54	207	261
VT		*	*		*	*		*	*
VA	1,824	265	2,089	1,243	184	1,427	3,019	774	3,793
WASH	12	120	132	18	88	106	24	389	413
W VA	903	*	*	442	*	*	698	*	*
WIS	10,476	3,127	13,603	15,870	1,488	17,358	21,134	6,777	27,911
WYO	165	19	184	128	7	135	77	27	104
UNALL*		2,190	4,974		576	1,190		1,010	1,733
U S	193,194	168,193	361,387	233,193	166,459	399,652	447,846	438,019	885,865

CORN - STOCKS BY POSITIONS, BY STATES, QUARTERLY, OCTOBER 1, 1975-79

STATE	ON	OFF	TOTAL ALL	ON	OFF	TOTAL ALL
	FARMS	FARMS 1/	POSITIONS	FARMS	FARMS 1/	POSITIONS
	1978			1979		
	1,000 BUSHELS					
ALA	218	828	1,046	816	1,270	2,086
ARIZ	50	*	*	58	*	*
ARK	114	87	201	90	44	134
CALIF		1,335	1,335		1,019	1,019
COLO	5,643	3,320	8,963	6,424	3,760	10,184
CONN		*	*		*	*
DEL	97	*	*	151	*	*
FLA	314	*	*	534	*	*
GA	4,560	1,289	5,849	2,250	*	*
IDAHO	69	69	138	303	81	384
ILL	41,454	74,835	116,289	37,196	60,820	98,016
IND	22,170	24,538	46,708	13,392	14,020	27,412
IOWA	163,830	109,611	273,441	192,108	140,370	332,478
KANS	9,677	25,766	35,443	13,770	21,281	35,051
KY	8,600	1,100	9,700	5,993	1,281	7,274
LA	17	9,273	9,290	55	6,120	6,175
MAINE		*	*		*	*
MD	648	*	*	858	*	*
MASS		*	*		*	*
MICH	16,932	5,810	22,742	19,440	3,798	23,238
MINN	120,000	41,614	161,614	173,815	72,908	246,723
MISS	346	99	445	416	*	*
MO	14,098	14,907	29,005	12,006	15,830	27,836
MONT	22	*	*	22	19	41
NEBR	136,175	62,760	198,935	160,178	101,752	261,930
NEV		*	*		*	*
N H		*	*		*	*
N J	208	72	280	375	32	407
N MEX	513	352	865	382	*	*
N Y	6,682	*	*	3,096	1,540	4,636
N C	1,331	545	1,876	3,040	1,290	4,330
N DAK	5,314	733	6,047	9,006	960	9,966
OHIO	19,005	20,147	39,152	18,953	10,015	28,968
OKLA	156	995	1,151	42	392	434
OREG	46	126	172	53	*	*
PA	12,245	2,307	14,552	11,590	2,171	13,761
R I						
S C	1,346	200	1,546	314	70	384
S DAK	22,833	5,472	28,305	46,163	8,194	54,357
TENN	4,468	510	4,978	4,099	980	5,079
TEX	809	18,799	19,608	1,440	13,885	15,325
UTAH	35	79	114	72	143	215
VT		*	*		*	*
VA	998	*	*	4,183	1,117	5,300
WASH	114	254	368	148	4,307	4,455
W VA	799	*	*	938	*	*
WIS	44,408	9,671	54,079	49,980	14,109	64,089
WYO	383	24	407	716	19	735
UNALL*		7,181	16,791		5,863	11,503
U S	666,727	444,708	1,111,435	794,465	509,460	1,303,925

SEE FOOTNOTES ON PAGE 71.

SORGHUM - STOCKS BY POSITIONS, BY STATES, QUARTERLY, JANUARY 1, 1975-79

STATE	ON	OFF	TOTAL ALL	ON	OFF	TOTAL ALL	ON	OFF	TOTAL ALL
	FARMS	FARMS 1/	POSITIONS	FARMS	FARMS 1/	POSITIONS	FARMS	FARMS 1/	POSITIONS
	1975			1976			1977		
	1,000 BUSHELS								
ALA	416	83	499	611	28	639	347	*	*
ARIZ	386	5,178	5,564	1,360	6,145	7,505	409	6,185	6,594
ARK	2,649	210	2,859	2,254	867	3,121	2,790	850	3,640
CALIF	1,058	3,263	4,321	1,788	3,724	5,512	1,044	5,194	6,238
COLO	2,075	2,850	4,925	2,187	4,064	6,251	3,118	3,753	6,871
CONN									
DEL									
FLA		*	*		*	*		*	*
GA	505	31	536	1,466	*	*	774	17	791
IDAHO		*	*		*	*		*	*
ILL	1,800	520	2,320	2,244	*	*	2,174	*	*
IND	543	23	566	702	52	754	915	8	923
IOWA	294	141	435	870	425	1,295	980	1,637	2,617
KANS	39,840	76,313	116,153	48,510	74,128	122,638	49,500	88,607	138,107
KY	1,073	78	1,151	860	40	900	780	149	929
LA	326	177	503	243	169	412	343	300	643
MAINE									
MD									
MASS									
MICH		*	*						
MINN		*	*		7	7		4	4
MISS	794	109	903	638	109	747	637	155	792
MO	9,025	6,390	15,415	10,674	4,350	15,024	12,672	9,210	21,882
MONT									
NEBR	28,842	27,333	56,175	42,845	47,655	90,500	49,077	52,053	101,130
NEV		*	*		*	*		*	*
N H									
N J									
N MEX	1,100	4,337	5,437	3,100	4,758	7,858	1,433	4,321	5,754
N Y		*	*						
N C	2,333	488	2,821	1,749	595	2,344	1,748	540	2,288
N DAK									
OHIO		*	*		7	7		11	11
OKLA	8,586	7,149	15,735	3,557	8,929	12,486	2,543	10,000	12,543
OREG		*	*		*	*		*	*
PA		47	47		*	*		*	*
R I									
S C	302	98	400	365	144	509	228	*	*
S DAK	2,471	440	2,911	3,725	1,045	4,770	2,727	500	3,227
TENN	651	*	*	736	76	812	777	144	921
TEX	15,600	122,251	137,851	33,696	151,603	185,299	23,432	146,079	169,511
UTAH		30	30		73	73		158	158
VT									
VA	372	28	400	329	18	347	251	51	302
WASH		*	*					*	*
W VA									
WIS		*	*					*	*
WYO		9	9		7	7		*	*
UNALL*		267	918		582	4,292		1,705	4,454
U S	121,041	257,843	378,884	164,509	309,600	474,109	158,699	331,631	490,330

SEE FOOTNOTES ON PAGE 71.

SORGHUM - STOCKS BY POSITIONS, BY STATES, QUARTERLY, JANUARY 1, 1975-79

STATE	ON	OFF	TOTAL ALL	ON	OFF	TOTAL ALL
	FARMS	FARMS 1/	POSITIONS	FARMS	FARMS 1/	POSITIONS
	1978			1979		
	1,000 BUSHEL					
ALA	335	*	*	579	17	596
ARIZ	240	2,473	2,713	488	4,880	5,368
ARK	3,407	3,294	6,701	5,880	4,477	10,357
CALIF	915	1,670	2,585	1,342	3,359	4,701
COLO	5,654	3,685	9,339	4,216	5,250	9,466
CONN		*	*		*	*
DEL						
FLA					*	*
GA	336	*	*	773	33	806
IDAHO		*	*			
ILL	2,335	*	*	2,142	*	*
IND	702	*	*	540	*	*
IOWA	1,302	327	1,629	1,206	735	1,941
KANS	70,680	121,035	191,715	62,995	115,696	178,691
KY	923	35	958	818	71	889
LA	264	201	465	202	166	368
MAINE						
MD						
MASS						
MICH		*	*		*	*
MINN		27	27		12	12
MISS	346	*	*	447	50	497
MO	24,440	8,782	33,222	33,150	14,059	47,209
MONT						
NEBR	58,788	76,077	134,865	61,710	77,809	139,519
NEV		*	*		*	*
N H						
N J						
N MEX	1,058	4,399	5,457	2,334	5,139	7,473
N Y					*	*
N C	1,190	329	1,519	1,940	672	2,612
N DAK						
OHIO		*	*		26	26
OKLA	4,938	13,712	18,650	3,667	10,371	14,038
OREG					*	*
PA					8	8
R I						
S C	91	63	154	233	57	290
S DAK	11,933	2,325	14,258	17,750	2,710	20,460
TENN	612	78	690	796	*	*
TEX	27,648	156,088	183,736	31,899	153,032	184,931
UTAH		100	100		70	70
VT						
VA	155	2	157	408	5	413
WASH		2,660	2,660		*	*
W VA						
WIS		*	*		6	6
WYO		*	*		*	*
UNALL*		883	4,937		2,774	6,252
U S	218,292	398,245	616,537	235,515	401,484	636,999

SEE FOOTNOTES ON PAGE 71.

SORGHUM - STOCKS BY POSITIONS, BY STATES, QUARTERLY, APRIL 1, 1975-79

STATE	ON	OFF	TOTAL ALL	ON	OFF	TOTAL ALL	ON	OFF	TOTAL ALL
	FARMS	FARMS 1/	POSITIONS	FARMS	FARMS 1/	POSITIONS	FARMS	FARMS 1/	POSITIONS
	1975			1976			1977		
	1,000 BUSHELS								
ALA	102	29	131	244	*	*	174	5	179
ARIZ	172	2,481	2,653	136	4,187	4,323	117	4,177	4,294
ARK	903	*	*	980	340	1,320	1,240	1,003	2,243
CALIF	454	1,823	2,277	1,118	1,741	2,859	596	2,709	3,305
COLO	845	1,711	2,556	1,357	2,521	3,878	2,248	2,297	4,545
CONN								*	*
DEL									
FLA		*	*		*	*		*	*
GA	281	*	*	677	*	*	464	35	499
IDAHO		*	*		*	*		*	*
ILL	1,152	389	1,541	1,224	*	*	1,107	*	*
IND	235	8	243	248	*	*	366	15	381
IOWA	184	97	281	403	138	541	592	277	869
KANS	19,920	47,346	67,266	22,050	46,732	68,782	28,050	57,222	85,272
KY	315	13	328	328	32	360	312	20	332
LA	122	126	248	91	163	254	98	246	344
MAINE									
MD									
MASS		*	*						
MICH		*	*						
MINN		10	10		*	*		6	6
MISS	159	36	195	200	30	230	76	254	330
MO	4,275	3,970	8,245	3,933	3,253	7,186	7,128	7,397	14,525
MONT									
NEBR	20,691	16,424	37,115	28,215	17,906	46,121	25,137	32,802	57,939
NEV		*	*		*	*		*	*
N H									
N J		*	*						
N MEX	220	3,318	3,538	2,170	3,206	5,376	955	3,043	3,998
N Y		*	*		*	*			
N C	778	380	1,158	488	470	958	362	304	666
N DAK									
OHIO		*	*		11	11		15	15
OKLA	1,336	4,970	6,306	1,976	3,590	5,566	1,526	5,313	6,839
OREG		19	19					*	*
PA		28	28		17	17		20	20
R I		*	*						
S C	122	106	228	133	87	220	86	*	*
S DAK	1,179	238	1,417	2,633	520	3,153	1,643	250	1,893
TENN	295	*	*	387	35	422	335	63	398
TEX	9,360	60,991	70,351	14,976	78,784	93,760	14,645	89,212	103,857
UTAH		71	71		22	22		*	*
VT		*	*						
VA	93	15	108	140	27	167	76	23	99
WASH		*	*		*	*			
W VA								*	*
WIS					*	*		25	25
WYO		6	6		3	3		*	*
UNALL*		673	2,152		406	2,799		1,517	2,710
U S	63,193	145,278	208,471	84,107	164,221	248,328	87,333	208,250	295,583

SEE FOOTNOTES ON PAGE 71.

SORGHUM - STOCKS BY POSITIONS, BY STATES, QUARTERLY, APRIL 1, 1975-79

STATE	ON	OFF	TOTAL ALL	ON	OFF	TOTAL ALL
	FARMS	FARMS 1/	POSITIONS	FARMS	FARMS 1/	POSITIONS
	1978			1979		
	1,000 BUSHEL					
ALA	131	*	*	264	3	267
ARIZ	48	2,308	2,356	195	2,145	2,340
ARK	1,966	2,010	3,976	1,800	2,251	4,051
CALIF	289	1,287	1,576	575	1,251	1,826
COLO	2,385	2,980	5,365	2,108	3,625	5,733
CONN		*	*		*	*
DEL						
FLA					*	*
GA	276	*	*	337	84	421
IDAHO		*	*			
ILL	1,352	*	*	1,071	*	*
IND	257	*	*	180	13	193
IOWA	734	*	*	630	587	1,217
KANS	44,764	86,217	130,981	39,372	83,440	122,812
KY	354	67	421	347	78	425
LA	119	100	219	58	386	444
MAINE						
MD						
MASS						
MICH		*	*		*	*
MINN		22	22		7	7
MISS	23	*	*	120	41	161
MO	16,973	6,471	23,444	21,216	9,899	31,115
MONT						
NEBR	44,091	56,252	100,343	44,880	56,858	101,738
NEV		*	*		*	*
N H						
N J						
N MEX	588	2,828	3,416	1,474	3,613	5,087
N Y						
N C	333	208	541	566	307	873
N DAK						
OHIO		15	15		16	16
OKLA	3,435	8,873	12,308	873	7,411	8,284
OREG		*	*		*	*
PA		16	16		33	33
R I						
S C	53	*	*	122	*	*
S DAK	9,412	1,302	10,714	12,425	2,135	14,560
TENN	235	*	*	367	*	*
TEX	11,520	100,327	111,847	11,393	100,434	111,827
UTAH		155	155		71	71
VT						
VA	112	3	115	233	*	*
WASH		953	953		*	*
W VA		*	*		*	*
WIS		*	*		2	2
WYO		*	*		*	*
UNALL*		1,131	4,192		1,994	3,787
U S	139,450	273,525	412,975	140,606	276,684	417,290

SEE FOOTNOTES ON PAGE 71 .

SOYBEAN - STOCKS BY POSITIONS, BY STATES, QUARTERLY, JULY 1, 1975 AND JUNE 1, 1976-79

STATE	ON	OFF	TOTAL ALL	ON	OFF	TOTAL ALL	ON	OFF	TOTAL ALL
	FARMS	FARMS 1/	POSITIONS	FARMS	FARMS 1/	POSITIONS	FARMS	FARMS 1/	POSITIONS
	JULY 1, 1975			JUNE 1, 1976			JUNE 1, 1977		
	1,000 BUSHELS								
ALA	51	13	64	73	*	*	43	*	*
ARIZ	86	310	396	68	1,391	1,459	44	2,306	2,350
ARK	151	34	185	196	48	244	775	412	1,187
CALIF	151	582	733	596	994	1,590	149	1,774	1,923
COLD	461	1,220	1,681	528	1,811	2,339	798	2,193	2,991
CONN									
DEL									
FLA		*	*						
GA	42		42	395	*	*	116		116
IDAHO		*	*		*	*		*	*
ILL	432	192	624	694	*	*	791	*	*
IND	41	*	*	86	*	*	141	7	148
IOWA	59	90	149	161	127	288	304	172	476
KANS	11,952	24,498	36,450	17,640	32,335	49,975	23,100	37,953	61,053
KY	114	10	124	109	18	127	156	27	183
LA	16	*	*	12	96	108	39	*	*
MAINE									
MD									
MASS									
MICH		*	*					*	*
MINN		6	6		*	*		3	3
MISS	43	17	60	67	*	*	30	115	145
MO	2,138	3,051	5,189	3,371	3,015	6,386	5,940	4,854	10,794
MONT									
NEBR	8,778	7,233	16,011	15,675	11,633	27,308	17,955	20,030	37,985
NEV		*	*		*	*			
N H									
N J									
N MEX	110	1,706	1,816	620	2,485	3,105	358	2,097	2,455
N Y					*	*			
N C	238	104	342	163	265	428	213	290	503
N DAK									
OHIO		*	*		5	5		12	12
OKLA	763	1,813	2,576	1,186	3,311	4,497	678	4,645	5,323
OREG		*	*						
PA		23	23		*	*		16	16
R I									
S C	86	*	*	66	*	*	54	*	*
S DAK	786	110	896	2,312	310	2,622	1,294	215	1,509
TENN	93	*	*	225	25	250	215	12	227
TEX	3,120	24,003	27,123	5,616	45,816	51,432	7,323	56,224	63,547
UTAH		139	139		51	51		*	*
VT									
VA	67	*	*	92	10	102	47	8	55
WASH								*	*
W VA								*	*
WIS					*	*		*	*
WYO		1	1		7	7		*	*
UNALL*		152	455		337	1,718		1,817	2,744
U S	29,778	65,307	95,085	49,951	104,090	154,041	60,563	135,182	195,745

SEE FOOTNOTES ON PAGE 71.

SORGHUM - STOCKS BY POSITIONS, BY STATES, QUARTERLY, JULY 1, 1975 AND JUNE 1, 1976-79

STATE	ON	OFF	TOTAL ALL	ON	OFF	TOTAL ALL
	FARMS	FARMS 1/	POSITIONS	FARMS	FARMS 1/	POSITIONS
	JUNE 1, 1978			JUNE 1, 1979		
	1,000 BUSHELS					
ALA	51	*	*	151	*	*
ARIZ	24	1,858	1,882	39	2,120	2,159
ARK	1,310	2,800	4,110	960	1,548	2,508
CALIF	193	893	1,086	96	775	871
COLO	1,590	3,025	4,615	1,581	2,580	4,161
CONN		*	*		*	*
DEL						
FLA					*	*
GA	67		67	100	51	151
IDAHO		*	*			
ILL	819	*	*	643	*	*
IND	94	*	*	63	*	*
ICWA	474	167	641	324	586	910
KANS	32,984	67,400	100,384	31,498	71,987	103,485
KY	246	27	273	223	78	301
LA	86	*	*	29	151	180
MAINE						
MD						
MASS						
MICH		4	4		*	*
MINN		7	7		7	7
MISS	4	*	*	40	*	*
MO	14,257	5,212	19,469	10,608	7,671	18,279
MONT						
NEBR	36,743	47,845	84,588	33,660	55,002	88,662
NEV					*	*
N H						
N J		*	*			
N MEX	353	1,671	2,024	614	2,123	2,737
N Y					1	1
N C	60	182	242	323	102	425
N DAK						
OHIO		12	12		14	14
OKLA	2,791	6,405	9,196	524	5,017	5,541
OREG		*	*			
PA		18	18		8	8
R I						
S C	29	*	*	56	*	*
S DAK	6,723	930	7,653	10,473	1,726	12,199
TENN	133	*	*	220	*	*
TEX	9,216	71,126	80,342	6,836	70,354	77,190
UTAH		87	87		20	20
VT						
VA	69	11	80	155	*	*
WASH		*	*		*	*
W VA					*	*
WIS		*	*		*	*
WYO		*	*			
UNALL*		1,069	2,285		1,067	2,395
U S	108,316	210,749	319,065	99,216	222,988	322,204

SEE FOOTNOTES ON PAGE 71.

SORGHUM - STOCKS BY POSITIONS, BY STATES, QUARTERLY, OCTOBER 1, 1975-79

STATE	ON	OFF	TOTAL ALL	ON	OFF	TOTAL ALL	ON	OFF	TOTAL ALL
	FARMS	FARMS 1/	POSITIONS	FARMS	FARMS 1/	POSITIONS	FARMS	FARMS 1/	POSITIONS
	1975			1976			1977		
	1,000 BUSHELS								
ALA	20	*	*	37	*	*	22		22
ARIZ	43	438	481	34	372	406		994	994
ARK	90	*	*	147	32	179	155	28	183
CALIF		611	611		265	265		184	184
COLO	231	584	815	151	790	941	145	1,306	1,451
CONN		*	*						
DEL									
FLA		*	*						
GA	14	*	*	132	*	*	58		58
IDAHO		*	*		*	*		*	*
ILL	108	*	*	245	39	284	316	*	*
IND	16	*	*	22	*	*	28		28
IOWA	15	35	50	81	457	538	186	126	312
KANS	2,656	11,523	14,179	4,410	12,702	17,112	8,250	17,460	25,710
KY	14	3	17	27	5	32	47	6	53
LA		*	*		*	*	10	*	*
MAINE		*	*						
MD		*	*						
MASS									
MICH		*	*		*	*		3	3
MINN		5	5		19	19		9	9
MISS	14		14	7	*	*	6		6
MO	238	684	922	562	333	895	1,980	1,058	3,038
MONT									
NEBR	2,508	2,834	5,342	4,180	6,695	10,875	5,985	17,303	23,288
NEV		*	*		*	*		*	*
N H									
N J		*	*						
N MEX	11	497	508	47	720	767	24	981	1,005
N Y					*	*		4	4
N C	86	10	96	20	*	*	21	17	38
N DAK									
OHIO		11	11		12	12		3	3
OKLA	286	692	978	593	1,206	1,799	254	1,889	2,143
OREG		*	*		*	*			
PA		18	18		*	*		3	3
R I									
S C	14		14	33		33	17	*	*
S DAK	505	70	575	1,349	95	1,444	874	33	907
TENN	39	53	92	44		44	84	*	*
TEX	936	8,649	9,585	1,872	13,448	15,320	2,929	27,506	30,435
UTAH		181	181		69	69		28	28
VT									
VA	5	*	*	15	*	*	5	*	*
WASH					*	*		*	*
W VA									
WIS					*	*		*	*
WYO		3	3		*	*		*	*
UNALL*		287	540		227	460		705	1,137
U S	7,849	27,188	35,037	14,008	37,486	51,494	21,396	69,646	91,042

SEE FOOTNOTES ON PAGE 71.

SORGHUM - STOCKS BY POSITIONS, BY STATES, QUARTERLY, OCTOBER 1, 1975-79

STATE	ON	OFF	TOTAL ALL	ON	OFF	TOTAL ALL
	FARMS	FARMS 1/	POSITIONS	FARMS	FARMS 1/	POSITIONS
	1978			1979		
	1,000 BUSHELS					
ALA	44	*	*	50	*	*
ARIZ		1,155	1,155		*	*
ARK	786	1,470	2,256	120	1,079	1,199
CALIF		600	600		158	158
COLO	1,149	2,510	3,659	949	1,620	2,569
CONN					*	*
DEL						
FLA						
GA	27		27	37	*	*
IDAHO		*	*		*	*
ILL	246	*	*	129	*	*
IND	23	*	*	18	5	23
IOWA	355	299	654	216	523	739
KANS	11,780	42,472	54,252	9,843	38,732	48,575
KY	139	13	152	62	*	*
LA	59	134	193	3	93	96
MAINE						
MD						
MASS						
MICH		*	*		*	*
MINN		5	5		12	12
MISS	1	*	*	12	*	*
MO	6,789	2,591	9,380	1,989	6,689	8,678
MONT						
NEBR	23,515	37,334	60,849	15,428	32,958	48,386
NEV		*	*		*	*
N H						
N J					*	*
N MEX	235	501	736	368	643	1,011
N Y		*	*			
N C	48	*	*	81	*	*
N DAK						
OHIO		*	*		*	*
OKLA	644	3,539	4,183	262	2,894	3,156
OREG		13	13			
PA		*	*		*	*
R I						
S C	7	*	*	17		17
S DAK	5,546	853	6,399	6,568	1,579	8,147
TENN	51	*	*	86	*	*
TEX	4,608	39,938	44,546	4,557	30,038	34,595
UTAH		92	92		70	70
VT						
VA	4		4	52	*	*
WASH		*	*		*	*
W VA						
WIS		*	*		*	*
WYO		*	*		*	*
UNALL*		958	1,378		1,590	2,099
U S	56,056	134,477	190,533	40,847	118,683	159,530

SEE FOOTNOTES ON PAGE 71.

GATS - STOCKS BY POSITIONS, BY STATES, QUARTERLY, OCTOBER 1, 1974-78

STATE	ON	OFF	TOTAL ALL	ON	OFF	TOTAL ALL	ON	OFF	TOTAL ALL
	FARMS	FARMS 1/	POSITIONS	FARMS	FARMS 1/	POSITIONS	FARMS	FARMS 1/	POSITIONS
	1974			1975			1976		
1,000 BUSHELS									
ALA	371	164	535	428	*	*	385	*	*
ARIZ		42	42		140	140		39	39
ARK	413	*	*	304	119	423	429	1,401	1,830
CALIF	858	497	1,355	1,060	543	1,603	858	503	1,361
COLO	1,597	356	1,953	2,017	374	2,391	2,230	319	2,549
CONN		*	*		*	*		*	*
DEL		*	*		29	29		5	5
FLA	97	154	251	103	221	324	150	194	344
GA	1,246	313	1,559	895	367	1,262	1,367	554	1,921
IDAHO	1,354	816	2,170	1,523	513	2,036	1,445	551	1,996
ILL	14,755	8,750	23,505	14,952	9,030	23,982	12,779	4,520	17,299
IND	6,445	1,592	8,037	6,997	1,986	8,977	5,324	1,734	7,058
IOWA	50,944	18,150	69,094	49,091	19,474	68,565	55,342	24,860	80,202
KANS	4,158	1,552	5,710	3,270	1,743	5,013	6,132	2,788	8,920
KY	155	*	*	164	*	*	133	*	*
LA	69	*	*	67	*	*	94	172	266
MAINE	1,218	*	*	935	*	*	960	*	*
MD	696	179	875	596	190	786	787	157	944
MASS		*	*		*	*		*	*
MICH	14,438	1,918	16,356	15,954	3,534	19,488	13,745	2,325	16,070
MINN	90,900	34,525	125,425	90,480	20,292	110,772	73,913	18,743	92,656
MISS	176	269	445	238	369	607	290	376	666
MO	2,970	10,343	13,313	2,619	7,460	10,079	3,264	4,598	7,862
MONT	7,914	970	8,884	7,704	473	8,177	8,064	472	8,536
NEBR	20,367	3,084	23,451	21,104	4,259	25,363	19,958	7,074	27,032
NEV	85	*	*	140	*	*	122	*	*
N H		*	*		*	*		*	*
N J	230	*	*	245	37	282	310	57	367
N MEX		30	30		117	117		*	*
N Y	15,555	7,157	22,712	14,688	4,684	19,372	11,261	1,775	13,036
N C	2,244	479	2,723	1,714	749	2,463	1,466	988	2,454
N DAK	52,920	17,877	70,797	56,732	14,588	71,320	56,050	5,922	61,972
OHIO	16,198	8,544	24,742	15,819	10,598	26,417	13,292	9,618	22,910
OKLA	3,278	965	4,243	2,423	572	2,995	4,455	895	5,350
OREG	1,593	1,879	3,472	1,478	2,169	3,647	1,540	2,093	3,633
PA	14,378	1,076	15,454	14,708	1,216	15,924	13,870	1,311	15,181
R I		*	*		*	*		*	*
S C	1,058	333	1,391	1,176	495	1,671	1,316	516	1,832
S DAK	82,742	15,700	98,442	78,496	10,325	88,821	46,008	9,460	55,468
TENN	234	396	630	287	303	590	405	361	766
TEX	5,184	5,507	10,691	11,895	1,754	13,649	8,081	1,863	9,944
UTAH	445	144	589	582	125	707	479	144	623
VT		*	*		*	*		*	*
VA	720	126	846	743	109	852	749	105	854
WASH	1,102	1,221	2,323	1,323	586	1,909	1,274	451	1,725
W VA	483	*	*	489	*	*	504	*	*
WIS	76,006	4,541	80,547	60,885	6,310	67,195	46,234	3,179	49,413
WYO	2,072	148	2,220	1,538	165	1,703	2,241	273	2,514
UNALL*		5,923	8,576		4,757	6,980		2,049	4,153
U S	497,668	155,720	653,388	485,856	130,775	616,631	417,306	112,445	529,751

OATS - STOCKS BY POSITIONS, BY STATES, QUARTERLY, OCTOBER 1, 1974-78

STATE	ON	OFF	TOTAL ALL	ON	OFF	TOTAL ALL
	FARMS	FARMS 1/	POSITIONS	FARMS	FARMS 1/	POSITIONS
	1977			1978		
	1,000 BUSHELS					
ALA	559	*	*	780	749	1,529
ARIZ		152	152		74	74
ARK	350	1,132	1,482	402	573	975
CALIF	1,193	907	2,100	1,114	1,077	2,191
COLO	1,267	352	1,619	1,880	250	2,130
CONN						
DEL		*	*		*	*
FLA	97	255	352		433	433
GA	1,210	768	1,978	1,802	1,682	3,484
IDAHO	1,436	588	2,024	1,505	1,249	2,754
ILL	12,261	3,500	15,761	9,240	2,860	12,100
IND	4,452	1,524	5,976	4,228	1,817	6,045
IOWA	53,528	24,518	78,046	48,720	17,037	65,757
KANS	5,670	3,150	8,820	3,399	1,170	4,569
KY	129	*	*	147	68	215
LA	76	277	353		302	302
MAINE	1,138	*	*	1,663	*	*
MD	637	148	785	675	199	874
MASS		*	*		*	*
MICH	11,968	3,340	15,308	15,658	4,907	20,565
MINN	116,525	25,874	142,399	102,773	26,977	129,750
MISS	170	*	*		*	*
MO	4,713	4,278	8,991	1,075	3,356	4,431
MONT	5,750	362	6,112	10,567	412	10,979
NEBR	30,856	7,112	37,968	20,093	4,999	25,092
NEV	187	*	*		*	*
N H		*	*		*	*
N J	302	53	355	253	44	297
N MEX		26	26		30	30
N Y	11,066	1,530	12,596	13,275	2,470	15,745
N C	1,386	625	2,011	2,328	1,748	4,076
N DAK	66,000	4,488	70,488	68,904	5,259	74,163
OHIO	12,443	8,040	20,483	12,444	8,971	21,415
OKLA	4,186	734	4,920	1,881	730	2,611
OREG	2,080	2,587	4,667	2,282	1,435	3,717
PA	13,727	1,299	15,026	13,695	1,347	15,042
R I		*	*		*	*
S C	1,139	441	1,580	1,404	1,296	2,700
S DAK	112,320	9,511	121,831	119,738	9,326	129,064
TENN	290	*	*	311	765	1,076
TEX	14,400	2,224	16,624	6,605	4,013	10,618
UTAH	440	123	563	609	139	748
VT		*	*		*	*
VA	766	100	866	713	209	922
WASH	873	386	1,259	1,218	569	1,787
W VA	403	*	*	418	*	*
WIS	66,164	2,690	68,854	56,448	4,505	60,953
WYO	1,938	192	2,130	2,634	144	2,778
UNALL*		2,173	5,049		1,817	3,898
U S	564,095	115,459	679,554	530,881	115,008	645,889

SEE FOOTNOTES ON PAGE 71.

OATS - STOCKS BY POSITIONS, BY STATES, QUARTERLY, JANUARY 1, 1975-79

STATE	ON	OFF	TOTAL ALL	ON	OFF	TOTAL ALL	ON	OFF	TOTAL ALL
	FARMS	FARMS 1/	POSITIONS	FARMS	FARMS 1/	POSITIONS	FARMS	FARMS 1/	POSITIONS
	1975			1976			1977		
1,000 BUSHELS									
ALA	182	*	*	209	135	344	198	87	285
ARIZ		36	36		18	18		60	60
ARK	220	*	*	187	*	*	236	*	*
CALIF	652	311	963	848	269	1,117	617	327	944
COLO	1,426	308	1,734	1,482	281	1,763	1,960	325	2,285
CONN		*	*		*	*		*	*
DEL		*	*		*	*		*	*
FLA	42	*	*	30	138	168	60	369	429
GA	510	131	641	579	125	704	890	261	1,151
IDAHO	1,148	561	1,709	1,320	539	1,859	1,276	530	1,806
ILL	11,989	8,450	20,439	12,958	7,294	20,252	11,210	2,820	14,030
IND	5,337	1,443	6,780	6,201	1,720	7,921	4,774	1,253	6,027
IOWA	45,458	12,594	58,052	46,070	14,243	60,313	48,734	15,777	64,511
KANS	3,437	1,127	4,564	2,398	1,120	3,518	4,704	2,456	7,160
KY	93	*	*	103	*	*	105	917	1,022
LA	34	*	*	40	*	*	56	92	148
MAINE	609	*	*	510	*	*	448	*	*
MD	607	154	761	458	132	590	666	138	804
MASS		*	*		*	*		*	*
MICH	11,550	1,344	12,894	13,261	2,495	15,756	10,407	1,648	12,055
MINN	66,660	27,389	94,049	70,720	13,568	84,288	60,646	11,239	71,885
MISS	92	432	524	163	400	563	82	345	427
MO	1,980	8,832	10,812	1,989	5,994	7,983	2,394	3,037	5,431
MONT	7,315	869	8,184	6,732	354	7,086	7,310	391	7,701
NEBR	17,099	1,925	19,024	17,924	2,992	20,916	17,186	4,584	21,770
NEV	60	*	*	99	*	*	86	*	*
N H	151	*	*		*	*		*	*
N J		*	*	141	43	184	159	*	*
N MEX		*	*		*	*		114	114
N Y	12,651	6,685	19,336	12,036	2,860	14,896	9,529	1,120	10,649
N C	1,584	281	1,865	1,224	573	1,797	1,015	750	1,765
N DAK	42,777	14,896	57,673	47,745	12,594	60,339	41,253	3,400	44,653
OHIO	10,897	5,846	16,743	10,253	7,349	17,602	8,527	5,926	14,453
OKLA	2,243	755	2,998	1,744	592	2,336	2,363	878	3,241
OREG	1,062	1,144	2,206	924	1,636	2,560	1,194	1,961	3,155
PA	11,745	757	12,502	12,323	790	13,113	10,501	849	11,350
R I		*	*		*	*		*	*
S C	486	180	666	764	245	1,009	497	400	897
S DAK	55,973	11,035	67,008	66,722	6,390	73,112	39,192	5,625	44,817
TENN	200	*	*	224	471	695	270	434	704
TEX	3,564	3,443	7,007	6,240	1,374	7,614	5,916	1,419	7,335
UTAH	350	305	655	408	105	513	287	225	512
VT		*	*		*	*		*	*
VA	624	99	723	540	119	659	549	105	654
WASH	882	578	1,460	1,002	482	1,484	882	374	1,256
W VA	386	*	*	397	*	*	416	*	*
WIS	56,364	2,794	59,158	50,490	2,863	53,353	38,528	1,506	40,034
WYO	1,625	107	1,732	1,230	130	1,360	2,009	194	2,203
UNALL*		7,701	9,678		3,659	4,995		1,541	2,886
U S	380,064	122,512	502,576	398,688	94,092	492,780	337,132	73,477	410,609

OATS - STOCKS BY POSITIONS, BY STATES, QUARTERLY, JANUARY 1, 1975-79

STATE	ON	OFF	TOTAL ALL	ON	OFF	TOTAL ALL
	FARMS	FARMS 1/	POSITIONS	FARMS	FARMS 1/	POSITIONS
	1978			1979		
	1,000 BUSHEL					
ALA	238	452	690	444	644	1,088
ARIZ		47	47		17	17
ARK	210	*	*	201	138	339
CALIF	872	736	1,608	883	580	1,463
COLO	957	406	1,363	1,335	225	1,560
CONN					*	*
DEL		*	*		4	4
FLA	43	639	682		*	*
GA	605	465	1,070	1,537	1,239	2,776
IDAHO	1,231	510	1,741	1,254	614	1,868
ILL	11,035	2,390	13,425	8,470	1,870	10,340
IND	3,498	1,037	4,535	3,791	1,227	5,018
IOWA	47,763	15,306	63,069	45,066	10,011	55,077
KANS	5,009	1,777	6,786	3,071	997	4,068
KY	104	*	*	109	137	246
LA	45	220	265		240	240
MAINE	578	*	*	1,053	*	*
MD	518	134	652	524	211	735
MASS		*	*		*	*
MICH	9,724	2,440	12,164	12,854	3,525	16,379
MINN	108,433	19,190	127,623	92,891	21,975	114,866
MISS	117	314	431		519	519
MO	3,698	3,070	6,768	922	1,877	2,799
MONT	5,200	319	5,519	9,435	300	9,735
NEBR	26,390	5,015	31,405	17,978	3,300	21,278
NEV	132	*	*		*	*
N H		*	*		*	*
N J	186	32	218	192	61	253
N MEX		27	27		20	20
N Y	9,529	955	10,484	10,797	1,758	12,555
N C	756	358	1,114	1,679	1,268	2,947
N DAK	53,400	3,381	56,781	62,640	4,380	67,020
OHIO	8,732	5,186	13,918	8,918	6,282	15,200
OKLA	3,110	587	3,697	1,539	446	1,985
OREG	1,664	1,979	3,643	1,901	1,358	3,259
PA	10,759	808	11,567	11,172	1,019	12,191
R I					*	*
S C	455	355	810	878	1,059	1,937
S DAK	102,492	8,620	111,112	106,327	6,982	113,309
TENN	206	225	431	209	504	713
TEX	7,920	1,527	9,447	2,890	1,043	3,933
UTAH	275	92	367	479	116	595
VT		*	*		*	*
VA	600	92	692	529	298	827
WASH	602	298	900	940	499	1,439
W VA	295	*	*	333	*	*
WIS	56,277	2,091	58,368	50,176	2,129	52,305
WYO	1,609	94	1,703	2,352	144	2,496
UNALL*		1,533	2,852		1,554	2,940
U S	485,267	82,707	567,974	465,769	80,570	546,339

SEE FOOTNOTES ON PAGE 71.

DATS - STOCKS BY POSITIONS, BY STATES, QUARTERLY, APRIL 1, 1975-79

STATE	ON	OFF	TOTAL ALL	ON	OFF	TOTAL ALL	ON	OFF	TOTAL ALL
	FARMS	FARMS 1/	POSITIONS	FARMS	FARMS 1/	POSITIONS	FARMS	FARMS 1/	POSITIONS
	1975			1976			1977		
1,000 BUSHELS									
ALA	105	*	*	94	163	257	89	53	142
ARIZ		*	*		*	*		29	29
ARK	83	*	*	47	27	74	107	*	*
CALIF	292	222	514	509	229	738	274	284	558
COLO	742	313	1,055	761	280	1,041	1,299	280	1,579
CONN		*	*		*	*		*	*
DEL		*	*		*	*		*	*
FLA	21	344	365	20	199	219	36	98	134
GA	425	144	569	237	94	331	413	156	569
IDAHO	757	365	1,122	787	406	1,193	722	258	980
ILL	6,917	6,555	13,482	7,725	3,744	11,469	6,502	2,020	8,522
IND	2,417	1,354	3,771	3,157	1,172	4,329	2,387	895	3,282
IOWA	32,134	8,210	40,344	30,965	11,202	42,167	30,562	9,114	39,676
KANS	2,439	879	3,318	1,439	820	2,259	2,436	1,228	3,664
KY	56	*	*	86	*	*	88	*	*
LA	10	*	*	13	122	135	19	137	156
MAINE	296	*	*	238	*	*	160	*	*
MD	380	138	518	223	139	362	375	130	505
MASS		*	*		*	*		*	*
MICH	6,545	1,059	7,604	7,252	1,634	8,886	4,516	1,233	5,749
MINN	40,400	18,143	58,543	44,720	10,582	55,302	39,799	8,812	48,611
MISS	31	140	171	48	75	123	33	150	183
MO	1,188	7,065	8,253	1,061	4,709	5,770	1,632	2,140	3,772
MONT	4,389	835	5,224	4,039	411	4,450	4,296	396	4,692
NEBR	13,578	1,215	14,793	12,431	1,960	14,391	11,365	2,342	13,707
NEV	20	*	*	41	*	*	36	*	*
N H		*	*		*	*		*	*
N J	82	75	157	87	85	172	102	*	*
N MEX		*	*		262	262		33	33
N Y	6,429	*	*	6,324	964	7,288	5,198	772	5,970
N C	1,012	198	1,210	734	230	964	451	400	851
N DAK	26,460	13,205	39,665	30,332	10,970	41,302	25,110	2,633	27,743
OHIO	6,185	4,857	11,042	5,859	5,518	11,377	4,514	3,761	8,275
OKLA	1,035	612	1,647	1,034	527	1,561	1,181	468	1,649
OREG	779	880	1,659	554	1,009	1,563	770	968	1,738
PA	7,088	582	7,670	6,758	557	7,315	6,518	639	7,157
R I		*	*		*	*		*	*
S C	360	135	495	294	111	405	249	186	435
S DAK	36,504	7,074	43,578	43,173	4,220	47,393	29,820	3,540	33,360
TENN	120	346	466	155	268	423	180	133	313
TEX	1,296	1,377	2,673	4,095	1,070	5,165	4,040	967	5,007
UTAH	165	317	482	255	88	343	185	115	300
VT		*	*		*	*		*	*
VA	276	125	401	270	109	379	275	100	375
WASH	594	416	1,010	605	292	897	588	236	824
W VA	245	*	*	232	*	*	252	*	*
WIS	30,744	1,823	32,567	29,700	2,938	32,638	23,117	1,142	24,259
WYO	714	99	813	820	103	923	953	113	1,066
UNALL*		10,753	17,997		2,812	3,409		1,498	2,243
U S	233,313	89,865	323,178	247,174	70,101	317,275	210,649	47,459	258,108

OATS - STOCKS BY POSITIONS, BY STATES, QUARTERLY, APRIL 1, 1975-79

STATE	ON	OFF	TOTAL ALL	ON	OFF	TOTAL ALL
	FARMS	FARMS 1/	POSITIONS	FARMS	FARMS 1/	POSITIONS
	1978			1979		
	1,000 BUSHEL					
ALA	107	179	286	215	327	542
ARIZ		35	35		28	28
ARK	70	*	*	120	39	159
CALIF	505	516	1,021	384	532	916
COLO	589	286	875	658	200	858
CONN		*	*			
DEL		*	*		9	9
FLA	22	266	288		*	*
GA	358	302	660	954	893	1,847
IDAHO	898	402	1,300	909	435	1,344
ILL	7,152	1,770	8,922	5,236	1,455	6,691
IND	2,099	936	3,035	2,041	1,144	3,185
IOWA	36,234	9,355	45,589	30,450	6,748	37,198
KANS	3,780	1,130	4,910	2,088	743	2,831
KY	57	239	296	65	119	184
LA	19	174	193		90	90
MAINE	280	*	*	693	*	*
MD	302	104	406	302	149	451
MASS		*	*		*	*
MICH	7,480	1,954	9,434	7,946	2,461	10,407
MINN	82,538	15,689	98,227	68,186	20,951	89,137
MISS	47	108	155		128	128
MO	2,683	1,670	4,353	717	1,225	1,942
MONT	3,600	269	3,869	6,510	237	6,747
NEBR	19,488	3,142	22,630	13,536	2,749	16,285
NEV	55	*	*		*	*
N H		*	*		*	*
N J	85	69	154	84	54	138
N MEX		23	23		*	*
N Y	5,072	853	5,925	6,195	1,098	7,293
N C	473	279	752	1,029	803	1,832
N DAK	40,200	3,294	43,494	46,980	4,039	51,019
OHIO	5,458	3,875	9,333	5,392	4,498	9,890
OKLA	1,914	418	2,332	684	402	1,086
OREG	1,040	1,464	2,504	1,268	561	1,829
PA	6,864	573	7,437	6,487	906	7,393
R I					*	*
S C	329	215	544	491	645	1,136
S DAK	87,048	7,156	94,204	72,800	6,120	78,920
TENN	123	64	187	122	196	318
TEX	5,760	934	6,694	2,064	606	2,670
UTAH	193	79	272	261	216	477
VT		*	*		*	*
VA	293	69	362	302	145	447
WASH	391	240	631	592	248	840
W VA	197	*	*	186	*	*
WIS	35,744	2,474	38,218	30,106	1,594	31,700
WYO	969	104	1,073	1,254	116	1,370
UNALL*		608	1,210		1,382	2,261
U S	360,516	61,317	421,833	317,307	64,291	381,598

SEE FOOTNOTES ON PAGE 71.

OATS - STOCKS BY POSITIONS, BY STATES, QUARTERLY, JULY 1, 1975 AND JUNE 1, 1976-79

STATE	ON	OFF	TOTAL ALL	ON	OFF	TOTAL ALL	ON	OFF	TOTAL ALL
	FARMS	FARMS 1/	POSITIONS	FARMS	FARMS 1/	POSITIONS	FARMS	FARMS 1/	POSITIONS
	JULY 1, 1975			JUNE 1, 1976			JUNE 1, 1977		
1,000 BUSHELS									
ALA	35	91	126	52	*	*	40	111	151
ARIZ		*	*		*	*		32	32
ARK	55	34	89	12	74	86	43	711	754
CALIF	17	135	152	212	222	434	103	250	353
COLO	542	214	756	617	171	788	760	159	919
CONN		*	*		*	*		*	*
DEL		*	*		*	*		*	*
FLA	4	233	237	10	130	140	9	109	118
GA	227	85	312	184	55	239	286	66	352
IDAHO	344	261	605	381	212	593	458	205	663
ILL	3,228	5,350	8,578	5,233	2,920	8,153	4,484	1,425	5,909
IND	1,208	718	1,926	1,917	828	2,745	1,744	559	2,303
IOWA	14,108	6,325	20,433	15,105	8,286	23,391	14,868	6,879	21,747
KANS	1,109	794	1,903	1,134	794	1,928	1,680	1,066	2,746
KY	19	*	*	49	*	*	28	79	107
LA	3	*	*	7	116	123	9	142	151
MAINE	52	*	*	94	*	*	24	*	*
MD	215	71	286	106	76	182	230	85	315
MASS		*	*		*	*		*	*
MICH	2,888	563	3,451	3,108	1,167	4,275	2,749	751	3,500
MINN	20,200	12,420	32,620	29,120	6,401	35,521	24,638	7,372	32,010
MISS	13	107	120	37	93	130	14	175	189
MO	792	5,695	6,487	663	3,039	3,702	1,088	1,768	2,856
MONT	2,860	441	3,301	3,142	298	3,440	3,391	219	3,610
NEBR	6,035	842	6,877	8,095	1,140	9,235	7,207	1,509	8,716
NEV	2	*	*	8	*	*	7	*	*
N H		*	*		*	*		*	*
N J	33	38	71	40	*	*	61	*	*
N MEX		*	*		*	*		25	25
N Y	3,526	*	*	3,468	590	4,058	2,426	483	2,909
N C	440	94	534	490	147	637	282	264	546
N DAK	14,553	12,658	27,211	23,591	6,823	30,414	17,039	2,037	19,076
OHIO	2,945	2,388	5,333	3,808	3,227	7,035	3,010	2,326	5,336
OKLA	759	337	1,096	808	473	1,281	851	384	1,235
OREG	283	473	756	259	564	823	385	499	884
PA	3,443	450	3,893	4,174	462	4,636	4,345	397	4,742
R I		*	*		*	*		*	*
S C	116	33	149	206	61	267	132	56	188
S DAK	20,280	3,340	23,620	29,436	2,090	31,526	17,892	2,210	20,102
TENN	34	*	*	86	236	322	126	82	208
TEX	810	520	1,330	2,925	649	3,574	2,453	861	3,314
UTAH	95	62	157	109	91	200	82	108	190
VT		*	*		*	*		*	*
VA	132	72	204	135	64	199	175	77	252
WASH	254	266	520	359	226	585	333	160	493
W VA	153	*	*	183	*	*	183	*	*
WIS	17,080	1,221	18,301	18,563	1,583	20,146	14,310	1,459	15,769
WYO	411	53	464	615	59	674	747	78	825
UNALL*		8,923	12,712		2,910	3,336		425	700
U S	119,303	64,307	184,610	158,541	46,277	204,818	128,692	35,603	164,295

OATS - STOCKS BY POSITIONS, BY STATES, QUARTERLY, JULY 1, 1975 AND JUNE 1, 1976-79

STATE	ON	OFF	TOTAL ALL	ON	OFF	TOTAL ALL
	FARMS	FARMS 1/	POSITIONS	FARMS	FARMS 1/	POSITIONS
	JUNE 1, 1978			JUNE 1, 1979		
	1,000 BUSHELS					
ALA	24	174	198	94	274	368
ARIZ		*	*		*	*
ARK	25	*	*	60	50	110
CALIF	230	603	833	192	353	545
COLO	295	200	495	395	160	555
CONN						
DEL		*	*		*	*
FLA	5	96	101		322	322
GA	110	93	203	636	313	949
IDAHO	410	322	732	564	200	764
ILL	4,904	1,310	6,214	3,080	1,180	4,260
IND	1,399	698	2,097	1,312	875	2,187
IOWA	23,058	7,746	30,804	19,488	5,732	25,220
KANS	2,457	1,361	3,818	1,515	638	2,153
KY	32	71	103	38	91	129
LA	6	147	153		181	181
MAINE	158	*	*	554	*	*
MD	151	63	214	151	173	324
MASS					*	*
MICH	4,675	1,545	6,220	5,375	1,550	6,925
MINN	63,118	16,064	79,182	50,398	18,438	68,836
MISS	18	111	129		152	152
MO	1,813	1,444	3,257	512	1,086	1,598
MONT	2,500	246	2,746	5,284	220	5,504
NEBR	14,616	2,549	17,165	8,460	1,644	10,104
NEV	11	*	*		*	*
N H		*	*		*	*
N J	58	56	114	61	55	116
N MEX		*	*		20	20
N Y	2,613	649	3,262	4,425	738	5,163
N C	284	160	444	542	557	1,099
N DAK	30,600	2,943	33,543	35,078	3,345	38,423
OHIO	3,711	2,796	6,507	3,526	2,811	6,337
OKLA	1,674	419	2,093	410	389	799
OREG	624	752	1,376	634	380	1,014
PA	4,823	459	5,282	4,865	701	5,566
R I						
S C	152	128	280	281	385	666
S DAK	64,584	6,164	70,748	56,516	4,588	61,104
TENN	65	*	*	74	153	227
TEX	4,800	1,393	6,193	1,651	691	2,342
UTAH	110	67	177	157	45	202
VT		*	*		*	*
VA	179	107	286	216	161	377
WASH	226	207	433	331	195	526
W VA	113	3	116	126	*	*
WIS	24,336	2,039	26,375	21,325	1,301	22,626
WYO	581	46	627	941	58	999
UNALL*		325	584		498	1,178
U S	259,548	53,556	313,104	229,267	50,703	279,970

SEE FOOTNOTES ON PAGE 71.

BARLEY - STOCKS BY POSITIONS, BY STATES, QUARTERLY, OCTOBER 1, 1974-78

STATE	ON	OFF	TOTAL ALL	ON	OFF	TOTAL ALL	ON	OFF	TOTAL ALL
	FARMS	FARMS 1/	POSITIONS	FARMS	FARMS 1/	POSITIONS	FARMS	FARMS 1/	POSITIONS
	1974			1975			1976		
1,000 BUSHELS									
ALA								*	*
ARIZ	511	1,986	2,497	731	1,769	2,500	780	1,958	2,738
ARK								*	*
CALIF	11,401	15,974	27,375	12,084	14,247	26,331	13,574	9,013	22,587
COLO	4,500	6,729	11,229	6,583	10,252	16,835	6,064	11,211	17,275
CONN		*	*		*	*		*	*
DEL	234	766	1,000	190	947	1,137	240	423	663
FLA									
GA	78	26	104	67	11	78	108	*	*
IDAHO	14,573	10,905	25,478	18,900	14,987	33,887	22,344	19,333	41,677
ILL	116	1,800	1,916	134	1,075	1,209	112	1,331	1,443
IND	148	*	*	172		172	166	*	*
IOWA		95	95		59	59		241	241
KANS	918	653	1,571	851	484	1,335	1,194	590	1,784
KY	231	150	381	337	55	392	272	144	416
LA		*	*		*	*		*	*
MAINE					*	*			
MD	1,260	1,118	2,378	898	1,128	2,026	1,041	1,072	2,113
MASS					*	*		*	*
MICH	392	*	*	580	*	*	483	*	*
MINN	24,531	25,354	49,885	25,696	18,606	44,302	28,208	26,303	54,511
MISS									
MO	97	17	114	146	6	152	115	2	117
MONT	32,250	6,889	39,139	41,067	3,943	45,010	38,007	4,329	42,336
NEBR	851	505	1,356	832	644	1,476	979	695	1,674
NEV	337	*	*	421	*	*	594	*	*
N H								*	*
N J	227	86	313	315	81	396	294	147	441
N MEX	245	216	461	487	103	590	318	190	508
N Y	207	1,424	1,631	270	1,006	1,276	214	1,437	1,651
N C	1,203	246	1,449	1,242	212	1,454	913	234	1,147
N DAK	47,838	9,026	56,864	63,840	10,553	74,393	65,869	12,389	78,258
OHIO	336	4	340	320	2	322	343	5	348
OKLA	1,932	1,077	3,009	1,800	655	2,455	1,686	791	2,477
OREG	2,993	3,533	6,526	2,708	4,926	7,634	3,480	5,605	9,085
PA	4,081	920	5,001	3,640	842	4,482	2,412	438	2,850
R I									
S C	327	58	385	259	21	280	288	50	338
S DAK	11,648	860	12,508	14,018	1,275	15,293	8,330	1,500	9,830
TENN	93	*	*	72	*	*	91	*	*
TEX	162	315	477	262	318	580	304	1,508	1,812
UTAH	3,466	2,642	6,108	4,617	3,029	7,646	3,718	4,290	8,008
VT					*	*		*	*
VA	2,246	447	2,693	1,764	527	2,291	1,546	284	1,830
WASH	3,725	8,701	12,426	5,639	14,866	20,505	5,054	16,108	21,162
W VA	300	*	*	322	*	*	280	*	*
WIS	454	23,013	23,467	903	17,840	18,743	768	28,659	29,427
WYO	2,730	302	3,032	2,772	*	*	3,181	*	*
UNALL*		328	1,598		2,494	6,661		2,074	6,977
U S	176,641	116,165	302,806	214,939	126,963	341,902	213,370	152,354	365,724

BARLEY - STOCKS BY POSITIONS, BY STATES, QUARTERLY, OCTOBER 1, 1974-78

STATE	ON	OFF	TOTAL ALL	ON	OFF	TOTAL ALL
	FARMS	FARMS 1/	POSITIONS	FARMS	FARMS 1/	POSITIONS
	1977			1978		
	1,000 BUSHELS					
ALA						
ARIZ	669	2,525	3,194	373	1,083	1,456
ARK		1	1		*	*
CALIF	14,896	17,959	32,855	15,048	12,105	27,153
COLO	8,265	8,846	17,111	10,267	9,300	19,567
CONN						
DEL	145	318	463	158	959	1,117
FLA						
GA	78	47	125		74	74
IDAHO	27,918	16,257	44,175	30,988	18,773	49,761
ILL	189	1,900	2,089	139	478	617
IND	160	*	*			
IOWA		*	*		*	*
KANS	1,445	929	2,374	1,063	549	1,612
KY	311	242	553	297	190	487
LA		*	*		*	*
MAINE		*	*		*	*
MD	866	1,090	1,956	1,041	1,145	2,186
MASS		*	*			
MICH	629	*	*	569	*	*
MINN	39,658	20,886	60,544	54,574	15,690	70,264
MISS						
MO	142	6	148		*	*
MONT	44,888	4,215	49,103	52,546	5,278	57,824
NEBR	1,432	604	2,036	1,036	87	1,123
NEV	822	*	*	891	*	*
N H						
N J	156	189	345	117	78	195
N MEX	332	268	600	371	214	585
N Y	220	1,136	1,356	252	525	777
N C	924	171	1,095	1,459	680	2,139
N DAK	84,856	11,082	95,938	118,335	12,392	130,727
OHIO	353	5	358	298	10	308
OKLA	2,730	976	3,706	1,414	650	2,064
OREG	3,929	5,235	9,164	4,428	4,955	9,383
PA	2,350	599	2,949	2,277	624	2,901
R I						
S C	311	70	381	406	52	458
S DAK	18,547	2,031	20,578	24,250	2,460	26,710
TENN	94	*	*	61	*	*
TEX	510	724	1,234	70	393	463
UTAH	3,713	3,610	7,323	4,875	3,701	8,576
VT		*	*		*	*
VA	1,320	1,259	2,579	1,162	813	1,975
WASH	2,741	9,154	11,895	6,954	14,839	21,793
W VA	299	*	*	299	*	*
WIS	940	24,806	25,746	833	18,993	19,826
WYO	3,267	*	*	5,670	2,034	7,704
UNALL*		2,194	7,465		487	2,307
U S	270,105	139,334	409,439	342,521	129,611	472,132

SEE FOOTNOTES ON PAGE 71.

BARLEY - STOCKS BY POSITIONS, BY STATES, QUARTERLY, JANUARY 1, 1975-79

STATE	ON	OFF	TOTAL ALL	ON	OFF	TOTAL ALL	ON	OFF	TOTAL ALL
	FARMS	FARMS 1/	POSITIONS	FARMS	FARMS 1/	POSITIONS	FARMS	FARMS 1/	POSITIONS
	1975			1976			1977		
	1,000 BUSHELS								
ALA									
ARIZ	383	999	1,382	488	647	1,135	433	1,026	1,459
ARK					*	*		*	*
CALIF	6,841	7,425	14,266	9,063	11,439	20,502	9,050	9,518	18,568
COLO	3,700	9,074	12,774	5,242	9,573	14,815	4,716	10,572	15,288
CONN		*	*		*	*		*	*
DEL	187	518	705	89	460	549	156	239	395
FLA									
GA	49	*	*	34	*	*	41	*	*
IDAHO	12,989	7,604	20,593	13,440	12,477	25,917	20,216	11,592	31,808
ILL	85	1,276	1,361	97	622	719	88	1,025	1,113
IND	98	*	*	120		120	113	*	*
IOWA		87	87		*	*		*	*
KANS	612	453	1,065	648	425	1,073	738	469	1,207
KY	158	100	258	250	64	314	213	106	319
LA		*	*		*	*		*	*
MAINE		*	*		*	*		*	*
MD	1,066	603	1,669	770	902	1,672	916	693	1,609
MASS		*	*		*	*		*	*
MICH	314	*	*	402	*	*	386	*	*
MINN	15,873	24,162	40,035	19,578	20,478	40,056	20,098	24,537	44,635
MISS									
MO	30	8	38	81	*	*	77	*	*
MONT	21,000	5,880	26,880	29,913	4,316	34,229	24,991	3,611	28,602
NEBR	614	468	1,082	594	599	1,193	720	638	1,358
NEV	153	*	*	191	*	*	270	*	*
N H					*	*		*	*
N J	105	*	*	169	68	237	98	60	158
N MEX	118	103	221	260	85	345	208	144	352
N Y	145	1,778	1,923	252	*	*	139	*	*
N C	902	188	1,090	938	175	1,113	772	158	930
N DAK	33,768	8,276	42,044	49,476	9,222	58,698	49,605	10,206	59,811
OHIO	193	10	203	241	6	247	257	12	269
OKLA	1,512	770	2,282	1,128	557	1,685	920	642	1,562
OREG	2,138	3,721	5,859	2,166	4,588	6,754	2,175	3,363	5,538
PA	2,695	431	3,126	2,600	483	3,083	1,939	234	2,173
R I		*	*		*	*		*	*
S C	172	56	228	170	8	178	144	*	*
S DAK	8,960	611	9,571	11,215	900	12,115	7,021	845	7,866
TENN	54	*	*	53		53	52	*	*
TEX	108	163	271	190	317	507	203	289	492
UTAH	2,830	1,746	4,576	3,645	2,200	5,845	2,860	3,265	6,125
VT					*	*		*	*
VA	1,638	281	1,919	1,455	298	1,753	1,369	284	1,653
WASH	2,484	5,397	7,881	3,424	11,096	14,520	3,159	9,002	12,161
W VA	250	*	*	235	*	*	227	*	*
WIS	403	20,031	20,434	632	18,023	18,655	640	22,381	23,021
WYO	2,405	152	2,557	2,548	*	*	2,595	*	*
UNALL*		357	1,380		3,480	7,223		2,600	6,644
U S	125,032	102,728	227,760	161,797	113,508	275,305	157,605	117,511	275,116

BARLEY - STOCKS BY POSITIONS, BY STATES, QUARTERLY, JANUARY 1, 1975-79

STATE	ON	OFF	TOTAL ALL	ON	OFF	TOTAL ALL
	FARMS	FARMS 1/	POSITIONS	FARMS	FARMS 1/	POSITIONS
	1978			1979		
1,000 BUSHELS						
ALA						
ARIZ	418	2,167	2,585	124	632	756
ARK		*	*		*	*
CALIF	10,640	11,588	22,228	9,120	7,893	17,013
COLO	5,273	9,202	14,475	6,560	7,795	14,355
CONN						
DEL	48	413	461	74	530	604
FLA						
GA	39	13	52		38	38
IDAHO	19,646	12,420	32,066	25,928	15,948	41,876
ILL	113	869	982	81	301	382
IND	112	*	*			
IOWA		*	*		*	*
KANS	1,051	617	1,668	809	483	1,292
KY	242	183	425	237	108	345
LA		*	*		*	*
MAINE					*	*
MD	766	1,041	1,807	933	1,011	1,944
MASS		*	*			
MICH	458	*	*	414	*	*
MINN	33,048	17,210	50,258	46,778	15,830	62,608
MISS						
MO	98	*	*		*	*
MONT	37,580	4,261	41,841	44,720	4,816	49,536
NEBR	1,161	461	1,622	716	97	813
NEV	374	*	*	405	*	*
N H						
N J	94	97	191	97	61	158
N MEX	199	211	410	171	127	298
N Y	176	1,162	1,338	147	1,252	1,399
N C	594	131	725	1,205	358	1,563
N DAK	75,976	10,265	86,241	96,922	13,720	110,642
OHIO	252	*	*	206	*	*
OKLA	1,890	708	2,598	1,088	745	1,833
OREG	2,500	4,346	6,846	2,592	3,806	6,398
PA	1,650	438	2,088	1,786	521	2,307
R I						
S C	202	14	216	293	22	315
S DAK	16,934	1,980	18,914	20,905	2,190	23,095
TENN	59	*	*	34	*	*
TEX	408	318	726	22	253	275
UTAH	3,038	2,681	5,719	3,998	3,117	7,115
VT					*	*
VA	1,100	397	1,497	1,061	578	1,639
WASH	1,890	6,182	8,072	4,172	11,076	15,248
W VA	242	*	*	224	*	*
WIS	861	19,126	19,987	662	18,908	19,570
WYO	2,822	*	*	4,536	*	*
UNALL*		1,765	6,182		1,948	7,767
U S	221,954	110,266	332,220	277,020	114,164	391,184

SEE FOOTNOTES ON PAGE 71.

BARLEY - STOCKS BY POSITIONS, BY STATES, QUARTERLY, APRIL 1, 1975-79

STATE	ON	OFF	TOTAL ALL	ON	OFF	TOTAL ALL	ON	OFF	TOTAL ALL
	FARMS	FARMS 1/	POSITIONS	FARMS	FARMS 1/	POSITIONS	FARMS	FARMS 1/	POSITIONS
	1975			1976			1977		
	1,000 BUSHELS								
ALA									
ARIZ	128	303	431	293	586	879	260	657	917
ARK					*	*		*	*
CALIF	1,824	4,033	5,857	3,625	6,172	9,797	3,394	6,150	9,544
COLO	900	7,641	8,541	1,707	7,951	9,658	1,887	9,116	11,003
CONN		*	*		*	*		*	*
DEL	23	192	215	25	295	320	36	100	136
FLA									
GA	6	*	*	6	*	*	8	*	*
IDAHO	6,970	4,540	11,510	7,560	7,190	14,750	7,448	7,450	14,898
ILL	58	839	897	67	581	648	64	783	847
IND	66	*	*	80	*	80	76	*	*
IOWA		120	120		*	*		*	*
KANS	383	330	713	370	370	740	521	340	861
KY	85	85	170	144	45	189	128	104	232
LA		*	*		*	*		*	*
MAINE		*	*		*	*		*	*
MD	581	317	898	342	526	868	500	528	1,028
MASS		*	*		*	*		*	*
MICH	157	*	*	223	*	*	242	*	*
MINN	5,772	18,117	23,889	14,377	18,536	32,913	15,162	23,685	38,847
MISS									
MO	11	7	18	29	*	*	36	*	*
MONT	9,750	2,428	12,178	14,703	3,565	18,268	12,496	2,603	15,099
NEBR	473	491	964	404	327	731	461	663	1,124
NEV	73	*	*	92	*	*	108	*	*
N H		*	*		*	*		*	*
N J	81	*	*	77	64	141	49	*	*
N MEX	98	58	156	211	44	255	147	95	242
N Y	104	901	1,005	113	340	453	55	*	*
N C	572	157	729	442	40	482	374	87	461
N DAK	21,386	6,887	28,273	36,708	7,814	44,522	34,154	9,479	43,633
OHIO	116	6	122	123	5	128	109	5	114
OKLA	980	621	1,601	672	396	1,068	613	526	1,139
OREG	941	1,520	2,461	1,354	2,746	4,100	1,131	2,643	3,774
PA	1,925	251	2,176	1,300	248	1,548	1,230	169	1,399
R I		*	*		*	*		*	*
S C	60	10	70	67	3	70	72	11	83
S DAK	4,736	594	5,330	6,762	650	7,412	4,939	665	5,604
TENN	30	*	*	34	*	*	28	*	*
TEX	81	108	189	95	175	270	122	435	557
UTAH	1,486	1,119	2,605	1,944	1,410	3,354	1,716	1,566	3,282
VT		*	*		*	*		*	*
VA	608	151	759	662	291	953	618	178	796
WASH	869	3,685	4,554	1,813	5,735	7,548	1,895	4,164	6,059
W VA	125	*	*	129	*	*	163	*	*
WIS	282	15,166	15,448	376	18,437	18,813	320	22,884	23,204
WYO	1,235	92	1,327	1,723	*	*	1,590	*	*
UNALL*		458	996		1,818	4,054		2,230	4,585
U S	62,975	71,227	134,202	98,652	86,360	185,012	92,152	97,316	189,468

BARLEY - STOCKS BY POSITIONS, BY STATES, QUARTERLY, APRIL 1, 1975-79

STATE	ON	OFF	TOTAL ALL	ON	OFF	TOTAL ALL
	FARMS	FARMS 1/	POSITIONS	FARMS	FARMS 1/	POSITIONS
	1978			1979		
	1,000 BUSHELS					
ALA					*	*
ARIZ	209	600	809	50	367	417
ARK		*	*			
CALIF	7,980	6,001	13,981	6,840	4,914	11,754
COLO	3,420	8,996	12,416	3,137	8,960	12,097
CONN					*	*
DEL	29	201	230	32	477	509
FLA						
GA	8	33	41		*	*
IDAHO	7,755	8,339	16,094	15,178	11,585	26,763
ILL	87	757	844	58	308	366
IND	48	*	*			
IOWA		*	*		*	*
KANS	657	343	1,000	462	268	730
KY	138	128	266	148	87	235
LA		*	*		*	*
MAINE		*	*		*	*
MD	433	683	1,116	359	777	1,136
MASS		22	22			
MICH	286	*	*	259	*	*
MINN	26,989	17,348	44,337	34,823	16,891	51,714
MISS						
MO	65	*	*		*	*
MONT	21,922	2,666	24,588	28,509	4,087	32,596
NEBR	871	437	1,308	551	72	623
NEV	150	*	*	162	*	*
N H						
N J	50	68	118	35	68	103
N MEX	133	131	264	128	*	*
N Y	110	671	781	84	558	642
N C	396	107	503	761	185	946
N DAK	54,269	11,288	65,557	76,636	14,700	91,336
OHIO	101	*	*	86	3	89
OKLA	1,176	548	1,724	598	481	1,079
OREG	1,340	3,144	4,484	1,404	2,413	3,817
PA	1,000	302	1,302	893	477	1,370
R I						
S C	126	5	131	135	65	200
S DAK	13,709	1,917	15,626	17,978	2,221	20,199
TENN	28	*	*	19	*	*
TEX	204	222	426	16	195	211
UTAH	1,823	1,363	3,186	2,438	1,707	4,145
VT		*	*		*	*
VA	396	232	628	707	335	1,042
WASH	1,512	4,559	6,071	2,782	8,238	11,020
W VA	159	*	*	132	*	*
WIS	470	16,648	17,118	370	15,450	15,820
WYO	2,079	*	*	2,930	*	*
UNALL*		1,284	4,200		1,864	5,494
U S	150,128	89,043	239,171	198,700	97,753	296,453

SEE FOOTNOTES ON PAGE 71.

BARLEY - STOCKS BY POSITIONS, BY STATES, QUARTERLY, JULY 1, 1975 AND JUNE 1, 1976-79

STATE	ON	OFF	TOTAL ALL	ON	OFF	TOTAL ALL	UN	OFF	TOTAL ALL
	FARMS	FARMS 1/	POSITIONS	FARMS	FARMS 1/	POSITIONS	FARMS	FARMS 1/	POSITIONS
	JULY 1, 1975			JUNE 1, 1976			JUNE 1, 1977		
	1,000 BUSHELS								
ALA		*	*						
ARIZ	43	20	63	122	192	314	87	292	379
ARK								*	*
CALIF	228	1,040	1,268	906	2,873	3,779	1,697	3,355	5,052
COLO	600	5,528	6,128	1,463	7,008	8,471	1,078	7,687	8,765
CONN		*	*		*	*		*	*
DEL	6	*	*	4	45	49	12	*	*
FLA									
GA	2		2	2	*	*	3	*	*
IDAHO	1,901	1,975	3,876	4,620	4,231	8,851	3,724	4,505	8,229
ILL	31	561	592	42	567	609	48	818	866
IND	30		30	40		40	38		38
IOWA		89	89		*	*		*	*
KANS	260	294	554	259	271	530	282	320	602
KY	24	55	79	77	73	150	68	100	168
LA		*	*		*	*		*	*
MAINE		*	*		*	*		*	*
MD	388	81	469	171	221	392	333	170	503
MASS					*	*			
MICH	63	*	*	134	*	*	116	*	*
MINN	3,463	11,518	14,981	7,342	16,124	23,466	8,462	18,424	26,886
MISS									
MO	6	6	12	13	*	*	20	*	*
MONT	4,875	1,327	6,202	8,112	1,911	10,023	7,810	1,700	9,510
NEBR	217	202	419	225	306	591	216	650	866
NEV	18	*	*	38	*	*	54	*	*
N H					*	*		*	*
N J	32	19	51	23	42	65	29	*	*
N MEX	59	*	*	114	26	140	73	59	132
N Y	58	707	765	77	678	755	28	563	591
N C	135	27	162	207	39	246	187	40	227
N DAK	10,130	5,302	15,432	28,728	5,649	34,377	19,517	6,490	26,007
OHIO	55	5	60	90	6	96	80	*	*
OKLA	504	360	864	384	378	762	368	423	791
OREG	257	644	901	361	1,953	2,314	696	1,650	2,346
PA	847	807	1,654	845	127	972	615	115	730
R I									
S C	9	*	*	22	*	*	43	*	*
S DAK	2,944	410	3,354	4,948	400	5,348	3,630	475	4,105
TENN	6		6	14	*	*	21	*	*
TEX	54	40	94	36	141	177	81	186	267
UTAH	849	657	1,506	1,377	1,091	2,468	858	1,418	2,276
VT					*	*		*	*
VA	304	96	400	353	119	472	265	107	372
WASH	248	2,842	3,090	906	4,146	5,052	948	3,767	4,715
W VA	40	*	*	78	*	*	102	*	*
WIS	181	10,773	10,954	301	14,312	14,613	282	18,886	19,168
WYO	715	50	765	1,199	*	*	1,088	*	*
UNALL*		207	402		1,737	3,237		1,248	2,816
U S	29,582	45,642	75,224	63,693	64,666	128,359	52,959	73,448	126,407

BARLEY - STOCKS BY POSITIONS, BY STATES, QUARTERLY, JULY 1, 1975 AND JUNE 1, 1976-79

STATE	ON	OFF	TOTAL ALL	ON	OFF	TOTAL ALL
	FARMS	FARMS 1/	POSITIONS	FARMS	FARMS 1/	POSITIONS
	JUNE 1, 1978			JUNE 1, 1979		
	1,000 BUSHELS					
ALA					*	*
ARIZ	84	80	164	12	154	166
ARK		*	*			
CALIF	1,596	2,996	4,592	912	2,217	3,129
COLO	2,708	7,970	10,678	1,283	7,830	9,113
CONN						
DEL	10	109	119	11	110	121
FLA						
GA	3	7	10		4	4
IDAHO	6,204	5,708	11,912	5,059	8,205	13,264
ILL	68	474	542	45	452	497
IND	10		10			
IOWA		*	*		77	77
KANS	394	429	823	347	328	675
KY	69	85	154	89	78	167
LA		*	*		*	*
MAINE		*	*			
MD	300	330	630	251	395	646
MASS					*	*
MICH	172	*	*	145	*	*
MINN	20,380	14,811	35,191	31,705	14,107	45,812
MISS						
MO	41	*	*		*	*
MONT	13,571	2,242	15,813	22,919	2,623	25,542
NEBR	522	323	845	441	56	497
NEV	75	*	*	81	*	*
N H						
N J	31	*	*	7	*	*
N MEX	40	64	104	86	51	137
N Y	66	672	738	42	1,050	1,092
N C	220	99	319	349	154	503
N DAK	42,428	6,917	49,345	61,985	12,017	74,002
OHIO	79	3	82	62	9	71
OKLA	588	607	1,195	299	359	658
OREG	357	1,568	1,925	432	2,004	2,436
PA	650	232	882	670	352	1,022
R I						
S C	67	*	*	68	*	*
S DAK	11,558	1,701	13,259	16,933	1,945	18,878
TENN	12	*	*	9	*	*
TEX	85	182	267	5	175	180
UTAH	810	567	1,377	1,170	1,160	2,330
VT					*	*
VA	132	165	297	556	197	753
WASH	662	3,198	3,860	1,159	6,330	7,489
W VA	110	4	114	88	*	*
WIS	392	14,775	15,167	318	14,653	14,971
WYO	1,188	*	*	1,890	*	*
UNALL*		1,059	2,645		1,523	3,811
U S	105,682	67,377	173,059	149,428	78,615	228,043

SEE FOOTNOTES ON PAGE 71.

ALL WHEAT - STOCKS BY POSITIONS, BY STATES, QUARTERLY, OCTOBER 1, 1974-78

STATE	ON	OFF	TOTAL ALL	ON	OFF	TOTAL ALL	ON	OFF	TOTAL ALL
	FARMS	FARMS	POSITIONS	FARMS	FARMS	POSITIONS	FARMS	FARMS	POSITIONS
	1974			1975			1976		
1,000 BUSHELS									
ALA	402	*	*	554	1,463	2,017	709	*	*
ARIZ	780	3,905	4,685	1,638	2,863	4,501	2,586	4,718	7,304
ARK	1,093	547	1,640	945	*	*	2,457	720	3,177
CALIF	9,000	13,482	22,482	8,574	15,801	24,375	11,944	17,575	29,519
COLO	32,681	26,081	58,762	29,379	29,042	58,421	28,858	28,239	57,097
CONN		*	*		*	*		*	*
DEL	135	468	603	77	311	388	112	571	683
FLA	16	*	*	42	*	*	34	*	*
GA	776	951	1,727	765	572	1,337	856	1,139	1,995
IDAHO	26,600	23,090	49,690	20,230	25,080	45,310	26,955	27,241	54,196
ILL	8,304	24,800	33,104	6,072	40,915	46,987	10,823	41,600	52,423
IND	6,094	13,390	19,484	5,544	22,802	28,346	5,940	18,902	24,842
IOWA	372	3,192	3,564	510	3,910	4,420	819	4,258	5,077
KANS	73,370	233,035	306,405	77,198	272,105	349,303	74,580	374,244	448,824
KY	3,062	4,214	7,276	2,829	4,570	7,399	2,558	4,090	6,648
LA	44	5,909	5,953	26	9,701	9,727	84	13,377	13,461
MAINE		*	*		*	*		*	*
MD	1,294	6,522	7,816	724	*	*	979	6,912	7,891
MASS		*	*		*	*		*	*
MICH	11,900	14,924	26,824	9,234	15,096	24,330	7,934	16,844	24,778
MINN	55,795	25,749	81,544	52,137	37,483	89,620	70,460	49,283	119,743
MISS	358	*	*	234	*	*	348	2,703	3,051
MO	6,078	24,533	30,611	7,022	34,066	41,088	11,537	49,372	60,909
MONT	87,679	22,594	110,273	116,944	28,631	145,575	142,201	30,900	173,101
NEBR	38,454	51,048	89,502	42,243	44,731	86,974	40,592	72,413	113,005
NEV	1,050	*	*	1,274	*	*	1,174	*	*
N H		*	*		*	*		*	*
N J	497	*	*	501	*	*	420	*	*
N MEX	272	919	1,191	1,258	2,321	3,579	1,911	2,910	4,821
N Y	4,967	9,745	14,712	3,772	19,658	23,430	2,860	21,997	24,857
N C	2,970	2,766	5,736	1,961	2,502	4,463	1,670	3,187	4,857
N DAK	166,494	42,477	208,971	198,294	49,839	248,133	238,899	67,449	306,348
OHIO	8,323	28,286	36,609	9,878	37,607	47,485	10,880	40,165	51,045
OKLA	22,848	79,396	102,244	27,336	115,044	142,380	22,680	124,234	146,914
OREG	16,351	31,710	48,061	20,314	40,582	60,896	21,105	39,270	60,375
PA	4,147	7,901	12,048	3,449	7,506	10,955	2,393	5,750	8,143
R I		*	*		*	*		*	*
S C	360	862	1,222	421	451	872	358	556	914
S DAK	37,633	11,187	48,820	42,575	12,530	55,105	30,430	15,320	45,750
TENN	1,488	4,113	5,601	1,507	7,088	8,595	1,887	6,729	8,616
TEX	3,696	56,327	60,023	11,799	97,855	109,654	7,238	114,756	121,994
UTAH	4,470	6,065	10,535	3,313	7,841	11,154	3,805	7,816	11,621
VT		*	*		*	*		*	*
VA	3,765	2,565	6,330	2,672	2,844	5,516	1,843	1,830	3,673
WASH	30,888	88,444	119,332	38,449	110,884	149,333	36,013	113,008	149,021
W VA	273	*	*	292	*	*	275	*	*
WIS	1,170	6,863	8,033	846	15,812	16,658	1,457	20,719	22,176
WYO	4,520	1,160	5,680	3,973	1,259	5,232	4,773	2,129	6,902
UNALL*		2,445	5,041		8,279	12,291		2,020	4,632
U S	680,469	881,665	1,562,134	756,805	1,129,044	1,885,849	835,437	1,354,946	2,190,383

ALL WHEAT - STOCKS BY POSITIONS, BY STATES, QUARTERLY, OCTOBER 1, 1974-78

STATE	ON	OFF	TOTAL ALL	ON	OFF	TOTAL ALL
	FARMS	FARMS 1/	POSITIONS	FARMS	FARMS 1/	POSITIONS
	1977			1978		
	1,000 BUSHELS					
ALA	524	*	*	515	*	*
ARIZ	1,210	3,751	4,961	773	3,577	4,350
ARK	1,287	1,803	3,090	1,055	1,403	2,458
CALIF	12,764	13,074	25,838	8,118	8,955	17,073
COLO	35,572	31,565	67,137	50,391	32,600	82,991
CONN		*	*			
DEL	52	606	658	30	78	108
FLA	23	248	271	26	*	*
GA	627	1,100	1,727	614	916	1,530
IDAHO	28,950	24,868	53,818	33,162	28,720	61,882
ILL	12,827	47,770	60,597	3,678	16,715	20,393
IND	6,138	19,224	25,362	2,597	9,396	11,993
IOWA	1,008	3,219	4,227	335	3,431	3,766
KANS	82,764	374,871	457,635	90,000	317,348	407,348
KY	1,926	4,097	6,023	842	2,088	2,930
LA	103	14,176	14,279	54	4,893	4,947
MAINE		*	*		*	*
MD	570	2,584	3,154	592	856	1,448
MASS		*	*		*	*
MICH	8,580	24,171	32,751	2,624	14,878	17,502
MINN	125,299	52,981	178,280	110,006	39,870	149,876
MISS	214	476	690	91	*	*
MO	15,873	43,983	59,856	4,284	20,322	24,606
MONT	146,630	25,053	171,683	156,274	29,293	185,567
NEBR	51,625	76,191	127,816	44,880	63,578	108,458
NEV	1,080	*	*	917	*	*
N H						
N J	306	182	488	162	*	*
N MEX	2,010	4,738	6,748	1,028	3,973	5,001
N Y	4,095	21,447	25,542	1,365	10,369	11,734
N C	1,380	2,688	4,068	1,485	2,910	4,395
N DAK	298,879	58,339	357,218	314,672	64,186	378,858
OHIO	10,857	53,316	64,173	6,739	23,628	30,367
OKLA	36,855	136,694	173,549	36,450	114,766	151,216
OREG	17,619	32,933	50,552	18,693	33,703	52,396
PA	2,264	6,283	8,547	1,987	5,094	7,081
R I						
S C	592	595	1,187	515	471	986
S DAK	59,730	17,047	76,777	75,900	23,708	99,608
TENN	1,915	4,784	6,699	756	4,855	5,611
TEX	22,325	142,050	164,375	8,100	93,695	101,795
UTAH	3,342	6,215	9,557	3,646	7,293	10,939
VT					*	*
VA	1,745	2,055	3,800	1,024	1,491	2,515
WASH	33,431	92,558	125,989	39,730	93,019	132,749
W VA	183	*	*	149	*	*
WIS	1,445	14,967	16,412	858	18,621	19,479
WYO	4,608	985	5,593	4,564	1,151	5,715
UNALL*		1,635	3,422		2,319	4,179
U S	1,039,227	1,365,322	2,404,549	1,029,681	1,104,169	2,133,850

SEE FOOTNOTES ON PAGE 71.

ALL WHEAT - STOCKS BY POSITIONS, BY STATES, QUARTERLY, JANUARY 1, 1975-79

STATE	ON	OFF	TOTAL ALL	ON	OFF	TOTAL ALL	ON	OFF	TOTAL ALL
	FARMS	FARMS 1/	POSITIONS	FARMS	FARMS 1/	POSITIONS	FARMS	FARMS 1/	POSITIONS
	1975			1976			1977		
1,000 BUSHELS									
ALA	223	*	*	370	1,219	1,589	369	*	*
ARIZ	390	1,396	1,786	1,092	1,282	2,374	1,616	3,085	4,701
ARK	87	121	208	540	112	652	1,229	1,245	2,474
CALIF	4,875	7,862	12,737	6,124	7,342	13,466	8,361	15,171	23,532
COLO	22,514	18,715	41,229	23,165	23,063	46,228	21,376	23,451	44,827
CONN		*	*		*	*		*	*
DEL	60	*	*	31	17	48	67	403	470
FLA	6	*	*	7	448	455	8	522	530
GA	212	402	614	219	469	688	428	681	1,109
IDAHO	16,702	14,958	31,660	15,805	18,251	34,056	24,769	21,800	46,569
ILL	5,709	20,750	26,459	4,048	30,602	34,650	8,658	31,920	40,578
IND	3,516	10,074	13,590	4,312	13,614	17,926	4,320	12,386	16,706
IOWA	167	1,717	1,884	340	1,900	2,240	364	3,491	3,855
KANS	47,850	165,367	213,217	63,162	219,898	283,060	57,630	313,601	371,231
KY	1,701	3,257	4,958	2,611	3,582	6,193	2,251	2,478	4,729
LA	12	9,064	9,076	6	5,253	5,259	21	6,308	6,329
MAINE		*	*		*	*		*	*
MD	787	*	*	579	2,078	2,657	724	*	*
MASS		*	*		*	*		*	*
MICH	7,820	11,656	19,476	6,840	8,742	15,582	6,612	14,003	20,615
MINN	33,153	22,501	55,654	40,649	25,259	65,908	61,327	42,500	103,827
MISS	211	*	*	59	482	541	52	535	587
MO	3,419	19,415	22,834	3,511	21,224	24,735	6,072	44,068	50,140
MONT	55,250	16,365	71,615	90,437	22,628	113,065	112,088	26,702	138,790
NEBR	29,580	30,051	59,631	31,437	37,910	69,347	30,208	64,900	95,108
NEV	600	*	*	819	*	*	671	*	*
N H									
N J	238	*	*	167	*	*	147	*	*
N MEX	204	546	750	1,030	1,934	2,964	410	3,128	3,538
N Y	3,973	11,142	15,115	2,788	18,391	21,179	2,394	17,400	19,794
N C	2,178	2,170	4,348	1,364	2,581	3,945	1,183	2,370	3,553
N DAK	111,699	31,458	143,157	142,772	40,475	183,247	207,238	55,849	263,087
OHIO	4,756	26,916	31,672	6,350	31,712	38,062	7,040	35,591	42,631
OKLA	14,784	59,776	74,560	14,472	84,838	99,310	13,608	112,683	126,291
OREG	11,604	25,713	37,317	12,769	27,400	40,169	16,884	30,200	47,084
PA	2,880	5,588	8,468	2,536	4,332	6,868	1,403	4,636	6,039
R I									
S C	288	425	713	140	278	418	65	246	311
S DAK	28,510	6,860	35,370	31,931	8,900	40,831	26,874	13,945	40,819
TENN	827	3,731	4,558	1,172	5,331	6,503	999	4,845	5,844
TEX	2,640	48,365	51,005	3,933	66,882	70,815	5,170	93,128	98,298
UTAH	3,273	6,393	9,666	2,429	6,391	8,820	2,629	6,570	9,199
VT					*	*		*	*
VA	3,053	1,880	4,933	1,207	1,314	2,521	922	1,450	2,372
WASH	17,297	63,111	80,408	23,661	81,243	104,904	25,929	91,785	117,714
W VA	198	*	*	197	*	*	222	*	*
WIS	856	7,546	8,402	705	9,283	9,988	1,133	9,684	10,817
WYO	2,187	857	3,044	2,814	1,103	3,917	3,739	959	4,698
UNALL*		5,023	7,346		265	1,448		2,657	4,790
U S	446,289	661,171	1,107,460	548,600	838,028	1,386,628	667,210	1,116,376	1,783,586

ALL WHEAT - STOCKS BY POSITIONS, BY STATES, QUARTERLY, JANUARY 1, 1975-79

STATE	ON	OFF	TOTAL ALL	ON	OFF	TOTAL ALL
	FARMS	FARMS 1/	POSITIONS	FARMS	FARMS 1/	POSITIONS
	1978			1979		
	1,000 BUSHELS					
ALA	462	*	*	234	*	*
ARIZ	907	2,204	3,111	290	1,240	1,530
ARK	901	3,201	4,102	389	97	486
CALIF	6,382	10,051	16,433	5,554	4,374	9,928
COLO	32,703	27,958	60,661	41,498	26,230	67,728
CONN		*	*			
DEL	17	529	546	12	*	*
FLA	8	222	230	9	359	368
GA	198	704	902	230	850	1,080
IDAHO	22,002	17,887	39,889	26,380	19,383	45,763
ILL	10,127	41,310	51,437	2,174	13,270	15,444
IND	4,464	13,625	18,089	1,154	6,636	7,790
IOWA	726	2,380	3,106	223	1,626	1,849
KANS	68,970	321,743	390,713	54,000	240,308	294,308
KY	1,419	2,838	4,257	454	1,392	1,846
LA	84	9,830	9,914	19	4,988	5,007
MAINE		*	*		*	*
MD	285	609	894	355	588	943
MASS		*	*		*	*
MICH	6,930	19,165	26,095	1,968	11,699	13,667
MINN	104,196	41,988	146,184	93,225	26,360	119,585
MISS	89	250	339	71	162	233
MO	10,101	37,273	47,374	1,999	15,288	17,287
MONT	126,992	21,858	148,850	131,445	25,829	157,274
NEBR	43,365	71,755	115,120	35,088	46,781	81,869
NEV	504		504	459	*	*
N H					*	*
N J	141	*	*	72	253	325
N MEX	1,188	4,011	5,199	907	3,289	4,196
N Y	2,594	21,750	24,344	578	10,485	11,063
N C	720	1,934	2,654	891	2,189	3,080
N DAK	246,000	47,578	293,578	271,762	47,076	318,838
OHIO	7,962	42,797	50,759	2,527	16,507	19,034
OKLA	21,060	120,113	141,173	20,412	81,033	101,445
OREG	12,857	25,567	38,424	15,058	25,920	40,978
PA	1,860	5,384	7,244	1,206	3,414	4,620
R I						
S C	394	319	713	193	244	437
S DAK	57,571	16,620	74,191	69,960	17,627	87,587
TENN	1,109	5,550	6,659	441	3,665	4,106
TEX	9,400	128,902	138,302	2,160	72,100	74,260
UTAH	2,719	4,859	7,578	3,241	5,575	8,816
VT					*	*
VA	1,246	2,293	3,539	745	1,212	1,957
WASH	21,274	75,877	97,151	23,069	70,072	93,141
W VA	155	*	*	128	*	*
WIS	1,292	9,431	10,723	702	5,618	6,320
WYO	3,203	762	3,965	3,118	1,410	4,528
UNALL*		1,332	2,090		1,215	2,048
U S	834,577	1,162,459	1,997,036	814,400	816,364	1,630,764

SEE FOOTNOTES ON PAGE 71.

ALL WHEAT - STOCKS BY POSITIONS, BY STATES, QUARTERLY, APRIL 1, 1975-79

STATE	ON FARMS	OFF FARMS 1/	TOTAL ALL POSITIONS	ON FARMS	OFF FARMS 1/	TOTAL ALL POSITIONS	ON FARMS	OFF FARMS 1/	TOTAL ALL POSITIONS
	1975			1976			1977		
1,000 BUSHELS									
ALA	89	*	*	158	*	*	170	*	*
ARIZ	65	320	385	91	553	644	485	2,583	3,068
ARK	44	95	139	203	23	226	246	360	606
CALIF	2,625	4,703	7,328	3,062	5,938	9,000	5,972	8,786	14,758
COLO	13,799	14,223	28,022	14,125	17,070	31,195	18,704	20,782	39,486
CONN		*	*		*	*		*	*
DEL	15	*	*	12	*	*	11	112	123
FLA	0	*	*	0	*	*	4	390	394
GA	71	356	427	73	*	*	143	556	699
IDAHO	9,279	8,243	17,522	9,483	9,744	19,227	17,484	14,650	32,134
ILL	1,817	8,280	10,097	2,361	19,072	21,433	5,772	28,435	34,207
IND	1,641	3,788	5,429	1,848	6,646	8,494	3,240	9,726	12,966
IOWA	93	1,307	1,400	170	1,504	1,674	273	2,709	2,982
KANS	28,710	103,714	132,424	42,108	166,178	208,286	44,070	254,587	298,657
KY	454	1,367	1,821	870	2,066	2,936	1,535	1,749	3,284
LA	2	2,596	2,598	2	2,513	2,515	5	6,620	6,625
MAINE		*	*		*	*		*	*
MD	141	*	*	193	*	*	85	499	584
MASS		*	*		*	*		*	*
MICH	3,740	6,768	10,508	2,394	6,806	9,200	4,628	12,245	16,873
MINN	20,216	19,940	40,156	22,976	23,277	46,253	52,193	42,826	95,019
MISS	98	609	707	9	288	297	7	135	142
MO	950	10,739	11,689	1,505	14,282	15,787	4,250	36,558	40,808
MONT	31,228	8,878	40,106	48,337	16,300	64,637	85,320	20,218	105,538
NEBR	17,748	20,017	37,765	17,683	30,543	48,226	25,488	55,529	81,017
NEV	165	*	*	328	*	*	168	*	*
N H									
N J	130	*	*	63	*	*	63	*	*
N MEX	136	419	555	229	1,603	1,832	137	2,352	2,489
N Y	2,619	4,276	6,895	1,230	9,837	11,067	1,463	9,850	11,313
N C	693	1,388	2,081	384	1,589	1,973	592	1,730	2,322
N DAK	84,301	22,172	106,473	111,045	30,444	141,489	175,576	46,224	221,800
OHIO	2,675	10,346	13,021	2,822	11,558	14,380	5,120	27,260	32,380
OKLA	6,048	25,490	31,538	10,452	56,797	67,249	7,560	79,293	86,853
OREG	6,329	15,060	21,389	6,965	14,912	21,877	8,442	18,917	27,359
PA	1,843	3,346	5,189	1,217	1,859	3,076	990	2,752	3,742
R I									
S C	36	249	285	70	169	239	49	313	362
S DAK	19,957	4,375	24,332	20,661	6,030	26,691	19,760	9,900	29,660
TENN	455	1,129	1,584	502	2,689	3,191	555	1,895	2,450
TEX	792	25,641	26,433	2,622	48,754	51,376	1,551	75,601	77,152
UTAH	1,836	4,389	6,225	1,693	5,001	6,694	2,006	3,804	5,810
VT		*	*		*	*		*	*
VA	1,323	2,047	3,370	646	1,325	1,971	538	1,349	1,887
WASH	9,884	38,966	48,850	11,830	48,150	59,980	14,405	58,967	73,372
W VA	91	*	*	74	*	*	102	*	*
WIS	656	8,279	8,935	564	16,334	16,898	971	16,358	17,329
WYO	1,312	598	1,910	2,152	831	2,983	2,227	799	3,026
UNALL*		3,869	4,500		3,466	4,367		1,115	1,618
U S	274,106	387,982	662,088	343,212	594,151	937,363	512,360	878,534	1,390,894

ALL WHEAT - STOCKS BY POSITIONS, BY STATES, QUARTERLY, APRIL 1, 1975-79

STATE	ON	OFF	TOTAL ALL	ON	OFF	TOTAL ALL
	FARMS	FARMS 1/	POSITIONS	FARMS	FARMS 1/	POSITIONS
	1978			1979		
	1,000 BUSHELS					
ALA	123	*	*	70	*	*
ARIZ	202	682	884	145	487	632
ARK	515	1,140	1,655	167	14	181
CALIF	2,127	5,936	8,063	2,564	2,388	4,952
COLO	23,523	25,226	48,749	28,456	18,440	46,896
CONN		*	*			
DEL	4	*	*	3	*	*
FLA	6	*	*	4	573	577
GA	66	306	372	77	535	612
IDAHO	14,475	10,839	25,314	17,335	11,935	29,270
ILL	5,063	31,210	36,273	502	8,495	8,997
IND	3,069	8,350	11,419	577	3,531	4,108
IOWA	323	2,226	2,549	153	1,646	1,799
KANS	48,279	256,848	305,127	39,000	173,217	212,217
KY	710	1,575	2,285	194	576	770
LA	78	3,766	3,844	3	1,000	1,003
MAINE		*	*		*	*
MD	143	394	537	59	505	564
MASS		*	*		*	*
MICH	2,640	14,942	17,582	820	8,645	9,465
MINN	83,093	45,416	128,509	72,716	31,766	104,482
MISS	36	*	*	40	*	*
MO	5,772	25,227	30,999	714	9,215	9,929
MONT	102,118	16,399	118,517	102,235	19,472	121,707
NEBR	38,203	58,020	96,223	28,560	39,375	67,935
NEV	216	*	*	197	*	*
N H						
N J	24	*	*	9	*	*
N MEX	914	3,432	4,346	847	2,725	3,572
N Y	887	9,988	10,875	263	4,257	4,520
N C	450	1,357	1,807	356	1,606	1,962
N DAK	209,215	41,199	250,414	243,155	43,565	286,720
OHIO	5,067	29,736	34,803	1,264	10,509	11,773
OKLA	10,530	89,982	100,512	9,477	50,139	59,616
OREG	6,191	17,691	23,882	8,308	18,474	26,782
PA	1,051	3,458	4,509	426	2,160	2,586
R I						
S C	197	152	349	86	99	185
S DAK	50,375	16,542	66,917	53,460	14,453	67,913
TENN	756	1,912	2,668	315	1,718	2,033
TEX	8,225	91,884	100,109	1,620	50,078	51,698
UTAH	2,039	3,648	5,687	2,431	3,734	6,165
VT		*	*		*	*
VA	436	952	1,388	349	900	1,249
WASH	11,144	45,280	56,424	12,816	47,507	60,323
W VA	47	*	*	74	*	*
WIS	1,076	20,208	21,284	593	10,587	11,180
WYO	2,698	933	3,631	2,814	1,239	4,053
UNALL*		976	1,432		607	1,000
U S	642,106	887,832	1,529,938	633,254	596,172	1,229,426

SEE FOOTNOTES ON PAGE 71.

ALL WHEAT - STOCKS BY POSITIONS, BY STATES, QUARTERLY, JULY 1, 1975 AND JUNE 1, 1976-79

STATE	ON	OFF	TOTAL ALL	ON	OFF	TOTAL ALL	ON	OFF	TOTAL ALL
	FARMS	FARMS 1/	POSITIONS	FARMS	FARMS 1/	POSITIONS	FARMS	FARMS 1/	POSITIONS
	JULY 1, 1975			JUNE 1, 1976			JUNE 1, 1977		
	1,000 BUSHEL								
ALA	11	*	*	53	*	*	57	*	*
ARIZ	52	*	*	73	501	574	226	704	930
ARK	26	6	32	27	42	69	98	291	389
CALIF	188	1,124	1,312	1,225	5,683	6,908	3,583	5,063	8,646
COLO	10,894	7,994	18,888	11,865	14,467	26,332	17,635	15,422	33,057
CONN		*	*		*	*		*	*
DEL	8	*	*	2	*	*	6	*	*
FLA	0	*	*		*	*		*	*
GA	35	*	*	36	244	280	71	417	488
IDAHO	2,474	3,737	6,211	5,690	5,904	11,594	12,385	9,445	21,830
ILL	779	2,290	3,069	1,012	14,175	15,187	3,608	21,815	25,423
IND	469	942	1,411	1,232	2,553	3,785	2,160	6,636	8,796
IOWA	19	779	798	136	1,577	1,713	137	2,411	2,548
KANS	17,545	60,292	77,837	31,581	133,911	165,492	30,510	218,140	248,650
KY	113	*	*	109	624	733	1,023	855	1,878
LA	1	2,832	2,833		2,375	2,375		4,928	4,928
MAINE		*	*		*	*		*	*
MD	84	142	226	97	*	*	64	*	*
MASS		*	*		*	*		*	*
MICH	1,700	3,479	5,179	1,710	5,371	7,081	3,306	8,524	11,830
MINN	6,469	12,109	18,578	14,139	13,543	27,682	44,364	30,413	74,777
MISS	3	*	*	3	226	229	3	124	127
MO	380	6,041	6,421	1,003	11,292	12,295	3,036	28,007	31,043
MONT	19,217	5,098	24,315	38,981	11,069	50,050	71,937	15,873	87,810
NEBR	9,860	10,695	20,555	12,771	23,366	36,137	23,600	43,803	67,403
NEV	30	*	*	73	*	*	34	*	*
N H									
N J	65	*	*	21	*	*	42	*	*
N MEX	34	*	*	114	1,462	1,576	68	2,045	2,113
N Y	813	3,447	4,260	656	6,546	7,202	998	9,089	10,087
N C	248	716	964	256	961	1,217	487	1,300	1,787
N DAK	35,828	11,701	47,529	76,674	21,709	98,383	161,185	33,400	194,585
OHIO	892	3,479	4,371	1,411	13,872	15,283	3,840	18,232	22,072
OKLA	2,688	11,836	14,524	4,020	44,639	48,659	4,536	62,328	66,864
OREG	2,110	6,353	8,463	4,643	9,203	13,846	5,427	14,488	19,915
PA	749	969	1,718	710	970	1,680	578	1,869	2,447
R I									
S C	18	10	28	35	98	133	13	182	195
S DAK	13,115	1,760	14,875	15,026	3,425	18,451	18,574	7,370	25,944
TENN	413	533	946	157	789	956	333	1,200	1,533
TEX	528	9,697	10,225	1,311	37,584	38,895	1,034	62,454	63,488
UTAH	878	2,490	3,368	1,104	3,415	4,519	1,384	3,651	5,035
VT					*	*		*	*
VA	509	627	1,136	345	1,176	1,521	307	807	1,114
WASH	2,471	16,095	18,566	5,915	28,971	34,886	8,643	41,014	49,657
W VA	48	*	*	53	*	*	60	*	*
WIS	314	4,832	5,146	423	6,381	6,804	712	11,940	12,652
WYO	656	343	999	1,159	610	1,769	1,273	618	1,891
UNALL*		1,807	2,206		1,034	1,333		1,054	1,317
U S	132,734	194,255	326,989	235,861	429,768	665,629	427,337	685,912	1,113,249

ALL WHEAT - STOCKS BY POSITIONS, BY STATES, QUARTERLY, JULY 1, 1975 AND JUNE 1, 1976-79

STATE	ON	OFF	TOTAL ALL	ON	OFF	TOTAL ALL
	FARMS	FARMS 1/	POSITIONS	FARMS	FARMS 1/	POSITIONS
	JUNE 1, 1978			JUNE 1, 1979		
	1,000 BUSHEL					
ALA	62	*	*	47	125	172
ARIZ	101	285	386	48	264	312
ARK	257	259	516	111	16	127
CALIF	425	2,741	3,166	427	1,597	2,024
COLO	20,655	19,970	40,625	23,120	13,195	36,315
CONN		*	*			
DEL	9	12	21	1	*	*
FLA	4	*	*	2	300	302
GA	50	390	440	38	437	475
IDAHO	5,790	6,635	12,425	10,552	6,920	17,472
ILL	2,025	21,240	23,265	334	4,470	4,804
IND	1,953	4,772	6,725	287	1,190	1,477
IOWA	242	2,146	2,388	112	1,907	2,019
KANS	37,934	208,752	246,686	33,000	120,361	153,361
KY	304	632	936	130	145	275
LA	45	3,690	3,735		2,304	2,304
MAINE		*	*		*	*
MD	71	*	*	30	*	*
MASS					*	*
MICH	1,650	10,778	12,428	656	7,284	7,940
MINN	72,542	34,061	106,603	68,987	19,625	88,612
MISS	25	51	76	10	*	*
MO	3,608	18,716	22,324	571	6,675	7,246
MONT	83,789	14,083	97,872	71,565	15,551	87,116
NEBR	30,975	54,598	85,573	27,744	31,841	59,585
NEV	72	*	*	66	*	*
N H						
N J	12	153	165	5	*	*
N MEX	822	3,230	4,102	786	2,165	2,951
N Y	614	11,461	12,075	210	4,441	4,651
N C	90	1,086	1,176	119	1,125	1,244
N DAK	156,337	32,804	189,141	180,221	32,042	212,263
OHIO	3,619	17,117	20,736	421	5,808	6,229
OKLA	7,020	63,394	70,414	2,916	30,024	32,940
OREG	4,286	11,254	15,540	3,635	13,641	17,276
PA	647	2,145	2,792	284	1,305	1,589
R I					*	*
S C	49	102	151	43	*	*
S DAK	40,300	14,475	54,775	45,540	12,327	57,867
TENN	454	1,372	1,826	95	1,470	1,565
TEX	5,875	73,504	79,379	1,350	48,016	49,366
UTAH	1,360	2,703	4,063	1,134	3,250	4,384
VT		*	*		*	*
VA	312	1,011	1,323	140	*	*
WASH	6,585	29,927	36,512	6,408	39,472	45,880
W VA	31	*	*	45	*	*
WIS	769	12,012	12,781	468	8,037	8,505
WYO	2,248	711	2,959	2,662	959	3,621
UNALL*		1,468	1,708		1,488	1,828
U S	494,018	683,790	1,177,808	484,320	439,777	924,097

DURUM WHEAT - STOCKS BY POSITIONS, BY STATES, QUARTERLY, OCTOBER 1, 1974-78 1/

STATE	ON	OFF	TOTAL ALL	ON	OFF	TOTAL ALL	ON	OFF	TOTAL ALL
	FARMS	FARMS 2/	POSITIONS	FARMS	FARMS 2/	POSITIONS	FARMS	FARMS 2/	POSITIONS
	1974			1975			1976		
	1,000 BUSHEL								
N DAK	62,304	13,647	75,951	74,507	16,536	91,043	95,930	22,124	118,054
OTH STS	7,892	7,730	15,622	12,899	11,121	24,020	14,614	17,447	32,061
U S	70,196	21,377	91,573	87,406	27,657	115,063	110,544	39,571	150,115
	1977			1978					
N DAK	89,562	16,280	105,842	100,019	15,141	115,160			
OTH STS	13,900	20,058	33,958	20,290	14,871	35,161			
U S	103,462	36,338	139,800	120,309	30,012	150,321			

DURUM WHEAT - STOCKS BY POSITIONS, BY STATES, QUARTERLY, JANUARY 1, 1975-79 1/

STATE	ON	OFF	TOTAL ALL	ON	OFF	TOTAL ALL	ON	OFF	TOTAL ALL
	FARMS	FARMS 2/	POSITIONS	FARMS	FARMS 2/	POSITIONS	FARMS	FARMS 2/	POSITIONS
	1975			1976			1977		
	1,000 BUSHEL								
N DAK	45,312	11,480	56,792	55,618	14,251	69,869	83,260	18,455	101,715
OTH STS	6,520	7,247	13,767	9,794	6,277	16,071	11,739	14,176	25,915
U S	51,832	18,727	70,559	65,412	20,528	85,940	94,999	32,631	127,630
	1978			1979					
N DAK	70,197	13,231	83,428	83,689	11,055	94,744			
OTH STS	11,694	13,293	24,987	15,005	7,257	22,262			
U S	81,891	26,524	108,415	98,694	18,312	117,006			

SEE FOOTNOTES ON PAGE 52.

DURUM WHEAT - STOCKS BY POSITIONS, BY STATES, QUARTERLY, APRIL 1, 1975-79 ^{1/}

STATE	ON	OFF	TOTAL ALL	ON	OFF	TOTAL ALL	ON	OFF	TOTAL ALL
	FARMS	FARMS ^{2/}	POSITIONS	FARMS	FARMS ^{2/}	POSITIONS	FARMS	FARMS ^{2/}	POSITIONS
	1975			1976			1977		
	1,000 BUSHELS								
N DAK	33,276	6,672	39,948	45,124	10,876	56,000	68,780	15,009	83,789
OTH STS	4,560	4,826	9,386	7,909	7,189	15,098	10,567	13,886	24,453
U S	37,836	11,498	49,334	53,033	18,065	71,098	79,347	28,895	108,242
	1978			1979					
N DAK	51,438	10,209	61,647	71,442	11,468	82,910			
OTH STS	10,197	19,545	29,742	11,524	10,051	21,575			
U S	61,635	29,754	91,389	82,966	21,519	104,485			

DURUM WHEAT - STOCKS BY POSITIONS, BY STATES, QUARTERLY, JULY 1, 1975 AND JUNE 1, 1976-79 ^{1/}

STATE	ON	OFF	TOTAL ALL	ON	OFF	TOTAL ALL	ON	OFF	TOTAL ALL
	FARMS	FARMS ^{2/}	POSITIONS	FARMS	FARMS ^{2/}	POSITIONS	FARMS	FARMS ^{2/}	POSITIONS
	1975			1976			1977		
	1,000 BUSHELS								
N DAK	12,036	3,625	15,661	33,581	9,148	42,729	61,540	10,048	71,588
OTH STS	2,557	3,088	5,645	5,325	5,402	10,727	9,103	11,072	20,175
U S	14,593	6,713	21,306	38,906	14,550	53,456	70,643	21,120	91,763
	1978			1979					
N DAK	40,545	7,490	48,035	60,215	8,211	68,426			
OTH STS	9,081	9,775	18,856	9,470	7,873	17,343			
U S	49,626	17,265	66,891	69,685	16,084	85,769			

^{1/} INCLUDED IN ALL WHEAT.

^{2/} INCLUDES STOCKS AT MILLS, ELEVATORS, WAREHOUSES, TERMINALS, AND PROCESSORS.

RYE - STOCKS BY POSITIONS, BY STATES, QUARTERLY, OCTOBER 1, 1974-78

STATE	ON	OFF	TOTAL ALL	ON	OFF	TOTAL ALL	ON	OFF	TOTAL ALL
	FARMS	FARMS 1/	POSITIONS	FARMS	FARMS 1/	POSITIONS	FARMS	FARMS 1/	POSITIONS
	1974			1975			1976		
	1,000 BUSHEL								
ALA	*	*		12	12		*	*	
ARIZ									
ARK	*	*							
CALIF									
COLO	125	35	160	123	24	147	161	*	*
CONN									
DEL	111	*	*	108	*	*	82	*	*
FLA		*	*		*	*		*	*
GA	1,197	295	1,492	797	89	886	1,296	214	1,510
IDAHO		*	*		*	*		*	*
ILL	101	96	197	105	*	*	82	90	172
IND	97	*	*	119	*	*	127	*	*
IOWA	85	*	*	59	*	*	109	*	*
KANS	173	25	198	67	20	87	82	25	107
KY	25	135	160	57	*	*	24	150	174
LA		*	*					*	*
MAINE									
MD	126	*	*	93	*	*	108		108
MASS									
MICH	203	30	233	205	25	230	211	15	226
MINN	465	2,933	3,398	690	2,254	2,944	614	3,374	3,988
MISS									
MO	38	*	*	77	1	78	42	3	45
MONT		*	*		*	*		*	*
NEBR	405	78	483	428	45	473	383	81	464
NEV		*	*					*	*
N H									
N J	117	*	*	80	*	*	120	*	*
N MEX		*	*		*	*		*	*
N Y	240	204	444	150	*	*	108	*	*
N C	156	*	*	133	18	151	171	45	216
N DAK	1,776	1,144	2,920	1,488	691	2,179	1,472	843	2,315
OHIO	108	*	*	115	4	119	115	4	119
OKLA	286	24	310	200	12	212	231	14	245
OREG	110	27	137	134	17	151	109	21	130
PA	214	26	240	191	18	209	187	10	197
R I									
S C	484	53	537	267	33	300	321	*	*
S DAK	3,807	1,725	5,532	2,815	560	3,375	1,337	555	1,892
TENN	23	*	*	16	*	*	27	*	*
TEX	87	66	153	61	21	82	23	118	141
UTAH									
VT									
VA	162	5	167	179	1	180	127	4	131
WASH	21	45	66	18	9	27	20	*	*
W VA									
WIS	163	1,365	1,528	189	1,330	1,519	176	267	443
WYO	30	*	*	33	2	35	43		43
UNALL*		570	1,461		468	1,255		287	1,362
U S	10,935	8,881	19,816	8,997	5,654	14,651	7,908	6,120	14,028

RYE - STOCKS BY POSITIONS, BY STATES, QUARTERLY, OCTOBER 1, 1974-78

STATE	ON	OFF	TOTAL ALL	ON	OFF	TOTAL ALL
	FARMS	FARMS 1/	POSITIONS	FARMS	FARMS 1/	POSITIONS
	1977			1978		
1,000 BUSHELS						
ALA		17	17		12	12
ARIZ		*	*			
ARK		1	1		*	*
CALIF						
COLO	57	*	*	79	*	*
CONN						
DEL	104	*	*	60	*	*
FLA		*	*			
GA	1,397	387	1,784	1,898	445	2,343
IDAHO		*	*		*	*
ILL	99	20	119	103	46	149
IND	143	*	*	88	*	*
IOWA	64	*	*	68	*	*
KANS	63	11	74	110	4	114
KY	55	*	*	64	*	*
LA		*	*			
MAINE						
MD	116	*	*	108	*	*
MASS					*	*
MICH	228	52	280	288	110	398
MINN	804	2,084	2,888	1,200	2,711	3,911
MISS					*	*
MO	65	6	71	67	*	*
MONT		*	*		*	*
NEBR	525	68	593	342	37	379
NEV		*	*			
N H						
N J	116	6	122	81	*	*
N MEX					7	7
N Y	140	*	*	140	*	*
N C	192	*	*	166	105	271
N DAK	1,914	273	2,202	3,780	941	4,721
OHIO	99	1	100	110	*	*
OKLA	194	6	200	257	2	259
OREG	81	*	*	109	21	130
PA	186	9	195	282	15	297
R I						
S C	347	37	384	436	61	497
S DAK	2,416	455	2,871	5,146	1,465	6,611
TENN	19	*	*	17	*	*
TEX	120	4	124	102	*	*
UTAH		*	*		*	*
VT						
VA	231	3	234	310	12	322
WASH	18	27	45	19	6	25
W VA					*	*
WIS	248	*	*	203	*	*
WYO	29		29	33		33
UNALL*		592	1,811		877	2,064
U S	10,070	4,074	14,144	15,666	6,877	22,543

SEE FOOTNOTES ON PAGE 71.

RYE - STOCKS BY POSITIONS, BY STATES, QUARTERLY, JANUARY 1, 1975-79

STATE	ON	OFF	TOTAL ALL	ON	OFF	TOTAL ALL	ON	OFF	TOTAL ALL
	FARMS	FARMS 1/	POSITIONS	FARMS	FARMS 1/	POSITIONS	FARMS	FARMS 1/	POSITIONS
	1975			1976			1977		
	1,000 BUSHELS								
ALA									
ARIZ									
ARK		*	*						
CALIF									
COLO	114	30	144	106	5	111	137	4	141
CONN									
DEL	8		8	8		8	11		11
FLA									
GA	95	*	*	108	*	*	397	37	434
IDAHO		*	*		*	*		*	*
ILL	54	61	115	45	*	*	38	*	*
IND	32	*	*	35	*	*	46	*	*
IOWA	30		30	35	*	*	53	*	*
KANS	114	19	133	52	21	73	27	21	48
KY	9	173	182	24	123	147	12	205	217
LA		*	*						
MAINE									
MD	25	*	*	24		24	24		24
MASS									
MICH	90	16	106	114	*	*	94	3	97
MINN	295	1,609	1,904	334	1,389	1,723	410	2,317	2,727
MISS									
MO	6	126	132	7	*	*	4	*	*
MONT		111	111		*	*		*	*
NEBR	306	55	361	257	12	269	245	57	302
NEV		*	*						
N H									
N J	24	*	*	28	*	*	32	*	*
N MEX		*	*		*	*		*	*
N Y	115	*	*	135	*	*	68	*	*
N C	34	*	*	17	*	*	38	23	61
N DAK	1,458	676	2,134	1,190	447	1,637	1,274	495	1,769
OHIO	36	*	*	45	20	65	45	4	49
OKLA	89	18	107	57	3	60	170	3	173
OREG	46	31	77	63	14	77	59	*	*
PA	67	12	79	83	*	*	44	9	53
R I									
S C	70	19	89	24	4	28	112	11	123
S DAK	2,738	1,247	3,985	2,299	360	2,659	1,188	405	1,593
TENN	8	*	*	5	*	*	7	*	*
TEX	45	33	78	30	32	62	8	8	16
UTAH									
VT									
VA	32	*	*	14	*	*	16	*	*
WASH	14	24	38	12	*	*	13	*	*
W VA									
WIS	106	716	822	126	901	1,027	126	125	251
WYO	22	5	27	22		22	29	*	*
UNALL*		528	929		446	1,084		424	789
U S	6,082	5,509	11,591	5,299	3,777	9,076	4,727	4,151	8,878

RYE - STOCKS BY POSITIONS, BY STATES, QUARTERLY, JANUARY, 1, 1975-79

STATE	ON	OFF	TOTAL ALL	ON	OFF	TOTAL ALL
	FARMS	FARMS 1/	POSITIONS	FARMS	FARMS 1/	POSITIONS
	1978			1979		
	1,000 BUSHELS					
ALA		*	*			
ARIZ		*	*		*	*
ARK		*	*		*	*
CALIF						
COLO	52	*	*	68	*	*
CONN						
DEL	14		14	7		7
FLA					*	*
GA	259	85	344	380	75	455
IDAHO		*	*		*	*
ILL	53	20	73	66	33	99
IND	52	*	*	26	*	*
IOWA	29	*	*	45	*	*
KANS	45	26	71	76	1	77
KY	11	284	295	13	267	280
LA						
MAINE						
MD	21		21	19	*	*
MASS						
MICH	91	17	108	120	51	171
MINN	365	1,377	1,742	964	2,114	3,078
MISS						
MO	19	3	22	18	*	*
MONT		*	*		*	*
NEBR	378	24	402	228	13	241
NEV					*	*
N H						
N J	79	*	*	63	*	*
N MEX		*	*		*	*
N Y	56	*	*	56	*	*
N C	72	*	*	46	*	*
N DAK	1,622	184	1,806	3,402	683	4,085
OHIO	37	*	*	37	*	*
OKLA	162	*	*	97	4	101
OREG	44	*	*	59	*	*
PA	45	*	*	128	22	150
R I						
S C	34	19	53	102	26	128
S DAK	2,075	398	2,473	3,720	983	4,703
TENN	5	*	*	5	*	*
TEX	40	*	*	32	*	*
UTAH						
VT						
VA	42	2	44	60	12	72
WASH	12	*	*	13	*	*
W VA						
WIS	146	*	*	118	*	*
WYO	19		19	22		22
UNALL*		471	1,302		894	1,499
U S	5,879	2,910	8,789	9,990	5,178	15,168

RYE - STOCKS BY POSITIONS, BY STATES, QUARTERLY, APRIL 1, 1975-79

STATE	ON	OFF	TOTAL ALL	ON	OFF	TOTAL ALL	ON	OFF	TOTAL ALL
	FARMS	FARMS 1/	POSITIONS	FARMS	FARMS 1/	POSITIONS	FARMS	FARMS 1/	POSITIONS
	1975			1976			1977		
	1,000 BUSHELS								
ALA		*	*					*	*
ARIZ									
ARK		*	*						
CALIF									
COLO	86	22	108	70	2	72	84	1	85
CONN					*	*			
DEL	3		3	3		3	5		5
FLA									
GA	76	27	103	68	*	*	188	76	264
IDAHO		*	*		*	*		*	*
ILL	40	57	97	30	*	*	22	*	*
IND	22	*	*	23	*	*	35	*	*
IOWA	18	*	*	23	*	*	41	*	41
KANS	67	20	87	34	16	50	14	15	29
KY	1	83	84	4	62	66	3	80	83
LA		*	*						
MAINE									
MD	10	*	*	6		6	7		7
MASS									
MICH	50	12	62	46	*	*	70	4	74
MINN	124	1,400	1,524	200	1,350	1,550	184	2,171	2,355
MISS									
MO	2	*	*	3	*	*	2	*	*
MONT		*	*		*	*		*	*
NEBR	225	45	270	103	13	116	92	43	135
NEV		*	*						
N H									
N J	17		17	16	*	*	17	*	*
N MEX		2	2		*	*		*	*
N Y	48	42	90	72	*	*	27	*	*
N C	16	*	*	3		3	11	23	34
N DAK	1,140	527	1,667	714	300	1,014	708	290	998
OHIO	25	*	*	22	2	24	22	3	25
OKLA	60	5	65	68	3	71	122	*	*
OREG	28	13	41	38	22	60	34	*	*
PA	40	8	48	48		48	22	9	31
R I									
S C	16	20	36	6	*	*	48	9	57
S DAK	1,626	751	2,377	1,173	220	1,393	936	270	1,206
TENN	4	*	*	3	*	*	4	*	*
TEX	12	35	47	23	4	27	6	29	35
UTAH									
VT									
VA	13	6	19	12		12	8		8
WASH	7	18	25	7	*	*	7	*	*
W VA									
WIS	72	890	962	95	565	660	101	93	194
WYO	13	7	20	11	*	*	16		16
UNALL*		90	187		271	579		251	521
U S	3,861	4,080	7,941	2,924	2,830	5,754	2,836	3,367	6,203

RYE - STOCKS BY POSITIONS, BY STATES, QUARTERLY, APRIL 1, 1975-79

STATE	ON	OFF	TOTAL ALL	ON	OFF	TOTAL ALL
	FARMS	FARMS 1/	POSITIONS	FARMS	FARMS 1/	POSITIONS
	1978			1979		
	1,000 BUSHELS					
ALA		*	*		1	1
ARIZ				*		*
ARK						
CALIF						
COLO	32	*	*	42	*	*
CONN						
DEL	6		6	2		2
FLA						
GA	219	106	325	177	60	237
IDAHO		*	*		*	*
ILL	40	22	62	52	24	76
IND	31	*	*	18	*	*
IOWA	23	*	*	30		30
KANS	32	4	36	63	*	*
KY	5	49	54	6	96	102
LA						
MAINE						
MD	9		9	7	*	*
MASS		*	*			
MICH	68	14	82	90	25	115
MINN	292	994	1,286	823	1,545	2,368
MISS						
MO	6	2	8	7	*	*
MONT		*	*		*	*
NEBR	210	26	236	114	55	169
NEV		*	*		*	*
N H						
N J	42	*	*	43	3	46
N MEX		*	*		*	*
N Y	25	*	*	20	*	*
N C	32	*	*	18	*	*
N DAK	1,290	126	1,416	3,132	620	3,752
OHIO	16		16	19	*	*
OKLA	129		129	57		57
OREG	23	*	*	30	*	*
PA	37	9	46	77	8	85
R I						
S C	12	*	*	65	*	*
S DAK	1,137	275	1,412	2,728	855	3,583
TENN	3	*	*	2	*	*
TEX	20	*	*	18		18
UTAH		*	*			
VT						
VA	21	1	22	30	8	38
WASH	7	*	*	6	*	*
W VA						
WIS	109	*	*	82	*	*
WYO	10		10	11		11
UNALL*		335	694		595	974
U S	3,886	1,963	5,849	7,769	3,895	11,664

SEE FOOTNOTES ON PAGE 71.

RYE - STOCKS BY POSITIONS, BY STATES, QUARTERLY, JULY 1, 1975 AND JUNE 1, 1976-79

STATE	ON	OFF	TOTAL ALL	ON	OFF	TOTAL ALL	ON	OFF	TOTAL ALL
	FARMS	FARMS 1/	POSITIONS	FARMS	FARMS 1/	POSITIONS	FARMS	FARMS 1/	POSITIONS
	JULY 1, 1975			JUNE 1, 1976			JUNE 1, 1977		
	1,000 BUSHELS								
ALA		*	*						
ARIZ									
ARK		*	*					*	*
CALIF									
COLO	68	5	73	53	1	54	64	1	65
CONN					*	*			
DEL	2		2	2		2	1		1
FLA								*	*
GA	57		57	27	*	*	84	108	192
IDAHO		*	*						
ILL	18	57	75	15	112	127	13	*	*
IND	9		9	11		11	12	*	*
IOWA	5		5	7	*	*	14		14
KANS	32	12	44	25	14	39	7	15	22
KY	1	*	*	1	17	18	2	80	82
LA		*	*						
MAINE									
MD	1		1	1		1	1		1
MASS									
MICH	32	4	36	32	6	38	47		47
MINN	16	1,108	1,124	111	1,065	1,176	123	1,371	1,494
MISS									
MO	1	*	*	1	*	*	1	*	*
MONT		*	*		*	*		*	*
NEBR	162	29	191	43	13	56	54	29	83
NEV		*	*						
N H									
N J	10	*	*	12	*	*	8		8
N MEX								*	*
N Y	32	*	*	30	*	*	14	*	*
N C	12	*	*	2		2	6	21	29
N DAK	742	390	1,132	536	205	741	510	188	698
OHIO	13	*	*	13	150	163	13	*	*
OKLA	36	*	*	34	7	41	91	1	92
OREG	9	4	13	17	15	32	13	*	*
PA	12	8	20	29	5	34	8	*	*
R I									
S C	8	12	20	3	*	*	26	5	31
S DAK	1,369	495	1,864	938	175	1,113	757	210	967
TENN	3	*	*	2	*	*	1	*	*
TEX	6	31	37	15	4	19	2	*	*
UTAH									
VT									
VA	10	*	*	3		3	3	*	*
WASH	3	13	16	3	*	*	4	*	*
W VA									
WIS	43	591	634	63	209	272	63	35	98
WYO	5	2	7	3		3	5		5
UNALL*		180	298		373	458		401	485
U S	2,717	2,941	5,658	2,032	2,371	4,403	1,949	2,465	4,414

RYE - STOCKS BY POSITIONS, BY STATES, QUARTERLY, JULY 1, 1975 AND JUNE 1, 1976-79

STATE	ON	OFF	TOTAL ALL	ON	OFF	TOTAL ALL
	FARMS	FARMS 1/	POSITIONS	FARMS	FARMS 1/	POSITIONS
	JUNE 1, 1978			JUNE 1, 1979		
	1,000 BUSHELS					
ALA		*	*			
ARIZ						
ARK						
CALIF						
COLO	24	*	*	21	*	*
CONN						
DEL	1		1	1		1
FLA						
GA	100	121	221	101	77	178
IDAHO		*	*			
ILL	23	33	56	33	35	68
IND	13	*	*	5		5
IOWA	12		12	14	*	*
KANS	18	4	22	47	*	*
KY	1	49	50	2	109	111
LA						
MAINE						
MD	1		1	1	*	*
MASS						
MICH	50	15	65	60	19	79
MINN	122	688	810	706	865	1,571
MISS						
MO	2	*	*	2	*	*
MONT		*	*		*	*
NEBR	147	19	166	91	23	114
NEV					*	*
N H						
N J	28	*	*	25	*	*
N MEX					*	*
N Y	11	*	*	14	*	*
N C	24	*	*	12	*	*
N DAK	1,040	93	1,133	2,430	486	2,916
OHIO	8		8	9	*	*
OKLA	52		52	23	*	*
OREG	10	*	*	8	26	34
PA	26	*	*	51	10	61
R I						
S C	6	*	*	51	*	*
S DAK	711	177	888	2,232	701	2,933
TENN	1	*	*	1	*	*
TEX	2	*	*	4		4
UTAH		*	*		*	*
VT						
VA	7	1	8	4		4
WASH	2	*	*	3	*	*
W VA						
WIS	91	*	*	71	*	*
WYO	5		5	4		4
UNALL*		231	471		596	890
U S	2,538	1,431	3,969	6,026	2,947	8,973

SEE FOOTNOTE ON PAGE 71.

SOYBEANS - STOCKS BY POSITIONS, BY STATES, QUARTER 'Y, JANUARY 1, 1975-79

STATE	ON	OFF	TOTAL ALL	ON	OFF	TOTAL ALL	ON	OFF	TOTAL ALL
	FARMS	FARMS 1/	POSITIONS	FARMS	FARMS 1/	POSITIONS	FARMS	FARMS 1/	POSITIONS
	1975			1976			1977		
	1,000 BUSHELS								
ALA	4,232	13,421	17,653	4,013	12,892	16,905	5,335	13,961	19,296
ARIZ		*	*					*	*
ARK	20,500	52,545	73,045	23,500	69,889	93,389	9,029	43,492	52,521
CALIF		*	*		*	*		*	*
COLO									
CONN									
DEL	1,430	*	*	1,688	*	*	1,230	*	*
FLA	1,591	1,474	3,065	1,821	1,260	3,081	592	1,590	2,182
GA	8,203	11,750	19,953	9,761	13,266	23,027	6,747	13,971	20,718
IDAHO									
ILL	90,983	91,090	182,073	125,798	123,781	249,579	109,771	109,790	219,561
IND	32,093	28,161	60,254	41,346	32,151	73,497	41,262	25,047	66,309
IOWA	103,522	74,258	177,780	125,599	116,950	242,549	109,973	108,310	218,283
KANS	6,534	15,966	22,500	6,124	23,555	29,679	3,374	14,447	17,821
KY	10,246	6,220	16,466	12,474	9,201	21,675	13,001	6,850	19,851
LA	13,992	15,466	29,458	10,560	18,795	29,355	12,600	17,603	30,203
MAINE									
MD	1,523	*	*	2,587	*	*	2,213	*	*
MASS									
MICH	4,410	3,190	7,600	6,344	4,401	10,745	3,475	1,604	5,079
MINN	46,706	25,992	72,698	61,101	41,445	102,546	39,864	34,130	73,994
MISS	11,700	23,688	35,388	19,656	30,853	50,509	14,300	31,568	45,868
MO	36,550	33,838	70,388	34,086	37,950	72,036	21,000	35,324	56,324
MONT									
NEBR	14,651	13,255	27,906	16,848	15,483	32,331	9,996	11,460	21,456
NEV									
N H									
N J	881	*	*	1,263	*	*	1,066	*	*
N MEX		26	26		*	*		*	*
N Y	203	30	233	140	14	154	234	*	*
N C	12,184	9,375	21,559	12,013	9,998	22,011	7,885	8,670	16,555
N DAK	1,770	844	2,614	1,453	1,184	2,637	1,195	431	1,626
OHIO	32,656	35,580	68,236	32,736	38,453	71,189	33,264	28,087	61,351
OKLA	915	1,378	2,293	886	2,467	3,353	1,188	1,487	2,675
OREG									
PA	743	1,623	2,366	844	541	1,385	470	*	*
R I									
S C	7,200	8,321	15,521	11,537	12,481	24,018	7,497	9,358	16,855
S DAK	4,784	1,341	6,125	5,130	2,350	7,480	2,810	1,230	4,040
TENN	6,384	14,922	21,306	10,175	20,716	30,891	6,075	20,029	26,104
TEX	1,350	6,509	7,859	3,053	7,262	10,315	2,436	4,546	6,982
UTAH					*	*		*	*
VT									
VA	4,438	3,864	8,302	5,750	5,507	11,257	3,182	4,414	7,596
WASH									
W VA									
WIS	2,604	505	3,109	2,640	731	3,371	2,341	442	2,783
WYO									
UNALL*		10,760	14,594		12,113	17,651		11,204	16,417
U S	484,978	505,392	990,370	590,926	665,689	1,256,615	473,405	559,045	1,032,450

SOYBEANS - STOCKS BY POSITIONS, BY STATES, QUARTERLY, JANUARY 1, 1975-79

STATE	ON	OFF	TOTAL ALL	ON	OFF	TOTAL ALL
	FARMS	FARMS 1/	POSITIONS	FARMS	FARMS 1/	POSITIONS
	1978			1979		
	1,000 BUSHELS					
ALA	7,245	11,144	18,389	5,828	14,237	20,065
ARIZ		*	*		17	17
ARK	20,102	66,813	86,915	17,273	66,210	83,483
CALIF		*	*		*	*
COLO						
CONN						
DEL	1,805	*	*	1,885	*	*
FLA	1,063	671	1,734	1,948	1,403	3,351
GA	6,104	13,260	19,364	7,644	13,913	21,557
IDAHO						
ILL	151,335	132,350	283,685	142,388	120,200	262,588
IND	53,391	30,985	84,376	51,916	32,588	84,504
IOWA	130,697	111,592	242,289	133,069	115,873	248,942
KANS	8,182	15,768	23,950	9,119	16,528	25,647
KY	18,414	11,611	30,025	17,136	11,712	28,848
LA	15,679	22,068	37,747	15,960	30,481	46,441
MAINE						
MD	1,796	*	*	3,648	*	*
MASS						
MICH	7,400	4,881	12,281	10,800	6,055	16,855
MINN	66,918	40,480	107,398	73,080	38,290	111,370
MISS	24,327	25,009	49,336	25,327	33,927	59,254
MO	41,664	44,350	86,014	44,962	49,981	94,943
MONT						
NEBR	20,340	15,721	36,061	20,825	16,401	37,226
NEV						
N H						
N J	1,699	*	*	2,428	*	*
N MEX		*	*		27	27
N Y	290	*	*	331	*	*
N C	10,501	9,995	20,496	13,709	14,761	28,470
N DAK	2,205	791	2,996	2,760	954	3,714
OHIO	41,412	37,729	79,141	45,976	38,543	84,519
OKLA	1,771	3,414	5,185	1,224	1,854	3,078
OREG						
PA	1,037	1,232	2,269	756	*	*
R I						
S C	8,795	9,384	18,179	11,642	14,390	26,032
S DAK	4,996	1,752	6,748	7,375	1,812	9,187
TENN	11,999	17,415	29,414	15,355	21,175	36,530
TEX	6,042	6,697	12,739	5,331	9,692	15,023
UTAH		*	*		*	*
VT						
VA	3,511	2,830	6,341	5,320	4,874	10,194
WASH						
W VA						
WIS	3,830	984	4,814	4,541	818	5,359
WYO						
UNALL*		13,474	19,064		15,818	24,866
U S	674,550	652,400	1,326,950	699,556	692,534	1,392,090

SOYBEANS - STOCKS BY POSITIONS, BY STATES, QUARTERLY, APRIL 1, 1975-79

STATE	ON	OFF	TOTAL ALL	ON	OFF	TOTAL ALL	ON	OFF	TOTAL ALL
	FARMS	FARMS 1/	POSITIONS	FARMS	FARMS 1/	POSITIONS	FARMS	FARMS 1/	POSITIONS
	1975			1976			1977		
1,000 BUSHELS									
ALA	1,693	8,855	10,548	3,396	7,129	10,525	2,527	7,284	9,811
ARIZ	12,300	*	*					*	*
ARK		27,350	39,650	10,575	33,189	43,764	4,104	21,954	26,058
CALIF		*	*		*	*		*	*
COLO									
CONN									
DEL	686	*	*	450	*	*	197	*	*
FLA	1,037	*	*	1,214	*	*	66	112	178
GA	5,468	7,019	12,487	5,620	8,628	14,248	1,636	10,781	12,417
IDAHO									
ILL	57,898	65,475	123,373	89,856	96,066	185,922	57,380	82,540	139,920
IND	21,395	14,455	35,850	23,105	19,153	42,258	18,958	19,735	38,693
IOWA	79,632	56,960	136,592	101,901	88,397	190,298	59,985	82,027	142,012
KANS	4,554	11,727	16,281	5,216	15,352	20,568	1,946	10,176	12,122
KY	5,498	4,187	9,685	8,316	5,445	13,761	3,467	5,676	9,143
LA	6,996	8,181	15,177	5,760	11,295	17,055	1,260	6,994	8,254
MAINE									
MD	952	*	*	1,201	*	*	369	*	*
MASS									
MICH	3,654	2,271	5,925	4,758	3,450	8,208	2,201	1,448	3,649
MINN	33,968	19,502	53,470	44,348	34,359	78,707	21,261	31,013	52,274
MISS	7,956	12,915	20,871	14,040	19,976	34,016	6,435	13,845	20,280
MO	22,844	19,641	42,485	21,588	24,371	45,959	14,280	20,203	34,483
MONT									
NEBR	13,242	9,725	22,967	12,312	11,464	23,776	4,704	8,949	13,653
NEV									
N H									
N J	483	22	505	147	*	*	213	*	*
N MEX		*	*		*	*		*	*
N Y	118	*	*	71	10	81	59	9	68
N C	6,560	3,192	9,752	7,008	6,018	13,026	3,203	5,800	9,003
N DAK	1,552	654	2,206	1,191	816	2,007	772	150	922
OHIO	22,859	23,743	46,602	25,575	30,437	56,012	15,206	24,127	39,333
OKLA	482	945	1,427	626	1,416	2,042	297	568	865
OREG									
PA	579	*	*	248	*	*	139	399	538
R I									
S C	4,800	4,755	9,555	6,679	8,341	15,020	1,285	6,130	7,415
S DAK	4,048	973	5,021	4,190	1,680	5,870	1,336	915	2,251
TENN	5,107	6,473	11,580	6,475	12,040	18,515	2,228	13,772	16,000
TEX	675	3,320	3,995	1,018	5,046	6,064	45	2,301	2,346
UTAH					6	6		2	2
VT									
VA	2,890	1,906	4,796	2,645	2,031	4,676	897	*	*
WASH									
W VA									
WIS	2,170	348	2,518	2,006	661	2,667	1,338	477	1,815
WYO									
UNALL*		7,723	12,095		9,507	12,767		12,827	14,503
U S	332,096	323,317	655,413	411,535	456,283	867,818	227,794	390,214	618,008

SOYBEANS - STOCKS BY POSITIONS, BY STATES, QUARTERLY, APRIL 1, 1975-79

STATE	ON	OFF	TOTAL ALL	ON	OFF	TOTAL ALL
	FARMS	FARMS 1/	POSITIONS	FARMS	FARMS 1/	POSITIONS
	1978			1979		
	1,000 BUSHELS					
ALA	4,095	4,014	8,109	3,885	7,626	11,511
ARIZ					*	*
ARK	10,580	30,796	41,376	7,485	27,929	35,414
CALIF		*	*		*	*
COLO						
CONN						
DEL	226	*	*	679	*	*
FLA	736	203	939	820	176	996
GA	3,052	7,458	10,510	2,646	6,950	9,596
IDAHO						
ILL	94,164	93,370	187,534	92,862	100,550	193,412
IND	24,531	21,256	45,787	29,598	20,310	49,908
IOWA	92,996	97,330	190,326	93,431	91,258	184,689
KANS	5,643	8,591	14,234	5,096	12,373	17,469
KY	8,184	8,434	16,618	6,936	8,074	15,010
LA	2,613	8,414	11,027	3,040	14,237	17,277
MAINE						
MD	567	*	*	1,702	*	*
MASS						
MICH	4,774	4,394	9,168	5,184	3,701	8,885
MINN	45,504	38,124	83,628	51,156	33,262	84,418
MISS	7,848	9,613	17,461	9,804	13,896	23,700
MO	25,296	32,457	57,753	29,458	30,571	60,029
MONT						
NEBR	12,204	11,722	23,926	12,325	12,226	24,551
NEV						
N H						
N J	297	*	*	533	*	*
N MEX		*	*		*	*
N Y	92	11	103	138	31	169
N C	4,257	4,270	8,527	7,561	8,508	16,169
N DAK	1,295	543	1,838	2,284	662	2,946
OHIO	25,578	39,246	64,824	25,542	35,179	60,721
OKLA	725	1,272	1,997	255	552	807
OREG						
PA	355	920	1,275	454	*	*
R I						
S C	3,465	6,293	9,758	4,851	7,812	12,663
S DAK	2,594	1,345	3,939	3,806	1,466	5,272
TENN	5,739	9,137	14,876	5,687	13,836	19,523
TEX	2,820	5,021	7,841	987	3,067	4,054
UTAH		*	*		*	*
VT						
VA	1,756	1,887	3,643	1,995	2,397	4,392
WASH						
W VA						
WIS	2,419	873	3,292	2,270	1,171	3,441
WYO						
UNALL*		8,454	9,544		9,826	13,194
U S	394,405	455,448	849,853	412,570	467,646	880,216

SOYBEANS - STOCKS BY POSITIONS, BY STATES, QUARTERLY, JULY 1, 1975 AND JUNE 1, 1979

STATE	ON	OFF	TOTAL ALL	ON	OFF	TOTAL ALL	ON	OFF	TOTAL ALL
	FARMS	FARMS 1/	POSITIONS	FARMS	FARMS 1/	POSITIONS	FARMS	FARMS 1/	POSITIONS
	JULY 1, 1975			JUNE 1, 1976			JUNE 1, 1977		
	1,000 BUSHELS								
ALA	317	4,087	4,404	1,235	3,798	5,033	421	6,819	7,240
ARIZ		*	*					*	*
ARK	6,560	11,631	18,191	4,113	16,108	20,221	1,642	11,377	13,019
CALIF			*		*	*		*	*
COLO									
CONN								*	*
DEL	286	*	*	169	*	*	49	*	*
FLA	277	*	*	674	*	*	33	*	*
GA	3,418	*	*	3,254	5,694	8,948	1,022	*	*
IDAHO									
ILL	22,746	33,390	56,136	59,904	69,990	129,894	22,453	55,210	77,663
IND	9,725	7,336	17,061	14,593	11,707	26,300	6,134	12,304	18,438
IOWA	45,788	41,185	86,973	71,094	64,750	135,844	25,994	45,517	71,511
KANS	3,366	7,919	11,285	3,856	7,901	11,757	779	5,591	6,370
KY	2,749	2,337	5,086	2,376	3,303	5,679	867	3,476	4,343
LA	3,032	7,083	10,115	3,120	6,506	9,626	630	5,879	6,509
MAINE									
MD	381	*	*	462	*	*	221	3,339	3,560
MASS									
MICH	1,260	1,221	2,481	2,696	1,315	4,011	405	510	915
MINN	18,682	16,754	35,436	28,580	23,396	51,976	11,295	21,346	32,641
MISS	2,808	6,583	9,391	6,318	8,716	15,034	2,145	7,189	9,334
MO	10,965	14,239	25,204	11,362	15,870	27,232	3,360	12,309	15,669
MONT									
NEBR	5,917	7,485	13,402	6,804	8,874	15,678	2,548	5,490	8,038
NEV		*	*		*	*		*	*
N H									
N J	256	*	*	88	*	*	71	*	*
N MEX		*	*		*	*		*	*
N Y	34	*	*	15	*	*	23	*	*
N C	4,374	1,107	5,481	2,670	2,729	5,399	862	5,135	5,997
N DAK	654	642	1,296	872	731	1,603	257	177	434
OHIO	10,613	13,587	24,200	16,368	21,896	38,264	7,128	12,706	19,834
OKLA	145	629	774	313	841	1,154	149	354	503
OREG									
PA	238	*	*	44	*	*	35	*	*
R I									
S C	2,280	1,918	4,198	3,947	4,862	8,809	643	3,985	4,628
S DAK	3,165	795	3,960	3,420	1,130	4,550	875	345	1,220
TENN	2,873	1,038	3,911	3,238	7,538	10,776	1,215	9,728	10,943
TEX	338	1,790	2,128	93	4,212	4,305		1,967	1,967
UTAH		*	*					*	*
VT									
VA	1,135	*	*	978	1,580	2,558	408	*	*
WASH									
W VA									
WIS	1,215	316	1,531	1,373	454	1,827	736	321	1,057
WYO									
UNALL*		8,632	14,657		7,037	8,489		12,261	13,902
U S	165,597	191,704	357,301	254,029	300,938	554,967	92,400	243,335	335,735

SOYBEANS - STOCKS BY POSITIONS, BY STATES, QUARTERLY, JULY 1, 1975 AND JUNE 1, 1976-79

STATE	ON	OFF	TOTAL ALL	ON	OFF	TOTAL ALL
	FARMS	FARMS 1/	POSITIONS	FARMS	FARMS 1/	POSITIONS
	JUNE 1, 1978			JUNE 1, 1979		
	1,000 BUSHEL					
ALA	315	2,956	3,271	1,554	5,432	6,986
ARIZ						
ARK	2,645	15,285	17,930	3,455	13,593	17,048
CALIF		*	*		*	*
COLO						
CONN						
DEL	113	*	*	302	*	*
FLA	245	34	279	461	*	*
GA	1,090	4,556	5,646	1,176	3,489	4,665
IDAHO						
ILL	43,719	65,100	108,819	49,526	73,185	122,711
IND	11,544	12,890	24,434	12,979	13,634	26,613
IOWA	60,322	63,416	123,738	62,288	60,552	122,840
KANS	2,822	5,845	8,667	3,487	5,307	8,794
KY	2,046	7,501	9,547	2,856	4,527	7,383
LA	1,307	6,444	7,751	1,900	10,334	12,234
MAINE						
MD	284	*	*	486	*	*
MASS						
MICH	1,910	2,809	4,719	2,160	1,710	3,870
MINN	30,782	26,744	57,526	38,002	22,417	60,419
MISS	2,747	4,670	7,417	4,494	5,684	10,178
MO	14,880	19,599	34,479	15,504	17,310	32,814
MONT						
NEBR	7,729	7,811	15,540	9,350	7,939	17,289
NEV						
N H						
N J	170	*	*	178	*	*
N MEX		*	*		*	*
N Y	24	*	*	28	*	*
N C	1,419	2,486	3,905	3,629	3,347	6,976
N DAK	875	395	1,270	1,332	503	1,835
OHIO	12,180	27,871	40,051	14,048	15,519	29,567
OKLA	322	380	702	153	386	539
OREG						
PA	191	*	*	126	*	*
R I						
S C	1,333	3,641	4,974	2,911	2,988	5,899
S DAK	1,922	952	2,874	3,093	949	4,042
TENN	2,609	5,080	7,689	2,844	5,785	8,629
TEX	403	3,511	3,914	296	2,031	2,327
UTAH		*	*		*	*
VT						
VA	585	*	*	1,330	*	*
WASH						
W VA						
WIS	1,008	1,708	2,716	1,307	1,524	2,831
WYO						
UNALL*		7,131	8,498		6,705	9,616
U S	207,541	298,815	506,356	241,255	284,850	526,105

SOYBEANS - STOCKS BY POSITIONS, BY STATES, QUARTERLY, SEPTEMBER 1, 1975-79

STATE	ON	OFF	TOTAL ALL	ON	OFF	TOTAL ALL	ON	OFF	TOTAL ALL
	FARMS	FARMS 1/	POSITIONS	FARMS	FARMS 1/	POSITIONS	FARMS	FARMS 1/	POSITIONS
	1975			1976			1977		
	1,000 BUSHELS								
ALA	296	934	1,230	617	1,693	2,310	281	820	1,101
ARIZ		*	*		*	*		*	*
ARK	3,690	3,804	7,494	1,175	4,856	6,031	410	1,500	1,910
CALIF		*	*		*	*		*	*
COLO									
CONN									
DEL	40	*	*	11	*	*	25	*	*
FLA	138	*	*	202	*	*	13		13
GA	797	1,139	1,936	592	*	*	204	*	*
IDAHO									
ILL	8,271	19,970	28,241	16,474	36,783	53,257	7,484	16,460	23,944
IND	4,376	3,076	7,452	4,864	5,840	10,704	2,230	3,011	5,241
IOWA	25,880	28,891	54,771	30,807	42,583	73,390	9,998	19,962	29,960
KANS	1,980	4,262	6,242	1,134	5,174	6,308	519	1,544	2,063
KY	1,000	1,688	2,688	891	*	*	433	1,133	1,566
LA	700	4,806	5,506	480	6,664	7,144	252	1,814	2,066
MAINE									
MD	57	*	*	18	*	*	30	*	*
MASS									
MICH	756	628	1,384	793	785	1,578	232	240	472
MINN	11,040	10,774	21,814	11,826	15,171	26,997	3,322	5,910	9,232
MISS	1,170	1,707	2,877	1,053	3,099	4,152	358	489	847
MO	4,112	8,480	12,592	3,409	8,289	11,698	1,260	3,856	5,116
MONT									
NEBR	3,381	4,630	8,011	2,916	4,337	7,253	882	1,832	2,714
NEV									
N H									
N J	43	*	*	15		15	18		18
N MEX		*	*						
N Y	10	*	*	6	*	*	4	*	*
N C	937	674	1,611	667	*	*	246	2,007	2,253
N DAK	272	406	678	407	272	679	74	108	182
OHIO	5,715	6,182	11,897	4,092	6,600	10,692	2,851	2,676	5,527
OKLA	29	293	322	26	210	236	59	*	*
OREG									
PA	74	*	*	22	*	*	9	*	*
R I									
S C	600	1,315	1,915	911	2,413	3,324	107	573	680
S DAK	1,251	585	1,836	1,368	582	1,950	507	237	744
TENN	958	1,250	2,208	694	3,006	3,700	405	1,886	2,291
TEX	203	1,433	1,636	46	1,447	1,493		480	480
UTAH									
VT									
VA	62	*	*	115	*	*	41	*	*
WASH									
W VA									
WIS	391	118	509	528	216	744	502	113	615
WYO									
UNALL*		2,877	3,301		8,761	11,285		3,517	3,889
U S	78,229	109,922	188,151	86,159	158,781	244,940	32,756	70,168	102,924

SOYBEANS - STOCKS BY POSITIONS, BY STATES, QUARTERLY, SEPTEMBER 1, 1975-79

STATE	ON	OFF	TOTAL ALL	ON	OFF	TOTAL ALL
	FARMS	FARMS 1/	POSITIONS	FARMS	FARMS 1/	POSITIONS
	1978			1979		
	1,000 BUSHELS					
ALA	126	907	1,033	389	1,106	1,495
ARIZ		*	*		*	*
ARK	529	3,356	3,885	1,152	5,209	6,361
CALIF		*	*		*	*
COLO						
CONN						
DEL	6	*	*	8	*	*
FLA	33	*	*	205	*	*
GA	218	1,737	1,955	118	2,522	2,640
IDAHO						
ILL	10,089	18,580	28,669	10,834	27,590	38,424
IND	2,165	4,291	6,456	4,326	4,439	8,765
IOWA	17,594	28,636	46,230	15,572	28,608	44,180
KANS	1,411	1,732	3,143	1,073	2,254	3,327
KY	409	1,720	2,129	816	1,136	1,952
LA	653	2,938	3,591	608	4,939	5,547
MAINE	47	*	*			
MD				73	*	*
MASS						
MICH	597	430	1,027	432	455	887
MINN	10,707	8,510	19,217	11,693	10,452	22,145
MISS	392	*	*	1,226	1,580	2,806
MO	3,720	7,552	11,272	3,101	5,833	8,934
MONT						
NEBR	2,848	3,690	6,538	2,975	3,654	6,629
NEV						
N H						
N J	85	*	*	118	*	*
N MEX		*	*		*	*
N Y	10		10	17	*	*
N C	568	913	1,481	605	1,093	1,698
N DAK	350	171	521	428	375	803
OHIO	3,045	7,028	10,073	3,193	3,543	6,736
OKLA	81	330	411	15	153	168
OREG						
PA	82	*	*	76	*	*
R I						
S C	800	1,157	1,957	323	984	1,307
S DAK	961	239	1,200	714	250	964
TENN	1,043	3,323	4,366	853	1,641	2,494
TEX	101	753	854	20	1,129	1,149
UTAH		*	*		*	*
VT						
VA	59	*	*	133	*	*
WASH						
W VA						
WIS	403	*	*	413	*	*
WYO						
UNALL*		4,051	5,158		3,634	4,677
U S	59,132	102,044	161,176	61,509	112,579	174,088

SEE FOOTNOTES ON PAGE 71.

FLAXSEED - STOCKS BY POSITIONS, BY STATES, QUARTERLY, OCTOBER 1, 1974-78

STATE	ON	OFF	TOTAL ALL	ON	OFF	TOTAL ALL	ON	OFF	TOTAL ALL
	FARMS	FARMS 1/	POSITIONS	FARMS	FARMS 1/	POSITIONS	FARMS	FARMS 1/	POSITIONS
	1974			1975			1976		
1,000 BUSHELS									
CALIF	*	*	*	*	*	*	*	*	*
IOWA									
MINN	1,898	2,428	4,326	1,265	2,200	3,465	215	3,255	3,470
MONT	40	*	*	42	*	*	48	*	*
NEBR									
N Y									
N DAK	4,882	1,344	6,226	4,620	2,277	6,897	2,632	1,240	3,872
OHIO									
S DAK	1,145	800	1,945	1,606	1,220	2,826	1,035	475	1,510
TEX	19	12	31	19	8	27	18		18
WIS					*	*			
UNALL*		15	55		523	565		1	49
U S	7,984	4,599	12,583	7,552	6,228	13,780	3,948	4,971	8,919

			1977				1978		

CALIF	*	*	*	*	*	*	*	*	*
IOWA									
MINN	1,914	1,726	3,640	1,453	1,559	3,012			
MONT	33	*	*		*	*			
N DAK	5,250	1,269	6,519	2,616	1,259	3,875			
S DAK	1,586	815	2,401	1,094	557	1,651			
TEX	4	83	87	8	*	*			
WIS		*	*						
UNALL*		414	447		15	23			
U S	8,787	4,307	13,094	5,171	3,390	8,561			

FLAXSEED - STOCKS BY POSITIONS, BY STATES, QUARTERLY, JANUARY 1, 1975-79

STATE	ON	OFF	TOTAL ALL	ON	OFF	TOTAL ALL	ON	OFF	TOTAL ALL
	FARMS	FARMS 1/	POSITIONS	FARMS	FARMS 1/	POSITIONS	FARMS	FARMS 1/	POSITIONS
	1975			1976			1977		
1,000 BUSHELS									
CALIF	*	*	*	*	*	*	*	*	*
IOWA									
MINN	949	2,158	3,107	546	2,519	3,065	176	3,340	3,516
MONT	36	*	*	38	*	*	45	*	*
N J									
N DAK	2,006	1,145	3,151	2,387	2,047	4,434	1,692	726	2,418
OHIO									
S DAK	1,031	426	1,457	1,249	950	2,199	828	295	1,123
TEX					*	*	4	12	16
WIS								*	*
UNALL*		16	52		17	55		2	47
U S	4,022	3,745	7,767	4,220	5,533	9,753	2,745	4,375	7,120

			1978				1979		

CALIF	*	*	*	*	*	*	*	*	*
IOWA									
MINN	1,212	2,675	3,887	792	2,380	3,172			
MONT	28	*	*		*	*			
N J									
N DAK	3,150	1,607	4,757	1,932	1,117	3,049			
S DAK	1,071	774	1,845	722	522	1,244			
TEX		*	*		*	*			
WIS		*	*		*	*			
UNALL*		112	140		8	8			
U S	5,461	5,168	10,629	3,446	4,027	7,473			

FLAXSEED - STOCKS BY POSITIONS, BY STATES, QUARTERLY, APRIL 1, 1975-79

STATE	ON FARMS	OFF FARMS 1/	TOTAL ALL POSITIONS	ON FARMS	OFF FARMS 1/	TOTAL ALL POSITIONS	ON FARMS	OFF FARMS 1/	TOTAL ALL POSITIONS
	1975			1976			1977		
	1,000 BUSHEL								
CALIF	*	*		*	*				
CONN									
IOWA									
MAINE									
MASS									
MINN	633	791	1,424	345	1,994	2,339	127	2,317	2,444
MONT	16	*	*	21	*	*	23	*	*
NEBR									
N H									
N J									
N Y									
N DAK	1,338	812	2,150	1,617	1,352	2,969	1,128	370	1,498
OHIO		*	*						
R I									
S DAK	764	298	1,062	1,026	620	1,646	718	180	898
TEX					17	17	2	10	12
WASH					*	*		*	*
WIS					*	*		*	*
UNALL*		6	22		181	202		2	25
U S	2,751	1,907	4,658	3,009	4,164	7,173	1,998	2,879	4,877
	1978			1979					
CALIF		*	*						
IOWA									
MINN	734	2,237	2,971	484	2,185	2,669			
MONT	14	*	*		*	*			
NEBR									
N DAK	2,660	1,006	3,666	1,449	560	2,009			
OHIO									
S DAK	833	642	1,475	416	286	702			
TEX		*	*		*	*			
UNALL*		20	34		8	8			
U S	4,241	3,905	8,146	2,349	3,039	5,388			

FLAXSEED - STOCKS BY POSITIONS, BY STATES, QUARTERLY, JULY 1, 1975 AND JUNE 1, 1976-79

STATE	ON FARMS	OFF FARMS 1/	TOTAL ALL POSITIONS	ON FARMS	OFF FARMS 1/	TOTAL ALL POSITIONS	ON FARMS	OFF FARMS 1/	TOTAL ALL POSITIONS
	JULY 1, 1975			JUNE 1, 1976			JUNE 1, 1977		
	1,000 BUSHEL								
CALIF		*	*		*	*			
IOWA									
MINN	253	361	614	115	1,835	1,950	59	1,499	1,558
MONT	8	*	*	13	*	*	15	*	*
N DAK	736	567	1,303	1,078	802	1,880	677	305	982
S DAK	153	170	323	624	380	1,004	276	125	401
TEX		*	*		15	15		*	*
WIS					23	23		*	*
UNALL*		2	10		5	18		5	20
U S	1,150	1,100	2,250	1,830	3,060	4,890	1,027	1,934	2,961
	JUNE 1, 1978			JUNE 1, 1979					
CALIF									
IOWA									
MINN	255	1,620	1,875	198	1,011	1,209			
MONT	9	*	*		*	*			
NEBR									
N DAK	1,890	642	2,532	604	421	1,025			
S DAK	555	340	895	175	169	344			
TEX		*	*		*	*			
WIS		*	*						
UNALL*		4	13		8	8			
U S	2,709	2,606	5,315	977	1,609	2,586			

ALL HAY - STOCKS ON FARMS, BY STATES, JANUARY 1 AND MAY 1, 1975-79

STATE	JANUARY 1					MAY 1				
	1975	1976	1977	1978	1979	1975	1976	1977	1978	1979
	1,000 TONS									
ALA	668	748	664	685	851	94	193	73	101	177
ARIZ	207	260	164	361	273	124	104	114	168	80
ARK	835	1,045	877	1,153	1,199	135	218	110	210	208
CALIF	1,693	1,681	1,737	2,860	2,226	308	306	680	1,082	765
COLO	1,892	1,843	1,907	1,850	2,034	373	476	531	578	484
CONN	109	128	111	101	159	23	30	26	18	42
DEL	26	26	22	18	24	3	3	3	1	9
FLA	261	253	226	312	470	50	46	27	74	87
GA	637	728	683	481	627	101	148	93	68	152
IDAHO	2,878	2,576	2,899	3,344	3,531	576	533	798	1,026	1,083
ILL	2,141	2,413	2,282	2,521	2,549	543	781	588	779	765
IND	1,210	1,586	1,465	1,576	1,486	303	460	306	437	372
IOWA	5,092	5,427	3,859	5,493	5,949	1,240	1,786	1,397	1,707	1,955
KANS	2,749	3,081	3,045	4,138	2,974	719	929	703	1,089	755
KY	2,547	2,081	2,181	2,505	2,561	569	780	598	340	664
LA	438	487	391	492	462	63	103	41	59	48
MAINE	223	234	303	218	307	48	53	108	68	84
MD	342	382	356	288	411	99	145	122	51	156
MASS	129	159	151	141	195	22	31	38	36	51
MICH	1,741	2,068	1,591	1,456	2,276	420	767	551	514	1,003
MINN	4,573	4,803	3,228	5,451	6,076	974	1,521	922	1,627	1,937
MISS	790	879	768	844	847	113	117	73	82	143
MO	4,677	4,673	4,057	4,733	5,077	924	1,576	544	1,014	1,027
MONT	3,764	3,696	4,058	3,673	3,981	688	1,189	955	508	869
NEBR	4,640	4,357	4,227	5,949	5,427	1,379	1,366	1,072	1,732	1,432
NEV	548	550	593	626	650	46	46	99	193	163
N H	97	102	119	113	123	19	27	45	35	40
N J	136	147	128	136	193	33	36	43	26	85
N MEX	370	281	310	393	426	80	83	100	127	66
N Y	3,253	3,171	3,479	2,830	3,231	800	767	1,070	649	1,112
N C	375	414	327	349	501	96	87	48	61	156
N DAK	3,813	4,267	3,499	2,809	5,091	941	1,528	716	452	1,697
OHIO	1,969	2,319	2,132	2,170	2,480	303	642	640	676	930
OKLA	2,050	2,456	2,063	2,605	1,859	355	688	324	634	252
OREG	1,600	1,742	1,850	1,824	2,218	364	303	375	608	527
PA	2,587	2,645	2,457	2,178	2,767	626	896	655	583	1,210
R I	9	10	12	11	12	2	2	2	2	4
S C	198	310	241	246	302	49	97	47	63	107
S DAK	4,826	4,669	3,096	5,443	7,095	986	1,480	710	1,468	2,640
TENN	1,364	1,348	1,292	1,329	1,472	345	383	295	291	421
TEX	3,217	2,780	3,598	3,551	2,655	715	1,049	967	538	704
UTAH	1,176	1,069	1,165	1,253	1,169	242	234	309	424	358
VT	490	445	547	486	670	95	102	205	109	179
VA	1,243	1,368	923	809	1,246	274	364	150	131	410
WASH	1,500	1,370	1,443	1,751	1,847	280	213	465	462	765
W VA	826	752	587	639	795	111	180	50	75	252
WIS	7,102	6,891	4,876	8,401	8,610	1,590	2,226	1,381	2,880	3,374
WYO	1,676	1,691	1,662	1,541	1,640	262	447	371	328	308
UNALL*										
U S	84,687	86,411	77,651	92,136	99,024	18,505	25,541	19,540	24,184	30,108

* INCLUDED IN UNALLOCATED TO AVOID DISCLOSING INDIVIDUAL OPERATIONS.
 1/ INCLUDES STOCKS AT MILLS, ELEVATORS, WAREHOUSES, TERMINALS, AND PROCESSORS.

END