



AgEcon SEARCH
RESEARCH IN AGRICULTURAL & APPLIED ECONOMICS

The World's Largest Open Access Agricultural & Applied Economics Digital Library

This document is discoverable and free to researchers across the globe due to the work of AgEcon Search.

Help ensure our sustainability.

Give to AgEcon Search

AgEcon Search

<http://ageconsearch.umn.edu>

aesearch@umn.edu

*Papers downloaded from **AgEcon Search** may be used for non-commercial purposes and personal study only. No other use, including posting to another Internet site, is permitted without permission from the copyright owner (not AgEcon Search), or as allowed under the provisions of Fair Use, U.S. Copyright Act, Title 17 U.S.C.*

FSB 635 (1980)

USDA STATISTICAL BUREAU

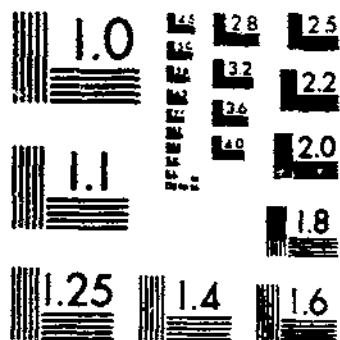
WPCDATA

INDICES OF AGRICULTURAL AND FOOD PRODUCTION FOR EUROPE AND THE U.S.S.R.

CHUGGEB

1 OF 1

START



MICROCOPY RESOLUTION TEST CHART
NATIONAL BUREAU OF STANDARDS-1963-A



MICROCOPY RESOLUTION TEST CHART
NATIONAL BUREAU OF STANDARDS-1963-A

INDICES OF AGRICULTURAL
AND FOOD PRODUCTION
FOR
EUROPE AND THE U.S.S.R.

Average 1961-65 and Annual 1970 Through 1979



United States Department of Agriculture
Economics, Statistics, and Cooperatives Service
Statistical Bulletin No. 635

INDICES OF AGRICULTURAL AND FOOD PRODUCTION FOR EUROPE AND THE U.S.S.R.: Average 1961-65 and Annual 1970 Through 1979, by Boyd Chugg. International Economics Division; Economics, Statistics, and Cooperatives Service. Statistical Bulletin No. 635.

ABSTRACT

Indices of total and per capita agricultural and food production for Europe and the U.S.S.R. are presented for the base period 1961-65 and annually for 1970-79. Data for population, agricultural production, and aggregates of agricultural and food production are also included. Country indices are calculated by Laspeyres' base-weighted aggregate formula.

Keywords: Indices, Europe, U.S.S.R., Agricultural production, Food production, Population.

CONTENTS

	<u>Page</u>
Introduction	1
 <u>Table</u>	
<u>Summary Tables, Eastern Europe and the U.S.S.R.</u>	
1	Population 3
2	Agricultural production 4
3	Indices of total agricultural production 5
4	Indices of per capita agricultural production 6
5	Indices of total food production 7
6	Indices of per capita food production 8
7	Aggregates of total agricultural production 9
8	Aggregates of total food production 10
 <u>Country Tables, Agricultural and Food Production and Indices</u>	
9	Bulgaria 11
10	Czechoslovakia 12
11	Germany, East 13
12	Hungary 14
13	Poland 15
14	Romania 16
15	Yugoslavia 17
16	U.S.S.R. 18
 <u>Summary Tables, Western Europe</u>	
17	Population 19
18	Agricultural production 20
19	Indices of total agricultural production 21
20	Indices of per capita agricultural production 22
21	Indices of total food production 23
22	Indices of per capita food production 24
23	Aggregates of total agricultural production 25
24	Aggregates of total food production 26
 <u>Country Tables, Agricultural and Food Production and Indices</u>	
25	Austria 27
26	Belgium-Luxembourg 28
27	Denmark 29
28	Finland 30
29	France 31
30	Germany, West 32
31	Greece 33
32	Ireland 34
33	Italy 35
34	Netherlands 36
35	Norway 37
36	Portugal 38
37	Spain 39
38	Sweden 40
39	Switzerland 41
40	United Kingdom 42

INDICES OF AGRICULTURAL AND FOOD PRODUCTION
FOR EUROPE AND THE U.S.S.R.
Average 1961-65 and Annual 1970 through 1979

INTRODUCTION

Europe and the U.S.S.R. produce and consume a large share of the world's food and fiber. Assessment of the agricultural and food situation in these areas is basic to a knowledge of world production, consumption, and trade in food and fibers. The indices presented in this publication are a part of the continuing effort of the Economics, Statistics, and Cooperatives Service (ESCS) to assess the world agricultural situation.

The country indices are calculated by Laspeyres' base-weighted aggregate formula. The weights used in Eastern Europe and the Soviet Union are estimates of the 1961-65 average prices received by farmers in Western Europe, and for West European countries they are the average base period prices received by farmers in each of the individual countries, expressed in U.S. dollars per metric ton. Regional indices are computed from sums of country aggregates.

A portion of each country's aggregate value of livestock output is subtracted to avoid double counting of feed and the livestock products produced from it. This share represents the estimated relationship between the value of livestock products and the value of feeds (not including forage), whether produced domestically or imported, as calculated for the base period years 1961-65. This feed deduction is a constant percentage and thus does not express year-to-year variations in feed actually fed. Unless there is a large change in livestock output relative to crop production, the feed deduction has little, if any, effect on the resulting index.

Most production data are official statistics of the respective countries or other international organizations. In a few cases, when data were unavailable, estimates were made by ESCS specialists.

Only those agricultural products of considerable significance in the respective countries are included. Production data are listed under the year in which the bulk of the harvest occurred.

Indices of food production are computed from the total aggregates of all food items listed, whether actually consumed or not. The list does not include all food grown or consumed in the country; therefore, it is not a measure of total calories consumed. Also, some output of crops and products is exported and not available for domestic use. Excluded from the food indices are fibers, tea, and tobacco.

Per capita indices are computed by dividing the agricultural or food indices by appropriate indices of population.

The production aggregates showing value in millions of dollars at constant 1961-65 West European producer prices should not be confused with gross value of agricultural production, gross sales by farmers, or agriculture's contribution to gross national product because a different average or current price may have been used and farm product sales would likely be more inclusive than the production aggregates. The aggregates permit year-to-year comparisons of the level of output in the various countries and the region. Trends in these aggregates should roughly parallel trends in total agricultural production.

These European countries customarily publish indices of the gross value of agricultural production using their own price weights and base years. These two factors plus differences in valuing meat production, changes in numbers of livestock, seed deductions,

and variations in commodity coverage are the major reasons for the deviations between ESCS/USDA indices of agricultural production and those published by the respective foreign countries.

Data appearing in these tables are those available to the Economics, Statistics, and Cooperatives Service prior to March 15, 1980, and supersede ERS-620 and any previous indices reports.

For further explanation and analyses of the agricultural situation in Europe and the Soviet Union, see: The Agricultural Situation in Western Europe, Review of 1979 and Outlook for 1980, Supplement 4 to WAS-21, May 1979; The Agricultural Situation in the Soviet Union, Review of 1979 and Outlook for 1980, Supplement 1 to WAS-21, April 1980; and The Agricultural Situation in East Europe, Review of 1979 and Outlook for 1980, Supplement 3 to WAS-21, May 1980.

Table 1--MID-YEAR POPULATION BY COUNTRY, 1970-79

COUNTRY AND REGION	1970	1971	1972	1973	1974	1975	1976	1977	1978	1979
	----- THOUSANDS -----									
BULGARIA	8,490	8,540	8,580	8,620	8,680	8,720	8,760	8,800	8,840	8,880
CZECHOSLOVAKIA	14,330	14,390	14,460	14,550	14,690	14,800	14,920	15,040	15,160	15,280
GERMANY, EAST	17,960	17,060	17,040	16,980	16,920	16,850	16,790	16,730	16,670	16,610
HUNGARY	10,340	10,370	10,400	10,430	10,480	10,540	10,600	10,660	10,720	10,780
POLAND	32,530	32,800	33,070	33,360	33,490	34,020	34,360	34,700	35,040	35,380
ROMANIA	20,250	20,470	20,660	20,830	21,030	21,250	21,450	21,650	21,850	22,050
YUGOSLAVIA	20,370	20,570	20,770	20,950	21,150	21,350	21,560	21,770	21,980	22,190
EASTERN EUROPE	123,370	124,200	124,980	125,740	126,640	127,530	128,440	129,350	130,260	131,170
U.S.S.R.	242,760	245,080	247,460	249,750	252,060	254,390	256,670	258,970	261,270	263,570
EASTERN EUROPE AND U.S.S.R.	366,130	369,280	372,440	375,490	378,700	381,920	385,110	388,320	391,530	394,740

TABLE 2.--EASTERN EUROPE & USSR

AGRICULTURAL PRODUCTION FOR SELECTED YEARS

COMMODITY	AVERAGE 1961-65	1970	1971	1972	1973	1974	1975	1976	1977	1978	1979		
					- 1,000 METRIC TONS -								
WHEAT	79,437	122,544	128,743	116,455	141,082	117,695	94,411	131,155	126,000	156,233	113,990		
RYE	25,724	20,695	23,390	20,690	21,770	26,090	37,740	23,255	17,307	23,829	15,767		
RICE, PADDY	434	1,487	1,688	1,844	1,978	2,111	2,252	2,134	2,403	2,272	2,349		
CORN	30,476	29,624	31,628	36,767	38,008	35,942	36,792	34,773	40,441	36,445	40,880		
BARLEY	24,240	47,102	45,446	46,361	67,657	69,154	50,294	83,925	67,667	76,608	65,038		
OATS	11,635	19,327	20,214	19,429	22,799	20,744	17,351	22,219	22,364	22,521	19,509		
MILLET	2,584	2,180	2,116	2,180	4,470	2,954	1,155	3,232	2,049	2,254	3,086		
BURGHUM	27	10	11	13	19	14	10	10	14	13	13		
OTHER GRAINS	2,014	2,422	2,659	2,473	3,211	3,161	2,317	2,929	2,982	3,353	2,930		
PULSES	7,713	8,736	8,066	7,997	9,321	9,670	6,177	9,405	6,258	6,536	6,540		
POTATOES	142,804	172,146	155,425	152,032	183,726	156,422	153,066	158,136	147,832	150,379	164,282		
SUGAR BEETS	79,006	114,221	106,177	116,567	125,745	120,657	111,132	143,224	142,714	140,835	122,420		
TOBACCO	336	527	511	631	623	625	689	761	652	606	671		
COTTON	4,722	6,938	7,151	7,352	7,710	8,453	7,902	6,266	6,778	6,518	9,182		
RAPESEED	505	665	961	837	951	972	1,299	1,524	1,307	1,355	689		
SUNFLOWER SEED	5,712	7,677	7,412	6,601	9,175	6,251	6,576	6,962	7,829	7,480	7,579		
VEGETABLES	24,992	32,446	31,957	31,661	38,300	37,018	34,850	37,478	37,511	41,758	40,000		
FRUIT	6,832	14,750	14,189	13,584	15,326	14,627	15,902	17,087	16,336	15,612	16,500		
GRAPES	6,174	7,637	8,668	6,910	10,117	8,693	9,518	10,340	8,957	10,171	10,970		
TEA	179	273	280	291	365	330	352	375	434	454	400		
FLAX FIBER	506	551	596	557	532	505	613	632	565	497	466		
HEMP FIBER	102	72	72	67	71	72	66	64	71	67	69		
BEEF AND VEAL	4,877	7,506	7,620	7,786	8,126	8,893	9,134	9,392	9,596	9,726	9,794		
MUTTON AND LAMB	1,316	1,271	1,280	1,201	1,238	1,257	1,295	1,178	1,184	1,198	1,204		
PORK	7,646	8,813	9,927	10,717	10,493	11,674	12,104	10,441	11,300	12,081	12,091		
POULTRY MEAT	1,319	1,976	2,184	2,310	2,460	2,716	2,916	2,922	3,361	3,682	3,993		
OTHER MEAT	376	387	415	435	442	457	500	481	414	497	492		
MILK	68,688	90,501	96,791	91,384	97,049	100,982	100,221	96,660	105,617	105,469	104,237		
CUN'D MILK	23,817	26,696	29,024	30,213	31,368	32,265	31,754	31,943	32,539	33,186	33,114		
WOOL, GREASY BASIS	456	521	529	521	535	566	573	565	574	561	569		
EGGS	2,636	3,653	3,961	4,159	4,361	4,735	4,904	4,892	5,262	5,475	5,705		

TABLE 3.-- EASTERN EUROPE AND U.S.S.R.

INDICES OF TOTAL AGRICULTURAL PRODUCTION, BY COUNTRY, 1970-79

(1961-65 = 100)

	1970	1971	1972	1973	1974	1975	1976	1977	1978	1979
BULGARIA	126	130	143	136	127	138	148	136	143	154
CZECHOSLOVAKIA	120	127	132	140	146	139	136	147	155	144
GERMANY, EAST	116	115	128	127	140	132	126	137	143	143
HUNGARY	116	134	143	147	157	155	151	166	172	163
POLAND	115	111	122	130	131	128	132	122	133	129
ROMANIA	110	136	153	143	147	150	148	183	186	193
YUGOSLAVIA	115	128	126	132	151	149	157	165	155	158
EASTERN EUROPE	116	122	132	135	140	130	145	145	150	149
U.S.S.R.	136	135	129	155	145	130	153	149	163	146
EASTERN EUROPE AND U.S.S.R.	120	131	130	148	144	133	150	148	150	147

TABLE 4.-- EASTERN EUROPE AND U.S.S.R.

INDICES OF PER CAPITA AGRICULTURAL PRODUCTION, BY COUNTRY, 1970-79

(1961-65 = 100)

	1970	1971	1972	1973	1974	1975	1976	1977	1978	1979
BULGARIA	119	122	134	127	118	127	136	124	130	139
CZECHOSLOVAKIA	117	123	127	134	138	131	127	136	142	131
GERMANY, EAST	115	114	128	128	141	134	128	140	146	146
HUNGARY	113	130	138	142	150	148	143	157	162	152
POLAND	108	104	112	119	119	115	117	107	116	111
ROMANIA	101	124	139	129	131	133	164	159	160	164
YUGOSLAVIA	107	118	115	120	135	133	138	144	134	135
EASTERN EUROPE	111	116	124	126	130	127	133	132	136	134
U.S.S.R.	125	124	117	139	129	114	134	129	140	124
EASTERN EUROPE AND U.S.S.R.	121	121	120	135	130	119	133	131	139	128

TABLE 5.-- EASTERN EUROPE AND U.S.S.R.

INDICES OF TOTAL FOOD PRODUCTION, BY COUNTRY, 1971-79

(1961-65 = 100)

	1970	1971	1972	1973	1974	1975	1976	1977	1978	1979
BULGARIA	127	132	143	137	127	137	149	139	145	156
CZECHOSLOVAKIA	120	127	132	140	146	139	137	148	155	145
GERMANY, EAST	116	115	128	128	140	132	126	137	143	143
HUNGARY	116	136	144	149	158	156	153	168	174	165
POLAND	115	112	122	131	132	129	132	123	134	130
ROMANIA	110	136	154	144	148	151	188	184	187	194
YUGOSLAVIA	116	130	127	133	153	151	159	157	157	160
EASTERN EUROPE	116	123	132	135	141	139	145	146	151	150
U.S.S.R.	136	135	128	155	144	128	153	148	163	144
EASTERN EUROPE AND U.S.S.R.	129	131	130	149	143	132	150	147	159	146

TABLE 6.-- EASTERN EUROPE AND U.S.S.R.

INDICES OF PER CAPITA FOOD PRODUCTION, BY COUNTRY, 1970-79

(1961-65 = 100)

	1970	1971	1972	1973	1974	1975	1976	1977	1978	1979
BULGARIA	121	124	134	128	118	127	137	127	132	141
CZECHOSLOVAKIA	117	123	127	134	138	131	127	137	143	132
GERMANY, EAST	115	114	128	128	141	134	128	140	146	146
HUNGARY	113	132	139	143	152	149	145	159	163	154
POLAND	108	104	113	119	120	115	118	108	117	112
ROMANIA	102	125	140	129	132	133	145	159	161	165
YUGOSLAVIA	108	120	116	121	137	134	140	146	136	137
EASTERN EUROPE	111	117	124	126	131	128	133	133	136	135
U.S.S.R.	125	124	116	139	128	113	133	128	140	122
EASTERN EUROPE AND U.S.S.R.	121	121	120	135	128	118	133	130	139	127

TABLE 7.-- EASTERN EUROPE AND U.S.S.R.

AGGREGATES OF TOTAL AGRICULTURAL PRODUCTION, BY COUNTRY, AVERAGE 1961-65, ANNUAL 1970-79

	AVERAGE 1961-65	1970	1971	1972	1973	1974	1975	1976	1977	1978	1979
	- - - - - MILLION DOLLARS AT CONSTANT PRICES - - - - -										
BULGARIA	1,271.5	1,600.1	1,649.3	1,816.0	1,732.4	1,619.8	1,750.2	1,882.4	1,730.4	1,821.5	1,954.8
CZECHOSLOVAKIA	1,814.1	2,179.9	2,306.6	2,394.4	2,543.1	2,640.6	2,520.9	2,475.2	2,672.7	2,813.0	2,620.1
GERMANY, EAST	2,336.0	2,698.5	2,679.7	2,989.2	2,977.6	3,265.6	3,091.6	2,948.5	3,209.7	3,335.0	3,334.1
HUNGARY	1,654.1	1,914.9	2,224.1	2,359.9	2,438.8	2,591.0	2,558.2	2,500.3	2,751.0	2,846.5	2,697.3
POLAND	6,060.6	6,952.1	6,753.6	7,391.7	7,876.7	7,964.8	7,741.5	8,010.6	7,409.8	8,058.3	7,827.4
ROMANIA	2,171.3	2,381.4	2,945.0	3,329.3	3,111.0	3,198.5	3,262.6	4,082.9	3,979.8	4,040.0	4,198.5
YUGOSLAVIA	2,097.6	2,420.9	2,693.9	2,647.0	2,774.7	3,161.0	3,130.1	3,301.4	3,463.8	3,254.0	3,313.6
EASTERN EUROPE	17,405.2	20,147.8	21,252.2	22,927.5	23,454.3	24,441.3	24,065.1	25,201.3	25,217.2	26,168.3	25,945.8
U.S.S.R.	32,707.1	44,378.3	44,307.2	42,298.9	50,644.1	47,477.9	42,402.8	50,140.2	48,835.5	53,473.7	47,584.3
EASTERN EUROPE AND U.S.S.R.	50,112.3	64,526.1	65,559.4	65,226.4	74,098.4	71,919.2	66,457.9	75,341.5	74,052.7	79,642.0	73,630.1

TABLE B.-- EASTERN EUROPE AND U.S.S.R.

AGGREGATES OF TOTAL FOOD PRODUCTION, BY COUNTRY, AVERAGE 1961-65, ANNUAL 1970-79

	AVERAGE 1961-65	1970	1971	1972	1973	1974	1975	1976	1977	1978	1979
	- - - - - MILLION DOLLARS AT CONSTANT PRICES - - - - -										
BULGARIA	1,151.3	1,466.7	1,519.4	1,646.7	1,578.2	1,462.6	1,580.2	1,716.9	1,601.2	1,675.0	1,790.7
CZECHOSLOVAKIA	1,805.5	2,171.2	2,297.1	2,386.5	2,534.4	2,631.1	2,511.8	2,466.9	2,664.4	2,805.5	2,611.8
GERMANY, EAST	2,328.7	2,691.4	2,672.6	2,982.1	2,970.9	3,258.0	3,084.0	2,940.9	3,201.3	3,325.8	3,324.9
HUNGARY	1,618.7	1,885.0	2,197.0	2,333.3	2,408.1	2,563.6	2,533.0	2,472.6	2,717.1	2,816.0	2,666.0
POLAND	5,943.0	6,822.7	6,638.8	7,278.4	7,763.8	7,858.1	7,613.0	7,866.3	7,296.7	7,960.8	7,722.9
ROMANIA	2,119.3	2,332.3	2,887.2	3,264.3	3,044.7	3,131.0	3,193.0	3,993.4	3,900.6	3,964.8	4,114.7
YUGOSLAVIA	2,030.8	2,360.7	2,640.4	2,582.0	2,706.6	3,097.9	3,059.5	3,223.2	3,395.0	3,191.6	3,248.0
EASTERN EUROPE	16,997.3	19,730.0	20,852.5	22,473.3	23,806.7	24,002.3	23,574.5	24,680.2	24,776.3	25,739.5	25,479.0
U.S.S.R.	30,698.1	41,677.8	41,523.1	39,441.5	47,679.4	44,284.2	39,290.4	46,914.0	45,438.8	50,188.7	44,238.7
EASTERN EUROPE AND U.S.S.R.	47,695.4	61,407.8	62,375.6	61,914.8	70,686.1	68,286.5	62,864.9	71,594.2	70,215.1	75,928.2	69,717.7

TABLE 9.--BULGARIA

PRODUCTION BY COMMODITY, VALUE AND INDICES OF TOTAL AGRICULTURAL AND FOOD PRODUCTION, AVERAGE 1961-65, ANNUAL 1970-79

COMMODITY	PRICE	AVERAGE	1970	1971	1972	1973	1974	1975	1976	1977	1978	1979
	WEIGHT	1961-65										
DOLLARS			-1,000 METRIC TONS-									
WHEAT	104	2,211	3,032	3,095	3,582	3,258	2,911	2,771	3,152	3,028	3,434	3,200
RYE	91	58	28	24	21	19	21	18	14	15	12	14
RICE, PADDY	108	37	66	67	69	62	58	68	41	68	68	50
CORN	78	1,601	2,175	2,518	2,974	2,586	1,626	2,822	3,031	2,513	2,310	3,000
BARLEY	84	694	1,167	1,253	1,427	1,368	1,636	1,699	1,781	1,481	1,498	1,700
OATS	78	141	98	102	75	51	67	53	65	88	60	60
MILLET	79	2	2	1	1	1	1	1	1	1	1	1
PULSES	130	97	114	95	68	85	70	83	70	86	84	90
POTATOES	44	401	374	404	382	328	345	318	350	383	391	400
SUGAR BEETS	18	1,440	1,714	1,516	1,951	1,719	1,611	1,758	2,327	1,751	1,600	1,840
TOBACCO	806	108	120	114	158	142	145	162	165	118	139	159
COTTON	256	39	36	40	49	38	37	32	3	13	16	20
SUNFLOWER SEED	120	338	407	462	494	448	368	426	362	423	369	380
VEGETABLES	100	1,035	1,073	1,101	1,207	1,145	1,278	925	1,095	1,122	1,205	1,250
FRUIT	150	849	1,110	983	979	899	794	944	870	788	800	850
GRAPES	80	943	884	1,059	933	1,294	1,090	885	1,207	868	1,257	1,300
FLAX FIBER	460	2	3	4	4	2	4	3	3	1	2	2
HEMP FIBER	440	6	7	6	8	7	7	6	7	5	4	5
BEEF AND VEAL	897	81	108	101	110	126	116	112	127	142	142	150
MUTTON AND LAMB	945	82	94	102	101	100	100	90	101	88	98	100
PORK	818	181	178	209	243	223	212	329	379	321	321	370
POULTRY MEAT	777	39	93	111	108	113	131	123	130	149	158	170
OTHER MEAT	750	3	3	4	4	3	3	3	4	3	3	3
MILK	92	1,236	1,632	1,671	1,674	1,708	1,782	1,803	1,817	1,929	1,993	2,115
WOOL, GREASY BASIS	840	24	29	30	31	32	33	34	34	34	34	34
EGGS	676	75	91	98	96	97	99	105	105	115	118	126
AGGREGATES OF PRODUCTION			-MILLION DOLLARS AT CONSTANT PRICES-									
CROPS		934.5	1,180.8	1,200.2	1,342.6	1,256.1	1,140.2	1,216.7	1,306.5	1,160.1	1,235.6	1,319.8
LIVESTOCK		518.4	645.0	690.8	728.2	732.7	757.7	820.7	845.8	877.3	901.3	976.8
LIVESTOCK FEED DEDUCTION	.35	-181.4	-225.7	-241.7	-254.9	-256.4	-258.1	-287.2	-310.0	-307.0	-315.4	-341.8
TOTAL AGRICULTURE		1,271.5	1,600.1	1,649.3	1,816.0	1,732.4	1,619.8	1,750.2	1,882.4	1,730.4	1,821.5	1,954.8
TOTAL FOOD		1,151.3	1,466.7	1,519.4	1,646.7	1,578.2	1,462.5	1,582.2	1,716.9	1,601.2	1,675.0	1,790.7
INDICES OF PRODUCTION			(1961-65 = 100)									
CROPS		100	126	128	144	134	122	130	140	124	132	141
TOTAL AGRICULTURE		100	126	130	143	136	127	138	148	136	143	154
TOTAL FOOD		100	127	132	143	137	127	137	149	139	145	156
PER CAPITA AGRICULTURE		100	120	123	134	128	119	127	136	125	131	140
PER CAPITA FOOD		100	121	125	135	128	118	127	137	128	133	141
INDEX OF POPULATION			1961-65 POPULATION = 8,074,000									
		100.0	105.2	105.8	106.3	106.8	107.5	108.0	108.5	109.0	109.5	110.0

TABLE 10.--CZECHOSLOVAKIA

PRODUCTION BY COMMODITY, VALUE AND INDICES OF TOTAL AGRICULTURAL AND FOOD PRODUCTION, AVERAGE 1961-65, ANNUAL 1970-79

COMMODITY	PRICE	AVERAGE	1970	1971	1972	1973	1974	1975	1976	1977	1978	1979
	WEIGHT	1961-65										
DOLLARS		-1,000 METRIC TONS-										
WHEAT	104	1,779	3,174	3,878	4,016	4,646	5,059	4,202	4,809	5,214	5,600	3,900
RYE	91	896	454	619	634	670	571	530	561	541	625	508
CORN	78	474	513	524	642	619	574	843	586	792	628	900
BARLEY	84	1,556	2,280	2,851	2,651	2,962	3,375	3,114	2,901	3,207	3,638	3,400
OATS	78	792	776	902	726	740	687	591	370	454	455	458
PULSES	130	37	13	14	8	10	20	29	24	30	42	35
POTATOES	44	5,635	4,793	4,621	5,058	5,047	4,522	3,565	4,214	3,750	3,995	3,700
SUGAR BEETS	18	6,772	6,644	5,832	6,884	6,163	8,219	7,734	5,248	8,229	7,292	7,900
TOBACCO	806	7	5	6	4	5	5	6	5	5	4	5
RAPESEED	110	59	63	101	107	117	94	131	134	162	166	60
VEGETABLES	100	864	917	794	904	913	855	856	641	901	859	900
FRUIT	150	343	508	255	209	364	247	318	365	293	301	300
GRAPES	80	62	138	130	153	198	138	209	209	238	220	250
FLAX FIBER	469	22	14	15	15	22	25	22	17	17	21	17
HEMP FIBER	440	5	3	3	3	3	3	2	2	2	2	2
BEEF AND VEAL	897	283	362	373	377	404	431	431	415	414	421	420
MUTTON AND LAMB	945	7	6	8	8	8	7	7	7	6	5	6
PORK	818	532	586	624	681	671	703	738	728	780	910	905
POULTRY MEAT	777	51	103	111	119	124	129	134	141	152	161	173
OTHER MEAT	750	16	40	41	40	36	36	39	31	31	31	30
COWS MILK	92	3,766	4,794	4,924	5,123	5,430	5,503	5,462	5,400	5,529	5,642	5,614
WOOL & GREASY BASIS	840	2	4	4	4	4	4	4	4	4	4	4
EGGS	676	142	205	220	227	234	246	247	247	255	258	266
AGGREGATES OF PRODUCTION	-MILLION DOLLARS AT CONSTANT PRICES-											
CROPS		1,046.8	1,221.8	1,302.2	1,338.2	1,452.5	1,505.8	1,367.2	1,336.3	1,490.6	1,545.7	1,347.5
LIVESTOCK		1,180.4	1,474.0	1,545.2	1,624.0	1,677.7	1,745.8	1,774.8	1,752.1	1,818.6	1,949.6	1,957.7
LIVESTOCK FEED DEDUCTION	35	-413.1	-515.9	-540.8	-568.7	-587.1	-611.0	-621.1	-613.2	-636.5	-682.3	-685.1
TOTAL AGRICULTURE		1,814.1	2,179.9	2,306.6	2,394.4	2,543.1	2,640.6	2,520.9	2,475.2	2,672.7	2,813.0	2,620.1
TOTAL FOOD		1,805.5	2,171.2	2,297.1	2,386.5	2,534.4	2,631.1	2,511.8	2,466.0	2,664.4	2,805.5	2,611.8
INDICES OF PRODUCTION	(1961-65 = 100)											
CROPS		100	117	124	128	139	144	131	128	142	148	129
TOTAL AGRICULTURE		100	120	127	132	140	146	139	136	147	155	144
TOTAL FOOD		100	120	127	132	140	146	139	137	148	155	145
PER CAPITA AGRICULTURE		100	117	123	127	134	138	131	129	137	143	132
PER CAPITA FOOD		100	117	123	128	135	138	131	128	137	143	132
INDEX OF POPULATION	1961-65 POPULATION= 13,958,000											
		100.0	102.7	103.1	103.6	104.3	105.2	106.0	106.9	107.8	108.6	109.5

TABLE 11.--GERMANY, EAST

PRODUCTION BY COMMODITY, VALUE AND INDICES OF TOTAL AGRICULTURAL AND FOOD PRODUCTION, AVERAGE 1961-65, ANNUAL 1970-79

COMMODITY	PRICE	AVERAGE										
	WEIGHT	1961-65	1970	1971	1972	1973	1974	1975	1976	1977	1978	1979
	DOLLARS	-1,000 METRIC TONS-										
WHEAT	104	1,357	2,132	2,490	2,744	2,861	3,154	2,736	2,715	2,914	3,147	3,000
RYE	91	1,741	1,483	1,754	1,904	1,699	1,949	1,563	1,455	1,644	1,895	1,800
CORN	78	3	14	9	27	13	3	2	0	2	2	2
BARLEY	84	1,291	1,926	2,286	2,592	2,848	3,422	3,681	3,456	3,681	4,135	3,800
OATS	74	850	558	807	890	805	922	780	506	411	595	400
OTHER GRAINS	79	606	343	395	379	276	254	148	58	43	50	40
PULSES	130	122	77	101	74	69	85	77	60	79	84	80
POTATOES	44	12,066	13,054	9,412	12,140	11,401	13,404	7,673	6,816	12,313	10,777	12,500
SUGAR BEETS	18	5,522	6,135	5,128	7,227	6,682	6,959	6,414	5,106	8,578	7,569	6,630
RAPESEED	110	171	190	196	234	246	299	363	329	308	318	237
VEGETABLES	100	772	782	689	837	757	801	687	687	1,139	960	1,000
FRUIT	150	553	546	652	600	525	431	543	610	478	480	600
FLAX FIBER	460	7	5	6	5	0	0	0	0	0	0	0
HEMP FIBER	440	2	1	1	1	0	0	0	0	0	0	0
BEEF AND VEAL	897	242	343	334	349	368	389	476	477	435	451	452
MUTTON AND LAMB	943	21	11	10	11	11	13	14	16	15	15	15
PORK	818	666	815	854	927	978	1,041	1,198	1,158	1,160	1,184	1,188
POULTRY MEAT	777	65	85	99	107	111	124	125	131	134	135	135
OTHER MEAT	750	15	18	29	29	30	31	27	29	29	29	29
COW'S MILK	92	5,704	7,091	7,150	7,515	7,738	8,075	8,095	8,092	7,939	8,226	8,100
WOOL, GREASY BASIS	840	4	8	8	8	8	9	9	9	10	11	11
EGGS	676	193	244	248	243	250	270	277	287	290	287	288
AGGREGATES OF PRODUCTION		-MILLION DOLLARS AT CONSTANT PRICES-										
CROPS		1,370.4	1,477.6	1,425.5	1,663.7	1,599.6	1,401.1	1,490.0	1,359.3	1,649.8	1,736.1	1,739.6
LIVESTOCK		1,485.5	1,878.3	1,929.4	2,039.1	2,119.9	2,253.0	2,464.0	2,444.8	2,399.8	2,459.7	2,453.0
LIVESTOCK FEED DEDUCTION	.35	-519.9	-657.4	-675.2	-713.6	-741.9	-788.5	-862.4	-855.6	-839.9	-860.8	-858.5
TOTAL AGRICULTURE		2,336.0	2,698.5	2,679.7	2,989.2	2,977.6	3,265.6	3,091.6	2,948.5	3,209.7	3,335.0	3,334.1
TOTAL FOOD		2,328.7	2,691.4	2,672.6	2,982.1	2,970.9	3,258.0	3,084.0	2,940.9	3,201.3	3,325.8	3,324.9
INDICES OF PRODUCTION		(1961-65 = 100)										
CROPS		100	108	104	121	117	131	109	99	120	127	127
TOTAL AGRICULTURE		100	116	115	128	127	140	132	125	137	143	143
TOTAL FOOD		100	116	115	128	128	140	132	126	137	143	143
PER CAPITA AGRICULTURE		100	116	115	128	128	141	134	128	140	146	147
PER CAPITA FOOD		100	116	115	128	128	141	134	128	140	146	147
INDEX OF POPULATION		1961-65 POPULATION = 17,076,000										
1961-65 POPULATION = 17,076,000		100.0	99.9	99.9	99.8	99.4	99.1	98.7	98.3	98.0	97.6	97.3

TABLE 12.--HUNGARY

PRODUCTION BY COMMODITY, VALUE AND INDICES OF TOTAL AGRICULTURAL AND FOOD PRODUCTION, AVERAGE 1961-65, ANNUAL 1970-79

COMMODITY	PRICE	AVERAGE										
	WEIGHT	1961-65	1970	1971	1972	1973	1974	1975	1976	1977	1978	1979
	DOLLARS	-1,000 METRIC TONS-										
WHEAT	104	1,967	2,718	3,915	4,089	4,498	4,968	4,005	5,143	5,315	5,665	3,700
RYE	91	260	155	180	171	175	175	147	156	142	136	100
RICE, PADDY	108	36	45	67	61	69	56	69	32	35	27	19
CORN	78	3,316	4,013	4,674	5,537	5,911	6,195	7,088	5,098	5,939	6,672	7,000
BARLEY	84	965	552	782	802	871	894	699	747	706	760	800
OATS	78	96	97	85	67	57	78	87	86	64	73	75
PULSES	130	94	119	127	83	70	125	116	125	99	124	124
POTATOES	44	1,735	1,813	1,797	1,310	1,163	1,364	1,268	1,087	1,335	1,515	1,200
SUGAR BEETS	18	3,090	2,175	2,023	2,909	2,752	3,707	4,089	3,942	3,889	4,192	3,900
TOBACCO	806	22	18	16	17	20	17	17	19	24	21	22
RAPESEED	110	7	46	71	52	68	45	65	66	89	107	65
SUNFLOWER SEED	120	110	92	149	132	152	120	154	185	212	223	415
VEGETABLES	100	633	735	889	934	1,001	1,030	769	873	1,135	983	1,100
FRUIT	150	940	1,288	1,207	1,349	1,441	1,449	1,330	1,457	1,588	1,375	1,300
GRAPES	80	546	743	745	844	1,016	690	813	742	929	786	900
FLAX FIBER	460	5	5	5	4	2	5	5	6	4	5	4
HEMP FIBER	440	22	16	15	14	18	16	11	11	14	10	10
BEEF AND VEAL	897	155	204	203	199	210	187	229	200	199	208	208
MUTTON AND LAMB	945	12	18	18	16	17	15	17	14	14	15	15
PORK	818	552	581	753	847	733	861	892	799	431	955	980
POULTRY MEAT	777	147	224	237	233	252	272	280	309	320	342	355
OTHER MEAT	750	9	5	5	7	5	5	4	14	5	5	5
COW'S MILK	92	1,825	1,863	1,803	1,810	1,957	2,020	1,822	1,931	2,142	2,198	2,300
WOOL, GREASY BASIS	840	9	10	9	8	9	9	8	9	10	11	11
EGGS	676	114	182	193	179	180	200	220	220	249	261	250
AGGREGATES OF PRODUCTION		-MILLION DOLLARS AT CONSTANT PRICES-										
CROPS		1,013.9	1,159.0	1,370.2	1,472.6	1,580.8	1,657.0	1,523.4	1,567.6	1,720.2	1,778.0	1,607.7
LIVESTOCK		984.8	1,162.9	1,313.6	1,365.0	1,320.0	1,436.9	1,499.6	1,434.8	1,585.7	1,643.7	1,676.2
LIVESTOCK FEED DEDUCTION .35		-344.6	-407.0	-459.7	-477.7	-462.0	-502.9	-524.8	-502.1	-554.9	-575.2	-586.6
TOTAL AGRICULTURE		1,654.1	1,914.9	2,224.1	2,359.9	2,438.8	2,591.0	2,558.2	2,500.3	2,751.0	2,846.5	2,597.3
TOTAL FOOD		1,618.7	1,885.0	2,197.0	2,333.3	2,408.1	2,553.6	2,533.0	2,472.6	2,717.1	2,816.0	2,666.0
INDICES OF PRODUCTION		(1961-65 = 100)										
CROPS		100	114	135	145	156	163	156	155	170	175	159
TOTAL AGRICULTURE		100	116	134	143	147	157	155	151	166	172	163
TOTAL FOOD		100	116	136	144	149	158	156	153	168	174	165
PER CAPITA AGRICULTURE		100	113	131	138	143	151	148	144	157	162	153
PER CAPITA FOOD		100	114	132	140	144	152	150	145	159	164	154
INDEX OF POPULATION		1961-65 POPULATION= 10,091,000										
		100.0	102.5	102.8	103.1	103.4	103.9	104.4	105.0	105.6	106.2	106.8

TABLE 13.--POLAND

PRODUCTION BY COMMODITY, VALUE AND INDICES OF TOTAL AGRICULTURAL AND FOOD PRODUCTION, AVERAGE 1961-65, ANNUAL 1970-79

COMMODITY	PRICE	AVERAGE	1970	1971	1972	1973	1974	1975	1976	1977	1978	1979
	WEIGHT	1961-65										
DOLLARS			- - - - - 1,000 METRIC TONS - - - - -									
WHEAT	104	2,988	4,508	5,456	5,147	5,817	6,409	5,207	5,745	5,308	6,022	4,220
RYE	91	7,466	5,433	7,827	8,149	8,268	7,981	6,270	6,922	6,250	7,427	5,233
CORN	72	20	12	13	10	13	19	79	231	232	119	187
BARLEY	84	1,368	2,149	2,450	2,750	3,154	3,908	3,638	3,617	3,396	3,633	3,785
OATS	78	2,641	3,209	3,195	3,212	3,220	3,244	2,920	2,695	2,552	2,490	2,199
MILLET	79	76	78	72	56	53	46	29	33	35	57	85
OTHER GRAINS	79	442	773	857	1,079	1,339	1,470	1,414	1,620	1,625	1,770	1,632
PULSES	130	428	362	350	311	295	322	261	230	205	252	245
POTATOES	44	43,802	50,301	39,801	48,735	51,928	48,519	46,429	49,951	41,148	46,648	49,582
SUGAR BEETS	18	11,436	12,742	12,557	14,341	13,654	12,971	15,707	15,107	15,640	15,797	14,280
TOBACCO	886	61	85	79	75	78	65	102	125	87	59	70
RAPESEED	110	323	566	595	439	512	523	726	980	798	691	234
VEGETABLES	100	3,435	4,180	3,523	3,638	4,036	3,591	4,125	3,783	3,836	4,402	4,600
FRUIT	150	612	1,009	841	813	928	834	1,084	1,572	1,279	1,364	1,460
FLAX FIBER	460	55	55	62	57	44	44	51	53	36	51	45
HEMP FIBER	440	15	14	12	11	9	11	11	10	14	14	12
BEEF AND VEAL	897	404	642	620	586	677	808	870	920	846	946	900
MUTTON AND LAMB	945	30	29	29	39	29	29	26	25	27	29	29
PORK	818	1,280	1,322	1,357	1,643	1,833	1,948	1,852	1,594	1,599	1,815	1,862
POULTRY MEAT	777	85	138	150	177	196	223	254	294	341	376	415
OTHER MEAT	750	31	51	55	49	44	55	60	63	64	64	64
COW'S MILK	92	12,870	14,948	15,147	15,765	16,243	16,667	16,375	16,520	16,929	17,122	17,100
WOOL, GREASY BASIS	840	8	9	9	9	9	9	9	11	12	13	13
EGGS	676	341	391	399	421	419	443	451	452	478	480	490
AGGREGATES OF PRODUCTION	- - - - - MILLION DOLLARS AT CONSTANT PRICES - - - - -											
CROPS	4,087.0	4,687.8	4,460.7	4,911.4	5,235.2	5,101.7	4,890.5	5,236.7	4,613.3	5,115.1	4,805.6	
LIVESTOCK	3,036.3	3,483.5	3,527.5	3,815.8	4,063.7	4,404.7	4,386.1	4,267.4	4,302.3	4,528.0	4,648.9	
LIVESTOCK FEED DEDUCTION	35	-1,062.7	-1,219.2	-1,234.6	-1,335.5	-1,422.2	-1,541.6	-1,535.1	-1,473.5	-1,505.8	-1,584.8	-1,627.1
TOTAL AGRICULTURE		6,060.6	6,952.1	6,751.6	7,391.7	7,876.7	7,964.8	7,741.5	8,010.6	7,409.8	8,058.3	7,827.4
TOTAL FOOD		5,943.0	6,822.7	6,638.8	7,278.4	7,753.8	7,858.1	7,613.0	7,866.3	7,296.7	7,960.8	7,722.9
INDICES OF PRODUCTION	(1961-65 = 100)											
CROPS	100	115	109	120	128	125	120	128	113	125	119	
TOTAL AGRICULTURE	100	115	111	122	130	131	128	132	122	133	129	
TOTAL FOOD	100	115	112	122	131	132	128	132	123	134	130	
PER CAPITA AGRICULTURE	100	108	104	113	119	119	115	118	108	116	112	
PER CAPITA FOOD	100	108	104	113	120	120	115	118	108	117	112	
INDEX OF POPULATION	1961-65 POPULATION= 30,624,000											
1961-65 POPULATION= 30,624,000	100.0	106.2	107.1	108.0	108.9	110.0	111.1	112.2	113.3	114.4	115.5	

TABLE 14.--ROMANIA

PRODUCTION BY COMMODITY, VALUE AND INDICES OF TOTAL AGRICULTURAL AND FOOD PRODUCTION, AVERAGE 1961-65, ANNUAL 1970-79

COMMODITY	PRICE	AVERAGE	1970	1971	1972	1973	1974	1975	1976	1977	1978	1979
	WEIGHT	1961-65										
DOLLARS			- - - - - 1,000 METRIC TONS - - - - -									
WHEAT	104	4,321	3,356	5,595	6,041	5,478	4,999	4,862	6,730	6,465	6,190	5,500
RYE	91	95	43	65	58	42	50	50	49	48	50	45
RICE, PADDY	108	40	65	67	45	50	53	69	37	47	42	45
CORN	78	5,853	6,536	7,850	9,817	7,397	7,440	9,241	11,583	10,114	10,208	12,000
BARLEY	84	414	514	789	839	730	917	952	1,231	1,859	2,307	2,000
OATS	47	154	117	161	111	102	91	57	55	61	57	50
PULSES	130	215	229	220	181	148	137	112	89	93	101	100
POTATOES	44	2,600	2,064	3,783	3,672	2,644	4,110	2,716	4,788	4,207	4,465	4,200
SUGAR BEETS	18	2,866	2,921	3,975	5,581	4,380	4,947	4,905	6,911	6,246	5,845	6,000
TOBACCO	806	32	22	30	30	38	39	40	64	47	41	50
SUNFLOWER SEED	120	504	770	791	850	756	681	728	799	807	816	889
VEGETABLES	100	1,657	2,004	2,581	2,544	2,779	2,955	2,518	3,593	3,244	3,662	3,500
FRUIT	150	873	1,100	937	1,253	972	1,050	1,078	1,321	1,424	1,286	1,700
GRAPES	80	908	760	1,111	1,055	1,574	1,087	1,182	1,536	1,459	1,321	1,700
FLAX FIBER	460	9	12	17	15	18	24	28	42	26	33	17
HEMP FIBER	440	14	14	21	19	22	23	26	25	27	29	32
BEEF AND VEAL	897	170	221	211	219	251	250	260	282	309	290	290
MUTTON AND LAMB	945	53	64	67	63	69	70	71	69	78	74	78
PORK	818	380	450	474	591	674	749	724	772	778	810	850
POULTRY MEAT	777	76	122	145	190	209	238	273	303	338	356	370
MILK	92	2,680	3,116	3,205	3,561	3,784	3,760	3,812	4,185	4,574	4,721	4,800
WOOL, GREASY WATTS	840	24	38	29	31	31	31	31	32	35	35	35
EGGS	676	114	161	181	195	212	222	246	280	287	303	315
AGGREGATES OF PRODUCTION			- - - - - MILLION DOLLARS AT CONSTANT PRICES - - - - -									
CROPS		1,614.5	1,634.8	2,162.4	2,431.8	2,115.7	2,145.3	2,184.2	2,914.6	2,740.9	2,772.1	2,889.0
LIVESTOCK		856.6	1,148.5	1,203.9	1,380.7	1,531.1	1,628.2	1,659.0	1,797.3	1,906.0	1,950.5	2,014.6
LIVESTOCK FEED DEDUCTION	.35	-299.8	-401.9	-421.3	-483.2	-535.9	-567.0	-590.6	-629.0	-667.1	-682.6	-705.1
TOTAL AGRICULTURE		2,171.3	2,381.4	2,945.0	3,329.3	3,111.0	3,198.5	3,262.6	4,082.9	3,979.8	4,040.0	4,198.5
TOTAL FOOD		2,119.3	2,332.3	2,897.2	3,264.3	3,044.7	3,131.0	3,193.0	3,993.4	3,900.6	3,964.8	4,114.7
INDICES OF PRODUCTION			(1961-65 = 100)									
CROPS		100	101	134	151	131	133	135	181	170	172	179
TOTAL AGRICULTURE		100	110	136	153	143	147	150	188	183	186	193
TOTAL FOOD		100	110	136	154	144	148	151	188	184	187	194
PER CAPITA AGRICULTURE		100	102	125	140	129	132	133	165	159	160	165
PER CAPITA FOOD		100	102	125	140	130	132	133	165	160	161	166
INDEX OF POPULATION												
1961-65 POPULATION= 18,804,000		100.0	107.7	108.9	109.9	110.8	111.8	113.0	114.1	115.1	116.2	117.3

TABLE 15.--YUGOSLAVIA

PRODUCTION BY COMMODITY, VALUE AND INDICES OF TOTAL AGRICULTURAL AND FOOD PRODUCTION, AVERAGE 1961-65, ANNUAL 1970-79

COMMODITY	PRICE	AVERAGE	1970	1971	1972	1973	1974	1975	1976	1977	1978	1979
	WEIGHT	1961-65										
DOLLARS			-1,000 METRIC TONS-									
WHEAT	104	3,596	3,790	5,604	4,843	4,750	6,282	4,404	5,979	5,595	5,355	4,479
RYE	91	169	127	134	120	118	120	98	105	87	81	75
RICE, PADDY	108	23	32	36	31	32	31	37	23	36	33	35
CORN	78	5,616	6,933	7,443	7,930	8,253	8,031	9,389	9,106	9,870	7,555	9,800
BARLEY	84	557	402	464	487	676	794	703	653	650	560	550
OATS	78	343	309	312	260	298	353	368	320	309	284	275
SORGHUM	79	21	10	11	13	19	14	10	10	14	13	13
OTHER GRAINS	79	33	18	17	14	13	13	11	9	8	8	8
PULSES	130	206	205	191	160	198	197	178	156	188	149	170
POTATOES	44	2,708	2,964	2,952	2,406	2,974	3,127	2,394	2,828	3,034	2,501	2,400
SUGAR BEETS	18	2,344	2,948	2,961	3,274	3,338	4,300	4,213	4,711	5,287	5,157	5,950
TOBACCO	806	44	40	44	62	55	59	70	81	69	62	65
COTTON	256	7	12	10	7	9	7	6	5	3	2	2
RAPESEED	110	4	10	18	14	8	12	14	24	40	73	93
SUNFLOWER SEED	120	207	264	347	277	434	298	272	319	479	539	525
VEGETABLES	100	1,182	1,523	1,540	1,656	1,742	1,787	1,619	1,815	1,985	1,785	1,950
FRUIT	150	1,302	1,501	1,474	1,597	1,423	1,380	1,670	1,392	1,466	1,313	1,290
GRAPES	80	1,134	1,191	1,096	1,139	1,450	1,080	1,029	1,204	1,217	1,080	1,320
FLAX FIBER	460	2	1	1	1	1	1	1	1	1	1	1
HEMP FIBER	440	43	17	14	11	12	12	8	9	9	8	8
BEEF AND VEAL	897	188	233	242	233	267	328	351	356	359	366	374
MUTTON AND LAMB	945	46	47	50	49	50	49	56	61	58	62	61
PORK	818	294	338	384	340	308	645	722	677	770	886	736
POULTRY MEAT	777	71	142	148	144	160	181	188	204	227	254	275
OTHER MEAT	750	3	1	1	0	0	0	12	11	11	12	11
MILK	92	2,417	2,737	2,732	2,968	3,257	3,640	3,802	3,991	4,214	4,277	4,322
WOOL, GREASY BASIS	840	13	12	11	10	10	10	11	10	10	10	11
EGGS	676	88	153	162	163	176	202	197	210	222	223	230
AGGREGATES OF PRODUCTION			-MILLION DOLLARS AT CONSTANT PRICES-									
CROPS		1,563.4	1,761.9	1,998.0	1,969.8	2,062.7	2,189.9	2,084.1	2,248.9	2,331.7	2,035.8	2,154.7
LIVESTOCK		821.7	1,013.8	1,079.5	1,041.8	1,095.3	1,493.9	1,609.1	1,619.1	1,741.6	1,874.1	1,782.9
LIVESTOCK FEED DEDUCTION	.35	-287.5	-354.8	-374.6	-364.6	-383.3	-522.8	-563.1	-566.6	-609.5	-655.9	-624.0
TOTAL AGRICULTURE		2,097.6	2,420.9	2,693.9	2,647.0	2,774.7	3,161.0	3,130.1	3,301.4	3,463.8	3,254.0	3,313.6
TOTAL FOOD		2,030.4	2,360.7	2,640.4	2,582.0	2,706.6	3,097.9	3,059.5	3,223.2	3,395.0	3,191.6	3,248.0
INDICES OF PRODUCTION			(1961-65 = 100)									
CROPS		100	113	128	126	132	140	133	144	149	130	138
TOTAL AGRICULTURE		100	115	128	126	132	151	149	157	165	155	158
TOTAL FOOD		100	116	130	127	133	153	151	159	167	157	160
PER CAPITA AGRICULTURE		100	108	110	116	120	136	133	139	144	134	135
PER CAPITA FOOD		100	109	120	116	121	137	134	140	146	136	137
INDEX OF POPULATION			1961-65 POPULATION= 19,022,000									
		100.0	107.1	109.1	109.2	110.2	111.2	112.2	113.3	114.4	115.6	116.7

TABLE 16.--U.S.S.R.

PRODUCTION BY COMMODITY, VALUE AND INDICES OF TOTAL AGRICULTURAL AND FOOD PRODUCTION, AVERAGE 1961-65, ANNUAL 1970-79

COMMODITY	PRICE	AVERAGE		1970	1971	1972	1973	1974	1975	1976	1977	1978	1979
	WEIGHT	1961-65	DOLLARS										
				-1,000 METRIC TONS-									
WHEAT	104	64,207	99,734	98,760	85,993	109,784	83,913	66,224	96,882	92,161	120,820	86,000	
RYE	91	15,093	12,972	12,787	8,633	10,759	15,223	9,064	13,991	8,480	13,603	8,000	
RICE, PADDY	108	390	1,279	1,429	1,647	1,765	1,913	2,009	2,001	2,217	2,095	2,200	
CORN	78	13,122	9,428	8,597	9,830	13,216	12,104	7,320	10,138	10,970	8,951	8,000	
BARLEY	84	20,318	38,172	34,571	76,813	55,044	54,208	35,808	69,539	52,687	62,077	49,000	
OATS	78	6,052	14,203	14,650	14,095	17,516	15,302	12,495	19,113	18,407	18,507	16,000	
MILLET	79	2,639	2,100	2,843	2,123	4,416	2,907	1,125	3,199	2,012	2,196	3,000	
OTHER GRAINS	79	1,026	1,288	1,390	1,001	1,583	1,424	744	1,242	1,306	1,525	1,250	
PULSES	130	7,489	7,619	6,948	7,103	8,447	8,714	5,321	9,651	7,479	7,700	5,500	
POTATOES	44	81,628	96,783	92,655	78,329	108,201	81,022	88,703	85,102	83,652	86,007	90,300	
SUGAR BEETS	18	59,170	78,942	72,185	76,424	87,047	77,943	66,312	99,872	93,094	93,483	76,000	
TOBACCO	806	135	228	231	277	275	294	299	303	302	280	300	
COTTON	256	4,996	6,890	7,101	7,296	7,664	8,409	7,864	8,279	8,762	8,509	9,160	
SUNFLOWER SEED	120	5,068	6,144	5,663	5,048	7,395	6,784	4,990	5,277	5,904	5,333	5,370	
VEGETABLES	100	16,877	21,212	20,840	19,941	25,927	24,811	23,351	24,991	24,149	27,902	25,800	
FRUIT	150	3,655	7,679	7,840	6,784	9,769	7,833	8,835	9,509	11,020	8,893	9,000	
GRAPES	80	2,826	4,011	4,467	2,786	4,583	4,608	5,400	5,442	4,255	5,498	5,500	
TEA	700	186	273	280	291	305	330	352	375	434	454	400	
FLAX FIBER	460	407	456	486	456	443	402	493	509	480	384	400	
BEEF AND VEAL	897	3,474	5,393	5,536	5,722	5,873	6,384	6,499	6,615	6,892	7,000	7,000	
MUTTON AND LAMB	945	1,050	1,002	996	923	954	974	1,014	885	898	900	900	
PORK	818	3,788	4,543	5,277	5,445	5,081	5,515	5,651	4,343	4,961	5,200	5,200	
POULTRY MEAT	777	748	1,071	1,183	1,237	1,295	1,420	1,539	1,411	1,700	1,900	2,100	
OTHER MEAT	750	260	269	280	306	324	327	355	329	271	353	350	
MILK	92	54,714	93,016	83,183	83,181	88,300	91,760	90,804	89,675	94,900	94,498	93,000	
WOOL, GREASY WATTS	840	362	419	429	420	433	462	467	436	459	463	470	
EGGS	676	1,581	2,226	2,480	2,635	2,813	3,053	3,161	3,091	3,366	3,545	3,740	
AGGREGATES OF PRODUCTION				-MILLION DOLLARS AT CONSTANT PRICES-									
CROPS		21,990.6	30,358.0	29,577.4	27,293.5	35,269.3	31,097.5	25,830.4	34,480.1	32,032.1	36,251.3	30,354.8	
LIVESTOCK		15,309.2	20,028.9	21,042.5	21,436.2	21,964.9	27,400.5	23,674.8	22,371.5	24,004.8	24,603.3	24,756.3	
LIVESTOCK FEED DEDUCTION	.30	-4,592.7	-6,808.6	-5,312.7	-6,430.8	-6,589.2	-7,020.1	-7,102.4	-6,711.4	-7,201.4	-7,380.9	-7,426.8	
TOTAL AGRICULTURE		32,707.1	44,378.3	44,307.2	42,298.9	50,644.1	47,477.9	42,402.8	50,140.2	48,835.5	53,473.7	47,684.3	
TOTAL FOOD		30,698.1	41,677.8	41,523.1	39,441.5	47,679.4	44,284.2	39,290.4	46,914.0	45,438.8	50,188.7	44,238.7	
INDICES OF PRODUCTION				(1961-65 = 100)									
CROPS		100	138	135	124	160	141	117	157	146	165	138	
TOTAL AGRICULTURE		100	136	135	129	155	145	130	153	149	163	146	
TOTAL FOOD		100	136	135	128	155	144	128	153	148	163	144	
PER CAPITA AGRICULTURE		100	126	124	117	139	129	115	134	130	141	124	
PER CAPITA FOOD		100	126	124	117	140	129	113	134	128	141	123	
INDEX OF POPULATION				1961-65 POPULATION=224,806,000									
1961-65 POPULATION=224,806,000		100.0	108.0	109.0	110.1	111.1	112.1	113.2	114.2	115.2	116.2	117.2	

Table 17.--MID-YEAR POPULATION BY COUNTRY, 1970-79

COUNTRY AND REGION	1970	1971	1972	1973	1974	1975	1976	1977	1978	1979
----- THOUSANDS -----										
BELGIUM-LUXEMBOURG	10,000	10,010	10,060	10,090	10,130	10,160	10,250	10,340	10,430	10,520
DENMARK	4,930	4,960	4,990	5,030	5,050	5,060	5,070	5,080	5,090	5,100
FRANCE	50,770	51,250	51,700	52,180	52,560	52,790	52,920	53,050	53,180	53,310
GERMANY, WEST	60,710	61,290	61,670	61,970	62,040	61,930	61,650	61,500	61,350	61,250
IRELAND	2,940	2,980	3,010	3,050	3,090	3,130	3,160	3,190	3,220	3,250
ITALY	53,660	54,010	54,410	54,910	55,410	55,910	56,410	56,910	57,410	57,910
NETHERLANDS	13,030	13,190	13,330	13,440	13,540	13,650	13,770	13,890	14,010	14,130
UNITED KINGDOM	55,420	55,610	55,790	55,930	55,970	55,960	55,930	55,900	55,870	55,850
EUROPEAN COMMUNITY	251,460	253,300	254,960	256,600	257,700	258,390	258,940	259,520	260,100	260,740
AUSTRIA	7,390	7,460	7,490	7,530	7,550	7,520	7,510	7,500	7,490	7,480
NORWAY	3,880	3,900	3,930	3,950	3,990	4,010	4,030	4,050	4,070	4,090
PORTUGAL	8,723	8,632	8,590	8,554	8,521	8,486	8,446	8,407	8,370	8,330
SWEDEN	8,240	8,100	8,120	8,140	8,160	8,190	8,220	8,240	8,260	8,290
SWITZERLAND	6,190	6,230	6,390	6,430	6,440	6,400	6,400	6,400	6,400	6,350
FINLAND	4,610	4,620	4,640	4,670	4,690	4,710	4,730	4,750	4,770	4,790
GREECE	8,793	8,831	8,880	8,929	8,962	8,946	8,937	8,918	8,900	8,880
SPAIN	33,779	34,134	34,494	34,860	35,220	35,600	35,970	36,340	36,710	37,080
OTHER WESTERN EUROPE	81,405	81,907	82,543	83,083	83,933	84,732	85,323	86,298	86,850	87,502
WESTERN EUROPE	332,865	335,207	337,503	339,683	341,723	343,122	344,263	345,618	346,950	348,242

TABLE 18. WESTERN EUROPE

AGRICULTURAL PRODUCTION FOR SELECTED YEARS

COMMODITY	AVERAGE 1961-65	1970	1971	1972	1973	1974	1975	1976	1977	1978	1979
-1,000 METRIC TONS-											
WHEAT	38,724	43,824	51,086	51,206	50,693	56,590	48,511	50,711	47,621	58,104	55,293
RYE	5,564	4,603	5,241	5,063	4,565	4,666	3,906	4,218	4,612	4,406	3,786
RICE, PADDY	1,412	1,583	1,562	1,376	1,751	1,650	1,661	1,522	1,316	1,629	1,665
CORN	6,479	16,434	18,059	17,448	20,614	18,200	17,997	14,977	19,654	20,522	22,259
BARLEY	25,192	35,584	41,566	43,655	44,392	46,719	44,968	41,666	50,520	54,829	52,139
OATS	12,367	11,668	13,575	12,371	11,439	12,402	11,671	9,929	10,089	11,244	10,262
MILLET	6	5	5	4	4	4	5	5	5	4	3
BURGHUM	57	385	416	406	474	441	469	457	569	722	648
OTHER GRAINS	3,316	2,532	2,770	2,682	2,520	2,536	2,346	1,602	1,934	1,962	1,781
POTATOES	72,898	59,714	57,497	53,801	52,870	54,709	45,276	41,921	49,959	48,605	46,410
SUGAR BEETS	52,215	69,479	75,662	74,716	80,267	74,144	89,429	97,017	96,792	92,650	89,637
TOBACCO	229	260	242	259	279	264	325	354	307	333	350
COTTON	203	161	162	196	164	167	183	154	201	189	148
TOMATOES	1,255	1,808	1,854	1,954	2,029	2,399	2,463	1,844	2,000	2,153	2,100
ORANGES	1,578	1,597	1,615	2,236	2,059	1,866	1,991	1,781	1,764	1,633	1,701
TANGERINES	136	349	373	578	599	591	652	660	713	911	762
LEMONS	102	97	110	196	265	225	254	236	337	248	296
APPLES	309	443	615	729	928	979	1,091	1,007	730	1,072	1,132
PEARS	136	240	418	457	471	482	405	512	242	450	469
GRAPES	3,481	3,776	3,627	4,047	5,026	5,343	4,754	3,905	3,554	4,620	5,313
OLIVE OIL	1,113	1,115	1,275	1,077	1,215	1,052	1,394	951	1,300	1,208	1,080
BEEF AND VEAL	5,815	6,991	7,105	6,620	6,813	7,930	7,972	7,761	7,609	7,660	7,897
MUTTON AND LAMB	698	759	773	753	771	826	854	854	832	841	832
PORK	6,930	8,862	9,061	9,145	9,253	9,625	9,533	9,913	10,373	10,914	11,424
POULTRY MEAT	1,296	2,579	2,651	2,808	3,137	3,177	3,119	3,354	3,597	3,598	3,799
OTHER MEAT	10	5	3	2	2	2	3	4	5	4	4
COW'S MILK	102,900	110,999	110,540	114,574	115,714	116,454	117,043	119,256	122,497	127,354	129,419
SUGAR	3,655	4,572	4,567	4,648	4,608	4,701	4,862	4,857	4,936	4,690	5,006

TABLE 19.-- WESTERN EUROPE

INDICES OF TOTAL AGRICULTURAL PRODUCTION, BY COUNTRY, 1970-79

(1961-65 = 100)

	1970	1971	1972	1973	1974	1975	1976	1977	1978	1979
BELGIUM-LUXEMBOURG	119	126	127	132	139	127	126	127	135	137
DENMARK	102	107	108	106	113	107	103	115	119	124
FRANCE	112	123	127	133	134	127	122	133	143	145
GERMANY, WEST	111	114	113	113	120	115	112	119	124	124
IRELAND	117	124	120	123	130	127	126	144	150	152
ITALY	119	124	116	122	122	129	121	124	129	129
NETHERLANDS	126	131	129	136	141	143	147	151	164	163
UNITED KINGDOM*	110	116	116	117	121	113	112	124	127	126
EUROPEAN COMMUNITY	113	120	119	122	126	122	118	127	133	134
AUSTRIA	113	119	115	120	124	120	128	125	130	121
NORWAY	109	107	107	112	122	105	109	121	123	122
PORTUGAL	112	112	106	105	107	114	109	97	102	102
SWEDEN	108	107	107	102	124	109	115	116	120	116
SWITZERLAND	113	118	116	119	127	123	129	128	132	136
FINLAND	121	128	123	118	121	132	149	122	125	131
GREECE	128	126	132	129	144	156	152	147	162	161
SPAIN	127	144	144	150	157	164	150	151	177	168
OTHER WESTERN EUROPE	119	127	126	128	137	139	141	137	147	143
WESTERN EUROPE	115	121	120	123	128	125	123	129	136	136

TABLE 20.-- WESTERN EUROPE

INDICES OF PER CAPITA AGRICULTURAL PRODUCTION, BY COUNTRY, 1970-79

(1961-65 = 100)

	1970	1971	1972	1973	1974	1975	1976	1977	1978	1979
BELGIUM-LUXEMBOURG	114	121	121	126	132	128	118	118	124	125
DENMARK	96	101	101	99	104	98	95	106	109	114
FRANCE	105	113	117	121	121	114	110	119	128	129
GERMANY, WEST	105	107	105	105	111	106	104	111	116	116
IRELAND	113	118	113	115	119	115	113	128	132	133
ITALY	113	118	109	113	112	118	110	112	115	115
NETHERLANDS	115	118	116	120	124	125	127	129	139	138
UNITED KINGDOM	106	112	111	112	115	107	107	119	121	120
EUROPEAN COMMUNITY	107	113	112	114	117	113	109	117	122	123
AUSTRIA	109	114	110	113	118	114	122	119	124	116
NORWAY	103	100	99	103	112	96	99	109	111	109
PORTUGAL	115	116	110	109	107	110	104	90	93	91
SWEDEN	101	100	100	95	115	101	106	105	107	103
SWITZERLAND	105	109	104	105	113	109	115	114	118	122
FINLAND	118	125	119	113	116	127	141	116	118	123
GREECE	123	121	124	122	136	146	151	136	149	147
SPAIN	117	132	131	135	140	144	139	139	151	142
OTHER WESTERN EUROPE	113	120	118	119	127	127	128	123	131	127
WESTERN EUROPE	109	114	113	115	119	115	113	118	124	124

TABLE 21.-- WESTERN EUROPE

INDICES OF TOTAL FOOD PRODUCTION, BY COUNTRY, 1970-79

(1961-65 = 100)

	1970	1971	1972	1973	1974	1975	1976	1977	1978	1979
BELGIUM-LUXEMBOURG	119	126	127	132	139	127	126	127	135	137
DENMARK	102	107	108	106	113	107	103	115	119	124
FRANCE	112	123	127	134	134	127	122	134	143	145
GERMANY, WEST	112	114	113	113	120	115	112	119	124	125
IRELAND	117	124	120	123	130	127	126	144	150	152
ITALY	119	124	116	121	121	128	120	123	128	128
NETHERLANDS	126	131	129	136	141	143	147	151	164	163
UNITED KINGDOM	110	116	116	117	121	113	112	124	127	126
EUROPEAN COMMUNITY	113	120	119	122	126	121	118	127	133	134
AUSTRIA	113	119	115	120	124	120	128	125	130	121
NORWAY	109	107	107	112	122	105	109	121	123	122
PORTUGAL	112	112	106	105	107	114	109	97	102	102
SWEDEN	108	107	107	102	124	109	115	116	120	116
SWITZERLAND	113	118	116	119	127	123	129	128	133	134
FINLAND	121	128	123	118	121	132	148	122	125	131
GREECE	137	137	143	138	159	167	172	154	171	173
SPAIN	128	145	145	152	159	155	161	163	179	169
OTHER WESTERN EUROPE	120	128	127	129	139	140	142	138	148	144
WESTERN EUROPE	115	121	121	124	129	125	123	129	136	136

TABLE 22.-- WESTERN EUROPE

INDICES OF PER CAPITA FOOD PRODUCTION, BY COUNTRY, 1970-79

(1961-65 = 100)

	1970	1971	1972	1973	1974	1975	1976	1977	1978	1979
BELGIUM-LUXEMBOURG	115	121	121	126	132	120	118	118	124	125
DENMARK	96	101	101	99	104	98	95	106	109	114
FRANCE	105	114	117	121	121	114	109	120	128	129
GERMANY, WFST	105	107	109	105	111	106	104	111	116	116
IRELAND	113	118	113	115	119	115	113	128	132	133
ITALY	113	118	109	113	112	117	109	111	115	114
NETHERLANDS	115	118	116	120	124	125	127	129	139	138
UNITED KINGDOM	106	112	111	112	115	107	107	119	121	120
EUROPEAN COMMUNITY	107	113	112	114	117	112	109	117	122	123
AUSTRIA	109	114	110	113	118	114	122	119	124	116
NORWAY	103	100	99	103	112	96	99	109	111	109
PORTUGAL	115	116	110	109	107	110	104	90	93	91
SWEDEN	101	100	100	95	115	101	106	105	107	103
SWITZERLAND	105	109	104	105	113	116	115	114	119	121
FINLAND	118	125	119	113	116	127	141	116	119	123
GREECE	132	131	134	131	150	156	150	142	157	158
SPAIN	118	133	132	136	141	145	140	140	153	143
OTHER WESTERN EUROPE	114	121	119	120	128	128	129	124	132	128
WESTERN EUROPE	109	114	113	116	119	115	113	118	124	124

TABLE 23.-- WESTERN EUROPE

AGGREGATES OF TOTAL AGRICULTURAL PRODUCTION, BY COUNTRY, AVERAGE 1961-65, ANNUAL 1970-79

	AVERAGE 1961-65	1970	1971	1972	1973	1974	1975	1976	1977	1978	1979
	- - - - - MILLION DOLLARS AT CONSTANT PRICES - - - - -										
BELGIUM-LUXEMBOURG	860.5	1,026.4	1,083.6	1,090.2	1,138.7	1,195.1	1,080.0	1,083.8	1,090.2	1,163.3	1,177.4
DENMARK	1,145.1	1,163.9	1,228.0	1,232.9	1,219.4	1,295.0	1,222.3	1,184.5	1,322.0	1,363.2	1,420.9
FRANCE	5,574.0	6,245.3	6,829.8	7,096.1	7,439.8	7,476.7	7,085.0	6,816.8	7,441.2	7,983.6	8,083.1
GERMANY, WEST	5,858.4	6,529.8	6,700.4	6,605.9	6,638.2	7,028.5	6,729.1	6,572.4	6,972.5	7,266.7	7,293.4
IRELAND	577.2	675.1	714.3	691.3	710.7	747.6	733.4	726.2	833.3	864.9	876.1
ITALY	3,598.7	4,277.0	4,478.6	4,185.6	4,377.5	4,386.1	4,629.5	4,354.3	4,475.9	4,632.3	4,643.4
NETHERLANDS	1,176.8	1,478.6	1,537.2	1,521.9	1,596.1	1,660.4	1,678.6	1,730.0	1,775.0	1,927.9	1,923.0
UNITED KINGDOM	3,643.2	4,015.2	4,238.4	4,226.6	4,268.8	4,402.6	4,102.0	4,001.0	4,527.3	4,617.6	4,594.4
EUROPEAN COMMUNITY	22,433.9	25,411.3	26,810.3	26,650.5	27,389.2	29,192.0	27,268.9	26,549.0	28,437.4	29,819.5	30,011.7
AUSTRIA	646.1	728.3	770.6	742.2	772.7	802.5	774.5	828.6	809.1	838.1	784.7
NORWAY	287.2	314.3	306.6	306.9	321.5	351.5	301.5	313.9	347.5	354.1	351.8
PORTUGAL	342.5	384.8	383.9	361.4	358.8	366.8	391.4	372.7	331.4	348.6	349.6
SWEDEN	911.4	979.8	975.1	972.5	930.5	1,126.9	997.2	1,044.1	1,055.7	1,089.3	1,054.4
SWITZERLAND	628.0	710.4	743.9	728.0	744.6	796.2	769.3	808.2	800.9	831.5	852.3
FINLAND	615.4	742.2	786.9	757.7	723.2	745.3	814.9	909.7	751.9	769.6	806.6
GREECE	655.1	836.9	827.4	865.5	846.7	842.4	1,022.0	1,064.0	961.6	1,059.6	1,053.4
SPAIN	2,348.7	2,980.0	3,374.2	3,386.5	3,524.4	3,698.5	3,847.7	3,748.7	3,788.4	4,166.7	3,939.5
OTHER WESTERN EUROPE	6,434.4	7,676.7	9,168.6	8,120.7	8,222.4	9,930.1	8,918.5	9,089.9	8,846.5	9,457.5	9,192.3
WESTERN EUROPE	28,868.3	33,088.0	34,978.9	34,771.2	35,611.6	37,022.1	36,187.4	35,638.9	37,293.9	39,277.0	39,204.0

TABLE 24.-- WESTERN EUROPE

AGGREGATES OF TOTAL FOOD PRODUCTION, BY COUNTRY, AVERAGE 1961-65, ANNUAL 1970-79

	AVERAGE 1961-65	1970	1971	1972	1973	1974	1975	1976	1977	1978	1979
- - - - - MILLION DOLLARS AT CONSTANT PRICES - - - - -											
BELGIUM-LUXEMBOURG	858.9	1,025.3	1,082.5	1,089.1	1,137.6	1,194.0	1,087.9	1,082.7	1,089.1	1,162.2	1,176.3
DENMARK	1,145.1	1,163.9	1,228.0	1,232.9	1,219.4	1,295.0	1,222.3	1,184.5	1,322.0	1,363.2	1,420.9
FRANCE	5,532.4	6,197.9	6,786.4	7,047.7	7,388.3	7,424.2	7,028.5	6,755.3	7,397.8	7,933.1	8,032.6
GERMANY, WEST	5,845.8	6,518.5	6,689.1	6,593.3	6,623.1	7,015.9	6,720.3	6,559.8	6,961.2	7,255.4	7,282.1
IRELAND	577.2	675.1	714.3	691.3	710.7	747.6	733.4	726.2	833.3	864.9	876.1
ITALY	3,549.0	4,211.0	4,414.3	4,114.6	4,298.1	4,307.5	4,534.1	4,262.2	4,383.0	4,539.4	4,549.6
NETHERLANDS	1,176.8	1,478.6	1,537.2	1,521.9	1,596.1	1,560.4	1,678.6	1,730.1	1,775.0	1,927.9	1,923.0
UNITED KINGDOM	3,643.2	4,015.2	4,238.4	4,226.6	4,268.8	4,402.6	4,182.0	4,081.0	4,527.3	4,617.6	4,594.4
EUROPEAN COMMUNITY	22,328.4	25,285.5	26,690.2	26,517.4	27,242.1	28,047.2	27,107.1	26,381.7	28,288.7	29,663.7	29,855.0
AUSTRIA	645.4	727.6	769.9	741.5	772.0	801.8	773.8	827.9	808.4	837.4	784.0
NORWAY	287.2	314.3	306.6	306.9	321.5	351.5	301.5	313.9	347.5	354.1	351.8
PORTUGAL	342.5	384.8	383.9	361.4	358.8	366.8	391.4	372.7	331.4	349.6	349.6
SWEDEN	911.4	979.8	975.1	972.5	930.5	1,126.9	997.2	1,044.1	1,055.7	1,089.3	1,054.4
SWITZERLAND	626.7	709.1	742.6	726.7	743.3	794.9	768.0	806.9	800.2	830.8	842.5
FINLAND	615.4	742.2	786.9	757.7	723.2	745.3	814.9	909.7	751.9	769.6	806.6
GREECE	519.0	710.7	711.3	742.9	718.1	826.6	866.8	800.9	800.6	886.3	897.8
SPAIN	2,310.6	2,956.1	3,352.1	3,360.7	3,501.9	3,673.6	3,823.3	3,725.1	3,766.1	4,145.5	3,913.4
OTHER WESTERN EUROPE	6,258.2	7,524.6	8,028.4	7,970.3	8,069.3	8,687.4	8,736.9	8,891.2	8,661.8	9,261.6	9,000.1
WESTERN EUROPE	28,586.6	32,810.1	34,718.6	34,487.7	35,311.4	36,734.6	35,844.0	35,272.9	36,950.5	38,925.3	38,855.1

TABLE 25.--AUSTRIA

PRODUCTION BY COMMODITY, VALUE AND INDICES OF TOTAL AGRICULTURAL AND FOOD PRODUCTION, AVERAGE 1961-65, ANNUAL 1970-79

COMMODITY	PRICE	AVERAGE	1970	1971	1972	1973	1974	1975	1976	1977	1978	1979
	WEIGHT	1961-65										
DOLLARS			- - - - -1,000 METRIC TONS- - - - -									
WHEAT	95	704	810	974	863	939	1,102	945	1,234	1,072	1,195	850
RYE	88	393	363	448	402	400	415	347	410	351	410	278
CORN	74	197	612	721	726	966	857	981	936	1,159	1,166	1,297
BARLEY	72	563	913	1,016	977	1,087	1,238	1,006	1,287	1,212	1,424	1,129
OATS	73	322	272	284	255	284	290	306	283	279	304	273
MILLET	73	1	3	3	2	2	2	2	2	2	0	0
OTHER GRAINS	73	56	98	99	92	109	113	119	128	130	131	107
POTATOES	41	3,217	2,704	2,717	2,341	2,117	1,996	1,579	1,746	1,352	1,403	1,368
SUGAR BEETS	16	1,710	1,950	1,590	2,148	2,220	2,386	3,134	2,583	2,721	1,869	1,700
TOBACCO	693	1	1	1	1	1	1	1	1	1	1	1
BEEF AND VEAL	719	137	154	160	160	166	195	194	184	173	186	198
MUTTON AND LAMB	567	1	1	1	1	1	1	2	2	2	2	2
PORK	675	245	277	292	291	288	298	307	328	340	340	359
POULTRY MEAT	923	30	46	51	46	50	47	48	53	57	60	59
COW'S MILK	83	3,058	3,328	3,282	3,286	3,277	3,283	3,265	3,290	3,348	3,334	3,341
EGGS	543	84	85	87	88	87	83	88	88	87	89	88
AGGREGATES OF PRODUCTION			- - - - -MILLION DOLLARS AT CONSTANT PRICES- - - - -									
CROPS		344.3	390.0	424.1	397.9	426.0	443.9	411.9	459.0	435.4	458.3	394.3
LIVESTOCK		591.6	663.2	679.4	675.0	679.8	703.0	710.9	724.6	732.7	744.7	765.4
LIVESTOCK FEED DEDUCTION	.49	-289.8	-324.9	-332.9	-330.7	-333.1	-344.4	-348.3	-355.0	-359.0	-364.9	-375.0
TOTAL AGRICULTURE		646.1	728.3	770.6	742.2	772.7	802.5	774.5	828.6	809.1	838.1	784.7
TOTAL FOOD		645.4	727.6	769.9	741.5	772.0	801.8	773.8	827.0	808.4	837.4	784.0
INDICES OF PRODUCTION			(1961-65 = 100)									
CROPS		100	113	123	116	124	129	120	133	126	133	115
TOTAL AGRICULTURE		100	113	119	115	120	124	120	128	125	130	121
TOTAL FOOD		100	113	119	115	120	124	120	129	125	130	121
PER CAPITA AGRICULTURE		100	109	115	110	114	118	114	122	120	124	116
PER CAPITA FOOD		100	109	115	110	114	118	114	123	120	124	116
INDEX OF POPULATION												
1961-65 POPULATION=	7,172,000	100.0	103.0	104.0	104.4	105.0	105.3	104.9	104.7	104.6	104.4	104.3

TABLE 26.--BELGIUM-LUXEMBOURG

PRODUCTION BY COMMODITY, VALUE AND INDICES OF TOTAL AGRICULTURAL AND FOOD PRODUCTION, AVERAGE 1961-65, ANNUAL 1970-79

COMMODITY	PRICE	AVERAGE										
	WEIGHT	1961-65	1970	1971	1972	1973	1974	1975	1976	1977	1978	1979
	DOLLARS	-1,000 METRIC TONS-										
WHEAT	94	870	763	950	985	1,049	1,078	724	940	775	1,021	1,013
RYE	75	127	68	95	80	66	54	33	53	69	64	53
CORN	75	2	10	19	19	27	25	37	32	30	30	39
BARLEY	81	548	571	644	693	776	752	476	645	733	941	848
OATS	71	425	225	319	284	247	302	257	143	135	161	145
OTHER GRAINS	71	31	41	49	46	51	50	45	36	31	28	26
POTATOES	27	1,769	1,665	1,687	1,163	1,258	1,518	1,300	879	1,424	1,302	1,236
SUGAR BEETS	16	2,502	3,871	4,876	4,319	5,136	4,465	4,915	4,602	4,341	5,224	5,379
TOBACCO	556	3	2	2	2	2	2	2	2	2	2	2
BEEF AND VEAL	969	221	270	279	267	271	318	305	290	281	275	275
MUTTON AND LAMB	1,136	3	4	1	3	3	3	3	3	3	3	3
PORK	842	258	441	472	539	587	638	579	576	589	631	675
POULTRY MEAT	650	85	113	112	114	110	105	104	106	109	114	108
COW'S MILK	83	4,106	4,232	4,042	3,971	3,850	3,960	3,869	3,843	3,872	4,021	3,900
EGGS	550	176	238	230	227	225	220	215	205	204	204	204
AGGREGATES OF PRODUCTION		-MILLION DOLLARS AT CONSTANT PRICES-										
CROPS		257.7	250.8	301.1	281.2	309.8	306.7	248.2	258.2	260.7	304.5	303.5
LIVESTOCK		927.3	1,193.1	1,203.7	1,244.5	1,275.2	1,366.7	1,293.4	1,270.1	1,276.1	1,321.2	1,344.4
LIVESTOCK FEED DEDUCTION	.35	-324.5	-417.5	-421.2	-435.5	-446.3	-478.3	-452.6	-444.5	-446.6	-462.4	-470.5
TOTAL AGRICULTURE		860.5	1,026.4	1,083.6	1,090.2	1,138.7	1,195.1	1,089.0	1,083.8	1,090.2	1,163.3	1,177.4
TOTAL FOOD		858.9	1,025.3	1,082.5	1,089.1	1,137.6	1,194.0	1,087.9	1,082.7	1,089.1	1,162.2	1,176.3
INDICES OF PRODUCTION		(1961-65 = 100)										
CROPS		100	97	117	109	120	119	96	100	101	118	118
TOTAL AGRICULTURE		100	119	126	127	132	139	127	126	127	135	137
TOTAL FOOD		100	119	126	127	132	139	127	126	127	135	137
PER CAPITA AGRICULTURE		100	115	121	121	126	132	120	118	118	125	125
PER CAPITA FOOD		100	115	121	121	126	132	120	118	118	125	125
INDEX OF POPULATION		1961-65 POPULATION = 9,630,000										
1961-65 POPULATION =	9,630,000	100.0	103.8	103.9	104.5	104.8	105.2	105.5	106.4	107.4	108.3	109.2

TABLE 27.--DENMARK

PRODUCTION BY COMMODITY, VALUE AND INDICES OF TOTAL AGRICULTURAL AND FOOD PRODUCTION, AVERAGE 1961-65, ANNUAL 1976-79

COMMODITY	PRICE	AVERAGE										
	WEIGHT	1961-65	1976	1971	1972	1973	1974	1975	1976	1977	1978	1979
	DOLLARS	-1,000 METRIC TONS-										
WHEAT	73	536	512	585	592	542	592	520	592	606	642	573
RYE	70	381	134	150	155	140	168	163	213	324	315	258
BARLEY	68	3,506	4,813	5,458	5,571	5,432	5,967	5,156	4,801	6,084	6,321	6,627
OATS	63	713	631	701	637	444	473	357	263	288	266	144
OTHER GRAINS	63	647	142	132	112	75	62	46	33	35	27	25
POTATOES	36	1,227	1,033	750	704	749	898	666	576	954	932	852
SUGAR BEETS	14	2,094	1,892	1,999	2,166	2,521	2,691	3,140	3,919	3,543	3,056	3,056
BEEF AND VEAL	698	179	190	195	171	184	261	259	242	243	237	250
MUTTON AND LAMBS	575	1	2	1	1	1	2	2	2	2	2	2
PORK	774	672	716	764	766	774	743	734	716	744	812	910
Poultry MEAT	532	68	79	80	85	90	95	90	97	103	98	98
COW'S MILK	65	5,313	4,637	4,557	4,789	4,729	4,818	4,918	5,045	5,138	5,324	5,230
EGGS	509	107	86	75	73	73	73	75	71	68	71	77
AGGREGATES OF PRODUCTION		-MILLION DOLLARS AT CONSTANT PRICES-										
CROPS		463.3	486.5	531.8	535.7	513.4	564.5	494.0	466.3	584.8	588.6	594.7
LIVESTOCK		1,082.1	1,075.2	1,105.0	1,106.6	1,120.4	1,159.4	1,155.9	1,139.9	1,170.1	1,229.4	1,311.3
LIVESTOCK FEED DEDUCTION	.37	-400.3	-397.8	-408.8	-409.4	-414.6	-428.9	-427.6	-421.7	-432.9	-454.8	-485.1
TOTAL AGRICULTURE		1,145.1	1,163.9	1,228.0	1,232.9	1,219.4	1,295.0	1,222.3	1,184.5	1,322.0	1,363.2	1,420.9
TOTAL FOOD		1,145.1	1,163.9	1,228.0	1,232.9	1,219.4	1,295.0	1,222.3	1,184.5	1,322.0	1,363.2	1,420.9
INDICES OF PRODUCTION		(1961-65 = 100)										
CROPS		100	105	115	116	111	122	107	101	126	127	128
TOTAL AGRICULTURE		100	102	107	108	106	113	107	103	115	119	124
TOTAL FOOD		100	102	107	108	106	113	107	103	115	119	124
PER CAPITA AGRICULTURE		100	97	101	101	99	105	99	96	106	110	114
PER CAPITA FOOD		100	97	101	101	99	105	99	96	106	110	114
INDEX OF POPULATION												
1961-65 POPULATION=	4,684,000	100.0	105.3	105.9	106.5	107.4	107.8	108.0	108.2	108.5	108.7	108.9

TABLE 28.--FINLAND

PRODUCTION BY COMMODITY, VALUE AND INDICES OF TOTAL AGRICULTURAL AND FOOD PRODUCTION, AVERAGE 1961-65, ANNUAL 1970-79

COMMODITY	PRICE	AVERAGE	1970	1971	1972	1973	1974	1975	1976	1977	1978	1979
	WEIGHT	1961-65										
	DOLLARS		-1,000 METRIC TONS-									
WHEAT	166	448	439	443	463	462	593	622	654	295	241	208
RYE	170	141	131	132	119	124	134	81	178	80	74	77
BARLEY	112	400	933	1,054	1,140	992	963	1,242	1,553	1,447	1,565	1,650
OATS	103	828	1,330	1,424	1,245	1,169	1,113	1,450	1,573	1,022	1,082	1,283
OTHER GRAINS	103	50	65	60	56	48	44	47	47	55	55	40
POTATOES	40	1,067	1,136	803	716	669	525	680	948	737	746	730
SUGAR BEETS	32	423	431	464	662	677	629	630	588	555	725	750
BEEF AND VEAL	810	88	101	112	106	98	118	112	114	106	106	114
MUTTON AND LAMB	969	1	5	6	1	1	1	1	1	1	1	1
PORK	929	66	125	154	128	125	125	127	136	140	154	168
POULTRY MEAT	965	2	4	6	3	8	9	11	12	13	12	13
COW'S MILK	102	3,723	3,174	3,247	3,190	3,107	3,155	3,164	3,278	3,231	3,225	3,255
EGGS	777	47	69	72	74	77	78	80	94	85	76	75
AGGREGATES OF PRODUCTION			-MILLION DOLLARS AT CONSTANT PRICES-									
CROPS		289.8	397.6	413.7	408.6	380.4	389.0	457.8	536.5	383.0	398.0	421.8
LIVESTOCK		551.8	583.9	632.5	591.6	580.9	603.8	605.2	632.4	625.1	629.7	652.2
LIVESTOCK FEED DEDUCTION	41	-226.2	-239.3	-259.3	-242.5	-238.1	-247.5	-248.1	-259.2	-256.2	-258.1	-267.4
TOTAL AGRICULTURE		615.4	742.2	786.9	757.7	723.2	745.3	814.9	909.7	751.9	769.6	806.6
TOTAL FOOD		615.4	742.2	786.9	757.7	723.2	745.3	814.9	909.7	751.9	769.6	806.6
INDICES OF PRODUCTION			(1961-65 = 100)									
CROPS		100	137	143	141	131	134	158	185	132	137	146
TOTAL AGRICULTURE		100	121	128	123	118	121	132	148	122	125	131
TOTAL FOOD		100	121	128	123	118	121	132	148	122	125	131
PER CAPITA AGRICULTURE		100	118	125	120	114	117	127	141	116	118	124
PER CAPITA FOOD		100	118	125	120	114	117	127	141	116	118	124
INDEX OF POPULATION												
1961-65 POPULATION=	4,516,000	100.0	102.1	102.3	102.7	103.4	103.9	104.3	104.7	105.2	105.6	106.1

TABLE 29.--FRANCE

PRODUCTION BY COMMODITY, VALUE AND INDICES OF TOTAL AGRICULTURAL AND FOOD PRODUCTION, AVERAGE 1961-65, ANNUAL 1970-79

COMMODITY	PRICE	AVERAGE										
	WEIGHT	1961-65	1970	1971	1972	1973	1974	1975	1976	1977	1978	1979
	DOLLARS	-1,000 METRIC TONS-										
WHEAT	83	12,495	12,922	15,482	18,046	17,850	19,141	15,013	16,125	17,346	20,970	19,400
RYE	69	367	287	294	328	327	311	292	297	308	435	349
RICE, PADDY	130	120	89	77	41	69	49	38	28	21	31	22
CORN	78	2,746	7,581	8,954	8,252	10,692	8,692	8,194	5,603	8,505	9,531	10,450
BARLEY	68	6,594	8,126	8,910	10,466	10,948	10,037	9,344	8,530	10,262	11,321	11,228
OATS	64	2,583	2,103	2,540	2,478	2,208	2,081	1,948	1,431	1,901	2,203	1,785
MILLET	72	3	1	1	1	1	1	2	2	2	3	2
SORGHUM	72	52	179	234	308	297	272	312	282	331	398	338
OTHER GRAINS	72	337	472	632	681	648	576	623	419	464	538	543
POTATOES	38	13,179	8,588	8,994	7,796	7,469	7,615	7,228	4,310	6,350	5,942	5,600
SUGAR BEETS	13	14,391	17,522	19,851	18,669	20,490	20,700	22,300	21,850	26,443	23,679	24,000
TOBACCO	1,000	41	47	43	48	51	52	56	61	43	50	50
BEEF AND VEAL	577	1,433	1,565	1,612	1,456	1,546	1,791	1,745	1,799	1,651	1,658	1,791
MUTTON AND LAMB	1,300	108	121	133	132	128	138	139	155	153	156	169
PORK	842	1,228	1,234	1,356	1,389	1,351	1,428	1,479	1,499	1,635	1,608	1,705
POULTRY MEAT	907	403	560	586	642	808	820	823	865	902	963	1,035
COW'S MILK	77	25,098	27,276	27,639	28,844	29,290	29,479	29,686	29,534	30,215	30,460	31,560
EGGS	601	535	657	662	680	714	725	760	746	745	771	787
AGGREGATES OF PRODUCTION		-MILLION DOLLARS AT CONSTANT PRICE-										
CROPS		2,663.5	3,030.7	3,449.2	3,698.3	3,992.9	3,782.5	3,358.9	3,031.1	3,638.2	4,080.3	3,768.8
LIVESTOCK		4,619.7	5,102.4	5,302.4	5,393.3	5,614.1	5,863.8	5,914.4	6,038.9	6,036.4	6,195.6	6,530.5
LIVESTOCK FEED DEDUCTION	.37	-1,709.2	-1,887.8	-1,761.8	-1,995.5	-2,077.2	-2,169.6	-2,188.3	-2,223.2	-2,233.4	-2,292.3	-2,416.2
TOTAL AGRICULTURE		5,574.0	6,245.3	6,829.8	7,096.1	7,439.8	7,476.7	7,085.0	6,816.8	7,441.2	7,983.6	8,083.1
TOTAL FOOD		5,532.4	6,197.9	6,786.4	7,047.7	7,388.3	7,424.2	7,028.5	6,755.3	7,397.6	7,933.1	8,032.6
INDICES OF PRODUCTION		(1961-65 = 100)										
CROPS		100	114	131	139	147	142	126	114	137	153	149
TOTAL AGRICULTURE		100	112	123	127	133	134	127	122	133	143	145
TOTAL FOOD		100	112	123	127	134	134	127	122	134	143	145
PER CAPITA AGRICULTURE		100	105	114	117	122	122	115	110	120	128	130
PER CAPITA FOOD		100	105	114	117	122	122	115	110	120	128	130
INDEX OF POPULATION		1961-65 POPULATION = 47,610,000										
1961-65 POPULATION = 47,610,000		100.0	106.6	107.6	108.6	109.6	110.4	110.9	111.2	111.4	111.7	112.0

TABLE 30.--GERMANY, WEST

PRODUCTION BY COMMODITY, VALUE AND INDICES OF TOTAL AGRICULTURAL AND FOOD PRODUCTION, AVERAGE 1961-65, ANNUAL 1970-79

COMMODITY	PRICE	AVERAGE										
	WEIGHT	1961-65	1970	1971	1972	1973	1974	1975	1976	1977	1978	1979
	DOLLARS	-1,000 METRIC TONS-										
WHEAT	106	4,607	5,662	7,142	6,608	7,134	7,761	7,014	6,702	7,235	9,118	7,971
RYE	96	3,029	2,665	3,032	2,917	2,576	2,559	2,125	2,103	2,540	2,457	2,105
CORN	75	55	507	594	564	573	521	531	489	579	620	655
BARLEY	106	3,461	4,754	5,774	5,997	6,622	7,048	6,971	6,487	7,592	8,608	8,154
OATS	91	2,185	2,484	3,037	2,887	3,045	3,482	3,445	2,497	2,714	3,202	2,999
OTHER GRAINS	91	1,364	1,226	1,366	1,270	1,225	1,282	1,149	869	960	938	799
POTATOES	39	22,225	16,250	15,176	15,038	13,676	14,548	10,853	9,802	11,368	10,510	7,848
SUGAR BEETS	19	11,015	13,329	14,409	14,765	16,553	17,013	19,078	18,930	20,649	19,100	18,913
TOBACCO	1,260	10	9	9	10	12	10	7	10	9	9	9
BEEF AND VEAL	1,002	1,152	1,392	1,334	1,257	1,236	1,394	1,336	1,348	1,322	1,435	1,520
MUTTON AND LAMB	979	14	11	10	12	11	15	24	27	26	28	28
PORK	886	2,128	2,577	2,271	2,237	2,173	2,380	2,319	2,423	2,483	2,618	2,730
POULTRY MEAT	789	127	258	272	261	291	266	282	304	323	249	366
COW'S MILK	96	20,577	21,856	21,165	21,490	21,270	21,508	21,604	22,165	22,523	23,291	23,800
EGGS	795	576	884	876	920	914	890	990	852	880	816	798
AGGREGATES OF PRODUCTION		-MILLION DOLLARS AT CONSTANT PRICES-										
CROPS		2,561.9	2,633.4	2,982.5	2,916.3	3,000.0	3,191.4	2,940.7	2,696.7	3,039.2	3,216.2	3,058.8
LIVESTOCK		5,587.2	6,603.2	6,301.4	6,253.5	6,166.4	6,503.5	6,420.9	6,568.9	6,666.6	6,865.1	7,177.2
LIVESTOCK FEED DEDUCTION	.41	-2,290.7	-2,707.3	-2,583.5	-2,563.9	-2,528.2	-2,666.4	-2,632.5	-2,693.2	-2,733.3	-2,814.6	-2,942.6
TOTAL AGRICULTURE		5,858.4	6,529.8	6,700.4	6,605.9	6,638.2	7,028.5	6,729.1	6,572.4	6,972.5	7,266.7	7,293.4
TOTAL FOOD		5,845.8	6,518.5	6,689.1	6,593.3	6,623.1	7,015.9	6,720.3	6,559.8	6,961.2	7,255.4	7,282.1
INDICES OF PRODUCTION		(1961-65 = 100)										
CROPS		100	103	116	114	117	125	115	105	119	126	119
TOTAL AGRICULTURE		100	111	114	113	113	126	115	112	119	124	124
TOTAL FOOD		100	112	114	113	113	120	115	112	119	124	125
PER CAPITA AGRICULTURE		100	105	107	105	105	111	107	104	111	116	117
PER CAPITA FOOD		100	105	107	105	105	111	107	105	111	116	117
INDEX OF POPULATION		1961-65 POPULATION = 57,422,000										
		100.0	105.7	106.7	107.4	107.9	108.0	107.7	107.4	107.1	106.8	106.7

TABLE 31.--GREECE

PRODUCTION BY COMMODITY, VALUE AND INDICES OF TOTAL AGRICULTURAL AND FOOD PRODUCTION, AVERAGE 1961-65, ANNUAL 1970-79

COMMODITY	PRICE	AVERAGE										
	WEIGHT	1961-65	1970	1971	1972	1973	1974	1975	1976	1977	1978	1979
	DOLLARS	-1,000 METRIC TONS-										
WHEAT	102	1,765	1,931	1,946	1,768	1,659	2,142	2,078	2,351	1,716	2,260	2,386
RYE	76	19	8	9	8	6	7	6	4	5	5	6
RICE, PADDY	111	87	99	70	74	82	107	102	84	94	95	95
CORN	75	239	511	571	584	585	455	540	551	541	537	750
BARLEY	77	248	737	781	874	848	933	924	955	702	755	860
OATS	78	142	107	115	113	106	121	106	104	80	98	89
MILLET	78	1	1	1	1	1	1	1	1	1	1	1
SORGHUM	78	2	0	0	0	0	0	0	0	0	0	0
OTHER GRAINS	78	7	3	3	3	3	1	1	1	1	1	1
POTATOES	47	560	797	727	732	787	794	868	933	920	903	963
SUGAR BEETS	15	361	1,450	1,252	1,134	1,340	1,490	2,666	2,895	2,347	2,801	2,815
TOBACCO	1,053	110	95	84	85	91	81	118	140	119	130	124
COTTON	238	85	110	116	139	138	128	130	108	150	153	105
OLIVE OIL	618	171	200	183	250	192	237	257	224	231	235	210
REEF AND VEAL	850	45	90	88	88	91	110	123	121	108	101	98
MUTTON AND LAMB	800	83	91	97	94	99	112	116	117	118	119	119
PORK	710	40	53	64	71	88	104	110	118	117	124	134
POULTRY MEAT	810	25	67	75	75	83	90	82	84	99	107	118
COW'S MILK	110	414	570	567	575	654	687	723	736	741	705	684
EGGS	639	73	108	110	109	103	108	108	118	118	118	119
AGGREGATES OF PRODUCTION		-MILLION DOLLARS AT CONSTANT PRICES-										
CROPS		513.2	621.4	601.4	637.0	601.6	669.4	739.7	771.5	669.3	765.9	756.9
LIVESTOCK		248.9	378.0	396.4	399.7	429.9	480.6	496.9	513.9	513.1	515.1	520.1
LIVESTOCK FEED DEDUCTION	.43	-107.0	-162.5	-170.4	-171.6	-184.8	-206.6	-213.6	-220.5	-220.6	-221.4	-223.6
TOTAL AGRICULTURE		655.1	836.9	827.4	865.5	846.7	942.4	1,022.0	1,064.9	961.6	1,059.6	1,053.4
TOTAL FOOD		519.0	710.7	711.3	742.9	718.1	826.6	866.8	890.0	800.6	886.3	997.8
INDICES OF PRODUCTION		(1961-65 = 100)										
CROPS		100	121	117	124	117	130	144	150	130	149	147
TOTAL AGRICULTURE		100	128	126	132	129	144	156	162	147	162	161
TOTAL FOOD		100	137	137	143	138	159	167	172	154	171	173
PER CAPITA AGRICULTURE		100	123	121	126	123	136	146	151	136	149	147
PER CAPITA FOOD		100	132	132	137	131	151	157	160	143	157	158
INDEX OF POPULATION												
1961-65 POPULATION=	8,477,000	100.0	103.7	104.2	104.9	105.3	105.7	106.7	107.3	107.9	108.5	109.1

TABLE 32.--IRELAND

PRODUCTION BY COMMODITY, VALUE AND INDICES OF TOTAL AGRICULTURAL AND FOOD PRODUCTION, AVERAGE 1961-65, ANNUAL 1970-79

COMMODITY	PRICE	AVERAGE	1970	1971	1972	1973	1974	1975	1976	1977	1978	1979
	WEIGHT	1961-65										
DOLLARS			-1,000 METRIC TONS-									
WHEAT	74	343	381	380	270	229	245	195	200	250	260	260
RYE	65	1	1	1	1	1	1	1	1	1	1	1
BARLEY	59	575	781	992	982	905	1,038	1,019	922	1,452	1,580	1,512
OATS	58	356	206	207	179	162	157	160	130	137	115	103
POTATOES	52	1,881	1,468	1,429	1,070	1,332	1,112	1,018	1,179	1,522	1,100	1,000
SUGAR BEETS	16	885	982	1,218	1,113	1,316	923	1,430	1,468	1,398	1,450	1,400
BEEF AND VEAL	678	117	216	236	205	210	342	420	328	385	388	380
MUTTON AND LAMB	784	45	40	47	45	43	45	46	40	39	46	40
PORK	689	118	144	154	160	143	131	99	122	128	133	142
POULTRY MEAT	667	19	30	35	40	43	38	34	41	43	41	42
COW'S MILK	110	2,937	3,623	3,688	3,935	4,153	4,040	3,608	3,922	4,262	4,849	5,100
EGGS	621	45	42	42	40	40	41	41	39	38	38	37
AGGREGATES OF PRODUCTION			-MILLION DOLLARS AT CONSTANT PRICES-									
CROPS		192.1	178.3	192.5	161.8	170.2	161.1	160.1	161.6	213.7	194.9	188.9
LIVESTOCK		558.1	719.9	756.1	767.3	783.2	849.9	830.8	818.2	897.9	971.0	995.8
LIVESTOCK FEED DEDUCTION	.31	-173.0	-223.1	-234.3	-237.8	-242.7	-263.4	-257.5	-253.6	-278.3	-301.0	-308.6
TOTAL AGRICULTURE		577.2	675.1	714.3	691.3	710.7	747.6	733.4	726.2	833.3	864.9	876.1
TOTAL FOOD		577.2	675.1	714.3	691.3	710.7	747.6	733.4	726.2	833.3	864.9	876.1
INDICES OF PRODUCTION			(1961-65 = 100)									
CROPS		100	93	100	84	89	84	83	84	111	101	98
TOTAL AGRICULTURE		100	117	124	120	123	130	127	126	144	150	152
TOTAL FOOD		100	117	124	120	123	130	127	126	144	150	152
PER CAPITA AGRICULTURE		100	113	118	113	115	119	116	113	129	133	133
PER CAPITA FOOD		100	113	118	113	115	119	116	113	129	133	133
INDEX OF POPULATION												
1961-65 POPULATION=	2,848,000	100.0	103.2	104.6	105.7	107.1	108.5	109.9	111.0	112.0	113.1	114.1

TABLE 33.--ITALY

PRODUCTION BY COMMODITY, VALUE AND INDICES OF TOTAL AGRICULTURAL AND FOOD PRODUCTION, AVERAGE 1961-65, ANNUAL 1970-79

COMMODITY	PRICE	AVERAGE	1970	1971	1972	1973	1974	1975	1976	1977	1978	1979
	WEIGHT	1961-65										
	DOLLARS		-1,000 METRIC TONS-									
WHEAT	115	8,857	9,630	9,994	9,421	8,970	9,695	9,620	9,196	6,218	9,191	8,800
RYE	96	87	69	55	38	38	37	37	35	31	36	35
RICE, PADDY	101	612	819	892	751	1,045	997	1,089	997	719	956	1,009
CORN	75	3,633	4,729	4,528	4,789	5,089	5,043	5,326	5,337	6,396	6,162	6,378
BARLEY	81	276	315	373	390	458	558	648	725	668	819	840
OATS	76	545	486	488	440	419	462	506	406	348	461	420
SORGHUM	74	20	16	9	8	13	12	13	16	46	47	45
OTHER GRAINS	76	11	8	4	5	1	5	5	3	2	2	2
POTATOES	60	3,850	3,668	3,268	2,949	2,937	2,903	2,943	2,928	3,146	2,801	2,841
SUGAR BEETS	16	7,795	9,557	8,776	11,177	9,203	7,711	12,536	15,442	11,400	11,002	11,100
TOBACCO	842	58	78	75	84	94	93	113	109	110	119	111
COTTON	250	5	1	1	1	1	1	1	1	1	1	1
OLIVE OIL	938	393	425	616	340	543	433	633	301	692	440	430
BEEF AND VEAL	1,094	679	1,076	1,084	1,049	1,062	1,076	965	1,018	1,052	1,027	1,075
MUTTON AND LAMB	1,350	41	55	54	52	50	45	49	50	51	50	51
PORK	859	424	593	644	694	689	738	735	782	854	931	921
COW'S MILK	92	9,375	9,358	9,374	9,613	9,549	9,650	9,760	9,573	9,080	10,800	11,016
EGGS	778	442	603	587	566	623	644	643	677	698	648	653
AGGREGATES OF PRODUCTION			-MILLION DOLLARS AT CONSTANT PRICES-									
CROPS		2,201.7	2,453.4	2,631.2	2,333.8	2,498.7	2,461.5	2,770.1	2,430.7	2,467.8	2,574.1	2,544.4
LIVESTOCK		2,367.7	3,090.8	3,131.1	3,138.6	3,184.4	3,261.9	3,151.5	3,260.3	3,403.5	3,488.0	3,557.6
LIVESTOCK FEED REDUCTION	.41	-970.7	-1,267.2	-1,283.7	-1,286.8	-1,305.6	-1,337.3	-1,292.1	-1,336.7	-1,395.4	-1,430.2	-1,458.6
TOTAL AGRICULTURE		3,598.7	4,277.0	4,478.6	4,185.6	4,377.5	4,386.1	4,629.5	4,354.3	4,475.9	4,632.3	4,643.4
TOTAL FOOD		3,549.0	4,211.0	4,414.3	4,114.6	4,298.1	4,307.5	4,534.1	4,262.2	4,383.0	4,539.4	4,549.6
INDICES OF PRODUCTION			(1961-65 = 100)									
CROPS		100	111	120	106	113	112	126	110	112	117	116
TOTAL AGRICULTURE		100	119	124	116	122	122	129	121	124	129	129
TOTAL FOOD		100	119	124	116	121	121	128	120	123	128	128
PER CAPITA AGRICULTURE		100	114	118	110	114	113	118	110	113	116	115
PER CAPITA FOOD		100	113	118	109	113	112	117	110	112	115	115
INDEX OF POPULATION			1961-65 POPULATION= 51,250,000									
		100.0	104.7	105.4	106.2	107.1	108.1	108.9	109.6	110.4	111.1	111.9

TABLE 34.--NETHERLANDS

PRODUCTION BY COMMODITY, VALUE AND INDICES OF TOTAL AGRICULTURAL AND FOOD PRODUCTION, AVERAGE 1961-65, ANNUAL 1970-79

COMMODITY	PRICE	AVERAGE	1970	1971	1972	1973	1974	1975	1976	1977	1978	1979
	WEIGHT	1961-65										
	DOLLARS	-1,000 METRIC TONS-										
WHEAT	92	604	640	706	673	724	745	528	710	661	792	836
RYE	88	312	168	209	151	145	78	63	65	74	68	49
BARLEY	84	390	329	373	340	342	315	336	243	287	355	288
OATS	85	421	199	206	140	174	163	158	103	94	140	109
OTHER GRAINS	85	138	8	7	4	2	2	5	5	5	2	5
POTATOES	38	3,773	5,604	5,749	5,581	5,771	6,095	5,003	4,783	5,752	6,231	6,277
SUGAR BEETS	17	3,386	4,711	5,024	4,957	5,592	4,911	5,927	6,484	6,017	6,324	5,491
BEEF AND VEAL	765	267	326	322	268	309	396	393	392	386	374	342
MUTTON AND LAMB	1,226	8	11	11	11	10	14	16	16	15	15	15
PORK	660	419	672	758	743	768	822	892	936	966	1,048	1,040
POULTRY MEAT	641	114	310	307	320	334	315	322	334	340	344	350
OTHER MEAT	675	9	5	3	2	2	2	3	4	5	4	4
COWS MILK	82	7,066	8,239	8,392	9,073	9,354	9,464	9,864	10,153	10,217	11,364	11,600
EGGS	510	315	267	251	255	269	275	308	326	341	408	463
AGGREGATES OF PRODUCTION		-MILLION DOLLARS AT CONSTANT PRICES-										
CROPS		364.2	412.0	436.7	412.4	433.9	431.1	387.0	394.3	420.7	465.1	446.9
LIVESTOCK		1,310.6	1,729.3	1,775.0	1,789.5	1,874.5	1,982.7	2,083.2	2,154.2	2,184.3	2,354.3	2,380.8
LIVESTOCK FEED DEDUCTION	.38	-498.0	-653.7	-674.5	-680.0	-712.3	-753.4	-791.6	-818.5	-830.0	-896.5	-904.7
TOTAL AGRICULTURE		1,176.8	1,478.6	1,537.2	1,521.9	1,596.1	1,660.4	1,678.6	1,730.0	1,775.0	1,927.9	1,923.0
TOTAL FOOD		1,176.8	1,478.6	1,537.2	1,521.9	1,596.1	1,660.4	1,678.6	1,730.0	1,775.0	1,927.9	1,923.0
INDICES OF PRODUCTION		(1961-65 = 100)										
CROPS		100	113	120	113	119	118	106	109	116	128	123
TOTAL AGRICULTURE		100	126	131	129	136	141	143	147	151	164	163
TOTAL FOOD		100	126	131	129	136	141	143	147	151	164	163
PER CAPITA AGRICULTURE		100	115	118	116	121	125	125	128	130	140	138
PER CAPITA FOOD		100	115	118	116	121	125	125	128	130	140	138
INDEX OF POPULATION		1961-65 POPULATION = 11,964,000										
1961-65 POPULATION = 11,964,000		100.0	108.9	110.2	111.4	112.3	113.2	114.1	115.1	116.1	117.1	118.1

TABLE 35.--NORWAY

PRODUCTION BY COMMODITY, VALUE AND INDICES OF TOTAL AGRICULTURAL AND FOOD PRODUCTION, AVERAGE 1961-65, ANNUAL 1970-79

COMMODITY	PRICE	AVERAGE	1970	1971	1972	1973	1974	1975	1976	1977	1978	1979
	WEIGHT	1961-65										
	DOLLARS		-----1,000 METRIC TONS-----									
WHEAT	123	19	12	10	12	20	62	50	63	77	80	77
RYE	112	3	5	5	5	7	11	4	8	8	10	9
BARLEY	98	440	590	569	522	535	649	445	452	609	669	647
OATS	84	127	228	279	271	349	404	259	277	360	367	357
OTHER GRAINS	84	3	1	2	1	2	2	1	1	1	3	2
POTATOES	45	1,059	857	708	634	672	766	423	533	651	625	530
CHEEF AND VEAL	810	55	57	54	54	60	66	66	61	67	68	70
MUTTON AND LAMB	912	15	17	16	16	16	16	16	16	17	18	19
PORK	774	56	67	68	76	76	79	75	76	80	78	82
POULTRY MEAT	946	3	5	7	8	8	8	8	8	9	10	10
COW'S MILK	112	1,664	1,726	1,686	1,755	1,749	1,746	1,793	1,872	1,856	1,842	1,875
EGGS	730	33	30	37	37	39	40	38	30	37	39	39
AGGREGATES OF PRODUCTION			-----MILLION DOLLARS AT CONSTANT PRICES-----									
CROPS		104.3	116.8	113.1	104.7	115.4	141.0	91.1	100.3	129.7	135.7	128.0
LIVESTOCK		315.2	340.4	333.6	348.4	355.2	362.9	362.7	368.2	375.4	376.5	385.8
LIVESTOCK FEED DEDUCTION	.42	-132.3	-142.9	-140.1	-146.4	-149.1	-152.4	-152.3	-154.6	-157.6	-158.1	-162.0
TOTAL AGRICULTURE		287.2	314.3	306.6	306.9	321.5	351.5	301.5	313.9	347.5	354.1	351.8
TOTAL FOOD		287.2	314.3	306.6	306.9	321.5	351.5	301.5	313.9	347.5	354.1	351.8
INDICES OF PRODUCTION			(1961-65 = 100)									
CROPS		100	112	108	100	111	135	87	96	124	130	123
TOTAL AGRICULTURE		100	109	107	107	112	122	105	109	121	123	122
TOTAL FOOD		100	109	107	107	112	122	105	109	121	123	122
PER CAPITA AGRICULTURE		100	103	100	100	104	112	96	99	110	111	110
PER CAPITA FOOD		100	103	100	100	104	112	96	99	110	111	110
INDEX OF POPULATION												
1961-65 POPULATION=	3,666,000	100.0	105.8	106.4	107.2	108.0	108.8	109.4	109.9	110.5	111.0	111.6

TABLE 36.--PORTUGAL

PRODUCTION BY COMMODITY, VALUE AND INDICES OF TOTAL AGRICULTURAL AND FOOD PRODUCTION, AVERAGE 1961-65, ANNUAL 1970-79

COMMODITY	PRICE	AVERAGE	1970	1971	1972	1973	1974	1975	1976	1977	1978	1979
	WEIGHT	1961-65										
	DOLLARS		-----1,000 METRIC TONS-----									
WHEAT	107	550	548	794	604	517	534	601	686	224	252	233
RYE	82	176	157	168	164	134	143	145	148	103	104	94
RICE, PADDY	98	167	195	162	164	168	130	133	97	102	135	109
CORN	77	560	581	526	519	509	486	451	379	442	443	444
BARLEY	91	61	54	84	62	57	75	84	117	39	39	33
OATS	85	87	72	125	85	79	99	121	127	60	59	60
POTATOES	44	1,025	1,148	1,124	1,139	1,086	1,114	1,023	918	1,201	1,128	1,012
OLIVE OIL	471	76	83	46	42	42	48	49	36	36	33	49
BEEF AND VEAL	761	49	77	74	73	81	85	98	79	74	88	90
MUTTON AND LAMB	582	20	28	21	21	24	22	22	22	23	22	23
PORK	776	89	101	95	103	112	113	132	127	140	151	160
COW'S MILK	66	362	472	433	460	476	498	530	582	569	569	575
EGGS	511	32	38	39	39	42	44	46	44	52	56	60
AGGREGATES OF PRODUCTION			-----MILLION DOLLARS AT CONSTANT PRICES-----									
CROPS		226.7	235.9	244.6	216.8	201.5	205.7	219.1	203.0	154.8	156.4	148.9
LIVESTOCK		158.5	203.9	190.7	198.0	215.4	220.6	248.3	232.4	241.9	263.2	274.8
LIVESTOCK FEED DEDUCTION	.27	-42.7	-55.0	-51.4	-53.4	-58.1	-59.5	-67.0	-62.7	-65.3	-71.0	-74.1
TOTAL AGRICULTURE		342.5	384.8	383.9	361.4	358.8	366.8	391.4	372.7	331.4	348.6	349.6
TOTAL FOOD		342.5	384.8	383.9	361.4	358.8	366.8	391.4	372.7	331.4	348.6	349.6
INDICES OF PRODUCTION			(1961-65 = 100)									
CROPS		100	104	108	96	89	91	93	90	68	69	66
TOTAL AGRICULTURE		100	112	112	106	105	107	114	109	97	102	102
TOTAL FOOD		100	112	112	106	105	107	114	109	97	102	102
PER CAPITA AGRICULTURE		100	116	116	110	110	108	111	104	91	93	92
PER CAPITA FOOD		100	116	116	110	110	108	111	104	91	93	92
INDEX OF POPULATION												
1961-65 POPULATION=	8,970,000	100.0	97.2	96.2	95.8	95.5	99.5	103.2	104.4	106.7	108.9	111.1

TABLE 37.--SPAIN

PRODUCTION BY COMMODITY, VALUE AND INDICES OF TOTAL AGRICULTURAL AND FOOD PRODUCTION, AVERAGE 1961-65, ANNUAL 1970-79

COMMODITY	PRICE	AVERAGE	1970	1971	1972	1973	1974	1975	1976	1977	1978	1979
	WEIGHT	1961-65										
DOLLARS			-1,000 METRIC TONS-									
WHEAT	102	4,359	4,960	5,455	4,562	3,956	4,534	4,302	4,436	4,064	4,795	4,118
RYE	87	385	259	272	263	252	254	241	214	228	259	215
RICE, PADDY	101	387	382	361	346	327	367	379	406	320	412	430
CORN	87	1,101	1,848	2,056	1,923	2,038	1,993	1,794	1,545	1,892	1,933	2,141
BARLEY	76	1,950	3,103	4,785	4,350	4,402	5,404	6,728	5,473	6,766	7,953	5,150
OATS	72	447	393	582	440	425	559	609	528	419	542	443
SORGHUM	72	19	190	173	178	154	157	144	159	192	278	265
POTATOES	52	4,496	4,848	4,857	5,275	5,578	5,693	5,338	5,659	5,881	5,364	5,307
SUGAR BEETS	19	3,553	5,433	6,214	5,212	5,501	3,989	6,337	10,157	8,307	8,227	5,468
TOBACCO	379	31	26	25	27	24	23	26	24	22	30	38
COTTON	279	94	50	45	56	45	59	52	45	50	35	42
TOMATOES	75	1,300	1,808	1,854	1,954	2,029	2,399	2,463	1,844	2,000	2,153	2,100
ORANGES	80	1,614	1,597	1,815	2,238	2,059	1,888	1,991	1,781	1,764	1,633	1,701
TANGERINES	102	146	349	373	578	599	591	652	660	713	911	782
LEMONS	112	107	97	110	196	265	225	254	239	337	248	296
APPLES	106	310	443	615	720	928	970	1,091	1,007	730	1,072	1,132
PEARS	149	147	240	418	457	471	482	405	512	242	450	469
GRAPES	43	3,914	3,776	3,627	4,047	5,926	5,343	4,754	3,905	3,554	4,620	5,313
OLIVE OIL	498	368	407	430	445	438	334	455	390	350	500	400
BEEF AND VEAL	763	183	308	324	302	371	416	453	419	431	391	387
MUTTON AND LAMB	980	112	140	138	139	144	155	148	146	144	142	125
PORK	806	287	492	475	461	588	710	602	649	734	803	845
POULTRY MEAT	577	165	499	477	544	690	640	631	695	735	755	766
COW'S MILK	88	2,324	3,660	3,708	3,790	4,131	4,290	4,373	4,705	4,815	5,100	5,150
EGGS	774	341	482	513	583	452	501	597	612	615	585	646
AGGREGATES OF PRODUCTION			-MILLION DOLLARS AT CONSTANT PRICES-									
CROPS		1,794.5	2,050.8	2,438.6	2,412.9	2,486.1	2,547.0	2,687.9	2,542.8	2,523.4	2,882.4	2,617.0
LIVESTOCK		1,045.6	1,753.2	1,765.2	1,837.1	1,958.9	2,181.9	2,188.2	2,275.1	2,386.7	2,423.1	2,495.2
LIVESTOCK FEED DEDUCTION	47	-491.4	-824.0	-829.6	-863.4	-920.6	-1,025.4	-1,028.4	-1,069.2	-1,121.7	-1,138.8	-1,172.7
TOTAL AGRICULTURE		2,348.7	2,980.0	3,374.2	3,386.5	3,524.4	3,698.5	3,847.7	3,748.7	3,788.4	4,166.7	3,939.5
TOTAL FOOD		2,310.6	2,956.1	3,352.1	3,360.7	3,501.0	3,673.6	3,823.3	3,725.1	3,766.1	4,145.5	3,913.4
INDICES OF PRODUCTION			(1961-65 = 100)									
CROPS		100	114	136	134	139	142	150	142	141	161	146
TOTAL AGRICULTURE		100	127	144	144	150	157	164	160	161	177	168
TOTAL FOOD		100	128	145	145	152	159	165	161	163	179	169
PER CAPITA AGRICULTURE		100	118	132	131	135	140	144	139	139	152	142
PER CAPITA FOOD		100	119	133	132	136	142	146	141	141	153	143
INDEX OF POPULATION												
1961-65 POPULATION= 31,396,000		100.0	107.6	108.7	109.9	111.0	112.2	113.4	114.6	115.7	116.9	118.1

TABLE 38.--SWEDEN

PRODUCTION BY COMMODITY, VALUE AND INDICES OF TOTAL AGRICULTURAL AND FOOD PRODUCTION, AVERAGE 1961-65, ANNUAL 1970-79

COMMODITY	PRICE	AVERAGE	1970	1971	1972	1973	1974	1975	1976	1977	1978	1979
	WEIGHT	1961-65										
	DOLLARS		-1,000 METRIC TONS-									
WHEAT	94	909	962	995	1,150	1,335	1,825	1,455	1,764	1,522	1,290	1,043
RYE	88	138	225	301	367	322	437	322	427	339	258	191
BARLEY	80	1,164	1,984	2,029	1,883	1,768	2,398	1,902	1,825	1,966	2,434	2,353
OATS	76	1,304	1,686	1,867	1,630	1,209	1,686	1,321	1,251	1,416	1,550	1,487
OTHER GRAINS	76	457	209	202	192	162	249	165	165	153	170	173
POTATOES	44	1,594	1,490	1,242	1,136	946	1,257	837	1,058	1,279	1,338	1,286
SUGAR BEETS	17	1,618	1,560	1,705	1,782	1,781	2,140	1,992	2,077	2,201	2,246	2,205
SEEP AND VEAL	1,007	151	175	146	131	127	144	144	149	148	147	151
MUTTON AND LAMB	787	2	3	4	3	2	4	4	5	5	5	5
PORK	934	213	228	248	271	265	279	283	290	304	307	315
POULTRY MEAT	596	19	28	27	28	29	37	37	40	39	41	40
COW'S MILK	101	3,851	3,250	2,870	2,972	2,986	3,072	3,168	3,247	3,249	3,298	3,391
EGGS	654	95	100	100	103	127	106	111	100	101	106	105
AGGREGATES OF PRODUCTION			-MILLION DOLLARS AT CONSTANT PRICES-									
CROPS		422.5	498.6	523.2	509.4	471.3	640.6	500.9	538.9	543.1	570.0	523.2
LIVESTOCK		814.8	802.0	753.1	771.7	765.3	810.4	827.1	841.9	854.2	865.4	885.2
LIVESTOCK FEED DEDUCTION	.40	-325.9	-320.8	-301.2	-308.6	-306.1	-324.1	-330.8	-336.7	-341.6	-346.1	-354.0
TOTAL AGRICULTURE		911.4	979.8	975.1	972.5	930.5	1,126.9	997.2	1,044.1	1,055.7	1,089.3	1,054.4
TOTAL FOOD		911.4	979.8	975.1	972.5	930.5	1,126.9	997.2	1,044.1	1,055.7	1,089.3	1,054.4
INDICES OF PRODUCTION			(1961-65 = 100)									
CROPS		100	118	124	121	112	152	119	128	129	135	124
TOTAL AGRICULTURE		100	108	107	107	102	124	109	115	116	120	116
TOTAL FOOD		100	108	107	107	102	124	109	115	116	120	116
PER CAPITA AGRICULTURE		100	102	101	100	96	115	102	106	106	108	104
PER CAPITA FOOD		100	102	101	100	96	115	102	106	106	108	104
INDEX OF POPULATION												
1961-65 POPULATION=	7,614,000	100.0	105.6	106.4	106.6	106.9	107.2	107.6	108.0	109.5	110.8	111.5

TABLE 39.--SWITZERLAND

PRODUCTION BY COMMODITY, VALUE AND INDICES OF TOTAL AGRICULTURAL AND FOOD PRODUCTION, AVERAGE 1961-65, ANNUAL 1970-79

COMMODITY	PRICE	AVERAGE	1970	1971	1972	1973	1974	1975	1976	1977	1978	1979
	WEIGHT	1961-65										
	DOLLARS	-1,000 METRIC TONS-										
WHEAT	157	355	346	410	410	345	411	356	408	310	384	385
RYE	128	53	49	52	50	45	40	24	41	32	40	45
CORN	92	14	55	90	72	135	128	143	114	110	100	105
BARLEY	125	102	142	168	156	173	210	172	183	180	197	220
OATS	93	40	29	41	37	39	55	55	49	46	48	50
OTHER GRAINS	93	7	2	2	3	2	3	2	3	3	3	4
POTATOES	58	1,145	976	1,093	1,000	1,025	1,085	966	874	800	950	970
SUGAR BEETS	18	270	379	472	396	540	519	480	587	545	580	580
TOBACCO	654	2	2	2	2	2	2	2	2	1	1	15
BEEF AND VEAL	1,392	109	135	134	124	126	145	140	149	150	151	160
MUTTON AND LAMB	1,469	3	3	3	3	3	2	2	4	4	4	4
PORK	1,116	144	196	209	207	219	233	228	246	262	267	264
POULTRY MEAT	977	8	16	18	18	19	21	19	21	22	22	22
COW'S MILK	112	3,082	3,204	3,160	3,234	3,274	3,340	3,375	3,473	3,511	3,545	3,542
EGGS	927	30	40	40	40	41	40	43	44	43	43	43
AGGREGATES OF PRODUCTION	-MILLION DOLLARS AT CONSTANT PRICES-											
CROPS		153.4	151.1	177.6	167.0	168.3	186.6	164.9	170.2	146.9	170.2	185.0
LIVESTOCK		697.8	822.5	832.7	824.9	847.5	896.4	888.7	938.1	961.7	972.5	981.3
LIVESTOCK FEED DEDUCTION	.32	-223.2	-263.2	-266.4	-263.9	-271.2	-286.8	-284.3	-300.1	-307.7	-311.2	-314.0
TOTAL AGRICULTURE		628.0	710.4	743.9	728.0	744.6	796.2	769.3	808.2	800.9	831.5	852.3
TOTAL FOOD		626.7	709.1	742.6	726.7	743.3	794.9	768.0	806.9	800.2	830.8	842.5
INDICES OF PRODUCTION	(1961-65 = 100)											
CROPS		100	99	116	109	110	122	107	111	96	111	121
TOTAL AGRICULTURE		100	113	118	116	119	127	123	129	128	132	136
TOTAL FOOD		100	113	118	116	119	127	123	129	128	133	134
PER CAPITA AGRICULTURE		100	105	109	104	106	113	110	115	114	119	123
PER CAPITA FOOD		100	105	109	104	106	113	110	116	115	119	122
INDEX OF POPULATION												
1961-65 POPULATION=	5,744,000	100.0	107.8	108.5	111.2	111.9	112.1	111.4	111.4	111.4	111.4	110.6

TABLE 40.--UNITED KINGDOM

PRODUCTION BY COMMODITY, VALUE AND INDICES OF TOTAL AGRICULTURAL AND FOOD PRODUCTION, AVERAGE 1961-65, ANNUAL 1970-79

COMMODITY	PRICE	AVERAGE										
	WEIGHT	1961-65	1970	1971	1972	1973	1974	1975	1976	1977	1978	1979
	DOLLARS	-1,000 METRIC TONS-										
WHEAT	72	3,520	4,236	4,815	4,779	5,002	6,130	4,488	4,740	5,250	6,613	7,140
RYE	60	21	13	18	19	22	17	22	22	38	30	21
BARLEY	71	6,668	7,529	8,558	9,244	9,007	9,133	8,513	7,648	10,531	9,848	9,600
OATS	71	1,533	1,217	1,360	1,250	1,080	955	795	764	790	706	515
OTHER GRAINS	71	129	257	212	216	192	147	111	90	90	64	54
POTATOES	44	6,890	7,482	7,173	6,527	6,807	6,790	4,551	4,789	6,622	7,330	6,590
SUGAR BEETS	18	5,980	6,412	7,712	6,216	7,427	4,587	4,864	6,325	6,325	6,382	7,080
BEEF AND VEAL	774	895	949	951	909	876	1,073	1,219	1,069	1,032	1,028	996
MUTTON AND LAMB	892	253	227	230	220	235	249	264	248	229	228	226
PORK	705	816	946	1,037	1,009	1,007	1,004	841	889	957	909	974
POULTRY MEAT	701	369	564	598	624	673	676	628	690	763	783	780
COW'S MILK	91	11,244	12,395	12,730	13,595	13,865	13,483	13,343	13,836	15,099	15,636	15,400
EGGS	981	833	834	846	814	800	832	919	811	822	822	812
AGGREGATES OF PRODUCTION		- MILLION DOLLARS AT CONSTANT PRICES -										
CROPS		1,256.7	1,389.6	1,521.5	1,584.7	1,524.4	1,550.4	1,281.4	1,270.8	1,595.8	1,669.1	1,654.8
LIVESTOCK		3,509.5	3,861.1	3,995.3	4,002.7	4,035.8	4,194.3	4,147.8	4,132.6	4,310.9	4,335.9	4,322.8
LIVESTOCK FEED DEDUCTION	32	-1,123.0	-1,235.5	-1,278.4	-1,280.8	-1,291.4	-1,342.1	-1,327.2	-1,322.4	-1,479.4	-1,387.4	-1,383.2
TOTAL AGRICULTURE		3,643.2	4,015.2	4,238.4	4,226.6	4,268.8	4,402.6	4,102.0	4,081.0	4,527.3	4,617.6	4,594.4
TOTAL FOOD		3,643.2	4,015.2	4,238.4	4,226.6	4,268.8	4,402.6	4,102.0	4,081.0	4,527.3	4,617.6	4,594.4
INDICES OF PRODUCTION		(1961-65 = 100)										
CROPS		100	111	121	120	121	123	102	101	127	133	132
TOTAL AGRICULTURE		100	110	116	116	117	121	113	112	124	127	126
TOTAL FOOD		100	110	116	116	117	121	113	112	124	127	126
PER CAPITA AGRICULTURE		100	106	112	111	112	116	109	107	119	121	121
PER CAPITA FOOD		100	106	112	111	112	116	108	107	119	121	121
INDEX OF POPULATION		1961-65 POPULATION= 53,530,000										
1961-65 POPULATION= 53,530,000		100.0	103.5	103.9	104.2	104.5	104.6	104.5	104.5	104.4	104.4	104.3

END