



AgEcon SEARCH
RESEARCH IN AGRICULTURAL & APPLIED ECONOMICS

The World's Largest Open Access Agricultural & Applied Economics Digital Library

This document is discoverable and free to researchers across the globe due to the work of AgEcon Search.

Help ensure our sustainability.

Give to AgEcon Search

AgEcon Search

<http://ageconsearch.umn.edu>

aesearch@umn.edu

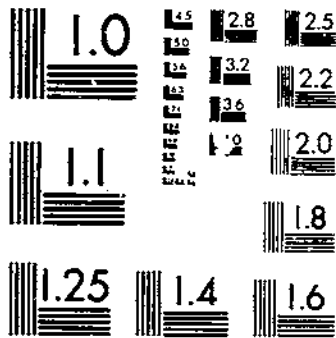
*Papers downloaded from **AgEcon Search** may be used for non-commercial purposes and personal study only. No other use, including posting to another Internet site, is permitted without permission from the copyright owner (not AgEcon Search), or as allowed under the provisions of Fair Use, U.S. Copyright Act, Title 17 U.S.C.*

SB 626 (1979) - USDA STATISTICAL BULLETINS
ANNUAL REPORT ON TOBACCO STATISTICS, 1978

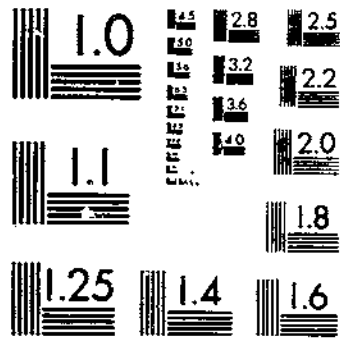
UPDATE

1 OF 1

START



MICROCOPY RESOLUTION TEST CHART
NATIONAL BUREAU OF STANDARDS-1533-A



MICROCOPY RESOLUTION TEST CHART
NATIONAL BUREAU OF STANDARDS-1533-A

10
630.5
U53-13
#626

17

ANNUAL REPORT ON TOBACCO STATISTICS 1978

U. S. DEPOSITORY

OCT 16 1979

Angeles Public Library



STATISTICAL BULLETIN NO. 626
U.S. DEPARTMENT OF AGRICULTURE
AGRICULTURAL MARKETING SERVICE
WASHINGTON, D.C. SEPTEMBER 1979

15

Brief classification of leaf tobacco

(Covering classes and types)

Class 1, Flue-cured types

- Type 11: Old Belt flue-cured; produced principally in the Piedmont sections of Virginia and North Carolina.
- Type 12: Eastern North Carolina flue-cured; produced principally in the coastal sections of North Carolina, north of the South River.
- Type 13: South Carolina flue-cured; produced principally in the coastal sections of South Carolina, the southeastern counties of North Carolina, south of the South River.
- Type 14: Georgia and Florida flue-cured; produced principally in southern Georgia and northern Florida.

Class 2, Fire-cured types

- Type 21: Virginia fire-cured; produced in the Piedmont and mountain sections of Virginia.
- Type 22: Tennessee-Kentucky fire-cured, eastern district, Clarksville, Springfield, and Hopkinsville; produced principally in a section east of the Tennessee River, in southern Kentucky, and northern Tennessee.
- Type 23: Kentucky-Tennessee fire-cured, western district, Mayfield and Murray; produced principally in a section between the Tennessee, Ohio, and Mississippi rivers in western Kentucky and northwestern Tennessee.

Class 3, Light air-cured types

- Type 31: Burley; produced principally in Kentucky, Tennessee, Ohio, Indiana, West Virginia, Virginia, North Carolina, and Missouri.
- Type 32: Southern Maryland; produced principally in five counties of southern Maryland - Prince Georges, Anne Arundel, Calvert, Charles, and St. Marys.
- Type 35: One sucker; produced in north-central Tennessee and south-central Kentucky.
- Type 36: Green River; produced in the northern part of Kentucky in the territory adjacent to Owensboro and Henderson.
- Type 37: Virginia sun-cured; produced principally in central Virginia, north of the James River.

Class 4, Cigar-filler types

- Type 41: Pennsylvania seedleaf; produced principally in Lancaster County, Pa., and the adjoining counties.
- Type 42-44: Ohio filler; produced principally in the Miami Valley section of Ohio and extending into Indiana.
- Type 46: Puerto Rican sun-grown, including primed (Deshojado) and stalk-cut (Mata); produced on the Island of Puerto Rico.

Class 5, Cigar-binder types

- Type 51: Connecticut broadleaf; produced in the Connecticut Valley sections of Connecticut and Massachusetts.
- Type 52: Connecticut Havana seed; produced in the Connecticut and Housatonic Valley sections of Connecticut and Massachusetts.
- Type 53: New York and Pennsylvania Havana seed; produced in the Big Flats and Onondaga sections of New York, and extending into Pennsylvania.
- Type 54: Southern Wisconsin; produced in Wisconsin, south and east of the Wisconsin River.
- Type 55: Northern Wisconsin; produced in Wisconsin, north and west of the Wisconsin River, and in eastern Minnesota.

Class 6, Cigar-wrapper types

- Type 61: Connecticut shade; produced in the Connecticut Valley sections of Connecticut and Massachusetts.
- Type 62: Georgia and Florida shade; produced in southwestern Georgia and north-central Florida.

Miscellaneous types of domestic tobacco

- Type 72: Louisiana perique.
- Type 73: All domestic types of tobacco not otherwise classified.

Foreign types

- Type 81: Cuba
- Type 82: Indonesia
- Type 83: Philippine Islands
- Type 84: Brazil
- Type 85: Colombia
- Type 86: Dominican Republic
- Type 87: Paraguay
- Type 88: Mexico
- Type 89: Other foreign-grown cigar leaf
- Type 91: Foreign-grown oriental and aromatic
- Type 92: Foreign-grown flue-cured
- Type 93: Foreign-grown burley

This is the forty-third in a series of annual reports on tobacco statistics prepared by the Tobacco Division of the Agricultural Marketing Service, USDA, and authorized by Congress in 1935 under the Tobacco Stocks and Standards Act.

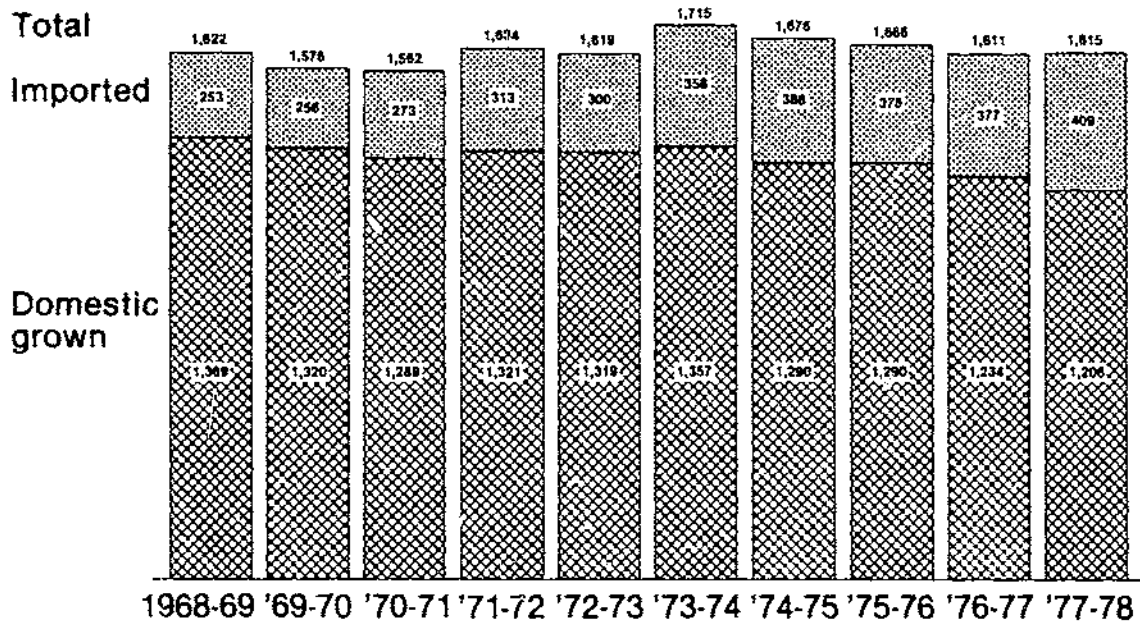
For sale by the Superintendent of Documents, U. S. Government Printing Office, Washington, D.C. 20402

C o n t e n t s

	<u>Page</u>
Charts: Total carryover stocks	4
Leaf tobacco disappearance in the United States	4
Domestic consumption of tobacco	5
Table 1. Acreage, yield, production, stocks, supply, disappearance, exports, domestic use, average price and crop value of different tobacco types in the United States and Puerto Rico, by crop years	6
Table 2. Acreage yield, production, price, and crop value of tobacco by States	10
Table 3. Selected sales, information, on auction markets	11
Table 4. Total stocks of leaf tobacco on a farm-sales-weight basis	12
Table 5. Stocks of leaf tobacco, domestic and imported, on a farm-sales-weight basis	13
Table 6. Average percentage of farm-sales-weight after redrying	15
Table 7. Factors for adjusting stocks reported by the trade to a farm-sales-weight basis, by types	16
Table 8. Dimensions and capacities of storage containers for tobacco	16
Table 9. Cash receipts from tobacco compared with all farm commodities, by States, calendar years	17
Table 10. Applicable loan level per pound of tobacco, by class or type	17
Tables 11a & b Allotments, poundage quotas, and allotted acreage by types	18
Table 12. Marketing quota referendums	20
Table 13. Domestic production and removals of tobacco products, by calendar years	21
Tables 14-15-16 Estimated utilization of domestic cigarette tobaccos in cigarettes and other products	22
Table 17. Large cigars removed tax-paid for domestic consumption, by calendar years	23
Table 18. Rates of Federal tax on tobacco products in the United States	23
Table 19. State tax rates on cigarettes	24
Table 20. Wholesale cigarette price revisions, 1940 to date	24
Table 21. Receipts from Federal taxes on tobacco products	25
Table 22. Estimated total expenditures for tobacco products, by types, calendar years	25
Table 23. Consumption of tobacco products in the United States, per capita	25
Table 24. Receipts from State taxes on tobacco products in the United States, by fiscal years	26
Table 25. United States exports to principal importing countries, by types, calendar years	27
Table 26. Exports of unmanufactured tobacco from the United States, by types, calendar years	30
Table 27. Exports of unmanufactured tobacco from the United States, to principal markets, calendar years	30
Table 28. United States exports of tobacco products, calendar years	31
Table 29. United States imports of tobacco products for consumption, by countries, calendar years	31
Table 30. United States imports of unmanufactured tobacco for consumption, by countries, calendar years	32
Table 31. Tariff rates on selective items of tobacco and tobacco products imported into the United States	34
Table 32. Import duties on unmanufactured tobacco in major United States markets	34
Table 33. Production of flue-cured tobacco in selected countries, calendar years	35
Table 34. Production of burley tobacco in selected countries, calendar years	35
Table 35. Acreage and production in selected countries, calendar years	36

Leaf Tobacco Disappearance In U.S.

Million lb. (farm sales weight)



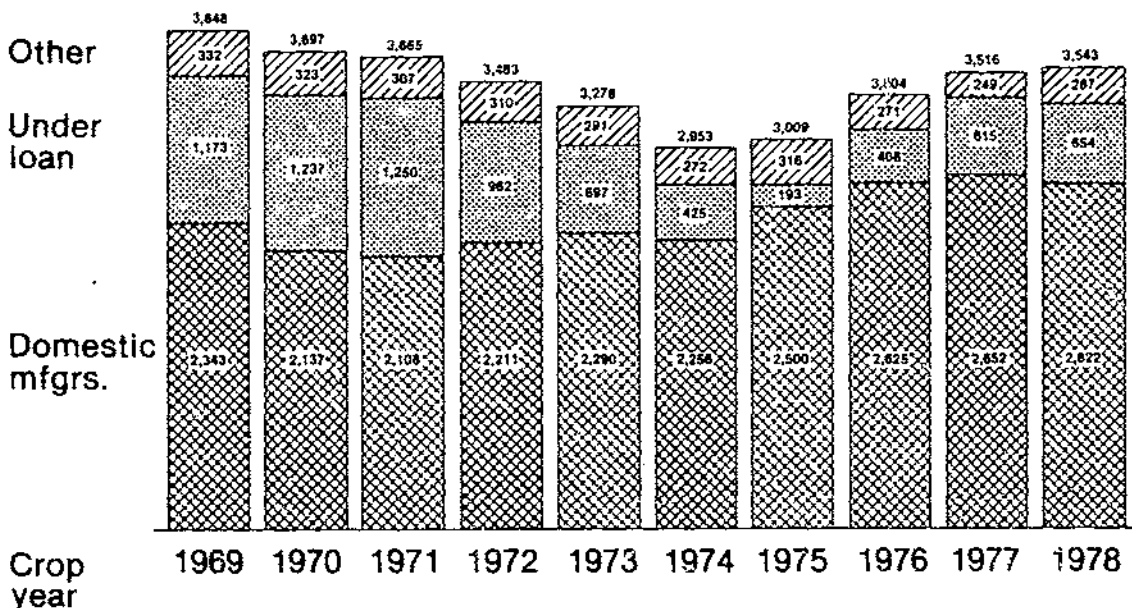
Columns for '73-74 and '74-75 were reversed in the Annual Report on Tobacco Statistics 1975 issued in April 1976. This chart shows the columns over the proper years and includes some revisions in amounts.

USDA

Neg. AMS 631-79(6)

Total Carryover Stocks U.S. Tobacco Types 11-62

Million lb. (farm sales weight)



USDA

Neg. AMS 629-79(6)

Trends in U.S. Consumption

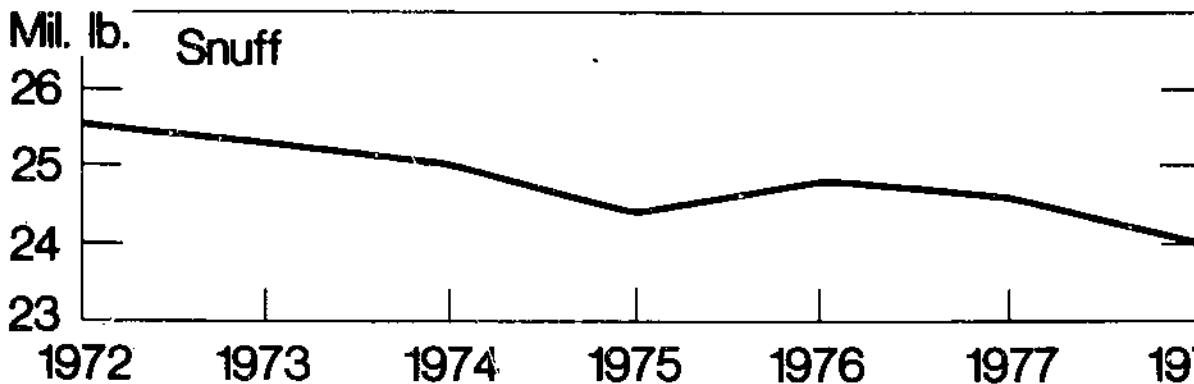
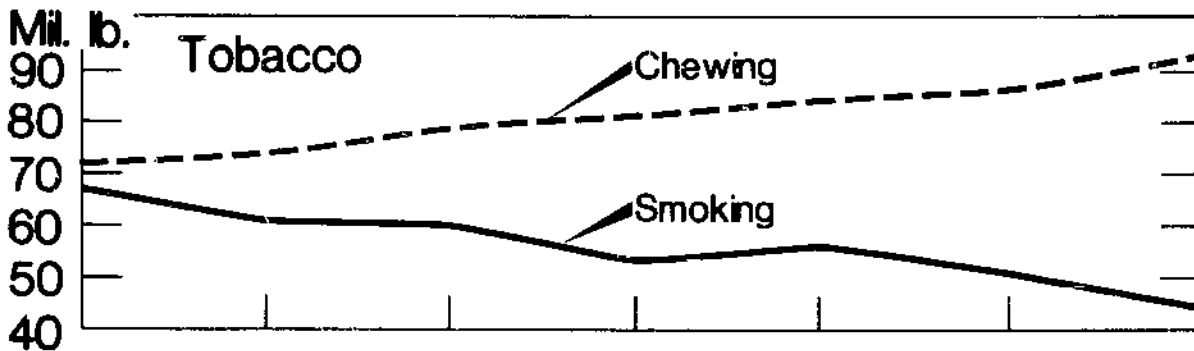
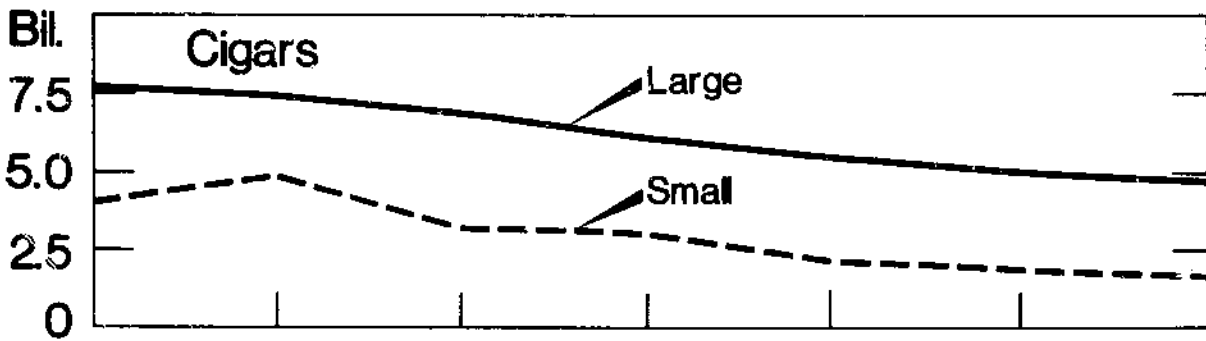
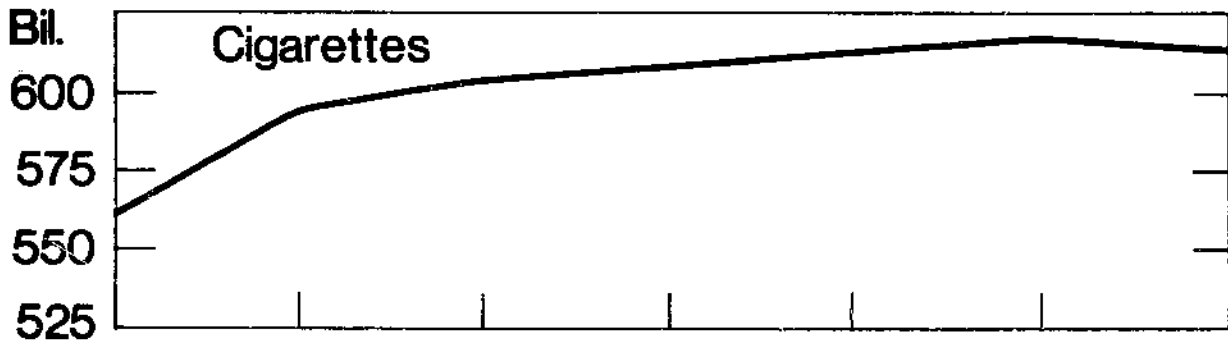


Table 1 --Acreage, yield per acre, production, stocks supply, total disappearance, exports, domestic use, average price per pound to growers, and crop value of different types of tobacco in the United States and Puerto Rico, by crop years, 1973 - 1978. 1/

Crop year	Acreage	Yield Per acre	Production or sales	Stocks	Supply	Disappearance		Average Price per pound to growers	Crop value	
						Total	Export			
	Acres	Pounds	1,000 Pounds	1,000 Pounds	1,000 Pounds	1,000 Pounds	1,000 Pounds	Cents	1,000 Dollars	
Types 11-62 Total U. S. and Puerto Rico.										
1973	893,690	1,975	1,764,612	3,277,902	5,042,514	2,089,498	732,154	1,357,344	89.8	1,584,841
1974	967,104	2,068	1,999,012	2,953,016	4,952,828	1,943,640	553,404	1,290,235	108.3	2,166,623
1975	1,089,425	2,014	2,184,861	3,009,188	5,194,049	1,943,812	654,141	1,289,671	102.5	2,240,345
1976	1,047,384	2,028	2,124,093	3,304,098	5,428,191	1,911,738	677,681	1,234,057	112.5	2,388,665
1977	959,710	1,991	1,905,644	3,527,269	5,432,913	1,898,764	693,141	1,205,623	118.4	2,255,743
1978	951,130	2,106	2,003,361	3,543,058	5,546,419				131.8	2,640,280
1979										
Types 11-14, total flue-cured										
1973	575,130	2,011	1,158,992	1,749,294	2,908,286	1,301,002	598,848	702,954	88.1	1,019,292
1974	616,330	2,014	1,245,109	1,607,284	2,852,393	1,200,428	548,293	652,135	105.0	1,307,364
1975	717,200	1,973	1,414,643	1,651,965	3,066,698	1,193,078	522,454	670,624	99.8	1,411,814
1976	666,640	1,974	1,316,018	1,898,281	3,214,299	1,148,233	514,228	634,005	110.4	1,452,884
1977	589,250	1,917	1,124,185	2,074,985	3,199,160	1,147,254	539,069	608,185	117.6	1,322,042
1978 2/	589,020	2,090	1,204,563	2,051,906	3,256,469				135.0	1,626,160
1979										
Type 21, Virginia fire-cured										
1973	4,700	1,205	5,664	7,628	13,292	6,191	4,455	1,736	75.5	4,276
1974	5,000	1,185	5,925	7,101	13,026	5,697	4,986	711	81.7	4,841
1975	5,000	975	4,875	7,329	12,204	4,766	3,381	1,385	93.0	4,534
1976	5,300	1,000	5,300	7,438	12,738	6,080	4,095	1,985	118.0	6,254
1977	7,200	1,000	7,200	6,658	13,858	5,189	2,409	2,780	96.3	6,934
1978 2/	6,100	1,120	6,832	8,669	15,501				94.5	6,456
1979										
Types 22-23, Total Kentucky and Tennessee fire-cured										
1973	16,620	1,668	27,721	57,257	84,978	39,879	24,206	15,673	71.7	19,864
1974	16,190	1,602	25,942	45,099	71,041	30,293	15,805	14,488	93.4	24,230
1975	18,380	1,772	32,560	40,748	73,308	30,723	18,546	12,177	104.7	34,101
1976	21,200	1,567	33,216	42,585	75,801	34,566	23,408	11,158	142.2	47,228
1977	25,560	1,767	45,166	41,235	86,401	35,392	18,024	17,368	114.6	51,754
1978 2/	26,170	1,892	49,523	59,678	109,201					
1979										
Type 22, Kentucky and Tennessee fire-cured (eastern district)										
1973	13,700	1,692	23,176	48,029	71,205	31,013			71.6	16,592
1974	13,150	1,608	21,149	40,192	61,341	25,204			93.4	19,753
1975	14,850	1,832	27,200	36,137	63,337	25,067			106.1	28,859
1976	17,000	1,603	27,251	38,270	65,521	30,615			143.4	39,077
1977	20,000	1,790	35,802	34,906	70,708	27,118			134.2	40,048
1978 2/	20,950	1,926	40,352	43,590	83,942				113.7	45,875
1979										
Type 23, Kentucky and Tennessee fire-cured (western district)										
1973	2,920	1,557	4,545	9,228	13,773	8,866			72.0	3,272
1974	3,040	1,577	4,793	4,907	9,700	5,089			93.2	4,467
1975	3,530	1,518	5,360	4,611	9,971	5,656			97.8	5,242
1976	4,200	1,420	5,965	4,315	10,280	3,951			136.6	8,151
1977	5,560	1,684	9,364	6,239	15,603	8,184			125.0	11,706
1978 2/	6,150	1,801	11,076	7,419	18,495				113.3	12,551
1979										

See footnotes at end of table.

Table 1-- Acreage, yield per acre, production, stocks supply, total disappearance, exports, domestic use, average price per pound to growers, and crop value of different types of tobacco in the United States and Puerto Rico, by crop years, 1973 - 1978. 1/

Crop year	Acreage	Yield per acre	Production or sales	Stocks	Supply	Disappearance			Average price per pound to growers	Crop value
						Total	Export	Domestic		
	Acres	Pounds	1,000 pounds	1,000 pounds	1,000 pounds	1,000 pounds	1,000 pounds	1,000 pounds	Cents	1,000 dollars
Type 31 - burley										
1973	222,100	2,028	460,715	1,229,175	1,689,888	619,223	86,759	532,464	92.9	428,002
1974	260,750	2,350	610,438	1,070,665	1,683,314	586,718	67,902	521,027	113.7	694,068
1975	282,150	2,265	639,056	1,094,385	1,733,441	602,449	92,422	510,027	105.5	674,448
1976	285,800	2,376	663,595	1,160,102	1,823,697	617,428	116,835	500,593	114.2	757,825
1977	268,600	2,298	612,532	1,217,225	1,829,757	611,318	116,489	494,829	120.0	740,626
1978 2/	261,000	2,399	626,263	1,218,439	1,844,702				131.0	820,407
1979										
Type 32, Maryland										
1973	27,800	1,260	35,027	52,682	87,709	25,998	12,345	13,653	90.5	31,699
1974	25,994	1,260	32,753	61,711	94,464	33,458	8,474	24,984	92.8	30,169
1975	23,000	950	21,058	61,006	82,064	33,435	9,677	23,758	107.5	23,817
1976	23,000	1,300	29,813	48,629	78,442	29,676	12,469	17,207	110.0	32,794
1977	23,000	1,310	30,130	48,766	78,896	28,290	9,408	18,882	115.0	34,650
1978 2/	23,000	1,400	32,813	56,606	83,419				124.5	40,089
1979										
Type 35, One sucker										
1973	5,300	1,633	8,654	28,030	36,684	13,567	2,643	10,924	61.2	5,294
1974	4,850	1,588	7,701	23,117	30,818	11,741	2,576	9,165	75.2	5,794
1975	5,550	1,732	9,611	19,077	28,688	13,144	2,457	10,667	90.5	8,700
1976	6,600	1,590	10,493	15,544	26,037	11,836	2,062	9,774	115.8	12,152
1977	7,900	1,844	14,571	14,201	28,772	12,467	1,999	10,468	117.7	17,144
1978 2/	8,100	2,000	16,200	16,305	32,505				100.8	16,326
1979										
Type 36, Green River										
1973	2,250	1,680	3,780	16,685	20,465	6,693	220	6,473	63.5	2,400
1974	2,150	1,800	3,870	13,772	17,642	5,885	268	3,617	80.1	3,100
1975	2,400	1,825	4,380	13,757	18,137	5,469	140	5,329	88.3	3,868
1976	2,650	1,730	4,585	12,668	17,253	5,395	65	5,330	118.5	5,433
1977	3,250	1,780	5,785	11,858	17,643	3,588	443	3,145	117.8	6,815
1978 2/	3,150	1,890	5,954	14,055	20,009				101.0	6,014
1979										
Type 37, Virginia sun-cured										
1973	700	1,320	924	3,204	4,128	1,154	235	919	69.2	639
1974	680	1,315	894	2,974	3,868	1,577	262	1,315	82.1	734
1975	750	930	679	2,291	2,970	898	188	720	85.6	581
1976	680	1,115	758	2,072	2,830	1,063	215	848	105.0	796
1977	800	1,030	824	1,767	2,591	757	127	630	100.0	824
1978 2/	730	1,205	880	1,334	2,714				88.8	781
1979										
Type 41, Pennsylvania seedleaf filler										
1973	13,000	1,700	22,100	53,720	75,820	28,307	759	27,548	52.0	11,492
1974	13,000	2,000	26,000	47,513	73,513	24,302	277	24,025	58.0	15,080
1975	12,000	1,650	19,800	49,211	69,011	22,223	385	21,838	58.0	11,484
1976	13,500	1,750	23,625	46,788	70,413	20,672	377	20,295	60.0	14,175
1977	13,500	1,940	26,190	49,741	75,931	21,846	276	21,570	60.0	15,714
1978 2/	13,000	1,940	25,220	54,085	79,305				62.0	15,636
1979										

See footnotes at end of table.

Table 1--Acreage, yield per acre, production, stocks, supply, total disappearance, exports, domestic use, average price per pound to growers, and crop value of different types of tobacco in the United States and Puerto Rico, by crop years, 1973 - 1978. 1/

Crop year	Acreage	Yield	Production or sales	Stocks	Supply	Disappearance			Average price per pound to growers	Crop Value
						Total	Export	Domestic		
	Acres	Pounds	1,000 pounds	1,000 pounds	1,000 pounds	1,000 pounds	1,000 pounds	1,000 pounds	Cents	1,000 dollars
Types 42-44, Miami Valley (Ohio) filler										
1973	2,200	1,420	3,124	6,830	9,954	4,100	---	4,100	51.0	1,593
1974	2,000	1,530	3,060	5,854	8,914	3,042	---	3,042	59.0	1,805
1975	1,800	1,660	2,988	5,872	8,860	3,164	---	3,164	60.0	1,793
1976	1,800	1,550	2,790	5,696	8,486	2,512	---	2,512	59.0	1,646
1977	1,500	2,070	3,000	5,971	8,974	1,973	---	1,978	62.0	1,860
1978 2/	1,400	2,000	2,800	6,996	9,796				64.0	1,792
1979										
Type 46, Puerto Rican filler 3/										
1973	4,500	1,444	6,500	9,192	15,692	5,646	---	5,646	41.2	2,678
1974	2,650	1,477	5,914	10,046	13,960	7,861	---	7,861	44.5	1,742
1975	3,225	1,543	4,330	6,099	10,429	3,207	---	3,207	49.7	2,152
1976	3,004	1,355	4,069	7,222	11,291	4,911	---	4,911	57.6	2,343
1977	2,650	1,480	3,922	6,380	10,302	3,870		5,870	60.2	2,362
1978 2/	2,300	1,480	3,400	6,432	9,832				60.2	2,047
1979										
Type 51, Connecticut Valley broadleaf										
1973	1,350	1,700	2,295	5,362	7,657	2,780	98	2,682	73.0	1,675
1974	1,300	1,700	2,210	4,877	7,087	2,592	206	2,386	82.0	1,812
1975	1,350	1,550	2,093	4,495	6,588	3,251	176	3,075	92.0	1,926
1976	1,350	1,580	2,133	3,337	5,470	1,971	149	1,822	90.0	1,920
1977	1,200	1,770	2,124	3,499	5,623	1,702	36	1,666	125.0	2,655
1978 2/	1,350	1,700	2,295	3,921	6,216				150.0	3,443
1979										
Type 52, Connecticut Valley Havana seed										
1973	210	1,850	389	2,123	2,512	391	---	391	72.0	280
1974	160	2,040	326	2,121	2,447	776	---	776	82.0	267
1975	170	1,650	281	1,671	1,952	1,030	---	1,030	98.0	275
1976	160	1,819	291	922	1,213	368	---	368	87.0	253
1977	180	1,880	338	845	1,183	184		184	98.0	331
1978 2/	170	2,000	340	999	1,339				110.0	374
1979										
Type 54, Southern Wisconsin										
1973	4,900	1,950	9,555	19,447	29,002	10,078	---	10,078	60.5	5,781
1974	4,700	2,060	9,682	18,924	28,606	8,795	---	8,795	74.9	7,252
1975	5,600	1,945	10,892	19,811	30,703	7,454	---	7,454	75.1	8,180
1976	5,600	1,890	10,584	23,249	33,833	10,066	---	10,066	75.1	7,949
1977	6,200	2,020	12,524	25,767	36,291	10,244		10,244	84.6	10,595
1978 2/	6,200	1,800	11,160	26,047	37,207				100.5	11,216
1979										
Type 55, Northern Wisconsin										
1973	5,300	1,775	9,408	19,546	28,954	12,033	3	12,030	60.7	5,711
1974	4,700	1,870	8,789	16,921	25,710	9,881	1	9,880	75.4	6,627
1975	5,400	1,835	9,909	15,829	25,738	9,725	98	9,627	75.1	7,442
1976	5,500	1,750	9,625	16,013	25,658	9,409	10	9,399	73.5	7,073
1977	5,800	2,045	11,861	16,229	28,514	9,463	108	9,355	85.5	10,141
1978 2/	5,900	1,600	9,440	19,051	28,491				100.5	9,487
1979										

1/See footnotes at end of table.

Table 1 --Acreage, yield per acre, production, stocks, supply, total disappearance, exports, domestic use, average price per pound to growers, and crop value of different types of tobacco in the United States and Puerto Rico, by crop years, 1973 - 1978. 1/

Crop year	Acreage	Yield per acre	Production or sales	Stocks	Supply	Disappearance			Average price per pound to growers	Crop value
						Total	Export	Domestic		
	Acres	Pounds	1,000 pounds	1,000 pounds	1,000 pounds	1,000 pounds	1,000 pounds	1,000 pounds	Cents	1,000 dollars
Type 61, Connecticut Valley shade-grown										
1973	5,000	1,210	6,050	10,745	16,795	8,292	1,853	6,439	515.0	31,158
1974	4,800	1,625	7,798	8,503	16,301	6,831	3,904	2,927	600.0	45,788
1975	4,350	1,371	5,963	9,470	15,433	7,889	3,783	4,106	640.0	38,164
1976	4,250	1,555	6,610	7,544	14,154	5,236	3,339	1,897	540.0	35,694
1977	3,280	1,544	5,064	8,918	13,982	4,707	4,213	494	600.0	30,384
1978 2/	2,710	1,392	3,773	9,275	13,048				750.0	28,298
1979										
Type 62, Georgia-Florida shade-grown										
1973	2,630	1,413	3,716	6,982	10,698	4,164	530	3,634	350.0	13,007
1974	1,850	1,724	3,190	6,534	9,724	3,552	450	3,102	380.0	12,122
1975	1,120	1,556	1,743	6,172	7,915	1,907	444	1,463	480.0	6,972
1976	350	1,680	588	6,008	6,596	2,366	429	1,937	395.1	2,323
1977	140	1,630	228	4,230	4,458	1,029	540	1,489	400.0	912
1978 2/	0	0	0	3,429	3,429				0	0
1979										

1/ This table is on a crop-year basis for 12 months beginning as follows: Types 11-14 and 61-62 - July 1; all other Types, October 1. Disappearance for any crop year is the sum of the stocks at the beginning of the year plus the current crop minus stocks remaining at the end of the crop year. Exports are on a farm-sales-weight basis. Domestic disappearance is total disappearance minus exports, and includes leaf used by manufacturers in the United States, losses or wastage, and difference which may result from errors in estimates and conversions of weights.

2/ Preliminary.

3/ Puerto Rican Type 46 production is that which is planted in the fall of the crop year shown and harvested the following spring.

Basic data obtained from "Crop Production", monthly and annual publication of Statistical Reporting Service, USDA; "Tobacco Stocks" quarterly publication of Agricultural Marketing Service, USDA; and monthly export reports from Bureau of the Census, U.S. Dept. of Commerce. Puerto Rican statistics obtained from the Puerto Rican Dept. of Agriculture.

Table 2 --Acreage, yield per acre, production, price per pound, and crop value of tobacco in the United States, by states and by years, 1972 - 1978.

Total, in the United States						Indiana total, type 31					
Year	Acreage	Yield per acre	Production 1,000 lb.	Price per pound	Crop value 1,000 dol.	Year	Acreage	Yield per acre	Production 1,000 lb.	Price per pound	Crop value 1,000 dol.
	Acres	Pounds	1,000 lb.	Cents	1,000 dol.		Acres	Pounds	1,000 lb.	Cents	1,000 dol.
1972	842,420	2,076	1,749,085	83.0	1,451,275.5	1972	6,100	2,540	15,494	78.5	12,163
1973	886,590	1,965	1,742,105	90.1	1,569,440.5	1973	5,600	1,890	10,584	92.6	9,801
1974	962,620	2,067	1,989,728	108.6	2,159,875.5	1974	7,000	2,380	16,660	112.0	18,659
1975	1,086,350	2,008	2,181,775	102.6	2,238,002.5	1975	7,500	2,260	16,950	104.0	17,628
1976	1,044,520	2,045	2,135,829	112.5	2,403,725.5	1976	7,500	2,420	18,150	113.0	20,510
1977	899,000	2,127	1,912,111	119.9	2,268,421.5	1977	6,900	2,400	16,560	119.5	19,789
1978 1/2	949,200	2,124	2,015,695	132.9	2,662,345.5	1978 1/2	6,600	2,450	16,170	131.5	21,264
Alabama total, type 14						Kentucky, all types					
1972	520	1,781	926	84.0	778.5	1972	172,250	2,593	446,725	77.7	346,916
1973	530	1,675	888	86.5	788.5	1973	161,750	1,984	320,869	91.5	293,464
1974	630	1,810	1,140	100.0	1,140.0	1974	189,050	2,391	452,008	112.8	509,914
1975	700	1,700	1,190	91.5	1,089.5	1975	200,700	2,275	456,654	106.1	484,716
1976	640	1,800	1,152	105.0	1,210.5	1976	207,000	2,403	497,401	115.8	576,005
1977	550	1,900	1,045	111.0	1,160.5	1977	196,750	2,297	452,024	122.0	551,578
1978 1/2	520	1,870	972	129.0	1,254.0	1978 1/2	191,450	2,369	453,521	131.2	594,943
Connecticut, all types						Louisiana total, type 72					
1972	4,200	1,343	5,640	337.0	19,032.0	1972	200	600	120	85.8	103
1973	5,050	1,341	6,772	365.2	24,732.0	1973	200	750	150	90.0	135
1974	4,800	1,649	7,915	455.4	36,042.0	1974	160	780	125	125.0	156
1975	4,450	1,435	6,387	460.4	29,408.0	1975	150	400	60	145.0	87
1976	4,550	1,580	7,189	406.5	29,222.0	1976	140	700	98	150.0	147
1977	3,500	1,606	5,620	420.5	23,631.0	1977	140	850	119	159.7	190
1978 1/2	3,510	1,531	5,373	483.0	25,954.0	1978 1/2	130	900	117	170.1	199
Florida, all types						Maryland total, type 32					
1972	12,500	1,877	23,468	116.0	27,168.0	1972	24,000	990	23,760	84.5	20,077
1973	13,700	1,752	23,999	120.8	28,987.0	1973	25,000	1,260	31,500	90.5	28,508
1974	13,220	2,095	27,805	128.2	35,638.0	1974	24,000	1,260	30,240	95.6	28,909
1975	14,490	2,042	29,595	113.0	33,438.0	1975	23,000	950	21,850	109.0	23,817
1976	14,350	2,148	30,828	114.9	35,436.0	1976	23,000	1,300	29,900	110.0	32,890
1977	11,840	2,094	24,798	122.6	30,396.0	1977	23,000	1,310	30,130	115.1	34,680
1978 1/2	10,500	2,100	22,050	144.0	31,752.0	1978 1/2	23,000	1,400	32,200	117.0	37,062
Georgia, all types						Massachusetts, all types					
1972	57,650	1,999	115,241	87.2	100,505.5	1972	1,410	1,361	1,919	379.0	7,272
1973	60,530	1,618	97,913	87.7	88,129.5	1973	1,510	1,299	1,962	427.2	8,381
1974	72,280	2,253	161,402	103.8	167,580.0	1974	1,460	1,657	2,419	530.7	12,829
1975	75,130	2,010	150,878	101.5	153,170.0	1975	1,420	1,373	1,950	561.9	10,957
1976	68,000	1,820	123,760	110.5	136,755.0	1976	1,210	1,525	1,845	468.6	8,645
1977	65,000	2,075	134,875	115.1	155,241.0	1977	1,160	1,643	1,906	511.0	9,739
1978 1/2	61,000	2,060	125,660	142.5	179,066.0	1978 1/2	990	1,389	1,375	611.2	8,404
Missouri total, type 31						Tennessee, all types					
1972	2,100	2,300	4,830	78.2	3,777.0	1972	57,390	2,172	124,657	75.3	93,853
1973	1,900	1,985	3,772	90.0	3,395.5	1973	51,420	1,969	101,271	88.3	89,440
1974	2,400	2,395	5,748	112.0	6,467.0	1974	56,540	1,962	110,945	111.0	123,202
1975	2,700	2,270	6,129	98.0	6,006.0	1975	66,030	2,038	134,569	102.9	138,472
1976	2,400	2,190	5,256	106.0	5,571.0	1976	68,450	2,040	139,668	117.1	163,529
1977	2,600	2,385	6,201	115.3	7,150.0	1977	68,460	1,997	136,746	119.3	163,085
1978 1/2	2,400	2,250	5,400	126.0	6,912.0	1978 1/2	68,850	2,107	147,178	130.6	192,044
North Carolina, all types						Virginia, all types					
1972	339,700	2,003	680,385	85.4	580,925.5	1972	66,800	1,678	112,074	80.9	90,646
1973	383,500	2,117	811,915	88.3	717,191.5	1973	74,400	1,857	138,138	88.5	122,268
1974	398,000	1,983	789,220	105.7	833,904.0	1974	77,680	1,818	141,577	106.4	150,573
1975	479,500	1,996	956,995	99.8	955,515.0	1975	84,530	1,681	142,054	99.5	141,392
1976	448,000	2,015	902,930	110.7	999,437.0	1976	86,780	1,773	153,878	107.2	164,900
1977	392,600	1,896	744,525	116.8	869,666.0	1977	79,700	1,794	142,985	116.1	166,057
1978 1/2	398,500	2,126	847,320	133.2	1,128,345.0	1978 1/2	73,250	1,843	134,991	129.7	175,044

See footnotes at end of table.

Table 2 --Acreage, yield per acre, production, price per pound, and crop value of tobacco in the United States, by states and by years, 1972 - 1978.

Ohio, all types						West Virginia total, type 31					
Year	Acreage	Yield per acre	Production	Price per pound	Crop value	Year	Acreage	Yield per acre	Production	Price per pound	Crop value
	Acres	Pounds	1,000 lb.	Cents	1,000 dol.		Acres	Pounds	1,000 lb.	Cents	1,000 dol.
1972	10,050	2,240	22,509	71.9	16,190	1972	1,750	1,895	3,316	77.5	2,570
1973	9,600	1,651	15,852	84.7	13,430	1973	1,700	1,645	2,797	91.0	2,545
1974	11,000	2,103	23,130	104.1	24,083	1974	1,750	1,670	2,923	106.6	3,116
1975	11,300	2,097	23,698	101.1	23,953	1975	1,750	1,780	3,115	102.5	3,193
1976	11,100	2,103	23,343	106.5	24,871	1976	1,800	1,790	3,222	108.5	3,496
1977	10,200	2,162	22,050	113.0	24,914	1977	1,600	2,020	3,232	113.0	3,652
1978 1/	9,900	2,293	22,705	123.6	28,060	1978 1/	1,500	1,800	2,700	127.5	3,443

Pennsylvania total, type 41						Wisconsin total					
Year	Acreage	Yield per acre	Production	Price per pound	Crop value	Year	Acreage	Yield per acre	Production	Price per pound	Crop value
	Acres	Pounds	1,000 lb.	Cents	1,000 dol.		Acres	Pounds	1,000 lb.	Cents	1,000 dol.
1972	13,000	1,410	18,200	46.0	8,372	1972	10,800	1,731	18,691	48.5	9,074
1973	13,000	1,700	22,100	52.0	11,492	1973	10,200	1,859	18,963	60.6	11,492
1974	13,000	2,000	26,000	58.0	15,080	1974	9,400	1,975	18,471	75.1	13,879
1975	12,000	1,650	19,800	58.0	11,484	1975	11,000	1,891	20,801	75.1	15,622
1976	12,500	1,750	23,625	60.0	14,175	1976	11,100	1,821	20,209	74.9	15,144
1977	13,500	1,940	26,190	60.0	15,714	1977	12,000	2,032	24,385	85.0	20,736
1978 1/	13,000	1,940	25,220	137.5	206,265	1978 1/	12,100	1,837	22,223	100.5	22,334

South Carolina total, type 13					
Year	Acreage	Yield per acre	Production	Price per pound	Crop value
	Acres	Pounds	1,000 lb.	Cents	1,000 dol.
1972	62,000	2,115	131,130	85.3	111,854
1973	67,000	1,980	132,660	86.9	115,282
1974	80,000	2,150	172,000	103.9	178,708
1975	90,000	2,100	189,000	99.5	188,055
1976	75,000	2,045	153,375	112.0	171,780
1977	68,000	2,040	138,720	123.3	171,042
1978 1/	71,000	2,120	150,520	137.5	206,265

1/ Preliminary. Data for this table was taken from "Crop Production, 1978 Annual Summary" and "Crop Values, 1976, 1977, 1978" published by the Economics, Statistics, and Cooperatives Service, U.S. Department of Agriculture.

Table 3 -- Sales and average prices of tobacco sold at auction in the United States; loan receipts, number of markets, number of sales floors, and sets of buyers, crops of 1972 - 1978.

Type and year	Producers sales	Average price	Loan receipts	Markets	Sales floors	Buyers
	1,000 lb.	Dollars	1,000 lb.	Number	Number	Sets
Flue-cured - types 11 - 14						
1972	1,015,575	85.37	24,281	94	433	145
1973	1,154,901	88.11	30,778	94	428	145
1974	1,240,092	105.06	22,988	94	421	66 1/
1975	1,410,608	99.90	259,029	94	421	66 1/
1976	1,312,948	110.51	276,902	94	420	66 1/
1977	1,121,404	117.68	193,085	93	431	66 1/
1978	1,201,827	135.07	63,591	91	427	66 1/
Virginia fire-cured - type 21						
1972	4,654	64.22	2	3	7	3
1973	5,654	75.55	0	3	6	3
1974	5,830	81.57	262	3	6	3
1975	4,754	92.97	45	3	6	3
1976	5,251	117.57	84	3	5	3
1977	7,293	96.29	1,036	3	3	3
1978	6,826	94.52	1,178	3	3	3
Eastern district fire-cured - types 22-23						
1972	30,938	55.81	2,796	5	24	5
1973	19,367	71.99	201	5	24	4
1974	20,584	94.01	367	5	24	4
1975	22,315	104.43	100	5	24	5
1976	4,994	138.09	9	5	24	5
1977	27,442	125.64	1,127	5	24	4
1978	41,508	104.39	11,286	5	24	4
Burley - type 31						
1972	590,335	79.22	22,837	61	379	71
1973	461,994	92.92	660	60	367	71
1974	610,334	113.90	2,547	60	348	71
1975	640,000	105.60	51,194	60	346	71
1976	654,820	114.24	46,185	60	346	72
1977	615,109	120.05	57,054	60	349	73
1978 2/	591,788	131.18	67,590	60	375	73

See footnotes at end of table.

Table 3-- Sales and average prices of tobacco sold at auction in the United States; loan receipts, number of markets, number of sales floors, and sets of buyers, crops of 1972 - 1978.

Type and year	Producers sales	Average price	Loan receipts	Markets	Sales floors	Buyers
	1,000 lb.	Dollars	1,000 lb.	Number	Number	Sets
Maryland - type 32						
1972	23,517	84.45	0 3/4	4	10	5
1973	31,562	90.49	0 3/4	4	10	5
1974	30,225	95.55	0 3/4	4	10	5
1975	20,356	109.11	0 3/4	4	10	5
1976	28,890	110.01	0 3/4	4	10	5
1977	29,650	115.09	0 3/4	4	10	5
1978 3/4						
One sucker - type 35						
1972	10,551	\$1.83	591	5	23	2
1973	6,940	60.27	18	5	21	2
1974	7,308	75.40	145	5	21	2
1975	7,661	90.11	32	5	21	2
1976	5,411	115.45	7	5	21	2
1977	8,683	116.41	44	5	21	2
1978	12,166	92.94	1,233	5	21	2
Green river - type 36						
1972	5,049	47.37	604	3	14	2
1973	3,930	63.56	0	3	14	2
1974	4,070	80.13	98	3	14	2
1975	4,678	88.27	26	3	14	2
1976	4,621	118.64	*	3	14	1
1977	6,022	118.06	*	3	14	1
1978	7,119	101.14	1,070	3	14	1
Virginia sun-cured - type 37						
1972	761	75.93	0	1	1	1
1973	927	69.18	0	1	1	1
1974	893	82.06	13	1	1	1
1975	668	85.46	0	1	1	1
1976	754	104.62	1	1	1	1
1977	826	100.10	13	1	1	1
1978	875	88.78	124	1	1	1

* Less than 500 pounds.

1/ Maximum number operating under grower designation program.

2/ Preliminary.

3/ Not available.

4/ Price support not in effect.

Agricultural Marketing Service, Tobacco Division. Compiled from Tobacco Market Review.

Table 4-- Total stocks of leaf tobacco, on a farm-sales-weight equivalent basis, held by dealers and manufacturers and in Government loan stocks in the United States and in Puerto Rico, by quarters, January 1974 - January 1978.

Quarter and year	Types 11 - 93			Quarter and year	Types 11 - 93		
	Held by trade	Under loan	Total stocks		Held by trade	Under loan	Total stocks
	1,000 lb.	1,000 lb.	1,000 lb.		1,000 lb.	1,000 lb.	1,000 lb.
January 1,				July 1,			
1974	4,364,903	598,563	4,408,857	1974	3,329,306	432,819	3,762,125
1975	4,173,504	283,811	4,457,315	1975	3,722,932	221,267	3,944,219
1976	4,335,016	402,517	4,737,533	1976	3,758,231	407,929	4,166,160
1977	4,340,718	637,613	4,978,331	1977	3,804,618	626,787	4,431,405
1978	4,262,047	698,918	5,008,418	1978	3,799,398	651,146	4,450,544
1979	4,356,357	714,608	5,070,965	1979			
1980							
April 1,				October 1,			
1974	3,740,302	474,251	4,214,553	1974	3,709,959	428,271	4,129,230
1975	4,065,783	248,826	4,314,609	1975	3,958,049	353,759	4,311,808
1976	4,160,458	488,012	4,568,470	1976	4,074,723	533,202	4,607,925
1977	4,140,178	657,238	4,797,416	1977	4,109,436	600,957	4,710,403
1978	4,113,750	667,043	4,780,803	1978	4,057,376	670,410	4,727,786
1979				1979			

Agricultural Marketing Service, Tobacco Division. Compiled from quarterly Tobacco Stocks Reports.

Table 5 -- Stocks of leaf tobacco, domestic and imported, by types, on a farm-sales-weight equivalent basis, owned by dealers and manufacturers in the United States and in Puerto Rico, by quarters, January 1974 - January 1979.

Quarter and year	Types 11-14 - flue-cured			Type 21 - Virginia fire-cured			Type 21 - Tennessee and Kentucky fire-cured		
	Held by trade	Under loan	Total farm sales-weight equivalent	Held by trade	Under loan	Total farm sales-weight equivalent	Held by trade	Under loan	Total farm sales-weight equivalent
	1,000 lb.	1,000 lb.	1,000 lb.	1,000 lb.	1,000 lb.	1,000 lb.	1,000 lb.	1,000 lb.	1,000 lb.
January 1:									
1974	1,878,893	353,475	2,232,368	6,910	1	6,911	37,568	2,233	39,801
1975	1,990,804	225,886	2,216,690	7,962	36	7,998	33,911	744	34,655
1976	2,085,648	357,807	2,443,455	8,233	281	8,514	28,817	133	28,950
1977	2,016,058	579,840	2,595,898	8,053	---	8,053	32,651	---	32,651
1978	1,937,390	641,304	2,578,694	8,131	615	8,746	28,677	---	28,677
1979	2,017,248	582,361	2,599,609	8,193	1,535	9,728	32,355	696	33,051
April 1:									
1974	1,628,540	297,968	1,926,508	9,635	---	9,635	52,830	1,679	54,509
1975	1,728,852	203,612	1,932,464	8,414	291	9,705	47,599	412	48,111
1976	1,733,520	355,895	2,089,415	8,576	55	8,629	51,748	180	51,928
1977	1,737,167	567,926	2,305,093	9,576	73	9,649	45,169	---	45,169
1978	1,729,191	547,021	2,276,212	11,529	1,115	12,644	53,274	771	54,045
July 1:									
1974	1,330,595	276,689	1,607,284	8,442	---	8,442	45,538	1,130	46,668
1975	1,472,020	179,945	1,651,965	8,561	291	8,852	42,035	512	42,547
1976	1,514,336	359,194	1,873,530	8,534	48	8,582	45,185	---	45,185
1977	1,518,098	556,877	2,074,975	8,381	---	8,381	42,123	---	42,123
1978	1,517,901	534,005	2,051,906	9,744	785	10,529	51,451	847	52,298
October 1:									
1974	1,875,366	280,470	2,155,835	7,101	---	7,101	39,279	913	40,192
1975	1,890,526	340,408	2,230,934	7,077	252	7,329	35,991	146	36,137
1976	1,982,814	485,416	2,468,230	7,413	25	7,438	38,270	---	38,270
1977	1,992,949	542,002	2,534,951	6,658	---	6,658	34,906	---	34,906
1978	1,979,354	550,149	2,529,503	7,884	785	8,669	42,778	812	43,590
				Type 23 - Kentucky and Tennessee fire-cured		Type 31 - burley		Type 32 - Southern Maryland	
January 1:									
1974	6,970	570	7,540	1,126,559	226,986	1,353,545	43,842	---	43,842
1975	3,940	160	4,064	1,261,951	52,350	1,314,301	51,703	---	51,703
1976	3,553	---	3,553	1,303,810	41,719	1,345,529	53,634	---	53,634
1977	4,560	---	4,560	1,345,070	53,557	1,398,627	41,859	---	41,859
1978	4,350	---	4,350	1,396,277	98,683	1,494,960	45,325	---	45,325
1979	4,506	172	4,678	1,366,419	123,277	1,489,696	41,877	---	41,877
April 1:									
1974	8,813	289	9,102	1,213,028	164,466	1,377,494	39,989	---	39,989
1975	6,305	172	6,477	1,332,434	41,454	1,373,888	45,387	---	45,387
1976	6,467	38	6,505	1,369,590	50,901	1,420,491	48,863	---	48,863
1977	6,962	---	6,962	1,417,392	84,361	1,501,753	37,988	---	37,988
1978	9,948	172	10,120	1,376,315	115,002	1,491,317	40,756	---	40,756
July 1:									
1974	6,415	278	6,693	1,070,226	146,309	1,216,535	67,711	---	67,711
1975	5,272	112	5,384	1,186,391	37,241	1,223,632	67,284	---	67,284
1976	5,557	---	5,557	1,217,753	47,727	1,265,480	57,762	---	57,762
1977	8,837	---	8,837	1,306,900	68,485	1,375,385	54,248	---	54,248
1978	11,714	172	11,886	1,240,705	112,484	1,353,189	63,353	---	63,353
October 1:									
1974	4,747	160	4,907	931,508	139,157	1,070,665	61,711	---	61,711
1975	4,611	---	4,611	1,082,407	11,978	1,094,385	61,006	---	61,006
1976	4,315	---	4,315	1,087,351	43,641	1,130,992	48,629	---	48,629
1977	6,329	---	6,329	1,162,332	54,893	1,217,225	48,766	---	48,766
1978	7,247	172	7,419	1,104,977	113,462	1,218,439	50,606	---	50,606
				Type 35 - one-sucker		Type 36 - green river		Type 37 - Virginia sun-cured	
January 1:									
1974	22,270	5,379	27,649	9,329	6,484	16,813	3,271	---	3,271
1975	20,607	745	21,352	13,058	475	13,533	3,086	---	3,086
1976	18,919	9	18,928	13,368	1	13,369	2,294	---	2,294
1977	16,172	3	16,175	11,308	---	11,308	2,186	---	2,186
1978	16,541	16	16,557	12,776	---	12,776	1,944	---	1,944
1979	16,210	567	16,777	14,060	111	14,171	2,275	44	2,319
April 1:									
1974	27,793	2,711	30,504	13,683	3,849	17,532	3,399	---	3,399
1975	23,878	468	24,346	16,085	242	16,327	2,672	---	2,672
1976	20,718	9	20,727	16,301	---	16,301	2,318	---	2,318
1977	18,398	---	18,398	14,318	---	14,318	2,140	---	2,140
1978	18,638	42	18,680	14,522	---	14,522	2,047	---	2,047
July 1:									
1974	24,833	3,012	27,845	12,222	3,167	15,389	3,177	---	3,177
1975	22,043	334	22,377	15,258	99	15,357	2,464	---	2,464
1976	19,453	---	19,453	14,018	---	14,018	2,210	---	2,210
1977	17,771	---	17,771	14,010	---	14,010	2,089	---	2,089
1978	18,349	42	18,391	18,297	---	18,297	1,947	---	1,947
October 1:									
1974	20,610	2,507	23,117	10,783	2,989	13,772	2,974	---	2,974
1975	19,047	30	19,077	13,757	---	13,757	2,291	---	2,291
1976	15,544	---	15,544	12,668	---	12,668	2,072	---	2,072
1977	14,201	---	14,201	11,858	---	11,858	1,767	---	1,767
1978	16,263	42	16,305	14,055	---	14,055	1,834	---	1,834

Table 5-- Stocks of leaf tobacco, domestic and imported, by types, on a farm-sales-weight equivalent basis, owned by dealers and manufacturers in the United States and in Puerto Rico, by quarters, January 1974 - January 1979.

Quarter and year	Type 41 Pennsylvania seedleaf			Type 42 Ohio			Type 46 - Puerto Rican - Continental United States and Puerto Rico								
	Held by trade	Under loan	Total farm sales-weight equivalent	Held by trade	Under loan	Total farm sales-weight equivalent	Held by trade	Under loan	Total farm sales-weight equivalent						
	1,000 lb.	1,000 lb.	1,000 lb.	1,000 lb.	1,000 lb.	1,000 lb.	1,000 lb.	1,000 lb.	1,000 lb.						
January 1:															
1974	44,951	---	44,951	5,797	---	5,797	6,767	---	6,767						
1975	41,047	---	41,047	5,044	---	5,044	5,966	---	5,966						
1976	43,726	---	43,726	4,605	---	4,805	6,061	---	6,061						
1977	42,948	---	42,948	4,694	---	4,694	6,887	3	6,890						
1978	45,648	---	45,648	4,973	442	5,415	1,947	2,609	4,556						
1979	53,158	---	51,158	6,180	386	6,556	100	3,621	3,721						
April 1:															
1974	55,190	---	55,190	8,538	---	8,538	6,487	---	6,487						
1975	57,420	---	57,420	7,492	50	7,542	7,518	---	7,518						
1976	58,344	---	58,344	7,029	---	7,029	6,006	---	6,006						
1977	56,739	---	56,739	6,527	412	6,939	5,233	3,332	8,565						
1978	64,991	---	64,991	7,740	426	8,166	3,303	1,392	4,695						
July 1:															
1974	49,214	---	49,214	6,849	---	6,849	11,290	---	11,290						
1975	54,569	---	54,569	6,633	50	6,683	8,016	1,344	9,360						
1976	52,119	---	52,119	6,334	---	6,334	5,602	---	5,602						
1977	53,368	---	53,368	6,154	442	6,596	7,133	---	7,133						
1978	57,037	---	57,037	7,265	521	7,786	4,283	1,392	5,675						
October 1:															
1974	47,513	---	47,513	5,854	---	5,854	10,046	---	10,046						
1975	49,211	---	49,211	5,822	50	5,872	6,099	---	6,099						
1976	46,788	---	46,788	5,695	---	5,695	3,890	3,332	7,222						
1977	49,741	---	49,741	5,510	464	5,974	3,730	2,650	6,380						
1978	54,085	---	54,085	6,610	386	6,996	2,649	3,583	6,432						
	Type 51 Connecticut broadleaf			Type 52 Connecticut Havana seed			Type 54 Southern Wisconsin								
January 1:															
1974	4,004	1,246	5,250	1,280	867	2,147	16,193	15	16,208						
1975	3,372	1,253	4,625	1,229	851	2,080	16,911	---	16,911						
1976	3,384	716	4,100	1,686	---	1,686	17,271	7	17,278						
1977	2,559	765	3,324	1,148	---	1,148	20,721	7	20,728						
1978	2,879	1,059	3,938	1,095	19	1,114	21,763	34	21,797						
1979	3,364	969	4,333	964	8	972	25,995	42	26,037						
April 1:															
1974	4,631	1,042	5,673	1,137	869	2,006	24,242	---	24,242						
1975	3,537	1,405	4,942	1,472	762	2,234	25,031	---	25,031						
1976	5,945	873	4,259	1,414	---	1,414	25,387	7	25,394						
1977	3,140	648	3,788	1,068	---	1,068	29,146	7	29,153						
1978	3,052	1,039	4,091	1,187	8	1,195	30,287	34	30,321						
July 1:															
1974	3,762	1,370	5,132	1,426	862	2,288	21,856	---	21,856						
1975	4,350	805	5,155	1,615	546	2,161	22,241	7	22,248						
1976	2,962	873	3,835	1,367	---	1,367	25,063	7	25,070						
1977	2,810	937	3,747	884	1	885	26,937	34	26,971						
1978	3,621	850	4,471	977	6	983	28,054	42	28,096						
October 1:															
1974	3,655	1,222	4,877	1,269	852	2,121	18,924	---	18,924						
1975	3,897	598	4,495	1,440	231	1,671	19,804	7	19,811						
1976	2,637	700	3,337	922	---	922	23,242	7	23,249						
1977	2,600	899	3,499	845	---	845	23,733	34	23,767						
1978	2,951	970	3,921	992	7	999	26,005	42	26,047						
	Type 55 Northern Wisconsin			Type 61 Connecticut shade grown			Type 62 Georgia-Florida shade grown			Type 72 Perique			Type 73 other misc. - domestic		
January 1:															
1974	16,991	1,307	18,298	10,328	---	7,308	734	---	---	---	---	---	5,720		
1975	14,052	1,303	15,355	11,517	---	7,275	711	---	---	---	---	---	6,782		
1976	14,452	1,838	16,290	11,493	---	7,898	546	---	---	---	---	---	5,872		
1977	13,427	112	13,539	10,662	---	4,995	593	---	---	---	---	---	5,983		
1978	15,590	1,588	17,178	8,455	---	3,962	545	---	---	---	---	---	5,063		
1979	16,974	819	17,793	8,535	---	2,566	511	---	---	---	---	---	6,073		
April 1:															
1974	23,411	18	23,529	9,804	---	7,303	575	---	---	---	---	---	5,465		
1975	20,214	---	20,214	12,220	---	7,121	484	---	---	---	---	---	6,095		
1976	22,479	55	22,534	10,138	---	6,290	553	---	---	---	---	---	6,379		
1977	17,982	240	18,222	10,948	---	3,934	574	---	---	---	---	---	5,596		
1978	23,414	21	23,435	9,915	---	3,655	593	---	---	---	---	---	4,709		
July 1:															
1974	20,433	---	20,433	8,503	---	6,534	601	---	---	---	---	---	5,899		
1975	17,894	---	17,894	9,470	---	6,172	561	---	---	---	---	---	6,046		
1976	20,855	79	20,934	7,544	---	6,008	501	---	---	---	---	---	6,443		
1977	18,087	11	18,098	8,917	---	4,230	529	---	---	---	---	---	5,250		
1978	22,255	---	22,255	9,275	---	3,429	558	---	---	---	---	---	4,273		
October 1:															
1974	16,921	---	16,921	9,652	---	6,621	523	---	---	---	---	---	6,712		
1975	15,829	---	15,829	10,158	---	5,978	482	---	---	---	---	---	6,219		
1976	15,933	80	16,013	8,829	---	5,337	459	---	---	---	---	---	6,089		
1977	16,204	25	16,229	9,492	---	4,263	531	---	---	---	---	---	4,777		
1978	19,051	---	19,051	7,747	---	3,144	555	---	---	---	---	---	5,890		

Table 5 -- Stocks of leaf tobacco, domestic and imported, by types, on a farm-sales-weight equivalent basis, owned by dealers and manufacturers in the United States and in Puerto Rico, by quarters, January 1974 - 1978.

Quarter and year	Foreign-grown cigar leaf types										Total imported cigar leaf types 61-89
	Cuba type 81	Indonesia type 82	Philippines type 83	Brazil type 84	Colombia type 85	Dominican Republic type 86	Paraguay type 87	Mexico type 88	Other type 89		
	1,000 lb.	1,000 lb.	1,000 lb.	1,000 lb.	1,000 lb.	1,000 lb.	1,000 lb.	1,000 lb.	1,000 lb.	1,000 lb.	
January 1:											
1974	279	9,763	33,535	7,707	10,433	17,907	9,019	4,791	18,850		112,284
1975	145	10,896	37,702	7,917	11,484	19,194	10,909	6,216	20,160		124,626
1976	116	11,761	43,817	7,952	9,484	19,596	8,231	6,086	24,051		131,094
1977	90	10,946	38,197	6,933	8,902	17,789	7,459	4,310	19,630		114,256
1978	80	12,767	28,907	7,822	8,412	11,417	8,136	4,375	18,396		100,315
1979	67	12,028	22,099	8,496	7,324	13,995	5,176	5,773	17,640		92,598
April 1:											
1974	191	10,561	35,309	7,923	9,809	22,780	7,106	4,449	22,327		120,455
1975	125	10,712	38,688	7,601	11,685	24,501	10,816	5,498	20,566		129,192
1976	115	12,654	45,989	6,587	8,920	18,715	7,409	3,871	21,365		125,605
1977	87	11,401	35,688	6,509	7,818	16,919	7,335	3,791	19,491		111,037
1978	81	11,493	26,387	8,209	7,342	14,703	7,354	5,483	19,967		101,019
July 1:											
1974	172	10,644	40,896	8,937	9,746	21,987	8,326	5,018	20,393		124,119
1975	126	10,910	39,738	8,340	12,538	24,009	10,824	4,780	22,964		134,229
1976	122	11,158	43,955	6,925	11,370	17,010	6,267	3,237	21,587		121,631
1977	86	10,965	32,346	6,389	9,043	15,314	8,411	4,029	19,401		105,984
1978	68	12,765	23,266	7,438	7,585	15,039	6,029	5,350	19,657		97,197
October 1:											
1974	173	9,352	40,959	8,834	13,756	19,876	8,072	5,616	19,547		126,119
1975	123	11,092	37,874	7,755	11,304	20,817	8,795	5,917	25,601		129,418
1976	111	10,877	38,967	6,240	10,101	14,460	4,820	3,022	20,770		109,379
1977	85	11,997	31,187	6,423	9,116	12,638	7,394	3,244	20,396		102,480
1978	70	12,732	22,925	6,536	7,557	13,296	5,608	5,630	17,194		91,548

Quarter and year	Imported foreign-grown cigarette leaf				Total stocks		
	Foreign-grown Oriental and Aromatic type 91	Foreign-grown flue-cured type 92	Foreign-grown burley type 93	Total imported cigarette leaf types 91-93	Total domestic leaf types 11-73	Total domestic cigarette leaf types 81-93	Grand total domestic and imported leaf types 11-93
	1,000 lb.	1,000 lb.	1,000 lb.	1,000 lb.	1,000 lb.	1,000 lb.	1,000 lb.
January 1:							
1974	355,127	37,802	49,396	442,325	3,854,248	554,609	4,409,215
1975	377,088	52,730	118,176	547,994	3,789,021	672,163	4,457,315
1976	361,288	73,567	113,575	548,430	4,038,009	699,524	4,737,533
1977	397,434	100,378	139,444	637,256	4,226,819	751,512	4,978,331
1978	537,320	117,326	143,757	594,403	4,509,700	698,718	5,008,418
1979	329,373	134,060	172,763	636,196	4,342,171	728,794	5,070,965
April 1:							
1974	373,592	43,802	59,320	476,714	3,617,365	597,169	4,214,593
1975	411,995	48,757	106,658	567,410	3,618,007	696,602	4,314,609
1976	431,260	73,346	123,742	628,348	3,814,517	753,953	4,568,470
1977	365,279	101,524	131,980	598,783	4,087,596	709,820	4,797,416
1978	343,776	119,761	140,138	603,675	4,076,109	704,694	4,780,803
July 1:							
1974	383,435	46,755	67,285	497,475	3,140,531	621,594	3,762,125
1975	414,769	70,394	144,672	629,835	3,180,174	764,043	3,944,219
1976	415,827	71,637	131,531	618,995	3,425,534	740,626	4,166,160
1977	362,817	108,780	120,281	596,878	3,723,543	697,862	4,431,405
1978	341,797	129,939	155,977	627,713	3,725,634	724,910	4,450,544
October 1:							
1974	350,304	54,400	88,353	493,057	3,510,038	619,192	4,129,230
1975	350,720	70,420	136,398	567,538	3,595,852	715,956	4,311,808
1976	404,791	100,948	140,708	646,447	3,852,099	755,826	4,607,925
1977	346,537	117,146	142,081	605,764	4,002,159	708,244	4,710,403
1978	309,339	134,404	167,208	610,951	4,025,287	702,499	4,727,786

Table 6 -- Average percentage of farm-sales-weight remaining after redrying and stemming.

Year	Flue-cured		Burley		Maryland	
	Unstemmed	Stemmed	Unstemmed	Stemmed	Unstemmed	Stemmed
1960	89.7	68.1	89.8	67.3		
1961	89.4	68.5	88.6	64.1	99.3	69.6
1962	89.5	67.7	89.1	65.2	98.7	68.6
1963	89.9	67.0	90.0	65.1	97.2	69.6
1964	89.4	66.5	90.0	64.3	97.2	69.9
1965	89.5	67.3	89.7	65.4	97.8	68.0
1966	89.0	66.8	88.7	64.3	98.2	69.7
1967	89.4	66.5	90.0	64.0	97.8	67.7
1968	89.4	65.5	89.4	64.1	97.0	68.2
1969	89.4	66.3	89.7	65.5	96.7	65.3
1970	89.9	67.8	89.5	65.1	97.2	66.4
1971	89.6	68.2	88.5	65.4	96.7	67.2
1972	89.7	69.1	89.0	63.6	95.2	67.3
1973	89.0	67.6	88.6	64.6	94.2	67.2
1974	88.7	67.7	87.8	64.0	94.9	65.9
1975	89.4	66.6	88.2	64.5	95.5	66.9
1976	89.6	68.1	87.2	63.4	94.4	68.7
1977	88.0	67.1	86.8	64.5	91.3	66.4
1978	89.4	69.2	84.3	63.8		

Agricultural Marketing Service, Tobacco Division. Compiled from Tobacco Division records.

Table 7--Factors for adjusting stocks reported by dealers and manufacturers to a farm-sales-weight equivalent, by types of tobacco.

		Auction market areas (types 11-37) 1/				
Type name	Type number	Factors to multiply by to convert -				
		Stemmed stocks to -		Unstemmed stocks to - Farm-sales-weight equivalent		
		Unstemmed equivalent	Farm-sales weight equivalent			
		From packed weight 1/				
Flue-cured	11-14	1.295	1.470	1.12		
Virginia fire-cured	21	1.299	1.598	1.23		
Tennessee and Kentucky fire-cured	22-23	1.324	2/ 1.471	1.04		
Burley	31	1.345	1.550	1.12		
Southern Maryland	32	1.373	1.400	1.02		
One sucker	35	1.413	2.554	1.10		
Green river	36	1.389	1.570	1.13		
Virginia sun-cured	37	1.326	1.538	1.16		
Miscellaneous domestic	72-73	1.333	1.493	1.12		
Domestic-grown cigar leaf (types 41-62)						
				Sweated weight 3/	Marked weight 3/	Farm sales weight 3/
Pennsylvania seedleaf	41	1.444	2/ 1.718	1.19	1.05	1.00
Ohio	42-44	1.454	1.730	1.19	1.05	1.00
Puerto Rican	46	1.314	1.551	1.18	1.16	1.00
Connecticut broadleaf	51	1.375	1.622	1.18	1.04	1.00
Connecticut havana seed	52	1.386	1.635	1.18	1.04	1.00
Southern Wisconsin	54	1.383	1.687	1.22	1.06	1.00
Northern Wisconsin	55	1.404	1.713	1.22	1.06	1.00
Connecticut shade	61	1.245	1.419	1.14	1.10	1.00
Georgia and Florida shade	62	1.235	1.408	1.14	1.10	1.00
Imported leaf (types 81-93)						
Cigar leaf	81-89	1.400	1.624		1.16	
Foreign-grown oriental & aromatic	91	1.333	1.466		1.10	
Foreign-grown flue-cured	92	1.295	1.450		1.12	
Foreign-grown burley	93	1.345	1.505		1.12	

1/ Types 11-37 are reported on the basis of packed weight.

2/ Farm-sales-weight equivalent based on unstemmed sweated weight factor.

3/ The instructions for reporting unstemmed cigar-leaf of the domestic types require that dealers and manufacturers indicate the weight basis on which the tobacco is reported, namely, farm-sales-weight, marked weight, or sweated weight. The stocks are converted to the farm-sales-weight equivalent on the basis of average factors reflecting the percentage reported each quarter in each category.

Table 8--Dimensions and capacities of storage containers for tobacco

Container	Dimensions	Average weight	
		Net Pounds	Gross Pounds
Standard hogshead	48 x 48 x 48	1,950	140
Small hogshead	48 x 48 x 45	1,950	100
Corrugated cartons	28 x 29 x 46½	450	40
Wooden cases	30 x 30 x 48	450	120

Table 9-- Cash receipts from tobacco compared with total cash receipts from all farm commodities, by States, 1975 - 1978.

State	Calendar year basis											
	1975			1976			1977 ^{1/}			1978 ^{1/}		
	Cash receipts		Tobacco	Cash receipts		Tobacco	Cash receipts		Tobacco	Cash receipts		Tobacco
	Total	Tobacco	as per-centage of total	Total	Tobacco	as per-centage of total	Total	Tobacco	as per-centage of total	Total	Tobacco	as per-centage of total
Mill. dol.	Mill. dol.	Pct.	Mill. dol.	Mill. dol.	Pct.	Mill. dol.	Mill. dol.	Pct.	Mill. dol.	Mill. dol.	Pct.	
North Carolina	2,704	951	35.6	2,810	999	35.6	2,622	866	33.0	3,075	1,106	36.0
Kentucky	1,347	408	27.8	1,646	522	31.7	1,830	619	34.3	1,971	542	27.5
South Carolina	812	188	22.7	833	154	18.5	784	171	21.8	930	205	22.0
Virginia	977	149	14.8	1,023	170	16.6	1,004	163	16.2	1,179	174	14.6
Tennessee	967	122	11.1	1,279	152	11.9	1,370	164	12.0	1,630	165	10.1
Georgia	2,235	154	6.9	2,179	138	6.3	2,194	150	6.8	2,569	174	6.8
Connecticut	220	36	16.7	228	30	13.1	234	34	14.5	233	23	9.9
Maryland	647	29	4.3	672	22	3.2	657	30	4.5	757	34	4.4
Florida	2,334	29	1.2	2,503	36	1.4	2,626	31	1.2	3,330	31	0.9
Pennsylvania	1,592	15	0.9	1,810	11	0.6	1,903	14	0.7	2,157	14	0.6
Massachusetts	201	13	6.4	214	11	5.1	214	11	5.1	226	9	4.0
Wisconsin	2,551	14	0.5	3,016	16	0.5	3,152	14	0.4	3,717	20	0.5
Ohio	2,690	21	0.8	2,736	22	0.8	2,794	29	0.1	3,068	23	0.7
Indiana	2,979	15	0.5	3,252	17	0.5	3,239	24	0.7	3,447	20	0.5
West Virginia	147	3	2.0	141	3	2.1	148	4	2.7	158	3	1.9
Missouri	2,537	6	0.2	2,702	4	0.1	2,870	5	0.2	3,597	6	0.2
Total:												
Tobacco States	24,940	2,153	8.6	27,044	2,307	8.5	27,617	2,329	8.4	32,044	2,549	8.0
Total:												
All States ^{2/}	90,370	2,155	2.4	94,501	2,310	2.4	96,084	2,331	2.4	110,221	2,549	2.3

^{1/} Subject to revision.

^{2/} Includes relatively small receipts from tobacco for a few States not shown separately.

Economics, Statistics, and Cooperatives Service

Table 10 --Applicable loan level per pound of tobacco, as of beginning of marketing year, by class or type of tobacco, 1974 - 1979.

Beginning marketing year ^{1/}	Loan level											
	Flue-cured	Burley	Mary-land	Fire-cured	Fire-cured	Dark air-cured	Virginia sun-cured	Cigar filler	Puerto Rican	Cigar filler	Cigar binder	Cigar binder
	types 11-14	type 31	type 32	type 21	types 22-23	types 35-36	type 37	type 41	type 46	types 42-44 6	types 51-52	types 53-55
Cents												
1974	83.3	85.9	^{2/}	58.2	58.2	51.8	51.8	^{2/}	44.6	42.9	59.4	59.4
1975	93.3	96.1	^{2/}	65.2	65.2	58.0	58.0	^{2/}	49.9	48.0	66.5	66.5
1976	106.0	109.3	^{2/}	74.1	74.1	65.9	65.9	^{2/}	56.7	54.6	75.6	75.6
1977	113.8	117.5	^{2/}	79.5	79.5	70.7	70.7	^{2/}	60.9	58.6	81.2	81.2
1978	121.0	124.7	^{2/}	84.6	84.6	75.2	75.2	^{2/}	64.7	62.3	86.3	86.3
1979 ^{3/}	129.3	133.3	^{2/}	90.4	90.4	80.4	80.4	^{2/}	69.2	66.6	92.3	92.3

^{1/} The marketing year begins as of July 1 for flue-cured and cigar wrapper, and as of October 1, for all other types.

^{2/} Announced "no support". Growers disapproved quotas.

^{3/} Subject to revision.

Agricultural Stabilization and Conservation Service. Tobacco and Peanut Division.

Table 11a--Number of allotments and poundage quotas for flue-cured and burley tobacco, 1974-1979.

Kind of tobacco and State	1974		1975		1976		1977		1978		1979	
	Allotments	1,000 lbs.	Allotments	1,000 lbs.	Allotments	1,000 lbs.	Allotments	1,000 lbs.	Allotments	1,000 lbs.	Allotments	1,000 lbs.
Flue-cured - 11-14												
Alabama	262	1,210	262	1,278	269	1,211	269	1,051	273	932	273	894
Florida	7,001	30,802	7,032	35,597	7,035	32,444	7,034	24,822	7,163	24,016	7,149	23,876
Georgia	24,961	162,604	24,976	157,480	25,075	138,921	25,079	132,203	25,154	117,770	25,137	111,295
North Carolina	114,726	848,818	115,074	1,051,367	115,376	942,429	115,349	786,412	115,735	795,211	115,517	705,720
South Carolina	23,771	174,242	23,875	186,798	23,936	155,139	23,903	140,236	23,862	140,495	23,800	130,200
Virginia	20,832	119,441	20,826	139,501	20,921	138,934	20,918	112,571	20,907	103,035	20,883	98,260
Total	191,291	1,337,117	192,045	1,572,021	192,610	1,409,078	192,552	1,197,274	193,094	1,181,459	192,759	1,070,245
Burley - 31 1/2												
Alabama	25	51	25	65	23	66	23	61	23	61	23	61
Arkansas	59	102	59	110	46	98	45	100	43	90	43	90
Georgia	179	200	183	231	144	196	181	215	185	213	185	213
Illinois	3	3	3	3	3	3	3	2	3	2	3	2
Indiana	9,634	20,041	9,752	20,458	9,727	19,563	9,815	17,982	9,979	17,280	9,979	17,280
Kansas	45	143	46	158	40	125	38	151	33	147	33	147
Kentucky	140,562	452,883	141,137	467,246	141,983	455,054	143,493	421,325	144,741	416,455	144,741	416,455
Missouri	1,519	7,107	1,527	7,319	1,456	6,545	1,484	7,114	1,512	6,777	1,512	6,777
North Carolina	18,285	26,849	18,463	30,756	18,247	28,697	18,437	30,250	18,531	27,323	18,531	27,323
Ohio	20,386	24,471	10,503	24,807	10,950	23,061	10,661	21,987	10,749	21,349	10,749	21,349
South Carolina	5	7	5	7	4	5	3	4	3	5	3	5
Tennessee	92,693	141,028	93,733	162,040	92,131	156,435	92,918	147,342	93,592	144,010	93,592	144,010
Virginia	16,861	27,241	16,981	29,710	16,814	29,080	16,755	29,536	16,703	26,952	16,703	26,952
West Virginia	4,431	6,702	4,465	7,531	4,258	7,426	4,251	7,363	4,197	7,125	4,197	7,125
Total	294,667	607,828	296,882	750,441	295,516	726,354	298,107	683,434	300,284	667,789	300,284	667,789

Table 11b--Number of allotments and acreage allotted for dark air-cured, fire-cured, and cigar tobaccos, 1974-1979.

Kind of tobacco and State	1974		1975		1976		1977		1978		1979	
	Allotments	Acreage	Allotments	Acreage	Allotments	Acreage	Allotments	Acreage	Allotments	Acreage	Allotments	Acreage
Fire-cured - 21-23												
Kentucky	7,746	13,910	7,634	13,891	7,558	15,564	7,464	15,310	7,264	15,218	7,170	12,943
Tennessee	7,630	15,799	7,545	15,506	7,538	17,541	7,514	17,422	7,401	17,417	7,306	14,311
Virginia	5,735	11,302	5,496	10,471	5,361	11,329	5,254	11,211	5,023	11,037	4,970	9,786
Total	21,120	41,011	20,675	39,688	20,457	44,434	20,232	43,943	19,688	43,672	19,446	37,540
Dark air-cured - 35-36												
Indiana	59	20	58	19	47	21	44	21	39	22	39	23
Kentucky	16,255	9,392	15,965	9,369	15,729	10,239	15,580	10,200	15,140	11,217	15,003	1,532
Tennessee	4,227	1,640	958	1,633	4,264	1,761	4,243	1,750	4,208	1,936	4,180	1,944
Total	20,531	11,052	16,971	11,021	20,040	12,021	19,867	11,970	19,387	13,175	19,222	13,299
Virginia sun-cured - 37												
Virginia	1,028	1,859	958	1,633	920	1,718	891	1,626	794	1,462	753	1,426
Cigar filler and binder - 42-44 and 53-55												
Illinois	1	1	1	1	1	1	-	-	-	-	-	-
Indiana	2	1	2	1	2	1	2	1	1	1	1	1
Iowa	1	8	1	8	-	-	-	-	-	-	-	-
Minnesota	54	111	54	111	53	117	53	117	53	117	54	119
New York	4	4	4	4	3	4	3	4	-	-	-	-
Ohio	1,107	3,952	1,086	3,924	1,099	4,252	1,090	4,152	1,076	3,977	1,057	3,846
Pennsylvania	28	79	25	70	24	67	21	54	17	51	14	35
Wisconsin	4,516	13,887	4,507	13,796	4,509	15,142	4,551	15,163	4,528	15,187	4,552	15,293
Total	5,713	18,043	5,680	17,915	5,691	19,584	5,724	19,491	5,675	19,333	5,678	19,294
Cigar binder - 51-52												
Connecticut	446	4,761	446	4,761	<u>2/</u>	<u>2/</u>	<u>2/</u>	<u>2/</u>	<u>2/</u>	<u>2/</u>	<u>3/</u>	<u>3/</u>
Massachusetts	156	1,029	150	897	<u>2/</u>	<u>2/</u>	<u>2/</u>	<u>2/</u>	<u>2/</u>	<u>2/</u>	<u>3/</u>	<u>3/</u>
Total	602	5,800	596	5,658	-	-	-	-	-	-	-	-
Grand total	534,972	77,765	533,807	75,915	535,234	77,757	537,373	77,030	538,922	77,662		

1/ Burley allotments not available until July.
 2/ Quota limitations on acreage has not applied to these types since 1970.
 3/ Suspension of 1979 quota limitations still pending.

© UPDATA 1981

Table 12--Marketing quota referendums, for crops covered since 1960, by kinds of tobacco. 1/

Kind of tobacco and date of referendum	Crops covered	Percentage of votes cast		Kind of tobacco and date of referendum	Crops covered	Percentage of votes cast	
		for 3 years	Against quotas			for 3 years	Against quotas
Flue-cured (11-14)				Dark air-cured (35-36)			
Dec. 12, 1961	1962, 1963, 1964	98.1	1.9	Feb. 24, 1961	1961, 1962, 1963	98.7	1.3
Dec. 15, 1964	1965, 1966, 1967	96.5	3.5	Feb. 28, 1964	1964, 1965, 1966	97.8	2.2
May 4, 1965	1965, 1966, 1967	73.6	26.4	Feb. 13-17, 1967	1967, 1968, 1969	93.0	7.0
July 18, 1967	1968, 1969, 1970	96.5	3.5	Feb. 16-20, 1970	1970, 1971, 1972	93.2	6.8
July 16, 1970	1971, 1972, 1973	98.4	1.6	Feb. 19-23, 1973	1973, 1974, 1975	93.7	6.3
July 17, 1973	1974, 1975, 1976	98.5	1.5	Feb. 19-23, 1976	1976, 1977, 1978	94.8	5.2
Oct. 16, 1976	1977, 1978, 1979	98.5	1.5	Feb. 20-23, 1979	1979, 1980, 1981	95.5	4.5
Burley (31)				Virginia sun-cured (37)			
Feb. 20, 1962	1962, 1963, 1964	99.2	.8	Feb. 20, 1962	1962, 1963, 1964	98.5	1.5
Feb. 25, 1965	1965, 1966, 1967	99.0	1.0	Feb. 25, 1965	1965, 1966, 1967	97.5	2.5
Mar. 10, 1966	1966, 1967, 1968	57.0	43.0	Feb. 26 - Mar. 1, 1968	1968, 1969, 1970	93.4	6.6
Feb. 27 - Mar. 3, 1967	1967, 1968, 1969	58.8	41.2	Feb. 22-26, 1971	1971, 1972, 1973	94.6	5.4
Feb. 26 - Mar. 1, 1968	1968, 1969, 1970	97.0	3.0	Feb. 25 - Mar. 1, 1974	1974, 1975, 1976	93.8	6.2
May 4, 1971	1971, 1972, 1973	96.9	3.4	Feb. 22-25, 1977	1977, 1978, 1979	95.8	4.2
Feb. 25 - Mar. 1, 1974	1974, 1975, 1976	98.3	1.7				
Feb. 22-25, 1977	1977, 1978, 1979	99.0	1.0				
Maryland (32)				Cigar filler (41)			
Feb. 2, 1960	1960, 1961, 1962	77.8	22.2	Feb. 20, 1962	1962, 1963, 1964	13.8	86.2
Feb. 14, 1963	1963, 1964, 1965	83.8	16.2	Feb. 18, 1965	1965, 1966, 1967	11.8	88.2
Feb. 25, 1966	1966, 1967, 1968	41.5	58.5	Feb. 19-23, 1968	1968, 1969, 1970	19.1	80.9
Feb. 20-24, 1967	1967, 1968, 1969	61.0	39.0	Feb. 22-26, 1971	1971, 1972, 1973	22.5	77.5
Feb. 19-23, 1968	1968, 1969, 1970	56.2	43.8	Feb. 25 - Mar. 1, 1974	1974, 1975, 1976	14.8	85.2
Feb. 22-26, 1971	1971, 1972, 1973	19.2	80.8	Feb. 22-25, 1977	1977, 1978, 1979	12.9	87.1
Feb. 25 - Mar. 1, 1974	1974, 1975, 1976	25.5	74.5				
Feb. 22-23, 1977	1977, 1978, 1979	31.3	68.7				
Fire-cured (21-24)				(53-55)			
Feb. 24, 1961	1961, 1962, 1963	98.0	2.0	Cigar filler & binder (43-44)			
Feb. 28, 1964	1964, 1965, 1966	94.7	5.3	Feb. 11, 1960	1960, 1961, 1962	95.4	4.6
Feb. 13-17, 1967	1967, 1968, 1969	93.5	6.5	Feb. 26, 1963	1963, 1964, 1965	89.6	10.4
Feb. 16-20, 1970	1970, 1971, 1972	93.8	6.2	Feb. 10, 1966	1966, 1967, 1968	91.3	8.7
Feb. 19-23, 1973	1973, 1974, 1975	93.2	6.8	Feb. 24-27, 1969	1969, 1970, 1971	84.6	15.4
Feb. 19-23, 1976	1976, 1977, 1978	94.2	5.8	Jan. 10-14, 1972	1972, 1973, 1974	91.2	8.8
Feb. 20-23, 1979	1979, 1980, 1981	94.9	5.1	Feb. 24-28, 1975	1975, 1976, 1977	86.6	13.4
				Feb. 21-24, 1978	1978, 1979, 1980	83.4	16.6
				Cigar binder (51-52)			
				Feb. 11, 1960	1960, 1961, 1962	89.7	10.3
				Feb. 26, 1963	1963, 1964, 1965	96.0	4.0
				Feb. 10, 1966	1966, 1967, 1968	96.6	3.4
				Feb. 24-27, 1969	1969, 1970, 1971	92.0	8.0
				Jan. 10-14, 1972	1972, 1973, 1974	92.2	7.8
				Feb. 25-28, 1975	1975, 1976, 1977	92.0	8.0
				Feb. 21-24, 1978	1978, 1979, 1980	90.8	9.2

1/ A two-thirds majority of farmers voting is required to place marketing quotas in effect.

Table 13 -- Cigars, cigarettes, chewing tobacco, smoking tobacco, and snuff manufactured and removed tax-paid and tax free, in the United States, by calendar years, 1972 - 1978.

Year	Manufactured												Total : chewing, : smoking & snuff : tobacco
	Cigars			Cigarettes			Chewing tobacco					Snuff	
	Domestic factories	Bonded ware- houses	Total	Small	Large 1/	Small	Plug	Twist	Fine-cut	Loose leaf	Smoking tobacco		
Millions	Millions	Millions	Millions	Millions	Millions	Mil. lb.	Mil. lb.	Mil. lb.	Mil. lb.	Mil. lb.	Mil. lb.	Mil. lb.	
1972	6,024.8	---	6,024.8	4,022.4	0.7	599,069.6	19.6	2.2	5.2	45.6	55.8	25.5	153.9
1973	5,664.2	---	5,664.2	4,414.9	1.1	644,245.0	18.6	2.1	5.7	47.6	53.0	25.3	152.3
1974	5,283.6	---	5,283.6	3,099.4	1.9	635,016.8	18.0	2.2	6.2	52.9	49.0	25.0	153.2
1975	4,524.2	---	4,524.2	2,942.3	2.3	651,211.0	18.1	2.3	7.3	53.7	46.2	24.4	152.0
1976	4,236.1	---	4,236.1	2,245.5	1.4	693,389.4	16.7	2.3	8.4	56.3	44.6	24.8	153.0
1977	3,907.0	---	3,907.0	1,828.0	1.3	665,864.2	16.4	2.1	10.1	61.3	40.7	24.6	155.2
1978 3/	3,741.0	---	3,741.0	1,645.0	1.0	695,894.0	15.9	2.1	12.0	64.6	36.4	25.1	156.1
Removed tax-paid													
1972	5,896.3	---	5,896.3	3,932.7	0.7	551,015.9	19.7	2.3	5.2	45.3	55.1	25.7	153.3
1973	5,554.4	---	5,554.4	4,334.1	1.0	590,341.1	19.0	2.3	5.9	47.3	51.7	25.5	151.7
1974	5,016.4	---	5,016.4	3,065.6	1.8	576,173.0	18.3	2.2	6.1	51.4	49.0	24.5	151.5
1975	4,476.0	---	4,476.0	2,891.9	1.8	588,345.5	17.6	2.3	7.2	53.6	45.6	25.2	151.5
1976	4,040.9	---	4,040.9	2,162.8	1.5	617,891.3	16.9	2.3	8.7	56.1	43.7	25.8	153.5
1977	3,809.0	---	3,809.0	1,811.0	1.3	591,417.0	16.3	2.2	10.0	60.2	40.2	24.4	153.3
1978 3/	3,621.0	---	3,621.0	1,553.0	1.4	614,231.0	15.6	2.1	11.7	63.0	35.2	24.3	151.9
Removed tax-free													
1972	139.3	---	139.3	40.7	2/	49,012.0	2/	2/	2/	2/	1.3	2/	1.4
1973	142.7	---	142.7	97.5	2/	55,901.8	2/	2/	2/	2/	1.5	2/	1.6
1974	137.7	---	137.7	74.3	2/	59,272.0	2/	2/	2/	2/	1.0	2/	1.1
1975	126.0	---	126.0	64.4	2/	62,277.2	2/	2/	2/	2/	1.0	0.1	1.2
1976	143.9	---	143.9	56.6	2/	72,125.8	0.1	2/	2/	2/	1.0	0.1	1.3
1977	134.3	---	134.3	19.7	2/	78,232.0	0.1	2/	2/	2/	1.0	0.1	1.4
1978 3/	166.0	---	166.0	31.0	2/	85,135.0	0.1	2/	0.1	2/	1.0	0.1	1.5

1/ Weighing more than 3 pounds per thousand.

2/ Less than 50,000.

3/ Subject to revision

Detail may not add to total because of rounding.

Compiled from reports of the Dept. of the Treasury and the Tobacco Division, AMS, USDA.

Table 14--Estimated utilization of Flue-cured, Burley, and Maryland tobaccos in cigarettes and other products, 1971-1977 (July-June basis).

Year beginning July	Flue-cured			Burley 1/			Maryland		
	Cigarettes	Other 2/ products	Total domestic	Cigarettes	Other 2/ products	Total domestic	Cigarettes	Other 2/ products	Total domestic
- Million Pounds -									
1971	618	45	663	455	60	515	17	1	18
1972	624	40	664	479	55	534	13	1	14
1973	655	48	703	473	60	533	13	1	14
1974	604	48	652	464	55	519	24	1	25
1975	642	29	671	465	45	510	25	0	25
1976	605	29	634	457	44	501	17	0	17
1977	580	28	608	453	42	495	19	0	19

1/ Marketing year domestic disappearance substituted for burley and Maryland.

2/ Smoking and chewing tobacco and cigars; includes also exports of partially processed and shredded tobacco, classified as (bulk smoking).

Table 15--Estimated leaf used by domestic manufacturers in cigarettes, by types of tobacco, 1971 - 1977 (July-June basis).

Year beginning July	Flue-cured		Burley 1/		Maryland 1/		Imported		Total leaf used	Production of cigarettes
	Quantity	Percent of total	Quantity	Percent of total	Quantity	Percent of total	Quantity	Percent of total		
	Mil. lbs.	Pct.	Mil. lbs.	Pct.	Mil. lb.	Pct.	Mil. lb.	Pct.	Mil. lb.	Billions
1971	618	47.4	455	34.9	17	1.3	215	16.4	1,305	592.6
1972	625	47.6	479	36.5	13	1.0	196	14.9	1,312	615.6
1973	655	47.4	473	34.2	13	1.0	242	17.4	1,383	652.0
1974	604	44.0	464	33.8	24	1.8	280	20.4	1,372	626.8
1975	642	45.8	465	33.2	25	1.8	270	19.2	1,402	688.2
1976	605	44.1	457	33.3	17	1.3	292	21.3	1,371	671.7
1977	580	41.4	453	32.3	19	1.4	350	25.0	1,402	686.0

1/ Burley and Maryland marketing year substituted.

Table 16--Estimated leaf used per 1,000 cigarettes by domestic manufacturers, by types of tobacco, 1971 - 1977 (July-June basis).

Year beginning July	Domestic types				Imported	Total	Cigarettes per pound of leaf
	Flue-cured	Burley	Maryland	Total domestic			
	Pounds	Pounds	Pounds	Pounds	Pounds	Pounds	Number
1971	1.04	.77	.03	1.84	.36	2.20	454
1972	1.01	.78	.02	1.81	.32	2.13	469
1973	1.01	.72	.02	1.75	.37	2.12	471
1974	.96	.74	.04	1.74	.45	2.19	457
1975	.93	.68	.04	1.65	.39	2.04	491
1976	.90	.68	.02	1.60	.44	2.04	489
1977	.84	.66	.03	1.53	.51	2.04	489

Agricultural Marketing Service. Taken from estimates of Tobacco Division.

Table 17 -- Large cigars removed tax paid for domestic consumption, by calendar years 1974 - 1978. 1/

Classification and year	Class A	Class B	Class C	Class D	Class E	Class F	Class G	Total
	Thousands	Thousands	Thousands	Thousands	Thousands	Thousands	Thousands	Thousands
Domestic Manufacture:								
1974	4,379	527,579	1,447,642	1,083,387	1,315,831	412,081	225,549	5,016,388
1975	3,493	396,994	1,275,673	1,039,032	1,118,542	409,952	232,269	4,475,954
1976	2,534	251,346	659,591	1,234,249	939,271	424,615	229,300	4,040,907
Imported:								
1974	4	1,689	1,173	635	2,621	6,725	20,197	33,043
1975	0	1,397	1,344	52	4,832	10,065	60,961	78,972
1976	79	5	136	26	5,103	10,855	71,373	87,578
Puerto Rican Manufacture:								
1974	115	6,671	215,912	145,986	614,513	229,780	10,801	1,223,780
1975	0	6,785	146,908	155,355	643,667	251,249	12,297	1,216,261
1976	1	10,839	82,789	245,256	614,198	257,232	14,239	1,224,552
Total:								
1974	4,498	535,879	1,664,727	1,230,008	1,932,965	648,586	256,547	6,273,210
1975	3,493	405,176	1,424,225	1,194,439	1,767,041	671,266	305,527	5,771,167
1976	2,613	262,190	1,042,516	1,479,531	1,558,572	692,702	314,912	5,353,036

Classification and Year 2/	New Class A	New Class B	New Class C	New Class D and E	New Class F	New Class G and H	Total
	Thousands	Thousands	Thousands	Thousands	Thousands	Thousands	Thousands
Domestic Manufacture:							
1977	191,282	812,581	1,162,085	911,702	458,250	239,628	3,775,528
1978 3/	165,879	643,147	1,230,653	703,794	451,305	426,692	3,621,470
Imported:							
1977	217	187	133	3,184	5,030	82,875	91,626
1978 3/	309	125	30	3,336	4,362	85,914	94,076
Puerto Rican Manufacture:							
1977	2,576	91,074	140,815	336,035	486,163	47,318	1,103,981
1978 3/	1,641	82,624	122,417	164,715	499,007	114,065	984,469
Total:							
1977	194,075	903,842	1,303,033	1,250,921	949,443	369,821	4,971,135
1978 3/	167,829	725,896	1,353,100	871,845	954,674	626,671	4,700,015

1/ Tax paid removals. 2/ Equivalences between old and new classes are as follows:
 3/ Subject to revision.

New A = Old A58	New DGE = Old E
B = C	F = F
C = D	G6H = C

U.S. Department of Treasury.

Table 18 -- Rates of Federal tax on tobacco products in the United States.

Products	Rate of tax per 1,000
	Dollars
Cigars weighing more than 3 pounds per 1,000 if manufactured or imported to retail at:	
(a) Not more than 2½ cents each	2.50
(b) More than 2½ and not more than 4 cents each	3.00
(c) More than 4 and not more than 6 cents each	4.00
(d) More than 6 and not more than 8 cents each	7.00
(e) More than 8 and not more than 15 cents each	10.00
(f) More than 15 and not more than 20 cents each	15.00
(g) More than 20 cents each	20.00
Weighing not more than 3 pounds per 1,000	.75
Cigarettes weighing more than 3 pounds per 1,000	8.40 1/
Cigarettes weighing not more than 3 pounds per 1,000	4.00
Cigarette papers (in books or sets of more than 25)	.005 2/
Cigarette tubes	.01 2/

1/ Except that if more than 6¼ inches in length, they shall be taxable at the rate prescribed for cigarettes weighing not more than 3 pounds per 1,000, counting each 2-3/4 inches, or fraction thereof, of the length of each as one cigarette (Revenue Act of May 10, 1934).

2/ Rate for each 50 or fraction thereof; except that if papers or tubes measure more than 6¼ inches in length they shall be taxable at the rate prescribed, counting each 2-3/4 inches, or fraction thereof, of the length of each as one paper or tube (Revenue Act of May 10, 1934).

Table 19 --State tax rates on cigarettes in the United States as of January 1, 1979.

State		Rate of tax 1/	Date of	Year	State		Rate of tax 1/	Date of	Year
		per standard	present	tax			per standard	present	tax
		package of 20	rate	enacted			package of 20	rate	enacted
		Cents					Cents		
Alabama	12	1969	1927	Nebraska	13	1971	1947		
Alaska	8	1961	1949	Nevada	10	1969	1947		
Arizona	13	1974	1933	New Hampshire 2/	12	1975	1939		
Arkansas	17.75	1971	1925	New Jersey	19	1972	1948		
California	10	1967	1959	New Mexico	12	1968	1943		
Colorado	10	1978	1964	New York	15	1972	1939		
Connecticut	21	1971	1935	North Carolina	2	1969	1969		
Delaware	14	1971	1949	North Dakota	11	1969	1925		
Florida	21	1971	1943	Ohio	15	1971	1931		
Georgia	12	1971	1923	Oklahoma	13	1968	1933		
Hawaii 2/	15.5	1978	1939	Oregon	9	1972	1966		
Idaho	9.1	1972	1945	Pennsylvania	18	1970	1935		
Illinois	12	1969	1941	Rhode Island	18	1975	1939		
Indiana	10.5	1965	1947	South Carolina	7	1977	1923		
Iowa	13	1971	1921	South Dakota	12	1969	1923		
Kansas	11	1970	1927	Tennessee	13	1969	1925		
Kentucky	3	1970	1936	Texas	18.5	1971	1931		
Louisiana	11	1970	1926	Utah	3	1963	1923		
Maine	16	1974	1941	Vermont	12	1969	1937		
Maryland	10	1975	1958	Virginia	2.5	1966	1960		
Massachusetts	21	1975	1939	Washington	16	1971	1938		
Michigan	11	1970	1947	West Virginia	17	1978	1947		
Minnesota	18	1971	1947	Wisconsin	16	1971	1939		
Mississippi	11	1973	1930	Wyoming	8	1967	1951		
Missouri	9	1969	1956	District of Columbia	13	1976	1949		
Montana	12	1971	1947						

1/ Some States impose varying tax rates for cigarettes of other quantities, sizes, weights, etc. Some municipalities and counties also levy taxes on cigarettes.

2/ Hawaii: 40 percent of wholesale price. New Hampshire: 42 percent of retail selling price. Tax per pack approximated.

Rates as of January 1, 1978, were identical to those of January 1, 1977. See previous Annual Report. Compiled from reports of proceedings of the annual meetings of the National Tobacco Tax Association and brought to date from Tax Administrators News, monthly publication of the Federation of Tax Administrators, Chicago, Illinois, and from records of the Tobacco Tax Council, Richmond, Virginia.

Table 20 --Wholesale cigarette price revisions, 1940 to date.

Approximate date of change	Net price per 1,000				Net price per 1,000 excluding Federal excise tax			
	Standard	King size	Filter tips	100 millimeter	Standard	King size	Filter tips	100 Millimeter
	Dollars	Dollars	Dollars	Dollars	Dollars	Dollars	Dollars	Dollars
July 1 1940	5.88	---	---	---	2.63	---	---	---
November 1 1942	6.13	---	---	---	2.63	---	---	---
April 25 1946	6.38	---	---	---	2.88	---	---	---
October 7 1946	6.64	---	---	---	3.14	---	---	---
July 22 1948	7.00	---	---	---	3.50	---	---	---
July 29 1950	7.20	7.24	---	---	3.70	3.74	---	---
November 1 1951	7.71	7.75	---	---	3.71	3.75	---	---
February 26 1953	8.10	8.19-8.40	---	---	4.10	4.19-4.40	---	---
March 1953	---	---	9.00	---	---	---	5.00	---
April 15 1955	---	8.55	---	---	---	4.55	---	---
June 17 1957	8.45	8.89	---	---	4.45	4.89	---	---
April - May 1963	8.80	9.00	---	---	4.80	5.00	---	---
March 1966	9.00	9.20	9.20	---	5.00	5.20	5.20	5.20
June 1967	9.25	9.45	9.45	9.95	5.25	5.45	5.45	5.95
November 1968	9.45	9.45	9.45	9.95	5.45	5.45	5.45	5.95
May 1969	9.80	9.80	9.80	10.30	5.80	5.80	5.80	6.30
May 1970	10.25	10.25	10.25	10.75	6.25	6.25	6.25	6.75
February-March 1973	(10.45-10.60)	(10.45-10.60)	(10.45-10.60)	(10.45-11.10)	(6.45-6.60)	(6.45-6.60)	(6.45-6.60)	(6.95-7.10)
January 1974	10.60	10.60	10.60	11.10	6.60	6.60	6.60	7.10
May 1974	11.30	11.30	11.30	11.80	7.30	7.30	7.30	7.80
November 1974	(11.80-12.00)	(11.80-12.00)	(11.80-12.00)	(12.30-12.50)	(7.80-8.00)	(7.80-8.00)	(7.80-8.00)	(8.30-8.50)
November 1975	(12.55-12.75)	(12.55-12.75)	(12.55-12.75)	(13.05-13.25)	(8.55-8.75)	(8.55-8.75)	(8.55-8.75)	(9.05-9.25)
October 1976	13.50	13.50	13.50	14.00	9.50	9.50	9.50	10.00
August 1977	14.35	14.35	14.35	14.85	10.35	10.35	10.35	10.85
June 1978	15.20	15.20	15.20	15.70	11.20	11.20	11.20	11.70
December 1978	15.75	15.75	15.75	16.25	11.75	11.75	11.75	12.25

Table 21-- Receipts from Federal taxes on tobacco products in the United States, by types of product, fiscal years, 1972-73 to 1977-1978. ^{1/}

Product	Federal tax receipts for year (July-June basis)					
	1972-73	1973-74	1974-75	1975-76	1976-77	1977-78
	1,000 dol.	1,000 dol.	1,000 dol.	1,000 dol.	1,000 dol.	1,000 dol.
Cigars (large)	49,790	49,074	48,733	47,958	35,681	36,794
Cigars (small)	3,940	2,481	2,472	1,829	1,423	1,225
Cigarettes (large)	8	18	16	18	19	10
Cigarettes (small)	2,221,012	2,383,018	2,261,099	2,434,812	2,357,500	2,408,383
Cigarette papers and tubes	1,240	1,477	1,494	1,330	1,393	1,291
Imported tobacco products, cigarette papers and tubes, and tobacco materials (Customs)	893	909	1,254	1,850	2,309 ^{2/}	3,147
Miscellaneous tax collections	4	1	---	71	1	---
Total	2,276,885	2,436,978	2,315,090	2,487,894	2,398,501	2,450,913

^{1/} For rates of tax on tobacco products, see Table 18.

^{2/} Collected by customs beginning October 1, 1961. Prior to October 1, 1961, customs collections were included in the applicable classes of tobacco tax. Detail may not add to total because of rounding. Internal Revenue Service.

Table 22-- Estimated total expenditures for tobacco products, by type of product, calendar years, 1950 - 1978

Year	Chewing and smoking				Total all products	Chewing and smoking				Total all products
	Cigars (large and small)	Cigarettes (large and small)	Chewing tobacco and snuff	Total		Cigars (large and small)	Cigarettes (large and small)	Chewing tobacco and snuff	Total	
	Mil. dol.	Mil. dol.	Mil. dol.	Mil. dol.		Mil. dol.	Mil. dol.	Mil. dol.	Mil. dol.	
1950	514	3,586	292	4,392	1965	734	7,609	308	8,651	
1951	526	3,876	283	4,685	1966	718	8,113	309	9,140	
1952	545	4,246	282	5,073	1967	607	8,572	304	9,582	
1953	560	4,436	268	5,264	1968	703	9,094	315	10,112	
1954	552	4,292	260	5,104	1969	701	9,404	339	10,444	
1955	550	4,409	258	5,217	1970	707	10,448	389	11,544	
1956	556	4,681	244	5,481	1971	709	11,040	415	12,115	
1957	562	5,072	243	5,877	1972	720	11,765	425	12,910	
1958	584	5,341	257	6,182	1973	730	12,325	430	13,485	
1959	629	5,834	281	6,764	1974	705	13,270	500	14,475	
1960	649	6,244	294	7,187	1975	680	14,250	575	15,505	
1961	631	6,538	303	7,472	1976	675	15,100	625	16,390	
1962	634	6,675	299	7,608	1977	675	15,850	675	17,200	
1963	649	7,055	300	8,004	1978 ^{1/}	670	16,580	750	18,000	
1964	765	7,024	324	8,113	1979	---	---	---	---	

^{1/} Preliminary.

Economics, Statistics, and Cooperatives Service. Compiled from Tobacco Situation.

Table 23-- Consumption per capita of tobacco products in the United States (including overseas forces) for specified periods. ^{1/}

Year	Per capita 18 years and over			Per male 18 years and over ^{2/}			Per person 18 years and over	
	Cigarettes ^{1/}		All tobacco products	Large cigars and ^{1/} cigarillos		Smoking tobacco ^{3/}	Chewing tobacco ^{3/}	Snuff ^{3/}
	Number	Pounds	Pounds	Number	Pounds	Pounds	Pounds	Pounds
1965	4,258	9.37	11.51	143.8	2.57	1.19	1.07	.24
1966	4,287	9.39	11.12	136.1	2.41	1.13	1.05	.23
1967	4,280	8.86	10.80	130.7	2.28	1.08	1.04	.23
1968	4,186	8.69	10.59	126.5	2.15	1.11	1.05	.21
1969	3,993	8.11	10.04	125.0	2.11	1.08	1.09	.20
1970	3,985	7.77	9.68	125.3	2.08	1.15	1.06	.19
1971	4,037	7.75	9.52	119.2	1.94	1.06	1.09	.19
1972	4,043	7.95	9.65	108.9	1.74	1.00	1.08	.18
1973	4,148	7.92	9.53	102.4	1.61	.88	1.10	.18
1974	4,141	7.90	9.40	91.9	1.47	.87	1.15	.18
1975	4,122	7.73	9.14	82.4	1.32	.76	1.15	.17
1976	4,092	7.27	8.69	75.0	1.20	.75	1.17	.17
1977	4,043	7.07	8.48	67.9	1.15	.65	1.22	.16
1978 ^{4/}	3,970	7.00	8.22	64.0	1.15	.59	1.24	.16

^{1/} Unstemmed processing-weight equivalent.

^{2/} Survey data indicates the number of female users of these products is negligible.

^{3/} Finished-product weight.

^{4/} Preliminary

Economics, Statistics, and Cooperatives Service. Compiled from the Tobacco Situation.

Table 24--Receipts from State taxes on tobacco products in the United States, by States, fiscal years 1973-74 - 1977-78. 1/

State	Receipts for year (July-June basis)				
	1973-74	1974-74	1975-76	1976-77	1977-78 2/
	1,000 dol.	1,000 dol.	1,000 dol.	1,000 dol.	1,000 dol.
Alabama 3/	44,666	45,964	48,060	49,541	51,867
Alaska	3,429	4,033	4,617	4,623	4,627
Arizona	27,147	34,172	34,958	35,497	36,791
Arkansas	39,984	41,727	44,251	46,066	48,843
California	263,637	253,076	266,454	271,504	281,257
Colorado	31,072	31,402	32,494	33,242	48,219
Connecticut	71,848	70,614	72,560	75,084	76,067
Delaware	11,924	11,609	12,116	12,246	12,401
Florida	174,271	176,948	182,590	186,355	232,480
Georgia	70,239	70,976	73,266	74,593	77,173
Hawaii	8,305	8,706	9,574	10,311	10,976
Idaho	7,440	7,579	7,906	7,997	8,104
Illinois	171,573	170,543	187,642	177,171	181,869
Indiana	49,484	49,307	52,602	51,521	79,893
Iowa	43,407	44,295	45,342	46,277	47,003
Kansas	29,355	30,462	31,688	32,108	32,169
Kentucky	20,087	21,185	22,190	22,253	21,986
Louisiana	51,910	53,321	55,950	56,954	59,011
Maine	19,992	22,977	23,935	24,296	24,364
Maryland	33,546	37,277	54,309 5/	54,349	53,487
Massachusetts	114,437	114,149	138,195 6/	142,759	142,972
Michigan	136,705	135,595	137,561	140,271	139,946
Minnesota	77,869	78,789	82,474	83,802	84,694
Mississippi	24,464	29,292	30,767	31,072	32,044
Missouri	58,041	56,602	58,250	59,458	60,156
Montana	10,458	10,830	11,136	11,528	11,425
Nebraska	21,002	21,571	22,604	22,610	22,489
Nevada	10,736	11,251	11,374	11,130	11,311
New Hampshire	23,419	23,877	27,486	27,130	26,528
New Jersey	168,270	166,640	167,508	168,780	168,940
New Mexico	12,741	13,431	13,649	13,683	14,051
New York	328,543	330,470	337,466	334,173	335,098
North Carolina	20,532	20,753	21,473	20,308	19,415
North Dakota	7,720	8,157	8,691	8,570	8,692
Ohio	189,602	190,334	194,820	196,910	202,750
Oklahoma	46,956	44,723	50,391	51,960	54,075
Oregon	29,958	31,230	31,370	31,817	32,496
Pennsylvania	237,658	239,331	245,100	247,966	251,137
Rhode Island	18,488	18,631	24,422 5/	24,393	24,076
South Carolina	21,611	22,084	23,420	23,575	27,863
South Dakota	8,596	8,906	9,134	9,027	9,181
Tennessee	61,816	62,820	65,896	67,829	71,090
Texas 3/	247,952	260,414	279,228	287,549	299,825
Utah	6,883	7,036	7,471	7,680	7,985
Vermont	8,490	8,802	9,703	9,600	9,392
Virginia	17,115	16,886	17,688	17,859	17,926
Washington	55,883	56,505	57,923	59,518	60,001
West Virginia	24,714	25,252	26,975	28,028	28,979
Wisconsin	80,026	80,996	83,104	84,353	84,977
Wyoming	3,927	4,323	4,525	4,672	4,837
Total, all States	3,249,805	3,285,851	3,462,304	3,499,988	3,652,940
Total State and local governments	3,367,000	3,395,000	3,581,000	3,632,000	4/
District of Columbia	7,861	7,334	9,842	12,514	12,667
Number of States using tax	50	50	50	50	50

1/ Does not include locally imposed and collected tax receipts, or locally imposed tax amounts collected by the State and returned to local governments. Totals for several of the States include related license taxes.

2/ Preliminary.

3/ Fiscal year for Alabama ends on September 30 and for Texas on August 31.

4/ Not available.

5/ Tax rate increased effective June 1, 1975.

6/ Tax rate increased effective July 1, 1975.

Table 25 -- United States exports of tobacco to principal importing countries, by types, calendar years, 1975 - 1978.

Importing country	Flue-cured			
	Metric tons			
	1975	1976	1977	1978 i/
	Metric tons	Metric tons	Metric tons	Metric tons
Canada	50	4	122	181
Jamaica	777	725	565	240
Sweden	4,102	3,241	2,838	3,905
Norway	1,563	1,843	1,868	1,120
Finland	2,316	1,960	1,585	2,132
Denmark	5,090	2,514	4,745	7,359
United Kingdom	27,231	23,246	15,576	49,354
Ireland (Eire)	2,495	2,095	1,488	1,918
Netherlands	7,486	6,236	6,910	6,612
Belgium and Luxembourg	2,388	2,242	2,945	5,421
France	689	815	1,015	2,157
Germany, West	33,030	22,740	25,742	16,054
Austria	1,462	1,392	1,372	1,285
Switzerland	6,489	4,137	4,017	3,859
Spain	4,013	2,089	1,926	7,876
Portugal	215	0	175	0
Italy	9,121	7,777	10,291	9,535
Thailand	7,100	8,624	5,262	5,260
Malaysia	2,595	2,999	4,368	4,213
Singapore	256	689	682	652
Philippines	2,809	2,822	4,547	3,049
Hong Kong	707	767	971	894
China, Republic of (Taiwan)	6,728	5,586	9,364	11,588
Japan	25,012	41,001	42,558	32,931
Australia	5,323	3,312	4,710	4,377
New Zealand	1,625	1,702	1,708	1,155
Egypt	4,410	3,439	8,108	7,455
Zaire (Congo, Kinshasa)	0	239	2,482	0
Other countries	11,792	17,555	18,819	15,897
Total	176,874	171,791	186,758	206,279

Burley, type 31				
Sweden	1,282	1,032	817	1,503
Norway	168	112	167	139
Denmark	1,011	512	783	1,741
United Kingdom	290	48	111	4,867
Netherlands	1,147	258	754	1,156
Belgium and Luxembourg	105	148	393	702
Japan	3,152	4,655	3,770	4,680
Germany, West	5,269	6,210	6,333	3,687
Switzerland	994	779	2,913	3,106
Finland	578	393	282	397
Portugal	71	0	726	0
Italy	4,757	6,522	7,453	8,716
Philippines	2,564	3,093	2,463	1,936
Other countries	6,682	7,016	8,911	8,665
Total	28,070	30,778	35,876	41,295

Dark Virginia, types 21 and 37				
Sweden	96	198	124	290
Norway	759	385	583	503
United Kingdom	104	35	123	42
Netherlands	0	0	30	12
Germany, West	345	244	283	184
Austria	42	64	0	35
Switzerland	82	77	356	28
Other countries	81	332	147	45
Total	1,509	1,335	1,646	1,139

See footnotes at end of table.

Table 25 -- United States exports of tobacco to principal importing countries, by types, calendar years 1975 - 1978.

Kentucky and Tennessee fire-cured, types 22 and 23

Importing country	Metric tons			
	1975	1976	1977	1978
	Metric tons	Metric tons	Metric tons	Metric tons
Sweden	0	359	205	350
Denmark	85	17	109	50
United Kingdom	17	20	3	62
Ireland (Eire)	11	5	0	0
Netherlands	4,041	4,165	5,342	6,559
Belgium and Luxembourg	221	216	474	248
France	1,084	1,205	644	1,082
West Germany	62	64	96	192
Switzerland	364	292	230	276
Italy	0	65	460	234
Zaire (Congo, Kinshasa)	0	183	191	250
Other countries	871	796	908	960
Total	6,756	7,387	8,662	10,263

Maryland, type 32

Netherlands	16	39	28	41
Belgium and Luxembourg	552	383	533	416
West Germany	655	1,011	409	749
Switzerland	415	1,834	2,067	2,315
Spain	25	0	102	0
Portugal	0	0	0	0
Other countries	185	516	334	1,285
Total	1,848	3,783	3,473	4,806

One sucker, type 35

United Kingdom	4	0	3	2
Belgium and Luxembourg	34	30	0	0
West Germany	0	1	0	0
Zaire (Congo, Kinshasa)	0	64	0	70
Other countries	14	0	35	36
Total	52	95	38	108

Green River, type 36

United Kingdom	39	15	23	27
Belgium and Luxembourg	48	0	1	7
Zaire (Congo, Kinshasa)	0	36	0	53
Other countries	1	3	0	134
Total	88	54	24	221

Cigar filler, types 41-46

Canada	4	7	5	14
France	67	124	88	51
New Zealand	0	0	0	0
Other countries	18	52	56	24
Total	89	183	149	89

Cigar binder, types 51-55

Canada	24	25	16	8
Netherlands	0	0	0	0
Belgium and Luxembourg	0	0	0	0
West Germany	7	0	0	0
Canary Islands	2	0	0	1
Other countries	43	109	57	8
Total	76	134	73	17

See footnotes at end of table.

Table 25 -- United States exports of tobacco to principal importing countries, by types, calendar years, 1975 - 1978.

Cigar wrapper - type 61-62

Importing country	Metric tons			
	1975	1976	1977	1978 1/
	Metric tons	Metric tons	Metric tons	Metric tons
Canada	73	85	26	23
Dominican Republic	773	800	880	1,139
United Kingdom	332	212	155	196
Netherlands	73	273	296	144
Belgium and Luxembourg	19	20	5	2
West Germany	193	97	164	54
Canary Islands	12	15	9	13
Other countries	469	205	303	109
Total	1,944	1,707	1,838	1,680

Total cigar leaf, types 41-62

Canada	101	117	47	46
Dominican Republic	784	871	949	1,151
United Kingdom	347	212	158	196
Netherlands	73	273	296	144
Belgium and Luxembourg	19	20	29	2
France	174	140	99	67
West Germany	200	140	164	54
Canary Islands	14	15	10	14
New Zealand	22	37	18	17
Other countries	374	200	290	96
Total	2,808	2,025	2,060	1,787

Perique, type 72

Norway	0	0	0	0
United Kingdom	13	11	24	6
Australia	9	4	11	9
Other countries	30	33	11	6
Total	52	48	46	21

Black fat

West Indies 2/.	1	1	5	0
Netherland Antilles	9	5	4	3
Canary Islands & Spanish Africa, n.e.s.:	2	1	0	1
Cameroun	311	256	115	134
Nigeria	70	216	160	190
Other countries	1,185	1,008	945	657
Total	1,578	1,487	1,229	1,175

Stems, trimmings, and scrap

Canada	410	424	1,925	1,158
United Kingdom	7,547	8,986	5,220	12,785
Ireland	1,217	1,397	909	464
Sweden	1,455	1,565	1,373	1,902
Denmark	1,252	1,040	2,020	3,118
Netherlands	792	230	493	952
France	1,785	926	885	942
West Germany	1,700	3,007	2,729	2,994
Austria	478	323	357	36
Malaysia	641	321	1,107	303
Japan	8,816	14,530	15,101	8,974
Australia	1,275	778	1,804	1,474
Other countries	8,407	9,914	11,381	9,777
Total	35,775	43,441	45,304	44,879

1/ Subject to revision.

2/ Includes Bahamas, Jamaica, Leeward and Windward Islands, Barbados, and Trinidad and Tobago.

Foreign Agricultural Service. Compiled from publications of the Bureau of Census, U. S. Department of Commerce.

Table 26 --Exports of unmanufactured tobacco from the United States, quantity and value, types, calendar years, 1975 - 1978.

Type	Metric tons			
	1975	1976	1977	1978 ^{1/}
	Metric tons	Metric tons	Metric tons	Metric tons
Flue-cured, types 11-14	177,553	171,791	186,758	206,279
Burley, type 31	28,071	30,778	35,876	41,295
Southern Maryland, type 32	1,848	3,783	3,473	4,806
Virginia dark, types 21 & 37	1,509	1,335	1,646	1,139
Kentucky & Tennessee fire-cured, types 22 & 23	6,756	7,387	8,662	10,263
One sucker, type 35	52	95	58	108
Green river, type 36	88	54	24	221
Cigar leaf, types 41-62	2,108	2,025	2,060	1,787
Black fat	1,578	1,487	1,229	1,175
Perique, type 72	52	48	46	21
Stems, trimmings and scrap	35,775	43,441	45,304	44,879
Total declared weight	255,390	262,224	285,116	311,973
	1,000 dollars	1,000 dollars	1,000 dollars	1,000 dollars
Flue-cured, types 11-14	663,266	700,596	836,669	1,022,568
Burley, type 31	108,877	123,504	151,693	187,888
Southern Maryland, type 32	5,576	13,253	14,078	20,784
Virginia dark, types 21 & 37	4,433	4,370	5,251	4,603
Kentucky & Tennessee fire-cured, types 22 & 23	17,434	21,329	31,652	40,208
One sucker, type 35	89	256	110	415
Green river, type 36	189	139	89	650
Cigar leaf, types 41-62	23,702	24,348	21,848	25,236
Black fat	5,370	6,625	6,441	6,683
Perique, type 72	225	170	266	132
Stems, trimmings and scrap	22,745	27,003	26,186	27,818
Total value	851,905	921,593	1,094,283	1,336,985

^{1/} Subject to revision. Detail may not add to total because of rounding.

Foreign Agricultural Service. Compiled from publications of the Bureau of the Census, U. S. Department of Commerce.

Table 27 --Exports of unmanufactured tobacco from the United States, to principal importing countries, calendar years, 1975 - 1978.

Country of destination	Metric tons			
	1975	1976	1977	1978 ^{1/}
	Metric tons	Metric tons	Metric tons	Metric tons
European Community:				
Denmark	7,447	4,084	7,659	12,280
United Kingdom	35,591	32,572	21,242	67,503
Ireland	3,723	3,497	2,434	2,382
Netherlands	13,556	11,202	13,852	15,503
Belgium & Luxembourg	3,668	3,395	4,472	7,646
France	4,308	3,753	2,853	4,445
West Germany	41,268	33,423	35,767	24,125
Italy	14,296	15,041	18,432	18,596
Total European Community	123,857	106,967	106,981	152,476
Sweden	6,935	6,394	5,357	7,951
Norway	2,553	2,577	2,701	1,912
Austria	2,302	1,919	1,795	1,574
Switzerland	11,730	11,024	13,045	11,893
Portugal	287	0	1,246	0
China, Republic of (Taiwan)	7,269	5,586	9,364	11,704
Thailand	8,463	9,871	7,243	8,257
Philippines	5,373	5,917	7,010	6,304
Hong Kong	986	1,243	1,354	1,256
Japan	36,987	60,208	61,429	46,385
Australia	7,054	4,691	6,435	5,602
New Zealand - Western Samoa	2,275	2,238	2,251	1,670
Other countries	39,339	43,648	58,920	60,543
Total	255,390	622,223	285,131	317,527

^{1/} Subject to revision. Detail may not add to totals because of rounding.

Foreign Agricultural Service. Compiled from publications of the Bureau of the Census, U. S. Department of Commerce.

Table 28--United States exports of tobacco products calendar years, 1973-1978

Product	Exports for year					
	1973	1974	1975	1976	1977	1978 ^{1/}
	Millions	Millions	Millions	Millions	Millions	Millions
Cigarettes	41,543	46,901	49,935	61,370	66,845	74,359
	Thousands	Thousands	Thousands	Thousands	Thousands	Thousands
Cigars, cheroots, and cigarillos	107,365	86,464	91,839	124,434	106,718	165,584
	Metric tons	Metric tons	Metric tons	Metric tons	Metric tons	Metric tons
Chewing tobacco and snuff	42	55	32	34	43	47
Smoking tobacco:						
in packages	529	425	706	370	385	596
in bulk	11,756	17,650	7,997	6,310	4,459	982
	1,000 dol.	1,000 dol.	1,000 dol.	1,000 dol.	1,000 dol.	1,000 dol.
Declared value	288,977	360,499	401,211	536,049	637,352	766,464

^{1/} Subject to revision.

Foreign Agricultural Service. Compiled from records of the Bureau of the Census, U.S. Department of Commerce.

Table 29--United States imports of tobacco products for consumption, by countries, calendar years, 1973-1978

	Imports for year					
	1973	1974	1975	1976	1977	1978 ^{1/}
	1,000 pcs.	1,000 pcs.	1,000 pcs.	1,000 pcs.	1,000 pcs.	1,000 pcs.
Cigarettes						
Canada	33,896	44,478	63,471	72,316	110,655	130,658
Denmark	60	2,225	9,260	9,440	7,600	8,885
United Kingdom	90,930	193,580	206,192	192,805	215,120	248,286
France	790	240	775	1,200	5,510	5,470
Germany	1,955	2,792	3,689	2,770	4,688	6,434
Philippines	160	0	480	0	0	40
Other countries	6,562	14,379	25,694	14,210	17,629	13,768
Total	134,353	257,694	309,561	292,741	361,202	413,521
	Metric tons	Metric tons	Metric tons	Metric tons	Metric tons	Metric tons
Cigars, cheroots, and cigarillos						
Mexico	62	77	65	74	98	123
Jamaica	92	86	90	0	127	154
Netherlands	24	21	26	22	12	14
Cenary Islands	108	121	127	112	141	124
Philippines	98	17	11	15	5	8
Other countries	173	232	308	514	458	465
Total	557	554	627	737	841	888
All other products: ^{2/}						
United Kingdom	207	199	295	264	182	253
Netherlands	1,518	1,549	1,226	1,415	1,016	1,000
Sweden	1,408	2,014	1,736	2,016	1,170	1,538
Other countries	497	1,178	700	3,112	3,058	1,301
Total	3,630	4,940	3,957	6,807	5,426	4,092
	1,000 dol.	1,000 dol.	1,000 dol.	1,000 dol.	1,000 dol.	1,000 dol.
Declared value	24,368	32,613	35,233	46,680	46,017	28,993

^{1/} Subject to revision.

^{2/} Practically all smoking tobacco, but includes all other manufactured tobacco products not specifically provided for.

Foreign Agricultural Service. Compiled from records of the Bureau of the Census, U.S. Department of Commerce.

Table 30 -- United States imports of unmanufactured tobacco for consumption, by countries, calendar year, 1975 - 1978.

Kind of tobacco and country from which imported	1975	1976	1977	1978 1/
	Metric tons	Metric tons	Metric tons	Metric tons
Cigarette leaf:				
Flue-cured and burley	16,524	15,704	10,756	8,581
Other cigarette leaf				
Yugoslavia	6,069	7,745	6,248	7,761
Greece	11,569	9,821	7,545	12,005
Turkey	50,516	42,774	39,664	40,978
Other countries	27,984	32,556	34,594	37,700
Total other cigarette leaf	96,138	92,896	88,048	89,444
Total cigarette leaf	112,662	106,600	99,164	98,025
Cigar leaf:				
Cigar wrapper:				
Mexico	38	32	29	49
Honduras	147	148	127	146
Nicaragua	236	249	340	286
Ecuador	15	18	13	11
Indonesia	1	0	0	3
Cameroon	195	196	212	213
Other countries	31	47	14	29
Total cigar wrapper	665	690	735	737
Cigar filler: (unstemmed)				
Mexico	331	113	152	92
Honduras	234	257	172	199
Nicaragua	537	289	275	185
Dominican Republic	434	520	41	146
Colombia	372	165	20	48
Brazil	125	83	16	99
Paraguay	190	156	5	23
Indonesia	542	553	328	789
Cameroon	105	274	60	50
Other countries	1,855	721	480	783
Total unstemmed	4,735	3,091	1,549	2,406
Cigar filler: (stemmed)				
Mexico	149	120	143	162
Honduras	309	297	324	347
Nicaragua	32	27	17	36
Dominican Republic	495	457	428	362
Colombia	6	3	3	2
Brazil	191	113	147	119
Indonesia	12	5	0	0
Other countries	190	74	78	105
Total stemmed	1,384	1,096	1,140	1,133
Total cigar leaf	6,782	4,877	3,424	4,276
Scrap:				
Canada 2/	667	635	685	1,626
Greece 2/	151	169	129	147
Italy 2/	154	47	298	1,975
Korea, Republic of 2/	3,334	5,497	7,489	7,569
Lebanon 2/	493	0	350	0
Malawi 2/	56	383	313	649
Mexico 2/	2,614	1,823	2,634	4,072
Mozambique 2/	324	427	79	5
Thailand 2/	100	109	336	320
Turkey 2/	2,633	2,277	2,920	2,984
Yugoslavia 2/	172	0	2	0
Cyprus 2/	0	51	0	3
Angola 2/	24	0	0	7
Syria 2/	131	0	60	0
Zambia 2/	15	16	5	9
Argentina	3,382	2,066	2,932	2,479
Brazil	5,191	6,608	11,467	11,149
Colombia	2,283	1,282	1,684	1,753
Dominican Republic	4,174	3,529	3,383	2,521
Honduras	572	764	754	1,027
Indonesia	1,671	1,894	2,059	2,953
Paraguay	1,823	1,387	1,182	1,371
Peru	629	215	210	97
Philippines	6,121	7,057	6,040	6,724
Other countries	1,432	1,879	3,715	5,591
Total scrap	38,144	38,115	48,726	54,011

See footnotes at end of table.

Table 30 -- United States imports of unmanufactured tobacco for consumption, by countries, calendar years, 1975 - 1978.

Kind of tobacco & country from which imported	Metric tons			
	1975	1976	1977	1978 ^{1/}
	Metric tons	Metric tons	Metric tons	Metric tons
Stems:				
Argentina	330	894	402	360
Brazil	2,100	2,651	1,393	1,445
Canada	362	277	20	288
Korea, Republic of	212	65	90	122
Malawi	85	0	45	0
Other countries	1,245	974	1,267	2,455
Total stems	4,234	4,861	3,217	4,670
Total imports	161,822	154,453	154,560	160,982
	Value			
	1,000 dollars	1,000 dollars	1,000 dollars	1,000 dollars
Cigarette leaf	158,249	199,346	230,595	261,001
Cigar leaf:				
Cigar wrapper ^{2/}	7,024	8,012	8,435	8,288
Cigar filler:				
Unstemmed	9,019	6,182	4,518	5,028
Stemmed	4,081	3,614	3,884	4,075
Total cigar leaf	20,123	17,812	16,837	17,391
Total scrap ^{3/}	48,003	50,778	78,772	98,144
Total stems	1,187	1,736	512	1,400
Total imports	227,561	269,672	326,716	377,936

^{1/} Subject to revision.

^{2/} Includes mixed filler and wrapper.

^{3/} Scrap imports from these countries are considered to be primarily cigarette type tobacco.

Foreign Agricultural Service, Department of Commerce. Compiled from records of the Bureau of the Census, Department of Commerce.

Table 31 -- Tariff rates on selective items of tobacco and tobacco products imported into the United States under the Tariff Act of 1930 and current trade agreements. 1/

Kinds of tobacco imported	TSUS item Number	Rate per lb.	Rate per lb.
		Tariff Act of 1930 Dollars	as of Jan. 1, 1978 Dollars 2/
Wrapper tobacco (whether or not mixed or packed with filler tobacco):			
Not stemmed	170.10	2.275	.909
Stemmed	170.15	2.925	1.548
Filler tobacco (whether or not mixed or packed with wrapper tobacco):			
When mixed or packed with over 35% of wrapper tobacco:			
Not stemmed	170.20	2,275	.909
Stemmed	170.25	2,925	1.548
Cigarette leaf:			
Not stemmed			
Leaf, oriental or Turkish type, not over 8.5 inches in length	170.28	.35	.115
Flue-cured and burley	170.32	.35	.1275
Stemmed	170.35	.50	.45
Other, including cigar leaf:			
Not stemmed	170.40	.35	.161
Stemmed	170.45	.50	.23
Tobacco stems:			
Not cut, ground, or pulverized	170.50	Free	Free
Scrap tobacco	170.60	.35	.161
Cigarettes	170.65	4.50 lb. + 25% ad val.	1.06 lb. + 5% ad val.
Cigars and cheroots:			
Cigars each valued 15 cents or over	170.66	4.50 lb. + 25% ad val.	.95 lb. + 5% ad val.
Other cigars	170.72	4.50 lb. + 25% ad val.	1.91 lb. + 10.5% ad val.
Snuff and snuff flour	170.78	.55	.11
Tobacco mfd. or not mfd. not specifically provided for	170.80	.55	.175

1/ Consult official tariff schedules for a complete listing of rates.

2/ Section 5 of the Trade Agreement Extension Act of 1951 requires imports from most communist countries to enter at the 1930 rates. Foreign Agricultural Service. Compiled from U. S. Tariff Commission, U.S. Department of Commerce.

Table 32 -- Import duties on unmanufactured tobacco in major United States markets, as of January 1, 1978.

Country	Tariff schedule
European community:	
United Kingdom	\$.33 to \$.84 per kilogram 1/
West Germany	"
Italy	"
France	"
Netherlands	"
Denmark	"
Ireland	"
Belgium	"
Luxembourg	"
Japan	Duty free 2/
Australia	\$1.63 per kilogram
Republic of China	39 percent ad valorem
Sweden	Duty free 2/
Switzerland	Duty free
Thailand	\$1.72 per kilogram or 60% ad valorem whichever is higher
Spain	Duty free 2/
Philippines	100 percent ad valorem 3/

Import duties converted at current exchange rates.

1/ Approximate minimum and maximum charges - tariff is ad valorem, and varies with the type and value of tobacco. Flue-cured and burley maximum is about .55 per kilogram.

2/ Imports by Government Tobacco Monopoly.

3/ Applied on 110% of F.O.B. invoice value.

NOTE: Government monopoly controls imports from Japan, Sweden, Thailand and Spain; imports are subject to non-tariff restrictions in Australia and the Philippines. Foreign import duties as expressed in dollars are approximate and subject to change with fluctuations in exchange rates.

Foreign Agricultural Service, USDA.

Table 33 -- Production of flue-cured tobacco in selected countries, calendar years, 1975 - 1978. 1/

Continent and country	1975	1976	1977	1978 2/
	Metric tons	Metric tons	Metric tons	Metric tons
North America:				
Canada	103,526	79,216	101,204	112,493
United States	641,686	597,054	512,436	552,717
South America:				
Argentina	37,764	39,107	43,834	34,541
Brazil	172,569	155,921	165,000	179,000
Venezuela	10,500	11,150	10,401	10,350
Europe:				
Italy	14,166	13,183	18,197	18,000
Asia:				
India	111,161	96,800	122,000	145,000
Pakistan	31,298	22,226	29,938	31,752
Indonesia	18,520	8,272	17,700	14,400
Japan	93,994	98,696	101,664	100,300
Korea, Republic of	75,572	76,200	92,463	92,130
China, Peoples Republic of	615,082	620,000	585,000	590,000
China, Republic of (Taiwan)	17,882	26,433	24,695	22,129
Philippines	33,720	47,952	45,000	42,195
Thailand	39,760	36,290	36,590	33,950
Africa:				
Rhodesia	90,720	100,000	80,400	64,000
Malawi	14,899	16,171	23,000	21,773
Tanzania	11,943	14,548	15,512	17,500
Zambia	6,466	6,270	5,588	3,704
South Africa, Republic of	16,850	19,740	26,340	28,723
Oceania:				
Australia	15,462	14,546	16,120	15,300
New Zealand	3,230	3,272	3,135	3,500
Estimated world total 3/	2,313,447	2,277,508	2,257,620	2,307,325

1/ Production figures are on a farm-sales-weight basis which is about 10 percent above dry weight basis normally reported in trade statistics.

2/ Subject to revision.

3/ Includes estimates for countries not listed.

Table 34 -- Production of burley tobacco in selected countries, calendar years, 1975 - 1978. 1/

Continent and country	1975	1976	1977	1978 2/
	Metric tons	Metric tons	Metric tons	Metric tons
North America:				
United States	289,878	307,984	279,839	282,464
Mexico	19,145	24,409	27,040	26,175
South America:				
Argentina	10,996	12,059	12,183	6,730
Brazil	26,947	23,322	26,000	31,000
Venezuela	4,600	4,363	4,225	4,200
Europe:				
Greece	13,233	16,536	17,112	18,400
Italy	46,680	41,730	44,327	45,000
Spain	19,449	21,373	18,582	28,753
Asia:				
Japan	21,907	25,542	23,301	22,900
Korea, Republic of	28,427	35,026	51,573	45,841
Philippines	13,000	7,000	8,250	11,000
Africa:				
Malawi	7,997	7,212	9,900	11,567
Rhodesia	3,765	3,300	2,500	1,940
Estimated world total 3/	562,562	587,101	582,539	600,674

1/ Production figures are on a farm-sales-weight basis which is about 10 percent above dry weight basis normally reported in trade statistics.

2/ Subject to revision.

3/ Includes estimates for countries not listed.

Foreign Agricultural Service circular on World Production. Official estimates of foreign countries, reports from U.S. Foreign Service officers, results of office research, and other information.

Table 35-- Acreage and production in selected countries, calendar years, annual: 1974 - 1978.

Continent and country	Acreage harvested					Production (farm-gates-weight)				
	1974	1975	1976	1977 1/	1978 2/	1974	1975	1976	1977 1/	1978 2/
	1,000 hectares	1,000 hectares	1,000 hectares	1,000 hectares	1,000 hectares	Metric tons	Metric tons	Metric tons	Metric tons	Metric tons
North America:										
Canada	50	42	37	44	49	116,479	106,055	81,499	104,275	114,747
Mexico	39	39	39	38	44	67,298	51,480	64,340	64,300	68,000
U.S. (incl. PR)	391	442	424	389	384	906,118	994,003	970,920	869,251	910,861
Cuba	69	69	60	60	60	49,896	49,896	45,824	45,000	46,000
Dominican Republic	30	17	25	28	40	37,583	15,121	46,000	38,700	57,100
South America:										
Argentina	92	91	79	75	75	97,652	96,769	94,600	82,530	62,141
Brazil	211	229	256	261	256	225,501	285,608	276,100	310,000	328,000
Colombia	25	31	29	33	36	41,100	45,700	38,621	58,461	62,425
Paraguay	28	22	33	21	21	33,000	24,000	45,800	26,700	26,000
Europe:										
France	20	21	22	22	20	51,731	56,325	61,600	43,586	55,000
Germany, West	4	4	4	4	4	10,188	8,937	10,046	8,783	8,936
Greece	82	98	121	104	104	81,101	118,194	138,834	118,938	113,470
Italy	49	57	66	59	57	92,754	113,446	108,642	109,706	107,640
Spain	13	16	16	15	17	22,245	26,945	28,562	21,556	31,700
Bulgaria	134	120	131	122	124	140,000	151,002	167,000	118,000	170,000
Yugoslavia	56	62	69	65	58	59,008	70,000	75,000	65,000	60,000
Africa:										
Algeria	11	11	9	9	9	6,001	5,897	1,680	4,000	4,100
Rhodesia	53	55	58	53	40	79,517	94,576	103,400	83,000	56,000
Zambia	7	9	8	6	5	6,630	7,874	6,476	5,900	4,004
Malawi	53	57	64	72	82	27,289	35,126	38,137	53,400	55,509
South Africa, Republic of	39	36	39	46	46	33,730	27,490	32,090	41,739	48,668
Asia:										
Iran	12	11	16	13	21	12,000	11,001	17,666	16,227	24,012
Iraq	17	17	17	17	17	10,400	10,432	10,432	9,600	9,500
Lebanon	8	8	7	4	4	10,000	10,300	8,000	5,000	5,500
Syria	15	15	17	17	14	10,122	11,500	12,000	11,500	11,000
Turkey	335	357	323	270	285	203,488	208,605	315,358	245,232	290,300
U.S.S.R.	187	189	166	182	182	313,002	298,002	303,000	302,000	300,000
Burma	64	64	64	64	64	74,173	74,844	74,844	75,000	75,000
China, Rep. of:	764	746	775	780	780	983,854	982,499	970,000	975,000	975,000
China, (Taiwan):	8	8	10	10	9	17,713	18,109	26,433	24,695	22,129
India	461	409	368	432	475	462,103	394,803	349,800	414,200	430,000
Pakistan	49	47	47	51	56	64,570	78,020	60,678	72,580	81,648
Bangladesh	47	49	49	68	46	40,942	39,708	44,462	63,530	40,557
Vietnam	9	9	9	15	20	8,401	8,401	8,401	20,000	25,000
Cambodia	12	12	12	12	14	7,257	7,257	7,257	7,300	8,800
Indonesia	170	171	160	182	149	78,344	82,159	80,097	75,900	70,300
Japan	56	58	160	64	64	151,340	165,706	176,159	173,249	172,600
Korea, Rep. of:	54	54	63	62	64	95,681	104,234	111,566	144,532	138,494
Philippines	105	81	112	110	104	88,431	66,271	89,002	84,300	79,245
Thailand	111	143	146	151	152	554,748	69,535	56,562	69,459	67,350
Oceania:										
Australia	9	9	10	9	9	15,407	15,916	15,146	16,820	15,800
New Zealand	2	2	2	2	2	3,224	3,330	3,349	3,197	3,600
Estimated world total 3/	4,293	4,355	4,362	4,395	4,422	5,185,387	5,369,265	5,572,405	5,449,879	5,592,550

1/ Subject to revision.

2/ Preliminary.

3/ Total includes data for countries not listed.

Foreign Agricultural Service. Official estimates of foreign countries, reports from U.S. Foreign Service officers, results of office research, and other information.

Major sources of tobacco statistics and information

U. S. Department of Agriculture:

Agricultural Marketing Service (AMS)

Tobacco Stocks Reports	Quarterly
Tobacco Market Review	Annual
Report on the Manufacture of Snuff, Smoking & Chewing Tobacco.	Quarterly
Report on Tobacco Statistics	Annual
Tobacco in the United States	Misc. pub. No. 867

Agricultural Stabilization & Conservation Service (ASCS)

Tobacco - Allotted by Counties and Kinds	Annual
Report of Financial Condition & Operations - Commodity Credit Corporation.	Annual
Tobacco Loan Status.	Monthly

Economics, Statistics, and Cooperatives Service (ESCS)

Tobacco Situation	Quarterly
Agricultural Outlook	Monthly
Foreign Agricultural Trade of the United States.	Monthly
State Farm Income Statistics	Annual
Acres.	Annual
Crop Production.	Monthly
Summary of Acres, Yield & Production of Tobacco.	Annual
Prospective Planting of Tobacco.	Annual
Agricultural Prices.	Monthly & Annual
Crop Values.	Annual
Agricultural Statistics.	Annual

Foreign Agricultural Service (FAS)

United States Calendar Year - Tobacco Exports.	Annual
United States Calendar Year - Tobacco Imports.	Annual
World Tobacco Trade.	Annual
United States Fiscal Year - Tobacco Trade.	Annual
World Cigarette Output	Annual
World Tobacco Production	Annual
Summary of Tariff and Non-tariff Barriers in Free World Markets.	As needed

U. S. Department of Commerce:

Bureau of the Census

Census of Manufacturers - Industry Series; Tobacco Products.	1972
State Tax Collections - 1975	Annual
State Government Finances - 1974	Annual
Governmental Finances 1973-74	Annual
United States Industrial Outlook	Annual

U. S. Department of the Treasury:

Bureau of Alcohol, Tobacco, and Firearms

Statistical Release.	Monthly
Summary Statistics - Alcohol, Tobacco and Firearms	Annual

Internal Revenue Service

Collections.	Quarterly
----------------------	-----------

Miscellaneous Publications

<u>Name:</u>	<u>Frequency</u>
Handbook of Agricultural Charts.	U. S. Department of Agriculture. Annual Washington, D.C. 20250
International Tobacco.	Tobacco International, Inc. Bi-weekly New York, N. Y. 10017
Flue-Cured Tobacco Farmer.	Specialized Agricultural Publications. Monthly Raleigh, N. C. 27606
Tobacco Reporter.	East First Street. Monthly Duluth, MN 55802
The Tax Burden on Tobacco.	Tobacco Tax Council. Annual Richmond, VA 23226
State Cigarette Tax Report	Tobacco Tax Council. Monthly Richmond, VA 23226
Tobacco Retailers' Almanac	Retail Tobacco Dealers of America, Inc. Annual New York, N. Y. 10001

U.S. DEPARTMENT OF AGRICULTURE
AGRICULTURAL MARKETING SERVICE
WASHINGTON, D.C. 20250

POSTAGE AND FEES PAID
U.S. DEPARTMENT OF
AGRICULTURE
AGR 101



Official Business

Penalty for Private Use \$300.00.

END