



AgEcon SEARCH
RESEARCH IN AGRICULTURAL & APPLIED ECONOMICS

The World's Largest Open Access Agricultural & Applied Economics Digital Library

This document is discoverable and free to researchers across the globe due to the work of AgEcon Search.

Help ensure our sustainability.

Give to AgEcon Search

AgEcon Search

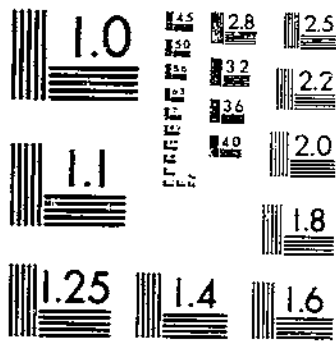
<http://ageconsearch.umn.edu>

aesearch@umn.edu

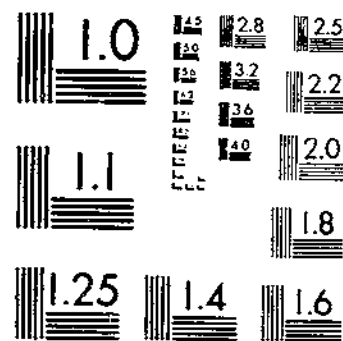
*Papers downloaded from **AgEcon Search** may be used for non-commercial purposes and personal study only. No other use, including posting to another Internet site, is permitted without permission from the copyright owner (not AgEcon Search), or as allowed under the provisions of Fair Use, U.S. Copyright Act, Title 17 U.S.C.*

SB 619 (1979) USDA STATISTICAL BULLETINS UPDATA
INDICES OF AGRICULTURAL PRODUCTION FOR ASIA AND OCEANIA 1961-65 1969-78
1 OF 1

START



MICROCOPY RESOLUTION TEST CHART
NATIONAL BUREAU OF STANDARDS-1963-A



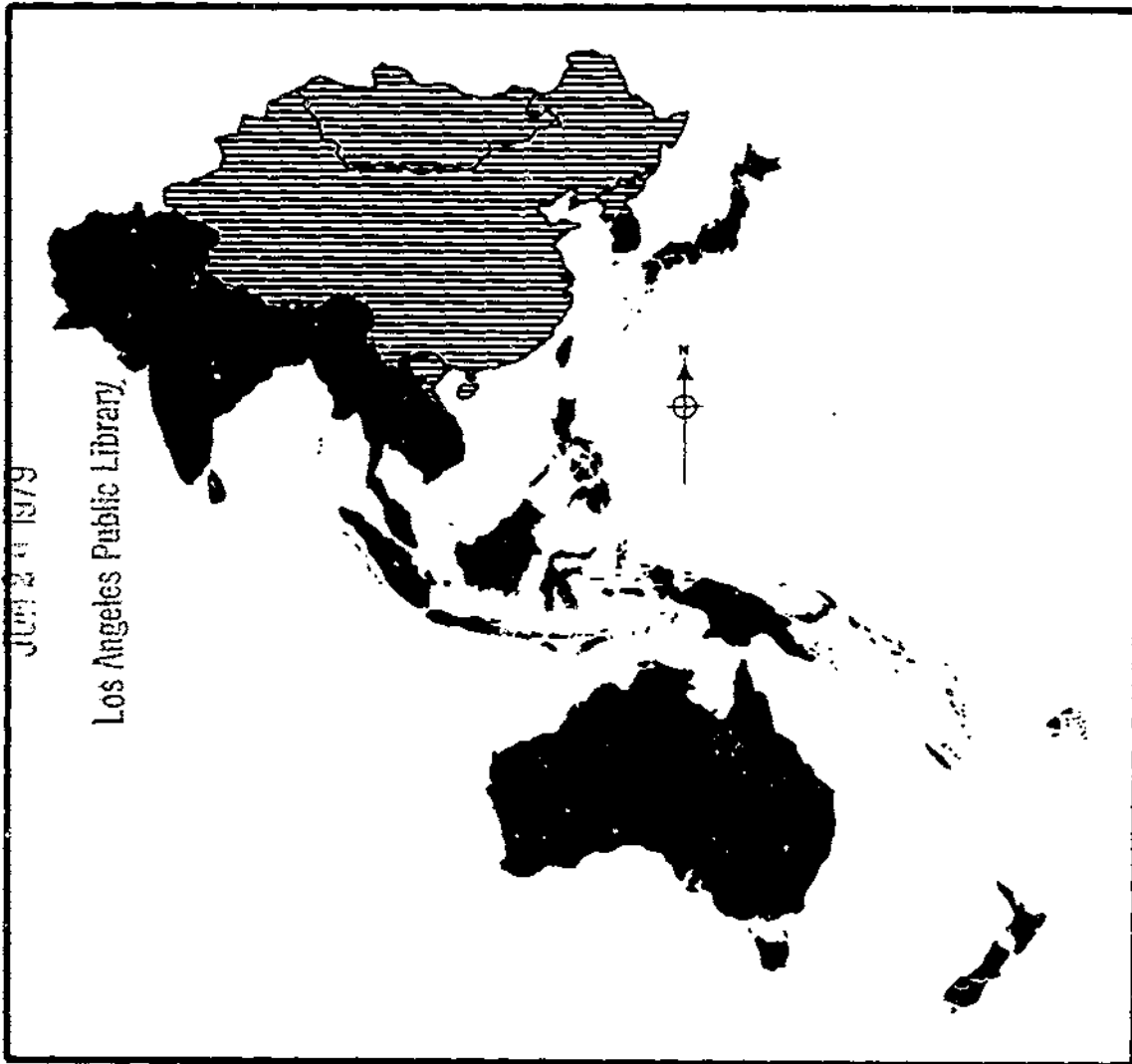
MICROCOPY RESOLUTION TEST CHART
NATIONAL BUREAU OF STANDARDS-1963-A

R
630.5
a 53.13

37

STATISTICAL BULLETIN NO. 619

Indices of Agricultural Production for Asia and Oceania, Average 1961-65 and Annual 1969-78



U. S. DEPOSITORY.

JUN 24 1979

Los Angeles Public Library

ECONOMICS, STATISTICS, and COOPERATIVES SERVICE
UNITED STATES DEPARTMENT OF AGRICULTURE

CONTENTS

| | <u>Page</u> |
|--|-------------|
| Introduction | 1 |
| <u>Table</u> | |
| <u>Summary tables</u> | |
| 1 South and East Asia and Oceania: Midyear population by country 1969-78. | 3 |
| 2 South and East Asia: Agricultural production for selected years . . | 4 |
| 3 Oceania: Agricultural production for selected years | 6 |
| 4 South and East Asia and Oceania: Indices of total agricultural production, by country, 1969-78. | 7 |
| 5 South and East Asia and Oceania: Indices of per capita agricultural production, by country, 1969-78. | 8 |
| 6 South and East Asia and Oceania: Indices of total food production by country, 1969-78. | 9 |
| 7 South and East Asia and Oceania: Indices of per capita food production, by country, 1969-78. | 10 |
| 8 South and East Asia and Oceania: Aggregates of total agricultural production, by country, average 1961-65, annual 1969-78 | 11 |
| 9 South and East Asia and Oceania: Aggregates of total food production, by country, average 1961-65, annual 1969-78. | 12 |
| <u>Country tables:</u> Production by commodity, value, and indices of total agricultural and food products, average 1961-65, annual 1969-78. | |
| 10 Australia. | 13 |
| 11 Bangladesh | 14 |
| 12 Burma. | 15 |
| 13 India. | 16 |
| 14 Indonesia. | 17 |
| 15 Japan. | 18 |
| 16 Korea, Republic of | 19 |
| 17 Malaysia, West | 20 |
| 18 New Zealand. | 21 |
| 19 Pakistan | 22 |
| 20 Philippines. | 23 |
| 21 Sri Lanka. | 24 |
| 22 Taiwan | 25 |
| 23 Thailand | 26 |



INDICES OF AGRICULTURAL PRODUCTION FOR ASIA AND OCEANIA,
AVERAGE 1961-65 AND ANNUAL 1969-78

Asia Branch
International Economics Division
Economics, Statistics, and Cooperatives Service

INTRODUCTION

Indices of agricultural production in foreign countries have been prepared since World War II as part of a continuing assessment of the current agricultural situation abroad. During and immediately after the war the effort focused on Europe. Since the mid-1950's, special attention has been given to the less developed countries because of an arrangement with the Agency for International Development, whereby the Department of Agriculture prepares annual reports on the volume of agricultural production in most countries that are aid recipients.

The indices presented on the following pages are constructed from production series given in metric tons, extending from 1969 through 1978, inclusive. To the extent possible, commodities were combined on a calendar year basis. Calendar year production includes crops harvested during the spring, summer, and autumn of 1969 (for example) and includes some crops such as rice, where the bulk of the crop is harvested in 1969, but continued into the early part of 1970. The base period is the average of the calendar years 1961-65. The indices in this report supersede those published in the June 1978 Indices of Agricultural Production for Asia and Oceania, Statistical Bulletin No. 606 and all previous editions.

The reader is cautioned against using the products listed by each country as its total food supply. The list does not include all food or fiber grown in the country. Also, output of some crops and products is exported and not available for domestic use.

Country Indices. Country indices are calculated with Laspeyres' base-weighted aggregate formula. Estimated base-period average prices received by farmers, expressed in U.S. dollars per metric ton, are used for weighting. When farm prices are not available it is necessary to use wholesale or export prices, adjusting to make them comparable to farm level.

Sources of Data. These indices are based on statistics of widely differing reliability. For most commodities, forecasts of production in the current year are published by the Foreign Agricultural Service. These forecasts cover the major producing countries and are subsequently revised by the governments concerned or by USDA. For other commodities (e.g., millet, sorghum, bananas, and cassava), FAS does not publish production statistics and ESCS must rely on other sources, such as FAO and foreign governments, for historical data and on estimates, based largely on trends, for the current year. Statistics of livestock products are generally less reliable than figures for output of the principal commercial crops. All production figures are based on the latest information available to this office as of the end of March 1979.

Regional Indices. Indices of agricultural production are computed for three regions: South Asia, East Asia, and Oceania, and totals for each region are included in the tables. Several smaller countries are omitted from the calculations for lack of data. The formula for the regional indices is a weighted-aggregative type, the regional aggregates being the sums of the country aggregates. This method is biased in favor of countries with relatively comprehensive commodity coverage or relatively high price weights, but the bias is not serious enough to offset the advantage of great flexibility in the grouping of countries into various alternative regions and sub-regions.

Commodity Coverage. In the country indices all major cash crops and subsistence crops are included if current production estimates are available. Hay and other crops grown for feeding on the farm are omitted. Output of milk, eggs, poultry meat, wool, honey, and fur skins, if significant, is included to the extent permitted by the quality of the data. Production of meat animals is represented for most countries by estimates of meat production.

Commodity Prices. Prices of agricultural commodities are generally reported in local currencies. Converting to U.S. dollars poses a problem. The currencies of many less developed countries are overvalued in varying degrees in the base-period years 1961-65. To convert with exchange rates at par value would give an unrealistic schedule of prices in U.S. dollars. Prices would be too high in proportion to the extent of currency depreciation. This would not affect the computation of an index for a given country, but it would cause difficulty when combining production

of several countries to obtain a regional index. Thus, conversion of prices to U.S. dollars, using free market exchange rates rather than official rates, offers a more standard basis for regional analysis. For this reason, prices in countries included in this publication are converted to U.S. dollars using free market rates reported in Hong Kong. The exchange rates employed are gathered on a monthly basis and averaged over the 5-year 1961-65 base period.

Feed Deduction. For Australia and Japan, the indices of agricultural production regard agriculture as consisting essentially of two farms: one which produces only crops and no livestock; and one which produces livestock products from pasture and forage, together with feed either produced domestically or imported. Aggregates are shown separately for crops and livestock, referring to the gross output of these two farms. When these two aggregates are combined, a deduction is made for livestock feed to avoid double counting of feed and the livestock products produced from it. This deduction is a fixed percentage of the livestock aggregates and represents the feed purchased by the national livestock farm.

The fixed percentage deduction for feed was derived by dividing the feed bill for the base period (1961-65) by the gross value of livestock output in the same years. The feed bill for the base period was calculated by applying to the grains, potatoes, and other crops fed, the prices received by farmers, with no markup for transportation or compounding. In the case of byproduct feeds, such as bran, oilcake, molasses, and brewers' grains, estimates of prices paid by farmers were used.

Food Production Indices. Index numbers of food production are computed for all countries and all regions. They are derived from the index numbers of agricultural production and differ only by the exclusion of inedible commodities and of coffee, tea, and spices.

COMMODITIES CLASSIFIED AS FOOD

| <u>Cereals</u> | <u>Vegetables and Tubers</u> | <u>Fruits</u> |
|--------------------------|------------------------------|---------------|
| Rice, paddy | White potatoes | Bananas |
| Wheat | Sweet potatoes | Pineapple |
| Millet and sorghum | Cassava | Citrus |
| Barley | Onions | Grapes |
| Corn | Chillies | Apples |
| Other grains | Other vegetables | Pears |
| | | Other fruit |
| | | |
| <u>Oilseeds and Oils</u> | <u>Livestock Products</u> | <u>Pulses</u> |
| Copra | Milk | Chickpeas |
| Peanuts | Eggs | Pigeon peas |
| Cottonseed | Meat | Other pulses |
| Rape and mustard seed | | |
| Soybeans | <u>Sugar</u> | <u>Other</u> |
| Sesame | Sugarcane | Cocoa |
| Palm oil | Sugar beets | |
| Palm kernel | Honey | |

TABLE 1--SOUTH AND EAST ASIA AND OCEANIA

| COUNTRY AND REGION | MID-YEAR POPULATION BY COUNTRY, 1969-78 | | | | | | | | | | Growth Rate ^{1/} Percent |
|-----------------------------------|---|------------------|------------------|------------------|------------------|------------------|------------------|------------------|------------------|------------------|---|
| | 1969 | 1970 | 1971 | 1972 | 1973 | 1974 | 1975 | 1976 | 1977 | 1978 | |
| | ----- THOUSANDS ----- | | | | | | | | | | |
| BANGLADESH | 68,170 | 69,920 | 71,622 | 73,057 | 74,946 | 76,887 | 78,963 | 81,095 | 83,284 | 85,294 | 2.2 |
| SRI LANKA | 12,091 | 12,360 | 12,635 | 12,916 | 13,190 | 13,456 | 13,728 | 14,006 | 14,289 | 14,578 | 1.8 |
| INDIA | 537,070 | 548,520 | 560,157 | 572,533 | 584,614 | 596,832 | 609,127 | 621,370 | 633,858 | 646,598 | 1.8 |
| PAKISTAN | 58,909 | 60,607 | 62,425 | 64,298 | 66,227 | 68,214 | 70,260 | 72,367 | 74,537 | 76,773 | 2.7 |
| SOUTH ASIA | 676,240 | 691,407 | 706,832 | 722,804 | 738,977 | 755,189 | 772,078 | 788,838 | 805,966 | 823,243 | 2.0 |
| BURMA | 27,306 | 27,637 | 27,900 | 28,232 | 29,052 | 29,749 | 30,463 | 31,194 | 31,890 | 32,590 | 1.8 |
| INDONESIA | 121,807 | 124,578 | 127,349 | 130,237 | 133,201 | 136,259 | 139,421 | 142,656 | 145,937 | 149,294 | 2.1 |
| JAPAN | 133,170 | 134,348 | 135,680 | 137,170 | 138,790 | 140,160 | 141,560 | 142,770 | 143,992 | 145,220 | 1.1 |
| KOREA, REPUBLIC OF | 31,652 | 32,394 | 33,209 | 33,637 | 34,276 | 34,927 | 35,749 | 36,557 | 36,975 | 37,695 | 1.7 |
| MALAYSIA, WEST | 8,952 | 9,176 | 9,405 | 9,640 | 9,882 | 10,121 | 10,378 | 10,646 | 10,921 | 11,279 | 2.3 |
| PHILIPPINES | 36,450 | 37,549 | 38,563 | 39,604 | 40,673 | 41,772 | 42,801 | 43,871 | 44,968 | 46,092 | 2.3 |
| TAIWAN (REP. OF CHINA) | 14,111 | 14,524 | 14,838 | 15,137 | 15,431 | 15,732 | 16,046 | 16,357 | 16,680 | 17,010 | 1.8 |
| THAILAND | 35,463 | 36,532 | 37,701 | 38,832 | 39,919 | 40,952 | 41,949 | 42,863 | 43,806 | 44,770 | 2.3 |
| EAST ASIA | 378,611 | 386,730 | 394,445 | 402,489 | 411,134 | 419,672 | 428,352 | 436,714 | 445,167 | 453,851 | 1.8 |
| EAST ASIA LESS JAPAN | 275,441 | 282,390 | 288,765 | 296,319 | 302,434 | 309,512 | 316,792 | 323,944 | 331,177 | 338,631 | 2.1 |
| SOUTH AND EAST ASIA | 1,054,851 | 1,078,137 | 1,101,277 | 1,125,293 | 1,150,111 | 1,175,061 | 1,200,430 | 1,225,552 | 1,251,135 | 1,277,094 | 1.9 |
| SO. AND E. ASIA LESS JAPAN | 951,681 | 973,797 | 995,597 | 1,018,123 | 1,041,411 | 1,064,901 | 1,088,870 | 1,112,782 | 1,137,145 | 1,161,874 | 2.0 |
| AUSTRALIA | 12,260 | 12,510 | 12,760 | 12,960 | 13,130 | 13,340 | 13,500 | 13,640 | 13,780 | 13,920 | 1.2 |
| NEW ZEALAND | 2,770 | 2,810 | 2,850 | 2,900 | 2,950 | 3,010 | 3,070 | 3,140 | 3,210 | 3,280 | 1.7 |
| OCEANIA | 15,030 | 15,320 | 15,610 | 15,860 | 16,080 | 16,350 | 16,570 | 16,780 | 16,990 | 17,200 | 1.3 |

^{1/} Compound annual rate, 1969-78.

TABLE 2-- SOUTH AND EAST ASIA

AGRICULTURAL PRODUCTION FOR SELECTED YEARS

| COMMODITY | AVERAGE 1961-65 | 1969 | 1970 | 1971 | 1972 | 1973 | 1974 | 1975 | 1976 | 1977 | 1978 | | |
|-------------------|--------------------|---------|---------|---------|-----------------------|---------|---------|---------|---------|---------|---------|--|--|
| | | | | | - 1,000 METRIC TONS - | | | | | | | | |
| WHEAT | 16,950 | 26,380 | 28,222 | 31,098 | 33,865 | 32,631 | 29,898 | 32,392 | 36,176 | 38,863 | 40,605 | | |
| RYE | 18 | 13 | 10 | 8 | 8 | 6 | 6 | 9 | 6 | 4 | 4 | | |
| RICE, PADDY | 132,471 | 156,027 | 157,797 | 155,416 | 147,489 | 164,787 | 160,339 | 178,368 | 168,162 | 188,518 | 192,625 | | |
| CORN | 10,269 | 12,579 | 15,215 | 12,973 | 12,728 | 14,336 | 14,601 | 17,082 | 15,598 | 15,056 | 15,608 | | |
| BARLEY | 5,263 | 5,017 | 5,004 | 4,914 | 4,621 | 4,182 | 4,148 | 5,210 | 5,306 | 3,504 | 4,120 | | |
| OATS | 145 | 67 | 61 | 60 | 57 | 41 | 37 | 28 | 22 | 18 | 26 | | |
| MILLET | 8,321 | 9,633 | 12,666 | 9,621 | 7,883 | 12,019 | 7,408 | 10,868 | 10,067 | 10,192 | 10,947 | | |
| BORGHUM | 9,139 | 10,116 | 8,548 | 8,183 | 7,410 | 9,687 | 10,964 | 10,108 | 11,053 | 12,319 | 12,483 | | |
| OTHER GRAINS | 43 | 28 | 22 | 25 | 29 | 25 | 4 | 4 | 5 | 4 | 2 | | |
| PULSES | 759 | 773 | 783 | 806 | 993 | 863 | 847 | 862 | 823 | 944 | 962 | | |
| CHICKPEAS | 6,211 | 4,892 | 6,115 | 5,788 | 5,649 | 5,150 | 4,771 | 4,635 | 6,519 | 6,104 | 6,131 | | |
| PIGEON PEA | 1,666 | 1,816 | 1,842 | 1,883 | 1,883 | 1,928 | 1,834 | 2,099 | 1,725 | 1,888 | 1,750 | | |
| OTHER PULSES | 4,512 | 4,293 | 4,303 | 4,736 | 4,330 | 3,402 | 4,500 | 4,165 | 5,061 | 4,212 | 4,459 | | |
| POTATOES | 7,340 | 8,954 | 8,190 | 8,730 | 9,009 | 8,410 | 8,354 | 10,226 | 11,718 | 11,369 | 11,400 | | |
| CASSAVA | 17,015 | 19,974 | 20,276 | 19,763 | 20,403 | 24,825 | 26,034 | 24,662 | 25,323 | 25,270 | 27,523 | | |
| SWEET POTATOES | 15,693 | 14,361 | 13,531 | 12,061 | 11,991 | 10,935 | 10,645 | 11,086 | 10,327 | 9,733 | 10,102 | | |
| OTHER ROOT CROPS | 158 | 160 | 143 | 137 | 127 | 125 | 125 | 138 | 150 | 150 | 150 | | |
| SUGARCANE | 163,886 | 194,739 | 212,757 | 208,814 | 186,832 | 208,561 | 235,495 | 233,134 | 249,954 | 271,697 | 287,674 | | |
| SUGAR BEETS | 1,323 | 2,075 | 2,324 | 2,197 | 2,760 | 2,951 | 1,879 | 1,758 | 2,169 | 2,333 | 2,400 | | |
| TOBACCO | 906 | 1,054 | 1,015 | 1,043 | 1,105 | 1,045 | 1,120 | 1,056 | 1,114 | 1,233 | 1,237 | | |
| COTTON | 1,455 | 1,622 | 1,545 | 2,059 | 1,872 | 1,850 | 1,853 | 1,806 | 1,595 | 1,776 | 1,803 | | |
| JUTE | 2,171 | 2,360 | 2,179 | 1,965 | 2,108 | 2,295 | 1,610 | 1,636 | 1,893 | 2,003 | 2,245 | | |
| KENAF | 303 | 375 | 390 | 370 | 432 | 640 | 400 | 250 | 180 | 270 | 300 | | |
| COTTONSEED | 2,907 | 3,244 | 3,090 | 4,116 | 3,725 | 3,714 | 3,926 | 3,299 | 3,106 | 3,977 | 3,926 | | |
| FLAXSEED | 445 | 339 | 480 | 464 | 542 | 437 | 513 | 573 | 607 | 428 | 515 | | |
| SOYBEANS | 944 | 882 | 981 | 947 | 1,000 | 1,054 | 1,198 | 1,229 | 1,092 | 1,060 | 1,163 | | |
| PEANUTS, IN SHELL | 6,164 | 6,331 | 7,457 | 7,425 | 5,285 | 7,230 | 6,367 | 8,126 | 6,528 | 7,449 | 7,614 | | |
| RAPESEED | 1,774 | 1,753 | 1,977 | 2,396 | 1,865 | 2,234 | 2,097 | 2,623 | 2,321 | 1,966 | 2,643 | | |
| SESAME SEED | 575 | 616 | 759 | 621 | 543 | 644 | 593 | 669 | 621 | 684 | 677 | | |
| CASTOR BEANS | 147 | 153 | 168 | 189 | 190 | 175 | 271 | 295 | 268 | 270 | 300 | | |
| CITRONELLA OIL | 3 | 1 | 1 | 1 | 1 | 1 | 1 | 1 | 1 | 1 | 1 | | |
| VEGETABLES | 14,836 | 19,534 | 18,788 | 19,678 | 19,530 | 19,104 | 19,404 | 19,802 | 20,547 | 20,840 | 21,017 | | |
| CITRUS FRUIT | 1,456 | 2,761 | 3,191 | 3,258 | 4,350 | 4,306 | 4,314 | 4,679 | 4,219 | 4,493 | 4,649 | | |
| APPLES | 1,186 | 1,304 | 1,233 | 1,226 | 1,220 | 1,254 | 1,147 | 1,239 | 1,229 | 1,309 | 1,226 | | |
| PEARS | 360 | 535 | 516 | 493 | 510 | 547 | 560 | 540 | 570 | 605 | 634 | | |
| PEACHES | 30 | 68 | 78 | 66 | 80 | 84 | 89 | 86 | 92 | 84 | 82 | | |
| PENSIMMONS | 400 | 478 | 373 | 326 | 338 | 379 | 326 | 313 | 304 | 325 | 327 | | |
| BANANAS | 1,377 | 1,888 | 1,751 | 1,871 | 1,994 | 1,803 | 2,087 | 2,320 | 1,816 | 1,898 | 1,930 | | |
| PINEAPPLES | 554 | 869 | 854 | 991 | 969 | 950 | 886 | 932 | 904 | 973 | 1,080 | | |
| OTHER FRUIT | 1,415 | 1,724 | 1,721 | 1,828 | 1,809 | 2,041 | 2,274 | 2,288 | 2,503 | 2,455 | 2,614 | | |

Continued--

TABLE 2--SOUTH AND EAST ASIA

AGRICULTURAL PRODUCTION FOR SELECTED YEARS -- continued

| COMMODITY | AVERAGE 1961-65 | 1969 | 1970 | 1971 | 1972 | 1973 | 1974 | 1975 | 1976 | 1977 | 1978 |
|---------------|---------------------------------------|-------|-------|-------|-------|-------|-------|-------|-------|-------|-------|
| | - - - - - 1,000 METRIC TONS - - - - - | | | | | | | | | | |
| SPICES | 39 | 72 | 68 | 67 | 68 | 67 | 68 | 65 | 63 | 65 | 70 |
| COFFEE | 197 | 300 | 309 | 340 | 304 | 325 | 332 | 342 | 330 | 356 | 362 |
| COCOA BEANS | 6 | 6 | 6 | 6 | 5 | 6 | 6 | 6 | 6 | 6 | 6 |
| TEA | 791 | 837 | 860 | 875 | 904 | 933 | 930 | 956 | 963 | 1,022 | 1,033 |
| RUBBER | 1,798 | 2,515 | 2,578 | 2,654 | 2,736 | 3,086 | 3,013 | 2,914 | 3,211 | 3,389 | 3,484 |
| ABACA | 114 | 108 | 122 | 105 | 110 | 115 | 126 | 134 | 140 | 140 | 150 |
| KAPOK | 23 | 28 | 28 | 29 | 28 | 29 | 29 | 29 | 29 | 30 | 30 |
| HEMP FIBER | 6 | 7 | 7 | 5 | 5 | 4 | 4 | 4 | 4 | 4 | 4 |
| PALM OIL | 270 | 515 | 616 | 799 | 928 | 740 | 1,159 | 1,403 | 1,652 | 1,981 | 1,950 |
| COPRA | 3,265 | 3,187 | 3,265 | 3,491 | 3,931 | 3,349 | 2,997 | 3,971 | 4,576 | 4,341 | 4,480 |
| PALM KERNELS | 63 | 117 | 135 | 175 | 196 | 193 | 244 | 302 | 359 | 433 | 424 |
| MEATS | 614 | 913 | 944 | 971 | 1,025 | 1,117 | 1,055 | 1,041 | 1,159 | 1,191 | 1,212 |
| BEEF AND VEAL | 278 | 287 | 309 | 321 | 337 | 287 | 341 | 418 | 374 | 442 | 499 |
| PORK | 316 | 545 | 690 | 784 | 663 | 923 | 1,053 | 1,128 | 1,144 | 1,315 | 1,472 |
| POULTRY MEAT | 148 | 400 | 487 | 537 | 639 | 705 | 764 | 617 | 701 | 785 | 890 |
| OTHER MEAT | 23 | 13 | 11 | 10 | 7 | 6 | 5 | 5 | 6 | 6 | 5 |
| MILK | 2,729 | 4,523 | 4,776 | 4,833 | 4,952 | 4,927 | 4,886 | 4,981 | 5,268 | 5,759 | 6,172 |
| EGGS | 882 | 1,607 | 1,739 | 1,806 | 1,794 | 1,805 | 1,799 | 1,788 | 1,860 | 1,878 | 1,956 |

TABLE 3--OCEANIA

AGRICULTURAL PRODUCTION FOR SELECTED YEARS

| COMMODITY | AVERAGE 1961-65 | 1969 | 1970 | 1971 | 1972 | 1973 | 1974 | 1975 | 1976 | 1977 | 1978 |
|--------------------|-----------------------|--------|--------|--------|--------|--------|--------|--------|--------|--------|--------|
| | - 1,000 METRIC TONS - | | | | | | | | | | |
| WHEAT | 8,469 | 11,003 | 8,177 | 8,932 | 8,974 | 12,363 | 11,572 | 12,185 | 12,094 | 9,868 | 17,988 |
| RYE | 11 | 20 | 22 | 24 | 9 | 21 | 8 | 11 | 15 | 12 | 14 |
| RICE, PADRY | 136 | 256 | 247 | 299 | 348 | 309 | 409 | 398 | 418 | 487 | 571 |
| CORN | 192 | 201 | 250 | 313 | 330 | 257 | 194 | 338 | 363 | 403 | 338 |
| BARLEY | 1,076 | 1,932 | 2,524 | 3,324 | 2,062 | 2,656 | 2,757 | 3,513 | 3,161 | 2,690 | 4,219 |
| OATS | 1,206 | 1,298 | 1,671 | 1,335 | 765 | 1,152 | 937 | 1,206 | 1,116 | 1,059 | 1,410 |
| MILLET | 29 | 26 | 20 | 29 | 24 | 24 | 35 | 23 | 14 | 20 | 20 |
| BURGHUM | 221 | 294 | 547 | 1,297 | 1,228 | 1,018 | 1,061 | 901 | 1,124 | 956 | 669 |
| PULSES | 25 | 57 | 50 | 52 | 60 | 60 | 53 | 68 | 55 | 45 | 48 |
| POTATOES | 755 | 1,067 | 1,015 | 957 | 1,066 | 937 | 855 | 968 | 944 | 976 | 984 |
| ONIONS | 21 | 30 | 26 | 30 | 32 | 32 | 39 | 29 | 38 | 40 | 40 |
| SUGARCANE | 12,936 | 15,784 | 17,645 | 19,391 | 18,928 | 19,278 | 20,418 | 21,959 | 23,344 | 23,493 | 21,500 |
| TOBACCO | 16 | 16 | 20 | 20 | 19 | 19 | 18 | 18 | 18 | 19 | 18 |
| COTTON | 8 | 28 | 20 | 44 | 31 | 31 | 33 | 25 | 28 | 44 | 48 |
| FLAXSEED | 24 | 37 | 31 | 10 | 11 | 14 | 36 | 16 | 19 | 44 | 31 |
| PEANUTS, IN SHELL | 18 | 17 | 43 | 31 | 46 | 39 | 29 | 24 | 31 | 27 | 31 |
| VEGETABLES | 601 | 745 | 800 | 852 | 957 | 893 | 794 | 884 | 871 | 890 | 960 |
| GRASS SEED | 38 | 50 | 42 | 61 | 38 | 48 | 45 | 47 | 44 | 50 | 50 |
| CITRUS FRUIT | 241 | 291 | 384 | 363 | 424 | 389 | 420 | 444 | 410 | 444 | 444 |
| APPLES | 426 | 529 | 559 | 557 | 509 | 583 | 488 | 527 | 447 | 448 | 428 |
| PEARS | 139 | 124 | 209 | 208 | 202 | 206 | 179 | 172 | 154 | 117 | 126 |
| APRICOTS | 38 | 44 | 39 | 53 | 32 | 44 | 37 | 27 | 24 | 27 | 23 |
| PEACHES | 97 | 131 | 138 | 147 | 139 | 138 | 104 | 115 | 103 | 89 | 78 |
| BANANAS | 126 | 132 | 130 | 128 | 124 | 125 | 114 | 97 | 115 | 97 | 93 |
| PINEAPPLES | 83 | 120 | 141 | 154 | 124 | 115 | 110 | 103 | 129 | 110 | 120 |
| GRAPES | 600 | 553 | 758 | 549 | 832 | 603 | 552 | 728 | 710 | 726 | 786 |
| BEEF AND VEAL | 1,220 | 1,386 | 1,441 | 1,560 | 1,848 | 1,756 | 1,952 | 2,388 | 2,614 | 2,688 | 2,925 |
| MUTTON AND LAMB | 1,070 | 1,316 | 1,368 | 1,520 | 1,268 | 1,013 | 1,028 | 1,079 | 1,083 | 1,069 | 975 |
| PORK | 164 | 211 | 221 | 236 | 277 | 246 | 204 | 208 | 218 | 238 | 234 |
| POULTRY MEAT | 7 | 10 | 12 | 17 | 17 | 13 | 14 | 14 | 23 | 25 | 24 |
| MILK | 12,481 | 14,164 | 13,411 | 13,212 | 13,373 | 12,671 | 12,811 | 13,022 | 12,617 | 11,576 | 12,016 |
| WOOL, GREASY BASIS | 1,085 | 1,251 | 1,220 | 1,202 | 1,044 | 986 | 1,088 | 1,066 | 1,006 | 988 | 1,006 |
| EGGS | 167 | 210 | 227 | 221 | 170 | 167 | 175 | 164 | 158 | 169 | 161 |

TABLE 4 -- SOUTH AND EAST ASIA AND OCEANIA

INDICES OF TOTAL AGRICULTURAL PRODUCTION, BY COUNTRY, 1969-78

| | (1961-65 = 100) | | | | | | | | | PRELIM. 1978 |
|----------------------------|-----------------|------|------|------|------|------|------|------|------|-----------------|
| | 1969 | 1970 | 1971 | 1972 | 1973 | 1974 | 1975 | 1976 | 1977 | |
| BANGLADESH | 121 | 114 | 100 | 103 | 117 | 109 | 123 | 116 | 126 | 132 |
| SRI LANKA | 123 | 128 | 122 | 119 | 119 | 126 | 119 | 119 | 131 | 138 |
| INDIA | 117 | 124 | 127 | 119 | 129 | 122 | 139 | 135 | 147 | 154 |
| PAKISTAN | 149 | 158 | 157 | 156 | 157 | 162 | 155 | 165 | 184 | 176 |
| SOUTH ASIA | 119 | 126 | 126 | 120 | 129 | 124 | 138 | 135 | 147 | 153 |
| BURMA | 105 | 107 | 106 | 101 | 116 | 116 | 118 | 119 | 121 | 128 |
| INDONESIA | 113 | 121 | 123 | 120 | 130 | 138 | 140 | 145 | 146 | 158 |
| JAPAN | 115 | 109 | 102 | 110 | 110 | 110 | 115 | 109 | 118 | 116 |
| KOREA, REPUBLIC OF | 131 | 129 | 130 | 136 | 139 | 144 | 158 | 170 | 176 | 181 |
| MALAYSIA, WEST | 149 | 156 | 169 | 170 | 195 | 205 | 191 | 220 | 235 | 232 |
| PHILIPPINES | 126 | 130 | 137 | 133 | 143 | 146 | 161 | 172 | 173 | 174 |
| TAIWAN | 128 | 138 | 134 | 137 | 146 | 146 | 145 | 162 | 164 | 162 |
| THAILAND | 129 | 132 | 141 | 131 | 159 | 156 | 162 | 167 | 167 | 179 |
| EAST ASIA | 120 | 115 | 117 | 121 | 126 | 128 | 134 | 135 | 142 | 144 |
| EAST ASIA LESS JAPAN | 125 | 130 | 134 | 133 | 145 | 149 | 154 | 165 | 168 | 174 |
| SOUTH AND EAST ASIA | 120 | 122 | 121 | 120 | 128 | 126 | 135 | 135 | 144 | 148 |
| SO. AND E. ASIA LESS JAPAN | 121 | 127 | 129 | 124 | 135 | 132 | 143 | 145 | 155 | 160 |
| AUSTRALIA | 121 | 129 | 126 | 112 | 118 | 121 | 126 | 123 | 118 | 135 |
| NEW ZEALAND | 120 | 118 | 119 | 123 | 115 | 115 | 123 | 130 | 126 | 127 |
| OCEANIA | 121 | 115 | 124 | 115 | 117 | 119 | 125 | 125 | 120 | 133 |

TABLE 5.-- SOUTH AND EAST ASIA AND OCEANIA

INDICES OF PER CAPITA AGRICULTURAL PRODUCTION, BY COUNTRY, 1969-78

(1961-65 = 100)

| | 1969 | 1970 | 1971 | 1972 | 1973 | 1974 | 1975 | 1976 | 1977 | PRELIM. 1978 |
|----------------------------|------|------|------|------|------|------|------|------|------|-----------------|
| BANGLADESH | 104 | 95 | 82 | 82 | 92 | 83 | 91 | 84 | 89 | 90 |
| SRI LANKA | 108 | 109 | 102 | 97 | 95 | 98 | 91 | 89 | 96 | 100 |
| INDIA | 102 | 107 | 107 | 98 | 104 | 96 | 107 | 102 | 109 | 112 |
| PAKISTAN | 126 | 120 | 124 | 120 | 118 | 118 | 109 | 113 | 122 | 115 |
| SOUTH ASIA | 104 | 102 | 106 | 98 | 103 | 97 | 106 | 101 | 108 | 110 |
| BURMA | 91 | 91 | 90 | 84 | 94 | 92 | 91 | 90 | 90 | 92 |
| INDONESIA | 98 | 102 | 102 | 97 | 102 | 106 | 106 | 107 | 106 | 112 |
| JAPAN | 107 | 101 | 93 | 99 | 97 | 96 | 100 | 93 | 100 | 97 |
| KOREA, REPUBLIC OF | 112 | 109 | 107 | 110 | 111 | 112 | 120 | 127 | 130 | 131 |
| MALAYSIA, WEST | 128 | 130 | 137 | 136 | 151 | 155 | 141 | 159 | 165 | 158 |
| PHILIPPINES | 105 | 105 | 108 | 102 | 107 | 106 | 114 | 119 | 117 | 115 |
| TAIWAN | 107 | 112 | 107 | 107 | 112 | 110 | 107 | 117 | 116 | 113 |
| THAILAND | 108 | 105 | 111 | 100 | 118 | 113 | 115 | 116 | 114 | 119 |
| EAST ASIA | 106 | 103 | 99 | 100 | 102 | 102 | 104 | 103 | 106 | 106 |
| EAST ASIA LESS JAPAN | 107 | 109 | 110 | 107 | 113 | 114 | 115 | 121 | 120 | 122 |
| SOUTH AND EAST ASIA | 105 | 105 | 102 | 99 | 103 | 99 | 104 | 102 | 107 | 107 |
| SO. AND E. ASIA LESS JAPAN | 105 | 106 | 107 | 101 | 107 | 103 | 109 | 108 | 113 | 114 |
| AUSTRALIA | 108 | 104 | 107 | 95 | 98 | 99 | 102 | 99 | 93 | 106 |
| NEW ZEALAND | 110 | 106 | 105 | 107 | 98 | 96 | 101 | 104 | 99 | 98 |
| OCEANIA | 109 | 105 | 107 | 98 | 98 | 98 | 102 | 101 | 95 | 104 |

TABLE 6.-- SOUTH AND EAST ASIA AND OCEANIA

INDICES OF TOTAL FOOD PRODUCTION, BY COUNTRY, 1969-78

(1961-65 = 100)

| | 1969 | 1970 | 1971 | 1972 | 1973 | 1974 | 1975 | 1976 | 1977 | PRELIM. 1978 |
|----------------------------|------|------|------|------|------|------|------|------|------|-----------------|
| BANGLADESH | 121 | 114 | 102 | 102 | 119 | 114 | 129 | 120 | 131 | 134 |
| SRI LANKA | 125 | 140 | 128 | 122 | 119 | 145 | 121 | 127 | 155 | 170 |
| INDIA | 118 | 127 | 127 | 119 | 130 | 122 | 140 | 137 | 149 | 156 |
| PAKISTAN | 150 | 160 | 152 | 152 | 159 | 164 | 161 | 177 | 193 | 187 |
| SOUTH ASIA | 120 | 128 | 126 | 119 | 130 | 124 | 140 | 137 | 150 | 156 |
| BURMA | 105 | 107 | 106 | 101 | 111 | 112 | 115 | 116 | 119 | 126 |
| INDONESIA | 113 | 122 | 124 | 119 | 130 | 140 | 141 | 145 | 145 | 158 |
| JAPAN | 115 | 110 | 103 | 110 | 110 | 111 | 115 | 109 | 118 | 117 |
| KOREA, REPUBLIC OF | 130 | 129 | 129 | 131 | 135 | 141 | 155 | 167 | 170 | 176 |
| MALAYSIA, WEST | 141 | 156 | 178 | 189 | 202 | 230 | 238 | 260 | 280 | 261 |
| PHILIPPINES | 127 | 131 | 138 | 134 | 145 | 147 | 163 | 173 | 175 | 176 |
| TAIWAN | 128 | 138 | 135 | 138 | 147 | 147 | 146 | 163 | 165 | 163 |
| THAILAND | 128 | 132 | 139 | 125 | 154 | 157 | 167 | 174 | 169 | 183 |
| EAST ASIA | 119 | 110 | 116 | 119 | 124 | 127 | 133 | 133 | 139 | 141 |
| EAST ASIA LESS JAPAN | 124 | 125 | 132 | 130 | 141 | 147 | 154 | 164 | 166 | 171 |
| SOUTH AND EAST ASIA | 119 | 123 | 121 | 119 | 127 | 125 | 136 | 135 | 144 | 148 |
| SO. AND E. ASIA LESS JAPAN | 121 | 128 | 128 | 123 | 134 | 132 | 145 | 146 | 155 | 161 |
| AUSTRALIA | 121 | 122 | 130 | 120 | 130 | 129 | 140 | 139 | 131 | 157 |
| NEW ZEALAND | 123 | 119 | 121 | 129 | 121 | 119 | 129 | 139 | 132 | 134 |
| OCEANIA | 122 | 121 | 128 | 123 | 127 | 127 | 137 | 139 | 131 | 150 |

TABLE 7.-- SOUTH AND EAST ASIA AND OCEANIA

INDICES OF PER CAPITA FOOD PRODUCTION, BY COUNTRY, 1969-78

(1961-65 = 100)

| | 1969 | 1970 | 1971 | 1972 | 1973 | 1974 | 1975 | 1976 | 1977 | PRELIM. 1978 |
|----------------------------|------|------|------|------|------|------|------|------|------|-----------------|
| BANGLADESH | 104 | 95 | 84 | 82 | 93 | 87 | 96 | 86 | 92 | 92 |
| SRI LANKA | 109 | 119 | 106 | 99 | 95 | 113 | 93 | 96 | 114 | 123 |
| INDIA | 103 | 109 | 107 | 98 | 104 | 96 | 108 | 103 | 111 | 113 |
| PAKISTAN | 126 | 131 | 121 | 117 | 119 | 119 | 114 | 121 | 128 | 121 |
| SOUTH ASIA | 105 | 110 | 106 | 97 | 104 | 97 | 107 | 103 | 110 | 112 |
| BURMA | 91 | 91 | 89 | 84 | 90 | 88 | 89 | 88 | 88 | 91 |
| INDONESIA | 98 | 103 | 103 | 96 | 103 | 108 | 107 | 107 | 104 | 111 |
| JAPAN | 107 | 101 | 94 | 99 | 98 | 97 | 100 | 93 | 100 | 98 |
| KOREA, REPUBLIC OF | 112 | 108 | 106 | 106 | 107 | 109 | 112 | 125 | 125 | 127 |
| MALAYSIA, WEST | 121 | 131 | 145 | 150 | 157 | 175 | 176 | 187 | 197 | 177 |
| PHILIPPINES | 106 | 106 | 109 | 103 | 108 | 107 | 116 | 120 | 118 | 116 |
| THAILAND | 107 | 112 | 108 | 108 | 113 | 111 | 108 | 118 | 117 | 114 |
| THAILAND | 107 | 109 | 110 | 96 | 115 | 114 | 118 | 121 | 115 | 122 |
| EAST ASIA | 105 | 102 | 92 | 99 | 101 | 101 | 104 | 102 | 104 | 104 |
| EAST ASIA LESS JAPAN | 107 | 102 | 108 | 104 | 110 | 112 | 115 | 120 | 119 | 119 |
| SOUTH AND EAST ASIA | 104 | 106 | 102 | 98 | 102 | 98 | 105 | 102 | 107 | 107 |
| SO. AND E. ASIA LESS JAPAN | 105 | 109 | 107 | 100 | 107 | 103 | 110 | 109 | 113 | 115 |
| AUSTRALIA | 108 | 106 | 111 | 101 | 108 | 106 | 113 | 111 | 104 | 123 |
| NEW ZEALAND | 112 | 107 | 107 | 112 | 103 | 100 | 106 | 112 | 104 | 103 |
| OCEANIA | 110 | 107 | 111 | 105 | 107 | 105 | 112 | 112 | 104 | 118 |

TABLE 8.-- SOUTH AND EAST ASIA AND OCEANIA

AGGREGATES OF TOTAL AGRICULTURAL PRODUCTION, BY COUNTRY, AVERAGE 1961-65, ANNUAL 1969-78

| | AVERAGE 1961-65 | 1969 | 1970 | 1971 | 1972 | 1973 | 1974 | 1975 | 1976 | 1977 | PRELIM. 1978 |
|--|--------------------|-----------------|-----------------|-----------------|-----------------|-----------------|-----------------|-----------------|-----------------|-----------------|-----------------|
| -----MILLION DOLLARS AT CONSTANT PRICES----- | | | | | | | | | | | |
| BANGLADESH | 1,098.2 | 1,329.5 | 1,245.1 | 1,059.0 | 1,128.0 | 1,287.1 | 1,200.6 | 1,354.0 | 1,271.6 | 1,389.0 | 1,447.7 |
| SRI LANKA | 229.8 | 283.6 | 294.3 | 281.2 | 274.3 | 274.0 | 288.5 | 274.1 | 275.1 | 300.7 | 318.2 |
| INDIA | 8,453.0 | 9,849.0 | 10,519.6 | 10,718.8 | 10,039.9 | 10,898.1 | 10,311.4 | 11,708.0 | 11,429.4 | 12,442.3 | 12,992.1 |
| PAKISTAN | 721.3 | 1,078.0 | 1,143.0 | 1,131.4 | 1,123.0 | 1,136.0 | 1,172.0 | 1,120.3 | 1,187.8 | 1,324.2 | 1,269.2 |
| SOUTH ASIA | 10,502.3 | 12,540.1 | 13,206.0 | 13,230.4 | 12,565.2 | 13,595.2 | 12,972.5 | 14,456.4 | 14,161.9 | 15,456.2 | 16,027.2 |
| BURMA | 219.7 | 230.0 | 235.1 | 233.2 | 221.8 | 255.7 | 254.7 | 259.0 | 261.1 | 266.6 | 281.0 |
| INDONESIA | 1,460.0 | 1,653.6 | 1,765.1 | 1,802.0 | 1,752.2 | 1,893.7 | 2,010.3 | 2,042.7 | 2,116.4 | 2,138.0 | 2,309.8 |
| JAPAN | 6,256.4 | 7,169.8 | 6,825.4 | 6,912.3 | 6,873.8 | 6,873.0 | 6,897.0 | 7,202.6 | 6,830.3 | 7,391.9 | 7,287.1 |
| KOREA, REPUBLIC OF | 1,103.9 | 1,441.0 | 1,427.1 | 1,420.1 | 1,506.3 | 1,538.3 | 1,585.4 | 1,744.7 | 1,878.9 | 1,944.4 | 1,993.3 |
| MALAYSIA, WEST | 508.4 | 759.7 | 753.8 | 857.1 | 866.6 | 924.4 | 1,039.9 | 968.8 | 1,119.0 | 1,194.3 | 1,181.3 |
| PHILIPPINES | 943.0 | 1,187.9 | 1,223.4 | 1,251.0 | 1,251.0 | 1,353.2 | 1,377.7 | 1,518.0 | 1,617.7 | 1,627.9 | 1,638.7 |
| TAIWAN | 608.6 | 777.1 | 838.0 | 815.8 | 834.8 | 888.2 | 887.5 | 879.7 | 984.1 | 998.2 | 986.4 |
| THAILAND | 712.2 | 919.2 | 945.1 | 1,001.0 | 930.8 | 1,131.0 | 1,108.4 | 1,155.0 | 1,191.4 | 1,191.1 | 1,277.9 |
| EAST ASIA | 11,812.2 | 14,138.3 | 14,067.0 | 13,842.5 | 14,237.3 | 14,925.5 | 15,160.9 | 15,770.5 | 15,998.9 | 16,752.4 | 16,955.5 |
| EAST ASIA LESS JAPAN | 5,555.8 | 6,968.5 | 7,231.6 | 7,430.2 | 7,363.5 | 8,052.5 | 8,263.9 | 8,567.9 | 9,168.6 | 9,360.5 | 9,668.4 |
| SOUTH AND EAST ASIA | 22,314.5 | 26,678.4 | 27,273.0 | 27,072.9 | 26,802.5 | 28,520.7 | 28,133.4 | 30,226.9 | 30,160.8 | 32,208.6 | 32,982.7 |
| SO. AND E. ASIA LESS JAPAN | 16,058.1 | 19,508.6 | 20,437.6 | 20,660.6 | 19,928.7 | 21,647.7 | 21,236.4 | 23,024.3 | 23,330.5 | 24,816.7 | 25,695.6 |
| AUSTRALIA | 2,703.2 | 3,273.4 | 3,231.6 | 3,394.6 | 3,038.8 | 3,179.8 | 3,274.5 | 3,407.1 | 3,332.3 | 3,187.8 | 3,654.5 |
| NEW ZEALAND | 577.4 | 1,176.2 | 1,145.8 | 1,162.8 | 1,200.0 | 1,123.9 | 1,120.5 | 1,206.9 | 1,268.4 | 1,227.1 | 1,240.4 |
| OCEANIA | 3,680.6 | 4,449.6 | 4,377.4 | 4,557.4 | 4,238.8 | 4,303.7 | 4,395.0 | 4,614.0 | 4,600.7 | 4,414.9 | 4,894.9 |

TABLE 9.--- SOUTH AND EAST ASIA AND OCEANIA

AGGREGATES OF TOTAL FOOD PRODUCTION, BY COUNTRY, AVERAGE 1961-65, ANNUAL 1969-78

| | AVERAGE 1961-65 | 1969 | 1970 | 1971 | 1972 | 1973 | 1974 | 1975 | 1976 | 1977 | PRELIM. 1978 |
|--|--------------------|-----------------|-----------------|-----------------|-----------------|-----------------|-----------------|-----------------|-----------------|-----------------|-----------------|
| ----- MILLION DOLLARS AT CONSTANT PRICES ----- | | | | | | | | | | | |
| BANGLADESH | 964.0 | 1,171.0 | 1,054.5 | 986.8 | 982.2 | 1,151.8 | 1,098.9 | 1,243.1 | 1,152.4 | 1,258.5 | 1,293.0 |
| SRI LANKA | 88.6 | 110.6 | 123.9 | 113.6 | 108.1 | 105.8 | 128.3 | 137.3 | 112.6 | 137.1 | 150.7 |
| INDIA | 7,604.8 | 8,537.1 | 9,625.0 | 9,673.8 | 9,030.7 | 9,855.8 | 9,252.4 | 10,663.8 | 10,385.7 | 11,330.5 | 11,838.3 |
| PAKISTAN | 597.8 | 895.3 | 957.8 | 908.4 | 910.4 | 951.3 | 979.8 | 964.8 | 1,058.0 | 1,155.0 | 1,119.1 |
| SOUTH ASIA | 9,255.2 | 11,114.0 | 11,805.2 | 11,682.0 | 11,831.4 | 12,064.7 | 11,459.4 | 12,979.0 | 12,708.7 | 13,881.1 | 14,393.1 |
| FLRPA | 207.6 | 217.8 | 222.8 | 220.2 | 208.8 | 239.8 | 231.9 | 238.6 | 241.8 | 247.3 | 262.2 |
| INDONESIA | 1,205.5 | 1,366.4 | 1,417.5 | 1,458.3 | 1,436.3 | 1,572.3 | 1,688.1 | 1,794.6 | 1,744.0 | 1,747.6 | 1,902.7 |
| JAPAN | 6,003.9 | 6,899.1 | 6,585.1 | 6,165.7 | 6,630.1 | 6,612.9 | 6,645.9 | 6,926.0 | 6,547.9 | 7,109.7 | 7,005.2 |
| KOREA, REPUBLIC OF | 1,161.4 | 1,383.3 | 1,265.6 | 1,366.7 | 1,391.6 | 1,429.5 | 1,492.2 | 1,641.6 | 1,769.8 | 1,803.8 | 1,863.8 |
| MALAYSIA, WEST | 172.3 | 243.3 | 269.2 | 306.0 | 324.8 | 348.8 | 396.9 | 409.8 | 447.2 | 481.8 | 448.9 |
| PHILIPPINES | 896.1 | 1,142.1 | 1,172.4 | 1,235.8 | 1,203.5 | 1,299.0 | 1,321.2 | 1,457.6 | 1,552.9 | 1,564.3 | 1,577.2 |
| TAIWAN | 590.1 | 754.1 | 815.2 | 796.5 | 816.6 | 867.8 | 869.5 | 860.5 | 961.3 | 975.2 | 963.4 |
| THAILAND | 582.2 | 745.1 | 771.8 | 869.8 | 728.5 | 897.6 | 917.3 | 971.7 | 1,013.3 | 988.4 | 1,069.8 |
| EAST ASIA | 10,720.4 | 12,748.4 | 12,676.6 | 12,402.5 | 12,742.2 | 13,258.7 | 13,563.0 | 14,210.4 | 14,278.2 | 14,918.1 | 15,093.2 |
| EAST ASIA LESS JAPAN | 4,716.5 | 5,849.3 | 6,027.5 | 6,237.3 | 6,112.1 | 6,645.8 | 6,917.1 | 7,284.4 | 7,730.3 | 7,808.4 | 8,088.0 |
| SOUTH AND EAST ASIA | 19,975.6 | 23,862.4 | 24,481.8 | 24,084.5 | 23,773.6 | 25,323.4 | 25,022.4 | 27,189.4 | 26,986.9 | 28,799.2 | 29,486.3 |
| S. AND E. ASIA LESS JAPAN | 11,971.7 | 16,963.3 | 17,892.7 | 17,919.3 | 17,143.5 | 18,710.5 | 18,376.5 | 20,263.4 | 20,439.0 | 21,689.5 | 22,481.1 |
| AUSTRALIA | 1,784.5 | 2,167.1 | 2,165.3 | 2,322.6 | 2,146.6 | 2,322.6 | 2,310.4 | 2,495.9 | 2,474.5 | 2,340.9 | 2,798.3 |
| NEW ZEALAND | 704.3 | 865.0 | 835.6 | 853.0 | 966.5 | 850.1 | 840.7 | 910.3 | 982.4 | 930.9 | 940.6 |
| OCEANIA | 2,488.2 | 3,032.1 | 3,000.9 | 3,175.6 | 3,053.1 | 3,172.7 | 3,151.1 | 3,406.2 | 3,456.9 | 3,271.8 | 3,738.9 |

TABLE 10.--AUSTRALIA

PRODUCTION BY COMMODITY, VALUE AND INDICES OF TOTAL AGRICULTURAL AND FOOD PRODUCTION, AVERAGE 1961-65, ANNUAL 1969-78

| COMMODITY | PRICE | AVERAGE | | | | | | | | | | |
|--------------------------|---------|--|---------|---------|---------|---------|---------|---------|---------|---------|---------|---------|
| | WEIGHT | 1961-65 | 1969 | 1970 | 1971 | 1972 | 1973 | 1974 | 1975 | 1976 | 1977 | 1978 |
| | DOLLARS | - 1,000 METRIC TONS - | | | | | | | | | | |
| WHEAT | 51 | 8,222 | 16,546 | 7,090 | 8,606 | 6,590 | 11,987 | 11,357 | 11,982 | 11,667 | 9,299 | 17,648 |
| RYE | 43 | 11 | 20 | 22 | 24 | 9 | 21 | 8 | 11 | 15 | 12 | 14 |
| RICE, PADDY | 58 | 136 | 256 | 247 | 299 | 248 | 309 | 409 | 308 | 418 | 487 | 571 |
| CORN | 52 | 176 | 158 | 191 | 212 | 214 | 139 | 106 | 133 | 131 | 144 | 111 |
| BARLEY | 43 | 978 | 1,699 | 2,350 | 3,065 | 1,727 | 2,398 | 2,515 | 3,179 | 2,847 | 2,386 | 3,953 |
| OATS | 38 | 1,172 | 1,246 | 1,613 | 1,275 | 736 | 1,107 | 874 | 1,141 | 1,072 | 991 | 1,551 |
| MILLET | 33 | 29 | 26 | 20 | 29 | 24 | 26 | 35 | 23 | 14 | 28 | 28 |
| SORGHUM | 33 | 221 | 254 | 547 | 1,297 | 1,228 | 1,018 | 1,061 | 901 | 1,124 | 956 | 669 |
| POTATOES | 58 | 551 | 811 | 762 | 747 | 822 | 721 | 649 | 742 | 696 | 728 | 734 |
| SUGARCANE | 11 | 12,936 | 15,784 | 17,645 | 19,391 | 18,928 | 19,278 | 20,418 | 21,959 | 23,344 | 23,493 | 21,500 |
| TOBACCO | 2,513 | 12 | 15 | 17 | 17 | 16 | 16 | 15 | 15 | 15 | 16 | 13 |
| COTTON | 744 | 8 | 28 | 28 | 44 | 31 | 31 | 33 | 25 | 28 | 44 | 48 |
| FLAXSEED | 142 | 24 | 37 | 31 | 10 | 14 | 14 | 36 | 16 | 15 | 44 | 31 |
| PEANUTS, IN SHELL | 187 | 18 | 17 | 43 | 31 | 46 | 39 | 29 | 26 | 24 | 27 | 31 |
| VEGETABLES | 168 | 601 | 745 | 809 | 852 | 957 | 893 | 794 | 884 | 871 | 890 | 960 |
| GRASS SEED | 517 | 14 | 26 | 24 | 27 | 15 | 20 | 22 | 23 | 26 | 25 | 25 |
| CITRUS FRUIT | 77 | 241 | 291 | 384 | 363 | 424 | 389 | 420 | 444 | 410 | 444 | 444 |
| APPLES | 93 | 340 | 422 | 425 | 443 | 360 | 431 | 335 | 368 | 275 | 382 | 245 |
| PEARS | 100 | 124 | 107 | 190 | 188 | 184 | 162 | 158 | 140 | 140 | 105 | 112 |
| APRICOTS | 125 | 38 | 44 | 39 | 53 | 32 | 44 | 37 | 27 | 26 | 27 | 23 |
| PEACHES | 111 | 81 | 108 | 112 | 123 | 117 | 114 | 81 | 91 | 79 | 66 | 61 |
| BANANAS | 106 | 126 | 132 | 130 | 128 | 124 | 125 | 118 | 97 | 115 | 97 | 93 |
| PINEAPPLES | 56 | 81 | 120 | 141 | 154 | 126 | 115 | 110 | 103 | 129 | 110 | 120 |
| GRAPES | 66 | 608 | 553 | 758 | 549 | 832 | 603 | 552 | 728 | 710 | 728 | 786 |
| BEEF AND VEAL | 238 | 541 | 1,010 | 1,048 | 1,167 | 1,438 | 1,310 | 1,547 | 1,840 | 1,988 | 2,130 | 1,970 |
| MUTTON AND LAMB | 265 | 599 | 755 | 825 | 956 | 713 | 457 | 527 | 588 | 550 | 511 | 480 |
| PORK | 579 | 122 | 174 | 182 | 154 | 236 | 211 | 175 | 174 | 185 | 199 | 208 |
| MILK | 54 | 6,962 | 7,712 | 9,450 | 7,275 | 6,952 | 6,978 | 6,710 | 6,454 | 5,963 | 5,338 | 5,505 |
| WOOL, GREASY BASIS | 1,115 | 780 | 923 | 886 | 880 | 35 | 701 | 794 | 754 | 703 | 677 | 691 |
| EGGS | 582 | 148 | 185 | 196 | 185 | 135 | 131 | 136 | 129 | 123 | 131 | 126 |
| AGGREGATES OF PRODUCTION | | - MILLION DOLLARS AT CONSTANT PRICES - | | | | | | | | | | |
| CROPS | | 992.5 | 1,265.5 | 1,240.9 | 1,355.3 | 1,180.2 | 1,470.6 | 1,414.4 | 1,521.8 | 1,498.9 | 1,378.0 | 1,869.5 |
| LIVESTOCK | | 1,785.2 | 2,095.5 | 2,077.7 | 2,125.1 | 1,941.2 | 1,789.7 | 1,936.0 | 1,958.7 | 1,903.4 | 1,876.9 | 1,853.0 |
| LIVESTOCK FEED DEDUCTION | -14 | -74.5 | -87.6 | -87.0 | -85.8 | -82.6 | -80.5 | -75.9 | -73.4 | -67.0 | -68.1 | -68.0 |
| TOTAL AGRICULTURE | | 2,703.2 | 3,273.4 | 3,231.6 | 3,394.6 | 3,038.8 | 3,179.8 | 3,274.5 | 3,407.1 | 3,332.3 | 3,187.8 | 3,654.5 |
| TOTAL FOOD | | 1,784.9 | 2,167.1 | 2,165.3 | 2,322.6 | 2,146.6 | 2,322.6 | 2,310.4 | 2,495.9 | 2,474.5 | 2,340.9 | 2,798.3 |
| INDICES OF PRODUCTION | | (1961-65 = 100) | | | | | | | | | | |
| CROPS | | 100 | 128 | 125 | 127 | 119 | 148 | 143 | 153 | 151 | 139 | 188 |
| TOTAL AGRICULTURE | | 100 | 121 | 120 | 126 | 112 | 118 | 121 | 126 | 123 | 118 | 135 |
| TOTAL FOOD | | 100 | 121 | 122 | 130 | 120 | 130 | 129 | 140 | 139 | 131 | 157 |
| PER CAPITA AGRICULTURE | | 100 | 108 | 105 | 108 | 95 | 98 | 100 | 102 | 99 | 94 | 106 |
| PER CAPITA FOOD | | 100 | 109 | 106 | 112 | 102 | 109 | 106 | 114 | 111 | 104 | 123 |
| INDEX OF POPULATION | | 1961-65 POPULATION = 10,959,000 | | | | | | | | | | |
| 1961-65 POPULATION | | 100.0 | 111.9 | 114.2 | 116.4 | 118.3 | 119.6 | 121.7 | 123.2 | 124.5 | 125.7 | 127.0 |

TABLE 11.--BANGLADESH

PRODUCTION BY COMMODITY, VALUE AND INDICES OF TOTAL AGRICULTURAL AND FOOD PRODUCTION, AVERAGE 1961-65, ANNUAL 1969-78

| COMMODITY | PRICE | AVERAGE | 1969 | 1970 | 1971 | 1972 | 1973 | 1974 | 1975 | 1976 | 1977 | 1978 |
|--------------------------|---------|---------|--------------------------------------|---------|---------|---------|---------|---------|---------|---------|---------|---------|
| | WEIGHT | 1961-65 | | | | | | | | | | |
| | DOLLARS | | -1,000 METRIC TONS- | | | | | | | | | |
| WHEAT | 49 | 38 | 93 | 105 | 112 | 91 | 111 | 117 | 218 | 259 | 336 | 490 |
| RICE, FACL | 60 | 15,050 | 18,026 | 16,733 | 14,913 | 15,150 | 17,881 | 16,947 | 19,163 | 17,647 | 19,317 | 19,678 |
| CCRA | 42 | 4 | 3 | 3 | 2 | 2 | 2 | 2 | 2 | 2 | 2 | 3 |
| BARLEY | 17 | 16 | 18 | 20 | 26 | 16 | 15 | 16 | 17 | 15 | 16 | 16 |
| CHICKPEAS | 47 | 36 | 55 | 58 | 55 | 58 | 60 | 62 | 70 | 39 | 41 | 70 |
| SUGARCANE | 9 | 5,022 | 7,414 | 7,537 | 7,600 | 5,686 | 6,340 | 6,800 | 7,250 | 7,250 | 7,500 | 7,750 |
| TOBACCO | 347 | 28 | 41 | 42 | 34 | 39 | 41 | 41 | 40 | 44 | 51 | 50 |
| COTTON | 259 | 3 | 2 | 2 | 2 | 2 | 2 | 2 | 2 | 1 | 1 | 1 |
| JUTE | 95 | 1,119 | 1,302 | 1,248 | 907 | 1,175 | 1,080 | 720 | 792 | 886 | 994 | 1,182 |
| COTTONSEED | 52 | 6 | 4 | 4 | 4 | 4 | 4 | 6 | 6 | 4 | 4 | 3 |
| FLAXSEED | 71 | 10 | 7 | 8 | 8 | 8 | 4 | 4 | 5 | 5 | 5 | 7 |
| RAPESEED | 82 | 98 | 130 | 128 | 128 | 139 | 120 | 99 | 116 | 112 | 114 | 134 |
| SESAME SEED | 126 | 25 | 30 | 27 | 29 | 25 | 23 | 25 | 28 | 29 | 27 | 30 |
| TEA | 654 | 26 | 30 | 31 | 20 | 30 | 27 | 28 | 32 | 29 | 27 | 37 |
| AGGREGATES OF PRODUCTION | | | -MILLION DOLLARS AT CONSTANT PRICES- | | | | | | | | | |
| CROPS | | 1,098.2 | 1,329.5 | 1,249.1 | 1,059.0 | 1,128.0 | 1,287.1 | 1,200.6 | 1,354.0 | 1,271.6 | 1,389.0 | 1,447.7 |
| LIVESTOCK | | 0.0 | 0.0 | 0.0 | 0.0 | 0.0 | 0.0 | 0.0 | 0.0 | 0.0 | 0.0 | 0.0 |
| TOTAL AGRICULTURE | | 1,098.2 | 1,329.5 | 1,249.1 | 1,059.0 | 1,128.0 | 1,287.1 | 1,200.6 | 1,354.0 | 1,271.6 | 1,389.0 | 1,447.7 |
| TOTAL FOOD | | 564.0 | 1,171.0 | 1,094.5 | 986.8 | 982.2 | 1,151.8 | 1,098.9 | 1,243.1 | 1,152.4 | 1,258.5 | 1,293.0 |
| INDICES OF PRODUCTION | | | (1961-65 = 100) | | | | | | | | | |
| CROPS | | 100 | 121 | 114 | 100 | 103 | 117 | 109 | 123 | 116 | 126 | 132 |
| TOTAL AGRICULTURE | | 100 | 121 | 114 | 100 | 103 | 117 | 109 | 123 | 116 | 126 | 132 |
| TOTAL FOOD | | 100 | 121 | 114 | 102 | 102 | 119 | 114 | 129 | 120 | 131 | 134 |
| PER CAPITA AGRICULTURE | | 100 | 104 | 96 | 82 | 83 | 92 | 84 | 92 | 84 | 89 | 91 |
| PER CAPITA FOOD | | 100 | 105 | 96 | 84 | 82 | 94 | 87 | 96 | 87 | 92 | 92 |
| INDEX OF POPULATION | | | 1961-65 POPULATION = 58,018,000 | | | | | | | | | |
| | | 100.0 | 115.9 | 118.9 | 121.8 | 124.2 | 127.4 | 130.7 | 134.2 | 137.9 | 141.6 | 145.0 |

TABLE 12.--BURMA

PRODUCTION BY COMMODITY, VALUE AND INDICES OF TOTAL AGRICULTURAL AND FOOD PRODUCTION, AVERAGE 1961-65, ANNUAL 1969-78

| COMMODITY | PRICE | AVERAGE | 1969 | 1970 | 1971 | 1972 | 1973 | 1974 | 1975 | 1976 | 1977 | 1978 |
|---|---------|---------------------|-------|-------|-------|-------|-------|-------|-------|-------|-------|--------|
| | WEIGHT | 1961-65 | | | | | | | | | | |
| | DOLLARS | -1,000 METRIC TONS- | | | | | | | | | | |
| WHEAT | 50 | 36 | 26 | 33 | 40 | 39 | 40 | 63 | 56 | 75 | 92 | 95 |
| RICE, PADDY | 13 | 7,769 | 7,985 | 8,162 | 8,175 | 7,360 | 8,602 | 8,582 | 9,207 | 9,312 | 9,462 | 10,000 |
| CORN | 12 | 59 | 68 | 67 | 73 | 59 | 32 | 62 | 65 | 62 | 95 | 85 |
| MILLET | 9 | 51 | 53 | 52 | 49 | 48 | 45 | 50 | 50 | 50 | 50 | 50 |
| PEASES | 30 | 368 | 320 | 273 | 290 | 345 | 265 | 262 | 291 | 255 | 337 | 350 |
| POTATOES | 24 | 39 | 36 | 41 | 41 | 50 | 49 | 57 | 45 | 54 | 60 | 67 |
| SUGARCANE | 3 | 1,104 | 1,308 | 1,312 | 1,437 | 1,400 | 2,020 | 1,678 | 1,199 | 1,621 | 1,600 | 1,600 |
| TOBACCO | 121 | 41 | 46 | 41 | 44 | 44 | 66 | 63 | 64 | 64 | 64 | 65 |
| COTTON | 139 | 19 | 11 | 14 | 16 | 14 | 43 | 37 | 42 | 37 | 33 | 17 |
| JUTE | 82 | 10 | 22 | 28 | 27 | 30 | 88 | 78 | 39 | 37 | 40 | 55 |
| COTTONSEED | 10 | 35 | 23 | 28 | 33 | 28 | 32 | 14 | 13 | 18 | 11 | 6 |
| PEANUTS, IN SHELL | 97 | 259 | 444 | 529 | 450 | 390 | 500 | 466 | 450 | 450 | 450 | 450 |
| SESAME SEED | 68 | 73 | 102 | 132 | 91 | 90 | 90 | 125 | 130 | 130 | 130 | 130 |
| VEGETABLES | 32 | 536 | 1,050 | 974 | 1,044 | 1,050 | 1,075 | 1,075 | 1,075 | 1,075 | 1,075 | 1,182 |
| BANANAS | 24 | 173 | 218 | 176 | 187 | 200 | 225 | 230 | 232 | 243 | 245 | 270 |
| OTHER FRUIT | 64 | 517 | 437 | 473 | 473 | 473 | 473 | 473 | 475 | 475 | 475 | 523 |
| TEA | 56 | 5 | 9 | 6 | 9 | 9 | 9 | 9 | 9 | 9 | 9 | 9 |
| RUBBER | 215 | 16 | 13 | 13 | 13 | 13 | 15 | 15 | 15 | 14 | 15 | 15 |
| AGGREGATES OF PRODUCTION ----- MILLION DOLLARS AT CONSTANT PRICES ----- | | | | | | | | | | | | |
| CROPS | | 219.7 | 234.0 | 235.1 | 233.2 | 221.8 | 255.7 | 254.7 | 259.9 | 261.1 | 266.6 | 281.0 |
| LIVESTOCK | | 0.0 | 0.0 | 0.0 | 0.0 | 0.0 | 0.0 | 0.0 | 0.0 | 0.0 | 0.0 | 0.0 |
| TOTAL AGRICULTURE | | 219.7 | 234.0 | 235.1 | 233.2 | 221.8 | 255.7 | 254.7 | 259.9 | 261.1 | 266.6 | 281.0 |
| TOTAL FOOD | | 207.6 | 217.8 | 222.8 | 220.2 | 208.8 | 238.8 | 231.9 | 238.6 | 241.8 | 247.3 | 262.2 |
| INDICES OF PRODUCTION (1961-65 = 100) | | | | | | | | | | | | |
| CROPS | | 100 | 105 | 107 | 106 | 101 | 116 | 116 | 118 | 119 | 121 | 128 |
| TOTAL AGRICULTURE | | 100 | 105 | 107 | 106 | 101 | 116 | 116 | 118 | 119 | 121 | 128 |
| TOTAL FOOD | | 100 | 105 | 107 | 106 | 101 | 111 | 112 | 115 | 116 | 119 | 126 |
| PER CAPITA AGRICULTURE | | 100 | 92 | 92 | 90 | 85 | 95 | 92 | 92 | 90 | 90 | 93 |
| PER CAPITA FOOD | | 100 | 92 | 92 | 90 | 84 | 91 | 89 | 89 | 88 | 88 | 92 |
| INDEX OF POPULATION | | | | | | | | | | | | |
| 1961-65 POPULATION = 23,654,000 | | 100.0 | 114.2 | 116.8 | 118.0 | 119.4 | 122.8 | 125.8 | 128.8 | 131.9 | 134.8 | 137.8 |

TABLE 13.--INDIA

PRODUCTION BY COMMODITY, VALUE AND INDICES OF TOTAL AGRICULTURAL AND FOOD PRODUCTION, AVERAGE 1961-65, ANNUAL 1969-78

| COMMODITY | PRICE | AVERAGE | 1969 | 1970 | 1971 | 1972 | 1973 | 1974 | 1975 | 1976 | 1977 | 1978 |
|--------------------------|--|---------------------|----------|----------|----------|----------|----------|----------|----------|----------|----------|---------|
| | WEIGHT | 1961-65 | | | | | | | | | | |
| DOLLARS | | -1,000 METRIC TONS- | | | | | | | | | | |
| WHEAT | 66 | 11,192 | 18,651 | 20,093 | 23,832 | 26,410 | 24,735 | 21,776 | 24,104 | 28,846 | 29,010 | 31,328 |
| RICE, PADDY | 53 | 52,264 | 61,708 | 63,401 | 64,667 | 58,926 | 66,077 | 62,438 | 73,183 | 62,938 | 75,093 | 74,829 |
| CORN | 55 | 4,599 | 5,674 | 7,486 | 5,181 | 6,388 | 5,804 | 5,559 | 7,256 | 6,361 | 5,947 | 5,500 |
| BARLEY | 52 | 2,601 | 2,424 | 2,716 | 2,784 | 2,577 | 2,379 | 2,371 | 3,135 | 3,192 | 2,344 | 2,309 |
| HILLET | 61 | 7,729 | 9,176 | 12,172 | 9,196 | 7,404 | 11,557 | 7,021 | 10,457 | 9,650 | 9,728 | 10,580 |
| SORGHUM | 61 | 8,845 | 9,721 | 8,105 | 7,722 | 6,968 | 9,097 | 10,414 | 9,504 | 10,524 | 11,818 | 12,080 |
| CHICKPEAS | 59 | 5,535 | 4,309 | 5,546 | 5,199 | 5,081 | 4,537 | 4,099 | 4,015 | 5,079 | 5,424 | 5,451 |
| PIGEON PEA | 68 | 1,660 | 1,816 | 1,842 | 1,883 | 1,683 | 1,928 | 1,834 | 2,099 | 1,725 | 1,808 | 1,750 |
| OTHER PULSES | 77 | 4,512 | 4,253 | 4,303 | 4,756 | 4,330 | 3,442 | 4,500 | 4,165 | 5,061 | 4,212 | 4,459 |
| POTATOES | 41 | 3,023 | 4,726 | 3,513 | 4,807 | 4,826 | 4,451 | 4,861 | 6,225 | 7,306 | 7,170 | 8,153 |
| CASSAVA | 20 | 2,295 | 4,636 | 5,214 | 5,130 | 5,939 | 6,371 | 6,421 | 6,326 | 6,638 | 6,375 | 6,493 |
| SWEET POTATOES | 39 | 584 | 1,764 | 1,444 | 1,750 | 2,267 | 1,550 | 1,658 | 1,672 | 1,811 | 1,361 | 1,800 |
| SUGARCANE | 8 | 106,403 | 124,676 | 135,024 | 126,368 | 113,570 | 124,867 | 140,805 | 144,289 | 140,609 | 153,809 | 181,628 |
| TOBACCO | 436 | 330 | 361 | 337 | 362 | 419 | 372 | 462 | 353 | 350 | 414 | 430 |
| COTTON | 281 | 1,032 | 1,052 | 972 | 1,296 | 1,129 | 1,161 | 1,140 | 1,240 | 1,110 | 1,165 | 1,275 |
| JUTE | 130 | 1,022 | 1,014 | 889 | 1,023 | 896 | 1,120 | 805 | 799 | 962 | 961 | 1,000 |
| COTTONSEED | 51 | 2,064 | 2,104 | 1,944 | 2,592 | 2,241 | 2,320 | 2,502 | 2,250 | 2,200 | 2,800 | 2,900 |
| FLAXSEED | 84 | 432 | 329 | 469 | 453 | 530 | 428 | 504 | 564 | 598 | 419 | 504 |
| PEANUTS, IN SHELL | 99 | 5,048 | 5,130 | 6,111 | 6,181 | 4,092 | 5,932 | 5,111 | 6,755 | 5,262 | 6,017 | 6,200 |
| RAPESEED | 114 | 1,277 | 1,347 | 1,564 | 1,976 | 1,433 | 1,808 | 1,704 | 2,252 | 1,936 | 1,551 | 1,610 |
| SESAME SEED | 152 | 444 | 448 | 562 | 450 | 385 | 484 | 392 | 479 | 422 | 486 | 475 |
| CASTOR BEANS | 83 | 107 | 116 | 123 | 136 | 154 | 145 | 229 | 210 | 225 | 225 | 250 |
| COFFEE | 555 | 43 | 74 | 69 | 115 | 74 | 95 | 92 | 98 | 89 | 187 | 110 |
| TEA | 532 | 357 | 396 | 422 | 433 | 456 | 473 | 490 | 487 | 512 | 560 | 566 |
| RUBBER | 438 | 38 | 82 | 92 | 101 | 112 | 123 | 130 | 138 | 138 | 150 | 140 |
| AGGREGATES OF PRODUCTION | - - - - - MILLION DOLLARS AT CONSTANT PRICES - - - - - | | | | | | | | | | | |
| CROPS | 8,453.0 | 9,849.0 | 10,519.6 | 10,718.8 | 10,039.9 | 10,898.1 | 10,311.4 | 11,708.0 | 11,429.4 | 12,442.3 | 12,992.1 | |
| LIVESTOCK | 0.0 | 0.0 | 0.0 | 0.0 | 0.0 | 0.0 | 0.0 | 0.0 | 0.0 | 0.0 | 0.0 | 0.0 |
| TOTAL AGRICULTURE | 8,453.0 | 9,849.0 | 10,519.6 | 10,718.8 | 10,039.9 | 10,898.1 | 10,311.4 | 11,708.0 | 11,429.4 | 12,442.3 | 12,992.1 | |
| TOTAL FOOD | 7,604.8 | 8,937.1 | 9,629.0 | 9,673.8 | 9,030.7 | 9,855.8 | 9,252.4 | 10,663.8 | 10,385.7 | 11,330.5 | 11,830.3 | |
| INDICES OF PRODUCTION | (1961-65 = 100) | | | | | | | | | | | |
| CROPS | 100 | 117 | 124 | 127 | 119 | 129 | 122 | 139 | 135 | 147 | 154 | |
| TOTAL AGRICULTURE | 100 | 117 | 124 | 127 | 119 | 129 | 122 | 139 | 135 | 147 | 154 | |
| TOTAL FOOD | 100 | 118 | 127 | 127 | 119 | 130 | 122 | 140 | 137 | 145 | 156 | |
| PER CAPITA AGRICULTURE | 100 | 103 | 107 | 107 | 98 | 104 | 97 | 108 | 103 | 110 | 112 | |
| PER CAPITA FOOD | 100 | 103 | 105 | 107 | 98 | 105 | 96 | 109 | 104 | 111 | 114 | |
| INDEX OF POPULATION | 1961-65 POPULATION=472,934,000 | | | | | | | | | | | |
| | 100.0 | 113.6 | 116.0 | 118.4 | 121.1 | 123.6 | 126.2 | 128.8 | 131.4 | 134.0 | 136.7 | |

TABLE 14.--INDONESIA

PRODUCTION BY COMMODITY, VALUE AND INDICES OF TOTAL AGRICULTURAL AND FOOD PRODUCTION, AVERAGE 1961-65, ANNUAL 1969-78

| COMMODITY | PRICE WEIGHT | AVERAGE 1961-65 | 1969 | 1970 | 1971 | 1972 | 1973 | 1974 | 1975 | 1976 | 1977 | 1978 |
|--|-----------------|--------------------|---------|---------|---------|---------|---------|---------|---------|---------|---------|---------|
| | | | | | | | | | | | | |
| DOLLARS | | | | | | | | | | | | |
| RICE, PADDY | 52 | 14,377 | 18,313 | 19,324 | 20,182 | 19,386 | 21,481 | 22,464 | 22,331 | 23,381 | 22,794 | 26,029 |
| CORN | 38 | 2,204 | 2,292 | 2,825 | 2,607 | 2,254 | 2,912 | 3,011 | 2,903 | 2,572 | 3,030 | 2,580 |
| CASSAVA | 12 | 11,832 | 11,034 | 10,451 | 10,042 | 9,450 | 12,300 | 14,000 | 12,456 | 12,191 | 12,170 | 13,000 |
| SWEET POTATOCES | 13 | 3,165 | 3,021 | 3,029 | 2,153 | 2,147 | 2,150 | 2,300 | 2,433 | 2,381 | 2,450 | 2,580 |
| SUGARCANE | 5 | 7,477 | 8,260 | 5,785 | 10,448 | 8,820 | 10,500 | 11,000 | 11,500 | 12,000 | 12,556 | 11,360 |
| TOBACCO | 862 | 74 | 69 | 72 | 72 | 77 | 79 | 79 | 83 | 118 | 129 | 135 |
| SOYBEANS | 73 | 395 | 389 | 488 | 475 | 518 | 529 | 564 | 598 | 522 | 480 | 580 |
| PEANUTS, IN SHELL | 76 | 280 | 382 | 419 | 424 | 412 | 434 | 437 | 576 | 517 | 614 | 606 |
| COFFEE | 224 | 111 | 177 | 185 | 191 | 174 | 174 | 180 | 175 | 169 | 177 | 180 |
| TEA | 263 | 84 | 63 | 67 | 71 | 69 | 79 | 77 | 88 | 84 | 85 | 85 |
| RUBBER | 215 | 663 | 788 | 811 | 804 | 885 | 890 | 890 | 950 | 970 | 1,000 | 1,050 |
| KAPCK | 74 | 23 | 28 | 28 | 29 | 28 | 29 | 29 | 29 | 29 | 30 | 30 |
| PALM OIL | 122 | 151 | 189 | 214 | 248 | 269 | 0 | 217 | 411 | 434 | 496 | 500 |
| COPPA | 42 | 1,251 | 1,097 | 1,064 | 1,135 | 1,215 | 1,070 | 1,150 | 1,225 | 1,458 | 1,376 | 1,400 |
| PALM KERNELS | 71 | 33 | 42 | 48 | 56 | 59 | 0 | 49 | 84 | 82 | 92 | 91 |
| AGGREGATES OF PRODUCTION | | | | | | | | | | | | |
| - - - - - MILLION DOLLARS AT CONSTANT PRICES - - - - - | | | | | | | | | | | | |
| CROPS | | 1,460.0 | 1,653.6 | 1,765.1 | 1,802.0 | 1,752.2 | 1,893.7 | 2,010.3 | 2,042.7 | 2,116.4 | 2,138.0 | 2,309.8 |
| LIVESTOCK | | 0.0 | 0.0 | 0.0 | 0.0 | 0.0 | 0.0 | 0.0 | 0.2 | 0.0 | 0.0 | 0.0 |
| TOTAL AGRICULTURE | | 1,460.0 | 1,653.6 | 1,765.1 | 1,802.0 | 1,752.2 | 1,893.7 | 2,010.3 | 2,042.7 | 2,116.4 | 2,138.0 | 2,309.8 |
| TOTAL FOOD | | 1,265.5 | 1,366.4 | 1,467.5 | 1,458.3 | 1,436.3 | 1,572.3 | 1,688.1 | 1,724.6 | 1,744.0 | 1,747.6 | 1,902.7 |
| INDICES OF PRODUCTION (1961-65 = 100) | | | | | | | | | | | | |
| CROPS | | 100 | 113 | 121 | 123 | 120 | 130 | 138 | 140 | 145 | 146 | 158 |
| TOTAL AGRICULTURE | | 100 | 113 | 121 | 123 | 120 | 130 | 138 | 140 | 145 | 146 | 158 |
| TOTAL FOOD | | 100 | 113 | 122 | 124 | 119 | 130 | 140 | 141 | 145 | 145 | 158 |
| PER CAPITA AGRICULTURE | | 100 | 58 | 103 | 102 | 97 | 103 | 107 | 106 | 107 | 106 | 112 |
| PER CAPITA FOOD | | 100 | 58 | 103 | 103 | 97 | 103 | 109 | 107 | 107 | 105 | 112 |
| INDEX OF POPULATION | | | | | | | | | | | | |
| 1961-65 POPULATION=125,643,000 | | 100.0 | 115.3 | 117.9 | 120.5 | 123.3 | 126.1 | 129.0 | 132.0 | 135.0 | 138.1 | 141.3 |

TABLE 15 --- JAPAN

PRODUCTION BY COMMODITY, VALUE AND INDICES OF TOTAL AGRICULTURAL AND FOOD PRODUCTION, AVERAGE 1961-65, ANNUAL 1969-78

| COMMODITY | PRICE | AVERAGE | | | | | | | | | | |
|--------------------------|---------|--|----------|----------|----------|----------|----------|----------|----------|----------|----------|----------|
| | WEIGHT | 1961-65 | 1969 | 1970 | 1971 | 1972 | 1973 | 1974 | 1975 | 1976 | 1977 | 1978 |
| | DOLLARS | -1,000 METRIC TONS- | | | | | | | | | | |
| WHEAT | 102 | 1,332 | 758 | 474 | 440 | 284 | 202 | 232 | 241 | 222 | 236 | 367 |
| RICE, PADDY | 202 | 15,808 | 17,594 | 15,861 | 13,609 | 14,861 | 15,180 | 15,365 | 16,456 | 14,716 | 16,368 | 15,736 |
| CCRN | 75 | 97 | 40 | 33 | 33 | 24 | 19 | 14 | 11 | 11 | 8 | 11 |
| BARLEY | 100 | 1,379 | 812 | 573 | 503 | 325 | 216 | 233 | 221 | 219 | 206 | 326 |
| OATS | 108 | 145 | 67 | 61 | 60 | 57 | 41 | 37 | 28 | 22 | 18 | 20 |
| MILLET | 124 | 51 | 14 | 11 | 14 | 12 | 10 | 10 | 4 | 4 | 4 | 4 |
| SCRGHM | 134 | 1 | 3 | 0 | 0 | 0 | 0 | 0 | 0 | 0 | 0 | 0 |
| OTHER GRAINS | 108 | 36 | 22 | 17 | 20 | 25 | 18 | 0 | 0 | 0 | 0 | 0 |
| PULSES | 196 | 289 | 218 | 254 | 186 | 265 | 235 | 212 | 166 | 151 | 180 | 160 |
| POTATGES | 40 | 3,781 | 3,575 | 3,611 | 3,271 | 3,533 | 3,413 | 2,942 | 3,261 | 3,742 | 3,520 | 3,300 |
| SWEETPOTATOS | 35 | 6,008 | 2,855 | 2,564 | 2,041 | 1,987 | 1,550 | 1,435 | 1,418 | 1,279 | 1,431 | 1,300 |
| SUGARCANE | 13 | 2,149 | 2,639 | 2,584 | 1,895 | 2,048 | 2,937 | 1,817 | 1,973 | 1,981 | 2,382 | 2,400 |
| SLGAR BEETS | 17 | 1,323 | 2,075 | 2,324 | 2,197 | 2,760 | 2,951 | 1,879 | 1,758 | 2,169 | 2,333 | 2,400 |
| TCBACC | 1,061 | 166 | 174 | 150 | 149 | 144 | 154 | 151 | 166 | 176 | 174 | 171 |
| SOYBEANS | 149 | 302 | 136 | 126 | 122 | 127 | 118 | 133 | 126 | 110 | 111 | 190 |
| PEANUTS, IN SHELL | 179 | 139 | 126 | 124 | 111 | 115 | 97 | 91 | 71 | 65 | 69 | 62 |
| RAPESEED | 140 | 178 | 48 | 30 | 23 | 16 | 13 | 9 | 7 | 6 | 5 | 5 |
| VEGETABLES | 82 | 11,483 | 14,320 | 13,319 | 13,084 | 13,765 | 13,276 | 13,040 | 12,835 | 13,112 | 13,749 | 13,435 |
| CITRUS FRUIT | 178 | 1,310 | 2,516 | 2,511 | 2,542 | 3,994 | 3,909 | 3,891 | 4,255 | 3,755 | 4,056 | 3,589 |
| APPLES | 91 | 1,066 | 1,085 | 1,021 | 1,005 | 959 | 963 | 850 | 902 | 879 | 959 | 837 |
| PEARS | 111 | 330 | 489 | 464 | 445 | 460 | 495 | 523 | 478 | 507 | 531 | 557 |
| PEARSIMONS | 132 | 382 | 444 | 343 | 303 | 377 | 347 | 284 | 275 | 264 | 275 | 270 |
| OTHER FRUIT | 190 | 518 | 680 | 680 | 655 | 641 | 723 | 737 | 710 | 720 | 728 | 778 |
| TEA | 957 | 80 | 50 | 91 | 93 | 95 | 101 | 95 | 105 | 100 | 102 | 105 |
| BEEF AND VEAL | 940 | 185 | 216 | 261 | 275 | 295 | 227 | 292 | 353 | 298 | 361 | 418 |
| PORK | 690 | 303 | 500 | 648 | 750 | 770 | 820 | 958 | 1,040 | 1,056 | 1,169 | 1,285 |
| POULTRY MEAT | 593 | 148 | 400 | 487 | 537 | 639 | 705 | 744 | 617 | 701 | 785 | 890 |
| OTHER MEAT | 596 | 23 | 13 | 11 | 10 | 7 | 6 | 5 | 5 | 6 | 6 | 5 |
| MILK | 85 | 2,711 | 4,509 | 4,762 | 4,819 | 4,939 | 4,912 | 4,669 | 4,961 | 5,266 | 5,737 | 6,150 |
| EGGS | 477 | 282 | 1,607 | 1,734 | 1,806 | 1,794 | 1,805 | 1,799 | 1,788 | 1,860 | 1,878 | 1,956 |
| AGGREGATES OF PRODUCTION | | - - - - - MILLION DOLLARS AT CONSTANT PRICES - - - - - | | | | | | | | | | |
| CROPS | | 5,773.9 | 6,347.8 | 5,855.7 | 5,413.3 | 5,837.6 | 5,834.1 | 5,785.5 | 6,068.5 | 5,669.4 | 6,132.9 | 5,917.0 |
| LIVESTOCK | | 1,121.9 | 1,512.2 | 2,175.9 | 2,323.2 | 2,409.7 | 2,415.9 | 2,584.7 | 2,637.4 | 2,699.7 | 2,927.8 | 3,186.1 |
| LIVESTOCK FEED DEDUCTION | .57 | -639.4 | -1,089.9 | -1,240.2 | -1,324.2 | -1,373.5 | -1,377.0 | -1,473.2 | -1,503.3 | -1,538.8 | -1,668.8 | -1,816.0 |
| TOTAL AGRICULTURE | | 6,256.4 | 7,169.8 | 6,835.4 | 6,412.3 | 6,873.8 | 6,873.0 | 6,897.0 | 7,202.6 | 6,830.3 | 7,391.9 | 7,287.1 |
| TOTAL FOOD | | 6,003.9 | 6,899.1 | 6,585.1 | 6,165.2 | 6,630.1 | 6,612.9 | 6,645.9 | 6,926.0 | 6,547.9 | 7,109.7 | 7,005.2 |
| INDICES OF PRODUCTION | | (1961-65 = 100) | | | | | | | | | | |
| CROPS | | 100 | 110 | 102 | 94 | 101 | 101 | 100 | 105 | 98 | 106 | 102 |
| TOTAL AGRICULTURE | | 100 | 115 | 109 | 102 | 110 | 110 | 110 | 115 | 109 | 118 | 116 |
| TOTAL FOOD | | 100 | 115 | 110 | 103 | 110 | 110 | 111 | 115 | 109 | 116 | 117 |
| PER CAPITA AGRICULTURE | | 100 | 108 | 101 | 94 | 99 | 98 | 97 | 100 | 94 | 100 | 98 |
| PER CAPITA FOOD | | 100 | 108 | 102 | 94 | 100 | 98 | 97 | 100 | 94 | 101 | 98 |
| INDEX OF POPULATION | | 1961-65 POPULATION = 96,858,000 | | | | | | | | | | |
| 1961-65 POPULATION | | 100.0 | 106.5 | 107.7 | 109.1 | 110.6 | 112.2 | 113.7 | 115.2 | 116.4 | 117.7 | 119.0 |

18

UPDATA 1981

TABLE 16.--KOREA, REPUBLIC OF

PRODUCTION BY COMMODITY, VALUE AND INDICES OF TOTAL AGRICULTURAL AND FOOD PRODUCTION, AVERAGE 1961-65, ANNUAL 1969-78

| COMMODITY | PRICE | AVERAGE | | | | | | | | | | |
|--------------------------|---------|--------------------------------------|---------|---------|---------|---------|---------|---------|---------|---------|---------|---------|
| | WEIGHT | 1961-65 | 1969 | 1970 | 1971 | 1972 | 1973 | 1974 | 1975 | 1976 | 1977 | 1978 |
| | DOLLARS | -1,000 METRIC TONS- | | | | | | | | | | |
| WHEAT | 90 | 170 | 224 | 219 | 196 | 149 | 100 | 74 | 97 | 82 | 45 | 36 |
| RYE | 79 | 16 | 13 | 10 | 8 | 8 | 6 | 6 | 9 | 6 | 4 | 4 |
| RICE, PADDY | 129 | 4,821 | 5,681 | 5,471 | 5,552 | 5,496 | 5,849 | 6,173 | 6,485 | 7,243 | 8,342 | 8,851 |
| CCRN | 91 | 26 | 63 | 68 | 64 | 54 | 61 | 58 | 60 | 84 | 113 | 112 |
| BARLEY | 97 | 1,148 | 1,666 | 1,591 | 1,510 | 1,600 | 1,443 | 1,388 | 1,700 | 1,759 | 814 | 1,348 |
| MILLET | 90 | 71 | 61 | 45 | 35 | 32 | 31 | 30 | 26 | 26 | 26 | 26 |
| SORGHUM | 90 | 6 | 7 | 7 | 6 | 5 | 6 | 5 | 4 | 4 | 6 | 6 |
| OTHER GRAINS | 77 | 7 | 6 | 5 | 5 | 4 | 7 | 4 | 4 | 5 | 4 | 4 |
| PULSES | 132 | 25 | 38 | 39 | 35 | 32 | 34 | 43 | 47 | 52 | 53 | 55 |
| POTATOES | 57 | 483 | 599 | 605 | 589 | 575 | 470 | 469 | 675 | 591 | 594 | 355 |
| SWEET POTATOES | 35 | 1,828 | 2,123 | 2,136 | 1,901 | 1,850 | 1,669 | 1,450 | 1,953 | 1,783 | 1,560 | 1,627 |
| TOBACCO | 954 | 40 | 59 | 56 | 63 | 115 | 111 | 95 | 105 | 112 | 145 | 134 |
| COTTON | 329 | 5 | 5 | 4 | 4 | 3 | 4 | 3 | 4 | 2 | 2 | 4 |
| COTTONSEED | 66 | 11 | 9 | 9 | 8 | 6 | 6 | 6 | 6 | 4 | 4 | 6 |
| SOYBEANS | 150 | 163 | 229 | 232 | 222 | 225 | 246 | 319 | 311 | 295 | 319 | 293 |
| PEANUTS, IN SHELL | 201 | 3 | 9 | 10 | 8 | 10 | 4 | 5 | 5 | 5 | 5 | 6 |
| VEGETABLES | 86 | 1,338 | 2,428 | 2,520 | 2,708 | 2,740 | 2,612 | 2,975 | 3,280 | 3,520 | 3,016 | 3,350 |
| APPLES | 117 | 120 | 219 | 212 | 221 | 261 | 291 | 297 | 337 | 350 | 350 | 389 |
| PEARS | 116 | 30 | 46 | 52 | 44 | 50 | 52 | 57 | 62 | 63 | 74 | 77 |
| PEACHES | 98 | 30 | 68 | 78 | 66 | 80 | 84 | 89 | 88 | 92 | 84 | 82 |
| PERSIMMONS | 153 | 18 | 34 | 30 | 23 | 31 | 32 | 42 | 38 | 40 | 50 | 57 |
| OTHER FRUIT | 223 | 15 | 49 | 51 | 52 | 54 | 90 | 98 | 135 | 159 | 162 | 203 |
| HEMP FIBER | 406 | 6 | 7 | 7 | 5 | 5 | 4 | 4 | 4 | 4 | 4 | 1 |
| BEEF AND VEAL | 758 | 43 | 31 | 48 | 46 | 42 | 60 | 49 | 65 | 76 | 81 | 81 |
| PORK | 437 | 15 | 37 | 42 | 34 | 93 | 103 | 95 | 88 | 88 | 146 | 187 |
| AGGREGATES OF PRODUCTION | | -MILLION DOLLARS AT CONSTANT PRICES- | | | | | | | | | | |
| CROPS | | 1,064.5 | 1,461.3 | 1,372.3 | 1,386.3 | 1,433.5 | 1,447.8 | 1,506.8 | 1,656.9 | 1,782.8 | 1,819.2 | 1,850.2 |
| LIVESTOCK | | 39.4 | 39.7 | 54.8 | 49.8 | 72.4 | 90.5 | 78.6 | 87.8 | 96.1 | 125.2 | 143.1 |
| TOTAL AGRICULTURE | | 1,103.9 | 1,501.0 | 1,427.1 | 1,436.1 | 1,505.9 | 1,538.3 | 1,585.4 | 1,744.7 | 1,878.9 | 1,944.4 | 1,993.3 |
| TOTAL FOOD | | 1,061.4 | 1,386.3 | 1,365.6 | 1,366.7 | 1,393.6 | 1,429.5 | 1,492.2 | 1,641.6 | 1,769.8 | 1,803.2 | 1,863.8 |
| INDICES OF PRODUCTION | | (1961-65 = 100) | | | | | | | | | | |
| CROPS | | 100 | 132 | 125 | 130 | 135 | 136 | 142 | 156 | 167 | 171 | 174 |
| TOTAL AGRICULTURE | | 100 | 131 | 125 | 130 | 136 | 139 | 144 | 158 | 170 | 176 | 181 |
| TOTAL FOOD | | 100 | 130 | 125 | 129 | 131 | 135 | 141 | 155 | 167 | 170 | 176 |
| PER CAPITA AGRICULTURE | | 100 | 113 | 109 | 107 | 111 | 111 | 112 | 121 | 128 | 130 | 131 |
| PER CAPITA FOOD | | 100 | 112 | 109 | 107 | 107 | 107 | 110 | 118 | 125 | 126 | 128 |
| INDEX OF POPULATION | | 1961-65 POPULATION = 27,360,000 | | | | | | | | | | |
| | | 100.0 | 115.9 | 118.6 | 120.9 | 123.2 | 125.5 | 127.9 | 130.9 | 133.1 | 135.4 | 137.7 |

TABLE 17.--MALAYSIA, WEST

PRODUCTION BY COMMODITY, VALUE AND INDICES OF TOTAL AGRICULTURAL AND FOOD PRODUCTION, AVERAGE 1961-65, ANNUAL 1969-78

| COMMODITY | PRICE | AVERAGE | 1969 | 1970 | 1971 | 1972 | 1973 | 1974 | 1975 | 1976 | 1977 | 1978 |
|--------------------------|-----------|---------|--|-------|-------|-------|-------|---------|-------|---------|---------|---------|
| | WEIGHT | 1961-65 | | | | | | | | | | |
| DOLLARS | | | -1,000 METRIC TONS- | | | | | | | | | |
| RICE, PADDY | 99 | 957 | 1,354 | 1,429 | 1,545 | 1,565 | 1,727 | 1,818 | 1,718 | 1,748 | 1,580 | 1,307 |
| SWEET POTATCES | 56 | 127 | 112 | 112 | 91 | 81 | 71 | 51 | 61 | 62 | 60 | 60 |
| TOBACCO | 594 | 3 | 2 | 3 | 4 | 5 | 5 | 9 | 6 | 4 | 4 | 4 |
| BANANAS | 62 | 337 | 188 | 213 | 178 | 178 | 142 | 198 | 205 | 210 | 210 | 210 |
| PINEAPPLES | 35 | 285 | 306 | 283 | 268 | 255 | 242 | 245 | 208 | 225 | 242 | 260 |
| COFFEE | 483 | 5 | 5 | 6 | 4 | 5 | 5 | 7 | 7 | 7 | 7 | 7 |
| TEA | 1,592 | 3 | 3 | 3 | 3 | 4 | 4 | 3 | 3 | 4 | 4 | 4 |
| RUBBER | 424 | 773 | 1,199 | 1,216 | 1,279 | 1,251 | 1,491 | 1,486 | 1,292 | 1,557 | 1,653 | 1,700 |
| PALM OIL | 168 | 120 | 326 | 402 | 551 | 659 | 740 | 942 | 1,072 | 1,218 | 1,485 | 1,450 |
| CCPRA | 133 | 136 | 121 | 160 | 167 | 154 | 121 | 109 | 100 | 123 | 120 | 120 |
| PALM KERNELS | 98 | 30 | 75 | 87 | 119 | 137 | 153 | 195 | 218 | 277 | 341 | 335 |
| MILK | 73 | 18 | 14 | 14 | 14 | 13 | 15 | 17 | 20 | 22 | 22 | 22 |
| AGGREGATES OF PRODUCTION | | | - MILLION DOLLARS AT CONSTANT PRICES - | | | | | | | | | |
| CROPS | | 507.1 | 758.7 | 752.8 | 856.1 | 865.7 | 991.3 | 1,038.7 | 967.3 | 1,117.4 | 1,192.7 | 1,179.7 |
| LIVESTOCK | | 1.3 | 1.0 | 1.0 | 1.0 | 0.9 | 1.1 | 1.2 | 1.5 | 1.6 | 1.6 | 1.6 |
| TOTAL AGRICULTURE | | 508.4 | 759.7 | 753.8 | 857.1 | 866.6 | 992.4 | 1,039.9 | 968.8 | 1,119.0 | 1,194.3 | 1,181.3 |
| TOTAL FOOD | | 172.3 | 243.3 | 269.2 | 306.0 | 324.8 | 348.8 | 356.9 | 409.8 | 447.2 | 481.8 | 448.9 |
| INDICES OF PRODUCTION | | | (1961-65 = 100) | | | | | | | | | |
| CROPS | | 100 | 150 | 156 | 169 | 171 | 195 | 205 | 191 | 220 | 235 | 233 |
| TOTAL AGRICULTURE | | 100 | 149 | 156 | 169 | 170 | 195 | 205 | 191 | 220 | 235 | 232 |
| TOTAL FOOD | | 100 | 141 | 156 | 178 | 189 | 202 | 230 | 238 | 260 | 280 | 261 |
| PER CAPITA AGRICULTURE | | 100 | 128 | 131 | 138 | 136 | 152 | 155 | 141 | 159 | 165 | 159 |
| PER CAPITA FOOD | | 100 | 121 | 131 | 145 | 150 | 158 | 175 | 176 | 188 | 197 | 178 |
| INDEX OF POPULATION | | | | | | | | | | | | |
| 1961-65 POPULATION= | 7,892,000 | 100.0 | 116.4 | 119.3 | 122.3 | 125.3 | 128.5 | 131.6 | 134.9 | 138.4 | 142.0 | 146.5 |

TABLE 18.--NEW ZEALAND

PRODUCTION BY COMMODITY, VALUE AND INDICES OF TOTAL AGRICULTURAL AND FOOD PRODUCTION, AVERAGE 1961-65, ANNUAL 1969-78

| COMMODITY | PRICE | AVERAGE | 1969 | 1970 | 1971 | 1972 | 1973 | 1974 | 1975 | 1976 | 1977 | 1978 |
|--------------------------|---------|---------|--------------------------------------|---------|---------|---------|---------|---------|---------|---------|---------|---------|
| | WEIGHT | 1961-65 | | | | | | | | | | |
| | DOLLARS | | -1,000 METRIC TONS- | | | | | | | | | |
| WHEAT | 69 | 248 | 457 | 287 | 326 | 384 | 376 | 215 | 203 | 427 | 369 | 340 |
| CORN | 83 | 16 | 51 | 59 | 101 | 116 | 118 | 80 | 205 | 232 | 259 | 227 |
| BARLEY | 58 | 98 | 233 | 174 | 259 | 335 | 258 | 242 | 334 | 334 | 304 | 266 |
| OATS | 76 | 34 | 52 | 58 | 60 | 49 | 45 | 63 | 65 | 44 | 68 | 59 |
| PULSES | 70 | 25 | 57 | 50 | 52 | 60 | 60 | 53 | 48 | 55 | 45 | 48 |
| POTATOCES | 55 | 204 | 256 | 253 | 210 | 244 | 216 | 286 | 226 | 248 | 248 | 250 |
| ONIONS | 82 | 21 | 30 | 26 | 38 | 32 | 32 | 39 | 29 | 38 | 40 | 40 |
| TOBACCO | 1,094 | 4 | 3 | 3 | 3 | 3 | 3 | 3 | 3 | 3 | 3 | 3 |
| GRASS SEED | 406 | 24 | 24 | 18 | 34 | 23 | 28 | 23 | 24 | 18 | 25 | 25 |
| APPLES | 125 | 86 | 107 | 134 | 114 | 149 | 152 | 153 | 159 | 172 | 146 | 183 |
| PEARS | 141 | 15 | 17 | 19 | 20 | 18 | 16 | 17 | 14 | 14 | 12 | 14 |
| PEACHES | 113 | 16 | 23 | 26 | 24 | 22 | 24 | 23 | 24 | 24 | 23 | 17 |
| BEEF AND VEAL | 295 | 278 | 376 | 393 | 393 | 410 | 446 | 405 | 508 | 628 | 558 | 555 |
| MUTTON AND LAMB | 334 | 471 | 563 | 563 | 564 | 575 | 556 | 501 | 491 | 513 | 498 | 495 |
| PORK | 519 | 42 | 37 | 39 | 44 | 41 | 35 | 34 | 34 | 33 | 39 | 39 |
| POULTRY MEAT | 992 | 7 | 10 | 12 | 17 | 17 | 13 | 19 | 19 | 23 | 25 | 24 |
| MILK | 66 | 5,515 | 6,422 | 5,961 | 5,937 | 6,421 | 5,693 | 6,101 | 6,568 | 6,654 | 6,238 | 6,511 |
| WOOL, GREASY BASIS | 909 | 285 | 328 | 334 | 322 | 309 | 285 | 294 | 312 | 303 | 311 | 315 |
| EGGS | 810 | 19 | 25 | 31 | 36 | 35 | 36 | 39 | 35 | 35 | 38 | 35 |
| AGGREGATES OF PRODUCTION | | | -MILLION DOLLARS AT CONSTANT PRICES- | | | | | | | | | |
| CROPS | | 70.2 | 105.2 | 91.7 | 105.1 | 115.6 | 111.5 | 95.8 | 111.1 | 128.9 | 126.0 | 123.0 |
| LIVESTOCK | | 907.2 | 1,071.0 | 1,058.1 | 1,057.7 | 1,084.4 | 1,012.4 | 1,024.7 | 1,095.8 | 1,139.5 | 1,101.1 | 1,117.4 |
| TOTAL AGRICULTURE | | 977.4 | 1,176.2 | 1,149.8 | 1,162.8 | 1,200.0 | 1,123.9 | 1,120.5 | 1,206.9 | 1,268.4 | 1,227.1 | 1,240.4 |
| TOTAL FOOD | | 704.3 | 865.0 | 835.6 | 853.7 | 906.5 | 850.1 | 840.7 | 910.3 | 982.4 | 930.9 | 940.6 |
| INDICES OF PRODUCTION | | | (1961-65 = 100) | | | | | | | | | |
| CROPS | | 100 | 150 | 131 | 150 | 165 | 159 | 136 | 158 | 184 | 179 | 175 |
| TOTAL AGRICULTURE | | 100 | 120 | 118 | 119 | 123 | 115 | 115 | 123 | 130 | 126 | 127 |
| TOTAL FOOD | | 100 | 123 | 115 | 121 | 129 | 121 | 119 | 129 | 139 | 132 | 134 |
| PER CAPITA AGRICULTURE | | 100 | 110 | 106 | 106 | 107 | 99 | 97 | 102 | 105 | 99 | 98 |
| PER CAPITA FOOD | | 100 | 112 | 107 | 108 | 112 | 104 | 100 | 107 | 113 | 104 | 103 |
| INDEX OF POPULATION | | | 1961-65 POPULATION= 2,534,000 | | | | | | | | | |
| | | 100.0 | 109.3 | 110.9 | 112.5 | 114.4 | 116.4 | 118.8 | 121.2 | 123.9 | 126.7 | 129.4 |

TABLE 19.--PAKISTAN

PRODUCTION BY COMMODITY, VALUE AND INDICES OF TOTAL AGRICULTURAL AND FOOD PRODUCTION, AVERAGE 1961-65, ANNUAL 1969-78

| COMMODITY | PRICE | AVERAGE | 1969 | 1970 | 1971 | 1972 | 1973 | 1974 | 1975 | 1976 | 1977 | 1978 |
|--------------------------|---------|---------|--------------------------------------|---------|---------|---------|---------|---------|---------|---------|---------|---------|
| | WEIGHT | 1961-65 | | | | | | | | | | |
| | DOLLARS | | -1,000 METRIC TONS- | | | | | | | | | |
| WHEAT | 49 | 4,153 | 6,618 | 7,294 | 6,476 | 6,890 | 7,442 | 7,629 | 7,673 | 8,691 | 9,143 | 8,288 |
| RICE, PADDY | 60 | 1,826 | 3,605 | 3,303 | 3,356 | 3,498 | 3,686 | 3,474 | 3,930 | 4,110 | 4,424 | 4,650 |
| CORN | 42 | 514 | 668 | 717 | 705 | 706 | 768 | 747 | 803 | 764 | 821 | 750 |
| BARLEY | 37 | 118 | 97 | 104 | 91 | 103 | 109 | 140 | 137 | 130 | 124 | 121 |
| MILLET | 43 | 394 | 302 | 361 | 304 | 360 | 351 | 265 | 308 | 311 | 318 | 341 |
| SORGHUM | 39 | 261 | 304 | 329 | 312 | 302 | 378 | 265 | 281 | 261 | 284 | 233 |
| CHICKPEAS | 47 | 639 | 528 | 511 | 494 | 518 | 553 | 610 | 550 | 601 | 639 | 610 |
| SUGARCANE | 9 | 15,852 | 21,971 | 26,369 | 23,167 | 19,962 | 19,947 | 23,910 | 21,240 | 25,545 | 29,379 | 30,076 |
| TOBACCO | 347 | 72 | 125 | 127 | 113 | 87 | 66 | 66 | 77 | 61 | 74 | 74 |
| COTTON | 259 | 380 | 537 | 544 | 705 | 703 | 623 | 652 | 496 | 418 | 553 | 479 |
| COTTONSEED | 52 | 760 | 1,075 | 1,087 | 1,415 | 1,404 | 1,318 | 1,355 | 992 | 836 | 1,106 | 958 |
| FLAXSEED | 71 | 3 | 3 | 3 | 3 | 4 | 5 | 5 | 4 | 4 | 4 | 4 |
| RAPESEED | 82 | 220 | 228 | 255 | 269 | 286 | 293 | 285 | 248 | 267 | 296 | 286 |
| SESAME SEED | 126 | 9 | 8 | 10 | 13 | 15 | 10 | 12 | 8 | 12 | 12 | 12 |
| AGGREGATES OF PRODUCTION | | | -MILLION DOLLARS AT CONSTANT PRICES- | | | | | | | | | |
| CROPS | | 721.3 | 1,078.0 | 1,143.9 | 1,131.4 | 1,123.6 | 1,136.0 | 1,172.0 | 1,120.3 | 1,187.8 | 1,324.2 | 1,269.2 |
| LIVESTOCK | | 0.0 | 0.0 | 0.0 | 0.0 | 0.0 | 0.0 | 0.0 | 0.0 | 0.0 | 0.0 | 0.0 |
| TOTAL AGRICULTURE | | 721.3 | 1,078.0 | 1,143.9 | 1,131.4 | 1,123.6 | 1,136.0 | 1,172.0 | 1,120.3 | 1,187.8 | 1,324.2 | 1,269.2 |
| TOTAL FOOD | | 597.8 | 895.3 | 957.8 | 908.4 | 910.4 | 951.3 | 979.8 | 964.8 | 1,050.0 | 1,155.0 | 1,119.1 |
| INDICES OF PRODUCTION | | | (1961-65 = 100) | | | | | | | | | |
| CROPS | | 100 | 149 | 158 | 157 | 156 | 157 | 162 | 155 | 165 | 184 | 176 |
| TOTAL AGRICULTURE | | 100 | 149 | 158 | 157 | 156 | 157 | 162 | 155 | 165 | 184 | 176 |
| TOTAL FOOD | | 100 | 150 | 162 | 152 | 152 | 159 | 164 | 161 | 177 | 193 | 187 |
| PER CAPITA AGRICULTURE | | 100 | 126 | 130 | 125 | 120 | 118 | 118 | 110 | 113 | 122 | 114 |
| PER CAPITA FOOD | | 100 | 126 | 131 | 121 | 118 | 119 | 119 | 114 | 122 | 129 | 121 |
| INDEX OF POPULATION | | | 1961-65 POPULATION= 49,710,000 | | | | | | | | | |
| | | 100.0 | 118.5 | 121.9 | 125.6 | 129.3 | 133.2 | 137.2 | 141.3 | 145.6 | 149.9 | 154.4 |

TABLE 20 ---PHILIPPINES

PRODUCTION BY COMMODITY, VALUE AND INDICES OF TOTAL AGRICULTURAL AND FOOD PRODUCTION, AVERAGE 1961-65, ANNUAL 1969-78

| COMMODITY | PRICE | AVERAGE | 1969 | 1970 | 1971 | 1972 | 1973 | 1974 | 1975 | 1976 | 1977 | 1978 |
|---------------------------------|--------|---------|--|---------|---------|---------|---------|---------|---------|---------|---------|---------|
| | WEIGHT | 1961-65 | | | | | | | | | | |
| DOLLARS | | | - - - - - 1,000 METRIC TONS - - - - - | | | | | | | | | |
| RICE, PADDY | 72 | 3,957 | 5,233 | 5,343 | 5,100 | 4,408 | 5,585 | 5,651 | 6,159 | 6,456 | 6,895 | 7,049 |
| CCRM | 48 | 1,205 | 2,008 | 2,005 | 2,013 | 1,831 | 2,289 | 2,568 | 2,767 | 2,843 | 2,854 | 3,200 |
| PULSES | 133 | 30 | 20 | 23 | 24 | 24 | 24 | 23 | 32 | 35 | 35 | 35 |
| POTATOES | 112 | 14 | 18 | 20 | 22 | 25 | 27 | 25 | 20 | 25 | 25 | 25 |
| CASSAVA | 23 | 548 | 506 | 442 | 427 | 440 | 460 | 480 | 679 | 700 | 700 | 725 |
| SWEETPOTATOES | 27 | 738 | 718 | 731 | 657 | 651 | 650 | 806 | 986 | 1,000 | 1,000 | 1,000 |
| OTHER ROOT CROPS | 26 | 158 | 160 | 143 | 137 | 127 | 125 | 125 | 138 | 150 | 150 | 150 |
| SUGARCANE | 9 | 14,232 | 15,550 | 17,535 | 23,287 | 19,941 | 22,676 | 26,085 | 24,596 | 29,220 | 28,208 | 24,360 |
| TOBACCO | 240 | 66 | 57 | 61 | 71 | 51 | 76 | 75 | 73 | 83 | 78 | 69 |
| PEANUTS, IN SHELL | 112 | 12 | 15 | 17 | 19 | 19 | 18 | 22 | 36 | 40 | 40 | 40 |
| VEGETABLES | 74 | 177 | 221 | 286 | 277 | 271 | 310 | 375 | 426 | 450 | 450 | 475 |
| CITRUS FRUIT | 67 | 62 | 75 | 71 | 63 | 65 | 65 | 62 | 76 | 80 | 80 | 85 |
| BANANAS | 23 | 641 | 856 | 500 | 1,035 | 1,250 | 1,013 | 1,328 | 1,686 | 1,150 | 1,210 | 1,250 |
| PINEAPPLES | 40 | 152 | 230 | 233 | 365 | 380 | 380 | 333 | 405 | 400 | 450 | 530 |
| OTHER FRUIT | 57 | 286 | 308 | 309 | 370 | 370 | 410 | 523 | 596 | 650 | 650 | 650 |
| COFFEE | 355 | 38 | 44 | 49 | 50 | 51 | 51 | 53 | 62 | 65 | 65 | 65 |
| COCOA BEANS | 748 | 4 | 4 | 4 | 4 | 3 | 4 | 4 | 4 | 4 | 4 | 4 |
| ABACA | 156 | 114 | 136 | 122 | 105 | 110 | 115 | 126 | 134 | 140 | 140 | 140 |
| CCPRA | 103 | 1,396 | 1,516 | 1,656 | 1,788 | 2,170 | 1,808 | 1,380 | 2,206 | 2,560 | 2,400 | 2,450 |
| MEATS | 546 | 322 | 465 | 450 | 469 | 484 | 485 | 478 | 454 | 448 | 451 | 465 |
| AGGREGATES OF PRODUCTION | | | - - - - - MILLION DOLLARS AT CONSTANT PRICES - - - - - | | | | | | | | | |
| CROPS | | 767.0 | 934.0 | 577.7 | 1,024.9 | 986.7 | 1,088.4 | 1,116.7 | 1,270.1 | 1,375.1 | 1,381.7 | 1,384.8 |
| LIVESTOCK | | 176.0 | 253.9 | 245.7 | 256.1 | 264.3 | 264.8 | 261.0 | 247.9 | 244.6 | 246.2 | 253.9 |
| TOTAL AGRICULTURE | | 943.0 | 1,187.9 | 1,223.4 | 1,251.0 | 1,251.0 | 1,353.2 | 1,377.7 | 1,518.0 | 1,617.7 | 1,627.9 | 1,638.7 |
| TOTAL FOOD | | 896.1 | 1,142.1 | 1,172.4 | 1,239.8 | 1,203.5 | 1,299.0 | 1,321.2 | 1,457.6 | 1,552.9 | 1,564.3 | 1,577.2 |
| INDICES OF PRODUCTION | | | (1961-65 = 100) | | | | | | | | | |
| CROPS | | 100 | 122 | 127 | 135 | 129 | 142 | 146 | 166 | 179 | 180 | 181 |
| TOTAL AGRICULTURE | | 100 | 126 | 130 | 137 | 133 | 143 | 146 | 161 | 172 | 173 | 174 |
| TOTAL FOOD | | 100 | 127 | 131 | 138 | 134 | 145 | 147 | 163 | 173 | 175 | 176 |
| PER CAPITA AGRICULTURE | | 100 | 196 | 195 | 188 | 182 | 198 | 197 | 115 | 119 | 117 | 115 |
| PER CAPITA FOOD | | 100 | 107 | 106 | 110 | 104 | 109 | 108 | 116 | 121 | 119 | 117 |
| INDEX OF POPULATION | | | | | | | | | | | | |
| 1961-65 POPULATION = 30,532,000 | | 100.0 | 119.4 | 123.0 | 126.3 | 129.7 | 133.2 | 136.8 | 140.2 | 143.7 | 147.3 | 151.0 |

TABLE 21 -- SRI LANKA

PRODUCTION BY COMMODITY, VALUE AND INDICES OF TOTAL AGRICULTURAL AND FOOD PRODUCTION, AVERAGE 1961-65, ANNUAL 1969-78

| COMMODITY | PRICE | AVERAGE | 1969 | 1970 | 1971 | 1972 | 1973 | 1974 | 1975 | 1976 | 1977 | 1978 |
|--------------------------|---------|---------|--|-------|-------|-------|-------|-------|-------|-------|-------|-------|
| | WEIGHT | 1961-65 | | | | | | | | | | |
| | DOLLARS | | -----1,000 METRIC TONS----- | | | | | | | | | |
| RICE, PADDY | 57 | 948 | 1,375 | 1,617 | 1,396 | 1,312 | 1,312 | 1,602 | 1,155 | 1,253 | 1,651 | 1,878 |
| CCRN | 34 | 10 | 17 | 16 | 18 | 20 | 15 | 23 | 27 | 35 | 35 | 37 |
| MILLET | 30 | 18 | 20 | 18 | 20 | 21 | 20 | 25 | 17 | 22 | 22 | 22 |
| SORGHUM | 30 | 1 | 0 | 0 | 0 | 0 | 0 | 0 | 0 | 0 | 0 | 0 |
| CASSAVA | 22 | 313 | 403 | 430 | 445 | 450 | 616 | 707 | 722 | 700 | 750 | 755 |
| SWEET POTATOES | 40 | 204 | 66 | 74 | 77 | 80 | 91 | 157 | 160 | 160 | 160 | 165 |
| TOBACCO | 400 | 4 | 7 | 10 | 9 | 9 | 9 | 9 | 9 | 9 | 9 | 9 |
| SESAME SEED | 77 | 6 | 6 | 6 | 6 | 6 | 6 | 6 | 6 | 6 | 6 | 6 |
| SPICES | 571 | 39 | 72 | 68 | 67 | 68 | 67 | 68 | 65 | 63 | 65 | 70 |
| COCOA BEANS | 290 | 2 | 2 | 2 | 2 | 2 | 2 | 2 | 2 | 2 | 2 | 2 |
| TEA | 420 | 217 | 220 | 212 | 219 | 215 | 211 | 204 | 214 | 200 | 208 | 206 |
| RUBBER | 243 | 107 | 151 | 159 | 141 | 138 | 155 | 132 | 149 | 152 | 146 | 154 |
| COFFEE | 70 | 280 | 201 | 183 | 195 | 190 | 100 | 108 | 170 | 165 | 175 | 180 |
| MEATS | 131 | 29 | 33 | 33 | 34 | 34 | 35 | 37 | 37 | 37 | 37 | 37 |
| AGGREGATES OF PRODUCTION | | | -----MILLION DOLLARS AT CONSTANT PRICES----- | | | | | | | | | |
| CROPS | | 225.9 | 279.3 | 290.0 | 276.7 | 269.8 | 269.4 | 283.7 | 269.3 | 268.3 | 295.9 | 313.4 |
| LIVESTOCK | | 1.9 | 4.3 | 4.3 | 4.5 | 4.5 | 4.6 | 4.8 | 4.8 | 4.8 | 4.8 | 4.8 |
| TOTAL AGRICULTURE | | 225.8 | 283.6 | 294.3 | 281.2 | 274.3 | 274.0 | 288.5 | 274.1 | 273.1 | 300.7 | 318.2 |
| TOTAL FOOD | | 88.6 | 110.6 | 123.9 | 113.0 | 108.1 | 105.8 | 128.3 | 107.3 | 112.6 | 137.1 | 150.7 |
| INDICES OF PRODUCTION | | | (1961-65 = 100) | | | | | | | | | |
| CROPS | | 100 | 124 | 128 | 122 | 119 | 119 | 126 | 119 | 119 | 131 | 139 |
| TOTAL AGRICULTURE | | 100 | 123 | 128 | 122 | 119 | 119 | 126 | 119 | 119 | 131 | 138 |
| TOTAL FOOD | | 100 | 125 | 140 | 128 | 122 | 119 | 145 | 121 | 127 | 155 | 170 |
| PER CAPITA AGRICULTURE | | 100 | 108 | 110 | 102 | 98 | 96 | 99 | 92 | 90 | 97 | 100 |
| PER CAPITA FOOD | | 100 | 109 | 120 | 107 | 100 | 96 | 114 | 93 | 96 | 115 | 123 |
| INDEX OF POPULATION | | | 1961-65 POPULATION = 10,579,000 | | | | | | | | | |
| | | 100.0 | 114.3 | 116.8 | 119.4 | 122.1 | 124.7 | 127.2 | 129.8 | 132.4 | 135.1 | 137.8 |

TABLE 22.--TAIWAN

PRODUCTION BY COMMODITY, VALUE AND INDICES OF TOTAL AGRICULTURAL AND FOOD PRODUCTION, AVERAGE 1961-65, ANNUAL 1969-78

| COMMODITY | PRICE | AVERAGE | | | | | | | | | | |
|--------------------------|---------|--------------------------------------|-------|-------|-------|-------|-------|-------|-------|-------|--------|-------|
| | WEIGHT | 1961-65 | 1969 | 1970 | 1971 | 1972 | 1973 | 1974 | 1975 | 1976 | 1977 | 1978 |
| | DOLLARS | -1,000 METRIC TONS- | | | | | | | | | | |
| WHEAT | 96 | 30 | 10 | 4 | 2 | 2 | 1 | 1 | 3 | 1 | 1 | 1 |
| RICE, PADDY | 88 | 2,937 | 3,135 | 3,583 | 3,137 | 3,302 | 3,057 | 3,325 | 3,381 | 3,678 | 3,592 | 3,426 |
| CORN | 78 | 36 | 45 | 57 | 57 | 71 | 84 | 107 | 138 | 114 | 95 | 110 |
| MILLET | 83 | 6 | 7 | 7 | 7 | 6 | 5 | 7 | 6 | 4 | 4 | 4 |
| SORGHUM | 83 | 4 | 6 | 7 | 8 | 15 | 16 | 22 | 19 | 14 | 11 | 14 |
| PULSES | 117 | 18 | 25 | 26 | 21 | 27 | 30 | 27 | 26 | 30 | 39 | 42 |
| CASSAVA | 17 | 235 | 316 | 308 | 288 | 324 | 328 | 376 | 279 | 294 | 275 | 250 |
| SWEET POTATOES | 16 | 2,988 | 3,702 | 3,441 | 3,351 | 2,928 | 3,204 | 2,788 | 2,403 | 1,851 | 1,711 | 1,650 |
| SUGARCANE | 6 | 7,362 | 7,012 | 5,591 | 7,281 | 7,092 | 7,474 | 8,900 | 7,687 | 8,728 | 11,063 | 9,900 |
| TOBACCO | 487 | 17 | 21 | 21 | 17 | 16 | 18 | 17 | 18 | 26 | 25 | 23 |
| JUTE | 199 | 12 | 13 | 8 | 2 | 1 | 1 | 1 | 1 | 1 | 1 | 1 |
| SOYBEANS | 143 | 57 | 67 | 65 | 61 | 60 | 61 | 67 | 62 | 53 | 52 | 55 |
| PEANUTS, IN SHELL | 156 | 107 | 101 | 122 | 98 | 94 | 98 | 94 | 91 | 89 | 79 | 80 |
| SESAME SEED | 218 | 3 | 3 | 2 | 2 | 2 | 2 | 2 | 1 | 1 | 1 | 1 |
| CITRONELLA OIL | 1,500 | 3 | 1 | 1 | 1 | 1 | 1 | 1 | 1 | 1 | 1 | 1 |
| VEGETABLES | 28 | 902 | 1,465 | 1,685 | 1,765 | 1,704 | 1,881 | 1,939 | 2,226 | 2,390 | 2,550 | 2,575 |
| CITRUS FRUIT | 93 | 83 | 170 | 209 | 253 | 291 | 332 | 361 | 348 | 384 | 357 | 375 |
| BANANAS | 63 | 225 | 586 | 462 | 471 | 366 | 423 | 333 | 197 | 213 | 183 | 200 |
| PINEAPPLES | 29 | 197 | 325 | 338 | 358 | 334 | 328 | 308 | 319 | 279 | 281 | 290 |
| OTHER FRUIT | 55 | 80 | 170 | 208 | 278 | 271 | 345 | 445 | 382 | 499 | 440 | 460 |
| TEA | 394 | 20 | 26 | 28 | 27 | 26 | 29 | 24 | 26 | 25 | 27 | 27 |
| MEATS | 537 | 262 | 415 | 461 | 468 | 507 | 597 | 540 | 550 | 674 | 703 | 710 |
| AGGREGATES OF PRODUCTION | | -MILLION DOLLARS AT CONSTANT PRICES- | | | | | | | | | | |
| CROPS | | 467.8 | 554.2 | 590.4 | 564.5 | 562.5 | 567.6 | 597.5 | 584.3 | 622.2 | 620.7 | 605.1 |
| LIVESTOCK | | 140.8 | 222.9 | 247.6 | 251.3 | 272.3 | 320.6 | 298.0 | 295.4 | 361.9 | 377.5 | 381.3 |
| TOTAL AGRICULTURE | | 608.6 | 777.1 | 838.0 | 815.8 | 834.8 | 888.2 | 887.5 | 879.7 | 984.1 | 998.2 | 986.4 |
| TOTAL FOOD | | 590.3 | 754.1 | 815.2 | 796.5 | 816.6 | 867.8 | 869.5 | 860.5 | 961.3 | 975.2 | 963.4 |
| INDICES OF PRODUCTION | | {1961-65 = 100} | | | | | | | | | | |
| CROPS | | 100 | 118 | 126 | 121 | 120 | 121 | 128 | 125 | 133 | 133 | 129 |
| TOTAL AGRICULTURE | | 100 | 128 | 138 | 134 | 137 | 146 | 146 | 145 | 162 | 164 | 162 |
| TOTAL FOOD | | 100 | 126 | 132 | 135 | 138 | 147 | 147 | 146 | 163 | 165 | 163 |
| PER CAPITA AGRICULTURE | | 100 | 108 | 113 | 107 | 108 | 112 | 110 | 107 | 117 | 117 | 113 |
| PER CAPITA FOOD | | 100 | 108 | 113 | 108 | 109 | 113 | 111 | 108 | 118 | 118 | 114 |
| INDEX OF POPULATION | | 1961-65 POPULATION = 11,880,000 | | | | | | | | | | |
| | | 100.0 | 118.8 | 122.3 | 124.9 | 127.4 | 129.9 | 132.4 | 135.0 | 137.7 | 140.4 | 143.2 |

TABLE 23.--THAILAND

PRODUCTION BY COMMODITY, VALUE AND INDICES OF TOTAL AGRICULTURAL AND FOOD PRODUCTION, AVERAGE 1961-65, ANNUAL 1969-78

| COMMODITY | PRICE | AVERAGE | | | | | | | | | | |
|--------------------------|---------|--------------------------------------|--------|--------|---------|--------|---------|---------|---------|---------|---------|---------|
| | WEIGHT | 1961-65 | 1969 | 1970 | 1971 | 1972 | 1973 | 1974 | 1975 | 1976 | 1977 | 1978 |
| | DOLLARS | -1,000 METRIC TONS- | | | | | | | | | | |
| RICE, PADDY | 39 | 11,158 | 13,410 | 13,576 | 13,744 | 12,219 | 14,350 | 14,500 | 15,200 | 15,760 | 15,000 | 16,600 |
| CORN | 44 | 815 | 1,700 | 1,938 | 2,300 | 1,315 | 2,350 | 2,450 | 3,050 | 2,750 | 2,050 | 3,300 |
| SCRGHLW | 38 | 20 | 75 | 100 | 135 | 120 | 179 | 280 | 339 | 250 | 200 | 230 |
| PLLSES | 99 | 89 | 152 | 148 | 250 | 300 | 275 | 280 | 300 | 300 | 300 | 320 |
| CASSAVA | 11 | 1,789 | 3,079 | 3,431 | 3,431 | 3,800 | 4,750 | 4,050 | 4,200 | 4,800 | 5,000 | 6,300 |
| SUGARCANE | 5 | 4,285 | 5,909 | 6,620 | 6,731 | 9,513 | 12,700 | 14,560 | 13,400 | 19,000 | 26,400 | 18,600 |
| TOBACCO | 332 | 59 | 52 | 95 | 99 | 99 | 48 | 53 | 62 | 67 | 66 | 68 |
| COTTON | 138 | 16 | 15 | 9 | 32 | 21 | 17 | 19 | 22 | 27 | 22 | 27 |
| JUTE | 124 | 8 | 5 | 6 | 6 | 6 | 6 | 6 | 7 | 7 | 7 | 7 |
| KENAF | 117 | 303 | 373 | 390 | 370 | 432 | 640 | 400 | 250 | 180 | 270 | 300 |
| COTTONSEED | 39 | 32 | 29 | 18 | 64 | 42 | 34 | 43 | 32 | 44 | 52 | 53 |
| SOYBEANS | 59 | 27 | 61 | 70 | 67 | 70 | 100 | 115 | 140 | 114 | 98 | 125 |
| PEANUTS, IN SHELL | 91 | 117 | 124 | 125 | 134 | 153 | 147 | 161 | 142 | 160 | 175 | 170 |
| SESAME SEED | 192 | 15 | 19 | 20 | 30 | 20 | 29 | 31 | 17 | 21 | 22 | 23 |
| CASTOR BEANS | 94 | 40 | 37 | 43 | 53 | 36 | 30 | 42 | 35 | 43 | 45 | 50 |
| RUBBER | 332 | 201 | 282 | 287 | 316 | 337 | 412 | 360 | 380 | 380 | 425 | 425 |
| COPRA | 219 | 202 | 202 | 202 | 202 | 202 | 250 | 250 | 270 | 270 | 270 | 290 |
| AGGREGATES OF PRODUCTION | | -MILLION DOLLARS AT CONSTANT PRICES- | | | | | | | | | | |
| CROPS | | 712.2 | 919.2 | 949.1 | 1,001.0 | 930.8 | 1,131.0 | 1,108.4 | 1,155.0 | 1,191.4 | 1,191.1 | 1,277.9 |
| LIVESTOCK | | 0.0 | 0.0 | 0.0 | 0.0 | 0.0 | 0.0 | 0.0 | 0.0 | 0.0 | 0.0 | 0.0 |
| TOTAL AGRICULTURE | | 712.2 | 919.2 | 949.1 | 1,001.0 | 930.8 | 1,131.0 | 1,108.4 | 1,155.0 | 1,191.4 | 1,191.1 | 1,277.9 |
| TOTAL FOOD | | 583.3 | 745.3 | 770.8 | 809.8 | 728.5 | 897.6 | 917.3 | 971.7 | 1,013.3 | 988.4 | 1,069.8 |
| INDICES OF PRODUCTION | | (1961-65 = 100) | | | | | | | | | | |
| CROPS | | 100 | 129 | 133 | 141 | 131 | 159 | 156 | 162 | 167 | 167 | 179 |
| TOTAL AGRICULTURE | | 100 | 129 | 133 | 141 | 131 | 159 | 156 | 162 | 167 | 167 | 179 |
| TOTAL FOOD | | 100 | 128 | 132 | 139 | 125 | 154 | 157 | 167 | 174 | 169 | 183 |
| PER CAPITA AGRICULTURE | | 100 | 109 | 109 | 111 | 101 | 119 | 114 | 116 | 117 | 114 | 120 |
| PER CAPITA FOOD | | 100 | 108 | 108 | 110 | 96 | 115 | 115 | 119 | 121 | 116 | 123 |
| INDEX OF POPULATION | | 1961-65 POPULATION = 29,874,000 | | | | | | | | | | |
| | | 100.0 | 118.7 | 122.3 | 126.2 | 130.0 | 133.6 | 137.1 | 140.4 | 143.5 | 146.6 | 149.9 |

UNITED STATES DEPARTMENT OF AGRICULTURE
WASHINGTON, D.C. 20250

POSTAGE AND FEES PAID
U.S. DEPARTMENT OF
AGRICULTURE
AGR 101
THIRD CLASS



END