



**AgEcon** SEARCH  
RESEARCH IN AGRICULTURAL & APPLIED ECONOMICS

*The World's Largest Open Access Agricultural & Applied Economics Digital Library*

**This document is discoverable and free to researchers across the globe due to the work of AgEcon Search.**

**Help ensure our sustainability.**

Give to AgEcon Search

AgEcon Search

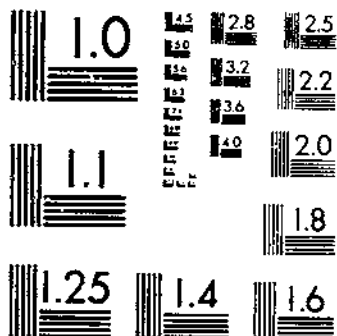
<http://ageconsearch.umn.edu>

[aesearch@umn.edu](mailto:aesearch@umn.edu)

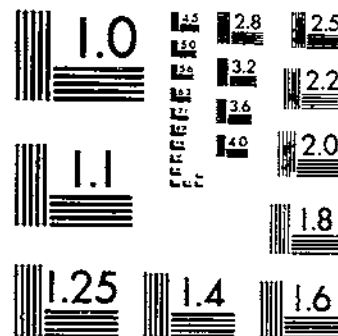
*Papers downloaded from **AgEcon Search** may be used for non-commercial purposes and personal study only. No other use, including posting to another Internet site, is permitted without permission from the copyright owner (not AgEcon Search), or as allowed under the provisions of Fair Use, U.S. Copyright Act, Title 17 U.S.C.*

SB 601 (1978) USDA STATISTICAL BULLETIN ~~NO. 601~~ UPDATA  
DISTRIBUTION OF THE VARIETIES OF WHEAT IN THE UNITED STATES IN 1974  
REITZ, J. P. CHANLIN, A. G. 1 OF 2

# START



MICROCOPY RESOLUTION TEST CHART  
NATIONAL BUREAU OF STANDARDS-1963-A



MICROCOPY RESOLUTION TEST CHART  
NATIONAL BUREAU OF STANDARDS-1963-A

630.5

K

SB 604/6/78

633-13

# DISTRIBUTION OF THE VARIETIES AND CLASSES OF WHEAT IN THE UNITED STATES IN 1974

U. S. DEPOSITORY

1978

Los Angeles Public Library



UNITED STATES  
DEPARTMENT OF  
AGRICULTURE

STATISTICAL  
BULLETIN  
NUMBER 604

PREPARED BY  
SCIENCE AND  
EDUCATION  
ADMINISTRATION

## CONTENTS

	<i>Page</i>
Wheat acreage of the United States .....	1
Varietal survey methods .....	1
Estimated acreage of varieties of wheat .....	5
Hard Red Winter wheat varieties .....	5
Hard Red Spring wheat varieties .....	5
Soft Red Winter wheat varieties .....	5
White and club wheat varieties .....	8
Durum wheat varieties .....	8
Species of wheat seeded .....	8
Distribution of market classes of wheat .....	8
Discussion of trends since 1974 .....	12
Summary .....	13
Appendix .....	14

---

On January 24, 1978, four USDA agencies—Agricultural Research Service (ARS), Cooperative State Research Service (CSRS), Extension Service (ES), and the National Agricultural Library (NAL)—merged to become a new organization, the Science and Education Administration (SEA), U.S. Department of Agriculture.

This publication was prepared by the Science and Education Administration's Federal Research staff, which was formerly the Agricultural Research Service.

---

# DISTRIBUTION OF THE VARIETIES AND CLASSES OF WHEAT IN THE UNITED STATES IN 1974

By L. P. REITZ, *ARS Staff Scientist (retired)*, and W. G. HAMLIN, *Estimates Division, Statistical Reporting Service*<sup>1</sup>

Wheatgrowers have many varieties from which to choose. New varieties become available from time to time. Experimental evidence, farm experience, and market demand affect the grower's choice. The extent to which acceptable varieties are being grown is important to the milling trade. Variety surveys provide a his-

torical record of changes and serve as a basis for further wheat improvement. To determine what farmers are growing, a wheat variety survey was conducted in 1974. This survey was similar to variety surveys conducted by the U.S. Department of Agriculture at 5-year intervals since 1919.<sup>2</sup>

## WHEAT ACREAGE OF THE UNITED STATES

The total seeded area in wheat in the United States in 1974 was 71,169,000 acres, or about 16,857,000 acres more than in 1969. Differences in total acreage for 1969 and 1974 complicate making direct comparisons of areas seeded to respective varieties and classes in the 2 years. Increases occurred for all wheat classes.

Distribution of all wheat in 1974 is shown in

figure 1. The geographical center of the wheat acreage in the United States falls on the Kansas-Nebraska line near the Colorado boundary. In general, the distribution pattern resembles closely that for 1969, except for more acres in the 1974 survey year. A general decline in the wheat acreage occurred in the North Atlantic States.

## VARIETAL SURVEY METHODS

Survey methods were similar to those used in previous surveys. Questionnaires were sent from State offices of the Statistical Reporting Service to wheatgrowers in the 42 States for which the Statistical Reporting Service estimated wheat acreages in 1974. The form of the questionnaires was the same as for recent surveys in which the varieties believed to be grown most extensively in each State were grouped by classes and listed alphabetically. Space was

provided on the questionnaires under each class for writing in the names of varieties not listed. The grower was asked to indicate the number of acres of each variety seeded on his farm for the 1974 harvest.

<sup>1</sup> The writers express appreciation to the State and Federal agricultural statisticians in the various State offices for cooperating in collecting basic information for this report, and to the Data Systems Application Division, ARS, for the machine tabulation of the data, and to L. W. Briggles, National Program Staff, ARS, for assistance in coding variety data.

<sup>2</sup> Results of the 1969 survey are given in U.S. Department of Agriculture Statistical Bulletin No. 475, DISTRIBUTION OF THE VARIETIES AND CLASSES OF WHEAT IN THE UNITED STATES IN 1969, issued in May 1972; results of the 1964 survey are given in Statistical Bulletin No. 369, DISTRIBUTION OF THE VARIETIES AND CLASSES OF WHEAT IN THE UNITED STATES IN 1964, issued in July 1966; a similar report for the 1959 survey appeared as Statistical Bulletin No. 272, issued in November 1960; and reference citations to all earlier survey reports are given in U.S. Department of Agriculture Handbook No. 108, DISTRIBUTION OF THE VARIETIES AND CLASSES OF WHEAT IN THE UNITED STATES IN 1954, issued in January 1957.

**ALL WHEAT-1974**

**71,169,000 ACRES SEEDED**

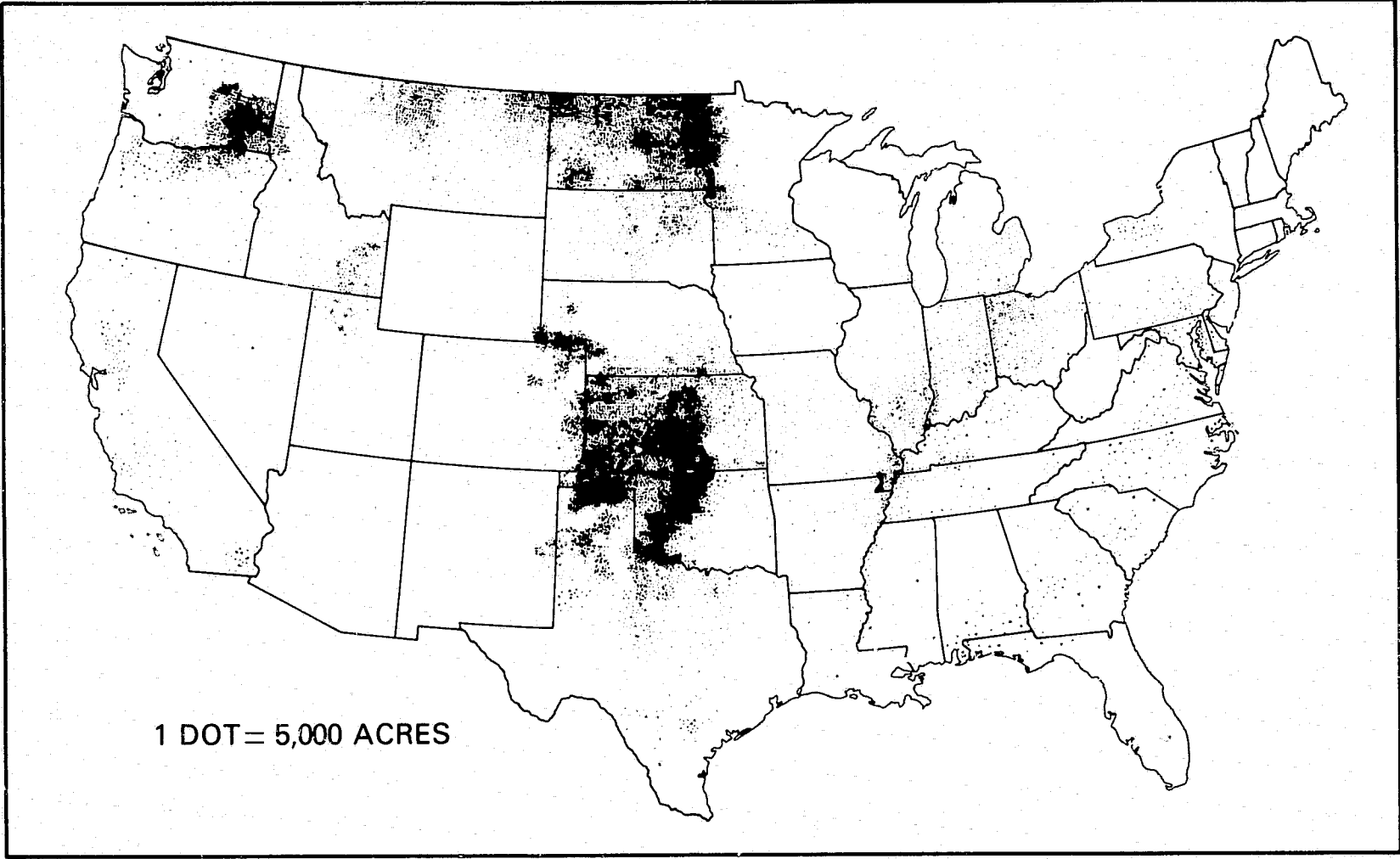


Figure 1.—Distribution of the total wheat acreage seeded in the United States in 1974.

A suggested number of samples desired was given to each State and, as a result, approximately 200,000 questionnaires were mailed to growers, from which 50,990 usable variety reports were tabulated. The number of reports used in each State appears in table 1 opposite the State name.<sup>3</sup>

Data from the questionnaires were summarized by crop-reporting districts, coded, and punched onto cards for machine analysis. Although essentially complete in its coverage of all crop-reporting districts in the 42 participating States, the sample was too small to provide reliable indications for varieties grown on very small acreages.

To determine each variety's percentage of the total acreage of wheat reported in a crop-reporting district (fig. 2), the reported acreage for each variety was divided by the sum of acreages of wheat reported on usable questionnaires for that district. The estimated acreage of each variety in the district was then calculated from the preliminary total acreage of all wheat seeded in the district, as published by the Statistical Reporting Service. Finally, a State total was obtained by combining the districts. To arrive at the class acreages, all varieties in each commercial class were then totaled for each district, State, and the United States. This procedure provided class totals that differed somewhat from those based on other sources. Undoubtedly, such small discrepancies will disturb some readers. However, sample surveys are subject to numerous kinds of deviations and are not applicable in a strictly literal sense. Furthermore, the base acreages used for crop-reporting districts were preliminary estimates made by the Statistical Reporting Service and may have been adjusted slightly after the variety acreage calculations were made. None of these adjustments alter the relative validity of the conclusions and trends shown by this variety survey.

A standard procedure, while generally adhered to, could not be followed exactly in all States. Consequently, minor variations were made to accommodate local situations and obtain a better sample. The survey was supplemented by data obtained in other ways in Idaho, Oregon, and Washington.

<sup>3</sup> All tables are included in the appendix.

A preliminary report was released by many of the State offices immediately upon completion of their part of the survey. In this way the results became known locally before harvest or early in the marketing year. For the most part, the preliminary reports and this one agree. Reasons for discrepancies included late adjustments in base acreage estimates, misclassification of varieties, disposition of synonymous names, and arithmetic rounding of calculated values.

Farmers do not always use the standard variety name. Acreages reported under synonymous names, therefore, were recorded under standard names recognized by the U.S. Department of Agriculture.<sup>4</sup> Some farmers either reported wheat under local names that could not be identified or did not give a name. These acreages are accounted for in the tables as "variety not reported."

Considerable uncertainty was evident in reporting varieties that exist in several forms. Some varieties improved by one or a very few characteristics (the original variety and the improved form look alike) retain the name of the original variety, and an adjective or number is added. Such groups of varieties include, for example: Baart, Baart 38, and Baart 46; Lemhi, Lemhi 53, Lemhi 62, and Lemhi 66; and the "Triumph" wheats. Acreages for certain of these closely related varieties were combined because it was impossible to separate them in some State tabulations; the separated records in some other States are in doubt. Most of the acreage was probably seeded to improved forms. Where individual State reports were clear, the full identity of such varieties was retained (table 1).

Maps (figs. 1, 3-7) showing the acreage distribution of all wheat and of different market

<sup>4</sup> Bayles, B. B., and J. A. Clark, CLASSIFICATION OF WHEAT VARIETIES GROWN IN THE UNITED STATES IN 1949. U.S. Department of Agriculture Technical Bulletin 1083, 173 pp., illus. 1954.

Briggle, L. W., and L. P. Reitz, CLASSIFICATION OF TRITICUM SPECIES AND OF WHEAT VARIETIES GROWN IN THE UNITED STATES. U.S. Department of Agriculture Technical Bulletin 1278, 135 pp., illus. 1963.

Craddock, J. C., H. I. Owens, and F. E. Westbrook. WHEAT VARIETY HANDBOOK. U.S. Department of Agriculture, Agricultural Research Service and Extension Service. April 1976. (Looseleaf, processed.)



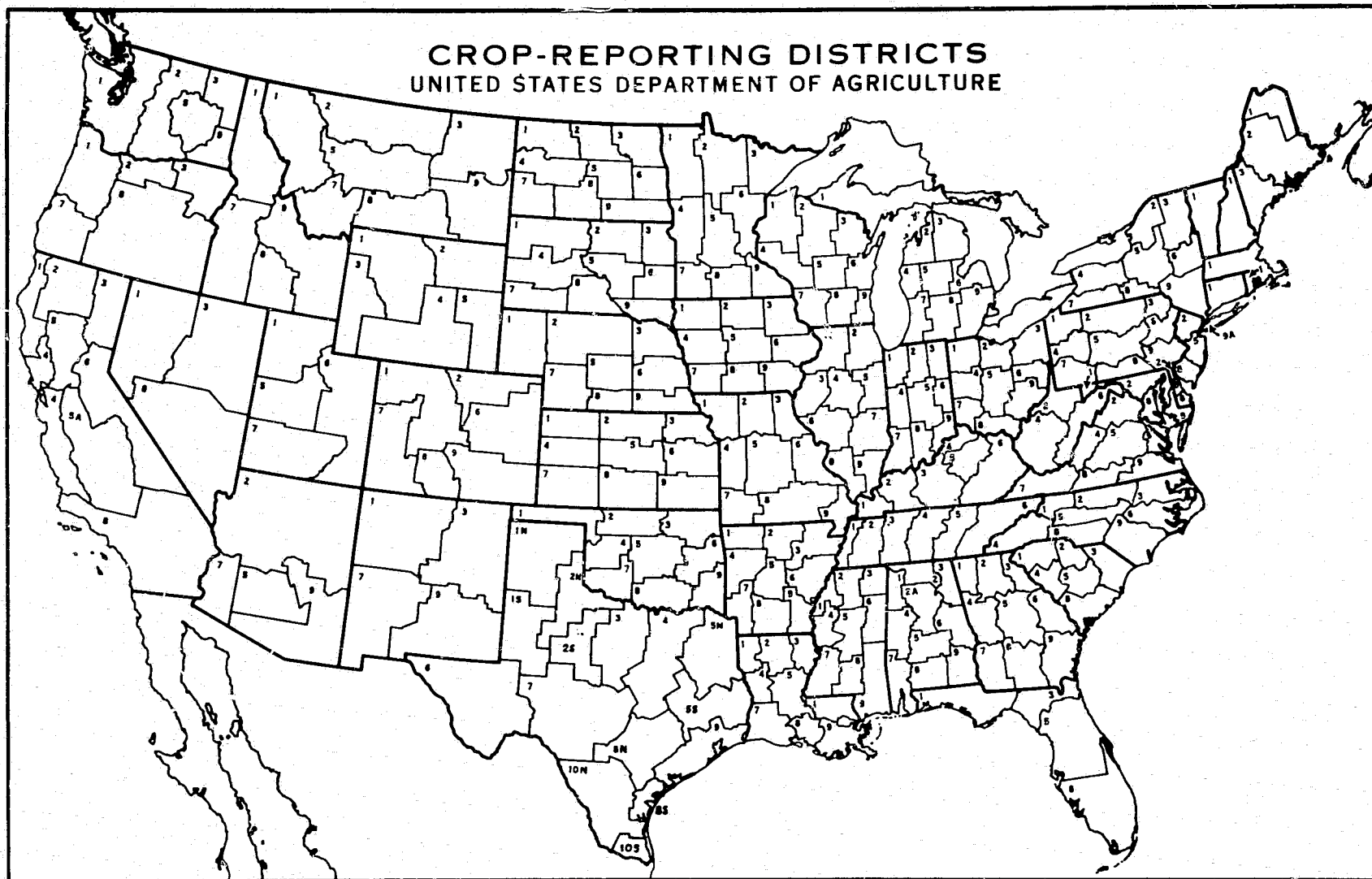


Figure 2.—Crop-reporting districts in the United States in 1974.

classes are included here. Each dot represents 5,000 acres. The maps are based on acreages in each crop-reporting district. Acreages in each county were also considered, but the dots on a county basis are not always exactly proportional.

In the 12 surveys, beginning in 1919, a total

of 139, 152, 190, 213, 208, 216, 199, 203, 212, 223, 263, and 315 distinct varieties respectively, were reported. In 1974, 112 varieties that had not appeared in previous surveys were reported, and 62 varieties grown in 1969 were not reported in 1974.

## ESTIMATED ACREAGE OF VARIETIES OF WHEAT

The percentage of the total wheat acreage occupied by each variety of wheat in 1969 and 1974 and the acreage for 1974 are shown by States in table 1. Varieties are grouped by market classes within States and arranged in order of declining estimated acreages in 1974.

Total countrywide acreages for each variety for 1974 are given in table 2. Percentages of the total wheat acreage in the United States occupied by each variety in 1969 and 1974 are given also. Varieties are listed alphabetically. The 50 most widely grown varieties are arranged in table 3 by declining acreage. Scout was the most widely seeded variety in the United States in 1974, occupying an estimated 7,076,736 acres or 9.94 percent of the total U.S. acreage. Arthur ranked second with 4,622,852 acres, and Waldron was third with 3,830,430 acres (table 3).

### Hard Red Winter Wheat Varieties

The percentage of the total Hard Red Winter wheat acreage occupied by each variety of that class in the United States in 1969 and 1974 and the estimated acreage for 1974 are given in table 4. Scout, with 7,076,736 acres, accounted for 19.35 percent of the total Hard Red Winter wheat acreage. Centurk, Eagle, and Triumph were each grown on more than 2 million acres. These four varieties comprise 14,820,297 acres, or 40.52 percent of the total acreage seeded to Hard Red Winter wheat. Among the 102 Hard Red Winter varieties, 11 were grown on more than 1 million acres each in 1974.

Eighty-seven Hard Red Winter wheat varieties were reported grown in 1969, and 102 in 1974 (table 4). The distribution of Hard Red Winter wheat is shown in figure 3.

### Hard Red Spring Wheat Varieties

Estimated acreages seeded to Hard Red Spring wheat varieties in 1974 and the percentage each variety comprised of this class in the two survey years, 1969 and 1974, are listed in table 5. The Hard Red Spring varieties, Chris, Fortuna, and Manitou, came into production after 1964 and together comprised 59.3 percent of the acreage of Hard Red Spring wheat grown in 1969. However, in 1974, Waldron, Era, and Fortuna were the leading Hard Red Spring varieties. Together they comprised 52.15 percent, or 7,690,472 acres, of the total spring wheat acreage. Era tended to dominate the eastern portion of the Hard Red Spring wheat region; Waldron was generally most popular in North Dakota; while Fortuna was found in the western part of the region, especially in Montana.

Eighty Hard Red Spring wheat varieties were reported grown in 1974 (table 5). Thirteen varieties reported grown in 1969 were not reported in the 1974 survey sample. The distribution of Hard Red Spring wheat is shown in figure 4.

### Soft Red Winter Wheat Varieties

The estimated acreage of all Soft Red Winter wheat varieties in 1974 and the percentage each comprised of this class of wheat in 1969 and 1974 are given in table 6. National distribution is shown in figure 5, but all the acreage is in the eastern half of the country. Sixty-two varieties are included in this class. Soft Red Winter wheat is grown over a large and varying geographical area in the Eastern United States. This area permits, and may even require, culture of rather diverse types of va-

# HARD RED WINTER WHEAT-1974

36,577,869 ACRES SEEDED

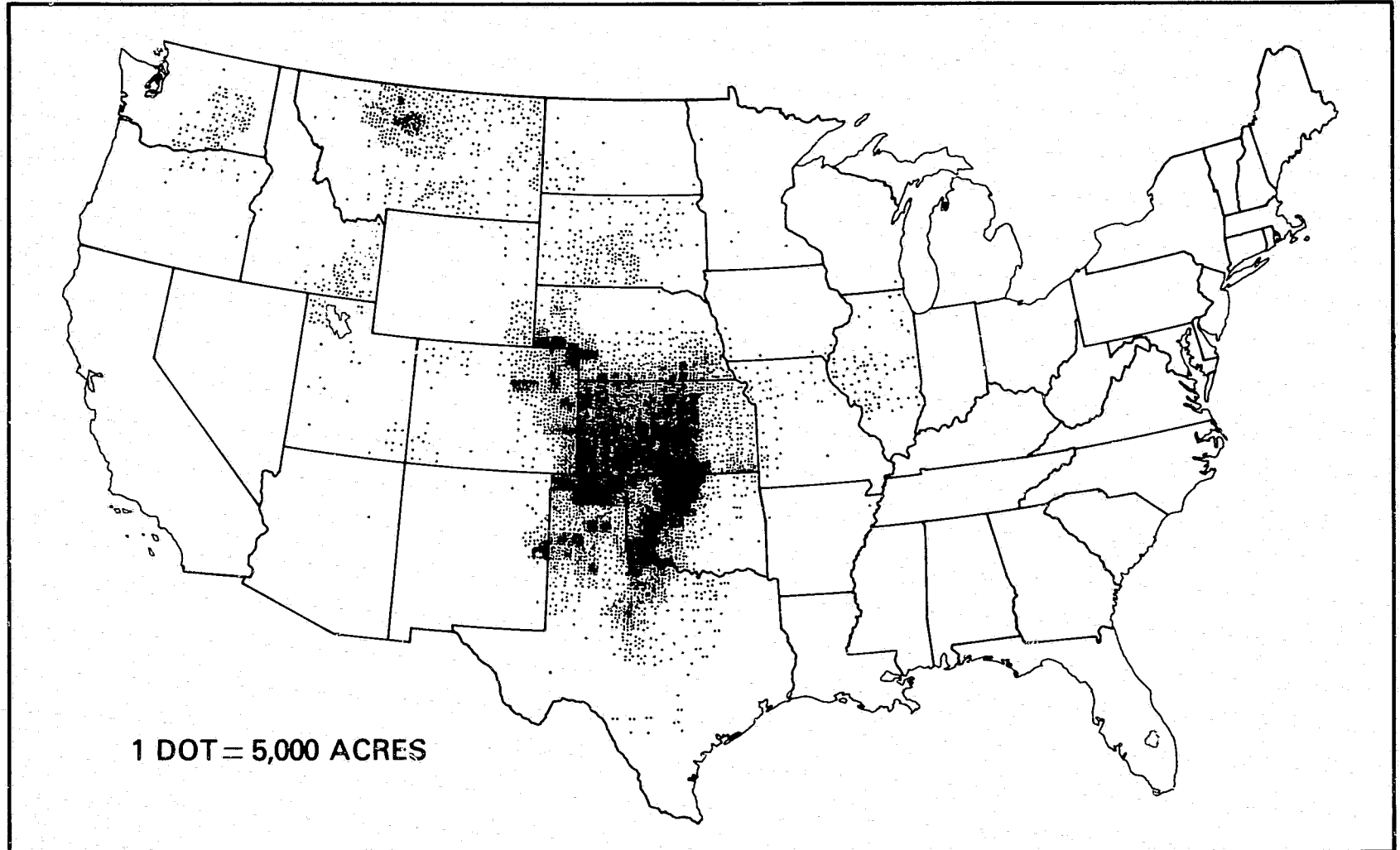


Figure 3.—Distribution of Hard Red Winter wheat in 1974.

# HARD RED SPRING WHEAT-1974

14,748,123 SEEDED ACRES

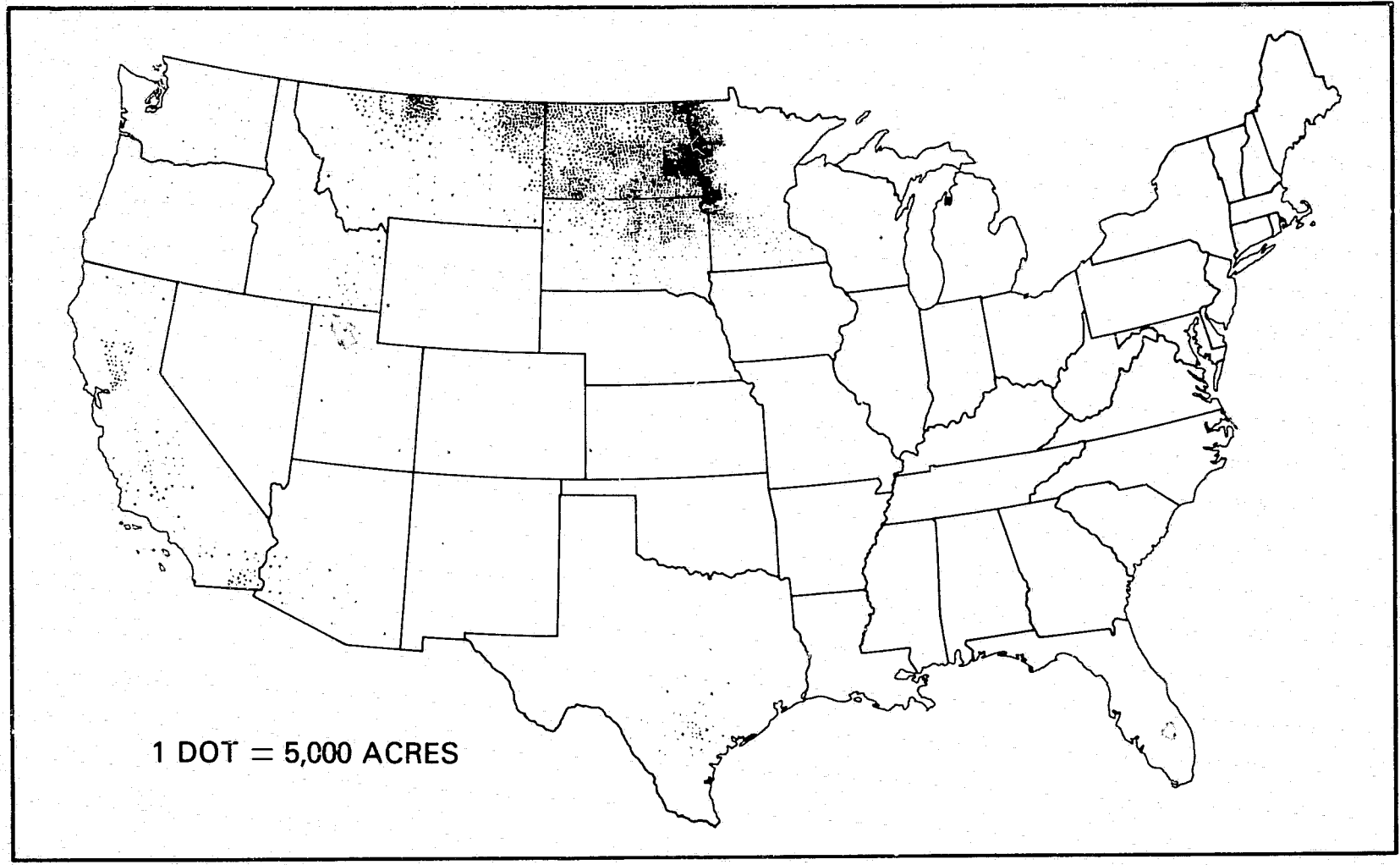


Figure 4.—Distribution of Hard Red Spring wheat in 1974.

rieties. Many varieties were seeded on small acreages. Arthur was grown on 4,622,852 acres and a similar form, Arthur 71, on 1,860,995 acres in 1974. Together, these two varieties comprised 67.76 percent of the Soft Red wheat acreage.

### White and Club Wheat Varieties

All White wheat varieties, including both common and club, are listed in table 7. Data are given on acreages for 1974 and on the percentage each variety comprised of the class total for 1969 and 1974. The semidwarf variety, Nugaines, seeded in the Pacific Northwest on 1,649,090 acres, was the leading variety of White wheat. Moro and Paha were the principal club varieties (table 8). All club varieties combined did not amount to 1 million acres (996,658 acres), but the acreage was only 705,762 in 1969 and 527,038 in 1964. These two years showed much less club wheat than in the 1959 survey when 1,841,124 acres were reported.

Forty-five common White wheat varieties and four club wheats were reported grown in 1974 (tables 7 and 8). The distribution of all White wheat is shown in figure 6. Three distinct regions are evident: The Northeast, the

Pacific Northwest, and the California-Arizona region. All club wheat is grown in the Pacific Northwest.

### Durum Wheat Varieties

Durum varieties are listed in table 9 with estimated acreages in 1974 and the percentage each comprised of total Amber Durum acreage in 1969 and 1974. Twenty-two varieties were reported grown in 1974. All have amber (white) grain except World Seeds MP C 3, which is classed as a Red Durum but may be purple in color. Rolette and Leeds each exceeded 1 million acres and together made up 61.89 percent of this class. The durumms were grown almost exclusively in the North Central States, although a sizable acreage appeared in Arizona. The concentrated acreage is in northeastern North Dakota, along the Red River Valley in adjacent parts of Minnesota, and in eastern South Dakota (fig. 7).

A small acreage of durum wheat was seeded in the Far Western States. Leeds, Sentry, and Wells were seeded in California, and Produra and Crane, in Arizona.

Four varieties reported in 1967 were not reported in the 1974 survey sample and, presumably, were not grown.

### SPECIES OF WHEAT SEEDED

The official commercial acreage of wheat in the United States includes common (*Triticum aestivum* L.), club (*T. aestivum* ssp. *compactum* (Host) MacKey), and durum (*T. durum* Desf.) species. In 1974, these species were seeded on 71,169,000 acres, divided as follows: 92.99 percent common, 1.40 percent club, and 5.61 per-

cent durum. Other species of wheat are generally recorded with miscellaneous crops and are too minor to report.

Triticale, a manmade cereal species derived from crossing wheat and rye, was reported grown by a few farmers in 1974, but no tabulation of acreages was made.

### DISTRIBUTION OF MARKET CLASSES OF WHEAT

The percentage of wheat comprising each principal market class of wheat in 1974 is indicated by crop-reporting districts for each State in table 10 and summarized for each State in table 11.

The values given in table 10 were obtained by totaling the acreage of varieties belonging to each class. The category "variety not reported" was apportioned to each market class according to the percentage of each class determined without including this category. This

apportionment was done by crop-reporting districts (fig. 2) and then totaled for each State (tables 10 and 11). Distributions of the market classes are presented in figures 3 to 7.

The White wheat class comprises all varieties having white grain, except durum, and thus includes club wheats as well as common white wheats. Club wheats currently grown have soft grain, are predominately of winter habit, and are fall sown. Common white wheats may have hard or soft grain, be of winter or spring habit,

# SOFT RED WINTER WHEAT-1974

9,569,710 ACRES SEEDED

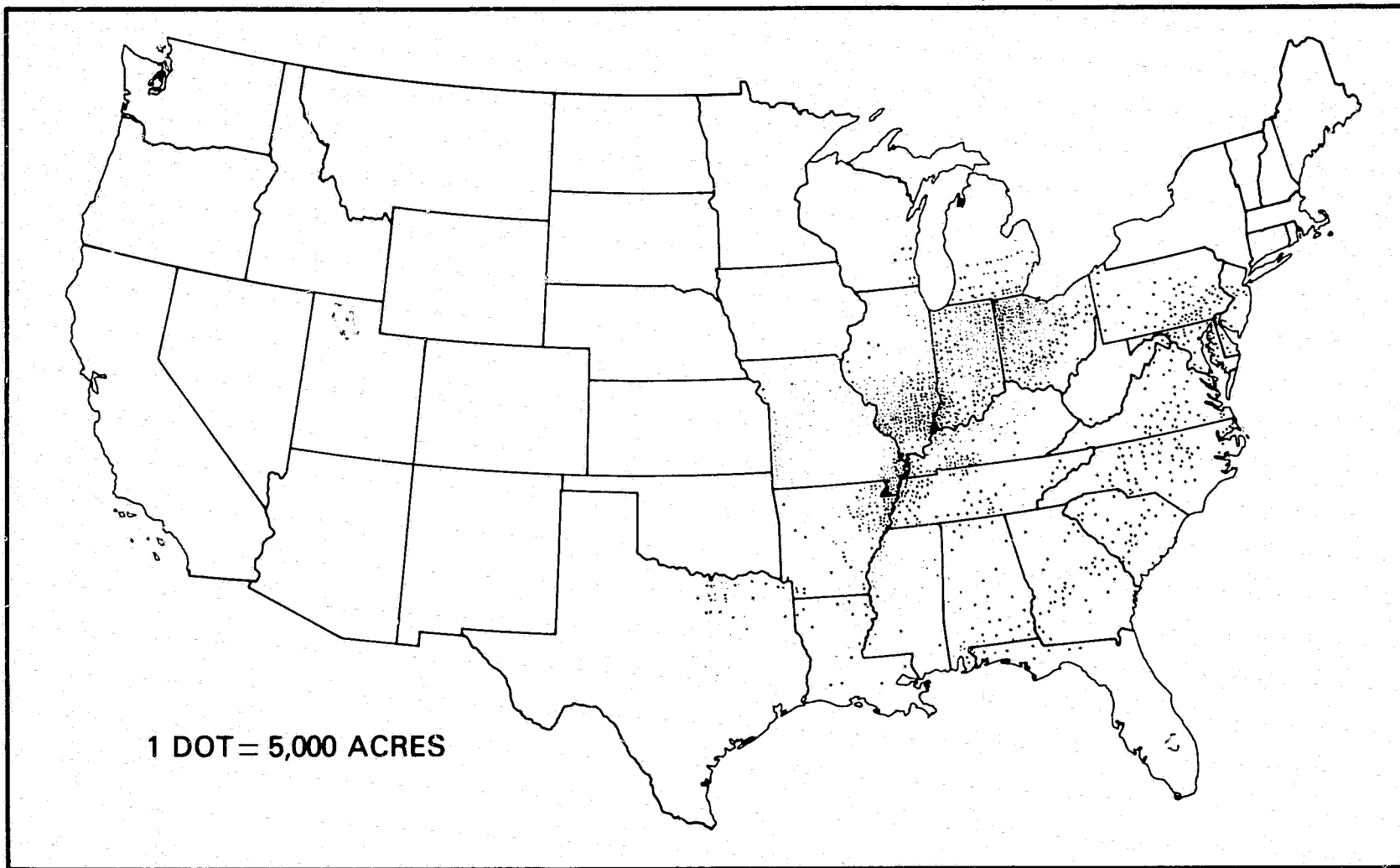


Figure 5.—Distribution of Soft Red Winter wheat in 1974.

# WHITE WHEAT-1974

6,284,249 ACRES SEEDED

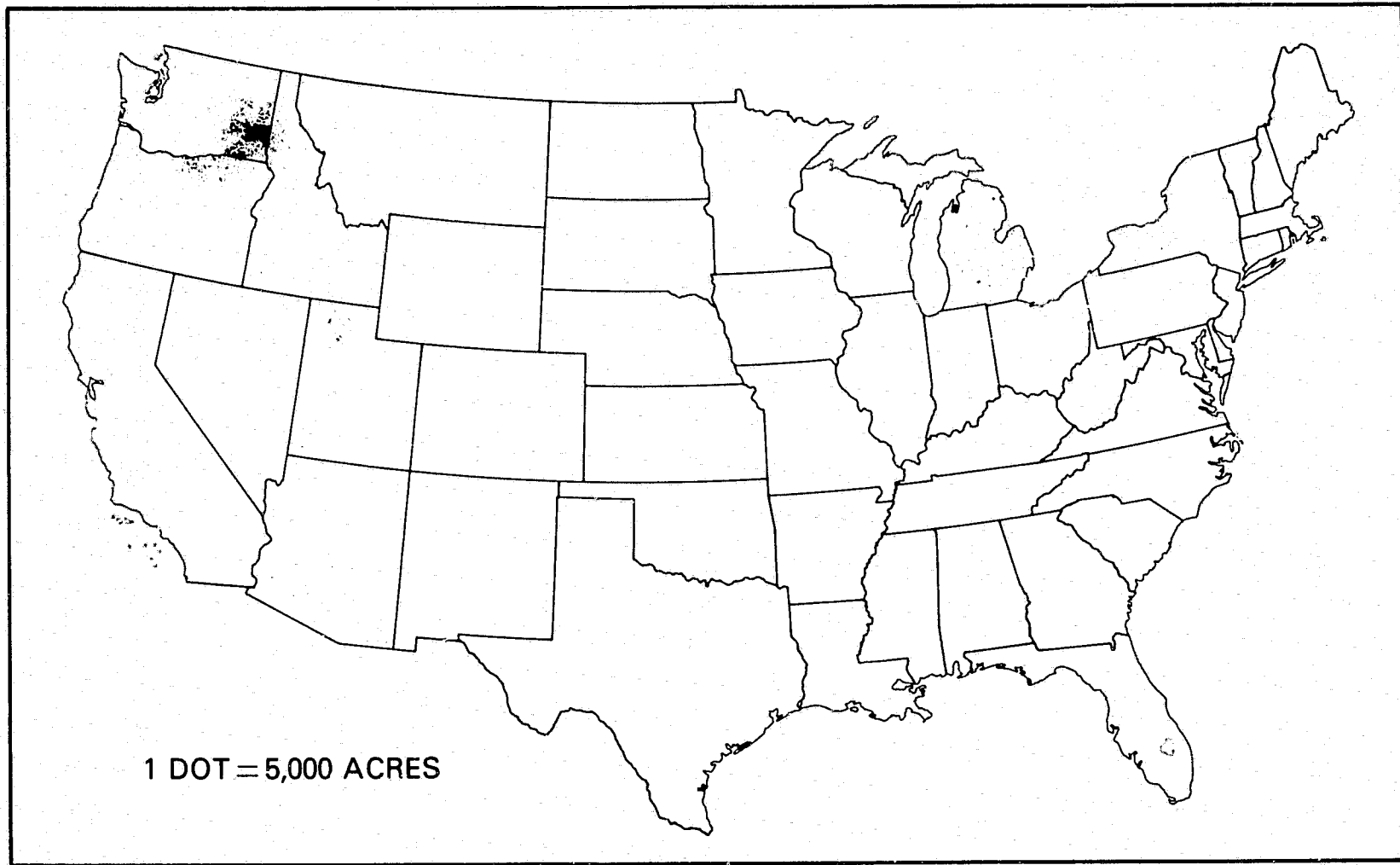


Figure 6.—Distribution of White wheat in 1974.

# DURUM WHEAT-1974

# 3,989,049 SEEDING ACRES

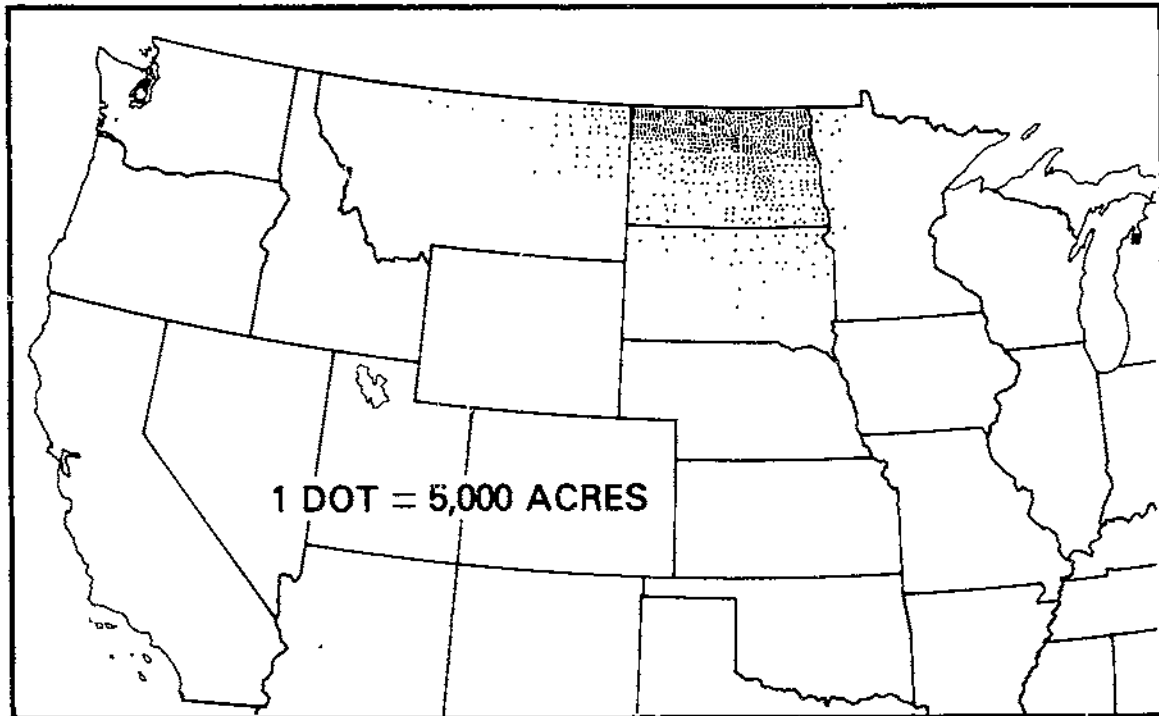


Figure 7.—Distribution of durum wheat in 1974.



and, for spring forms, be sown either in fall in mild climates or in the spring. Club wheat varieties are listed separately in table 8. Hard- or semihard-grained varieties are marked in table 7 (see symbol #) to facilitate interpretation of the results of the survey in terms of market subclasses.

Soft Red Winter wheat and White wheat were by far the most important market classes grown in the Northeastern States, Ohio River Valley, and Southeastern States (table 10). Most of the wheat grown in New York and Michigan was white. Soft Red Winter wheat predominated in 21 States.

Almost all the durum wheat was produced in the North Central States, and for the first time, durum became significant in Arizona. This was the first time in 25 years that the survey detected any of the market class Red Durum. Only 806 acres were reported.

The Central Plains States produced mainly Hard Red Winter wheat. Hard Red Spring wheat was widely grown in four North Central States and predominated in California. White wheat predominated or was of major importance in five Western States, although Hard Red Winter wheat also was important here.

The relative importance of each class in each crop-reporting district within States indicates

the classes of wheat locally available. In some States the disparity among districts is great.

Twenty-five States were essentially single-class producers—having a minimum of 98 percent of the seeded acreage in one class of wheat in 1974 (table 11). Some States are in transition zones, where more than one class is about equally well adapted. Illinois and Missouri are two examples. States showing the greatest class shifts in 1974 estimates were as follows: Arizona had more durum and, along with California, reported less White and more Hard Red Spring; Idaho reported more White and less Hard Red Spring; Montana and Washington, more Hard Red Spring and less Hard Red Winter; Illinois, Kentucky, and Missouri, less Hard Red Winter and more Soft Red Winter; Montana, North Dakota, and South Dakota, less durum than in the 1969 survey.

The percentage of the national wheat acreage allocated to each market class by the survey is shown in table 12. Hard Red Winter led with 36,577,869 acres (51.40 percent of the total); it also led by a wide margin in earlier surveys. Hard Red Spring ranked second with 14,748,123 acres (20.72 percent), followed by Soft Red Winter with 9,569,710 acres (13.44 percent), White with 6,284,249 acres (8.83 percent), and durum with 3,989,049 acres (5.61 percent).

## DISCUSSION OF TRENDS SINCE 1974

Miscellaneous sources of information help to project trends beyond the national survey year. In some States an annual survey of varieties is conducted. Minor variations in use of varieties occur every year.

The Southwest showed a decline in 1974 in use of White wheat and an increase of red grain semidwarf spring wheats for late fall seeding. Most varieties were of Mexican origin. California, formerly having a high percentage of its acreage seeded to standard-height white wheats, showed 86 percent red grain semidwarf types in 1974. Arizona followed this same pattern until 1975 when a dramatic increase in durum acreage occurred. The 1974 survey showed 2.34 percent of the Arizona acreage

was durum, but in 1976 the amount of durum probably exceeded 65 percent.

Only a small amount of hybrid wheat was picked up in the 1974 survey sample. A small commercial acreage was seeded to hybrid wheat in 1975 and 1976, especially in Oklahoma, Kansas, and Montana. Triticale declined in acreage.

According to the Crop Reporting Board (CrPr 2-1 (76)), the planted acreage of all wheat in 1975 was 75.1 million acres, or 105 percent of the 1974 acreage. The 1975 acreages relative to 1974 seeded acreages were: All winter, 107 percent; durum, 115 percent; and other spring wheat, 95 percent.

## SUMMARY

Farmers in 42 States supplied data for this publication, which reports the results of the 12th in a series of wheat variety surveys conducted by the U.S. Department of Agriculture at 5-year intervals, beginning in 1919.

A total of 315 distinct varieties were reported as having been seeded for the 1974 crop. Of these, 112 were new or were not reported in the survey conducted in 1969.

Scout was the most widely grown variety in 1974 with 7,076,736 acres seeded. Seven varieties exceeded 2 million acres each and 19 exceeded 1 million. Fifty percent of the acreage was seeded to 13 varieties.

The acreage determined for the varieties was grouped into five principal market classes of wheat and totaled. Hard Red Winter wheat was seeded on 36,577,869 acres (51.40 percent of the total wheat acreage). Hard Red Spring was seeded on 14,748,123 acres (20.72 percent),

Soft Red Winter on 9,569,710 acres (13.44 percent), White wheat (including club) on 6,284,249 acres (8.83 percent), and durum on 3,989,049 acres (5.61 percent). Hard Red Winter wheat decreased in relative importance, but the acreage was above that of 1969. Hard Red Spring wheat and Soft Red Winter wheat increased in both actual acreage and percentage from 1969 levels. White wheat increased in actual acreage but declined in percentage. Durum increased slightly in acreage and declined slightly in percentage, compared with 1969. One variety of Red Durum was reported in the 1974 survey.

The preliminary estimate of the total seeded acreage of wheat in the United States was 54,312,000 acres in 1969 as compared with 71,169,000 acres in 1974. Dot maps show the acreage distribution for all wheat and for each of five market classes.

APPENDIX

TABLE 1.—Estimated percentage of the total wheat acreage occupied by each variety of wheat in each State in 1969 and 1974, and the acreage in 1974

State, Class, and Variety	Percentage of Acreage		Acreage
	1969	1974	1974
ALABAMA			<sup>1</sup> (482)
Hard Red Winter:			
Triumph -----		.05	85
Oro -----	.20		
Soft Red Winter:			
Arthur -----		30.65	56,704
Coker 68-15 -----		13.79	25,504
Wakeland -----	29.60	13.20	24,423
Coker 68-19 -----		12.32	22,798
McNair 701 -----		7.39	13,668
Georgia 1123 -----	20.30	5.82	10,769
Coker 65-20 -----	2.30	5.32	9,837
Blueboy -----	14.80	4.09	7,571
Holley -----		.64	1,190
Knox 62 -----	.80	.28	524
Monon -----	2.40	.24	444
McNair 2203 -----	.10	.24	440
Hadden -----	8.90	.06	104
Knox -----	5.20		
Redcoat -----	.10		
Seneca -----	.30		
Benhur -----	1.30		
Ace -----	.20		
Coastal -----	.50		
Chancellor -----	(*)		
Anderson -----	1.90		
Atlas 66 -----	.30		
Coker 47-27 -----	3.70		
Bledsoe -----	.20		
Variety Not Reported <sup>2</sup> -----	6.90	5.91	10,939
TOTAL -----	100.00	100.00	185,000
ARIZONA			<sup>1</sup> (99)
Hard Red Winter:			
Turkey -----	2.10		
Hard Red Spring:			
Bluebird 2 -----		19.77	49,417
Inia 66 -----		11.17	27,929
Cajeme 71 -----		7.18	17,955
Super X -----		1.54	3,842

See footnotes at end of the table.

TABLE 1.—Estimated percentage of the total wheat acreage occupied by each variety of wheat in each State in 1969 and 1974, and the acreage in 1974—Continued

State, Class, and Variety	Percentage of Acreage		Acreage
	1969	1974	1974
<b>ARIZONA (Cont)</b>			
Hard Red Spring: (Cont)			
Anza -----		.37	918
Pitic 62 -----	.60		
Lerma Rojo -----	.60		
Red River 68 -----	1.10		
Sonora 64 -----	26.10		
World Seeds 1657 -----	1.30		
White:			
Siete Cerros 66 -----	27.10	39.83	99,566
Nuqaines -----		15.18	37,944
Gainex -----	21.50	1.44	3,608
Yecora 70 -----		.14	358
Federation -----	.30		
Maricopa -----	4.50		
Defiance -----	.50		
Ramona 50 <sup>3</sup> -----	9.80		
Durum:			
Produra -----		2.16	5,409
Crane -----		.16	398
Variety Not Reported <sup>2</sup> -----	4.50	1.06	2,656
TOTAL -----	100.00	100.00	250,000
			<sup>1</sup> (654)
<b>ARKANSAS</b>			
Hard Red Winter:			
Sturdy -----		.98	4,625
Triumph -----		.06	280
Scout -----	(*)		
Ponca -----	.10		
RedChief -----	(*)		
Improved Triumph -----	2.30		
Concho -----	(*)		
Soft Red Winter:			
Arthur -----		61.29	288,042
Arthur 71 -----		17.07	80,243
Coker 68-15 -----		3.95	18,567
Ace -----	1.90	2.15	10,084
Knox 62 -----	29.30	2.12	9,964
Coker 65-20 -----	.50	2.12	9,961
Monon -----	27.70	2.06	9,693

See footnotes at end of the table.

TABLE 1.—Estimated percentage of the total wheat acreage occupied by each variety of wheat in each State in 1969 and 1974, and the acreage in 1974—Continued

State, Class, and Variety	Percentage of Acreage		Acreage
	1969	1974	1974
<b>ARKANSAS (Cont)</b>			
Soft Red Winter: (Cont)			
Abe		1.96	9,227
Blueboy	8.50	1.78	8,386
Georgia 1123	1.40	1.54	7,259
Benhur	15.50	1.49	7,018
McNair 701		.77	3,641
Blueboy II		.22	1,026
Coker 68-19		.15	710
Stadler	2.80	.14	669
Taylor	1.70	.04	191
Riley	.10		
Knox	(*)		
Vermillion	(*)		
Redcoat	(*)		
Chancellor	1.60		
Atlas 66	.30		
Variety Not Reported <sup>2</sup>	6.30	.11	414
<b>TOTAL</b>	<b>100.00</b>	<b>100.00</b>	<b>470,000</b>
			<sup>1</sup> (509)
<b>CALIFORNIA</b>			
Hard Red Spring:			
Inia 66	.40	23.70	193,403
Anza		21.61	176,360
Pitic 62	27.80	16.36	133,512
Cajeme 71		13.66	111,449
Bluebird 2		4.27	34,829
World Seeds 1877		.70	5,735
Super X	(*)	.45	3,689
Sonora 64	17.10	.41	3,336
Nainari 60	2.10	.30	2,486
Red River 68	1.50	.27	2,172
Nadadores 63	.20		
Yaqui 54	.50		
Lerma Rojo 64	.70		
White:			
Siete Cerros 66	6.80	6.76	55,125
Ramona 50 <sup>3</sup>	24.50	2.47	20,188
Nugaines	.50	1.15	9,403
Gaines	1.10	1.12	9,120

See footnotes at end of the table.

TABLE 1.—Estimated percentage of the total wheat acreage occupied by each variety of wheat in each State in 1969 and 1974, and the acreage in 1974—Continued

State, Class, and Variety	Percentage of Acreage		Acreage
	1969	1974	1974
<b>CALIFORNIA (Cont)</b>			
White: (Cont)			
Onas -----	2.20	1.02	8,358
White Federation 54 <sup>3</sup> -----	8.00	(*)	63
Pacific Bluestem <sup>3</sup> -----	.60	-----	-----
Idaed -----	.10	-----	-----
Baart 46 <sup>3</sup> -----	.50	-----	-----
Onas 53 -----	.20	-----	-----
Maricopa -----	.10	-----	-----
Galqaios -----	.90	-----	-----
Club:			
Big Club 60 <sup>3</sup> -----	.70	-----	-----
Durum:			
Leeds -----	1.00	.12	980
Stewart 63 -----	.10	-----	-----
Sentry -----	.30	-----	-----
Lakota -----	.20	-----	-----
Variety Not Reported <sup>2</sup> -----	1.90	5.62	45,792
TOTAL -----	100.00	100.00	816,000
			<sup>1</sup> (1171)
<b>COLORADO</b>			
Hard Red Winter:			
Scout -----	34.80	30.20	856,353
Scout 66 -----	-----	16.40	464,983
Centurk -----	-----	13.93	395,146
Wichita -----	25.00	13.71	388,696
Warrior -----	22.60	7.57	214,780
Lancer -----	4.50	2.85	80,841
Trapper -----	.90	2.35	66,596
Satanta -----	-----	1.80	51,155
Esque -----	-----	1.13	32,172
Delmar -----	1.10	.75	21,164
Comanche -----	2.30	.73	20,714
Tenmarq -----	.20	.72	20,330
Colorow -----	.10	.67	18,966
Crest -----	-----	.66	18,668
Bridger -----	-----	.66	18,648
Cheyenne -----	1.80	.63	17,861
Kaw -----	1.10	.59	16,841
Baca -----	-----	.57	16,306

See footnotes at end of the table.

TABLE 1.—Estimated percentage of the total wheat acreage occupied by each variety of wheat in each State in 1969 and 1974, and the acreage in 1974—Continued

State, Class, and Variety	Percentage of Acreage		Acreage
	1969	1974	1974
COLORADO (Cont)			
Hard Red Winter: (Cont)			
Bison -----	1.00	.43	12,266
Trader -----	.60	.33	9,355
Turkey -----	1.10	.21	5,975
Itana -----	.60	.16	4,607
Concho -----	.40	.16	4,557
Sturdy -----		.14	3,927
Tam W101 -----		.08	2,129
Wasatch -----	(*)	.06	1,733
Parker -----		.04	1,058
Rodco -----	.10	.03	831
Ottawa -----	(*)	.03	727
Caddo -----	(*)	.02	547
Chiefkan -----		(*)	261
Nebred -----	(*)		
Kiowa -----	(*)		
Golden 50 -----	.20		
Apache -----	(*)		
Tascosa -----	.20		
Tendoy -----	.20		
Hard Red Spring:			
Ceres -----	.10	.35	10,023
Red River 68 -----	(*)	.10	2,918
Bounty 208 -----		.08	2,222
Inia 66 -----		.04	1,033
Lee -----	.20	.02	569
Waliron -----		.01	288
Komar -----		(*)	173
Super X -----		(*)	98
Marquis -----		(*)	66
World Seeds Mp-6 -----		(*)	66
Thatcher -----	(*)	(*)	52
Nadadores 53 -----	(*)	(*)	35
Crim -----	(*)		
White:			
Nuquines -----	(*)	.13	3,780
Springfield -----		.10	2,758
Siete Cerros 66 -----		.03	790
Gaines -----	.20	.02	513
Twin -----		.01	302
Lemhi 53 -----	(*)	(*)	159

See footnotes at end of the table.

TABLE 1.—Estimated percentage of the total wheat acreage occupied by each variety of wheat in each State in 1969 and 1974, and the acreage in 1974—Continued

State, Class, and Variety	Percentage of Acreage		Acreage
	1969	1974	1974
<b>COLORADO (Cont)</b>			
Club:			
Hybrid -----	(*)		
Variety Not Reported <sup>2</sup> -----	.70	1.47	41,962
TOTAL -----	100.00	100.00	2,836,000
<b>DELAWARE</b>			
Soft Red Winter:			1(80)
Redcoat -----	61.90	35.96	12,585
Arthur -----		29.86	10,452
Blueboy -----	7.60	18.85	6,599
Arthur 71 -----		10.57	3,699
Abe -----		3.86	1,350
Monon -----	23.30	.82	287
McNair 2203 -----		.08	27
Thorne -----	1.90		
Tayland -----	.90		
Variety Not Reported <sup>2</sup> -----	4.40	(*)	1
TOTAL -----	100.00	100.00	35,000
<b>FLORIDA</b>			
Soft Red Winter:			1(9)
McNair 701 -----		77.88	40,499
Georgia 1123 -----		5.03	2,614
Holley -----		4.28	2,225
Wakeford -----	98.70	4.04	2,100
McNair 2203 -----		2.78	1,446
Coker 68-19 -----		.11	57
Hadden -----	1.00		
Variety Not Reported <sup>2</sup> -----	.30	5.88	3,059
TOTAL -----	100.00	100.00	52,000
<b>GEORGIA</b>			
Hard Red Winter:			1(500)
Pronto -----		.10	218

See footnotes at end of the table.



TABLE 1.—Estimated percentage of the total wheat acreage occupied by each variety of wheat in each State in 1969 and 1974, and the acreage in 1974—Continued

State, Class, and Variety	Percentage of Acreage		Acreage
	1969	1974	1974
<b>GEORGIA (Cont)</b>			
Soft Red Winter:			
Arthur		30.39	65,339
Holley		27.71	59,578
Georgia 1123	58.10	11.50	24,720
McNair 701		8.18	17,583
Coker 68-19		5.46	11,749
Coker 65-20	17.20	5.29	11,380
Coker 68-15		3.90	8,387
Blueboy	11.90	2.87	6,181
McNair 2203		1.05	2,252
Blueboy II		.70	1,496
Knox	2.20	.24	510
Chancellor	1.10	.02	44
Coastal	.20		
Anderson	.20		
Bledsoe	.90		
Hadden	1.90		
Atlas 66	.50		
Wakeford	.30		
Redcoat	.40		
Andnox	.40		
Variety Not Reported <sup>2</sup>	4.70	2.59	5,563
TOTAL	100.00	100.00	215,000
			1 (643)
<b>IDAHO</b>			
Hard Red Winter:			
Itana 65	11.90	12.57	194,910
Wanser	4.60	3.39	52,617
Bridger		2.43	37,730
Cache	8.00	2.30	35,697
McCa11	2.30	2.24	34,760
Ranger		1.57	24,310
Turkey	2.90	1.46	22,660
Crest		1.01	15,730
Franklin		.50	7,810
Delmar	1.40	.43	6,710
Mosida	.10	.37	5,720
Tendoy	6.70	.20	3,089
Oro	(*)	.12	1,873

See footnotes at end of the table.

TABLE 1.—Estimated percentage of the total wheat acreage occupied by each variety of wheat in each State in 1969 and 1974, and the acreage in 1974

State, Class, and Variety	Percentage of Acreage		Acreage
	1969	1974	1974
IDAHO (Cont)			
Hard Red Winter: (Cont)			
Cheyenne	.20	.03	423
Columbia	(*)		
Itana	1.30		
Ridit	.40		
Kiowa	.10		
Wasatch	1.00		
Hard Red Spring:			
Komar	1.30	4.35	67,413
Moran	.80	1.00	15,510
Bannock		.91	14,164
Peak		.87	13,420
Bounty 208		.44	6,820
Fortuna	(*)	.43	6,600
Red River 68	.40	.20	3,122
Fremont		.18	2,750
Thatcher	1.20	.17	2,691
Pilot	.50	.13	1,980
Henry		.10	1,580
Justin	.10	.07	1,057
Ceres		.04	550
Selkirk	.10	.03	529
Manitou	(*)		
Saunders	(*)		
Centana	.30		
Canthatch	.20		
White:			
Nuquaines	23.10	18.30	283,624
Springfield		12.61	195,436
Hyslop		9.34	144,816
Gaines	15.50	8.78	136,154
Twin		7.22	111,968
Idaæd 59	1.20	.91	14,163
Luke		.50	7,766
Adams	(*)	.41	6,337
Lemhi 66	9.20	.24	3,740
McDermid		.05	770
Golden		.03	423
Fielder		.01	220
Baart 46 <sup>3</sup>	.40		
Lemhi 62	1.50		

See footnotes at end of the table.

TABLE 1.—Estimated percentage of the total wheat acreage occupied by each variety of wheat in each State in 1969 and 1974, and the acreage in 1974—Continued

State, Class, and Variety	Percentage of Acreage		Acreage
	1969	1974	1974
<b>IDAHO (Cont)</b>			
<b>White: (Cont)</b>			
Lemhi 53 -----	.10		
Federation 67 -----	1.40		
Idaad -----	1.40		
Brevor -----	(*)		
Burt -----	.10		
Dicklow -----	(*)		
Federation -----	.10		
Aiba -----	(*)		
<b>Club:</b>			
Paha -----		2.86	44,401
Elgin -----	(*)		
Moro -----	.20		
Variety Not Reported 2 -----	.00	1.20	17,957
<b>TOTAL</b> -----	<b>100.00</b>	<b>100.00</b>	<b>1,550,000</b>
<b>ILLINOIS</b>			
			1(3211)
<b>Hard Red Winter:</b>			
Parker -----	.40	6.59	121,974
Gage -----	25.30	6.26	115,792
Centurk -----		4.35	80,494
Pawnee -----	7.40	1.30	24,037
Ottawa -----	6.30	.77	14,242
Triumph -----	2.10	.42	7,757
Satanta -----		.16	3,044
Ponca -----	.70	.05	866
Homestead -----		(*)	29
Scout -----	.30		
Shawnee -----	(*)		
Omaha -----	.20		
<b>Soft Red Winter:</b>			
Arthur -----	.20	39.53	731,385
Arthur 71 -----		24.38	451,074
Monon -----	37.60	5.44	100,673
Blueboy -----	(*)	2.90	53,668
Abe -----		2.89	53,459
Benhur -----	13.70	2.05	38,004
Blueboy II -----		.86	15,879
Knox 62 -----	1.60	.31	5,721

See footnotes at end of the table.

TABLE 1.—Estimated percentage of the total wheat acreage occupied by each variety of wheat in each State in 1969 and 1974, and the acreage in 1974—Continued

State, Class, and Variety	Percentage of Acreage		Acreage
	1969	1974	1974
<b>ILLINOIS (Cont)</b>			
<b>Soft Red Winter: (Cont)</b>			
Knox -----	1.70	.22	4,123
Tinwin -----		.22	4,054
McNair 701 -----		.13	2,446
Oasis -----		.06	1,055
Kenosha -----		.04	811
Riley 67 -----		.02	383
Dual -----	.20	.02	378
Lewis -----	(*)	.01	255
McNair 4823 -----		(*)	160
Riley -----	1.00	(*)	157
Vermillion -----	.80	(*)	106
Redcoat -----	(*)		
Reed -----	(*)		
Laporte -----	.10		
Clarkan -----	(*)		
Variety Not Reported <sup>2</sup> -----	.40	.99	17,974
<b>TOTAL -----</b>	<b>100.00</b>	<b>100.00</b>	<b>1,850,000</b>
<b>INDIANA</b>			<b>1 (795)</b>
<b>Hard Red Winter:</b>			
Pawnee -----	.60	.05	722
Ottawa -----	.20		
Gage -----	.10		
<b>Soft Red Winter:</b>			
Arthur -----	.70	47.06	677,642
Arthur 71 -----		38.76	558,213
Abe -----		6.66	95,880
Monon -----	55.10	4.33	62,346
Knox 62 -----	4.80	.61	8,783
Benhur -----	16.20	.38	5,448
Redcoat -----	4.10	.19	2,773
Logan -----		.19	2,691
Reed -----	4.50	.16	2,250
Oasis -----		.10	1,479
Laporte -----	.10	.10	1,433
Thorne -----		.07	977
Blueboy -----		(*)	129
Riley -----	5.40		

See footnotes at end of the table.

TABLE 1.—Estimated percentage of the total wheat acreage occupied by each variety of wheat in each State in 1969 and 1974, and the acreage in 1974—Continued

State, Class, and Variety	Percentage of Acreage		Acreage
	1969	1974	1974
<b>INDIANA (Cont)</b>			
Soft Red Winter: (Cont)			
Vermillion -----	.30		
Seneca -----	(*)		
Riley 67 -----	1.30		
Knox -----	3.50		
Dua1 -----	.30		
White:			
Genesee -----	.10		
Variety Not Reported <sup>2</sup> -----	2.70	1.33	19,234
<b>TOTAL</b> -----	<b>100.00</b>	<b>100.00</b>	<b>1,440,000</b>
<b>IOWA</b>			
Hard Red Winter:			<sup>1</sup> (211)
Gage -----	56.50	33.82	14,880
Centurk -----		23.86	10,498
Pawnee -----	12.40	10.31	4,536
Scout 66 -----		7.68	3,377
Parker -----	.10	2.58	1,133
Lancer -----	4.30	2.17	954
Ottawa -----	8.30	1.03	452
Scout -----	2.30	.94	414
Scoutland -----		.75	329
Shawnee -----		.72	315
Eagle -----		.33	143
Triumph -----	.20	.15	65
Buckskin -----		.12	52
Omaha -----	4.00	.09	41
Ioturk -----	.10		
Ponca -----	2.00		
Apache -----	(*)		
Wichita -----	.70		
Guide -----	.10		
Hard Red Spring:			
Chris -----	1.40	4.75	2,089
Seikirk -----	1.50	1.51	663
Waldron -----		1.03	452
Era -----		.88	387
Manitou -----	.30		
Thatcher -----	.10		

See footnotes at end of the table.

TABLE 1.—Estimated percentage of the total wheat acreage occupied by each variety of wheat in each State in 1969 and 1974, and the acreage in 1974—Continued

State, Class, and Variety	Percentage of Acreage		Acreage
	1969	1974	1974
<b>IOWA (Cont)</b>			
Hard Red Spring: (Cont)			
Pembina -----	.10		
Henry -----	(*)		
Crim -----	.30		
Soft Red Winter:			
Arthur -----		1.42	624
Abe -----		.53	232
Monon -----	.60	.49	217
Blueboy -----		.40	178
Vermillion -----	.10		
Seneca -----	.20		
White:			
Gaines -----	.10	.10	45
Variety Not Reported <sup>2</sup> -----	4.30	4.34	1,924
TOTAL -----	100.00	100.00	44,000
<b>KANSAS</b>			
Hard Red Winter:			<sup>1</sup> (4763)
Scout -----	42.20	36.57	4,388,946
Eagle -----		17.82	2,137,820
Centurk -----		9.42	1,130,432
Triumph -----	5.80	8.43	1,012,180
Parker -----	2.50	7.56	907,251
Satanta -----	(*)	4.66	559,225
Chanute -----	(*)	2.72	325,877
Gage -----	3.40	2.41	289,784
Sturdy -----		1.48	177,291
Bison -----	8.60	1.19	143,373
Wichita -----	5.30	1.00	120,538
Apache -----	3.80	.97	116,650
Danne -----		.92	110,432
Lancer -----	3.00	.77	92,560
Kaw -----	6.20	.54	65,274
Shawnee -----	.50	.49	58,664
Kiowa -----	2.20	.34	41,270
Warrior -----	1.00	.28	33,985
Pronto -----		.21	24,736
Caprock -----		.17	20,921
Tam W101 -----		.15	18,536

See footnotes at end of the table.

TABLE 1.—Estimated percentage of the total wheat acreage occupied by each variety of wheat in each State in 1969 and 1974, and the acreage in 1974—Continued

State, Class, and Variety	Percentage of Acreage		Acreage
	1969	1974	1974
<b>KANSAS (Cont)</b>			
<b>Hard Red Winter: (Cont)</b>			
Comanche -----	.60	.14	16,652
Concho -----	.30	.11	13,075
Ottawa -----	2.40	.10	12,511
Rodco -----	1.20	.09	10,505
Sage -----	-----	.08	9,456
Scoutland -----	-----	.07	8,898
Golden 50 -----	.40	.07	8,673
Pawnee -----	.50	.06	6,766
Ponca -----	.10	.05	6,356
Tascosa -----	.80	.05	5,665
Crockett 70 -----	-----	.04	5,008
FedChief -----	(*)	.02	1,888
Kerwin -----	-----	.01	1,725
Funk W 332 -----	-----	.01	1,700
Cloud -----	-----	.01	1,651
ManKing -----	-----	(*)	1,016
Trapper -----	(*)	(*)	998
Palo Duro -----	-----	(*)	570
Trison -----	-----	(*)	358
Golden Chief -----	(*)	(*)	285
Homestead -----	-----	(*)	138
Trader -----	(*)	-----	-----
Guide -----	(*)	-----	-----
Hybrid wheat -----	(*)	-----	-----
Kenbe II -----	(*)	-----	-----
Turkey -----	(*)	-----	-----
Taganore -----	(*)	-----	-----
Scout 66 -----	.10	-----	-----
Kaw 61 -----	.20	-----	-----
Evtol -----	(*)	-----	-----
Improved Triumph -----	5.90	-----	-----
Rust Resistant Triumph -----	1.20	-----	-----
Yendoy -----	(*)	-----	-----
Crockett -----	(*)	-----	-----
Tennard -----	(*)	-----	-----
Cheyenne -----	(*)	-----	-----
Super Triumph -----	1.50	-----	-----
Omaha -----	(*)	-----	-----
<b>Hard Red Spring:</b>			
Bounty 208 -----	-----	(*)	1,089

See footnotes at end of the table.

TABLE 1.—Estimated percentage of the total wheat acreage occupied by each variety of wheat in each State in 1969 and 1974, and the acreage in 1974—Continued

State, Class, and Variety	Percentage of Acreage		Acreage
	1969	1974	1974
<b>KANSAS (Cont)</b>			
Hard Red Spring: (Cont)			
Super X		(*)	1,040
Soft Red Winter:			
Blueboy		.02	2,946
Arthur		.02	2,825
Variety Not Reported <sup>2</sup>	.70	.91	102,505
TOTAL	100.00	100.00	12,000,000
<b>KENTUCKY</b>			
			<sup>1</sup> (1062)
Hard Red Winter:			
Triumph	3.10	.59	2,699
Soft Red Winter:			
Arthur	.40	49.01	225,423
Arthur 71		22.36	102,637
Blueboy	6.40	5.05	23,237
Abe		4.78	21,991
Knox 62	13.90	4.34	19,960
Benhur	21.80	1.34	6,157
Monon	18.60	1.17	5,396
McNair 4823		.08	365
Dua 1	.60	(*)	34
Knox	19.10		
Reed	.30		
Thorne	1.10		
Redcoat	1.90		
Vermillion	1.00		
Vigo	.90		
Variety Not Reported <sup>2</sup>	10.90	11.27	51,901
TOTAL	100.00	100.00	460,000
<b>LOUISIANA</b>			
			<sup>1</sup> (56)
Hard Red Spring:			
Lerma Rojo 64	5.90		
Soft Red Winter:			
Arthur		27.59	22,069
Wakeland	15.10	25.68	20,542
Georgia 1123	35.90	22.95	18,356

See footnotes at end of the table.



TABLE 1.—Estimated percentage of the total wheat acreage occupied by each variety of wheat in each State in 1969 and 1974, and the acreage in 1974

State, Class, and Variety	Percentage of Acreage		Acreage
	1969	1974	1974
<b>LOUISIANA (Cont)</b>			
Soft Red Winter: (Cont)			
Atlas 66 -----	17.90	3.24	2,592
Coker 65-20 -----	9.30	2.87	2,294
Arthur 71 -----		1.18	940
Blueboy II -----		.77	612
Knox 62 -----		.10	82
Hadden -----	3.40		
Knox -----	6.50		
Bledsoe -----	.50		
Monon -----	2.80		
Blueboy -----	1.20		
Variety Not Reported <sup>2</sup> -----	1.50	15.62	12,514
TOTAL -----	100.00	100.00	80,000
<b>MARYLAND</b>			
Soft Red Winter:			
Arthur -----		32.46	51,281
Redcoat -----	65.40	26.35	41,632
Blueboy -----	9.80	17.83	28,178
Arthur 71 -----		14.25	22,512
Abe -----		5.24	8,278
Penno11 -----	3.40	.77	1,223
Seneca -----	.80	.41	654
Mammoth Red -----	.60	.33	517
Thorne -----	1.90	.15	237
Leapland -----	.40	.05	77
Dual -----	1.00		
Monon -----	6.30		
Tayland -----	1.30		
Benhur -----	.10		
Compact -----	.30		
Variety Not Reported <sup>2</sup> -----	8.70	2.16	3,411
TOTAL -----	100.00	100.00	158,000
<b>MICHIGAN</b>			
Hard Red Winter:			
Turkey -----		(*)	72

See footnotes at end of the table.

TABLE 1.—Estimated percentage of the total wheat acreage occupied by each variety of wheat in each State in 1969 and 1974, and the acreage in 1974—Continued

State, Class, and Variety	Percentage of Acreage		Acreage
	1969	1974	1974
<b>MICHIGAN (Cont)</b>			
Hard Red Winter: (Cont)			
Minter -----	(*)		
Hard Red Spring:			
Chris -----		.02	237
Neepawa -----		(*)	60
Era -----		(*)	17
Selkirk -----	(*)		
Soft Red Winter:			
Arthur -----	.20	15.55	147,771
Arthur 71 -----		6.58	62,511
Monon -----	13.50	.79	7,484
Abe -----		.19	1,781
Redcoat -----	1.40	.13	1,248
Loqan -----		.09	818
Blueboy -----		.08	726
Seneca -----	.20	.02	208
Reed -----	.50	.01	117
Benhur -----	.40	(*)	40
Riley -----	.20		
Fulton -----	(*)		
Royal -----	.30		
Dual -----	.20		
White:			
Genesee -----	62.00	32.17	305,623
Ionia -----		27.29	259,232
Yorkstar -----	.60	8.36	79,444
Avon -----	16.70	4.98	47,331
Yorkwin -----	1.30	1.29	12,214
Talbot -----	1.10		
Cornell 595 -----	.10		
Variety Not Reported <sup>2</sup> -----	1.30	2.43	23,066
TOTAL -----	100.00	100.00	950,000
			1 (1500)
<b>MINNESOTA</b>			
Hard Red Winter:			
Minter -----	1.40	.68	19,318
Winoka -----		.23	6,535
Froid -----		.08	2,415
Bronze -----		.03	732

See footnotes at end of the table.

TABLE 1.—Estimated percentage of the total wheat acreage occupied by each variety of wheat in each State in 1969 and 1974, and the acreage in 1974—Continued

State, Class, and Variety	Percentage of Acreage		Acreage
	1969	1974	1974
<b>MINNESOTA (Cont)</b>			
<b>Hard Red Winter: (Cont)</b>			
Centurk -----		(*)	141
Pawnee -----		(*)	139
Sundance -----		(*)	105
<b>Hard Red Spring:</b>			
Era -----	(*)	61.38	1,755,400
World Seeds 1809 -----		8.84	252,798
Lark -----		6.86	196,173
Chris -----	50.40	5.16	147,666
Waldron -----	.50	3.26	93,286
Bounty 208 -----		2.48	70,921
World Seeds 1877 -----		1.58	45,091
Bonanza -----		1.11	31,606
Novesta -----		.64	18,261
Inia 66 -----		.60	17,156
Poik -----	11.00	.52	14,975
World Seeds Mp-6 -----		.42	11,872
Protor -----		.29	8,176
Olaf -----		.26	7,422
Pletcher -----		.21	6,053
World Seeds 1657 -----		.20	5,788
Glenlea -----		.17	4,891
Nordak -----		.08	2,286
Selkirk -----	3.40	.06	1,808
Profit 75 -----		.02	681
Manitou -----	18.80	.02	636
Sheridan -----	(*)	.02	545
Red River 68 -----	1.50	.02	485
Zilar -----		(*)	166
Fortuna -----		(*)	160
Tobari -----	(*)		
Kurtzman -----	.10		
Valley (spring) -----	(*)		
World Seeds 1812 -----	1.50		
Cris -----	.30		
Pushmore -----	(*)		
Pembina -----	.20		
Nordman -----	.10		
Justin -----	.50		
Henry -----	(*)		

See footnotes at end of the table.

TABLE 1.—Estimated percentage of the total wheat acreage occupied by each variety of wheat in each State in 1969 and 1974, and the acreage in 1974—Continued

State, Class, and Variety	Percentage of Acreage		Acreage
	1969	1974	1974
<b>MINNESOTA (Cont)</b>			
Durum:			
Folette -----		.88	25,177
Ward -----		.54	15,554
Wells -----	3.70	.49	14,029
Leeds -----	5.10	.12	3,535
Wascana -----		.04	1,108
Botno -----		(*)	277
Rugby -----		(*)	111
Stewart -----		(*)	97
Langdon -----	(*)		
Lakota -----	1.00		
Variety Not Reported <sup>2</sup> -----	.50	2.68	76,425
TOTAL -----	100.00	100.00	2,860,000
<b>MISSISSIPPI</b>			
Hard Red Winter:			
Concho -----	.90		
Soft Red Winter:			
Coker 68-15 -----		28.08	54,765
Arthur -----		27.57	53,754
Georgia 1123 -----	28.20	12.51	24,404
Arthur 71 -----		10.46	20,400
Coker 68-19 -----		4.39	8,559
Blueboy -----	9.90	3.23	6,303
Coker 47-27 -----	12.20	2.37	4,624
Coker 68-20 -----		1.36	2,652
Atlas 66 -----	3.20	.80	1,553
Anderson -----	1.70	.18	348
Hadden -----	4.70	.06	121
Knox -----	11.20	.06	118
Chancellor -----	7.20	.03	59
Monon -----	7.70		
Coastal -----	(*)		
Bledsoe -----	9.60		
Variety Not Reported <sup>2</sup> -----	3.50	8.90	17,340
TOTAL -----	100.00	100.00	195,000

See footnotes at end of the table.

TABLE 1.—Estimated percentage of the total wheat acreage occupied by each variety of wheat in each State in 1969 and 1974, and the acreage in 1974—Continued

State, Class, and Variety	Percentage of Acreage		Acreage
	1969	1974	1974
MISSOURI			1 (2996)
Hard Red Winter:			
Triumph -----	15.60	7.44	107,858
Parker -----	5.50	5.99	86,789
Gage -----	12.30	3.20	46,388
Chanute -----		.45	6,459
Centurk -----		.41	5,886
Pawnee -----	9.50	.40	5,842
Danne -----		.29	4,243
Scout -----	.70	.26	3,747
Sturdy -----		.14	2,033
Concho -----		.03	390
Pronto -----		.02	311
Punk W 332 -----		.02	311
Ponca -----	1.20	(*)	124
Ottawa -----	1.20	(*)	123
Eagle -----		(*)	51
Guide -----	(*)		
Wichita -----	.20		
Lancer -----	.10		
Reliant -----	.20		
Kaw -----	.10		
Hard Red Spring:			
Red River 68 -----		.01	167
Redman -----		(*)	139
Soft Red Winter:			
Arthur -----	.20	65.95	956,230
Monon -----	30.40	5.23	75,849
Blueboy -----	.60	1.44	20,933
Arthur 71 -----		1.43	20,691
Knox -----	9.70	.84	12,153
Stadler -----	4.30	.81	11,796
Abe -----		.68	9,911
Redcoat -----	.70	.36	5,257
Benhur -----	1.70	.32	4,634
Dual -----	.40	.11	1,598
Vermillion -----	.30	.10	1,417
Lewis -----	.20	.07	993
Coker 68-15 -----		.04	611
Seneca -----	.20	.04	571
Stoddard -----		.03	448
Oasis -----		.02	252

See footnotes at end of the table.

TABLE 1.—Estimated percentage of the total wheat acreage occupied by each variety of wheat in each State in 1969 and 1974, and the acreage in 1974—Continued

State, Class, and Variety	Percentage of Acreage		Acreage
	1969	1974	1974
<b>MISSOURI (Cont)</b>			
Soft Red Winter: (Cont)			
Blueboy II		.02	235
Vigo	.90	(*)	85
Clarkan		(*)	72
Early Premium	.20		
Fultz	(*)		
Knox 62	.90		
Riley 67	.20		
Riley	.10		
White:			
Genesee		.02	362
Variety Not Reported <sup>2</sup>	(*)	3.79	55,041
TOTAL	100.00	100.00	1,450,000
<b>MONTANA</b>			
Hard Red Winter:			
Winalta	29.40	21.06	1,057,445
Cheyenne	22.80	18.00	903,392
Winoka		3.72	186,693
Warrior	6.90	3.37	169,211
Froid	(*)	1.25	62,850
Trapper	(*)	1.08	53,981
Lancer	1.80	.99	49,774
Wanser		.67	33,405
Itana	1.00	.56	27,899
McCall		.47	23,451
Crest	(*)	.39	19,507
Centurk		.35	17,533
Delmar	.20	.25	12,502
Scout		.24	12,120
Teton		.21	10,361
Turkey	.20	.14	7,071
Scoutland		.14	7,069
Sundance		.13	6,506
Sawmont	(*)	.10	5,068
Nicoma		.07	3,739
Westmont	(*)	.04	1,940
Minter	.20	.03	1,350
Apache		.02	797

<sup>1</sup> (1472)

See footnotes at end of the table.

TABLE 1.—Estimated percentage of the total wheat acreage occupied by each variety of wheat in each State in 1969 and 1974, and the acreage in 1974—Continued

State, Class, and Variety	Percentage of Acreage		Acreage
	1969	1974	1974
<b>MONTANA (Cont)</b>			
<b>Hard Red Winter: (Cont)</b>			
Rego -----	.30	.02	787
Yoqo -----	.10	.01	526
Wichita -----	.10	-----	-----
Hume -----	.10	-----	-----
Wasatch -----	(*)	-----	-----
Newturk -----	.10	-----	-----
Montana 36 -----	.10	-----	-----
Comanche -----	.10	-----	-----
Gage -----	(*)	-----	-----
Karmont -----	1.00	-----	-----
<b>Hard Red Spring:</b>			
Fortuna -----	14.50	21.63	1,085,723
Thatcher -----	5.80	4.03	202,391
Manitou -----	.40	4.02	201,864
Era -----	-----	2.18	109,544
Canthatch -----	1.30	1.52	76,215
Red River 68 -----	.10	1.07	53,709
Bounty 208 -----	-----	.55	27,523
Waldron -----	-----	.53	26,790
Bonanza -----	-----	.52	26,064
World Seeds 1809 -----	-----	.48	24,050
Chinook -----	1.30	.41	20,366
Lark -----	-----	.31	15,634
Centana -----	.70	.29	14,579
World Seeds 1812 -----	-----	.26	13,156
Crim -----	.60	.26	12,899
Justin -----	.20	.22	11,111
Norana -----	-----	.20	10,243
Weathermaster 106 -----	-----	.16	8,136
Olaf -----	-----	.15	7,405
Rushmore -----	-----	.14	6,954
Rescue -----	.30	.14	6,837
Shortana -----	-----	.09	4,435
Tioqa -----	-----	.06	2,788
Ceres -----	.80	.04	1,869
Selkirk -----	.10	.01	560
Prospur -----	-----	(*)	377
World Seeds Mp-6 -----	-----	(*)	206
Sheridan -----	.30	-----	-----
Polk -----	(*)	-----	-----

See footnotes at end of the table.

TABLE 1.—Estimated percentage of the total wheat acreage occupied by each variety of wheat in each State in 1969 and 1974, and the acreage in 1974

State, Class, and Variety	Percentage of Acreage		Acreage
	1969	1974	1974
<b>MONTANA (Cont)</b>			
<b>Hard Red Spring: (Cont)</b>			
Marquis -----	(*)	-----	-----
Cypress -----	.10	-----	-----
Lee -----	.10	-----	-----
Chris -----	(*)	-----	-----
Sawtana -----	.30	-----	-----
Hida -----	(*)	-----	-----
<b>White:</b>			
Gaines -----	.70	.38	18,896
Twin -----	-----	.09	4,766
Nuqaines -----	-----	.09	4,273
Springfield -----	-----	.01	643
Luke -----	-----	.01	545
Lemhi 66 -----	(*)	-----	-----
Onas -----	(*)	-----	-----
<b>Durum:</b>			
Wells -----	3.50	3.20	160,403
Leeds -----	1.80	1.44	72,227
Hercules -----	-----	.16	8,268
Wascana -----	-----	.14	6,964
Ward -----	-----	.11	5,312
Stewart 63 -----	.20	.09	4,563
Adur X Wells -----	-----	.07	3,646
Triangle -----	-----	.02	943
Ramsey -----	.10	-----	-----
Langdon -----	.40	-----	-----
Mindum -----	.20	-----	-----
Lakota -----	.10	-----	-----
Variety Not Reported <sup>2</sup> -----	1.70	1.60	82,146
<b>TOTAL</b> -----	<b>100.00</b>	<b>100.00</b>	<b>5,020,000</b>
<b>NEBRASKA</b>			<sup>1</sup> (2577)
<b>Hard Red Winter:</b>			
Centurk -----	-----	29.95	898,575
Scout 66 -----	1.30	20.42	612,455
Scout -----	26.50	11.19	335,737
Lancer -----	32.00	11.10	333,098
Warrior -----	13.60	8.23	246,794
Gage -----	12.90	7.22	216,680

See footnotes at end of the table.



TABLE 1.—Estimated percentage of the total wheat acreage occupied by each variety of wheat in each State in 1969 and 1974, and the acreage in 1974—Continued

State, Class, and Variety	Percentage of Acreage		Acreage
	1969	1974	1974
<b>NEBRASKA (Cont)</b>			
<b>Hard Red Winter: (Cont)</b>			
Scoutland -----		3.77	113,099
Trapper -----	.90	2.66	79,731
Eagle -----		1.01	30,227
Cheyenne -----	1.50	.68	20,471
Omaha -----	1.70	.58	17,514
Ottawa -----	3.00	.50	15,100
Pawnee -----	1.40	.42	12,749
Trader -----	.60	.32	9,591
Parker -----		.20	5,993
Satanta -----		.17	5,184
Buckskin -----		.11	3,225
Chanute -----		.08	2,518
Sentinel -----		.08	2,424
Nebred -----	.60	.07	2,180
Homestead -----		.07	1,951
Triumph -----	.40	.06	1,907
Turkey -----	.10	.06	1,727
Hiplains -----		.05	1,453
Bison -----	.40	.05	1,408
Kanred -----		.03	1,004
Sturdy -----		.02	749
Punk W 332 -----		.02	714
Ponca -----	.10	.02	530
Guide -----	.30	(*)	206
Wichita -----	.80	(*)	152
Tenmarq -----	(*)	(*)	29
Nebraska 60 -----	(*)		
Rodco -----	.20		
Kaw -----	.10		
Kiowa -----	.10		
Winatta -----	(*)		
<b>Hard Red Spring:</b>			
Selkirk -----	(*)		
<b>Soft Red Winter:</b>			
Arthur -----		(*)	96
Variety Not Reported <sup>2</sup> -----	1.50	.84	24,729
<b>TOTAL</b> -----	<b>100.00</b>	<b>100.00</b>	<b>3,000,000</b>

See footnotes at end of the table.

TABLE 1.—Estimated percentage of the total wheat acreage occupied by each variety of wheat in each State in 1969 and 1974, and the acreage in 1974—Continued

State, Class, and Variety	Percentage of Acreage		Acreage
	1969	1974	1974
<b>NEVADA</b>			<sup>1</sup> (61)
Hard Red Winter:			
Turkey -----		.05	9
Hard Red Spring:			
Anza -----		.71	141
Pitic 62 -----	12.90		
Sonora 64 -----	2.40		
Red River 68 -----	.30		
Inia 66 -----	1.40		
White:			
Gaines -----	16.10	35.66	7,132
Springfield -----		26.91	5,382
Nugaines -----	25.40	25.19	5,038
Lemhi 66 -----	14.90	1.08	216
Twin -----		.38	75
Siete Cerros 66 -----	2.20		
Ramona 50 -----	9.00		
Lemhi 62 -----	9.20		
Federation 67 -----	2.00		
Variety Not Reported <sup>2</sup> -----	4.20	10.02	2,007
TOTAL -----	100.00	100.00	20,000
<b>NEW JERSEY</b>			<sup>1</sup> (219)
Hard Red Winter:			
Shoshoni -----		.99	592
Ponca -----	.10		
Westar -----	1.00		
Soft Red Winter:			
Arthur -----		25.80	15,481
Redcoat -----	61.40	23.42	14,052
Blueboy -----	.20	19.78	11,869
Arthur 71 -----		14.75	8,849
Abe -----		4.56	2,736
Penno11 -----	28.70	3.65	2,191
Blueboy II -----		2.62	1,574
Monon -----	.30	1.03	616
Leap -----	.40		
Knox -----	.20		
Seneca -----	.60		
Dua1 -----	.80		

See footnotes at end of the table.

TABLE 1.—Estimated percentage of the total wheat acreage occupied by each variety of wheat in each State in 1969 and 1974, and the acreage in 1974—Continued

State, Class, and Variety	Percentage of Acreage		Acreage
	1969	1974	1974
<b>NEW JERSEY (Cont)</b>			
Soft Red Winter: (Cont)			
Benhur -----	3.60		
White:			
Yorkstar -----		.33	198
Genesee -----	.10		
Variety Not Reported <sup>2</sup> -----	2.60	3.07	1,842
TOTAL -----	100.00	100.00	60,000
<b>NEW MEXICO</b>			
Hard Red Winter:			1 (322)
Scout -----	33.90	30.23	129,678
Centurk -----		18.09	77,626
Concho -----	25.40	9.77	41,901
Comanche -----	5.30	9.35	40,128
Scout 66 -----	3.10	6.76	28,993
Tascosa -----	9.20	5.45	23,385
Palo Duro -----		4.97	21,333
Turkey -----	1.00	1.70	7,304
Blackhu11 -----	3.70	1.10	4,725
Kaw -----	.20	.93	4,003
Sturdy -----	1.30	.91	3,903
Apache -----	2.00	.86	3,691
Caprock -----		.39	1,662
Cheyenne -----	5.30	.33	1,433
Caddo -----	1.10	.31	1,338
Warrior -----	.50	.28	1,194
Improved Triumph -----		.20	865
Kanred -----	.10	.17	717
Pronto -----		.14	621
Tam W101 -----		.09	382
Bison -----	.20	.01	48
Wichita -----	2.30		
Tenmarq -----	.20		
Early Blackhu11 -----	.40		
Triumph -----	.90		
Hard Red Spring:			
Bluebird 2 -----		.43	1,840
Lee -----	(*)	.10	434
Cofano -----		(*)	24

See footnotes at end of the table.

TABLE 1.—Estimated percentage of the total wheat acreage occupied by each variety of wheat in each State in 1969 and 1974, and the acreage in 1974—Continued

State, Class, and Variety	Percentage of Acreage		Acreage
	1969	1974	1974
<b>NEW MEXICO (Cont)</b>			
Hard Red Spring: (Cont)			
Komar -----	(*)		
Thatcher -----	(*)		
White:			
Siete Cerros 66 -----		.26	1,121
Gaines -----	.10	.24	1,019
Variety Not Reported <sup>2</sup> -----	3.80	6.92	29,632
TOTAL -----	100.00	100.00	429,000
<b>NEW YORK</b>			
Hard Red Winter:			1(520)
Pawnee -----	(*)		
Soft Red Winter:			
Redcoat -----	1.10	.38	835
Penno11 -----	.20		
Seneca -----	.10		
Blueboy -----	(*)		
White:			
Yorkstar -----	35.40	77.28	170,015
Avon -----	35.20	7.14	15,697
Arrow -----		6.54	14,386
Genesee -----	22.60	6.34	13,942
Ionia -----		.61	1,347
Yorkwin -----	2.30		
Gaines -----	(*)		
Cornell 595 -----	1.00		
Variety Not Reported <sup>2</sup> -----	2.10	1.71	3,778
TOTAL -----	100.00	100.00	220,000
<b>NORTH CAROLINA</b>			
Soft Red Winter:			1(1210)
Arthur -----		49.65	161,364
Arthur 71 -----		17.44	56,669
Blueboy -----	78.60	9.81	31,893
Coker 68-15 -----		3.61	11,718
McNair 701 -----		3.60	11,701
Blueboy II -----		2.86	9,310

See footnotes at end of the table.

TABLE 1.—Estimated percentage of the total wheat acreage occupied by each variety of wheat in each State in 1969 and 1974, and the acreage in 1974—Continued

State, Class, and Variety	Percentage of Acreage		Acreage
	1969	1974	1974
<b>NORTH CAROLINA (Cont)</b>			
Soft Red Winter: (Cont)			
Knox 62	1.80	2.84	9,242
Abe		1.06	4,744
Coker 68-19		1.40	4,564
McNair 4823		.75	2,444
Coker 65-20	1.30	.37	1,210
Anderson	1.00	.19	605
McNair 2203		.14	468
Seneca	.60	.03	104
Taylor	.70	.03	83
Thorne	2.70	.02	78
Wakeford	2.70		
Andnox	.10		
Knox	7.00		
Georgia 1123	.50		
Purplestraw	(*)		
Redhart	.30		
Atlas 66	.20		
Hadden	.50		
Redcoat	.10		
Variety Not Reported <sup>2</sup>	1.90	5.80	18,803
<b>TOTAL</b>	<b>100.00</b>	<b>100.00</b>	<b>325,000</b>
			<b>1(3659)</b>
<b>NORTH DAKOTA</b>			
Hard Red Winter:			
Froid		.61	62,529
Winoka		.21	21,667
Winalta	.10	.14	13,871
Bronze		.07	7,180
Hume	.30	.06	6,345
Minter	.10	.05	5,383
Scout	(*)	.04	3,720
Lancer	.20	.03	3,165
Sundance		(*)	809
Trader	(*)		
Warrior	(*)		
Nebred	(*)		
Cheyenne	(*)		
Trapper	.10		

See footnotes at end of the table.

TABLE 1.—Estimated percentage of the total wheat acreage occupied by each variety of wheat in each State in 1969 and 1974, and the acreage in 1974—Continued

State, Class, and Variety	Percentage of Acreage		Acreage
	1969	1974	1974
NORTH DAKOTA (Cont)			
Hard Red Spring:			
Waldron -----	1.10	33.46	3,416,641
Lark -----		5.46	557,655
Era -----		4.41	450,553
Bounty 208 -----		3.72	380,015
Olaf -----		2.70	275,888
Chris -----	17.40	2.64	269,686
World Seeds 1809 -----	.10	2.62	267,713
Justin -----	7.30	1.55	157,794
Manitou -----	10.90	1.53	156,156
Bonanza -----	(*)	1.34	136,795
Polk -----	1.80	1.26	128,994
Portuna -----	10.70	1.19	121,679
Nowesta -----		.30	30,978
World Seeds 1877 -----		.18	18,533
Red River 68 -----	.90	.18	18,509
Nordak -----		.17	17,343
Canthatch -----	.90	.14	14,277
Walhalla -----		.09	9,169
Ellar -----		.07	6,985
Glen Lea -----		.07	6,834
Crim -----	1.70	.07	6,745
World Seeds 1812 -----	.20	.04	4,378
Thatcher -----	.10	.04	3,681
World Seeds Mp-6 -----		.03	3,383
Hida -----	.10	.03	2,786
Profit 75 -----		.02	2,487
Neepawa -----		.02	2,189
Forx -----	.20	.02	2,189
-----		.02	1,890
Protor -----		.02	1,890
Tioqa -----		.01	1,194
Pembina -----	.40	.01	1,194
Valley (spring) -----	.60	.01	1,194
Barton -----		(*)	995
Selkirk -----	.80	(*)	796
Empire -----		(*)	696
Vesta -----	(*)		
Rushmore -----	.10		
Chinook -----	(*)		
Nordman -----	.10		

See footnotes at end of the table.

TABLE 1.—Estimated percentage of the total wheat acreage occupied by each variety of wheat in each State in 1969 and 1974, and the acreage in 1974

State, Class, and Variety	Percentage of Acreage		Acreage
	1969	1974	1974
<b>NORTH DAKOTA (Cont)</b>			
Hard Red Spring: (Cont)			
Lee	.10	-----	-----
Kurtzman	(*)	-----	-----
Rival	(*)	-----	-----
Plainsman	(*)	-----	-----
Sheridan	.10	-----	-----
Durum:			
Rolette	-----	12.60	1,286,070
Leeds	26.00	9.53	973,320
Wells	16.50	6.45	658,997
Ward	-----	4.55	464,957
Hercules	-----	.51	52,074
Wascana	-----	.20	20,377
Lakota	.30	.03	3,483
Crosby	-----	.02	2,497
Obregon 73	-----	.02	2,112
Rugby	-----	.02	1,598
Botno	-----	.02	1,584
Triangle	-----	(*)	405
Langdon	.10	(*)	100
Vernum	(*)	-----	-----
Stewart 63	.20	-----	-----
Variety Not Reported <sup>2</sup>	.50	1.38	137,873
<b>TOTAL</b>	<b>100.00</b>	<b>100.00</b>	<b>10,210,000</b>
			<b>1(3577)</b>
<b>OHIO</b>			
Soft Red Winter:			
Arthur	.20	42.68	674,381
Arthur 71	-----	19.71	311,450
Logan	.10	12.87	203,424
Monon	49.20	8.96	141,576
Reed	19.60	4.93	77,830
Abe	-----	1.94	30,581
Seneca	4.10	1.80	28,433
Redcoat	7.20	1.55	24,540
Vermilion	4.60	.81	12,787
Lucas	1.10	.58	9,161
Thorne	.70	.45	7,135
Benhur	4.60	.35	5,480

See footnotes at end of the table.

TABLE 1.—Estimated percentage of the total wheat acreage occupied by each variety of wheat in each State in 1969 and 1974, and the acreage in 1974—Continued

State, Class, and Variety	Percentage of Acreage		Acreage
	1969	1974	1974
<b>OHIO (Cont)</b>			
Soft Red Winter: (Cont)			
Blueboy -----	.10	.27	4,189
Fulton -----	1.30	.24	3,794
Pennoll -----	.60	.23	3,614
Knox -----	.60	.17	2,620
Dual -----	.80	.16	2,606
Knox 62 -----	.20	.16	2,526
Riley -----	1.20	.06	927
Butler -----	.30	.04	626
Riley 67 -----	.70	.03	500
Vigo -----	(*)	.02	384
Laporte -----	.90	-----	-----
Stadler -----	.10	-----	-----
Variety Not Reported <sup>2</sup> -----	1.80	1.99	31,436
<b>TOTAL</b> -----	<b>100.00</b>	<b>100.00</b>	<b>1,580,000</b>
<b>OKLAHOMA</b>			
			<sup>1</sup> (2323)
Hard Red Winter:			
Improved Triumph -----	31.20	15.52	1,086,469
Scout -----	14.40	13.58	950,639
Triumph -----	17.90	12.10	847,032
Danne -----	-----	9.79	685,064
Rust Resistant Triumph -----	4.80	9.38	656,639
Sturdy -----	.40	6.65	465,437
Scout 66 -----	.20	5.53	387,394
Wichita -----	9.30	3.79	265,080
Centurk -----	-----	3.70	258,780
Agent -----	.50	2.83	197,794
Caprock -----	-----	2.71	189,873
Tam W101 -----	-----	2.57	180,202
Palo Duro -----	-----	1.62	113,442
Yukon -----	-----	1.60	112,156
Concho -----	3.00	1.36	95,199
Kaw 61 -----	-----	1.28	89,779
Pronto -----	-----	.74	51,601
Tascosa -----	1.20	.57	39,982
Satanta -----	-----	.44	31,031
Scoutland -----	-----	.41	29,013
Esque -----	-----	.37	25,744

See footnotes at end of the table.



TABLE 1.—Estimated percentage of the total wheat acreage occupied by each variety of wheat in each State in 1969 and 1974, and the acreage in 1974—Continued

State, Class, and Variety	Percentage of Acreage		Acreage
	1969	1974	1974
<b>OKLAHOMA (Cont)</b>			
<b>Hard Red Winter: (Cont)</b>			
Parker -----	(*)	.28	19,544
Nicom -----		.16	11,218
Chanute -----		.10	7,213
Warrior -----		.10	7,047
Crockett 70 -----		.09	6,030
Caddo -----	(*)	.07	5,109
Gage -----	.20	.07	4,970
Comanche -----	.10	.06	4,329
Bison -----	.30	.03	1,865
Baca -----		.02	1,152
RedChief -----		.01	1,029
Tam W103 -----		(*)	627
Ponca -----	.10	(*)	435
Kiowa -----	(*)	(*)	394
Cloud -----		(*)	307
Blackhu11 -----		(*)	263
Cheyenne -----	.10		
Kaw -----	9.30		
Crockett -----	1.10		
Super Triumph -----	5.50		
Ottawa -----	.10		
<b>Soft Red Winter:</b>			
Arthur -----		(*)	600
Dual -----		(*)	478
Blueboy II -----		(*)	215
Variety Not Reported <sup>2</sup> -----	.30	2.42	168,825
<b>TOTAL</b> -----	100.00	100.00	7,000,000
<b>OREGON</b>			1(1149)
<b>Hard Red Winter:</b>			
Wanser -----	2.90	6.10	78,000
Turkey -----	1.00	.41	5,300
McCall -----	.10	.16	2,000
Golden West -----		(*)	100
Itana -----	(*)		
Comanche -----	.10		
Columbia -----	.10		
Bison -----	.10		

See footnotes at end of the table.

TABLE 1.—Estimated percentage of the total wheat acreage occupied by each variety of wheat in each State in 1969 and 1974, and the acreage in 1974—Continued

State, Class, and Variety	Percentage of Acreage		Acreage
	1969	1974	1974
OREGON (Cont)			
Hard Red Winter: (Cont)			
Pawnee 33 -----	(*)		
Hard Red Spring:			
World Seeds 1657 -----	(*)	.84	10,700
Fortuna -----		.32	4,100
World Seeds 1859 -----		.22	2,800
Bluebird 2 -----		.13	1,600
Anza -----		.07	900
World Seeds 1616 -----		.03	400
Bounty 208 -----		.02	300
Pitic 62 -----	(*)	.02	200
Marquis -----	(*)	.02	200
Huston -----	.10	(*)	100
World Seeds Mp-6 -----		(*)	100
Peak -----		(*)	100
Henry -----	(*)		
White:			
Hyslop -----		38.30	489,500
Nuquaines -----	24.00	16.06	205,300
Yamhi 11 -----		8.48	108,400
Gaines -----	27.70	5.54	70,850
Twin -----		3.51	44,900
Adams -----	.40	2.71	34,600
Springfield -----		2.11	27,000
Golden -----	2.50	1.41	18,000
Federation -----	1.00	.99	12,700
McDermid -----		.67	8,500
Idaed -----		.59	7,600
Luke -----		.40	5,100
Burt -----	2.90	.37	4,700
Baart 46 <sup>3</sup> -----	.20	.20	2,500
Druchamp -----	3.50	.16	2,000
Beaver -----	.60	.13	1,600
Onas 53 -----		.11	1,400
Lemhi 66 -----	.10	.11	1,400
Brevor -----	.60	.10	1,300
Requa -----	.70	.08	1,000
Oregon Zimmerman -----	.40	.05	700
Galgalos -----	.20	.05	700
Alba -----	.20	.05	650
World Seeds No. 1 -----		.05	650

See footnotes at end of the table.

TABLE 1.—Estimated percentage of the total wheat acreage occupied by each variety of wheat in each State in 1969 and 1974, and the acreage in 1974—Continued

State, Class, and Variety	Percentage of Acreage		Acreage
	1969	1974	1974
<b>OREGON (Cont)</b>			
White: (Cont)			
Rex -----		.02	300
Orfed -----	.10	.02	200
Pacific Bluestem -----	(*)		
Marfed -----	.10		
Rex -----	.10		
Lemhi 62 -----	1.30		
Woodstock -----	(*)		
Sonora -----	(*)		
Wilhelmina -----	(*)		
Lemhi 53 -----	.10		
Onas -----	.10		
Idaed 59 -----	2.60		
Club:			
Moro -----	24.50	4.66	59,600
Paha -----		4.39	56,100
Omar -----	1.70	.17	2,200
Elgin -----	(*)		
Elmar -----	(*)		
Durum:			
Leeds -----	(*)		
Variety Not Reported <sup>2</sup> -----	.00	.13	1,650
TOTAL -----	100.00	100.00	1,278,000
<b>PENNSYLVANIA</b>			
Hard Red Spring:			<sup>1</sup> (3297)
Chris -----		(*)	29
Soft Red Winter:			
Redcoat -----	74.20	53.93	194,162
Arthur 71 -----		17.45	62,828
Blueboy -----	.30	10.90	39,251
Penno11 -----	12.20	7.89	28,417
Abe -----		1.84	6,635
Thorne -----	1.90	1.61	5,780
Blueboy II -----		1.02	3,660
Arthur -----		.62	2,219
Compact -----	3.40	.54	1,934
Logan -----		.31	1,106
Seneca -----	3.40	.31	1,106

See footnotes at end of the table.

TABLE 1.—Estimated percentage of the total wheat acreage occupied by each variety of wheat in each State in 1969 and 1974, and the acreage in 1974—Continued

State, Class, and Variety	Percentage of Acreage		Acreage
	1969	1974	1974
<b>PENNSYLVANIA (Cont)</b>			
Soft Red Winter: (Cont)			
Reed -----	.10	.13	484
Dual -----	1.70	.13	476
Nittany -----	(*)	.11	409
Lucas -----	(*)	.05	177
Fairfield -----	(*)	.02	88
Fulton -----	(*)	.02	67
Contender -----	.10	.02	66
Nured -----	(*)	-----	-----
White:			
Yorkstar -----	(*)	.34	1,226
Genesee -----	.20	.24	847
Avon -----	.20	.06	208
Cornell 595 -----	-----	.04	128
Variety Not Reported <sup>2</sup> -----	2.30	2.41	8,697
TOTAL -----	100.00	100.00	360,000
			<sup>1</sup> (575)
<b>SOUTH CAROLINA</b>			
Soft Red Winter:			
Coker 68-15 -----	-----	22.85	41,122
Arthur -----	-----	15.53	27,954
Coker 68-19 -----	-----	12.29	22,113
Coker 65-20 -----	16.90	11.16	20,094
McNair 701 -----	-----	9.26	16,675
Holley -----	-----	6.64	11,948
Blueboy -----	38.20	6.24	11,240
Arthur 71 -----	-----	3.10	5,582
Blueboy II -----	-----	2.75	4,948
Georgia 1123 -----	6.90	2.51	4,515
Wakeland -----	3.80	1.59	2,854
Anderson -----	6.80	.36	654
Knox 62 -----	.30	.35	625
Hadden -----	5.30	.34	611
McNair 2203 -----	-----	.24	438
McNair 1813 -----	-----	.21	386
Coker 61-19 -----	3.60	-----	-----
Coastal -----	.40	-----	-----
Taylor -----	.70	-----	-----
Andnox -----	4.40	-----	-----

See footnotes at end of the table.

TABLE 1.—Estimated percentage of the total wheat acreage occupied by each variety of wheat in each State in 1969 and 1974, and the acreage in 1974—Continued

State, Class, and Variety	Percentage of Acreage		Acreage
	1969	1974	1974
<b>SOUTH CAROLINA (Cont)</b>			
Soft Red Winter: (Cont)			
Coker 47-27 -----	5.30	-----	-----
Knox -----	3.90	-----	-----
Atlas 66 -----	.50	-----	-----
Variety Not Reported <sup>2</sup> -----	3.00	4.58	8,241
<b>TOTAL</b> -----	<b>100.00</b>	<b>100.00</b>	<b>180,000</b>
<b>SOUTH DAKOTA</b>			
			<sup>1</sup> (965)
Hard Red Winter:			
Lancer -----	17.80	7.14	235,974
Scout 66 -----	.20	6.69	221,149
Winoka -----	-----	4.39	145,105
Centurk -----	-----	4.05	133,697
Eagle -----	-----	2.59	85,438
Scout -----	7.90	2.28	75,515
Gage -----	2.10	.89	29,421
Scoutland -----	-----	.82	27,230
Minter -----	2.00	.61	20,073
Bronze -----	-----	.55	18,226
Hume -----	2.40	.45	14,735
Kaw -----	-----	.26	8,746
Winalta -----	.20	.09	2,865
Nebred -----	.90	.06	1,867
Baca -----	-----	.03	832
Buckskin -----	-----	(*)	241
Warrior -----	.20	-----	-----
Trader -----	(*)	-----	-----
Ottawa -----	.30	-----	-----
Rodco -----	.10	-----	-----
Omaha -----	.60	-----	-----
Wichita -----	.30	-----	-----
Trapper -----	.20	-----	-----
Cheyenne -----	(*)	-----	-----
Bison -----	.10	-----	-----
Guide -----	.20	-----	-----
Hard Red Spring:			
Chris -----	14.00	12.00	396,585
Bounty 208 -----	-----	8.90	294,271
Waldron -----	.10	8.85	292,534

See footnotes at end of the table.

TABLE 1.—Estimated percentage of the total wheat acreage occupied by each variety of wheat in each State in 1969 and 1974, and the acreage in 1974—Continued

State, Class, and Variety	Percentage of Acreage		Acreage
	1969	1974	1974
SOUTH DAKOTA (Cont)			
Hard Red Spring: (Cont)			
Fortuna -----	3.00	6.10	201,442
World Seeds 1809 -----		5.58	184,278
Bonanza -----		5.40	178,566
Poik -----	1.10	4.81	158,818
Era -----		3.33	110,154
Nordak -----		1.18	39,161
Sheridan -----	5.10	.83	27,356
Lark -----		.66	21,783
Red River 68 -----	1.80	.50	16,559
Novesta -----		.36	12,048
Crim -----	7.80	.24	7,924
World Seeds 1877 -----		.20	6,750
Neepawa -----		.18	6,093
Justin -----	7.80	.17	5,775
Olaf -----		.17	5,717
Manitou -----	4.40	.17	5,693
World Seeds Mp-6 -----		.16	5,426
Nida -----	.20	.11	3,644
Seikirk -----	2.00	.09	2,965
World Seeds 1812 -----		.06	2,009
Valley (spring) -----	.50	.04	1,296
Protor -----		.04	1,157
Fletcher -----		.03	869
Rushmore -----	.90	.02	585
Lee -----	.80	.02	524
Barton -----		(*)	316
Ceres -----		(*)	262
Inia 66 -----	(*)		
Nordman -----	(*)		
Pembina -----	1.10		
Forx -----	.20		
Spinkcota -----	.10		
Rival -----	(*)		
White:			
Siete Cerros 66 -----	(*)		
Durum:			
Leeds -----	9.10	3.07	101,387
Wells -----	2.50	1.40	46,111
Wascana -----		.43	14,296
Hercules -----		.34	11,130

See footnotes at end of the table.

TABLE 1.—Estimated percentage of the total wheat acreage occupied by each variety of wheat in each State in 1969 and 1974, and the acreage in 1974—Continued

State, Class, and Variety	Percentage of Acreage		Acreage
	1969	1974	1974
SOUTH DAKOTA (Cont)			
Durum: (Cont)			
Rolette -----		.18	5,888
Stewart 63 -----	.20	.17	5,740
Ward -----		.11	3,794
Langdon -----	.10	.03	1,148
Yuma -----		.03	1,022
World Seeds Mp-3 -----		.02	806
Lakota -----	.20		
Variety Not Reported <sup>2</sup> -----	1.50	3.09	102,004
TOTAL -----	100.00	100.00	3,305,000
TENNESSEE			1 (591)
Hard Red Winter:			
Parker -----	.10	.91	3,597
Triumph -----	1.70	.05	180
Soft Red Winter:			
Arthur -----	1.70	59.05	233,245
Arthur 71 -----		17.51	69,150
Blueboy -----	17.20	6.75	26,669
Monon -----	48.60	5.90	23,311
Knox 62 -----	6.80	2.14	8,466
Blueboy II -----		1.25	4,933
Abe -----		.72	2,826
Coker 68-15 -----		.47	1,869
Vigo -----	.30	.28	1,115
Seneca -----	1.50	.12	477
McNair 4823 -----		.05	196
McNair 2203 -----		.04	176
Oasis -----		.02	96
McNair 701 -----		.01	50
Pennington 6-23 -----		(*)	36
Thorne -----	.60		
Reed -----	2.50		
Benhur -----	1.70		
Knox -----	12.40		
Purplestraw -----	(*)		
Coker 65-20 -----	.60		
Fulcaster -----	.30		
Redcoat -----	(*)		

See footnotes at end of the table.

TABLE 1.—Estimated percentage of the total wheat acreage occupied by each variety of wheat in each State in 1969 and 1974, and the acreage in 1974—Continued

State, Class, and Variety	Percentage of Acreage		Acreage
	1969	1974	1974
<b>TENNESSEE (Cont)</b>			
White:			
Gaines -----	.30		
Variety Not Reported <sup>2</sup> -----	3.70	4.72	18,608
<b>TOTAL</b> -----	<b>100.00</b>	<b>100.00</b>	<b>395,000</b>
<b>TEXAS</b>			
			<sup>1</sup> (1778)
Hard Red Winter:			
Sturdy -----	6.70	15.72	880,400
Tascosa -----	12.60	10.43	584,200
Caddo -----	10.20	9.28	519,700
Improved Triumph -----	13.60	7.92	443,400
Wichita -----	8.40	6.86	384,200
Palo Duro -----		6.50	364,100
Concho -----	8.10	5.71	319,500
Triumph -----	9.80	5.69	318,600
Scout -----	5.00	5.20	291,400
Scout 66 -----	.30	3.18	178,000
Centurk -----		1.72	96,400
Crockett -----	3.60	1.46	82,000
Caprock -----		1.45	81,000
Agent -----		1.43	80,200
Tam W101 -----		1.43	80,000
Yukon -----		1.04	58,200
Kaw -----	2.90	1.03	57,800
Newest Improved Triumph -----	2.10	.72	40,300
Rosetta -----	.30	.49	27,400
Comanche -----	1.10	.45	25,000
Apache -----		.38	21,000
Funk W 332 -----		.16	8,800
Oklahoma 68-15 -----		.14	7,800
Scoutland -----		.13	7,400
Danne -----		.10	5,800
Fox -----		.10	5,700
Blackhu11 -----	.10	.10	5,600
Crockett 70 -----		.09	4,800
Tam W103 -----		.05	3,000
Pronto -----		.05	2,900
Super Triumph -----	1.20	.04	2,500
Satanta -----		.02	900

See footnotes at end of the table.



TABLE 1.—Estimated percentage of the total wheat acreage occupied by each variety of wheat in each State in 1969 and 1974, and the acreage in 1974—Continued

State, Class, and Variety	Percentage of Acreage		Acreage
	1969	1974	1974
<b>TEXAS (Cont)</b>			
<b>Hard Red Winter: (Cont)</b>			
Oro -----	(*)	.02	900
Quannah -----	.50	(*)	300
Gage -----	.10	-----	-----
Kiowa -----	.10	-----	-----
Stafford -----	(*)	-----	-----
Trapper -----	(*)	-----	-----
Ponca -----	.40	-----	-----
Warrior -----	.10	-----	-----
Rust Resistant Triumph -----	.20	-----	-----
Tenmarq -----	(*)	-----	-----
Trader -----	(*)	-----	-----
Lancer -----	(*)	-----	-----
Westar -----	.10	-----	-----
BlueJacket -----	(*)	-----	-----
Cheyenne -----	.10	-----	-----
RedChief -----	.20	-----	-----
Aztec -----	.20	-----	-----
Bison -----	.40	-----	-----
<b>Hard Red Spring:</b>			
Milam -----	2.60	1.93	108,200
Penjamo 62 -----	.40	1.21	68,000
Chaparral -----	-----	.43	24,200
Nadadores 63 -----	-----	.22	12,200
Era -----	-----	.06	3,100
Cajeme 71 -----	-----	.02	1,200
Red River 68 -----	(*)	(*)	500
Inia 66 -----	-----	(*)	500
Sonora 64 -----	(*)	(*)	400
Anza -----	-----	(*)	100
Seabreeze -----	.10	-----	-----
<b>Soft Red Winter:</b>			
Knox -----	3.50	1.81	101,100
Knox 62 -----	1.20	.74	41,700
Arthur -----	-----	.49	27,300
Blueboy II -----	-----	.16	8,700
Benhur -----	(*)	.10	5,600
Georgia 1123 -----	-----	.06	3,600
Riley -----	.10	.03	1,700
Stadler -----	.20	(*)	500
Riley 67 -----	(*)	-----	-----

See footnotes at end of the table.

TABLE 1.—Estimated percentage of the total wheat acreage occupied by each variety of wheat in each State in 1969 and 1974, and the acreage in 1974—Continued

State, Class, and Variety	Percentage of Acreage		Acreage
	1969	1974	1974
<b>TEXAS (Cont)</b>			
Soft Red Winter: (Cont)			
Blueboy -----	(*)	-----	-----
Mediterranean -----	(*)	-----	-----
Atlas 66 -----	.20	-----	-----
Monon -----	(*)	-----	-----
White:			
Gaines -----	(*)	-----	-----
Siete Cerros 66 -----	(*)	-----	-----
Club:			
Hybrid -----	(*)	-----	-----
Variety Not Reported <sup>2</sup> -----	3.30	3.60	202,200
TOTAL -----	100.00	100.00	5,600,000
<b>UTAH</b>			
Hard Red Winter:			<sup>1</sup> (827)
Bridger -----	-----	15.62	49,826
Cache -----	42.20	14.46	46,130
Delmar -----	8.90	8.55	27,284
Tendoy -----	4.50	5.14	16,410
McCall -----	.60	4.94	15,772
Wichita -----	4.10	3.75	11,956
Wasatch -----	5.30	3.01	9,594
Centurk -----	-----	2.04	6,492
Trapper -----	-----	1.80	5,732
Comanche -----	2.60	1.71	5,446
Franklin -----	-----	1.52	4,848
Scout -----	1.30	1.25	3,988
Turkey -----	3.90	1.25	3,986
Ranger -----	-----	1.24	3,968
Itana -----	1.30	.56	1,772
Utah Kanred -----	.40	.10	328
Columbia -----	.70	-----	-----
Bison -----	1.60	-----	-----
Hard Red Spring:			
Kovar -----	1.40	3.54	11,292
Fremont -----	-----	2.36	7,530
Peak 72 -----	-----	.98	3,120
Bannock -----	-----	.67	2,130
Red River 68 -----	.50	.62	1,986

See footnotes at end of the table.

TABLE 1.—Estimated percentage of the total wheat acreage occupied by each variety of wheat in each State in 1969 and 1974, and the acreage in 1974—Continued

State, Class, and Variety	Percentage of Acreage		Acreage
	1969	1974	1974
<b>UTAH (Cont)</b>			
<b>Hard Red Spring: (Cont)</b>			
Peak -----		.56	1,784
Pilot -----	.10	.35	1,108
Thatcher -----	.10	.31	990
Protor -----		.16	500
Chris -----	.70	.10	312
Moran -----	.10	.07	222
Bounty 208 -----		.01	34
World Seeds 1657 -----		(*)	16
Inia 66 -----	(*)		
<b>White:</b>			
Gaines -----	9.90	9.13	29,118
Nuaines -----	1.80	6.60	21,058
Twin -----		2.09	6,672
Springfield -----		1.44	4,606
Baart 46 <sup>3</sup> -----	1.00	1.35	4,308
Lemhi 53 -----	2.60	.58	1,858
Lemhi 62 -----	1.30	.30	968
Siete Cerros 66 -----	(*)	.20	646
Lemhi 66 -----	1.10	.20	638
Federation -----	.10	.06	196
Dicklow -----	.20	.01	36
Brevor -----	.10		
Variety Not Reported <sup>2</sup> -----	1.60	1.36	4,340
TOTAL -----	100.00	100.00	319,000
<b>VIRGINIA</b>			1(1355)
<b>Soft Red Winter:</b>			
Arthur -----		61.39	184,179
Blueboy -----	56.70	15.66	46,986
Arthur 71 -----		7.78	23,347
Redcoat -----	19.20	3.69	11,080
Abe -----		2.95	8,854
Blueboy II -----		2.13	6,385
Seneca -----	5.70	1.28	3,850
Coker 68-15 -----		.98	2,953
Thorne -----	7.20	.95	2,863
McNair 701 -----		.35	1,039
Coker 68-19 -----		.13	382

See footnotes at end of the table.

TABLE 1.—Estimated percentage of the total wheat acreage occupied by each variety of wheat in each State in 1969 and 1974, and the acreage in 1974—Continued

State, Class, and Variety	Percentage of Acreage		Acreage
	1969	1974	1974
<b>VIRGINIA (Cont)</b>			
Soft Red Winter: (Cont)			
Wakeland -----	2.20	.10	294
Reed -----	.20	.09	267
McNair 4823 -----		.08	243
Knox -----	.60	.06	171
Anderson -----	.60	.04	116
Tayland -----		.01	34
Vahart -----	1.70		
Penno11 -----	.10		
Monon -----	.10		
Knox 62 -----	.30		
Coker 47-27 -----	.10		
Atlas 66 -----	.70		
Hadden -----	(*)		
Dual -----	(*)		
Coker 65-20 -----	.30		
Redhart -----	1.50		
Variety Not Reported <sup>2</sup> -----	2.80	2.33	6,957
<b>TOTAL</b> -----	<b>100.00</b>	<b>100.00</b>	<b>300,000</b>
			<b>1(818)</b>
<b>WASHINGTON</b>			
Hard Red Winter:			
Wanser -----	11.90	11.74	385,020
McCall -----	5.50	2.88	94,350
Cheyenne -----	.60	.76	24,800
Bison -----		.07	2,400
Itana -----	.30	.04	1,420
Turkey -----	.10	(*)	30
Ridit -----	(*)		
Rio -----	(*)		
Columbia -----	(*)		
Hard Red Spring:			
World Seeds 1657 -----		.73	23,920
Peak 72 -----		.32	10,530
Justin -----	(*)	.30	9,890
Fortuna -----	(*)	.18	5,780
Protor -----		.11	3,730
Bounty 208 -----		.11	3,580
Ceres -----	.10	.07	2,200

See footnotes at end of the table.

TABLE 1.—Estimated percentage of the total wheat acreage occupied by each variety of wheat in each State in 1969 and 1974, and the acreage in 1974—Continued

State, Class, and Variety	Percentage of Acreage		Acreage
	1969	1974	1974
WASHINGTON (Cont)			
Hard Red Spring: (Cont)			
World Seeds Mp-6		.01	440
Rival		(*)	300
World Seeds 1812		(*)	210
Neepawa		(*)	60
World Seeds No. 15		(*)	20
Prodax		(*)	20
World Seeds No. 19		(*)	10
Thatcher	(*)		
Selkirk	(*)		
Henry	.10		
Soft Red Winter:			
Jones Pife	(*)	(*)	50
White:			
Nuqaines	33.70	32.89	1,078,670
Gaines	19.00	7.83	256,720
Marfed	7.40	5.02	164,550
Twin		4.85	159,160
Springfield		2.40	78,560
Luke		1.51	49,690
Hyslop		1.40	45,900
Idaed 59	.20	.37	12,170
Yamhi <sup>11</sup>		.34	11,200
Sprague		.21	6,860
Requa	.40	.09	3,080
Druchamp	.10	.08	2,500
Burt	1.50	.08	2,460
Baart 46 <sup>3</sup>	.70	.07	2,340
Fielder		.02	750
World Seeds No. 1		.02	680
Golden	.10	.02	560
Adams		.01	450
McDermid		.01	410
Beaver		(*)	240
Federation	.10	(*)	40
Brevor	(*)		
Idaed	1.70		
Club:			
Paha		11.55	378,800
Moro	13.20	10.08	330,500
Omar	3.10	3.72	121,960

See footnotes at end of the table.

TABLE 1.—Estimated percentage of the total wheat acreage occupied by each variety of wheat in each State in 1969 and 1974, and the acreage in 1974—Continued

State, Class, and Variety	Percentage of Acreage		Acreage
	1969	1974	1974
<b>WASHINGTON (Cont)</b>			
Club: (Cont)			
Elgin -----	(*)	.08	2,620
Elmer -----	(*)		
Durum:			
Wanderl -----		.01	350
World Seeds No. 14 -----		(*)	20
Wells -----	(*)		
Variety Not Reported <sup>2</sup> -----	.20		
TOTAL -----	100.00	100.00	3,280,000
<b>WEST VIRGINIA</b>			
			<sup>1</sup> (173)
Hard Red Winter:			
Pawnee -----	2.80	.21	45
Soft Red Winter:			
Redcoat -----	36.90	33.01	6,932
Arthur -----		26.58	5,581
Blueboy -----	11.60	15.90	3,340
Thorne -----	26.70	7.49	1,573
Seneca -----	4.70	3.54	743
Blueboy II -----		1.88	395
Dual -----	4.50	1.28	268
Monon -----	.70	1.00	211
VPI 131 -----	.20	.62	131
Logan -----		.47	98
Reed -----	2.80	.12	26
Penno11 -----	.90		
Poole -----	.90		
Anderson -----	.60		
White:			
Avon -----	.30		
Variety Not Reported <sup>2</sup> -----	6.40	7.90	1,657
TOTAL -----	100.00	100.00	21,000
<b>WISCONSIN</b>			
			<sup>1</sup> (842)
Hard Red Winter:			
Minter -----	.60	1.12	931
Centurk -----		.81	671

See footnotes at end of the table.

TABLE 1.—Estimated percentage of the total wheat acreage occupied by each variety of wheat in each State in 1969 and 1974, and the acreage in 1974—Continued

State, Class, and Variety	Percentage of Acreage		Acreage
	1969	1974	1974
<b>WISCONSIN (Cont)</b>			
<b>Hard Red Winter: (Cont)</b>			
Pawnee -----	2.80	.70	582
Gage -----	9.10	.67	559
Scout -----		.18	147
Winoka -----		.01	9
Ponca -----	.20		
<b>Hard Red Spring:</b>			
Polk -----	.20	8.47	7,031
Chris -----	4.70	2.80	2,327
Era -----		2.62	2,175
Henry -----	6.50	2.17	1,798
Seikirk -----	10.60	1.78	1,478
Lathrop -----	6.70	1.08	895
Waldron -----		.53	439
Russell -----	.80	.43	353
Inia 66 -----		.20	167
World Seeds 1859 -----		.07	54
Lark -----		.02	16
Red River 68 -----	.70		
<b>Soft Red Winter:</b>			
Tinwin -----	5.80	23.73	19,695
Kenosha -----	.40	21.54	17,879
Racine -----	34.60	14.24	11,819
Monon -----	2.90	1.50	1,247
Arthur -----		1.10	912
Blackhawk -----	2.20	.33	273
Benhur -----	.90	.11	89
Dual -----	2.30	.10	80
Laporte -----		.09	76
Coker 61-19 -----		.01	11
Reed -----	.40		
Knox -----	.10		
Seneca -----	.40		
<b>White:</b>			
Avon -----	.10		
Genesee -----	(*)		
Variety Not Reported <sup>2</sup> -----	7.00	13.59	11,287
<b>TOTAL</b> -----	<b>100.00</b>	<b>100.00</b>	<b>83,000</b>

See footnotes at end of the table.

TABLE 1.—Estimated percentage of the total wheat acreage occupied by each variety of wheat in each State in 1969 and 1974, and the acreage in 1974—Continued

State, Class, and Variety	Percentage of Acreage		Acreage
	1969	1974	1974
WYOMING			(1974)
Hard Red Winter:			
Lancer	37.80	27.79	80,038
Cheyenne	27.70	16.61	47,847
Scout 66	.20	16.47	47,443
Scout	7.60	8.45	24,332
Centurk		7.28	20,952
Trapper	.80	3.51	10,101
Bridger		3.33	9,586
Warrior	9.00	2.97	8,564
Trader	(*)	1.83	5,270
Wichita	2.30	1.58	4,545
Shoshoni	4.80	.91	2,607
Gage	.60	.84	2,415
Scoutland		.08	220
Concho	.10	.06	164
Wanser		.04	104
Itana	1.10	.01	29
Kanred	.10		
Yogo	.20		
Ottawa	.10		
Nebred	.10		
Turkey	.30		
Cache	.10		
Bison	1.20		
Hard Red Spring:			
Fortuna		1.11	3,197
Inia 66		.97	2,797
Crim	1.00	.88	2,527
Thatcher	1.10	.82	2,361
Mida	.90	.65	1,867
Seikirk	.20	.61	1,769
Pilot	.20	.55	1,595
Red River 68	(*)	.16	455
Lee	.40	.10	295
Marquis	.10	.08	237
Manitou		.08	225
Shortana		.04	113
Era		.01	31
Nordman	.20		
Sawtana	.10		
Moran	(*)		

See footnotes at end of the table.



TABLE 1.--Estimated percentage of the total wheat acreage occupied by each variety of wheat in each State in 1969 and 1974, and the acreage in 1974—Continued

State, Class, and Variety	Percentage of Acreage		Acreage
	1969	1974	1974
WYOMING (Cont)			
Hard Red Spring: (Cont)			
Rushmore -----	.30		
White:			
Pacific Bluestem -----	(*)		
Lemhi 53 <sup>2</sup> -----	.40		
Onas -----	.10		
Idaed 59 -----	(*)		
Idaed -----	(*)		
Variety Not Reported <sup>2</sup> -----	.90	2.18	6,314
TOTAL -----	100.00	100.00	288,000

<sup>1</sup> Shows the number of farm reports used in computing the data.

<sup>2</sup> Includes all wheat for which the variety name or names each year were not reported.

<sup>3</sup> Includes acreage for all forms of the variety.

\* Less than 0.10 percent of the total wheat acreage.

TABLE 2.—Estimated percentage of the total wheat acreage in the United States occupied by each variety in 1969 and 1974, and the acreage in 1974

Variety	Percentage of Acreage		Acreage
	1969	1974	1974
Abe		.36	258,485
Ace	.01	.01	10,084
Adams	.01	.05	41,387
Adur X Wells		(*)	3,646
Agent	.05	.39	277,994
Anderson	.03	(*)	1,723
Andnox	.01		
Anza		.25	178,419
Apache	.76	.19	142,138
Arrow		.02	14,386
Arthur	.04	6.49	4,622,852
Arthur 71		2.61	1,860,995
Atlas 66	.06	(*)	4,145
Avon	.34	.08	63,236
Aztec	.01		
Alba	(*)	(*)	650
Baart 46 <sup>1</sup>	.06	.01	9,148
Baca		.02	18,290
Bannock		.02	16,294
Barton		(*)	1,311
Beaver	.01	(*)	1,840
Benhur	.99	.10	72,470
Big Club 60 <sup>1</sup>	(*)		
Bison	1.87	.22	161,360
Bonanza	(*)	.52	373,031
Botno		(*)	1,861
Bounty 208		1.10	786,735
Brevor	.01	(*)	1,300
Bridger		.16	115,790
Bronze		.03	26,138
Buckskin		(*)	3,518
Burt	.12	.01	7,160
Butler	.01	(*)	626
Blackhawk	(*)	(*)	273
Blackhall	.02	.01	10,588
Bledsoe	.03		
Bluebird 2		.12	87,686
Blueboy	.88	.47	340,472
Blueboy II		.08	59,368
BlueJacket	(*)		
Cache	.36	.11	81,827
Caddo	.78	.74	526,694
Calene 71		.18	130,604
Canthatch	.21	.12	90,492
Caprock		.41	293,456
Centana	.05	.02	14,579
Centurk		4.40	3,133,323

See footnotes at end of the table.

TABLE 2.—Estimated percentage of the total wheat acreage in the United States occupied by each variety in 1969 and 1974, and the acreage in 1974—Continued

Variety	Percentage of Acreage		Acreage
	1969	1974	1974
Ceres	.07	.02	14,904
Chancellor	.03	(*)	103
Chanute	(*)	.48	342,067
Chaparral		.03	24,200
Cheyenne	2.02	1.42	1,016,227
Chiefkan		(*)	261
Chinook	.10	.02	20,366
Chris	3.59	1.15	818,931
Coastal	(*)		
Coker 47-27	.05	(*)	4,624
Coker 61-19	.01	(*)	11
Coker 65-20	.09	.07	54,776
Coker 68-15		.23	165,496
Coker 68-19		.09	70,932
Coker 68-20		(*)	2,652
Comanche	.40	.15	112,269
Compact	.02	(*)	1,934
Concho	1.13	.66	474,786
Contender	(*)	(*)	66
Cornell 595	.01	(*)	128
Colano		(*)	24
Colorow	.01	.02	18,966
Columbia	.01		
Crane		(*)	398
Crest	(*)	.07	53,905
Crim	.59	.04	30,095
Crockett	.39	.11	82,000
Crockett 70		.02	15,838
Crosby		(*)	2,497
Cypress	.01		
Clarkan	(*)	(*)	72
Cloud		(*)	1,958
Danne		1.13	805,539
Defiance	(*)		
Delmar	.15	.09	67,660
Dicklow	(*)	(*)	36
Druchamp	.06	(*)	4,500
Dual	.06	(*)	5,918
Eagle		3.24	2,311,595
Early Blackhall	(*)		
Early Premium	(*)		
Empire		(*)	696
Era	(*)	3.41	2,431,361
Etgin	(*)	(*)	2,620
Elmar	(*)		
Ellar		.01	7,151
Fairfield	(*)	(*)	88
Federation	.02	.01	12,936

See footnotes at end of the table.

TABLE 2.—Estimated percentage of the total wheat acreage in the United States occupied by each variety in 1969 and 1974, and the acreage in 1974—Continued

Variety	Percentage of Acreage		Acreage
	1969	1974	1974
Federation 67	.03		
Pielder		(*)	970
Fortuna	2.50	2.00	1,428,681
FORX	.03	(*)	2,189
Fox		(*)	5,700
Franklin		.01	12,658
Fremont		.01	10,280
Froid	(*)	.17	127,794
Funk # 332		.01	11,525
Fulcaster	(*)		
Fulton	.03	(*)	3,861
Pufftz	(*)		
Fletcher		(*)	6,922
Gage	2.46	1.01	720,889
Gaines	1.92	.74	533,175
Galgalos	.01	(*)	700
Genesee	.86	.45	320,774
Georgia 1123	.30	.13	96,237
Golden	.04	.02	18,983
Golden Chief	(*)	(*)	285
Golden West		(*)	100
Golden 50	.10	.01	8,673
Guide	.03	(*)	206
Glen Lea		.01	11,725
Hadden	.05	(*)	836
Henry	.01	(*)	3,378
Hercules		.10	71,472
Hiptains		(*)	1,453
Homestead		(*)	2,118
Holley		.10	74,941
Hume	.15	.02	21,080
Huston	(*)	(*)	100
Hybrid	(*)		
Hybrid wheat	(*)		
Hyslop		.95	680,216
Idaed	.12	.01	7,600
Idaed 59	.07	.03	26,333
Improved Triumph	5.25	2.15	1,530,734
Inia 66	.01	.34	242,985
Ionia		.36	260,579
Ioturk	(*)		
Itana	.16	.05	35,727
Itapa 65	.25	.27	194,910
Jones Fife	(*)	(*)	50
Justin	1.27	.26	185,627
Kanred	(*)	(*)	1,721
KanKing		(*)	1,016
Karmont	.07		

See footnotes at end of the table.

TABLE 2.—Estimated percentage of the total wheat acreage in the United States occupied by each variety in 1969 and 1974, and the acreage in 1974—Continued

Variety	Percentage of Acreage		Acreage
	1969	1974	1974
Kaw	2.44	.21	152,664
Kaw 61	.04	.12	89,779
Kenbe II	(*)		
Kenosha	(*)	.02	18,690
Kerwin		(*)	1,725
Kiowa	.45	.05	41,664
Knox	.83	.16	120,795
Knox 62	.56	.15	107,593
Komar	.03	.11	78,878
Kurtzman	(*)		
Lakota	.07	(*)	3,483
Lancer	3.69	1.23	876,404
Langdon	.04	(*)	1,248
Laporte	.02	(*)	1,509
Lark		1.11	791,261
Lathrop	.01	(*)	895
Leap	(*)		
Leapland	(*)	(*)	77
Lee	.07	(*)	1,822
Leeds	3.90	1.61	1,151,449
Lemhi 53	.02	(*)	2,017
Lemhi 62	.06	(*)	968
Lemhi 66	.21	(*)	5,994
Lerma Rojo	(*)		
Lerma Rojo 64	.01		
Lewis	(*)	(*)	1,248
Logan	(*)	.29	208,137
Lucas	.02	.01	9,338
Luke		.08	63,101
Mammoth Red	(*)	(*)	517
Manitou	1.89	.51	364,574
Marfed	.39	.23	164,550
Maricopa	.01		
Marquis	(*)	(*)	503
McCall	.34	.23	170,333
McDermid		.01	9,680
McNair 1813		(*)	386
McNair 2203	(*)	(*)	5,247
McNair 4823		(*)	3,408
McNair 701		.15	107,302
Mediterranean	(*)		
Mida	.03	.01	8,297
Mindum	.02		
Minter	.13	.06	47,055
Milam	.20	.15	108,200
Monon	4.33	.60	429,350
Montana 36	(*)		
Moran	.02	.02	15,732

See footnotes at end of the table.

TABLE 2.—Estimated percentage of the total wheat acreage in the United States occupied by each variety in 1969 and 1974, and the acreage in 1974—Continued

Variety	Percentage of Acreage		Acreage
	1969	1974	1974
Moro	1.08	.54	390,100
Mosida	(*)	(*)	5,720
Nadadores 63	(*)	.01	12,235
Nainari 60	.01	(*)	2,486
Nebraska 60	(*)		
Nebred	.07	(*)	4,047
Neepawa		.01	8,402
Newest Improved Triumph	.16	.05	40,300
Newturk	.01		
Nicoma		.02	14,957
Nittany	(*)	(*)	409
Norana		.01	10,243
Nordak		.08	58,790
Nordman	.01		
Nowesta		.08	61,287
Nuquines	2.68	2.31	1,649,090
Nured	(*)		
Oasis		(*)	2,882
Obregon 73		(*)	2,112
Oklahoma 68-15		.01	7,800
Omaha	.13	.02	17,555
Omar	.19	.17	124,160
Onas	.02	.01	8,358
Onas 53	(*)	(*)	1,400
Oregon Zimmerman	.01	(*)	700
Orfed	(*)	(*)	200
Oro	(*)	(*)	2,773
Ottawa	.86	.06	43,155
Olaf		.41	296,432
Pacific Bluestem <sup>1</sup>	(*)		
Paha		.67	479,301
Parker	.62	1.61	1,147,339
Pawnee	.59	.07	55,418
Pawnee 33	(*)		
Palo Duro		.70	499,445
Peak		.02	15,304
Peak 72		.01	13,650
Pembina	.10	(*)	1,194
Penjamo 62	.03	.09	68,000
Pennington 6-23		(*)	36
Pennoll	.12	.04	35,445
Pitic 62	.22	.18	133,712
Pilot	.01	(*)	4,683
Ponca	.11	.01	8,311
Poole	(*)		
Polk	.45	.43	309,818
Prodax		(*)	20
Produra		(*)	5,409

See footnotes at end of the table.

TABLE 2.—Estimated percentage of the total wheat acreage in the United States occupied by each variety in 1969 and 1974, and the acreage in 1974—Continued

Variety	Percentage of Acreage		Acreage
	1969	1974	1974
Profit 75		(*)	3,168
Pronto		.11	80,387
Prospur		(*)	377
Protor		.02	15,453
Purplestraw	(*)		
Plainsman	(*)		
Quanah	.03	(*)	300
Racine	.03	.01	11,819
Ramona 50 <sup>1</sup>	.19	.02	20,188
Ramsey	.01		
Ranger		.03	28,278
Red River 68	.24	.14	100,582
Redcoat	1.04	.44	315,096
Redhart	.01		
Redman		(*)	139
RedChief	.02	(*)	2,917
Reed	.50	.11	80,974
Rego	.02	(*)	787
Requa	.03	(*)	4,080
Rescue	.02	(*)	6,837
Rev		(*)	300
Rex	(*)		
Reliant	(*)		
Ridit	.01		
Rio	(*)		
Rival	(*)	(*)	300
Riley	.15	(*)	2,784
Riley 67	.04	(*)	883
Rodco	.26	.01	11,336
Rosetta	.02	.03	27,400
Royal	(*)		
Rolette		1.85	1,317,135
Rugby		(*)	1,709
Rushmore	.05	.01	7,539
Russell	(*)	(*)	353
Rust Resistant Triumph	.72	.92	656,639
Rytol	(*)		
Sage		.01	9,456
Satanta	(*)	.91	650,539
Saunders	(*)		
Sawmont	(*)	(*)	5,068
Sawtana	.02		
Scout	14.18	9.94	7,076,736
Scout 66	.16	2.73	1,943,794
Scoutland		.27	193,258
Seabreeze	.01		
Seneca	.15	.05	36,146
Sentinel		(*)	2,424

See footnotes at end of the table.

TABLE 2.—Estimated percentage of the total wheat acreage in the United States occupied by each variety in 1969 and 1974, and the acreage in 1974—Continued

Variety	Percentage of Acreage		Acreage
	1969	1974	1974
Sentry	(*)		
Selkirk	.26	.01	10,568
Shawnee	.11	.08	58,979
Sheridan	.24	.03	27,901
Shortana		(*)	4,548
Shoshoni	.03	(*)	3,199
Siete Cerros 66	.11	.22	157,248
Sonora	(*)		
Sonora 64	.19	(*)	3,736
Spinkcota	.01		
Sprague		(*)	6,860
Springfield		.44	314,385
Stadler	.13	.01	12,965
Stafford	(*)		
Stewart		(*)	97
Stewart 63	.05	.01	10,303
Stoddard		(*)	448
Sturdy	.55	2.16	1,538,365
Sundance		.01	7,420
Super Triumph	.93	(*)	2,500
Super X	(*)	.01	8,669
Tagamore	(*)		
Tam W101		.39	281,249
Tam W103		(*)	3,627
Tascosa	1.22	.91	653,232
Tayland	(*)	(*)	34
Taylor	.02	(*)	274
Talbot	.01		
Tendoy	.17	.02	19,499
Tenmarq	.02	.02	20,359
Teton		.01	10,361
Thatcher	.45	.29	212,166
Thorne	.08	.02	18,643
Timwin	.01	.03	23,749
Tioqa		(*)	3,982
Tobari	(*)		
Trader	.07	.03	24,216
Trapper	.12	.30	217,139
Triangle		(*)	1,348
Trison		(*)	354
Triumph	4.09	3.22	2,298,643
Turkey	.19	.07	54,134
Twin		.46	327,843
Utah Kanred	(*)	(*)	328
Vahart	.01		
Valley (Spring)	.10	(*)	2,490
Vermilion	.13	.02	14,310
Vernum	(*)		

See footnotes at end of the table.



TABLE 2.—Estimated percentage of the total wheat acreage in the United States occupied by each variety in 1969 and 1974, and the acreage in 1974—Continued

Variety	Percentage of Acreage		Acreage
	1969	1974	1974
Vesta	(*)		
Vigo	.03	(*)	1,584
VPI 131	(*)	(*)	131
Wakefield	.21	.07	50,213
Wandell		(*)	350
Wanser	.77	.77	549,146
Ward		.68	489,617
Warrior	2.80	.95	681,575
Wasatch	.05	.01	11,327
Wascana		.06	42,745
Waldron	.15	5.38	3,830,430
Walhalla		.01	9,169
Weathermaster 106		.01	8,136
Westar	.01		
Westmont	(*)	(*)	1,940
Wells	2.51	1.23	879,540
White Federation 54 <sup>1</sup>	.06	(*)	63
Wichita	4.14	1.65	1,175,167
Winalta	2.16	1.50	1,074,181
Winoka		.50	360,009
Wilhelmina	(*)		
Woodstock	(*)		
World Seeds Mp-3		(*)	806
World Seeds Mp-6		.03	21,493
World Seeds No. 1		(*)	1,330
World Seeds No. 14		(*)	20
World Seeds No. 15		(*)	20
World Seeds No. 19		(*)	10
World Seeds 1616		(*)	400
World Seeds 1657	(*)	.05	40,424
World Seeds 1809	.02	1.02	728,839
World Seeds 1812	.05	.02	19,753
World Seeds 1859		(*)	2,854
World Seeds 1877		.10	76,109
Yamhill		.16	119,600
Yaqui 54	(*)		
Yecora 70		(*)	358
Yogo	.01	(*)	526
Yorkstar	.14	.35	250,883
Yorkwin	.02	.01	12,214
Yukon		.23	170,356
Yuma		(*)	1,022
Variety Not Reported <sup>2</sup>	1.09	1.95	1,382,704
TOTAL	100.00	100.00	71,169,000

<sup>1</sup> Includes acreages for all forms of the variety.

<sup>2</sup> Includes all wheat for which the variety name or names each year were not reported.

\* Less than 0.01 percent of the total wheat acreage.

TABLE 3.—The 50 leading varieties ranked in order of estimated percentage of the total wheat acreage in the United States in 1974 with corresponding percentage in 1969 and the acreage in 1974

Variety	Percentage of Acreage		Acreage
	1969	1974	1974
Scout	14.18	9.94	7,076,736
Arthur	.04	6.49	4,622,852
Waldron	.15	5.38	3,830,430
Centurk		4.40	3,133,323
Era	(*)	3.41	2,431,361
Eagle		3.24	2,311,595
Triumph	4.09	3.22	2,298,643
Scout 66	.16	2.73	1,943,794
Arthur 71		2.61	1,860,995
Nuqaines	2.68	2.31	1,649,090
Sturdy	.55	2.16	1,538,365
Improved Triumph	5.25	2.15	1,530,734
Fortuna	2.50	2.00	1,428,681
Rolette		1.85	1,317,135
Wichita	4.14	1.65	1,175,167
Leeds	3.90	1.61	1,151,449
Parker	.62	1.61	1,147,339
Winata	2.09	1.50	1,074,181
Cheyenne	2.02	1.42	1,016,227
Wells	2.51	1.23	879,540
Lancer	3.69	1.23	876,404
Chris	3.59	1.15	918,931
Danne		1.13	805,539
Lark		1.11	791,261
Bounty 208		1.10	786,735
World Seeds 1809	.02	1.02	728,839
Gage	2.46	1.01	720,889
Warrior	2.80	.95	681,575
Hyslop		.95	680,216
Rust Resistant Triumph	.72	.92	656,639
Tascosa	1.22	.91	653,232
Satanta	(*)	.91	650,539
Wanser	.77	.77	549,146
Gaines	1.92	.74	533,175
Caddo	.78	.74	526,694
Palo Duro		.70	499,445
Ward		.68	489,617
Paha		.67	479,301
Concho	1.13	.66	474,786
Monon	4.33	.60	429,350
Moro	1.08	.54	390,100
Bonanza	(*)	.52	373,031
Manitou	1.89	.51	364,574
Winoka		.50	360,009
Chanute	(*)	.48	342,067
Blueboy	.88	.47	340,472
Twin		.46	327,843
Genesee	.86	.45	320,774
Redcoat	1.04	.44	315,096
Springfield		.44	314,385

\* Less than 0.01 percent of the total wheat acreage.

TABLE 4.—Percentage of the total Hard Red Winter wheat acreage occupied by each variety of that class in the United States in 1969 and 1974, and the estimated acreage for 1974

Variety	Percentage of Acreage		Acreage
	1969	1974	1974
Scout	23.80	19.35	7,076,736
Centurk		8.57	3,133,323
Eagle		6.32	2,311,595
Triumph	6.90	6.28	2,298,643
Scout 66	.30	5.31	1,943,794
Sturdy	.90	4.21	1,538,365
Improved Triumph	8.80	4.18	1,530,734
Wichita	7.00	3.21	1,175,167
Parker	1.00	3.14	1,147,139
Winalta	3.50	2.94	1,074,181
Chevenne	3.40	2.78	1,016,227
Lancer	6.20	2.40	876,404
Danne		2.20	805,539
Gage	4.10	1.97	720,889
Warrior	4.70	1.86	681,575
Rust Resistant Triumph	1.20	1.80	656,639
Tascosa	2.00	1.79	653,232
Satanta	(*)	1.78	650,539
Wanser	1.30	1.50	549,146
Caddo	1.30	1.44	526,694
Palo Duro		1.37	499,445
Concho	1.90	1.30	474,786
Winoka		.98	360,009
Chanute	(*)	.94	342,067
Caprock		.80	293,456
Tam #101		.77	281,249
Agent	.10	.76	277,994
Trapper	.20	.59	217,139
Itana 65	.40	.53	194,910
Scoutland		.53	193,258
Yukon		.47	170,356
McCall	.60	.47	170,333
Bison	3.10	.44	161,360
Kaw	4.10	.42	152,664
Apache	1.30	.39	142,138
Froid	(*)	.35	127,794
Bridger		.32	115,790
Comanche	.70	.31	112,269
Kaw 61	.10	.25	89,779
Crockett	.70	.22	82,000
Cache	.60	.22	81,827
Pronto		.22	80,387
Delmar	.20	.18	67,660
Shawnee	.20	.16	58,979
Pawnee	1.00	.15	55,418
Turkey	.30	.15	54,134
Crest	(*)	.15	53,905

See footnotes at end of the table.

TABLE 4.—Percentage of the total Hard Red Winter wheat acreage occupied by each variety of that class in the United States in 1969 and 1974, and the estimated acreage for 1974—  
Continued

Variety	Percentage of Acreage		Acreage
	1969	1974	1974
Winter	.20	.13	47,055
Ottawa	1.40	.12	43,155
Kiowa	.80	.11	41,664
Newest Improved Triumph	.30	.11	40,300
Itana	.30	.10	35,727
Pander		.08	28,278
Posetta	(*)	.07	27,400
Pronze		.07	26,138
Trader	.10	.07	24,216
Hume	.30	.06	21,080
Tenmar	(*)	.06	20,359
Tendoy	.30	.05	19,499
Colorow	(*)	.05	18,966
Baca		.05	18,290
Omaha	.20	.05	17,555
Crockett 70		.04	15,838
Nicoma		.04	14,957
Franklin		.03	12,658
Funk # 332		.03	11,525
Podco	.40	.03	11,336
Wasatch	.10	.03	11,327
Blackhull	(*)	.03	10,588
Teton		.03	10,361
Sage		.03	9,456
Golden 50	.20	.02	8,673
Ponca	.20	.02	8,311
Oklahoma 68-15		.02	7,800
Sundance		.02	7,420
Mosita	(*)	.02	5,720
Fox		.02	5,700
Sawmont	(*)	.01	5,068
Vehred	.10	.01	4,047
Tam #103		(*)	3,627
Buckskin		(*)	3,518
Shoshoni	(*)	(*)	3,199
RedChief	(*)	(*)	2,917
Oro	(*)	(*)	2,773
Super Triumph	1.60	(*)	2,500
Sentinel		(*)	2,424
Homestead		(*)	2,118
Cloud		(*)	1,958
Westmont	(*)	(*)	1,940
Kerwin		(*)	1,725
Kanred	(*)	(*)	1,721
Hidplains		(*)	1,453
KanKing		(*)	1,016
Pedo	(*)	(*)	787

See footnotes at end of the table.

TABLE 4.—Percentage of the total Hard Red Winter wheat acreage occupied by each variety of that class in the United States in 1969 and 1974, and the estimated acreage for 1974—Continued

Variety	Percentage of Acreage		Acreage
	1969	1974	1974
Yogo	(*)	(*)	526
Trison	(*)	(*)	354
Utah Kanred	(*)	(*)	328
Ouanah	.10	(*)	300
Golden Chief	(*)	(*)	285
Chiefkan	(*)	(*)	261
Guide	.10	(*)	206
Golden West	(*)	(*)	100
Ryto1	(*)	(*)	
Hybrid wheat	(*)	(*)	
Kenbe II	(*)	(*)	
Tadmore	(*)	(*)	
Westar	(*)	(*)	
Pawnee 33	(*)	(*)	
Newturk	(*)	(*)	
Nebraska 60	(*)	(*)	
Montana 36	(*)	(*)	
Karmont	.10	(*)	
Ioturk	(*)	(*)	
Early Blackhull	(*)	(*)	
Stafford	(*)	(*)	
Rio	(*)	(*)	
Ridit	(*)	(*)	
Reliant	(*)	(*)	
BlueJacket	(*)	(*)	
Aztec	(*)	(*)	
Columbia	(*)	(*)	
Variety Not Reported <sup>1</sup>	1.30	1.82	673,499
TOTAL	100.00	100.00	36,577,869

<sup>1</sup> Derived by apportioning to each of the 5 principal market classes all wheat acreage for which the variety name was not reported.

\* Less than 0.10 percent of the total acreage for the class.

TABLE 5.—Percentage of the total Hard Red Spring wheat acreage occupied by each variety of that class in the United States in 1969 and 1974, and the estimated acreage for 1974

Variety	Percentage of Acreage		Acreage
	1969	1974	1974
Waldron	1.10	25.97	3,830,430
Era	(*)	16.49	2,431,361
Fortuna	18.60	9.69	1,428,681
Chris	26.70	5.55	818,931
Lark		5.37	791,261
Bounty 208		5.33	786,735
World Seeds 1809	.10	4.94	728,839
Bonanza	(*)	2.53	373,031
Manitou	14.00	2.47	364,574
Polk	3.40	2.10	309,818
Olaf		2.01	296,432
Inia 66	(*)	1.65	242,985
Thatcher	3.40	1.44	212,166
Justin	9.50	1.26	185,627
Anza		1.21	178,419
Pitic 62	1.50	.91	133,712
Cajeme 71		.89	130,604
Milam	1.50	.73	108,200
Red River 68	1.80	.68	100,582
Canthatch	1.60	.61	90,492
Bluebird 2		.59	87,686
Komar	.30	.53	78,878
World Seeds 1877		.52	76,109
Penjamo 62	.20	.46	68,000
Novesta		.42	61,287
Nordak		.40	58,790
World Seeds 1657	(*)	.27	40,424
Crim	4.40	.20	30,095
Sheridan	1.80	.19	27,901
Chaparral		.16	24,200
World Seeds Mp-6		.15	21,493
Chinook	.70	.14	20,366
World Seeds 1812	.40	.13	19,753
Bannock		.11	16,294
Moran	.10	.11	15,732
Protor		.10	15,453
Peak		.10	15,304
Ceres	.50	.10	14,904
Centana	.40	.10	14,579
Peak 72		.09	13,650
Nadadores 63	(*)	.08	12,235
Glen Lea		.08	11,725
Seikirk	1.90	.07	10,568
Freemont		.07	10,280
Norana		.07	10,243
Walthalla		.06	9,169
Super X	(*)	.06	8,669

See footnotes at end of the table.

TABLE 5.—Percentage of the total Hard Red Spring wheat acreage occupied by each variety of that class in the United States in 1969 and 1974, and the estimated acreage for 1974—  
Continued

Variety	Percentage of Acreage		Acreage
	1969	1974	1974
Neebawa		.06	8,402
Nida	.20	.06	8,297
Weathermaster 106		.06	8,136
Rushmore	.30	.05	7,539
Ellar		.05	7,151
Fletcher		.05	6,922
Rescue	.10	.05	6,837
Pilot	.10	.03	4,683
Shortana		.03	4,548
Tioga		.03	3,982
Sonora 64	1.20	.03	3,736
Henry	.10	.02	3,378
Profit 75		.02	3,168
World Seeds 1859		.02	2,854
Valley (spring)	.70	.02	2,490
Nainari 60	.10	.02	2,486
Forx	.20	.01	2,189
Lee	.50	.01	1,822
Barton		(*)	1,311
Pembina	.80	(*)	1,194
Lathrop	(*)	(*)	895
Empire		(*)	696
Marquis	(*)	(*)	503
World Seeds 1616		(*)	400
Prospur		(*)	377
Russell	(*)	(*)	353
Rival	(*)	(*)	300
Redman		(*)	139
Huston	(*)	(*)	100
Colano		(*)	24
World Seeds No. 15		(*)	20
Prodax		(*)	20
World Seeds No. 19		(*)	10
Cypress	(*)		
Plainsman	(*)		
Lerma Roto 64	.10		
Lerma Roto	(*)		
Nordman	.10		
Saunders	(*)		
Spinkcota	(*)		
Sawtana	.20		
Yaqui 54	(*)		
Vesta	(*)		
Seabreeze	(*)		
Tobari	(*)		
Kurtzman	(*)		
Variety Not Reported <sup>1</sup>	1.40	2.15	314,604
TOTAL	100.00	100.00	14,748,123

<sup>1</sup> Derived by apportioning to each of the 5 principal market classes all wheat acreage for which the variety name was not reported.

\* Less than 0.10 percent of the total acreage for the class.

TABLE 6.—Percentage of the total Soft Red Winter wheat acreage occupied by each variety of that class in the United States and in 1969 and 1974, and the estimated acreage for 1974

Variety	Percentage of Acreage		Acreage
	1969	1974	1974
Arthur	.30	48.31	4,622,852
Arthur 71		19.45	1,860,995
Monon	37.70	4.49	429,350
Blueboy	7.60	3.56	340,472
Redcoat	9.10	3.29	315,096
Abe		2.70	258,485
Logan	(*)	2.17	208,137
Coker 68-15		1.73	165,496
Knox	7.30	1.26	120,795
Knox 62	4.90	1.12	107,593
McNair 701		1.12	107,302
Georgia 1123	2.70	1.01	96,237
Reed	4.40	.85	80,974
Holley		.78	74,941
Benhur	8.60	.76	72,470
Coker 68-19		.74	70,932
Blueboy II		.62	59,368
Coker 65-20	.80	.57	54,776
Wakeford	1.80	.52	50,213
Seneca	1.30	.38	36,146
Penno11	1.10	.37	35,445
Timwin	(*)	.25	23,749
Kenosha	(*)	.20	18,690
Thorne	.70	.19	18,643
Vermillion	1.10	.15	14,310
Stadler	1.10	.14	12,965
Racine	.30	.12	11,819
Ace	.10	.11	10,084
Lucas	.20	.10	9,338
Dual	.50	.06	5,918
McNair 2203	(*)	.05	5,247
Coker 47-27	.40	.05	4,624
Atlas 66	.50	.04	4,145
Fulton	.20	.04	3,861
McNair 4823		.04	3,408
Oasis		.03	2,882
Riley	1.30	.03	2,784
Coker 68-20		.03	2,652
Compact	.20	.02	1,934
Anderson	.20	.02	1,723
Vigo	.20	.02	1,584
Laporte	.20	.02	1,509
Lewis	(*)	.01	1,248
Riley 67	.40	(*)	883
Hadden	.50	(*)	836
Butler	.10	(*)	626
Mammoth Red	(*)	(*)	517

See footnotes at end of the table.



TABLE 6.—Percentage of the total Soft Red Winter wheat acreage occupied by each variety of that class in the United States and in 1969 and 1974, and the estimated acreage for 1974—Continued

Variety	Percentage of Acreage		Acreage
	1969	1974	1974
Stoddard		(*)	448
Nittany	(*)	(*)	409
McNair 1813		(*)	386
Taylor	.10	(*)	274
Blackhawk	(*)	(*)	273
VPI 131	(*)	(*)	131
Chancellor	.30	(*)	103
Fairfield	(*)	(*)	88
Leapland	(*)	(*)	77
Clarkan	(*)	(*)	72
Contender	(*)	(*)	66
Jones Five	(*)	(*)	50
Pennington 6-23		(*)	36
Tayland	(*)	(*)	34
Coker 61-19	.10	(*)	11
Nured	(*)		
Vahart	(*)		
Early Premium	(*)		
Purplestraw	(*)		
Mediterranean	(*)		
Leap	(*)		
Poole	(*)		
Andnox	.10		
Coastal	(*)		
Redhart	.10		
Fulcaster	(*)		
Royal	(*)		
Bledsoe	.30		
Fultz	(*)		
Variety Not Reported <sup>1</sup>	3.20	2.44	233,198
TOTAL	100.00	100.00	9,569,710

<sup>1</sup> Derived by apportioning to each of the 5 principal market classes all wheat acreage for which the variety name was not reported.

\* Less than 0.10 percent of the total acreage for the class.

TABLE 7.—Percentage of the total White wheat acreage occupied by each variety of that class in the United States in 1969 and 1974, and the estimated acreage for 1974

Variety	Percentage of Acreage		Acreage
	1969	1974	1974
Nuquines -----	29.90	26.24	1,649,090
Hyslop -----		10.82	680,216
Gaines -----	21.40	8.48	533,175
Paha -----		7.63	479,301
Moro -----	12.10	6.21	390,100
Twin -----		5.22	327,843
Genesee -----	9.60	5.10	320,774
Springfield -----		5.00	314,385
Ionia -----		4.15	260,579
Yorkstar -----	1.50	3.99	250,883
Marfed -----	4.40	2.62	164,550
Siete Cerros 66 -----	1.00	2.50	157,248
Omar -----	2.10	1.98	124,160
Yamhi11 -----		1.90	119,600
Avon -----	3.80	1.01	63,236
Luke -----		1.00	63,101
Adams# -----	.10	.66	41,387
Idaed 59 -----	.80	.42	26,333
Ramona 50# -----	2.10	.32	20,188
Golden -----	.50	.30	18,983
Arrow -----		.23	14,386
Federation -----	.20	.21	12,936
Yorkwin -----	.30	.19	12,214
McDermid -----		.15	9,680
Baart 46# -----	.60	.15	9,148
Onas -----	.20	.13	8,358
Idaed -----	1.40	.12	7,600
Burt# -----	1.40	.11	7,160
Sprague -----		.11	6,860
Lemhi 66 -----	2.30	.10	5,994
Druchamp -----	.60	.07	4,500
Requa -----	.40	.06	4,080
Elgin -----	(*)	.04	2,620
Lemhi 53 -----	.20	.03	2,017
Beaver -----	.10	.03	1,840
Onas 53 -----	(*)	.02	1,400
World Seeds No. 1 -----		.02	1,330
Brevor -----	.10	.02	1,300
Fielder -----		.02	970
Lemhi 62 -----	.70	.02	968
Oregon Zimmerman -----	.10	.01	700
Galgalos -----	.10	.01	700
Alba -----	(*)	.01	650
Yecora 70 -----		(*)	358
Rev -----		(*)	300
Orfed -----	(*)	(*)	200
Corne11 595 -----	.10	(*)	128

See footnotes at end of table.

TABLE 7.—Percentage of the total White wheat acreage occupied by each variety of that class in the United States in 1969 and 1974, and the estimated acreage for 1974—Continued

Variety	Percentage of Acreage		Acreage
	1969	1974	1974
White Federation 54#	.60	(*)	63
Dicklow	(*)	(*)	36
Defiance	(*)		
Wilhelmina	(*)		
Woodstock	(*)		
Pacific Bluestem #	.10		
Hybrid	(*)		
Talbot	.20		
Rex	(*)		
Big Club 60	.10		
Maricopa #	.10		
Federation 67	.30		
Sonora	(*)		
Elmar	(*)		
Variety Not Reported <sup>1</sup>	.50	2.58	160,621
TOTAL	100.00	100.00	6,284,249

<sup>1</sup> Derived by apportioning to each of the 5 principal market classes all wheat acreage for which the variety name was not reported.

\* Indicates the estimated acreage was less than 0.10 percent of the total acreage for the class.

# Variety normally has hard to semihard grain.

**TABLE 8.—Percentage of the total acreage of club wheat occupied by each variety of that subclass in the United States in 1969 and 1974, and the estimated acreage for 1974**

Variety	Percentage of Acreage		Acreage
	1969	1974	1974
Paha		48.09	479,301
Moro	83.20	39.14	390,100
Omar	14.80	12.46	124,160
Elgin	.20	.26	2,620
Hybrid	(*)		
Elmar	.20		
Big Club 60	.40		
Variety Not Reported <sup>1</sup>	1.20	.05	477
<b>TOTAL</b>	<b>100.00</b>	<b>100.00</b>	<b>996,658</b>

<sup>1</sup> Derived by apportioning to each of the 5 principal market classes all wheat acreage for which the variety name was not reported.

\* Less than 0.10 percent of the total acreage for the class.

TABLE 9.—Percentage of the total acreage of durum wheat occupied by each variety of that class in the United States in 1969 and 1974, and the estimated acreage for 1974

Variety	Percentage of Acreage		Acreage
	1969	1974	1974
Rolette		33.02	1,317,135
Leeds	58.80	28.87	1,151,449
Wells	37.90	22.05	879,540
Ward		12.27	489,617
Hercules		1.79	71,472
Wascana		1.07	42,745
Stewart 63	.70	.26	10,303
Produra		.14	5,409
Adur X Wells		.09	3,646
Lakota	1.10	.09	3,483
Crosby		.06	2,497
Obregon 73		.05	2,112
Botno		.05	1,861
Rugby		.04	1,709
Triangle		.03	1,348
Langdon	.70	.03	1,248
Yuma		.03	1,022
World Seeds Mp-3		.02	806
Crane		(*)	398
Wandel1		(*)	350
Stewart		(*)	97
World Seeds No. 14		(*)	20
Ramsey	.10		
Mindum	.20		
Sentry	(*)		
Vernum	(*)		
Variety Not Reported <sup>1</sup>	.50	.02	782
TOTAL	100.00	100.00	3,989,049

<sup>1</sup> Derived by apportioning to each of the 5 principal market classes all wheat acreage for which the variety name was not reported.

\* Less than 0.10 percent of the total acreage for the class.

TABLE 10.—Estimated acreage and percentage of the total wheat acreage occupied by each of the classes of wheat grown in each crop-reporting district and State in 1974

Division, State, and District	Hard Red Winter		Hard Red Spring		Soft Red Winter		White		Durum		Total Acreage
	Acreage	Percentage	Acreage	Percentage	Acreage	Percentage	Acreage	Percentage	Acreage	Percentage	
<b>NORTH ATLANTIC:</b>											
<b>NEW JERSEY</b>											
20	601	5.1			10,938	94.0	111	.9			11,650
50					31,300	100.0					31,300
80					16,607	99.5	93	.5			16,700
90					350	100.00					350
Total	601	1.0			59,195	98.7	204	.3			60,000
<b>NEW YORK</b>											
20							1,300	100.0			1,300
30							1,000	100.0			1,000
40							161,400	100.0			161,400
50							28,800	100.0			28,800
60							3,700	100.0			3,700
70							11,100	100.0			11,100
80							8,900	100.0			8,900
90					941	33.6	1,959	66.4			2,800
91							1,000	100.0			1,000
Total					941	.4	219,059	99.6			220,000
<b>PENNSYLVANIA</b>											
10					14,100	100.0					14,100
20					10,742	92.7	858	7.3			11,600
30					284	94.7	16	5.3			300
40					20,045	98.8	255	1.2			20,300
50					82,083	99.2	717	.8			82,800
60					35,700	100.0					35,700
70			32	.2	14,214	99.5	54	.3			14,300
80					83,620	99.4	580	.6			84,200
90					96,700	100.0					96,700
Total			32	(*)	357,488	99.4	2,480	.6			360,000
<b>NORTH CENTRAL:</b>											
<b>ILLINOIS</b>											
10	16,664	90.1			1,836	9.9					18,500
20	23,660	36.4			41,340	63.6					65,000
30	58,590	71.4			23,510	28.6					82,100

See footnote at end of the table.

TABLE 10.—Estimated acreage and percentage of the total wheat acreage occupied by each of the classes of wheat grown in each crop-reporting district and State in 1974—Continued

Division, State, and District	Hard Red Winter		Hard Red Spring		Soft Red Winter		White		Durum		Total Acreage
	Acreage	Per- centage	Acreage	Per- centage	Acreage	Per- centage	Acreage	Per- centage	Acreage	Per- centage	
<b>NORTH CENTRAL: (CONT)</b>											
<b>ILLINOIS (CONT)</b>											
40	73,017	79.3			19,083	20.7					92,100
50	45,593	58.6			32,307	41.4					77,900
60	102,990	28.5			257,310	71.5					360,300
70	51,729	10.5			439,371	89.5					491,100
80	2,629	.7			361,371	99.3					364,000
90	224	(*)			298,776	100.0					299,000
<b>Total</b>	<b>375,096</b>	<b>20.2</b>			<b>1,474,904</b>	<b>79.8</b>					<b>1,850,000</b>
<b>INDIANA</b>											
10					112,700	100.0					112,700
20					180,600	100.0					180,600
30	735	.3			187,565	99.7					188,300
40					157,200	100.0					157,200
50					252,000	100.0					252,000
60					123,300	100.0					123,300
70					285,600	100.0					285,600
80					77,500	100.0					77,500
90					62,800	100.0					62,800
<b>Total</b>	<b>735</b>	<b>(*)</b>			<b>1,439,265</b>	<b>100.0</b>					<b>1,440,000</b>
<b>IOEA</b>											
10			980	100.0							980
20			1,570	100.0							1,570
30			434	66.8	216	33.2					650
40	5,966	85.2	1,044	14.8							7,010
50	880	100.0									880
60	2,240	100.0									2,240
70	12,320	100.0									12,320
80	1,960	100.0									1,960
90	15,165	92.7	93	.5	1,065	6.6	46	.2			16,390
<b>Total</b>	<b>38,531</b>	<b>87.7</b>	<b>4,121</b>	<b>9.3</b>	<b>1,302</b>	<b>2.9</b>	<b>46</b>	<b>.1</b>			<b>44,000</b>

Division, State, and District	Hard Red Winter		Hard Red Spring		Soft Red Winter		White		Durum		Total Acreage
	Acreage	Percentage	Acreage	Percentage	Acreage	Percentage	Acreage	Percentage	Acreage	Percentage	
<b>NORTH CENTRAL: (CONT)</b>											
<b>KANSAS</b>											
11	1,248,000	100.0									1,248,000
24	1,348,000	100.0									1,348,000
37	2,096,951	100.0	1,049	(*)							2,098,000
42	1,338,000	100.0									1,338,000
55	1,835,815	100.0			785	(*)					1,836,000
68	2,847,408	100.0			2,592	(*)					2,850,000
73	303,000	100.0									303,000
86	342,758	99.7	745	.2	497	.1					344,000
90	632,133	99.6	318	(*)	2,549	.4					635,000
<b>Total</b>	<b>11,992,065</b>	<b>100.0</b>	<b>2,112</b>	<b>(*)</b>	<b>5,823</b>	<b>(*)</b>					<b>12,000,000</b>
<b>MICHIGAN</b>											
10			329	43.8	45	6.0	376	50.2			750
20					328	7.2	4,172	92.8			4,500
30					24	.2	9,576	99.8			9,600
40							17,850	100.0			17,850
50					827	.8	99,773	99.2			100,600
60					6,975	3.2	209,525	96.8			216,500
70					42,551	41.5	59,949	58.5			102,500
80	73	(*)			72,629	25.1	215,898	74.9			288,600
90			60	(*)	104,424	49.9	104,616	50.1			209,100
<b>Total</b>	<b>73</b>	<b>(*)</b>	<b>389</b>	<b>(*)</b>	<b>227,803</b>	<b>23.9</b>	<b>721,735</b>	<b>76.1</b>			<b>950,000</b>
<b>MINNESOTA</b>											
10	10,945	.7	1,505,300	96.4					46,755	2.9	1,563,000
20			11,860	98.1					240	1.9	12,100
30			400	100.0							400
40	5,155	.5	941,492	98.1					13,753	1.4	960,400
50	4,424	2.8	151,098	96.8					778	.4	156,300
60	218	2.9	7,182	97.1							7,400
70	2,675	6.3	39,525	93.7							42,200
80	1,129	1.5	71,271	98.5							72,400
90	5,942	12.9	39,858	87.1							45,800
<b>Total</b>	<b>30,488</b>	<b>1.0</b>	<b>2,767,986</b>	<b>96.9</b>					<b>61,526</b>	<b>2.1</b>	<b>2,860,000</b>

See footnote at end of the table.



TABLE 10.—Estimated acreage and percentage of the total wheat acreage occupied by each of the classes of wheat grown in each crop-reporting district and State in 1974—Continued

Division, State, and District	Hard Red Winter		Hard Red Spring		Soft Red Winter		White		Durum		Total Acreage
	Acreage	Per- centage	Acreage	Per- centage	Acreage	Per- centage	Acreage	Per- centage	Acreage	Per- centage	
<b>NORTH CENTRAL: (CONT)</b>											
<b>MISSOURI</b>											
10	93,851	83.8			18,149	16.2					112,000
20	35,195	34.5			66,805	65.5					102,000
30	41,468	37.0			70,532	63.0					112,000
40	41,101	24.9			123,899	75.1					165,000
50	6,235	4.1			144,765	95.9					151,000
60	4,819	2.6			175,181	97.4					180,000
70	56,548	33.2	317	.1	112,760	66.5	375	.2			170,000
80	1,418	3.7			36,582	96.3					38,000
90	286	(*)			419,714	100.0					420,000
Total	280,921	19.3	317	(*)	1,168,387	80.7	375	(*)			1,450,000
<b>NEBRASKA</b>											
10	963,000	100.0									963,000
20	15,000	100.0									15,000
30	14,000	100.0									14,000
50	115,000	100.0									115,000
60	305,000	100.0									305,000
70	734,904	100.0			96	(*)					735,000
80	356,000	100.0									356,000
90	497,000	100.0									497,000
Total	2,999,904	100.0			96	(*)					3,000,000
<b>NORTH DAKOTA</b>											
10	7,673	.4	658,597	40.7					951,030	58.9	1,617,300
20	2,609	.2	373,025	34.8					695,766	65.0	1,071,400
30	686	(*)	999,245	55.9					789,069	44.1	1,789,000
40	17,961	2.3	532,383	68.9					222,656	28.8	773,000
50	500	(*)	802,325	67.2					392,675	32.8	1,195,500
60	2,010	.1	1,049,689	88.4					136,701	11.5	1,186,400
70	84,971	9.6	723,999	82.5					70,130	7.9	879,100
80	2,975	.4	562,672	87.5					78,353	12.1	644,000
90	8,860	.8	878,449	83.6					164,991	15.6	1,052,300
Total	128,245	1.2	6,580,384	64.6					3,501,371	34.2	10,210,000

Division, State, and District	Hard Red Winter		Hard Red Spring		Soft Red Winter		White		Durus		Total Acreage
	Acreage	Per- centage	Acreage	Per- centage	Acreage	Per- centage	Acreage	Per- centage	Acreage	Per- centage	
<b>NORTH CENTRAL: (CONT)</b>											
<b>OHIO</b>											
10					448,000	100.0					448,000
20					281,200	100.0					281,200
30					86,800	100.0					86,800
40					253,900	100.0					253,900
50					285,500	100.0					285,500
60					35,200	100.0					35,200
70					111,400	100.0					111,400
80					55,200	100.0					55,200
90					22,800	100.0					22,800
Total					1,580,000	100.0					1,580,000
<b>SOUTH DAKOTA</b>											
10	76,904	19.3	281,874	70.9					39,222	9.8	398,000
20	111,777	10.7	854,548	82.5					71,275	6.8	1,037,600
30	22,503	4.1	464,738	84.8					61,059	11.1	548,300
40	257,667	89.7	29,733	10.3							287,400
50	180,652	38.8	270,243	58.3					13,605	2.9	464,500
60	13,078	14.4	74,945	83.1					2,277	2.5	90,300
70	125,900	100.0									125,900
80	267,000	86.1	35,285	11.3					8,215	2.6	310,500
90	11,473	26.9	31,027	73.1							42,500
Total	1,066,954	32.2	2,042,393	61.9					195,653	5.9	3,305,000
<b>WISCONSIN</b>											
10	37	1.7	199	9.2	1,914	89.1					2,150
20			632	46.8	718	53.2					1,350
30	36	1.6	1,502	68.4	662	30.0					2,200
40	969	17.0	3,762	66.0	969	17.0					5,700
50	73	2.2	706	22.0	2,421	75.8					3,200
60	1,153	6.0	4,636	24.2	13,311	69.8					19,100
70			690	49.3	710	50.7					1,400
80	943	5.0	4,407	23.6	13,250	71.4					18,600
90	263	.8	3,816	13.0	25,221	86.2					29,300
Total	3,474	4.1	20,350	24.5	59,176	71.4					83,000

See footnote at end of the table.

TABLE 10.—Estimated acreage and percentage of the total wheat acreage occupied by each of the classes of wheat grown in each crop-reporting district and State in 1974—Continued

Division, State, and District	Hard Red Winter		Hard Red Spring		Soft Red Winter		White		Durum		Total Acreage
	Acreage	Per- centage	Acreage	Per- centage	Acreage	Per- centage	Acreage	Per- centage	Acreage	Per- centage	
<b>SOUTH ATLANTIC:</b>											
<b>DELAWARE</b>											
20					12,700	100.0					12,700
50					12,300	100.0					12,300
80					10,000	100.0					10,000
Total					35,000	100.0					35,000
<b>FLORIDA</b>											
10					47,500	100.0					47,500
30					3,700	100.0					3,700
50					800	100.0					800
Total					52,000	100.0					52,000
<b>GEORGIA</b>											
10					3,330	100.0					3,330
20					7,440	100.0					7,440
30					14,350	100.0					14,350
40					18,370	100.0					18,370
50	219	.3			62,011	99.7					62,230
60					40,990	100.0					40,990
70					43,700	100.0					43,700
80					20,350	100.0					20,350
90					4,240	100.0					4,240
Total	219	.1			214,781	99.9					215,000
<b>MARYLAND</b>											
10					1,600	100.0					1,600
20					102,800	100.0					102,800
80					17,600	100.0					17,600
90					36,000	100.0					36,000
Total					158,000	100.0					158,000

Division, State, and District	Hard Red Winter		Hard Red Spring		Soft Red Winter		White		Durum		Total Acreage
	Acreage	Percentage	Acreage	Percentage	Acreage	Percentage	Acreage	Percentage	Acreage	Percentage	
<b>SOUTH ATLANTIC: (CONT)</b>											
<b>NORTH CAROLINA</b>											
10					13,180	100.0					13,180
20					5,520	100.0					5,520
40					86,300	100.0					86,300
50					56,900	100.0					56,900
60					56,700	100.0					56,700
70					40,500	100.0					40,500
80					40,600	100.0					40,600
90					25,300	100.0					25,300
Total					325,000	100.0					325,000
<b>SOUTH CAROLINA</b>											
10					29,600	100.0					29,600
20					3,200	100.0					3,200
30					28,200	100.0					28,200
40					14,800	100.0					14,800
50					71,900	100.0					71,900
80					32,300	100.0					32,300
Total					180,000	100.0					180,000
<b>VIRGINIA</b>											
20					40,600	100.0					40,600
40					7,700	100.0					7,700
50					59,300	100.0					59,300
60					78,000	100.0					78,000
70					4,400	100.0					4,400
80					53,400	100.0					53,400
90					56,600	100.0					56,600
Total					300,000	100.0					300,000
<b>WEST VIRGINIA</b>											
20	13	.5			2,387	99.5					2,400
40	35	1.4			2,465	98.6					2,500
60					16,100	100.0					16,100
Total	48	.2			20,952	99.8					21,000

See footnote at end of the table.

TABLE 10.—Estimated acreage and percentage of the total wheat acreage occupied by each of the classes of wheat grown in each crop-reporting district and State in 1974—Continued

Division, State, and District	Hard Red Winter		Hard Red Spring		Soft Red Winter		White		Durum		Total Acreage
	Acreage	Per- centage	Acreage	Per- centage	Acreage	Per- centage	Acreage	Per- centage	Acreage	Per- centage	
<b>SOUTH CENTRAL:</b>											
<b>ALABAMA</b>											
10	86	.8			9,914	99.2					10,000
20					22,000	100.0					22,000
21					3,000	100.0					3,000
30					9,000	100.0					9,000
40					17,000	100.0					17,000
50					23,000	100.0					23,000
60					9,000	100.0					9,000
70					37,000	100.0					37,000
80					26,000	100.0					26,000
90					29,000	100.0					29,000
Total	86	(*)			184,914	100.0					185,000
<b>ARKANSAS</b>											
10					6,100	100.0					6,100
20					3,300	100.0					3,300
30					242,000	100.0					242,000
40	4,905	29.1			11,895	70.9					16,800
50					17,200	100.0					17,200
60					120,000	100.0					120,000
70					23,300	100.0					23,300
80					3,300	100.0					3,300
90					38,000	100.0					38,000
Total	4,905	1.0			465,095	99.0					470,000
<b>KENTUCKY</b>											
10	258	.3			75,742	99.7					76,000
20	961	.4			213,039	99.6					214,000
30	1,061	1.4			69,939	98.6					71,000
40	64	.4			15,936	99.6					16,000
50	753	1.0			73,247	99.0					74,000
60					9,000	100.0					9,000
Total	3,097	.6			456,903	99.4					460,000

Division, State, and District	Hard Red Winter		Hard Red Spring		Soft Red Winter		White		Durum		Total Acreage
	Acreage	Percentage	Acreage	Percentage	Acreage	Percentage	Acreage	Percentage	Acreage	Percentage	
<b>SOUTH CENTRAL: (CONT)</b>											
<b>LOUISIANA</b>											
10					15,000	100.0					15,000
20					3,500	100.0					3,500
30					31,000	100.0					31,000
40					2,000	100.0					2,000
50					13,500	100.0					13,500
60					2,000	100.0					2,000
70					8,500	100.0					8,500
80					1,500	100.0					1,500
90					3,000	100.0					3,000
Total					80,000	100.0					80,000
<b>MISSISSIPPI</b>											
10					56,000	100.0					56,000
20					12,000	100.0					12,000
30					7,500	100.0					7,500
40					66,000	100.0					66,000
50					8,300	100.0					8,300
60					25,000	100.0					25,000
70					11,000	100.0					11,000
80					4,000	100.0					4,000
90					5,200	100.0					5,200
Total					195,000	100.0					195,000
<b>OKLAHOMA</b>											
10	1,281,000	100.0									1,281,000
20	1,021,000	100.0									1,021,000
30	1,348,000	100.0									1,348,000
40	2,157,852	100.0			148	(*)					2,158,000
50	865,000	100.0									865,000
60	126,000	100.0									126,000
70	166,505	99.8			495	.2					167,000
80	26,130	99.8			70	.2					26,200
90	7,151	91.7			649	8.3					7,800
Total	6,998,638	100.0			1,362	(*)					7,000,000

See footnote at end of the table.

TABLE 10.—Estimated acreage and percentage of the total wheat acreage occupied by each of the classes of wheat grown in each crop-reporting district and State in 1974—Continued

Division, State, and District	Hard Red Winter		Hard Red Spring		Soft Red Winter		White		Durum		Total Acreage
	Acreage	Per- centage	Acreage	Per- centage	Acreage	Per- centage	Acreage	Per- centage	Acreage	Per- centage	
<b>SOUTH CENTRAL: (CONT.)</b>											
<b>TENNESSEE</b>											
10	2,859	2.5			110,041	97.5					112,900
20					116,500	100.0					116,500
30	183	.3			48,017	99.7					48,200
40	778	2.0			37,222	98.0					38,000
50					47,500	100.0					47,500
60	97	.3			31,803	99.7					31,900
Total	3,917	.9			391,083	99.1					395,000
<b>TEXAS</b>											
11	2,797,758	100.0			2,242	(*)					2,800,000
12	300,000	100.0									300,000
21	700,000	100.0									700,000
22	580,000	100.0									580,000
30	384,286	98.6			5,714	1.4					390,000
40	228,048	59.3	5,070	1.3	151,882	39.4					385,000
51					36,000	100.0					36,000
52	6,392	91.4	222	3.1	365	5.5	1	(*)			7,000
60	6,000	100.0									6,000
70	119,263	82.3	25,737	17.7							145,000
81	43,734	23.7	139,954	76.2	312	.1					184,000
82	1,826	91.3	64	3.2	110	5.5					2,000
90			3,000	100.0							3,000
96	8,884	14.8	51,116	85.2							60,000
97	1,826	91.3	64	3.2	110	5.5					2,000
Total	5,178,017	92.5	225,227	4.0	196,755	3.5	1	.0			5,600,000
<b>WESTERN:</b>											
<b>ARIZONA</b>											
20			841	40.0			1,189	56.7	70	3.3	2,100
50			37,607	28.9			88,550	68.2	3,843	2.9	130,000
70			51,546	89.0			4,891	7.7	1,963	3.3	58,000
90			11,009	18.3			48,891	81.7			59,900
Total			101,003	40.4			143,121	57.3	5,876	2.3	250,000

Division, State, and District	Hard Red Winter		Hard Red Spring		Soft Red Winter		White		Durum		Total Acreage
	Acreage	Per-centage	Acreage	Per-centage	Acreage	Per-centage	Acreage	Per-centage	Acreage	Per-centage	
<b>WESTERN: (CONT)</b>											
<b>CALIFORNIA</b>											
10			261	87.0			39	13.0			300
20			19,665	86.7			3,009	13.2	26	.1	22,700
30			20,617	86.7			3,155	13.2	28	.1	23,800
40			27,509	32.4			57,191	67.6			84,700
50			267,740	99.4			1,860	.6			269,600
51			215,265	94.9			11,735	5.1			227,000
60			2,503	42.4			3,230	54.8	167	2.8	5,900
80			165,042	90.7			16,958	9.3			182,000
Total			718,602	88.1			97,177	11.9	221	(*)	816,000
<b>COLORADO</b>											
10	84,390	92.8	3,695	4.0			2,915	3.2			91,000
20	531,754	99.5	2,746	.5							534,500
60	1,698,747	100.0	1,189	(*)			1,564	(*)			1,701,500
70	62,502	90.7	3,911	5.6			2,587	3.7			69,000
80			6,239	78.0			1,761	22.0			8,000
90	430,914	99.8	1,086	.2							432,000
Total	2,808,307	99.1	18,866	.6			8,827	.3			2,836,000
<b>IDAHO</b>											
10	423	(*)	1,588	.3			447,289	99.7			449,300
70	3,522	3.9	2,028	2.2			82,950	93.9			88,500
80	46,288	22.1	14,379	6.8			148,533	71.1			209,200
90	401,231	50.1	122,465	15.2			279,304	34.7			803,000
Total	451,464	29.1	140,460	9.0			958,076	61.9			1,550,000
<b>MONTANA</b>											
10	13,808	25.0	20,393	36.9			20,999	38.1			55,200
20	1,385,890	66.8	659,756	31.7			500	(*)	31,354	1.5	2,077,500
30	342,600	20.4	1,098,743	65.6					235,157	14.0	1,676,500
50	428,754	86.8	65,325	13.1					821	.1	494,900
70	61,475	76.4	12,142	15.0			6,983	8.6			80,600
80	292,694	93.6	18,905	6.0			1,301	.4			312,900
90	188,023	58.5	133,782	41.4					595	.1	322,400
Total	2,713,244	54.2	2,009,046	40.0			29,783	.5	267,927	5.3	5,020,000

See footnote at end of the table.



TABLE 10.—Estimated acreage and percentage of the total wheat acreage occupied by each of the classes of wheat grown in each crop-reporting district and State in 1974—Continued

Division, State, and District	Hard Red Winter		Hard Red Spring		Soft Red Winter		White		Durum		Total Acreage
	Acreage	Per- centage	Acreage	Per- centage	Acreage	Per- centage	Acreage	Per- centage	Acreage	Per- centage	
<b>WESTERN: (CONT)</b>											
<b>NEVADA</b>											
10			156	.9			16,144	99.1			16,300
30	9	.2					3,091	99.8			3,100
80							600	100.0			600
Total	9	(*)	156	.7			19,835	99.3			20,000
<b>NEW MEXICO</b>											
10	8,443	91.9	521	5.6			236	2.5			9,200
30	411,231	99.8					869	.2			412,100
70	2,153	56.8					1,645	43.2			3,800
90	2,043	52.4	1,857	47.6							3,900
Total	423,872	98.9	2,378	.5			2,750	.6			429,000
<b>OREGON</b>											
10			5,296	2.4			207,304	97.6			212,600
20	44,323	7.9	3,301	.5			508,276	91.6			555,900
30	30,052	7.5	801	.2			366,947	92.3			397,800
70							2,100	100.0			2,100
80	11,155	10.1	12,159	11.0			86,286	78.9			109,600
Total	85,530	6.6	21,557	1.6			1,170,913	91.8			1,278,000
<b>UTAH</b>											
10	106,410	63.9	20,870	12.5			39,320	23.6			166,600
50	49,040	64.2	2,990	3.9			24,420	31.9			76,450
60	56,486	86.4	7,450	11.3			1,554	2.3			65,490
70	4,502	43.0	18	.1			5,940	56.9			10,460
Total	216,438	67.9	31,328	9.8			71,234	22.3			319,000
<b>WASHINGTON</b>											
10							17,300	100.0			17,300
20	184,835	48.6	23,358	6.1	49	(*)	173,008	45.3	350	(*)	381,600
30							228,500	100.0			228,500
50	317,758	18.9	36,664	2.1			1,318,858	79.0	20	(*)	1,673,300

Division, State, and District	Hard Red Winter		Hard Red Spring		Soft Red Winter		White		Duru		Total Acreage
	Acreage	Per- centage	Acreage	Per- centage	Acreage	Per- centage	Acreage	Per- centage	Acreage	Per- centage	
WESTERN: (CONT)											
WASHINGTON (CONT)											
90-----	5,439	.5	660	(*)			973,201	99.5			979,300
Total-----	508,032	15.4	60,682	1.8	49	(*)	2,710,867	82.8	370	(*)	3,280,000
WYOMING											
10-----			1,800	100.0							1,800
20-----	41,750	81.4	9,550	18.6							51,300
30-----	531	14.7	3,069	85.3							3,600
40-----	4,546	91.0	454	9.0							5,000
50-----	220,718	97.6	5,582	2.4							226,300
Total-----	267,545	92.9	20,455	7.1							288,000

\* Less than 0.1 percent.

TABLE 11.—Estimated percentage of total wheat acreage in each State occupied by each market class in 1969 and 1974

State	Class	Percentage of Acreage	
		1969	1974
ALABAMA	Hard Red Winter	.30	.11
	Soft Red Winter	99.70	99.89
ARIZONA	Hard Red Winter	2.20	
	Hard Red Spring	31.10	40.45
	White	66.70	57.21
	Durum		2.34
ARKANSAS	Hard Red Winter	4.30	1.04
	Soft Red Winter	95.70	98.96
CALIFORNIA	Hard Red Spring	51.16	86.62
	White	46.48	13.26
	Durum	2.36	.12
COLORADO	Hard Red Winter	99.49	99.08
	Hard Red Spring	.31	.63
	White	.20	.29
DELAWARE	Soft Red Winter	100.00	100.00
FLORIDA	Soft Red Winter	100.00	100.00
GEORGIA	Hard Red Winter		.10
	Soft Red Winter	100.00	99.90
IDAHO	Hard Red Winter	40.80	28.97
	Hard Red Spring	5.00	9.03
	Soft Red Winter	54.00	59.11
	White	.20	2.89
ILLINOIS	Hard Red Winter	42.89	20.70
	Soft Red Winter	57.11	79.30
INDIANA	Hard Red Winter	.92	.05
	Soft Red Winter	98.97	99.95
	White	.11	
IOWA			

TABLE 11.—Estimated percentage of total wheat acreage in each State occupied by each market class in 1969 and 1974—Continued

State	Class	Percentage of Acreage	
		1969	1974
IOWA	Cont)		
	Hard Red Winter-----	94.99	88.38
	Hard Red Spring-----	3.87	8.55
	Soft Red Winter-----	1.04	2.97
	White-----	.10	.10
KANSAS			
	Hard Red Winter-----	100.00	99.92
	Hard Red Spring-----		.02
	Soft Red Winter-----		.06
KENTUCKY			
	Hard Red Winter-----	3.43	.70
	Soft Red Winter-----	96.57	99.30
LOUISIANA			
	Hard Red Spring-----	5.98	
	Soft Red Winter-----	94.02	100.00
MARYLAND			
	Soft Red Winter-----	100.00	100.00
MICHIGAN			
	Hard Red Spring-----		.03
	Soft Red Winter-----	17.27	24.04
	White-----	82.73	75.93
MINNESOTA			
	Hard Red Winter-----	1.40	1.02
	Hard Red Spring-----	88.66	96.81
	White-----	9.94	2.17
MISSISSIPPI			
	Hard Red Winter-----	.93	
	Soft Red Winter-----	99.07	100.00
MISSOURI			
	Hard Red Winter-----	47.70	19.37
	Hard Red Spring-----		.02
	Soft Red Winter-----	52.30	80.59
	White-----		.02
MONTANA			
	Hard Red Winter-----	65.72	54.18
	Hard Red Spring-----	27.44	39.91
	White-----	.70	.58
	Durum-----	6.14	5.33
NEBRASKA			

SB 604 (1979)

USDA STATISTICAL BULLETINS

UPDATA

DISTRIBUTION OF THE VARIETIES WHEAT IN THE UNITED STATES IN 1974

REITZ, L. P. HANLIN, H. G.

2 OF 2

TABLE 11.—Estimated percentage of total wheat acreage in each State occupied by each market class in 1969 and 1974—Continued

State	Class	Percentage of Acreage	
		1969	1974
NEBRASKA	Cont)		
	Hard Red Winter	99.99	99.99
	Hard Red Spring	.01	
	Soft Red Winter		.01
NEVADA			
	Hard Red Winter		.06
	Hard Red Spring	17.77	.80
	White	82.23	99.14
NEW JERSEY			
	Hard Red Winter	1.13	1.02
	Soft Red Winter	98.70	98.62
	White	.17	.36
NEW MEXICO			
	Hard Red Winter	99.76	99.76
	Hard Red Spring	.12	.12
	White	.12	.12
NEW YORK			
	Hard Red Winter	.01	.01
	Soft Red Winter	1.43	.40
	White	98.56	99.59
NORTH CAROLINA			
	Hard Red Winter		.49
	Soft Red Winter	100.00	99.51
NORTH DAKOTA			
	Hard Red Winter	.80	1.20
	Hard Red Spring	55.83	64.35
	Durum	43.37	34.45
OHIO			
	Soft Red Winter	100.00	100.00
OKLAHOMA			
	Hard Red Winter	100.00	99.99
	Soft Red Winter		.01
OREGON			
	Hard Red Winter	4.20	6.67
	Hard Red Spring	.20	1.68
	White	95.60	91.65
PENNSYLVANIA			
	Soft Red Winter	99.60	99.33
	White	.40	.67

TABLE 11.—Estimated percentage of total wheat acreage in each State occupied by each market class in 1969 and 1974—Continued

State	Class	Percentage of Acreage	
		1969	1974
SOUTH CAROLINA			
	Soft Red Winter-----	100.00	100.00
SOUTH DAKOTA			
	Hard Red Winter-----	36.07	31.88
	Hard Red Spring-----	51.66	62.15
	Durum-----	12.27	5.97
TENNESSEE			
	Hard Red Winter-----	1.87	1.01
	Soft Red Winter-----	97.79	98.99
	White-----	.34	
TEXAS			
	Hard Red Winter-----	91.30	92.41
	Hard Red Spring-----	3.19	4.04
	Soft Red Winter-----	5.50	3.55
	White-----	.01	
UTAH			
	Hard Red Winter-----	78.65	67.85
	Hard Red Spring-----	2.94	9.85
	White-----	18.41	22.30
VIRGINIA			
	Soft Red Winter-----	100.00	100.00
WASHINGTON			
	Hard Red Winter-----	18.40	15.49
	Hard Red Spring-----	.40	1.85
	Soft Red Winter-----		.01
	White-----	81.20	82.65
WEST VIRGINIA			
	Hard Red Winter-----	2.99	.29
	Soft Red Winter-----	96.64	99.71
	White-----	.37	
WISCONSIN			
	Hard Red Winter-----	13.59	4.04
	Hard Red Spring-----	32.57	23.29
	Soft Red Winter-----	53.72	72.67
	White-----	.12	
WYOMING			
	Hard Red Winter-----	94.07	93.78
	Hard Red Spring-----	5.43	6.22
	White-----	.50	

TABLE 12.—Estimated percentage of the total wheat acreage in the United States occupied by each of the classes of wheat in 1969 and 1974, and the estimated acreage in 1974

Class	Percentage of Acreage		Acreage
	1969	1974	1974
Hard Red Winter	59.50	51.40	36,577,869
Hard Red Spring	13.40	20.72	14,748,123
Soft Red Winter	11.50	13.44	9,569,710
White	9.00	8.83	6,284,249
Durum	6.60	5.61	3,989,049
TOTAL	100.00	100.00	71,169,000



**END**