



AgEcon SEARCH
RESEARCH IN AGRICULTURAL & APPLIED ECONOMICS

The World's Largest Open Access Agricultural & Applied Economics Digital Library

This document is discoverable and free to researchers across the globe due to the work of AgEcon Search.

Help ensure our sustainability.

Give to AgEcon Search

AgEcon Search

<http://ageconsearch.umn.edu>

aesearch@umn.edu

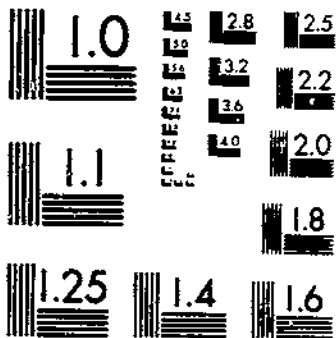
*Papers downloaded from **AgEcon Search** may be used for non-commercial purposes and personal study only. No other use, including posting to another Internet site, is permitted without permission from the copyright owner (not AgEcon Search), or as allowed under the provisions of Fair Use, U.S. Copyright Act, Title 17 U.S.C.*

FSB 603 (1978) - USDA STATISTICAL BULLETINS
FRESH FRUITS AND VEGETABLES, 1972

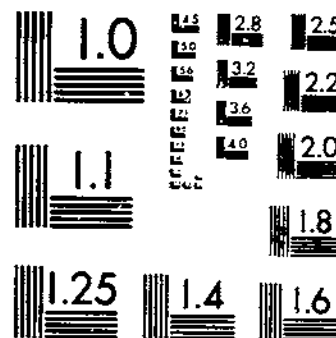
UPDATA

1 OF 1

START



MICROCOPY RESOLUTION TEST CHART
NATIONAL BUREAU OF STANDARDS-1963-A



MICROCOPY RESOLUTION TEST CHART
NATIONAL BUREAU OF STANDARDS-1963-A

14
630.5
US3-13
-71603

FRESH FRUIT AND VEGETABLE PRICES 1977

U. S. DEPOSITORY,

APR 28 1978

Los Angeles Public Library



F.O.B. LEADING SHIPPING POINTS | **WHOLESALE CHICAGO AND NEW YORK CITY**

STATISTICAL BULLETIN NO. 603
UNITED STATES DEPARTMENT OF AGRICULTURE
AGRICULTURAL MARKETING SERVICE
FRUIT AND VEGETABLE DIVISION
WASHINGTON, D.C. 20250

P R E F A C E

Prices listed in this report represent sales of certain fresh fruits and vegetables at important shipping points and at New York City and Chicago during 1977.

Prices reported for important shipping points are simple averages of the mid-points of the daily range throughout the year as reported by local market news offices. They refer to sales in straight or mixed carloads or truckloads, unless otherwise noted. An average shipping point price for a month generally is shown only when there were quotations for six or more days for daily, four or more for semi-weekly, and two or more for weekly reports during the month.

Prices FOB shipping point represent sales for the commodity loaded on a rail car or truck at shipping point or point of entry. Transportation and protective service charges are not included in prices shown.

Wholesale prices for private sales at New York City and Chicago are simple averages of representative prices for each Tuesday. In arriving at the Tuesday prices, local market reporters consider estimated volume of sales at different price levels, quality, condition, and other factors. These wholesale prices in most cases represent private sales in wholesale lots. Generally they represent sales made by the first seller on the wholesale market. In a few instances, prices representing sales at auction are reported, but these are indicated in the body of the report. Prices are for stock of generally good merchantable quality and condition, protective services are extra, unless otherwise stated. Grades are shown where quoted by grade.

Prepared by
United States Department of Agriculture
Agricultural Marketing Service
Fruit and Vegetable Division
Market News Branch
Washington, DC 20250

C O N T E N T S

	Page
Introduction	3
Table 1. -Average prices of specified fruits and vegetables at leading shipping points, each month, by description of sale, 1977	5
<u>Berries</u>	
Blueberries	5
Cranberries	5
Strawberries	5
<u>Citrus Fruits</u>	
Grapefruit	5
Lemons	6
Limes	6
Oranges	6
Royal Mandarins	6
Tangelos	6
Tangerines	7
<u>Other Fruits</u>	
Apples	7
Apricots	9
Avocados	9
Cherries	9
Grapes	9
Mangoes	9
Nectarines	9
Peaches	10
Pears	10
Pineapples	10
Plums	11
Prunes, Fresh	11
<u>Melons</u>	
Cantaloups	11
Honeydew Melons	11
Watermelons	12
<u>Nuts</u>	
Pecans	13
<u>Vegetables</u>	
Asparagus	13
Beans, Green	13
Broccoli	13
Cabbage	13
Carrots	14
Cauliflower	14
Celery	14
Corn, Sweet	15
Cucumbers	15
Eggplant	15
Escarole	16
Endive	16
Lettuce	16
Onions, Dry	16
Peppers, Green	18
Potatoes	18
Radishes	20
Spinach	20
Sweetpotatoes	20
Tomatoes	20

	Page
Table 2. -Wholesale prices of specified fruits and vegetables at New York City and Chicago, each month by market, origin and description, 1977	22
<u>Berries</u>	
Blackberries	22
Blueberries	22
Cranberries	22
Raspberries	22
Strawberries	22
<u>Citrus Fruits</u>	
Grapefruit	22
Lemons	22
Limes	22
Oranges	23
Tangelos	23
Tangerines	23
<u>Other Fruits</u>	
Apples	23
Avocados	24
Cherries	24
Grapes	24
Nectarines	24
Peaches	24
Pears	25
Plums	25
Prunes, Fresh	25
<u>Melons</u>	
Cantaloups	25
Honeydew Melons	25
Watermelons	25
<u>Vegetables</u>	
Asparagus	26
Beans, Green	26
Beets	26
Broccoli	26
Brussels Sprouts	26
Cabbage	27
Carrots	27
Cauliflower	27
Celery	27
Corn, Sweet	27
Cucumbers	28
Eggplant	28
Endive-Chicory	28
Escarole	28
Kale	28
Lettuce	28
Mushrooms	29
Onions, Dry	29
Peas, Green	29
Peppers, Green	29
Potatoes	30
Radishes	30
Rhubarb	30
Spinach	30
Sweetpotatoes	31
Tomatoes	31

April 1978

-000000000000-

Table 1.--Average prices of specified fruits and vegetables at leading shipping points, each month 1977.

(Prices in this table are simple averages of the mid-points of the daily range and are only for months during which market news stations were in operation in the specified districts. All sales free on board at shipping point. Unless otherwise stated protective services are extra.)

BERRIES

Shipping point and description of sale	Jan.	Feb.	Mar.	Apr.	May	June	July	Aug.	Sept.	Oct.	Nov.	Dec.
- Dollars per Unit -												
<u>Blueberries</u>												
<u>Cultivated, film wrpd., 12-pint flat</u>												
West & Central Michigan	-	-	-	-	-	-	8.55	9.54	-	-	-	-
South & Central New Jersey	-	-	-	-	-	7.45	7.51	-	-	-	-	-
<u>Cranberries</u>												
<u>24-1-lb. packages - (Weekly)</u>												
<u>Cape Cod, Massachusetts</u>												
Early Blacks	-	-	-	-	-	-	-	-	-	6.55	7.00	-
Howes, window box	-	-	-	-	-	-	-	-	-	6.10	6.37	7.00
film bag	-	-	-	-	-	-	-	-	-	-	6.50	7.35
<u>Madison, Wisconsin</u>												
Searles	-	-	-	-	-	-	-	-	-	6.71	7.12	7.35
<u>Strawberries</u>												
<u>12-pint flat</u>												
Central Coast, Calif.	-	-	-	-	4.13	4.15	4.07	5.08	5.28	5.38	7.23	-
Southern Calif.	-	7.55	6.46	4.61	3.76	-	-	-	-	-	-	-
Florida	-	6.89	5.83	4.11	-	-	-	-	-	-	-	-
Hammond & Ponchatoula, La.	-	-	5.94	4.94	-	-	-	-	-	-	-	-
Mexico-FOB So. Tex. (Point of Entry)	-	-	-	-	-	-	-	-	-	-	-	-
Duty and crossing charges paid	5.10	4.66	4.33	-	-	-	-	-	-	-	5.98	5.49
<u>16-quart crate</u>												
Southwest Michigan	-	-	-	-	-	9.85	-	-	-	-	-	-
Northeast Mich. - Auction sales	-	-	-	-	-	11.61	-	-	-	-	-	-
Hampton, N.J. - Auction sales	-	-	-	-	11.87	10.92	-	-	-	-	-	-

CITRUS FRUITS

<u>Grapefruit</u>												
<u>Carton, Shippers First Grade</u>												
<u>California:</u>												
<u>Coachella Valley</u>												
White, 23s	2.96	2.84	2.85	2.74	2.55	2.25	2.25	-	-	-	2.63	2.63
27s	2.96	2.84	2.85	2.74	2.66	2.75	2.75	-	-	-	2.88	2.88
32s	2.96	3.31	3.13	3.08	3.04	3.27	3.25	-	-	-	2.88	2.88
36s	2.96	3.31	3.13	3.08	3.04	3.27	3.25	-	-	-	2.63	2.63
40s	2.96	3.31	3.13	3.08	3.04	3.39	3.38	-	-	-	2.63	2.63
48s	2.57	2.94	3.00	2.76	2.74	3.20	3.25	-	-	-	2.38	2.38
56s	2.57	2.68	2.50	2.50	2.43	2.51	2.50	-	-	-	2.13	2.13
6-8-lb. film bag	-	3.72	3.75	3.66	3.67	4.09	4.13	-	-	-	-	-
Red, 23s	3.57	3.03	2.87	2.76	2.81	2.88	2.88	-	-	-	3.56	3.38
27s	3.57	3.61	3.37	3.03	3.15	3.82	3.75	-	-	-	4.06	3.79
32s	3.54	3.87	3.97	4.01	3.95	4.46	4.25	-	-	-	4.06	3.79
36s	3.54	3.87	3.97	4.01	3.95	4.46	4.25	-	-	-	3.34	3.13
40s	3.54	3.87	3.92	4.01	3.76	4.46	4.25	-	-	-	3.34	3.13
48s	3.46	3.25	3.36	3.01	3.18	4.30	4.38	-	-	-	2.84	2.63
56s	2.78	2.87	2.79	2.63	2.73	3.48	3.63	-	-	-	2.42	2.38
6-8-lb. film bag	-	4.24	4.27	3.85	4.76	5.52	5.63	-	-	-	-	-
<u>Southern</u>												
White, 23s	-	-	-	-	-	2.46	-	-	-	-	-	-
27s	-	-	-	-	-	3.18	3.00	2.46	2.67	-	-	-
32s	-	-	-	-	-	3.71	3.63	3.53	3.69	-	-	-
36s	-	-	-	-	-	3.74	3.63	3.34	3.59	-	-	-
40s	-	-	-	-	-	3.96	3.88	3.84	4.09	-	-	-
48s	-	-	-	-	-	3.71	3.96	4.13	4.22	-	-	-
56s	-	-	-	-	-	3.21	3.13	3.13	3.14	-	-	-
6-8-lb. film bag	-	-	-	-	-	-	-	-	4.82	-	-	-
Red, 23s	-	-	-	-	-	3.50	3.29	2.47	2.80	-	-	-
27s	-	-	-	-	-	4.25	4.07	3.05	3.52	-	-	-
32s	-	-	-	-	-	4.55	4.18	3.66	4.05	-	-	-
36s	-	-	-	-	-	4.50	4.16	3.66	4.12	-	-	-
40s	-	-	-	-	-	4.75	4.87	3.97	4.28	-	-	-
48s	-	-	-	-	-	4.88	5.23	4.87	4.69	-	-	-
56s	-	-	-	-	-	3.50	3.87	3.30	3.55	-	-	-
6-8-lb. film bag	-	-	-	-	-	6.25	6.25	6.25	6.41	-	-	-

Table 1. --Continued

CITRUS FRUITS--CONTINUED

Shipping point and description of sale	Jan.	Feb.	Mar.	Apr.	May	June	July	Aug.	Sept.	Oct.	Nov.	Dec.
- Dollars per Unit -												
<u>Grapefruit--Continued</u>												
<u>Carton, U.S.No.1</u>												
<u>Texas:</u>												
<u>Lower Rio Grande Valley</u>												
Red, 27s	5.10	5.32	5.09	4.96	5.00	-	-	-	-	-	-	5.91
32s	4.55	5.05	4.78	4.51	4.50	-	-	-	-	7.11	5.88	5.38
36s	4.04	4.59	4.07	3.86	3.79	-	-	-	-	6.79	5.29	4.88
40s	3.17	4.09	3.56	3.41	3.40	-	-	-	-	6.26	4.48	4.01
48s	2.98	3.59	2.96	2.91	3.01	-	-	-	-	5.41	3.69	3.18
56s	-	2.86	2.25	2.13	2.19	-	-	-	-	4.64	-	-
8-5-lb. film bag, 40-48s	3.96	4.75	3.93	3.84	4.07	-	-	-	-	-	5.01	4.76
<u>Lemons</u>												
<u>Carton</u>												
<u>California:</u>												
<u>Shippers First Grade, 140-165s</u>												
Coachella Valley	5.66	5.78	-	-	-	-	-	-	-	-	-	-
Southern & Central	5.66	5.78	6.29	6.61	6.79	7.13	7.47	7.99	8.27	8.03	6.26	5.92
<u>Choice, 140-165s</u>												
Coachella Valley	4.63	4.75	-	-	-	-	-	-	-	-	-	-
Southern & Central	4.63	4.75	4.76	4.98	6.14	6.50	6.89	7.41	7.56	6.56	4.89	4.58
<u>Limes</u>												
<u>Florida: --(Semi-weekly)</u>												
<u>South Florida</u>												
<u>10-lb. carton, 42-63s</u>												
Persian Seedless	7.97	8.00	-	-	-	3.58	2.25	2.63	2.55	2.83	3.86	5.19
<u>Oranges</u>												
<u>Carton</u>												
<u>California:</u>												
<u>Southern & Central</u>												
<u>Navels</u>												
<u>Shippers First Grade</u>												
88-113s	3.99	4.40	4.23	4.47	4.50	-	-	-	-	-	7.35	5.79
138-163s	3.32	4.18	4.21	4.25	3.97	-	-	-	-	-	4.62	4.12
<u>Choice</u>												
88-113s	3.02	3.08	3.11	3.09	3.25	-	-	-	-	-	6.16	4.54
138-163s	2.67	3.00	3.00	3.00	2.96	-	-	-	-	-	3.84	3.76
<u>Valencias</u>												
<u>Shippers First Grade</u>												
88-113s	-	-	-	-	4.07 1/2	4.17 1/2	4.74	5.36	6.08	7.46	-	-
138-163s	-	-	-	-	3.92 1/2	3.66 1/2	4.40	5.11	6.05	7.24	-	-
<u>Choice</u>												
88-113s	-	-	-	-	3.33	3.38	3.74	4.52	5.18	6.24	-	-
138-163s	-	-	-	-	3.32	3.25	3.49	4.09	4.73	5.99	-	-
<u>Texas:</u>												
<u>Lower Rio Grande Valley</u>												
<u>U.S. Combination-U.S.No.1</u>												
Early & Midseason, 80-125s	2.80	3.00	-	-	-	-	-	-	-	4.74	4.48	4.26
8-5-lb. film bag, 80-125s	2.96	3.31	-	-	-	-	-	-	-	5.55	4.70	4.43
<u>Valencias, 80-125s</u>												
8-5-lb. film bag, 80-125s	-	3.69	3.30	3.30	3.39	-	-	-	-	-	-	-
-	-	4.00	3.75	3.61	3.65	-	-	-	-	-	-	-
<u>Royal Mandarins</u>												
<u>California:</u>												
<u>Coachella Valley</u>												
<u>Carton, Shippers First Grade</u>												
88-113s	-	4.47	3.91	-	-	-	-	-	-	-	-	-
138-163s	-	3.68	3.15	-	-	-	-	-	-	-	-	-
<u>Tangelos</u>												
<u>California:</u>												
<u>Coachella Valley</u>												
<u>Carton</u>												
Orlandos, Mammoth	3.45	-	-	-	-	-	-	-	-	-	-	4.69
Jumbo	3.19	-	-	-	-	-	-	-	-	-	-	4.19
Large	2.79	-	-	-	-	-	-	-	-	-	-	3.40
Medium	2.29	-	-	-	-	-	-	-	-	-	-	3.09
16-3-lb., film bag	4.50	-	-	-	-	-	-	-	-	-	-	5.92
Minneolas, Mammoth	4.45	4.43	3.90	4.09	-	-	-	-	-	-	-	-
Jumbo	4.26	4.24	3.67	3.59	-	-	-	-	-	-	-	-
Large	3.66	3.74	3.27	3.14	-	-	-	-	-	-	-	-
Medium	2.87	2.82	2.75	2.78	-	-	-	-	-	-	-	-
16-3-lb., film bag	4.98	5.46	5.52	5.50	-	-	-	-	-	-	-	-

Table 1. --Continued

CITRUS FRUITS--CONTINUED

Shipping point and description of sale	Jan.	Feb.	Mar.	Apr.	May	June	July	Aug.	Sept.	Oct.	Nov.	Dec.
- Dollars per Unit -												
<u>Tangerines</u>												
<u>California:</u>												
<u>Coachella Valley</u>												
<u>Carton</u>												
Various varieties, Mammoth	4.65	4.75	4.75	-	-	-	-	-	-	-	-	6.12
Jumbo	4.32	4.49	4.25	-	-	-	-	-	-	-	-	5.39
Large	3.39	3.61	3.25	-	-	-	-	-	-	-	-	4.19
Medium	2.46	2.77	2.75	-	-	-	-	-	-	-	-	3.16
16-3-lb. film bag ...	-	-	-	-	-	-	-	-	-	-	-	9.44
<u>OTHER FRUITS</u>												
<u>Apples</u>												
<u>Colorado:</u>												
<u>West Slope - (Weekly)</u>												
<u>U.S. Extra Fancy, Tray pack, 88-113s</u>												
Red Delicious	7.38	-	-	-	-	-	-	-	-	8.67	8.38	8.65
Golden Delicious	-	-	-	-	-	-	-	-	-	-	7.69	7.75
<u>Idaho:</u>												
<u>West Idaho</u>												
<u>Idaho State Grade or US Grade</u>												
<u>Tray pack, Extra Fancy, 80-125s</u>												
Red Delicious	7.74	-	-	-	-	-	-	-	-	8.44	8.47	8.50
Golden Delicious	6.25	-	-	-	-	-	-	-	-	-	7.06	6.94
Red Rome, 64-113s	7.75	-	-	-	-	-	-	-	-	10.00	9.88	10.00
<u>C.A. Storage</u>												
Red Delicious	-	-	9.13	9.00	-	-	-	-	-	-	-	-
<u>Michigan:</u>												
<u>Film bag, 12-3-lb., US Fancy, 24" up</u>												
Jonathan	5.92	-	-	-	-	-	-	-	5.98	5.62	5.52	5.52
McIntosh	6.39	-	-	-	-	-	-	-	6.01	5.74	5.76	5.79
Red Delicious	5.33	5.21	-	-	-	-	-	-	6.86	6.66	6.71	6.81
<u>C.A. Storage</u>												
Jonathan	6.64	6.69	6.60	5.97	6.00	-	-	-	-	-	-	6.25
McIntosh	6.64	6.69	6.88	-	-	-	-	-	-	-	-	-
Red Delicious	6.52	6.40	6.16	6.16	6.25	-	-	-	-	-	-	7.42
<u>New York:</u>												
<u>Hudson Valley</u>												
<u>U.S. Fancy</u>												
<u>Cell pack, 100-120s</u>												
McIntosh	-	-	-	-	-	-	-	-	-	6.91	6.61	6.89
<u>C.A. Storage</u>												
Cortland, 80-100s	7.06	7.28	7.27	-	-	-	-	-	-	-	-	-
<u>Tray pack, 88-113s</u>												
Red Delicious	7.21	-	-	-	-	-	-	-	-	7.85 ^{1/}	7.25	8.98 ^{1/}
<u>C.A. Storage</u>												
Red Delicious	7.77	8.20	8.27	7.96	-	-	-	-	-	-	-	-
<u>Film bag, 12-3-lb., 24" up</u>												
Cortland	-	-	-	-	-	-	-	-	5.05	5.05	4.88	4.84
McIntosh	6.18	-	-	-	-	-	-	-	5.07	5.07	5.14	5.15
Red Delicious	6.25	-	-	-	-	-	-	-	5.84	5.84	5.88	6.56
Red Rome	5.50	5.50	-	-	-	-	-	-	-	-	-	-
<u>C.A. Storage</u>												
Cortland	5.72	6.13	6.10	-	-	-	-	-	-	-	-	-
McIntosh	6.33	6.51	6.64	6.71	6.95	-	-	-	-	-	-	-
Red Delicious	6.79	6.95	7.14	7.24	7.50	-	-	-	-	-	-	-
Red Rome	-	-	6.59	6.77	7.31	-	-	-	-	-	-	-
<u>Lake Champlain-Mohawk Valley</u>												
<u>U.S. Fancy</u>												
<u>Cell pack, 100-120s</u>												
McIntosh	8.53	-	-	-	-	-	-	-	-	7.26	7.43	7.86
<u>C.A. Storage</u>												
McIntosh	8.76	9.00	9.13	9.31	9.58	-	-	-	-	-	-	-
<u>Film bag, 12-3-lb., 24" up</u>												
McIntosh	5.78	-	-	-	-	-	-	-	-	4.88	5.06	5.23
<u>C.A. Storage</u>												
McIntosh	5.90	6.22	6.30	6.50	6.50	-	-	-	-	-	-	-

1/Combination US Extra Fancy & Fancy or better.

Table 1. --Continued

OTHER FRUITS-CONTINUED

Shipping point and description of sale	Jan.	Feb.	Mar.	Apr.	May	June	July	Aug.	Sept.	Oct.	Nov.	Dec.
- Dollars per Unit -												
<u>Apricots</u>												
<u>California:</u>												
<u>Minters-Krentwood-N. San Joaquin Vly.</u>												
<u>Lugs, mostly 24-lb., tight-fill and</u>												
<u>volume-fill pack</u>												
Derby Royal & Royal, Jumbo	-	-	-	-	-	9.53	-	-	-	-	-	-
Extra large ..	-	-	-	-	-	7.88	-	-	-	-	-	-
Large	-	-	-	-	-	5.44	-	-	-	-	-	-
<u>Avocados</u>												
<u>Florida: -(Semi-weekly)</u>												
<u>South Florida</u>												
<u>Plats, 8-16s</u>												
Various Greenskin varieties	4.30	-	-	-	-	-	6.25	6.00	6.38	6.54	6.50	6.50
<u>Cherries</u>												
<u>California:</u>												
<u>Stockton-Linden-Lodi</u>												
<u>18-lb. lugs, loose pack</u>												
Bing, 12-row & lgr., US#1	-	-	-	-	12.58	10.00	-	-	-	-	-	-
<u>Washington:</u>												
<u>Yakima Valley-Wenatchee</u>												
<u>(Including Milton Freewater, Oreg.)</u>												
<u>20-lb. lugs & cartons</u>												
<u>12-row & lgr., US#1</u>												
Bing	-	-	-	-	-	9.04	8.50	-	-	-	-	-
Lambert	-	-	-	-	-	-	8.14	-	-	-	-	-
<u>Grapes</u>												
<u>California:</u>												
<u>22-lb. lug, U.S.No.1</u>												
<u>Coachella Valley</u>												
Beauty Seedless	-	-	-	-	-	11.61	-	-	-	-	-	-
Cardinal	-	-	-	-	-	12.21	-	-	-	-	-	-
Parlette	-	-	-	-	-	12.00	-	-	-	-	-	-
Thompson Seedless	-	-	-	-	-	12.00	12.50	-	-	-	-	-
<u>23-lb. lug</u>												
<u>Central San Joaquin Valley</u>												
Almeria	-	-	-	-	-	-	-	-	7.65	7.00	-	-
Calmeria	-	-	-	-	-	-	-	-	8.00	8.00	8.00	-
Cardinal	-	-	-	-	-	-	-	8.07	-	-	-	-
Emperor	6.19	6.50	-	-	-	-	-	-	-	6.11	5.38	5.28
Red Malaga	-	-	-	-	-	-	-	7.70	-	-	-	-
Ribier	-	-	-	-	-	-	-	8.44	7.86	7.50	7.50	7.33
Thompson Seedless	-	-	-	-	-	-	-	7.92	8.79	7.58	-	-
<u>Kern District</u>												
Calmeria	-	-	-	-	-	-	-	-	-	8.00	8.00	8.00
Cardinal	-	-	-	-	-	-	10.00	8.46	-	-	-	-
Emperor	7.75	7.75	-	-	-	-	-	-	-	6.32	5.80	6.01
Exotics	-	-	-	-	-	-	13.19	6.74	-	-	-	-
Red Malaga	-	-	-	-	-	-	-	8.06	-	-	-	-
Ribier	-	-	-	-	-	-	-	8.81	7.68	8.00	8.00	8.00
Thompson Seedless	-	-	-	-	-	-	-	8.46	8.80	8.50	-	-
<u>Lodi -(U.S.No.1)</u>												
Tokay	-	-	-	-	-	-	-	-	6.59	5.50	-	-
<u>Mangoes</u>												
<u>Florida: -(Semi-weekly)</u>												
<u>South Florida</u>												
<u>Plats, 8-16s</u>												
Various varieties	-	-	-	-	-	6.04	5.41	5.39	-	-	-	-
<u>Nectarines</u>												
<u>California:</u>												
<u>Central San Joaquin Valley</u>												
<u>U.S.No.1, 56-88s</u>												
<u>Various varieties</u>												
2-layer lug, tray pack	-	-	-	-	-	5.61	5.44	3.73	3.60	-	-	-
25-lb. tight-fill & volume-fill carton	-	-	-	-	-	6.05	6.43	4.17	3.88	-	-	-

Table 1. --Continued

OTHER FRUITS--CONTINUED

Shipping point and description of sale	Jan.	Feb.	Mar.	Apr.	May	June	July	Aug.	Sept.	Oct.	Nov.	Dec.
	- Dollars per Unit -											
<u>Peaches</u>												
<u>Various varieties, Yellow Flesh</u>												
<u>California:</u>												
<u>Central & Southern San Joaquin Valley</u>												
<u>U.S.No.1</u>												
2-layer lug, tray pack, 56-88s	-	-	-	-	7.38	4.64	4.54	4.04	4.17	4.89	-	-
Peach box wrapped, 50-70s	-	-	-	-	-	-	3.20	2.78	-	-	-	-
<u>Colorado:</u>												
<u>Western Slope (Palisade)</u>												
<u>3/4-bushel crate & carton, US#1</u>												
2-1/8-in. min.	-	-	-	-	-	-	-	5.13	-	-	-	-
17-lb. box, 55-70s	-	-	-	-	-	-	-	3.15	-	-	-	-
<u>South Georgia-North & Central Florida</u>												
<u>U.S. Extra No. 1, 1/2-bushel carton</u>												
2" up	-	-	-	-	9.61	-	-	-	-	-	-	-
1-7/8" up	-	-	-	-	8.15	-	-	-	-	-	-	-
<u>Georgia:</u>												
<u>Central Georgia</u>												
<u>3/4-bushel crate & carton</u>												
<u>Most Hydrocooling included</u>												
1-7/8" up	-	-	-	-	-	5.99	-	-	-	-	-	-
2" up	-	-	-	-	-	7.98	-	-	-	-	-	-
<u>Michigan:</u>												
<u>West Michigan</u>												
<u>3/4-bushel crate or carton</u>												
<u>U.S.No.1, Hydrocooling included</u>												
2" up	-	-	-	-	-	-	-	7.67	-	-	-	-
2-1/4" up	-	-	-	-	-	-	-	9.79	9.56	-	-	-
2-1/8" up	-	-	-	-	-	-	11.29	8.76	8.56	-	-	-
<u>New Jersey:</u>												
<u>South & Central New Jersey</u>												
<u>Hydrocooled, mostly No grade mark</u>												
<u>3/4-bushel crate or carton</u>												
2" up	-	-	-	-	-	-	8.69	6.23	-	-	-	-
2-1/4" up	-	-	-	-	-	-	10.66	7.39	-	-	-	-
<u>South Carolina:</u>												
<u>U.S. Extra No. 1, Hydrocooling included</u>												
<u>3/4-bushel crate or carton</u>												
2" up	-	-	-	-	-	7.84	7.19	5.70	-	-	-	-
<u>Washington:</u>												
<u>Yakima Valley-Wenatchee</u>												
<u>Wash. Extra Fancy</u>												
2-layer lug, tray pack, 30-64s ...	-	-	-	-	-	-	-	4.68	-	-	-	-
<u>West Virginia:</u>												
<u>Appalachian-(W.Va.-Va.-Md.-Pa.)</u>												
<u>U.S. Extra No. 1</u>												
<u>3/4-bushel crate or carton</u>												
2" up	-	-	-	-	-	-	-	5.66	-	-	-	-
2-1/4" up	-	-	-	-	-	-	-	7.44	-	-	-	-
<u>Pears</u>												
<u>California:</u>												
<u>Standard box 1/2 carton, wrapped pack</u>												
<u>U.S.No.1, 90-150s</u>												
<u>Bartlett</u>												
Sacramento District	-	-	-	-	-	-	7.50	7.25	-	-	-	-
Lake County	-	-	-	-	-	-	-	8.16	8.81	8.79	-	-
Mendocino County	-	-	-	-	-	-	-	7.92	8.46	-	-	-
<u>Washington:</u>												
<u>Yakima Valley-Wenatchee</u>												
<u>Boxes, wrapped, film lined</u>												
<u>U.S.No.1, 90-135s</u>												
Bartlett	-	-	-	-	-	-	-	7.22	8.18	8.50	-	-
D'Anjou	6.18	6.16	5.83	-	-	-	-	-	-	7.49	7.87	8.08
<u>C.A. Storage</u>												
D'Anjou	-	-	-	6.66	6.55	6.65	-	-	-	-	-	-
<u>Pineapples</u>												
<u>Mexico:</u>												
<u>FOB South Texas-(Point of Entry)</u>												
<u>Duty and crossing charges paid</u>												
<u>Various varieties, mostly Cayenne</u>												
40-lb. carton (6-12s)	3.00	3.05	3.23	3.38	3.38	-	-	-	-	-	-	3.50

Table 1. --Continued

OTHER FRUITS--CONTINUED

Shipping point and description of sale	Jan.	Feb.	Mar.	Apr.	May	June	July	Aug.	Sept.	Oct.	Nov.	Dec.
	- Dollars per Unit -											
<u>Plums</u>												
<u>California:</u>												
<u>Central San Joaquin Valley</u>												
<u>28-lb.tight-fill & volume-fill</u>												
<u>carton, U.S.No.1,4x4s</u>												
Red Beaut	-	-	-	-	-	13.62	-	-	-	-	-	-
Casselman	-	-	-	-	-	-	-	4.90	5.64	-	-	-
Eldorado	-	-	-	-	-	-	7.25	-	-	-	-	-
Laroda	-	-	-	-	-	-	6.36	4.27	-	-	-	-
Late Santa Rosa	-	-	-	-	-	-	6.20	4.50	-	-	-	-
Nubiana	-	-	-	-	-	-	6.36	-	-	-	-	-
Queen Ann	-	-	-	-	-	-	6.67	-	-	-	-	-
Santa Rosa	-	-	-	-	-	8.00	7.30	-	-	-	-	-
Simka	-	-	-	-	-	-	6.55	5.86	-	-	-	-
<u>Prunes, Fresh</u>												
<u>Idaho:</u>												
<u>Western Idaho-Malheur County Oregon</u>												
<u>U.S.No.1, 1 1/4"min.</u>												
<u>30-lb.carton</u>												
Italian type, loose	-	-	-	-	-	-	-	-	4.64	-	-	-
<u>Michigan:</u>												
<u>West Michigan</u>												
<u>U.S.No.1, 1 1/4"min., mostly precooled</u>												
<u>30-lb.carton & crate</u>												
Stanley	-	-	-	-	-	-	-	5.72	5.44	-	-	-
<u>Washington</u>												
<u>Yakima Valley</u>												
<u>Wash. No.1, 1 1/4"min.</u>												
<u>30-lb.carton</u>												
Italian type, loose	-	-	-	-	-	-	-	5.33	-	-	-	-
<u>MELONS</u>												
<u>Cantaloups</u>												
<u>Arizona:</u>												
<u>Western Arizona</u>												
Jumbo crate, 36s	-	-	-	-	-	8.57	-	-	-	-	-	-
<u>California:</u>												
<u>Imperial Valley</u>												
Jumbo crate, 36s	-	-	-	-	-	9.86	-	-	-	-	-	-
<u>Kern District</u>												
Jumbo crate, 36s	-	-	-	-	-	-	10.79	-	-	-	-	-
<u>Westside District</u>												
Jumbo crate, 36s	-	-	-	-	-	-	-	10.63	-	-	-	-
2/3-crate or carton, 24s	-	-	-	-	-	-	8.48	6.36	6.57	-	-	-
1/2-carton, 18s	-	-	-	-	-	-	5.98	4.08	4.43	-	-	-
<u>Delaware:</u>												
<u>Laurel - Auction sales</u>												
Var.varieties, loose,each	-	-	-	-	-	-	.33	.31	.19	-	-	-
<u>Texas:</u>												
<u>Lower Rio Grande Valley</u>												
1/2-carton, 18s	-	-	-	-	7.67	5.59	-	-	-	-	-	-
23s	-	-	-	-	6.75	4.72	-	-	-	-	-	-
<u>Mexico:</u>												
<u>Duty and crossing charges paid</u>												
<u>FOB Nogales,Arizona-(Point of Entry)</u>												
Jumbo crate, 36s	-	-	-	19.17	19.29	-	-	-	-	-	-	-
1/2-crate & carton, 18s	-	-	-	9.83	9.05	-	-	-	-	-	-	-
23s	-	-	-	8.83	7.83	-	-	-	-	-	-	-
<u>FOB South Texas-(Point of Entry)</u>												
Jumbo crate, 36s	-	-	22.17	19.03	20.87	-	-	-	-	-	-	-
<u>Honeydews</u>												
<u>Carton</u>												
<u>California:</u>												
<u>Sacramento Valley,5-6s</u>												
-	-	-	-	-	-	-	-	2.78	2.26	2.33	-	-
<u>Westside District,5-6s</u>												
-	-	-	-	-	-	-	-	2.60	2.42	-	-	-
<u>Texas:</u>												
<u>Lower Rio Grande Vly.,6-8s</u>												
-	-	-	-	4.71	2.79	-	-	-	-	-	-	-
<u>Mexico:</u>												
<u>Duty and crossing charges paid</u>												
<u>FOB South Texas-(Point of Entry)</u>												
Standard flat crate,9-12s	-	-	-	8.26	-	-	-	-	-	-	-	-

Table 1. --Continued

MELONS--CONTINUED

Shipping point and description of sale	Jan.	Feb.	Mar.	Apr.	May	June	July	Aug.	Sept.	Oct.	Nov.	Dec.
- Dollars per Unit -												
<u>Watermelons</u>												
<u>Arizona:</u>												
<u>Central Arizona</u>												
<u>Peacock - Per Ton</u>												
16-22-lb. Av.	-	-	-	-	-	-	4.41	-	-	-	-	-
<u>California:</u>												
<u>Imperial Valley</u>												
<u>Peacock - Per Pound</u>												
16-18-lb. Av.	-	-	-	-	.0540	-	-	-	-	-	-	-
<u>Kern District</u>												
<u>Peacock - Per Pound</u>												
16-20-lb. Av.	-	-	-	-	-	.0440	-	-	-	-	-	-
<u>Delaware:</u>												
<u>Laurel - Auction Sales</u>												
<u>20-lb. up - Per Melon</u>												
Long Gray	-	-	-	-	-	-	1.47	.68	.58	-	-	-
Crimson Sweet	-	-	-	-	-	-	1.58	.73	.66	-	-	-
All Sweet	-	-	-	-	-	-	-	.79	.73	-	-	-
Jubilee	-	-	-	-	-	-	-	.67	.58	-	-	-
<u>Icebox type</u>												
Sugar baby, loose, each	-	-	-	-	-	.39	.25	.13	-	-	-	-
<u>Florida:</u>												
<u>Long Gray & Crimson Sweet - Per CWT</u>												
24-lb. Av. & smaller	-	-	-	-	5.21	2.86	2.83	-	-	-	-	-
25-lb. Av. & larger	-	-	-	-	5.65	2.83	3.17	-	-	-	-	-
<u>Jubilee - Per CWT</u>												
28-40-lb. Av.	-	-	-	-	6.04	2.86	3.17	-	-	-	-	-
<u>Georgia:</u>												
<u>South & Central Georgia</u>												
<u>Long Gray & Crimson Sweet - Per CWT</u>												
24-lb. Av. & smaller	-	-	-	-	-	3.01	2.96	-	-	-	-	-
25-lb. Av. & larger	-	-	-	-	-	2.74	3.25	-	-	-	-	-
<u>Jubilee - Per CWT</u>												
28-40-lb. Av.	-	-	-	-	-	3.28	-	-	-	-	-	-
<u>Mississippi:</u>												
<u>Various varieties, mostly Jubilee</u>												
<u>Per CWT</u>												
17-24-lb. Av.	-	-	-	-	-	-	3.63	-	-	-	-	-
25-35-lb. Av.	-	-	-	-	-	-	4.00	-	-	-	-	-
<u>Missouri:</u>												
<u>Southeast Missouri</u>												
<u>Long Gray, Crimson Sweet & Jubilee</u>												
<u>Per CWT</u>												
16-28-lb. Av.	-	-	-	-	-	-	4.18	3.18	-	-	-	-
<u>North Carolina:</u>												
<u>Prices paid to growers - Per CWT</u>												
<u>Long Gray & Crimson Sweet</u>												
14-20-lb. Av.	-	-	-	-	-	-	3.91	-	-	-	-	-
<u>South Carolina:</u>												
<u>Long Gray, Crimson Sweet & Jubilee</u>												
<u>Per CWT</u>												
18-24-lb. Av.	-	-	-	-	-	3.33	3.24	-	-	-	-	-
25-30-lb. Av.	-	-	-	-	-	3.20	3.35	-	-	-	-	-
<u>Texas:</u>												
<u>South, Central & East Texas</u>												
<u>Mostly Long Gray - Per CWT</u>												
16-24-lb. Av.	-	-	-	-	4.96	3.57	3.37	3.18	-	-	-	-
25-lb. Av. & larger	-	-	-	-	-	3.83	3.38	3.18	-	-	-	-
<u>Virginia:</u>												
<u>Southeast Virginia</u>												
<u>Prices paid to growers</u>												
<u>Long Gray - Per CWT</u>												
12-17-lb. Av.	-	-	-	-	-	-	3.33	1.90	-	-	-	-
19-23-lb. Av.	-	-	-	-	-	-	4.50	2.45	-	-	-	-
25-30-lb. Av.	-	-	-	-	-	-	5.14	3.00	-	-	-	-
<u>Mexico:</u>												
<u>Duty and crossing charges paid</u>												
<u>FOB Nogales, Arizona-(Point of Entry)</u>												
<u>Carton, 4-5-6s - per pound</u>												
Peacock	-	-	-	.1434	.1060	-	-	-	-	-	-	-
Jubilee	-	-	-	.1354	.0990	-	-	-	-	-	-	-
<u>FOB South Texas-(Point of Entry)</u>												
Peacock	-	-	.1447	.1469	-	-	-	-	-	-	-	-
Long Gray	-	-	.1235	.1288	.0861	-	-	-	-	-	-	-
Jubilee	-	-	.1337	.1386	.0948	-	-	-	-	-	-	-

Table 1. --Continued

NUTS

Shipping point and description of sale	Jan.	Feb.	Mar.	Apr.	May	June	July	Aug.	Sept.	Oct.	Nov.	Dec.
- Dollars per Unit -												
<u>Pecans</u>												
<u>Prices paid to growers - Per pound</u>												
<u>Southeast-(Ala.-Fla.-Ga.-Miss.):</u>												
<u>(Semi-weekly)</u>												
Natives	-	-	-	-	-	-	-	-	-	.44	.45	.44
Stuarts	-	-	-	-	-	-	-	-	-	.62	.63	.65
Moneymaker	-	-	-	-	-	-	-	-	-	.48	.45	-
<u>Texas: -(Semi-weekly)</u>												
Natives	-	-	-	-	-	-	-	-	-	.47	.42	.46
Improved varieties	-	-	-	-	-	-	-	-	-	.83	.53	-
<u>Eastern North Carolina: -(Weekly)</u>												
Natives	-	-	-	-	-	-	-	-	-	-	.41	.39
Stuarts	-	-	-	-	-	-	-	-	-	-	.56	.53
<u>Oklahoma: -(Semi-weekly)</u>												
Natives	-	-	-	-	-	-	-	-	-	-	.41	.44

VEGETABLES

AsparagusPyramid crateCalifornia:Imperial-Coachella Valley

Green, loose, large	-	22.80	19.15	-	-	-	-	-	-	-	-	-
standard	-	21.80	18.13	-	-	-	-	-	-	-	-	-

Delta

Green, loose, 9" cut, large	-	-	16.22	12.93	-	-	-	-	-	-	-	-
standard	-	-	15.22	12.42	-	-	-	-	-	-	-	-

Salinas

Green, loose, 9" cut, large	-	-	-	13.24	13.60	-	-	-	-	-	-	-
12-bunches, large	-	-	-	15.30	16.29	-	-	-	-	-	-	-

New Jersey:Swedesboro - Auction sales

12-bchs., field-run	-	-	-	15.91	17.76	18.19	-	-	-	-	-	-
---------------------------	---	---	---	-------	-------	-------	---	---	---	---	---	---

Vineland - Auction sales

12-bchs., field-run	-	-	-	-	18.20	19.73	-	-	-	-	-	-
---------------------------	---	---	---	---	-------	-------	---	---	---	---	---	---

Beans, GreenBushel hamper crate and cartonRound Green Type

Pompano Beach Florida (State Farmers Market)	9.43	-	6.70	5.16	-	-	-	-	-	-	6.32	6.08
Central & North Florida	-	-	-	-	9.11	-	-	-	-	-	-	-
South Georgia	-	-	-	-	-	7.19	-	-	-	-	-	-
Vineland, N.J.-Auction sales	-	-	-	-	-	7.18	5.00	6.08	5.47	7.76	-	-
Western North Carolina	-	-	-	-	-	-	5.61	7.28	6.11	-	-	-
Faison, N.C.-Auction sales	-	-	-	-	-	7.39	-	-	-	-	-	-

Poles

Dade County, Florida	8.18	-	-	6.10	7.01	-	-	-	-	-	6.66	7.65
South Georgia	-	-	-	-	-	7.98	-	-	-	-	-	-
Western North Carolina	-	-	-	-	-	-	8.72	9.42	8.78	-	-	-

BroccoliCarton, 14-bunchesCalifornia:

Salinas-Watsonville	5.89	-	4.91	4.26	3.88	3.88	4.67	5.02	4.97	5.05	4.76	3.88
Oceano-Santa Maria-Guadalupe	6.23	7.45	4.89	4.27	3.73	3.67	4.53	4.88	4.52	4.78	4.52	3.71

Texas: -(Semi-weekly)

Lower Rio Grande Valley	6.19	6.54	-	-	-	-	-	-	-	-	-	-
-------------------------------	------	------	---	---	---	---	---	---	---	---	---	---

CabbageGreenCalifornia:Imperial-Coachella Valley

Carton, 24s	8.83	9.54	-	-	-	-	-	-	-	-	-	2.45
-------------------	------	------	---	---	---	---	---	---	---	---	---	------

Southern

Carton, 24s	-	-	-	5.18	2.64	-	-	-	-	-	-	-
-------------------	---	---	---	------	------	---	---	---	---	---	---	---

Table 1. --Continued

VEGETABLES--CONTINUED

Shipping point and description of sale	Jan.	Feb.	Mar.	Apr.	May	June	July	Aug.	Sept.	Oct.	Nov.	Dec.
- Dollars per Unit -												
<u>Cabbage-Continued</u>												
<u>Green</u>												
<u>Florida:</u>												
<u>1-3/4-bushel crate</u>												
North-(Hastings)	8.69	9.48	7.48	5.50	3.51	3.06	-	-	-	-	-	3.03
South-(Lake Okeechobee)	8.79	10.61	7.93	5.95	3.34	-	-	-	-	-	-	-
Central-(Sanford-Oviedo-Zellwood) ..	8.69	9.82	7.70	5.90	3.50	-	-	-	-	-	-	-
<u>Michigan</u>												
1-3/4-bushel crate & 50-lb.carton..	-	-	-	-	-	-	2.84	2.82	3.28	-	-	-
<u>New Jersey</u>												
<u>South & Central New Jersey</u>												
<u>1-3/4-bushel crate & carton</u>												
Medium-large	-	-	-	-	-	-	2.58	-	3.13	4.91	-	-
<u>Vineland - Auction sales</u>												
Medium-large	-	-	-	-	-	2.28	2.34	-	-	-	-	-
<u>New York:</u>												
<u>Western & Central New York</u>												
<u>50-lb. crate & carton</u>												
Medium	-	-	-	-	-	-	-	2.47	2.94	3.37	-	-
<u>50-lb. sack</u>												
Danish, Medium	8.38	10.33	-	-	-	-	-	-	-	3.70	3.03	2.65
Large	8.38	10.35	11.13	-	-	-	-	-	-	2.66	2.48	2.43
<u>Long Island - Auction sales</u>												
1-3/4-bushel crate	-	-	-	-	-	-	-	-	2.77	4.77	3.88	-
<u>North Carolina:</u>												
<u>1-3/4-bushel crate</u>												
Eastern North Carolina	-	-	-	-	3.83	2.34	-	-	-	-	4.12	-
Western North Carolina	-	-	-	-	-	-	2.96	2.74	3.14	-	-	-
<u>Texas:</u>												
<u>Lower Rio Grande Valley</u>												
1-3/4-bushel crate	8.58	-	-	-	-	-	-	-	-	-	-	-
50-lb.sack	8.57	9.17	7.86	4.88	2.75	-	-	-	-	-	3.38	1.79
50-lb.carton	9.09	9.79	8.46	5.49	3.34	-	-	-	-	-	3.99	2.46
<u>San Antonio-Winter Garden</u>												
50-lb.sack	7.86	-	-	-	-	-	-	-	-	-	3.48	1.84
50-lb.carton	7.84	-	-	-	-	-	-	-	-	-	4.13	2.47
<u>Carrots</u>												
<u>48-1-lb.film bag, sacks</u>												
<u>Arizona:</u>												
Central Arizona	-	-	-	-	-	3.65	-	-	-	-	-	-
<u>California:</u>												
Imperial-Coachella Valley	9.71	8.21	6.95	4.84	5.11	-	-	-	-	-	-	-
Kern District	9.58	8.70	7.02	4.93	5.09	3.60	3.50	3.92	4.50	4.78	4.92	5.18
Salinas-King City	-	-	-	-	-	4.00	4.00	4.46	5.00	5.00	5.08	5.43
<u>Florida:</u>												
Central Florida	9.97	8.47	7.09	5.78	5.50	4.08	-	-	-	-	-	6.00
<u>Michigan</u>												
.....	-	-	-	-	-	-	-	5.51	5.09	5.80	5.58	-
<u>Texas:</u>												
Lower Rio Grande Valley	10.32	7.87	6.39	5.08	-	-	-	-	-	-	-	5.78
San Antonio-Winter Garden	9.45	8.18	6.32	5.10	-	-	-	-	-	-	-	5.63
<u>Cauliflower</u>												
<u>Carton, film wrapped, 12#</u>												
<u>California:</u>												
Irvington-Alvarado-Centerville	7.85	7.74	7.64	6.00	-	-	-	-	-	-	-	-
Oceanso-Santa Maria-Guadalupe	-	-	6.22	4.82	-	-	-	-	-	-	-	-
Salinas-Watsonville	-	-	5.93	4.46	4.60	5.30	6.24	6.02	6.05	5.79	5.68	4.77
Southern California	7.21	-	-	4.21	4.79	-	-	-	-	-	-	-
<u>Florida:</u>												
Central -(Ruskin)	8.50	7.82	7.24	5.70	6.00	-	-	-	-	-	-	6.20
<u>New York:</u>												
<u>Long Island - Auction sales</u>												
<u>Long Island crate, 12#</u>												
Riverhead	-	-	-	-	-	-	-	-	7.17	6.84	6.51	-
<u>Celery</u>												
<u>Crate</u>												
Southern Calif., 2-3-dozen	8.40	8.42	5.82	6.26	5.41	3.58	4.75	-	-	-	4.72	3.63
Salinas-Watsonville, Calif., 2-3-dozen ..	-	-	-	-	-	-	4.32	3.45	3.90	4.14	4.73	3.24
South Fla., 2-6-dozen	6.93	8.34	6.12	5.83	5.85	-	-	-	-	-	5.68	3.59
Central Fla., 2-6-dozen	-	-	5.57	5.81	5.80	5.06	-	-	-	-	-	-
West Michigan, 2-6-dozen	-	-	-	-	-	-	6.06	5.13	4.81	4.73	-	-
Orange County, N.Y., 2-6-dozen	-	-	-	-	-	-	5.71	5.36	5.12	5.08	-	-

Table 1. --Continued

VEGETABLES--CONTINUED

Shipping point and description of sale	Jan.	Feb.	Mar.	Apr.	May	June	July	Aug.	Sept.	Oct.	Nov.	Dec.
	- Dollars per Unit -											
<u>Corn, Sweet</u>												
<u>Crate, 4 1/2-dozen, Yellow</u>												
<u>California:</u>												
Imperial-Coachella Vly., Carton ...	-	-	-	-	5.21	4.10	-	-	-	-	-	-
<u>Florida:</u>												
South	4.93	-	-	4.35	3.50	-	-	-	-	3.60	3.30	2.76
Central	-	-	-	-	3.50	2.75	-	-	-	-	-	-
<u>Georgia:</u>												
South Georgia & North Florida	-	-	-	-	-	2.62	2.64	-	-	-	-	-
<u>New Jersey:</u>												
South & Central New Jersey	-	-	-	-	-	-	2.71	2.46	-	-	-	-
<u>New York:</u>												
Hudson Valley, Crate & Paper sack...	-	-	-	-	-	-	2.81	2.70	3.59	-	-	-
Western & Central	-	-	-	-	-	-	-	-	3.76	-	-	-
<u>Cucumbers</u>												
<u>Medium, waxed</u>												
<u>Florida:</u>												
<u>1-1/9-bushel crate & carton</u>												
South Florida	-	-	-	7.23	5.44	-	-	-	-	8.33	5.54	5.73
Central Florida	-	-	-	-	6.36	5.28	-	-	-	-	-	-
North Florida	-	-	-	-	6.36	5.21	-	-	-	-	-	-
<u>Michigan:</u>												
<u>Bushel carton</u>												
Mostly waxed	-	-	-	-	-	-	7.35	5.65	5.41	-	-	-
<u>New Jersey:</u>												
<u>1-1/9-bushel crate</u>												
South & Central New Jersey	-	-	-	-	-	-	7.66	-	-	-	-	-
Vineland-Auction sales, unwaxed ...	-	-	-	-	-	10.64	8.46	6.51	-	-	-	-
<u>New York:</u>												
<u>Western & Central New York</u>												
Carton, 24s	-	-	-	-	-	-	-	1.56	1.49	-	-	-
1-1/9-bushel carton	-	-	-	-	-	-	-	4.63	4.74	-	-	-
<u>North Carolina:</u>												
<u>1-1/9-bushel crate & carton</u>												
Western North Carolina	-	-	-	-	-	-	-	7.80	7.16	-	-	-
Eastern North Carolina	-	-	-	-	-	-	5.95	-	-	-	-	-
<u>Bushel basket & 1-1/9-bushel crate</u>												
Faison-Auction sales, unwaxed	-	-	-	-	-	4.94	-	-	-	-	-	-
(85% or more U.S.No.1)												
<u>South Carolina:</u>												
<u>1-1/9-bushel crate & carton</u>												
Charleston-Beaufort-Jasper	-	-	-	-	7.63	4.79	-	-	-	-	-	-
<u>Texas:</u>												
<u>Bushel carton</u>												
Lower Rio Grande Valley	-	-	-	-	5.79	-	-	-	-	-	4.97	-
<u>Virginia: -(Semi-weekly)</u>												
<u>1-1/9-bushel crate</u>												
Eastern Shore Virginia	-	-	-	-	-	-	-	-	4.42	-	-	-
<u>Mexico:</u>												
<u>FOB Nogales, Arizona-(Point of Entry)</u>												
<u>Duty and crossing charges paid</u>												
1-1/9-bushel crate & carton	8.43	10.97	16.26	-	-	-	-	-	-	-	-	5.46
<u>Eggplant</u>												
<u>Florida:</u>												
<u>Pompano Beach -(State Farmers Market)</u>												
<u>Bushel carton & 1-1/9-bu.crt.& ctn.</u>												
Medium, wrapped	5.10	-	-	4.10	3.50	-	-	-	-	-	1.89	2.23
<u>Central & North Florida</u>												
1-1/9-bu.crt.& ctn., wrapped	-	-	-	-	6.42	5.37	-	-	-	-	-	-
<u>New Jersey:</u>												
<u>Vineland - Auction sales</u>												
Bu.bkt.& 1-1/9-bu.crt.& ctn.,Med...	-	-	-	-	-	-	6.11	2.15	3.20	4.83	-	-
<u>North Carolina:</u>												
<u>Faison - Auction sales</u>												
Bu.bkt.& crt.,85% or more US#1	-	-	-	-	-	6.12	4.94	-	-	-	-	-
<u>Mexico:</u>												
<u>FOB Nogales, Arizona-(Point of Entry)</u>												
<u>Duty and crossing charges paid</u>												
<u>Bushel crate & carton</u>												
Wrapped, 18-24s	5.91	6.22	8.34	3.30	-	-	-	-	-	-	-	2.54

Table 1. --Continued

VEGETABLES-CONTINUED

Shipping point and description of sale	Jan.	Feb.	Mar.	Apr.	May	June	July	Aug.	Sept.	Oct.	Nov.	Dec.
- Dollars per Unit -												
<u>Escarole</u>												
<u>Florida:</u>												
<u>1-1/9-bushel crate</u>												
Central Florida	-	-	3.33	1.93	2.81	-	-	-	-	-	2.33	2.35
South Florida	6.48	7.11	3.63	2.26	-	-	-	-	-	-	-	-
<u>Endive</u>												
<u>Florida:</u>												
<u>1-1/9-bushel crate</u>												
Central Florida	-	-	-	2.15	2.69	-	-	-	-	-	2.33	2.35
South Florida	6.45	8.24	4.43	2.63	-	-	-	-	-	-	2.38	2.70
<u>Lettuce</u>												
<u>Iceberg type, carton, 24s</u>												
<u>Arizona:</u>												
Central Arizona	-	-	-	2.04	-	-	-	-	-	-	5.11	-
Western Arizona	3.73	2.74	3.61	2.06	-	-	-	-	-	-	5.34	2.60
<u>California:</u>												
Imperial Valley	3.81	2.83	3.84	-	-	-	-	-	-	-	-	2.53
Palo Verde Valley	-	-	3.71	2.16	-	-	-	-	-	-	5.75	2.69
Oxnard	-	-	-	1.99	2.41	-	-	-	-	-	-	-
Salinas-Watsonville	-	-	-	-	2.58	2.07	2.51	3.08	3.57	3.66	-	-
Central San Joaquin Valley	-	-	-	2.00	-	-	-	-	-	3.25	5.64	-
South San Joaquin Valley	-	-	-	2.01	-	-	-	-	-	-	-	-
Kern District	-	-	-	-	-	-	-	-	-	3.29	5.56	-
<u>Colorado:</u>												
San Luis Valley	-	-	-	-	-	-	2.61	2.84	3.69	-	-	-
<u>New Jersey:</u>												
South New Jersey	-	-	-	-	-	3.18	-	-	-	4.28	-	-
<u>New York: -(Vacuum cooled)</u>												
Western & Central New York	-	-	-	-	-	-	3.69	3.59	4.06	-	-	-
Orange County	-	-	-	-	-	-	3.81	3.09	-	-	-	-
<u>New Mexico:</u>												
Las Cruces-Hatch	-	-	-	-	3.36	-	-	-	-	3.57	-	-
<u>Texas:</u>												
Lower Rio Grande Valley	3.54	-	3.36	-	-	-	-	-	-	-	-	2.59
Hereford-Hi Plains	-	-	-	-	-	-	-	-	-	3.65	-	-
<u>Big Boston type</u>												
<u>New York:</u>												
<u>Eastern Boston crate, 24s</u>												
Orange County	-	-	-	-	-	-	2.64	3.86	-	-	-	-
<u>Onions, Dry</u>												
<u>50-lb. sack</u>												
<u>Arizona:</u>												
<u>Central Arizona - U.S.No.1</u>												
Yellow Granex, medium	-	-	-	-	3.90	3.39	-	-	-	-	-	-
repacker	-	-	-	-	4.45	3.80	-	-	-	-	-	-
<u>California:</u>												
<u>Imperial Valley</u>												
Yellow Granex-Grano, medium	-	-	-	-	4.21	-	-	-	-	-	-	-
large	-	-	-	-	4.63	-	-	-	-	-	-	-
repacker	-	-	-	-	5.60	-	-	-	-	-	-	-
Yellow Grano, medium	-	-	-	-	4.17	3.75	-	-	-	-	-	-
large	-	-	-	-	5.83	3.94	-	-	-	-	-	-
repacker	-	-	-	-	5.20	4.00	-	-	-	-	-	-
White, medium	-	-	-	-	6.13	-	-	-	-	-	-	-
large	-	-	-	-	8.68	-	-	-	-	-	-	-
<u>Stockton - U.S.No.1</u>												
Stockton Yellow, medium	-	-	-	-	-	3.74	3.68	-	-	-	-	-
large	-	-	-	-	-	4.05	4.14	-	-	-	-	-
repacker	-	-	-	-	-	4.20	-	-	-	-	-	-
<u>Colorado:</u>												
<u>U.S.No.1, 3" & larger</u>												
<u>Yellow Hybrid type</u>												
North & East Colorado	6.93	8.00	9.25	-	-	-	-	-	3.21	3.62	3.78	3.29
Western Slope	6.65	8.00	11.18	-	-	-	-	-	-	-	3.54	2.97
<u>Idaho-Oregon:</u>												
<u>Western Idaho-Malheur Co.Oregon</u>												
<u>U.S.No.1</u>												
Yellow Spanish, 2 1/2-3-in.	4.78	5.79	7.22	-	-	-	-	2.02	2.18	2.34	2.59	1.91
3" & lgr.	5.41	6.99	12.14	-	-	-	-	2.60	2.46	2.70	2.91	2.52
White, 3" & lgr.	-	-	-	-	-	-	-	6.33	6.10	6.14	6.79	-
lge-med.	-	-	-	-	-	-	-	5.00	4.98	4.96	5.71	-

Table 1. --Continued

VEGETABLES--CONTINUED

Shipping point and description of sale	Jan.	Feb.	Mar.	Apr.	May	June	July	Aug.	Sept.	Oct.	Nov.	Dec.
- Dollars per Unit -												
<u>Onions, Dry--Continued</u>												
<u>50-lb. sack</u>												
<u>Michigan:</u>												
<u>U.S.No.1,70% or more, 2" x lgr.</u>												
Yellow Globe	5.71	7.51	9.20	-	-	-	-	3.68	3.22	3.18	3.04	3.05
<u>New Jersey:</u>												
<u>South & Central New Jersey</u>												
Pronto,small-medium	-	-	-	-	-	-	3.67	-	-	-	-	-
<u>New Mexico</u>												
<u>South New Mexico</u>												
Yellow Grano, medium	-	-	-	-	-	4.40	-	-	-	-	-	-
repacker	-	-	-	-	-	4.51	-	-	-	-	-	-
Yellow Hybrid type, medium	-	-	-	-	-	-	3.23	3.00	-	-	-	-
large	-	-	-	-	-	-	5.43	5.20	-	-	-	-
repacker	-	-	-	-	-	-	3.35	2.83	-	-	-	-
White, medium	-	-	-	-	-	7.86	7.50	6.87	-	-	-	-
large	-	-	-	-	-	9.00	8.83	7.49	-	-	-	-
repacker	-	-	-	-	-	6.66	5.50	5.50	-	-	-	-
<u>New York:</u>												
<u>Western & Central New York</u>												
<u>U.S.No.1, 50-70% 2" x lgr.</u>												
Yellow Globe	6.52	7.89	8.71	7.93	-	-	-	-	-	-	3.04	2.93
<u>Orange County</u>												
<u>U.S.No.1, 60-70% 2" x lgr.</u>												
Yellow Globe	6.40	7.95	9.17	-	-	-	-	3.71	3.12	3.50	3.36	3.05
<u>Texas:</u>												
<u>Lower Rio Grande Valley</u>												
<u>80% U.S.No.1 or better</u>												
Yellow Granex-Grano, medium	-	-	-	9.88	-	-	-	-	-	-	-	-
large	-	-	-	9.69	-	-	-	-	-	-	-	-
repacker	-	-	-	10.31	-	-	-	-	-	-	-	-
Yellow Granex, medium	-	-	-	7.36	4.30	-	-	-	-	-	-	-
large	-	-	-	9.05	5.46	-	-	-	-	-	-	-
repacker	-	-	-	7.95	5.72	-	-	-	-	-	-	-
Yellow Grano, large	-	-	-	-	6.02	-	-	-	-	-	-	-
White, medium	-	-	-	11.47	7.43	-	-	-	-	-	-	-
large	-	-	-	12.80	9.60	-	-	-	-	-	-	-
repacker	-	-	-	9.64	5.79	-	-	-	-	-	-	-
<u>San Antonio-Winter Garden</u>												
Yellow Grano, medium	-	-	-	-	-	4.26	-	-	-	-	-	-
large	-	-	-	-	-	5.00	-	-	-	-	-	-
repacker	-	-	-	-	-	4.43	-	-	-	-	-	-
White, medium	-	-	-	-	-	7.33	-	-	-	-	-	-
large	-	-	-	-	-	9.25	-	-	-	-	-	-
repacker	-	-	-	-	-	7.25	-	-	-	-	-	-
<u>Hi Plains-Panhandle</u>												
Yellow Grano, medium	-	-	-	-	-	-	3.93	-	-	-	-	-
large	-	-	-	-	-	-	5.00	-	-	-	-	-
repacker	-	-	-	-	-	-	4.14	-	-	-	-	-
Yellow Spanish, medium	-	-	-	-	-	-	3.49	3.09	-	-	-	-
large	-	-	-	-	-	-	6.00	5.27	-	-	-	-
repacker	-	-	-	-	-	-	3.43	2.89	-	-	-	-
White, medium	-	-	-	-	-	-	7.95	6.91	-	-	-	-
large	-	-	-	-	-	-	9.49	7.55	-	-	-	-
repacker	-	-	-	-	-	-	5.87	5.50	-	-	-	-
<u>Washington:</u>												
<u>Walla Walla District</u>												
Yellow, medium	-	-	-	-	-	-	4.19	2.84	-	-	-	-
3" x lgr.	-	-	-	-	-	-	4.75	4.68	-	-	-	-
<u>Mexico:</u>												
<u>FOB South Texas-(Point of Entry)</u>												
<u>Duty and crossing charges paid</u>												
<u>U.S.No.1, quality</u>												
<u>Morelos-Cuernavaca-Tampico</u>												
White, medium	7.73	7.88	12.59	14.00	-	-	-	-	-	-	-	10.97
large	9.27	8.11	13.14	15.00	-	-	-	-	-	-	-	12.00
repacker	7.37	7.83	12.43	11.61	-	-	-	-	-	-	-	9.00
Yellow Grano, medium	-	-	-	9.91	-	-	-	-	-	-	-	-
large	-	-	-	11.55	-	-	-	-	-	-	-	-
repacker	-	-	-	10.50	-	-	-	-	-	-	-	-

Table 1. --Continued

VEGETABLES--CONTINUED

Shipping point and description of sale	Jan.	Feb.	Mar.	Apr.	May	June	July	Aug.	Sept.	Oct.	Nov.	Dec.
	- Dollars per Unit -											
<u>Peppers, Green</u>												
<u>California Wonder type, large</u>												
<u>California:</u>												
<u>Gilroy, Hollister, King City</u>												
Approximate 30-lb. carton	-	-	-	-	-	-	-	-	4.49	5.55	5.74	-
<u>Oceano-Arroyo Grande</u>												
Approximate 30-lb. carton	-	-	-	-	-	-	-	-	-	5.94	6.30	-
<u>Florida:</u>												
<u>Pompano Beach</u>												
<u>State Farmers Market</u>												
Bushel crate & carton	10.61	-	-	9.85	4.75	-	-	-	-	-	5.67	4.63
<u>South Florida</u>												
Bushel carton	11.61	-	-	10.86	4.83	-	-	-	-	-	6.06	5.34
<u>Central & North Florida</u>												
1-1/9-bushel crate	-	-	-	-	5.23	4.88	-	-	-	-	-	-
<u>New Jersey:</u>												
<u>Vineland - Auction sales</u>												
1-1/9-bushel & carton, med-lge	-	-	-	-	-	-	7.35	4.73	4.49	3.46	-	-
<u>North Carolina:</u>												
<u>Eastern North Carolina</u>												
1-1/9-bushel crate	-	-	-	-	-	-	5.96	-	-	-	-	-
<u>Western North Carolina</u>												
1-1/9-bushel crate	-	-	-	-	-	-	-	6.01	5.28	-	-	-
<u>Faison - Auction sales</u>												
<u>85% or more U.S.No.1</u>												
1-1/9-bushel crate, med-lge	-	-	-	-	-	7.07	5.82	-	-	-	-	-
<u>Texas:</u>												
<u>Bushel carton</u>												
<u>Hi Plains-Panhandle</u>												
Lower Rio Grande Valley	-	-	-	-	4.88	4.39	-	4.66	4.00	-	-	5.35
<u>Mexico:</u>												
<u>FOB Nogales, Arizona-(Point of Entry)</u>												
<u>Duty and crossing charges paid</u>												
1-1/9-bushel crate & carton	12.37	12.47	21.22	-	-	-	-	-	-	-	-	6.50
<u>Potatoes</u>												
<u>Washed, U.S.No.1, Size A</u>												
<u>Alabama:</u>												
<u>100-lb. sack</u>												
<u>Northeast Alabama</u>												
Round Reds	-	-	-	-	-	-	5.65	-	-	-	-	-
<u>South Alabama</u>												
Round Reds	-	-	-	-	9.67	7.40	-	-	-	-	-	-
Round Whites	-	-	-	-	8.00	8.00	-	-	-	-	-	-
<u>Arizona:</u>												
<u>100-lb. sack</u>												
<u>Central Arizona</u>												
Round Reds	-	-	-	-	9.34	-	-	-	-	-	-	-
Norgold	-	-	-	-	-	5.84	-	-	-	-	-	-
50-lb. ctn., CWT. basis, 6-14-oz.	-	-	-	-	-	7.83	-	-	-	-	-	-
Centennials	-	-	-	-	-	6.73	-	-	-	-	-	-
50-lb. ctn., CWT. basis, 80-100s.	-	-	-	-	-	9.25	-	-	-	-	-	-
<u>California:</u>												
<u>100-lb. sack</u>												
<u>Kern District</u>												
Long Whites	-	-	-	-	6.50	4.70	3.75	-	-	-	-	-
50-lb. ctn., CWT. basis	-	-	-	-	-	5.70	4.71	-	-	-	-	-
50-lb. ctn., CWT. basis, 80-100s.	-	-	-	-	-	7.34	6.50	-	-	-	-	-
Round Reds	-	-	-	-	-	5.98	-	-	-	-	-	-
Centennials	-	-	-	-	-	4.32	4.39	-	-	-	-	-
50-lb. ctn., CWT. basis, 80-100s.	-	-	-	-	-	8.60	8.64	-	-	-	-	-
<u>Colorado:</u>												
<u>100-lb. sack</u>												
<u>Northern Colorado (Greeley)</u>												
Norgold, 1-7/8" or 4-oz. min.	-	-	-	-	-	-	-	4.64	-	-	-	-
50-lb. ctn., CWT. basis, 80-100s.	-	-	-	-	-	-	-	14.84	13.47	-	-	-
Round Reds	-	-	-	-	-	-	-	4.16	4.50	-	-	-
<u>San Luis Valley</u>												
Red McClures, 2" up	4.26	5.10	5.30	5.57	-	-	-	-	5.00	5.00	4.63	4.63
Russets, 1-7/8" min.	5.51	5.66	5.60	5.88	6.35	-	-	-	5.83	5.63	5.65	5.51
50-lb. ctn., CWT. basis, 80-100s.	8.18	8.24	8.15	9.46	10.00	-	-	-	12.83	11.22	10.37	10.08

1/Large & few Extra large.

Table 1. --Continued

VEGETABLES--CONTINUED

Shipping point and description of sale	Jan.	Feb.	Mar.	Apr.	May	June	July	Aug.	Sept.	Oct.	Nov.	Dec.
- Dollars per Unit -												
<u>Potatoes--Continued</u>												
<u>Washed, U.S.No.1, Size A</u>												
<u>Delaware:</u>												
<u>100s & 50s, CWT.basis</u>												
Round Whites	-	-	-	-	-	-	4.45	3.87	-	-	-	-
<u>Florida:</u>												
<u>50-lb.sack</u>												
<u>South Florida</u>												
Round Reds, Size A	5.58	5.47	5.38	6.50	-	-	-	-	-	-	-	-
Size B	6.58	6.46	5.04	6.26	-	-	-	-	-	-	-	-
<u>Hastings</u>												
Round Whites	-	-	-	-	4.00	-	-	-	-	-	-	-
<u>To Processors, bulk per CWT.unwashed</u>												
<u>85¢ or more U.S.No.1, quality</u>												
Round Whites, 1-5/8"up	-	-	-	-	3.46	-	-	-	-	-	-	-
<u>Idaho:</u>												
<u>Upper Valley-Twin Falls-Burley</u>												
<u>2"or 4-oz.min., Per CWT.basis:</u>												
Russets, Baled, 10-lb.mesh sack, non-size A	5.76	6.57	6.21	7.04	8.85	8.13	-	-	-	5.33	5.26	4.99
50-lb.ctn., 80-100s	8.26	7.69	8.22	10.08	10.92	10.75	-	-	-	11.86	10.72	10.90
<u>Maine:</u>												
<u>50-lb.sack, unwashed, 2"min.</u>												
<u>Aroostook County</u>												
Round Whites, mostly Katahdins	2.54	2.49	2.43	3.17	3.58	-	-	-	-	1.71	1.43	1.26
<u>Michigan:</u>												
<u>50-lb.sack</u>												
Round Whites	2.48	2.96	2.93	-	-	-	2.48	1.83	1.81	.50 ¹ / ₂	.48 ¹ / ₂	.44 ¹ / ₂
<u>Minnesota</u>												
<u>100-lb.sack</u>												
<u>Anoka Cty-Oaseco-Big Lake</u>												
Early Gem	-	-	-	-	-	-	-	4.61	-	-	-	-
Norgold	-	-	-	-	-	-	-	4.31	4.06	-	-	-
Round Reds	-	-	-	-	-	-	4.76	2.74	3.21	-	-	-
Round Whites	-	-	-	-	-	-	-	3.25	-	-	-	-
Russet Burbanks	-	-	-	-	-	-	-	4.53	5.38	-	-	-
<u>New Jersey:</u>												
<u>100s & 50s CWT.basis</u>												
<u>South & Central New Jersey</u>												
Round Whites	-	-	-	-	-	-	-	3.75	4.01	4.39	-	-
<u>New York:</u>												
<u>50-lb.sack</u>												
<u>Long Island - 2"min.</u>												
Round Whites, mostly washed	3.05	3.00	3.00	-	-	-	-	2.01	1.98	2.25	2.06	1.94
<u>Western & Central New York</u>												
Round Whites	3.24	3.37	3.41	4.31	-	-	-	-	-	-	2.22	2.11
<u>North Carolina:</u>												
<u>100-lb.sack</u>												
<u>Eastern North Carolina</u>												
Round Whites	-	-	-	-	-	6.94	-	-	-	-	-	-
<u>North Dakota-Minnesota:</u>												
<u>100-lb.sack</u>												
<u>Red River Valley</u>												
Round Reds	3.93	4.94	4.36	4.47	-	-	-	-	3.95	3.86	3.34	3.16
<u>Oregon-California:</u>												
<u>Klamath Basin</u>												
<u>1-7/8"min., CWT.basis</u>												
Russets, Baled, 10-lb.file bags, non-size A	4.21	4.17	4.14	4.49	5.63	-	-	-	-	3.94	3.81	3.82
50-lb.ctn., 80-90s	7.10	7.13	7.20	7.92	9.81	-	-	-	-	10.71	10.50	10.50
<u>Pennsylvania: -(Semi-weekly)</u>												
<u>50-lb.sack</u>												
Round Whites, mostly unwashed	2.83	2.87	2.85	-	-	-	-	-	-	-	-	1.94
<u>Texas:</u>												
<u>100-lb.sack</u>												
<u>Ni Plains-Panhandle</u>												
Norgold	-	-	-	-	-	-	8.18	6.80	-	-	-	-
Round Reds	-	-	-	-	-	-	4.96	3.60	-	-	-	-
<u>Virginia:</u>												
<u>100-lb.sack</u>												
<u>Eastern Shore</u>												
Round Whites	-	-	-	-	-	6.11	4.92	-	-	-	-	-

1/Open window paper, 10-lb. loose.

Table 1. --Continued

VEGETABLES--CONTINUED

Shipping point and description of sale	Jan.	Feb.	Mar.	Apr.	May	June	July	Aug.	Sept.	Oct.	Nov.	Dec.
	Dollars per Unit											
<u>Potatoes--Continued</u>												
<u>Washed, U.S.No.1, Size A</u>												
<u>Washington:</u>												
<u>Yakima Valley-Columbia Basin</u>												
<u>2" or 4-oz.min., CWT.basis</u>												
Norgold, Baled, 10-lb.mesh sack, non-size A	-	-	-	-	-	-	-	5.30	4.75	-	-	-
50-lb.ctn., 80-100s	-	-	-	-	-	-	-	13.06	11.75	-	-	-
Russet Burbanks	4.69	-	4.63	-	-	-	-	-	-	-	-	-
Baled, 10-lb.film bags, non-size A	4.44	4.51	4.50	5.03	6.64	-	-	-	4.08	4.05	4.43	4.47
50-lb.ctn., 80-100s	7.10	6.82	6.65	7.96	8.86	-	-	-	11.45	9.67	9.73	9.75
<u>Wisconsin:</u>												
<u>100-lb.sack</u>												
Norgold	-	-	-	-	-	-	-	4.41	4.00	-	-	-
Round Reds	-	-	-	-	-	-	-	2.95	3.24	3.67	3.93	3.94
Round Whites	-	-	-	-	-	-	-	2.95	3.14	3.24	3.15	2.92
Russet Burbanks	-	-	-	-	-	-	-	-	-	4.50	4.50	4.44
50-lb.ctn., CWT.basis, 80-100s...	8.35	7.98	7.58	8.47	-	-	-	14.22	12.16	10.71	10.15	10.36
<u>Radishes</u>												
<u>Carton, film bags, Reds, 30-6-oz.</u>												
Florida	2.93	2.92	1.65	1.43	2.21	-	-	-	-	-	1.97	2.78
Michigan	-	-	-	-	-	1.70	2.42	1.93	2.43	-	-	-
<u>Spinach</u>												
<u>Savoy type, bushel basket or crate</u>												
<u>New Jersey:</u>												
Vineland - Auction sales	-	-	-	-	2.72	4.08	-	-	-	5.71	-	-
<u>Texas:</u>												
San Antonio-Winter Garden	4.85	4.54	3.70	-	-	-	-	-	-	-	-	4.03
<u>Sweetpotatoes</u>												
<u>California: -(Semi-weekly)</u>												
<u>Atwater-Livingston</u>												
<u>40-lb.carton</u>												
Yellow Jersey	9.50	9.20	8.70	8.55	8.50	8.50	-	-	-	10.00	9.98	10.09
Porto Rico type Garnet	7.50	7.53	7.90	8.25	8.68	9.25	-	-	-	7.90	7.48	7.96
Jewel	6.70	6.70	6.70	6.83	7.03	-	-	-	-	7.33	7.13	7.78
<u>Georgia:</u>												
<u>50-lb.crt. & ctn., washed & waxed</u>												
Jewel & Porto Rico type	-	-	-	-	-	-	-	-	6.38	6.47	6.71	8.50 ^{1/2}
<u>Louisiana:</u>												
<u>50-lb.crate & carton, U.S.No.1</u>												
Centennial & Porto Rico, cured	6.76	7.63	8.30	8.75	-	-	-	-	-	-	9.75	9.75
uncured	-	-	-	-	-	-	-	11.02	7.61	7.24	7.99	-
<u>New Jersey:-(Semi-weekly)</u>												
<u>50-lb.carton, washed, waxed & cured</u>												
Jewel	-	-	-	-	-	-	-	-	-	-	7.56	7.75
Goldmar	-	-	-	-	-	-	-	-	-	-	6.97	7.16
<u>North Carolina:</u>												
<u>Eastern North Carolina</u>												
<u>50-lb.carton, US#1, washed & waxed</u>												
Jewel & Porto Rico type, cured	5.86	6.98	8.17	8.75	9.69	-	-	-	-	-	8.03	8.41
uncured	-	-	-	-	-	-	-	-	6.66	6.33	-	-
<u>Virginia-Maryland: -(Semi-weekly)</u>												
<u>Eastern Shore</u>												
<u>50-lb.crate & carton, washed</u>												
Various varieties, cured	5.38	-	-	-	-	-	-	-	-	-	8.00	8.08
uncured	-	-	-	-	-	-	-	-	6.09	6.13	-	-
<u>Tomatoes</u>												
<u>Arkansas:</u>												
<u>Bradley-Drew County</u>												
<u>(Monticello-Warren-Hermitage Auction)</u>												
<u>Auction price to growers</u>												
<u>20-lb.carton, U.S.No.1</u>												
Large	-	-	-	-	-	4.18	5.75	-	-	-	-	-
<u>California:</u>												
<u>Imperial Valley - 85% or more US#1</u>												
<u>30-lb.carton, 5x6s</u>												
5x6s	-	-	-	-	-	6.10	-	-	-	-	-	-
6x6s	-	-	-	-	-	4.27	-	-	-	-	-	-
6x7s	-	-	-	-	-	3.25	-	-	-	-	-	-
<u>2-layer flat, 5x6s</u>												
5x6s	-	-	-	-	-	4.54	-	-	-	-	-	-

Table 1. --Continued

VEGETABLES--CONTINUED

Shipping point and description of sale	Jan.	Feb.	Mar.	Apr.	May	June	July	Aug.	Sept.	Oct.	Nov.	Dec.
- Dollars per Unit -												
<u>Tomatoes--Continued</u>												
<u>California: --Continued</u>												
<u>Cutler-Orosi-Kern</u>												
<u>2-layer flat</u>												
4x5-5x6s	-	-	-	-	-	4.96	6.50	-	-	-	-	-
<u>Southern Calif.</u>												
<u>2-layer flat</u>												
4x5-5x6s	-	-	-	-	-	-	7.00	5.68	5.63	5.06	8.43	7.00
<u>Gonzales-King City</u>												
<u>30-lb. carton, 85% or more U.S.No.1</u>												
5x6s	-	-	-	-	-	-	-	5.92	5.93	6.11	-	-
6x6s	-	-	-	-	-	-	-	4.92	4.88	5.19	-	-
6x7s	-	-	-	-	-	-	-	3.94	4.30	4.19	-	-
<u>Merced & Central Westside</u>												
<u>30-lb. carton, 85% or more U.S.No.1</u>												
5x6s	-	-	-	-	-	-	8.39	-	-	-	-	-
6x6s	-	-	-	-	-	-	7.37	-	-	-	-	-
6x7s	-	-	-	-	-	-	6.64	-	-	-	-	-
<u>Northern San Joaquin Valley</u>												
<u>30-lb. carton, 85% or more U.S.No.1</u>												
5x6s	-	-	-	-	-	-	-	7.00	-	7.05	-	-
6x6s	-	-	-	-	-	-	-	6.00	-	6.04	-	-
6x7s	-	-	-	-	-	-	-	4.96	-	4.89	-	-
<u>Florida:</u>												
<u>South & Central Florida</u>												
<u>30-lb. carton, 85% or more U.S.No.1</u>												
Extra large	11.08	-	-	12.00	8.13	-	-	-	-	-	11.55	8.30
Large	10.75	-	-	11.91	6.60	-	-	-	-	-	11.10	7.48
Medium	7.83	-	-	6.73	4.46	-	-	-	-	-	7.63	4.35
<u>20-lb. carton, approx. 80-85% US.No.1</u>												
Extra large	7.04	7.79	-	8.60	-	-	-	-	-	-	-	5.92
Large	6.83	7.79	-	8.60	-	-	-	-	-	-	-	5.23
Medium	4.88	-	-	6.17	-	-	-	-	-	-	-	3.83
<u>Michigan:</u>												
<u>Southwest Michigan, Mich.No.1</u>												
<u>Carton, 2-layer, 5x6s</u>												
30-lb., medium-large	-	-	-	-	-	-	-	6.06	5.39	-	-	-
8-qt., medium-large	-	-	-	-	-	-	-	5.80	-	-	-	-
<u>New Jersey:</u>												
<u>Swedesboro - Auction sales</u>												
<u>1/2-bushel hamper</u>												
Medium-large	-	-	-	-	-	9.98	6.96	4.55	-	-	-	-
Small-medium	-	-	-	-	-	6.19	5.37	3.18	-	-	-	-
<u>30-lb. carton</u>												
Medium-large	-	-	-	-	-	-	-	-	-	-	-	-
Small-medium	-	-	-	-	-	-	5.68	3.56	-	-	-	-
<u>North Carolina:</u>												
<u>Western North Carolina</u>												
<u>20-lb. carton, Extra large-large ...</u>												
Medium	-	-	-	-	-	-	6.80	5.64	6.00	-	-	-
Medium	-	-	-	-	-	-	5.30	4.11	4.13	-	-	-
<u>Ohio:</u>												
<u>Cleveland-Northern Ohio (Greenhouse)</u>												
<u>8-lb. bkt., U.S.No.1, Medium</u>												
Large	-	-	6.08	5.10	4.12	2.61	3.29	-	-	3.31	4.32	-
Large	-	-	6.03	5.13	4.55	3.39	3.61	-	-	3.28	4.29	-
<u>South Carolina:</u>												
<u>Charleston-Beaufort -85% or more US#1</u>												
<u>30-lb. carton, 5x6s</u>												
6x6s	-	-	-	-	-	5.96	-	-	-	-	-	-
6x6s	-	-	-	-	-	5.22	-	-	-	-	-	-
6x7s	-	-	-	-	-	3.22	-	-	-	-	-	-
<u>Mexico:</u>												
<u>Duty and crossing charges paid</u>												
<u>FOB Nogales, Arizona - (Point of Entry)</u>												
<u>3-layer lug, 85% or more U.S.No.1</u>												
6x6s	9.49	9.08	11.14	9.33	5.46	4.88	-	-	-	-	-	-
6x7s	8.40	7.97	10.21	8.45	4.24	4.38	-	-	-	-	-	-
7x7s	7.13	6.80	9.21	7.08	3.89	-	-	-	-	-	-	-
2-layer flat, 4x5-5x6s	7.96	6.71	8.24	6.75	5.37	3.56	-	-	-	-	-	-
<u>Baja Calif. Mexico</u>												
<u>FOB San Ysidoro, Calif. - (Point of Entry)</u>												
<u>2-layer flat, 4x5-5x6s</u>												
3-layer lug, 6x6s	-	-	-	-	-	-	-	-	-	5.31	8.45	7.26
3-layer lug, 6x6s	-	-	-	-	-	-	-	-	-	7.33	10.50	7.49
6x7s	-	-	-	-	-	-	-	-	-	6.72	9.35	6.21

Table 2. --Wholesale prices of specified fruits and vegetables at New York City and Chicago, each month by market, origin, and description, 1977 1/

Market, Origin and description	BERRIES											
	Jan.	Feb.	Mar.	Apr.	May	June	July	Aug.	Sept.	Oct.	Nov.	Dec.
	- Dollars per Unit -											
	<u>Blackberries</u>											
New York:												
N.J., per pint	-	-	-	-	-	.75	.80	.83	-	-	-	-
	<u>Blueberries</u>											
Per pint												
New York:												
N.C.	-	-	-	-	.80	.78	-	-	-	-	-	-
N.J.	-	-	-	-	-	.70	.75	1.09	-	-	-	-
Chicago:												
Mich.	-	-	-	-	-	.78	.76	.96	-	-	-	-
N.J.	-	-	-	-	-	.77	.79	-	-	-	-	-
	<u>Cranberries</u>											
24-1-lb. film bags, carton												
New York:												
Mass., Early varieties	-	-	-	-	-	-	-	-	-	7.33	7.50	-
Howes	-	-	-	-	-	-	-	-	-	-	-	8.00
Chicago:												
Mass., Early varieties	-	-	-	-	-	-	-	-	-	6.25	5.25	-
Howes	-	-	-	-	-	-	-	-	-	-	-	7.68
Wis., Ben Lear	-	-	-	-	-	-	-	-	-	7.38	7.79	-
Searles	-	-	-	-	-	-	-	-	-	-	7.36	7.25
	<u>Raspberries</u>											
New York:												
Calif., Reds, 1/2-pint	-	-	-	-	-	1.29	1.15	1.65	1.73	1.25	1.25	-
	<u>Strawberries</u>											
Various varieties, per pint												
New York:												
Calif.	-	1.00	.79	.67	.53	.66	.60	.68	.65	.68	.84	1.75
Fla.94	.76	.65	.48	-	-	-	-	-	-	-	-
Mexico73	.51	.37	-	-	-	-	-	-	-	.60	.87
Chicago:												
Calif.	-	.91	.78	.60	.52	.55	.48	.49	.52	.55	.7	.84
Fla.	1.00	.77	.79	-	-	-	-	-	-	-	-	-
Mexico68	.47fq	.41fq	.40fq	-	-	-	-	-	-	.60 ^{1/2}	.66
Mich., 16-quart crate	-	-	-	-	7.87	-	-	-	-	-	-	-
	<u>CITRUS-FRUITS</u>											
	<u>Grapefruit</u>											
Carton, 32-40s												
New York:												
Fla., Indian River District												
White	4.50	4.95	4.62	4.38	5.47	5.00	-	-	7.75	6.00	4.75	4.38
Red	5.19	6.42	6.06	5.38	6.00	6.00	-	-	-	7.50	6.75	5.81
Chicago:												
Fla., Indian River District												
White	4.82	6.13	5.50	5.00	5.80	6.33	-	-	-	5.90	5.25	5.05
Red	5.56	7.13	6.35	6.38	7.15	7.50	-	-	-	7.52	6.57	6.00
Texas, Red	5.00	-	5.56	5.75	-	-	-	-	-	-	6.50	6.33
	<u>Lemons 2/</u>											
Carton												
New York:												
Calif.	7.18	6.16	7.01	6.43	7.87	7.10	7.84	6.05	5.34	7.39	6.68	6.83
Chicago:												
Calif.	6.54	6.88	6.93	6.97	8.58	7.28	7.79	7.03	7.89	7.95	7.22	7.12
	<u>Limes</u>											
10-lb. carton, Persian seedless, 40-72s												
New York:												
Fla.	9.67	8.65	14.55	15.44	13.60	7.06	3.09	3.40	3.13	3.59	4.65	6.08
Chicago:												
Fla.	9.19	9.17	-	15.25	16.92	8.50	3.13	3.30	3.60	3.75	4.86	7.96
Mexico	-	-	-	-	-	-	2.77	3.59	3.67	3.63	4.42	6.78

1/Prices shown are simple average of representative prices for Tuesday of each week during the month.

2/Auction prices, weighted average, all sizes and grades. New York prices, compiled by National Economic Analysis

Division, ERS.

fq-Fair quality.

Table 2. --Continued

CITRUS FRUITS--CONTINUED

Market, Origin and description	Jan.	Feb.	Mar.	Apr.	May	June	July	Aug.	Sept.	Oct.	Nov.	Dec.
- Dollars per Unit -												
<u>Oranges</u>												
<u>Carton</u>												
<u>New York:</u>												
Calif., 72-113s, Navels	7.00	6.88	6.60	6.71	7.57	-	-	-	-	-	12.00	9.00
Valencias	-	-	-	-	-	7.25	7.03	7.55	8.58	9.31	9.38	-
Fla., Various varieties, 64-100s ...	4.46	6.25	5.42	5.25	5.77	6.65	8.13	-	-	8.50	6.65	5.96
<u>Chicago:</u>												
Calif., 72-113s, Navels	5.85	6.44	6.10	6.53	7.22	-	-	-	-	-	11.06	8.69
Valencias	-	-	-	-	7.38	7.19	7.42	7.84	8.35	9.78	10.50	-
Fla., Various varieties, 64-100s ...	4.83	6.25	5.85	5.53	6.00	6.67	8.42	8.50	-	9.35	7.07	6.54
<u>Tangelos</u>												
<u>Crate & Carton, 80-100s</u>												
<u>New York:</u>												
Fla.	4.35	-	-	-	-	-	-	-	-	-	6.25	6.38
<u>Chicago:</u>												
Fla.	6.38	6.62½	-	-	-	-	-	-	-	-	7.17	6.74
<u>Tangerines</u>												
<u>Crate & Carton, 120-176s</u>												
<u>New York:</u>												
Fla.	6.88	-	-	-	-	-	-	-	-	-	9.88	8.38
<u>Chicago:</u>												
Fla.	7.06	8.81	9.08	9.63	-	-	-	-	-	9.63	8.63	8.34
Mexico	6.58	-	-	-	-	-	-	-	-	-	8.88	8.83
<u>OTHER FRUITS</u>												
<u>Apples</u>												
<u>Carton</u>												
<u>New York:</u>												
<u>U.S. Fancy</u>												
<u>N.Y. Hudson Valley</u>												
<u>Film bags, 12-3-lb., 24" min.</u>												
Cortland	5.85	6.00	-	-	-	-	-	-	5.33	5.25	5.28	5.35
McIntosh	6.25	5.50	-	-	-	-	-	-	-	5.19	5.25	5.65
Red Delicious	6.75	6.00	-	-	-	-	-	-	-	6.00	6.13	6.94
<u>C.A. Storage</u>												
Cortland	7.13	6.88	6.83	6.75	-	-	-	-	-	-	-	-
McIntosh	6.75	6.75	6.50	-	5.25fc	6.00fc	-	-	-	-	-	-
Red Delicious	-	7.70	7.71	7.85	8.12	8.38	8.50	-	-	-	-	-
<u>Cell pack, 100-120s</u>												
McIntosh	7.50	7.25	-	-	-	-	-	-	7.65	7.38	7.15	8.00
McIntosh -C.A. Storage	8.75	7.50fc	7.25	-	9.63	-	-	-	-	-	-	-
<u>New England</u>												
<u>Film bags, 12-3-lb., 24" min.</u>												
McIntosh	6.65	-	-	-	-	-	-	6.25	6.50	5.63	5.69	6.25
Red Delicious	7.50	6.50	-	-	-	-	-	-	-	6.25	7.50	-
<u>C.A. Storage</u>												
McIntosh	7.15	7.40	7.63	8.19	12.71	-	-	-	-	-	-	-
<u>Cell pack, 100-120s</u>												
McIntosh	9.50	9.25	-	-	-	-	-	-	-	7.88	8.60	8.85
McIntosh -C.A. Storage	9.75	10.13	10.17	10.50	12.15	-	-	-	-	-	-	-
<u>Washington</u>												
<u>Wash. Extra Fancy or US Grade</u>												
<u>Tray pack, 100-125s</u>												
Red Delicious	11.17	11.42	-	-	-	-	-	-	-	12.60	12.10	12.56
Red Delicious -C.A. Storage	-	-	11.75	12.33	12.06	12.63	14.75	15.25	-	-	-	-
<u>Chicago:</u>												
<u>U.S. Fancy</u>												
<u>Film bags, 12-3-lb., 24" min.</u>												
Mich., Jonathan	6.94	-	-	-	-	-	-	-	-	6.25	6.63	6.63
McIntosh	7.06	-	-	-	-	-	-	-	7.33	6.74	6.63	6.63
Red Delicious	-	-	-	-	-	-	-	-	7.13	6.80	7.30	7.25
<u>C.A. Storage</u>												
Mich., Jonathan	8.00	8.00	8.05	7.28	6.95	6.75	-	-	-	-	-	-
McIntosh	8.00	8.06	7.90	7.25	-	-	-	-	-	-	-	-
Red Delicious	8.00	8.13	7.70	7.22	7.00	7.25	-	-	-	-	-	-
<u>Tray pack, 100-125s</u>												
<u>Wash. Extra Fancy or US Grade</u>												
Wash., Red Delicious	11.19	11.75	11.65	11.22	10.8 ^{fc}	-	-	-	14.75	12.69	12.01	12.38
Red Delicious -C.A. Storage	-	-	11.81	12.13	12.50	13.00	13.76	13.44	-	-	-	-

fc-Fair condition.

Table 2. --Continued

OTHER FRUITS--CONTINUED

Market, Origin and description	Jan.	Feb.	Mar.	Apr.	May	June	July	Aug.	Sept.	Oct.	Nov.	Dec.
- Dollars per Unit -												
<u>Avocados</u>												
<u>Various varieties, flat & carton (approx. 13-lbs.)</u>												
<u>New York:</u>												
Calif.	7.25	7.06	7.28	7.31	7.75	7.63	7.48	7.50	8.00	11.19	10.20	7.88
Fla.	5.78	5.95	-	-	-	-	6.88	7.13	7.44	7.69	7.10	7.25
<u>Chicago:</u>												
Calif.	8.13	6.31	6.30	6.91	6.80	6.44	6.96	7.19	9.67	11.66	10.31	8.81
Fla.	5.00	4.44	-	-	-	-	-	5.45	6.00	8.13	6.62	6.75
<u>Cherries</u>												
<u>Lug or Carton, 12-row & lgr.</u>												
<u>New York:</u>												
Calif., 18-lb.	-	-	-	-	18.00	11.31	-	-	-	-	-	-
Northwest, 20-lb.	-	-	-	-	-	11.50	11.56	13.25	-	-	-	-
<u>Chicago:</u>												
Calif., 18-lb.	-	-	-	-	-	11.50	-	-	-	-	-	-
Northwest, 20-lb.	-	-	-	-	-	11.13	10.91	14.75	-	-	-	-
<u>Grapes</u>												
<u>New York:</u>												
<u>22-lb.lug</u>												
Calif., Cardinal	-	-	-	-	24.00	16.50	13.92	-	-	-	-	-
Perlette	-	-	-	-	24.00	14.75	-	-	-	-	-	-
Thompson Seedless	-	-	-	-	-	17.25	17.94	-	-	-	-	-
<u>23-lb.lug</u>												
Calif., Calmeria	-	-	-	-	-	-	-	-	-	11.00	10.85	10.75
Cardinal	-	-	-	-	-	-	13.00	12.00	-	-	-	-
Emperor	11.94	-	-	-	-	-	-	-	-	9.63	9.05	8.94
Ribier	-	-	-	-	-	-	-	11.25	11.75	11.75	10.92	10.38
Thompson Seedless	-	-	-	-	-	-	20.00	12.80	11.63	12.25	-	-
<u>Chicago:</u>												
<u>22-lb.lug</u>												
Calif., Cardinal	-	-	-	-	15.75	15.50	-	-	-	-	-	-
Perlette	-	-	-	-	-	14.63	-	-	-	-	-	-
Thompson Seedless	-	-	-	-	-	-	16.54	-	-	-	-	-
<u>23-lb.lug</u>												
Calif., Calmeria	-	-	-	-	-	-	-	-	-	10.50	10.75	10.56
Cardinal	-	-	-	-	-	-	-	13.55	-	-	-	-
Emperor	9.81	10.17	9.50fg	-	-	-	-	-	11.15	11.31	9.70	8.90
Ribier	-	-	-	-	-	-	-	-	13.25	11.80	11.50	10.83
Thompson Seedless	-	-	-	-	-	-	-	12.85	11.70	12.06	10.00fg	-
Tokay	-	-	-	-	-	-	-	-	9.75	8.45	-	-
<u>Nectarines</u>												
<u>Various varieties, 2-layer lug, 56-88s</u>												
<u>New York:</u>												
Calif.	-	-	-	-	15.00	8.75	9.44	7.60	6.38	5.50	-	-
<u>Chicago:</u>												
Calif.	-	-	-	-	-	8.00	9.15	6.80	5.94	7.17	-	-
<u>Peaches</u>												
<u>Various varieties, Yellow Flesh</u>												
<u>U.S.No.1 or better</u>												
<u>New York:</u>												
<u>2-layer lug, 56-72s</u>												
Calif.	-	-	-	-	10.00	-	12.00	7.00	8.33	-	-	-
<u>1/2-bushel crate or carton, 2"up</u>												
Ga.	-	-	-	-	9.50	-	-	-	-	-	-	-
<u>3/4-bushel crate or carton, 2"up</u>												
Ga.	-	-	-	-	-	9.75	8.75	-	-	-	-	-
N.C.	-	-	-	-	14.50	8.50	-	-	-	-	-	-
N.J.	-	-	-	-	-	-	8.70	6.05	8.50	-	-	-
24"up	-	-	-	-	-	-	10.33	8.90	11.00	-	-	-
Pa.	-	-	-	-	-	-	-	6.25	-	-	-	-
24"up	-	-	-	-	-	-	-	7.81	-	-	-	-
S.C.	-	-	-	-	-	9.56	9.38	6.92	-	-	-	-
<u>Chicago:</u>												
Calif., 2-layer lug, 56-72s	-	-	-	-	-	8.75	7.93	7.56	7.31	7.62	-	-
<u>1/2-bushel crate or carton, 2"up</u>												
Ga.	-	-	-	-	11.00	7.25	-	-	-	-	-	-
<u>3/4-bushel crate or carton, 2"up</u>												
Ga.	-	-	-	-	-	9.25	8.63	-	-	-	-	-
Mich.	-	-	-	-	-	-	11.50	10.39	-	-	-	-
S.C.	-	-	-	-	-	9.25	9.08	8.25	-	-	-	-

Table 2. --Continued

OTHER FRUITS--CONTINUED

Market, Origin and description	Jan.	Feb.	Mar.	Apr.	May	June	July	Aug.	Sept.	Oct.	Nov.	Dec.
- Dollars per Unit -												
<u>Pears</u>												
<u>Standard box or carton, US#1, 90-135s</u>												
<u>New York:</u>												
Calif., Bartlett, 90-150s	-	-	-	-	-	-	15.00	11.75	12.25	-	-	-
Greg., Bartlett	-	-	-	-	-	-	-	-	-	11.50	-	-
Greg., D'Anjou	9.38	-	-	-	9.75	10.25	-	-	-	-	-	13.50
Wash., Bartlett	-	-	-	-	-	-	-	-	12.13	11.92	-	-
Wash., D'Anjou	9.69	9.75	9.80	9.83	9.84	-	-	-	-	10.87	11.00	11.50
<u>Chicago:</u>												
Calif., Bartlett, 90-150s	-	-	-	-	-	-	14.43	10.23	13.33	13.75	11.93	-
Greg., Bartlett	-	-	-	-	-	-	-	-	11.75	12.38/13.00/	-	-
Bosc	13.69	15.50	16.00	-	-	-	-	-	-	-	15.10	15.28
D'Anjou	8.96	8.41	9.13	8.88	9.17	9.92	9.25	-	-	15.40	10.68	11.09
Wash., Bartlett	-	-	-	-	-	-	-	10.12	11.56	11.65	9.90	-
Wash., D'Anjou	9.00	8.79	8.92	8.75	9.15	-	-	-	-	10.15	10.22	10.98
<u>Plums</u>												
<u>28-lb. carton, 4x4s</u>												
<u>New York:</u>												
Calif., Casselman	-	-	-	-	-	-	-	7.00	7.50	-	-	-
Eldorado	-	-	-	-	-	-	12.50	9.63	-	-	-	-
Late Santa Rosa	-	-	-	-	-	-	-	6.88	-	-	-	-
Red Beaut	-	-	-	-	27.00	16.33	-	-	-	-	-	-
Santa Rosa	-	-	-	-	-	12.50	10.13	-	-	-	-	-
<u>Chicago:</u>												
Calif., Casselman	-	-	-	-	-	-	-	7.60	7.50	-	-	-
Eldorado	-	-	-	-	-	-	10.13	-	-	-	-	-
Laroda	-	-	-	-	-	-	-	9.85	8.68	-	-	-
Late Santa Rosa	-	-	-	-	-	-	-	9.98	-	-	-	-
Nubiana	-	-	-	-	-	-	-	11.50	9.25	-	-	-
Red Beaut	-	-	-	-	-	14.38	-	-	-	-	-	-
Santa Rosa	-	-	-	-	-	-	9.98	-	-	-	-	-
<u>Prunes, Fresh</u>												
<u>30-lb. carton, Italian type</u>												
<u>New York:</u>												
Northwest	-	-	-	-	-	-	-	7.38	-	-	-	-
<u>Chicago:</u>												
Northwest	-	-	-	-	-	-	-	7.37	7.20	-	-	-
<u>MELONS</u>												
<u>Cantaloups</u>												
<u>New York:</u>												
Ariz., Jumbo crate, 36s	-	-	-	-	-	15.50	-	-	-	-	-	-
Calif., Jumbo crate, 36s	-	-	-	-	-	19.50	17.13	15.40	16.75	18.88	20.00	-
1/2-crate & carton, 18s	-	-	-	-	-	8.83	9.38	7.25	8.17	9.00	-	-
Mexico, Jumbo crate, 36s	-	34.00	27.80	23.88	27.30	-	-	-	-	-	-	-
<u>Chicago:</u>												
Calif., Jumbo crate, 36s	-	-	-	-	-	10.50	15.79	14.20	12.38	19.00	-	-
1/2-crate & carton, 18s	-	-	-	-	-	7.00	9.25	6.56	7.33	8.38	-	-
Mexico, Jumbo crate, 36s	-	-	26.33	23.17	25.06	-	-	-	-	-	-	-
<u>Honeydews</u>												
<u>Carton, 5-8#</u>												
<u>New York:</u>												
Calif.	-	-	-	-	-	5.25	6.63	4.90	4.56	5.31	7.30	9.00
Texas	-	-	-	-	7.75	4.38	5.17	4.63	-	-	-	-
Mexico, crate, 9-12s	-	-	14.50	11.33	10.13	-	-	-	-	-	-	-
<u>Chicago:</u>												
Calif.	-	-	-	-	-	-	6.92	4.75	4.35	4.78	6.00fc	-
Texas	-	-	-	-	5.25fa	5.42	5.75	4.50	-	4.50	4.25fc	-
Mexico, crate, 9-12s	-	-	-	10.56	12.20	7.00	-	-	-	-	-	-
<u>Watermelons</u>												
<u>Per pound</u>												
<u>New York:</u>												
<u>Various Eastern States</u>												
Long Gray, 20-24-lb. Av.	-	-	-	-	.1000	.0656	.0750	.0740	.0750	-	-	-
26-32-lb. Av.	-	-	-	-	.1025	.0713	.0850	.0835	.0925	.1150	-	-
<u>Mexico, flat carton</u>												
Long Gray	-	.1675	.1960	.2000	.1467	.1100	-	-	-	-	-	-
Jubilee	-	.1675	.1960	.2050	.1575	.1100	-	-	-	-	-	-

Table 2. --Continued

MELONS--CONTINUED

Market, Origin and description	Jan.	Feb.	Mar.	Apr.	May	June	July	Aug.	Sept.	Oct.	Nov.	Dec.
- Dollars per Unit -												
<u>Watermelons--Continued</u>												
<u>Per pound</u>												
<u>Chicago:</u>												
<u>Various Southern States</u>												
Various varieties, 20-24-lb.Av.	-	-	-	-	.1225	.0788	.0750	.0675	-	.1131	-	-
26-32-lb.Av.	-	-	-	-	.1250	.0856	.0775	.0700	.0800	-	-	-
<u>Various Midwestern States</u>												
Various varieties, 20-24-lb.Av.	-	-	-	-	-	-	-	.0675	.0495	-	-	-
26-32-lb.Av.	-	-	-	-	-	-	-	.0670	.0543	-	-	-
<u>Texas, carton, 3-4s</u>												
Long Gray	-	-	-	-	-	.0758	.0856	-	-	-	-	-
Crimson Sweet	-	-	-	-	-	-	-	-	-	-	-	-
<u>Mexico, flat carton</u>												
Peacock2350	.1800	.2150	.2150	-	-	-	-	-	-	-	-
Long Gray	-	.1483	.1850	.1638	.1367	-	-	-	-	-	-	-
Jubilee2100	.1788	.2000	.1783	.1500	-	-	-	-	-	-	-

VEGETABLES

AsparagusPyramid crateNew York:

Calif., loose, large	22.50	30.00	23.40	14.88	21.00	15.25	-	-	-	-	-	-
N.J., 12-bunches, large	-	-	-	14.13	20.63	21.67	-	-	-	-	-	-

Chicago:

Calif., loose, large	-	28.00	26.50	19.00	24.00	32.50	-	-	-	-	-	-
Ill., crt. & ctn., 24-bchs., large	-	-	-	15.50	18.00	-	-	-	-	-	-	-

Beans, GreenBushel basket, hamper or crateRound Green typeNew York:

Fla.	13.81	-	9.88	7.44	10.88	-	-	-	-	-	9.00	9.44
N.C.	-	-	-	-	12.00	7.42	-	-	-	-	-	-
N.J.	-	-	-	-	-	10.00	6.31	7.88	6.56	9.13	-	-
N.Y. L.I.	-	-	-	-	-	-	-	8.63	7.50	-	-	-
N.Y. Madison County	-	-	-	-	-	-	6.38	7.25	4.00fg	-	-	-
S.C.	-	-	-	-	13.00	8.00	-	-	-	-	-	-
Va.	-	-	-	-	-	8.00	6.00	-	6.50	10.31	-	-

Chicago:

Fla.	14.06	-	9.50	8.75	11.48	-	-	-	-	12.00	10.40	10.85
Ill.	-	-	-	-	-	8.63	7.17	7.30	6.81	11.00	-	-
La.	-	-	-	-	11.50	-	-	-	-	-	-	-
N.C.	-	-	-	-	-	9.50	7.69	8.25	7.00	7.75	-	-

BeetsNew York:

N.J., crate & carton, 12-bchs.	-	-	-	-	-	4.38	3.25	3.31	3.50	3.38	3.25	4.00
Texas, 1-2/5-bushel crate, 24-bchs.	9.50	12.00	8.58	10.08	8.50	-	-	-	-	-	8.00	7.00

Chicago:

Ill., crate & carton, 12-bchs.	-	-	-	-	-	2.88	3.21	3.94	4.38	4.91	4.62	-
Texas, crate & carton, 24-bchs.	8.00	-	7.40	8.42	8.50	-	-	-	-	-	7.25	6.64

BroccoliCarton, 14-bunchesNew York:

Calif.	9.19	10.00	7.95	6.81	6.50	6.08	6.69	7.75	7.88	7.25	6.80	6.38
<u>Chicago:</u>												
Calif.	8.19	9.25	7.53	6.81	6.43	6.00	6.63	7.32	7.50	7.15	6.78	6.10

Brussels SproutsNew York:

Calif., repacked locally, 10-oz. cup60	.55	.54	-	.48	-	-	-	-	.55	.55	.55
N.Y. L.I., 10-oz. cup	-	-	-	-	-	-	-	-	.60	.53	.49	.35fc
<u>Chicago:</u>												
Calif., 25-lb. carton	10.25	10.42	10.25	-	-	-	-	-	10.75	10.25	10.08	9.25
Repacked locally, origin unknown, 10-oz. cup55	.55	.55	.55	.55	-	-	-	.55	.55	.55	.55

fg-Fair quality.
fc-Fair condition.

Table 2. --Continued

VEGETABLES--CONTINUED

Market, Origin and description	Jan.	Feb.	Mar.	Apr.	May	June	July	Aug.	Sept.	Oct.	Nov.	Dec.
	- Dollars per Unit -											
<u>Cabbage</u>												
<u>New York:</u>												
<u>Danish type</u>												
W.Y., 50-lb. sack	9.06	12.00	-	-	-	-	-	-	-	-	3.33	3.31
<u>Green</u>												
<u>1-3/4-bushel crate</u>												
Fla.	10.63	13.69	9.65	8.19	5.63	-	-	-	-	-	-	5.08
N.C.	-	-	-	-	5.63	3.50	-	-	-	-	-	-
N.Y.L.I.	-	-	-	-	-	-	2.75	2.63	3.13	3.92	-	-
N.J., Var. used crt. approx. 50-lb. ...	-	-	-	-	-	2.50	2.72	2.63	3.13	3.75	4.10	-
<u>Chicago:</u>												
<u>Danish type</u>												
Wis., 50-lb. sack	6.75	9.72	-	-	-	-	-	-	-	-	3.00	3.43
<u>Green</u>												
<u>1-3/4-bushel crate</u>												
Fla.	11.33	-	-	8.33	5.38	4.58	-	-	-	-	-	5.05
Texas	11.42	12.19	10.25	8.23	5.49	-	-	-	-	-	6.00	4.66
Wis.	-	-	-	-	-	-	2.25	2.89	3.35	5.93	5.63	-
Ill., Var. used crt. approx. 50-lb. ...	-	-	-	-	-	2.88	2.38	2.58	3.34	5.25	-	-
<u>Carrots</u>												
<u>48-1-lb. film bags</u>												
<u>New York:</u>												
Calif., carton	12.63	-	-	9.19	8.81	7.44	7.38	7.70	8.56	8.67	8.80	9.31
sack	13.97	12.88	10.40	9.19	8.95	6.88	6.88	7.31	7.88	8.50	8.30	8.63
Texas, sack	-	12.00	7.83	7.13	7.75	-	-	-	-	-	-	-
Canada, sack	9.13	-	-	-	-	-	-	-	-	6.00	6.05	6.75
<u>Chicago:</u>												
Calif., carton	13.63	13.15	9.94	8.98	8.47	7.49	7.23	7.43	8.25	8.50	8.15	9.29
sack	12.94	12.50	9.23	8.92	8.30	7.30	7.02	6.98	7.75	8.00	7.33	8.45
Texas, sack	-	11.83	8.75	7.78	-	-	-	-	-	-	7.00	8.50
<u>Cauliflower</u>												
<u>New York:</u>												
Calif., carton, film wrpd., 12s	10.88	10.06	9.10	7.31	7.75	8.42	10.31	9.10	9.44	9.00	8.56	8.69
N.Y. (Catskill Sec.), carton, film wrpd., 12s	-	-	-	-	-	-	-	8.00	8.00	6.13	-	-
jacket pack, 12s	-	-	-	-	-	-	7.00	7.50	7.75	7.75	-	-
N.Y.L.I., Long Island type crate, jacket pack, 12s	-	-	-	-	-	-	-	6.50	6.63	6.58	6.80	7.50
<u>Chicago:</u>												
Calif., carton, film wrpd., 12s	10.56	9.16	10.56	7.66	7.17	8.38	8.75	9.06	8.67	9.42	9.20	8.79
Mich., carton, jacket pack, 12s	-	-	-	-	-	-	-	-	7.00	6.50	5.75	-
<u>Celery</u>												
<u>Crate</u>												
<u>New York:</u>												
Calif., 2-3-dozen	14.25	14.25	11.00	10.25	10.25	7.25	9.00	7.00	7.94	7.81	8.95	7.69
Fla., 2-4-dozen	11.63	12.13	8.80	8.69	8.92	6.50	-	-	-	-	7.00	7.25
N.Y. Org. Co., 2-3-dozen	-	-	-	-	-	-	5.75	5.13	6.50	-	-	-
<u>Chicago:</u>												
Calif., 2-3-dozen	12.50	12.61	10.25	9.93	9.75	8.28	8.83	7.43	8.16	7.54	8.95	7.55
Fla., 2-4-dozen	11.33	12.25	8.63	9.75	8.29	-	-	-	-	-	-	-
Mich., 2-4-dozen	-	-	-	-	-	-	7.00	5.00	6.41	5.88	-	-
<u>Corn, Sweet</u>												
<u>Crate, 4 1/2-5-dozen, Yellow</u>												
<u>New York:</u>												
Fla.	7.69	9.00	-	6.71	6.10	5.03	4.13	-	-	6.75	6.40	5.06
N.J.	-	-	-	-	-	-	4.25	3.00	3.25	-	-	-
N.Y. Hudson Valley	-	-	-	-	-	-	-	3.00	3.75	4.13	-	-
<u>Chicago:</u>												
Fla.	5.63	-	-	7.32	6.58	5.19	4.32	-	7.00	6.60	5.60	4.80
Ill.	-	-	-	-	-	-	3.33	2.69	3.00	-	-	-
Wis.	-	-	-	-	-	-	3.15	3.42	-	-	-	-

Table 2. --Continued

VEGETABLES--CONTINUED

Market, Origin and description	Jan.	Feb.	Mar.	Apr.	May	June	July	Aug.	Sept.	Oct.	Nov.	Dec.
- Dollars per Unit -												
<u>Cucumbers</u>												
<u>Bushel carton & 1-1/9-bu.crt.& ctn.</u>												
<u>New York:</u>												
Fla.	-	-	-	-	8.70	6.88	-	-	-	9.50	8.02	7.38
Md.	-	-	-	-	-	-	9.38	-	6.00	6.25	-	-
N.J.	-	-	-	-	-	-	10.19	7.20	6.00	-	-	-
N.Y.L.I.	-	-	-	-	-	-	-	7.70	7.00	-	-	-
N.C.	-	-	-	-	-	7.44	11.50	-	5.25	7.75	-	-
S.C.	-	-	-	-	-	7.25	-	-	-	-	-	-
Va.	-	-	-	-	-	-	9.50	-	5.75	6.25	-	-
Mexico	11.88	13.31	21.50	17.50	-	-	-	-	-	-	-	10.38
<u>Chicago:</u>												
Fla.	-	-	-	10.67	9.55	-	-	-	-	9.50	6.58	3.00fq
Ill.	-	-	-	-	-	7.70	8.63	5.33	6.75	6.88	-	-
Mich.	-	-	-	-	-	-	6.50	6.38	5.50fq	-	-	-
N.C.	-	-	-	-	-	8.58	-	-	-	6.25	-	-
S.C.	-	-	-	-	-	7.50	-	-	-	-	-	-
La.	-	-	-	-	9.50	7.58	-	-	-	-	-	-
Texas	-	-	-	-	8.88	-	-	-	-	-	7.38	4.25fq
Mexico	12.63	13.19	18.15	11.75	8.00	-	-	-	-	-	8.50	9.16
<u>Eggplant</u>												
<u>Bushel carton & 1-1/9-bushel crate</u>												
<u>New York:</u>												
Fla.	7.81	7.75fa	13.50	7.06	6.45	6.75	5.38	-	-	6.94	4.50	4.81
N.J.	-	-	-	-	-	-	7.50	4.25	2.60	5.63	-	-
N.C.	-	-	-	-	-	5.50	5.75	5.75	-	6.50	-	-
<u>Chicago:</u>												
Fla.	8.88	8.00	-	8.25	6.94	-	3.50fc	-	-	7.92	5.70	5.69
Ill.	-	-	-	-	-	-	9.50	5.63	5.13	4.50	-	-
<u>Endive-Chicory</u>												
<u>New York:</u>												
<u>1-1/9-bushel crate</u>												
Fla.	8.38	10.69	7.00	4.47	4.56	-	-	-	-	-	4.10	4.16
N.J.	-	-	-	-	3.75	2.44	3.63	3.15	3.25	3.38	3.38	-
<u>Escarole</u>												
<u>New York:</u>												
<u>1-1/9-bushel crate</u>												
Fla.	8.44	10.25	5.65	4.19	4.50	-	-	-	-	-	4.10	4.22
N.J.	-	-	-	-	3.75	2.56	3.38	3.20	3.25	3.31	3.25	-
<u>Kale</u>												
<u>New York:</u>												
<u>Bunched</u>												
N.J., Various used crate	-	-	-	4.75	4.00	3.56	3.25	3.25	3.83	3.50	3.33	-
Va., 1-3/5-bushel crate	5.50fq	-	5.00	-	5.25	-	-	-	-	5.50	4.92	4.58
Ga., 1-3/5-bushel crate	-	9.00	5.50	5.92	5.00fq	-	-	-	-	-	4.25	4.58
<u>Lettuce</u>												
<u>New York:</u>												
<u>Iceberg type, carton, 24s</u>												
Ariz.	8.21	6.50	7.34	5.38	7.13	-	-	-	-	-	8.81	5.50
Calif.	8.03	6.41	7.02	5.44	6.90	6.00	6.63	6.75	7.50	8.19	8.80	6.00
<u>Big Boston type</u>												
<u>Eastern Boston crate & carton, 24s</u>												
Fla.	7.54	7.92	6.18	4.25	4.38	-	-	-	-	-	6.38	5.25
N.J.	-	-	-	-	4.25	3.94	3.25	-	4.25	4.44	4.88	-
N.Y.Orange County	-	-	-	-	-	3.00	3.38	4.65	5.33	3.75	-	-
<u>Romaine type</u>												
<u>1-1/9-bushel crate</u>												
Fla.	8.13	7.38	5.88	3.94	3.33	-	-	-	-	-	4.72	3.92
N.J.	-	-	-	-	3.25	2.94	2.33	2.75	3.25	3.38	4.13	-
N.Y.Orange County	-	-	-	-	-	2.75	2.38	2.95	3.42	3.31	-	-
<u>Chicago:</u>												
<u>Iceberg type, carton, 24s</u>												
Ariz.	7.08	5.75	6.70	5.03	5.25	-	-	-	-	-	8.87	5.65
Calif.	7.75	6.23	6.94	5.03	6.05	5.46	5.95	6.20	6.63	7.59	8.51	5.51
Colo.	-	-	-	-	-	-	5.35	6.21	6.13	-	-	-

fa-Fair appearance.

fc-Fair condition.

fq-Fair quality.

Table 2. --Continued

VEGETABLES-CONTINUED

Market, Origin and description	Jan.	Feb.	Mar.	Apr.	May	June	July	Aug.	Sept.	Oct.	Nov.	Dec.
- Dollars per Unit -												
<u>Mushrooms</u>												
<u>New York:</u>												
<u>Extra Fancy and special</u>												
Pa., 4-quart basket	3.63	3.94	4.08	4.22	4.13	4.22	4.76	4.75	4.49	3.88	4.12	4.23
<u>Chicago:</u>												
Ill., one pound carton	1.23	1.25	1.23	1.23	1.15	1.15	1.25	1.25	1.25	1.25	1.25	1.25
<u>Onions, Dry</u>												
<u>50-lb. sack</u>												
<u>New York:</u>												
Calif., Yellow, medium	-	-	-	-	7.00	6.25	5.88	5.88	-	-	-	-
large	-	-	-	-	-	7.00	6.88	6.70	-	-	-	-
repacker	-	-	-	-	-	-	6.53	5.00	-	-	-	-
Ida.-Oreg., Yellow Spanish, large ..	7.76	9.50	13.87	12.33	-	-	-	-	5.00	5.06	5.25	4.98
N.Y.Org.Co., Yellow Globe, medium ...	5.38	8.25	8.50	-	-	-	-	-	3.67	3.94	3.92	4.00
large	-	-	-	-	-	-	-	-	4.17	4.25	4.18	4.28
N.Y.West Sec. Yellow Globe, medium ..	6.69	8.53	9.77	9.56	7.38	-	-	-	-	-	-	4.00
large	6.75	8.17	14.00	10.75	-	-	-	-	-	-	-	4.34
Texas, Yellow Granex, medium	-	-	-	-	9.75	-	-	-	-	-	-	-
large	-	-	-	-	11.00	6.25	-	-	-	-	-	-
repacker	-	-	-	-	11.25	6.87 ¹	6.88	-	-	-	-	-
Yellow Grano, medium	-	-	-	-	7.75	-	5.75	5.67	-	-	-	-
large	-	-	-	13.50	8.90	7.00	6.83	6.80	-	-	-	-
repacker	-	-	-	-	8.60	6.81	5.88	5.17	-	-	-	-
<u>Chicago:</u>												
Calif., Yellow, medium	-	-	-	-	-	5.69	5.88	4.91	4.63	-	-	-
large	-	-	-	-	-	7.00	6.22	6.43	-	-	-	-
repacker	-	-	-	-	-	-	-	4.50	4.50	-	-	-
Ida.-Oreg., Yellow Spanish, large ...	7.12	9.06	13.53	12.75	-	-	-	4.80	4.60	4.76	4.95	4.76
Midwestern, Yellow Globe, medium ...	5.69	7.50	9.40	11.58	-	-	-	-	4.25	4.20	3.70	4.14
Texas, Yellow Granex, medium	-	-	-	11.25	7.50	-	-	-	-	-	-	-
large	-	-	-	12.50	8.33	-	-	-	-	-	-	-
repacker	-	-	-	11.25	-	-	-	-	-	-	-	-
Yellow Grano, medium	-	-	-	10.75	7.33	6.13	5.92	5.05	4.50	-	-	-
large	-	-	-	14.75	8.60	6.16	6.58	7.00	-	-	-	-
repacker	-	-	-	11.25	7.70	6.63	6.19	5.42	-	-	-	-
Mexico, Yellow Grano, large	-	-	-	13.00	-	-	-	-	-	-	-	-
<u>Peas, Green</u>												
<u>Bushel basket, crate or carton</u>												
<u>New York:</u>												
Calif.	-	-	-	11.13	12.25	6.50	-	-	-	-	-	-
Mexico	9.42	11.56	19.00	13.83	10.00	-	-	-	-	-	-	14.17
<u>Chicago:</u>												
Calif.	-	-	-	10.00	10.75	-	-	-	-	-	-	-
Mexico	8.00 ^{fc}	9.92	13.50	13.33	-	-	-	-	-	-	-	-
<u>Peppers, Green</u>												
<u>Bushel carton or 1-1/9-bushel crate & carton</u>												
<u>Calif. Wonder type, large</u>												
<u>New York:</u>												
Calif.	-	-	-	-	-	-	-	8.33	6.50	7.56	8.25	-
Fla.	12.13	10.25	15.50	10.50	6.40	6.88	-	-	-	8.00	7.30	6.25
N.C.	-	-	-	-	-	8.88	6.42	-	-	-	-	-
N.J.	-	-	-	-	-	-	7.88	5.60	5.25	4.50	-	-
Texas	-	-	-	-	-	6.25	-	5.00	4.75	6.25	6.63	6.50
Mexico	15.17	14.38	23.60	17.83	-	-	-	-	-	-	-	-
<u>Chicago:</u>												
Calif.	-	-	-	-	-	-	-	-	7.88	8.63	8.75	-
Fla.	14.13	12.75	-	10.00	7.47	7.00	-	-	-	-	7.04	7.63
Ill.	-	-	-	-	-	-	9.90	5.54	6.17	-	-	-
La.	-	-	-	-	8.10	7.12	-	-	-	-	-	-
N.C.	-	-	-	-	-	10.25	7.30	-	-	-	-	-
Texas	-	-	-	-	7.25	-	8.32	-	-	-	6.75	7.45
Mexico	15.67	14.03	23.45	16.88	8.50	-	-	-	-	-	-	8.25

fc-Fair condition.

Table 2. --Continued

VEGETABLES--CONTINUED

Market, Origin and description	Jan.	Feb.	Mar.	Apr.	May	June	July	Aug.	Sept.	Oct.	Nov.	Dec.
- Dollars per Unit -												
<u>Potatoes</u>												
<u>New York:</u>												
<u>U.S.No.1, Size A, 50-lb.sack</u>												
<u>washed, unless otherwise stated</u>												
Ala., Round Reds	-	-	-	-	8.00	7.00	6.00	-	-	-	-	-
Calif., Long Whites, 50-lb. carton ...	7.63	7.63	7.50	7.50	8.50	6.35	5.59	6.64	7.25	7.50	-	-
Fla., Round Reds, Size A	-	7.19	6.73	8.25	8.47	6.25	-	-	-	-	-	-
Size B	-	8.32	7.20	8.19	8.45	6.13	-	-	-	-	-	-
Idaho, Russet Burbanks 1/.....	5.25	5.64	5.50	5.69	6.32	7.13	-	-	-	6.46	6.23	6.00
50-lb. carton, 80-100s	7.00	6.59	6.84	7.41	8.30	8.33	8.50	-	-	9.00	8.43	8.19
Maine, Katahdin type, unwashed 2/...	3.76	3.85	3.75	4.40	4.91	5.44	-	-	-	3.15	2.78	2.46
N.Y.L.I., Various Round Whites, mostly washed 2/.....	3.63	3.71	3.62	3.60	4.75	-	-	2.62	2.69	2.94	2.64	2.59
Va., Round Whites	-	-	-	-	-	-	3.56	-	-	-	-	-
Wa., Morgold, 50-lb. carton, 80-100s ..	-	-	-	-	-	-	-	9.38	9.25	8.75	-	-
Wis., Round Reds	-	-	-	-	-	-	-	5.50	4.50	4.30	4.23	4.04
Russet Burbanks, 50-lb. carton, 80-100s	5.85	6.19	5.90	6.70	7.25	-	-	-	-	-	-	-
<u>Chicago:</u>												
<u>U.S.No.1, Size A, 100-lb.sack</u>												
<u>washed</u>												
Ala., Round Reds	-	-	-	-	-	9.75	7.88	-	-	-	-	-
Calif., Long Whites	-	-	-	-	11.00	9.78	8.44	7.76	-	-	-	-
50-lb. carton, 80-100s ..	-	-	-	-	-	5.38	5.50	-	-	-	-	-
Fla., Round Reds, 50-lb. sack, Size A ..	7.50	6.87	7.82	7.83	6.00	-	-	-	-	-	-	-
Size B ..	8.50	7.32	7.75	8.13	-	-	-	-	-	-	-	-
Idaho, Russet Burbanks	9.37	9.47	9.75	10.00	11.43	12.00	11.00	-	-	11.40	10.93	10.57
50-lb. carton, 80-100s	6.32	6.35	6.08	6.85	7.48	7.38	7.75	-	-	8.31	7.57	7.44
Minn., Round Reds	-	-	-	-	-	-	-	5.00	5.25	5.35	-	-
Minn.-N.Dak (Red Riv. Vly) Round Reds..	6.06	7.44	7.25	7.38	10.69	-	7.50	5.29	5.31	5.50	6.05	6.00
Wis., Round Reds	-	-	-	-	-	-	-	5.00	-	5.50	5.25	-
Round Whites	-	-	-	-	-	-	5.75	5.03	5.01	5.06	5.00	5.00
Russet Burbanks	6.53	7.56	7.75	7.91	8.25	-	-	-	-	6.13	6.25	6.45
50-lb. carton, 80-100s	5.88	-	-	5.25	6.25	-	-	-	-	-	-	-
<u>Radishes</u>												
<u>Carton, 30-6-oz., film bags, topped</u>												
<u>New York:</u>												
Fla., Reds	3.60	3.88	2.60	2.29	2.98	2.50	-	-	-	5.08	2.68	3.22
N.J., Reds, per bunch	-	-	-	1.806	1.292	1.500	1.0917	-	-	-	-	-
Ohio, Reds	-	-	-	-	-	2.19	2.60	2.65	2.25	4.92	2.25	-
<u>Chicago:</u>												
Fla., Reds	3.29	4.38	2.79	2.57	3.16	-	-	-	-	5.75	2.95	3.89
Mich., Reds	-	-	-	-	3.00	2.13	2.44	2.75	2.50	4.50	2.75	-
Ohio, Reds	-	-	-	-	3.13	2.00	2.53	2.72	2.47	5.00	-	-
<u>Rhubarb</u>												
<u>Carton</u>												
<u>New York:</u>												
Mich., 5-lb. Extra Fancy Special long ..	1.57	1.96	2.38	2.88	-	-	-	-	-	-	-	-
N.Y.L.I., per bunch	-	-	-	-	2.50	-	-	-	-	-	-	-
Oregon, 20-lb.	-	-	-	-	4.83	6.00	-	-	-	-	-	-
<u>Spinach</u>												
<u>New York:</u>												
<u>Bushel basket or crate</u>												
<u>Savoy type</u>												
Colo.	-	-	-	-	-	8.00	8.00	12.10	9.38	8.00	-	-
N.J.	-	-	-	4.33	3.65	4.19	4.50	12.00	-	6.88	8.38	-
Texas	9.19	9.88	7.30	6.88	-	-	-	-	-	-	8.00	7.63
Calif., Celery Crt., 24-bchs.	9.50	8.25	7.00	-	-	-	-	10.00	6.00 ^{2c}	8.25	7.00	7.00
<u>Chicago:</u>												
<u>Bushel basket</u>												
Ill., Semi-flat type	-	-	-	5.00	3.88	4.42	5.25	-	-	-	4.25	-
Texas, Savoy type	8.75	8.75	6.13	-	-	-	-	-	-	-	-	-
Calif., crate & carton, 24-bchs., Semi-flat type	8.75	7.69	6.50	5.69	5.44	-	-	9.50	8.75	7.50	6.90	6.98

1/2-inch or 4-oz. minimum.

2/2-inch minimum.

fc-Fair condition.

Table 2. --Continued

VEGETABLES-CONTINUED

Market, Origin and description	Jan.	Feb.	Mar.	Apr.	May	June	July	Aug.	Sept.	Oct.	Nov.	Dec.
	Dollars per Unit											
<u>Sweetpotatoes</u>												
<u>50-lb. carton, crate & bushel basket</u>												
<u>New York:</u>												
La., Porto Rico type, US#1, uncured ..	-	-	-	-	-	-	17.50	13.70	9.19	7.88	-	-
N.C., Jewel type, cured	6.88	8.06	9.25	9.81	11.70	14.38	16.75	-	-	-	9.83	9.63
uncured	-	-	-	-	-	-	-	12.38	8.13	7.56	-	-
N.J., Orange Jersey type, cured	6.00	6.00	6.00	7.00	-	-	-	-	-	-	8.38	6.67
uncured	-	-	-	-	-	-	-	9.00	8.00	7.67	-	-
<u>Chicago:</u>												
La., Porto Rico type, US#1, cured ...	8.56	9.58	10.40	11.25	-	-	-	-	-	-	11.92	11.75
uncured ...	-	-	-	-	-	-	-	14.06	9.25	8.68	9.45	-
N.C., Jewel type, cured	7.38	8.44	9.58	10.84	12.75	-	18.00	-	-	-	9.83	10.17
uncured	-	-	-	-	-	-	-	-	8.25	8.25	8.62	-
<u>Tomatoes</u>												
<u>New York:</u>												
Calif., 30-lb. carton												
Extra large	-	-	-	-	-	7.63	12.63	10.55	9.75	9.75	12.38	-
2-layer lug												
Extra large	-	-	-	-	-	-	9.25	7.50	7.41	7.13	11.20	-
Fla., 30-lb. carton												
Extra large	15.94	20.00	14.50	16.00	11.40	-	-	-	-	-	15.85	12.25
Large	13.88	18.92	14.83	15.00	9.67	-	-	-	-	-	14.75	10.00
20-lb. carton												
Extra large	10.00	9.38	10.25	11.00	10.50	-	-	-	-	-	-	7.63
Large	-	8.08	-	10.33	-	-	-	-	-	-	-	-
N.C., 20-lb. carton												
Large-Extra large	-	-	-	-	-	-	8.75	6.88	-	-	-	-
N.J., 30-lb. carton												
Medium-large	-	-	-	-	-	-	-	8.25	-	-	-	-
Small-medium	-	-	-	-	-	-	7.50	6.00	-	-	-	-
S.C., 30-lb. carton												
Extra large	-	-	-	-	-	9.75	10.50	-	-	-	-	-
Mexico, 2-layer flat												
Extra large	11.75	9.08	10.70	10.56	9.75	-	-	-	-	-	-	8.25
Ohio, 8-lb. basket, greenhouse, US#1												
Medium	-	-	-	-	3.13	2.92	4.00	-	-	3.71	4.50	-
Large	-	-	6.33	6.25	5.59	4.75	-	-	-	4.17	4.63	3.50
<u>Chicago:</u>												
Ark., 20-lb. carton												
Large-Extra large	-	-	-	-	-	5.52	6.50	-	-	-	-	-
Calif., 30-lb. carton												
Extra large	-	-	-	-	-	8.25	11.88	9.44	10.25	8.94	-	-
2-layer lug												
Extra large	-	-	-	-	-	7.25	6.50	-	8.00	6.41	10.35	-
Fla., 30-lb. carton												
Extra large	15.50	17.75	-	14.75	11.20	9.40	-	-	-	-	15.67	11.45
Large	13.69	17.00	-	14.25	9.88	7.75	-	-	-	-	14.38	10.56
20-lb. carton												
Extra large	10.00	-	-	-	-	-	-	-	-	-	-	8.85
Large	8.50	-	-	-	-	-	-	-	-	-	-	7.70
Ill., 10-lb. basket												
Medium-large	-	-	-	-	3.50	2.34	3.76	-	-	-	-	-
Ky., 10-lb. basket												
Medium-large	-	-	-	-	-	2.75	4.30	-	-	-	-	-
Mich., 10-lb. basket												
Medium-large	-	-	-	-	-	-	-	2.92	2.92	3.50fq	-	-
Mexico, 2-layer flat												
Extra large	10.58	8.60	10.51	9.66	8.00	4.25	-	-	-	6.00	10.33	7.25
Midwestern, 8-lb. carton, greenhouse												
Medium	-	-	6.00	5.08	3.80	2.50	-	-	-	3.50	3.88	-
Large	-	-	-	4.75	3.80	2.50	-	-	-	3.50	3.88	-

fq-Fair quality.

UNITED STATES DEPARTMENT OF AGRICULTURE
WASHINGTON, D. C. 20250

OFFICIAL BUSINESS
PENALTY FOR PRIVATE USE, \$300

POSTAGE AND FEES PAID
U.S. DEPARTMENT OF
AGRICULTURE
AGR 101



THIRD CLASS

END