



AgEcon SEARCH
RESEARCH IN AGRICULTURAL & APPLIED ECONOMICS

The World's Largest Open Access Agricultural & Applied Economics Digital Library

This document is discoverable and free to researchers across the globe due to the work of AgEcon Search.

Help ensure our sustainability.

Give to AgEcon Search

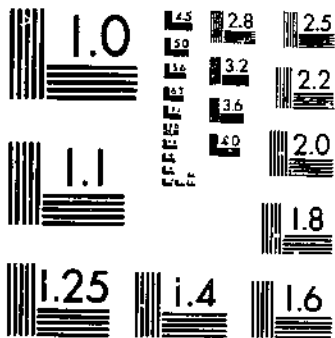
AgEcon Search
<http://ageconsearch.umn.edu>
aesearch@umn.edu

*Papers downloaded from **AgEcon Search** may be used for non-commercial purposes and personal study only. No other use, including posting to another Internet site, is permitted without permission from the copyright owner (not AgEcon Search), or as allowed under the provisions of Fair Use, U.S. Copyright Act, Title 17 U.S.C.*

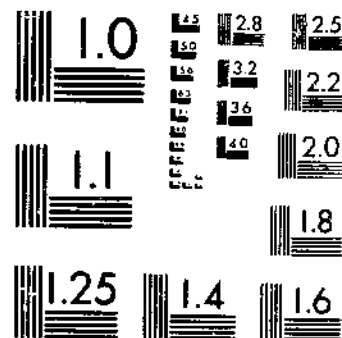
5B502 (1979) USDA STATISTICAL BULLETINS
POULTRY PRODUCTION AND DISPOSITION AND INCOME, FINAL ESTIMATES, 1970-75

1 OF 1

START



MICROCOPY RESOLUTION TEST CHART
NATIONAL BUREAU OF STANDARDS-1963-A



MICROCOPY RESOLUTION TEST CHART
NATIONAL BUREAU OF STANDARDS-1963-A

630.5 453-13

57

POULTRY

Production, Disposition, and Income

Final Estimates, 1970-75

U. S. DEPOSITORY

APR 19 1978

Los Angeles Public Library



Crop Reporting Board

Economics, Statistics, and

© UPDATA 1981

U.S. Department of Agriculture

Washington, D.C. 20250

Statistical Bulletin No. 602
April 1978

571602

C O N T E N T S

	<u>PAGE</u>
<u>CHICKENS, EGGS, AND BROILERS</u> : Number, Production, Sales, Home Consumption, Prices, Values and Income, United States, 1970-75	5
<u>CHICKENS</u> : Inventory Numbers, Number Raised, and Disposition, by States, 1970-75	6
<u>CHICKENS</u> : Disposition, Cash Receipts, and Gross Income, by States, 1970-75	12
<u>EGGS</u> : Production, Disposition, and Income, by States, 1970-75	18
<u>BROILERS</u> : Production, and Gross Income, by States, 1970-75	24
<u>CHICKENS</u> : Total Sales of Chickens and Broilers, by States, 1970-75	27

POULTRY

Production, Disposition, and Income

Final Estimates, 1970-75

This publication presents the final estimates made by the Crop Reporting Board relating to production, disposition, and income from chickens, eggs, and broilers, 1970-75, and continues the official series published in Statistical Bulletin No. 512 issued February 1973.

These revisions were made only after a thorough review of the original estimates published during 1970-75, consideration of new data such as the 1974 Census of Agriculture, and the general level and trends of all other applicable indications. When inventory numbers were revised, corresponding adjustments were necessary in other items.

The various items included in this report are described as follows:

ON HAND DECEMBER 1: The chickens on hand December 1 each year are considered as the annual inventory number.

DEATH LOSS OF LAYERS: Losses are estimated from producers' reports showing number of layers per flock which died during the preceding month. The annual death loss is computed from these monthly returns.

CHICKENS RAISED: Estimates of chickens raised are primarily based on the number of egg-type chicks produced by commercial hatcheries, including male breeding stock.

CHICKENS AND POUNDS PRODUCED: The estimate is the net annual production of chickens raised during the year less death losses during the year and deaths of young chickens from the current year's hatch. The pounds produced equal the pounds sold, plus pounds consumed on chicken operations, and plus or minus the change in the inventory live weight during the year.

EGGS PRODUCED: Annual estimates of egg production cover the 12 months from December 1 through November 30.

HOME CONSUMPTION OF CHICKENS AND EGGS: This refers to chickens and eggs consumed on the production units.

SALES OF CHICKENS AND EGGS: These sales are computed by subtracting home consumption from estimated production. Estimates of chickens sold are checked against data on commercial slaughter of mature chickens.

BROILERS: Broilers include all young chickens of the heavy or cross breeds raised for meat, from which pullets and cockerels are sold as broilers, but do not include egg-type chickens.

PRICES: Average annual prices per pound of chickens and broilers and per dozen eggs are computed from monthly prices received by producers weighted by the estimated quantities sold each month. Prices of eggs are for all egg sales, including hatching eggs and those sold at retail by producers.

INCOME: Cash receipts from marketings of chickens are computed by multiplying pounds of chickens sold by the average price per pound. Cash receipts from marketings of eggs are derived by multiplying dozens of eggs sold by the annual average price per dozen. Gross income from chickens is the total of cash receipts plus the value of chickens consumed in households of chicken producers. Gross income from eggs is the total of cash receipts plus the value of eggs consumed in households of egg producers. Gross income from broilers is derived by multiplying pounds produced by price per pound. It includes consumption in households of broiler producers.

CHICKENS, EGGS, AND BROILERS: NUMBERS ON HAND, PRODUCTION, SALES, HOME CONSUMPTION, PRICES, VALUES AND INCOME, UNITED STATES, 1970-75

YEAR	CHICKENS								
	ON HAND DEC. 1	LOST ^{1/}	RAISED	PRODUCTION ^{2/}		SALES		HOME CONSUMPTION	
				NUMBER	POUNDS	NUMBER	POUNDS	NUMBER	POUNDS
				1,000 HEAD	1,000 POUNDS	1,000 HEAD	1,000 POUNDS	1,000 HEAD	1,000 POUNDS
1970	433,280	60,614	324,483	263,869	1,190,105	233,316	1,120,603	19,369	73,409
1971	421,763	58,507	316,755	258,248	1,211,567	251,957	1,192,639	17,808	67,941
1972	404,191	58,045	291,352	233,307	1,117,816	234,769	1,128,813	16,110	61,724
1973	408,769	47,769	298,826	251,057	1,172,220	231,821	1,121,546	14,658	56,245
1974	384,101	46,235	288,353	242,118	1,186,148	252,365	1,202,562	14,421	55,162
1975	379,754	43,210	276,035	232,825	1,066,512	223,721	1,047,000	13,451	51,393

YEAR	CHICKENS					EGGS				
	PRICE PER POUND	VALUE OF--		CASH RECEIPTS	GROSS INCOME	PRODUC- TION	HOME CONSUMP- TION	SALES	PRICE PER DOZEN	CASH RECEIPTS
		PRODUC-	HOME							
		TION	CONSUMP-							
CENTS	1,000 DOLLARS	1,000 DOLLARS	1,000 DOLLARS	MILLIONS	MILLIONS	MILLIONS	MILLIONS	CENTS	1,000 DOLLARS	
1970	9.1	107,178	6,356	102,279	108,635	68,212	953	67,259	39.1	2,190,339
1971	7.8	94,751	5,262	98,876	98,138	69,649	789	68,860	31.4	1,800,746
1972	8.9	100,457	5,155	100,634	105,789	69,219	692	68,527	30.9	1,763,899
1973	15.1	176,454	7,878	169,495	177,373	66,039	627	65,412	52.5	2,859,253
1974	9.7	114,896	5,213	116,414	121,627	55,620	580	65,040	53.2	2,884,478
1975	9.9	104,669	5,175	104,093	109,268	64,626	536	64,090	52.4	2,796,785

YEAR	EGGS		BROILERS		CHICKENS AND BROILERS				
	VALUE OF HOME CONSUMP- TION	GROSS INCOME	PRODUCTION		PRICE PER POUND	GROSS INCOME	POUNDS SOLD	PRICE PER POUND	CASH RECEIPTS
			NUMBER	POUNDS					
	1,000 DOLLARS	1,000 DOLLARS	1,000 HEAD	1,000 POUNDS	CENTS	1,000 DOLLARS	1,000 POUNDS	CENTS	1,000 DOLLARS
1970	30,348	2,220,687	2,986,769	10,818,916	13.6	1,474,710	11,939,519	13.2	1,576,989
1971	20,038	1,820,784	2,945,348	10,817,657	13.8	1,487,077	12,010,296	13.2	1,579,953
1972	16,982	1,780,881	3,074,921	11,480,101	14.1	1,622,638	12,608,914	13.7	1,723,272
1973	26,517	2,885,770	3,008,667	11,219,885	24.0	2,690,362	12,341,431	23.2	2,859,857
1974	25,044	2,909,522	2,992,820	11,320,396	21.5	2,436,224	12,522,958	20.4	2,552,638
1975	22,490	2,819,275	2,950,099	11,096,015	26.3	2,915,017	12,143,015	24.9	3,019,110

^{1/} LOSS DURING YEAR.

^{2/} QUANTITY AVAILABLE FOR UTILIZATION DURING THE YEAR, I.E., SALES PLUS HOME CONSUMPTION PLUS OR MINUS THE CHANGE IN INVENTORY.

CHICKENS INVENTORY NUMBERS, NUMBER RAISED, AND DISPOSITION, DEC 1, 1969-NOV 30, 1970 1/

STATE	ALL CHICKENS ON HAND DEC. 1, 1969	LOST 2/	RAISED	HOME CONSUMPTION	SOLD	ALL CHICKENS ON HAND DEC. 1, 1970	PRODUCED 3/		
							NUMBER	WEIGHT	
						1000 HEAD		1000 LBS.	
ALA	21000	3056	14365	592	11867	19850	11309	54887	
ALAS	30	7	26	3	20	26	19	93	
ARIZ	1464	260	800	12	634	1358	540	2135	
ARK	24592	3262	21247	716	16837	25024	17985	90518	
CALIF	50922	7436	32112	260	18986	56352	24676	97671	
COLOR	1783	254	1688	170	1169	1878	1434	5623	
CONN	4619	646	3180	14	2769	4370	2534	15149	
DEL	842	124	735	27	544	882	611	3507	
FLA	17459	2850	13440	140	10250	17659	10590	44475	
GA	38745	5412	30914	583	23764	39900	25502	110970	
HAW	1271	251	710	15	335	1380	459	1273	
IDAHO	1095	107	620	116	362	1130	513	2132	
ILL	10300	1350	8000	540	5735	10675	6650	25992	
IND	17330	2285	13597	485	10647	17510	11312	44866	
IOWA	13777	1550	10600	924	7792	14111	9050	34383	
KANS	4619	563	3700	540	2826	4390	3137	14731	
KY	3608	586	3175	854	1873	3474	2593	12111	
LA	5309	1000	3500	650	2585	4574	2500	12428	
MAINE	7805	1074	5171	19	4131	7752	4097	25288	
MD	2144	260	1823	84	1557	2066	1563	7464	
MASS	3038	412	1764	18	1520	2852	1352	8102	
MICH	8171	1070	5800	475	4340	8086	4730	23137	
MINN	12392	1700	11325	735	6963	14319	9625	37210	
MISS	15627	2850	14377	1150	10527	15477	11527	52927	
MO	8040	1415	9219	885	6000	8959	7804	36750	
MONT	1095	180	1050	220	572	1173	870	3428	
NEBR	4979	649	3990	692	2398	5230	3341	12537	
NEV	26	5	13	6	7	21	8	31	
N H	1806	235	1218	9	1065	1715	983	6190	
N J	4885	790	3375	29	2600	4841	2585	10750	
N MEX	1246	200	952	35	620	1343	752	3372	
N Y	13635	1900	9550	245	7475	13565	7650	30493	
N C	22115	3250	16100	1075	12095	21795	12850	73961	
N DAK	1017	192	1132	400	523	1034	940	3781	
OHIO	12901	2080	11400	700	8343	13178	9320	35916	
OKLA	3120	374	2826	482	1839	3251	2452	12012	
OREG	2947	341	2154	102	1726	2932	1813	8066	
PA	17443	2788	13400	405	9408	18242	10612	57285	
R I	442	56	355	2	263	476	299	1755	
S C	8234	1000	5546	408	4475	7897	4546	21777	
S DAK	5121	617	4394	611	3037	5250	3777	14765	
TENN	6307	1117	4403	860	2414	6319	3286	14352	
TEX	16887	2350	13434	1313	9321	17337	11084	45912	
UTAH	1751	200	862	38	638	1737	662	2336	
VT	499	71	435	15	334	514	364	1979	
VA	5367	776	4420	588	3119	5304	3644	20546	
WASH	6505	754	4506	150	3047	7060	3752	14976	
W VA	1442	205	1066	195	690	1418	861	4940	
WIS	6177	680	5900	760	3204	7433	5220	24774	
WYO	167	24	110	22	70	161	86	349	
U S	422096	60614	324483	19369	233316	433280	263869	1190105	

1/ EXCLUDES BROILERS.

2/ LOSS DURING YEAR.

3/ THE QUANTITY AVAILABLE FOR UTILIZATION DURING THE YEAR, I.E., SALES PLUS HOME CONSUMPTION PLUS OR MINUS THE CHANGE IN INVENTORY.

CHICKENS INVENTORY NUMBERS, NUMBER RAISED, AND DISPOSITION, DEC 1, 1970-NOV 30, 1971 1/

STATE	ALL CHICKENS ON HAND DEC. 1, 1970	LOST 2/	RAISED	HOME CONSUMPTION	SOLD	ALL CHICKENS ON HAND DEC. 1, 1971	PRODUCED 3/		
							NUMBER	WEIGHT	
						1000 HEAD		1000 LBS.	
ALA	19850	3100	14200	1000	10182	19768	11100	53613	
ALAS	26	7	36	4	15	36	29	129	
ARIZ	1358	210	725	14	783	1076	515	2195	
ARK	25024	3360	21884	644	17902	25002	18524	97228	
CALIF	56352	7465	31434	250	26539	53582	24019	93747	
COLO	1878	300	1700	155	1340	1783	1400	6063	
CONN	4370	670	3620	11	2452	4857	2950	16888	
DEL	882	118	650	27	525	862	532	3323	
FLA	17659	2892	12532	120	9150	18029	9640	38266	
GA	39900	4581	28902	564	25717	37940	24321	115173	
HAW	1380	339	785	10	411	1405	446	1576	
IDAHO	1130	125	814	90	818	911	689	2550	
ILL	10675	1450	7400	480	6345	9800	5950	23689	
IND	17510	2083	13674	513	10019	18569	11591	44956	
IOWA	14111	1616	9879	832	8123	13419	8263	31514	
KANS	4390	550	3650	412	3114	3964	3100	16064	
KY	3474	575	3011	775	1800	3335	2436	11908	
LA	4574	700	3600	400	2322	4752	2900	14367	
MAINE	7752	1000	5423	18	4212	7945	4423	25920	
MD	2066	295	1820	81	1470	2040	1525	7498	
MASS	2852	331	1961	13	1700	2769	1630	8895	
MICH	8086	900	6100	450	4346	8490	5200	23457	
MINN	14319	1950	10629	800	7736	14462	8679	36309	
MISS	15477	2710	13660	1210	10308	14909	10950	50315	
MO	8959	1300	8272	800	6319	8812	6972	37076	
MONT	1173	234	1200	195	790	1154	966	3892	
NEBR	5230	750	3750	670	2748	4812	3000	10871	
NEV	21	4	12	5	6	18	8	35	
N H	1715	216	1230	7	1086	1636	1014	5990	
N J	4841	720	3076	32	3050	4115	2356	10204	
N MEX	1343	215	914	30	803	1209	699	3233	
N Y	13565	1850	9500	241	7680	13294	7650	30792	
N C	21795	2860	18285	1097	14528	21595	15425	94508	
N DAK	1034	200	1150	400	653	931	950	3758	
OHIO	13178	2000	10279	630	7145	13682	8279	33809	
OKLA	3251	350	2405	335	1655	3316	2055	9667	
OREG	2932	418	2251	81	1635	3049	1833	7814	
PA	18242	2400	13482	340	12934	16050	11082	68449	
R I	476	45	245	1	355	320	200	1289	
S C	7897	900	5324	400	3798	8123	4424	21899	
S DAK	5250	654	4118	446	3543	4725	3464	13801	
TENN	6319	1134	4331	720	2667	6129	3197	15336	
TEX	17337	2080	12371	1116	9815	16697	10291	45431	
UTAH	1737	190	1045	20	900	1772	855	3146	
VT	514	63	469	11	333	576	406	2151	
VA	5304	740	4400	500	3295	5169	3660	21003	
WASH	7060	742	4207	107	4538	5880	3465	15301	
W VA	1418	200	1150	180	788	1400	950	5194	
WIS	7433	890	5050	560	3600	7433	4160	20962	
WYO	161	25	100	11	64	161	75	313	
U S	433280	58507	316755	17808	251957	421763	258240	1211567	

1/ EXCLUDES BROILERS.

2/ LOSS DURING YEAR.

3/ THE QUANTITY AVAILABLE FOR UTILIZATION DURING THE YEAR, I.E., SALES PLUS HOME CONSUMPTION PLUS OR MINUS THE CHANGE IN INVENTORY.

CHICKENS INVENTORY NUMBERS, NUMBER RAISED, AND DISPOSITION, DEC 1, 1971-NOV 30, 1972 1/

STATE	ALL CHICKENS	LOST 2/	RAISED	HOME CONSUMPTION	SOLD	ALL CHICKENS	PRODUCED 3/	
	ON HAND DEC. 1, 1971					ON HAND DEC. 1, 1972	NUMBER	WEIGHT
	1000 HEAD						1000 LBS.	
ALA	19768	2000	12500	850	9828	19590	10500	51028
ALAS	36	8	35	6	20	37	27	122
ARIZ	1076	147	380	12	297	1000	233	952
ARK	25002	2520	21884	592	18725	23049	19364	96845
CALIF	53582	4/14439	26904	240	17583	48224	12465	49076
COLO	1783	290	1690	145	1275	1763	1400	5763
CONN	4857	560	3510	10	2970	4827	2950	17943
DEL	862	113	625	25	467	882	512	3049
FLA	18029	2536	11016	110	9238	17161	8480	33141
GA	37940	3426	23179	564	20521	36608	19753	90618
HAW	1405	315	637	5	392	1330	322	1343
IDAHO	911	95	500	70	296	950	405	1470
ILL	9800	1200	7300	440	6303	9157	6100	24379
IND	18569	1821	11999	575	9589	18583	10178	37800
IOWA	13419	1500	9100	690	7929	12400	7600	26298
KANS	3964	520	3350	370	2674	3750	2830	14176
KY	3335	545	3200	700	1690	3600	2655	10324
LA	4752	600	3400	400	2711	4441	2800	15330
MAINE	7945	952	5886	16	4371	8492	4934	29767
MD	2040	265	1815	70	1390	2130	1550	7517
MASS	2769	295	1798	12	1981	2279	1503	8273
MICH	8490	875	5500	415	4552	8148	4625	21468
MINN	14462	1500	9211	750	7284	13739	7311	29045
MISS	14909	2629	13194	1100	10380	13994	10565	51252
MU	9812	1200	8052	600	5700	8364	6852	37495
MO	1154	220	1230	180	804	1180	1010	3863
NEBK	4812	700	2860	620	1925	4427	2160	7745
NEV	18	4	18	4	6	22	14	51
N H	1636	195	1255	6	997	1693	1060	6320
N J	4115	520	2521	30	2300	3786	2001	8360
N MEX	1209	194	887	31	600	1271	693	2531
N Y	13294	1830	9800	231	8670	12363	7970	34829
N C	21595	2517	17005	1020	14548	20515	14488	94289
N DAK	931	200	1044	380	566	829	844	3413
OHIO	13682	1900	9934	599	7717	13400	8034	33069
OKLA	3316	350	1964	220	1800	2910	1614	8549
OREG	3049	350	1851	75	1625	2850	1501	7304
PA	16050	1766	13300	280	11754	15550	11534	75798
R I	320	30	160	1	148	301	130	710
S C	8123	900	6000	370	4506	8347	5100	23989
S DAK	4725	615	3780	420	3091	4379	3165	12634
TENN	6129	508	4200	580	3107	6134	3692	18568
TEX	16697	1856	11003	1000	9534	15310	9147	44007
UTAH	1772	190	830	20	690	1702	640	2349
VT	576	60	600	10	322	784	540	2863
VA	5169	720	4700	500	3015	5634	3980	21671
WASH	5880	722	4063	95	3292	5834	3341	14120
W VA	1400	190	1050	160	820	1280	860	4752
WIS	7433	720	4536	500	3700	7049	3816	19315
WYO	161	37	96	11	66	143	59	283
U S	421763	4/58045	291352	16110	234769	404191	233307	1117816

- 1/ EXCLUDES BROILERS.
- 2/ LOSS DURING YEAR.
- 3/ PRODUCTION IS THE QUANTITY AVAILABLE FOR UTILIZATION DURING THE YEAR, I.E., SALES PLUS HOME CONSUMPTION PLUS OR MINUS THE CHANGE IN INVENTORY.
- 4/ INCLUDES 8.7 MILLION CHICKENS DESTROYED UNDER THE EXOTIC NEWCASTLE DISEASE ERADICATION PROGRAM.

CHICKENS INVENTORY NUMBERS, NUMBER RAISED, AND DISPOSITION, DEC 1, 1972-NOV 30, 1973 1/

STATE	ALL CHICKENS ON HAND DEC. 1, 1972	LOST 2/	1000 HEAD			ALL CHICKENS ON HAND DEC. 1, 1973	PRODUCED 3/	
			RAISED	HOME CONSUMPTION	SOLD		NUMBER	WEIGHT
							1000 LBS.	
ALA	19590	2050	14250	750	10820	20220	12200	58197
ALAS	37	8	35	10	16	38	27	121
ARIZ	1000	123	704	11	530	1040	581	2283
ARK	25049	2592	22541	625	20066	24307	19949	109166
CALIF	48224	4/ 8043	27673	240	17230	50384	19630	77909
COLO	1763	270	2058	145	1250	2156	1788	6526
CONN	4827	430	3350	10	3495	4242	2920	17784
DEL	882	111	625	24	464	908	514	3157
FLA	17161	2375	11600	100	9153	17133	9225	41892
GA	36608	3449	29775	564	21301	41069	26326	110133
HAW	1330	320	700	5	410	1295	380	1384
IDAHO	950	95	730	70	440	1075	635	2347
ILL	9157	1150	7258	400	6100	8765	6108	23663
IND	18583	1682	12932	520	10563	18750	11250	38717
IOWA	12400	1400	9000	550	7350	12100	7600	27909
KANS	3750	450	3315	350	2762	3503	2865	14756
KY	3600	500	3100	650	1950	3600	2600	10130
LA	4441	620	3300	400	2393	4328	2680	13862
MAINE	8492	850	6024	15	4400	9256	5179	28938
MD	2130	252	1620	68	1380	2050	1368	6799
MASS	2279	201	1874	12	1700	2240	1673	8674
MICH	8148	850	5700	350	4830	7818	4850	22079
MINN	13739	1800	10111	650	6875	14525	8311	32041
MISS	13994	1600	11891	990	9650	13645	10291	47740
MO	8364	1100	8000	475	6637	8152	6900	37489
MONT	1180	210	1200	180	800	1190	990	4072
NEBR	4427	600	3023	520	1700	4630	2423	8566
NEV	22	4	18	4	6	26	14	60
N H	1693	200	1280	6	1218	1549	1080	6745
N J	3786	480	2700	28	2100	3878	2220	9756
N MEX	1271	149	774	29	681	1186	625	2263
N Y	12363	1775	9750	228	7800	12310	7975	33949
N C	20515	2341	14794	970	11898	20100	12453	84632
N DAK	829	190	1077	375	500	841	887	3488
OHIO	13400	1710	9025	484	7331	12900	7315	29597
OKLA	2910	350	2100	200	1600	2860	1750	7433
OREG	2850	280	1962	75	1500	2957	1682	6627
PA	15550	1328	13500	220	13042	14460	12172	80235
R I	301	27	154	1	125	302	127	745
S C	8347	1150	5900	360	4362	8375	4750	22348
S DAK	4375	510	3700	385	2938	4246	3190	12723
TENN	6134	600	3800	520	2694	6120	3200	15736
TEX	15310	1000	10308	810	8000	15800	9300	36371
UTAH	1702	180	1075	16	710	1871	895	3489
VT	784	60	376	10	349	741	316	1715
VA	5634	772	4700	510	3650	5402	3928	22442
WASH	5834	642	3979	86	2849	6236	3337	13418
W VA	1280	160	1100	140	853	1227	940	4275
WIS	7049	700	4272	500	3300	6821	3572	17548
WYO	143	30	96	17	50	142	66	289
U S	404161	4/ 47765	298826	14658	231821	408769	251057	1172220

1/ EXCLUDES BROILERS.

2/ LOSS DURING YEAR.

3/ THE QUANTITY AVAILABLE FOR UTILIZATION DURING THE YEAR, I.E., SALES PLUS HOME CONSUMPTION PLUS OR MINUS THE CHANGE IN INVENTORY.

4/ INCLUDES 3.7 MILLION CHICKENS DESTROYED UNDER THE EXOTIC NEWCASTLE DISEASE ERADICATION PROGRAM.

CHICKENS INVENTORY NUMBERS, NUMBER RAISED, AND DISPOSITION, DEC , 1973-NOV 30, 1974 1/

STATE	ALL CHICKENS ON HAND DEC. 1, 1973	LOST 2/	RAISED	HOME CONSUMPTION	SOLD	ALL CHICKENS ON HAND DEC. 1, 1974	PRODUCED 3/	
							NUMBER	WEIGHT
			1000 HEAD				1000 LBS.	
AL A	20220	1950	11550	750	11000	18070	9600	59912
AL AS	38	9	37	23	13	30	28	131
AR TZ	1040	95	406	11	465	875	311	1409
ARK	24307	2462	23217	625	21934	22503	20755	116726
CAL IF	50384	6151	26457	240	20572	49878	20306	87039
CON D	2156	260	2136	140	1500	2392	1876	7129
CONN	4242	400	3240	10	3138	3934	2840	15824
DEL	908	113	550	25	500	820	437	2787
FL A	17133	2250	11400	105	9929	16249	9150	42603
GA	41069	3190	23100	564	25805	34610	19910	101601
HAW	1295	374	710	5	344	1322	376	1467
IND AN	1075	130	740	70	625	990	610	2405
ILL	8765	1300	6700	380	5235	8550	5400	20239
IND	18750	1781	13932	575	10587	19739	12151	44531
IOWA	12100	1300	9800	550	8650	11400	8500	32956
KANS	3508	450	3165	340	2532	3346	2715	13734
KY	3600	550	3100	650	2200	3300	2550	10580
LA	4328	670	3250	400	2662	3846	2580	14504
MAINE	9256	850	6990	15	5381	10000	6140	35223
MD	2050	230	1400	65	1165	1990	1170	5998
MASS	2740	175	1881	12	1697	2237	1706	10037
MICH	7818	1700	5900	300	3913	7805	4200	19598
MINN	14525	1850	10460	588	9727	12820	8610	35595
MISS	13645	1400	10690	890	10100	11945	9290	48599
MO	8152	1187	6661	475	6000	7158	5481	29361
MONT	1190	200	1120	180	905	1025	920	3710
NEBR	4630	600	2830	470	1940	4450	2230	8282
NEV	26	6	21	4	10	27	15	62
N H	1549	140	1261	6	1221	1443	1121	6864
N J	3878	483	2100	25	2000	3470	1617	7088
N MEX	1186	147	721	27	526	1207	574	2013
N Y	12310	1700	9700	235	8835	11240	8000	35292
N C	20100	2300	15000	1000	13100	18700	12700	90122
N DAK	841	192	1050	375	500	824	858	3453
OHIO	12900	1878	8921	375	7538	12030	7043	29219
OKLA	2860	420	2499	289	1850	2800	2079	9486
OREG	2957	310	1972	75	1650	2894	1662	6703
PA	14460	1100	14000	250	12060	15050	12900	73291
R I	302	25	220	1	221	275	195	1152
S C	8375	850	5360	400	4500	7985	4510	20210
S DAK	4246	575	3640	355	2838	4118	3065	12264
TENN	6120	550	3400	470	3000	5500	2850	15012
TEX	15800	1100	10600	800	10400	14100	9500	41161
UTAH	1871	199	1024	14	895	1796	834	3274
VT	741	55	540	10	579	637	485	2589
VA	5402	779	4550	550	3750	4873	3771	22744
WASH	6236	830	4112	77	3798	5643	3282	15748
W VA	1227	185	1150	135	782	1275	965	4340
WTS	6821	800	5000	475	3751	6795	4200	20851
WYD	142	40	90	15	42	135	50	234
U S	408769	46235	288353	14421	252365	384101	242118	1186148

1/ EXCLUDES BROILERS.

2/ LOSS DURING YEAR.

3/ THE QUANTITY AVAILABLE FOR UTILIZATION DURING THE YEAR, I.E., SALES PLUS HOME CONSUMPTION PLUS OR MINUS THE CHANGE IN INVENTORY.

CHICKENS INVENTORY NUMBERS, NUMBER RAISED, AND DISPOSITION, DEC 1, 1974 - NOV 30, 1975 1/

STATE	ALL CHICKENS	LOST 2/	RAISED	HOME CONSUMPTION	SOLD	ALL CHICKENS	PRODUCED 3/	
	ON HAND DEC. 1, 1974					ON HAND DEC. 1, 1975	NUMBER	WEIGHT
			1000 HEAD				1000 LBS.	
ALA	18070	1900	14330	600	11200	18700	12430	58218
ALAS	30	15	68	44	13	26	53	241
ARIZ	875	180	518	11	437	765	338	1359
ARK	22503	2325	20092	600	15672	23998	17767	101508
CAL IF	49878	6777	22527	245	17312	48071	15750	63853
CON D	2392	265	2088	130	1470	2615	1823	6303
CONN	3934	590	3330	9	2169	4496	2740	14747
DEL	820	108	655	22	490	855	547	3230
FLA	16249	2050	11300	105	8389	17005	9250	40504
GA	34610	2710	20800	530	17842	34328	18090	79199
HAW	1322	235	565	5	404	1243	330	851
IDAHO	990	110	760	70	500	1070	650	2523
ILL	8550	1025	6300	310	5415	8100	5275	19899
IND	19739	1548	13200	550	11361	19480	11652	40786
IOWA	11400	1325	10600	525	8950	11200	9275	33056
KANS	3346	430	2816	330	2263	3139	2386	12221
KY	3300	500	3000	600	2200	3000	2500	10695
LA	3846	570	3100	350	1975	4047	2530	12639
MAINE	10000	945	7390	15	5742	10688	6445	39164
MD	1990	230	1500	65	1285	1910	1270	6302
MASS	2237	210	1581	11	1506	2091	1371	7111
MICH	7805	700	6000	388	4575	8142	5300	24017
MINN	12820	1400	9572	475	7377	13140	8172	32968
MISS	11945	1300	10300	800	8833	11312	9000	40585
MO	7158	1050	7078	450	5716	7020	6028	35816
MDNT	1025	175	1175	175	830	1020	1000	4036
NEBR	4450	560	2550	430	1760	4250	1990	7073
NEV	77	8	17	4	8	24	9	37
N H	1443	160	1200	5	1075	1403	1040	6596
N J	3470	361	2200	25	2230	3054	1839	7822
N MEX	1207	131	1300	27	879	1470	1169	4415
N Y	11740	1665	8500	240	7185	10650	6835	34982
N C	18700	2200	14000	1000	11500	18000	11800	81843
N DAK	824	180	800	362	400	682	620	2497
OHIO	12030	1700	8900	270	7020	11940	7200	30978
OKLA	7800	300	2100	150	1450	3000	1800	8114
ORFG	2894	310	1640	74	1300	2850	1330	5366
PA	15050	1100	12440	250	12290	13850	11340	33652
R I	775	30	202	1	206	240	172	958
S C	7985	900	6040	440	4000	8685	5140	22022
S DAK	4118	500	3320	320	2800	3818	2820	10986
TFNN	5500	550	3300	450	2600	5200	2750	13642
TEX	14170	1200	11000	800	11000	12100	9800	40463
UTAH	1796	144	922	13	827	1734	778	3032
VT	637	53	475	9	437	613	422	2030
VA	4873	680	4400	500	3003	5090	3720	21097
WASH	5643	900	4648	71	3873	5447	3748	15447
W VA	1275	175	1050	140	814	1196	875	4048
WTS	6795	680	4300	440	3096	6879	3620	17497
WYO	135	50	86	15	38	118	36	174
U S	384101	43210	276035	13451	223721	379754	232825	1066512

1/ EXCLUDES BROILERS.

2/ LOSS DURING YEAR.

3/ QUANTITY AVAILABLE FOR UTILIZATION DURING THE YEAR, I. E., SALES PLUS HOME CONSUMPTION PLUS OR MINUS THE CHANGE IN INVENTORY.

CHICKENS DISPOSITION, CASH RECEIPTS, AND GROSS INCOME, DEC 1, 1969 - NOV 30, 1970 ^{1/}

STATE	SOLD	HOME CONSUMPTION	PRICE PER POUND	VALUE OF PRODUCTION	CASH RECEIPTS	VALUE OF HOME CONSUMPTION	GROSS INCOME
	1000 POUNDS		CENTS		1000 DOLLARS		
ALA	60522	1776	9.3	5105	5629	165	5794
ALAS	98	14	17.5	16	17	2	19
ARIZ	2663	46	6.4	137	170	3	173
ARK	90920	2506	10.2	9233	9274	256	9530
CALIF	75944	1040	7.3	7130	5544	76	5620
COLD	5027	646	9.5	534	478	61	539
CONN	16614	73	9.6	1454	1595	7	1602
DEL	3318	116	12.3	431	408	14	422
FLA	47150	434	7.5	3336	3536	33	3569
GA	111691	2157	9.2	10209	10276	198	10474
MAW	1206	54	12.3	157	148	7	155
IDAHO	1557	452	5.0	107	78	23	101
ILL	22367	2106	7.4	1923	1655	156	1811
IND	41523	2183	8.0	3589	3322	175	3497
IOWA	30389	3881	5.9	2029	1793	229	2022
KANS	14695	1890	5.6	825	823	106	929
KY	10302	2818	10.1	1223	1041	285	1326
LA	14218	2210	10.0	1243	1422	221	1643
MAINE	25612	97	10.5	2655	2689	10	2599
MD	7629	370	10.5	784	801	39	840
MASS	8816	65	9.6	778	846	8	854
MICH	19964	2138	8.1	1874	1617	173	1790
MINN	28548	3161	5.3	1972	2513	160	1681
MISS	52635	3680	10.1	5346	5316	372	5688
MO	32400	3009	7.8	2867	2527	235	2762
MONT	2460	836	8.0	274	197	67	264
NEBR	8633	2491	4.2	527	363	105	468
NEV	29	24	5.5	2	2	1	3
N H	6603	46	9.6	594	634	4	638
N J	11180	145	9.4	1011	1051	14	1065
N MEX	2728	116	8.0	270	218	9	227
N Y	30648	1225	9.8	2988	3004	120	3124
N C	74989	4300	12.0	8875	8999	516	9515
N DAK	2197	1520	5.5	208	121	84	205
OHIO	36206	3010	9.9	3556	3386	298	3684
OKLA	10115	1494	8.0	961	809	120	929
OREG	7249	408	6.0	484	435	24	459
PA	54566	1944	12.3	7046	6712	239	6951
R I	1578	11	9.6	168	151	1	152
S C	23270	1428	8.8	1916	2048	126	2174
S DAK	12148	2322	4.7	694	571	109	680
TENN	12553	3096	10.3	1478	1293	319	1612
TEX	42877	4464	10.8	4959	4631	482	5113
UTAH	2552	152	4.0	93	102	6	108
VT	1904	72	9.6	190	183	7	190
VA	18714	2352	11.9	2445	2227	280	2507
WASH	12797	615	7.0	1048	896	43	939
W VA	4485	819	11.6	573	520	95	615
WIS	16020	3496	7.4	1833	1185	259	1444
WYO	294	81	7.9	28	23	6	29
U S	1120603	73409	9.1	107178	102279	6356	108635

^{1/} EXCLUDES BROILERS

CHICKENS DISPOSITION, CASH RECEIPTS, AND GROSS INCOME, DEC 1, 1970 - NOV. 30, 1971 1/

STATE	SOLD	HOME CONSUMPTION	PRICE PER POUND	VALUE OF PRODUCTION	CASH RECEIPTS	VALUE OF HOME CONSUMPTION	GROSS INCOME
	1000 POUNDS		CENTS		1000 DOLLARS		
ALA	50910	3100	7.3	3914	3716	226	3942
ALAC	71	18	18.5	24	13	3	16
ARTZ	3132	48	3.9	86	122	2	124
ARK	94881	2254	9.5	9237	9014	214	9228
CAL IF	106156	1000	3.7	3469	3928	37	3965
COLO	6030	605	6.0	364	362	36	398
CONN	14712	56	8.5	1435	1251	5	1256
DEL	3255	122	11.6	385	378	14	392
FLA	34770	360	5.4	2066	1878	19	1897
GA	118298	2087	7.9	9099	9346	165	9511
HAW	1480	36	10.0	158	148	4	152
IDAHO	3272	360	5.0	128	164	18	182
ILL	24746	1872	6.8	1611	1683	127	1810
IND	39074	2309	6.0	2697	2344	139	2483
IOWA	30867	3494	5.0	1576	1543	175	1718
KANS	16193	1442	5.0	803	810	72	882
KY	9360	2480	10.2	1219	955	253	1208
LA	12771	1360	7.9	1135	1009	107	1116
MAINE	25693	88	9.0	2333	2312	8	2320
MD	7203	373	9.7	727	699	36	735
MASS	9350	61	8.5	756	795	5	800
MICH	19992	1890	8.0	1877	1599	151	1750
MINN	31718	3440	4.3	1561	1364	148	1512
MISS	49478	3872	8.6	4327	4255	333	4588
MO	35386	2640	7.0	2595	2477	185	2662
MONT	3160	780	5.0	195	158	39	197
NEBR	9893	2412	3.0	326	297	72	369
NEV	25	20	3.7	1	1	1	2
N H	6625	35	8.5	509	563	3	566
N J	12810	157	7.7	786	986	12	998
N MEX	3533	93	5.5	178	194	5	199
N Y	31488	1205	7.6	2340	2393	92	2485
N C	98074	4937	11.3	10679	10178	558	10736
N DAK	2743	1520	5.0	188	197	76	213
OHIO	29295	2835	10.0	3381	2930	284	3214
OKLA	8606	1072	7.4	715	637	79	716
OREG	7194	340	4.5	352	324	15	339
PA	77304	1632	11.0	7529	8536	100	8716
R I	2059	5	8.5	110	175	0	175
S C	19750	1440	6.8	1489	1343	98	1441
S DAK	14172	1739	4.0	552	567	70	637
TENN	14135	2520	9.9	1518	1399	249	1648
TEX	44168	3906	10.0	4543	4417	391	4808
UTAH	3040	80	4.0	126	122	3	125
VT	1798	51	8.5	183	153	4	157
VA	19770	2000	11.1	2331	2194	222	2416
WASH	19060	439	5.0	765	953	22	975
W VA	4570	738	12.0	623	548	89	637
WIS	18000	2576	8.3	1740	1494	214	1708
WYO	269	42	4.5	14	12	2	14
U S	1192639	67941	7.8	94751	92876	5262	98130

1/ EXCLUDES BROILERS.

CHICKENS DISPOSITION, CASH RECEIPTS, AND GROSS INCOME, DEC 1, 1971 - NOV 30, 1972 1/

STATE	SOLD	HOME CONSUMPTION	PRICE PER POUND	VALUE OF PRODUCTION	CASH RECEIPTS	VALUE OF HOME CONSUMPTION	GROSS INCOME
	1000 POUNDS		CENTS		1000 DOLLARS		
ALA	49140	2550	6.5	4337	4177	217	4394
ALAS	90	27	18.5	23	17	5	22
ARIZ	1188	41	5.5	52	65	2	67
ARK	93625	2072	5.8	9491	9175	203	9378
CALIF	70332	960	5.4	2650	2/ 3798	52	2/ 3850
COLO	5483	564	6.5	375	356	37	393
CGNN	17820	53	9.5	1705	1693	5	1698
DEL	2895	115	13.3	406	385	15	400
FLA	36028	365	6.0	1988	2162	23	2185
GA	94397	2087	9.4	8518	8873	196	9069
HAW	1411	18	10.0	134	141	2	143
IDAHO	1154	266	5.0	74	58	13	71
ILL	24582	1760	6.3	1536	1549	111	1660
IND	36438	2415	7.1	2684	2587	171	2758
IOWA	29337	2858	6.5	1839	1907	188	2095
KANS	13905	1295	4.5	638	626	58	684
KY	5281	2240	9.9	1022	820	222	1042
LA	14911	1360	8.5	1303	1267	116	1383
MAINE	27100	74	9.5	2828	2575	7	2582
MD	6950	308	11.2	842	778	35	813
MASS	10697	55	9.5	786	1016	5	1021
MICH	20939	1868	8.5	1625	1780	159	1939
MINN	29136	3225	4.5	1307	1311	145	1456
MISS	51900	3520	10.6	5433	5501	373	5874
MO	37520	1960	9.0	3375	3377	178	3555
MONT	3216	720	6.0	232	193	43	236
NEBR	7123	2294	3.9	302	278	89	367
NEV	25	16	5.8	3	1	1	2
N H	6082	30	9.5	600	578	3	581
N J	9660	147	8.7	727	840	13	853
N MEX	2280	109	6.0	152	137	7	144
N Y	37281	1155	7.8	2717	2908	90	2998
N C	94562	4550	11.3	10655	10686	519	11205
N DAK	2377	1444	4.5	154	107	65	172
OHIO	31640	2656	9.8	3241	3101	264	3365
OKLA	9000	704	8.1	692	729	57	786
GREG	7150	315	4.0	292	286	13	299
PA	76401	1344	14.5	10985	11078	195	11273
R I	799	6	9.5	67	76	1	77
S C	22530	1332	8.0	1919	1802	107	1909
S DAK	12364	1638	4.0	505	495	66	561
TENN	16467	2030	10.0	1857	1647	203	1850
TEX	44810	3500	10.4	4577	4660	364	5024
UTAH	2691	80	5.6	132	151	4	155
VT	1771	48	9.5	272	168	5	173
VA	18090	2000	10.8	2340	1954	216	2170
WASH	13826	390	4.7	664	650	18	668
W VA	4592	656	11.4	542	523	75	598
WIS	18500	2300	8.5	1642	1573	196	1769
WYO	317	42	6.0	17	19	3	22
U S	1128813	61724	8.9	100457	2/ 100634	5155	2/ 105789

1/ EXCLUDES BROILERS.

2/ DOES NOT INCLUDE GOVERNMENT INDEMNITY PAYMENTS FOR CHICKENS DESTROYED UNDER THE EXOTIC NEWCASTLE DISEASE ERADICATION PROGRAM.

CHICKENS DISPOSITION, CASH RECEIPTS, AND GROSS INCOME, DEC 1, 1972-NOV 30, 1973 1/

STATE	SOLD	HOME CONSUMPTION	PRICE PER POUND	VALUE OF PRODUCTION	CASH RECEIPTS	VALUE OF HOME CONSUMPTION	GROSS INCOME
	1000 POUNDS		CENTS		1000 DOLLARS		
ALA	54100	2250	14.2	8264	7682	320	8002
ALAS	72	45	19.0	23	14	9	23
ARIZ	2120	37	12.9	295	273	5	278
ARK	110363	2188	14.5	15829	16003	317	16320
CALIF	68920	960	13.5	10518	2/9304	130	2/9434
COLU	4500	566	14.5	946	653	82	735
CONN	20621	53	15.4	2739	3176	8	3184
DEL	2877	110	17.2	543	495	19	514
FLA	42104	350	12.9	5404	5431	45	5476
GA	93724	2087	17.4	19163	16308	363	16671
HAW	1435	18	14.5	201	208	3	211
IDAHO	1716	280	12.0	282	206	34	240
ILL	23790	1600	9.6	2272	2284	154	2438
IND	39083	2184	13.6	5266	5315	297	5612
IOWA	27195	2310	11.8	3293	3209	273	3482
KANS	14362	1225	8.0	1180	1149	98	1247
KY	8775	2080	14.8	1499	1299	308	1607
LA	13162	1360	15.3	2121	2014	208	2222
MAINE	26840	65	15.4	4456	4133	11	4144
MD	6900	299	17.0	1156	1173	51	1224
MASS	9010	55	15.4	1336	1388	8	1356
MICH	22218	1575	11.8	2605	2622	186	2808
MINN	27500	2795	8.0	2563	2200	224	2424
MISS	47285	3168	18.3	8736	8653	580	9233
MO	37167	1568	16.1	6036	5984	252	6236
MONT	3200	720	10.5	428	336	76	412
NEBR	6120	1924	7.5	642	459	144	603
NEV	25	16	14.6	9	4	2	6
N H	7430	30	15.4	1039	1144	5	1149
N J	9030	140	15.2	1483	1373	21	1394
N MEX	2520	53	14.0	317	353	13	366
N Y	34320	1140	12.6	4278	4324	144	4468
N C	83286	4365	19.7	16673	16407	860	17267
N DAK	2100	1425	6.6	230	139	94	233
OHIO	30057	2178	13.7	4055	4118	298	4416
OKLA	7360	640	12.5	929	920	80	1000
OREG	6300	308	11.3	749	712	35	747
PA	83469	1056	20.6	16528	17195	218	17413
R I	738	6	15.4	115	114	1	115
S C	20938	1368	15.1	3375	3162	207	3369
S DAK	11752	1502	8.5	1081	999	128	1127
TENN	14278	1820	15.7	2471	2242	286	2528
TEX	33600	2835	17.5	6365	5880	496	6376
UTAH	2769	64	12.0	419	332	8	340
VT	1885	48	15.4	264	290	7	297
VA	21900	2040	16.3	3658	3570	333	3903
WASH	11966	353	12.5	1677	1496	44	1540
W VA	3924	574	13.2	564	518	76	594
WIS	16500	2300	13.3	2334	2195	306	2501
WYO	240	68	15.5	45	37	11	48
U S	1121546	56245	15.1	176454	2/169495	7878	2/177373

1/ EXCLUDES BROILERS.

2/ DOES NOT INCLUDE GOVERNMENT INDEMNITY PAYMENTS FOR CHICKENS DESTROYED UNDER THE EXOTIC NEWCASTLE DISEASE ERADICATION PROGRAM.

CHICKENS DISPOSITION, CASH RECEIPTS, AND GROSS INCOME, DEC 1, 1973-NOV 30, 1974 1/

STATE	SOLD	HOME CONSUMPTION	PRICE PER POUND	VALUE OF PRODUCTION	CASH RECEIPTS	VALUE OF HOME CONSUMPTION	GROSS INCOME
	1000 POUNDS		CENTS		1000 DOLLARS		
ALA	55000	2250	8.7	4429	4785	196	4981
ALAS	59	104	19.0	25	11	20	31
ARTZ	1860	37	6.8	96	126	3	129
ARK	120637	2188	9.5	11089	11461	208	11669
CALIF	82288	960	6.9	6006	5678	66	5744
COLOR	5400	546	6.0	428	324	33	357
CONN	18200	53	10.4	1646	1893	6	1899
DEL	3100	115	10.0	279	310	12	322
FLA	44681	368	6.1	2599	2726	22	2748
GA	116123	2087	9.8	9957	11380	205	11585
HAW	1238	18	14.5	213	180	3	183
IDAH	2438	280	8.0	192	195	22	217
ILL	19893	1520	8.8	1781	1751	134	1885
IND	39172	2415	7.0	3117	2742	169	2911
IOWA	32870	2310	5.5	1813	1808	127	1935
KANS	13166	1190	7.5	1030	987	89	1076
KY	9900	2080	10.9	1153	1079	227	1306
LA	14641	1360	9.3	1349	1362	126	1488
MAINE	32286	69	10.3	3628	3325	7	3332
MD	5825	286	10.0	600	583	29	612
MASS	10012	55	10.3	1034	1031	6	1037
MTCH	18000	1350	8.3	1627	1494	112	1606
MINN	38908	2528	4.2	1495	1634	106	1740
MISS	51510	2848	10.7	5200	5512	305	5817
MO	31200	1568	10.7	3142	3338	168	3506
MONT	3620	720	7.0	260	253	50	303
NBR	6994	1692	5.3	439	370	90	460
NFV	41	16	6.1	4	3	1	4
NH	7326	30	10.3	707	755	3	758
NJ	8600	125	12.9	914	1109	16	1125
NMEX	1946	86	6.0	121	117	5	122
NY	37107	1175	6.1	2153	2264	72	2336
NC	91700	4500	15.0	13518	13755	675	14430
NDAK	2100	1425	7.2	249	151	103	254
OHIO	29398	1688	7.5	2191	2205	127	2332
OKLA	8880	925	10.2	968	906	94	1000
OREG	6600	300	8.0	536	528	24	552
PA	68747	1200	17.0	12459	11686	204	11890
RI	1792	6	10.3	119	132	1	133
SC	20250	1440	8.7	1758	1762	125	1887
SDAK	11352	1385	7.0	858	795	97	892
TENN	15900	1645	12.6	1892	2003	207	2210
TEX	43680	2800	12.0	4939	5242	336	5578
UTAH	3491	56	6.0	196	209	3	212
VT	3011	48	10.3	267	310	5	315
VA	22500	2200	9.6	2183	2160	211	2371
WASH	17091	316	7.0	1102	1195	22	1218
WVA	3597	554	9.9	430	356	55	411
WIS	18755	2185	12.9	2690	2413	282	2701
WYO	702	60	6.6	15	13	4	17
U S	1202562	55162	9.7	114896	116414	5213	121627

1/ EXCLUDES BROILERS.

CHICKENS DISPOSITION, CASH RECEIPTS, AND GROSS INCOME, DEC 1, 1974-NOV 30, 1975 1/

STATF	SOLD	HOME CONSUMPTION	PRICE PER POUND	VALUE OF PRODUCTION	CASH RECEIPTS	VALUE OF HOME CONSUMPTION	GROSS INCOME
	1000 POUNDS		CENTS		1000 DOLLARS		
ALA	56000	1800	8.9	5181	4984	160	5144
ALAS	59	198	19.0	46	11	38	49
ARIZ	1748	37	5.4	73	94	2	96
ARK	94032	2100	9.1	9237	8557	191	8748
CALIF	69248	980	5.0	3193	3462	49	3511
COLO	5292	507	9.0	567	476	46	522
CONN	11930	48	10.0	1475	1193	5	1198
DEI	2989	101	10.8	349	323	11	334
FLA	97751	368	5.8	2349	2190	21	2211
GA	80289	1961	11.1	8791	8912	218	9130
HAW	1374	17	11.5	98	158	2	160
IDAH	1950	280	5.0	126	98	14	112
ILL	20036	1240	6.7	1333	1342	83	1425
IND	40900	2255	6.0	2447	2454	135	2589
IOWA	32270	2205	4.7	1554	1514	104	1618
KANS	11768	1155	5.0	611	588	58	646
KY	9900	1920	9.2	984	911	177	1088
LA	10885	1190	8.9	1125	969	106	1075
MATNE	36175	69	10.2	3995	3690	7	3697
MO	6425	260	10.9	687	700	28	728
MASS	7982	51	10.3	732	822	5	827
MICH	21045	1746	14.5	3482	3052	253	3305
MINN	29508	2043	3.0	989	885	61	946
MISS	40632	2560	12.7	5154	5160	325	5485
MO	34868	1485	11.2	4011	3905	166	4071
MONT	3320	700	5.5	222	183	39	222
NEBR	6336	1548	4.2	297	266	65	331
NEV	33	16	5.1	2	2	1	3
N H	6773	25	10.2	673	691	3	694
N J	9589	125	6.6	516	633	8	641
N MEX	3252	86	7.5	331	244	6	250
N Y	36644	1203	4.7	1644	1722	56	1778
N C	80500	4500	20.9	17105	16825	941	17766
N DAK	1680	1376	10.0	250	168	138	306
OHIO	28080	1215	5.8	1797	1629	70	1699
OKLA	6960	480	9.2	746	640	44	684
OREG	5200	296	5.0	268	260	15	275
PA	49160	950	20.6	6932	10127	196	10323
R I	1092	6	10.2	98	111	1	112
S C	17600	1628	13.4	2951	2358	218	2576
S DAK	11200	1248	5.0	549	560	62	622
TENN	13000	1575	13.8	1883	1794	217	2011
TEX	42900	2800	8.6	3480	3689	241	3930
UTAH	3143	51	4.0	121	126	2	128
VT	2279	43	10.2	207	227	4	231
VA	18018	2000	11.8	2489	2126	236	2362
WASH	15879	291	5.2	803	826	15	841
W VA	3744	574	13.1	530	490	75	565
WIS	15480	2024	12.5	2176	1935	253	2188
WYO	182	60	5.9	10	11	4	15
U S	1047000	51393	5.9	104669	104093	5175	109260

1/ EXCLUDES BROILERS.

EGGS PRODUCTION, DISPOSITION, AND INCOME, DEC 1, 1969-NOV 30, 1970

STATE	EGGS PRODUCED	HOME CONSUMPTION	EGGS SOLD	PRICE PER DOZEN	CASH RECEIPTS	VALUE OF HOME CONSUMPTION 1/	GROSS INCOME
	MILLION			CENTS		1000 DOLLARS	
ALA	2844	28	2816	44.2	103723	1031	104754
ALAS	4.9	.1	4.8	83.6	334	7	341
ARIZ	226	1	225	32.3	6056	27	6083
ARK	3638	25	3613	37.1	111702	773	112475
CALIF	8658	11	8647	33.8	243557	310	243867
COLO	286	11	275	37.9	8685	347	9032
CONN	789	1	788	55.8	36642	47	36689
OEL	126	1	125	56.9	5927	47	5974
FLA	2540	7	2533	33.7	71135	197	71332
GA	5398	26	5372	44.7	200107	969	201076
HAW	197	1	196	51.4	8395	43	8438
IDAHO	191	8	183	42.1	6420	281	6701
ILL	1820	30	1790	34.6	51612	865	52477
IND	2696	22	2674	39.8	88688	730	89418
IOWA	2473	59	2414	31.8	63971	1564	65535
KANS	772	26	746	30.2	18774	654	19428
KY	572	45	527	37.9	16644	1421	18065
LA	776	21	755	40.2	25293	704	25997
MAINE	1301	2	1299	48.0	51960	80	52040
MD	331	5	326	52.8	14344	220	14564
MASS	521	1	520	50.9	22057	42	22099
MICH	1450	23	1427	36.1	42929	692	43621
MINN	2249	39	2210	31.1	57276	1011	58287
MISS	2474	29	2445	44.5	90669	1075	91744
MO	1362	56	1306	34.9	37983	1629	39612
MONT	209	13	196	45.8	7481	496	7977
NEBR	858	33	825	28.0	19250	770	20020
NEV	4.0	1	3.0	37.0	93	31	124
N H	299	1	298	49.8	12367	42	12409
N J	831	2	829	44.5	30742	74	30816
N MEX	220	4	216	40.8	7344	136	7480
N Y	2296	16	2280	41.3	78470	551	79021
N C	3440	49	3391	44.4	125467	1813	127280
N DAK	179	15	164	29.3	4004	366	4370
OHIO	2160	31	2129	39.2	69547	1013	70560
OKLA	503	29	474	38.3	15129	926	16055
OREG	497	8	489	39.0	15893	260	16153
PA	3220	23	3197	40.9	108964	784	109748
R I	81.5	2/	81.5	54.7	3715	2/	3715
S C	1301	14	1287	37.3	40004	435	40439
S DAK	914	25	889	28.4	21040	592	21632
TENN	1064	45	1019	43.0	36514	1613	38127
TEX	2677	65	2612	42.1	91638	2280	93918
UTAH	271	4	267	36.0	8010	120	8130
VT	85	2	83	47.0	3251	78	3329
VA	849	28	821	43.5	29761	1015	30776
WASH	1079	7	1072	33.7	30105	197	30302
W VA	268	12	256	48.1	10261	481	10742
WIS	1178	44	1134	37.5	35438	1375	36813
WYO	32.9	4	28.9	40.2	968	134	1102
U S	3/68212	953	3/67259	39.1	2190339	30348	2220687

- 1/ VALUED AT SAME PRICE AS EGGS SOLD.
- 2/ LESS THAN ONE-HALF MILLION EGGS.
- 3/ SUM OF STATES WILL NOT ADD TO U S TOTAL DUE TO ROUNDING.

EGGS PRODUCTION, DISPOSITION, AND INCOME, DEC 1, 1970-NOV 30, 1971

STATE	EGGS PRODUCED	HOME CONSUMPTION	EGGS SOLD	PRICE PER DOZEN	CASH RECEIPTS	VALUE OF HOME CONSUMPTION 1/	GROSS INCOME
	MILLION			CENTS		1000 DOLLARS	
ALA	2861	23	2838	36.4	86086	698	86784
ALAS	5.8	.1	5.7	85.0	404	7	411
ARIZ	195	1	194	25.3	4090	21	4111
ARK	3641	21	3620	34.9	105282	611	105893
CALIF	9012	9	9003	25.5	191314	191	191505
COLOR	305	8	297	30.1	7450	201	7651
CONN	784	1	783	50.5	32951	42	32993
DEL	131	1	130	51.1	5536	43	5579
FLA	2802	6	2796	24.9	58017	125	58142
GA	5600	21	5579	35.5	165045	621	165666
HAW	211	1	210	42.5	7438	35	7473
IDAHO	186	7	179	30.2	4505	176	4681
ILL	1799	27	1772	29.0	42823	653	43476
IND	3000	19	2981	31.1	77258	492	77750
IOWA	2406	47	2359	23.8	46787	932	47719
KANS	752	23	729	23.1	14033	443	14476
KY	566	34	532	30.0	13300	850	14150
LA	757	16	741	33.2	20501	443	20944
MAINE	1368	2	1366	41.3	47013	69	47082
MD	326	4	322	44.9	12048	150	12198
MASS	512	1	511	44.5	18950	37	18987
MICH	1505	19	1486	27.8	34426	440	34866
MINN	2493	32	2461	22.2	45529	592	46121
MISS	2317	25	2292	41.1	78501	856	79357
MO	1460	46	1414	26.3	30990	1008	31998
MONT	221	10	211	36.3	6383	303	6686
NEBR	861	30	831	20.4	14127	510	14637
NEV	3.0	.9	2.1	27.8	49	21	70
N H	305	1	304	45.3	11476	38	11514
N J	804	2	802	36.2	24194	60	24254
N MEX	218	4	214	35.3	6295	118	6413
N Y	2316	15	2301	31.3	60018	391	60409
N C	3381	28	3353	39.1	109252	912	110164
N DAK	168	13	155	22.1	2855	239	3094
OHIO	2338	27	2311	28.4	54694	639	55333
OKLA	528	21	507	30.9	13055	541	13596
OREG	514	8	506	29.0	12228	193	12421
PA	3162	21	3141	32.3	84545	565	85110
R I	69.5	2/	69.5	51.5	2983	2/	2983
S C	1341	10	1331	31.0	34384	258	34642
S DAK	901	23	878	19.5	14268	374	14642
TENN	1010	33	977	37.0	30124	1018	31142
TEX	2607	62	2545	33.9	71896	1752	73648
UTAH	287	3	284	23.9	5656	60	5716
VT	56	2	94	42.1	3298	70	3368
VA	858	23	835	40.7	28320	780	29100
WASH	1021	6	1015	24.3	20554	122	20676
W VA	269	11	258	39.6	8514	363	8877
WIS	1344	37	1307	28.0	30497	863	31360
WYO	32.7	4	28.7	33.6	804	112	916
U S	3/69649	789	3/68860	31.4	1800746	20038	1820784

1/ VALUED AT SAME PRICE AS EGGS SOLD.
 2/ LESS THAN ONE-HALF MILLION EGGS.
 3/ SUM OF STATES WILL NOT ADD TO U S TOTAL DUE TO ROUNDING.

EGGS PRODUCTION, DISPOSITION, AND INCOME, DEC 1, 1971-NOV 30, 1972

STATE	EGGS PRODUCED	HOME CONSUMPTION	EGGS SOLD	PRICE PER DOZEN	CASH RECEIPTS	VALUE OF HOME CONSUMPTION 1/	GROSS INCOME
	MILLION			CENTS		1000 DOLLARS	
ALA	2852	18	2834	34.1	80533	512	81045
ALAS	6.6	.1	6.5	90.0	488	8	496
ARIZ	164	1	163	26.3	3572	22	3594
ARK	3795	21	3774	36.1	113535	632	114167
CALIF	8652	7	8645	28.1	202437	164	202601
COLO	297	7	290	33.5	8096	195	8291
CONN	857	1	856	50.3	35881	42	35923
DEL	130	1	129	51.9	5579	43	5622
FLA	2837	5	2832	24.9	58764	104	58868
GA	5465	19	5446	35.1	159296	556	159852
HAW	204	2/	204	47.0	7990	2/	7990
IDAH	168	5	163	33.0	4483	138	4421
ILL	1778	24	1754	25.3	36980	506	37486
IND	3209	17	3192	29.0	77140	411	77551
IOWA	2296	39	2257	23.5	44200	764	44964
KANS	718	20	698	21.1	12273	352	12625
KY	537	29	508	29.0	12277	701	12978
LA	744	14	730	32.1	19528	375	19903
MAINE	1443	1	1442	39.8	47826	33	47859
MD	334	4	330	45.3	12458	151	12609
MASS	466	1	465	42.9	16624	36	16660
MICH	1523	18	1505	26.3	32985	395	33380
MINN	2584	35	2549	20.5	43545	598	44143
MISS	2281	20	2261	40.2	75744	670	76414
MO	1473	36	1437	24.8	29698	744	30442
MONT	217	10	207	36.8	6348	307	6655
NEBR	813	29	784	18.8	12283	454	12737
NEV	3.1	.8	2.3	30.1	58	20	78
N H	300	1	299	44.9	11188	37	11225
N J	746	2	744	35.4	21948	59	22007
N MEX	234	3	231	35.9	6911	90	7001
N Y	2271	13	2258	31.2	58708	338	59046
N C	3433	27	3406	34.4	97639	774	98413
N DAK	153	12	141	21.7	2550	217	2767
OHIO	2324	20	2304	25.8	49536	430	49966
OKLA	502	19	483	31.6	12719	500	13219
OREG	554	7	547	33.0	15043	193	15236
PA	2918	19	2899	30.5	73683	483	74166
R I	56.8	2/	56.8	49.2	2329	2/	2329
S C	1381	9	1372	30.2	34529	227	34756
S DAK	814	22	792	18.0	11880	330	12210
TENN	1113	26	1087	37.0	33516	802	34318
TEX	2685	40	2625	33.7	73719	1685	75404
UTAH	296	2	294	27.8	6811	46	6857
VT	128	2	126	41.3	4337	69	4406
VA	824	21	803	41.0	27436	718	28154
WASH	1033	6	1027	26.5	22680	133	22813
W VA	261	9	252	35.6	7476	267	7743
WIS	1313	26	1287	25.9	27778	561	28339
WYO	31.8	3	28.8	35.9	862	90	952
U S	3/69219	692	3/68527	30.9	1763899	16982	1780881

1/ VALUED AT SAME PRICE AS EGGS SOLD.
 2/ LESS THAN ONE-HALF MILLION EGGS.
 3/ SUM OF U S TOTAL WILL NOT ADD DUE TO ROUNDING.

EGGS PRODUCTION, DISPOSITION, AND INCOME, DEC 1, 1972-NOV 30, 1973

STATE	EGGS PRODUCED	HOME CONSUMPTION	EGGS SOLD	PRICE PER DOZEN	CASH RECEIPTS	VALUE OF HOME CONSUMPTION 1/	GROSS INCOME
		MILLION		CENTS		1000 DOLLARS	
ALA	2853	16	2837	53.1	125537	708	126245
ALAS	7.0	.1	6.9	95.0	546	8	554
ARIZ	153	1	152	50.6	6409	42	6451
ARK	3695	18	3677	55.9	171287	839	172126
CAL IF	7680	5	7675	50.6	323629	211	323840
COLU	317	6	311	56.2	14565	281	14846
CONN	822	1	821	72.6	49671	61	49732
DEL	128	1	127	65.8	6964	55	7019
FLA	2806	5	2801	46.5	108539	194	108733
GA	5534	16	5518	56.3	258886	751	259637
HAW	208	2/	208	65.0	11267	2/	11267
IDAHO	197	4	193	55.9	8991	186	9177
ILL	1666	21	1645	44.0	60327	770	61087
IND	3148	16	3132	50.8	132583	677	133285
IOWA	2167	31	2136	43.8	77964	1132	79096
KANS	673	18	655	40.6	22161	609	22770
KY	515	27	488	50.6	20577	1139	21716
LA	665	13	652	54.4	29557	589	30146
MAINE	1549	1	1548	60.1	77529	50	77579
MD	327	4	323	65.7	17684	219	17903
MASS	393	1	392	62.9	20547	52	20599
MICH	1539	17	1522	49.6	62909	703	63612
MINN	2474	29	2445	44.6	90873	1078	91951
MISS	1983	18	1965	60.3	98741	905	99646
MO	1347	31	1316	47.8	52421	1235	53656
MONT	215	9	206	57.8	9922	434	10356
NEBR	775	24	751	37.4	23406	748	24154
NEV	3.6	.8	2.8	53.7	125	36	161
N H	304	1	303	64.0	16160	53	16213
N J	756	1	755	58.7	36932	49	36981
N MEX	208	3	205	57.6	9840	144	9984
N Y	2052	13	2039	54.4	92435	589	93024
N C	3212	25	3187	58.9	156429	1227	157656
N DAK	153	11	142	35.9	4248	329	4577
OHIO	2102	20	2082	47.9	83107	798	83905
OKLA	446	17	429	50.7	18125	718	18843
OREG	535	7	528	53.9	23716	314	24030
PA	2851	18	2833	50.9	120166	764	120930
R I	51.9	2/	51.9	71.0	3071	2/	3071
S C	1319	9	1310	53.4	58295	401	58696
S DAK	785	21	764	36.8	23429	644	24073
TENN	1088	24	1064	56.4	50008	1128	51138
TEX	2496	60	2436	55.5	112665	2775	115440
UTAH	306	2	304	48.9	12388	82	12470
VT	150	2	148	61.3	7560	102	7662
VA	790	20	770	58.5	37538	975	38513
WASH	1058	6	1052	50.5	44272	253	44525
W VA	240	8	232	58.2	11252	388	11640
WIS	1267	22	1245	50.9	52809	933	53742
WYU	28.9	3	25.9	55.4	1196	139	1335
U S	3/66039	627	3/65412	52.5	2859253	26517	2885770

1/ VALUED AT SAME PRICE AS EGGS SOLD.

2/ LESS THAN ONE-HALF MILLION EGGS.

3/ SUM OF STATES WILL NOT ADD TO U S TOTAL DUE TO ROUNDING.

EGGS PRODUCTION, DISPOSITION, AND INCOME, DEC 1, 1973-NOV 30, 1974

STATE	EGGS PRODUCED	HOME CONSUMPTION	EGGS SOLD	PRICE PER DOZEN CENTS	CASH RECEIPTS	VALUE OF HOME CONSUMPTION 1/	GROSS INCOME
		MILLION				1000 DOLLARS	
ALA	2945	15	2930	53.7	131118	671	131789
ALAS	5.4	.7	6.3	95.0	499	8	507
ARIZ	150	1	149	46.9	5823	39	5862
ARK	3601	15	3586	63.0	188265	788	189053
CALIF	8485	5	8480	47.9	338493	200	338693
COLOR	399	6	384	54.1	17312	271	17583
CONN	727	1	726	74.6	45133	62	45195
DEI	135	1	134	67.5	7538	56	7594
FLA	2852	4	2848	45.6	108224	152	108376
GA	5827	13	5814	58.9	285371	638	286009
HAW	207	2/	207	66.0	11385	2/	11385
IDAH	186	4	182	53.3	8084	178	8262
ILL	1543	18	1525	49.0	62271	735	63006
IND	3080	16	3064	50.2	128177	665	128846
IOWA	2087	31	2056	41.7	71446	1077	72523
KANS	601	14	587	41.0	20056	478	20534
KY	527	27	500	51.9	21625	1168	22793
LA	664	12	652	55.9	30372	559	30931
MAINE	1671	1	1670	60.0	83500	50	83550
MD	335	4	331	67.7	18674	226	18900
MASS	376	1	375	64.5	20156	54	20210
MICH	1412	16	1396	48.4	56305	645	56950
MINN	2385	28	2357	44.8	87995	1045	89040
MISS	1908	16	1892	61.5	96965	820	97785
MO	1149	27	1122	52.1	48714	1172	49886
MONT	203	8	195	58.5	9506	390	9896
NEBR	723	22	701	39.5	23075	724	23799
NEV	4.8	.8	4.0	49.7	166	33	199
NH	255	1	254	63.7	13483	53	13536
NJ	736	1	735	59.8	36628	50	36678
NMEX	197	3	194	58.5	9458	146	9604
NY	2030	13	2017	53.0	89084	574	89658
NC	3037	23	3014	64.0	160747	1227	161974
NDAK	151	11	140	37.3	4352	342	4694
OHIO	2103	20	2083	47.4	82279	790	83069
OKLA	428	17	411	52.3	17913	741	18654
OREG	543	8	535	52.0	23183	347	23530
PA	2759	18	2741	54.0	123345	810	124155
RI	60.6	2/	60.6	74.0	3737	2/	3737
SC	1301	9	1292	53.3	57386	400	57786
S DAK	770	19	751	36.9	23093	584	23677
TFNN	1028	20	1008	58.2	48888	970	49858
TEX	2292	51	2241	56.2	104954	2389	107343
UTAH	311	2.5	308.5	46.3	11903	96	11999
VT	136	2	134	59.6	6655	99	6754
VA	758	18	740	63.0	38850	945	39795
WASH	1085	6	1079	47.1	42351	236	42587
WVA	248	7	241	58.8	11809	343	12152
WIS	1183	21	1162	48.5	46964	849	47813
WYD	27.2	3	24.2	57.9	1168	145	1313
U S	3/65620	580	3/65040	53.2	2884478	25044	2909522

1/ VALUED AT SAME PRICE AS EGGS SOLD.

2/ LESS THAN ONE-HALF MILLION EGGS.

3/ SUM OF STATES WILL NOT ADD TO U S TOTAL DUE TO ROUNDING.

EGGS PRODUCTION, DISPOSITION, AND INCOME, DEC 1, 1974-NOV 30, 1975

STATE	EGGS PRODUCED	HOME CONSUMPTION	EGGS SOLD	PRICE PFR DOZEN CENTS	CASH RECEIPTS	VALUE OF HOME CONSUMPTION 1/ 1000 DOLLARS	GROSS INCOME
		MILLION					
ALA	2951	15	2936	53.8	131631	673	132304
ALAS	5.0	2/	5.0	100.0	417	2/	417
ARIZ	159	.6	158.4	46.4	6125	23	6148
ARK	3594	14	3580	60.8	181387	709	182096
CALIF	8467	5	8462	49.8	351173	208	351381
COLO	476	6	470	49.9	19544	250	19794
CONN	702	1	701	70.5	41184	59	41243
DEI	115	1	114	68.7	6527	57	6584
FLA	2779	4	2775	44.1	101981	147	102128
GA	5284	10	5274	59.5	261503	496	261999
HAW	209	2/	209	64.5	11234	2/	11234
IDAHO	184	4	180	50.5	7575	168	7743
ILL	1507	15	1492	51.3	63783	641	64424
IND	3156	16	3140	49.4	129263	659	129922
IOWA	2058	30	2028	39.5	66755	988	67743
KANS	599	13	586	39.4	19240	427	19567
KY	518	26	492	49.1	20131	1064	21195
LA	658	11	647	53.6	28899	491	29390
MAINE	1708	1	1707	63.7	90613	53	90666
MD	331	4	327	68.7	18721	229	18950
MASS	407	1	401	66.2	22122	55	22177
MICH	1467	16	1451	45.3	54775	604	55379
MINN	2209	24	2185	39.7	72287	794	73081
MISS	1707	13	1694	59.8	84418	648	85066
MO	1241	24	1217	47.5	48173	950	49123
MDNT	199	8	191	55.4	8818	369	9187
NEBR	782	20	762	37.3	23686	622	24308
NEV	4.3	.7	3.6	45.8	137	27	164
NH	260	1	259	67.2	14504	56	14560
NJ	620	1	619	58.0	29918	48	29966
NMEX	734	3	231	58.1	11184	145	11329
NY	1984	13	1971	51.1	83932	554	84486
NC	2802	21	2781	62.3	144380	1090	145470
NDAK	132	11	121	35.8	3610	328	3938
OHIO	2109	19	2090	45.5	79246	720	79966
OKLA	430	16	414	53.7	18527	716	19243
ORFG	519	7	512	51.3	21888	299	22187
PA	2800	18	2782	51.2	118699	768	119467
RI	59.2	2/	59.2	67.3	3320	2/	3320
SC	1384	9	1375	51.7	59240	388	59628
S DAK	698	16	682	34.4	19551	459	20010
TENN	1002	18	984	55.2	45264	828	46092
TEX	2363	43	2317	59.6	115078	2136	117214
UTAH	321	2	319	42.7	11351	71	11422
VT	115	2	113	74.7	7034	125	7159
VA	767	17	750	63.3	39563	897	40460
WASH	1082	6	1076	46.3	41516	232	41748
WVA	256	7	249	56.7	11765	331	12096
WIS	1194	20	1174	45.0	44025	750	44775
WYO	26.6	3	23.6	55.3	1088	138	1226
U S	64626	536	64090	52.4	2796785	22490	2819275

1/ VALUED AT SAME PRICE AS EGGS SOLD.
 2/ LESS THAN ONE-HALF MILLION EGGS.

BROILERS PRODUCTION AND GROSS INCOME

1970-71 1/

STATE	DEC 1, 1969-NOV 30, 1970				DEC 1, 1970-NOV 30, 1971			
	NUMBER PRODUCED	POUNDS PRODUCED	PRICE POUND 2/	GROSS INCOME 3/	NUMBER PRODUCED	POUNDS PRODUCED	PRICE POUND 2/	GROSS INCOME 3/
	THOUSANDS		CENTS	DOLLARS	THOUSANDS		CENTS	DOLLARS
ALA	376112	1316392	12.2	160600	384347	1345215	12.6	169497
ARK	450779	1532649	13.2	202310	476143	1666501	13.3	221645
CALIF	85927	335115	16.8	56299	89233	356932	17.1	61035
CONN	6254	24391	16.2	3951	4539	18610	15.6	2903
DEL	135574	528739	14.9	78782	125833	490749	14.7	72140
FLA	46578	167681	13.0	21799	48606	174982	12.7	22223
GA	453886	1588601	12.4	196987	431307	1552705	12.9	200299
MAW	1845	6458	31.8	2054	1794	6279	30.3	1903
IND	13710	50727	14.8	7508	9603	35531	14.8	5259
IOWA	2710	20325	23.0	4675	2439	18293	26.0	4756
KANS	960	3168	16.0	507	680	2380	15.6	371
KY	7334	26402	14.0	3696	7481	26932	14.5	3905
LA	51099	183956	12.7	23362	53934	199556	13.1	26142
MAINE	76068	319486	16.2	51757	72014	309660	15.6	48307
MD	187137	729834	14.9	108745	180837	705264	14.7	103674
MASS	1717	7898	16.0	1264	725	3770	15.5	584
MICH	699	4753	17.0	808	1085	5534	17.7	980
MINN	10952	42713	16.5	7048	10930	45906	17.0	7804
MISS	247795	892062	12.2	108832	247822	892159	12.7	113304
MO	24282	87415	14.3	12500	24638	91161	13.5	12307
NEBR	1371	4524	17.0	769	1412	4660	17.0	792
N J	1800	10080	24.0	2419	650	3445	27.8	958
N Y	2194	8776	20.0	1755	2000	8000	22.0	1760
N C	308624	1141909	13.7	156442	289926	1101719	13.4	147630
OHIO	9548	38192	14.9	5691	9071	36284	14.2	5152
OKLA	20000	70000	13.6	9520	19250	69300	13.3	9217
OREG 4/	24803	82168	17.2	14120	22300	78230	17.6	13793
PA	53677	214708	15.6	33494	60209	240836	16.0	38534
S C	27670	56845	13.0	12590	28189	98662	13.0	12826
TFNN	46237	161830	14.1	22818	49311	177520	14.0	24853
TEX	185534	667922	13.7	91505	171732	618235	14.1	87171
UTAH	1206	4583	17.0	779	0	0	0.0	0
VA	69099	241847	15.1	36519	71258	256529	14.9	38223
WASH	21118	82360	17.7	14578	14931	58231	18.4	10715
W VA	17439	62780	14.7	9229	16169	56592	13.3	7527
WIS	15031	61627	14.6	8998	14950	61295	14.5	8888
TOTAL 5/	2986769	10818916	13.6	1474710	2945348	10817657	13.8	1487077

1/ BROILER PRODUCTION INCLUDING OTHER MEAT-TYPE BREEDS. 2/ LIVELWEIGHT EQUIVALENT PRICE.
 3/ GROSS INCOME-INCLUDES HOME CONSUMPTION. 4/ IDAHO INCLUDED WITH OREGON TO AVOID DISCLOSING
 INDIVIDUAL OPERATIONS. 5/ EXCLUDES STATES PRODUCING LESS THAN 500,000.

BROILERS

PRODUCTION AND GROSS INCOME

1972-73 1/

STATE	DEC 1, 1971-NOV 30, 1972				DEC 1, 1972-NOV 30, 1973			
	NUMBER PRODUCED	POUNDS PRODUCED	PRICE POUND 2/	GROSS INCOME 3/	NUMBER PRODUCED	POUNDS PRODUCED	PRICE POUND 2/	GROSS INCOME 3/
	THOUSANDS		CENTS	1000 DOLLARS	THOUSANDS		CENTS	1000 DOLLARS
ALA	399274	1437386	13.1	188298	399324	1437566	23.4	336390
ARK	532135	1862473	13.7	255159	501845	1756458	23.7	416281
CALIF	86022	361292	17.5	63226	83193	341091	24.7	84249
CONN	3329	13649	16.2	2211	2730	11466	25.5	2924
DEL	131873	514305	15.7	80746	140967	563868	23.8	134201
FLA	56655	205624	13.3	27880	56833	215965	23.1	49888
GA	442927	1638867	13.1	214692	412986	1528048	23.9	365203
HAW	2046	7161	33.5	2399	1915	6703	39.5	2648
IND	13201	50164	14.4	7224	13583	50257	22.9	11509
IDWA	2952	23536	28.0	6702	3889	29168	40.0	11667
KANS	613	2146	15.6	335	703	2601	23.4	609
KY	7257	27577	13.5	3723	7239	27508	24.0	6602
LA	55769	206345	13.9	28682	55509	188731	24.1	45484
MAINE	71344	306775	16.2	49698	75662	317696	25.5	81012
MD	177247	691263	15.7	108528	190673	743625	23.8	176983
MICH	566	2943	18.5	544	557	2896	27.6	799
MINN	11039	47468	16.1	7642	11149	49056	28.2	13834
MISS	256264	948177	13.2	125159	239130	884781	23.5	207924
MO	23354	88745	13.5	11981	21533	81825	23.6	19311
NEBR	1733	6412	17.5	1122	2267	9068	28.2	2557
N J	650	3525	30.0	1073	625	3500	39.0	1365
N Y	1730	6520	23.0	1592	1650	6270	31.0	1944
N C	301772	1176911	13.9	163591	290448	1132747	24.5	277523
OHIO	12700	50800	13.3	6756	14000	54600	23.5	12831
OKLA	21500	77400	13.8	10681	23650	85140	24.0	20434
OREG 4/	17100	62810	17.6	11050	14000	53200	25.0	13300
PA	59368	243405	16.4	39919	61263	251178	27.5	69074
S C	28263	98921	13.2	13058	28853	100986	23.6	23833
TENN	54962	197643	13.1	25920	52342	172729	22.7	39209
TEX	178511	660491	14.2	93790	173330	641321	22.8	146221
VA	77238	278057	15.1	41987	77168	285522	23.7	67669
WASH	16396	63944	18.4	11766	17575	68543	26.6	18232
W VA	15951	59829	12.5	6979	17301	53633	23.3	12496
WIS	13130	56459	15.1	8525	14795	62139	26.0	16156
TOTAL 5/	3074921	11480101	14.1	1622638	3008667	11219885	24.0	2690362

1/ BROILER PRODUCTION INCLUDING OTHER MEAT-TYPE BREEDS. 2/ LIVWEIGHT EQUIVALENT PRICE.

3/ GROSS INCOME-INCLUDES HOME CONSUMPTION. 4/ 1972 INCLUDES IDAHO AND 1973 EXCLUDES IDAHO.

5/ EXCLUDES STATES PRODUCING LESS THAN 500,000.

STATE	DEC 1, 1973-NOV 30, 1974				DEC 1, 1974-NOV 30, 1975			
	NUMBER PRODUCED	POUNDS PRODUCED	PRICE POUND 2/	GROSS INCOME 3/	NUMBER PRODUCED	POUNDS PRODUCED	PRICE POUND 2/	GROSS INCOME 3/
	THOUSANDS		CENTS	1000 DOLLARS	THOUSANDS		CENTS	1000 DOLLARS
ALA	398303	1433891	20.0	286770	395769	1464345	25.3	370479
ARK	482875	1738350	21.2	368530	481886	1686601	26.2	441889
CALIF	90377	379583	25.7	97553	95825	412048	24.9	102600
CONN	1836	7711	22.5	1735	1039	4364	26.5	1156
DEI	146945	587780	21.7	127548	136278	531484	25.6	136060
FLA	59727	226963	19.9	45166	64347	244519	25.5	62352
GA	426857	1579371	21.1	333247	416599	1541416	26.9	414641
HAW	1900	6650	39.5	2627	1789	6262	39.6	2480
IND	11679	40877	24.6	10056	12295	45492	25.6	11646
IOWA	3615	27113	39.0	10574	3250	24375	40.0	9750
KANS	780	3042	23.2	706	627	2320	25.2	585
KY	6885	28917	22.0	6362	5870	26415	25.2	6657
LA	54443	195995	21.7	42531	50662	187449	26.8	50236
MAINF	77476	325189	22.5	73168	81035	332244	26.5	88045
MD	189709	758836	21.6	163909	179769	719076	25.7	184803
MICH	577	2943	27.7	815	510	2601	27.0	702
MINN	10815	46505	24.3	11301	10092	44405	29.6	13144
MISS	227220	840714	23.5	172346	231301	855814	25.7	219944
MO	19796	77204	20.5	15827	23369	88802	26.1	23177
NBRP	2312	9248	22.5	2081	1720	6880	24.0	1651
N J	0	0	0.0	0	0	0	0.0	0
N Y	1580	6478	28.0	1814	1450	7105	33.0	2345
N C	286558	1146232	21.2	243001	283936	1107545	25.6	283532
OHIO	11900	47600	21.1	10044	16666	64997	27.4	17809
OKLA	79560	112328	20.7	23252	28770	103572	26.0	26929
ORFG	14253	55587	27.0	15008	14000	53200	30.0	15960
PA	63649	260961	29.3	76462	65770	269657	31.5	84942
S C	31552	107277	19.9	21348	27405	93177	24.6	22922
TENN	42586	149051	18.8	28022	32000	112000	25.2	28224
TEX	173588	659634	21.3	140502	166169	614825	27.8	170921
VA	77220	285714	21.4	61143	77751	287679	25.4	73070
WASH	16730	68593	27.5	18863	15235	59417	29.9	17766
W VA	18293	56708	23.7	13440	15798	50554	31.8	16076
WIS	11274	47351	22.1	10465	11067	45375	27.6	12524
TOTAL 4/	2992820	11320396	21.5	2436224	2950099	11096015	26.3	2915017

1/ BROILER PRODUCTION INCLUDING OTHER MEAT-TYPE BREEDS.

2/ LIVE WEIGHT EQUIVALENT PRICE. 3/ GROSS INCOME - INCLUDES HOME CONSUMPTION.

4/ EXCLUDES STATES PRODUCING LESS THAN 500,000.

CHICKENS

TOTAL SALES OF CHICKENS AND BROILERS

1970-71

STATE	DEC 1, 1969-NOV 30, 1970			DEC 1, 1970-NOV 30, 1971		
	POUNDS SOLD	PRICE PER POUND 1/	VALUE OF SALES	POUNDS SOLD	PRICE PER POUND 1/	VALUE OF SALES
	THOUSANDS	CENTS	1000 DOLLARS	THOUSANDS	CENTS	1000 DOLLARS
ALA	1376914	12.1	166229	1396125	12.4	173213
ALAS	98	17.5	17	71	18.5	13
ARIZ	2663	6.4	170	3132	3.9	122
ARK	1623569	13.0	211584	1761382	13.1	230659
CALIF 2/	411059	15.0	61843	463088	14.0	64963
COLD	5027	9.5	478	6030	6.0	362
CONN	41005	13.5	5546	33322	12.5	4154
DEL	532057	14.9	79190	494004	14.7	72518
FLA	214831	11.8	25335	209752	11.5	24101
GA	1700292	12.2	207263	1671003	12.5	209645
MAV	7664	28.7	2202	7759	26.4	2051
ILL	22367	7.4	1655	24746	6.8	1683
IND	92250	11.7	10830	74605	10.2	7603
IDWA	50714	12.8	6468	49160	12.8	6299
KANS	17863	7.4	1320	18573	6.4	1181
KY	36704	12.9	4737	36292	13.4	4860
LA	198174	12.5	24784	212327	12.8	27151
MAINE	345098	15.8	54446	335353	15.1	50619
MD	737463	14.9	109546	712467	14.6	104373
MASS	16714	12.6	2110	13120	10.5	1379
MICH	24717	9.8	2425	25526	10.1	2579
MINN	71261	12.0	8561	77624	11.8	9168
MISS	944697	12.1	114148	941637	12.5	117559
MO	119815	12.5	15027	126547	11.7	14784
MONT	2460	8.0	197	3160	5.0	158
NEBR	13157	8.6	1132	14553	7.5	1089
NEV	29	5.5	2	25	3.7	1
N H	6603	9.6	634	6625	8.5	563
N J	21260	16.3	3470	16255	12.0	1944
N MEX	2728	6.0	218	3533	5.5	194
N Y	39424	12.1	4759	39488	10.5	4153
N C	1216898	13.6	165441	1191793	13.2	157808
N DAK	2197	5.5	121	2743	5.0	137
OHIO	72398	12.5	9077	65579	12.3	8082
OKLA	80115	12.9	10329	77906	12.6	9854
OREG 3/	90974	16.1	14633	88696	16.1	14281
PA	269274	14.9	40206	318440	14.8	47070
R I	1578	9.6	151	2059	8.5	175
S C	120115	12.2	14638	118412	12.0	14169
S DAK	12148	4.7	571	14172	4.0	567
TENN	174383	13.8	24111	191655	13.7	26252
TEX	710799	13.5	96136	662403	13.8	91588
UTAH	7135	12.3	881	3040	4.0	122
VT	1904	9.6	183	1798	8.5	153
VA	260561	14.9	38746	276299	14.6	40417
WASH	95157	16.3	15474	77291	15.1	11668
W VA	67265	14.5	9749	61162	13.2	8075
WIS	77647	13.1	10183	79295	13.1	10382
WYO	294	7.9	23	269	4.5	12
U S 2/	11939519	13.2	1576989	12010296	13.2	1579953

1/ PRICE OBTAINED BY DIVIDING VALUE OF SALES BY POUNDS SOLD.

2/ DOES NOT INCLUDE GOVERNMENT INDEMNITY PAYMENTS FOR CHICKENS DESTROYED UNDER THE EXOTIC NEWCASTLE DISEASE ERADICATION PROGRAM.

3/ INCLUDES IDAHO TO AVOID DISCLOSING INDIVIDUAL OPERATIONS.

CHICKENS

TOTAL SALES OF CHICKENS AND BROILERS

1972-73

STATE	DEC 1, 1971-NOV 30, 1972			DEC 1, 1972-NOV 30, 1973		
	POUNDS SOLD	PRICE PER POUND 1/	VALUE OF SALES	POUNDS SOLD	PRICE PER POUND 1/	VALUE OF SALES
	THOUSANDS	CENTS	1000 DOLLARS	THOUSANDS	CENTS	1000 DOLLARS
ALA	1486526	12.9	192475	1491666	23.1	344072
ALAS	90	18.5	17	72	19.0	14
ARIZ	1188	5.5	65	2120	12.9	273
ARK	1956098	13.5	264334	1866821	23.2	432284
CALIF 2/	431624	15.5	67024	410011	22.8	93553
COLO	5483	6.5	356	4500	14.5	653
CONN	31465	12.4	3904	32087	19.0	6100
DEL	517200	15.7	81131	566745	23.8	134696
FLA	245652	12.2	30042	258069	21.4	55319
GA	1733264	12.9	223565	1621772	23.5	381511
HAW	8572	29.6	2540	8138	35.1	2856
IDAHO				1716	12.0	206
ILL	24582	6.3	1549	23790	9.6	2284
IND	86602	11.3	9811	89340	18.8	16824
IOWA	53273	16.2	8609	56363	26.4	14876
KANS	16051	6.0	961	16963	10.4	1758
KY	35858	12.7	4545	36283	21.8	7901
LA	221256	13.5	29949	201893	23.5	47498
MAINE	333879	15.7	52273	344536	24.7	85145
MD	698213	15.7	109306	756525	23.7	178156
MASS	10697	9.5	1016	9010	15.4	1388
MICH	23882	9.7	2324	25114	13.6	3421
MINN	76604	11.7	8953	76556	20.9	16034
MISS	1000077	13.1	130660	932066	23.2	216577
MO	126265	12.2	15358	118992	21.3	25295
MONT	3216	6.0	193	3200	10.5	336
NEBR	13535	10.3	1400	15188	19.9	3016
NEV	25	5.8	1	25	14.6	4
N H	6082	9.5	578	7430	15.4	1144
N J	13235	14.5	1913	12530	21.9	2738
N MEX	2280	6.0	137	2520	14.0	353
N Y	44201	10.2	4500	40590	15.4	6268
N C	1271473	13.7	174277	1216033	24.2	293930
N DAK	2377	4.5	107	2100	6.6	139
OHIO	82440	12.0	9857	84657	20.0	16949
OKLA	86400	13.2	11410	92500	23.1	21354
OREG 3/	71114	16.0	11394	59500	23.5	14012
PA	319810	15.9	50997	334647	25.8	86269
R I	799	9.5	76	738	15.4	114
S C	121451	12.2	14860	121924	22.1	26995
S DAK	12364	4.0	495	11752	8.5	999
TENN	214330	12.9	27567	187007	22.2	41451
TEX	705301	14.0	98450	674921	22.5	152101
UTAH	2491	5.6	151	2769	12.0	332
VT	1771	9.5	168	1885	15.4	290
VA	296147	14.8	43941	307422	23.2	71239
WASH	77770	16.0	12416	80509	24.5	19728
W VA	60421	12.4	7502	57557	22.6	13014
WIS	74959	13.5	10098	78639	23.3	18351
WYO	317	6.0	19	240	15.5	37
U S 2/	12608914	13.7	1723272	12341431	23.2	2859857

1/ PRICE OBTAINED BY DIVIDING VALUE OF SALES BY POUNDS SOLD.

2/ DOES NOT INCLUDE GOVERNMENT INDEMNITY PAYMENTS FOR CHICKENS DESTROYED UNDER THE EXOTIC NEWCASTLE DISEASE ERADICATION PROGRAM.

3/ 1972 INCLUDES IDAHO.

CHICKENS TOTAL SALES OF CHICKENS AND BROILERS 1974-75

STATE	DEC 1, 1973-NOV 30, 1974			DEC 1, 1974-NOV 30, 1975		
	POUNDS SOLD	PRICE PER POUND 1/	VALUE OF SALES	POUNDS SOLD	PRICE PER POUND 1/	VALUE OF SALES
	THOUSANDS	CENTS	1000 DOLLARS	THOUSANDS	CENTS	1000 DOLLARS
ALA	1488891	19.6	291563	1520345	24.7	375463
ALAS	59	19.0	11	59	19.0	11
ARIZ	1860	6.8	126	1748	5.4	94
ARK	1858987	20.4	379991	1780633	25.3	450446
CALIF	461871	22.4	103231	481296	22.0	106062
COLO	5400	6.0	324	5292	9.0	476
CONN	25911	14.0	3628	16294	14.4	2349
DEI	590880	21.6	127858	534473	25.5	136383
FLA	271644	17.6	47892	282270	22.9	64542
GA	1695494	20.3	344627	1621705	26.1	423553
HAW	7888	35.6	2807	7636	34.5	2638
IDAH	2438	8.0	195	1950	5.0	98
ILL	19893	8.8	1751	20036	6.7	1342
IND	80049	16.0	12798	86392	16.3	14100
IOWA	59983	20.6	12382	56595	19.9	11264
KANS	16208	10.4	1693	14088	8.3	1173
KY	38817	19.2	7441	36315	20.8	7568
LA	210636	20.8	43893	198334	25.8	51205
MATNF	357475	21.4	76493	368419	24.9	91735
MD	764661	21.5	164492	725501	25.6	185503
MASS	10012	10.3	1031	7982	10.3	822
MICH	20943	11.0	2309	23646	15.9	3754
MINN	85413	15.1	12935	73913	19.0	14029
MISS	892724	19.9	177858	896446	25.1	225104
MO	108404	17.7	19165	123670	21.9	27082
MONT	3620	7.0	253	3320	5.5	183
NFR	16232	15.1	2451	13216	14.5	1917
NFV	41	6.1	3	33	5.1	2
NH	7326	10.3	755	6773	10.2	691
NJ	8600	12.9	1109	9589	6.6	633
NMEX	1946	6.0	117	3252	7.5	244
NY	43585	9.4	4078	43749	9.3	4067
NC	1237932	20.7	256756	1188045	25.3	300357
NDAK	2100	7.2	151	1680	10.0	168
OHIO	76998	15.9	12249	93077	20.9	19438
OKLA	121208	19.9	24158	110532	24.9	27569
ORFG	62187	25.0	15536	58400	27.8	16220
PA	329703	26.7	88148	318817	29.8	95069
RI	1282	10.3	132	1092	10.2	111
SC	127527	18.1	23110	110777	22.8	25280
S DAK	11352	7.0	795	11200	5.0	560
TFNN	164951	18.2	30025	125000	24.0	30018
TEX	703314	20.7	145744	657725	26.5	174610
UTAH	3491	6.0	209	3143	4.0	126
VT	3011	10.3	310	2229	10.2	227
VA	308714	20.5	63303	305697	24.6	75196
WASH	85684	23.4	20059	75296	24.7	18592
WVA	60305	22.9	13796	54298	30.5	16566
WTS	66106	19.5	12884	60855	23.8	14459
WYO	202	6.6	13	182	5.9	11
U S	12522958	20.4	2552638	12143015	24.9	3019110

1/ PRICE OBTAINED BY DIVIDING VALUE OF SALES BY POUNDS SOLD.

END