



**AgEcon** SEARCH  
RESEARCH IN AGRICULTURAL & APPLIED ECONOMICS

*The World's Largest Open Access Agricultural & Applied Economics Digital Library*

**This document is discoverable and free to researchers across the globe due to the work of AgEcon Search.**

**Help ensure our sustainability.**

Give to AgEcon Search

AgEcon Search

<http://ageconsearch.umn.edu>

[aesearch@umn.edu](mailto:aesearch@umn.edu)

*Papers downloaded from **AgEcon Search** may be used for non-commercial purposes and personal study only. No other use, including posting to another Internet site, is permitted without permission from the copyright owner (not AgEcon Search), or as allowed under the provisions of Fair Use, U.S. Copyright Act, Title 17 U.S.C.*

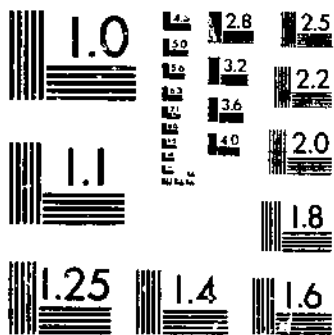


SEARCHED 1978 - USDA STATISTICAL BULLETINS  
DAIRY MARKET STATISTICS 1977

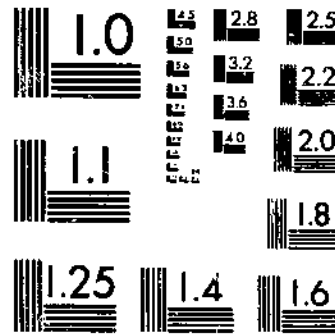
UPDATER

1 OF 1

# START



MICROCOPY RESOLUTION TEST CHART  
NATIONAL BUREAU OF STANDARDS-1963-A



MICROCOPY RESOLUTION TEST CHART  
NATIONAL BUREAU OF STANDARDS-1963-A

30.5  
US3-13

31

# DAIRY MARKET STATISTICS

## 1977 ANNUAL SUMMARY

STATISTICAL BULLETIN NO. 601

UNITED STATES DEPARTMENT OF AGRICULTURE  
AGRICULTURAL MARKETING SERVICE

U. S. DEPOSITORY

APR 13 1978

Los Angeles Public Library



TABLE OF CONTENTS

	Page
<u>STORAGE</u>	
Table 1.	Holdings of dairy products in selected storage centers, by weeks, 1977..... 5
Table 2.	Percent of total U.S. holdings of dairy products in selected storage centers at the close of each month, by years, 1973-77..... 6
Table 3.	Total U.S. holdings of dairy products at close of each month, 1977..... 6
<u>BUTTER</u>	
Table 4.	Prices on the Chicago and New York Mercantile Exchanges, 1977..... 7
Table 5.	Sales, unfilled bids, and uncovered offers on the Chicago and New York Mercantile Exchanges, 1977..... 9
Table 6.	Average wholesale selling prices in specified cities, by months, 1977..... 9
Table 7.	Average prices to chain stores and jobbers, f.o.b. California plants, by months, 1977..... 10
Table 8.	Average wholesale selling prices in specified cities, by months, 1977..... 10
<u>CHEESE</u>	
Table 9.	Sales, unfilled bids, and uncovered offers on the National Cheese Exchange, Inc., 1977..... 12
Table 10.	Prices on the National Cheese Exchange, Inc., 1977..... 13
Table 11.	Average prices paid f.o.b. Wisconsin Assembling Points, by months, 1977..... 15
Table 12.	Average wholesale selling prices at Wisconsin, by months, 1977..... 15
Table 13.	Average wholesale selling prices at Chicago, by months, 1977..... 16
Table 14.	Average wholesale selling prices, delivered Eastern area, by months, 1977..... 17
Table 15.	Average wholesale selling prices in specified West Coast cities, by months, 1977..... 18
Table 16.	Imported: Wholesale selling prices in seller's dock or warehouse at specified cities, by months, 1977..... 19
Table 17.	Domestically Made Foreign Type: Wholesale selling prices at seller's dock or warehouse in specified cities, by months, 1977..... 23
<u>CONCENTRATED AND DRY MILK</u>	
Table 18.	Nonfat dry milk: Prices paid f.o.b. Central States production area and wholesale selling prices in specified areas, (spray process), by months, 1977.. 28
Table 19.	Nonfat dry milk used for animal feed: Prices paid f.o.b. Central States production area and wholesale selling prices delivered Eastern area (skim powder, spray process) and agglomerated instantized, by months, 1977..... 29
Table 20.	National evaporated milk: Average wholesale selling prices, delivered major U.S. cities, by months, 1977..... 30
Table 21.	Whey powder, edible: Prices paid f.o.b. production areas and wholesale selling prices, delivered specified areas (spray process), by months, 1977..... 30
Table 22.	Whey powder used for animal feed: Prices paid f.o.b. production areas, and wholesale selling prices delivered East Coast cities (spray process), by months, 1977..... 31
Table 23.	Sweet cream buttermilk powder: Prices paid f.o.b. Central States production area and wholesale selling prices, delivered specified areas (spray process), by months, 1977..... 32
Table 24.	Whole milk powder: Wholesale selling prices delivered East Coast cities (spray process), by months, 1977..... 33
Table 25.	Lactose: Prices paid f.o.b. Central States production area and wholesale selling prices delivered Eastern area (spray process), by months, 1977..... 33
<u>FLUID MILK AND CREAM</u>	
Table 26.	Spot sales of Class I milk: Prices delivered equivalent the New York Metropolitan area, by months, 1977..... 34
Table 27.	Spot sales of Class II cream: Delivered specified areas, by months, 1977..... 34
Table 28.	Spot sales of condensed skim: Delivered specified areas, by months, 1977..... 35
Table 29.	Fluid milk: Volume shipped from Wisconsin shipping points, by weeks, 1977..... 36

## DAIRY MARKET STATISTICS - 1977 ANNUAL SUMMARY

This is an annual summary of market statistics on dairy products collected and compiled by the Market Information Branch, and published in a weekly report entitled "Dairy Market News."

Dairy market news service is provided by the U.S. Department of Agriculture and cooperating State agencies. The purpose is to provide dairy farmers and their cooperatives, processors, buyers and sellers of dairy products, and others with information which will help in making buying and selling decisions and future planning.

Dairy market news covers markets for dairy products of commercial significance. The kinds of market data gathered are determined by industry needs and by the willingness of industry members to voluntarily provide the necessary information. The information is gathered by reporters by telephone, teletype, and mail. They use the telephone most extensively in reaching buyers and sellers who are widely scattered.

Prices for most products are issued once a week and, unless otherwise noted, monthly averages represent weekly prices. The weekly price is applied to each workday--Monday through Friday--for that week. Weekly prices are applied to only those workdays in the month in arriving at the respective monthly average prices. This procedure (time weighting) is important for months having a split week because it gives the proper weight to the days in each month. No monthly average price is computed if one or more weekly prices are missing. Monthly averages for prices reported more than once a week are simple averages of all prices issued during the month. Yearly averages are simple averages of the monthly average prices. No yearly average is computed if one or more monthly average prices are missing.

The addresses and telephone numbers of Market Information Branch offices are:

### HEADQUARTERS

Market Information Branch  
Dairy Division  
Agricultural Marketing Service  
U.S. Department of Agriculture  
Washington, DC 20250  
PHONE: 202/447-7461  
FTS: 447-7461

National Dairy Market News Supervisor  
Market Information Branch  
Dairy Division, AMS, USDA  
801 West Badger Road  
Madison, WI 53713  
PHONE: 608/252-5280  
FTS: 364-5280

Federal-State field offices are located in Madison, Wisconsin; Philadelphia, Pennsylvania; and St. Paul, Minnesota. Write to the Market Information Branch Office, Dairy Division, AMS, USDA, at the following addresses:

801 West Badger Road  
Madison, WI 53713  
PHONE: 608/252-5254  
FTS: 364-5254

2nd and Chestnut Streets  
Room 604-C  
Philadelphia, PA 19106  
PHONE: 215/597-8101  
FTS: 597-8101

Federal Courts Building  
Room 643  
316 North Robert Street  
St. Paul, MN 55101  
PHONE: 612/725-7868  
FTS: 725-7868

DIRECTORY OF SELECTED STORAGE CENTERS

Cold storage data are collected from the following storage centers each Monday and published as COLD STORAGE HOLDINGS - SELECTED STORAGE CENTERS.

BUTTER

Boston, MA  
 Buffalo, NY  
 Chicago, IL  
 Detroit, MI  
 Dubuque, IA  
 Duluth, MN  
 Green Bay, WI  
 Kansas City, MO  
 Los Angeles, CA  
 Madison, WI  
 Mankato, MN  
 Mason City, IA  
 Milwaukee, WI  
 Minneapolis - St. Paul, MN  
 New York, NY  
 Oakland, CA  
 Omaha, NE  
 Philadelphia, PA  
 Pittsburgh, PA  
 Portland, OR  
 Providence, RI  
 St. Louis, MO  
 San Francisco, CA  
 Springfield, MO

CHEESE

Atlanta, GA  
 Boston, MA  
 Buffalo, NY  
 Chicago, IL  
 Clintonville, WI  
 Detroit, MI  
 Fremont, WI  
 Green Bay, WI  
 Kansas City, KS  
 Los Angeles, CA  
 Marshfield, WI  
 Milwaukee, WI  
 Minneapolis - St. Paul, MN  
 Monroe, WI  
 Mosinee, WI  
 Nashville, TN  
 Neosho, MO

New Ulm, MN  
 New York, NY  
 Oakland, CA  
 Omaha, NB  
 Philadelphia, PA  
 Pittsburgh, PA  
 Plymouth, WI  
 Pocatello, ID  
 Portage, WI  
 Providence, RI  
 St. Louis, MO  
 San Francisco, CA  
 Sheboygan, WI  
 Springfield, MA  
 Springfield, MO  
 Syracuse, NY  
 Tillamook, OR

Table 1.--STORAGE: Holdings of Dairy Products in Selected Storage Centers, by Weeks, 1977, 1/  
(Includes Government Stocks)

WEEK ENDING	BUTTER	AMERICAN CHEESE	WEEK ENDING	BUTTER	AMERICAN CHEESE
1,000 lbs.					
JAN 3	24,636	219,590	JUL 5	97,247	252,028
10	27,213	222,692	11	99,239	275,266
17	28,717	225,951	18	100,752	274,796
24	30,018	224,158	25	100,730	276,115
31	33,198	221,851			
FEB 7	35,751	222,085	AUG 1	104,225	280,610
14	42,614	220,767	8	103,560	284,584
22	45,197	223,039	15	103,815	279,979
28	49,911	221,750	22	105,441	280,245
			29	105,587	277,702
MAR 7	50,313	216,829	SEP 6	105,723	277,902
14	53,879	215,794	12	104,734	275,235
21	55,589	215,602	19	104,832	272,419
28	55,720	214,058	26	104,851	274,722
APR 4	57,081	213,007	OCT 3	103,851	270,044
11	58,033	213,613	11	103,042	259,532
18	58,829	217,262	17	101,457	256,724
25	58,956	217,454	25	101,232	251,227
			31	99,974	248,988
MAY 2	62,622	221,538	NOV 7	98,499	239,768
9	65,802	227,248	14	95,902	236,535
16	68,764	234,125	21	96,305	232,664
23	71,652	240,215	28	96,030	232,880
31	74,373	248,225			
JUN 6	76,669	252,028	DEC 5	95,209	231,079
13	81,214	259,409	12	93,869	227,823
20	88,155	261,428	19	92,313	221,569
27	94,789	270,268	27	90,416	221,699

1/ Holdings as of mornings of given dates.



Table 2.--STORAGE: Percent of Total U.S. Holdings of Dairy Products in Selected Storage Centers at the Close of Each Month, by Years, 1973-1977 (Includes Government Stocks)

MONTH	BUTTER					AMERICAN CHEESE				
	1973	1974	1975	1976	1977	1973	1974	1975	1976	1977
JAN	38.6	56.9	52.2	34.0	49.8	65.1	58.7	53.7	50.1	53.2
FEB	41.3	59.2	53.6	48.4	53.0	63.8	56.3	53.3	58.7	54.7
MAR	44.1	53.9	49.2	59.4	53.4	64.2	55.7	52.8	47.6	50.5
APR	44.5	53.8	45.3	58.9	48.7	60.3	55.1	53.8	48.8	49.5
MAY	46.7	55.3	41.9	53.5	45.6	59.3	57.1	51.8	49.4	50.7
JUN	49.5	54.6	41.3	56.9	49.4	58.5	54.9	52.4	49.4	55.0
JUL	51.0	53.8	47.7	55.4	50.0	62.2	56.8	52.9	52.8	54.1
AUG	51.1	53.8	51.7	54.5	50.9	60.6	56.2	56.0	52.2	53.7
SEP	51.6	52.7	34.6	51.6	51.1	60.0	54.4	53.6	54.0	55.9
OCT	47.6	52.1	34.4	50.8	50.3	58.4	54.9	50.8	55.4	56.5
NOV	45.2	52.7	28.8	53.6	49.3	56.2	54.7	50.6	55.5	55.5
DEC	46.7	53.2	31.7	52.4	48.7	58.3	53.5	52.0	53.4	54.5
AVERAGE	46.5	54.3	42.7	52.4	50.0	60.6	55.7	52.8	52.3	53.6

Table 3.--STORAGE: Total U.S. Holdings of Dairy Products at Close of Each Month, 1977 (Includes Government Stocks)\*

MONTH	BUTTER	CHEESE		EVAPORATED AND
	(Creamery)	American	Swiss	CONDENSED MILK
		1,000 lbs.		(Case Goods)
JAN	67,646	417,054	11,360	675
FEB	94,266	403,473	11,080	677
MAR	106,431	422,459	9,969	1,159
APR	128,476	447,419	10,277	1,719
MAY	163,977	491,481	9,450	1,926
JUN	196,760	510,559	9,458	2,246
JUL	208,424	518,293	11,148	2,551
AUG	207,662	516,902	10,996	2,750
SEP	203,369	483,189	10,351	2,203
OCT	198,324	437,464	9,238	1,739
NOV	193,652	417,746	9,555	1,775
DEC	184,907	404,669	8,209	1,688

SOURCE: Statistical Reporting Service, USDA  
\* Partially revised.

Table 4.--BUTTER, SPOT CASH CALL: Prices on the Chicago and New York Mercantile Exchanges, 1977

MONTH AND DAY	CHICAGO				NEW YORK							
	GRADE AA (93-SCORE)		GRADE A (92-SCORE)		GRADE AA (93-SCORE)		GRADE A (92-SCORE)					
	Price :	LST 1/	Price :	LST 1/	Price :	LST 1/	Price :	LST 1/				
Change : Sale, Bid, or Offer				Change : Sale, Bid, or Offer				Change : Sale, Bid, or Offer				
Dollars per lb.				Dollars per lb.				Dollars per lb.				
JAN 7	NC	.8975	2/ B	NC	.8975	3/ B	NC	.9225	2/ O	NC	.9175	4/ O
14	NC	.8975	B	NC	.8975	B	NC	.9225	O	NC	.9175	O
21	NC	.8975	B	NC	.8975	B	NC	.9225	O	NC	.9175	O
28	NC	.8975	B	NC	.8975	B	NC	.9225	O	NC	.9175	O
AVERAGE*		.8975			.8975			.9225			.9175	
FEB 4	NC	.8975	B	NC	.8975	B	NC	.9225	O	NC	.9175	O
11	NC	.8975	B	NC	.8975	B	NC	.9225	O	NC	.9175	O
18	NC	.8975	B	NC	.8975	B	NC	.9225	O	NC	.9175	O
25	NC	.8975	B	NC	.8975	B	NC	.9225	O	NC	.9175	O
AVERAGE		.8975			.8975			.9225			.9175	
MAR 4	NC	.8975	B	NC	.8975	B	NC	.9225	O	NC	.9175	O
11	+ .0200	.9175	B	NC	.8975	B	+ .0200	.9425	B	NC	.9175	O
18	NC	.9175	B	NC	.8975	B	NC	.9425	B	+ .0075	.9250	B
25	+ .0775	.9950	O	+ .0925	.9900	B	+ .0725	1.0150	B	+ .0750	1.0000	B
AVERAGE		.9319			.9206			.9556			.9400	
APR 1	NC	.9950	O	NC	.9900	B	NC	1.0150	B	+ .0125	1.0125	B
8	NC	.9950	O	NC	.9900	B	NC	1.0150	B	NC	1.0125	B
15	NC	.9950	O	NC	.9900	B	+ .0025	1.0175	B	+ .0025	1.0150	B
22	NC	.9950	O	NC	.9900	B	NC	1.0175	B	NC	1.0150	B
29	NC	.9950	O	NC	.9900	B	NC	1.0175	B	NC	1.0150	B
AVERAGE		.9950			.9900			1.0165			1.0140	
MAY 6	NC	.9950	O	NC	.9900	B	NC	1.0175	B	NC	1.0150	B
13	NC	.9950	O	NC	.9900	B	NC	1.0175	B	NC	1.0150	B
20	NC	.9950	O	NC	.9900	B	NC	1.0175	B	NC	1.0150	B
27	- .0025	.9925	S	NC	.9900	B	NC	1.0175	B	NC	1.0150	B
AVERAGE		.9944			.9900			1.0175			1.0150	
JUN 3	NC	.9925	S	NC	.9900	B	NC	1.0175	B	NC	1.0150	B
10	NC	.9925	S	NC	.9900	B	NC	1.0175	B	NC	1.0150	B
17	NC	.9925	S	NC	.9900	B	NC	1.0175	B	NC	1.0150	B
24	NC	.9925	S	NC	.9900	B	NC	1.0175	B	NC	1.0150	B
AVERAGE		.9925			.9900			1.0175			1.0150	
JUL 1	NC	.9925	S	NC	.9900	B	NC	1.0175	B	NC	1.0150	B
8	NC	.9925	S	NC	.9900	B	NC	1.0175	B	NC	1.0150	B
15	NC	.9925	S	NC	.9900	B	NC	1.0175	B	NC	1.0150	B
22	NC	.9925	S	NC	.9900	B	NC	1.0175	B	NC	1.0150	B
29	NC	.9925	S	NC	.9900	B	NC	1.0175	B	NC	1.0150	B
AVERAGE		.9925			.9900			1.0175			1.0150	

Continued

C  
 UPDATA  
 1981

7

Table 4.--BUTTER, SPOT CASH CALL: Prices on the Chicago and New York Mercantile Exchanges, 1977--Continued

C  
UPDATA  
1981

MONTH AND DAY	CHICAGO				NEW YORK							
	GRADE AA (93-SCORE)		GRADE A (92-SCORE)		GRADE AA (93-SCORE)		GRADE A (92-SCORE)					
	Price :	LST 1/	Price :	LST 1/	Price :	LST 1/	Price :	LST 1/				
Change : Sale, Bid, or Offer		Change : Sale, Bid, or Offer		Change : Sale, Bid, or Offer		Change : Sale, Bid, or Offer						
Dollars per lb.				Dollars per lb.								
AUG 5	NC	.9925	S	NC	.9900	B	NC	1.0175	B	NC	1.0150	B
12	NC	.9925	S	NC	.9900	B	NC	1.0175	B	NC	1.0150	B
19	NC	.9925	S	NC	.9900	B	NC	1.0175	B	NC	1.0150	B
26	NC	.9925	S	NC	.9900	B	NC	1.0175	B	NC	1.0150	B
AVERAGE		.9925			.9900			1.0175			1.0150	
SEP 2	NC	.9925	S	NC	.9900	B	NC	1.0175	B	NC	1.0150	B
9	+ .0050	.9975	B	+ .0050	.9950	B	+ .0050	1.0225	B	+ .0050	1.0200	B
16	NC	.9975	B	NC	.9950	B	NC	1.0225	B	NC	1.0200	B
23	+ .0150	1.0125	B	+ .0050	1.0000	B	+ .0150	1.0375	B	+ .0050	1.0250	B
30	+ .0100	1.0225	B	NC	1.0000	B	+ .0100	1.0475	S	+ .0050	1.0300	B
AVERAGE		1.0045			.9960			1.0295			1.0220	
OCT 7	NC	1.0225	S	NC	1.0000	B	- .0050	1.0425	O	- .0075	1.0225	O
14	- .0200	1.0025	S	- .0100	.9900	O	- .0150	1.0275	O	- .0050	1.0175	O
21	NC	1.0025	B	NC	.9900	O	NC	1.0275	O	NC	1.0175	O
28	NC	1.0025	B	NC	.9900	O	NC	1.0275	O	NC	1.0175	O
AVERAGE		1.0075			.9925			1.0312			1.0188	
NOV 4	NC	1.0025	B	NC	.9900	O	NC	1.0275	O	NC	1.0175	O
11	NC	1.0025	B	NC	.9900	O	NC	1.0275	O	NC	1.0175	O
18	NC	1.0025	B	NC	.9900	O	NC	1.0275	O	NC	1.0175	O
25	+ .0250	1.0275	B	+ .0250	1.0150	B	+ .0200	1.0475	B	+ .0100	1.0275	B
AVERAGE		1.0088			.9962			1.0325			1.0200	
DEC 2	NC	1.0275	B	NC	1.0150	S	- .0025	1.0450	O	NC	1.0275	B
9	NC	1.0275	B	NC	1.0150	S	NC	1.0450	O	NC	1.0275	B
16	NC	1.0275	B	NC	1.0150	B	NC	1.0450	O	NC	1.0275	B
23	- .0350	.9925	O	- .0250	.9900	O	- .0250	1.0200	O	- .0125	1.0150	O
30	NC	.9925	O	NC	.9900	O	NC	1.0200	O	NC	1.0150	O
AVERAGE		1.0135			1.0050			1.0350			1.0225	

1/ LST = Last Significant Transaction. (S = Sale. B = Bid--willingness to buy at a stated price. O = Offer--willingness to sell at a stated price). For these markets, a general understanding exists as to how the trading is interpreted. The last sale is considered to represent the market for the coming week except that a subsequent bid higher than the last sale, or a subsequent offer lower than the last sale, is considered indicative of the market. In the absence of sales, the last bid higher than the previous week's market, or the last offer lower than the previous week's market, is considered indicative of the market. In the absence of any sales, offers, or bids, the market is considered to be unchanged.

2/ Last significant transaction - October 29, 1976.

3/ Last significant transaction - October 15, 1976.

4/ Last significant transaction - December 23, 1976.

NC = No Change

\* = Monthly averages represent a simple average of weekly prices.

Table 5.--BUTTER: Sales, Unfilled Bids, and Uncovered Offers on the Chicago and New York Mercantile Exchanges, 1977

MONTH	CHICAGO						NEW YORK					
	GRADE AA			GRADE A			GRADE AA			GRADE A		
	(93-SCORE)			(92-SCORE)			(93-SCORE)			(92-SCORE)		
	S*	B*	O*	S*	B*	O*	S*	B*	O*	S*	B*	O*
	Cars 1/						Units 1/					
JAN	1	1	1	1	1	0	0	0	0	0	0	0
FEB	0	0	0	0	0	0	0	0	0	0	0	0
MAR	7	6	1	0	2	0	0	3	5	0	6	5
APR	0	0	0	0	0	0	0	1	0	0	2	0
MAY	1	0	0	0	0	0	0	0	0	0	0	0
JUN	0	0	0	0	0	0	0	0	0	0	0	0
JUL	0	0	0	0	0	0	0	1	1	0	3	1
AUG	0	0	0	0	0	0	0	2	0	0	1	1
SEP	0	4	0	0	2	0	1	5	0	0	4	0
OCT	6	4	1	0	0	1	0	0	4	0	0	4
NOV	0	1	0	0	1	0	0	1	0	0	1	0
DEC	0	0	1	6	1	1	0	0	2	0	0	1
TOTAL 1977	15	13	3	7	7	2	1	12	12	0	17	11
TOTAL 1976	70	24	8	7	17	10	64	70	20	4	29	20

\* S = Sales    B = Unfilled Bids    O = Unfilled Offers  
 1/ Car = 38,000 pounds; unit = 100 boxes, 60-68 pounds per box.

Table 6.--BUTTER: Average Wholesale Selling Prices in Specified Cities, by Months, 1977 (Bulk in Fiber Boxes - Less Than Trucklot)

MONTH	CHICAGO		NEW YORK 1/	
	Grade AA	Grade A	Grade AA	Grade A
	Dollars per lb.			
JAN	.9082	.9082	.9400	.9266
FEB	.9082	.9082	.9400	.9288
MAR	.9299	.9268	.9701	.9518
APR	1.0033	1.0006	1.0383	1.0324
MAY	1.0071	1.0071	1.0375	1.0292
JUN	1.0071	1.0071	1.0375	1.0289
JUL	1.0071	1.0071	1.0375	1.0312
AUG	1.0071	1.0071	1.0385	1.0370
SEP	1.0100	1.0072	1.0546	1.0507
OCT	1.0151	1.0073	1.0697	1.0557
NOV	1.0108	1.0089	1.0626	1.0497
DEC	1.0244	1.0154	1.0744	1.0602
AVERAGE - 1977 *	.9865	.9842	1.0251	1.0152
AVERAGE - 1976 *	.9326	.9203	.9635	.9440

1/ Minimum sale - 25 boxes (approximately 1,700 lbs.).

\* Prices reported more than once a week. Monthly prices represent a simple average of prices issued during the month.

Table 7.--BUTTER: Average Prices to Chain Stores and Jobbers, f.o.b. California Plants, by Months, 1977 (100 Cases and Up)

MONTH	GRADE AA 1/4-lb. PRINTS	MONTH	GRADE AA 1/4-lb. PRINTS
	Dollars per lb.		Dollars per lb.
JAN	.9680	SEP	1.0800
FEB	.9680	OCT	1.0815
MAR	.9818	NOV	1.0827
APR	1.0749	DEC	1.0859
MAY	1.0800	AVERAGE	1.0536
JUN	1.0800	1977	
JUL	1.0800	AVERAGE	.9762
AUG	1.0800	1976	

Table 8.--BUTTER: Average Wholesale Selling Prices in Specified Cities, by Months, 1977 (Prints - Less Than Trucklot)

MONTH	GRADES AA AND A 1/4-POUND PRINTS, PARCHMENT OR FOIL WRAPPED IN CARTONS					
	Fresno	Los Angeles	San Francisco	Boston	Phila- delphia	New York
	Dollars per lb.					
JAN	1.0800	1.0812	1.0800	1.0884	1.0257	1.0458
FEB	1.0800	1.0812	1.0800	1.0938	1.0416	1.0500
MAR	1.0926	1.0943	1.0926	1.1201	1.0654	1.0764
APR	1.1549	1.1622	1.1549	1.1956	1.1393	1.1493
MAY	1.1550	1.1625	1.1550	1.1962	1.1399	1.1499
JUN	1.1550	1.1625	1.1550	1.1962	1.1388	1.1488
JUL	1.1550	1.1625	1.1550	1.1962	1.1388	1.1488
AUG	1.1550	1.1625	1.1550	1.1962	1.1388	1.1488
SEP	1.1550	1.1625	1.1550	1.2099	1.1459	1.1615
OCT	1.1550	1.1625	1.1550	1.2207	1.1582	1.1802
NOV	1.1564	1.1641	1.1564	1.2199	1.1525	1.1745
DEC	1.1650	1.1738	1.1650	1.2509	1.1638	1.1835
AVERAGE 1977	1.1382	1.1443	1.1382	1.1820	1.1207	1.1348
AVERAGE 1976	<u>1/</u>	1.0906	1.0931	1.0862	1.0446	<u>1/</u>

Continued

Table 8.--BUTTER: Average Wholesale Selling Prices in Specified Cities, by Months, 1977 (Prints - Less Than Trucklot)--Continued

MONTH	GRADES AA AND A ONE-POUND PRINTS, PARCHMENT WRAPPED				
	San Francisco	Los Angeles	Boston	Philadelphia	New York
	Dollars per lb.				
JAN	1.0788	1.0800	1.0400	.9888	.9979
FEB	1.0788	1.0800	1.0400	.9966	1.0050
MAR	1.0898	1.0922	1.0619	1.0161	1.0374
APR	1.1473	1.1583	1.1428	1.0943	1.1231
MAY	1.1475	1.1588	1.1438	1.0950	1.1237
JUN	1.1475	1.1588	1.1438	1.0950	1.1138
JUL	1.1475	1.1588	1.1438	1.0950	1.1012
AUG	1.1475	1.1588	1.1438	1.0950	1.1005
SEP	1.1475	1.1588	1.1473	1.1010	1.1104
OCT	1.1475	1.1588	1.1472	1.1078	1.1235
NOV	1.1493	1.1600	1.1489	1.1032	1.1038
DEC	1.1600	1.1675	1.1799	1.1162	1.1255
AVERAGE 1977	1.1324	1.1409	1.1236	1.0753	1.0888
AVERAGE 1976	1.1000	1.0969	1.0238	.9990	1/

MONTH	CHIPS/PATTIES			REDDIES		
	New York	Boston	Phila- delphia	New York	Boston	Phila- delphia
	Dollars per lb.			Dollars per lb.		
JAN	.9986	1.0738	1.0088	1.0834	1.1452	1.0979
FEB	.9950	1.0738	1.0137	1.0888	1.1438	1.1027
MAR	1.0347	1.0957	1.0369	1.1230	1.1651	1.1293
APR	1.1081	1.1765	1.1107	1.2012	1.2465	1.2093
MAY	1.1088	1.1775	1.1112	1.2011	1.2475	1.2099
JUN	1.1088	1.1775	1.1100	1.1988	1.2475	1.2088
JUL	1.1088	1.1775	1.1100	1.1997	1.2475	1.2088
AUG	1.1088	1.1775	1.1100	1.1993	1.2475	1.2088
SEP	1.1183	1.1799	1.1171	1.2149	1.2511	1.2159
OCT	1.1309	1.1834	1.1289	1.2264	1.2512	1.2277
NOV	1.1275	1.1841	1.1232	1.2141	1.2546	1.2205
DEC	1.1478	1.2112	1.1345	1.2247	1.2812	1.2281
AVERAGE 1977	1.0913	1.1574	1.0929	1.1813	1.2274	1.1890
AVERAGE 1976	1/	1/	1/	1/	1/	1/

Continued

Table 8.--BUTTER: Average Wholesale Selling Prices in Specified Cities, by Months, 1977 (Prints - Less Than Trucklot)--Continued

MONTH	PATTIES			MONTH	PATTIES		
	GRADES AA AND A				GRADES AA AND A		
	Los Angeles	San Francisco			Los Angeles	San Francisco	
	Dollars per lb.				Dollars per lb.		
JAN	1.1012	1.1000		SEP	1.1838	1.1750	
FEB	1.1012	1.1000		OCT	1.1838	1.1750	
MAR	1.1139	1.1124		NOV	1.1859	1.1771	
APR	1.1833	1.1748		DEC	1.1988	1.1900	
MAY	1.1838	1.1750		AVERAGE 1977	1.1656	1.1587	
JUN	1.1838	1.1750		AVERAGE 1976	1.1350	1.1308	
JUL	1.1838	1.1750					
AUG	1.1838	1.1750					

1/ Not computed because of insufficient price data.

Table 9.--CHEESE: Sales, Unfilled Bids, and Uncovered Offers on the National Cheese Exchange, Inc., 1977

MONTH	CHEDDAR AND			CHEDDAR 40-LB.			SWISS GRADES		
	GRANULAR BARRELS			BLOCKS 1/			A, B, C, AND D		
	Sales	Bids	Offers	Sales	Bids	Offers	Sales	Bids	Offers
	Cars 2/			Cars 2/			Cars 2/		
JAN	57	4	12	11	0	1	0	0	1
FEB	93	37	4	4	0	2	0	1	0
MAR	51	26	0	15	0	2	0	3	0
APR	55	13	0	11	0	5	7	9	2
MAY	30	2	10	0	0	5	1	0	2
JUN	2	0	9	0	0	4	0	0	2
JUL	12	4	2	1	0	4	3	1	1
AUG	4	0	0	2	2	1	0	0	0
SEP	47	4	4	6	3	4	2	4	0
OCT	5	0	9	5	3	1	0	0	0
NOV	28	14	0	10	10	0	0	0	0
DEC	83	14	2	21	14	0	0	19	0
TOTAL 1977	467	118	52	86	32	29	13	37	8
TOTAL 1976	376	82	104	123	92	17	6	12	5

1/ Includes moisture premium and no moisture premium. 2/ Car = 36,000-40,000 pounds.

Table 10.--CHEESE: Prices on the National Cheese Exchange, Inc., 1977

MONTH AND DAY	CHEDDAR BARRELS			CHEDDAR 40-LB. BLOCKS			SWISS GRADE A		
	Price	LST 1/		Price	LST 1/		Price	LST 1/	
	Change	Sale, Bid, or Offer		Change	Sale, Bid, or Offer		Change	Sale, Bid, or Offer	
	Dollars per lb.			Dollars per lb.			Dollars per lb.		
JAN 7	-.0050	.8200	S	NC	.8925	2/ S	NC	1.2100	3/ O
14	-.0025	.8175	O	NC	.8925	S	NC	1.2100	O
21	NC	.8175	S	NC	.8925	S	NC	1.2100	O
28	+.0050	.8225	S	NC	.8925	S	NC	1.2100	O
AVERAGE *		.8194			.8925			1.2100	
FEB 4	+.0050	.8275	B	NC	.8925	S	NC	1.2100	O
11	NC	.8275	S	NC	.8925	S	NC	1.2100	O
18	NC	.8275	S	NC	.8925	S	NC	1.2100	O
25	+.0225	.8500	B	NC	.8925	O	NC	1.2100	O
AVERAGE		.8331			.8925			1.2100	
MAR 4	NC	.8500	S	NC	.8925	O	NC	1.2100	O
11	+.0025	.8525	S	NC	.8925	S	NC	1.2100	O
18	+.0125	.8650	B	+.0100	.9025	S	NC	1.2100	O
25	+.0500	.9150	B	+.0450	.9475	S	+.0400	1.2500	B
AVERAGE		.8706			.9088			1.2200	
APR 1	-.0050	.9100	S	-.0025	.9450	S	NC	1.2500	B
8	+.0050	.9150	S	NC	.9450	S	NC	1.2500	B
15	NC	.9150	S	NC	.9450	S	+.0100	1.2600	S
22	NC	.9150	S	NC	.9450	O	-.0100	1.2500	S
29	NC	.9150	S	NC	.9450	O	NC	1.2500	S
AVERAGE		.9140			.9450			1.2520	
MAY 6	NC	.9150	S	NC	.9450	O	NC	1.2500	S
13	-.0050	.9100	S	NC	.9450	O	-.0100	1.2400	S
20	-.0200	.8900	S	NC	.9450	O	NC	1.2400	S
27	NC	.8900	O	NC	.9450	O	NC	1.2400	S
AVERAGE		.9012			.9450			1.2425	
JUN 3	-.0025	.8875	O	NC	.9450	O	NC	1.2400	S
10	NC	.8875	O	NC	.9450	O	NC	1.2400	S
17	-.0200	.8675	O	NC	.9450	O	NC	1.2400	S
24	NC	.8675	S	NC	.9450	O	NC	1.2400	O
AVERAGE		.8775			.9450			1.2400	
JUL 1	+.0325	.9000	B	NC	.9450	O	-.0200	1.2200	S
8	+.0125	.9125	S	NC	.9450	O	NC	1.2200	S
15	NC	.9125	S	NC	.9450	O	NC	1.2200	S
22	+.0025	.9150	S	NC	.9450	O	NC	1.2200	S
29	NC	.9150	S	NC	.9450	S	-.0150	1.2050	S
AVERAGE		.9110			.9450			1.2170	

Continued

UPDATA 1981

13



Table 10.--CHEESE: Prices on the National Cheese Exchange, Inc., 1977--Continued

MONTH AND DAY	CHEDDAR BARRELS			CHEDDAR 40-LB. BLOCKS			SWISS GRADE A		
	Price Change	LST 1/ Sale, Bid, or Offer		Price Change	LST 1/ Sale, Bid, or Offer		Price Change	LST 1/ Sale, Bid, or Offer	
	Dollars per lb.			Dollars per lb.			Dollars per lb.		
AUG 5	NC	.9150	S	NC	.9450	S	NC	1.2050	S
12	NC	.9150	S	NC	.9450	O	NC	1.2050	S
19	NC	.9150	S	NC	.9450	O	NC	1.2050	S
26	NC	.9150	S	NC	.9450	S	NC	1.2050	S
AVERAGE		.9150			.9450			1.2050	
SEP 2	+ .0075	.9225	S	+ .0050	.9500	B	NC	1.2050	S
9	+ .0025	.9250	S	NC	.9500	S	NC	1.2050	S
16	+ .0125	.9375	B	+ .0150	.9650	B	+ .0200	1.2250	B
23	NC	.9375	S	NC	.9650	S	NC	1.2250	B
30	- .0025	.9350	S	- .0050	.9600	O	+ .0200	1.2450	S
AVERAGE		.9315			.9580			1.2210	
OCT 7	- .0100	.9250	O	- .0050	.9550	S	NC	1.2450	S
14	NC	.9250	S	NC	.9550	S	NC	1.2450	S
21	- .0050	.9200	S	NC	.9550	S	NC	1.2450	S
28	NC	.9200	O	NC	.9550	S	NC	1.2450	S
AVERAGE		.9225			.9550			1.2450	
NOV 4	NC	.9200	B	NC	.9550	S	NC	1.2450	S
11	+ .0050	.9250	B	+ .0050	.9600	B	NC	1.2450	S
18	NC	.9250	S	+ .0100	.9700	B	NC	1.2450	S
23	NC	.9250	S	+ .0050	.9750	S	NC	1.2450	S
AVERAGE		.9238			.9650			1.2450	
DEC 2	+ .0150	.9400	B	NC	.9750	S	+ .0250	1.2700	B
9	NC	.9400	S	NC	.9750	S	+ .0200	1.2900	B
16	NC	.9400	B	NC	.9750	S	NC	1.2900	B
23	- .0150	.9250	S	NC	.9750	S	NC	1.2900	B
30	- .0100	.9150	S	NC	.9750	S	NC	1.2900	B
AVERAGE		.9320			.9750			1.2860	

1/ LST - Last Significant Transaction. (S = Sale. B = Bid--willingness to buy at a stated price. O = Offer--willingness to sell at a stated price.) For this market, a general understanding exists as to how the trading is interpreted. The last sale is considered to represent the market for the coming week except that a subsequent bid higher than the last sale, or a subsequent offer lower than the last sale, is considered indicative of the market. In the absence of sales, the last bid higher than the previous week's market, or the last offer lower than the previous week's market, is considered indicative of the market. In the absence of any sales, offers, or bids, the market is considered to be unchanged.

2/ Last significant transaction - October 22, 1976.

3/ Last significant transaction - November 24, 1976.

NC = No Change

\* = Monthly averages represent a simple average of weekly prices.

Table 11.--CHEESE: Average Prices Paid f.o.b. Wisconsin Assembling Points, by Months, 1977 (Carlot or Trucklot Prices)

MONTH	WISCONSIN STATE BRAND CURRENT CHEESE 1/				
	Cheddar Styles				
	Barrel	40-Pound Blocks	Single Daisies	Longhorns	Midgets
<u>Dollars per lb.</u>					
JAN	.8401	.9262	.9838	.9900	.9950
FEB	.8476	.9262	.9838	.9900	.9950
MAR	.8851	.9380	.9955	1.0017	1.0067
APR	.9338	.9789	1.0364	1.0426	1.0476
MAY	.9267	.9786	1.0362	1.0425	1.0475
JUN	.8976	.9742	1.0362	1.0425	1.0475
JUL	.9234	.9712	1.0362	1.0425	1.0475
AUG	.9300	.9712	1.0362	1.0425	1.0475
SEP	.9445	.9829	1.0479	1.0542	1.0592
OCT	.9413	.9826	1.0476	1.0538	1.0588
NOV	.9379	.9882	1.0532	1.0594	1.0644
DEC	.9502	1.0012	1.0662	1.0725	1.0775
AVERAGE 1977	.9132	.9683	1.0299	1.0362	1.0412
AVERAGE 1976	.9084	.9630	1.0151	1.0211	1.0258

1/ Less than 60-day cheese.

Table 12.--CHEESE: Average Wholesale Selling Prices at Wisconsin, by Months, 1977 (Less Than Trucklot)

MONTH	PASTEURIZED PROCESSED AMERICAN		Brick and Muenster	40-POUND BLOCKS		Monterey Jack
	5-Pound Loaf	5-Pound Sliced		Colby	Cheddar	
	<u>Dollars per lb.</u>					
JAN	.9389	.9839	.9500	.9625	.9775	.9650
FEB	.9464	.9914	.9500	.9625	.9775	.9650
MAR	.9839	1.0289	.9617	.9742	.9892	.9767
APR	1.0326	1.0776	1.0026	1.0151	1.0301	1.0176
MAY	1.0254	1.0704	1.0025	1.0150	1.0300	1.0175
JUN	1.0005	1.0414	1.0025	1.0150	1.0300	1.0175
JUL	1.0321	1.0671	1.0025	1.0150	1.0300	1.0175
AUG	1.0388	1.0738	1.0025	1.0150	1.0300	1.0175
SEP	1.0533	1.0883	1.0142	1.0267	1.0417	1.0292
OCT	1.0501	1.0851	1.0138	1.0263	1.0413	1.0288
NOV	1.0466	1.0816	1.0194	1.0319	1.0469	1.0344
DEC	1.0590	1.0940	1.0325	1.0450	1.0600	1.0475
AVERAGE 1977	1.0173	1.0570	.9962	1.0087	1.0237	1.0112
AVERAGE 1976	1.0140	1.0276	.9892	.9930	1.0056	.9916

Table 13.--CHEESE: Average Wholesale Selling Prices at Chicago, by Months, 1977  
(Less Than Trucklot)

MONTH	COLBY					
	Pasteurized	Processed	Brick and Muenster	5-Pound Loaves	40-Pound	Longhorns
	American	5-Pound Loaf	Square or Round	Blocks	Monterey	Jack
	Dollars per lb.					
JAN	1.0313	1.0825	1.0888	1.1525	1.0775	
FEB	1.0355	1.0825	1.0888	1.1525	1.0775	
MAR	1.0724	1.0942	1.0984	1.1601	1.0857	
APR	1.1338	1.1351	1.1389	1.2001	1.1272	
MAY	1.1267	1.1375	1.1388	1.2004	1.1275	
JUN	1.1038	1.1438	1.1388	1.2012	1.1275	
JUL	1.1289	1.1438	1.1388	1.2012	1.1275	
AUG	1.1350	1.1438	1.1388	1.2012	1.1275	
SEP	1.1455	1.1554	1.1504	1.2120	1.1403	
OCT	1.1413	1.1551	1.1501	1.2113	1.1401	
NOV	1.1368	1.1607	1.1557	1.2176	1.1457	
DEC	1.1427	1.1738	1.1688	1.2350	1.1588	
AVERAGE 1977	1.1111	1.1340	1.1329	1.1954	1.1219	
AVERAGE 1976	1.0692	1.1125	1.1065	1.1670	1.0927	

MONTH	CHEDDAR STYLES					
	CURRENT			AGED		
	40-Pound	Single	Longhorns	40-Pound	Flats	
	Blocks	Daisies		Blocks		
Dollars per lb.						
JAN	1.0862	1.1400	1.1425	1.3075	1.3862	
FEB	1.0862	1.1400	1.1425	1.3075	1.3862	
MAR	1.0980	1.1517	1.1501	1.3350	1.3980	
APR	1.1389	1.1926	1.1901	1.3589	1.4389	
MAY	1.1388	1.1929	1.1904	1.3591	1.4391	
JUN	1.1388	1.1938	1.1912	1.3600	1.4400	
JUL	1.1388	1.1938	1.1912	1.3600	1.4400	
AUG	1.1388	1.1938	1.1912	1.3600	1.4400	
SEP	1.1470	1.2054	1.2045	1.3728	1.4528	
OCT	1.1463	1.2057	1.2013	1.3726	1.4532	
NOV	1.1519	1.2107	1.2083	1.3753	1.4582	
DEC	1.1650	1.2238	1.2300	1.3712	1.4712	
AVERAGE 1977	1.1312	1.1870	1.1861	1.3533	1.4336	
AVERAGE 1976	1.1162	1.1608	1.1602	1.3312	1.4119	

Table 14.--CHEESE: Average Wholesale Selling Prices, Delivered Eastern Area, by Months, 1977 (Less Than Trucklot)

MONTH	CHEDDAR STYLES--CURRENT						
	10-Pound	Single	40-Pound	Muenster	5-Pound Processed		
	Square Prints	Midgets	Daisies	Blocks		Loaf	Sliced
	Dollars per lb.					Dollars per lb.	
JAN	1.1850	1.1464	1.1463	1.0764	1.1066	1.0038	1.0796
FEB	1.1850	1.1488	1.1475	1.0800	1.1138	1.0070	1.0838
MAR	1.1972	1.1605	1.1597	1.0904	1.1259	1.0197	1.0848
APR	1.2413	1.2014	1.2038	1.1335	1.1701	1.0649	1.1320
MAY	1.2410	1.1992	1.2033	1.1361	1.1706	1.0754	1.1289
JUN	1.2350	1.2012	1.1950	1.1325	1.1618	1.0719	1.1113
JUL	1.2350	1.2012	1.1975	1.1325	1.1500	1.0673	1.1388
AUG	1.2350	1.2012	1.2025	1.1325	1.1500	1.0775	1.1438
SEP	1.2467	1.2147	1.2164	1.1442	1.1719	1.1076	1.1545
OCT	1.2470	1.2095	1.2135	1.1438	1.1738	1.1028	1.1495
NOV	1.2519	1.2144	1.2132	1.1506	1.1808	1.1046	1.1479
DEC	1.2718	1.2275	1.2300	1.1685	1.2018	1.1190	1.1625
AVERAGE 1977	1.2310	1.1938	1.1941	1.1268	1.1564	1.0685	1.1264
AVERAGE 1976	1.2083	1.1626	1.1577	1.0962	1.1252	1.0239	1.1284

MONTH	CHEDDAR STYLES--NEW YORK STATE AGED			
	Midgets	Flats	40-Pound Blocks	10-lb. Prints
	Dollars per lb.			
JAN	1.4371	1.3979	1.3900	1.4662
FEB	1.4550	1.4050	1.4025	1.4662
MAR	1.4609	1.4128	1.4142	1.4799
APR	1.4813	1.4375	1.4563	1.5313
MAY	1.4812	1.4439	1.4562	1.5312
JUN	1.4812	1.4600	1.4562	1.5312
JUL	1.4812	1.4600	1.4562	1.5331
AUG	1.4817	1.4600	1.4562	1.5338
SEP	1.4872	1.4717	1.4679	1.5432
OCT	1.4876	1.4713	1.4682	1.5451
NOV	1.4897	1.4773	1.4732	1.5507
DEC	1.4943	1.4993	1.4931	1.5706
AVERAGE 1977	1.4765	1.4497	1.4492	1.5235
AVERAGE 1976	1.4296	1.4235	1.3908	1/

Continued

Table 14.--CHEESE: Average Wholesale Selling Prices, Delivered Eastern Area, by Months, 1977 (Less Than Trucklot)--Continued

MONTH	CHEDDAR STYLES--OTHER STATES, AGED			
	10-Pound Square Prints	Midgets	Flats	40-Pound Blocks
Dollars per lb.				
JAN	1.3305	1.3202	1.2260	1.2421
FEB	1.3147	1.3500	1.2275	1.2600
MAR	1.3284	1.3591	1.2392	1.2722
APR	1.3726	1.3876	1.2992	1.3163
MAY	1.3725	1.3861	1.3057	1.3062
JUN	1.3694	1.3825	1.3062	1.2812
JUL	1.3650	1.3844	1.3062	1.2812
AUG	1.3650	1.3815	1.3062	1.2812
SEP	1.3732	1.3792	1.3179	1.2929
OCT	1.3720	1.3970	1.3176	1.2901
NOV	1.3788	1.3990	1.3232	1.2933
DEC	1.3975	1.3948	1.3362	1.2925
AVERAGE 1977	1.3616	1.3768	1.2926	1.2841
AVERAGE 1976	1.3398	1.3174	1.2572	1.2554

1/ Not computed because of insufficient price data.

Table 15.--CHEESE: Average Wholesale Selling Prices, in Specified West Coast Cities, by Months, 1977 (Less Than Trucklot)

MONTH	PASTEURIZED PROCESSED AMERICAN 5-POUND LOAF			MONTEREY JACK		
	Los Angeles	Portland	San Francisco	Los Angeles	Portland	San Francisco
Dollars per lb.						
JAN	1.0486	1.0587	1.0486	1.1756	1.1750	1.1756
FEB	1.0501	1.0601	1.0502	1.1750	1.1750	1.1750
MAR	1.0854	1.0843	1.0862	1.1869	1.1862	1.1869
APR	1.1301	1.1238	1.1301	1.2313	1.2288	1.2325
MAY	1.1243	1.1180	1.1243	1.2312	1.2288	1.2325
JUN	1.0998	1.0951	1.0998	1.2312	1.2288	1.2320
JUL	1.1229	1.1204	1.1229	1.2312	1.2288	1.2312
AUG	1.1275	1.1250	1.1275	1.2295	1.2270	1.2295
SEP	1.1408	1.1389	1.1408	1.2379	1.2360	1.2379
OCT	1.1376	1.1360	1.1376	1.2394	1.2363	1.2394
NOV	1.1341	1.1329	1.1341	1.2442	1.2419	1.2442
DEC	1.1544	1.1532	1.1544	1.2665	1.2652	1.2665
AVERAGE 1977	1.1130	1.1122	1.1130	1.2233	1.2215	1.2236
AVERAGE 1976	1.1402	1.1168	1.1160	1.2112	1.1818	1.2054

Continued

Table 15.--CHEESE: Average Wholesale Selling Prices, Specified West Coast Area Cities, by Months, 1977 (Less Than Trucklot)--Continued

MONTH	CHEDDAR STYLES					
	40-Pound Rindless Blocks			Single Daisies		
	Los Angeles	Portland	San Francisco	Los Angeles	San Francisco	
	Dollars per lb.			Dollars per lb.		
JAN	1.1038	1.1050	1.1038	1.1550	1.1550	
FEB	1.1038	1.1050	1.1038	1.1550	1.1550	
MAR	1.1142	1.1168	1.1142	1.1647	1.1647	
APR	1.1501	1.1563	1.1501	1.1977	1.1977	
MAY	1.1500	1.1562	1.1500	1.1975	1.1975	
JUN	1.1515	1.1547	1.1515	1.1975	1.1975	
JUL	1.1526	1.1501	1.1526	1.1975	1.1975	
AUG	1.1495	1.1500	1.1495	1.1975	1.1975	
SEP	1.1548	1.1593	1.1548	1.2080	1.2080	
OCT	1.1547	1.1563	1.1547	1.2076	1.2076	
NOV	1.1607	1.1623	1.1607	1.2132	1.2132	
DEC	1.1848	1.1852	1.1848	1.2348	1.2348	
AVERAGE 1977	1.1442	1.1464	1.1442	1.1938	1.1938	
AVERAGE 1976	1.1629	1.1454	1.1620	1/	1.2197	

1/ Not computed because of insufficient price data.

Table 16.--CHEESE - IMPORTED: Wholesale Selling Prices at Seller's Dock or Warehouse in Specified Cities, by Months, 1977 (Less Than Trucklot)

MONTH	ROQUEFORT			BLUE		
	Chicago	New York	San Francisco	Chicago	New York	San Francisco
	Dollars per lb.			Dollars per lb.		
JAN	3.01-3.05	2.85-3.05	2.99-3.14	1.35-1.78	1.55-1.80	1.75-1.86
FEB	3.01-3.05	2.85-3.06	2.99-3.14	1.35-1.78	1.55-1.80	1.75-1.86
MAR	3.01-3.13	2.93-3.15	3.00-3.18	1.41-1.78	1.57-1.80	1.75-1.91
APR	3.01-3.15	2.99-3.15	3.04-3.34	1.72-1.78	1.58-1.80	1.75-1.92
MAY	3.01-3.15	3.03-3.15	3.04-3.34	1.72-1.78	1.58-1.80	1.75-1.92
JUN	3.01-3.15	3.04-3.19	3.04-3.34	1.72-1.78	1.60-1.80	1.75-1.92
JUL	3.01-3.15	3.04-3.20	3.04-3.34	1.72-1.80	1.63-1.80	1.76-1.92
AUG	3.13-3.21	3.10-3.24	3.15-3.34	1.78-1.82	1.63-1.84	1.80-1.92
SEP	3.13-3.29	3.10-3.30	3.15-3.34	1.78-1.82	1.63-1.84	1.80-1.93
OCT	3.13-3.34	3.10-3.36	3.15-3.34	1.78-1.82	1.63-1.84	1.79-1.95
NOV	3.13-3.34	3.10-3.36	3.17-3.34	1.78-1.83	1.63-1.86	1.79-1.95
DEC	3.13-3.34	3.10-3.36	3.25-3.34	1.78-1.86	1.65-1.88	1.80-1.95

Continued

Table 16.--CHEESE - IMPORTED: Wholesale Selling Prices at Seller's Dock or Warehouse at Specified Cities, by Months, 1977 (Less Than Trucklot)--Continued

MONTH	GORGONZOLA		PARMESAN		REGGIANTO
	New York		Chicago	New York	(ARGENTINA) New York
<u>Dollars per lb.</u>					
JAN	2.45-2.69		3.55-3.63	3.35-4.60	1.20-1.30
FEB	2.45-2.69		3.65-3.75	3.35-4.57	1.20-1.30
MAR	2.45-2.68		3.65-3.75	3.56-4.50	1.20-1.30
APR	2.45-2.69		3.65-3.75	3.60-4.50	1.21-1.34
MAY	2.45-2.69		3.65-3.75	3.60-4.52	1.26-1.40
JUN	2.45-2.69		3.65-4.09	3.60-4.52	1.31-1.49
JUL	2.45-2.69		3.65-4.25	3.60-4.52	1.35-1.49
AUG	2.45-2.69		3.65-4.25	3.60-4.52	1.36-1.54
SEP	2.45-2.69		3.65-4.25	3.53-4.52	1.47-1.62
OCT	2.45-2.69		3.65-4.25	3.46-4.52	1.49-1.62
NOV	2.45-2.69		3.65-4.25	3.60-4.52	1.48-1.63
DEC	2.45-2.69		3.65-4.25	3.60-4.53	1.44-1.64

MONTH	GENUINE PECORINO ROMANO			PECORINO SARDO	
	Chicago	New York	San Francisco	Chicago	New York
<u>Dollars per lb.</u>					
JAN	3.18-3.23	2.85-3.30	2.70	2.65-2.90	2.59-2.86
FEB	3.20-3.25	2.84-3.33	2.70	2.65-2.95	2.59-2.86
MAR	3.20-3.25	2.81-3.41	2.73	2.68-2.95	2.59-2.90
APR	3.20-3.25	2.80-3.41	2.90	2.84-2.95	2.59-2.90
MAY	3.20-3.25	2.80-3.41	2.90	2.84-2.95	2.59-2.90
JUN	3.17-3.38	2.78-3.41	2.90	2.84-2.95	2.59-2.90
JUL	3.15-3.45	2.75-3.41	2.90	2.84-2.95	2.59-2.90
AUG	3.15-3.45	2.75-3.41	2.90-2.91	2.85-2.95	2.59-2.96
SEP	3.15-3.31	2.67-3.41	2.90-2.94	2.85-2.95	2.54-2.96
OCT	3.15-3.25	2.56-3.41	2.90-2.94	2.85-2.95	2.49-2.96
NOV	3.10-3.25	2.70-3.41	2.91-2.94	2.85-2.95	2.49-2.96
DEC	3.10-3.25	2.60-3.41	2.94-2.95	2.85-2.95	2.43-2.96

Continued

Table 16.--CHEESE - IMPORTED: Wholesale Selling Prices at Seller's Dock or Warehouse at Specified Cities, by Months, 1977 (Less Than Trucklot)--Continued

MONTH	EDAM--Two-Pound Package			EDAM--Four-Pound Package		
	Chicago	New York	San Francisco	Chicago	New York	San Francisco
	Dollars per lb.			Dollars per lb.		
JAN	1.76-2.13	1.77-2.13	1.77	1.62-1.93	1.64-1.90	1.63
FEB	1.76-2.13	1.77-2.13	1.77	1.62-1.93	1.64-1.90	1.63
MAR	1.76-2.13	1.77-2.14	1.77	1.62-1.93	1.64-1.90	1.63
APR	1.76-2.13	1.78-2.14	1.77	1.62-1.93	1.64-1.90	1.63
MAY	1.76-2.13	1.78-2.14	1.77	1.62-1.93	1.64-1.90	1.63
JUN	1.76-2.13	1.78-2.14	1.77	1.62-1.93	1.64-1.93	1.63
JUL	1.76-2.13	1.78-2.14	1.77	1.62-1.93	1.64-1.94	1.63
AUG	1.93-2.13	1.88-2.14	1.94	1.87-1.93	1.73-1.94	1.87
SEP	1.93-2.13	1.88-2.13	1.94	1.87-1.93	1.73-1.94	1.87
OCT	1.93-2.13	1.88-2.13	1.94	1.87-1.93	1.71-1.94	1.87
NOV	1.93-2.13	1.88-2.14	1.94	1.87-1.93	1.71-1.95	1.87
DEC	1.93-2.18	1.89-2.19	1.94	1.87-1.99	1.71-2.00	1.87

MONTH	GOUDA - LARGE		GOUDA - BABY (10-ounce Unit)		
	Chicago	New York	Chicago	San Francisco	New York
	Dollars per lb.		Dollars per Doz.		
JAN	1.75-1.92	1.72-2.01	18.50-18.60	18.60	17.30-25.20
FEB	1.75-1.92	1.72-2.01	18.50-18.60	18.60	17.30-25.20
MAR	1.75-1.92	1.74-2.01	18.50-18.60	18.60	17.48-20.85
APR	1.75-1.92	1.77-2.01	18.50-18.60	18.60	17.75-19.94
MAY	1.75-1.92	1.77-2.01	18.50-18.60	18.60	17.75-19.94
JUN	1.75-1.92	1.77-2.04	18.50-18.60	18.60	17.91-19.94
JUL	1.75-1.92	1.77-2.05	18.50-18.60	18.60	17.95-19.94
AUG	1.75-1.92	1.80-2.05	18.50-18.60	18.60	17.80-19.94
SEP	1.75-1.92	1.80-2.02	18.50-18.60	18.60	18.23-19.95
OCT	1.75-1.92	1.80-1.98	18.50-18.60	18.60	18.59-20.00
NOV	1.75-1.92	1.79-1.98	18.50-18.60	18.60	18.42-20.00
DEC	1.75-1.92	1.75-1.98	18.50-19.15	18.60	18.11-20.00

Continued



Table 16.--CHEESE - IMPORTED: Wholesale Selling Prices at Seller's Dock or Warehouse at Specified Cities, by Months, 1977 (Less Than Trucklot)--Continued

MONTH	SARDO ROMANO	PROVOLONE (Giganti)	SWISS WHEELS	
	(Cow's Milk)	25-lb. Units and Up	Chicago	New York
	Argentina			
	New York		Chicago	New York
<u>Dollars per lb.</u>				
JAN	1.18-1.27	2.85-2.95	2.45-3.70	1.57-1.60
FEB	1.17-1.27	2.85-2.95	2.45-3.70	1.57-1.60
MAR	1.15-1.27	2.85-2.95	2.45-3.70	1.57-1.60
APR	1.17-1.31	2.85-2.95	2.45-3.70	1.57-1.60
MAY	1.24-1.37	2.85-2.95	2.45-3.70	1.57-1.60
JUN	1.31-1.47	2.85-2.95	2.45-3.70	1.51-1.60
JUL	1.35-1.47	2.85-2.95	2.45-3.70	1.52-1.60
AUG	1.36-1.52	2.85-2.95	2.45-3.70	1.57-1.60
SEP	1.45-1.62	2.85-2.95	2.45-3.63	1.57-1.60
OCT	1.47-1.62	2.85-2.95	2.45-3.55	1.57-1.59
NOV	1.46-1.63	2.85-2.95	2.45-3.55	1.57-1.60
DEC	1.43-1.64	2.85-2.95	2.45-3.55	1.66-1.69

MONTH	JARLSBERG	SWISS CUTS - FINNISH		
	BRAND	San Francisco	New York	Chicago
	New York			
<u>Dollars per lb.</u>				
JAN	1.71-1.87	1.44-1.55	1.45-1.59	1.41-1.54
FEB	1.72-1.87	1.45-1.55	1.41-1.59	1.41-1.54
MAR	1.73-1.88	1.45-1.55	1.42-1.58	1.41-1.54
APR	1.73-1.87	1.48-1.55	1.42-1.56	1.45-1.54
MAY	1.71-1.87	1.48-1.55	1.40-1.56	1.44-1.54
JUN	1.73-1.87	1.48-1.55	1.39-1.56	1.44-1.54
JUL	1.73-1.87	1.46-1.51	1.39-1.56	1.42-1.54
AUG	1.71-1.87	1.44-1.50	1.39-1.53	1.40-1.50
SEP	1.72-1.87	1.44-1.50	1.41-1.54	1.41-1.49
OCT	1.73-1.87	1.44-1.50	1.42-1.55	1.44-1.49
NOV	1/	1.46-1.50	1.44-1.55	1.44-1.49
DEC	1/	1.50-1.52	1.45-1.57	1.47-1.49

Continued

Table 16.--CHEESE - IMPORTED: Wholesale Selling Prices at Seller's Dock or Warehouse at Specified Cities, by Months, 1977 (Less Than Trucklot)--Continued

MONTH	SWISS CUTS			
	SWITZERLAND			AUSTRIAN
	Chicago	New York	New York	New York
	<u>Dollars per lb.</u>			
JAN	1.72-1.78	1.65-1.78		1.50-1.51
FEB	1.72-1.78	1.61-1.79		1.43-1.51
MAR	1.73-1.86	1.58-1.88		1.40-1.50
APR	1.76-1.88	1.58-1.88		1.43-1.47
MAY	1.76-1.88	1.59-1.88		1.38-1.47
JUN	1.76-1.88	1.58-1.88		1.38-1.47
JUL	1.76-1.88	1.58-1.88		1.38-1.47
AUG	1.78-1.88	1.58-1.88		1.39-1.47
SEP	1.78-1.88	1.58-1.88		1.40-1.50
OCT	1.78-1.88	1.58-1.88		1.41-1.54
NOV	1.78-1.88	1.63-1.89		1.44-1.54
DEC	1.78-1.97	1.70-1.98		1.48-1.54

1/ Not computed because of insufficient price data.

Table 17.--CHEESE - DOMESTICALLY MADE FOREIGN TYPE: Wholesale Selling Prices at Seller's Dock or Warehouse in Specified Cities, by Months, 1977 (Less Than Trucklot)

MONTH	BLUE				ROMANO (Cow's Milk)	
	Wisconsin	Chicago	New York	San Francisco	Chicago	New York
	<u>Dollars per lb.</u>				<u>Dollars per lb.</u>	
JAN	1.14-1.20	1.18-1.46	1.20-1.59	1.22-1.41	1.58-2.08	1.56-1.87
FEB	1.14-1.20	1.18-1.46	1.20-1.59	1.22-1.41	1.58-2.08	1.56-1.87
MAR	1.15-1.21	1.19-1.46	1.22-1.59	1.23-1.42	1.59-2.07	1.57-1.88
APR	1.20-1.25	1.24-1.46	1.32-1.59	1.28-1.46	1.64-2.00	1.62-1.91
MAY	1.20-1.25	1.24-1.46	1.32-1.59	1.28-1.46	1.64-2.00	1.62-1.92
JUN	1.20-1.25	1.25-1.46	1.32-1.59	1.30-1.46	1.64-2.00	1.62-1.92
JUL	1.20-1.25	1.25-1.46	1.30-1.58	1.30-1.46	1.64-2.00	1.62-1.92
AUG	1.20-1.25	1.25-1.46	1.26-1.56	1.30-1.46	1.64-2.00	1.62-1.92
SEP	1.21-1.26	1.27-1.48	1.27-1.56	1.31-1.47	1.65-2.00	1.63-1.93
OCT	1.21-1.26	1.28-1.48	1.28-1.56	1.31-1.47	1.66-2.00	1.63-1.94
NOV	1.21-1.26	1.28-1.48	1.28-1.56	1.31-1.47	1.67-2.00	1.64-1.94
DEC	1.22-1.28	1.30-1.49	1.30-1.56	1.33-1.49	1.67-2.00	1.65-1.96

Continued

Table 17.--CHEESE - DOMESTICALLY MADE FOREIGN TYPE: Wholesale Selling Prices at Seller's Dock or Warehouse in Specified Cities, by Months, 1977  
(Less Than Trucklot)--Continued

MONTH	PARMESAN			GORGONZOLA		
	Chicago	New York	San Francisco	Chicago	New York (Splits)	San Francisco
	Dollars per lb.			Dollars per lb.		
JAN	1.85-2.25	1.60-2.14	1.58-1.94	1.30-1.55	1.31-1.64	1.34-1.52
FEB	1.85-2.25	1.60-2.14	1.58-1.94	1.30-1.55	1.31-1.63	1.34-1.52
MAR	1.86-2.25	1.61-2.14	1.59-1.97	1.31-1.56	1.32-1.64	1.35-1.53
APR	1.90-2.25	1.65-2.14	1.63-2.07	1.36-1.60	1.36-1.68	1.40-1.59
MAY	1.90-2.25	1.65-2.14	1.63-2.07	1.36-1.60	1.36-1.68	1.40-1.59
JUN	1.90-2.25	1.65-2.14	1.63-2.07	1.37-1.60	1.36-1.68	1.40-1.59
JUL	1.90-2.25	1.65-2.14	1.63-2.07	1.37-1.60	1.36-1.68	1.40-1.59
AUG	1.90-2.25	1.65-2.14	1.63-2.07	1.37-1.60	1.36-1.68	1.40-1.59
SEP	1.91-2.25	1.67-2.14	1.67-2.07	1.38-1.62	1.38-1.70	1.42-1.59
OCT	1.91-2.25	1.68-2.14	1.71-2.12	1.39-1.62	1.40-1.73	1.42-1.59
NOV	1.91-2.25	1.69-2.14	1.72-2.13	1.39-1.62	1.40-1.74	1.43-1.60
DEC	1.92-2.25	1.70-2.16	1.74-2.14	1.41-1.64	1.44-1.76	1.45-1.61

MONTH	GOUDA - BABY			GOUDA - LARGE	
	8-Ounce Unit New York	7-Ounce Unit Chicago	New York	San Francisco	New York
	Dollars per Doz.			Dollars per lb.	
JAN	10.68-11.10	7.61-9.48	8.40- 9.90	1.26-1.27	1.26-1.46
FEB	10.68-11.10	7.61-9.48	8.40- 9.90	1.26-1.27	1.26-1.46
MAR	10.68-11.10	7.66-9.51	8.45- 9.90	1.27-1.28	1.27-1.47
APR	10.68-11.10	7.93-9.78	8.68- 9.90	1.31-1.33	1.32-1.50
MAY	10.68-11.10	7.93-9.84	8.68-10.00	1.31-1.32	1.32-1.50
JUN	10.68-11.10	7.93-9.84	8.69-10.25	1.31-1.32	1.32-1.50
JUL	10.68-11.10	7.93-9.84	8.69-10.25	1.31-1.32	1.32-1.47
AUG	10.68-11.10	7.93-9.84	8.69-10.25	1.31-1.32	1.32-1.38
SEP	10.79-11.10	7.98-9.84	8.76-10.25	1.32-1.34	1.33-1.39
OCT	11.03-11.13	7.99-9.85	8.80-10.25	1.32-1.34	1.33-1.41
NOV	11.06-11.22	7.99-9.96	8.85-10.25	1.32-1.34	1.33-1.42
DEC	11.11-11.22	8.08-9.96	8.94-10.32	1.34-1.36	1.34-1.46

Continued

Table 17.--CHEESE - DOMESTICALLY MADE FOREIGN TYPE: Wholesale Selling Prices at Seller's Dock or Warehouse in Specified Cities, by Months, 1977 (Less Than Trucklot)--Continued

MONTH	PROVOLONE (8-12 POUND UNITS)				PROVOLONE - Giganti (25-POUND UNITS & UP)	
	Wisconsin	Chicago	New York	San Francisco	Chicago	New York
	Dollars per lb.				Dollars per lb.	
JAN	1.02-1.05	1.12-1.29	1.09-1.34	1.16-1.34	1.46-1.52	1.38-1.71
FEB	1.02-1.05	1.12-1.28	1.07-1.34	1.16-1.34	1.46-1.52	1.36-1.71
MAR	1.03-1.06	1.13-1.29	1.09-1.36	1.17-1.36	1.47-1.53	1.35-1.72
APR	1.08-1.11	1.18-1.33	1.13-1.40	1.21-1.40	1.52-1.58	1.35-1.74
MAY	1.08-1.10	1.19-1.33	1.13-1.41	1.22-1.40	1.52-1.58	1.40-1.74
JUN	1.08-1.10	1.20-1.33	1.13-1.42	1.24-1.34	1.52-1.58	1.41-1.74
JUL	1.08-1.10	1.20-1.33	1.13-1.42	1.24-1.34	1.52-1.58	1.41-1.74
AUG	1.08-1.10	1.20-1.33	1.14-1.42	1.24-1.34	1.50-1.58	1.41-1.74
SEP	1.09-1.12	1.21-1.34	1.14-1.44	1.25-1.34	1.52-1.59	1.41-1.75
OCT	1.09-1.12	1.21-1.35	1.14-1.44	1.25-1.34	1.54-1.60	1.41-1.76
NOV	1.09-1.12	1.21-1.35	1.15-1.45	1.25-1.34	1.54-1.60	1.42-1.77
DEC	1.10-1.14	1.23-1.36	1.17-1.46	1.27-1.36	1.55-1.61	1.45-1.78

MONTH	EDAM (Two-Pound Units)		EDAM (Four-Pound Units)		MOZZARELLA
	New York	San Francisco	New York	San Francisco	Wisconsin
	Dollars per lb.				
JAN	1.56-1.75	1.56	1.21-1.31	1.30	1.00-1.07
FEB	1.56-1.75	1.56	1.21-1.31	1.30	1.00-1.07
MAR	1.57-1.82	1.45-1.57	1.23-1.32	1.31-1.32	1.01-1.08
APR	1.62-1.89	1.31-1.61	1.26-1.37	1.35-1.36	1.06-1.12
MAY	1.62-1.90	1.30-1.61	1.26-1.37	1.35-1.36	1.06-1.12
JUN	1.62-1.90	1.30-1.61	1.26-1.37	1.35-1.36	1.06-1.12
JUL	1.62-1.90	1.30-1.61	1.26-1.37	1.35-1.36	1.06-1.12
AUG	1.62-1.90	1/	1.25-1.37	1.35-1.36	1.06-1.12
SEP	1/	1/	1.30-1.38	1.36-1.37	1.07-1.13
OCT	1/	1/	1.31-1.39	1.36-1.37	1.07-1.13
NOV	1/	1/	1.32-1.39	1.36-1.37	1.07-1.14
DEC	1/	1/	1.33-1.46	1.38-1.39	1.08-1.15

Continued

Table 17.--CHEESE - DOMESTICALLY MADE FOREIGN TYPE: Wholesale Selling Prices at Seller's Dock or Warehouse in Specified Cities, by Months, 1977 (Less Than Trucklot)--Continued

MONTH	SWISS BLOCKS (80-100 Pound Units)			
	Wisconsin		Chicago	
	Grade A	Grade B	Grade A	Grade B
	<u>Dollars per lb.</u>			
JAN	1.26-1.28	1.24-1.26	1.32-1.38	1.30-1.36
FEB	1.26-1.28	1.24-1.26	1.32-1.38	1.30-1.36
MAR	1.26-1.28	1.24-1.26	1.33-1.38	1.31-1.36
APR	1.30-1.32	1.28-1.30	1.37-1.42	1.34-1.40
MAY	1.29-1.31	1.26-1.28	1.36-1.41	1.33-1.38
JUN	1.28-1.30	1.26-1.28	1.36-1.40	1.32-1.38
JUL	1.27-1.29	1.23-1.25	1.36-1.39	1.30-1.35
AUG	1.25-1.27	1.22-1.24	1.32-1.37	1.30-1.34
SEP	1.26-1.28	1.24-1.26	1.33-1.38	1.31-1.36
OCT	1.29-1.31	1.27-1.29	1.37-1.41	1.35-1.39
NOV	1.29-1.31	1.27-1.29	1.37-1.41	1.35-1.39
DEC	1.33-1.35	1.31-1.33	1.41-1.45	1.39-1.43

MONTH	SWISS BLOCKS (80-100 Pound Units)		MONTH	SWISS BLOCKS (80-100 Pound Units)	
	Los Angeles	San Francisco		Los Angeles	San Francisco
	Grade A	Grade A		Grade A	Grade A
	<u>Dollars per lb.</u>			<u>Dollars per lb.</u>	
JAN	1.34-1.40	1.34-1.40	JUL	1.36-1.40	1.36-1.40
FEB	1.34-1.37	1.34-1.37	AUG	1.31-1.38	1.31-1.38
MAR	1.34-1.38	1.34-1.38	SEP	1.32-1.37	1.32-1.37
APR	1.38-1.43	1.38-1.43	OCT	1.36-1.40	1.36-1.40
MAY	1.37-1.42	1.37-1.42	NOV	1.37-1.40	1.37-1.40
JUN	1.37-1.42	1.37-1.42	DEC	1.41-1.44	1.41-1.44

Continued

Table 17.--CHEESE - DOMESTICALLY MADE FOREIGN TYPE: Wholesale Selling Prices at Seller's Dock or Warehouse in Specified Cities, by Months, 1977  
(Less Than Trucklot)--Continued

MONTH	SWISS CUTS			
	Wisconsin	Chicago		San Francisco
	Grade A	Grade A	Grade B	Grade A
	Dollars per lb.			
JAN	1.34-1.44	1.41-1.50	1.38-1.44	1.47-1.51
FEB	1.34-1.44	1.41-1.50	1.38-1.44	1.47-1.51
MAR	1.34-1.45	1.43-1.51	1.39-1.44	1.48-1.53
APR	1.38-1.48	1.45-1.54	1.42-1.47	1.50-1.56
MAY	1.37-1.47	1.44-1.53	1.41-1.46	1.50-1.56
JUN	1.36-1.47	1.44-1.53	1.40-1.44	1.48-1.56
JUL	1.35-1.45	1.42-1.51	1.37-1.42	1.47-1.54
AUG	1.33-1.44	1.40-1.50	1.37-1.42	1.46-1.52
SEP	1.34-1.44	1.42-1.50	1.39-1.43	1.47-1.53
OCT	1.37-1.48	1.46-1.54	1.43-1.46	1.47-1.56
NOV	1.37-1.48	1.46-1.54	1.43-1.46	1.48-1.57
DEC	1.41-1.51	1.50-1.57	1.47-1.50	1.54-1.61

MONTH	SWISS CUTS - NEW YORK		
	Grade A	Grade B	Grade C
	Dollars per lb.		
JAN	1.40-1.48	1.32-1.46	1.20-1.38
FEB	1.40-1.48	1.32-1.46	1.20-1.38
MAR	1.40-1.49	1.33-1.47	1.22-1.45
APR	1.44-1.53	1.36-1.51	1.34-1.49
MAY	1.43-1.52	1.35-1.50	1.32-1.47
JUN	1.42-1.52	1.34-1.49	1.31-1.47
JUL	1.41-1.49	1.32-1.46	1.29-1.39
AUG	1.39-1.47	1.32-1.45	1.28-1.36
SEP	1.40-1.48	1.32-1.46	1.28-1.38
OCT	1.43-1.51	1.36-1.49	1.30-1.42
NOV	1.43-1.51	1.36-1.49	1.30-1.42
DEC	1.47-1.56	1.37-1.53	1.32-1.46

1/ Not computed because of insufficient price data.

Table 18.--NONFAT DRY MILK: Prices Paid f.o.b. Central States Production Area and Wholesale Selling Prices in Specified Areas (Spray Process), by Months, 1977 (50 or 100 Pound Bags in Carlot or Trucklot Quantities)

MONTH	F.O.B. CENTRAL STATES AREA	DELIVERED SPECIFIED AREAS				
		Chicago	Los Angeles	San Francisco	East Coast Cities 1/	Southern Cities 1/
<u>HIGH HEAT - Dollars per lb.</u>						
JAN	.6193	.6300	.6350	.6335	.6369	.6362
FEB	.6185	.6300	.6350	.6335	.6355	.6379
MAR	.6290	.6409	.6409	.6392	.6502	.6536
APR	.6737	.6847	.6961	.6936	.6851	.6907
MAY	.6761	.6878	.6975	.6950	.6896	.6907
JUN	.6785	.6878	.6966	.6941	.6883	.6863
JUL	.6785	.6878	.6925	.6900	.6898	.6885
AUG	.6785	.6878	.6925	.6900	.6917	.6912
SEP	.6785	.6878	.6925	.6900	.6917	.6908
OCT	.6785	.6878	.6922	.6900	.6922	.6933
NOV	.6785	.6878	.6912	.6900	.6922	.6976
DEC	.6785	.6878	.6912	.6900	.6945	.6993
AVERAGE 1977	.6638	.6740	.6794	.6774	.6781	.6797
AVERAGE 1976	.6257	.6347	.6430	.6419	.6470	.6427

MONTH	F.O.B. CENTRAL STATES AREA	DELIVERED SPECIFIED AREAS		
		Chicago	Los Angeles	San Francisco
<u>LOW HEAT - Dollars per lb.</u>				
JAN	.6245	.6338	.6400	.6360
FEB	.6245	.6338	.6400	.6360
MAR	.6354	.6446	.6450	.6412
APR	.6777	.6853	.6961	.6936
MAY	.6822	.6902	.6975	.6950
JUN	.6822	.6902	.6966	.6941
JUL	.6822	.6902	.6925	.6900
AUG	.6822	.6902	.6925	.6900
SEP	.6822	.6902	.6925	.6900
OCT	.6822	.6902	.6922	.6900
NOV	.6822	.6902	.6912	.6900
DEC	.6822	.6902	.6912	.6900
AVERAGE 1977	.6683	.6766	.6806	.6780
AVERAGE 1976	.6299	.6391	.6440	.6425

Continued

Table 18.--NONFAT DRY MILK: Prices Paid f.o.b. Central States Production Area and Wholesale Selling Prices in Specified Areas (Spray Process), by Months, 1977 (50 or 100 Pound Bags in Carlot or Trucklot Quantities)--Continued

MONTH	F.O.B. CENTRAL STATES AREA		DELIVERED SPECIFIED AREAS			
			Los Angeles	San Francisco	East Coast Cities	Southern Cities
			Grade A - Dollars per lb.			
JAN	.6342	::	.6475	.6435	.6430	.6492
FEB	.6342	::	.6475	.6435	.6430	.6492
MAR	.6452	::	.6525	.6488	.6564	.6620
APR	.6889	::	.7048	.7023	.6931	.6980
MAY	.6900	::	.7061	.7036	.9644	.7011
JUN	.6898	::	.7015	.6991	.6954	.7032
JUL	.6898	::	.6968	.6950	.6972	.7026
AUG	.6898	::	.6968	.6950	.6989	.7049
SEP	.6898	::	.6968	.6950	.6985	.7060
OCT	.6898	::	.6964	.6950	.6985	.7071
NOV	.6899	::	.6966	.6964	.6989	.7096
DEC	.6905	::	.6975	.6975	.7016	.7084
AVERAGE 1977	.6768	::	.6867	.6846	.6849	.6918
AVERAGE 1976	.6470	::	.6528	.6513	.6529	.6570

1/ No distinction made between high and low heat powder pricewise.

Table 19.--NONFAT DRY MILK USED FOR ANIMAL FEED: Prices Paid f.o.b. Central States Production Area and Wholesale Selling Prices Delivered Eastern Area (Skim Powder, Spray Process) and Agglomerated Instantized, by Months, 1977 (Carlot or Trucklot Quantities)

MONTH	DELIVERED EASTERN AREA		F.O.B. CENTRAL STATES AREA
	Milk Replacer	Agglomerated (Instantized)	
Dollars per lb.			
JAN	.4100	.4875	*
FEB	.3942	.4770	*
MAR	.3917	.4768	*
APR	.4095	.4674	*
MAY	.4290	.4733	*
JUN	.4278	.4900	.4000
JUL	.4334	.4900	.3995
AUG	1/	.4900	.3733
SEP	.3976	.4831	.3619
OCT	.3958	.4800	.3600
NOV	.4050	.4800	.3589
DEC	.4016	.4800	1/
AVERAGE 1977	1/	.4813	1/
AVERAGE 1976	.4355	1/	2/

\* = New price series. 1/ Not computed because of insufficient price data.  
2/ Not previously reported.



Table 20.--NATIONAL EVAPORATED MILK: Average Wholesale Selling Prices, Delivered Major U.S. Cities, by Months, 1977 (Carlot or Trucklot Quantities)

MONTH	MAJOR U.S. CITIES	MONTH	MAJOR U.S. CITIES
<u>Dollars per case 1/</u>		<u>Dollars per case 1/</u>	
JAN	14.40	SEP	15.25
FEB	14.40	OCT	15.25
MAR	14.40	NOV	15.25
APR	14.91	DEC	15.25
MAY	15.25	AVERAGE	15.01
JUN	15.25	1977	
JUL	15.25	AVERAGE	14.14
AUG	15.25	1976	

1/ Case = 48-14 1/2 oz. cans.

Table 21.--WHEY POWDER, EDIBLE: Prices Paid f.o.b. Production Areas, and Wholesale Selling Prices, Delivered Specified Areas (Spray Process), by Months, 1977 (Carlot or Trucklot Quantities)

MONTH	F.O.B. CENTRAL STATES AREA		F.O.B. WEST COAST	
	Hygroscopic	Nonhygroscopic	Hygroscopic	Nonhygroscopic
<u>Dollars per lb.</u>		<u>Dollars per lb.</u>		
JAN	.0730	.0889	1/	.0787
FEB	.0693	.0816	1/	.0772
MAR	.0675	.0794	1/	.0725
APR	.0702	.0798	1/	.0728
MAY	.0792	.0885	.0700	.0741
JUN	.0889	.1009	.0711	.0793
JUL	.0984	.1097	.0712	.0856
AUG	.1206	.1280	.0864	.1003
SEP	.1498	.1609	.1140	.1312
OCT	.1644	.1714	.1303	.1428
NOV	.1758	.1799	.1411	.1507
DEC	.1775	.1867	.1425	.1550
AVERAGE	.1112	.1213	1/	.1017
1977				
AVERAGE	.0591	.0684	1/	.0725
1976				

Continued

Table 21.--WHEY POWDER, EDIBLE: Prices Paid f.o.b. Production Areas, and Wholesale Selling Prices, Delivered Specified Areas (Spray Process), by Months, 1977 (Carlot or Trucklot Quantities)--Continued

MONTH	DELIVERED EASTERN AREA			DELIVERED SOUTH
	Hygroscopic	Nonhygroscopic	USPH Grade A	Nonhygroscopic
				Dollars per lb.
JAN	.1000	.1062	.1093	.1101
FEB	.0967	.1022	.1069	.1109
MAR	.0948	.0964	.1050	.1078
APR	.0962	.0959	.1056	.1033
MAY	.1022	.1075	.1232	.1183
JUN	.1095	.1186	.1388	.1274
JUL	.1209	.1308	.1569	.1421
AUG	.1380	.1520	.1875	.1664
SEP	1/	.1821	.2118	.1872
OCT	1/	.1939	.2199	.2019
NOV	1/	.2023	.2248	.2085
DEC	1/	.2036	.2215	.2095
AVERAGE 1977	1/	.1410	.1593	.1494
AVERAGE 1976	.0804	.0891	.0905	1/

1/ Not computed because of insufficient price data.

Table 22.--WHEY POWDER USED FOR ANIMAL FEED: Prices Paid f.o.b. Production Areas, and Wholesale Selling Prices Delivered East Coast Cities (Spray Process), by Months, 1977 (Carlot or Trucklot Quantities)

MONTH	F.O.B. CENTRAL STATES AREA				
	SPRAY PROCESS		ROLLER PROCESS		DELACTOSE
	Milk Replacer	Standard	Ground	Popcorn	
Dollars per lb.					
JAN	.0805	.0707	.0800	.0654	*
FEB	.0768	.0645	.0800	.0662	*
MAR	.0740	.0600	.0800	.0642	*
APR	.0717	.0600	.0800	.0604	*
MAY	.0774	.0621	.0800	.0601	*
JUN	.0882	.0675	.0839	.0612	*
JUL	.0965	.0750	.0884	.0644	.1399
AUG	.1148	.0859	.0939	.0697	.1511
SEP	.1384	.1103	.1050	.0796	.1625
OCT	.1559	.1312	.1167	.0942	.1696
NOV	.1724	1/	.1406	.1279	.1779
DEC	.1809	1/	.1486	.1400	.1845
AVERAGE 1977	.1106	1/	.0981	.0794	1/
AVERAGE 1976	.0614	.0526	1/	.0540	2/

Continued

Table 22.--WHEY POWDER USED FOR ANIMAL FEED: Prices Paid f.o.b. Production Areas, and Wholesale Selling Prices Delivered East Coast Cities (Spray Process), by Months, 1977 (Carlot or Trucklot Quantities)--Continued

SPRAY PROCESS				SPRAY PROCESS			
MONTH	F.O.B. WEST COAST MANUFAC- PLANTS	DELIVERED		MONTH	F.O.B. WEST COAST MANUFAC- PLANTS	DELIVERED	
		EAST COAST CITIES	Milk Replacer			EAST COAST CITIES	Milk Replacer
Dollars per lb.				Dollars per lb.			
JAN	.0638	.1012		SEP	.0917	.1622	
FEB	.0638	.0979		OCT	.1055	.1745	
MAR	.0638	.0908		NOV	.1150	.1790	
APR	.0638	.0909		DEC	.1241	.1858	
MAY	.0638	.1017		AVERAGE			
JUN	.0643	.1065		1977	.0800	.1287	
JUL	.0675	.1153		AVERAGE			
AUG	.0728	.1382		1976	.0565	.0797	

\* = New price series.

1/ Not computed because of insufficient price data.

2/ Not previously reported.

Table 23.--SWEET CREAM BUTTERMILK POWDER: Prices Paid f.o.b. Central States Production Area and Wholesale Selling Prices, Delivered Specified Areas (Spray Process), by Months, 1977 (Carlot or Trucklot Quantities)

MONTH	F.O.B. CENTRAL STATES AREA	DELIVERED SPECIFIED AREAS	
		East Coast Cities	South
Dollars per lb.		Dollars per lb.	
JAN	.4768	.5029	.5025
FEB	.4640	.4890	<u>1/</u>
MAR	.4773	.5047	.5094
APR	.5486	.5673	.5782
MAY	.5877	.5995	.6098
JUN	.5959	.6105	.6180
JUL	.5941	.6044	.6182
AUG	.6051	.6280	.6313
SEP	.6213	.6500	.6526
OCT	.6397	.6630	.6676
NOV	.6530	.6743	.6818
DEC	.6511	.6673	.6802
AVERAGE 1977	.5762	.5967	<u>1/</u>
AVERAGE 1976	.6047	.6252	<u>1/</u>

1/ Not computed because of insufficient price data.

Table 24.--WHOLE MILK POWDER: Wholesale Selling Prices Delivered East Coast Cities (Spray Process), by Months, 1977 (Carlot or Trucklot Quantities)

MONTH	26 PERCENT		28 - 28 1/2 PERCENT		MONTH	26 PERCENT		28 - 28 1/2 PERCENT	
	BUTTERFAT		BUTTERFAT			BUTTERFAT		BUTTERFAT	
Dollars per lb.				Dollars per lb.					
JAN	.8017		.8085		SEP	.8504		.8591	
FEB	.8017		.8071		OCT	.8550		.8610	
MAR	.8168		.8230		NOV	.8550		.8610	
APR	.8591		.8555		DEC	.8539		.8630	
MAY	.8598		.8661		AVERAGE				
JUN	.8514		.8636		1977	.8413		.8486	
JUL	.8475		.8602		AVERAGE				
AUG	.8433		.8557		1976	.8115		.8259	

Table 25.--LACTOSE: Prices Paid f.o.b. Central States Production Area and Wholesale Selling Prices Delivered Eastern Area (Spray Process), by Months, 1977 (Carlot or Trucklot Quantities)

MONTH	F.O.B. CENTRAL STATES AREA		DELIVERED EASTERN AREA	
	Edible	Edible Refined	Trucklot	Less Than Trucklot
Dollars per lb.			Dollars per lb.	
JAN	.1175	.1838	.1625	.2055
FEB	.1175	.1838	.1625	.2055
MAR	.1175	.1830	.1625	.2055
APR	.1127	.2111	.1863	.2070
MAY	.1150	.2125	.1862	.2095
JUN	.1150	.2145	.1939	.2115
JUL	.1228	.2175	.1984	.2145
AUG	.1357	.2238	.2047	.2397
SEP	.1590	.2370	.2270	.2610
OCT	.1696	.2401	.2336	.2961
NOV	.1836	.2475	.2492	.3002
DEC	.1945	.2575	.2623	.3059
AVERAGE				
1977	.1384	.2177	.2024	.2385
AVERAGE				
1976	1/	1/	.1721	.2005

1/ Not computed because of insufficient price data.

Table 26.--SPOT SALES OF CLASS I MILK: Prices Delivered Equivalent the New York Metropolitan Area, by Months, 1977 (Tanklot Quantities)

MONTH	40-QUART 85-POUND UNIT	PER CWT.	MONTH	40-QUART 85-POUND UNIT	PER CWT.
<u>Dollars</u>			<u>Dollars</u>		
JAN	9.58	11.27	SEP	10.00	11.76
FEB	9.48	11.16	OCT	10.08	11.86
MAR	9.41	11.07	NOV	10.02	11.79
APR	9.34	10.99	DEC	9.88	11.62
MAY	9.34	10.99	AVERAGE	9.68	11.39
JUN	9.42	11.09	1977		
JUL	9.66	11.37	AVERAGE	10.00	11.76
AUG	9.93	11.69	1976		

Table 27.--SPOT SALES OF CLASS II CREAM: Delivered Specified Areas, by Months, 1977 (Tanklot Quantities)

MONTH	Boston Metropolitan Area	New York Metropolitan Area	Southeast Pennsylvania Area	Southern Regional Area
<u>Dollars per lb. Butterfat</u>				
JAN	1/	1/	1/	1.1553
FEB	1/	1.1433	1/	1/
MAR	1.1672	1.1681	1.1761	1.1767
APR	1.2562	1.2776	1.2709	1.2786
MAY	1.2635	1.2711	1.2761	1.2823
JUN	1.2641	1.2685	1.2751	1.2820
JUL	1.2875	1.2849	1.2859	1.3015
AUG	1.3181	1.3084	1.3048	1.3089
SEP	1.3002	1.3064	1.3010	1.3180
OCT	1.2993	1.2978	1.3015	1.3043
NOV	1.2907	1.2950	1.2938	1.3049
DEC	1.2937	1.3045	1.2956	1.3259
AVERAGE 1977	1/	1/	1/	1/
AVERAGE 1976	1/	1.1964	1.1983	1.2011

1/ Not computed because of insufficient price data.

Table 28.--SPOT SALES OF CONDENSED SKIM: Delivered Specified Areas, by Months, 1977  
(Tanklot Quantities)

MONTH	Boston Metropolitan Area	New York Metropolitan Area	Southeast Pennsylvania Area
	<u>Dollars per lb. Wet Solids</u>		
JAN	.6583	.6384	.6512
FEB	.6382	.6188	.6512
MAR	.6445	.6295	.6523
APR	.6690	.6682	.6906
MAY	.6741	.6685	.6897
JUN	.6725	.6564	.6900
JUL	.6725	.6675	.6900
AUG	.6773	.6850	.6902
SEP	.6892	.6805	.6924
OCT	.6878	.6804	.6914
NOV	.6925	.6875	.6923
DEC	.6925	.6852	.6912
AVERAGE 1977	.6724	.6638	.6810
AVERAGE 1976	.6731	.6558	.6628

Table 29.--FLUID MILK: Volume Shipped from Wisconsin Shipping Points, by Weeks, 1977  
(3.5 Percent Butterfat Bulk Milk)

WEEK ENDING	LOADS	POUNDS (Thousands)	WEEK ENDING	LOADS	POUNDS (Thousands)
JAN 6	52	2,444	JUL 7	21	987
13	64	3,008	14	22	1,034
20	51	2,397	21	23	1,081
27	39	1,833	28	19	893
FEB 3	72	3,384	AUG 4	31	1,457
10	44	2,068	11	1	47
17	16	752	18	0	0
24	31	1,457	25	8	376
MAR 3	18	846	SEP 1	70	3,290
10	19	893	8	127	5,969
17	10	470	15	93	4,371
24	8	376	22	98	4,606
31	4	188	29	103	6,110
APR 6	3	141	OCT 6	80	3,760
14	1	47	13	91	4,277
21	1	47	20	75	3,525
28	1	47	28	101	4,474
MAY 5	1	47	NOV 3	115	5,405
12	0	0	10	81	3,807
19	0	0	17	112	5,264
26	0	0	24	88	4,136
JUN 2	3	141	DEC 1	55	2,585
9	11	517	8	83	3,901
16	5	235	15	102	4,794
23	2	94	22	50	2,350
30	7	329	29	2	94

**END**