



AgEcon SEARCH
RESEARCH IN AGRICULTURAL & APPLIED ECONOMICS

The World's Largest Open Access Agricultural & Applied Economics Digital Library

This document is discoverable and free to researchers across the globe due to the work of AgEcon Search.

Help ensure our sustainability.

Give to AgEcon Search

AgEcon Search

<http://ageconsearch.umn.edu>

aesearch@umn.edu

*Papers downloaded from **AgEcon Search** may be used for non-commercial purposes and personal study only. No other use, including posting to another Internet site, is permitted without permission from the copyright owner (not AgEcon Search), or as allowed under the provisions of Fair Use, U.S. Copyright Act, Title 17 U.S.C.*

SB 598 (1978)

USDA STATISTICAL BULLETINS

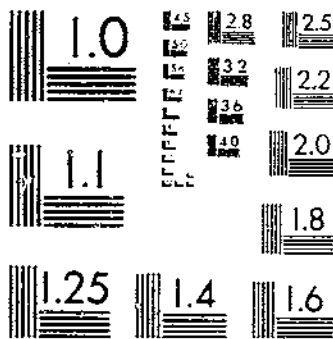
MEAT ANIMALS, PRODUCTION, DISPOSITION, INCOME, FINAL ESTIMATES FOR 1970-74.

UPDATA

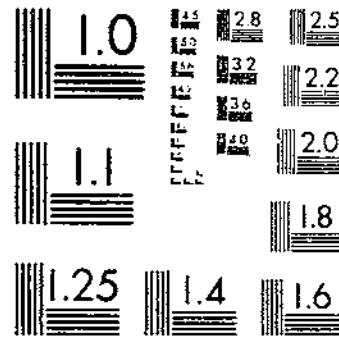
1970-74.

1 OF 1

START



MICROCOPY RESOLUTION TEST CHART
NATIONAL BUREAU OF STANDARDS 1963-A



MICROCOPY RESOLUTION TEST CHART
NATIONAL BUREAU OF STANDARDS 1963-A

30.5 453-13

MEAT ANIMALS

PRODUCTION, DISPOSITION, INCOME

Final Estimates for 1970-74

U. S. DEPOSITORY

APR 12 1978

Los Angeles Public Library



Crop Reporting Board
Economics, Statistics, and Cooperatives Service

U.S. Department of Agriculture
Washington, D.C. 20250

Statistical Bulletin No. 598
March 1978

C O N T E N T S

PAGE

INTRODUCTION 3

TABLES

UNITED STATES:

Meat Animals: Production and Income	3
Cattle and Calves: Inventory, Supply, and Disposition	4
Hogs and Pigs: Inventory, Supply, and Disposition	4
Sheep and Lambs: Inventory, Supply, and Disposition	4
Cattle and Calves: Production and Income	5
Hogs and Pigs: Production and Income	5
Sheep and Lambs: Production and Income	5

BY STATES:

Cattle and Calves: Inventory, Supply, Disposition, Production, and Income .	6-15
Hogs and Pigs: Inventory, Supply, Disposition, Production, and Income	16-25
Sheep and Lambs: Inventory, Supply, Disposition, Production, and Income ...	26-35

D E F I N I T I O N S

INVENTORY, SUPPLY, AND DISPOSITION: Balance sheet estimates; the sum of inventory on hand beginning of year, births and inshipments equal the sum of marketings, farm slaughter, deaths and inventory on hand end of year.

INSHIPMENTS: Livestock shipped into States for feeding or breeding. Excludes livestock for immediate slaughter.

MARKETINGS: Shipments to markets and slaughterers within the State, all shipments out of the State. Excludes interfarm sales within the State and farm slaughter. Number of head marketed includes all custom slaughter while live weight marketed excludes custom slaughter consumed on farms where produced.

FARM SLAUGHTER: Slaughter on farms. Excludes custom slaughter for farmers at commercial establishments.

PRODUCTION: Total live weight of livestock marketed, farm slaughter and custom slaughter consumed on farms where produced, minus live weight of inshipments, and plus the increase or minus the decrease in inventory live weight.

PRICE: State prices are annual prices, computed by weighting monthly estimated prices received by farmers by monthly marketings; U.S. prices are derived by weighting State prices by marketings.

CASH RECEIPTS: Receipts from marketings and sale of farm slaughtered meats.

VALUE OF HOME CONSUMPTION: Total value of slaughter on the farm and custom slaughter consumed on farms where produced.

MEAT ANIMALS

Production, Disposition, Income Final Estimates for 1970-74

INTRODUCTION

This publication presents final estimates, including some revisions, for farm production, disposition and income from meat animals made by the Crop Reporting Board for the period 1970-74, and continues the official series published in Statistical Bulletin No. 510 issued March 1973.

Estimates were published on a current basis for each year. Final estimates for the State and U. S. series resulted from a thorough review of the original survey indications and estimates and consideration of new data including the 1974 Census of Agriculture. Consideration was also given to records relating to market receipts and estimates of commercial and farm slaughter. The inventory estimates relate to January 1 of each year for cattle and sheep and to December 1 for hogs.

Final estimates of inventory numbers and births were released in Statistical Bulletins No. 587 (Sheep), No. 588 (Hogs), and No. 589 (Cattle). When revisions are made for the inventory numbers or births, corresponding adjustments are usually required in other items of the balance sheet. Because production estimates take into account the differences in inventory numbers and weights at the beginning and end of the year as well as pounds sold during the year, a revision of the inventory numbers, births, or disposition items generally requires adjustments in production and income estimates.

MEAT ANIMALS: PRODUCTION AND INCOME, UNITED STATES, 1970-74 ^{1/}

YEAR	PRODUCTION	MARKETINGS	VALUE OF PRODUCTION	CASH RECEIPTS	VALUE OF HOME CONSUMPTION	GROSS INCOME
	MILLION POUNDS		MILLION DOLLARS			
1970	62,343.4	71,243.0	16,130.4	18,645.5	379.5	19,025.0
1971	63,337.2	75,280.5	15,872.5	19,354.7	364.6	19,719.3
1972	63,148.1	75,475.8	19,683.4	23,837.4	489.3	24,326.6
1973	62,281.6	71,907.7	26,170.9	30,254.8	692.4	30,947.2
1974	63,543.7	71,685.6	22,015.6	25,159.3	733.1	25,892.4

^{1/} INCLUDES CATTLE AND CALVES, SHEEP AND LAMBS, AND HOGS.

CATTLE AND CALVES
INVENTORY, SUPPLY AND DISPOSITION, UNITED STATES, 1970-74 1/

YEAR	INVENTORY JAN 1	CALVES BORN	INSHIP- MENTS	MARKETINGS 2/		FARM SLAUGHTER 3/	DEATHS	
				CATTLE	CALVES	CATTLE & CALVES	CATTLE	CALVES
1,000 HEAD								
1970	112,369	45,871	20,059	46,926	12,036	462	1,583	2,714
1971	114,578	46,738	22,673	49,143	12,086	456	1,634	2,808
1972	117,862	47,682	24,831	51,743	12,164	503	1,780	3,346
1973	121,539	49,194	24,133	48,369	11,652	570	2,099	4,388
1974	127,788	50,873	18,103	48,383	9,514	729	2,006	4,104
1975	132,028							

SEE FOOTNOTES AT BOTTOM OF PAGE.

HOGS AND PIGS
INVENTORY, SUPPLY AND DISPOSITION, UNITED STATES, 1970-74 1/

YEAR	INVENTORY DEC 1 PREVIOUS YEAR	PIG CROP	INSHIPMENTS	MARKETINGS 2/	FARM SLAUGHTER 3/	DEATHS
1970	57,046	101,714	3,211	86,919	1,235	6,532
1971	67,285	97,924	3,639	98,644	1,210	6,584
1972	62,412	90,574	3,360	89,555	1,158	6,617
1973	59,017	88,123	3,902	82,419	1,095	6,914
1974	60,614	83,744	3,979	85,504	1,321	6,819
1975	54,693					

SEE FOOTNOTES AT BOTTOM OF PAGE.

SHEEP AND LAMBS
INVENTORY, SUPPLY AND DISPOSITION, UNITED STATES, 1970-74 1/ 4/

YEAR	INVENTORY JAN 1	LAMB CROP	INSHIPMENTS	MARKETINGS 2/		FARM SLAUGHTER 3/	DEATHS	
				SHEEP	LAMBS		SHEEP	LAMBS
1,000 HEAD								
1970	20,423	13,465	4,032	1,983	12,840	249	1,638	1,478
1971	19,731	12,998	4,004	2,202	12,627	236	1,482	1,446
1972	18,739	12,599	3,976	2,170	12,383	224	1,417	1,480
1973	17,641	11,500	3,275	2,198	10,879	202	1,386	1,441
1974	16,310	10,509	2,629	2,172	9,888	217	1,248	1,409
1975	14,515							

1/ BALANCE SHEET ESTIMATES; THE SUM OF INVENTORY BEGINNING OF YEAR, BIRTHS, AND INSHIPMENTS IS EQUAL TO THE SUM OF MARKETINGS, FARM SLAUGHTER, DEATHS AND INVENTORY END OF YEAR FOR INDIVIDUAL STATES.

2/ INCLUDES CUSTOM SLAUGHTER FOR USE ON FARMS WHERE PRODUCTS PRODUCED, STATE OUTSHIPMENTS, BUT EXCLUDES INTERFARM SALES WITHIN THE STATE.

3/ EXCLUDES CUSTOM SLAUGHTER FOR FARMERS AT COMMERCIAL ESTABLISHMENTS.

4/ EXCLUDES HAWAII.

CATTLE AND CALVES
PRODUCTION AND INCOME, UNITED STATES, 1970-74

YEAR	PRODUCTION 1/	MARKETINGS 2/	AVERAGE PRICE PER 100 POUNDS		VALUE OF PRODUCTION	CASH RECEIPTS 3/	VALUE OF HOME CONSUMPTION	GROSS INCOME
			CATTLE	CALVES				
			DOLLARS		1,000 DOLLARS			
1970	39,342,987	49,459,720	27.10	34.50	10,915,510	13,691,776	242,920	13,934,696
1971	39,434,379	50,685,799	29.00	36.40	11,631,478	14,985,864	260,669	15,246,533
1972	41,225,193	53,141,798	33.50	44.70	14,166,979	18,236,654	342,486	18,579,140
1973	44,231,455	51,022,731	42.80	56.60	18,138,977	22,336,212	477,818	22,814,030
1974	42,760,575	50,208,435	35.60	35.20	14,905,532	17,843,774	505,841	18,349,615

SEE FOOTNOTES AT BOTTOM OF PAGE.

HOGS AND PIGS
PRODUCTION AND INCOME, UNITED STATES, 1970-74

YEAR	PRODUCTION 1/	MARKETINGS 2/	AVERAGE PRICE PER 100 POUNDS		VALUE OF PRODUCTION	CASH RECEIPTS 3/	VALUE OF HOME CONSUMPTION	GROSS INCOME
			DOLLARS		1,000 DOLLARS			
1970	21,822,826	20,347,354	22.70		4,954,546	4,619,946	130,898	4,750,844
1971	22,832,335	23,147,614	17.50		3,990,854	4,045,843	98,553	4,144,396
1972	20,918,802	20,922,577	25.10		5,245,034	5,246,914	141,040	5,387,954
1973	20,154,425	19,606,900	38.40		7,738,196	7,529,002	207,729	7,736,731
1974	19,976,384	20,299,581	34.20		6,838,022	6,946,761	219,400	7,166,161

SEE FOOTNOTES AT BOTTOM OF PAGE.

SHEEP AND LAMBS
PRODUCTION AND INCOME, UNITED STATES, 1970-74 4/

YEAR	PRODUCTION 1/	MARKETINGS 2/	AVERAGE PRICE PER 100 POUNDS		VALUE OF PRODUCTION	CASH RECEIPTS 3/	VALUE OF HOME CONSUMPTION	GROSS INCOME
			SHEEP	LAMBS				
			DOLLARS		1,000 DOLLARS			
1970	1,099,385	1,435,918	7.52	26.40	260,373	333,746	5,691	339,437
1971	1,070,502	1,447,047	6.56	25.90	250,159	322,982	5,399	328,381
1972	1,004,102	1,411,461	7.26	29.10	271,434	353,803	5,725	359,528
1973	895,776	1,278,090	12.90	35.10	293,732	389,585	6,895	396,480
1974	806,755	1,177,539	11.20	37.00	272,048	368,747	7,870	376,617

- 1/ ADJUSTMENTS MADE FOR CHANGES IN INVENTORY AND FOR INSHIPMENTS.
 2/ EXCLUDES INTERFARM SALES WITHIN THE STATE.
 3/ RECEIPTS FROM MARKETINGS AND SALE OF FARM SLAUGHTER.
 4/ EXCLUDES HAWAII.

CATTLE AND CALVES
INVENTORY, SUPPLY AND DISPOSITION 1970 1/

STATE	INVENTORY	CALF	INSHIP- MENTS	MARKETINGS 2/		FARM SLAUGHTER 3/	DEATHS		INVENTORY
	JAN 1 1970	CROP		CATTLE	CALVES	CATTLE & CALVES	CATTLE	CALVES	JAN 1 1971
	1000 HD	1000 HD	1000 HD	1000 HD	1000 HD	1000 HD	1000 HD	1000 HD	1000 HD
ALA	1,953	907	15	419	404	8.0	29	42	1,973
ALAS	8.7	3.8	-	0.7	0.7	1.1	0.6	0.6	6.8
ARIZ	1,302	341	922	1,104	122	4.0	22	24	1,289
ARK	1,805	905	59	461	413	8.0	29	53	1,805
CALIF	4,730	1,546	1,728	2,941	206	14.0	70	93	4,680
COLO	3,212	1,044	2,029	2,677	82	8.0	50	54	3,414
CONN	114	60	7	25	36	1.0	2	5	112
DEI	31	15	-	6	6	1.0	1	1	31
FLA	2,020	1,000	73	383	589	6.0	27	28	2,060
GA	1,889	850	1	378	281	6.0	30	43	2,002
HAW	246	77	1	62	2	1.0	4	6	249
IDAHO	1,780	714	189	664	125	11.0	27	41	1,815
ILL	3,325	1,006	884	1,760	27	13.0	45	70	3,300
IND	1,918	666	186	712	37	15.0	24	45	1,937
IOWA	7,478	2,069	3,100	4,905	106	13.0	100	120	7,403
KANS	6,016	1,954	2,134	3,383	44	5.0	75	100	6,497
KY	2,803	1,328	207	873	476	8.0	40	82	2,859
LA	1,630	878	35	357	457	11.0	38	50	1,630
MAINE	138	69	4	33	34	2.0	2	5	135
MD	400	197	27	89	119	4.0	4	16	392
MASS	111	60	13	28	38	1.0	2	4	111
MICH	1,500	581	114	450	80	19.0	24	62	1,560
MINN	3,958	1,473	782	1,789	196	30.0	75	125	3,998
MISS	2,210	1,139	40	456	574	4.0	45	56	2,254
MO	4,940	2,139	358	1,648	601	14.0	65	120	4,989
MONT	3,014	1,535	106	874	477	13.0	39	87	3,165
NEBR	6,330	2,006	2,214	3,750	150	8.0	78	107	6,457
NEV	626	309	17	155	128	3.0	12	15	639
NH	73	37	2	16	21	1.0	1	2	71
NJ	132	70	10	31	46	2.0	2	6	125
NMEX	1,572	635	832	1,188	240	5.0	19	31	1,558
NY	1,799	975	33	303	605	10.0	23	84	1,782
NC	980	446	10	189	191	12.0	19	35	960
NDAK	2,110	1,113	52	600	335	13.0	29	72	2,230
OHIO	2,031	747	319	805	94	16.0	39	71	2,072
OKLA	4,985	2,084	1,034	2,375	462	11.0	63	107	5,085
ORFG	1,514	692	63	457	210	16.0	24	33	1,529
PA	1,781	831	120	396	455	22.0	26	70	1,763
RI	12.0	7.4	1.0	3.8	3.6	0.2	0.2	0.6	12.0
SC	600	277	5	135	99	4.0	11	19	618
SDAK	4,237	1,834	435	1,678	351	11.0	53	91	4,322
TENN	2,308	1,151	70	567	494	9.0	35	70	2,354
TEX	12,830	5,378	1,401	5,350	696	25.0	128	210	13,200
UTAH	808	372	50	213	140	4.0	17	24	833
VT	337	196	16	66	124	2.0	5	13	339
VA	1,475	646	7	379	183	6.0	21	49	1,490
WASH	1,260	513	48	339	127	20.0	21	29	1,285
WVA	485	234	-	94	117	6.0	7	19	480
WIS	4,076	2,080	81	777	1,022	30.0	60	190	4,158
WYD	1,476	681	225	581	210	5.0	24	42	1,520
U S	112,369	45,871	20,059	46,926	12,036	462	1,583	2,714	114,578

- 1/ BALANCE SHEET ESTIMATES BY STATES; THE SUM OF INVENTORY JAN 1, 1970, CALF CROP AND INSHIPMENTS IS EQUAL TO THE SUM OF MARKETINGS, FARM SLAUGHTER, DEATHS AND INVENTORY JAN 1, 1971.
2/ INCLUDES CUSTOM SLAUGHTER FOR USE ON FARMS WHERE PRODUCED, STATE OUTSHIPMENTS, BUT EXCLUDES INTERFARM SALES WITHIN THE STATE.
3/ EXCLUDES CUSTOM SLAUGHTER FOR FARMERS AT COMMERCIAL ESTABLISHMENTS.

CATTLE AND CALVES
PRODUCTION AND INCOME 1970

STATE	PRODUCTION	MARKETINGS	AVERAGE PRICE PER 100 POUNDS		VALUE OF PRODUCTION	CASH RECEIPTS	VALUE OF HOME CONSUMPTION	GROSS INCOME
	1/	2/	CATTLE	CALVES				
	1000 LBS	1000 LBS	DOLS	DOLS	1000 DOLS	1000 DOLS	1000 DOLS	1000 DOLS
ALA	559,130	549,090	26.10	33.40	159,511	156,187	2,685	158,872
ALAS	1,855	1,310	25.40	32.70	504	355	147	502
ARIZ	588,919	1,101,538	28.30	33.30	169,137	314,321	1,482	315,803
ARK	543,330	556,870	26.20	34.50	154,286	157,468	3,267	160,735
CALIF	1,988,643	3,061,227	27.50	32.10	549,608	845,137	6,769	851,906
COLO	1,655,138	2,699,940	29.30	36.20	488,199	793,256	4,240	797,496
CONN	71,570	28,480	20.70	30.50	4,859	6,300	315	6,615
DELA	8,030	7,255	22.20	39.00	2,059	1,834	355	2,189
FLA	576,260	549,560	25.20	33.10	151,193	153,811	2,795	156,606
GA	520,440	445,160	24.10	33.50	137,273	117,655	2,508	120,163
IA	60,140	59,450	23.40	22.00	14,038	13,901	398	14,299
INDIAN	413,988	682,460	26.80	35.10	168,440	186,443	5,413	191,856
ILL	1,240,337	1,784,917	27.50	33.70	341,699	491,066	11,552	502,618
IND	640,546	719,516	27.10	34.40	174,578	195,422	8,861	204,283
IOWA	3,090,067	5,072,500	28.20	32.90	871,477	1,431,168	12,087	1,443,255
KANS	2,526,017	3,570,841	27.70	33.70	706,937	990,072	3,289	993,361
KY	858,967	950,737	26.20	34.80	235,724	258,392	3,758	262,150
LA	490,489	496,701	24.40	34.50	141,132	141,880	3,600	145,480
MAINE	32,980	35,172	21.00	31.00	7,309	7,799	686	8,485
MD	98,494	115,327	23.60	39.30	27,758	31,664	2,072	33,736
MASS	27,430	31,456	20.80	30.50	4,975	6,852	340	7,192
MICH	447,595	453,484	25.80	37.60	122,888	118,282	12,121	130,503
MINN	1,511,540	1,915,530	25.50	39.20	389,501	492,193	17,884	510,077
MISS	656,690	654,658	24.00	34.10	186,275	184,421	1,355	185,776
MO	1,437,124	1,817,992	27.90	32.50	465,558	515,056	8,611	523,667
MONT	1,089,075	1,045,986	27.00	35.50	313,693	299,169	5,673	304,842
NEBR	2,750,517	3,976,055	28.30	35.30	779,511	1,129,359	6,515	1,135,874
NEV	197,450	195,656	26.80	33.50	56,571	55,845	1,049	56,898
NH	17,730	18,489	20.60	30.50	3,791	4,059	387	4,448
NJ	77,810	39,703	21.10	35.20	6,739	9,284	825	10,109
NMEX	613,150	1,113,770	28.40	33.20	178,542	320,877	1,985	322,862
NY	347,460	372,024	21.30	34.70	83,104	88,416	4,116	92,532
NC	726,888	214,427	23.30	35.20	58,657	55,026	4,249	59,285
NDAK	754,214	695,074	26.40	35.00	210,588	192,085	7,321	199,406
OHIO	658,724	804,910	26.40	37.60	176,841	214,860	9,602	224,462
OKLA	1,797,885	2,295,270	27.30	34.40	505,800	639,461	7,384	646,845
OREG	520,765	520,435	26.00	32.80	140,669	140,284	7,423	147,707
PA	374,890	444,156	25.20	39.20	102,026	119,431	9,083	128,514
RI	3,542	4,057	20.60	30.50	765	872	65	937
SC	160,239	146,362	23.90	34.80	42,589	38,900	1,629	40,529
S DAK	1,582,780	1,745,045	27.20	35.10	439,564	482,920	8,105	491,025
TENN	690,810	704,356	24.30	35.00	185,675	187,367	3,352	190,719
TEX	4,438,949	4,995,051	27.30	33.20	1,232,138	1,381,788	11,170	1,392,958
UTAH	256,121	259,978	25.60	34.20	70,803	71,552	2,189	73,741
VT	68,470	76,020	19.40	29.70	14,465	15,898	745	16,643
VA	440,520	428,162	22.90	34.90	107,222	104,144	2,222	106,366
WASH	404,578	384,633	27.00	34.60	113,276	107,945	9,216	117,161
W VA	121,020	117,478	23.20	35.40	31,470	30,472	1,891	32,363
WIS	1,037,190	942,058	22.00	38.10	251,787	230,039	18,161	248,200
WYO	461,282	559,394	27.40	37.20	134,226	160,674	1,973	162,647
US	39,471,123	49,459,720	27.10	34.50	10,915,510	13,691,776	242,920	13,934,696

1/ ADJUSTMENTS MADE FOR CHANGES IN INVENTORY AND FOR INSHIPMENTS.

2/ EXCLUDES CUSTOM SLAUGHTER FOR USE ON FARMS WHERE PRODUCED AND INTERFARM SALES WITHIN THE STATE

3/ RECEIPTS FROM MARKETINGS AND SALE OF FARM SLAUGHTER.

CATTLE AND CALVES
INVENTORY, SUPPLY AND DISPOSITION 1971 1/

STATE	INVENTORY	CALF	INSHIP- MENTS	MARKETINGS 2/		FARM SLAUGHTER 2/	DEATHS		INVENTORY
	JAN 1 1971	CROP		CATTLE	CALVES	CATTLE & CALVES	CATTLE	CALVES	JAN 1 1972
	1000 HD	1000 HD	1000 HD	1000 HD	1000 HD	1000 HD	1000 HD	1000 HD	1000 HD
ALA	1,973	962	15	421	377	8.0	31	43	2,050
ALAS	8.8	3.6	0.1	0.6	0.5	7.0	0.6	1.0	8.8
ARIZ	1,289	338	1,015	1,143	150	4.0	22	20	1,295
ARK	1,15	959	55	489	306	8.0	30	55	1,931
CALIF	4,680	1,539	1,802	2,985	186	14.0	75	100	4,662
COLO	3,474	1,681	2,499	3,205	75	6.0	49	49	3,610
CONN	112	56	7	23	32	1.0	2	5	112
DEL	31	15	-	6	6	1.0	1	1	31
FLA	2,060	1,025	115	361	657	6.0	21	25	2,130
GA	2,002	893	1	432	340	6.0	31	45	2,042
HAW	249	73	2	66	3	1.0	4	5	245
IDAH	1,815	740	189	677	101	10.0	25	43	1,888
ILL	3,300	1,014	823	1,568	42	12.0	45	70	3,400
IND	1,437	670	175	707	38	13.0	21	47	1,956
IOWA	7,403	2,150	3,215	4,639	111	15.0	110	120	7,773
KANS	6,457	1,958	2,440	3,926	35	7.0	70	100	6,757
KY	2,859	1,365	205	892	489	8.0	41	83	2,916
LA	1,630	894	30	573	345	11.0	40	57	1,728
MAINE	125	66	5	27	34	2.0	2	5	136
MD	392	192	26	83	104	4.0	4	16	400
MASS	111	40	12	29	37	1.0	2	4	110
MICH	1,560	587	94	479	78	20.0	25	63	1,576
MINN	3,958	1,502	886	2,000	163	25.0	70	130	3,998
MISS	2,254	1,198	40	443	609	4.0	52	62	2,322
MO	4,989	2,240	360	1,561	559	20.0	76	135	5,230
MONT	3,165	1,582	104	909	654	9.0	41	73	3,165
NEBR	6,457	2,118	2,451	3,900	155	6.0	75	110	6,780
NEV	639	309	26	167	136	3.0	10	13	645
NH	71	37	2	13	22	1.0	1	2	71
NJ	125	67	11	37	31	2.0	2	6	125
NMEX	1,556	615	816	1,223	180	5.0	30	40	1,509
NY	1,782	967	37	303	595	11.0	24	89	1,764
NC	990	459	9	192	186	11.0	22	37	1,010
NDAK	2,230	1,148	55	672	338	13.0	25	66	2,319
OHIO	2,072	762	340	835	99	17.0	37	73	2,113
OKLA	5,085	2,123	1,287	2,409	446	9.0	70	120	5,441
OREG	1,529	699	57	468	211	13.0	25	39	1,529
PA	1,763	831	126	391	447	23.0	27	69	1,763
RI	12.0	6.6	1.0	2.6	3.9	0.2	0.2	0.7	12.0
SC	618	302	10	139	115	3.0	14	16	643
S DAK	4,322	1,889	522	1,781	389	10.0	55	90	4,408
TENN	2,354	1,188	78	520	505	8.0	37	78	2,472
TEX	13,200	5,286	2,300	6,152	794	22.0	134	220	13,464
UTAH	822	378	42	235	137	3.0	14	31	832
VT	339	192	12	63	121	2.0	5	13	339
VA	1,450	660	9	375	200	6.0	22	51	1,505
WASH	1,285	527	43	330	87	19.0	22	35	1,362
WVA	480	239	1	46	111	17.0	6	15	485
WIS	4,158	2,082	67	760	1,011	30.0	65	200	4,241
WYO	1,520	710	255	645	227	5.0	21	37	1,550
U S	114,578	46,728	22,673	49,143	12,086	456	1,634	2,808	117,862

- 1/ BALANCE SHEET ESTIMATES BY STATES; THE SUM OF INVENTORY JAN 1, 1971, CALF CROP AND INSHIPMENTS IS EQUAL TO THE SUM OF MARKETINGS, FARM SLAUGHTER, DEATHS AND INVENTORY JAN 1, 1972.
2/ INCLUDES CUSTOM SLAUGHTER FOR USE ON FARMS WHERE PRODUCED, STATE OUTSHIPMENTS, BUT EXCLUDES INTERFARM SALES WITHIN THE STATE.
3/ EXCLUDES CUSTOM SLAUGHTER FOR FARMERS AT COMMERCIAL ESTABLISHMENTS.

CATTLE AND CALVES
PRODUCTION AND INCOME 1971

STATE	PRODUCTION 1/	MARKETINGS 2/	AVERAGE PRICE PER 100 POUNDS		VALUE OF PRODUCTION	CASH RECEIPTS 3/	VALUE OF HOMF CONSUMPTION	GROSS INCOME
			CATTLE	CALVES				
	1000 LBS	1000 LBS	DOLS	DOLS	1000 DOLS	1000 DOLS	1000 DOLS	1000 DOLS
ALA	588,500	537,940	26.20	34.80	169,108	155,081	2,735	157,816
ALAS	1,145	950	27.00	33.40	329	273	74	347
ARIZ	604,284	1,156,368	30.30	36.60	187,502	354,750	1,593	356,343
ARK	583,700	531,924	27.30	36.20	169,268	154,186	3,764	157,950
CALIF	1,882,373	3,003,798	30.40	34.90	575,289	915,994	8,928	924,922
COLO	1,767,460	3,130,120	31.90	38.40	567,356	1,000,374	3,941	1,004,315
CONN	21,900	26,190	21.00	28.00	4,871	5,772	319	6,091
DEL	8,288	6,348	22.80	39.70	2,080	1,638	388	2,026
FLA	525,520	556,090	25.90	35.80	157,582	166,178	2,924	169,102
GA	535,270	516,700	24.60	33.70	142,432	139,294	2,545	141,839
HAW	60,290	62,860	25.10	24.50	15,131	15,772	417	16,189
IDAHN	656,344	681,304	29.10	36.10	193,988	200,782	6,049	206,831
ILL	1,150,950	1,561,800	28.60	34.60	330,052	447,042	11,083	458,125
IND	615,214	704,384	28.80	36.00	178,785	203,323	6,912	210,235
IOWA	2,874,602	4,662,857	30.30	34.70	876,529	1,413,646	15,072	1,428,718
KANS	2,659,105	3,986,200	29.60	35.20	789,293	1,180,554	5,539	1,186,093
KY	887,016	957,331	27.40	36.90	254,983	273,792	3,941	277,733
LA	522,549	460,591	25.10	36.00	149,332	132,478	3,736	136,214
MAINE	29,520	29,952	21.10	29.00	6,580	6,647	690	7,337
MD	100,324	105,032	24.00	40.60	28,429	29,225	2,110	31,335
MASS	23,175	32,495	21.10	28.00	5,113	7,080	363	7,445
MICH	484,606	487,689	26.40	40.30	130,123	130,443	12,140	142,583
MINN	1,537,995	2,077,854	26.80	40.60	417,102	561,152	15,684	576,836
MISS	674,030	649,852	24.40	35.90	198,642	191,552	1,430	192,983
MO	1,685,627	1,678,456	29.30	35.00	504,709	501,046	13,452	514,498
MONT	1,122,103	1,128,876	29.20	38.10	347,947	353,134	5,125	358,259
NEBR	2,651,430	4,018,313	30.50	36.90	814,906	1,229,191	4,311	1,233,502
NEV	204,125	211,845	27.90	35.60	61,036	63,252	943	64,196
N H	16,160	15,299	20.70	28.50	3,529	3,372	389	3,761
N J	37,195	44,308	21.30	36.50	8,711	10,126	835	10,961
N MEX	563,260	1,084,675	30.90	36.80	178,611	339,347	2,498	341,845
N Y	226,339	367,395	21.90	36.20	83,284	90,008	4,839	94,847
N C	236,088	216,092	24.30	35.90	63,085	57,266	4,536	61,802
N DAK	836,214	766,967	27.90	37.80	244,248	223,956	8,299	232,255
OHIO	674,715	828,376	27.50	40.00	188,613	230,700	10,636	241,336
OKLA	1,764,555	2,274,590	29.30	37.20	535,053	680,221	7,196	687,417
OREG	512,672	525,077	27.00	33.50	143,580	146,499	7,560	154,059
PA	390,817	455,462	26.20	40.50	111,513	127,722	9,858	137,580
R I	2,326	2,841	21.00	28.00	516	624	66	690
S C	183,580	158,312	24.70	35.50	50,438	43,982	1,373	45,355
S DAK	1,670,198	1,873,869	29.30	37.20	500,224	558,205	9,218	567,423
TENN	709,285	663,162	25.50	35.80	198,803	186,098	3,133	189,231
TEX	4,200,887	5,675,802	29.60	35.50	1,274,037	1,700,137	10,637	1,710,774
UTAH	250,655	281,845	27.40	35.70	73,622	82,154	2,124	84,278
VT	67,590	73,250	19.60	29.00	14,271	15,400	753	16,153
VA	450,510	427,714	22.80	35.60	110,314	104,886	2,332	107,218
WASH	423,225	352,870	28.70	36.50	124,368	103,727	10,767	114,504
W VA	126,311	103,214	24.70	36.80	34,781	28,419	5,584	34,003
WIS	1,016,690	906,412	22.50	39.80	256,221	229,887	19,594	249,481
WYO	507,162	624,038	29.20	37.40	155,060	189,465	2,234	191,699
U S	39,434,379	50,685,799	29.00	36.40	11,631,478	14,985,864	260,669	15,246,533

1/ ADJUSTMENTS MADE FOR CHANGES IN INVENTORY AND FOR INSHIPMENTS.
 2/ EXCLUDES CUSTOM SLAUGHTER FOR USE ON FARMS WHERE PRODUCED AND INTERFARM SALES WITHIN THE STATE
 3/ RECEIPTS FROM MARKETINGS AND SALE OF FARM SLAUGHTER.

CATTLE AND CALVES
INVENTORY, SUPPLY AND DISPOSITION 1972 1/

STATE	INVENTORY	CALF	INSHIP- MENTS	MARKETINGS 2/		FARM SLAUGHTER 3/	DEATHS		INVENTORY JAN 1 1973
	JAN 1 1972	CROP		CATTLE	CALVES	CATTLE & CALVES	CATTLE	CALVES	
	1000 HD	1000 HD	1000 HD	1000 HD	1000 HD	1000 HD	1000 HD	1000 HD	1000 HD
ALA	2,050	980	15	436	407	8.0	32	50	2,112
ALAS	8.8	3.6	0.1	0.5	0.4	1.0	0.6	1.1	8.9
ARIZ	1,255	327	1,188	1,189	148	4.0	23	26	1,420
ARK	1,931	1,007	50	475	383	8.0	32	62	2,028
CALIF	4,662	1,522	1,901	3,010	150	20.0	80	125	4,710
COLOR	3,610	1,110	2,648	3,380	25	7.0	65	85	3,756
CONN	112	56	8	25	30	1.0	2	5	113
DEL	31	15	-	6	6	1.0	1	1	31
FLA	2,130	1,087	91	300	692	7.0	34	38	2,237
GA	2,042	911	1	441	361	9.0	31	50	2,062
HAW	245	72	2	64	3	1.0	4	5	242
IDAHO	1,888	760	230	728	149	15.0	28	60	1,888
ILL	3,400	1,010	755	1,729	61	12.0	41	82	3,240
IND	1,956	672	189	655	32	15.0	25	65	2,025
IOWA	7,773	2,160	2,980	4,672	166	15.0	130	160	7,770
KANS	6,757	2,060	2,867	4,577	74	8.0	75	150	6,800
KY	2,916	1,420	213	878	494	12.0	42	90	3,033
LA	1,728	912	45	437	367	18.0	40	60	1,763
MAINE	136	67	4	25	38	1.0	2	5	136
MD	400	193	20	83	96	4.0	5	17	408
MASS	110	60	11	29	33	1.0	2	5	111
MICH	1,576	593	80	495	60	16.0	26	76	1,576
MINN	3,958	1,472	800	1,843	149	20.0	70	150	4,038
MISS	2,322	1,222	40	462	575	3.0	55	74	2,415
MO	5,238	2,375	390	1,613	570	20.0	80	170	5,550
MONT	2,165	1,640	126	880	721	10.0	39	84	3,157
NEBR	6,780	2,130	2,608	4,288	140	5.0	80	140	6,865
NEV	645	312	37	168	147	3.0	10	15	651
NH	71	26	3	13	22	1.0	1	3	70
NJ	125	65	12	38	27	2.0	2	7	126
N MEX	1,509	619	1,036	1,232	180	4.0	33	50	1,615
NY	1,764	969	35	293	572	14.0	25	100	1,764
NC	1,010	475	10	186	190	14.0	23	40	1,040
N DAK	2,319	1,205	55	675	350	13.0	28	78	2,435
OHIO	2,113	750	317	829	79	20.0	38	80	2,134
OKLA	5,441	2,187	1,414	2,888	277	10.0	70	137	5,660
OREG	1,629	699	87	469	251	13.0	26	42	1,514
PA	1,763	820	105	401	426	19.0	26	71	1,745
RI	12.0	6.0	0.8	2.3	3.2	0.1	0.4	0.8	12.0
SD	643	310	22	122	157	4.0	13	17	662
S DAK	4,408	1,965	509	1,771	437	10.0	56	112	4,496
TENN	2,472	1,225	109	604	545	9.0	41	87	2,520
TEX	13,464	5,354	3,315	5,994	580	25.0	174	260	15,100
UTAH	832	378	42	239	137	4.0	15	33	824
VT	339	192	13	62	121	2.0	5	15	339
VA	1,505	680	6	351	192	6.0	22	50	1,570
WASH	1,362	537	100	381	128	38.0	25	38	1,389
W VA	485	244	1	85	116	17.0	8	14	490
WIS	4,241	2,080	85	805	1,009	28.0	73	210	4,283
WYO	1,550	729	255	656	237	5.0	21	50	1,565
U S	117,862	47,682	24,831	51,043	12,164	503	1,780	3,346	121,539

- 1/ BALANCE SHEET ESTIMATES BY STATES; THE SUM OF INVENTORY JAN 1, 1972, CALF CROP AND INSHIPMENTS IS EQUAL TO THE SUM OF MARKETINGS, FARM SLAUGHTER, DEATHS AND INVENTORY JAN 1, 1973.
2/ INCLUDES CUSTOM SLAUGHTER FOR USE ON FARMS WHERE PRODUCED, STATE OUTSHIPMENTS, BUT EXCLUDES INTERFARM SALES WITHIN THE STATE.
3/ EXCLUDES CUSTOM SLAUGHTER FOR FARMERS AT COMMERCIAL ESTABLISHMENTS.

CATTLE AND CALVES
PRODUCTION AND INCOME 1972

STATE	PRODUCTION	MARKETINGS	AVERAGE PRICE		VALUE OF PRODUCTION	CASH RECEIPTS	VALUE OF HOME CONSUMPTION	GROSS INCOME
	1/	2/	PER 100 CATTLE	POUNDS CALVES				
	1000 LBS	1000 LBS	DOLS	DOLS	1000 DOLS	1000 DOLS	1000 DOLS	1000 DOLS
ALA	616,585	573,190	32.00	44.10	219,786	204,909	3,391	208,300
ALAS	1,268	928	28.90	33.40	411	278	120	398
ARIZ	628,760	1,213,902	33.70	44.20	222,513	416,827	1,790	418,617
ARK	610,540	546,456	31.50	45.60	212,294	190,199	5,279	195,478
CALIF	1,990,125	3,111,166	33.50	40.00	670,542	1,045,913	11,140	1,057,053
COLO	1,835,400	3,364,520	15.50	47.00	660,537	1,197,612	5,903	1,203,515
CONN	23,235	28,430	24.10	34.50	6,003	7,226	366	7,592
DEL	7,555	6,720	26.60	48.40	2,373	2,071	452	2,523
FLA	534,750	510,910	30.00	46.00	199,860	191,252	4,041	195,293
GA	557,345	522,240	29.90	41.90	184,508	176,185	4,605	180,790
HAW	56,750	59,760	27.70	28.00	15,726	16,557	499	17,056
IDAHO	661,725	766,875	34.60	45.70	235,765	271,346	8,460	279,806
ILL	1,176,245	1,739,475	32.90	41.70	388,227	573,225	14,970	588,195
IND	616,780	644,810	32.50	43.40	203,022	210,077	10,137	220,214
IOWA	2,907,105	4,891,015	34.00	43.30	989,450	1,665,630	17,608	1,683,238
KANS	3,009,770	4,709,690	35.00	43.40	1,053,583	1,650,650	7,776	1,658,426
KY	888,070	923,575	32.20	44.00	301,186	310,560	6,991	317,551
LA	547,070	528,290	29.50	43.00	185,135	177,782	7,296	185,078
MAINE	27,820	29,246	24.20	32.50	7,116	7,461	395	7,856
MD	102,640	103,788	28.20	48.90	34,132	33,890	2,479	36,369
MASS	24,660	32,020	24.20	34.00	6,274	8,025	416	8,441
MICH	427,750	506,296	30.50	49.70	150,987	156,269	11,314	167,583
MINN	1,487,220	1,918,131	30.70	47.20	458,323	593,596	14,415	608,011
MISS	668,310	621,778	28.90	43.40	229,636	213,995	1,315	215,310
MO	1,745,070	1,716,350	33.20	43.20	604,342	584,573	18,542	603,115
MONT	1,103,350	1,125,763	34.80	48.00	422,124	431,156	6,556	437,712
NEBR	2,742,730	4,409,946	34.90	43.80	962,216	1,543,592	5,580	1,549,172
NEV	204,355	220,191	32.30	44.40	73,088	78,159	1,313	79,472
N H	12,180	15,359	23.80	34.00	3,436	3,925	448	4,373
N J	37,205	44,933	24.90	45.30	10,352	12,056	986	13,042
N MEX	614,390	1,170,984	35.80	43.50	226,921	424,671	2,392	427,063
N Y	345,600	355,018	25.20	44.80	100,161	101,927	6,449	108,376
N C	248,670	206,688	28.50	43.10	77,219	64,702	6,692	71,394
N DAK	866,550	785,347	33.50	46.70	306,186	276,875	8,260	285,135
OHIO	661,200	821,170	31.50	48.00	212,216	261,640	14,206	275,846
OKLA	2,047,085	2,648,750	34.60	43.90	718,212	926,271	10,230	936,501
ORFG	518,620	542,134	31.30	40.20	170,247	177,695	10,189	187,884
PA	397,595	468,121	29.90	50.90	131,583	151,680	9,393	161,073
R I	1,255	2,591	24.10	34.50	368	657	38	695
S C	177,295	166,185	29.90	43.40	62,293	58,383	2,146	60,529
S DAK	1,705,590	1,898,858	33.80	46.10	595,643	660,532	11,178	671,710
TENN	747,820	757,060	30.50	41.80	248,244	251,010	4,436	255,446
TEX	4,658,250	5,573,100	34.90	44.50	1,673,791	1,969,795	14,955	1,984,750
UTAH	259,080	276,875	32.00	44.10	89,920	95,152	2,756	97,908
VT	65,820	73,132	22.80	33.50	16,190	17,857	832	18,689
VA	460,150	403,488	27.80	44.00	139,004	121,094	3,247	124,341
WASH	427,420	384,684	33.30	42.40	146,148	131,769	29,491	161,260
W VA	128,545	104,804	30.00	46.30	43,339	35,570	6,448	42,018
WIS	1,004,450	961,994	26.70	47.30	300,736	287,765	21,500	309,265
WYO	507,180	645,060	36.40	49.90	195,461	246,613	3,065	249,678
U S	41,225,192	53,141,798	33.50	44.70	14,166,979	18,236,654	342,486	18,579,140

1/ ADJUSTMENTS MADE FOR CHANGES IN INVENTORY AND FOR INSHIPMENTS.
 2/ EXCLUDES CUSTOM SLAUGHTER FOR USE ON FARMS WHERE PRODUCTION AND INTERFARM SALES WITHIN THE STATE
 3/ RECEIPTS FROM MARKETINGS AND SALE OF FARM SLAUGHTER.

CATTLE AND CALVES
INVENTORY, SUPPLY AND DISPOSITION 1973 1/

STATE	INVENTORY	CALF	INSHIP- MENTS	MARKETINGS 2/		FARM SLAUGHTER 3/	DEATHS		INVENTORY
	JAN 1 1973	CROP		CATTLE	CALVES	CATTLE & CALVES	CATTLE	CALVES	JAN 1 1974
	1000 HD	1000 HD	1000 HD	1000 HD	1000 HD	1000 HD	1000 HD	1000 HD	1000 HD
ALA	2,112	1,033	15	420	406	10.0	31	53	2,240
ALAS	8.9	3.7	0.1	0.4	0.4	0.9	0.7	1.1	9.2
ARIZ	1,420	335	1,159	1,292	172	3.0	24	33	1,390
ARK	2,028	1,030	20	480	331	8.0	39	80	2,140
CALIF	4,710	1,580	2,078	2,733	62	30.0	88	205	5,250
COLOR	3,756	1,120	1,992	2,779	75	10.0	70	190	3,744
CONN	113	54	7	26	31	1.0	2	5	109
DEL	31	15	-	7	4	1.0	1	1	32
FLA	2,237	1,180	100	289	626	9.0	38	65	2,490
GA	2,062	920	1	421	353	9.0	32	65	2,103
HAW	242	72	2	62	2	1.0	5	6	240
IDAHO	1,888	790	265	595	186	16.0	40	80	2,026
ILL	3,240	1,030	691	1,484	86	11.0	40	90	3,250
IND	2,025	710	205	687	20	23.0	30	80	2,100
IOWA	7,770	2,100	2,615	4,313	106	15.0	161	230	7,660
KANS	6,800	2,050	2,600	4,077	51	7.0	115	210	6,990
KY	2,033	1,470	179	814	481	9.0	53	110	3,215
LA	1,763	870	40	382	411	18.0	42	75	1,745
MAINE	136	65	4	24	27	1.0	2	5	136
MD	468	185	19	85	84	3.0	6	22	412
MASS	111	57	10	33	30	1.0	3	6	105
MICH	1,576	581	93	496	60	18.0	31	95	1,550
MINN	4,028	1,480	875	1,751	118	21.0	78	185	4,240
MISS	2,415	1,245	50	524	442	4.0	50	80	2,610
MO	5,550	2,760	400	1,137	841	22.0	100	230	6,330
MONT	3,157	1,730	147	763	757	12.0	42	120	3,380
NEBR	6,865	2,200	2,734	3,909	150	7.0	108	215	7,410
NEV	651	315	43	167	142	3.0	13	20	664
N H	70	35	2	13	20	1.0	1	3	69
N J	126	61	7	27	27	3.0	3	10	124
N MEX	1,615	610	1,073	1,407	177	4.0	38	57	1,615
N Y	1,764	959	35	277	544	16.0	28	105	1,788
N C	1,040	507	8	191	178	15.0	24	47	1,100
N DAK	2,425	1,264	65	659	350	14.0	26	80	2,635
OHIO	2,134	725	265	746	76	18.0	44	90	2,150
OKLA	5,660	2,220	1,700	2,944	291	12.0	118	195	6,020
OREG	1,514	730	63	399	260	15.0	28	45	1,560
PA	1,745	790	131	331	354	25.0	29	95	1,832
R I	12.0	6.0	0.7	2.3	3.2	0.7	0.3	0.8	12.0
S C	662	292	32	126	156	4.0	13	17	670
S DAK	4,496	2,100	568	1,544	435	8.0	56	121	5,000
TENN	2,520	1,215	75	590	381	10.0	44	95	2,690
TEX	15,100	5,900	3,201	6,882	517	20.0	207	345	16,250
UTAH	824	350	47	223	102	4.0	20	40	832
VT	239	186	14	63	120	2.0	5	15	334
VA	1,570	675	8	326	177	15.0	23	60	1,652
WASH	1,389	547	140	384	167	66.0	29	50	1,380
W VA	490	246	7	84	109	17.0	8	20	505
WIS	4,283	2,035	95	746	903	20.0	84	260	4,400
WYO	1,565	760	252	624	240	7.0	26	80	1,600
U S	121,539	49,194	24,133	48,369	11,652	570	2,099	4,388	127,788

1/ BALANCE SHEET ESTIMATES BY STATES; THE SUM OF INVENTORY JAN 1, 1973, CALF CROP AND INSHIPMENTS IS EQUAL TO THE SUM OF MARKETINGS, FARM SLAUGHTER, DEATHS AND INVENTORY JAN 1, 1974.

2/ INCLUDES CUSTOM SLAUGHTER FOR USE ON FARMS WHERE PRODUCED, STATE OUTSHIPMENTS, BUT EXCLUDES INTERFARM SALES WITHIN THE STATE.

3/ EXCLUDES CUSTOM SLAUGHTER FOR FARMERS AT COMMERCIAL ESTABLISHMENTS.

CATTLE AND CALVES
PRODUCTION AND INCOME 1973

STATE	PRODUCTION 1/	MARKETINGS 2/	AVERAGE PRICE PER 100 POUNDS		VALUE OF PRODUCTION	CASH RECEIPTS 3/	VALUE OF HOMF CONSUMPTION	GROSS INCOME
			CATTLE	CALVES				
	1000 LBS	1000 LBS	DOLS	DOLS	1000 DOLS	1000 DOLS	1000 DOLS	1000 DOLS
ALA	630,560	543,453	41.60	52.50	282,515	244,426	7,633	252,059
ALAS	1,233	808	39.60	34.00	467	309	146	455
ARIZ	704,050	1,349,396	42.70	53.60	309,771	585,537	1,619	587,156
ARK	595,355	519,955	41.70	60.60	271,150	236,316	7,216	243,532
CALIF	1,899,105	2,788,043	42.90	53.70	825,056	1,198,796	22,363	1,221,159
COLOR	1,841,025	3,009,973	45.20	58.40	828,490	1,363,669	10,639	1,374,308
CONN	23,940	32,490	33.20	42.50	8,319	11,157	505	11,662
DEL	10,125	7,675	37.20	61.50	3,977	3,065	632	3,697
FLA	586,020	466,040	38.40	57.50	267,741	217,783	6,881	224,664
GA	539,945	507,200	40.10	57.00	240,423	225,637	6,210	231,847
HAW	56,540	58,470	33.90	35.00	19,180	19,831	576	20,407
IDAH	637,660	681,030	44.70	58.00	295,862	313,626	7,688	321,314
ILL	1,116,285	1,494,965	41.70	52.50	468,803	625,255	19,412	644,667
IND	655,593	683,578	41.40	55.90	274,834	283,218	20,949	304,167
IOWA	2,805,525	4,589,645	42.80	54.20	1,200,039	1,966,400	22,157	1,988,557
KANS	2,795,410	4,263,430	44.40	53.60	1,243,511	1,894,622	9,776	1,904,398
KY	868,030	859,730	43.00	57.00	391,913	384,310	7,002	391,312
LA	472,010	487,342	39.00	57.70	217,983	221,764	9,865	231,629
MAINE	25,095	28,001	33.10	43.50	8,839	9,738	541	10,279
MO	97,585	105,217	37.20	61.50	41,863	43,915	2,258	46,173
MASS	28,675	40,115	33.50	44.00	9,888	13,717	576	14,293
MICH	491,140	516,280	40.20	62.40	197,760	209,525	16,287	225,812
MINN	1,535,085	1,906,985	38.40	54.40	596,766	735,876	22,325	758,201
MISS	672,610	618,478	36.60	55.10	287,515	258,466	2,273	260,739
MO	1,839,635	1,390,365	43.00	54.50	821,042	621,972	30,116	652,088
MONT	1,053,950	969,346	45.80	58.30	520,220	482,156	9,047	491,203
NEBR	2,622,270	4,023,410	44.10	55.80	1,170,745	1,780,858	10,159	1,791,017
NEV	209,295	223,571	41.00	54.80	94,009	99,610	1,644	101,254
N H	14,670	15,529	33.10	42.00	5,060	5,345	623	5,968
N J	27,345	30,784	33.60	57.00	10,630	11,622	2,242	13,864
N MEX	705,060	1,331,736	45.30	55.70	324,860	610,577	2,246	612,823
N Y	348,620	337,576	33.70	54.60	131,305	126,353	10,669	137,022
N C	279,845	220,904	36.60	57.30	111,576	88,035	9,204	97,239
N DAK	913,910	767,750	43.90	60.10	419,572	353,959	11,707	365,666
OHIO	586,840	740,580	41.30	62.00	249,117	309,458	16,567	326,025
OKLA	2,111,165	2,758,210	45.00	59.10	965,039	1,257,320	19,480	1,276,800
OREG	544,335	518,886	40.30	52.60	234,239	222,806	14,358	237,164
PA	372,070	381,187	38.90	62.10	159,347	158,922	15,746	174,668
P I	2,094	2,510	33.20	42.50	732	871	52	923
S C	158,295	171,335	38.80	56.00	72,721	77,046	2,134	79,180
S DAK	1,845,560	1,779,520	43.10	58.00	829,118	793,163	10,606	803,769
TENN	744,195	706,869	40.00	54.80	321,836	300,814	6,367	307,181
TEX	5,004,600	6,216,920	44.00	57.70	2,255,344	2,811,225	15,776	2,827,001
UTAH	243,380	258,255	40.30	53.90	103,727	109,819	3,454	113,273
VT	59,900	74,592	33.00	44.90	20,897	25,684	1,204	26,888
VA	451,750	381,494	37.40	54.80	180,457	151,657	8,537	160,194
WASH	437,030	447,496	42.20	53.10	190,556	194,693	36,727	231,420
W VA	128,305	100,743	40.20	57.50	56,496	44,565	9,006	53,571
WIS	936,170	905,644	34.30	58.90	360,724	343,707	19,612	363,319
WYO	500,155	609,260	45.50	56.90	236,941	287,017	5,006	292,023
U S	41,231,445	51,022,731	42.80	56.60	18,138,977	22,336,212	477,818	22,814,030

1/ ADJUSTMENTS MADE FOR CHANGES IN INVENTORY AND FOR INSHIPMENTS.
2/ EXCLUDES CUSTOM SLAUGHTER FOR USE ON FARMS WHERE PRODUCED AND INTERFARM SALES WITHIN THE STATE
3/ RECEIPTS FROM MARKETINGS AND SALE OF FARM SLAUGHTER.

CATTLE AND CALVES
INVENTORY, SUPPLY AND DISPOSITION 1974 1/

STATE	INVENTORY JAN 1 1974	CALF CROP	INSHIP- MENTS	MARKETINGS 2/		FARM SLAUGHTER 3/	DEATHS		INVENTORY JAN 1 1975
				CATTLE	CALVES		CATTLE	CALVES	
	1000 HD	1000 HD	1000 HD	1000 HD	1000 HD	1000 HD	1000 HD	1000 HD	1000 HD
ALA	2,240	1,140	15	271	299	15.0	45	65	2,700
ALAS	9.2	3.7	0.1	0.5	0.3	0.9	0.9	0.7	9.7
ARIZ	1,390	355	747	1,154	104	3.0	23	28	1,170
ARK	2,140	1,150	36	454	36	16.0	55	85	2,680
CALIF	5,250	1,600	1,806	3,015	130	38.0	93	180	5,200
COLO	3,744	1,080	1,572	2,743	123	10.0	54	91	3,375
CONN	109	54	6	20	31	1.0	2	5	110
DEL	32	16	-	7	5	1.0	1	1	33
FLA	2,490	1,320	70	350	442	18.0	55	65	2,950
GA	2,103	940	1	290	207	22.0	40	65	2,420
HAW	240	71	1	54	-	1.0	5	10	242
IDAHO	2,026	810	195	590	151	15.0	35	90	2,150
ILL	3,250	1,030	661	1,465	113	13.0	45	105	3,200
IND	2,100	730	127	687	20	24.0	29	72	2,125
IOWA	7,660	2,090	2,400	4,362	126	12.0	100	200	7,350
KANS	6,990	2,000	1,650	3,956	42	12.0	80	150	6,400
KY	3,215	1,570	160	596	409	15.0	60	115	3,750
LA	1,745	860	18	305	364	12.0	50	60	1,832
MAINE	136	64	2	22	34	1.0	2	5	138
MD	412	193	11	66	79	3.0	6	18	444
MASS	105	55	8	27	26	1.0	2	5	107
MICH	1,550	585	105	453	45	12.0	50	100	1,580
MINN	4,240	1,525	670	1,571	111	28.0	70	225	4,430
MISS	2,610	1,320	30	384	397	14.0	65	100	3,000
MO	6,330	2,840	100	1,556	592	32.0	90	200	6,800
MONT	3,380	1,725	90	1,007	688	25.0	35	100	3,340
NEBR	7,410	2,300	1,727	4,144	160	8.0	75	150	6,900
NEV	664	300	44	174	148	3.0	9	17	657
N H	69	35	4	13	19	1.0	1	3	71
N J	124	56	6	33	27	1.0	2	6	117
N MEX	1,615	600	720	1,028	97	10.0	30	50	1,720
N Y	1,788	960	30	272	458	23.0	30	120	1,875
N C	1,100	539	8	203	215	14.0	23	42	1,150
N DAK	2,635	1,345	32	827	406	19.0	25	100	2,635
OHIO	2,150	760	275	591	76	20.0	43	105	2,350
OKLA	6,020	2,415	1,500	3,044	120	15.0	95	160	6,500
OREG	1,560	740	60	358	260	15.0	27	50	1,650
PA	1,832	780	103	350	248	22.0	35	100	1,960
R I	12.0	6.0	0.6	2.3	3.2	0.2	0.3	0.6	12.0
S C	670	298	15	121	111	4.0	16	25	710
S DAK	5,000	2,205	400	1,945	532	8.0	45	125	4,950
TENN	2,690	1,305	50	457	118	16.0	44	110	3,300
TEX	16,250	6,200	2,050	6,964	340	36.0	240	320	16,600
UTAH	832	380	45	194	105	5.0	18	35	900
VT	334	185	12	62	110	2.0	5	16	326
VA	1,652	720	9	299	173	25.0	22	53	1,809
WASH	1,380	536	160	396	106	69.0	25	60	1,420
W VA	505	246	7	88	84	21.0	8	17	540
WIS	4,400	2,050	95	728	813	40.0	74	250	4,640
WYO	1,600	785	265	674	210	6.0	21	49	1,650
U S	127,788	50,873	18,103	48,383	9,514	729	2,006	4,104	132,028

1/ BALANCE SHEET ESTIMATES BY STATES; THE SUM OF INVENTORY JAN 1, 1974, CALF CROP AND INSHIPMENTS IS EQUAL TO THE SUM OF MARKETINGS, FARM SLAUGHTER, DEATHS AND INVENTORY JAN 1, 1975.

2/ INCLUDES CUSTOM SLAUGHTER FOR USE ON FARMS WHERE PRODUCED, STATE OUTSHIPMENTS, BUT EXCLUDES INTERFARM SALES WITHIN THE STATE.

3/ EXCLUDES CUSTOM SLAUGHTER FOR FARMERS AT COMMERCIAL ESTABLISHMENTS.

CATTLE AND CALVES
PRODUCTION AND INCOME 1974

STATE	PRODUCTION 1/	MARKETINGS 2/	AVERAGE PRICE PER 100 POUNDS		VALUE OF PRODUCTION	CASH RECEIPTS 3/	VALUE OF HOME CONSUMPTION	GROSS INCOME
			CATTLE	CALVES				
	1000 LBS	1000 LBS	DOLLS	DOLLS	1000 DOLLS	1000 DOLLS	1000 DOLLS	1000 DOLLS
ALA	617,750	319,200	28.40	25.30	169,443	86,866	14,023	100,889
ALAS	1,646	856	36.10	33.00	591	322	151	473
ARIZ	696,535	1,229,317	39.10	36.30	271,706	479,290	1,489	480,779
ARK	880,385	393,137	31.70	35.70	282,857	124,892	9,585	134,477
CALIF	1,909,440	3,162,840	39.60	37.10	750,735	1,244,865	36,151	1,281,016
COLO	1,649,195	2,961,276	40.30	40.40	664,645	1,193,442	11,879	1,205,321
CONN	23,170	26,110	26.60	30.00	6,317	7,080	404	7,484
DEL	10,680	7,730	32.10	47.60	3,589	2,642	546	3,188
FLA	721,675	453,575	31.00	30.80	223,294	140,313	10,215	150,532
GA	520,650	306,230	30.20	27.00	152,883	90,030	9,223	99,253
HAW	53,055	50,935	35.90	43.10	19,047	18,284	610	18,896
ICAHN	645,845	664,318	37.20	34.20	238,105	245,591	5,535	251,520
ILL	1,057,330	1,441,990	38.80	44.00	411,549	560,546	22,790	583,336
IND	622,605	657,530	37.60	45.40	236,395	247,354	19,203	266,557
ICWA	2,891,905	4,651,429	38.10	36.60	1,102,377	1,771,905	15,158	1,787,067
KANS	2,739,800	4,114,580	34.40	38.80	940,978	1,416,015	14,198	1,430,213
KY	530,800	635,630	31.80	40.10	307,744	211,324	8,451	219,775
LA	465,640	444,604	29.60	35.50	155,066	141,399	4,858	146,257
MAINE	26,680	25,696	27.30	29.00	7,364	7,085	446	7,531
MD	103,005	94,017	32.10	47.60	36,878	29,825	1,925	31,750
MASS	30,405	32,845	27.50	28.00	8,371	9,042	473	9,516
MICH	449,380	474,964	36.30	35.00	164,433	173,115	10,264	183,379
MINN	1,400,825	1,665,042	34.20	37.90	481,338	570,165	26,224	596,393
MISS	718,650	473,904	27.90	34.00	212,473	142,115	5,654	147,769
MO	1,940,385	1,656,505	34.60	30.50	677,049	590,057	29,801	619,558
MONT	1,035,930	1,133,651	30.80	30.40	317,826	348,072	12,358	360,430
NERR	2,533,860	4,432,690	37.30	36.40	1,093,479	1,652,852	8,980	1,661,832
NEV	196,065	233,038	33.90	33.70	66,332	78,880	1,185	80,065
NH	14,465	15,474	26.70	29.50	3,947	4,193	502	4,695
NJ	29,830	39,030	25.80	47.00	9,353	12,594	1,082	13,676
N MEX	592,380	943,880	36.70	30.90	214,289	344,194	5,393	349,587
NY	404,350	317,650	28.20	40.80	121,763	95,575	12,404	108,379
NC	274,520	225,526	30.30	30.30	80,548	71,155	6,778	77,937
N DAK	993,260	952,544	33.70	37.30	338,744	325,361	11,896	337,257
OHIO	579,010	594,160	37.10	51.30	221,385	222,873	16,625	239,498
OKLA	2,252,140	2,712,920	33.60	38.10	761,513	913,571	18,901	932,472
OREG	500,310	445,808	34.10	35.50	172,237	153,564	10,437	164,001
PA	437,575	392,224	34.30	47.60	157,185	138,572	12,135	151,107
RI	2,259	2,436	26.90	30.00	620	668	85	753
SC	176,010	151,810	28.50	29.20	50,588	43,606	1,352	44,958
S DAK	1,581,730	2,212,106	36.90	40.30	738,773	823,470	11,078	834,548
TENN	803,590	475,621	28.60	39.40	244,388	139,842	7,172	147,014
TEX	5,513,975	6,297,690	34.00	33.70	1,874,359	2,140,789	19,702	2,160,491
UTAH	239,080	225,562	31.20	33.70	75,813	71,386	3,008	74,394
VT	69,960	72,822	26.60	30.10	18,940	15,723	570	20,693
VA	471,530	328,810	29.40	36.70	144,312	100,868	14,583	115,451
WASH	445,340	470,400	35.80	36.00	159,529	168,474	22,850	191,324
W VA	135,355	95,455	29.00	35.70	41,194	28,863	7,777	36,640
WIS	1,024,040	821,048	27.70	38.50	301,074	240,571	34,682	275,253
WYO	525,135	637,240	31.10	33.10	165,568	195,689	4,242	203,931
U S	142,760,575	50,208,435	35.60	35.20	14,005,532	17,843,774	505,841	18,349,615

- 1/ ADJUSTMENTS MADE FOR CHANGES IN INVENTORY AND FOR INSHIPMENTS.
2/ EXCLUDES CUSTOM SLAUGHTER FOR USE ON FARMS WHERE PRODUCED AND INTERFARM SALES WITHIN THE STATE
3/ RECEIPTS FROM MARKETINGS AND SALE OF FARM SLAUGHTER.

HOGS AND PIGS
INVENTORY, SUPPLY AND DISPOSITION 1970 1/

STATE	INVENTORY DEC 1 1969	PIG CROP		INSHIP- MENTS	MARKETINGS 2/	FARM SLAUGHTER 3/	DEATHS	INVENTORY DEC 1 1970
		DEC - MAY	JUN - NOV					
	1000 MD	1000 MD	1000 MD	1000 MD	1000 MD	1000 MD	1000 MD	1000 MD
ALA	949	759	670	15	1,332	53	168	1,040
ALAS	1.1	0.8	0.9	-	0.1	0.8	0.8	1.1
ARIZ	69	63	62	6	112	2	5	81
ARK	286	299	350	2	458	33	56	392
CALIF	165	104	118	22	298	6	30	165
COLO	261	242	270	21	416	9	28	339
CONN	8.5	7.3	5.4	-	11.6	0.3	1.3	8.0
DEL	51	40	44	-	66	2	7	60
FLA	331	266	269	3	435	16	44	374
GA	1,780	1,433	1,354	54	2,240	61	235	2,065
MAH	57	37	39	1	59	3	14	58
IDAHO	124	112	116	13	169	5	11	180
ILL	6,842	5,849	6,080	449	10,866	24	700	7,630
IND	4,499	3,725	3,550	637	6,751	17	520	5,129
IOWA	13,720	12,331	10,562	895	20,003	45	1,350	16,110
KANS	1,643	1,626	1,619	157	2,719	12	112	2,202
KY	1,400	1,302	1,280	9	2,016	88	207	1,680
LA	164	135	119	3	195	24	32	170
MAINE	9.5	5.1	5.8	-	9.7	1.2	1.7	7.8
MD	164	117	161	-	266	11	31	212
MASS	83	46	47	-	90	1	12	73
MICH	697	590	706	39	1,050	20	92	870
MINN	3,243	3,248	2,817	105	5,229	39	413	3,752
MISS	450	455	392	4	640	50	71	540
MO	4,197	4,027	4,352	7	6,918	66	487	5,120
MONT	217	152	146	25	306	12	22	200
NEBR	3,000	3,095	2,767	166	5,017	20	308	3,691
NEV	9.4	7.4	7.5	0.1	10.0	0.5	0.9	13.0
N H	13.0	7.0	7.8	-	14.6	0.8	1.4	11.0
N J	105	42	35	70	132	2	13	105
N MEX	65	47	41	6	83	4	5	67
N Y	95	70	70	-	122	5	15	93
N C	1,580	1,870	1,458	7	2,525	150	255	1,985
N DAK	302	323	259	6	414	22	46	408
OHIO	2,557	1,982	2,244	289	3,911	18	305	2,838
OKLA	348	355	350	32	569	12	62	442
OREG	108	88	88	1	153	5	10	117
PA	570	428	426	-	659	46	92	627
R I	11.0	5.0	4.7	-	5.4	0.3	4.0	11.0
S C	476	393	432	-	568	33	72	628
S DAK	1,674	2,034	1,341	112	2,986	10	156	2,009
TENN	1,163	1,066	1,095	3	1,672	97	163	1,395
TEX	1,005	883	1,140	14	1,413	44	98	1,487
UTAH	43	34	33	2	58	3	6	45
VT	4.2	3.6	3.4	-	5.5	0.9	0.8	4.0
VA	601	459	454	23	637	75	104	721
WASH	73	64	68	4	112	12	12	73
W VA	69	50	54	2	73	20	9	73
WIS	1,680	1,817	1,835	5	3,226	31	148	1,932
WYO	41	32	33	2	52	2	3	51
U S	57,046	52,126	49,588	3,211	86,919	1,235	6,532	67,285

1/ BALANCE SHEET ESTIMATES BY STATES; THE SUM OF INVENTORY DEC 1, 1969, PIG CROP AND INSHIPMENTS IS EQUAL TO THE SUM OF MARKETINGS, FARM SLAUGHTER, DEATHS AND INVENTORY DEC 1, 1970.

2/ INCLUDES CUSTOM SLAUGHTER FOR USE ON FARMS WHERE PRODUCED, STATE OUTSHIPMENTS, BUT EXCLUDES INTERFARM SALES WITHIN THE STATE.

3/ EXCLUDES CUSTOM SLAUGHTER FOR FARMERS AT COMMERCIAL ESTABLISHMENTS.

HOGS AND PIGS
PRODUCTION AND INCOME 1970

STATE	PRODUCTION 1/ 1000 LBS	MARKETINGS 2/ 1000 LBS	AVERAGE PRICE PER 100 POUNDS	VALUE OF PRODUCTION 1000 DOLS	CASH RECEIPTS 3/ 1000 DOLS	VALUE OF HOME CONSUMPTION 1000 DOLS	GROSS INCOME 1000 DOLS
ALA	324,168	287,914	22.20	71,964	63,917	5,295	69,212
ALAS	189	164	45.80	87	75	7	82
ARIZ	28,084	25,571	23.90	6,712	6,111	175	6,286
ARK	106,328	79,878	23.00	24,455	18,372	3,347	21,719
CALIF	45,846	45,100	23.50	10,774	10,599	465	11,064
COLO	108,139	95,144	23.10	24,980	21,978	1,124	23,102
CONN	2,670	2,667	19.00	507	507	23	530
DEL	16,580	14,876	24.70	4,095	3,674	193	3,867
FLA	91,808	82,265	21.90	20,106	18,016	1,261	19,277
GA	532,129	463,293	22.70	120,793	105,168	8,035	113,203
MAW	11,270	10,538	38.90	4,384	4,099	243	4,342
IDAMO	46,194	38,138	22.70	10,486	8,657	549	9,206
ILL	2,703,944	2,650,307	23.20	627,315	614,871	3,533	618,404
IND	1,738,064	1,679,220	22.80	398,279	382,862	2,047	384,909
IOWA	5,096,239	4,876,892	22.60	1,151,750	1,102,178	7,887	1,110,065
NANS	722,426	661,478	22.30	161,101	147,510	1,606	149,116
KY	468,076	394,848	22.80	106,721	90,825	9,892	99,917
LA	45,010	37,920	23.00	10,352	8,722	1,573	10,295
MAINE	2,565	2,173	18.50	475	402	89	491
MD	53,206	44,862	24.40	12,982	10,946	1,067	12,013
MASS	19,135	19,998	18.50	3,540	3,700	81	3,781
MICH	270,332	242,476	22.90	61,906	55,527	2,317	57,844
MINN	1,301,894	1,241,232	22.20	288,843	275,554	4,952	280,506
MISS	158,816	131,862	22.60	35,892	29,801	4,407	34,208
MO	1,742,531	1,601,635	23.20	404,267	371,579	8,804	380,383
MONT	71,573	70,078	22.40	16,032	15,697	1,075	16,772
NEBR	1,357,087	1,270,435	22.30	302,764	283,307	3,060	286,367
NEV	2,617	2,121	22.60	591	479	42	521
N H	3,358	3,224	18.50	621	596	69	665
N J	22,180	26,050	23.10	5,124	6,018	204	6,222
N MEX	20,656	18,903	22.50	4,648	4,253	329	4,582
N Y	29,028	26,780	23.70	6,880	6,347	545	6,892
N C	641,842	538,844	22.40	143,773	120,701	12,701	133,402
N DAK	115,705	95,661	21.80	25,224	20,854	1,916	22,770
OHIO	884,480	873,887	23.20	206,243	202,742	2,401	205,143
OKLA	145,565	131,099	22.60	32,898	29,628	1,302	30,930
OREG	36,740	32,993	23.80	8,764	7,852	684	8,536
PA	165,803	142,305	23.90	39,627	34,011	4,453	38,464
R I	1,318	1,224	19.00	250	233	27	260
S C	153,466	128,172	21.90	33,609	28,070	2,529	30,599
S DAK	789,009	757,912	21.90	172,793	165,983	1,205	167,188
TENN	380,963	312,650	22.50	85,717	70,346	9,821	80,167
TEX	394,539	315,452	22.50	88,771	70,977	4,950	75,927
UTAH	13,852	12,488	22.40	3,103	2,797	269	3,066
VT	1,649	1,284	19.00	313	244	77	321
VA	178,957	137,628	23.50	42,055	32,343	6,909	39,252
WASH	27,543	22,336	23.50	6,473	5,249	1,458	6,707
W VA	23,822	15,975	22.80	5,431	3,642	1,756	5,398
WIS	707,823	667,987	22.50	159,260	150,279	3,924	154,203
WYO	13,315	11,495	21.30	2,836	2,448	220	2,668
U S	21,822,826	20,347,354	22.70	4,954,546	4,619,946	130,898	4,750,844

- 1/ ADJUSTMENTS MADE FOR CHANGES IN INVENTORY AND FOR INSHIPMENTS.
 2/ EXCLUDES CUSTOM SLAUGHTER FOR USE ON FARMS WHERE PRODUCED AND INTERFARM SALES WITHIN THE STATE
 3/ RECEIPTS FROM MARKETINGS AND SALE OF FARM SLAUGHTER.

HOGS AND PIGS

INVENTORY, SUPPLY AND DISPOSITION 1971 1/

STATE	INVENTORY DEC 1 1970	PIG CROP		INSHIP- MENTS	MARKETINGS 2/	FARM SLAUGHTER 3/	DEATHS	INVENTORY DEC 1 1971
		DEC - MAY	JUN - NOV					
	1000 HD	1000 HD	1000 HD	1000 HD	1000 HD	1000 HD	1000 HD	1000 HD
ALA	1,040	900	888	-	1,554	52	167	1,055
ALAS	1.1	0.7	1.4	-	0.2	0.8	0.7	1.5
ARIZ	81	69	72	4	122	1	6	97
ARK	392	329	343	3	596	31	52	388
CALIF	165	108	117	22	212	6	32	162
COLO	339	293	266	43	563	7	31	340
CONN	8.0	7.1	5.2	-	11.4	0.3	1.0	7.6
DEL	60	47	48	-	86	2	7	60
FLA	374	289	269	4	509	16	48	363
GA	2,065	1,541	1,186	75	2,581	81	243	1,962
HAW	58	38	37	2	62	3	8	62
IDAH	180	114	96	8	214	5	17	162
ILL	7,630	5,678	5,395	363	11,774	22	670	6,600
IND	5,129	2,720	3,373	628	7,295	20	515	5,020
IOWA	16,110	11,424	9,838	1,132	22,216	45	1,390	14,853
KANS	2,202	1,751	1,588	166	3,450	13	144	2,100
KY	1,680	1,264	1,051	28	2,244	90	195	1,394
LA	170	146	122	1	195	22	32	190
MAINE	7.8	4.9	5.7	-	8.9	1.0	1.0	7.5
MD	212	140	158	-	262	11	31	206
MASS	73	51	47	-	88	1	9	73
MICH	870	619	599	21	1,243	18	82	766
MINN	2,752	3,277	2,749	174	6,008	39	361	3,544
MISS	540	532	350	4	794	52	67	513
MO	5,120	2,800	4,088	4	7,822	57	474	4,659
MONT	280	225	205	25	340	10	20	285
NEBR	2,651	3,078	2,574	338	6,001	18	340	3,322
NEV	13.0	7.6	6.8	0.1	14.8	0.6	1.1	11.0
NH	11.0	7.1	7.3	-	13.8	0.8	1.0	9.8
NJ	105	47	35	84	157	4	14	96
NMEX	67	46	47	4	79	3	7	75
NY	93	69	69	-	117	5	13	96
NC	1,585	1,993	1,246	4	2,981	150	247	1,850
NDAK	408	368	233	8	569	22	47	379
OHIO	2,838	1,932	2,064	268	4,133	18	340	2,611
OKLA	442	414	376	24	713	11	62	470
OREG	117	85	85	1	157	5	10	116
PA	627	444	380	-	698	46	93	614
RI	11.0	6.0	5.3	-	11.3	0.3	1.2	9.5
SC	628	441	440	-	781	36	72	620
S DAK	2,009	2,004	1,256	125	3,343	10	173	1,868
TENN	1,395	1,020	895	12	1,816	92	155	1,269
TEX	1,487	1,172	1,066	18	2,186	44	108	1,405
UTAH	45	36	38	3	63	3	6	50
VT	4.0	3.7	2.8	-	4.6	0.8	0.6	4.5
VA	721	462	410	29	775	70	98	678
WASH	73	69	62	4	104	12	12	80
WVA	72	51	53	5	84	20	9	69
WIS	1,922	1,747	1,725	5	3,437	30	165	1,777
WYO	51	38	33	1	55	2	5	61
U S	67,285	51,918	46,006	3,639	98,644	1,210	6,584	62,412

- 1/ BALANCE SHEET ESTIMATES BY STATES; THE SUM OF INVENTORY DEC 1, 1970, PIG CROP AND INSHIPMENTS IS EQUAL TO THE SUM OF MARKETINGS, FARM SLAUGHTER, DEATHS AND INVENTORY DEC 1, 1971.
 2/ INCLUDES CUSTOM SLAUGHTER FOR USE ON FARMS WHERE PRODUCED, STATE OUTSHIPMENTS, BUT EXCLUDES INTERFARM SALES WITHIN THE STATE.
 3/ EXCLUDES CUSTOM SLAUGHTER FOR FARMERS AT COMMERCIAL ESTABLISHMENTS.

HOGS AND PIGS
PRODUCTION AND INCOME 1971

STATE	PRODUCTION 1/ 1000 LBS	MARKETINGS 2/ 1000 LBS	AVERAGE PRICE PER 100 POUNDS	VALUE OF PRODUCTION 1000 DOLS	CASH RECEIPTS 3/ 1000 DOLS	VALUE OF HOME CONSUMPTION 1000 DOLS	GRASS INCOME 1000 DOLS
ALA	354,550	332,384	16.80	59,564	55,841	4,040	59,881
ALAS	242	184	47.60	115	88	8	96
ARIZ	30,233	27,967	19.00	5,763	5,314	86	5,400
ARK	107,806	94,058	17.60	18,974	16,554	2,406	18,960
CALIF	46,151	45,848	18.40	8,499	8,436	369	8,825
COLOR	130,281	129,561	17.70	23,060	22,932	699	23,631
CONN	2,670	2,629	18.50	494	486	20	506
DEL	19,350	18,820	17.80	3,444	3,350	139	3,489
FLA	101,431	101,836	16.60	16,838	16,905	956	17,861
GA	571,002	541,443	17.20	98,212	93,128	5,893	99,021
HAW	12,440	11,262	39.60	4,926	4,460	283	4,743
IDAHO	46,481	46,994	17.40	8,088	8,177	479	8,656
ILL	2,811,819	2,930,278	17.50	492,068	512,799	2,624	515,423
IND	1,845,455	1,885,780	17.60	324,800	331,897	1,690	333,587
IOWA	5,055,015	5,309,565	17.50	884,628	929,174	5,922	935,096
KANS	823,682	840,621	17.70	145,792	148,790	1,325	150,115
KY	487,650	480,716	17.80	86,802	85,567	7,433	93,000
LA	45,929	36,776	17.80	8,175	6,546	1,190	7,736
MAINE	2,447	2,021	18.00	440	364	83	447
MD	59,995	56,222	18.20	10,919	10,232	796	11,028
MASS	19,746	19,556	17.50	3,456	3,422	77	3,499
MICH	288,506	292,717	17.90	51,643	52,396	1,667	54,063
MINN	1,415,287	1,428,101	17.50	247,675	249,918	3,904	253,822
MISS	180,902	164,300	17.60	31,839	28,917	3,569	32,486
MO	1,810,426	1,855,082	17.40	315,014	322,784	6,387	329,171
MONT	90,309	77,409	17.40	15,443	13,237	796	14,033
NEBR	1,440,442	1,492,600	17.10	246,316	255,235	2,232	257,467
NEV	3,115	3,150	17.50	545	551	36	587
N H	3,211	3,059	18.00	578	551	67	618
N J	27,572	31,841	17.70	4,880	5,636	280	5,916
N MEX	19,104	17,242	18.50	3,524	3,190	263	3,453
N Y	28,299	25,625	18.00	5,094	4,613	393	5,006
N C	666,315	625,795	17.20	114,606	107,637	9,404	117,041
N DAK	138,866	136,134	17.00	23,607	23,142	1,406	24,549
OHIO	858,916	923,625	17.80	160,007	164,405	1,922	166,327
OKLA	172,721	164,161	17.50	29,881	28,400	1,005	29,405
OREG	37,031	34,013	17.40	6,443	5,918	540	6,458
PA	167,794	150,660	18.50	31,042	27,872	3,217	31,089
P I	2,668	2,640	18.00	480	475	26	501
S C	189,673	177,913	16.80	31,865	29,889	2,117	32,006
S DAK	810,702	831,899	17.40	141,062	144,750	1,044	145,794
TENN	354,013	221,912	17.30	61,244	55,691	7,640	63,331
TEX	507,499	501,878	16.60	84,245	83,312	3,835	87,147
UTAH	15,090	13,676	16.40	2,475	2,243	208	2,451
VT	1,598	1,105	18.00	288	199	68	267
VA	193,154	172,420	17.90	34,575	31,042	4,561	35,603
WASH	27,440	21,770	18.70	5,131	4,071	1,002	5,073
W VA	26,519	19,605	17.50	4,641	3,447	1,251	4,698
WIS	725,938	729,530	17.80	129,217	129,856	3,004	132,860
WYO	14,710	12,141	16.50	2,427	2,003	171	2,174
U S	22,832,335	23,147,614	17.50	3,990,854	4,045,843	98,553	4,144,396

1/ ADJUSTMENTS MADE FOR CHANGES IN INVENTORY AND FOR INSHIPMENTS.
 2/ EXCLUDES CUSTOM SLAUGHTER FOR USE ON FARMS WHERE PRODUCED AND INTERFARM SALES WITHIN THE STATE
 3/ RECEIPTS FROM MARKETINGS AND SALE OF FARM SLAUGHTER.

HOGS AND PIGS
INVENTORY, SUPPLY AND DISPOSITION 1972 1/

STATE	INVENTORY DEC 1 1971	PIG CROP		INSHIP- MENTS	MARKETINGS 2/	FARM SLAUGHTER 3/	DEATHS	INVENTORY DEC 1 1972
		DEC - MAY	JUN - NOV					
	1000 HD	1000 HD	1000 HD	1000 HD	1000 HD	1000 HD	1000 HD	1000 HD
ALA	1.055	833	762	35	1.507	49	159	970
ALAS	1.5	1.1	0.9	-	0.2	0.7	1.1	1.5
ARIZ	97	72	62	5	145	2	7	82
ARK	388	259	289	4	530	30	50	330
CALIF	162	130	115	18	234	7	33	151
COLOR	340	293	278	49	573	7	30	350
CONN	7.6	5.9	5.4	-	10.0	0.3	0.8	7.8
DEL	60	44	48	-	89	1	7	55
FLA	363	229	221	4	444	17	46	310
GA	1,962	1,390	1,063	50	2,273	77	231	1,884
HAW	62	34	33	1	61	3	8	58
IDAH	162	98	86	5	180	6	16	149
ILL	6,600	5,732	5,439	362	10,825	20	638	6,650
IND	5,020	3,596	3,356	495	7,045	22	550	4,850
IOWA	14,853	10,838	9,247	1,050	20,244	44	1,500	14,200
KANS	2,100	1,698	1,593	153	3,285	16	143	2,100
KY	1,354	1,065	936	34	1,891	83	200	1,255
LA	190	131	116	1	224	24	28	162
MAINE	7.5	5.1	5.0	-	8.5	0.6	0.8	7.7
MD	206	135	158	-	254	9	30	206
MASS	73	44	43	-	89	1	7	63
MICH	766	585	518	43	1,085	15	92	720
MINN	3,544	2,855	2,720	152	5,341	39	341	3,590
MISS	513	454	317	4	716	44	66	462
MO	4,659	3,578	3,646	5	6,991	52	495	4,350
MONT	285	168	180	15	373	10	20	245
NEBR	3,322	2,651	2,498	348	5,203	16	300	3,300
NEV	11.0	6.0	6.7	0.2	12.3	0.6	1.0	10.0
NH	9.8	7.0	8.1	-	14.1	0.6	0.8	9.4
NJ	96	45	27	58	127	3	20	76
NMEX	75	48	43	4	100	3	7	60
NY	96	71	66	-	126	5	13	89
NC	1,850	1,480	1,197	16	2,612	150	242	1,739
NDAK	379	331	228	5	521	22	44	356
OHIO	2,611	1,788	1,806	230	3,747	18	350	2,320
OKLA	470	317	288	17	666	10	64	352
OREG	116	84	78	3	152	4	12	113
PA	614	418	351	-	685	46	99	553
RI	9.5	5.1	5.4	-	10.1	0.2	0.9	8.8
SC	620	385	399	1	748	35	72	550
S DAK	1,868	1,671	1,212	111	2,894	10	165	1,793
TENN	1,269	878	753	9	1,608	88	163	1,050
TEX	1,405	857	851	18	1,846	41	94	1,150
UTAH	50	32	30	2	65	3	4	42
VT	4.5	3.8	2.9	-	5.5	0.6	0.4	4.7
VA	678	405	378	36	721	60	99	617
WASH	80	56	52	5	101	9	10	73
WVA	69	43	42	6	77	18	13	52
WIS	1,777	1,439	1,465	5	3,040	33	138	1,475
WYD	61	29	27	1	56	2	5	55
U S	62,412	47,523	43,051	3,360	89,555	1,158	6,617	59,017

1/ BALANCE SHEET ESTIMATES BY STATES: THE SUM OF INVENTORY DEC 1, 1971, PIG CROP AND INSHIPMENTS IS EQUAL TO THE SUM OF MARKETINGS, FARM SLAUGHTER, DEATHS AND INVENTORY DEC 1, 1972.

2/ INCLUDES CUSTOM SLAUGHTER FOR USE ON FARMS WHERE PRODUCED, STATE OUTSHIPMENTS, BUT EXCLUDES INTERFARM SALES WITHIN THE STATE.

3/ EXCLUDES CUSTOM SLAUGHTER FOR FARMERS AT COMMERCIAL ESTABLISHMENTS.

HOGS AND PIGS
PRODUCTION AND INCOME 1972

STATE	PRODUCTION 1/	MARKETINGS 2/	AVERAGE PRICE PER 100 POUNDS	VALUE OF PRODUCTION	CASH RECEIPTS 3/	VALUE OF HOME CONSUMPTION	GROSS INCOME
	1000 LBS	1000 LBS	DOLS	1000 DOLS	1000 DOLS	1000 DOLS	1000 DOLS
AL A	330,937	320,457	24.20	80,087	77,551	5,484	83,035
ALAS	180	166	47.60	86	79	7	86
ARIZ	31,176	33,160	26.50	8,262	8,787	244	9,031
ARK	90,424	82,700	24.20	21,883	20,013	3,267	23,280
CALIF	57,481	52,194	25.30	13,278	13,205	623	13,828
CONN	134,919	130,368	24.90	33,595	32,462	1,147	33,609
COLO	2,548	2,412	25.00	637	603	30	633
DELA	19,791	19,608	25.50	5,047	5,000	133	5,133
FLA	91,381	89,750	24.20	22,114	21,720	1,358	23,078
GA	506,787	482,911	24.10	122,136	116,382	7,414	123,796
HAW	10,938	11,142	40.60	4,441	4,524	285	4,809
IDAH	39,877	38,426	24.30	9,690	9,338	820	10,158
ILL	2,683,008	2,693,030	25.20	676,118	678,644	3,790	682,434
IND	1,743,615	1,778,786	25.60	446,365	455,369	3,109	458,478
IOWA	4,763,077	4,854,835	25.30	1,205,058	1,228,273	8,894	1,237,167
KANS	804,598	794,228	25.20	202,759	200,146	2,710	202,855
KY	419,111	399,140	25.40	106,454	101,382	11,005	112,387
LA	49,477	45,424	24.00	11,874	10,902	1,751	12,653
MAINE	2,228	1,871	24.50	546	458	88	546
MD	57,536	53,666	25.20	14,499	13,524	1,022	14,546
MASS	19,191	19,835	25.00	4,798	4,959	110	5,069
MICH	756,167	257,325	25.50	65,323	65,618	2,195	67,817
MINN	1,250,755	1,240,001	25.10	313,940	311,240	6,030	317,270
MISS	161,760	148,436	25.60	41,411	38,000	4,686	42,686
MO	1,599,863	1,590,354	25.00	399,966	397,589	7,774	405,363
MONT	86,884	85,335	23.40	20,331	19,968	1,376	21,344
NEBR	1,283,767	1,286,197	24.80	318,373	318,977	3,472	322,449
NEV	2,782	2,624	24.80	690	651	51	702
NH	3,323	3,093	24.50	814	758	76	834
NJ	70,660	25,595	24.40	5,041	6,245	323	6,568
NMEX	21,825	22,723	25.50	5,565	5,794	329	6,123
NY	28,438	27,780	24.90	7,081	6,917	515	7,432
NC	596,334	564,970	24.50	146,102	138,418	12,899	151,317
NDAK	116,901	111,718	24.20	28,290	27,036	2,002	29,038
OHIO	826,531	851,719	25.30	209,112	215,485	2,732	218,217
OKLA	146,596	155,436	24.60	36,063	38,237	1,417	39,654
OREG	35,852	33,257	25.10	8,999	8,348	693	9,041
PA	156,274	146,178	26.20	40,944	38,299	4,556	42,855
RI	2,693	2,403	25.00	673	601	30	631
SC	177,537	171,977	24.30	43,141	41,790	3,083	44,873
S DAK	699,874	707,648	24.60	172,169	174,081	1,661	175,742
TENN	296,235	292,380	24.80	73,466	72,510	11,785	84,295
TEX	429,945	431,980	24.00	103,187	103,675	6,396	110,071
UTAH	15,093	14,898	22.90	3,456	3,412	275	3,687
VT	1,689	1,344	24.50	414	329	81	410
VA	176,780	164,022	24.80	43,841	40,677	5,416	46,053
WASH	25,278	21,638	25.50	6,446	5,518	1,212	6,730
WVA	21,607	17,833	24.50	5,294	4,369	1,667	6,036
WIS	611,771	627,934	24.90	152,331	156,356	4,622	160,978
WYO	12,312	11,670	23.10	2,844	2,696	391	3,027
U S	20,918,802	20,922,577	25.10	5,245,034	5,246,914	141,040	5,387,954

1/ ADJUSTMENTS MADE FOR CHANGES IN INVENTORY AND FOR INSHIPMENTS.
2/ EXCLUDES CUSTOM SLAUGHTER FOR USE ON FARMS WHERE PRODUCED AND INTERFARM SALES WITHIN THE STATE
3/ RECEIPTS FROM MARKETINGS AND SALE OF FARM SLAUGHTER.

HOGS AND PIGS
INVENTORY, SUPPLY AND DISPOSITION 1973 1/

STATE	INVENTORY DEC 1 1972	PIG CROP		INSHIP- MENTS	MARKETINGS 2/	FARM SLAUGHTER 3/	DEATHS	INVENTORY DEC 1 1973
		DEC - MAY	JUN - NOV					
	1000 HD	1000 HD	1000 HD	1000 HD	1000 HD	1000 HD	1000 HD	1000 HD
ALA	970	713	616	30	1,385	49	155	740
ALAS	1.5	0.5	0.9	0.1	0.2	0.7	0.9	1.2
ARIZ	82	74	68	2	136	2	7	81
ARK	330	234	270	3	486	28	50	273
CALIF	151	105	105	15	197	6	30	143
COLO	350	241	266	78	556	8	31	340
CONN	7.8	5.6	4.8	-	9.2	0.3	0.8	7.9
DEL	55	44	41	-	78	1	6	55
FLA	310	204	192	4	347	15	44	304
GA	1,484	1,353	1,135	57	2,274	70	240	1,840
HAW	58	34	35	-	56	2	8	61
IDAH	149	68	60	2	144	7	18	110
ILL	6,650	5,894	5,465	312	10,253	18	700	7,350
IND	4,850	2,516	3,237	559	6,664	23	600	4,875
IOWA	14,200	10,353	8,740	1,400	18,230	38	1,625	14,700
KANS	2,100	1,637	1,401	113	3,088	13	150	2,000
KY	1,255	1,067	993	150	1,910	75	200	1,280
LA	162	116	96	5	181	21	27	150
MAINE	7.7	5.4	5.3	-	9.1	0.8	0.9	7.6
MO	206	118	146	-	252	8	25	185
MASS	63	42	43	-	80	1	7	60
MICH	720	593	511	24	1,018	15	92	727
MINN	3,550	3,076	3,027	173	5,421	39	390	3,976
MISS	462	440	328	4	650	40	64	480
MO	4,250	3,451	3,408	6	6,282	58	450	4,325
MONT	245	165	192	20	331	10	19	262
NEBP	1,300	2,563	2,333	400	4,766	15	360	3,455
NEV	10.0	9.0	7.5	0.2	14.1	0.5	1.1	11.0
N H	9.4	7.8	8.5	-	14.9	0.7	0.9	9.2
N J	76	34	24	78	117	2	14	79
N MEX	60	53	46	4	81	3	9	70
N Y	89	66	63	-	107	6	12	93
N C	1,739	1,667	1,326	50	2,412	155	265	1,950
N DAK	356	320	231	9	478	19	45	374
OHIO	2,320	1,611	1,629	150	3,100	16	320	2,274
OKLA	352	265	231	13	476	10	60	315
OREG	113	78	74	3	153	4	10	101
PA	552	406	359	-	623	43	92	560
R I	8.8	5.0	4.7	-	9.4	0.2	0.9	8.0
S C	550	362	345	1	706	30	72	450
S DAK	1,793	1,750	1,426	134	2,740	8	180	2,175
TENN	1,050	774	740	10	1,394	85	155	940
TEX	1,150	729	803	13	1,510	35	100	1,050
UTAH	42	35	33	2	59	3	4	46
VT	4.7	3.6	3.0	-	5.2	0.8	0.4	4.9
VA	617	359	365	50	643	50	93	605
WASH	72	51	58	-	92	8	10	72
W VA	52	43	44	11	70	17	9	54
WIS	1,475	1,358	1,435	17	2,557	33	155	1,540
WYO	55	26	23	1	54	2	5	44
U S	55,017	46,125	41,998	3,902	82,419	1,095	6,914	60,614

1/ BALANCE SHEET ESTIMATES BY STATES; THE SUM OF INVENTORY DEC 1, 1972, PIG CROP AND INSHIPMENTS IS EQUAL TO THE SUM OF MARKETINGS, FARM SLAUGHTER, DEATHS AND INVENTORY DEC 1, 1973.

2/ INCLUDES CUSTOM SLAUGHTER FOR USE ON FARMS WHERE PRODUCED, STATE OUTSHIPMENTS, BUT EXCLUDES INTERFARM SALES WITHIN THE STATE.

3/ EXCLUDES CUSTOM SLAUGHTER FOR FARMERS AT COMMERCIAL ESTABLISHMENTS.

HOGS AND PIGS
PRODUCTION AND INCOME 1973

STATE	PRODUCTION 1/	MARKETINGS 2/	AVERAGE PRICE PER 100 POUNDS	VALUE OF PRODUCTION	CASH RECEIPTS 3/	VALUE OF HOME CONSUMPTION	GROSS INCOME
	1000 LBS	1000 LBS	DOLS	1000 DOLS	1000 DOLS	1000 DOLS	1000 DOLS
ALA	283,731	291,793	37.10	105,264	108,255	8,421	116,676
ALAS	132	166	48.40	64	80	7	87
ARIZ	32,476	31,153	40.00	12,990	12,461	405	12,856
ARK	115,351	107,713	37.20	42,911	40,069	5,078	45,147
CALIF	44,856	45,107	37.70	16,911	17,005	946	17,951
COLOR	124,872	126,155	37.70	47,077	47,560	2,013	49,573
CONN	2,437	2,190	37.00	902	810	49	859
DEL	18,142	17,104	38.20	6,930	6,534	179	6,713
FLA	73,589	69,780	36.80	27,081	25,679	1,766	27,445
GA	486,115	478,025	37.20	180,835	177,825	12,239	190,064
HAW	10,807	9,910	47.80	5,166	4,737	244	4,981
IDAH	30,104	31,097	37.50	11,289	11,661	1,477	13,138
ILL	2,739,528	2,851,416	38.40	1,051,979	1,018,144	5,806	1,023,950
IND	1,688,047	1,695,568	39.30	663,402	666,358	5,031	671,389
IOWA	4,513,300	4,451,052	38.60	1,742,134	1,718,106	11,969	1,730,075
KANS	737,888	747,170	39.10	288,514	292,143	3,416	295,559
KY	437,323	402,801	38.60	168,807	155,481	15,951	171,432
LA	44,651	38,305	36.60	16,342	14,020	2,582	16,602
MAINE	2,313	1,941	36.00	833	699	151	850
MD	53,441	54,466	38.20	20,414	20,806	1,377	22,183
MASS	18,862	18,068	37.00	6,979	6,685	171	6,856
MICH	251,754	242,195	39.50	99,443	95,667	3,407	99,074
MINN	1,337,190	1,284,989	38.80	518,830	498,576	9,821	508,397
MISS	152,162	134,208	39.00	59,343	52,341	6,490	58,831
MO	1,501,515	1,479,810	38.10	572,077	563,808	12,706	576,514
MONT	82,918	77,972	36.70	30,431	28,616	2,158	30,774
NEBR	1,184,108	1,172,713	38.50	455,882	451,495	5,198	456,693
NEV	3,571	3,147	38.60	1,378	1,215	67	1,282
NH	3,636	3,319	36.00	1,309	1,195	138	1,333
NJ	23,123	25,935	35.40	8,189	9,181	443	9,624
N MEX	20,567	18,306	39.00	8,021	7,139	503	7,642
N Y	26,482	23,172	36.30	9,613	8,411	1,052	9,463
N C	601,423	523,449	37.90	227,939	198,387	19,827	218,214
N DAK	112,553	103,127	37.40	42,469	38,569	2,505	41,074
OHIO	705,063	703,949	38.30	270,039	269,612	3,677	273,289
OKLA	112,369	111,500	37.50	42,138	41,813	2,250	44,063
OREG	34,440	33,148	37.80	13,018	12,530	1,130	13,660
PA	148,672	132,902	39.80	59,171	52,895	6,469	59,364
P T	2,304	2,292	37.00	852	848	39	887
S C	151,174	161,150	37.10	59,796	59,787	4,174	63,961
S DAK	724,726	683,800	37.90	274,672	259,160	2,198	261,358
TENN	252,135	317,280	37.70	132,755	119,615	16,343	135,958
TEX	262,039	354,508	37.90	137,213	134,359	7,959	142,318
UTAH	15,056	13,511	35.90	5,405	4,850	430	5,280
VT	1,739	1,244	36.00	626	448	151	595
VA	155,377	142,979	38.00	59,043	54,332	7,448	61,780
WASH	22,030	19,718	36.00	8,291	7,098	1,348	8,446
W VA	21,940	15,982	37.00	8,118	5,912	2,466	8,379
WIS	562,495	537,912	37.50	210,936	201,717	7,518	209,235
WYO	11,888	11,703	36.80	4,375	4,307	536	4,843
U S	20,154,425	19,606,900	38.40	7,738,196	7,529,002	207,729	7,736,731

1/ ADJUSTMENTS MADE FOR CHANGES IN INVENTORY AND FOR INSHIPMENTS.
 2/ EXCLUDES CUSTOM SLAUGHTER FOR USE ON FARMS WHERE PRODUCED AND INTERFARM SALES WITHIN THE STATE
 3/ RECEIPTS FROM MARKETINGS AND SALE OF FARM SLAUGHTER.

HOGS AND PIGS
INVENTORY, SUPPLY AND DISPOSITION 1974 1/

STATE	INVENTORY DEC 1 1973	PIG CROP		INSHIP- MENTS	MARKETINGS 2/	FARM SLAUGHTER 3/	DEATHS	INVENTORY DEC 1 1974
		DEC - MAY	JUN - NOV					
	1000 HD	1000 HD	1000 HD	1000 HD	1000 HD	1000 HD	1000 HD	1000 HD
ALA	740	544	660	100	1,060	54	150	780
ALAS	1.2	0.6	0.9	0.1	0.2	0.9	0.5	1.2
ARIZ	81	68	76	27	144	1	8	59
ARK	273	252	235	-	463	30	47	270
CALIF	143	88	86	15	168	15	25	124
COLO	340	230	230	75	510	8	32	325
CONN	7.9	5.6	5.0	-	9.6	0.3	0.5	8.0
DEL	55	48	41	8	96	1	7	48
FLA	304	199	182	3	338	17	41	292
GA	1,840	1,347	1,010	65	2,277	95	200	1,590
HAW	61	35	34	-	58	3	8	61
IDAH	110	66	53	15	138	6	10	90
ILL	7,350	5,950	4,725	281	10,651	20	735	6,500
IND	4,875	3,177	2,988	524	6,638	26	600	4,300
IOWA	14,700	10,067	8,078	1,250	19,040	45	1,610	13,400
KANS	2,000	1,540	1,351	195	3,201	15	120	1,750
KY	1,280	1,080	859	115	1,924	110	200	1,100
LA	150	106	94	3	149	21	23	160
MAINE	7.6	5.6	4.8	-	10.1	0.5	0.8	6.6
MD	185	110	133	13	233	8	27	173
MASS	60	42	41	-	86	1	5	51
MICH	727	553	554	32	1,051	18	82	715
MINN	3,676	3,154	2,866	181	5,967	50	460	3,700
MISS	480	340	258	4	606	50	56	370
MO	4,325	3,412	2,201	8	6,511	65	470	3,900
MDNT	262	143	158	64	391	13	19	204
NEBR	3,455	2,621	2,167	400	5,263	20	310	3,050
NEV	11.0	6.5	7.3	0.1	12.3	0.8	0.8	11.0
N H	9.2	6.8	9.4	-	14.8	0.2	0.9	9.5
N J	79	34	26	70	119	2	8	80
N MEX	70	53	48	4	96	5	8	66
N Y	93	78	80	-	113	8	15	115
N C	1,950	1,577	1,324	59	2,625	170	225	1,890
N DAK	374	329	212	8	530	24	47	322
OHIO	2,274	1,586	1,534	168	3,245	17	350	1,950
OKLA	315	274	231	27	472	12	53	310
ORFG	101	88	73	3	155	5	10	95
PA	560	421	362	-	611	47	95	590
R I	8.0	5.4	5.0	-	9.7	0.1	0.8	7.8
S C	450	336	336	1	534	38	71	480
S DAK	2,175	1,867	1,311	111	3,562	12	190	1,700
TENN	940	778	745	18	1,266	95	140	880
TEX	1,050	693	617	17	1,209	50	78	940
UTAH	46	35	32	2	63	4	4	44
VT	4.9	3.5	3.2	-	5.9	0.3	0.3	5.1
VA	605	385	380	87	737	65	80	575
WASH	72	45	60	-	96	10	10	61
W VA	54	42	44	6	61	20	10	55
WIS	1,540	1,339	1,349	18	2,636	40	170	1,400
WYO	44	26	22	2	48	2	5	39
U S	60,614	44,792	38,952	3,579	85,504	1,321	6,819	54,693

- 1/ BALANCE SHEET ESTIMATES BY STATES; THE SUM OF INVENTORY DEC 1, 1973, PIG CROP AND INSHIPMENTS IS EQUAL TO THE SUM OF MARKETINGS, FARM SLAUGHTER, DEATHS AND INVENTORY DEC 1, 1974.
2/ INCLUDES CUSTOM SLAUGHTER FOR USE ON FARMS WHERE PRODUCED, STATE OUTSHIPMENTS, BUT EXCLUDES INTERFARM SALES WITHIN THE STATE.
3/ EXCLUDES CUSTOM SLAUGHTER FOR FARMERS AT COMMERCIAL ESTABLISHMENTS.

HOGS AND PIGS
PRODUCTION AND INCOME 1974

STATE	PRODUCTION 1/	MARKETINGS 2/	AVERAGE PRICE PER 100 POUNDS	VALUE OF PRODUCTION	CASH RECEIPTS 3/	VALUE OF HOME CONSUMPTION	GROSS INCOME
	1000 LBS	1000 LBS	DOLS	1000 DOLS	1000 DOLS	1000 DOLS	1000 DOLS
ALA	241,335	220,781	34.20	82,538	75,507	6,782	82,289
ALAS	216	202	42.40	92	86	8	94
ARIZ	34,775	33,204	37.00	12,867	12,285	187	12,472
ARK	84,986	70,522	35.40	30,085	24,965	5,310	30,275
CALIF	38,662	36,360	34.00	13,145	12,362	1,714	14,076
COLO	113,451	113,424	33.40	37,893	37,884	2,009	39,893
CONN	2,390	2,254	33.00	789	744	44	788
DEL	20,123	20,948	36.20	7,285	7,583	188	7,771
FLA	68,408	64,955	34.10	23,327	22,150	1,855	24,005
GA	519,665	521,192	34.00	176,687	177,205	9,868	187,073
HAW	11,155	10,604	34.90	6,146	5,822	353	6,175
IDAH0	29,525	28,505	34.00	10,042	9,692	1,408	11,100
ILL	2,675,665	2,771,932	34.40	920,429	952,545	6,605	960,150
IND	1,580,038	1,676,811	34.30	541,952	575,146	6,421	581,567
IOWA	4,486,360	4,676,360	34.10	1,529,849	1,594,639	12,890	1,607,529
KANS	747,150	776,100	34.40	257,020	266,978	4,334	271,312
KY	444,155	415,870	35.20	156,343	146,386	17,889	164,275
LA	38,552	31,790	34.80	13,416	11,062	2,302	13,365
MAINE	2,478	2,178	32.00	793	697	140	837
MD	46,652	43,730	36.20	16,888	15,830	1,305	17,135
MASS	18,764	19,910	33.00	6,192	6,570	254	6,824
MICH	248,323	239,950	35.80	88,903	85,902	3,705	89,607
MINN	1,416,027	1,412,755	34.10	482,865	481,749	10,878	492,627
MISS	130,800	125,160	34.80	45,518	43,556	6,786	50,342
MO	1,449,254	1,470,695	34.30	497,108	504,448	14,358	518,806
MONT	84,065	87,539	32.80	27,770	28,713	2,089	30,802
NEBR	1,224,630	1,276,925	33.70	412,700	430,324	5,945	436,269
NEV	2,808	2,613	35.00	983	915	97	1,012
NH	3,584	3,425	32.00	1,147	1,096	58	1,154
NJ	24,186	26,505	32.70	7,909	8,667	409	9,076
N MEX	22,682	21,982	35.50	8,052	7,804	611	8,415
NY	31,116	23,582	34.40	10,704	8,112	1,393	9,505
NC	617,918	577,758	35.00	216,271	202,215	20,885	223,100
N DAK	107,244	106,355	35.50	35,927	35,629	2,834	38,463
OHIO	688,630	734,209	34.90	240,332	256,235	4,450	260,689
OKLA	120,886	113,070	34.60	41,827	39,122	3,488	42,610
OREG	37,044	35,858	34.00	12,595	12,192	799	12,991
PA	158,710	134,185	35.10	55,707	47,095	6,681	53,780
RI	2,418	2,396	33.00	798	791	17	808
SC	137,545	120,948	34.60	47,591	41,846	4,602	46,450
S DAK	829,537	885,697	33.60	278,724	297,594	2,923	300,517
TENN	297,560	265,050	34.20	101,766	90,647	14,621	105,268
TEX	330,351	317,751	33.30	110,007	105,811	8,974	114,785
UTAH	14,760	12,803	33.20	4,910	4,251	718	4,969
VT	1,902	1,594	32.00	609	510	84	594
VA	180,274	164,620	35.10	63,276	57,782	8,305	66,087
WASH	23,674	20,090	35.60	8,428	7,152	1,709	8,861
W VA	21,742	14,100	34.60	7,523	4,875	2,616	7,455
WIS	553,818	555,130	32.70	181,098	181,528	7,063	188,591
WYO	5,652	9,204	33.10	3,195	3,047	436	3,483
U S	19,576,384	20,299,581	34.20	6,838,022	6,946,761	219,400	7,166,161

1/ ADJUSTMENTS MADE FOR CHANGES IN INVENTORY AND FOR INSHIPMENTS.
2/ EXCLUDES CUSTOM SLAUGHTER FOR USE ON FARMS WHERE PRODUCED AND INTERFARM SALES WITHIN THE STATE
3/ RECEIPTS FROM MARKETINGS AND SALE OF FARM SLAUGHTER.

SHEEP AND LAMBS
INVENTORY, SUPPLY AND DISPOSITION 1970 1/

STATE	INVENTORY JAN 1 1970	LAMB CROP	INSHTP-- MENTS	MARKETINGS 2/		FARM SLAUGHTER 3/	DEATHS		INVENTORY JAN 1 1971
				SHEEP	LAMBS		SHEEP	LAMBS	
	1000 HD	1000 HD	1000 HD	1000 HD	1000 HD	1000 HD	1000 HD	1000 HD	1000 HD
ALA	6.1	4.1	-	0.9	1.9	0.4	0.6	0.9	5.5
ALAS	27.0	5.0	-	-	-	0.9	6.2	1.9	23.0
ARIZ	508	254	110	50	190	75	25	26	506
ARK	8.0	5.7	-	1.0	3.2	0.2	0.7	1.2	7.4
CALIF	1,317	932	266	106	993	15	67	70	1,264
COLO	1,303	717	1,124	186	1,507	9	64	104	1,274
CONN	5.1	4.6	-	1.2	2.7	0.2	0.3	0.5	4.8
DEL	1.8	1.3	-	0.2	0.6	-	0.2	0.3	1.8
FLA	5.0	3.1	-	0.9	1.2	0.4	0.3	0.6	4.7
GA	4.6	2.4	0.9	1.3	0.9	0.2	0.8	0.5	4.2
IDAHO	840	653	381	99	844	6	50	47	828
ILL	386	241	124	71	321	2	23	25	309
IND	274	207	26	31	175	2	22	16	261
IOWA	869	555	380	86	754	2	87	70	765
KANS	378	221	152	31	294	1	24	28	373
KY	100	89	2	12	65	1	11	14	88
LA	24	11	-	3	3	2	2	2	23
MAINE	16	12	-	4	6	1	1	1	15
MD	21	17	-	3	11	1	1	2	20
MASS	8.6	6.2	-	1.8	3.4	0.1	0.5	0.8	8.2
MICH	264	174	18	19	144	2	20	16	255
MINN	554	397	191	63	481	2	40	52	504
MISS	13.0	7.5	-	4.0	2.3	0.7	1.0	1.5	11.0
MO	276	196	23	21	158	2	35	28	251
MONT	1,113	743	46	164	461	3	90	117	1,067
NEBR	377	191	202	44	297	1	23	35	370
NEV	227	153	60	23	162	4	23	22	206
N H	5.3	4.3	-	0.6	1.9	0.2	0.3	0.6	6.0
N J	9.5	7.5	-	0.9	4.1	0.5	0.5	1.0	10.0
N MEX	773	454	123	165	250	45	80	68	742
N Y	106	74	10	6	54	3	13	11	103
N C	16	12	-	2	6	1	2	3	14
N DAK	420	295	45	37	248	2	26	32	415
OHIO	728	473	48	46	383	6	72	55	687
OKLA	138	86	25	12	96	-	9	10	122
OREG	541	373	44	34	322	5	65	40	452
PA	165	123	-	17	75	2	20	13	160
R I	1.8	1.5	-	0.5	0.7	0.1	0.1	0.2	1.7
S C	1.6	0.9	-	0.2	0.3	0.1	0.1	0.3	1.5
S DAK	1,207	865	150	86	739	3	85	108	1,201
TENN	50	38	2	13	26	-	3	7	41
TEX	3,708	2,383	170	149	1,821	8	319	175	3,789
UTAH	1,053	780	100	74	646	25	94	85	1,009
VT	6.7	5.5	-	1.6	2.8	0.3	0.4	0.7	6.4
VA	202	187	4	22	136	1	18	24	192
WASH	141	111	26	4	50	4	19	17	144
W VA	174	155	1	25	110	1	11	18	165
WIS	167	118	15	18	103	1	15	12	151
WYO	1,883	1,115	163	242	802	6	167	114	1,829
U S	20,423	13,465	4,032	1,983	12,840	249	1,638	1,478	19,731

1/ BALANCE SHEET ESTIMATES BY STATES; THE SUM OF INVENTORY JAN 1, 1970, LAMB CROP AND INSHIPMENTS IS EQUAL TO THE SUM OF MARKETINGS, FARM SLAUGHTER, DEATHS AND INVENTORY JAN 1, 1971.

2/ INCLUDES CUSTOM SLAUGHTER FOR USE ON FARMS WHERE PRODUCED, STATE OUTSHIPMENTS, BUT EXCLUDES INTERFARM SALES WITHIN THE STATE.

3/ EXCLUDES CUSTOM SLAUGHTER FOR FARMERS AT COMMERCIAL ESTABLISHMENTS.

SHEEP AND LAMBS
PRODUCTION AND INCOME 1970

STATE	PRODUCTION 1/	MARKETINGS 2/	AVERAGE PRICE PER 100 POUNDS		VALUE OF PRODUCTION	CASH RECEIPTS 3/	VALUE OF HOME CONSUMPTION	GROSS INCOME
			SHEEP	LAMBS				
	1000 LBS	1000 LBS	DOLS	DOLS	1000 DOLS	1000 DOLS	1000 DOLS	1000 DOLS
ALA	210	253	5.80	23.60	44	42	9	51
ALAS	4/	65	25.00	35.00		17	10	27
ARIZ	20,757	20,677	7.00	27.20	4,002	4,513	1,272	5,785
ARK	319	386	8.00	24.50	73	75	4	79
CALIF	87,495	106,795	7.80	27.20	21,944	26,580	443	27,023
COLO	84,635	167,197	7.50	28.00	21,674	41,059	314	42,173
CONN	345	246	8.40	26.00	72	68	5	73
DFL	86	79	7.60	27.10	17	17	-	17
FLA	163	180	6.50	24.00	32	25	9	34
GA	71	208	6.00	26.00	23	26	7	33
IDAHN	66,812	97,194	7.00	26.00	16,583	22,827	151	22,978
ILL	22,990	40,555	7.30	27.00	5,531	9,202	76	9,278
IND	17,117	20,181	7.90	26.00	4,061	4,581	76	4,657
IOWA	50,149	93,599	7.10	27.00	13,864	23,218	75	23,293
KANS	20,604	30,178	6.40	26.60	5,179	7,276	39	7,315
KY	5,884	7,574	8.10	27.30	1,655	1,792	40	1,832
LA	564	496	8.50	23.50	90	72	29	101
MAINE	940	898	8.60	24.00	173	151	27	178
MD	1,222	1,279	7.40	27.10	304	281	36	317
MASS	391	454	8.40	26.00	80	86	3	89
MICH	13,737	15,580	8.90	27.20	3,459	3,826	71	3,897
MINN	39,043	56,722	7.40	26.40	9,699	13,502	78	13,580
MISS	387	592	6.50	25.00	67	67	17	84
MO	14,123	18,470	6.90	26.50	3,834	4,382	73	4,455
MONT	53,858	61,975	6.80	26.10	11,056	12,219	78	12,297
NEBR	19,831	35,760	7.30	27.50	5,318	8,724	39	8,763
NEV	10,593	16,806	7.50	27.00	2,726	4,045	86	4,131
NH	339	203	8.60	25.00	58	41	6	47
NJ	545	397	10.70	26.90	118	91	14	105
NMEX	31,065	38,893	8.80	26.40	6,172	6,930	680	7,610
NY	4,829	5,148	7.60	25.30	1,122	1,185	90	1,275
NC	554	662	6.00	22.50	115	115	28	143
NDAK	24,110	28,102	6.20	25.90	5,806	6,368	80	6,448
OHIO	36,324	41,483	8.00	26.60	8,886	10,029	180	10,209
OKLA	7,390	10,090	6.10	26.00	1,725	2,337	-	2,337
ORFG	30,051	35,852	5.80	25.10	6,950	8,149	138	8,287
PA	7,197	7,958	7.60	27.20	1,787	1,818	87	1,905
RI	104	106	8.40	26.00	20	19	3	22
SC	35	40	6.50	24.00	8	6	3	9
SDAK	70,870	81,638	6.30	26.70	16,875	19,604	86	19,690
TFNN	2,567	3,770	7.70	26.00	598	718	-	718
TEX	166,285	170,096	11.20	24.80	37,435	40,058	208	40,266
UTAH	60,909	73,550	7.10	25.40	15,009	16,992	608	17,600
VT	391	390	8.60	25.00	75	70	9	79
VA	14,082	15,520	6.70	26.20	3,371	3,552	37	3,589
WASH	8,966	9,428	6.10	26.70	2,132	2,415	98	2,513
WVA	12,362	12,620	6.80	25.10	2,621	2,663	36	2,699
WIS	9,776	12,211	6.20	25.10	2,222	2,657	35	2,692
WY	78,206	93,261	7.00	26.30	15,708	18,456	198	18,654
U S	1,099,385	1,435,918	7.52	26.40	260,373	333,746	5,691	339,437

- 1/ ADJUSTMENTS MADE FOR CHANGES IN INVENTORY AND FOR INSHIPMENTS.
2/ EXCLUDES CUSTOM SLAUGHTER FOR USE ON FARMS WHERE PRODUCED AND INTERFARM SALES WITHIN THE STATE
3/ RECEIPTS FROM MARKETINGS AND SALE OF FARM SLAUGHTER.
4/ DECREASE IN INVENTORY AND THE DEATH LOSS OF SHEEP RESULTED IN A DEFICIT IN NUMBER OF POUNDS PRODUCED.

SHEEP AND LAMBS
INVENTORY, SUPPLY AND DISPOSITION 1971 1/

STATE	INVENTORY JAN 1 1971	LAMB CROP	INSHIP- MENTS	MARKETINGS 2/		FARM SLAUGHTER 3/	DEATHS		INVENTORY JAN 1 1972
				SHEEP	LAMBS		SHEEP	LAMBS	
	1000 HD	1000 HD	1000 HD	1000 HD	1000 HD	1000 HD	1000 HD	1000 HD	1000 HD
ALA	5.5	3.7	-	0.6	1.9	0.3	0.5	0.7	5.2
ALAS	23.0	3.0	-	-	-	0.6	5.5	0.9	19.0
ARIZ	506	261	91	46	180	70	32	27	503
ARK	7.4	5.6	-	1.1	3.1	0.2	0.5	1.1	7.0
CALIF	1,264	913	255	121	978	12	70	79	1,171
CGLO	1,274	674	1,374	190	1,750	12	64	85	1,220
CONN	4.8	4.0	-	0.9	2.1	0.3	0.3	0.4	4.8
DEL	1.8	1.3	-	0.2	0.6	-	0.2	0.3	1.8
FLA	4.7	2.9	-	0.8	0.8	0.4	0.4	0.6	4.6
GA	4.2	2.3	3.0	2.0	1.2	0.1	0.9	0.5	4.8
IDAHN	828	670	281	83	815	6	35	60	780
ILL	309	208	164	44	293	2	22	25	295
IND	261	203	15	28	169	2	21	15	244
IOWA	765	506	339	59	660	2	82	72	735
KANS	373	219	144	34	294	1	22	28	357
KY	88	80	2	9	60	1	10	12	78
LA	23	11	-	3	3	2	2	2	22
MAINE	15	11	-	3	6	1	1	1	14
MD	20	16	-	2	9	1	2	2	20
MASS	8.2	6.2	-	1.4	3.8	0.3	0.3	0.8	7.8
MICH	255	173	9	28	151	1	19	16	222
MINN	504	361	188	62	440	2	37	45	467
MISS	11.0	6.4	-	2.9	2.0	0.7	0.9	1.2	9.7
MO	251	177	17	12	148	2	33	20	230
MONT	1,067	740	48	174	471	5	90	115	1,000
NEBR	370	180	214	40	305	1	22	30	366
NEV	206	143	91	18	176	3	19	20	204
N H	8.0	5.0	-	1.1	2.3	0.3	0.3	0.5	6.5
N J	10.0	7.9	-	1.5	4.4	0.5	0.5	1.0	10.0
N MEX	742	409	107	146	196	46	83	73	714
N Y	103	72	8	5	52	3	12	10	101
N C	14	11	-	1	6	1	2	2	13
N DAK	415	285	42	35	263	2	24	29	389
OHIO	687	474	30	42	397	8	59	45	640
OKLA	122	82	56	15	103	-	9	10	123
OREG	492	366	60	33	261	4	45	50	525
PA	160	121	-	19	76	4	20	12	150
P I	1.7	1.4	-	0.3	0.8	0.1	0.1	0.2	1.6
S C	1.5	0.8	-	0.2	0.2	0.1	0.2	0.2	1.4
S DAK	1,201	882	135	98	741	3	80	115	1,181
TENN	41	30	3	12	20	-	3	6	33
TEX	3,789	2,285	55	422	1,737	8	264	173	3,524
UTAH	1,009	710	70	51	578	12	92	80	976
VT	6.4	5.0	-	1.3	2.6	0.3	0.3	0.7	6.2
VA	192	176	1	23	126	1	19	23	177
WASH	144	112	29	11	93	5	19	20	137
W VA	165	149	1	17	104	1	13	18	162
WIS	151	111	7	12	90	1	14	11	141
WYO	1,829	1,121	165	289	850	5	130	106	1,735
U S	19,731	12,998	4,884	2,202	12,627	236	1,482	1,446	18,739

1/ BALANCE SHEET ESTIMATES BY STATES; THE SUM OF INVENTORY JAN 1, 1971, LAMB CROP AND INSHIPMENTS IS EQUAL TO THE SUM OF MARKETINGS, FARM SLAUGHTER, DEATHS AND INVENTORY JAN 1, 1972.

2/ INCLUDES CUSTOM SLAUGHTER FOR USE ON FARMS WHERE PRODUCED, STATE OUTSHIPMENTS, BUT EXCLUDES INTERFARM SALES WITHIN THE STATE.

3/ EXCLUDES CUSTOM SLAUGHTER FOR FARMERS AT COMMERCIAL ESTABLISHMENTS.

SHEEP AND LAMBS
PRODUCTION AND INCOME 1971

STATE	PRODUCTION 1/	MARKETINGS 2/	AVERAGE PRICE PER 100 POUNDS		VALUE OF PRODUCTION	CASH RECEIPTS 3/	VALUE OF HOME CONSUMPTION	GROSS INCOME
			SHEEP	LAMBS				
	1000 LBS	1000 LBS	DOLS	DOLS	1000 DOLS	1000 DOLS	1000 DOLS	1000 DOLS
ALA	226	224	6.50	26.50	49	46	7	53
ALAS	4/	42	24.00	35.00		10	6	16
ARIZ	22,076	21,227	6.70	26.90	4,550	4,688	1,215	5,903
ARK	364	388	7.50	24.50	73	73	4	77
CALIF	80,713	107,210	7.10	26.70	20,511	25,779	369	26,148
COLOR	85,018	190,749	5.70	27.50	22,089	47,071	457	47,528
CONN	318	266	10.50	25.00	61	53	7	60
DEL	79	79	6.40	26.60	17	17	-	17
FLA	160	136	7.00	25.00	29	18	10	28
GA	86	313	5.50	27.00	22	37	3	40
IDAH	68,707	92,198	6.80	25.50	16,053	21,491	154	21,645
ILL	20,386	34,380	6.20	25.50	4,567	7,705	71	7,776
IND	16,628	19,206	6.60	25.40	3,827	4,258	75	4,333
IOWA	45,132	74,973	5.60	25.90	11,534	17,980	72	18,052
KANS	19,659	30,573	5.70	27.10	5,059	7,413	40	7,453
KY	5,439	6,741	7.00	27.30	1,512	1,621	42	1,663
LA	581	480	8.00	25.50	95	71	32	103
MAINE	815	793	9.00	25.00	153	148	28	176
MD	1,076	989	6.40	26.60	269	219	35	254
MASS	440	443	10.00	25.50	93	91	9	100
MICH	13,087	17,287	8.20	26.60	3,264	3,997	35	4,032
MINN	34,502	51,366	5.90	25.80	8,418	11,772	76	11,848
MISS	366	449	7.00	27.50	59	58	19	77
MO	12,828	16,313	6.10	27.00	3,624	4,095	76	4,171
MONT	54,888	63,460	5.50	24.00	10,225	11,142	139	11,281
NEBR	15,769	36,073	5.60	26.70	5,139	8,576	37	8,613
NEV	10,400	17,502	6.30	25.60	2,667	4,099	58	4,157
NH	373	283	9.50	26.00	73	55	9	64
NJ	545	497	10.20	25.60	117	103	14	117
NMEX	23,738	32,119	7.30	24.90	4,465	5,050	690	5,740
NY	4,471	4,863	6.70	24.60	1,042	1,099	88	1,187
NC	616	612	6.00	23.00	146	123	28	151
NDAK	21,482	29,273	5.10	24.20	5,912	6,248	77	6,325
OHIO	35,846	43,100	7.20	26.20	9,475	10,357	219	10,576
OKLA	6,710	11,090	5.70	25.50	1,685	2,472	-	2,472
ORFG	28,632	29,755	5.60	25.60	6,778	6,760	122	6,882
PA	7,415	8,185	6.90	24.80	1,651	1,676	106	1,782
RI	98	95	10.50	25.50	20	20	3	23
SC	26	32	6.20	25.50	8	4	3	7
S DAK	72,251	83,294	5.40	26.50	16,588	19,489	93	19,582
TENN	1,734	3,125	6.70	28.20	489	597	-	597
TEX	175,090	202,527	8.50	25.30	39,934	42,424	208	43,632
UTAH	57,745	63,960	5.50	23.70	12,755	14,004	283	14,287
VT	380	344	9.00	25.00	73	64	9	73
VA	12,797	14,688	5.90	26.40	3,178	3,312	37	3,349
WASH	7,819	10,617	6.30	25.30	2,022	2,425	113	2,538
WVA	11,320	11,695	6.00	25.30	2,603	2,598	37	2,635
WTS	8,587	10,067	5.60	24.80	1,974	2,231	35	2,266
WYO	79,050	102,974	6.00	24.60	15,212	18,343	149	18,492
U S	1,070,502	1,447,047	6.56	25.90	250,159	322,982	5,399	328,381

- 1/ ADJUSTMENTS MADE FOR CHANGES IN INVENTORY AND FOR INSHIPMENTS.
2/ EXCLUDES CUSTOM SLAUGHTER FOR USE ON FARMS WHERE PRODUCED AND INTERFARM SALES WITHIN THE STATE
3/ RECEIPTS FROM MARKETINGS AND SALE OF FARM SLAUGHTER.
4/ DECREASE IN INVENTORY AND THE DEATH LOSS OF SHEEP RESULTED IN A DEFICIT IN NUMBER OF POUNDS PRODUCED.

SHEEP AND LAMBS
INVENTORY, SUPPLY AND DISPOSITION 1972 1/

STATE	INVENTORY JAN 1 1972	LAMB CROP	INSHIP- MENTS	MARKETINGS 2/		FARM SLAUGHTER 3/	DEATHS		INVENTORY JAN 1 1973
				SHEEP	LAMBS		SHEEP	LAMBS	
	1000 HD	1000 HD	1000 HD	1000 HD	1000 HD	1000 HD	1000 HD	1000 HD	1000 HD
ALA	5.2	3.5	-	0.3	1.5	0.3	0.7	0.9	5.0
ALAS	19.0	2.0	-	-	-	0.5	4.5	-	16.0
ARIZ	503	245	109	51	178	72	28	26	502
ARK	7.0	5.4	-	1.4	3.2	0.2	0.6	1.0	6.0
CALIF	1,171	860	204	78	831	10	82	93	1,141
COLO	1,220	611	1,633	161	1,917	12	68	102	1,204
CONN	4.8	4.7	-	1.1	2.7	0.3	0.2	0.4	4.8
DEL	1.8	1.3	-	0.2	0.7	-	0.2	0.2	1.8
FLA	4.6	2.9	-	0.9	0.7	0.6	0.3	0.5	4.5
GA	4.8	3.0	-	2.1	1.4	0.3	0.2	0.8	3.0
IDAH	780	644	102	84	630	5	43	57	707
ILL	255	199	100	46	222	2	23	26	275
IND	244	192	15	34	147	1	19	15	235
IOWA	735	479	320	79	635	2	80	78	660
KANS	357	209	109	29	269	1	21	24	331
KY	78	73	2	17	55	1	7	11	62
LA	27	10	-	4	2	2	2	2	20
MAINE	14.0	9.5	-	2.8	5.7	-	1.0	1.0	13.0
MD	20	16	-	3	10	-	2	2	19
MASS	7.8	5.6	-	1.5	3.1	0.2	0.4	0.7	7.5
MICH	222	154	8	31	115	1	15	16	206
MINN	467	333	147	41	374	2	35	50	445
MISS	9.7	5.9	-	2.9	2.3	0.6	0.8	1.0	8.0
MO	230	164	12	11	131	3	27	19	215
MONY	1,000	711	30	186	458	4	96	117	880
NEBR	344	184	202	39	282	1	25	35	370
NEV	204	132	143	34	221	3	17	24	180
NH	6.5	5.0	-	1.3	2.9	0.2	0.3	0.5	6.3
NJ	10.0	7.9	-	1.7	4.1	0.4	0.6	1.4	5.7
NMEX	714	435	117	124	210	40	79	70	743
NY	101	72	7	5	51	3	12	11	98
NC	13	10	-	2	5	1	1	2	12
NDAK	389	255	28	47	207	2	22	28	366
OHIO	640	457	42	50	379	10	70	50	590
OKLA	123	79	45	16	93	-	8	10	120
ORFG	525	362	23	60	286	4	40	46	474
PA	150	111	-	14	69	4	20	10	144
RI	1.6	1.3	-	0.3	0.6	0.1	0.1	0.2	1.6
SC	1.4	0.8	-	0.2	0.2	0.1	0.2	0.2	1.3
S DAK	1,181	896	111	75	747	3	90	112	1,161
TENN	33	24	1	7	14	-	3	5	26
TEX	2,524	2,302	137	349	2,022	5	210	163	3,214
UTAH	976	713	65	72	593	13	82	89	905
VT	6.2	5.0	-	1.1	2.4	0.3	0.2	0.7	6.5
VA	177	173	6	14	127	1	18	21	175
WASH	137	102	20	2	86	4	19	19	129
WVA	162	143	1	33	103	1	10	17	142
WIS	141	108	8	15	94	1	13	10	124
WYO	1,735	1,077	229	339	788	6	120	110	1,678
U S	18,739	12,599	3,976	2,170	12,383	224	1,417	1,480	17,641

- 1/ BALANCE SHEET ESTIMATES BY STATES; THE SUM OF INVENTORY JAN 1, 1972, LAMB CROP AND INSHIPMENTS IS EQUAL TO THE SUM OF MARKETINGS, FARM SLAUGHTER, DEATHS AND INVENTORY JAN 1, 1973.
2/ INCLUDES CUSTOM SLAUGHTER FOR USE ON FARMS WHERE PRODUCED, STATE OUTSHIPMENTS, BUT EXCLUDES INTERFARM SALES WITHIN THE STATE.
3/ EXCLUDES CUSTOM SLAUGHTER FOR FARMERS AT COMMERCIAL ESTABLISHMENTS.

SHEEP AND LAMBS
PRODUCTION AND INCOME 1972

STATE	PRODUCTION 1/ 1000 LBS	MARKETINGS 2/ 1000 LBS	AVERAGE PRICE PER 100 POUNDS		VALUE OF PRODUCTION 1000 DOLS	CASH RECEIPTS 3/ 1000 DOLS	VALUE OF HOME CONSUMPTION 1000 DOLS	GROSS INCOME 1000 DOLS
			SHEEP DOLS	LAMBS DOLS				
ALA	157	155	6.90	28.50	45	37	7	44
ALAS	4/	39	24.00	35.00		9	5	14
ARIZ	18,850	21,602	6.00	29.70	4,432	5,087	1,317	6,404
ARK	310	432	9.00	25.50	71	84	4	88
CALIF	74,953	88,145	7.60	29.70	21,049	24,110	303	24,413
COLO	82,989	202,705	5.70	30.60	24,094	56,816	495	57,311
CONN	348	337	12.00	33.50	96	88	10	98
DEL	88	88	8.00	29.00	21	21	-	21
FLA	172	132	9.00	30.00	36	20	16	36
GA	154	331	8.00	31.00	34	49	11	60
IDAHM	58,242	73,725	8.40	29.10	15,885	19,195	194	19,389
ILL	17,841	27,350	6.80	27.40	4,048	6,309	82	6,391
IND	15,238	17,651	8.20	28.40	3,783	4,128	44	4,172
IOWA	42,143	75,412	6.00	29.30	12,474	19,887	88	19,975
KANS	18,281	27,723	5.80	29.60	5,119	7,378	43	7,421
KY	4,997	7,238	7.30	29.60	1,529	1,688	41	1,729
LA	502	498	10.50	29.00	90	70	41	111
MATNF	639	779	10.00	30.00	161	175	-	175
MD	1,093	1,230	8.00	29.00	276	287	-	287
MASS	382	397	12.00	32.50	101	98	7	105
MICH	11,414	14,367	9.70	29.50	3,210	3,519	39	3,558
MINN	29,129	42,246	7.20	29.30	8,472	11,291	86	11,377
MISS	354	474	8.00	31.00	69	73	18	91
MO	11,939	14,191	5.80	28.90	3,479	3,787	121	3,908
MONT	45,031	66,266	6.10	27.90	11,376	13,217	118	13,335
NEBR	19,300	34,156	6.00	29.60	5,637	8,960	44	9,004
NEV	11,080	23,197	7.10	28.10	2,760	5,733	72	5,805
N H	362	360	11.00	32.00	89	88	7	95
N J	485	488	13.90	32.90	134	127	14	141
N MEX	25,106	30,865	7.60	29.00	5,807	5,912	640	6,552
N Y	4,258	4,783	8.90	28.10	1,175	1,238	100	1,338
N C	590	602	7.00	28.00	151	125	36	161
N DAK	20,244	25,461	4.80	27.10	5,059	5,590	83	5,673
OHIO	32,867	42,297	8.50	29.00	9,608	11,060	318	11,378
OKLA	6,335	10,310	5.80	28.50	1,769	2,502	-	2,502
OREG	28,937	36,910	6.60	27.30	7,306	8,462	111	8,573
PA	6,739	7,057	8.30	28.90	1,784	1,740	123	1,863
R I	88	78	12.00	33.00	23	20	4	24
S C	35	34	7.00	28.50	8	5	3	8
S DAK	74,503	83,975	5.60	28.90	19,578	22,084	102	22,186
TFNN	1,432	2,030	6.50	29.80	366	425	-	425
TEX	168,230	208,221	10.60	29.40	47,735	54,333	154	54,487
UTAH	53,105	65,120	6.20	27.70	14,113	16,105	369	16,474
VT	362	305	10.50	31.00	94	71	11	82
VA	13,198	13,941	7.00	29.30	3,649	3,710	46	3,756
WASH	6,753	8,773	6.90	28.70	2,025	2,463	106	2,569
W VA	10,984	13,515	7.20	28.60	2,825	3,054	43	3,097
WY	8,312	10,799	6.10	27.40	2,171	2,591	38	2,629
WYO	75,511	104,671	6.70	28.10	17,627	19,982	211	20,193
U S	1,004,102	1,411,461	7.26	29.10	271,434	353,603	5,725	359,528

- 1/ ADJUSTMENTS MADE FOR CHANGES IN INVENTORY AND FOR INSHIPMENTS.
2/ EXCLUDES CUSTOM SLAUGHTER FOR USE ON FARMS WHERE PRODUCED AND INTERFARM SALES WITHIN THE STATE
3/ RECEIPTS FROM MARKETINGS AND SALE OF FARM SLAUGHTER.
4/ DECREASE IN INVENTORY AND THE DEATH LOSS OF SHEEP RESULTED IN A DEFICIT IN NUMBER OF POUNDS PRODUCED.

SHEEP AND LAMBS
INVENTORY, SUPPLY AND DISPOSITION 1973 1/

STATE	INVENTORY	LAMB	INSHIP- MENTS	MARKETINGS		FARM SLAUGHTER	DEATHS		INVENTORY
	JAN 1 1973	CROP		2/			3/	SHEEP	LAMBS
	1000 HD	1000 HD	1000 HD	1000 HD	1000 HD	1000 HD	1000 HD	1000 HD	1000 HD
ALA	5.0	3.3	-	0.6	1.3	0.3	0.6	0.9	4.6
ALAS	16.0	2.0	-	-	-	0.5	3.5	-	14.0
ARIZ	502	232	110	46	196	60	27	27	488
ARK	6.0	5.1	-	0.6	2.9	0.2	0.5	0.9	6.0
CALIF	1,141	838	234	20	798	11	81	94	1,209
COLD	1,204	590	1,393	136	1,714	7	78	112	1,140
CONN	4.8	4.7	-	1.0	2.4	0.3	0.3	0.4	5.1
DEL	1.8	1.3	-	0.1	0.6	0.1	0.2	0.3	1.8
FLA	4.5	2.9	-	0.8	0.8	0.7	0.3	0.5	4.3
GA	3.0	2.0	0.1	-	0.6	0.5	-	0.4	3.6
IDAH0	707	596	88	47	569	8	35	48	684
ILL	275	191	72	41	197	2	23	23	252
IND	235	180	3	45	134	1	16	20	202
IOWA	660	431	152	76	505	2	67	62	531
KANS	221	200	65	31	232	1	18	24	290
KY	62	60	4	15	45	1	5	9	50
LA	20	10	-	4	2	2	2	2	18
MAINE	13.0	9.6	-	2.2	4.4	1.0	1.0	1.0	13.0
MD	19	14	-	4	8	-	1	2	18
MASS	7.5	5.3	-	1.5	2.9	0.4	0.4	0.7	6.9
MICH	206	139	8	21	118	1	20	16	177
MINN	445	316	131	44	341	2	35	55	415
MISS	8.0	4.9	-	1.9	1.5	0.5	0.7	0.8	7.5
MO	215	171	7	16	121	3	15	34	204
MONT	880	604	28	140	406	4	85	127	750
NEBR	270	165	130	44	263	1	29	38	290
NEV	180	127	90	12	166	3	18	21	177
N H	6.3	5.0	-	1.3	2.5	0.3	0.3	0.4	6.5
N J	9.7	7.0	-	3.1	2.9	0.6	0.6	1.0	8.5
N MEX	743	410	127	196	210	34	86	82	672
N Y	98	70	5	8	48	3	14	13	87
N C	12.0	9.0	-	1.0	4.0	1.0	1.0	2.0	12.0
N DAK	366	235	35	43	216	2	21	24	330
OHIO	580	403	22	35	326	8	61	50	525
OKLA	120	72	32	3	92	-	9	16	104
OREG	474	350	31	19	242	5	33	41	515
PA	144	111	-	6	68	2	22	12	144
R I	1.6	1.4	0.4	0.2	0.3	0.1	-	0.2	2.6
S C	1.3	0.9	-	0.2	0.3	0.1	0.1	0.3	1.2
S DAK	1,161	887	86	258	747	3	55	95	976
TENN	29	22	1	7	14	-	3	4	24
TEX	3,214	1,964	150	456	1,468	4	190	120	3,090
UTAH	995	635	60	99	551	9	84	85	772
VT	6.5	5.5	-	1.3	2.8	0.3	0.3	0.7	6.6
VA	175	169	5	14	121	2	17	20	175
WASH	129	97	13	2	81	4	16	19	117
W VA	142	129	1	21	87	1	9	18	136
WIS	124	100	5	16	80	1	11	9	112
WY0	1,678	912	186	257	682	7	190	108	1,532
U S	17,641	11,500	3,275	2,198	10,879	202	1,386	1,441	16,310

- 1/ BALANCE SHEET ESTIMATES BY STATES; THE SUM OF INVENTORY JAN 1, 1973, LAMB CROP AND INSHIPMENTS IS EQUAL TO THE SUM OF MARKETINGS, FARM SLAUGHTER, DEATHS AND INVENTORY JAN 1, 1974.
2/ INCLUDES CUSTOM SLAUGHTER FOR USE ON FARMS WHERE PRODUCED, STATE OUTSHIPMENTS, BUT EXCLUDES INTERFARM SALES WITHIN THE STATE.
3/ EXCLUDES CUSTOM SLAUGHTER FOR FARMERS AT COMMERCIAL ESTABLISHMENTS.

SHEEP AND LAMBS
PRODUCTION AND INCOME 1973

STATE	PRODUCTION 1/ 1000 LBS	MARKETINGS 2/ 1000 LBS	AVERAGE PRICE PER 100 POUNDS		VALUE OF PRODUCTION 1000 DOLS	CASH RECEIPTS 3/ 1000 DOLS	VALUE OF HOME CONSUMPTION 1000 DOLS	GROSS INCOME 1000 DOLS
			SHEEP DOLS	LAMBS DOLS				
ALA	163	172	10.00	34.80	44	44	8	52
ALAS	47	39	24.00	35.00		9	5	14
ARIZ	18,960	22,674	10.20	35.40	5,288	6,751	1,511	8,262
ARK	313	295	10.50	28.00	77	72	4	76
CALIF	71,434	78,210	14.20	35.30	24,126	27,102	352	27,454
COLO	72,110	180,321	9.40	36.50	26,178	61,026	333	61,359
CONN	394	324	14.00	42.00	121	99	14	113
DEL	76	63	11.10	35.30	24	19	5	24
FLA	184	128	12.00	33.00	41	24	21	45
GA	166	13	12.00	38.00	43	5	22	27
IDAHO	55,312	62,648	13.70	35.30	18,380	20,796	394	21,190
ILL	15,916	24,100	9.60	34.40	4,892	7,019	103	7,122
IND	14,192	18,391	14.20	35.30	4,464	5,258	58	5,316
IOWA	35,925	62,015	10.70	35.50	13,090	19,754	114	19,868
KANS	16,365	24,633	9.90	35.20	5,658	7,729	51	7,780
KY	4,312	6,163	11.80	36.40	1,560	1,800	50	1,850
LA	502	510	15.00	35.00	115	99	47	146
MAINE	762	634	12.00	38.00	210	161	49	210
MD	1,023	1,160	11.10	35.30	288	303	-	303
MASS	366	395	14.00	41.00	122	112	21	133
MICH	9,399	13,472	13.60	36.60	3,441	4,267	49	4,416
MINN	26,581	39,315	12.60	35.10	9,194	12,611	98	12,709
MISS	301	308	11.00	40.00	79	63	20	83
MO	12,257	13,860	11.20	36.10	4,332	4,509	152	4,661
MONY	38,153	55,553	11.80	34.00	11,132	14,568	156	14,724
NEBR	15,941	33,851	10.50	35.20	5,829	10,558	53	10,611
NEV	9,854	15,924	11.60	33.10	3,057	4,987	79	5,066
N H	417	347	14.00	41.00	118	101	16	117
N J	445	535	18.30	35.80	124	135	23	158
N MEX	20,076	39,206	13.30	34.80	5,895	8,803	735	9,538
N Y	3,437	4,858	14.50	33.30	1,216	1,453	119	1,572
N C	560	432	11.00	32.00	156	115	41	156
N DAK	18,990	25,745	9.80	32.40	5,873	7,127	123	7,250
OHIO	28,098	35,459	13.70	36.00	10,399	11,848	308	12,156
OKLA	5,230	8,660	9.40	33.70	1,793	2,831	-	2,831
OREG	30,504	27,454	13.90	33.20	9,432	8,639	296	8,935
PA	6,453	6,134	14.80	39.30	2,388	2,263	125	2,388
R I	142	47	14.00	41.00	35	13	5	18
S C	47	43	11.00	34.80	11	9	4	13
S DAK	75,776	106,782	10.60	34.70	24,041	29,287	145	29,432
TENN	1,306	2,030	8.70	34.60	419	503	-	503
TEX	148,755	172,431	16.40	35.20	46,799	51,700	147	51,847
UTAH	45,942	67,265	12.40	31.90	15,033	19,045	321	19,366
VT	466	397	14.00	40.00	130	114	17	131
VA	13,173	13,286	9.90	38.10	4,613	4,588	130	4,718
WASH	6,418	8,194	11.30	34.20	2,244	2,748	153	2,901
W VA	9,317	10,080	12.70	34.00	2,893	2,935	54	2,989
WIS	7,656	9,556	10.00	31.40	2,331	2,607	44	2,651
WYO	51,008	83,978	15.50	34.80	16,004	22,876	320	23,196
U S	895,776	1,278,090	12.90	35.10	293,732	389,585	6,895	396,480

- 1/ ADJUSTMENTS MADE FOR CHANGES IN INVENTORY AND FOR INSHIPMENTS.
2/ EXCLUDES CUSTOM SLAUGHTER FOR USE ON FARMS WHERE PRODUCED AND INTERFARM SALES WITHIN THE STATE
3/ RECEIPTS FROM MARKETINGS AND SALE OF FARM SLAUGHTER.
4/ DECREASE IN INVENTORY AND THE DEATH LOSS OF SHEEP RESULTED IN A DEFICIT IN NUMBER OF POUNDS PRODUCED.

SHEEP AND LAMBS
INVENTORY, SUPPLY AND DISPOSITION 1974 1/

STATE	INVENTORY	LAMB	INSHIP- MENTS	MARKETINGS 2/		FARM SLAUGHTER 3/	DEATHS		INVENTORY
	JAN 1 1974	CROP		SHEEP	LAMBS		SHEEP	LAMBS	JAN 1 1975
	1000 HD	1000 HD	1000 HD	1000 HD	1000 HD	1000 HD	1000 HD	1000 HD	1000 HD
ALA	4.6	3.0	-	0.4	1.3	0.3	0.4	0.8	4.4
ALAS	14.0	2.0	0.1	-	-	2.0	1.7	-	12.4
ARIZ	468	232	137	41	198	64	26	18	510
ARK	6.0	4.4	-	1.2	2.3	0.3	0.3	0.7	5.5
CALIF	1,209	809	256	73	825	15	90	72	1,199
COLU	1,140	542	1,014	152	1,389	8	57	100	990
CONN	5.1	4.0	-	0.5	1.9	0.5	0.2	0.5	5.5
DEL	1.8	1.4	-	0.2	0.7	0.1	0.1	0.3	1.7
FLA	4.3	2.8	-	0.6	0.8	0.7	0.3	0.5	4.2
GA	3.8	2.0	-	0.8	0.5	0.4	0.2	0.4	3.5
IAHND	684	645	58	72	609	4	47	60	595
ILL	252	176	49	33	164	2	22	27	229
IND	202	150	3	20	106	4	14	28	183
INWA	531	365	137	56	388	2	60	67	460
KANS	290	180	50	43	221	1	15	20	220
KY	50	50	1	13	37	1	3	7	40
LA	18	11	-	3	4	2	2	3	15
MAINE	13.0	9.4	-	2.5	4.9	1.0	1.0	1.0	12.0
MD	18	14	-	3	8	1	1	2	17
MASS	6.9	5.2	-	1.2	2.6	0.2	0.3	0.8	7.0
MICH	177	121	5	22	104	1	15	14	147
MINN	415	304	45	37	260	2	30	45	390
MISS	7.5	4.2	-	1.6	1.3	0.4	0.8	0.6	7.0
MO	204	148	3	27	114	2	13	22	177
MONT	750	550	27	111	239	4	80	118	675
NEBR	290	160	91	32	214	1	19	35	240
NEV	177	125	78	18	169	2	18	21	151
N H	6.5	5.7	-	1.1	3.0	0.4	0.4	0.6	6.7
N J	8.5	7.1	-	0.3	3.3	0.4	0.4	1.2	10.0
N MEX	672	395	115	148	259	31	80	86	578
N Y	87	62	6	9	44	2	10	10	79
N C	12.0	9.0	-	2.0	4.0	1.0	1.0	2.0	11.0
N DAK	330	213	24	22	216	2	24	27	276
OHIO	525	360	18	52	265	11	54	46	475
OKLA	104	71	14	18	67	-	5	10	89
OREG	515	358	20	41	320	5	43	44	440
PA	144	116	-	23	78	3	20	11	125
R I	2.6	1.3	-	0.4	0.6	0.1	0.1	0.2	2.5
S C	1.2	0.9	-	-	0.2	0.1	0.1	0.3	1.4
S DAK	976	806	65	194	692	2	55	111	792
TENN	24	18	1	5	11	-	2	4	21
TEX	2,090	1,500	225	486	1,266	13	200	135	2,715
UTAH	772	578	50	75	462	6	72	88	697
VT	6.6	5.4	-	1.1	2.4	0.4	0.3	1.0	6.8
VA	175	170	4	16	119	2	16	19	177
WASH	117	94	3	16	64	4	18	20	92
W VA	136	120	1	22	82	1	8	15	128
WYS	112	88	5	11	71	1	10	7	105
WYD	1,532	910	124	264	692	7	111	106	1,386
U S	16,310	10,509	2,629	2,172	9,888	217	1,248	1,409	14,515

1/ BALANCE SHEET ESTIMATES BY STATES; THE SUM OF INVENTORY JAN 1, 1974, LAMB CROP AND INSHIPMENTS IS EQUAL TO THE SUM OF MARKETINGS, FARM SLAUGHTER, DEATHS AND INVENTORY JAN 1, 1975.

2/ INCLUDES CUSTOM SLAUGHTER FOR USE ON FARMS WHERE PRODUCED, STATE OUTSHIPMENTS, BUT EXCLUDES INTERFARM SALES WITHIN THE STATE.

3/ EXCLUDES CUSTOM SLAUGHTER FOR FARMERS AT COMMERCIAL ESTABLISHMENTS.

SHEEP AND LAMBS
PRODUCTION AND INCOME 1974

STATE	PRODUCTION 1/	MARKETINGS 2/	AVERAGE PRICE PER 100 POUNDS		VALUE OF PRODUCTION	CASH RECEIPTS 2/	VALUE OF HOME CONSUMPTION	GROSS INCOME
			SHEEP	LAMBS				
	1000 LBS	1000 LBS	DOLS	DOLS	1000 DOLS	1000 DOLS	1000 DOLS	1000 DOLS
ALA	156	157	10.10	36.80	47	46	6	52
ALAS	4/	204	24.00	35.00		49	9	58
ARIZ	21,595	23,295	12.70	38.80	6,852	7,862	1,638	9,500
ARK	313	341	11.30	30.10	75	74	8	82
CALIF	68,596	85,685	12.10	37.90	25,479	30,594	739	31,333
COLO	62,478	151,621	11.20	39.80	23,598	54,694	362	55,056
CONN	314	209	17.00	37.00	94	64	21	85
DEL	94	96	10.40	38.00	30	27	5	32
FLA	171	107	8.00	28.00	33	17	18	35
GA	113	111	12.00	38.00	32	20	17	37
IDAHO	55,300	70,103	12.20	36.50	19,786	23,314	194	23,508
ILL	13,840	19,969	10.80	35.10	4,330	6,007	105	6,112
IND	10,377	12,324	11.60	36.90	3,610	3,900	221	4,121
IOWA	27,804	46,172	8.90	39.10	10,798	16,024	125	16,149
KANS	14,738	25,098	9.60	38.90	5,621	8,251	57	8,308
KY	3,715	5,075	11.20	39.30	1,445	1,556	57	1,613
LA	504	550	9.50	34.00	98	114	41	155
MAINE	707	719	15.00	36.00	211	186	46	232
MD	1,047	1,009	10.40	38.00	306	292	50	342
MASS	349	318	17.00	37.00	103	91	10	101
MICH	8,610	12,282	11.40	38.60	3,223	4,036	51	4,087
MINN	24,524	30,370	10.10	37.30	8,576	10,120	104	10,224
MISS	246	263	10.00	35.00	52	48	14	62
MO	11,245	14,458	9.60	39.20	4,155	4,673	110	4,783
MONT	35,019	45,895	11.80	34.40	10,453	12,301	158	12,459
NEBR	15,033	26,846	9.40	38.40	5,719	9,149	58	9,207
NEV	8,890	16,848	11.90	36.30	3,209	5,633	66	5,719
N H	425	360	15.00	36.00	127	101	18	119
N J	521	274	17.80	36.60	158	95	22	117
N MEX	18,660	37,620	12.40	36.80	5,961	6,699	650	10,349
N Y	3,535	4,628	11.50	36.10	1,299	1,427	129	1,556
N C	530	542	12.50	34.50	165	139	44	183
N DAK	16,810	23,205	8.30	33.20	5,124	7,019	98	7,117
OHIO	25,499	31,432	11.90	39.10	9,525	10,626	475	11,105
OKLA	5,355	8,210	8.40	35.20	1,822	2,311	-	2,311
OREG	29,176	38,404	9.00	32.50	9,190	11,229	341	11,570
PA	6,731	8,753	13.20	39.20	2,533	2,809	125	2,934
R I	98	98	17.00	37.00	29	26	5	31
S C	44	13	10.00	34.00	12	4	4	8
S DAK	66,601	93,292	9.20	36.70	21,835	27,576	150	27,726
TENN	1,082	1,540	9.00	36.10	344	407	-	407
TEX	110,765	158,041	14.20	35.70	33,034	45,455	532	45,987
UTAH	41,520	54,507	11.50	34.90	14,341	16,834	217	17,051
VT	405	330	15.00	36.00	113	89	19	108
VA	12,896	12,704	11.30	42.60	4,993	4,836	170	5,006
WASH	5,452	8,890	9.40	35.30	2,233	2,620	142	2,762
W VA	8,853	9,835	9.90	35.50	2,766	2,872	55	2,927
WIS	6,935	8,112	8.25	34.80	2,284	2,487	49	2,536
WYO	59,078	85,624	8.60	34.80	16,225	20,944	311	21,255
U S	806,755	1,177,539	11.20	37.00	272,048	368,747	7,870	376,617

- 1/ ADJUSTMENTS MADE FOR CHANGES IN INVENTORY AND FOR INSHIPMENTS.
2/ EXCLUDES CUSTOM SLAUGHTER FOR USE ON FARMS WHERE PRODUCED AND INTERFARM SALES WITHIN THE STATE
3/ RECEIPTS FROM MARKETINGS AND SALE OF FARM SLAUGHTER.
4/ DECREASE IN INVENTORY AND THE DEATH LOSS OF SHEEP RESULTED IN A DEFICIT IN NUMBER OF POUNDS PRODUCED.

END