



**AgEcon** SEARCH  
RESEARCH IN AGRICULTURAL & APPLIED ECONOMICS

*The World's Largest Open Access Agricultural & Applied Economics Digital Library*

**This document is discoverable and free to researchers across the globe due to the work of AgEcon Search.**

**Help ensure our sustainability.**

Give to AgEcon Search

AgEcon Search

<http://ageconsearch.umn.edu>

[aesearch@umn.edu](mailto:aesearch@umn.edu)

*Papers downloaded from **AgEcon Search** may be used for non-commercial purposes and personal study only. No other use, including posting to another Internet site, is permitted without permission from the copyright owner (not AgEcon Search), or as allowed under the provisions of Fair Use, U.S. Copyright Act, Title 17 U.S.C.*

SB 593 (1972)

USDA STATISTICAL BULLETINS

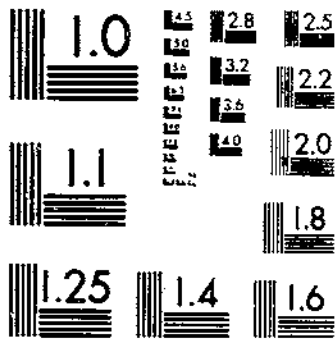
UPDATA

NONCITRUS FRUITS AND NUTS PRODUCTION, USE, AND VALUE

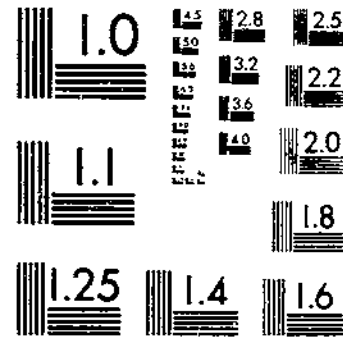
BY STATE, 1969-74

1 OF 1

# START



MICROCOPY RESOLUTION TEST CHART  
NATIONAL BUREAU OF STANDARDS-1963-A



MICROCOPY RESOLUTION TEST CHART  
NATIONAL BUREAU OF STANDARDS-1963-A

630,15  
U.S. 13 # 593

57  
c-2

# NONCITRUS FRUITS AND NUTS

Production, Use, And Value Estimates  
By State, 1969-74

Los Angeles Public Library

FEB 1 1978



Crop  
Reporting  
Board

U.S. Department  
of Agriculture  
Washington, D.C.  
20250

Statistical Bulletin 593

© UPDATA 1981

## C O N T E N T S

	<u>PAGE</u>
 <u>NONCITRUS FRUITS:</u>	
Production by kinds in tons	70
Combined, production, value and utilization	71
 Apples:	
Production, price, and value	6
Disposition	12
Production by varieties	16
Apricots	44
Avocados	44
Bananas	50
Bushberries	37
Cherries, tart	56
Cherries, sweet	58
Cranberries	39
Dates	45
Figs	45
Grapes	40
Nectarines	45
Olives	45
Papayas	50
Peaches	28
Pears	52
Persimmons	45
Plums	46
Pomegranates	46
Prunes	46
Prunes and plums	47
 Economic abandonment	 66
Marketing seasons	4
 <u>NUTS:</u>	
Almonds	64
Filberts	64
Macadamia nuts	64
Pecans	62
Walnuts	64

December 1977

## NONCITRUS FRUITS AND NUTS

### Production, Use, and Value Estimates for 1969-74

This publication presents revised statistics by States on production, utilization, price, and value of all noncitrus fruits and nuts for 1969-74.

For noncitrus fruits, these statistics continue the historical series begun in 1889. Revisions for 1964-70 were published in Statistical Bulletin No. 505 issued in January 1973. For tree nuts, data were begun in 1909, and revisions for 1964-70 appear in Statistical Bulletin No. 504 published in December 1972.

For most fruits, production is estimated at two levels--total and utilized. Total production is the quantity actually harvested plus quantities acceptable for fresh market or processing but not harvested, primarily for economic reasons. Utilized production is the amount sold plus the quantities used at home or held in storage. The difference between total and utilized production is the quantity of mature fruit not harvested for economic reasons or excess cullage of harvested fruit.

Historically, apples and peaches have been reported in bushels. However, because of the wide variety of containers used for marketing, and the varying weights per container, bushels were converted to pounds in establishing official estimates: 42-pound equivalents for apples and 48-pound equivalents for peaches. Commercial apples refers to the crop produced in orchards of 100 or more bearing-age trees. Peach production includes all orchards.

Statistics on utilization of fruit by commercial processors refer to first utilization, not necessarily final utilization. For example, frozen fruit includes fruit which may later be used for preserves.

The price shown for each crop is a season average price for all methods of sales.

Prices for fresh fruit, except as noted below, are the average prices producers received at the point of first sale, commonly referred to as the average price as sold. Since the point of first sale is not the same for all producers, prices for the various methods of sale are weighted by the proportionate quantity sold. For example, if in a given State part of the fruit crop is sold f.o.b. packed by growers, part sold as bulk fruit at the packinghouse door, and some sold retail at roadside stands, the fresh fruit average price as sold is a weighted average of the average price for each method of sale.

Prices for fruit sold for processing are expressed as equivalent returns for fruit delivered to the processing plant door.

When a crop is sold for both fresh and processing, the season average price is a weighted average of the fresh and processing prices.

Exceptions to the above price definitions are:

(1) Fresh fruit sales in Washington and Oregon are equivalent returns at the packinghouse door. F.o.b. packed prices are adjusted to an equivalent incoming packinghouse door price by subtracting all costs that accumulate between the incoming packinghouse door and the f.o.b. price, such as grading, packing, inspection fees, selling, and other costs.

CONTINUED

(2) Prices shown for California represent returns at the first delivery point by the producer. The first delivery point price is an equivalent price received by growers for fruit delivered at the local market, packinghouse, receiving shed, or any other first delivery point.

Value estimates in this report cover the marketing season or crop year and should not be confused with cash receipts from these crops for a calendar year. Season average price for each State is applied to utilized production to compute value of production. The average price shown for the United States is obtained by dividing U. S. value of production by U. S. quantity utilized.

#### FRUITS (NONCITRUS): MARKETING SEASONS FOR SPECIFIED CROPS

- APPLES : All South Atlantic States, Kentucky, Tennessee, Indiana, Illinois, Missouri, Arkansas, New Mexico, and California, June 1 to May 31; all other States, July 1 to June 30, except Washington and Oregon where the bulk of the crop is marketed August 1 to July 31.
- APRICOTS : Fresh fruit--May 25 to August 20.  
Canning--June 15 to August 15.  
Dried--California, June 20 to August 20.
- AVOCADOS : California--November 1 to November 30, (Following Year).  
Florida--June 20 to March 1.
- CHERRIES : Fresh fruit--Sweet varieties, May 1 to August 15;  
Tart varieties, June 15 to August 20.
- CRANBERRIES : September 5 to December 20.
- DATES : August 15 to March 15.
- FIGS : Fresh fruit--June 5 to October 15.  
Canning--August 1 to October 15.  
Dried--California, June 20 to October 31.
- GRAPES : Fresh fruit--California, May 25 to April 30;  
Arizona, June 5 to July 15;  
all other States, July 10 to October 31.  
Crushed for juice, wine, and brandy--August 1 to December 15.  
Dried for raisins--California, September 1 to May 30.
- NECTARINES : California, June 10 to August 31.
- OLIVES : September 25 to March 15.
- PEACHES : Fresh fruit--Georgia and South Carolina, May 20 to August 31;  
other South Atlantic States, South Central States,  
and California, June 1 to September 30; New England  
States, New York, Michigan, and Idaho, August 1 to  
September 30; all other States, July 1 to September 30.  
Canning--California, July 1 to September 10.  
Dried--California, August 1 to October 10.

CONTINUED

FRUITS (NONCITRUS): MARKETING SEASONS FOR SPECIFIED CROPS CONTINUED

- PEARS : Fresh fruit--California, July 1 to April 30; Washington and Oregon, August 10 to May 31; other States, July 1 to December 15.  
Canning and dried--California, Washington, and Oregon, August 1 to November 30.
- PERSIMMONS : September 25 to January 10.
- POMEGRANATES : September 15 to November 10.
- PLUMS : Fresh fruit--May 25 to September 30.  
Canning--June 1 to September 30.
- PRUNES : Dried--August 15 to April 15.
- PRUNE AND PLUMS : Fresh fruit and canning--August 10 to October 20.

TREE NUTS

- ALMONDS : August 5 to November 15.
- FILBERTS : October 1 to September 30.
- MACADAMIA NUTS : January 1 to December 31 (Peak harvest August to January).
- PECANS : September 30 to March 15.
- WALNUTS : September 15 to December 30.



APPLES, COMMERCIAL CROP

YEAR AND STATE	PRODUCTION				PRICE PER POUND	VALUE OF UTILIZED PRODUCTION
	42-POUND EQUIVALENTS		POUNDS			
	TOTAL	UTILIZED	TOTAL	UTILIZED		
1969	1,000 UNITS		MILLION UNITS		CENTS	1,000 DOLLARS
ARK	250	250	10.5	10.5	5.51	579
CALIF	12,857	12,857	540.0	540.0	3.25	17,550
COLO	1,905	1,833	80.0	77.0	4.15	3,196
CONN	1,071	1,062	45.0	44.6	7.84	3,497
DEL	357	333	15.0	14.0	5.01	701
IDAHO	3,190	3,190	134.0	134.0	5.14	6,888
ILL	2,619	2,567	110.0	107.8	5.41	5,832
IND	2,024	2,024	85.0	85.0	5.82	4,947
IOWA	333	333	14.0	14.0	7.27	1,018
KANS	419	393	17.6	16.5	4.94	815
KY	512	490	21.5	20.6	6.00	1,236
MAINE	1,738	1,738	73.0	73.0	6.37	4,650
MD	1,762	1,714	74.0	72.0	5.31	3,823
MASS	2,381	2,381	100.0	100.0	6.98	6,980
MICH	16,071	16,071	675.0	675.0	3.63	24,503
MINN	500	455	21.0	19.1	7.09	1,354
MO	1,410	1,410	59.2	59.2	6.38	3,777
N H	1,024	1,024	43.0	43.0	6.94	2,984
N J	3,267	2,850	137.2	119.7	5.31	6,356
N MEX	643	593	27.0	24.9	5.86	1,459
N Y	20,357	20,357	855.0	855.0	4.68	40,014
N C	5,310	4,857	223.0	204.0	4.08	8,323
OHIO	3,333	3,262	140.0	137.0	6.15	8,426
OREG	3,976	3,976	167.0	167.0	2.91	4,860
PA	12,738	12,500	535.0	525.0	3.66	19,215
R I	105	102	4.4	4.3	8.13	350
S C	210	210	8.8	8.8	9.08	799
TENN	248	248	10.4	10.4	4.85	504
UTAH	1,214	1,000	51.0	42.0	4.05	1,701
VT	905	905	38.0	38.0	7.75	2,945
VA	11,524	11,238	484.0	472.0	3.81	17,983
WASH	40,357	39,881	1,695.0	1,675.0	2.93	49,078
W VA	6,310	6,190	265.0	260.0	4.55	11,830
WIS	1,452	1,452	61.0	61.0	6.84	4,172
U S	162,372	159,746	6,819.6	6,709.4	4.06	272,345

CONTINUED

APPLES, COMMERCIAL CROP

CONTINUED

YEAR AND STATE	PRODUCTION				PRICE PER POUND	VALUE OF UTILIZED PRODUCTION
	42-POUND EQUIVALENTS		POUNDS			
	TOTAL	UTILIZED	TOTAL	UTILIZED		
	1,000 UNITS		MILLION UNITS	CENTS	1,000 DOLLARS	
<u>1970</u>						
ARK	207	207	8.7	8.7	4.83	420
CALIF	11,905	11,905	500.0	500.0	3.40	17,000
COLO	1,500	1,500	63.0	63.0	5.47	3,446
CONN	1,048	1,014	44.0	42.6	6.27	2,671
DEL	333	286	14.0	12.0	4.20	504
IDAHO	1,429	1,429	60.0	60.0	6.78	4,068
ILL	2,500	2,450	105.0	102.9	5.71	5,876
IND	1,857	1,857	78.0	78.0	5.38	4,196
IOWA	310	310	13.0	13.0	8.39	1,091
KANS	310	288	13.0	12.1	4.43	536
KY	405	386	17.0	16.2	6.80	1,102
MAINE	1,786	1,786	75.0	75.0	6.21	4,658
MD	1,714	1,643	72.0	69.0	5.34	3,685
MASS	2,619	2,567	110.0	107.8	6.31	6,802
MICH	16,429	16,429	690.0	690.0	3.73	25,737
MINN	619	595	26.0	25.0	7.38	1,845
MO	1,338	1,338	56.2	56.2	6.47	3,636
N H	1,376	1,310	57.8	55.0	6.07	3,339
N J	2,619	2,357	110.0	99.0	4.89	4,841
N MEX	643	607	27.0	25.5	5.31	1,354
N Y	23,691	22,500	995.0	945.0	3.82	36,099
N C	5,571	5,310	234.0	223.0	4.07	9,076
OHIO	3,095	3,095	130.0	130.0	6.58	8,554
OREG	2,738	2,738	115.0	115.0	4.43	5,095
PA	12,857	12,143	540.0	510.0	3.79	19,329
R I	143	140	6.0	5.9	6.95	410
S C	310	310	13.0	13.0	9.25	1,203
TENN	214	214	9.0	9.0	5.66	509
UTAH	667	655	28.0	27.5	5.71	1,570
VT	952	905	40.0	38.0	6.26	2,379
VA	11,310	11,024	475.0	463.0	3.76	17,409
WASH	33,143	33,095	1,392.0	1,390.0	5.07	70,473
W VA	5,310	5,238	223.0	220.0	4.90	10,780
WIS	1,381	1,381	58.0	58.0	7.20	4,176
U S	152,329	149,012	6,397.7	6,258.4	4.54	283,869

CONTINUED

APPLES, COMMERCIAL CROP

CONTINUED

YEAR AND STATE	PRODUCTION				PRICE PER POUND	VALUE OF UTILIZED PRODUCTION
	42-POUND EQUIVALENTS		POUNDS			
	TOTAL	UTILIZED	TOTAL	UTILIZED		
	1,000 UNITS		MILLION UNITS	CENTS	1,000 DOLLARS	
1971						
ARK	229	229	9.6	9.6	4.55	437
CALIF	9,524	9,524	400.0	400.0	3.83	15,320
COLO	1,762	1,762	74.0	74.0	7.03	5,202
CONN	1,190	1,076	50.0	45.2	6.17	2,789
DEL	310	286	13.0	12.0	5.05	606
IDAHO	2,143	2,143	90.0	90.0	7.47	6,723
ILL	2,619	2,548	110.0	107.0	5.76	6,163
IND	2,143	2,143	90.0	90.0	5.36	4,824
IOWA	252	252	10.6	10.6	8.20	869
KANS	369	357	15.5	15.0	6.57	986
KY	476	462	20.0	19.4	5.95	1,154
MAINE	2,310	2,190	97.0	92.0	6.85	6,302
MD	1,714	1,643	72.0	69.0	5.37	3,705
MASS	2,738	2,500	115.0	105.0	6.55	6,878
MICH	17,381	16,667	730.0	700.0	3.57	24,990
MINN	595	560	25.0	23.5	7.51	1,765
MO	1,338	1,338	56.2	56.2	8.12	4,563
N H	1,640	1,548	68.9	65.0	6.73	4,375
N J	2,976	2,619	125.0	110.0	5.47	6,017
N MEX	298	286	12.5	12.0	5.99	839
N Y	25,000	22,024	1,050.0	925.0	3.61	33,393
N C	4,524	4,405	190.0	185.0	4.24	7,844
OHIO	3,810	3,571	160.0	150.0	6.56	9,840
OREG	2,976	2,976	125.0	125.0	5.08	6,350
PA	12,857	12,024	540.0	505.0	3.90	19,695
R I	131	121	5.5	5.1	7.28	371
S C	286	286	12.0	12.0	9.64	1,157
TENN	224	224	9.4	9.4	6.07	571
UTAH	619	595	26.0	25.0	7.14	1,785
VT	1,071	969	45.0	40.7	6.47	2,633
VA	11,905	11,429	500.0	480.0	3.97	19,056
WASH	28,714	28,571	1,206.0	1,200.0	6.20	74,400
W VA	6,071	5,952	255.0	250.0	4.99	12,475
WIS	1,548	1,548	65.0	65.0	7.81	5,077
U S	151,743	144,828	6,373.2	6,082.7	4.92	299,154

CONTINUED

APPLES, COMMERCIAL CROP

CONTINUED

YEAR AND STATE	PRODUCTION				PRICE PEP POUND	VALUE OF UTILIZED PRODUCTION
	42-POUND EQUIVALENTS		POUNDS			
	TOTAL	UTILIZED	TOTAL	UTILIZED		
	1,000 UNITS		MILLION UNITS		CENTS	1,000 DOLLARS
1972						
ARK	205	205	8.6	8.6	5.57	479
CALIF	12,619	12,619	530.0	530.0	4.75	25,175
COLO	262	262	11.0	11.0	13.10	1,441
CONN	786	786	33.0	33.0	9.93	3,277
DEL	262	262	11.0	11.0	6.08	669
IDAHO	1,190	1,190	50.0	50.0	9.24	4,620
ILL	2,452	2,452	103.0	103.0	7.30	7,519
IND	1,786	1,786	75.0	75.0	7.46	5,595
IOWA	317	317	13.3	13.3	11.00	1,463
KANS	295	286	12.4	12.0	5.48	658
KY	357	336	15.0	14.1	6.71	946
MAINE	1,786	1,786	75.0	75.0	9.71	7,283
MD	1,571	1,571	66.0	66.0	6.88	4,541
MASS	2,167	2,167	91.0	91.0	9.29	8,454
MICH	17,381	17,381	730.0	730.0	4.30	31,390
MINN	619	619	26.0	26.0	9.05	2,353
MO	1,429	1,429	60.0	60.0	8.83	5,298
N H	1,310	1,310	55.0	55.0	9.65	5,308
N J	2,095	2,095	88.0	88.0	7.42	6,530
N MEX	48	48	2.0	2.0	10.00	200
N Y	18,333	18,333	770.0	770.0	5.77	44,429
N C	5,952	5,833	250.0	245.0	4.57	11,197
OHIO	2,976	2,976	125.0	125.0	7.29	9,113
OREG	2,500	2,500	105.0	105.0	5.78	6,069
PA	9,524	9,524	400.0	400.0	5.42	21,680
R I	114	112	4.8	4.7	9.60	451
S C	476	476	20.0	20.0	7.41	1,482
TENN	219	219	9.2	9.2	6.60	607
UTAH	95	95	4.0	4.0	8.88	355
VT	1,012	967	42.5	40.6	9.25	3,756
VA	10,000	10,000	420.0	420.0	5.70	23,940
WASH	33,167	33,095	1,393.0	1,390.0	8.21	114,119
W VA	5,119	5,119	215.0	215.0	5.63	12,105
WIS	1,548	1,548	65.0	65.0	7.65	4,973
U S	139,972	139,704	5,878.8	5,867.5	6.43	377,475

CONTINUED

APPLES, COMMERCIAL CROP

CONTINUED

YEAR AND STATE	PRODUCTION				PRICE PER POUND	VALUE OF UTILIZED PRODUCTION
	42-POUND EQUIVALENTS		POUNDS			
	TOTAL	UTILIZED	TOTAL	UTILIZED		
	1,000 UNITS		MILLION UNITS	CENTS	1,000 DOLLARS	
1973						
ARK	143	143	6.0	6.0	8.8	528
CALIF	11,667	11,667	490.0	490.0	6.7	32,830
COLO	2,738	2,738	115.0	115.0	7.5	8,625
CONN	786	786	33.0	33.0	13.0	4,290
DEL	310	310	13.0	13.0	9.0	1,170
IDAHO	3,095	3,095	130.0	130.0	10.1	13,130
ILL	2,119	2,071	89.0	87.0	9.0	7,830
IND	1,500	1,500	63.0	63.0	10.5	6,615
IOWA	248	248	10.4	10.4	12.4	1,290
KANS	357	357	15.0	15.0	7.4	1,110
KY	238	233	10.0	9.8	10.5	1,029
MAINE	1,310	1,310	55.0	55.0	13.3	7,315
MD	1,667	1,667	70.0	70.0	9.5	6,650
MASS	1,976	1,976	83.0	83.0	13.3	11,039
MICH	11,191	11,191	470.0	470.0	9.3	43,710
MINN	476	476	20.0	20.0	12.4	2,480
MO	1,286	1,286	54.0	54.0	11.2	6,048
N H	1,048	1,048	44.0	44.0	13.6	5,984
N J	2,381	2,381	100.0	100.0	9.5	9,500
N MEX	1,000	905	42.0	38.0	8.1	3,078
N Y	17,143	17,143	720.0	720.0	9.7	69,840
N C	5,048	5,000	212.0	210.0	6.4	13,440
OHIO	2,381	2,381	100.0	100.0	11.2	11,200
OREG	3,976	3,976	167.0	167.0	6.5	10,855
PA	11,905	11,905	500.0	500.0	8.7	43,000
R I	131	131	5.5	5.5	13.8	759
S C	405	405	17.0	17.0	7.9	1,343
TENN	74	74	3.1	3.1	9.7	301
UTAH	1,381	1,255	58.0	52.7	6.7	3,531
VT	833	833	35.0	35.0	12.8	4,480
VA	9,524	9,524	400.0	400.0	8.4	33,600
WASH	44,286	44,286	1,860.0	1,860.0	8.4	156,240
W VA	5,357	5,357	225.0	225.0	8.9	20,025
WIS	1,190	1,190	50.0	50.0	12.2	6,100
U S	149,170	148,848	6,265.0	6,251.5	8.8	548,965

CONTINUED

APPLES, COMMERCIAL CROP

CONTINUED

YEAR AND STATE	PRODUCTION				PRICE PER POUND	VALUE OF UTILIZED PRODUCTION 1,000 DOLLARS
	42-POUND EQUIVALENTS		POUNDS			
	TOTAL	UTILIZED	TOTAL	UTILIZED		
	1,000 UNITS		MILLION UNITS		CENTS	
1974						
ARK	310	310	13.0	13.0	11.5	1,495
CALIF	10,476	10,476	440.0	440.0	7.1	31,240
COLO	1,071	1,071	45.0	45.0	9.0	4,050
CONN	1,190	1,131	50.0	47.5	11.1	5,273
DEL	333	333	14.0	14.0	8.9	1,246
IDAHO	2,214	2,214	93.0	93.0	11.6	10,788
ILL	2,095	2,071	88.0	87.0	10.8	9,396
IND	929	910	39.0	38.2	10.2	3,896
IOWA	340	329	14.3	13.8	14.8	2,042
KANS	340	333	14.3	14.0	9.8	1,372
KY	357	343	15.0	14.4	10.8	1,555
MAINE	1,810	1,738	76.0	73.0	10.6	7,738
MD	1,548	1,548	65.0	65.0	9.2	5,980
MASS	2,548	2,381	107.0	100.0	10.3	10,300
MICH	15,952	15,952	670.0	670.0	6.2	41,540
MINN	610	595	25.6	25.0	13.4	3,350
MO	1,405	1,405	59.0	59.0	13.1	7,729
N H	1,524	1,452	64.0	61.0	10.7	6,527
N J	2,857	2,857	120.0	120.0	8.6	10,320
N MEX	214	190	9.0	8.0	9.9	792
N Y	21,429	21,167	900.0	889.0	7.3	64,897
N C	7,143	7,024	300.0	295.0	6.2	18,290
OHIO	3,095	3,024	130.0	127.0	11.2	14,224
OREG	3,929	3,929	165.0	165.0	6.2	10,230
PA	11,429	11,429	480.0	480.0	8.3	39,840
R I	155	155	6.5	6.5	11.5	748
S C	476	476	20.0	20.0	10.3	2,060
TENN	167	167	7.0	7.0	10.4	728
UTAH	881	881	37.0	37.0	9.4	3,478
VT	1,238	1,143	52.0	48.0	10.4	4,992
VA	9,048	9,010	380.0	378.4	8.4	31,786
WASH	43,000	43,000	1,806.0	1,806.0	9.3	167,958
W VA	5,000	5,000	210.0	210.0	9.4	19,740
WIS	1,548	1,429	65.0	60.0	10.0	6,000
U S	156,661	155,473	6,579.7	6,529.8	8.4	551,600

APPLES, COMMERCIAL CROP

CONTINUED

USE AND STATE	FRESH AND PROCESSED UTILIZATION 1/					
	QUANTITY			PRICE PER UNIT		
	1969	1970	1971	1969	1970	1971
	MILLION POUNDS			CENTS PER POUND		
<b>FRESH</b>						
CALIF	130.0	120.0	112.0	5.28	7.82	6.75
COLO	41.2	45.7	56.3	6.16	6.86	8.80
CONN	39.8	34.6	33.1	8.50	7.30	7.70
DEL	7.1	4.7	6.0	7.30	7.30	7.90
IDAHO	104.0	49.2	76.0	6.30	8.00	8.37
ILL	94.6	90.5	93.4	5.93	6.27	6.40
IND	69.9	61.2	69.7	6.66	6.46	6.40
IOWA						
KANS	10.2	7.1	9.4	7.00	6.00	9.00
MAINE	63.6	63.9	80.7	7.20	7.00	7.60
MD	42.7	41.0	39.0	7.20	7.50	7.90
MASS	84.4	90.6	88.0	7.80	7.10	7.50
MICH	247.0	283.0	280.0	5.70	6.30	5.80
MINN	17.4	23.8		7.55	7.64	
MO	51.2	48.2	49.2	6.95	7.10	8.92
N H	35.7	43.2	55.6	8.00	7.30	7.60
N J	67.3	57.5	68.0	7.60	7.00	7.40
N Y	349.3	357.4	353.0	7.50	6.80	6.29
N C	154.0	184.0	155.0	4.62	4.48	4.60
OHIO	105.3	98.5	122.9	7.33	8.02	7.56
OREG	116.9	91.1	100.0	3.60	5.13	5.87
PA	141.0	195.0	185.0	6.10	6.40	7.10
S C						
TENN			7.4			7.10
UTAH	36.6	21.3		4.40	6.95	
VT	33.5	32.5	33.0	8.50	7.00	7.60
VA	181.5	189.6	196.0	5.79	6.20	6.66
WASH	1,218.0	1,070.0	932.0	3.48	6.15	7.22
W VA	127.4	101.0	122.4	6.47	8.15	7.98
WIS	50.5	46.0	54.4	7.80	8.50	8.90
OTH STS	80.6	80.9	106.4	6.98	7.21	7.68
U S	3,700.7	3,531.5	3,483.9	5.49	6.53	6.97
<b>PROCESSED</b>						
					DOLLARS PER TON	
CALIF	410.0	380.0	288.0	52.00	40.20	54.50
COLO	35.8	17.3	17.7	36.70	36.00	28.00
CONN	4.8	8.0	12.1	40.40	36.00	39.40
DEL	6.9	7.3	6.0	53.10	44.00	44.00
IDAHO	30.0	10.8	14.0	22.80	24.60	37.20
ILL	13.2	12.4	13.6	33.00	33.00	26.00
IND	15.1	16.8	20.3	38.90	27.60	36.20
IOWA						
KANS	6.3	5.0	5.6	32.00	44.00	50.00
MAINE	9.4	11.1	11.3	36.30	33.00	30.40
MD	29.3	28.0	30.0	50.90	43.60	41.30
MASS	15.6	17.2	17.0	51.10	43.40	32.90
MICH	428.0	407.0	420.0	48.60	39.00	41.50
MINN	1.7	1.2		48.60	46.20	
MO	8.0	8.0	7.0	54.40	54.00	50.00
N H	7.3	11.8	9.4	34.60	31.40	31.80
N J	52.4	41.5	42.0	47.70	39.20	46.80
N Y	505.7	587.6	572.0	54.60	40.20	39.00
N C	50.0	39.0	30.0	48.20	43.00	47.00
OHIO	31.7	31.5	27.1	44.80	41.60	41.40
OREG	50.1	23.9	25.0	26.10	35.00	37.50
PA	384.0	315.0	320.0	55.30	43.40	41.00
S C						
TENN			2.0			45.80
UTAH	5.4	6.2		32.80	28.60	
VT	4.5	5.5	7.7	44.30	37.80	32.70
VA	290.5	273.4	284.0	51.40	41.40	42.10
WASH	457.0	320.0	268.0	29.20	29.00	53.10
W VA	132.6	119.0	127.6	53.90	43.00	42.60
WIS	10.5	12.0	10.6	44.00	44.00	44.00
OTH STS	12.9	10.4	10.8	49.00	51.50	40.30
U S	3,008.7	2,726.9	2,598.8	47.40	39.20	43.40

APPLES, COMMERCIAL CROP

CONTINUED

USE AND STATE	FRESH AND PROCESSED UTILIZATION 1/					
	QUANTITY			PRICE PER UNIT		
	1972	1973	1974	1972	1973	1974
	MILLION POUNDS			CENTS PER POUND		
<b>FRESH</b>						
CAL IF	100.0	108.0	120.0	8.62	11.1	11.2
COLO	9.6	61.9	35.4	14.60	9.8	10.0
CONN	30.1	29.0	41.7	10.60	14.1	12.2
DEL	5.7			9.00		
IDAHO	37.0	85.0	67.7	11.40	12.5	14.5
ILL	93.5	76.2	77.0	7.87	9.6	11.3
IND	62.7	49.8	30.0	8.44	12.2	12.1
IOWA			12.5			16.0
KANS	7.4	11.3		7.40	8.4	
MAINE	65.8	48.0	60.8	10.70	14.4	12.0
MD	36.5	36.0	33.5	9.80	12.4	12.6
MASS	79.2	74.0	77.8	10.20	14.1	12.2
MICH	235.0	160.0	240.0	7.10	11.0	9.5
MINN	24.5			9.46		
MO	50.0	46.5	52.6	10.00	11.9	14.2
N H	48.4	40.1	50.8	10.60	14.4	12.3
N J	57.0	55.0	65.0	9.67	12.0	11.6
N Y	290.0	300.0	300.0	10.40	14.0	12.0
N C	175.0	135.0	183.0	5.30	7.0	7.2
OHIO	93.2	76.0	115.0	8.80	12.8	12.0
OREG	88.0	109.0	113.0	6.32	6.6	6.9
PA	169.9	186.9	168.1	8.40	12.0	12.8
S C		13.5	15.5		8.6	11.9
TENN						
UTAH	4.0	29.1	34.0	8.88	8.4	9.9
VT	35.4	28.4	39.3	10.20	14.4	12.1
VA	186.0	147.8	160.1	9.03	12.4	12.6
WASH	1,094.5	1,405.0	1,365.6	9.37	9.4	10.7
W VA	99.4	94.0	97.0	8.51	12.6	14.0
WIS	54.5	42.5	48.6	8.72	13.1	11.4
OTH STS	59.7	91.4	86.5	8.90	10.6	11.8
U S	3,342.0	3,539.4	3,690.5	8.92	10.7	11.1
<b>PROCESSED</b>						
					DOLLARS PER TON	
CAL IF	380.0	382.0	320.0	64.40	109.00	110.00
COLO	1.4	53.1	9.6	62.70	98.00	101.00
CONN	2.9	4.0	5.8	57.20	97.00	58.00
DEL	5.3			50.50		
IDAHO	13.0	45.0	25.3	61.80	114.00	76.00
ILL	9.5	10.8	10.0	33.30	94.90	61.50
IND	12.3	13.2	8.2	49.30	82.00	68.00
IOWA			1.3			68.30
KANS	4.6	3.7		48.00	88.00	
MAINE	9.2	7.0	12.2	52.20	137.00	71.10
MD	29.5	34.0	31.5	65.20	127.00	110.00
MASS	11.8	9.0	22.2	64.00	132.00	72.50
MICH	495.0	310.0	430.0	59.30	169.00	85.10
MINN	1.5			48.60		
MO	10.0	7.5	6.4	59.90	139.00	87.60
N H	6.6	3.9	10.2	53.80	114.00	56.80
N J	31.0	45.0	55.0	65.60	129.00	109.00
N Y	480.0	420.0	589.0	59.60	133.00	98.30
N C	70.0	75.0	112.0	55.00	108.00	89.80
OHIO	31.8	24.0	12.0	57.30	120.00	65.70
OREG	17.0	56.0	52.0	59.60	128.00	96.20
PA	230.1	313.1	311.9	64.40	134.00	116.00
S C		5.5	4.5		106.00	72.70
TENN						
UTAH		23.6	3.0		91.00	72.00
VT	5.2	6.6	8.7	56.20	121.00	57.60
VA	234.0	252.2	218.3	61.10	121.00	110.00
WASH	295.5	455.0	440.4	77.80	106.00	76.00
W VA	115.6	131.0	113.0	63.10	126.00	110.00
WIS	10.5	7.5	11.4	42.00	144.00	76.60
OTH STS	12.2	14.4	15.4	51.50	133.00	98.10
U S	2,525.5	2,712.1	2,839.3	62.80	125.00	96.10

SEE FOOTNOTES ON PAGE 15.

CONTINUED



APPLES, COMMERCIAL CROP

CONTINUED

USE AND STATE	CANNED, JUICE AND FROZEN UTILIZATION 1/					
	QUANTITY			PRICE PER TON		
	1969	1970	1971	1969	1970	1971
	MILLION POUNDS			DOLLARS		
<b>CANNED</b>						
CALIF	134.0	120.0	92.0	58.00	48.00	59.00
IDAHO						
MAINE						
MD	19.0	16.1	16.7	60.00	50.00	48.00
MICH	157.0	135.0	137.0	57.00	49.00	52.00
MO	2.5			80.00		
N J	15.2	15.4	18.5	61.00	49.00	56.60
N Y	307.0	292.1	290.0	59.00	46.80	46.40
N C	22.3	20.0	16.6	64.00	56.00	58.40
OHIO	2.0		1.4	59.00		57.00
OREG	34.4	14.4	14.0	29.00	38.90	53.20
PA	328.5	225.1	186.8	59.40	47.20	47.60
VA	172.9	149.6	161.7	61.50	51.50	49.00
WASH	62.2	53.4	45.4	34.40	37.90	50.30
W VA	84.4	68.9	67.5	61.20	50.20	49.00
OTH STS	58.3	48.5	45.9	46.30	48.80	42.70
U S	1,399.7	1,158.5	1,093.5	57.00	47.90	49.40
<b>JUICE</b>						
CALIF	114.0	166.0	132.0	45.00	32.00	54.00
COLO	21.2	7.4		25.00	22.00	
CONN	3.8		9.0	33.00		27.00
IDAHO						
IND	3.3			30.80		
KANS	4.8	3.4	0	32.00	44.00	
MAINE						
MD	8.4	9.4	11.5	32.00	34.50	32.50
MASS	8.4	10.0	11.0	38.00	30.00	27.00
MICH	170.0	185.0	202.0	31.00	27.00	31.00
MO						
N H		10.0	7.0		27.00	28.00
N J	20.6	16.5	15.0	39.00	32.40	34.40
N Y	124.9	205.1	200.0	38.30	23.40	24.60
N C	10.3		10.0	32.00		33.00
OHIO	19.7	22.0	17.1	41.00	38.00	36.00
OREG	15.7	9.5	11.0	19.80	28.70	17.50
PA	45.4	78.9	124.4	26.40	32.40	31.80
UTAH						
VT	3.4	4.0	5.0	36.00	28.00	28.00
VA	80.8	86.1	91.0	31.50	25.00	30.00
WASH	220.3	136.4	153.0	24.60	27.60	56.80
W VA	20.0	30.9	45.6	31.60	29.00	29.80
OTH STS	41.1	51.1	42.4	26.10	27.30	31.70
U S	936.1	1,031.7	1,087.0	32.00	27.90	36.10
<b>FROZEN</b>						
CALIF	42.0	24.4	24.0	58.00	47.60	56.00
MO	.9	.9	.9	57.00	46.00	45.00
MICH			69.0			53.00
N Y	58.5	65.8	63.0	65.40	56.00	47.80
OHIO			4.8			65.00
W VA	14.0	6.4	7.9	69.40	58.00	54.40
OTH STS	131.3	105.5	20.9	66.80	52.90	54.70
U S	246.7	203.0	190.5	65.10	53.40	52.20

SEE FOOTNOTES ON PAGE 15.

CONTINUED

APPLES, COMMERCIAL CROP

CONTINUED

USE AND STATE	CANNED, JUICE AND FROZEN UTILIZATION 1/					
	QUANTITY			PRICE PER TON		
	1972	1973	1974	1972	1973	1974
	MILLION POUNDS			DOLLARS		
<b>CANNED</b>						
CALIF	110.6	164.0	95.0	70.00	719.00	125.00
IDAHO		12.7			152.00	
MAINE	1.5			65.00		
MD	15.6	20.7	19.8	71.00	137.00	133.00
MICH	128.0	121.0	149.0	66.00	175.00	127.00
MO						
N J	11.0	17.0	21.6	74.40	145.00	132.00
N Y	230.0	195.0	302.0	60.60	90.00	120.00
N C	26.0	32.6	41.3	72.00	135.00	122.00
OHIO	1.9	6.7		79.00	120.00	
OREG	10.0	40.0	28.0	66.40	140.00	130.00
PA	163.7	250.1	222.1	70.20	145.00	134.00
VA	135.0	165.7	147.1	67.60	131.00	123.00
WASH	51.2	102.0	81.8	82.70	124.00	94.30
W VA	66.6	74.8	70.9	68.20	140.00	125.00
OTH STS	25.8	53.1	47.0	64.10	132.00	113.00
U S	976.9	1,255.4	1,225.6	67.40	131.00	123.00
<b>JUICE</b>						
CALIF	151.0	107.0	119.0	59.50	107.00	96.00
COLO						
CONN						
IDAHO		25.5	20.2		100.00	60.00
IND	10.2			48.00		
KANS	4.6	0		48.00		
MAINE	6.5	5.2	5.9	51.00	92.00	54.00
MD	11.2	8.4	9.6	55.50	93.00	65.00
MASS	5.0	3.3	9.9	52.00	87.00	56.00
MICH	243.0	80.0	180.0	47.80	117.00	46.00
MO		1.4	3.0		93.60	63.20
N H	4.5			52.00		
N J	16.3	12.0	29.0	56.00	100.00	81.40
N Y	160.0	140.0	167.0	53.40	96.20	66.00
N C	39.0	34.6	42.0	45.00	84.00	64.00
OHIO	22.2	12.8	7.8	54.00	120.00	61.60
OREG	7.0			50.00		
PA	64.0	50.1	62.7	49.80	84.20	62.00
UTAH	0		3.0			72.00
VT	3.4			52.00		
VA	66.2	43.2	43.8	48.40	89.20	66.00
WASH	159.8	187.0	233.1	76.90	100.00	62.50
W VA	29.4	29.0	33.0	49.40	88.50	71.00
OTH STS	25.3	82.7	61.7	57.70	88.00	59.50
U S	1,028.6	822.2	1,030.7	55.70	98.20	64.70
<b>FROZEN</b>						
CALIF	29.6			83.00		
MD	1.9	3.3		79.00	153.00	
MICH		103.0	73.0		206.00	110.00
N Y	71.0	64.0	46.0	67.60	157.00	125.00
OHIO						
W VA	12.3	14.8	6.3	78.20	155.00	140.00
OTH STS	120.5	74.1	56.4	78.90	139.00	129.00
U S	235.3	259.2	181.7	76.00	171.00	121.00

1/ MISSING DATA INCLUDED IN OTHER STATES TO AVOID DISCLOSURE OF INDIVIDUAL OPERATIONS. CONTINUED

APPLES, COMMERCIAL CROP CONTINUED

USE AND STATE	DRIED AND OTHER UTILIZATION 1/					
	QUANTITY			PRICE PER TON		
	1969	1970	1971	1969	1970	1971
	MILLION POUNDS			DOLLARS		
DRIED						
CALIF	120.0	69.6	40.0	50.00	44.00	45.00
N J	.1	0	0	28.00		
N Y						
WASH	160.2	117.4	54.2	33.00	26.60	46.20
OTH STS	2.4	2.8	2.0	49.30	40.00	31.60
U S	282.7	189.8	96.2	40.40	33.20	45.40
OTHER (INCLUDES VINEGAR, WINE, JAM, FRESH SLICES FOR PIE MAKING)						
CALIF	0	0	0			
CONN			1.5			75.00
IND						
MAINE	.1	.2	0	92.00	90.00	
MD	1.0	1.6	.9	32.00	33.80	27.40
MICH			12.0			30.50
N Y						
OHIO			3.8			30.00
WASH		12.8	15.4		31.40	49.70
W VA	14.2	12.8	6.6	28.60	26.80	31.70
OTH STS	128.2	116.5	91.4	39.00	39.10	36.60
U S	143.5	143.9	131.6	38.00	37.30	37.50

1/ MISSING DATA INCLUDED IN OTHER STATES TO AVOID DISCLOSURE OF INDIVIDUAL OPERATIONS. CONTINUED

TOTAL PRODUCTION BY VARIETIES

VARIETY	POUNDS			42-POUND EQUIVALENT		
	1969	1970	1971	1969	1970	1971
	MILLION UNITS			1,000 UNITS		
CORTLAND	153.4	158.2	180.2	3,651	3,767	4,291
DELICIOUS	2,094.1	1,801.6	1,788.1	49,860	42,895	42,576
GOLDEN DELICIOUS	888.6	817.9	802.5	21,157	19,472	19,108
GRAVENSTEIN	120.1	116.8	83.6	2,859	2,781	1,990
JONATHAN	437.2	409.0	403.8	10,407	9,737	9,615
MCINTOSH	649.5	723.4	770.6	15,464	17,227	18,347
NORTHERN SPY	133.8	131.3	122.2	3,185	3,127	2,909
R I GREENING	140.8	156.7	170.5	3,353	3,732	4,060
ROME BEAUTY	538.1	516.7	539.3	12,812	12,302	12,840
STAYMAN	306.9	282.5	287.1	7,307	6,725	6,835
WINESAP	261.4	212.3	166.2	6,222	5,054	3,958
YELLOW NEWTOWN	200.3	166.6	146.3	4,769	3,967	3,484
YORK IMPERIAL	343.4	350.7	360.4	8,177	8,349	8,582
OTHER VARIETIES	552.0	554.0	552.4	13,147	13,190	13,152
TOTAL 1/	6,819.6	6,397.7	6,373.2	162,372	152,329	151,743

1/ FOR 42-POUND EQUIVALENTS, SUM OF VARIETIES MAY NOT ADD TO TOTAL DUE TO ROUNDING OF INDIVIDUAL VARIETIES. CONTINUED

APPLES, COMMERCIAL CROP CONTINUED

USE AND STATE	DRIED AND OTHER UTILIZATION 1/					
	QUANTITY			PRICE PER TON		
	1972	1973	1974	1972	1973	1974
	MILLION POUNDS			DOLLARS		
DRIED						
CALIF	66.0			65.00		
N J	0		0			
N Y			18.0			108.00
WASH	80.6	158.0	108.3	71.90	102.00	94.80
OTH STS	2.0	89.7	70.9	54.00	108.00	105.00
U S	148.6	247.7	197.2	68.60	104.00	99.70
OTHER (INCLUDES VINEGAR, WINE, JAM, FRESH SLICES FOR PIE MAKING)						
CALIF	22.8	5.0		35.00	96.00	
CONN		0				
IND	1.3		0	40.60		
MAINE	1.2	0		42.00		
MD	.8			53.00		
MICH		6.0			98.50	
N Y			56.0			53.00
OHIO						
WASH	3.9	8.0	17.2	60.10	80.00	65.00
W VA	7.3		2.8	45.10		119.00
OTH STS	98.8	108.6	128.1	43.20	105.00	68.80
U S	136.1	127.6	204.1	42.40	103.00	64.80

1/ MISSING DATA INCLUDED IN OTHER STATES TO AVOID DISCLOSURE OF INDIVIDUAL OPERATIONS.

TOTAL PRODUCTION BY VARIETIES CONTINUED

VARIETY	POUNDS			42-POUND EQUIVALENT		
	1972	1973	1974	1972	1973	1974
	MILLION UNITS			1,000 UNITS		
CORTLAND	125.7	127.1	146.6	2,995	3,026	3,490
DELICIOUS	1,729.4	2,178.3	2,126.9	41,174	51,862	50,640
GOLDEN DELICIOUS	921.9	977.6	1,079.1	21,951	23,275	25,692
GRAVENSTEIN	107.2	84.2	84.0	2,553	2,004	2,000
JONATHAN	361.7	381.6	361.0	8,613	9,086	8,598
MCINTOSH	658.5	499.2	728.9	15,678	11,886	17,354
NORTHERN SPY	114.9	82.5	93.2	2,735	1,964	2,220
R I GREENING	121.9	68.5	117.0	2,903	1,631	2,786
ROME BEAUTY	458.0	513.3	494.2	10,905	12,223	11,765
STAYMAN	221.3	237.3	246.9	5,268	5,650	5,881
WINESAP	162.4	168.1	166.7	3,867	4,002	3,971
YELLOW NEWTOWN	153.4	162.5	138.0	3,652	3,869	3,286
YORK IMPERIAL	273.9	341.7	267.2	6,521	8,136	6,361
OTHER VARIETIES	468.6	443.1	530.0	11,159	10,549	12,618
TOTAL 1/	5,878.8	6,265.0	6,579.7	139,972	149,170	156,661

1/ FOR 42-POUND EQUIVALENTS, SUM OF VARIETIES MAY NOT ADD TO TOTAL DUE TO ROUNDING OF INDIVIDUAL VARIETIES.

APPLES, COMMERCIAL CROP

CONTINUED

CROP AND STATE	TOTAL PRODUCTION BY VARIETIES					
	POUNDS			42 LB EQUIVALENT		
	1969	1970	1971	1969	1970	1971
	MILLION UNITS			1,000 UNITS		
<u>CORTLAND</u>						
CONN	5.8	4.0	5.7	138	95	136
IND	1.4	.9	1.0	33	21	24
MAINE	6.9	7.5	9.2	164	179	219
MASS	9.8	8.1	10.5	233	193	250
MICH	11.0	12.0	14.0	262	286	333
MINN	.6	.5	.5	14	12	12
N H	3.0	4.7	6.3	71	112	150
N J	1.8	2.1	1.5	43	50	36
N Y	84.6	95.2	105.0	2,014	2,267	2,500
OHIO	6.3	5.2	5.6	150	124	133
PA	12.8	9.2	9.7	305	219	231
R I	.2	.2	.2	5	5	5
VT	1.9	2.2	1.5	45	52	36
WIS	7.3	6.4	9.5	174	152	226
U S	153.4	158.2	180.2	3,651	3,767	4,291
<u>DELICIOUS</u>						
ARK	2.9	2.5	.8	69	60	19
CALIF	137.2	133.0	117.2	3,267	3,167	2,791
COLO	28.0	24.6	27.5	667	586	655
CONN	6.0	7.9	9.6	143	188	229
DEL	4.1	4.3	4.0	98	102	95
IDAHO	66.0	28.5	45.0	1,571	679	1,071
ILL	22.0	23.1	24.2	524	550	576
IND	16.6	15.1	18.0	395	360	429
IOWA	2.6	3.7	2.2	62	88	52
KANS	5.1	2.1	3.8	121	50	90
KY	8.0	6.8	7.1	190	162	169
MAINE	7.1	7.6	10.2	169	181	243
MO	14.4	15.6	15.1	343	371	360
MASS	9.7	11.4	13.7	231	271	326
MICH	120.0	90.0	130.0	2,857	2,143	3,095
MINN	2.1	3.4	4.0	50	81	95
MO	13.6	12.9	13.5	324	307	321
N H	4.7	7.2	9.0	112	171	214
N J	30.0	26.3	32.2	714	626	767
N MEX	16.9	14.3	6.9	402	340	164
N Y	72.7	91.8	105.0	1,731	2,186	2,500
N C	73.6	98.3	76.0	1,752	2,341	1,810
OHIO	23.1	20.8	30.4	550	495	724
OREG	73.5	43.7	55.0	1,750	1,040	1,310
PA	54.6	61.0	72.4	1,300	1,452	1,724
R I	.4	.6	.7	10	14	17
S C	5.5	8.2	7.8	131	195	186
TENN	3.6	3.6	3.7	86	86	88
UTAH	26.5	17.2	14.9	631	410	355
VT	3.6	3.4	3.2	86	81	76
VA	121.0	138.2	138.5	2,881	3,291	3,298
WASH	1,057.6	824.0	742.0	25,181	19,619	17,667
W VA	51.7	40.0	39.0	1,231	952	929
WIS	9.7	10.5	5.5	231	250	131
U S	2,094.1	1,801.6	1,788.1	49,860	42,895	42,576

CONTINUED

APPLES, COMMERCIAL CROP

CONTINUED

CROP AND STATE	TOTAL PRODUCTION BY VARIETIES					
	POUNDS			42 LB EQUIVALENT		
	1972	1973	1974	1972	1973	1974
	MILLION UNITS			1,000 UNITS		
<b>CORTLAND</b>						
CONN	2.6	4.0	4.5	62	95	107
IND	1.5	1.0	.3	36	24	7
MAINE	5.2	5.5	5.9	124	131	140
MASS	5.2	7.9	6.0	124	188	143
MICH	14.6	7.0	13.0	348	167	310
MINN	.5	1.2	1.5	12	29	36
N H	3.6	4.4	4.5	86	105	107
N J	.7	.8	1.2	17	19	29
N Y	73.9	79.0	88.0	1,760	1,881	2,095
OHIO	5.0	4.5	4.8	119	107	114
PA	4.0	4.0	5.3	95	95	126
R I	.1	.1	.2	2	2	5
VT	1.2	1.9	1.6	29	45	38
WIS	7.6	5.8	9.8	181	138	233
U S	125.7	127.1	146.6	2,995	3,026	3,490
<b>DELICIOUS</b>						
ARK	.8	.6	1.4	19	14	33
CALIF	152.6	112.7	114.0	3,633	2,683	2,714
COLO	3.2	41.0	19.5	76	976	464
CONN	6.9	8.2	10.4	164	195	248
DEL	3.0	3.8	4.2	71	90	100
IDAHO	25.0	68.0	51.0	595	1,619	1,214
ILL	24.7	20.5	18.7	588	488	445
IND	15.0	12.0	5.7	357	286	136
IOWA	2.8	2.5	3.4	67	60	81
KANS	1.9	2.7	2.6	45	64	62
KY	6.0	2.9	5.1	143	69	121
MAINE	7.1	5.8	8.3	169	138	198
MD	14.1	12.4	15.3	336	295	364
MASS	10.4	11.1	10.9	248	264	260
MICH	130.4	73.8	105.0	3,105	1,757	2,500
MINN	5.2	4.3	5.8	124	102	138
MO	15.8	13.5	17.8	376	321	424
N H	6.6	6.8	6.7	157	162	160
N J	27.4	27.7	32.4	652	660	771
N MEX	.8	22.0	5.9	19	524	140
N Y	85.2	88.0	97.0	2,029	2,095	2,310
N C	93.1	91.2	129.0	2,217	2,171	3,071
OHIO	18.7	14.5	19.2	445	345	457
OREG	44.0	94.0	94.5	1,048	2,238	2,250
PA	57.6	67.5	79.2	1,371	1,607	1,886
R I	.6	1.0	.9	14	24	21
S C	12.8	13.0	15.0	305	310	357
TENN	2.7	1.1	2.6	64	26	62
UTAH	.6	33.3	21.5	14	793	512
VT	4.0	3.7	3.6	95	88	86
VA	117.6	88.0	113.6	2,800	2,095	2,705
WASH	794.0	1,194.1	1,054.7	18,905	28,432	25,112
W VA	30.8	28.1	42.0	733	669	1,000
WIS	8.0	8.5	10.0	190	202	238
U S	1,729.4	2,178.3	2,126.9	41,174	51,862	50,640

CONTINUED

APPLES, COMMERCIAL CROP

CONTINUED

CROP AND STATE	TOTAL PRODUCTION BY VARIETIES					
	POUNDS			42 LB EQUIVALENT		
	1969	1970	1971	1969	1970	1971
	MILLION UNITS			1,000 UNITS		
<u>GOLDEN DELICIOUS</u>						
ARK	.5	.6	.6	12	14	14
CALIF	36.2	33.0	26.4	862	786	629
COLO	7.2	7.4	7.2	171	176	171
CONN	.4	.5	.9	10	12	21
DEL	2.1	1.8	1.8	50	43	43
IDAHO	8.0	4.0	5.8	190	95	138
ILL	33.0	34.6	34.1	786	824	812
IND	13.7	12.3	14.5	326	293	345
IOWA	1.6	1.4	1.0	38	33	24
KANS	2.3	1.8	2.6	55	43	62
KY	4.9	3.4	5.4	117	81	129
MAINE	4.1	5.3	6.3	98	126	150
MD	10.4	9.4	10.9	248	224	260
MASS	1.2	1.4	1.6	29	33	38
MICH	30.0	30.0	35.0	714	714	833
MINN	.9	.5	.8	21	12	19
MO	9.4	9.0	9.6	224	214	229
N H	.6	.9	1.0	14	21	24
N J	5.9	6.0	6.8	140	143	162
N MEX	2.0	2.1	1.0	48	50	24
N Y	37.6	37.1	42.5	895	883	1,012
N C	35.7	39.8	26.6	850	948	633
OHIO	16.1	14.3	20.8	383	340	495
OREG	18.4	15.5	16.9	438	369	402
PA	96.3	98.3	97.7	2,293	2,341	2,326
R I	.1	.1	0	2	2	0
S C	1.4	2.2	1.6	33	52	38
TENN	1.4	.9	1.4	33	21	33
UTAH	5.1	2.0	2.3	121	48	55
VT	.4	.7	.4	10	17	10
VA	73.1	68.9	74.0	1,741	1,641	1,762
WASH	372.9	341.0	311.0	8,879	8,119	7,405
W VA	54.3	30.0	33.0	1,293	714	786
WIS	1.4	1.7	1.0	33	40	24
U S	888.6	817.9	802.5	21,157	19,472	19,108
<u>GRAVENSTEIN</u>						
CALIF	117.7	114.0	82.0	2,802	2,714	1,952
MASS	1.9	2.0	1.6	45	48	38
N H	.5	.8	0	12	19	0
U S	120.1	116.8	83.6	2,859	2,781	1,990
<u>JONATHAN</u>						
ARK	3.7	3.5	4.4	88	83	105
CALIF	24.8	23.0	16.0	590	548	381
COLO	24.0	15.8	19.2	571	376	457
IDAHO	16.1	6.2	9.0	383	148	214
ILL	33.0	29.4	31.9	786	700	760
IND	16.1	16.0	19.0	383	381	452
IOWA	7.7	5.9	5.2	183	140	124
KANS	5.3	3.9	4.0	126	93	95
KY	1.7	1.4	1.3	40	33	31
MD	3.4	3.0	2.6	81	71	62
MICH	170.0	185.0	180.0	4,048	4,405	4,286
MINN	2.9	4.2	3.7	69	100	88
MO	26.6	25.2	24.6	633	600	586
N MEX	1.6	2.2	1.2	38	52	29
OHIO	23.1	20.8	24.8	550	495	590
PA	21.4	21.6	20.0	510	514	476
TENN	.1	.1	.3	2	2	7
UTAH	6.7	3.6	3.4	160	86	81
VA	11.1	10.9	12.0	264	260	286
WASH	25.4	18.2	12.2	605	433	290
W VA	10.6	7.1	7.0	252	169	167
WIS	1.9	2.0	2.0	45	48	48
U S	437.2	409.0	403.8	10,407	9,737	9,615

CONTINUED

APPLES, COMMERCIAL CROP

CONTINUED

CROP AND STATE	TOTAL PRODUCTION BY VARIETIES					
	POUNDS			42 LB EQUIVALENT		
	1972	1973	1974	1972	1973	1974
	MILLION UNITS			1,000 UNITS		
<b>GOLDEN DELICIOUS</b>						
ARK	.7	1.0	1.9	17	24	45
CALIF	34.5	39.2	35.0	821	933	833
COLO	1.6	13.8	4.5	38	329	107
CONN	1.6	1.1	1.3	38	26	31
DEL	1.7	1.8	2.1	40	43	50
IDAHO	5.8	9.0	7.0	138	214	167
ILL	31.9	29.3	30.8	760	698	733
IND	13.0	14.0	5.6	310	333	133
IOWA	1.5	1.3	2.0	36	31	48
KANS	2.9	3.0	3.0	69	71	71
KY	3.6	3.0	3.6	86	71	86
MAINE	4.9	5.0	5.3	117	119	126
MD	9.4	10.6	11.7	224	252	279
MASS	1.5	1.4	1.7	36	33	40
MICH	32.3	32.0	40.0	769	762	952
MINN	.5	.9	1.0	12	21	24
MO	10.2	8.1	9.9	243	193	236
N H	.7	.8	.8	17	19	19
N J	5.9	5.7	4.9	140	136	117
N MEX	.1	6.3	.8	2	150	19
N Y	39.0	40.0	42.0	929	952	1,000
N C	51.5	46.6	57.0	1,226	1,110	1,357
OHIO	17.5	15.0	20.3	417	357	483
OREG	18.9	23.5	24.1	450	560	574
PA	74.8	91.5	82.1	1,781	2,179	1,955
S C	3.0	2.7	3.0	71	64	71
TENN	2.6	.8	1.9	62	19	45
UTAH	.6	5.2	2.0	14	124	48
VT	.6	.6	.7	14	14	17
VA	75.6	64.0	66.9	1,800	1,524	1,593
WASH	431.8	457.6	565.3	10,281	10,895	13,460
W VA	38.8	41.0	38.7	924	976	921
WIS	2.9	1.8	2.2	69	43	52
U S	921.9	977.6	1,079.1	21,951	23,275	25,692
<b>GRAVENSTEIN</b>						
CALIF	106.0	83.3	84.0	2,524	1,983	2,000
MASS	1.2	.9	0	29	21	0
N H	0	0	0	0	0	0
U S	107.2	84.2	84.0	2,553	2,004	2,000
<b>JONATHAN</b>						
ARK	4.4	2.9	5.7	105	69	136
CALIF	21.2	24.5	18.0	505	583	429
COLO	1.0	31.0	10.0	24	738	238
IDAHO	3.5	14.3	8.0	83	340	190
ILL	30.9	24.9	25.3	736	593	602
IND	15.0	13.5	8.4	357	321	200
IOWA	6.6	4.7	6.2	157	112	148
KANS	3.5	4.9	4.9	83	117	117
KY	1.1	1.2	2.0	26	29	48
MO	1.8	2.1	2.9	43	50	69
MICH	177.3	122.7	170.0	4,222	2,921	4,048
MINN	2.6	1.8	2.6	62	43	62
MO	25.4	25.9	22.7	605	617	540
N MEX	0	3.2	.5	0	76	12
OHIO	21.2	17.5	22.1	505	417	526
PA	12.8	17.0	17.3	305	405	412
TENN	.2	.2	.2	5	5	5
UTAH	.1	10.1	3.3	2	240	79
VA	11.5	8.8	5.7	250	210	136
WASH	77.9	42.8	18.1	331	1,019	431
W VA	6.0	5.6	4.6	143	133	110
WIS	2.7	2.0	2.5	64	48	60
U S	361.7	381.6	361.0	8,613	9,086	8,598



APPLES, COMMERCIAL CROP

CONTINUED

CROP AND STATE	TOTAL PRODUCTION BY VARIETIES					
	POURDS			42 LB EQUIVALENT		
	1969	1970	1971	1969	1970	1971
	MILLION UNITS			1,000 UNITS		
<u>MCINTOSH</u>						
CONN	22.9	22.2	20.8	545	529	495
IND	2.8	1.4	1.5	67	33	36
IOWA	.1	.2	.1	2	5	2
MAINE	48.2	48.7	64.1	1,148	1,160	1,526
MO	.9	.7	.7	21	17	17
MASS	62.7	68.8	73.4	1,493	1,638	1,748
MICH	120.0	140.0	130.0	2,857	3,333	3,095
MINN	3.4	3.9	4.0	81	93	95
N H	30.3	37.7	46.2	727	838	1,100
N J	7.1	5.4	6.3	169	129	150
N Y	275.3	315.4	332.0	6,555	7,510	7,905
OHIO	6.3	7.2	8.8	150	171	210
PA	16.6	17.8	18.4	395	424	438
R I	3.0	4.1	3.8	71	98	90
VT	28.5	29.8	35.5	679	710	845
WIS	21.4	20.1	25.0	510	479	595
U S	649.5	723.4	770.6	15,464	17,227	18,347
<u>NORTHERN SPY</u>						
CONN	.5	.7	0	12	17	0
MAINE	3.1	2.4	1.4	74	57	33
MASS	1.9	1.8	1.1	45	43	26
MICH	90.0	85.0	80.0	2,143	2,024	1,905
N Y	34.2	37.3	35.0	814	888	833
OHIO	1.4	1.3	1.6	33	31	38
VT	2.7	2.8	3.1	64	67	74
U S	133.8	131.3	122.2	3,185	3,127	2,909
<u>R I GREENING</u>						
MICH	13.0	13.0	18.0	310	310	429
N Y	127.4	143.3	152.5	3,033	3,412	3,631
VT	.4	.4	0	10	10	0
U S	140.8	156.7	170.5	3,353	3,732	4,060
<u>ROME BEAUTY</u>						
CALIF	51.8	44.0	30.0	1,233	1,048	714
COLO	13.6	9.8	13.0	324	233	310
CONN	1.7	1.1	5.1	40	26	121
DEL	5.8	5.5	5.1	138	131	121
IDAHO	40.2	19.5	28.8	957	464	686
ILL	4.4	3.2	3.8	105	76	90
IND	9.4	9.4	10.0	224	224	238
KANS	.4	.5	.5	10	12	12
KY	1.3	.9	1.1	31	21	26
MD	9.2	8.6	8.8	219	205	210
MASS	1.9	1.8	2.4	45	43	57
MICH	18.0	25.0	28.0	429	595	667
MO	.6	.6	.6	14	14	14
N J	32.2	29.1	29.7	767	693	707
N MEX	3.0	5.3	1.9	71	126	45
N Y	92.3	98.2	120.5	2,198	2,338	2,869
N C	44.6	51.5	53.2	1,062	1,226	1,267
OHIO	22.4	24.7	30.4	533	588	724
OREG	3.3	2.3	1.9	79	55	45
PA	68.5	65.3	63.7	1,631	1,555	1,517
TENN	2.2	1.0	.5	52	24	12
UTAH	10.2	3.5	4.0	243	86	95
VA	24.2	26.1	27.5	576	621	655
WASH	42.4	48.7	33.8	1,010	1,160	805
W VA	34.5	31.0	35.0	821	738	833
U S	538.1	516.7	539.3	12,812	12,302	12,840

CONTINUED

APPLES, COMMERCIAL CROP CONTINUED

CROP AND STATE	TOTAL PRODUCTION BY VARIETIES					
	POUNDS			42 LB EQUIVALENT		
	1972	1973	1974	1972	1973	1974
	MILLION UNITS			1,000 UNITS		
<u>MCINTOSH</u>						
CONN	14.5	14.2	20.9	345	338	498
IND	1.5	1.0	1.0	36	24	24
IOWA	.1	.1	.8	2	2	19
MAINE	53.6	34.9	50.9	1,276	831	1,212
MD	.8	.4	.6	19	10	14
MASS	62.2	51.9	74.1	1,481	1,235	1,764
MICH	150.2	67.7	130.0	3,576	1,612	3,095
MINN	5.2	1.8	2.3	124	43	55
N H	39.6	28.8	46.2	943	686	1,100
N J	2.9	3.8	5.3	69	90	126
N Y	246.5	230.0	305.0	5,869	5,476	7,262
OHIO	6.3	5.5	5.7	150	131	136
PA	13.6	12.0	15.3	324	286	364
R I	2.9	3.7	4.2	69	78	100
VT	32.9	25.5	42.1	783	607	1,002
WIS	25.7	17.9	24.5	612	426	583
U S	658.5	499.2	728.9	15,678	11,886	17,354
<u>NORTHERN SPY</u>						
CONN	0	0	0	0	0	0
MAINE	.9	.9	1.2	21	21	29
MASS	.6	.7	.9	14	17	21
MICH	88.6	59.7	60.0	2,110	1,421	1,429
N Y	20.6	18.0	28.0	490	429	657
OHIO	1.3	1.0	1.0	31	24	24
VT	2.9	2.2	2.1	69	52	50
U S	114.9	82.5	93.2	2,735	1,964	2,220
<u>R I GREENING</u>						
MICH	13.6	8.5	12.0	324	202	286
N Y	108.3	60.0	105.0	2,579	1,429	2,500
VT	0	0	0	0	0	0
U S	121.9	68.5	117.0	2,903	1,631	2,786
<u>ROME BEAUTY</u>						
CALIF	51.9	49.0	31.0	1,236	1,167	738
COLO	4.8	20.0	8.0	114	476	190
CORN	1.0	1.9	2.5	24	45	60
DEL	4.3	5.2	5.6	102	124	133
IDAHO	15.0	38.0	26.0	357	905	619
ILL	3.1	3.6	3.3	74	86	79
IND	9.0	7.5	5.0	214	179	119
KANS	.2	.4	.1	5	10	2
KY	.9	.7	.9	21	17	21
MD	9.4	9.0	7.2	224	214	171
MASS	.7	1.7	1.9	17	40	45
MICH	23.0	24.4	35.0	548	581	833
MO	1.8	1.6	2.3	43	38	55
N J	18.5	23.5	27.6	440	560	657
N MEX	1.0	6.3	1.1	24	150	26
N Y	84.7	90.0	95.0	2,017	2,143	2,262
N C	63.7	33.9	63.0	1,517	807	1,500
OHIO	25.0	19.0	25.1	595	452	598
OREG	2.1	2.5	3.0	50	60	71
PA	53.6	66.5	55.7	1,276	1,583	1,326
TENN	.2	.1	.3	5	2	7
UTAH	2.7	7.8	9.7	64	186	231
VA	22.7	26.4	20.1	540	629	479
WASH	34.8	44.6	41.5	829	1,062	988
W VA	23.9	29.7	23.3	569	707	555
U S	458.0	513.3	494.2	10,905	12,223	11,765

CONTINUED

APPLES, COMMERCIAL CROP CONTINUED

CROP AND STATE	TOTAL PRODUCTION BY VARIETIES					
	POUNDS			42 LB EQUIVALENT		
	1969	1970	1971	1969	1970	1971
	MILLION UNITS			1,000 UNITS		
<u>STAYMAN</u>						
CONN	.8	1.1	.9	19	26	21
DEL	1.1	1.1	.9	26	26	21
IND	5.2	5.6	6.0	124	133	143
KANS	.5	.1	.3	12	2	7
KY	2.2	1.7	1.3	52	40	31
MD	12.8	13.5	12.8	305	321	305
MICH	16.0	17.0	19.0	381	405	452
N J	26.8	19.3	23.1	638	460	550
N MEX	2.7	2.6	1.3	64	62	31
N C	42.4	30.4	19.0	1,010	724	452
OHIO	16.1	15.6	19.2	383	371	457
PA	85.6	85.9	85.3	2,038	2,045	2,031
S C	.9	1.0	1.2	21	24	29
TENN	1.5	1.3	1.8	36	31	43
VA	65.8	60.3	65.0	1,567	1,436	1,548
W VA	26.5	26.0	30.0	631	619	714
U S	306.9	282.5	287.1	7,307	6,725	5,835
<u>WINESAP</u>						
CALIF	7.0	5.0	4.4	167	119	105
COLO	3.6	2.2	3.7	86	52	88
DEL	.2	.1	.1	5	2	2
IDAHO	2.7	1.2	.9	64	29	21
ILL	2.2	2.1	2.8	52	50	67
IND	1.9	.9	1.0	45	21	24
KANS	1.9	2.6	2.0	45	62	48
KY	.6	.7	1.2	14	17	29
MD	.9	.9	.9	21	21	21
MO	3.0	2.8	3.4	71	67	81
N C	2.2	2.3	1.9	52	55	45
S C	0	0	0	0	0	0
TENN	.3	.1	.4	7	2	10
UTAH	.5	.7	.5	12	17	12
VA	42.6	33.2	36.0	1,014	790	857
WASH	186.5	153.1	102.0	4,441	3,645	2,429
W VA	5.3	4.4	5.0	126	105	119
U S	261.4	212.3	166.2	6,222	5,054	3,958
<u>YELLOW NEWTOWN</u>						
CALIF	131.8	116.0	97.6	3,138	2,762	2,324
OREG	68.5	50.6	48.7	1,631	1,205	1,160
U S	200.3	166.6	146.3	4,769	3,967	3,484
<u>YORK IMPERIAL</u>						
DEL	.2	.2	.2	5	5	5
KANS	.2	.1	.2	5	2	5
MD	15.2	15.3	15.7	362	364	374
PA	149.8	152.3	131.2	3,567	3,626	3,124
TENN	.6	1.1	.6	14	26	14
VA	119.1	114.0	127.5	2,836	2,714	3,036
W VA	58.3	67.7	85.0	1,388	1,612	2,024
U S	343.4	350.7	360.4	8,177	8,349	8,582

CONTINUED

APPLES, COMMERCIAL CROP CONTINUED

CROP AND STATE	TOTAL PRODUCTION BY VARIETIES					
	POUNDS			42 LB EQUIVALENT		
	1972	1973	1974	1972	1973	1974
	MILLION UNITS			1,000 UNITS		
<u>STAYMAN</u>						
CONN	.9	.4	.7	21	10	17
DEL	.9	1.0	1.0	21	24	24
IND	5.0	4.0	1.6	119	95	38
KANS	.1	.2	.3	2	5	7
KY	1.0	.5	1.2	24	12	29
MD	10.6	12.0	10.9	252	286	260
MICH	17.7	16.9	18.0	421	402	429
N J	17.6	17.5	22.2	419	417	529
N MEX	0	3.8	.6	0	90	14
N C	27.0	23.3	33.0	643	555	786
OHIO	13.8	8.5	12.5	329	202	298
PA	57.6	73.0	72.0	1,371	1,738	1,714
S C	1.8	.2	.4	43	5	10
TENN	1.2	.5	1.3	29	12	31
VA	46.2	54.4	50.2	1,100	1,295	1,195
W VA	19.9	21.1	21.0	474	502	500
U S	221.3	237.3	246.9	5,268	5,650	5,881
<u>WINESAP</u>						
CALIF	5.3	4.9	4.0	126	117	95
COLO	.2	4.6	1.5	5	110	36
DEL	.1	.1	.2	2	2	5
IDAHO	.5	0	0	12	0	0
ILL	2.1	1.0	1.1	50	24	26
IND	1.0	1.0	1.3	24	24	31
KANS	1.3	1.5	2.0	31	36	48
KY	.7	.3	.6	17	7	14
MD	1.3	1.0	1.5	31	24	36
MO	2.4	1.6	3.1	57	38	74
N C	2.4	2.2	3.0	57	52	71
S C	0	.2	.4	0	5	10
TENN	.2	.1	.2	5	2	5
UTAH	0	.6	.2	0	14	5
VA	29.4	32.4	31.5	700	771	750
WASH	111.5	111.6	113.8	2,655	2,657	2,710
W VA	4.0	5.0	2.3	95	119	55
U S	162.4	168.1	166.7	3,867	4,002	3,971
<u>YELLOW NEWTOWN</u>						
CALIF	116.6	122.5	101.0	2,776	2,917	2,405
OREG	36.8	40.0	37.0	876	952	881
U S	153.4	162.5	138.0	3,652	3,869	3,286
<u>YORK IMPERIAL</u>						
DEL	.3	.2	.3	7	5	7
KANS	.1	.3	.1	2	7	2
MD	13.4	17.1	11.4	319	407	271
PA	97.6	139.0	115.2	2,324	3,310	2,743
TENN	.3	0	0	7	0	0
VA	94.5	106.4	77.2	2,250	2,533	1,838
W VA	67.7	78.7	63.0	1,612	1,874	1,500
U S	273.9	341.7	267.2	6,521	8,136	6,361

CONTINUED

APPLES, COMMERCIAL CROP CONTINUED

CROP AND STATE	TOTAL PRODUCTION BY VARIETIES					
	POUNDS			42 LB EQUIVALENT		
	1969	1970	1971	1969	1970	1971
	MILLION UNITS			1,000 UNITS		
<u>OTHER VARIETIES</u>						
ARK	3.4	2.1	3.8	81	50	90
CALIF	33.5	32.0	26.4	798	762	629
COLO	3.6	3.2	3.4	86	76	81
CONN	6.9	6.5	7.0	164	155	167
DEL	1.5	1.0	.9	36	24	21
IDAHO	1.0	.6	.5	24	14	12
ILL	15.4	12.6	13.2	367	300	314
IND	17.9	16.4	19.0	426	390	452
IOWA	2.0	1.8	2.1	48	43	50
KANS	1.9	1.9	2.7	45	45	50
KY	2.8	2.1	2.6	67	50	62
MAINE	3.6	3.5	5.8	86	83	138
MD	6.8	5.0	4.5	162	119	107
MASS	10.9	14.7	10.7	260	350	255
MICH	87.0	93.0	96.0	2,071	2,214	2,286
MINN	11.1	13.5	12.0	264	321	286
MO	6.0	5.7	4.5	143	136	107
N H	3.9	6.5	6.4	93	155	152
N J	33.4	21.8	25.4	795	519	605
N MEX	.8	.5	.2	19	12	5
N Y	130.9	176.7	157.5	3,117	4,207	3,750
N C	24.5	11.7	13.3	583	279	317
OHIO	25.2	20.1	18.4	600	479	438
OREG	3.3	2.9	2.5	79	69	60
PA	29.4	28.6	41.6	700	681	990
R I	.7	1.0	.8	17	24	19
S C	1.0	1.6	1.4	24	38	33
TENN	.7	.9	.7	17	21	17
UTAH	2.0	.9	.9	48	21	21
VT	.5	.7	1.3	12	17	31
VA	27.1	23.4	19.5	645	557	464
WASH	10.2	7.0	5.0	243	167	119
W VA	23.8	16.8	21.0	567	400	500
WIS	19.3	17.3	22.0	460	412	524
U S	552.0	554.0	552.4	13,147	13,190	13,152

CONTINUED

APPLES, COMMERCIAL CROP CONTINUED

CROP AND STATE	TOTAL PRODUCTION BY VARIETIES					
	POUNDS			42 LB EQUIVALENT		
	1972	1973	1974	1972	1973	1974
	MILLION UNITS			1,000 UNITS		
<u>OTHER VARIETIES</u>						
ARK	2.7	1.5	4.0	64	36	95
CALIF	41.9	53.9	53.0	998	1,283	1,262
COLO	.2	4.6	1.5	5	110	36
CONN	5.5	3.2	9.7	131	76	231
DEL	.7	.9	.6	17	21	14
IDAHO	.2	.7	1.0	5	17	24
ILL	10.3	9.7	8.8	245	231	210
IND	14.0	9.0	10.1	333	214	240
IOWA	2.3	1.8	1.9	55	43	45
KANS	2.4	2.0	1.3	57	48	31
KY	1.7	1.4	1.6	40	33	38
MAINE	3.3	2.9	4.4	79	69	105
MD	5.2	5.4	3.5	124	129	83
MASS	9.2	7.4	11.5	219	176	274
MICH	82.3	57.3	87.0	1,960	1,364	2,071
MINN	12.0	10.0	12.4	286	238	295
MO	4.4	3.3	3.2	105	79	76
N H	4.5	3.2	5.8	107	76	138
N J	15.0	21.0	26.4	357	500	629
N MEX	.1	.4	.1	2	10	2
N Y	111.8	115.0	140.0	2,662	2,738	3,333
N C	12.3	14.8	15.0	293	352	357
OHIO	16.2	14.5	19.3	386	345	460
OREG	3.2	7.0	6.4	76	167	152
PA	28.4	29.5	37.9	676	702	902
R I	1.2	.7	1.2	29	17	29
S C	2.4	.9	1.2	57	21	29
TENN	1.8	.3	.5	43	7	12
UTAH	0	1.0	.3	0	24	7
VT	.9	1.1	1.9	21	26	45
VA	23.5	19.6	14.8	560	467	352
WASH	7.0	9.3	12.6	167	221	300
W VA	23.9	15.8	15.1	569	376	360
WIS	18.1	14.0	16.0	431	333	381
U S	468.6	443.1	530.0	11,159	10,549	12,618

## PEACHES

YEAR AND STATE	PRODUCTION				PRICE PER POUND	VALUE OF UTILIZED PRODUCTION
	48-POUND EQUIVALENTS		POUNDS			
	TOTAL	UTILIZED	TOTAL	UTILIZED		
1969	1,000 UNITS		MILLION UNITS		CENTS	1,000 DOLLARS
ALA	604	604	29.0	29.0	7.85	2,277
ARK	875	875	42.0	42.0	6.45	2,709
CALIF FREESTONE	10,000	10,000	480.0	480.0	4.24	20,352
COLO	823	683	39.5	32.8	7.29	2,391
CONN	90	90	4.3	4.3	10.50	452
DEL	83	83	4.0	4.0	7.70	308
GA	3,854	3,854	185.0	185.0	6.92	12,802
IDAHO	313	313	15.0	15.0	8.40	1,260
ILL	542	525	26.0	25.2	6.64	1,673
IND	229	229	11.0	11.0	7.90	869
KANS	198	198	9.5	9.5	7.40	703
KY	344	344	16.5	16.5	7.10	1,172
LA	135	135	6.5	6.5	10.60	689
MD	458	458	22.0	22.0	6.93	1,525
MASS	54	54	2.6	2.6	10.50	273
MICH	2,438	2,021	117.0	97.0	5.02	4,869
MISS	271	271	13.0	13.0	7.00	910
MO	396	396	19.0	19.0	6.56	1,246
N H	6	6	.3	.3	10.50	32
N J	2,458	2,177	118.0	104.5	7.40	7,733
N Y	375	375	18.0	18.0	8.00	1,440
N C	1,229	1,167	59.0	56.0	6.74	3,774
OHIO	542	542	26.0	26.0	8.42	2,189
OKLA	208	208	10.0	10.0	6.32	632
OREG	333	333	16.0	16.0	6.29	1,006
PA	2,500	2,500	120.0	120.0	5.55	6,660
R I	10	10	.5	.5	9.50	48
S C	7,042	7,042	338.0	338.0	5.19	17,542
TENN	196	196	9.4	9.4	6.04	568
TEX	673	673	32.3	32.3	7.20	2,326
UTAH	313	313	15.0	15.0	5.56	834
VA	833	785	40.0	37.7	4.80	1,810
WASH	260	260	12.5	12.5	7.00	875
W VA	571	571	227.4	27.4	4.95	1,356
TOTAL ABOVE	39,256	38,291	1,884.3	1,838.0	5.73	105,305
CALIF CLINGSTONE	37,500	32,750	1,800.0	1,572.0	4.64	72,941
U S	76,756	71,041	3,684.3	3,410.0	5.23	178,246

CONTINUED

## PEACHES CONTINUED

YEAR AND STATE	PRODUCTION				PRICE PER POUND	VALUE OF UTILIZED PRODUCTION
	48-POUND EQUIVALENTS		POUNDS			
	TOTAL	UTILIZED	TOTAL	UTILIZED		
1970	1,000 UNITS		MILLION UNITS		CENTS	1,000 DOLLARS
ALA	313	313	15.0	15.0	9.65	1,448
ARK	833	833	40.0	40.0	6.72	2,688
CALIF FREESTONE	8,333	8,333	400.0	400.0	4.40	17,600
COLO	500	427	24.0	20.5	7.98	1,636
CONN	77	77	3.7	3.7	11.00	407
DEL	63	63	3.0	3.0	7.80	234
GA	3,542	3,542	170.0	170.0	8.95	15,215
IDAHO	188	188	9.0	9.0	9.40	846
ILL	406	406	19.5	19.5	7.22	1,408
IND	177	177	8.5	8.5	9.31	791
KANS	167	167	8.0	8.0	7.60	608
KY	260	260	12.5	12.5	7.60	950
LA	125	125	6.0	6.0	12.40	744
MD	479	479	23.0	23.0	8.99	2,068
MASS	73	73	3.5	3.5	11.00	385
MICH	1,563	1,563	75.0	75.0	7.22	5,415
MISS	244	244	11.7	11.7	10.30	1,205
MO	419	419	20.1	20.1	6.77	1,361
N H	13	13	.6	.6	10.50	63
N J	1,979	1,896	95.0	91.0	8.97	8,163
N Y	344	344	16.5	16.5	9.26	1,528
N C	958	875	46.0	42.0	7.27	3,053
OHIO	313	313	15.0	15.0	10.70	1,605
OKLA	177	177	8.5	8.5	7.00	595
OREG	177	177	8.5	8.5	10.80	918
PA	1,750	1,750	84.0	84.0	7.70	6,468
R I	8	8	.4	.4	10.00	40
S C	5,625	5,625	270.0	270.0	7.55	20,385
TENN	142	142	6.8	6.8	6.77	460
TEX	688	688	33.0	33.0	8.00	2,640
UTAH	271	271	13.0	13.0	6.35	826
VA	792	792	38.0	38.0	5.41	2,056
WASH	875	833	42.0	40.0	4.79	1,916
W VA	500	500	24.0	24.0	6.40	1,536
TOTAL ABOVE	32,374	32,093	1,553.8	1,540.3	6.96	107,261
CALIF CLINGSTONE	30,042	25,958	1,442.0	1,246.0	4.90	61,054
U S	62,416	58,051	2,995.8	2,786.3	6.04	168,315

CONTINUED



PEACHES CONTINUED

YEAR AND STATE	PRODUCTION				PRICE PER POUND	VALUE OF UTILIZED PRODUCTION
	48-POUND EQUIVALENTS		POUNDS			
	TOTAL	UTILIZED	TOTAL	UTILIZED		
1971	1,000 UNITS		MILLION UNITS		CENTS	1,000 DOLLARS
ALA	208	208	10.0	10.0	12.70	1,270
ARK	896	896	43.0	43.0	7.30	3,139
CALIF						
FREESTONE	8,583	8,583	412.0	412.0	4.70	19,364
COLO	542	477	26.0	22.9	9.26	2,121
CONN	100	100	4.8	4.8	11.00	528
DEL	83	83	4.0	4.0	8.60	344
GA	2,500	2,500	120.0	120.0	8.70	10,440
IDAHO	313	313	15.0	15.0	7.70	1,155
ILL	500	485	24.0	23.3	7.10	1,654
IND	229	229	11.0	11.0	9.80	1,078
KANS	125	125	6.0	6.0	8.80	528
KY	323	323	15.5	15.5	7.10	1,101
LA	83	83	4.0	4.0	14.00	560
MD	479	479	23.0	23.0	8.20	1,886
MASS	79	79	3.8	3.8	10.50	399
MICH	1,708	1,708	82.0	82.0	5.80	4,756
MISS	217	217	10.4	10.4	10.50	1,092
MO	419	419	20.1	20.1	10.00	2,010
N H	15	15	.7	.7	11.00	77
N J	2,833	2,604	136.0	125.0	8.50	10,625
N Y	396	396	19.0	19.0	8.01	1,522
N C	750	729	36.0	35.0	8.88	3,108
OHIO	583	583	28.0	28.0	9.50	2,660
OKLA	163	163	7.8	7.8	7.63	595
OREG	292	292	14.0	14.0	8.90	1,246
PA	2,188	2,188	105.0	105.0	6.52	6,846
R I	6	6	.3	.3	10.50	32
S C	6,042	6,042	290.0	290.0	8.08	23,432
TENN	171	171	8.2	8.2	6.77	555
TEX	104	104	5.0	5.0	14.00	700
UTAH	271	271	13.0	13.0	6.50	845
VA	792	792	38.0	38.0	5.85	2,223
WASH	896	844	43.0	40.5	4.39	1,778
W VA	542	542	26.0	26.0	5.50	1,430
TOTAL ABOVE	33,431	33,049	1,604.6	1,586.3	7.00	111,099
CALIF						
CLINGSTONE	26,625	24,083	1,278.0	1,156.0	4.80	55,488
U S	60,056	57,132	2,882.6	2,742.3	6.07	166,587

CONTINUED

## PEACHES CONTINUED

YEAR AND STATE	PRODUCTION				PRICE PER POUND	VALUE OF UTILIZED PRODUCTION
	48-POUND EQUIVALENTS		POUNDS			
	TOTAL	UTILIZED	TOTAL	UTILIZED		
1972	1,000 UNITS		MILLION UNITS		CENTS	1,000 DOLLARS
ALA	333	333	16.0	16.0	11.20	1,792
ARK	875	875	42.0	42.0	7.77	3,263
CALIF FREESTONE	7,333	7,333	352.0	352.0	5.90	20,768
COLO	167	146	8.0	7.0	14.20	994
CONN	50	50	2.4	2.4	18.00	432
DEL	21	21	1.0	1.0	12.50	125
GA	3,958	3,958	190.0	190.0	8.87	16,853
IDAHO	42	42	2.0	2.0	10.50	210
ILL	250	250	12.0	12.0	9.29	1,115
IND	8	8	.4	.4	16.70	67
KANS	35	35	1.7	1.7	9.00	153
KY	104	104	5.0	5.0	11.50	575
LA	146	146	7.0	7.0	12.50	875
MD	260	260	12.5	12.5	14.30	1,788
MASS	35	35	1.7	1.7	17.00	289
MICH	208	208	10.0	10.0	10.70	1,070
MISS	292	292	14.0	14.0	11.70	1,638
MO	419	419	20.1	20.1	16.00	3,216
N H 1/	15	15	.7	.7	18.50	130
N J	521	521	25.0	25.0	17.10	4,275
N Y	354	354	17.0	17.0	12.00	2,040
N C	521	521	25.0	25.0	10.50	2,625
OHIO	21	21	1.0	1.0	20.00	200
OKLA	129	129	6.2	6.2	7.39	458
OREG	146	146	7.0	7.0	12.30	861
PA	1,667	1,667	80.0	80.0	13.00	10,400
R I 1/	4	4	.2	.2	18.00	36
S C	3,854	3,854	185.0	185.0	10.20	18,870
TENN	179	179	8.6	8.6	7.25	624
TEX	604	604	29.0	29.0	11.00	3,190
UTAH	31	31	1.5	1.5	13.30	200
VA	458	458	22.0	22.0	9.87	2,171
WASH	594	573	28.5	27.5	9.55	2,626
W VA	271	271	13.0	13.0	12.90	1,677
TOTAL ABOVE	23,905	23,863	1,147.5	1,145.5	9.22	105,606
CALIF CLINGSTONE	25,500	23,000	1,224.0	1,104.0	4.50	49,680
U S	49,405	46,863	2,371.5	2,249.5	6.90	155,286

1/ DISCONTINUED AFTER 1972.

CONTINUED

## PEACHES CONTINUED

YEAR AND STATE	PRODUCTION				PRICE PER POUND	VALUE OF UTILIZED PRODUCTION
	48-POUND EQUIVALENTS		POUNDS			
	TOTAL	UTILIZED	TOTAL	UTILIZED		
1973	1,000 UNITS		MILLION UNITS		CENTS	1,000 DOLLARS
ALA	146	146	7.0	7.0	15.1	1,057
ARK	750	750	36.0	36.0	11.8	4,248
CALIF FREESTONE	8,750	8,750	420.0	420.0	6.5	27,300
COLO	583	481	28.0	23.1	12.7	2,934
CONN	94	94	4.5	4.5	19.0	855
DEL	60	60	2.9	2.9	10.5	305
GA	2,083	2,083	100.0	100.0	15.9	15,900
IDAHO	17	17	.8	.8	13.0	104
ILL	167	167	8.0	8.0	12.8	1,024
IND	73	73	3.5	3.5	20.0	700
KANS	208	208	10.0	10.0	11.7	1,120
KY	83	83	4.0	4.0	14.0	560
LA	135	135	6.5	6.5	15.5	1,008
MD	313	306	15.0	14.7	12.3	1,808
MASS	58	58	2.8	2.8	20.0	560
MICH	1,042	1,042	50.0	50.0	11.5	5,750
MISS	146	146	7.0	7.0	14.6	1,022
MO	208	208	10.0	10.0	16.7	1,670
N J	2,125	1,917	102.0	92.0	13.9	12,788
N Y	313	313	15.0	15.0	15.9	2,385
N C	625	625	30.0	30.0	11.3	3,390
OHIO	146	146	7.0	7.0	17.0	1,190
OKLA	192	192	9.2	9.2	11.5	1,058
OREG	250	250	12.0	12.0	13.0	1,560
PA	1,688	1,688	81.0	81.0	11.3	9,153
S C	4,375	4,375	210.0	210.0	11.3	23,730
TENN	77	77	3.7	3.7	11.0	407
TEX	313	313	15.0	15.0	14.0	2,100
UTAH	250	250	12.0	12.0	12.6	1,512
VA	417	417	20.0	20.0	10.5	2,100
WASH	1,000	979	48.0	47.0	9.4	4,418
W VA	333	333	16.0	16.0	12.2	1,952
TOTAL ABOVE	27,020	26,682	1,296.9	1,280.7	10.6	135,668
CALIF CLINGSTONE	26,958	23,583	1,294.0	1,132.0	5.6	63,392
U S	53,978	50,265	2,590.9	2,412.7	8.3	199,060

CONTINUED

## PEACHES CONTINUED

YEAR AND STATE	PRODUCTION				PRICE PER POUND	VALUE OF UTILIZED PRODUCTION
	48-POUND EQUIVALENTS		POUNDS			
	TOTAL	UTILIZED	TOTAL	UTILIZED		
	1,000 UNITS		MILLION UNITS	CENTS	1,000 DOLLARS	
1974						
ALA	188	188	9.0	9.0	19.2	1,728
ARK	417	417	20.0	20.0	15.5	3,100
CALIF FREESTONE	9,750	9,750	468.0	468.0	7.9	36,972
COLO	313	285	15.0	13.7	15.8	2,165
CONN	88	88	4.2	4.2	18.0	756
DEL	38	38	1.8	1.8	12.2	220
GA	938	938	45.0	45.0	17.9	8,055
IDAHO	208	208	10.0	10.0	10.9	1,090
ILL	104	104	5.0	5.0	15.8	790
IND	42	42	2.0	2.0	20.0	400
KANS	52	52	2.5	2.5	13.0	325
KY	104	104	5.0	5.0	15.5	775
LA	146	146	7.0	7.0	18.5	1,295
MD	479	425	23.0	20.4	11.3	2,305
MASS	35	35	1.7	1.7	18.0	306
MICH	1,458	1,458	70.0	70.0	11.7	8,190
MISS	104	104	5.0	5.0	17.0	850
MO	135	135	6.5	6.5	22.9	1,489
N J	1,979	1,896	95.0	91.0	14.4	13,104
N Y	313	313	15.0	15.0	16.4	2,460
N C	417	417	20.0	20.0	13.7	2,640
OHIO	375	354	18.0	17.0	17.2	2,924
OKLA	10	10	.5	.5	15.0	75
OREG	229	229	11.0	11.0	16.8	1,848
PA	2,083	2,083	100.0	100.0	11.8	11,800
S C	4,479	4,479	215.0	215.0	12.6	27,090
TENN	83	83	4.0	4.0	14.5	580
TEX	375	375	18.0	18.0	16.0	2,880
UTAH	333	333	16.0	16.0	12.1	1,936
VA	771	771	37.0	37.0	11.9	4,403
WASH	750	750	36.0	36.0	9.1	3,276
W VA	479	479	23.0	23.0	12.1	2,783
TOTAL ABOVE	27,275	27,089	1,309.2	1,300.3	11.4	148,610
CALIF CLINGSTONE	33,500	30,333	1,608.0	1,456.0	7.7	112,112
U S	60,775	57,422	2,917.2	2,756.3	9.5	260,722

## PEACHES

USE AND STATE	FRESH AND PROCESSED UTILIZATION 1/					
	QUANTITY			PRICE PER UNIT		
	1969	1970	1971	1969	1970	1971
	MILLION POUNDS			CENTS PER POUND		
<b>FRESH</b>						
ALA	29.0	15.0	10.0	7.85	9.65	12.70
ARK	36.0	33.6	36.6	6.83	7.24	7.80
CALIF						
CLINGSTONE	2.6	2.8	2.6	4.71	5.40	5.60
FREESTONE	180.2	164.0	179.2	5.03	5.75	6.05
COLO	32.8	20.5	22.9	7.29	7.98	9.26
CONN	4.3	3.7	4.8	10.50	11.00	11.00
DEL	4.0	3.0	4.0	7.70	7.80	8.60
GA	134.2	137.7	92.2	8.29	10.30	10.50
IDAHO	15.0	9.0	15.0	8.40	9.40	7.70
ILL	24.2	18.5	22.4	6.75	7.40	7.20
IND	11.0	8.5	11.0	7.90	9.31	9.80
KANS	9.5	8.0	6.0	7.40	7.60	8.80
KY	16.5	12.5	15.5	7.10	7.60	7.10
LA	6.5	6.0	4.0	10.60	12.40	14.00
MD	20.0	22.2	20.8	7.30	9.20	8.60
MASS	2.6	3.5	3.8	10.50	11.00	10.50
MICH	83.1	65.8	61.0	5.40	7.70	6.50
MISS	13.0	11.7	10.4	7.00	10.30	10.50
MO	19.0	20.1	20.1	6.56	6.77	10.00
N H	.3	.6	.7	10.50	10.50	11.00
N J						
N Y	15.2	14.3		8.70	10.00	
N C		40.8	33.0		7.37	9.17
OHIO						
OKLA						
PA	111.0	74.0	88.7	5.70	8.20	6.90
R I	.5	.4	.3	9.50	10.00	10.50
S C	286.0	238.0	247.0	5.50	8.10	8.80
TENN	9.4	6.8	8.2	6.04	6.77	6.77
TEX	32.3	33.0	5.0	7.20	8.00	14.00
UTAH	15.0	13.0	13.0	5.56	6.35	6.50
VA	24.1	26.9	27.1	5.70	6.40	6.60
WASH	12.5	22.8	24.5	8.28	5.91	5.13
W VA	24.9	22.8	22.7	5.15	6.58	5.67
OTH STS	210.7	122.0	188.5	7.25	9.21	8.68
U S	1,384.8	1,181.5	1,201.0	6.43	8.03	9.65
<b>PROCESSED</b>						
				DOLLARS PER TON 2/		
ARK	6.0	6.4	6.4	83.60	80.00	84.00
CALIF						
CLINGSTONE	1,569.4	1,243.2	1,153.4	92.80	98.60	95.20
FREESTONE	299.8	236.0	232.8	72.40	67.30	70.80
GA	50.8	32.3	27.8	66.00	63.60	55.20
ILL	1.0	1.0	.9	79.00	78.60	84.60
MD	2.0	.8	2.2	64.00	62.00	84.60
MICH	13.9	9.2	21.0	55.40	76.40	78.00
N J						
N Y	2.8	2.2		84.50	88.50	
N C		1.2	2.0		76.00	82.00
PA	9.0	10.0	16.3	73.30	80.00	89.30
S C	52.0	32.0	43.0	70.00	70.00	79.40
VA	13.6	11.1	10.9	64.00	60.00	80.00
WASH	0	17.2	16.0		68.60	65.00
W VA	2.5	1.2	3.3	59.00	59.20	82.00
OTH STS	2.4	1.0	5.3	86.30	83.00	96.60
U S	2,025.2	1,604.8	1,541.3	88.30	92.30	89.90

SEE FOOTNOTES ON PAGE 35.

CONTINUED

PEACHES CONTINUED

USE AND STATE	FRESH AND PROCESSED UTILIZATION 1/					
	QUANTITY			PRICE PER UNIT		
	1972	1973	1974	1972	1973	1974
	MILLION POUNDS			CENTS PER POUND		
<b>FRESH</b>						
ALA	16.0	7.0	9.0	11.20	15.1	19.2
ARK	32.9			8.68		
CALIF						
CLINGSTONE	2.4	2.0	3.0	7.30	12.4	12.0
FREESTONE	163.0	169.0	222.0	7.45	6.8	8.2
COLO	7.0	23.1	13.7	14.20	12.7	15.8
CONN	2.4	4.5	4.2	18.00	19.0	18.0
DEL	1.0	2.9	1.8	12.50	10.5	12.2
GA	135.6	80.4	34.7	11.40	19.0	23.3
IDAHO	2.0	.8	10.0	10.50	13.0	10.9
ILL						
IND	.4	3.5	2.0	16.70	20.0	20.0
KANS	1.7	10.0	2.5	9.00	11.2	13.0
KY	5.0	4.0	5.0	11.50	14.0	15.5
LA	7.0	6.5	7.0	12.50	15.5	18.5
MD	11.9	14.1	19.2	14.80	12.5	11.6
MASS	1.7	2.8	1.7	17.00	20.0	18.0
MICH		36.0	54.0		13.5	13.0
MISS	14.0	7.0	5.0	11.70	14.6	17.0
MO	20.1	10.0	6.5	16.00	16.7	22.9
N H 3/	.7			18.50		
N J	25.0	89.3		17.10	14.2	
N Y						
N C	24.3			10.70		
OHIO	1.0	7.0		20.00	17.0	
OKLA		9.2	.5		11.5	15.0
PA	71.8	70.3	86.4	13.80	11.9	12.5
R I 3/	.2			18.00		
S C	165.0	185.0	177.0	10.80	12.2	14.0
TENN	8.6	3.7	4.0	7.25	11.0	14.5
TEX	29.0	15.0	18.0	11.00	14.0	16.0
UTAH	1.5	12.0	16.0	13.30	12.6	12.1
VA	17.6	17.2	31.0	11.30	11.3	13.0
WASH	20.1	35.0	27.8	11.60	10.8	10.4
W VA	11.9	14.8	21.0	13.70	12.7	12.7
OTH STS	44.1	93.1	169.0	11.70	13.1	15.5
U S	844.9	935.2	952.0	11.00	12.3	13.0
<b>PROCESSED</b>						
ARK	9.1			90.00		
CALIF						
CLINGSTONE	1,101.6	1,130.0	1,453.0	89.60	112.00	153.00
FREESTONE	189.0	251.0	246.0	87.60	124.00	156.00
GA	54.4	19.6	10.3	51.40	63.70	63.00
ILL						
MD	.6	.6	1.2	105.00	130.00	142.00
MICH		14.0	16.0		126.00	149.00
N J	0	2.7			92.00	
N Y						
N C	.7			90.00		
PA	8.2	10.7	13.6	111.00	148.00	139.00
S C	20.0	25.0	38.0	96.00	98.00	109.00
VA	4.4	2.8	6.0	83.50	117.00	123.00
WASH	7.4	12.0	8.2	80.00	104.00	93.10
W VA	1.1	1.2	2.0	88.90	114.00	125.00
OTH STS	8.1	7.9	10.0	98.60	112.00	124.00
U S	1,404.6	1,477.5	1,804.3	88.10	113.00	151.00

1/ MISSING DATA INCLUDED IN OTHER STATES TO AVOID DISCLOSURE OF INDIVIDUAL OPERATIONS.  
 2/ EXCLUDING DRIED PEACHES.  
 3/ DISCONTINUED AFTER 1972.

PEACHES CONTINUED

USE AND STATE	PROCESSED UTILIZATION 1/ CANNED, FROZEN, DRIED AND OTHER					
	QUANTITY			PRICE PER TON		
	1969	1970	1971	1969	1970	1971
	MILLION POUNDS			DOLLARS		
<b>CANNED</b>						
ARK	6.0	6.4	6.4	83.60	80.00	84.00
CALIF						
CLINGSTONE	1,550.2	1,233.8	1,140.0	93.50	99.10	95.70
FREESTONE	201.2	141.6	135.4	75.30	68.50	68.90
GA	40.8			68.00		
ILL	1.0		.9	79.00		84.60
MD	1.0			64.00		
N Y		2.2			88.50	
PA	7.6	8.3	12.3	75.20	82.00	89.80
S C	45.7	26.2	39.5	70.00	68.00	80.00
VA	7.9	5.3	7.5	64.00	66.00	78.00
WASH	0					
OTH STS	14.9	52.8	55.1	67.40	70.80	77.30
U S	1,876.3	1,476.6	1,397.1	90.00	94.30	91.70
<b>FROZEN</b>						
CALIF						
FREESTONE	42.4	58.0	67.6	58.40	64.40	74.70
MD	1.0			64.00		
PA	1.4	1.7	4.0	63.20	70.60	87.80
VA						
OTH STS	19.4	14.0	14.7	69.20	73.90	82.50
U S	64.2	73.7	86.3	61.90	66.30	76.60
<b>DRIED</b>						
CALIF						
FREESTONE	56.2	36.4	29.8	87.50	87.50	87.50
U S	56.2	36.4	29.8	87.50	87.50	87.50
<b>OTHER (PICKLES, WINE AND BRANDY)</b>						
CALIF						
CLINGSTONE	19.2	9.4	13.4	39.00	38.60	50.50
OTH STS	9.3	8.7	14.7	46.20	37.50	29.10
U S	28.5	18.1	28.1	41.40	38.10	39.30
	1972	1973	1974	1972	1973	1974
<b>CANNED</b>						
ARK	9.1			90.00		
CALIF						
CLINGSTONE	1,084.0	1,121.0	1,433.8	90.30	112.00	154.00
FREESTONE	105.0	136.0	152.0	86.30	118.00	156.00
GA	24.4	9.7		78.00	90.00	
ILL						
MD						
N Y						
PA	7.2		11.3	113.00		138.00
S C		16.9	24.6		98.00	131.00
VA		1.5			104.00	
WASH	7.4			80.00		
OTH STS	31.7	40.3	28.9	95.40	121.00	138.00
U S	1,268.8	1,325.4	1,650.6	89.90	113.00	153.00
<b>FROZEN</b>						
CALIF						
FREESTONE	60.0	91.0		89.90	132.00	
MD						
PA	1.0			97.40		
VA		1.3			132.00	
OTH STS	4.3	12.6	78.1	93.20	116.00	154.00
U S	65.3	104.9	78.1	90.20	130.00	154.00
<b>DRIED</b>						
CALIF						
FREESTONE	24.0	24.0	29.0	110.00	141.00	115.00
U S	24.0	24.0	29.0	110.00	141.00	115.00
<b>OTHER (PICKLES, WINE AND BRANDY)</b>						
CALIF						
CLINGSTONE	17.6	9.0		45.50	56.60	
OTH STS	28.9	14.2	46.6	27.00	52.90	63.60
U S	46.5	23.2	46.6	34.00	54.30	63.60

1/ MISSING DATA INCLUDED IN OTHER STATES TO AVOID DISCLOSURE OF INDIVIDUAL OPERATIONS.

BERRIES

CROP, STATE AND YEAR	AREA HARVESTED ACRES	YIELD PER ACRE POUNDS	PRODUCTION		UTILIZATION		PRICE PER POUND			VALUE OF UTILIZED PRODUCTION 1,000 DOLLARS
			TOTAL	UTILIZED	FRESH	PROCESSED	FRESH	PROCESSED	ALL	
			1,000 POUNDS				CENTS			
<u>CULTIVATED BLACKBERRIES</u>										
OREG										
1969	4,300	7,000	30,100	30,100	500	29,600	18.1	18.9	18.9	5,689
1970	4,300	7,700	33,110	33,110	300	32,810	16.9	15.2	15.2	5,033
1971	4,100	6,800	27,880	27,880	480	27,400	15.6	11.9	12.0	3,346
1972	4,000	6,900	27,600	27,600	450	27,150	26.7	23.9	23.9	6,596
1973	2,600	3,100	8,060	8,060	350	7,710	44.3	51.6	51.3	4,135
1974	4,000	7,000	28,000	28,000	200	27,800	26.6	22.3	22.3	6,244
WASH										
1969	550	8,200	4,550	4,510	90	4,420	20.0	18.0	18.0	812
1970	460	6,900	3,270	3,174	50	3,124	21.1	14.1	14.2	451
1971	400	5,500	3,200	2,200	51	2,149	16.8	12.0	12.1	266
1972	280	4,700	1,376	1,316	11	1,305	30.0	22.8	22.9	301
1973	220	3,500	794	770	6	764	53.5	47.1	47.2	363
1974	200	7,400	1,556	1,480	13	1,467	31.2	19.2	19.3	286
TOTAL										
1969	4,850	7,136	34,650	34,610	590	34,020	18.4	18.8	18.8	6,501
1970	4,760	7,623	36,380	36,284	350	35,934	17.5	15.1	15.1	5,484
1971	4,500	6,684	31,080	30,080	531	29,549	15.7	11.9	12.0	3,612
1972	4,280	6,756	28,976	28,916	461	28,455	26.8	23.8	23.9	6,897
1973	2,820	3,131	8,854	8,830	356	8,474	44.5	51.9	50.9	4,498
1974	4,200	7,019	29,556	29,480	213	29,267	26.9	22.1	22.2	6,530
<u>BLUEBERRIES</u>										
WASH										
1969	650	6,000	4,000	3,900	1,340	2,560	25.8	19.9	21.9	854
1970	670	6,100	4,162	4,087	1,146	2,941	26.4	20.7	22.3	911
1971	650	4,300	2,925	2,795	912	1,883	29.0	24.1	25.7	718
1972	690	5,100	3,649	3,519	1,061	2,458	35.6	30.2	31.8	1,119
1973	800	6,480	5,300	5,180	1,450	3,730	36.8	34.1	34.9	1,808
1974	800	5,100	4,100	4,080	1,710	2,370	41.3	28.4	33.8	1,379
<u>BOYSENBERRIES &amp; YOUNGBERRIES</u>										
OREG										
1969	1,500	3,100	4,650	4,650	250	4,400	18.9	20.1	20.0	930
1970	1,450	4,200	6,090	6,090	190	5,900	18.2	17.9	17.9	1,090
1971	1,350	2,900	3,915	3,915	315	3,600	19.8	18.0	18.1	709
1972	1,200	2,800	3,360	3,360	260	3,100	32.8	36.0	35.8	1,203
1973	800	2,000	1,600	1,600	130	1,470	44.9	49.5	49.1	786
1974	1,200	2,420	2,900	2,900	160	2,740	34.0	32.3	32.4	940
<u>CURRANTS</u>										
WASH										
1969	210	4,200	882	882	4	878	20.0	17.0	17.0	150
1970	170	3,200	544	544	1	543	20.0	16.2	16.2	88
1971	170	3,500	595	595	6	589	20.0	16.0	16.0	95
1972	160	1,300	208	208	9	199	20.0	18.5	18.6	39
1973	170	2,800	476	476	9	467	25.0	20.9	21.0	100
1974	160	2,410	390	385	4	381	25.0	18.6	18.7	72

CONTINUED



BERRIES CONTINUED

CROP, STATE AND YEAR	AREA HAR- VESTED ACRES	YIELD PER ACRE POUNDS	PRODUCTION		UTILIZATION		PRICE PER POUND			VALUE OF UTILIZED PRODUCTION 1,000 DOLLARS
			TOTAL	UTILIZED	FRESH	PRO- CESSED	FRESH	PRO- CESSED	ALL	
				1,000 POUNDS				CENTS		
<b>LOGANBERRIES</b>										
OREG										
1969	500	4,900	2,450	2,450	50	2,400	21.0	20.4	20.4	500
1970	450	5,600	2,520	2,520	50	2,470	22.0	20.0	20.0	504
1971	400	5,500	2,200	2,200	100	2,100	22.2	20.1	20.2	444
1972	430	3,800	1,634	1,634	34	1,600	27.8	29.0	29.0	474
1973	390	2,700	1,053	1,053	73	980	44.0	46.0	45.9	483
1974	470	3,900	1,833	1,833	32	1,801	41.5	40.2	40.2	737
<b>BLACK RASPBERRIES</b>										
OREG										
1969	2,900	2,000	5,800	5,800	135	5,665	25.7	35.9	35.7	2,071
1970	2,900	1,000	2,900	2,900	100	2,800	22.8	25.0	24.9	722
1971	2,800	1,000	2,800	2,800	150	2,650	23.0	25.0	24.9	697
1972	2,200	1,250	2,750	2,750	100	2,650	43.0	45.0	44.9	1,235
1973	1,800	1,100	1,980	1,980	120	1,860	68.3	85.0	84.0	1,663
1974	1,500	1,440	2,160	2,160	110	2,050	49.5	51.0	50.9	1,099
WASH										
1969	170	2,600	442	442	1	441	50.0	39.0	39.0	172
1970	160	1,600	264	256	4	252	30.0	25.0	25.1	64
1971	140	800	126	112	4	108	30.0	25.0	25.2	28
1972	130	800	118	104	11	93	48.0	42.0	42.6	44
1973	130	700	91	91	6	85	88.8	88.8	88.8	81
1974	140	1,070	150	150	5	145	50.0	50.0	50.0	75
TOTAL										
1969	3,070	2,033	6,242	6,242	136	6,106	25.9	36.1	35.9	2,243
1970	3,060	1,031	3,164	3,156	104	3,052	23.1	25.0	24.9	786
1971	2,940	990	2,926	2,912	154	2,758	23.2	25.0	24.9	725
1972	2,330	1,225	2,868	2,854	111	2,743	43.5	44.9	44.8	1,279
1973	1,930	1,073	2,071	2,071	126	1,945	69.3	85.2	84.2	1,744
1974	1,640	1,409	2,310	2,310	115	2,195	49.5	50.9	50.8	1,174
<b>RED RASPBERRIES</b>										
OREG										
1969	2,800	4,700	13,160	13,160	800	12,360	23.4	26.7	26.5	3,487
1970	2,700	4,400	11,880	11,880	880	11,000	19.8	21.5	21.4	2,542
1971	2,700	4,300	11,610	11,610	1,000	10,610	22.0	23.6	23.5	2,728
1972	2,400	4,100	9,840	9,840	1,400	8,440	32.5	32.0	32.1	3,159
1973	2,100	5,000	10,500	10,500	700	9,800	40.5	46.0	45.6	4,788
1974	2,300	4,300	9,900	9,900	400	9,500	39.1	32.3	32.6	3,227
WASH										
1969	2,900	6,900	20,010	20,010	620	19,390	28.0	27.4	27.4	5,483
1970	2,900	5,000	14,625	14,500	996	13,504	29.8	21.9	22.4	3,248
1971	2,700	5,000	13,765	13,500	1,135	12,365	26.2	23.7	23.9	3,227
1972	2,600	4,600	12,050	11,960	965	10,995	33.2	31.2	31.4	3,755
1973	2,700	5,020	13,840	13,550	878	12,672	45.1	43.1	43.2	5,854
1974	2,800	5,100	15,030	14,280	1,180	13,100	40.4	36.9	37.2	5,312
TOTAL										
1969	5,700	5,819	33,170	33,170	1,420	31,750	25.4	27.1	27.0	8,970
1970	5,600	4,711	26,505	26,380	1,876	24,504	25.1	21.7	21.9	5,790
1971	5,400	4,650	25,375	25,110	2,135	22,975	24.2	23.7	23.7	5,955
1972	5,000	4,360	21,890	21,800	2,365	19,435	32.8	31.5	31.7	6,914
1973	4,800	5,010	24,340	24,050	1,578	22,472	43.1	44.4	44.2	10,642
1974	5,100	4,747	24,930	24,180	1,580	22,600	40.1	35.0	35.3	8,539

CRANBERRIES

YEAR AND STATE	AREA HARVESTED	YIELD PER ACRE	PRODUCTION 1/		UTILIZATION			PRICE PER BARREL 3/	VALUE OF UTILIZED PRODUCTION
			TOTAL	UTILIZED	FRESH	PROCESSED	SHRINK-AGE 2/		
	ACRES		BARRELS					DOLLARS	T,000 DOLLARS
<b>1969</b>									
MASS	11,200	67.4	755,000	755,000	152,000	567,000	36,000	15.40	11,627
N J	3,000	53.3	160,000	160,000	1,000	155,000	4,000	15.50	2,480
OREG	685	83.4	57,100	57,100		56,900	200	15.40	879
WASH	1,000	105.0	105,000	105,000	5,000	94,900	5,100	15.40	1,617
WIS	5,400	138.1	746,000	746,000	184,100	538,800	23,100	15.60	11,638
U S	21,285	85.7	1,823,100	1,823,100	342,100	1,412,600	68,400	15.50	28,241
<b>1970</b>									
MASS	11,200	85.4	957,000	864,000	210,000	607,000	47,000	10.70	9,245
N J	3,100	57.7	179,000	179,000	2,000	174,000	3,000	10.80	1,933
OREG	745	81.3	60,600	60,600		60,500	100	10.60	642
WASH	1,000	138.0	138,000	138,000	40,000	93,500	4,500	10.60	1,463
WIS	5,700	123.2	702,000	603,000	115,000	465,000	23,000	10.60	6,392
U S	21,745	93.7	2,036,600	1,844,600	367,000	1,400,000	77,600	10.70	19,675
<b>1971</b>									
MASS	11,200	95.7	1,072,000	737,000	239,000	441,000	57,000	10.70	7,886
N J	3,100	76.5	237,000	178,000	1,000	174,000	3,000	11.00	1,958
OREG	810	84.9	68,800	68,800		68,800		10.70	736
WASH	1,000	145.0	145,000	104,000	26,000	76,000	2,000	10.70	1,113
WIS	6,300	117.8	742,000	552,000	135,000	399,000	18,000	10.70	5,906
U S	22,410	101.1	2,264,800	1,639,800	401,000	1,158,800	80,000	10.70	17,599
<b>1972</b>									
MASS	11,200	73.1	819,000	819,000	170,000	600,000	49,000	12.60	10,319
N J	3,000	65.3	196,000	196,000	500	191,500	4,000	12.60	2,470
OREG	890	116.9	104,000	104,000		103,600	400	12.60	1,310
WASH	1,000	154.0	154,000	154,000	29,000	115,000	10,000	12.60	1,940
WIS	6,500	123.8	805,000	805,000	122,000	557,000	126,000	12.40	9,982
U S	22,590	92.0	2,078,000	2,078,000	321,500	1,567,100	189,400	12.50	26,021
<b>1973</b>									
MASS	11,200	80.4	901,000	901,000	246,000	563,000	92,000	13.60	12,254
N J	3,200	71.3	228,000	228,000	500	222,000	5,500	13.70	3,124
OREG	900	108.1	97,300	97,300		97,200	100	13.60	1,323
WASH	1,100	107.3	118,000	118,000	34,000	81,000	3,000	13.80	1,628
WIS	6,700	112.8	756,000	756,000	118,000	507,000	131,000	13.30	10,055
U S	23,100	90.9	2,100,300	2,100,300	398,500	1,470,200	231,600	13.50	28,384
<b>1974</b>									
MASS	11,200	83.2	932,000	932,000	167,000	491,000	274,000	10.70	9,972
N J	3,200	78.1	250,000	250,000	500	244,500	5,000	10.60	2,650
OREG	900	102.2	92,000	92,000	800	91,000	200	10.40	957
WASH	1,100	83.6	92,000	92,000	30,200	59,200	2,600	10.40	957
WIS	7,000	124.3	870,000	870,000	119,000	601,000	150,000	11.70	10,179
U S	23,400	95.6	2,236,000	2,236,000	317,500	1,486,700	431,800	11.00	24,715

1/ DIFFERENCES BETWEEN TOTAL PRODUCTION AND PRODUCTION UTILIZED ARE CRANBERRIES THAT WERE PUT IN SET-ASIDE UNDER THE CRANBERRY MARKETING ORDER. CRANBERRIES PUT IN SET-ASIDE, BUT SOLD FOR EXPORT ARE INCLUDED IN PRODUCTION UTILIZED.

2/ BERRIES PAID FOR BY PROCESSORS AND LOST BECAUSE OF DEHYDRATION AND BERRY BREAKDOWN AFTER DELIVERY.

3/ EQUIVALENT RETURNS AT FIRST DELIVERY POINT, SCREENED BASIS OF UTILIZED PRODUCTION.

GRAPES

STATE AND TYPE	PRODUCTION		PRICE PER TON	VALUE OF UTILIZED PRODUCTION	PRODUCTION		PRICE PER TON	VALUE OF UTILIZED PRODUCTION
	TOTAL	UTILIZED			TOTAL	UTILIZED		
	1969		1970		1971		1972	
	TONS	DOLLARS	1,000 DOLLARS	TONS	DOLLARS	1,000 DOLLARS	TONS	DOLLARS
ARIZ	15,200	15,200	250.00	3,800	10,900	10,900	340.00	3,706
ARK	11,000	11,000	135.00	1,485	8,200	8,200	141.00	1,156
CALIF								
ALL VARIETIES 1/	3,595,000	3,595,000	65.30	234,707	2,747,000	2,747,000	85.00	233,596
WINE VARIETIES	775,000	775,000	80.50	62,388	531,000	531,000	117.00	62,127
TABLE VARIETIES	665,000	665,000	56.70	37,706	345,000	345,000	109.00	37,605
RAISIN VARIETIES 2/	2,155,000	2,155,000	62.50	134,613	1,871,000	1,871,000	71.60	133,864
DRIED 3/	251,000	251,000	266.00	66,766	193,000	193,000	283.00	54,619
NOT DRIED	1,148,000	1,148,000	59.10	67,847	1,051,000	1,051,000	75.40	79,245
MICH	38,000	38,000	145.00	5,510	62,000	62,000	141.00	8,742
MO	4,500	4,500	147.00	662	2,500	2,500	155.00	388
N J	960	960	151.00	145	1,400	1,400	161.00	225
N Y	121,000	121,000	175.00	21,175	152,000	152,000	171.00	25,992
N C	2,200	2,200	225.00	495	2,200	2,200	302.00	664
OHIO	9,300	9,300	171.00	1,590	11,000	11,000	174.00	1,914
PA	25,000	25,000	160.00	4,000	45,000	45,000	147.00	6,615
WASH	69,400	69,400	115.00	7,981	54,500	54,500	147.00	8,012
OTH STS 4/	5,950	5,950	162.00	964	6,630	6,630	189.00	1,253
U S	3,897,510	3,897,510	72.50	282,514	3,103,330	3,103,330	94.20	292,263
ARIZ	14,700	14,700	510.00	7,497	13,600	13,600	555.00	7,548
ARK	9,200	9,200	159.00	1,463	9,500	9,500	167.00	1,587
CALIF								
ALL VARIETIES 1/	3,531,000	3,531,000	87.20	308,045	2,275,000	2,275,000	162.00	368,106
WINE VARIETIES	765,000	765,000	139.00	106,335	630,000	630,000	222.00	139,860
TABLE VARIETIES	454,000	454,000	96.10	43,629	301,000	301,000	210.00	63,210
RAISIN VARIETIES 2/	2,312,000	2,312,000	68.40	158,081	1,344,000	1,344,000	123.00	165,036
DRIED 3/	194,100	194,100	329.00	63,859	105,000	105,000	560.00	58,800
NOT DRIED	1,419,000	1,419,000	66.40	94,222	908,000	908,000	117.00	106,236
MICH	69,000	69,000	120.00	8,280	53,000	53,000	166.00	8,798
MO	3,500	3,500	159.00	557	3,600	3,600	178.00	641
N J	1,300	1,300	183.00	238	600	600	231.00	139
N Y	200,000	200,000	166.00	33,200	103,000	103,000	186.00	19,158
N C	2,800	2,800	293.00	820	2,200	2,200	325.00	715
OHIO	19,000	19,000	171.00	3,249	12,000	12,000	178.00	2,136
PA	57,000	57,000	137.00	7,809	37,600	37,600	172.00	6,467
WASH	79,400	79,400	133.00	10,560	62,100	62,100	154.00	9,563
OTH STS 4/	7,520	7,520	206.00	1,549	6,450	6,450	214.00	1,380
U S	3,994,420	3,994,420	96.00	383,267	2,578,650	2,578,650	165.00	426,238

SEE FOOTNOTES ON PAGE 41.

GRAPES CONTINUED

STATE AND TYPE	PRODUCTION		PRICE	VALUE OF	PRODUCTION		PRICE	VALUE OF
	TOTAL	UTILIZED	PER TON	UTILIZED PRODUCTION	TOTAL	UTILIZED	PER TON	UTILIZED PRODUCTION
	TONS		DOLLARS	1,000 DOLLARS	TONS		DOLLARS	1,000 DOLLARS
	1973				1974			
ARIZ	12,700	12,700	455.00	5,779	12,500	12,500	720.00	9,000
ARK	8,000	8,000	200.00	1,600	8,000	8,000	187.00	1,496
CALIF								
ALL VARIETIES 1/	3,891,000	3,891,000	158.00	614,402	3,794,000	3,794,000	130.00	494,017
WINE VARIETIES	1,040,000	1,040,000	208.00	216,320	1,238,000	1,238,000	133.00	164,654
TABLE VARIETIES	475,000	475,000	174.00	82,650	586,000	586,000	131.00	76,766
RAISIN VARIETIES 2/	2,376,000	2,376,000	133.00	315,432	1,970,000	1,970,000	128.00	252,597
DRIED 3/	224,000	224,000	754.00	168,896	241,500	241,500	602.00	145,383
NOT DRIED	1,409,000	1,409,000	104.00	146,536	948,800	948,800	113.00	107,214
MICH	23,500	23,500	207.00	4,865	47,500	47,500	190.00	9,025
MO	1,900	1,900	198.00	376	1,800	1,800	216.00	389
N J	1,050	1,050	207.00	217	1,000	1,000	245.00	245
N Y	128,000	128,000	213.00	27,264	177,000	177,000	220.00	38,940
N C	3,400	3,400	333.00	1,132	3,100	3,100	306.00	949
OHIO	13,000	13,000	219.00	2,847	15,500	15,500	213.00	3,302
PA	40,000	40,000	221.00	8,840	53,000	53,000	198.00	10,494
WASH	69,200	69,200	185.00	12,802	80,500	80,500	164.00	13,202
OTH STS 4/	6,600	6,600	235.00	1,551	4,900	4,900	251.00	1,230
U S	4,198,350	4,198,350	162.00	681,675	4,198,800	4,198,800	139.00	582,289

FRESH UTILIZATION

	QUANTITY			PRICE PER TON		
	1969	1970	1971	1969	1970	1971
	TONS			DOLLARS		
ARIZ	15,200	10,900	14,700	250.00	340.00	510.00
ARK	693	824	800	190.00	200.00	200.00
CALIF						
ALL VARIETIES	533,500	365,500	363,700	92.50	175.00	166.00
WINE VARIETIES	64,000	36,000	43,000	81.00	185.00	188.00
TABLE VARIETIES	232,800	183,200	164,100	91.00	157.00	174.00
RAISIN VARIETIES	236,700	146,300	156,600	97.00	194.00	151.00
MICH	2,500	3,600	3,400	225.00	215.00	190.00
MO	930	480	330	175.00	175.00	175.00
N J	185	200	190	220.00	240.00	255.00
N Y	2,440	2,000	2,000	240.00	260.00	300.00
N C 5/			900			300.00
OHIO	1,245	1,500	1,900	200.00	200.00	220.00
PA	1,500	1,800	2,170	240.00	220.00	200.00
WASH	1,300	930	1,100	163.00	176.00	210.00
OTH STS 4/	2,470	2,272	1,460	233.00	257.00	232.00
U S	561,963	390,006	392,650	99.70	181.00	181.00

	1972			1973			1974		
	1972	1973	1974	1972	1973	1974	1972	1973	1974
	TONS			DOLLARS					
ARIZ	13,600	12,700	12,500	555.00	455.00	720.00			
ARK	700	650	500	220.00	200.00	210.00			
CALIF									
ALL VARIETIES	332,100	381,700	411,700	323.00	300.00	252.00			
WINE VARIETIES	35,000	45,000	57,000	312.00	268.00	168.00			
TABLE VARIETIES	156,600	196,700	221,200	328.00	300.00	240.00			
RAISIN VARIETIES	140,500	140,000	133,500	319.00	310.00	307.00			
MICH	2,800	1,600	2,000	300.00	390.00	350.00			
MO	500	250	550	175.00	175.00	190.00			
N J	100	160	150	298.00	315.00	320.00			
N Y	1,900	1,800	1,900	260.00	300.00	340.00			
N C 5/	900	700		360.00	440.00				
OHIO	1,300	1,700	1,200	240.00	300.00	310.00			
PA	2,275	2,390	1,275	250.00	260.00	256.00			
WASH	1,000	900	1,000	170.00	200.00	232.00			
OTH STS 4/	1,410	1,255	1,715	245.00	259.00	422.00			
U S	358,585	405,805	434,490	329.00	305.00	267.00			

1/ PRICE DERIVED FROM UNROUNDED DATA FOR CALIFORNIA ALL VARIETIES AND RAISIN VARIETIES. 2/ FRESH EQUIVALENT OF DRIED AND NOT DRIED. 3/ DRIED BASIS: 1 TON OF RAISINS EQUIVALENT TO 4.01 OF FRESH GRAPES FOR 1969; 4.25 FOR 1970; 4.60 FOR 1971; 4.15 FOR 1972; 4.32 FOR 1973; AND 4.23 FOR 1974. INCLUDES SUBSTANDARD RAISINS DIVERTED TO OTHER USES. 4/ GEORGIA AND SOUTH CAROLINA. 5/ MISSING DATA INCLUDED IN OTHER STATES TO AVOID DISCLOSURE OF INDIVIDUAL OPERATIONS.

GRAPES CONTINUED

USE AND STATE	PROCESSED UTILIZATION					
	QUANTITY 1/			PRICE PER TON 2/		
	1969	1970	1971	1969	1970	1971
	TONS			DOLLARS		
<b>TOTAL PROCESSED</b>						
ARK	10,307	7,376	8,400	131.00	134.00	155.00
CALIF						
ALL VARIETIES	3,061,500	2,381,500	3,167,300	60.60	71.40	78.30
WINE VARIETIES	711,000	495,000	722,000	80.50	112.00	136.00
TABLE VARIETIES	432,200	161,800	289,900	38.20	55.50	52.00
RAISIN VARIETIES	1,918,300	1,724,700	2,155,400	58.20	61.20	62.50
MICH	35,500	58,400	65,600	139.00	137.00	116.00
MO	3,570	2,020	3,170	140.00	150.00	157.00
N J	775	1,200	1,110	135.00	148.00	171.00
N Y	118,560	150,000	198,000	174.00	170.00	165.00
N C			1,900			290.00
OHIO	8,055	9,500	17,100	166.00	170.00	165.00
PA	23,500	43,200	54,830	156.00	144.00	135.00
WASH	68,100	53,570	78,300	114.00	147.00	132.00
OTH STS	5,680	6,558	6,060	156.00	204.00	200.00
U S	3,335,547	2,713,324	3,601,770	68.00	81.80	86.80
<b>CANNED</b>						
CALIF	66,300	53,700	58,400	73.00	89.00	94.00
U S	66,300	53,700	58,400	73.00	89.00	94.00
<b>JUICE</b>						
MICH	28,150	51,100	59,300	138.00	137.00	117.00
N Y	69,400	91,800	125,000	155.00	152.00	143.00
OHIO	5,735	6,830		166.00	170.00	
PA	21,630	36,230	51,470	151.00	140.00	130.00
WASH	64,200		75,700	116.00		133.00
OTH STS	9,717	57,615	21,370	134.00	147.00	161.00
U S	198,832	243,575	332,840	139.00	146.00	135.00
<b>WINE</b>						
CALIF						
ALL VARIETIES	1,985,000	1,506,000	2,213,000	57.20	73.30	80.40
WINE VARIETIES	711,000	495,000	722,000	80.50	112.00	136.00
TABLE VARIETIES	429,000	160,000	287,000	37.90	55.10	51.50
RAISIN VARIETIES	845,000	851,000	1,204,000	47.40	54.20	54.00
MICH	6,100	6,500	6,000	142.00	139.00	107.00
N J	775	1,200	1,110	135.00	148.00	171.00
N Y	45,900	53,800	69,500	203.00	201.00	206.00
N C			1,900			290.00
OHIO	2,130	2,100	3,500	166.00	170.00	165.00
PA						
WASH			2,600			98.00
OTH STS	14,250	13,629	12,130	140.00	179.00	195.00
U S	2,054,155	1,583,229	2,309,740	61.40	79.00	85.20
<b>DRIED (FRESH BASIS)</b>						
CALIF						
ALL VARIETIES	1,010,200	821,800	895,900	66.40	66.60	72.10
TABLE VARIETIES	3,200	1,800	2,900	83.50	87.50	100.00
RAISIN VARIETIES	1,007,000	820,000	893,000	66.30	66.60	72.00
U S	1,010,200	821,800	895,900	66.40	66.60	72.10
<b>OTHER (JAM, JELLY, ETC)</b>						
MICH	1,250	800	300	142.00	139.00	106.00
N Y	3,260	4,400	3,500	160.00	152.00	135.00
OHIO	190	570		166.00	170.00	
OTH STS	1,360	5,250	1,090	129.00	140.00	143.00
U S	6,060	11,020	4,890	150.00	146.00	135.00

SEE FOOTNOTES ON PAGE 43.

CONTINUED

GRAPES CONTINUED

USE AND STATE	PROCESSED UTILIZATION 1/					
	QUANTITY			PRICE PER TON		
	1972	1973	1974	1972	1973	1974
	TONS			DOLLARS		
<b>TOTAL PROCESSED</b>						
ARK	8,800	7,350	7,500	163.00	200.00	185.00
CALIF						
ALL VARIETIES	1,942,900	3,509,300	3,382,300	134.00	143.00	115.00
WINE VARIETIES	595,000	995,000	1,181,000	217.00	205.00	131.00
TABLE VARIETIES	144,400	278,300	364,800	81.80	84.10	65.40
RAISIN VARIETIES	1,203,500	2,236,000	1,836,500	100.00	122.00	115.00
MICH	50,200	21,900	45,500	158.00	194.00	183.00
MO	3,100	1,650	1,250	179.00	201.00	227.00
N J	500	890	850	217.00	187.00	232.00
N Y	101,100	126,200	175,100	185.00	212.00	219.00
N C	1,300	2,700		300.00	305.00	
OHIO	10,700	11,300	14,300	171.00	207.00	205.00
PA	35,325	37,610	51,725	167.00	219.00	198.00
WASH	61,100	68,300	79,500	154.00	185.00	163.00
OTH STS	5,040	5,345	6,285	205.00	230.00	231.00
U S	2,220,065	3,792,545	3,764,310	139.00	148.00	124.00
<b>CANNED</b>						
CALIF	50,500	59,000	61,200	116.00	135.00	152.00
U S	50,500	59,000	61,200	116.00	135.00	152.00
<b>JUICE</b>						
MICH	42,900	16,600	37,300	158.00	190.00	183.00
N Y	56,300	56,300	80,000	168.00	201.00	183.00
OHIO						
PA	32,410	33,367	42,217	164.00	217.00	183.00
WASH	58,200	66,200	76,500	154.00	186.00	163.00
OTH STS	16,300	14,250	16,550	166.00	203.00	186.00
U S	206,110	186,717	252,567	161.00	198.00	177.00
<b>WINE</b>						
CALIF						
ALL VARIETIES	1,455,000	2,481,000	2,297,300	135.00	130.00	102.00
WINE VARIETIES	595,000	995,000	1,181,000	217.00	205.00	131.00
TABLE VARIETIES	143,000	276,000	362,200	81.30	83.40	64.70
RAISIN VARIETIES	717,000	1,210,000	754,100	77.60	78.50	76.00
MICH	4,700		5,450	161.00		188.00
N J	500	890	850	217.00	187.00	232.00
N Y	42,300	61,100	88,600	208.00	224.00	254.00
N C	1,300	2,700		300.00	305.00	
OHIO	2,100	2,000	2,800	171.00	207.00	289.00
PA		4,243			235.00	
WASH	2,900	2,100		160.00	160.00	
OTH STS	11,390	13,295	20,711	196.00	217.00	234.00
U S	1,520,190	2,567,328	2,415,711	138.00	133.00	110.00
<b>DRIED (FRESH BASIS)</b>						
CALIF						
ALL VARIETIES	437,400	969,300	1,023,800	135.00	175.00	141.00
TABLE VARIETIES	1,400	2,300	2,600	138.00	173.00	161.00
RAISIN VARIETIES	436,000	967,000	1,021,200	135.00	175.00	141.00
U S	437,400	969,300	1,023,800	135.00	175.00	141.00
<b>OTHER (JAM, JELLY, ETC)</b>						
MICH	2,600		2,750	160.00		174.00
N Y	2,500	8,800	6,500	161.00	201.00	180.00
OHIO						
OTH STS	765	1,400	1,782	163.00	190.00	177.00
U S	5,865	10,200	11,032	161.00	199.00	178.00

1/ MISSING DATA INCLUDED IN OTHER STATES TO AVOID DISCLOSURE OF INDIVIDUAL OPERATIONS.

APRICOTS AND AVOCADOS

CROP, STATE AND SEASON	PRODUCTION		UTILIZATION		PRICE PER TON			VALUE OF UTILIZED PRODUCTION 1,000 DOLLARS
	TOTAL	UTILIZED	FRESH	PROCESSED	FRESH	PROCESSED 1/	ALL	
	TONS				DOLLARS			
<b>APRICOTS</b>								
<b>CALIF</b>								
1969	222,300	222,300	8,000	214,300	179.00	132.00	143.00	31,789
1970	169,000	169,000	10,000	159,000	200.00	85.50	110.00	18,590
1971	181,000	144,000	12,400	131,600	130.00	74.30	93.50	13,464
1972	126,000	126,000	8,800	117,200	240.00	121.00	143.00	18,018
1973	152,000	152,000	6,900	145,100	370.00	141.00	167.00	25,384
1974	91,000	91,000	6,200	84,800	480.00	222.00	268.00	24,388
<b>UTAH</b>								
1969 2/	3,100	3,100	3,100		128.00		128.00	397
1970 2/	1,300	1,300	1,300		135.00		135.00	176
1971 2/	2,800	2,500	2,500		140.00		140.00	350
1972	0	0	0	0				
1973 2/	2,300	2,170	2,170		145.00		145.00	315
1974	550	550	550	0	384.00		384.00	211
<b>WASH</b>								
1969	3,200	3,050	1,600	1,450	173.00	123.00	149.00	454
1970	4,700	4,400	3,240	1,160	142.00	99.00	131.00	576
1971	2,650	2,350	2,020	330	131.00	99.00	127.00	298
1972	1,600	1,470	1,250	220	246.00	27.00	213.00	313
1973	3,600	3,520	2,800	720	257.00	31.60	211.00	743
1974	2,000	2,000	1,700	300	394.00	40.00	341.00	682
<b>TOTAL</b>								
1969	228,600	228,450	12,700	215,750	166.00	132.00	143.00	32,640
1970	175,000	174,700	14,540	160,160	181.00	85.60	111.00	19,342
1971	186,450	148,850	16,920	131,930	132.00	74.40	94.80	14,112
1972	127,600	127,470	10,050	117,420	241.00	121.00	144.00	18,331
1973	157,900	157,690	11,870	145,820	302.00	140.00	168.00	26,442
1974	93,550	93,550	8,450	85,100	456.00	221.00	270.00	25,281
<b>AVOCADOS</b>								
<b>CALIF</b>								
1969-70	31,700	31,700	31,700		682.00		682.00	21,619
1970-71	67,000	67,000	67,000		376.00		376.00	25,192
1971-72	26,100	26,100	26,100		952.00		952.00	24,847
1972-73	70,500	70,500	70,500		546.00		546.00	38,493
1973-74	53,400	53,400	53,400		793.00		793.00	42,346
1974-75 2/	105,500	105,500	105,500		475.00		475.00	50,113
<b>FLA</b>								
1969-70 2/	14,000	14,000	14,000				288.00	4,032
1970-71 2/	18,800	18,800	18,800				290.00	5,452
1971-72 2/	19,300	19,300	19,300				338.00	6,523
1972-73	18,800	18,800	17,875	925	328.00	178.00	321.00	6,035
1973-74	20,300	20,300	19,150	1,150	365.00	190.00	355.00	7,207
1974-75	21,900	21,900	20,700	1,200	336.00	180.00	327.00	7,161
<b>TOTAL</b>								
1969-70	45,700	45,700	45,700		561.00		561.00	25,651
1970-71	85,800	85,800	85,800		357.00		357.00	30,644
1971-72	45,400	45,400	45,400		691.00		691.00	31,370
1972-73	89,300	89,300	88,375	925	502.00	178.00	499.00	44,528
1973-74	73,700	73,700	72,550	1,150	680.00	190.00	672.00	49,553
1974-75	127,400	127,400	126,200	1,200	452.00	180.00	450.00	57,274

1/ ALL PROCESSING EXCLUDING DRIED FOR APRICOTS.

2/ SMALL QUANTITIES PROCESSED ARE INCLUDED IN FRESH TO AVOID DISCLOSURE OF INDIVIDUAL OPERATIONS.

DATES, FIGS, NECTARINES, OLIVES AND PERSIMMONS

CROP, STATE AND YEAR	PRODUCTION		UTILIZATION		PRICE PER TON			VALUE OF UTILIZED PRODUCTION
	TOTAL	UTILIZED	FRESH	PROCESSED	FRESH	PROCESSED	ALL	
	TONS				DOLLARS			1,000 DOLLARS
<b>DATES</b>								
CALIF								
1969	16,500	16,500	16,500		154.00		154.00	2,541
1970	18,200	18,200	18,200		149.00		149.00	2,712
1971	19,500	19,500	19,500		159.00		159.00	3,101
1972	15,700	15,700	15,700		173.00		173.00	2,716
1973	23,100	23,100	23,100		198.00		198.00	4,574
1974	22,700	22,700	22,700		222.00		222.00	5,039
<b>FIGS</b>								
CALIF								
1969	58,500	58,500	1,390	57,110	298.00	82.20	87.30	5,107
1970	49,600	49,600	1,420	48,180	344.00	96.20	103.00	5,109
1971	45,600	45,600	1,390	44,210	299.00	79.80	86.50	3,944
1972 1/	36,400	36,400	3,250	33,150	364.00	133.00	141.00	5,132
1973 1/	41,600	41,600	4,340	37,260	426.00	225.00	231.00	9,610
1974 1/	44,600	44,600	5,000	39,600	434.00	226.00	233.00	10,392
<b>NECTARINES</b>								
CALIF								
1969	66,000	66,000	65,000	1,000	141.00	89.00	140.00	9,240
1970	66,500	66,500	65,300	1,200	153.00	91.90	152.00	10,108
1971	70,000	70,000	69,100	900	156.00	88.20	155.00	10,850
1972	87,000	87,000	86,400	600	177.00	106.00	177.00	15,399
1973	86,500	86,500	85,600	900	257.00	98.10	255.00	22,058
1974	117,000	117,000	115,600	1,400	230.00	91.50	228.00	26,676
<b>OLIVES</b>								
CALIF								
1969	70,000	70,000	600	69,400	394.00	328.00	329.00	23,030
1970	52,000	52,000	600	51,400	382.00	245.00	247.00	12,844
1971	55,000	55,000	700	54,300	355.00	145.00	148.00	8,140
1972	24,200	24,200	200	24,000	426.00	415.00	415.00	10,043
1973	70,000	70,000	700	69,300	451.00	391.00	392.00	27,440
1974	58,500	58,500	900	57,600	311.00	436.00	434.00	25,389
<b>PERSIMMONS</b>								
CALIF								
1969	1,600	1,600	1,600		125.00		125.00	200
1970	2,000	2,000	2,000		122.00		122.00	244
1971	1,350	1,350	1,350		126.00		126.00	170
1972	2,500	2,500	2,500		229.00		229.00	573
1973	1,950	1,950	1,950		373.00		373.00	727
1974	2,500	2,500	2,500		334.00		334.00	835

1/ SMALL QUANTITIES CANNED ARE INCLUDED IN FRESH TO AVOID DISCLOSURE OF INDIVIDUAL OPERATIONS.



PLUMS, POMEGRANATES AND PRUNES, CALIFORNIA

CROP, STATE AND YEAR	PRODUCTION		UTILIZATION		PRICE PER TON			VALUE OF UTILIZED PRODUCTION 1,000 DOLLARS
	TOTAL	UTILIZED	FRESH	PROCESSED	FRESH	PROCESSED	ALL	
	TONS				DOLLARS			
<b>PLUMS</b>								
CALIF								
1969	67,000	67,000	63,600	3,400	248.00	38.20	237.00	15,879
1970	123,000	123,000	119,300	3,700	164.00	25.40	160.00	19,680
1971	101,000	101,000	98,200	2,800	235.00	24.00	229.00	23,129
1972	96,000	96,000	93,300	2,700	255.00	19.40	248.00	23,808
1973	97,000	97,000	93,800	3,200	331.00	22.60	321.00	31,137
1974	143,000	143,000	140,000	3,000	280.00	32.80	275.00	39,325
<b>POMEGRANATES</b>								
CALIF								
1969	7,400	7,400	7,400		123.00		123.00	910
1970	8,000	8,000	7,800	200	128.00	17.00	125.00	1,000
1971	8,500	8,500	8,400	100	132.00	15.00	131.00	1,114
1972 1/	7,100	7,100	7,100		124.00		124.00	880
1973 T/	5,800	5,800	5,800		170.00		170.00	986
1974 T/	8,100	8,100	8,100		151.00		151.00	1,223
<b>PRUNES</b>								
(DRIED BASIS)								
CALIF								
1969	130,000	130,000		130,000	288.00		288.00	37,440
1970	200,000	200,000		200,000	202.00		202.00	40,400
1971	131,000	131,000		131,000	287.00		287.00	37,597
1972	77,000	77,000		77,000	535.00		535.00	41,195
1973	205,000	205,000		205,000	462.00		462.00	94,710
1974	142,000	142,000		142,000	440.00		440.00	62,480

1/ SMALL QUANTITIES PROCESSED ARE INCLUDED IN FRESH TO AVOID DISCLOSURE OF INDIVIDUAL OPERATIONS.

PRUNES AND PLUMS OTHER STATES

CROP, STATE AND YEAR	PRODUCTION		UTILIZATION		PRICE PER TON			VALUE OF UTILIZED PRODUCTION
	TOTAL	UTILIZED	FRESH	PROCESSED	FRESH	PROCESSED	ALL	
	TONS				DOLLARS			1,000 DOLLARS
<b>PRUNES AND PLUMS</b>								
<b>IDAHO</b>								
1969	25,500	18,500	14,680	3,820	125.00	43.00	108.00	1,998
1970	10,000	7,150	6,740	410	169.00	50.00	162.00	1,158
1971	19,000	12,800	11,520	1,280	155.00	45.00	144.00	1,843
1972	7,500	7,080	6,930	150	222.00	125.00	220.00	1,558
1973	8,600	8,050	7,600	450	236.00	147.00	231.00	1,860
1974 1/	6,100	6,100					266.00	1,623
<b>MICH</b>								
1969	17,500	16,500	7,400	9,100	111.00	61.80	83.90	1,384
1970	11,500	11,500	6,500	5,000	147.00	103.00	128.00	1,472
1971	25,000	20,000	8,200	11,800	106.00	52.60	74.50	1,490
1972	14,000	14,000	6,100	7,900	209.00	84.40	139.00	1,946
1973	18,000	18,000	3,650	14,350	218.00	99.10	123.00	2,214
1974 1/	16,000	16,000					171.00	2,736
<b>OREG</b>								
1969	32,000	32,000	3,000	29,000	107.00	62.10	66.30	2,122
1970	20,300	20,300	7,100	13,200	120.00	85.70	97.70	1,983
1971	27,900	16,700	3,600	13,100	84.20	62.80	67.40	1,126
1972	8,400	8,400	5,700	2,700	214.00	115.00	182.00	1,529
1973	32,000	25,800	6,500	19,300	192.00	106.00	128.00	3,302
1974	28,000	28,000	8,000	20,000	146.00	129.00	134.00	3,752
<b>WASH</b>								
1969	29,000	27,200	18,200	9,000	102.00	50.00	84.80	2,307
1970	9,700	9,400	7,700	1,700	148.00	42.00	129.00	1,213
1971	16,500	15,500	10,960	4,540	108.00	39.40	87.90	1,362
1972	12,500	12,400	10,310	2,090	210.00	14.50	177.00	2,195
1973	14,700	14,700	11,600	3,100	201.00	36.00	166.00	2,440
1974	21,100	21,100	16,150	4,950	137.00	71.70	122.00	2,574
<b>TOTAL 4 STATES</b>								
1969	104,000	94,200	43,280	50,920	112.00	58.50	82.90	7,811
1970	51,500	48,350	28,040	20,310	146.00	85.60	121.00	5,826
1971	88,400	65,000	34,280	30,720	121.00	54.70	89.60	5,821
1972	42,400	41,880	29,040	12,840	213.00	79.90	173.00	7,228
1973	73,300	66,550	29,350	37,200	210.00	98.00	148.00	9,816
1974	71,200	71,200	35,350	35,850	179.00	121.00	150.00	10,685

1/ MISSING DATA NOT PUBLISHED TO AVOID DISCLOSURE OF INDIVIDUAL OPERATIONS.

APRICOTS, FIGS, OLIVES, PRUNES AND PLUMS CONTINUED

CROP, USE AND STATE	PROCESSED UTILIZATION					
	QUANTITY			PRICE PER TON		
	1969	1970	1971	1969	1970	1971
	TONS			DOLLARS		
<u>APRICOTS</u>						
<u>CANNED</u>						
CALIF 1/	163,000	114,900	99,200	132.00	85.50	74.40
WASH 1/	1,450	1,160	330	123.00	99.00	99.00
U S	164,450	116,060	99,530	132.00	85.60	74.50
<u>FROZEN</u>						
CALIF	9,500	7,700	6,400	130.00	86.00	73.10
<u>DRIED (FRESH BASIS)</u>						
CALIF	41,800	36,400	26,000	185.00	167.00	154.00
<u>FIGS</u>						
<u>CANNED</u>						
CALIF	4,040	5,970	3,890	269.00	260.00	205.00
<u>DRIED (FRESH BASIS)</u>						
CALIF	53,070	42,210	40,320	68.00	73.00	67.70
<u>OLIVES</u>						
<u>CANNED</u>						
CALIF	51,700	39,200	39,600	400.00	286.00	173.00
<u>CRUSHED FOR OIL</u>						
CALIF	5,200	4,100	4,900	30.00	30.80	26.80
<u>CHOPPED, MINCED, GRINED AND OTHER CURES</u>						
CALIF	12,500	8,100	9,800	155.00	158.00	93.80
<u>PLUMS</u>						
<u>CANNED</u>						
CALIF	600	400	500	62.70	41.40	52.60
<u>FROZEN</u>						
CALIF	2,800	3,300	2,300	32.90	23.50	17.80
<u>PRUNES AND PLUMS</u>						
<u>CANNED</u>						
IDAHO	3,820	410	1,280	43.00	50.00	45.00
MICH	8,290	3,600	11,380	62.00	104.00	52.30
OREG	19,300	8,480	6,700	53.70	82.00	48.00
WASH	6,610	620	3,640	54.00	108.00	48.00
4-STATE TOTAL	38,020	13,110	23,000	54.50	88.30	50.00
<u>DRIED</u>						
OREG						
FRESH BASIS	7,400	3,950	5,500	86.00	93.00	83.00
DRIED BASIS	2,055	1,129	1,570	301.00	326.00	290.00
<u>FROZEN AND OTHER CURES</u>						
4-STATE TOTAL	5,500	3,250	2,220	49.40	65.70	32.90

SEE FOOTNOTES ON PAGE 49.

CONTINUED

APRICOTS, FIGS, OLIVES, PRUNES AND PLUMS CONTINUED

CROP, USE AND STATE	PROCESSED UTILIZATION					
	QUANTITY			PRICE PER TON		
	1972	1973	1974	1972	1973	1974
	TONS			DOLLARS		
<u>APRICOTS</u>						
<u>CANNED</u>						
CALIF 1/	92,800	116,000	62,200	121.00	140.00	220.00
WASH 1/	220	720	300	27.00	31.60	40.00
U S	93,020	116,720	62,500	121.00	139.00	219.00
<u>FROZEN</u>						
CALIF	6,400	9,600	5,600	125.00	145.00	240.00
<u>DRIED (FRESH BASIS)</u>						
CALIF	18,000	19,500	17,000	217.00	260.00	375.00
<u>FIGS</u>						
<u>CANNED</u>						
CALIF 2/						
<u>DRIED (FRESH BASIS)</u>						
CALIF	33,150	37,260	39,600	130.00	227.00	226.00
<u>OLIVES</u>						
<u>CANNED</u>						
CALIF	20,000	54,300	46,700	459.00	452.00	482.00
<u>CRUSHED FOR OIL</u>						
CALIF	700	4,300	3,100	24.00	58.00	86.00
<u>CHOPPED, MINCED, BRINED AND OTHER CURES</u>						
CALIF	3,300	10,700	7,800	233.00	214.00	301.00
<u>PLUMS</u>						
<u>CANNED</u>						
CALIF 2/	200			61.50		
<u>FROZEN</u>						
CALIF 2/	2,500			16.00		
<u>PRUNES AND PLUMS</u>						
<u>CANNED</u>						
IDAHO 2/	150			125.00		
MICH	6,600	13,700	8,700	85.30	98.20	132.00
OREG 2/		7,000	11,100		85.00	129.00
WASH 2/						
4-STATE TOTAL	7,460	21,730	21,665	87.80	95.70	131.00
<u>DRIED</u>						
OREG 2/						
FRESH BASIS	2,000	11,050		120.00	121.00	
DRIED BASIS	570	3,157		420.00	425.00	
<u>FROZEN AND OTHER CURES</u>						
4-STATE TOTAL	3,380	4,420		39.20	50.10	

1/ SMALL QUANTITIES USED FOR JUICE ARE INCLUDED IN CANNED TO AVOID DISCLOSURE OF INDIVIDUAL OPERATIONS.

2/ MISSING DATA NOT PUBLISHED TO AVOID DISCLOSURE OF INDIVIDUAL OPERATIONS.

CALIFORNIA DRY FRUITS CONTINUED

CROP	QUANTITY			PRICE PER TON		
	1969	1970	1971	1969	1970	1971
	TONS			DOLLARS		
<b>FRESH BASIS</b>						
APPLES	60,000	34,800	20,000	50.00	44.00	45.00
APRICOTS	41,800	36,400	26,000	185.00	167.00	154.00
FIGS	53,070	42,210	40,320	68.00	73.00	67.70
GRAPES:						
RAISIN	1,007,000	820,000	893,000	66.30	66.60	72.00
TABLE	3,200	1,800	2,900	83.50	87.50	100.00
PEACHES:						
FREESTONE	28,100	18,200	14,900	87.50	87.50	87.50
PEARS:						
BARLETT	4,200	3,500	4,500	125.00	143.00	125.00
PRUNES	325,000	612,000	393,000	104.00	66.70	95.70
<b>DRIED BASIS</b>						
APPLES	7,500	4,350	2,500	400.00	352.00	360.00
APRICOTS	6,430	5,600	4,000	1,200.00	1,086.00	1,000.00
FIGS:						
STANDARD	14,370	12,280	10,370	244.00	246.00	253.00
SUB-STANDARD	3,320	1,790	3,070	33.00	32.00	35.00
GRAPES:						
RAISIN	251,000	193,000	194,100	266.00	283.00	329.00
TABLE	800	450	730	334.00	350.00	400.00
PEACHES:						
FREESTONE	3,510	2,275	1,860	700.00	700.00	700.00
PEARS:						
BARTLETT	764	585	750	688.00	860.00	750.00
PRUNES	130,000	200,000	131,000	288.00	202.00	287.00

CONTINUED

BANANAS AND PAPAYAS

CROP AND YEAR	UTILIZED PRODUCTION	UTILIZATION		PRICE PER POUND			VALUE OF UTILIZED PRODUCTION
		FRESH	PROCESSED	FRESH	PROCESSED	ALL	
	1,000 POUNDS			FRESH	PROCESSED	ALL	1,000 DOLLARS
<b>BANANAS</b>							
HAW							
1969	6,170			9.4		9.4	580
1970	5,600			10.6		10.6	594
1971	5,865			11.6		11.6	680
1972	6,000			12.0		12.0	720
1973	7,295			10.6		10.6	773
1974	6,600			13.1		13.1	865
<b>PAPAYAS</b>							
HAW							
1969	19,235	16,337	2,898	14.0	3.6	12.4	2,385
1970	24,960	23,938	1,022	10.0	3.9	9.8	2,436
1971	20,725	19,172	1,553	14.0	3.3	13.2	2,736
1972	25,735	21,959	3,776	15.1	2.9	13.3	3,423
1973	32,824	28,848	3,976	14.0	3.5	12.7	4,180
1974	37,224	34,529	2,695	13.9	3.1	13.1	4,871

CONTINUED

CALIFORNIA DRY FRUITS CONTINUED

CROP	QUANTITY			PRICE PER TON		
	1972	1973	1974	1972	1973	1974
	TONS			DOLLARS		
<b>FRESH BASIS</b>						
APPLES 1/	33,000			65.00		
APRICOTS	18,000	19,500	17,000	217.00	260.00	375.00
FIGS	33,150	37,260	39,600	130.00	227.00	226.00
GRAPES:						
RAISIN	436,000	967,000	1,021,200	135.00	175.00	141.00
TABLE	1,400	2,300	2,600	138.00	173.00	161.00
PEACHES:						
FREESTONE	12,000	12,000	14,500	110.00	141.00	115.00
PEARS						
BARTLETT	5,300	4,900	5,100	172.00	173.00	150.00
PRUNES	220,990	612,950	444,460	191.00	154.00	141.00
<b>DRIED BASIS</b>						
APPLES 1/	4,125			520.00		
APRICOTS	3,000	3,260	2,640	1,300.00	1,560.00	2,400.00
FIGS:						
STANDARD	8,950	11,220	11,430	468.00	742.00	768.00
SUB-STANDARD	2,100	1,200	1,700	51.00	98.00	100.00
GRAPES:						
RAISIN	105,000	224,000	241,500	560.00	754.00	602.00
TABLE	350	526	630	550.00	752.00	666.00
PEACHES:						
FREESTONE	1,500	1,500	1,750	880.00	1,130.00	920.00
PEARS:						
BARTLETT	960	790	700	951.00	949.00	1,090.00
PRUNES	77,000	205,000	142,000	535.00	462.00	440.00

1/ MISSING DATA NOT PUBLISHED TO AVOID DISCLOSURE OF INDIVIDUAL OPERATIONS.

ALL PEARS

STATE AND YEAR	PRODUCTION		UTILIZATION 1/		PRICE PER TON 1/			VALUE OF UTILIZED PRODUCTION
	TOTAL	UTILIZED	FRESH	PROCESSED 2/	FRESH	PROCESSED EXCEPT DRIED:	ALL	
	TONS				DOLLARS			1,000 DOLLARS
CALIF								
1969	351,000	351,000	71,000	280,000	103.00	108.00	107.00	37,482
1970	258,000	258,000	48,200	209,800	153.00	139.00	142.00	36,636
1971	338,000	309,000	66,500	242,500	97.40	94.00	95.10	29,397
1972	295,600	295,600	65,800	229,800	147.00	125.00	130.00	38,514
1973	327,300	327,300	81,700	245,600	129.00	132.00	132.00	43,152
1974	310,900	310,900	57,900	253,000	197.00	180.00	183.00	56,830
COLO								
1969	7,950	7,800					115.00	897
1970	4,555	4,530					110.00	498
1971	5,740	5,490					91.00	500
1972	2,800	2,780					171.00	475
1973	6,090	5,510					122.00	672
1974	4,650	4,590					204.00	936
CONN								
1969	1,670	1,670	1,670		185.00		185.00	309
1970	1,650	1,650	1,650		210.00		210.00	347
1971	1,630	1,630	1,630		210.00		210.00	342
1972	2,000	2,000	2,000		220.00		220.00	440
1973	1,600	1,600	1,600		300.00		300.00	480
1974	1,520	1,520	1,520		315.00		315.00	479
IDAHO								
1969	2,100	2,100	1,466	634	85.00	97.00	89.00	187
1970	1,200	1,200					116.00	139
1971	2,300	2,300					89.00	205
1972	800	800	800		180.00		180.00	144
1973	1,300	1,300					137.00	178
1974	1,050	1,050	1,050		180.00		180.00	189
MICH								
1969	30,000	24,200					69.00	1,670
1970	17,000	17,000					94.00	1,598
1971	20,500	18,500					80.90	1,497
1972	22,500	22,500					88.90	2,000
1973	11,500	11,500					163.00	1,875
1974	14,000	13,000					162.00	2,106
N Y								
1969	16,500	16,500	5,900	10,600	160.00	96.00	119.00	1,964
1970	13,500	13,500	7,650	5,850	150.00	108.00	132.00	1,782
1971	18,000	18,000					113.00	2,034
1972	18,500	18,500					121.00	2,239
1973	12,600	12,600					166.00	2,092
1974	14,000	14,000					189.00	2,646

SEE FOOTNOTES ON PAGE 53.

CONTINUED

ALL PEARS CONTINUED

STATE AND YEAR	PRODUCTION		UTILIZATION 1/		PRICE PER TON 1/			VALUE OF UTILIZED PRODUCTION
	TOTAL	UTILIZED	FRESH	PROCESSED 2/	FRESH	PROCESSED EXCEPT DRIED	ALL	
	TONS				DOLLARS			T,000 DOLLARS
OREG								
1969	191,000	191,000					93.50	17,854
1970	90,000	90,000					122.00	11,001
1971	179,000	179,000					92.30	16,528
1972	110,000	110,000					150.00	16,488
1973	171,000	171,000					139.00	23,829
1974	175,000	175,000					154.00	27,010
PA								
1969	3,900	3,900					134.00	523
1970	4,100	4,100					153.00	627
1971	3,700	3,700					128.00	474
1972	3,700	3,300	3,300		196.00		196.00	647
1973	1,900	1,900	1,900		230.00		230.00	437
1974	4,100	4,100					235.00	954
UTAH								
1969	5,500	5,500					92.00	506
1970	4,300	4,300					102.00	439
1971	4,200	4,200	4,200		87.00		87.00	365
1972	200	200	200		214.00		214.00	43
1973	5,830	5,830					107.00	624
1974	3,200	3,200	3,200		202.00		202.00	646
WASH								
1969	117,000	107,900					96.60	10,423
1970	154,500	144,500					129.00	18,588
1971	176,000	165,400					93.50	15,468
1972	156,000	153,000					153.00	23,436
1973	191,300	187,300					143.00	26,765
1974	213,300	213,300					157.00	33,583
U S								
1969	726,620	711,570	271,151	440,419	107.00	97.30	101.00	71,815
1970	548,805	538,780	197,923	340,857	146.00	125.00	133.00	71,655
1971	749,070	707,220	284,787	422,433	102.00	84.00	94.50	66,810
1972	612,100	608,680	251,035	357,645	175.00	113.00	139.00	84,426
1973	730,420	725,840	307,230	418,610	160.00	121.00	138.00	100,104
1974	741,720	740,660	295,960	444,700	182.00	161.00	169.00	125,389

1/ DATA NOT PUBLISHED FOR SOME STATES TO AVOID DISCLOSURE OF INDIVIDUAL OPERATIONS BUT INCLUDED IN U.S.  
 2/ MOSTLY CANNED, INCLUDES SMALL QUANTITIES DRIED AND OTHER USES NOT PUBLISHED BY STATES TO AVOID DISCLOSURE OF INDIVIDUAL OPERATIONS.



BARTLETT PEARS, CALIFORNIA, OREGON AND WASHINGTON

CROP, STATE AND YEAR	PRODUCTION		UTILIZATION		PRICE PER TON				VALUE OF
	TOTAL	UTILIZED	FRESH	PROCESSED 1/	FRESH	CANNED	PROCESSED EXCEPT DRIED	ALL	UTILIZED PRODUCTION
	TONS				DOLLARS				1,000 DOLLARS
<b>BARTLETT</b>									
<b>CALIF</b>									
1969	336,000	336,000	64,800	271,200	103.00	108.00	108.00	107.00	35,952
1970	245,000	245,000	41,500	203,500	154.00	139.00	139.00	142.00	34,790
1971	330,000	301,000	62,500	238,500	97.60	94.00	94.00	95.20	28,655
1972	286,000	286,000	61,000	225,000	146.00	125.00	125.00	130.00	37,180
1973	317,000	317,000	77,000	240,000	128.00	132.00	132.00	132.00	41,844
1974	297,000	297,000	53,000	244,000	196.00	183.00	182.00	184.00	54,648
<b>OREG</b>									
1969	82,000	82,000	16,400	65,600	102.00	87.50	85.00	88.00	7,216
1970	39,000	39,000	9,300	29,700	182.00	105.00	95.00	116.00	4,524
1971	83,000	83,000	20,500	62,500	89.00	80.00	77.00	80.00	6,640
1972	51,000	51,000	13,000	38,000	176.00	105.00	103.00	122.00	6,222
1973	73,000	73,000	20,000	53,000	138.00	115.00	109.00	117.00	8,541
1974	72,000	72,000	14,400	57,600	214.00	166.00	161.00	172.00	12,384
<b>WASH</b>									
1969	73,500	69,700	16,200	53,500	97.00	91.00	90.50	92.00	6,412
1970	105,000	99,800	24,800	75,000	147.00	119.00	117.00	124.00	12,375
1971	121,000	112,000	33,100	78,900	122.00	84.00	75.00	89.00	9,968
1972	101,000	99,000	39,100	59,900	162.00	105.00	103.00	126.00	12,474
1973	127,500	123,500	38,000	85,500	152.00	123.00	123.00	132.00	16,302
1974	126,400	126,400	34,900	91,500	196.00	164.00	155.00	166.00	20,982
<b>TOTAL</b>									
1969	491,500	487,700	97,400	390,300	102.00	100.00	102.00	102.00	49,580
1970	389,000	383,800	75,600	308,200	154.00	119.00	129.00	135.00	51,689
1971	534,000	496,000	116,100	379,900	103.00	84.00	87.20	91.30	45,263
1972	438,000	436,000	113,100	322,900	155.00	119.00	118.00	128.00	55,876
1973	517,500	513,500	135,000	378,500	136.00	122.00	127.00	130.00	66,687
1974	495,400	495,400	102,300	393,100	199.00	167.00	173.00	178.00	88,014

1/ MOSTLY CANNED, INCLUDES SMALL QUANTITIES DRIED AND OTHER USES NOT PUBLISHED BY STATES TO AVOID DISCLOSURE OF INDIVIDUAL OPERATIONS. SEE PAGE 50 FOR CALIF DRIED.

OTHER PEARS, CALIFORNIA, OREGON AND WASHINGTON

CROP, STATE AND YEAR	PRODUCTION		UTILIZATION 1/		PRICE PER TON 1/			ALL	VALUE OF UTILIZED PRODUCTION
	TOTAL	UTILIZED	FRESH	PROCESSED 2/	FRESH	CANNED 1/	PROCESSED: EXCEPT DRIED		
	TONS				DOLLARS			1,000 DOLLARS	
<b>OTHER</b>									
<b>CALIF</b>									
1969	15,000	15,000	6,200	8,800	100.00	104.00	104.00	102.00	1,530
1970	13,000	13,000	6,700	6,300	146.00	137.00	137.00	142.00	1,846
1971	8,000	8,000	4,000	4,000	92.50	93.00	93.00	92.80	742
1972	9,600	9,600	4,800	4,800	155.00	123.00	123.00	139.00	1,334
1973	10,300	10,300	4,700	5,600	151.00	106.00	106.00	127.00	1,308
1974	13,900	13,900	4,900	9,000	208.00	161.00	130.00	157.00	2,182
<b>OREG</b>									
1969	109,000	109,000						97.60	10,638
1970	51,000	51,000						127.00	6,477
1971	96,000	96,000						103.00	9,888
1972	59,000	59,000						174.00	10,266
1973	98,000	98,000						156.00	15,288
1974	103,000	103,000						142.00	14,626
<b>WASH</b>									
1969	43,500	38,200						105.00	4,011
1970	49,500	44,700						139.00	6,213
1971	55,000	53,400						103.00	5,500
1972	55,000	54,000						203.00	10,962
1973	63,800	63,800						164.00	10,463
1974	86,900	86,900						145.00	12,601
<b>TOTAL</b>									
1969	167,500	162,200	140,400	21,800	108.00		49.60	99.70	16,179
1970	113,500	108,700	94,600	14,100	143.00		74.50	134.00	14,536
1971	159,000	157,400	137,050	20,350	113.00		29.90	102.00	16,130
1972	123,600	122,600	108,600	14,000	202.00		51.20	184.00	22,562
1973	172,100	172,100	145,750	26,350	178.00		43.40	157.00	27,059
1974	203,800	203,800	165,700	38,100	167.00		45.20	144.00	29,409

1/ DATA NOT PUBLISHED FOR SOME STATES TO AVOID DISCLOSURE OF INDIVIDUAL OPERATIONS. 2/ MOSTLY CANNED, INCLUDES SMALL QUANTITIES DRIED AND OTHER USES NOT PUBLISHED BY STATES TO AVOID DISCLOSURE OF INDIVIDUAL OPERATIONS.

## TART CHERRIES CONTINUED

STATE AND YEAR	PRODUCTION		UTILIZATION <sup>1/</sup>		PRICE PER POUND			VALUE OF UTILIZED PRODUCTION
	TOTAL	UTILIZED	FRESH	PROCESSED <sup>2/</sup>	FRESH	PROCESSED	ALL	
	MILLION POUNDS				CENTS			1,000 DOLLARS
COLO								
1969	3.5	3.5	.4	3.1	9.8	8.1	8.3	291
1970	2.0	2.0			10.6	9.0	9.2	184
1971	3.2	3.2			12.2	9.5	9.8	314
1972	1.0	1.0			15.0	9.7	11.8	118
1973	2.0	2.0			21.0	18.8	19.2	384
1974	2.5	2.5			21.5	18.3	18.7	468
IDAHO								
1969	1.9	1.9	.2	1.7	19.0	9.3	10.3	196
1970 <sup>3/</sup>	1.0	1.0					11.1	111
MICH								
1969	222.0	212.0	3.2	208.8	8.4	7.6	7.6	16,112
1970	166.0	158.0	4.0	154.0	7.4	7.1	7.1	11,218
1971	178.0	178.0	4.0	174.0	11.0	9.8	9.8	17,444
1972	250.0	214.0	3.0	211.0	9.0	8.1	8.1	17,334
1973	116.0	116.0	.9	115.1	22.0	19.5	19.5	22,620
1974	206.0	206.0	2.0	204.0	20.5	18.4	18.4	37,904
N Y								
1969	31.6	30.6	.8	29.8	18.3	7.9	8.2	2,509
1970	39.6	36.4	.8	35.6	16.5	7.8	8.0	2,912
1971	42.0	41.0	.9	40.1	15.0	9.8	9.9	4,059
1972	34.0	29.2	.8	28.4	13.3	8.2	8.3	2,424
1973	21.2	20.4	.4	20.0	21.0	17.7	17.8	3,631
1974	16.2	16.2	.2	16.0	23.0	19.5	19.5	3,159
OHIO								
1969	2.0	2.0	.5	1.5	15.0	3.5	6.4	128
1970	2.0	2.0	.4	1.6	22.0	8.0	10.8	216
1971	1.0	1.0					11.5	115
1972	.8	.8	.2	.6	20.0	7.7	10.8	86
1973	.3	.3					25.0	75
1974	.6	.6	.2	.4	30.0	21.2	24.1	145
OREG								
1969	12.4	12.4	1.2	11.2	11.4	7.7	8.1	1,004
1970	4.0	4.0	.8	3.2	15.0	12.0	12.6	504
1971	10.0	10.0	.8	9.2	7.5	7.4	7.4	740
1972	2.0	2.0	.6	1.4	12.0	9.7	10.4	208
1973	7.0	6.6	.8	5.8	13.8	18.0	17.5	1,155
1974	4.2	4.2	.6	3.6	13.5	16.1	15.7	659

SEE FOOTNOTES ON PAGE 57.

CONTINUED

## TART CHERRIES

CONTINUED

STATE AND YEAR	PRODUCTION		UTILIZATION 1/		PRICE PER POUND			VALUE OF UTILIZED PRODUCTION
	TOTAL	UTILIZED	FRESH	PROCESSED 2/	FRESH	PROCESSED	ALL	
	MILLION POUNDS				CENTS			1,000 DOLLARS
PA								
1969	20.0	20.0	.7	19.3	12.5	7.2	7.4	1,480
1970	14.0	14.0	.5	13.5	12.0	7.6	7.8	1,092
1971	12.7	12.7	.9	11.8	14.0	11.1	11.3	1,435
1972	12.3	11.1	.7	10.4	14.2	8.3	8.7	966
1973	6.3	6.3	.4	5.9	17.8	19.9	19.8	1,247
1974	13.1	13.1	.9	12.2	22.5	19.6	19.8	2,594
UTAH								
1969	13.4	12.4	.7	11.7	8.5	8.0	8.0	992
1970	9.8	9.8	.8	9.0	8.8	7.0	7.1	696
1971	13.4	13.4	.8	12.6	8.5	8.0	8.0	1,072
1972	1.3	1.3	.2	1.1	28.0	7.0	10.2	153
1973	17.0	17.0					16.7	2,839
1974	11.6	11.6	.1	11.5	12.5	18.6	18.5	2,146
WASH								
1969	2.2	2.2	1.0	1.2	20.0	8.0	13.5	297
1970 3/	1.6	1.6	.9	.7	20.0	15.8	18.2	291
WIS								
1969	6.1	5.5	.8	4.7	16.5	8.5	9.7	534
1970	8.8	7.0	.8	6.2	12.5	7.9	8.4	588
1971	17.0	16.7	.7	16.0	9.0	.5	10.4	1,737
1972	10.4	9.2	.4	8.8	10.5	8.8	8.9	819
1973	4.8	4.8	.4	4.4	18.5	20.9	20.7	994
1974	10.7	10.4	.1	10.3	20.0	18.2	18.2	1,893
U S								
1969	315.1	302.5	9.5	293.0	12.5	7.6	7.8	23,543
1970	248.8	235.8	10.0	225.8	11.6	7.4	7.6	17,812
1971	277.3	276.0	8.8	267.3	11.2	9.7	9.8	26,916
1972	311.8	268.6	6.3	262.3	12.0	8.1	8.2	22,088
1973	174.6	173.4	5.4	168.0	17.1	19.1	19.0	32,945
1974	264.9	264.6	4.4	260.2	20.4	18.5	18.5	48,968

1/ DATA NOT PUBLISHED FOR SOME STATES TO AVOID DISCLOSURE OF INDIVIDUAL OPERATIONS BUT INCLUDED IN U.S.

2/ CANNED, FROZEN, AND OTHER PROCESSED ITEMS ON PAGES 60 AND 61.

3/ ESTIMATES DISCONTINUED IN SUCCEEDING YEARS.

SWEET CHERRIES CONTINUED

STATE AND YEAR	PRODUCTION		UTILIZATION 1/		PRICE PER TON			VALUE OF UTILIZED PRODUCTION
	TOTAL	UTILIZED	FRESH	PROCESSED 2/	FRESH	PROCESSED	ALL	
	TONS				DOLLARS			1,000 DOLLARS
CALIF								
1969	30,600	30,600	19,600	11,000	525.00	328.00	454.00	13,892
1970	25,400	25,400	15,400	10,000	595.00	294.00	476.00	12,090
1971	32,000	32,000	21,000	11,000	506.00	268.00	424.00	13,568
1972	20,000	20,000	14,000	5,000	682.00	315.00	572.00	11,440
1973	40,000	40,000	26,400	13,600	425.00	293.00	380.00	15,200
1974	28,000	28,000	20,300	7,700	700.00	429.00	625.00	17,500
COLO								
1969	900	850	750	100	365.00	220.00	348.00	296
1970	360	360					523.00	188
1971	350	350					536.00	188
1972	150	150					808.00	121
1973	560	560					535.00	300
1974	250	250					642.00	161
IDAHO								
1969	3,800	3,200	1,890	1,310	513.00	222.00	394.00	1,261
1970	1,600	1,600	1,200	400	479.00	220.00	414.00	626
1971	3,000	2,800	2,170	630	510.00	240.00	449.00	1,257
1972	600	600					570.00	342
1973	1,500	1,500					452.00	678
1974	2,250	2,250					441.00	992
MICH								
1969	21,500	21,500	1,500	20,000	320.00	205.00	213.00	4,580
1970	21,000	21,000	1,500	19,500	380.00	189.00	203.00	4,263
1971	23,500	23,500	1,500	22,000	320.00	182.00	191.00	4,489
1972	28,000	28,000	1,200	26,800	340.00	188.00	195.00	5,460
1973	17,000	17,000	1,000	16,000	420.00	270.00	279.00	4,743
1974	28,000	28,000	1,200	26,800	565.00	350.00	359.00	10,052
MONT								
1969	610	610	610		535.00		535.00	326
1970	1,400	1,270					313.00	398
1971	2,840	2,840					415.00	1,179
1972	1,200	1,200					478.00	574
1973	2,510	2,510					670.00	1,682
1974	1,650	1,650					532.00	878
N Y								
1969	7,300	7,300	1,230	6,070	485.00	195.00	244.00	1,781
1970	3,400	3,200	1,100	2,100	470.00	192.00	288.00	922
1971	6,500	6,500	1,450	5,050	470.00	182.00	246.00	1,599
1972	4,500	4,500	330	4,170	415.00	184.00	201.00	905
1973	3,400	3,400	900	2,500	490.00	290.00	343.00	1,166
1974	2,600	2,600	1,350	1,250	600.00	373.00	491.00	1,277

SEE FOOTNOTES ON PAGE 59.

CONTINUED

SWEET CHERRIES CONTINUED

STATE AND YEAR	PRODUCTION		UTILIZATION <sup>1/</sup>		PRICE PER TON			VALUE OF UTILIZED PRODUCTION 1,000 DOLLARS
	TOTAL	UTILIZED	FRESH	PROCESSED <sup>2/</sup>	FRESH	PROCESSED	ALL	
	TONS				DOLLARS			
OREG								
1969	35,000	35,000	6,600	28,400	375.00	307.00	320.00	11,200
1970	40,000	40,000	6,600	33,400	380.00	320.00	330.00	13,200
1971	32,700	32,700	7,800	24,900	333.00	248.00	268.00	8,764
1972	20,000	20,000	8,500	11,500	613.00	277.00	420.00	8,400
1973	40,000	37,000	9,000	28,000	341.00	338.00	339.00	12,543
1974	33,500	33,500	6,500	27,000	432.00	359.00	373.00	12,496
PA								
1969	800	800					448.00	358
1970	600	600					500.00	300
1971	800	800					449.00	359
1972	200	190					415.00	79
1973	660	660					640.00	422
1974	730	730					700.00	511
UTAH								
1969	3,300	3,300					326.00	1,076
1970	2,300	2,300	2,030	270	377.00	240.00	361.00	830
1971	4,600	4,600	3,290	1,310	260.00	200.00	243.00	1,118
1972	0	0	0	0				
1973	6,500	6,500	4,924	1,576	340.00	230.00	313.00	2,035
1974	5,000	5,000	3,500	1,500	346.00	324.00	339.00	1,695
WASH								
1969	24,500	23,800	15,100	8,700	353.00	321.00	341.00	8,116
1970	26,200	25,800	18,280	7,520	436.00	314.00	400.00	10,320
1971	35,000	33,900	27,600	6,300	363.00	240.00	340.00	11,526
1972	21,400	21,200	15,700	5,500	520.00	213.00	440.00	9,328
1973	46,500	45,500	35,900	9,600	399.00	234.00	364.00	16,562
1974	45,000	45,000	30,800	14,200	464.00	297.00	411.00	18,495
U S								
1969	128,310	126,960	49,820	77,140	437.00	274.00	338.00	42,886
1970	122,260	121,530	48,292	73,238	475.00	276.00	355.00	43,173
1971	141,290	139,990	68,627	71,363	409.00	224.00	315.00	44,047
1972	96,050	95,840	41,668	54,172	589.00	223.00	382.00	36,649
1973	158,630	154,630	82,839	71,791	412.00	296.00	358.00	55,331
1974	146,980	146,980	67,516	79,464	538.00	350.00	436.00	64,057

<sup>1/</sup> DATA NOT PUBLISHED FOR SOME STATES TO AVOID DISCLOSURE OF INDIVIDUAL OPERATIONS BUT INCLUDED IN U.S.  
<sup>2/</sup> CANNED, BRINED, AND OTHER PROCESSED ITEMS ON PAGES 60 AND 61.

CHERRIES CONTINUED

CROP, USE AND STATE	PROCESSED UTILIZATION 1/					
	CANNED, FROZEN, JUICE, BRINED AND OTHER					
	QUANTITY			PRICE PER UNIT		
	1969	1970	1971	1969	1970	1971
	MILLION POUNDS			CENTS PER POUND		
<b>TART CHERRIES</b>						
<b>CANNED</b>						
COLO	1.6			8.1		
MICH	77.0	51.0	45.2	8.1	7.5	10.0
OHIO	0	0	0			
OREG	6.8	1.2		7.7	13.5	
PA	9.2	5.5	7.0	7.4	8.0	11.4
UTAH	.9	1.7	1.2	8.0	7.0	8.0
OTH STS	11.4	13.6	21.0	8.6	7.8	10.2
U S	106.9	73.0	74.4	8.1	7.7	10.1
<b>FROZEN</b>						
COLO	1.5			8.1		
MICH	117.0	94.0	123.0	7.7	7.2	10.0
N Y			27.0			9.5
OHIO	.2	1.1		3.5	8.0	
OREG	4.1	1.4	5.6	7.8	12.0	7.2
PA	8.9	6.8		7.1	7.8	
UTAH	10.2	7.3	11.4	8.0	7.0	8.0
WASH	1.2	.7		8.0	15.8	
WIS	2.3	2.5	11.0	8.5	7.9	10.5
OTH STS	20.9	25.3	6.7	7.8	8.0	10.2
U S	166.3	139.1	184.7	7.7	7.5	9.8
<b>OTHER (JUICE, WINE, BRINED)</b>						
MICH			5.8			5.0
OHIO	1.3	.5	0	3.5	8.0	
OREG	.3			7.0		
PA	1.2	1.2		7.0	8.2	
UTAH	.6	0	0	8.0		
WIS			.8			10.5
OTH STS	16.4	12.0	1.5	4.8	5.1	8.1
U S	19.8	13.7	8.1	5.0	5.5	6.1
<b>SWEET CHERRIES</b>						
<b>CANNED</b>						
COLO	100			220.00		
IDAHO		0	90			225.00
MICH	3,000	2,500	3,100	298.00	220.00	205.00
OREG	8,220	5,700	4,400	345.00	370.00	276.00
WASH	5,200	3,160	2,600	340.00	327.00	226.00
OTH STS	2,835	473	1,668	403.00	374.00	265.00
U S	19,335	11,833	11,858	344.00	327.00	245.00
<b>BRINED</b>						
CALIF	8,200	9,500	9,200	305.00	290.00	271.00
IDAHO	1,015	400	540	237.00	220.00	240.00
MICH	17,000	17,000	18,300	189.00	184.00	177.00
N Y	5,790	2,030	4,800	195.00	191.00	182.00
OREG	19,450	23,000	20,350	290.00	300.00	242.00
UTAH	1,300	270	1,310	260.00	240.00	200.00
WASH	2,700	3,660	3,700	320.00	320.00	250.00
OTH STS	150	20	165	220.00	220.00	177.00
U S	55,605	55,880	58,365	251.00	259.00	221.00
<b>OTHER (FROZEN, JUICE, ETC.)</b>						
MICH	0	0	600			205.00
MONT	0		0			
WASH	800	700	0	200.00	219.00	
OTH STS	1,400	4,825	540	240.00	355.00	182.00
U S	2,200	5,525	1,140	225.00	337.00	194.00

SEE FOOTNOTE ON PAGE 61.

CONTINUED

CHERRIES CONTINUED

CROP, USE AND STATE	PROCESSED UTILIZATION 1/					
	CANNED, FROZEN, JUICE, BRINED AND OTHER					
	QUANTITY			PRICE PER UNIT		
	1972	1973	1974	1972	1973	1974
<b>TART CHERRIES</b>	MILLION POUNDS			CENTS PER POUND		
<b>CANNED</b>						
COLO	0					
MICH	64.0	32.9	71.0	8.0	19.7	18.4
OHIO			.4			21.2
OREG		4.7			20.6	
PA						
UTAH	0					
OTH STS	20.0	8.4	18.3	7.9	19.6	19.5
U S	84.0	46.0	89.7	8.0	19.8	18.6
<b>FROZEN</b>						
COLO						
MICH	136.0	78.4	126.4	8.4	19.6	18.5
N Y	17.9	12.8	11.6	8.2	17.4	19.0
OHIO		0	0			
OREG						
PA						
UTAH	1.1			7.0		
WASH						
WIS	6.8	4.0		8.9	20.9	
OTH STS	4.4	20.9	24.6	10.0	17.4	18.3
U S	166.2	116.1	162.6	8.4	19.0	18.5
<b>OTHER (JUICE, WINE, BRINED)</b>						
MICH	11.0	3.8	6.6	4.4	15.0	16.0
OHIO		0	0			
OREG			0			
PA						
UTAH	0	0	0			
WIS		.4			20.9	
OTH STS	1.1	1.7	1.3	8.0	10.7	16.1
U S	12.1	5.9	7.9	4.7	14.2	16.0
<b>SWEET CHERRIES</b>		TONS			DOLLARS PER TON	
<b>CANNED</b>						
COLO	0					
IDAHO	0	0	0			
MICH	2,000	1,800	3,300	205.00	322.00	392.00
OREG	3,600	5,200	5,900	346.00	343.00	438.00
WASH	2,070	4,320	5,000	296.00	310.00	382.00
OTH STS	400	883	924	321.00	342.00	444.00
U S	8,070	12,203	15,124	297.00	320.00	410.00
<b>BRINED</b>						
CALIF	5,240	12,600	6,600	329.00	291.00	429.00
IDAHO						
MICH	24,000	13,700	22,100	187.00	262.00	339.00
N Y	4,000	2,345	1,200	184.00	289.00	370.00
OREG	6,475	20,600	17,950	241.00	346.00	350.00
UTAH	0					
WASH	3,240	4,150	3,800	163.00	165.00	290.00
OTH STS	200	1,448	1,950	159.00	228.00	302.00
U S	43,155	54,843	53,600	210.00	293.00	350.00
<b>OTHER (FROZEN, JUICE, ETC.)</b>						
MICH	800	500	1,400	182.00	302.00	418.00
MONT	0	0	50			120.00
WASH		1,130	5,400		194.00	223.00
OTH STS	2,147	3,115	3,890	224.00	246.00	270.00
U S	2,947	4,745	10,740	212.00	240.00	265.00

1/ MISSING DATA INCLUDED IN OTHER STATES TO AVOID DISCLOSURE OF INDIVIDUAL OPERATIONS.



PECANS

VARIETY AND STATE	UTILIZED PRODUCTION			PRICE PER POUND			VALUE OF UTILIZED PRODUCTION		
	1969	1970	1971	1969	1970	1971	1969	1970	1971
	1,000 POUNDS			CENTS			1,000 DOLLARS		
<b>IMPROVED VARIETIES</b>									
ALA	27,000	11,300	29,000	30.0	39.0	36.0	8,100	4,407	10,440
ARK	2,400	1,000	1,600	33.0	42.0	37.0	792	420	592
FLA	2,100	1,700	2,100	30.0	39.0	36.0	630	663	756
GA	73,000	45,000	75,000	31.0	42.0	35.0	22,630	18,900	26,250
LA	7,500	3,000	7,000	31.0	40.0	33.0	2,325	1,200	2,310
MISS	6,100	2,000	6,600	34.0	40.0	34.0	2,074	800	2,244
N MEX	6,700	9,200	4,200	37.0	45.0	46.5	2,479	4,140	1,953
N C	1,700	800	4,300	33.0	41.0	33.0	561	329	1,419
OKLA	1,100	500	1,500	41.0	49.0	45.0	451	245	675
S C	2,400	720	8,000	33.0	43.0	30.5	792	310	2,440
TEX	5,700	6,500	3,000	40.0	46.0	43.0	2,280	2,990	1,290
U S	135,700	81,720	142,300	31.8	42.1	35.4	43,114	34,403	50,369
<b>NATIVE &amp; SEEDLING</b>									
ALA	6,500	3,700	8,000	25.0	34.0	30.0	1,625	1,258	2,400
ARK	6,200	3,600	5,900	27.0	36.0	31.0	1,674	1,296	1,829
FLA	1,900	1,700	1,900	25.0	32.0	29.0	475	544	551
GA	15,000	9,000	15,000	25.5	34.5	29.0	3,825	3,105	4,350
LA	22,200	11,500	21,000	27.0	34.0	30.0	5,994	3,910	6,300
MISS	5,400	3,900	9,400	28.0	34.0	28.0	1,512	1,326	2,632
N C	900	300	2,200	26.0	31.0	25.0	234	93	550
OKLA	14,400	8,000	17,500	28.0	36.0	29.0	4,032	2,880	5,075
S C	600	180	2,000	25.0	32.0	25.5	150	51	510
TEX	17,300	31,500	21,000	28.0	37.0	32.0	4,844	11,655	6,720
U S	90,400	73,380	103,900	27.0	35.6	29.8	24,365	26,125	30,917
<b>ALL PECANS</b>									
ALA	33,500	15,000	37,000	29.0	37.8	34.7	9,725	5,665	12,840
ARK	8,600	4,600	7,500	28.7	37.3	32.3	2,466	1,716	2,421
FLA	4,000	3,400	4,000	27.6	35.5	32.7	1,105	1,207	1,307
GA	88,000	54,000	90,000	30.1	40.8	34.0	26,455	22,005	30,600
LA	29,700	14,500	28,000	28.0	35.2	30.8	8,319	5,110	8,610
MISS	11,500	5,900	16,000	31.2	36.0	30.5	3,586	2,126	4,876
N MEX	6,700	9,200	4,200	37.0	45.0	46.5	2,479	4,140	1,953
N C	2,600	1,100	6,500	30.6	38.3	30.3	795	421	1,969
OKLA	15,500	8,500	19,000	28.9	36.8	30.3	4,483	3,125	5,750
S C	3,000	900	10,000	31.4	40.9	29.5	942	368	2,950
TEX	23,000	38,000	24,000	31.0	38.5	33.4	7,124	14,645	8,010
U S	226,100	155,100	246,200	29.8	39.0	33.0	67,479	60,528	81,286

CONTINUED

PECANS CONTINUED

VARIETY AND STATE	UTILIZED PRODUCTION			PRICE PER POUND			VALUE OF UTILIZED PRODUCTION		
	1972	1973	1974	1972	1973	1974	1972	1973	1974
	1,000 POUNDS			CENTS			1,000 DOLLARS		
<b>IMPROVED VARIETIES</b>									
ALA	17,000	28,000	8,800	43.0	39.0	53.0	7,310	10,920	4,664
ARK	630	1,000	500	48.0	41.0	65.0	302	410	325
FLA	3,200	2,700	1,200	45.0	37.0	49.0	1,440	999	588
GA	40,000	79,000	47,000	46.5	43.5	52.0	18,600	34,365	24,440
LA	2,500	4,500	1,400	44.0	33.0	64.0	1,100	1,485	896
MISS	3,500	11,000	2,000	43.0	36.0	51.2	1,505	3,960	1,024
N MEX	8,100	8,500	13,200	53.0	48.0	51.0	4,293	4,080	6,732
N C	380	900	1,500	40.0	45.0	50.0	152	405	750
OKLA	600	2,000	200	52.0	53.0	59.0	312	1,060	118
S C	80	1,100	1,500	53.0	48.5	52.0	34	534	780
TEX	13,000	6,500	9,500	46.0	55.0	55.0	5,980	3,575	5,225
U S	88,990	145,200	86,800	46.1	42.6	52.5	41,028	61,793	45,542
<b>NATIVE &amp; SEEDLING</b>									
ALA	3,000	13,000	2,200	35.0	31.0	38.0	1,080	4,030	836
ARK	1,170	5,000	700	38.0	33.0	40.0	445	1,650	280
FLA	3,200	3,900	1,300	38.0	30.0	38.5	1,216	1,170	501
GA	8,000	21,000	11,000	37.5	33.0	39.0	3,000	6,930	4,290
LA	9,500	35,500	1,600	35.0	29.0	35.0	3,325	10,295	560
MISS	3,500	11,000	1,000	37.0	30.0	43.0	1,295	3,300	430
N C	120	700	700	30.0	26.0	35.0	36	182	245
OKLA	3,600	26,000	2,300	39.0	29.0	36.0	1,404	7,540	828
S C	20	900	1,000	35.0	38.5	39.9	7	347	399
TEX	62,000	13,500	28,500	40.0	30.0	38.0	24,800	4,050	10,830
U S	94,110	130,500	50,300	38.9	30.3	38.2	36,608	39,494	19,199
<b>ALL PECANS</b>									
ALA	20,000	41,000	11,000	42.0	36.5	50.0	8,390	14,950	5,500
ARK	1,800	6,000	1,200	41.5	34.3	50.4	747	2,060	605
FLA	6,400	6,600	2,500	41.5	32.9	43.6	2,656	2,169	1,089
GA	48,000	100,000	58,000	45.0	41.3	49.5	21,600	41,295	28,730
LA	12,000	40,000	3,000	36.9	29.5	48.5	4,425	11,780	1,456
MISS	7,000	22,000	3,000	40.0	33.0	48.5	2,800	7,260	1,454
N MEX	8,100	8,500	13,200	53.0	48.0	51.0	4,293	4,080	6,732
N C	500	1,600	2,200	37.6	36.7	45.2	188	587	995
OKLA	4,200	28,000	2,500	40.9	30.7	37.8	1,716	8,600	946
S C	100	2,000	2,500	41.0	44.1	47.2	41	881	1,179
TEX	75,000	20,000	38,000	41.0	38.1	42.3	30,780	7,625	16,055
U S	183,100	275,700	137,100	42.4	36.7	47.2	77,636	101,287	64,741

ALMONDS, FILBERTS, WALNUTS, AND MACADAMIA NUTS

CROP AND STATE	UTILIZED PRODUCTION			PRICE PER UNIT			VALUE OF UTILIZED PRODUCTION		
	1969	1970	1971	1969	1970	1971	1969	1970	1971
	TONS (IN-SHELL BASIS)			DOLLARS PER TON			1,000 DOLLARS		
ALMONDS									
CALIF	122,000	124,000	134,000	606.00	646.00	650.00	73,932	80,104	87,100
FILBERTS									
OREG	7,100	8,750	11,000	550.00	570.00	414.00	3,905	4,988	4,554
WASH	300	510	370	555.00	571.00	416.00	167	291	154
TOTAL	7,400	9,260	11,370	550.00	570.00	414.00	4,072	5,279	4,708
WALNUTS (ENGLISH)									
CALIF	103,000	108,000	135,000	420.00	407.00	420.00	43,260	43,956	56,700
OREG	2,500	3,800	1,400	364.00	360.00	290.00	910	1,368	406
TOTAL	105,500	111,800	136,400	419.00	405.00	419.00	44,170	45,324	57,106
MACADAMIA NUTS	1,000 POUNDS (IN-SHELL BASIS)			CENTS PER POUND					
HAW	10,057	13,216	14,448	24.6	21.7	24.7	2,474	2,868	3,569

ALMONDS, FILBERTS, WALNUTS, AND PECANS

CROP AND STATE	PRODUCTION						MEAT PRODUCTION OF NUTS SOLD SHELLED		
	SOLD IN SHELL			SOLD SHELLED			1969	1970	1971
	1969	1970	1971	1969	1970	1971	1969	1970	1971
	TONS (IN-SHELL BASIS)						1,000 POUNDS		
ALMONDS 1/				122,000	124,000	134,000	132,000	149,000	162,000
CALIF									
FILBERTS									
OREG	6,240	6,990	6,470	860	1,760	4,530	509	1,331	3,305
WASH	270	437	248	30	73	122	20	55	89
TOTAL	6,510	7,427	6,718	890	1,833	4,652	529	1,386	3,394
WALNUTS (ENGLISH)									
CALIF	30,400	32,700	38,200	72,600	75,300	96,800	53,896	54,826	70,682
OREG	1,395	1,700	620	1,105	2,100	780	712	1,500	431
TOTAL	31,795	34,400	38,820	73,705	77,400	97,580	54,608	56,326	71,113
PECANS				1,000 POUNDS (IN-SHELL BASIS)					
U S	51,600	28,800	44,300	174,500	126,300	201,900			

1/ CALIFORNIA ALMONDS SOLD IN THE SHELL ARE INCLUDED IN SOLD SHELLED.

CONTINUED

## ALMONDS, FILBERTS, WALNUTS, AND MACADAMIA NUTS

CONTINUED

CROP AND STATE	UTILIZED PRODUCTION						VALUE OF UTILIZED PRODUCTION		
	1972	1973	1974	1972	1973	1974	1972	1973	1974
	TONS (IN-SHELL BASIS)			DOLLARS PER TON			1,000 DOLLARS		
ALMONDS									
CALIF	125,000	134,000	189,000	785.00	1,490.00	900.00	98,125	199,660	170,100
FILBERTS									
OREG	9,600	11,700	6,400	508.00	570.00	560.00	4,877	6,669	3,584
WASH	550	550	300	509.00	635.00	565.00	280	349	170
TOTAL	10,150	12,250	6,700	508.00	573.00	560.00	5,157	7,018	3,754
WALNUTS (ENGLISH)									
CALIF	116,000	174,000	155,000	564.00	605.00	419.00	65,424	105,270	64,945
OREG	800	1,000	1,500	538.00	550.00	380.00	430	550	570
TOTAL	116,800	175,000	156,500	564.00	605.00	419.00	65,854	105,820	65,515
MACADAMIA NUTS									
HAW	13,110	12,124	16,370	23.3	25.5	32.0	3,055	3,092	5,238

## ALMONDS, FILBERTS, WALNUTS, AND PECANS

CROP AND STATE	PRODUCTION						MEAT PRODUCTION OF NUTS SOLD SHELLED		
	SOLD IN SHELL			SOLD SHELLED			1972	1973	1974
	1972	1973	1974	1972	1973	1974	1972	1973	1974
	TONS (IN-SHELL)						1,000 POUNDS		
ALMONDS 1/									
CALIF				125,000	134,000	189,000	151,000	155,000	230,000
FILBERTS									
OREG	7,180	8,300	4,900	2,420	3,400	1,500	1,980	2,686	1,020
WASH	380	427	252	170	123	48	139	97	33
TOTAL	7,560	8,727	5,152	2,590	3,523	1,548	2,119	2,783	1,053
WALNUTS (ENGLISH)									
CALIF	33,100	55,587	48,720	82,900	118,413	106,280	59,688	88,573	71,846
OREG	390	390	400	410	610	1,100	273	451	800
TOTAL	33,490	55,977	49,120	83,310	119,023	107,380	59,961	89,024	72,646
PECANS									
U S	34,100	52,940	23,430	149,000	222,760	113,670			

1/ CALIFORNIA ALMONDS SOLD IN THE SHELL ARE INCLUDED IN SOLD SHELLED.

ECONOMIC ABANDONMENT

CROP AND STATE	NOT HARVESTED					
	1969	1970	1971	1972	1973	1974
	MILLION POUNDS					
APPLES						
COLO	3.0					
CONN	.4	1.4	4.8			2.5
DEL	1.0	2.0	1.0			
ILL	2.2	2.1	2.0			
IND						.3
KANS	1.1	.9	.5	.4		.1
KY	.6	.6	.4	.9	.1	.4
MAINE			5.0			3.0
MD	2.0	3.0	3.0			
MASS		2.2	10.0			7.0
MICH			30.0			
MINN	1.9	1.0	1.5			.6
N H		2.8	3.9			3.0
N J	13.0	9.0	15.0			
N MEX	1.0	.5			2.0	.6
N Y		50.0	125.0			11.0
N C	13.7	5.0	5.0	5.0	2.0	5.0
OHIO	3.0		10.0			3.0
PA	10.0	30.0	35.0			
R I	.1	.1	.4	.1		
UTAH	6.0				4.3	
VT		2.0	4.3	1.9		4.0
VA	12.0	12.0	20.0			
WASH	15.0	2.0	2.0	1.0		
W VA	5.0	3.0	5.0			
WIS						3.8
U S	91.0	129.6	283.8	9.3	8.4	44.3
PEACHES						
COLO	1.5				1.1	
ILL	.8					
MD					.3	1.0
MICH	20.0					
N J	6.0		7.5		5.5	1.0
N C	3.0	4.0	1.0			
OHIO						1.0
VA	2.3					
U S	33.6	4.0	8.5		6.9	3.0
CHERRIES (TART)						
MICH	10.0	8.0		36.0		
N Y	1.0	2.0		3.3		
OREG					.2	
PA				1.2		
UTAH	1.0					
WIS	.6	1.8	.3	1.2		.3
U S	12.6	11.8	.3	41.7	.2	.3
	TONS					
CHERRIES (SWEET)						
IDAHO	600					
NDNT		80				
N Y		200				
OREG					1,000	
WASH	400					
U S	1,000	280			1,000	

ECONOMIC ABANDONMENT CONTINUED

CROP AND STATE	NOT HARVESTED					
	1969	1970	1971	1972	1973	1974
	TONS					
<u>APRICOTS</u>						
CALIF			37,000			
UTAH			300		130	
U S			37,300		130	
<u>PEARS</u>						
CALIF						
BARTLETT			29,000			
COLO			220		520	40
MICH	5,800		2,000			1,000
PA				400		
WASH						
BARTLETT		1,400	3,000			
OTHER	500	500				
U S	6,300	1,900	34,220	400	520	1,040
<u>PRUNES AND PLUMS</u>						
IDAHO	5,640	2,000	5,130			
MICH	1,000		5,000			
OREG			11,200		6,200	
WASH	1,000					
TOTAL	7,640	2,000	21,330		6,200	
<u>FILBERTS</u>						
OREG						500
			1,000 POUNDS			
<u>BUSHBERRIES</u>						
<u>CULTIVATED BLACKBERRIES</u>						
WASH	40	96	1,000	40	24	76
<u>BLUEBERRIES</u>						
WASH	100	75	130	130	120	20
<u>CURRANTS</u>						
WASH						5
<u>BLACK RASPBERRIES</u>						
WASH		8	14	14		
<u>RED RASPBERRIES</u>						
WASH		125	225	35	100	700
<u>PECANS</u>						
FLA						200

CONTINUED

ECONOMIC ABANMENT CONTINUED

CROP AND STATE	EXCESS CULLAGE					
	1969	1970	1971	1972	1973	1974
	MILLION POUNDS					
<u>APPLES</u>						
ILL			1.0		2.0	1.0
IND						.5
IOWA						.5
KANS						.2
KY	.3	.2	.2		.1	.2
N J	4.5	2.0				
N MEX	1.1	1.0	.5		2.0	.4
N C	5.3	6.0				
UTAH	3.0	.5	1.0		1.0	
VA						1.6
WASH	5.0		4.0	2.0		
WIS						1.2
U S	19.2	9.7	6.7	2.0	5.1	5.6
<u>PEACHES</u>						
CALIF						
CLINGSTONE	228.0	196.0	122.0	120.0	162.0	152.0
COLO	5.2	3.5	3.1	1.0	3.8	1.3
ILL			.7			
MD						1.6
N J	7.5	4.0	3.5		4.5	3.0
WASH		2.0	2.5	1.0	1.0	
U S	240.7	205.5	131.8	122.0	171.3	157.9
<u>CHERRIES (TART)</u>						
N Y		1.2	1.0	1.5	.8	
OREG					.2	
U S		1.2	1.0	1.5	1.0	
	TONS					
<u>CHERRIES (SWEET)</u>						
COLO	50					
IDAHO			200			
MONT		50				
OREG					2,000	
PA				10		
WASH	300	400	1,100	200	1,000	
U S	350	450	1,300	210	3,000	
<u>APRICOTS</u>						
WASH	150	300	300	130	80	

CONTINUED

ECONOMIC ABANDONMENT CONTINUED

CROP AND STATE	EXCESS CULLAGE					
	1969	1970	1971	1972	1973	1974
	TONS					
<u>PEARS</u>						
<u>COLO</u>	150	25	30	20	60	20
<u>WASH</u>						
<u>BARTLETT</u>	3,800	3,800	6,000	2,000	4,000	
<u>OTHER</u>	4,800	4,300	1,600	1,000		
<u>U S</u>	8,750	8,125	7,630	3,020	4,060	20
<u>PRUNES AND PLUMS</u>						
<u>IDAHO</u>	1,360	850	1,070	420	550	
<u>WASH</u>	800	300	1,000	100		
<u>TOTAL</u>	2,160	1,150	2,070	520	550	
	1,000 POUNDS					
<u>BUSHBERRIES:</u>						
<u>CULTIVATED BLACKBERRIES</u>						
<u>WASH</u>				20		
<u>RED RASPBERRIES</u>						
<u>WASH</u>			40	55	190	50



UTILIZED PRODUCTION AND VALUE OF NONCITRUS FRUITS AND NUTS  
BY KINDS, UNITED STATES, 1969-71

CROP	UTILIZED PRODUCTION			VALUE OF UTILIZED PRODUCTION		
	1969	1970	1971	1969	1970	1971
	1,000 TONS FRESH EQUIVALENT			1,000 DOLLARS		
APPLES	3,355	3,129	3,041	272,345	283,869	299,154
APRICOTS	228	175	149	32,640	19,342	14,112
AVOCADOS	46	86	45	25,651	30,644	31,370
BANANAS	3	3	3	580	594	680
BUSHBERRIES	43	40	34	20,148	14,653	12,258
CHERRIES, SWEET	27	122	140	42,886	43,173	44,047
CHERRIES, TART	151	118	138	23,543	17,812	26,916
CRANBERRIES	91	92	82	28,241	19,675	17,599
DATES	17	18	20	2,541	2,712	3,101
FIGS	59	50	46	5,107	5,109	3,944
GRAPES	3,898	3,103	3,994	282,514	292,263	383,267
NECTARINES	66	67	70	9,240	10,108	10,850
OLIVES	70	52	55	23,030	12,844	8,140
PAPAYAS	10	12	10	2,385	2,436	2,736
PEACHES 1/	1,819	1,491	1,432	178,246	168,315	166,587
PEARS	712	539	707	71,815	71,655	66,810
PERSIMMONS	2	2	1	200	244	170
POMEGRANATES	7	8	9	910	1,000	1,114
PRUNES AND PLUMS	486	783	559	61,130	65,906	66,547
TOTAL NONCITRUS FRUITS	11,190	9,890	10,535	1,083,152	1,062,354	1,159,402
	1,000 TONS					
ALMONDS	122	124	134	73,932	80,104	87,100
FILBERTS	7	9	11	4,072	5,279	4,708
MACADAMIA NUTS	5	7	7	2,474	2,868	3,569
PECANS	113	78	123	67,479	60,528	81,286
WALNUTS	106	112	136	44,170	45,324	57,106
TOTAL NUTS	353	330	411	192,127	194,103	233,769

1/ UTILIZED PRODUCTION INCLUDES CULLS AND CANNERY DIVERSIONS FOR CALIF CLINGSTONE PEACHES, BUT EXCLUDED IN VALUE. CONTINUED

UTILIZED PRODUCTION AND VALUE OF NONCITRUS FRUITS AND NUTS  
BY KINDS, UNITED STATES, 1972-74 CONTINUED

CROP	UTILIZED PRODUCTION			VALUE OF UTILIZED PRODUCTION		
	1972	1973	1974	1972	1973	1974
	1,000 TONS FRESH EQUIVALENT			1,000 DOLLARS		
APPLES	2,934	3,126	3,265	377,475	548,965	551,600
APRICOTS	127	158	94	18,331	26,442	25,281
AVOCADOS	89	74	127	44,528	49,553	57,274
BANANAS	3	4	3	720	773	865
BUSHBERRIES	31	22	33	17,925	20,061	19,371
CHERRIES, SWEET	96	155	147	36,649	55,331	64,057
CHERRIES, TART	134	87	132	22,088	32,945	48,968
CRANBERRIES	104	105	112	26,021	28,384	24,715
DATES	16	23	23	2,716	4,574	5,039
FIGS	36	42	45	5,132	9,610	10,392
GRAPES	2,579	4,198	4,199	426,238	681,675	582,289
NECTARINES	87	87	117	15,399	22,058	26,676
OLIVES	24	70	59	10,043	27,440	25,389
PAPAYAS	13	16	19	3,423	4,180	4,871
PEACHES <sup>1/</sup>	1,185	1,287	1,454	155,286	199,060	260,722
PEARS	609	726	741	84,426	100,104	125,389
PERSIMMONS	3	2	3	573	727	835
POMEGRANATES	7	6	8	880	986	1,223
PRUNES AND PLUMS	359	777	659	72,231	135,663	112,490
TOTAL NONCITRUS FRUITS	8,436	10,965	11,240	1,320,084	1,948,531	1,947,446
	1,000 TONS					
ALMONDS	125	134	189	98,125	199,660	170,100
FILBERTS	10	12	7	5,157	7,018	3,754
MACADAMIA NUTS	7	6	8	3,055	3,092	5,238
PECANS	92	138	69	77,636	101,287	64,741
WALNUTS	117	175	157	65,854	105,820	65,515
TOTAL NUTS	351	465	430	249,827	416,877	309,348

<sup>1/</sup> UTILIZED PRODUCTION INCLUDES CULLS AND CANNERY DIVERSIONS FOR CALIF CLINGSTONE PEACHES, BUT EXCLUDED IN VALUE.

UTILIZATION OF PRODUCTION OF NONCITRUS  
FRUITS, AND VALUE, UNITED STATES, 1969-74

YEAR	UTILIZED PRODUCTION <sup>1/</sup>	FRESH	PROCESSED					VALUE OF UTILIZED PRODUCTION <sup>2/</sup>	
			CANNED	DRIED	JUICE	FROZEN	WINE		OTHER
			1,000 TONS					1,000 DOLLARS	
1969	11,190	3,719	2,571	1,612	667	254	2,054	199	1,083,152
1970	9,890	3,378	2,030	1,634	708	221	1,583	238	1,062,354
1971	10,535	3,421	2,003	1,431	877	240	2,310	192	1,159,402
1972	8,436	3,114	1,805	804	720	244	1,520	169	1,320,084
1973	10,965	3,403	2,071	1,795	598	254	2,567	196	1,948,531
1974	11,240	3,620	2,203	1,655	768	223	2,416	279	1,947,446

<sup>1/</sup> INCLUDES CULLS AND CANNERY DIVERSIONS FOR CALIF CLINGSTONE PEACHES (TONS): 1969-114,000; 1970-98,000; 1971-61,000; 1972-60,000; 1973-81,000; 1974-76,000. <sup>2/</sup> EXCLUDES CULLS AND CANNERY DIVERSIONS FOR CALIF CLINGSTONE PEACHES.

END