



**AgEcon** SEARCH  
RESEARCH IN AGRICULTURAL & APPLIED ECONOMICS

*The World's Largest Open Access Agricultural & Applied Economics Digital Library*

**This document is discoverable and free to researchers across the globe due to the work of AgEcon Search.**

**Help ensure our sustainability.**

Give to AgEcon Search

AgEcon Search

<http://ageconsearch.umn.edu>

[aesearch@umn.edu](mailto:aesearch@umn.edu)

*Papers downloaded from **AgEcon Search** may be used for non-commercial purposes and personal study only. No other use, including posting to another Internet site, is permitted without permission from the copyright owner (not AgEcon Search), or as allowed under the provisions of Fair Use, U.S. Copyright Act, Title 17 U.S.C.*

SB 584 (1978)

USDA STATISTICAL BULLETINS

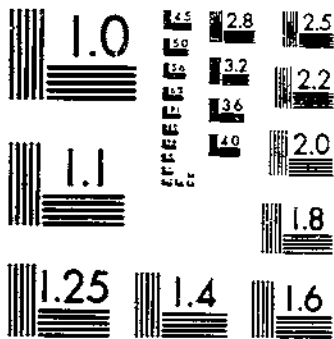
UP DATA

PEANUT STOCKS AND PROCESSING - AUGUST 1963 - JULY 1976

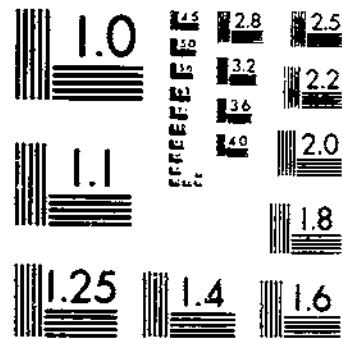
JONES

1 OF 1

# START



MICROCOPY RESOLUTION TEST CHART  
NATIONAL BUREAU OF STANDARDS-1963-A



MICROCOPY RESOLUTION TEST CHART  
NATIONAL BUREAU OF STANDARDS-1963-A

51

12  
630.5  
U 53-13

# PEANUT STOCKS AND PROCESSING

August 1963-July 1976

U. S. GOVERNMENT PRINTING OFFICE

1976

U. S. GOVERNMENT PRINTING OFFICE

374-596

U.S. 12

SEP 8 1978



Crop Reporting Board

U.S. Department of Agriculture

Statistical Bulletin No. 584  
January 1978

SEP 19 1978

Washington, D.C. 20250

© UPDATA 1981

# CONTENTS

PAGE

INTRODUCTION

3

## SEASONAL TABLES

TABLE

1.	Stocks of Peanuts on Hand Beginning of Season, 1963-64 Through 1976-77	4
2.	Farmers' Stock Peanuts by Type, on Hand Beginning of Season, 1963-64 Through 1976-77	4
3.	Shelled and Roasting Stock Peanuts on Hand Beginning of Season, 1963-64 Through 1976-77	5
4.	Shelled Oil Stock Peanuts, Peanut Oil, and Cake and Meal on Hand Beginning of Season, 1963-64 Through 1976-77	5
5.	Farmers' Stock Peanuts Milled, by Seasons, 1963-64 Through 1976-77	6
6.	Production of Shelled and Roasting Stock Peanuts, by Seasons, 1963-64 Through 1975-76	6
7.	Shelled Peanuts Crushed and Production of Peanut Crude Oil, Cake and Meal by Seasons, 1963-64 Through 1975-76	8
8.	Apparent Disappearance of Milled Peanut Products, by Seasons, 1963-64 Through 1975-76	8
9.	Shelled Peanuts (Raw Basis) by Types, Used in Primary Products, 1963-64 Through 1975-76	9

## MONTHLY TABLES

10.	Stocks of Peanuts and Specified Products by Types, on Hand at Month's End, 1963-64 Through 1975-76	11
11.	Farmers' Stock Peanuts by Types, on Hand at Month's End, 1963-64 Through 1975-76	15
12.	Shelled and Roasting Stock Peanuts on Hand at Month's End, 1963-64 Through 1975-76	19
13.	Shelled Oil Stock Peanuts, Crude Peanut Oil and Cake, and Meal on Hand at Month's End, 1963-64 Through 1975-76	23
14.	Farmers' Stock Peanuts Milled by Months and by Types, 1963-64 Through 1975-76	25
15.	Production of Shelled and Roasting Stock (In Shell) Peanuts by Months, 1963-64 Through 1975-76	29
16.	Shelled Peanuts Crushed, and Production of Crude Peanut Oil and Peanut Cake and Meal by Months, 1963-64 Through 1975-76	33
17.	Apparent Disappearance of Milled Peanut Products by Months, 1963-64 Through 1975-76	35
18.	Shelled Peanuts (Raw Basis) Used in Primary Products by Months, 1963-64 Through 1975-76	39

## CHARTS AND GRAPHS

FIGURE

1.	Farmers' Stock Peanuts Milled, by Seasons	7
2.	Farmers' Stock Peanuts Milled, Seasonal Trend	7
3.	Apparent Disappearance of Shelled Peanuts	38
4.	Shelled Peanuts Used in Primary Products	42

# PEANUT STOCKS AND PROCESSING

August 1963 - July 1976

## INTRODUCTION

Much of the data in this bulletin was originally published in the "Peanut Stocks and Processing" reports issued monthly from August 1963 through July 1976 by the Statistical Reporting Service. However, included are some revised data on peanut stocks, millings (cleaning and shelling operations), crushings, disappearance, and amounts of shelled peanuts (raw basis) used in primary products. This publication serves as a single data source of this information. Where possible, data are shown by production areas and types.

The first part of the bulletin contains seasonal tables which show totals for each marketing year beginning August 1 and ending July 31 of the following year. The second part shows the same data by months for each season. These statistics were collected under the Peanut Statistics Act (7 U.S.C. 951 et seq). Each month, information is collected by the Statistical Reporting Service from cleaners, shellers, crushers, warehousemen, cold storage plants, and processors of raw peanuts. Data on use of shelled peanuts (raw basis) cover approximately 95 percent of all peanuts going to specified products.

Previous statistical series on peanuts have included "Statistics on Commercial Peanuts by Months and Seasons, September 1938 through August 1944," published in 1945 and "Statistics on Commercial Peanuts, by Seasons, 1938-39 to 1949-50, by Months 1944-45 to 1949-50," published in 1951, and "Commercial Peanuts, Seasons 1939-40 through 1962-63, and Months, August 1949-July 1963," published in 1964.

The Virginia-Carolina production area includes Virginia and North Carolina; the Southeastern area refers to Alabama, Florida, Georgia, South Carolina, and Mississippi; and the Southwestern area includes New Mexico, Oklahoma, and Texas. These were the major producing States for the 1963-76 period and the only States for which estimates were made.

This bulletin was compiled by Sylvia E. Jones with supervision by Ronald F. Kriesel, under the general direction of Robert L. Schulte, Head, Cotton and Special Crops Section and Floyd E. Rolf, Chief, Crops Branch, Statistical Reporting Service, United States Department of Agriculture.

TABLE 1.--STOCKS OF PEANUTS ON HAND BEGINNING OF SEASON, 1963-64 THROUGH 1976-77 1/

SEASON BEGINNING AUGUST 1	FARMERS' STOCK	SHELLED PEANUTS 2/	ROASTING STOCK (IN SHELL) 3/	FARMERS' STOCK EQUIVALENT 4/ 5/	
				SHELLED PEANUTS	TOTAL
1,000 POUNDS					
1963-64	13,994	236,871	14,982	367,150	396,875
1964-65	10,652	245,571	17,369	380,635	409,524
1965-66	7,444	225,965	14,518	350,246	372,934
1966-67	11,543	249,316	13,707	386,440	412,375
1967-68	6,514	264,774	13,578	352,149	372,241
1968-69	7,359	248,334	15,372	330,284	353,015
1969-70	9,056	250,192	14,865	332,755	356,676
1970-71	2,809	251,002	16,059	333,833	352,701
1971-72	14,223	318,046	15,966	423,002	453,191
1972-73	27,394	258,312	20,885	343,555	391,834
1973-74	56,899	266,272	17,659	354,141	428,699
1974-75	38,392	375,878	15,092	499,918	553,402
1975-76	226,991	300,135	17,829	399,180	644,000
1976-77	250,005	398,841	30,567	530,459	811,031

1/ EXCLUDES STOCKS ON FARMS. INCLUDES STOCKS OWNED BY CCC AND STOCKS HELD BY COOPERATIVE ASSOCIATIONS ON WHICH CCC HAS ADVANCED LOANS, EXCEPT BEFORE 1966-67 SHELLED OIL STOCK WAS EXCLUDED FROM TOTAL (SEE FOOTNOTE 2). STARTING WITH 1966-67 FARMERS' STOCK ARE ON NET WEIGHT BASIS.

2/ STARTING WITH AUGUST 1, 1966-67, SEASON INCLUDES SHELLED EDIBLES AND SHELLED OIL STOCK FOR TOTAL SHELLED PEANUTS. BEFORE AUGUST 1, 1966-67 INCLUDES SHELLED EDIBLES ONLY.

3/ CLEANED AND UNSHELLED.

4/ PRIOR TO AUGUST 1, 1966-67, ACTUAL FARMERS' STOCK (GROSS WEIGHT) X 1.00 PLUS SHELLED EDIBLES X 1.55 PLUS ROASTING STOCK X 1.05 EQUALS TOTAL FARMERS' STOCK EQUIVALENT.

5/ BEGINNING AUGUST 1, 1966-67 SEASON, ACTUAL FARMERS' STOCK (NET WEIGHT) X 1.00 PLUS SHELLED PEANUTS (SHELLED EDIBLES PLUS SHELLED OIL STOCK) X 1.33 PLUS ROASTING STOCK X 1.00 EQUALS TOTAL FARMERS' STOCK EQUIVALENT.

TABLE 2.--FARMERS' STOCK PEANUTS BY TYPE, ON HAND BEGINNING OF SEASON, 1963-64 THROUGH 1976-77

SEASON BEGINNING AUGUST 1	VIRGINIAS	RUNNERS	SPANISH (BY AREAS)				TOTAL ALL TYPES
			VIRGINIA- N. CAROLINA	SOUTH EAST	SOUTH WEST	TOTAL	
1,000 POUNDS							
1963-64	1,238	4,046	---	4,033	4,677	8,710	13,994
1964-65	1,390	2,704	---	3,078	3,480	6,558	10,652
1965-66	1,727	941	---	4,306	470	4,776	7,444
1966-67	3,918	5,175	---	1,408	1,042	2,450	11,543
1967-68	64	24	---	2,472	3,954	6,426	6,514
1968-69	534	1,670	---	5,155	---	5,155	7,359
1969-70	676	562	---	3,564	4,254	7,818	9,056
1970-71	2,356	---	---	---	453	453	2,809
1971-72	3,233	4,006	---	3,032	3,952	6,984	14,223
1972-73	3,533	8,170	---	2,402	13,289	15,691	27,394
1973-74	2,947	48,720	6	1,338	3,888	5,232	56,899
1974-75	3,817	30,385	---	---	4,190	4,190	38,392
1975-76	16,353	193,848	---	1,804	14,986	16,790	226,991
1976-77	4,046	244,017	---	688	1,254	1,942	250,005

1/ EXCLUDES STOCKS ON FARMS, BUT INCLUDES STOCKS OWNED OR HELD BY CCC OR HELD BY COOPERATIVE ASSOCIATION ON WHICH CCC HAS ADVANCED LOANS. BEGINNING AUGUST 1, 1966-67 FARMERS' STOCK ARE ON A NET WEIGHT BASIS.

TABLE 3.--SHELLED AND ROASTING STOCK PEANUTS ON HAND BEGINNING OF SEASON,  
1963-64 THROUGH 1976-77 1/

SEASON BEGINNING AUGUST 1	SHELLED EDIBLES				SHELLED	TOTAL	ROASTING
	VIRGINIAS	RUNNERS	SPANISH	TOTAL	OIL STOCK 2/	SHELLED	STOCK 3/
1,000 POUNDS							
1963-64	135,872	64,685	36,314	236,871	2,089	238,960	14,982
1964-65	125,201	69,874	50,496	245,571	2,729	248,300	17,369
1965-66	119,571	60,415	45,979	225,965	3,961	229,926	14,518
1966-67	125,166	64,512	59,638	249,316	8,960	258,276	13,707
1967-68	126,343	59,003	60,332	245,678	19,096	264,774	13,578
1968-69	101,359	67,863	50,495	219,717	28,617	248,334	15,372
1969-70	103,359	66,966	56,433	226,758	23,434	250,192	14,865
1970-71	105,770	65,408	67,147	238,325	12,677	251,002	16,059
1971-72	126,893	81,063	83,009	290,965	27,081	318,046	15,966
1972-73	66,870	90,678	66,981	224,529	33,783	258,312	20,885
1973-74	45,203	121,992	73,491	240,686	25,586	266,272	17,659
1974-75	87,318	209,488	62,946	359,752	16,126	375,878	15,092
1975-76	89,266	129,894	60,241	279,401	20,734	300,135	17,829
1976-77	68,529	159,902	87,236	315,667	83,174	398,841	30,567

1/ EXCLUDES STOCKS ON FARMS. INCLUDES STOCKS OWNED BY OR HELD FOR ACCOUNT OF CCC IN COMERCIAL STORAGEES.  
2/ INCLUDES UNGRADED OR STRAIGHT RUN OIL STOCK PEANUTS.  
3/ CLEANED AND UNSHELLED.

TABLE 4.--SHELLED OIL STOCK PEANUTS, PEANUT OIL, AND CAKE AND MEAL ON HAND  
BEGINNING OF SEASON, 1963-64 THROUGH 1976-77

SEASON	SHELLED	CRUDE	PEANUT	SEASON	SHELLED	CRUDE	PEANUT
BEGINNING	OIL	PEANUT	CAKE AND	BEGINNING	OIL	PEANUT	CAKE AND
AUGUST 1	STOCK 1/	OIL 2/	MEAL 2/	AUGUST 1	STOCK 1	OIL 2/	MEAL 2/
1,000 POUNDS				1,000 POUNDS			
1963-64	2,089	13,439	5,341	1975-76	20,734	18,253	10,374
1964-65	2,729	7,381	11,329	1976-77	83,174	22,936	5,863
1965-66	3,961	8,065	5,195				
1966-67	8,960	13,214	6,360				
1967-68	19,096	12,456	19,122				
1968-69	28,617	7,036	9,148				
1969-70	23,434	9,543	8,876				
1970-71	12,677	8,773	7,738				
1971-72	27,081	11,793	21,587				
1972-73	33,783	8,453	2,979				
1973-74	25,586	11,727	6,962				
1974-75	16,126	10,897	6,838				

1/ INCLUDES UNGRADED AND STRAIGHT RUN OIL STOCK PEANUTS.  
2/ RELATES TO PEANUT OIL MILLS ONLY.



TABLE 5.--FARMERS' STOCK PEANUTS MILLED, BY SEASONS, 1963-64 THROUGH 1975-76 1/

SEASON BEGINNING AUGUST 1	VIRGINIAS	RUNNERS	SPANISH (BY AREAS) 2/				TOTAL ALL TYPES
			VIRGINIA- N. CAROLINA	SOUTH EAST	SOUTH WEST	TOTAL	
1,000 POUNDS							
1963-64	553,536	611,720	----	295,396	321,898	617,294	1,782,550
1964-65	583,778	605,536	----	375,320	406,876	782,196	1,971,510
1965-66	739,208	632,832	----	412,270	455,454	867,724	2,239,764
1966-67	698,414	551,370	----	355,930	551,410	907,340	2,157,124
1967-68	684,038	612,508	----	461,822	500,604	962,426	2,258,972
1968-69	700,078	583,522	----	419,888	571,520	991,408	2,275,008
1969-70	768,016	496,595	----	479,742	523,573	1,003,315	2,267,926
1970-71	880,412	692,908	----	491,393	551,179	1,042,572	2,615,892
1971-72	675,080	1,065,730	----	360,671	548,815	909,486	2,650,296
1972-73	689,098	1,288,108	----	287,191	624,175	911,366	2,888,572
1973-74	784,212	1,397,693	----	204,757	664,324	869,081	3,050,986
1974-75	636,142	1,645,522	----	154,600	486,660	641,260	2,922,924
1975-76	663,649	2,213,271	----	89,689	494,895	584,584	3,461,504

1/ EXCLUDES PEANUTS MILLED FOR SEED.

2/ VIRGINIA-NORTH CAROLINA, SOUTHEASTERN, SOUTHWESTERN.

TABLE 6.--PRODUCTION OF SHELLED AND ROASTING STOCK PEANUTS, BY SEASONS, 1963-64 THROUGH 1975-76 1/

SEASON BEGINNING AUGUST 1	SHELLED EDIBLES				SHELLED OIL STOCK	TOTAL SHELLED	ROASTING STOCK 2/
	VIRGINIAS	RUNNERS	SPANISH	TOTAL			
1,000 POUNDS							
1963-64	265,766	316,588	368,942	951,296	243,028	1,194,324	86,731
1964-65	287,115	366,181	445,185	1,098,481	259,299	1,357,780	83,050
1965-66	389,666	354,571	485,390	1,229,627	317,001	1,546,628	93,837
1966-67	363,767	323,369	489,693	1,176,829	361,026	1,537,855	92,173
1967-68	349,300	374,446	548,967	1,272,713	347,543	1,620,250	93,328
1968-69	342,378	333,740	575,924	1,252,042	352,057	1,604,099	103,380
1969-70	393,786	307,200	583,852	1,284,838	315,672	1,600,510	107,026
1970-71	441,957	371,104	560,015	1,373,076	482,274	1,855,350	119,146
1971-72	302,980	565,326	517,279	1,385,585	518,747	1,904,332	121,009
1972-73	284,858	666,672	551,594	1,503,124	567,067	2,070,191	113,341
1973-74	378,190	778,383	521,961	1,678,534	509,306	2,187,840	149,503
1974-75	283,289	892,193	381,616	1,557,098	558,409	2,115,507	132,185
1975-76	283,488	966,491	340,937	1,590,916	914,655	2,505,571	154,768

1/ EXCLUDES PEANUTS MILLED FOR SEED.

2/ CLEANED AND UNSHELLED.

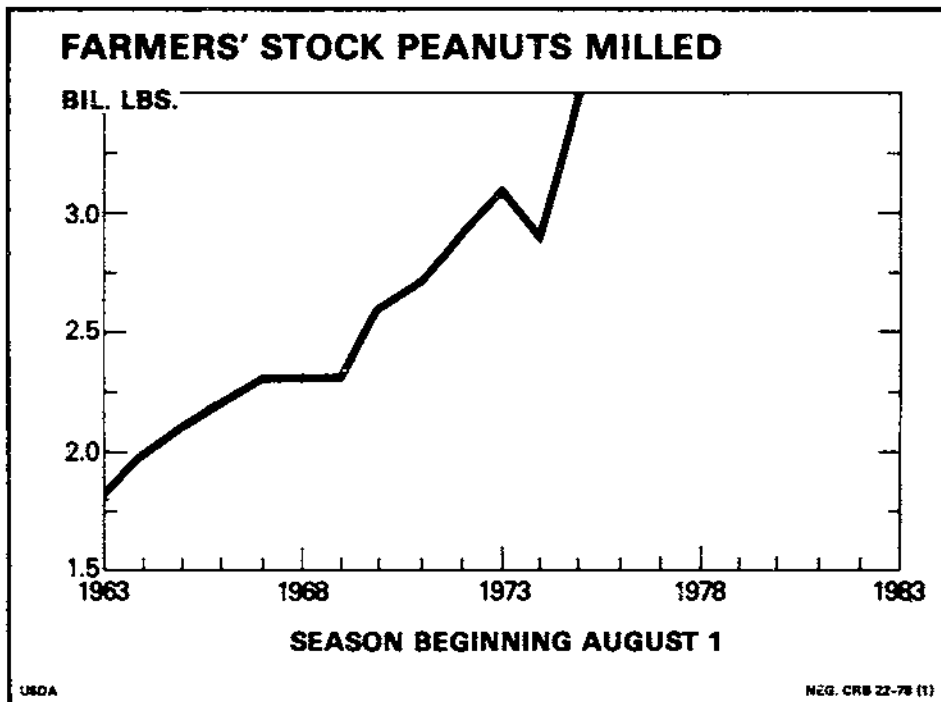


Figure 1

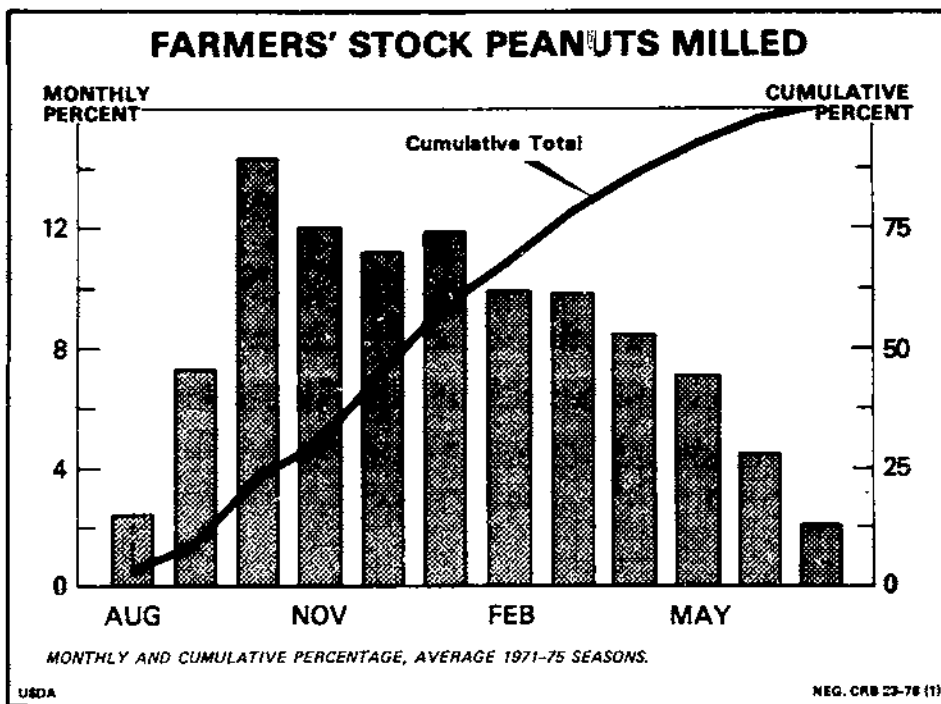


Figure 2

TABLE 7.--SHELLED PEANUTS CRUSHED AND PRODUCTION OF PEANUT CRUDE OIL, CAKE AND MEAL, BY SEASONS, 1963-64 THROUGH 1975-76 1/

SEASON BEGINNING AUGUST 1	SHELLED PEANUTS CRUSHED 2/	CRUDE PEANUT OIL	PEANUT CAKE AND MEAL	SEASON BEGINNING AUGUST 1	SHELLED PEANUTS CRUSHED 2/	CRUDE PEANUT OIL	PEANUT CAKE AND MEAL
	1,000 POUNDS				1,000 POUNDS		
1963-64	268,376	111,287	154,945	1975-76	1,088,087	475,961	601,243
1964-65	340,672	141,327	192,698				
1965-66	373,547	155,591	206,610				
1966-67	418,292	172,840	232,796				
1967-68	483,992	199,205	266,341				
1968-69	491,447	205,222	275,210				
1969-70	437,127	181,961	243,848				
1970-71	600,855	253,544	340,351				
1971-72	612,322	259,994	334,428				
1972-73	638,755	268,950	359,769				
1973-74	513,552	213,896	284,997				
1974-75	443,665	188,365	245,584				

1/ RELATES TO PEANUT OIL MILLS ONLY.

2/ ALL CRUSHINGS REGARDLESS OF GRADE.

TABLE 8.--APPARENT DISAPPEARANCE OF MILLED PEANUT PRODUCTS, BY SEASONS, 1963-64 THROUGH 1975-76 1/

SEASON BEGINNING AUGUST 1	EDIBLE GRADES	SHELLED PEANUTS OIL STOCK 2/ 3/	TOTAL ALL GRADES	ROASTING STOCK 4/	CRUDE PEANUT OIL 3/	CAKE AND MEAL 3/
	1,000 POUNDS					
1963-64	942,596	242,388	1,184,984	84,344	117,345	148,957
1964-65	1,118,087	258,067	1,376,154	85,901	140,643	198,832
1965-66	1,206,276	312,002	1,518,278	94,648	150,442	205,445
1966-67	1,180,467	350,890	1,531,357	92,302	173,598	220,034
1967-68	1,298,674	338,022	1,636,696	91,534	204,625	276,315
1968-69	1,245,001	357,240	1,602,241	103,887	202,715	275,482
1969-70	1,273,270	326,428	1,599,698	105,831	182,733	244,987
1970-71	1,320,437	467,871	1,788,308	119,236	250,524	326,505
1971-72	1,452,018	512,046	1,964,064	116,089	263,333	353,036
1972-73	1,486,969	575,267	2,062,236	116,567	265,678	355,785
1973-74	1,559,466	518,769	2,078,235	152,070	214,725	285,121
1974-75	1,637,449	551,001	2,188,450	129,447	181,010	242,048
1975-76	1,554,649	852,216	2,406,865	142,029	471,279	605,753

1/ INCLUDES IN TRANSIT, EXPORTS AND DOMESTIC USE.

2/ DISAPPEARANCE OF BOTH GRADED AND UNGRADED OIL STOCK. FOR TOTAL PEANUTS CRUSHED, SEE TABLE 7.

3/ RELATES TO PEANUT OIL MILLS ONLY.

4/ CLEANED AND UNSHELLED.

TABLE 9.--SHELLED PEANUTS (RAW BASIS) BY TYPES, USED IN PRIMARY PRODUCTS, 1963-64 THROUGH 1975-76

ALL TYPES

SEASON BEGINNING AUGUST 1	EDIBLE GRADES USED IN --						TOTAL ALL GRADES 4/
	PEANUT CANDY 1/	SALTED PEANUTS	PEANUT BUTTER SANDWICHES 2/	PEANUT BUTTER 3/	OTHER PRODUCTS	TOTAL	
	1,000 POUNDS						
1963-64	149,406	199,439	20,677	462,075	15,255	846,852	1,115,228
1964-65	160,534	202,448	20,265	480,093	15,852	879,192	1,219,864
1965-66	180,059	213,359	21,502	499,490	18,313	932,723	1,306,270
1966-67	198,427	228,721	22,616	480,387	17,399	947,550	1,365,842
1967-68	216,146	232,630	22,393	513,728	17,241	1,002,138	1,486,130
1968-69	226,372	240,023	22,078	524,750	18,502	1,031,725	1,523,172
1969-70	236,375	240,911	21,655	540,514	21,148	1,060,603	1,497,730
1970-71	243,239	238,804	25,317	540,350	17,571	1,065,281	1,666,136
1971-72	246,046	241,651	25,594	556,847	16,968	1,087,106	1,699,428
1972-73	259,848	254,430	25,646	578,061	17,573	1,135,558	1,774,313
1973-74	251,504	284,307	23,882	659,971	19,295	1,238,959	1,752,511
1974-75	217,034	278,285	20,368	650,984	14,379	1,181,050	1,620,365
1975-76	239,676	301,635	20,957	648,057	15,997	1,226,322	2,314,409

VIRGINIAS

1963-64	40,265	141,860	6,951	51,987	4,312	245,375	---
1964-65	44,870	141,283	6,253	55,221	4,200	251,827	---
1965-66	51,389	150,476	7,565	69,871	5,506	284,807	---
1966-67	54,861	163,676	7,970	68,663	5,371	300,541	---
1967-68	58,815	168,652	7,925	48,585	5,533	289,510	---
1968-69	57,444	173,447	8,548	38,415	4,940	282,794	---
1969-70	58,679	177,319	6,983	47,355	7,834	298,170	---
1970-71	58,729	176,816	7,895	50,294	5,895	299,629	---
1971-72	52,157	173,597	8,211	40,685	4,550	279,200	---
1972-73	50,597	167,941	7,770	46,435	4,508	277,251	---
1973-74	53,052	171,695	3,821	72,614	4,336	305,518	---
1974-75	51,278	132,861	2,978	67,461	3,180	257,758	---
1975-76	52,335	147,933	3,068	62,244	2,746	268,326	---

SEE FOOTNOTES AT END OF TABLE.

TABLE 9.--SHELLED PEANUTS (RAW BASIS) BY TYPES, USED IN PRIMARY PRODUCTS, 1963-64 THROUGH 1975-76  
CONTINUED

SEASON BEGINNING AUGUST 1	EDIBLE GRADES USED IN --					OTHER PRODUCTS	TOTAL	TOTAL ALL GRADES 4/
	PEANUT CANDY 1/	SALTED PEANUTS	PEANUT BUTTER SANDWICHES 2/	PEANUT BUTTER 3/				
1,000 POUNDS								
1963-64	32,601	2,930	9,580	241,020	7,582	293,713	---	
1964-65	29,546	4,199	9,988	241,217	7,399	292,349	---	
1965-66	32,093	3,965	9,925	235,617	8,668	290,268	---	
1966-67	41,144	5,116	9,890	210,146	7,703	273,999	---	
1967-68	51,096	5,087	10,335	239,313	8,449	314,280	---	
1968-69	62,177	6,408	9,795	212,443	9,608	300,431	---	
1969-70	71,252	8,217	10,318	209,676	9,600	307,063	---	
1970-71	95,373	5,820	9,941	232,567	7,743	351,444	---	
1971-72	109,463	11,948	12,004	250,903	8,431	392,749	---	
1972-73	122,164	29,665	12,983	265,938	8,694	439,444	---	
1973-74	115,278	51,555	16,020	330,043	10,502	523,398	---	
1974-75	101,728	86,092	13,781	415,720	7,435	624,756	---	
1975-76	124,423	94,633	15,204	447,182	9,742	691,184	---	

SPANISH

1963-64	76,540	54,649	4,146	169,068	3,361	307,764	---
1964-65	86,118	56,966	4,024	183,655	4,253	335,016	---
1965-66	96,577	58,918	4,012	194,002	4,139	357,648	---
1966-67	102,422	59,929	4,756	201,578	4,325	373,010	---
1967-68	106,235	58,891	4,133	225,830	3,259	398,348	---
1968-69	106,751	60,168	3,735	273,892	3,954	448,500	---
1969-70	106,444	57,375	4,354	283,483	3,714	455,370	---
1970-71	89,137	56,168	7,481	257,489	3,933	414,208	---
1971-72	84,426	56,106	5,379	265,259	3,987	415,157	---
1972-73	87,087	56,824	4,893	265,688	4,371	418,863	---
1973-74	83,174	61,057	4,041	257,314	4,457	410,043	---
1974-75	64,028	59,332	3,609	167,803	3,764	298,536	---
1975-76	62,918	59,069	2,685	138,631	3,509	266,812	---

1/ INCLUDES PEANUT BUTTER MADE BY MANUFACTURERS FOR OWN USE IN CANDY.

2/ INCLUDES PEANUT BUTTER COOKIES.

3/ EXCLUDES PEANUT BUTTER MADE BY MANUFACTURERS FOR OWN USE IN CANDY OR SANDWICHES.

4/ INCLUDES ALL SHELLED PEANUTS CRUSHED REGARDLESS OF GRADE. CRUSHINGS BY TYPE NOT AVAILABLE.

TABLE 10.--STOCKS OF PEANUTS AND SPECIFIED PRODUCTS AT MONTH'S END, 1963-64 THROUGH 1975-76 1/

SEASON AND MONTH	FARMERS' STOCK	SHELLED PEANUTS 2/	ROASTING	FARMERS' STOCK EQUIVALENT 4/ 5/	
			STOCK (IN SHELL) 3/	SHELLED PEANUTS	TOTAL
1,000 POUNDS					
<b>1963-1964</b>					
AUGUST	369,404	208,125	8,894	322,594	701,337
SEPTEMBER	783,507	208,254	5,909	322,794	1,112,505
OCTOBER	942,558	244,795	8,638	379,432	1,331,060
NOVEMBER	1,027,575	310,613	16,607	481,450	1,526,462
DECEMBER	963,762	346,735	19,461	537,439	1,521,635
JANUARY	754,737	378,068	22,526	586,005	1,364,394
FEBRUARY	576,481	385,423	25,782	597,406	1,200,958
MARCH	381,314	396,186	29,117	614,088	1,025,975
APRIL	213,174	380,105	28,557	589,163	832,322
MAY	99,785	352,950	25,038	547,072	673,147
JUNE	29,284	316,344	21,801	490,333	542,508
JULY	10,652	245,571	17,369	380,635	409,524
<b>1964-1965</b>					
AUGUST	107,407	176,637	12,249	273,787	394,055
SEPTEMBER	806,328	161,002	9,445	249,553	1,065,798
OCTOBER	972,686	204,946	10,266	317,666	1,301,131
NOVEMBER	1,091,468	280,241	18,599	434,374	1,545,371
DECEMBER	1,063,885	331,942	22,051	514,510	1,601,549
JANUARY	855,758	369,122	28,590	572,139	1,457,917
FEBRUARY	632,776	419,374	30,119	650,030	1,314,431
MARCH	425,420	405,837	30,702	629,047	1,086,704
APRIL	225,317	385,229	27,390	597,105	851,182
MAY	88,262	362,801	24,550	562,342	676,382
JUNE	28,928	296,164	19,921	459,054	508,899
JULY	7,444	225,965	14,518	350,246	372,934
<b>1965-1966</b>					
AUGUST	346,269	153,962	8,774	238,641	549,123
SEPTEMBER	973,355	159,044	7,808	246,518	1,228,071
OCTOBER	1,286,817	241,356	16,615	374,102	1,678,365
NOVEMBER	1,357,090	319,577	22,483	495,344	1,876,041
DECEMBER	1,131,709	386,354	24,617	598,849	1,756,406
JANUARY	877,274	419,980	27,414	650,969	1,557,028
FEBRUARY	642,344	451,123	26,637	699,241	1,369,554
MARCH	395,888	450,366	28,095	698,067	1,123,455
APRIL	200,394	435,173	27,030	674,518	903,294
MAY	80,978	396,624	22,991	614,767	719,886
JUNE	30,991	328,374	17,564	508,980	558,413
JULY	11,543	249,316	13,707	386,440	412,375
<b>1966-1967</b>					
AUGUST	313,079	187,056	5,208	248,784	567,071
SEPTEMBER	851,935	186,588	3,834	248,162	1,103,931
OCTOBER	1,042,981	235,515	6,399	313,235	1,362,615
NOVEMBER	1,410,527	340,694	10,716	453,123	1,874,366
DECEMBER	1,176,688	444,661	14,263	591,399	1,782,350
JANUARY	915,514	494,608	23,230	657,829	1,596,573
FEBRUARY	642,884	513,005	29,529	682,257	1,354,710
MARCH	386,910	519,320	31,838	690,696	1,109,444
APRIL	199,168	490,011	31,234	651,715	882,117
MAY	62,470	441,079	27,013	586,635	676,118
JUNE	5,552	360,116	21,546	478,954	506,052
JULY	6,514	264,774	13,578	352,149	372,241

SEE FOOTNOTES AT END OF TABLE.

TABLE 10.--STOCKS OF PEANUTS AND SPECIFIED PRODUCTS AT MONTH'S END, 1963-64 THROUGH 1975-76 1/--CONTINUED

SEASON AND MONTH	FARMERS' STOCK	SHELLED PEANUTS 2/	ROASTING	FARMERS' STOCK EQUIVALENT 4/ 5/	
			STOCK (IN SHELL) 3/	SHELLED PEANUTS	TOTAL
1,000 POUNDS					
<b>1967-1968</b>					
AUGUST	334,353	188,802	10,595	251,107	596,055
SEPTEMBER	1,060,608	182,959	7,483	243,335	1,311,426
OCTOBER	1,211,039	243,892	16,831	324,376	1,552,246
NOVEMBER	1,379,694	352,373	23,632	468,656	1,871,982
DECEMBER	1,198,756	444,493	29,189	591,176	1,819,121
JANUARY	892,086	495,782	36,676	659,390	1,588,152
FEBRUARY	614,669	521,006	39,284	692,938	1,346,891
MARCH	374,915	510,557	36,195	679,041	1,090,151
APRIL	181,555	490,581	31,706	652,473	865,734
MAY	59,988	437,077	26,796	581,312	668,096
JUNE	16,796	351,578	21,116	467,599	505,511
JULY	7,359	248,334	15,372	330,284	353,015
<b>1968-1969</b>					
AUGUST	538,184	196,226	8,865	260,981	808,030
SEPTEMBER	1,056,280	201,833	8,574	268,438	1,333,292
OCTOBER	1,317,556	288,981	19,454	384,345	1,721,355
NOVEMBER	1,403,575	360,333	22,744	479,243	1,905,562
DECEMBER	1,197,366	428,650	24,852	570,104	1,792,342
JANUARY	893,653	474,930	32,801	631,657	1,558,111
FEBRUARY	660,269	504,438	34,946	670,903	1,366,118
MARCH	434,437	496,308	33,474	660,090	1,128,001
APRIL	238,014	467,310	30,341	621,522	889,877
MAY	102,863	418,523	24,811	556,636	684,310
JUNE	43,245	329,286	20,062	437,950	501,257
JULY	9,056	250,192	14,865	332,755	356,676
<b>1969-1970</b>					
AUGUST	275,333	187,369	8,812	249,201	533,346
SEPTEMBER	1,037,244	189,756	4,123	252,376	1,293,743
OCTOBER	1,375,310	278,101	17,354	369,875	1,762,539
NOVEMBER	1,414,537	351,907	21,246	468,036	1,903,819
DECEMBER	1,173,897	441,853	27,523	587,664	1,789,084
JANUARY	891,396	496,886	34,629	660,858	1,586,883
FEBRUARY	626,362	527,827	39,314	702,010	1,367,686
MARCH	391,527	514,603	39,157	684,422	1,115,106
APRIL	204,111	467,262	35,823	621,458	861,392
MAY	78,723	410,562	29,115	546,047	653,885
JUNE	19,574	338,128	21,855	449,710	491,139
JULY	2,809	251,002	16,059	333,833	352,701
<b>1970-1971</b>					
AUGUST	280,014	200,467	9,397	266,621	556,032
SEPTEMBER	1,355,902	252,578	12,771	335,929	1,704,602
OCTOBER	1,664,358	348,598	23,556	463,635	2,151,549
NOVEMBER	1,723,933	406,528	27,602	540,683	2,292,218
DECEMBER	1,493,891	462,760	30,602	615,472	2,139,965
JANUARY	1,198,152	495,109	35,918	658,494	1,892,564
FEBRUARY	896,918	534,253	37,527	710,557	1,645,002
MARCH	637,567	529,626	39,948	704,403	1,381,918
APRIL	360,587	504,905	32,066	671,524	1,064,177
MAY	153,454	494,937	27,812	658,267	839,533
JUNE	33,747	435,215	22,765	578,836	635,348
JULY	14,223	318,046	15,966	423,002	453,191

SEE FOOTNOTES AT END OF TABLE.

TABLE 10.--STOCKS OF PEANUTS AND SPECIFIED PRODUCTS AT MONTH'S END, 1963-64 THROUGH 1975-76 1/--CONTINUED

SEASON AND MONTH	FARMERS' STOCK	SHELLED PEANUTS 2/	ROASTING	FARMERS' STOCK EQUIVALENT 4/ 5/	
			STOCK (IN SHELL) 3/ 1,000 POUNDS	SHELLED PEANUTS	TOTAL
<b>1971-1972</b>					
AUGUST	173,347	232,658	8,486	309,435	491,268
SEPTEMBER	1,431,348	247,676	5,184	329,409	1,765,941
OCTOBER	1,684,365	322,562	14,164	429,008	2,127,537
NOVEMBER	1,850,479	372,847	20,207	495,886	2,366,572
DECEMBER	1,546,708	418,044	21,957	555,998	2,124,663
JANUARY	1,233,083	436,803	30,663	580,948	1,844,694
FEBRUARY	964,209	462,043	37,129	614,517	1,615,855
MARCH	663,632	468,070	39,111	622,533	1,325,276
APRIL	424,304	437,844	38,545	582,333	1,045,182
MAY	197,219	407,925	33,155	542,540	772,914
JUNE	62,851	353,733	28,398	470,466	561,715
JULY	27,394	258,312	20,885	343,555	391,834
<b>1972-1973</b>					
AUGUST	229,895	181,836	12,526	241,841	484,262
SEPTEMBER	1,357,641	191,424	6,602	254,593	1,618,836
OCTOBER	1,790,456	250,592	12,918	333,287	2,136,661
NOVEMBER	1,903,639	340,926	20,193	453,431	2,377,263
DECEMBER	1,643,040	396,586	24,220	527,459	2,194,719
JANUARY	1,361,336	465,831	31,542	619,555	2,012,433
FEBRUARY	1,074,343	492,845	36,316	655,485	1,766,144
MARCH	754,968	461,477	38,484	613,765	1,407,217
APRIL	520,950	447,667	35,083	595,398	1,151,431
MAY	296,924	421,087	29,751	560,046	886,721
JUNE	107,008	349,071	24,698	464,265	595,971
JULY	56,899	266,272	17,659	354,141	428,699
<b>1973-1974</b>					
AUGUST	75,965	195,591	9,614	260,137	345,716
SEPTEMBER	1,104,983	174,107	7,445	231,563	1,343,991
OCTOBER	2,032,201	252,387	14,793	335,675	2,382,669
NOVEMBER	2,106,660	334,859	18,830	445,362	2,570,852
DECEMBER	1,835,296	402,489	20,144	535,311	2,390,751
JANUARY	1,401,578	492,674	29,422	655,257	2,086,257
FEBRUARY	1,147,485	507,039	36,540	674,363	1,858,388
MARCH	788,669	507,974	39,434	675,606	1,503,709
APRIL	461,052	502,016	37,056	667,681	1,165,789
MAY	206,821	510,113	30,343	678,451	915,615
JUNE	73,907	444,519	23,959	591,211	689,077
JULY	39,392	375,878	15,092	499,918	553,402
<b>1974-1975</b>					
AUGUST	103,501	290,319	7,488	386,125	497,114
SEPTEMBER	1,367,601	282,657	3,176	375,934	1,746,711
OCTOBER	2,287,486	342,458	7,729	455,469	2,750,684
NOVEMBER	2,317,148	405,631	11,479	539,489	2,868,116
DECEMBER	2,030,673	470,834	16,138	626,210	2,673,021
JANUARY	1,685,406	520,184	26,433	691,845	2,403,684
FEBRUARY	1,394,812	558,573	32,946	742,902	2,170,660
MARCH	1,128,773	571,038	37,349	759,481	1,925,603
APRIL	892,926	559,332	35,788	743,911	1,672,625
MAY	676,944	491,861	30,405	654,176	1,361,525
JUNE	440,452	402,259	24,406	535,005	999,863
JULY	226,991	300,135	17,829	399,180	644,000

SEE FOOTNOTES AT END OF TABLE.



TABLE 10.--STOCKS OF PEANUTS AND SPECIFIED PRODUCTS AT MONTH'S END, 1963-64 THROUGH 1975-76 1/--CONTINUED

SEASON AND MONTH	FARMERS' STOCK	SHELLED PEANUTS 2/	ROASTING STOCK (IN SHELL) 3/	FARMERS' STOCK EQUIVALENT 4/ 5/	
				SHELLED PEANUTS	TOTAL
1,000 POUNDS					
1975-1976					
AUGUST	285,740	256,955	11,460	341,751	638,951
SEPTEMBER	1,605,130	279,667	5,816	371,957	1,982,903
OCTOBER	2,590,352	372,077	13,366	494,863	3,098,581
NOVEMBER	2,522,714	430,465	19,920	572,519	3,115,153
DECEMBER	2,277,134	523,073	26,863	695,687	2,999,684
JANUARY	1,945,660	577,452	36,734	768,011	2,750,405
FEBRUARY	1,578,671	626,297	47,200	832,975	2,458,846
MARCH	1,231,979	652,383	49,691	867,670	2,149,340
APRIL	852,871	647,709	47,304	861,453	1,761,628
MAY	545,592	603,050	43,995	802,056	1,391,643
JUNE	373,898	507,473	37,815	674,940	1,086,653
JULY	250,005	398,841	30,567	530,459	811,031

1/ EXCLUDES STOCKS ON FARMS. INCLUDES STOCKS OWNED BY CCC AND STOCKS HELD BY COOPERATIVE ASSOCIATIONS ON WHICH CCC HAS ADVANCED LOANS, EXCEPT BEFORE 1966-67 SHELLED OIL STOCK WAS EXCLUDED FROM TOTAL (SEE FOOTNOTE 2). STARTING WITH 1966-67 FARMERS' STOCK ARE ON NET WEIGHT BASIS.

2/ STARTING WITH AUGUST 1, 1966-67, SEASON INCLUDES SHELLED EDIBLES AND SHELLED OIL STOCK FOR TOTAL SHELLED PEANUTS. BEFORE AUGUST 1, 1966-67 INCLUDES SHELLED EDIBLES ONLY.

3/ CLEANED AND UNSHELLED.

4/ PRIOR TO AUGUST 1, 1966-67, ACTUAL FARMERS' STOCK (GROSS WEIGHT) X 1.00 PLUS SHELLED EDIBLES X 1.55 PLUS ROASTING STOCK X 1.05 EQUALS TOTAL FARMERS' STOCK EQUIVALENT.

5/ BEGINNING AUGUST 1, 1966-67 SEASON, ACTUAL FARMERS' STOCK (NET WEIGHT) X 1.00 PLUS SHELLED PEANUTS (SHELLED EDIBLES PLUS SHELLED OIL STOCK) X 1.33 PLUS ROASTING STOCK X 1.00 EQUALS TOTAL FARMERS' STOCK EQUIVALENT.

TABLE 11.--FARMERS' STOCK PEANUTS BY TYPES, ON HAND AT MONTH'S END, 1963-64 THROUGH 1975-76 1/

SEASON AND MONTH	VIRGINIAS	RUNNERS	SPANISH (BY AREAS)				TOTAL ALL TYPES
			VIRGINIA N. CAROLINA	SOUTH EAST	SOUTH WEST	TOTAL	
1,000 POUNDS							
<b>1963-1964</b>							
AUGUST	7,848	148,695	0	191,847	21,014	212,861	369,404
SEPTEMBER	29,461	456,299	0	268,909	28,838	297,747	783,507
OCTOBER	118,703	448,541	0	239,901	135,413	375,314	942,558
NOVEMBER	246,525	386,498	0	213,038	181,514	394,552	1,027,575
DECEMBER	259,399	332,446	0	194,913	177,004	371,917	963,762
JANUARY	205,483	251,441	0	158,661	139,152	297,813	754,737
FEBRUARY	143,100	193,610	0	133,899	105,872	239,771	576,481
MARCH	86,734	125,796	0	96,393	72,391	168,784	381,314
APRIL	43,871	69,380	0	57,329	42,594	99,923	213,174
MAY	19,480	30,270	0	26,046	23,989	50,035	99,785
JUNE	1,734	11,643	0	11,370	4,537	15,907	29,284
JULY	1,390	2,704	0	3,078	3,480	6,558	10,652
<b>1964-1965</b>							
AUGUST	2,307	16,871	0	66,724	21,505	88,229	107,407
SEPTEMBER	45,093	446,175	0	298,926	16,134	315,060	806,328
OCTOBER	147,871	474,003	0	281,640	69,172	350,812	972,686
NOVEMBER	265,418	416,828	0	245,972	163,250	409,222	1,091,468
DECEMBER	258,708	344,170	0	210,958	250,049	461,007	1,063,885
JANUARY	197,338	266,085	0	173,284	219,051	392,335	855,758
FEBRUARY	133,418	180,356	0	144,423	174,579	319,002	632,776
MARCH	78,846	102,692	0	109,625	134,257	243,882	425,420
APRIL	31,092	51,959	0	61,164	81,102	142,266	225,317
MAY	11,306	20,952	0	27,361	28,643	56,004	88,262
JUNE	2,330	12,294	0	6,970	7,334	14,304	28,928
JULY	1,727	941	0	4,306	470	4,776	7,444
<b>1965-1966</b>							
AUGUST	8,657	107,542	0	210,260	19,810	230,070	346,269
SEPTEMBER	82,721	525,608	0	348,812	16,214	365,026	973,355
OCTOBER	357,687	509,184	0	308,955	110,991	419,946	1,286,817
NOVEMBER	392,137	436,691	0	266,337	261,925	528,262	1,357,090
DECEMBER	305,282	336,809	0	230,120	259,498	489,618	1,131,709
JANUARY	227,414	254,302	0	183,659	211,899	395,558	877,274
FEBRUARY	150,416	177,046	0	146,311	168,571	314,882	642,344
MARCH	78,085	103,368	0	102,837	111,598	214,435	395,888
APRIL	30,513	57,042	0	59,749	53,090	112,839	200,394
MAY	15,708	27,598	0	16,446	21,226	37,672	80,978
JUNE	6,388	18,477	0	3,438	2,688	6,126	30,991
JULY	3,918	5,175	0	1,408	1,042	2,450	11,543
<b>1966-1967</b>							
AUGUST	5,628	85,988	0	197,132	24,331	221,463	313,079
SEPTEMBER	57,596	460,040	0	319,498	14,801	334,299	851,935
OCTOBER	174,719	437,074	0	285,521	145,667	431,188	1,042,981
NOVEMBER	381,598	374,795	0	254,695	399,439	654,134	1,410,527
DECEMBER	318,950	300,631	0	206,821	350,286	557,107	1,176,688
JANUARY	237,091	221,463	0	173,276	283,684	456,960	915,514
FEBRUARY	164,350	152,687	0	129,348	196,499	325,847	642,884
MARCH	83,347	81,700	0	91,522	130,341	221,863	386,910
APRIL	40,017	38,104	0	53,534	67,513	121,047	199,168
MAY	8,374	14,165	0	19,385	20,546	39,931	62,470
JUNE	64	38	0	5,012	438	5,450	5,552
JULY	64	24	0	2,472	3,954	6,426	6,514

SEE FOOTNOTES AT END OF TABLE.

TABLE 11.--FARMERS' STOCK PEANUTS BY TYPES ON HAND AT MONTH'S END, 1963-64 THROUGH 1975-76 1/--CONTINUED

SEASON AND MONTH	VIRGINIAS	RUNNERS	SPANISH (BY AREAS)				TOTAL
			VIRGINIA N. CAROLINA	SOUTH EAST	SOUTH WEST	TOTAL	ALL TYPES
1,000 POUNDS							
<b>1967-1968</b>							
AUGUST	6,081	79,462	0	228,736	20,074	248,810	334,353
SEPTEMBER	94,506	560,015	0	393,728	12,359	406,087	1,060,608
OCTOBER	238,318	502,464	0	340,341	129,916	470,257	1,211,039
NOVEMBER	376,960	438,959	0	300,687	263,088	563,775	1,379,694
DECEMBER	288,991	354,553	0	262,511	292,701	555,212	1,198,756
JANUARY	182,275	261,141	0	222,500	226,170	448,670	892,086
FEBRUARY	111,582	190,411	0	162,908	149,768	312,676	614,669
MARCH	56,977	114,459	0	123,030	80,449	203,479	374,915
APRIL	21,510	52,004	0	73,034	35,007	108,041	181,555
MAY	3,743	14,430	0	34,111	7,704	41,815	59,988
JUNE	766	5,820	0	7,208	3,002	10,210	16,796
JULY	534	1,670	0	5,155	0	5,155	7,359
<b>1968-1969</b>							
AUGUST	35,987	166,702	0	303,076	32,419	335,495	538,184
SEPTEMBER	160,685	508,212	0	352,476	34,907	387,383	1,056,280
OCTOBER	366,526	468,636	0	298,827	183,567	482,394	1,317,556
NOVEMBER	394,753	382,648	0	245,241	380,933	626,174	1,403,575
DECEMBER	328,908	323,464	0	205,004	340,010	545,014	1,197,386
JANUARY	230,931	234,691	0	145,704	282,327	428,031	893,653
FEBRUARY	159,960	176,195	0	104,262	219,852	324,114	660,269
MARCH	98,800	110,091	0	66,035	159,511	225,546	434,437
APRIL	43,533	57,076	0	33,352	104,053	137,405	238,014
MAY	14,938	27,719	0	11,220	48,986	60,206	102,863
JUNE	13,810	9,068	0	5,822	14,545	20,367	43,245
JULY	676	562	0	3,564	4,254	7,818	9,056
<b>1969-1970</b>							
AUGUST	11,331	34,202	0	187,166	42,634	229,800	275,333
SEPTEMBER	228,979	446,764	0	333,261	28,240	361,501	1,037,244
OCTOBER	490,367	451,151	0	301,637	132,155	433,792	1,375,310
NOVEMBER	453,322	389,106	0	261,392	310,717	572,109	1,414,537
DECEMBER	341,633	313,390	0	218,130	300,744	518,874	1,173,897
JANUARY	240,146	238,676	0	166,281	246,293	412,574	891,396
FEBRUARY	147,066	164,639	0	127,856	186,801	314,657	626,362
MARCH	64,646	98,619	0	95,083	133,179	228,262	391,527
APRIL	25,460	49,212	0	48,128	81,311	129,439	204,111
MAY	10,962	14,222	0	16,736	36,803	53,539	78,723
JUNE	3,212	2,248	0	2,492	11,622	14,114	19,574
JULY	2,356	0	0	0	453	453	2,809
<b>1970-1971</b>							
AUGUST	19,033	65,100	0	161,033	34,848	195,881	280,014
SEPTEMBER	349,612	574,530	0	394,693	37,067	431,760	1,355,902
OCTOBER	657,631	545,893	0	355,294	105,540	460,834	1,664,358
NOVEMBER	640,978	478,281	0	305,734	298,940	604,674	1,723,933
DECEMBER	544,240	401,305	0	250,528	297,818	548,346	1,493,891
JANUARY	417,106	317,598	0	191,717	271,731	463,448	1,198,152
FEBRUARY	293,701	231,165	0	152,091	219,961	372,052	896,918
MARCH	198,013	150,160	0	118,885	170,509	289,394	637,567
APRIL	89,970	99,199	0	69,974	101,444	171,418	360,587
MAY	40,529	32,400	0	29,447	51,078	80,525	153,454
JUNE	9,735	12,494	0	4,550	6,968	11,518	33,747
JULY	3,233	4,006	0	3,032	3,952	6,984	14,223

SEE FOOTNOTES AT END OF TABLE.

TABLE 11.--FARMERS' STOCK PEANUTS BY TYPES ON HAND AT MONTH'S END, 1963-64 THROUGH 1975-76 1/--CONTINUED

SEASON AND MONTH	VIRGINIAS	RUNNERS	SPANISH (BY AREAS)				TOTAL ALL TYPES
			VIRGINIA : N. CAROLINA	SOUTH : EAST	SOUTH : WEST	TOTAL	
1,000 POUNDS							
<b>1971-1972</b>							
AUGUST	4,686	49,954	0	82,277	36,430	118,707	173,347
SEPTEMBER	132,665	964,692	0	298,632	35,359	333,991	1,431,348
OCTOBER	304,058	945,645	0	277,286	157,376	434,662	1,684,365
NOVEMBER	390,511	845,084	0	259,827	355,057	614,884	1,850,479
DECEMBER	319,642	703,771	0	219,617	303,678	523,295	1,546,708
JANUARY	241,011	578,523	0	180,087	233,462	413,549	1,233,083
FEBRUARY	163,751	482,042	0	138,033	180,383	318,416	964,209
MARCH	88,258	352,825	0	93,587	128,962	222,549	663,632
APRIL	37,527	238,850	0	65,266	82,661	147,927	424,304
MAY	20,119	117,460	0	35,010	24,630	59,640	197,219
JUNE	5,285	45,094	0	11,714	758	12,472	62,851
JULY	3,533	8,170	0	2,402	13,289	15,691	27,394
<b>1972-1973</b>							
AUGUST	4,206	92,366	76	97,480	35,767	133,323	229,895
SEPTEMBER	68,796	984,792	76	243,081	60,896	304,053	1,357,641
OCTOBER	251,550	977,627	0	222,061	339,218	561,279	1,790,456
NOVEMBER	417,817	873,289	0	195,012	417,521	612,533	1,903,639
DECEMBER	354,261	735,121	0	167,209	386,449	553,658	1,643,040
JANUARY	271,281	625,263	0	127,676	337,116	464,792	1,361,336
FEBRUARY	189,743	519,903	0	92,784	271,913	364,697	1,074,343
MARCH	114,412	376,173	0	70,488	193,895	264,383	754,968
APRIL	61,356	282,219	0	49,604	127,771	177,375	520,950
MAY	25,451	171,906	0	28,742	70,825	99,567	296,924
JUNE	8,842	71,304	0	9,050	17,812	26,862	107,008
JULY	2,947	48,720	6	1,338	3,888	5,232	56,899
<b>1973-1974</b>							
AUGUST	2,055	17,991	2	35,051	20,866	55,919	75,965
SEPTEMBER	117,427	790,625	0	148,964	47,967	196,931	1,104,983
OCTOBER	482,443	1,203,064	0	142,738	203,956	346,694	2,032,201
NOVEMBER	464,153	1,121,409	0	117,669	403,429	521,098	2,106,660
DECEMBER	373,744	985,542	0	100,533	375,477	476,010	1,835,296
JANUARY	246,481	775,240	0	90,273	289,584	379,857	1,401,578
FEBRUARY	164,108	656,755	0	79,863	246,759	326,622	1,147,485
MARCH	91,039	453,449	0	63,073	181,108	244,181	788,669
APRIL	41,712	285,593	0	27,077	106,670	133,747	461,052
MAY	16,821	128,703	0	15,567	45,730	61,297	206,821
JUNE	4,819	55,226	0	2,288	11,574	13,862	73,907
JULY	3,817	30,385	0	0	4,190	4,190	38,392
<b>1974-1975</b>							
AUGUST	2,416	39,648	0	42,951	18,486	61,437	103,501
SEPTEMBER	13,212	1,243,338	0	86,224	24,827	111,051	1,367,601
OCTOBER	359,239	1,692,180	0	93,155	142,912	236,067	2,287,486
NOVEMBER	408,521	1,570,807	0	73,335	264,485	337,820	2,317,148
DECEMBER	316,168	1,399,414	0	54,060	210,031	315,091	2,030,673
JANUARY	241,887	1,198,789	0	34,689	260,041	244,730	1,685,406
FEBRUARY	175,553	1,033,539	0	21,149	164,571	185,720	1,394,812
MARCH	111,470	873,403	0	16,171	127,729	143,900	1,128,773
APRIL	78,298	713,776	0	11,037	89,815	100,852	892,926
MAY	42,962	568,421	0	7,400	58,161	65,561	676,944
JUNE	32,412	375,570	0	3,476	28,994	32,470	440,452
JULY	16,353	193,848	0	1,804	14,986	16,790	226,991

SEE FOOTNOTES AT END OF TABLE.

TABLE 11.--FARMERS' STOCK PEANUTS BY TYPES ON HAND AT MONTH'S END, 1963-64 THROUGH 1975-76 1/--CONTINUED

SEASON AND MONTH	VIRGINIAS	RUNNERS	SPANISH (BY AREAS)				TOTAL ALL TYPES
			VIRGINIA : N. CAROLINA	SOUTH : EAST	SOUTH : WEST	TOTAL	
1,000 POUNDS							
1975-1976							
AUGUST	13,961	247,047	0	10,541	14,191	24,732	285,740
SEPTEMBER	20,718	1,406,129	0	62,869	35,414	98,283	1,605,130
OCTOBER	341,806	1,935,897	0	58,293	254,356	312,649	2,590,352
NOVEMBER	335,298	1,851,376	0	45,473	290,567	336,040	2,522,714
DECEMBER	261,154	1,724,105	0	39,414	252,461	291,875	2,277,134
JANUARY	190,104	1,511,030	0	29,983	214,543	244,526	1,945,660
FEBRUARY	117,569	1,274,184	0	26,153	160,765	186,918	1,578,671
MARCH	56,804	1,043,463	0	23,523	108,189	131,712	1,231,979
APRIL	29,491	744,784	0	17,333	61,263	78,596	852,871
MAY	16,438	506,729	0	4,033	18,392	22,425	545,592
JUNE	4,998	353,248	0	2,580	13,072	15,652	373,898
JULY	4,046	244,017	0	688	1,254	1,942	250,005

1/ EXCLUDES STOCKS ON FARMS. INCLUDES STOCKS OWNED BY OR HELD FOR ACCOUNT OF CCC IN COMMERCIAL STORAGE.  
FARMERS' STOCK ON NET WEIGHT BASIS.

TABLE 12.--SHELLED AND ROASTING STOCK PEANUTS ON HAND AT MONTH'S END, 1963-64 THROUGH 1975-76 1/1

SEASON AND MONTH	SHELLED EDIBLES				SHELLED OIL STOCK 2/	TOTAL SHELLED	ROASTING STOCK 3/
	VIRGINIAS	RUNNERS	SPANISH	TOTAL			
1,000 POUNDS							
<b>1963-1964</b>							
AUGUST	113,609	52,340	42,176	208,125	5,589	213,714	8,894
SEPTEMBER	93,760	66,000	48,494	208,254	8,443	216,697	5,909
OCTOBER	101,680	85,456	57,659	244,795	10,644	255,439	8,638
NOVEMBER	139,354	105,837	65,422	310,613	14,770	325,383	16,607
DECEMBER	147,978	125,148	73,609	346,735	16,779	363,514	19,461
JANUARY	159,080	135,003	83,985	378,068	20,113	398,181	22,526
FEBRUARY	166,095	132,833	86,495	385,423	17,322	402,745	25,782
MARCH	170,171	131,027	94,988	396,186	15,515	411,701	29,117
APRIL	166,769	124,600	88,736	380,105	15,169	395,274	28,557
MAY	157,203	113,525	82,222	352,950	14,762	367,712	25,038
JUNE	146,005	97,125	73,214	316,344	7,628	323,972	21,801
JULY	125,201	69,874	50,496	245,571	2,729	248,300	17,369
<b>1964-1965</b>							
AUGUST	101,330	38,198	37,109	176,637	2,855	179,492	12,249
SEPTEMBER	75,366	36,529	49,107	161,002	8,414	169,416	9,445
OCTOBER	87,268	57,209	60,469	204,946	16,886	221,832	10,266
NOVEMBER	124,923	80,026	75,292	280,241	20,796	301,037	18,599
DECEMBER	140,258	100,770	90,914	331,942	25,653	357,595	22,051
JANUARY	156,248	111,871	101,003	369,122	31,061	400,183	28,590
FEBRUARY	175,354	128,822	115,198	419,374	32,156	451,530	30,119
MARCH	173,288	133,811	98,738	405,837	26,219	432,056	30,702
APRIL	164,922	126,347	93,960	385,229	22,125	407,354	27,390
MAY	154,463	119,472	92,866	362,801	15,421	378,222	24,550
JUNE	138,022	92,787	65,355	296,164	9,966	306,130	19,921
JULY	119,571	60,415	45,979	225,965	3,961	229,926	14,518
<b>1965-1966</b>							
AUGUST	77,855	37,577	38,530	153,962	6,141	160,103	8,774
SEPTEMBER	48,925	45,944	64,175	159,044	12,563	171,607	7,808
OCTOBER	103,821	61,287	76,248	241,356	14,487	255,843	16,615
NOVEMBER	134,934	85,519	99,124	319,577	17,929	337,506	22,483
DECEMBER	160,043	106,524	119,687	386,354	29,391	415,745	24,617
JANUARY	164,295	121,964	133,721	419,980	39,097	459,077	27,414
FEBRUARY	180,334	131,007	139,782	451,123	40,993	492,116	26,637
MARCH	187,831	128,140	134,395	450,366	35,362	485,728	28,095
APRIL	181,541	119,620	134,012	435,173	26,507	461,680	27,030
MAY	167,885	110,301	118,438	396,624	27,365	423,989	22,991
JUNE	149,498	89,029	89,847	328,374	19,623	347,997	17,564
JULY	125,166	64,512	59,638	249,316	8,960	258,276	13,707
<b>1966-1967</b>							
AUGUST	92,823	34,361	53,446	180,630	6,426	187,056	5,208
SEPTEMBER	66,983	44,173	59,728	170,884	15,704	186,588	3,834
OCTOBER	82,559	57,486	75,794	215,839	19,676	235,515	6,399
NOVEMBER	132,651	84,818	98,829	316,298	24,396	340,694	10,716
DECEMBER	183,375	108,430	123,452	415,257	29,404	444,661	14,263
JANUARY	202,081	127,472	131,702	461,255	33,353	494,608	23,230
FEBRUARY	215,106	132,387	136,201	483,694	29,311	513,005	29,529
MARCH	217,943	141,056	131,743	490,742	28,578	519,320	31,838
APRIL	205,514	131,617	122,988	460,119	29,892	490,011	31,234
MAY	192,444	112,257	107,575	412,276	28,803	441,079	27,013
JUNE	161,702	92,057	82,649	336,408	23,708	360,116	21,546
JULY	126,343	59,003	60,332	245,678	19,096	264,774	13,578

SEE FOOTNOTES AT END OF TABLE.

TABLE 12.--SHELLED AND ROASTING STOCK PEANUTS ON HAND AT MONTH'S END, 1963-64 THROUGH 1975-76 1/--CONTINUED

SEASON AND MONTH	SHELLED EDIBLES				SHELLED OIL STOCK 2/	TOTAL SHELLED	ROASTING STOCK 3/
	VIRGINIAS	RUNNERS	SPANISH	TOTAL			
1,000 POUNDS							
<b>1967-1968</b>							
AUGUST	86,679	34,170	55,364	176,213	12,589	188,802	10,595
SEPTEMBER	60,198	41,665	63,501	165,364	17,595	182,959	7,483
OCTOBER	75,742	64,264	74,720	214,726	29,166	243,892	16,831
NOVEMBER	121,732	93,036	95,392	310,160	42,213	352,373	23,632
DECEMBER	152,081	121,659	117,389	391,129	53,364	444,493	29,189
JANUARY	180,535	136,399	123,825	440,759	55,023	495,782	36,676
FEBRUARY	190,312	136,330	126,947	453,589	67,417	521,006	39,284
MARCH	183,592	136,498	128,257	448,347	62,210	510,557	36,195
APRIL	169,769	132,596	123,829	426,194	64,387	490,581	31,706
MAY	149,526	120,290	103,887	373,703	63,374	437,077	26,796
JUNE	127,041	97,780	81,687	306,508	45,070	351,578	21,116
JULY	101,359	67,863	50,495	219,717	28,617	248,334	15,372
<b>1968-1969</b>							
AUGUST	69,121	44,764	63,810	177,695	18,531	196,226	8,865
SEPTEMBER	57,182	51,100	72,548	180,830	21,003	201,833	8,574
OCTOBER	101,031	55,860	97,821	254,712	34,269	288,981	19,454
NOVEMBER	123,456	78,776	115,412	317,644	42,689	360,333	22,744
DECEMBER	143,606	97,629	133,425	374,660	53,990	428,650	24,852
JANUARY	160,072	108,865	137,504	406,441	68,489	474,930	32,801
FEBRUARY	171,131	126,382	145,891	443,404	61,034	504,438	34,946
MARCH	165,121	131,784	141,197	438,102	58,206	496,308	33,474
APRIL	158,423	126,818	129,902	415,143	52,167	467,310	30,341
MAY	148,540	114,171	112,147	374,858	43,665	418,523	24,811
JUNE	126,891	90,496	83,764	301,151	28,135	329,286	20,062
JULY	103,359	66,966	56,433	226,758	23,434	250,192	14,865
<b>1969-1970</b>							
AUGUST	77,776	40,242	51,688	169,706	17,663	187,369	8,812
SEPTEMBER	60,593	38,139	74,020	172,752	17,004	189,756	4,123
OCTOBER	112,406	50,539	92,602	255,547	22,554	278,101	17,354
NOVEMBER	141,687	61,230	114,731	317,648	34,259	351,907	21,246
DECEMBER	171,479	91,262	136,077	398,818	43,035	441,853	27,523
JANUARY	191,089	110,079	144,911	446,079	50,807	496,886	34,629
FEBRUARY	193,146	118,805	160,086	472,037	55,790	527,827	39,314
MARCH	194,160	123,691	147,188	465,039	49,564	514,603	39,157
APRIL	176,671	112,812	137,254	426,737	40,525	467,262	35,823
MAY	151,573	104,464	119,222	375,259	35,303	410,562	29,115
JUNE	127,648	90,273	94,821	312,742	25,386	338,128	21,855
JULY	105,770	65,408	67,147	238,325	12,677	251,002	16,059
<b>1970-1971</b>							
AUGUST	79,396	38,965	72,475	190,836	9,631	200,467	9,397
SEPTEMBER	80,581	59,133	94,778	234,492	18,086	252,578	12,771
OCTOBER	127,491	77,779	112,591	317,861	30,737	348,598	23,556
NOVEMBER	149,878	99,357	128,205	377,440	29,088	406,528	27,602
DECEMBER	168,575	112,505	142,939	424,019	38,741	462,760	30,602
JANUARY	176,867	128,886	143,188	448,941	46,168	495,109	35,918
FEBRUARY	187,672	138,927	144,240	470,839	63,414	534,253	37,527
MARCH	191,544	139,040	142,385	472,969	56,657	529,626	39,948
APRIL	178,708	125,015	141,767	445,490	59,415	504,905	32,066
MAY	167,039	123,681	141,209	431,929	63,008	494,937	27,812
JUNE	156,913	108,475	125,608	390,996	44,219	435,215	22,765
JULY	126,893	81,063	83,009	290,965	27,081	318,046	15,966

SEE FOOTNOTES AT END OF TABLE.

TABLE 12.--SHELLED AND ROASTING STOCK PEANUTS ON HAND AT MONTH'S END, 1963-64 THROUGH 1975-76 1/--CONTINUED

SEASON AND MONTH	SHELLED EDIBLES				SHELLED OIL STOCK 2/	TOTAL SHELLED	ROASTING STOCK 3/
	VIRGINIAS	RUNNERS	SPANISH	TOTAL			
1,000 POUNDS							
<u>1971-1972</u>							
AUGUST	105,778	55,571	64,936	226,285	6,373	232,658	8,486
SEPTEMBER	82,580	64,285	83,499	230,364	17,312	247,676	5,184
OCTOBER	108,076	80,673	98,841	287,590	34,972	322,562	14,164
NOVEMBER	117,443	99,654	107,783	324,880	47,967	372,847	20,207
DECEMBER	125,822	123,587	120,722	370,131	47,913	418,044	21,957
JANUARY	131,788	135,721	124,692	392,201	44,602	436,803	30,663
FEBRUARY	134,862	141,035	140,476	416,373	45,670	462,043	37,129
MARCH	130,773	155,115	138,711	424,599	43,471	468,070	39,111
APRIL	125,351	151,797	127,890	405,038	32,806	437,844	38,545
MAY	103,932	140,604	119,325	363,861	44,064	407,925	33,155
JUNE	90,184	121,350	95,745	307,279	46,454	353,733	28,398
JULY	66,870	90,678	66,981	224,529	33,783	258,312	20,885
<u>1972-1973</u>							
AUGUST	44,862	55,789	61,462	162,113	19,723	181,836	12,526
SEPTEMBER	25,349	73,071	71,588	170,008	21,416	191,424	6,602
OCTOBER	44,704	89,755	79,970	214,429	36,163	250,592	12,918
NOVEMBER	66,468	129,367	92,999	288,834	52,092	340,926	20,193
DECEMBER	78,400	158,813	107,959	345,172	51,414	396,586	24,220
JANUARY	97,886	179,010	123,087	399,983	65,848	465,831	31,542
FEBRUARY	111,011	183,169	126,521	420,701	72,144	492,845	36,316
MARCH	106,617	181,727	122,511	410,855	50,622	461,477	38,484
APRIL	100,023	179,837	111,526	391,386	56,281	447,667	35,083
MAY	83,374	180,569	98,972	362,915	58,172	421,087	29,751
JUNE	63,629	154,690	86,712	305,031	44,040	349,071	24,698
JULY	45,203	121,992	73,491	240,686	25,586	266,272	17,659
<u>1973-1974</u>							
AUGUST	25,544	83,747	53,679	162,970	32,621	195,591	9,614
SEPTEMBER	21,317	74,992	58,051	154,360	19,747	174,107	7,445
OCTOBER	54,591	104,005	69,809	228,405	23,982	252,387	14,793
NOVEMBER	76,601	157,550	75,334	309,485	25,374	334,859	18,830
DECEMBER	92,558	191,354	85,627	369,539	32,950	402,489	20,144
JANUARY	118,526	227,504	90,545	436,575	56,099	492,674	29,422
FEBRUARY	132,744	227,029	87,158	446,931	60,108	507,039	36,540
MARCH	135,649	232,733	86,245	454,627	53,347	507,974	39,434
APRIL	131,252	232,482	90,956	454,690	47,326	502,016	37,056
MAY	118,048	238,718	98,493	455,259	54,854	510,113	30,343
JUNE	105,451	230,338	82,028	417,817	26,702	444,519	23,959
JULY	87,318	209,488	62,946	359,752	16,126	375,878	15,092
<u>1974-1975</u>							
AUGUST	64,233	154,738	54,633	273,604	16,715	290,319	7,488
SEPTEMBER	40,335	158,519	68,251	267,105	15,552	282,657	3,176
OCTOBER	54,158	178,019	83,472	315,649	26,809	342,458	7,729
NOVEMBER	76,582	175,726	110,204	362,512	43,119	405,631	11,479
DECEMBER	100,632	201,710	127,554	429,896	40,938	470,834	16,138
JANUARY	128,777	210,663	141,305	480,745	39,439	520,184	26,433
FEBRUARY	134,796	242,778	139,419	516,993	41,580	558,573	32,946
MARCH	159,917	241,921	137,253	539,091	31,947	571,038	37,349
APRIL	150,616	254,601	130,115	535,332	24,000	559,332	35,788
MAY	131,842	232,429	110,003	474,274	17,587	491,861	30,405
JUNE	110,063	179,135	88,813	378,011	24,248	402,259	24,406
JULY	89,266	129,894	60,241	279,401	20,734	300,135	17,829

SEE FOOTNOTES AT END OF TABLE.



TABLE 12.--SHELLED AND ROASTING STOCK PEANUTS ON HAND AT MONTH'S END, 1963-64 THROUGH 1975-76 1/--CONTINUED

SEASON AND MONTH	SHELLED EDIBLES				SHELLED OIL STOCK 2/	TOTAL SHELLED	ROASTING STOCK 3/
	VIRGINIAS	RUNNERS	SPANISH	TOTAL			
	1,000 POUNDS						
1975-1976							
AUGUST	67,954	84,905	59,476	212,335	44,620	256,955	11,460
SEPTEMBER	43,234	132,131	53,970	229,335	50,332	279,667	5,816
OCTOBER	63,627	180,090	83,358	327,075	45,002	372,077	13,366
NOVEMBER	79,061	210,454	99,424	388,939	41,526	430,465	19,920
DECEMBER	101,963	269,162	116,635	487,760	35,313	523,073	26,863
JANUARY	110,316	280,205	129,966	520,487	56,965	577,452	36,734
FEBRUARY	119,703	291,306	146,463	557,472	68,825	626,297	47,200
MARCH	120,001	299,666	149,784	569,451	82,932	652,383	49,691
APRIL	110,051	299,335	141,862	551,248	96,461	647,709	47,304
MAY	97,128	269,825	133,337	500,290	102,760	603,050	43,995
JUNE	87,308	229,589	109,329	426,226	81,247	507,473	37,815
JULY	68,529	159,902	87,236	315,657	83,174	398,841	30,567

1/ EXCLUDES STOCKS ON FARMS, INCLUDES STOCKS OWNED BY OR HELD FOR ACCOUNT OF CCC IN COMMERCIAL STORAGES. FARMERS' STOCK ON NET WEIGHT BASIS.

2/ INCLUDES UNGRADED AND STRAIGHT RUN OIL STOCK PEANUTS.

3/ CLEANED AND UNSHELLED.

TABLE 13.--SHELLED OIL STOCK PEANUTS, CRUDE PEANUT OIL, AND CAKE, AND MEAL ON HAND AT MONTH'S END  
1963-64 THROUGH 1975-76

SEASON AND MONTH	SHELLED OIL STOCK	CRUDE PEANUT OIL 1/	PEANUT CAKE AND MEAL 1/	SEASON AND MONTH	SHELLED OIL STOCK	CRUDE PEANUT OIL 1/	PEANUT CAKE AND MEAL 1/
	1,000 POUNDS				1,000 POUNDS		
<b>1963-1964</b>				<b>1967-1968</b>			
AUGUST	5,589	10,927	2,946	AUGUST	12,589	10,247	12,937
SEPTEMBER	8,443	10,100	3,953	SEPTEMBER	17,595	4,944	8,062
OCTOBER	10,644	9,435	4,026	OCTOBER	29,166	2,563	6,447
NOVEMBER	14,770	10,225	3,961	NOVEMBER	42,213	6,167	5,623
DECEMBER	16,779	8,993	2,693	DECEMBER	53,364	6,717	4,720
JANUARY	20,113	10,364	5,247	JANUARY	55,023	8,323	5,563
FEBRUARY	17,322	9,940	7,777	FEBRUARY	67,417	9,047	6,587
MARCH	15,515	9,623	10,433	MARCH	62,210	12,470	6,198
APRIL	15,169	11,755	13,241	APRIL	64,387	10,851	7,773
MAY	14,762	14,402	15,121	MAY	63,374	10,690	10,080
JUNE	7,628	11,253	14,339	JUNE	45,070	11,485	12,374
JULY	2,729	7,381	11,329	JULY	28,617	7,036	9,148
<b>1964-1965</b>				<b>1968-1969</b>			
AUGUST	2,855	4,900	6,781	AUGUST	18,531	4,110	7,828
SEPTEMBER	8,414	1,494	4,345	SEPTEMBER	21,003	3,029	5,863
OCTOBER	16,886	2,463	5,491	OCTOBER	34,269	2,465	3,810
NOVEMBER	20,796	1,520	7,341	NOVEMBER	42,689	4,430	4,299
DECEMBER	25,653	3,326	9,049	DECEMBER	53,990	6,343	11,172
JANUARY	31,061	3,531	10,336	JANUARY	68,489	8,067	15,301
FEBRUARY	32,156	3,893	14,579	FEBRUARY	61,034	9,713	19,604
MARCH	26,219	3,252	22,104	MARCH	58,206	11,285	16,564
APRIL	22,125	5,767	25,550	APRIL	52,167	11,121	11,241
MAY	15,421	7,126	18,462	MAY	43,665	11,238	11,186
JUNE	9,966	8,662	9,148	JUNE	28,135	12,319	10,071
JULY	3,961	8,065	5,195	JULY	23,434	9,543	8,876
<b>1965-1966</b>				<b>1969-1970</b>			
AUGUST	6,141	7,200	4,449	AUGUST	17,663	3,869	5,570
SEPTEMBER	12,563	5,467	3,488	SEPTEMBER	17,004	3,478	4,897
OCTOBER	14,487	5,733	4,393	OCTOBER	22,554	4,198	6,112
NOVEMBER	17,929	5,149	4,517	NOVEMBER	34,259	3,603	6,169
DECEMBER	29,391	7,011	4,462	DECEMBER	43,035	4,577	5,751
JANUARY	39,097	9,770	6,290	JANUARY	50,807	6,085	3,822
FEBRUARY	40,993	10,882	6,680	FEBRUARY	55,790	7,416	6,436
MARCH	35,362	14,490	11,661	MARCH	49,564	7,943	9,458
APRIL	26,507	15,925	14,271	APRIL	40,525	10,954	11,590
MAY	27,365	14,352	10,727	MAY	35,303	11,526	13,398
JUNE	19,623	13,190	9,982	JUNE	25,386	12,453	13,652
JULY	8,960	13,214	6,360	JULY	12,677	8,773	7,738
<b>1966-1967</b>				<b>1970-1971</b>			
AUGUST	6,426	8,300	4,900	AUGUST	9,631	4,601	2,743
SEPTEMBER	15,704	3,961	2,291	SEPTEMBER	18,086	2,485	2,191
OCTOBER	19,676	4,996	4,131	OCTOBER	30,737	4,570	5,624
NOVEMBER	24,396	4,948	4,621	NOVEMBER	29,088	5,890	8,175
DECEMBER	29,404	5,711	5,297	DECEMBER	38,741	4,129	7,596
JANUARY	33,353	7,349	9,298	JANUARY	46,168	5,525	8,471
FEBRUARY	29,311	9,955	14,915	FEBRUARY	63,414	7,641	9,432
MARCH	28,578	9,141	21,257	MARCH	56,657	8,211	14,310
APRIL	29,892	10,605	25,811	APRIL	59,415	12,859	20,182
MAY	28,803	11,522	23,860	MAY	63,008	15,799	21,080
JUNE	23,708	12,796	22,037	JUNE	46,219	16,477	23,535
JULY	19,096	12,456	19,122	JULY	27,081	11,793	21,587

SEE FOOTNOTES AT END OF TABLE.

TABLE 13.--SHELLED OIL STOCK PEANUTS, CRUDE PEANUT OIL, AND CAKE, AND MEAL ON HAND AT MONTH'S END,  
1963-64 THROUGH 1975-76 CONTINUED

SEASON AND MONTH	SHELLED OIL STOCK	CRUDE PEANUT OIL 1/	PEANUT CAKE AND MEAL 1/	SEASON AND MONTH	SHELLED OIL STOCK	CRUDE PEANUT OIL 1/	PEANUT CAKE AND MEAL 1/
	1,000 POUNDS				1,000 POUNDS		
<u>1971-1972</u>				<u>1975-1976</u>			
AUGUST	6,373	9,613	14,020	AUGUST	44,620	10,196	4,558
SEPTEMBER	17,312	4,196	9,769	SEPTEMBER	50,332	13,071	6,549
OCTOBER	34,972	4,939	10,080	OCTOBER	45,002	14,369	3,524
NOVEMBER	47,967	4,891	9,582	NOVEMBER	41,526	15,888	4,264
DECEMBER	47,913	2,923	4,399	DECEMBER	35,313	21,445	1,944
JANUARY	44,602	4,983	4,490	JANUARY	56,965	18,818	2,248
FEBRUARY	45,670	6,132	4,798	FEBRUARY	68,825	21,800	6,378
MARCH	43,471	6,594	3,705	MARCH	82,932	15,991	9,811
APRIL	32,806	8,675	5,227	APRIL	96,461	17,458	12,451
MAY	44,064	8,623	6,007	MAY	102,760	20,605	13,626
JUNE	46,454	9,337	4,319	JUNE	81,247	22,641	11,071
JULY	33,783	8,453	2,979	JULY	83,174	22,936	5,863
<u>1972-1973</u>				<u>1973-1974</u>			
AUGUST	19,723	9,510	3,171	AUGUST	32,621	6,401	5,771
SEPTEMBER	21,416	3,937	4,888	SEPTEMBER	19,747	3,125	6,266
OCTOBER	36,163	3,682	5,813	OCTOBER	23,982	4,402	5,012
NOVEMBER	52,092	4,602	4,146	NOVEMBER	25,374	5,528	4,864
DECEMBER	51,414	5,490	4,180	DECEMBER	32,950	6,053	-5,039
JANUARY	65,848	6,837	6,443	JANUARY	56,099	6,063	4,288
FEBRUARY	72,144	7,257	7,487	FEBRUARY	60,108	5,579	6,747
MARCH	50,622	11,054	10,403	MARCH	53,347	5,966	9,843
APRIL	56,281	11,564	10,516	APRIL	47,326	6,424	13,203
MAY	58,172	12,196	9,873	MAY	54,854	7,839	12,373
JUNE	44,040	10,725	8,341	JUNE	26,702	11,283	12,558
JULY	25,586	11,727	6,962	JULY	16,126	10,897	6,838
<u>1974-1975</u>				<u>1975-1976</u>			
AUGUST	16,715	7,353	1,976	AUGUST	16,715	7,353	1,976
SEPTEMBER	15,552	4,552	7,341	SEPTEMBER	15,552	4,552	7,341
OCTOBER	26,809	4,569	4,158	OCTOBER	26,809	4,569	4,158
NOVEMBER	43,119	5,775	5,053	NOVEMBER	43,119	5,775	5,053
DECEMBER	40,938	7,432	5,521	DECEMBER	40,938	7,432	5,521
JANUARY	39,439	8,680	4,618	JANUARY	39,439	8,680	4,618
FEBRUARY	41,580	6,642	4,168	FEBRUARY	41,580	6,642	4,168
MARCH	31,947	5,645	4,322	MARCH	31,947	5,645	4,322
APRIL	24,000	8,165	3,254	APRIL	24,000	8,165	3,254
MAY	17,587	11,321	3,443	MAY	17,587	11,321	3,443
JUNE	24,248	9,746	6,015	JUNE	24,248	9,746	6,015
JULY	20,734	18,253	10,374	JULY	20,734	18,253	10,374

1/ RELATES TO PEANUT OIL MILLS ONLY.

TABLE 14.--FARMERS' STOCK PEANUTS MILLED BY MONTHS AND BY TYPES, 1963-64 THROUGH 1975-76 1/

SEASON AND MONTH	VIRGINIAS	RUNNERS	SPANISH (BY AREAS)				TOTAL
			VIRGINIA N. CAROLINA	SOUTH EAST	SOUTH WEST	TOTAL	ALL TYPES
1,000 POUNDS							
<b>1963-1964</b>							
AUGUST	954	17,024	---	33,918	24,534	58,452	76,430
SEPTEMBER	12,918	70,230	---	28,100	22,822	50,922	134,070
OCTOBER	81,366	75,964	---	31,584	42,608	74,192	231,522
NOVEMBER	123,124	72,048	---	21,320	37,244	58,564	253,736
DECEMBER	66,812	61,484	---	19,418	34,728	54,146	182,442
JANUARY	71,886	86,262	---	27,684	40,330	68,014	226,162
FEBRUARY	65,430	59,174	---	19,740	27,556	47,296	171,900
MARCH	58,254	49,430	---	29,042	25,036	54,078	161,762
APRIL	35,612	50,484	---	34,970	25,172	60,142	146,238
MAY	21,720	38,048	---	26,618	16,610	43,228	102,996
JUNE	15,076	22,016	---	14,528	14,686	29,214	66,306
JULY	384	9,556	---	8,474	10,572	19,046	28,986
<b>TOTAL</b>	<b>553,536</b>	<b>611,720</b>	<b>---</b>	<b>295,396</b>	<b>321,898</b>	<b>617,294</b>	<b>1,782,550</b>
<b>1964-1965</b>							
AUGUST	152	2,712	---	13,264	24,706	37,970	40,834
SEPTEMBER	12,078	60,212	---	47,828	30,026	77,854	150,144
OCTOBER	95,318	78,870	---	49,472	31,734	81,206	255,394
NOVEMBER	118,006	70,780	---	37,262	40,020	77,282	266,068
DECEMBER	85,094	71,190	---	35,292	39,430	74,722	231,006
JANUARY	81,692	80,624	---	40,040	45,076	85,116	247,432
FEBRUARY	72,254	82,370	---	25,958	45,446	71,404	226,028
MARCH	54,698	68,276	---	26,364	48,930	75,294	198,268
APRIL	39,966	48,794	---	38,742	34,636	73,378	162,138
MAY	12,692	24,320	---	38,302	35,924	74,226	111,238
JUNE	9,840	5,788	---	19,670	20,698	40,368	55,996
JULY	1,988	11,600	---	3,126	10,250	13,376	26,964
<b>TOTAL</b>	<b>583,778</b>	<b>605,536</b>	<b>---</b>	<b>375,320</b>	<b>406,876</b>	<b>782,196</b>	<b>1,971,510</b>
<b>1965-1966</b>							
AUGUST	1,276	6,356	---	34,834	25,950	60,784	68,416
SEPTEMBER	27,990	75,388	---	52,402	36,986	89,388	192,766
OCTOBER	156,248	71,362	---	49,552	43,208	92,760	320,370
NOVEMBER	127,056	83,594	---	37,324	47,362	84,686	295,336
DECEMBER	111,792	95,708	---	30,206	57,354	87,560	295,060
JANUARY	80,634	84,200	---	43,874	53,518	97,392	262,226
FEBRUARY	85,930	68,036	---	31,186	38,768	69,954	223,920
MARCH	75,682	58,166	---	29,744	47,612	77,356	211,204
APRIL	43,596	40,758	---	41,946	54,864	96,810	181,164
MAY	14,572	25,776	---	45,710	29,440	75,150	115,498
JUNE	11,966	10,144	---	13,462	14,542	28,004	50,114
JULY	2,466	13,344	---	2,030	5,850	7,880	23,690
<b>TOTAL</b>	<b>739,208</b>	<b>632,832</b>	<b>---</b>	<b>412,270</b>	<b>455,454</b>	<b>867,724</b>	<b>2,239,764</b>
<b>1966-1967</b>							
AUGUST	1,632	6,206	---	21,116	32,252	53,368	61,206
SEPTEMBER	15,614	71,126	---	41,732	45,964	87,696	174,436
OCTOBER	88,592	71,432	---	41,818	53,182	95,000	255,024
NOVEMBER	151,048	72,376	---	28,108	60,138	88,246	311,670
DECEMBER	113,492	73,184	---	37,644	64,462	102,106	288,782
JANUARY	98,996	75,970	---	30,462	66,582	97,044	272,010
FEBRUARY	79,388	62,328	---	36,680	49,914	86,594	228,310
MARCH	74,110	52,808	---	31,272	56,512	87,784	214,702
APRIL	37,734	29,998	---	34,846	60,844	95,690	163,422
MAY	30,122	21,870	---	36,394	39,900	76,294	128,286
JUNE	7,686	14,058	---	13,318	15,764	29,082	50,826
JULY	---	14	---	2,540	5,896	8,436	8,450
<b>TOTAL</b>	<b>698,414</b>	<b>551,370</b>	<b>---</b>	<b>355,930</b>	<b>551,410</b>	<b>907,340</b>	<b>2,157,124</b>

SEE FOOTNOTE AT END OF TABLE.

TABLE 14.--FARMERS' STOCK PEANUTS MILLED BY MONTHS AND BY TYPES, 1963-64 THROUGH 1975-76 1/--CONTINUED

SEASON AND MONTH	VIRGINIAS	RUNNERS	SPANISH (BY AREAS)				TOTAL	TOTAL ALL TYPES
			VIRGINIA N. CAROLINA	SOUTH EAST	SOUTH WEST	TOTAL		
1,000 POUNDS								
<b>1967-1968</b>								
AUGUST	1,352	8,320	---	32,206	38,020	70,226	79,098	
SEPTEMBER	20,664	61,406	---	51,168	41,284	92,452	174,522	
OCTOBER	120,710	69,756	---	45,788	45,244	91,032	281,498	
NOVEMBER	143,846	78,756	---	45,034	55,880	100,914	323,516	
DECEMBER	113,212	80,218	---	42,986	52,974	95,960	289,390	
JANUARY	111,202	89,652	---	35,226	57,396	92,622	293,476	
FEBRUARY	73,200	57,140	---	52,594	59,294	111,888	242,228	
MARCH	48,366	60,122	---	35,176	62,044	97,220	205,708	
APRIL	30,182	51,966	---	44,942	38,204	83,146	165,294	
MAY	16,428	41,234	---	42,340	41,480	83,820	141,482	
JUNE	4,646	8,166	---	28,388	5,080	33,468	46,280	
JULY	230	5,772	---	5,974	3,704	9,678	15,680	
<b>TOTAL</b>	<b>684,038</b>	<b>612,508</b>	<b>---</b>	<b>461,822</b>	<b>500,604</b>	<b>962,426</b>	<b>2,258,972</b>	
<b>1968-1969</b>								
AUGUST	3,148	15,442	---	49,124	36,900	86,024	104,614	
SEPTEMBER	35,406	56,994	---	38,692	50,326	89,018	181,418	
OCTOBER	155,012	65,534	---	63,024	62,216	125,240	345,786	
NOVEMBER	110,356	79,176	---	49,496	68,740	118,236	307,768	
DECEMBER	89,546	69,214	---	44,046	65,104	109,150	267,910	
JANUARY	103,070	85,634	---	49,908	59,084	108,992	297,696	
FEBRUARY	70,212	55,336	---	36,166	49,516	85,682	211,230	
MARCH	51,638	57,414	---	26,730	47,204	73,934	182,986	
APRIL	37,524	44,972	---	27,742	44,796	72,538	155,034	
MAY	19,466	30,048	---	24,668	43,528	68,196	117,710	
JUNE	11,442	15,348	---	8,034	27,494	35,528	62,318	
JULY	13,258	8,410	---	2,258	16,612	18,870	40,538	
<b>TOTAL</b>	<b>700,078</b>	<b>583,522</b>	<b>---</b>	<b>419,888</b>	<b>571,520</b>	<b>991,408</b>	<b>2,275,008</b>	
<b>1969-1970</b>								
AUGUST	44	1,422	---	43,298	34,310	77,608	79,074	
SEPTEMBER	23,886	45,024	---	71,350	42,638	113,988	182,898	
OCTOBER	163,869	73,578	---	51,230	61,735	112,965	350,412	
NOVEMBER	129,280	58,005	---	47,980	61,154	109,134	296,419	
DECEMBER	116,816	73,739	---	39,698	58,897	98,595	289,150	
JANUARY	112,744	59,240	---	55,634	59,375	115,009	286,993	
FEBRUARY	93,111	56,298	---	44,193	53,475	97,668	247,077	
MARCH	71,371	54,351	---	28,877	39,243	68,120	193,842	
APRIL	35,487	33,341	---	39,898	45,013	84,911	153,739	
MAY	14,335	27,193	---	39,512	38,835	78,347	119,875	
JUNE	6,109	12,482	---	16,042	18,158	34,200	52,791	
JULY	964	1,922	---	2,030	10,740	12,770	15,656	
<b>TOTAL</b>	<b>768,016</b>	<b>496,595</b>	<b>---</b>	<b>479,742</b>	<b>523,573</b>	<b>1,003,315</b>	<b>2,267,926</b>	
<b>1970-1971</b>								
AUGUST	1,452	1,736	---	46,208	36,678	82,886	86,074	
SEPTEMBER	71,231	64,426	---	61,997	48,364	110,361	246,518	
OCTOBER	177,006	72,065	---	51,240	62,109	113,349	362,420	
NOVEMBER	101,279	64,196	---	43,369	52,670	96,039	261,514	
DECEMBER	97,863	88,407	---	44,588	46,122	90,710	276,980	
JANUARY	99,380	95,848	---	44,808	57,628	102,436	297,664	
FEBRUARY	98,750	77,798	---	32,280	49,094	81,374	257,922	
MARCH	79,509	77,388	---	36,399	52,455	88,854	245,751	
APRIL	77,303	62,442	---	41,318	51,643	92,961	232,706	
MAY	38,973	58,908	---	43,880	49,308	93,188	191,069	
JUNE	29,902	20,610	---	27,930	35,920	63,850	114,362	
JULY	7,764	9,084	---	17,376	8,688	26,064	42,912	
<b>TOTAL</b>	<b>880,412</b>	<b>692,908</b>	<b>---</b>	<b>491,393</b>	<b>551,179</b>	<b>1,042,572</b>	<b>2,615,892</b>	

SEE FOOTNOTE AT END OF TABLE.

TABLE 14.--FARMERS' STOCK PEANUTS MILLED BY MONTHS AND BY TYPES, 1963-64 THROUGH 1975-76 1/--CONTINUED

SEASON AND MONTH	VIRGINIAS	RUNNERS	SPANISH (BY AREAS)				TOTAL ALL TYPES
			VIRGINIA N. CAROLINA	SOUTH EAST	SOUTH WEST	TOTAL	
1,000 POUNDS							
<b>1971-1972</b>							
AUGUST	2,052	6,476	---	16,782	26,698	43,480	52,008
SEPTEMBER	26,856	81,170	---	51,216	50,105	101,321	209,347
OCTOBER	126,978	104,634	---	32,375	62,072	94,447	326,059
NOVEMBER	106,789	106,955	---	25,092	60,854	85,946	299,690
DECEMBER	80,884	143,119	---	35,172	69,301	104,473	328,476
JANUARY	89,885	117,072	---	46,008	63,310	109,318	316,275
FEBRUARY	75,085	98,915	---	38,217	56,156	94,373	268,373
MARCH	76,179	110,644	---	34,663	44,630	79,293	266,116
APRIL	50,418	99,889	---	23,666	41,382	65,048	215,355
MAY	20,213	94,796	---	32,396	42,694	75,090	190,099
JUNE	18,202	71,262	---	18,972	24,509	43,481	132,945
JULY	1,539	30,798	---	6,112	7,104	13,216	45,553
TOTAL	675,080	1,065,730	---	360,671	548,815	909,486	2,650,296
<b>1972-1973</b>							
AUGUST	66	13,248	---	22,246	42,494	64,740	78,054
SEPTEMBER	10,878	108,570	---	38,048	52,044	90,092	209,540
OCTOBER	103,555	141,890	---	26,922	71,632	98,554	343,999
NOVEMBER	124,230	152,345	---	28,658	61,751	90,409	366,984
DECEMBER	86,744	138,817	---	26,469	66,301	92,770	318,331
JANUARY	95,522	124,120	---	44,662	64,184	108,846	328,488
FEBRUARY	93,944	99,197	---	22,797	55,271	78,068	271,209
MARCH	75,586	127,922	---	19,545	66,921	86,466	289,974
APRIL	46,846	131,678	---	18,706	56,241	74,947	253,471
MAY	34,792	155,947	---	15,594	43,408	59,002	249,741
JUNE	13,411	75,012	---	16,162	33,104	49,266	137,689
JULY	3,524	19,362	---	7,382	10,824	18,206	41,092
TOTAL	689,098	1,288,108	---	287,191	624,175	911,366	2,888,572
<b>1973-1974</b>							
AUGUST	876	42,742	---	10,156	39,514	49,670	93,288
SEPTEMBER	31,137	84,720	---	50,858	60,936	111,794	227,651
OCTOBER	151,526	150,933	---	26,554	74,551	101,105	403,564
NOVEMBER	122,332	165,283	---	18,852	80,276	99,128	386,743
DECEMBER	89,220	155,834	---	8,854	71,392	80,246	325,300
JANUARY	117,705	184,355	---	13,177	80,272	93,449	395,509
FEBRUARY	98,746	130,498	---	7,036	51,249	58,285	287,529
MARCH	88,294	135,319	---	12,769	58,180	70,949	294,562
APRIL	52,287	117,833	---	28,726	65,272	93,998	264,118
MAY	24,824	139,366	---	13,071	44,393	57,464	221,654
JUNE	6,755	66,222	---	12,416	27,721	40,137	113,114
JULY	510	24,588	---	2,288	10,568	12,856	37,954
TOTAL	784,212	1,397,693	---	204,757	664,324	869,081	3,050,986
<b>1974-1975</b>							
AUGUST	1,704	30,342	---	8,396	32,068	40,464	72,510
SEPTEMBER	6,136	105,892	---	38,812	36,166	74,978	187,006
OCTOBER	109,209	221,631	---	15,888	71,770	87,658	418,498
NOVEMBER	98,629	182,349	---	20,608	71,226	91,834	372,812
DECEMBER	91,399	173,026	---	18,092	69,292	87,384	351,809
JANUARY	103,163	181,851	---	19,722	59,062	78,784	363,798
FEBRUARY	83,846	153,955	---	15,158	35,448	50,606	288,407
MARCH	79,312	147,501	---	3,982	36,697	40,679	267,492
APRIL	38,148	149,052	---	4,338	35,083	39,421	226,621
MAY	10,762	146,352	---	3,892	20,127	24,019	181,133
JUNE	10,072	86,675	---	4,112	13,419	17,531	114,278
JULY	3,762	66,896	---	1,600	6,302	7,902	78,560
TOTAL	636,142	1,645,522	---	154,600	486,660	641,260	2,922,924

SEE FOOTNOTE AT END OF TABLE.

TABLE 14.--FARMERS' STOCK PEANUTS MILLED BY MONTHS AND BY TYPES, 1963-64 THROUGH 1975-76 1/--CONTINUED

SEASON AND MONTH	VIRGINIAS	RUNNERS	SPANISH (BY AREAS)				TOTAL
			VIRGINIA N. CAROLINA	SOUTH EAST	SOUTH EAST	TOTAL	ALL TYPES
1,000 POUNDS							
1975-1976							
AUGUST	6,668	50,534	---	2,588	22,810	25,398	82,600
SEPTEMBER	10,972	210,147	---	16,802	40,810	57,612	278,731
OCTOBER	140,058	249,454	---	19,790	80,996	100,786	490,298
NOVEMBER	105,852	196,120	---	12,036	54,403	66,439	368,411
DECEMBER	99,248	198,540	---	2,690	40,594	43,284	341,072
JANUARY	90,526	223,147	---	10,100	52,313	62,413	376,086
FEBRUARY	88,821	221,253	---	3,836	53,660	57,496	367,570
MARCH	64,827	243,050	---	2,068	40,005	42,073	349,950
APRIL	30,055	219,880	---	4,369	40,934	45,303	295,238
MAY	14,951	156,898	---	12,218	42,528	54,746	226,595
JUNE	11,233	150,622	---	1,576	13,250	14,826	176,681
JULY	438	93,626	---	1,616	12,592	14,208	108,272
TOTAL	663,649	2,213,271	---	89,689	494,895	584,584	3,461,504

1/ EXCLUDES PEANUTS MILLED FOR SEED.

TABLE 15.--PRODUCTION OF SHELLED AND ROASTING STOCK (IN SHELL) PEANUTS BY MONTHS, 1963-64 THROUGH 1975-76 1/

SEASON AND MONTH	SHELLED EDIBLES				SHELLED OIL STOCK	TOTAL SHELLED	ROASTING STOCK 2/
	VIRGINIAS	RUNNERS	SPANISH	TOTAL			
1,000 POUNDS							
<b>1963-1964</b>							
AUGUST	384	11,471	36,491	48,346	5,785	54,131	362
SEPTEMBER	5,599	47,616	34,732	87,947	6,098	94,045	4,040
OCTOBER	38,312	48,551	49,379	136,242	13,644	149,886	15,648
NOVEMBER	61,966	44,793	37,865	144,624	18,451	163,075	18,842
DECEMBER	32,024	34,448	34,565	101,037	17,934	118,971	11,244
JANUARY	34,808	39,796	39,298	113,902	38,017	151,919	10,218
FEBRUARY	29,315	26,019	25,430	80,764	32,339	113,103	9,585
MARCH	27,232	21,152	29,179	77,563	32,278	109,841	8,193
APRIL	16,918	19,419	33,215	69,552	31,742	101,294	4,234
MAY	11,152	13,583	23,474	48,209	23,803	72,012	2,807
JUNE	7,913	7,154	15,231	30,298	14,914	45,212	1,394
JULY	143	2,586	10,083	12,812	8,023	20,835	164
<b>TOTAL</b>	<b>265,766</b>	<b>316,588</b>	<b>368,942</b>	<b>951,296</b>	<b>243,028</b>	<b>1,194,324</b>	<b>86,731</b>
<b>1964-1965</b>							
AUGUST	---	1,774	24,592	26,366	3,001	29,367	151
SEPTEMBER	4,252	40,793	53,191	98,236	6,471	104,707	4,924
OCTOBER	47,933	52,237	52,514	152,684	18,923	171,607	13,636
NOVEMBER	60,546	45,715	47,148	153,409	22,219	175,628	18,464
DECEMBER	41,923	42,380	46,625	130,928	24,870	155,798	13,330
JANUARY	41,039	47,409	50,179	138,627	29,202	167,833	11,670
FEBRUARY	36,536	48,335	37,311	122,182	34,622	156,804	7,966
MARCH	27,430	38,936	36,903	103,269	38,066	141,335	5,384
APRIL	16,129	24,226	39,317	79,672	36,356	116,028	3,554
MAY	6,477	12,857	35,842	55,176	25,833	81,009	1,717
JUNE	3,735	5,586	15,438	24,759	14,066	38,825	2,040
JULY	1,115	5,933	6,125	13,173	5,666	18,839	214
<b>TOTAL</b>	<b>287,115</b>	<b>366,181</b>	<b>445,185</b>	<b>1,098,481</b>	<b>259,299</b>	<b>1,357,780</b>	<b>83,050</b>
<b>1965-1966</b>							
AUGUST	331	4,102	40,089	44,522	3,948	48,470	94
SEPTEMBER	13,444	49,908	59,777	123,129	11,790	134,899	6,483
OCTOBER	86,553	48,037	58,667	193,257	21,192	214,449	21,415
NOVEMBER	70,716	50,949	52,978	174,643	22,495	197,138	16,338
DECEMBER	61,384	52,745	53,359	167,488	34,724	202,212	11,927
JANUARY	40,589	46,180	57,393	144,162	37,855	182,017	9,027
FEBRUARY	41,682	35,910	38,693	116,285	41,528	157,813	7,341
MARCH	39,134	27,464	38,461	105,059	42,232	147,291	9,435
APRIL	22,252	18,645	41,735	82,632	44,101	126,733	6,674
MAY	6,985	13,100	30,975	51,060	32,830	83,890	2,212
JUNE	5,227	4,620	9,770	19,617	15,532	35,149	2,410
JULY	1,369	2,911	3,493	7,773	8,794	16,567	481
<b>TOTAL</b>	<b>389,666</b>	<b>354,571</b>	<b>485,390</b>	<b>1,229,627</b>	<b>317,001</b>	<b>1,546,628</b>	<b>93,837</b>
<b>1966-1967</b>							
AUGUST	264	2,032	36,758	39,054	6,008	45,062	285
SEPTEMBER	5,884	46,967	59,797	112,648	13,838	126,486	5,931
OCTOBER	46,235	47,474	64,305	158,014	20,701	178,715	12,564
NOVEMBER	80,283	47,856	55,897	184,036	34,502	218,538	16,669
DECEMBER	60,575	42,162	58,388	161,125	41,576	202,701	13,334
JANUARY	51,063	41,892	45,542	138,497	53,177	191,674	15,614
FEBRUARY	38,249	34,671	38,105	111,025	51,027	162,052	11,997
MARCH	37,916	30,167	35,609	103,692	49,123	152,815	9,962
APRIL	19,822	13,579	42,537	75,938	43,732	119,670	3,509
MAY	18,239	9,667	33,706	61,612	32,526	94,138	1,464
JUNE	5,237	6,893	13,049	25,179	14,448	39,627	844
JULY	---	9	6,000	6,009	368	6,377	---
<b>TOTAL</b>	<b>363,767</b>	<b>323,369</b>	<b>489,693</b>	<b>1,176,829</b>	<b>361,026</b>	<b>1,537,855</b>	<b>92,173</b>

SEE FOOTNOTES AT END OF TABLE.



TABLE 15.--PRODUCTION OF SHELLED AND ROASTING STOCK (IN SHELL) PEANUTS BY MONTHS,  
1963-64 THROUGH 1975-76 1/--CONTINUED

SEASON AND MONTH	SHELLED EDIBLES				SHELLED OIL STOCK	TOTAL SHELLED	ROASTING STOCK 2/
	VIRGINIAS	RUNNERS	SPANISH	TOTAL			
1,000 POUNDS							
<b>1967-1968</b>							
AUGUST	791	5,474	47,149	53,414	5,683	59,097	177
SEPTEMBER	10,072	42,638	62,612	115,322	14,232	129,554	4,142
OCTOBER	60,872	46,087	58,709	165,668	24,925	190,593	22,053
NOVEMBER	75,512	51,530	62,963	190,005	36,549	226,554	18,483
DECEMBER	56,165	49,176	58,310	163,651	42,557	206,208	15,238
JANUARY	56,180	54,762	51,384	162,326	46,839	209,165	15,015
FEBRUARY	35,679	33,495	53,606	122,780	52,510	175,290	9,716
MARCH	26,391	33,988	42,614	102,993	45,499	148,492	4,162
APRIL	16,275	28,637	43,618	88,530	33,017	121,547	2,035
MAY	8,629	22,595	47,228	78,452	27,721	106,173	1,813
JUNE	2,654	3,594	16,389	22,637	13,125	35,762	455
JULY	80	2,470	4,385	6,935	4,886	11,821	39
TOTAL	349,300	374,446	548,967	1,272,713	347,543	1,620,256	93,328
<b>1968-1969</b>							
AUGUST	1,174	10,091	57,430	68,695	7,798	76,493	993
SEPTEMBER	15,451	35,403	55,492	106,346	22,086	128,432	8,306
OCTOBER	80,084	41,564	75,554	197,202	38,709	235,911	25,812
NOVEMBER	56,978	48,648	71,801	177,427	40,552	217,979	15,180
DECEMBER	44,046	40,916	62,087	147,049	41,337	188,386	11,821
JANUARY	48,108	49,477	63,736	161,321	45,927	207,248	15,943
FEBRUARY	34,088	32,187	50,642	116,917	31,373	148,290	10,744
MARCH	24,229	32,048	41,311	97,588	31,080	128,668	7,085
APRIL	18,855	23,204	39,284	81,343	31,820	113,163	3,237
MAY	10,150	13,977	34,193	58,320	25,470	83,790	2,676
JUNE	4,613	4,122	15,449	24,184	21,884	46,068	1,225
JULY	4,602	2,103	8,945	15,650	14,021	29,671	358
TOTAL	342,378	333,740	575,924	1,252,042	352,057	1,604,099	103,380
<b>1969-1970</b>							
AUGUST	---	909	51,237	52,146	7,876	60,022	10
SEPTEMBER	12,592	30,087	71,946	114,625	17,307	131,932	3,516
OCTOBER	88,374	47,633	72,465	208,472	30,385	238,857	26,546
NOVEMBER	71,309	37,256	67,791	176,356	29,427	205,783	17,793
DECEMBER	62,231	46,960	60,952	170,143	32,398	202,541	15,701
JANUARY	57,049	35,584	60,091	152,724	47,744	199,868	15,831
FEBRUARY	44,239	34,131	55,928	134,298	38,806	173,104	13,461
MARCH	33,878	31,165	37,830	102,873	33,423	136,296	8,047
APRIL	15,365	18,881	42,735	76,981	35,179	112,160	3,477
MAY	6,446	15,289	37,470	59,205	30,161	89,366	673
JUNE	2,110	7,739	17,130	26,979	12,039	39,018	1,696
JULY	193	1,566	8,277	10,036	1,527	11,563	275
TOTAL	393,786	307,200	583,852	1,284,838	315,672	1,600,510	107,026
<b>1970-1971</b>							
AUGUST	965	1,206	55,137	57,308	7,024	64,332	61
SEPTEMBER	38,327	43,002	74,124	155,453	17,451	172,904	11,740
OCTOBER	88,753	48,245	72,294	209,292	35,518	244,810	25,031
NOVEMBER	54,422	40,358	58,697	153,477	26,533	180,010	16,192
DECEMBER	52,540	44,841	45,577	142,958	50,594	193,552	14,322
JANUARY	51,420	50,487	52,289	154,196	54,140	208,336	15,035
FEBRUARY	48,153	38,609	37,119	123,881	61,012	184,893	11,319
MARCH	40,745	40,601	47,573	128,919	47,692	176,611	11,388
APRIL	32,565	32,438	44,915	109,918	57,852	167,770	4,628
MAY	21,177	23,360	41,034	85,571	61,900	147,471	3,500
JUNE	11,856	7,350	25,857	45,063	38,825	83,888	4,712
JULY	1,034	607	5,399	7,040	23,733	30,773	1,218
TOTAL	441,957	371,104	560,015	1,373,076	482,274	1,855,350	119,146

SEE FOOTNOTES AT END OF TABLE.

TABLE 15.--PRODUCTION OF SHELLED AND ROASTING STOCK (IN SHELL) PEANUTS BY MONTHS,  
1963-64 THROUGH 1975-76 1/--CONTINUED

SEASON AND MONTH	SHELLED EDIBLES				SHELLED OIL STOCK	TOTAL SHELLED	ROASTING STOCK 2/
	VIRGINIAS	RUNNERS	SPANISH	TOTAL			
1,000 POUNDS							
<b>1971-1972</b>							
AUGUST	292	2,252	26,674	29,218	9,385	38,603	83
SEPTEMBER	14,042	56,151	65,178	135,371	20,580	155,951	4,826
OCTOBER	59,738	61,592	55,267	176,597	47,693	224,290	24,697
NOVEMBER	50,383	62,284	51,963	164,630	46,398	211,028	17,786
DECEMBER	36,237	79,703	54,310	170,250	60,893	231,143	16,107
JANUARY	37,913	62,783	59,153	159,849	60,934	220,783	17,518
FEBRUARY	31,724	52,059	53,342	137,125	52,743	189,868	14,723
MARCH	31,867	63,833	46,217	141,917	55,335	197,252	11,238
APRIL	24,642	48,076	37,770	110,488	51,033	161,521	6,121
MAY	8,017	41,448	37,518	86,983	55,584	142,567	4,422
JUNE	7,355	29,011	21,752	58,118	38,170	96,288	3,349
JULY	770	6,134	8,135	15,039	19,999	35,038	139
TOTAL	302,980	565,326	517,279	1,385,585	518,747	1,904,332	121,009
<b>1972-1973</b>							
AUGUST	---	3,574	38,257	41,831	17,091	58,922	---
SEPTEMBER	4,177	67,798	60,936	132,911	24,870	157,781	1,714
OCTOBER	46,545	79,550	60,391	186,486	51,858	238,344	20,228
NOVEMBER	55,177	85,377	52,892	193,446	65,094	258,540	20,543
DECEMBER	34,011	71,600	52,904	158,515	64,852	223,367	15,941
JANUARY	40,069	65,590	61,432	167,091	64,501	231,592	17,051
FEBRUARY	38,798	52,148	47,652	138,598	53,934	192,532	12,816
MARCH	32,372	70,057	49,373	151,802	52,477	204,279	10,415
APRIL	16,006	68,913	43,065	127,984	58,944	186,928	5,132
MAY	10,558	72,929	41,692	125,179	59,379	184,558	5,425
JUNE	5,924	26,560	32,270	64,754	37,516	102,270	3,755
JULY	1,221	2,576	10,730	14,527	16,551	31,078	321
TOTAL	284,858	666,672	551,594	1,503,124	567,067	2,070,191	113,341
<b>1973-1974</b>							
AUGUST	198	2,893	33,003	36,094	33,693	69,787	113
SEPTEMBER	14,862	58,286	70,467	143,615	22,682	166,297	6,370
OCTOBER	76,493	100,737	63,412	240,642	38,762	279,404	30,039
NOVEMBER	60,402	99,787	62,628	222,817	49,873	272,690	23,681
DECEMBER	43,968	81,984	45,246	171,198	62,687	233,885	15,810
JANUARY	58,505	102,988	51,989	213,482	67,332	280,814	22,894
FEBRUARY	45,420	75,337	29,854	150,611	48,755	199,366	18,603
MARCH	38,715	78,574	39,182	156,471	56,016	212,487	16,070
APRIL	25,117	65,241	56,129	146,487	45,595	192,082	8,344
MAY	11,795	76,658	37,070	125,523	41,438	166,961	5,236
JUNE	2,699	25,887	24,793	53,379	31,940	85,319	2,036
JULY	16	10,011	8,188	18,215	10,533	28,748	307
TOTAL	378,190	778,383	521,961	1,678,534	509,306	2,187,840	149,503
<b>1974-1975</b>							
AUGUST	882	4,014	26,955	31,851	22,661	54,512	165
SEPTEMBER	1,689	71,543	48,449	121,681	17,445	139,126	2,599
OCTOBER	43,738	132,202	54,044	229,984	66,905	296,889	21,998
NOVEMBER	45,979	99,397	56,419	201,795	64,704	266,499	19,402
DECEMBER	39,691	89,037	50,965	179,693	71,075	250,768	17,446
JANUARY	45,681	99,879	46,547	192,107	68,844	260,951	21,274
FEBRUARY	40,557	98,104	29,579	168,240	43,997	212,237	16,481
MARCH	39,858	89,860	25,571	155,289	35,244	190,533	14,398
APRIL	19,024	89,002	24,035	132,061	35,837	167,898	8,599
MAY	4,584	76,658	13,534	94,776	40,929	135,705	4,620
JUNE	1,537	29,830	3,992	35,359	51,715	87,074	3,384
JULY	69	12,667	1,526	14,262	39,053	53,315	1,819
TOTAL	283,289	892,193	381,616	1,557,098	558,409	2,115,507	132,185

SEE FOOTNOTES AT END OF TABLE.

TABLE 15.--PRODUCTION OF SHELLED AND ROASTING STOCK (IN SHELL) PEANUTS BY MONTHS,  
1963-64 THROUGH 1975-76 1/--CONTINUED

SEASON AND MONTH	SHELLED EDIBLES				SHELLED OIL STOCK	TOTAL SHELLED	ROASTING STOCK 2/
	VIRGINIAS	RUNNERS	SPANISH	TOTAL			
	1,000 POUNDS						
1975-1976							
AUGUST	---	9,728	16,904	26,632	36,894	63,526	---
SEPTEMBER	1,837	126,578	34,815	163,230	46,790	210,020	2,656
OCTOBER	59,739	159,557	64,472	283,768	58,919	342,687	31,818
NOVEMBER	43,158	108,712	44,348	196,218	58,308	254,526	24,624
DECEMBER	43,295	115,664	28,224	187,183	54,312	241,495	22,901
JANUARY	40,370	100,972	41,528	182,870	78,522	261,392	21,563
FEBRUARY	40,732	98,280	37,002	176,014	86,839	262,853	20,075
MARCH	31,642	108,198	23,733	163,573	88,554	252,127	14,134
APRIL	12,916	90,873	23,201	126,990	99,394	226,384	7,961
MAY	5,497	34,726	23,263	63,486	106,605	170,091	5,109
JUNE	4,283	11,766	2,677	18,726	116,364	135,090	3,631
JULY	19	1,437	770	2,226	83,154	85,380	296
TOTAL	283,488	966,491	340,937	1,590,916	914,655	2,505,571	154,768

1/ EXCLUDES PEANUTS MILLED FOR SEED.

2/ CLEANED AND UNSHELLED.

TABLE 16.--SHELLED PEANUTS CRUSHED AND PRODUCTION OF CRUDE PEANUT OIL AND PEANUT CAKE AND MEAL BY MONTHS, 1963-64 THROUGH 1975-76 1/

SEASON AND MONTH	SHELLED PEANUTS CRUSHED 2/	CRUDE PEANUT OIL	PEANUT CAKE AND MEAL	SEASON AND MONTH	SHELLED PEANUTS CRUSHED 2/	CRUDE PEANUT OIL	PEANUT CAKE AND MEAL
	1,000 POUNDS				1,000 POUNDS		
<b>1963-1964</b>				<b>1967-1968</b>			
AUGUST	7,431	2,667	4,560	AUGUST	31,233	13,175	17,161
SEPTEMBER	11,884	4,930	6,480	SEPTEMBER	21,326	8,599	11,706
OCTOBER	18,380	7,541	10,450	OCTOBER	27,090	11,082	14,769
NOVEMBER	17,365	7,058	10,137	NOVEMBER	34,873	13,966	18,726
DECEMBER	17,794	7,438	10,515	DECEMBER	40,324	16,510	21,868
JANUARY	35,024	14,316	20,023	JANUARY	53,964	21,964	30,413
FEBRUARY	32,385	13,215	18,379	FEBRUARY	51,490	21,240	28,902
MARCH	34,500	14,618	20,069	MARCH	62,264	25,887	34,128
APRIL	32,721	14,088	19,013	APRIL	44,473	18,471	24,345
MAY	23,730	9,603	13,741	MAY	44,534	18,480	24,532
JUNE	21,121	8,749	12,693	JUNE	44,163	17,853	24,182
JULY	16,041	7,064	8,885	JULY	28,258	11,978	15,609
TOTAL	268,376	111,287	154,945	TOTAL	483,992	199,205	266,341
<b>1964-1965</b>				<b>1968-1969</b>			
AUGUST	9,294	4,113	5,370	AUGUST	28,032	11,773	15,184
SEPTEMBER	14,861	6,228	8,589	SEPTEMBER	20,883	8,859	11,375
OCTOBER	20,366	8,382	11,470	OCTOBER	36,580	15,125	20,960
NOVEMBER	25,920	10,289	14,078	NOVEMBER	45,558	18,752	25,848
DECEMBER	32,971	13,593	18,590	DECEMBER	43,773	18,423	24,570
JANUARY	32,896	13,781	18,555	JANUARY	48,428	20,045	27,000
FEBRUARY	39,064	16,108	22,230	FEBRUARY	49,728	20,313	27,521
MARCH	48,478	20,079	27,383	MARCH	50,284	21,219	28,295
APRIL	42,369	18,103	23,158	APRIL	46,863	19,643	26,228
MAY	34,135	14,110	18,661	MAY	49,160	20,481	27,366
JUNE	26,112	10,814	15,387	JUNE	39,359	16,696	22,659
JULY	14,206	5,727	9,227	JULY	32,799	13,893	18,204
TOTAL	340,672	141,327	192,698	TOTAL	491,447	205,222	275,210
<b>1965-1966</b>				<b>1969-1970</b>			
AUGUST	14,872	6,031	8,115	AUGUST	17,276	7,447	10,143
SEPTEMBER	17,187	6,871	9,557	SEPTEMBER	17,303	7,206	9,848
OCTOBER	19,488	7,438	10,660	OCTOBER	33,045	13,664	18,506
NOVEMBER	19,594	7,773	10,925	NOVEMBER	28,630	11,457	15,982
DECEMBER	28,319	11,652	15,787	DECEMBER	38,613	16,136	22,085
JANUARY	34,454	14,177	18,870	JANUARY	45,442	19,175	26,001
FEBRUARY	34,684	14,355	19,262	FEBRUARY	47,643	19,964	26,308
MARCH	48,165	20,703	26,196	MARCH	56,914	23,538	31,436
APRIL	51,228	21,636	28,288	APRIL	54,856	22,588	29,641
MAY	38,375	16,074	21,882	MAY	41,965	17,478	22,822
JUNE	36,433	15,861	20,304	JUNE	30,420	12,849	17,174
JULY	30,748	13,020	16,764	JULY	25,020	10,459	13,902
TOTAL	373,547	155,591	206,610	TOTAL	437,127	181,961	243,848
<b>1966-1967</b>				<b>1970-1971</b>			
AUGUST	27,308	11,731	14,989	AUGUST	13,239	5,538	7,201
SEPTEMBER	19,267	8,104	11,001	SEPTEMBER	16,077	6,741	11,026
OCTOBER	22,561	9,185	12,006	OCTOBER	36,332	14,758	21,702
NOVEMBER	23,400	9,133	12,916	NOVEMBER	47,191	19,685	26,989
DECEMBER	31,642	12,806	18,300	DECEMBER	55,946	23,678	33,725
JANUARY	41,738	16,961	23,286	JANUARY	60,159	25,366	34,168
FEBRUARY	42,692	17,483	23,793	FEBRUARY	58,153	24,560	32,357
MARCH	51,643	21,186	28,029	MARCH	66,653	28,369	35,929
APRIL	48,580	20,430	27,317	APRIL	66,243	28,437	37,691
MAY	45,048	18,966	25,730	MAY	66,959	28,052	37,007
JUNE	38,872	16,114	21,325	JUNE	65,678	27,913	36,585
JULY	25,541	10,741	14,104	JULY	48,225	20,447	25,971
TOTAL	418,292	172,840	232,796	TOTAL	600,855	253,544	340,351

SEE FOOTNOTES AT END OF TABLE.

TABLE 16.--SHELLED PEANUTS CRUSHED AND PRODUCTION OF CRUDE PEANUT OIL AND PEANUT CAKE AND MEAL BY MONTHS, 1963-64 THROUGH 1975-76 1/ -- CONTINUED

SEASON AND MONTH	SHELLED PEANUTS CRUSHED 2/	CRUDE PEANUT OIL	PEANUT CAKE AND MEAL	SEASON AND MONTH	SHELLED PEANUTS CRUSHED 2/	CRUDE PEANUT OIL	PEANUT CAKE AND MEAL
	1,000 POUNDS				1,000 POUNDS		
<b>1971-1972</b>				<b>1975-1976</b>			
AUGUST	34,645	15,029	18,628	AUGUST	67,191	29,114	34,497
SEPTEMBER	23,098	9,428	13,065	SEPTEMBER	79,053	33,601	41,691
OCTOBER	48,834	21,062	26,370	OCTOBER	79,076	34,649	42,096
NOVEMBER	59,672	25,423	32,840	NOVEMBER	64,164	27,601	35,629
DECEMBER	63,925	26,464	35,071	DECEMBER	59,050	25,333	32,433
JANUARY	68,464	28,547	37,685	JANUARY	62,050	26,603	34,010
FEBRUARY	60,272	25,409	33,308	FEBRUARY	74,347	32,632	41,853
MARCH	59,375	24,794	32,794	MARCH	100,831	44,344	56,455
APRIL	54,985	23,483	29,586	APRIL	115,335	51,081	64,328
MAY	56,421	24,014	30,629	MAY	129,342	56,892	75,197
JUNE	45,269	19,734	24,536	JUNE	150,176	66,523	85,289
JULY	37,362	16,607	19,976	JULY	107,472	47,588	57,765
TOTAL	612,322	259,994	334,428	TOTAL	1,088,087	475,961	601,243
<b>1972-1973</b>							
AUGUST	41,436	17,800	25,452				
SEPTEMBER	28,222	11,951	15,877				
OCTOBER	40,952	17,407	22,473				
NOVEMBER	59,625	24,643	33,667				
DECEMBER	56,272	23,407	36,303				
JANUARY	58,765	24,504	32,436				
FEBRUARY	55,589	23,398	30,756				
MARCH	65,977	28,022	35,671				
APRIL	55,036	23,323	30,282				
MAY	60,796	25,391	33,094				
JUNE	60,476	25,392	33,428				
JULY	55,609	23,712	30,330				
TOTAL	638,755	268,950	359,769				
<b>1973-1974</b>							
AUGUST	40,092	17,730	22,320				
SEPTEMBER	39,344	16,463	21,672				
OCTOBER	43,304	17,696	24,154				
NOVEMBER	48,357	19,181	27,253				
DECEMBER	49,856	21,137	27,142				
JANUARY	53,346	22,295	29,535				
FEBRUARY	44,733	18,718	25,017				
MARCH	47,619	19,562	26,444				
APRIL	43,679	17,905	24,600				
MAY	39,908	16,236	21,858				
JUNE	33,719	14,218	18,658				
JULY	29,595	12,755	16,344				
TOTAL	513,552	213,896	284,997				
<b>1974-1975</b>							
AUGUST	16,992	8,179	10,041				
SEPTEMBER	16,995	7,227	9,445				
OCTOBER	38,028	15,877	21,065				
NOVEMBER	37,966	15,988	21,968				
DECEMBER	40,203	15,067	21,864				
JANUARY	42,227	17,652	23,843				
FEBRUARY	31,677	12,821	17,457				
MARCH	29,534	12,132	16,582				
APRIL	32,228	13,278	17,609				
MAY	39,673	17,170	21,745				
JUNE	51,754	22,803	28,233				
JULY	66,388	29,171	35,732				
TOTAL	443,665	188,365	245,584				

1/ RELATES TO PEANUT OIL MILLS ONLY.  
2/ ALL CRUSHINGS REGARDLESS OF GRADE.

TABLE 17.--APPARENT DISAPPEARANCE OF MILLED PEANUT PRODUCTS BY MONTHS, 1963-64 THROUGH 1975-76 1/

SEASON AND MONTH	SHELLED PEANUTS			ROASTING STOCK 3/	CRUDE PEANUT OIL 4/	CAKE AND MEAL 4/
	EDIBLE GRADES	OIL STOCK 2/	TOTAL ALL GRADES			
1,000 POUNDS						
<b>1963-1964</b>						
AUGUST	77,092	2,285	79,377	6,450	5,179	6,955
SEPTEMBER	87,818	3,244	91,062	7,025	5,757	5,473
OCTOBER	99,701	11,443	111,144	12,919	8,206	10,377
NOVEMBER	78,806	14,325	93,131	10,873	6,268	10,202
DECEMBER	64,915	15,925	80,840	8,390	8,670	11,783
JANUARY	82,569	34,683	117,252	7,153	12,945	17,469
FEBRUARY	73,409	35,130	108,539	6,329	13,639	15,849
MARCH	66,800	34,085	100,885	4,858	14,935	17,413
APRIL	85,633	32,088	117,721	4,794	11,956	16,205
MAY	75,364	24,210	99,574	6,326	6,956	11,861
JUNE	66,904	22,048	88,952	4,631	11,898	13,475
JULY	83,585	12,922	96,507	4,596	10,936	11,895
TOTAL	942,596	242,388	1,184,984	84,344	117,345	148,957
<b>1964-1965</b>						
AUGUST	95,300	2,875	98,175	5,271	6,594	9,918
SEPTEMBER	113,871	912	114,783	7,728	9,634	11,025
OCTOBER	108,740	10,451	119,191	12,815	7,413	10,324
NOVEMBER	78,114	18,309	96,423	10,131	11,232	12,228
DECEMBER	79,227	20,013	99,240	9,878	11,787	16,882
JANUARY	101,447	23,798	125,245	5,131	13,576	17,268
FEBRUARY	71,930	33,527	105,457	6,437	15,746	17,987
MARCH	116,806	44,003	160,809	4,801	20,720	19,858
APRIL	100,280	40,450	140,730	6,866	15,588	19,712
MAY	77,604	32,537	110,141	4,557	12,751	25,749
JUNE	91,396	19,521	110,917	6,669	9,278	24,701
JULY	83,372	11,671	95,043	5,617	6,324	13,180
TOTAL	1,118,087	258,067	1,376,154	85,901	140,643	198,832
<b>1965-1966</b>						
AUGUST	116,525	1,768	118,293	5,838	6,896	8,861
SEPTEMBER	118,047	5,348	123,395	7,449	8,604	10,518
OCTOBER	110,945	19,268	130,213	12,608	7,172	9,755
NOVEMBER	96,422	19,053	115,475	10,470	8,357	10,801
DECEMBER	100,711	23,262	123,973	9,793	9,790	15,842
JANUARY	110,536	28,149	138,685	6,230	11,418	17,042
FEBRUARY	85,142	39,632	124,774	8,118	13,243	18,872
MARCH	105,816	47,863	153,679	7,977	17,095	21,215
APRIL	97,825	52,956	150,781	7,739	20,201	25,678
MAY	89,609	31,972	121,581	6,251	17,647	25,426
JUNE	87,867	23,274	111,141	7,837	17,023	21,049
JULY	86,831	19,457	106,288	4,338	12,996	20,386
TOTAL	1,206,276	312,002	1,518,278	94,648	150,442	205,445
<b>1966-1967</b>						
AUGUST	107,740	8,542	116,282	8,784	16,645	16,449
SEPTEMBER	122,394	4,560	126,954	7,305	12,443	13,610
OCTOBER	113,059	16,729	129,788	9,999	8,150	10,166
NOVEMBER	83,577	29,782	113,359	12,352	9,181	12,426
DECEMBER	62,166	36,568	98,734	9,787	12,043	17,624
JANUARY	92,499	49,228	141,727	6,647	15,323	19,285
FEBRUARY	88,586	55,069	143,655	5,698	14,877	18,176
MARCH	96,644	49,856	146,500	7,653	22,000	21,687
APRIL	106,561	42,418	148,979	4,113	18,966	22,763
MAY	109,455	33,615	143,070	5,685	18,049	27,681
JUNE	101,047	19,543	120,590	6,311	14,840	23,148
JULY	96,739	4,980	101,719	7,968	11,081	17,019
TOTAL	1,180,467	350,890	1,531,357	92,302	173,598	220,034

SEE FOOTNOTES AT END OF TABLE.

TABLE 17.--APPARENT DISAPPEARANCE OF MILLED PEANUT PRODUCTS BY MONTHS, 1963-64 THROUGH 1975-76 1/--CONTINUED

SEASON AND MONTH	SHELLED PEANUTS			ROASTING STOCK 3/	CRUDE PEANUT OIL 4/	CAKE AND MEAL 4/
	EDIBLE GRADES	OIL STOCK 2/	TOTAL ALL GRADES			
1,000 POUNDS						
<b>1967-1968</b>						
AUGUST	122,879	12,190	135,069	3,160	15,384	23,346
SEPTEMBER	126,171	9,226	135,397	7,254	13,902	16,581
OCTOBER	116,306	13,354	129,660	12,705	13,463	16,384
NOVEMBER	94,571	23,502	118,073	11,682	10,362	19,550
DECEMBER	82,682	31,406	114,088	9,681	15,960	22,771
JANUARY	112,696	45,180	157,876	7,528	20,358	29,570
FEBRUARY	109,950	40,116	150,066	7,108	20,516	27,878
MARCH	108,235	50,706	158,941	7,251	22,464	34,517
APRIL	110,683	30,840	141,523	6,524	20,090	22,770
MAY	130,943	28,734	159,677	6,723	18,641	22,225
JUNE	89,832	31,429	121,261	6,135	17,058	21,888
JULY	93,726	21,339	115,065	5,783	16,427	18,835
TOTAL	1,298,674	338,022	1,636,696	91,534	204,625	276,315
<b>1968-1969</b>						
AUGUST	110,717	17,884	128,601	7,500	14,699	16,504
SEPTEMBER	103,211	19,614	122,825	8,597	9,940	13,340
OCTOBER	123,320	25,443	148,763	14,932	15,689	23,013
NOVEMBER	114,495	32,132	146,627	11,890	16,787	25,359
DECEMBER	90,033	30,036	120,069	9,713	16,510	17,697
JANUARY	129,540	31,428	160,968	7,994	18,321	22,871
FEBRUARY	79,954	38,828	118,782	8,599	18,667	23,218
MARCH	102,890	33,908	136,798	8,557	19,647	31,335
APRIL	104,302	37,859	142,161	6,370	19,807	31,551
MAY	98,605	33,972	132,577	8,206	20,364	27,421
JUNE	97,891	37,414	135,305	5,974	15,615	23,774
JULY	90,043	18,722	108,765	5,555	16,669	19,399
TOTAL	1,245,001	357,240	1,602,241	103,887	202,715	275,482
<b>1969-1970</b>						
AUGUST	109,197	13,647	122,844	6,063	13,121	13,449
SEPTEMBER	111,581	17,966	129,547	8,204	7,596	10,521
OCTOBER	125,677	24,835	150,512	13,315	12,944	17,292
NOVEMBER	114,254	17,722	131,976	13,900	12,052	15,925
DECEMBER	88,975	23,622	112,597	9,425	15,162	22,503
JANUARY	105,462	39,372	144,834	8,725	17,668	27,930
FEBRUARY	108,340	33,822	142,162	8,777	18,633	23,695
MARCH	109,870	39,650	149,520	8,203	23,011	28,413
APRIL	115,284	44,218	159,502	6,811	19,578	27,510
MAY	110,683	35,382	146,065	7,382	16,906	21,013
JUNE	89,495	21,956	111,451	8,956	11,922	16,920
JULY	84,452	14,236	98,688	6,070	14,140	19,816
TOTAL	1,273,270	326,428	1,599,698	105,831	182,733	244,987
<b>1970-1971</b>						
AUGUST	104,797	10,070	114,867	6,723	9,710	12,196
SEPTEMBER	111,797	8,996	120,793	8,366	8,857	11,579
OCTOBER	125,922	22,868	148,790	14,246	12,673	18,269
NOVEMBER	93,898	28,182	122,080	12,145	18,365	24,437
DECEMBER	96,380	40,941	137,321	11,322	25,440	34,305
JANUARY	129,273	46,712	175,985	9,718	23,969	33,293
FEBRUARY	101,983	43,766	145,749	9,709	22,445	31,396
MARCH	126,789	54,450	181,239	8,967	27,799	31,051
APRIL	137,396	55,094	192,490	12,511	23,788	31,820
MAY	99,134	58,307	157,441	7,753	25,112	36,109
JUNE	85,996	57,614	143,610	9,759	27,235	34,130
JULY	107,072	40,871	147,943	8,017	25,131	27,920
TOTAL	1,320,437	467,871	1,788,308	119,236	250,524	326,505

SEE FOOTNOTES AT END OF TABLE.

TABLE 17.--APPARENT DISAPPEARANCE OF MILLED PEANUT PRODUCTS BY MONTHS, 1963-64 THROUGH 1975-76 1/--CONTINUED

SEASON AND MONTH	SHELLED PEANUTS			ROASTING STOCK 3/	CRUDE PEANUT OIL 4/	CAKE AND MEAL 4/
	EDIBLE GRADES	OIL STOCK 2/	TOTAL ALL GRADES			
1,000 POUNDS						
<b>1971-1972</b>						
AUGUST	93,897	30,094	123,991	7,563	17,210	26,194
SEPTEMBER	131,293	9,641	140,934	8,128	14,844	17,317
OCTOBER	119,370	30,032	149,402	15,716	20,319	26,058
NOVEMBER	127,341	33,403	160,744	11,742	25,471	33,338
DECEMBER	125,000	60,948	185,948	14,357	28,432	40,195
JANUARY	137,777	64,245	202,022	8,812	26,487	37,594
FEBRUARY	112,952	51,675	164,627	8,258	24,260	33,001
MARCH	133,692	57,534	191,226	9,255	24,331	33,886
APRIL	130,048	61,698	191,746	6,688	21,403	28,065
MAY	128,160	44,326	172,486	9,812	24,065	29,848
JUNE	114,700	35,780	150,480	8,106	19,021	26,224
JULY	97,788	32,670	130,458	7,652	17,490	21,316
TOTAL	1,452,018	512,046	1,964,064	116,089	263,333	353,036
<b>1972-1973</b>						
AUGUST	104,248	31,151	135,399	8,359	16,743	25,260
SEPTEMBER	125,015	23,177	148,192	7,637	17,525	14,161
OCTOBER	142,066	37,111	179,177	13,912	17,663	21,548
NOVEMBER	119,040	49,165	168,205	13,268	23,722	35,335
DECEMBER	102,178	65,531	167,709	11,914	22,519	36,269
JANUARY	112,280	50,067	162,347	9,730	23,156	30,172
FEBRUARY	117,880	47,638	165,518	8,041	22,979	29,711
MARCH	161,647	73,999	235,646	8,248	24,226	32,755
APRIL	147,455	53,286	200,741	8,533	22,813	30,168
MAY	153,649	57,489	211,138	10,757	24,758	33,738
JUNE	122,637	51,648	174,285	8,808	26,864	34,960
JULY	78,874	35,005	113,879	7,360	22,710	31,708
TOTAL	1,486,969	575,267	2,062,236	116,567	265,678	355,785
<b>1973-1974</b>						
AUGUST	113,809	26,658	140,467	8,158	23,056	23,511
SEPTEMBER	152,225	35,556	187,781	8,540	19,739	21,177
OCTOBER	166,596	34,528	201,124	22,691	16,419	25,409
NOVEMBER	141,736	48,481	190,217	19,644	18,055	27,402
DECEMBER	111,144	55,111	166,255	14,496	20,612	26,966
JANUARY	146,446	44,184	190,630	13,616	22,284	30,287
FEBRUARY	140,255	44,745	185,000	11,485	19,202	22,557
MARCH	148,775	62,778	211,553	13,175	19,176	23,348
APRIL	146,425	51,615	198,040	10,722	17,446	21,240
MAY	124,954	33,910	158,864	11,949	14,821	22,687
JUNE	90,819	60,093	150,912	8,420	10,774	18,472
JULY	76,282	21,110	97,392	9,174	13,141	22,065
TOTAL	1,559,466	518,769	2,078,235	152,070	214,725	285,121
<b>1974-1975=</b>						
AUGUST	117,998	22,071	140,069	7,769	11,723	14,903
SEPTEMBER	128,180	18,608	146,788	6,911	10,029	4,080
OCTOBER	181,439	55,648	237,087	17,445	15,860	24,248
NOVEMBER	154,933	48,393	203,326	15,651	14,782	21,073
DECEMBER	112,308	73,257	185,565	12,787	14,410	21,395
JANUARY	141,258	70,342	211,600	10,980	16,403	24,747
FEBRUARY	131,992	41,856	173,848	9,967	14,860	17,907
MARCH	133,192	44,878	178,070	9,995	13,129	16,428
APRIL	135,820	43,784	179,604	10,160	10,758	18,677
MAY	155,834	47,342	203,176	10,004	14,014	21,556
JUNE	131,622	45,054	176,676	9,383	24,378	25,561
JULY	112,873	39,768	152,641	8,395	20,664	31,373
TOTAL	1,637,449	551,001	2,188,450	129,447	181,010	242,048

SEE FOOTNOTES AT END OF TABLE.



TABLE 17.--APPARENT DISAPPEARANCE OF MILLED PEANUT PRODUCTS BY MONTHS, 1963-64 THROUGH 1975-76 1/--CONTINUED

SEASON AND MONTH	SHELLED PEANUTS			ROASTING STOCK 3/	CRUDE PEANUT OIL 4/	CAKE AND MEAL 4/
	EDIBLE GRADES	OIL STOCK 2/	TOTAL ALL GRADES			
1,000 POUNDS						
1975-1976						
AUGUST	93,697	13,008	106,705	6,369	37,171	40,312
SEPTEMBER	146,230	41,077	187,307	8,300	30,726	39,700
OCTOBER	186,029	64,249	250,278	24,267	33,350	45,121
NOVEMBER	134,355	61,784	196,139	18,070	26,083	34,889
DECEMBER	88,360	60,526	148,886	15,958	19,776	34,753
JANUARY	150,144	56,870	207,014	11,692	29,230	33,706
FEBRUARY	139,027	74,979	214,006	9,609	29,650	37,724
MARCH	151,595	74,448	226,043	11,643	50,153	53,021
APRIL	145,193	85,865	231,058	10,348	49,614	61,688
MAY	114,443	100,305	214,748	8,418	53,745	74,023
JUNE	92,791	137,878	230,669	9,810	64,488	87,843
JULY	112,785	81,227	194,012	7,545	47,293	62,973
TOTAL	1,554,649	852,216	2,406,865	142,029	471,279	605,753

1/ INCLUDES IN TRANSIT, EXPORTS AND DOMESTIC USE.

2/ DISAPPEARANCE OF BOTH GRADED AND UNGRADED OIL STOCK. FOR TOTAL PEANUTS CRUSHED, SEE TABLE 16.

3/ CLEANED AND UNSHELLED.

4/ RELATES TO PEANUT OIL MILLS ONLY.

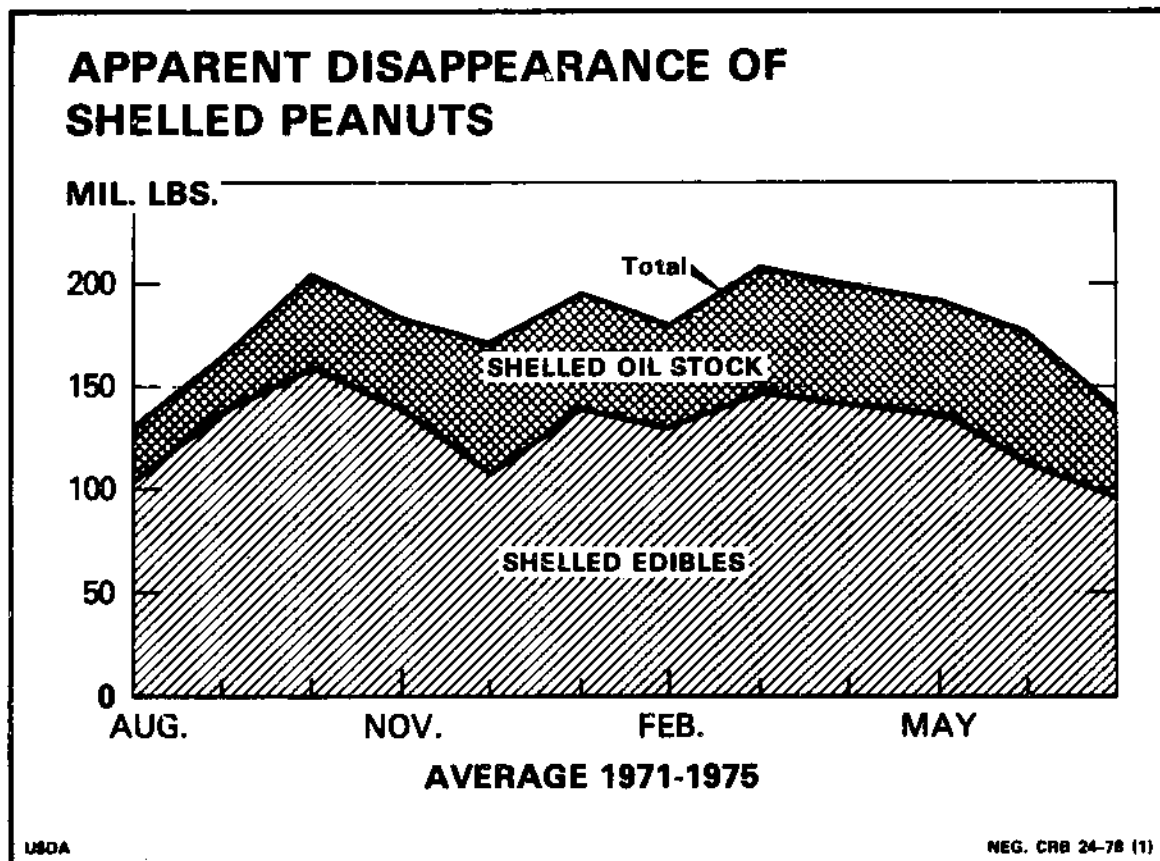


Figure 3

TABLE 18.--SHELLED PEANUTS (RAW BASIS) USED IN PRIMARY PRODUCTS BY MONTHS, 1963-64 THROUGH 1975-76

SEASON AND MONTH	EDIBLE GRADES USED IN						TOTAL EDIBLE GRADES	TOTAL ALL GRADES 4/
	PEANUT CANDY 1/	SALTED PEANUTS	PEANUT BUTTER SANDWICHES 2/	PEANUT BUTTER 3/	OTHER PRODUCTS	TOTAL		
1,000 POUNDS								
<b>1963-1964</b>								
AUGUST	14,743	19,019	1,773	37,809	1,529	74,873	82,304	
SEPTEMBER	15,750	18,234	1,685	39,052	2,090	76,811	88,695	
OCTOBER	16,380	20,027	1,940	45,162	1,528	85,037	103,417	
NOVEMBER	11,296	17,841	1,460	40,161	1,230	71,988	89,353	
DECEMBER	9,740	16,982	1,462	31,806	1,083	61,073	78,867	
JANUARY	12,841	16,382	1,852	40,348	898	72,321	107,345	
FEBRUARY	11,649	14,778	1,745	41,039	1,078	70,289	102,674	
MARCH	11,956	16,109	1,830	38,868	1,197	69,960	104,460	
APRIL	11,535	15,583	1,862	39,298	1,105	69,383	102,104	
MAY	10,139	14,966	1,787	36,494	1,196	64,582	88,312	
JUNE	11,454	14,614	1,866	37,279	1,158	66,371	87,492	
JULY	11,923	14,904	1,415	34,759	1,163	64,164	80,205	
<b>TOTAL</b>	<b>149,406</b>	<b>199,439</b>	<b>20,677</b>	<b>462,075</b>	<b>15,255</b>	<b>846,852</b>	<b>1,115,228</b>	
<b>1964-1965</b>								
AUGUST	15,878	17,308	1,777	39,787	1,326	76,076	85,370	
SEPTEMBER	17,128	20,006	1,618	42,386	1,420	82,558	97,419	
OCTOBER	15,741	21,085	1,846	49,260	1,641	89,573	109,939	
NOVEMBER	12,017	17,867	1,568	37,322	1,053	69,827	95,747	
DECEMBER	11,764	18,891	1,547	32,748	970	65,920	98,891	
JANUARY	12,632	15,463	1,623	37,584	877	68,179	101,075	
FEBRUARY	12,518	12,221	1,451	40,913	990	68,093	107,157	
MARCH	14,752	17,326	1,747	41,032	1,268	76,125	124,603	
APRIL	12,670	15,594	1,721	39,748	1,269	71,002	113,371	
MAY	11,545	14,439	1,722	39,452	1,593	68,751	102,886	
JUNE	11,640	16,613	1,868	42,738	1,807	74,666	100,778	
JULY	12,249	15,635	1,777	37,123	1,638	68,422	82,628	
<b>TOTAL</b>	<b>160,534</b>	<b>202,448</b>	<b>20,265</b>	<b>480,093</b>	<b>15,852</b>	<b>879,192</b>	<b>1,219,864</b>	
<b>1965-1966</b>								
AUGUST	17,670	19,085	1,791	46,153	1,470	86,169	101,041	
SEPTEMBER	18,576	19,170	1,764	47,781	1,778	89,069	106,256	
OCTOBER	16,997	20,120	1,780	49,258	1,592	89,747	109,235	
NOVEMBER	14,546	20,110	1,614	39,536	1,438	77,244	96,838	
DECEMBER	12,731	18,630	1,467	34,099	1,189	68,116	96,435	
JANUARY	13,017	15,196	1,609	41,151	1,442	72,415	106,869	
FEBRUARY	14,795	15,133	2,246	44,359	1,348	77,881	112,565	
MARCH	16,244	18,711	1,813	45,934	1,846	84,548	132,713	
APRIL	13,469	17,200	1,835	38,589	1,612	72,705	123,933	
MAY	13,753	16,587	1,739	39,220	1,608	72,907	111,282	
JUNE	15,116	18,226	2,026	40,812	1,921	78,101	114,534	
JULY	13,145	15,191	1,818	32,598	1,069	63,821	94,569	
<b>TOTAL</b>	<b>180,059</b>	<b>213,359</b>	<b>21,502</b>	<b>499,490</b>	<b>18,313</b>	<b>932,723</b>	<b>1,306,270</b>	
<b>1966-1967</b>								
AUGUST	18,336	20,232	1,932	44,167	1,752	86,419	113,727	
SEPTEMBER	19,561	20,384	1,319	50,506	1,746	94,016	113,283	
OCTOBER	18,792	21,398	1,866	45,676	1,558	89,290	111,851	
NOVEMBER	17,778	24,130	1,864	33,447	1,467	78,686	102,086	
DECEMBER	14,260	19,765	1,773	34,325	879	71,002	102,644	
JANUARY	14,728	16,846	1,679	36,879	1,057	71,189	112,927	
FEBRUARY	15,632	15,175	1,954	39,822	1,305	73,888	116,580	
MARCH	17,795	20,163	1,759	41,587	1,552	82,856	134,499	
APRIL	14,310	16,281	2,287	35,688	1,379	69,945	118,525	
MAY	17,282	19,001	2,589	40,982	1,421	81,275	126,323	
JUNE	15,658	18,940	1,544	38,948	1,952	77,042	115,914	
JULY	14,295	16,406	1,550	38,360	1,331	71,942	97,483	
<b>TOTAL</b>	<b>198,427</b>	<b>228,721</b>	<b>22,616</b>	<b>480,387</b>	<b>17,399</b>	<b>947,550</b>	<b>1,365,842</b>	

SEE FOOTNOTES AT END OF TABLE.

TABLE 18.--SHELLED PEANUTS (RAW BASIS) USED IN PRIMARY PRODUCTS BY MONTHS,  
1963-64 THROUGH 1975-76 1/--CONTINUED

SEASON AND MONTH	EDIBLE GRADES USED IN						TOTAL EDIBLE GRADES	TOTAL ALL GRADES 4/
	PEANUT CANDY 1/	SALTED PEANUTS	PEANUT BUTTER SANDWICHES 2/	PEANUT BUTTER 3/	OTHER PRODUCTS			
1,000 POUNDS								
<b>1967-1968</b>								
AUGUST	20,290	20,480	2,452	52,786	1,477	97,485	128,718	
SEPTEMBER	20,692	20,455	1,898	47,725	1,576	92,346	113,672	
OCTOBER	21,848	23,970	2,046	45,054	1,494	94,412	121,502	
NOVEMBER	17,107	23,447	1,790	37,938	1,183	81,465	116,338	
DECEMBER	15,146	19,283	1,416	32,867	1,092	69,804	110,128	
JANUARY	18,293	18,771	1,726	47,612	836	87,238	141,202	
FEBRUARY	17,327	14,328	1,758	44,625	1,589	79,627	131,117	
MARCH	17,217	16,870	1,776	36,759	1,832	74,454	136,718	
APRIL	17,179	18,848	1,834	43,264	1,443	82,568	127,041	
MAY	17,515	19,228	2,031	44,328	1,632	84,734	129,268	
JUNE	16,532	18,650	1,814	40,018	1,613	78,627	122,790	
JULY	17,000	18,300	1,852	40,752	1,474	79,378	107,636	
TOTAL	216,146	232,630	22,393	513,728	17,241	1,002,138	1,486,130	
<b>1968-1969</b>								
AUGUST	20,171	19,683	1,871	42,699	1,628	86,052	114,084	
SEPTEMBER	23,337	19,988	1,947	48,686	1,728	95,686	116,569	
OCTOBER	23,724	26,784	2,136	50,596	1,599	104,839	141,419	
NOVEMBER	19,703	25,019	1,622	42,411	1,471	90,226	135,784	
DECEMBER	15,223	19,268	1,429	37,811	1,154	74,885	118,658	
JANUARY	16,714	17,308	2,129	46,351	1,221	83,723	132,151	
FEBRUARY	16,869	15,512	1,683	42,838	1,416	78,318	128,046	
MARCH	19,572	19,216	1,799	42,182	1,650	84,419	134,703	
APRIL	19,778	19,570	1,839	43,871	1,575	86,633	133,496	
MAY	19,578	18,734	1,933	42,435	1,696	84,376	133,536	
JUNE	15,752	19,857	1,772	43,449	1,872	82,702	122,061	
JULY	15,951	19,084	1,918	41,421	1,492	79,866	112,665	
TOTAL	226,372	240,023	22,078	524,750	18,502	1,031,725	1,523,172	
<b>1969-1970</b>								
AUGUST	21,664	20,959	1,632	45,609	1,415	91,279	108,555	
SEPTEMBER	23,209	23,279	1,959	49,267	1,596	99,310	116,613	
OCTOBER	21,447	28,141	1,969	52,906	893	105,356	138,401	
NOVEMBER	18,741	23,716	1,929	41,555	2,271	88,212	116,842	
DECEMBER	17,411	21,410	1,493	39,209	1,398	80,921	119,534	
JANUARY	17,731	18,482	1,731	46,784	1,310	86,038	131,480	
FEBRUARY	19,363	15,433	1,617	46,640	1,333	84,386	132,029	
MARCH	21,046	17,515	1,790	46,625	2,192	89,168	146,082	
APRIL	19,417	18,132	1,907	45,175	2,025	86,656	141,512	
MAY	18,158	17,799	1,824	41,785	2,127	81,693	123,658	
JUNE	21,871	20,008	1,947	43,949	2,507	90,282	120,702	
JULY	16,317	16,037	1,857	41,010	2,081	77,302	102,322	
TOTAL	236,375	240,911	21,655	540,514	21,148	1,060,603	1,497,730	
<b>1970-1971</b>								
AUGUST	23,752	17,897	2,179	48,936	1,781	94,545	107,784	
SEPTEMBER	23,041	21,778	2,075	50,592	2,069	99,555	115,632	
OCTOBER	21,908	24,511	3,080	49,341	1,810	100,650	136,982	
NOVEMBER	16,918	22,896	2,167	39,599	1,515	83,095	130,286	
DECEMBER	16,648	20,884	1,513	38,336	1,184	78,565	134,511	
JANUARY	18,572	16,799	2,075	49,631	1,046	88,123	148,282	
FEBRUARY	19,875	14,583	1,992	46,545	1,142	84,137	142,290	
MARCH	22,330	20,731	2,067	48,107	1,507	94,742	161,395	
APRIL	20,424	22,326	2,081	41,687	1,262	87,780	154,023	
MAY	19,845	17,270	2,111	41,911	1,295	82,432	149,391	
JUNE	20,590	22,180	2,200	43,436	1,647	90,053	155,731	
JULY	19,336	16,949	1,777	42,229	1,313	81,604	129,829	
TOTAL	243,239	238,804	25,317	540,350	17,571	1,065,281	1,666,136	

SEE FOOTNOTES AT END OF TABLE.

TABLE 18.--SHELLED PEANUTS (RAW BASIS) USED IN PRIMARY PRODUCTS BY MONTHS,  
1963-64 THROUGH 1975-76 1/--CONTINUED

SEASON AND MONTH	EDIBLE GRADES USED IN						TOTAL ALL GRADES 4/
	PEANUT CANDY 1/	SALTED PEANUTS	PEANUT BUTTER SANDWICHES 2/	PEANUT BUTTER 3/	OTHER PRODUCTS	TOTAL EDIBLE GRADES	
1,000 POUNDS							
<b>1971-1972</b>							
AUGUST	22,282	19,190	2,003	48,021	1,575	93,071	127,716
SEPTEMBER	24,598	23,466	2,230	47,490	1,732	99,516	122,614
OCTOBER	23,387	22,814	2,473	47,556	1,488	97,718	146,552
NOVEMBER	19,110	24,577	2,054	45,498	1,737	92,976	152,648
DECEMBER	19,505	21,455	1,709	42,313	999	85,981	149,906
JANUARY	19,560	16,045	1,796	50,833	1,270	89,504	157,968
FEBRUARY	18,888	16,279	2,195	49,622	1,347	88,331	148,603
MARCH	20,922	19,140	2,285	46,483	1,321	90,151	149,526
APRIL	19,927	18,847	2,273	44,453	1,050	86,550	141,535
MAY	20,184	21,177	2,446	48,568	1,386	93,761	150,182
JUNE	20,492	20,392	2,190	45,789	1,668	90,531	135,800
JULY	17,191	18,269	1,940	40,221	1,395	79,016	116,378
TOTAL	246,046	241,651	25,594	556,847	16,968	1,087,106	1,699,428
<b>1972-1973</b>							
AUGUST	25,282	22,526	2,229	50,751	1,588	102,376	143,812
SEPTEMBER	26,422	21,602	2,189	48,498	1,813	100,524	128,746
OCTOBER	24,715	26,138	2,251	49,718	1,529	104,351	145,303
NOVEMBER	20,482	27,518	2,308	43,456	1,229	94,993	154,618
DECEMBER	16,717	20,014	1,876	40,783	1,355	80,745	137,017
JANUARY	21,230	17,310	2,104	50,496	1,017	92,157	150,922
FEBRUARY	20,785	15,293	1,936	47,410	1,091	86,515	142,104
MARCH	22,677	21,291	2,310	52,708	1,560	100,546	166,523
APRIL	21,891	18,817	2,147	48,713	1,273	92,841	147,877
MAY	21,285	23,239	2,352	55,306	1,742	103,924	164,720
JUNE	21,744	21,008	2,035	47,189	1,925	93,901	154,377
JULY	16,618	19,674	1,909	43,033	1,451	82,685	138,294
TOTAL	259,848	254,430	25,646	578,061	17,573	1,135,558	1,774,313
<b>1973-1974</b>							
AUGUST	22,505	24,841	1,961	54,221	1,507	105,035	145,127
SEPTEMBER	23,213	25,472	2,032	55,870	1,847	108,434	147,778
OCTOBER	26,518	29,723	2,048	64,498	1,990	124,777	168,081
NOVEMBER	18,051	27,403	2,044	53,282	1,591	102,371	150,728
DECEMBER	17,245	22,605	1,881	47,672	1,616	91,019	140,875
JANUARY	19,993	22,400	1,830	63,708	1,277	109,208	162,554
FEBRUARY	20,263	20,091	1,885	63,045	1,312	106,596	151,329
MARCH	23,114	22,946	1,994	59,328	1,738	109,120	156,739
APRIL	22,271	25,018	2,157	55,954	1,626	107,026	150,705
MAY	20,500	23,298	2,074	52,378	1,640	99,890	139,798
JUNE	18,149	19,046	1,899	45,517	1,675	86,286	120,005
JULY	19,682	21,464	2,077	44,498	1,476	89,197	118,792
TOTAL	251,504	284,307	23,882	659,971	19,295	1,238,959	1,752,511
<b>1974-1975</b>							
AUGUST	22,664	24,874	1,833	52,658	1,575	103,604	120,596
SEPTEMBER	23,077	25,453	1,761	48,633	1,490	100,414	117,409
OCTOBER	22,783	27,819	1,931	61,200	1,706	115,439	153,467
NOVEMBER	15,838	22,559	1,728	53,985	1,314	95,424	133,390
DECEMBER	10,890	20,024	1,217	41,702	695	74,528	114,731
JANUARY	16,147	17,661	1,605	54,441	644	90,498	132,725
FEBRUARY	16,001	18,694	1,573	53,039	635	89,942	121,619
MARCH	15,531	21,238	1,686	57,658	901	97,014	126,548
APRIL	17,880	25,345	1,626	61,710	1,131	107,692	139,920
MAY	17,553	26,105	1,883	61,042	1,520	108,103	147,776
JUNE	20,063	24,356	1,613	53,193	1,446	100,471	152,225
JULY	18,607	24,357	1,912	51,723	1,322	97,921	159,959
TOTAL	217,034	278,285	20,368	650,984	14,379	1,181,050	1,620,365

SEE FOOTNOTES AT END OF TABLE.

TABLE 18.--SHELLED PEANUTS (RAW BASIS) USED IN PRIMARY PRODUCTS BY MONTHS, 1963-64 THROUGH 1975-76 1/--CONTINUED

SEASON AND MONTH	EDIBLE GRADES USED IN					TOTAL EDIBLE GRADES	TOTAL ALL GRADES 4/
	PEANUT CANDY 1/	SALTED PEANUTS	PEANUT BUTTER SANDWICHES 2/	PEANUT BUTTER 3/	OTHER PRODUCTS		
T,000 POUNDS							
1975-1976							
AUGUST	22,214	24,189	1,583	54,045	1,529	103,560	170,751
SEPTEMBER	22,781	28,590	2,044	58,627	1,660	113,702	192,755
OCTOBER	24,003	34,294	1,871	67,632	1,786	129,586	208,662
NOVEMBER	17,829	27,324	1,634	49,282	1,057	97,126	161,290
DECEMBER	13,543	27,740	1,233	43,406	854	86,776	145,826
JANUARY	16,669	21,480	1,613	55,684	952	96,398	158,448
FEBRUARY	19,735	18,739	1,716	53,735	935	94,860	169,207
MARCH	20,951	26,663	1,810	59,611	1,472	110,507	211,338
APRIL	19,438	26,146	1,864	53,244	1,387	102,079	217,414
MAY	19,340	23,489	1,842	48,768	1,364	94,803	224,145
JUNE	22,263	22,774	1,952	52,027	1,677	100,693	250,869
JULY	20,910	20,207	1,795	51,996	1,324	96,232	203,704
TOTAL	239,676	301,635	20,957	648,057	15,997	1,226,322	2,314,409

1/ INCLUDES PEANUT BUTTER MADE BY MANUFACTURERS FOR OWN USE IN CANDY.

2/ INCLUDES PEANUT BUTTER COOKIES.

3/ EXCLUDES PEANUT BUTTER MADE BY MANUFACTURERS FOR OWN USE IN CANDY OR SANDWICHES.

4/ INCLUDES ALL SHELLED PEANUTS CRUSHED REGARDLESS OF GRADE.

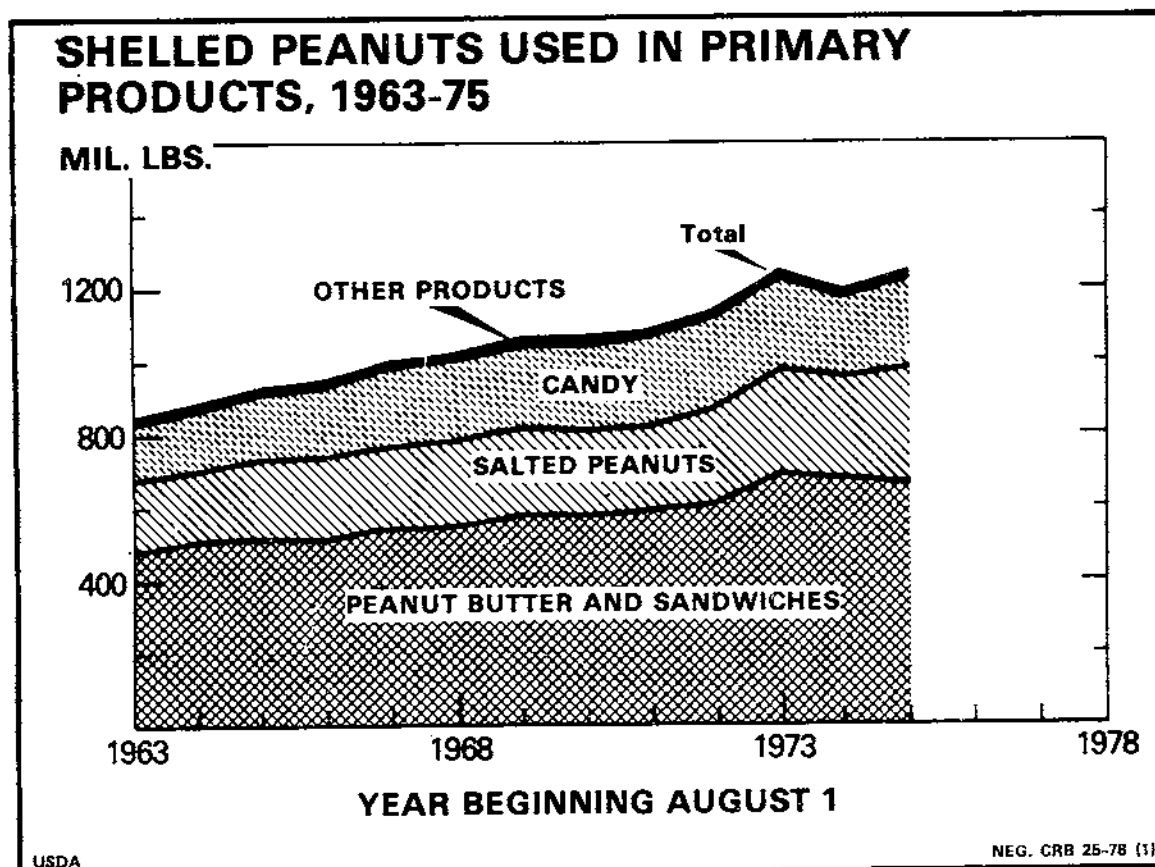


Figure 4

**END**