



AgEcon SEARCH
RESEARCH IN AGRICULTURAL & APPLIED ECONOMICS

The World's Largest Open Access Agricultural & Applied Economics Digital Library

This document is discoverable and free to researchers across the globe due to the work of AgEcon Search.

Help ensure our sustainability.

Give to AgEcon Search

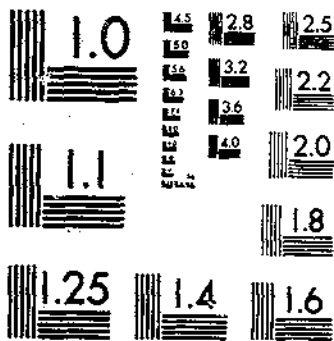
AgEcon Search
<http://ageconsearch.umn.edu>
aesearch@umn.edu

*Papers downloaded from **AgEcon Search** may be used for non-commercial purposes and personal study only. No other use, including posting to another Internet site, is permitted without permission from the copyright owner (not AgEcon Search), or as allowed under the provisions of Fair Use, U.S. Copyright Act, Title 17 U.S.C.*

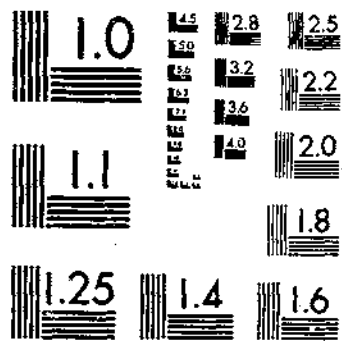
SR 572 (1977) USDA STATISTICAL BULLETINS UPDATA
INDICES OF AGRICULTURAL PRODUCTION IN AFRICA AND THE NEAR EAST, 1967-76

1 OF 1

START



MICROCOPY RESOLUTION TEST CHART
NATIONAL BUREAU OF STANDARDS-1963-A



MICROCOPY RESOLUTION TEST CHART
NATIONAL BUREAU OF STANDARDS-1963-A

51

R
630.5
WS3-13
#572

INDICES OF AGRICULTURAL PRODUCTION

IN AFRICA AND THE NEAR EAST 1967-76

JUL 18 1977



UNITED STATES
DEPARTMENT
OF AGRICULTURE

ECONOMIC
RESEARCH
SERVICE

STATISTICAL
BULLETIN
NUMBER 572

CONTENTS

	<u>Page</u>
INTRODUCTORY NOTES.....	1
SUMMARY TABLES - AFRICA	
Table 1. Mid-Year Population by Country, 1967-76.....	3
Table 2. Indices of Total Agricultural Production, by Country, 1967-76.....	4
Table 3. Indices of Per Capita Agricultural Production, by Country, 1967-76.....	5
Table 4. Indices of Total Food Production, by Country, 1967-76.....	6
Table 5. Indices of Per Capita Food Production, by Country, 1967-76.....	7

COUNTRY TABLES - AFRICA

	<u>Page</u>		<u>Page</u>
Table 6. Algeria.....	8	Table 22. Morocco.....	24
Table 7. Angola.....	9	Table 23. Niger.....	25
Table 8. Benin (Dahomey).....	10	Table 24. Nigeria.....	26
Table 9. Burundi.....	11	Table 25. Rhodesia.....	27
Table 10. Cameroon.....	12	Table 26. Rwanda.....	28
Table 11. Egypt.....	13	Table 27. Senegal.....	29
Table 12. Ethiopia.....	14	Table 28. Sierra Leone.....	30
Table 13. Ghana.....	15	Table 29. South Africa, Rep. of..	31
Table 14. Guinea.....	16	Table 30. Sudan.....	32
Table 15. Ivory Coast.....	17	Table 31. Tanzania.....	33
Table 16. Kenya.....	18	Table 32. Togo.....	34
Table 17. Liberia.....	19	Table 33. Tunisia.....	35
Table 18. Libya.....	20	Table 34. Uganda.....	36
Table 19. Madagascar.....	21	Table 35. Upper Volta.....	37
Table 20. Malawi.....	22	Table 36. Zaire.....	38
Table 21. Mali.....	23	Table 37. Zambia.....	39

SUMMARY TABLES - NEAR EAST

Table 38. Mid-Year Population by Country, 1967-76.....	40
Table 39. Indices of Total Agricultural Production, by Country, 1967-76.....	41
Table 40. Indices of Per Capita Agricultural Production, by Country, 1967-76....	41
Table 41. Indices of Total Food Production, by Country, 1967-76.....	42
Table 42. Indices of Per Capita Food Production, by Country, 1967-76.....	42

COUNTRY TABLES - NEAR EAST

	<u>Page</u>		<u>Page</u>
Table 43. Cyprus.....	43	Table 47. Israel.....	47
Table 11. Egypt.....	13	Table 48. Jordan.....	48
Table 44. Greece.....	44	Table 49. Lebanon.....	49
Table 45. Iran.....	45	Table 50. Syria.....	52
Table 46. Iraq.....	46	Table 51. Turkey.....	50

INDICES OF AGRICULTURAL PRODUCTION IN AFRICA AND THE NEAR EAST

Developing Countries Program Area
Foreign Demand and Competition Division
Economic Research Service

INTRODUCTORY NOTES

Indices of agricultural production in foreign countries are prepared as part of a continuing assessment of the current agricultural situation abroad. The country indices are calculated by Laspeyre's base-weighted aggregative formula. They are constructed from production series given in thousands of metric tons. The time reference is the calendar year in which the bulk of the crop is harvested or, in some cases, notably coffee and cocoa beans, the marketing year beginning in the indicated calendar year.

The base period for the indices is the average of calendar years 1961-65. The weights are estimated base period average prices received by farmers expressed in U.S. dollars per metric ton. A separate schedule of price weights is used in each country.

Indices for individual countries are based on statistics from various sources, and of widely differing reliability. Statistics on livestock products generally are not as reliable as figures for the output of the principal commercial crops. Periodic commodity reports published by the Foreign Agricultural Service give data for the most recent years. This source is supplemented by publications of foreign governments and international organizations such as FAO, particularly for historical statistics. In some cases, in the absence of other data, the ERS country specialist has made his own estimates based on past trends and his knowledge of the country situation.

Country indices include all major cash crops and subsistence crops for which current estimates of production are obtainable. Hay and other crops grown for feeding on the farm have been omitted. Outputs of milk, eggs, and wool have been included to the extent permitted by the quality of the data. Production of meat animals is

represented for a number of countries by estimates of meat production, with allowances for imports or exports of live cattle in some countries, but with no adjustment for changes in the number of animals in the national herd or in the average live weight of animals. Considering the great importance of meat animals and the defects in current estimates of meat production, the present practice is recognized as subject to substantial improvement. No allowance is made for sales of work animals from the farming sector to other sectors of the economy.

To calculate the indices for each country, the production of each commodity is multiplied by its price weight and the resulting aggregates are summed for each year. (Note that since the weights are actual prices, the aggregates that appear in the following tables are values of production in million U.S. dollars.) The total aggregate for a given year is then divided by the average aggregate for the base period (1961-65) to obtain the index number. The per capita indices for each country are calculated by dividing the indices of total agricultural production by the population indices. Food production indices are calculated similarly, and differ only by the exclusion of inedible commodities, coffee, tea, and spices.

To avoid double counting of livestock products and feed in certain countries, a portion of the aggregate value of output of livestock products has been subtracted to determine total agricultural output. In deriving this deduction the agriculture of each country is regarded as consisting essentially of two farms: one with no livestock which produces only crops, and one with grazing land but no crops which produces livestock products from pasture and from feed purchased either from the domestic crop farm or from abroad. Aggregates are published separately for crops

and livestock, referring to the gross output of these two farms. When these two aggregates are combined, a deduction is made in certain countries for livestock feed. This deduction is a fixed percentage of the livestock aggregate and represents the feed purchased by the national livestock farm. The concept of agricultural production--gross production of crops plus value added by livestock--thus resembles the index of net U.S. output used by the Economic Research Service.

The fixed percentage deduction for feed was derived by dividing the feed bill for the base period by the gross value of livestock output in the same years. The feed bill for the base period was calculated by applying to the grains, potatoes, and other crops fed the prices received by farmers, with no markup for transportation or compounding. In the case of byproduct feeds, such as bran, oilcake, molasses, and brewers' grains, estimates of prices paid by farmers were used.

A subindex for crops is published. When divided by an index of cropland harvested it provides a measure of changes over time in output per acre. This is not an index of yields, since the relative importance of the different crops is not held constant.

No subindex of livestock production is published because of the inadequate coverage already mentioned. A researcher could easily compute such a subindex from the published aggregates of livestock production, but it is hoped that the very act of examining the commodity content of those aggregates would convey to the researcher an understanding of their inadequacy.

The reader is cautioned against misinterpreting the aggregates; these are shown in "millions of dollars at constant prices." The aggregates may be used to calculate the effects of revisions in the estimates of production. Not all crops and livestock products produced in a country are listed. Only those crops and livestock products produced in a country are listed. Only those crops and livestock products with significant production or those for which reasonable estimates of production could be made were used. Therefore, the aggregates do not measure the gross value of agricultural production, gross sales by

farmers, or the farming component of the gross domestic product, although year-to-year changes in the aggregates may be correlated with similar changes in those other series.

The reader is also cautioned against misinterpretation of the indices of total food production and per capita food production. The entire output of an edible commodity is used in the index calculation regardless of the share consumed in the country or the share entering commercial channels for export or other use. Therefore, the index may not accurately reflect the domestic availability of food in a country or region.

The regional indices are computed from the sums of the country aggregates for the various regions. This method involves a bias favoring countries with relatively comprehensive commodity coverage or relatively high price weights, but this bias normally is not serious enough to offset the advantage of great flexibility in the grouping of countries into various alternative regions.

Under a continuing arrangement, the United States Agency for International Development (AID) provided some financial assistance in researching and preparing the production indices presented in this publication.

MID-YEAR POPULATION BY COUNTRY, 1967-76

COUNTRY AND REGION	1967	1968	1969	1970	1971	1972	1973	1974	1975	1976
	----- THOUSANDS -----									
ALGERIA	12,244	12,605	12,985	13,385	13,800	14,223	14,669	15,124	15,592	16,076
ANGOLA	5,364	5,450	5,537	5,632	5,710	5,798	5,891	5,985	6,081	6,178
BURUNDI	3,274	3,302	3,331	3,359	3,388	3,417	3,470	3,547	3,625	3,705
CAMEROON	5,538	5,635	5,734	5,836	5,941	6,049	6,161	6,282	6,398	6,523
BENIN (DAHOMEY)	2,500	2,567	2,637	2,710	2,785	2,863	2,944	3,029	3,112	3,197
ETHIOPIA	22,871	23,438	24,022	24,626	25,248	25,890	26,544	27,239	27,946	28,673
GHANA	7,972	8,183	8,405	8,638	8,871	9,111	9,357	9,609	9,869	10,135
GUINEA	3,702	3,772	3,847	3,925	4,007	4,094	4,184	4,280	4,379	4,481
IVORY COAST	5,069	5,248	5,433	5,625	5,825	6,030	6,247	6,471	6,703	6,944
KENYA	10,389	10,719	11,065	11,430	11,807	12,197	12,600	13,016	13,446	13,890
LIBERIA	1,226	1,263	1,302	1,342	1,384	1,428	1,473	1,519	1,567	1,615
LIÉYA	1,752	1,825	1,903	1,984	2,070	2,159	2,250	2,346	2,444	2,547
MADAGASCAR	6,332	6,468	6,607	6,750	6,896	7,046	7,200	7,357	7,518	7,683
MALAWI	4,129	4,230	4,333	4,438	4,552	4,666	4,791	4,916	5,044	5,175
MALI	4,725	4,827	4,934	5,047	5,143	5,257	5,376	5,492	5,611	5,732
MOROCCO	13,715	14,104	14,509	14,926	15,355	15,847	16,309	16,880	17,305	17,829
NIGER	3,710	3,806	3,909	4,024	4,126	4,243	4,304	4,476	4,600	4,724
NIGERIA	51,116	52,386	53,702	55,074	56,511	58,020	59,607	61,275	63,022	64,850
RHODESIA	4,790	4,960	5,130	5,310	5,500	5,690	5,900	6,100	6,310	6,534
RWANDA	3,393	3,485	3,582	3,683	3,788	3,896	4,008	4,123	4,238	4,357
SENEGAL	3,979	4,092	4,208	4,327	4,450	4,575	4,705	4,838	4,975	5,115
SIERRA LEONE	2,515	2,573	2,632	2,694	2,758	2,826	2,897	2,971	3,043	3,114
SOUTH AFRICA, REPUBLIC OF	20,725	21,292	21,881	22,469	23,032	23,670	24,317	24,920	25,471	26,101
SUDAN	13,157	13,443	13,735	14,033	14,337	14,648	14,970	15,295	15,627	15,966
TANZANIA	12,265	12,590	12,930	13,273	13,634	13,966	14,377	14,758	15,155	15,563
TOGO	1,825	1,869	1,915	1,963	2,013	2,064	2,117	2,173	2,230	2,288
TUNISIA	4,819	4,920	5,027	5,137	5,230	5,330	5,444	5,641	5,772	5,908
UGANDA	8,951	9,226	9,510	9,806	10,127	10,462	10,810	11,172	11,546	11,932
UPPER VOLTA	5,091	5,214	5,341	5,462	5,584	5,706	5,829	5,955	6,083	6,217
ZAIRE	17,560	17,996	18,430	18,861	19,297	19,747	20,214	20,695	21,191	21,706
ZAMBIA	3,885	3,999	4,118	4,240	4,367	4,500	4,639	4,784	4,936	5,092
AFRICA LESS EGYPT	268,583	275,487	282,634	290,009	297,536	305,418	313,604	322,268	330,839	339,851
AFRICA LESS EGYPT AND SO AFRICA	247,858	254,195	260,753	267,540	274,504	281,748	289,287	297,348	305,368	313,750
EGYPT	30,907	31,693	32,501	33,329	34,076	34,839	35,619	36,417	37,233	38,067
AFRICA AND EGYPT	299,490	307,180	315,135	323,338	331,612	340,257	349,223	358,685	368,072	377,918
AFRICA AND EGYPT LESS SO AFRICA	278,765	285,888	293,254	300,869	308,580	316,587	324,906	333,765	342,601	351,817

TABLE 2.-- AFRICA

INDICES OF TOTAL AGRICULTURAL PRODUCTION, BY COUNTRY, 1967-76

(1961-65 = 100)

	1967	1968	1969	1970	1971	1972	1973	1974	1975	PRELIM. 1976
ALGERIA	89	107	96	105	98	108	94	96	92	117
ANGOLA	112	110	116	118	113	114	116	115	69	64
BURUNDI	116	116	120	127	131	130	129	110	130	130
CAMEROON	115	117	117	113	121	122	116	131	126	130
BENIN (DAHOMEY)	106	106	106	115	114	117	126	133	122	124
ETHIOPIA	110	114	117	118	120	114	111	115	104	108
GHANA	112	105	111	108	116	109	118	121	114	117
GUINEA	109	119	122	120	124	126	127	128	130	132
IVORY COAST	126	120	136	134	149	150	145	173	202	208
KENYA	115	118	119	125	123	140	145	148	152	155
LIBERIA	113	114	120	135	131	141	149	165	157	157
LIBYA	136	158	144	129	121	177	188	199	214	210
MADAGASCAR	118	120	121	128	127	129	123	136	139	141
MALAWI	145	112	123	123	138	153	151	153	153	164
MALI	107	99	117	111	110	94	85	91	109	121
MOROCCO	104	160	124	128	143	148	118	146	119	153
NIGER	120	113	117	117	112	95	71	95	88	103
NIGERIA	97	94	119	113	114	119	112	119	121	124
RHODESIA	100	87	93	88	101	113	92	124	132	120
RWANDA	134	133	138	147	149	145	152	136	150	146
SENEGAL	116	92	106	78	112	79	95	122	140	139
SIERRA LEONE	103	107	104	109	117	118	118	121	125	128
SOUTH AFRICA, REPUBLIC OF	131	115	119	123	136	142	119	148	139	139
SUDAN	121	111	124	136	140	136	132	140	128	145
TANZANIA	110	114	116	120	124	127	128	119	129	135
TOGO	116	132	128	125	123	124	120	124	127	127
TUNISIA	89	100	85	113	145	145	155	187	217	208
UGANDA	112	126	131	129	126	128	121	116	111	110
UPPER VOLTA	101	99	97	96	88	86	84	101	100	98
ZAIRE	117	129	137	140	133	134	140	144	144	147
ZAMBIA	175	91	98	105	133	150	133	164	172	185
AFRICA LESS EGYPT	111	111	118	119	123	126	119	130	127	132
AFRICA LESS EGYPT AND SO AFRICA	108	111	117	118	121	123	119	127	125	131
EGYPT	101	105	114	113	117	119	120	118	119	124
AFRICA AND EGYPT	110	110	117	118	123	125	119	128	126	131
AFRICA AND EGYPT LESS SO AFRICA	107	110	117	117	121	123	119	125	124	130

TABLE 3.-- AFRICA

INDICES OF PER CAPITA AGRICULTURAL PRODUCTION, BY COUNTRY, 1967-76

(1961-65 = 100)

	1967	1968	1969	1970	1971	1972	1973	1974	1975	PRELIM. 1976
ALGERIA	80	94	82	87	79	84	71	70	65	80
ANGOLA	105	102	105	105	100	99	99	97	57	52
BURUNDI	109	108	111	117	119	117	115	96	111	108
CAMEROON	107	107	105	100	105	104	97	107	101	103
BENIN (DAHOMEY)	96	93	91	96	93	92	97	99	89	88
ETHIOPIA	101	102	103	101	100	93	88	89	78	79
GHANA	101	92	95	90	94	86	91	91	83	83
GUINEA	102	109	110	106	107	106	105	103	103	102
IVORY COAST	110	101	111	105	113	110	102	118	133	132
KENYA	102	101	99	101	96	106	106	105	104	103
LIBERIA	101	99	101	110	104	108	111	119	110	106
LIBYA	117	130	114	98	88	123	126	128	132	124
MADAGASCAR	109	108	107	110	107	107	99	108	108	107
MALAWI	131	99	106	104	113	123	118	116	113	118
MALI	98	89	103	96	93	78	69	72	84	92
MOROCCO	94	141	106	106	115	116	90	107	85	106
NIGER	107	98	99	96	90	74	54	70	63	72
NIGERIA	88	83	103	95	93	95	87	90	89	89
RHODESIA	88	74	77	70	78	84	66	86	88	78
RWANDA	121	117	118	123	121	114	116	101	109	103
SENEGAL	103	80	89	64	89	61	72	90	100	96
SIERRA LEONE	95	96	91	93	98	96	94	94	95	95
SOUTH AFRICA, REPUBLIC OF	117	100	101	102	110	111	91	110	101	99
SUDAN	111	100	109	117	118	112	106	111	99	110
TANZANIA	100	101	100	100	101	101	99	90	95	96
TOGO	106	117	111	106	102	100	94	95	95	92
TUNISIA	82	90	75	90	123	121	127	148	167	157
UGANDA	100	109	110	105	99	97	89	83	76	73
UPPER VOLTA	92	88	84	81	73	70	67	79	76	73
ZAIRE	106	114	118	118	110	108	110	111	108	108
ZAMBIA	156	79	82	86	105	115	99	119	121	126
AFRICA LESS EGYPT	101	98	102	100	101	100	92	98	93	95
AFRICA LESS EGYPT AND SO AFRICA	98	98	101	99	99	98	93	96	92	94
EGYPT	91	93	98	95	96	95	94	91	89	91
AFRICA AND EGYPT	100	97	101	99	101	100	93	97	93	94
AFRICA AND EGYPT LESS SO AFRICA	97	97	101	98	99	98	93	95	92	93

TABLE 4.-- AFRICA

INDICES OF TOTAL FOOD PRODUCTION, BY COUNTRY, 1967-76

(1961-65 = 100)

	1967	1968	1969	1970	1971	1972	1973	1974	1975	PRELIM. 1976
ALGERIA	89	107	96	105	98	108	94	96	92	118
ANGOLA	110	112	117	117	108	102	112	112	87	79
BURUNDI	115	116	121	127	129	130	129	106	131	130
CAMEROON	114	116	114	110	118	114	111	120	121	122
BENIN (DAHOMEY)	105	106	105	111	110	113	122	130	119	121
ETHIOPIA	109	114	116	117	119	113	111	113	102	106
GHANA	112	105	110	108	116	109	118	121	114	116
GUINEA	110	120	123	122	128	129	132	133	136	137
IVORY COAST	121	123	133	136	149	144	155	180	213	219
KENYA	120	118	116	120	117	131	132	136	145	145
LIBERIA	95	94	98	100	106	109	122	142	138	140
LIBYA	135	158	144	128	122	178	190	201	216	212
MADAGASCAR	117	121	126	127	129	131	123	131	138	137
MALAWI	160	114	133	114	132	147	140	145	130	142
MALI	104	92	110	102	97	82	75	79	88	95
MOROCCO	104	163	125	129	145	148	117	146	119	154
NIGER	120	113	117	117	111	94	70	94	87	102
NIGERIA	97	94	118	114	114	119	113	119	121	124
RHODESIA	105	100	110	100	122	139	110	148	152	138
RWANDA	134	133	138	147	149	145	152	136	150	146
SENEGAL	116	91	104	76	110	76	91	117	136	133
SIERRA LEONE	103	107	104	108	118	118	119	120	126	128
SOUTH AFRICA, REPUBLIC OF	137	116	121	125	143	150	125	157	146	147
SUDAN	119	100	119	129	137	130	126	140	147	155
TANZANIA	109	114	116	123	127	132	133	124	141	147
TOGO	119	132	131	128	125	127	123	126	131	132
TUNISIA	89	99	84	112	145	145	155	188	218	210
UGANDA	117	124	126	125	124	122	120	123	116	117
UPPER VOLTA	100	96	93	92	84	82	79	97	95	92
ZAIRE	121	128	137	143	133	132	139	147	145	150
ZAMBIA	210	94	106	117	143	172	148	189	199	217
AFRICA LESS EGYPT	111	111	117	118	124	125	119	130	129	134
AFRICA LESS EGYPT AND SO AFRICA	107	110	117	117	121	122	118	126	126	131
EGYPT	103	108	113	113	119	122	124	125	131	136
AFRICA AND EGYPT	111	110	117	118	123	125	119	129	129	134
AFRICA AND EGYPT LESS SO AFRICA	107	110	116	117	120	122	118	126	127	132

TABLE 5.-- AFRICA

INDICES OF PER CAPITA FOOD PRODUCTION, BY COUNTRY, 1967-76

(1961-65 = 100)

	1967	1968	1969	1970	1971	1972	1973	1974	1975	PRELIM. 1976
ALGERIA	80	94	82	87	79	84	71	70	65	81
ANGOLA	103	103	106	105	95	89	96	94	72	64
BURUNDI	108	108	112	117	118	117	115	92	112	108
CAMEROON	106	106	102	97	102	97	93	98	97	96
BENIN (DAHOMEY)	95	93	90	93	89	89	94	97	87	86
ETHIOPIA	100	102	102	100	99	92	88	87	77	78
GHANA	101	92	94	90	94	86	91	91	83	82
GUINEA	103	110	110	107	110	109	109	107	107	106
IVORY COAST	105	103	108	107	113	105	110	123	140	139
KENYA	106	101	96	97	91	99	96	96	99	93
LIBERIA	85	82	82	82	84	84	91	102	96	98
LIBYA	116	130	114	97	89	124	127	129	133	125
MADAGASCAR	108	109	111	110	109	108	99	104	107	104
MALAWI	145	101	115	96	108	118	109	110	96	103
MALI	96	83	97	88	82	68	61	63	68	72
MOROCCO	94	143	107	107	117	116	89	107	85	107
NIGER	107	98	99	96	89	73	54	69	62	71
NIGERIA	88	83	102	96	93	95	88	90	89	89
RHODESIA	93	85	91	80	94	103	79	103	102	89
RWANDA	121	117	118	123	121	114	116	101	109	103
SENEGAL	103	79	88	62	88	59	69	86	97	92
SIERRA LEONE	95	96	91	93	99	96	95	93	96	95
SOUTH AFRICA, REPUBLIC OF	123	101	103	103	115	118	95	117	106	105
SUDAN	109	90	105	111	115	107	102	111	114	117
TANZANIA	99	101	100	103	104	105	103	93	103	105
TOGO	108	117	114	108	103	102	97	96	98	96
TUNISIA	82	90	74	97	123	121	127	148	168	158
UGANDA	104	107	105	101	97	93	88	88	80	78
UPPER VOLTA	91	85	81	78	70	67	63	76	72	69
ZAIRE	110	113	118	121	110	106	109	113	109	110
ZAMBIA	187	81	89	96	117	132	110	137	140	148
AFRICA LESS EGYPT	101	98	101	99	101	100	92	98	95	96
AFRICA LESS EGYPT AND SO AFRICA	97	97	101	98	99	97	92	95	93	94
EGYPT	93	95	97	95	98	98	97	96	98	100
AFRICA AND EGYPT	101	97	101	99	101	100	93	98	95	96
AFRICA AND EGYPT LESS SO AFRICA	97	97	100	98	98	97	92	95	94	95

TABLE 6.--ALGERIA

PRODUCTION BY COMMODITY, VALUE AND INDICES OF TOTAL AGRICULTURAL AND FOOD PRODUCTION, AVERAGE 1961-65, ANNUAL 1967-76

COMMODITY	PRICE	AVERAGE	1967	1968	1969	1970	1971	1972	1973	1974	1975	1976
	WEIGHT	1961-65										
	DOLLARS	-1,000 METRIC TONS-										
WHEAT	92	1,245	1,266	1,534	1,326	1,435	1,317	1,656	1,157	1,150	900	2,000
RICE, PADDY	150	6	4	6	7	2	2	2	2	6	6	6
CORN	71	5	4	7	6	6	5	5	5	5	4	4
BARLEY	65	460	340	538	466	571	372	644	370	300	420	420
OATS	65	28	26	41	44	42	38	39	53	38	37	37
BROAD BEANS	43	15	15	14	14	17	25	18	14	14	15	18
LENTILS	105	4	4	9	12	6	7	9	8	8	8	9
CHICKPEAS	130	8	12	17	12	11	11	13	15	13	11	15
POTATOES	50	226	99	110	224	262	274	268	270	350	322	400
TOBACCO	608	6	6	6	6	4	4	2	2	4	3	3
TOMATOES	51	95	69	84	93	118	85	85	95	150	140	140
ORANGES AND TANGERINES	71	398	412	470	470	487	491	440	435	435	430	430
LEMONS	57	15	14	17	17	16	14	15	15	14	14	14
FIGS, FRESH	155	56	44	45	24	56	51	45	45	45	47	45
GRAPES, FOR WINE	45	1,600	319	1,264	1,109	1,104	925	750	845	896	900	800
DATES	188	117	148	161	79	144	140	150	158	180	180	180
OLIVE OIL	468	17	14	18	17	15	20	23	18	14	18	14
MEATS	581	84	85	85	86	88	90	95	100	100	105	110
MILK	96	437	460	460	460	465	475	465	480	475	470	480
WOOL, GREASY BASIS	655	9	9	9	9	9	10	10	9	10	10	9
AGGREGATES OF PRODUCTION - - - - - MILLION DOLLARS AT CONSTANT PRICES - - - - -												
CROPS		310.6	264.1	334.3	290.6	324.7	293.2	351.7	272.4	279.2	262.8	362.2
LIVESTOCK		96.6	99.5	99.5	100.1	101.6	104.5	106.4	110.1	110.3	112.7	115.9
TOTAL AGRICULTURE		407.2	363.6	433.8	390.7	426.3	397.7	438.1	382.5	389.5	375.5	478.1
TOTAL FOOD		397.8	354.1	424.3	381.2	418.0	388.7	430.3	375.4	380.5	367.1	470.4
INDICES OF PRODUCTION (1961-65 = 100)												
CROPS		100	85	108	94	105	94	107	88	90	85	117
TOTAL AGRICULTURE		100	89	107	96	105	98	108	94	96	92	117
TOTAL FOOD		100	89	107	96	105	98	108	94	96	92	118
PER CAPITA AGRICULTURE		100	81	93	82	87	78	84	71	70	65	81
PER CAPITA FOOD		100	80	94	82	87	78	84	71	70	65	81
INDEX OF POPULATION												
1961-65 POPULATION= 11,062,000		100.0	110.7	113.9	117.4	121.0	124.8	128.6	132.6	136.7	141.0	145.3

PRODUCTION BY COMMODITY, VALUE AND INDICES OF TOTAL AGRICULTURAL AND FOOD PRODUCTION, AVERAGE 1961-65, ANNUAL 1967-76

COMMODITY	PRICE	AVERAGE	1967	1968	1969	1970	1971	1972	1973	1974	1975	1976
	WEIGHT	1961-65										
	DOLLARS		-1,000 METRIC TONS-									
WHEAT	76	19	27	27	14	12	23	13	15	12	10	10
RICE, PADDY	92	27	33	33	16	39	58	50	29	28	20	25
CORN	49	360	380	400	540	456	404	400	430	600	450	450
MILLET	40	68	75	77	78	78	42	27	78	80	25	25
BEANS, DRY	100	59	64	64	64	75	65	60	72	72	50	50
POTATOES	35	23	31	32	34	34	36	32	36	30	20	20
CASSAVA	25	1,309	1,525	1,545	1,590	1,600	1,134	928	1,200	1,100	900	900
SWEET POTATOES	28	121	145	140	145	147	150	130	145	130	115	110
TOBACCO	435	4	6	5	4	4	4	5	6	7	4	3
COTTON	420	5	9	15	20	29	35	18	26	38	11	15
COTTONSEED	42	12	22	30	40	53	51	30	53	63	31	36
PEANUTS, IN SHELL	101	30	32	32	32	18	27	26	25	20	15	15
CASTOR BEANS	65	5	5	5	5	3	3	5	6	5	3	3
CITRUS FRUIT	106	71	78	80	81	82	80	80	80	80	50	40
PLANTAINS	60	195	213	213	220	225	230	230	240	250	200	200
COFFEE	507	176	204	186	198	198	204	225	204	186	72	72
SISAL	225	67	59	61	65	68	46	68	60	70	40	20
SUGAR, RAW	80	66	67	68	66	79	76	84	82	80	50	40
PALM OIL	163	38	38	38	38	38	38	38	40	40	35	25
PALM KERNELS	50	16	20	26	14	14	13	13	12	12	10	5
MEATS	316	52	53	52	54	54	58	64	65	55	50	40
MILK	180	122	127	130	133	134	136	130	135	125	100	70
AGGREGATES OF PRODUCTION - - - - - MILLION DOLLARS AT CONSTANT PRICES - - - - -												
CROPS		210.7	237.6	233.3	248.0	251.9	239.4	239.5	242.7	246.5	139.4	133.5
LIVESTOCK		28.6	29.4	29.4	30.4	30.5	31.9	33.2	34.0	29.9	25.8	19.6
TOTAL AGRICULTURE		239.3	267.0	262.7	278.4	282.4	271.3	272.7	276.7	276.4	165.2	153.1
TOTAL FOOD		130.8	143.6	145.9	153.0	152.6	140.9	133.2	145.9	147.0	113.2	103.9
INDICES OF PRODUCTION (1961-65 = 100)												
CROPS		100	113	111	118	120	114	114	115	117	66	63
TOTAL AGRICULTURE		100	112	110	116	118	113	114	116	116	69	64
TOTAL FOOD		100	110	112	117	117	108	102	112	112	87	79
PER CAPITA AGRICULTURE		100	105	101	106	106	100	99	99	97	57	52
PER CAPITA FOOD		100	103	103	106	104	95	88	95	95	72	65
INDEX OF POPULATION												
1961-65 POPULATION= 5,036,000		100.0	106.5	108.2	109.9	111.8	113.4	115.1	117.0	118.8	120.8	122.7

TABLE 8.--BENIN (DAHOMEY)

PRODUCTION BY COMMODITY, VALUE AND INDICES OF TOTAL AGRICULTURAL AND FOOD PRODUCTION, AVERAGE 1961-65, ANNUAL 1967-76

COMMODITY	PRICE	AVERAGE	1967	1968	1969	1970	1971	1972	1973	1974	1975	1976
	WEIGHT	1961-65										
	DOLLARS		-1,000 METRIC TONS-									
CORN	96	219	247	222	200	229	175	207	238	310	200	200
MILLET	104	6	6	7	6	5	7	6	18	12	12	12
SORGHUM	104	59	62	59	63	43	48	50	78	79	59	50
PULSES	110	24	33	34	35	36	37	38	38	39	40	41
BAMBARRA GROUNDNUTS	65	2	2	2	2	2	2	2	2	2	2	2
CASSAVA	15	1,108	1,120	1,142	1,165	1,190	1,215	1,240	1,265	1,300	1,330	1,360
SWEET POTATOES	78	37	44	45	46	47	48	49	50	51	52	53
YAMS	79	522	560	571	585	600	615	630	645	660	675	690
TOBACCO	252	1	1	1	1	1	1	1	1	1	1	1
COTTON	300	1	4	4	4	14	18	17	17	12	13	14
COTTONSEED	43	3	8	8	8	28	36	34	34	24	26	28
PEANUTS, IN SHELL	81	27	38	25	30	57	42	42	35	40	40	40
COFFEE	340	1	1	1	1	1	1	1	1	1	1	1
SHEA NUTS	25	5	9	5	5	5	5	5	5	5	5	5
PALM OIL	152	40	25	35	33	36	48	39	45	47	47	49
PALM KERNELS	84	52	41	56	51	57	62	62	65	67	70	70
MEATS	420	4	4	4	4	4	4	4	4	4	4	4
AGGREGATES OF PRODUCTION	- - - - - MILLION DOLLARS AT CONSTANT PRICES - - - - -											
CROPS		105.7	111.9	112.3	112.0	121.5	121.1	124.4	133.9	141.0	129.8	132.1
LIVESTOCK		1.7	1.7	1.7	1.7	1.7	1.7	1.7	1.7	1.7	1.7	1.7
TOTAL AGRICULTURE		107.4	113.6	114.0	113.7	123.2	122.8	126.1	135.6	142.7	131.5	133.8
TOTAL FOOD		106.2	111.8	112.2	111.9	118.4	116.8	120.4	129.9	138.5	127.0	129.0
INDICES OF PRODUCTION		(1961-65 = 100)										
CROPS		100	106	106	106	115	115	118	127	133	123	125
TOTAL AGRICULTURE		100	106	106	106	115	114	117	126	133	122	125
TOTAL FOOD		100	105	106	105	111	110	113	122	130	120	121
PER CAPITA AGRICULTURE		100	96	94	91	96	93	93	97	99	89	88
PER CAPITA FOOD		100	95	93	90	93	89	90	94	97	87	86
INDEX OF POPULATION		1961-65 POPULATION = 2,264,000										
1961-65 POPULATION =	2,264,000	100.0	110.4	113.4	116.5	119.7	123.0	126.5	130.0	133.8	137.5	141.2

TABLE 9.--BURUNDI

PRODUCTION BY COMMODITY, VALUE AND INDICES OF TOTAL AGRICULTURAL AND FOOD PRODUCTION, AVERAGE 1961-65, ANNUAL 1967-76

COMMODITY	PRICE	AVERAGE	1967	1968	1969	1970	1971	1972	1973	1974	1975	1976
	WEIGHT	1961-65										
	DOLLARS		-1,000 METRIC TONS-									
WHEAT	90	7	8	10	4	13	5	3	6	7	7	7
RICE, PADDY	100	3	1	5	3	12	8	3	5	5	5	5
CORN	50	98	116	120	237	182	247	250	184	225	250	250
MILLET	35	19	21	23	21	34	22	35	40	55	75	43
SORGHUM	35	99	121	123	51	96	53	107	100	100	94	94
BEANS, DRY	100	118	123	121	152	156	158	150	156	95	150	150
DRY PEAS	100	34	37	36	43	44	45	45	46	26	45	45
POTATOES	33	72	95	99	41	70	80	75	80	60	80	80
CASSAVA	25	854	932	930	935	950	965	960	980	935	975	975
SWEETPOTATOES	38	615	757	758	755	760	765	760	775	600	750	750
COTTON	400	3	3	3	3	3	3	2	1	2	2	2
COTTONSEED	40	5	8	7	6	6	6	3	2	5	5	5
PEANUTS, IN SHELL	116	2	7	7	7	22	21	22	22	7	15	13
PLANTAINS	46	1,141	1,310	1,320	1,350	1,400	1,450	1,450	1,450	1,150	1,475	1,450
COFFEE	475	15	19	17	15	22	24	21	21	27	17	21
MEATS	370	11	13	13	14	15	16	16	16	16	16	16
MILK	100	13	15	15	16	16	16	16	16	13	15	15
AGGREGATES OF PRODUCTION			-MILLION DOLLARS AT CONSTANT PRICES-									
CROPS		133.4	154.3	154.7	159.5	170.0	174.4	173.5	171.7	145.6	173.2	173.2
LIVESTOCK		5.4	6.3	6.3	6.8	7.2	7.5	7.5	7.5	7.2	7.4	7.4
TOTAL AGRICULTURE		138.8	160.6	161.0	166.3	177.2	181.9	181.0	179.2	152.8	180.6	180.5
TOTAL FOOD		130.8	150.4	151.7	158.0	165.5	169.3	170.2	168.8	139.2	171.7	169.8
INDICES OF PRODUCTION			(1961-65 = 100)									
CROPS		100	116	116	120	127	131	130	129	109	130	130
TOTAL AGRICULTURE		100	116	116	120	128	131	130	129	110	130	130
TOTAL FOOD		100	115	116	121	127	129	130	129	108	131	130
PER CAPITA AGRICULTURE		100	109	109	111	117	119	118	115	96	111	108
PER CAPITA FOOD		100	108	108	112	116	118	118	115	93	112	108
INDEX OF POPULATION												
1961-65 POPULATION=	3,089,000	100.0	106.0	106.9	107.8	108.7	109.7	110.6	112.3	114.8	117.4	117.9

TABLE 10.--CAMEROON

PRODUCTION BY COMMODITY, VALUE AND INDICES OF TOTAL AGRICULTURAL AND FOOD PRODUCTION, AVERAGE 1961-65, ANNUAL 1967-76

COMMODITY	PRICE	AVERAGE	1967	1968	1969	1970	1971	1972	1973	1974	1975	1975
	WEIGHT	1961-65										
	DOLLARS		-1,000 METRIC TONS-									
RICE, PADDY	109	10	22	16	18	14	14	11	8	14	12	12
CORN	85	278	455	457	319	263	355	319	300	340	350	350
MILLET	96	413	388	350	376	312	331	339	321	350	386	390
CASSAVA	23	798	847	855	870	890	910	930	950	970	990	1,010
SWEETPOTATOES AND YAMS	52	218	240	255	260	265	270	275	280	285	290	295
COCOYAMS	47	655	690	700	715	730	745	760	775	790	805	820
TOBACCO	582	2	4	4	4	6	6	6	6	6	6	6
COTTON	350	15	17	22	24	13	15	15	11	15	19	19
COTTONSEED	35	31	35	44	62	26	29	31	22	31	38	38
PEANUTS, IN SHELL	84	109	198	208	188	190	209	150	85	165	165	165
SESAME SEED	110	3	3	4	4	4	4	4	4	4	4	4
BANANAS AND PLANTAINS	46	684	650	650	665	680	695	710	725	740	755	770
COFFEE	564	54	66	66	72	69	75	95	76	102	80	95
COCOA BEANS	202	81	92	104	108	112	124	107	110	118	96	90
RUBBER	424	9	12	8	10	12	14	13	16	16	15	15
PALM OIL	277	32	35	46	52	54	56	58	60	60	60	60
PALM KERNELS	58	34	38	51	42	56	58	57	60	60	60	60
MEATS	420	40	44	46	47	48	49	50	50	51	52	53
-----MILLION DOLLARS AT CONSTANT PRICES-----												
AGGREGATES OF PRODUCTION												
CROPS		235.5	271.8	276.6	275.4	264.0	285.3	287.9	271.2	308.6	295.4	305.0
LIVESTOCK		16.7	18.5	19.3	19.7	20.2	20.6	21.0	21.0	21.4	21.8	22.3
TOTAL AGRICULTURE		252.2	290.3	295.9	295.1	284.2	305.9	308.9	292.2	330.0	317.2	327.3
TOTAL FOOD		211.0	239.7	245.3	239.6	232.1	248.9	241.0	235.1	252.9	255.5	257.1
INDICES OF PRODUCTION							(1961-65 = 100)					
CROPS		100	115	117	117	112	121	122	115	131	125	130
TOTAL AGRICULTURE		100	115	117	117	113	121	122	116	131	126	130
TOTAL FOOD		100	114	116	114	110	118	114	111	120	121	122
PER CAPITA AGRICULTURE		100	107	107	105	100	105	104	97	107	101	103
PER CAPITA FOOD		100	106	106	102	97	102	97	93	98	98	96
INDEX OF POPULATION												
1961-65 POPULATION= 5,154,000		100.0	107.5	109.3	111.3	113.2	115.3	117.4	119.5	121.9	124.1	126.6

TABLE 11.--EGYPT

PRODUCTION BY COMMODITY, VALUE AND INDICES OF TOTAL AGRICULTURAL AND FOOD PRODUCTION, AVERAGE 1961-65, ANNUAL 1967-76

COMMODITY	PRICE	AVERAGE	1967	1968	1969	1970	1971	1972	1973	1974	1975	1976
	WEIGHT	1961-65										
DOLLARS			-1,000 METRIC TONS-									
WHEAT	69	1,459	1,299	1,526	1,277	1,519	1,732	1,618	1,938	1,884	2,034	1,970
RICE, PADDY	54	1,845	2,279	2,586	2,556	2,604	2,681	2,507	2,274	2,242	2,423	2,530
CORN	58	1,913	2,167	2,300	2,368	2,397	2,342	2,421	2,508	2,641	2,782	2,710
BARLEY	65	137	114	126	117	84	76	109	97	89	118	122
SORGHUM	61	723	881	906	813	874	854	831	853	824	775	800
BROAD BEANS	132	292	188	238	297	277	256	361	273	234	234	264
LENTILS	148	50	34	35	23	33	50	54	62	51	39	40
POTATOES	32	397	278	472	487	548	451	595	796	709	720	923
SWEETPOTATOES	19	84	68	77	91	85	84	86	60	75	75	80
ONIONS	31	613	587	444	567	437	571	519	539	550	585	620
SUGARCANE	5	4,755	5,257	6,083	6,878	6,945	7,498	7,713	7,276	7,018	7,902	8,000
COTTON	776	452	436	437	541	509	510	514	493	441	382	412
COTTONSEED	50	860	758	758	921	884	886	893	851	819	652	704
FLAXSEED	177	12	9	15	17	10	10	13	17	23	24	25
PEANUTS, IN SHELL	157	48	32	36	43	38	33	31	28	25	28	36
SESAME SEED	209	19	7	10	16	20	21	24	21	14	17	20
CABBAGE	17	243	204	253	258	279	275	278	283	299	321	335
TOMATOES	35	1,069	1,230	1,496	1,547	1,553	1,637	1,668	1,577	1,729	2,107	2,230
ORANGES	120	289	530	494	625	567	707	684	769	819	856	905
TANGERINES	100	53	83	67	92	72	101	83	89	90	97	110
LEMONS	85	62	83	58	63	64	70	74	83	51	59	60
APPLES	119	5	7	18	20	32	35	36	37	35	33	33
PEARS	82	12	18	13	13	23	15	23	21	20	21	22
BANANAS	80	59	66	86	91	82	95	108	101	110	112	115
GRAPES	60	105	117	111	104	100	121	142	149	221	225	242
OLIVES	230	10	8	7	6	4	6	6	6	6	6	6
DATES	190	407	319	264	355	294	340	396	397	396	405	410
MEATS	374	313	300	302	305	320	330	335	345	360	400	430
MILK	98	1,573	1,600	1,605	1,610	1,603	1,651	1,688	1,721	1,759	1,790	1,845
WOOL, GREASY BASIS	618	4	3	3	3	3	3	3	3	3	3	3
AGGREGATES OF PRODUCTION	-----MILLION DOLLARS AT CONSTANT PRICES-----											
CROPS	1,053.3	1,070.8	1,122.8	1,245.4	1,217.8	1,270.0	1,291.5	1,290.2	1,250.8	1,250.3	1,303.5	
LIVESTOCK	273.8	270.9	272.1	273.8	278.7	287.1	292.6	299.6	308.9	326.9	343.5	
TOTAL AGRICULTURE	1,327.1	1,341.7	1,394.9	1,519.2	1,496.5	1,557.1	1,584.1	1,589.8	1,559.7	1,577.2	1,647.0	
TOTAL FOOD	971.6	999.9	1,051.2	1,094.5	1,097.8	1,157.6	1,181.0	1,202.3	1,211.5	1,274.7	1,321.0	
INDICES OF PRODUCTION	(1961-65 = 100)											
CROPS	100	102	107	118	116	121	123	122	119	119	124	
TOTAL AGRICULTURE	100	101	105	114	113	117	119	120	118	119	124	
TOTAL FOOD	100	103	108	113	113	119	122	124	125	131	136	
PER CAPITA AGRICULTURE	100	91	93	99	95	96	96	94	90	89	91	
PER CAPITA FOOD	100	93	95	97	95	98	98	97	96	99	100	
INDEX OF POPULATION	1961-65 POPULATION= 27,966,000											
1961-65 POPULATION= 27,966,000	100.0	110.5	113.3	116.2	119.2	121.8	124.6	127.4	130.2	133.1	136.1	

-11-

TABLE 12.--ETHIOPIA

PRODUCTION BY COMMODITY, VALUE AND INDICES OF TOTAL AGRICULTURAL AND FOOD PRODUCTION, AVERAGE 1961-65, ANNUAL 1967-76

COMMODITY	PRICE	AVERAGE										
	WEIGHT	1961-65	1967	1968	1969	1970	1971	1972	1973	1974	1975	1976
	DOLLARS	-1,000 METRIC TONS-										
WHEAT	79	663	760	782	808	840	876	782	532	625	640	620
CORN	43	763	853	880	909	939	971	440	798	955	1,000	1,000
BARLEY	48	1,430	1,430	1,463	1,496	1,530	1,565	1,601	1,500	1,400	1,500	1,500
MILLET	50	144	151	152	154	155	157	145	140	150	130	130
SORGHUM	50	849	989	1,323	1,343	1,067	1,102	595	651	669	1,100	1,100
OTHER GRAINS	80	1,225	1,304	1,323	1,343	1,362	1,380	1,350	1,300	1,350	1,300	1,300
BEANS, DRY	53	62	65	65	65	65	65	65	60	65	55	60
BROAD BEANS	53	103	120	115	120	115	115	115	110	115	105	110
LENTILS	56	93	95	100	107	111	115	120	100	110	100	100
CHICKPEAS	53	163	174	170	170	175	175	175	150	170	150	160
DRY PEAS	53	113	120	120	120	120	120	120	110	115	110	115
POTATOES	64	132	148	152	161	165	165	165	155	160	155	155
SWEETPOTATOES	42	35	40	40	50	50	50	50	50	50	45	50
COTTON	550	4	10	12	14	16	17	21	26	25	24	24
COTTONSEED	55	9	20	24	30	33	33	41	52	50	48	48
FLAXSEED	178	51	60	60	62	64	70	65	60	72	55	60
PEANUTS, IN SHELL	110	16	19	20	20	23	24	25	20	26	20	25
SESAME SEED	119	31	51	60	69	81	93	115	125	100	120	120
SUNFLOWER SEED	80	27	34	38	40	40	35	35	35	35	30	35
CASTOR BEANS	108	10	11	11	12	13	13	13	12	13	10	10
BANANAS	60	40	44	50	50	50	50	50	50	50	40	40
COFFEE	446	72	83	85	83	87	89	85	60	80	83	83
SUGAR, RAW	133	55	74	67	77	122	130	144	150	160	150	155
MEATS	450	487	520	530	540	550	560	565	565	568	400	450
MILK	91	1,946	2,100	2,150	2,160	2,160	2,170	2,175	2,150	2,160	1,900	1,950

AGGREGATES OF PRODUCTION

	MILLION DOLLARS AT CONSTANT PRICES										
CROPS	396.6	446.7	472.4	485.3	490.3	504.5	452.7	430.7	457.6	475.1	477.6
LIVESTOCK	396.3	425.1	434.2	439.6	444.1	449.5	452.2	450.0	452.2	352.9	360.0
TOTAL AGRICULTURE	792.9	871.8	906.6	924.9	934.4	954.0	904.9	880.7	909.8	828.0	857.6
TOTAL FOOD	748.4	817.4	850.2	867.9	874.0	891.0	842.4	827.6	846.1	766.9	795.6

INDICES OF PRODUCTION

	(1961-65 = 100)										
CROPS	100	113	119	122	124	127	114	109	115	120	120
TOTAL AGRICULTURE	100	110	114	117	118	120	114	111	115	104	108
TOTAL FOOD	100	109	114	116	117	119	113	111	113	102	106
PER CAPITA AGRICULTURE	100	101	103	102	101	100	93	88	89	79	79
PER CAPITA FOOD	100	101	102	102	100	99	92	88	87	77	78

INDEX OF POPULATION

1961-65 POPULATION= 21,065,000	100.0	108.6	111.3	114.0	116.9	119.9	122.9	126.0	129.3	132.7	136.1
--------------------------------	-------	-------	-------	-------	-------	-------	-------	-------	-------	-------	-------

TABLE 13.--GHANA

PRODUCTION BY COMMODITY, VALUE AND INDICES OF TOTAL AGRICULTURAL AND FOOD PRODUCTION, AVERAGE 1961-65, ANNUAL 1967-76

COMMODITY	PRICE	AVERAGE	1967	1968	1969	1970	1971	1972	1973	1974	1975	1976
	WEIGHT	1961-65										
	DOLLARS	-1,000 METRIC TONS-										
RICE, PADDY	149	36	52	65	67	80	67	72	75	79	78	83
CORN	87	202	343	301	304	442	384	389	438	486	475	485
MILLET	130	58	93	73	88	93	122	98	109	154	125	125
SORGHUM	131	104	98	83	83	90	173	151	167	176	148	179
PULSES	165	43	48	45	46	46	47	49	49	50	52	54
CASSAVA	37	1,020	1,176	914	940	940	965	995	1,020	1,050	1,080	1,110
YAMS	73	1,600	1,814	1,800	1,850	1,459	1,486	1,514	1,534	1,575	1,625	1,675
COCUYAMS	46	846	897	977	965	1,099	1,208	944	1,685	1,510	1,099	1,317
TOBACCO	360	2	1	1	1	1	1	1	3	3	2	2
COTTON	309	0	0	0	0	0	0	1	1	1	3	5
COTTONSEED	60	0	0	0	0	0	0	2	2	2	6	10
PEANUTS, IN SHELL	90	44	34	53	54	52	71	77	86	90	93	85
CITRUS FRUIT	111	39	42	43	44	44	45	46	47	48	49	50
BANANAS	51	225	252	250	255	254	260	270	280	290	300	310
PLANTAINS	22	1,873	2,092	2,050	2,100	2,134	2,195	1,658	2,060	2,023	1,245	1,533
COFFEE	243	3	6	5	6	4	5	5	3	3	4	4
COCOA BEANS	221	454	422	339	414	392	464	420	353	375	397	320
SHEA NUTS	30	29	35	30	30	25	26	27	27	28	29	30
KOLA NUTS	150	43	48	49	49	49	50	52	53	55	57	58
PALM OIL	240	27	56	54	55	56	58	61	61	65	65	65
PALM KERNELS	81	15	35	34	34	37	37	32	32	33	34	32
MEATS	430	57	65	67	66	66	68	70	68	68	70	71
AGGREGATES OF PRODUCTION	-MILLION DOLLARS AT CONSTANT PRICES-											
CROPS		423.7	473.9	441.9	467.3	455.9	491.9	458.7	499.4	514.1	481.5	492.4
LIVESTOCK		24.5	28.0	28.8	28.4	28.4	29.2	30.1	29.2	29.2	30.1	30.5
TOTAL AGRICULTURE		448.2	501.9	470.7	495.7	484.3	521.1	488.8	528.6	543.3	511.6	522.9
TOTAL FOOD		446.8	500.0	469.1	493.8	482.9	519.5	486.8	526.4	541.1	508.6	519.1
INDICES OF PRODUCTION	(1961-65 = 100)											
CROPS		100	112	104	110	108	116	108	118	121	114	116
TOTAL AGRICULTURE		100	112	105	111	108	116	109	118	121	114	117
TOTAL FOOD		100	112	105	111	108	116	109	118	121	114	116
PER CAPITA AGRICULTURE		100	101	92	95	90	94	86	91	91	83	83
PER CAPITA FOOD		100	101	92	95	90	94	86	91	91	83	83
INDEX OF POPULATION												
1961-65 POPULATION=	7,199,000	100.0	110.7	113.7	116.8	120.0	123.2	126.6	130.0	133.5	137.1	140.8

TABLE 14.--GUINEA

PRODUCTION BY COMMODITY, VALUE AND INDICES OF TOTAL AGRICULTURAL AND FOOD PRODUCTION, AVERAGE 1961-65, ANNUAL 1967-76

COMMODITY	PRICE	AVERAGE	1967	1968	1969	1970	1971	1972	1973	1974	1975	1976
	WEIGHT	1961-65										
	DOLLARS		----- -1,000 METRIC TONS-----									
RICE, PADDY	74	278	350	375	368	350	375	375	385	386	400	401
CORN	48	137	140	150	160	165	170	174	174	178	182	188
MILLET	60	62	70	70	70	72	74	76	76	78	80	80
CASSAVA	20	411	420	450	470	480	495	505	520	530	540	550
SWEETPOTATOES	30	84	87	89	90	92	95	97	100	102	104	106
PEANUTS, IN SHELL	65	19	17	19	25	25	25	25	26	27	27	27
BANANAS	44	80	50	75	80	85	88	90	93	95	97	99
PINEAPPLES	145	11	12	12	13	13	13	13	13	13	13	13
COFFEE	364	11	10	11	12	9	6	8	6	6	5	5
PALM OIL	230	11	14	15	16	15	16	16	16	16	16	17
PALM KERNELS	70	22	24	33	35	35	35	35	35	35	35	35
MEATS	480	14	15	16	16	17	18	18	18	18	18	18
AGGREGATES OF PRODUCTION			----- -MILLION DOLLARS AT CONSTANT PRICES-----									
CROPS		56.2	61.3	66.9	68.8	67.0	69.0	70.4	71.0	71.8	73.0	74.0
LIVESTOCK		6.5	7.2	7.7	7.7	8.2	8.6	8.6	8.6	8.6	8.6	8.6
TOTAL AGRICULTURE		62.7	68.5	74.6	76.5	75.2	77.6	79.0	79.6	80.4	81.6	82.5
TOTAL FOOD		58.7	64.9	70.6	72.1	71.9	75.4	76.1	77.4	78.2	79.8	80.8
INDICES OF PRODUCTION			(1961-65 = 100)									
CROPS		100	109	119	122	119	123	125	126	128	130	132
TOTAL AGRICULTURE		100	109	119	122	120	124	126	127	128	130	132
TOTAL FOOD		100	111	120	123	122	128	130	132	133	136	138
PER CAPITA AGRICULTURE		100	102	109	110	106	107	106	105	104	103	102
PER CAPITA FOOD		100	103	110	110	108	111	109	109	108	107	106
INDEX OF POPULATION												
1961-65 POPULATION= 3,457,000		100.0	107.1	109.1	111.3	113.5	115.9	118.4	121.0	123.8	126.7	129.5

TABLE 15.--IVORY COAST

PRODUCTION BY COMMODITY, VALUE AND INDICES OF TOTAL AGRICULTURAL AND FOOD PRODUCTION, AVERAGE 1961-65, ANNUAL 1967-76

COMMODITY	PRICE	AVERAGE										
	WEIGHT	1961-65	1967	1968	1969	1970	1971	1972	1973	1974	1975	1976
	DOLLARS	-1,000 METRIC TONS-										
RICE, PADDY	70	219	347	365	303	316	385	320	335	406	452	540
CORN	61	158	224	212	260	231	280	226	232	240	250	270
MILLET	69	37	37	35	33	30	29	30	29	35	36	36
SORGHUM	69	10	12	12	14	13	16	15	16	16	14	15
BAMBARRA GROUNDNUTS	65	6	6	6	7	7	7	7	7	7	7	7
CASSAVA	32	488	520	530	532	540	567	585	625	625	1,260	1,109
SWEET POTATOES	44	16	21	21	21	21	21	21	23	24	25	25
YAMS	51	1,239	1,350	1,388	1,520	1,551	1,555	1,520	1,624	1,780	2,100	2,200
COCOYAMS	45	152	162	162	176	182	189	195	200	206	282	215
TOBACCO	360	2	3	2	3	3	3	3	3	3	3	3
COTTON	450	3	13	17	12	11	20	21	22	23	26	24
COTTONSEED	45	5	22	28	22	22	27	31	33	34	35	48
PEANUTS, IN SHELL	89	25	30	32	42	36	40	40	44	46	45	45
BANANAS	65	133	187	172	172	178	188	212	177	212	200	170
PLANTAINS	42	624	621	625	638	650	670	690	720	720	1,146	1,150
PINEAPPLES	29	28	83	89	90	111	139	203	243	260	205	215
COFFEE	328	207	270	204	276	240	268	303	197	270	305	312
COCOA BEANS	271	109	147	143	180	176	222	179	206	242	231	240
SHEA NUTS	30	2	2	2	3	3	3	3	3	3	3	3
RUBBER	474	1	6	7	7	11	12	13	15	17	18	19
KOLA NUTS	149	32	40	60	60	60	60	40	45	59	60	60
SUGAR, RAW	100	0	0	0	0	0	0	0	0	5	22	42
PALM OIL	344	25	30	31	38	52	55	81	93	145	165	175
COPRA	102	1	6	7	8	9	11	12	12	17	19	21
PALM KERNELS	80	15	23	22	23	25	13	21	25	36	33	33
AGGREGATES OF PRODUCTION		-MILLION DOLLARS AT CONSTANT PRICES-										
CROPS		267.6	336.9	321.9	363.4	359.0	397.5	401.0	388.7	463.0	541.1	555.3
LIVESTOCK		0.0	0.0	0.0	0.0	0.0	0.0	0.0	0.0	0.0	0.0	0.0
TOTAL AGRICULTURE		267.6	336.9	321.9	363.4	359.0	397.5	401.0	388.7	463.0	541.1	555.3
TOTAL FOOD		197.2	238.5	243.3	263.1	269.0	293.8	284.8	306.0	354.8	419.8	432.1
INDICES OF PRODUCTION		(1961-65 = 100)										
CROPS		100	126	120	136	134	149	150	145	173	202	208
TOTAL AGRICULTURE		100	126	120	136	134	149	150	145	173	202	208
TOTAL FOOD		100	121	123	133	136	149	144	155	180	213	219
PER CAPITA AGRICULTURE		100	110	101	110	105	113	110	103	118	133	132
PER CAPITA FOOD		100	105	104	108	107	113	106	110	123	140	139
INDEX OF POPULATION		1961-65 POPULATION= 4,417,000										
1961-65 POPULATION=		100.0	114.8	118.8	123.0	127.3	131.9	136.5	141.4	146.5	151.8	157.2

TABLE 16.--KENYA

PRODUCTION BY COMMODITY, VALUE AND INDICES OF TOTAL AGRICULTURAL AND FOOD PRODUCTION, AVERAGE 1961-65, ANNUAL 1967-76

COMMODITY	PRICE	AVERAGE	1967	1968	1969	1970	1971	1972	1973	1974	1975	1976
	WEIGHT	1961-65										
	DOLLARS		-1,000 METRIC TONS-									
WHEAT	73	122	162	216	242	222	206	164	150	149	158	175
RICE, PADDY	63	14	16	19	23	29	32	30	36	33	32	37
CORN	49	1,521	1,633	1,600	1,400	1,500	1,300	1,700	1,600	1,600	1,900	1,600
BARLEY	62	15	7	8	11	16	18	25	31	34	32	34
OATS	68	11	9	9	9	10	10	7	6	5	5	4
MILLET	62	327	380	350	325	350	350	350	320	360	360	320
BEANS, DRY	60	31	32	33	25	30	35	42	34	29	41	15
POTATOES	51	193	195	195	200	210	200	288	304	320	336	400
COTTON	500	3	4	4	4	6	6	6	5	5	5	5
COTTONSEED	50	6	8	8	8	12	12	12	10	10	10	10
PEANUTS, IN SHELL	85	5	11	13	15	13	3	4	1	2	1	1
SESAME SEED	130	2	3	3	3	1	1	1	2	1	1	1
SUNFLOWER SEED	42	2	4	3	4	2	3	3	2	4	4	2
CASTOR BEANS	65	5	4	3	4	3	2	1	1	1	2	1
PYRETHRUM FLOWERS, DRIED	600	9	10	11	7	6	10	14	11	14	15	14
VEGETABLES	84	152	170	175	180	180	250	365	384	404	425	420
CASHEWS, IN SHELL	94	6	12	12	18	14	15	21	10	21	19	23
PINEAPPLES	74	17	30	35	35	35	44	37	48	44	83	113
COFFEE	915	41	39	48	54	60	60	62	71	70	66	80
TEA	1,082	17	23	30	36	41	36	53	57	53	57	62
SISAL	228	65	52	49	50	44	45	41	58	86	44	34
SUGAR, RAW	146	39	64	103	125	133	127	108	158	175	171	173
MEATS	353	178	210	175	175	177	178	179	180	182	184	190
MILK	69	316	366	372	370	375	380	400	400	375	355	340
HIDES AND SKINS	750	24	24	22	22	22	22	23	25	24	25	28
AGGREGATES OF PRODUCTION			-MILLION DOLLARS AT CONSTANT PRICES-									
CROPS		207.9	238.8	261.9	267.2	283.8	275.1	325.3	341.3	351.9	364.0	368.2
LIVESTOCK		102.3	117.4	104.0	103.8	104.9	105.5	108.1	109.9	108.1	108.3	111.6
TOTAL AGRICULTURE		310.2	356.2	365.9	371.0	388.7	380.6	433.4	451.2	460.0	472.3	479.8
TOTAL FOOD		213.8	257.4	253.0	248.2	256.1	250.8	281.3	283.3	290.0	309.8	299.7
INDICES OF PRODUCTION			(1961-65 = 100)									
CROPS		100	115	126	129	137	132	156	164	169	175	177
TOTAL AGRICULTURE		100	115	118	120	125	123	140	145	148	152	155
TOTAL FOOD		100	120	118	116	120	117	132	133	136	145	140
PER CAPITA AGRICULTURE		100	102	101	99	101	96	105	106	105	104	102
PER CAPITA FOOD		100	107	102	97	96	91	99	97	96	99	93
INDEX OF POPULATION			1961-65 POPULATION= 9,203,000									
1961-65 POPULATION=	9,203,000	100.0	112.9	116.5	120.2	124.2	128.3	132.5	136.9	141.4	146.1	150.9

-18-

TABLE 17.--LIBERIA

PRODUCTION BY COMMODITY, VALUE AND INDICES OF TOTAL AGRICULTURAL AND FOOD PRODUCTION, AVERAGE 1961-65, ANNUAL 1967-76

COMMODITY	PRICE	AVERAGE	1967	1968	1969	1970	1971	1972	1973	1974	1975	1976
	WEIGHT	1961-65										
DOLLARS		-1,000 METRIC TONS-										
RICE, PADDY	95	162	125	125	133	138	150	152	185	248	228	249
CORN	40	11	11	10	11	11	11	11	11	11	11	11
CASSAVA	34	229	225	230	233	235	237	244	250	258	265	275
SWEET POTATOES	36	8	8	9	9	9	10	10	10	10	10	10
YAMS	51	6	6	7	7	8	8	8	8	8	8	9
COCUYAMS	32	9	9	9	9	9	9	9	9	9	9	9
PEANUTS, IN SHELL	85	2	2	2	2	2	2	2	2	2	2	2
BANANAS	55	55	57	58	59	60	62	64	65	65	67	69
PLANTAINS	38	22	22	23	23	24	25	26	28	28	29	30
PINEAPPLES	48	5	5	6	6	7	7	7	7	7	7	7
COFFEE	240	3	3	4	4	5	4	5	4	4	4	5
COCOA BEANS	290	1	2	2	2	2	3	2	3	3	3	3
RUBBER	471	44	62	64	67	83	74	83	84	88	82	77
PALM OIL	220	12	17	12	14	14	15	17	19	22	23	23
PALM KERNELS	87	9	14	14	15	15	15	15	15	15	14	14
MEATS	480	2	2	3	3	3	3	4	4	4	4	4
AGGREGATES OF PRODUCTION		-MILLION DOLLARS AT CONSTANT PRICES-										
CROPS		52.8	59.9	60.5	63.4	71.7	69.3	74.3	78.8	87.1	83.0	83.3
LIVESTOCK		1.2	1.0	1.4	1.4	1.4	1.4	1.9	1.9	1.9	1.9	1.9
TOTAL AGRICULTURE		54.0	60.9	61.9	64.8	73.1	70.7	76.2	80.7	89.0	84.9	85.2
TOTAL FOOD		32.8	31.0	30.8	32.2	32.8	34.8	35.9	40.1	46.6	45.3	47.7
INDICES OF PRODUCTION		(1961-65 = 100)										
CROPS		100	113	115	120	136	131	141	149	165	157	158
TOTAL AGRICULTURE		100	113	115	120	135	131	141	149	165	157	158
TOTAL FOOD		100	95	94	98	100	106	109	122	142	138	145
PER CAPITA AGRICULTURE		100	101	99	101	111	104	108	111	119	110	107
PER CAPITA FOOD		100	84	81	83	82	84	84	91	103	97	99
INDEX OF POPULATION												
1961-65 POPULATION=	1,096,000	100.0	111.9	115.2	118.8	122.4	126.3	130.3	134.4	138.6	143.0	147.4

-61-

TABLE 18.--LIBYA

PRODUCTION BY COMMODITY, VALUE AND INDICES OF TOTAL AGRICULTURAL AND FOOD PRODUCTION, AVERAGE 1961-65, ANNUAL 1967-76

COMMODITY	PRICE	AVERAGE	1967	1968	1969	1970	1971	1972	1973	1974	1975	1976
	WEIGHT	1961-65										
	DOLLARS		-1,000 METRIC TONS-									
WHEAT	90	37	62	52	78	21	18	42	67	70	80	80
BARLEY	74	87	110	98	124	53	32	116	205	112	100	100
POTATOES	56	13	10	12	12	10	23	49	78	60	80	85
ONIONS	69	5	10	12	12	24	18	28	39	40	40	45
TOBACCO	582	1	2	2	2	2	1	1	1	1	1	1
PEANUTS, IN-SHELL	185	9	13	13	10	11	11	14	11	13	14	13
TOMATOES	21	58	101	110	130	136	131	170	176	180	180	185
ORANGES AND TANGERINES	69	17	22	21	18	18	23	25	18	26	25	23
GRAPES	126	7	4	6	6	6	7	8	11	11	12	11
DATES	146	44	55	50	55	49	66	60	62	62	65	65
OLIVE OIL	500	13	15	28	6	13	1	20	26	20	25	19
MEATS	556	20	30	38	39	40	44	47	30	53	58	60
AGGREGATES OF PRODUCTION												
			-MILLION DOLLARS AT CONSTANT PRICES-									
CROPS		40.3	54.9	64.0	58.2	52.1	49.0	71.4	76.0	80.5	86.3	84.8
LIVESTOCK		0.0	0.0	0.0	0.0	0.0	0.0	0.0	0.0	0.0	0.0	0.0
TOTAL AGRICULTURE		40.3	54.9	64.0	58.2	52.1	49.0	71.4	76.0	80.5	86.3	84.8
TOTAL FOOD		39.6	53.7	62.8	57.0	50.9	48.4	70.8	75.4	79.9	85.7	84.2
INDICES OF PRODUCTION (1961-65 = 100)												
CROPS		100	136	159	144	129	122	177	189	200	214	210
TOTAL AGRICULTURE		100	136	159	144	129	122	177	189	200	214	210
TOTAL FOOD		100	136	159	144	129	122	179	190	202	216	213
PER CAPITA AGRICULTURE		100	117	131	114	98	88	124	126	128	132	124
PER CAPITA FOOD		100	116	131	114	98	89	125	127	129	133	126
INDEX OF POPULATION												
1961-65 POPULATION= 1,505,000		100.0	116.4	121.3	126.4	131.8	137.5	143.5	149.5	155.9	162.4	169.2

TABLE 19.--MADAGASCAR

PRODUCTION BY COMMODITY, VALUE AND INDICES OF TOTAL AGRICULTURAL AND FOOD PRODUCTION, AVERAGE 1961-65, ANNUAL 1967-76

COMMODITY	PRICE	AVERAGE										
	WEIGHT	1961-65	1967	1968	1969	1970	1971	1972	1973	1974	1975	1976
	DOLLARS	-1,000 METRIC TONS-										
RICE, PADDY	56	1,529	1,830	1,572	1,859	1,869	1,872	1,795	1,729	1,852	1,936	1,845
CORN	40	112	145	140	142	105	113	108	107	119	112	120
BEANS, DRY	60	24	34	34	35	35	55	61	56	59	62	60
POTATOES	35	68	100	99	97	94	125	124	125	125	125	125
CASSAVA	17	838	1,042	1,140	1,253	1,218	1,213	1,233	1,175	1,378	1,400	1,400
SWEETPOTATOES	32	287	357	363	366	350	328	345	300	350	350	350
TOBACCO	515	5	5	4	5	5	6	5	6	6	6	5
COTTON	450	2	3	3	5	5	8	9	12	12	13	14
COTTONSEED	45	3	6	6	10	10	14	14	18	24	27	29
PEANUTS, IN SHELL	80	32	42	39	44	41	41	49	38	38	37	39
BEANS, LIMA	66	19	12	15	21	22	20	27	20	26	37	30
BANANAS	42	139	170	180	257	262	256	276	283	375	363	385
CLOVES	575	5	6	13	1	13	6	7	4	17	9	12
PEPPER	525	1	2	3	3	2	3	3	3	3	3	3
VANILLA	550	1	1	1	1	1	2	2	1	1	2	1
COFFEE	446	55	66	54	50	67	58	60	60	75	72	78
SISAL	195	24	24	25	30	26	25	28	31	30	31	30
SUGAR, RAW	120	96	106	104	100	104	93	104	99	112	114	119
CLOVE OIL	300	1	1	1	1	1	1	1	1	1	1	1
TUNG OIL	250	2	2	2	2	2	1	1	1	1	1	1
MEATS	350	164	180	190	200	210	220	230	210	200	220	230
MILK	65	30	35	35	35	35	40	40	40	40	42	40
AGGREGATES OF PRODUCTION		-MILLION DOLLARS AT CONSTANT PRICES-										
CROPS		175.8	211.3	214.4	213.2	224.9	219.7	221.5	213.9	246.6	248.1	247.6
LIVESTOCK		59.3	65.3	68.8	72.3	75.8	79.6	83.1	76.1	72.6	79.7	83.1
TOTAL AGRICULTURE		235.1	276.6	283.2	285.5	300.7	299.3	304.6	290.0	319.2	327.8	330.7
TOTAL FOOD		197.9	232.5	240.2	248.8	250.8	255.0	258.3	243.6	258.7	272.2	270.9
INDICES OF PRODUCTION		(1961-65 = 100)										
CROPS		100	120	122	121	128	125	126	122	140	141	141
TOTAL AGRICULTURE		100	118	120	121	128	127	130	123	136	139	141
TOTAL FOOD		100	117	121	126	127	129	131	123	131	138	137
PER CAPITA AGRICULTURE		100	108	109	107	110	108	107	100	108	108	107
PER CAPITA FOOD		100	108	109	111	109	109	108	100	104	107	104
INDEX OF POPULATION												
1961-65 POPULATION=	5,826,000	100.0	108.7	111.0	113.4	115.9	118.4	120.9	123.6	126.3	129.0	131.9

TABLE 20.--MALAWI

PRODUCTION BY COMMODITY, VALUE AND INDICES OF TOTAL AGRICULTURAL AND FOOD PRODUCTION, AVERAGE 1961-65, ANNUAL 1967-76

COMMODITY	PRICE	AVERAGE	1967	1968	1969	1970	1971	1972	1973	1974	1975	1976
	WEIGHT	1961-65										
DOLLARS			-1,000 METRIC TONS-									
RICE, PADDY	54	6	5	2	8	9	19	30	18	21	14	14
CORN	26	807	1,270	1,089	1,153	900	1,100	1,338	1,202	1,280	1,000	1,200
CASSAVA	19	142	140	142	143	144	145	147	150	150	150	150
TOBACCO	584	17	16	15	12	23	28	30	31	27	35	38
COTTON	338	5	4	4	6	7	7	7	5	7	7	5
COTTONSEED	31	10	8	8	12	14	15	15	11	15	14	12
PEANUTS, IN SHELL	144	146	245	131	171	155	170	170	165	165	165	165
TEA	812	13	17	16	17	19	18	20	23	24	26	27
TJUNG NUTS	100	4	5	5	3	3	2	2	3	3	4	4
SUGAR, RAW	75	0	16	20	28	33	32	34	54	53	69	70
AGGREGATES OF PRODUCTION			-MILLION DOLLARS AT CONSTANT PRICES-									
CROPS		67.5	97.7	75.4	83.3	83.3	93.4	103.1	102.2	103.6	103.4	110.9
LIVESTOCK		0.0	0.0	0.0	0.0	0.0	0.0	0.0	0.0	0.0	0.0	0.0
TOTAL AGRICULTURE		67.5	97.7	75.4	83.3	83.3	93.4	103.1	102.2	103.6	103.4	110.9
TOTAL FOOD		45.3	72.7	51.7	60.2	51.8	59.8	66.8	63.4	65.6	59.1	64.4
INDICES OF PRODUCTION			(1961-65 = 100)									
CROPS		100	145	112	123	123	138	153	151	153	153	164
TOTAL AGRICULTURE		100	145	112	123	123	138	153	151	153	153	164
TOTAL FOOD		100	160	114	133	114	132	147	140	145	130	142
PER CAPITA AGRICULTURE		100	131	99	107	104	114	122	118	117	114	119
PER CAPITA FOOD		100	145	101	115	96	108	118	109	110	97	103
INDEX OF POPULATION												
1961-65 POPULATION=	3,740,000	100.0	110.4	113.1	115.9	118.7	121.7	124.8	128.1	131.4	134.9	138.4

TABLE 21.--MALI

PRODUCTION BY COMMODITY, VALUE AND INDICES OF TOTAL AGRICULTURAL AND FOOD PRODUCTION, AVERAGE 1961-65, ANNUAL 1967-76

COMMODITY	PRICE	AVERAGE	1967	1968	1969	1970	1971	1972	1973	1974	1975	1976
	WEIGHT	1961-65										
	DOLLARS	-----1,000 METRIC TONS-----										
RICE, PADDY	45	170	172	94	119	138	170	130	100	90	110	130
CORN	40	80	66	107	126	80	80	60	80	60	60	60
MILLET	42	782	857	757	913	775	675	550	550	600	675	700
CASSAVA	27	160	150	150	150	155	150	140	140	140	150	155
SWEETPOTATOES	28	58	61	62	63	64	60	50	50	50	60	61
COTTON	490	7	12	17	18	20	25	24	19	23	37	43
COTTONSEED	40	13	21	28	30	40	50	48	38	46	74	90
PEANUTS, IN SHELL	55	125	119	96	125	158	152	150	100	120	100	123
AGGREGATES OF PRODUCTION	-----MILLION DOLLARS AT CONSTANT PRICES-----											
CROPS		59.8	64.2	59.3	69.9	66.3	65.5	56.4	50.6	54.5	64.9	72.1
LIVESTOCK		0.0	0.0	0.0	0.0	0.0	0.0	0.0	0.0	0.0	0.0	0.0
TOTAL AGRICULTURE		59.8	64.2	59.3	69.9	66.3	65.5	56.4	50.6	54.5	64.9	72.1
TOTAL FOOD		57.1	59.4	52.5	62.7	58.3	55.5	46.8	43.0	45.3	50.1	54.1
INDICES OF PRODUCTION	(1961-65 = 100)											
CROPS		100	107	99	117	111	110	94	85	91	109	121
TOTAL AGRICULTURE		100	107	99	117	111	110	94	85	91	109	121
TOTAL FOOD		100	104	92	110	102	97	82	75	79	88	95
PER CAPITA AGRICULTURE		100	99	89	103	96	93	78	68	72	84	91
PER CAPITA FOOD		100	96	83	97	88	82	68	61	63	68	72
INDEX OF POPULATION												
1951-65 POPULATION=	4,348,000	100.0	108.7	111.0	113.5	116.1	118.3	120.9	123.6	126.3	129.0	131.8

TABLE 22.--MOROCCO

PRODUCTION BY COMMODITY, VALUE AND INDICES OF TOTAL AGRICULTURAL AND FOOD PRODUCTION, AVERAGE 1961-65, ANNUAL 1967-76

COMMODITY	PRICE	AVERAGE										
	WEIGHT	1961-65	1967	1968	1969	1970	1971	1972	1973	1974	1975	1976
	DOLLARS	-1,000 METRIC TONS-										
WHEAT	74	1,336	1,268	2,778	1,594	1,801	2,189	2,390	1,574	1,853	1,575	2,135
RICE, PADDY	103	20	28	41	50	40	3	14	10	12	29	18
CORN	46	352	236	415	450	320	390	368	217	390	371	493
BARLEY	44	1,314	1,320	3,494	2,205	1,953	2,572	2,466	1,255	2,387	1,585	2,761
OATS	46	18	19	21	11	12	15	24	12	20	29	35
SORGHUM	62	74	48	87	41	48	121	59	52	88	75	55
OTHER GRAINS	98	22	17	24	10	48	26	17	13	15	17	34
BEANS, DRY	130	4	5	7	4	3	4	2	2	2	3	2
BROAD BEANS	43	75	97	170	115	190	243	267	189	345	212	230
LENTILS	105	15	15	18	20	20	16	20	11	27	34	41
CHICKPEAS	130	42	66	118	73	137	2	34	79	164	61	51
DRY PEAS	62	34	32	47	41	60	50	62	37	124	99	112
POTATOES	60	193	205	160	300	275	275	280	280	275	275	234
SUGAR BEETS	12	86	367	785	918	1,000	1,584	1,677	1,293	1,950	1,792	2,361
TOBACCO.	588	2	2	1	2	3	3	4	4	4	4	5
COTTON	650	6	5	6	6	6	8	8	9	6	5	4
COTTONSEED	65	13	11	13	12	13	16	16	15	12	12	15
FLAXSEED	140	6	3	5	7	3	3	5	1	3	2	4
SUNFLOWER SEED	103	6	9	4	8	21	12	25	18	14	25	12
TOMATOES	43	232	277	245	276	280	300	350	350	325	325	285
ORANGES AND TANGERINES	52	528	775	720	819	753	821	838	925	820	580	725
LEMONS	42	7	5	5	3	3	8	4	4	3	3	3
GRAPEFRUIT	45	13	15	13	8	5	15	8	10	17	16	17
FIGS, FRESH	148	76	65	65	60	60	65	65	65	65	65	65
ALMONDS, IN SHELL	470	18	24	14	13	13	12	19	13	17	10	15
GRAPES	57	404	238	310	160	203	276	264	282	240	220	225
DATES	210	71	75	100	100	100	75	100	90	95	50	90
OLIVE OIL	532	25	18	50	16	30	55	30	21	30	26	39
MEATS	454	154	174	175	180	175	175	180	175	210	220	235
MILK	96	421	520	525	535	525	535	550	543	521	350	525
WOOL, GREASY BASIS	572	15	14	12	17	16	14	20	23	21	20	21

AGGREGATES OF PRODUCTION	-MILLION DOLLARS AT CONSTANT PRICES-											
CROPS	324.8	324.6	575.3	409.4	431.2	497.7	510.1	379.4	489.6	384.7	510.6	
LIVESTOCK	119.1	136.9	136.8	142.8	139.1	138.9	145.9	144.8	157.3	144.9	169.1	
TOTAL AGRICULTURE	443.9	461.5	712.1	552.2	570.3	636.6	656.0	524.2	646.9	529.6	679.7	
TOTAL FOOD	429.5	448.6	700.0	536.4	555.0	621.2	636.3	502.6	628.2	512.2	661.5	

INDICES OF PRODUCTION	(1961-65 = 100)											
CROPS	100	100	177	126	133	153	157	117	151	118	157	
TOTAL AGRICULTURE	100	104	160	124	128	143	148	118	146	119	153	
TOTAL FOOD	100	104	163	125	129	145	148	117	146	119	154	
PER CAPITA AGRICULTURE	100	94	141	106	107	116	116	90	107	86	107	
PER CAPITA FOOD	100	94	143	107	107	117	116	89	107	85	107	
INDEX OF POPULATION												
1961-65 POPULATION= 12,406,000	100.0	110.6	113.7	117.0	120.3	123.8	127.7	131.5	136.1	139.5	143.7	

TABLE 23.--NIGER

PRODUCTION BY COMMODITY, VALUE AND INDICES OF TOTAL AGRICULTURAL AND FOOD PRODUCTION, AVERAGE 1961-65, ANNUAL 1967-76

COMMODITY	PRICE	AVERAGE	1967	1968	1969	1970	1971	1972	1973	1974	1975	1976
	WEIGHT	1961-65										
DOLLARS			- - - - -1,000 METRIC TONS- - - - -									
RICE, PADDY	81	11	33	39	39	37	27	32	46	30	35	38
CORN	73	3	3	2	2	2	2	1	1	2	2	2
MILLET	65	524	580	580	590	610	550	500	400	500	580	634
SORGHUM	65	306	342	300	289	337	300	210	126	219	254	262
COWPEAS	101	74	77	74	80	75	75	75	75	75	75	75
CASSAVA	25	135	170	198	200	200	200	200	200	200	200	200
ONIONS	63	28	38	40	41	42	42	42	42	42	42	42
COTTON	550	2	2	2	2	3	3	3	3	3	3	3
COTTONSEED	55	4	4	5	5	6	6	6	6	6	6	5
PEANUTS, IN SHELL	86	210	298	252	280	236	260	195	75	186	25	125
AGGREGATES OF PRODUCTION			- - - - -MILLION DOLLARS AT CONSTANT PRICES- - - - -									
CROPS		87.1	104.2	98.6	101.7	102.2	97.2	82.9	61.7	82.4	76.5	89.4
LIVESTOCK		0.0	0.0	0.0	0.0	0.0	0.0	0.0	0.0	0.0	0.0	0.0
TOTAL AGRICULTURE*		87.1	104.2	98.6	101.7	102.2	97.2	82.9	61.7	82.4	76.5	89.4
TOTAL FOOD		86.0	103.1	97.5	100.6	100.5	95.5	81.2	60.0	80.7	74.8	87.7
INDICES OF PRODUCTION			(1961-65 = 100)									
CROPS		100	120	113	117	117	112	95	71	95	88	103
TOTAL AGRICULTURE		100	120	113	117	117	112	95	71	95	88	103
TOTAL FOOD		100	120	113	117	117	111	94	70	94	87	102
PER CAPITA AGRICULTURE		100	107	98	99	96	89	74	54	70	63	72
PER CAPITA FOOD		100	107	98	99	96	89	74	54	69	62	71
INDEX OF POPULATION												
1961-65 POPULATION=	3,304,000	100.0	112.3	115.2	118.3	121.8	124.9	128.4	130.3	135.5	139.2	143.0

TABLE 24.--NIGERIA

PRODUCTION BY COMMODITY, VALUE AND INDICES OF TOTAL AGRICULTURAL AND FOOD PRODUCTION, AVERAGE 1961-65, ANNUAL 1967-76

COMMODITY	PRICE	AVERAGE	1967	1968	1969	1970	1971	1972	1973	1974	1975	1976
	WEIGHT	1961-65										
DOLLARS			-1,000 METRIC TONS-									
RICE, PADDY	103	356	391	375	386	427	462	466	514	523	600	609
CORN	53	1,016	1,000	950	1,426	1,310	1,042	1,182	1,287	1,350	1,400	1,443
MILLET	53	2,615	2,590	2,196	3,298	3,284	2,688	3,048	2,150	2,800	2,865	2,863
SORGHUM	70	4,204	3,389	2,821	4,080	4,080	3,140	3,561	2,968	3,500	3,590	3,680
PULSES	90	442	530	520	904	536	542	540	480	525	540	560
CASSAVA	29	9,656	8,331	8,128	11,807	11,410	12,396	12,700	13,000	13,300	13,600	13,900
YAMS	61	11,611	11,685	11,481	14,814	14,682	16,104	16,257	16,800	17,200	17,600	18,000
COCOYAMS	50	1,312	1,459	1,499	1,539	1,341	1,479	1,524	1,565	1,600	1,640	1,680
TOBACCO	300	13	11	12	10	14	15	13	12	12	18	18
COTTON	309	45	27	60	87	39	38	49	30	52	58	67
COTTONSEED	60	90	55	115	186	80	77	95	64	93	116	134
SOYBEANS	66	18	16	7	34	11	1	4	1	1	1	1
PEANUTS, IN SHELL	114	1,419	1,260	1,445	1,360	780	845	1,125	340	530	300	550
SESAME SEED	145	22	13	13	25	6	3	7	3	4	5	5
BANANAS AND PLANTAINS	38	1,603	1,321	1,219	1,270	1,270	1,300	1,330	1,360	1,390	1,420	1,450
OTHER FRUIT	20	39	43	45	46	46	47	48	50	51	52	54
COFFEE	328	2	3	3	3	5	4	4	2	2	4	5
COCOA BEANS	269	215	239	195	225	323	265	264	218	213	217	160
RUBBER	463	65	52	56	61	65	62	57	66	78	60	60
KOLA NUTS	150	138	129	132	130	132	136	139	143	146	150	154
SUGAR, RAW	75	3	30	34	35	43	34	40	40	60	60	60
PALM OIL	110	521	325	371	423	457	432	457	432	491	500	500
PALM KERNELS	70	419	250	225	264	270	307	295	244	310	295	295
MEATS	425	369	534	533	534	539	555	555	565	555	575	590
MILK	65	349	365	365	366	371	381	381	360	355	360	370
AGGREGATES OF PRODUCTION			- - - - - MILLION DOLLARS AT CONSTANT PRICES - - - - -									
CROPS		2,064.0	1,919.9	1,862.4	2,408.2	2,286.5	2,290.9	2,405.6	2,253.9	2,417.5	2,448.2	2,513.4
LIVESTOCK		179.5	250.7	250.2	250.8	253.2	260.7	260.7	263.5	259.0	267.8	274.9
TOTAL AGRICULTURE		2,243.5	2,170.6	2,112.6	2,659.0	2,539.7	2,551.6	2,666.3	2,517.4	2,676.5	2,716.0	2,788.3
TOTAL FOOD		2,195.1	2,133.9	2,063.6	2,599.9	2,491.7	2,505.4	2,619.6	2,473.2	2,620.0	2,663.6	2,732.8
INDICES OF PRODUCTION			(1961-65 = 100)									
CROPS		100	93	90	117	111	111	117	109	117	119	120
TOTAL AGRICULTURE		100	97	94	119	113	114	119	112	119	121	124
TOTAL FOOD		100	97	94	118	114	114	119	113	119	121	124
PER CAPITA AGRICULTURE		100	88	83	102	95	93	95	87	90	89	89
PER CAPITA FOOD		100	88	83	102	96	94	95	88	90	89	89
INDEX OF POPULATION			1961-65 POPULATION = 46,342,000									
1961-65 POPULATION = 46,342,000		100.0	110.3	113.0	115.9	118.8	121.9	125.2	128.6	132.2	136.0	139.9

TABLE 25.--RHODESIA

PRODUCTION BY COMMODITY, VALUE AND INDICES OF TOTAL AGRICULTURAL AND FOOD PRODUCTION, AVERAGE 1961-65, ANNUAL 1967-76

COMMODITY	PRICE WEIGHT	AVERAGE 1961-65	1967	1968	1969	1970	1971	1972	1973	1974	1975	1975
	DOLLARS	-1,000 METRIC TONS-										
WHEAT	60	2	18	18	25	40	82	78	70	85	126	100
CORN	47	833	1,000	950	1,020	700	1,179	1,540	635	1,700	1,748	1,400
MILLET	40	240	279	250	250	220	220	220	220	220	220	220
SORGHUM	40	58	58	55	55	50	50	50	50	50	50	50
PULSES	60	21	22	21	23	23	24	24	25	26	26	25
POTATOES	90	22	21	20	22	22	23	24	25	25	25	25
CASSAVA	29	43	42	44	45	46	47	49	45	50	48	50
TOBACCO	940	105	93	60	60	60	60	65	57	80	95	83
COTTON	281	3	17	45	43	53	50	48	35	43	40	38
COTTONSEED	30	6	35	88	80	118	110	100	70	86	80	76
PEANUTS, IN SHELL	115	123	77	35	122	104	108	125	110	120	120	122
TEA	941	1	3	2	2	2	3	4	4	5	5	5
SUGAR, RAW	75	133	136	120	136	145	175	200	248	250	265	240
MEATS	343	170	171	175	173	177	185	195	200	200	200	202
AGGREGATES OF PRODUCTION												
-----MILLION DOLLARS AT CONSTANT PRICES-----												
CROPS	180.7	181.2	148.9	163.3	150.4	178.1	203.7	150.5	228.4	247.2	217.6	
LIVESTOCK	58.3	58.7	60.0	59.3	60.7	63.5	66.9	68.6	68.6	68.6	69.3	
TOTAL AGRICULTURE	239.0	239.9	208.9	222.6	211.1	241.6	270.6	219.1	297.0	315.8	286.9	
TOTAL FOOD	138.3	144.9	138.0	152.2	137.9	168.3	192.2	151.9	205.0	210.6	191.6	
INDICES OF PRODUCTION (1961-65 = 100)												
CROPS	100	100	82	90	83	99	113	83	126	137	120	
TOTAL AGRICULTURE	100	100	87	93	88	101	113	92	124	132	120	
TOTAL FOOD	100	105	100	110	100	122	139	110	148	152	139	
PER CAPITA AGRICULTURE	100	89	75	77	70	78	84	66	86	89	78	
PER CAPITA FOOD	100	92	85	91	79	94	103	79	103	102	90	
INDEX OF POPULATION												
1961-65 POPULATION=	4,228,000	100.0	113.3	117.3	121.3	125.6	130.1	134.6	139.5	144.3	149.2	154.5

TABLE 26.--RWANDA

PRODUCTION BY COMMODITY, VALUE AND INDICES OF TOTAL AGRICULTURAL AND FOOD PRODUCTION, AVERAGE 1961-65, ANNUAL 1967-76

COMMODITY	PRICE	AVERAGE	1967	1968	1969	1970	1971	1972	1973	1974	1975	1976
	WEIGHT	1961-65										
	DOLLARS		-1,000 METRIC TONS-									
CORN	50	47	53	43	41	64	56	50	55	35	55	47
MILLET	33	137	146	124	127	158	142	146	145	123	146	130
BEANS, DRY	100	85	132	116	146	144	144	131	133	114	135	116
DRY PEAS	100	37	52	46	61	65	68	55	56	51	55	48
POTATOES	33	62	107	79	129	126	148	131	140	110	135	130
CASSAVA	25	132	230	233	283	345	372	350	364	360	365	350
SWEETPOTATOES	38	394	360	368	324	413	399	415	425	250	425	420
PEANUTS, IN SHELL	116	8	16	10	6	7	8	8	8	8	8	6
PLANTAINS	65	1,115	1,560	1,616	1,638	1,651	1,679	1,681	1,767	1,648	1,700	1,700
COFFEE	500	9	11	12	9	16	16	11	16	15	18	18
MEATS	370	12	14	14	15	15	15	15	15	15	15	15
MILK	100	13	14	14	14	14	14	14	14	10	14	12
AGGREGATES OF PRODUCTION			-MILLION DOLLARS AT CONSTANT PRICES-									
CROPS		117.0	157.7	157.1	162.4	173.9	176.1	170.5	180.2	160.0	176.8	172.4
LIVESTOCK		5.7	6.6	6.6	7.0	7.0	7.0	7.0	7.0	6.6	7.0	6.9
TOTAL AGRICULTURE		122.7	164.3	163.7	169.4	180.9	183.1	177.5	187.2	166.6	183.8	179.2
TOTAL FOOD		122.7	164.3	163.7	169.4	180.9	183.1	177.5	187.2	166.6	183.8	179.2
INDICES OF PRODUCTION			(1961-65 = 100)									
CROPS		100	135	134	139	149	151	146	154	137	151	147
TOTAL AGRICULTURE		100	134	133	138	147	149	145	153	136	150	146
TOTAL FOOD		100	134	133	138	147	149	145	153	136	150	146
PER CAPITA AGRICULTURE		100	121	118	118	123	121	114	117	101	109	103
PER CAPITA FOOD		100	121	118	118	123	121	114	117	101	109	103
INDEX OF POPULATION												
1961-65 POPULATION=	3,071,000	100.0	110.5	113.5	116.6	119.9	123.3	126.9	130.5	134.3	138.0	141.9

TABLE 27.--SENEGAL

PRODUCTION BY COMMODITY, VALUE AND INDICES OF TOTAL AGRICULTURAL AND FOOD PRODUCTION, AVERAGE 1961-65, ANNUAL 1967-76

COMMODITY	PRICE	AVERAGE	1967	1968	1969	1970	1971	1972	1973	1974	1975	1976
	WEIGHT	1961-65										
	DOLLARS	-1,000 METRIC TONS-										
RICE, PADDY	76	100	138	58	155	91	108	37	64	114	146	168
CORN	49	32	87	25	49	39	39	20	45	42	44	50
MILLET	74	483	661	454	639	405	587	323	511	685	650	700
COMPEAS	101	15	30	17	22	15	26	11	15	30	24	17
CASSAVA	20	151	239	232	250	260	270	270	270	270	275	114
SWEETPOTATOES	30	18	15	19	18	20	22	22	22	22	23	24
COTTON	550	0	1	3	4	4	8	9	12	15	11	16
COTTONSEED	55	0	3	6	8	8	13	15	21	25	22	32
PEANUTS, IN SHELL	85	1,006	1,005	830	800	545	920	610	700	900	1,210	1,100
VEGETABLES	113	34	41	41	38	40	70	73	63	75	80	82
SUGAR, RAW	100	0	0	0	0	0	0	0	0	20	60	70
MEATS	303	33	37	43	46	48	50	50	48	54	55	55
MILK	75	107	118	115	113	110	110	110	110	110	113	115
AGGREGATES OF PRODUCTION - - - - - MILLION DOLLARS AT CONSTANT PRICES - - - - -												
CROPS		139.2	162.8	123.3	144.1	99.5	153.4	100.8	126.9	167.3	195.2	192.2
LIVESTOCK		18.1	20.1	21.6	22.4	22.8	23.5	23.5	22.8	24.7	25.2	25.7
TOTAL AGRICULTURE		157.3	182.9	144.9	166.5	122.3	176.9	124.3	149.7	192.0	220.4	217.9
TOTAL FOOD		157.3	182.3	143.2	164.3	120.1	172.5	119.3	143.1	183.7	214.3	209.1
INDICES OF PRODUCTION (1961-65 = 100)												
CROPS		100	117	89	104	71	110	72	91	120	140	138
TOTAL AGRICULTURE		100	116	92	106	78	112	79	95	122	140	139
TOTAL FOOD		100	116	91	104	76	110	76	91	117	136	133
PER CAPITA AGRICULTURE		100	104	80	89	64	90	61	72	90	100	96
PER CAPITA FOOD		100	103	79	88	63	88	59	69	86	97	92
INDEX OF POPULATION												
1961-65 POPULATION=	3,552,000	100.0	112.0	115.2	118.5	121.8	125.3	128.8	132.5	136.2	140.1	144.0

TABLE 28.--SIERRA LEONE

PRODUCTION BY COMMODITY, VALUE AND INDICES OF TOTAL AGRICULTURAL AND FOOD PRODUCTION, AVERAGE 1961-65, ANNUAL 1967-76

COMMODITY	PRICE	AVERAGE	1967	1968	1969	1970	1971	1972	1973	1974	1975	1976
	WEIGHT	1961-65										
DOLLARS		-----1,000 METRIC TONS-----										
RICE, PADDY	90	406	400	433	407	425	500	477	479	490	517	520
CORN	45	9	10	11	10	11	11	11	12	12	14	14
MILLET	65	23	24	24	24	12	13	13	17	18	17	17
CASSAVA	31	449	476	480	478	495	505	550	560	570	585	600
SWEETPOTATOES AND YAMS	43	55	60	61	61	63	64	68	70	72	74	75
PEANUTS, IN SHELL	85	23	20	21	20	20	20	20	20	20	20	20
SESAME SEED	145	1	1	1	1	1	1	1	1	1	1	1
CITRUS FRUIT	95	89	97	100	101	104	106	110	115	118	121	124
BANANAS AND PLANTAINS	41	154	167	169	171	174	178	182	186	190	194	198
GINGER	275	1	1	1	1	1	1	1	1	1	1	0
COFFEE	350	5	5	6	5	8	6	8	4	8	5	8
COCOA BEANS	290	4	5	4	4	5	6	7	8	5	6	5
KOLA NUTS	150	1	1	1	2	1	1	2	2	2	2	2
PIASSAVA, PALM FIBER	120	5	4	2	3	2	2	4	4	4	4	4
PALM OIL	116	37	41	42	45	48	53	53	51	46	56	56
PALM KERNELS	80	56	57	60	48	58	53	48	46	46	49	51
MEATS	360	5	5	5	6	6	6	6	6	6	6	6
AGGREGATES OF PRODUCTION		-----MILLION DOLLARS AT CONSTANT PRICES-----										
CROPS		84.2	87.0	90.6	87.5	91.6	98.8	99.8	99.8	101.8	105.8	108.0
LIVESTOCK		1.8	1.8	1.8	2.2	2.2	2.2	2.2	2.2	2.2	2.2	2.2
TOTAL AGRICULTURE		86.0	88.8	92.4	89.7	93.8	101.0	102.0	102.0	104.0	108.0	110.2
TOTAL FOOD		83.4	86.2	89.8	87.2	90.5	98.4	98.4	99.8	100.4	105.4	108.9
INDICES OF PRODUCTION		(1961-65 = 100)										
CROPS		100	103	108	104	109	117	119	119	121	126	128
TOTAL AGRICULTURE		100	103	107	104	109	117	119	119	121	126	128
TOTAL FOOD		100	103	108	105	109	118	118	120	120	126	128
PER CAPITA AGRICULTURE		100	95	97	92	94	98	97	95	94	95	95
PER CAPITA FOOD		100	95	97	92	93	99	96	95	94	96	95
INDEX OF POPULATION												
1961-65 POPULATION=	2,311,000	100.0	108.8	111.3	113.9	116.6	119.3	122.3	125.4	128.6	131.7	134.7

TABLE 29.--SOUTH AFRICA, REPUBLIC OF

PRODUCTION BY COMMODITY, VALUE AND INDICES OF TOTAL AGRICULTURAL AND FOOD PRODUCTION, AVERAGE 1961-65, ANNUAL 1967-76

COMMODITY	PRICE	AVERAGE	1967	1968	1969	1970	1971	1972	1973	1974	1975	1976
	WEIGHT	1961-65										
DOLLARS			-1,000 METRIC TONS-									
WHEAT	84	834	1,077	1,247	1,316	1,396	1,670	1,746	1,871	1,596	1,792	2,015
RYE	50	10	13	8	7	7	6	7	6	5	4	4
CORN	45	5,248	9,762	5,316	5,340	6,132	8,600	9,483	4,160	11,105	9,131	7,395
BARLEY	46	40	51	37	19	30	32	33	32	50	51	63
OATS	60	107	169	116	90	121	98	105	91	103	99	102
SORGHUM	55	292	727	199	199	379	551	510	222	682	401	290
BEANS, DRY	196	42	83	63	53	49	60	66	60	83	58	60
DRY PEAS	126	8	6	8	6	4	4	5	5	6	13	5
COWPEAS	126	9	12	4	19	11	15	16	10	13	8	10
POTATOES	80	376	509	558	535	631	623	637	579	685	686	672
SWEETPOTATOES	58	39	41	40	36	43	37	42	41	43	39	41
TOBACCO	757	27	27	38	38	34	32	31	30	29	34	30
COTTON	500	11	15	16	24	16	14	16	18	40	35	19
COTTONSEED	50	23	31	32	48	33	27	32	36	80	71	39
PEANUTS, IN SHELL	163	221	423	232	352	306	379	395	195	525	252	149
SUNFLOWER SEED	71	94	110	85	92	97	134	151	233	253	209	253
CHICORY	119	11	6	11	12	11	22	9	6	12	12	24
TOMATOES	108	169	195	241	204	239	221	214	272	240	264	294
ORANGES	52	436	512	530	487	548	524	581	531	594	541	560
APPLES	165	122	193	234	243	250	275	346	289	307	341	385
PEARS	120	63	79	85	95	88	91	105	106	92	101	108
PEACHES	99	105	134	136	148	136	156	159	153	167	165	179
BANANAS	65	43	38	52	46	68	64	81	76	99	102	98
PINEAPPLES	107	121	143	132	126	172	174	187	174	194	177	177
GRAPES, FOR WINE	47	542	679	764	794	685	978	986	948	901	1,037	1,039
SUGAR, RAW	75	1,080	1,823	1,505	1,622	1,399	1,865	1,915	1,732	1,883	1,801	2,000
RAISINS	172	7	9	12	17	12	12	13	15	6	10	9
MEATS	441	663	697	667	677	728	760	786	791	761	775	818
MILK	90	2,391	2,500	2,768	2,992	2,902	2,678	2,801	2,711	2,500	2,366	2,500
WOOL, GREASY BASIS	1,086	138	133	138	143	146	124	119	110	106	108	107
MOHAIR, GREASY BASIS	1,283	5	5	6	5	5	4	4	3	4	4	4
EGGS	637	86	111	114	115	116	115	110	115	139	154	211

AGGREGATES OF PRODUCTION

	-MILLION DOLLARS AT CONSTANT PRICES-											
CROPS	702.1	1,112.4	865.0	900.6	936.7	1,144.8	1,214.1	915.4	1,342.3	1,217.6	1,191.8	1,191.8
LIVESTOCK	664.0	683.2	700.8	729.6	747.2	716.0	733.0	716.1	680.8	677.1	707.0	707.0
TOTAL AGRICULTURE	1,366.1	1,795.6	1,565.8	1,630.2	1,683.9	1,860.8	1,947.1	1,631.5	2,023.1	1,894.7	1,898.8	1,898.8
TOTAL FOOD	1,184.0	1,616.9	1,371.4	1,427.7	1,485.2	1,689.8	1,781.3	1,476.5	1,860.9	1,729.1	1,745.3	1,745.3

INDICES OF PRODUCTION

(1961-65 = 100)

CROPS	100	158	123	128	133	163	173	130	191	173	170	170
TOTAL AGRICULTURE	100	131	115	119	123	136	143	119	148	139	139	139
TOTAL FOOD	100	137	116	121	125	143	150	125	157	146	147	147
PER CAPITA AGRICULTURE	100	118	100	101	102	110	112	91	110	101	99	99
PER CAPITA FOOD	100	122	101	102	104	115	118	95	117	106	105	105

INDEX OF POPULATION

1961-65 POPULATION= 18,571,000	100.0	111.6	114.7	117.8	121.0	124.0	127.5	130.9	134.2	137.2	140.5	140.5
--------------------------------	-------	-------	-------	-------	-------	-------	-------	-------	-------	-------	-------	-------

TABLE 30.--SUDAN

PRODUCTION BY COMMODITY, VALUE AND INDICES OF TOTAL AGRICULTURAL AND FOOD PRODUCTION, AVERAGE 1961-65, ANNUAL 1967-76

COMMODITY	PRICE	AVERAGE	1967	1968	1969	1970	1971	1972	1973	1974	1975	1976
	WEIGHT	1961-65										
DOLLARS			-1,000 METRIC TONS-									
WHEAT	46	36	78	88	123	115	163	140	152	236	273	250
CORN	42	17	18	16	36	37	9	9	20	15	15	20
MILLET	63	303	369	267	384	460	325	355	368	444	500	500
SORGHUM	47	1,256	1,980	870	1,499	1,529	2,153	1,300	1,664	1,744	2,333	2,470
PULSES	97	176	188	190	200	200	200	200	180	190	200	205
CASSAVA	16	120	126	130	132	134	134	134	140	140	150	150
ONIONS	56	50	60	60	70	70	70	70	70	70	75	75
COTTON	655	157	196	229	218	252	237	240	239	217	109	180
COTTONSEED	60	308	334	426	455	472	460	465	465	430	215	350
PEANUTS, IN SHELL	119	256	297	240	280	351	394	515	314	534	450	523
SESAME SEED	149	165	186	154	202	297	271	290	245	300	350	350
ORANGES	52	5	7	7	7	7	7	7	7	7	7	7
DATES	98	41	46	46	50	50	50	50	50	50	50	50
MEATS	349	79	93	95	110	110	120	120	120	120	125	135
MILK	60	1,774	1,830	1,875	1,870	1,870	1,880	1,880	1,880	1,885	1,885	1,885
AGGREGATES OF PRODUCTION			-MILLION DOLLARS AT CONSTANT PRICES-									
CROPS		282.4	360.6	318.3	366.1	418.0	430.4	410.6	396.4	427.4	375.8	445.3
LIVESTOCK		134.0	142.3	145.7	150.6	150.6	154.7	154.7	154.7	155.0	156.7	160.2
TOTAL AGRICULTURE		416.4	502.9	464.0	516.7	568.6	585.1	565.3	551.1	582.4	532.5	605.5
TOTAL FOOD		313.8	374.5	314.0	373.9	403.5	429.9	408.1	394.6	440.3	461.1	487.5
INDICES OF PRODUCTION			(1961-65 = 100)									
CROPS		100	128	113	130	148	152	145	140	151	133	158
TOTAL AGRICULTURE		100	121	111	124	137	141	136	132	140	128	145
TOTAL FOOD		100	119	100	119	129	137	130	126	140	147	155
PER CAPITA AGRICULTURE		100	111	100	109	118	118	112	107	110	99	110
PER CAPITA FOOD		100	110	90	105	111	115	107	101	111	114	118
INDEX OF POPULATION												
1961-65 POPULATION= 12,080,000		100.0	108.9	111.3	113.7	116.2	118.7	121.3	123.9	126.6	129.4	132.2

TABLE 31.--TANZANIA

PRODUCTION BY COMMODITY, VALUE AND INDICES OF TOTAL AGRICULTURAL AND FOOD PRODUCTION, AVERAGE 1961-65, ANNUAL 1967-76

COMMODITY	PRICE	AVERAGE	1967	1968	1969	1970	1971	1972	1973	1974	1975	1975
	WEIGHT	1961-65										
	DOLLARS		-1,000 METRIC TONS-									
WHEAT	73	20	31	44	39	61	84	98	50	14	35	24
RICE, PADDY	69	117	114	136	144	182	193	171	204	310	385	400
CORN	46	543	549	664	525	637	715	881	888	550	900	1,050
MILLET	62	1,052	1,145	1,150	1,155	1,180	1,200	1,220	1,165	950	1,200	1,200
BEANS, DRY	67	253	270	275	280	285	280	280	270	255	270	275
POTATOES	51	17	35	57	45	48	51	95	157	175	186	185
CASSAVA	34	1,078	1,200	1,205	1,409	1,470	1,560	1,590	1,600	1,600	1,700	1,800
SWEETPOTATOES	67	243	259	284	299	300	300	300	296	300	305	310
TOBACCO	555	3	8	10	12	11	12	14	13	18	16	15
COTTON	328	47	79	51	71	63	65	65	65	66	42	68
COTTONSEED	52	99	142	103	143	126	135	135	135	135	86	140
SOYBEANS	78	3	4	4	4	4	4	4	3	4	4	4
PEANUTS, IN SHELL	31	24	11	11	19	38	38	34	54	62	62	62
SESAME SEED	132	10	10	10	19	10	10	10	8	10	11	11
SUNFLOWER SEED	42	9	7	7	7	8	15	15	12	10	10	10
CASTOR BEANS	87	16	13	8	11	9	15	13	12	8	7	7
PYRETHRUM FLOWERS, DRIED	600	3	7	5	4	2	4	5	4	3	5	7
ORANGES AND TANGERINES	85	13	22	21	21	22	22	22	22	22	22	23
CASHEWS, IN SHELL	80	58	76	109	91	100	126	126	146	154	165	170
BANANAS	38	12	12	12	12	12	12	12	10	11	11	12
CLOVES	575	10	4	14	3	5	10	15	12	5	8	8
COFFEE	393	32	44	57	46	57	51	48	55	45	51	54
TEA	970	5	7	8	9	8	11	13	13	13	14	15
SISAL	232	218	220	197	209	202	181	157	155	135	125	100
QUININE BARK	100	10	11	11	11	11	11	11	10	11	11	11
SUGAR, RAW	147	48	82	86	91	93	90	92	106	110	112	115
COPRA	105	24	26	26	27	28	28	28	28	25	28	28
MEATS	280	159	158	163	170	175	175	175	180	175	180	184
MILK	65	368	375	380	385	390	390	390	375	370	375	380
HIDES AND SKINS	500	22	20	20	23	23	23	23	26	28	28	28
AGGREGATES OF PRODUCTION			-MILLION DOLLARS AT CONSTANT PRICES-									
CROPS		289.2	328.1	340.3	342.9	357.3	371.0	382.4	383.6	350.6	388.5	409.5
LIVESTOCK		79.5	78.6	80.3	84.1	85.9	85.9	85.9	87.8	87.1	88.8	90.2
TOTAL AGRICULTURE		368.7	406.7	420.6	427.0	443.2	456.9	468.3	471.4	437.7	477.3	499.7
TOTAL FOOD		262.6	286.1	299.9	304.6	322.3	334.6	346.5	348.9	324.5	369.1	385.5
INDICES OF PRODUCTION			(1961-65 = 100)									
CROPS		100	113	118	119	124	128	132	133	121	134	142
TOTAL AGRICULTURE		100	110	114	116	120	124	127	128	119	129	136
TOTAL FOOD		100	109	114	116	123	127	132	133	124	141	147
PER CAPITA AGRICULTURE		100	100	101	100	101	101	101	99	89	95	97
PER CAPITA FOOD		100	99	101	100	103	104	105	103	93	103	105
INDEX OF POPULATION			1961-65 POPULATION= 11,121,000									
		100.0	110.3	113.2	116.3	119.4	122.6	125.6	129.3	132.7	136.3	139.9

TABLE 32.--T060

PRODUCTION BY COMMODITY, VALUE AND INDICES OF TOTAL AGRICULTURAL AND FOOD PRODUCTION, AVERAGE 1961-65, ANNUAL 1967-76

COMMODITY	PRICE	AVERAGE	1967	1968	1969	1970	1971	1972	1973	1974	1975	1976
	WEIGHT	1961-65										
DOLLARS		-----1,000 METRIC TONS-----										
RICE, PADDY	64	19	28	17	15	18	24	15	11	20	24	24
CORN	40	75	93	120	125	100	80	76	91	82	84	85
MILLET	70	99	124	191	160	130	100	151	130	140	135	135
BEANS, DRY	80	14	15	15	15	15	15	15	15	15	15	15
BAMBARRA GROUNDNUTS	65	7	8	8	8	8	8	8	8	8	8	8
CASSAVA	30	363	410	410	420	430	440	450	460	475	490	505
SWEETPOTATOES	31	8	9	8	8	8	8	8	8	8	8	3
YAMS	38	374	425	425	435	445	455	465	475	490	505	520
COCOYAMS	29	3	3	3	3	3	3	3	3	3	3	3
COTTON	400	3	4	3	3	3	3	3	3	3	4	2
COTTONSEED	40	7	8	5	5	5	5	5	5	5	8	4
PEANUTS, IN SHELL	101	11	18	18	18	18	18	20	20	20	20	20
COFFEE	284	12	10	17	13	12	12	12	11	12	9	11
COCOA BEANS	251	14	17	21	23	28	30	20	16	14	17	15
COPRA	102	4	4	4	4	4	4	4	4	4	4	4
PALM KERNELS	76	13	13	13	19	17	18	9	6	6	6	5
AGGREGATES OF PRODUCTION		-----MILLION DOLLARS AT CONSTANT PRICES-----										
CROPS		48.9	56.8	64.4	62.7	61.3	60.0	60.6	58.6	60.4	61.9	62.1
LIVESTOCK		0.0	0.0	0.0	0.0	0.0	0.0	0.0	0.0	0.0	0.0	0.0
TOTAL AGRICULTURE		48.9	56.8	64.4	62.7	61.3	60.0	60.6	58.6	60.4	61.9	62.1
TOTAL FOOD		44.2	52.4	58.4	57.8	56.7	55.4	56.0	54.3	55.8	57.7	58.2
INDICES OF PRODUCTION		(1961-65 = 100)										
CROPS		100	116	132	128	125	123	124	120	124	127	127
TOTAL AGRICULTURE		100	116	132	128	125	123	124	120	124	127	127
TOTAL FOOD		100	119	132	131	128	125	127	123	126	131	132
PER CAPITA AGRICULTURE		100	106	117	111	106	101	100	94	95	95	92
PER CAPITA FOOD		100	108	118	114	109	104	102	97	97	97	96
INDEX OF POPULATION												
1961-65 POPULATION=	1,665,000	100.0	109.6	112.3	115.0	117.9	120.9	124.0	127.1	130.5	133.9	137.4

PRODUCTION BY COMMODITY, VALUE AND INDICES OF TOTAL AGRICULTURAL AND FOOD PRODUCTION, AVERAGE 1961-65, ANNUAL 1967-76

COMMODITY	PRICE	AVERAGE	1967	1968	1969	1970	1971	1972	1973	1974	1975	1976
	WEIGHT	1961-65										
DOLLARS		-1,000 METRIC TONS-										
WHEAT	86	448	282	383	300	450	600	800	700	755	910	830
BARLEY	45	145	70	130	81	151	140	236	210	171	210	220
OATS	64	6	9	10	10	5	6	6	6	6	6	3
SORGHUM	54	5	5	6	6	7	8	10	7	3	3	3
BROAD BEANS	43	12	18	22	20	18	40	35	37	50	47	50
CHICKPEAS	130	8	9	10	10	8	17	20	19	21	18	20
POTATOES	65	50	79	75	75	75	91	100	71	111	127	125
SUGAR BEETS	13	33	40	23	35	37	45	31	50	47	50	65
TOBACCO	296	1	2	3	3	3	3	3	2	2	2	2
TOMATOES	36	92	115	86	137	155	163	173	227	230	267	275
ORANGES AND TANGERINES	84	68	65	83	67	70	61	102	65	76	113	143
LEMONS	60	14	12	14	8	8	14	16	18	18	18	22
APRICOTS	169	13	16	17	20	20	20	22	19	22	23	23
FIGS, FRESH	133	20	20	22	20	20	20	21	20	20	17	20
GRAPES, FOR WINE	45	227	137	123	126	110	125	143	133	155	168	170
DATES	146	35	39	48	31	45	50	42	52	44	60	50
OLIVE OIL	361	63	51	55	25	90	167	70	130	117	158	130
MEATS	465	36	50	50	53	45	36	51	58	143	150	155
MILK	94	142	140	140	140	145	184	196	210	227	225	227
WOOL, GREASY BASIS	564	4	4	6	6	5	5	6	5	6	6	5
AGGREGATES OF PRODUCTION		-MILLION DOLLARS AT CONSTANT PRICES-										
CROPS		104.2	82.9	97.4	75.4	116.8	161.4	152.7	162.1	164.7	202.6	188.4
LIVESTOCK		32.3	38.8	40.0	41.3	37.4	36.9	45.6	49.6	91.3	94.5	96.9
TOTAL AGRICULTURE		136.5	121.7	137.4	116.7	154.2	198.3	198.3	211.7	256.0	297.1	285.3
TOTAL FOOD		133.8	118.8	133.0	112.3	150.4	194.5	193.9	208.2	251.9	293.0	281.2
INDICES OF PRODUCTION		(1961-65 = 100)										
CROPS		100	80	93	72	112	155	147	156	158	194	181
TOTAL AGRICULTURE		100	89	101	85	113	145	145	155	188	218	209
TOTAL FOOD		100	89	99	84	112	145	145	156	188	219	210
PER CAPITA AGRICULTURE		100	82	91	76	98	124	121	127	148	168	158
PER CAPITA FOOD		100	82	90	74	97	124	121	127	149	169	158
INDEX OF POPULATION												
1961-65 POPULATION=	4,454,000	100.0	108.2	110.5	112.9	115.3	117.4	119.7	122.2	126.7	129.6	132.6

TABLE 34.--UGANDA

PRODUCTION BY COMMODITY, VALUE AND INDICES OF TOTAL AGRICULTURAL AND FOOD PRODUCTION, AVERAGE 1961-65, ANNUAL 1967-76

COMMODITY	PRICE WEIGHT	AVERAGE 1961-65	1967	1968	1969	1970	1971	1972	1973	1974	1975	1976
	DOLLARS		-----1,000 METRIC TONS-----									
CORN	20	216	230	333	338	335	335	375	419	505	870	870
MILLET	31	444	575	626	630	630	630	620	651	705	682	720
SORGHUM	31	276	268	254	332	320	332	320	416	538	467	490
BEANS, DRY	32	192	252	260	260	224	250	270	240	260	250	250
CASSAVA	17	1,164	1,200	1,250	1,250	1,250	1,250	1,250	1,250	1,100	1,000	1,000
SWEETPOTATOES	36	967	980	980	985	990	990	1,000	900	1,000	900	900
TOBACCO	251	2	4	5	3	3	4	4	3	2	2	2
COTTON	500	66	51	76	85	86	75	80	50	30	26	25
COTTONSEED	50	131	126	154	168	172	152	162	101	61	53	51
PEANUTS, IN SHELL	42	182	200	234	234	210	200	215	215	200	200	200
SESAME SEED	120	33	34	34	34	34	36	38	38	38	38	38
CASTOR BEANS	65	2	2	2	2	1	3	3	2	3	3	3
VEGETABLES	81	70	72	76	78	80	75	85	85	90	85	85
BANANAS	37	240	270	280	300	300	300	300	310	320	320	310
COFFEE	162	154	162	200	201	180	171	171	213	186	180	168
TEA	1,070	7	11	15	18	18	18	23	20	17	18	19
SUGAR, RAW	123	122	150	157	148	152	141	89	75	59	34	35
MEATS	180	121	155	155	160	160	160	160	160	160	162	160
MILK	72	294	460	500	500	500	500	500	500	500	400	400
HIDES AND SKINS	500	5	5	6	6	6	6	6	6	6	6	6

AGGREGATES OF PRODUCTION	-----MILLION DOLLARS AT CONSTANT PRICES-----											
CROPS	200.8	212.2	244.3	254.9	250.4	241.9	246.6	231.0	218.2	211.2	211.3	
LIVESTOCK	45.5	63.5	66.9	67.8	67.8	67.8	67.8	67.8	67.8	61.0	60.6	
TOTAL AGRICULTURE	246.3	275.7	311.2	322.7	318.2	309.7	314.4	298.8	286.0	272.2	271.9	
TOTAL FOOD	178.2	208.6	220.3	224.4	222.8	221.0	217.9	214.0	219.0	207.0	208.2	

INDICES OF PRODUCTION	(1961-65 = 100)											
CROPS	100	106	122	127	125	120	123	115	109	105	105	
TOTAL AGRICULTURE	100	112	126	131	129	126	128	121	116	111	110	
TOTAL FOOD	100	117	124	126	125	124	122	120	123	116	117	
PER CAPITA AGRICULTURE	100	100	109	110	105	99	97	89	83	76	74	
PER CAPITA FOOD	100	104	107	105	101	97	93	88	88	80	78	

INDEX OF POPULATION	1961-65 POPULATION = 7,957,000											
1961-65 POPULATION = 7,957,000	100.0	112.5	115.9	119.5	123.2	127.3	131.5	135.9	140.4	145.1	150.0	

TABLE 35.--UPPER VOLTA

PRODUCTION BY COMMODITY, VALUE AND INDICES OF TOTAL AGRICULTURAL AND FOOD PRODUCTION, AVERAGE 1961-65, ANNUAL 1967-76

COMMODITY	PRICE	AVERAGE	1967	1968	1969	1970	1971	1972	1973	1974	1975	1976
	WEIGHT	1961-65										
	DOLLARS	-1,000 METRIC TONS-										
RICE, PADDY	68	34	44	40	34	34	37	30	31	36	40	40
CORN	46	100	124	137	60	55	66	59	58	62	80	83
MILLET	52	300	300	368	382	378	277	278	253	370	350	350
SORGHUM	52	653	604	530	547	563	493	515	481	705	650	553
COWPEAS	165	65	65	60	61	55	55	55	55	55	56	57
BAMBARRA GROUNDNUTS	63	70	70	70	71	72	70	65	65	65	66	67
CASSAVA	32	31	30	30	31	32	32	30	30	30	31	32
SWEETPOTATOES	60	22	20	20	20	20	20	15	15	15	15	15
YAMS	64	25	25	25	25	25	25	25	25	25	26	27
COTTON	370	3	6	11	14	14	14	15	15	15	18	22
COTTONSEED	37	6	11	21	26	26	26	28	28	28	36	44
PEANUTS, IN SHELL	109	122	125	92	71	68	66	60	63	65	65	65
SESAME SEED	145	3	3	3	3	3	3	3	3	3	3	3
MEATS	330	27	29	29	30	31	30	28	28	28	29	30
MILK	101	64	66	66	67	68	65	60	60	60	61	62
AGGREGATES OF PRODUCTION	-MILLION DOLLARS AT CONSTANT PRICES-											
CROPS		90.7	91.2	89.1	86.1	85.2	76.6	76.2	73.6	92.0	90.9	88.2
LIVESTOCK		15.5	16.3	16.3	16.7	17.1	16.5	15.3	15.3	15.3	15.8	16.2
TOTAL AGRICULTURE		106.2	107.5	105.4	102.8	102.3	93.1	91.5	88.9	107.3	106.7	104.4
TOTAL FOOD		105.1	105.3	101.3	97.6	97.1	87.9	85.9	83.3	101.7	100.0	96.3
INDICES OF PRODUCTION	(1961-65 = 100)											
CROPS		100	101	98	95	94	84	84	81	101	100	97
TOTAL AGRICULTURE		100	101	99	97	96	88	86	84	101	100	98
TOTAL FOOD		100	100	96	93	92	84	82	79	97	95	92
PER CAPITA AGRICULTURE		100	92	88	84	82	73	70	67	79	77	73
PER CAPITA FOOD		100	91	86	81	78	69	66	63	75	73	68
INDEX OF POPULATION												
1961-65 POPULATION=	4,638,000	100.0	109.8	112.4	115.2	117.8	120.4	123.0	125.7	128.4	131.2	134.0

TABLE 36.--ZAIRE

PRODUCTION BY COMMODITY, VALUE AND INDICES OF TOTAL AGRICULTURAL AND FOOD PRODUCTION, AVERAGE 1961-65, ANNUAL 1967-76

COMMODITY	PRICE	AVERAGE	1967	1968	1969	1970	1971	1972	1973	1974	1975	1976
	WEIGHT	1961-65										
DOLLARS			-1,000 METRIC TONS-									
WHEAT	75	3	4	3	3	3	2	2	1	3	2	2
RICE, PADDY	85	62	100	130	130	188	195	206	227	240	250	291
CORN	68	239	297	250	350	375	409	433	477	524	420	450
MILLET	55	40	26	18	30	38	40	58	64	70	70	70
PULSES	100	65	86	105	155	205	233	173	190	209	200	201
POTATOES	45	15	52	50	15	47	59	39	42	47	45	47
CASSAVA	28	6,491	8,657	8,951	9,429	9,475	8,975	8,950	9,500	10,000	10,000	10,500
SWEET POTATOES	31	253	252	387	377	344	350	350	350	360	360	370
COTTON	450	15	12	19	20	18	20	21	23	18	17	9
CONGO JUTE	250	6	5	7	12	12	12	10	11	12	12	11
COTTONSEED	45	28	13	27	27	34	40	40	44	40	36	33
PEANUTS, IN SHELL	142	127	163	160	200	180	180	180	200	250	250	250
SESAME SEED	110	5	4	4	3	5	5	5	5	4	4	5
PYRETHRUM FLOWERS, DRIED	608	1	1	1	1	1	1	1	2	2	2	2
BANANAS AND PLANTAINS	40	1,380	1,550	1,600	1,650	1,700	1,100	1,200	1,200	1,300	1,300	1,325
COFFEE	475	53	54	73	77	68	74	80	79	69	83	85
COCOA BEANS	440	6	6	6	5	5	6	6	6	5	5	5
TEA	584	4	4	6	8	9	9	10	9	8	6	6
RUBBER	540	34	31	43	37	32	40	40	40	40	38	35
SUGAR, RAW	100	35	45	38	36	43	45	50	57	63	63	68
PALM OIL	225	193	149	203	196	211	190	190	185	174	165	155
PALM KERNELS	46	111	102	102	126	132	120	105	87	77	74	72
MEATS	250	20	25	28	34	35	35	35	37	37	37	38
AGGREGATES OF PRODUCTION			-MILLION DOLLARS AT CONSTANT PRICES-									
CROPS		411.0	481.2	529.2	562.7	573.6	545.9	548.9	574.1	593.1	590.3	605.8
LIVESTOCK		0.0	0.0	0.0	0.0	0.0	0.0	0.0	0.0	0.0	0.0	0.0
TOTAL AGRICULTURE		411.0	481.2	529.2	562.7	573.6	545.9	548.9	574.1	593.1	590.3	605.8
TOTAL FOOD		355.6	429.2	456.8	488.8	507.0	471.2	470.9	495.3	521.7	515.0	534.4
INDICES OF PRODUCTION			(1961-65 = 100)									
CROPS		100	117	129	137	140	133	134	140	144	144	147
TOTAL AGRICULTURE		100	117	129	137	140	133	134	140	144	144	147
TOTAL FOOD		100	121	128	137	143	133	132	139	147	145	150
PER CAPITA AGRICULTURE		100	106	114	118	118	110	108	110	111	108	108
PER CAPITA FOOD		100	109	114	119	120	109	107	110	113	109	110
INDEX OF POPULATION												
1961-65 POPULATION= 15,919,000		100.0	110.3	113.0	115.8	118.5	121.2	124.0	127.0	130.0	133.1	136.4

TABLE 37.--ZAMBIA

PRODUCTION BY COMMODITY, VALUE AND INDICES OF TOTAL AGRICULTURAL AND FOOD PRODUCTION, AVERAGE 1961-65, ANNUAL 1967-76

COMMODITY	PRICE	AVERAGE	1967	1968	1969	1970	1971	1972	1973	1974	1975	1976
	WEIGHT	1961-65										
	DOLLARS		-1,000 METRIC TONS-									
CORN <u>1/</u>	40	187	375	249	253	124	374	572	383	563	575	675
SORGHUM	40	341	844	207	232	445	339	275	275	275	275	273
POTATOES	103	3	2	2	3	4	6	6	15	44	50	55
CASSAVA	29	145	143	145	145	143	145	175	174	173	172	170
TOBACCO	850	9	5	7	6	5	6	6	7	7	7	7
COTTON	388	0	1	1	2	2	4	3	2	1	1	1
COTTONSEED	37	1	2	3	5	4	8	5	4	2	2	2
PEANUTS, IN SHELL <u>1/</u>	108	15	25	12	24	15	33	32	30	34	35	36
SUGAR, RAW	75	0	22	22	30	40	42	51	58	65	85	90
AGGREGATES OF PRODUCTION	- - - - - MILLION DOLLARS AT CONSTANT PRICES - - - - -											
CROPS		35.4	62.3	32.2	34.9	37.1	47.2	53.4	47.3	58.1	60.9	65.8
LIVESTOCK		0.0	0.0	0.0	0.0	0.0	0.0	0.0	0.0	0.0	0.0	0.0
TOTAL AGRICULTURE		35.4	62.3	32.2	34.9	37.1	47.2	53.4	47.3	58.1	60.9	65.8
TOTAL FOOD		27.4	57.6	25.8	29.0	32.0	40.5	47.1	40.5	51.7	54.5	59.4
INDICES OF PRODUCTION	(1961-65 = 100)											
CROPS		100	176	91	99	105	133	151	134	164	172	186
TOTAL AGRICULTURE		100	176	91	99	105	133	151	134	164	172	186
TOTAL FOOD		100	210	94	106	117	148	172	148	189	199	217
PER CAPITA AGRICULTURE		100	157	79	83	86	106	116	100	119	121	126
PER CAPITA FOOD		100	187	82	89	95	117	132	110	137	140	147
INDEX OF POPULATION												
1961-65 POPULATION= 3,464,000		100.0	112.2	115.4	118.9	122.4	126.1	129.9	133.9	138.1	142.5	147.0

1/ COMMERCIAL PRODUCTION ONLY.

TABLE 38. NEAR EAST

MID-YEAR POPULATION BY COUNTRY, 1967-76

COUNTRY AND REGION	1967	1968	1969	1970	1971	1972	1973	1974	1975	1976
	----- THOUSANDS -----									
CYPRUS	599	604	609	615	620	626	634	639	639	644
IRAN	27,600	28,411	29,242	30,096	30,980	31,900	32,858	33,859	34,903	35,994
IRAQ	8,506	8,788	9,079	9,381	9,694	10,018	10,354	10,701	11,060	11,432
ISRAEL	2,712	2,813	2,891	2,978	3,078	3,182	3,284	3,379	3,459	3,544
JORDAN	2,038	2,102	2,192	2,299	2,382	2,457	2,537	2,618	2,702	2,788
LEBANON	2,145	2,206	2,268	2,330	2,394	2,459	2,524	2,589	2,656	2,725
SYRIA	5,681	5,867	6,059	6,258	6,464	6,676	6,895	7,121	7,355	7,595
TURKEY	32,729	33,584	34,465	35,373	36,189	37,079	37,990	38,924	39,881	40,861
WEST ASIA	82,010	84,375	86,805	89,330	91,801	94,397	97,076	99,830	102,655	105,584
EGYPT	30,907	31,693	32,501	33,329	34,076	34,839	35,619	36,417	37,233	38,067
GREECE	8,716	8,741	8,773	8,793	8,831	8,889	8,929	8,962	9,046	9,097
NEAR EAST	121,633	124,809	128,079	131,452	134,708	138,125	141,654	145,209	148,934	152,748

TABLE 39.--NEAR EAST

INDICES OF TOTAL AGRICULTURAL PRODUCTION, BY COUNTRY, 1967-76

(1961-65 = 100)

	1967	1968	1969	1970	1971	1972	1973	1974	1975	PRELIM. 1976
CYPRUS	145	132	140	124	163	156	120	157	133	118
IRAN	122	134	127	132	119	135	144	159	172	189
IRAQ	106	128	120	113	103	150	112	122	111	140
ISRAEL	128	134	134	138	156	170	179	189	188	197
JORDAN	128	78	108	69	108	134	66	165	73	109
LEBANON	135	117	105	115	152	159	150	177	153	151
SYRIA	94	87	95	78	83	127	73	124	119	133
TURKEY	120	123	119	123	137	136	125	136	150	167
WEST ASIA	119	124	120	122	129	139	128	143	152	169
EGYPT	101	105	114	113	117	119	120	118	119	124
GREECE	122	108	110	128	126	133	130	144	156	161
NEAR EAST	116	118	118	121	126	135	127	139	146	160

-11-

TABLE 40.--NEAR EAST

INDICES OF PER CAPITA AGRICULTURAL PRODUCTION, BY COUNTRY, 1967-76

(1961-65 = 100)

	1967	1968	1969	1970	1971	1972	1973	1974	1975	PRELIM. 1976
CYPRUS	141	127	134	118	153	145	110	143	121	107
IRAN	109	116	107	108	95	104	108	116	121	129
IRAQ	93	109	99	90	80	112	81	85	75	92
ISRAEL	112	113	110	110	121	127	130	133	129	132
JORDAN	113	67	88	54	81	98	47	113	49	70
LEBANON	121	102	89	95	122	124	114	131	110	106
SYRIA	83	74	78	62	64	95	53	87	81	87
TURKEY	109	109	103	103	112	109	98	104	112	121
WEST ASIA	107	108	102	100	103	108	97	105	109	118
EGYPT	91	93	99	95	96	96	94	90	89	91
GREECE	119	105	106	124	121	126	123	136	146	150
NEAR EAST	105	104	102	102	103	108	99	106	108	116

TABLE 41.--NEAR EAST

INDICES OF TOTAL FOOD PRODUCTION, BY COUNTRY, 1967-76
(1961-65 = 100)

	1967	1968	1969	1970	1971	1972	1973	1974	1975	PRELIM. 1976
CYPRUS	147	133	142	126	165	158	121	159	134	119
IRAN	123	134	127	132	118	134	144	159	175	193
IRAQ	106	127	120	112	102	151	112	122	111	141
ISRAEL	126	130	129	134	152	166	177	183	183	191
JORDAN	128	78	108	69	108	134	66	165	73	109
LEBANON	135	114	100	111	150	153	143	172	146	149
SYRIA	100	79	91	69	76	138	62	138	128	149
TURKEY	118	121	118	122	134	132	122	131	149	165
WEST ASIA	119	123	120	122	127	137	127	141	152	169
EGYPT	103	108	113	113	119	122	124	125	131	136
GREECE	127	115	117	138	137	144	139	160	167	172
NEAR EAST	117	120	118	122	126	135	127	140	150	164

-42-

TABLE 42.--NEAR EAST

INDICES OF PER CAPITA FOOD PRODUCTION, BY COUNTRY, 1967-76
(1961-65 = 100)

	1967	1968	1969	1970	1971	1972	1973	1974	1975	PRELIM. 1976
CYPRUS	143	128	136	119	155	147	111	145	122	108
IRAN	110	116	107	108	94	103	108	116	123	132
IRAQ	93	108	99	89	79	113	81	85	75	92
ISRAEL	111	110	106	107	118	124	128	129	126	128
JORDAN	113	67	88	54	81	98	47	113	49	70
LEBANON	121	99	85	91	120	119	109	127	105	105
SYRIA	88	67	75	55	59	103	45	97	87	98
TURKEY	107	107	102	102	110	106	95	100	111	120
WEST ASIA	107	107	102	100	102	107	96	104	109	118
EGYPT	93	95	97	95	98	98	97	96	99	100
GREECE	123	112	113	133	132	137	132	151	157	161
NEAR EAST	106	106	102	102	103	108	99	106	111	119

TABLE 43.--CYPRUS

PRODUCTION BY COMMODITY, VALUE AND INDICES OF TOTAL AGRICULTURAL AND FOOD PRODUCTION, AVERAGE 1961-65, ANNUAL 1967-76

COMMODITY	PRICE	AVERAGE	1967	1968	1969	1970	1971	1972	1973	1974	1975	1976
	WEIGHT	1961-65										
	DOLLARS		-1,000 METRIC TONS-									
WHEAT	110	63	97	67	80	44	97	80	4	115	65	65
BARLEY	71	87	87	51	92	56	112	80	3	120	70	70
BEANS, DRY	200	1	1	1	1	1	1	1	1	1	1	1
BROAD BEANS	200	2	2	2	2	2	2	2	2	2	2	2
LENTILS	200	1	1	1	1	1	1	1	1	1	1	1
VETCH	200	6	10	10	8	8	8	4	1	2	1	2
POTATOES	64	115	173	176	163	208	160	175	163	152	123	168
TOBACCO	772	1	1	1	1	1	1	1	1	1	1	1
ORANGES	128	56	86	110	96	102	163	162	227	173	157	97
LEMONS	100	17	24	22	18	18	33	41	39	41	18	20
GRAPEFRUIT	74	18	36	43	47	50	61	44	67	68	58	50
CARROBS	45	50	56	62	51	58	32	38	14	6	23	15
GRAPES	53	104	147	169	203	183	182	166	95	142	171	160
OLIVES	374	15	30	15	19	8	15	20	2	8	13	10
AGGREGATES OF PRODUCTION			-MILLION DOLLARS AT CONSTANT PRICES-									
CROPS		47.5	69.2	62.8	66.7	59.2	77.4	74.2	57.1	74.9	63.1	56.0
LIVESTOCK		0.0	0.0	0.0	0.0	0.0	0.0	0.0	0.0	0.0	0.0	0.0
TOTAL AGRICULTURE		47.5	69.2	62.8	66.7	59.2	77.4	74.2	57.1	74.9	63.1	56.0
TOTAL FOOD		46.4	68.4	62.0	65.9	58.4	75.6	73.4	56.3	74.1	62.3	55.2
INDICES OF PRODUCTION			(1961-65 = 100)									
CROPS		100	146	132	140	125	163	156	120	158	133	118
TOTAL AGRICULTURE		100	146	132	140	125	163	156	120	158	133	118
TOTAL FOOD		100	147	134	142	126	165	158	121	160	134	119
PER CAPITA AGRICULTURE		100	142	128	134	118	153	145	111	144	121	107
PER CAPITA FOOD		100	143	129	136	119	155	147	112	146	123	108
INDEX OF POPULATION												
1961-65 POPULATION=	583,000	100.0	102.7	103.6	104.5	105.5	106.3	107.4	108.7	109.6	109.6	110.5

-43-

TABLE 44.--GREECE

PRODUCTION BY COMMODITY, VALUE AND INDICES OF TOTAL AGRICULTURAL AND FOOD PRODUCTION, AVERAGE 1961-65, ANNUAL 1967-76

COMMODITY	PRICE	AVERAGE	1967	1968	1969	1970	1971	1972	1973	1974	1975	1976
	WEIGHT	1961-65										
DOLLARS			-1,000 METRIC TONS-									
WHEAT	102	1,765	1,936	1,568	1,723	1,931	1,946	1,768	1,659	2,142	2,078	2,351
RYE	76	19	13	8	9	9	9	8	6	7	6	5
RICE, PADDY	111	87	93	102	101	99	70	74	82	107	102	92
CORN	75	239	313	344	413	511	571	584	585	455	540	551
BARLEY	77	248	774	471	447	737	781	874	848	933	924	955
OATS	78	142	153	98	102	107	115	113	106	121	106	104
MILLET	78	1	2	1	1	1	1	1	1	1	1	1
SORGHUM	78	2	0	0	0	0	0	0	0	0	0	0
OTHER GRAINS	78	7	5	3	3	3	3	3	3	1	1	1
POTATOES	47	560	721	603	676	797	727	732	787	794	868	925
SUGAR BEETS	15	361	899	688	1,036	1,450	1,252	1,134	1,380	1,490	2,660	3,080
TOBACCO	1,053	110	115	89	80	95	84	85	91	81	118	127
COTTON	238	85	96	76	113	110	116	139	138	128	130	108
OLIVE OIL	618	171	194	204	150	200	183	250	192	237	257	230
BEEF AND VEAL	850	45	70	73	84	90	88	88	91	110	123	109
MUTTON AND LAMB	1,000	52	59	59	58	61	61	62	66	70	72	74
PORK	710	40	38	38	46	53	64	71	88	104	110	111
POULTRY MEAT	810	25	47	51	58	67	75	75	83	90	82	91
COW'S MILK	119	414	564	562	565	570	567	575	654	687	723	735
EGGS	639	73	93	100	107	108	110	109	103	108	108	118
AGGREGATES OF PRODUCTION	-----MILLION DOLLARS AT CONSTANT PRICES-----											
CROPS		513.2	615.6	518.3	512.4	621.4	601.4	637.8	601.6	668.4	738.6	764.8
LIVESTOCK		234.9	310.1	320.2	344.7	366.2	379.8	386.1	416.7	461.0	476.1	482.2
LIVESTOCK FEED DEDUCTION	.43	-101.0	-133.3	-137.6	-148.2	-157.4	-163.3	-166.0	-179.1	-198.2	-204.7	-207.3
TOTAL AGRICULTURE		647.1	792.4	700.9	708.9	830.2	817.9	857.9	839.2	931.2	1,010.0	1,039.7
TOTAL FOOD		511.0	648.5	589.1	597.8	704.0	701.8	735.3	710.6	815.4	854.8	880.3
INDICES OF PRODUCTION	(1961-65 = 100)											
CROPS		100	120	101	100	121	117	124	117	130	144	149
TOTAL AGRICULTURE		100	122	108	110	128	126	133	130	144	156	161
TOTAL FOOD		100	127	115	117	138	137	144	139	160	167	172
PER CAPITA AGRICULTURE		100	119	105	106	124	121	126	123	136	146	150
PER CAPITA FOOD		100	123	112	113	133	132	137	132	151	157	161
INDEX OF POPULATION												
1961-65 POPULATION=	8,477,000	100.0	102.8	103.1	103.5	103.7	104.2	104.9	105.3	105.7	106.7	107.3

-44-

PRODUCTION BY COMMODITY, VALUE AND INDICES OF TOTAL AGRICULTURAL AND FOOD PRODUCTION, AVERAGE 1961-65, ANNUAL 1967-76

COMMODITY	PRICE	AVERAGE										
	WEIGHT	1961-65	1967	1968	1969	1970	1971	1972	1973	1974	1975	1976
	DOLLARS	-1,000 METRIC TONS-										
WHEAT	109	2,807	4,000	4,400	3,900	3,800	3,300	4,034	3,950	3,900	5,000	5,500
RICE, PADDY	115	851	1,083	1,172	1,058	1,350	877	1,200	1,333	1,077	1,201	1,275
CORN	75	16	30	35	35	35	35	40	40	50	65	80
BARLEY	52	970	1,020	1,270	1,200	1,200	800	800	900	800	1,100	1,150
BEANS, DRY	108	35	63	63	63	63	63	65	70	68	85	90
LENTILS	108	23	17	17	17	17	17	17	20	20	30	30
CHICKPEAS	108	49	25	25	25	25	25	25	30	25	40	40
TOBACCO	656	16	22	20	17	17	20	19	15	12	14	18
COTTON	364	117	118	160	155	150	148	208	200	230	145	165
COTTONSEED	150	258	233	320	352	341	280	320	300	450	290	330
FLAXSEED	107	7	4	5	6	6	3	3	3	3	3	3
SESAME SEED	230	6	7	8	8	8	3	4	5	4	4	4
CASTOR BEANS	92	8	9	9	9	9	9	9	12	11	12	12
VEGETABLES	61	1,002	1,110	1,150	1,200	1,250	1,275	1,300	1,400	1,500	1,550	1,650
ORANGES AND TANGERINES	81	41	48	50	52	54	55	57	60	63	65	68
ALMONDS, IN SHELL	265	23	20	29	22	22	16	21	17	21	16	13
WALNUTS, IN SHELL	250	5	4	6	6	5	4	3	3	3	3	3
FILBERTS, IN SHELL	380	16	13	13	12	12	12	12	12	12	13	14
PISTACHIOS, IN SHELL	450	7	4	16	7	16	8	16	20	17	18	45
OTHER FRUIT	70	997	1,000	1,100	1,100	1,200	1,150	1,200	1,200	1,250	1,260	1,320
GRAPES	75	257	260	270	260	270	260	260	270	350	387	420
TEA	554	10	18	18	19	19	20	22	23	20	23	22
OLIVES	220	15	15	15	12	15	12	15	13	16	13	17
SUGAR, RAW	110	189	424	478	540	566	580	581	610	640	657	750
RAISINS	190	50	45	60	35	60	60	45	45	55	59	60
DATES	131	302	280	280	290	310	280	300	285	310	290	300
APRICOTS, DRIED	210	9	7	9	4	12	7	10	9	9	9	5
MEATS	772	193	226	240	252	240	239	290	400	608	641	727
MILK	119	1,554	1,900	1,900	1,800	1,900	1,900	1,900	1,900	1,910	2,000	2,160
WOOL, GREASY BASIS	656	18	19	19	20	20	19	18	17	17	18	18
AGGREGATES OF PRODUCTION		-MILLION DOLLARS AT CONSTANT PRICES-										
CROPS		811.5	1,003.1	1,125.6	1,053.8	1,100.6	949.8	1,107.0	1,120.7	1,135.0	1,243.8	1,363.3
LIVESTOCK		346.0	413.1	423.9	421.8	424.5	423.1	461.8	546.1	707.9	744.7	830.0
TOTAL AGRICULTURE		1,157.5	1,416.2	1,549.5	1,475.6	1,525.1	1,372.9	1,568.8	1,666.8	1,842.9	1,988.5	2,193.3
TOTAL FOOD		1,085.4	1,335.1	1,454.4	1,383.0	1,434.3	1,281.2	1,455.5	1,559.1	1,727.7	1,900.6	2,096.0
INDICES OF PRODUCTION		(1961-65 = 100)										
CROPS		100	124	139	130	136	117	136	138	140	153	168
TOTAL AGRICULTURE		100	122	134	127	132	119	136	144	159	172	189
TOTAL FOOD		100	123	134	127	132	118	134	144	159	175	193
PER CAPITA AGRICULTURE		100	109	116	107	108	94	105	108	116	121	130
PER CAPITA FOOD		100	110	116	107	108	94	104	108	116	124	132
INDEX OF POPULATION		1961-65 POPULATION= 24,634,000										
		100.0	112.0	115.3	118.7	122.2	125.8	129.5	133.4	137.4	141.7	146.1

TABLE 46.--IRAQ

PRODUCTION BY COMMODITY, VALUE AND INDICES OF TOTAL AGRICULTURAL AND FOOD PRODUCTION, AVERAGE 1961-65, ANNUAL 1967-76

COMMODITY	PRICE	AVERAGE	1967	1968	1969	1970	1971	1972	1973	1974	1975	1976
	WEIGHT	1961-65										
DOLLARS			-1,000 METRIC TONS-									
WHEAT	91	849	860	1,537	1,183	1,236	822	2,625	957	1,339	845	1,300
RICE, PADDY	125	141	308	354	318	180	307	268	157	68	61	164
BARLEY	46	851	855	992	963	682	432	980	462	533	400	600
MILLET	73	9	17	13	5	8	12	12	9	5	5	17
BEANS, DRY	118	7	14	7	11	9	10	10	7	8	12	11
BROAD BEANS	118	14	19	20	18	20	20	15	18	18	20	22
LENTILS	118	7	6	7	7	6	6	7	2	4	3	4
CHICKPEAS	118	3	3	4	4	4	3	4	4	8	7	3
COWPEAS	126	4	8	8	7	6	7	7	8	8	5	9
TOBACCO	533	9	13	14	16	14	14	10	10	9	9	9
COTTON	371	8	12	13	13	13	14	17	14	15	16	17
COTTONSEED	70	17	22	25	27	28	29	35	29	30	32	34
FLAXSEED	98	7	13	12	14	12	14	6	4	8	8	8
SESAME SEED	188	6	12	12	12	8	9	9	9	9	10	10
OLIVES	175	8	9	9	7	10	7	10	8	10	12	12
DATES	40	312	250	330	480	386	450	385	395	440	380	455
MEATS	772	104	100	110	110	110	100	110	157	165	170	210
MILK	121	1,265	1,275	1,275	1,300	1,300	1,300	1,300	1,320	1,350	1,400	1,540
WOOL, GREASY BASIS	350	12	12	13	13	13	12	13	12	12	12	13
AGGREGATES OF PRODUCTION			-MILLION DOLLARS AT CONSTANT PRICES-									
CROPS		163.6	191.0	268.1	236.6	206.2	176.1	356.9	154.8	194.7	141.9	210.2
LIVESTOCK		237.5	235.7	243.8	246.8	246.8	238.7	246.8	285.1	295.0	304.8	353.0
TOTAL AGRICULTURE		401.1	426.7	511.9	483.4	453.0	414.8	603.7	449.9	489.7	446.7	563.2
TOTAL FOOD		388.6	410.2	494.3	464.6	435.4	397.0	587.2	435.1	474.6	431.3	547.0
INDICES OF PRODUCTION			(1961-65 = 100)									
CROPS		100	117	164	145	126	108	218	101	119	87	128
TOTAL AGRICULTURE		100	106	128	121	113	103	151	112	122	111	140
TOTAL FOOD		100	106	127	120	112	102	151	112	122	111	141
PER CAPITA AGRICULTURE		100	94	109	99	90	80	113	81	85	75	92
PER CAPITA FOOD		100	93	108	99	89	79	113	81	85	75	92
INDEX OF POPULATION												
1961-65 POPULATION=	7,491,000	100.0	113.5	117.3	121.2	125.2	129.4	133.7	138.2	142.9	147.6	152.6

-94-

PRODUCTION BY COMMODITY, VALUE AND INDICES OF TOTAL AGRICULTURAL AND FOOD PRODUCTION, AVERAGE 1961-65, ANNUAL 1967-76

COMMODITY	PRICE	AVERAGE	1967	1968	1969	1970	1971	1972	1973	1974	1975	1976
	WEIGHT	1961-65										
	DOLLARS		-1,000 METRIC TONS-									
WHEAT	95	90	222	175	156	125	200	301	242	274	243	203
BARLEY	76	66	56	25	21	14	18	33	18	30	21	27
SORGHUM	76	53	24	21	16	11	21	40	30	34	32	17
POTATOES	69	104	93	110	115	137	142	143	165	152	163	175
SUGAR BEETS	22	263	289	248	215	237	259	249	217	117	259	324
COTTON	831	17	29	33	39	35	37	40	37	50	49	54
COTTONSEED	65	26	48	53	61	50	60	67	63	64	82	82
PEANUTS, IN SHELL	267	13	13	11	12	19	21	19	15	18	19	24
VEGETABLES	93	299	342	382	443	472	490	502	533	496	609	585
ORANGES	80	599	785	958	850	909	1,076	1,148	1,221	1,232	1,016	983
LEMONS	66	28	40	43	32	35	42	35	42	39	31	30
GRAPEFRUIT	66	132	264	265	258	279	355	328	384	388	403	445
APPLES	340	40	56	65	53	59	55	68	98	74	70	70
BANANAS	154	48	50	44	53	61	56	42	38	34	52	57
GRAPES	211	71	82	72	80	61	67	81	78	82	76	75
OLIVES	239	14	25	10	21	7	13	27	4	30	5	22
MEATS	929	86	105	117	121	129	152	170	198	222	233	250
MILK	123	376	429	443	454	488	498	519	566	591	640	715
EGGS	633	72	84	75	72	78	84	83	83	88	95	102

AGGREGATES OF PRODUCTION

- - - - - MILLION DOLLARS AT CONSTANT PRICES - - - - -

CROPS	172.6	232.4	242.4	242.3	243.3	275.8	303.2	308.7	318.6	305.0	311.3
LIVESTOCK	169.7	201.0	208.4	211.6	226.8	253.2	271.7	303.5	332.0	352.5	381.7
LIVESTOCK FEED DEDUCTION .38	-64.4	-76.3	-79.1	-80.4	-86.1	-96.2	-103.2	-115.3	-126.1	-133.9	-145.0
TOTAL AGRICULTURE	277.9	357.1	371.7	373.5	384.0	432.8	471.7	496.9	524.5	523.6	548.0
TOTAL FOOD	263.9	333.0	344.3	341.1	354.9	402.1	438.5	466.2	482.9	482.9	503.1

INDICES OF PRODUCTION

(1961-65 = 100)

CROPS	100	135	140	140	141	160	176	179	185	177	180
TOTAL AGRICULTURE	100	128	134	134	138	156	170	179	189	188	197
TOTAL FOOD	100	126	130	129	134	152	166	177	183	183	191
PER CAPITA AGRICULTURE	100	113	113	111	111	121	127	130	133	130	133
PER CAPITA FOOD	100	111	110	107	108	118	124	128	129	126	128

INDEX OF POPULATION

1961-65 POPULATION= 2,382,000	100.0	113.9	118.1	121.4	125.0	129.2	133.6	137.9	141.9	145.2	148.3
-------------------------------	-------	-------	-------	-------	-------	-------	-------	-------	-------	-------	-------

TABLE 48.--JORDAN

PRODUCTION BY COMMODITY, VALUE AND INDICES OF TOTAL AGRICULTURAL AND FOOD PRODUCTION, AVERAGE 1961-65, ANNUAL 1967-76

COMMODITY	PRICE	AVERAGE	1967	1968	1969	1970	1971	1972	1973	1974	1975	1976
	WEIGHT	1961-65										
	DOLLARS		-----1,000 METRIC TONS-----									
WHEAT	75	180	226	113	183	77	206	256	86	290	80	109
BARLEY	43	63	80	27	53	25	36	50	21	68	27	25
BEANS, DRY	94	2	6	2	3	2	3	3	2	3	2	2
BROAD BEANS	88	1	1	1	1	1	1	1	2	3	6	4
LENTILS	108	15	24	11	20	12	25	25	12	34	14	18
CHICKPEAS	88	4	3	1	2	1	1	3	2	9	4	6
VETCH	88	9	8	2	4	3	10	12	5	12	5	10
POTATOES	38	12	17	18	16	7	6	9	9	13	15	23
ONIONS	38	19	28	28	25	20	25	25	14	16	13	12
SESAME SEED	250	2	2	3	3	3	3	4	4	5	4	5
TOMATOES	46	202	216	180	215	219	216	189	109	180	181	122
CITRUS FRUIT	91	31	49	50	63	54	60	69	74	96	76	82
BANANAS	113	11	22	18	17	17	20	15	10	20	14	14
GRAPES	47	75	28	25	40	36	47	46	52	58	53	57
OLIVES	134	59	99	40	63	18	49	105	26	150	15	123
AGGREGATES OF PRODUCTION			-----MILLION DOLLARS AT CONSTANT PRICES-----									
CROPS		45.8	58.4	35.6	49.5	31.8	49.6	61.2	30.2	75.4	33.6	49.7
LIVESTOCK		0.0	0.0	0.0	0.0	0.0	0.0	0.0	0.0	0.0	0.0	0.0
TOTAL AGRICULTURE		45.8	58.4	35.6	49.5	31.8	49.6	61.2	30.2	75.4	33.6	49.7
TOTAL FOOD		45.8	58.4	35.6	49.5	31.8	49.6	61.2	30.2	75.4	33.6	49.7
INDICES OF PRODUCTION			(1961-65 = 100)									
CROPS		100	128	78	108	69	108	134	66	165	73	109
TOTAL AGRICULTURE		100	128	78	108	69	108	134	66	165	73	109
TOTAL FOOD		100	128	78	108	69	108	134	66	165	73	109
PER CAPITA AGRICULTURE		100	112	66	89	54	82	98	47	113	49	70
PER CAPITA FOOD		100	112	66	89	54	82	98	47	113	49	70
INDEX OF POPULATION												
1961-65 POPULATION=	1,797,000	100.0	113.4	117.0	122.0	127.9	132.6	136.7	141.2	145.7	150.4	155.1

TABLE 49.--LEBANON

PRODUCTION BY COMMODITY, VALUE AND INDICES OF TOTAL AGRICULTURAL AND FOOD PRODUCTION, AVERAGE 1961-65, ANNUAL 1967-76

COMMODITY	PRICE	AVERAGE	1967	1968	1969	1970	1971	1972	1973	1974	1975	1976
	WEIGHT	1961-65										
	DOLLARS		-1,000 METRIC TONS-									
WHEAT	82	64	58	48	33	43	29	64	35	76	65	78
BARLEY	56	13	16	12	7	6	6	8	7	13	14	13
BEANS, DRY	224	3	2	2	2	2	1	1	1	1	1	1
BROAD BEANS	119	2	1	1	1	1	1	1	1	1	1	1
LENTILS	210	2	3	1	1	2	2	2	1	1	1	1
CHICKPEAS	197	1	3	2	1	2	1	2	2	2	2	2
VETCH	197	3	5	3	4	3	4	5	6	6	5	5
POTATOES	47	56	75	67	70	93	109	117	116	115	115	100
ONIONS	44	33	30	30	25	36	36	30	31	35	30	30
SUGAR BEETS	18	45	125	120	100	120	146	190	139	80	80	70
TOBACCO	1,330	5	6	7	7	7	8	10	10	10	10	8
ORANGES AND TANGERINES	89	107	132	135	145	162	192	191	202	220	210	175
LEMONS	95	37	48	50	53	61	75	82	86	79	80	75
GRAPEFRUIT	73	3	4	5	10	11	19	6	8	7	7	5
APPLES	90	92	186	170	80	120	170	184	160	174	144	130
FIGS, FRESH	61	6	6	4	5	6	11	11	9	9	9	8
BANANAS	145	22	25	23	21	23	38	39	44	45	45	40
GRAPES	81	90	88	84	77	90	115	109	107	105	105	100
OLIVES	239	42	60	30	38	20	55	40	32	81	40	70
AGGREGATES OF PRODUCTION			-MILLION DOLLARS AT CONSTANT PRICES-									
CROPS		61.5	83.0	72.2	64.7	70.8	93.8	97.8	92.5	108.8	94.3	93.0
LIVESTOCK		0.0	0.0	0.0	0.0	0.0	0.0	0.0	0.0	0.0	0.0	0.0
TOTAL AGRICULTURE		61.5	83.0	72.2	64.7	70.8	93.8	97.8	92.5	108.8	94.3	93.0
TOTAL FOOD		55.4	75.0	62.9	55.4	61.5	83.2	84.5	79.2	95.5	81.0	82.4
INDICES OF PRODUCTION			(1961-65 = 100)									
CROPS		100	135	117	105	115	153	159	150	177	153	151
TOTAL AGRICULTURE		100	135	117	105	115	153	159	150	177	153	151
TOTAL FOOD		100	135	114	100	111	150	153	143	172	146	149
PER CAPITA AGRICULTURE		100	121	102	89	95	122	124	114	131	111	106
PER CAPITA FOOD		100	121	99	85	91	120	119	109	128	106	105
INDEX OF POPULATION												
1961-65 POPULATION=	1,918,000	100.0	111.8	115.0	118.2	121.5	124.8	128.2	131.6	135.0	138.5	142.1

TABLE 51.--TURKEY

PRODUCTION BY COMMODITY, VALUE AND INDICES OF TOTAL AGRICULTURAL AND FOOD PRODUCTION, AVERAGE 1961-65, ANNUAL 1967-76

COMMODITY	PRICE	AVERAGE										
	WEIGHT	1961-65	1967	1968	1969	1970	1971	1972	1973	1974	1975	1976
	DOLLARS	-1,000 METRIC TONS-										
WHEAT	89	7,092	9,000	8,400	8,300	8,000	10,700	9,500	8,000	8,300	11,500	13,000
RYE	41	734	900	820	817	630	895	755	690	560	750	710
RICE, PADDY	203	205	215	189	195	246	269	188	245	231	231	252
CORN	75	950	1,050	1,000	1,000	1,040	1,135	1,030	1,040	1,200	1,200	1,230
BARLEY	55	3,447	3,800	3,560	3,740	3,250	4,170	3,725	2,900	3,330	4,500	4,900
OATS	58	495	510	450	468	415	455	396	376	380	390	392
MILLET	56	60	55	53	56	46	61	52	33	40	40	43
OTHER GRAINS	37	339	304	273	300	261	314	283	261	227	251	281
BEANS, DRY	95	136	139	135	138	138	153	159	148	145	155	155
BROAD BEANS	95	49	43	43	45	39	42	47	46	54	50	50
LENTILS	153	94	106	96	107	92	101	105	67	120	135	210
CHICKPEAS	95	89	97	102	111	109	133	183	185	195	172	165
DRY PEAS	95	3	6	4	4	4	4	4	4	4	4	4
VEGETABLES	95	207	204	201	172	167	172	152	131	135	145	150
POTATOES	82	1,536	1,760	1,805	1,936	1,915	2,100	2,200	2,200	2,275	2,495	2,670
ONIONS	72	460	550	525	585	680	570	575	610	630	675	713
SUGAR BEETS	15	3,403	5,253	4,716	3,356	4,254	5,956	5,896	5,095	5,707	7,000	9,000
TOBACCO	819	130	183	162	144	147	174	178	149	204	209	302
COTTON	578	273	396	435	400	400	523	544	513	600	480	470
COTTONSEED	96	448	634	700	639	640	835	870	821	958	768	747
PEANUTS, IN SHELL	214	24	29	33	38	37	45	42	44	44	40	45
SESAME SEED	269	39	40	50	41	36	43	33	26	29	33	30
SUNFLOWER SEED	148	109	230	230	310	375	465	560	560	420	440	521
ORANGES AND TANGERINES	146	297	451	542	483	523	535	563	554	612	645	665
LEMONS	191	55	90	130	122	126	142	149	122	265	290	280
APPLES	163	326	640	700	620	748	780	850	850	950	900	1,000
PEARS	140	141	165	180	160	180	175	196	195	230	240	250
QUINCES	60	34	40	41	33	36	34	39	35	37	40	42
APRICOTS	130	94	118	131	113	95	80	123	143	124	165	170
CHERRIES	184	57	50	54	54	59	50	65	66	67	73	75
PEACHES	143	82	103	99	66	112	84	140	120	160	200	200
PLUMS	87	94	102	105	99	119	111	131	124	136	130	130
FIGS, FRESH	89	208	232	215	215	214	195	216	190	156	200	240
ALMONDS, IN SHELL	295	12	9	20	16	20	17	24	22	25	37	30
WALNUTS, IN SHELL	255	77	85	90	75	90	75	80	85	100	95	95
FILBERTS, IN SHELL	460	96	70	130	160	240	150	190	240	240	320	250
PISTACHIOS, IN SHELL	501	7	5	12	2	12	2	14	6	10	14	4
GRAPES	120	2,744	3,128	3,313	3,275	3,322	3,453	3,010	3,004	3,006	2,834	3,840
OLIVES	159	490	400	730	350	675	380	897	333	675	603	900
FLAX FIBER	457	5	4	4	4	2	2	1	1	3	3	3
HEMP FIBER	477	10	7	9	8	8	8	8	8	9	7	9
RAISINS	161	86	93	103	90	132	100	106	85	85	110	80

MEATS	329	443	455	469	517	544	525	461	473	553	610	693
MILK	132	3,938	4,426	4,451	4,381	4,293	4,280	4,445	4,591	4,672	4,945	5,000
WOOL, GREASY BASIS	926	43	46	47	47	47	48	50	52	52	53	54
EGGS	534	68	77	82	91	96	106	123	128	128	130	133

AGGRESATES OF PRODUCTION ----- MILLION DOLLARS AT CONSTANT PRICES -----

CROPS	2,341.9	2,867.6	2,935.1	2,877.7	2,923.1	3,329.9	3,298.4	2,967.5	3,262.1	3,624.7	4,077.2
LIVESTOCK	748.2	815.3	825.6	837.2	837.5	835.5	846.7	874.3	911.3	968.0	1,005.0
LIVESTOCK FEED DEDUCTION .26	-192.4	-211.9	-214.9	-217.8	-217.7	-217.2	-220.1	-227.3	-236.8	-251.6	-261.3
TOTAL AGRICULTURE	2,888.7	3,471.0	3,546.8	3,427.7	3,543.0	3,948.2	3,925.0	3,614.5	3,936.5	4,341.1	4,820.9
TOTAL FOOD	2,577.7	3,244.5	3,113.1	3,029.5	3,143.2	3,454.3	3,414.2	3,143.5	3,358.7	3,838.7	4,246.7

INDICES OF PRODUCTION (1961-65 = 100)

CROPS	100	122	125	120	125	142	141	127	139	155	174
TOTAL AGRICULTURE	100	120	123	119	123	137	136	125	136	150	167
TOTAL FOOD	100	118	121	118	122	134	132	122	131	149	165
PER CAPITA AGRICULTURE	100	109	109	102	103	112	109	98	104	112	121
PER CAPITA FOOD	100	107	107	101	102	110	106	95	100	111	123

INDEX OF POPULATION

1961-65 POPULATION= 29,717,000	100.0	110.1	113.0	116.0	119.0	121.8	124.8	127.8	131.0	134.2	137.5
--------------------------------	-------	-------	-------	-------	-------	-------	-------	-------	-------	-------	-------

TABLE 50.--SYRIA

PRODUCTION BY COMMODITY, VALUE AND INDICES OF TOTAL AGRICULTURAL AND FOOD PRODUCTION, AVERAGE 1961-65, ANNUAL 1967-76

COMMODITY	PRICE	AVERAGE	1967	1968	1969	1970	1971	1972	1973	1974	1975	1976
	WEIGHT	1961-65										
	DOLLARS		-1,000 METRIC TONS-									
WHEAT	59	1,093	1,049	600	1,003	625	662	1,808	593	1,630	1,550	1,500
BARLEY	35	649	590	512	627	235	123	710	102	656	597	1,000
MILLET	58	46	39	37	21	14	19	27	13	14	15	20
BEANS, DRY	90	2	2	3	1	3	4	5	5	6	7	9
BROAD BEANS	116	11	14	8	9	9	10	13	7	7	9	10
LENTILS	64	64	94	47	30	58	61	96	24	83	67	160
CHICKPEAS	90	26	64	36	45	15	24	36	28	60	27	35
VETCH	90	48	48	40	50	24	52	61	17	52	36	50
POTATOES	38	44	40	50	49	65	73	119	111	105	125	140
ONIONS	30	48	44	50	50	65	90	81	99	133	133	150
SUGAR BEETS	15	112	154	166	189	228	232	249	152	139	187	221
TOBACCO	672	3	6	9	11	12	7	12	11	10	12	12
COTTON	426	157	120	154	149	150	157	163	156	145	158	155
COTTONSEED	43	349	209	240	246	244	251	255	249	241	255	250
APPLES	180	21	28	26	30	18	34	42	41	44	46	50
PEARS	150	4	6	6	6	6	6	6	4	6	7	5
FIGS, FRESH	51	41	61	32	32	38	38	38	31	38	36	39
GRAPES	110	233	213	215	230	206	209	208	147	250	281	300
OLIVES	181	85	113	112	60	85	117	161	73	215	157	215
WOOL, GREASY BASIS	794	10	14	14	14	7	6	6	5	7	6	7
AGGREGATES OF PRODUCTION			-MILLION DOLLARS AT CONSTANT PRICES-									
CROPS		241.8	224.3	205.4	225.7	189.0	201.4	311.5	179.3	302.8	293.3	326.2
LIVESTOCK		7.6	11.1	11.1	11.1	5.6	4.8	4.8	4.0	5.6	4.8	5.5
TOTAL AGRICULTURE		249.4	235.4	216.5	236.8	194.6	206.2	316.3	183.3	308.4	298.1	331.8
TOTAL FOOD		169.6	169.2	133.8	154.8	117.0	129.8	234.0	105.4	234.3	217.9	252.1
INDICES OF PRODUCTION			(1961-65 = 100)									
CROPS		100	93	85	93	78	83	129	74	125	121	135
TOTAL AGRICULTURE		100	94	87	95	78	83	127	73	124	120	133
TOTAL FOOD		100	100	79	91	69	77	138	62	138	128	149
PER CAPITA AGRICULTURE		100	83	74	78	62	64	95	53	87	81	88
PER CAPITA FOOD		100	88	67	75	55	59	103	45	97	87	98
INDEX OF POPULATION												
1961-65 POPULATION=	4,998,000	100.0	113.7	117.4	121.2	125.2	129.3	133.6	138.0	142.5	147.2	152.0

UNITED STATES DEPARTMENT OF AGRICULTURE
WASHINGTON, D.C. 20250

OFFICIAL BUSINESS
PENALTY FOR PRIVATE USE, \$300

POSTAGE AND FEES PAID
U.S. DEPARTMENT OF
AGRICULTURE
AGR 101
THIRD CLASS



END