



AgEcon SEARCH
RESEARCH IN AGRICULTURAL & APPLIED ECONOMICS

The World's Largest Open Access Agricultural & Applied Economics Digital Library

This document is discoverable and free to researchers across the globe due to the work of AgEcon Search.

Help ensure our sustainability.

Give to AgEcon Search

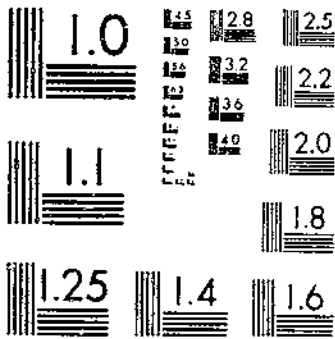
AgEcon Search
<http://ageconsearch.umn.edu>
aesearch@umn.edu

*Papers downloaded from **AgEcon Search** may be used for non-commercial purposes and personal study only. No other use, including posting to another Internet site, is permitted without permission from the copyright owner (not AgEcon Search), or as allowed under the provisions of Fair Use, U.S. Copyright Act, Title 17 U.S.C.*

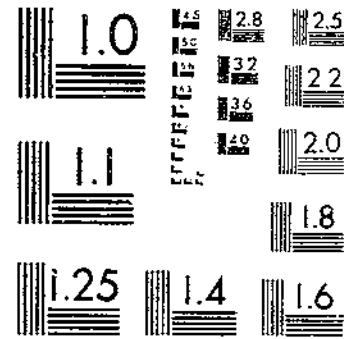
5B-569 (1972) USDA STATISTICAL BULLETINS SUPPLEMENTARY DATA
INDICES OF AGRICULTURAL PRODUCTION FOR THE WESTERN HEMISPHERE 1967-76

1 OF 1

START



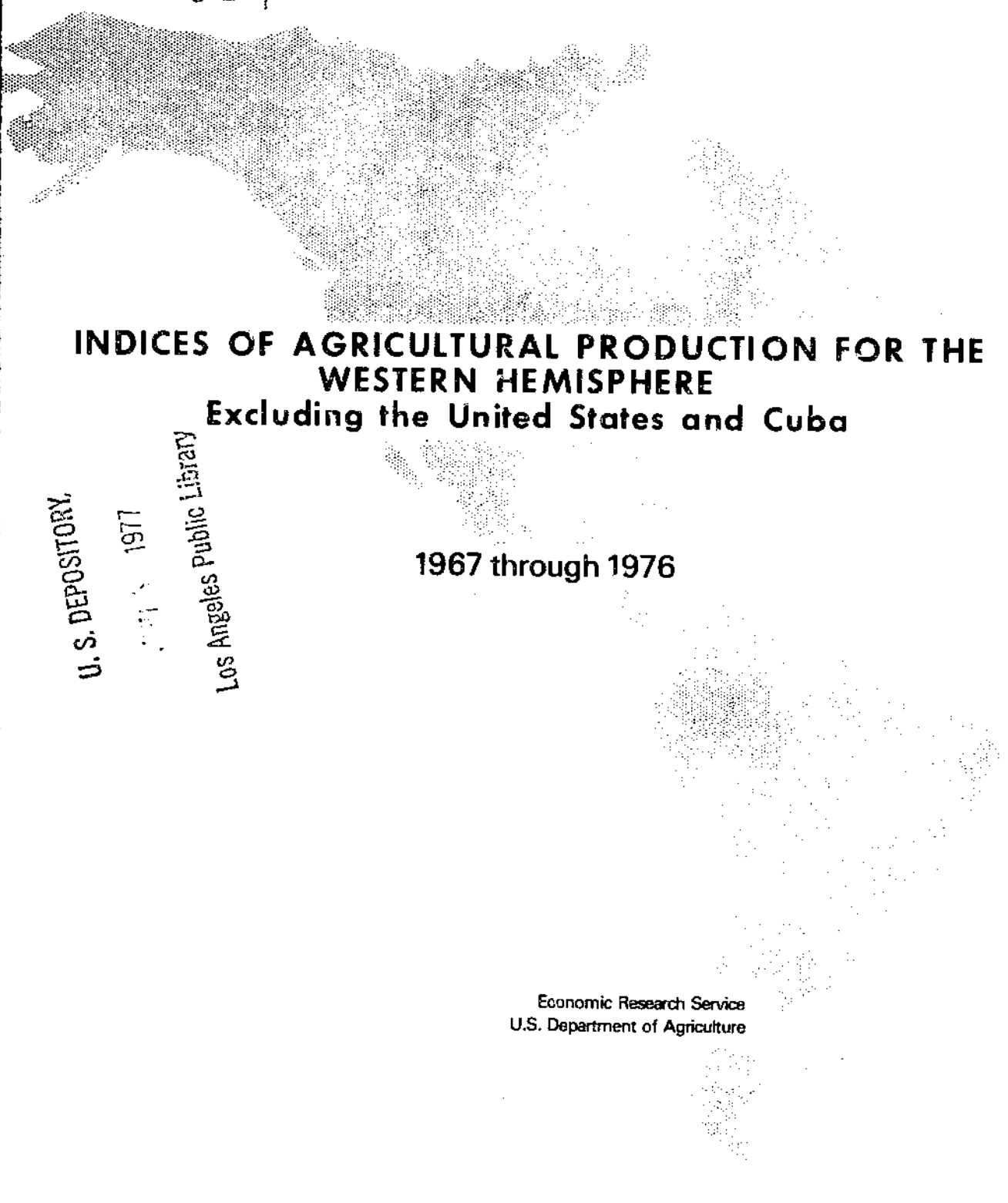
MICROCOPY RESOLUTION TEST CHART
NATIONAL BUREAU OF STANDARDS 61-A



MICROCOPY RESOLUTION TEST CHART
NATIONAL BUREAU OF STANDARDS 1963-A

R
633.5
11213
#259

15



**INDICES OF AGRICULTURAL PRODUCTION FOR THE
WESTERN HEMISPHERE**
Excluding the United States and Cuba

U. S. DEPOSITORY,

1977

Los Angeles Public Library

1967 through 1976

Economic Research Service
U.S. Department of Agriculture

Statistical Bulletin 569

CONTENTS

	<u>PAGE</u>
Introduction	1
<u>Summary Tables</u>	
Table 1-- Western Hemisphere: Indices of total agricultural production, by country, 1967-76.	3
Table 2-- Western Hemisphere: Indices of per capita agricultural production, by country, 1967-76.	4
Table 3-- Western Hemisphere: Indices of total food production, by country, 1967-76.	5
Table 4-- Western Hemisphere: Indices of per capita food production, by country, 1967-76.	6
Table 5-- Western Hemisphere: Aggregates of total agricultural production, by country, average 1961-65, annual 1967-76.	7
Table 6-- Western Hemisphere: Aggregates of total food production, by country, average 1961-65, annual 1967-76	8
Table 7-- Latin America: Production of selected agricultural products, 1967-76.	9
Table 8-- Western Hemisphere: Mid-year population, by country, 1967-76.	10
<u>Country Tables: Production by commodity, value and indices of total agricultural and food production, average 1961-65, annual 1967-76</u>	
Table 9-- Canada	11
Table 10-- Argentina.	12
Table 11-- Bolivia.	13
Table 12-- Brazil	14
Table 13-- Chile.	15
Table 14-- Colombia	16
Table 15-- Costa Rica	17
Table 16-- Dominican Republic	18
Table 17-- Ecuador.	19
Table 18-- El Salvador.	20
Table 19-- Guatemala.	21
Table 20-- Guyana	22
Table 21-- Haiti.	23
Table 22-- Honduras	24
Table 23-- Jamaica.	25
Table 24-- Mexico	26
Table 25-- Nicaragua.	27
Table 26-- Panama	28
Table 27-- Paraguay	29
Table 28-- Peru	30
Table 29-- Trinidad and Tobago.	31
Table 30-- Uruguay.	32
Table 31-- Venezuela.	33

INDICES OF AGRICULTURAL PRODUCTION FOR THE WESTERN HEMISPHERE
EXCLUDING THE UNITED STATES AND CUBA, 1967 THROUGH 1976

Developing Countries Program Area
Foreign Demand and Competition Division
Economic Research Service

INTRODUCTION

The indices of agricultural production in this publication were prepared as a part of a continuing assessment of the current agricultural situation abroad. The formula for the country indices is Laspeyre's base-weighted aggregative formula. The weights are estimates of 1961-65 average prices received by farmers, expressed in U.S. dollars per metric ton. The regional indices were computed for the sums of the country aggregates for the various regions. This method involves a bias favoring countries with relatively comprehensive commodity coverage or relatively high price weights, but this bias is normally not serious enough to offset the advantage of flexibility in the grouping of countries into various alternative regions (e.g., the Caribbean and Central America). Indices of food production were computed from aggregates covering edible products which contribute energy to the diet, regardless of the extent to which they are actually used for food. Coffee is, therefore, excluded from the indices of food production. Per capita indices were computed by dividing the country or regional indices of total production by appropriate indices of population (1961-65 = 100).

To avoid double counting of livestock products and feed in certain countries, a constant fraction of the aggregate value of output of livestock products has been subtracted. This constant percentage represents the base period average relation between the value of livestock products and the value (at 1961-65 price weights) of quantities of crops and derived products (bran, oilcake, molasses, beet pulp) used for feed in 1961-65. This method treats a nation's agriculture as though it consisted of two farms: one producing and selling nothing but crops, and the other producing livestock products buying all feed except pasture. It may overvalue feed by applying a price which refers to qualities of crops used for human consumption to the crops fed, but if this is the case, the overvaluation of the crops needs to be off set by the feed deduction.

Meat data are on a carcass weight basis including slaughter of domestic and imported livestock, except where commercial slaughter only is indicated. Data for mutton include goat meat. Data for milk include goat milk when available.

For a few countries, in which the value of foreign trade in live cattle is significant relative to the value of total agricultural production, the value (at 1961-65 average prices) of live cattle exports has been added and the value of live cattle imports has been subtracted. This procedure is considered preferable to adjusting the statistics on production of meat to reflect the national production of live animals. Allowances have not been made for countries which have insignificant international trade in live animals.

Statistics on production of most products were received from the Foreign Agricultural Service (FAS). When figures from FAS were unavailable, data were compiled from official publications or from reports and publications of FAO and other international organizations. In a few cases, in the absence of other data, the ERS country specialist has made his own estimates based on past trends and his knowledge of the situation; such figures are naturally subject to error. Most of the production estimates for

1976 used in this publication were received from FAS before February 14, but a few were received later; all are preliminary.

The time reference is the calendar year in which the bulk of the crop is harvested, with the exceptions noted below. Data for coffee and cocoa beans for all countries refer to the marketing years beginning in the indicated calendar years, even though most or all of the harvest occurs between January 1 and the end of the marketing year (e.g., cocoa beans in Trinidad and Tobago, and in Venezuela).

The reader should note that the production figures in this publication differ from those published by FAS with respect to cotton in Brazil, Colombia, and Peru, because in each case there are separate figures for output of distinct portions of the crop harvest of a given year with the late harvest of the previous year, while here they have been left on a calendar year basis.

The reader is cautioned against misinterpretation of the aggregates, which are shown in "million dollars at constant prices." These aggregates are published for the convenience of users who may wish to calculate the effect of revisions in the estimates of production. The aggregates do not measure the gross value of agricultural production, gross sales by farmers, or the farming component of the gross domestic product, although changes from year to year in the aggregates may be correlated with similar changes in those other series. Readers and users of these indices, are cautioned against using the products listed by each country as its total food supply. The list does not include all food or fiber grown in the country. Also output of some crops and products are exported and not available for domestic use.

Under a continuing arrangement, the United States Agency for International Development (AID) provided some financial assistance in researching and preparing the production indices presented in this publication.

The Economic Research Service has revised the indices of agricultural production, which appear in this publication, to reflect changes recently made in foreign grain production for the last 25 years. The grain production data were revised in part to more closely agree with data published by foreign governments. These indices supercede those published in Statistical Bulletin Nos. 540 and 552 and all previous editions, published annually for 1964 through 1973 as ERS-Foreign Report No. 264.

TABLE 1 -- WESTERN HEMISPHERE

INDICES OF TOTAL AGRICULTURAL PRODUCTION, BY COUNTRY, 1967-76

(1961-65 = 100)

	1967	1968	1969	1970	1971	1972	1973	1974	1975	PRELIM. 1976
CANADA	108	117	122	112	129	120	124	112	126	139
MEXICO	115	120	119	126	133	132	140	142	149	147
DOMINICAN REPUBLIC	98	94	114	119	129	134	138	146	136	147
HAITI	94	89	94	99	100	102	102	104	99	102
JAMAICA	98	93	87	84	87	88	85	89	84	86
TRINIDAD AND TOBAGO	97	107	112	97	92	98	85	92	76	85
CARIBBEAN	97	94	105	107	113	117	118	123	115	123
COSTA RICA	124	128	141	148	147	158	170	157	179	175
EL SALVADOR	109	105	116	117	133	119	131	154	130	148
GUATEMALA	113	116	115	121	138	143	163	166	173	176
HONDURAS	125	131	127	127	144	138	141	138	119	141
NICARAGUA	116	117	109	118	136	130	148	147	152	153
PANAMA	124	144	155	147	155	143	136	144	152	149
CENTRAL AMERICA AND PANAMA	118	121	124	127	141	138	150	153	152	159
CENTRAL AMERICA LESS PANAMA	117	118	121	125	140	137	151	154	152	160
ARGENTINA	113	105	114	115	110	104	115	122	123	134
BOLIVIA	104	106	115	119	118	122	136	138	138	143
BRAZIL	113	116	121	121	128	134	133	151	153	158
CHILE	117	123	116	127	128	110	98	119	124	120
COLOMBIA	111	116	119	121	123	133	135	144	150	149
ECUADOR	104	108	111	120	115	119	119	131	129	137
GUYANA	99	98	104	97	104	90	81	110	109	98
PARAGUAY	107	103	108	124	104	116	117	134	132	137
PERU	101	94	99	105	108	101	102	103	102	103
URUGUAY	83	97	95	108	89	65	91	100	101	114
VENEZUELA	125	130	134	142	148	143	151	158	174	160
SOUTH AMERICA	111	112	117	120	121	122	125	137	140	144
LATIN AMERICA (22 COUNTRIES)	112	113	118	121	124	125	129	139	141	145
LATIN AMERICA (19 COUNTRIES) ^{1/}	112	114	118	121	125	125	130	139	142	146

^{1/} EXCLUDES GUYANA, JAMAICA, AND TRINIDAD AND TOBAGO.

TABLE 2 -- WESTERN HEMISPHERE

INDICES OF PER CAPITA AGRICULTURAL PRODUCTION, BY COUNTRY, 1967-76

{1961-65 = 100}

	1967	1968	1969	1970	1971	1972	1973	1974	1975	PRELIM. 1976
CANADA	100	107	110	100	113	104	106	94	105	114
MEXICO	100	101	97	99	101	97	100	98	99	94
DOMINICAN REPUBLIC	87	81	96	97	102	103	103	106	96	101
HAITI	88	82	85	88	87	87	85	85	80	80
JAMAICA	92	87	80	76	78	77	73	76	70	71
TRINIDAD AND TOBAGO	92	101	105	83	78	82	70	75	62	69
CARIBBEAN	89	85	93	92	95	97	95	97	89	93
COSTA RICA	108	109	116	119	113	119	126	114	126	120
EL SALVADOR	95	89	95	92	101	88	93	106	87	96
GUATEMALA	101	101	97	100	112	111	124	123	124	123
HONDURAS	109	111	104	100	110	102	101	95	79	91
NICARAGUA	104	102	92	97	109	101	112	108	109	107
PANAMA	110	124	130	120	123	110	102	105	108	103
CENTRAL AMERICA AND PANAMA	104	104	103	103	110	105	111	110	106	108
CENTRAL AMERICA LESS PANAMA	103	101	101	101	110	104	111	110	106	108
ARGENTINA	107	98	105	105	99	92	101	106	105	113
BOLIVIA	93	92	98	98	95	96	105	103	100	101
BRAZIL	101	101	103	100	102	104	100	111	109	110
CHILE	106	109	101	108	107	91	79	95	97	92
COLOMBIA	99	100	100	99	98	103	103	107	109	106
ECUADOR	93	94	94	99	92	92	90	96	92	94
GUYANA	91	88	91	83	87	74	65	86	84	74
PARAGUAY	96	98	92	103	84	91	90	100	95	96
PERU	90	82	83	86	86	78	76	75	72	70
URUGUAY	81	95	93	105	86	82	87	96	96	108
VENEZUELA	110	110	110	113	114	107	109	111	119	106
SOUTH AMERICA	100	99	100	100	98	97	97	103	103	103
LATIN AMERICA (22 COUNTRIES)	101	99	100	100	100	98	98	103	102	102
LATIN AMERICA (19 COUNTRIES) <u>1/</u>	100	99	100	100	100	98	99	103	102	102

1/ EXCLUDES GUYANA, JAMAICA, AND TRINIDAD AND TOBAGO.

TABLE 3 -- WESTERN HEMISPHERE

INDICES OF TOTAL FOOD PRODUCTION, BY COUNTRY, 1967-76

	(1961-65 = 100)									
	1967	1968	1969	1970	1971	1972	1973	1974	1975	PRELIM. 1976
CANADA	108	118	121	109	130	122	124	112	128	142
MEXICO	120	124	126	137	143	142	151	148	166	164
DOMINICAN REPUBLIC	99	97	117	122	133	137	138	146	137	151
HAITI	101	94	101	102	167	110	108	108	104	107
JAMAICA	98	93	87	84	87	88	85	89	83	86
TRINIDAD AND TOBAGO	96	107	114	96	93	98	85	91	76	87
CARIBBEAN	99	96	108	108	116	119	118	124	116	125
COSTA RICA	121	130	144	160	154	171	179	166	202	193
EL SALVADOR	118	129	122	136	144	133	162	155	173	163
GUATEMALA	116	127	134	141	155	156	177	179	207	208
HONDURAS	127	135	127	127	146	133	137	130	110	132
NICARAGUA	120	129	127	132	146	134	148	154	166	158
PANAMA	125	146	157	149	157	146	139	147	154	151
CENTRAL AMERICA AND PANAMA	122	132	135	140	150	146	157	155	168	168
CENTRAL AMERICA LESS PANAMA	121	130	132	139	149	146	160	157	170	171
ARGENTINA	117	108	117	117	115	108	120	126	127	139
BOLIVIA	102	103	113	118	115	117	125	129	131	139
BRAZIL	120	125	129	137	137	142	147	163	168	186
CHILE	118	124	117	129	132	112	160	122	127	122
COLOMBIA	112	118	120	125	131	137	143	152	161	161
ECUADOR	100	106	114	116	113	117	120	128	128	136
GUYANA	99	98	104	97	104	90	81	110	109	98
PARAGUAY	109	103	106	125	105	112	110	127	126	128
PERU	110	98	108	116	121	113	112	114	115	119
URUGUAY	80	98	97	113	95	90	101	112	111	128
VENEZUELA	128	133	137	145	150	148	152	162	174	164
SOUTH AMERICA	116	117	121	127	127	127	133	144	148	158
LATIN AMERICA (22 COUNTRIES)	116	118	123	129	131	130	137	145	151	159
LATIN AMERICA (19 COUNTRIES) ^{1/}	116	118	123	130	131	131	137	146	152	160

^{1/} EXCLUDES GUYANA, JAMAICA, AND TRINIDAD AND TOBAGO.

TABLE 4 -- WESTERN HEMISPHERE

INDICES OF PER CAPITA FOOD PRODUCTION, BY COUNTRY, 1967-76

(1961-65 = 100)

	1967	1968	1969	1970	1971	1972	1973	1974	1975	PRELIM. 1976
CANADA	100	108	109	97	114	106	106	94	106	116
MEXICO	105	105	103	108	109	104	107	102	110	105
DOMINICAN REPUBLIC	88	84	98	99	105	105	103	106	97	103
HAITI	94	86	91	90	93	94	90	89	84	84
JAMAICA	92	87	80	76	78	77	73	76	69	71
TRINIDAD AND TOBAGO	91	101	107	82	79	82	70	74	62	70
CARIBBEAN	91	87	96	93	98	98	95	98	90	95
COSTA RICA	106	111	118	129	119	129	133	120	142	133
EL SALVADOR	103	109	100	107	110	98	115	107	116	106
GUATEMALA	104	110	113	116	124	122	134	132	149	145
HONDURAS	111	114	104	100	112	98	98	89	73	85
NICARAGUA	108	112	107	109	117	104	112	113	119	110
PANAMA	111	126	131	121	124	113	104	107	110	104
CENTRAL AMERICA AND PANAMA	108	113	112	113	110	111	116	111	117	114
CENTRAL AMERICA LESS PANAMA	107	112	110	112	117	111	118	112	118	115
ARGENTINA	111	101	108	107	104	96	105	109	108	117
BOLIVIA	91	90	96	97	93	92	95	96	95	98
BRAZIL	107	109	109	113	109	110	111	120	120	129
CHILE	107	110	102	110	111	92	81	97	99	94
COLOMBIA	99	102	101	102	104	106	109	113	117	114
ECUADOR	90	92	97	95	90	91	91	94	91	94
GUYANA	91	88	91	83	87	74	65	86	84	74
PARAGUAY	98	90	91	104	85	88	84	95	91	90
PERU	98	85	91	95	96	87	84	83	81	81
URUGUAY	78	96	94	110	92	87	97	107	106	121
VENEZUELA	112	113	113	116	116	111	110	114	119	108
SOUTH AMERICA	105	103	104	106	103	101	103	109	109	114
LATIN AMERICA (22 COUNTRIES)	104	103	105	107	105	102	104	107	109	112
LATIN AMERICA (19 COUNTRIES) ^{1/}	104	103	104	107	105	102	104	108	109	112

^{1/} EXCLUDES GUYANA, JAMAICA, AND TRINIDAD AND TOBAGO.

TABLE 5 -- WESTERN HEMISPHERE

AGGREGATES OF TOTAL AGRICULTURAL PRODUCTION, BY COUNTRY, AVERAGE 1961-65, ANNUAL 1967-76

	AVERAGE 1961-65	1967	1968	1969	1970	1971	1972	1973	1974	1975	PRELIM. 1976
- - - - - MILLION DOLLARS AT CONSTANT PRICES - - - - -											
CANADA	2,897.2	3,032.0	3,293.4	3,417.7	3,141.5	3,623.8	3,372.9	3,468.6	3,146.0	3,543.6	3,890.7
MEXICO	2,115.3	2,427.8	2,544.4	2,522.1	2,668.3	2,823.1	2,802.4	2,956.7	3,000.9	3,156.7	3,112.6
DOMINICAN REPUBLIC	207.4	202.9	194.7	236.0	246.3	266.6	277.5	286.5	302.2	281.9	305.8
HAITI	58.6	55.3	52.1	55.3	57.8	58.6	59.9	60.0	60.8	58.1	59.7
JAMAICA	76.9	75.1	71.5	67.0	64.3	66.9	67.3	65.5	68.3	64.5	66.5
TRINIDAD AND TOBAGO	27.1	26.3	29.0	30.3	26.2	25.0	26.6	22.9	24.8	20.6	23.0
CARIBBEAN	370.0	359.6	347.3	388.6	394.6	417.1	431.3	434.9	456.1	425.1	455.0
COSTA RICA	130.2	161.9	166.5	183.5	192.3	191.4	206.1	221.8	204.6	233.0	227.9
EL SALVADOR	162.1	177.2	170.6	188.0	189.2	216.0	192.4	212.8	250.3	210.7	240.0
GUATEMALA	197.4	223.4	228.5	227.5	238.9	274.6	282.1	322.2	328.5	340.8	346.5
HONDURAS	128.0	160.4	167.4	162.2	162.2	184.9	176.9	180.3	176.4	152.1	180.6
NICARAGUA	129.0	150.0	150.5	140.7	151.9	174.9	167.3	191.2	189.9	196.5	196.9
PANAMA	71.2	88.4	102.4	110.5	104.5	110.6	102.1	96.5	102.3	108.1	106.1
CENTRAL AMERICA AND PANAMA	817.9	961.3	985.9	1,012.4	1,039.0	1,152.4	1,126.9	1,224.8	1,252.0	1,241.2	1,298.0
CENTRAL AMERICA LESS PANAMA	746.7	872.9	883.5	901.5	934.5	1,041.8	1,024.8	1,128.3	1,149.7	1,133.1	1,191.9
ARGENTINA	2,161.7	2,444.0	2,272.7	2,460.6	2,492.9	2,381.0	2,253.0	2,484.0	2,635.0	2,664.8	2,896.6
BOLIVIA	137.7	142.6	145.3	158.6	164.2	162.5	168.6	189.8	189.6	189.5	196.9
BRAZIL	3,417.6	3,854.8	3,955.1	4,134.1	4,147.4	4,387.7	4,577.3	4,549.2	5,160.6	5,213.9	5,386.8
CHILE	292.5	342.7	360.5	339.1	370.6	375.5	322.2	287.8	349.3	364.1	351.7
COLOMBIA	1,118.7	1,239.0	1,293.6	1,330.0	1,351.1	1,371.4	1,487.7	1,506.1	1,605.4	1,679.2	1,670.1
ECUADOR	279.7	289.5	301.8	310.6	334.8	322.4	331.5	333.1	367.2	362.2	382.5
GUYANA	41.8	41.5	40.9	43.6	40.5	43.3	37.6	33.9	46.1	45.4	40.9
PARAGUAY	100.1	107.1	103.6	108.6	124.2	104.5	115.8	117.2	134.2	131.9	137.8
PERU	398.9	401.9	374.1	396.6	420.7	429.0	402.7	405.9	409.8	405.4	410.0
URUGUAY	248.2	204.8	239.7	236.7	268.0	221.6	210.6	224.7	247.4	250.4	282.1
VENEZUELA	432.5	540.9	563.9	581.2	613.3	641.4	619.0	653.5	682.7	751.0	691.8
SOUTH AMERICA	8,629.4	9,608.8	9,651.2	10,099.7	10,327.7	10,440.3	10,526.0	10,785.2	11,827.3	12,057.8	12,446.3
LATIN AMERICA (22 COUNTRIES)	11,932.6	13,357.5	13,528.8	14,022.8	14,429.6	14,832.9	14,886.6	15,401.6	16,536.3	16,880.8	17,311.9
LATIN AMERICA (19 COUNTRIES) ^{1/}	11,786.8	13,214.6	13,387.4	13,881.9	14,298.6	14,697.7	14,755.1	15,279.3	16,397.1	16,750.3	17,181.6

^{1/} EXCLUDES GUYANA, JAMAICA, AND TRINIDAD AND TOBAGO.

TABLE 6 -- WESTERN HEMISPHERE

AGGREGATES OF TOTAL FOOD PRODUCTION, BY COUNTRY, AVERAGE 1961-65, ANNUAL 1967-76

	AVERAGE 1961-65	1967	1968	1969	1970	1971	1972	1973	1974	1975	PRELIM. 1976
-----MILLION DOLLARS AT CONSTANT PRICES-----											
CANADA	2,639.9	2,863.9	3,109.0	3,196.0	2,876.4	3,436.5	3,218.3	3,274.9	2,969.2	3,371.0	3,743.9
MEXICO	1,726.9	2,066.5	2,137.3	2,183.6	2,357.4	2,473.8	2,445.4	2,599.4	2,558.4	2,872.7	2,830.6
DOMINICAN REPUBLIC	179.7	177.1	174.0	210.2	219.2	238.5	245.3	248.5	263.0	247.0	270.9
HAITI	40.7	41.1	38.2	41.2	41.6	43.7	44.6	43.9	44.1	42.5	43.6
JAMAICA	75.2	73.8	70.2	65.7	63.0	65.6	66.0	63.6	67.0	62.6	64.8
TRINIDAD AND TOBAGO	25.6	24.7	27.4	29.1	24.6	23.8	25.0	21.7	23.2	19.4	22.2
CARIBBEAN	321.2	316.7	309.8	346.2	348.4	371.6	360.9	377.7	397.3	371.5	401.5
COSTA RICA	90.0	109.2	117.0	129.3	143.9	138.7	154.0	160.7	149.5	181.8	174.1
EL SALVADOR	65.5	77.6	84.2	80.1	88.9	94.3	86.8	106.0	101.7	113.2	106.5
GUATEMALA	102.3	118.9	129.8	137.1	144.1	158.3	159.9	180.6	182.9	211.5	212.8
HONDURAS	109.2	139.1	147.2	139.1	138.6	159.1	145.1	149.9	142.1	120.3	144.1
NICARAGUA	68.1	81.8	87.6	86.7	89.7	99.6	91.3	100.5	105.0	113.2	107.5
PANAMA	68.2	85.0	99.7	107.1	101.8	107.2	99.4	94.5	100.3	104.7	102.7
CENTRAL AMERICA AND PANAMA	503.3	611.6	665.5	679.4	707.0	757.2	736.5	792.2	781.5	844.7	847.7
CENTRAL AMERICA LESS PANAMA	435.1	526.6	565.8	572.3	605.2	650.0	637.1	697.7	681.2	740.0	745.0
ARGENTINA	1,910.7	2,232.6	2,065.4	2,228.5	2,235.0	2,192.1	2,055.9	2,284.6	2,409.9	2,421.0	2,648.5
BOLIVIA	135.8	138.5	140.4	153.7	160.3	156.2	159.5	169.4	174.9	177.8	189.3
BRAZIL	2,691.7	3,218.5	3,364.6	3,460.9	3,676.4	3,681.4	3,828.8	3,958.6	4,396.0	4,514.0	4,995.9
CHILE	276.4	325.7	344.1	322.3	355.7	363.6	310.3	276.1	337.4	351.0	338.0
COLOMBIA	801.4	900.4	946.4	960.7	1,002.6	1,052.0	1,101.2	1,147.2	1,221.7	1,291.0	1,291.9
ECUADOR	253.4	253.0	269.7	288.6	293.9	287.6	296.3	304.6	325.0	324.3	344.6
GUYANA	41.4	41.1	40.5	43.2	40.1	42.9	37.2	33.5	45.7	45.0	40.4
PARAGUAY	91.7	100.4	94.1	97.4	114.7	96.6	102.8	100.6	116.6	115.6	117.4
PERU	285.2	313.5	280.8	308.3	329.6	344.0	321.4	318.6	326.1	328.6	339.5
URUGUAY	184.1	146.7	180.5	177.8	208.2	175.7	166.3	186.2	206.7	204.0	235.4
VENEZUELA	379.8	487.5	504.6	518.5	550.8	570.5	561.2	576.3	615.5	660.2	621.4
SOUTH AMERICA	7,051.6	8,157.9	8,231.1	8,559.9	8,967.3	8,962.6	8,940.9	9,355.7	10,175.5	10,432.5	11,162.3
LATIN AMERICA (22 COUNTRIES)	9,603.0	11,152.7	11,343.7	11,769.1	12,380.1	12,565.2	12,503.7	13,125.0	13,912.7	14,521.4	15,242.1
LATIN AMERICA (19 COUNTRIES) ^{1/}	9,460.6	11,013.1	11,205.6	11,631.1	12,252.4	12,432.9	12,375.5	13,006.2	13,776.8	14,394.4	15,114.7

^{1/} EXCLUDES GUYANA, JAMAICA, AND TRINIDAD AND TOBAGO.

TABLE 7--LATIN AMERICA

PRODUCTION OF SELECTED AGRICULTURAL PRODUCTS, 1967-76 1/

COMMODITY	1967	1968	1969	1970	1971	1972	1973	1974	1975	1976
----- 1,000 METRIC TONS -----										
WHEAT	11,469	10,306	12,138	10,867	11,769	10,765	11,935	12,861	14,676	18,781
RICE, PADDY	10,078	9,959	9,916	10,453	9,061	10,038	10,737	11,190	12,501	13,275
SORGHUM 2/	3,671	4,697	5,600	7,214	8,056	5,502	9,018	9,659	9,541	9,843
CORN	34,716	33,416	32,983	37,750	38,781	33,625	38,026	39,198	38,948	38,887
BARLEY	1,382	1,434	1,339	1,216	1,352	1,755	1,542	1,296	1,518	1,513
OATS	907	795	613	619	698	788	827	610	747	815
PULSES 3/	4,250	4,149	3,765	3,927	4,204	4,258	3,835	3,816	4,095	3,550
POTATOES	8,039	8,513	8,843	9,203	9,245	8,468	8,402	9,818	8,689	9,669
CASSAVA	30,760	32,623	33,786	33,563	33,802	33,604	30,186	28,961	29,983	31,326
SWEET POTATOES AND YAMS	3,350	3,138	3,317	3,312	3,365	3,188	3,452	2,856	3,273	3,321
SUGAR (CENTRIFUGAL)	12,421	12,333	13,070	13,206	14,657	15,681	17,340	18,428	17,265	18,842
SUGAR NONCENTRIFUGAL	876	861	859	891	853	896	967	1,026	1,082	1,078
TOBACCO	366	370	423	441	439	449	518	547	582	593
COTTON	1,406	1,683	1,626	1,486	1,537	1,691	1,825	1,788	1,460	1,292
COTTONSEED	2,717	3,017	2,821	2,835	2,813	3,247	3,363	3,292	2,697	2,369
FLAXSEED	427	576	755	774	399	389	334	441	466	644
SOYBEANS	955	1,047	1,519	1,923	2,576	4,338	6,030	9,087	11,386	12,516
PEANUTS, IN SHELL	1,229	1,149	1,135	1,333	1,500	1,311	1,247	978	856	923
OTHER EDIBLE OILSEEDS 4/	1,686	1,376	1,394	1,884	1,663	1,491	1,438	1,544	1,597	1,776
BANANAS 5/	15,804	16,920	18,241	19,097	19,551	20,224	16,389	15,947	16,165	17,678
COFFEE	2,690	2,237	2,476	1,918	2,771	2,901	2,262	3,209	2,959	2,094
COCOA BEANS	328	319	373	347	357	327	415	467	463	444
BEEF AND VEAL	6,015	6,324	6,890	6,876	6,169	6,649	6,612	6,949	7,498	8,154
MUTTON AND LAMB	489	507	481	452	464	371	332	320	327	372
PORK	1,313	1,376	1,408	1,521	1,597	1,613	1,744	1,732	1,757	1,804
MILK 6/	22,067	22,874	23,638	23,966	25,168	25,888	26,362	28,127	30,260	31,216
WOOL	338	329	328	328	287	278	272	267	281	290

1/ INCLUDES QUANTITIES OF COMMODITIES INCLUDED IN INDICES TABLES FOR THE 22 LATIN AMERICAN COUNTRIES, AND SUGAR FOR COUNTRIES WHERE SUGARCANE AND SUGARBEETS ARE GROWN. QUANTITIES ARE ESTIMATED TO REPRESENT 90 PERCENT OR MORE OF THE TOTAL VOLUME OF PRODUCTION FOR COMMODITIES SHOWN.

2/ INCLUDES MILLET.

3/ INCLUDES DRY BEANS, PEAS, LENTILS, AND CHICKPEAS.

4/ INCLUDES RAPESEED, SESAME, SUNFLOWER, AND SAFFLOWER.

5/ INCLUDES EXPORT-TYPE BANANAS ONLY FOR ECUADOR.

6/ INCLUDES COMMERCIAL PRODUCTION ONLY FOR ARGENTINA.

TABLE 8--WESTERN HEMISPHERE

MID-YEAR POPULATION BY COUNTRY, 1967-76

COUNTRY AND REGION	1967	1968	1969	1970	1971	1972	1973	1974	1975	1976
	THOUSANDS									
CANADA	20,410	20,730	21,030	21,320	21,600	21,850	22,130	22,480	22,830	23,180
MEXICO	45,700	47,300	48,960	50,690	52,450	54,270	56,160	58,120	60,150	62,250
DOMINICAN REPUBLIC	3,720	3,830	3,950	4,060	4,180	4,300	4,430	4,560	4,700	4,840
HAITI	4,350	4,420	4,500	4,580	4,660	4,750	4,850	4,950	5,050	5,160
JAMAICA	1,800	1,820	1,840	1,870	1,900	1,930	1,980	2,000	2,030	2,060
TRINIDAD AND TOBAGO	921	929	935	1,027	1,032	1,048	1,062	1,070	1,078	1,085
CARIBBEAN	10,791	10,999	11,225	11,537	11,772	12,028	12,322	12,580	12,858	13,145
COSTA RICA	1,590	1,630	1,690	1,730	1,800	1,840	1,870	1,920	1,970	2,020
EL SALVADOR	3,160	3,270	3,380	3,500	3,630	3,750	3,880	4,000	4,130	4,270
GUATEMALA	4,860	5,000	5,140	5,270	5,410	5,570	5,720	5,880	6,050	6,220
HONDURAS	2,440	2,520	2,610	2,700	2,790	2,890	2,990	3,100	3,210	3,320
NICARAGUA	1,760	1,820	1,870	1,920	1,980	2,040	2,090	2,150	2,210	2,270
PANAMA	1,340	1,380	1,420	1,460	1,500	1,540	1,590	1,630	1,670	1,720
CENTRAL AMERICA AND PANAMA	15,150	15,620	16,110	16,580	17,110	17,630	18,140	18,680	19,240	19,820
CENTRAL AMERICA LESS PANAMA	13,810	14,240	14,690	15,120	15,610	16,090	16,550	17,050	17,570	18,100
ARGENTINA	22,800	23,110	23,430	23,750	24,070	24,390	24,720	25,050	25,380	25,710
BOLIVIA	4,560	4,680	4,770	4,930	5,060	5,190	5,330	5,470	5,630	5,790
BRAZIL	85,450	87,860	90,340	92,910	95,990	98,690	101,430	104,240	107,150	110,120
CHILE	9,110	9,320	9,520	9,710	9,880	10,060	10,230	10,400	10,580	10,770
COLOMBIA	19,690	20,250	20,830	21,400	21,970	22,510	23,030	23,550	24,090	24,640
ECUADOR	5,320	5,480	5,640	5,810	5,980	6,150	6,330	6,510	6,730	6,930
GUYANA	659	673	688	703	719	735	752	769	786	804
PARAGUAY	2,130	2,180	2,240	2,300	2,370	2,430	2,500	2,570	2,650	2,730
PERU	12,190	12,560	12,930	13,330	13,740	14,150	14,580	15,030	15,490	15,950
URUGUAY	2,690	2,700	2,710	2,720	2,730	2,740	2,750	2,760	2,770	2,780
VENEZUELA	9,860	10,190	10,520	10,870	11,240	11,590	11,950	12,320	12,700	13,090
SOUTH AMERICA	174,459	179,003	183,610	188,433	193,749	198,635	203,602	208,669	213,956	219,314
LATIN AMERICA (22 COUNTRIES)	246,100	252,922	259,913	267,240	275,081	282,563	290,224	298,049	306,204	314,529
LATIN AMERICA (19 COUNTRIES) ^{1/}	242,720	249,500	256,450	263,640	271,430	278,850	286,430	294,210	302,310	310,580
WESTERN HEMISPHERE	266,510	273,652	280,943	288,560	296,681	304,413	312,354	320,529	329,034	337,709

^{1/} EXCLUDES GUYANA, JAMAICA, AND TRINIDAD AND TOBAGO.

TABLE 9 -- CANADA

PRODUCTION BY COMMODITY, VALUE AND INDICES OF TOTAL AGRICULTURAL AND FOOD PRODUCTION, AVERAGE 1961-65, ANNUAL 1967-76

COMMODITY	PRICE	AVERAGE	1967	1968	1969	1970	1971	1972	1973	1974	1975	1976
	WEIGHT	1961-65										
DOLLARS			-1,000 METRIC TONS-									
WHEAT	57	15,364	16,157	17,689	18,267	9,024	14,412	14,514	16,458	13,295	17,078	23,522
RYE	40	318	304	331	385	400	557	344	363	480	523	561
CORN	47	1,072	1,883	2,076	1,883	2,634	2,946	2,528	2,803	2,577	3,645	3,676
BARLEY	42	3,860	5,506	7,099	8,084	8,889	13,095	11,285	10,224	8,802	9,520	10,303
OATS	41	6,078	4,654	5,501	5,473	5,445	5,606	4,630	5,041	3,929	4,204	4,961
OTHER GRAINS	54	1,479	1,597	1,717	1,830	2,088	2,241	2,166	2,010	1,675	1,253	1,714
POTATOES	41	2,090	2,120	2,399	2,352	2,501	2,214	1,991	2,158	2,501	2,195	2,641
SUGAR BEETS	13	1,077	981	996	978	832	1,103	971	902	751	943	1,158
TOBACCO	1,060	85	106	99	112	101	102	85	117	115	101	92
FLAXSEED	109	513	238	500	700	1,243	567	448	493	350	445	297
SOYBEANS	69	181	220	246	209	283	280	375	397	280	367	252
RAPESEED	94	278	561	440	758	1,637	2,155	1,300	1,207	1,163	1,749	930
APPLES	63	416	446	409	472	425	391	393	375	406	463	397
CATTLE EXPORTS ^{1/}	2/102	422	262	254	242	247	245	300	426	153	170	385
CATTLE IMPORTS ^{1/}	2/237	14	31	6	8	52	91	73	230	144	110	238
BEEF AND VEAL	780	734	856	903	866	863	875	898	896	941	1,052	1,134
PORK	525	454	536	536	515	602	685	632	617	611	523	476
CHICKEN MEAT	370	207	271	271	312	340	327	343	363	322	300	313
TURKEY MEAT	550	71	94	91	92	102	102	97	109	109	87	100
MILK	67	8,348	8,268	8,329	8,481	8,307	7,924	8,033	7,659	7,562	7,927	7,684
EGGS	480	293	301	308	319	338	323	322	318	327	303	302
FUR PELTS ^{3/}	4/ 15	1,415	1,987	1,668	1,779	1,499	1,158	1,048	1,067	1,114	1,130	1,136
AGGREGATES OF PRODUCTION	- - - - - MILLION DOLLARS AT CONSTANT PRICES - - - - -											
CROPS		1,744.1	1,867.2	2,095.3	2,231.5	1,928.5	2,410.4	2,154.2	2,279.2	1,951.6	2,322.1	2,652.8
LIVESTOCK		1,687.3	1,848.8	1,901.6	1,882.7	1,925.3	1,925.9	1,934.3	1,887.9	1,895.8	1,938.8	1,964.9
LIVESTOCK FEED DEDUCTION ³⁷		-624.3	-684.0	-703.5	-696.5	-712.3	-712.5	-715.6	-698.5	-701.4	-717.3	-727.0
TOTAL AGRICULTURE		2,807.1	3,032.0	3,293.4	3,417.7	3,141.5	3,623.8	3,372.9	3,468.6	3,146.0	3,543.6	3,890.7
TOTAL FOOD		2,639.9	2,863.9	3,109.0	3,196.0	2,876.4	3,436.5	3,218.3	3,274.9	2,969.2	3,371.0	3,743.8
INDICES OF PRODUCTION	(1961-65 = 100)											
CROPS		100	107	120	128	111	138	124	131	112	133	152
TOTAL AGRICULTURE		100	108	117	122	112	129	120	124	112	126	139
TOTAL FOOD		100	108	118	121	109	130	122	124	112	128	142
PER CAPITA AGRICULTURE		100	100	107	110	100	113	104	106	95	105	113
PER CAPITA FOOD		100	101	108	109	97	114	106	106	95	106	116
INDEX OF POPULATION	1961-65 POPULATION= 18,971,000											
		100.0	107.6	109.3	110.9	112.4	113.9	115.2	116.7	118.5	120.3	122.2

1/ IN 1,000 HEAD.
 2/ PRICE PER HEAD.
 3/ IN 1,000 PELTS.
 4/ PRICE PER PELT.

TABLE 10 --ARGENTINA

PRODUCTION BY COMMODITY, VALUE AND INDICES OF TOTAL AGRICULTURAL AND FOOD PRODUCTION, AVERAGE 1961-65, ANNUAL 1967-76

COMMODITY	PRICE	AVERAGE	1967	1968	1969	1970	1971	1972	1973	1974	1975	1976
	WEIGHT	1961-65										
DOLLARS			-1,000 METRIC TONS-									
WHEAT	44	7,541	7,320	5,740	7,020	4,920	5,680	6,900	6,560	5,970	8,570	11,000
RYE	35	422	352	360	377	181	256	690	515	306	273	400
RICE, PADDY	20	193	217	203	345	407	288	294	260	316	351	311
CORN	43	4,984	8,510	6,560	6,860	9,360	9,930	5,860	9,700	9,900	7,700	5,855
BARLEY	32	679	588	556	579	367	553	880	732	430	522	520
OATS	28	676	690	490	425	364	475	566	561	327	432	560
MILLET	25	187	224	229	196	125	183	105	227	229	200	293
SORGHUM	28	1,144	1,380	1,297	2,484	3,820	4,660	2,360	4,960	5,900	4,830	5,060
POTATOES	28	1,738	1,777	1,957	2,346	2,336	1,958	1,340	1,535	2,173	1,350	1,528
SWEET POTATOES	43	361	444	379	482	438	454	328	474	295	419	354
SUGARCANE	9	10,765	8,007	8,261	9,124	9,780	10,260	12,870	16,874	15,536	15,600	16,100
TOBACCO	350	53	62	62	54	66	62	74	71	98	97	95
COTTON	480	120	87	72	112	145	84	87	125	127	172	132
COTTONSEED	37	231	158	138	215	272	167	173	244	238	314	250
FLAXSEED	78	763	385	510	640	660	316	350	297	381	377	580
SOYBEANS	73	12	20	22	32	27	59	78	272	496	485	695
PEANUTS, IN SHELL	115	357	354	283	217	234	388	252	440	290	375	338
SUNFLOWER SEED	81	625	1,120	940	876	1,140	830	628	886	970	732	1,085
ORANGES	21	501	640	662	821	865	990	750	783	833	783	691
TANGERINES	20	169	114	134	214	227	265	226	249	230	229	212
APPLES	85	440	516	470	446	446	924	512	233	726	729	577
PEARS	83	96	119	112	103	94	74	98	43	110	97	123
PEACHES	148	169	203	224	248	236	278	265	94	265	252	289
PLUMS	150	42	63	64	62	66	64	73	29	80	74	90
GRAPES	53	2,266	2,993	2,540	2,131	2,452	2,865	2,600	2,610	3,528	3,100	3,760
TUNG NUTS	75	93	103	137	66	142	110	170	11	136	66	118
CATTLE EXPORTS 1/	2/110	196	208	163	160	104	58	48	40	40	37	38
BEEF AND VEAL	300	2,229	2,522	2,561	2,883	2,624	2,001	2,198	2,148	2,163	2,414	2,792
MUTTON AND LAMB	260	156	204	209	193	176	175	132	108	87	89	130
PORK	295	174	217	183	205	210	248	215	258	240	239	253
MILK 3/	36	4,294	4,366	4,678	4,552	4,195	4,831	5,421	5,864	5,133	5,645	5,975
WOOL, GREASY BASIS 4/	580	188	190	174	180	175	162	154	156	155	160	167

AGGREGATES OF PRODUCTION

- - - - - MILLION DOLLARS AT CONSTANT PRICES - - - - -

CROPS	1,241.3	1,419.7	1,248.5	1,350.4	1,473.0	1,506.8	1,331.7	1,551.2	1,736.1	1,681.0	1,786.5
LIVESTOCK	1,045.6	1,163.9	1,163.8	1,261.5	1,158.9	993.3	1,046.9	1,025.8	1,321.4	1,117.9	1,261.4
LIVESTOCK FEED DEDUCTION 1/2	-125.4	-139.6	-139.6	-151.3	-139.0	-119.1	-125.6	-123.0	-122.5	-134.1	-151.3
TOTAL AGRICULTURE	2,161.5	2,444.0	2,272.7	2,460.6	2,492.9	2,381.0	2,253.0	2,484.0	2,635.0	2,664.8	2,896.5
TOTAL FOOD	1,918.7	2,232.6	2,065.4	2,228.5	2,235.0	2,192.1	2,055.9	2,284.6	2,409.9	2,421.0	2,648.5

INDICES OF PRODUCTION

(1961-65 = 100)

CROPS	100	114	101	109	119	121	107	127	140	135	144
TOTAL AGRICULTURE	100	113	105	114	115	110	104	115	122	123	134
TOTAL FOOD	100	117	108	117	117	115	108	120	126	127	139
PER CAPITA AGRICULTURE	100	107	99	105	105	99	93	101	105	105	113
PER CAPITA FOOD	100	111	101	108	107	103	96	105	109	108	117

INDEX OF POPULATION

1961-65 POPULATION= 21,672,000	100.0	105.2	106.6	108.1	109.6	111.1	112.5	114.1	115.6	117.1	118.5
--------------------------------	-------	-------	-------	-------	-------	-------	-------	-------	-------	-------	-------

- 1/ IN 1,000 HEAD.
- 2/ PRICE PER HEAD.
- 3/ COMMERCIAL USE ONLY.
- 4/ EXCLUDES WOOL ON SHEEP SKINS.

TABLE 11 --BOLIVIA

PRODUCTION BY COMMODITY, VALUE AND INDICES OF TOTAL AGRICULTURAL AND FOOD PRODUCTION, AVERAGE 1961-65, ANNUAL 1967-76

COMMODITY	PRICE	AVERAGE	1967	1968	1969	1970	1971	1972	1973	1974	1975	1976
	WEIGHT	1961-65										
DOLLARS		- - - - -1,000 METRIC TONS- - - - -										
WHEAT	70	48	27	45	53	44	47	54	57	62	69	70
RICE, PADDY	125	43	57	66	83	64	77	76	69	75	90	90
CORN	71	254	273	288	289	246	297	269	276	277	330	330
BARLEY	67	61	56	60	61	62	66	70	72	75	66	65
BEANS, DRY	190	14	14	14	14	14	17	18	20	21	20	21
POTATOES	84	625	635	598	627	655	698	703	729	749	740	750
CASSAVA	61	106	110	113	213	221	234	242	245	270	225	270
COTTON	491	1	3	4	4	5	10	15	38	27	21	12
COFFEE	285	4	9	10	10	5	5	6	6	5	5	5
SUGAR, RAW	65	73	86	113	124	117	80	104	174	153	200	277
BEEF AND VEAL	295	55	58	59	59	54	52	55	57	60	55	58
MUTTON AND LAMB	485	15	16	15	16	14	16	16	16	17	17	18
PORK	515	16	18	18	18	17	17	18	22	23	22	24
MILK	110	55	32	33	36	131	42	45	48	50	50	51
AGGREGATES OF PRODUCTION		- - - - -MILLION DOLLARS AT CONSTANT PRICES- - - - -										
CROPS		99.1	104.9	107.7	120.1	118.3	126.0	130.3	148.6	146.4	148.3	153.1
LIVESTOCK		38.4	37.7	37.6	38.5	45.9	36.5	38.3	41.2	43.2	41.2	43.9
TOTAL AGRICULTURE		137.5	142.6	145.3	158.6	164.2	162.5	168.6	189.8	189.6	189.5	196.9
TOTAL FOOD		135.7	138.5	140.4	153.7	160.3	156.2	159.5	169.4	174.9	177.6	189.3
INDICES OF PRODUCTION		(1961-65 = 100)										
CROPS		100	106	109	121	119	127	131	150	148	150	154
TOTAL AGRICULTURE		100	104	106	115	119	118	123	138	138	138	143
TOTAL FOOD		100	102	103	113	118	115	118	125	129	131	139
PER CAPITA AGRICULTURE		100	93	92	94	99	95	96	105	103	100	101
PER CAPITA FOOD		100	91	90	97	98	93	92	95	96	95	98
INDEX OF POPULATION		1961-65 POPULATION= 4,072,600										
1961-65 POPULATION=	4,072,600	100.0	112.0	114.9	117.1	121.1	124.3	127.5	130.9	134.3	138.3	142.2

TABLE 12 --BRAZIL

PRODUCTION BY COMMODITY, VALUE AND INDICES OF TOTAL AGRICULTURAL AND FOOD PRODUCTION, AVERAGE 1961-65, ANNUAL 1967-76

COMMODITY	PRICE	AVERAGE	1967	1968	1969	1970	1971	1972	1973	1974	1975	1976
	WEIGHT	1961-65										
DOLLARS			-1,000 METRIC TONS-									
WHEAT	99	211	365	694	1,146	1,735	2,034	694	1,937	2,814	1,555	3,050
RYE	30	18	17	19	19	19	20	16	16	16	16	13
RICE, PADDY	63	6,123	6,792	6,652	6,394	6,648	5,394	6,132	6,632	6,483	7,000	8,500
CORN	31	10,124	12,824	12,814	13,693	14,216	14,130	14,891	14,186	16,284	16,354	17,283
BARLEY	25	26	31	29	31	27	20	15	13	26	24	56
OATS	20	20	21	26	26	27	29	25	38	38	38	38
BEANS, DRY	97	1,928	2,548	2,420	2,200	2,211	2,364	2,688	2,229	2,238	2,271	1,842
POTATOES	44	1,178	1,467	1,606	1,507	1,583	1,649	1,589	1,337	1,673	1,669	1,791
CASSAVA	8	21,900	27,268	29,203	30,074	29,464	30,258	29,829	26,559	24,715	25,812	26,446
SWEETPOTATOES	17	1,534	2,226	2,120	2,175	2,134	2,155	2,140	2,249	1,814	2,150	2,250
ONIONS	92	216	250	273	275	285	246	282	306	341	349	430
SUGARCANE	4	65,577	77,087	76,680	75,250	79,753	79,754	85,000	91,994	96,412	91,386	106,652
TOBACCO	195	162	145	152	188	193	196	191	234	226	286	258
COTTON	350	490	445	606	705	581	595	682	660	517	515	370
JUTE	115	48	40	51	49	38	35	35	62	32	41	39
COTTONSEED	40	1,133	1,015	1,200	1,266	1,173	1,200	1,480	1,400	1,130	1,100	786
SOYBEANS	59	353	716	654	1,057	1,509	2,077	3,666	5,012	7,876	9,692	11,227
PEANUTS, IN SHELL	78	610	751	754	754	928	945	893	650	530	335	422
CASTOR BEANS	53	268	355	370	378	349	362	265	420	540	280	160
TOMATOES	57	502	745	775	700	764	820	892	809	1,035	1,047	1,168
BANANAS	13	6,287	8,056	8,453	9,266	9,860	10,100	10,900	7,071	6,974	7,081	7,966
PINEAPPLES	84	188	225	225	260	283	333	357	326	369	344	349
GRAPES	49	463	501	539	483	598	502	564	394	564	587	634
COFFEE	280	1,655	1,380	990	1,140	585	1,415	1,470	858	1,650	1,440	570
COCOA BEANS	195	128	145	166	202	182	165	159	245	267	257	249
COCONUTS	79	237	412	345	328	350	363	322	274	254	241	232
SISAL	128	186	199	190	193	164	169	178	194	225	185	165
BEEF AND VEAL	420	1,404	1,505	1,694	1,827	1,845	1,838	2,820	2,000	2,100	2,250	2,300
MUTTON AND LAMS	325	48	52	57	56	55	61	58	50	58	59	60
PORK	395	468	557	634	642	679	674	645	701	725	750	775
MILK	58	5,742	6,904	7,116	7,244	7,346	7,323	7,146	7,763	9,023	10,003	10,701
WOOL, GREASY BASIS	545	29	31	40	37	41	34	37	36	30	32	32
AGGREGATES OF PRODUCTION	-----MILLION DOLLARS AT CONSTANT PRICES-----											
CROPS	2,460.5	2,774.3	2,766.5	2,891.3	2,879.5	3,126.6	3,269.5	3,200.4	3,709.9	3,653.0	3,765.8	
LIVESTOCK	1,139.1	1,286.3	1,419.9	1,479.5	1,509.4	1,501.2	1,556.8	1,605.7	1,727.0	1,858.1	1,929.7	
LIVESTOCK FEED DEDUCTION	-182.2	-205.8	-226.3	-236.7	-241.5	-240.1	-249.0	-256.9	-276.3	-297.2	-306.7	
TOTAL AGRICULTURE	3,417.4	3,854.8	3,955.1	4,134.1	4,147.4	4,387.7	4,577.3	4,549.2	5,160.6	5,213.9	5,386.8	
TOTAL FOOD	2,691.6	3,218.5	3,364.6	3,460.9	3,676.4	3,681.4	3,828.8	3,958.6	4,396.0	4,514.0	4,993.9	
INDICES OF PRODUCTION	(1961-65 = 100)											
CROPS	100	113	112	118	117	127	133	130	151	148	153	
TOTAL AGRICULTURE	100	113	116	121	121	128	134	133	151	153	158	
TOTAL FOOD	100	120	125	129	137	137	142	147	163	168	186	
PER CAPITA AGRICULTURE	100	101	101	103	100	102	104	100	111	109	110	
PER CAPITA FOOD	100	107	109	109	113	109	110	111	120	120	129	
INDEX OF POPULATION	1961-65 POPULATION = 76,574,000											
1961-65 POPULATION = 76,574,000	100.0	111.6	114.7	118.0	121.3	125.4	128.9	132.5	136.1	139.9	143.8	

TABLE 13 --CHILE

PRODUCTION BY COMMODITY, VALUE AND INDICES OF TOTAL AGRICULTURAL AND FOOD PRODUCTION, AVERAGE 1961-65, ANNUAL 1967-76

COMMODITY	PRICE WEIGHT	AVERAGE 1961-65	1967	1968	1969	1970	1971	1972	1973	1974	1975	1976
	DOLLARS		-----1,000 METRIC TONS-----									
WHEAT	65	1,082	1,203	1,226	1,214	1,307	1,368	900	747	734	900	702
RYE	38	7	9	8	10	11	12	12	9	15	11	11
RICE, PADDY	82	85	84	94	37	76	67	86	55	34	76	91
CORN	66	204	362	321	154	239	258	283	294	366	329	273
BARLEY	60	74	118	157	80	97	114	139	108	150	121	78
OATS	54	89	115	163	95	111	112	111	109	150	131	77
BEANS, DRY	170	87	90	65	47	65	72	83	65	75	74	71
LENTILS	151	17	4	4	4	11	12	11	10	13	12	15
CHICKPEAS	125	6	4	8	3	5	7	9	4	5	5	3
POTATOES	43	769	717	725	602	684	836	733	624	1,012	738	725
ONIONS	18	122	104	95	80	75	72	50	48	134	134	140
SUGAR BEETS	13	548	1,048	1,194	1,238	1,456	1,248	1,057	592	833	1,617	2,067
TOBACCO	185	6	6	6	5	5	5	5	4	5	8	8
RAPESEED	119	46	61	48	64	70	82	71	37	32	61	64
SUNFLOWER SEED	105	39	33	43	20	28	20	19	13	10	18	15
CATTLE IMPORTS 1/	2/150	138	133	98	84	40	44	28	12	10	8	5
BEEF AND VEAL	515	127	127	126	167	176	152	106	115	175	215	220
MUTTON AND LAMB	535	27	32	36	26	22	25	16	12	16	18	13
PORK	580	43	56	63	42	44	45	51	49	50	30	24
CHICKEN MEAT	785	16	36	47	54	43	45	56	51	56	44	44
MILK	55	814	872	938	982	1,071	1,150	906	881	933	985	1,052
WOOL, GREASY BASIS	616	24	26	25	26	22	18	18	18	18	19	20
AGGREGATES OF PRODUCTION			-----MILLION DOLLARS AT CONSTANT PRICES-----									
CROPS		171.5	197.4	198.9	166.6	195.0	205.4	173.2	140.1	170.2	181.7	166.5
LIVESTOCK		157.0	188.7	209.8	224.0	228.0	220.8	193.4	191.7	232.5	236.8	240.5
LIVESTOCK FEED DEDUCTION 23		-36.1	-43.4	-48.2	-51.5	-52.4	-50.7	-44.4	-44.0	-53.4	-54.4	-55.3
TOTAL AGRICULTURE		292.4	342.7	360.5	339.1	370.6	375.5	322.2	287.8	349.3	364.1	351.7
TOTAL FOOD		276.3	325.7	344.1	322.3	355.7	363.6	310.3	276.1	337.4	351.0	338.0
INDICES OF PRODUCTION			(1961-65 = 100)									
CROPS		100	115	116	97	114	120	101	82	99	106	97
TOTAL AGRICULTURE		100	117	123	116	127	128	110	98	119	125	120
TOTAL FOOD		100	118	125	117	129	132	112	100	122	127	122
PER CAPITA AGRICULTURE		100	107	110	101	108	108	91	80	95	97	92
PER CAPITA FOOD		100	107	111	101	110	110	92	81	97	99	94
INDEX OF POPULATION												
1961-65 POPULATION= 8,280,000		100.0	110.0	112.6	115.0	117.3	119.3	121.5	123.6	125.6	127.8	130.1

1/ IN 1,000 HEAD.
2/ PRICE PER HEAD.

TABLE 14 --COLOMBIA

PRODUCTION BY COMMODITY, VALUE AND INDICES OF TOTAL AGRICULTURAL AND FOOD PRODUCTION, AVERAGE 1961-65, ANNUAL 1967-76

COMMODITY	PRICE	AVERAGE	1967	1968	1969	1970	1971	1972	1973	1974	1975	1976
	WEIGHT	1961-65										
DOLLARS			- - - - - 1,000 METRIC TONS - - - - -									
WHEAT	125	123	80	105	72	55	49	79	91	86	34	45
RICE, MADDY	130	576	662	786	694	752	905	1,043	1,175	1,548	1,614	1,549
CORN	85	827	850	886	920	862	915	872	824	775	847	884
BARLEY	86	106	95	75	85	100	112	106	94	100	118	71
SORGHUM	52	31	90	100	100	165	219	238	398	235	450	429
BEANS, DRY	320	44	38	48	48	46	50	50	50	51	62	64
POTATOES	70	725	800	950	850	980	950	1,058	1,130	1,135	1,150	1,400
CASSAVA	54	746	850	900	1,000	1,100	1,100	1,300	1,320	1,398	1,350	1,900
TOBACCO	290	38	42	42	44	44	44	42	48	41	53	54
COTTON	520	67	97	120	125	128	112	136	146	151	121	133
COTTONSEED	70	116	158	207	207	220	194	237	249	249	235	233
SOYBEANS	130	32	80	87	100	95	115	122	114	114	160	85
SESAME SEED	265	36	35	15	20	30	37	29	17	17	21	21
BANANAS	52	577	764	770	800	817	841	828	900	954	1,050	1,050
PLANTAINS	50	1,321	1,590	1,600	1,640	1,680	1,723	1,700	1,752	1,805	1,900	1,900
COFFEE	575	472	480	474	507	468	432	528	468	510	539	510
COCOA BEANS	690	15	18	18	15	17	18	20	23	25	27	26
SUGAR, RAW (CENTRIFUGAL) ^{1/}	85	412	636	671	702	688	790	821	878	940	970	803
SUGAR, NONCENTRIFUGAL	80	626	670	660	670	700	675	720	800	850	900	900
BEEF AND VEAL	390	388	389	409	444	461	462	425	408	423	470	543
MUTTON AND LAMB	330	2	2	2	2	2	2	3	3	2	2	2
PORK	480	52	51	53	54	56	59	87	95	98	98	103
MILK	100	1,843	2,080	2,070	2,160	2,250	2,340	2,400	2,450	2,600	2,650	2,200
AGGREGATES OF PRODUCTION			- - - - - MILLION DOLLARS AT CONSTANT PRICES - - - - -									
CROPS		807.9	904.1	952.0	968.2	974.9	985.8	1,097.4	1,113.9	1,194.1	1,247.6	1,250.8
LIVESTOCK		358.0	384.9	392.6	415.8	432.4	443.2	448.6	450.7	472.7	496.0	481.3
LIVESTOCK FEED DEDUCTION	.13	-46.5	-50.0	-51.0	-54.0	-56.2	-57.6	-58.3	-58.5	-61.4	-64.4	-62.5
TOTAL AGRICULTURE		1,118.5	1,239.0	1,293.6	1,330.0	1,351.1	1,371.4	1,487.7	1,506.1	1,605.4	1,679.2	1,670.1
TOTAL FOOD		801.3	900.4	946.4	960.7	1,002.6	1,052.0	1,101.2	1,147.2	1,221.7	1,291.0	1,291.9
INDICES OF PRODUCTION			(1961-65 = 100)									
CROPS		100	112	118	120	121	122	136	138	148	155	155
TOTAL AGRICULTURE		100	111	116	119	121	123	133	135	144	150	149
TOTAL FOOD		100	112	118	120	125	131	137	143	152	161	161
PER CAPITA AGRICULTURE		100	98	104	100	99	98	163	162	107	109	106
PER CAPITA FOOD		100	100	102	101	102	105	107	109	113	117	114
INDEX OF POPULATION												
1961-65 POPULATION = 17,495,000		100.0	112.5	115.7	119.1	122.3	125.6	128.7	131.6	134.6	137.7	140.8

^{1/} YEAR BEGINNING APRIL 1.

TABLE 15 --COSTA RICA

PRODUCTION BY COMMODITY, VALUE AND INDICES OF TOTAL AGRICULTURAL AND FOOD PRODUCTION, AVERAGE 1961-65, ANNUAL 1967-76

COMMODITY	PRICE	AVERAGE	1967	1968	1969	1970	1971	1972	1973	1974	1975	1976
	WEIGHT	1961-65										
	DOLLARS		-1,000 METRIC TONS-									
RICE, PADDY	56	64	81	84	104	79	90	89	135	121	168	67
CORN	56	67	75	78	59	45	64	64	52	42	92	97
BEANS, DRY	160	17	4	6	5	8	10	9	5	14	16	13
POTATOES	69	10	10	11	19	16	20	20	21	22	23	24
TOBACCO	445	1	2	2	1	1	2	2	2	3	3	3
BANANAS	65	511	784	864	1,010	1,230	1,048	1,213	1,278	1,110	1,300	1,300
COFFEE	640	62	81	76	84	75	81	80	94	84	78	82
COCOA BEANS	300	11	8	9	5	4	7	5	7	7	7	4
SUGAR, RAW (CENTRIFUGAL)	79	63	122	127	131	151	155	179	174	164	174	190
SUGAR, NONCENTRIFUGAL	75	70	40	40	41	41	42	40	34	37	40	43
CATTLE EXPORTS ^{1/}	2/110	12	6	3	1	1	1	14	9	1	20	20
BEEF AND VEAL	365	27	32	34	40	42	47	52	48	58	60	62
PORK	360	7	5	5	5	7	8	7	8	7	9	5
MILK	95	147	157	164	170	177	180	191	202	184	261	272
AGGREGATES OF PRODUCTION ----- MILLION DOLLARS AT CONSTANT PRICES-----												
CROPS		102.3	132.8	136.4	150.8	157.6	154.1	165.0	181.2	163.3	180.9	175.1
LIVESTOCK		27.8	29.1	30.1	32.7	34.7	37.3	41.1	40.6	41.3	52.1	52.8
TOTAL AGRICULTURE		130.1	161.9	166.5	183.5	192.3	191.4	206.1	221.8	204.6	233.0	227.9
TOTAL FOOD		90.0	109.2	117.0	129.3	143.9	138.7	154.0	160.7	149.5	181.8	174.1
INDICES OF PRODUCTION (1961-65 = 100)												
CROPS		100	130	133	147	154	151	161	177	160	177	171
TOTAL AGRICULTURE		100	124	126	141	148	147	158	170	157	179	175
TOTAL FOOD		100	121	130	144	160	154	171	179	166	202	193
PER CAPITA AGRICULTURE		100	109	109	116	119	114	120	127	114	126	121
PER CAPITA FOOD		100	106	111	118	128	119	129	133	120	143	133
INDEX OF POPULATION												
1961-65 POPULATION=	1,390,000	100.0	114.4	117.3	121.6	124.5	129.5	132.4	134.5	138.1	141.7	145.3

^{1/} IN 1,000 HEAD.
^{2/} PRICE PER HEAD.

TABLE 16 --DOMINICAN REPUBLIC

PRODUCTION BY COMMODITY, VALUE AND INDICES OF TOTAL AGRICULTURAL AND FOOD PRODUCTION, AVERAGE 1961-65, ANNUAL 1967-76

COMMODITY	PRICE	AVERAGE	1967	1968	1969	1970	1971	1972	1973	1974	1975	1976
	WEIGHT	1961-65										
DOLLARS			-1,000 METRIC TONS-									
RICE, PADDY	150	130	147	181	195	210	217	210	205	235	236	274
CORN	60	45	39	40	43	45	47	52	33	53	49	50
BEANS, DRY	270	21	23	20	26	25	28	30	20	36	29	40
POTATOES	59	11	20	20	23	23	24	25	26	27	16	30
CASSAVA	42	148	152	155	165	170	184	195	200	205	160	210
SWEETPOTATOES	55	75	75	78	84	87	91	95	97	110	80	100
TOBACCO	395	26	21	15	21	22	26	28	43	36	17	35
PEANUTS, IN SHELL	180	48	45	47	73	75	77	83	82	60	60	72
BANANAS	35	312	240	250	267	275	286	290	310	315	280	300
COFFEE	465	38	38	32	38	40	39	46	46	53	61	45
COCOA BEANS	300	34	30	21	43	26	42	28	36	33	31	37
SUGAR, RAW (CENTRIFUGAL)	75	798	810	666	885	984	1,098	1,139	1,143	1,194	1,135	1,179
BEEF AND VEAL	350	25	25	30	32	32	33	37	39	39	37	40
PORK	400	8	9	10	10	11	12	16	17	18	19	21
MILK	150	253	231	247	264	283	304	315	330	340	339	345
AGGREGATES OF PRODUCTION			-MILLION DOLLARS AT CONSTANT PRICES-									
CROPS		157.4	155.8	143.1	181.2	188.2	204.6	210.8	216.5	230.3	210.4	231.5
LIVESTOCK		50.0	47.1	51.6	54.8	58.1	62.0	66.7	70.0	71.9	71.5	74.2
TOTAL AGRICULTURE		207.4	202.9	194.7	236.0	246.3	266.6	277.5	286.5	302.2	281.9	305.8
TOTAL FOOD		179.7	177.1	174.0	210.2	219.2	238.5	245.3	248.5	263.0	247.0	270.9
INDICES OF PRODUCTION			(1961-65 = 100)									
CROPS		100	99	91	115	120	130	134	138	146	134	147
TOTAL AGRICULTURE		100	98	94	114	119	129	134	138	146	136	147
TOTAL FOOD		100	99	97	117	122	133	137	138	146	137	151
PER CAPITA AGRICULTURE		100	87	81	95	97	102	103	103	106	96	101
PER CAPITA FOOD		100	88	84	98	100	105	105	103	106	97	103
INDEX OF POPULATION												
1961-65 POPULATION=	3,312,000	100.0	112.3	115.6	119.3	122.6	126.2	129.8	133.8	137.7	141.9	146.1

TABLE 17 --ECUADOR

PRODUCTION BY COMMODITY, VALUE AND INDICES OF TOTAL AGRICULTURAL AND FOOD PRODUCTION, AVERAGE 1961-65, ANNUAL 1967-76

COMMODITY	PRICE	AVERAGE	1967	1968	1969	1970	1971	1972	1973	1974	1975	1976
	WEIGHT	1961-65										
DOLLARS			- - - - -1,000 METRIC TONS- - - - -									
WHEAT	77	61	60	68	79	66	60	50	44	54	51	46
RICE, PADDY	72	173	173	127	233	232	150	189	228	233	321	289
CORN	69	103	115	100	125	140	110	130	120	142	113	93
BARLEY	54	87	105	110	100	110	69	62	57	56	55	57
BEANS, DRY	175	24	34	35	30	35	38	30	32	28	26	31
POTATOES	56	277	280	340	290	380	400	473	539	503	499	630
COTTON	245	4	5	7	5	4	4	5	6	13	9	5
COTTONSEED	35	8	8	13	8	8	7	8	10	20	16	11
CASTOR BEANS	65	22	9	11	16	20	17	20	20	21	16	13
BANANAS ^{1/}	60	2,213	1,812	2,068	2,260	2,098	2,093	2,088	2,188	2,295	2,130	2,425
COFFEE	495	48	70	60	40	78	66	66	52	76	70	72
COCOA BEANS	385	40	70	53	55	65	65	58	43	72	75	64
SUGAR, RAW (CENTRIFUGAL)	75	165	186	218	209	227	249	249	245	268	287	306
SUGAR, NONCENTRIFUGAL	65	35	40	40	40	40	40	40	40	40	40	40
BEEF AND VEAL	325	33	37	41	42	44	47	60	62	63	65	66
MUTTON AND LAMB	290	3	3	5	7	7	8	7	7	8	8	3
PORK	370	14	17	24	24	27	24	26	28	30	31	32
MILK	65	376	443	458	475	492	510	529	549	544	580	590
AGGREGATES OF PRODUCTION			- - - - -MILLION DOLLARS AT CONSTANT PRICES- - - - -									
CROPS		238.4	241.5	248.3	255.1	276.5	262.7	266.0	264.8	297.9	289.6	308.5
LIVESTOCK		41.3	48.0	53.5	55.5	58.3	59.7	65.5	68.3	69.3	72.6	74.0
TOTAL AGRICULTURE		279.7	289.5	301.8	310.6	334.8	322.4	331.5	333.1	367.2	362.2	382.5
TOTAL FOOD		253.4	253.0	269.7	288.6	293.9	287.6	296.3	304.6	325.0	324.3	344.5
INDICES OF PRODUCTION			(1961-65 = 100)									
CROPS		100	101	104	107	116	110	112	111	125	121	129
TOTAL AGRICULTURE		100	104	108	111	120	115	119	119	131	129	137
TOTAL FOOD		100	100	106	114	116	113	117	120	128	128	136
PER CAPITA AGRICULTURE		100	93	94	94	98	92	92	90	96	92	94
PER CAPITA FOOD		100	90	93	97	95	91	91	91	94	91	94
INDEX OF POPULATION			1961-65 POPULATION= 4,780,000									
1961-65 POPULATION=	4,780,000	100.0	111.3	114.6	118.0	121.5	125.1	128.7	132.4	136.2	140.8	145.0
^{1/} EXPORTABLE-TYPE PRODUCTION.												

TABLE 18 --EL SALVADOR

PRODUCTION BY COMMODITY, VALUE AND INDICES OF TOTAL AGRICULTURAL AND FOOD PRODUCTION, AVERAGE 1961-65, ANNUAL 1967-76

COMMODITY	PRICE	AVERAGE										
	WEIGHT	1961-65	1967	1968	1969	1970	1971	1972	1973	1974	1975	1976
	DOLLARS	- - - - -1,000 METRIC TONS- - - - -										
RICE, PADDY	105	27	78	80	36	44	55	49	54	31	58	36
CORN	65	192	209	258	279	363	377	237	406	353	439	342
SORGHUM	53	97	108	124	128	147	156	196	156	131	175	139
BEANS, DRY	155	14	17	21	26	30	34	27	38	34	40	38
TOBACCO	450	1	2	1	1	1	1	1	1	1	1	1
COTTON	475	66	35	44	46	54	68	70	75	74	59	64
COTTONSEED	50	112	58	74	76	91	110	112	124	125	98	105
COFFEE	570	113	144	114	150	130	156	126	124	198	121	180
SUGAR, RA ¹ (CENTRIFUGAL)	60	72	125	135	109	117	158	168	232	257	261	270
SUGAR, NONCENTRIFUGAL	75	21	28	26	23	28	13	13	40	16	16	10
CATTLE EXPORTS ¹ / ₂	41	18	21	10	18	17	5	1	1	1	1	1
CATTLE IMPORTS ¹ / ₂	52	10	2	2	1	2	2	1	1	1	1	1
BEEF AND VEAL	335	21	21	21	21	20	20	25	27	30	26	30
PORK	385	14	13	13	12	11	10	10	11	11	12	13
MILK	75	231	262	271	289	275	275	275	280	280	305	328
AGGREGATES OF PRODUCTION		- - - - -MILLION DOLLARS AT CONSTANT PRICES- - - - -										
CROPS		131.9	144.7	139.0	154.8	157.1	184.7	159.6	178.7	215.1	174.6	200.4
LIVESTOCK		30.0	32.5	32.6	33.2	32.1	31.3	32.8	34.1	35.2	36.1	39.6
TOTAL AGRICULTURE		161.9	177.2	170.6	188.0	189.2	216.0	192.4	212.8	250.3	210.7	240.0
TOTAL FOOD		65.5	77.6	84.2	80.1	88.9	94.3	86.8	106.0	101.7	113.2	106.5
INDICES OF PRODUCTION		(1961-65 = 100)										
CROPS		100	110	105	117	119	140	121	135	163	132	152
TOTAL AGRICULTURE		100	109	105	116	117	133	119	131	155	130	148
TOTAL FOOD		100	118	129	122	136	144	133	162	155	173	163
PER CAPITA AGRICULTURE		100	96	89	95	92	102	88	94	107	87	96
PER CAPITA FOOD		100	104	109	100	107	110	98	115	107	116	105
INDEX OF POPULATION		1961-65 POPULATION= 2,766,000										
		100.0	114.2	118.2	122.2	126.5	131.2	135.6	140.3	144.6	149.3	154.4

¹/₂ IN 1,000 HEAD.
²/₂ PRICE PER HEAD.

TABLE 19 --GUATEMALA

PRODUCTION BY COMMODITY, VALUE AND INDICES OF TOTAL AGRICULTURAL AND FOOD PRODUCTION, AVERAGE 1961-65, ANNUAL 1967-76

COMMODITY	PRICE	AVERAGE	1967	1968	1969	1970	1971	1972	1973	1974	1975	1976
	WEIGHT	1961-65										
DOLLARS			-1,000 METRIC TONS-									
WHEAT	130	31	32	33	33	31	33	44	30	30	40	51
RICE, PADDY	120	16	21	25	27	26	58	60	67	52	70	52
CORN	56	591	687	689	709	719	726	685	701	698	881	828
SORGHUM	45	25	32	42	54	46	47	45	46	47	61	59
BEANS, DRY	135	36	69	69	58	70	77	55	67	67	80	85
POTATOES	65	17	18	20	16	23	25	25	26	32	30	33
TOBACCO	580	2	3	2	2	3	3	3	5	7	7	7
COTTON	450	61	76	73	53	55	31	82	119	105	100	115
COTTONSEED	55	100	127	118	88	88	100	138	203	168	160	183
BANANAS	55	153	120	176	282	330	384	407	447	458	476	480
COFFEE	610	109	111	104	105	110	126	135	137	152	129	123
RUBBER	300	0	3	4	4	4	4	4	5	5	5	5
SUGAR, RAW (CENTRIFUGAL)	89	124	181	152	173	178	204	235	384	450	548	593
SUGAR, NONCENTRIFUGAL	75	34	42	48	48	45	45	45	45	45	50	50
CATTLE IMPORTS ^{1/}	<u>2/45</u>	29	45	37	36	21	15	10	10	10	12	12
BEEF AND VEAL	350	41	49	57	57	58	64	62	61	62	71	77
PORK	600	7	8	8	9	10	10	9	10	9	9	9
MILK	85	142	177	192	200	207	214	221	233	236	244	208
AGGREGATES OF PRODUCTION			- - - - - MILLION DOLLARS AT CONSTANT PRICES - - - - -									
CROPS		167.6	188.4	189.1	186.7	195.9	228.7	236.7	275.5	281.8	290.3	296.7
LIVESTOCK		29.6	35.0	39.4	40.8	43.0	45.9	45.4	46.7	46.7	50.5	49.5
TOTAL AGRICULTURE		197.2	223.4	228.5	227.5	238.9	274.6	282.1	322.2	328.5	340.8	346.5
TOTAL FOOD		102.2	118.9	129.8	137.1	144.1	158.3	159.9	180.6	182.9	211.5	212.8
INDICES OF PRODUCTION			(1961-65 = 100)									
CROPS		100	112	113	111	117	136	141	164	168	173	177
TOTAL AGRICULTURE		100	113	116	115	121	139	143	163	167	173	176
TOTAL FOOD		100	115	127	134	141	155	156	177	179	207	208
PER CAPITA AGRICULTURE		100	101	101	97	100	112	112	124	123	124	123
PER CAPITA FOOD		100	104	110	113	116	124	122	134	132	149	145
INDEX OF POPULATION												
1961-65 POPULATION=	4,344,000	100.0	111.9	115.1	118.3	121.3	124.5	128.2	131.7	135.4	139.3	143.2
^{1/} IN 1,000 HEAD.												
^{2/} PRICE PER HEAD.												

TABLE 20 -- GUYANA

PRODUCTION BY COMMODITY, VALUE AND INDICES OF TOTAL AGRICULTURAL AND FOOD PRODUCTION, AVERAGE 1961-65, ANNUAL 1967-76

COMMODITY	PRICE WEIGHT	AVERAGE 1961-65	1967	1968	1969	1970	1971	1972	1973	1974	1975	1976
	DOLLARS		- - - - -1,000 METRIC TONS- - - - -									
RICE, PADDY	65	239	198	210	191	210	185	154	152	256	280	154
CITRUS FRUIT	60	10	9	9	10	8	10	10	10	10	10	11
COFFEE	360	1	1	1	1	1	1	1	1	1	1	1
COCONUTS	51	24	15	25	35	25	32	35	32	35	36	35
SUGAR, RAW (CENTRIFUGAL)	70	312	349	322	370	316	374	319	270	346	305	355
BEEF AND VEAL	480	3	4	4	4	4	4	4	4	4	4	4
PORK	570	1	1	1	1	1	1	1	1	1	2	2
AGGREGATES OF PRODUCTION			- - - - -MILLION DOLLARS AT CONSTANT PRICES- - - - -									
CROPS		39.6	39.0	38.4	41.1	38.0	40.8	35.1	31.4	43.6	42.4	37.8
LIVESTOCK		2.1	2.5	2.5	2.5	2.5	2.5	2.5	2.5	2.5	3.0	3.0
TOTAL AGRICULTURE		41.7	41.5	40.9	43.6	40.5	43.3	37.6	33.9	46.1	45.4	40.8
TOTAL FOOD		41.3	41.1	40.5	43.2	40.1	42.9	37.2	33.5	45.7	45.0	40.4
INDICES OF PRODUCTION			(1961-65 = 100)									
CROPS		100	98	97	104	96	103	89	79	110	107	95
TOTAL AGRICULTURE		100	100	98	105	97	104	90	81	111	109	98
TOTAL FOOD		100	100	98	105	97	104	90	81	111	109	98
PER CAPITA AGRICULTURE		100	91	88	92	83	87	74	65	87	84	74
PER CAPITA FOOD		100	91	88	92	83	87	74	65	87	84	73
INDEX OF POPULATION												
1961-65 POPULATION=	604,000	100.0	109.1	111.4	113.9	116.4	119.0	121.7	124.5	127.3	130.1	133.1

TABLE 21 --HAITI

PRODUCTION BY COMMODITY, VALUE AND INDICES OF TOTAL AGRICULTURAL AND FOOD PRODUCTION, AVERAGE 1961-65, ANNUAL 1967-76

COMMODITY	PRICE	AVERAGE	1967	1968	1969	1970	1971	1972	1973	1974	1975	1976
	WEIGHT	1961-65										
	DOLLARS		- - - - -1,000 METRIC TONS- - - - -									
RICE, PADDY	75	64	77	77	83	80	81	82	80	82	82	82
CORN	90	231	246	220	242	240	252	257	250	250	250	250
TOBACCO	250	1	1	1	1	1	1	1	1	1	1	1
COTTON	200	1	1	1	1	1	1	1	1	1	1	1
COTTONSEED	32	3	3	3	3	3	3	3	2	2	2	2
COFFEE	420	36	30	29	28	53	30	32	33	34	33	34
COCOA BEANS	340	2	2	2	2	2	4	3	3	3	3	3
SISAL	100	24	11	12	18	18	18	14	17	19	12	13
SUGAR, RAW (CENTRIFUGAL)	55	64	54	51	54	60	65	64	65	65	58	56
BEEF AND VEAL <u>1/</u>	350	11	11	10	11	11	11	12	12	12	10	12
MUTTON AND LAMB <u>1/</u>	280	2	2	2	2	2	2	2	2	2	2	2
PORK <u>1/</u>	560	13	10	10	10	11	11	12	12	12	11	12
AGGREGATES OF PRODUCTION			- - - - -MILLION DOLLARS AT CONSTANT PRICES- - - - -									
CROPS		47.8	45.8	43.0	45.8	47.8	48.6	49.1	49.2	50.0	48.5	48.9
LIVESTOCK		10.8	9.5	9.1	9.5	10.0	10.0	10.8	10.8	10.8	9.6	10.8
TOTAL AGRICULTURE		58.6	55.3	52.1	55.3	57.8	58.6	59.9	60.0	60.8	58.1	59.7
TOTAL FOOD		40.7	41.1	38.2	41.2	41.6	43.7	44.6	43.9	44.1	42.5	43.6
INDICES OF PRODUCTION			(1961-65 = 100)									
CROPS		100	96	90	96	100	102	103	103	105	101	102
TOTAL AGRICULTURE		100	94	89	94	99	100	102	102	104	99	102
TOTAL FOOD		100	101	94	101	102	107	110	108	108	104	107
PER CAPITA AGRICULTURE		100	88	82	85	87	87	87	86	85	80	80
PER CAPITA FOOD		100	94	86	91	91	94	94	90	89	84	84
INDEX OF POPULATION												
1961-65 POPULATION= 4,062,000		100.0	107.1	108.8	110.8	112.8	114.7	116.9	119.4	121.9	124.3	127.0

1/ COMMERCIAL PRODUCTION.

TABLE 22 --HONDURAS

PRODUCTION BY COMMODITY, VALUE AND INDICES OF TOTAL AGRICULTURAL AND FOOD PRODUCTION, AVERAGE 1961-65, ANNUAL 1967-76

COMMODITY	PRICE	AVERAGE	1967	1968	1969	1970	1971	1972	1973	1974	1975	1976
	WEIGHT	1961-65										
	DOLLARS		-----1,000 METRIC TONS-----									
RICE, PADDY	87	24	25	32	6	6	13	16	17	29	29	25
CORN	59	298	335	353	339	346	351	290	359	335	334	304
SORGHUM	53	55	53	53	48	47	47	35	36	38	53	55
BEANS, DRY	145	45	57	63	55	55	55	35	48	55	51	55
TOBACCO	455	3	3	3	2	2	3	3	4	4	4	4
COTTON	460	7	8	8	8	3	2	4	5	5	3	3
COTTONSEED	45	12	14	13	13	5	6	12	14	8	5	3
BANANAS	66	942	1,281	1,351	1,280	1,264	1,537	1,388	1,364	1,181	772	1,134
COFFEE	560	25	29	27	33	38	42	51	47	54	51	57
SUGAR, RAW (CENTRIFUGAL)	70	27	45	54	55	53	61	62	59	84	87	113
CATTLE EXPORTS ^{1/}	2/40	38	32	24	10	15	5	9	3	2	2	3
BEEF AND VEAL	320	18	23	26	29	30	38	39	42	35	41	44
PORK	450	3	5	5	5	5	5	6	5	9	10	10
MILK	100	130	143	146	148	150	153	159	165	172	176	180
AGGREGATES OF PRODUCTION			-----MILLION DOLLARS AT CONSTANT PRICES-----									
CROPS		106.3	135.1	141.2	135.4	134.7	154.9	145.4	148.0	143.8	116.8	143.9
LIVESTOCK		21.6	25.3	26.2	26.8	27.5	30.0	31.5	32.3	32.6	35.3	36.7
TOTAL AGRICULTURE		127.9	160.4	167.4	162.2	162.2	184.9	176.9	180.3	176.4	152.1	180.6
TOTAL FOOD		109.1	139.1	147.2	139.1	138.6	159.1	145.1	149.9	142.1	120.3	144.1
INDICES OF PRODUCTION			(1961-65 = 100)									
CROPS		100	127	133	127	127	146	137	139	135	110	135
TOTAL AGRICULTURE		100	125	131	127	127	145	138	141	138	119	141
TOTAL FOOD		100	127	135	127	127	146	133	137	130	110	132
PER CAPITA AGRICULTURE		100	110	111	104	100	111	102	101	95	79	91
PER CAPITA FOOD		100	112	114	104	100	112	98	98	90	73	85
INDEX OF POPULATION												
1961-65 POPULATION=	2,134,000	100.0	114.3	118.1	122.3	126.5	130.7	135.4	140.1	145.3	150.4	155.6

^{1/} IN 1,000 HEAD.
^{2/} PRICE PER HEAD.

TABLE 23 --JAMAICA

PRODUCTION BY COMMODITY, VALUE AND INDICES OF TOTAL AGRICULTURAL AND FOOD PRODUCTION, AVERAGE 1961-65, ANNUAL 1967-76

COMMODITY	PRICE	AVERAGE	1967	1968	1969	1970	1971	1972	1973	1974	1975	1976
	WEIGHT	1961-65										
	DOLLARS		-----1,000 METRIC TONS-----									
RICE, PADDY	130	4	1	1	1	1	1	1	1	1	3	3
CORN	65	4	4	4	4	4	4	5	5	12	10	10
PULSES	230	4	4	5	5	5	5	7	5	6	5	6
POTATOES	85	9	12	13	8	9	9	16	15	16	14	15
CASSAVA	70	12	12	8	11	8	20	18	18	19	17	18
SWEETPOTATOES AND YAMS	60	154	150	145	150	150	150	175	170	180	170	173
TOBACCO	350	1	2	2	2	2	2	2	2	2	2	3
BANANAS	55	296	275	210	200	195	195	200	200	160	140	155
COFFEE	585	2	1	1	1	1	1	1	2	1	2	1
COCOA BEANS	360	2	2	2	2	2	2	2	2	2	2	2
SUGAR, RAW (CENTRIFUGAL)	56	475	455	452	389	374	396	378	325	377	357	356
BEEF AND VEAL	680	12	14	14	14	12	12	10	11	12	11	12
MUTTON AND LAMB	320	2	2	2	2	2	3	3	3	3	3	3
PORK	340	3	4	4	4	4	5	5	8	8	7	7
MILK	105	41	42	44	45	45	42	45	46	47	46	47
AGGREGATES OF PRODUCTION			-----MILLION DOLLARS AT CONSTANT PRICES-----									
CROPS		62.5	59.2	55.4	50.8	49.4	51.6	53.1	49.5	51.5	48.8	50.0
LIVESTOCK		14.2	15.9	16.1	16.2	14.9	15.3	14.2	16.0	16.8	15.7	16.5
TOTAL AGRICULTURE		76.7	75.1	71.5	67.0	64.3	66.9	67.3	65.5	68.3	64.5	66.5
TOTAL FOOD		75.0	73.8	70.2	65.7	63.0	65.6	66.0	63.6	67.0	62.6	64.8
INDICES OF PRODUCTION			(1961-65 = 100)									
CROPS		100	95	89	81	79	83	85	79	82	78	80
TOTAL AGRICULTURE		100	98	93	87	84	87	88	85	89	84	87
TOTAL FOOD		100	98	94	88	84	87	88	85	89	83	86
PER CAPITA AGRICULTURE		100	92	87	81	76	78	77	73	76	76	71
PER CAPITA FOOD		100	93	87	81	76	78	77	73	76	70	71
INDEX OF POPULATION												
1961-65 POPULATION= 1,698,000		100.0	106.0	107.2	108.4	110.1	111.9	113.7	116.6	117.8	119.6	121.3

TABLE 24 --MEXICO

PRODUCTION BY COMMODITY, VALUE AND INDICES OF TOTAL AGRICULTURAL AND FOOD PRODUCTION, AVERAGE 1961-65, ANNUAL 1967-76

COMMODITY	PRICE	AVERAGE	1967	1968	1969	1970	1971	1972	1973	1974	1975	1976
	WEIGHT	1961-65										
DOLLARS			-1,000 METRIC TONS-									
WHEAT	74	1,783	2,051	1,780	1,915	2,144	2,013	1,760	2,000	2,400	2,540	3,180
RICE, PADDY	81	314	418	347	395	495	367	420	435	487	720	450
CORN	56	7,369	8,405	9,062	8,411	8,879	9,302	8,100	9,000	7,780	9,180	9,700
BARLEY	60	175	203	253	212	258	227	294	270	263	410	460
OATS	76	54	48	43	29	43	22	26	54	48	85	79
SORGHUM	52	452	1,667	2,133	2,456	2,747	2,595	2,441	2,900	2,760	3,500	3,350
BEANS, DRY	120	740	1,008	1,956	500	1,000	1,100	870	1,006	930	1,130	1,080
CHICKPEAS	95	113	133	135	156	157	170	185	90	79	24	17
POTATOES	60	378	378	400	441	422	443	461	450	460	480	695
CARROTS	60	95	159	169	135	153	206	206	206	210	220	230
SUGARCANE	5	19,933	25,556	24,383	27,047	24,524	25,985	25,900	30,000	30,492	30,277	29,891
TOBACCO	300	44	47	46	62	63	58	56	58	68	52	64
COTTON	525	503	435	533	381	314	373	390	372	510	207	218
COTTONSEED	66	882	818	888	629	638	692	735	650	875	340	358
FLAXSEED	140	19	15	10	10	30	46	10	11	21	27	3
SOYBEANS	115	20	121	270	300	240	250	375	510	420	625	254
PEANUTS, IN SHELL	100	85	56	47	72	77	70	63	59	62	68	79
SESAME SEED	165	158	140	140	90	140	130	100	90	120	119	109
SAFFLOWER SEED	110	65	140	65	170	285	421	325	252	275	530	330
WATERMELONS	54	251	390	420	460	424	259	282	310	345	351	353
CANTALOUPE	48	152	188	177	149	174	181	207	213	218	224	183
TOMATOES	71	454	617	666	756	940	850	1,204	1,091	1,097	1,127	913
PEPPERS, GREEN	83	117	139	142	154	211	184	435	440	416	429	380
ORANGES	60	801	882	892	937	1,020	1,999	1,613	1,798	1,908	2,477	1,650
STRAWBERRIES	160	31	126	98	101	118	122	90	105	83	118	72
BANANAS	53	783	986	995	1,024	1,136	1,116	1,093	1,064	832	1,241	1,230
PINEAPPLES	47	210	251	268	302	353	270	218	268	241	262	300
GRAPES	150	82	97	102	127	144	160	191	218	225	181	245
COFFEE	550	157	174	171	184	192	204	204	222	237	252	240
COCOA BEANS	280	22	21	23	24	25	30	29	30	35	37	39
HENEQUEN	150	149	140	120	115	115	122	145	140	140	115	100
CATTLE EXPORTS 1/	2/ 35	557	524	712	840	937	757	916	553	435	196	502
CATTLE IMPORTS 1/	2/ 285	17	21	19	18	12	14	21	35	63	115	92
BEEF AND VEAL	340	475	480	468	534	590	581	703	744	844	889	951
MUTTON AND LAMB	360	59	57	56	57	56	54	53	58	58	56	55
PORK	380	206	242	247	253	317	351	395	386	354	370	395
MILK	85	4,114	4,631	4,780	5,116	5,344	5,711	6,070	6,203	6,331	6,619	6,915
AGGREGATES OF PRODUCTION			-MILLION DOLLARS AT CONSTANT PRICES-									
CROPS		1,589.5	1,855.2	1,962.9	1,885.8	1,975.3	2,102.2	2,004.1	2,152.5	2,179.6	2,316.8	2,210.2
LIVESTOCK		625.5	681.6	692.2	757.4	824.9	858.2	950.3	957.3	977.7	999.8	1,074.2
LIVESTOCK FEED DEDUCTION 1/6		-100.0	-109.0	-110.7	-121.1	-131.9	-137.3	-152.0	-153.1	-156.4	-159.9	-171.8
TOTAL AGRICULTURE		2,115.0	2,427.8	2,544.4	2,522.1	2,668.3	2,823.1	2,802.4	2,956.7	3,000.9	3,156.7	3,112.6
TOTAL FOOD		1,726.8	2,066.5	2,137.3	2,183.6	2,357.4	2,473.8	2,445.4	2,599.4	2,558.4	2,872.7	2,830.5
INDICES OF PRODUCTION			(1961-65 = 100)									
CROPS		100	117	123	119	124	132	126	135	137	146	139
TOTAL AGRICULTURE		100	115	120	119	126	133	133	140	142	149	147
TOTAL FOOD		100	120	124	126	137	143	142	151	148	166	164
PER CAPITA AGRICULTURE		100	100	102	97	99	102	98	99	98	99	94
PER CAPITA FOOD		100	105	105	103	108	109	104	107	102	110	105
INDEX OF POPULATION												
1961-65 POPULATION= 39,948,000		100.0	114.4	118.4	122.6	126.9	131.3	135.9	140.6	145.5	150.6	155.8

1/ IN 1,000 HEAD.
2/ PRICE PER HEAD.

TABLE 25 --NICARAGUA

PRODUCTION BY COMMODITY, VALUE AND INDICES OF TOTAL AGRICULTURAL AND FOOD PRODUCTION, AVERAGE 1961-65, ANNUAL 1967-76

COMMODITY	PRICE WEIGHT	AVERAGE 1961-65	1967	1968	1969	1970	1971	1972	1973	1974	1975	1976	
	DOLLARS					-1,000	METRIC TONS-						
RICE, PADDY	110	44	67	85	65	75	82	74	84	90	118	65	
CORN	62	144	202	216	231	177	239	129	220	239	239	149	
SORGHUM	55	47	52	56	57	51	51	40	31	66	77	49	
BEANS, DRY	175	34	44	45	42	44	45	34	40	46	59	53	
TOBACCO	570	1	1	1	2	2	2	1	1	2	2	2	
COTTON	465	90	101	91	68	79	103	107	144	121	111	116	
COTTONSEED	53	156	167	143	112	128	162	166	231	215	168	209	
COFFEE	625	29	33	32	34	39	42	41	37	44	49	55	
SUGAR, RAW (CENTRIFUGAL)	65	89	103	106	125	141	170	164	142	196	246	280	
SUGAR, NONCENTRIFUGAL	62	20	20	18	10	12	12	12	12	12	10	10	
BEEF AND VEAL	345	32	40	48	53	60	63	69	64	55	58	66	
MILK	90	215	230	240	242	250	255	255	275	275	282	293	
AGGREGATES OF PRODUCTION													
						-MILLION DOLLARS AT CONSTANT PRICES-							
CROPS		98.4	115.5	112.3	100.6	108.7	130.2	120.5	144.3	146.1	151.1	147.7	
LIVESTOCK		30.5	34.5	38.2	40.1	43.2	44.7	46.8	46.9	43.8	45.4	49.2	
TOTAL AGRICULTURE		128.9	150.0	150.5	140.7	151.9	174.9	167.3	191.2	189.9	196.5	196.9	
TOTAL FOOD		68.1	81.8	87.6	86.7	89.7	99.6	91.3	100.5	105.0	113.2	107.5	
INDICES OF PRODUCTION													
						{1961-65 = 100}							
CROPS		100	117	114	102	110	132	122	147	148	154	150	
TOTAL AGRICULTURE		100	116	117	109	118	136	130	148	147	152	153	
TOTAL FOOD		100	120	129	127	132	146	134	148	154	166	158	
PER CAPITA AGRICULTURE		100	105	101	92	97	108	101	112	108	109	106	
PER CAPITA FOOD		100	108	112	108	109	117	104	112	113	119	110	
INDEX OF POPULATION													
1961-65 POPULATION=	1,582,000	100.0	111.3	115.0	118.2	121.4	125.2	129.0	132.1	135.9	139.7	143.5	

TABLE 26 --PANAMA

PRODUCTION BY COMMODITY, VALUE AND INDICES OF TOTAL AGRICULTURAL AND FOOD PRODUCTION, AVERAGE 1961-65, ANNUAL 1967-76

COMMODITY	PRICE	AVERAGE	1967	1968	1969	1970	1971	1972	1973	1974	1975	1976
	WEIGHT	1961-65										
	DOLLARS		- - - - -1,000 METRIC TONS- - - - -									
RICE, PADDY	100	122	151	163	165	131	136	162	174	175	185	140
CORN	75	78	89	84	88	56	54	56	60	61	65	54
BEANS, DRY	211	6	6	5	5	3	3	3	4	4	4	4
BANANAS	65	472	600	804	875	894	930	788	638	700	720	720
COFFEE	675	4	5	4	5	4	5	4	3	3	5	5
COCOA BEANS	250	1	1	1	1	1	1	1	1	1	1	1
SUGAR, RAW (CENTRIFUGAL)	73	38	59	68	74	74	85	84	132	132	137	160
BEEF AND VEAL	350	26	30	31	34	35	39	40	42	45	46	49
MILK	110	56	73	70	78	73	76	64	55	60	70	75
AGGREGATES OF PRODUCTION	- - - - -MILLION DOLLARS AT CONSTANT PRICES- - - - -											
CROPS		55.9	69.9	83.8	90.0	84.2	88.5	81.1	75.7	79.9	84.3	80.5
LIVESTOCK		15.3	18.5	18.6	20.5	20.3	22.1	21.0	20.8	22.4	23.8	25.3
TOTAL AGRICULTURE		71.2	88.4	102.4	110.5	104.5	110.6	102.1	96.5	102.3	108.1	105.8
TOTAL FOOD		68.2	85.0	99.7	107.1	101.8	107.2	99.4	94.5	100.3	104.7	102.7
INDICES OF PRODUCTION	(1961-65 = 100)											
CROPS		100	125	150	161	151	158	145	135	143	151	144
TOTAL AGRICULTURE		100	124	144	155	147	155	143	136	144	152	149
TOTAL FOOD		100	125	146	157	149	157	146	139	147	154	151
PER CAPITA AGRICULTURE		100	110	124	130	119	123	111	101	105	108	103
PER CAPITA FOOD		100	110	126	131	121	124	112	104	107	109	104
INDEX OF POPULATION												
1961-65 POPULATION= 1,182,000		100.0	112.8	116.2	119.5	122.9	126.3	129.6	133.8	137.2	140.6	144.8

TABLE 27 --PARAGUAY

PRODUCTION BY COMMODITY, VALUE AND INDICES OF TOTAL AGRICULTURAL AND FOOD PRODUCTION, AVERAGE 1961-65, ANNUAL 1967-76

COMMODITY	PRICE	AVERAGE										
	WEIGHT	1961-65	1967	1968	1969	1970	1971	1972	1973	1974	1975	1976
	DOLLARS	- - - - -1,000 METRIC TONS- - - - -										
WHEAT	65	7	25	32	31	48	55	18	23	35	18	19
RICE, PADDY	90	18	18	21	30	45	39	44	42	51	56	51
CORN	39	154	225	180	153	259	230	209	246	282	301	371
BEANS, DRY	94	39	34	31	33	35	26	32	34	42	50	35
CASSAVA	21	1,525	1,543	1,504	1,560	1,782	1,198	1,208	1,108	1,395	1,428	1,450
SWEET POTATOES	24	80	122	85	94	134	138	72	88	97	85	90
SUGARCANE	5	795	988	702	821	973	982	1,045	1,101	1,203	1,100	1,200
TOBACCO	215	16	14	20	24	18	18	24	27	32	28	38
COTTON	295	11	9	10	14	13	6	18	29	27	30	35
COTTONSEED	45	22	16	18	25	27	12	32	51	54	58	65
SOYBEANS	75	8	18	14	30	52	75	97	122	181	216	253
PEANUTS, IN SHELL	110	21	21	17	16	17	18	17	14	14	15	18
CASTOR BEANS	65	15	5	12	13	17	17	17	17	24	10	10
COFFEE	369	2	2	4	3	2	3	4	3	3	2	1
BEEF AND VEAL ^{1/}	289	114	122	117	116	126	108	131	113	113	99	85
MILK	74	81	87	88	90	85	86	92	95	110	99	100
AGGREGATES OF PRODUCTION		- - - - -MILLION DOLLARS AT CONSTANT PRICES- - - - -										
CROPS		62.1	66.5	64.3	69.4	82.6	67.9	72.3	78.6	94.5	96.9	105.8
LIVESTOCK		38.0	40.6	39.3	35.2	41.6	36.6	43.5	38.6	39.7	35.0	31.2
TOTAL AGRICULTURE		100.1	107.1	103.6	108.6	124.2	104.5	115.8	117.2	134.2	131.9	137.0
TOTAL FOOD		91.7	100.4	94.1	97.4	114.7	96.6	102.8	100.6	116.6	115.6	117.4
INDICES OF PRODUCTION		(1961-65 = 100)										
CROPS		100	107	104	112	133	109	116	127	152	156	170
TOTAL AGRICULTURE		100	107	103	108	124	104	116	117	134	132	137
TOTAL FOOD		100	109	103	106	125	105	112	110	127	126	128
PER CAPITA AGRICULTURE		100	96	91	93	103	84	91	90	100	95	96
PER CAPITA FOOD		100	98	90	91	104	85	88	84	95	91	90
INDEX OF POPULATION		1961-65 POPULATION = 1,914,000										
1961-65 POPULATION =	1,914,000	100.0	111.3	113.9	117.0	120.2	123.8	127.0	130.6	134.3	138.5	142.6

^{1/} COMMERCIAL SLAUGHTER ONLY.

TABLE 28 --PERU

PRODUCTION BY COMMODITY, VALUE AND INDICES OF TOTAL AGRICULTURAL AND FOOD PRODUCTION, AVERAGE 1961-65, ANNUAL 1967-76

COMMODITY	PRICE	AVERAGE	1967	1968	1969	1970	1971	1972	1973	1974	1975	1976
	WEIGHT	1961-65										
	DOLLARS		- - - - -1,000 METRIC TONS- - - - -									
WHEAT	68	150	152	119	137	125	122	140	149	150	143	143
RICE, PADDY	75	324	461	285	444	587	591	552	451	426	473	530
CORN	69	490	591	533	585	615	616	589	616	600	625	670
BARLEY	54	185	172	146	164	170	159	160	165	168	168	165
MILLET	40	25	17	6	9	9	8	8	8	8	8	10
SORGHUM	40	2	4	5	12	15	18	20	22	18	30	45
BEANS, DRY	155	39	65	40	50	53	48	47	37	35	36	35
POTATOES	56	1,487	1,712	1,592	1,856	1,929	1,968	1,750	1,713	1,722	1,700	1,750
CASSAVA	25	436	507	399	450	498	482	490	460	669	670	675
SWEETPOTATOES	27	148	150	145	156	178	168	170	155	146	150	155
SUGARCANE	5	7,373	7,373	7,226	6,214	7,530	8,291	8,582	8,746	9,179	8,928	8,940
TOBACCO	325	3	5	4	3	3	2	3	4	5	5	5
COTTON	575	140	91	101	89	91	77	73	84	83	71	57
COTTONSEED	75	233	153	180	151	159	122	115	149	160	132	102
COFFEE	545	48	53	52	56	59	62	62	60	54	54	57
CATTLE IMPORTS ^{1/}	^{2/} 120	76	85	62	81	113	101	87	30	10	10	10
BEEF AND VEAL	420	91	93	90	88	85	111	96	85	84	86	88
MUTTON AND LAMB	290	38	37	37	33	33	33	31	34	35	37	39
PORK	360	43	41	40	47	46	54	42	45	46	47	48
WOOL, GREASY BASIS	560	11	10	10	10	10	11	8	9	9	9	9
AGGREGATES OF PRODUCTION	- - - - -MILLION DOLLARS AT CONSTANT PRICES- - - - -											
CROPS		345.7	350.3	321.5	345.5	374.3	369.0	352.3	351.5	353.1	347.3	350.3
LIVESTOCK		61.9	60.0	61.1	59.4	53.9	69.7	58.5	63.2	65.9	67.5	69.4
LIVESTOCK FEED DEDUCTION ^{1/4}		-8.6	-8.4	-8.5	-8.3	-7.5	-9.7	-8.1	-8.8	-9.2	-9.4	-9.7
TOTAL AGRICULTURE		399.0	401.9	374.1	396.6	420.7	429.0	402.7	405.9	409.8	405.4	410.0
TOTAL FOOD		285.3	313.5	280.8	308.3	329.6	344.0	321.4	318.6	326.1	328.6	339.5
INDICES OF PRODUCTION	(1961-65 = 100)											
CROPS		100	101	93	100	108	107	102	102	102	100	101
TOTAL AGRICULTURE		100	101	94	99	105	108	101	102	103	102	103
TOTAL FOOD		100	110	98	108	116	121	113	112	114	115	119
PER CAPITA AGRICULTURE		100	90	81	84	86	85	78	76	74	72	70
PER CAPITA FOOD		100	98	85	91	94	96	87	84	83	81	81
INDEX OF POPULATION												
1961-65 POPULATION= 10,902,000		100.0	111.8	115.2	118.6	122.3	126.0	129.8	133.7	137.9	142.1	146.3

^{1/} IN 1,000 HEAD.

^{2/} PRICE PER HEAD.

TABLE 29 --TRINIDAD AND TOBAGO

PRODUCTION BY COMMODITY, VALUE AND INDICES OF TOTAL AGRICULTURAL AND FOOD PRODUCTION, AVERAGE 1961-65, ANNUAL 1967-76

COMMODITY	PRICE WEIGHT	AVERAGE 1961-65	1967	1968	1969	1970	1971	1972	1973	1974	1975	1976
	DOLLARS					-1,000 METRIC TONS-						
RICE, PADDY	126	10	11	10	10	10	12	12	12	18	20	21
CASSAVA	64	5	2	3	3	3	3	4	4	5	4	4
SWEETPOTATOES AND YAMS	55	5	5	5	5	5	6	6	6	7	6	5
BANANAS	73	28	27	30	28	30	29	32	28	30	25	28
COFFEE	395	4	4	4	3	4	3	4	3	4	3	2
COCOA BEANS	525	5	6	5	6	4	4	5	4	5	4	2
SUGAR, RAW (CENTRIFUGAL)	70	234	201	243	241	220	217	232	186	186	160	200
BEEF AND VEAL	575	2	3	2	2	2	2	1	2	2	1	1
PORK	690	2	3	4	6	3	2	2	2	2	1	2
AGGREGATES OF PRODUCTION												
						-MILLION DOLLARS AT CONSTANT PRICES-						
CROPS		24.4	22.5	25.0	25.0	22.9	22.4	24.6	20.3	22.2	19.3	21.0
LIVESTOCK		2.6	3.8	4.0	5.3	3.3	2.6	2.0	2.6	2.6	1.3	2.0
TOTAL AGRICULTURE		27.0	26.3	29.0	30.3	26.2	25.0	26.6	22.9	24.8	20.6	23.0
TOTAL FOOD		25.5	24.7	27.4	29.1	24.6	23.8	25.0	21.7	23.2	19.4	22.2
INDICES OF PRODUCTION						(1961-65 = 100)						
CROPS		100	92	102	102	94	92	101	83	91	79	86
TOTAL AGRICULTURE		100	97	107	112	97	93	99	85	92	76	85
TOTAL FOOD		100	97	107	114	96	93	96	85	91	76	87
PER CAPITA AGRICULTURE		100	93	101	105	83	79	82	70	75	62	69
PER CAPITA FOOD		100	92	101	107	82	79	82	70	74	62	70
INDEX OF POPULATION												
1961-65 POPULATION=	876,000	100.0	105.1	106.1	106.7	117.2	117.8	119.6	121.2	122.1	123.1	123.9

TABLE 30 --URUGUAY

PRODUCTION BY COMMODITY, VALUE AND INDICES OF TOTAL AGRICULTURAL AND FOOD PRODUCTION, AVERAGE 1961-65, ANNUAL 1967-76

COMMODITY	PRICE	AVERAGE	1967	1968	1969	1970	1971	1972	1973	1974	1975	1976
	WEIGHT	1961-65										
DOLLARS			-1,000 METRIC TONS-									
WHEAT	51	465	144	470	447	388	302	186	297	526	456	550
RICE, PADDY	61	66	116	104	134	139	122	128	137	158	188	217
CORN	58	147	117	69	129	199	165	141	228	225	157	210
BARLEY	54	30	14	48	36	45	32	29	31	28	34	40
OATS	41	72	33	73	38	78	60	58	55	47	61	61
SORGHUM	38	7	28	30	51	36	72	57	225	193	77	118
POTATOES	58	121	60	128	138	118	150	106	133	142	120	165
SWEETPOTATOES AND YAMS	44	79	80	80	70	79	79	80	80	80	82	85
SUGARCANE	11	151	108	126	198	159	167	267	196	203	280	350
SUGAR BEETS	13	357	219	478	275	513	342	426	428	573	800	830
FLAXSEED	65	70	27	56	105	64	43	29	26	39	62	55
PEANUTS, IN SHELL	95	6	2	1	3	2	2	3	2	2	3	3
SUNFLOWER SEED	84	65	76	49	63	65	49	60	71	48	51	90
BEEF AND VEAL	235	313	241	290	238	365	270	287	297	330	345	400
MUTTON AND LAMB	215	51	82	86	87	83	85	50	31	34	36	35
PORK	460	24	25	22	24	22	17	19	23	26	25	25
MILK	56	747	621	661	767	764	706	705	708	710	720	728
WOOL, GREASY BASIS	695	86	81	80	75	80	62	61	53	55	61	62
AGGREGATES OF PRODUCTION			-MILLION DOLLARS AT CONSTANT PRICES-									
CROPS		68.6	43.5	67.3	72.2	74.9	64.8	56.9	76.2	88.2	83.8	102.2
LIVESTOCK		197.1	176.8	189.4	180.7	212.1	172.2	168.8	163.1	174.9	183.0	197.6
LIVESTOCK FEED DEDUCTION	.09	-17.7	-15.9	-17.0	-16.2	-19.0	-15.4	-15.1	-14.6	-15.7	-16.4	-17.7
TOTAL AGRICULTURE		248.0	204.8	239.7	236.7	268.0	221.6	210.6	224.7	247.4	250.4	282.1
TOTAL FOOD		183.9	146.7	180.5	177.8	208.2	175.7	166.3	186.2	206.7	204.0	235.4
INDICES OF PRODUCTION			(1961-65 = 100)									
CROPS		100	64	98	105	109	94	83	111	129	122	149
TOTAL AGRICULTURE		100	83	97	95	108	89	85	91	100	101	114
TOTAL FOOD		100	80	98	97	113	96	90	101	112	111	128
PER CAPITA AGRICULTURE		100	81	95	93	105	86	82	87	95	96	108
PER CAPITA FOOD		100	78	96	94	110	92	87	97	108	106	122
INDEX OF POPULATION												
1961-65 POPULATION=	2,640,000	100.0	101.9	102.3	102.7	103.0	103.4	103.8	104.2	104.5	104.9	105.3

TABLE 31 -- VENEZUELA

PRODUCTION BY COMMODITY, VALUE AND INDICES OF TOTAL AGRICULTURAL AND FOOD PRODUCTION, AVERAGE 1961-65, ANNUAL 1967-76

COMMODITY	PRICE	AVERAGE	1967	1968	1969	1970	1971	1972	1973	1974	1975	1976
	WEIGHT	1961-65										
	DOLLARS		-1,000 METRIC TONS-									
RICE, PADDY	130	136	223	245	244	226	141	165	272	297	363	277
CORN	60	477	633	661	670	710	713	506	454	524	653	532
SORGHUM	50	1	16	22	5	6	2	7	9	34	80	238
BEANS, DRY	235	40	50	59	54	55	43	35	29	37	41	34
POTATOES	125	113	133	143	124	125	115	109	124	152	160	135
CASSAVA	50	316	316	341	310	317	323	318	272	293	317	353
SWEETPOTATOES AND YAMS	80	81	98	101	103	107	124	122	133	137	131	105
TOBACCO	950	9	10	11	11	12	14	13	13	14	16	15
COTTON	650	10	13	13	15	13	21	21	21	27	40	23
COTTONSEED	100	19	22	22	25	23	38	36	36	48	69	44
SESAME SEED	250	37	81	76	83	126	94	59	78	72	65	62
BANANAS	45	749	859	949	948	968	992	997	901	938	950	890
PLANTAINS	40	216	197	222	260	281	298	282	280	290	300	373
COFFEE	730	49	45	52	54	54	57	40	66	46	64	50
COCOA BEANS	565	19	25	19	18	19	19	17	19	17	19	18
SISAL	190	19	13	12	16	17	12	13	15	14	15	14
SUGAR, RAW (CENTRIFUGAL)	100	295	386	354	424	492	517	507	484	514	495	455
SUGAR, NONCENTRIFUGAL	95	44	36	29	27	25	26	26	26	26	26	25
BEEF AND VEAL	420	148	189	192	195	200	214	217	231	240	245	250
PORK	559	28	31	32	37	40	44	47	63	63	65	45
MILK	225	547	716	758	789	828	970	1,049	1,023	1,099	1,186	1,156
AGGREGATES OF PRODUCTION												
			-MILLION DOLLARS AT CONSTANT PRICES-									
CROPS		255.4	314.2	327.3	334.9	356.0	348.8	308.3	335.0	345.8	394.0	348.6
LIVESTOCK		200.9	257.6	268.8	279.8	292.3	332.4	353.0	361.9	382.8	405.6	389.9
LIVESTOCK FEED DEDUCTION .12		-24.1	-30.9	-32.2	-33.5	-35.0	-39.8	-42.3	-43.4	-45.9	-48.6	-46.7
TOTAL AGRICULTURE		432.2	540.9	563.9	581.2	613.3	641.4	619.0	653.5	682.7	751.0	691.9
TOTAL FOOD		379.6	487.5	504.6	518.5	550.8	570.5	561.2	575.3	615.5	660.2	621.4
INDICES OF PRODUCTION												
			(1961-65 = 100)									
CROPS		100	123	128	131	139	137	121	131	135	154	136
TOTAL AGRICULTURE		100	125	130	134	142	148	143	151	158	174	160
TOTAL FOOD		100	128	133	137	145	150	148	152	162	174	164
PER CAPITA AGRICULTURE		100	110	111	111	113	114	107	110	111	119	106
PER CAPITA FOOD		100	113	113	112	116	116	110	110	114	119	108
INDEX OF POPULATION												
1961-65 POPULATION= 8,662,000		100.0	113.8	117.6	121.5	125.5	129.8	133.8	138.0	142.2	146.6	151.1

END