



AgEcon SEARCH
RESEARCH IN AGRICULTURAL & APPLIED ECONOMICS

The World's Largest Open Access Agricultural & Applied Economics Digital Library

This document is discoverable and free to researchers across the globe due to the work of AgEcon Search.

Help ensure our sustainability.

Give to AgEcon Search

AgEcon Search

<http://ageconsearch.umn.edu>

aesearch@umn.edu

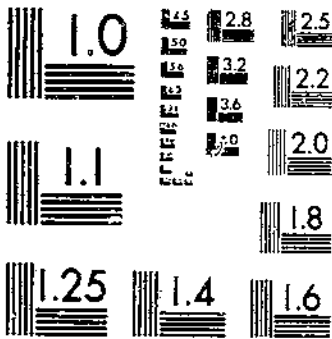
*Papers downloaded from **AgEcon Search** may be used for non-commercial purposes and personal study only. No other use, including posting to another Internet site, is permitted without permission from the copyright owner (not AgEcon Search), or as allowed under the provisions of Fair Use, U.S. Copyright Act, Title 17 U.S.C.*

SD 565 (1977) USDA STATISTICAL BULLETINS
INTERREGIONAL MOVEMENTS OF EGGS AND POULTRY, 1955-75.
ROGERS, G. B. IRVIN, R. J.

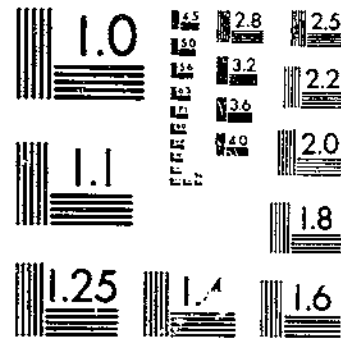
UPDATA

1 OF 2

START



MICROCOPY RESOLUTION TEST CHART
NATIONAL BUREAU OF STANDARDS-1963-A



MICROCOPY RESOLUTION TEST CHART
NATIONAL BUREAU OF STANDARDS-1963-A

R

57

630.5

653-13

565

INTERREGIONAL MOVEMENTS OF EGGS AND POULTRY, 1955-75

U. S. DEPOSITORY

MAR 1977

Los Angeles Public Library

U.S. Department of Agriculture / Economic Research Service
Statistical Bulletin No. 565

ABSTRACT

Data are presented on the estimated annual volumes of shell eggs and egg products and ready-to-cook and further-processed poultry moving within and between eight geographic regions during 1955-75. Also shown are data on supplies both produced and consumed within each region. Interregional movements reflect not only attempts to balance surplus-deficit positions, but also movements of particular grades and sizes. Changing patterns of regional output, consumption, and interregional movements may affect the dollar costs of long-distance transportation.

KEYWORDS: Eggs, poultry, supplies, consumption, interregional movements, costs.

ACKNOWLEDGMENTS

Verel W. Benson and Thomas J. Witzig developed the computer program and refined the input data necessary to improve the series on aggregate surplus-deficit quantities by States and to develop regional totals. A debt of gratitude is due the researchers who developed the early applications of surplus-deficit analysis for regulatory programs and statistical purposes. These earlier efforts provided a good starting point for subsequent improvements and refinements in methodology and data series.

CONTENTS

	<i>Page</i>
INTRODUCTION	1
METHODOLOGY	1
USES OF THE DATA	3
SELECTED REFERENCES	3

TABLES

1-4	Surplus-deficit quantities by region for eggs, turkeys, young chickens, and mature chickens, 1955-75	4
5-8	Production by region of processed eggs, further-processed turkeys, young chickens, and mature chickens, 1955-75	8
9-12	Supplies by region of shell eggs, ready-to-cook turkeys, young chickens, and mature chickens, 1955-75	12
13-33	Eggs: Interregional movements in shell and processed forms, 1955-75	16
34-54	Turkeys: Interregional movements in ready-to-cook and further-processed forms, 1955-75	37
55-75	Young chickens: Interregional movements in ready-to-cook and further-processed forms, 1955-75	58
76-96	Mature chickens: Interregional movements in ready-to-cook and further-processed forms, 1955-75	79
97-100	Measures of the degree of self-sufficiency by region, eggs, turkeys, young chickens, and mature chickens, selected years	100
101-104	Aggregate long-distance transfer costs and relative importance of interregional movements, shell and processed eggs, ready-to-cook and further-processed turkeys, young chickens, and mature chickens, selected periods	104

INTERREGIONAL MOVEMENTS OF EGGS AND POULTRY, 1955-75

by

George B. Rogers and Ruth J. Irvin¹
Commodity Economics Division
Economic Research Service

INTRODUCTION

The movement of eggs and poultry within and between regions is a fundamental part of the marketing system. Many previous studies made in individual markets or areas at particular points in time measured the relative importance of various supply sources. But such studies did not provide continuing measurements of long-distance movements for the United States as a whole or assess the impacts of changes in regional outputs and needs. The purpose of this study was to develop time series suitable for these purposes.

The concept of the surplus or deficit status of regions, States and counties was first used in a comprehensive way as a device to permit equal access to available supplies in zone price ceilings on eggs and poultry established by the Office of Price Administration (OPA) in 1944-45 (1, 2).² The same approach was used by the Office of Price Stabilization (OPS) in the 1951-53 period in developing standby price regulations for eggs and poultry. An OPS report detailed surplus-deficit information for eggs, turkeys, and chickens (5). During the fifties, The Farmer Cooperative Service (FCS), U.S. Department of Agriculture (USDA), began to calculate annual surplus-deficit amounts by States and regions for all eggs, broilers, and turkeys. These series were continued by FCS until 1969 when the Economic Research Service (ERS) assumed the task. Such aggregate surplus-deficit series illustrate the changing regional relationships in the egg and poultry industries and imply the net total movements which could occur between regions.

METHODOLOGY

Revised aggregate surplus-deficit calculations by regions constituted the starting point for developing other data in this report. Because some adjustments in method were made, the series do not exactly correspond with those previously calculated by FCS. Differences arose mainly from the forced balancing of surpluses and deficits to equal "zero" for U.S. totals. This method was not used in the previous series.

Total surplus or deficit figures for each region were obtained by subtracting regional supply from regional consumption data (tables 1-4). Regional supply was estimated by applying regional percentages of U.S. production derived from series of the Statistical Reporting Service to total U.S. consumption. Assuming uniform per capita consumption by regions, regional consumption was derived by multiplying per

¹Mrs. Irvin retired in April 1975.

²Italicized numbers in parentheses refer to references listed at the end of the report.

capita consumption by regional population.³ Per capita consumption levels were taken from annual series for all eggs, turkeys, young chickens, and mature chickens regularly prepared by ERS. The series net out the effects of changes in inventories, eggs used for hatching, imports, exports, and shipments.

A second stage in data development involved the separation of shell and processed eggs and ready-to-cook and further-processed poultry, plus the addition of mature chickens to the product classes. The production of processed items is not distributed by regions in the same manner as the production of table eggs or ready-to-cook poultry. Also, interregional movements of the various product forms are different.

An essential input to subsequent calculations was the development of annual estimates of processed product output by regions (tables 5-8). In recent years, compulsory inspection data from the Agricultural Marketing Service (AMS), USDA, have provided such measurements on processed eggs. Previous studies by ERS provided the data base for years prior to 1971. For turkeys, young chickens, and mature chickens, 1960-75 inspection data were used to derive regional output estimates of further-processed poultry. These data were collected by AMS, and subsequently by the Animal and Plant Health Inspection Service. Estimates were made by ERS for years prior to 1960 using voluntary inspection data and other studies.

Regional consumption of processed eggs was derived by using ERS estimates of U.S. per capita consumption times regional population. For further-processed poultry, estimates of total U.S. consumption were used to derive estimated per capita consumption.

Regional production of processed eggs and poultry may utilize supplies from within the region as well as from outside it. Estimates of these proportions were developed. The quantities of supplies from within regions used for processed products were subtracted from total regional supplies to derive regional supplies of shell eggs and ready-to-cook poultry (tables 9-12).

The final stage of data development concerned the estimation of movements of shell and processed eggs and ready-to-cook and further-processed poultry occurring between regions to fill consumption requirements. These requirements involve not only balancing total quantities, but also recognition of movements that occur because of particular grades and sizes and institutional factors. Recognition of the latter considerations produces movement patterns that differ somewhat from mere surplus-deficit balancing.

Various sources of information were used in completing interregional movement estimates. Data showing these estimates plus consumption met from regional supplies are in tables 13-96. Prior to 1960, AMS data on origins of receipts by State at terminal markets were particularly useful. Other sources used included ERS and State studies of specific markets, AMS Market News Service estimates of major States supplying selected cities used in price spreads work, and major directional movements indicated by Market News and trade group transportation rate series.

Two applications of the data in tables 13-96 were developed. The first involved deriving measures of changes in regional self-sufficiency for selected years (tables 97-100). These changes reflected the total effects of regional shifts in total production of eggs and types of poultry, in population, and of certain kinds of changes in interregional movements.

³This assumption may well be disputed since there are some indications that per capita consumption varies by region. The food consumption surveys conducted in 1955-56 and 1965-66 by the Agricultural Research Service (ARS) suggest this. More recently, studies completed in Georgia developed some of these differences for particular years (3, 4). However, annual estimates are not available over the entire period studied, so the uniform per capita consumption method was retained. The effect of the uniform per capita consumption approach may overstate or understate some derived interregional movements.

The second application involved estimating the aggregate effects on long-distance transportation costs of changes in the above factors (tables 101-104). In order to isolate the effects of these changes, the set of transfer costs within and between various regions was not varied over time. The matrix used for each commodity contained costs for the midsixties. Also calculated were the relative importance of costs and volumes of interregional movements for selected years.

USES OF THE DATA

An article published in 1974 (6) discussed the changes in interregional movements of eggs and poultry from the late fifties to the early sixties, the early to midsixties, and from the midsixties to early seventies. A second article (8) summarized major changes in regional self-sufficiency for eggs and poultry resulting from changes in production, consumption, and interregional movements. Data on aggregate long-distance transfer costs were also used in estimating long-distance transportation costs in a study of price spreads, costs, and productivity from 1955 to 1974 (7).

Preliminary data on interregional movements and costs were also used in transportation rate cases, by other researchers working on interregional competition and potential market analyses, in developing estimates of the cost components of annual price spreads, and for estimating energy use in long-distance transportation.

Since the development and updating of the data took several years, some of the information in the early working drafts may be slightly different than the data presented in this report. These were mainly due to revisions in some of the production and consumption series in the past few years.

SELECTED REFERENCES

- (1) Office of Price Administration
Revised Maximum Price Regulation 333: Eggs and Egg Products. Sept. 16, 1944.
- (2) _____
Second Revised Maximum Price Regulation 269, including Amendments 1-8: Poultry. June 25, 1945.
- (3) Rauniker, R., J.C. Purcell, and J.C. Elrod
Spatial and Temporal Aspects of the Demand for Food in the U.S., IV, Poultry. AES Res. Bull. 87. Univ. of Ga., May 1971.
- (4) _____
Spatial and Temporal Aspects of the Demand for Food in the U.S., VI, Eggs. AES, Res. Bull. 93. Univ. of Ga., June 1971.
- (5) Rogers, G.B., F.L. Faber, and E.J. Lebrun
Estimated Amounts of Surplus or Deficit Production of Eggs, Turkeys, and Chickens, by Regions, States, and Counties, 1949. Office of Price Stabilization (mimeographed), August 1952, 145 pp.
- (6) Rogers, G.B. and R.J. Irvin
Interregional Movements of Eggs and Poultry Products, 1955-73. Poultry and Egg Situation, PES-283. U.S. Dept. Agr., Econ. Res. Serv., Sept. 1974, pp. 26-28.
- (7) Rogers, G.B.
Price Spreads, Costs and Productivity in Poultry and Egg Marketing, 1955-74. Agr. Econ. Rpt. 326. U.S. Dept. Agr., Econ. Res. Serv., Feb. 1976.
- (8) _____
Changes in Regional Self-Sufficiency in Egg and Poultry Supplies, 1955-75. Poultry and Egg Situation, PES-291. U.S. Dept. Agr., Econ. Res. Serv., Sept. 1976, pp. 25-29.

Table 1--Eggs: Total surplus or deficit by region, 1955-75

Year	Region							
	New England	Middle Atlantic	East North Central	West North Central	South Atlantic	South Central	Mountain	Pacific
<u>1,000 cases, shell egg equivalent</u>								
1955.....	-2,321	-8,812	-1,007	30,420	-8,938	-6,813	-1,500	-1,029
1956.....	-2,039	-8,731	-1,061	29,779	-8,751	-6,151	-1,837	-1,208
1957.....	-2,194	-8,896	-2,180	30,708	-8,347	-5,937	-2,041	-1,113
1958.....	-2,412	-9,310	-2,060	30,382	-8,013	-5,801	-2,064	-721
1959.....	-2,734	-10,192	-3,096	29,197	-6,047	-4,436	-2,223	-420
1960.....	-2,642	-10,784	-3,459	27,137	-4,397	-4,472	-2,314	931
1961.....	-2,453	-11,716	-4,671	26,120	-3,483	-3,010	-2,631	1,844
1962.....	-2,548	-12,484	-4,793	24,415	-2,473	-1,787	-2,785	2,414
1963.....	-2,150	-12,377	-5,844	20,589	54	-78	-2,824	2,627
1964.....	-2,063	-13,127	-7,380	19,612	1,114	1,798	-3,175	3,220
1965.....	-2,298	-12,809	-7,630	18,081	1,771	2,762	-3,301	3,424
1966.....	-2,185	-13,782	-8,462	16,040	3,328	4,524	-3,201	3,738
1967.....	-2,654	-14,979	-9,119	14,775	4,846	6,617	-3,313	3,827
1968.....	-2,636	-14,986	-8,747	11,477	5,651	7,632	-3,286	4,896
1969.....	-2,198	-14,537	-9,648	9,203	7,970	7,032	-3,229	5,407
1970.....	-2,037	-15,057	-9,564	9,785	7,722	6,920	-3,295	5,527
1971.....	-2,127	-14,946	-8,520	10,026	8,222	5,209	-3,573	5,707
1972.....	-1,478	-14,661	-8,137	9,636	7,867	5,536	-3,820	5,057
1973.....	-598	-13,379	-8,072	9,112	8,105	4,958	-3,595	3,469
1974.....	-530	-13,117	-8,994	7,746	8,418	4,275	-3,561	5,764
1975.....	-389	-13,042	-8,554	7,811	6,870	4,364	-3,108	6,050

© UFDATA 1981

Table 2--Turkeys: Total surplus or deficit by region, 1955-75

Year	Region							
	New England	Middle Atlantic	East North Central	West North Central	South Atlantic	South Central	Mountain	Pacific
	<u>Million pounds, ready-to-cook equivalent</u>							
1955.....	-33.3	-129.4	-63.0	167.3	-5.8	-59.6	25.5	98.2
1956.....	-38.8	-146.0	-73.6	178.7	-5.9	-41.9	25.4	102.2
1957.....	-46.3	-167.3	-76.2	195.7	-13.2	-45.9	25.8	127.5
1958.....	-49.7	-171.4	-67.5	231.4	-30.4	-59.2	30.3	116.4
1959.....	-53.9	-181.6	-59.2	290.3	-43.2	-74.7	22.7	99.6
1960.....	-56.0	-184.4	-66.1	297.4	-70.8	-63.8	28.6	115.2
1961.....	-66.4	-225.0	-71.0	354.7	-82.1	-68.7	36.3	122.2
1962.....	-66.0	-217.4	-69.0	306.9	-79.5	-72.4	38.8	158.4
1963.....	-65.8	-214.4	-55.0	315.5	-61.8	-55.3	38.2	98.7
1964.....	-74.1	-233.0	-64.5	349.8	-43.4	-51.6	23.8	93.0
1965.....	-77.4	-238.7	-76.9	362.0	-38.2	-36.9	35.8	81.4
1966.....	-82.5	-250.7	-96.1	363.1	-27.0	-20.7	30.1	83.7
1967.....	-91.9	-276.4	-126.9	392.8	-36.1	5.0	39.7	93.8
1968.....	-86.0	-260.6	-117.4	360.2	9.6	-2.9	34.3	62.8
1969.....	-92.4	-270.3	-134.8	364.5	31.2	-7.1	32.7	76.2
1970.....	-87.8	-256.5	-118.6	336.3	31.2	-.3	39.7	56.0
1971.....	-97.9	-274.9	-144.5	382.2	25.7	3.6	42.5	63.4
1972.....	-106.2	-294.9	-140.5	443.9	26.0	-30.4	45.1	57.0
1973.....	-101.1	-280.7	-151.8	448.0	37.9	-26.8	42.2	32.2
1974.....	-104.3	-286.1	-134.8	410.6	75.3	-30.0	34.1	35.1
1975.....	-101.9	-274.4	-144.7	408.3	75.2	-36.5	46.7	27.4

Table 3--Young chickens: Total surplus or deficit by region, 1955-75

Year	Region								
	New England	Middle Atlantic	East North Central	West North Central	South Atlantic	South Central	Mountain	Pacific	
Million pounds, ready-to-cook equivalent									
1955.....	73.7	-338.4	-317.0	-131.5	682.1	215.2	-73.6	-110.6	
1956.....	82.6	-428.2	-411.5	-171.9	867.8	315.6	-96.9	-157.5	
1957.....	72.6	-494.2	-470.7	-207.2	1,015.5	417.7	-111.7	-222.1	
1958.....	60.6	-574.3	-554.4	-225.8	1,129.0	555.6	-128.7	-261.9	
1959.....	32.2	-623.4	-617.6	-228.4	1,118.0	734.1	-136.7	-278.3	
1960.....	-1.9	-661.5	-662.0	-256.4	1,234.7	777.5	-146.3	-284.2	
1961.....	-26.5	-759.8	-758.0	-269.1	1,316.5	996.3	-169.6	-329.8	
1962.....	-37.9	-771.9	-797.9	-277.0	1,360.4	1,050.4	-174.6	-351.4	
1963.....	-49.7	-834.6	-879.8	-316.6	1,452.5	1,203.8	-187.7	-387.8	
1964.....	-57.5	-869.7	-932.6	-326.9	1,482.2	1,315.4	-195.0	-415.9	
1965.....	-84.5	-939.0	-1,016.8	-316.0	1,592.3	1,475.1	-210.8	-455.4	
1966.....	-116.1	-1,043.9	-1,135.0	-421.0	1,773.9	1,680.5	-227.9	-510.6	
1967.....	-122.4	-1,052.2	-1,160.7	-426.9	1,783.3	1,726.4	-235.3	-512.3	
1968.....	-130.6	-1,066.6	-1,186.8	-432.6	1,791.4	1,804.6	-241.4	-538.0	
1969.....	-171.4	-1,154.9	-1,297.3	-471.1	1,948.6	1,998.4	-267.9	-584.5	
1970.....	-194.8	-1,213.9	-1,382.3	-494.5	2,018.3	2,167.7	-286.9	-613.7	
1971.....	-208.4	-1,195.2	-1,386.2	-489.5	1,929.3	2,264.9	-292.8	-622.0	
1972.....	-243.0	-1,269.8	-1,456.5	-521.7	2,008.6	2,484.9	-334.6	-667.9	
1973.....	-227.2	-1,228.4	-1,421.5	-507.2	2,017.6	2,381.5	-347.2	-667.6	
1974.....	-224.8	-1,215.6	-1,442.9	-514.5	2,073.5	2,330.6	-354.7	-651.7	
1975.....	-211.2	-1,177.6	-1,398.3	-497.1	1,998.0	2,266.0	-355.5	-624.3	

6

Table 4--Mature chickens: Total surplus or deficit by region, 1955-75

Year	Region								
	New England	Middle Atlantic	East North Central	West North Central	South Atlantic	South Central	Mountain	Pacific	
	<u>Million pounds, ready-to-cook equivalent</u>								
1955.....	16.3	-92.5	6.1	223.7	-47.4	-60.9	-11.5	-33.8	
1956.....	3.9	-93.4	-2.7	239.5	-40.3	-47.8	-14.5	-44.7	
1957.....	11.1	-79.1	-14.6	182.2	-14.7	-44.7	-11.9	-28.4	
1958.....	3.3	-87.9	-16.8	199.1	-16.6	-32.7	-15.7	-32.6	
1959.....	6.5	-82.0	-42.9	152.5	5.7	-10.8	-14.4	-14.6	
1960.....	9.7	-72.2	-39.2	131.0	6.7	-22.1	-12.6	-1.4	
1961.....	1.1	-73.8	-38.8	119.1	16.6	-6.0	-13.9	-4.3	
1962.....	4.0	-69.0	-49.1	90.7	35.8	-1.8	-15.8	5.1	
1963.....	1.9	-65.9	-44.8	75.1	42.1	8.4	-16.0	-9	
1964.....	-3.6	-69.2	-43.8	65.5	41.5	26.7	-17.4	.3	
1965.....	1.6	-73.2	-57.3	58.2	52.4	43.6	-17.8	-7.5	
1966.....	-1.2	-76.4	-66.2	58.6	54.6	66.0	-20.2	-15.3	
1967.....	-1.0	-80.8	-70.0	49.9	55.6	82.4	-19.0	-17.2	
1968.....	3.5	-79.1	-67.5	33.4	62.9	79.4	-18.1	-14.5	
1969.....	-.2	-71.5	-56.7	33.2	55.7	80.7	-16.5	-24.7	
1970.....	-6.4	-75.6	-51.6	35.9	66.1	68.4	-18.4	-18.3	
1971.....	-6.0	-78.4	-61.0	35.2	81.7	70.4	-18.9	-22.9	
1972.....	0.9	-55.3	-56.8	29.3	70.5	77.2	-20.0	-45.7	
1973.....	-1.4	-49.3	-54.4	24.5	62.0	60.7	-16.1	-26.0	
1974.....	3.3	-55.2	-61.8	25.6	63.9	68.3	-19.5	-24.6	
1975.....	10.5	-75.3	-51.4	34.9	60.3	72.8	-17.7	-34.2	

Table 5--Processed egg production by region, 1955-75 ^{1/}

Year	Region								
	New England	Middle Atlantic	East North Central	West North Central	South Atlantic	South Central	Mountain	Pacific	
	1,000 cases, shell egg equivalent								
1955.....	23	160	1,907	8,528	285	297	80	137	
1956.....	34	168	1,849	8,350	280	303	78	146	
1957.....	39	195	2,115	9,629	350	389	78	181	
1958.....	37	187	1,998	9,243	375	375	75	200	
1959.....	49	246	2,628	12,107	493	493	82	330	
1960.....	42	211	2,253	10,239	423	423	70	423	
1961.....	46	228	2,360	10,781	609	609	61	533	
1962.....	47	233	2,409	10,630	777	777	47	622	
1963.....	44	220	2,202	9,674	881	881	44	734	
1964.....	66	329	2,469	10,469	1,021	1,070	49	988	
1965.....	78	391	2,298	9,332	1,297	1,094	47	1,094	
1966.....	85	509	2,475	9,595	1,610	1,356	51	1,271	
1967.....	97	580	2,823	10,642	2,030	1,740	58	1,547	
1968.....	125	713	2,654	8,853	2,120	1,781	53	1,514	
1969.....	174	1,045	2,629	7,940	2,003	1,916	52	1,654	
1970.....	231	1,345	2,575	8,491	2,056	2,498	96	1,921	
1971.....	297	2,038	2,885	8,214	2,038	3,056	149	2,547	
1972.....	398	2,261	2,930	6,803	2,407	3,182	210	2,742	
1973.....	347	1,970	2,554	5,928	2,098	2,772	182	2,390	
1974.....	336	2,955	3,203	5,733	2,660	2,762	126	3,199	
1975.....	325	2,380	2,893	4,952	2,022	2,574	150	3,051	

^{1/} Includes production from eggs produced in the region as well as from those shipped in from other regions.

Table 6--Turkeys: Further-processed production by region, 1955-75 ^{1/}

Year	Region							
	New England	Middle Atlantic	East North Central	West North Central	South Atlantic	South Central	Mountain	Pacific
	Million pounds, ready-to-cook equivalent							
1955.....	0.1	0.4	2.8	42.4	---	---	---	1.4
1956.....	.2	1.1	3.0	36.8	---	---	---	1.7
1957.....	.3	2.7	5.9	59.3	0.7	1.5	---	3.7
1958.....	.5	5.9	9.1	63.5	2.7	1.8	---	8.2
1959.....	.6	8.4	13.5	67.4	5.6	2.2	---	14.6
1960.....	.7	12.2	16.4	56.3	8.2	2.3	---	21.1
1961.....	1.0	15.0	19.4	43.4	9.1	3.4	---	22.9
1962.....	1.2	22.7	30.2	50.9	14.3	4.8	---	35.0
1963.....	1.4	29.4	40.2	63.5	19.7	7.1	0.3	42.3
1964.....	1.2	34.8	25.2	74.5	33.3	15.5	.6	40.0
1965.....	.6	44.1	27.5	84.0	39.9	20.7	.5	52.1
1966.....	.4	51.2	31.9	103.2	59.5	42.6	.8	68.8
1967.....	.3	47.0	47.3	91.8	71.4	34.2	.4	52.7
1968.....	.1	49.1	52.1	136.9	89.0	32.3	.4	53.8
1969.....	9.1	44.5	58.9	209.8	90.5	44.2	.8	68.1
1970.....	5.0	41.1	69.7	209.6	77.9	48.7	.6	59.9
1971.....	5.0	41.7	73.0	255.6	91.0	71.2	3.4	57.7
1972.....	7.8	43.9	77.6	299.6	95.5	68.8	10.6	76.2
1973.....	.9	50.3	83.4	386.5	103.4	95.2	15.5	107.3
1974.....	1.5	56.4	96.3	365.4	140.7	86.9	18.3	151.7
1975.....	1.3	67.4	106.9	389.0	157.1	76.5	23.8	125.1

^{1/} Includes production from turkeys produced in the region as well as from those shipped in from other regions.

Table 7--Young chickens: Further-processed production by region, 1955-75 ^{1/}

Year	Region							
	New England	Middle Atlantic	East North Central	West North Central	South Atlantic	South Central	Mountain	Pacific
Million pounds, ready-to-cook equivalent								
1955.....	0.2	0.2	0.1	1.3	7.1	3.9	---	0.1
1956.....	.3	.2	.2	2.8	9.2	5.5	---	.2
1957.....	.5	.4	.4	5.4	12.2	7.9	---	.4
1958.....	.8	.7	.9	9.6	18.3	12.5	---	.7
1959.....	1.4	1.5	1.9	15.5	25.8	17.2	---	1.2
1960.....	2.8	3.5	4.6	28.6	38.8	33.7	---	2.3
1961.....	2.5	3.0	4.3	22.1	28.9	22.2	---	2.0
1962.....	3.0	3.5	5.6	25.1	31.7	21.8	---	2.4
1963.....	3.6	4.5	7.1	29.4	36.6	26.7	2/	3.0
1964.....	2.0	5.8	11.7	28.4	38.6	43.1	0.1	2.9
1965.....	3.7	10.5	13.1	30.5	39.0	46.3	2/	4.2
1966.....	4.4	18.8	13.2	47.3	49.0	52.4	---	6.3
1967.....	5.5	28.4	12.2	44.1	86.4	56.1	.1	5.9
1968.....	6.7	46.4	9.0	30.8	102.9	68.3	.1	8.1
1969.....	7.0	48.5	7.9	35.0	90.8	85.8	.2	16.8
1970.....	9.0	59.5	11.5	39.3	108.9	111.8	.3	20.3
1971.....	10.4	73.3	12.0	28.4	115.6	148.2	.2	18.7
1972.....	12.4	86.5	18.5	41.8	125.8	160.2	.3	19.0
1973.....	12.6	95.3	22.2	47.1	133.3	181.1	.4	26.1
1974.....	13.0	113.9	27.6	32.1	122.1	199.8	.4	21.3
1975.....	11.2	112.8	32.1	24.0	133.7	138.4	.8	21.9

^{1/} Includes production from young chickens produced in the region as well as from those shipped in from other regions.
^{2/} Less than 50,000 pounds.

Table 8--Mature chickens: Further-processed production by region, 1955-75 ^{1/}

Year	Region							
	New England	Middle Atlantic	East North Central	West North Central	South Atlantic	South Central	Mountain	Pacific
<u>Million pounds, ready-to-cook equivalent</u>								
1955.....	0.2	4.4	10.8	131.2	6.2	---	---	1.5
1956.....	.2	4.6	12.9	129.3	11.3	1.6	---	1.6
1957.....	.3	6.6	17.2	125.4	17.2	3.4	---	1.7
1958.....	.4	8.5	19.6	120.9	21.3	3.6	---	3.6
1959.....	.4	9.9	20.6	111.4	22.3	3.4	---	3.4
1960.....	.5	13.0	25.1	116.0	29.0	3.9	---	5.8
1961.....	.7	23.0	41.5	118.5	37.9	7.1	---	8.3
1962.....	.8	28.6	42.4	106.0	38.9	9.4	---	9.4
1963.....	.9	33.5	45.5	119.4	46.3	11.6	0.1	11.8
1964.....	1.0	34.9	45.5	115.4	50.7	12.9	<u>2/</u>	13.7
1965.....	1.6	39.2	53.3	137.6	60.6	17.8	.1	19.0
1966.....	3.9	42.2	45.7	125.9	60.0	28.9	.1	17.8
1967.....	4.5	42.6	55.8	129.7	99.2	32.4	.1	12.8
1968.....	5.5	42.7	53.1	159.0	91.7	36.5	.1	17.0
1969.....	6.5	44.2	56.3	148.7	96.0	34.0	.2	19.3
1970.....	7.5	48.7	53.7	162.3	98.1	29.8	.1	19.2
1971.....	9.4	41.8	61.0	177.2	100.7	34.3	.2	30.1
1972.....	14.6	35.8	59.6	211.9	98.6	36.5	.2	37.7
1973.....	6.2	42.5	45.6	216.7	117.7	40.4	<u>2/</u>	43.3
1974.....	3.0	41.1	44.2	173.7	114.5	34.3	<u>2/</u>	37.4
1975.....	1.5	33.2	39.7	140.1	98.9	38.7	<u>2/</u>	24.8

^{1/} Includes production from mature chickens produced in the region as well as from those shipped in from other regions.
^{2/} Less than 50,000 pounds.

Table 9--Shell eggs: Regional supply, 1955-75 1/

Year	Region							
	New England	Middle Atlantic	East North Central	West North Central	South Atlantic	South Central	Mountain	Pacific
	1,000 cases, shell egg equivalent							
1955.....	7,019	21,767	29,127	35,864	12,791	18,516	4,015	15,335
1956.....	7,356	22,156	29,764	35,584	13,613	19,481	3,915	15,815
1957.....	7,209	22,035	28,622	35,179	14,395	19,805	3,854	16,308
1958.....	7,043	21,666	28,989	35,066	14,875	19,907	3,887	17,072
1959.....	6,944	21,187	27,759	31,251	17,277	21,652	3,925	17,871
1960.....	6,756	19,721	26,813	30,722	18,564	21,169	3,814	18,879
1961.....	6,892	18,914	25,514	29,178	19,611	22,593	3,693	20,124
1962.....	7,052	18,613	25,781	27,770	21,029	24,228	3,761	21,292
1963.....	7,450	18,493	24,750	24,710	23,524	25,609	3,750	21,623
1964.....	7,827	18,377	23,854	23,193	25,241	27,957	3,595	22,702
1965.....	7,599	18,605	23,888	22,677	25,783	28,818	3,467	23,012
1966.....	7,763	17,622	23,252	20,391	27,289	30,443	3,596	23,431
1967.....	7,666	17,366	23,509	18,677	29,381	33,065	3,726	24,200
1968.....	7,557	16,927	23,750	16,852	30,065	33,839	3,761	25,254
1969.....	7,796	16,425	22,297	15,301	32,240	32,727	3,799	25,515
1970.....	7,976	15,756	22,689	15,415	32,217	32,220	3,809	25,616
1971.....	8,069	15,818	24,086	16,227	33,511	30,696	3,768	25,754
1972.....	8,556	15,499	24,087	17,155	32,969	30,912	3,623	24,734
1973.....	8,990	15,245	22,767	16,792	32,675	29,641	3,748	22,594
1974.....	8,877	13,820	20,570	15,390	32,388	28,756	3,859	23,935
1975.....	8,740	13,459	20,313	15,794	30,979	28,452	4,217	23,938

1/ Excludes eggs produced in region which were used for processing. Includes eggs subsequently shipped to other regions for shell egg or processing use.

Table 10--Turkeys: Regional supply of ready-to-cook, 1955-75 1/

Year	Region							
	New England	Middle Atlantic	East North Central	West North Central	South Atlantic	South Central	Mountain	Pacific
<u>Million pounds, ready-to-cook equivalent</u>								
1955.....	20.6	47.5	118.9	205.5	121.1	88.1	57.7	192.0
1956.....	17.5	39.0	119.2	226.8	129.8	113.1	60.4	203.4
1957.....	16.4	37.7	137.5	230.5	140.1	126.9	65.6	241.2
1958.....	14.3	37.0	148.0	262.6	125.0	116.3	71.2	230.5
1959.....	13.5	35.4	161.1	321.8	117.5	108.7	66.2	215.4
1960.....	11.3	33.0	151.7	340.7	89.4	121.5	73.2	226.4
1961.....	12.6	32.5	184.4	428.0	108.8	149.2	90.2	258.2
1962.....	10.2	29.5	165.4	389.2	100.9	137.7	91.7	279.8
1963.....	9.2	27.0	164.6	362.3	111.5	148.1	90.4	212.7
1964.....	8.7	30.0	194.7	393.8	135.4	162.7	80.8	225.7
1965.....	9.2	32.1	191.1	399.7	143.1	179.6	83.9	210.1
1966.....	9.0	32.6	188.1	394.3	150.5	189.5	93.4	210.7
1967.....	8.2	32.8	169.9	446.6	151.1	246.0	109.1	256.1
1968.....	7.9	27.4	152.9	358.9	165.2	222.7	99.7	211.4
1969.....	4.6	28.9	145.5	298.4	200.5	221.1	102.2	223.8
1970.....	4.5	28.3	143.1	284.5	213.3	221.2	111.5	213.4
1971.....	3.4	31.5	133.7	276.0	207.1	216.7	114.3	231.6
1972.....	2.9	31.5	155.1	296.3	222.4	203.9	115.7	218.8
1973.....	3.3	23.2	118.7	205.7	215.2	169.0	106.5	153.0
1974.....	2.8	26.7	134.3	194.3	231.5	186.9	100.0	121.7
1975.....	1.9	25.5	101.6	163.2	208.7	183.5	106.0	135.2

1/ Excludes turkeys produced in region which were used for processing. Includes turkeys subsequently shipped to other regions for ready-to-cook or processing use.

Table 11--Young chickens: Regional supply of ready-to-cook, 1955-75 1/

Year	Region							
	New England	Middle Atlantic	East North Central	West North Central	South Atlantic	South Central	Mountain	Pacific
<u>Million pounds, ready-to-cook equivalent</u>								
1955.....	217.1	133.0	174.4	81.6	1,012.7	604.3	12.2	142.4
1956.....	260.5	158.7	205.9	93.0	1,286.7	800.5	13.3	166.9
1957.....	269.4	155.5	216.4	81.9	1,485.6	955.6	13.0	145.2
1958.....	285.5	165.8	230.4	95.7	1,663.8	1,163.2	14.5	165.2
1959.....	270.6	154.6	205.8	118.7	1,679.3	1,372.1	16.8	180.8
1960.....	244.2	144.4	190.7	105.0	1,812.2	1,430.8	17.1	197.7
1961.....	249.2	143.0	193.4	134.4	1,983.1	1,743.2	17.8	220.1
1962.....	238.6	132.3	154.8	125.7	2,032.4	1,805.0	16.4	211.3
1963.....	245.7	126.6	134.0	108.7	2,171.1	2,000.9	17.5	221.0
1964.....	251.3	120.9	116.4	108.9	2,228.8	2,122.4	17.7	220.3
1965.....	248.3	130.4	120.7	106.1	2,407.0	2,344.7	19.1	238.0
1966.....	250.4	131.7	124.9	91.7	2,670.2	2,636.3	25.2	258.1
1967.....	251.4	132.0	114.9	88.9	2,694.3	2,726.3	20.9	276.2
1968.....	247.4	134.9	108.7	90.4	2,708.5	2,810.9	21.1	265.8
1969.....	236.2	143.8	107.6	97.0	2,928.8	3,038.2	20.6	285.9
1970.....	237.9	156.2	103.8	105.8	3,090.7	3,293.4	21.2	312.2
1971.....	222.7	167.6	92.1	108.0	2,999.4	3,358.6	20.1	307.4
1972.....	213.1	168.4	106.4	111.9	3,156.3	3,652.4	6.5	317.7
1973.....	218.6	171.2	111.6	112.7	3,114.8	3,467.2	---	299.0
1974.....	220.1	176.0	90.5	106.2	3,203.0	3,411.2	---	331.4
1975.....	223.9	179.7	102.9	108.3	3,061.4	3,345.8	---	344.4

1/ Excludes young chickens produced in region which were used for processing. Includes young chickens subsequently shipped to other regions for ready-to-cook or processing use.

Table 12--Mature chickens: Regional supply of ready-to-cook, 1955-75 ^{1/}

Year	Region							
	New England	Middle Atlantic	East North Central	West North Central	South Atlantic	South Central	Mountain	Pacific
<u>Million pounds, ready-to-cook equivalent</u>								
1955.....	85.7	131.5	233.5	196.3	110.2	129.6	30.1	87.3
1956.....	72.1	127.2	221.4	212.9	112.7	138.8	27.8	78.2
1957.....	67.2	100.3	164.8	141.0	106.1	107.9	23.8	75.0
1958.....	64.8	106.8	179.2	169.1	113.8	133.9	23.6	81.3
1959.....	62.1	90.1	129.2	122.6	120.5	138.7	21.5	89.4
1960.....	54.7	62.7	92.3	81.6	90.3	99.6	17.3	81.3
1961.....	45.5	50.9	80.2	66.4	91.3	111.5	16.5	76.8
1962.....	49.4	56.8	76.5	51.7	113.3	117.1	15.8	89.1
1963.....	43.2	43.7	61.6	20.7	102.4	112.8	12.9	73.4
1964.....	37.5	40.4	61.0	19.7	97.2	129.1	11.5	73.3
1965.....	44.8	39.4	53.6	18.5	105.4	147.8	12.6	66.4
1966.....	42.5	45.1	57.7	21.1	116.1	166.7	12.3	66.5
1967.....	43.9	42.3	55.0	20.0	82.6	183.8	14.7	74.1
1968.....	44.0	32.5	43.7	17.1	89.5	167.6	13.5	66.0
1969.....	36.2	28.6	40.1	16.0	70.5	163.2	13.2	47.7
1970.....	29.6	26.8	42.6	16.0	80.7	156.6	12.0	56.0
1971.....	31.2	28.9	41.5	17.0	102.4	162.9	14.2	47.3
1972.....	29.0	41.8	27.8	12.0	84.7	157.8	11.2	8.6
1973.....	28.9	20.8	22.7	8.0	42.5	121.3	11.6	9.9
1974.....	41.3	29.3	31.7	11.0	61.3	148.2	12.2	27.8
1975.....	48.4	23.3	46.0	14.0	74.1	149.2	14.5	31.3

^{1/} Excludes mature chickens produced in region which were used for processing. Includes mature chickens subsequently shipped to other regions for ready-to-cook or processing use.

Table 13--Eggs: Interregional movements in shell and processed forms, 1955

Origin and product form	Destination								
	New England	Middle Atlantic	East North Central	West North Central	South Atlantic	South Central	Mountain	Pacific	
	<u>1,000 cases, shell equivalent</u>								
New England:									
Shell.....	6,584	352	<u>1/83</u>	---	---	---	---	---	---
Processed.....	23	---	---	---	---	---	---	---	---
Middle Atlantic:									
Shell.....	---	21,379	<u>1/388</u>	---	---	---	---	---	---
Processed.....	---	160	---	---	---	---	---	---	---
East North Central:									
Shell.....	400	1,600	27,127	---	---	---	---	---	---
Processed.....	199	628	1,080	---	---	---	---	---	---
West North Central:									
Shell.....	1,693	5,156	2,095	12,199	7,784	5,194	1,100		643
Processed.....	464	1,464	1,267	1,024	1,328	1,580	329		1,072
South Atlantic:									
Shell.....	---	---	---	<u>1/173</u>	12,618	---	---	---	---
Processed.....	---	---	---	---	285	---	---	---	---
South Central:									
Shell.....	---	---	---	<u>1/361</u>	---	18,155	---	---	---
Processed.....	---	---	---	---	---	297	---	---	---
Mountain:									
Shell.....	---	---	---	<u>1/43</u>	---	---	3,972	---	---
Processed.....	---	---	---	---	---	---	80	---	---
Pacific:									
Shell.....	---	---	---	<u>1/172</u>	---	400	114		14,649
Processed.....	---	---	---	---	---	---	---		137

1/ Mostly eggs for processing within the region of destination.

Table 14--Eggs: Interregional movements in shell and processed forms, 1956

Origin and product form	Destination									
	New England	Middle Atlantic	East North Central	West North Central	South Atlantic	South Central	Mountain	Pacific		
<u>1,000 cases, shell equivalent</u>										
New England:										
Shell.....	6,909	370	<u>1/77</u>	---	---	---	---	---	---	---
Processed.....	34	---	---	---	---	---	---	---	---	---
Middle Atlantic:										
Shell.....	---	21,766	<u>1/390</u>	---	---	---	---	---	---	---
Processed.....	---	168	---	---	---	---	---	---	---	---
East North Central:										
Shell.....	400	1,600	27,764	---	---	---	---	---	---	---
Processed.....	189	607	1,053	---	---	---	---	---	---	---
West North Central:										
Shell.....	1,455	5,128	2,138	12,366	7,640	4,664	1,276	917		
Processed.....	442	1,416	1,252	999	1,317	1,526	333	1,065		
South Atlantic:										
Shell.....	---	---	---	<u>1/206</u>	13,407	---	---	---	---	---
Processed.....	---	---	---	---	280	---	---	---	---	---
South Central:										
Shell.....	---	---	---	<u>1/389</u>	---	19,092	---	---	---	---
Processed.....	---	---	---	---	---	303	---	---	---	---
Mountain:										
Shell.....	---	---	---	<u>1/22</u>	---	---	3,893	---	---	---
Processed.....	---	---	---	---	---	---	78	---	---	---
Pacific:										
Shell.....	---	---	---	<u>1/173</u>	---	350	250	15,042		
Processed.....	---	---	---	---	---	---	---	146		

1/ Mostly eggs for processing within the region of destination.

17

Table 15--Eggs: Interregional movements in shell and processed forms, 1957

Origin and product form	Destination							
	New England	Middle Atlantic	East North Central	West North Central	South Atlantic	South Central	Mountain	Pacific
	<u>1,000 cases, shell equivalent</u>							
New England:								
Shell.....	6,777	362	<u>1/70</u>	---	---	---	---	---
Processed.....	39	---	---	---	---	---	---	---
Middle Atlantic:								
Shell.....	---	21,674	<u>1/361</u>	---	---	---	---	---
Processed.....	---	195	---	---	---	---	---	---
East North Central:								
Shell.....	375	1,500	26,747	---	---	---	---	---
Processed.....	218	697	1,200	---	---	---	---	---
West North Central:								
Shell.....	1,526	5,072	3,075	12,307	6,993	4,128	1,301	777
Processed.....	507	1,626	1,463	1,141	1,519	1,725	405	1,243
South Atlantic:								
Shell.....	---	---	---	<u>1/166</u>	14,229	---	---	---
Processed.....	---	---	---	---	350	---	---	---
South Central:								
Shell.....	---	---	---	<u>1/318</u>	---	19,487	---	---
Processed.....	---	---	---	---	---	389	---	---
Mountain:								
Shell.....	---	---	---	<u>1/20</u>	---	---	3,834	---
Processed.....	---	---	---	---	---	---	78	---
Pacific:								
Shell.....	---	---	---	<u>1/149</u>	---	402	355	15,402
Processed.....	---	---	---	---	---	---	---	181

1/ Mostly eggs for processing within the region of destination.

Table 16--Eggs: Interregional movements in shell and processed forms, 1958

Origin and product form	Destination							
	New England	Middle Atlantic	East North Central	West North Central	South Atlantic	South Central	Mountain	Pacific
<u>1,000 cases, shell equivalent</u>								
New England:								
Shell.....	6,620	354	<u>1/69</u>	---	---	---	---	---
Processed.....	37	---	---	---	---	---	---	---
Middle Atlantic:								
Shell.....	---	21,307	<u>1/359</u>	---	---	---	---	---
Processed.....	---	187	---	---	---	---	---	---
East North Central:								
Shell.....	375	1,500	27,114	---	---	---	---	---
Processed.....	210	669	1,119	---	---	---	---	---
West North Central:								
Shell.....	1,761	5,584	2,941	12,184	6,743	3,863	1,337	653
Processed.....	489	1,562	1,445	1,080	1,430	1,648	393	1,196
South Atlantic:								
Shell.....	---	---	---	<u>1/159</u>	14,716	---	---	---
Processed.....	---	---	---	---	375	---	---	---
South Central:								
Shell.....	---	---	---	<u>1/335</u>	---	19,572	---	---
Processed.....	---	---	---	---	---	375	---	---
Mountain:								
Shell.....	---	---	---	<u>1/24</u>	---	---	3,863	---
Processed.....	---	---	---	---	---	---	75	---
Pacific:								
Shell.....	---	---	---	<u>1/145</u>	---	625	358	15,944
Processed.....	---	---	---	---	---	---	---	200

1/ Mostly eggs for processing within the region of destination.

Table 17--Eggs: Interregional movements in shell and processed forms, 1959

Origin and product form	Destination							
	New England	Middle Atlantic	East North Central	West North Central	South Atlantic	South Central	Mountain	Pacific
1,000 cases, shell equivalent								
New England:								
Shell.....	6,538	350	<u>1/56</u>	---	---	---	---	---
Processed.....	49	---	---	---	---	---	---	---
Middle Atlantic:								
Shell.....	---	20,897	<u>1/290</u>	---	---	---	---	---
Processed.....	---	246	---	---	---	---	---	---
East North Central:								
Shell.....	350	1,400	26,009	---	---	---	---	---
Processed.....	277	875	1,476	---	---	---	---	---
West North Central:								
Shell.....	1,866	5,816	3,780	12,132	4,288	2,052	1,052	265
Processed.....	647	2,041	1,872	1,416	1,888	2,165	541	1,537
South Atlantic:								
Shell.....	---	---	---	<u>1/129</u>	17,148	---	---	---
Processed.....	---	---	---	---	493	---	---	---
South Central:								
Shell.....	---	---	---	<u>1/282</u>	---	21,370	---	---
Processed.....	---	---	---	---	---	493	---	---
Mountain:								
Shell.....	---	---	---	<u>1/18</u>	---	---	3,907	---
Processed.....	---	---	---	---	---	---	82	---
Pacific:								
Shell.....	---	---	---	<u>1/184</u>	---	500	648	16,539
Processed.....	---	---	---	---	---	---	---	330

1/ Mostly eggs for processing within the region of destination.

20

Table 18--Eggs: Interregional movements in shell and processed forms, 1960

Origin and product form	Destination							
	New England	Middle Atlantic	East North Central	West North Central	South Atlantic	South Central	Mountain	Pacific
	<u>1,000 cases, shell equivalent</u>							
New England:								
Shell.....	6,356	340	<u>1/60</u>	---	---	---	---	---
Processed.....	42	---	---	---	---	---	---	---
Middle Atlantic:								
Shell.....	---	19,434	<u>1/287</u>	---	---	---	---	---
Processed.....	---	211	---	---	---	---	---	---
East North Central:								
Shell.....	350	1,400	25,063	---	---	---	---	---
Processed.....	235	741	1,277	---	---	---	---	---
West North Central:								
Shell.....	1,905	6,846	4,262	11,831	3,011	1,900	715	252
Processed.....	551	1,743	1,577	1,213	1,629	1,863	474	1,189
South Atlantic:								
Shell.....	---	---	---	<u>1/242</u>	18,322	---	---	---
Processed.....	---	---	---	---	423	---	---	---
South Central:								
Shell.....	---	---	---	<u>1/333</u>	---	20,836	---	---
Processed.....	---	---	---	---	---	423	---	---
Mountain:								
Shell.....	---	---	---	<u>1/27</u>	---	---	3,787	---
Processed.....	---	---	---	---	---	---	70	---
Pacific:								
Shell.....	---	---	---	<u>1/177</u>	---	1,042	1,153	16,507
Processed.....	---	---	---	---	---	---	---	423

1/ Mostly eggs for processing within the region of destination.

Table 19--Eggs: Interregional movements in shell and processed forms, 1961

Origin and product form	Destination							
	New England	Middle Atlantic	East North Central	West North Central	South Atlantic	South Central	Mountain	Pacific
	<u>1,000 cases, shell equivalent</u>							
New England:								
Shell.....	6,572	351	<u>1/59</u>	---	---	---	---	---
Processed.....	46	---	---	---	---	---	---	---
Middle Atlantic:								
Shell.....	---	18,663	<u>1/251</u>	---	---	---	---	---
Processed.....	---	228	---	---	---	---	---	---
East North Central:								
Shell.....	325	1,300	23,889	---	---	---	---	---
Processed.....	245	815	1,300	---	---	---	---	---
West North Central:								
Shell.....	1,691	7,070	4,746	12,002	1,961	953	512	243
Processed.....	601	1,860	1,762	1,302	1,621	1,857	541	1,237
South Atlantic:								
Shell.....	---	---	---	<u>1/99</u>	19,512	---	---	---
Processed.....	---	---	---	---	609	---	---	---
South Central:								
Shell.....	---	571	538	<u>1/203</u>	---	21,281	---	---
Processed.....	---	---	---	---	---	609	---	---
Mountain:								
Shell.....	---	---	---	<u>1/33</u>	---	---	3,660	---
Processed.....	---	---	---	---	---	---	61	---
Pacific:								
Shell.....	---	---	---	<u>1/200</u>	---	1,512	1,612	16,800
Processed.....	---	---	---	---	---	---	---	533

1/ Mostly eggs for processing within the region of destination.

Table 20--Eggs: Interregional movements in shell and processed forms, 1962

Origin and product form	Destination								
	New England	Middle Atlantic	East North Central	West North Central	South Atlantic	South Central	Mountain	Pacific	
	<u>1,000 cases, shell equivalent</u>								
New England:									
Shell.....	6,638	355	<u>1/59</u>	---	---	---	---	---	---
Processed.....	47	---	---	---	---	---	---	---	---
Middle Atlantic:									
Shell.....	---	18,375	<u>1/238</u>	---	---	---	---	---	---
Processed.....	---	233	---	---	---	---	---	---	---
East North Central:									
Shell.....	300	1,200	24,281	---	---	---	---	---	---
Processed.....	257	809	1,343	---	---	---	---	---	---
West North Central:									
Shell.....	1,800	7,194	4,774	12,172	964	269	360	237	
Processed.....	604	1,904	1,762	1,317	1,509	1,746	574	1,214	
South Atlantic:									
Shell.....	---	---	---	---	21,029	---	---	---	---
Processed.....	---	---	---	---	777	---	---	---	---
South Central:									
Shell.....	---	1,220	525	<u>1/198</u>	---	22,285	---	---	---
Processed.....	---	---	---	---	---	777	---	---	---
Mountain:									
Shell.....	---	---	---	<u>1/48</u>	---	---	3,713	---	---
Processed.....	---	---	---	---	---	---	47	---	---
Pacific:									
Shell.....	---	---	---	<u>1/250</u>	---	1,715	1,900	17,427	
Processed.....	---	---	---	---	---	---	---	622	

1/ Mostly eggs for processing within the region of destination.

Table 21--Eggs: Interregional movements in shell and processed forms, 1963

Origin and product form	Destination									
	New England	Middle Atlantic	East North Central	West North Central	South Atlantic	South Central	Mountain	Pacific		
<u>1,000 cases, shell equivalent</u>										
New England:										
Shell.....	7,007	375	<u>1/68</u>	---	---	---	---	---	---	---
Processed.....	44	---	---	---	---	---	---	---	---	---
Middle Atlantic:										
Shell.....	---	18,245	<u>1/248</u>	---	---	---	---	---	---	---
Processed.....	---	220	---	---	---	---	---	---	---	---
East North Central:										
Shell.....	300	1,200	23,250	---	---	---	---	---	---	---
Processed.....	244	762	1,196	---	---	---	---	---	---	---
West North Central:										
Shell.....	977	6,196	4,625	11,918	370	120	273	231		
Processed.....	572	1,791	1,729	1,230	1,291	1,489	546	1,026		
South Atlantic:										
Shell.....	500	800	414	---	21,810	---	---	---	---	---
Processed.....	---	---	---	---	881	---	---	---	---	---
South Central:										
Shell.....	---	1,500	1,263	<u>1/246</u>	---	22,600	---	---	---	---
Processed.....	---	---	---	---	---	881	---	---	---	---
Mountain:										
Shell.....	---	---	---	<u>1/51</u>	---	---	3,699	---	---	---
Processed.....	---	---	---	---	---	---	44	---	---	---
Pacific:										
Shell.....	---	---	---	<u>1/350</u>	---	1,478	2,056	17,739		
Processed.....	---	---	---	---	---	---	---	734		

1/ Mostly eggs for processing within the region of destination.

Table 22--Eggs: Interregional movements in shell and processed forms, 1964

Origin and product form	Destination							
	New England	Middle Atlantic	East North Central	West North Central	South Atlantic	South Central	Mountain	Pacific
	<u>1,000 cases, shell equivalent</u>							
New England:								
Shell.....	7,380	395	<u>1/52</u>	---	---	---	---	---
Processed.....	66	---	---	---	---	---	---	---
Middle Atlantic:								
Shell.....	---	18,240	<u>1/137</u>	---	---	---	---	---
Processed.....	---	329	---	---	---	---	---	---
East North Central:								
Shell.....	275	1,100	22,479	---	---	---	---	---
Processed.....	269	826	1,374	---	---	---	---	---
West North Central:								
Shell.....	732	5,284	4,980	11,710	---	---	258	229
Processed.....	633	1,942	1,905	1,367	1,426	1,579	614	1,003
South Atlantic:								
Shell.....	600	1,400	539	---	22,702	---	---	---
Processed.....	---	---	---	---	1,021	---	---	---
South Central:								
Shell.....	---	2,317	2,237	453	---	22,950	---	---
Processed.....	---	---	---	---	---	1,070	---	---
Mountain:								
Shell.....	---	---	---	<u>1/42</u>	---	---	3,553	---
Processed.....	---	---	---	---	---	---	49	---
Pacific:								
Shell.....	---	---	---	478	---	1,630	2,344	18,250
Processed.....	---	---	---	---	---	---	---	988

1/ Mostly eggs for processing within the region of destination.

25

Table 23--Eggs: Interregional movements in shell and processed forms, 1965

Origin and product form	Destination								
	New England	Middle Atlantic	East North Central	West North Central	South Atlantic	South Central	Mountain	Pacific	
<u>1,000 cases, shell equivalent</u>									
New England:									
Shell.....	7,178	384	<u>1/37</u>	---	---	---	---	---	---
Processed.....	78	---	---	---	---	---	---	---	---
Middle Atlantic:									
Shell.....	---	18,521	<u>1/84</u>	---	---	---	---	---	---
Processed.....	---	391	---	---	---	---	---	---	---
East North Central:									
Shell.....	275	1,100	22,513	---	---	---	---	---	---
Processed.....	251	758	1,289	---	---	---	---	---	---
West North Central:									
Shell.....	802	4,803	5,002	11,600	---	---	243	227	
Processed.....	591	1,784	1,830	1,285	1,037	1,410	582	813	
South Atlantic:									
Shell.....	800	1,500	508	---	22,975	---	---	---	---
Processed.....	---	---	---	---	1,297	---	---	---	---
South Central:									
Shell.....	---	2,563	2,553	506	---	23,196	---	---	---
Processed.....	---	---	---	---	---	1,094	---	---	---
Mountain:									
Shell.....	---	---	---	<u>1/41</u>	---	---	3,426	---	---
Processed.....	---	---	---	---	---	---	47	---	---
Pacific:									
Shell.....	---	---	---	497	---	1,450	2,517	18,548	
Processed.....	---	---	---	---	---	---	---	1,094	

26

1/ Mostly eggs for processing within the region of destination.

Table 24--Eggs: Interregional movements in shell and processed forms, 1966

Origin and product form	Destination								
	New England	Middle Atlantic	East North Central	West North Central	South Atlantic	South Central	Mountain	Pacific	
<u>1,000 cases, shell equivalents</u>									
New England:									
Shell.....	7,338	392	<u>1/33</u>	---	---	---	---	---	---
Processed.....	85	---	---	---	---	---	---	---	---
Middle Atlantic:									
Shell.....	---	17,622	---	---	---	---	---	---	---
Processed.....	---	509	---	---	---	---	---	---	---
East North Central:									
Shell.....	275	1,100	21,877	---	---	---	---	---	---
Processed.....	272	793	1,410	---	---	---	---	---	---
West North Central:									
Shell.....	424	4,119	4,694	10,744	---	---	185	225	
Processed.....	639	1,867	1,984	1,385	929	1,352	629	810	
South Atlantic:									
Shell.....	1,000	2,474	783	---	23,032	---	---	---	---
Processed.....	---	---	---	---	1,610	---	---	---	---
South Central:									
Shell.....	---	3,038	3,408	977	---	23,020	---	---	---
Processed.....	---	---	---	---	---	1,356	---	---	---
Mountain:									
Shell.....	---	---	---	<u>1/40</u>	---	---	3,556	---	---
Processed.....	---	---	---	---	---	---	51	---	---
Pacific:									
Shell.....	---	---	---	800	---	1,546	2,427	18,658	
Processed.....	---	---	---	---	---	---	---	1,271	

1/ Mostly eggs for processing within the region of destination.

27

Table 25--Eggs: Interregional movements in shell and processed forms, 1967

Origin and product form	Destination									
	New England	Middle Atlantic	East North Central	West North Central	South Atlantic	South Central	Mountain	Pacific		
<u>1,000 cases, shell equivalent</u>										
New England:										
Shell.....	7,269	388	1/9	---	---	---	---	---	---	---
Processed.....	97	---	---	---	---	---	---	---	---	---
Middle Atlantic:										
Shell.....	---	17,366	---	---	---	---	---	---	---	---
Processed.....	---	580	---	---	---	---	---	---	---	---
East North Central:										
Shell.....	275	1,100	22,134	---	---	---	---	---	---	---
Processed.....	311	900	1,612	---	---	---	---	---	---	---
West North Central:										
Shell.....	434	3,537	3,731	10,619	---	---	133	223		
Processed.....	731	2,118	2,262	1,570	873	1,341	718	849		
South Atlantic:										
Shell.....	1,300	3,070	1,349	---	23,662	---	---	---	---	---
Processed.....	---	---	---	---	2,030	---	---	---	---	---
South Central:										
Shell.....	---	3,866	4,353	1,138	---	23,708	---	---	---	---
Processed.....	---	---	---	---	---	1,740	---	---	---	---
Mountain:										
Shell.....	---	---	---	1/37	---	---	3,689	---	---	---
Processed.....	---	---	---	---	---	---	58	---	---	---
Pacific:										
Shell.....	---	---	---	999	---	1,400	2,500	19,301		
Processed.....	---	---	---	---	---	---	---	1,547		

1/ Mostly eggs for processing within the region of destination.

Table 26--Eggs: Interregional movements in shell and processed forms, 1968

Origin and product form	Destinaton								
	New England	Middle Atlantic	East North Central	West North Central	South Atlantic	South Central	Mountain	Pacific	
<u>1,000 cases, shell equivalent</u>									
New England:									
Shell.....	7,173	384	---	---	---	---	---	---	---
Processed.....	125	---	---	---	---	---	---	---	---
Middle Atlantic:									
Shell.....	---	16,927	---	---	---	---	---	---	---
Processed.....	---	713	---	---	---	---	---	---	---
East North Central:									
Shell.....	275	1,100	22,375	---	---	---	---	---	---
Processed.....	275	773	1,606	---	---	---	---	---	---
West North Central:									
Shell.....	225	3,308	3,150	9,831	---	---	117	221	
Processed.....	645	1,820	1,955	1,442	568	1,055	666	702	
South Atlantic:									
Shell.....	1,600	3,219	1,400	---	23,846	---	---	---	---
Processed.....	---	---	---	---	2,120	---	---	---	---
South Central:									
Shell.....	---	4,383	4,666	1,338	---	23,452	---	---	---
Processed.....	---	---	---	---	---	1,781	---	---	---
Mountain:									
Shell.....	---	---	---	1/32	---	---	3,729	---	---
Processed.....	---	---	---	---	---	---	53	---	---
Pacific:									
Shell.....	---	---	---	1,585	---	1,699	2,535	19,435	
Pacific.....	---	---	---	---	---	---	---	1,514	

29

1/ Mostly eggs for processing within the region of destination.

Table 27--Eggs: Interregional movements in shell and processed forms, 1969

Origin and product form	Destination							
	New England	Middle Atlantic	East North Central	West North Central	South Atlantic	South Central	Mountain	Pacific
	<u>1,000 cases, shell equivalent</u>							
New England:								
Shell.....	7,397	399	---	---	---	---	---	---
Processed.....	174	---	---	---	---	---	---	---
Middle Atlantic:								
Shell.....	---	16,425	---	---	---	---	---	---
Processed.....	---	1,045	---	---	---	---	---	---
East North Central:								
Shell.....	250	1,000	21,047	---	---	---	---	---
Processed.....	252	645	1,732	---	---	---	---	---
West North Central:								
Shell.....	---	2,462	3,002	9,508	---	---	110	219
Processed.....	594	1,522	1,738	1,409	634	855	658	530
South Atlantic:								
Shell.....	1,500	4,931	2,173	---	23,636	---	---	---
Processed.....	---	---	---	---	2,003	---	---	---
South Central:								
Shell.....	---	3,578	4,883	1,227	---	23,039	---	---
Processed.....	---	---	---	---	---	1,916	---	---
Mountain:								
Shell.....	---	---	---	1/44	---	---	3,755	---
Processed.....	---	---	---	---	---	---	52	---
Pacific:								
Shell.....	---	---	---	1,850	---	1,801	2,505	19,359
Processed.....	---	---	---	---	---	---	---	1,654

30

1/ Mostly eggs for processing within the region of destination.

Table 28--Eggs: Interregional movements in shell and processed forms, 1970

Origin and product form	Destination							
	New England	Middle Atlantic	East North Central	West North Central	South Atlantic	South Central	Mountain	Pacific
	<u>1,000 cases, shell equivalent</u>							
New England:								
Shell.....	7,574	402	---	---	---	---	---	---
Processed.....	231	---	---	---	---	---	---	---
Middle Atlantic:								
Shell.....	---	15,756	---	---	---	---	---	---
Processed.....	---	1,345	---	---	---	---	---	---
East North Central:								
Shell.....	250	1,000	21,439	---	---	---	---	---
Processed.....	266	651	1,658	---	---	---	---	---
West North Central:								
Shell.....	---	3,105	2,714	9,271	---	---	108	217
Processed.....	628	1,536	2,168	1,551	860	556	695	497
South Atlantic:								
Shell.....	1,295	5,200	2,088	---	23,634	---	---	---
Processed.....	---	---	---	---	2,056	---	---	---
South Central:								
Shell.....	---	3,163	4,762	1,302	---	22,993	---	---
Processed.....	---	---	---	---	---	2,498	---	---
Mountain:								
Shell.....	---	---	---	1/2	---	---	3,807	---
Processed.....	---	---	---	---	---	---	96	---
Pacific:								
Shell.....	---	---	---	1,995	---	1,752	2,494	19,375
Processed.....	---	---	---	---	---	---	---	1,921

1/ Mostly eggs for processing within the region of destination.

Table 29--Eggs: Interregional movements in shell and processed forms, 1971

Origin and product form	Destination							
	New England	Middle Atlantic	East North Central	West North Central	South Atlantic	South Atlantic	Mountain	Pacific
<u>1,000 cases, shell equivalent</u>								
New England:								
Shell.....	7,667	402	---	---	---	---	---	---
Processed.....	297	---	---	---	---	---	---	---
Middle Atlantic:								
Shell.....	---	15,818	---	---	---	---	---	---
Processed.....	---	2,038	---	---	---	---	---	---
East North Central:								
Shell.....	250	1,000	22,836	---	---	---	---	---
Processed.....	282	548	2,055	---	---	---	---	---
West North Central:								
Shell.....	---	3,308	2,777	9,770	---	---	157	215
Processed.....	664	1,300	2,150	1,708	1,199	325	738	130
South Atlantic:								
Shell.....	1,333	5,388	2,700	---	24,090	---	---	---
Processed.....	---	---	---	---	2,038	---	---	---
South Central:								
Shell.....	---	3,000	2,974	1,187	---	23,535	---	---
Processed.....	---	---	---	---	---	3,056	---	---
Mountain:								
Shell.....	---	---	---	---	---	---	3,768	---
Processed.....	---	---	---	---	---	---	149	---
Pacific:								
Shell.....	---	---	---	1,750	---	1,626	2,677	19,701
Processed.....	---	---	---	---	---	---	---	2,547

32

Table 30—Eggs: Interregional movements in shell and processed forms, 1972

Origin and product form	Destination							
	New England	Middle Atlantic	East North Central	West North Central	South Atlantic	South Central	Mountain	Pacific
	1,000 cases, shell equivalent							
New England:								
Shell.....	8,156	400	---	---	---	---	---	---
Processed.....	398	---	---	---	---	---	---	---
Middle Atlantic:								
Shell.....	---	15,499	---	---	---	---	---	---
Processed.....	---	2,261	---	---	---	---	---	---
East North Central:								
Shell.....	254	850	22,983	---	---	---	---	---
Processed.....	248	462	2,220	---	---	---	---	---
West North Central:								
Shell.....	---	3,406	3,165	10,220	---	---	155	210
Processed.....	578	1,080	1,903	1,680	819	168	575	---
South Atlantic:								
Shell.....	799	5,416	2,472	---	24,282	---	---	---
Processed.....	---	---	---	---	2,407	---	---	---
South Central:								
Shell.....	---	3,048	2,411	1,343	---	24,110	---	---
Processed.....	---	---	---	---	---	3,182	---	---
Mountain:								
Shell.....	---	---	---	---	---	---	3,623	---
Processed.....	---	---	---	---	---	---	210	---
Pacific:								
Shell.....	---	---	---	1,079	---	1,099	2,977	19,579
Processed.....	---	---	---	---	---	---	113	2,629

Table 31--Eggs: Interregional movements in shell and processed forms, 1973

Origin and product form	Destination								
	New England	Middle Atlantic	East North Central	West North Central	South Atlantic	South Central	Mountain	Pacific	
	<u>1,000 cases, shell equivalent</u>								
New England:									
Shell.....	8,410	580	---	---	---	---	---	---	---
Processed.....	347	---	---	---	---	---	---	---	---
Middle Atlantic:									
Shell.....	---	15,245	---	---	---	---	---	---	---
Processed.....	---	1,970	---	---	---	---	---	---	---
East North Central:									
Shell.....	100	800	21,867	---	---	---	---	---	---
Processed.....	220	384	1,950	---	---	---	---	---	---
West North Central:									
Shell.....	---	2,893	2,657	10,890	---	---	150	200	---
Processed.....	495	915	1,619	1,454	752	162	531	---	---
South Atlantic:									
Shell.....	363	5,500	2,994	---	23,818	---	---	---	---
Processed.....	---	---	---	---	2,098	---	---	---	---
South Central:									
Shell.....	---	2,306	2,306	1,263	---	23,766	---	---	---
Processed.....	---	---	---	---	---	2,772	---	---	---
Mountain:									
Shell.....	---	---	---	---	---	---	3,748	---	---
Processed.....	---	---	---	---	---	---	182	---	---
Pacific:									
Shell.....	---	---	---	---	---	755	2,823	19,016	---
Processed.....	---	---	---	---	---	---	91	2,299	---

Table 32--Eggs: Interregional movements in shell and processed forms, 1974

Origin and product form	Destination							
	New England	Middle Atlantic	East North Central	West North Central	South Atlantic	South Central	Mountain	Pacific
	<u>1,000 cases, shell equivalent</u>							
New England:								
Shell.....	8,178	699	---	---	---	---	---	---
Processed.....	336	---	---	---	---	---	---	---
Middle Atlantic:								
Shell.....	---	13,820	---	---	---	---	---	---
Processed.....	---	2,955	---	---	---	---	---	---
East North Central:								
Shell.....	100	750	19,720	---	---	---	---	---
Processed.....	305	363	2,535	---	---	---	---	---
West North Central:								
Shell.....	---	2,231	3,669	9,150	---	---	148	190
Processed.....	571	401	1,542	1,664	654	628	273	---
South Atlantic:								
Shell.....	253	5,846	2,973	---	23,316	---	---	---
Processed.....	---	---	---	---	2,660	---	---	---
South Central:								
Shell.....	---	2,827	2,328	1,155	---	22,446	---	---
Processed.....	---	---	---	---	---	2,762	---	---
Mountain:								
Shell.....	---	---	---	---	---	---	3,859	---
Processed.....	---	---	---	---	---	---	126	---
Pacific:								
Shell.....	---	---	---	1,407	---	1,407	2,600	18,521
Processed.....	---	---	---	---	---	---	540	2,659

Table 33--Eggs: Interregional movements in shell and processed forms, 1975

Origin and product form	Destination							
	New England	Middle Atlantic	East North Central	West North Central	South Atlantic	South Central	Mountain	Pacific
<u>1,000 cases, shell equivalent</u>								
New England:								
Shell.....	8,050	690	---	---	---	---	---	---
Processed.....	325	---	---	---	---	---	---	---
Middle Atlantic:								
Shell.....	---	13,459	---	---	---	---	---	---
Processed.....	---	2,380	---	---	---	---	---	---
East North Central:								
Shell.....	100	675	19,538	---	---	---	---	---
Processed.....	250	327	2,316	---	---	---	---	---
West North Central:								
Shell.....	---	2,489	4,238	8,796	---	---	121	150
Processed.....	481	519	1,232	1,445	897	259	118	---
South Atlantic:								
Shell.....	248	4,863	2,656	---	23,212	---	---	---
Processed.....	---	---	---	---	2,022	---	---	---
South Central:								
Shell.....	---	3,479	1,781	1,102	---	22,090	---	---
Processed.....	---	---	---	---	---	2,574	---	---
Mountain:								
Shell.....	---	---	---	---	---	---	4,217	---
Processed.....	---	---	---	---	---	---	150	---
Pacific:								
Shell.....	---	---	---	1,593	---	1,593	2,302	18,450
Processed.....	---	---	---	---	---	145	567	2,339

Table 34--Turkeys: Interregional movements in ready-to-cook and further-processed forms, 1955

Origin and product form	Destination							
	New England	Middle Atlantic	East North Central	West North Central	South Atlantic	South Central	Mountain	Pacific
<u>Million pounds, ready-to-cook equivalent</u>								
New England:								
Ready-to-cook.....	20.6	---	---	---	---	---	---	---
Processed.....	.1	---	---	---	---	---	---	---
Middle Atlantic:								
Ready-to-cook.....	---	47.5	---	---	---	---	---	---
Processed.....	---	0.4	---	---	---	---	---	---
East North Central:								
Ready-to-cook.....	2.1	9.6	107.2	---	---	---	---	---
Processed.....	---	---	2.8	---	---	---	---	---
West North Central:								
Ready-to-cook.....	12.3	50.3	30.0	76.3	12.7	20.4	---	3.5
Processed.....	2.7	8.9	6.9	4.2	6.7	7.7	1.7	3.6
South Atlantic:								
Ready-to-cook.....	4.6	8.9	4.3	---	93.2	10.1	---	---
Processed.....	---	---	---	---	---	---	---	---
South Central:								
Ready-to-cook.....	---	---	---	---	---	88.1	---	---
Processed.....	---	---	---	---	---	---	---	---
Mountain:								
Ready-to-cook.....	2.6	10.3	7.0	---	3.5	2.1	30.6	1.6
Processed.....	---	---	---	---	---	---	---	---
Pacific:								
Ready-to-cook.....	9.0	41.3	26.6	---	10.9	19.3	---	85.0
Processed.....	---	---	---	---	---	---	---	1.4

Table 35--Turkeys: Interregional movements in ready-to-cook and further-processed forms, 1956

Origin and product form	Destination							
	New England	Middle Atlantic	East North Central	West North Central	South Atlantic	South Central	Mountain	Pacific
<u>Million pounds, ready-to-cook equivalent</u>								
New England:								
Ready-to-cook.....	17.5	---	---	---	---	---	---	---
Processed.....	.2	---	---	---	---	---	---	---
Middle Atlantic:								
Ready-to-cook.....	---	39.0	---	---	---	---	---	---
Processed.....	---	1.1	---	---	---	---	---	---
East North Central:								
Ready-to-cook.....	2.4	10.4	106.4	---	---	---	---	---
Processed.....	---	---	3.0	---	---	---	---	---
West North Central:								
Ready-to-cook.....	15.8	60.0	42.6	81.0	11.3	14.2	---	1.8
Processed.....	2.4	7.4	5.9	3.9	6.2	6.6	1.6	2.9
South Atlantic:								
Ready-to-cook.....	4.1	11.0	5.2	---	104.5	5.1	---	---
Processed.....	---	---	---	---	---	---	---	---
South Central:								
Ready-to-cook.....	---	---	---	---	---	113.1	---	---
Processed.....	---	---	---	---	---	0.4	---	---
Mountain:								
Ready-to-cook.....	3.2	10.4	8.0	---	3.3	2.1	33.4	<u>1/</u>
Processed.....	---	---	---	---	---	---	---	---
Pacific:								
Ready-to-cook.....	11.0	41.6	30.0	---	10.5	13.9	---	96.4
Processed.....	---	---	---	---	---	---	---	1.7

1/ Less than 50,000 pounds.

38

Table 36--Turkeys: Interregional movements in ready-to-cook and further-processed forms, 1957

Origin and product form	Destination							
	New England	Middle Atlantic	East North Central	West North Central	South Atlantic	South Central	Mountain	Pacific
Million pounds, ready-to-cook equivalent								
New England:								
Ready-to-cook.....	16.4	---	---	---	---	---	---	---
Processed.....	.3	---	---	---	---	---	---	---
Middle Atlantic:								
Ready-to-cook.....	---	37.7	---	---	---	---	---	---
Processed.....	---	2.7	---	---	---	---	---	---
East North Central:								
Ready-to-cook.....	2.5	10.9	124.1	---	---	---	---	---
Processed.....	---	---	5.9	---	---	---	---	---
West North Central:								
Ready-to-cook.....	15.5	63.0	35.0	87.5	13.2	13.1	1.4	1.7
Processed.....	4.1	11.7	9.3	6.5	9.9	10.6	2.8	4.4
South Atlantic:								
Ready-to-cook.....	4.6	13.7	5.3	---	111.2	5.3	---	---
Processed.....	---	---	---	---	.7	---	---	---
South Central:								
Ready-to-cook.....	---	---	---	---	---	126.9	---	---
Processed.....	---	---	---	---	---	1.5	---	---
Mountain:								
Ready-to-cook.....	4.7	10.0	9.0	---	4.2	2.1	35.7	---
Processed.....	---	---	---	---	---	---	---	---
Pacific:								
Ready-to-cook.....	15.0	58.0	31.0	---	14.8	14.8	---	107.6
Processed.....	---	---	---	---	---	---	---	3.7

39

Table 37--Turkeys: Interregional movements in ready-to-cook and further-processed forms, 1958

Origin and product form	Destination							
	New England	Middle Atlantic	East North Central	West North Central	South Atlantic	South Central	Mountain	Pacific
<u>Million pounds, ready-to-cook equivalent</u>								
New England:								
Ready-to-cook.....	14.3	---	---	---	---	---	---	---
Processed.....	.5	---	---	---	---	---	---	---
Middle Atlantic:								
Ready-to-cook.....	---	37.0	---	---	---	---	---	---
Processed.....	---	3.3	---	---	---	---	---	---
East North Central:								
Ready-to-cook.....	2.7	11.1	134.2	---	---	---	---	---
Processed.....	---	---	9.1	---	---	---	---	---
West North Central:								
Ready-to-cook.....	20.0	<u>1/75.1</u>	33.4	86.8	22.3	18.8	1.4	4.8
Processed.....	4.8	12.6	9.5	7.8	10.4	12.9	3.4	2.0
South Atlantic:								
Ready-to-cook.....	3.4	14.2	5.8	---	95.3	6.3	---	---
Processed.....	---	---	---	---	2.7	---	---	---
South Central:								
Ready-to-cook.....	---	---	---	---	---	116.3	---	---
Processed.....	---	---	---	---	---	1.8	---	---
Mountain:								
Ready-to-cook.....	5.8	<u>1/10.5</u>	9.5	---	6.5	2.8	36.1	---
Processed.....	---	---	---	---	---	---	---	---
Pacific:								
Ready-to-cook.....	12.9	<u>1/47.8</u>	23.0	---	21.0	18.4	---	107.4
Processed.....	---	---	---	---	---	---	---	8.2

1/ Includes some turkeys for further processing within the region of destination.

Table 38--Turkeys: Interregional movements in ready-to-cook and further-processed forms, 1959

Origin and product form	Destination									
	New England	Middle Atlantic	East North Central	West North Central	South Atlantic	South Central	Mountain	Pacific		
<u>Million pounds, ready-to-cook equivalent</u>										
New England:										
Ready-to-cook.....	13.5	---	---	---	---	---	---	---	---	---
Processed.....	.6	---	---	---	---	---	---	---	---	---
Middle Atlantic:										
Ready-to-cook.....	---	35.4	---	---	---	---	---	---	---	---
Processed.....	---	3.9	---	---	---	---	---	---	---	---
East North Central:										
Ready-to-cook.....	2.6	10.9	147.5	---	---	---	---	---	---	---
Processed.....	---	---	13.5	---	---	---	---	---	---	---
West North Central:										
Ready-to-cook.....	24.2	<u>1</u> /90.1	34.0	89.2	42.5	34.8	1.4	5.6		
Processed.....	6.1	13.2	9.4	9.7	10.7	15.9	2.4	---		
South Atlantic:										
Ready-to-cook.....	5.2	14.5	2.4	---	88.5	6.9	---	---		
Processed.....	---	---	---	---	5.6	---	---	---		
South Central:										
Ready-to-cook.....	---	---	---	---	---	108.7	---	---		
Processed.....	---	---	---	---	---	2.2	---	---		
Mountain:										
Ready-to-cook.....	3.8	<u>1</u> /8.0	5.0	---	8.0	3.6	37.8	---		
Processed.....	---	---	---	---	---	---	---	---		
Pacific:										
Ready-to-cook.....	12.0	<u>1</u> /44.8	22.0	---	11.1	13.5	---	112.0		
Processed.....	---	---	---	---	---	---	1.8	12.8		

1/ Includes some turkeys for further processing within the region of destination.

Table 39--Turkeys: Interregional movements in ready-to-cook and further-processed forms, 1960

Origin and product form	Destination								
	New England	Middle Atlantic	East North Central	West North Central	South Atlantic	South Central	Mountain	Pacific	
<u>Million pounds, ready-to-cook equivalent</u>									
New England:									
Ready-to-cook.....	11.3	---	---	---	---	---	---	---	---
Processed.....	.7	---	---	---	---	---	---	---	---
Middle Atlantic:									
Ready-to-cook.....	---	33.0	---	---	---	---	---	---	---
Processed.....	---	3.7	---	---	---	---	---	---	---
East North Central:									
Ready-to-cook.....	2.5	10.5	138.7	---	---	---	---	---	---
Processed.....	---	---	16.4	---	---	---	---	---	---
West North Central:									
Ready-to-cook.....	26.0	<u>1</u> /98.4	40.0	89.5	54.8	27.0	1.4	3.6	
Processed.....	6.2	10.2	7.3	10.1	8.9	13.5	---	---	
South Atlantic:									
Ready-to-cook.....	3.0	5.1	2.4	---	71.9	6.9	---	---	
Processed.....	---	---	---	---	8.2	---	---	---	
South Central:									
Ready-to-cook.....	---	---	---	---	---	121.5	---	---	
Processed.....	---	---	---	---	---	2.3	---	---	
Mountain:									
Ready-to-cook.....	4.4	<u>1</u> /10.0	7.0	---	10.3	2.8	38.7	---	
Processed.....	---	---	---	---	---	---	---	---	
Pacific:									
Ready-to-cook.....	13.9	<u>1</u> /50.2	22.3	---	14.3	10.5	---	115.3	
Processed.....	---	---	---	---	---	3.2	4.5	13.4	

1/ Includes some turkeys for further processing within the region of destination.

42

Table 40--Turkeys: Interregional movements in ready-to-cook and further-processed forms, 1961

Origin and product form	Destination								
	New England	Middle Atlantic	East North Central	West North Central	South Atlantic	South Central	Mountain	Pacific	
<u>Million pounds, ready-to-cook equivalent</u>									
New England:									
Ready-to-cook.....	12.6	---	---	---	---	---	---	---	---
Processed.....	1.0	---	---	---	---	---	---	---	---
Middle Atlantic:									
Ready-to-cook.....	---	32.5	---	---	---	---	---	---	---
Processed.....	---	3.0	---	---	---	---	---	---	---
East North Central:									
Ready-to-cook.....	2.1	10.3	172.0	---	---	---	---	---	---
Processed.....	---	---	19.4	---	---	---	---	---	---
West North Central:									
Ready-to-cook.....	35.0	<u>1/138.5</u>	43.7	107.1	67.7	30.1	1.6	4.3	
Processed.....	5.7	6.8	3.6	9.8	7.6	10.0	---	---	
South Atlantic:									
Ready-to-cook.....	3.3	4.2	2.1	---	90.6	8.6	---	---	
Processed.....	---	---	---	---	9.1	---	---	---	
South Central:									
Ready-to-cook.....	---	---	---	---	---	149.2	---	---	
Processed.....	---	---	---	---	---	3.4	---	---	
Mountain:									
Ready-to-cook.....	6.1	<u>1/14.0</u>	9.0	---	10.2	3.1	47.8	---	
Processed.....	---	---	---	---	---	---	---	---	
Pacific:									
Ready-to-cook.....	14.2	<u>1/51.2</u>	25.0	---	14.8	11.7	---	141.3	
Processed.....	---	---	---	---	---	5.1	4.5	13.3	

1/ Includes some turkeys for further processing within the region of destination.

43

Table 41--Turkeys: Interregional movements in ready-to-cook and further-processed forms, 1962

Origin and product form	Destination								
	New England	Middle Atlantic	East North Central	West North Central	South Atlantic	South Central	Mountain	Pacific	
<u>Million pounds, ready-to-cook equivalent</u>									
New England:									
Ready-to-cook.....	10.2	---	---	---	---	---	---	---	
Processed.....	1.2	---	---	---	---	---	---	---	
Middle Atlantic:									
Ready-to-cook.....	---	29.5	---	---	---	---	---	---	
Processed.....	---	4.0	---	---	---	---	---	---	
East North Central:									
Ready-to-cook.....	2.3	10.1	153.0	---	---	---	---	---	
Processed.....	---	---	30.2	---	---	---	---	---	
West North Central:									
Ready-to-cook.....	32.8	<u>1/122.8</u>	37.2	98.7	46.8	24.7	1.4	3.9	
Processed.....	8.1	7.5	1.6	13.5	9.1	11.2	---	---	
South Atlantic:									
Ready-to-cook.....	2.5	2.9	1.1	---	89.5	5.1	---	---	
Processed.....	---	---	---	---	14.3	---	---	---	
South Central:									
Ready-to-cook.....	---	---	---	---	---	137.7	---	---	
Processed.....	---	---	---	---	---	4.8	---	---	
Mountain:									
Ready-to-cook.....	6.3	<u>1/16.8</u>	11.4	---	9.0	3.1	45.1	---	
Processed.....	---	---	---	---	---	---	---	---	
Pacific:									
Ready-to-cook.....	14.1	<u>1/57.3</u>	30.1	---	26.1	18.5	---	133.7	
Processed.....	---	---	---	---	---	9.8	6.4	18.8	

1/ Includes some turkeys for further processing within the region of destination.

Table 42—Turkeys: Interregional movements in ready-to-cook and further processed forms, 1963

Origin and product form	Destination							
	New England	Middle Atlantic	East North Central	West North Central	South Atlantic	South Central	Mountain	Pacific
<u>Million pounds, ready-to-cook equivalent</u>								
New England:								
Ready-to-cook.....	9.2	---	---	---	---	---	---	---
Processed.....	1.4	---	---	---	---	---	---	---
Middle Atlantic:								
Ready-to-cook.....	---	27.0	---	---	---	---	---	---
Processed.....	---	5.0	---	---	---	---	---	---
East North Central:								
Ready-to-cook.....	2.2	10.3	152.1	---	---	---	---	---
Processed.....	---	---	40.2	---	---	---	---	---
West North Central:								
Ready-to-cook.....	31.4	<u>1/136.3</u>	32.1	92.3	48.9	15.2	1.3	4.9
Processed.....	10.5	8.9	0.3	17.0	10.3	15.5	---	---
South Atlantic:								
Ready-to-cook.....	2.9	3.9	1.7	---	95.9	7.1	---	---
Processed.....	---	---	---	---	19.7	---	---	---
South Central:								
Ready-to-cook.....	---	---	---	---	---	148.1	---	---
Processed.....	---	---	---	---	---	7.1	---	---
Mountain:								
Ready-to-cook.....	6.4	<u>1/19.0</u>	13.1	---	7.4	1.6	43.0	---
Processed.....	---	---	---	---	---	---	.3	---
Pacific:								
Ready-to-cook.....	12.5	<u>1/36.0</u>	20.4	---	10.7	5.9	---	127.1
Processed.....	---	---	---	---	---	10.1	7.8	24.3

1/ Includes some turkeys for further processing within the region of destination.

Table 43--Turkeys: Interregional movements in ready-to-cook and further-processed forms, 1964

Origin and product form	Destination									
	New England	Middle Atlantic	East North Central	West North Central	South Atlantic	South Central	Mountain	Pacific		
<u>Million pounds, ready-to-cook equivalent</u>										
New England:										
Ready-to-cook.....	8.7	---	---	---	---	---	---	---	---	---
Processed.....	1.2	---	---	---	---	---	---	---	---	---
Middle Atlantic:										
Ready-to-cook.....	---	30.0	---	---	---	---	---	---	---	---
Processed.....	---	5.6	---	---	---	---	---	---	---	---
East North Central:										
Ready-to-cook.....	2.5	11.0	181.1	---	---	---	---	---	---	---
Processed.....	---	---	25.2	---	---	---	---	---	---	---
West North Central:										
Ready-to-cook.....	38.2	<u>1/163.6</u>	26.4	99.9	45.8	15.2	2.3	---	2.4	---
Processed.....	11.6	6.2	19.6	18.7	1.9	16.5	---	---	---	---
South Atlantic:										
Ready-to-cook.....	3.2	5.1	2.9	---	116.0	8.2	---	---	---	---
Processed.....	0.4	1.4	---	---	31.6	---	---	---	---	---
South Central:										
Ready-to-cook.....	---	---	---	---	---	162.7	---	---	---	---
Processed.....	---	---	---	---	---	15.5	---	---	---	---
Mountain:										
Ready-to-cook.....	5.8	<u>1/10.5</u>	9.9	---	6.9	1.6	46.2	---	---	---
Processed.....	---	---	---	---	---	---	.6	---	---	---
Pacific:										
Ready-to-cook.....	12.3	<u>1/35.2</u>	19.2	---	10.0	5.9	---	---	143.1	---
Processed.....	---	---	---	---	---	4.2	8.5	---	27.2	---

1/ Includes some turkeys for further processing within the region of destination.

46

Table 44--Turkeys: Interregional movements in ready-to-cook and further-processed forms, 1965

Origin and product form	Destination							
	New England	Middle Atlantic	East North Central	West North Central	South Atlantic	South Central	Mountain	Pacific
Million pounds, ready-to-cook equivalent								
New England:								
Ready-to-cook.....	9.2	---	---	---	---	---	---	---
Processed.....	.6	---	---	---	---	---	---	---
Middle Atlantic:								
Ready-to-cook.....	---	32.1	---	---	---	---	---	---
Processed.....	---	7.1	---	---	---	---	---	---
East North Central:								
Ready-to-cook.....	2.5	11.2	177.5	---	---	---	---	---
Processed.....	---	---	27.5	---	---	---	---	---
West North Central:								
Ready-to-cook.....	38.4	<u>1/170.7</u>	34.1	99.6	45.8	4.1	2.8	4.3
Processed.....	14.3	4.2	26.3	22.1	3.5	13.6	---	---
South Atlantic:								
Ready-to-cook.....	3.9	8.3	4.2	---	118.3	8.4	---	---
Processed.....	.9	2.2	---	---	36.7	---	---	---
South Central:								
Ready-to-cook.....	---	---	---	---	---	179.6	---	---
Processed.....	---	---	---	---	---	20.7	---	---
Mountain:								
Ready-to-cook.....	6.6	<u>1/12.9</u>	11.1	---	6.9	.4	45.9	---
Processed.....	---	---	---	---	---	---	.5	---
Pacific:								
Ready-to-cook.....	10.8	<u>1/29.2</u>	14.9	---	10.0	1.6	---	143.6
Processed.....	---	---	---	---	---	8.8	10.4	32.9

1/ Includes some turkeys for further processing within the region of destination.

47

Table 45--Turkeys: Interregional movements in ready-to-cook and further processed forms, 1966

Origin and product form	Destination							
	New England	Middle Atlantic	East North Central	West North Central	South Atlantic	South Central	Mountain	Pacific
<u>Million pounds, ready-to-cook equivalent</u>								
New England:								
Ready-to-cook.....	9.0	---	---	---	---	---	---	---
Processed.....	.4	---	---	---	---	---	---	---
Middle Atlantic:								
Ready-to-cook.....	---	32.6	---	---	---	---	---	---
Processed.....	---	9.5	---	---	---	---	---	---
East North Central:								
Ready-to-cook.....	2.4	11.2	174.5	---	---	---	---	---
Processed.....	---	---	31.9	---	---	---	---	---
West North Central:								
Ready-to-cook.....	36.4	<u>1/169.8</u>	32.7	100.2	42.7	---	3.7	8.7
Processed.....	19.0	11.6	39.9	29.3	---	3.5	---	---
South Atlantic:								
Ready-to-cook.....	4.2	7.7	1.8	---	125.2	11.5	---	---
Processed.....	1.6	4.2	---	---	53.7	---	---	---
South Central:								
Ready-to-cook.....	---	---	5.1	---	---	184.4	---	---
Processed.....	---	---	---	---	---	42.6	---	---
Mountain:								
Ready-to-cook.....	7.9	<u>1/18.0</u>	15.5	---	6.4	---	45.5	---
Processed.....	---	---	---	---	---	---	.8	---
Pacific:								
Ready-to-cook.....	12.1	<u>1/31.5</u>	15.9	---	9.4	---	---	141.9
Processed.....	---	---	---	---	---	11.1	13.6	44.0

1/ Includes some turkeys for further processing within the region of destination

Table 46--Turkeys: Interregional movements in ready-to-cook and further-processed forms, 1967

Origin and product form	Destination							
	New England	Middle Atlantic	East North Central	West North Central	South Atlantic	South Central	Mountain	Pacific
Million pounds, ready-to-cook equivalent								
New England:								
Ready-to-cook.....	8.2	---	---	---	---	---	---	---
Processed.....	.3	---	---	---	---	---	---	---
Middle Atlantic:								
Ready-to-cook.....	---	32.8	---	---	---	---	---	---
Processed.....	---	8.2	---	---	---	---	---	---
East North Central:								
Ready-to-cook.....	2.2	11.6	156.1	---	---	---	---	---
Processed.....	---	---	47.3	---	---	---	---	---
West North Central:								
Ready-to-cook.....	42.7	<u>1/180.1</u>	40.5	112.1	53.6	6.5	3.4	7.6
Processed.....	13.1	4.5	21.9	28.0	---	20.8	3.5	---
South Atlantic:								
Ready-to-cook.....	3.0	6.2	2.0	---	134.9	5.0	---	---
Processed.....	6.9	12.7	---	---	51.8	---	---	---
South Central:								
Ready-to-cook.....	---	---	37.4	---	---	208.5	---	---
Processed.....	---	---	---	---	---	34.2	---	---
Mountain:								
Ready-to-cook.....	9.3	<u>1/23.0</u>	17.5	---	7.2	---	52.0	---
Processed.....	---	---	---	---	---	---	.4	---
Pacific:								
Ready-to-cook.....	15.9	<u>1/42.0</u>	23.2	---	11.6	---	---	163.4
Processed.....	---	---	---	---	---	---	10.0	42.8

49

1/ Includes some turkeys for further processing within the region of destination.

Table 47--Turkeys: Interregional movements in ready-to-cook and further-processed forms, 1968

Origin and product form	Destination							
	New England	Middle Atlantic	East North Central	West North Central	South Atlantic	South Central	Mountain	Pacific
<u>Million pounds, ready-to-cook equivalent</u>								
New England:								
Ready-to-cook.....	7.9	---	---	---	---	---	---	---
Processed.....	.1	---	---	---	---	---	---	---
Middle Atlantic:								
Ready-to-cook.....	---	27.4	---	---	---	---	---	---
Processed.....	---	9.4	---	---	---	---	---	---
East North Central:								
Ready-to-cook.....	2.2	10.6	140.1	---	---	---	---	---
Processed.....	---	---	52.1	---	---	---	---	---
West North Central:								
Ready-to-cook.....	36.9	<u>1/166.6</u>	20.2	97.6	19.2	9.8	3.6	4.9
Processed.....	17.1	13.5	28.6	33.5	---	30.3	14.0	---
South Atlantic:								
Ready-to-cook.....	1.0	3.5	2.0	---	156.8	2.0	---	---
Processed.....	7.1	14.2	2.0	---	62.4	3.3	---	---
South Central:								
Ready-to-cook.....	---	---	42.4	---	---	180.3	---	---
Processed.....	---	---	---	---	---	32.3	---	---
Mountain:								
Ready-to-cook.....	10.1	<u>1/23.2</u>	18.5	---	2.8	---	45.1	---
Processed.....	---	---	---	---	---	---	.4	---
Pacific:								
Ready-to-cook.....	12.7	<u>1/32.3</u>	18.0	---	3.3	---	---	145.1
Processed.....	---	---	---	---	---	---	2.3	51.5

1/ Includes some turkeys for further processing within the region of destination.

Table 48--Turkeys: Interregional movements in ready-to-cook and further-processed forms, 1969

Origin and product form	Destination							
	New England	Middle Atlantic	East North Central	West North Central	South Atlantic	South Central	Mountain	Pacific
<u>Million pounds, ready-to-cook equivalent</u>								
New England:								
Ready-to-cook.....	4.6	---	---	---	---	---	---	---
Processed.....	2.0	---	---	---	---	---	---	---
Middle Atlantic:								
Ready-to-cook.....	---	28.9	---	---	---	---	---	---
Processed.....	---	12.8	---	---	---	---	---	---
East North Central:								
Ready-to-cook.....	2.2	10.4	132.9	---	---	---	---	---
Processed.....	---	---	58.9	---	---	---	---	---
West North Central:								
Ready-to-cook.....	<u>1/33.8</u>	<u>1/127.5</u>	23.0	96.0	---	11.0	3.6	6.2
Processed.....	18.8	47.1	44.7	42.5	---	38.2	18.5	---
South Atlantic:								
Ready-to-cook.....	3.9	11.2	3.8	---	179.6	2.0	---	---
Processed.....	2.9	5.4	1.2	---	79.6	1.3	---	---
South Central:								
Ready-to-cook.....	---	---	45.4	---	---	175.7	---	---
Processed.....	---	---	---	---	---	44.2	---	---
Mountain:								
Ready-to-cook.....	<u>1/12.3</u>	<u>1/28.2</u>	16.9	---	---	---	44.8	---
Processed.....	---	---	---	---	---	---	.8	---
Pacific:								
Ready-to-cook.....	<u>1/19.9</u>	<u>1/44.4</u>	17.0	---	---	---	---	142.5
Processed.....	---	---	---	---	---	---	2.2	66.0

51

1/ Includes some turkeys for further processing within the region of destination.

Table 49--Turkeys: Interregional movements in ready-to-cook and further-processed forms, 1970

Origin and product form	Destination							
	New England	Middle Atlantic	East North Central	West North Central	South Atlantic	South Central	Mountain	Pacific
<u>Million pounds, ready-to-cook equivalent</u>								
New England:								
Ready-to-cook.....	4.5	---	---	---	---	---	---	---
Processed.....	1.9	---	---	---	---	---	---	---
Middle Atlantic:								
Ready-to-cook.....	---	28.3	---	---	---	---	---	---
Processed.....	---	12.2	---	---	---	---	---	---
East North Central:								
Ready-to-cook.....	2.2	9.4	131.5	---	---	---	---	---
Processed.....	---	---	69.7	---	---	---	---	---
West North Central:								
Ready-to-cook.....	<u>1/27.5</u>	<u>1/118.4</u>	18.3	95.9	---	11.4	3.1	9.9
Processed.....	23.8	50.0	32.3	41.4	4.2	32.8	20.5	4.6
South Atlantic:								
Ready-to-cook.....	6.7	19.5	5.8	---	180.3	1.0	---	---
Processed.....	1.2	3.1	---	---	73.6	---	---	---
South Central:								
Ready-to-cook.....	---	---	44.9	---	---	176.3	---	---
Processed.....	---	---	---	---	---	48.7	---	---
Mountain:								
Ready-to-cook.....	<u>1/14.2</u>	<u>1/32.5</u>	18.9	---	---	---	45.8	---
Processed.....	---	---	---	---	---	---	.6	---
Pacific:								
Ready-to-cook.....	<u>1/17.6</u>	<u>1/39.1</u>	17.1	---	---	---	---	139.6
Processed.....	---	---	---	---	---	---	---	59.9

1/ Includes some turkeys for further processing within the region of destination.

Table 50--Turkeys: Interregional movements in ready-to-cook and further-processed forms, 1971

Origin and product form	Destination							
	New England	Middle Atlantic	East North Central	West North Central	South Atlantic	South Central	Mountain	Pacific
<u>Million pounds, ready-to-cook equivalent</u>								
New England:								
Ready-to-cook.....	3.4	---	---	---	---	---	---	---
Processed.....	1.7	---	---	---	---	---	---	---
Middle Atlantic:								
Ready-to-cook.....	---	31.5	---	---	---	---	---	---
Processed.....	---	15.9	---	---	---	---	---	---
East North Central:								
Ready-to-cook.....	1.9	8.4	123.3	---	---	---	---	---
Processed.....	---	---	73.0	---	---	---	---	---
West North Central:								
Ready-to-cook.....	<u>1/26.4</u>	<u>1/109.9</u>	20.1	95.4	---	10.1	3.4	10.8
Processed.....	28.7	64.1	45.6	48.2	5.4	24.2	21.6	17.8
South Atlantic:								
Ready-to-cook.....	4.8	15.1	3.5	---	180.8	3.0	---	---
Processed.....	1.4	3.8	---	---	85.9	---	---	---
South Central:								
Ready-to-cook.....	---	---	41.0	---	---	175.7	---	---
Processed.....	---	---	---	---	---	71.2	---	---
Mountain:								
Ready-to-cook.....	<u>1/14.9</u>	<u>1/33.4</u>	19.9	---	---	---	46.1	---
Processed.....	---	---	---	---	---	---	3.4	---
Pacific:								
Ready-to-cook.....	<u>1/21.3</u>	<u>1/44.4</u>	27.2	---	---	---	---	138.7
Processed.....	---	---	---	---	---	---	---	57.7

1/ Includes some turkeys for further processing within the region of destination.

53

Table 51--Turkeys: Interregional movements in ready-to-cook and further-processed forms, 1972

Origin and product form	Destination							
	New England	Middle Atlantic	East North Central	West North Central	South Atlantic	South Central	Mountain	Pacific
<u>Million pounds, ready-to-cook equivalent</u>								
New England:								
Ready-to-cook.....	2.9	---	---	---	---	---	---	---
Processed.....	1.6	---	---	---	---	---	---	---
Middle Atlantic:								
Ready-to-cook.....	---	31.5	---	---	---	---	---	---
Processed.....	---	17.7	---	---	---	---	---	---
East North Central:								
Ready-to-cook.....	2.7	9.2	143.2	---	---	---	---	---
Processed.....	---	---	77.6	---	---	---	---	---
West North Central:								
Ready-to-cook.....	<u>1/29.9</u>	<u>1/122.1</u>	20.9	97.4	---	12.0	3.4	10.5
Processed.....	30.5	75.4	56.4	54.6	14.9	40.0	18.6	9.2
South Atlantic:								
Ready-to-cook.....	8.3	20.5	4.5	---	187.1	2.0	---	---
Processed.....	1.5	4.2	---	---	89.9	---	---	---
South Central:								
Ready-to-cook.....	---	9.4	14.2	---	---	180.3	---	---
Processed.....	---	---	---	---	---	68.8	---	---
Mountain:								
Ready-to-cook.....	<u>1/15.1</u>	<u>1/24.6</u>	27.3	---	---	---	48.7	---
Processed.....	---	---	---	---	---	---	10.6	---
Pacific:								
Ready-to-cook.....	<u>1/18.2</u>	<u>1/29.5</u>	29.0	---	---	---	---	142.0
Processed.....	---	---	---	---	---	---	---	76.2

54

1/ Includes some turkeys for further processing within the region of destination.

Table 52--Turkeys: Interregional movements in ready-to-cook and further-processed forms, 1973

Origin and product form	Destination							
	New England	Middle Atlantic	East North Central	West North Central	South Atlantic	South Central	Mountain	Pacific
<u>Million pounds, ready-to-cook equivalent</u>								
New England:								
Ready-to-cook.....	3.3	---	---	---	---	---	---	---
Processed.....	.9	---	---	---	---	---	---	---
Middle Atlantic:								
Ready-to-cook.....	---	23.2	---	---	---	---	---	---
Processed.....	---	20.4	---	---	---	---	---	---
East North Central:								
Ready-to-cook.....	2.4	10.7	105.6	---	---	---	---	---
Processed.....	---	---	83.4	---	---	---	---	---
West North Central:								
Ready-to-cook.....	25.8	<u>1/60.7</u>	15.9	76.9	---	12.5	3.4	10.5
Processed.....	46.4	95.6	81.8	67.3	33.9	40.6	20.9	---
South Atlantic:								
Ready-to-cook.....	10.6	<u>1/38.6</u>	14.3	---	150.7	1.0	---	---
Processed.....	1.9	5.5	---	---	98.0	---	---	---
South Central:								
Ready-to-cook.....	---	14.4	13.0	---	---	141.7	---	---
Processed.....	---	---	---	---	---	95.2	---	---
Mountain:								
Ready-to-cook.....	14.1	<u>1/34.0</u>	19.3	---	---	---	39.1	---
Processed.....	---	---	---	---	---	---	15.5	---
Pacific:								
Ready-to-cook.....	---	<u>1/21.2</u>	20.6	---	---	---	---	111.1
Processed.....	---	---	---	---	---	---	.9	106.5

1/ Includes some turkeys for further processing within the region of destination.

55

Table 53--Turkeys: Interregional movements in ready-to-cook and further-processed forms, 1974

Origin and product form	Destination									
	New England	Middle Atlantic	East North Central	West North Central	South Atlantic	South Central	Mountain	Pacific		
<u>Million pounds, ready-to-cook equivalent</u>										
New England:										
Ready-to-cook.....	2.8	---	---	---	---	---	---	---	---	---
Processed.....	1.5	---	---	---	---	---	---	---	---	---
Middle Atlantic:										
Ready-to-cook.....	---	25.7	---	---	---	---	---	---	---	---
Processed.....	---	21.5	---	---	---	---	---	---	---	---
East North Central:										
Ready-to-cook.....	2.0	12.0	120.3	---	---	---	---	---	---	---
Processed.....	---	---	96.3	---	---	---	---	---	---	---
West North Central:										
Ready-to-cook.....	24.6	<u>1/54.0</u>	12.9	76.4	---	13.5	3.0	---	10.0	---
Processed.....	49.7	101.0	82.0	72.8	11.2	48.8	---	---	---	---
South Atlantic:										
Ready-to-cook.....	11.1	<u>1/47.9</u>	19.5	---	150.0	1.0	---	---	---	---
Processed.....	1.8	5.3	---	---	133.7	---	---	---	---	---
South Central:										
Ready-to-cook.....	---	<u>1/33.7</u>	12.1	---	---	141.0	---	---	---	---
Processed.....	---	---	---	---	---	86.9	---	---	---	---
Mountain:										
Ready-to-cook.....	15.1	<u>1/32.3</u>	12.5	---	---	---	40.1	---	---	---
Processed.....	---	---	---	---	---	---	18.3	---	---	---
Pacific:										
Ready-to-cook.....	---	---	9.7	---	---	---	---	---	112.0	---
Processed.....	---	---	---	---	---	12.6	22.8	---	116.3	---

1/ Includes some turkeys for further processing within the region of destination.

56

Table 54--Turkeys: Interregional movements in ready-to-cook and further-processed forms, 1975

Origin and product form	Destination							
	New England	Middle Atlantic	East North Central	West North Central	South Atlantic	South Central	Mountain	Pacific
	<u>Million pounds, ready-to-cook equivalent</u>							
New England:								
Ready-to-cook.....	1.9	---	---	---	---	---	---	---
Processed.....	1.3	---	---	---	---	---	---	---
Middle Atlantic:								
Ready-to-cook.....	---	25.5	---	---	---	---	---	---
Processed.....	---	21.3	---	---	---	---	---	---
East North Central:								
Ready-to-cook.....	2.0	12.0	87.6	---	---	---	---	---
Processed.....	---	---	106.9	---	---	---	---	---
West North Central:								
Ready-to-cook.....	16.9	37.6	16.4	69.3	---	12.0	2.0	9.0
Processed.....	51.8	94.2	76.3	74.6	---	77.2	15.0	---
South Atlantic:								
Ready-to-cook.....	9.8	<u>1</u> /46.0	11.0	---	140.0	2.0	---	---
Processed.....	1.4	5.0	---	---	150.7	---	---	---
South Central:								
Ready-to-cook.....	---	<u>1</u> /25.6	29.1	---	---	128.8	---	---
Processed.....	---	---	---	---	---	76.5	---	---
Mountain:								
Ready-to-cook.....	15.2	<u>1</u> /36.7	16.0	---	---	---	38.0	---
Processed.....	---	---	---	---	---	---	23.8	---
Pacific:								
Ready-to-cook.....	4.8	<u>1</u> /17.3	9.9	---	---	---	---	103.1
Processed.....	---	---	---	---	---	---	4.3	120.7

57

1/ Includes some turkeys for further-processing within the region of destination.

Table 55—Young chickens: Interregional movements in ready-to-cook and further processed forms, 1955

Origin and product form	Destination							
	New England	Middle Atlantic	East North Central	West North Central	South Atlantic	South Central	Mountain	Pacific
	<u>Million pounds, ready-to-cook equivalent</u>							
New England:								
Ready-to-cook.....	142.9	74.3	---	---	---	---	---	---
Processed.....	.2	---	---	---	---	---	---	---
Middle Atlantic:								
Ready-to-cook.....	---	133.0	---	---	---	---	---	---
Processed.....	---	.2	---	---	---	---	---	---
East North Central:								
Ready-to-cook.....	---	---	174.4	---	---	---	---	---
Processed.....	---	---	.1	---	---	---	---	---
West North Central:								
Ready-to-cook.....	---	---	---	82.4	---	---	---	---
Processed.....	---	---	.1	.4	---	---	---	---
South Atlantic:								
Ready-to-cook.....	---	261.7	290.3	<u>1/</u> 79.2	335.9	---	18.3	27.3
Processed.....	.6	2.4	2.0	---	1.8	---	.1	.2
South Central:								
Ready-to-cook.....	---	---	24.1	<u>1/</u> 52.4	---	391.0	54.9	82.0
Processed.....	---	---	.4	---	---	2.1	.4	1.0
Mountain:								
Ready-to-cook.....	---	---	---	---	---	---	12.2	---
Processed.....	---	---	---	---	---	---	---	---
Pacific:								
Ready-to-cook.....	---	---	---	---	---	---	---	142.4
Processed.....	---	---	---	---	---	---	---	.1

1/ Includes young chickens for further processing within the region of destination.

Table 56—Young chickens: Interregional movements in ready-to-cook and further-processed forms, 1956

Origin and product form	Destination							
	New England	Middle Atlantic	East North Central	West North Central	South Atlantic	South Central	Mountain	Pacific
<u>Million pounds, ready-to-cook equivalent</u>								
New England:								
Ready-to-cook.....	177.2	83.4	---	---	---	---	---	---
Processed.....	.3	---	---	---	---	---	---	---
Middle Atlantic:								
Ready-to-cook.....	---	158.7	---	---	---	---	---	---
Processed.....	---	.2	---	---	---	---	---	---
East North Central:								
Ready-to-cook.....	---	---	205.9	---	---	---	---	---
Processed.....	---	---	.2	---	---	---	---	---
West North Central:								
Ready-to-cook.....	---	---	---	95.2	---	---	---	---
Processed.....	---	---	1.1	.6	---	---	---	---
South Atlantic:								
Ready-to-cook.....	---	341.4	360.8	<u>1/101.1</u>	425.5	---	22.1	35.8
Processed.....	.8	3.4	2.1	---	2.6	---	.1	.3
South Central:								
Ready-to-cook.....	---	---	47.2	<u>1/71.9</u>	---	487.3	74.1	119.9
Processed.....	---	---	.4	---	---	3.0	.6	1.5
Mountain:								
Ready-to-cook.....	---	---	---	---	---	---	13.3	---
Processed.....	---	---	---	---	---	---	---	---
Pacific:								
Ready-to-cook.....	---	---	---	---	---	---	---	166.9
Processed.....	---	---	---	---	---	---	---	.2

1/ Includes young chickens for further processing within the region of destination.

Table 57--Young chickens: Interregional movements in ready-to-cook and further-processed forms, 1957

Origin and product form	Destination							
	New England	Middle Atlantic	East North Central	West North Central	South Atlantic	South Central	Mountain	Pacific
<u>Million pounds, ready-to-cook equivalent</u>								
New England:								
Ready-to-cook.....	182.5	86.9	---	---	---	---	---	---
Processed.....	.5	---	---	---	---	---	---	---
Middle Atlantic:								
Ready-to-cook.....	---	155.5	---	---	---	---	---	---
Processed.....	---	.4	---	---	---	---	---	---
East North Central:								
Ready-to-cook.....	---	---	216.4	---	---	---	---	---
Processed.....	---	---	.4	---	---	---	---	---
West North Central:								
Ready-to-cook.....	---	---	---	86.6	---	---	---	---
Processed.....	---	---	3.1	.7	---	---	---	---
South Atlantic:								
Ready-to-cook.....	13.1	402.4	402.1	<u>1</u> /120.2	478.4	---	23.2	46.1
Processed.....	1.2	4.9	1.7	---	3.9	---	.2	.5
South Central:								
Ready-to-cook.....	---	---	63.4	<u>1</u> /90.1	---	541.3	87.5	173.4
Processed.....	---	---	.5	---	---	4.4	.9	2.1
Mountain:								
Ready-to-cook.....	---	---	---	---	---	---	13.0	---
Processed.....	---	---	---	---	---	---	---	---
Pacific:								
Ready-to-cook.....	---	---	---	---	---	---	---	145.2
Processed.....	---	---	---	---	---	---	---	.4

1/ Includes young chickens for further processing within the region of destination.

Table 58--Young chickens: Interregional movements in ready-to-cook and further-processed forms, 1958

Origin and product form	Destination							
	New England	Middle Atlantic	East North Central	West North Central	South Atlantic	South Central	Mountain	Pacific
	<u>Million pounds, ready-to-cook equivalent</u>							
New England:								
Ready-to-cook.....	192.2	93.3	---	---	---	---	---	---
Processed.....	.8	---	---	---	---	---	---	---
Middle Atlantic:								
Ready-to-cook.....	---	165.8	---	---	---	---	---	---
Processed.....	---	.8	---	---	---	---	---	---
East North Central:								
Ready-to-cook.....	---	---	230.4	---	---	---	---	---
Processed.....	---	---	.9	---	---	---	---	---
West North Central:								
Ready-to-cook.....	---	---	---	104.1	---	---	---	---
Processed.....	---	1.0	4.8	1.2	---	---	---	---
South Atlantic:								
Ready-to-cook.....	30.9	473.3	377.7	<u>1/161.9</u>	546.8	---	24.1	49.0
Processed.....	1.8	6.7	2.5	---	6.3	---	.3	.8
South Central:								
Ready-to-cook.....	---	---	168.6	<u>1/69.8</u>	---	613.1	102.9	208.8
Processed.....	---	---	.8	---	---	7.1	1.3	3.4
Mountain:								
Ready-to-cook.....	---	---	---	---	---	---	14.5	---
Processed.....	---	---	---	---	---	---	---	---
Pacific:								
Ready-to-cook.....	---	---	---	---	---	---	---	165.2
Processed.....	---	---	---	---	---	---	---	.7

1/ Includes young chickens for further processing within the region of destination.

Table 59--Young chickens: Interregional movements in ready-to-cook and further-processed forms, 1959

Origin and product form	Destination							
	New England	Middle Atlantic	East North Central	West North Central	South Atlantic	South Central	Mountain	Pacific
<u>Million pounds, ready-to-cook equivalent</u>								
New England:								
Ready-to-cook.....	178.5	92.1	---	---	---	---	---	---
Processed.....	1.4	---	---	---	---	---	---	---
Middle Atlantic:								
Ready-to-cook.....	---	154.6	---	---	---	---	---	---
Processed.....	---	1.5	---	---	---	---	---	---
East North Central:								
Ready-to-cook.....	---	---	205.8	---	---	---	---	---
Processed.....	---	---	1.9	---	---	---	---	---
West North Central:								
Ready-to-cook.....	---	---	---	118.7	---	---	---	---
Processed.....	---	2.3	7.6	1.9	---	---	---	---
South Atlantic:								
Ready-to-cook.....	57.4	520.4	318.3	<u>1/136.4</u>	577.7	---	22.8	46.3
Processed.....	2.4	8.6	3.0	---	9.4	---	.7	1.8
South Central:								
Ready-to-cook.....	---	---	281.1	<u>1/101.9</u>	---	644.7	111.5	225.9
Processed.....	---	---	.6	---	---	10.4	1.8	4.4
Mountain:								
Ready-to-cook.....	---	---	---	---	---	---	16.8	---
Processed.....	---	---	---	---	---	---	---	---
Pacific:								
Ready-to-cook.....	---	---	---	---	---	---	---	180.8
Processed.....	---	---	---	---	---	---	---	1.2

1/ Includes young chickens for further processing within the region of destination.

Table 60--Young chickens: Interregional movements in ready-to-cook and further-processed forms, 1960

Origin and product form	Destination							
	New England	Middle Atlantic	East North Central	West North Central	South Atlantic	South Central	Mountain	Pacific
<u>Million pounds, ready-to-cook equivalent</u>								
New England:								
Ready-to-cook.....	154.5	89.6	---	---	---	---	---	---
Processed.....	2.8	---	---	---	---	---	---	---
Middle Atlantic:								
Ready-to-cook.....	---	144.4	---	---	---	---	---	---
Processed.....	---	3.5	---	---	---	---	---	---
East North Central:								
Ready-to-cook.....	---	---	190.7	---	---	---	---	---
Processed.....	---	---	4.6	---	---	---	---	---
West North Central:								
Ready-to-cook.....	---	---	---	105.0	---	---	---	---
Processed.....	---	6.4	12.3	2.9	---	---	---	---
South Atlantic:								
Ready-to-cook.....	87.5	533.6	356.4	<u>1</u> /152.7	599.7	---	21.3	41.0
Processed.....	4.0	11.9	4.4	---	16.6	---	.5	1.4
South Central:								
Ready-to-cook.....	---	---	287.0	<u>1</u> /122.4	---	668.4	120.6	232.4
Processed.....	---	---	1.9	---	---	18.5	3.9	9.4
Mountain:								
Ready-to-cook.....	---	---	---	---	---	---	17.1	---
Processed.....	---	---	---	---	---	---	---	---
Pacific:								
Ready-to-cook.....	---	---	---	---	---	---	---	197.7
Processed.....	---	---	---	---	---	---	---	2.3

1/ Includes young chickens for further processing within the region of destination.

63

Table 61--Young Chickens: Interregional movements in ready-to-cook and further-processed forms, 1961

Origin and product form	Destination							
	New England	Middle Atlantic	East North Central	West North Central	South Atlantic	South Central	Mountain	Pacific
	<u>Million pounds, ready-to-cook equivalent</u>							
New England:								
Ready-to-cook.....	153.3	95.9	---	---	---	---	---	---
Processed.....	2.5	---	---	---	---	---	---	---
Middle Atlantic:								
Ready-to-cook.....	---	143.0	---	---	---	---	---	---
Processed.....	---	2.7	---	---	---	---	---	---
East North Central:								
Ready-to-cook.....	---	---	193.4	---	---	---	---	---
Processed.....	---	---	3.6	---	---	---	---	---
West North Central:								
Ready-to-cook.....	---	---	---	134.5	---	---	---	---
Processed.....	---	4.7	10.2	2.5	---	---	---	---
South Atlantic:								
Ready-to-cook.....	119.9	<u>1/650.8</u>	<u>1/343.9</u>	<u>1/122.0</u>	683.0	---	21.6	41.9
Processed.....	2.5	8.5	2.2	---	12.5	---	1.4	1.9
South Central:								
Ready-to-cook.....	---	---	<u>1/401.2</u>	<u>1/162.0</u>	---	755.3	144.6	280.1
Processed.....	---	---	.5	---	---	13.8	2.0	5.9
Mountain:								
Ready-to-cook.....	---	---	---	---	---	---	17.8	---
Processed.....	---	---	---	---	---	---	---	---
Pacific:								
Ready-to-cook.....	---	---	---	---	---	---	---	220.1
Processed.....	---	---	---	---	---	---	---	2.0

1/ Includes young chickens for further processing within the region of destination.

Table 62--Young Chickens: Interregional movements in ready-to-cook and further-processed forms, 1962

Origin and product form	Destination							
	New England	Middle Atlantic	East North Central	West North Central	South Atlantic	South Central	Mountain	Pacific
<u>Million pounds, ready-to-cook equivalent</u>								
New England:								
Ready-to-cook.....	146.7	92.0	---	---	---	---	---	---
Processed.....	3.0	---	---	---	---	---	---	---
Middle Atlantic:								
Ready-to-cook.....	---	132.3	---	---	---	---	---	---
Processed.....	---	2.6	---	---	---	---	---	---
East North Central:								
Ready-to-cook.....	---	---	154.8	---	---	---	---	---
Processed.....	---	---	3.1	---	---	---	---	---
West North Central:								
Ready-to-cook.....	---	---	---	125.7	---	---	---	---
Processed.....	---	6.3	11.0	2.5	---	---	---	---
South Atlantic:								
Ready-to-cook.....	127.4	<u>1/665.8</u>	<u>1/364.4</u>	<u>1/123.2</u>	689.9	---	20.5	41.1
Processed.....	2.4	7.8	1.7	---	13.7	---	2.1	3.8
South Central:								
Ready-to-cook.....	---	---	<u>1/420.5</u>	<u>1/171.1</u>	---	761.3	150.4	301.7
Processed.....	---	---	.3	---	---	15.1	1.6	4.8
Mountain:								
Ready-to-cook.....	---	---	---	---	---	---	16.5	---
Processed.....	---	---	---	---	---	---	---	---
Pacific:								
Ready-to-cook.....	---	---	---	---	---	---	---	211.3
Processed.....	---	---	---	---	---	---	---	2.4

1/ Includes young chickens for further processing within the region of destination.

Table 63--Young Chickens: Interregional movements in ready-to-cook and further-processed forms, 1963

Origin and product form	Destination								
	New England	Middle Atlantic	East North Central	West North Central	South Atlantic	South Central	Mountain	Pacific	
<u>Million pounds, ready-to-cook equivalent</u>									
New England:									
Ready-to-cook.....	153.3	92.4	---	---	---	---	---	---	---
Processed.....	3.6	---	---	---	---	---	---	---	---
Middle Atlantic:									
Ready-to-cook.....	---	126.6	---	---	---	---	---	---	---
Processed.....	---	2.8	---	---	---	---	---	---	---
East North Central:									
Ready-to-cook.....	---	---	134.0	---	---	---	---	---	---
Processed.....	---	---	3.0	---	---	---	---	---	---
West North Central:									
Ready-to-cook.....	---	---	---	108.7	---	---	---	---	---
Processed.....	---	8.7	11.4	2.4	---	---	---	---	---
South Atlantic:									
Ready-to-cook.....	139.3	<u>1/725.7</u>	<u>1/369.1</u>	<u>1/136.6</u>	738.7	---	20.2	41.5	
Processed.....	2.9	7.8	3.2	---	16.4	---	2.4	4.0	
South Central:									
Ready-to-cook.....	---	---	<u>1/495.8</u>	<u>1/200.1</u>	---	805.9	163.1	336.0	
Processed.....	---	---	.4	---	---	17.9	2.1	6.3	
Mountain:									
Ready-to-cook.....	---	---	---	---	---	---	17.5	---	
Processed.....	---	---	---	---	---	---	---	---	
Pacific:									
Ready-to-cook.....	---	---	---	---	---	---	---	221.0	
Processed.....	---	---	---	---	---	---	---	3.0	

1/ Includes young chickens for further processing within the region of destination.

Table 64--Young chickens: Interregional movements in ready-to-cook and further-processed forms, 1964

Origin and product form	Destination							
	New England	Middle Atlantic	East North Central	West North Central	South Atlantic	South Central	Mountain	Pacific
<u>Million pounds, ready-to-cook equivalent</u>								
New England:								
Ready-to-cook.....	158.7	92.6	---	---	---	---	---	---
Processed.....	2.0	---	---	---	---	---	---	---
Middle Atlantic:								
Ready-to-cook.....	---	120.9	---	---	---	---	---	---
Processed.....	---	3.1	---	---	---	---	---	---
East North Central:								
Ready-to-cook.....	---	---	116.4	---	---	---	---	---
Processed.....	---	---	3.1	---	---	---	---	---
West North Central:								
Ready-to-cook.....	---	---	---	108.9	---	---	---	---
Processed.....	---	7.3	9.1	2.8	---	---	---	---
South Atlantic:								
Ready-to-cook.....	144.3	<u>1/758.0</u>	<u>1/381.9</u>	<u>1/125.9</u>	765.4	---	17.1	36.2
Processed.....	5.8	9.8	1.2	---	19.7	---	.9	2.2
South Central:								
Ready-to-cook.....	---	---	<u>1/536.0</u>	<u>1/218.4</u>	---	828.7	172.7	366.5
Processed.....	---	2.0	4.5	---	---	21.3	4.3	10.9
Mountain:								
Ready-to-cook.....	---	---	---	---	---	---	17.7	---
Processed.....	---	---	---	---	---	---	.1	---
Pacific:								
Ready-to-cook.....	---	---	---	---	---	---	---	220.3
Processed.....	---	---	---	---	---	---	---	2.9

67

1/ Includes young chickens for further processing within the region of destination.

Table 65--Young chickens: Interregional movements in ready-to-cook and further-processed forms, 1965

Origin and product form	Destination							
	New England	Middle Atlantic	East North Central	West North Central	South Atlantic	South Central	Mountain	Pacific
<u>Million pounds, ready-to-cook equivalent</u>								
New England:								
Ready-to-cook.....	151.4	97.0	---	---	---	---	---	---
Processed.....	3.7	---	---	---	---	---	---	---
Middle Atlantic:								
Ready-to-cook.....	---	130.4	---	---	---	---	---	---
Processed.....	---	3.5	---	---	---	---	---	---
East North Central:								
Ready-to-cook.....	---	---	120.7	---	---	---	---	---
Processed.....	---	---	3.2	---	---	---	---	---
West North Central:								
Ready-to-cook.....	---	---	---	106.1	---	---	---	---
Processed.....	---	8.2	10.2	2.8	---	---	---	---
South Atlantic:								
Ready-to-cook.....	176.5	<u>1/824.9</u>	<u>1/395.7</u>	<u>1/133.0</u>	831.7	---	14.3	30.9
Processed.....	5.0	7.0	1.3	---	22.0	---	.9	2.2
South Central:								
Ready-to-cook.....	---	---	<u>1/604.8</u>	<u>1/246.3</u>	---	892.2	190.5	410.8
Processed.....	---	2.0	4.2	---	---	23.6	5.0	11.5
Mountain:								
Ready-to-cook.....	---	---	---	---	---	---	19.1	---
Processed.....	---	---	---	---	---	---	<u>2/</u>	---
Pacific:								
Ready-to-cook.....	---	---	---	---	---	---	---	238.0
Processed.....	---	---	---	---	---	---	---	4.2

1/ Includes young chickens for further processing within the region of destination.

2/ Less than 50,000 pounds.

Table 66--Young chickens: Interregional movements in ready-to-cook and further-processed forms, 1966

Origin and product form	Destination							
	New England	Middle Atlantic	East North Central	West North Central	South Atlantic	South Central	Mountain	Pacific
<u>Million pounds, ready-to-cook equivalent</u>								
New England:								
Ready-to-cook.....	155.1	95.3	---	---	---	---	---	---
Processed.....	4.7	---	---	---	---	---	---	---
Middle Atlantic:								
Ready-to-cook.....	---	131.7	---	---	---	---	---	---
Processed.....	---	4.1	---	---	---	---	---	---
East North Central:								
Ready-to-cook.....	---	---	124.9	---	---	---	---	---
Processed.....	---	---	3.9	---	---	---	---	---
West North Central:								
Ready-to-cook.....	---	---	---	91.7	---	---	---	---
Processed.....	---	10.8	20.8	2.9	---	---	---	---
South Atlantic:								
Ready-to-cook.....	204.5	<u>1</u> /931.6	<u>1</u> /430.5	<u>1</u> /151.3	916.6	---	11.0	24.7
Processed.....	6.9	6.1	3.1	---	28.7	---	2.5	1.7
South Central:								
Ready-to-cook.....	---	---	<u>1</u> /679.4	<u>1</u> /301.3	---	977.6	209.2	468.7
Processed.....	---	---	1.2	---	---	30.6	5.2	15.5
Mountain:								
Ready-to-cook.....	---	---	---	---	---	---	25.2	---
Processed.....	---	---	---	---	---	---	---	---
Pacific:								
Ready-to-cook.....	---	---	---	---	---	---	---	258.1
Processed.....	---	---	---	---	---	---	---	6.3

1/ Includes young chickens for further processing within the region of destination.

Table 67--Young chickens: Interregional movements in ready-to-cook and further-processed forms, 1967

Origin and product form	Destination							
	New England	Middle Atlantic	East North Central	West North Central	South Atlantic	South Central	Mountain	Pacific
	Million pounds, ready-to-cook equivalent							
New England:								
Ready-to-cook.....	166.2	85.3	---	---	---	---	---	---
Processed.....	5.5	---	---	---	---	---	---	---
Middle Atlantic:								
Ready-to-cook.....	---	132.0	---	---	---	---	---	---
Processed.....	---	5.1	---	---	---	---	---	---
East North Central:								
Ready-to-cook.....	---	---	114.9	---	---	---	---	---
Processed.....	---	---	4.4	---	---	---	---	---
West North Central:								
Ready-to-cook.....	---	---	---	88.9	---	---	---	---
Processed.....	---	4.6	20.2	3.4	---	---	---	---
South Atlantic:								
Ready-to-cook.....	200.8	<u>1</u> /966.0	<u>1</u> /420.2	<u>1</u> /142.4	935.9	---	9.2	19.8
Processed.....	8.5	11.5	14.8	---	35.8	---	5.2	10.6
South Central:								
Ready-to-cook.....	---	---	<u>1</u> /721.6	<u>1</u> /315.4	---	993.1	220.0	476.2
Processed.....	---	---	.6	---	---	38.0	4.4	13.1
Mountain:								
Ready-to-cook.....	---	---	---	---	---	---	20.9	---
Processed.....	---	---	---	---	---	---	.1	---
Pacific:								
Ready-to-cook.....	---	---	---	---	---	---	---	276.2
Processed.....	---	---	---	---	---	---	---	5.9

1/ Includes young chickens for further processing within the region of destination.

Table 68--Young chickens: Interregional movements in ready-to-cook and further-processed forms, 1968

Origin and product form	Destination									
	New England	Middle Atlantic	East North Central	West North Central	South Atlantic	South Central	Mountain	Pacific		
<u>Million pounds, ready-to-cook equivalent</u>										
New England:										
Ready-to-cook.....	172.7	74.7	---	---	---	---	---	---	---	---
Processed.....	6.7	---	---	---	---	---	---	---	---	---
Middle Atlantic:										
Ready-to-cook.....	---	134.9	---	---	---	---	---	---	---	---
Processed.....	---	5.8	---	---	---	---	---	---	---	---
East North Central:										
Ready-to-cook.....	---	---	108.7	---	---	---	---	---	---	---
Processed.....	---	---	4.7	---	---	---	---	---	---	---
West North Central:										
Ready-to-cook.....	---	---	---	90.4	---	---	---	---	---	---
Processed.....	---	---	8.7	3.9	---	---	---	---	---	---
South Atlantic:										
Ready-to-cook.....	197.9	<u>1/1,003.1</u>	<u>1/410.1</u>	<u>1/121.6</u>	953.2	---	7.0	15.6		
Processed.....	9.2	4.2	35.9	---	41.1	---	4.9	7.7		
South Central:										
Ready-to-cook.....	---	---	<u>1/748.2</u>	<u>1/326.0</u>	---	1,005.4	226.9	504.3		
Processed.....	---	---	.8	---	---	43.3	6.0	18.1		
Mountain:										
Ready-to-cook.....	---	---	---	---	---	---	21.1	---		
Processed.....	---	---	---	---	---	---	0.1	---		
Pacific:										
Ready-to-cook.....	---	---	---	---	---	---	---	265.8		
Processed.....	---	---	---	---	---	---	---	8.1		

1/ Includes young chickens for further processing within the range of destination.

Table 69--Young chickens: Interregional movements in ready-to-cook and further-processed forms, 1969

Origin and product form	Destination								
	New England	Middle Atlantic	East North Central	West North Central	South Atlantic	South Central	Mountain	Pacific	
	<u>Million pounds, ready-to-cook equivalent</u>								
New England:									
Ready-to-cook.....	159.5	76.6	---	---	---	---	---	---	---
Processed.....	7.0	---	---	---	---	---	---	---	---
Middle Atlantic:									
Ready-to-cook.....	---	143.8	---	---	---	---	---	---	---
Processed.....	---	6.2	---	---	---	---	---	---	---
East North Central:									
Ready-to-cook.....	---	---	107.6	---	---	---	---	---	---
Processed.....	---	---	4.6	---	---	---	---	---	---
West North Central:									
Ready-to-cook.....	---	---	---	97.0	---	---	---	---	---
Processed.....	---	---	11.4	4.2	---	---	---	---	---
South Atlantic:									
Ready-to-cook.....	237.9	<u>1/1,072.9</u>	<u>1/438.7</u>	<u>1/136.1</u>	1,026.9	---	5.1	11.3	
Processed.....	10.1	5.4	31.1	---	44.2	---	---	---	---
South Central:									
Ready-to-cook.....	---	---	<u>1/808.2</u>	<u>1/346.4</u>	---	1,079.1	251.0	<u>1/553.4</u>	
Processed.....	---	---	7.8	---	---	46.5	11.8	19.8	
Mountain:									
Ready-to-cook.....	---	---	---	---	---	---	20.6	---	---
Processed.....	---	---	---	---	---	---	.2	---	---
Pacific:									
Ready-to-cook.....	---	---	---	---	---	---	---	---	290.2
Processed.....	---	---	---	---	---	---	---	---	12.5

1/ Includes young chickens for further processing within the region of destination.

Table 70--Young chickens: Interregional movements in ready-to-cook and further-processed forms, 1970

Origin and product form	New England	Middle Atlantic	East North Central	West North Central	South Atlantic	South Central	Mountain	Pacific
	Million pounds, ready-to-cook equivalent							
New England:								
Ready-to-cook.....	159.8	78.2	---	---	---	---	---	---
Processed.....	9.0	---	---	---	---	---	---	---
Middle Atlantic:								
Ready-to-cook.....	---	156.2	---	---	---	---	---	---
Processed.....	---	7.8	---	---	---	---	---	---
East North Central:								
Ready-to-cook.....	---	---	103.8	---	---	---	---	---
Processed.....	---	---	5.2	---	---	---	---	---
West North Central:								
Ready-to-cook.....	---	---	---	105.8	---	---	---	---
Processed.....	---	---	10.2	5.3	---	---	---	---
South Atlantic:								
Ready-to-cook.....	263.6	<u>1</u> /1,146.5	<u>1</u> /438.5	<u>1</u> /136.0	1,097.4	---	2.8	6.0
Processed.....	12.1	6.8	35.3	---	54.7	---	---	---
South Central:								
Ready-to-cook.....	---	---	<u>1</u> /903.5	<u>1</u> /375.9	---	1,148.9	273.6	<u>1</u> /591.5
Processed.....	---	---	14.8	---	---	57.3	14.6	25.1
Mountain:								
Ready-to-cook.....	---	---	---	---	---	---	21.2	---
Processed.....	---	---	---	---	---	---	0.3	---
Pacific:								
Ready-to-cook.....	---	---	---	---	---	---	---	316.7
Processed.....	---	---	---	---	---	---	---	15.8

73

1/ Includes young chickens for further processing within the region of destination.

Table 71--Young chickens: Interregional movements in ready-to-cook and further processed forms, 1971

Origin and product form	Destination							
	New England	Middle Atlantic	East North Central	West North Central	South Atlantic	South Central	Mountain	Pacific
<u>Million pounds, ready-to-cook equivalent</u>								
New England:								
Ready-to-cook.....	158.3	64.4	---	---	---	---	---	---
Processed.....	10.4	---	---	---	---	---	---	---
Middle Atlantic:								
Ready-to-cook.....	---	167.6	---	---	---	---	---	---
Processed.....	---	9.5	---	---	---	---	---	---
East North Central:								
Ready-to-cook.....	---	---	92.1	---	---	---	---	---
Processed.....	---	---	5.2	---	---	---	---	---
West North Central:								
Ready-to-cook.....	---	---	---	108.0	---	---	---	---
Processed.....	---	---	---	6.1	---	---	---	---
South Atlantic:								
Ready-to-cook.....	262.4	<u>1/1,146.9</u>	<u>1/392.1</u>	<u>1/102.2</u>	1,095.6	---	---	---
Processed.....	13.4	1.1	39.0	---	62.0	---	---	---
South Central:								
Ready-to-cook.....	---	---	<u>1/945.6</u>	<u>1/390.0</u>	---	1,144.4	280.2	<u>1/598.4</u>
Processed.....	---	---	29.6	4.4	---	64.8	16.8	32.6
Mountain:								
Ready-to-cook.....	---	---	---	---	---	---	20.1	---
Processed.....	---	---	---	---	---	---	.2	---
Pacific:								
Ready-to-cook.....	---	---	---	---	---	---	---	308.6
Processed.....	---	---	---	---	---	---	---	17.5

1/ Includes young chickens for further processing within the region of destination.

Table 72--Young chickens: Interregional movements in ready-to-cook and further-processed forms, 1972

Origin and product form	Destination							
	New England	Middle Atlantic	East North Central	West North Central	South Atlantic	South Central	Mountain	Pacific
	Million pounds, ready-to-cook equivalent							
New England:								
Ready-to-cook.....	145.9	67.2	---	---	---	---	---	---
Processed.....	12.4	---	---	---	---	---	---	---
Middle Atlantic:								
Ready-to-cook.....	---	168.4	---	---	---	---	---	---
Processed.....	2.2	10.3	---	---	---	---	---	---
East North Central:								
Ready-to-cook.....	---	---	106.4	---	---	---	---	---
Processed.....	---	---	6.5	---	---	---	---	---
West North Central:								
Ready-to-cook.....	---	---	---	111.9	---	---	---	---
Processed.....	---	---	4.4	6.8	---	---	---	---
South Atlantic:								
Ready-to-cook.....	298.9	<u>1</u> /1,223.0	<u>1</u> /368.9	<u>1</u> /92.5	1,172.9	---	---	---
Processed.....	12.6	---	41.6	---	71.6	---	---	---
South Central:								
Ready-to-cook.....	---	---	<u>1</u> /1,035.8	<u>1</u> /441.0	---	1,217.7	319.8	638.2
Processed.....	---	---	26.8	---	---	74.3	19.7	39.4
Mountain:								
Ready-to-cook.....	---	---	---	---	---	---	6.5	---
Processed.....	---	---	---	---	---	---	.3	---
Pacific:								
Ready-to-cook.....	---	---	---	---	---	---	---	317.7
Processed.....	---	---	---	---	---	---	---	19.0

75

1/ Includes young chickens for further processing within the region of destination.

Table 73--Young chickens: Interregional movements in ready-to-cook and further-processed forms, 1973

Origin and product form	Destination							
	New England	Middle Atlantic	East North Central	West North Central	South Atlantic	South Central	Mountain	Pacific
<u>Million pounds, ready-to-cook equivalent</u>								
New England:								
Ready-to-cook.....	153.9	64.7	---	---	---	---	---	---
Processed.....	12.6	---	---	---	---	---	---	---
Middle Atlantic:								
Ready-to-cook.....	---	171.2	---	---	---	---	---	---
Processed.....	2.1	12.1	---	---	---	---	---	---
East North Central:								
Ready-to-cook.....	---	---	111.6	---	---	---	---	---
Processed.....	---	---	7.7	---	---	---	---	---
West North Central:								
Ready-to-cook.....	---	---	---	112.7	---	---	---	---
Processed.....	---	---	5.6	7.9	---	---	---	---
South Atlantic:								
Ready-to-cook.....	274.4	<u>1/1,165.8</u>	<u>1/415.7</u>	<u>1/109.4</u>	1,149.6	---	---	---
Processed.....	15.4	---	36.9	---	80.9	---	---	---
South Central:								
Ready-to-cook.....	---	---	<u>1/927.1</u>	<u>1/403.4</u>	---	1,183.5	<u>1/324.8</u>	628.5
Processed.....	---	---	36.1	---	---	83.3	22.5	39.2
Mountain:								
Ready-to-cook.....	---	---	---	---	---	---	---	---
Processed.....	---	---	---	---	---	---	---	---
Pacific:								
Ready-to-cook.....	---	---	---	---	---	---	---	299.0
Processed.....	---	---	---	---	---	---	---	26.1

76

1/ Includes young chickens for further processing within the region of destination.

Table 74--Young chickens: Interregional movements in ready-to-cook and further-processed forms, 1974

Origin and product form	Destination							
	New England	Middle Atlantic	East North Central	West North Central	South Atlantic	South Central	Mountain	Pacific
Million pounds, ready-to-cook equivalent								
New England:								
Ready-to-cook.....	154.2	66.0	---	---	---	---	---	---
Processed.....	13.0	---	---	---	---	---	---	---
Middle Atlantic:								
Ready-to-cook.....	---	176.0	---	---	---	---	---	---
Processed.....	10.7	13.3	9.2	---	---	---	---	---
East North Central:								
Ready-to-cook.....	---	---	90.5	---	---	---	---	---
Processed.....	---	---	6.7	---	---	---	---	---
West North Central:								
Ready-to-cook.....	---	---	---	106.2	---	---	---	---
Processed.....	---	---	---	8.0	---	---	---	---
South Atlantic:								
Ready-to-cook.....	273.1	<u>1/1,169.5</u>	<u>1/512.4</u>	<u>1/80.1</u>	1,167.8	---	---	---
Processed.....	7.0	---	31.4	---	83.7	---	---	---
South Central:								
Ready-to-cook.....	---	---	<u>1/855.0</u>	<u>1/424.4</u>	---	1,194.7	<u>1/331.3</u>	605.7
Processed.....	---	---	34.9	9.9	---	85.7	23.4	45.9
Mountain:								
Ready-to-cook.....	---	---	---	---	---	---	---	---
Processed.....	---	---	---	---	---	---	---	---
Pacific:								
Ready-to-cook.....	---	---	---	---	---	---	---	331.4
Processed.....	---	---	---	---	---	---	---	21.3

1/ Includes young chickens for further processing within the region of destination.

77

Table 75--Young chickens: Interregional movements in ready-to-cook and further-processed forms, 1975

Origin and product form	Destination							
	New England	Middle Atlantic	East North Central	West North Central	South Atlantic	South Central	Mountain	Pacific
<u>Million pounds, ready-to-cook equivalent</u>								
New England:								
Ready-to-cook.....	158.0	65.9	---	---	---	---	---	---
Processed.....	11.2	---	---	---	---	---	---	---
Middle Atlantic:								
Ready-to-cook.....	---	179.7	---	---	---	---	---	---
Processed.....	15.0	13.5	14.3	---	---	---	---	---
East North Central:								
Ready-to-cook.....	---	---	102.9	---	---	---	---	---
Processed.....	---	---	7.7	---	---	---	---	---
West North Central:								
Ready-to-cook.....	---	---	---	108.3	---	---	---	---
Processed.....	---	---	---	8.2	---	---	---	---
South Atlantic:								
Ready-to-cook.....	258.0	<u>1/1,124.4</u>	<u>1/427.7</u>	<u>1/101.6</u>	1,149.7	---	---	---
Processed.....	1.1	---	45.4	11.6	75.6	---	---	---
South Central:								
Ready-to-cook.....	---	---	<u>1/891.2</u>	<u>1/375.0</u>	---	1,173.1	<u>1/329.7</u>	576.9
Processed.....	---	---	---	1.8	---	77.1	20.8	38.6
Mountain:								
Ready-to-cook.....	---	---	---	---	---	---	---	---
Processed.....	---	---	---	---	---	---	---	---
Pacific:								
Ready-to-cook.....	---	---	---	---	---	---	---	344.4
Processed.....	---	---	---	---	---	---	---	21.9

1/ Includes young chickens for further processing within the region of destination.

Table 76--Mature chickens: Interregional movements in ready-to-cook and further-processed forms, 1955

Origin and product form	Destination							
	New England	Middle Atlantic	East North Central	West North Central	South Atlantic	South Central	Mountain	Pacific
	<u>Million pounds, ready-to-cook equivalent</u>							
New England:								
Ready-to-cook.....	60.3	25.5	---	---	---	---	---	---
Processed.....	.2	---	---	---	---	---	---	---
Middle Atlantic:								
Ready-to-cook.....	---	131.5	---	---	---	---	---	---
Processed.....	---	4.4	---	---	---	---	---	---
East North Central:								
Ready-to-cook.....	---	27.0	206.4	---	---	---	---	---
Processed.....	---	---	10.8	---	---	---	---	---
West North Central:								
Ready-to-cook.....	---	14.0	---	90.0	31.7	35.5	6.0	19.0
Processed.....	9.1	26.0	20.9	13.8	15.6	25.4	5.5	14.8
South Atlantic:								
Ready-to-cook.....	---	---	---	---	110.6	---	---	---
Processed.....	---	---	---	---	6.2	---	---	---
South Central:								
Ready-to-cook.....	---	---	---	---	---	129.6	---	---
Processed.....	---	---	---	---	---	---	---	---
Mountain:								
Ready-to-cook.....	---	---	---	---	---	---	30.1	---
Processed.....	---	---	---	---	---	---	---	---
Pacific:								
Ready-to-cook.....	---	---	---	---	---	---	---	87.3
Processed.....	---	---	---	---	---	---	---	1.5

Table 77--Mature chickens: Interregional movements in ready-to-cook and further-processed forms, 1956

Origin and product form	Destination							
	New England	Middle Atlantic	East North Central	West North Central	South Atlantic	South Central	Mountain	Pacific
	<u>Million pounds, ready-to-cook equivalent</u>							
New England:								
Ready-to-cook.....	58.8	13.3	---	---	---	---	---	---
Processed.....	.2	---	---	---	---	---	---	---
Middle Atlantic:								
Ready-to-cook.....	---	127.2	---	---	---	---	---	---
Processed.....	---	4.6	---	---	---	---	---	---
East North Central:								
Ready-to-cook.....	---	17.6	203.8	---	---	---	---	---
Processed.....	---	---	12.9	---	---	---	---	---
West North Central:								
Ready-to-cook.....	---	35.6	---	88.3	28.6	23.0	8.5	28.9
Processed.....	9.4	26.9	20.3	14.4	11.7	24.8	5.9	15.8
South Atlantic:								
Ready-to-cook.....	---	---	---	---	112.7	---	---	---
Processed.....	---	---	---	---	11.3	---	---	---
South Central:								
Ready-to-cook.....	---	---	---	---	---	138.8	---	---
Processed.....	---	---	---	---	---	1.6	---	---
Mountain:								
Ready-to-cook.....	---	---	---	---	---	---	27.8	---
Processed.....	---	---	---	---	---	---	---	---
Pacific:								
Ready-to-cook.....	---	---	---	---	---	---	---	78.2
Processed.....	---	---	---	---	---	---	---	1.6

Table 78--Mature chickens: Interregional movements in ready-to-cook and further-processed forms, 1957

Origin and product form	Destination							
	New England	Middle Atlantic	East North Central	West North Central	South Atlantic	South Central	Mountain	Pacific
<u>Million pounds, ready-to-cook equivalent</u>								
New England:								
Ready-to-cook.....	46.3	20.9	---	---	---	---	---	---
Processed.....	.3	---	---	---	---	---	---	---
Middle Atlantic:								
Ready-to-cook.....	---	100.3	---	---	---	---	---	---
Processed.....	---	6.6	---	---	---	---	---	---
East North Central:								
Ready-to-cook.....	---	3.5	161.3	---	---	---	---	---
Processed.....	---	---	17.2	---	---	---	---	---
West North Central:								
Ready-to-cook.....	---	27.9	---	69.1	7.1	20.2	5.5	11.3
Processed.....	9.8	26.8	18.1	15.1	7.6	24.6	6.4	17.1
South Atlantic:								
Ready-to-cook.....	---	---	---	---	106.1	---	---	---
Processed.....	---	---	---	---	17.2	---	---	---
South Central:								
Ready-to-cook.....	---	---	---	---	---	107.9	---	---
Processed.....	---	---	---	---	---	3.4	---	---
Mountain:								
Ready-to-cook.....	---	---	---	---	---	---	23.8	---
Processed.....	---	---	---	---	---	---	---	---
Pacific:								
Ready-to-cook.....	---	---	---	---	---	---	---	75.0
Processed.....	---	---	---	---	---	---	---	1.7

Table 79--Mature chickens: Interregional movements in ready-to-cook and further-processed forms, 1958

Origin and product form	Destination							
	New England	Middle Atlantic	East North Central	West North Central	South Atlantic	South Central	Mountain	Pacific
<u>Million pounds, ready-to-cook equivalent</u>								
New England:								
Ready-to-cook.....	51.4	13.4	---	---	---	---	---	---
Processed.....	4	---	---	---	---	---	---	---
Middle Atlantic:								
Ready-to-cook.....	---	106.8	---	---	---	---	---	---
Processed.....	---	8.5	---	---	---	---	---	---
East North Central:								
Ready-to-cook.....	---	.1	179.1	---	---	---	---	---
Processed.....	---	---	19.6	---	---	---	---	---
West North Central:								
Ready-to-cook.....	---	48.6	---	75.5	12.3	7.4	9.0	16.2
Processed.....	10.1	26.0	16.9	15.4	4.4	25.3	6.7	16.3
South Atlantic:								
Ready-to-cook.....	---	---	---	---	113.8	---	---	---
Processed.....	---	---	---	---	21.3	---	---	---
South Central:								
Ready-to-cook.....	---	---	---	---	---	133.9	---	---
Processed.....	---	---	---	---	---	3.6	---	---
Mountain:								
Ready-to-cook.....	---	---	---	---	---	---	23.6	---
Processed.....	---	---	---	---	---	---	---	---
Pacific:								
Ready-to-cook.....	---	---	---	---	---	---	---	81.3
Processed.....	---	---	---	---	---	---	---	3.6

Table 80--Mature chickens: Interregional movements in ready-to-cook and further-processed forms, 1959

Origin and product form	Destination							
	New England	Middle Atlantic	East North Central	West North Central	South Atlantic	South Central	Mountain	Pacific
	<u>Million pounds, ready-to-cook equivalent</u>							
New England:								
Ready-to-cook.....	45.8	16.3	---	---	---	---	---	---
Processed.....	.4	---	---	---	---	---	---	---
Middle Atlantic:								
Ready-to-cook.....	---	90.1	---	---	---	---	---	---
Processed.....	---	9.9	---	---	---	---	---	---
East North Central:								
Ready-to-cook.....	---	---	129.2	---	---	---	---	---
Processed.....	---	---	20.6	---	---	---	---	---
West North Central:								
Ready-to-cook.....	---	34.3	15.1	66.7	---	---	6.5	---
Processed.....	9.7	23.1	14.4	14.8	2.6	24.3	6.5	16.1
South Atlantic:								
Ready-to-cook.....	---	8.3	---	---	112.2	---	---	---
Processed.....	---	---	---	---	22.3	---	---	---
South Central:								
Ready-to-cook.....	---	---	13.5	---	---	125.3	---	---
Processed.....	---	---	---	---	---	3.4	---	---
Mountain:								
Ready-to-cook.....	---	---	---	---	---	---	21.5	---
Processed.....	---	---	---	---	---	---	---	---
Pacific:								
Ready-to-cook.....	---	---	---	---	---	---	1.5	88.0
Processed.....	---	---	---	---	---	---	---	3.4

C UPDATA 1981

Table 81--Mature chickens: Interregional movements in ready-to-cook and further-processed forms, 1960

Origin and product form	Destination							
	New England	Middle Atlantic	East North Central	West North Central	South Atlantic	South Central	Mountain	Pacific
	<u>Million pounds, ready-to-cook equivalent</u>							
New England:								
Ready-to-cook.....	34.1	20.6	---	---	---	---	---	---
Processed.....	0.5	---	---	---	---	---	---	---
Middle Atlantic:								
Ready-to-cook.....	---	62.2	---	---	---	---	---	---
Processed.....	---	13.0	---	---	---	---	---	---
East North Central:								
Ready-to-cook.....	---	---	92.3	---	---	---	---	---
Processed.....	---	---	25.1	---	---	---	---	---
West North Central:								
Ready-to-cook.....	---	18.8	12.9	49.9	---	---	---	---
Processed.....	10.9	23.1	14.0	16.6	---	27.5	7.5	16.3
South Atlantic:								
Ready-to-cook.....	---	5.9	---	---	84.5	---	---	---
Processed.....	---	0.8	---	---	28.2	---	---	---
South Central:								
Ready-to-cook.....	---	---	5.4	---	---	94.1	---	---
Processed.....	---	---	---	---	---	3.9	---	---
Mountain:								
Ready-to-cook.....	---	---	---	---	---	---	17.3	---
Processed.....	---	---	---	---	---	---	---	---
Pacific:								
Ready-to-cook.....	---	3.0	6.8	---	---	---	5.1	66.4
Processed.....	---	---	---	---	---	---	---	5.8

Table 82--Mature chickens: Interregional movements in ready-to-cook and further-processed forms, 1961

Origin and product form	Destination							
	New England	Middle Atlantic	East North Central	West North Central	South Atlantic	South Central	Mountain	Pacific
	<u>Million pounds, ready-to-cook equivalent</u>							
New England:								
Ready-to-cook.....	31.2	14.3	---	---	---	---	---	---
Processed.....	.7	---	---	---	---	---	---	---
Middle Atlantic:								
Ready-to-cook.....	---	50.5	---	---	---	---	---	---
Processed.....	---	22.5	---	---	---	---	---	---
East North Central:								
Ready-to-cook.....	---	---	80.2	---	---	---	---	---
Processed.....	---	---	35.7	---	---	---	---	---
West North Central:								
Ready-to-cook.....	---	20.4	.5	45.5	---	---	---	---
Processed.....	13.2	20.0	6.2	20.3	---	30.2	9.4	19.3
South Atlantic:								
Ready-to-cook.....	---	<u>1</u> /13.4	---	---	78.0	---	---	---
Processed.....	---	2.2	---	---	34.7	1.1	---	---
South Central:								
Ready-to-cook.....	---	---	<u>1</u> /25.2	---	---	86.2	---	---
Processed.....	---	---	---	---	---	7.1	---	---
Mountain:								
Ready-to-cook.....	---	---	---	---	---	---	16.5	---
Processed.....	---	---	---	---	---	---	---	---
Pacific:								
Ready-to-cook.....	---	3.5	6.9	---	---	---	4.5	61.9
Processed.....	---	---	---	---	---	---	---	8.3

1/ Includes mature chickens for further processing within the region of destination.

Table 83--Mature chickens: Interregional movements in ready-to-cook and further-processed forms, 1962

Origin and product form	Destination								
	New England	Middle Atlantic	East North Central	West North Central	South Atlantic	South Central	Mountain	Pacific	
	<u>Million pounds, ready-to-cook equivalent</u>								
New England:									
Ready-to-cook.....	32.4	17.0	---	---	---	---	---	---	---
Processed.....	0.8	---	---	---	---	---	---	---	---
Middle Atlantic:									
Ready-to-cook.....	---	56.8	---	---	---	---	---	---	---
Processed.....	---	24.1	---	---	---	---	---	---	---
East North Central:									
Ready-to-cook.....	---	---	76.5	---	---	---	---	---	---
Processed.....	---	---	32.5	---	---	---	---	---	---
West North Central:									
Ready-to-cook.....	---	---	4.7	47.0	---	---	---	---	---
Processed.....	13.0	13.2	4.7	20.0	---	27.4	9.4	18.4	
South Atlantic:									
Ready-to-cook.....	---	<u>1/28.6</u>	3.0	---	81.7	---	---	---	---
Processed.....	---	2.8	---	---	34.6	1.4	---	---	---
South Central:									
Ready-to-cook.....	---	---	<u>1/27.0</u>	---	---	90.1	---	---	---
Processed.....	---	---	---	---	---	9.4	---	---	---
Mountain:									
Ready-to-cook.....	---	---	---	---	---	---	15.8	---	---
Processed.....	---	---	---	---	---	---	---	---	---
Pacific:									
Ready-to-cook.....	---	<u>1/7.4</u>	<u>1/9.7</u>	---	---	---	6.4	65.6	
Processed.....	---	---	---	---	---	---	---	9.4	

1/ Includes mature chickens for further processing within the region of destination.

Table 84--Mature chickens: Interregional movements in ready-to-cook and further-processed forms, 1963

Origin and product form	Destination							
	New England	Middle Atlantic	East North Central	West North Central	South Atlantic	South Central	Mountain	Pacific
<u>Million pounds, ready-to-cook equivalent</u>								
New England:								
Ready-to-cook.....	26.3	16.8	---	---	---	---	---	---
Processed.....	.9	---	---	---	---	---	---	---
Middle Atlantic:								
Ready-to-cook.....	---	43.7	---	---	---	---	---	---
Processed.....	---	26.1	---	---	---	---	---	---
East North Central:								
Ready-to-cook.....	---	---	61.6	---	---	---	---	---
Processed.....	---	---	36.8	---	---	---	---	---
West North Central:								
Ready-to-cook.....	---	---	---	20.7	---	---	---	---
Processed.....	14.9	14.0	7.0	17.8	---	29.7	10.8	20.5
South Atlantic:								
Ready-to-cook.....	---	<u>1/22.0</u>	<u>1/8.0</u>	<u>1/5.7</u>	66.5	---	---	---
Processed.....	---	3.2	1.1	---	39.8	2.2	---	---
South Central:								
Ready-to-cook.....	---	<u>1/4.3</u>	<u>1/20.8</u>	<u>1/15.1</u>	---	72.6	---	---
Processed.....	---	---	---	---	---	11.6	---	---
Mountain:								
Ready-to-cook.....	---	---	---	---	---	---	12.9	---
Processed.....	---	---	---	---	---	---	.1	---
Pacific:								
Ready-to-cook.....	---	<u>1/5.6</u>	<u>1/7.8</u>	<u>1/1.0</u>	---	---	5.2	53.9
Processed.....	---	---	---	---	---	---	---	11.8

87

1/ Includes mature chickens for further processing within the region of destination.

Table 85--Mature chickens: Interregional movements in ready-to-cook and further-processed forms, 1964

Origin and product form	Destination							
	New England	Middle Atlantic	East North Central	West North Central	South Atlantic	South Central	Mountain	Pacific
	Million pounds, ready-to-cook equivalent							
New England:								
Ready-to-cook.....	26.0	11.5	---	---	---	---	---	---
Processed.....	1.0	---	---	---	---	---	---	---
Middle Atlantic:								
Ready-to-cook.....	---	40.4	---	---	---	---	---	---
Processed.....	---	25.1	---	---	---	---	---	---
East North Central:								
Ready-to-cook.....	---	---	61.0	---	---	---	---	---
Processed.....	---	---	37.9	---	---	---	---	---
West North Central:								
Ready-to-cook.....	---	---	---	19.7	---	---	---	---
Processed.....	15.1	12.3	6.8	16.8	---	27.9	11.0	19.5
South Atlantic:								
Ready-to-cook.....	---	<u>1</u> /18.9	<u>1</u> /7.2	<u>1</u> /5.4	65.7	---	---	---
Processed.....	---	4.4	2.3	---	40.8	3.3	---	---
South Central:								
Ready-to-cook.....	---	<u>1</u> /17.1	<u>1</u> /20.3	<u>1</u> /20.6	---	71.2	---	---
Processed.....	---	---	---	---	---	12.9	---	---
Mountain:								
Ready-to-cook.....	---	---	---	---	---	---	11.5	---
Processed.....	---	---	---	---	---	---	<u>2</u> /	---
Pacific:								
Ready-to-cook.....	---	<u>1</u> /5.1	<u>1</u> /7.3	<u>1</u> /1.1	---	---	6.4	53.5
Processed.....	---	---	---	---	---	---	---	13.7

1/ Includes mature chickens for further processing within the region of destination.

2/ Less than 50,000 pounds.

Table 86--Mature chickens: Interregional movements in ready-to-cook and further-processed forms, 1965

Origin and product form	Destination							
	New England	Middle Atlantic	East North Central	West North Central	South Atlantic	South Central	Mountain	Pacific
	Million pounds, ready-to-cook equivalent							
New England:								
Ready-to-cook.....	25.4	19.4	---	---	---	---	---	---
Processed.....	1.6	---	---	---	---	---	---	---
Middle Atlantic:								
Ready-to-cook.....	---	39.4	---	---	---	---	---	---
Processed.....	---	30.1	---	---	---	---	---	---
East North Central:								
Ready-to-cook.....	---	---	53.6	---	---	---	---	---
Processed.....	---	---	40.9	---	---	---	---	---
West North Central:								
Ready-to-cook.....	---	---	---	18.5	---	---	---	---
Processed.....	17.8	17.6	9.7	15.4	---	31.2	13.1	21.2
South Atlantic:								
Ready-to-cook.....	---	<u>1</u> /19.9	<u>1</u> /8.7	<u>1</u> /12.3	64.5	---	---	---
Processed.....	---	4.9	2.7	---	49.2	3.8	---	---
South Central:								
Ready-to-cook.....	---	<u>1</u> /9.3	<u>1</u> /34.1	<u>1</u> /35.1	---	69.2	---	---
Processed.....	---	---	---	---	---	17.8	---	---
Mountain:								
Ready-to-cook.....	---	---	---	---	---	---	12.6	---
Processed.....	---	---	---	---	---	---	.1	---
Pacific:								
Ready-to-cook.....	---	<u>1</u> /2.0	<u>1</u> /2.1	<u>1</u> /4.9	---	---	4.7	52.7
Processed.....	---	---	---	---	---	---	---	19.0

1/ Includes mature chickens for further processing within the region of destination.

Table 87--Mature chickens: Interregional movements in ready-to-cook and further-processed forms, 1966

Origin and product form	Destination							
	New England	Middle Atlantic	East North Central	West North Central	South Atlantic	South Central	Mountain	Pacific
<u>Million pounds, ready-to-cook equivalent</u>								
New England:								
Ready-to-cook.....	28.6	13.9	---	---	---	---	---	---
Processed.....	3.9	---	---	---	---	---	---	---
Middle Atlantic:								
Ready-to-cook.....	---	45.1	---	---	---	---	---	---
Processed.....	---	30.1	---	---	---	---	---	---
East North Central:								
Ready-to-cook.....	---	---	57.7	---	---	---	---	---
Processed.....	---	---	38.5	---	---	---	---	---
West North Central:								
Ready-to-cook.....	---	---	---	21.1	---	---	---	---
Processed.....	14.2	14.5	16.6	16.4	---	19.1	12.9	22.1
South Atlantic:								
Ready-to-cook.....	---	<u>1/25.1</u>	<u>1/10.0</u>	<u>1/8.1</u>	72.9	---	---	---
Processed.....	1.0	4.0	2.6	---	48.6	3.8	---	---
South Central:								
Ready-to-cook.....	---	<u>1/18.9</u>	<u>1/36.9</u>	<u>1/32.6</u>	---	77.7	.5	---
Processed.....	---	---	---	---	---	28.9	---	---
Mountain:								
Ready-to-cook.....	---	---	---	---	---	---	12.3	---
Processed.....	---	---	---	---	---	---	.1	---
Pacific:								
Ready-to-cook.....	---	---	---	---	---	---	6.8	59.8
Processed.....	---	---	---	---	---	---	---	17.8

1/ Includes mature chickens for further processing within the region of destination.

Table 88—Mature chickens: Interregional movements in ready-to-cook and further-processed forms, 1967

Origin and product form	Destination							
	New England	Middle Atlantic	East North Central	West North Central	South Atlantic	South Central	Mountain	Pacific
	<u>Million pounds, ready-to-cook equivalent</u>							
New England:								
Ready-to-cook.....	27.2	16.7	---	---	---	---	---	---
Processed.....	4.5	---	---	---	---	---	---	---
Middle Atlantic:								
Ready-to-cook.....	---	42.3	---	---	---	---	---	---
Processed.....	---	33.2	---	---	---	---	---	---
East North Central:								
Ready-to-cook.....	---	---	55.0	---	---	---	---	---
Processed.....	---	---	43.3	---	---	---	---	---
West North Central:								
Ready-to-cook.....	---	---	---	20.0	---	---	---	---
Processed.....	8.1	12.7	7.7	15.4	---	21.6	15.1	33.9
South Atlantic:								
Ready-to-cook.....	---	<u>1/9.2</u>	<u>1/3.9</u>	---	69.5	---	---	---
Processed.....	9.6	14.8	12.0	---	56.6	6.1	---	---
South Central:								
Ready-to-cook.....	---	<u>1/24.5</u>	<u>1/41.9</u>	<u>1/43.6</u>	---	73.7	---	---
Processed.....	---	---	---	---	---	32.4	---	---
Mountain:								
Ready-to-cook.....	---	---	---	---	---	---	14.7	---
Processed.....	---	---	---	---	---	---	.1	---
Pacific:								
Ready-to-cook.....	---	<u>1/2.9</u>	<u>1/4.4</u>	<u>1/5.6</u>	---	---	3.9	57.3
Processed.....	---	---	---	---	---	---	---	12.8

1/ Includes mature chickens for further processing within the region of destination.

C UPDATA 1031

16

Table 89--Mature chickens: Interregional movements in ready-to-cook and further-processed forms, 1968

Origin and product form	Destination							
	New England	Middle Atlantic	East North Central	West North Central	South Atlantic	South Central	Mountain	Pacific
<u>Million pounds, ready-to-cook equivalent</u>								
New England:								
Ready-to-cook.....	22.2	21.8	---	---	---	---	---	---
Processed.....	5.5	---	---	---	---	---	---	---
Middle Atlantic:								
Ready-to-cook.....	---	32.5	---	---	---	---	---	---
Processed.....	---	33.8	---	---	---	---	---	---
East North Central:								
Ready-to-cook.....	---	---	43.7	---	---	---	---	---
Processed.....	---	---	45.5	---	---	---	---	---
West North Central:								
Ready-to-cook.....	---	---	---	17.1	---	---	---	---
Processed.....	12.6	23.4	20.0	10.0	---	20.5	16.3	33.5
South Atlantic:								
Ready-to-cook.....	---	<u>1</u> /16.5	<u>1</u> /10.2	<u>1</u> /5.7	57.0	---	---	---
Processed.....	5.7	9.2	8.0	---	61.2	7.6	---	---
South Central:								
Ready-to-cook.....	---	<u>1</u> /5.2	<u>1</u> /24.2	<u>1</u> /78.0	---	60.1	---	---
Processed.....	---	---	---	---	---	36.5	---	---
Mountain:								
Ready-to-cook.....	---	---	---	---	---	---	13.5	---
Processed.....	---	---	---	---	---	---	.1	---
Pacific:								
Ready-to-cook.....	---	<u>1</u> /3.0	<u>1</u> /5.1	<u>1</u> /9.1	---	---	1.8	47.0
Processed.....	---	---	---	---	---	---	---	17.0

1/ Includes mature chickens for further processing within the region of destination.

Table 90--Mature chickens: Interregional movements in ready-to-cook and further-processed forms, 1969

Origin and product form	Destination							
	New England	Middle Atlantic	East North Central	West North Central	South Atlantic	South Central	Mountain	Pacific
	<u>Million pounds, ready-to-cook equivalent</u>							
New England:								
Ready-to-cook.....	19.2	17.0	---	---	---	---	---	---
Processed.....	6.5	---	---	---	---	---	---	---
Middle Atlantic:								
Ready-to-cook.....	---	28.6	---	---	---	---	---	---
Processed.....	---	35.0	---	---	---	---	---	---
East North Central:								
Ready-to-cook.....	---	---	40.1	---	---	---	---	---
Processed.....	---	---	49.0	---	---	---	---	---
West North Central:								
Ready-to-cook.....	---	---	---	16.0	---	---	---	---
Processed.....	10.7	20.2	15.4	11.7	---	21.8	16.4	31.5
South Atlantic:								
Ready-to-cook.....	---	<u>1/12.1</u>	<u>1/5.9</u>	<u>1/3.0</u>	49.5	---	---	---
Processed.....	6.6	10.4	9.0	---	61.4	8.7	---	---
South Central:								
Ready-to-cook.....	---	<u>1/11.7</u>	<u>1/26.4</u>	<u>1/73.1</u>	---	52.0	---	---
Processed.....	---	---	---	---	---	34.0	---	---
Mountain:								
Ready-to-cook.....	---	---	---	---	---	---	13.2	---
Processed.....	---	---	---	---	---	---	.2	---
Pacific:								
Ready-to-cook.....	---	---	---	<u>1/6.6</u>	---	---	.2	41.0
Processed.....	---	---	---	---	---	---	---	19.3

1/ Includes mature chickens for further processing within the region of destination.

SB 565 (1972)

USDA STATISTICAL BULLETINS

UPDATA

INTERREGIONAL MOVEMENTS OF EGGS AND POULTRY, 1955-75

ROGERS, G. B. DRYIN, R. J.

2 OF 2

Table 91--Mature chickens: Interregional movements in ready-to-cook and further-processed forms, 1970

Origin and product form	Destination							
	New England	Middle Atlantic	East North Central	West North Central	South Atlantic	South Central	Mountain	Pacific
<u>Million pounds, ready-to-cook equivalent</u>								
New England:								
Ready-to-cook.....	18.9	10.7	---	---	---	---	---	---
Processed.....	7.5	---	---	---	---	---	---	---
Middle Atlantic:								
Ready-to-cook.....	---	26.8	---	---	---	---	---	---
Processed.....	---	34.1	---	---	---	---	---	---
East North Central:								
Ready-to-cook.....	---	---	42.6	---	---	---	---	---
Processed.....	---	---	53.7	---	---	---	---	---
West North Central:								
Ready-to-cook.....	---	---	---	16.0	---	---	---	---
Processed.....	10.1	17.8	21.0	12.8	---	28.3	17.1	33.6
South Atlantic:								
Ready-to-cook.....	---	<u>1</u> /20.6	<u>1</u> /7.0	<u>1</u> /4.0	49.1	---	---	---
Processed.....	7.0	10.6	8.8	---	63.7	8.6	---	---
South Central:								
Ready-to-cook.....	---	<u>1</u> /13.4	<u>1</u> /10.8	<u>1</u> /81.0	---	51.4	---	---
Processed.....	---	---	---	---	---	29.8	---	---
Mountain:								
Ready-to-cook.....	---	---	---	---	---	---	12.0	---
Processed.....	---	---	---	---	---	---	.1	---
Pacific:								
Ready-to-cook.....	---	<u>1</u> /2.5	<u>1</u> /4.0	<u>1</u> /7.5	---	---	1.3	40.7
Processed.....	---	---	---	---	---	---	---	19.2

1/ Includes mature chickens for further processing within the region of destination.

Table 92--Mature chickens: Interregional movements in ready-to-cook and further-processed forms, 1971

Origin and product form	Destination							
	New England	Middle Atlantic	East North Central	West North Central	South Atlantic	South Central	Mountain	Pacific
Million pounds, ready-to-cook equivalent								
New England:								
Ready-to-cook.....	20.0	11.2	---	---	---	---	---	---
Processed.....	9.4	---	---	---	---	---	---	---
Middle Atlantic:								
Ready-to-cook.....	---	28.9	---	---	---	---	---	---
Processed.....	---	38.3	---	---	---	---	---	---
East North Central:								
Ready-to-cook.....	---	---	41.5	---	---	---	---	---
Processed.....	---	---	55.1	---	---	---	---	---
West North Central:								
Ready-to-cook.....	---	---	---	17.0	---	---	---	---
Processed.....	9.8	32.4	22.0	12.8	---	30.3	18.8	27.2
South Atlantic:								
Ready-to-cook.....	---	<u>1</u> /21.4	<u>1</u> /13.7	<u>1</u> /15.3	52.0	---	---	---
Processed.....	7.4	9.0	7.0	---	69.4	7.8	---	---
South Central:								
Ready-to-cook.....	---	<u>1</u> /4.4	<u>1</u> /18.3	<u>1</u> /85.8	---	54.3	---	---
Processed.....	---	---	---	---	---	34.3	---	---
Mountain:								
Ready-to-cook.....	---	---	---	---	---	---	14.2	---
Processed.....	---	---	---	---	---	---	.2	---
Pacific:								
Ready-to-cook.....	---	---	---	<u>1</u> /4.2	---	---	.1	43.0
Processed.....	---	---	---	---	---	---	---	30.1

1/ Includes mature chickens for further processing within the region of destination.

Table 93--Mature chickens: Interregional movements in ready-to-cook and further-processed forms, 1972

Origin and product form	Destination							
	New England	Middle Atlantic	East North Central	West North Central	South Atlantic	South Central	Mountain	Pacific
	Million pounds, ready-to-cook equivalent							
New England:								
Ready-to-cook.....	13.9	1.3	13.9	---	---	---	---	---
Processed.....	14.6	---	---	---	---	---	---	---
Middle Atlantic:								
Ready-to-cook.....	---	41.8	---	---	---	---	---	---
Processed.....	---	35.8	---	---	---	---	---	---
East North Central:								
Ready-to-cook.....	---	---	27.8	---	---	---	---	---
Processed.....	---	---	59.6	---	---	---	---	---
West North Central:								
Ready-to-cook.....	---	---	---	12.0	---	---	---	---
Processed.....	9.3	46.8	33.9	14.4	---	36.7	21.0	24.5
South Atlantic:								
Ready-to-cook.....	---	---	5.0	<u>1</u> /43.2	36.5	---	---	---
Processed.....	5.0	7.3	4.0	---	76.3	6.1	---	---
South Central:								
Ready-to-cook.....	---	---	---	<u>1</u> /99.7	---	37.9	---	20.2
Processed.....	---	---	---	---	---	36.5	---	---
Mountain:								
Ready-to-cook.....	---	---	---	---	---	---	10.2	1.0
Processed.....	---	---	---	---	---	---	.2	---
Pacific:								
Ready-to-cook.....	---	---	---	---	---	---	---	8.6
Processed.....	---	---	---	---	---	---	---	37.7

1/ Includes mature chickens for further processing within the region of destination.

Table 94--Mature chickens: Interregional movements in ready-to-cook and further-processed forms, 1973

Origin and product form	New England	Middle Atlantic	East North Central	West North Central	South Atlantic	South Central	Mountain	Pacific
	<u>Million pounds, ready-to-cook equivalent</u>							
New England:								
Ready-to-cook.....	5.7	---	---	<u>1</u> /22.2	---	---	---	---
Processed.....	6.2	---	---	---	---	---	---	---
Middle Atlantic:								
Ready-to-cook.....	---	20.8	---	0.1	---	---	---	---
Processed.....	---	42.5	---	---	---	---	---	---
East North Central:								
Ready-to-cook.....	---	---	22.7	0.3	---	---	---	---
Processed.....	---	---	45.6	---	---	---	---	---
West North Central:								
Ready-to-cook.....	---	---	---	8.0	---	---	---	---
Processed.....	16.2	40.2	48.9	14.4	---	26.8	22.6	21.3
South Atlantic:								
Ready-to-cook.....	---	---	---	<u>1</u> /24.4	18.1	---	---	---
Processed.....	7.4	9.2	5.8	---	80.1	15.2	---	---
South Central:								
Ready-to-cook.....	---	---	---	<u>1</u> /102.7	---	18.6	---	---
Processed.....	---	---	---	---	---	40.4	---	---
Mountain:								
Ready-to-cook.....	---	---	---	<u>1</u> /1.8	---	---	5.1	4.7
Processed.....	---	---	---	---	---	---	<u>2</u> /	---
Pacific:								
Ready-to-cook.....	---	---	---	---	---	---	---	9.9
Processed.....	---	---	---	---	---	---	---	43.3

1/ Includes mature chickens for further processing within the region of destination.

2/ Less than 50,000 pounds.

Table 95--Mature chickens: Interregional movements in ready-to-cook and further-processed forms, 1974

Origin and product form	Destination							
	New England	Middle Atlantic	East North Central	West North Central	South Atlantic	South Central	Mountain	Pacific
<u>Million pounds, ready-to-cook equivalent</u>								
New England:								
Ready-to-cook.....	15.0	16.8	9.4	---	---	---	---	---
Processed.....	3.0	---	---	---	---	---	---	---
Middle Atlantic:								
Ready-to-cook.....	---	29.3	---	---	---	---	---	---
Processed.....	---	41.1	---	---	---	---	---	---
East North Central:								
Ready-to-cook.....	---	---	31.7	---	---	---	---	---
Processed.....	---	---	44.2	---	---	---	---	---
West North Central:								
Ready-to-cook.....	---	---	---	11.0	---	---	---	---
Processed.....	15.7	27.7	36.1	13.5	---	19.2	20.0	19.5
South Atlantic:								
Ready-to-cook.....	---	---	5.2	<u>1/15.0</u>	41.1	---	---	---
Processed.....	7.2	10.7	6.8	---	70.8	19.0	---	---
South Central:								
Ready-to-cook.....	---	---	4.3	<u>1/97.2</u>	---	42.0	---	4.6
Processed.....	---	---	---	---	---	34.3	---	---
Mountain:								
Ready-to-cook.....	---	---	---	---	---	---	11.6	.6
Processed.....	---	---	---	---	---	---	<u>2/</u>	---
Pacific:								
Ready-to-cook.....	---	---	---	---	---	---	---	27.8
Processed.....	---	---	---	---	---	---	---	37.4

1/ Includes mature chickens for further processing within the region of destination.

2/ Less than 50,000 pounds.

Table 96--Mature chickens: Interregional movements in ready-to-cook and further processed forms, 1975

Origin and product form	Destination							
	New England	Middle Atlantic	East North Central	West North Central	South Atlantic	South Central	Mountain	Pacific
<u>Million pounds, ready-to-cook equivalent</u>								
New England:								
Ready-to-cook.....	19.1	<u>1</u> /20.8	9.9	---	---	---	---	---
Processed.....	1.5	---	---	---	---	---	---	---
Middle Atlantic:								
Ready-to-cook.....	---	23.3	---	---	---	---	---	---
Processed.....	---	26.0	---	---	---	---	---	---
East North Central:								
Ready-to-cook.....	---	---	46.0	---	---	---	---	---
Processed.....	---	---	40.0	---	---	---	---	---
West North Central:								
Ready-to-cook.....	---	---	---	14.0	---	---	---	---
Processed.....	12.0	21.0	25.7	13.8	---	11.2	17.1	23.3
South Atlantic:								
Ready-to-cook.....	---	<u>1</u> /8.4	4.5	<u>1</u> /8.5	52.8	---	---	---
Processed.....	8.2	12.0	7.5	---	60.0	11.2	---	---
South Central:								
Ready-to-cook.....	---	<u>1</u> /13.0	3.8	<u>1</u> /67.1	---	53.8	.6	10.9
Processed.....	---	---	---	---	---	38.7	---	---
Mountain:								
Ready-to-cook.....	---	---	---	---	---	---	14.5	---
Processed.....	---	---	---	---	---	---	<u>2</u> /	---
Pacific:								
Ready-to-cook.....	---	---	---	---	---	---	---	31.3
Processed.....	---	---	---	---	---	---	---	24.8

96

1/ Includes mature chickens for further processing within the region of destination.
2/ Less than 50,000 pounds.

Table 97--Eggs: Measures of the degree of self-sufficiency by region, selected years

Measure, item, and year	New England	Middle Atlantic	East North Central	West North Central	South Atlantic	South Central	Mountain	Pacific
	<u>Percent</u>							
Regional supply as share of regional consumption:								
Total: <u>1/</u>								
1955.....	75	71	97	318	59	73	73	94
1960.....	72	65	89	296	81	83	63	105
1965.....	77	60	77	230	107	110	52	117
1970.....	80	53	73	169	129	125	54	125
1975.....	96	55	73	160	126	116	58	129
Shell eggs: <u>2/</u>								
1955.....	81	76	98	277	63	78	77	100
1960.....	79	70	90	244	87	89	67	113
1965.....	84	64	78	179	112	117	56	123
1970.....	88	55	73	123	136	130	59	131
1975.....	104	53	72	137	134	120	64	129
Regional production as a share of regional consumption: <u>3/</u>								
Processed eggs:								
1955.....	3	7	81	833	18	16	20	11
1960.....	5	8	79	844	21	19	13	26
1965.....	9	13	74	726	56	44	8	57
1970.....	21	38	67	548	71	82	12	79
1975.....	31	74	82	343	69	86	18	130
Regional consumption met from regional supplies: <u>4/</u>								
Shell eggs:								
1955.....	76	76	91	94	62	76	77	96
1960.....	74	70	85	94	86	88	67	99
1965.....	79	64	77	92	100	94	56	99
1970.....	83	55	69	74	100	93	59	99
1975.....	96	53	69	77	100	93	64	99
Processed eggs:								
1955.....	3	7	46	100	18	16	20	11
1960.....	5	8	45	100	21	19	13	26
1965.....	9	13	41	100	56	44	8	57
1970.....	21	38	43	100	71	82	12	79
1975.....	31	74	65	100	69	86	18	100

1/ Derived from total surplus-deficit series for all eggs. 2/ Does not reflect interregional movements. 3/ Includes production from regional supplies as well as production from receipts from other regions. 4/ The quantity of shipments to other regions is removed from regional supply.

Table 98—Turkeys: Measures of the degree of self-sufficiency by region, selected years

Measure, item, and year	New England	Middle Atlantic	East North Central	West North Central	South Atlantic	South Central	Mountain	Pacific
	<u>Percent</u>							
Regional supply as share of regional consumption:								
Total: <u>1/</u>								
1955.....	38	27	66	308	95	60	179	203
1960.....	18	17	72	399	58	66	164	187
1965.....	11	14	74	397	83	84	142	145
1970.....	6	13	63	360	113	100	160	128
1975.....	3	15	59	384	126	88	156	112
Ready-to-cook: <u>2/</u>								
1955.....	40	28	68	269	101	63	189	213
1960.....	19	17	72	381	59	72	183	190
1965.....	13	14	79	401	79	93	172	142
1970.....	6	13	61	297	118	117	208	143
1975.....	4	17	60	236	149	129	265	121
Regional production as a share of regional consump- tion: <u>3/</u>								
Further-processed:								
1955.....	4	4	29	1004	0	0	0	28
1960.....	10	54	69	557	48	12	0	157
1965.....	4	87	51	380	99	48	4	158
1970.....	17	44	68	507	100	60	3	93
1975.....	2	41	58	522	104	50	55	112
Regional consumption met from regional supplies: <u>4/</u>								
Ready-to-cook:								
1955.....	40	28	61	100	78	63	100	94
1960.....	19	17	66	100	48	72	96	97
1965.....	13	14	73	100	65	93	94	97
1970.....	6	13	56	100	100	93	94	93
1975.....	4	17	52	100	100	90	95	92
Further-processed:								
1955.....	4	4	29	100	0	0	0	28
1960.....	10	17	69	100	48	12	0	100
1965.....	4	14	51	100	91	48	4	100
1970.....	6	13	68	100	95	60	3	93
1975.....	2	13	58	100	100	50	55	100

1/ Derived from total surplus-deficit series for all turkeys. 2/ Does not reflect interregional movements. 3/ Includes production from regional supplies as well as production from receipts from other regions. 4/ The quantity of shipments to other regions is removed from regional supply.

Table 99--Young chickens: Measures of the degree of self-sufficiency by region, selected years

Measure, item, and year	New England	Middle Atlantic	East North Central	West North Central	South Atlantic	South Central	Mountain	Pacific
	<u>Percent</u>							
Regional supply as share of regional consumption:								
Total: <u>1/</u>								
1955.....	151	28	36	39	302	155	14	56
1960.....	99	18	23	30	300	213	11	41
1965.....	75	13	11	23	287	271	8	35
1970.....	56	12	7	18	278	282	7	35
1975.....	53	14	7	19	261	279	6	37
Ready-to-cook: <u>2/</u>								
1955.....	152	28	36	39	302	155	14	57
1960.....	101	18	23	30	302	214	11	42
1965.....	76	13	11	23	289	263	9	34
1970.....	56	12	7	18	282	287	7	35
1975.....	54	14	7	19	266	285	0	37
Regional production as a share of regional consumption: <u>3/</u>								
Further-processed:								
1955.....	23	6	5	112	389	185	0	10
1960.....	41	16	20	290	233	182	0	18
1965.....	42	38	45	252	178	196	0	24
1970.....	43	90	16	135	199	195	2	45
1975.....	41	135	35	64	177	180	4	36
Regional consumption met from regional supplies: <u>4/</u>								
Ready-to-cook:								
1955.....	100	28	36	39	100	100	14	57
1960.....	64	18	23	30	100	100	11	42
1965.....	46	13	11	23	100	100	9	34
1970.....	38	12	7	18	100	100	7	35
1975.....	38	14	7	19	100	100	0	37
Further-processed:								
1955.....	23	6	5	39	100	100	0	10
1960.....	41	16	20	30	100	100	0	18
1965.....	42	13	11	23	100	100	0	24
1970.....	43	12	7	18	100	100	2	35
1975.....	41	16	8	22	100	100	0	36

102

1/ Derived from total surplus-deficit series for all young chickens. 2/ Does not reflect interregional movements. 3/ Includes production from regional supplies as well as production from receipts from other regions. 4/ The quantity of shipments to other regions is removed from regional supply.

Table 100--Mature chickens: Measures of the degree of self-sufficiency by region, selected years

Measure, item, and year	New England	Middle Atlantic	East North Central	West North Central	South Atlantic	South Central	Mountain	Pacific
<u>Percent</u>								
Regional supply as share of regional consumption:								
Total: <u>1/</u>								
1955.....	123	60	103	315	71	68	72	73
1960.....	121	51	75	297	106	95	58	98
1965.....	104	49	62	193	146	136	42	92
1970.....	85	45	65	160	159	158	40	80
1975.....	122	40	63	163	154	163	45	62
Ready-to-cook: <u>2/</u>								
1955.....	142	66	113	218	78	79	84	82
1960.....	160	57	79	164	107	106	77	123
1965.....	176	49	62	52	164	214	73	126
1970.....	156	45	66	61	164	305	90	138
1975.....	253	40	72	54	140	277	96	74
Regional production as a share of regional consumption: <u>3/</u>								
Further-processed:								
1955.....	2	15	34	948	28	0	0	10
1960.....	4	35	64	697	103	12	0	26
1965.....	8	64	81	509	123	34	1	47
1970.....	31	63	64	479	154	45	1	36
1975.....	7	50	54	472	165	63	<u>5/</u>	52
Regional consumption met from regional supplies: <u>4/</u>								
Ready-to-cook:								
1955.....	100	66	100	100	78	79	84	82
1960.....	100	57	79	100	100	100	77	100
1965.....	100	49	62	52	100	100	73	100
1970.....	100	45	66	61	100	100	90	100
1975.....	100	40	72	54	100	100	96	74
Further-processed:								
1955.....	2	15	34	100	28	0	0	10
1960.....	4	35	64	100	100	12	0	26
1965.....	8	49	62	57	100	34	1	47
1970.....	31	44	64	47	100	45	1	36
1975.....	7	39	54	47	100	63	<u>5/</u>	52

1/ Derived from total surplus-deficit series for all mature chickens. 2/ Does not reflect interregional movements. 3/ Includes production from regional supplies as well as production from receipts from other regions. 4/ The quantity of shipments to other regions is removed from regional supply. 5/ Less than 1/2 to 1 percent.

Table 101--Eggs: Aggregate long-distance transfer costs and relative importance of interregional movements, selected periods

Item	1955-59	1960-64	1965-69	1970-74	1975
<u>Cents per dozen, shell egg equivalent</u>					
Costs per unit for all long-distance movements: <u>1/</u>					
Shell eggs.....	1.30	1.25	1.25	1.24	1.24
Processed eggs.....	2.17	2.05	1.77	1.45	1.38
All eggs.....	1.37	1.32	1.30	1.26	1.26
<u>Percent</u>					
Costs of interregional movements as share of total long-distance transfer costs:					
Shell eggs.....	35.4	31.2	33.3	32.6	32.9
Processed eggs.....	87.2	83.3	71.6	50.9	44.7
All eggs.....	42.0	38.7	38.5	35.1	34.3
Volume of interregional movements as share of total long-distance movements:					
Shell eggs.....	18.1	16.3	18.8	18.9	10.3
Processed eggs.....	72.5	66.5	50.9	31.4	26.1
All eggs.....	22.4	20.9	22.1	20.4	20.0

1/ Reflects movements within and between regions. Costs based on midsixties levels.

Table 102--Turkeys: Aggregate long-distance transfer costs and relative importance of interregional movements, selected periods

Item	1955-59	1960-64	1965-69	1970-74	1975
<u>Cents per pound, ready-to-cook equivalent</u>					
Costs per unit for all long-distance movements: ^{1/}					
Ready-to-cook.....	1.10	1.13	1.08	1.04	1.05
Further-processed.....	1.25	.87	.79	.91	.88
All turkeys.....	1.12	1.09	1.02	.99	.96
<u>Percent</u>					
Costs of interregional movements as share of total long-distance transfer costs:					
Ready-to-cook.....	66.3	67.5	63.9	61.2	61.7
Further-processed.....	84.0	62.5	56.0	61.7	58.8
All turkeys.....	70.0	67.1	62.5	61.4	60.4
Volume of interregional movements as share of total long-distance movements:					
Ready-to-cook.....	36.5	38.3	34.1	32.0	32.4
Further-processed.....	66.7	46.1	41.3	41.0	39.2
All turkeys.....	38.6	39.3	35.8	35.5	35.9

^{1/} Reflects movements within and between regions. Costs based on midsixties levels.

Table 103—Young chickens: Aggregate long-distance transfer costs and relative importance of interregional movements, selected periods

Item	1955-59	1960-64	1965-69	1970-74	1975
<u>Cents per pound, ready-to-cook equivalent</u>					
Costs per unit for all long-distance movements: ^{1/}					
Ready-to-cook.....	0.90	0.97	1.01	1.03	1.03
Further-processed.....	.93	.86	.74	.71	.71
All young chickens.....	.90	.97	1.01	1.01	1.01
<u>Percent</u>					
Costs of interregional movements as share of total long-distance transfer costs:					
Ready-to-cook.....	69.4	75.5	78.5	79.1	78.4
Further-processed.....	73.3	75.6	71.1	69.3	68.0
All young chickens.....	69.6	75.5	78.2	78.7	77.8
Volume of interregional movements as share of total long-distance movements:					
Ready-to-cook.....	44.9	52.3	56.3	56.9	55.5
Further-processed.....	59.0	55.7	57.9	56.4	54.7
All young chickens.....	45.0	52.4	56.3	56.9	55.4

^{1/} Reflects movements within and between regions. Costs based on midsixties levels.

Table 104--Mature chickens: Aggregate long-distance transfer costs and relative importance of interregional movements, selected periods

Item	1955-59	1960-64	1965-69	1970-74	1975
<u>Cents per pound, ready-to-cook equivalent</u>					
Costs per unit for all long-distance movements: <u>1/</u>					
Ready-to-cook.....	0.60	0.68	0.90	1.38	0.97
Further-processed.....	.98	.81	.75	.76	.76
All mature chickens.....	.66	.72	.82	.94	.86
<u>Percent</u>					
Costs of interregional movements as share of total long-distance transfer costs:					
Ready-to-cook.....	28.9	38.6	56.1	67.5	60.3
Further-processed.....	82.1	66.8	64.3	63.0	64.4
All mature chickens.....	41.2	48.8	59.6	65.1	62.2
Volume of interregional movements as share of total long-distance movements:					
Ready-to-cook.....	13.8	17.0	22.2	18.8	23.1
Further-processed.....	65.1	46.5	46.6	45.8	45.8
All mature chickens.....	22.0	26.5	33.6	36.3	35.2

1/ Reflects movements within and between regions. Costs based on midsixties levels.

UNITED STATES DEPARTMENT OF AGRICULTURE
WASHINGTON, D.C. 20250

POSTAGE AND FEES PAID
U.S. DEPARTMENT OF
AGRICULTURE
AGR 101
THIRD CLASS



END