



**AgEcon** SEARCH  
RESEARCH IN AGRICULTURAL & APPLIED ECONOMICS

*The World's Largest Open Access Agricultural & Applied Economics Digital Library*

**This document is discoverable and free to researchers across the globe due to the work of AgEcon Search.**

**Help ensure our sustainability.**

Give to AgEcon Search

AgEcon Search

<http://ageconsearch.umn.edu>

[aesearch@umn.edu](mailto:aesearch@umn.edu)

*Papers downloaded from **AgEcon Search** may be used for non-commercial purposes and personal study only. No other use, including posting to another Internet site, is permitted without permission from the copyright owner (not AgEcon Search), or as allowed under the provisions of Fair Use, U.S. Copyright Act, Title 17 U.S.C.*

USDA (1976)

USDA STATISTICAL BULLETINS

UPDATE

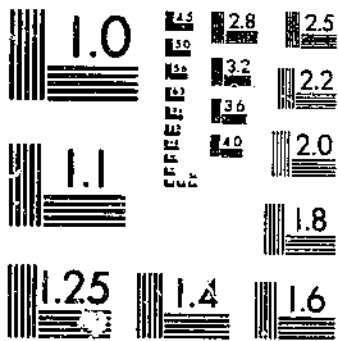
INDICES OF AGRICULTURAL PRODUCTION FOR THE FAR EAST AND

1961-65

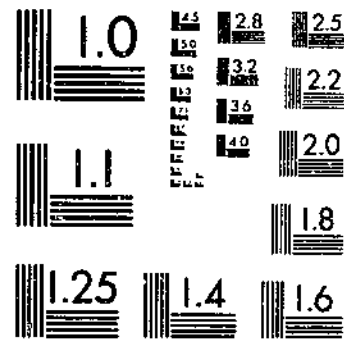
1966-75

1 OF 1

# START



MICROCOPY RESOLUTION TEST CHART  
NATIONAL BUREAU OF STANDARDS-1963-A



MICROCOPY RESOLUTION TEST CHART  
NATIONAL BUREAU OF STANDARDS-1963-A

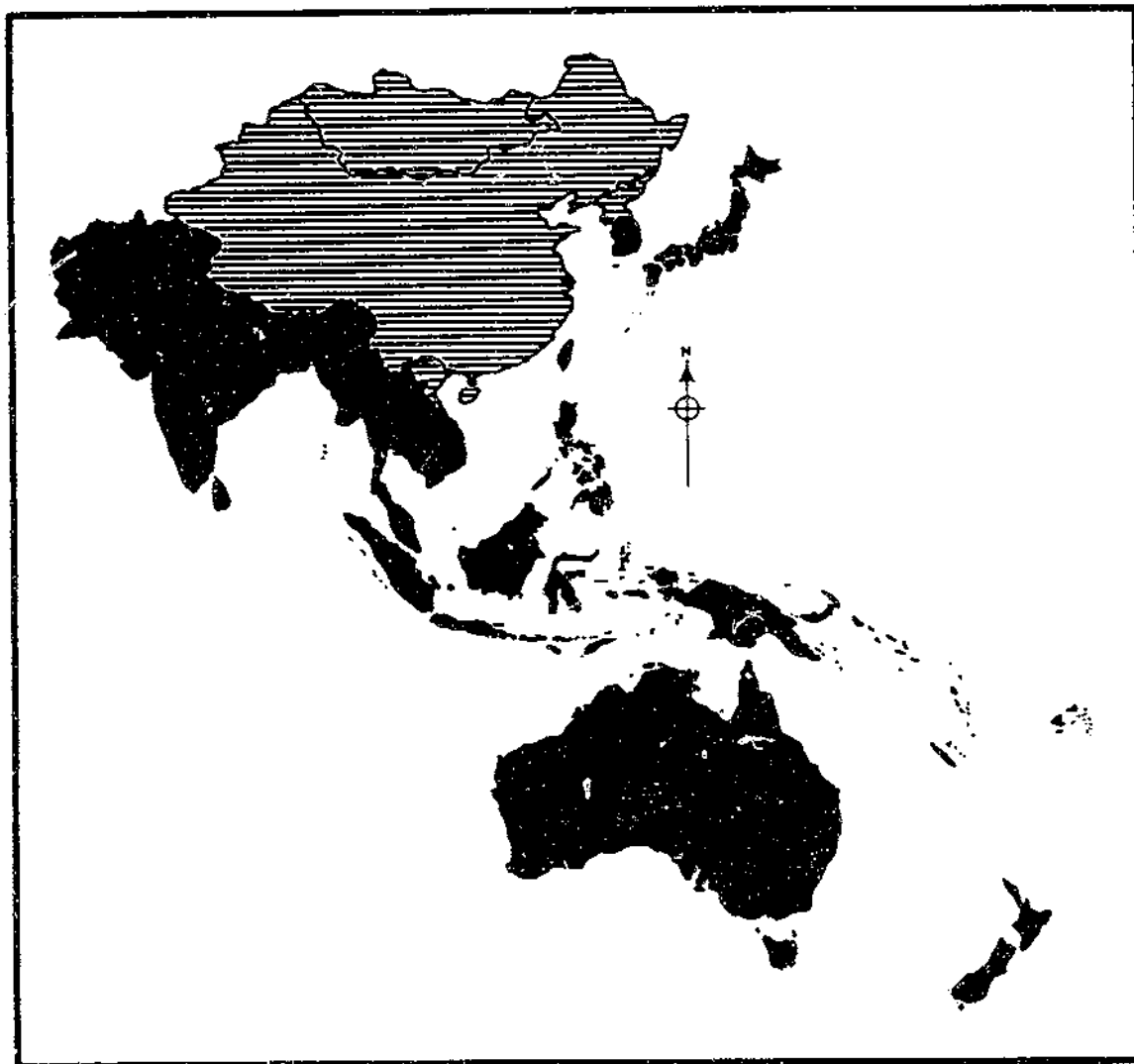
R  
630.4  
653-13  
# 555

57  
22

STATISTICAL BULLETIN NO.555

# Indices of Agricultural Production for the Far East and Oceania, Average 1961-65 and Annual 1966-75

LOS ANGELES PUBLIC LIBRARY  
DEC 2 1976



ECONOMIC RESEARCH SERVICE  
UNITED STATES DEPARTMENT OF AGRICULTURE

LIST OF TABLES

<u>Table</u>		<u>Page</u>
<u>Summary tables</u>		
1	South and East Asia and Oceania: Mid-year population by country, 1966-75 . . . . .	1
2	South and East Asia: Agricultural production for selected years. . . . .	2
3	Oceania: Agricultural production for selected years. . . . .	4
4	South and East Asia and Oceania: Indices of total agricultural production, by country, 1966-75 . . . . .	5
5	South and East Asia and Oceania: Indices of per capita agricultural production, by country, 1966-75. . . . .	6
6	South and East Asia and Oceania: Indices of total food production, by country, 1966-75 . . . . .	7
7	South and East Asia and Oceania: Indices of per capita food production, by country, 1966-75 . . . . .	8
8	South and East Asia and Oceania: Aggregates of total agricultural production, by country, average 1961-65, annual 1966-75 . . . . .	9
9	South and East Asia and Oceania: Aggregates of total food production, by country, average 1961-65, annual 1966-75 . . . . .	10
 <u>Country tables:</u> Production by commodity, value and indices of total agricultural and food products, average 1961-65, annual 1966-75		
10	Australia . . . . .	11
11	Bangladesh. . . . .	12
12	Burma . . . . .	13
13	Cambodia. . . . .	14
14	India . . . . .	15
15	Indonesia . . . . .	16
16	Japan . . . . .	17
17	Korea, Republic of. . . . .	18
18	Malaysia, West. . . . .	19
19	New Zealand . . . . .	20
20	Pakistan. . . . .	21
21	Philippines . . . . .	22
22	Sri Lanka . . . . .	23
23	Taiwan (Rep. of China). . . . .	24
24	Thailand. . . . .	25
25	Vietnam, South. . . . .	26

INDICES OF AGRICULTURAL PRODUCTION FOR THE FAR EAST AND OCEANIA,  
AVERAGE 1961-65 AND ANNUAL 1966-75

Asia Area  
Foreign Demand and Competition Division  
Economic Research Service

INTRODUCTION

Indices of agricultural production in foreign countries have been prepared since World War II as part of a continuing assessment of the current agricultural situation abroad. During and immediately after the war the effort was focused on Europe. Since the middle 1950's special attention has been given to the less developed countries because of an arrangement with the Agency for International Development whereby the Department of Agriculture prepares annual reports on the volume of agricultural production in most countries which are aid recipients.

The indices presented on the following pages are constructed from production series given in metric tons, extending from 1966 through 1975 inclusive. To the extent possible, commodities were combined on a calendar year basis. Calendar year production includes crops harvested during the spring, summer and autumn of 1966 (for example) and includes some crops such as rice, where the bulk of the crop is harvested in 1966, but continued into the early part of 1967. The base period is the average of the calendar years 1961-65.

The Economic Research Service has revised the indices of agricultural production which appear in this publication to reflect changes recently made in foreign cereal production for the last 25 years. These revisions were made in part to more closely agree with data published by foreign governments. The indices in this report thus supercede those published in the July 1975 Indices of Agricultural Production for the Far East and Oceania, Statistical Bulletin No. 545, and all previous editions.

Country Indices. Country indices are calculated with Laspeyres' base-weighted aggregate formula. Estimated base-period average prices received by farmers, expressed in U.S. dollars per metric ton are used for weighting. When farm prices were not available it was necessary to use wholesale or export prices, adjusting to make them comparable to farm level.

Sources of Data. These indices are based on statistics of widely differing reliability. For most commodities, forecasts of production in the current year are published by Foreign Agricultural Service. These forecasts cover the major producing countries and are subsequently revised by the governments concerned or by FAS. For other commodities (e.g. millet, sorghum, bananas, and cassava), FAS does not publish production statistics and ERS must rely on other sources, such as FAO and foreign governments, for historical data and on estimates, based largely on trends, for the current year. Statistics of livestock products are generally less reliable than figures for output of the principal commercial crops. All production figures are based on the latest information available to this office as of April 1976.

Regional Indices. Indices of agricultural production are computed for three regions: South Asia, East Asia, and Oceania and totals for each region are included in the tables. Several smaller countries are omitted from the calculations for lack of data. The formula for the regional indices is a weighted-aggregative type, the regional aggregates being the sums of the country aggregates. This method is biased in favor of countries with relatively comprehensive commodity coverage or relatively high price weights, but the bias is not serious enough to offset the advantage of great flexibility in the grouping of countries into various alternative regions and sub-regions.

Commodity Coverage. In the country indices all major cash crops and subsistence crops are included if current estimates of their production are obtainable. Hay and other crops grown for feeding on the farm are omitted. Outputs of milk, eggs, poultry meat, wool, honey, and fur skins, if significant, are included to the extent permitted by the quality of the data. Production of meat animals is represented for most countries by estimates of meat production.

Commodity Prices. Prices of agricultural commodities are generally reported in local currencies. Converting to U.S. dollars poses a problem. The currencies of many less developed countries are overvalued in varying degrees in the base-period years 1961-65. To convert with exchange rates at par value would give an unrealistic schedule of prices in U.S. dollars. Prices would be too high in proportion to the extent of currency depreciation. This would not affect the computation of an index for a given country, but it would cause difficulty when combining production of several

countries to obtain a regional index. Thus, conversion of prices to U.S. dollars, using free market exchange rates rather than official rates, offers a more standard basis for regional analysis. For this reason prices in countries included in this publication are converted to U.S. dollars using free market rates reported at Hong Kong. The exchange rates employed are gathered on a monthly basis and averaged over the 5-year 1961-65 base period.

Feed Deduction. For Australia and Japan, the indices of agricultural production regard agriculture as consisting essentially of two farms, one with no livestock which produces only crops and one with grazing land but no crops except hay and forage crops which produces livestock products from pasture and forage, and from feed purchases either from the domestic crop farm or from abroad. Aggregates are shown separately for crops and livestock, referring to the gross output of these two farms. When these two aggregates are combined, a deduction is made for livestock feed to avoid double counting of feed and the livestock products produced from it. This deduction is a fixed percentage of the livestock aggregates and represents the feed purchased by the national livestock farm.

The fixed percentage deduction for feed was derived by dividing the feed bill for the base period (1961-65) by the gross value of livestock output in the same years. The feed bill for the base period was calculated by applying to the grains, potatoes, and other crops fed, the prices received by farmers, with no markup for transportation or compounding. In the case of byproduct feeds, such as bran, oilcake, molasses, and brewers' grains, estimates of prices paid by farmers were used.

Food Production Indices. Index numbers of food production are computed for all countries and for regions. They are derived from the index numbers of agricultural production and differ only by the exclusion of inedible commodities and of coffee, tea, and spices.

#### COMMODITIES CLASSIFIED AS FOOD

<u>Cereals</u>	<u>Vegetable and Tubers</u>	<u>Fruits</u>
Rice, paddy	White potatoes	Bananas
Wheat	Sweet potatoes	Pineapple
Millet and sorghum	Cassava	Citrus
Barley	Onions	Grapes
Corn	Chillies	Apples
Other grains	Other vegetables	Pears
		Other fruit
<u>Oilseeds and Oils</u>	<u>Livestock Products</u>	<u>Pulses</u>
Copra	Milk	Chickpeas
Peanuts	Eggs	Pigeon peas
Cottonseed	Meat	Other pulses
Rape and mustard seed		
Soybeans	<u>Sugar</u>	<u>Other</u>
Sesame	Sugarcane	Cocoa
Palm oil	Sugar beets	
Palm kernel	Honey	

TABLE 1.—SOUTH AND EAST ASIA AND OCEANIA

## MID-YEAR POPULATION BY COUNTRY, 1966-75

COUNTRY AND REGION	1966	1967	1968	1969	1970	1971	1972	1973	1974	1975	Growth Rate <sup>1/</sup>
	----- THOUSANDS -----										
BANGLADESH	64,250	65,990	67,780	69,600	70,990	72,830	74,370	76,410	78,470	80,645	2.9
SRI LANKA	11,370	11,620	11,890	12,140	12,390	12,640	12,920	13,200	13,500	13,790	2.2
INDIA	517,230	528,740	540,500	552,520	564,810	577,370	590,220	603,210	616,480	630,040	2.2
PAKISTAN	53,550	55,070	56,650	58,270	59,970	61,720	63,530	65,400	67,330	69,290	2.9
SOUTH ASIA	646,400	661,420	676,820	692,530	708,160	724,560	741,040	758,220	775,780	793,765	2.3
BURMA	25,270	25,820	26,390	26,980	27,590	28,220	28,900	29,550	30,230	30,925	2.3
INDONESIA	108,250	110,850	113,660	116,650	119,720	123,020	126,390	129,850	133,360	136,960	2.6
JAPAN	99,790	100,820	101,950	103,160	104,330	105,600	106,960	108,140	109,440	110,750	1.2
KHMER REPUBLIC	6,370	6,540	6,720	6,910	7,110	7,320	7,550	7,770	8,000	8,230	2.9
KOREA, REPUBLIC OF	29,190	29,860	30,520	31,200	31,820	32,420	33,090	33,780	34,460	35,150	2.1
MALAYSIA, WEST	8,300	8,540	8,770	9,000	9,260	9,520	9,790	10,050	10,330	10,620	2.8
PHILIPPINES	33,430	34,530	35,680	36,870	38,110	39,400	40,730	42,060	43,410	44,710	3.3
TAIWAN	13,020	13,370	13,680	14,100	14,500	14,830	15,130	15,430	15,720	16,040	2.3
THAILAND	32,630	33,690	34,780	35,950	37,160	38,400	39,700	41,050	42,450	43,850	3.3
VIETNAM, SOUTH	16,540	16,970	17,410	17,870	18,330	18,810	19,300	19,800	20,320	20,850	2.6
EAST ASIA	372,790	380,990	389,560	398,690	407,930	417,540	427,540	437,480	447,720	458,085	2.3
EAST ASIA LESS JAPAN	273,000	280,170	287,610	295,530	303,600	311,940	320,580	329,340	338,280	347,335	2.7
SOUTH AND EAST ASIA	1,019,190	1,042,410	1,066,380	1,091,220	1,116,090	1,142,100	1,168,580	1,195,700	1,223,500	1,251,850	2.3
SO. AND E. ASIA LESS JAPAN	919,400	941,590	964,430	988,060	1,011,760	1,036,500	1,061,620	1,087,560	1,114,060	1,141,100	2.4
AUSTRALIA	11,600	11,800	12,010	12,260	12,510	12,760	12,960	13,130	13,300	13,520	1.7
NEW ZEALAND	2,677	2,727	2,751	2,777	2,810	2,850	2,900	2,960	3,020	3,096	1.6
OCEANIA	14,277	14,527	14,761	15,037	15,320	15,610	15,860	16,090	16,320	16,616	1.7

<sup>1/</sup> Compound Rate 1966-75



TABLE 2.—SOUTH AND EAST ASIA

## AGRICULTURAL PRODUCTION FOR SELECTED YEARS

COMMODITY	AVERAGE 1961-65	1966	1967	1968	1969	1970	1971	1972	1973	1974	1975
--1,000 METRIC TONS--											
WHEAT	17,057	15,810	17,184	24,442	26,522	28,360	31,224	33,956	33,050	30,102	32,431
RYE	37	41	27	25	27	22	17	16	12	11	18
RICE, PADDY	138,054	133,481	148,785	157,167	164,956	166,244	163,795	154,593	172,697	169,536	183,544
CORN	10,479	12,197	12,819	13,162	12,728	15,383	13,129	12,846	14,440	15,110	16,164
BARLEY	5,533	5,600	5,399	6,733	5,417	5,387	5,262	4,986	4,497	4,464	5,633
OATS	145	102	101	93	67	61	60	57	41	37	28
MILLET	8,321	8,109	9,503	7,748	9,633	12,666	9,621	7,883	12,019	7,484	10,149
SORGHUM	9,139	9,632	10,426	10,146	10,113	8,548	8,183	7,410	9,667	10,794	11,345
OTHER GRAINS	43	35	33	35	28	22	25	22	25	4	5
PULSES	770	703	767	795	785	774	817	1,007	968	973	953
CHICKPEAS	6,211	4,808	4,306	6,500	4,892	6,115	5,748	5,649	5,150	4,670	4,684
PIGEON PEA	1,668	1,733	1,130	1,741	1,816	1,842	1,883	1,683	1,928	1,408	1,818
OTHER PULSES	4,512	3,987	3,595	4,390	4,293	4,303	4,736	4,330	3,442	4,500	4,525
POTATOES	7,340	8,185	7,771	8,959	8,954	8,190	8,730	9,009	8,416	8,361	10,236
CASSAVA	17,309	18,038	18,107	20,129	20,207	20,492	19,979	20,650	25,034	26,114	27,459
SWEETPOTATOES	16,170	15,583	14,019	14,189	14,587	13,751	12,281	12,232	11,736	11,059	11,639
OTHER ROOT CROPS	158	156	152	151	160	143	137	127	125	125	125
SUGARCANE	154,869	194,089	163,607	165,398	195,060	213,093	209,254	188,363	208,521	235,366	243,721
SUGAR BEETS	1,323	1,639	1,984	2,110	2,075	2,324	2,197	2,760	2,951	1,879	2,170
TOBACCO	922	1,029	1,140	1,131	1,078	1,033	1,060	1,123	1,097	1,173	1,155
COTTON	1,459	1,504	1,717	1,646	1,624	1,545	2,059	1,873	1,824	1,938	1,891
JUTE	2,171	2,183	2,420	1,609	2,360	2,179	1,965	2,108	2,240	1,555	1,617
KENAF	303	661	421	316	373	390	370	432	570	400	300
COTTONSEED	2,914	3,024	3,399	3,299	3,248	3,090	4,116	3,727	3,716	3,927	3,781
FLAXSEED	445	343	272	449	339	480	464	542	437	480	560
SOYBEANS	957	893	949	962	897	997	963	1,009	1,067	1,257	1,269
PEANUTS, IN SHELL	6,211	5,636	6,947	5,910	6,387	7,506	7,538	5,388	7,350	6,421	8,459
RAPESEED	1,774	1,672	1,614	2,032	1,753	1,977	2,396	1,865	2,234	2,118	2,663
SESAME SEED	585	544	630	585	627	770	632	553	650	576	575
CASTOR BEANS	147	122	148	160	153	166	189	211	259	258	260
CITRONELLA OIL	3	3	2	1	1	1	1	1	1	1	1
VEGETABLES	14,836	17,294	17,800	19,353	19,534	18,784	19,678	19,530	19,094	19,489	19,661
CITRUS FRUIT	1,456	2,301	2,177	2,992	2,761	3,191	3,258	4,350	4,306	4,317	4,638
APPLES	1,186	1,233	1,315	1,335	1,304	1,233	1,226	1,220	1,254	1,147	1,239
PEARS	360	445	488	523	535	516	493	510	547	580	562
PEACHES	30	63	71	72	68	78	66	80	84	89	88
PERSIMMONS	400	441	528	485	478	373	326	338	379	326	348
BANANAS	1,377	1,714	1,842	1,806	1,888	1,751	1,871	1,994	1,800	2,071	2,250
PINEAPPLES	554	716	784	820	869	854	991	969	950	953	933
OTHER FRUIT	1,415	1,620	1,768	1,792	1,724	1,721	1,828	1,809	2,011	2,175	2,204

CONTINUED--

TABLE 2.--SOUTH AND EAST ASIA

## AGRICULTURAL PRODUCTION FOR SELECTED YEARS --CONTINUED

COMMODITY	AVERAGE 1961-65	1966	1967	1968	1969	1970	1971	1972	1973	1974	1975
	-----1,000 METRIC TONS-----										
SPICES	39	43	51	47	72	68	67	68	67	68	65
PEPPER	2	2	3	2	2	2	2	2	2	2	2
COFFEE	197	242	256	263	300	309	360	308	327	334	337
COCOA BEANS	6	7	7	6	6	6	6	5	6	6	6
TEA	796	840	838	816	842	866	881	910	938	937	957
RUBBER	1,917	2,146	2,236	2,354	2,589	2,624	2,725	2,786	3,152	3,052	2,972
ABACA	114	113	103	103	106	122	105	110	115	125	125
KAPOK	32	33	34	30	32	32	33	32	33	33	33
HEMP FIBER	6	6	6	6	7	7	5	5	4	4	4
PALM OIL	270	360	391	453	515	616	799	928	1,029	1,267	1,422
COPRA	3,303	3,383	3,082	3,241	3,172	3,294	3,520	3,960	3,383	3,068	3,916
PALM KERNELS	63	78	84	100	117	135	175	196	217	261	288
MEATS	614	768	829	860	913	944	971	1,025	1,094	1,063	1,087
BEEF AND VEAL	228	184	192	207	247	309	321	337	280	341	405
PORK	318	583	624	616	545	690	784	863	923	1,053	993
POULTRY MEAT	148	240	292	328	400	487	537	639	705	744	750
OTHER MEAT	23	14	15	16	13	11	10	7	6	5	5
MILK	2,729	3,421	3,579	4,030	4,523	4,776	4,833	4,952	4,927	4,886	4,975
EGGS	882	1,087	1,296	1,373	1,607	1,734	1,806	1,794	1,805	1,799	1,755

TABLE 3.--OCEANIA

## AGRICULTURAL PRODUCTION FOR SELECTED YEARS

COMMODITY	AVERAGE 1961-65	1966	1967	1968	1969	1970	1971	1972	1973	1974	1975
	-----1,000 METRIC TONS-----										
WHEAT	8,469	12,991	7,895	15,246	11,003	8,177	8,932	6,979	12,365	11,605	11,935
RYE	11	16	10	16	20	22	24	9	21	18	16
RICE, PADDY	136	182	214	221	256	247	299	242	309	409	386
CORN	192	144	208	217	201	250	313	330	241	236	348
BARLEY	1,076	1,511	969	1,865	1,932	2,524	3,324	2,062	2,655	2,794	2,734
OATS	1,206	1,987	747	1,755	1,298	1,671	1,335	785	1,152	922	1,165
MILLET	29	22	32	21	26	20	29	24	26	35	37
SORGHUM	221	195	319	288	294	547	1,297	1,228	1,018	1,061	850
PULSES	25	29	32	36	57	50	52	52	59	66	68
POTATOES	755	884	840	905	1,067	1,015	957	1,042	954	900	988
ONIONS	21	22	24	24	30	26	30	26	37	29	32
SUGARCANE	12,936	16,953	17,025	18,412	15,784	17,645	19,391	18,928	19,278	20,377	22,160
TOBACCO	16	15	16	14	18	20	20	19	17	17	19
COTTON	8	20	36	33	28	20	44	31	31	34	36
FLAXSEED	24	14	11	20	37	31	10	11	14	32	15
PEANUTS, IN SHELL	18	28	42	31	17	43	31	46	38	29	32
VEGETABLES	601	671	766	671	745	800	852	957	893	820	820
GRASS SEED	38	43	53	38	50	42	61	38	44	50	51
CITRUS FRUIT	241	277	267	315	291	384	363	424	390	415	400
APPLES	426	485	478	487	529	559	557	509	569	477	528
PEARS	139	170	150	170	124	209	208	202	184	169	156
APRICOTS	38	39	52	33	44	39	53	32	28	24	21
PEACHES	97	133	143	150	131	138	147	139	139	104	124
BANANAS	126	124	131	125	132	130	128	124	125	122	118
PINEAPPLES	83	115	130	121	120	141	154	126	115	116	118
GRAPES	600	591	695	639	553	758	549	832	598	612	715
BEEF AND VEAL	1,220	1,171	1,206	1,280	1,386	1,441	1,560	1,848	1,756	1,912	2,211
MUTTON AND LAMB	1,070	1,065	1,186	1,246	1,318	1,388	1,520	1,288	1,012	1,023	1,048
PORK	164	183	187	200	211	221	238	277	246	212	207
POULTRY MEAT	7	9	11	10	10	12	17	17	25	22	20
MILK	12,481	13,610	13,203	13,465	14,164	13,411	13,212	13,168	12,824	12,374	12,492
WOOL, GREASY BASIS	1,065	1,121	1,133	1,216	1,251	1,220	1,202	1,045	985	1,086	1,089
EGGS	189	211	224	229	233	247	239	228	223	224	225

TABLE 4.-- SOUTH AND EAST ASIA AND OCEANIA

## INDICES OF TOTAL AGRICULTURAL PRODUCTION, BY COUNTRY, 1966-75

(1961-65 = 100)

	1966	1967	1968	1969	1970	1971	1972	1973	1974	PRELIM. 1975
BANGLADESH	99	114	113	121	114	100	101	116	108	120
SRI LANKA	103	111	110	123	128	122	119	117	122	112
INDIA	95	104	111	117	124	127	119	129	122	136
PAKISTAN	113	124	139	149	158	156	155	159	163	155
SOUTH ASIA	97	106	113	119	126	126	119	130	123	135
BURMA	91	102	102	105	107	106	101	112	110	128
INDONESIA	110	104	120	121	130	132	129	142	150	158
JAPAN	106	115	119	115	109	102	110	110	110	115
CAMBODIA (KHMER REP.)	101	128	104	144	101	86	49	36	45	45
KOREA, REPUBLIC OF	122	114	115	131	129	129	136	138	142	157
MALAYSIA, WEST	115	118	133	149	156	169	170	195	204	190
PHILIPPINES	111	115	117	126	130	137	133	142	146	158
TAIWAN (REP. OF CHINA)	118	125	130	128	138	134	137	160	163	160
THAILAND	126	109	121	129	133	141	131	161	159	169
VIETNAM, SOUTH	86	91	84	94	103	113	113	121	129	132
EAST ASIA	110	113	119	120	120	118	121	128	130	136
EAST ASIA LESS JAPAN	114	112	118	127	131	135	133	147	151	158
SOUTH AND EAST ASIA	104	110	116	120	122	122	120	129	127	136
SO. AND E. ASIA LESS JAPAN	103	108	115	122	128	129	124	136	133	144
AUSTRALIA	115	105	125	121	120	126	113	117	121	125
NEW ZEALAND	109	113	119	120	117	118	120	118	114	119
OCEANIA	114	107	124	121	119	124	115	118	119	123

TABLE 5.-- SOUTH AND EAST ASIA AND OCEANIA

INDICES OF PER CAPITA AGRICULTURAL PRODUCTION, BY COUNTRY, 1966-75

(1961-65 = 100)

	1966	1967	1968	1969	1970	1971	1972	1973	1974	PRELIM. 1975
BANGLADESH	92	103	99	103	95	82	81	90	82	88
SRI LANKA	96	101	98	107	110	102	98	94	96	86
INDIA	89	95	99	103	106	107	98	104	96	105
PAKISTAN	104	111	121	126	130	125	120	120	119	110
SOUTH ASIA	91	97	101	104	107	105	97	104	96	103
BURMA	85	94	92	92	92	89	83	90	86	98
INDONESIA	103	95	107	105	110	108	103	110	113	116
JAPAN	103	110	113	108	101	94	100	98	97	101
CAMBODIA (KHMER REP.)	94	116	91	123	84	69	38	27	33	32
KOREA, REPUBLIC OF	113	103	102	114	110	108	111	111	111	121
MALAYSIA, WEST	105	105	115	126	128	135	132	147	150	136
PHILIPPINES	101	101	99	104	103	105	99	102	102	107
TAIWAN (REP. OF CHINA)	108	111	113	108	113	108	108	123	123	119
THAILAND	115	96	103	107	106	109	98	117	111	115
VIETNAM, SOUTH	80	82	74	81	86	92	90	94	97	97
EAST ASIA	103	104	107	105	103	99	99	102	101	104
EAST ASIA LESS JAPAN	105	101	104	108	109	109	105	113	113	115
SOUTH AND EAST ASIA	97	101	104	105	104	102	98	103	99	104
SO. AND E. ASIA LESS JAPAN	96	98	102	106	108	107	100	107	102	108
AUSTRALIA	109	97	114	108	105	108	96	98	100	101
NEW ZEALAND	103	105	110	109	105	105	105	101	96	97
OCEANIA	108	99	113	109	105	107	98	99	98	100

TABLE 6.— SOUTH AND EAST ASIA AND OCEANIA

## INDICES OF TOTAL FOOD PRODUCTION, BY COUNTRY, 1966-75

(1961-65 = 100)

	1966	1967	1968	1969	1970	1971	1972	1973	1974	PRELIM. 1975
BANGLADESH	98	114	115	121	114	102	100	118	112	125
SRI LANKA	95	109	123	125	140	127	122	115	138	106
INDIA	95	103	112	118	127	127	119	130	121	137
PAKISTAN	110	119	137	150	160	151	152	161	165	160
SOUTH ASIA	96	105	114	120	128	126	119	131	123	137
BURMA	91	102	102	105	107	106	101	112	112	130
INDONESIA	108	100	123	123	133	135	130	146	156	164
JAPAN	106	115	119	115	110	103	110	110	111	115
CAMBODIA (KHMER REP.)	99	128	101	149	109	87	44	28	41	40
KOREA, REPUBLIC OF	120	113	113	130	129	129	131	134	139	153
MALAYSIA, WEST	108	112	128	141	156	178	189	202	230	237
PHILIPPINES	111	116	118	127	131	138	134	143	146	159
TAIWAN (REP. OF CHINA)	119	126	130	128	138	135	138	161	165	162
THAILAND	121	106	120	128	132	140	126	155	159	171
VIETNAM, SOUTH	68	93	86	98	108	118	120	127	137	139
EAST ASIA	109	113	118	120	119	117	120	125	128	135
EAST ASIA LESS JAPAN	113	110	118	126	131	134	131	144	150	160
SOUTH AND EAST ASIA	103	109	116	120	123	121	119	128	126	136
SO. AND E. ASIA LESS JAPAN	102	107	115	122	129	129	123	135	133	145
AUSTRALIA	121	105	131	121	122	130	121	130	130	135
NEW ZEALAND	108	113	120	122	118	120	125	125	118	124
OCEANIA	117	107	128	122	120	127	123	129	126	132

TABLE 7.-- SOUTH AND EAST ASIA AND OCEANIA

INDICES OF PER CAPITA FOOD PRODUCTION, BY COUNTRY, 1966-75

(1961-65 = 100)

	1966	1967	1968	1969	1970	1971	1972	1973	1974	PRELIM. 1975
BANGLADESH	91	103	101	103	95	83	80	92	85	92
SRI LANKA	89	100	110	109	120	107	100	92	108	82
INDIA	89	94	100	103	109	107	98	104	95	105
PAKISTAN	101	107	119	127	132	121	118	121	121	114
SOUTH ASIA	90	96	102	105	109	105	97	104	96	104
BURMA	85	94	92	92	92	89	83	90	88	100
INDONESIA	101	91	109	106	112	111	104	113	118	121
JAPAN	103	110	113	108	102	94	100	98	98	101
CAMBODIA (KHMER REP.)	92	116	89	127	91	70	34	21	30	29
KOREA, REPUBLIC OF	111	102	100	113	110	108	107	107	109	118
MALAYSIA, WEST	99	100	111	119	128	142	147	153	169	169
PHILIPPINES	101	102	100	104	104	106	100	103	102	108
TAIWAN (REP. OF CHINA)	109	112	113	108	113	108	109	124	125	120
THAILAND	110	94	103	106	106	108	94	112	111	116
VIETNAM, SOUTH	81	84	76	84	90	96	95	98	103	102
EAST ASIA	102	104	106	105	102	98	98	100	100	103
EAST ASIA LESS JAPAN	104	99	104	108	109	108	103	110	112	116
SOUTH AND EAST ASIA	96	100	104	105	105	101	97	102	98	104
SO. AND E. ASIA LESS JAPAN	95	97	102	106	109	107	99	106	102	109
AUSTRALIA	114	97	119	108	107	112	102	108	107	109
NEW ZEALAND	102	105	110	111	106	107	109	107	99	101
OCEANIA	111	99	117	109	106	110	105	108	104	107

TABLE 8.-- SOUTH AND EAST ASIA AND OCEANIA

AGGREGATES OF TOTAL AGRICULTURAL PRODUCTION, BY COUNTRY, AVERAGE 1961-65, ANNUAL 1966-75

	AVERAGE 1961-65	1966	1967	1968	1969	1970	1971	1972	1973	1974	PRELIM. 1975
-----MILLION DOLLARS AT CONSTANT PRICES-----											
BANGLADESH	1,098.3	1,080.0	1,250.4	1,244.0	1,329.5	1,249.1	1,097.2	1,113.5	1,270.0	1,188.1	1,313.2
SRI LANKA	230.0	235.9	256.3	253.4	283.6	294.3	281.2	274.3	270.2	280.1	257.8
INDIA	8,453.2	8,046.3	8,779.3	9,356.3	9,849.0	10,519.6	10,718.8	10,041.6	10,929.9	10,313.3	11,532.8
PAKISTAN	721.4	815.8	893.1	1,003.0	1,078.0	1,143.0	1,128.2	1,119.7	1,149.9	1,176.8	1,115.6
<b>SOUTH ASIA</b>	<b>10,502.9</b>	<b>10,187.0</b>	<b>11,179.1</b>	<b>11,856.7</b>	<b>12,540.1</b>	<b>13,206.0</b>	<b>13,225.4</b>	<b>12,549.1</b>	<b>13,620.0</b>	<b>12,958.3</b>	<b>14,219.4</b>
BURMA	219.7	199.6	224.6	224.9	230.0	235.1	233.2	221.8	245.6	241.6	280.8
INDONESIA	1,361.2	1,493.8	1,413.1	1,633.4	1,653.6	1,765.1	1,802.0	1,752.2	1,933.5	2,046.9	2,155.5
JAPAN	6,256.9	6,643.4	7,184.4	7,431.7	7,169.4	6,835.4	6,412.3	6,873.0	6,870.1	6,896.4	7,195.4
CAMBODIA (KHMER REP.)	80.2	80.7	102.7	83.6	115.6	81.3	69.2	39.4	28.8	36.3	36.2
KOREA, REPUBLIC OF	1,141.5	1,394.1	1,306.0	1,313.5	1,493.6	1,477.6	1,475.9	1,550.7	1,576.8	1,622.1	1,789.6
MALAYSIA, WEST	508.6	582.8	598.3	674.9	759.7	793.8	857.1	866.6	992.5	1,040.0	969.8
PHILIPPINES	943.2	1,048.2	1,083.6	1,100.5	1,187.9	1,223.4	1,291.0	1,252.4	1,339.2	1,372.7	1,490.6
TAIWAN (REP. OF CHINA)	608.7	718.0	761.6	789.2	777.1	838.0	815.8	834.8	971.7	990.6	976.1
THAILAND	712.2	893.9	777.2	861.3	919.2	949.1	1,007.0	935.4	1,144.1	1,133.7	1,201.8
VIETNAM, SOUTH	235.3	203.0	213.6	197.2	220.3	242.9	265.4	266.1	285.6	303.9	309.5
<b>EAST ASIA</b>	<b>12,067.5</b>	<b>13,257.5</b>	<b>13,665.1</b>	<b>14,310.2</b>	<b>14,526.4</b>	<b>14,441.7</b>	<b>14,228.9</b>	<b>14,592.4</b>	<b>15,387.9</b>	<b>15,684.2</b>	<b>16,404.3</b>
<b>EAST ASIA LESS JAPAN</b>	<b>5,810.6</b>	<b>6,614.1</b>	<b>6,480.7</b>	<b>6,878.5</b>	<b>7,357.0</b>	<b>7,606.3</b>	<b>7,816.6</b>	<b>7,719.4</b>	<b>8,517.8</b>	<b>8,787.8</b>	<b>9,208.9</b>
<b>SOUTH AND EAST ASIA</b>	<b>22,570.4</b>	<b>23,444.5</b>	<b>24,844.2</b>	<b>26,166.9</b>	<b>27,066.5</b>	<b>27,647.7</b>	<b>27,454.3</b>	<b>27,141.5</b>	<b>29,007.9</b>	<b>28,642.5</b>	<b>30,623.7</b>
<b>SO. AND E. ASIA LESS JAPAN</b>	<b>16,313.5</b>	<b>16,801.1</b>	<b>17,659.8</b>	<b>18,735.2</b>	<b>19,897.1</b>	<b>20,812.3</b>	<b>21,042.0</b>	<b>20,268.5</b>	<b>22,137.8</b>	<b>21,746.1</b>	<b>23,428.3</b>
AUSTRALIA	2,703.5	3,110.4	2,846.0	3,390.7	3,273.4	3,231.6	3,394.6	3,059.9	3,176.3	3,273.5	3,379.1
NEW ZEALAND	995.7	1,088.7	1,128.0	1,181.2	1,194.8	1,166.0	1,177.3	1,198.6	1,172.4	1,131.5	1,182.9
<b>OCEANIA</b>	<b>3,699.2</b>	<b>4,199.1</b>	<b>3,974.0</b>	<b>4,571.9</b>	<b>4,468.2</b>	<b>4,397.6</b>	<b>4,571.9</b>	<b>4,258.5</b>	<b>4,348.7</b>	<b>4,405.0</b>	<b>4,562.0</b>



TABLE 9.-- SOUTH AND EAST ASIA AND OCEANIA

AGGREGATES OF TOTAL FOOD PRODUCTION, BY COUNTRY, AVERAGE 1961-65, ANNUAL 1966-75

	AVERAGE 1961-65	1966	1967	1968	1969	1970	1971	1972	1973	1974	PRELIM. 1975
-----MILLION DOLLARS AT CONSTANT PRICES-----											
BANGLADESH	964.0	947.7	1,098.7	1,111.5	1,171.0	1,094.5	985.0	967.7	1,134.7	1,084.1	1,202.2
SRI LANKA	88.7	84.3	96.9	109.1	110.6	123.9	113.0	108.1	102.0	122.1	93.7
INDIA	7,604.9	7,217.4	7,845.8	8,502.8	8,937.1	9,629.0	9,673.8	9,030.7	9,880.0	9,227.2	10,437.3
PAKISTAN	597.8	659.6	710.4	821.4	895.3	957.8	905.2	907.1	965.2	984.6	958.4
SOUTH ASIA	9,255.4	8,909.0	9,751.8	10,544.8	11,114.0	11,805.2	11,677.0	11,013.6	12,081.9	11,418.0	12,691.6
BURMA	207.6	189.5	212.3	212.2	217.8	222.8	220.2	208.8	232.0	231.7	269.5
INDONESIA	1,106.5	1,200.2	1,110.8	1,360.8	1,366.4	1,467.5	1,498.3	1,436.3	1,612.1	1,724.7	1,819.9
JAPAN	6,004.3	6,353.9	6,881.4	7,145.6	6,898.7	6,589.1	6,165.2	6,629.3	6,610.0	6,645.3	6,924.6
CAMBODIA (KHMER REP.)	68.0	67.1	87.3	68.9	101.2	74.1	58.9	29.7	19.1	28.2	27.3
KOREA, REPUBLIC OF	1,099.0	1,321.4	1,239.3	1,243.0	1,432.9	1,420.1	1,412.5	1,438.0	1,468.0	1,528.9	1,686.5
MALAYSIA, WEST	172.3	186.8	192.6	221.3	243.3	269.2	306.0	324.8	348.9	397.0	407.5
PHILIPPINES	896.2	998.7	1,036.3	1,053.2	1,142.1	1,172.4	1,239.8	1,203.5	1,284.0	1,312.1	1,426.9
TAIWAN (REP. OF CHINA)	590.4	699.8	741.3	767.3	754.1	815.2	796.5	816.6	951.3	972.6	956.9
THAILAND	583.3	705.6	621.1	699.1	745.3	770.8	815.8	733.1	902.3	925.3	996.6
VIETNAM, SOUTH	208.9	183.0	194.9	179.8	204.3	225.0	246.8	250.3	264.9	285.5	291.1
EAST ASIA	10,936.5	11,906.0	12,317.3	12,951.2	13,106.1	13,026.2	12,760.0	13,070.4	13,692.6	14,051.3	14,806.8
EAST ASIA LESS JAPAN	4,932.2	5,552.1	5,435.9	5,805.6	6,207.4	6,437.1	6,594.8	6,441.1	7,082.6	7,406.0	7,882.2
SOUTH AND EAST ASIA	20,191.9	20,815.0	22,069.1	23,496.0	24,220.1	24,831.4	24,437.0	24,084.0	25,774.5	25,469.3	27,498.4
SO. AND E. ASIA LESS JAPAN	14,187.6	14,461.1	15,187.7	16,350.4	17,321.4	18,242.3	18,271.8	17,454.7	19,164.5	18,824.0	20,573.8
AUSTRALIA	1,784.9	2,163.1	1,876.7	2,341.7	2,167.1	2,169.3	2,322.6	2,166.6	2,325.2	2,314.0	2,416.1
NEW ZEALAND	722.6	782.5	813.3	867.2	883.6	851.8	867.5	905.1	900.3	849.6	897.3
OCEANIA	2,507.5	2,945.6	2,690.0	3,208.9	3,050.7	3,021.1	3,190.1	3,071.7	3,225.5	3,163.6	3,313.4

TABLE 10.--AUSTRALIA

PRODUCTION BY COMMODITY, VALUE AND INDICES OF TOTAL AGRICULTURAL AND FOOD PRODUCTION, AVERAGE 1961-65, ANNUAL 1966-75

COMMODITY	PRICE	AVERAGE	1966	1967	1968	1969	1970	1971	1972	1973	1974	1975
	WEIGHT	1961-65										
	DOLLARS		-1,000 METRIC TONS-									
WHEAT	51	8,222	12,699	7,547	14,804	10,546	7,890	8,606	6,590	11,987	11,357	11,732
RYE	43	11	16	10	16	20	22	24	9	21	18	16
RICE, PADDY	58	136	192	214	221	256	247	299	242	309	409	386
CORN	52	176	125	190	181	150	191	212	214	139	106	139
BARLEY	43	978	1,397	835	1,646	1,699	2,350	3,065	1,727	2,398	2,515	2,400
OATS	38	1,172	1,943	719	1,710	1,246	1,613	1,275	736	1,107	874	1,100
MILLET	33	29	22	32	21	26	20	29	24	26	35	37
SORGHUM	33	221	195	319	288	294	547	1,297	1,228	1,018	1,061	850
POTATOES	58	551	649	653	669	811	762	747	822	693	637	725
SUGARCANE	11	12,936	16,953	17,025	18,412	15,784	17,645	19,391	18,928	19,278	20,377	22,160
TOBACCO	2,513	13	12	13	11	15	17	17	16	14	14	16
COTTON	744	8	20	36	33	28	20	44	31	31	34	36
FLAXSEED	142	24	14	11	20	37	31	10	11	14	32	15
PEANUTS, IN SHELL	187	18	28	42	31	17	43	31	46	38	29	32
VEGETABLES	168	601	671	706	671	745	800	852	957	893	820	820
GRASS SEED	517	14	18	25	16	26	24	27	15	20	22	23
CITRUS FRUIT	77	241	277	267	315	291	384	363	424	390	415	400
APPLES	93	340	377	370	374	422	425	443	360	425	330	370
PEARS	100	124	153	134	150	107	190	188	184	163	153	140
APRICOTS	125	38	39	52	33	44	39	53	32	28	24	21
PEACHES	111	81	112	121	128	108	112	123	117	114	80	100
BANANAS	106	126	124	131	125	132	130	128	124	125	122	119
PINEAPPLES	56	83	115	130	121	120	141	154	126	115	116	118
GRAPES	66	600	591	695	639	553	758	549	832	598	612	715
BEEF AND VEAL	238	941	879	904	935	1,010	1,048	1,167	1,438	1,310	1,507	1,720
MUTTON AND LAMB	265	599	596	665	680	755	825	956	713	456	525	551
PORK	579	122	142	150	162	174	182	194	236	211	178	175
MILK	54	6,962	7,499	6,994	7,153	7,732	7,450	7,275	6,952	6,780	6,543	6,420
WOOL, GREASY BASIS	1,115	780	799	803	884	923	886	880	736	700	792	791
EGGS	582	148	162	172	175	185	196	185	176	170	166	167
AGGREGATES OF PRODUCTION	-----MILLION DOLLARS AT CONSTANT PRICES-----											
CROPS		992.7	1,352.3	1,073.6	1,501.7	1,265.5	1,246.9	1,355.3	1,179.8	1,458.2	1,417.0	1,472.8
LIVESTOCK		1,785.3	1,839.4	1,851.4	1,970.4	2,095.5	2,077.7	2,125.1	1,966.1	1,800.3	1,933.9	1,982.6
LIVESTOCK FEED DEDUCTION	.14	-74.5	-81.3	-79.0	-81.4	-87.6	-87.0	-85.8	-86.0	-82.2	-77.4	-76.3
TOTAL AGRICULTURE		2,703.5	3,110.4	2,846.0	3,390.7	3,273.4	3,231.6	3,394.6	3,059.9	3,176.3	3,273.5	3,379.1
TOTAL FOOD		1,784.9	2,163.1	1,876.7	2,341.7	2,167.1	2,169.3	2,322.6	2,166.6	2,325.2	2,314.0	2,416.1
INDICES OF PRODUCTION	(1961-65 = 100)											
CROPS		100	136	108	151	127	125	137	119	147	143	148
TOTAL AGRICULTURE		100	115	105	125	121	120	126	113	117	121	125
TOTAL FOOD		100	121	105	131	121	122	130	121	130	130	135
PER CAPITA AGRICULTURE		100	109	97	114	108	105	108	96	98	100	101
PER CAPITA FOOD		100	114	97	119	108	107	112	102	108	107	109
INDEX OF POPULATION	1961-65 POPULATION = 10,959,000											
1961-65 POPULATION = 10,959,000		100.0	105.8	107.7	109.6	111.9	114.2	116.4	118.3	119.8	121.4	123.4

TABLE 11.--BANGLADFSH

PRODUCTION BY COMMODITY, VALUE AND INDICES OF TOTAL AGRICULTURAL AND FOOD PRODUCTION, AVERAGE 1961-65, ANNUAL 1966-75

COMMODITY	PRICE	AVERAGE	1966	1967	1968	1969	1970	1971	1972	1973	1974	1975
	WEIGHT	1961-65										
	DOLLARS		-1,000 METRIC TONS-									
WHEAT	49	38	36	59	59	93	105	112	90	109	115	200
RICE, PADDY	60	15,050	14,377	16,774	17,033	18,026	16,733	14,883	14,910	17,599	16,680	18,468
CORN	42	4	3	3	3	3	3	2	2	2	3	3
BARLEY	37	16	12	15	16	18	20	26	16	15	16	16
CHICKPEAS	47	36	44	49	48	55	58	55	58	60	62	70
SUGARCANE	9	5,022	7,670	8,200	7,710	7,414	7,537	7,600	5,686	6,340	6,800	7,250
TOBACCO	347	28	27	38	40	41	42	34	39	41	40	42
COTTON	259	3	2	3	2	2	2	2	2	2	2	2
JUTE	95	1,119	1,184	1,243	1,045	1,302	1,248	907	1,175	1,080	720	792
COTTONSEED	52	6	5	6	5	4	4	4	4	4	4	4
FLAXSEED	71	10	9	9	7	7	8	8	8	8	4	5
RAPESEED	82	98	97	104	122	130	128	128	130	120	120	140
SESAME SEED	126	25	27	30	31	30	27	29	25	23	23	26
TEA	654	26	28	29	28	30	31	20	30	27	32	31
AGGREGATES OF PRODUCTION			-MILLION DOLLARS AT CONSTANT PRICES-									
CROPS		1,098.3	1,089.0	1,250.4	1,244.0	1,329.5	1,249.1	1,097.2	1,113.5	1,270.0	1,188.1	1,313.2
LIVESTOCK		0.0	0.0	0.0	0.0	0.0	0.0	0.0	0.0	0.0	0.0	0.0
TOTAL AGRICULTURE		1,098.3	1,089.0	1,250.4	1,244.0	1,329.5	1,249.1	1,097.2	1,113.5	1,270.0	1,188.1	1,313.2
TOTAL FOOD		964.0	947.7	1,098.7	1,111.5	1,171.0	1,094.5	985.0	967.7	1,134.7	1,084.1	1,202.2
INDICES OF PRODUCTION			(1961-65 = 100)									
CROPS		100	99	114	113	121	114	100	101	116	108	120
TOTAL AGRICULTURE		100	99	114	113	121	114	100	101	116	108	120
TOTAL FOOD		100	98	114	115	121	114	102	100	118	112	125
PER CAPITA AGRICULTURE		100	92	103	99	103	95	82	81	90	82	88
PER CAPITA FOOD		100	91	103	101	103	95	83	80	92	85	92
INDEX OF POPULATION												
1961-65 POPULATION= 59,452,000		100.0	108.1	111.0	114.0	117.1	119.4	122.5	125.1	128.5	132.0	135.6

TABLE 12.--BURMA

PRODUCTION BY COMMODITY, VALUE AND INDICES OF TOTAL AGRICULTURAL AND FOOD PRODUCTION, AVERAGE 1961-65, ANNUAL 1966-75

COMMODITY	PRICE	AVERAGE	1966	1967	1968	1969	1970	1971	1972	1973	1974	1975
	WEIGHT	1961-65										
	DOLLARS		--1,000 METRIC TONS--									
WHEAT	50	36	96	67	51	26	33	40	39	40	40	40
RICE, PADDY	13	7,769	6,636	7,769	8,023	7,985	8,162	8,175	7,360	8,602	8,582	9,144
CORN	12	59	54	65	62	68	67	73	59	32	59	58
MILLET	9	51	40	26	43	53	52	49	48	45	50	50
PULSES	30	308	278	263	268	320	273	290	345	360	375	380
POTATOES	24	39	21	28	42	36	41	41	50	55	60	60
SUGARCANE	3	1,104	1,448	1,582	1,446	1,308	1,312	1,437	1,400	1,450	1,000	11,000
TOBACCO	121	41	35	43	53	46	41	44	44	45	30	35
COTTON	139	19	14	16	11	11	14	16	14	16	10	12
JUTE	82	10	13	22	21	22	28	27	30	33	20	25
COTTONSEED	10	35	28	33	21	23	28	33	28	32	20	25
PEANUTS, IN SHELL	47	359	277	371	398	444	529	450	390	500	500	500
SESAME SEED	68	73	57	108	83	102	132	91	90	90	90	90
VEGETABLES	32	936	986	1,015	957	1,090	974	1,044	1,050	1,075	1,075	1,075
BANANAS	28	173	213	209	211	218	176	187	200	225	240	245
OTHER FRUIT	64	517	461	472	467	437	473	473	473	473	473	475
TEA	56	5	9	9	9	9	6	9	9	9	9	9
RUBBER	215	16	11	12	12	13	13	13	13	13	13	13
AGGREGATES OF PRODUCTION			--MILLION DOLLARS AT CONSTANT PRICES--									
CROPS		219.7	199.6	224.6	224.9	230.0	235.1	233.2	221.8	245.6	241.6	280.8
LIVESTOCK		0.0	0.0	0.0	0.0	0.0	0.0	0.0	0.0	0.0	0.0	0.0
TOTAL AGRICULTURE		219.7	199.6	224.6	224.9	230.0	235.1	233.2	221.8	245.6	241.6	280.8
TOTAL FOOD		207.6	189.5	212.3	212.2	217.8	222.8	220.2	208.8	232.0	231.7	269.5
INDICES OF PRODUCTION	(1961-65 = 100)											
CROPS		100	91	102	102	105	107	106	101	112	110	128
TOTAL AGRICULTURE		100	91	102	102	105	107	106	101	112	110	128
TOTAL FOOD		100	91	102	102	105	107	106	101	112	112	130
PER CAPITA AGRICULTURE		100	85	94	92	92	92	89	83	90	86	98
PER CAPITA FOOD		100	85	94	92	92	92	89	83	90	88	100
INDEX OF POPULATION												
1961-65 POPULATION= 23,692,000		100.0	106.7	109.0	111.4	113.9	116.5	119.1	122.0	124.7	127.6	130.5

TABLE 13--CAMBODIA

PRODUCTION BY COMMODITY, VALUE AND INDICES OF TOTAL AGRICULTURAL AND FOOD PRODUCTION, AVERAGE 1961-65, ANNUAL 1966-75

COMMODITY	PRICE WEIGHT	AVERAGE 1961-65	-1,000 METRIC TONS-									
			1966	1967	1968	1969	1970	1971	1972	1973	1974	1975
RICE, PADDY	25	2,459	2,457	3,251	2,503	3,814	2,732	2,138	1,050	635	1,000	900
CORN	25	170	136	150	154	118	137	122	80	73	72	120
TOBACCO	318	8	10	12	14	16	10	9	9	9	9	9
COTTON	85	4	1	1	2	2	0	0	1	1	1	1
COTTONSEED	21	7	2	2	4	4	0	0	2	2	2	2
SOYBEANS	98	9	7	8	4	9	9	9	2	2	2	3
PEANUTS, IN SHELL	57	15	21	21	26	22	17	15	14	14	14	18
SESAME SEED	43	10	10	5	9	11	11	11	10	10	10	12
PEPPER	738	2	2	3	2	2	2	2	2	2	2	2
RUBBER	155	45	51	54	49	46	13	35	30	30	20	25
KAPOK	126	9	7	7	7	4	4	4	4	4	4	4
AGGREGATES OF PRODUCTION			-MILLION DOLLARS AT CONSTANT PRICES-									
CROPS		80.2	80.7	102.7	83.6	115.6	81.3	69.2	39.4	28.8	36.3	36.2
LIVESTOCK		0.0	0.0	0.0	0.0	0.0	0.0	0.0	0.0	0.0	0.0	0.0
TOTAL AGRICULTURE		80.2	80.7	102.7	83.6	115.6	81.3	69.2	39.4	28.8	36.3	36.2
TOTAL FOOD		68.0	67.1	87.3	68.9	101.2	74.1	58.9	29.7	19.1	28.2	27.3
INDICES OF PRODUCTION			(1961-65 = 100)									
CROPS		100	101	128	104	144	101	86	49	36	45	45
TOTAL AGRICULTURE		100	101	128	104	144	101	86	49	36	45	45
TOTAL FOOD		100	99	128	101	149	109	87	44	28	41	40
PER CAPITA AGRICULTURE		100	94	116	91	123	84	69	38	27	33	32
PER CAPITA FOOD		100	92	116	89	127	91	70	34	21	30	29
INDEX OF POPULATION												
1961-65 POPULATION=	5,908,000	100.0	107.8	110.7	113.7	117.0	120.3	123.9	127.8	131.5	135.4	139.3

TABLE 14.--INDIA

PRODUCTION BY COMMODITY, VALUE AND INDICES OF TOTAL AGRICULTURAL AND FOOD PRODUCTION, AVERAGE 1961-65, ANNUAL 1966-75

COMMODITY	PRICE WEIGHT	AVERAGE 1961-65, ANNUAL 1966-75										
		AVERAGE 1961-65	1966	1967	1968	1969	1970	1971	1972	1973	1974	1975
DOLLARS		-1,000 METRIC TONS-										
WHEAT	66	11,192	10,394	11,393	16,540	18,651	20,093	23,832	26,410	24,735	21,778	24,235
RICE, PADDY	53	52,864	45,703	56,474	59,701	60,706	63,401	64,667	58,926	66,143	60,438	69,069
CORN	55	4,592	4,894	6,270	5,701	5,674	7,486	5,101	6,388	5,804	5,723	5,800
BARLEY	52	2,601	2,382	2,348	3,504	2,424	2,716	2,784	2,577	2,379	2,371	3,150
MILLET	61	7,729	7,587	8,976	7,254	9,176	12,172	9,196	7,404	11,557	7,085	9,700
SORGHUM	61	8,845	9,224	10,048	9,804	9,721	8,105	7,722	6,968	9,097	10,221	10,700
CHICKPEAS	59	5,535	4,224	3,622	5,971	4,309	5,546	5,199	5,081	4,537	4,099	4,055
PIGEON PEA	68	1,668	1,733	1,130	1,741	1,816	1,842	1,883	1,683	1,928	1,408	1,818
OTHER PULSES	77	4,512	3,987	3,595	4,390	4,293	4,303	4,736	4,330	3,442	4,500	4,525
POTATOES	41	3,023	4,078	3,522	4,232	4,726	3,913	4,807	4,826	4,451	4,861	6,171
CASSAVA	20	2,295	3,467	3,817	4,644	4,636	5,214	5,130	5,939	6,371	6,358	6,630
SWEETPOTATOES	39	984	991	1,297	1,588	1,764	1,444	1,750	2,267	2,082	2,000	2,300
SUGARCANE	8	106,403	123,990	92,826	95,500	124,676	135,024	126,368	113,570	124,867	140,804	140,196
TOBACCO	436	338	293	353	369	361	337	362	419	372	462	395
COTTON	281	1,032	997	1,149	1,062	1,052	972	1,296	1,129	1,161	1,251	1,332
JUTE	130	1,022	964	1,138	528	1,018	889	1,023	896	1,120	808	792
COTTONSEED	51	2,064	1,994	2,298	2,124	2,104	1,944	2,592	2,241	2,320	2,502	2,664
FLAXSEED	89	432	331	260	438	329	469	453	530	428	471	550
PEANUTS, IN SHELL	99	5,048	4,411	5,731	4,631	5,130	6,111	6,181	4,092	5,932	4,991	7,000
RAPESEED	114	1,277	1,298	1,228	1,568	1,347	1,564	1,976	1,433	1,808	1,704	2,211
SESAME SEED	152	444	416	445	422	448	562	450	385	484	408	400
CASTOR BEANS	83	107	80	110	121	116	123	136	175	229	216	225
COFFEE	555	43	64	78	57	74	69	115	74	97	92	98
TEA	532	357	376	385	402	396	422	433	456	472	491	492
RUBBER	438	38	55	65	71	82	92	101	112	123	128	142
AGGREGATES OF PRODUCTION		--BILLION DOLLARS AT CONSTANT PRICES--										
CROPS		8,453.2	8,046.3	8,779.3	9,356.3	9,849.0	10,519.6	10,718.8	10,041.6	10,929.9	10,313.3	11,532.8
LIVESTOCK		0.0	0.0	0.0	0.0	0.0	0.0	0.0	0.0	0.0	0.0	0.0
TOTAL AGRICULTURE		8,453.2	8,046.3	8,779.3	9,356.3	9,849.0	10,519.6	10,718.8	10,041.6	10,929.9	10,313.3	11,532.8
TOTAL FOOD		7,604.9	7,217.4	7,845.8	8,502.8	8,937.1	9,629.0	9,673.8	9,030.7	9,880.0	9,227.2	10,437.3
INDICES OF PRODUCTION		(1961-65 = 100)										
CROPS		100	95	104	111	117	124	127	119	129	122	136
TOTAL AGRICULTURE		100	95	104	111	117	124	127	119	129	122	136
TOTAL FOOD		100	95	103	112	118	127	127	119	130	121	137
PER CAPITA AGRICULTURE		100	89	95	99	103	106	107	98	104	96	105
PER CAPITA FOOD		100	89	94	100	103	109	107	98	104	95	105
INDEX OF POPULATION		1961-65 POPULATION=484,432,000										
1961-65 POPULATION=484,432,000		100.0	106.8	109.1	111.6	114.1	116.6	119.2	121.8	124.5	127.3	130.1

TABLE 15.--INDONESIA

PRODUCTION BY COMMODITY, VALUE AND INDICES OF TOTAL AGRICULTURAL AND FOOD PRODUCTION, AVERAGE 1961-65, ANNUAL 1966-75

COMMODITY	PRICE	AVERAGE	1966	1967	1968	1969	1970	1971	1972	1973	1974	1975
	WEIGHT	1961-65										
	DOLLARS		-----1,000 METRIC TONS-----									
RICE, PADDY	52	12,471	13,734	13,304	17,156	18,013	19,323	20,182	19,387	21,481	22,724	23,900
CORN	38	2,804	3,717	2,369	3,166	2,293	2,825	2,607	2,254	2,912	3,239	3,500
CASSAVA	12	11,832	11,232	10,747	11,356	11,034	10,451	10,042	9,450	12,300	14,000	15,000
SWEETPOTATOES	13	3,165	2,476	2,144	2,364	3,021	3,029	2,153	2,147	2,150	2,300	2,400
SUGARCANE	5	7,477	9,170	8,880	9,190	8,260	9,785	10,448	8,820	10,500	11,000	11,500
TOBACCO	862	74	98	101	69	69	72	78	77	79	79	80
SOYBEANS	73	395	417	416	420	389	488	475	518	529	564	575
PEANUTS, IN SHELL	76	380	400	365	414	382	419	424	412	434	437	450
COFFEE	224	111	130	129	157	177	185	191	174	174	180	175
TEA	263	84	92	78	73	63	67	71	69	79	77	80
RUBBER	215	663	716	762	730	788	811	804	885	890	890	950
KAPOK	74	23	26	27	23	28	28	29	28	29	29	29
PALM OIL	122	151	174	174	188	189	214	246	269	289	325	350
COPRA	42	1,251	1,129	1,094	1,131	1,097	1,064	1,139	1,215	1,070	1,150	1,225
PALM KERNELS	71	33	35	35	40	42	48	56	59	64	66	70
AGGREGATES OF PRODUCTION			-----MILLION DOLLARS AT CONSTANT PRICES-----									
CROPS		1,361.2	1,493.8	1,413.1	1,633.4	1,653.6	1,765.1	1,802.0	1,752.2	1,933.5	2,046.9	2,155.5
LIVESTOCK		0.0	0.0	0.0	0.0	0.0	0.0	0.0	0.0	0.0	0.0	0.0
TOTAL AGRICULTURE		1,361.2	1,493.8	1,413.1	1,633.4	1,653.6	1,765.1	1,802.0	1,752.2	1,933.5	2,046.9	2,155.5
TOTAL FOOD		1,106.5	1,200.2	1,110.8	1,360.8	1,366.4	1,467.5	1,498.3	1,436.3	1,612.1	1,724.7	1,819.9
INDICES OF PRODUCTION			(1961-65 = 100)									
CROPS		100	110	104	120	121	130	132	129	142	150	158
TOTAL AGRICULTURE		100	110	104	120	121	130	132	129	142	150	158
TOTAL FOOD		100	108	100	123	123	133	135	130	146	156	164
PER CAPITA AGRICULTURE		100	103	95	107	105	110	108	103	110	113	116
PER CAPITA FOOD		100	101	91	109	106	112	111	104	113	118	121
INDEX OF POPULATION			1961-65 POPULATION=100,918,000									
		100.0	107.3	109.8	112.6	115.6	118.6	121.9	125.2	128.7	132.1	135.7

TABLE 16.--JAPAN

PRODUCTION BY COMMODITY, VALUE AND INDICES OF TOTAL AGRICULTURAL AND FOOD PRODUCTION, AVERAGE 1961-65, ANNUAL 1966-75

COMMODITY	PRICE	AVERAGE	1966	1967	1968	1969	1970	1971	1972	1973	1974	1975
	WEIGHT	1961-65										
	DOLLARS		--1,000 METRIC TONS--									
WHEAT	102	1,332	1,024	997	1,012	758	474	440	284	202	232	241
RICE, PADDY	202	15,808	15,931	18,066	18,061	17,504	15,861	13,609	14,861	15,180	15,365	16,456
CORN	75	97	63	61	51	40	33	33	24	19	14	14
BARLEY	100	1,379	1,105	1,032	1,021	812	573	503	325	216	233	221
OATS	108	145	102	101	93	67	61	60	57	41	37	28
MILLET	134	51	28	22	20	14	11	10	12	10	0	0
SORGHUM	134	1	0	0	0	0	0	0	0	0	0	0
OTHER GRAINS	108	36	28	28	22	22	17	20	18	18	0	0
PULSES	196	289	206	291	247	218	254	186	265	235	213	166
POTATOES	40	3,781	3,383	3,638	4,056	3,575	3,611	3,271	3,533	3,413	2,942	3,300
SWEET POTATOES	35	6,008	4,810	4,031	3,594	2,855	2,564	2,041	1,987	1,550	1,435	1,418
SUGARCANE	13	2,149	2,532	2,814	2,829	2,639	2,584	1,895	2,048	2,037	1,817	2,015
SUGAR BEETS	17	1,323	1,639	1,984	2,110	2,075	2,324	2,197	2,760	2,951	1,879	2,170
TOBACCO	1,061	166	198	209	193	174	150	149	144	154	151	165
SOYBEANS	149	302	199	190	168	136	126	122	127	118	133	126
PEANUTS, IN SHELL	179	139	139	136	122	126	124	111	115	97	91	71
RAPESEED	140	178	95	79	68	48	30	23	16	13	9	7
VEGETABLES	82	11,483	13,420	13,649	14,821	14,320	13,319	13,884	13,765	13,226	13,040	12,835
CITRUS FRUIT	178	1,310	2,089	1,944	2,738	2,516	2,911	2,942	3,994	3,909	3,891	4,230
APPLES	91	1,066	1,059	1,125	1,136	1,085	1,021	1,005	959	963	850	902
PEARS	111	330	404	447	475	489	464	445	460	495	523	500
PERSIMMONS	132	382	419	504	450	444	343	303	307	347	284	310
OTHER FRUIT	190	518	650	729	736	680	680	655	641	723	740	766
TEA	957	80	83	85	85	90	91	93	95	101	95	100
BEEF AND VEAL	940	185	155	158	176	216	261	275	295	220	292	340
PORK	690	303	565	603	590	508	648	750	770	820	958	905
POULTRY MEAT	503	148	240	292	328	400	487	537	639	705	744	750
OTHER MEAT	596	23	14	15	16	13	11	10	7	6	5	5
MILK	85	2,711	3,409	3,566	4,016	4,509	4,762	4,819	4,939	4,912	4,869	4,955
EGGS	477	882	1,087	1,296	1,373	1,607	1,734	1,806	1,794	1,805	1,799	1,755
AGGREGATES OF PRODUCTION	-----MILLION DOLLARS AT CONSTANT PRICES-----											
CROPS		5,774.3	6,010.0	6,478.4	6,682.0	6,347.1	5,899.7	5,413.3	5,836.8	5,834.1	5,784.9	6,084.8
LIVESTOCK		1,122.3	1,472.9	1,641.7	1,743.3	1,912.2	2,175.9	2,323.2	2,409.7	2,409.3	2,584.7	2,582.7
LIVESTOCK FEED DEDUCTION	.57	-639.7	-839.5	-935.7	-993.6	-1,089.9	-1,240.2	-1,324.2	-1,373.5	-1,373.3	-1,473.2	-1,472.1
TOTAL AGRICULTURE		6,256.9	6,643.4	7,184.4	7,431.7	7,169.4	6,835.4	6,412.3	6,873.0	6,870.1	6,896.4	7,195.4
TOTAL FOOD		6,004.3	6,353.9	6,881.4	7,145.6	6,898.7	6,589.1	6,165.2	6,629.3	6,610.0	6,645.3	6,924.6
INDICES OF PRODUCTION	(1961-65 = 100)											
CROPS		100	104	112	116	110	102	94	101	101	100	105
TOTAL AGRICULTURE		100	106	115	119	115	109	102	110	110	110	115
TOTAL FOOD		100	106	115	119	115	110	103	110	110	111	115
PER CAPITA AGRICULTURE		100	103	110	113	108	101	94	100	98	97	101
PER CAPITA FOOD		100	103	110	113	108	102	94	100	98	98	101
INDEX OF POPULATION	1961-65 POPULATION= 96,860,000											
1961-65 POPULATION=		100.0	103.0	104.1	105.3	106.5	107.7	109.0	110.4	111.6	113.0	114.3



TABLE 17.--KOREA, REPUBLIC OF

PRODUCTION BY COMMODITY, VALUE AND INDICES OF TOTAL AGRICULTURAL AND FOOD PRODUCTION, AVERAGE 1961-65, ANNUAL 1966-75

COMMODITY	PRICE	AVERAGE										
	WEIGHT	1961-65	1966	1967	1968	1969	1970	1971	1972	1973	1974	1975
	DOLLARS	-1,000 METRIC TONS-										
WHEAT	90	277	315	310	345	366	357	322	241	162	136	136
RYE	79	37	41	27	25	27	22	17	16	12	11	18
RICE, PADDY	129	4,821	5,443	5,004	4,438	5,681	5,471	5,552	5,496	5,849	6,173	6,485
CORN	91	26	34	60	63	63	68	64	54	61	58	60
BARLEY	97	1,419	2,018	1,916	2,084	2,066	1,974	1,858	1,965	1,778	1,705	2,119
MILLET	90	71	59	42	79	61	45	35	32	31	30	26
SORGHUM	90	6	8	6	7	7	7	6	5	6	5	4
OTHER GRAINS	77	7	7	5	13	6	5	5	4	7	4	5
PULSES	132	25	31	30	38	38	39	35	32	34	43	47
POTATOES	57	483	688	566	617	599	605	589	575	470	469	675
SWEETPOTATOES	35	1,828	2,690	1,671	2,049	2,123	2,136	1,901	1,850	1,669	1,450	1,953
TOBACCO	954	40	72	66	70	59	56	63	115	111	95	105
COTTON	329	5	5	4	4	5	4	4	3	4	3	4
COTTONSEED	66	11	9	8	8	9	9	8	6	6	6	6
SOYBEANS	150	163	161	201	245	229	232	222	225	246	319	311
PEANUTS, IN SHELL	201	3	5	6	8	9	10	8	10	4	5	5
VEGETABLES	86	1,338	1,717	1,869	2,150	2,428	2,520	2,708	2,740	2,612	2,975	3,280
APPLES	117	120	174	190	199	219	212	221	261	291	297	337
PEARS	116	30	41	41	48	46	52	48	50	52	57	62
PEACHES	98	30	63	71	72	68	78	66	80	84	89	88
PERSIMMONS	153	18	22	24	35	34	30	23	31	32	42	38
OTHER FRUIT	223	15	30	34	40	49	51	52	54	90	98	135
HEMP FIBER	406	6	6	6	6	7	7	5	5	4	4	4
BEEF AND VEAL	758	43	29	34	31	31	48	46	42	60	49	65
PORK	437	15	18	21	26	37	42	34	93	103	95	88
AGGREGATES OF PRODUCTION		-MILLION DOLLARS AT CONSTANT PRICES-										
CROPS	1,102.1	1,364.2	1,271.0	1,278.6	1,453.9	1,422.8	1,426.1	1,478.3	1,486.3	1,543.5	1,701.8	
LIVESTOCK	39.4	29.9	35.0	34.9	39.7	54.8	49.8	72.4	90.5	78.6	87.8	
TOTAL AGRICULTURE	1,141.5	1,394.1	1,306.0	1,313.5	1,493.6	1,477.6	1,475.9	1,550.7	1,576.8	1,622.1	1,789.6	
TOTAL FOOD	1,099.0	1,321.4	1,239.3	1,243.0	1,432.9	1,420.1	1,412.5	1,438.0	1,468.0	1,528.9	1,686.5	
INDICES OF PRODUCTION		(1961-65 = 100)										
CROPS	100	124	115	116	132	129	129	134	135	140	154	
TOTAL AGRICULTURE	100	122	114	115	131	129	129	136	138	142	157	
TOTAL FOOD	100	120	113	113	130	129	129	131	134	139	153	
PER CAPITA AGRICULTURE	100	113	103	102	114	110	108	111	111	111	121	
PER CAPITA FOOD	100	111	102	100	113	110	108	107	107	109	118	
INDEX OF POPULATION		1961-65 POPULATION= 27,064,000										
1961-65 POPULATION= 27,064,000	100.0	107.9	110.3	112.8	115.3	117.6	119.8	122.3	124.8	127.3	129.9	

TABLE 18.--MALAYSIA, WEST

PRODUCTION BY COMMODITY, VALUE AND INDICES OF TOTAL AGRICULTURAL AND FOOD PRODUCTION, AVERAGE 1961-65, ANNUAL 1966-75

COMMODITY	PRICE WEIGHT	AVERAGE 1961-65	1966	1967	1968	1969	1970	1971	1972	1973	1974	1975
	DOLLARS		-1,000 METRIC TONS-									
RICE, PADDY	99	957	1,041	1,029	1,218	1,354	1,429	1,545	1,565	1,728	1,819	1,697
SWEETPOTATOES	56	127	146	142	132	112	112	91	81	71	51	61
TOBACCO	594	3	2	2	2	2	3	4	5	5	9	10
BANANAS	62	337	208	198	203	188	213	178	178	142	198	205
PINEAPPLES	35	205	258	280	283	306	283	268	255	242	245	203
COFFEE	403	5	5	5	5	5	6	4	5	5	7	7
TEA	1,592	3	3	3	3	3	3	3	4	4	3	3
RUBBER	424	773	915	938	1,051	1,199	1,216	1,279	1,251	1,491	1,486	1,292
PALM OIL	168	120	186	217	265	326	402	551	659	740	942	1,072
COPRA	133	136	130	138	146	131	160	167	154	121	109	100
PALM KERNELS	98	30	43	49	60	75	87	119	137	153	195	218
MILK	73	18	12	13	14	14	14	14	13	15	17	20
AGGREGATES OF PRODUCTION			-MILLION DOLLARS AT CONSTANT PRICES-									
CROPS		507.3	581.9	597.4	673.9	758.7	792.8	856.1	865.7	991.4	1,038.8	967.3
LIVESTOCK		1.3	0.9	0.9	1.0	1.0	1.0	1.0	0.9	1.1	1.2	1.5
TOTAL AGRICULTURE		508.6	582.8	598.3	674.9	759.7	793.8	857.1	866.6	992.5	1,040.0	968.8
TOTAL FOOD		172.3	186.8	192.6	221.3	243.3	269.2	306.0	324.8	348.9	397.0	407.5
INDICES OF PRODUCTION			(1961-65 = 100)									
CROPS		100	115	118	133	150	156	169	171	195	205	191
TOTAL AGRICULTURE		100	115	118	133	149	156	169	170	195	204	190
TOTAL FOOD		100	108	112	128	141	156	178	189	202	230	237
PER CAPITA AGRICULTURE		100	105	105	115	126	128	135	132	147	150	136
PER CAPITA FOOD		100	99	100	111	119	128	142	147	153	169	169
INDEX OF POPULATION												
1961-65 POPULATION=	7,596,000	100.0	109.3	112.4	115.5	118.5	121.9	125.3	128.9	132.3	136.0	139.8

TABLE 19.—NEW ZEALAND

PRODUCTION BY COMMODITY, VALUE AND INDICES OF TOTAL AGRICULTURAL AND FOOD PRODUCTION, AVERAGE 1961-65, ANNUAL 1966-75

COMMODITY	PRICE	AVERAGE	1966	1967	1968	1969	1970	1971	1972	1973	1974	1975
	WEIGHT	1961-65										
DOLLARS			-1,000 METRIC TONS-									
WHEAT	69	248	292	348	442	457	287	326	389	378	248	203
CORN	83	16	19	18	36	51	59	101	116	102	130	209
BARLEY	58	98	114	134	219	233	174	259	335	257	279	334
OATS	76	34	44	28	45	52	58	60	49	45	48	65
PULSES	70	25	29	32	36	57	50	52	58	59	66	68
POTATOES	55	204	235	187	236	256	253	210	220	261	263	263
ONIONS	82	21	22	24	24	30	26	30	26	37	29	32
TOBACCO	1,094	4	3	3	3	3	3	3	3	3	3	3
GRASS SEED	406	24	25	28	22	24	18	34	23	24	28	28
APPLES	125	86	108	108	113	107	134	114	149	144	147	158
PEARS	141	15	17	16	20	17	19	20	18	21	16	16
PEACHES	113	16	21	22	22	23	26	24	22	25	24	24
BEEF AND VEAL	295	278	292	302	345	376	393	393	410	446	405	491
MUTTON AND LAMB	334	471	469	521	566	563	563	564	575	556	498	497
PORK	519	42	41	37	38	37	39	44	41	35	34	32
POULTRY MEAT	992	7	9	11	10	10	12	17	17	25	22	20
MILK	66	5,519	6,111	6,209	6,312	6,432	5,961	5,937	6,216	6,044	5,831	6,072
WOOL, GREASY BASIS	909	285	322	330	332	328	334	322	309	285	294	298
EGGS	810	41	49	52	54	48	51	54	52	53	58	58
AGGREGATES OF PRODUCTION			-MILLION DOLLARS AT CONSTANT PRICES-									
CROPS		70.2	80.1	82.9	98.7	105.2	91.7	105.1	114.0	111.2	107.3	117.0
LIVESTOCK		925.5	1,008.6	1,045.1	1,082.5	1,089.6	1,074.3	1,072.2	1,084.6	1,061.2	1,024.2	1,065.9
TOTAL AGRICULTURE		995.7	1,088.7	1,128.0	1,181.2	1,194.8	1,166.0	1,177.3	1,198.6	1,172.4	1,131.5	1,182.9
TOTAL FOOD		722.6	782.5	813.3	867.2	883.6	851.8	867.5	905.1	900.3	849.6	897.3
INDICES OF PRODUCTION			(1961-65 = 100)									
CROPS		100	114	118	141	150	131	150	162	158	153	167
TOTAL AGRICULTURE		100	109	113	119	120	117	118	120	118	114	119
TOTAL FOOD		100	108	113	120	122	118	120	125	125	118	124
PER CAPITA AGRICULTURE		100	103	105	110	109	105	105	105	101	96	97
PER CAPITA FOOD		100	102	105	110	111	106	107	109	107	99	101
INDEX OF POPULATION			1961-65 POPULATION= 2,533,000									
1961-65 POPULATION=	2,533,000	100.0	105.7	107.7	108.6	109.6	110.9	112.5	114.5	116.9	119.2	122.2

TABLE 20 .--PAKISTAN

PRODUCTION BY COMMODITY, VALUE AND INDICES OF TOTAL AGRICULTURAL AND FOOD PRODUCTION, AVERAGE 1961-65, ANNUAL 1966-75

COMMODITY	PRICE WEIGHT	AVERAGE 1961-65	1966	1967	1968	1969	1970	1971	1972	1973	1974	1975
	DOLLARS		-1,000 METRIC TONS-									
WHEAT	49	4,153	3,916	4,334	6,418	6,618	7,294	6,476	6,890	7,800	7,800	7,579
RICE, PADDY	60	1,826	2,049	2,250	3,051	3,605	3,303	3,343	3,443	3,628	3,474	3,754
CORN	42	514	587	792	626	668	717	705	706	767	747	768
BARLEY	37	118	83	88	108	97	104	91	103	109	139	127
MILLET	43	394	371	414	330	302	361	304	360	351	292	347
SORGHUM	39	261	277	291	262	304	329	312	302	378	266	316
CHICKPEAS	47	639	540	635	481	528	511	494	510	553	509	559
SUGARCANE	9	15,852	22,310	21,988	18,650	21,971	26,369	23,167	19,962	19,947	23,910	21,240
TOBACCO	347	72	110	140	130	125	127	113	87	66	66	66
COTTON	259	380	455	517	526	537	544	709	703	623	652	517
COTTONSEED	52	760	927	998	1,059	1,075	1,087	1,415	1,404	1,318	1,355	1,034
FLAXSEED	71	3	3	3	4	3	3	3	4	5	5	5
RAPESEED	82	220	182	203	274	228	255	269	286	293	285	305
SESAME SEED	126	9	7	9	8	8	10	13	15	10	12	10
AGGREGATES OF PRODUCTION			-MILLION DOLLARS AT CONSTANT PRICES-									
CROPS		721.4	815.8	893.1	1,003.0	1,078.0	1,143.0	1,128.2	1,119.7	1,149.9	1,176.8	1,115.6
LIVESTOCK		0.0	0.0	0.0	0.0	0.0	0.0	0.0	0.0	0.0	0.0	0.0
TOTAL AGRICULTURE		721.4	815.8	893.1	1,003.0	1,078.0	1,143.0	1,128.2	1,119.7	1,149.9	1,176.8	1,115.6
TOTAL FOOD		597.8	659.6	710.4	821.4	895.3	957.8	905.2	907.1	965.2	984.6	958.4
INDICES OF PRODUCTION			(1961-65 = 100)									
CROPS		100	113	124	139	149	158	156	155	159	163	155
TOTAL AGRICULTURE		100	113	124	139	149	158	156	155	159	163	155
TOTAL FOOD		100	110	119	137	150	160	151	152	161	165	160
PER CAPITA AGRICULTURE		100	104	111	121	126	130	125	120	120	119	110
PER CAPITA FOOD		100	101	107	119	127	132	121	118	121	121	114
INDEX OF POPULATION			1961-65 POPULATION= 49,354,000									
		100.0	108.5	111.6	114.8	118.1	121.5	125.1	128.7	132.5	136.4	140.4

TABLE 21.—PHILIPPINES

PRODUCTION BY COMMODITY, VALUE AND INDICES OF TOTAL AGRICULTURAL AND FOOD PRODUCTION, AVERAGE 1961-65, ANNUAL 1966-75

COMMODITY	PRICE	AVERAGE	1966	1967	1968	1969	1970	1971	1972	1973	1974	PRELIM.
	WEIGHT	1961-65										1975
DOLLARS			-1,000 METRIC TONS-									
RICE, PADDY	72	3,957	4,094	4,561	4,445	5,233	5,343	5,100	4,408	5,585	5,651	5,976
CORN	48	1,305	1,490	1,619	1,733	2,008	2,005	2,013	1,831	2,289	2,568	2,650
PULSES	133	30	24	21	22	20	23	24	24	24	23	32
POTATOES	112	14	17	17	12	18	20	22	25	27	25	20
CASSAVA	23	548	614	529	487	506	442	427	440	460	480	679
SWEET POTATOES	27	738	701	687	706	718	731	657	651	650	806	986
OTHER ROOT CROPS	26	158	156	152	151	160	143	137	127	125	125	138
SUGARCANE	9	14,232	13,282	15,277	15,525	15,550	17,535	23,287	19,941	22,676	26,085	24,616
TOBACCO	240	66	69	65	65	57	61	71	51	80	90	61
PEANUTS, IN SHELL	112	12	14	14	15	15	17	19	19	18	22	36
VEGETABLES	74	177	208	215	216	231	286	277	271	310	375	426
CITRUS FRUIT	67	62	75	78	78	75	71	63	65	65	62	76
BANANAS	23	641	765	781	747	896	900	1,035	980	1,013	1,236	1,686
PIHEAPPLES	40	152	188	208	226	238	233	365	380	410	333	360
OTHER FRUIT	57	286	367	374	365	388	309	370	379	380	523	641
COFFEE	355	38	43	44	44	44	49	50	55	51	53	62
COCOA BEANS	748	4	4	4	4	4	4	4	3	4	4	4
ABACA	156	114	113	103	103	106	122	105	110	115	126	134
COPRA	103	1,396	1,686	1,431	1,542	1,516	1,656	1,788	2,170	1,808	1,380	2,206
MEATS	546	322	414	426	440	465	450	469	484	485	477	490
AGGREGATES OF PRODUCTION			-MILLION DOLLARS AT CONSTANT PRICES-									
CROPS		767.1	822.2	851.0	860.3	934.0	977.7	1,034.9	982.3	1,088.9	1,118.2	1,249.3
LIVESTOCK		176.1	226.0	232.6	240.2	253.9	245.7	256.1	264.3	264.8	260.4	267.5
TOTAL AGRICULTURE		943.2	1,048.2	1,083.6	1,100.5	1,187.9	1,223.4	1,291.0	1,246.6	1,353.7	1,378.6	1,516.8
TOTAL FOOD		896.2	998.7	1,036.3	1,053.2	1,142.1	1,172.4	1,239.8	1,197.7	1,298.5	1,318.5	1,459.3
INDICES OF PRODUCTION			(1961-65 = 100)									
CROPS		100	107	111	112	122	127	135	128	142	146	163
TOTAL AGRICULTURE		100	111	115	117	126	130	137	132	144	146	161
TOTAL FOOD		100	111	116	118	127	131	138	134	145	147	163
PER CAPITA AGRICULTURE		100	101	101	99	104	103	105	98	104	102	109
PER CAPITA FOOD		100	101	102	100	104	104	106	100	104	103	111
INDEX OF POPULATION			1961-65 POPULATION= 30,322,000									
		100.0	110.2	113.9	117.7	121.6	125.7	129.9	132.3	138.7	143.2	147.5

TABLE 22.--SRI LANKA

PRODUCTION BY COMMODITY, VALUE AND INDICES OF TOTAL AGRICULTURAL AND FOOD PRODUCTION, AVERAGE 1961-65, ANNUAL 1966-75

COMMODITY	PRICE	AVERAGE	1966	1967	1968	1969	1970	1971	1972	1973	1974	1975
	WEIGHT	1961-65										
	DOLLARS		-----1,000 METRIC TONS-----									
RICE, PADDY	57	948	954	1,145	1,348	1,375	1,617	1,396	1,312	1,312	1,602	1,100
CORN	34	10	10	17	12	17	16	18	20	15	15	15
MILLET	30	18	18	16	15	20	18	20	21	20	20	20
SORGHUM	30	1	1	1	1	0	0	0	0	0	0	0
CASSAVA	22	313	289	391	429	403	430	445	450	445	450	440
SWEETPOTATOES	40	54	63	73	76	66	74	77	80	80	85	85
TOBACCO	400	4	5	7	7	7	10	9	9	9	9	9
SESAME SEED	77	6	5	7	7	6	6	6	6	6	6	6
SPICES	571	39	43	51	47	72	68	67	68	67	68	65
COCOA BEANS	290	2	3	3	2	2	2	2	2	2	2	2
TEA	420	217	222	221	187	220	212	219	215	211	200	210
RUBBER	243	107	131	143	149	151	159	141	138	155	130	145
COPRA	70	280	212	191	194	201	183	195	190	105	150	155
MEATS	131	29	31	32	33	33	33	34	34	35	37	37
AGGREGATES OF PRODUCTION			-----MILLION DOLLARS AT CONSTANT PRICES-----									
CROPS		226.1	231.8	252.1	249.1	279.3	290.0	276.7	269.8	265.6	275.3	253.0
LIVESTOCK		3.9	4.1	4.2	4.3	4.3	4.3	4.5	4.5	4.6	4.8	4.8
TOTAL AGRICULTURE		230.0	235.9	256.3	253.4	283.6	294.3	281.2	274.3	270.2	280.1	257.8
TOTAL FOOD		88.7	84.3	96.9	109.1	110.6	123.9	113.0	108.1	102.0	122.1	93.7
INDICES OF PRODUCTION			(1961-65 = 100)									
CROPS		100	103	111	110	124	128	122	119	117	122	112
TOTAL AGRICULTURE		100	103	111	110	123	128	122	119	117	122	112
TOTAL FOOD		100	95	109	123	125	140	127	122	115	138	106
PER CAPITA AGRICULTURE		100	96	101	98	107	110	102	98	94	96	86
PER CAPITA FOOD		100	89	100	110	109	120	107	100	92	108	82
INDEX OF POPULATION												
1961-65 POPULATION= 10,612,000		100.0	107.1	109.5	112.0	114.4	116.8	119.1	121.7	124.4	127.2	129.9

TABLE 23.--TAIWAN (REP. OF CHINA)

PRODUCTION BY COMMODITY, VALUE AND INDICES OF TOTAL AGRICULTURAL AND FOOD PRODUCTION, AVERAGE 1961-65, ANNUAL 1966-75

COMMODITY	PRICE	AVERAGE	1966	1967	1968	1969	1970	1971	1972	1973	1974	1975
	WEIGHT	1961-65										
	DOLLARS		-----1,000 METRIC TONS-----									
WHEAT	96	30	29	24	17	10	4	2	2	2	1	0
RICE, PADDY	88	2,937	3,226	3,272	3,414	3,135	3,583	3,137	3,308	4,005	4,428	4,395
CORN	78	36	52	64	51	45	57	57	71	84	107	120
MILLET	83	6	5	7	7	7	7	7	6	5	7	6
SORGHUM	83	4	5	10	7	6	7	8	15	16	22	25
PULSES	117	18	18	20	23	25	26	21	27	30	27	25
CASSAVA	17	235	264	299	342	316	308	288	324	328	376	279
SWEETPOTATOES	16	2,988	3,460	3,720	3,445	3,702	3,441	3,391	2,928	3,204	2,788	2,422
SUGARCANE	6	7,362	8,924	6,744	8,268	7,012	5,991	7,881	7,092	7,474	8,900	7,400
TOBACCO	487	17	15	18	21	21	21	17	16	18	17	18
JUTE	199	12	11	10	11	13	8	2	1	1	1	1
SOYBEANS	143	57	63	75	73	67	65	61	60	61	67	62
PEANUTS, IN SHELL	156	107	115	137	106	101	122	98	94	98	94	91
SESAME SEED	218	3	2	3	3	3	2	2	2	2	2	1
CITRONELLA OIL	1,500	3	3	2	1	1	1	1	1	1	1	1
VEGETABLES	28	902	963	1,052	1,209	1,465	1,685	1,765	1,704	1,881	2,079	2,131
CITRUS FRUIT	93	83	137	155	176	170	209	253	291	332	361	343
BANANAS	63	225	528	654	645	586	462	471	366	423	333	350
PINEAPPLES	29	197	270	296	311	325	338	358	334	328	308	320
OTHER FRUIT	55	80	112	157	184	170	208	278	271	345	484	438
TEA	394	20	22	24	24	26	28	27	26	29	24	26
MEATS	537	262	323	371	387	415	461	468	507	597	540	550
AGGREGATES OF PRODUCTION			-----MILLION DOLLARS AT CONSTANT PRICES-----									
CROPS		467.9	544.5	562.4	581.4	554.2	590.4	564.5	562.5	651.1	700.6	680.7
LIVESTOCK		140.8	173.5	199.2	207.8	222.9	247.6	251.3	272.3	320.6	290.0	295.4
TOTAL AGRICULTURE		608.7	718.0	761.6	789.2	777.1	838.0	815.8	834.8	971.7	990.6	976.1
TOTAL FOOD		590.4	699.8	741.3	767.3	754.1	815.2	796.1	816.6	951.3	972.6	956.9
INDICES OF PRODUCTION			(1961-65 = 100)									
CROPS		100	116	120	124	118	126	121	120	139	150	145
TOTAL AGRICULTURE		100	118	125	130	128	138	134	137	160	163	160
TOTAL FOOD		100	119	126	130	128	138	135	138	161	165	162
PER CAPITA AGRICULTURE		100	108	111	113	108	113	108	108	123	123	119
PER CAPITA FOOD		100	109	112	113	108	113	108	109	124	125	120
INDEX OF POPULATION			1961-65 POPULATION = 11,902,000									
		100.0	109.4	112.3	114.9	118.5	121.8	124.6	127.1	129.6	132.1	134.8

TABLE 24.--THAILAND

PRODUCTION BY COMMODITY, VALUE AND INDICES OF TOTAL AGRICULTURAL AND FOOD PRODUCTION, AVERAGE 1961-65, ANNUAL 1966-75

COMMODITY	PRICE	AVERAGE										
	WEIGHT	1961-65	1966	1967	1968	1969	1970	1971	1972	1973	1974	1975
	DOLLARS	-----1,000 METRIC TONS-----										
RICE, PADDY	39	11,158	13,500	11,198	12,410	13,410	13,570	13,744	12,219	14,350	14,500	15,000
CORN	44	815	1,122	1,315	1,508	1,700	1,938	2,300	1,315	2,350	2,450	3,000
SORGHUM	38	20	114	70	65	75	100	135	120	170	280	300
PULSES	99	89	132	122	184	152	148	250	300	275	280	300
CASSAVA	11	1,789	1,892	2,062	2,611	3,079	3,431	3,431	3,800	4,750	4,050	4,200
SUGARCANE	5	4,285	3,827	4,526	5,879	5,909	6,620	6,731	9,513	12,700	14,500	17,000
TOBACCO	332	59	88	78	90	92	95	99	99	98	105	110
COTTON	138	16	30	27	39	15	9	32	21	17	19	23
JUTE	124	8	11	7	4	5	6	6	6	6	6	7
KENAF	117	303	661	421	316	373	390	370	432	570	400	300
COTTONSEED	39	32	59	54	78	29	18	64	42	34	38	46
SOYBEANS	99	27	38	53	45	61	70	67	70	100	160	180
PEANUTS, IN SHELL	91	117	220	132	158	124	125	200	203	208	217	250
SESAME SEED	192	15	20	23	22	19	20	30	20	25	25	30
CASTOR BEANS	94	40	42	38	39	37	43	53	36	30	42	35
RUBBER	332	201	218	219	258	282	287	316	337	412	360	380
COPRA	219	202	194	195	200	202	202	202	202	250	250	270
AGGREGATES OF PRODUCTION		-----MILLION DOLLARS AT CONSTANT PRICES-----										
CROPS		712.2	893.9	777.2	861.3	919.2	949.1	1,007.0	935.4	1,144.1	1,133.7	1,201.8
LIVESTOCK		0.0	0.0	0.0	0.0	0.0	0.0	0.0	0.0	0.0	0.0	0.0
TOTAL AGRICULTURE		712.2	893.9	777.2	861.3	919.2	949.1	1,007.0	935.4	1,144.1	1,133.7	1,201.8
TOTAL FOOD		583.3	705.6	621.1	699.1	745.3	770.8	815.8	733.1	902.3	925.3	996.6
INDICES OF PRODUCTION		(1961-65 = 100)										
CROPS		100	126	109	121	129	133	141	131	161	159	169
TOTAL AGRICULTURE		100	126	109	121	129	133	141	131	161	159	169
TOTAL FOOD		100	121	106	120	128	132	140	126	155	159	171
PER CAPITA AGRICULTURE		100	115	96	103	107	106	109	98	117	111	115
PER CAPITA FOOD		100	110	94	103	106	106	108	94	112	111	116
INDEX OF POPULATION												
1961-65 POPULATION= 29,734,000		100.0	109.7	113.3	117.0	120.9	125.0	129.1	133.5	138.1	142.8	147.5



TABLE 25.--VIETNAM, SOUTH

PRODUCTION BY COMMODITY, VALUE AND INDICES OF TOTAL AGRICULTURAL AND FOOD PRODUCTION, AVERAGE 1961-65, ANNUAL 1966-75

COMMODITY	PRICE	AVERAGE	1966	1967	1968	1969	1970	1971	1972	1973	1974	1975
	WEIGHT	1961-65										
	DOLLARS		-----1,000 METRIC TONS-----									
RICE, PADDY	35	5,029	4,336	4,688	4,366	5,115	5,716	6,324	6,348	6,600	7,100	7,200
CORN	54	39	35	34	32	31	31	34	42	32	55	56
PULSES	102	11	14	20	13	12	11	11	14	10	10	10
CASSAVA	27	296	280	262	260	233	216	216	247	380	400	420
SWEETPOTATOES	32	278	246	254	235	226	220	220	241	280	300	350
SUGARCANE	4	983	936	770	401	321	336	440	331	530	550	550
TOBACCO	756	8	7	8	8	8	8	8	9	10	11	11
SOYBEANS	129	4	8	6	7	6	7	7	7	11	12	12
PEANUTS, IN SHELL	95	32	34	34	32	34	32	32	39	45	50	50
TEA	748	5	5	4	5	5	6	6	6	6	6	6
RUBBER	225	74	49	43	34	28	33	36	20	38	25	25
COPRA	142	38	32	33	28	25	29	29	29	29	29	29
AGGREGATES OF PRODUCTION			-----MILLION DOLLARS AT CONSTANT PRICES-----									
CROPS		235.3	203.0	213.6	197.2	220.3	242.9	265.4	266.1	285.6	303.9	309.5
LIVESTOCK		0.0	0.0	0.0	0.0	0.0	0.0	0.0	0.0	0.0	0.0	0.0
TOTAL AGRICULTURE		235.3	203.0	213.6	197.2	220.3	242.9	265.4	266.1	285.6	303.9	309.5
TOTAL FOOD		208.9	183.0	194.9	179.8	204.3	225.0	246.8	250.3	264.9	285.5	291.1
INDICES OF PRODUCTION			(1961-65 = 100)									
CROPS		100	86	91	84	94	103	113	113	121	129	132
TOTAL AGRICULTURE		100	86	91	84	94	103	113	113	121	129	132
TOTAL FOOD		100	88	93	86	98	108	118	120	127	137	139
PER CAPITA AGRICULTURE		100	80	82	74	81	86	92	90	94	97	97
PER CAPITA FOOD		100	81	84	76	84	90	96	95	98	103	102
INDEX OF POPULATION												
1961-65 POPULATION= 15,316,000		100.0	108.0	110.8	113.7	116.7	119.7	122.8	126.0	129.3	132.7	136.1

**UNITED STATES DEPARTMENT OF AGRICULTURE  
WASHINGTON, D.C. 20250**

---

**OFFICIAL BUSINESS  
PENALTY FOR PRIVATE USE, \$300**

**POSTAGE AND FEES PAID  
U.S. DEPARTMENT OF  
AGRICULTURE  
AGR 101  
THIRD CLASS**



**END**