



**AgEcon** SEARCH  
RESEARCH IN AGRICULTURAL & APPLIED ECONOMICS

*The World's Largest Open Access Agricultural & Applied Economics Digital Library*

**This document is discoverable and free to researchers across the globe due to the work of AgEcon Search.**

**Help ensure our sustainability.**

Give to AgEcon Search

AgEcon Search  
<http://ageconsearch.umn.edu>  
[aesearch@umn.edu](mailto:aesearch@umn.edu)

*Papers downloaded from **AgEcon Search** may be used for non-commercial purposes and personal study only. No other use, including posting to another Internet site, is permitted without permission from the copyright owner (not AgEcon Search), or as allowed under the provisions of Fair Use, U.S. Copyright Act, Title 17 U.S.C.*

SO 552 (1976)

USDA STATISTICAL BULLETINS

UPDATA

INDICES

OF AGRICULTURAL

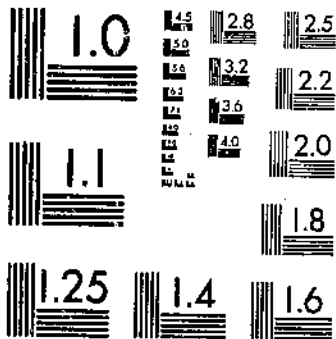
PRODUCTION

FOR THE WESTERN HEMISPHERE

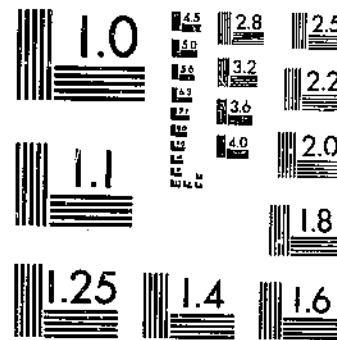
1966-75

1 OF 1

# START



MICROCOPY RESOLUTION TEST CHART  
NATIONAL BUREAU OF STANDARDS-1963-A



MICROCOPY RESOLUTION TEST CHART  
NATIONAL BUREAU OF STANDARDS-1963-A

R630.5

U53-13

#552

57

REFERENCE  
DO NOT LOAN

U. S. DEPOSITORY

JUN 14 1976

Los Angeles Public Library

**INDICES OF AGRICULTURAL PRODUCTION FOR THE  
WESTERN HEMISPHERE**  
Excluding the United States and Cuba

1966 through 1975

Economic Research Service  
U.S. Department of Agriculture

Statistical Bulletin 552

© UPDATA 1981

CONTENTS

	<u>PAGE</u>
Introduction . . . . .	1
<u>Summary Tables</u>	
Table 1-- Western Hemisphere: Indices of total agricultural production, by country, 1966-75. . . . .	3
Table 2-- Western Hemisphere: Indices of per capita agricultural production, by country, 1966-75. . . . .	4
Table 3-- Western Hemisphere: Indices of total food production, by country, 1966-75. . . . .	5
Table 4-- Western Hemisphere: Indices of per capita food production, by country, 1966-75. . . . .	6
Table 5-- Western Hemisphere: Aggregates of total agricultural production, by country, average 1961-65, annual 1966-75 . . . . .	7
Table 6-- Western Hemisphere: Aggregates of total food production, by country, average 1961-65, annual 1966-75 . . . . .	8
Table 7-- Latin America: Production of selected agricultural products, 1966-75. . . . .	9
Table 8-- Western Hemisphere: Mid-year population, by country, 1966-75. . . . .	10
<u>Country Tables: Production by commodity, value and indices of total agricultural and food production, average 1961-65, annual 1966-75</u>	
Table 9-- Canada . . . . .	11
Table 10-- Argentina. . . . .	12
Table 11-- Bolivia. . . . .	13
Table 12-- Brazil . . . . .	14
Table 13-- Chile. . . . .	15
Table 14-- Colombia . . . . .	16
Table 15-- Costa Rica . . . . .	17
Table 16-- Dominican Republic . . . . .	18
Table 17-- Ecuador. . . . .	19
Table 18-- El Salvador. . . . .	20
Table 19-- Guatemala. . . . .	21
Table 20-- Guyana . . . . .	22
Table 21-- Haiti. . . . .	23
Table 22-- Honduras . . . . .	24
Table 23-- Jamaica. . . . .	25
Table 24-- Mexico . . . . .	26
Table 25-- Nicaragua. . . . .	27
Table 26-- Panama . . . . .	28
Table 27-- Paraguay . . . . .	29
Table 28-- Peru . . . . .	30
Table 29-- Trinidad and Tobago. . . . .	31
Table 30-- Uruguay. . . . .	32
Table 31-- Venezuela. . . . .	33

INDICES OF AGRICULTURAL PRODUCTION FOR THE WESTERN HEMISPHERE  
EXCLUDING THE UNITED STATES AND CUBA, 1966 THROUGH 1975

Developing Countries Program Area  
Foreign Demand and Competition Division  
Economic Research Service

INTRODUCTION

The indices of agricultural production in this publication were prepared as a part of a continuing assessment of the current agricultural situation abroad. The formula for the country indices is Laspeyre's base-weighted aggregative formula. The weights are estimates of 1961-65 average prices received by farmers, expressed in U.S. dollars per metric ton. The regional indices were computed for the sums of the country aggregates for the various regions. This method involves a bias favoring countries with relatively comprehensive commodity coverage or relatively high price weights, but this bias is normally not serious enough to offset the advantage of flexibility in the grouping of countries into various alternative regions (e.g., the Caribbean and Central America). Indices of food production were computed from aggregates covering edible products which contribute energy to the diet, regardless of the extent to which they are actually used for food. Coffee is, therefore, excluded from the indices of food production. Per capita indices were computed by dividing the country or regional indices of total production by appropriate indices of population (1961-65 = 100).

To avoid double counting of livestock products and feed in certain countries, a constant fraction of the aggregate value of output of livestock products has been subtracted. This constant percentage represents the base period average relation between the value of livestock products and the value (at 1961-65 price weights) of quantities of crops and derived products (bran, oilcake, molasses, beet pulp) used for feed in 1961-65. This method treats a nation's agriculture as though it consisted of two farms: one producing and selling nothing but crops, and the other producing livestock products buying all feed except pasture. It may overvalue feed by applying a price which refers to qualities of crops used for human consumption to the crops fed, but if this is the case, the overvaluation of the crops needs to be offset by the feed deduction.

Meat data are on a carcass weight basis including slaughter of domestic and imported livestock, except where commercial slaughter only is indicated. Data for mutton include goat meat. Data for milk include goat milk when available.

For a few countries, in which the value of foreign trade in live cattle is significant relative to the value of total agricultural production, the value (at 1961-65 average prices) of live cattle exports has been added and the value of live cattle imports has been subtracted. This procedure is considered preferable to adjusting the statistics on production of meat to reflect the national production of live animals. Allowances have not been made for countries which have insignificant international trade in live animals.

Statistics on production of most products were received from the Foreign Agricultural Service (FAS). When figures from FAS were unavailable, data were compiled from official publications or from reports and publications of FAO and other international organizations. In a few cases, in the absence of other data, the ERS country specialist has made his own estimates based on past trends and his knowledge of the situation; such figures are naturally subject to error. Most of the production estimates for

1975 used in this publication were received from FAS before February 14, but a few were received later; all are preliminary.

The time reference is the calendar year in which the bulk of the crop is harvested, with the exceptions noted below. Data for coffee and cocoa beans for all countries refer to the marketing years beginning in the indicated calendar years, even though most or all of the harvest occurs between January 1 and the end of the marketing year (e.g., cocoa beans in Trinidad and Tobago and in Venezuela).

The reader should note that the production figures in this publication differ from those published by FAS with respect to cotton in Brazil, Colombia, and Peru, because in each case there are separate figures for output of distinct portions of the crop harvested early in the calendar year and late in the year. FAS combines the early harvest of a given year with the late harvest of the previous year, while here they have been left on a calendar year basis.

The reader is cautioned against misinterpretation of the aggregates, which are shown in "million dollars at constant prices." These aggregates are published for the convenience of users who may wish to calculate the effect of revisions in the estimates of production. The aggregates do not measure the gross value of agricultural production, gross sales by farmers, or the farming component of the gross domestic product, although changes from year to year in the aggregates may be correlated with similar changes in those other series.

Under a continuing arrangement, the United States Agency for International Development (AID) provided some financial assistance in researching and preparing the production indices presented in this publication.

The Economic Research Service has revised the indices of agricultural production, which appear in this publication, to reflect changes recently made in foreign grain production for the last 25 years. The grain production data were revised in part to more closely agree with data published by foreign governments. The indices in this report thus supersede those published in the May 1975 Indices of Agricultural Production for the Western Hemisphere, Statistical Bulletin No. 540, and all previous editions, published annually for 1964 through 1973 as ERS-Foreign Report No. 264.

TABLE 1 -- WESTERN HEMISPHERE

## INDICES OF TOTAL AGRICULTURAL PRODUCTION, BY COUNTRY, 1966-75

(1961-65 = 100)

	1966	1967	1968	1969	1970	1971	1972	1973	1974	PRELIM. 1975
CANADA	126	108	117	122	112	129	120	124	112	126
MEXICO	116	115	120	119	126	134	133	140	141	147
DOMINICAN REPUBLIC	98	98	94	114	119	129	130	132	137	126
HAITI	94	94	89	94	99	100	103	103	104	104
JAMAICA	108	99	94	88	85	88	90	85	89	86
TRINIDAD AND TOBAGO	97	97	107	112	97	92	100	87	87	85
CARIBBEAN	99	97	94	105	107	113	115	114	118	111
COSTA RICA	117	124	128	141	148	147	158	170	157	171
EL SALVADOR	101	109	105	116	117	133	119	131	159	131
GUATEMALA	102	113	116	115	121	139	143	151	165	156
HONDURAS	117	125	131	127	127	144	138	141	139	105
NICARAGUA	118	116	117	109	118	136	130	148	143	147
PANAMA	120	124	144	155	147	155	158	143	134	145
CENTRAL AMERICA AND PANAMA	110	118	121	124	127	141	139	147	153	143
CENTRAL AMERICA LESS PANAMA	110	117	118	121	125	140	137	148	154	143
ARGENTINA	105	113	105	114	115	110	104	114	122	122
BOLIVIA	107	105	107	115	113	117	121	133	130	128
BRAZIL	106	112	115	120	121	127	133	131	148	147
CHILE	117	117	123	116	127	128	116	103	116	119
COLOMBIA	106	111	116	119	121	123	133	134	144	149
ECUADOR	110	108	110	116	133	133	139	140	141	147
GUYANA	99	99	98	104	97	104	90	83	114	113
PARAGUAY	100	107	103	106	123	104	108	111	116	119
PERU	100	101	94	99	105	108	101	104	105	104
URUGUAY	94	83	97	95	108	89	85	91	100	100
VENEZUELA	118	125	130	134	142	148	143	153	160	169
SOUTH AMERICA	106	111	112	117	120	121	122	125	136	137
LATIN AMERICA (22 COUNTRIES)	108	112	113	117	121	124	125	129	138	138
LATIN AMERICA (19 COUNTRIES) <u>1/</u>	108	112	113	118	121	125	125	129	138	139

1/ EXCLUDES GUYANA, JAMAICA, AND TRINIDAD AND TOBAGO.



TABLE 2 -- WESTERN HEMISPHERE

INDICES OF PER CAPITA AGRICULTURAL PRODUCTION, BY COUNTRY, 1966-75

(1961-65 = 100)

	1966	1967	1968	1969	1970	1971	1972	1973	1974	PRELIM. 1975
CANADA	119	100	107	110	100	113	104	106	95	105
MEXICO	105	100	101	97	99	102	98	100	97	98
DOMINICAN REPUBLIC	90	88	82	96	97	102	100	98	98	87
HAITI	89	87	81	83	86	84	84	82	81	79
JAMAICA	104	94	88	81	77	78	79	73	75	71
TRINIDAD AND TOBAGO	93	92	101	105	91	86	94	81	81	79
CARIBBEAN	93	89	85	92	92	95	94	91	92	84
COSTA RICA	106	109	109	116	118	114	119	125	113	120
EL SALVADOR	91	95	88	94	92	101	88	94	110	88
GUATEMALA	95	103	103	100	102	114	115	118	125	115
HONDURAS	106	109	111	104	101	110	102	101	96	70
NICARAGUA	108	103	101	91	96	108	99	109	102	102
PANAMA	110	110	124	130	120	122	121	106	96	101
CENTRAL AMERICA AND PANAMA	101	105	104	104	103	111	107	109	110	100
CENTRAL AMERICA LESS PANAMA	101	104	102	101	102	111	105	110	111	100
ARGENTINA	100	106	97	104	103	97	91	98	104	102
BOLIVIA	100	96	95	100	96	97	98	105	100	96
BRAZIL	98	100	100	102	100	102	104	99	109	105
CHILE	111	109	112	104	111	110	98	85	94	95
COLOMBIA	96	98	99	98	97	95	100	97	101	102
ECUADOR	100	95	93	95	105	102	103	100	98	98
GUYANA	92	90	87	90	82	86	72	65	87	84
PARAGUAY	93	97	91	93	103	85	86	86	88	88
PERU	92	90	82	84	86	86	78	78	76	73
URUGUAY	90	79	91	88	99	81	76	80	88	86
VENEZUELA	107	110	111	111	113	115	107	111	112	115
SOUTH AMERICA	98	100	98	100	100	98	96	96	102	100
LATIN AMERICA (22 COUNTRIES)	100	100	99	99	100	99	97	98	102	99
LATIN AMERICA (19 COUNTRIES) <sup>1/</sup>	99	100	98	100	100	100	97	98	102	99

<sup>1/</sup> EXCLUDES GUYANA, JAMAICA, AND TRINIDAD AND TOBAGO.

TABLE 3 -- WESTERN HEMISPHERE

INDICES OF TOTAL FOOD PRODUCTION, BY COUNTRY, 1966-75

(1961-65 = 100)

	1966	1967	1968	1969	1970	1971	1972	1973	1974	PRELIM. 1975
CANADA	126	108	118	121	109	130	122	124	112	127
MEXICO	120	120	124	126	137	144	142	150	150	164
DOMINICAN REPUBLIC	99	99	97	117	122	133	133	131	137	130
HAITI	100	101	94	101	102	107	110	108	109	108
JAMAICA	107	98	93	87	84	87	89	84	88	85
TRINIDAD AND TOBAGO	98	96	107	114	96	93	100	88	89	84
CARIBBEAN	101	99	96	108	108	116	117	114	118	113
COSTA RICA	117	121	130	144	160	154	171	179	166	185
EL SALVADOR	118	118	129	122	136	144	133	162	158	168
GUATEMALA	105	116	127	134	141	155	156	165	170	184
HONDURAS	121	127	135	127	127	146	133	137	137	95
NICARAGUA	114	120	129	127	132	146	134	147	150	164
PANAMA	120	125	146	157	149	157	160	146	136	147
CENTRAL AMERICA AND PANAMA	116	122	132	135	140	150	148	156	153	155
CENTRAL AMERICA LESS PANAMA	115	121	130	132	139	149	147	157	156	156
ARGENTINA	106	117	108	117	117	114	107	118	126	125
BOLIVIA	106	104	105	113	111	115	117	122	122	122
BRAZIL	111	119	124	128	135	135	140	144	159	160
CHILE	117	118	124	117	129	132	119	105	119	122
COLOMBIA	109	112	118	120	125	131	138	142	152	158
ECUADOR	109	105	108	120	131	133	139	144	140	152
GUYANA	90	99	98	104	97	104	90	82	114	113
PARAGUAY	103	109	103	106	124	105	104	104	108	112
PERU	104	110	98	108	116	121	113	116	117	119
URUGUAY	93	80	98	97	113	95	90	101	113	110
VENEZUELA	120	128	133	137	145	150	147	153	162	170
SOUTH AMERICA	109	116	116	121	127	127	127	132	143	144
LATIN AMERICA (22 COUNTRIES)	111	116	118	122	129	131	130	136	144	147
LATIN AMERICA (19 COUNTRIES) <sup>1/</sup>	111	116	118	123	129	131	131	137	144	148

<sup>1/</sup> EXCLUDES GUYANA, JAMAICA, AND TRINIDAD AND TOBAGO.

UPDATA 1981

TABLE 4 -- WESTERN HEMISPHERE

INDICES OF PER CAPITA FOOD PRODUCTION, BY COUNTRY, 1966-75

(1961-65 = 100)

	1966	1967	1968	1969	1970	1971	1972	1973	1974	PRELIM. 1975
CANADA	110	100	108	109	97	114	106	106	95	105
MEXICO	108	105	105	103	108	110	105	107	104	109
DOMINICAN REPUBLIC	91	89	84	99	100	105	102	97	98	90
HAITI	95	93	85	89	88	90	90	86	85	82
JAMAICA	103	93	87	80	76	77	78	72	74	70
TRINIDAD AND TOBAGO	94	91	101	107	90	87	94	82	83	78
CARIBBEAN	95	91	86	95	93	97	96	91	92	85
COSTA RICA	106	106	110	119	128	120	129	132	119	130
EL SALVADOR	106	103	109	99	107	110	98	116	109	113
GUATEMALA	98	106	113	116	119	128	125	129	129	136
HONDURAS	109	111	114	104	101	112	98	98	95	64
NICARAGUA	104	107	112	106	107	116	102	109	107	114
PANAMA	110	111	126	131	121	123	122	108	98	102
CENTRAL AMERICA AND PANAMA	106	108	114	113	114	118	113	116	110	109
CENTRAL AMERICA LESS PANAMA	105	108	112	111	113	118	113	117	112	109
ARGENTINA	101	110	100	107	105	101	94	102	107	105
BOLIVIA	99	95	94	98	94	95	95	96	94	91
BRAZIL	102	107	108	108	111	108	109	109	117	115
CHILE	111	109	113	105	113	114	100	87	97	98
COLUMBIA	99	99	101	99	100	101	103	103	107	108
ECUADOR	99	92	92	98	104	102	103	103	97	102
GUYANA	92	90	87	90	82	86	72	64	87	84
PARAGUAY	95	99	91	91	104	86	83	81	82	83
PERU	96	98	85	91	95	96	87	87	85	84
URUGUAY	89	76	92	90	104	86	80	89	99	95
VENEZUELA	109	113	113	113	115	116	110	111	114	116
SOUTH AMERICA	101	105	102	104	106	103	100	102	107	105
LATIN AMERICA (22 COUNTRIES)	102	104	103	103	106	105	101	103	106	105
LATIN AMERICA (19 COUNTRIES) <sup>1/</sup>	102	104	103	104	106	105	102	104	106	106

<sup>1/</sup> EXCLUDES GUYANA, JAMAICA, AND TRINIDAD AND TOBAGO.

TABLE 5 -- WESTERN HEMISPHERE

AGGREGATES OF TOTAL AGRICULTURAL PRODUCTION, BY COUNTRY, AVERAGE 1961-65, ANNUAL 1966-75

	AVERAGE 1961-65	1966	1967	1968	1969	1970	1971	1972	1973	1974	PRELIM. 1975
-----MILLION DOLLARS AT CONSTANT PRICES-----											
CANADA	2,807.2	3,532.5	3,032.0	3,293.4	3,417.7	3,141.5	3,623.8	3,372.9	3,468.6	3,146.0	3,523.4
MEXICO	2,115.3	2,455.1	2,427.8	2,544.4	2,522.1	2,668.3	2,828.9	2,808.7	2,955.6	2,993.1	3,119.9
DOMINICAN REPUBLIC	207.4	202.3	202.9	194.7	236.0	246.3	266.6	270.6	274.3	284.1	262.0
HAITI	58.6	54.9	55.3	52.1	55.3	57.8	58.6	60.1	60.1	61.1	60.7
JAMAICA	77.0	82.8	76.2	72.6	68.1	65.4	68.9	69.5	65.6	68.3	66.0
TRINIDAD AND TOBAGO	27.1	26.3	26.3	29.0	30.3	26.2	25.0	27.2	23.7	23.5	23.0
CARIBBEAN	370.1	366.3	360.7	348.4	389.7	395.7	418.2	427.4	423.7	437.0	411.7
COSTA RICA	130.2	152.7	161.9	166.5	183.5	192.3	191.4	206.1	221.8	204.8	223.1
EL SALVADOR	162.1	163.8	177.2	170.6	188.0	189.2	216.0	193.0	212.8	257.8	212.5
GUATEMALA	197.4	200.5	223.4	228.5	227.5	238.9	274.6	282.1	298.8	326.2	307.5
HONDURAS	128.0	149.4	160.4	167.4	162.2	162.2	184.9	176.9	180.3	178.3	134.4
NICARAGUA	129.0	151.6	150.0	150.5	140.7	151.9	174.9	167.3	190.5	185.0	189.8
PANAMA	71.2	85.1	88.4	102.4	110.5	104.5	110.6	112.4	102.1	95.3	102.9
CENTRAL AMERICA AND PANAMA	817.9	903.1	961.3	985.9	1,012.4	1,039.0	1,152.4	1,137.8	1,206.3	1,247.4	1,170.2
CENTRAL AMERICA LESS PANAMA	746.7	818.0	872.9	883.5	901.9	934.5	1,041.8	1,025.4	1,104.2	1,152.1	1,067.3
ARGENTINA	2,161.7	2,268.8	2,444.0	2,272.7	2,460.6	2,489.4	2,373.4	2,244.1	2,456.0	2,634.7	2,633.1
BOLIVIA	158.9	169.6	166.7	170.4	182.4	178.9	186.5	192.9	212.1	205.9	202.7
BRAZIL	3,453.2	3,654.0	3,881.0	3,971.1	4,156.6	4,164.1	4,390.7	4,588.0	4,531.9	5,098.5	5,069.6
CHILE	292.5	340.9	342.7	360.5	339.1	370.6	375.5	340.7	301.5	339.1	349.4
COLOMBIA	1,118.7	1,184.3	1,239.0	1,293.6	1,330.0	1,351.1	1,371.4	1,491.1	1,494.5	1,613.6	1,665.7
ECUADOR	269.4	296.3	290.7	295.7	313.8	358.9	358.2	374.3	377.8	379.6	397.2
GUYANA	41.8	41.2	41.5	40.9	43.6	40.5	43.3	37.6	34.5	47.6	47.3
PARAGUAY	100.1	100.5	107.1	103.6	108.3	123.0	104.0	108.4	111.6	116.6	119.6
PERU	398.9	399.7	401.9	374.1	396.6	420.7	429.0	402.7	416.2	420.5	416.8
URUGUAY	248.2	234.2	204.8	239.7	236.7	268.0	221.6	210.6	224.7	249.2	248.1
VENEZUELA	432.5	508.4	540.9	563.9	581.2	613.3	641.4	616.6	663.5	693.5	731.2
SOUTH AMERICA	8,675.9	9,197.9	9,660.3	9,686.2	10,148.9	10,378.5	10,495.0	10,607.0	10,824.3	11,798.8	11,880.7
LATIN AMERICA (22 COUNTRIES)	11,979.2	12,922.4	13,410.1	13,564.9	14,073.1	14,481.5	14,894.5	14,980.9	15,409.9	16,476.3	16,582.5
LATIN AMERICA (19 COUNTRIES) <sup>1/</sup>	11,833.3	12,772.1	13,266.1	13,422.4	13,931.1	14,349.4	14,758.2	14,846.6	15,286.1	16,336.9	16,446.2

<sup>1/</sup> EXCLUDES GUYANA, JAMAICA, AND TRINIDAD AND TOBAGO.

TABLE 6 -- WESTERN HEMISPHERE

AGGREGATES OF TOTAL FOOD PRODUCTION, BY COUNTRY, AVERAGE 1961-65, ANNUAL 1966-75

	AVERAGE 1961-65	1966	1967	1968	1969	1970	1971	1972	1973	1974	PRELIM. 1975
- - - - - MILLION DOLLARS AT CONSTANT PRICES - - - - -											
CANADA	2,639.9	3,331.7	2,963.9	3,109.0	3,196.0	2,876.4	3,436.5	3,218.3	3,274.9	2,969.2	3,350.8
MEXICO	1,726.9	2,074.4	2,066.5	2,137.3	2,183.6	2,357.4	2,479.6	2,451.7	2,598.3	2,583.9	2,837.7
DOMINICAN REPUBLIC	179.7	177.5	177.1	174.0	210.2	219.2	238.5	238.4	236.3	245.3	233.6
HAITI	40.7	40.7	41.1	38.2	41.2	41.6	43.7	44.8	44.0	44.4	44.1
JAMAICA	75.2	80.4	73.8	70.2	65.7	63.0	65.6	67.1	63.2	65.9	63.6
TRINIDAD AND TOBAGO	25.6	25.1	24.7	27.4	29.1	24.6	23.8	25.6	22.5	22.7	21.4
CARIBBEAN	321.2	323.7	316.7	309.8	346.2	348.4	371.6	375.9	366.0	378.3	362.7
COSTA RICA	90.0	105.1	109.2	117.0	129.3	143.9	138.7	154.0	160.7	149.7	166.1
EL SALVADOR	65.5	77.1	77.6	84.2	80.1	88.9	94.3	87.4	106.0	103.5	109.9
GUATEMALA	102.3	107.8	118.9	129.3	137.1	144.1	158.3	159.9	168.3	174.0	187.8
HONDURAS	109.2	132.2	139.1	147.2	139.1	138.6	159.1	145.1	149.9	149.6	103.4
NICARAGUA	68.1	77.6	81.8	87.6	86.7	89.7	99.6	91.3	99.8	102.0	111.5
PANAMA	68.2	81.7	85.0	99.7	107.1	101.8	107.2	109.0	99.4	92.6	100.2
CENTRAL AMERICA AND PANAMA	503.3	581.5	611.6	665.5	679.4	707.0	757.2	746.7	784.1	771.4	778.9
CENTRAL AMERICA LESS PANAMA	435.1	499.8	526.6	565.8	572.3	605.2	650.0	637.7	684.7	678.8	678.7
ARGENTINA	1,910.7	2,022.0	2,232.6	2,065.4	2,228.5	2,231.5	2,184.5	2,047.0	2,256.6	2,409.6	2,388.1
BOLIVIA	157.0	165.8	162.6	165.5	177.5	175.0	180.2	183.8	190.8	191.2	191.5
BRAZIL	2,727.3	3,032.0	3,244.7	3,380.6	3,483.4	3,687.2	3,679.1	3,829.0	3,936.2	4,323.1	4,354.0
CHILE	276.4	324.1	325.7	344.1	322.3	355.7	363.6	330.0	290.4	327.8	337.5
COLOMBIA	801.4	870.3	900.4	946.4	960.7	1,002.6	1,052.0	1,104.6	1,135.6	1,219.0	1,268.1
ECUADOR	243.1	265.8	254.2	263.6	291.8	318.0	323.4	339.1	349.3	339.9	369.9
GUYANA	41.4	40.8	41.1	40.5	43.2	40.1	42.9	37.2	34.1	47.2	46.9
PARAGUAY	91.7	94.9	100.4	94.1	97.1	113.5	96.1	95.7	95.2	99.4	102.8
PERU	285.2	295.2	313.5	280.8	308.3	329.6	344.0	321.4	330.0	333.9	338.5
URUGUAY	184.1	171.8	146.7	180.5	177.8	208.2	175.7	166.3	186.2	208.5	202.6
VENFUZUELA	379.8	455.0	487.5	504.6	518.5	550.8	570.5	558.8	582.4	615.9	646.9
SOUTH AMERICA	7,098.1	7,737.7	8,209.4	8,266.1	8,609.1	9,012.2	9,012.0	9,012.9	9,386.8	10,115.5	10,246.8
LATIN AMERICA (22 COUNTRIES)	9,649.5	10,717.3	11,204.2	11,378.7	11,818.3	12,425.0	12,620.4	12,587.2	13,135.2	13,849.1	14,226.1
LATIN AMERICA (19 COUNTRIES) <sup>1/</sup>	9,507.3	10,571.0	11,064.6	11,240.6	11,680.3	12,297.3	12,488.1	12,457.3	13,015.4	13,713.3	14,094.2

<sup>1/</sup> EXCLUDES GUYANA, JAMAICA, AND TRINIDAD AND TOBAGO.

TABLE 7 --LATIN AMERICA

PRODUCTION OF SELECTED AGRICULTURAL PRODUCTS, 1966-75 1/

COMMODITY	1966	1967	1968	1969	1970	1971	1972	1973	1974	1975
----- 1,000 METRIC TONS -----										
WHEAT	10,556	11,733	10,468	12,366	10,969	11,746	10,761	12,037	12,868	14,063
RICE, PADDY	8,884	10,078	9,959	9,913	10,445	9,126	9,993	10,730	11,111	11,876
SORGHUM 2/	4,073	3,671	4,697	5,600	7,214	8,056	5,633	8,878	10,095	9,056
CORN	32,471	34,716	33,416	32,983	37,750	38,781	33,613	37,245	37,999	37,170
BARLEY	1,216	1,382	1,434	1,339	1,216	1,352	1,766	1,664	1,336	1,600
OATS	805	907	795	613	619	698	790	813	602	737
PULSES 3/	3,821	4,250	4,149	3,765	3,927	4,204	4,256	3,837	3,842	4,137
POTATOES	7,431	8,039	8,513	8,843	9,285	9,292	8,325	8,361	9,503	8,913
CASSAVA	28,134	30,760	32,623	33,786	33,563	33,802	33,604	30,173	28,391	30,241
SWEETPOTATOES AND YAMS	2,936	3,350	3,138	3,317	3,312	3,365	3,188	3,004	3,208	3,284
SUGAR (CENTRIFUGAL)	12,046	12,421	12,333	13,070	13,206	14,657	15,681	17,382	18,442	18,204
SUGAR NONCENTRIFUGAL	859	876	861	859	891	853	896	967	1,026	1,082
6 TOBACCO	340	369	373	426	444	442	451	467	548	591
COTTON	1,627	1,406	1,683	1,626	1,486	1,537	1,691	1,807	1,849	1,468
COTTONSEED	2,989	2,717	3,017	2,821	2,835	2,813	3,250	3,328	3,387	2,725
FLAXSEED	631	427	576	755	774	399	389	334	440	481
SOYBEANS	777	955	1,047	1,519	1,923	2,576	4,338	6,030	8,963	11,168
PEANUTS, IN SHELL	1,457	1,229	1,149	1,135	1,333	1,500	1,311	1,247	972	856
OTHER EDIBLE OILSEEDS 4/	1,510	1,686	1,376	1,394	1,884	1,663	1,499	1,442	1,552	1,614
BANANAS 5/	15,464	16,082	17,092	18,581	19,799	20,458	21,505	17,760	16,646	16,952
COFFEE	2,387	2,690	2,237	2,476	1,918	2,771	2,902	2,262	3,135	2,898
COCOA BEANS	331	328	319	373	347	357	327	405	468	440
BEEF AND VEAL	5,762	6,015	6,324	6,890	6,874	6,170	6,645	6,585	6,798	7,340
MUTTON AND LAMB	487	521	540	513	486	496	403	392	380	373
PORK	1,299	1,313	1,376	1,408	1,522	1,598	1,615	1,771	1,739	1,715
MILK 6/	22,105	21,906	22,704	23,449	23,673	24,953	25,947	26,300	27,950	29,054
WOOL	351	338	329	328	328	287	276	271	270	280

1/ INCLUDES QUANTITIES OF COMMODITIES INCLUDED IN INDICES TABLES FOR THE 22 LATIN AMERICAN COUNTRIES, AND SUGAR FOR COUNTRIES WHERE SUGARCANE AND SUGARBEETS ARE GROWN. QUANTITIES ARE ESTIMATED TO REPRESENT 90 PERCENT OR MORE OF THE TOTAL VOLUME OF PRODUCTION FOR COMMODITIES SHOWN.

2/ INCLUDES MILLET.

3/ INCLUDES DRY BEANS, PEAS, LENTILS, AND CHICKPEAS.

4/ INCLUDES RAPESEED, SESAME, SUNFLOWER, AND SAFFLOWER.

5/ INCLUDES EXPORT-TYPE BANANAS ONLY FOR ECUADOR.

6/ INCLUDES COMMERCIAL PRODUCTION ONLY FOR ARGENTINA.

TABLE 8 --WESTERN HEMISPHERE

## MID-YEAR POPULATION, BY COUNTRY, 1966-75

COUNTRY AND REGION	1966	1967	1968	1969	1970	1971	1972	1973	1974	1975
----- THOUSANDS -----										
CANADA	20,050	20,410	20,730	21,030	21,320	21,600	21,850	22,130	22,410	22,840
MEXICO	44,200	45,740	47,310	48,920	50,550	52,230	54,040	55,910	57,810	59,871
DOMINICAN REPUBLIC	3,760	3,870	3,990	4,100	4,230	4,370	4,520	4,670	4,830	4,990
HAITI	4,130	4,220	4,310	4,420	4,520	4,640	4,760	4,890	5,020	5,150
JAMAICA	1,760	1,780	1,810	1,840	1,870	1,900	1,930	1,980	2,020	2,060
TRINIDAD AND TOBAGO	928	935	940	946	945	948	951	954	957	961
CARIBBEAN	10,578	10,805	11,050	11,306	11,565	11,858	12,161	12,494	12,827	13,161
COSTA RICA	1,541	1,590	1,640	1,685	1,740	1,790	1,840	1,890	1,940	1,980
EL SALVADOR	3,080	3,190	3,300	3,420	3,530	3,640	3,750	3,880	4,010	4,130
GUATEMALA	4,690	4,800	4,910	5,040	5,170	5,310	5,460	5,610	5,770	5,930
HONDURAS	2,364	2,445	2,527	2,614	2,703	2,796	2,880	2,990	3,090	3,190
NICARAGUA	1,710	1,760	1,810	1,870	1,930	1,980	2,050	2,120	2,190	2,260
PANAMA	1,272	1,311	1,350	1,390	1,430	1,480	1,520	1,570	1,620	1,670
CENTRAL AMERICA AND PANAMA	14,657	15,096	15,537	16,019	16,503	16,996	17,510	18,060	18,620	19,160
CENTRAL AMERICA LESS PANAMA	13,385	13,785	14,187	14,629	15,073	15,516	15,990	16,490	17,000	17,490
ARGENTINA	22,770	23,110	23,460	23,810	24,160	24,500	24,840	25,190	25,540	25,910
BOLIVIA	4,230	4,330	4,430	4,540	4,658	4,770	4,890	5,020	5,150	5,290
BRAZIL	84,650	87,010	89,470	92,010	94,660	97,380	100,160	103,000	105,880	108,800
CHILE	8,626	8,790	8,957	9,127	9,300	9,480	9,660	9,830	10,010	10,190
COLOMBIA	19,270	19,900	20,550	21,220	21,920	22,630	23,370	24,120	24,890	25,670
ECUADOR	5,320	5,500	5,690	5,880	6,080	6,290	6,510	6,740	6,970	7,200
GUYANA	652	667	684	700	718	736	755	773	792	811
PARAGUAY	2,040	2,090	2,150	2,200	2,260	2,320	2,380	2,440	2,500	2,570
PERU	11,970	12,320	12,680	13,060	13,450	13,860	14,280	14,710	15,150	15,600
URUGUAY	2,749	2,783	2,818	2,852	2,886	2,920	2,960	2,990	3,020	3,060
VENEZUELA	9,486	9,796	10,116	10,447	10,788	11,130	11,500	11,880	12,270	12,670
SOUTH AMERICA	171,763	176,296	181,005	185,846	190,880	196,016	201,305	206,693	212,172	217,771
LATIN AMERICA (22 COUNTRIES)	241,198	247,937	254,902	262,091	269,498	277,100	285,016	293,157	301,429	309,963
LATIN AMERICA (19 COUNTRIES) <sup>1/</sup>	237,858	244,555	251,468	258,605	265,965	273,516	281,380	289,450	297,660	306,131
WESTERN HEMISPHERE	261,248	268,347	275,632	283,121	290,818	298,700	306,866	315,287	323,839	332,803

<sup>1/</sup> EXCLUDES GUYANA, JAMAICA, AND TRINIDAD AND TOBAGO.





TABLE 10 -- ARGENTINA

PRODUCTION BY COMMODITY, VALUE AND INDICES OF TOTAL AGRICULTURAL AND FOOD PRODUCTION, AVERAGE 1961-65, ANNUAL 1966-75

COMMODITY	PRICE WEIGHT	AVERAGE 1961-65	1,000 METRIC TONS									
			1966	1967	1968	1969	1970	1971	1972	1973	1974	1975
DOLLARS												
WHEAT	40	7,541	6,247	7,320	5,740	7,020	4,920	5,680	6,900	6,560	5,970	8,000
RYE	35	422	270	352	360	377	181	256	690	613	306	280
RICE, PADDY	80	193	165	217	283	345	407	288	294	260	316	351
CORN	43	4,984	7,040	8,510	6,560	6,860	9,360	9,930	5,860	9,000	9,900	7,700
BARLEY	32	679	438	588	556	570	367	553	880	732	430	594
OATS	28	676	540	690	490	425	360	475	566	561	327	414
MILLETT	25	187	186	224	229	196	125	183	105	227	229	260
SORGHUM	28	1,144	2,130	1,380	1,897	2,484	3,820	4,660	2,360	4,960	5,900	4,230
POTATOES	28	1,738	1,484	1,797	1,967	2,340	2,338	2,005	1,340	1,535	1,820	1,350
SWEET POTATOES	43	360	362	444	379	480	438	454	328	474	295	419
SUGARCANE	9	10,765	10,242	8,007	8,281	9,124	9,301	9,265	11,878	15,649	14,421	16,000
TOBACCO <sup>1</sup>	350	50	45	62	62	54	66	62	74	71	98	98
COTTON	480	120	116	87	72	112	145	84	87	125	127	172
COTTONSEED	37	231	213	158	138	218	272	167	173	244	238	300
FLAXSEED	78	763	577	385	510	640	680	316	350	297	381	393
SOYBEANS	73	12	18	20	22	32	27	59	78	272	496	485
PEANUTS, IN SHELL	115	357	411	354	283	217	234	388	252	440	290	375
SUNFLOWER SEED	81	625	782	1,120	940	876	1,140	930	828	880	970	732
ORANGES	21	501	614	640	682	821	865	990	750	783	833	765
TANGERINES	20	169	175	114	134	218	227	265	226	249	230	227
APPLES	85	440	414	516	470	446	446	424	512	233	786	608
PEARS	83	96	82	119	112	103	94	74	98	43	110	97
PEACHES	148	189	113	203	224	248	236	278	265	90	265	252
PLUMS	150	42	41	63	64	62	66	64	73	29	80	74
GRAPES	53	2,266	2,625	2,993	2,540	2,131	2,462	2,865	2,600	2,610	3,528	3,100
TUNG NUTS	75	93	175	103	137	68	142	110	170	11	136	61
CATTLE EXPORTS <sup>1/</sup>	2/110	196	119	208	163	160	104	58	48	40	40	37
BEEF AND VEAL	300	2,229	2,321	2,522	2,561	2,883	2,624	2,001	2,198	2,152	2,145	2,417
MUTTON AND LAMB	260	156	188	204	209	193	176	175	132	128	109	115
PORK	295	174	233	217	183	205	210	248	215	258	286	210
MILK <sup>3/</sup>	36	4,294	4,732	4,366	4,678	4,552	4,195	4,831	5,421	5,300	5,365	5,526
WOOL, GREASY BASIS <sup>4/</sup>	580	188	202	190	174	180	175	162	154	156	155	160

AGGREGATES OF PRODUCTION

-----MILLION DOLLARS AT CONSTANT PRICES-----

CROPS	1,241.4	1,287.9	1,419.7	1,248.5	1,350.4	1,469.5	1,499.2	1,322.8	1,540.1	1,716.3	1,653.8
LIVESTOCK	1,045.7	1,114.6	1,163.9	1,163.8	1,261.5	1,158.0	993.3	1,046.9	1,040.7	1,043.6	1,112.8
LIVESTOCK FEED DEDUCTION (.12)	-125.4	-133.7	-139.6	-139.6	-151.3	-139.0	-119.1	-125.6	-124.8	-125.2	-133.5
TOTAL AGRICULTURE	2,161.7	2,268.8	2,444.0	2,272.7	2,460.6	2,489.4	2,373.4	2,244.1	2,456.0	2,634.7	2,633.1
TOTAL FOOD	1,910.7	2,022.0	2,232.6	2,065.4	2,228.5	2,231.5	2,184.5	2,047.0	2,256.6	2,409.6	2,388.1

INDICES OF PRODUCTION

(1961-65 = 100)

CROPS	100	104	114	101	109	118	121	107	124	138	133
TOTAL AGRICULTURE	100	105	113	105	114	115	110	104	114	122	122
TOTAL FOOD	100	106	117	108	117	117	114	107	118	126	125
PER CAPITA AGRICULTURE	100	100	106	97	104	103	97	91	98	104	102
PER CAPITA FOOD	100	101	110	100	107	105	101	94	102	107	105

INDEX OF POPULATION

1961-65 POPULATION= 21,720,000	100.0	104.8	106.4	108.0	109.6	111.2	112.9	114.4	116.0	117.6	119.3
--------------------------------	-------	-------	-------	-------	-------	-------	-------	-------	-------	-------	-------

- <sup>1/</sup> IN 1,000 HEAD.
- <sup>2/</sup> PRICE PER HEAD.
- <sup>3/</sup> COMMERCIAL USE ONLY.
- <sup>4/</sup> EXCLUDES WOOL ON SHEEP SKINS.

TABLE 11 --BOLIVIA

PRODUCTION BY COMMODITY, VALUE AND INDICES OF TOTAL AGRICULTURAL AND FOOD PRODUCTION, AVERAGE 1961-65, ANNUAL 1966-75

COMMODITY	PRICE	AVERAGE	1966	1967	1968	1969	1970	1971	1972	1973	1974	1975
	WEIGHT	1961-65										
	DOLLARS		-1,000 METRIC TONS-									
WHEAT	70	48	41	27	45	53	44	47	51	57	63	65
RICE, PADDY	125	43	52	57	66	83	64	77	76	69	75	75
CORN	71	254	269	278	288	289	286	297	269	276	277	275
BARLEY	67	61	60	56	60	61	62	66	70	72	75	75
BEANS, DRY	190	14	14	14	14	14	14	17	18	20	21	20
POTATOES	84	625	670	635	598	627	655	698	703	729	749	740
CASSAVA	61	106	110	110	110	213	221	234	242	245	230	225
COTTON	491	1	3	3	4	4	5	10	15	40	27	20
COFFEE	285	4	8	9	10	10	5	5	6	6	5	5
SUGAR, RAW	65	73	91	86	113	124	117	80	104	174	153	166
BEEF AND VEAL	295	55	57	58	59	59	52	53	56	57	53	55
MUTTON AND LAMB	485	47	48	48	48	48	48	48	48	48	48	48
PORK	515	16	18	18	18	18	18	18	20	19	20	20
MILK	110	111	112	110	115	112	115	112	115	115	115	115
AGGREGATES OF PRODUCTION	-MILLION DOLLARS AT CONSTANT PRICES-											
CROPS		99.2	107.9	104.9	107.7	120.1	118.3	126.0	130.1	149.5	144.0	140.2
LIVESTOCK		59.7	61.7	61.8	62.7	62.3	60.6	60.5	62.8	62.6	61.9	62.5
TOTAL AGRICULTURE		158.9	169.6	166.7	170.4	182.4	178.9	186.5	192.9	212.1	205.9	202.7
TOTAL FOOD		157.0	165.8	162.6	165.5	177.5	175.0	180.2	183.8	190.8	191.2	191.5
INDICES OF PRODUCTION	(1961-65 = 100)											
CROPS		100	109	106	109	121	119	127	131	151	145	141
TOTAL AGRICULTURE		100	107	105	107	115	113	117	121	133	130	128
TOTAL FOOD		100	106	104	105	113	111	115	117	122	122	122
PER CAPITA AGRICULTURE		100	100	96	95	100	96	97	98	105	100	96
PER CAPITA FOOD		100	99	95	94	98	94	95	95	96	94	91
INDEX OF POPULATION	1961-65 POPULATION = 3,952,000											
1961-65 POPULATION =	3,952,000	100.0	107.0	109.6	112.1	114.9	117.9	120.7	123.7	127.0	130.3	133.9

TABLE 12 --BRAZIL

PRODUCTION BY COMMODITY, VALUE AND INDICES OF TOTAL AGRICULTURAL AND FOOD PRODUCTION, AVERAGE 1961-65, ANNUAL 1966-75

COMMODITY	PRICE WEIGHT	AVERAGE 1961-65	1,000 METRIC TONS									
			1966	1967	1968	1969	1970	1971	1972	1973	1974	1975
DOLLARS												
WHEAT	99	574	615	629	856	1,374	1,844	2,011	693	2,031	2,820	1,600
RYE	30	18	17	17	19	19	19	20	16	16	19	19
RICE, PADDY	63	6,123	5,802	6,792	6,652	6,394	6,648	5,394	6,132	6,652	6,421	6,500
CORN	31	10,112	11,371	12,824	12,814	12,693	14,216	14,130	14,891	14,109	15,000	15,000
BARLEY	25	26	35	31	29	31	27	20	26	13	26	27
OATS	20	20	23	21	26	26	27	29	27	38	27	28
BEANS, DRY	97	1,928	2,148	2,548	2,420	2,200	2,211	2,364	2,688	2,229	2,238	2,271
POTATOES	44	1,178	1,329	1,467	1,606	1,507	1,593	1,649	1,589	1,337	1,672	1,669
CASSAVA	8	21,900	24,710	27,268	29,203	30,074	29,464	30,258	29,829	26,559	24,715	26,683
SWEET POTATOES	17	1,534	1,913	2,226	2,120	2,175	2,134	2,155	2,140	1,814	2,200	2,150
ONIONS	92	216	277	250	273	275	285	246	282	306	341	349
SUGARCANE	4	65,577	75,787	77,087	76,600	75,250	79,753	79,754	85,000	91,877	96,412	88,412
TOBACCO	195	162	136	145	152	188	193	196	191	181	226	286
COTTON	350	490	561	445	606	705	581	595	682	660	517	510
JUTE	115	48	44	40	51	49	38	35	35	62	32	41
COTTONSEED	40	1,133	1,119	1,015	1,200	1,266	1,173	1,200	1,480	1,460	1,130	1,100
SOYBEANS	59	353	595	716	654	1,057	1,509	2,077	3,666	5,012	7,700	9,700
PEANUTS, IN SHELL	78	610	895	751	754	754	928	945	893	650	530	350
CASTOR BEANS	53	268	329	355	370	378	349	362	265	449	540	290
TOMATOES	57	502	679	745	775	700	764	820	892	809	1,036	801
BANANAS	13	6,287	7,117	8,056	8,453	9,266	9,860	10,100	10,900	7,128	6,974	7,068
PINEAPPLES	84	188	197	225	225	260	283	333	357	325	369	344
GRAPES	49	463	523	501	539	483	598	502	564	394	564	587
COFFEE	280	1,655	1,200	1,400	990	1,140	585	1,416	1,470	858	1,650	1,440
COCOA BEANS	195	128	173	145	166	202	182	165	159	245	267	237
COCONUTS	79	237	343	412	345	328	350	363	322	274	254	239
SISAL	128	186	202	199	190	193	210	210	260	302	293	313
BEEF AND VEAL	420	1,404	1,452	1,505	1,694	1,827	1,845	1,838	2,020	2,000	2,100	2,250
MUTTON AND LAMB	325	48	56	52	57	56	55	61	58	58	58	58
PORK	395	468	545	557	634	642	679	674	645	701	725	750
MILK	58	5,742	6,889	6,904	7,116	7,344	7,346	7,323	7,146	7,310	8,497	8,827
WOOL, GREASY BASIS	545	29	27	31	40	37	41	34	37	36	34	34

AGGREGATES OF PRODUCTION

-----MILLION DOLLARS AT CONSTANT PRICES-----

CROPS	2,496.3	2,597.6	2,800.5	2,782.5	2,913.8	2,896.2	3,129.6	3,280.2	3,205.2	3,671.6	3,565.4
LIVESTOCK	1,139.1	1,257.6	1,286.3	1,414.9	1,479.5	1,509.4	1,501.2	1,556.8	1,579.4	1,698.6	1,790.7
LIVESTOCK FEED DEDUCTION (.16)	-182.2	-201.2	-205.8	-226.3	-236.7	-241.5	-240.1	-249.0	-252.7	-271.7	-286.5
TOTAL AGRICULTURE	3,453.2	3,654.0	3,881.0	3,971.1	4,156.6	4,164.1	4,390.7	4,588.0	4,531.9	5,098.5	5,069.6
TOTAL FOOD	2,727.3	3,032.0	3,244.7	3,380.6	3,483.4	3,687.2	3,679.1	3,829.0	3,936.2	4,323.1	4,354.0

INDICES OF PRODUCTION

(1961-65 = 100)

CROPS	100	104	112	111	117	116	125	131	128	147	143
TOTAL AGRICULTURE	100	106	112	115	120	121	127	133	131	148	147
TOTAL FOOD	100	111	119	124	128	135	135	140	144	159	160
PER CAPITA AGRICULTURE	100	98	100	100	102	100	102	104	99	109	105
PER CAPITA FOOD	100	102	107	108	108	111	108	109	109	117	115

INDEX OF POPULATION

1961-65 POPULATION= 78,016,000	100.0	108.5	111.5	114.7	117.9	121.3	124.8	128.4	132.0	135.7	139.5
--------------------------------	-------	-------	-------	-------	-------	-------	-------	-------	-------	-------	-------

TABLE 13 --CHILE

PRODUCTION BY COMMODITY, VALUE AND INDICES OF TOTAL AGRICULTURAL AND FOOD PRODUCTION, AVERAGE 1961-65, ANNUAL 1966-75

COMMODITY	PRICE WEIGHT	AVERAGE 1961-65	1966	1967	1968	1969	1970	1971	1972	1973	1974	1975
WHEAT	65	1,082	1,346	1,203	1,220	1,214	1,307	1,368	900	747	734	900
RYE	38	7	11	9	8	10	11	12	12	9	15	11
RICE, PADDY	82	85	77	84	94	37	76	67	86	55	34	76
CORN	66	204	285	362	321	154	239	258	283	294	366	329
BARLEY	60	74	88	118	157	80	97	114	139	108	150	121
OATS	54	89	107	115	163	95	111	112	111	109	150	131
BEANS, DRY	170	87	93	90	65	47	65	72	83	65	75	74
LENTILS	151	17	11	4	4	8	11	12	11	10	13	12
CHICKPEAS	125	6	7	8	8	3	5	7	9	4	5	5
POTATOES	43	769	717	717	725	602	684	836	733	624	1,012	738
ONIONS	18	122	156	104	95	80	75	72	65	48	54	55
SUGAR BEETS	13	548	768	1,048	1,194	1,238	1,466	1,248	1,202	854	833	1,406
TOBACCO	185	6	5	6	6	5	8	5	5	4	5	8
RAPESEED	115	46	77	61	48	64	70	82	78	40	31	56
SUNFLOWER SEED	105	39	54	33	43	28	28	20	20	14	10	17
CATTLE IMPORTS <sup>1/</sup>	<sup>2/</sup> 150	138	96	133	98	84	40	44	28	12	10	0
BEEF AND VEAL	515	127	124	127	126	167	176	152	118	100	110	110
MUTTON AND LAMB	535	27	32	32	36	26	22	25	16	20	23	25
PORK	580	43	52	56	63	42	44	45	51	51	52	46
CHICKEN MEAT	785	16	27	38	47	54	43	45	61	55	60	60
MILK	55	814	855	872	938	982	1,071	1,150	1,107	1,109	1,200	1,266
WOOL, GREASY BASIS	610	24	26	26	25	26	22	18	16	17	17	17

AGGREGATES OF PRODUCTION

- MILLION DOLLARS AT CONSTANT PRICES -

CROPS	171.5	201.6	197.4	198.9	166.6	195.0	205.4	176.3	143.9	168.7	176.9
LIVESTOCK	157.1	180.9	188.7	209.8	224.0	228.0	220.8	213.4	204.6	221.2	223.9
LIVESTOCK FEED DEDUCTION (.23)	-36.1	-41.6	-43.4	-48.2	-51.5	-52.4	-50.7	-49.0	-47.0	-50.8	-51.4
TOTAL AGRICULTURE	292.5	340.9	342.7	360.5	339.1	370.6	375.5	340.7	301.5	339.1	349.4
TOTAL FOOD	276.4	324.1	325.7	344.1	322.3	355.7	363.6	330.0	290.4	327.8	337.5

INDICES OF PRODUCTION

(1961-65 = 100)

CROPS	100	118	115	116	97	114	120	103	84	98	103
TOTAL AGRICULTURE	100	117	117	123	116	127	128	116	103	116	119
TOTAL FOOD	100	117	118	124	117	129	132	119	105	119	122
PER CAPITA AGRICULTURE	100	111	109	112	104	111	110	98	85	94	95
PER CAPITA FOOD	100	111	109	113	105	113	114	100	87	97	98

INDEX OF POPULATION

1961-65 POPULATION= 8,155,000	100.0	105.8	107.8	109.8	111.9	114.0	116.2	118.5	120.5	122.7	125.0
-------------------------------	-------	-------	-------	-------	-------	-------	-------	-------	-------	-------	-------

<sup>1/</sup> IN 1,000 HEAD.

<sup>2/</sup> PRICE PER HEAD.

TABLE 14 --- COLOMBIA

PRODUCTION BY COMMODITY, VALUE AND INDICES OF TOTAL AGRICULTURAL AND FOOD PRODUCTION, AVERAGE 1961-65, ANNUAL 1966-75

COMMODITY	PRICE	AVERAGE	1966	1967	1968	1969	1970	1971	1972	1973	1974	1975
	WEIGHT	1961-65										
	DOLLARS		-----1,000 METRIC TONS-----									
WHEAT	125	123	125	80	105	72	55	49	79	91	86	39
RICE, PADDY	130	576	680	662	786	604	752	905	1,043	1,175	1,540	1,614
CORN	85	827	850	850	886	920	862	915	872	824	890	965
BARLEY	86	106	95	95	75	85	100	112	106	94	110	122
SORGHUM	52	31	60	60	100	100	165	219	238	398	298	325
BEANS, DRY	320	44	35	38	48	48	46	50	50	50	51	62
POTATOES	70	725	760	800	950	850	980	950	978	902	972	950
CASSAVA	54	746	840	850	900	1,000	1,100	1,100	1,300	1,320	1,390	1,350
TOBACCO	290	38	44	42	42	44	44	44	42	48	41	53
COTTON	520	67	75	97	120	125	128	112	136	146	172	139
COTTONSEED	70	116	125	158	207	207	220	194	237	249	293	235
SOYBEANS	130	32	52	80	87	100	95	115	122	114	167	168
SESAME SEED	265	36	57	35	15	20	30	37	29	17	23	21
BANANAS	52	577	721	764	770	800	817	841	900	954	980	1,050
PLANTAINS	50	1,321	1,423	1,590	1,600	1,640	1,680	1,723	1,700	1,752	1,805	1,900
COFFEE	575	472	456	480	474	507	468	432	528	468	510	529
COCOA BEANS	690	15	17	18	18	15	17	18	20	23	24	24
SUGAR, RAW (CENTERIFUGAL) 1/	85	412	543	636	671	702	688	790	821	878	940	970
SUGAR, NONCENTRIFUGAL	80	626	680	670	660	670	700	675	720	800	850	900
BEEF AND VEAL	390	380	365	389	409	444	461	462	425	410	387	415
MUTTON AND LAMB	330	2	2	2	2	2	2	2	3	3	2	3
PORK	480	52	50	51	53	54	56	59	87	66	67	70
MILK	100	1,843	2,020	2,080	2,070	2,160	2,250	2,340	2,460	2,600	2,688	2,864
AGGREGATES OF PRODUCTION	-----MILLION DOLLARS AT CONSTANT PRICES-----											
CROPS	807.1	863.1	904.1	952.0	968.2	974.9	985.8	1,095.5	1,100.7	1,219.8	1,245.5	
LIVESTOCK	358.1	369.1	384.9	392.6	415.8	432.4	443.2	454.6	452.6	452.6	482.9	
LIVESTOCK FEED DEDUCTION (.13)	-46.5	-47.9	-50.0	-51.0	-54.0	-56.2	-57.6	-59.0	-58.8	-58.8	-62.7	
TOTAL AGRICULTURE	1,118.7	1,184.3	1,239.0	1,293.6	1,330.0	1,351.1	1,371.4	1,491.1	1,494.5	1,613.6	1,665.7	
TOTAL FOOD	801.4	870.3	900.4	946.4	960.7	1,002.6	1,052.0	1,104.6	1,135.6	1,219.0	1,268.1	
INDICES OF PRODUCTION	(1961-65 = 100)											
CROPS	100	107	112	118	120	121	122	136	136	151	154	
TOTAL AGRICULTURE	100	106	111	116	119	121	123	133	134	144	149	
TOTAL FOOD	100	109	112	118	120	125	131	138	142	152	158	
PER CAPITA AGRICULTURE	100	96	98	99	98	97	95	100	97	101	102	
PER CAPITA FOOD	100	99	99	101	99	100	101	103	103	107	108	
INDEX OF POPULATION												
1961-65 POPULATION= 17,516,000	100.0	110.0	113.6	117.3	121.1	125.1	129.2	133.4	137.7	142.1	146.6	

1/ YEAR BEGINNING APRIL 1.

TABLE 15 --COSTA RICA

PRODUCTION BY COMMODITY, VALUE AND INDICES OF TOTAL AGRICULTURAL AND FOOD PRODUCTION, AVERAGE 1961-65, ANNUAL 1966-75

COMMODITY	PRICE	AVERAGE	1966	1967	1968	1969	1970	1971	1972	1973	1974	1975
	WEIGHT	1961-65										
	DOLLARS		-----1,000 METRIC TONS-----									
RICE, PADDY	96	64	77	81	84	104	79	90	89	135	121	168
CORN	66	67	65	75	73	59	45	64	64	52	42	52
BEANS, DRY	160	17	7	4	6	5	8	10	9	5	14	16
POTATOES	69	10	10	10	11	19	16	20	20	21	22	23
TOBACCO	445	1	2	2	2	1	1	2	2	2	3	3
BANANAS	65	511	736	784	864	1,010	1,230	1,048	1,213	1,278	1,110	1,200
COFFEE	640	62	73	81	76	84	75	81	80	94	84	97
COCOA BEANS	300	11	9	8	9	5	4	7	5	7	7	7
SUGAR, RAW (CENTRIFUGAL)	79	83	126	122	127	131	151	155	179	174	167	178
SUGAR, NONCENTRIFUGAL	75	70	40	40	40	41	41	42	40	34	37	40
CATTLE EXPORTS <sup>1/</sup>	<sup>2/</sup> 110	12	10	6	3	1	1	1	14	9	1	20
BEEF AND VEAL	365	27	28	32	34	40	42	47	52	48	58	57
PORK	360	7	7	5	5	5	7	8	7	8	7	9
MILK	95	147	150	157	164	170	177	180	191	202	184	200
AGGREGATES OF PRODUCTION			-----MILLION DOLLARS AT CONSTANT PRICES-----									
CROPS		102.4	124.6	132.8	136.4	150.8	157.6	154.1	165.0	181.2	163.5	177.9
LIVESTOCK		27.8	28.1	29.1	30.1	32.7	34.7	37.3	41.1	40.6	41.3	45.2
TOTAL AGRICULTURE		130.2	152.7	161.9	166.5	183.5	192.3	191.4	206.1	221.8	204.8	223.1
TOTAL FOOD		90.0	105.1	109.2	117.0	129.3	143.9	138.7	154.0	160.7	149.7	166.1
INDICES OF PRODUCTION			(1961-65 = 100)									
CROPS		100	122	130	133	147	154	150	161	177	160	174
TOTAL AGRICULTURE		100	117	124	128	141	148	147	158	170	157	171
TOTAL FOOD		100	117	121	130	144	160	154	171	179	166	185
PER CAPITA AGRICULTURE		100	106	109	109	116	119	114	119	125	113	120
PER CAPITA FOOD		100	106	106	110	119	128	120	129	132	119	130
INDEX OF POPULATION												
1961-65 POPULATION=	1,392,000	100.0	110.7	114.2	117.8	121.0	125.0	128.6	132.2	135.8	139.4	142.2

<sup>1/</sup> IN 1,000 HEAD.  
<sup>2/</sup> PRICE PER HEAD.

TABLE 16 --DOMINICAN REPUBLIC

PRODUCTION BY COMMODITY, VALUE AND INDICES OF TOTAL AGRICULTURAL AND FOOD PRODUCTION, AVERAGE 1961-65, ANNUAL 1966-75

COMMODITY	PRICE	AVERAGE	1966	1967	1968	1969	1970	1971	1972	1973	1974	1975
	WEIGHT	1961-65										
	DOLLARS		-----1,000 METRIC TONS-----									
RICE, PADDY	160	130	178	147	181	195	210	207	210	199	210	202
CORN	60	45	42	39	40	43	45	47	52	38	47	55
BEANS, DRY	270	21	29	23	20	26	25	28	30	20	36	28
POTATOES	59	11	19	20	20	23	23	24	25	26	16	28
CASSAVA	42	148	153	152	155	165	170	184	195	200	140	160
SWEETPOTATOES	55	75	77	75	78	84	87	91	95	97	73	60
TOBACCO	385	26	28	21	15	21	22	26	28	43	38	17
PEANUTS, IN SHELL	180	48	51	45	47	73	75	77	83	82	73	50
BANANAS	35	312	240	240	250	267	275	286	290	310	315	315
COFFEE	465	38	30	38	32	38	40	39	46	46	52	47
COCOA BEANS	300	34	28	30	21	43	26	42	28	28	38	32
SUGAR, RAW (CENTRIFUGAL)	75	798	671	810	666	885	984	1,088	1,046	1,033	1,080	1,040
BEEF AND VEAL	350	25	25	25	30	32	32	33	37	39	39	36
PORK	400	8	9	9	10	10	11	12	16	17	18	19
MILK	150	253	255	231	247	264	283	304	315	330	340	339
AGGREGATES OF PRODUCTION	-----MILLION DOLLARS AT CONSTANT PRICES-----											
CROPS		157.4	151.6	155.8	143.1	181.2	188.2	204.6	203.9	204.3	212.2	190.9
LIVESTOCK		50.0	50.7	47.1	51.6	54.8	58.1	62.0	66.7	70.0	71.9	71.1
TOTAL AGRICULTURE		207.4	202.3	202.9	194.7	236.0	246.3	266.6	270.6	274.3	284.1	262.0
TOTAL FOOD		179.7	177.5	177.1	174.0	210.2	219.2	238.5	238.4	236.3	245.3	233.6
INDICES OF PRODUCTION	(1961-65 = 100)											
CROPS	100	96	99	91	115	120	130	130	130	135	121	
TOTAL AGRICULTURE	100	98	98	94	114	119	129	130	132	137	126	
TOTAL FOOD	100	99	99	97	117	122	133	133	131	137	130	
PER CAPITA AGRICULTURE	100	90	88	82	96	97	102	100	98	98	87	
PER CAPITA FOOD	100	91	89	84	99	100	105	102	97	98	90	
INDEX OF POPULATION	1961-65 POPULATION= 3,462,000											
1961-65 POPULATION=	3,462,000	100.0	108.6	111.8	115.3	118.4	122.2	126.2	130.6	134.9	139.5	144.1

TABLE 17 --ECUADOR

PRODUCTION BY COMMODITY, VALUE AND INDICES OF TOTAL AGRICULTURAL AND FOOD PRODUCTION, AVERAGE 1961-65, ANNUAL 1966-75

COMMODITY	PRICE	AVERAGE	1966	1967	1968	1969	1970	1971	1972	1973	1974	1975
	WEIGHT	1961-65										
DOLLARS			-1,000 METRIC TONS-									
WHEAT	77	61	57	60	68	70	66	60	50	44	54	48
RICE, PADDY	72	173	185	173	127	233	232	150	199	228	241	321
CORN	69	130	120	115	100	125	140	110	130	120	142	146
BARLEY	54	87	95	105	110	100	110	69	62	57	56	57
BEANS, DRY	175	24	31	34	35	30	35	38	30	35	36	30
POTATOES	56	277	220	280	340	290	380	400	473	539	503	658
COTTON	245	4	5	5	7	5	4	4	5	6	13	8
COTTONSEED	35	8	9	8	13	8	8	7	8	8	17	16
CASTOR BEANS	65	22	9	9	11	16	20	17	20	20	21	16
BANANAS <sup>1/</sup>	60	2,213	2,500	2,090	2,240	2,600	2,800	3,000	3,100	3,200	2,800	3,000
COFFEE	495	48	58	70	60	40	78	66	66	52	71	49
COCOA BEANS	385	40	53	70	53	55	65	65	58	43	72	75
SUGAR, RAW (CENTRIFUGAL)	75	165	168	186	218	209	227	249	249	268	268	292
SUGAR, NONCENTRIFUGAL	65	35	35	40	40	40	40	40	40	40	40	40
BEEF AND VEAL	325	33	36	37	41	42	44	47	60	62	63	65
MUTTON AND LAMB	290	3	3	3	5	7	7	8	7	7	8	8
PORK	370	14	16	17	24	24	27	24	26	28	30	31
MILK	65	188	199	204	206	210	215	225	254	270	279	290
AGGREGATES OF PRODUCTION			-MILLION DOLLARS AT CONSTANT PRICES-									
CROPS		240.3	264.9	258.2	258.6	275.5	318.6	317.1	326.7	327.6	327.6	343.4
LIVESTOCK		29.1	31.4	32.5	37.1	38.3	40.3	41.1	47.6	50.2	52.0	53.8
TOTAL AGRICULTURE		269.4	296.3	290.7	295.7	313.8	358.9	358.2	374.3	377.8	379.6	397.2
TOTAL FOOD		243.1	265.8	254.2	263.6	291.8	318.0	323.4	339.1	349.3	339.9	369.9
INDICES OF PRODUCTION			(1961-65 = 100)									
CROPS		100	110	107	108	115	133	132	136	136	136	143
TOTAL AGRICULTURE		100	110	108	110	116	133	133	139	140	141	147
TOTAL FOOD		100	109	105	108	120	131	133	139	144	140	152
PER CAPITA AGRICULTURE		100	100	95	93	95	105	102	103	100	98	98
PER CAPITA FOOD		100	99	92	92	98	104	102	103	103	97	102
INDEX OF POPULATION												
1961-65 POPULATION=	4,824,000	100.0	110.3	114.0	118.0	121.9	126.0	130.4	135.0	139.7	144.5	149.3

<sup>1/</sup> EXPORTABLE-TYPE PRODUCTION.



TABLE 18 --EL SALVADOR

PRODUCTION BY COMMODITY, VALUE AND INDICES OF TOTAL AGRICULTURAL AND FOOD PRODUCTION, AVERAGE 1961-65, ANNUAL 1966-75

COMMODITY	PRICE	AVERAGE	1966	1967	1968	1969	1970	1971	1972	1973	1974	1975
	WEIGHT	1961-65										
	DOLLARS		- - - - -1,000 METRIC TONS- - - - -									
RICE, PADDY	105	27	50	78	80	36	44	55	49	54	49	92
CORN	65	192	266	209	258	279	363	377	237	406	353	380
SORGHUM	53	97	115	108	124	128	147	156	157	156	131	146
BEANS, DRY	155	14	16	17	21	26	30	34	27	38	34	37
TOBACCO	450	1	2	2	1	1	1	1	1	1	1	1
COTTON	475	66	39	35	44	46	54	68	70	75	74	59
COTTONSEED	50	112	65	58	74	76	91	110	112	124	125	96
COFFEE	570	113	118	144	114	150	130	156	126	124	208	130
SUGAR, RAW (CENTRIFUGAL)	80	72	111	125	135	109	117	158	188	232	257	253
SUGAR, NONCENTRIFUGAL	75	21	23	28	26	23	28	13	13	10	16	18
CATTLE EXPORTS <sup>1/</sup>	2/41	18	19	21	10	18	17	5	1	0	0	0
CATTLE IMPORTS <sup>1/</sup>	2/52	10	1	2	2	1	2	2	1	1	1	1
BEEF AND VEAL	335	21	22	21	21	21	20	20	25	27	30	26
PORK	385	14	13	13	13	12	11	10	10	11	11	12
MILK	75	231	252	262	271	280	275	275	275	280	280	300
AGGREGATES OF PRODUCTION	- - - - -MILLION DOLLARS AT CONSTANT PRICES- - - - -											
CROPS		132.1	131.8	144.7	138.0	154.8	157.1	184.7	160.2	178.7	222.6	176.8
LIVESTOCK		30.0	32.0	32.5	32.6	33.2	32.1	31.3	32.8	34.1	35.2	35.7
TOTAL AGRICULTURE		162.1	163.8	177.2	170.6	188.0	189.2	216.0	193.0	212.8	257.8	212.5
TOTAL FOOD		65.5	77.1	77.6	84.2	80.1	88.9	94.3	87.4	106.0	103.5	109.9
INDICES OF PRODUCTION	(1961-65 = 100)											
CROPS		100	100	110	104	117	119	140	121	135	169	134
TOTAL AGRICULTURE		100	101	109	105	116	117	133	119	131	159	131
TOTAL FOOD		100	118	118	129	122	136	144	133	162	158	168
PER CAPITA AGRICULTURE		100	91	95	88	94	92	101	88	94	110	88
PER CAPITA FOOD		100	106	103	109	99	107	110	98	116	109	113
INDEX OF POPULATION	1961-65 POPULATION= 2,778,000											
1961-65 POPULATION*	2,778,000	100.0	110.9	114.8	118.8	123.1	127.1	131.0	135.0	139.7	144.3	148.7

<sup>1/</sup> IN 1,000 HEAD.  
<sup>2/</sup> PRICE PER HEAD.

TABLE 19 — GUATEMALA

PRODUCTION BY COMMODITY, VALUE AND INDICES OF TOTAL AGRICULTURAL AND FOOD PRODUCTION, AVERAGE 1961-65, ANNUAL 1966-75

COMMODITY	PRICE	AVERAGE	1966	1967	1968	1969	1970	1971	1972	1973	1974	1975
	WEIGHT	1961-65										
DOLLARS			-1,000 METRIC TONS-									
WHEAT	130	31	30	32	33	33	31	33	44	38	30	46
RICE, PADDY	120	16	15	21	25	27	26	58	60	61	52	64
CORN	56	591	594	607	689	709	719	726	685	701	698	770
SORGHUM	45	25	34	32	42	54	46	47	45	46	44	52
BEANS, DRY	135	36	51	69	69	58	70	77	55	67	67	76
POTATOES	65	17	17	18	20	18	23	25	25	26	27	29
TOBACCO	580	2	4	3	2	2	3	3	3	5	5	6
COTTON	450	61	64	76	73	53	55	81	82	95	121	103
COTTONSEED	55	100	106	127	118	88	88	100	138	160	203	173
BANANAS	55	153	125	120	176	282	330	384	407	433	447	458
COFFEE	610	109	100	111	104	105	110	126	135	137	153	112
RUBBER	300	0	2	3	4	4	4	4	4	4	5	5
SUGAR, RAW (CENTRIFUGAL)	80	124	158	181	152	173	178	204	235	270	325	348
SUGAR, NONCENTRIFUGAL	75	34	29	42	48	48	45	45	45	45	45	45
CATTLE IMPORTS <sup>1/</sup>	<sup>2/</sup> 45	29	38	45	37	36	21	15	10	10	10	10
BEEF AND VEAL	350	41	44	49	57	57	58	64	62	61	63	73
PORK	600	7	7	8	8	9	10	10	9	10	9	9
MILK	85	142	164	177	192	200	207	214	221	229	233	236
AGGREGATES OF PRODUCTION			-MILLION DOLLARS AT CONSTANT PRICES-									
CROPS		167.7	168.7	188.4	189.1	186.7	195.9	228.7	236.7	252.4	279.4	256.9
LIVESTOCK		29.7	31.8	35.0	39.4	40.8	43.0	45.9	45.4	46.4	46.8	50.6
TOTAL AGRICULTURE		197.4	200.5	223.4	228.5	227.5	238.9	274.6	282.1	298.8	326.2	307.5
TOTAL FOOD		102.3	107.8	118.9	129.8	137.1	144.1	158.3	159.9	168.3	174.0	187.8
INDICES OF PRODUCTION			(1961-65 = 100)									
CROPS		100	101	112	113	111	117	136	141	151	167	153
TOTAL AGRICULTURE		100	102	113	116	115	121	139	143	151	165	156
TOTAL FOOD		100	105	116	127	134	141	155	156	165	170	184
PER CAPITA AGRICULTURE		100	95	103	103	100	102	114	115	118	125	115
PER CAPITA FOOD		100	98	106	113	116	119	128	125	129	129	136
INDEX OF POPULATION			1961-65 POPULATION= 4,374,000									
1961-65 POPULATION=	4,374,000	100.0	107.2	109.7	112.3	115.2	118.2	121.4	124.8	128.3	131.9	135.6

<sup>1/</sup> IN 1,000 HEAD.  
<sup>2/</sup> PRICE PER HEAD.

TABLE 20 --GUYANA

PRODUCTION BY COMMODITY, VALUE AND INDICES OF TOTAL AGRICULTURAL AND FOOD PRODUCTION, AVERAGE 1961-65, ANNUAL 1966-75

COMMODITY	PRICE WEIGHT	AVERAGE 1961-65	1966	1967	1968	1969	1970	1971	1972	1973	1974	1975
	DOLLARS	- - - - -1,000 METRIC TONS- - - - -										
RICE, PADDY	65	239	249	198	210	191	210	185	154	168	281	321
CITRUS FRUIT	60	10	9	9	9	10	8	10	10	10	11	11
COFFEE	360	1	1	1	1	1	1	1	1	1	1	1
COCONUTS	51	24	22	15	25	35	25	32	35	32	35	36
SUGAR, RAW (CENTRIFUGAL)	70	312	293	349	322	370	316	374	319	264	341	300
BEEF AND VEAL	480	3	4	4	4	4	4	4	4	4	4	4
PORK	570	1	1	1	1	1	1	1	1	1	1	1
<b>AGGREGATES OF PRODUCTION</b>		- - - - -MILLION DOLLARS AT CONSTANT PRICES- - - - -										
CROPS		39.6	38.7	39.0	38.4	41.1	38.0	40.8	35.1	32.0	45.1	44.8
LIVESTOCK		2.2	2.5	2.5	2.5	2.5	2.5	2.5	2.5	2.5	2.5	2.5
TOTAL AGRICULTURE		41.8	41.2	41.5	40.9	43.6	40.5	43.3	37.6	34.5	47.6	47.3
TOTAL FOOD		41.4	40.8	41.1	40.5	43.2	40.1	42.9	37.2	34.1	47.2	46.9
<b>INDICES OF PRODUCTION</b>		(1961-65 = 100)										
CROPS		100	98	98	97	104	96	103	89	81	114	113
TOTAL AGRICULTURE		100	99	99	98	104	97	104	90	83	114	113
TOTAL FOOD		100	99	99	98	104	97	104	90	82	114	113
PER CAPITA AGRICULTURE		100	92	90	87	90	82	86	72	65	87	84
PER CAPITA FOOD		100	92	90	87	90	82	86	72	64	87	84
<b>INDEX OF POPULATION</b>		1961-65 POPULATION= 606,000										
		100.1	107.6	110.1	112.9	115.5	118.5	121.5	124.6	127.6	130.7	133.8

TABLE 21 --HAITI

PRODUCTION BY COMMODITY, VALUE AND INDICES OF TOTAL AGRICULTURAL AND FOOD PRODUCTION, AVERAGE 1961-65, ANNUAL 1966-75

COMMODITY	PRICE WEIGHT	AVERAGE 1961-65	1966-75									
			1966	1967	1968	1969	1970	1971	1972	1973	1974	1975
DOLLARS			-1,000 METRIC TONS-									
RICE, PADDY	75	64	76	77	77	83	80	81	82	80	82	82
CORN	90	231	234	246	220	242	240	252	257	250	250	250
TOBACCO	250	1	1	1	1	1	1	1	1	1	1	1
COTTON	200	1	1	1	1	1	1	1	1	1	1	1
COTTONSEED	32	3	3	3	3	3	3	3	3	2	2	2
COFFEE	420	36	28	30	29	28	33	30	32	33	34	34
COCOA BEANS	300	2	2	2	2	2	2	4	3	3	3	3
SISAL	100	24	19	11	12	18	18	18	14	17	19	18
SUGAR, RAW (CENTRIFUGAL)	55	64	61	54	51	54	60	65	68	67	71	65
BEEF AND VEAL 1/	350	11	12	11	10	11	11	11	12	12	12	12
MUTTON AND LAMB 1/	280	2	2	2	2	2	2	2	2	2	2	2
PORK 1/	500	13	10	10	10	10	11	11	12	12	12	12
AGGREGATES OF PRODUCTION			-MILLION DOLLARS AT CONSTANT PRICES-									
CROPS		47.8	45.1	45.8	43.0	45.8	47.8	48.6	49.3	49.3	50.3	49.9
LIVESTOCK		10.8	9.8	9.5	9.1	9.5	10.0	10.0	10.8	10.8	10.8	10.8
TOTAL AGRICULTURE		58.6	54.9	55.3	52.1	55.3	57.8	58.6	60.1	60.1	61.1	60.7
TOTAL FOOD		40.7	40.7	41.1	38.2	41.2	41.6	43.7	44.8	44.0	44.4	44.1
INDICES OF PRODUCTION			(1961-65 = 100)									
CROPS		100	94	96	90	96	100	102	103	103	105	104
TOTAL AGRICULTURE		100	94	94	89	94	99	100	103	103	104	104
TOTAL FOOD		100	100	101	94	101	102	107	110	108	109	108
PER CAPITA AGRICULTURE		100	89	87	81	83	86	94	84	82	81	79
PER CAPITA FOOD		100	95	93	85	89	88	90	90	86	85	82
INDEX OF POPULATION												
1961-65 POPULATION=	3,906,000	100.0	105.7	108.0	110.3	113.2	115.7	119.8	121.9	125.2	128.5	131.8
1/ COMMERCIAL PRODUCTION.												

23

TABLE 22 --HONDURAS

PRODUCTION BY COMMODITY, VALUE AND INDICES OF TOTAL AGRICULTURAL AND FOOD PRODUCTION, AVERAGE 1961-65, ANNUAL 1966-75

COMMODITY	PRICE WEIGHT	AVERAGE 1961-65	1966	1967	1968	1969	1970	1971	1972	1973	1974	1975
	DOLLARS	-----1,000 METRIC TONS-----										
RICE, PADDY	87	24	28	25	32	6	6	13	16	17	19	16
CORN	59	288	316	335	353	339	346	351	290	350	335	220
SORGHUM	53	55	44	53	53	48	47	47	35	36	38	38
BEANS, DRY	145	45	49	57	63	55	55	55	35	48	55	52
TOBACCO	455	3	3	3	3	2	2	3	3	4	4	4
COTTON	460	7	10	8	8	8	3	2	4	5	5	4
COTTONSEED	45	12	17	14	13	13	5	6	12	14	14	12
BANANAS	60	942	1,270	1,281	1,351	1,280	1,264	1,537	1,388	1,364	1,360	700
COFFEE	560	25	20	29	27	33	38	42	51	47	44	49
SUGAR, RAW (CENTRIFUGAL)	70	27	37	45	54	55	53	61	62	59	73	77
CATTLE EXPORTS <sup>1/</sup>	40	38	28	32	24	10	15	5	9	3	2	2
BEEF AND VFAL	320	18	17	23	26	29	30	38	39	42	35	35
PORK	450	3	4	5	5	5	5	5	6	5	5	6
MILK	100	130	139	143	146	148	150	153	159	165	172	176
AGGREGATES OF PRODUCTION		-----MILLION DOLLARS AT CONSTANT PRICES-----										
CROPS		106.3	127.2	135.1	141.2	135.4	134.7	154.9	145.4	148.0	147.5	102.8
LIVESTOCK		21.7	22.2	25.3	26.2	26.8	27.5	30.0	31.5	32.3	30.8	31.6
TOTAL AGRICULTURE		128.0	149.4	160.4	167.4	162.2	162.2	184.9	176.9	180.3	178.3	134.4
TOTAL FOOD		109.2	132.2	139.1	147.2	139.1	138.6	159.1	145.1	149.9	149.6	103.4
INDICES OF PRODUCTION		(1961-65 = 100)										
CROPS		100	120	127	133	127	127	146	137	139	139	97
TOTAL AGRICULTURE		100	117	125	131	127	127	144	138	141	139	105
TOTAL FOOD		100	121	127	135	127	127	146	133	137	137	95
PER CAPITA AGRICULTURE		100	106	109	111	104	101	110	102	101	96	70
PER CAPITA FOOD		100	109	111	114	104	101	112	98	98	95	64
INDEX OF POPULATION		1961-65 POPULATION= 2,140,000										
1961-65 POPULATION=	2,140,000	100.0	110.5	114.3	118.1	122.1	126.3	130.7	135.0	139.7	144.4	149.1

<sup>1/</sup> IN 1,000 HEAD.  
<sup>2/</sup> PRICE PER HEAD.

TABLE 23 --JAMAICA

PRODUCTION BY COMMODITY, VALUE AND INDICES OF TOTAL AGRICULTURAL AND FOOD PRODUCTION, AVERAGE 1961-65, ANNUAL 1966-75

COMMODITY	PRICE	AVERAGE	1966	1967	1968	1969	1970	1971	1972	1973	1974	1975
	WEIGHT	1961-65										
	DOLLARS		-----1,000 METRIC TONS-----									
RICE, PADDY	130	4	2	1	1	1	1	1	1	1	2	3
CORN	65	4	4	4	4	4	4	4	5	5	12	10
PULSES	230	4	5	4	5	5	5	5	5	5	5	5
POTATOES	85	9	12	12	13	8	9	9	13	15	16	17
CASSAVA	70	12	12	12	8	11	8	20	18	18	19	19
SWEETPOTATOES AND YAMS	60	154	150	150	145	150	150	150	175	170	180	190
TOBACCO	350	2	5	5	5	5	5	5	5	5	5	5
BANANAS	55	290	320	275	210	200	195	195	200	200	160	140
COFFEE	585	2	1	1	1	1	1	1	1	1	1	1
COCOA BEANS	360	2	2	2	2	2	2	2	2	2	2	2
SUGAR, RAW (CENTRIFUGAL)	66	475	508	455	452	389	374	396	384	325	377	350
BEEF AND VEAL	680	12	14	14	14	14	12	12	12	12	12	12
MUTTON AND LAMB	320	2	2	2	2	2	2	3	3	3	3	3
PORK	340	3	4	4	4	4	4	5	5	5	5	5
MILK	105	41	43	42	44	45	45	42	45	45	46	46
AGGREGATES OF PRODUCTION			-----MILLION DOLLARS AT CONSTANT PRICES-----									
CROPS		62.7	66.8	60.3	56.5	51.9	50.5	52.7	53.9	50.0	52.6	50.3
LIVESTOCK		14.3	16.0	15.9	16.1	16.2	14.9	15.3	15.6	15.6	15.7	15.7
TOTAL AGRICULTURE		77.0	82.8	76.2	72.6	68.1	65.4	68.0	69.5	65.6	68.3	66.0
TOTAL FOOD		75.2	80.4	73.8	70.2	65.7	63.0	65.6	67.1	63.2	65.9	63.6
INDICES OF PRODUCTION			(1961-65 = 100)									
CROPS		100	107	96	90	83	81	84	86	80	84	80
TOTAL AGRICULTURE		100	108	99	94	88	85	88	90	85	89	86
TOTAL FOOD		100	107	98	93	87	84	87	89	84	88	85
PER CAPITA AGRICULTURE		100	104	94	88	81	77	78	79	73	75	71
PER CAPITA FOOD		100	103	93	87	80	76	77	78	72	74	70
INDEX OF POPULATION												
1961-65 POPULATION=	1,692,000	100.0	104.0	105.2	107.0	108.7	110.5	112.3	114.1	117.0	119.4	121.7

TABLE 24 --MEXICO

PRODUCTION BY COMMODITY, VALUE AND INDICES OF TOTAL AGRICULTURAL AND FOOD PRODUCTION, AVERAGE 1961-65, ANNUAL 1966-75

COMMODITY	PRICE WEIGHT	AVERAGE 1961-65	-1,000 METRIC TONS-									
			1966	1967	1968	1969	1970	1971	1972	1973	1974	1975
			DOLLARS									
WHEAT	74	1,783	1,612	2,061	1,780	1,915	2,148	2,019	1,700	2,000	2,400	2,700
RICE, PADDY	81	314	372	418	347	395	405	438	420	435	470	615
CORN	66	7,369	9,271	8,405	9,062	8,411	8,879	9,302	8,100	9,000	7,800	9,100
BARLEY	60	175	220	203	253	212	238	227	294	392	270	383
OATS	76	64	63	48	43	29	43	22	28	50	51	80
SORGHUM	52	452	1,411	1,667	2,133	2,456	2,747	2,593	2,561	2,760	3,147	3,185
BEANS, DRY	120	740	1,002	1,008	1,056	900	1,000	1,100	870	1,008	895	1,130
CHICKPEAS	95	113	138	133	135	156	157	170	185	90	150	155
POTATOES	60	378	457	378	400	441	422	443	461	450	460	480
ONIONS	60	95	108	159	169	135	153	206	206	206	210	220
SUGAR CANE	5	19,933	23,132	25,556	24,383	27,047	24,524	25,985	25,900	30,000	31,000	29,702
TBACCO	300	44	42	47	46	62	63	58	56	58	67	63
COTTON	525	503	490	435	533	381	314	373	390	372	513	204
COTTONSEED	68	882	892	818	888	629	638	692	735	650	875	370
FLAXSEED	140	19	14	15	10	10	30	40	10	11	20	30
SOYBEANS	115	28	100	121	270	300	240	250	375	510	420	600
PEANUTS, IN SHELL	100	85	75	56	47	72	77	70	63	59	63	66
SESAME SEED	165	158	186	140	140	90	140	130	100	90	120	120
SAFFLOWER SEED	110	65	195	140	65	170	285	421	325	252	275	550
WATERMELONS	54	251	385	390	420	460	424	259	282	310	345	351
CANTALOUPE	48	152	201	188	177	149	174	181	207	213	218	224
TOMATOES	71	464	497	617	666	756	940	850	1,204	1,091	1,097	1,127
PEPPERS, GREEN	83	117	137	139	142	154	211	184	435	440	416	429
ORANGES	60	801	880	882	892	937	1,020	1,099	1,613	1,798	1,900	2,477
STRAWBERRIES	160	31	146	126	98	101	118	122	90	105	83	118
BANANAS	53	783	978	986	995	1,024	1,136	1,116	1,093	1,064	832	1,241
PINEAPPLES	47	210	231	251	268	302	353	270	218	268	241	267
GRAPES	150	82	96	97	102	127	144	160	191	218	225	181
COFFEE	550	157	159	174	171	184	192	204	204	222	172	234
COCOA BEANS	280	22	20	21	23	24	25	30	29	30	33	35
HENEQUEN	150	149	142	140	120	115	115	122	145	140	149	155
CATTLE EXPORTS <sup>1/</sup>	<sup>2/</sup> 35	557	590	524	712	840	937	757	916	553	435	196
CATTLE IMPORTS <sup>1/</sup>	<sup>2/</sup> 285	17	19	21	19	18	12	14	21	35	63	115
REEF AND VEAL	340	475	510	480	468	534	590	581	703	744	844	889
MUTTON AND LAMB	360	59	62	57	56	57	56	54	53	58	58	58
PORK	380	206	231	242	247	253	317	351	395	386	354	377
MILK	85	4,114	4,480	4,631	4,700	5,116	5,344	5,711	6,070	6,203	6,331	6,619
AGGREGATES OF PRODUCTION			- MILLION DOLLARS AT CONSTANT PRICES -									
CROPS		1,589.9	1,884.2	1,855.2	1,962.9	1,885.8	1,975.3	2,108.0	2,010.4	2,151.4	2,171.8	2,277.2
LIVESTOCK		625.4	679.6	681.6	692.2	757.4	824.9	858.2	950.3	957.3	977.7	1,003.2
LIVESTOCK FEED DEDUCTION (1.6)		-100.0	-108.7	-109.0	-110.7	-121.1	-131.9	-137.3	-152.0	-153.1	-156.4	-160.5
TOTAL AGRICULTURE		2,115.3	2,455.1	2,427.8	2,544.4	2,522.1	2,668.3	2,828.9	2,808.7	2,955.6	2,993.1	3,119.9
TOTAL FOOD		1,726.9	2,074.4	2,066.5	2,137.3	2,183.6	2,357.4	2,479.6	2,451.7	2,598.3	2,583.9	2,837.7
INDICES OF PRODUCTION			(1961-65 = 100)									
CROPS		100	119	117	123	119	124	133	126	135	137	143
TOTAL AGRICULTURE		100	116	115	120	119	126	134	133	140	141	147
TOTAL FOOD		100	120	120	124	126	137	144	142	150	150	164
PER CAPITA AGRICULTURE		100	105	100	101	97	99	102	98	100	97	98
PER CAPITA FOOD		100	108	105	105	103	108	110	105	107	104	109
INDEX OF POPULATION			1961-65 POPULATION = 39,926,000									
1961-65 POPULATION		100.0	110.7	114.6	118.5	122.5	126.6	130.8	135.4	140.0	144.6	150.0

<sup>1/</sup> IN 1,000 HEAD.<sup>2/</sup> PRICE PER HEAD.

TABLE 25 --NICARAGUA

PRODUCTION BY COMMODITY, VALUE AND INDICES OF TOTAL AGRICULTURAL AND FOOD PRODUCTION, AVERAGE 1961-65, ANNUAL 1966-75

COMMODITY	PRICE	AVERAGE	1966	1967	1968	1969	1970	1971	1972	1973	1974	1975
	WEIGHT	1961-65										
	DOLLARS		--1,000 METRIC TONS--									
RICE, PADDY	110	44	63	67	85	65	75	82	74	77	82	118
CORN	62	144	176	202	216	231	177	239	129	220	228	250
SORGHUM	55	47	49	52	56	57	51	51	40	31	55	85
BEANS, DRY	175	34	42	44	45	42	44	45	34	40	41	52
TOBACCO	570	1	1	1	1	2	2	2	1	1	2	2
COTTON	465	90	119	101	91	68	79	103	107	144	121	111
COTTONSEED	53	156	189	167	143	112	128	162	166	231	215	186
COFFEE	625	29	29	33	32	34	39	42	41	37	41	41
SUGAR, RAW (CENTRIFUGAL)	65	89	67	103	106	125	141	170	164	142	196	245
SUGAR, NONCENTRIFUGAL	62	20	16	20	18	10	12	12	12	12	13	14
BEEF AND VEAL	345	32	38	40	48	53	60	63	69	64	55	58
MILK	90	215	235	230	240	242	250	255	255	275	275	250
AGGREGATES OF PRODUCTION			--MILLION DOLLARS AT CONSTANT PRICES--									
CROPS		98.5	117.3	115.5	112.3	100.6	108.7	130.2	120.5	143.6	141.2	147.3
LIVESTOCK		30.5	34.3	34.5	38.2	40.1	43.2	44.7	46.8	46.9	43.8	42.5
TOTAL AGRICULTURE		129.0	151.6	150.0	150.5	140.7	151.9	174.9	167.3	190.5	185.0	189.8
TOTAL FOOD		68.1	77.6	81.8	87.6	86.7	89.7	99.6	91.3	99.8	102.0	111.5
INDICES OF PRODUCTION	(1961-65 = 100)											
CROPS	100	119	117	114	102	110	132	122	146	143	150	
TOTAL AGRICULTURE	100	118	116	117	109	118	136	130	148	143	147	
TOTAL FOOD	100	114	125	129	127	132	146	134	147	150	164	
PER CAPITA AGRICULTURE	100	108	103	101	91	96	108	99	109	102	102	
PER CAPITA FOOD	100	104	107	112	106	107	116	102	109	107	114	
INDEX OF POPULATION	1961-65 POPULATION= 1,568,000											
1961-65 POPULATION=	1,568,000	100.0	109.1	112.2	115.4	119.3	123.1	126.3	130.7	135.2	139.7	144.1

27



TABLE 26 --PANAMA

PRODUCTION BY COMMODITY, VALUE AND INDICES OF TOTAL AGRICULTURAL AND FOOD PRODUCTION, AVERAGE 1961-65, ANNUAL 1966-75

COMMODITY	PRICE	AVERAGE	1966	1967	1968	1969	1970	1971	1972	1973	1974	1975
	WEIGHT	1961-65										
DOLLARS			-1,000 METRIC TONS-									
RICE, PADDY	100	122	140	151	163	165	131	136	125	162	174	175
CORN	75	78	84	89	84	88	56	54	44	56	60	61
BEANS, DRY	211	6	7	6	5	5	3	3	3	3	4	4
BANANAS	65	472	590	600	804	876	894	930	985	788	638	700
COFFEE	675	4	5	5	4	5	4	5	5	4	4	4
COCOA BEANS	250	1	1	1	1	1	1	1	1	1	1	1
SUGAR, RAW (CENTRIFUGAL)	70	38	41	59	68	74	74	85	86	84	104	140
BEEF AND VEAL	350	26	31	30	31	34	35	39	41	40	42	43
MILK	110	56	67	73	70	78	73	76	72	64	55	60
AGGREGATES OF PRODUCTION			-MILLION DOLLARS AT CONSTANT PRICES-									
CROPS		55.9	66.8	69.9	83.8	90.0	84.2	88.5	90.1	81.1	74.5	81.2
LIVESTOCK		15.3	18.3	18.5	18.6	20.5	20.3	22.1	22.3	21.0	20.8	21.7
TOTAL AGRICULTURE		71.2	85.1	88.4	102.4	110.5	104.5	110.6	112.4	102.1	95.3	102.9
TOTAL FOOD		68.2	81.7	85.0	99.7	107.1	101.8	107.2	109.0	99.4	92.6	100.2
INDICES OF PRODUCTION			(1961-65 = 100)									
CROPS		100	119	125	150	161	151	158	161	145	133	145
TOTAL AGRICULTURE		100	120	124	144	155	147	155	158	143	134	145
TOTAL FOOD		100	120	125	146	157	149	157	160	146	136	147
PER CAPITA AGRICULTURE		100	110	110	124	130	120	122	121	106	96	101
PER CAPITA FOOD		100	110	111	126	131	121	123	122	108	98	102
INDEX OF POPULATION												
1961-65 POPULATION=	1,163,000	100.1	109.4	112.7	116.1	119.5	123.0	127.3	130.7	135.0	139.3	143.6

TABLE 27 --PARAGUAY

PRODUCTION BY COMMODITY, VALUE AND INDICES OF TOTAL AGRICULTURAL AND FOOD PRODUCTION, AVERAGE 1961-65, ANNUAL 1966-75

COMMODITY	PRICE	AVERAGE										
	WEIGHT	1961-65	1966	1967	1968	1969	1970	1971	1972	1973	1974	1975
	DOLLARS	-1,000 METRIC TONS-										
WHEAT	65	7	9	25	32	31	41	55	18	23	35	45
RICE, PADDY	90	18	10	18	21	27	37	33	36	44	42	50
CORN	39	154	166	225	180	153	259	230	209	246	250	275
BEANS, DRY	94	39	30	34	31	33	35	26	32	34	33	30
CASSAVA	21	1,525	1,498	1,543	1,504	1,560	1,782	1,198	1,208	1,060	1,100	1,000
SWEETPOTATOES	24	80	119	122	85	94	134	138	72	88	90	85
SUGARCANE	5	795	988	988	702	821	973	982	1,006	1,273	1,300	1,000
TOBACCO	215	16	9	14	20	24	18	18	23	26	33	24
COTTON	295	11	9	9	10	14	13	6	18	29	27	33
COTTONSEED	45	22	20	16	18	25	27	12	35	57	57	58
SOYBEANS	75	8	12	18	14	30	52	75	97	122	180	215
PEANUTS, IN SHELL	110	21	20	21	17	16	17	18	17	14	13	12
CASTOR BEANS	65	15	5	5	12	13	17	17	17	17	15	13
COFFEE	360	2	2	2	4	3	2	3	4	3	3	3
BEEF AND VEAL <sup>1/</sup>	280	114	123	122	117	116	126	108	110	96	90	100
MILK	74	81	86	87	88	90	85	86	87	80	80	80
AGGREGATES OF PRODUCTION		-MILLION DOLLARS AT CONSTANT PRICES-										
CROPS		62.1	59.7	66.5	64.3	69.1	81.4	67.4	71.2	78.8	85.5	85.7
LIVESTOCK		38.0	40.8	40.6	39.3	39.2	41.6	36.6	37.2	32.8	31.1	33.9
TOTAL AGRICULTURE		100.1	100.5	107.1	103.6	108.3	123.0	104.0	108.4	111.6	116.6	119.6
TOTAL FOOD		91.7	94.9	100.4	94.1	97.1	113.5	96.1	95.7	95.2	99.4	102.8
INDICES OF PRODUCTION		(1961-65 = 100)										
CROPS		100	96	107	104	111	131	109	115	127	138	138
TOTAL AGRICULTURE		100	100	107	103	108	123	104	108	111	116	119
TOTAL FOOD		100	103	109	103	106	124	105	104	104	108	112
PER CAPITA AGRICULTURE		100	93	97	91	93	103	85	86	86	88	88
PER CAPITA FOOD		100	96	99	91	91	104	86	83	81	82	83
INDEX OF POPULATION		1961-65 POPULATION= 1,898,000										
		100.0	107.5	110.1	113.3	115.9	119.1	122.2	125.4	128.6	131.7	135.4

<sup>1/</sup> COMMERCIAL SLAUGHTER ONLY.

TABLE 28 --PERU

PRODUCTION BY COMMODITY, VALUE AND INDICES OF TOTAL AGRICULTURAL AND FOOD PRODUCTION, AVERAGE 1961-65, ANNUAL 1966-75

COMMODITY	PRICE	AVERAGE	1966	1967	1968	1969	1970	1971	1972	1973	1974	1975
	WEIGHT	1961-65										
DOLLARS			-1,000 METRIC TONS-									
WHEAT	68	150	145	152	119	137	125	122	140	149	150	150
RICE, PADDY	76	324	374	461	286	444	587	591	552	451	426	456
CORN	69	490	581	591	533	585	615	616	589	616	600	625
BARLEY	54	185	154	172	146	164	170	159	160	165	168	170
MILLET	40	25	15	17	6	9	9	9	8	8	8	9
SORGHUM	40	2	3	4	5	12	15	18	20	22	18	30
BEANS, DRY	155	39	59	65	40	50	53	48	47	37	35	36
POTATOES	56	1,487	1,499	1,712	1,592	1,856	1,929	1,968	1,750	1,900	1,940	1,950
CASSAVA	25	436	487	507	399	450	498	482	490	495	500	500
SWEET POTATOES	27	148	133	150	145	156	178	168	170	175	178	180
SUGARCANE	5	7,373	7,855	7,373	7,226	6,214	7,530	8,291	8,582	8,746	9,179	9,000
TOBACCO	325	3	3	5	4	3	3	2	3	4	5	4
COTTON	575	140	121	91	101	89	91	77	73	82	88	74
COTTONSEED	75	233	207	153	180	151	159	122	115	143	145	126
COFFEE	545	48	52	53	52	56	59	62	62	60	54	54
CATTLE IMPORTS <sup>1/</sup>	<sup>2/</sup> 120	76	116	85	62	81	113	101	87	30	10	10
BEEF AND VEAL	420	91	95	93	90	88	85	111	96	85	84	86
MUTTON AND LAMB	290	38	36	37	37	33	33	33	31	34	35	37
PORK	360	43	44	41	40	47	46	54	42	45	46	47
WOOL, GREASY BASIS	560	11	10	10	10	10	10	11	8	9	9	9
AGGREGATES OF PRODUCTION			-MILLION DOLLARS AT CONSTANT PRICES-									
CROPS		345.7	349.9	350.3	321.5	345.5	374.3	369.0	352.3	361.8	363.8	358.7
LIVESTOCK		61.8	57.8	60.0	61.1	59.4	53.9	69.7	58.5	63.2	65.9	67.5
LIVESTOCK FEED DEDUCTION (.14)		-8.6	-8.0	-8.4	-8.5	-8.3	-7.5	-9.7	-8.1	-8.8	-9.2	-9.4
TOTAL AGRICULTURE		398.9	399.7	401.9	374.1	396.6	420.7	429.0	402.7	416.2	420.5	416.8
TOTAL FOOD		285.2	295.2	313.5	280.8	308.3	329.6	344.0	321.4	330.0	333.9	338.5
INDICES OF PRODUCTION			(1961-65 = 100)									
CROPS		100	101	101	93	100	108	107	102	105	105	104
TOTAL AGRICULTURE		100	100	101	94	99	105	108	101	104	105	104
TOTAL FOOD		100	104	110	98	108	116	121	113	116	117	119
PER CAPITA AGRICULTURE		100	92	90	82	84	86	86	78	78	76	73
PER CAPITA FOOD		100	96	98	85	91	95	96	87	87	85	84
INDEX OF POPULATION												
1961-65 POPULATION= 11,026,000		100.0	108.6	111.7	115.0	118.4	122.0	125.7	129.5	133.4	137.4	141.5

<sup>1/</sup> IN 1,000 HEAD.  
<sup>2/</sup> PRICE PER HEAD.

TABLE 29 --TRINIDAD AND TOBAGO

PRODUCTION BY COMMODITY, VALUE AND INDICES OF TOTAL AGRICULTURAL AND FOOD PRODUCTION, AVERAGE 1961-65, ANNUAL 1966-75

COMMODITY	PRICE	AVERAGE	1966	1967	1968	1969	1970	1971	1972	1973	1974	1975
	WEIGHT	1961-65										
	DOLLARS		-1,000 METRIC TONS-									
RICE, PADDY	120	10	10	11	10	10	10	12	12	18	19	19
CASSAVA	64	5	4	2	3	3	3	3	4	4	4	4
SWEETPOTATOES AND YAMS	55	5	5	5	5	5	5	6	6	6	6	6
BANANAS	70	29	27	27	30	28	30	29	32	28	30	30
COFFEE	395	4	3	4	4	3	4	3	4	3	2	4
COCOA BEANS	525	5	5	6	5	6	4	4	5	4	4	5
SUGAR, RAW (CENTRIFUGAL)	70	234	214	201	243	241	220	217	232	186	186	160
BEEF AND VEAL	575	2	3	3	2	2	2	2	2	2	2	2
PORK	690	2	3	3	4	6	3	2	2	2	2	2
31 AGGREGATES OF PRODUCTION	-MILLION DOLLARS AT CONSTANT PRICES-											
CROPS		24.5	22.5	22.5	25.0	25.0	22.9	22.4	24.6	21.1	20.9	20.4
LIVESTOCK		2.6	3.8	3.8	4.0	5.3	3.3	2.6	2.6	2.6	2.6	2.6
TOTAL AGRICULTURE		27.1	26.3	26.3	29.0	30.3	26.2	25.0	27.2	23.7	23.5	23.0
TOTAL FOOD		25.6	25.1	24.7	27.4	29.1	24.6	23.8	25.6	22.5	22.7	21.4
INDICES OF PRODUCTION	(1961-65 = 100)											
CROPS		100	92	92	102	102	93	91	100	86	85	83
TOTAL AGRICULTURE		100	97	97	107	112	97	92	100	87	87	85
TOTAL FOOD		100	99	96	107	114	96	93	100	88	89	84
PER CAPITA AGRICULTURE		100	93	92	101	105	91	86	94	81	81	79
PER CAPITA FOOD		100	94	91	101	107	90	87	94	82	83	79
INDEX OF POPULATION												
1961-65 POPULATION=	890,000	100.0	104.3	105.1	105.6	106.3	106.2	106.5	106.9	107.2	107.5	108.0

TABLE 30 --URUGUAY

PRODUCTION BY COMMODITY, VALUE AND INDICES OF TOTAL AGRICULTURAL AND FOOD PRODUCTION, AVERAGE 1961-65, ANNUAL 1966-75

COMMODITY	PRICE WEIGHT	AVERAGE 1961-65	1966	1967	1968	1969	1970	1971	1972	1973	1974	1975
	DOLLARS		- - - - -1,000 METRIC TONS- - - - -									
WHEAT	51	465	329	144	470	447	388	302	186	297	526	470
RICE, PADDY	61	66	84	116	104	134	139	122	128	137	158	188
CORN	58	147	180	117	69	129	189	166	141	228	225	157
BARLEY	54	30	31	14	48	36	45	32	29	31	51	51
OATS	41	72	72	33	73	38	78	60	58	55	47	84
SORGHUM	38	7	15	28	30	51	36	72	57	225	193	77
POTATOES	58	121	112	60	128	138	118	150	106	133	142	121
SWEETPOTATOES AND YAMS	44	79	81	80	80	70	79	79	80	80	82	84
SUGARCANE	11	151	138	108	126	108	159	167	267	196	203	260
SUGAR BEETS	13	357	368	219	478	275	513	342	426	428	571	800
FLAXSEED	65	70	40	27	56	105	64	43	29	26	39	58
PEANUTS, IN SHELL	95	6	5	2	1	3	2	2	3	2	3	3
SUNFLOWER SEED	84	65	99	76	49	63	65	49	60	71	51	43
BEEF AND VEAL	235	313	261	241	290	238	365	270	287	297	330	350
MUTTON AND LAMB	215	51	56	82	86	87	83	85	50	31	34	16
PORK	460	24	23	25	22	24	22	17	19	23	26	24
MILK	56	747	745	621	661	767	764	706	705	700	710	720
WOOL, GREASY BASIS	695	86	86	81	80	75	80	62	61	53	55	60
AGGREGATES OF PRODUCTION			- - - - -MILLION DOLLARS AT CONSTANT PRICES- - - - -									
CROPS		68.6	65.4	43.9	67.3	72.2	74.9	64.8	56.9	76.2	90.0	85.4
LIVESTOCK		197.3	185.4	176.8	189.4	180.7	212.1	172.2	168.8	163.1	174.9	178.7
LIVESTOCK FEED DEDUCTION (.09)		-17.7	-16.6	-15.9	-17.0	-16.2	-19.0	-15.4	-15.1	-14.6	-15.7	-16.0
TOTAL AGRICULTURE		248.2	234.2	204.8	239.7	236.7	268.0	221.6	210.6	224.7	249.2	243.1
TOTAL FOOD		184.1	171.8	146.7	180.5	177.8	208.2	175.7	166.3	186.2	208.5	202.6
INDICES OF PRODUCTION			(1961-65 = 100)									
CROPS		100	95	64	98	105	100	94	83	111	131	124
TOTAL AGRICULTURE		100	94	83	97	95	108	89	85	91	100	100
TOTAL FOOD		100	93	80	98	97	113	95	90	101	113	110
PER CAPITA AGRICULTURE		100	90	79	91	88	99	81	76	80	88	86
PER CAPITA FOOD		100	89	76	92	90	104	86	80	89	99	95
INDEX OF POPULATION												
1961-65 POPULATION= 2,646,000		100.0	103.9	105.2	106.5	107.8	109.1	110.4	111.9	113.0	114.1	115.6

TABLE 31 --VENEZUELA

PRODUCTION BY COMMODITY, VALUE AND INDICES OF TOTAL AGRICULTURAL AND FOOD PRODUCTION, AVERAGE 1961-65, ANNUAL 1966-75

COMMODITY	PRICE	AVERAGE	1966	1967	1968	1969	1970	1971	1972	1973	1974	1975
	WEIGHT	1961-65										
	DOLLARS		-1,000 METRIC TONS-									
RICE, PADDY	130	136	195	223	245	244	226	141	165	272	297	370
CORN	80	477	557	633	661	670	710	713	506	454	524	550
SORGHUM	50	1	11	16	22	5	6	2	7	9	34	80
BEANS, DRY	235	40	47	50	59	54	55	43	35	29	33	42
POTATOES	125	113	126	133	143	124	125	115	109	124	152	160
CASSAVA	60	316	320	316	341	310	317	323	318	272	293	300
SWEETPOTATOES AND YAMS	80	81	96	98	101	103	107	124	122	100	104	110
TOBACCO	950	9	10	10	11	11	12	14	13	13	14	16
COTTON	650	10	14	13	13	15	13	21	21	27	43	30
COTTONSEED	100	19	24	27	22	25	23	33	36	46	73	51
SESAME SEED	250	37	60	81	76	83	126	94	59	78	72	75
BANANAS	45	749	840	859	949	948	968	992	997	1,013	1,000	1,050
PLANTAINS	40	216	212	197	222	260	281	298	282	280	290	300
COFFEE	730	49	44	45	52	54	54	57	40	66	46	64
COCOA BEANS	565	19	21	25	19	18	19	19	17	19	17	19
SISAL	190	10	14	13	12	16	17	12	13	15	14	15
SUGAR, RAW (CENTRIFUGAL)	100	295	360	386	354	424	492	517	483	510	500	500
SUGAR, NONCENTRIFUGAL	95	44	36	36	29	27	25	26	26	26	25	25
BEEF AND VEAL	420	148	180	189	192	195	200	214	217	231	240	245
PORK	550	28	29	31	32	37	40	44	47	63	63	65
MILK	225	547	682	716	758	789	828	970	1,049	1,023	1,100	1,140
AGGREGATES OF PRODUCTION	- - - - - MILLION DOLLARS AT CONSTANT PRICES - - - - -											
CROPS	255.7	292.7	314.2	327.3	334.9	356.0	348.8	305.9	345.0	356.4	383.4	
LIVESTOCK	200.9	245.1	257.6	268.8	279.8	292.3	332.4	353.0	361.9	383.0	395.2	
LIVESTOCK FEED DEDUCTION (.12)	-24.1	-29.4	-30.9	-32.2	-33.5	-35.0	-39.8	-42.3	-43.4	-45.9	-47.4	
TOTAL AGRICULTURE	432.5	508.4	540.9	563.9	581.2	613.3	641.4	616.6	663.5	693.5	731.2	
TOTAL FOOD	379.8	455.0	487.5	504.6	518.5	550.8	570.5	558.8	582.4	615.9	646.9	
INDICES OF PRODUCTION	(1961-65 = 100)											
CROPS	100	114	123	128	131	139	136	120	135	139	150	
TOTAL AGRICULTURE	100	118	125	130	134	142	148	143	153	160	169	
TOTAL FOOD	100	120	128	133	137	145	150	147	153	162	170	
PER CAPITA AGRICULTURE	100	107	110	111	111	113	115	107	111	112	115	
PER CAPITA FOOD	100	109	113	113	113	116	116	110	111	114	116	
INDEX OF POPULATION	1961-65 POPULATION= 8,623,000											
1961-65 POPULATION=	8,623,000	100.0	110.0	113.6	117.3	121.2	125.1	129.1	133.4	137.8	142.3	146.9

**UNITED STATES DEPARTMENT OF AGRICULTURE  
WASHINGTON, D.C. 20250**

**POSTAGE AND FEES PAID  
U.S. DEPARTMENT OF  
AGRICULTURE  
AGR 101  
FIRST CLASS**



**OFFICIAL BUSINESS  
PENALTY FOR PRIVATE USE, \$300**

**NOTICE:** If you don't want future issues of this ERS publication, check here  and mail this sheet to the address below.

If your address should be changed, write your new address on this sheet and mail it to:

**Automated Mailing List Section  
Office of Plant and Operations  
U.S. Department of Agriculture  
Washington, D.C. 20250**

**END**