



AgEcon SEARCH
RESEARCH IN AGRICULTURAL & APPLIED ECONOMICS

The World's Largest Open Access Agricultural & Applied Economics Digital Library

This document is discoverable and free to researchers across the globe due to the work of AgEcon Search.

Help ensure our sustainability.

Give to AgEcon Search

AgEcon Search

<http://ageconsearch.umn.edu>

aesearch@umn.edu

*Papers downloaded from **AgEcon Search** may be used for non-commercial purposes and personal study only. No other use, including posting to another Internet site, is permitted without permission from the copyright owner (not AgEcon Search), or as allowed under the provisions of Fair Use, U.S. Copyright Act, Title 17 U.S.C.*

SB 5515 (1976)

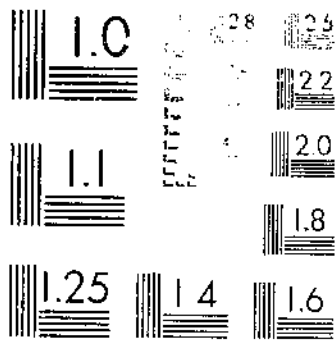
USDA STATISTICAL BULLETINS

UPDATE

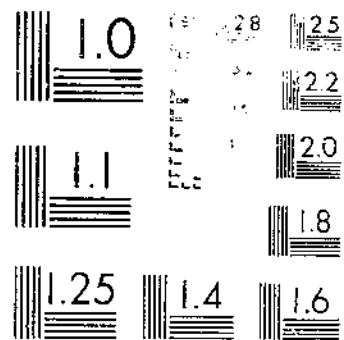
ANNUAL REPORT ON TOBACCO STATISTICS, 1975

1 OF 1

START



MICROFILM Edition, July 1981
NATIONAL BUREAU OF STANDARDS



MICROFILM Edition, July 1981
NATIONAL BUREAU OF STANDARDS

ANNUAL REPORT ON TOBACCO STATISTICS 1975

REFERENCE
DO NOT LOAN



STATISTICAL BULLETIN NO. 551
U.S. DEPARTMENT OF AGRICULTURE
AGRICULTURAL MARKETING SERVICE
WASHINGTON, D.C. APRIL 1976

BRIEF CLASSIFICATION OF LEAF TOBACCO

(Covering classes and types)

CLASS 1, FLUE-CURED TYPES

- Type 11: Old Belt flue-cured; produced principally in the Piedmont sections of Virginia and North Carolina.
- Type 12: Eastern North Carolina flue-cured; produced principally in the coastal sections of North Carolina, north of the South River.
- Type 13: South Carolina flue-cured; produced principally in the coastal sections of South Carolina, the southeastern counties of North Carolina, south of the South River.
- Type 14: Georgia and Florida flue-cured; produced principally in southern Georgia and northern Florida.

CLASS 2, FIRE-CURED TYPES

- Type 21: Virginia fire-cured; produced in the Piedmont and mountain sections of Virginia.
- Type 22: Tennessee-Kentucky fire-cured, eastern district, Clarksville, Springfield, and Hopkinsville; produced principally in a section east of the Tennessee River, in southern Kentucky and northern Tennessee.
- Type 23: Kentucky-Tennessee fire-cured, western district, Mayfield, and Murray; produced principally in a section between the Tennessee, Ohio, and Mississippi Rivers in western Kentucky and northwestern Tennessee.

CLASS 3, AIR-CURED TYPES

LIGHT AIR-CURED (CLASS 3a)

- Type 31: Lightest produced principally in the Virginia, North Carolina, and Missouri.
- Type 32: Southern Maryland produced principally in five counties of Southern Maryland - Prince Georges, St. Anne's, Calvert, Charles, and St. Mary's.

LIGHT AIR-CURED (CLASS 3b)

- Type 33: Old leaf type produced in north-central, western, and south-central Kentucky.
- Type 34: Steam-cured, produced in the northern part of Kentucky in the territory adjacent to Paducah and Hazard.
- Type 37: Virginia air-cured type produced principally in central Virginia, north of the South River.

CLASS 4, CIGAR-FILLER TYPES

- Type 41: Pennsylvania Seedleaf; produced principally in Lancaster County, Pa., and the adjoining counties.
- Type 42-44: Ohio filler; produced principally in the Miami Valley section of Ohio and extending into Indiana.
- Type 46: Puerto Rican sun-grown, including primed (Desajado) and stalk-cut (Nata); produced on the Island of Puerto Rico.

CLASS 5, CIGAR-BINDER TYPES

- Type 51: Connecticut Broadleaf; produced in the Connecticut Valley sections of Connecticut and Massachusetts.
- Type 52: Connecticut Havana Seed; produced in the Connecticut and Housatonic Valley sections of Connecticut and Massachusetts.
- Type 53: New York and Pennsylvania Havana Seed; produced in the Big Flats and Thundaga sections of New York, and extending into Pennsylvania.
- Type 54: Southern Wisconsin; produced in Wisconsin, south and east of the Wisconsin River.
- Type 55: Northern Wisconsin; produced in Wisconsin, north and west of the Wisconsin River, and in eastern Minnesota.

CLASS 6, CIGAR-WRAPPER TYPES

- Type 61: Connecticut Shade; produced in the Connecticut Valley sections of Connecticut and Massachusetts.
- Type 62: Georgia and Florida Shade; produced in south-western Georgia and north-central Florida.

MISCELLANEOUS TYPES OF DOMESTIC TOBACCO

- Type 72: Louisiana Toriques.
- Type 73: All other types of tobacco not otherwise classified.

FOREIGN TYPES

- Type 81: Cuba
- Type 82: Colombia
- Type 83: Philippines Islands
- Type 84: Brazil
- Type 85: Indonesia
- Type 86: Dominican Republic
- Type 87: Surinam
- Type 88: Mexico
- Type 89: Other foreign-grown cigar leaf
- Type 91: Foreign-grown material - Aromatic
- Type 92: Foreign-grown flue-cured
- Type 93: Foreign-grown burley

All tobacco types and grades shown are typical of the quality of the product as it is produced in the geographical area shown. There may be variations in quality and quantity of production in other areas of the same geographical area.

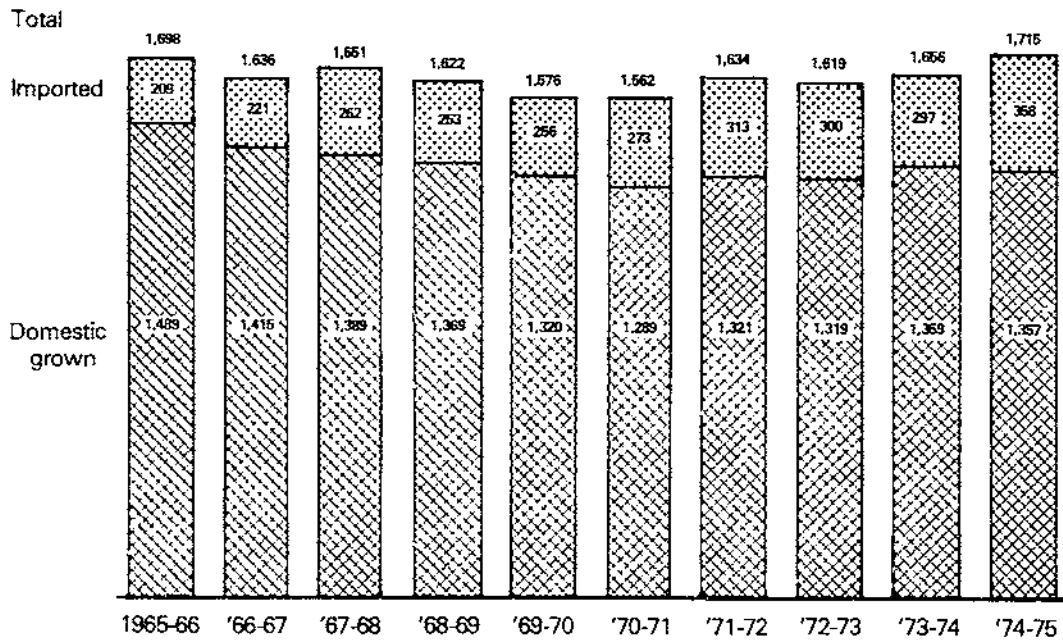
For sale by the Superintendent of Documents, U.S. Government Printing Office, Washington, D.C. 20540.

C O N T E N T S

	<u>PAGE</u>
Charts: Total carryover stocks	4
Leaf Tobacco Disappearance in the United States	4
Domestic Consumption of tobacco	5
Table 1. Acreage yield, production, stocks, supply, disappearance, exports, domestic use, average price and crop value of different tobacco types in the United States and Puerto Rico, by crop years.	6-10
Table 2. Cash receipts from tobacco compared with cash receipts from all farm commodities, by States, calendar years	11
Table 3. Applicable loan level per pound of tobacco, by class or type of tobacco	11
Table 4. Acreage yield, production, price, and crop value of tobacco by States	12-13
Table 5. Selected sales information on auction markets	14
Table 6. Total stocks of leaf tobacco, on a farm-sales-weight basis, held by the trade and in Government Loan Stocks in the United States and in Puerto Rico, by quarters.	14
Table 7. Stocks of leaf tobacco, domestic and imported, on a farm-sales-weight basis, owned by the trade, by quarters.	15-19
Table 8. Average percentage of farm-sales-weight after redrying.	19
Table 9. Factors for adjusting stocks reported by the trade to a farm-sales-weight basis, by types	20
Table 10. Dimensions and capacities of storage containers for tobacco	20
Tables 11-12-13 Estimated utilization of domestic cigarette tobaccos in cigarettes and other products.	21
Table 14. Number of allotments and poundage quotas, by types, calendar years.	22-23
Table 15. Marketing Quota referendums	24
Table 16. Domestic production and removals of manufactured tobacco products, by calendar years.	25
Table 17. Large cigars removed tax-paid for domestic consumption, by calendar years	26
Table 18. Rates of Federal tax on tobacco products in the United States	26
Table 19. State tax rates on cigarettes	27
Table 20. Wholesale cigarette price revisions, 1940 to date	27
Table 21. Receipts from Federal taxes on tobacco products	28
Table 22. Estimated total expenditures for tobacco products, by types, calendar years	28
Table 23. Consumption of tobacco products in the United States, per capita.	28
Table 24. Receipts from State taxes on tobacco products in the United States, by fiscal years	29
Table 25. United States exports to principal importing countries, by types, calendar years.	30-32
Table 26. Exports of unmanufactured tobacco from the United States, by types, calendar years.	33
Table 27. Exports of unmanufactured tobacco from the United States, to principal markets, calendar years.	33
Table 28. United States exports of tobacco products, calendar years	34
Table 29. United States imports of tobacco products for consumption, by countries, calendar years	34
Table 30. United States imports of unmanufactured tobacco for consumption, by countries, calendar years	35-36
Table 31. United States imports of unmanufactured tobacco for consumption, fiscal years	36
Table 32. Inruff rates on selective items of tobacco and tobacco products imported into the United States	37
Table 33. Import duties on unmanufactured tobacco in major United States markets.	37
Table 34. Production of flue-cured tobacco in selected countries, calendar years.	38
Table 35. Production of Burley tobacco in selected countries, calendar years.	38
Table 36. Acreage and production in selected countries, calendar years.	39
INDEX	42

LEAF TOBACCO DISAPPEARANCE IN U.S.

Million Lb. (farm sales weight)

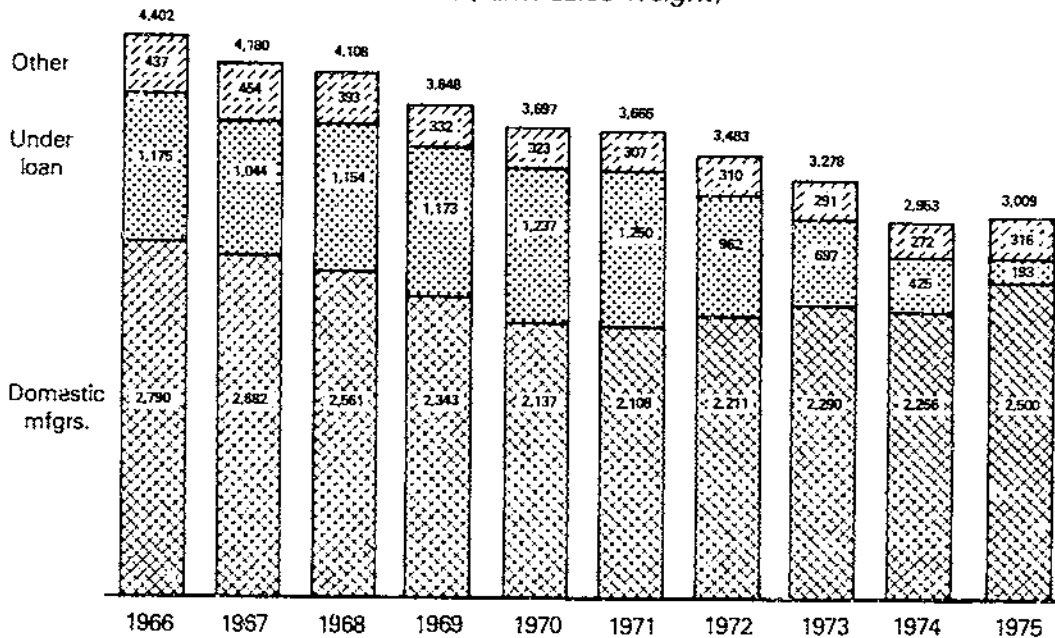


U.S. DEPARTMENT OF AGRICULTURE

NEG. AMS F31-76 (4) AGRICULTURAL MARKETING SERVICE

TOTAL CARRYOVER STOCKS U.S. TOBACCO TYPES 11-62

Million Lb. (farm sales weight)



U.S. DEPARTMENT OF AGRICULTURE

NEG. 529-76 (4) AGRICULTURAL MARKETING SERVICE

TRENDS IN U.S. CONSUMPTION

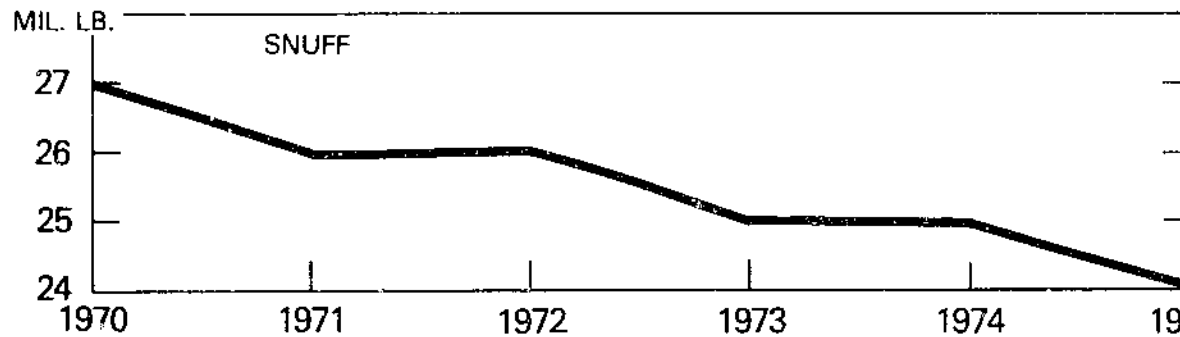
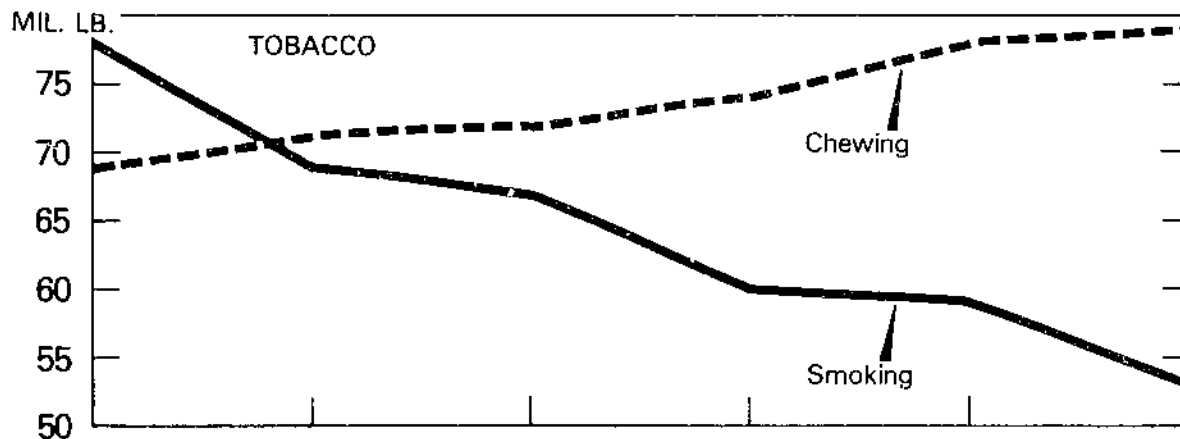
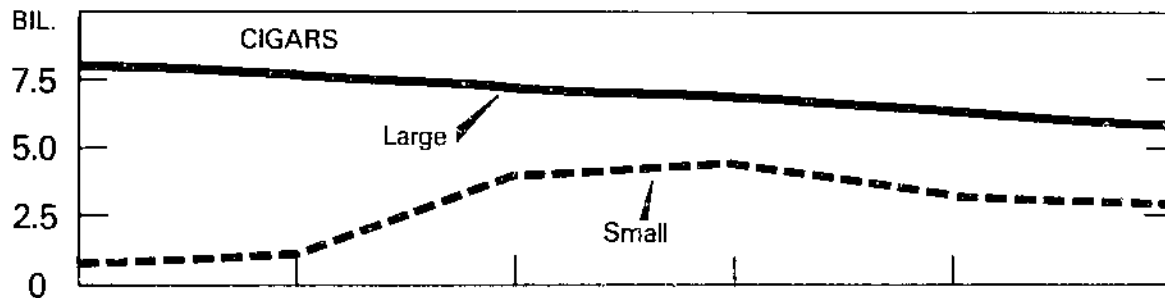
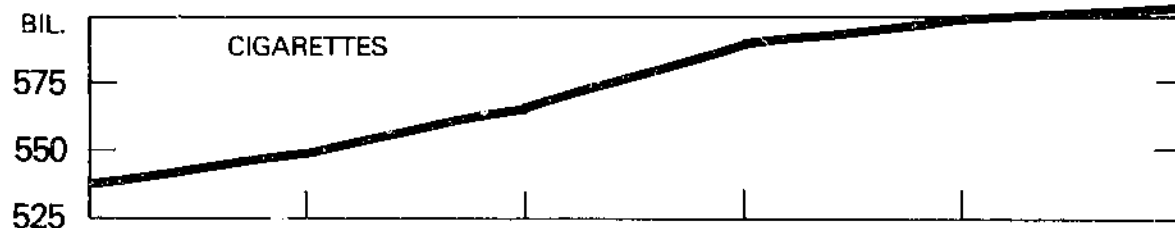


Table 1. Acreage, yield per acre, production, stocks supply, total disappearance, exports, domestic use, average price per pound to growers, and crop value of different types of tobacco in the United States and Puerto Rico, by crop years, annual 1970-1975. 1/

Crop Year	Acreage	Yield per Acre	Production or Sales	Stocks	Supply	Disappearance			Average Price per Pound to Growers	Crop Value
						Total	Export	Domestic		
	acres	Pounds	1,000 Pounds	1,000 Pounds	1,000 Pounds	1,000 Pounds	1,000 Pounds	1,000 Pounds	Cents	1,000 Dollars
TYPES 11-62, TOTAL U.S. AND PUERTO RICO										
1970	901,320	2,103	1,895,874	3,696,992	5,582,866	1,927,415	638,527	1,288,888	73.3	1,390,772
1971	852,190	2,030	1,709,952	3,665,451	5,375,403	1,892,261	571,026	1,321,235	78.5	1,362,189
1972	857,855	2,067	1,752,709	3,483,142	5,235,851	1,957,949	539,044	1,418,906	82.9	1,453,174
1973	893,690	1,975	1,764,612	3,277,902	5,042,514	2,089,498	732,154	1,357,344	89.8	1,584,841
1974	967,110	2,056	1,997,601	2,953,016	4,950,617	1,941,429	653,404	1,288,025	108.5	2,166,623
1975 2/	1,086,977	2,015	2,190,623	3,009,188	5,199,811					
1976										
1977										
TYPES 11-14, TOTAL FLUE-CURED										
1970	584,060	2,042	1,178,100	1,972,430	3,150,530	1,174,061	531,998	640,063	72.0	859,094
1971	525,790	2,050	1,076,300	1,976,459	3,052,759	1,142,583	480,028	662,545	77.2	832,367
1972	513,620	1,971	1,022,080	1,910,176	2,932,256	1,182,962	518,810	664,152	85.3	863,540
1973	575,130	2,011	1,158,992	1,749,294	2,908,286	1,301,002	598,048	702,954	88.1	1,019,292
1974	616,330	2,014	1,245,109	1,607,284	2,852,393	1,200,428	548,293	652,155	105.0	1,307,364
1975 2/	717,200	1,970	1,414,643	1,651,965	3,066,609				99.9	1,411,228
1976										
1977										
TYPES 21-23, TOTAL FIRE-CURED										
1970	22,680	1,635	37,074	71,639	110,713	48,500	32,971	15,599	54.0	20,030
1971	24,510	1,775	43,511	62,213	105,724	42,243	22,193	19,050	60.0	26,104
1972	25,190	1,677	42,248	64,481	106,729	41,844	26,363	15,481	58.1	24,531
1973	21,320	1,566	33,385	54,885	98,270	46,070	28,661	17,409	72.3	24,140
1974	21,190	1,504	31,867	52,200	84,067	35,990	20,791	15,119	91.2	29,063
1975 2/	23,490	1,576	37,016	48,077	85,093					
1976										
1977										
TYPE 21, VIRGINIA FIRE-CURED										
1970	5,000	1,230	6,150	9,797	15,947	6,988	4,635	2,353	52.0	3,198
1971	5,000	1,180	5,900	8,959	14,859	6,593	3,501	3,092	54.8	3,233
1972	4,800	970	4,656	8,266	12,922	5,294	4,066	1,228	64.2	2,989
1973	4,700	1,205	5,664	7,628	13,292	6,191	4,455	1,736	75.5	4,276
1974	5,000	1,185	5,925	7,101	13,026	5,697	4,986	711	81.7	4,841
1975 2/	5,000	1,070	5,350	7,329	12,679					
1976										
1977										
TYPES 22-23, TOTAL KENTUCKY AND TENNESSEE FIRE-CURED										
1970	17,680	1,749	30,924	63,842	94,766	41,512	28,336	13,176	54.4	16,832
1971	19,510	1,928	37,611	53,254	90,865	34,650	18,691	15,959	60.8	22,871
1972	20,390	1,844	37,592	56,215	93,807	36,550	22,297	14,253	57.3	21,542
1973	16,620	1,668	27,721	57,257	84,978	39,879	24,206	15,673	71.7	19,864
1974	16,190	1,734	25,942	45,099	71,041	30,253	15,805	14,488	93.4	24,230
1975 2/	18,690	1,713	31,666	48,748	72,414					
1976										
1977										
TYPE 22, KENTUCKY AND TENNESSEE FIRE-CURED (EASTERN DISTRICT)										
1970	13,600	1,794	24,396	52,766	77,162	31,346			54.8	13,365
1971	15,200	1,965	29,875	55,816	75,691	28,583			61.0	18,221
1972	16,050	1,909	30,633	47,108	77,741	29,712			58.0	17,758
1973	13,700	1,692	23,176	48,029	71,205	31,013			71.6	16,592
1974	13,150	1,608	21,149	40,192	61,341	25,204			93.4	19,753
1975 2/	14,900	1,734	25,830	36,137	61,967					
1976										
1977										

See Footnotes at end of table.

Table 1. Acreage, yield per acre, production, stocks supply, total disappearance, exports, domestic use, average price per pound to growers, and crop value of different types of tobacco in the United States and Puerto Rico, by crop years, annual 1970-75. 1/

Crop Year	Acreage	Yield per Acre	Production or Sales	Stocks	Supply	Disappearance			Average Price per Pound to Growers	Crop Value
						Total	Export	Domestic		
	Acre	Pounds	1,000 Pounds	1,000 Pounds	1,000 Pounds	1,000 Pounds	1,000 Pounds	1,000 Pounds	Cents	1,000 Dollars
TYPE 23, KENTUCKY AND TENNESSEE FIRE-CURED (WESTERN DISTRICT)										
1970	4,080	1,600	6,528	11,076	17,604	10,166			53.1	3,467
1971	4,310	1,795	7,736	7,438	15,174	6,067			60.1	4,650
1972	4,340	1,603	6,959	9,107	16,066	6,838			54.4	3,784
1973	2,920	1,557	4,545	9,228	13,773	8,866			72.0	3,272
1974	3,040	1,577	4,793	4,907	9,700	5,089			93.2	4,467
1975 2/	3,590	1,626	5,836	4,611	10,447					
1976										
1977										
TYPE 31, BURLEY										
1970	216,400	2,590	560,545	1,342,703	1,903,248	557,418	54,414	503,004	72.2	404,919
1971	213,500	2,213	472,576	1,345,830	1,818,406	569,937	34,729	515,208	80.9	382,421
1972	235,550	2,552	590,335	1,248,469	1,838,804	609,629	75,616	534,013	79.2	476,228
1973	222,100	2,028	460,715	1,229,175	1,689,888	619,223	86,759	532,464	92.9	428,002
1974	260,750	2,350	610,438	1,070,665	1,681,103	586,718	67,902	518,816	113.7	694,068
1975 2/	278,500	2,292	638,330	1,094,385	1,732,715				105.6	674,076
1976										
1977										
TYPE 32, MARYLAND										
1970	27,000	1,090	29,430	61,961	91,391	39,545	11,903	27,642	78.6	23,132
1971	27,000	1,040	28,080	51,846	79,296	25,456	7,998	17,458	81.9	22,998
1972	24,000	990	23,760	54,470	78,230	25,548	12,122	13,426	84.5	20,077
1973	25,800	1,260	35,027	52,682	87,709	25,998	12,345	13,653	90.5	31,699
1974	26,000	1,260	32,753	61,711	94,464	33,458	8,474	24,984	92.8	30,395
1975 2/	24,000	1,050	25,200	61,006	86,206					
1976										
1977										
TYPES 35-37, TOTAL DARK AIR-CURED										
1970	9,250	1,780	16,466	57,018	73,484	20,504	2,801	17,703	46.5	7,664
1971	9,450	1,774	16,763	52,980	69,743	20,555	2,131	18,424	47.5	7,967
1972	9,050	1,798	16,273	49,188	65,461	17,542	2,471	15,071	50.7	8,246
1973	8,250	1,619	13,358	47,919	61,277	21,414	3,098	18,316	62.4	8,333
1974	7,680	1,623	12,465	39,863	52,328	17,203	3,106	14,097	77.2	9,628
1975 2/	8,780	1,708	14,996	35,125	50,123					
1976										
1977										
TYPES 35-36, TOTAL KENTUCKY AND TENNESSEE DARK AIR-CURED										
1970	8,250	1,863	15,366	53,691	69,057	19,223	2,557	16,666	46.0	7,072
1971	8,550	1,834	15,683	49,834	65,917	19,328	1,947	17,381	47.1	7,383
1972	8,250	1,875	15,465	46,189	61,654	16,939	2,257	14,682	50.3	7,778
1973	7,550	1,647	12,434	44,715	57,149	20,260	2,863	17,397	61.9	7,694
1974	7,000	1,653	11,571	36,889	48,460	15,626	2,844	12,782	76.7	8,894
1975 2/	8,050	1,772	14,268	32,834	47,102					
1976										
1977										
TYPE 35, ONE SUCKER										
1970	5,850	1,868	10,926	34,308	45,234	13,216	2,049	11,167	47.5	5,185
1971	6,100	1,840	11,224	32,018	43,242	13,825	1,674	12,151	47.3	5,314
1972	5,750	1,842	10,590	29,617	40,007	11,977	2,004	9,973	51.6	5,467
1973	5,300	1,633	8,654	28,030	36,684	13,567	2,643	10,924	61.2	5,294
1974	4,850	1,588	7,701	23,117	30,818	11,741	2,576	9,165	75.2	5,794
1975 2/	5,600	1,738	9,735	19,077	28,812					
1976										
1977										

See Footnotes at end of table.

Table 1. Acreage, yield per acre, production, stocks, supply total disappearance, exports, domestic use, average price per pound to growers, and crop value of different types of tobacco in the United States and Puerto Rico, by crop years, annual 1970-1975. 1/

Crop Year	Acreage	Yield per Acre	Production or Sales	Stocks	Supply	Disappearance			Average Price per Pound to Growers	Crop Value
						Total	Export	Domestic		
	Acres	Pounds	1,000 Pounds	1,000 Pounds	1,000 Pounds	1,000 Pounds	1,000 Pounds	1,000 Pounds	Cents	1,000 Dollars
TYPE 36, GREEN RIVER										
1970	2,400	1,850	4,440	19,383	23,823	6,007	508	5,499	42.5	1,887
1971	2,450	1,820	4,459	17,816	22,275	5,503	273	5,230	46.4	2,069
1972	2,500	1,950	4,875	16,772	21,647	4,962	253	4,709	47.4	2,311
1973	2,250	1,680	3,780	16,685	20,465	6,693	220	6,473	61.5	2,400
1974	2,150	1,800	3,870	13,772	17,642	3,885	268	3,617	80.1	3,100
1975 2/	2,450	1,850	4,533	13,757	18,290					
1976										
1977										
TYPE 37, VIRGINIA SUN-CURED										
1970	1,000	1,100	1,100	3,327	4,427	1,281	244	1,037	53.8	592
1971	900	1,200	1,080	3,156	4,226	1,227	184	1,043	54.2	584
1972	800	1,010	808	2,999	3,807	603	214	389	57.9	468
1973	700	1,320	924	3,204	4,128	1,154	235	919	69.2	639
1974	680	1,315	894	2,974	3,868	1,577	262	1,315	82.1	734
1975 2/	730	1,000	730	2,291	3,021					
1976										
1977										
TYPES 41-62, TOTAL CONTINENTAL CIGAR TOBACCO (INCLUDES PUERTO RICAN)										
1970	41,920	1,771	74,259	184,241	263,500	87,377	2,440	84,937	102.8	76,352
1971	41,940	1,734	72,722	176,123	248,845	92,487	3,947	88,540	96.7	70,332
1972	40,445	1,434	58,013	156,358	214,371	80,424	3,662	76,762	104.4	60,552
1973	39,090	1,615	63,137	133,947	197,084	75,791	3,243	72,548	116.2	73,375
1974	35,100	1,848	64,969	121,293	186,262	67,632	4,838	62,794	144.1	93,638
1975 2/	35,007	1,726	60,436	118,630						
1976										
1977										
TYPES 41-46, TOTAL CIGAR FILLER										
1970	21,850	1,737	37,959	125,569	163,528	53,708	224	53,484	32.1	12,195
1971	22,050	1,587	34,993	109,820	144,813	54,928	376	54,552	37.3	13,049
1972	20,985	1,293	27,135	89,885	117,020	47,273	312	46,966	45.0	12,215
1973	19,700	1,610	31,724	69,742	101,466	38,033	759	37,294	49.7	15,763
1974	17,650	1,868	32,974	63,111	96,387	35,205	277	34,928	56.9	18,769
1975 2/	16,967	1,711	29,025	61,162	90,207					
1976										
1977										
TYPE 41, PENNSYLVANIA SEEDLEAF FILLER										
1970	17,000	1,800	30,600	97,261	127,866	40,868	124	40,644	31.0	9,486
1971	15,200	1,616	24,472	86,994	111,470	41,291	376	40,915	36.0	8,810
1972	13,000	1,400	18,200	70,119	88,379	34,659	312	34,347	46.0	8,372
1973	13,000	1,700	22,100	53,710	75,820	28,307	759	27,548	52.0	11,492
1974	13,000	2,000	26,000	47,513	73,513	24,302	277	24,025	58.0	15,080
1975 2/	12,500	1,750	21,875	49,211	71,086					
1976										
1977										
TYPES 42-44, MIAMI VALLEY (OHIO) FILLER										
1970	1,650	1,750	2,888	9,020	11,908	4,070	---	4,070	38.0	1,097
1971	2,050	1,850	3,793	7,838	11,631	4,596	---	4,596	41.0	1,555
1972	2,350	1,780	4,183	7,035	11,218	4,388	---	4,388	44.0	1,841
1973	2,200	1,420	3,124	6,830	9,954	4,100	---	4,100	51.0	1,593
1974	2,000	1,530	3,060	5,854	8,914	3,042	---	3,042	59.0	1,947
1975 2/	1,800	1,750	3,150	5,872	9,022					
1976										
1977										

See Footnotes at end of table.

Table 1. Acreage, yield per acre, production, stocks supply, total disappearance, exports, domestic use, average price per pound to growers, and crop value of different types of tobacco in the United States and Puerto Rico, by crop years, annual 1970-1975. 1/

Crop Year	Acreage	Yield per Acre	Production or Sales	Stocks	Supply	Disappearance			Average Price per Pound to Growers	Crop Value
						Total	Export	Domestic		
	Acres	Pounds	1,000 Pounds	1,000 Pounds	1,000 Pounds	1,000 Pounds	1,000 Pounds	1,000 Pounds	Cents	1,000 Dollars
TYPE 46, PUERTO RICAN FILLER 3/										
1970	3,200	1,397	4,471	19,283	23,754	8,770	---	8,770	36.1	1,612
1971	4,806	1,400	6,728	14,984	21,712	9,041	---	9,041	39.8	2,684
1972	5,635	843	4,752	12,671	17,423	8,231	---	8,231	42.1	2,002
1973	4,500	1,444	6,500	9,192	15,692	5,646	---	5,646	41.2	2,678
1974	2,650	1,477	3,914	10,046	13,960	7,861	---	7,861	44.5	1,742
1975 2/	2,667	1,500	4,000	6,099	10,099					
1976										
1977										
TYPES 51-55, TOTAL CIGAR BINDER										
1970	10,470	2,041	21,368	42,252	63,620	19,326	343	18,983	53.1	11,348
1971	12,210	2,075	25,332	44,294	69,626	22,973	96	22,877	56.1	14,199
1972	12,360	1,714	21,187	46,653	67,840	21,362	109	21,253	51.3	10,823
1973	11,760	1,841	21,647	46,478	68,125	25,282	101	25,181	62.2	13,447
1974	10,860	1,934	21,007	42,843	63,850	22,044	207	21,837	76.0	15,959
1975 2/	12,470	1,880	23,438	41,806	65,244					
1976										
1977										
TYPE 51, CONNECTICUT VALLEY BROADLEAF										
1970	1,300	1,700	2,210	4,312	6,522	2,137	273	1,864	67.0	1,481
1971	1,300	1,670	2,171	4,385	6,556	1,404	95	1,309	67.0	1,455
1972	1,300	1,550	2,315	5,152	7,167	1,805	103	1,702	72.0	1,651
1973	1,350	1,700	2,295	5,362	7,657	2,780	98	2,682	73.0	1,675
1974	1,300	1,700	2,210	4,877	7,087	2,592	206	2,386	82.0	1,812
1975 2/	1,300	1,500	1,950	4,495	6,445					
1976										
1977										
TYPE 52, CONNECTICUT VALLEY HAVANA SEED										
1970	370	1,950	722	2,699	3,421	655	---	655	61.0	440
1971	310	2,050	636	2,766	3,402	1,116	---	1,116	61.0	388
1972	260	1,850	481	3,286	2,767	644	---	644	62.0	298
1973	210	1,850	389	2,123	2,512	391	---	391	72.0	280
1974	160	2,040	326	2,121	2,447	776	---	776	82.0	267
1975 2/	170	1,750	298	1,671	1,969					
1976										
1977										
TYPE 54, SOUTHERN WISCONSIN										
1970	4,400	2,135	9,394	16,685	26,079	7,323	---	7,323	50.3	4,725
1971	5,300	2,270	12,031	18,756	30,787	10,531	---	10,531	55.6	6,689
1972	5,000	1,685	8,425	20,256	28,681	9,234	---	9,234	48.0	4,044
1973	4,900	1,950	9,555	19,447	29,002	10,078	---	10,078	60.5	5,781
1974	4,700	2,060	9,682	18,924	28,606	8,795	---	8,795	74.9	7,252
1975 2/	5,600	2,000	11,200	19,811	31,011					
1976										
1977										
TYPE 55, NORTHERN WISCONSIN										
1970	4,400	2,055	9,042	18,556	27,598	9,211	70	9,141	52.0	4,702
1971	5,300	1,980	10,494	18,387	28,881	9,922	1	9,921	54.0	5,667
1972	5,800	1,770	10,266	18,959	29,225	9,679	6	9,673	49.0	5,030
1973	5,300	1,775	9,408	19,546	28,954	12,033	3	12,030	60.7	5,711
1974	4,700	1,870	8,789	16,921	25,710	9,881	1	9,880	75.4	6,627
1975 2/	5,400	1,850	9,990	15,829	25,819					
1976										
1977										

See Footnotes at end of table.

Table 1. Acreage, yield per acre, production, stocks, supply, total disappearance, exports, domestic use, average price per pound to growers, and crop value of different types of tobacco in the United States and Puerto Rico, by crop years, annual 1970-1975. ^{1/}

Crop Year	Acreage	Yield per Acre	Production or Sales	Stocks	Supply	Disappearance			Average Price per Pound to Growers	Crop Value
						Total	Export	Domestic		
	Acres	Pounds	1,000 Pounds	1,000 Pounds	1,000 Pounds	1,000 Pounds	1,000 Pounds	1,000 Pounds	Cents	1,000 Dollars
TYPES 61-62, TOTAL CIGAR WRAPPER										
1970	9,600	1,555	14,932	21,420	36,352	14,343	1,873	12,470	350.9	52,390
1971	7,680	1,614	12,397	22,009	34,406	14,586	3,475	11,111	347.5	43,084
1972	7,100	1,365	9,691	19,820	29,511	11,784	3,242	8,543	387.1	37,514
1973	7,630	1,280	9,766	17,727	27,493	12,456	2,383	10,073	452.2	44,165
1974	6,650	1,652	10,988	15,037	26,025	10,383	4,354	6,029	536.1	58,910
1975 ^{2/}	5,570	1,431	7,973	15,642	23,613					
1976										
1977										
TYPE 61, CONNECTICUT VALLEY SHADE-GROWN										
1970	6,050	1,535	9,287	12,239	21,526	7,678	981	6,657	400.0	37,148
1971	4,700	1,635	7,683	13,888	21,571	8,401	2,702	5,701	400.0	30,732
1972	4,050	1,250	5,063	13,168	18,211	7,486	2,804	4,682	485.0	24,555
1973	5,000	1,210	6,050	10,745	16,795	8,292	1,853	6,439	515.0	31,158
1974	4,800	1,625	7,798	8,503	16,301	6,831	3,904	2,927	600.0	46,788
1975 ^{2/}	4,450	1,400	6,230	9,470	15,700					
1976										
1977										
TYPE 62, GEORGIA-FLORIDA SHADE-GROWN										
1970	3,550	1,590	5,645	9,181	14,826	6,705	892	5,813	270.0	15,242
1971	2,980	1,582	4,714	8,121	12,835	6,183	773	5,410	262.0	12,352
1972	3,050	1,517	4,628	6,652	11,280	4,298	438	3,860	280.0	12,959
1973	2,630	1,413	3,716	6,982	10,698	4,164	570	3,634	350.0	13,007
1974	1,850	1,724	3,190	6,534	9,724	3,552	450	3,102	380.0	12,122
1975 ^{2/}	1,120	1,556	1,743	6,172	7,915					
1976										
1977										

^{1/} This table is on a crop-year basis for 12 months beginning as follows: Types 11-14 and 61-62 - July 1; all other Types, October 1. Disappearance for any crop year is the sum of the stocks at the beginning of the year plus the current crop minus stocks remaining at the end of the crop year. Exports are on a farm-sales-weight basis. Domestic disappearance is total disappearance minus exports, and includes leaf used by manufacturers in the United States, losses or wastage, and difference which may result from errors in estimates and conversions of weights.

^{2/} Preliminary.

^{3/} Puerto Rican Type 46 production is that which is planted in the fall of the crop year shown and harvested the following Spring.

Basic data obtained from "Crop Production", monthly and annual publication of Statistical Reporting Service, USDA; "Tobacco Stocks" quarterly publication of Agricultural Marketing Service, USDA; and monthly export reports from Bureau of the Census, U.S. Dept. of Commerce. Puerto Rican statistics obtained from the Puerto Rican Dept. of Agriculture.

Table 2. Cash Receipts from tobacco compared with total cash receipts from all farm commodities, by States, annual 1972 - 1975.

	(Calendar Year Basis)											
	1972			1973			1974 ¹			1975 ¹		
	Cash Receipts		Tobacco	Cash Receipts		Tobacco	Cash Receipts		Tobacco	Cash Receipts		Tobacco
	Total	Tobacco	as per-centage of Total	Total	Tobacco	as per-centage of Total	Total	Tobacco	as per-centage of Total	Total	Tobacco	as per-centage of Total
Mill. Dol.	Mill. Dol.	Pct.	Mill. Dol.	Mill. Dol.	Pct.	Mill. Dol.	Mill. Dol.	Pct.	Mill. Dol.	Mill. Dol.	Pct.	
North Carolina	1,840	586	35.7	2,314	719	30.8	2,632	838	31.9	2,304	951	45.2
Kentucky	1,078	331	30.7	1,319	306	23.3	1,588	476	31.8	1,427	399	28.0
South Carolina	539	113	20.9	712	115	16.2	827	179	21.6	812	174	21.4
Virginia	666	90	13.5	908	122	13.4	972	157	15.2	977	159	16.3
Tennessee	831	92	11.0	1,143	89	7.8	1,005	123	12.2	967	126	13.0
Georgia	1,375	100	7.3	1,876	89	4.7	2,099	168	8.0	2,235	154	6.9
Connecticut	168	22	13.0	203	21	10.2	213	26	12.0	223	34	15.4
Maryland	412	23	5.6	575	20	3.5	622	29	4.6	667	29	4.5
Florida	1,687	27	1.6	2,014	29	1.4	2,241	37	1.6	2,344	29	1.2
Pennsylvania	1,113	9	0.8	1,380	8	0.6	1,601	17	0.7	1,592	14	0.9
Massachusetts	159	9	5.5	190	8	4.0	201	10	4.8	201	12	6.0
Wisconsin	1,849	12	0.7	2,281	9	0.4	2,444	11	0.5	2,101	13	0.7
Ohio	1,578	13	0.9	2,098	16	0.7	2,566	21	0.9	2,496	18	0.7
Indiana	1,726	10	0.6	2,933	11	0.4	3,750	18	0.4	2,979	16	0.5
West Virginia	115	2	1.7	151	3	1.8	191	2	1.0	147	3	2.0
Missouri	1,898	4	0.2	2,588	4	0.1	2,750	6	0.2	2,557	7	0.3
Total:												
Tobacco States	19,834	1,442	7.6	22,689	1,569	6.9	24,777	2,098	8.5	22,940	2,136	9.5
Total												
All States	261,190	1,442	2.4	86,875	1,570	1.8	193,521	2,099	1.1	190,572	2,136	2.4

¹ Subject to revision.

² Includes relatively small receipts from tobacco for a few States not shown separately.

Compiled from State Farm Income Statistics, Economic Research Service.

Table 3. Applicable loan level per pound of tobacco, as of beginning of marketing year, by class or type of tobacco, 1971 - 1976.

Beginning Marketing Year ¹	Loan Level											
	Flue-cured types	Burley	Maryland	Flue-cured	Flue-cured	Dark Air-cured	Virginia	Cigar Wrapper	Shag	Stem	Leaf	Leaf
	11-14	11	12	11	22-23	13-16	17	11	11	11	11	11
1971	69.1	71.5	72.7	66.5	48.5	43.1	43.1	2	37.1	37.8	38.5	38.5
1972	72.7	74.9	74.9	50.8	50.8	45.2	45.2	2	38.9	38.9	38.9	38.9
1973	76.9	78.9	78.9	54.5	54.5	47.6	47.6	2	41.0	41.0	41.0	41.0
1974	81.3	81.8	81.8	58.2	58.2	51.8	51.8	2	42.7	42.7	42.7	42.7
1975	93.2	96.1	96.1	63.2	63.2	58.0	58.0	2	44.9	44.9	44.9	44.9
1976 ²	108.0	109.3	109.3	74.1	74.1	67.9	67.9	2	46.2	46.2	46.2	46.2

¹ The Marketing Year begins as of July 1 for Flue-cured and Cigar Wrapper, and as of October 1 for all other types.

² Announced "no support" growers' unapproved quotas.

³ Subject to revision.

Compiled from records of ARS.

Table 4. Acreage, yield per acre, production, price per pound, and crop value of tobacco in the United States, by States and by years, 1970 - 1975.

TOTAL, IN THE UNITED STATES						INDIANA TOTAL, TYPE 31					
Year	Acreage	Yield per Acre	Production 1,000 lb.	Price per Pound	Crop Value 1,000 Dol.	Year	Acreage	Yield per Acre	Production 1,000 lb.	Price per Pound	Crop Value 1,000 Dol.
1970	898,330	2,122	1,906,453	72.9	1,389,711	1970	5,400	2,700	14,580	71.4	10,410
1971	837,590	2,015	1,704,884	78.6	1,339,644	1971	5,400	2,235	12,069	81.1	9,788
1972	842,420	2,076	1,749,085	83.0	1,451,275	1972	6,100	2,540	15,494	78.5	12,163
1973	886,590	1,965	1,742,105	90.1	1,569,440	1973	5,600	1,890	10,584	92.6	9,801
1974	962,620	2,067	1,989,728	108.6	2,159,875	1974	7,000	2,380	16,660	112.0	18,659
1975 1/2	1,083,460	2,016	2,184,075	102.1	2,229,735	1975 1/2	7,500	2,200	16,500	104.0	17,160
1976						1976					
ALABAMA TOTAL, TYPE 14						KENTUCKY, ALL TYPES					
1970	570	1,565	892	71.0	644	1970	147,100	2,622	411,871	70.7	291,349
1971	590	1,754	1,035	73.0	756	1971	159,200	2,238	356,322	78.9	281,255
1972	520	1,781	926	84.0	778	1972	172,250	2,593	446,725	77.7	346,916
1973	530	1,675	888	86.5	768	1973	161,750	1,984	320,869	91.5	293,464
1974	630	1,819	1,140	100.0	1,140	1974	189,050	2,391	452,008	112.8	509,914
1975 1/2	700	1,800	1,260	91.5	1,153	1975 1/2	201,900	2,307	465,706	105.7	492,386
1976						1976					
CONNECTICUT, ALL TYPES						LOUISIANA TOTAL, TYPE 72					
1970	5,500	1,576	8,657	315.0	27,269	1970	210	900	189	80.0	151
1971	4,700	1,619	7,611	305.0	23,215	1971	200	350	170	82.0	139
1972	4,200	1,343	5,640	337.0	19,032	1972	200	600	120	85.8	103
1973	5,050	1,341	6,772	365.2	24,732	1973	200	750	150	90.0	135
1974	4,800	1,649	7,915	455.4	36,042	1974	160	780	125	125.0	156
1975 1/2	4,500	1,429	6,430	445.0	28,616	1975 1/2	150	400	60	145.0	87
1976						1976					
FLORIDA, ALL TYPES						MARYLAND TOTAL, TYPE 32					
1970	15,000	1,928	28,923	104.7	30,278	1970	27,000	1,090	29,430	78.6	23,132
1971	17,150	1,949	25,630	103.8	26,616	1971	27,000	1,040	28,680	81.9	22,998
1972	12,500	1,877	23,668	116.0	27,168	1972	24,000	990	23,760	84.5	20,077
1973	13,700	1,752	23,999	120.8	28,987	1973	25,000	1,260	31,500	90.5	28,508
1974	13,270	2,095	27,805	128.2	35,638	1974	24,000	1,260	30,240	95.6	28,909
1975 1/2	14,490	2,061	29,865	113.4	33,853	1975 1/2	23,000	1,050	24,150		23,087
1976						1976					
GEORGIA, ALL TYPES						MASSACHUSETTS, ALL TYPES					
1970	66,750	1,997	133,305	76.7	102,260	1970	2,220	1,605	3,562	331.3	11,800
1971	59,630	1,931	115,119	79.1	91,054	1971	1,610	1,788	2,879	325.1	9,360
1972	77,650	1,959	115,241	87.2	100,505	1972	1,410	1,361	1,919	379.0	7,272
1973	60,150	1,618	97,913	87.7	88,129	1973	1,510	1,299	1,962	427.2	8,381
1974	72,280	2,233	161,602	103.8	167,580	1974	1,460	1,657	2,419	530.7	12,829
1975 1/2	79,170	2,010	150,975	101.5	153,193	1975 1/2	1,420	1,442	2,048	526.7	10,786
1976						1976					
MISSOURI TOTAL, TYPE 11						TENNESSEE, ALL TYPES					
1970	2,000	2,600	5,200	68.0	1,536	1970	53,830	2,123	114,269	69.6	79,577
1971	2,100	2,400	5,040	80.5	4,057	1971	51,760	2,040	104,605	75.7	79,983
1972	2,160	2,400	4,830	78.2	3,777	1972	57,390	2,172	126,657	75.3	93,853
1973	1,900	1,985	3,772	90.0	3,395	1973	51,420	1,969	101,271	88.3	89,440
1974	2,400	2,395	5,746	112.5	6,467	1974	56,540	1,962	110,945	111.0	123,202
1975 1/2	2,700	2,100	6,210	98.0	6,086	1975 1/2	61,640	2,023	124,678	100.8	125,687
1976						1976					
NORTH CAROLINA, ALL TYPES						VIRGINIA, ALL TYPES					
1970	391,100	2,084	815,520	71.7	584,755	1970	68,300	1,843	125,844	69.5	87,478
1971	346,000	2,102	727,145	77.5	563,559	1971	67,300	1,759	117,365	76.4	90,383
1972	319,700	2,003	640,385	85.4	580,925	1972	66,800	1,678	112,074	80.9	90,646
1973	334,500	2,117	811,915	88.3	717,191	1973	74,400	1,857	138,138	88.5	122,268
1974	398,000	1,983	789,220	105.7	833,904	1974	77,680	1,818	141,577	106.4	150,573
1975 1/2	479,000	1,990	953,125	99.8	950,817	1975 1/2	84,730	1,688	143,830	99.3	142,065
1976						1976					

See Footnotes at end of table.

Table 4. Acreage, yield per acre, production, price per pound, and crop value of tobacco in the United States, by States and by years, 1970 - 1975.

OHIO, ALL TYPES						WEST VIRGINIA TOTAL, TYPE 31					
Year	Acreage	Yield per Acre	Production	Price per Pound	Crop Value	Year	Acreage	Yield per Acre	Production	Price per Pound	Crop Value
	Acres	Pounds	1,000 lb.	Cents	1,000 Dol.		Acres	Pounds	1,000 lb.	Cents	1,000 Dol.
1970	8,350	2,496	20,844	67.3	14,025	1970	1,700	1,915	3,256	71.0	2,312
1971	8,750	2,003	17,528	72.3	12,680	1971	1,400	1,460	2,044	80.0	1,635
1972	10,050	2,240	22,509	71.9	16,190	1972	1,750	1,895	3,316	77.5	2,570
1973	9,600	1,651	15,852	84.7	13,430	1973	1,700	1,645	2,797	91.0	2,545
1974	11,000	2,103	23,130	104.1	24,083	1974	1,750	1,670	2,923	106.6	3,116
1975 <u>1/</u>	11,300	2,212	25,000	100.2	25,051	1975 <u>1/</u>	1,800	1,650	2,970	102.5	3,044
1976											

PENNSYLVANIA TOTAL, TYPE 41						WISCONSIN TOTAL					
Year	Acreage	Yield per Acre	Production	Price per Pound	Crop Value	Year	Acreage	Yield per Acre	Production	Price per Pound	Crop Value
	Acres	Pounds	1,000 lb.	Cents	1,000 Dol.		Acres	Pounds	1,000 lb.	Cents	1,000 Dol.
1970	17,000	1,800	30,600	31.0	9,486	1970	8,800	2,095	18,436	51.1	9,427
1971	15,200	1,610	24,472	36.0	8,810	1971	10,600	2,125	22,525	54.9	12,356
1972	13,000	1,400	18,200	46.0	8,372	1972	10,800	1,731	18,691	48.5	9,074
1973	13,000	1,700	22,100	52.0	11,492	1973	10,200	1,859	18,963	60.6	11,492
1974	13,000	2,000	26,000	58.0	15,080	1974	9,400	1,975	18,471	75.1	13,879
1975 <u>1/</u>	12,500	1,750	21,875		12,688	1975	11,000	1,926	21,190		15,921
1976											

SOUTH CAROLINA TOTAL, TYPE 13					
Year	Acreage	Yield per Acre	Production	Price per Pound	Crop Value
	Acres	Pounds	1,000 lb.	Cents	1,000 Dol.
1970	67,500	2,090	141,075	71.9	101,433
1971	63,000	2,115	133,245	75.8	101,000
1972	62,000	2,115	131,130	85.3	111,854
1973	67,000	1,980	132,660	86.9	115,282
1974	80,000	2,150	172,000	103.9	178,708
1975 <u>1/</u>	90,000	2,100	189,000	99.5	198,055
1976					

1/ Preliminary. Data for this table was taken from "Crop Production, 1975 Annual Summary" CrPr 2-1(76) and "Crop Values, 1973-1974-1975" CrPr 2-1-1(76) published by the Statistical Reporting Service, U.S. Dept. of Agriculture.

Table 5. Sales and average prices of tobacco sold at auction in the United States; loan receipts, number of markets, number of sales floors, and sets of buyers, crops of 1970 - 1975. 1/

Type and Year	Producer Sales	Average Price	Loan Receipts	Markets	Sales Floors	Buyers
	1,000 lb.	Dollars	1,000 lb.	Number	Number	Sets
Flue-cured - Types 11-14						
1970	1,178,100	72.04	144,226	94	431	145
1971	1,074,316	77.24	55,670	94	430	145
1972	1,015,575	85.37	24,281	94	433	145
1973	1,154,901	88.11	30,778	94	438	145
1974	1,240,092	105.06	22,988	94	421	---
1975	1,410,608	99.90	259,029	94	420	---
1976						
Virginia Fire-cured - Type 21						
1970	6,247	51.98	122	3	7	3
1971	5,851	54.83	59	3	7	3
1972	4,654	64.22	2	3	7	3
1973	5,654	75.55	0	3	6	3
1974	5,830	81.57	262	3	6	3
1975	4,754	92.97	45	3	6	3
1976						
Eastern District Fire-cured - Type 22						
1970	24,345	54.79	31	3	18	3
1971	29,860	60.96	36	3	18	3
1972	31,080	75.89	2,172	3	18	3
1973	23,020	71.66	191	3	19	3
1974	20,998	93.18	243	3	19	3
1975	17,491	106.38	56	3	19	3
1976						
Western District Fire-cured - Type 23						
1970	6,315	53.14	0	2	7	2
1971	7,443	60.01	1	2	7	2
1972	6,154	54.44	624	2	6	2
1973	4,392	72.20	10	2	5	1
1974	4,650	93.20	124	2	5	1
1975	4,824	97.37	44	2	5	2
1976						

Table 5. Sales and average prices of tobacco sold at auction in the United States; loan receipts, number of markets, number of sales floors, and sets of buyers, crops of 1970 - 1975. 1/

Type and Year	Producer Sales 1,000 lb.	Average Price Dollars	Loan Receipts 1,000 lb.	Markets Number	Sales Floors Number	Buyers Sets
Burley - Type 31						
1970	551,107	72.13	47,660	61	382	71
1971	470,710	80.88	178	61	381	71
1972	590,335	79.22	22,837	61	379	71
1973	461,994	92.92	660	60	367	71
1974	610,334	113.90	2,547	60	348	71
4/ 1975	640,000	105.60	51,194	60	346	71
1976						
Maryland - Type 32						
1970	29,311	78.56	3/ 0	4	13	5
1971	37,837	81.86	3/ 0	4	13	5
1972	23,517	84.45	3/ 0	4	13	5
1973	31,562	90.49	3/ 0	4	14	5
1974	30,225	95.55	3/ 0	4	14	5
2/ 1975						
1976						
One Sucker - Type 35						
1970	10,690	47.52	661	5	24	2
1971	10,999	47.46	1,296	5	23	2
1972	10,551	51.83	591	5	23	2
1973	6,940	60.27	18	5	21	2
1974	7,308	75.40	145	5	21	2
1975	7,661	90.11	32	5	21	2
1976						
Green River - Type 36						
1970	4,670	42.51	382	3	15	2
1971	4,605	46.42	387	3	14	2
1972	5,049	47.37	604	3	14	2
1973	3,930	63.56	0	3	14	2
1974	4,070	80.13	98	3	14	2
1975	4,678	89.27	20	3	14	2
1976						
Virginia Sun-cured - Type 37						
1970	1,066	53.84	3	1	1	1
1971	1,053	54.10	0	1	1	1
1972	761	75.93	0	1	1	1
1973	927	69.18	0	1	1	1
1974	893	82.06	13	1	1	1
1975	668	85.46	0	1	1	1
1976						

1/ Includes country and hogstead sales where applicable.

2/ Not available.

3/ Price support not in effect.

4/ Preliminary.

Compiled from Tobacco Market Reviews, Tobacco Division, AMS.

Table 6. Total stocks of leaf tobacco, on a farm-sales-weight equivalent basis, held by dealers and manufacturers and in Government loan stocks in the United States and in Puerto Rico, by quarters, January 1970 - January 1975.

TYPES 11 - 91								
Quarter and Year	Held by Trade 1,000 lb.	Under Loan 1,000 lb.	Total Stocks 1,000 lb.	Quarter and Year	Held by Trade 1,000 lb.	Under Loan 1,000 lb.	Total Stocks 1,000 lb.	
January 1:				July 1:				
1970	3,684,388	1,255,976	4,940,364	1970	3,190,627	1,248,198	4,438,825	
1971	3,634,696	1,371,006	5,005,702	1971	3,108,072	1,262,545	4,370,617	
1972	3,679,358	1,148,631	4,827,989	1972	3,214,335	971,665	4,186,000	
1973	3,895,265	805,095	4,700,360	1973	3,331,578	707,874	4,039,452	
1974	4,364,903	598,563	4,963,466	1974	3,329,306	432,819	3,762,125	
1975	4,177,373	283,811	4,461,184	1975	3,722,932	221,287	3,944,219	
1976	4,335,016	402,517	4,737,533	1976				
April 1:				October 1:				
1970	3,546,416	1,275,407	4,821,823	1970	3,371,668	1,278,656	4,650,324	
1971	3,441,645	1,321,153	4,762,798	1971	3,210,455	1,263,870	4,474,325	
1972	3,521,103	1,009,492	4,530,595	1972	3,530,217	874,553	4,404,770	
1973	3,709,098	749,498	4,458,596	1973	3,553,256	643,073	4,196,329	
1974	3,740,302	474,251	4,214,553	1974	3,700,959	428,271	4,129,230	
1975	4,065,783	248,826	4,314,609	1975	3,958,049	353,759	4,311,808	
1976								

Compiled from quarterly Tobacco Stocks Reports, Tobacco Division, AMS.

Table 7. Stocks of leaf tobacco, domestic and imported, by type, on a farm-value-weight equivalent basis, owned by dealers and manufacturers in the United States and in Puerto Rico, by quarter, January 1971 - 1976.

Quarter and Year	TYPES 11-14 - FLUE-CURED			TYPE 21 - VIRGINIA FIRE-CURED			TYPE 22 - TENNESSEE AND KENTUCKY FIRE-CURED		
	Held by Trade	Under Loan	Total farm-sales-weight equivalent	Held by Trade	Under Loan	Total farm-sales-weight equivalent	Held by Trade	Under Loan	Total farm-sales-weight equivalent
	1,000 lb.	1,000 lb.	1,000 lb.	1,000 lb.	1,000 lb.	1,000 lb.	1,000 lb.	1,000 lb.	1,000 lb.
January 1971	1,656,001	547,264	2,503,861	8,552	1,526	9,952	6,920	6,632	64,552
1972	1,782,923	718,941	2,511,877	9,678	730	10,408	47,919	4,752	43,681
1973	1,842,047	494,005	2,440,857	2,457	6	2,467	9,711	641	40,366
1974	1,878,894	471,075	2,349,968	1,916	1	5,911	17,761	2,243	38,801
1975	1,990,834	225,989	2,216,823	7,862	36	7,992	33,911	74	34,655
1976	2,085,648	475,507	2,561,155	8,231	181	8,512	28,827	143	28,950
April 1	1,411,792	802,420	2,214,212	11,209	1,208	12,417	57,093	6,179	63,212
1971	1,411,902	649,116	2,061,050	10,911	730	11,642	54,243	1,877	61,122
1972	1,493,648	443,769	1,937,417	7,134	6	7,140	21,736	614	62,427
1973	1,529,340	297,968	1,827,308	9,711	---	9,657	17,830	1,679	71,504
1974	1,724,097	273,932	1,998,029	9,414	293	9,707	27,069	511	48,111
July 1	1,414,422	261,917	1,676,339	10,011	1,117	11,125	56,727	1,347	56,063
1971	1,414,422	261,917	1,676,339	10,011	1,117	11,125	56,727	1,347	56,063
1972	1,474,234	204,289	1,678,523	7,058	---	7,058	11,716	2,407	34,229
1973	1,474,234	204,289	1,678,523	7,058	---	7,058	11,716	2,407	34,229
1974	1,474,234	204,289	1,678,523	7,058	---	7,058	11,716	2,407	34,229
1975	1,474,234	204,289	1,678,523	7,058	---	7,058	11,716	2,407	34,229
October 1	1,474,234	204,289	1,678,523	7,058	---	7,058	11,716	2,407	34,229
1971	1,474,234	204,289	1,678,523	7,058	---	7,058	11,716	2,407	34,229
1972	1,474,234	204,289	1,678,523	7,058	---	7,058	11,716	2,407	34,229
1973	1,474,234	204,289	1,678,523	7,058	---	7,058	11,716	2,407	34,229
1974	1,474,234	204,289	1,678,523	7,058	---	7,058	11,716	2,407	34,229
1975	1,474,234	204,289	1,678,523	7,058	---	7,058	11,716	2,407	34,229
1976	1,474,234	204,289	1,678,523	7,058	---	7,058	11,716	2,407	34,229
January 1971	8,704	2,266	10,970	10,208	1,506	11,714	1,107	686,418	1,406,174
1972	10,000	2,266	12,266	10,000	1,506	11,506	1,107	1,150,000	1,504,937
1973	10,000	2,266	12,266	10,000	1,506	11,506	1,107	244,666	1,506,832
1974	10,000	2,266	12,266	10,000	1,506	11,506	1,107	244,666	1,506,832
1975	10,000	2,266	12,266	10,000	1,506	11,506	1,107	244,666	1,506,832
1976	10,000	2,266	12,266	10,000	1,506	11,506	1,107	244,666	1,506,832
April 1	10,000	2,266	12,266	10,000	1,506	11,506	1,107	244,666	1,506,832
1971	10,000	2,266	12,266	10,000	1,506	11,506	1,107	244,666	1,506,832
1972	10,000	2,266	12,266	10,000	1,506	11,506	1,107	244,666	1,506,832
1973	10,000	2,266	12,266	10,000	1,506	11,506	1,107	244,666	1,506,832
1974	10,000	2,266	12,266	10,000	1,506	11,506	1,107	244,666	1,506,832
1975	10,000	2,266	12,266	10,000	1,506	11,506	1,107	244,666	1,506,832
1976	10,000	2,266	12,266	10,000	1,506	11,506	1,107	244,666	1,506,832
July 1	10,000	2,266	12,266	10,000	1,506	11,506	1,107	244,666	1,506,832
1971	10,000	2,266	12,266	10,000	1,506	11,506	1,107	244,666	1,506,832
1972	10,000	2,266	12,266	10,000	1,506	11,506	1,107	244,666	1,506,832
1973	10,000	2,266	12,266	10,000	1,506	11,506	1,107	244,666	1,506,832
1974	10,000	2,266	12,266	10,000	1,506	11,506	1,107	244,666	1,506,832
1975	10,000	2,266	12,266	10,000	1,506	11,506	1,107	244,666	1,506,832
1976	10,000	2,266	12,266	10,000	1,506	11,506	1,107	244,666	1,506,832
October 1	10,000	2,266	12,266	10,000	1,506	11,506	1,107	244,666	1,506,832
1971	10,000	2,266	12,266	10,000	1,506	11,506	1,107	244,666	1,506,832
1972	10,000	2,266	12,266	10,000	1,506	11,506	1,107	244,666	1,506,832
1973	10,000	2,266	12,266	10,000	1,506	11,506	1,107	244,666	1,506,832
1974	10,000	2,266	12,266	10,000	1,506	11,506	1,107	244,666	1,506,832
1975	10,000	2,266	12,266	10,000	1,506	11,506	1,107	244,666	1,506,832
1976	10,000	2,266	12,266	10,000	1,506	11,506	1,107	244,666	1,506,832
January 1971	10,000	2,266	12,266	10,000	1,506	11,506	1,107	244,666	1,506,832
1972	10,000	2,266	12,266	10,000	1,506	11,506	1,107	244,666	1,506,832
1973	10,000	2,266	12,266	10,000	1,506	11,506	1,107	244,666	1,506,832
1974	10,000	2,266	12,266	10,000	1,506	11,506	1,107	244,666	1,506,832
1975	10,000	2,266	12,266	10,000	1,506	11,506	1,107	244,666	1,506,832
1976	10,000	2,266	12,266	10,000	1,506	11,506	1,107	244,666	1,506,832
April 1	10,000	2,266	12,266	10,000	1,506	11,506	1,107	244,666	1,506,832
1971	10,000	2,266	12,266	10,000	1,506	11,506	1,107	244,666	1,506,832
1972	10,000	2,266	12,266	10,000	1,506	11,506	1,107	244,666	1,506,832
1973	10,000	2,266	12,266	10,000	1,506	11,506	1,107	244,666	1,506,832
1974	10,000	2,266	12,266	10,000	1,506	11,506	1,107	244,666	1,506,832
1975	10,000	2,266	12,266	10,000	1,506	11,506	1,107	244,666	1,506,832
1976	10,000	2,266	12,266	10,000	1,506	11,506	1,107	244,666	1,506,832
July 1	10,000	2,266	12,266	10,000	1,506	11,506	1,107	244,666	1,506,832
1971	10,000	2,266	12,266	10,000	1,506	11,506	1,107	244,666	1,506,832
1972	10,000	2,266	12,266	10,000	1,506	11,506	1,107	244,666	1,506,832
1973	10,000	2,266	12,266	10,000	1,506	11,506	1,107	244,666	1,506,832
1974	10,000	2,266	12,266	10,000	1,506	11,506	1,107	244,666	1,506,832
1975	10,000	2,266	12,266	10,000	1,506	11,506	1,107	244,666	1,506,832
1976	10,000	2,266	12,266	10,000	1,506	11,506	1,107	244,666	1,506,832
October 1	10,000	2,266	12,266	10,000	1,506	11,506	1,107	244,666	1,506,832
1971	10,000	2,266	12,266	10,000	1,506	11,506	1,107	244,666	1,506,832
1972	10,000	2,266	12,266	10,000	1,506	11,506	1,107	244,666	1,506,832
1973	10,000	2,266	12,266	10,000	1,506	11,506	1,107	244,666	1,506,832
1974	10,000	2,266	12,266	10,000	1,506	11,506	1,107	244,666	1,506,832
1975	10,000	2,266	12,266	10,000	1,506	11,506	1,107	244,666	1,506,832
1976	10,000	2,266	12,266	10,000	1,506	11,506	1,107	244,666	1,506,832

* Excludes

Table 7. Stocks of leaf tobacco, domestic and imported, by type, on a farm-sales-weight equivalent basis, owned by dealers and manufacturers in the United States and in Puerto Rico, by quarters, January 1971 - 1976.

Quarter and Year	TYPE 37 - VIRGINIA SUN-CURED			TYPES 35-37 - TOTAL DARK AIR-CURED			TYPE 41 - PENNSYLVANIA SEEDLEAF		
	Held by Trade	Under Loan	Total farm-sales-weight equivalent	Held by Trade	Under Loan	Total farm-sales-weight equivalent	Held by Trade	Under Loan	Total farm-sales-weight equivalent
	1,000 lb.	1,000 lb.	1,000 lb.	1,000 lb.	1,000 lb.	1,000 lb.	1,000 lb.	1,000 lb.	1,000 lb.
January 1:									
1971	3,593	---	3,593	40,558	16,525	59,083	86,680	---	86,680
1972	3,412	---	3,412	40,478	13,702	54,180	79,193	---	79,193
1973	3,105	---	3,105	38,254	13,099	51,353	60,369	---	60,369
1974	3,271	---	3,271	34,870	11,863	46,733	44,951	---	44,951
1975	3,086	---	3,086	36,762	1,229	37,991	41,047	---	41,047
1976	2,294	---	2,294	34,800	11	34,811	43,726	---	43,726
April 1:									
1971	3,668	---	3,668	45,356	17,610	62,966	108,712	---	108,712
1972	3,649	---	3,649	44,989	13,455	58,444	58,729	---	58,729
1973	3,694	---	3,694	43,467	13,078	56,545	65,106	---	65,106
1974	3,399	---	3,399	43,879	7,560	51,439	55,190	---	55,190
1975	2,672	---	2,672	42,631	710	43,341	57,420	---	57,420
July 1:									
1971	3,387	---	3,387	42,285	14,224	57,509	98,798	---	98,798
1972	3,294	---	3,294	41,124	13,144	54,268	79,117	---	79,117
1973	3,472	---	3,472	39,935	12,897	51,832	57,946	---	57,946
1974	3,177	---	3,177	40,217	6,150	46,367	49,214	---	49,214
1975	2,464	---	2,464	39,769	434	40,203	54,569	---	54,569
October 1:									
1971	3,256	---	3,256	38,645	14,335	52,980	86,998	---	86,998
1972	3,999	---	3,999	39,474	11,715	49,188	70,179	---	70,179
1973	3,204	---	3,204	35,122	12,797	47,919	53,720	---	53,720
1974	3,075	---	3,075	30,366	5,497	35,863	47,513	---	47,513
1975	2,291	---	2,291	33,095	30	33,125	49,211	---	49,211
	TYPES 42-44 - OHIO			TYPES 41-44 - TOTAL CONTINENTAL GROWN FILLER			TYPE 46 - PUERTO RICAN - CONTINENTAL UNITED STATES		
January 1:									
1971	8,999	---	8,999	93,379	5	95,363	5,180	---	5,180
1972	7,228	---	7,228	86,421	---	86,421	4,475	---	4,475
1973	6,139	---	6,139	60,508	---	60,508	3,347	---	3,347
1974	5,797	---	5,797	40,768	---	40,768	3,207	---	3,207
1975	4,044	---	4,044	42,057	---	42,057	2,312	---	2,312
1976	4,805	---	4,805	54,592	---	54,592	1,743	---	1,743
April 1:									
1971	9,798	---	9,798	119,916	---	119,916	5,506	---	5,506
1972	9,691	---	9,691	97,125	---	97,125	4,112	---	4,112
1973	8,683	---	8,683	73,799	---	73,799	3,688	---	3,688
1974	8,538	---	8,538	63,728	---	63,728	3,850	---	3,850
1975	7,492	50	7,542	64,962	---	64,962	2,389	---	2,389
July 1:									
1971	8,753	---	8,753	107,251	---	107,251	5,641	---	5,641
1972	8,274	---	8,274	87,195	---	87,195	3,809	---	3,809
1973	7,634	---	7,634	65,560	---	65,560	3,338	---	3,338
1974	6,849	---	6,849	50,063	---	50,063	2,841	---	2,841
1975	6,637	50	6,687	70,631	---	70,631	2,390	---	2,390
October 1:									
1971	7,848	---	7,848	94,849	---	94,849	4,789	---	4,789
1972	6,937	---	6,937	73,224	---	73,224	3,479	---	3,479
1973	6,836	---	6,836	58,711	---	58,711	3,273	---	3,273
1974	6,876	---	6,876	54,367	---	54,367	3,557	---	3,557
1975	5,874	50	5,924	61,282	---	61,282	3,663	---	3,663
	TYPE 46 - PUERTO RICAN - PUERTO RICO			TYPE 46 - PUERTO RICAN - CONTINENTAL UNITED STATES AND PUERTO RICO			TYPES 41-44 - TOTAL CIGAR FILLER		
January 1:									
1971	9,056	4,040	13,096	142,314	1,000	143,314	116,014	4,040	120,054
1972	8,067	2,065	10,132	113,840	2,465	116,305	97,264	2,465	99,729
1973	6,138	---	6,138	49,966	---	49,966	34,568	---	34,568
1974	5,954	---	5,954	47,697	---	47,697	37,515	---	37,515
1975	4,654	---	4,654	39,094	---	39,094	32,937	---	32,937
1976	4,113	---	4,113	6,001	---	6,001	64,587	---	64,587
April 1:									
1971	4,474	4,060	8,534	9,999	4,440	14,439	128,490	4,060	132,550
1972	3,607	1,749	5,356	11,016	879	11,895	109,139	530	109,669
1973	5,711	---	5,711	9,394	---	9,394	82,188	---	82,188
1974	4,937	---	4,937	7,487	---	7,487	70,215	---	70,215
1975	5,149	---	5,149	7,118	---	7,118	73,680	---	73,680
July 1:									
1971	6,564	6,186	12,750	12,137	6,186	18,323	119,426	6,186	125,612
1972	5,781	3,274	9,055	11,592	3,274	14,866	86,847	3,274	90,121
1973	4,501	3,762	8,263	7,545	2,762	10,307	74,794	3,762	78,556
1974	4,049	---	4,049	11,290	---	11,290	67,333	---	67,333
1975	5,426	1,344	6,770	8,316	1,344	9,660	69,758	1,344	71,102
October 1:									
1971	7,041	2,754	9,795	12,430	2,754	15,184	107,066	2,754	109,820
1972	9,190	---	9,190	30,215	---	30,215	89,885	---	89,885
1973	5,919	---	5,919	9,134	---	9,134	69,762	---	69,762
1974	6,689	---	6,689	10,369	---	10,369	64,413	---	64,413
1975	4,436	---	4,436	6,093	---	6,093	61,182	---	61,182

Table 7. Stocks of leaf tobacco, domestic and imported, by types on a farm-sales-weight equivalent basis, owned by dealers and manufacturers in the United States and in Puerto Rico, by quarters, January 1971 - 1976.

Quarter and Year	TYPE 51 - CONNECTICUT BROADLEAF			TYPE 52 - CONNECTICUT HAVANA SEED			TYPE 54 - SOUTHERN WISCONSIN		
	Held by Trade	Under Loan	Total farm-sales-weight equivalent	Held by Trade	Under Loan	Total farm-sales-weight equivalent	Held by Trade	Under Loan	Total farm-sales-weight equivalent
	1,000 lb.	1,000 lb.	1,000 lb.	1,000 lb.	1,000 lb.	1,000 lb.	1,000 lb.	1,000 lb.	1,000 lb.
January 1:									
1971	3,285	1,035	4,320	1,550	1,408	2,958	16,787	---	16,787
1972	4,040	1,223	5,263	1,841	875	2,716	17,713	---	17,713
1973	3,932	1,283	5,215	1,474	1,030	2,504	17,938	6	17,944
1974	4,004	1,246	5,250	1,280	867	2,147	16,193	15	16,208
1975	3,372	1,251	4,623	1,229	851	2,080	16,911	---	16,911
1976	3,384	716	4,100	1,686	---	1,686	17,271	7	17,278
April 1:									
1971	3,683	1,066	4,749	1,843	1,247	3,090	23,750	---	23,750
1972	4,562	1,364	5,926	1,834	844	2,678	24,845	---	24,845
1973	4,197	1,424	5,621	1,372	1,041	2,413	24,236	---	24,236
1974	4,631	1,042	5,673	1,137	869	2,006	24,242	---	24,242
1975	3,537	1,405	4,942	1,472	762	2,234	25,031	---	25,031
July 1:									
1971	3,582	1,152	4,734	1,744	1,212	2,956	21,539	---	21,539
1972	4,297	1,290	5,587	1,489	840	2,329	22,489	6	22,495
1973	4,032	1,372	5,404	1,180	1,032	2,212	21,510	14	21,524
1974	3,762	1,370	5,132	1,426	862	2,288	21,857	---	21,857
1975	4,350	805	5,155	1,615	546	2,161	22,241	7	22,248
October 1:									
1971	3,273	1,112	4,385	1,927	839	2,766	18,756	---	18,756
1972	3,927	1,225	5,152	1,466	820	2,286	20,250	6	20,256
1973	4,122	1,240	5,362	1,258	865	2,123	19,432	15	19,447
1974	3,655	1,222	4,877	1,269	852	2,121	18,924	---	18,924
1975	3,897	598	4,495	1,440	231	1,671	19,804	7	19,811
	TYPE 55 - NORTHERN WISCONSIN			TYPES 51-55 - TOTAL CIGAR BINDER					
January 1:									
1971	18,116	1,447	19,563	39,748	3,890	43,628			
1972	16,863	2,123	18,986	40,457	4,221	44,678			
1973	16,930	534	17,464	40,274	2,853	43,127			
1974	16,991	1,307	18,298	38,468	3,435	41,903			
1975	14,052	1,303	15,355	35,564	3,407	38,971			
1976	14,452	1,838	16,290	37,509	1,845	39,354			
April 1:									
1971	23,451	23	23,474	52,727	2,336	55,063			
1972	23,841	---	23,841	54,082	2,200	57,290			
1973	23,414	231	23,645	53,219	2,696	55,915			
1974	23,411	18	23,429	53,061	2,289	55,350			
1975	20,214	---	20,214	52,421	---	52,421			
July 1:									
1971	21,049	---	21,049	47,914	2,364	50,278			
1972	21,480	---	21,480	49,755	2,164	51,891			
1973	22,705	136	22,841	49,427	2,554	51,981			
1974	20,433	---	20,433	47,477	2,233	49,710			
1975	17,894	---	17,894	46,107	1,351	47,458			
October 1:									
1971	18,387	---	18,387	42,343	1,951	44,294			
1972	18,959	---	18,959	44,602	2,051	46,653			
1973	19,546	---	19,546	44,358	2,120	46,478			
1974	16,921	---	16,921	40,769	2,075	42,843			
1975	15,829	---	15,829	40,971	835	41,806			

Table 7. Stocks of leaf tobacco, domestic and imported, by types, on a farm-sales-weight equivalent basis, owned by dealers and manufacturers in the United States and in Puerto Rico, by quarters, January 1971 - 1976.

Quarter and Year	TYPE 61 CONNECTICUT SHADE-GROWN	TYPE 62 GEORGIA & FLORIDA SHADE-GROWN	TYPES 61-62 TOTAL CIGAR WRAPPER		TYPE 72 PERIQUE	TYPE 73 1/ OTHER MISC. DOMESTIC	TYPES 72-73 TOTAL MISC. DOMESTIC			
(ALL STOCKS IN THESE TYPES HELD BY TRADE)										
	1,000 lb.	1,000 lb.	1,000 lb.		1,000 lb.	1,000 lb.	1,000 lb.	1,000 lb.		
January 1:										
1971	15,512	11,625	27,137		698	5,538		6,236		
1972	14,160	8,739	22,899		580	5,325		5,905		
1973	11,545	8,336	19,881		625	5,081		5,706		
1974	10,323	7,368	17,690		734	5,720		6,454		
1975	11,517	7,275	18,792		711	6,782		7,493		
1976	11,493	7,898	19,391		546	5,872		6,418		
April 1:										
1971	15,314	9,845	25,159		825	5,456		6,281		
1972	13,992	7,735	21,727		747	4,617		5,364		
1973	11,394	8,196	19,590		590	5,204		5,863		
1974	9,804	7,303	17,107		575	5,465		6,040		
1975	12,220	7,121	19,341		484	6,095		6,579		
July 1:										
1971	13,888	8,121	22,009		635	5,772		6,407		
1972	13,168	6,652	19,820		694	5,465		6,159		
1973	10,745	6,932	17,677		691	5,367		6,058		
1974	8,503	6,534	15,037		601	5,399		6,500		
1975	9,470	6,172	15,642		561	6,046		6,607		
October 1:										
1971	14,170	8,838	23,008		676	5,669		6,345		
1972	12,175	7,930	20,105		948	5,303		6,251		
1973	11,384	6,946	18,330		663	5,420		6,083		
1974	9,652	6,621	16,273		523	6,712		7,235		
1975	10,158	5,978	16,136		482	6,719		7,201		
FOREIGN-GROWN CIGAR LEAF TYPES										
Quarter and Year	Cuba Type 81	Indonesia Type 82	Philippines Type 83	Brazil Type 84	Colombia Type 85	Dominican Republic Type 86	Paraguay Type 87	Mexico Type 88	Other Type 89	Total Imported Cigar Leaf Types 81-89
										1,000 lb.
January 1:										
1971	825	2,946	40,401	7,969	8,597	9,841	9,009	6,675	12,605	98,868
1972	540	4,125	31,623	7,279	6,373	9,247	5,628	5,701	12,413	82,929
1973	416	6,698	37,296	8,022	7,048	17,115	6,866	6,464	16,513	106,437
1974	279	9,763	33,535	7,707	10,433	17,907	9,019	4,791	18,850	112,284
1975	145	10,896	37,702	7,917	11,484	19,194	10,909	6,216	20,160	124,626
1976	116	11,761	43,817	7,952	9,484	19,596	8,231	6,086	24,051	131,094
April 1:										
1971	760	3,496	44,954	7,274	6,826	13,316	8,058	6,611	12,975	103,670
1972	539	4,437	32,430	6,306	6,771	12,707	5,451	6,139	11,732	86,512
1973	350	6,644	36,864	8,074	8,730	19,883	7,843	5,740	19,495	113,623
1974	191	10,561	35,309	7,923	9,809	22,780	7,106	4,449	22,327	120,455
1975	125	10,712	38,688	7,601	10,685	24,501	10,816	5,498	20,566	129,192
July 1:										
1971	717	4,718	38,704	9,380	10,387	13,526	7,282	5,289	12,411	102,414
1972	503	4,337	33,923	8,019	11,120	11,950	4,112	6,007	13,791	93,762
1973	298	9,045	31,101	10,467	13,195	18,667	6,717	4,929	19,777	114,196
1974	172	10,644	40,896	8,917	9,746	21,987	8,326	3,018	20,393	124,119
1975	126	10,910	39,738	8,340	12,538	24,009	10,824	4,780	22,964	134,229
October 1:										
1971	633	4,186	39,888	9,503	8,245	10,797	6,723	6,272	12,038	98,285
1972	486	4,604	37,677	7,200	10,553	10,426	4,339	6,713	13,155	95,153
1973	300	10,226	33,237	8,804	13,363	16,556	7,273	6,395	19,161	115,315
1974	174	9,352	40,939	8,834	11,756	19,826	8,072	5,616	19,547	126,119
1975	133	11,092	37,874	7,755	11,304	20,957	8,795	5,917	25,601	129,418

Table 7. Stocks of leaf tobacco, domestic and imported, by types, on a farm-sales-weight equivalent basis, owned by dealers and manufacturers in the United States and in Puerto Rico, by quarters, January 1970 - January 1975.

Quarter and Year	IMPORTED FOREIGN-GROWN CIGARETTE LEAF				TOTAL STOCKS		
	Foreign-grown Oriental and Aromatic	Foreign-grown Flue-cured Type 92 3/	Foreign-grown Burley Type 93 3/	Total Imported Cigarette Leaf Types 91-93 3/	Total Domestic Leaf Types 11-73	Total Imported Cigar and Cigarette Leaf Types 81-93	Grand Total Domestic and Imported Leaf Types 11-93
	1,000 lb.	1,000 lb.	1,000 lb.	1,000 lb.	1,000 lb.	1,000 lb.	1,000 lb.
January 1: 1970				412,221	4,433,336	507,028	4,940,364
1971	367,063	13,264	5,272	385,599	4,521,235	484,467	5,005,702
1972	320,148	12,070	6,895	339,113	4,405,947	422,042	4,827,989
1973	369,373	31,131	17,086	417,590	4,176,333	524,027	4,700,360
1974	355,127	37,802	49,396	442,325	3,854,248	554,609	4,409,215
1975	377,068	52,730	118,176	547,994	3,789,021	672,163	4,457,315
1976	361,286	73,567	113,575	564,430	4,038,009	699,524	4,737,533
April 1: 1970				425,807	4,293,964	527,859	4,821,823
1971	370,542	10,637	4,752	385,931	4,272,997	489,601	4,762,598
1972	356,554	11,610	8,571	376,737	4,067,346	463,249	4,530,595
1973	375,856	31,277	23,657	430,790	3,914,183	544,413	4,458,596
1974	373,592	43,802	59,320	476,714	3,617,385	597,169	4,214,553
1975	411,995	48,757	106,658	567,410	3,618,007	696,602	4,314,609
1976							
July 1: 1970				428,396	3,905,585	533,240	4,438,825
1971	381,610	14,429	3,826	399,865	3,868,338	502,279	4,370,617
1972	389,429	24,402	9,370	423,201	3,669,037	516,963	4,186,000
1973	387,358	39,763	27,490	454,611	3,470,645	568,807	4,039,452
1974	383,435	46,755	67,285	497,475	3,140,531	621,594	3,762,125
1975	414,769	70,394	144,672	627,835	3,180,174	784,045	3,964,219
1976							
October 1: 1970				405,829	4,145,354	504,970	4,650,324
1971	346,708	14,640	5,992	367,340	4,008,700	465,625	4,474,325
1972	360,000	19,495	10,504	389,999	3,919,618	485,152	4,404,770
1973	360,425	37,679	35,925	434,029	3,646,985	549,344	4,196,329
1974	350,304	54,400	88,353	493,057	3,510,038	619,192	4,129,230
1975	350,720	70,420	136,398	586,338	3,595,852	715,956	4,311,808
1976							

1/Type 73 is defined as all domestic tobacco not otherwise classified.

2/Separate reporting of Mexican stocks was not required until October 1968. In previous quarters Mexican totals were included as other foreign-grown cigar leaf. Other foreign-grown leaf is now type 89.

3/These tobaccos were previously grouped together and reported as Type 90. Beginning January 1, 1971, they were reclassified as: Oriental and Aromatic, Type 91; Foreign-grown Flue-cured, Type 92; and Foreign-grown Burley, Type 93.

Compiled from quarterly Tobacco Stocks Reports, Tobacco Division, AMS.

Table B. Average Percentage of Farm-Sales-Weight remaining after redrying and steaming.

Year	Flue-cured		Burley		Maryland	
	Unstemmed	Stemmed	Unstemmed	Stemmed	Unstemmed	Stemmed
1959	89.1	67.5	69.4	67.2		
1960	89.7	68.1	89.8	67.3		
1961	89.4	68.5	88.6	64.1	99.3	69.6
1962	89.5	67.7	89.1	65.2	98.7	68.6
1963	88.9	67.0	90.0	65.1	97.2	69.6
1964	89.4	66.5	90.0	64.3	97.2	69.9
1965	89.5	67.3	89.7	65.4	97.8	68.0
1966	89.0	66.8	88.7	64.3	98.2	69.7
1967	89.4	66.5	90.0	64.0	97.8	67.7
1968	89.4	65.5	89.4	64.1	97.0	68.2
1969	89.4	66.3	89.7	65.5	96.7	65.3
1970	89.9	67.8	89.5	65.1	97.2	66.4
1971	89.6	68.2	88.5	65.4	96.7	67.2
1972	89.7	69.1	89.0	63.6	95.2	67.3
1973	89.0	67.6	88.6	64.9	94.2	67.2
1974	88.7	67.7	87.8	64.0		
1975						
1976						

Compiled from AMS Tobacco Division records.

Table 9 Factors for adjusting stocks reported by dealers and manufacturers to a farm-sales-weight equivalent, by types of tobacco.

		Auction Market Areas (Types 11-37) ^{1/}				
TYPE NAME	Type Number	Factors to multiply by to convert -				
		Steamed stocks to -		Unsteamed stocks to -		
		Unsteamed equivalent	Farm-sales weight equivalent	Farm-sales-weight equivalent		
				From packed weight ^{1/}		
Blue-cured	11-14	1.295	1.450	1.12		
Virginia fire-cured	21	1.299	1.598	1.23		
Virginia and Kentucky fire-cured	22-23	1.324	1.471	1.04		
Dark	31	1.41	1.510	1.12		
Shade Maryland	32	1.373	1.400	1.02		
Black	33	1.318	1.554	1.10		
Free hand	36	1.389	1.570	1.13		
Virginia unsteamed	37	1.326	1.538	1.16		
Miscellaneous domestic	72-73	1.333	1.493	1.12		
Domestic-Grown Cigar Leaf (Types 41-62)						
				Sweated weight ^{2/}	Marked weight ^{3/}	Farm sales weight ^{3/}
Central Asia oriental	41	1.44	1.718	1.19	1.05	1.00
India	42-44	1.454	1.730	1.19	1.05	1.00
East Indian	46	1.314	1.551	1.18	1.16	1.00
Southwest Brazilian	51	1.375	1.622	1.18	1.04	1.00
Central Asia Broad Leaf	52	1.366	1.635	1.18	1.04	1.00
Other Broad Leaf	53	1.363	1.687	1.22	1.06	1.00
Northern Wisconsin	55	1.344	1.713	1.22	1.06	1.00
Connecticut Broad	61	1.245	1.419	1.14	1.10	1.00
Georgia and Florida Broad	62	1.235	1.408	1.14	1.10	1.00
Imported Leaf (Types 81-93)						
Cigar leaf	81-89	1.400	1.624	1.16		
Foreign-grown oriental - Aromatic	91	1.133	1.460	1.10		
Foreign-grown fire-cured	92	1.295	1.450	1.12		
Foreign-grown broad	93	1.345	1.506	1.12		

^{1/} Types 11-37 are reported on the basis of packed weight.

^{2/} Farm-sales-weight equivalent based on unsteamed steamed weight factor.

^{3/} The instructions for reporting unsteamed cigar-leaf of the domestic types require that dealers and manufacturers indicate the weight basis on which the tobacco is reported, namely, farm-sales-weight, marked weight, or sweated weight. The stocks are converted to the farm-sales-weight equivalent on the basis of average factors reflecting the percentage reported each quarter in each of these categories.

Table 10 Dimensions and capacities of storage containers for tobacco

CONTAINER	Dimensions	Average weight	
		Net	Gross
		Pounds	Pounds
Standard binhead	48 x 48 x 48	1,950	140
Small binhead	48 x 48 x 45	1,950	100
Corrugated cartons	28 x 29 x 46 1/2	450	40
Wooden crates	30 x 30 x 48	450	120

Table 11. Estimated utilization of flue-cured, burley, and Maryland tobaccos in cigarettes and other products, annual 1970 - 1975 (July-June Basis).

(Farm-sales-weight)

Year Beginning July	FLUE-CURED			BURLEY 1/			MARYLAND		
	Cigarettes	Other 2/ Products	Total Domestic	Cigarettes	Other 2/ Products	Total Domestic	Cigarettes	Other 2/ Products	Total Domestic
	Million Pounds								
1970	596	44	640	441	62	503	27	1	28
1971	618	45	663	455	60	515	17	1	18
1972	624	40	664	479	55	534	13	1	14
1973	655	48	703	473	60	533	13	1	14
1974	604	48	652	464	55	419	24	1	25
1975									
1976									

1/ Marketing year domestic disappearance substituted for burley and Maryland.

2/ Smoking and chewing tobacco and cigars; includes also exports of partially processed and shredded tobacco, classified as "bulk smoking".

Table 12. Estimated leaf used by domestic manufacturers in cigarettes, by types of tobacco, annual 1970 - 1974 (July-June Basis).

(Farm-sales-weight)

Year Beginning July	Flue-cured		Burley 1/		Maryland 1/		Imported		Total Leaf Used	Production of Cigarettes
	Quantity	Percent of total	Quantity	Percent of total	Quantity	Percent of total	Quantity	Percent of total		
	Mill. lb.	Pct.	Mill. lb.	Pct.	Mill. lb.	Pct.	Mill. lb.	Pct.	Mill. lb.	Billions
1970	596	47.6	441	35.3	27	2.2	187	14.9	1,251	585.1
1971	618	47.4	455	34.9	17	1.3	215	16.4	1,305	592.0
1972	624	47.6	479	36.5	13	1.0	196	14.9	1,312	615.6
1973	655	47.4	473	34.2	13	1.0	242	17.4	1,383	652.0
1974	604	44.0	464	33.8	24	1.8	280	20.4	1,372	626.8
1975										
1976										

1/ Burley and Maryland marketing year substituted.

Table 13. Estimated leaf used per 1,000 cigarettes by domestic manufacturers, by types of tobacco, annual 1970 - 1974 (July-June Basis).

(Farm-sales-weight)

Year Beginning July	DOMESTIC TYPES				Imported	Total	Cigarettes per pound of leaf
	Flue-cured	Burley	Maryland	Total Domestic			
	Pounds	Pounds	Pounds	Pounds	Pounds	Pounds	Number
1970	1.02	.75	.05	1.82	.32	2.14	468
1971	1.04	.77	.03	1.84	.36	2.20	454
1972	1.01	.78	.02	1.81	.32	2.13	469
1973	1.01	.72	.02	1.75	.37	2.12	471
1974	.96	.74	.04	1.74	.45	2.19	457
1975							
1976							

Source for tables on this page: Estimates of Tobacco Division, Agricultural Marketing Service.

Table 14. Number of allotments and pounds of plants for Flue-cured and Burley tobacco, 1971 - 1976.

KIND OF TOBACCO AND STATE	1971		1972		1973		1974		1975		1976	
	Allot-ments	1,000 lbs.	Allot-ments	1,000 lbs.	Allot-ments	1,000 lbs.	Allot-ments	1,000 lbs.	Allot-ments	1,000 lbs.	Allot-ments	1,000 lbs.
Flue-cured - 11-14												
Alabama	265	1,001	267	920	259	999	262	1,210	262	1,278	266	1,213
Florida	7,795	21,504	7,894	21,534	7,917	25,556	7,991	30,862	7,953	25,547	7,944	32,455
Georgia	23,431	118,416	23,164	115,536	23,027	124,598	24,961	162,604	24,976	157,489	24,995	138,921
North Carolina	115,102	698,242	114,908	688,743	114,845	742,147	114,726	848,818	115,074	1,051,367	114,931	942,612
South Carolina	24,111	133,245	23,878	132,421	23,704	140,212	23,771	176,242	23,875	186,798	23,863	155,189
Virginia	20,994	97,139	20,896	97,020	20,834	115,963	23,832	119,441	20,826	139,501	20,835	138,985
TOTAL	192,731	1,069,887	192,067	1,056,674	191,588	1,205,566	191,291	1,437,117	192,045	1,522,621	191,894	1,409,373
Burley - 31												
Alabama	23	29	23	28	25	30	25	51	25	65	22	66
Arkansas	59	52	59	59	59	53	59	102	59	110	46	98
Georgia	185	105	170	102	172	109	179	200	183	231	140	198
Illinois	3	2	3	2	3	2	3	4	3	5	3	3
Indiana	9,372	14,446	9,343	13,894	8,506	14,630	9,634	20,041	9,752	20,458	9,615	19,710
Kansas	47	95	46	83	45	87	45	143	46	158	34	92
Kentucky	136,756	376,922	137,864	353,144	139,186	371,918	140,562	452,883	141,137	467,256	140,604	454,972
Missouri	1,841	5,221	1,500	4,009	1,505	5,278	1,519	7,107	1,527	7,319	1,517	6,506
North Carolina	17,674	19,609	27,920	19,054	18,106	20,069	18,285	26,849	18,461	30,756	17,961	28,597
Ohio	9,936	17,364	10,090	16,619	10,225	17,463	20,386	24,471	10,503	24,807	10,409	23,064
South Carolina	5	4	5	4	5	4	5	7	5	7	3	4
Tennessee	89,296	102,804	90,464	98,990	91,704	104,269	92,693	141,028	93,733	162,040	91,079	156,249
Virginia	16,534	21,277	16,664	20,576	16,787	21,689	16,861	27,241	16,981	29,710	16,651	29,177
West Virginia	4,358	4,046	4,382	3,919	4,410	4,138	4,431	6,702	4,465	7,531	4,251	7,492
TOTAL	285,731	555,063	288,634	531,466	291,738	559,723	294,687	607,828	296,882	750,441	292,235	726,228

Table 14. Number of allotments and acreage allotted for Dark Air-cured, Fire-cured, and Cigar Tobaccos.

KIND OF TOBACCO AND STATE	1971		1972		1973		1974		1975		1976	
	Allotments	Acreage Allotted	Allotments	Acreage Allotted	Allotments	Acreage Allotted	Allotments	Acreage Allotted	Allotments	Acreage Allotted	Allotments	Acreage Allotted
Fire-Cured - 21-23												
Kentucky	7,928	12,819	7,814	14,132	7,746	13,910	7,634	13,891	7,558	15,564		
Tennessee	7,297	14,146	7,781	15,890	7,630	15,799	7,545	15,506	7,538	17,541		
Virginia	6,064	12,597	5,906	12,193	5,735	11,302	5,496	10,471	3,361	11,329		
TOTAL	21,919	39,832	21,501	42,215	21,120	41,011	20,675	39,868	20,457	44,434		
Dark Air-cured - 35-36												
Indiana	57	21	51	21	59	20	58	19	47	21		
Kentucky	16,862	9,645	16,601	9,628	16,255	9,392	15,965	9,369	15,729	10,239		
Tennessee	4,294	1,649	4,254	1,655	4,227	1,640	958	1,633	4,264	1,761		
TOTAL	21,213	11,315	20,906	11,304	20,531	11,052	16,971	11,021	20,040	12,021		
Virginia Sun-cured - 37												
Virginia	1,161	2,213	1,087	2,095	1,028	1,859	958	1,633	920	1,718		
Cigar Filler and Binder - 42-44 and 53-55												
Illinois	1	2	1	2	1	1	1	1	1	1		
Indiana	2	1	2	1	2	1	2	1	2	1		
Iowa	1	8	1	8	1	8	1	8	-	-		
Minnesota	52	110	53	110	54	111	54	111	53	117		
New York	6	6	4	4	4	4	4	4	3	4		
Ohio	1,184	4,196	1,159	4,058	1,107	3,952	1,086	3,924	1,099	4,252		
Pennsylvania	32	100	31	88	28	79	25	70	24	67		
Wisconsin	4,546	14,038	4,545	13,948	4,516	13,887	4,507	13,796	4,509	15,142		
TOTAL	5,624	18,460	5,796	18,220	5,713	18,043	5,680	17,915	5,691	19,584		
Cigar Binder - 51-52												
Connecticut	473	5,509	462	5,338	446	4,761	446	4,761	1/	1/		
Massachusetts	190	1,411	156	1,286	156	1,029	150	897	1/	1/		
TOTAL	663	6,920	629	6,624	602	5,800	596	5,658				
GRAND TOTAL	529,282	78,740	530,620	80,458	532,320	77,765	530,858	76,095	47,108	77,757		

1/ Terminated in 1975. Compiled from records of the Tobacco & Peanut Division, ASCS, USDA.

Table 15. Marketing quota referendums, for crops covered since 1960, by kind of tobacco.

Kind of tobacco and Date of referendum	Crops covered	Percentage of votes cast			Kind of tobacco and Date of referendum	Percentage of votes cast	Marketing quota			
		For 3 years	For 1 year	Against quotas			For 3 years	For 1 year	Against quotas	
Flue-cured (11-14)					Dark air-cured (35-36)					
Dec. 12, 1961	1962, 1963, 1964	98.2	--	1.9	Feb. 24, 1961	90.1	1960, 1961, 1962	98.2	--	1.8
Dec. 15, 1964	1965, 1966, 1967	96.0	--	3.9	Feb. 24, 1964	1964, 1965, 1966	97.5	--	2.5	
May 4, 1965	1965, 1966, 1967	73.6	--	26.4	Feb. 13-17, 1967	1967, 1968, 1969	94.0	--	6.0	
July 13, 1967	1968, 1969, 1970	96.5	--	3.5	Feb. 16-20, 1970	1970, 1971, 1972	97.0	--	3.0	
July 16, 1970	1971, 1972, 1973	98.4	--	1.6	Feb. 19-23, 1973	1973, 1974, 1975	97.1	--	2.9	
July 17, 1973	1974, 1975, 1976	98.5	--	1.5	Feb. 19-23, 1976	1976, 1977, 1978	94.8	--	5.2	
Burley (31)					Virginia sun-cured (37)					
Feb. 20, 1962	1962, 1963, 1964	99.2	--	.8	Feb. 20, 1962	1962, 1963, 1964	98.0	--	2.0	
Feb. 25, 1965	1965, 1966, 1967	99.0	--	1.0	Feb. 25, 1965	1965, 1966, 1967	97.0	--	3.0	
Mar. 10, 1966	1966, 1967, 1968	57.0	--	43.0	Feb. 26-Mar. 1, 1968	1968, 1969, 1970	94.0	--	6.0	
Feb. 27-Mar. 3, 1967	1967, 1968, 1969	58.8	--	41.2	Feb. 22-26, 1971	1971, 1972, 1973	94.0	--	6.0	
Feb. 26-Mar. 1, 1968	1968, 1969, 1970	97.0	--	3.0	Feb. 25-Mar. 1, 1974	1974, 1975, 1976	94.8	--	5.2	
May 4, 1971	1971, 1972, 1973	96.6	--	3.4						
Feb. 25-Mar. 1, 1974	1974, 1975, 1976	93.3	--	1.7						
Maryland (32)					Cigar filler (41)					
Feb. 2, 1960	1960, 1961, 1962	77.8	--	22.2	Feb. 20, 1962	1962, 1963, 1964	13.8	--	86.2	
Feb. 14, 1963	1963, 1964, 1965	83.8	--	16.2	Feb. 18, 1965	1965, 1966, 1967	11.8	--	88.2	
Feb. 25, 1966	1966, 1967, 1968	41.5	--	58.5	Feb. 19-23, 1968	1968, 1969, 1970	19.1	--	80.9	
Feb. 20-24, 1967	1967, 1968, 1969	61.0	--	39.0	Feb. 22-26, 1971	1971, 1972, 1973	24.9	--	75.1	
Feb. 19-23, 1968	1968, 1969, 1970	55.2	--	44.8	Feb. 25-Mar. 1, 1974	1974, 1975, 1976	14.8	--	85.2	
Feb. 22-26, 1971	1971, 1972, 1973	19.2	--	80.8						
Feb. 25-Mar. 1, 1974	1974, 1975, 1976	25.5	--	74.5						
Fire-cured (21-24)					Cigar filler and binder (42-44, 53-55)					
Feb. 24, 1961	1961, 1962, 1963	98.0	--	2.0	Feb. 11, 1960	1960, 1961, 1962	95.4	--	4.6	
Feb. 28, 1964	1964, 1965, 1966	94.7	--	5.3	Feb. 26, 1963	1963, 1964, 1965	89.6	--	10.4	
Feb. 13-17, 1967	1967, 1968, 1969	93.5	--	6.5	Feb. 10, 1966	1966, 1967, 1968	91.3	--	8.7	
Feb. 16-20, 1970	1970, 1971, 1972	93.8	--	6.2	Feb. 24-27, 1969	1969, 1970, 1971	84.6	--	15.4	
Feb. 19-23, 1973	1973, 1974, 1975	93.2	--	6.8	Jan 10-14, 1972	1972, 1973, 1974	91.2	--	8.8	
Feb. 19-23, 1976	1976, 1977, 1978	94.2	--	5.8	Feb. 24-28, 1975	1975, 1976, 1978	86.5	--	13.5	
					Cigar binder (51-52)					
					Feb. 11, 1960	1960, 1961, 1962	89.7	--	10.3	
					Feb. 26, 1963	1963, 1964, 1965	95.0	--	4.0	
					Feb. 10, 1966	1966, 1967, 1968	91.6	--	8.4	
					Feb. 24-27, 1969	1969, 1970, 1971	92.0	--	8.0	
					Jan. 10-14, 1972	1972, 1973, 1974	92.2	--	7.8	
					Feb. 24-28, 1975	1975, 1976, 1977	92.0	--	8.0	

1/ A two-thirds majority of farmers voting is required to place marketing quotas in effect. Compiled from records of the Tobacco & Peanut Division, ASCS, USDA.

Table 16. Cigars, cigarettes, chewing tobacco, smoking tobacco, and snuff manufactured and removed tax-paid and tax-free, in the United States, by calendar years, annual 1970 - 1975.

YEAR	MANUFACTURED														Total Chewing, Smoking & Snuff Tobacco
	CIGARS				CIGARETTES				CHEWING TOBACCO						
	Domestic Factories	Large		Total	Small	Large	Small ^{1/}	Plug	Twist	Fine-cut	Loose Leaf	Total Chewing	Smoking Tobacco	Snuff	
		Bonded Ware- houses	Millions												
1970	7,094.7	---	7,094.7	933.4	1.1	583,250.2	22.0	2.4	4.8	39.5	68.8	69.4	26.5	164.7	
1971	6,707.0	---	6,707.0	1,135.5	0.5	576,424.8	20.6	2.4	5.1	43.3	71.4	60.5	26.4	158.3	
1972	6,024.8	---	6,024.8	4,022.4	0.7	599,069.6	19.6	2.2	5.2	45.6	72.6	55.8	25.5	154.2	
1973	5,654.2	---	5,654.2	4,414.9	1.1	644,245.0	18.6	2.1	5.7	47.6	74.0	53.0	25.3	226.3	
1974	5,283.6	---	5,283.6	3,099.4	1.9	635,016.8	18.0	2.2	6.2	52.9	79.2	49.0	25.0	232.5	
1975 ^{3/}	4,523.7	---	4,523.7	2,942.3	2.3	651,210.5	18.1	2.3	7.3	52.2	80.0	44.5	24.4	228.8	
1976															
REMOVED TAX-PAID															
1970	6,704.9	---	6,704.9	897.4	1.0	532,768.3	21.9	2.4	4.7	39.1	68.2	65.6	26.7	160.5	
1971	6,505.6	---	6,505.6	1,083.3	0.6	528,857.4	20.5	2.3	5.1	43.9	71.8	61.3	26.6	149.8	
1972	5,896.3	---	5,896.3	3,932.7	0.7	551,015.9	19.7	2.3	5.2	45.3	72.5	55.1	25.7	153.5	
1973	5,554.4	---	5,554.4	4,334.1	1.0	590,341.1	19.0	2.3	5.9	47.3	74.5	51.7	25.5	226.2	
1974	5,016.4	---	5,016.4	3,065.6	1.8	576,173.0	18.3	2.2	6.1	51.4	78.1	49.0	24.5	229.6	
1975 ^{3/}	4,475.6	---	4,475.6	2,891.9	1.8	588,435.5	17.6	2.3	7.2	52.0	79.1	44.5	25.2	227.9	
1976															
REMOVED TAX-FREE															
1970	151.8	---	151.8	13.4	^{2/}	51,167.2	0.1	^{2/}	^{2/}	0.2	0.3	1.5	^{2/}	1.8	
1971	131.4	---	131.4	18.3	^{2/}	49,205.4	0.1	^{2/}	^{2/}	0.1	0.2	1.4	^{2/}	1.6	
1972	139.3	---	139.3	40.7	^{2/}	49,012.0	^{2/}	^{2/}	^{2/}	^{2/}	0.1	1.3	^{2/}	1.4	
1973	142.7	---	142.7	97.5	^{2/}	55,901.8	^{2/}	^{2/}	^{2/}	^{2/}	0.1	1.5	^{2/}	1.6	
1974	137.7	---	137.7	74.3	^{2/}	59,272.0	^{2/}	^{2/}	^{2/}	^{2/}	0.1	1.0	^{2/}	1.1	
1975 ^{3/}	126.2	---	126.2	64.4	^{2/}	62,277.2	^{2/}	^{2/}	^{2/}	^{2/}	0.1	1.0	^{2/}	1.1	
1976															

^{1/} "King Size" cigarettes are included in this category.

^{2/} Less than 50,000.

^{3/} Subject to revision.

Detail may not add to total because of rounding.

Compiled from reports of the Dept. of the Treasury and the Tobacco Division, AMS, USDA.

Table 17. Large cigars removed tax paid for domestic consumption, by calendar years, 1970 - 1975. 1.

Classification and Year	Class A	Class B	Class C	Class D	Class E	Class F	Class G	Total
	Thousands	Thousands	Thousands	Thousands	Thousands	Thousands	Thousands	Thousands
Domestic Manufacture:								
1970	179,305	468,715	2,680,328	1,453,122	1,480,095	262,224	171,117	6,704,906
1971	196,626	712,817	2,363,093	1,359,595	1,452,022	248,669	174,739	6,505,551
1972	76,800	673,688	2,161,308	1,107,276	1,345,985	256,073	186,166	5,896,295
1973	6,145	627,304	2,031,478	1,053,151	1,344,451	285,060	206,640	5,554,428
1974	4,379	527,579	1,447,642	1,083,387	1,315,831	412,081	225,549	5,016,388
1975 1	3,493	396,994	1,275,676	1,039,028	1,118,542	409,944	231,892	4,475,570
1976								
Imported:								
1970	2	21	5,376	274	4,708	3,603	7,009	20,992
1971	---	---	5,213	218	3,059	2,962	7,416	18,888
1972	22	---	4,927	462	5,957	4,221	8,295	23,883
1973	10	20	1,602	2,782	3,564	1,803	20,640	35,221
1974	4	1,689	1,173	635	2,621	6,725	20,197	33,043
1975 1	0	45	1,560	41	4,105	10,375	55,161	71,988
1976								
Foreign Manufacture:								
1970	73	527	352,655	79,595	732,599	82,377	11,038	1,258,864
1971	89	1,525	298,176	49,619	776,649	88,021	8,216	1,222,295
1972	49	918	354,043	32,010	801,741	74,381	8,780	1,271,923
1973	168	1,641	317,261	31,266	863,219	81,874	8,949	1,303,678
1974	115	6,671	215,912	145,986	614,513	229,780	10,801	1,223,780
1975 1	0	6,785	146,908	135,355	643,667	251,269	12,297	1,216,261
1976								
Total:								
1970	179,378	469,264	3,048,359	1,532,992	2,217,402	348,204	189,164	7,984,763
1971	196,705	714,342	2,660,682	1,409,452	2,231,730	337,652	190,371	7,746,734
1972	76,871	674,606	2,520,278	1,228,748	2,153,683	334,675	203,241	7,192,102
1973	6,323	628,565	2,150,241	1,087,198	2,311,234	373,737	236,029	6,893,327
1974	4,488	535,879	1,664,727	1,230,008	1,522,965	648,586	256,547	6,273,211
1975 1	3,493	404,524	1,424,144	1,194,424	1,766,314	671,568	299,350	5,763,819
1976								

1 Tax paid removals.
 2 Less than 500.
 3 Subject to revision.
 Compiled from reports of the Dept. of the Treasury.

Table 18. Rates of Federal tax on tobacco products in the United States.

PRODUCT	RATE OF TAX PER 1,000
	Dollars
Cigars weighing more than 3 pounds per 1,000 if manufactured or imported to retail at:	
(a) Not more than 2½ cents each	2.50
(b) More than 2½ and not more than 4 cents each	3.00
(c) More than 4 and not more than 6 cents each	4.00
(d) More than 6 and not more than 8 cents each	7.00
(e) More than 8 and not more than 15 cents each	10.00
(f) More than 15 and not more than 20 cents each	15.00
(g) More than 20 cents each	20.00
weighing not more than 3 pounds per 1,000	.75
Cigarettes weighing more than 3 pounds per 1,000	1/ 8.40
weighing not more than 3 pounds per 1,000	4.00
Cigarette papers (in books or sets of more than 25)	2/ .005
Cigarette tubes	2/ .01

1 Except that if more than 6½ inches in length, they shall be taxable at the rate prescribed for cigarettes weighing not more than 3 pounds per 1,000, counting each 2-3/4 inches, or fraction thereof, of the length of each as one cigarette (Revenue Act of May 10, 1934).
 2 Rate for each 50 or fraction thereof; except that if papers or tubes measure more than 6½ inches in length they shall be taxable at the rate prescribed, counting each 2-3/4 inches, or fraction thereof, of the length of each as one paper or tube (Revenue Act of May 10, 1934). Internal Revenue Service regulations.

Table 19. State tax rates on cigarettes in the United States as of January 1, 1976.

CIGARETTES									
STATE	Rate of tax 1/	Date of	Year	STATE	Rate of tax 1/	Date of	Year	STATE	Rate of tax 1/
	per standard	Present	Tax		per standard	Present	Tax		per standard
	Package of 20	Rate	Enacted		Package of 20	Rate	Enacted		Package of 20
	Cents				Cents				Cents
Alabama	12	1969	1927	Nebraska	13	1971	1947		
Alaska	8	1961	1949	Nevada	10	1969	1947		
Arizona	13	1974	1933	New Hampshire 2/	12	1975	1939		
Arkansas	17.75	1971	1925	New Jersey	19	1972	1948		
California	10	1967	1959	New Mexico	12	1968	1943		
Colorado	10	1973	1964	New York	15	1972	1939		
Connecticut	21	1971	1935	North Carolina	2	1969	1969		
Delaware	14	1971	1949	North Dakota	11	1969	1925		
Florida	17	1971	1943	Ohio	15	1971	1931		
Georgia	12	1971	1923	Oklahoma	13	1968	1933		
Hawaii 1/	10	1972	1939	Oregon	9	1972	1966		
Idaho	9.1	1972	1945	Pennsylvania	18	1970	1935		
Illinois	12	1969	1941	Rhode Island	18	1975	1939		
Indiana	6	1965	1947	South Carolina	6	1969	1923		
Iowa	13	1967	1921	South Dakota	12	1969	1923		
Kansas	11	1970	1927	Tennessee	13	1969	1925		
Kentucky	3	1970	1936	Texas	18.5	1972	1931		
Louisiana	11	1970	1926	Utah	8	1963	1923		
Maine	16	1974	1941	Vermont	12	1969	1937		
Maryland	10	1975	1958	Virginia	2.5	1966	1960		
Massachusetts	21	1975	1939	Washington	16	1971	1935		
Michigan	11	1970	1947	West Virginia	12	1970	1947		
Minnesota	18	1971	1947	Wisconsin	16	1971	1939		
Mississippi	11	1973	1930	Wyoming	8	1967	1951		
Missouri	9	1969	1956	District of Columbia	6	1972	1949		
Montana	12	1971	1947						

1/ Some States impose varying tax rates for cigarettes of other quantities, sizes, weights, etc. Some municipalities and counties also levy taxes on cigarettes.

2/ Hawaii: 40 percent of wholesale price. New Hampshire: 42 percent of retail selling price. Tax per pack approximated.

Compiled from reports of proceedings of the Annual Meetings of the National Tobacco Tax Association and brought to date from Tax Administrators News, monthly publication of the Federation of Tax Administrators, Chicago, Illinois, and from records of the Tobacco Tax Council, Richmond, Virginia.

Table 20. Wholesale cigarette price revisions, 1940 to date.

Approximate Date of Change	Net Price per 1,000				Net Price per 1,000 excluding Federal Excise Tax			
	Standard	King Size	Filter Tips	100 Millimeter	Standard	King Size	Filter Tips	100 Millimeter
	Dollars	Dollars	Dollars	Dollars	Dollars	Dollars	Dollars	Dollars
July 1 1940	5.88	---	---	---	2.63	---	---	---
November 1 1942	6.13	---	---	---	2.63	---	---	---
April 25 1946	6.38	---	---	---	2.88	---	---	---
October 7 1946	6.64	---	---	---	3.14	---	---	---
July 22 1948	7.00	---	---	---	3.50	---	---	---
July 29 1950	7.20	7.24	---	---	3.70	3.74	---	---
November 1 1951	7.71	7.75	---	---	3.71	3.75	---	---
February 20 1953	8.10	8.19-8.40	---	---	4.10	4.19-4.40	---	---
March 1953	---	---	9.00	---	---	---	5.00	---
April 15 1955	---	8.55	---	---	---	4.55	---	---
June 17 1957	8.45	8.89	---	---	4.45	4.89	---	---
April & May 1963	8.80	9.00	---	---	4.80	5.00	---	---
March 1966	9.00	9.20	9.20	---	5.00	5.20	5.20	5.20
June 1967	9.25	9.45	9.45	9.95	5.25	5.45	5.45	5.95
November 1968	9.45	9.45	9.45	9.95	5.45	5.45	5.45	5.95
May 1969	9.80	9.80	9.80	10.30	5.80	5.80	5.80	6.30
May 1970	10.25	10.25	10.25	10.75	6.25	6.25	6.25	6.75
February-March 1973	(10.45-10.60)	(10.45-10.60)	(10.45-10.60)	(10.95-11.10)	(6.45-6.60)	(6.45-6.60)	(6.45-6.60)	(6.95-7.10)
January 1974	10.60	10.60	10.60	11.10	6.60	6.60	6.60	7.10
May 1974	11.30	11.30	11.30	11.80	7.30	7.30	7.30	7.80
November 1974	(11.80-12.00)	(11.80-12.00)	(11.80-12.00)	(12.30-12.50)	(7.80-8.00)	(7.80-8.00)	(7.80-8.00)	(8.30-8.50)
November 1975	12.75	12.75	12.75	13.25	8.75	8.75	8.75	9.25

Table 21. Receipts from Federal taxes on tobacco products in the United States, by types of product, fiscal years, 1970-71 to 1974-75. 1/

PRODUCT	Federal tax receipts for year (July-June Basis)				
	1970-71	1971-72	1972-73	1973-74	1974-75
	1,000 Dol.	1,000 lb.	1,000 lb.	1,000 lb.	1,000 Dol.
Cigars (Large)	2/ 54,138	2/ 53,047	2/ 49,790	49,074	48,733
Cigars (Small)	637	1,126	3,940	2,481	2,472
Cigarettes (Large)	12	5	8	18	16
Cigarettes (Small)	2,149,516	2,151,153	2,221,012	2,383,018	2,261,099
Chewing, Smoking Tobacco, and Snuff	3/	3/	3/	3/	3/
Cigarette papers and tubes	1,513	1,513	1,240	1,477	1,494
Tobacco Materials - Violations	4/	4/	4/	4/	4/
Imported tobacco products, cigarette papers and tubes, and tobacco materials (Customs)	5/ 765	5/ 779	5/ 893	909	1,254
Miscellaneous tax collections	4	10	4	1	-
TOTAL	2,206,585	2,207,273	2,276,885	2,436,978	2,315,090

1/ For rates of tax on tobacco products, see Table 20.

2/ Includes prepayment.

3/ Tax repealed effective January 1, 1966. (Public Law 89-44).

4/ Included in miscellaneous tax collections.

5/ Collected by Customs beginning October 1, 1961. Prior to October 1, 1961, customs collection were included in the applicable classes of tobacco tax.

Detail may not add to total because of rounding. Compiled from reports of the Internal Revenue Service.

Table 22. Estimated total expenditures for tobacco products, by type of product, calendar years, 1950 - 1975. 1/

Year	Cigars (large and small)	Cigarettes (large and small)	Chewing and Smoking Tobacco and Snuff	Total All Products	Year	Cigars (large and small)	Cigarettes (large and small)	Chewing and Smoking Tobacco and Snuff	Total All Products
	Mil. Dol.	Mil. Dol.	Mil. Dol.	Mil. Dol.		Mil. Dol.	Mil. Dol.	Mil. Dol.	Mil. Dol.
1950	514	3,586	292	4,392	1965	734	7,609	308	8,651
1951	526	3,876	283	4,685	1966	718	8,113	309	9,140
1952	545	4,246	282	5,073	1967	607	8,572	304	9,582
1953	560	4,436	268	5,264	1968	703	9,094	315	10,112
1954	552	4,292	260	5,104	1969	701	9,404	339	10,444
1955	550	4,409	258	5,217	1970	707	10,448	389	11,544
1956	556	4,681	244	5,481	1971	700	11,040	415	12,115
1957	562	5,072	243	5,877	1972	720	11,765	425	12,910
1958	584	5,341	257	6,182	1973	730	12,325	430	13,485
1959	629	5,834	281	6,764	1974	705	13,270	745	14,450
1960	649	6,244	294	7,187	1975	675	14,450	505	15,630
1961	631	6,538	303	7,472	1976				
1962	634	6,675	299	7,608	1977				
1963	649	7,055	300	8,004	1978				
1964	765	7,024	324	8,113	1979				

1/ Compiled from the Tobacco Situation, Economic Research Service.

Table 23. Consumption per capita of tobacco products in the United States (including overseas forces) for specified periods. 1/

Year	Per Capita 18 years and over			Per Male 18 years and over			Per Person 18 years and over		
	Cigarettes 1/	Tobacco Products	All	Large Cigars and Cigarettes 1/	Smoking Tobacco 2/	Chewing Tobacco 2/	Snuff 2/		
	Number	Pounds	Pounds	Number	Pounds	Pounds	Pounds	Pounds	Pounds
1965	4,258	9.37	11.51	143.8	2.57	1.19	1.07	.24	
1966	4,287	9.39	11.12	136.1	2.41	1.13	1.05	.23	
1967	4,280	8.86	10.80	130.7	2.28	1.08	1.04	.23	
1968	4,186	8.69	10.59	126.5	2.15	1.11	1.05	.21	
1969	3,993	8.11	10.04	125.0	2.11	1.08	1.09	.20	
1970	3,985	7.77	9.68	125.3	2.08	1.15	1.06	.19	
1971	4,037	7.75	9.52	119.2	1.94	1.06	1.09	.19	
1972	4,043	7.95	9.65	108.9	1.74	1.00	1.08	.18	
1973	4,147	7.92	9.53	102.4	1.61	.88	1.10	.18	
1974	4,141	7.90	9.40	91.9	1.47	.87	1.13	.18	
1975	4,121	7.75	9.14	82.4	1.32	.76	1.12	.17	
1976									
1977									
1978									

1/ Unstamped processing-weight equivalent.

2/ Finished-product weight.

Table 24. Receipts from State taxes on tobacco products in the United States, by States, fiscal years 1970-71 - 1974-75. ^{1/}

STATE	RECEIPTS FOR YEAR (JULY-JUNE BASIS)				
	1970-71	1971-72	1972-73	1973-74	1974-75 ^{2/}
	1,000 Dol.	1,000 Dol.	1,000 Dol.	1,000 Dol.	1,000 Dol.
Alabama ^{3/}	38,659	40,597	41,604	44,000	45,964
Alaska	2,953	3,221	3,244	3,429	4,033
Arizona	19,644	23,013	24,970	27,147	34,172
Arkansas	26,018	30,380	37,722	39,984	41,727
California	237,112	240,641	250,794	263,637	253,076
Colorado	13,137	14,006	17,282	17,072	31,402
Connecticut	50,267	68,130	70,181	71,848	70,614
Delaware	9,478	11,811	11,474	11,824	11,609
Florida	48,863	64,627	159,115	174,271	176,948
Georgia	49,271	64,492	66,913	70,239	70,970
Hawaii	0,438	0,577	7,514	8,305	8,700
Idaho	5,173	6,130	7,150	7,490	7,579
Illinois	161,220	172,007	162,714	171,573	170,543
Indiana	41,227	43,000	47,584	49,384	49,307
Iowa	31,022	40,107	40,966	47,407	44,293
Kansas	24,098	20,604	27,681	29,355	30,462
Kentucky	15,036	14,667	18,852	20,687	21,185
Louisiana	44,581	47,464	49,945	51,930	51,523
Maine	15,341	18,734	19,448	19,997	21,977
Maryland	28,443	30,300	31,000	31,500	37,277
Massachusetts	88,843	105,047	111,200	115,000	114,149
Michigan	122,170	128,718	132,200	136,705	135,595
Minnesota	56,379	60,012	70,009	71,000	78,789
Mississippi	20,989	22,500	23,400	24,400	25,492
Missouri	51,097	54,002	59,300	60,000	56,002
Montana	0,079	14,298	10,200	10,350	10,800
Nebraska	13,302	14,213	20,021	21,000	21,571
Nevada	8,608	9,548	10,200	10,700	11,200
New Hampshire	17,139	21,973	23,900	24,400	21,877
New Jersey	122,017	136,131	140,000	168,270	160,640
New Mexico	10,835	11,700	12,000	12,000	11,431
New York ^{3/}	262,611	273,284	272,286	228,544	190,470
North Carolina	16,361	14,891	20,229	20,500	20,753
North Dakota	6,658	7,092	7,490	7,720	8,157
Ohio	120,993	154,728	160,701	180,602	190,336
Oklahoma	40,465	42,100	49,178	46,950	44,723
Oregon	14,350	19,029	24,000	29,958	31,230
Pennsylvania	118,181	222,020	221,000	237,658	239,331
Rhode Island	15,484	16,850	17,879	18,488	18,631
South Carolina	18,575	19,373	20,345	21,011	22,084
South Dakota	7,394	8,150	8,180	8,590	8,700
Tennessee	53,448	56,000	58,100	61,810	62,820
Texas ^{3/}	201,424	231,000	241,000	247,900	260,414
Utah	5,731	6,195	6,324	6,880	7,130
Vermont	6,813	7,000	8,150	8,490	8,802
Virginia	14,167	15,303	16,200	17,115	16,986
Washington	39,152	52,161	51,000	55,883	56,505
West Virginia	22,518	23,000	23,800	24,700	25,252
Wisconsin	61,887	73,049	77,373	80,000	80,996
Wyoming	1,294	3,500	3,550	3,927	4,123
TOTAL, ALL STATES	2,539,913	2,841,122	3,112,478	3,249,805	3,285,851
TOTAL STATE AND LOCAL GOVERNMENTS	2,475,913	2,980,000	3,287,606	3,467,000	3,470,000
District of Columbia	0,000	0,000	7,775	7,861	7,330
Number of States using tax	50	50	50	50	50

^{1/} Does not include locally imposed and collected tax receipts, or locally imposed tax amounts collected by the State and returned to local governments. Totals for several of the States include related license cases.

^{2/} Preliminary.

^{3/} Fiscal year for Alabama ends on September 30; for Texas on August 31; and for New York on March 31.

^{4/} Not available.

Taken from "State Tax Collections", U. S. Dept. of Commerce.

Table 25. United States exports of tobacco to principal importing countries, by types, calendar years, annual 1970 - 1975.

IMPORTING COUNTRY	FLUE-CURED					
	Exports for Calendar year (declared weight)					
	1970	1971	1972	1973	1974	1975 ^{1/}
	1,000 lb.	1,000 lb.	1,000 lb.	1,000 lb.	1,000 lb.	1,000 lb.
Canada	1,164	1,086	829	2,116	1,234	110
Jamaica	2,047	1,776	1,660	1,362	1,578	1,713
Sweden	8,844	7,280	8,400	8,127	6,659	9,043
Norway	4,685	2,320	3,334	3,549	3,632	3,443
Finland	3,349	2,899	3,195	3,460	1,913	5,105
Denmark	10,805	11,376	14,686	20,845	7,642	11,222
United Kingdom	83,470	73,301	89,800	95,285	71,463	60,634
Ireland (Eire)	8,843	6,599	10,798	6,755	7,738	5,561
Netherlands	15,158	15,192	11,688	14,863	14,125	16,504
Belgium and Luxembourg	8,037	11,267	8,993	12,706	10,247	5,265
France	3,088	2,148	1,030	888	1,581	1,520
Germany, West	71,013	80,882	75,507	74,519	71,289	72,819
Austria	3,736	421	2,500	1,788	1,956	3,223
Switzerland	10,094	6,098	7,700	13,350	6,192	14,305
Spain	2,996	5,093	4,214	3,679	7,484	8,447
Portugal	2,634	2,338	1,340	686	897	474
Italy	1,945	10,311	13,350	11,217	13,111	21,199
Thailand	16,758	17,511	25,382	8,409	17,696	14,454
Vietnam, South	7,834	13,055	13,638	11,313	10,521	1,491
Malaysia	7,063	6,965	4,492	6,404	9,391	3,729
Singapore	1,773	1,733	2,000	2,027	858	564
Philippines	3,403	2,698	5,469	4,810	5,949	6,192
Hong Kong	2,987	2,320	2,320	1,984	2,718	1,550
China, Republic of, (Taiwan)	8,593	9,491	14,039	16,552	23,837	14,832
Japan	46,320	13,418	68,082	55,263	77,107	51,141
Australia	8,603	9,384	11,758	10,057	17,278	11,736
New Zealand	3,960	2,750	3,358	3,078	3,388	3,333
Egypt	624	1,181	825	2,203	11,407	4,721
Zaire (Congo, Kinshasa)	1,465	810	1,666	1,778	1,814	0
Other Countries	16,863	50,082	13,670	18,345	33,915	25,891
TOTAL	368,154	371,785	424,723	418,395	440,887	491,441

BURLEY, TYPE 31						
	1970	1971	1972	1973	1974	1975
Sweden	3,557	2,083	3,503	2,577	3,138	2,827
Norway	682	423	614	566	407	471
Denmark	3,553	2,350	2,546	4,114	2,163	2,229
United Kingdom	49	72	282	51	493	640
Netherlands	708	1,342	571	3,861	2,304	2,328
Belgium and Luxembourg	1,397	760	442	1,255	602	211
Japan	162	1,102	3,306	4,247	6,287	4,968
Germany, West	11,316	10,575	14,008	15,053	13,235	11,617
Switzerland	3,632	2,674	3,111	4,684	2,590	2,192
Finland	976	1,019	983	1,415	608	1,375
Portugal	1,765	132	905	1,491	1,503	157
Italy	627	5,428	9,238	8,783	10,444	10,448
Philippines	3,129	1,922	3,831	3,986	4,916	5,053
Other Countries	9,832	6,653	7,027	6,318	12,557	14,700
TOTAL	41,385	36,535	53,601	58,925	60,836	61,856

DARK VIRGINIA, TYPES 21 and 37						
	1970	1971	1972	1973	1974	1975
Sweden	438	188	756	203	548	211
Norway	2,244	1,431	2,893	1,331	1,007	1,624
United Kingdom	489	211	306	191	302	229
Netherlands	55	7	1	1	8	0
Germany, West	876	333	424	445	728	762
Austria	70	144	89	95	119	115
Switzerland	207	388	198	284	1,316	181
Other Countries	109	480	342	469	2,048	177
TOTAL	4,488	3,182	5,009	3,919	6,074	3,326

See Footnotes at end of table.

Table 25. United States exports of tobacco to principal importing countries, by types, calendar years, annual 1970 - 1975.

IMPORTING COUNTRY	KENTUCKY AND TENNESSEE FIRE-CURED, TYPES 22 and 23					
	Exports for calendar year (declared weight)					
	1970	1971	1972	1973	1974	1975
	1,000 lb.	1,000 lb.	1,000 lb.	1,000 lb.	1,000 lb.	1,000 lb.
Sweden	0	236	1,108	22	752	0
Denmark	239	315	138	617	279	187
United Kingdom	38	86	104	27	17	37
Ireland (Eire)	101	81	31	28	8	25
Netherlands	8,791	10,150	9,174	10,112	12,101	8,909
Belgium and Luxembourg	1,504	648	631	811	784	597
France	2,002	2,643	3,544	2,055	1,957	2,390
Germany, West	486	371	432	328	132	117
Switzerland	852	656	1,366	1,338	1,286	802
Italy	435	120	489	450	4	0
Zaire (Congo, Kinshasa)	1,977	1,313	337	1,009	446	0
Other Countries	3,279	2,796	3,276	1,643	1,589	1,910
TOTAL	19,704	19,622	20,630	18,430	19,355	14,894
MARYLAND, TYPE 32						
Netherlands	418	44	0	60	575	36
Belgium and Luxembourg	1,036	1,153	1,918	1,130	1,630	1,217
Germany, West	2,234	1,381	2,283	2,254	1,934	1,445
Switzerland	7,330	9,270	6,515	4,845	5,267	916
Spain	51	124	398	233	364	55
Portugal	421	212	149	310	388	0
Other Countries	303	762	139	739	694	406
TOTAL	11,793	8,945	10,992	9,571	10,842	4,075
ONE BUCKER, TYPE 35						
United Kingdom	17	23	13	0	12	8
Belgium and Luxembourg	175	161	0	112	228	76
Germany, West	18	0	0	0	0	0
Zaire (Congo, Kinshasa)	170	150	165	89	138	0
Other Countries	125	224	121	90	363	30
TOTAL	505	558	299	291	741	114
GREEN RIVER, TYPE 36						
United Kingdom	95	107	113	84	109	87
Belgium and Luxembourg	3	25	106	5	0	106
Zaire (Congo, Kinshasa)	196	74	44	51	103	0
Other Countries	34	864	52	0	1	1
TOTAL	328	1,070	305	130	213	194
CIGAR FILLER, TYPES 41-46						
Canada	76	16	0	0	0	8
France	247	155	246	291	255	147
New Zealand	20	89	48	32	310	0
Other Countries	60	7	1	5	73	42
TOTAL	403	267	295	328	638	197
CIGAR BINDER, TYPES 51-55						
Canada	5	33	28	19	27	53
Netherlands	76	27	7	11	0	1
Belgium and Luxembourg	8	14	4	25	0	0
Germany, West	135	0	48	0	31	15
Canary Islands	49	8	0	35	0	5
Other Countries	62	42	16	4	67	92
TOTAL	335	124	103	94	125	166

See Footnotes at end of table.

Table 25. United States exports of tobacco to principal importing countries, by types, calendar years, annual 1970 - 1975.

CIGAR WRAPPER, TYPES 61-62						
IMPORTING COUNTRY	Exports for calendar year (declared weight)					
	1970	1971	1972	1973	1974	1975 ^{1/}
	1,000 lb.	1,000 lb.	1,000 lb.	1,000 lb.	1,000 lb.	1,000 lb.
Canada	320	413	272	351	253	161
Dominican Republic	0	160	360	240	667	1,703
United Kingdom	232	924	1,121	469	997	731
Netherlands	20	19	137	61	148	160
Belgium and Luxembourg	51	77	115	34	30	42
Germany, West	661	450	716	612	353	525
Canary Islands	124	89	152	146	130	3
Other Countries	472	435	197	178	274	1,035
TOTAL	1,370	2,537	3060	2,091	2,852	4,260
TOTAL CIGAR LEAF, TYPES 41-62						
Canada	401	461	300	369	281	222
Dominican Republic	0	160	360	240	677	1,726
United Kingdom	232	924	1,122	469	1,054	765
Netherlands	96	47	134	77	148	161
Belgium and Luxembourg	59	91	118	60	30	42
France	266	185	269	333	321	383
Germany, West	496	440	766	612	384	440
Canary Islands	163	97	152	181	190	8
New Zealand	1	121	74	61	152	48
Other Countries	552	402	178	112	175	828
TOTAL	2,308	2,928	3,471	2,514	3,614	4,623
PERIQUE, TYPE 72						
Norway	41	0	0	0	20	0
United Kingdom	64	54	46	92	22	28
Australia	39	29	40	10	22	20
Other Countries	67	67	366	0	111	67
TOTAL	211	148	289	122	175	115
BLACK FAT						
West Indies ^{2/}	1	0	0	2	0	2
Netherland Antilles	16	11	12	18	3	19
Canary Islands and Spanish Africa, n.e.s.:	140	22	18	0	0	0
Cameroon	570	490	503	487	361	686
Nigeria	397	563	228	125	269	154
Other Countries	1,638	1,376	2,502	2,624	2,104	2,618
TOTAL	2,662	2,462	3,263	1,056	2,737	3,479
STEMS, PULTINGS, AND SCRAP						
Canada	652	547	377	183	2,591	904
United Kingdom	11,030	15,069	21,281	22,998	20,844	16,637
Ireland	1,222	2,352	3,144	2,166	2,426	2,662
Sweden	6,666	4,895	6,710	6,117	3,428	3,207
Bosnia	3,450	2,580	3,442	11,302	2,489	2,760
Netherlands	1,329	1,406	740	2,559	1,697	1,747
France	2,497	4,123	2,617	4,140	3,814	3,935
Germany, West	6,155	5,794	5,777	6,313	9,315	1,747
Austria	16	229	409	834	1,513	1,054
Malaysia	2,175	1,809	1,196	1,633	2,472	1,413
Japan	12,139	9,057	17,862	19,045	26,214	19,436
Australia	1,334	1,122	2,760	3,018	4,614	2,811
Other Countries	10,096	14,208	14,625	18,316	24,426	18,535
TOTAL	58,830	56,994	82,940	97,968	105,931	78,868

^{1/} Subject to revision.

^{2/} Includes Bahama, Jamaica, Leeward and Windward Islands, Barbados, and Trinidad and Tobago.

Compiled from publications of the Bureau of the Census, U.S. Department of Commerce.

Table 26. Exports of unmanufactured tobacco from the United States, quantity and value, types, calendar years, annual 1970-1976.

TYPE	Quantity (shelled weight)					
	1970	1971	1972	1973	1974	1975
	1,000 lb.	1,000 lb.	1,000 lb.	1,000 lb.	1,000 lb.	1,000 lb.
Flue-cured, Types 11-14	368,154	341,785	25,408	418,495	440,861	291,631
Burley, Type 31	41,385	36,535	21,085	58,921	60,438	41,998
Southern Maryland, Type 32	11,793	9,004	10,991	2,571	13,852	7,339
Virginia Dark, Types 21 & 37	4,488	2,858	1,000	1,023	5,052	3,329
Kentucky & Tennessee Fire-cured, Types 22 & 23	19,704	19,622	20,630	18,440	19,055	14,981
One Sucker, Type 35	503	558	299	491	741	114
Green River, Type 36	328	427	105	110	213	191
Cigar Leaf, Types 41-62	2,308	2,928	1,471	2,424	3,611	4,113
Black Fat	2,662	2,402	1,263	1,059	1,787	2,529
Perique, Type 72	211	148	281	205	171	317
Stems, Trimings, and Scrap	58,820	56,993	52,959	49,008	50,272	45,048
Total Declared Weight	510,358	473,221	401,269	672,722	681,222	491,001
Total Farm-sales-weight (no S.T.S.)	573,979	523,006	481,766	771,000	771,000	571,000

	VALUE					
	1,000 Dol.	1,000 Dol.	1,000 Dol.	1,000 Dol.	1,000 Dol.	1,000 Dol.
	1,000 Dol.	1,000 Dol.	1,000 Dol.	1,000 Dol.	1,000 Dol.	1,000 Dol.
Flue-cured, Types 11-14	403,171	378,418	519,244	711,000	681,000	441,000
Burley, Type 31	41,602	39,540	21,267	58,000	60,000	41,000
Southern Maryland, Type 32	19,412	14,872	17,501	4,000	13,000	7,000
Virginia Dark, Types 21 & 37	3,790	2,300	800	800	4,000	2,500
Kentucky & Tennessee Fire-cured, Types 22 & 23	12,971	13,402	14,277	12,000	12,000	9,000
One Sucker, Type 35	267	312	175	290	450	70
Green River, Type 36	192	269	182	190	380	350
Cigar Leaf, Types 41-62	5,664	11,000	14,000	22,000	33,000	38,000
Black Fat	2,865	2,400	1,200	1,000	1,600	2,300
Perique, Type 72	220	169	300	200	150	300
Stems, Trimings, and Scrap	7,202	6,900	6,200	5,800	6,000	5,400
Total Value	486,270	461,100	642,200	872,000	872,000	621,000

1/ Subject to revision. Detail may not add to total because of rounding.
 Compiled from publications of the Bureau of the Census, U.S. Department of Commerce.

Table 27. Exports of unmanufactured tobacco from the United States, by principal foreign country, quantity and value, annual 1970-1976.

COUNTRY OF DESTINATION	Total Quantity (shelled weight)					
	1970	1971	1972	1973	1974	1975
	1,000 lb.	1,000 lb.	1,000 lb.	1,000 lb.	1,000 lb.	1,000 lb.
European Community						
Denmark	18,111	17,292	21,000	26,000	11,700	14,000
United Kingdom	93,483	84,000	67,000	110,000	110,000	70,000
Ireland (Eire)	10,199	8,000	7,000	10,000	10,000	10,000
Netherlands	28,561	24,000	19,000	24,000	24,000	24,000
Belgium & Luxembourg	12,000	12,000	12,000	12,000	12,000	12,000
France	8,937	7,000	7,000	7,000	7,000	7,000
Germany, West	92,659	82,000	67,000	80,000	80,000	60,000
Italy	3,100	3,000	3,000	3,000	3,000	3,000
Total European Community	262,900	252,000	214,000	272,000	272,000	214,000
Sweden	19,387	18,000	18,000	18,000	18,000	18,000
Norway	8,083	7,000	7,000	7,000	7,000	7,000
Austria	4,041	4,000	4,000	4,000	4,000	4,000
Switzerland	24,000	24,000	24,000	24,000	24,000	24,000
Portugal	5,890	5,000	5,000	5,000	5,000	5,000
China, Republic of (Taiwan)	58,500	58,000	58,000	58,000	58,000	58,000
Thailand	26,148	18,000	18,000	18,000	18,000	18,000
Philippines	7,425	7,229	7,000	7,000	7,000	7,000
Hong Kong	4,274	4,000	4,000	4,000	4,000	4,000
Japan	50,649	48,000	48,000	48,000	48,000	48,000
Australia	10,210	10,000	10,000	10,000	10,000	10,000
New Zealand - West Samoa	2,035	2,000	2,000	2,000	2,000	2,000
Other Countries	12,446	12,000	12,000	12,000	12,000	12,000
TOTAL	510,358	473,221	401,269	672,722	681,222	491,001

1/ Subject to revision. Detail may not add to totals because of rounding.
 Compiled from publications of the Bureau of the Census, U.S. Department of Commerce.

Table 28. United States exports of tobacco products, calendar years, annual 1970 - 1975.

PRODUCT	Exports for Year					
	1970	1971	1972	1973	1974	1975 ^{1/}
	Millions	Millions	Millions	Millions	Millions	Millions
Cigarettes	29,154	31,792	34,602	41,543	46,901	50,224
	Thousands	Thousands	Thousands	Thousands	Thousands	Thousands
Cigars, Cheroots, and Cigarillos	54,114	53,102	75,398	108,022	86,464	131,839
	1,000 lb.	1,000 lb.	1,000 lb.	1,000 lb.	1,000 lb.	1,000 lb.
Chewing Tobacco and Snuff	64	39	42	92	122	71
Smoking Tobacco:						
In packages	939	1,205	1,058	1,291	938	1,556
In bulk	24,083	30,881	29,367	25,792	38,912	17,631
	1,000 pcs.	1,000 pcs.	1,000 pcs.	1,000 pcs.	1,000 pcs.	1,000 pcs.
Declared Value	190,612	221,444	239,859	288,982	360,499	401,470

^{1/} Subject to revision. Compiled from records of Bureau of the Census, U.S. Department of Commerce.

Table 29. United States imports of tobacco products for consumption, by countries, calendar years, 1970 - 1975.

	Imports for Year					
	1970	1971	1972	1973	1974	1975 ^{1/}
	1,000 pcs.	1,000 pcs.	1,000 pcs.	1,000 pcs.	1,000 pcs.	1,000 pcs.
Cigarettes:						
Canada	43,910	25,571	40,340	33,896	44,478	63,471
Denmark	1,950	5,410	3,320	60	2,225	9,260
United Kingdom	59,041	93,988	73,619	40,930	193,580	206,192
France	2,210	410	1,305	590	240	775
Germany, West	1,110	443	1,775	1,955	2,792	3,689
Philippines	150	150	150	100	0	480
Other Countries	2,553	1,948	3,221	6,562	11,739	25,694
Total	100,920	130,820	123,521	139,353	257,694	369,561
	1,000 lbs.	1,000 lbs.	1,000 lbs.	1,000 lbs.	1,000 lbs.	1,000 lbs.
Cigars, Cheroots, and Cigarillos						
Mexico	66	80	94	137	169	144
Jamaica	108	130	159	203	189	199
Netherlands	38	37	51	54	46	64
Canary Islands	128	146	193	237	267	270
Philippines	142	151	173	217	37	23
Other Countries	168	191	292	380	211	674
Total	650	500	950	1,229	1,219	1,363
All other products: ^{2/}						
United Kingdom	480	542	372	457	638	651
Netherlands	2,451	4,024	4,446	3,347	1,416	2,703
Sweden	1,571	3,013	5,594	3,102	1,441	3,827
Other Countries	960	797	1,244	1,039	2,597	1,543
Total	8,461	8,380	11,656	8,002	10,892	8,724
	1,000 Dol.	1,000 Dol.	1,000 Dol.	1,000 Dol.	1,000 Dol.	1,000 Dol.
Declared Value	16,578	17,890	45,201	24,368	32,813	35,009

^{1/} Subject to revision.

^{2/} Practically all smoking tobacco, but includes all other manufactured tobacco products not specifically provided for.

Compiled from records of the Bureau of the Census, U.S. Department of Commerce.

Table 30. United States imports of unmanufactured tobacco for consumption, by countries, calendar year, annual 1970 - 1975.

KIND OF TOBACCO & COUNTRY FROM WHICH IMPORTED	Imports for Year (calendar year basis) declared weight					
	1970	1971	1972	1973	1974	1975 ^{1/}
	1,000 lb.	1,000 lb.	1,000 lb.	1,000 lb.	1,000 lb.	1,000 lb.
Cigarette Leaf:						
Flue-cured and Burley	7,756	4,381	6,733	6,219	22,107	36,429
Other Cigarette Leaf:						
Yugoslavia	15,819	21,756	15,148	15,580	16,512	13,379
Greece	28,706	29,186	29,441	24,773	23,660	25,505
Turkey	91,013	101,471	95,697	114,902	112,465	111,367
Other Countries	6,257	11,531	17,018	12,584	13,250	25,264
Total Other Cigarette Leaf	141,795	163,924	157,304	167,839	165,887	175,515
TOTAL CIGARETTE LEAF	149,551	168,305	164,037	174,058	187,994	211,944
Cigar Leaf:						
Cigar Wrapper:						
Mexico	30	64	44	76	66	82
Honduras	235	349	256	287	210	319
Nicaragua	218	233	359	409	488	515
Ecuador	37	46	14	17	22	33
Indonesia	75	6	0	0	0	1
Cameroon	223	166	169	177	174	371
Other Countries	15	98	83	168	253	136
Total Cigar Wrapper	833	962	936	1,134	1,213	1,457
Cigar Filler: (Unstemmed)						
Mexico	217	296	612	360	223	729
Honduras	176	300	327	385	591	516
Nicaragua	414	493	516	545	458	1,184
Dominican Republic	530	308	1,201	1,004	849	956
Colombia	83	311	1,122	311	817	820
Brazil	531	244	875	159	388	276
Paraguay	343	218	1,012	684	309	419
Indonesia	115	309	1,273	1,844	1,723	1,194
Cameroon	107	204	67	129	179	231
Other Countries	519	567	1,298	2,635	2,000	4,114
Total Unstemmed	3,035	3,250	8,303	8,056	7,537	10,439
Cigar Filler: (Stemmed)						
Mexico	518	697	489	483	394	328
Honduras	799	682	567	644	689	682
Nicaragua	160	137	160	137	49	70
Dominican Republic	718	1,037	781	1,124	1,250	1,092
Colombia	35	22	12	14	18	14
Brazil	272	429	363	452	440	420
Indonesia	30	14	11	1	0	26
Other Countries	95	142	124	186	524	420
Total Stemmed	2,627	3,160	2,507	3,041	3,364	3,052
TOTAL CIGAR LEAF	6,495	7,372	11,746	12,220	12,114	14,948
Scrap:						
Canada ^{2/}	1,098	3,083	1,797	1,470	1,259	1,470
Greece ^{2/}	1,489	1,104	293	2,277	1,633	333
Italy ^{2/}	0	0	124	679	431	339
Korea, Republic of ^{2/}	5	1,287	2	445	2,876	7,349
Lebanon ^{2/}	1,295	2,427	36	1,264	949	1,082
Malawi ^{2/}	7	88	11	598	1,713	123
Mexico ^{2/}	1,532	1,878	3,438	9,401	16,039	5,763
Mozambique ^{2/}	204	216	511	338	1,477	717
Thailand ^{2/}	74	186	41	358	1,249	221
Turkey ^{2/}	10,660	10,116	10,625	7,187	6,718	5,804
Yugoslavia ^{2/}	0	378	395	731	159	379
Cyprus ^{2/}	187	120	186	11	233	0
Angola ^{2/}	0	0	0	36	49	54
Syria ^{2/}	0	0	7	28	474	288
Zambia ^{2/}	106	33	0	20	0	32
Iraq ^{2/}	0	0	0	0	0	0
Argentina	1,792	3,142	2,538	4,932	5,154	7,457
Brazil	3,778	4,099	6,012	10,758	9,818	11,445
Colombia	4,357	4,550	5,778	6,687	3,565	5,032
Dominican Republic	6,601	6,484	6,147	8,001	6,721	9,202
Honduras	300	544	212	374	409	1,260
Indonesia	2,052	1,477	1,302	2,638	4,576	3,683
Paraguay	2,618	2,158	2,432	4,051	3,960	4,018
Peru	396	338	654	919	1,167	1,386
Philippines	22,318	27,187	18,275	14,504	24,227	13,494
Other Countries	1,308	1,166	253	505	979	3,161
TOTAL SCRAP	62,177	72,061	61,069	78,212	95,835	84,092

Table 30. United States imports of unmanufactured tobacco for consumption, by countries, calendar years, 1970 - 1975.

KIND OF TOBACCO & COUNTRY FROM WHICH IMPORTED	Imports for Year (calendar year basis) declared weight					
	1970	1971	1972	1973	1974	1975 ^{1/}
	1,000 lb.	1,000 lb.	1,000 lb.	1,000 lb.	1,000 lb.	1,000 lb.
Stems:						
Argentina	4	10	0	817	53	508
Brazil	1	193	615	5,327	2,658	4,830
Canada	0	240	1,017	251	317	799
Korea, Republic of	0	0	47	0	0	468
Malawi	0	0	712	1,282	182	187
Other Countries	386	351	1,266	1,517	893	2,742
TOTAL STEMS	391	792	3,657	9,094	4,003	9,334
TOTAL IMPORTS	218,614	248,529	240,509	273,595	299,946	320,318
	VALUE (calendar year basis)					
	1,000 Dol.	1,000 Dol.	1,000 Dol.	1,000 Dol.	1,000 Dol.	1,000 Dol.
Cigarette Leaf	99,730	109,336	100,926	101,859	117,733	158,249
Cigar Leaf:						
Cigar Wrapper ^{1/}	3,511	3,364	3,053	4,979	4,996	7,024
Cigar Filler:						
Unstemmed	2,534	3,369	5,317	5,672	4,837	9,019
Stemmed	3,428	4,213	3,139	4,138	4,512	4,081
Total Cigar Leaf	9,475	10,946	11,509	14,789	14,345	20,124
Total Scrap	19,172	20,617	22,077	37,608	49,756	48,003
Total Stems	28	79	311	1,023	666	1,187
TOTAL IMPORTS	128,405	140,968	134,463	157,279	182,498	227,563

^{1/} Subject to revision. ^{2/} Scrap imports from these countries are considered to be primarily cigarette type tobacco.
^{3/} Includes mixed filler and wrapper. Compiled from records of the Bureau of the Census, Dept. of Commerce.

Table 31. United States imports of unmanufactured tobacco for consumption, fiscal years, annual 1969-70 - 1974-75.

KIND OF TOBACCO	1969-70	1970-71	1971-72	1972-73	1973-74	1974-75
	1,000 lb.	1,000 lb.	1,000 lb.	1,000 lb.	1,000 lb.	1,000 lb.
	Cigarette Leaf	144,987	151,693	178,744	164,212	185,269
Cigar Leaf:						
Cigar Wrapper ^{2/}	897	765	1,055	1,021	1,257	1,198
Cigar Filler:						
Unstemmed	2,210	3,495	5,977	7,241	8,441	11,207
Stemmed	2,692	2,523	2,875	2,922	3,095	3,453
Total Cigar Leaf	5,799	6,783	9,907	11,184	12,795	15,858
Total Scrap	58,816	64,905	67,870	68,838	89,992	87,785
Total Stems	452	559	2,609	6,072	6,177	6,447
TOTAL IMPORTS	210,054	223,940	259,129	250,306	294,213	322,443
	VALUE (July-June basis)					
	1,000 Dol.	1,000 Dol.	1,000 Dol.	1,000 Dol.	1,000 Dol.	1,000 Dol.
Cigarette Leaf	96,382	96,854	106,788	96,438	111,145	143,697
Cigar Leaf:						
Cigar Wrapper ^{2/}	3,570	2,864	3,630	3,948	5,169	5,492
Cigar Filler:						
Unstemmed	2,197	2,788	4,995	4,724	6,096	7,825
Stemmed	3,449	3,338	3,689	3,880	4,251	4,372
Total Cigar Leaf	9,216	8,990	12,314	12,552	15,517	17,689
Total Scrap	21,669	22,154	25,856	30,097	45,958	46,860
Total Stems	159	37	189	566	811	961
TOTAL IMPORTS	127,426	128,035	145,147	139,653	175,431	209,207

^{1/} Subject to revision. ^{2/} Includes mixed filler and wrapper. Compiled from the records of Bureau of Census, Dept. of Commerce.

Table 32. Tariff rates on selective items of tobacco and tobacco products imported into the United States under the Tariff Act of 1930 and current Trade Agreements. 1/

Kinds of tobacco imported	TSUS	Rate per lb.	Rate per lb.
	Item	Tariff Act of 1930	as of Jan. 1, 1975 2/
	Number	Dollars	Dollars
Wrapper tobacco (whether or not mixed or packed with filler tobacco):			
Not Stemmed.	170.10	2.275	.909
Stemmed.	170.15	2.925	1.548
Filler tobacco (whether or not mixed or packed with wrapper tobacco). When mixed or packed with over 35% of wrapper tobacco:			
Not Stemmed.	170.20	2.275	.909
Stemmed.	170.25	2.925	1.548
Cigarette leaf:			
Not Stemmed:			
Leaf, oriental or Turkish type, not over 8.5 inches in length.	170.28	.35	.115
Flue-cured and Burley	170.32	.35	.1275
Stemmed.	170.35	.50	.45
Other, including cigar leaf:			
Not Stemmed.	170.40	.35	.161
Stemmed.	170.45	.50	.23
Tobacco Stems:			
Not cut, ground, or pulverized	170.50	Free	Free
Scrap Tobacco.	170.60	.35	.161
Cigarettes	170.65	4.50 lb. + 25% ad val.	1.06 lb. + 5% ad val.
Cigars and Cigerools:			
Cigars each valued 15 cents or over.	170.66	4.50 lb. + 25% ad val.	.95 lb. + 5% ad val.
Other Cigars	170.72	4.50 lb. + 25% ad val.	1.91 lb. + 10.5% ad val.
Snuff and snuff flour.	170.78	.55	.11
Tobacco mfd. or not mfd., not specifically provided for.	170.80	.55	.175

1/ Consult official tariff schedules for a complete listing of rates.
2/ Section 5 of the Trade Agreement Extension Act of 1951 requires imports from most Communist Countries to enter at the 1930 rates.
Foreign Agricultural Service. Compiled from U. S. Tariff Commission, U.S. Department of Commerce.

Table 33. Import duties on unmanufactured tobacco in major United States markets, as of January 1, 1976.

COUNTRY	Tariff Schedule
European Community:	
United Kingdom15 to .38 per pound 1/
West Germany	"
Italy	"
France	"
Netherlands.	"
Denmark.	"
Ireland.	"
Belgium.	"
Luxembourg	"
Japan	Duty Free 2/
Australia76 per lb.
Republic of China (Taiwan).	39 percent ad valorem
Sweden	Duty Free 2/
Switzerland	Duty Free
Thailand78 per lb. or 60% ad valorem whichever is higher
Spain	Duty Free 2/
Philippines	100 percent ad valorem 3/

Import Duties converted at current exchange rates
1/ Minimum and maximum charges - tariff is ad valorem, and varies with the type and value of tobacco. Flue-cured & Burley maximum is .25 lb.
2/ Imports by Government Tobacco Monopoly.
3/ Applied on 110% of F.O.B. invoice value.

NOTE: Government monopoly controls imports in Japan, Republic of Korea, Sweden, Thailand and Spain; imports are subject to non-tariff restrictions in Australia and the Philippines.

From Foreign Agricultural Service, USDA.

Table 34. Production of Flue-cured tobacco in selected countries, calendar years, annual 1970 - 1975. ^{1/}

CONTINENT AND COUNTRY	1970	1971	1972	1973	1974 ^{2/}	1975 ^{3/}
	1,000 lb.	1,000 lb.	1,000 lb.	1,000 lb.	1,000 lb.	1,000 lb.
North America:						
Canada	214,139	217,262	180,958	251,201	252,294	218,890
United States	1,192,961	1,077,790	1,012,415	1,156,659	1,241,326	1,419,560
South America:						
Argentina	52,580	50,393	58,281	64,315	84,436	83,113
Brazil	188,410	194,646	171,107	156,097	242,506	380,443
Venezuela	13,710	16,324	16,654	16,975	20,304	22,112
Europe:						
Italy	21,662	15,880	14,010	20,697	24,004	28,660
Asia:						
India	178,352	205,028	307,320	256,836	309,967	209,999
Pakistan	74,160	77,600	23,499	38,999	51,610	65,501
Indonesia	37,478	31,000	28,627	29,930	34,423	35,000
Japan	204,109	204,328	181,742	204,003	199,377	202,823
Korea, Republic of	95,581	106,118	177,792	171,635	157,408	165,345
China, Peoples Republic of	947,978	1,016,162	1,203,699	1,366,852	1,388,999	1,356,001
China, Republic of (Taiwan)	45,306	36,555	35,693	34,621	38,550	39,182
Philippines	92,592	66,178	55,777	56,438	65,697	74,339
Thailand	46,978	49,995	52,428	45,973	66,519	86,939
Africa:						
Rhodesia	132,000	132,000	145,501	129,999	165,001	199,999
Malawi	10,312	14,129	19,068	22,024	21,197	31,001
Tanzania				27,599	25,999	23,001
Zambia	10,567	13,026	12,196	13,735	13,671	16,001
South Africa, Republic of	45,194	41,006	41,094	37,853	42,615	39,068
Oceania:						
Australia	37,203	37,043	36,914	33,159	34,004	33,181
New Zealand	6,867	7,595	7,090	6,250	6,907	7,121
Estimated World Total ^{4/}	3,936,843	3,918,448	4,076,362	4,403,856	4,761,292	5,044,164

^{1/} Production figures are on a farm-sales-weight basis which is about 10 percent above dry weight basis normally reported in trade statistics.

^{2/} Subject to revision. ^{3/} Preliminary.

^{4/} Includes estimates for countries not listed.

Table 35. Production of Burley tobacco in selected countries, calendar years, annual 1970 - 1975. ^{1/}

CONTINENT AND COUNTRY	1970	1971	1972	1973	1974	1975
	1,000 lb.	1,000 lb.	1,000 lb.	1,000 lb.	1,000 lb.	1,000 lb.
North America:						
United States	560,545	472,576	600,982	450,400	612,643	638,959
Mexico	24,207	37,478	41,888	43,100	42,635	42,207
South America:						
Argentina	18,005	10,086	14,169	16,402	14,242	24,251
Brazil	26,927	33,730	30,964	23,567	33,069	59,407
Venezuela	12,068	13,500	7,826	10,582	10,935	12,963
Europe:						
Greece	29,308	30,988	26,601	31,202	23,766	29,762
Italy	28,896	77,082	82,940	89,593	87,774	89,286
Spain	34,246	35,315	38,149	39,652	34,114	42,877
Asia:						
Japan	22,509	25,289	34,800	41,081	41,596	45,415
Korea, Republic of	26,098	32,337	76,785	71,700	52,910	66,138
Philippines	3,969	5,511	6,173	11,023	25,353	27,558
Africa:						
Malawi	12,510	12,490	12,024	13,327	11,843	15,201
Rhodesia	8,500	12,000	15,000	12,000	10,000	8,300
Estimated World Total ^{4/}	906,289	868,457	1,094,286	947,447	1,112,551	1,235,087

^{1/} Production figures are on a farm-sales-weight basis which is about 10 percent above dry weight basis normally reported in trade statistics.

^{2/} Subject to revision.

^{3/} Preliminary.

^{4/} Includes estimates for countries not listed.

Foreign Agricultural Service. Official estimates of foreign countries, reports from U.S. Foreign Service officers, results of office research, and other information.

Table 36. Acreage and production in selected countries, calendar years, annual 1971 - 1975.

CONTINENT AND COUNTRY	Acreage Harvested					Production (farm-sales-weight basis)				
	1971	1972	1973	1974 ^{1/}	1975 ^{2/}	1971	1972	1973	1974 ^{1/}	1975 ^{2/}
	1,000 Acres	1,000 Acres	1,000 Acres	1,000 Acres	1,000 Acres	1,000 lb.	1,000 lb.	1,000 lb.	1,000 lb.	1,000 lb.
North America:										
Canada	98	103	121	124	104	224,412	187,073	257,310	256,787	224,195
Mexico	77	86	86	97	96	128,638	123,016	128,418	148,365	113,493
United States	839	843	887	963	1,085	1,707,313	1,749,948	1,742,664	1,989,962	2,192,770
Cuba	103	142	160	170	170	60,000	99,999	99,998	110,001	110,001
Dominican Republic	52	62	78	75	57	51,440	62,611	96,158	82,855	36,971
South America:										
Argentina	177	193	217	228	228	136,114	162,258	156,527	215,167	205,127
Brazil	521	517	506	522	565	432,322	421,076	399,039	479,498	629,647
Colombia	57	62	69	63	77	95,900	92,592	106,923	103,616	117,946
Paraguay	43	44	56	70	54	42,074	41,888	55,113	72,752	52,910
Europe:										
Belgium	2	2	1	1	1	5,079	4,740	4,173	3,318	4,233
France	49	50	51	49	51	96,295	109,171	111,687	114,046	123,899
Germany, West	9	10	10	10	10	20,630	21,074	20,800	22,460	22,200
Greece	219	221	205	203	242	186,159	187,620	202,087	179,225	241,095
Italy	104	112	126	122	127	166,478	175,644	206,686	204,439	209,790
Spain	35	40	39	32	40	54,200	56,185	56,716	49,041	59,401
Bulgaria	331	331	331	331	356	282,189	293,210	308,642	308,642	330,692
Yugoslavia	102	127	138	138	148	104,886	143,783	143,319	130,265	148,811
Africa:										
Algeria	26	25	26	26	26	13,230	13,230	13,230	13,230	13,001
Rhodesia	121	130	127	131	137	144,300	152,115	142,298	175,301	208,500
Zambia	15	13	15	19	21	13,891	12,699	14,773	14,616	16,900
Malawi	121	140	131	132	140	58,192	67,195	69,778	60,161	74,502
South Africa, Republic of	100	100	92	96	90	71,429	74,893	68,231	74,361	65,501
Asia:										
Iran	41	47	38	27	27	43,387	44,342	34,392	26,455	26,253
Iraq	42	42	42	42	43	22,000	22,000	22,000	22,928	22,998
Lebanon	19	19	19	19	19	18,298	20,723	20,944	22,046	22,707
Syria	31	31	41	38	57	26,450	26,449	24,028	20,626	33,069
Turkey (Europe & Asia)	864	945	865	828	865	370,783	401,235	333,483	430,214	397,269
U.S.S.R. (Europe & Asia)	431	465	452	461	---	604,060	665,767	672,403	663,578	---
Burma	133	135	135	159	159	94,798	96,000	95,997	163,520	165,001
China, Republic of	1,680	1,654	1,704	1,888	1,863	1,750,000	1,851,849	2,102,990	2,168,991	2,116,002
China, (Taiwan)	21	19	19	20	20	37,055	36,193	35,121	39,050	39,683
India	1,104	1,132	1,099	1,103	1,025	797,845	923,503	820,552	973,110	864,999
Pakistan	262	125	109	121	128	348,632	191,648	138,519	142,349	163,438
Bangladesh	---	101	116	115	113	---	75,341	86,000	91,709	89,000
Vietnam, South	22	22	22	22	22	18,519	18,519	18,521	18,521	18,521
Khmer, Republic of (Cambodia)	40	33	30	30	30	21,385	18,960	15,999	15,999	15,999
Indonesia	314	372	431	436	440	210,486	165,269	286,904	186,108	187,999
Japan	162	153	146	138	165	328,490	318,112	346,614	333,642	346,563
Korea, Republic of	105	117	133	134	133	139,692	255,586	244,362	210,936	232,078
Philippines	195	148	239	260	190	155,424	106,922	167,880	173,127	133,048
Thailand	219	250	244	275	353	98,328	108,450	99,710	122,990	151,571
Oceania:										
Australia	27	25	24	23	22	37,393	37,714	34,151	35,005	34,182
New Zealand	5	5	5	4	5	7,855	7,339	6,499	7,108	7,341
Estimated World Total ^{3/}	9,665	9,904	10,125	10,512	10,727	9,864,733	10,154,925	10,669,671	11,355,806	11,667,579

^{1/} Subject to revision. ^{2/} Preliminary. ^{3/} Total includes data for countries not listed.
 Foreign Agricultural Service. Official estimates of foreign countries, reports from U.S. Foreign Service Officers, results of office research, and other information.

MAJOR SOURCES OF TOBACCO STATISTICS AND INFORMATION

UNITED STATES DEPT. OF AGRICULTURE:

AGRICULTURAL MARKETING SERVICE (AMS)

Tobacco Stocks Reports	Quarterly
Tobacco Market Reviews	Annual
Report on the Manufacture of Snuff, Smoking & Chewing Tobacco.	Quarterly
Report on Tobacco Statistics	Annual
Tobacco in the United States	No. 867

AGRICULTURAL STABILIZATION & CONSERVATION SERVICE (ASCS)

Tobacco - Allotted by Counties and Kinds	Annual
Report of Financial Condition & Operations - Commodity Credit Corporation.	Annual
Tobacco Loan Status.	Monthly

ECONOMIC RESEARCH SERVICE (ERS)

Tobacco Situation.	Quarterly
Agricultural Outlook	Monthly
Foreign Agricultural Trade of the United States.	Monthly
State Farm Income Statistics	Annual

FOREIGN AGRICULTURAL SERVICE (FAS)

United States Calendar Year - Tobacco Exports.	Annual
United States Calendar Year - Tobacco Imports.	Annual
World Tobacco Trade.	Annual
United States Fiscal Year - Tobacco Trade.	Annual
World Cigarette Output	Annual
World Tobacco Production	Annual
Summary of Tariff and Non-tariff Barriers in Free World Markets.	As needed

STATISTICAL REPORTING SERVICE (SRS)

Acreage.	Annual
Crop Production.	Monthly
Summary of Acreage, Yield & Production of Tobacco.	Annual
Prospective Planting of Tobacco.	Annual
Agricultural Prices.	Monthly & Annual
Crop Values.	Annual
Agricultural Statistics.	Annual

UNITED STATES DEPARTMENT OF COMMERCE:

BUREAU OF CENSUS

Census of Manufacturers - Industry Series: Tobacco Products.	1972
State Tax Collections - 1975	Annual
State Government Finances - 1974	Annual
Governmental Finances 1973-74.	Annual
United States Industrial Outlook	Annual

UNITED STATES DEPARTMENT OF TREASURY:

BUREAU OF ALCOHOL, TOBACCO, AND FIREARMS

Statistical Release.	Monthly
Summary Statistics - Alcohol, Tobacco and Firearms	Annual

INTERNAL REVENUE SERVICE

Collections.	Monthly
----------------------	---------

MISCELLANEOUS PUBLICATIONS

<u>NAME</u>	<u>FREQUENCY</u>
Handbook of Agricultural Charts.	U. S. Dept. of Agriculture, Annual Washington, D. C. 20250
International Tobacco.	Tobacco International, Inc. Bi-weekly New York, N.Y. 10017
Tobacco Farmer	Specialized Agricultural Publications Monthly Raleigh, N. C. 27606
Tobacco Reporter	Western Printing Co. Monthly Cincinnati, Ohio 45202
The Tax Burden on Tobacco.	Tobacco Tax Council Annual
State Cigaret Tax Report	Richmond, Va. 23226 Monthly
Tobacco Intelligence	Marlborough House Quarterly London, SW1Y 5HX, England
Tobacco Retailers' Almanac	Retail Tobacco Dealers of America, Inc. Annual New York, N.Y. 10001

I N D E X

	<u>PAGE</u>		<u>PAGE</u>
ACREAGE:		PRODUCTION:	
by class or type	6-10	by type	6-10
by States	12-13	by States	12-13
foreign countries	39	foreign, all types by countries	39
		foreign Flue-cured by countries	38
		foreign Burley by countries	38
ALLOCMENTS:		PRODUCTS:	
number and acreage	22-23	consumption, domestic	5
		consumption, per capita	28
AUCTION MARKETS:		expenditures, consumer	28
number	14	exports	33-34
sets of buyers	14	imports	34-36
prices	14	manufactured	25
warehouses	14	removals	25
BUYERS:		RECEIPTS:	
auction markets	14	cash, by States, tobacco & other commodities	11
		leaf under loan, crop years	11,14
CONSUMPTION:		taxes, Federal	28
domestic	5	taxes, State	29
per capita	28		
		REFERENDUMS:	
CROP VALUE:		marketing quota	24
by type	6-10		
by State	12-13	REMOVALS:	
		cigars by classes	26
DISAPPEARANCE:		products, tax paid	25
chart	4	products, tax free	25
total and domestic, crop year	6-10		
		SALES:	
EXPORTS:		auction	14
as part of disappearance	6-10		
leaf, by types, countries, crop years	30-32	STOCKS:	
leaf, by types, calendar years	33	by crop year	6-10
leaf, value by types, calendar years	33	by quarter, domestic types	15-19
leaf, by countries, calendar years	33	by quarter, foreign types	18-19
cigars and products, quantity and value	36	by quarter, all types	14
		conversion factors	20
IMPORTS:		hogshead dimensions	20
leaf, by kind and countries, calendar years	36		
leaf, quantity and value, calendar years	36	TARIFF:	
leaf, quantity and value, fiscal years	36	common market countries	37
products, by countries	34	foreign rates, selected countries	37
		United States rates	37
LEAF:			
disappearance	4,6-10	TAXES:	
exports	30-32	rates, Federal	26
imports	34-36	rates, State	27
production, United States	6-13	receipts, Federal	28
production, foreign	39	receipts, State	29
stocks	15-19		
used in cigarettes	21	YIELD:	
		domestic types by class	6-10
LOAN LEVELS AND RECEIPTS:		domestic types by States	12-13
by type	11		
by auction sales	14	PRICES:	
		by type on total production	6-14
MARKETS:		by type on auction markets	14
auction	14	by States on total production	12-13
		cigarettes, wholesale	27

U.S. DEPARTMENT OF AGRICULTURE
AGRICULTURAL MARKETING SERVICE
WASHINGTON, D.C. 20250

POSTAGE AND FEES PAID
U.S. DEPARTMENT OF
AGRICULTURE
AGR 101



Official Business

Penalty for Private Use \$300.00.

END