



AgEcon SEARCH
RESEARCH IN AGRICULTURAL & APPLIED ECONOMICS

The World's Largest Open Access Agricultural & Applied Economics Digital Library

This document is discoverable and free to researchers across the globe due to the work of AgEcon Search.

Help ensure our sustainability.

Give to AgEcon Search

AgEcon Search

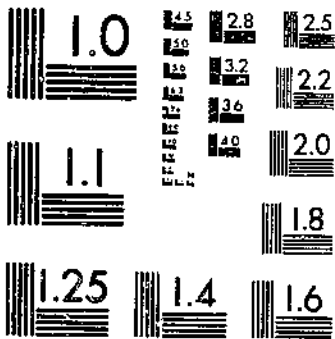
<http://ageconsearch.umn.edu>

aesearch@umn.edu

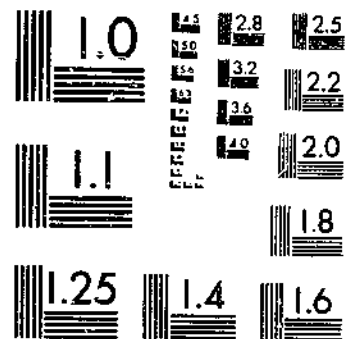
*Papers downloaded from **AgEcon Search** may be used for non-commercial purposes and personal study only. No other use, including posting to another Internet site, is permitted without permission from the copyright owner (not AgEcon Search), or as allowed under the provisions of Fair Use, U.S. Copyright Act, Title 17 U.S.C.*

WASB 536 (1975) USDA STATISTICAL BULLETIN SUPPLEMENT
VACANT HOUSING IS IT ADEQUATE AND IN THE RIGHT PLACES?
BIRD IR 1 OF 1

START



MICROCOPY RESOLUTION TEST CHART
NATIONAL BUREAU OF STANDARDS-1963-A



MICROCOPY RESOLUTION TEST CHART
NATIONAL BUREAU OF STANDARDS-1963-A

R630.5 US3-13

#536

VACANT HOUSING

Is It Adequate and in
the Right Places?

REFERENCE
DO NOT LOAN

Statistical
Bulletin
No. 536

Economic
Research
Service

United States
Department
of Agriculture

VACANT HOUSING: Is It Adequate and in the Right Places? By Ronald Bird.
Economic Research Service, U.S. Department of Agriculture. Statistical Bulletin No. 536.

ABSTRACT

An analysis of the First Count Summary Tapes of the 1970 Census of Housing indicates that there are few adequate vacant units located in counties having the worst housing in both metropolitan and nonmetropolitan counties in the United States. Even in counties having the best housing conditions, vacancy rates needed for mobility and choice would leave few counties with more adequate vacant units than occupied substandard units. There were about 174,000 vacant units available in nonmetro counties and about 493,000 in metro counties. These numbers represent about 7.3 percent of the occupied inadequate units in nonmetro counties and 31 percent in metro counties.

KEYWORDS: Housing, Vacant, Substandard, Metro, Nonmetro, Counties.

17 - 30.5 U 53-12
no 30-11

Washington, D.C. NOV 19 1977

February 1975

iii

8 1977

CONTENTS

	<u>Page</u>
INTRODUCTION.....	1
VACANT HOUSING LOCATION.....	2
Nonmetro Counties.....	2
Metro Counties.....	2
Regions.....	3
VACANCY RATES.....	3
Nonmetro.....	3
Metro.....	4
TABLES.....	5

VACANT HOUSING

Is It Adequate and in the Right Places?

by Ronald Bird
Economic Development Division
Economic Research Service

INTRODUCTION

Vacant housing in both urban and rural areas has been pointed to as a potential resource for replacing the 5.3 million substandard units in the United States. Substandard units are defined as those units that lack complete plumbing or are dilapidated. The 1970 Census of Housing identified 4.3 million housing units vacant all year round--only half of which were available for rent or sale. Of the available units, 1.8 million were standard units. ^{1/} Therefore, if used to replace occupied substandard housing, these adequate vacant units would reduce the number of occupied substandard units by about 33 percent. However, since conventional housing is almost completely immobile, location becomes the critical factor in determining the potential vacant housing has in replacing occupied substandard units.

The First Count Summary Tapes of the 1970 Census of Population and Housing were used to obtain county housing data to determine the extent existing adequate vacant units are located in the counties having the worst housing.

The county boundary was assumed to be the limit to which a household would move to improve its housing. This assumption was based on data in the 1970 Census of Housing which show that 78 percent of the household heads who were not in college or in the armed forces and who moved within the same State during 1965-70 remained within the same county. ^{2/} Also, the data show that the poorly housed were the least mobile.

Substandard is the term most commonly used to identify inadequate housing--homes being either dilapidated or lacking complete plumbing. However, since the 1970 Census did not obtain information on dilapidation at the county level--only on the number of units lacking complete plumbing--this study uses the plumbing criterion to define adequacy of housing.

^{1/} U.S. Bureau of Census, Census of Housing: 1970, Plumbing Facilities and Estimates of Dilapidated Housing, Final Report HC(6).

^{2/} U.S. Bureau of Census, Census of Housing: 1970, Subject Reports, Final Report HC(7)-5, Mover Households.

However, using only the plumbing criterion may result in overstating the ability of vacant units to fulfill housing needs. For example, Census did estimate both the dilapidation and plumbing criteria at the State level. ^{3/} If only the plumbing criterion had been used, the number of adequate vacant units would have been 5 percent larger and the number of inadequate occupied units 29 percent smaller.

In this study, the counties ^{4/} were grouped by the percentage of occupied units lacking complete plumbing by metropolitan and nonmetropolitan areas and by Census regions. The number of occupied units lacking complete plumbing and the number of vacant units with complete plumbing were then compiled for each county grouping. A further breakdown was made on vacancy rates--the number of vacant units with complete plumbing for sale or rent divided by the number of occupied units multiplied by 100. In 1970, the average vacancy rate was 3.0 in metro areas and 2.7 in nonmetro areas.

VACANT HOUSING LOCATION

The match of adequate vacant units to inadequate occupied units was far better in metro than in nonmetro counties. The overall ratio was .936 for metro areas, compared with .221 for nonmetro areas (table 1 and 2).

Nonmetro Counties

County differences were particularly extreme between nonmetro counties. In general, the nonmetro counties having the worst housing were also the ones with the fewest adequate vacant units. For example, the 367 counties with the poorest housing would have a deficit of 542,000 even if all vacant units were used to replace the inadequate occupied ones. On the other hand, in the 463 counties having the best housing, there would be a surplus of 9,000 adequate units (table 1). In terms of the ratio of adequate vacant units to occupied inadequate units, the ratio was .039 for the worst housed counties and 1.053 for the best housed counties.

About one half of the housing lacking complete plumbing in nonmetro counties was located in 30 percent of the counties. More than 20 percent of the housing in these counties lacked complete plumbing. Even if all the adequate vacant units in these counties were occupied by those now residing in inadequate units, only 6 percent of the inadequately housed would be affected.

Metro Counties

In 1970, 329 of the 474 metro counties had fewer adequate vacant units than occupied inadequate ones (table 2). The total deficit was about 300,000

^{3/} U.S. Bureau of Census, Census of Housing: 1970 Plumbing Facilities and Estimates of Dilapidated Housing, Final Report HC (6).

^{4/} The term county also includes independent cities as in Virginia and Missouri.

units, most of which were in the 176 counties having the poorest housing. In these counties, the ratio of adequate vacant units to occupied inadequate ones was .395. In the 298 counties having the best housing, there was a surplus of 228,000 units. The adequacy ratio was 1.266 for these counties.

Regions

When the counties were grouped regionally, about 60 percent of the deficit in nonmetro counties was found in the South Atlantic and East South-Central regions (tables 3-11). These two regions contained about 53 percent of the occupied units lacking complete plumbing but only 32 percent of the vacant adequate housing.

In the metro counties, over 35 percent of the deficit was in the Middle Atlantic Region. The Pacific Coast Region accounted for 59 percent of the surplus.

VACANCY RATES

In the normal operation of housing markets, a certain number of units are vacant because of market conditions resulting from household moves and new home construction. The U.S. average vacancy rate for both homeowner and rental units was 2.9 in 1970. For nonmetro counties, the rates varied between regions from 2.1 to 3.6, and for metro counties, from 1.7 to 5.3. This study assures that a rate in excess of 2.0 within a county would indicate a surplus above the level normally needed to meet market conditions.

Nonmetro

Based on the above market assumption, there were 1,060 nonmetro counties that would have no vacant housing available to help the inadequately housed (table 12). These counties accounted for about one-half of the occupied housing lacking complete plumbing in nonmetro areas.

Another 1,179 counties had vacancy rates ranging from 2.0 to 3.9. If 2 percent of their housing was needed for normal market conditions, then only 73,000 units were available to help improve housing. Within these counties, there were over 1 million households living in units lacking complete plumbing. If the adequate vacant units were fully utilized, only 7 percent of the poorly housed would be affected.

Only 428 counties had rates greater than 3.9, and these counties contained 153,181 adequate vacant units. About 52,000 of these units would be needed for normal market conditions, leaving about 101,000 units that could be used to replace the inadequate ones. There were 173,390 households living in housing lacking complete plumbing within these counties.

When the nonmetro counties were regionally grouped, it was found that 68 percent of the counties having a vacancy rate greater than 3.9 were located in the Pacific, Mountain, and South-Central regions (tables 14-22). These were

the regions which were experiencing rapid increases in populations, and thus had the best housing.

After a deduction of 2 percent of the vacant units for normal market conditions, the 2,667 nonmetro counties had 174,000 adequate vacant units in 1970. This number could replace about 7.3 percent of the occupied inadequate units in the nonmetro areas. Allowing for the 2 percent normal vacancy rate, only 64 nonmetro counties had more adequate vacant units than occupied inadequate units in 1970.

Metro

In the metro areas, 154 of the 474 counties had a vacancy rate of less than 2.0 (table 13). These counties had 386,498 households living in housing lacking complete plumbing. Another 236 metro counties had vacancy rates ranging from 2.0 to 3.9. They contained 701,992 vacant units. If a vacancy rate of 2.0 is needed for mobility and choice, about 471,000 of these units would be needed for this purpose, leaving a surplus of 231,000 units. But, within these counties there were 749,388 households living in housing lacking complete plumbing. Of the 84 metro counties having vacancy rates greater than 3.9, only 49 had a surplus of adequate vacant units above the number needed for mobility and choice.

In total, there were about 435,000 adequate vacant units above the number needed for mobility and choice in metro counties. This figure would represent about 31 percent of the 1,409,000 inadequate occupied units.

A regional grouping of the metro counties revealed that 61 of the 84 counties having a vacancy rate greater than 3.9 were located in the South Atlantic and West South-Central regions (tables 23-31). These regions, unlike other regions, often had high levels of poor housing in high vacancy rate counties.

Table 1--Adequacy of vacant housing (for rent or sale) for fulfilling the needs of the inadequately housed by county groups in 2,667 nonmetropolitan counties, 1970

Item	Counties where occupied units lacking complete plumbing account for the following percentages--							Total
	0.0 to 4.9	5.0 to 9.9	10.0 to 14.9	15.0 to 19.9	20.0 to 24.9	25.0 to 29.9	30.0 and over	
	<u>Number</u>							
Counties.....	1/ 463	2/ 697	396	319	240	185	367	2,667
Occupied units.....	4,980,015	5,518,725	2,872,506	1,967,574	1,385,094	906,130	1,473,329	19,103,373
Lacking complete plumbing.....	164,995	391,098	354,864	344,714	308,140	247,482	563,308	2,374,601
Vacant - complete plumbing 3/.....	173,759	158,313	75,859	47,890	28,899	17,588	21,728	524,036
Surplus 4/.....	8,764							8,764
Deficit 4/.....		232,785	279,005	296,824	279,241	229,894	541,580	1,859,329
Adequacy ratio 5/.....	1.053	.405	.214	.139	.094	.071	.039	.221

1/ There were 242 counties which had more vacant units with complete plumbing than occupied units lacking complete plumbing.

2/ There were 32 counties which had more vacant units with complete plumbing than occupied units lacking complete plumbing.

3/ Units for rent or sale.

4/ The difference between occupied units lacking complete plumbing and vacant units with complete plumbing.

5/ Adequacy ratio derived by dividing number of vacant units with complete plumbing by number of occupied units lacking complete plumbing.

Source: First Count Tapes of the U.S. Census of Housing, 1970.

Table 2--Adequacy of vacant housing (for rent or sale) for fulfilling the needs of the inadequately housed by county groups in 474 metropolitan counties, 1970

Item	Counties where occupied units lacking complete plumbing account for the following percentages--								Total
	0.0 to 4.9	5.0 to 9.9	10.0 to 14.9	15.0 to 19.9	20.0 to 24.9	25.0 to 29.9	30.0 and over		
	<u>Number</u>								
Counties.....	1/ 298	2/ 115	32	17	9	2	1	474	
Occupied units.....	37,631,748	5,702,808	601,536	216,608	107,762	61,415	13,255	44,335,132	
Lacking complete plumbing.....	883,471	373,037	71,628	37,065	24,121	15,742	4,166	1,409,230	
Vacant - complete plumbing 3/.....	1,111,921	176,430	19,495	5,711	4,018	1,579	291	1,319,445	
Surplus 4/.....	228,450							228,450	
Deficit 4/.....		196,607	52,133	31,354	20,103	14,163	3,875	318,235	
Adequacy ratio 5/.....	1.266	.473	.272	.154	.167	.100	.070	.936	

1/ There were 143 counties which had more vacant units with complete plumbing than occupied units lacking complete plumbing.

2/ There were two counties which had more vacant units with complete plumbing than occupied units lacking complete plumbing.

3/ For rent or sale.

4/ The difference between units lacking complete plumbing and vacant units with complete plumbing.

5/ Adequacy ratio derived by dividing number of vacant units with complete plumbing by number of occupied units lacking complete plumbing.

Source: First Count Tapes of the U.S. Census of Housing, 1970.

Table 3--Adequacy of vacant housing (for rent or sale) for fulfilling the needs of the inadequately housed by counties grouped by percent lacking complete plumbing for 47 nonmetropolitan and 20 metropolitan counties in New England Region, 1/ 1970

Item	Counties where occupied units lacking complete plumbing account for the following percentages--							Total
	0.0 to 4.9	5.0 to 9.9	10.0 to 14.9	15.0 to 19.9	20.0 to 24.9	25.0 to 29.9	30.0 and over	
	<u>Number</u>							
Nonmetropolitan:								
Counties.....	11	21	6	7	1	1	0	47
Occupied units.....	281,024	272,393	104,699	65,589	7,117	9,468	0	740,290
Lacking complete plumbing.....	8,785	18,017	12,884	11,356	1,679	2,458	0	55,179
Vacant - complete plumbing <u>2/</u>	8,473	6,862	2,446	1,487	148	203	0	19,619
Surplus <u>3/</u>								
Deficit <u>3/</u>	312	11,155	10,438	9,869	1,531	2,255	0	35,560
Metropolitan:								
Counties.....	17	3	0	0	0	0	0	20
Occupied units.....	2,568,164	336,871	0	0	0	0	0	2,905,035
Lacking complete plumbing.....	70,623	20,313	0	0	0	0	0	90,936
Vacant - complete plumbing <u>2/</u>	51,310	12,865	0	0	0	0	0	64,175
Surplus <u>3/</u>								
Deficit <u>3/</u>	19,313	7,448	0	0	0	0	0	26,761

1/ New England Region includes Maine, New Hampshire, Vermont, Massachusetts, Connecticut, and Rhode Island.

2/ For rent or sale.

3/ The difference between units lacking complete plumbing and vacant units with complete plumbing.

Source: First Count Tapes of the U.S. Census of Housing, 1970.

Table 4--Adequacy of vacant housing (for rent or sale) for fulfilling the needs of the inadequately housed by counties grouped by percent lacking complete plumbing for 83 nonmetropolitan and 67 metropolitan counties in Middle Atlantic Region, 1/ 1970

Item	Counties where occupied units lacking complete plumbing account for the following percentages--							Total
	0.0 to 4.9	5.0 to 9.9	10.0 to 14.9	15.0 to 19.9	20.0 to 24.9	25.0 to 29.9	30.0 and over	
	Number							
Nonmetropolitan:								
Counties.....	34	38	7	4	0	0	0	83
Occupied units.....	939,920	664,248	139,222	18,368	0	0	0	1,761,758
Lacking complete plumbing.....	31,460	44,810	17,677	2,961	0	0	0	96,908
Vacant - complete plumbing <u>2</u> /.....	25,210	13,370	2,035	288	0	0	0	40,903
Surplus <u>3</u> /.....								
Deficit <u>3</u> /.....	6,250	31,440	15,642	2,673	0	0	0	56,005
Metropolitan:								
Counties.....	49	16	2	0	0	0	0	67
Occupied units.....	8,451,399	1,591,286	33,010	0	0	0	0	10,075,695
Lacking complete plumbing.....	184,443	94,400	3,899	0	0	0	0	282,742
Vacant - complete plumbing <u>2</u> /.....	144,377	26,318	299	0	0	0	0	170,994
Surplus <u>3</u> /.....								
Deficit <u>3</u> /.....	40,066	68,082	3,600	0	0	0	0	111,748

1/ Middle Atlantic Region includes New York, New Jersey, and Pennsylvania.

2/ For rent or sale.

3/ The difference between units lacking complete plumbing and vacant units with complete plumbing.

Source: First Count Tapes of the U.S. Census of Housing, 1970

Table 5--Adequacy of vacant housing (for rent or sale) for fulfilling the needs of the inadequately housed by counties grouped by percent lacking complete plumbing for 332 nonmetropolitan and 105 metropolitan counties in East North-Central Region, 1/ 1970

Item	Counties where occupied units lacking complete plumbing account for the following percentages--							Total
	0.0 to 4.9	5.0 to 9.9	10.0 to 14.9	15.0 to 19.9	20.0 to 24.9	25.0 to 29.9	30.0 and over	
	Number							
Nonmetropolitan:								
Counties.....	57	143	70	34	16	6	6	332
Occupied units.....	1,009,413	1,479,961	468,506	182,348	70,944	23,617	16,434	3,251,223
Lacking complete plumbing.....	38,655	105,471	57,494	31,424	15,633	6,502	5,594	260,773
Vacant - complete plumbing <u>2</u> /.....	23,344	33,949	10,685	3,569	1,533	309	204	73,593
Surplus <u>3</u> /.....								
Deficit <u>3</u> /.....	15,311	71,522	46,799	27,855	14,100	6,193	5,390	187,170
Metropolitan:								
Counties.....	78	19	5	3	0	0	0	105
Occupied units.....	8,598,403	439,104	62,289	31,908	0	0	0	9,131,704
Lacking complete plumbing.....	232,470	30,009	7,546	5,013	0	0	0	275,038
Vacant - complete plumbing <u>2</u> /.....	245,388	8,979	1,169	781	0	0	0	256,317
Surplus <u>3</u> /.....	12,918	0	0	0	0	0	0	12,918
Deficit <u>3</u> /.....	0	21,030	6,377	4,232	0	0	0	31,639

1/ East North-Central Region includes Ohio, Indiana, Illinois, Michigan, and Wisconsin.

2/ For rent or sale.

3/ The difference between units lacking complete plumbing and vacant units with complete plumbing.

Table 6--Adequacy of vacant housing (for rent or sale) for fulfilling the needs of the inadequately housed by counties grouped by percent lacking complete plumbing for 581 nonmetropolitan and 38 metropolitan counties in the West North-Central Region, 1/ 1970

Item	Counties where occupied units lacking complete plumbing account for the following percentages--								Total
	0.0 to 4.9	5.0 to 9.9	10.0 to 14.9	15.0 to 19.9	20.0 to 24.9	25.0 to 29.9	30.0 and over		
	<u>Number</u>								
Nonmetropolitan:									
Counties.....	114	221	127	70	24	15	10	581	
Occupied units.....	562,158	1,251,909	477,005	239,798	80,818	36,541	20,217	2,668,446	
Lacking complete plumbing.....	20,897	89,254	59,310	41,535	17,943	10,043	7,085	246,067	
Vacant - complete plumbing ^{2/}	19,285	30,196	10,081	5,025	1,536	718	298	67,139	
Surplus ^{3/}									
Deficit ^{3/}	1,612	59,058	49,229	36,510	16,407	9,325	6,787	178,928	
Metropolitan:									
Counties.....	25	13	0	0	0	0	0	38	
Occupied units.....	1,981,333	504,550	0	0	0	0	0	2,485,883	
Lacking complete plumbing.....	57,781	32,673	0	0	0	0	0	90,454	
Vacant - complete plumbing ^{2/}	60,649	24,585	0	0	0	0	0	85,234	
Surplus ^{3/}	2,868							2,868	
Deficit ^{3/}		8,088						8,088	

^{1/} West North-Central Region includes Minnesota, Iowa, Missouri, North Dakota, South Dakota, Nebraska, and Kansas.

^{2/} For rent or sale.

^{3/} The difference between units lacking complete plumbing and vacant units with complete plumbing.

Source: First Count Tapes of the U.S. Census of Housing, 1970.

10

Table 7--Adequacy of vacant housing (for rent or sale) for fulfilling the needs of the inadequately housed by counties grouped by percent lacking complete plumbing for 497 nonmetropolitan and 92 metropolitan counties in South Atlantic Region, 1/ 1970

Item	Counties where occupied units lacking complete plumbing account for the following percentages--								Total
	0.0 to 4.9	5.0 to 9.9	10.0 to 14.9	15.0 to 19.9	20.0 to 24.9	25.0 to 29.9	30.0 and over		
	Number								
Nonmetropolitan:									
Counties.....	11	42	45	92	94	63	150	497	
Occupied units.....	249,558	770,575	621,302	728,155	561,999	377,465	609,539	3,918,593	
Lacking complete plumbing.....	7,148	54,878	78,159	128,293	124,318	102,744	224,014	719,554	
Vacant - complete plumbing 2/.....	16,013	30,255	15,256	18,499	11,935	6,977	8,556	107,491	
Surplus 3/.....	8,865							8,865	
Deficit 3/.....	0	24,623	62,903	109,794	112,383	95,767	215,458	612,063	
Metropolitan:									
Counties.....	43	31	9	6	3	0	0	92	
Occupied units.....	4,188,164	1,023,103	211,430	73,047	19,162	0	0	5,514,906	
Lacking complete plumbing.....	106,897	75,545	24,415	12,791	4,449	0	0	224,097	
Vacant - complete plumbing 2/.....	148,009	35,794	8,651	1,644	880	0	0	194,978	
Surplus 3/.....	41,112							41,112	
Deficit 3/.....	0	39,751	15,764	11,147	3,569	0	0	70,231	

1/ South Atlantic Region includes Delaware, Maryland, District of Columbia, Virginia, North Carolina, South Carolina, Georgia, and Florida.

2/ For rent or sale.

3/ The difference between units lacking complete plumbing and vacant units with complete plumbing.

Source: First Count Tapes of the U.S. Census of Housing, 1970.

Table 8--Adequacy of vacant housing (for rent or sale) for fulfilling the needs of the inadequately housed by counties grouped by percent lacking complete plumbing for 333 nonmetropolitan and 31 metropolitan counties in East South-Central Region, 1/ 1970

Item	Counties where occupied units lacking complete plumbing account for the following percentages--							Total
	0.0 to 4.9	5.0 to 9.9	10.0 to 14.9	15.0 to 19.9	20.0 to 24.9	25.0 to 29.9	30.0 and over	
	Number							
Nonmetropolitan:								
Counties.....	0	7	30	41	55	52	148	333
Occupied units.....	0	145,032	399,466	370,211	377,794	269,401	657,490	2,219,394
Lacking complete plumbing.....	0	12,053	49,602	65,261	84,388	73,750	262,084	547,138
Vacant - complete plumbing ^{2/}	0	4,926	12,137	8,603	7,469	4,516	9,383	47,034
Surplus ^{3/}								
Deficit ^{3/}	0	7,127	37,465	56,658	76,919	69,234	252,701	500,104
Metropolitan:								
Counties.....	5	12	7	2	4	1	0	31
Occupied units.....	706,491	704,357	148,655	22,797	45,937	17,691	0	1,645,928
Lacking complete plumbing.....	26,476	45,963	18,245	3,944	10,374	4,519	0	109,521
Vacant - complete plumbing ^{2/}	24,978	26,112	4,087	469	1,067	211	0	56,924
Surplus ^{3/}								
Deficit ^{3/}	1,498	19,851	14,158	3,475	9,307	4,308	0	52,597

^{1/} East South-Central Region includes Kentucky, Tennessee, Alabama, and Mississippi.

^{2/} For rent or sale.

^{3/} The difference between units lacking complete plumbing and vacant units with complete plumbing.

Source: First Count Tapes of the U.S. Census of Housing, 1970.

Table 9--Adequacy of vacant housing (for rent or sale) for fulfilling the needs of the inadequately housed by counties grouped by percent lacking complete plumbing for 404 nonmetropolitan and 66 metropolitan counties in West South-Central Region, 1/ 1970

Item	Counties where occupied units lacking complete plumbing account for the following percentages--							Total
	0.0 to 4.9	5.0 to 9.9	10.0 to 14.9	15.0 to 19.9	20.0 to 24.9	25.0 to 29.9	30.0 and over	
	Number							
Nonmetropolitan:								
Counties.....	66	92	73	51	44	44	34	404
Occupied units.....	350,480	474,545	529,800	322,644	281,115	170,821	125,326	2,254,731
Lacking complete plumbing.....	12,084	35,484	63,074	56,478	63,069	46,679	44,165	321,033
Vacant - complete plumbing <u>2/</u>	19,265	20,526	18,789	8,846	6,162	4,094	2,367	80,049
Surplus <u>3/</u>	7,181							7,181
Deficit <u>3/</u>		14,958	44,285	47,632	56,907	42,585	41,798	240,984
Metropolitan:								
Counties.....	28	19	9	6	2	1	1	66
Occupied units.....	2,575,638	783,091	146,162	88,856	42,663	43,724	13,255	3,693,389
Lacking complete plumbing.....	58,766	52,857	17,523	15,317	9,298	11,223	4,166	169,150
Vacant - complete plumbing <u>2/</u>	150,257	33,251	5,289	2,817	2,071	1,368	291	195,344
Surplus <u>3/</u>	91,491	0	0	0	0	0	0	91,491
Deficit <u>3/</u>		19,606	12,234	12,500	7,227	9,855	3,875	65,297

1/ West South-Central Region includes Arkansas, Louisiana, Oklahoma, and Texas.
 2/ For rent or sale.
 3/ The difference between units lacking complete plumbing and vacant units with complete plumbing.

Source: First Count Tapes of the U.S. Census of Housing, 1970.

13

Table 10--Adequacy of vacant housing (for rent or sale) for fulfilling the needs of the inadequately housed by counties grouped by percent lacking complete plumbing for 260 nonmetropolitan and 19 metropolitan counties in Mountain Region ^{1/} 1970

Item	Counties where occupied units lacking complete plumbing account for the following percentages--							Total
	0.0 to 4.9	5.0 to 9.9	10.0 to 14.9	15.0 to 19.9	20.0 to 24.9	25.0 to 29.9	30.0 and over	
	<u>Number</u>							
Nonmetropolitan:								
Counties.....	88	113	30	14	5	2	8	260
Occupied units.....	521,146	365,163	86,593	36,409	4,747	16,784	36,164	1,067,006
Lacking complete plumbing.....	16,765	24,802	10,258	6,643	988	4,782	14,129	78,367
Vacant - complete plumbing ^{2/}	22,741	14,312	3,278	1,448	116	709	812	43,416
Surplus ^{3/}	5,976							5,976
Deficit ^{3/}		10,490	6,980	5,195	872	4,073	13,317	34,951
Metropolitan:								
Counties.....	18	1	0	0	0	0	0	19
Occupied units.....	1,426,036	25,272	0	0	0	0	0	1,451,308
Lacking complete plumbing.....	34,239	1,283	0	0	0	0	0	35,522
Vacant - complete plumbing ^{2/}	40,616	747	0	0	0	0	0	41,363
Surplus ^{3/}	6,377							6,377
Deficit ^{3/}		536						536

^{1/} Mountain Region includes Montana, Idaho, Wyoming, Colorado, New Mexico, Arizona, Utah, and Nevada.

^{2/} For rent or sale.

^{3/} The difference between units lacking complete plumbing and vacant units with complete plumbing.

Source: First Count Tapes of the U.S. Census of Housing, 1970.

Table 11--Adequacy of vacant housing (for rent or sale) for fulfilling the needs of the inadequately housed by counties grouped by percent lacking complete plumbing for 130 nonmetropolitan and 36 metropolitan counties in Pacific Region, 1/ 1970

Item	Counties where occupied units lacking complete plumbing account for the following percentages--							Total
	0.0 to 4.9	5.0 to 9.9	10.0 to 14.9	15.0 to 19.9	20.0 to 24.9	25.0 to 29.9	30.0 and over	
	Number							
Nonmetropolitan:								
Counties.....	82	20	8	6	1	2	11	130
Occupied units.....	1,066,316	94,899	45,913	4,052	560	2,033	8,159	1,221,932
Lacking complete plumbing.....	29,201	6,329	6,406	763	122	524	6,237	49,582
Vacant - complete plumbing ^{2/}	39,428	3,917	1,152	125	0	62	108	44,792
Surplus ^{3/}	10,227							10,227
Deficit ^{3/}		2,412	5,254	638	122	462	6,129	15,017
Metropolitan:								
Counties.....	35	1	0	0	0	0	0	36
Occupied units.....	7,136,120	295,174	0	0	0	0	0	7,431,294
Lacking complete plumbing.....	111,776	19,994	0	0	0	0	0	131,770
Vacant - complete plumbing ^{2/}	246,337	7,779	0	0	0	0	0	254,116
Surplus ^{3/}	134,561							134,561
Deficit ^{3/}		12,215						12,215

^{1/} Pacific Region includes Washington, Oregon, California, Hawaii, and Alaska.

^{2/} For rent or sale.

^{3/} The difference between units lacking complete plumbing and vacant units with complete plumbing.

Source: First Count Tapes of the U.S. Census of Housing, 1970.

15

Table 12--Adequacy of vacant housing (for rent or sale) for fulfilling the needs of the inadequately housed by county groups and by vacancy rates in 2,667 nonmetropolitan counties, 1970

Item	Counties where occupied units lacking complete plumbing account for the following percentages--							Total
	0.0 to 4.9	5.0 to 9.9	10.0 to 14.9	15.0 to 19.9	20.0 to 24.9	25.0 to 29.9	30.0 and over	
	<u>Number</u>							
Vacancy rate $\frac{1}{100}$ --0.0 to 1.9:								
Counties.....	62	182	130	129	134	114	309	1,060
Occupied units.....	814,826	1,694,332	859,639	701,521	730,435	571,465	1,190,998	6,563,216
Lacking complete plumbing.....	32,893	122,231	106,395	123,564	162,474	155,408	458,839	1,161,804
Vacant - complete plumbing $\frac{2}{100}$	13,842	27,646	13,462	10,977	10,996	7,985	14,703	99,611
Surplus $\frac{3}{100}$								
Deficit $\frac{3}{100}$	19,051	94,585	92,933	112,587	151,478	147,423	444,136	1,062,193
Vacancy rate $\frac{1}{100}$ --2.0 to 3.9:								
Counties.....	222	358	214	166	100	63	56	1,179
Occupied units.....	2,964,022	2,881,787	1,720,027	1,151,490	624,975	299,744	274,291	9,916,336
Lacking complete plumbing.....	96,294	205,693	214,471	200,904	139,257	82,144	100,644	1,039,407
Vacant - complete plumbing $\frac{2}{100}$	84,191	78,805	46,595	30,705	16,425	7,856	6,667	271,244
Surplus $\frac{3}{100}$								
Deficit $\frac{3}{100}$	12,103	126,888	167,876	170,199	122,832	74,288	93,977	768,163
Vacancy rate $\frac{1}{100}$ --4.0 to 5.9:								
Counties.....	115	104	35	16	5	7	2	284
Occupied units.....	806,742	729,714	231,287	82,196	27,748	26,159	8,040	1,911,886
Lacking complete plumbing.....	25,243	48,820	26,936	14,525	5,957	7,403	3,825	132,707
Vacant - complete plumbing $\frac{2}{100}$	39,288	34,829	11,332	3,907	1,337	1,140	358	92,191
Surplus $\frac{3}{100}$	14,045							14,045
Deficit $\frac{3}{100}$		13,991	15,604	10,618	4,620	6,263	3,467	54,563
Vacancy rate $\frac{1}{100}$ --6.0 and over:								
Counties.....	64	53	17	8	1	1	0	144
Occupied units.....	394,425	212,892	61,553	32,367	1,936	8,762	0	711,935
Lacking complete plumbing.....	10,565	14,354	7,062	5,721	452	2,527	0	40,681
Vacant - complete plumbing $\frac{2}{100}$	36,438	17,033	4,470	2,301	141	607	0	60,990
Surplus $\frac{3}{100}$	25,873	2,679						28,552
Deficit $\frac{3}{100}$			2,592	3,420	311	1,920		8,243

$\frac{1}{100}$ Number of vacant units with complete plumbing for rent or sale divided by number of occupied units multiplied by 100.

$\frac{2}{100}$ For rent or sale.

$\frac{3}{100}$ The difference between units lacking complete plumbing and vacant units with complete plumbing.

Source: First Count Tapes of the U.S. Census of Housing.

Table 13--Adequacy of vacant housing (for rent or sale) for fulfilling the needs of the inadequately housed by county groups and by vacancy rates in 474 metropolitan counties, 1970

Item	Counties where occupied units lacking complete plumbing account for the following percentages--							Total
	0.0 to 4.9	5.0 to 9.9	10.0 to 14.9	15.0 to 19.9	20.0 to 24.9	25.0 to 29.9	30.0 and over	
	Number							
Vacancy rate <u>1</u> /--0.0 to 1.9:								
Counties.....	97	38	9	6	3	1	0	154
Occupied units.....	10,702,366	1,846,027	137,863	62,944	29,639	17,691	0	12,797,530
Lacking complete plumbing.....	229,119	118,184	16,880	10,963	6,833	4,519	0	386,498
Vacant - complete plumbing <u>2</u> /.....	162,729	29,473	1,932	895	396	211	0	195,636
Surplus <u>3</u> /.....								
Deficit <u>3</u> /.....	66,390	88,711	14,948	10,068	6,437	4,308		190,862
Vacancy rate <u>1</u> /--2.0 to 3.9:								
Counties.....	152	49	20	9	4	1	1	236
Occupied units.....	20,773,138	2,209,836	357,781	126,387	35,658	43,724	13,255	23,559,779
Lacking complete plumbing.....	512,458	149,836	42,716	21,046	7,943	11,223	4,166	749,388
Vacant - complete plumbing <u>2</u> /.....	621,289	63,331	11,190	3,518	1,005	1,368	291	701,992
Surplus <u>3</u> /.....	108,831							108,831
Deficit <u>3</u> /.....		86,505	31,526	17,528	6,938	9,855	3,875	156,227
Vacancy rate <u>1</u> /--4.0 to 5.9:								
Counties.....	36	24	7	2	1	0	0	65
Occupied units.....	4,547,926	1,334,108	37,789	27,277	35,508	0	0	5,982,608
Lacking complete plumbing.....	99,780	84,952	4,985	5,056	7,848	0	0	202,621
Vacant - complete plumbing <u>2</u> /.....	222,640	60,653	1,711	1,298	1,918	0	0	288,220
Surplus <u>3</u> /.....	122,860							122,860
Deficit <u>3</u> /.....		24,299	3,274	3,758	5,930			37,261
Vacancy rate <u>1</u> /--6.0 and over:								
Counties.....	13	4	1	0	1	0	0	19
Occupied units.....	1,607,328	312,837	68,103	0	6,957	0	0	1,995,225
Lacking complete plumbing.....	42,114	20,065	7,047	0	1,497	0	0	70,723
Vacant - complete plumbing <u>2</u> /.....	105,253	22,973	4,662	0	699	0	0	133,587
Surplus <u>3</u> /.....	63,139	2,908						66,047
Deficit <u>3</u> /.....			2,385		798			3,183

1/ Number of vacant units with complete plumbing for rent or sale divided by number of occupied units multiplied by 100.

2/ For rent or sale.

3/ The difference between units lacking complete plumbing and vacant units with complete plumbing.

Source: First Count Tapes of the U.S. Census of Housing.

UPDATA 1981

17

Table 14--Adequacy of vacant housing (for rent or sale) for fulfilling the needs of the inadequately housed by counties grouped by percent lacking plumbing and by vacancy rates for 47 nonmetropolitan counties in New England Region, 1/ 1970

Item	Counties where occupied units lacking complete plumbing account for the following percentages--							Total
	0.0 to 4.9	5.0 to 9.9	10.0 to 14.9	15.0 to 19.9	20.0 to 24.9	25.0 to 29.9	30.0 and over	
	Number							
Vacancy rate <u>2</u> /--0.0 to 1.9:								
Counties.....	2	5	3	1	0	0	0	11
Occupied units.....	80,308	65,048	54,844	6,825	0	0	0	207,025
Lacking complete plumbing.....	2,159	4,191	7,031	1,146	0	0	0	14,527
Vacant - complete plumbing <u>3</u> /.....	1,486	1,175	1,082	133	0	0	0	3,876
Surplus <u>4</u> /.....								
Deficit <u>4</u> /.....	673	3,016	5,955	1,013				10,657
Vacancy rate <u>2</u> /--2.0 to 3.9:								
Counties.....	6	15	3	6	1	1	0	32
Occupied units.....	164,151	201,323	49,855	58,764	7,117	9,468	0	490,678
Lacking complete plumbing.....	5,942	13,434	5,853	10,210	1,679	2,458	0	39,576
Vacant - complete plumbing <u>3</u> /.....	4,333	5,410	1,364	1,354	148	203	0	12,812
Surplus <u>4</u> /.....								
Deficit <u>4</u> /.....	1,609	8,024	4,489	8,856	1,531	2,255		26,764
Vacancy rate <u>2</u> /--4.0 to 5.9:								
Counties.....	2	1	0	0	0	0	0	3
Occupied units.....	3,629	6,022	0	0	0	0	0	9,651
Lacking complete plumbing.....	95	392	0	0	0	0	0	487
Vacant - complete plumbing <u>3</u> /.....	160	277	0	0	0	0	0	437
Surplus <u>4</u> /.....	65							65
Deficit <u>4</u> /.....		115						115
Vacancy rate <u>2</u> /--6.0 and over:								
Counties.....	1	0	0	0	0	0	0	1
Occupied units.....	32,936	0	0	0	0	0	0	32,936
Lacking complete plumbing.....	589	0	0	0	0	0	0	589
Vacant - complete plumbing <u>3</u> /.....	2,494	0	0	0	0	0	0	2,494
Surplus <u>4</u> /.....	1,905							1,905
Deficit <u>4</u> /.....								

1/ New England Region includes Maine, New Hampshire, Vermont, Massachusetts, Rhode Island, and Connecticut.

2/ Number of vacant units with complete plumbing for rent or sale divided by number of occupied units multiplied by 100.

3/ For rent or sale.

4/ The difference between units lacking complete plumbing and vacant units with complete plumbing.

Source: First Count Tapes of the U.S. Census of Housing.

Table 15--Adequacy of vacant housing (for rent or sale) for fulfilling the needs of the inadequately housed by counties grouped by percent lacking plumbing and by vacancy rates for 83 nonmetropolitan counties in Middle Atlantic Region 1/ 1970

Item	Counties where occupied units lacking complete plumbing account for the following percentages--							Total
	0.0 to 4.9	5.0 to 9.9	10.0 to 14.9	15.0 to 19.9	20.0 to 24.9	25.0 to 29.9	30.0 and over	
	Number							
Vacancy rate 2/--0.0 to 1.9:								
Counties.....	12	23	6	3	0	0	0	44
Occupied units.....	249,263	409,769	126,315	16,530	0	0	0	801,877
Lacking complete plumbing.....	10,340	28,564	16,188	2,684	0	0	0	57,776
Vacant - complete plumbing 3/.....	4,287	6,945	1,688	251	0	0	0	13,171
Surplus 4/.....								
Deficit 4/.....	6,053	21,619	14,500	2,433	0	0	0	44,605
Vacancy rate 2/--2.0 to 3.9:								
Counties.....	20	14	1	1	0	0	0	36
Occupied units.....	652,615	252,852	12,907	1,838	0	0	0	920,212
Lacking complete plumbing.....	19,767	16,096	1,489	277	0	0	0	37,629
Vacant - complete plumbing 3/.....	17,896	6,322	347	37	0	0	0	24,602
Surplus 4/.....								
Deficit 4/.....	1,871	9,774	1,142	240	0	0	0	13,027
Vacancy rate 2/--4.0 to 5.9:								
Counties.....	0	0	0	0	0	0	0	0
Occupied units.....	0	0	0	0	0	0	0	0
Lacking complete plumbing.....	0	0	0	0	0	0	0	0
Vacant - complete plumbing 3/.....	0	0	0	0	0	0	0	0
Surplus 4/.....	0	0	0	0	0	0	0	0
Deficit 4/.....	0	0	0	0	0	0	0	0
Vacancy rate 2/--6.0 and over:								
Counties.....	2	1	0	0	0	0	0	3
Occupied units.....	38,042	1,627	0	0	0	0	0	39,669
Lacking complete plumbing.....	1,353	150	0	0	0	0	0	1,503
Vacant - complete plumbing 3/.....	3,027	103	0	0	0	0	0	3,130
Surplus 4/.....	1,674							1,674
Deficit 4/.....		47	0	0	0	0	0	47

1/ Middle Atlantic Region includes New York, New Jersey, and Pennsylvania.

2/ Number of vacant units with complete plumbing for rent or sale divided by number of occupied units multiplied by 100.

3/ For rent or sale.

4/ The difference between units lacking complete plumbing and vacant units with complete plumbing.

Source: First Count Tapes of the U.S. Census of Housing.

UPDATA 1981

19

Table 16--Adequacy of vacant housing (for rent or sale) for fulfilling the needs of the inadequately housed by counties grouped by percent lacking plumbing and by vacancy rates for 332 nonmetropolitan counties in East North-Central Region 1/ 1970

Item	Counties where occupied units lacking complete plumbing account for the following percentages--							Total
	0.0 to 4.9	5.0 to 9.9	10.0 to 14.9	15.0 to 19.9	20.0 to 24.9	25.0 to 29.9	30.0 and over	
	<u>Number</u>							
Vacancy rate <u>2/</u>--0.0 to 1.9:								
Counties.....	19	55	27	20	8	5	6	140
Occupied units.....	317,040	608,422	154,718	97,984	34,905	21,487	16,434	1,250,990
Lacking complete plumbing.....	13,492	43,835	18,855	17,304	7,508	5,896	5,594	112,484
Vacant - complete plumbing <u>3/</u>	5,115	9,780	2,360	1,473	542	255	204	19,729
Surplus <u>4/</u>								
Deficit <u>4/</u>	8,377	34,055	16,495	15,831	6,966	5,641	5,390	92,755
Vacancy rate <u>2/</u>--2.0 to 3.9:								
Counties.....	35	78	40	13	7	1	0	174
Occupied units.....	652,099	819,084	304,319	82,383	31,691	2,130	0	1,891,706
Lacking complete plumbing.....	23,491	57,936	37,490	13,737	7,215	606	0	140,475
Vacant - complete plumbing <u>3/</u>	16,524	21,204	7,701	2,001	743	54	0	48,227
Surplus <u>4/</u>								
Deficit <u>4/</u>	6,967	36,732	29,789	11,736	6,472	552	0	92,248
Vacancy rate <u>2/</u>--4.0 to 5.9:								
Counties.....	3	7	2	1	1	0	0	14
Occupied units.....	40,274	42,746	6,526	1,981	4,348	0	0	95,875
Lacking complete plumbing.....	1,672	3,077	752	383	910	0	0	6,794
Vacant - complete plumbing <u>3/</u>	1,705	1,952	305	95	248	0	0	4,305
Surplus <u>4/</u>	33							33
Deficit <u>4/</u>		1,125	447	288	662	0	0	2,522
Vacancy rate <u>2/</u>--6.0 and over:								
Counties.....	0	3	1	0	0	0	0	4
Occupied units.....	0	9,709	2,943	0	0	0	0	12,652
Lacking complete plumbing.....	0	623	397	0	0	0	0	1,020
Vacant - complete plumbing <u>3/</u>	0	1,013	319	0	0	0	0	1,332
Surplus <u>4/</u>		390						390
Deficit <u>4/</u>			78					78

1/ East North-Central Region includes Ohio, Indiana, Illinois, Michigan, and Wisconsin.
2/ Number of vacant units with complete plumbing for rent or sale divided by number of occupied units multiplied by 100.
3/ For rent or sale.
4/ The difference between units lacking complete plumbing and vacant units with complete plumbing.

Source: First Count Tapes of the U.S. Census of Housing.

Table 17--Adequacy of vacant housing (for rent or sale) for fulfilling the needs of the inadequately housed by counties grouped by percent lacking plumbing by vacancy rates for 581 nonmetropolitan counties in West North-Central Region, 1/ 1970

Item	Counties where occupied units lacking complete plumbing account for the following percentages--							Total
	0.0 to 4.9	5.0 to 9.9	10.0 to 14.9	15.0 to 19.9	20.0 to 24.9	25.0 to 29.9	30.0 and over	
	Number							
Vacancy rate $\frac{2}{-}$ --0.0 to 1.9:								
Counties.....	13	81	65	37	16	10	8	230
Occupied units.....	84,776	454,872	242,288	120,319	52,054	21,422	18,015	993,746
Lacking complete plumbing.....	3,486	33,213	30,384	21,058	11,311	5,876	5,909	111,237
Vacant - complete plumbing $\frac{3}{/}$	1,521	7,080	3,749	1,788	720	270	242	15,370
Surplus $\frac{4}{/}$								
Deficit $\frac{4}{/}$	1,965	26,133	26,635	19,270	10,591	5,606	5,667	95,867
Vacancy rate $\frac{2}{-}$ --2.0 to 3.9:								
Counties.....	54	126	60	31	7	5	2	285
Occupied units.....	301,277	739,307	230,499	106,387	25,792	15,119	2,202	1,420,583
Lacking complete plumbing.....	11,243	52,406	28,438	18,335	5,911	4,167	1,176	121,676
Vacant - complete plumbing $\frac{3}{/}$	8,724	20,555	6,070	2,692	667	448	56	39,212
Surplus $\frac{4}{/}$								
Deficit $\frac{4}{/}$	2,519	31,851	22,368	15,643	5,244	3,719	1,120	82,464
Vacancy rate $\frac{2}{-}$ --4.0 to 5.9:								
Counties.....	36	12	1	2	1	0	0	52
Occupied units.....	150,612	54,581	1,870	13,092	2,972	0	0	223,127
Lacking complete plumbing.....	5,372	3,467	253	2,142	721	0	0	11,955
Vacant - complete plumbing $\frac{3}{/}$	7,177	2,351	103	545	149	0	0	10,325
Surplus $\frac{4}{/}$	1,805							1,805
Deficit $\frac{4}{/}$		1,116	150	1,597	572	0	0	1,630
Vacancy rate $\frac{2}{-}$ --6.0 and over:								
Counties.....	11	2	1	0	0	0	0	14
Occupied units.....	25,493	3,149	2,348	0	0	0	0	30,990
Lacking complete plumbing.....	796	168	235	0	0	0	0	1,199
Vacant - complete plumbing $\frac{3}{/}$	1,863	210	159	0	0	0	0	2,232
Surplus $\frac{4}{/}$	1,067	42						1,109
Deficit $\frac{4}{/}$			76	0	0	0	0	76

1/ West North-Central Region includes Minnesota, Iowa, Missouri, North Dakota, South Dakota, Nebraska, and Kansas.

2/ Number of vacant units with complete plumbing for rent or sale divided by number of occupied units multiplied by 100.

3/ For rent or sale.

4/ The difference between units lacking complete plumbing and vacant units with complete plumbing.

Source: First Count Tapes of the U.S. Census of Housing.

UPDATA 1981

Table 18--Adequacy of vacant housing (for rent or sale) for fulfilling the needs of the inadequately housed by counties grouped by percent lacking plumbing and by vacancy rates for 497 nonmetropolitan counties in South Atlantic Region, 1/ 1970

Item	Counties where occupied units lacking complete plumbing account for the following percentages--							Total
	0.0 to 4.9	5.0 to 9.9	10.0 to 14.9	15.0 to 19.9	20.0 to 24.9	25.0 to 29.9	30.0 and over	
	Number							
Vacancy rate 2/--0.0 to 1.9:								
Counties.....	1	7	10	37	49	40	129	273
Occupied units.....	5,350	127,210	179,922	280,146	262,396	266,102	514,397	1,635,523
Lacking complete plumbing.....	254	10,394	21,896	49,244	58,267	72,650	190,997	403,702
Vacant - complete plumbing 3/.....	93	2,221	2,798	4,483	3,762	3,783	6,241	23,381
Surplus 4/.....								
Deficit 4/.....	161	8,173	19,098	44,761	54,505	68,867	184,756	380,321
Vacancy rate 2/--2.0 to 3.9:								
Counties.....	4	19	30	50	43	21	21	188
Occupied units.....	26,295	296,684	416,610	400,253	293,440	98,368	95,142	1,626,792
Lacking complete plumbing.....	1,069	22,539	53,245	70,787	64,746	26,406	33,017	271,809
Vacant - complete plumbing 3/.....	711	8,523	11,156	11,041	7,825	2,415	2,315	43,986
Surplus 4/.....								
Deficit 4/.....	358	14,016	42,089	59,746	56,921	23,991	30,702	227,823
Vacancy rate 2/--4.0 to 5.9:								
Counties.....	5	11	4	3	1	1	0	25
Occupied units.....	149,508	259,079	22,318	25,286	4,227	4,233	0	464,651
Lacking complete plumbing.....	4,674	16,566	2,715	4,190	853	1,161	0	30,159
Vacant - complete plumbing 3/.....	8,158	12,965	1,102	1,342	207	172	0	23,946
Surplus 4/.....	3,484							3,484
Deficit 4/.....		3,601	1,613	2,848	646	989	0	9,697
Vacancy rate 2/--6.0 and over:								
Counties.....	1	5	1	2	1	1	0	11
Occupied units.....	68,405	87,602	2,452	22,470	1,936	8,762	0	191,627
Lacking complete plumbing.....	1,151	5,379	303	4,072	452	2,527	0	13,884
Vacant - complete plumbing 3/.....	7,051	6,556	200	1,633	141	607	0	16,188
Surplus 4/.....	5,900	1,177						7,077
Deficit 4/.....			103	2,439	311	1,920	0	4,773

1/ South Atlantic Region includes Delaware, Maryland, Virginia, West Virginia, North Carolina, South Carolina, Georgia, and Florida.

2/ Number of vacant units with complete plumbing for rent or sale divided by number of occupied units multiplied by 100.

3/ For rent or sale.

4/ The difference between units lacking complete plumbing and vacant units with complete plumbing.

Source: First Count Tapes of the U.S. Census of Housing.

Table 19--Adequacy of vacant housing (for rent or sale) for fulfilling the needs of the inadequately housed by counties grouped by percent lacking plumbing and by vacancy rates for 333 nonmetropolitan counties in East South-Central Region, 1/ 1970

Item	Counties where occupied units lacking complete plumbing account for the following percentages--							Total
	0.0 to 4.9	5.0 to 9.9	10.0 to 14.9	15.0 to 19.9	20.0 to 24.9	25.0 to 29.9	30.0 and over	
	Number							
Vacancy rate 2/--0.0 to 1.9:								
Counties.....	0	0	5	17	39	45	131	237
Occupied units.....	0	0	58,657	134,708	254,969	212,025	545,082	1,205,441
Lacking complete plumbing.....	0	0	7,169	24,017	56,743	57,457	218,614	364,000
Vacant - complete plumbing 3/.....	0	0	1,086	2,134	3,961	2,933	6,686	16,800
Surplus 4/.....								
Deficit 4/.....	0	0	6,083	21,883	52,782	54,524	211,928	347,200
Vacancy rate 2/--2.0 to 3.9:								
Counties.....	0	5	21	23	14	7	17	87
Occupied units.....	0	115,296	278,823	221,944	106,624	57,376	112,408	892,471
Lacking complete plumbing.....	0	10,220	35,465	38,562	24,172	16,293	43,470	168,182
Vacant - complete plumbing 3/.....	0	3,257	7,737	5,888	2,775	1,583	2,697	23,937
Surplus 4/.....								
Deficit 4/.....	0	6,963	27,728	32,674	21,397	14,710	40,773	144,245
Vacancy rate 2/--4.0 to 5.9:								
Counties.....	0	1	3	1	2	0	0	7
Occupied units.....	0	24,584	45,163	13,559	16,201	0	0	99,507
Lacking complete plumbing.....	0	1,351	5,275	2,682	3,473	0	0	12,781
Vacant - complete plumbing 3/.....	0	1,345	2,180	581	733	0	0	4,839
Surplus 4/.....								
Deficit 4/.....	0	6	3,095	2,101	2,740	0	0	7,942
Vacancy rate 2/--6.0 and over:								
Counties.....	0	1	1	0	0	0	0	2
Occupied units.....	0	5,152	16,823	0	0	0	0	21,975
Lacking complete plumbing.....	0	482	1,693	0	0	0	0	2,175
Vacant - complete plumbing 3/.....	0	314	1,134	0	0	0	0	1,448
Surplus 4/.....								
Deficit 4/.....	0	168	559	0	0	0	0	727

1/ East South-Central Region includes Kentucky, Tennessee, Alabama, and Mississippi.

2/ Number of vacant units with complete plumbing for rent or sale divided by number of occupied units multiplied by 100.

3/ For rent or sale.

4/ The difference between units lacking complete plumbing and vacant units with complete plumbing.

Source: First Count Tapes of the U.S. Census of Housing.

UPDATA 1981

Table 20--Adequacy of vacant housing (for rent or sale) for fulfilling the needs of the inadequately housed by counties grouped by percent lacking plumbing and by vacancy rates for 404 nonmetropolitan counties in West South-Central Region, 1/ 1970

Item	Counties where occupied units lacking complete plumbing account for the following percentages--							Total
	0.0 to 4.9	5.0 to 9.9	10.0 to 14.9	15.0 to 19.9	20.0 to 24.9	25.0 to 29.9	30.0 and over	
	Number							
Vacancy rate 2/--0.0 to 1.9:								
Counties.....	2	1	6	9	19	14	21	72
Occupied units.....	614	6,533	23,384	40,590	123,132	50,429	73,590	318,272
Lacking complete plumbing.....	23	554	2,481	7,312	27,988	13,529	26,185	78,072
Vacant - complete plumbing 3/.....	6	72	431	657	1,976	744	1,056	4,942
Surplus 4/.....								
Deficit 4/.....	17	482	2,050	6,655	26,012	12,785	25,129	73,130
Vacancy rate 2/--2.0 to 3.9:								
Counties.....	11	37	42	34	25	27	12	188
Occupied units.....	95,881	203,700	346,722	249,409	157,983	115,442	50,528	1,219,665
Lacking complete plumbing.....	4,041	15,760	42,394	43,373	35,081	31,745	17,493	189,887
Vacant - complete plumbing 3/.....	3,079	6,319	10,039	6,574	4,186	3,101	1,260	34,558
Surplus 4/.....								
Deficit 4/.....	962	9,441	32,355	36,799	30,895	28,644	16,233	155,329
Vacancy rate 2/--4.0 to 5.9:								
Counties.....	27	35	20	7	0	3	1	93
Occupied units.....	136,395	197,172	136,777	26,873	0	4,950	1,208	503,375
Lacking complete plumbing.....	4,584	14,433	15,528	4,887	0	1,405	487	41,324
Vacant - complete plumbing 3/.....	6,726	9,160	6,803	1,268	0	249	51	24,257
Surplus 4/.....	2,142							2,142
Deficit 4/.....		5,273	8,725	3,619	0	1,156	436	19,209
Vacancy rate 2/--6.0 and over:								
Counties.....	26	19	5	1	0	0	0	51
Occupied units.....	117,590	67,140	22,917	5,772	0	0	0	213,419
Lacking complete plumbing.....	3,436	4,737	2,671	906	0	0	0	11,750
Vacant - complete plumbing 3/.....	9,454	4,975	1,516	347	0	0	0	16,292
Surplus 4/.....	6,018	238						6,256
Deficit 4/.....			1,155	559	0	0	0	1,714

1/ West South-Central Region includes Arkansas, Louisiana, Oklahoma, and Texas.

2/ Number of vacant units with complete plumbing for rent or sale divided by number of occupied units multiplied by 100.

3/ For rent or sale.

4/ The difference between units lacking complete plumbing and vacant units with complete plumbing.

Source: First Count Tapes of the U.S. Census of Housing.

Table 21--Adequacy of vacant housing (for rent or sale) for fulfilling the needs of the inadequately housed by counties grouped by percent lacking plumbing and by vacancy rates for 260 nonmetropolitan counties in Mountain Region, 1/ 1970

Item	Counties where occupied units lacking complete plumbing account for the following percentages--							Total
	0.0 to 4.9	5.0 to 9.9	10.0 to 14.9	15.0 to 19.9	20.0 to 24.9	25.0 to 29.9	30.0 and over	
	Number							
Vacancy rate $\frac{2}{4}$ --0.0 to 1.9:								
Counties.....	11	9	6	4	2	0	5	37
Occupied units.....	68,849	18,255	6,337	3,194	2,419	0	17,451	116,305
Lacking complete plumbing.....	2,857	1,207	788	559	535	0	6,626	12,572
Vacant - complete plumbing $\frac{3}{4}$	1,167	304	98	40	35	0	235	1,879
Surplus $\frac{4}{4}$								
Deficit $\frac{4}{4}$	1,690	903	690	519	500	0	6,391	10,693
Vacancy rate $\frac{2}{4}$ -- 2.0 to 3.9:								
Counties.....	45	56	15	4	3	0	2	125
Occupied units.....	300,826	213,414	54,750	28,276	2,328	0	11,881	611,475
Lacking complete plumbing.....	9,595	14,620	6,292	5,217	453	0	4,165	40,342
Vacant - complete plumbing $\frac{3}{4}$	9,304	6,054	1,662	1,049	81	0	270	18,420
Surplus $\frac{4}{4}$								
Deficit $\frac{4}{4}$	291	8,566	4,630	4,168	372	0	3,895	21,922
Vacancy rate $\frac{2}{4}$ --4.0 to 5.9:								
Counties.....	17	29	5	2	0	2	1	56
Occupied units.....	83,734	101,823	18,633	1,405	0	16,784	6,832	229,211
Lacking complete plumbing.....	2,084	6,752	2,413	241	0	4,782	3,338	19,610
Vacant - complete plumbing $\frac{3}{4}$	3,881	4,697	859	76	0	709	307	10,509
Surplus $\frac{4}{4}$	1,797							1,797
Deficit $\frac{4}{4}$		2,055	1,574	165	0	4,073	3,031	10,898
Vacancy rate $\frac{2}{4}$ --6.0 and over:								
Counties.....	15	19	4	4	0	0	0	42
Occupied units.....	67,937	31,671	6,873	3,534	0	0	0	110,015
Lacking complete plumbing.....	2,229	2,223	765	626	0	0	0	5,843
Vacant - complete plumbing $\frac{3}{4}$	8,389	3,257	679	283	0	0	0	12,608
Surplus $\frac{4}{4}$	6,160	1,034						7,194
Deficit $\frac{4}{4}$			86	343	0	0	0	429

1/ Mountain Region includes Montana, Idaho, Wyoming, Colorado, New Mexico, Arizona, Utah, and Nevada.

2/ Number of vacant units with complete plumbing for rent or sale divided by number of occupied units multiplied by 100.

3/ For rent or sale.

4/ The difference between units lacking complete plumbing and vacant units with complete plumbing.

Source: First Count Tapes of the U.S. Census of Housing.

© UPDATA 1981

Table 22--Adequacy of vacant housing (for rent or sale) for fulfilling the needs of the inadequately housed by counties grouped by percent lacking plumbing and by vacancy rates for 130 nonmetropolitan counties in Pacific Region, 1/ 1970

Item	Counties where occupied units lacking complete plumbing account for the following percentages--							Total
	0.0 to 4.9	5.0 to 9.9	10.0 to 14.9	15.0 to 19.9	20.0 to 24.9	25.0 to 29.9	30.0 and over	
	<u>Number</u>							
Vacancy rate <u>2</u> --0.0 to 1.9:								
Counties.....	2	1	2	1	1	0	9	16
Occupied units.....	8,826	4,223	13,174	1,225	560	0	6,029	34,037
Lacking complete plumbing.....	282	273	1,603	240	122	0	4,914	7,434
Vacant - complete plumbing <u>3</u> /.....	167	69	170	18	0	0	39	463
Surplus <u>4</u> /.....								
Deficit <u>4</u> /.....	115	204	1,433	222	122	0	4,875	6,971
Vacancy rate <u>2</u> --2.0 to 3.9:								
Counties.....	47	8	2	4	0	1	2	64
Occupied units.....	770,878	40,127	25,542	2,236	0	1,841	2,130	842,754
Lacking complete plumbing.....	21,146	2,682	3,805	406	0	469	1,323	29,831
Vacant - complete plumbing <u>3</u> /.....	23,620	1,161	519	69	0	52	69	25,490
Surplus <u>4</u> /.....	2,474							2,474
Deficit <u>4</u> /.....		1,521	3,286	337	0	417	1,254	6,815
Vacancy rate <u>2</u> --4.0 to 5.9:								
Counties.....	25	8	0	0	0	1	0	34
Occupied units.....	242,590	43,707	0	0	0	192	0	286,489
Lacking complete plumbing.....	6,762	2,782	0	0	0	55	0	9,599
Vacant - complete plumbing <u>3</u> /.....	11,481	2,082	0	0	0	10	0	13,573
Surplus <u>4</u> /.....	4,719							4,719
Deficit <u>4</u> /.....		700	0	0	0	45	0	745
Vacancy rate <u>2</u> --6.0 and over:								
Counties.....	8	3	4	1	0	0	0	16
Occupied units.....	44,022	6,842	7,197	591	0	0	0	58,652
Lacking complete plumbing.....	1,011	592	998	117	0	0	0	2,718
Vacant - complete plumbing <u>3</u> /.....	4,160	605	463	38	0	0	0	5,266
Surplus <u>4</u> /.....	3,149	13						3,162
Deficit <u>4</u> /.....			535	79	0	0	0	614

1/ Pacific Region includes Washington, Oregon, California, Hawaii, and Alaska.

2/ Number of vacant units with complete plumbing for rent or sale divided by number of occupied units multiplied by 100.

3/ For rent or sale.

4/ The difference between units lacking complete plumbing and vacant units with complete plumbing.

Source: First Count Tapes of the U.S. Census of Housing.

Table 23--Adequacy of vacant housing (for rent or sale) for fulfilling the needs of the inadequately housed by counties grouped by percent lacking plumbing and by vacancy rates for 20 metropolitan counties in New England Region, 1/ 1970

Item	Counties where occupied units lacking complete plumbing account for the following percentages--							Total
	0.0 to 4.9	5.0 to 9.9	10.0 to 14.9	15.0 to 19.9	20.0 to 24.9	25.0 to 29.9	30.0 and over	
	Number							
Vacancy rate $\frac{2}{-}$--0.0 to 1.9:								
Counties.....	10	0	0	0	0	0	0	10
Occupied units.....	1,618,072	0	0	0	0	0	0	1,618,072
Lacking complete plumbing.....	43,897	0	0	0	0	0	0	43,897
Vacant - complete plumbing $\frac{3}{-}$	25,615	0	0	0	0	0	0	25,615
Surplus $\frac{4}{-}$								
Deficit $\frac{4}{-}$	18,282							18,282
Vacancy rate $\frac{2}{-}$--2.0 to 3.9:								
Counties.....	7	2	0	0	0	0	0	9
Occupied units.....	950,092	88,902	0	0	0	0	0	1,038,994
Lacking complete plumbing.....	26,726	6,601	0	0	0	0	0	33,327
Vacant - complete plumbing $\frac{3}{-}$	25,695	2,540	0	0	0	0	0	28,235
Surplus $\frac{4}{-}$								
Deficit $\frac{4}{-}$	1,031	4,061						5,092
Vacancy rate $\frac{2}{-}$--4.0 to 5.9:								
Counties.....	0	1	0	0	0	0	0	1
Occupied units.....	0	247,969	0	0	0	0	0	247,969
Lacking complete plumbing.....	0	13,712	0	0	0	0	0	13,712
Vacant - complete plumbing $\frac{3}{-}$	0	10,325	0	0	0	0	0	10,325
Surplus $\frac{4}{-}$								
Deficit $\frac{4}{-}$		3,387						3,387
Vacancy rate $\frac{2}{-}$--6.0 and over:								
Counties.....	0	0	0	0	0	0	0	0
Occupied units.....	0	0	0	0	0	0	0	0
Lacking complete plumbing.....	0	0	0	0	0	0	0	0
Vacant - complete plumbing $\frac{3}{-}$	0	0	0	0	0	0	0	0
Surplus $\frac{4}{-}$								
Deficit $\frac{4}{-}$								

1/ New England Region includes Maine, New Hampshire, Vermont, Massachusetts, Rhode Island, and Connecticut.

2/ Number of vacant units with complete plumbing for rent or sale divided by number of occupied units multiplied by 100.

3/ For rent or sale.

4/ The difference between units lacking complete plumbing and vacant units with complete plumbing.

Source: First Count Tapes of the U.S. Census of Housing.

Table 24--Adequacy of vacant housing (for rent or sale) for fulfilling the needs of the inadequately housed by counties grouped by percent lacking plumbing and by vacancy rates for 67 metropolitan counties in Middle Region, 1/ 1970

Item	Counties where occupied units lacking complete plumbing account for the following percentages--							Total
	0.0 to 4.9	5.0 to 9.9	10.0 to 14.9	15.0 to 19.9	20.0 to 24.9	25.0 to 29.9	30.0 and over	
	Number							
Vacancy rate 2/--0.0 to 1.9:								
Counties.....	36	14	2	0	0	0	0	52
Occupied units.....	6,259,123	1,373,330	33,010	0	0	0	0	7,665,463
Lacking complete plumbing.....	122,537	82,812	3,899	0	0	0	0	209,248
Vacant - complete plumbing 3/.....	88,192	21,942	299	0	0	0	0	110,463
Surplus 4/.....								
Deficit 4/.....	34,345	60,870	3,600					98,815
Vacancy rate 2/--2.0 to 3.9:								
Counties.....	12	2	0	0	0	0	0	14
Occupied units.....	2,131,560	217,956	0	0	0	0	0	2,349,516
Lacking complete plumbing.....	60,559	11,588	0	0	0	0	0	72,147
Vacant - complete plumbing 3/.....	52,955	4,376	0	0	0	0	0	57,331
Surplus 4/.....								
Deficit 4/.....	7,604	7,212						14,816
Vacancy rate 2/--4.0 to 5.9:								
Counties.....	1	0	0	0	0	0	0	1
Occupied units.....	60,716	0	0	0	0	0	0	60,716
Lacking complete plumbing.....	1,347	0	0	0	0	0	0	1,347
Vacant - complete plumbing 3/.....	3,230	0	0	0	0	0	0	3,230
Surplus 4/.....	1,883							1,883
Deficit 4/.....								
Vacancy rate 2/--6.0 and over:								
Counties.....	0	0	0	0	0	0	0	0
Occupied units.....	0	0	0	0	0	0	0	0
Lacking complete plumbing.....	0	0	0	0	0	0	0	0
Vacant - complete plumbing 3/.....	0	0	0	0	0	0	0	0
Surplus 4/.....								
Deficit 4/.....								

1/ Middle Atlantic Region includes New York, Pennsylvania, and New Jersey.

2/ Number of vacant units with complete plumbing for rent or sale divided by number of occupied units multiplied by 100.

3/ For rent or sale.

4/ The difference between units lacking complete plumbing and vacant units with complete plumbing.

Source: First Count Tapes of the U.S. Census of Housing.

Table 25--Adequacy of vacant housing (for rent or sale) for fulfilling the needs of the inadequately housed by counties grouped by percent lacking plumbing and by vacancy rates for 105 metropolitan counties in East North-Central Region, 1/ 1970

Item	Counties where occupied units lacking complete plumbing account for the following percentages--							Total
	0.0 to 4.9	5.0 to 9.9	10.0 to 14.9	15.0 to 19.9	20.0 to 24.9	25.0 to 29.9	30.0 and over	
	Number							
Vacancy rate 2/--0.0 to 1.9:								
Counties.....	30	14	4	1	0	0	0	49
Occupied units.....	1,449,970	251,152	53,705	6,014	0	0	0	1,760,841
Lacking complete plumbing.....	38,247	18,091	6,681	998	0	0	0	64,017
Vacant - complete plumbing 3/.....	24,295	3,997	952	105	0	0	0	29,349
Surplus 4/.....								
Deficit 4/.....	13,952	14,094	5,729	893				34,668
Vacancy rate 2/--2.0 to 3.9:								
Counties.....	47	5	1	2	0	0	0	55
Occupied units.....	6,896,911	187,952	8,584	25,894	0	0	0	7,119,341
Lacking complete plumbing.....	186,427	11,918	865	4,015	0	0	0	203,225
Vacant - complete plumbing 3/.....	207,882	4,982	217	676	0	0	0	213,757
Surplus 4/.....	21,455							21,455
Deficit 4/.....		6,936	648	3,339				10,923
Vacancy rate 2/--4.0 to 5.9:								
Counties.....	1	0	0	0	0	0	0	1
Occupied units.....	251,522	0	0	0	0	0	0	251,522
Lacking complete plumbing.....	7,796	0	0	0	0	0	0	7,796
Vacant - complete plumbing 3/.....	13,211	0	0	0	0	0	0	13,211
Surplus 4/.....	5,415							5,415
Deficit 4/.....								
Vacancy rate 2/--6.0 and over:								
Counties.....	0	0	0	0	0	0	0	0
Occupied units.....	0	0	0	0	0	0	0	0
Lacking complete plumbing.....	0	0	0	0	0	0	0	0
Vacant - complete plumbing 3/.....	0	0	0	0	0	0	0	0
Surplus 4/.....								
Deficit 4/.....								

1/ East North-Central Region includes Ohio, Indiana, Illinois, Michigan, and Wisconsin.

2/ Number of vacant units with complete plumbing for rent or sale divided by number of occupied units multiplied by 100.

3/ For rent or sale.

4/ The difference between units lacking complete plumbing and vacant units with complete plumbing.

Source: First Count Tapes of the U.S. Census of Housing.

C UPDATA 1981

29

Table 26--Adequacy of vacant housing (for rent or sale) for fulfilling the needs of the inadequately housed by counties grouped by percent lacking plumbing and by vacancy rates for 38 metropolitan counties in West North-Central Region, 1/ 1970

Item	Counties where occupied units lacking complete plumbing account for the following percentages--							Total
	0.0 to 4.9	5.0 to 9.9	10.0 to 14.9	15.0 to 19.9	20.0 to 24.9	25.0 to 29.9	30.0 and over	
	Number							
Vacancy rate 2/--0.0 to 1.9:								
Counties.....	4	2	0	0	0	0	0	6
Occupied units.....	225,875	94,455	0	0	0	0	0	320,330
Lacking complete plumbing.....	6,624	7,880	0	0	0	0	0	14,504
Vacant - complete plumbing 3/.....	3,701	1,570	0	0	0	0	0	5,271
Surplus 4/.....								
Deficit 4/.....	2,923	6,310						9,233
Vacancy rate 2/--2.0 to 3.9:								
Counties.....	18	8	0	0	0	0	0	26
Occupied units.....	1,296,203	140,818	0	0	0	0	0	1,437,021
Lacking complete plumbing.....	38,194	8,982	0	0	0	0	0	47,174
Vacant - complete plumbing 3/.....	33,886	4,347	0	0	0	0	0	38,233
Surplus 4/.....								
Deficit 4/.....	4,306	4,635						8,941
Vacancy rate 2/--4.0 to 5.9:								
Counties.....	3	2	0	0	0	0	0	5
Occupied units.....	459,255	53,798	0	0	0	0	0	513,053
Lacking complete plumbing.....	12,965	3,263	0	0	0	0	0	16,228
Vacant - complete plumbing 3/.....	23,062	2,220	0	0	0	0	0	25,282
Surplus 4/.....	10,097							10,097
Deficit 4/.....		1,043						1,043
Vacancy rate 2/--6.0 and over:								
Counties.....	0	1	0	0	0	0	0	1
Occupied units.....	0	215,479	0	0	0	0	0	215,479
Lacking complete plumbing.....	0	12,548	0	0	0	0	0	12,548
Vacant - complete plumbing 3/.....	0	16,448	0	0	0	0	0	16,448
Surplus 4/.....		3,900						3,900
Deficit 4/.....								

1/ West North-Central Region includes Minnesota, Iowa, Missouri, North Dakota, South Dakota, Nebraska, and Kansas.
 2/ Number of vacant units with complete plumbing for rent or sale divided by number of occupied units multiplied by 100.
 3/ For rent or sale.
 4/ The difference between units lacking complete plumbing and vacant units with complete plumbing.

Source: First Count Tapes of the U.S. Census of Housing.

Table 27--Adequacy of vacant housing (for rent or sale) for fulfilling the needs of the inadequately housed by counties grouped by percent lacking plumbing and by vacancy rates for 92 metropolitan counties in South Atlantic Region, 1/ 1970

Item	Counties where occupied units lacking complete plumbing account for the following percentages--							Total
	0.0 to 4.9	5.0 to 9.9	10.0 to 14.9	15.0 to 19.9	20.0 to 24.9	25.0 to 29.9	30.0 and over	
	Number							
Vacancy rate $\frac{2}{4}$--0.0 to 1.9:								
Counties.....	8	8	3	4	1	0	0	24
Occupied units.....	556,734	127,090	51,148	45,764	6,461	0	0	787,207
Lacking complete plumbing.....	10,718	9,401	6,300	7,970	1,580	0	0	35,969
Vacant - complete plumbing $\frac{3}{4}$	10,073	1,964	681	599	63	0	0	13,380
Surplus $\frac{4}{4}$								
Deficit $\frac{4}{4}$	645	7,437	5,619	7,371	1,517			22,589
Vacancy rate $\frac{2}{4}$--2.0 to 3.9:								
Counties.....	24	14	4	1	1	0	0	44
Occupied units.....	2,534,219	569,011	65,206	12,743	5,744	0	0	3,186,923
Lacking complete plumbing.....	62,846	40,996	7,553	2,147	1,372	0	0	114,914
Vacant - complete plumbing $\frac{3}{4}$	84,815	17,303	2,137	309	118	0	0	104,682
Surplus $\frac{4}{4}$	21,969							21,969
Deficit $\frac{4}{4}$		23,693	5,416	1,838	1,254			32,201
Vacancy rate $\frac{2}{4}$--4.0 to 5.9:								
Counties.....	10	8	1	1	0	0	0	20
Occupied units.....	1,044,923	301,245	26,973	14,540	0	0	0	1,387,681
Lacking complete plumbing.....	31,567	23,450	3,515	2,674	0	0	0	61,206
Vacant - complete plumbing $\frac{3}{4}$	49,885	14,622	1,171	736	0	0	0	66,414
Surplus $\frac{4}{4}$	18,318							18,318
Deficit $\frac{4}{4}$		8,828	2,344	1,938				13,110
Vacancy rate $\frac{2}{4}$--6.0 and over:								
Counties.....	1	1	1	0	1	0	0	4
Occupied units.....	52,288	25,757	68,103	0	6,957	0	0	153,105
Lacking complete plumbing.....	1,766	1,698	7,047	0	1,497	0	0	12,008
Vacant - complete plumbing $\frac{3}{4}$	3,236	1,905	4,662	0	699	0	0	10,502
Surplus $\frac{4}{4}$	1,470	207						1,677
Deficit $\frac{4}{4}$			2,385	0	798			3,183

1/ South Atlantic Region includes Delaware, Maryland, District of Columbia, Virginia, West Virginia, North Carolina, South Carolina, Georgia, and Florida.

2/ Number of vacant units with complete plumbing for rent or sale divided by number of occupied units multiplied by 100.

3/ For rent or sale.

4/ The difference between units lacking complete plumbing and vacant units with complete plumbing.

Source: First Count Tapes of the U.S. Census of Housing.

Table 28--Adequacy of vacant housing (for rent or sale) for fulfilling the needs of the inadequately housed by counties grouped by percent lacking plumbing and by vacancy rates for 31 metropolitan counties in East South-Central Region, 1/ 1970

Item	Counties where occupied units lacking complete plumbing account for the following percentages--							Total
	0.0 to 4.9	5.0 to 9.9	10.0 to 14.9	15.0 to 19.9	20.0 to 24.9	25.0 to 29.9	30.0 and over	
	Number							
Vacancy rate <u>2</u> --0.0 to 1.9:								
Counties.....	0	0	0	1	2	1	0	4
Occupied units.....	0	0	0	11,166	23,178	17,691	0	52,035
Lacking complete plumbing.....	0	0	0	1,995	5,253	4,519	0	11,767
Vacant - complete plumbing <u>3</u> /.....	0	0	0	191	333	211	0	735
Surplus <u>4</u> /.....								
Deficit <u>4</u> /.....				1,804	4,920	4,308		11,032
Vacancy rate <u>2</u> --2.0 to 3.9:								
Counties.....	4	8	7	1	2	0	0	22
Occupied units.....	642,028	471,193	148,655	11,631	22,759	0	0	1,306,266
Lacking complete plumbing.....	24,556	31,126	18,245	1,949	5,121	0	0	80,997
Vacant - complete plumbing <u>3</u> /.....	21,143	14,158	4,087	278	734	0	0	40,400
Surplus <u>4</u> /.....								
Deficit <u>4</u> /.....	3,413	16,968	14,158	1,671	4,387			40,597
Vacancy rate <u>2</u> --4.0 to 5.9:								
Counties.....	0	3	0	0	0	0	0	3
Occupied units.....	0	182,391	0	0	0	0	0	182,391
Lacking complete plumbing.....	0	10,556	0	0	0	0	0	10,556
Vacant - complete plumbing <u>3</u> /.....	0	8,852	0	0	0	0	0	8,852
Surplus <u>4</u> /.....								
Deficit <u>4</u> /.....		1,704						1,704
Vacancy rate <u>2</u> --6.0 and over:								
Counties.....	1	1	0	0	0	0	0	2
Occupied units.....	54,463	50,773	0	0	0	0	0	105,236
Lacking complete plumbing.....	1,920	4,281	0	0	0	0	0	6,201
Vacant - complete plumbing <u>3</u> /.....	3,835	3,102	0	0	0	0	0	6,937
Surplus <u>4</u> /.....	1,915							1,915
Deficit <u>4</u> /.....		1,179						1,179

1/ East South-Central Region includes Kentucky, Tennessee, Alabama, and Mississippi.
 2/ Number of vacant units with complete plumbing for rent or sale divided by number of occupied units multiplied by 100.
 3/ For rent or sale.
 4/ The difference between units lacking complete plumbing and vacant units with complete plumbing.

Source: First Count Tapes of the U.S. Census of Housing

Table 29--Adequacy of vacant housing (for rent or sale) for fulfilling the needs of the inadequately housed by counties grouped by percent lacking plumbing and by vacancy rates for 66 metropolitan counties in West South-Central Region, 1/ 1970

Item	Counties where occupied units lacking complete plumbing account for the following percentages--							Total
	0.0 to 4.9	5.0 to 9.9	10.0 to 14.9	15.0 to 19.9	20.0 to 24.9	25.0 to 29.9	30.0 and over	
	Number							
Vacancy rate <u>2</u> /--0.0 to 1.9:								
Counties.....	1	0	0	0	0	0	0	1
Occupied units.....	13,707	0	0	0	0	0	0	13,707
Lacking complete plumbing.....	279	0	0	0	0	0	0	279
Vacant - complete plumbing <u>3</u> /.....	251	0	0	0	0	0	0	251
Surplus <u>4</u> /.....								
Deficit <u>4</u> /.....	28							28
Vacancy rate <u>2</u> /--2.0 to 3.9:								
Counties.....	4	8	8		1	1	1	28
Occupied units.....	141,116	213,558	135,336	28,119	7,155	43,724	13,255	630,263
Lacking complete plumbing.....	3,649	17,348	16,053	12,935	1,450	11,223	4,166	66,824
Vacant - complete plumbing <u>3</u> /.....	5,009	7,099	4,749	2,255	153	1,368	291	20,924
Surplus <u>4</u> /.....	1,360							1,360
Deficit <u>4</u> /.....		10,249	11,304	10,688	1,297	9,855	3,875	47,260
Vacancy rate <u>2</u> /--4.0 to 5.9:								
Counties.....	13	10	1	1	1	0	0	26
Occupied units.....	1,311,997	548,705	10,826	12,737	35,508	0	0	1,919,773
Lacking complete plumbing.....	26,194	33,971	1,470	2,382	7,848	0	0	71,865
Vacant - complete plumbing <u>3</u> /.....	71,196	24,634	540	562	1,918	0	0	98,850
Surplus <u>4</u> /.....	45,002							45,002
Deficit <u>4</u> /.....		9,337	930	1,820	5,930			18,017
Vacancy rate <u>2</u> /--6.0 and over:								
Counties.....	10	1	0	0	0	0	0	11
Occupied units.....	1,108,818	20,828	0	0	0	0	0	1,129,646
Lacking complete plumbing.....	28,644	1,538	0	0	0	0	0	30,182
Vacant - complete plumbing <u>3</u> /.....	73,791	1,518	0	0	0	0	0	75,309
Surplus <u>4</u> /.....	45,147							45,147
Deficit <u>4</u> /.....		20						20

1/ West South-Central Region includes Arkansas, Louisiana, Oklahoma, and Texas.

2/ Number of vacant units with complete plumbing for rent or sale divided by number of occupied units multiplied by 100.

3/ For rent or sale.

4/ The difference between units lacking complete plumbing and vacant units with complete plumbing.

Source: First Count Tapes of the U.S. Census of Housing.

Table 30--Adequacy of vacant housing (for rent or sale) for fulfilling the needs of the inadequately housed by counties grouped by percent lacking plumbing and by vacancy rates for 19 metropolitan counties in Mountain Region, 1/ 1970

Item	Counties where occupied units lacking complete plumbing account for the following percentages--							Total
	0.0 to 4.9	5.0 to 9.9	10.0 to 14.9	15.0 to 19.9	20.0 to 24.9	25.0 to 29.9	30.0 and over	
	Number							
Vacancy rate 2/--0.0 to 1.9:								
Counties.....	7	0	0	0	0	0	0	7
Occupied units.....	394,857	0	0	0	0	0	0	394,857
Lacking complete plumbing.....	5,398	0	0	0	0	0	0	5,398
Vacant - complete plumbing 3/.....	6,975	0	0	0	0	0	0	6,975
Surplus 4/.....	1,577							1,577
Deficit 4/.....								
Vacancy rate 2/--2.0 to 3.9:								
Counties.....	9	1	0	0	0	0	0	10
Occupied units.....	875,870	25,272	0	0	0	0	0	901,142
Lacking complete plumbing.....	26,323	1,283	0	0	0	0	0	27,606
Vacant - complete plumbing 3/.....	26,319	747	0	0	0	0	0	27,066
Surplus 4/.....								
Deficit 4/.....	4	536						540
Vacancy rate 2/--4.0 to 5.9:								
Counties.....	2	0	0	0	0	0	0	2
Occupied units.....	155,309	0	0	0	0	0	0	155,309
Lacking complete plumbing.....	2,518	0	0	0	0	0	0	2,518
Vacant - complete plumbing 3/.....	7,322	0	0	0	0	0	0	7,322
Surplus 4/.....	4,804							4,804
Deficit 4/.....								
Vacancy rate 2/--6.0 and over:								
Counties.....	0	0	0	0	0	0	0	0
Occupied units.....	0	0	0	0	0	0	0	0
Lacking complete plumbing.....	0	0	0	0	0	0	0	0
Vacant - complete plumbing 3/.....	0	0	0	0	0	0	0	0
Surplus 4/.....								
Deficit 4/.....								

1/ Mountain Region includes Montana, Idaho, Wyoming, Colorado, New Mexico, Arizona, Utah, and Nevada.

2/ Number of vacant units with complete plumbing for rent or sale divided by number of occupied units multiplied by 100.

3/ For rent or sale.

4/ The difference between units lacking complete plumbing and vacant units with complete plumbing.

Source: First Count Tapes of the U.S. Census of Housing.

Table 31--Adequacy of vacant housing (for rent or sale) for fulfilling the needs of the inadequately housed by counties grouped by percent lacking plumbing and by vacancy rate for 36 metropolitan counties in Pacific Region, 1/ 1970

Item	Counties where occupied units lacking complete plumbing account for the following percentages--							Total
	0.0 to 4.9	5.0 to 9.9	10.0 to 14.9	15.0 to 19.9	20.0 to 24.9	25.0 to 29.9	30.0 and over	
	<u>Number</u>							
Vacancy rate <u>2</u> /--0.0 to 1.9:								
Counties.....	1	0	0	0	0	0	0	1
Occupied units.....	185,028	0	0	0	0	0	0	185,028
Lacking complete plumbing.....	1,419	0	0	0	0	0	0	1,419
Vacant - complete plumbing <u>3</u> /.....	3,627	0	0	0	0	0	0	3,627
Surplus <u>4</u> /.....	2,208							2,208
Deficit <u>4</u> /.....								
Vacancy rate <u>2</u> /--2.0 to 3.9:								
Counties.....	27	1	0	0	0	0	0	28
Occupied units.....	5,295,139	295,174	0	0	0	0	0	5,590,313
Lacking complete plumbing.....	83,180	19,994	0	0	0	0	0	103,174
Vacant - complete plumbing <u>3</u> /.....	163,585	7,779	0	0	0	0	0	171,364
Surplus <u>4</u> /.....	80,405							80,405
Deficit <u>4</u> /.....		12,215						12,215
Vacancy rate <u>2</u> /--4.0 to 5.9:								
Counties.....	6	0	0	0	0	0	0	6
Occupied units.....	1,264,194	0	0	0	0	0	0	1,264,194
Lacking complete plumbing.....	17,393	0	0	0	0	0	0	17,393
Vacant - complete plumbing <u>3</u> /.....	54,734	0	0	0	0	0	0	54,734
Surplus <u>4</u> /.....	37,341							37,341
Deficit <u>4</u> /.....								
Vacancy rate <u>2</u> /--6.0 and over:								
Counties.....	1	0	0	0	0	0	0	1
Occupied units.....	391,759	0	0	0	0	0	0	391,759
Lacking complete plumbing.....	9,784	0	0	0	0	0	0	9,784
Vacant - complete plumbing <u>3</u> /.....	24,391	0	0	0	0	0	0	24,391
Surplus <u>4</u> /.....	14,607	0						14,607
Deficit <u>4</u> /.....								

1/ Pacific Region includes Washington, Oregon, California, Hawaii, and Alaska.

2/ Number of vacant units with complete plumbing for rent or sale divided by number of occupied units multiplied by 100.

3/ For rent or sale.

4/ The difference between units lacking complete plumbing and vacant units with complete plumbing.

Source: First Count Tapes of the U.S. Census of Housing.

**UNITED STATES DEPARTMENT OF AGRICULTURE
WASHINGTON, D.C. 20250**

**OFFICIAL BUSINESS
PENALTY FOR PRIVATE USE, \$300**

**POSTAGE AND FEES PAID
U.S. DEPARTMENT OF
AGRICULTURE
AGR 101
FIRST CLASS**



END