



**AgEcon** SEARCH  
RESEARCH IN AGRICULTURAL & APPLIED ECONOMICS

*The World's Largest Open Access Agricultural & Applied Economics Digital Library*

**This document is discoverable and free to researchers across the globe due to the work of AgEcon Search.**

**Help ensure our sustainability.**

Give to AgEcon Search

AgEcon Search  
<http://ageconsearch.umn.edu>  
[aesearch@umn.edu](mailto:aesearch@umn.edu)

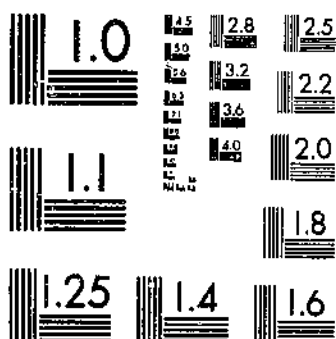
*Papers downloaded from **AgEcon Search** may be used for non-commercial purposes and personal study only. No other use, including posting to another Internet site, is permitted without permission from the copyright owner (not AgEcon Search), or as allowed under the provisions of Fair Use, U.S. Copyright Act, Title 17 U.S.C.*

5B-523 (1970) - USDA STATISTICAL BULLETIN 523  
FARM POPULATION ESTIMATES 1910-70  
BANKS, J. BEALE, CALIF.

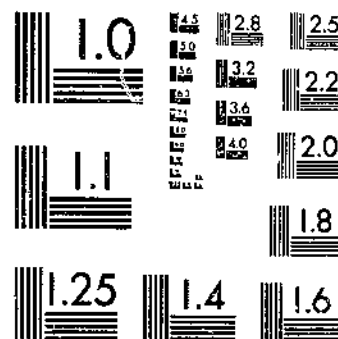
UPDATA

1 OF 1

# START



MICROCOPY RESOLUTION TEST CHART  
NATIONAL BUREAU OF STANDARDS-1963-A

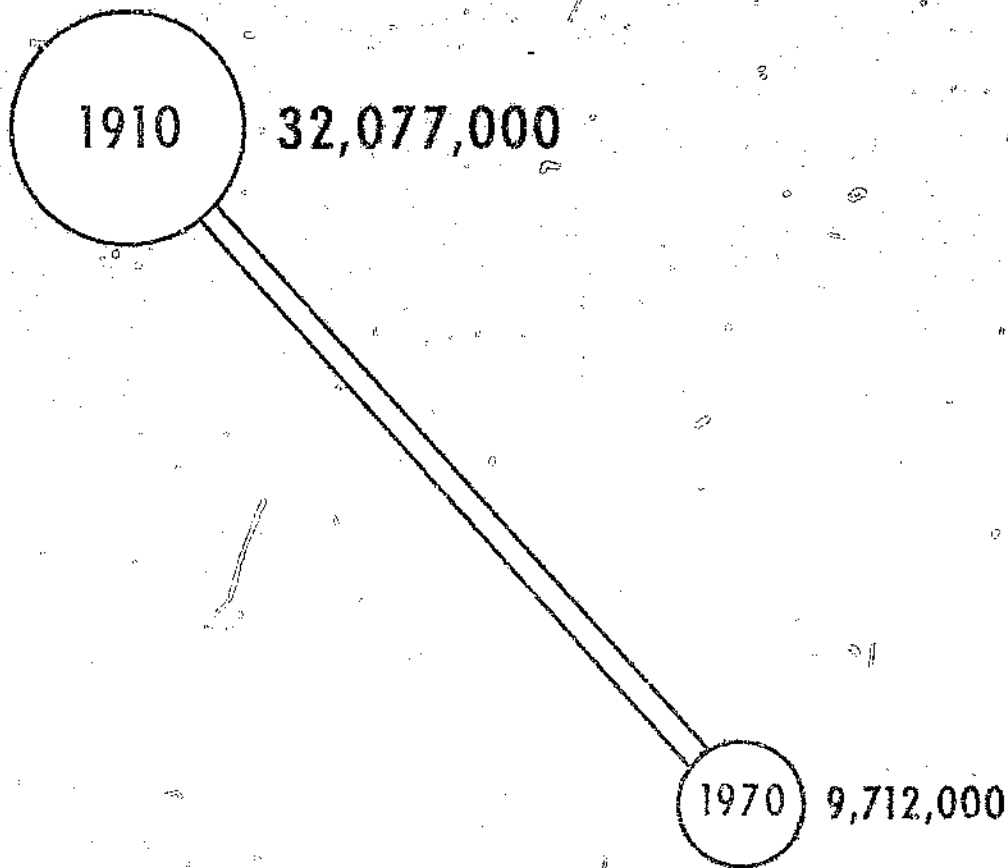


MICROCOPY RESOLUTION TEST CHART  
NATIONAL BUREAU OF STANDARDS-1963-A

630.5 #523  
450-13

# FARM POPULATION ESTIMATES 1910-70

REFERENCE  
DO NOT LOAN



DEPOSITORY

AUG 2 1973

Los Angeles Public Library

## ABSTRACT

In 1970, the number of persons on farms in rural areas of the United States averaged 9,712,000. In continuation of a longtime downward trend, the 1970 farm population was about 38 percent less than in 1960. This absolute loss of about 6 million during 1960-70 was the least for a decade since the 1930's. However, the relative loss was the highest recorded rate of decline for a decade.

During the decade, the Southern Region dropped from first to second place in number of farm residents. The North Central Region now ranks first. The ranking States in farm population are Iowa, Minnesota, and Illinois. States with the highest proportion of their people on farms are South Dakota and North Dakota.

Between 1960 and 1970, the net loss in the farm population through migration or reclassification of residence from farm to nonfarm averaged 694,000 annually. The annual rate of this loss was 5.6 percent.

Keywords: Farm population, migration.

## CONTENTS

	Page
Summary .....	ii
Introduction .....	1
Farm Population of the United States .....	1
Geographic Distribution of the Farm Population .....	2
Components of Farm Population Change .....	6
Natural Increase .....	6
Migration .....	6
Definitions and Explanations .....	7
Source and Reliability of Estimates .....	9
Methods of Deriving Estimates .....	12
Literature Cited .....	13

# TABLES

Number		Page
1	Total and farm population of the United States, annual estimates, April 1910-70 .....	14
2	Numerical and percentage change in farm population, United States, regions, divisions, and States, by decades, April 1920-70 .....	16
3	Farm population by regions, divisions, and States, annual estimates, April 1920-70 .....	18
4	Percentage distribution of farm population, by regions, divisions, and States, 5-year intervals, April 1920-70 .....	26
5	Total and farm population of the United States, by regions, divisions, and States, for decade years, April 1920-70 .....	28
6	Natural increase of the farm population and net change through migration and reclassification of residence for the United States, by regions and divisions, annual estimates, April 1920-70 .....	32
7	Components of farm population change and rate of net migration, annual averages for the United States, regions, and divisions, April 1960-70 .....	47
8	Components of farm population change and rate of net migration, decade and quinquennial annual averages for the United States, April 1920-70.....	47

# FIGURES

Number		Page
1	Farm population, 1910-70 .....	3
2	Regional distribution of the farm population, 1940-70 .....	3
3	Farm population as a percent of total population by States, 1970.	5
4	Net outmigration from the farm population, 1920-70 .....	8
5	Annual rate of net outmigration from the farm population, by region, 1960-70 .....	8
6	Facsimile of annual farm population survey questionnaire .....	10

## SUMMARY

An average of 9,712,000 persons lived on farms in rural areas of the United States in the 12-month period centered on April 1970. Of the total U.S. population, only 4.8 percent, or 1 person in 21, lived on farms.

Between 1960 and 1970, in continuation of a longtime downward trend, the farm population declined by about 6 million, or 38 percent. Among the four regions of the country, the South continued to experience the most farm population loss. As a consequence, this region, traditionally the most populous in number of farm residents, now ranks second. The North Central Region had a modest loss and ranks first. Three North Central States, Iowa, Minnesota, and Illinois, lead in farm population. States with the highest percentage of their total population living on farms are South Dakota and North Dakota.

During the 1960-70 decade, a net average of 694,000 persons left farms annually. The annual rate of outmigration during this period was 5.6 percent. Although the number of net outmovers was fewer than in earlier decades, the rate of outmovement was about the same as in the 1950's.

# FARM POPULATION ESTIMATES, 1910-70

by

Vera J. Banks and Calvin L. Beale <sup>1/</sup>  
Economic Development Division

## INTRODUCTION

This report presents a continuous series of U.S. farm population estimates for 1910-70, and estimates of the farm population for geographic regions, divisions, and States for 1920-70. Annual estimates of the components of farm population change -- births, deaths, and net change through migration and re-classification of residence -- are presented for the United States, regions, and divisions for 1920-70.

All of the estimates for 1910-60 are as published in an earlier report in this data series and are included here for convenience (1). <sup>2/</sup> The 1961-70 estimates of the U.S. total farm population are also as published in earlier reports in this data series (1 and 8). However, the 1961-70 estimates for regions and divisions are revisions of earlier figures, reflecting changes in geographic distribution of the farm population as indicated by the 1970 Census of Population (2). The State farm population estimates for 1961-70 are new.

Although the data presented cover the period 1910-70, the analysis of farm population change relates primarily to the 1960-70 decade. An analysis of farm population changes for earlier years is available in (1).

Data on the characteristics of farm people by age, sex, race, and labor force status for 1960 through 1970 are presented in (4).

## FARM POPULATION OF THE UNITED STATES

The number of persons living on farms in rural areas of the United States averaged 9,712,000 in the 12-month period centered on April 1970 (table 1). This represents a decline of about 6 million, or 38 percent, since 1960 (table 2). The sharp drop continued a longtime downward trend in the number of farm people.

---

<sup>1/</sup> The authors are grateful for the assistance of Peggy A. Colbert, Manuel L. Goldberg, Dorothy A. Hull, Anna E. Lane, and Gloria J. Jackson in the preparation of this report.

<sup>2/</sup> Underscored numbers in parentheses refer to items listed in Literature Cited, page 13.



Except for brief interruptions during the depression and following World Wars I and II, the size of the farm population has steadily declined (fig. 1). This continuous decrease has been fostered in great part by lowered manpower requirements in agriculture, increased employment opportunities in nonagricultural industries, and the unfavorable disparity between farm and nonfarm incomes.

The decreasing number of farm residents has been accompanied by steady increases in the number of persons living in nonfarm areas. In 1910, the earliest date for which data are available in this series, the farm population was 32 million, and about 1 person out of every 3 was a farm resident. By 1950, the ratio had changed to 1 out of 7; by 1960, to 1 out of 12; and by 1970, when farm people were just 4.8 percent of the U.S. total, only about 1 person in 21 lived on a farm.

The relative loss in the farm population between 1960 and 1970 of nearly two-fifths is the highest recorded rate of decline for a decade. In the years prior to the 1940's, the farm population experienced minimal declines. However, with the advent of World War II, especially sharp and permanent drops occurred. In 1940, there were 30.5 million farm people, and they comprised more than a fifth of the national total. During the 1940's, the farm population declined by 7.5 million persons, a loss of 25 percent. Between 1950 and 1960, the absolute loss in the number of farm residents was at about the same level as in the 1940's -- but because of a smaller population base, the rate of loss increased to about 32 percent.

The acceleration in the rate of farm population loss to 38 percent during the 1960's resulted in a further sharp drop of 5.9 million persons. In 1970, the number of farm residents was less than 10 million for the first time in the 20th century. One would have to go back to the 1830's to find an earlier figure of this level. Although the farm population is at its lowest modern point, it is almost certain that some further decline will occur. There are still a number of middle-aged and older farmers living on farms of inadequate commercial scale from which reasonable incomes are difficult to obtain. As these men die or retire, their farms often will be consolidated into larger units.

#### GEOGRAPHIC DISTRIBUTION OF THE FARM POPULATION

The South has traditionally had the largest proportionate share of the U.S. total farm population. As late as 1950, more than half of all farm people lived on southern farms. However, persistently heavier rates of population loss have resulted in a continuous decline in the relative position of the South. In the past decade, 1960-70, the number of southern farm residents was reduced by nearly half, dropping from 7.2 to 3.8 million. The South's share of the national farm total fell from 46 to 39 percent (tables 3 and 4 and fig. 2). Consequently, in 1970, this region was no longer the most populous in farm population.

The more rapid decline of the southern farm population, compared with the rest of the Nation, has been associated with the mechanization of cotton production and near abandonment of the share-tenant system of farming. In addition, higher employment opportunities and living standards in nonfarm areas made obsolete the semisubsistence way of life and substandard housing and services that

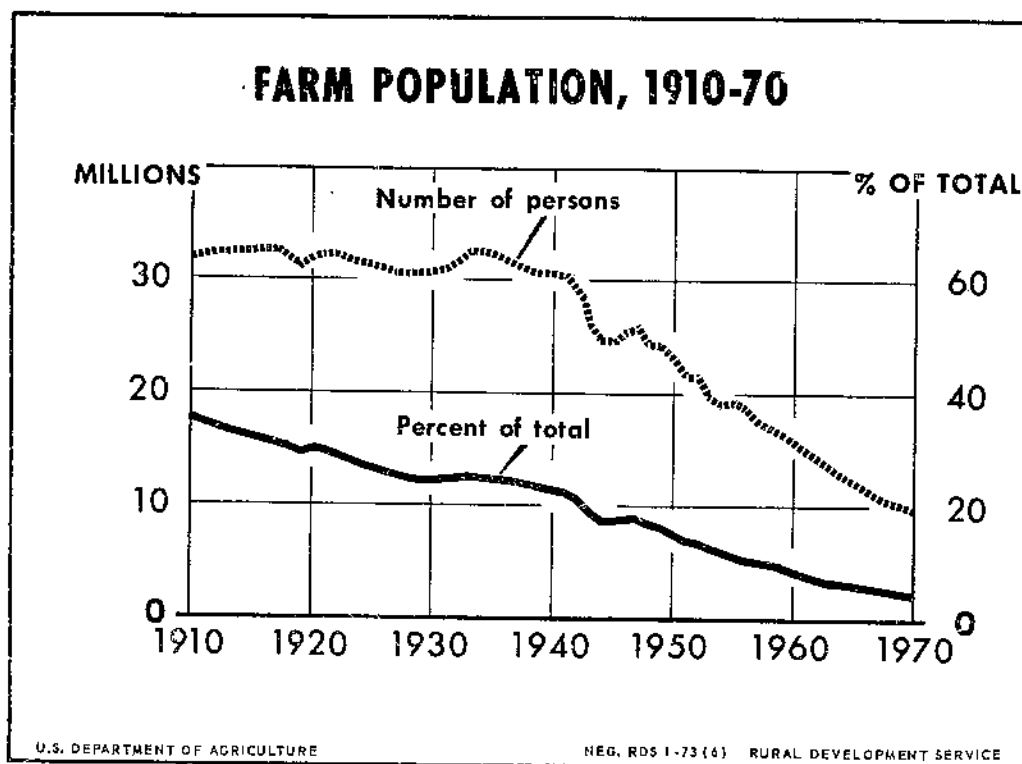


Figure 1

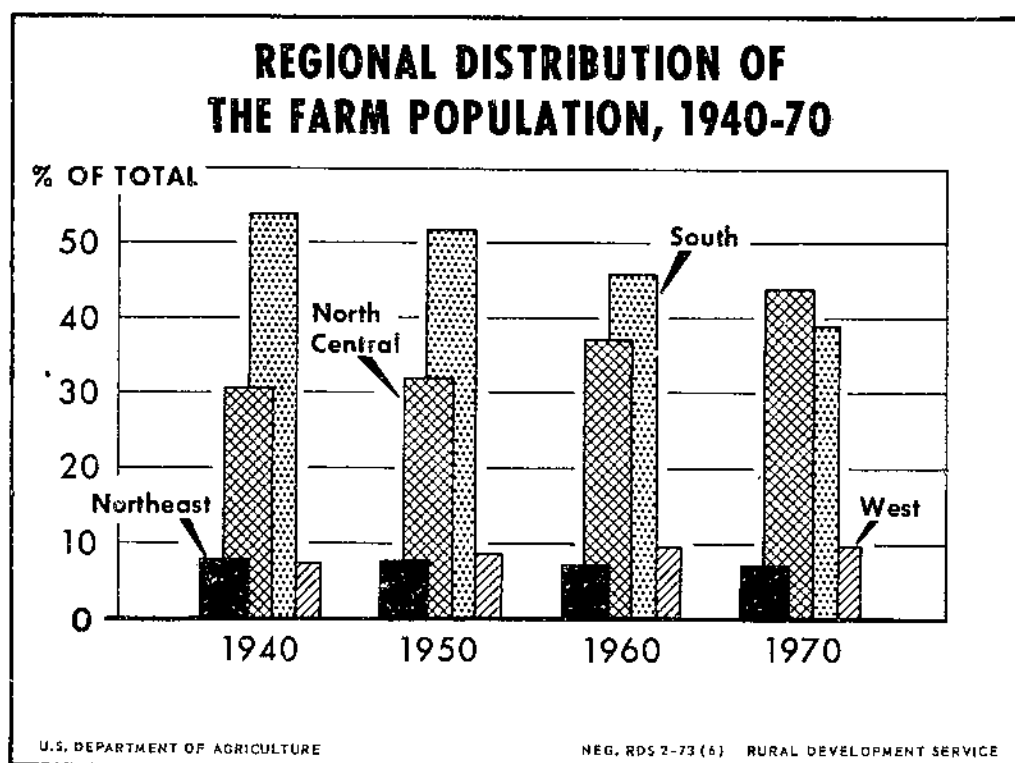


Figure 2

were characteristic of so much of the region. This heavier decrease also reflects the extremely high rates of outmigration of Negro farm residents, of whom more than 90 percent lived in the 16 Southern States at the beginning of the decade (3). Although data by race are not shown in this report, it is known from other sources that the Negro farm population decreased by about five-eighths in the 1960-70 decade (5).

The decline in the South's share of the total farm population has been accompanied by an increase in the North Central Region's proportion. At mid-century, 32 percent of all farm residents were living in the North Central States; by 1960 their share had risen to 37 percent, and by 1970 to 44 percent. However, the North Central Region has experienced farm population decreases, as have all parts of the country. But farming in this region has not undergone such drastic changes as in the South, and population loss has been of a lesser degree. About the middle of the 1960-70 decade, the gradually rising proportion for the North Central Region became greater than that of the South. Consequently, for the first time, the North Central States now have the largest regional farm population.

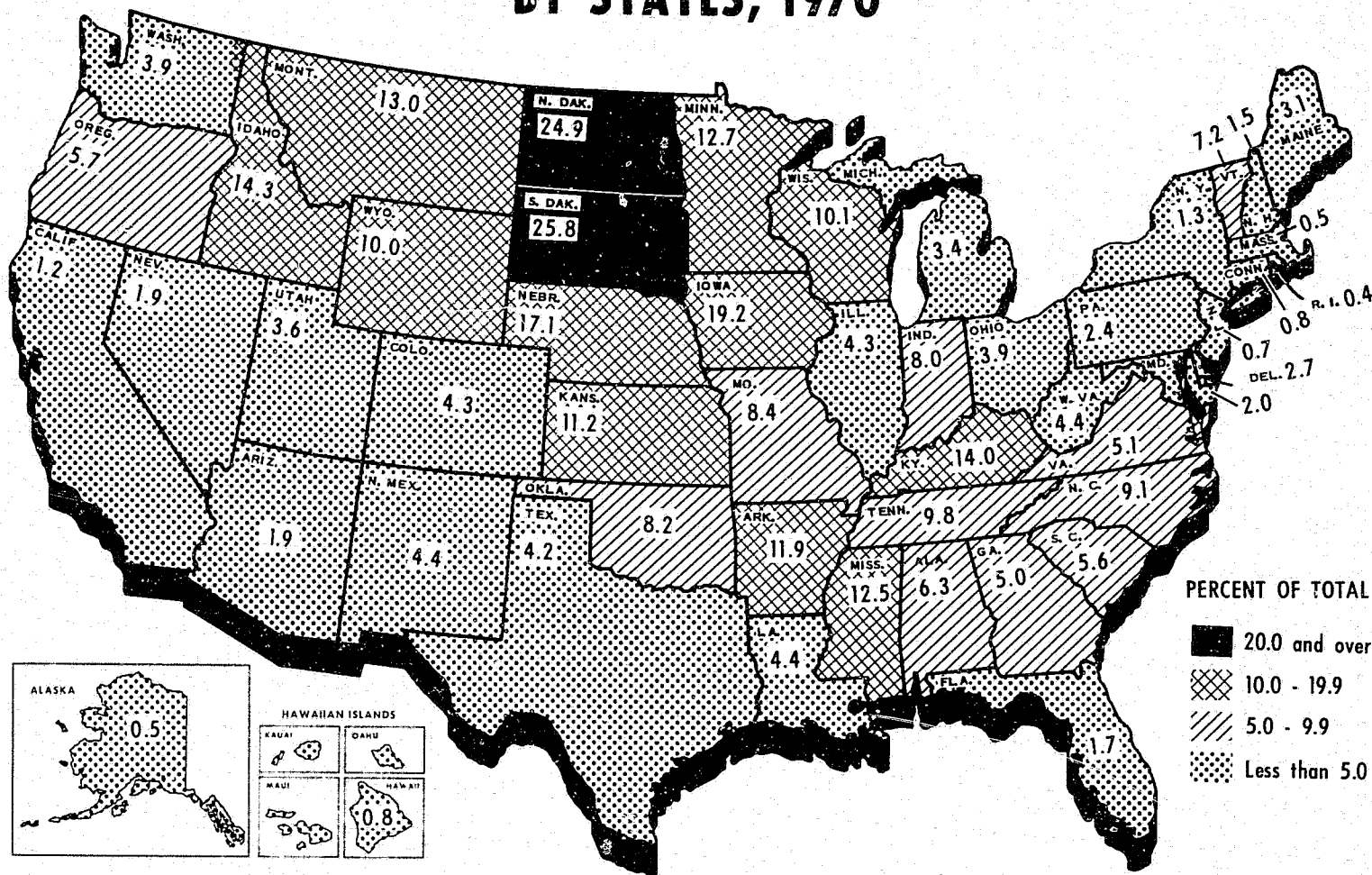
Continuous population declines have had no major effect on the percentage of the total farm population residing in the Northeastern and Western Regions. Between 1960 and 1970, their proportionate shares of the total remained practically unchanged at 7 and 10 percent, respectively.

The more moderate rates of farm population loss throughout the North Central Region that led to the shift in rank between the North Central and Southern Regions also produced some marked changes in the relative ranking of States. For the first time, the States with the largest farm population are not southern. In 1970, Iowa ranked first in farm population. Previously, the leading States were North Carolina and Texas. However, these two Southern States experienced particularly high rates of farm population decrease in the last two decades, which caused Iowa, with only moderate declines during these periods, to advance from third rank in 1960 to first.

Two other North Central States -- Minnesota and Illinois -- were also involved in conspicuous changes in rank during the 1960-70 decade. Because of farm population losses considerably below the national average, Minnesota advanced from sixth in 1960 to second in 1970, and Illinois progressed from seventh to third. North Carolina and Texas, which had ranked first and second, respectively, in 1960, dropped to fifth and fourth in 1970.

In 1920, when State data first become available, 11 of the 48 States had a majority of their people living on farms, and in two-thirds of the States, farm residents constituted a fourth or more of the total. However, the continuing decline in farm population and steady increase in the number of persons residing in nonfarm areas has caused sharp drops in the farm share. By 1970, in only 13 States did the farm population comprise 10 percent or more of the State total population. States with the highest proportion of their people on farms were South Dakota and North Dakota, with 26 and 25 percent, respectively (table 5 and fig. 3).

# FARM POPULATION AS A PERCENT OF TOTAL POPULATION BY STATES, 1970



U.S. DEPARTMENT OF AGRICULTURE

NEG. RDS 3-73 (6) RURAL DEVELOPMENT SERVICE

Figure 3

## COMPONENTS OF FARM POPULATION CHANGE

Estimates of the components of farm population change -- births, deaths, and net change through migration and reclassification of residence -- are available annually from 1920 through 1970 (table 6). However, because the estimates of change in farm population from one year to another fluctuate in part from sampling variation, averages for a period of years are deemed more reliable.

### Natural Increase

Between 1960 and 1970, the excess of births over deaths in the farm population -- known as natural increase -- averaged 102,000 annually (table 7). This resulted from an average of 222,000 births and 120,000 deaths a year to farm residents. Natural increase among farm people has been declining steadily as high rates of outmigration have persisted among young farm adults of childbearing age, and as average farm family size has dropped. The farm population, which historically has been characterized as one of high fertility, averaged about 18 births per 1,000 total population during the 1960-70 decade, a significant drop from a rate of about 23 in the 1950's and 25 in the 1940's.

The number of deaths to farm residents also declined during 1960-70, but not enough to cause any significant change in the farm crude death rate. Consequently, with farm deaths at about the same level and with a considerable drop in farm births, natural increase for the 1960's was about 60 percent lower than in the 1950's when the excess of farm births over deaths averaged 271,000 annually (table 8). Even if there had been no changes in farm fertility and mortality levels, natural increase would have been lower because of the outmovement of potential young parents and aging of the population.

### Migration

Natural increase is the ultimate source of population growth. However, in the farm population where the flow of migrants is responsive to many influences such as employment opportunities, mechanization, and technological advancements, migration becomes the dominant factor in population change, rather than the balance of births and deaths. Net change through migration in this data series includes not only those persons who made a physical move from farm to nonfarm areas, but also the loss that occurred when agricultural operations ceased on a place, and the occupants of the related dwelling units were reclassified from farm to nonfarm. Although exact figures are not available, actual migration is considered to be the larger of these two components. However, reclassification of residence is not of negligible amount, in view of abandonment of poorer farms, and the conversion of farmland to urban or other nonfarm uses. For convenience, the terms "migration" and "movement" will be used to refer to the total of both types of change -- physical migration and reclassification.

Except for the depression decade, 1930-40, the excess of farm births over farm deaths has been more than offset by net outmovement from the farm population. Between 1960 and 1970, a net average of 694,000 persons left farms annually. This represented a cut in the volume of net loss through migration of

nearly a third from the average of about 1 million for the 1950's and 1940's (fig. 4). With the decrease in size of the farm population, the possibility of the volume of farm to nonfarm migration reaching the magnitude of these earlier decades no longer exists.

Although the absolute average loss to the farm population from migration has declined substantially from previous levels, the percentage rate of net outmigration for 1960-70 was about the same as in the 1950's and even higher than in the 1940's. During the 1960's, a net average of 5.6 percent of all farm residents moved away each year, or ceased to farm -- although continuing to live on the place. For the decades of 1950-60 and 1940-50, the annual average rate of net outmigration was 5.3 and 4.4 percent, respectively. The implication is that the "push" and "pull" forces leading to migration have not lessened over the years, but rather that the supply of potential migrants has diminished. Heavy farm population loss from the South was reflected in the high rate of net outmigration from this region. During the 1960-70 decade, an average of 7.3 percent of the South's farm population left farms annually, the highest rate of net outflow among the four regions of the country (fig. 5). The smallest rate (3.8 percent) of net outmovement during this period occurred in the North Central Region.

#### DEFINITIONS AND EXPLANATIONS

Population Coverage.--The estimates presented in this report relate to the rural civilian population living on farms, regardless of occupation. For convenience, the term "farm population" is used without qualification, although the relatively few members of the Armed Forces living on farms are excluded.

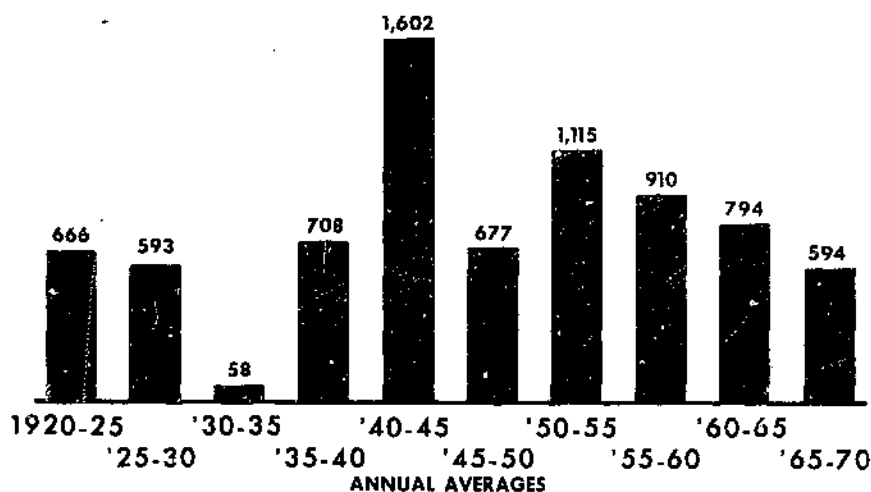
Farm Population.--Since 1960, the farm population has been defined as all persons living in rural territory on places of 10 or more acres, if as much as \$50 worth of agricultural products were sold from the place in the reporting year. It also includes those living on places of under 10 acres, if as much as \$250 worth of agricultural products were sold from the place in the reporting year. Persons in institutions, summer camps, motels, and tourist camps, and those living in rented places where no land is used for farming are classified as nonfarm.

In the Current Population Survey of the Bureau of the Census (CPS), from which current estimates of the total population of the United States are obtained, unmarried persons attending college away from home are enumerated as residents of their parent's homes. In the Censuses of Population, such persons are enumerated as residents of the communities in which they live while attending college. The effect of this difference is to classify a larger number of college-age persons as farm residents in the CPS than would be so classified under decennial census usage.

Previous to 1960, no specific criteria of acreage operated or value of products sold from a place were used to classify farm population. The change in definition in 1960 was largely stimulated by the fact that an increasing number of families whose livelihood was not gained directly from agriculture were living in the open country (many of them in former farm houses) (6).

# NET OUTMIGRATION\* FROM THE FARM POPULATION, 1920-70

THOUSANDS



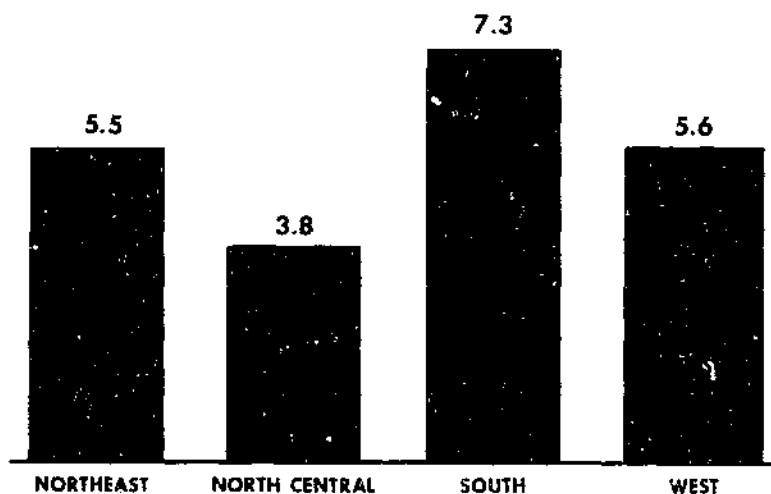
\*NET CHANGE THROUGH MIGRATION AND RECLASSIFICATION OF RESIDENCE FROM FARM TO NONFARM.

U.S. DEPARTMENT OF AGRICULTURE

NEG. RDS 4-73 (6) RURAL DEVELOPMENT SERVICE

Figure 4

# ANNUAL RATE OF NET OUTMIGRATION\* FROM THE FARM POPULATION, BY REGION, 1960-70



\*NET CHANGE THROUGH MIGRATION AND RECLASSIFICATION OF RESIDENCE FROM FARM TO NONFARM.

U.S. DEPARTMENT OF AGRICULTURE

NEG. RDS 5-73 (6) RURAL DEVELOPMENT SERVICE

Figure 5

April-Centered Annual Averages.--April-centered annual averages of the U.S. total farm population for 1960 through 1970 were computed by using data from the five quarters centered on the April date for which the estimate was being prepared. For example, for April 1970, quarterly estimates for the months of October 1969 and January, April, July, and October 1970 were used with a weight of one-eighth given to each of the two October estimates and a weight of one-fourth to each of the estimates of the other 3 months. Estimates for years prior to 1960 relate to the month of April only.

Rounding.--The individual figures in this report are rounded to the nearest thousand and have not been adjusted to group totals, which are independently rounded. Percentages are rounded to the nearest tenth of a percent; therefore, the percentages in a distribution do not always add to exactly 100.0 percent.

#### SOURCE AND RELIABILITY OF ESTIMATES

The 1960-70 estimates in this report are based on data obtained from three principal sources. These are: (1) the Current Population Survey of the Bureau of the Census (CPS), which provides the annual estimate of the U.S. farm population; (2) the 1970 and 1960 Censuses of Population, from which benchmark data for States, geographic divisions, and regions are derived; and (3) annual surveys of the farm population, conducted for the Economic Research Service by the Statistical Reporting Service, on which annual estimates of geographic distributions are based for intercensal years, and from which estimates of components of farm population change are derived annually.

Current Population Survey.--The U.S. farm population estimates for 1960-70 are April-centered annual averages based on data obtained in the CPS. That is, the estimates were computed by using data for the five quarters centered on the April date for which the estimate was prepared. (See "Definitions and Explanations" for further clarification.) These estimates were previously published in the cooperative annual Census-ERS reports (4). A detailed statement on the sample design, estimating procedures, and reliability of the estimates is presented in the joint Census-ERS release for the specified year.

Annual Farm Population Survey.--The Economic Research Service and its predecessor agencies conducted an annual survey of the farm population and its components of change from 1923 to 1969. Utilizing USDA's crop reporting system, reports were collected through a mailed questionnaire (fig. 6). Respondents reported on the number of persons who were living on their own and neighboring farms at the beginning and end of a specified 12-month period. They also reported on births, deaths, and changes through migration which occurred during this period.

From these data, ratios of each component of change during the specified period to the sample farm population at the beginning of the period were computed for each State. By applying ratios from the sample to previously obtained expanded State estimates for the beginning of the period, estimates were obtained of each component of change during a year. These expanded estimates of births, deaths, and movement of persons to and from farms were summed to the populations at the beginning of the period to obtain a set of preliminary estimates of the



State \_\_\_\_\_  
County \_\_\_\_\_  
(in which your farm is located)

# ANNUAL FARM POPULATION SURVEY

APRIL 1, 1968

Dear Sir:

Information on the number of people living on farms is important in measuring changes that are occurring in agriculture. This information is used in planning and improving programs important to rural America.

Please answer the questions for the farm\* which you operate and for each farm\* which touches any part of yours or is separated from yours by only a road.

Report for all places farmed at any time between April 1, 1967 and April 1, 1968 even though there have been no population changes during the year or the place is converted to other uses.

Include in the count of persons moving to the farms all who stayed on more than a month and include in the count of persons moving away from the farms those who stayed away one month or more.

If you cannot give complete information for any farm, write in "Don't know" for the unknown items. Individual

reports are confidential and used only in combination with reports received from others.

Please return this form in the enclosed envelope which requires no stamp.

Very truly yours,

*M. L. Lipekurak*  
Administrator

\*Count places as farms:

- (1) if they are 10 acres or more in size and sold at least \$50 worth of agricultural products in 1967.
- (2) if they are under 10 acres and sold at least \$250 worth of agricultural products in 1967.

10

Farm	Number of PERSONS including babies living in all houses on farm (except families paying cash rent for house and yard only)		During the past 12 months (April 1, 1967 - March 31, 1968)										
	On April 1, 1968	On April 1, 1967	How many babies were born to persons living on each farm?	How many persons died who were living on each farm?	How many persons moved to each farm?			How many persons moved away from each farm?					
					From other farms	From armed forces	From cities, towns, or villages	From other or unknown places	To other farms	To armed forces	To cities, towns, or villages	To other or unknown places	
Starting with the farm north of yours and continuing on a clockwise basis account for each farm which borders yours. If there are more than 6 farms report on the 6 which have houses nearest you.													
Farm you operate.....0													
Bordering Farm.....1													
Bordering Farm.....2													
Bordering Farm.....3													
Bordering Farm.....4													
Bordering Farm.....5													
Bordering Farm.....6													

FOR OFFICE USE ONLY - PLEASE DO NOT WRITE IN THE SPACES BELOW

Your comments about the movement of persons to and from farms, of farm people to or from nonfarm employment, and the starting or abandoning of farms in your locality will be greatly appreciated. Please use other side.

farm population at the end of the year. Final estimates were developed by adjusting the preliminary State estimates so that they would sum to the independent estimate for the United States provided by the CPS. Components of change likewise were adjusted to account for differences shown.

Although the basic procedures involved preparation of estimates for each State, postcensal estimates are published only for regions and divisions because of the limitations of the sample and the estimating procedures. When terminal as well as beginning benchmark Census of Population data become available for a period, the postcensal estimates are revised and become intercensal estimates. Data from the new Census of Population, along with data from the mailed questionnaires, previous censuses, CPS surveys, and other independent sources are utilized in making the intercensal estimates. Estimates for States as well as for geographic divisions and regions are issued retrospectively for intercensal periods.

Reliability of the Estimates.--Annual estimates of the U.S. total farm population are obtained from the CPS. As these estimates are based on a sample, they may differ somewhat from figures obtained if a complete census had been taken using the same schedules, instructions, and enumerators. As in any survey work, the results are subject to error of response and of reporting as well as to sampling variability.

The standard error is primarily a measure of sampling variability. It measures variations that occur by chance because a sample rather than the whole population is surveyed. The calculated standard error also partially measures the effect of response and enumeration errors but does not measure any systematic biases in the data. The chances are about 68 out of 100 that an estimate from the sample would differ from a complete census figure by less than the standard error. The chances are about 95 out of 100 that the difference would be less than twice the standard error.

When two estimates of the total farm population of the United States are compared, there is a reduction in the standard error of the difference when the estimates are for consecutive years. The standard error of such differences in the period 1967 through 1970 is about 150,000. The standard error of the difference between the 1966 and 1967 estimates of the U.S. farm population is about 200,000. The standard error for such differences for earlier years (back to 1960) is about 175,000. Tables of standard errors for April-centered annual averages for 1967 through 1970 are presented in (5).

Farm population estimates for geographic subdivisions and all estimates of components of change are based on U.S. Department of Agriculture mailed-questionnaire survey data, tied to benchmark figures from complete censuses, and adjusted to total estimates of farm population obtained from the CPS. The reliability of these estimates is therefore partly dependent upon the reliability of the U.S. estimate discussed above, and the mail survey data. The reliability of data from the mail survey alone cannot be assessed in terms of sample error. Reliability depends in part upon State-to-State variations in the size and representativeness of the mailing list, as well as upon variations in rate, representativeness, and accuracy of returns. The survey data on births and deaths consistently have appeared to be of poorer quality than those on population and

migration. They have been adjusted where necessary, with general State vital statistics trends used as guidelines for such adjustments.

In general, it should be noted that small figures, small changes, and trends over a short period of time may have less reliability than larger numbers and changes and trends over a period of several years.

#### METHODS OF DERIVING ESTIMATES

Benchmark Data for States, Geographic Regions, and Divisions.--The 1970 Census of Population rural farm population figure for States, which totaled 8,292,150, was inflated to the U.S. figure of 9,712,000 from the CPS (2 and 5). To do this, State inflation factors were developed which reflected the 1970 relationship between regional farm population estimates obtained from the Census of Population and the CPS. Consideration also was given to the individual State adjustments made in the inflation of the 1960 Census of Population farm population figure to the level of the CPS. Division and region benchmark estimates were obtained by summation of the appropriate State figures.

The rural population figures for States from the 1960 Census of Population (which yielded a U.S. figure of 13,444,898) were inflated to 15,635,000 from the CPS (1 and 3). The resulting 1960 estimates and the method of their development were published in an earlier report of this series (1).

Division and Regional Population Estimates, 1961-69.--Methods of interpolation were utilized which considered the annual changes in the total farm population of the United States, along with the percentage that a division comprised of the U.S. total at the beginning and at the end of the 1960-70 decade. Thus, divisional percentages of the U.S. total for each year, 1961-69, were obtained. These percentages were then applied to the established total to obtain annual estimates of the farm population by division. Regional totals were obtained by summation of the appropriate division figures.

Division and Regional Components of Change Estimates, 1960-70.--Estimates of the components of change in the farm population developed annually for geographic divisions and regions were adjusted to reflect the changes in the revised annual farm population estimates. This was done by applying birth and death rates from the annual surveys to the revised division farm population estimates to produce revised estimates of the numbers of births and deaths. Annual revised estimates of net change through migration and reclassification of residence were obtained as residuals by subtracting the revised natural increase (births minus deaths) from the change in the population at the beginning and end of a specified year. Regional totals for the components were obtained by summation.

State Population Estimates, 1961-70.--Annual State farm population estimates were developed by interpolating between 1960 and 1970 benchmark percentage distributions. The derived percentages were then applied to the established geographic division estimates.

Farm Population Estimates, 1910-60.--Farm population estimates for 1960 and earlier years were developed and published by the Economic Research Service and the predecessor agencies of ERS (1, 7, 9, and 10). These estimates are presented here for convenience without revision. A statement on the development of estimates for these years is not included in this report.

#### LITERATURE CITED

1. Banks, Vera J., Beale, Calvin L., and Bowles, Gladys K.  
1963. Farm Population Estimates for 1910-62. U.S. Dept. Agr., Econ. Res. Serv., ERS-130.
2. U.S. Bureau of the Census  
1972. U.S. Census of Population: 1970. General Social and Economic Characteristics. United States Summary. Final Report PC(1)-C1.
3. \_\_\_\_\_  
1962. U.S. Census of Population: 1960. General Social and Economic Characteristics. United States Summary. Final Report PC(1)-1C.
4. U.S. Bureau of the Census and U.S. Department of Agriculture  
Farm Population of the United States: (for specified year). Series Census-ERS, P-27. (Available from either Department.)
5. \_\_\_\_\_  
1971. Farm Population of the United States: 1970. Series Census-ERS, P-27, No. 42. (Available from either Department.)
6. \_\_\_\_\_  
1961. Effect of Definition Changes on Size and Composition of the Rural-Farm Population: April 1960 and 1959. Series Census-AMS, P-27, No. 28. (Available from either Department.)
7. \_\_\_\_\_  
1953. Revised Estimates of the Farm Population of the United States, 1910 to 1950. Series Census-BAE, No. 16. (Available from either Department.)
8. U.S. Department of Agriculture  
Farm Population Estimates (for specified year). Econ. Res. Serv., ERS series.
9. \_\_\_\_\_  
1954. Farm Population...Migration To and From Farms, 1920-54. Agr. Mktg. Serv., AMS-10. (Out of Print.)
10. \_\_\_\_\_  
1953. Farm Population...Annual Estimates by States, Major Geographic Divisions and Regions, 1920-50...and for the United States, 1910-50. Agr. Mktg. Serv., AMS-102. Reissued in 1956. (Out of Print.)

Table 1--Total and farm population of the United States,  
annual estimates, April 1910-70

Year		Total		Farm population	
		population, including		Number	
		Armed Forces <u>1/</u>		Percentage	
		overseas		of	
		Thousands		total	
		Thousands		Percent	
1970		204,335	9,712	4.8	
1969		202,161	10,307	5.1	
1968		200,208	10,454	5.3	
1967		198,206	10,875	5.5	
1966		195,999	11,595	5.9	
1965		193,709	12,363	6.4	
1964		191,245	12,954	6.8	
1963		188,580	13,367	7.1	
1962		185,874	14,313	7.7	
1961		182,992	14,803	8.1	
1960	<u>2/</u>	180,007	15,635	8.7	
1959	<u>3/</u>	176,551	16,592	9.4	
1958		173,367	17,128	9.9	
1957		170,496	17,656	10.4	
1956		167,509	18,712	11.2	
1955		164,607	19,078	11.6	
1954		161,761	19,019	11.8	
1953		159,012	19,874	12.5	
1952		156,421	21,748	13.9	
1951		153,691	21,890	14.2	
1950		151,132	23,048	15.3	
1949		148,595	24,194	16.3	
1948		146,051	24,383	16.7	
1947		143,480	25,829	18.0	
1946		141,039	25,403	18.0	
1945		139,583	24,420	17.5	
1944		138,027	24,815	18.0	
1943		136,297	26,186	19.2	
1942		134,498	28,914	21.5	
1941		133,098	30,118	22.6	
1940		131,820	30,547	23.2	

Continued

Table 1--Total and farm population of the United States,  
annual estimates, April 1910-70--Continued

Year	:	Total population, including Armed Forces <u>1/</u> overseas	:	Farm population	
				:	Percentage
				Number	of total
		Thousands		Thousands	Percent
1939	:	130,642	:	30,840	23.6
1938	:	129,589	:	30,980	23.9
1937	:	128,649	:	31,266	24.3
1936	:	127,886	:	31,737	24.8
1935	:	127,057	:	32,161	25.3
1934	:	126,192	:	32,305	25.6
1933	:	125,401	:	32,393	25.8
1932	:	124,658	:	31,388	25.2
1931	:	123,841	:	30,845	24.9
1930	:	122,775	:	30,529	24.9
	:		:		
1929	:	121,453	:	30,580	25.2
1928	:	120,135	:	30,548	25.4
1927	:	118,628	:	30,530	25.7
1926	:	117,007	:	30,979	26.5
1925	:	115,402	:	31,190	27.0
1924	:	113,573	:	31,177	27.5
1923	:	111,476	:	31,490	28.2
1922	:	109,676	:	32,109	29.3
1921	:	108,023	:	32,123	29.7
1920	:	106,089	:	31,974	30.1
	:		:		
1919	:	104,935	:	31,200	29.7
1918	:	104,266	:	31,950	30.6
1917	:	103,052	:	32,430	31.5
1916	:	101,612	:	32,530	32.0
1915	:	100,191	:	32,440	32.4
1914	:	98,645	:	32,320	32.8
1913	:	96,753	:	32,270	33.4
1912	:	94,965	:	32,210	33.9
1911	:	93,502	:	32,110	34.3
1910	:	91,885	:	32,077	34.9

1/ Includes the Armed Forces overseas except for 1910-16 and 1920-39. Data for those years relate only to persons residing in continental United States; numbers in the Armed Forces overseas during those years were fairly small.

2/ Beginning 1960 includes Hawaii. 3/ Beginning 1959 includes Alaska.

Table 2--Numerical and percentage change in farm population, United States, regions, divisions, and States, by decades, April 1920-70

Area	Change		Change		Change		Change		Change	
	1920 to 1930		1930 to 1940		1940 to 1950		1950 to 1960		1960 to 1970	
	Thou.	Pct.	Thou.	Pct.	Thou.	Pct.	Thou.	Pct.	Thou.	Pct.
United States 1/	-1,445	-4.5	18	0.1	-7,499	-24.5	-7,413	-32.2	-5,923	-37.9
Region										
Northeast	-250	-9.9	124	5.4	-620	-25.7	-672	-37.5	-420	-37.5
North Central	-575	-5.7	-234	-2.4	-1,916	-20.5	-1,597	-21.5	-1,531	-26.2
South	-699	-4.1	36	.2	-4,504	-27.5	-4,736	-39.8	-3,405	-47.6
West 1/	79	3.6	92	4.0	-458	-19.2	-409	-21.2	-566	-37.2
Division										
New England	-58	-9.2	48	8.4	-220	-35.3	-171	-42.4	-104	-44.7
Middle Atlantic	-192	-10.1	76	4.4	-400	-22.4	-501	-36.1	-317	-35.7
East North Central	-452	-9.1	137	3.0	-935	-20.2	-882	-23.8	-768	-27.2
West North Central	-123	-2.4	-371	-7.3	-982	-20.8	-714	-19.1	-763	-25.3
South Atlantic	-582	-9.0	146	2.5	-1,427	-23.5	-1,795	-38.7	-1,480	-52.2
East South Central	-148	-2.8	174	3.4	-1,235	-23.4	-1,554	-38.4	-1,165	-46.7
West South Central	31	.6	-284	-5.3	-1,842	-36.4	-1,387	-43.1	-760	-41.6
Mountain	-36	-3.1	-25	-2.2	-259	-23.2	-181	-21.1	-232	-34.2
Pacific 1/	115	11.1	117	10.2	-200	-15.7	-228	-21.3	-334	-39.7
New England										
Maine	-29	-14.5	5	2.9	-54	-30.7	-61	-50.0	-31	-50.2
New Hampshire	-14	-18.2	8	12.7	-24	-33.8	-25	-53.2	-11	-48.9
Vermont	-14	-11.0	-6	-5.3	-26	-24.3	-25	-30.9	-24	-43.2
Massachusetts	4	3.3	23	18.6	-67	-45.6	-30	-37.5	-23	-45.0
Rhode Island	2	13.3	0	---	-7	-41.2	-4	-40.0	-2	-37.4
Connecticut	-7	-7.4	18	20.7	-42	-40.0	-27	-42.9	-13	-36.0
Middle Atlantic										
New York	-84	-10.4	8	1.1	-152	-20.8	-191	-33.0	-149	-38.4
New Jersey	-14	-9.7	12	9.2	-38	-26.6	-34	-32.4	-24	-33.7
Pennsylvania	-94	-9.9	56	6.5	-210	-23.0	-277	-39.3	-144	-33.6
East North Central										
Ohio	-133	-11.6	73	7.2	-236	-21.7	-272	-31.9	-167	-28.7
Indiana	-99	-10.8	1	.1	-149	-18.3	-128	-19.2	-124	-22.9
Illinois	-105	-9.5	-23	-2.3	-216	-22.1	-142	-18.6	-148	-23.9
Michigan	-71	-8.3	86	11.0	-176	-20.2	-209	-30.1	-180	-37.1
Wisconsin	-44	-4.8	0	---	-158	-17.9	-131	-18.1	-149	-25.1

Table 2--Numerical and percentage change in farm population, United States, regions, divisions, and States, by decades, April 1920-70--Continued

Area	Change 1920 to 1930		Change 1930 to 1940		Change 1940 to 1950		Change 1950 to 1960		Change 1960 to 1970	
	Thou.	Pct.	Thou.	Pct.	Thou.	Pct.	Thou.	Pct.	Thou.	Pct.
West North Central										
Minnesota	-5	-0.6	17	1.9	-175	-19.1	-116	-15.7	-142	-22.7
Iowa	-10	-1.0	-50	-5.1	-148	-15.9	-80	-10.2	-160	-22.7
Missouri	-101	-8.3	7	.6	-262	-23.3	-268	-31.1	-200	-33.6
North Dakota	0	---	-70	-17.6	-74	-22.6	-47	-18.5	-53	-25.6
South Dakota	27	7.4	-84	-21.5	-53	-17.3	-37	-14.6	-46	-21.0
Nebraska	-1	-.2	-89	-15.2	-107	-21.5	-62	-15.9	-76	-23.0
Kansas	-33	-4.4	-102	-14.4	-163	-26.9	-104	-23.4	-88	-25.8
South Atlantic										
Delaware	-5	-9.6	-1	-2.1	-12	-26.1	-7	-20.6	-12	-45.3
Maryland	-45	-15.9	8	3.4	-63	-25.6	-51	-27.9	-54	-40.5
Virginia	-125	-11.6	33	3.5	-254	-25.8	-265	-36.2	-229	-49.0
West Virginia	-34	-7.0	83	18.4	-122	-22.9	-256	-62.3	-78	-50.1
North Carolina	84	5.5	55	3.4	-282	-17.0	-427	-31.0	-488	-51.3
South Carolina	-169	-15.5	-2	-.2	-216	-23.6	-268	-38.2	-288	-66.6
Georgia	-283	-16.6	-55	-3.9	-406	-29.7	-447	-46.5	-287	-55.8
Florida	-5	-1.8	25	8.9	-72	-23.6	-76	-32.6	-44	-28.0
East South Central										
Kentucky	-144	-10.9	81	6.9	-287	-22.8	-356	-36.6	-166	-26.8
Tennessee	-71	-5.5	57	4.7	-260	-20.4	-339	-33.4	-293	-43.3
Alabama	-11	-.8	-1	-.1	-383	-28.5	-441	-45.9	-303	-58.4
Mississippi	78	6.1	37	2.7	-306	-21.8	-417	-38.0	-403	-59.3
West South Central										
Arkansas	-43	-3.7	-9	-.8	-311	-27.9	-387	-48.3	-187	-45.0
Louisiana	35	4.4	21	2.5	-287	-33.6	-254	-44.8	-152	-48.8
Oklahoma	-6	-.6	-97	-9.4	-377	-40.5	-259	-46.8	-85	-28.9
Texas	45	1.9	-199	-8.4	-868	-40.2	-486	-37.6	-335	-41.6
Mountain										
Montana	-23	-10.1	-29	-14.2	-40	-22.7	-21	-15.4	-25	-21.7
Idaho	-14	-6.9	14	7.4	-38	-18.7	-17	-10.3	-47	-31.4
Wyoming	6	8.8	-1	2/	-16	-21.9	-10	-17.5	-14	-29.4
Colorado	16	6.0	-31	-10.9	-55	-21.7	-55	-27.8	-49	-34.5
New Mexico	-4	-2.5	19	12.0	-46	-25.8	-60	-45.5	-27	-37.5
Arizona	7	7.6	15	15.2	-37	-32.5	-3	-3.9	-40	-54.2
Utah	-25	-17.7	-11	-9.5	-24	-22.9	-16	-19.8	-27	-41.1
Nevada	1	6.2	-1	-5.9	-3	-18.8	0	---	-3	-25.8
Pacific										
Washington	17	5.9	34	11.1	-66	-19.4	-75	-27.4	-67	-33.4
Oregon	5	2.3	35	15.6	-31	-12.0	-63	-27.6	-47	-28.2
California	93	17.6	48	7.7	-102	-15.2	-105	-18.5	-214	-46.2
Alaska	---	---	---	---	---	---	---	---	-2	-50.2
Hawaii	---	---	---	---	---	---	---	---	-6	-47.3

1/ Changes include Alaska and Hawaii starting in 1960. 2/ Less than 0.05 percent.



Table 3--Farm population by regions, divisions, and States, annual estimates, April 1920-70

Area	1920	1921	1922	1923	1924	1925	1926	1927	1928	1929
Thousands										
United States	31,974	32,123	32,109	31,490	31,177	31,190	30,979	30,530	30,548	30,580
Region										
Northeast	2,537	2,559	2,532	2,478	2,447	2,435	2,413	2,355	2,335	2,315
North Central	10,158	10,125	9,994	9,857	9,793	9,805	9,721	9,605	9,579	9,536
South	17,063	17,215	17,328	16,950	16,753	16,762	16,648	16,339	16,380	16,452
West	2,216	2,224	2,255	2,205	2,184	2,188	2,197	2,231	2,254	2,277
Division										
New England	633	636	630	615	611	617	611	596	593	590
Middle Atlantic	1,904	1,923	1,902	1,863	1,836	1,818	1,802	1,759	1,742	1,725
East North Central	4,953	4,865	4,737	4,660	4,626	4,637	4,589	4,516	4,526	4,468
West North Central	5,205	5,260	5,257	5,197	5,167	5,168	5,132	5,089	5,053	5,068
South Atlantic	6,496	6,550	6,553	6,321	6,204	6,215	6,092	5,959	5,989	5,979
East South Central	5,257	5,313	5,301	5,209	5,162	5,163	5,131	5,053	5,066	5,101
West South Central	5,310	5,352	5,474	5,420	5,387	5,384	5,425	5,327	5,325	5,372
Mountain	1,179	1,163	1,166	1,135	1,120	1,119	1,111	1,120	1,123	1,141
Pacific	1,037	1,061	1,089	1,070	1,064	1,069	1,086	1,111	1,131	1,136
New England										
Maine	200	199	197	191	189	190	187	181	179	177
New Hampshire	77	77	75	73	72	72	70	67	67	65
Vermont	127	128	125	123	121	122	120	118	117	116
Massachusetts	120	122	123	121	121	125	126	124	125	126
Rhode Island	15	15	16	15	17	16	16	16	16	16
Connecticut	94	95	94	92	91	92	92	90	89	90
Middle Atlantic										
New York	806	814	805	787	775	768	760	741	734	727
New Jersey	145	146	145	142	140	138	138	135	134	133
Pennsylvania	953	963	952	934	921	912	904	883	874	865
East North Central										
Ohio	1,149	1,124	1,094	1,072	1,064	1,060	1,046	1,030	1,027	1,013
Indiana	914	900	871	857	846	848	840	822	824	813
Illinois	1,107	1,085	1,057	1,040	1,032	1,033	1,024	1,007	1,010	995
Michigan	856	842	820	806	801	807	799	786	788	777
Wisconsin	927	914	895	885	883	889	880	871	877	870
West North Central										
Minnesota	903	915	921	909	904	908	903	896	889	897
Iowa	991	999	1,005	991	987	990	985	977	968	978
Missouri	1,219	1,226	1,216	1,194	1,178	1,172	1,160	1,142	1,125	1,119
North Dakota	398	400	400	400	398	397	396	393	394	396
South Dakota	364	373	373	373	377	380	379	382	384	385
Nebraska	588	595	595	592	589	588	585	581	581	583
Kansas	742	752	747	738	734	733	724	718	712	710
South Atlantic										
Delaware	52	52	53	52	49	49	48	48	48	48
Maryland	283	287	282	272	260	261	256	244	245	239
Virginia	1,078	1,087	1,081	1,038	1,018	1,020	993	966	971	969
West Virginia	484	484	485	475	465	466	457	447	455	454
North Carolina	1,520	1,558	1,579	1,550	1,545	1,566	1,559	1,549	1,581	1,596
South Carolina	1,088	1,087	1,081	1,031	1,005	1,001	975	947	940	933
Georgia	1,706	1,708	1,697	1,619	1,576	1,566	1,523	1,478	1,467	1,453
Florida	285	287	295	284	286	286	281	280	282	287

Continued

Table 3--Farm population by regions, divisions, and States, annual estimates, April 1920-70--Continued

Area	1920	1921	1922	1923	1924	1925	1926	1927	1928	1929
<u>Thousands</u>										
East South Central										
Kentucky	1,324	1,330	1,314	1,280	1,258	1,249	1,226	1,198	1,190	1,188
Tennessee	1,290	1,297	1,293	1,264	1,253	1,249	1,242	1,218	1,220	1,225
Alabama	1,355	1,372	1,373	1,353	1,341	1,343	1,339	1,323	1,325	1,336
Mississippi	1,288	1,314	1,321	1,312	1,310	1,322	1,324	1,314	1,331	1,352
West South Central										
Arkansas	1,165	1,165	1,189	1,171	1,160	1,153	1,159	1,135	1,127	1,135
Louisiana	798	807	827	823	819	823	835	820	825	833
Oklahoma	1,033	1,043	1,063	1,052	1,046	1,045	1,046	1,028	1,026	1,033
Texas	2,314	2,337	2,395	2,374	2,362	2,363	2,385	2,344	2,347	2,371
Mountain										
Montana	228	223	222	214	210	209	206	206	205	207
Idaho	203	199	200	193	191	189	187	188	188	191
Wyoming	68	69	69	69	68	69	69	70	71	72
Colorado	268	268	271	266	265	267	268	272	275	282
New Mexico	163	160	161	156	154	154	154	155	156	158
Arizona	92	91	92	91	91	92	91	93	94	97
Utah	141	137	135	130	126	124	121	120	119	118
Nevada	16	16	16	16	15	15	15	16	15	16
Pacific										
Washington	289	295	300	294	290	291	294	299	303	302
Oregon	219	222	227	221	219	217	219	222	224	224
California	529	544	562	555	555	561	573	590	604	610
	1930	1931	1932	1933	1934	1935	1936	1937	1938	1939
<u>Thousands</u>										
United States	30,529	30,845	31,388	32,393	32,305	32,161	31,737	31,266	30,980	30,840
Region										
Northeast	2,287	2,391	2,473	2,640	2,660	2,633	2,538	2,474	2,450	2,432
North Central	9,583	9,596	9,769	10,069	10,044	9,951	9,810	9,602	9,400	9,360
South	16,364	16,535	16,758	17,208	17,142	17,162	17,014	16,831	16,777	16,690
West	2,295	2,323	2,388	2,476	2,459	2,415	2,375	2,359	2,353	2,358
Division										
New England	575	612	647	698	719	718	682	656	648	631
Middle Atlantic	1,712	1,779	1,826	1,942	1,941	1,915	1,856	1,818	1,802	1,801
East North Central	4,501	4,555	4,647	4,868	4,852	4,808	4,771	4,702	4,650	4,642
West North Central	5,082	5,041	5,122	5,201	5,192	5,143	5,039	4,900	4,750	4,718
South Atlantic	5,914	6,014	6,083	6,275	6,266	6,283	6,286	6,239	6,224	6,175
East South Central	5,109	5,177	5,252	5,388	5,378	5,409	5,365	5,350	5,357	5,367
West South Central	5,341	5,344	5,423	5,545	5,498	5,470	5,363	5,242	5,196	5,148
Mountain	1,143	1,158	1,202	1,225	1,219	1,199	1,165	1,134	1,112	1,113
Pacific	1,152	1,165	1,186	1,251	1,240	1,216	1,210	1,225	1,241	1,245
New England										
Maine	171	178	183	193	193	187	181	177	178	175
New Hampshire	63	67	70	75	77	77	74	72	72	71
Vermont	113	117	121	127	127	123	117	113	111	108
Massachusetts	124	134	143	156	163	165	158	152	152	149
Rhode Island	17	17	19	21	22	22	20	19	18	18
Connecticut	87	99	111	126	137	144	132	123	117	110

Continued

Table 3--Farm population by regions, divisions, and States, annual estimates, April 1920-70--Continued

Area	1930	1931	1932	1933	1934	1935	1936	1937	1938	1939
Thousands										
Middle Atlantic										
New York	722	746	762	807	803	789	762	745	738	736
New Jersey	131	137	141	148	148	145	143	142	141	142
Pennsylvania	859	896	923	987	990	981	951	931	923	923
East North Central										
Ohio	1,016	1,039	1,069	1,129	1,135	1,136	1,127	1,109	1,094	1,090
Indiana	815	824	837	876	868	860	850	836	824	821
Illinois	1,002	1,006	1,017	1,061	1,048	1,026	1,017	1,000	986	983
Michigan	785	793	813	852	854	847	850	850	852	862
Wisconsin	883	893	911	950	947	939	927	907	894	886
West North Central										
Minnesota	898	897	917	936	940	934	929	916	897	906
Iowa	981	967	978	993	986	974	964	941	922	920
Missouri	1,118	1,119	1,153	1,181	1,194	1,192	1,171	1,152	1,121	1,121
North Dakota	398	389	395	396	395	389	374	357	342	334
South Dakota	391	383	378	379	368	360	348	333	318	311
Nebraska	587	580	589	593	592	585	566	544	518	509
Kansas	709	706	712	723	717	709	687	657	632	617
South Atlantic										
Delaware	47	48	49	51	51	50	51	50	50	50
Maryland	238	240	243	245	244	245	245	243	249	247
Virginia	953	980	1,004	1,041	1,053	1,066	1,061	1,042	1,033	1,014
West Virginia	450	474	498	527	546	569	565	555	554	544
North Carolina	1,604	1,616	1,624	1,669	1,656	1,645	1,658	1,666	1,674	1,681
South Carolina	919	931	937	966	960	960	961	948	946	933
Georgia	1,423	1,431	1,430	1,462	1,442	1,424	1,425	1,417	1,407	1,397
Florida	280	294	298	314	314	324	320	318	311	309
East South Central										
Kentucky	1,180	1,211	1,245	1,288	1,302	1,326	1,309	1,300	1,291	1,288
Tennessee	1,219	1,243	1,266	1,309	1,312	1,326	1,309	1,300	1,302	1,299
Alabama	1,344	1,356	1,376	1,406	1,403	1,405	1,389	1,380	1,371	1,369
Mississippi	1,366	1,367	1,365	1,385	1,361	1,352	1,358	1,370	1,393	1,411
West South Central										
Arkansas	1,122	1,133	1,160	1,193	1,193	1,198	1,175	1,148	1,143	1,133
Louisiana	833	839	852	976	869	872	863	855	858	860
Oklahoma	1,027	1,021	1,036	1,053	1,044	1,031	1,009	980	966	952
Texas	2,359	2,351	2,375	2,423	2,392	2,369	2,316	2,259	2,229	2,203
Mountain										
Montana	205	205	209	208	204	197	190	184	178	177
Idaho	189	192	201	205	205	201	199	196	196	198
Wyoming	74	74	77	78	77	76	74	73	72	73
Colorado	284	285	292	292	286	278	268	260	253	252
New Mexico	159	165	176	187	190	192	187	182	178	179
Arizona	99	100	102	104	103	101	102	103	106	109
Utah	116	121	129	135	138	139	130	121	114	109
Nevada	17	16	16	16	16	15	15	15	15	16
Pacific										
Washington	306	312	322	344	346	342	337	338	339	337
Oregon	224	231	238	254	254	253	251	253	256	256
California	622	622	626	653	640	621	622	634	646	652

Continued

Table 3--Farm population by regions, divisions, and States, annual estimates, April 1920-70--Continued

Area	: 1940	: 1941	: 1942	: 1943	: 1944	: 1945	: 1946	: 1947	: 1948	: 1949
	:	:	:	:	:	:	:	:	:	:
	:	:	:	:	:	:	:	:	:	:
	Thousands									
United States	: 30,547	: 30,118	: 28,914	: 26,186	: 24,815	: 24,420	: 25,403	: 25,829	: 24,383	: 24,194
Region	:	:	:	:	:	:	:	:	:	:
Northeast	: 2,411	: 2,370	: 2,271	: 2,049	: 1,938	: 1,906	: 1,985	: 2,020	: 1,903	: 1,888
North Central	: 9,349	: 9,306	: 8,989	: 8,255	: 7,877	: 7,767	: 8,040	: 8,157	: 7,757	: 7,704
South	: 16,400	: 16,058	: 15,346	: 13,754	: 12,966	: 12,740	: 13,303	: 13,548	: 12,719	: 12,611
West	: 2,387	: 2,384	: 2,307	: 2,128	: 2,035	: 2,008	: 2,075	: 2,104	: 2,005	: 1,992
Division	:	:	:	:	:	:	:	:	:	:
New England	: 623	: 598	: 564	: 491	: 456	: 446	: 471	: 482	: 445	: 441
Middle Atlantic	: 1,788	: 1,772	: 1,707	: 1,558	: 1,482	: 1,460	: 1,514	: 1,538	: 1,458	: 1,447
East North Central	: 4,638	: 4,620	: 4,465	: 4,105	: 3,920	: 3,866	: 4,000	: 4,057	: 3,861	: 3,835
West North Central	: 4,711	: 4,686	: 4,524	: 4,149	: 3,957	: 3,901	: 4,040	: 4,100	: 3,896	: 3,869
South Atlantic	: 6,060	: 5,989	: 5,758	: 5,233	: 4,968	: 4,891	: 5,082	: 5,164	: 4,884	: 4,847
East South Central	: 5,283	: 5,223	: 5,023	: 4,568	: 4,338	: 4,271	: 4,436	: 4,508	: 4,265	: 4,233
West South Central	: 5,057	: 4,846	: 4,565	: 3,953	: 3,660	: 3,578	: 3,785	: 3,876	: 3,570	: 3,531
Mountain	: 1,118	: 1,106	: 1,064	: 968	: 919	: 905	: 940	: 955	: 904	: 897
Pacific	: 1,270	: 1,278	: 1,243	: 1,160	: 1,115	: 1,102	: 1,134	: 1,148	: 1,101	: 1,094
New England	:	:	:	:	:	:	:	:	:	:
Maine	: 176	: 169	: 159	: 139	: 128	: 125	: 133	: 139	: 130	: 130
New Hampshire	: 71	: 68	: 65	: 56	: 52	: 51	: 55	: 57	: 53	: 53
Vermont	: 107	: 102	: 95	: 83	: 77	: 75	: 80	: 82	: 77	: 78
Massachusetts	: 147	: 142	: 137	: 120	: 113	: 111	: 114	: 113	: 102	: 97
Rhode Island	: 17	: 16	: 15	: 13	: 12	: 12	: 13	: 14	: 12	: 12
Connecticut	: 105	: 100	: 94	: 80	: 74	: 71	: 76	: 78	: 72	: 71
Middle Atlantic	:	:	:	:	:	:	:	:	:	:
New York	: 730	: 725	: 698	: 640	: 609	: 601	: 624	: 634	: 599	: 595
New Jersey	: 143	: 142	: 137	: 123	: 117	: 112	: 118	: 121	: 118	: 119
Pennsylvania	: 915	: 906	: 872	: 794	: 756	: 746	: 772	: 782	: 740	: 734
East North Central	:	:	:	:	:	:	:	:	:	:
Ohio	: 1,089	: 1,081	: 1,045	: 961	: 913	: 893	: 932	: 949	: 907	: 905
Indiana	: 816	: 818	: 795	: 731	: 706	: 696	: 720	: 730	: 695	: 694
Illinois	: 979	: 970	: 938	: 858	: 819	: 808	: 828	: 836	: 788	: 778
Michigan	: 871	: 864	: 826	: 755	: 713	: 704	: 736	: 755	: 726	: 725
Wisconsin	: 883	: 887	: 862	: 801	: 768	: 765	: 784	: 787	: 745	: 732
West North Central	:	:	:	:	:	:	:	:	:	:
Minnesota	: 915	: 909	: 878	: 801	: 764	: 753	: 784	: 799	: 764	: 762
Iowa	: 931	: 937	: 914	: 851	: 819	: 815	: 844	: 857	: 814	: 809
Missouri	: 1,125	: 1,106	: 1,059	: 959	: 906	: 882	: 921	: 943	: 904	: 905
North Dakota	: 328	: 328	: 317	: 290	: 281	: 277	: 283	: 283	: 265	: 263
South Dakota	: 307	: 305	: 299	: 274	: 265	: 261	: 271	: 275	: 261	: 259
Nebraska	: 498	: 497	: 480	: 444	: 419	: 417	: 428	: 435	: 409	: 402
Kansas	: 607	: 604	: 579	: 531	: 503	: 495	: 509	: 508	: 479	: 468
South Atlantic	:	:	:	:	:	:	:	:	:	:
Delaware	: 46	: 48	: 46	: 42	: 40	: 39	: 41	: 41	: 39	: 39
Maryland	: 246	: 246	: 236	: 215	: 204	: 201	: 208	: 212	: 200	: 199
Virginia	: 986	: 982	: 956	: 879	: 840	: 831	: 854	: 857	: 801	: 790
West Virginia	: 533	: 527	: 512	: 471	: 452	: 445	: 462	: 470	: 444	: 441
North Carolina	: 1,659	: 1,641	: 1,583	: 1,444	: 1,376	: 1,360	: 1,428	: 1,467	: 1,402	: 1,406
South Carolina	: 917	: 898	: 858	: 769	: 725	: 709	: 742	: 759	: 723	: 722
Georgia	: 1,368	: 1,341	: 1,272	: 1,146	: 1,078	: 1,052	: 1,082	: 1,095	: 1,026	: 1,003
Florida	: 305	: 305	: 294	: 267	: 253	: 254	: 264	: 263	: 249	: 247

Continued

Table 3--Farm population by regions, divisions, and States, annual estimates, April 1920-70--Continued

Area	1940	1941	1942	1943	1944	1945	1946	1947	1948	1949
<u>Thousands</u>										
East South Central										
Kentucky	1,261	1,254	1,211	1,101	1,050	1,038	1,078	1,091	1,032	1,020
Tennessee	1,276	1,264	1,221	1,115	1,063	1,046	1,096	1,122	1,066	1,067
Alabama	1,343	1,321	1,266	1,147	1,084	1,068	1,096	1,104	1,036	1,020
Mississippi	1,403	1,384	1,326	1,206	1,141	1,119	1,167	1,190	1,130	1,126
West South Central										
Arkansas	1,113	1,066	1,013	878	816	798	863	903	850	854
Louisiana	854	819	771	672	619	608	647	667	618	618
Oklahoma	930	892	835	723	670	651	681	690	628	614
Texas	2,160	2,069	1,945	1,680	1,556	1,520	1,593	1,616	1,474	1,444
Mountain										
Montana	176	170	161	142	133	134	140	143	137	136
Idaho	203	200	191	173	164	161	169	175	168	170
Wyoming	73	73	70	63	60	53	57	58	57	57
Colorado	253	245	233	208	194	191	202	208	199	202
New Mexico	178	176	167	152	143	149	152	153	143	139
Arizona	114	118	119	113	112	101	101	99	90	84
Utah	105	107	107	102	99	102	104	104	98	96
Nevada	16	15	15	15	14	14	14	14	14	13
Pacific										
Washington	340	344	334	312	300	304	307	305	287	280
Oregon	259	261	255	239	231	233	238	241	230	229
California	670	673	654	609	584	565	589	602	583	585
<u>Thousands</u>										
United States	23,048	21,890	21,748	19,874	19,019	19,078	18,712	17,656	17,128	16,592
Region										
Northeast	1,791	1,673	1,659	1,477	1,397	1,402	1,368	1,271	1,224	1,175
North Central	7,433	7,264	7,241	6,904	6,732	6,744	6,668	6,435	6,312	6,191
South	11,896	11,066	10,967	9,698	9,139	9,177	8,941	8,274	7,948	7,613
West	1,929	1,887	1,881	1,795	1,751	1,755	1,735	1,675	1,644	1,613
Division										
New England	403	372	368	322	301	303	294	270	258	246
Middle Atlantic	1,388	1,301	1,291	1,155	1,095	1,099	1,074	1,001	966	929
East North Central	3,703	3,593	3,578	3,375	3,276	3,283	3,239	3,109	3,041	2,974
West North Central	3,729	3,672	3,663	3,529	3,457	3,462	3,429	3,326	3,271	3,217
South Atlantic	4,633	4,315	4,277	3,788	3,573	3,588	3,497	3,239	3,113	2,984
East South Central	4,048	3,778	3,745	3,329	3,146	3,158	3,080	2,860	2,752	2,641
West South Central	3,215	2,973	2,945	2,580	2,420	2,431	2,364	2,175	2,083	1,988
Mountain	859	840	837	800	780	782	773	747	733	719
Pacific	1,070	1,047	1,043	996	971	973	962	929	911	894
New England										
Maine	122	111	109	94	86	86	82	75	70	66
New Hampshire	47	42	41	35	32	31	30	27	25	23
Vermont	81	77	77	69	66	68	67	63	61	60
Massachusetts	80	74	74	65	61	62	61	56	54	52
Rhode Island	10	10	10	8	8	8	8	7	7	6
Connecticut	63	58	57	50	47	47	46	42	40	39

Continued

Table 3--Farm population by regions, divisions, and States, annual estimates, April 1920-70--Continued

Area	1950	1951	1952	1953	1954	1955	1956	1957	1958	1959
<u>Thousands</u>										
Middle Atlantic										
New York	578	545	543	490	467	472	463	435	421	408
New Jersey	105	100	99	90	85	87	85	80	77	75
Pennsylvania	705	656	648	575	543	541	526	487	467	446
East North Central										
Ohio	853	819	801	749	717	706	690	653	630	607
Indiana	667	650	655	621	606	614	609	588	581	569
Illinois	763	744	748	709	694	699	693	672	660	652
Michigan	695	668	658	614	590	588	573	544	526	510
Wisconsin	725	711	716	682	668	676	674	653	645	636
West North Central										
Minnesota	740	731	733	709	698	706	703	685	677	671
Iowa	783	782	791	769	767	772	775	765	756	755
Missouri	863	841	817	780	747	734	713	679	654	630
North Dakota	254	250	249	240	235	235	233	226	222	220
South Dakota	254	250	253	244	238	242	240	233	232	228
Nebraska	391	386	388	374	370	370	370	359	357	349
Kansas	444	433	432	413	401	402	394	379	373	364
South Atlantic										
Delaware	34	30	30	30	29	29	28	29	28	26
Maryland	183	177	175	159	150	154	150	143	137	135
Virginia	732	686	684	610	579	588	577	538	520	502
West Virginia	411	367	346	295	264	251	231	204	184	165
North Carolina	1,377	1,299	1,313	1,171	1,126	1,145	1,136	1,059	1,037	1,006
South Carolina	701	651	646	576	543	545	532	496	476	455
Georgia	962	884	864	750	697	685	657	596	564	530
Florida	233	220	218	197	186	190	185	175	168	165
East South Central										
Kentucky	974	914	906	809	768	771	755	704	677	652
Tennessee	1,016	956	955	859	818	827	813	764	740	715
Alabama	960	884	865	759	708	698	672	615	583	553
Mississippi	1,097	1,024	1,019	902	852	862	841	778	751	721
West South Central										
Arkansas	802	737	730	637	595	598	579	531	508	483
Louisiana	567	523	512	446	414	413	397	363	344	326
Oklahoma	553	508	498	433	404	401	388	355	335	318
Texas	1,292	1,204	1,204	1,063	1,007	1,019	1,000	927	896	860
Mountain										
Montana	136	134	135	130	128	129	129	125	124	123
Idaho	165	164	166	161	159	163	163	160	159	158
Wyoming	57	56	56	54	54	54	54	53	52	52
Colorado	198	193	191	181	175	174	170	163	159	154
New Mexico	132	124	120	110	103	99	94	87	81	76
Arizona	77	76	78	75	74	76	76	74	74	73
Utah	81	79	79	76	74	74	73	72	70	69
Nevada	13	13	13	14	13	13	13	13	13	13
Pacific										
Washington	274	266	264	250	242	241	237	227	221	216
Oregon	228	221	218	207	200	198	194	187	181	176
California	568	560	561	539	529	533	531	515	508	502

Continued

Table 3--Farm population by regions, divisions, and States, annual estimates, April 1920-70--Continued

Area	1960	1961	1962	1963	1964	1965	1966	1967	1968	1969	1970
	Thousands										
United States	15,635	14,803	14,313	13,367	12,954	12,363	11,595	10,875	10,454	10,307	9,712
Region											
Northeast	1,119	1,060	1,026	959	929	888	833	782	752	741	699
North Central	5,836	5,671	5,566	5,348	5,246	5,093	4,882	4,671	4,542	4,496	4,305
South	7,160	6,630	6,326	5,756	5,513	5,174	4,745	4,356	4,134	4,056	3,754
West	1,520	1,441	1,395	1,305	1,265	1,209	1,135	1,066	1,026	1,011	954
Division											
New England	232	216	207	190	183	172	159	147	140	138	128
Middle Atlantic	887	844	819	769	747	715	674	635	612	603	571
East North Central	2,821	2,736	2,682	2,571	2,519	2,442	2,337	2,233	2,170	2,147	2,053
West North Central	3,015	2,936	2,884	2,777	2,727	2,650	2,544	2,438	2,373	2,349	2,252
South Atlantic	2,838	2,600	2,464	2,212	2,106	1,959	1,774	1,609	1,515	1,483	1,357
East South Central	2,494	2,314	2,210	2,016	1,933	1,817	1,670	1,536	1,460	1,433	1,329
West South Central	1,828	1,717	1,652	1,528	1,474	1,399	1,301	1,211	1,159	1,141	1,069
Mountain	678	647	629	593	577	554	523	494	477	471	446
Pacific	842	794	766	712	689	655	612	572	549	541	508
New England											
Maine	61	56	53	48	46	43	39	36	34	33	30
New Hampshire	22	21	20	18	17	16	15	13	13	12	11
Vermont	56	52	50	46	45	42	39	36	35	34	32
Massachusetts	50	47	45	41	39	37	34	32	30	30	28
Rhode Island	6	5	5	5	5	5	4	4	4	4	4
Connecticut	36	34	33	31	30	29	27	26	25	25	23
Middle Atlantic											
New York	387	367	355	332	321	306	287	269	258	254	239
New Jersey	71	68	66	62	61	58	55	52	50	50	47
Pennsylvania	428	409	398	375	365	351	332	313	303	300	284
East North Central											
Ohio	581	562	550	526	515	498	476	454	440	434	415
Indiana	539	526	519	500	493	481	463	445	434	432	416
Illinois	621	605	596	574	565	550	529	507	495	492	473
Michigan	486	464	449	424	410	392	369	348	333	324	305
Wisconsin	594	578	568	546	537	522	501	480	467	464	445
West North Central											
Minnesota	624	610	601	581	572	558	538	517	505	502	482
Iowa	703	687	678	655	645	629	606	583	569	565	544
Missouri	595	573	557	530	515	494	469	444	427	417	395
North Dakota	207	201	198	190	187	182	174	167	162	161	154
South Dakota	217	213	210	204	201	197	190	183	179	178	172
Nebraska	329	321	316	305	301	293	282	271	265	263	253
Kansas	340	330	324	312	306	297	285	273	266	263	252
South Atlantic											
Delaware	27	25	24	22	21	20	18	17	16	16	15
Maryland	132	124	121	111	108	103	95	88	85	84	79
Virginia	467	431	411	372	356	333	304	277	263	259	238
West Virginia	155	143	136	123	117	110	100	91	86	84	78
North Carolina	950	872	828	745	710	662	601	545	515	507	463
South Carolina	433	384	353	307	282	254	222	193	175	165	144
Georgia	515	469	441	393	371	342	308	277	259	251	228
Florida	157	151	150	141	140	136	128	120	118	117	113

Continued

Table 3--Farm population by regions, divisions, and States, annual estimates, April 1920-70--Continued

[illegible]



Table 4--Percentage distribution of farm population, by regions, divisions, and States, 5-year intervals, April 1920-70

Area	1920	1925	1930	1935	1940	1945	1950	1955	1960	1965	1970
	Percent										
United States	100.0	100.0	100.0	100.0	100.0	100.0	100.0	100.0	100.0	100.0	100.0
Region											
Northeast	8.0	7.8	7.5	8.2	7.9	7.8	7.8	7.4	7.2	7.2	7.2
North Central	31.8	31.5	31.4	31.0	30.6	31.8	32.3	35.3	37.3	41.2	44.3
South	53.3	53.7	53.6	53.3	53.7	52.2	51.6	48.1	45.8	41.8	38.6
West	6.9	7.0	7.5	7.5	7.8	8.2	8.3	9.2	9.7	9.8	9.8
Division											
New England	2.0	2.0	1.9	2.2	2.0	1.8	1.8	1.6	1.5	1.4	1.3
Middle Atlantic	6.0	5.8	5.6	6.0	5.9	6.0	6.0	5.8	5.7	5.8	5.9
East North Central	15.5	14.9	14.7	15.0	15.2	15.8	16.1	17.2	18.0	19.8	21.1
West North Central	16.3	16.6	16.7	16.0	15.4	16.0	16.2	18.1	19.3	21.4	23.2
South Atlantic	20.3	19.9	19.4	19.5	19.8	20.0	20.1	18.8	18.2	15.8	14.0
East South Central	16.4	16.5	16.7	16.8	17.3	17.5	17.6	16.6	15.9	14.7	13.7
West South Central	16.6	17.3	17.5	17.0	16.6	14.7	13.9	12.7	11.7	11.3	11.0
Mountain	3.7	3.6	3.7	3.7	3.7	3.7	3.7	4.1	4.3	4.5	4.6
Pacific	3.2	3.4	3.8	3.8	4.1	4.5	4.6	5.1	5.4	5.3	5.2
New England											
Maine	.6	.6	.5	.6	.6	.5	.5	.5	.4	.3	.3
New Hampshire	.2	.2	.2	.2	.2	.2	.2	.2	.1	.1	.1
Vermont	.4	.4	.4	.4	.3	.3	.4	.4	.4	.3	.3
Massachusetts	.4	.4	.4	.5	.5	.5	.3	.3	.3	.3	.3
Rhode Island	.1	.1	.1	.1	.1	<u>1/</u>	<u>1/</u>	<u>1/</u>	<u>1/</u>	<u>1/</u>	<u>1/</u>
Connecticut	.3	.3	.3	.4	.3	.3	.3	.2	.2	.2	.2
Middle Atlantic											
New York	2.5	2.5	2.4	2.5	2.4	2.5	2.5	2.5	2.5	2.5	2.5
New Jersey	.5	.4	.4	.4	.5	.5	.4	.5	.5	.5	.5
Pennsylvania	3.0	2.9	2.8	3.1	3.0	3.0	3.1	2.8	2.7	2.8	2.9
East North Central											
Ohio	3.6	3.4	3.3	3.6	3.6	3.7	3.7	3.7	3.7	4.0	4.3
Indiana	2.8	2.7	2.7	2.7	2.7	2.8	2.9	3.2	3.4	3.9	4.3
Illinois	3.5	3.3	3.3	3.2	3.2	3.3	3.3	3.7	4.0	4.4	4.9
Michigan	2.7	2.6	2.5	2.6	2.8	2.9	3.0	3.1	3.1	3.2	3.1
Wisconsin	2.9	2.9	2.9	2.9	2.9	3.1	3.2	3.5	3.8	4.2	4.6
West North Central											
Minnesota	2.8	2.9	3.0	2.9	3.0	3.1	3.2	3.7	4.0	4.5	5.0
Iowa	3.1	3.2	3.2	3.1	3.0	3.4	3.4	4.0	4.5	5.1	5.6
Missouri	3.8	3.8	3.7	3.7	3.7	3.6	3.8	3.9	3.8	4.0	4.1
North Dakota	1.3	1.3	1.3	1.2	1.1	1.1	1.1	1.2	1.3	1.5	1.6
South Dakota	1.1	1.2	1.3	1.1	1.0	1.1	1.1	1.3	1.4	1.6	1.8
Nebraska	1.9	1.9	1.9	1.8	1.6	1.7	1.7	1.9	2.1	2.4	2.6
Kansas	2.3	2.3	2.3	2.2	2.0	2.0	1.9	2.1	2.2	2.4	2.6
South Atlantic											
Delaware	.1	.2	.1	.1	.2	.2	.1	.1	.2	.2	.2
Maryland	.9	.8	.8	.8	.8	.8	.8	.8	.8	.8	.8
Virginia	3.4	3.3	3.1	3.3	3.2	3.4	3.2	3.1	3.0	2.7	2.5
West Virginia	1.5	1.5	1.5	1.8	1.7	1.8	1.8	1.3	1.0	.9	.8
North Carolina	4.8	5.0	5.3	5.1	5.4	5.6	6.0	6.0	6.1	5.4	4.8
South Carolina	3.4	3.2	3.0	3.0	3.0	2.9	3.0	2.9	2.8	2.1	1.5
Georgia	5.3	5.0	4.7	4.4	4.5	4.3	4.2	3.6	3.3	2.8	2.3
Florida	.9	.9	.9	1.0	1.0	1.0	1.0	1.0	1.0	1.1	1.2

Continued

Table 4--Percentage distribution of farm population, by regions, divisions, and States, 5-year intervals, April 1920-70--Continued

Area	1920	1925	1930	1935	1940	1945	1950	1955	1960	1965	1970
	Percent										
East South Central											
Kentucky	4.1	4.0	3.8	4.1	4.1	4.2	4.2	4.1	4.0	4.3	4.7
Tennessee	4.0	4.0	4.0	4.1	4.2	4.3	4.4	4.3	4.3	4.1	4.0
Alabama	4.3	4.3	4.4	4.4	4.4	4.4	4.2	3.7	3.3	2.7	2.2
Mississippi	4.0	4.2	4.5	4.2	4.6	4.6	4.8	4.5	4.3	3.5	2.8
West South Central											
Arkansas	3.7	3.7	3.7	3.7	3.6	3.3	3.5	3.1	2.6	2.5	2.4
Louisiana	2.5	2.6	2.7	2.7	2.8	2.5	2.4	2.2	2.0	1.8	1.6
Oklahoma	3.2	3.4	3.4	3.2	3.1	2.7	2.4	2.1	1.9	2.0	2.2
Texas	7.2	7.6	7.7	7.4	7.1	6.2	5.6	5.3	5.2	5.0	4.8
Mountain											
Montana	.7	.7	.7	.6	.6	.5	.6	.7	.7	.8	.9
Idaho	.6	.6	.6	.6	.7	.7	.7	.8	.9	1.0	1.0
Wyoming	.2	.2	.2	.2	.2	.2	.2	.3	.3	.3	.3
Colorado	.9	.8	.9	.9	.8	.8	.9	.9	.9	.9	1.0
New Mexico	.5	.5	.5	.6	.6	.6	.6	.5	.5	.5	.5
Arizona	.3	.3	.3	.3	.4	.4	.3	.4	.5	.4	.3
Utah	.4	.4	.4	.4	.3	.4	.3	.4	.4	.4	.4
Nevada	.1	.1	.1	.1	.1	.1	.1	.1	.1	.1	.1
Pacific											
Washington	.9	.9	1.0	1.1	1.1	1.2	1.2	1.3	1.3	1.3	1.4
Oregon	.7	.7	.7	.8	.8	1.0	1.0	1.0	1.0	1.1	1.2
California	1.6	1.8	2.1	1.9	2.2	2.3	2.4	2.8	3.0	2.8	2.6
Alaska	--	--	--	--	--	--	--	--	1/	1/	1/
Hawaii	--	--	--	--	--	--	--	--	.1	.1	.1

1/ Less than 0.05 percent.

Table 5--Total and farm population of the United States, by regions, divisions, and States, for decade years, April 1920-70

Area	1920			1930			1940		
	Total popu- lation 1/	Farm population		Total popu- lation	Farm population		Total popu- lation	Farm population	
		Number	Per- centage of total		Number	Per- centage of total		Number	Per- centage of total
Thou.	Thou.	Pct.	Thou.	Thou.	Pct.	Thou.	Thou.	Pct.	
United States 2/ (including Armed Forces overseas)	106,089	31,974	30.1	122,775	30,529	24.9	131,820	30,547	23.2
Region									
Northeast	29,669	2,537	8.6	34,427	2,287	6.6	35,977	2,411	6.7
North Central	34,197	10,158	29.7	38,594	9,583	24.8	40,143	9,349	23.3
South 2/	33,242	17,063	51.3	37,858	16,364	43.2	41,666	16,400	39.4
West	8,981	2,216	24.7	11,896	2,295	19.3	13,883	2,387	17.2
Division									
New England	7,428	633	8.5	8,166	575	7.0	8,437	623	7.4
Middle Atlantic	22,241	1,904	8.6	26,261	1,712	6.5	27,540	1,788	6.5
East North Central	21,644	4,953	22.9	25,297	4,501	17.8	26,626	4,638	17.4
West North Central	12,553	5,205	41.5	13,297	5,082	38.2	13,517	4,711	34.8
South Atlantic 2/	14,046	6,496	46.2	15,794	5,914	37.4	17,823	6,060	34.0
East South Central	8,901	5,257	59.1	9,887	5,109	51.7	10,778	5,283	49.0
West South Central	10,295	5,310	51.6	12,177	5,341	43.9	13,065	5,057	38.7
Mountain	3,340	1,179	35.3	3,702	1,143	30.9	4,150	1,118	26.9
Pacific	5,641	1,037	18.4	8,194	1,152	14.1	9,733	1,269	13.0
New England									
Maine	770	200	26.0	797	171	21.5	847	176	20.8
New Hampshire	443	77	17.4	465	63	13.6	492	71	14.4
Vermont	353	127	36.0	360	113	31.4	359	107	29.8
Massachusetts	3,867	120	3.1	4,250	124	2.9	4,317	147	3.4
Rhode Island	609	15	2.5	687	17	2.5	713	17	2.4
Connecticut	1,386	94	6.8	1,607	87	5.4	1,709	105	6.1
Middle Atlantic									
New York	10,334	806	7.8	12,589	722	5.7	13,479	730	5.4
New Jersey	3,177	145	4.6	4,041	131	3.2	4,160	143	3.4
Pennsylvania	8,730	953	10.9	9,631	859	8.9	9,901	915	9.2
East North Central									
Ohio	5,779	1,149	19.9	6,647	1,016	15.3	6,907	1,089	15.8
Indiana	2,939	914	31.1	3,239	815	25.2	3,428	816	23.8
Illinois	6,574	1,107	16.8	7,630	1,002	13.1	7,997	979	12.4
Michigan	3,696	856	23.2	4,842	785	16.2	5,256	871	16.6
Wisconsin	2,656	927	34.9	2,939	883	30.0	3,138	883	28.1
West North Central									
Minnesota	2,395	903	37.7	2,564	898	35.0	2,792	915	32.8
Iowa	2,402	991	41.3	2,471	981	39.7	2,538	931	36.7
Missouri	3,404	1,219	35.8	3,629	1,118	30.8	3,785	1,125	29.7
North Dakota	647	398	61.5	681	398	58.4	642	328	51.1
South Dakota	638	364	57.0	693	391	56.4	643	307	47.7
Nebraska	1,298	588	45.3	1,378	587	42.6	1,316	498	37.8
Kansas	1,769	742	41.9	1,881	709	37.7	1,801	607	33.7

Continued

Table 5--Total and farm population of the United States, by regions, divisions, and States, for decade years, April 1920-70--Continued

Area	1920			1930			1940		
	Total popu- lation 1/ Thou.	Farm		Total popu- lation Thou.	Farm		Total popu- lation Thou.	Farm	
		population			population			population	
		Number	Per- centage of total		Number	Per- centage of total		Number	Per- centage of total
Thou.	Thou.	Pct.	Thou.	Thou.	Pct.	Thou.	Thou.	Pct.	
South Atlantic <sup>2/</sup>									
Delaware	221	52	23.5	238	47	19.8	266	46	17.3
Maryland	1,457	283	19.4	1,632	238	14.6	1,821	246	13.5
Virginia	2,328	1,078	46.3	2,422	953	39.4	2,678	986	36.8
West Virginia	1,467	484	33.0	1,729	450	26.0	1,902	533	28.0
North Carolina	2,573	1,520	59.1	3,170	1,604	50.6	3,572	1,659	46.4
South Carolina	1,685	1,088	64.6	1,739	919	52.8	1,900	917	48.3
Georgia	2,911	1,706	58.6	2,909	1,423	48.9	3,124	1,368	43.8
Florida	965	285	29.5	1,468	280	19.1	1,897	305	16.1
East South Central									
Kentucky	2,419	1,324	54.7	2,615	1,180	45.1	2,845	1,261	44.3
Tennessee	2,334	1,290	55.3	2,616	1,219	46.6	2,916	1,276	43.8
Alabama	2,353	1,355	57.6	2,646	1,344	50.8	2,833	1,343	47.4
Mississippi	1,795	1,288	71.8	2,010	1,366	68.0	2,184	1,403	64.2
West South Central									
Arkansas	1,754	1,165	66.4	1,854	1,122	60.5	1,949	1,113	57.1
Louisiana	1,806	798	44.2	2,102	833	39.6	2,364	854	36.1
Oklahoma	2,042	1,033	50.6	2,396	1,027	42.9	2,337	930	39.8
Texas	4,693	2,314	49.3	5,825	2,359	40.5	6,415	2,160	33.7
Mountain									
Montana	546	228	41.8	538	205	38.1	560	176	31.4
Idaho	432	203	47.0	445	189	42.5	525	203	38.7
Wyoming	196	68	34.7	226	74	32.7	251	73	29.1
Colorado	938	268	28.6	1,035	284	27.4	1,123	253	22.5
New Mexico	362	163	45.0	423	159	37.6	532	178	33.5
Arizona	337	92	27.3	436	99	22.7	499	114	22.8
Utah	451	141	31.3	508	116	22.8	550	105	19.1
Nevada	78	16	20.5	91	17	18.7	110	16	14.6
Pacific									
Washington	1,365	289	21.2	1,563	306	19.6	1,736	340	19.6
Oregon	785	219	27.9	954	224	23.5	1,090	259	23.8
California	3,491	529	15.2	5,677	622	11.0	6,907	670	9.7

Continued

Table 5--Total and farm population of the United States, by regions, divisions, and States, for decade years, April 1920-70--Continued

Area	1950			1960			1970		
	Total popu- lation	Farm population		Total popu- lation	Farm population		Total popu- lation	Farm population	
		Number	Per- centage of total		Number	Per- centage of total		Number	Per- centage of total
Thou.	Thou.	Pct.	Thou.	Thou.	Pct.	Thou.	Thou.	Pct.	
United States <sup>2/</sup> (including Armed Forces overseas)	151,132	23,048	15.3	180,007	15,635	8.7	204,235	9,712	4.8
Region									
Northeast	39,478	1,791	4.5	44,678	1,119	2.5	49,041	699	1.4
North Central	44,461	7,433	16.7	51,619	5,836	11.3	56,572	4,305	7.6
South <sup>2/</sup>	47,197	11,896	25.2	54,973	7,160	13.0	62,795	3,754	6.0
West	19,562	1,929	9.9	28,053	1,520	5.4	34,804	954	2.7
Division									
New England	9,314	403	4.3	10,509	232	2.2	11,842	128	1.1
Middle Atlantic	30,164	1,388	4.6	34,168	887	2.6	37,199	571	1.5
East North Central	30,399	3,703	12.2	36,225	2,821	7.8	40,253	2,053	5.1
West North Central	14,061	3,729	26.5	15,394	3,015	19.6	16,319	2,252	13.8
South Atlantic <sup>2/</sup>	21,182	4,633	21.9	25,972	2,838	10.9	30,671	1,357	4.4
East South Central	11,477	4,048	35.3	12,050	2,494	20.7	12,803	1,329	10.4
West South Central	14,538	3,215	22.1	16,951	1,828	10.8	19,321	1,069	5.5
Mountain	5,075	859	16.9	6,855	678	9.9	8,282	446	5.4
Pacific	14,487	1,070	7.4	21,198	842	4.0	26,523	508	1.9
New England									
Maine	914	122	13.3	969	61	6.3	992	30	3.1
New Hampshire	533	47	8.8	607	22	3.6	738	11	1.5
Vermont	378	81	21.4	390	56	14.4	444	32	7.2
Massachusetts	4,691	80	1.7	5,149	50	1.0	5,689	28	.5
Rhode Island	792	10	1.3	859	6	.7	947	4	.4
Connecticut	2,007	63	3.1	2,535	36	1.4	3,032	23	.8
Middle Atlantic									
New York	14,930	578	3.9	16,782	387	2.3	18,237	239	1.3
New Jersey	4,35	105	2.2	6,067	71	1.2	7,168	47	.7
Pennsylvania	10,498	705	6.7	11,319	428	3.8	11,794	284	2.4
East North Central									
Ohio	7,947	853	10.7	9,706	581	6.0	10,652	415	3.9
Indiana	3,934	667	17.0	4,662	539	11.6	5,194	416	8.0
Illinois	8,712	763	8.8	10,081	621	6.2	11,114	473	4.3
Michigan	6,372	695	10.9	7,823	486	6.2	8,875	305	3.4
Wisconsin	3,435	725	21.1	3,952	594	15.0	4,418	445	10.1
West North Central									
Minnesota	2,982	740	24.8	3,414	624	18.3	3,805	482	12.7
Iowa	2,621	783	29.9	2,758	703	25.5	2,824	544	19.2
Missouri	3,955	863	21.8	4,320	595	13.8	4,677	395	8.4
North Dakota	620	254	41.0	632	207	32.8	618	154	24.9
South Dakota	653	254	38.9	681	217	31.9	666	172	25.8
Nebraska	1,326	391	29.5	1,411	329	23.3	1,483	253	17.1
Kansas	1,905	444	23.3	2,179	340	15.6	2,247	252	11.2

Continued

Table 5--Total and farm population of the United States, regions, divisions, and States, for decade years, April 1920-70--Continued

Area	1950			1960			1970					
	Farm		Total	Farm		Total	Farm		Total			
	population			population			population					
	Total	Per-		centage	Total		Per-	centage		Total	Per-	centage
popu-	Number	of	popu-	Number	of	popu-	Number	of	popu-			
lation	Number	total	lation	Number	total	lation	Number	total	lation			
	Thou.	Thou.	Pct.	Thou.	Thou.	Pct.	Thou.	Thou.	Pct.			
South Atlantic <sup>2/</sup>												
Delaware	318	34	10.7	446	27	6.1	548	15	2.7			
Maryland	2,343	183	7.8	3,101	132	4.3	3,922	79	2.0			
Virginia	3,319	732	22.1	3,967	467	11.8	4,648	238	5.1			
West Virginia	2,006	411	20.5	1,860	155	8.3	1,744	78	4.4			
North Carolina	4,062	1,377	33.9	4,556	950	20.9	5,082	463	9.1			
South Carolina	2,117	701	33.1	2,383	433	18.2	2,591	144	5.6			
Georgia	3,445	962	27.9	3,943	515	13.1	4,590	228	5.0			
Florida	2,771	233	8.4	4,952	157	3.2	6,789	113	1.7			
East South Central												
Kentucky	2,945	974	33.1	3,038	618	20.3	3,219	452	14.0			
Tennessee	3,292	1,016	30.9	3,567	677	19.0	3,924	384	9.8			
Alabama	3,062	960	31.4	3,267	519	15.9	3,444	216	6.3			
Mississippi	2,179	1,097	50.3	2,178	680	31.2	2,217	277	12.5			
West South Central												
Arkansas	1,910	802	42.0	1,786	415	23.2	1,923	228	11.9			
Louisiana	2,684	567	21.1	3,257	313	9.6	3,641	160	4.4			
Oklahoma	2,233	553	24.8	2,328	294	12.6	2,559	209	8.2			
Texas	7,711	1,292	16.8	9,580	806	8.4	11,197	471	4.2			
Mountain												
Montana	591	136	23.0	675	115	17.0	694	90	13.0			
Idaho	589	165	28.0	667	148	22.2	713	102	14.3			
Wyoming	291	57	19.7	330	47	14.2	332	33	10.0			
Colorado	1,325	198	14.9	1,754	143	8.2	2,207	94	4.3			
New Mexico	681	132	19.4	951	72	7.6	1,016	45	4.4			
Arizona	750	77	10.3	1,302	74	5.7	1,771	34	1.9			
Utah	689	81	11.8	891	65	7.3	1,059	38	3.6			
Nevada	160	13	8.1	285	13	4.6	489	9	1.9			
Pacific												
Washington	2,379	274	11.5	2,853	199	7.0	3,409	133	3.9			
Oregon	1,521	228	15.0	1,769	165	9.3	2,091	119	5.7			
California	10,586	568	5.4	15,717	463	2.9	19,953	249	1.2			
Alaska	---	---	---	226	3	1.3	300	2	.5			
Hawaii	---	---	---	633	12	1.9	769	6	.8			

1/ Total population for April 1920 obtained by linear interpolation between the January and July 1920 figures of the Bureau of the Census.

2/ Population of District of Columbia is included in the South Atlantic Division, the South, and the United States total population figures. The rounded figures for the population living on farms in these areas are not changed by the inclusion of the District of Columbia.

Table 6--Natural increase of the farm population and net change through migration and reclassification of residence for the United States, by regions and divisions, annual estimates, April 1920-70

[illegible]

Continued

Table 6--Natural increase of the farm population and net change through migration and reclassification of residence for the United States, by regions and divisions, annual estimates, April 1920-70--Continued

Year and area	Farm population, April	Natural increase			Net change through migration and reclassification of residence 1/
		Total	Births	Deaths	
Region		Thousands			
Northeast					
1970	699				
1969	741	3	11	-9	-45
1968	752	4	12	-8	-14
1967	782	4	13	-9	-34
1966	833	5	14	-9	-56
1965	888	6	16	-10	-61
1964	929	7	17	-10	-49
1963	959	8	18	-10	37
1962	1,026	9	20	-11	76
1961	1,060	10	21	-11	-45
1960	1,119	10	22	-12	-69
1959	1,175	12	24	-12	-68
1958	1,224	13	24	-11	-61
1957	1,271	12	24	-12	-59
1956	1,368	13	27	-14	-109
1955	1,402	17	30	-13	-52
1954	1,397	16	29	-13	-11
1953	1,477	18	33	-15	-98
1952	1,659	22	36	-14	-204
1951	1,673	22	38	-16	-36
1950	1,791	22	38	-16	-140
1949	1,888	26	43	-17	-122
1948	1,903	28	46	-18	-44
1947	2,020	32	52	-20	-150
1946	1,985	33	53	-20	1
1945	1,906	22	42	-20	58
1944	1,938	24	44	-20	-56
1943	2,049	25	46	-21	-136
1942	2,271	27	50	-23	-249
1941	2,370	22	46	-24	-120
1940	2,411	24	49	-25	-65
1939	2,432	12	42	-30	-33
1938	2,450	12	42	-30	-30
1937	2,474	11	41	-30	-35
1936	2,538	8	39	-31	-72
1935	2,633	6	36	-30	-101
1934	2,660	5	37	-32	-32
1933	2,640	5	37	-32	15
1932	2,473	7	38	-31	160
1931	2,391	8	40	-32	74
1930	2,287	8	40	-32	96
1929	2,315	8	39	-31	-36
1928	2,335	12	40	-28	-32
1927	2,355	13	40	-27	-33
1926	2,413	11	42	-31	-69
1925	2,435	14	42	-28	-36
1924	2,447	14	42	-28	-26
1923	2,478	14	43	-29	-45
1922	2,532	16	44	-28	-70
1921	2,559	17	45	-28	-44
1920	2,537	11	43	-32	11

Continued



Table 6--Natural increase of the farm population and net change through migration and reclassification of residence for the United States, by regions and divisions, annual estimates, April 1920-70--Continued

[illegible]

Continued

Table 6--Natural increase of the farm population and net change through migration and reclassification of residence for the United States, by regions and divisions, annual estimates, April 1920-70--Continued

Year and area	Farm population, April	Natural increase			Net change through migration and reclassification of residence 1/
		Total	Births	Deaths	
Thousands					
South					
1970	3,754				
1969	4,058	18	58	-39	-322
1968	4,134	20	60	-40	-96
1967	4,356	23	64	-41	-245
1966	4,745	29	74	-44	-418
1965	5,174	38	86	-48	-467
1964	5,513	48	99	-51	-388
1963	5,756	53	107	-54	-295
1962	6,326	62	120	-59	-632
1961	6,630	68	130	-61	-372
1960	7,160	77	142	-65	-606
1959	7,613	83	152	-69	-536
1958	7,948	96	168	-72	-431
1957	8,274	103	180	-77	-429
1956	8,941	119	200	-81	-786
1955	9,177	129	208	-79	-365
1954	9,139	141	215	-74	-103
1953	9,698	157	230	-73	-716
1952	10,967	177	267	-90	-1,446
1951	11,066	188	274	-86	-286
1950	11,896	220	308	-88	-1,050
1949	12,611	222	324	-102	-937
1948	12,719	218	329	-111	-325
1947	13,548	249	374	-125	-1,078
1946	13,303	261	387	-126	-15
1945	12,740	174	306	-132	388
1944	12,966	196	328	-132	-422
1943	13,754	214	362	-148	-1,003
1942	15,346	252	401	-149	-1,844
1941	16,058	240	400	-160	-952
1940	16,400	229	397	-168	-570
1939	16,690	277	441	-164	-567
1938	16,777	273	439	-166	-360
1937	16,831	259	438	-179	-313
1936	17,014	254	437	-183	-437
1935	17,162	261	440	-179	-409
1934	17,142	269	452	-183	-249
1933	17,208	256	428	-172	-322
1932	16,758	272	446	-174	178
1931	16,535	259	437	-178	-36
1930	16,364	249	435	-186	-78
1929	16,452	284	459	-175	-372
1928	16,380	299	462	-163	-227
1927	16,339	310	466	-156	-269
1926	16,648	302	477	-175	-611
1925	16,762	322	486	-164	-436
1924	16,753	327	490	-163	-318
1923	16,950	322	493	-171	-519
1922	17,328	336	503	-167	-714
1921	17,215	357	521	-164	-244
1920	17,063	320	503	-183	-168

Continued



Table 6--Natural increase of the farm population and net change through migration and reclassification of residence for the United States, by regions and divisions, annual estimates, April 1920-70--Continued

Year and area	Farm population, April	Natural increase			Net change through migration and reclassification of residence 1/
		Total	Births	Deaths	
<u>Thousands</u>					
Division					
New England					
1970	128				
1969	138	2/	2	-2	-10
1968	140	1	2	-1	-3
1967	147	2/	2	-2	-7
1966	159	2/	2	-2	-12
1965	172	1	3	-2	-14
1964	183	1	3	-2	-11
1963	190	1	3	-2	-8
1962	207	2	4	-2	-19
1961	216	2	4	-2	-11
1960	232	1	4	-3	-17
1959	246	2	5	-3	-17
1958	258	3	6	-3	-14
1957	270	3	5	-2	-14
1956	294	4	7	-3	-28
1955	303	4	7	-3	-12
1954	301	4	7	-3	-2
1953	322	3	7	-4	-23
1952	368	5	8	-3	-52
1951	372	4	8	-4	-8
1950	403	5	9	-4	-36
1949	441	6	10	-4	-44
1948	445	7	11	-4	-12
1947	482	8	13	-5	-45
1946	471	8	13	-5	3
1945	446	6	10	-4	19
1944	456	6	11	-5	-16
1943	491	6	11	-5	-42
1942	564	8	13	-5	-81
1941	598	7	13	-6	-41
1940	623	8	14	-6	-33
1939	631	3	11	-8	-11
1938	648	3	11	-8	-20
1937	656	2	11	-9	-10
1936	682	1	10	-9	-27
1935	718	1	9	-8	-37
1934	719	2	10	-8	-3
1933	698	1	9	-8	20
1932	647	1	9	-8	50
1931	612	2	10	-8	33
1930	575	1	9	-8	36
1929	590	2	10	-8	-17
1928	593	3	10	-7	-6
1927	596	3	10	-7	-6
1926	611	3	11	-8	-18
1925	617	4	11	-7	-10
1924	611	4	11	-7	2
1923	615	4	11	-7	-8
1922	630	4	11	-7	-19
1921	636	5	12	-7	-11
1920	633	3	11	-8	0



Table 6--Natural increase of the farm population and net change through migration and reclassification of residence for the United States, by regions and divisions, annual estimates, April 1920-70--Continued

Year and area	Farm population, April	Natural increase			Net change through migration and reclassification of residence 1/
		Total	Births	Deaths	
Thousands					
East North Central					
1970	2,053				
1969	2,147	8	29	-21	-102
1968	2,170	8	30	-21	-31
1967	2,233	11	31	-21	-74
1966	2,337	13	35	-22	-117
1965	2,442	14	38	-23	-120
1964	2,519	19	43	-24	-95
1963	2,571	19	44	-25	-71
1962	2,682	23	48	-25	-134
1961	2,736	26	52	-25	-80
1960	2,821	28	54	-26	-113
1959	2,974	32	61	-29	-185
1958	3,041	34	63	-29	-101
1957	3,109	40	67	-27	-107
1956	3,239	37	69	-32	-167
1955	3,283	38	68	-30	-82
1954	3,276	40	70	-30	-34
1953	3,375	43	72	-29	-142
1952	3,578	46	78	-32	-249
1951	3,593	47	79	-32	-61
1950	3,703	46	79	-33	-156
1949	3,835	50	86	-36	-131
1948	3,861	53	90	-37	-80
1947	4,057	59	99	-40	-256
1946	4,000	63	104	-41	-5
1945	3,866	38	79	-41	96
1944	3,920	44	84	-40	-98
1943	4,105	38	86	-48	-224
1942	4,465	42	90	-48	-402
1941	4,620	36	83	-47	-191
1940	4,638	31	79	-48	-48
1939	4,642	40	86	-46	-44
1938	4,650	39	86	-47	-47
1937	4,702	33	82	-49	-85
1936	4,771	29	80	-51	-98
1935	4,808	30	81	-51	-67
1934	4,852	27	81	-54	-71
1933	4,868	32	83	-51	-48
1932	4,647	33	85	-52	188
1931	4,555	32	85	-53	60
1930	4,501	33	86	-53	21
1929	4,468	37	87	-50	-4
1928	4,526	41	88	-47	-99
1927	4,516	44	88	-44	-34
1926	4,589	40	90	-50	-113
1925	4,637	45	92	-47	-93
1924	4,626	46	93	-47	-35
1923	4,660	45	94	-49	-79
1922	4,737	49	96	-47	-126
1921	4,865	52	99	-47	-180
1920	4,953	44	96	-52	-132

Continued

Table 6--Natural increase of the farm population and net change through migration and reclassification of residence for the United States, by regions and divisions, annual estimates, April 1920-70--Continued

Year and area	Farm population, April	Natural increase			Net change through
		Total	Births	Deaths	migration and reclassification of residence 1/
Thousands					
West North Central					
1970	2,252				
1969	2,349	12	35	-23	-110
1968	2,373	13	36	-23	-36
1967	2,438	14	38	-23	-80
1966	2,544	17	42	-24	-124
1965	2,650	21	46	-25	-127
1964	2,727	26	51	-26	-102
1963	2,777	27	54	-27	-78
1962	2,884	31	58	-27	-138
1961	2,936	34	62	-27	-85
1960	3,015	36	65	-29	-115
1959	3,217	38	69	-31	-240
1958	3,271	40	66	-26	-94
1957	3,326	43	68	-25	-98
1956	3,429	46	72	-26	-149
1955	3,462	49	75	-26	-82
1954	3,457	45	74	-29	-39
1953	3,529	52	83	-31	-124
1952	3,663	52	85	-33	-186
1951	3,672	54	87	-33	-62
1950	3,729	55	86	-31	-112
1949	3,869	60	91	-31	-199
1948	3,896	62	93	-31	-89
1947	4,100	66	100	-34	-270
1946	4,040	76	110	-34	-17
1945	3,901	52	87	-35	87
1944	3,957	60	95	-35	-116
1943	4,149	64	101	-37	-257
1942	4,524	66	106	-40	-440
1941	4,686	55	94	-39	-217
1940	4,711	46	84	-38	-71
1939	4,718	57	93	-36	-64
1938	4,750	58	94	-36	-90
1937	4,900	51	96	-45	-201
1936	5,039	51	100	-49	-190
1935	5,143	57	102	-45	-161
1934	5,192	60	109	-49	-109
1933	5,201	61	107	-46	-70
1932	5,122	64	110	-46	15
1931	5,041	66	112	-46	15
1930	5,082	66	113	-47	-107
1929	5,068	73	117	-44	-59
1928	5,053	77	118	-41	-62
1927	5,089	80	119	-39	-116
1926	5,132	78	122	-44	-121
1925	5,168	83	124	-41	-119
1924	5,167	84	125	-41	-83
1923	5,197	84	127	-43	-114
1922	5,257	87	129	-42	-147
1921	5,260	92	133	-41	-95
1920	5,205	82	129	-47	-27

Continued

Table 6--Natural increase of the farm population and net change through migration and reclassification of residence for the United States, by regions and divisions, annual estimates, April 1920-70--Continued

Year and area	Farm population, April	Natural increase			Net change through migration and reclassification of residence 1/
		Total	Births	Deaths	
		Thousands			
South Atlantic					
1970	1,357				
1969	1,483	7	21	-15	-133
1968	1,515	8	23	-15	-39
1967	1,609	10	25	-15	-103
1966	1,774	12	29	-17	-177
1965	1,959	16	34	-18	-200
1964	2,106	20	39	-20	-167
1963	2,212	22	43	-21	-128
1962	2,464	26	48	-23	-278
1961	2,600	28	52	-24	-163
1960	2,838	33	58	-25	-270
1959	2,984	34	62	-28	-181
1958	3,113	35	64	-29	-165
1957	3,239	40	69	-29	-165
1956	3,497	45	78	-33	-303
1955	3,588	54	85	-31	-145
1954	3,573	56	85	-29	-41
1953	3,788	62	91	-29	-277
1952	4,277	69	104	-35	-557
1951	4,315	75	106	-31	-113
1950	4,633	82	120	-38	-401
1949	4,847	84	126	-42	-298
1948	4,884	85	130	-45	-122
1947	5,164	100	149	-49	-380
1946	5,082	109	157	-48	-26
1945	4,891	76	126	-50	115
1944	4,968	81	132	-51	-158
1943	5,233	85	142	-57	-350
1942	5,758	103	159	-56	-627
1941	5,989	96	156	-60	-326
1940	6,060	88	152	-64	-159
1939	6,175	105	169	-64	-220
1938	6,224	104	168	-64	-153
1937	6,239	95	167	-72	-110
1936	6,286	89	164	-75	-136
1935	6,283	89	161	-72	-86
1934	6,266	92	165	-73	-75
1933	6,275	88	154	-66	-97
1932	6,083	93	161	-68	99
1931	6,014	86	156	-70	-17
1930	5,914	85	157	-72	15
1929	5,979	94	162	-68	-159
1928	5,989	100	163	-63	-110
1927	5,959	105	165	-60	-75
1926	6,092	100	168	-68	-233
1925	6,215	108	171	-63	-231
1924	6,204	110	173	-63	-99
1923	6,321	108	174	-66	-225
1922	6,553	113	178	-65	-345
1921	6,550	121	184	-63	-118
1920	6,496	107	178	-71	-53

Continued



Table 6--Natural increase of the farm population and net change through migration and reclassification of residence for the United States, by regions and divisions, annual estimates, April 1920-70--Continued

Year and area	Farm population, April	Natural increase			Net change through migration and reclassification of residence 1/
		Total	Births	Deaths	
Thousands					
East South Central					
1970	1,329				
1969	1,433	6	20	-14	-111
1968	1,460	6	21	-15	-33
1967	1,536	7	22	-15	-84
1966	1,670	9	26	-16	-143
1965	1,817	13	30	-17	-160
1964	1,933	16	34	-18	-132
1963	2,016	18	37	-20	-100
1962	2,210	19	41	-22	-214
1961	2,314	22	45	-23	-126
1960	2,494	25	49	-24	-205
1959	2,641	27	52	-25	-174
1958	2,752	32	59	-27	-144
1957	2,860	36	63	-27	-144
1956	3,080	40	70	-30	-260
1955	3,158	47	74	-27	-125
1954	3,146	49	76	-27	-37
1953	3,329	56	82	-26	-240
1952	3,745	64	95	-31	-480
1951	3,778	65	97	-32	-97
1950	4,048	81	111	-30	-351
1949	4,233	79	113	-34	-264
1948	4,265	76	113	-37	-108
1947	4,508	79	123	-44	-322
1946	4,436	81	124	-43	-9
1945	4,271	54	98	-44	112
1944	4,338	65	108	-43	-131
1943	4,568	72	121	-49	-301
1942	5,023	80	129	-49	-535
1941	5,223	80	133	-53	-280
1940	5,283	77	132	-55	-137
1939	5,367	91	144	-53	-175
1938	5,357	89	143	-54	-79
1937	5,350	87	142	-55	-80
1936	5,365	86	142	-56	-101
1935	5,409	87	143	-56	-131
1934	5,378	86	143	-57	-55
1933	5,388	83	137	-54	-93
1932	5,252	89	143	-54	47
1931	5,177	81	136	-55	-6
1930	5,109	77	136	-59	-9
1929	5,101	93	148	-55	-85
1928	5,066	97	149	-52	-62
1927	5,053	100	150	-50	-87
1926	5,131	99	154	-55	-177
1925	5,163	105	157	-52	-137
1924	5,162	106	158	-52	-105
1923	5,209	105	159	-54	-152
1922	5,301	109	162	-53	-201
1921	5,313	116	168	-52	-128
1920	5,257	104	162	-58	-48

Continued

Table 6--Natural increase of the farm population and net change through migration and reclassification of residence for the United States, by regions and divisions, annual estimates, April 1920-70--Continued

Year and area	Farm population, April	Natural increase			Net change through migration and reclassification of residence 1/
		Total	Births	Deaths	
Thousands					
West South Central					
1970	1,069				
1969	1,141	6	16	-10	-78
1968	1,159	6	16	-10	-24
1967	1,211	6	17	-11	-58
1966	1,301	8	19	-11	-98
1965	1,399	10	22	-12	-107
1964	1,474	12	25	-13	-88
1963	1,528	14	27	-13	-67
1962	1,652	17	31	-14	-140
1961	1,717	18	33	-14	-83
1960	1,828	20	36	-16	-131
1959	1,988	22	38	-16	-181
1958	2,083	27	44	-17	-122
1957	2,175	28	48	-20	-120
1956	2,364	33	52	-19	-223
1955	2,431	29	49	-20	-96
1954	2,420	35	53	-18	-25
1953	2,580	39	57	-18	-199
1952	2,945	44	67	-23	-409
1951	2,973	48	71	-23	-76
1950	3,215	57	78	-21	-299
1949	3,531	59	85	-26	-375
1948	3,570	57	86	-29	-96
1947	3,876	69	102	-33	-375
1946	3,785	71	106	-35	20
1945	3,578	45	82	-37	162
1944	3,660	52	89	-37	-134
1943	3,953	58	100	-42	-352
1942	4,565	71	114	-43	-682
1941	4,846	64	111	-47	-346
1940	5,057	64	113	-49	-274
1939	5,148	81	128	-47	-172
1938	5,196	80	128	-48	-128
1937	5,242	77	129	-52	-123
1936	5,363	79	131	-52	-200
1935	5,470	85	136	-51	-192
1934	5,498	91	144	-53	-119
1933	5,545	85	137	-52	-132
1932	5,423	90	142	-52	32
1931	5,344	92	145	-53	-13
1930	5,341	87	142	-55	-84
1929	5,372	97	149	-52	-128
1928	5,325	102	150	-48	-55
1927	5,327	105	151	-46	-107
1926	5,425	103	155	-52	-201
1925	5,384	109	158	-49	-68
1924	5,387	111	159	-48	-114
1923	5,420	109	160	-51	-142
1922	5,474	114	163	-49	-168
1921	5,352	120	169	-49	2
1920	5,310	109	163	-54	-67

Continued

Table 6--Natural increase of the farm population and net change through migration and reclassification of residence for the United States, by regions and divisions, annual estimates, April 1920-70--Continued

Year and area	Farm population, April	Natural increase			Net change through migration and reclassification of residence 1/
		Total	Births	Deaths	
					Thousands
Mountain					
1970	446				
1969	471	3	8	-4	-28
1968	477	3	8	-5	-9
1967	494	4	9	-4	-22
1966	523	5	10	-4	-35
1965	554	6	11	-4	-37
1964	577	8	12	-4	-31
1963	593	7	13	-5	-23
1962	629	8	14	-5	-44
1961	647	9	14	-5	-28
1960	678	10	16	-6	-41
1959	719	10	16	-6	-51
1958	733	11	17	-6	-25
1957	747	10	17	-7	-25
1956	773	12	18	-6	-39
1955	782	14	19	-5	-23
1954	780	13	18	-5	-12
1953	800	13	19	-6	-33
1952	837	15	21	-6	-53
1951	840	16	22	-6	-19
1950	859	15	21	-6	-34
1949	897	16	23	-7	-56
1948	904	18	25	-7	-24
1947	955	17	26	-9	-69
1946	940	17	26	-9	-2
1945	905	12	21	-9	23
1944	919	13	22	-9	-27
1943	968	13	22	-9	-61
1942	1,064	14	25	-11	-110
1941	1,106	14	25	-11	-57
1940	1,118	15	26	-11	-27
1939	1,113	15	26	-11	-10
1938	1,112	14	26	-12	-13
1937	1,134	13	25	-12	-35
1936	1,165	14	26	-12	-45
1935	1,199	15	28	-13	-49
1934	1,219	15	28	-13	-35
1933	1,225	15	27	-12	-21
1932	1,202	15	27	-12	8
1931	1,158	16	28	-12	28
1930	1,143	16	29	-13	-1
1929	1,141	20	32	-12	-18
1928	1,123	20	32	-12	-2
1927	1,120	21	32	-11	-18
1926	1,111	21	33	-12	-12
1925	1,119	21	33	-12	-29
1924	1,120	22	33	-11	-23
1923	1,135	22	34	-12	-37
1922	1,166	23	35	-12	-54
1921	1,163	24	36	-12	-21
1920	1,179	22	35	-13	-38

Continued

Table 6--Natural increase of the farm population and net change through migration and reclassification of residence for the United States, by regions and divisions, annual estimates, April 1920-70--Continued

Year and area	Farm population, April	Natural increase			Net change through migration and reclassification of residence 1/
		Total	Births	Deaths	
		<u>Thousands</u>			
Pacific					
1970	508				
1969	541	3	8	-5	-35
1968	549	3	8	-5	-11
1967	572	4	9	-5	-27
1966	612	3	9	-6	-43
1965	655	4	10	-6	-47
1964	689	6	12	-6	-39
1963	712	6	12	-6	-29
1962	766	7	14	-7	-61
1961	794	8	15	-7	-36
1960	842	8	16	-8	-56
1959	894	9	17	-8	-61
1958	911	10	18	-8	-28
1957	929	12	19	-7	-29
1956	962	11	19	-8	-45
1955	973	13	20	-7	-24
1954	971	12	19	-7	-11
1953	996	13	20	-7	-38
1952	1,043	16	22	-6	-64
1951	1,047	15	21	-6	-18
1950	1,070	14	22	-8	-38
1949	1,094	16	25	-9	-41
1948	1,101	18	28	-10	-24
1947	1,148	19	30	-11	-67
1946	1,134	20	30	-10	-6
1945	1,102	13	24	-11	19
1944	1,115	15	26	-11	-28
1943	1,160	15	26	-11	-60
1942	1,243	16	28	-12	-100
1941	1,278	16	28	-12	-51
1940	1,270	14	27	-13	-6

Continued

Table 6--Natural increase of the farm population and net change through migration and reclassification of residence for the United States, by regions and divisions, annual estimates, April 1920-70--Continued

Year and area	Farm population, April	Natural increase			Net change through migration and reclassification of residence 1/
		Total	Births	Deaths	
<u>Thousands</u>					
Pacific (Cont'd):					
1939	1,245	9	22	-13	15
1938	1,241	9	22	-13	-5
1937	1,225	8	21	-13	8
1936	1,210	7	21	-14	8
1935	1,216	6	20	-14	-12
1934	1,240	7	20	-13	-31
1933	1,251	6	19	-13	-17
1932	1,186	7	20	-13	58
1931	1,165	6	19	-13	15
1930	1,152	5	18	-13	8
1929	1,136	4	16	-12	12
1928	1,131	5	17	-12	0
1927	1,111	7	18	-11	13
1926	1,086	6	18	-12	19
1925	1,069	6	18	-12	11
1924	1,064	7	18	-11	-2
1923	1,070	7	19	-12	-13
1922	1,089	7	19	-12	-26
1921	1,061	8	20	-12	20
1920	1,037	6	19	-13	18

1/ Beginning 1940, includes inductions and enlistments into Armed Forces, and persons returning from Armed Forces. For all years includes persons who did not move but who were in or out of the farm population because agricultural operations on the places where they were living either ceased or were begun.

2/ Less than 500 persons.

Table 7--Components of farm population change and rate of net migration, annual averages for the United States, regions, and divisions, April 1960-70

Area	Natural increase			Net change through migration and reclassification of residence 1/	Annual rate of net migration 2/
	Total	Births	Deaths		
	Thousands				Percent
United States	102	222	-120	-694	-5.6
Region					
Northeast	6	16	-10	-49	-5.5
North Central	40	89	-49	-193	-3.8
South	44	94	-50	-384	-7.3
West	12	22	-11	-68	-5.6
Division					
New England	1	3	-2	-11	-6.5
Middle Atlantic	6	13	-8	-37	-5.2
East North Central	17	40	-23	-94	-3.9
West North Central	23	49	-25	-100	-3.8
South Atlantic	18	37	-19	-166	-8.3
East South Central	14	33	-18	-131	-7.1
West South Central	12	24	-13	-88	-6.2
Mountain	7	11	-5	-30	-5.4
Pacific	5	11	-6	-39	-5.9

1/ Includes persons who have not moved but who were in or out of the farm population because agricultural operations ceased or were begun on the places where they were living. 2/ Based on annual average net change in population through migration and average of the April farm populations for the period indicated.

Table 8--Components of farm population change and rate of net migration, decade and quinquennial annual averages for the United States, April 1920-70

Period	Natural increase			Net change through migration and reclassification of residence 1/	Annual rate of net migration 2/
	Total	Births	Deaths		
	Thousands				Percent
Decade averages					
1960-70	102	222	-120	-694	-5.6
1950-60	271	436	-165	-1,013	-5.3
1940-50	390	644	-254	-1,139	-4.4
1930-40	385	713	-328	-382	-1.2
1920-30	485	796	-311	-630	-2.0
Quinquennial averages					
1965-70	65	171	-106	-594	-5.5
1960-65	139	272	-133	-794	-5.7
1955-60	221	379	-158	-910	-5.2
1950-55	321	493	-172	-1,115	-5.4
1945-50	403	631	-228	-677	-2.8
1940-45	376	656	-280	-1,602	-5.8
1935-40	385	706	-321	-708	-2.3
1930-35	384	719	-335	-58	-.2
1925-30	460	769	-309	-593	-1.9
1920-25	509	823	-314	-666	-2.1

See footnotes to table 7.

UNITED STATES DEPARTMENT OF AGRICULTURE  
WASHINGTON, D.C. 20250

OFFICIAL BUSINESS  
PENALTY FOR PRIVATE USE, \$300

POSTAGE AND FEES PAID  
U.S. DEPARTMENT OF  
AGRICULTURE  
AGR 101  
FIRST CLASS



END