



**AgEcon** SEARCH  
RESEARCH IN AGRICULTURAL & APPLIED ECONOMICS

*The World's Largest Open Access Agricultural & Applied Economics Digital Library*

**This document is discoverable and free to researchers across the globe due to the work of AgEcon Search.**

**Help ensure our sustainability.**

Give to AgEcon Search

AgEcon Search

<http://ageconsearch.umn.edu>

[aesearch@umn.edu](mailto:aesearch@umn.edu)

*Papers downloaded from **AgEcon Search** may be used for non-commercial purposes and personal study only. No other use, including posting to another Internet site, is permitted without permission from the copyright owner (not AgEcon Search), or as allowed under the provisions of Fair Use, U.S. Copyright Act, Title 17 U.S.C.*

SB 520 (1973)

INADEQUATE HOUSING

BIRD, R.

USDA STATISTICAL BULLETINS

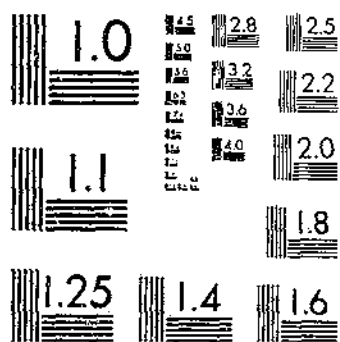
AND POVERTY STATUS OF HOUSEHOLDS,

1970, BY STATES

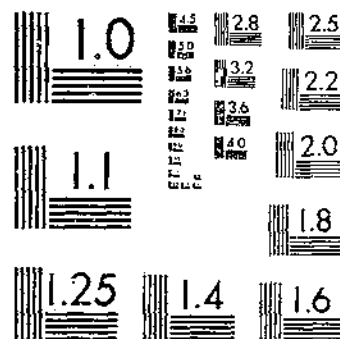
UPDATA

1 OF 1

# START



MICROCOPY RESOLUTION TEST CHART  
NATIONAL BUREAU OF STANDARDS-1963-A



MICROCOPY RESOLUTION TEST CHART  
NATIONAL BUREAU OF STANDARDS-1963-A

R  
630.5  
US3-13  
71570

REFERENCE  
DO NOT LOAN

# INADEQUATE HOUSING AND POVERTY STATUS OF HOUSEHOLDS

Areas Served By  
Farmers Home Administration Programs,  
1970, By States

DEPOSITORY

JUL 3 - 1973

Los Angeles Public Library

## CONTENTS

	Page
Highlights.....	iv
Introduction.....	1
Area Studied.....	2
Characteristics of Households and Housing.....	2
Households Living in Poverty.....	2
Households Living in Poverty--Lacking Complete Plumbing.....	3
Households Not Living in Poverty--Lacking Complete Plumbing.....	4
Status of White Households.....	4
Status of Black Households.....	4
Status of Spanish Heritage Households.....	5
Status of Other Than Black or White Households.....	5
Distribution of Black and White Households.....	5
Appendix.....	23

### Abstract

Analysis of selected housing data from the 1970 census indicates that about one-half of the 2.6 million housing units lacking complete plumbing in areas served by Farmers Home Administration programs were occupied by households who had incomes above the poverty level. Of those who had incomes above the poverty level, white households occupied 79 percent of the inadequate units, black households 20 percent, and other households about 1 percent. The racial composition of households who had incomes below the poverty level and occupied inadequate housing was 62 percent white, 35 percent black, and 3 percent other.

KEYWORDS: Housing, homeownership, Negro, rural housing, United States, Farmers Home Administration, income, poverty, Census.

## HIGHLIGHTS

In areas served by Farmers Home Administration (FHA) housing programs, there were 1.3 million housing units lacking complete plumbing occupied by households whose incomes were above the poverty level in 1969. Seventy-eight percent of these units were occupied by white households and 21 percent were occupied by black households.

In 1970 in FHA areas, there were only about 30,000 units lacking complete plumbing occupied by households with a Spanish heritage who had household incomes above the poverty level in 1969.

In the same areas in 1970, there were 1.3 million housing units lacking complete plumbing whose households had incomes below the poverty level in 1969. About 0.8 million of these households were white and 0.4 million were black.

Households of Spanish heritage who lived in housing lacking complete plumbing and who had incomes below the poverty level numbered about 45,000 in 1970.

In 1969, 18 percent of the white households in FHA areas had incomes below the poverty level, compared with 32 percent of the Spanish heritage households and 52 percent of the black households.

INADEQUATE HOUSING AND POVERTY STATUS OF HOUSEHOLDS  
Areas Served by Farmers Home Administration  
Programs, 1970,  
By States

by

Ronald Bird  
Economic Development Division  
Rural Development Service

INTRODUCTION

USDA's Farmers Home Administration (FHA) has been assigned the responsibility for operating Federal housing programs in rural areas. These programs consist mainly of administering insured housing loans. Most of these loans have been made to owners for the purpose of building a new house. Since these are loans and not grants, borrowers are expected to repay them. In fact, FHA is specifically directed by law to make loans only to those individuals who have the ability to repay the loans. 1/ As a result, FHA has difficulty in reaching the very poor.

In an endeavor to help Federal agencies reach lower income borrowers, Congress enacted an interest supplement provision. Under this provision, low-income borrowers have obtained loans at interest rates as low as 1 percent a year. But even with the addition of this provision, Federal agencies have not reached many of the very poor. In fiscal 1970, less than 5 percent of FHA's low-to-moderate-income loans went to families with annual incomes of less than \$3,000 a year. 2/ Similar results were experienced by the Department of Housing and Urban Development in administering Section 235 homeownership assistance loans under the Housing and Urban Development Act of 1968. In fiscal 1970, only 6 percent of their loans went to families with annual incomes of less than \$4,000 a year. 3/

Credit programs have not helped very many poor households obtain adequate housing. Therefore, these poor households should not be included in tabulations designed to help program administrators allocate resources for credit programs. Those tabulations should, rather, identify people who live in inadequate housing and could be helped by credit programs. Poorly housed

1/ Title V of the Housing Act of 1949, as amended.

2/ Unpublished reports of FHA.

3/ Third Annual Report on National Housing Goals--Message from the President of the United States, 1971.

households whose incomes are too low for credit programs to help them need to be identified separately so other programs can be designed to help them.

The objectives of this study were to determine (by race for each State for areas served by FHA housing programs): (1) how many rural households are living in poverty, (2) how many households living in poverty reside in inadequate housing, and (3) how many households not living in poverty are residing in inadequate housing.

In many instances, data from the 1970 Census of Population and Housing could be used directly to make these estimates. In other instances, certain assumptions had to be made to obtain approximate estimates. The methods used are reported in the appendix.

### Area Studied

The study area was the one served by FHA housing programs in 1970. This area includes rural areas and places with 2,500 to 10,000 population located outside urbanized areas.

Household incomes and household size have been found to be important determinants of the ability of a borrower to repay a loan. In this study, it was assumed that a household having income below the poverty level may have difficulty in repaying a loan for major repairs or to build a new house. The poverty levels used for the various sizes of households were the same levels as used in 1970 by the Bureau of Census (table 1).

## CHARACTERISTICS OF HOUSEHOLDS AND HOUSING

### Households Living in Poverty

In 1970, FHA areas contained 40 percent of the households who had incomes below the poverty level in the United States. About 4.1 million of these households were in FHA areas. This number was about 20 percent of the total number of households residing in FHA areas.

Of the total number of households with incomes below the poverty level, 3,350,000 were white, 652,000 were black, and 75,000 were other races.

Poverty was far more common for black households than for white households in 1969; 52 percent of the black households had incomes below the poverty level, compared with 18 percent of the white households.

Poverty was more common for white and black households in the South than it was for white and black households in the North and West. But the ratio of the percentage of black to white households living in poverty in the various regions did not differ markedly between regions.



In terms of the total number of white and black households living in poverty in FHA areas, 84 percent were white households and 16 percent were black households (table 2).

In only two States in FHA areas (South Carolina and Mississippi) were there more black households than white households living on incomes below the poverty level.

#### Households Living in Poverty--Lacking Complete Plumbing

Substandard is the term most commonly used to identify inadequate housing--homes being either dilapidated or lacking complete plumbing. In 1970, Census did not obtain data on the structural condition of housing (dilapidation), but it did on the adequacy of plumbing. In the 1950 and 1960 Censuses, about 90 percent of the rural housing that was rated structurally unsound (dilapidated) in rural areas also lacked complete plumbing. For this reason, the number of homes reported as lacking complete plumbing was considered a fairly reliable indicator of the number of substandard homes in rural areas in 1970.

In FHA areas, 31 percent of the white and black households who had incomes below the poverty level were residing in housing units lacking complete plumbing, compared with 8 percent of the nonpoverty households.

Fortunately, 69 percent of the households who had incomes below the poverty level were living in housing having complete plumbing in 1970. Apparently, past incomes of these households had made it possible for them to purchase or rent adequate housing.

There were 1.3 million housing units lacking complete plumbing in 1970 that were occupied by households having incomes below the poverty level in 1969. This number represented 49 percent of all housing units that lacked complete plumbing. White households occupied 64 percent of them and black households occupied 36 percent (table 3).

These are the households who probably can neither afford a new home nor extensive remodeling of their current one. Sixty percent of these dwellings were owned and 40 percent were rented. For each owner, a small repair loan to correct their most serious housing deficiency may be needed. This might be a repair loan to help them obtain adequate plumbing facilities.

For the 40 percent occupying inadequate rental units, the solution is more difficult. More than 70 percent of these rental units were occupied by tenants who paid less than \$50 a month rent or "no cash rent." These units are not apt to be improved, if they require extensive repairs, without the rent being raised. And if the rents are increased, the tenants may not be able to afford them.

Among black households, the percentage of the total living on poverty incomes and in inadequate housing varied from 1 percent in Hawaii to 50 percent in Mississippi.

Census identified the Spanish heritage population in several ways. In 42 States and the District of Columbia, this group was identified as persons of Spanish language background; in five Southwestern States as persons of Spanish background or having a Spanish surname; and in the three Middle Atlantic States as persons of Puerto Rican birth or parentage. <sup>4/</sup> Based on this definition, there were 45,000 households of Spanish heritage who were living in housing lacking complete plumbing in 1970 and who had household incomes below the poverty level in 1969.

#### Households Not Living in Poverty--Lacking Complete Plumbing

It was assumed that most households who had incomes above the poverty level and were currently living in housing lacking complete plumbing might be able to qualify for housing loans to remodel extensively or build new housing. Under this premise, there were 1.3 million households in areas served by FHA in 1970. About 50 percent of these households owned their homes and 50 percent rented.

Seventy-nine percent of these inadequate housing units were occupied by white households, 21 percent by black households. State percentages on the number who were black varied from none in Idaho and Hawaii to 64 percent in Louisiana (table 4).

Households of Spanish heritage who had incomes above the poverty level and who were living in housing lacking complete plumbing numbered about 12,000 in 1970.

#### Status of White Households

In 1969, 18 percent of the white households in FHA areas had incomes below the poverty level (table 5). But only 10 percent of all white households were living in inadequate housing units in 1970. Of those white households living in inadequate housing units, 42 percent had incomes below the poverty level and 58 percent had incomes above the poverty level in 1969.

#### Status of Black Households

Fifty-two percent of the black households in FHA areas had incomes below the poverty level in 1969, and 56 percent were living in housing units lacking complete plumbing in 1970 (table 6). But, of those living in units lacking complete plumbing, 62 percent had incomes below the poverty level and 38 percent had incomes above the poverty level.

<sup>4/</sup> United States Census of Population, 1970.

### Status of Spanish Heritage Households

Thirty-two percent of the Spanish heritage households had incomes below the poverty level, but only 19 percent of them were residing in units lacking complete plumbing (table 7). Of those residing in units lacking complete plumbing, 60 percent had incomes below the poverty level.

### Status of Other Than Black or White Households

Thirty-nine percent of the households that were of a race other than white or black had household incomes below the poverty level. But there were only 28 percent of these other race households living in housing lacking complete plumbing. Of those living in housing lacking complete plumbing, 77 percent had incomes below and 23 percent had incomes above the poverty level.

### Distribution of Black and White Households

In areas served by FHA in 1970, there were 19,966,963 white households, 1,258,438 black households, and 188,924 households of other races. Blacks represented 6.2 percent of the total number of black and white households in these areas (table 8). The percentage of housing units occupied by blacks in each State varied from less than 0.1 percent in Minnesota to 32 percent in Mississippi. In only 11 States did black households represent more than 10 percent of the total number of black-white households in FHA areas.

In FHA areas in 1970, there were 2,576,014 housing units lacking complete plumbing; 1,814,224 of these units were occupied by white households, 709,711 by black households, and 52,079 by households of other races. Fifty-seven percent of the units were owned and 43 percent were rented.

White households occupied 70 percent of the housing units lacking complete plumbing and blacks occupied 28 percent (table 9). In seven States, however, blacks occupied over 50 percent of the housing lacking complete plumbing (table 9). Yet, even in the 16 Southern States <sup>5/</sup> where the black population is mainly located, they occupied only 41 percent of the housing units lacking complete plumbing.

<sup>5/</sup> Includes Alabama, Arkansas, Delaware, Florida, Georgia, Kentucky, Louisiana, Maryland, Mississippi, North Carolina, Oklahoma, South Carolina, Texas, Tennessee, Virginia, and West Virginia.

Table 1 --Weighted average thresholds at the poverty level,  
by size of family and sex of head, by farm and  
nonfarm residence, 1969 1/

Size of family	Total	Nonfarm		Farm			
		Total	Male head	Female head	Total	Male head	Female head
	Dollars	Dollars		Dollars			
All unrelated individuals.....	1,834	1,840	1,923	1,792	1,569	1,607	1,512
Under 65 years.....	1,888	1,893	1,974	1,826	1,641	1,678	1,552
65 years and over.....	1,749	1,757	1,773	1,751	1,498	1,508	1,487
All families.....	3,388	3,410	3,451	3,082	2,954	2,965	2,757
2 persons.....	2,364	2,383	2,394	2,320	2,012	2,017	1,931
Head under 65 years...	2,441	2,458	2,473	2,373	2,093	2,100	1,984
Head 65 years and over.....	2,194	2,215	2,217	2,202	1,882	1,883	1,861
3 persons.....	2,905	2,924	2,937	2,830	2,480	2,485	2,395
4 persons.....	3,721	3,743	3,745	3,725	3,195	3,197	3,159
5 persons.....	4,386	4,415	4,418	4,377	3,769	3,770	3,761
6 persons.....	4,921	4,958	4,962	4,917	4,244	4,245	4,205
7 or more persons.....	6,034	6,101	6,116	5,952	5,182	5,185	5,129

1/ Source: United States Census of Population for 1970.

Table 2 --Distribution of housing units, white and black households in poverty, areas served by Farmers Home Administration, by States and Standard Federal Regions, 1970 1/

State and Standard Federal Region	Total		White		Black	
	Number	Percent	Number	Percent	Number	Percent
Maine.....	32,966	100.0	32,905	99.8	61	0.2
N.H.....	15,404	100.0	15,361	99.7	43	0.3
Vt.....	16,404	100.0	16,373	99.8	31	0.2
Mass.....	29,845	100.0	29,449	98.7	396	1.3
R.I.....	4,653	100.0	4,594	98.7	59	1.3
Conn.....	17,346	100.0	17,127	98.7	219	1.3
Region I.....	116,618	100.0	115,809	99.3	809	0.7
N.Y.....	118,902	100.0	116,553	98.0	2,349	2.0
N.J.....	29,335	100.0	26,152	89.1	3,183	10.9
Region II <u>2/</u> .....	148,237	100.0	142,705	96.3	5,532	3.7
Pa.....	175,902	100.0	173,114	98.4	2,788	1.6
Del.....	8,904	100.0	6,576	73.9	2,328	26.1
Md.....	40,370	100.0	31,312	77.6	9,058	22.4
D.C.....	---	---	---	---	---	---
Va.....	122,818	100.0	87,091	70.9	35,727	29.1
W.Va.....	98,210	100.0	93,984	95.7	4,226	4.3
Region III.....	446,204	100.0	392,077	87.9	54,127	12.1
N.C.....	211,724	100.0	139,796	66.0	71,928	34.0
S.C.....	120,567	100.0	55,439	46.0	65,128	54.0
Ga.....	164,461	100.0	99,465	60.5	64,996	39.5
Fla.....	136,374	100.0	101,868	74.7	34,506	25.3
Ky.....	166,987	100.0	157,546	94.3	9,441	3.7
Tenn.....	162,538	100.0	142,083	87.4	20,455	12.6
Ala.....	158,690	100.0	98,400	62.0	60,290	38.0
Miss.....	157,574	100.0	69,616	44.2	87,958	55.8
Region IV.....	1,278,915	100.0	864,213	65.6	414,702	34.4
Ohio.....	123,601	100.0	121,229	98.1	2,372	1.9
Ind.....	90,396	100.0	89,814	99.4	582	0.6
Ill.....	122,246	100.0	119,647	97.9	2,599	2.1
Mich.....	110,619	100.0	108,019	97.6	2,600	2.4
Wis.....	82,810	100.0	82,671	99.8	139	0.2
Minn.....	85,805	100.0	85,767	99.9	38	0.1
Region V.....	615,477	100.0	607,147	98.6	8,330	1.4
Ark.....	125,516	100.0	92,774	73.9	32,742	26.1
La.....	143,582	100.0	78,423	54.6	65,159	45.4
Okla.....	99,836	100.0	92,142	92.3	7,694	7.7
Tex.....	268,855	100.0	218,845	81.4	50,010	18.6

See footnotes at end of table

--Continued

Table 2 --Distribution of housing units, white and black households in poverty, areas served by Farmers Home Administration, by States and Standard Federal Regions, 1970 1/--Continued

State and Standard Federal Region	Total		White		Black	
	Number	Percent	Number	Percent	Number	Percent
N. Mex.....	27,162	100.0	26,869	98.9	293	1.1
Region VI.....	664,951	100.0	509,053	76.6	155,898	23.4
Iowa.....	85,854	100.0	85,761	99.9	93	0.1
Mo.....	140,742	100.0	134,696	95.7	6,046	4.3
Nebr.....	45,870	100.0	45,845	99.9	25	0.1
Kans.....	59,709	100.0	58,878	98.6	831	1.4
Region VII.....	332,175	100.0	325,180	97.9	6,995	2.1
N.Dak.....	21,486	100.0	21,463	99.9	23	0.1
S.Dak.....	28,969	100.0	28,929	99.9	40	0.1
Mont.....	20,988	100.0	20,966	99.9	22	0.1
Wyo.....	8,820	100.0	8,760	99.3	60	0.7
Colo.....	34,578	100.0	34,473	99.7	105	0.3
Utah.....	12,143	100.0	12,103	99.7	40	0.3
Region VIII.....	126,984	100.0	126,694	97.8	290	2.2
Ariz.....	21,455	100.0	20,586	95.9	869	4.1
Nev.....	4,467	100.0	4,396	98.4	71	1.6
Calif.....	126,926	100.0	123,130	97.0	3,796	3.0
Hawaii.....	2,473	100.0	2,443	98.8	30	1.2
Region IX <u>3/</u> .....	155,321	100.0	150,555	96.9	4,766	3.1
Wash.....	49,154	100.0	48,925	99.5	229	0.5
Oreg.....	43,190	100.0	43,058	99.7	132	0.3
Idaho.....	21,648	100.0	21,576	99.7	72	0.3
Alaska.....	3,529	100.0	3,438	97.4	91	2.6
Region X.....	117,521	100.0	116,997	99.6	524	0.4
United States.....	4,002,403	<u>4/</u> 100.0	3,350,430	83.7	651,973	16.3

1/ Source: 1970 Census of Housing, includes rural areas and 2,989 cities located outside urbanized areas with population of 2,500 to 10,000 persons.

2/ Excludes Puerto Rico and Virgin Islands.

3/ Excludes Guam.

4/ Excludes 75,000 households of other races.

Table 3 --Distribution of housing units lacking complete plumbing and households in poverty, white and black households, areas served by Farmers Home Administration, by States and Standard Federal Regions, 1970 1/

State and Standard Federal Region	Total		White		Black	
	Number	Percent	Number	Percent	Number	Percent
Maine.....	10,561	100.0	10,546	99.9	15	0.1
N.H.....	2,653	100.0	2,641	99.5	12	0.5
Vt.....	2,426	100.0	2,419	99.7	7	0.3
Mass.....	2,411	100.0	2,345	97.3	66	2.7
R.I.....	571	100.0	561	98.2	10	1.8
Conn.....	1,578	100.0	1,545	97.9	33	2.1
Region I.....	20,200	100.0	20,057	99.3	143	0.7
N.Y.....	14,818	100.0	14,291	96.4	527	3.6
N.J.....	3,086	100.0	2,074	67.2	1,012	32.8
Region II <u>2/</u> .....	17,904	100.0	16,365	91.4	1,539	8.6
Pa.....	34,087	100.0	32,684	95.9	1,403	4.1
Del.....	2,128	100.0	679	31.9	1,449	68.1
Md.....	12,980	100.0	7,232	55.7	5,748	44.3
D.C.....	---	---	---	---	---	---
Va.....	62,507	100.0	35,656	57.0	26,851	43.0
W.Va.....	41,187	100.0	39,031	94.8	2,156	5.2
Region III.....	152,889	100.0	115,282	75.4	37,607	24.6
N.C.....	91,267	100.0	39,230	43.0	52,037	57.0
S.C.....	60,617	100.0	13,568	22.4	47,049	77.6
Ga.....	73,373	100.0	26,369	35.9	47,004	64.1
Fla.....	30,983	100.0	11,266	36.4	19,717	63.6
Ky.....	91,227	100.0	85,323	93.5	5,904	6.5
Tenn.....	71,331	100.0	57,946	81.2	13,385	18.8
Ala.....	79,557	100.0	33,920	42.6	45,637	57.4
Miss.....	81,940	100.0	18,099	22.1	63,841	77.9
Region IV.....	580,295	100.0	285,721	49.2	294,574	50.8
Ohio.....	32,938	100.0	31,938	99.1	1,000	0.9
Ind.....	21,256	100.0	21,060	99.1	196	0.9
Ill.....	25,472	100.0	24,191	95.0	1,281	5.0
Mich.....	16,765	100.0	16,111	96.1	654	3.9
Wis.....	14,229	100.0	14,195	99.8	34	0.2
Minn.....	19,461	100.0	19,449	99.9	12	0.1
Region V.....	130,121	100.0	126,944	97.6	3,177	2.4
Ark.....	49,274	100.0	26,434	53.6	22,840	46.4
La.....	53,327	100.0	14,685	27.5	38,642	72.5
Okla.....	16,242	100.0	12,834	79.0	3,408	21.0
Tex.....	83,509	100.0	52,295	62.6	31,214	37.4

See footnotes at end of table.

--Continued

Table 3 --Distribution of housing units lacking complete plumbing and households in poverty, white and black households, areas served by Farmers Home Administration, by States and Standard Federal Regions, 1970 1/--Continued

State and Standard Federal Region	Total		White		Black	
	Number	Percent	Number	Percent	Number	Percent
N.Mex.....	9,082	100.0	8,995	99.0	87	1.0
Region VI.....	211,434	100.0	115,243	54.5	96,191	45.5
Iowa.....	13,553	100.0	13,532	99.8	21	0.2
Mo.....	38,159	100.0	34,944	91.6	3,215	8.4
Nebr.....	11,098	100.0	11,094	99.9	4	0.1
Kans.....	6,894	100.0	6,711	97.3	183	2.7
Region VII.....	69,704	100.0	66,281	95.1	3,423	4.9
N.Dak.....	5,526	100.0	5,516	99.8	10	0.2
S.Dak.....	6,704	100.0	6,699	99.9	5	0.1
Mont.....	3,495	100.0	3,490	99.9	5	0.1
Wyo.....	1,120	100.0	1,110	99.1	10	0.9
Colo.....	4,735	100.0	4,719	99.6	16	0.4
Utah.....	609	100.0	607	99.7	2	0.3
Region VIII.....	22,189	100.0	22,141	99.8	48	0.2
Ariz.....	2,996	100.0	2,578	86.0	418	14.0
Nev.....	545	100.0	532	97.6	13	2.4
Calif.....	5,982	100.0	5,447	91.1	535	8.9
Hawaii.....	340	100.0	337	99.1	3	0.9
Region IX 3/.....	9,863	100.0	8,894	90.2	969	9.8
Wash.....	3,239	100.0	3,206	99.0	33	1.0
Oreg.....	3,296	100.0	3,252	98.7	44	1.3
Idaho.....	2,026	100.0	2,013	99.4	13	0.6
Alaska.....	717	100.0	705	98.3	12	1.7
Region X.....	9,278	100.0	9,176	98.9	102	1.1
United States.....	1,223,877	4/100.0	786,104	64.2	437,773	35.8

1/ Source: 1970 Census of Housing, includes rural areas and 2,989 cities located outside urbanized areas with populations of 2,500 to 10,000 persons.

2/ Excludes Puerto Rico and Virgin Islands.

3/ Excludes Guam.

4/ Excludes 40,000 households of other races.



Table 4 --Distribution of housing units lacking complete plumbing and households not in poverty, white and black households, areas served by Farmers Home Administration, by States and Standard Federal Regions, 1970 1/

State and Standard Federal Region	Total		White		Black	
	Number	Percent	Number	Percent	Number	Percent
Maine.....	20,087	100.0	20,075	99.9	12	0.1
N.H.....	5,797	100.0	5,797	100.0	0	0.0
Vt.....	4,682	100.0	4,680	99.9	2	0.1
Mass.....	7,915	100.0	7,860	99.3	55	0.7
R.I.....	1,240	100.0	1,215	98.0	25	2.0
Conn.....	4,250	100.0	4,216	99.2	34	0.8
Region I.....	43,971	100.0	43,843	99.7	128	0.3
N.Y.....	28,960	100.0	28,107	97.1	853	2.9
N.J.....	6,183	100.0	5,173	83.7	1,010	16.3
Region II <u>2/</u> .....	35,143	100.0	33,280	94.7	1,863	5.3
Pa.....	59,820	100.0	59,258	99.1	562	0.9
Del.....	4,010	100.0	2,120	52.9	1,890	47.1
Md.....	21,555	100.0	12,962	60.1	8,593	39.9
D.C.....	---	---	---	---	---	---
Va.....	84,091	100.0	56,294	66.9	27,797	33.1
W.Va.....	41,823	100.0	39,783	95.1	2,040	4.9
Region III.....	211,299	100.0	170,417	80.7	40,882	19.3
N.C.....	96,166	100.0	56,310	59.6	39,856	40.4
S.C.....	46,989	100.0	17,634	37.5	29,355	62.5
Ga.....	61,134	100.0	30,718	50.2	30,416	49.8
Fla.....	26,702	100.0	13,481	50.5	13,221	49.5
Ky.....	78,109	100.0	74,698	95.6	3,411	4.4
Tenn.....	69,111	100.0	59,536	86.1	9,575	13.9
Ala.....	54,434	100.0	32,197	59.1	22,237	40.9
Miss.....	42,984	100.0	17,813	41.4	25,171	58.6
Region IV.....	475,629	100.0	302,387	63.6	173,242	36.4
Ohio.....	56,645	100.0	55,490	98.0	1,155	2.0
Ind.....	36,213	100.0	35,940	99.2	273	0.8
Ill.....	35,253	100.0	34,306	97.3	947	2.7
Mich.....	31,781	100.0	31,168	98.1	613	1.9
Wis.....	32,772	100.0	32,763	99.9	9	<u>3/</u>
Minn.....	31,759	100.0	31,740	99.9	19	<u>3/</u>
Region V.....	224,423	100.0	221,407	98.7	3,016	1.3
Ark.....	37,387	100.0	26,079	69.8	11,308	30.2
La.....	30,131	100.0	10,833	35.9	19,298	64.1
Okla.....	19,074	100.0	16,801	88.1	2,273	11.9
Tex.....	56,017	100.0	39,018	69.7	16,999	30.3

See footnotes at end of table

--Continued

Table 4 --Distribution of housing units lacking complete plumbing and households not in poverty, white and black households, areas served by Farmers Home Administration, by States and Standard Federal Regions, 1970 1/--Continued

State and Standard Federal Region	Total		White		Black	
	Number	Percent	Number	Percent	Number	Percent
N.Mex.....	5,017	100.0	4,979	99.2	38	0.8
Region VI.....	147,626	100.0	97,710	66.2	49,916	33.8
Iowa.....	22,989	100.0	22,961	99.9	28	0.1
Mo.....	47,474	100.0	45,550	96.0	1,924	4.0
Nebr.....	3,144	100.0	3,123	99.3	21	0.7
Kans.....	14,077	100.0	13,881	98.6	196	1.4
Region VII.....	87,684	100.0	85,515	97.5	2,169	2.5
N.Dak.....	8,819	100.0	8,817	99.9	2	<u>3/</u>
S.Dak.....	8,865	100.0	8,858	99.9	7	0.1
Mont.....	5,641	100.0	5,629	99.8	12	0.2
Wyo.....	2,083	100.0	2,081	99.9	2	0.1
Colo.....	6,990	100.0	6,961	99.6	29	0.4
Utah.....	1,994	100.0	1,988	99.7	6	0.3
Region VIII.....	34,392	100.0	34,334	99.8	58	0.2
Ariz.....	3,384	100.0	3,265	96.5	119	3.5
Nev.....	1,136	100.0	1,125	99.0	11	1.0
Calif.....	12,488	100.0	12,049	96.5	439	3.5
Hawaii.....	2,202	100.0	2,202	100.0	0	0.0
Region IX <u>4/</u> .....	19,210	100.0	18,641	97.0	569	3.0
Wash.....	6,788	100.0	6,720	99.0	68	1.0
Oreg.....	6,223	100.0	6,220	99.9	3	0.1
Idaho.....	4,036	100.0	4,036	100.0	0	0.0
Alaska.....	3,634	100.0	3,610	99.3	24	0.7
Region X.....	20,681	100.0	20,586	99.5	95	0.5
United States.....	1,300,058	<u>5/</u> 100.0	1,028,120	79.1	271,938	20.9

1/ Source: 1970 Census of Housing, includes rural areas and 2,989 cities located outside urbanized areas with populations of 2,500 to 10,000 persons.

2/ Excludes Puerto Rico and Virgin Islands.

3/ Less than 0.1 percent.

4/ Excludes Guam.

5/ Excludes 12,000 households of other races.

Table 5 --Proportion of white households in poverty and poverty status of white households occupying units lacking complete plumbing, Farmers Home Administration areas, by States and Standard Federal Regions, 1970 <sup>1/</sup>

State and Standard Federal Region	Occupied units	Households living in poverty	Housing units lacking complete plumbing		
			Total	Households living in poverty	Households not living in poverty
	Number		Percent		
Maine.....	200,296	16.4	15.3	5.3	10.0
N.H.....	120,612	12.7	7.0	2.2	4.8
Vt.....	110,664	14.8	6.4	2.2	4.2
Mass.....	319,948	9.2	3.2	0.7	2.5
R.I.....	36,111	12.7	4.9	1.6	3.3
Conn.....	228,751	7.5	2.5	0.7	1.8
Region I.....	1,016,382	11.4	6.3	2.0	4.3
N.Y.....	938,955	12.4	4.5	1.5	3.0
N.J.....	278,075	9.4	2.6	0.7	1.9
Region II <sup>2/</sup> .....	1,217,030	11.7	4.1	1.3	2.7
Pa.....	1,260,873	13.7	7.3	2.6	4.7
Del.....	46,971	14.0	6.0	1.5	4.5
Md.....	271,930	11.5	7.4	2.7	4.7
D.C.....	---	---	---	---	---
Va.....	481,403	18.1	19.1	7.4	11.7
W.Va.....	353,162	26.6	22.3	11.1	11.2
Region III.....	2,414,339	16.2	11.8	4.8	7.0
N.C.....	782,548	17.9	12.2	5.0	7.2
S.C.....	339,977	16.3	9.2	4.0	5.2
Ga.....	528,650	18.8	10.8	5.0	5.8
Fla.....	568,962	17.9	4.4	2.0	2.4
Ky.....	520,910	30.2	30.7	16.4	14.3
Tenn.....	557,145	25.5	21.1	10.4	10.7
Ala.....	424,384	23.2	15.6	8.0	7.6
Miss.....	280,228	24.8	12.8	6.5	6.4
Region IV.....	4,002,804	21.6	14.7	7.1	7.6
Ohio.....	910,734	13.3	9.6	3.5	6.1
Ind.....	681,279	13.2	8.4	3.1	5.3
Ill.....	789,014	15.2	7.4	3.1	4.3
Mich.....	809,926	13.3	5.8	2.0	3.8
Wis.....	551,083	15.0	8.5	2.6	5.9
Minn.....	464,569	18.5	11.0	4.2	6.8
Region V.....	4,206,605	14.4	8.3	3.0	5.3

See footnotes at end of table.

--Continued

Table 5 --Proportion of white households in poverty and poverty status of white households occupying units lacking complete plumbing, Farmers Home Administration areas, by States and Standard Federal Regions, 1970 <sup>1/</sup>--Continued

State and Standard Federal Region	Occupied units	Households living in poverty	Housing units lacking complete plumbing		
			Total	Households living in poverty	Households not living in poverty
	Number		Percent		
Ark.....	325,937	28.5	16.1	8.1	8.0
La.....	329,380	23.8	7.8	4.5	3.3
Okla.....	349,854	26.3	8.5	3.7	4.8
Tex.....	914,709	23.9	10.0	5.7	4.3
N.Mex.....	102,058	26.3	13.7	8.8	4.9
Region VI.....	2,021,938	25.2	10.5	5.7	4.8
Iowa.....	507,464	16.9	7.2	2.7	4.5
Mo.....	576,671	23.4	14.0	6.1	7.9
Nebr.....	230,844	19.9	6.2	4.8	1.4
Kans.....	316,607	18.6	6.5	2.1	4.4
Region VII.....	1,631,586	19.9	9.3	4.1	5.2
N.Dak.....	111,298	19.3	12.9	5.0	7.9
S.Dak.....	129,370	22.4	12.0	5.2	6.8
Mont.....	128,733	16.3	7.1	2.7	4.4
Wyo.....	62,119	14.1	5.1	1.8	3.3
Colo.....	187,177	18.4	6.2	2.5	3.7
Utah.....	73,634	16.4	3.5	0.8	2.7
Region VIII.....	692,331	18.3	8.2	3.2	5.0
Ariz.....	123,586	16.7	4.7	2.1	2.6
Nev.....	37,214	11.8	4.5	1.4	3.1
Calif.....	787,686	15.6	2.2	0.7	1.5
Hawaii.....	18,346	13.3	13.8	1.8	12.0
Region IX <sup>3/</sup> .....	966,832	14.8	2.8	0.9	1.9
Wash.....	350,167	14.0	2.8	0.9	1.9
Oreg.....	274,869	15.7	3.5	1.2	2.3
Idaho.....	128,649	16.8	4.7	1.6	3.1
Alaska.....	43,431	7.9	9.9	1.6	8.3
Region X.....	797,116	14.7	3.7	1.1	2.6
United States.....	18,966,963	17.7	9.6	4.1	5.5

<sup>1/</sup> Source: United States Census of Population and Housing, 1970. Farmers Home Administration areas include rural areas and 2,989 cities located outside urbanized areas with population of 2,500 to 10,000 persons.

<sup>2/</sup> Excludes Puerto Rico and Virgin Islands.

<sup>3/</sup> Excludes Guam.

Table 6 --Proportion of black households in poverty and poverty status of black households occupying units lacking complete plumbing, Farmers Home Administration areas, by States and Standard Federal Regions, 1970 1/

State and Standard Federal Region	Occupied units	Households living in poverty	Housing units lacking complete plumbing		
			Total	Households living in poverty	Households not living in poverty
	Number		Percent		
Maine.....	362	16.9	7.5	4.1	3.4
N.H.....	163	26.4	7.4	7.4	---
Vt.....	147	21.1	6.1	4.8	1.3
Mass.....	2,254	17.6	5.4	2.9	2.5
R.I.....	304	19.4	11.5	3.3	8.2
Conn.....	1,649	13.3	4.1	2.0	2.1
Region I.....	4,879	16.6	5.6	2.9	2.7
N.Y.....	10,617	22.1	13.0	5.0	8.0
N.J.....	12,919	24.6	15.7	7.8	7.9
Region II <u>2/</u> .....	23,536	23.5	14.5	6.5	8.0
Pa.....	9,992	27.9	19.7	14.0	5.7
Del.....	7,073	32.9	47.2	20.5	26.7
Md.....	30,492	29.7	47.0	18.9	28.1
D.C.....	---	---	---	---	---
Va.....	88,377	40.4	61.8	30.4	31.4
W.Va.....	10,061	42.0	41.7	21.4	20.3
Region III.....	145,995	37.1	53.8	25.8	28.0
N.C.....	153,680	46.8	59.8	33.9	25.9
S.C.....	125,786	51.8	60.7	37.4	23.3
Ga.....	122,624	53.0	63.1	38.3	24.8
Fla.....	71,774	48.1	45.9	27.5	18.4
Ky.....	18,328	51.5	50.8	32.2	18.6
Tenn.....	40,201	50.9	57.1	33.3	23.8
Ala.....	97,145	62.1	69.9	47.0	22.9
Miss.....	129,115	68.1	68.9	49.5	19.4
Region IV.....	758,653	54.7	61.7	38.8	22.9
Ohio.....	9,100	26.1	23.7	11.0	12.7
Ind.....	2,106	27.6	22.3	9.3	13.0
Ill.....	6,511	39.9	34.2	19.7	14.5
Mich.....	9,412	27.6	13.5	7.0	6.5
Wis.....	437	31.8	9.8	7.8	2.0
Minn.....	197	19.3	15.7	6.1	9.6
Region V.....	27,763	30.0	22.3	11.4	10.9

See footnotes at end of table.

--Continued

Table 6 --Proportion of black households in poverty and poverty status of black households occupying units lacking complete plumbing, Farmers Home Administration areas, by States and Standard Federal Regions, 1970 1/--Continued

State and Standard Federal Region	Occupied units	Households living in poverty	Housing units lacking complete plumbing		
			Total	Households living in poverty	Households not living in poverty
	Number		Percent		
Ark.....	53,400	61.3	64.0	42.8	21.2
La.....	108,801	59.9	53.3	35.5	17.8
Okla.....	13,514	56.9	42.0	25.2	16.8
Tex.....	89,992	55.6	53.6	34.7	18.9
N.Mex.....	895	32.7	14.0	9.7	4.3
Region VI.....	266,602	58.5	54.8	36.1	18.7
Iowa.....	383	24.3	12.8	5.5	7.3
Mo.....	10,425	58.0	49.3	30.8	18.5
Nebr.....	117	21.4	21.4	3.4	18.0
Kans.....	2,378	34.9	15.9	7.7	8.2
Region VII.....	13,303	52.6	42.0	25.7	16.3
N.Dak.....	65	35.4	18.5	15.4	3.1
S.Dak.....	219	18.3	5.5	2.3	3.2
Mont.....	92	23.9	18.5	5.4	13.1
Wyo.....	157	38.2	7.6	6.4	1.2
Colo.....	465	22.6	9.7	3.4	6.3
Utah.....	117	34.2	6.8	1.7	5.1
Region VIII.....	1,115	26.0	9.5	4.3	5.2
Ariz.....	2,310	37.6	23.2	18.1	5.1
Nev.....	331	21.5	7.3	3.9	3.4
Calif.....	11,246	33.8	8.7	4.8	3.9
Hawaii.....	261	11.5	1.2	1.2	---
Region IX <u>3/</u> .....	14,148	33.7	10.9	6.9	4.0
Wash.....	944	24.3	10.7	3.5	7.2
Oreg.....	379	34.8	12.4	11.6	0.8
Idaho.....	178	40.5	7.3	7.3	---
Alaska.....	943	9.7	3.8	1.3	2.5
Region X.....	2,444	21.4	8.1	4.2	3.9
United States.....	1,258,438	51.8	56.4	34.8	21.6

1/ Source: United States Census of Population and Housing, 1970. Farmers Home Administration areas include rural areas and 2,989 cities located outside urbanized areas with populations of 2,500 to 10,000 persons.

2/ Excludes Puerto Rico and Virgin Islands.

3/ Excludes Guam.

Table 7 --Proportion of Spanish heritage households 1/ in poverty and poverty status of Spanish heritage households occupying units lacking complete plumbing, Farmers Home Administration areas, by States and Standard Federal Regions, 1970 2/

State and Standard Federal Region	Occupied units	Households living in poverty	Housing units lacking complete plumbing		
			Total	Households living in poverty	Households not living in poverty
	Number		Percent		
Maine.....	667	10.5	4.2	2.1	2.1
N.H.....	301	5.0	3.3	---	3.3
Vt.....	441	6.4	3.6	0.5	3.1
Mass.....	1,473	9.0	3.9	0.4	3.5
R.I.....	198	13.6	1.5	---	1.5
Conn.....	1,673	6.1	1.8	0.4	1.4
Region I.....	4,753	7.9	3.0	0.6	2.4
N.Y.....	3,814	25.8	3.1	1.8	1.3
N.J.....	2,022	20.5	4.0	1.8	2.2
Region II <u>3/</u> .....	5,836	24.0	3.4	1.8	1.6
Pa.....	1,422	28.9	3.0	1.8	1.2
Del.....	331	11.8	14.2	1.8	12.4
Md.....	1,760	9.3	4.6	2.3	2.3
D.C.....	---	---	---	---	---
Va.....	1,914	11.6	6.2	1.7	4.5
W.Va.....	934	17.2	8.1	6.5	1.6
Region III.....	6,361	15.7	5.7	2.6	3.1
N.C.....	1,856	12.2	8.9	3.4	5.5
S.C.....	937	12.3	6.5	3.5	3.0
Ga.....	1,595	11.4	3.5	2.1	1.4
Fla.....	8,780	19.6	12.3	7.7	4.6
Ky.....	695	18.0	9.6	3.3	6.3
Tenn.....	923	17.9	8.1	3.8	4.3
Ala.....	1,093	13.2	4.2	2.2	2.0
Miss.....	924	20.4	9.2	7.1	2.1
Region IV.....	16,803	17.1	9.7	5.7	4.0
Ohio.....	4,536	13.2	11.5	4.6	6.9
Ind.....	2,602	14.4	7.5	2.3	5.2
Ill.....	4,625	12.7	6.2	1.9	4.3
Mich.....	5,917	13.1	11.4	3.2	8.2
Wis.....	1,603	11.3	3.4	2.0	1.4
Minn.....	829	13.4	7.8	2.2	5.6
Region V.....	20,112	13.1	8.9	2.9	6.0

See footnotes at end of table.

--Continued

Table 7 --Proportion of Spanish heritage households 1/ in poverty and poverty status of Spanish heritage households occupying units lacking complete plumbing, Farmers Home Administration areas, by States and Standard Federal Regions, 1970 2/--Continued

State and Standard Federal Region	Occupied units	Households living in poverty	Housing units lacking complete plumbing		
			Total	Households living in poverty	Households not living in poverty
	Number		Percent		
Ark.....	1,094	25.1	23.2	11.3	11.9
La.....	3,733	21.9	7.4	5.1	2.3
Okla.....	2,638	27.4	6.0	2.0	4.0
Tex.....	114,531	48.4	35.4	22.4	13.0
N.Mex.....	47,506	38.8	31.6	19.1	12.5
Region VI.....	169,502	44.7	33.2	20.7	12.5
Iowa.....	958	15.5	8.7	2.7	6.0
Mo.....	1,780	16.1	12.5	4.6	7.9
Nebr.....	1,649	19.2	5.9	3.9	2.0
Kans.....	2,360	18.6	8.7	3.6	5.1
Region VII.....	6,747	17.7	9.0	3.8	5.2
N.Dak.....	437	22.0	7.3	2.8	4.5
S.Dak.....	358	23.5	9.8	4.8	5.0
Mont.....	828	18.1	7.1	3.5	3.6
Wyo.....	2,072	26.4	15.0	5.4	9.6
Colo.....	19,799	28.2	18.8	9.5	9.3
Utah.....	1,673	18.7	7.3	2.5	4.8
Region VIII.....	25,167	26.9	17.0	8.4	8.6
Ariz.....	24,879	27.3	12.9	9.2	3.7
Nev.....	1,873	10.9	5.2	1.6	3.6
Calif.....	92,142	23.4	5.0	2.6	2.4
Hawaii.....	1,455	14.9	9.4	1.4	8.0
Region IX <u>4/</u> .....	120,349	23.9	6.7	3.9	2.8
Wash.....	6,082	28.0	8.7	6.4	2.3
Oreg.....	3,124	22.5	7.3	4.1	3.2
Idaho.....	2,588	32.4	14.6	9.5	3.1
Alaska.....	934	6.3	10.3	1.5	8.8
Region X.....	12,728	25.9	9.7	6.1	3.6
United States.....	388,358	31.9	19.2	11.6	7.6

1/ Spanish heritage households include (a) persons speaking Spanish language in 42 States, (b) persons speaking Spanish or having Spanish surname in five Southwestern States, and (c) persons of Puerto Rican birth or parentage in three Middle Atlantic States. 2/ Source: United States Census of Population and Housing, 1970. Farmers Home Administration areas include rural areas and 2,989 cities located outside urbanized areas with population of 2,500 to 10,000 persons. 3/ Excludes Puerto Rico and Virgin Islands. 4/ Excludes Guam.



Table 8 --Distribution of housing units, white and black heads of households, areas served by Farmers Home Administration, by States and Standard Federal Regions, 1970 1/

State and Standard Federal Region	Total		White		Black	
	Number	Percent	Number	Percent	Number	Percent
Maine.....	200,658	100.0	200,296	99.8	362	0.2
N.H.....	120,775	100.0	120,612	99.9	163	0.1
Vt.....	110,811	100.0	100,664	99.9	147	0.1
Mass.....	322,202	100.0	319,948	99.3	2,254	0.7
R.I.....	36,415	100.0	36,111	99.2	304	0.8
Conn.....	230,400	100.0	228,751	99.3	1,649	0.7
Region I.....	1,021,261	100.0	1,016,382	99.5	4,879	0.5
N.Y.....	949,572	100.0	938,955	98.9	10,617	1.1
N.J.....	290,994	100.0	278,075	95.6	12,919	4.4
Region II <u>2/</u> .....	1,240,566	100.0	1,217,030	98.1	23,536	1.9
Pa.....	1,270,865	100.0	1,260,873	99.2	9,992	0.8
Del.....	54,044	100.0	46,971	86.9	7,073	13.1
Md.....	302,422	100.0	271,930	89.9	30,492	10.1
D.C.....	---	---	---	---	---	---
Va.....	569,780	100.0	481,403	84.5	88,377	15.5
W.Va.....	363,223	100.0	353,162	97.2	10,061	2.8
Region III.....	2,560,334	100.0	2,414,339	94.3	145,995	5.7
N.C.....	936,228	100.0	782,548	83.6	153,680	16.4
S.C.....	465,763	100.0	339,977	73.0	125,786	27.0
Ga.....	651,274	100.0	528,650	81.2	122,624	18.8
Fla.....	640,736	100.0	568,962	88.8	71,774	11.2
Ky.....	539,238	100.0	520,910	96.6	18,328	3.4
Tenn.....	597,346	100.0	557,145	93.3	40,201	6.7
Ala.....	521,529	100.0	424,384	81.4	97,145	18.6
Miss.....	409,343	100.0	280,228	68.5	129,115	31.5
Region IV.....	4,761,457	100.0	4,002,804	84.1	758,653	15.9
Ohio.....	919,834	100.0	910,734	99.0	9,100	1.0
Ind.....	683,385	100.0	681,279	99.7	2,106	0.3
Ill.....	795,525	100.0	789,014	99.2	6,511	0.8
Mich.....	819,338	100.0	809,926	98.9	9,412	1.1
Wis.....	551,520	100.0	551,083	99.9	437	0.1
Minn.....	464,766	100.0	464,569	99.9	197	*
Region V.....	4,234,368	100.0	4,206,605	99.3	27,763	0.7
Ark.....	379,337	100.0	325,937	85.9	53,400	14.1
La.....	438,181	100.0	329,380	75.2	108,801	24.8
Okla.....	363,368	100.0	349,854	96.3	13,514	3.7
Tex.....	1,004,701	100.0	914,709	91.0	89,992	9.0

See footnotes at end of table.

--Continued

Table 8 --Distribution of housing units, white and black heads of households, areas served by Farmers Home Administration, by States and Standard Federal Regions, 1970 1/--Continued

State and Standard Federal Region	Total		White		Black	
	Number	Percent	Number	Percent	Number	Percent
N.Mex.....	102,953	100.0	102,058	99.1	895	0.9
Region VI.....	2,288,540	100.0	2,021,938	88.4	266,602	11.6
Iowa.....	507,847	100.0	507,464	99.9	383	0.1
Mo.....	587,096	100.0	576,671	98.2	10,425	1.8
Nebr.....	230,961	100.0	230,844	99.9	117	0.1
Kans.....	318,985	100.0	316,607	99.3	2,378	0.7
Region VII.....	1,644,889	100.0	1,631,586	99.2	13,303	0.8
N.Dak.....	111,383	100.0	111,298	99.9	65	*
S.Dak.....	129,589	100.0	129,370	99.8	219	0.2
Mont.....	128,825	100.0	128,733	99.9	92	0.1
Wyo.....	62,276	100.0	62,119	99.7	157	0.3
Colo.....	187,642	100.0	187,177	99.8	465	0.2
Utah.....	73,751	100.0	73,634	99.8	117	0.2
Region VIII.....	693,446	100.0	692,331	99.8	1,115	0.2
Ariz.....	125,896	100.0	123,586	98.2	2,310	1.8
Nev.....	37,545	100.0	37,214	99.1	331	0.9
Calif.....	798,932	100.0	787,686	98.6	11,246	1.4
Hawaii.....	18,607	100.0	18,346	98.6	261	1.4
Region IX <u>3/</u> .....	980,980	100.0	966,832	98.6	14,148	1.4
Wash.....	351,111	100.0	350,167	99.7	944	0.3
Oreg.....	275,248	100.0	274,869	99.9	379	0.1
Idaho.....	128,827	100.0	128,649	99.9	178	0.1
Alaska.....	44,374	100.0	43,431	97.9	943	2.1
Region X.....	799,560	100.0	797,116	99.7	2,444	0.3
United States.....	20,225,401	<u>4/</u> 100.0	18,966,963	93.8	1,258,438	6.2

1/ Source: 1970 Census of Housing, includes rural areas and 2,989 cities located outside urbanized areas with populations of 2,500 to 10,000 persons.

2/ Excludes Virgin Islands and Puerto Rico.

3/ Excludes Guam.

4/ Excludes 188,924 households of other races.

Table 9 --Distribution of housing units lacking plumbing, white and black households, areas served by Farmers Home Administration, by States and Standard Federal Regions, 1970 1/

State and Standard Federal Region	Total		White		Black	
	Number	Percent	Number	Percent	Number	Percent
Maine.....	30,648	100.0	30,621	99.9	27	0.1
N.H.....	8,450	100.0	8,438	99.9	12	0.1
Vt.....	7,108	100.0	7,099	99.9	9	0.1
Mass.....	10,326	100.0	10,205	98.8	121	1.2
R.I.....	1,811	100.0	1,776	98.1	35	1.9
Conn.....	5,828	100.0	5,761	98.8	67	1.2
Region I.....	64,171	100.0	63,900	99.6	271	0.4
N.Y.....	43,778	100.0	42,398	96.8	1,380	3.2
N.J.....	9,269	100.0	7,247	78.2	2,022	21.8
Region II <u>2/</u> .....	53,047	100.0	49,645	93.6	3,402	6.4
Pa.....	93,907	100.0	91,942	97.9	1,965	2.1
Del.....	6,138	100.0	2,799	45.6	3,339	54.4
Md.....	34,535	100.0	20,194	58.5	14,341	41.5
D.C.....	---	---	---	---	---	---
Va.....	146,598	100.0	91,950	62.7	54,648	37.3
W.Va.....	83,010	100.0	78,814	94.9	4,196	5.1
Region III.....	364,188	100.0	285,699	78.4	78,489	21.6
N.C.....	187,433	100.0	95,540	51.0	91,893	49.0
S.C.....	107,606	100.0	31,202	29.0	76,404	71.0
Ga.....	134,507	100.0	57,087	42.4	77,420	57.6
Fla.....	57,685	100.0	24,747	42.9	32,938	57.1
Ky.....	169,336	100.0	160,021	94.4	9,315	5.6
Tenn.....	140,442	100.0	117,482	83.7	22,960	16.3
Ala.....	133,991	100.0	66,117	49.4	67,874	50.6
Miss.....	124,924	100.0	35,912	28.7	89,012	71.3
Region IV.....	1,055,924	100.0	588,108	55.7	467,816	44.3
Ohio.....	89,583	100.0	87,428	97.6	2,155	2.4
Ind.....	57,469	100.0	57,000	99.2	469	0.8
Ill.....	60,725	100.0	58,497	96.3	2,228	3.7
Mich.....	48,546	100.0	47,279	97.4	1,267	2.6
Wis.....	47,001	100.0	46,958	99.9	43	0.1
Minn.....	51,220	100.0	51,189	99.9	31	0.1
Region V.....	354,544	100.0	348,351	98.3	6,193	1.7
Ark.....	86,661	100.0	52,513	60.6	34,148	39.4
La.....	83,458	100.0	25,518	30.6	57,940	69.4
Okla.....	35,316	100.0	29,635	83.9	5,681	16.1
Tex.....	139,526	100.0	91,313	65.4	48,213	34.6

See footnotes at end of table

--Continued

Table 9 --Distribution of housing units lacking plumbing, white and black households, areas served by Farmers Home Administration, by States and Standard Federal Regions, 1970 1/--Continued

State and Standard Federal Region	Total		White		Black	
	Number	Percent	Number	Percent	Number	Percent
N.Mex.....	14,099	100.0	13,974	99.1	125	0.9
Region VI.....	359,060	100.0	212,953	59.3	146,107	40.7
Iowa.....	36,542	100.0	36,493	99.9	49	0.1
Mo.....	85,633	100.0	80,494	94.0	5,139	6.0
Nebr.....	14,242	100.0	14,217	99.8	25	0.2
Kans.....	20,971	100.0	20,592	98.2	379	1.8
Region VII.....	157,388	100.0	151,796	96.4	5,592	3.6
N.Dak.....	14,345	100.0	14,333	99.9	12	0.1
S.Dak.....	15,569	100.0	15,557	99.9	12	0.1
Mont.....	9,136	100.0	9,119	99.8	17	0.2
Wyo.....	3,203	100.0	3,191	99.6	12	0.4
Colo.....	11,725	100.0	11,680	99.6	45	0.4
Utah.....	2,603	100.0	2,595	99.7	8	0.3
Region VIII.....	56,581	100.0	56,475	99.8	106	0.2
Ariz.....	6,380	100.0	5,843	91.6	537	8.4
Nev.....	1,681	100.0	1,657	98.6	24	1.4
Calif.....	18,470	100.0	17,496	94.7	974	5.3
Hawaii.....	2,542	100.0	2,539	99.9	3	0.1
Region IX <u>3/</u> .....	29,073	100.0	27,535	94.7	1,538	5.3
Wash.....	10,027	100.0	9,926	99.0	101	1.0
Oreg.....	9,519	100.0	9,472	99.5	47	0.5
Idaho.....	6,062	100.0	6,049	99.8	13	0.2
Alaska.....	4,351	100.0	4,315	99.2	36	0.8
Region X.....	29,959	100.0	29,762	99.3	197	0.7
United States.....	2,523,935	<u>4/</u> 100.0	1,814,224	71.9	709,711	28.1

1/ Source: 1970 Census of Housing, includes rural areas and 2,989 cities located outside urbanized areas with population of 2,500 to 10,000 persons.

2/ Excludes Puerto Rico and Virgin Islands.

3/ Excludes Guam.

4/ Excludes 52,000 households occupied by other races.

## Appendix

Several inductions had to be made in using data reported by Census (1970 General Social and Economic Characteristics, volumes by States) on housing conditions by poverty status to derive estimates for areas served by FHA programs in each State. Census data show the number of households living in poverty and lacking complete plumbing only for those on acreage less than 10. Housing condition by poverty status by race is not shown for places with population of 2,500 to 10,000. To derive estimates for housing condition and poverty status for places greater than 10 acres in rural areas and similar data for racial breaks in places of 2,500 to 10,000 population, these inductions were made.

Census reports show the number of families and unrelated individuals living in poverty on acreages greater than and less than 10 acres by States. Since households include family and primary households, data had to be derived for primary households for each State. In doing this, it was assumed that primary individuals had poverty level incomes about as frequently as did unrelated individuals. Analysis of data from Bureau of the Census Public Use Sample tapes validated this assumption at the national level. The State ratio reported by Census for unrelated individuals in poverty to total unrelated individuals in rural areas was multiplied by the total number of primary individuals to obtain an estimate of the total number of primary individuals in poverty. This number was added to the number of families in poverty in each State to get household numbers in poverty.

Census reports show the percentage of households, by States, in poverty residing on places less than 10 acres and living in housing lacking complete plumbing. It was assumed that the frequency of households living in poverty in rural areas on places of more and less than 10 acres and lacking complete plumbing was about the same. Analysis of 1970 Census data contained in the Public Use Sample tapes validated this assumption at the national level. Therefore, total households in poverty in rural areas were multiplied by the ratio reported by Census (the number of housing units lacking complete plumbing to those occupied by households in poverty residing on acreage less than 10) to obtain the total number of households living in poverty and residing in housing lacking plumbing.

Census reports show the number of families and unrelated individuals below the poverty level in places of 2,500 to 10,000 population, but they do not show these data by race for these city sizes by States. To derive racial estimates, rural nonfarm ratios for each race were used. Estimates were summed to see if they equalled the number reported for all races by Census. If the two sums did not total, the ratios for each racial group were adjusted in the same proportion until the totals were reached.

UNITED STATES DEPARTMENT OF AGRICULTURE  
WASHINGTON, D.C. 20250

OFFICIAL BUSINESS  
PENALTY FOR PRIVATE USE, \$300

POSTAGE AND FEES PAID  
U.S. DEPARTMENT OF  
AGRICULTURE  
AGR 101  
FIRST CLASS



**END**