



AgEcon SEARCH
RESEARCH IN AGRICULTURAL & APPLIED ECONOMICS

The World's Largest Open Access Agricultural & Applied Economics Digital Library

This document is discoverable and free to researchers across the globe due to the work of AgEcon Search.

Help ensure our sustainability.

Give to AgEcon Search

AgEcon Search
<http://ageconsearch.umn.edu>
aesearch@umn.edu

*Papers downloaded from **AgEcon Search** may be used for non-commercial purposes and personal study only. No other use, including posting to another Internet site, is permitted without permission from the copyright owner (not AgEcon Search), or as allowed under the provisions of Fair Use, U.S. Copyright Act, Title 17 U.S.C.*

SB 512 (1973)

CHICKENS AND EGGS

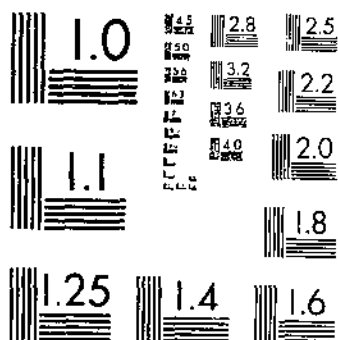
USDA STATISTICAL BULLETINS

REVISED ESTIMATES, 1965-69

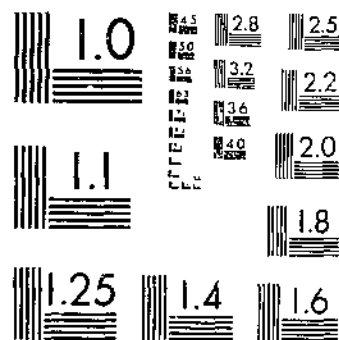
UPDATA

1 OF 1

START



MICROCOPY RESOLUTION TEST CHART
NATIONAL BUREAU OF STANDARDS 1963 A



MICROCOPY RESOLUTION TEST CHART
NATIONAL BUREAU OF STANDARDS 1963 A

Sci

R
630.5
u.53-19

#512

REFERENCE
DO NOT LOAN



chickens and eggs

REVISED ESTIMATES, 1965-69

Chickens and Eggs

- Production
- Disposition
- Cash Receipts
- Gross Income

Broilers

- Production
- Gross Income

STATISTICAL BULLETIN NO. 512
FEBRUARY 1973

Statistical Bulletin No. 512

February 1973

CROP REPORTING BOARD

STATISTICAL REPORTING SERVICE • U.S. DEPARTMENT OF AGRICULTURE • WASHINGTON, D.C.

C O N T E N T S

	<u>Page</u>
Comments	3
Chickens, eggs, and broilers: Number on hand, production, sales, home consumption, prices, values, and income, United States, 1965-69	5
Chickens: Number on farms, January 1, 1965-70	6
Chickens: Number lost and number raised by States, 1965-69 ..	7
Chickens: Number and pounds produced by States, 1965-69	8
Chickens: Number and pounds of home consumption, by States, 1965-69	9
Chickens: Number and pounds sold, by States, 1965-69	10
Chickens: Price per pound and value of production, by States, 1965-69	11
Chickens: Value of home consumption and cash receipts from sales, by States, 1965-69	12
Chickens: Gross income, by States, 1965-69	13
Eggs: Number produced and home consumption, by States, 1965-69	14
Eggs: Number sold and price per dozen, by States 1965-69	15
Eggs: Cash receipts and value of home consumption, by States, 1965-69	16
Eggs: Gross income, by States, 1965-69	17
Broilers: Number produced, by States, 1965-69	18
Broilers: Number of pounds produced, by States, 1965-69	19
Broilers: Price per pound and gross income, by States, 1965-69	20
Chickens and broilers combined: Total pounds sold, by States, 1965-69	21
Chickens and broilers combined: Price per pound and cash receipts, by States, 1965-69	22

CHICKENS AND EGGS

Revised Estimates, 1965-69

This publication presents a record of the revised estimates of the Crop Reporting Board of the Statistical Reporting Service relating to production, disposition and income from chickens, eggs and broilers, 1965-69. It continues and combines the official series on chickens and eggs previously shown in the following publication of USDA's Statistical Reporting Service:

Chickens and Eggs, Production, Disposition, Cash Receipts, and Gross Income, and Commercial Broilers, Production and Gross Income, by States, 1960-64; Statistical Bulletin No. 399, April 1967.

Estimates for the period were released currently in annual reports and other publications. Current estimates relate to annual estimates of chicken inventories, egg production, and broiler production. When revisions are made for the inventory numbers, corresponding adjustments are usually necessary in other items, since production estimates take into account the difference in inventory numbers and weights at the beginning and end of the year as well as pounds sold during the year. The revisions in this publication resulted from review and analysis of the 1969 Census of Agriculture covering chicken numbers and other data relating to the production and disposition of chickens and eggs.

The various items included in this report are defined as follows:

On hand January 1. Inventory numbers on hand at the beginning and end of the year are the official estimates of the Crop Reporting Board published in Statistical Bulletin No. 501 released November 29, 1972.

Death loss of layers. Annual death loss of chickens relates to those on hand at the beginning of the year. Losses are estimated from monthly returns from producers showing the number of layers per flock which died during the preceding month. Annual death loss is computed from these monthly returns.

Chickens raised. The estimates of numbers of chickens raised are based primarily on the number of egg-type chicks produced by commercial hatcheries and the proportions of these bought (excluding cockerels destroyed) for poultry production, and on assessors' enumerations where available.

Chickens produced. The estimate of the number produced is the net annual farm production of chickens, equivalent to the number raised during the year less death loss of chickens that were on hand at the beginning of the year. Young chickens of the current year's hatchings that die are not included in the number of chickens raised. The number produced also equals the number sold, plus pounds consumed on producing farms, plus or minus the change in inventory live weight during the year.

Eggs produced. Annual egg production is the sum of production in 12 months.

Home consumption of chickens and eggs. Annual home consumption of chickens and eggs is estimated from quarterly returns from crop reporters showing household consumption on farms where produced.

Sales of chickens and eggs. Sales of chickens and eggs are computed by subtracting farm utilization from estimated production. These estimates of chickens sold are checked insofar as possible against the available data on commercial slaughter of mature chickens.

Broilers. Broilers include all young chickens of the heavy or cross breeds raised for meat, from which pullets as well as cockerels are sold as broilers. Broiler production is not included in the estimated production of farm chickens.

Prices. Average annual prices per pound of chickens and broilers and per dozen of eggs sold are computed from monthly prices received by farmers weighted by the estimated quantities sold each month. Prices of eggs are for all egg sales from farms, including hatching eggs and eggs sold at retail by farmers.

Income. Cash receipts from marketings of farm chickens are computed by multiplying pounds of chickens sold by the average price per pound. Cash receipts from marketings of eggs are derived by multiplying dozens of eggs sold by the annual average price per dozen. Gross income from farm chickens is the total of cash receipts plus the value of chickens consumed in farm households. Gross income from eggs is the total of cash receipts plus the value of eggs consumed in farm households.

Gross income from broilers is derived by multiplying pounds produced by price per pound. It includes consumption in households of broiler producers, which is less than 1 percent of total production for the United States.

Table 1. Chickens, eggs, and broilers: Numbers on hand, production, sales, home consumption, prices, values and income, United States, 1964-69

Year	Chickens 1/									
	On hand			Production 3/		Sales 4/		Home consumption 5/		
	Jan. 1	Lost 2/	Raised	Number	Pounds	Number	Pounds	Number	Pounds	
	1,000 head			1,000 pounds		1,000 head	1,000 pounds	1,000 head	1,000 pounds	
1965	394,118	61,058	301,059	240,001	1,116,528	201,508	969,288	40,360	151,147	
1966	392,251	56,701	335,582	278,881	1,261,578	212,170	1,031,688	33,391	123,374	
1967	425,571	57,265	320,679	263,414	1,258,481	239,337	1,156,613	29,148	108,468	
1968	420,500	54,313	298,090	243,777	1,108,815	225,386	1,090,428	25,604	95,957	
1969	413,287	57,140	309,314	252,174	1,144,029	218,928	1,062,969	22,238	83,897	

	Chickens					Eggs				
	Price per pound	Value of -- Production	Home consumption	Cash receipts	Gross income	Production	Home consumption 5/	Sales	Price per dozen	Cash receipts
	Cents	1,000 dollars			Millions			Cents	1,000 dollars	
1965	8.9	100,749	13,202	86,329	99,531	65,560	2,056	63,504	33.7	1,784,898
1966	9.7	122,576	11,400	99,958	111,360	66,205	1,612	64,593	39.1	2,105,841
1967	7.9	99,393	8,379	91,206	99,585	69,327	1,558	67,769	31.3	1,764,933
1968	8.2	91,838	7,645	89,580	97,225	68,156	1,393	66,763	34.0	1,892,800
1969	9.7	110,827	7,556	103,566	111,122	67,546	1,172	66,374	40.0	2,212,189

	Eggs		Broilers			Chickens and broilers			
	Value of home consumption	Gross income	Production Number	Production Pounds	Price per pound	Gross income	Pounds sold	Price per pound	Cash receipts
	1,000 dollars		1,000 head	1,000 pounds		Cents	1,000 dollars	1,000 pounds	Cents
1965	55,752	1,840,650	2,333,633	8,111,426	15.0	1,217,383	9,080,714	14.4	1,303,712
1966	50,686	2,156,527	2,570,516	8,988,508	15.3	1,371,006	10,020,196	14.7	1,470,964
1967	38,878	1,803,811	2,591,850	9,183,426	13.3	1,222,641	10,340,039	12.7	1,313,847
1968	38,016	1,930,816	2,619,855	9,326,341	14.2	1,325,665	10,416,769	13.6	1,415,245
1969	38,178	2,250,367	2,788,732	10,047,769	15.2	1,531,404	11,110,738	14.7	1,634,970

1/ Total of sales, home consumption, losses and on hand end of year equals the number raised and on hand beginning of year.
 2/ Loss during year relates to chickens on hand January 1, does not include young chickens lost.
 3/ Production is the quantity available for utilization during the year, i.e., sales plus home consumption plus or minus the change in inventory.
 4/ Sold for slaughter.
 5/ Consumed in the household on farms where produced.

Table 2. Chickens: Number on farms, January 1, 1965-70

State	Number of chickens January 1					
	1965	1966	1967	1968	1969	1970
	1,000 head					
Maine	5,653	5,959	6,293	6,497	6,780	7,805
N. H.	2,205	2,249	2,340	2,176	1,993	1,819
Vt.	744	706	679	569	564	484
Mass.	3,198	3,107	3,222	2,964	3,023	3,077
R. I.	481	471	479	450	468	474
Conn.	4,853	4,897	4,945	4,844	4,787	4,895
N. Y.	13,067	13,263	14,219	14,032	13,747	13,765
N. J.	8,139	7,297	7,155	6,032	5,372	4,885
Pa.	19,576	18,857	19,299	17,748	17,578	17,540
Ohio	14,233	13,288	13,740	13,525	12,113	12,918
Ind.	15,123	14,613	16,170	17,283	17,019	17,356
Ill.	10,338	10,142	10,864	10,581	10,348	10,060
Mich.	8,554	8,284	9,006	8,443	8,043	8,088
Wis.	8,336	7,639	7,889	7,450	6,626	6,234
Minn.	14,334	12,883	13,254	12,766	11,745	12,336
Iowa	19,959	18,043	17,160	14,774	12,886	13,682
Mo.	7,728	7,526	8,132	8,133	7,982	8,216
N. Dak.	1,914	1,646	1,597	1,373	1,126	1,025
S. Dak.	7,597	7,266	7,497	6,684	5,240	4,998
Nebr.	7,532	6,719	6,819	6,259	5,343	5,000
Kans.	5,404	5,247	5,393	5,173	4,880	4,500
Del.	837	796	849	860	834	842
Md.	2,161	1,952	1,913	2,009	1,989	2,133
Va.	6,676	6,628	6,421	6,210	5,648	5,159
W. Va.	1,869	1,834	1,863	1,718	1,565	1,428
N. C.	17,450	17,604	19,396	19,073	19,685	22,123
S. C.	5,864	6,146	7,287	6,869	7,146	8,259
Ga.	26,833	28,533	34,335	34,215	36,969	39,483
Fla.	10,772	11,240	13,582	14,430	17,333	17,312
Ky.	4,109	3,943	3,984	3,984	3,687	3,650
Tenn.	6,078	6,077	6,403	6,329	6,292	6,483
Ala.	15,140	15,729	17,405	18,449	19,355	20,620
Miss.	13,176	14,424	16,232	15,905	15,630	15,772
Ark.	15,165	17,564	22,426	24,004	23,871	25,267
La.	4,421	4,752	5,352	5,100	5,340	5,238
Okla.	3,300	3,090	3,112	2,983	2,954	3,119
Texas	17,195	17,767	20,415	19,298	17,445	17,096
Mont.	1,042	1,034	1,126	1,117	1,157	1,117
Idaho	1,183	1,158	1,185	1,151	1,053	1,106
Wyo.	269	249	224	207	181	165
Colo.	1,377	1,417	1,491	1,672	1,709	1,676
N. Mex.	810	858	899	934	963	1,262
Ariz.	1,301	1,372	1,529	1,540	1,450	1,445
Utah	1,384	1,484	1,723	1,670	1,686	1,739
Nev.	58	55	51	42	34	26
Wash.	6,565	6,320	6,735	6,949	6,394	6,402
Oreg.	3,077	3,009	3,128	3,032	3,069	2,975
Calif.	45,740	45,890	49,041	51,680	50,879	51,921
Alaska	39	47	51	37	30	30
Hawaii	1,263	1,177	1,261	1,277	1,276	1,290
U. S.	394,118	392,251	425,571	420,500	413,287	424,295

Table 3. Chickens: Number lost and number raised, by States, 1965-69

State	Number lost 1/					Number raised				
	1965	1966	1967	1968	1969	1965	1966	1967	1968	1969
	1,000 head									
Maine	735	712	687	595	954	5,290	5,607	5,802	5,644	5,824
N. H.	353	360	335	202	208	2,016	2,117	2,011	1,810	1,296
Vt.	104	82	78	67	63	571	571	497	447	438
Mass.	384	404	387	360	425	2,553	2,706	2,490	2,316	2,085
R. I.	67	61	58	50	45	393	393	373	336	357
Conn.	679	635	591	600	570	3,800	3,654	3,712	3,572	3,560
N. Y.	1,568	1,459	1,942	1,850	1,800	8,978	10,325	9,719	9,233	9,773
N. J.	977	1,095	944	862	846	4,211	5,053	3,880	2,899	2,464
Pa.	3,132	2,640	2,411	2,362	2,509	13,719	14,679	13,505	12,454	12,828
Ohio	2,277	2,126	2,201	1,720	1,486	9,959	10,544	9,680	8,131	8,538
Ind.	2,420	2,192	2,296	1,909	1,995	11,696	13,216	13,480	13,076	13,207
Ill.	1,447	1,420	1,464	1,375	1,445	8,022	8,423	8,423	8,086	8,490
Mich.	1,454	1,240	1,279	1,100	1,050	5,639	6,147	5,532	5,440	5,430
Wis.	1,334	1,059	936	700	694	5,125	5,484	4,716	4,340	4,600
Minn.	1,720	1,804	1,616	1,556	1,596	10,318	12,175	10,970	8,995	9,715
Iowa	2,994	2,319	2,024	1,700	1,520	15,760	14,499	11,744	8,456	9,555
Mo.	1,236	1,129	979	867	1,024	7,239	8,470	8,639	7,861	8,218
N. Dak.	383	276	223	227	207	1,588	1,667	1,506	1,265	1,110
S. Dak.	1,216	1,017	864	718	637	5,686	6,255	5,379	4,142	4,100
Nebr.	1,205	941	866	775	736	5,998	6,778	5,645	4,290	3,947
Kans.	850	691	605	579	527	4,859	5,005	4,555	4,145	3,855
Del.	97	89	81	82	84	673	747	665	632	650
Md.	308	280	224	242	239	1,587	1,650	1,617	1,698	1,805
Va.	935	1,024	900	873	810	5,716	6,059	5,877	4,937	4,295
W. Va.	336	293	278	248	223	1,258	1,321	1,295	1,204	1,132
N. C.	2,618	2,465	2,531	2,357	2,475	13,838	14,668	14,375	14,806	15,398
S. C.	938	983	978	845	836	5,179	6,577	5,262	5,052	6,012
Ga.	4,196	4,053	4,852	5,084	5,642	22,300	26,760	26,203	24,408	28,951
Fla.	1,293	1,574	1,608	1,542	2,289	8,332	9,832	11,310	11,310	11,762
Ky.	720	676	636	655	620	3,035	3,035	3,058	2,997	3,057
Tenn.	972	972	1,100	1,112	1,139	3,866	4,253	4,423	4,556	4,647
Ala.	2,877	2,674	2,637	2,785	3,021	12,900	14,577	14,285	15,142	16,442
Miss.	2,372	2,308	2,154	2,175	2,262	11,291	13,549	13,549	13,685	13,806
Ark.	2,730	2,631	2,894	2,839	3,027	13,322	18,987	20,023	19,355	20,866
La.	884	855	770	720	820	3,884	3,977	3,540	3,660	3,640
Okla.	594	494	477	411	383	2,539	2,684	2,441	2,391	2,629
Texas	2,751	2,487	2,672	2,705	2,585	14,146	17,258	15,359	13,055	12,794
Mont.	229	198	188	192	178	984	1,060	1,134	1,110	1,010
Idaho	201	174	167	150	102	1,050	1,071	900	810	744
Wyo.	38	37	32	27	22	191	185	179	145	138
Colo.	262	241	281	271	216	1,052	1,136	1,500	1,404	1,572
N. Mex.	130	146	147	145	163	662	722	787	771	964
Ariz.	221	206	207	209	181	913	910	958	805	845
Utah	230	247	242	224	185	910	1,029	936	936	889
Nev.	17	10	9	8	7	48	47	36	33	21
Wash.	1,116	948	904	798	767	4,433	4,610	4,794	4,075	4,156
Oreg.	431	391	356	277	350	2,164	2,229	2,211	2,083	2,143
Calif.	6,861	6,425	6,967	6,951	7,971	30,570	32,099	31,168	29,274	28,838
Alaska	12	6	7	10	8	47	34	31	29	26
Hawaii	159	152	180	202	198	749	748	705	789	692
U. S.	61,058	56,701	57,265	54,313	57,140	301,059	335,582	320,679	298,090	309,314

1/ Number lost relates to those on hand January 1, does not include young chickens lost during year.

Table 4. Chickens: Number and pounds produced, by States, 1965-69 1/

State	Number produced					Pounds produced				
	1965	1966	1967	1968	1969	1965	1966	1967	1968	1969
	1,000 head					1,000 pounds				
Maine	4,555	4,895	5,115	5,049	4,870	24,771	27,327	29,104	28,911	28,294
N. H.	1,663	1,757	1,676	1,608	1,088	3,988	9,528	9,226	9,525	6,681
Vt.	467	489	419	380	375	2,427	2,708	2,462	2,067	2,166
Mass.	2,169	2,302	2,103	1,956	1,660	12,114	13,181	11,608	11,027	9,797
R. I.	326	332	315	286	312	1,861	1,920	1,629	1,626	1,854
Conn.	3,121	3,019	3,121	2,972	2,990	17,748	17,396	18,401	16,800	17,826
N. Y.	7,410	8,866	7,777	7,383	7,973	34,807	39,208	34,956	31,906	33,258
N. J.	3,234	3,958	2,936	2,037	1,618	14,675	15,616	13,037	9,032	6,876
Pa.	10,587	12,039	11,094	10,092	10,319	52,386	61,959	64,973	52,669	59,088
Ohio	7,682	8,418	7,479	6,411	7,052	35,507	35,228	37,853	24,699	27,258
Ind.	9,276	11,024	11,184	11,167	11,212	40,967	46,211	43,536	41,966	44,705
Ill.	6,575	7,003	6,959	6,711	7,045	24,542	26,543	27,627	25,887	28,480
Mich.	4,185	4,907	4,253	4,340	4,380	19,074	20,628	20,077	17,552	20,010
Wis.	3,791	4,425	3,780	3,640	3,906	18,254	20,821	18,015	15,796	18,658
Minn.	8,598	10,371	9,354	7,439	8,119	33,400	40,816	39,423	30,302	32,895
Iowa	12,766	12,180	9,720	6,756	8,035	54,158	50,722	40,424	28,049	30,739
Mo.	6,003	7,341	7,660	6,994	7,194	27,889	32,884	36,707	31,874	33,415
N. Dak.	1,205	1,391	1,283	1,038	903	4,811	5,559	5,198	4,178	3,638
S. Dak.	4,470	5,238	4,515	3,424	3,463	19,691	21,759	18,867	13,830	14,261
Nebr.	4,793	5,837	4,779	3,515	3,211	20,855	24,180	19,416	13,305	12,612
Kans.	4,009	4,314	3,950	3,566	3,328	16,029	18,006	16,627	15,158	16,625
Del.	576	658	584	550	566	3,014	3,727	3,202	3,103	3,354
Md.	1,279	1,370	1,393	1,456	1,566	6,665	6,857	6,912	6,865	7,270
Va.	4,781	5,035	4,977	4,064	3,485	24,447	27,644	27,941	24,523	21,208
W. Va.	922	1,028	1,017	956	909	4,342	4,715	4,731	4,511	4,548
N. C.	11,220	11,203	11,844	12,449	12,923	59,686	62,699	62,611	68,630	52,533
S. C.	4,241	5,594	4,284	4,207	5,176	21,760	27,368	21,576	20,201	24,062
Ga.	18,104	22,707	21,351	19,324	23,309	88,900	104,848	105,677	88,109	105,106
Fla.	7,039	8,258	9,702	9,768	9,473	34,221	35,597	39,245	39,977	41,843
Ky.	2,315	2,359	2,422	2,342	2,437	10,413	9,312	11,465	9,378	10,120
Tenn.	2,894	3,281	3,323	3,444	3,508	11,860	14,509	15,333	15,543	16,563
Ala.	10,023	11,903	11,648	12,357	13,421	52,648	57,081	71,349	58,558	64,723
Miss.	8,919	11,241	11,395	11,510	11,544	43,310	53,949	62,011	56,318	51,414
Ark.	10,592	16,356	17,129	16,516	17,839	50,436	82,383	85,901	78,716	92,508
La.	3,000	3,122	2,770	2,940	2,820	13,317	13,655	13,204	13,278	13,550
Okla.	1,945	2,190	1,964	1,980	2,246	8,938	10,093	9,025	9,267	10,728
Texas	11,395	14,771	12,687	10,350	10,209	51,451	62,666	55,256	47,209	48,148
Mont.	755	862	946	918	832	3,069	3,214	4,056	3,621	3,385
Idaho	849	897	733	660	642	3,583	3,583	2,999	2,481	2,438
Wyo.	153	148	147	118	116	700	584	585	460	503
Colo.	790	895	1,019	1,133	1,356	3,368	3,698	4,634	4,633	5,871
N. Mex.	532	576	640	626	801	2,150	2,056	2,829	2,537	3,151
Ariz.	692	704	751	596	664	2,852	2,764	3,773	2,551	2,603
Utah	680	782	694	712	704	2,831	3,129	3,017	2,734	2,795
Nev.	36	37	27	25	14	138	145	121	96	58
Wash.	3,317	3,662	3,890	3,277	3,389	15,493	14,573	17,881	14,709	15,312
Oreg.	1,733	1,838	1,855	1,806	1,793	7,856	7,536	8,432	7,851	8,325
Calif.	23,709	25,674	24,201	22,323	20,867	101,653	108,725	103,692	94,587	81,072
Alaska	35	28	24	19	18	178	120	126	103	90
Hawaii	590	596	525	587	494	2,294	2,148	1,731	2,107	1,612
U. S.	240,001	278,881	263,414	243,777	252,174	1,116,528	1,261,578	1,258,481	1,108,815	1,144,029

1/ Production is the quantity available for utilization during the year, i.e., sales plus home consumption, plus or minus change in inventory.

Table 5. Chickens: Number and pounds of home consumption, by States, 1965-69

State	Number consumed					Pounds consumed				
	1965	1966	1967	1968	1969	1965	1966	1967	1968	1969
	1,000 head					1,000 pounds				
Maine	85	62	53	35	26	450	316	276	178	133
N. H.	35	27	22	15	11	192	154	119	79	58
Vt.	67	48	35	23	18	315	240	175	113	88
Mass.	58	42	34	22	23	284	214	163	103	108
R. I.	8	6	5	3	3	45	32	28	16	16
Conn.	42	33	26	19	15	210	172	143	101	79
N. Y.	390	367	330	328	255	1,872	1,725	1,650	1,574	1,275
N. J.	98	85	72	58	32	461	408	346	284	160
Pa.	752	615	554	499	450	3,610	2,952	2,659	2,395	2,295
Ohio	1,066	917	917	770	693	4,690	4,035	4,127	3,311	2,980
Ind.	935	701	701	604	503	4,114	2,874	2,804	2,416	2,264
Ill.	1,441	1,020	918	826	661	6,052	4,080	3,764	3,387	2,578
Mich.	664	511	485	450	405	3,121	2,402	2,280	2,160	1,823
Wis.	1,138	819	901	901	865	5,007	3,604	4,145	4,145	4,065
Minn.	1,526	1,282	1,154	926	814	6,409	5,256	4,847	3,982	3,582
Iowa	2,200	1,892	1,589	1,255	1,004	9,020	7,757	6,515	5,145	4,217
Mo.	2,105	1,768	1,414	1,131	1,100	7,157	5,834	4,808	3,845	3,740
N. Dak.	678	597	537	483	425	2,712	2,328	2,202	1,932	1,615
S. Dak.	874	848	721	642	623	3,409	3,222	2,740	2,568	2,367
Nebr.	1,438	1,251	1,063	1,010	859	5,177	4,629	3,827	3,737	3,264
Kans.	1,410	1,198	958	800	672	4,935	4,193	3,353	2,880	2,285
Del.	45	43	38	34	27	180	172	148	136	113
Md.	251	196	157	126	88	979	784	644	529	378
Va.	1,185	948	853	725	653	4,266	3,413	3,327	2,827	2,547
W. Va.	411	358	286	266	240	1,644	1,432	1,144	1,037	960
N. C.	2,415	1,811	1,630	1,597	1,278	8,694	6,520	6,031	6,228	4,729
S. C.	1,194	884	751	600	480	4,060	3,006	2,628	2,040	1,584
Ga.	1,497	1,411	1,285	964	772	4,790	4,515	4,112	3,374	2,856
Fla.	273	235	200	150	140	901	752	640	510	448
Ky.	1,600	1,500	1,300	1,100	897	5,920	5,400	4,420	3,520	2,870
Tenn.	1,960	1,607	1,382	1,230	1,007	7,448	6,107	5,113	4,551	3,625
Ala.	1,577	1,232	907	843	728	5,046	4,066	2,902	2,698	2,548
Miss.	2,089	1,985	1,687	1,575	1,457	6,685	5,955	5,230	4,882	4,662
Ark.	1,434	1,168	962	848	802	5,019	3,854	3,271	2,714	2,807
La.	1,309	1,152	979	900	820	4,451	4,032	3,329	3,150	2,952
Okla.	1,172	914	743	661	613	4,336	3,199	2,452	2,181	2,023
Texas	2,610	2,062	1,856	1,652	1,437	8,613	6,805	5,754	5,286	4,598
Mont.	354	300	300	270	251	1,345	1,140	1,140	1,026	954
Idaho	243	182	164	142	129	923	692	607	525	503
Wyo.	110	100	90	74	53	462	390	351	281	212
Colo.	339	244	232	230	193	1,187	978	858	874	695
N. Mex.	108	85	81	73	66	335	272	267	248	231
Ariz.	30	28	22	15	13	108	104	84	56	46
Utah	80	70	60	50	40	304	259	228	195	156
Nev.	20	15	12	11	9	72	54	42	36	36
Wash.	315	224	202	207	176	1,228	918	788	828	739
Oreg.	258	193	174	158	129	1,032	811	766	664	503
Calif.	442	327	278	275	260	1,768	1,308	1,112	1,100	1,040
Alaska	3	3	3	3	3	15	14	14	15	14
Hawaii	26	25	25	25	20	94	95	95	95	76
U. S.	40,360	33,391	29,148	25,604	22,238	151,147	123,374	108,468	95,957	83,897

Table 6. Chickens: Number and pounds sold, by States, 1965-69 1/

State	Number sold					Pounds sold				
	1965	1966	1967	1968	1969	1965	1966	1967	1968	1969
	1,000 head					1,000 pounds				
Maine	4,164	4,499	4,858	4,731	3,819	22,902	26,094	28,176	27,913	23,678
N. H.	1,584	1,639	1,818	1,776	1,251	8,554	9,342	10,544	10,478	7,756
Vt.	438	468	494	362	437	2,321	2,621	2,816	2,100	2,535
Mass.	2,202	2,145	2,327	1,875	1,583	12,331	12,656	13,497	11,062	9,498
R. I.	328	318	339	265	303	1,870	1,844	1,932	1,563	1,818
Conn.	3,035	2,938	3,196	3,010	2,867	17,300	17,040	18,537	17,759	17,489
N. Y.	6,824	7,543	7,634	7,340	7,700	32,073	34,698	34,353	32,296	32,340
N. J.	3,978	4,015	3,987	2,639	2,073	17,105	17,264	17,144	11,612	8,914
Pa.	10,554	10,982	12,091	9,763	9,907	53,825	57,106	62,873	51,744	58,451
Ohio	7,561	7,049	6,777	7,053	5,554	33,268	31,016	29,141	29,623	23,327
Ind.	8,851	8,766	9,370	10,827	10,372	38,944	38,570	37,480	43,308	41,488
Ill.	5,330	5,261	6,324	6,118	6,672	21,320	21,044	25,928	24,472	26,688
Mich.	3,791	3,674	4,331	4,290	3,930	17,060	16,166	19,056	18,018	18,078
Wis.	3,350	3,356	3,318	3,563	3,433	15,410	15,773	15,595	16,746	16,822
Minn.	8,523	8,718	8,688	7,534	6,714	35,797	36,616	36,490	30,889	27,527
Iowa	12,482	11,171	10,517	7,389	6,235	53,673	46,918	44,171	31,773	25,563
Mo.	4,096	4,967	6,245	6,014	5,860	20,890	25,828	31,850	31,273	30,472
N. Dak.	795	843	970	802	579	3,498	3,625	4,074	3,288	2,432
S. Dak.	3,927	4,159	4,607	4,226	3,082	17,672	17,884	19,349	17,749	12,636
Nebr.	4,168	4,486	4,276	3,421	2,695	18,339	19,290	17,959	13,684	11,049
Kans.	2,756	2,970	3,212	3,059	3,036	11,851	13,365	14,775	14,377	15,787
Del.	572	562	535	542	531	3,146	3,260	3,210	3,306	3,186
Md.	1,237	1,213	1,140	1,350	1,334	6,556	6,186	5,700	6,615	6,403
Va.	3,644	4,294	4,335	3,901	3,321	20,406	25,764	26,010	24,576	20,590
W. Va.	546	641	876	843	806	2,675	3,333	4,555	4,468	4,191
N. C.	8,651	8,600	10,537	10,240	9,207	48,446	50,740	61,115	60,416	57,083
S. C.	2,765	3,569	3,951	3,330	3,583	15,760	20,343	21,335	17,982	18,990
Ga.	14,907	15,494	20,186	15,606	20,023	76,026	80,569	100,930	78,030	96,110
Fla.	6,298	5,681	8,654	6,715	9,354	30,230	26,133	38,943	30,218	41,158
Ky.	881	818	1,122	1,539	1,577	5,022	4,581	6,059	8,311	8,674
Tenn.	935	1,348	2,015	2,251	2,310	5,423	7,684	11,083	12,155	12,243
Ala.	7,857	8,995	9,697	10,608	11,428	43,999	49,473	53,334	58,344	61,711
Miss.	5,582	7,448	10,035	10,210	9,945	31,259	40,219	53,186	53,092	48,731
Ark.	6,759	10,326	14,589	15,801	15,641	36,499	54,728	78,781	85,325	84,461
La.	1,360	1,370	2,043	1,800	2,102	7,344	7,398	10,828	9,540	11,561
Okla.	983	1,254	1,350	1,348	1,468	5,505	6,897	7,290	7,414	8,514
Texas	8,213	10,061	11,948	10,551	9,121	38,601	48,293	57,350	50,645	45,605
Mont.	409	470	655	608	621	1,759	2,021	2,751	2,554	2,670
Idaho	631	688	603	616	460	2,650	2,890	2,533	2,587	1,794
Wyo.	63	73	74	70	79	302	328	326	308	356
Colo.	411	577	600	866	1,196	2,014	2,654	2,727	3,897	5,382
N. Mex.	376	450	524	524	436	1,542	1,800	2,253	2,201	1,788
Ariz.	591	519	718	671	656	2,482	2,232	3,015	2,818	2,755
Utah	500	473	687	646	611	2,100	2,034	2,954	2,713	2,505
Nev.	19	26	24	22	13	78	112	103	95	55
Wash.	3,247	3,023	3,474	3,625	3,205	14,612	13,301	15,286	15,950	14,423
Oreg.	1,543	1,526	1,777	1,611	1,758	6,789	6,562	7,819	7,088	7,735
Calif.	23,117	22,196	21,284	22,849	19,565	99,403	95,443	89,393	95,966	78,260
Alaska	24	21	35	23	15	122	99	164	117	77
Hawaii	650	487	484	563	460	2,535	1,851	1,839	1,970	1,610
U. S.	201,508		239,337		218,928		1,031,688		1,090,428	
		212,170		225,386		969,288		1,156,613		1,062,969

1/ Sold for slaughter.

Table 7. Chickens: Price per pound and value of production, by States, 1965-69

State	Average annual price per pound					Value of production				
	1965	1966	1967	1968	1969	1965	1966	1967	1968	1969
	Cents					1,000 dollars				
Maine	10.5	11.1	8.8	9.1	11.0	2,601	3,033	2,561	2,631	3,112
N. H.	10.5	10.5	8.6	8.8	10.1	944	1,000	793	838	675
Vt.	11.0	10.9	9.0	8.9	10.0	268	295	222	184	217
Mass.	10.7	11.0	8.8	8.8	10.0	1,296	1,450	1,022	970	980
R. I.	10.8	11.0	8.8	8.8	10.0	201	211	143	143	185
Conn.	10.7	10.8	8.8	8.7	10.0	1,899	1,879	1,619	1,462	1,783
N. Y.	9.4	11.7	8.1	8.6	11.2	3,272	4,587	2,831	2,744	3,725
N. J.	7.5	9.3	6.1	7.4	10.8	1,101	1,452	795	668	743
Pa.	12.1	13.0	10.8	10.4	12.6	6,339	8,055	7,017	5,478	7,445
Ohio	8.9	9.7	7.2	8.6	10.6	3,160	3,417	2,725	2,124	2,889
Ind.	9.4	9.9	6.1	6.5	9.7	3,851	4,575	2,656	2,728	4,336
Ill.	6.6	7.8	6.3	6.2	6.7	1,620	2,070	1,741	1,605	1,908
Mich.	9.4	10.1	8.6	8.2	8.4	1,793	2,083	1,727	1,439	1,681
Wis.	7.8	8.4	6.8	6.5	6.8	1,424	1,749	1,225	1,027	1,269
Minn.	5.6	6.7	5.0	4.8	5.9	2,094	2,735	1,971	1,454	1,941
Iowa	5.5	5.6	4.3	4.9	6.6	2,979	2,840	1,738	1,374	2,029
Mo.	7.6	8.0	7.1	6.2	7.0	2,120	2,631	2,606	1,976	2,339
N. Dak.	4.9	5.0	4.2	4.2	4.6	236	278	218	175	167
S. Dak.	5.2	5.8	4.6	4.2	4.7	1,024	1,262	868	581	670
Nebr.	5.2	5.5	4.4	3.9	5.4	1,084	1,330	854	519	681
Kans.	5.7	5.8	5.2	4.8	5.0	914	1,044	865	728	831
Del.	11.0	12.8	10.4	11.6	13.4	331	477	333	360	449
Md.	10.2	11.6	8.3	9.2	11.5	680	795	574	632	836
Va.	11.0	11.5	10.3	10.7	13.0	2,689	3,179	2,878	2,624	2,757
W. Va.	11.7	12.1	10.9	11.0	11.9	508	571	516	496	541
N. C.	12.0	13.0	10.8	11.5	13.0	7,162	8,151	6,762	7,892	6,829
S. C.	11.6	11.9	10.1	10.5	11.2	2,524	3,257	2,179	2,121	2,695
Ga.	11.1	11.1	8.6	9.6	11.7	9,868	11,638	9,088	8,458	12,297
Fla.	9.1	9.5	7.2	6.9	8.4	3,114	3,382	2,826	2,758	3,515
Ky.	10.0	10.6	10.1	10.6	10.2	1,041	987	1,158	994	1,032
Tenn.	9.7	10.5	9.8	9.8	10.1	1,150	1,523	1,503	1,523	1,673
Ala.	12.0	10.1	9.0	9.5	10.5	6,318	5,765	6,421	5,563	6,796
Miss.	9.0	10.4	9.0	10.5	10.3	3,898	5,611	5,581	5,913	5,296
Ark.	11.1	11.3	9.7	10.0	10.2	5,598	9,309	8,332	7,872	9,436
La.	11.7	10.9	7.6	8.1	11.2	1,558	1,488	1,004	1,076	1,518
Okla.	8.2	8.3	8.2	8.0	8.2	733	838	740	741	880
Texas	8.0	8.8	8.0	8.1	8.7	4,116	5,515	4,420	3,824	4,189
Mont.	10.8	11.0	10.6	10.5	10.5	331	354	430	380	355
Idaho	6.7	6.5	6.2	6.5	6.7	240	233	186	161	163
Wyo.	10.3	11.0	10.1	10.6	11.8	72	64	59	49	59
Colo.	11.3	11.7	11.3	10.5	9.3	381	433	524	486	546
N. Mex.	9.2	8.5	8.2	9.8	10.0	198	175	232	249	315
Ariz.	4.8	5.5	4.6	4.1	5.5	137	152	174	105	143
Utah	5.0	5.7	5.0	4.3	5.9	142	178	151	118	165
Nev.	5.0	5.9	5.7	5.5	6.5	7	9	7	5	4
Wash.	6.6	8.1	6.4	5.0	5.6	1,023	1,180	1,144	735	857
Oreg.	5.4	7.8	5.0	5.0	5.5	424	588	422	393	458
Calif.	5.8	7.7	5.1	5.5	8.9	5,896	8,372	5,288	5,202	7,215
Alaska	16.0	16.0	16.0	16.0	16.5	28	19	20	16	15
Hawaii	15.8	16.6	14.1	11.6	11.6	362	357	244	244	187
U. S.	8.9	9.7	7.9	8.2	9.7	100,749	122,576	99,393	91,838	110,827

Table 8. Chickens: Value of home consumption and cash receipts from sales, by States, 1965-69 1/

State	Value of home consumption 2/					Cash receipts from sales				
	1965	1966	1967	1968	1969	1965	1966	1967	1968	1969
	1,000 dollars									
Maine	47	35	24	16	15	2,405	2,896	2,480	2,540	2,605
N. H.	20	16	10	7	6	898	981	907	922	783
Vt.	35	26	16	10	9	255	286	253	187	253
Mass.	30	24	14	9	11	1,319	1,392	1,188	973	950
R. I.	5	4	2	1	2	202	203	170	138	182
Conn.	22	19	13	9	8	1,851	1,840	1,631	1,545	1,749
N. Y.	176	202	134	135	143	3,015	4,060	2,783	2,777	3,622
N. J.	35	38	21	21	17	1,283	1,604	1,046	859	963
Pa.	437	384	287	249	289	6,513	7,424	6,790	5,381	7,365
Ohio	417	391	297	285	316	2,961	3,009	2,098	2,548	2,473
Ind.	387	285	171	157	220	3,661	3,818	2,286	2,815	4,024
Ill.	399	318	237	210	173	1,407	1,641	1,633	1,517	1,788
Mich.	293	243	196	177	153	1,604	1,633	1,639	1,477	1,519
Wis.	391	303	282	269	276	1,202	1,325	1,060	1,088	1,144
Minn.	359	352	242	191	211	2,005	2,453	1,824	1,483	1,624
Iowa	496	434	280	252	278	2,952	2,627	1,899	1,557	1,687
Mo.	544	467	341	238	262	1,588	2,066	2,261	1,939	2,133
N. Dak.	133	116	92	81	74	171	181	171	138	112
S. Dak.	177	187	126	108	111	919	1,037	890	745	594
Nebr.	269	255	168	146	176	954	1,061	790	534	597
Kans.	281	243	174	138	114	675	775	768	690	789
Del.	20	22	15	16	15	346	417	334	384	427
Md.	100	91	53	49	44	669	718	473	609	736
Va.	469	392	343	303	331	2,245	2,963	2,679	2,630	2,677
W. Va.	192	173	125	114	114	313	403	497	491	499
N. C.	1,043	848	651	716	615	5,814	6,596	6,600	6,948	7,421
S. C.	471	358	265	214	177	1,828	2,421	2,155	1,888	2,127
Ga.	532	501	354	324	334	8,439	8,943	8,680	7,491	11,245
Fla.	82	71	46	35	38	2,751	2,483	2,804	2,085	3,457
Ky.	592	572	446	373	293	502	486	612	881	885
Tenn.	722	641	501	446	366	526	807	1,086	1,191	1,237
Ala.	606	411	261	256	268	5,280	4,997	4,800	5,543	6,480
Miss.	602	619	471	513	480	2,813	4,183	4,787	5,575	5,019
Ark.	557	436	317	271	286	4,051	6,184	7,642	8,533	8,615
La.	521	439	253	255	331	859	806	823	773	1,295
Okla.	356	266	201	175	166	451	572	598	593	698
Texas	689	599	460	428	400	3,088	4,250	4,588	4,102	3,968
Mont.	145	125	121	108	100	190	222	292	268	280
Idaho	62	45	38	34	34	178	188	157	168	120
Wyo.	48	43	35	30	25	31	36	33	33	42
Colo.	134	103	97	92	65	228	311	308	409	501
N. Mex.	31	23	22	24	23	142	153	185	216	179
Ariz.	5	6	4	2	3	119	123	139	116	152
Utah	15	15	11	8	9	105	116	148	117	148
Nev.	4	3	2	2	2	4	7	6	5	4
Wash.	81	74	50	41	41	964	1,077	978	798	808
Oreg.	56	63	38	33	28	367	512	391	354	425
Calif.	97	101	57	61	93	5,765	7,349	4,559	5,278	6,965
Alaska	2	2	2	2	2	20	16	26	19	13
Hawaii	15	16	13	11	9	401	307	259	229	187
U. S.	13,202	11,400	8,379	7,645	7,556	86,329	99,958	91,206	89,580	103,566

1/ Data cover both farm and commercial operations but exclude broilers shown in later tables.
 2/ Valued at same price as chickens sold.

Table 9. Chickens: Gross income, by States, 1965-69 1/

State	1965	1966	1967	1968	1969
	1,000 dollars				
Maine	2,452	2,931	2,504	2,556	2,620
N. H.	918	997	917	929	789
Vt.	290	312	269	197	262
Mass.	1,349	1,416	1,202	982	961
R. I.	207	207	172	139	184
Conn.	1,873	1,859	1,644	1,554	1,757
N. Y.	3,191	4,262	2,917	2,912	3,765
N. J.	1,318	1,644	1,067	380	980
Pa.	6,950	7,808	7,077	5,630	7,654
Ohio	3,378	3,400	2,395	2,833	2,789
Ind.	4,048	4,103	2,457	2,972	4,244
Ill.	1,806	1,959	1,870	1,727	1,961
Mich.	1,897	1,876	1,835	1,654	1,672
Wis.	1,593	1,628	1,342	1,357	1,420
Minn.	2,364	2,805	2,066	1,674	1,835
Iowa	3,448	3,061	2,179	1,809	1,965
Mo.	2,132	2,533	2,602	2,177	2,395
N. Dak.	304	297	263	219	186
S. Dak.	1,096	1,224	1,016	853	705
Nebr.	1,223	1,316	958	680	773
Kans.	956	1,018	942	828	903
Del.	366	439	349	400	442
Md.	769	809	526	658	780
Va.	2,714	3,355	3,022	2,933	3,008
W. Va.	505	576	622	605	613
N. C.	6,857	7,444	7,251	7,664	8,036
S. C.	2,299	2,779	2,420	2,102	2,304
Ga.	8,971	9,444	9,034	7,815	11,579
Fla.	2,833	2,554	2,850	2,120	3,495
Ky.	1,094	1,058	1,058	1,254	1,178
Tenn.	1,248	1,448	1,587	1,637	1,603
Ala.	5,886	5,408	5,061	5,799	6,748
Miss.	3,415	4,802	5,258	6,088	5,499
Ark.	4,608	6,620	7,959	8,804	8,901
La.	1,380	1,245	1,076	1,028	1,626
Okla.	807	838	799	768	864
Texas	3,777	4,849	5,048	4,530	4,368
Mont.	335	347	413	376	380
Idaho	240	233	195	202	154
Wyo.	79	79	68	63	67
Colo.	362	414	405	501	566
N. Mex.	173	176	207	240	202
Ariz.	124	129	143	118	155
Utah	120	131	159	125	157
Nev.	8	10	8	7	6
Wash.	1,045	1,151	1,028	839	849
Oreg.	423	575	429	387	453
Calif.	5,862	7,450	4,616	5,339	7,058
Alaska	22	18	28	21	15
Hawaii	416	323	272	240	196
U. S.	99,531	111,360	99,585	97,225	111,122

1/ Data cover both farm and commercial operations but exclude broilers shown in later tables.

Table 10. Eggs: Number produced and home consumption, by States, 1965-69

State	Egg production					Eggs consumed in households				
	1965	1966	1967	1968	1969	1965	1966	1967	1968	1969
	Millions									
Maine	1,022	1,043	1,085	1,102	1,217	6	5	4	4	4
N. H.	359	389	379	360	332	2	2	2	2	2
Vt.	139	133	116	100	93	5	4	3	3	3
Mass.	553	531	531	509	524	3	2	2	2	2
R. I.	80	80	79	76	74	1	1/	1/	1/	1/
Conn.	797	832	820	792	795	3	2	2	2	2
N. Y.	2,257	2,302	2,374	2,410	2,309	30	23	21	19	17
N. J.	1,378	1,191	1,176	975	902	6	5	4	4	3
Pa.	3,392	3,205	3,165	3,143	3,246	57	43	40	34	25
Ohio	2,370	2,285	2,365	2,205	2,206	65	49	46	40	34
Ind.	2,460	2,443	2,545	2,886	2,636	46	35	35	30	24
Ill.	1,821	1,800	1,917	1,844	1,721	68	49	49	42	35
Mich.	1,543	1,567	1,620	1,535	1,464	44	32	30	27	25
Wis.	1,470	1,392	1,385	1,256	1,139	75	64	61	58	49
Minn.	2,622	2,389	2,463	2,270	2,139	95	73	73	62	52
Iowa	3,785	3,457	3,146	2,628	2,390	126	95	100	85	64
Mo.	1,375	1,340	1,419	1,336	1,294	102	81	81	69	60
N. Dak.	314	291	270	229	193	37	30	30	27	18
S. Dak.	1,374	1,355	1,353	1,039	883	43	39	38	36	28
Nebr.	1,346	1,223	1,232	1,050	900	71	56	53	48	37
Kans.	967	958	962	883	836	61	47	45	38	29
Del.	132	131	131	127	129	2	2	1	1	1
Md.	332	311	324	344	342	11	9	8	7	5
Va.	1,071	1,033	1,027	963	897	66	51	55	50	46
W. Va.	325	329	339	301	277	25	21	20	17	15
N. C.	2,632	2,717	2,949	3,035	3,295	107	81	85	89	77
S. C.	1,001	1,114	1,234	1,184	1,307	42	32	30	26	20
Ga.	4,042	3,501	4,986	4,992	5,426	44	38	36	36	24
Fla.	1,778	1,999	2,199	2,412	2,515	11	9	10	9	8
Ky.	658	642	688	666	596	110	85	76	65	61
Tenn.	963	972	1,052	1,029	965	102	79	72	61	53
Ala.	2,291	2,387	2,643	2,702	2,851	69	53	53	48	41
Miss.	2,222	2,338	2,510	2,575	2,404	81	76	73	66	51
Ark.	2,386	2,815	3,268	3,415	3,579	66	49	45	40	40
La.	712	755	804	817	839	49	38	35	31	26
Okla.	518	502	524	488	498	60	48	48	43	36
Texas	2,606	2,737	2,949	2,931	2,651	115	86	83	75	70
Mont.	178	187	190	194	201	23	20	19	18	15
Idaho	225	222	224	209	188	19	15	13	11	8
Wyo.	49	45	43	38	35	8	7	6	5	5
Colo.	238	234	276	272	276	19	15	14	14	14
N. Mex.	145	153	145	159	194	7	5	6	5	5
Ariz.	208	207	243	244	227	2	2	2	2	1
Utah	241	283	280	280	288	8	6	6	5	4
Nev.	8.6	8.1	6.8	5.6	5.2	2	1	1	1	1
Wash.	1,062	1,007	1,094	1,065	1,010	19	15	13	11	9
Oreg.	498	509	510	536	495	18	14	12	10	9
Calif.	7,406	7,663	8,081	8,332	8,557	24	18	16	14	13
Alaska	9.2	10.2	9.1	7.5	5.2	.1	.1	.1	.1	.1
Hawaii	190	188	196	204	201	1	1	1	1	1
U. S.	65,560	66,205	69,327	68,156	67,546	2,056	1,612	1,558	1,393	1,172

1/ Less than one-half million eggs.

Table 11. Eggs: Number sold and price per dozen, by States, 1965-69

State	Eggs sold					Price per dozen				
	1965	1966	1967	1968	1969	1965	1966	1967	1968	1969
	Millions					Cents				
Maine	1,016	1,038	1,081	1,098	1,213	45.4	46.6	38.9	43.0	49.8
N. H.	357	387	377	358	330	46.3	48.1	40.6	44.9	50.6
Vt.	134	129	113	97	90	43.8	45.3	36.9	41.5	48.0
Mass.	550	529	529	507	522	48.6	50.2	43.0	46.6	53.0
R. I.	79	80	79	76	74	49.4	51.5	44.8	49.7	56.6
Conn.	794	830	818	790	793	49.8	53.1	45.6	49.6	57.8
N. Y.	2,227	2,279	2,353	2,391	2,292	37.3	42.9	31.5	37.0	44.0
N. J.	1,372	1,186	1,172	971	899	36.6	43.0	32.5	37.9	45.1
Pa.	3,335	3,162	3,125	3,109	3,221	36.1	42.3	34.6	37.0	41.8
Ohio	2,305	2,236	2,319	2,165	2,172	32.0	36.9	28.7	31.6	38.7
Ind.	2,423	2,408	2,510	2,856	2,612	30.5	36.9	29.0	31.2	38.5
Ill.	1,753	1,751	1,868	1,802	1,686	27.5	31.8	25.7	29.7	34.0
Mich.	1,499	1,535	1,590	1,508	1,439	31.3	36.4	28.7	33.3	37.2
Wis.	1,395	1,328	1,324	1,198	7,090	28.9	36.1	26.9	30.4	39.1
Minn.	2,527	2,316	2,390	2,208	2,087	25.3	31.6	22.5	26.0	31.9
Iowa	3,659	3,362	3,046	2,543	2,326	24.2	30.8	22.0	24.2	31.2
Mo.	1,273	1,259	1,338	1,267	1,234	26.5	31.1	23.0	25.4	34.1
N. Dak.	277	261	240	202	175	24.9	30.2	22.2	22.9	29.7
S. Dak.	1,331	1,316	1,315	1,003	855	23.2	30.2	20.8	21.3	29.6
Nebr.	1,275	1,167	1,179	1,002	863	23.1	29.7	20.9	21.2	28.2
Kans.	906	911	917	845	807	23.7	29.3	21.9	23.4	31.3
Del.	130	129	130	126	128	45.4	51.1	42.1	47.9	54.1
Md.	321	302	316	337	337	37.6	44.4	34.9	40.6	49.0
Va.	1,005	982	972	913	851	38.4	43.4	35.8	38.4	43.3
W. Va.	300	308	319	284	262	38.3	43.9	35.8	39.0	47.3
N. C.	2,525	2,636	2,864	2,946	3,218	38.0	45.1	36.9	39.3	45.7
S. C.	959	1,082	1,204	1,158	1,287	38.8	43.1	37.3	38.3	41.9
Ga.	3,998	4,463	4,950	4,956	5,402	42.5	47.1	37.1	42.1	47.5
Fla.	1,767	1,990	2,189	2,403	2,507	33.8	39.3	29.6	30.1	35.8
Ky.	548	557	612	601	535	31.8	36.8	29.8	32.3	38.2
Tenn.	861	893	980	968	912	36.7	39.9	32.9	36.6	42.4
Ala.	2,222	2,334	2,590	2,564	2,810	39.7	43.9	38.6	38.6	44.6
Miss.	2,141	2,262	2,437	2,509	2,353	39.3	43.0	37.3	40.6	44.0
Ark.	2,320	2,766	3,223	3,375	3,539	37.5	39.6	34.3	37.8	38.3
La.	663	717	769	786	813	39.4	40.7	34.7	38.9	41.6
Okla.	458	454	476	445	462	30.7	36.3	28.8	32.1	38.7
Texas	2,491	2,651	2,866	2,856	2,581	36.4	40.7	32.6	36.9	45.0
Mont.	155	167	171	176	186	34.3	39.6	33.5	36.1	44.2
Idaho	206	207	211	198	180	32.5	39.8	32.2	32.8	42.0
Wyo.	41	38	37	33	30	36.2	39.0	33.3	36.9	43.7
Colo.	219	219	262	258	262	35.4	40.9	31.0	30.7	36.6
N. Mex.	138	148	139	154	189	35.5	44.0	37.5	39.9	43.3
Ariz.	206	205	241	242	226	31.5	36.0	28.3	27.4	34.1
Utah	233	277	274	275	284	33.1	38.2	29.2	31.4	36.7
Nev.	6.6	7.1	5.8	4.6	4.2	36.8	40.8	31.4	31.7	35.0
Wash.	1,043	992	1,081	1,054	1,001	30.5	36.9	28.8	29.7	34.4
Oreg.	480	495	498	526	486	34.2	40.0	33.6	33.8	41.1
Calif.	7,382	7,645	8,065	8,318	8,544	30.2	36.0	28.3	28.4	34.1
Alaska	9.1	10.1	9.0	7.4	5.1	77.0	77.0	79.0	80.5	77.2
Hawaii	189	187	195	203	200	47.3	51.9	43.7	39.2	47.0
U. S.	63,504	64,593	67,769	66,763	66,374	33.7	39.1	31.3	34.0	40.0

Table 12. Eggs: Cash receipts and value of home consumption, by States, 1965-69

State	Cash receipts					Value of home consumption 1/				
	1965	1966	1967	1968	1969	1965	1966	1967	1968	1969
	1,000 dollars									
Maine	38,439	40,309	35,042	39,345	50,340	227	194	130	143	166
N. H.	13,774	15,512	12,755	13,395	13,915	77	80	68	75	84
Vt.	4,891	4,870	3,475	3,355	3,600	182	151	92	104	120
Mass.	22,275	22,130	18,956	19,688	23,055	122	84	72	78	88
R. I.	3,252	3,433	2,949	3,148	3,490	41	2/	2/	2/	2/
Conn.	32,951	36,728	31,084	32,653	38,196	124	89	76	83	96
N. Y.	69,223	81,474	61,766	73,722	84,040	932	822	551	586	623
N. J.	41,846	42,498	31,742	30,667	33,787	183	179	108	126	113
Pa.	100,328	111,460	90,104	95,861	112,198	1,715	1,516	1,153	1,048	871
Ohio	61,467	68,757	55,463	57,012	70,047	1,733	1,507	1,100	1,053	1,097
Ind.	61,585	74,046	60,658	74,256	83,802	1,169	1,076	846	780	770
Ill.	40,173	46,402	40,006	44,600	47,770	1,558	1,298	1,049	1,040	992
Mich.	39,099	46,562	38,028	41,847	44,609	1,148	971	718	749	775
Wis.	33,596	39,951	29,680	30,349	35,516	1,806	1,925	1,367	1,469	1,597
Minn.	53,277	60,988	44,812	47,840	55,479	2,003	1,922	1,369	1,343	1,382
Iowa	73,790	86,291	55,843	51,284	60,476	2,541	2,438	1,833	1,714	1,664
Mo.	28,112	32,629	25,645	26,818	35,066	2,252	2,099	1,553	1,461	1,705
N. Dak.	5,748	6,569	4,440	3,855	4,331	768	755	555	515	446
S. Dak.	25,733	33,119	22,793	17,803	21,090	831	982	659	639	691
Nebr.	24,544	28,883	20,534	17,702	20,281	1,367	1,386	923	848	870
Kans.	17,894	22,244	17,735	16,478	21,049	1,205	1,148	821	741	756
Del.	4,918	5,493	4,561	5,030	5,771	76	85	35	40	45
Md.	10,058	11,174	9,190	11,402	13,761	345	333	233	237	204
Va.	32,160	35,516	28,998	29,216	30,707	2,112	1,845	1,641	1,600	1,660
W. Va.	9,575	11,268	9,517	9,230	10,327	798	768	597	553	591
N. C.	79,958	99,070	88,068	96,482	122,552	3,388	3,044	2,614	2,915	2,932
S. C.	51,008	38,862	37,424	36,960	44,938	1,358	1,149	932	830	698
Ga.	141,596	175,173	153,038	173,873	213,829	1,558	1,492	1,113	1,263	950
Fla.	49,771	65,172	53,995	60,275	74,792	310	295	247	226	239
Ky.	14,322	17,081	15,198	16,177	17,031	2,915	2,607	1,887	1,750	1,942
Tenn.	26,332	29,692	26,869	29,524	32,224	3,119	2,627	1,974	1,861	1,873
Ala.	73,511	85,385	83,312	85,370	104,438	2,283	1,939	1,705	1,544	1,524
Miss.	70,118	81,055	75,750	84,888	86,277	2,653	2,723	2,269	2,233	1,870
Ark.	72,500	91,278	92,124	106,313	112,953	2,062	1,617	1,286	1,260	1,277
La.	21,768	24,318	22,237	25,480	28,184	1,609	1,289	1,012	1,005	901
Okla.	11,717	13,734	11,424	11,904	14,900	1,535	1,452	1,152	1,150	1,161
Texas	75,560	89,913	77,860	87,822	96,788	3,488	2,917	2,255	2,306	2,625
Mont.	4,430	5,511	4,774	5,295	6,851	657	660	530	541	552
Idaho	5,579	6,866	5,662	5,412	6,300	515	498	349	301	280
Wyo.	1,237	1,235	1,027	1,015	1,093	241	228	167	154	182
Colo.	6,460	7,464	6,768	6,600	7,991	560	511	362	358	427
N. Mex.	4,082	5,427	4,344	5,120	6,820	207	183	188	166	180
Ariz.	5,408	6,150	5,684	5,526	6,422	52	60	47	46	28
Utah	6,427	8,818	6,667	7,196	8,686	221	191	146	131	122
Nev.	202	241	152	122	123	61	34	26	26	29
Wash.	26,510	30,504	25,944	26,087	28,695	483	461	312	272	258
Oreg.	13,680	16,500	13,944	14,816	16,646	513	467	336	282	308
Calif.	185,781	229,350	190,199	196,860	242,792	604	540	377	331	369
Alaska	584	648	592	496	328	6	6	7	7	6
Hawaii	7,449	8,088	7,101	6,631	7,833	39	43	36	33	39
U. S.	1,784,898	2,105,841	1,764,933	1,892,800	2,212,189	55,752	50,686	38,878	38,016	38,178

1/ Valued at same price as eggs sold.

2/ Less than one-half million eggs consumed.

Table 13. Eggs: Gross income, by States, 1965-69

State	1965	1966	1967	1968	1969
1,000 dollars					
Maine	38,666	40,503	35,172	39,488	50,506
N. H.	13,851	15,592	12,823	13,470	13,999
Vt.	5,073	5,021	3,567	3,459	3,720
Mass.	22,397	22,214	19,028	19,766	23,143
R. I.	3,293	3,433	2,949	3,148	3,490
Conn.	33,075	36,817	31,160	32,736	38,292
N. Y.	70,155	82,296	62,317	74,308	84,663
N. J.	42,029	42,677	31,850	30,793	33,900
Pa.	102,043	112,976	91,257	96,909	113,069
Ohio	63,200	70,264	56,563	58,065	71,144
Ind.	62,754	75,122	61,504	75,036	84,572
Ill.	41,731	47,700	41,055	45,640	48,762
Mich.	40,247	47,533	38,746	42,596	45,384
Wis.	35,402	41,876	31,047	31,818	37,113
Minn.	55,280	62,910	46,181	49,183	56,861
Iowa	76,331	88,729	57,676	52,998	62,140
Mo.	30,364	34,728	27,198	28,279	36,771
N. Dak.	6,516	7,324	4,995	4,370	4,777
S. Dak.	26,564	34,101	23,452	18,442	21,781
Nebr.	25,911	30,269	21,457	18,550	21,151
Kans.	19,099	23,392	17,556	17,219	21,805
Del.	4,994	5,578	4,596	5,070	5,816
Md.	10,403	11,507	9,423	11,639	13,965
Va.	34,272	37,361	30,639	30,816	32,367
W. Va.	10,373	12,036	10,114	9,783	10,918
N. C.	83,346	102,114	90,682	99,397	125,484
S. C.	32,366	40,011	38,356	37,790	45,636
Ga.	143,154	176,655	154,151	175,136	214,779
Fla.	50,081	65,467	54,242	60,501	75,031
Ky.	17,437	19,688	17,085	17,927	18,973
Tenn.	29,451	32,319	28,843	31,385	34,097
Ala.	75,794	87,324	85,017	86,914	105,962
Miss.	72,771	83,778	78,019	87,121	88,147
Ark.	74,562	92,895	93,410	107,573	114,230
La.	23,377	25,607	23,249	26,485	29,085
Okla.	13,252	15,186	12,576	13,054	16,061
Texas	79,048	92,830	80,115	90,128	99,413
Mont.	5,087	6,171	5,304	5,836	7,403
Idaho	6,094	7,364	6,011	5,713	6,580
Wyo.	1,478	1,463	1,194	1,169	1,275
Colo.	7,020	7,975	7,130	6,958	8,418
N. Mex.	4,289	5,610	4,532	5,286	7,000
Ariz.	5,460	6,210	5,731	5,572	6,459
Utah	6,648	9,009	6,813	7,327	8,808
Nev.	263	275	178	148	152
Wash.	26,993	30,965	26,256	26,359	28,953
Oreg.	14,193	16,967	14,280	15,098	16,954
Calif.	186,385	229,890	190,576	197,191	243,161
Alaska	590	654	599	503	334
Hawaii	7,488	8,131	7,137	6,664	7,872
U. S.	1,840,650	2,156,527	1,803,811	1,930,816	2,250,367

Table 14. Broilers: Number produced, by States, 1965-69

State	1965	1966	1967	1968	1969
Thousands					
Maine	68,357	72,458	73,907	72,429	72,900
N. H.	2,051	2,030	2,293	1,376	1,237
Vt.	166	70	65	62	18
Mass.	6,079	5,593	5,593	5,369	3,216
R. I.	935	944	538	656	387
Conn.	11,806	10,271	9,038	8,134	6,657
N. Y.	3,208	3,304	2,709	2,709	2,438
N. J.	1,500	1,350	1,075	1,300	1,400
Pa.	42,962	43,983	44,256	45,424	48,998
Ohio	10,004	10,004	10,504	9,664	10,051
Ind.	23,829	21,208	17,039	17,100	13,934
Ill.	620	542			
Mich.	1,882	1,882	941	518	777
Wis.	12,576	13,959	14,238	14,238	14,807
Minn.	9,020	9,100	9,464	10,126	10,531
Iowa	2,603	2,499	2,374	2,659	2,606
Mo.	30,700	21,965	20,867	20,450	21,796
Nebr.	1,184	1,468	1,404	1,292	1,318
Kans.	556	467	612	557	709
Del.	109,293	121,678	127,346	114,873	133,503
Md.	144,759	159,491	151,032	157,887	174,274
Va.	47,884	50,278	51,786	56,965	63,469
W. Va.	18,605	18,605	16,460	16,460	16,542
N. C.	234,477	260,269	262,872	262,872	280,637
S. C.	16,448	17,486	19,483	19,543	24,219
Ga.	402,770	456,192	447,123	436,748	442,221
Fla.	12,855	18,640	25,164	35,481	38,737
Ky.	10,737	10,737	9,663	8,987	7,190
Tenn.	44,893	50,325	46,802	42,100	46,132
Ala.	285,077	324,124	324,629	328,510	352,745
Miss.	167,867	183,734	196,931	203,451	221,016
Ark.	320,135	361,753	365,371	390,947	414,623
La.	31,579	35,317	41,240	42,776	46,706
Okla.	13,170	12,907	13,552	13,281	17,650
Tex.	142,217	152,918	161,434	161,940	170,574
Idaho	4,651	5,650	6,090	6,400	
Utah	2,281	3,422	1,779	1,815	1,652
Wash.	21,030	22,412	21,980	21,288	21,436
Oreg.	11,200	12,600	13,150	13,750	14,700
Calif.	59,852	67,034	69,045	67,664	76,757
Hawaii	1,292	1,285	1,292	1,362	1,521
Other States 1/	523	562	709	692	8,648
U. S.	2,333,633	2,570,516	2,591,850	2,619,855	2,788,732

1/ Colorado and Arizona 1965-66; Illinois and Arizona 1967-68; Illinois, Idaho and Arizona 1969 combined to avoid disclosing individual operations.

Table 15. Broilers: Number of pounds produced, by States, 1965-69

State	1965	1966	1967	1968	1969
	1,000 pounds				
Maine	273,428	289,832	295,628	296,959	298,890
N. H.	8,614	8,120	9,172	5,504	4,948
Vt.	697	280	260	254	76
Mass.	26,140	22,931	22,931	22,550	14,472
R. I.	3,553	3,493	2,044	2,558	1,509
Conn.	44,863	38,003	34,344	31,723	25,297
N. Y.	14,115	14,207	11,378	10,836	9,752
N. J.	8,100	7,560	5,912	6,500	7,140
Pa.	167,552	171,534	177,024	181,696	195,992
Ohio	39,016	41,016	43,066	38,656	40,204
Ind.	78,636	76,349	63,044	61,560	51,556
Ill.	2,356	2,168			
Mich.	7,904	9,410	4,799	2,124	5,439
Wis.	47,789	54,440	56,952	56,952	60,709
Minn.	33,374	34,580	35,963	38,479	41,071
Iowa	16,920	18,742	15,431	17,284	19,545
Mo.	98,240	74,681	73,035	71,575	76,286
Nebr.	4,026	4,991	4,493	4,264	4,349
Kans.	1,835	1,541	2,020	1,838	2,340
Del.	415,313	462,376	483,915	436,517	520,662
Md.	550,084	606,066	573,922	599,971	679,669
Va.	148,440	155,862	165,715	187,984	222,142
W. Va.	63,257	63,257	57,610	59,256	57,897
N. C.	820,670	910,942	946,339	972,626	1,038,357
S. C.	57,568	61,201	68,190	68,400	84,766
Ga.	1,369,418	1,551,053	1,564,930	1,528,618	1,547,774
Fla.	43,707	59,648	83,041	124,184	135,580
Ky.	37,580	37,580	34,787	31,454	25,884
Tenn.	152,636	171,105	159,127	143,140	166,075
Ala.	969,262	1,134,434	1,136,202	1,149,785	1,234,608
Miss.	570,748	606,322	669,565	691,733	773,556
Ark.	1,024,432	1,193,785	1,205,724	1,290,125	1,409,718
La.	107,369	120,078	144,340	153,994	168,142
Okla.	44,778	43,884	47,432	46,484	60,010
Texas	483,538	519,921	548,876	566,790	597,009
Idaho	16,744	20,340	21,315	21,760	
Utah	8,668	13,688	7,116	6,897	5,286
Wash.	75,708	82,924	83,524	80,894	83,600
Oreg.	40,320	45,360	47,340	49,500	54,390
Calif.	227,438	248,026	269,276	257,123	291,677
Hawaii	4,910	4,883	5,039	5,312	5,780
Other States 1/	1,680	1,895	2,605	2,482	25,612
U. S.	8,111,426	8,988,508	9,183,426	9,326,341	10,047,769

1/ Colorado and Arizona 1965-66; Illinois and Arizona 1967-68; Illinois, Idaho and Arizona 1969 combined to avoid disclosing individual operations.

Table 16. Broilers: Price per pound and gross income, by States, 1965-69

State	Price per pound					Gross income 1/				
	1965	1966	1967	1968	1969	1965	1966	1967	1968	1969
	Cents					1,000 dollars				
Maine	17.3	18.2	16.3	16.1	17.6	47,303	52,749	48,187	47,810	52,605
H. H.	16.8	17.6	15.5	16.0	17.5	1,447	1,429	1,422	881	866
Vt.	16.6	17.8	15.5	16.4	18.1	116	50	40	42	14
Mass.	17.0	17.4	15.4	15.9	17.5	4,444	3,990	3,531	3,585	2,533
R. I.	16.9	17.4	15.4	15.9	17.5	600	608	315	407	264
Conn.	17.1	17.9	15.8	16.2	17.5	7,672	6,803	5,426	5,139	4,427
N. Y.	21.3	20.7	20.7	21.7	21.2	3,006	2,941	2,355	2,351	2,067
N. J.	25.0	24.6	22.8	23.1	25.2	2,025	1,860	1,348	1,502	1,799
Pa.	17.6	16.5	15.4	16.2	16.9	29,489	28,303	27,262	29,435	33,123
Ohio	15.8	15.9	14.9	15.5	16.2	6,165	6,522	6,417	5,992	6,513
Ind.	15.4	15.9	14.6	15.1	16.0	12,110	12,139	9,204	9,296	8,249
Ill.	15.9	16.0				375	347			
Mich.	17.7	18.2	17.4	17.5	17.9	1,399	1,713	835	372	974
Wis.	16.4	15.4	13.8	15.1	16.1	7,837	8,384	7,859	8,600	9,774
Minn.	16.0	16.3	15.8	16.7	17.6	5,340	5,637	5,682	6,426	7,228
Iowa	15.4	22.2	24.0	24.0	25.0	2,606	4,161	3,703	4,148	4,886
Mo.	14.7	15.0	13.6	14.7	15.5	14,441	11,202	9,933	10,522	11,824
Nebr.	17.0	16.5	15.6	15.3	17.1	684	824	701	652	744
Kans.	15.1	16.7	16.2	15.8	16.0	277	257	327	290	374
Del.	16.2	15.9	14.4	15.5	16.6	67,281	73,518	69,684	67,660	86,430
Md.	16.2	15.9	14.5	15.5	16.6	89,114	96,364	83,219	92,996	112,825
Va.	15.6	15.5	14.5	15.0	16.1	23,157	24,159	24,029	28,198	35,765
W. Va.	15.7	15.6	14.6	14.8	15.2	9,931	9,868	8,411	8,770	8,800
N. C.	14.4	15.3	13.1	14.4	15.3	118,176	139,374	123,970	140,058	158,869
S. C.	14.4	14.5	12.3	13.4	14.1	8,290	8,874	8,387	9,166	11,952
Ga.	14.5	14.5	12.2	13.1	14.1	198,566	224,903	190,921	200,249	218,236
Fla.	14.5	14.8	12.7	13.4	14.1	6,338	8,828	10,546	16,641	19,117
Ky.	14.7	15.1	13.5	14.4	14.9	5,524	5,675	4,696	4,529	3,857
Tenn.	14.6	15.4	14.4	15.0	15.6	22,285	26,350	22,914	21,471	25,908
Ala.	14.5	14.2	12.0	13.2	14.0	138,604	161,090	136,344	151,772	172,845
Miss.	14.2	14.6	12.1	13.0	14.0	81,046	88,523	81,017	89,925	108,298
Ark.	14.0	14.7	12.6	13.6	15.0	143,420	175,486	151,921	175,457	211,458
La.	14.0	14.5	12.6	13.5	14.4	15,032	17,411	18,187	20,789	24,212
OKla.	14.1	14.7	12.7	13.4	14.7	6,314	6,451	6,024	6,229	8,821
Texas	14.9	15.2	13.3	14.4	15.5	72,047	79,028	73,001	81,618	92,536
Idaho	16.5	17.5	17.2	16.9	18.1	2,813	3,560	3,666	3,677	
Utah	17.3	17.2	16.8	17.0	17.6	1,500	2,354	1,195	1,172	930
Wash.	17.3	18.0	17.1	17.7	18.4	13,097	14,926	14,283	14,318	15,382
Oreg.	17.5	18.0	17.1	17.7	18.4	7,056	8,165	8,095	8,762	10,008
Calif.	16.9	17.8	16.9	16.6	17.3	38,437	44,149	45,508	42,682	50,460
Hawaii	35.1	34.9	33.1	32.1	32.1	1,723	1,704	1,668	1,705	1,855
Other Sts. 2/	17.6	17.3	15.7	14.9	17.9	296	327	408	371	4,576
U. S.	15.0	15.3	13.3	14.2	15.2	1,217,383	1,371,006	1,222,641	1,325,665	1,531,404

1/ Includes home consumption which is less than 1 percent of total production. 2/ Colorado and Arizona 1965-66; Illinois and Arizona 1967-68; Illinois, Idaho and Arizona 1969 combined to avoid disclosing individual operations.

Table 17. Chickens and broilers combined: Total pounds sold, by States, 1965-69

State	1965	1966	1967	1968	1969
	1,000 pounds				
Maine	296,350	315,926	323,804	324,872	522,568
N. H.	17,168	17,462	19,716	15,982	12,704
Vt.	3,018	2,901	3,076	2,354	2,611
Mass.	38,471	35,587	36,428	33,612	23,970
R. I.	5,423	5,337	3,976	4,121	3,327
Conn.	62,163	55,043	52,881	49,482	42,786
N. Y.	46,188	48,905	55,731	43,132	42,092
N. J.	25,205	24,824	23,056	18,112	16,054
Pa.	221,377	228,640	239,897	233,440	254,443
Ohio	72,284	72,032	72,207	68,279	63,531
Ind.	117,580	114,919	100,524	104,868	93,044
Ill.	23,676	23,212			
Mich.	24,964	25,576	23,855	20,142	23,517
Wis.	63,199	70,213	72,547	73,698	77,531
Minn.	69,171	71,196	72,453	69,368	68,598
Iowa	70,593	65,660	59,602	49,057	45,108
Mo.	119,130	100,509	104,885	102,848	106,758
N. Dak.	3,498	3,625	4,074	3,288	2,432
S. Dak.	17,672	17,884	19,349	17,749	12,636
Nebr.	22,365	24,281	22,452	17,948	15,398
Kans.	13,686	14,906	16,795	16,215	18,127
Del.	418,459	465,636	487,125	439,823	523,848
Md.	556,640	612,252	579,622	606,586	686,072
Va.	168,846	181,626	191,725	212,560	242,732
W. Va.	65,932	66,590	62,165	63,724	62,088
N. C.	869,116	961,682	1,007,454	1,033,042	1,095,440
S. C.	73,328	81,544	89,525	86,382	103,756
Ga.	1,445,444	1,631,622	1,665,860	1,606,648	1,643,884
Fla.	73,937	85,781	121,984	154,402	176,738
Ky.	42,602	42,161	40,846	39,765	34,558
Tenn.	158,059	178,789	170,210	155,295	178,318
Ala.	1,013,261	1,183,907	1,189,536	1,208,129	1,296,319
Miss.	602,007	646,541	722,751	744,825	822,287
Ark.	1,060,931	1,248,513	1,284,505	1,375,450	1,494,179
La.	114,713	127,476	155,168	163,534	179,703
Okla.	50,283	50,781	54,722	53,898	68,524
Texas	522,139	568,214	606,226	617,435	642,614
Mont.	1,759	2,021	2,751	2,554	2,670
Idaho	19,394	23,230	23,848	24,347	
Wyo.	302	328	326	308	356
Colo.			2,727	3,897	5,382
N. Mex.	1,542	1,800	2,253	2,201	1,788
Ariz.					
Utah	10,768	15,722	10,070	9,610	7,791
Nev.	78	112	103	95	55
Wash.	90,320	96,225	98,810	96,844	98,023
Oreg.	47,109	51,922	55,159	56,588	62,125
Calif.	326,841	343,469	358,669	553,089	369,937
Alaska	122	99	164	117	77
Hawaii	7,445	6,734	6,878	7,282	7,390
Other States 1/	6,176	6,781	31,549	29,772	56,849
U. S.	9,080,714	10,020,196	10,340,039	10,416,769	11,110,738

1/ Colorado and Arizona 1965-66; Illinois and Arizona 1967-68; Illinois, Idaho and Arizona 1969 combined to avoid disclosing individual operations.

Table 18. Chickens and broilers combined: Price per pound and cash receipts, by States, 1965-69

State	Average annual price per pound 1/					Cash receipts				
	1965	1966	1967	1968	1969	1965	1966	1967	1968	1969
	Cents					1,000 dollars				
Maine	16.8	17.6	15.6	15.5	17.1	49,708	55,645	50,667	50,350	55,210
N. H.	13.7	13.8	11.8	11.3	13.0	2,345	2,410	2,329	1,803	1,649
Vt.	12.3	11.6	9.5	9.7	10.2	371	336	293	229	267
Mass.	15.0	15.1	13.0	13.6	14.5	5,763	5,382	4,719	4,558	3,483
R. I.	14.8	15.2	12.2	13.2	13.4	802	811	485	545	446
Conn.	15.3	15.7	13.3	13.5	14.4	9,523	8,643	7,057	6,684	6,176
N. Y.	13.0	14.3	11.2	11.9	13.5	6,021	7,001	5,138	5,128	5,689
N. J.	13.1	14.0	10.4	13.0	17.2	3,308	3,464	2,394	2,361	2,762
Pa.	16.3	15.6	14.2	14.9	15.9	36,002	35,727	34,052	34,816	40,488
Ohio	12.6	13.2	11.8	12.5	14.1	9,126	9,531	8,515	8,540	8,986
Ind.	13.4	13.9	11.4	11.5	13.2	15,771	15,957	11,490	12,111	12,273
Ill.	7.5	8.6				1,782	1,988			
Mich.	12.0	13.1	10.4	9.2	10.6	3,003	3,346	2,474	1,849	2,493
Wis.	14.3	13.8	12.3	13.1	14.1	9,039	9,709	8,919	9,688	10,918
Minn.	10.6	11.4	10.4	11.4	12.9	7,345	8,090	7,506	7,909	8,852
Iowa	7.9	10.3	9.4	11.6	14.6	5,558	6,788	5,602	5,705	6,573
Mo.	13.5	13.2	11.6	12.1	13.1	16,029	13,268	12,194	12,461	13,957
N. Dak.	4.9	5.0	4.2	4.2	4.6	171	181	171	138	112
S. Dak.	5.2	5.8	4.6	4.2	4.7	919	1,037	890	745	594
Nebr.	7.3	7.8	6.6	6.6	8.7	1,638	1,885	1,491	1,186	1,341
Kans.	7.0	6.9	6.5	6.0	6.4	952	1,032	1,095	980	1,163
Del.	16.2	15.9	14.4	15.5	16.6	67,627	73,935	70,018	68,044	86,857
Md.	16.1	15.9	14.4	15.4	16.6	89,783	97,082	83,692	93,605	113,561
Va.	15.0	14.9	13.9	14.5	15.8	25,402	27,122	26,708	30,828	38,442
W. Va.	15.5	15.4	14.3	14.5	15.0	10,244	10,271	8,908	9,261	9,299
N. C.	14.3	15.2	13.0	14.2	15.2	123,990	145,970	130,570	147,006	166,290
S. C.	13.8	13.9	11.8	13.0	13.6	10,118	11,295	10,542	11,268	14,079
Ga.	14.3	14.3	12.0	12.9	14.0	207,005	233,846	199,601	207,740	229,481
Fla.	12.3	13.2	10.9	12.1	12.8	9,089	11,311	13,350	18,726	22,574
Ky.	14.1	14.6	13.0	13.6	13.7	6,026	6,161	5,308	5,410	4,742
Tenn.	14.4	15.2	14.1	14.6	15.2	22,811	27,157	24,000	22,662	27,145
Ala.	14.2	14.0	11.9	13.0	13.8	143,884	166,087	141,144	157,315	179,325
Miss.	13.9	14.3	11.9	12.8	13.8	83,859	92,706	85,804	95,500	113,317
Ark.	13.9	14.6	12.4	13.4	14.7	147,471	181,670	159,563	183,990	220,073
La.	13.9	14.3	12.3	13.2	14.2	15,891	18,217	19,010	21,562	25,507
Okla.	13.5	13.8	12.1	12.7	13.9	6,765	7,023	6,622	6,822	9,519
Texas	14.4	14.7	12.8	13.9	15.0	75,135	83,278	77,589	85,720	96,504
Mont.	10.8	11.0	10.6	10.5	10.5	190	222	292	268	280
Idaho	15.4	16.1	16.0	15.8		2,991	3,748	3,823	3,845	
Wyo.	10.3	11.0	10.1	10.6	11.8	31	36	33	33	42
Colo.			11.3	10.5	9.3			308	409	501
N. Mex.	9.2	8.5	8.2	9.8	10.0	142	153	185	216	179
Ariz.										
Utah	14.9	15.7	13.3	13.4	13.8	1,605	2,470	1,343	1,289	1,078
Nev.	5.0	5.9	5.7	5.5	6.5	4	7	6	5	4
Wash.	15.6	16.6	15.4	15.6	16.5	14,061	16,003	15,261	15,116	16,190
Oreg.	15.8	16.7	15.4	16.1	16.8	7,423	8,677	8,486	9,116	10,433
Calif.	13.5	15.0	14.0	13.6	15.5	44,202	51,498	50,067	47,960	57,425
Alaska	16.0	16.0	16.0	16.0	16.5	20	16	26	19	13
Hawaii	28.5	29.9	28.0	26.6	27.6	2,124	2,011	1,927	1,934	2,042
Other States 2/	10.4	11.2	6.9	6.7	11.7	643	761	2,180	2,004	6,636
U. S.	14.4	14.7	12.7	13.6	14.7	1,303,712	1,470,964	1,313,847	1,415,245	1,634,970

1/ Price obtained by dividing value of sales by pounds sold.

2/ Colorado and Arizona 1965-66; Illinois and Arizona 1967-68; Illinois, Idaho and Arizona 1969 combined to avoid disclosing individual operations.

UNITED STATES DEPARTMENT OF AGRICULTURE
WASHINGTON, D. C. 20250

OFFICIAL BUSINESS
PENALTY FOR PRIVATE USE, \$300

POSTAGE AND FEES PAID
U.S. DEPARTMENT OF
AGRICULTURE



AGR 101

FIRST-CLASS MAIL

END