



**AgEcon** SEARCH  
RESEARCH IN AGRICULTURAL & APPLIED ECONOMICS

*The World's Largest Open Access Agricultural & Applied Economics Digital Library*

**This document is discoverable and free to researchers across the globe due to the work of AgEcon Search.**

**Help ensure our sustainability.**

Give to AgEcon Search

AgEcon Search

<http://ageconsearch.umn.edu>

[aesearch@umn.edu](mailto:aesearch@umn.edu)

*Papers downloaded from **AgEcon Search** may be used for non-commercial purposes and personal study only. No other use, including posting to another Internet site, is permitted without permission from the copyright owner (not AgEcon Search), or as allowed under the provisions of Fair Use, U.S. Copyright Act, Title 17 U.S.C.*

SB 502 (1972)

SHEEP AND LAMBS,

USDA STATISTICAL BULLETINS

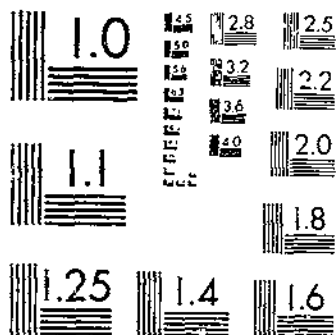
GOATS: REVISED ESTIMATES, 1965-70,

SHEEP AND LAMBS—

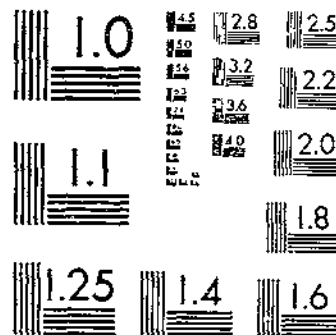
UPDATA

1 OF 1

# START



MICROCOPY RESOLUTION TEST CHART  
NATIONAL BUREAU OF STANDARDS-1963-A



MICROCOPY RESOLUTION TEST CHART  
NATIONAL BUREAU OF STANDARDS-1963-A

57

502

REFERENCE  
DO NOT LOAN



# sheep and lambs goats

REVISED ESTIMATES, 1965-70

- Sheep and Lambs--Number and Classes
- Lamb Crop
- Sheep and Lambs on Feed
- Wool Production
- Goats--Number and Value
- Mohair Production
- Sheep Farms

BIBLIOTHECA

JAN 4 1973

East Carolina Public Library

Statistical Bulletin 502

December 1972

CROP REPORTING BOARD

STATISTICAL REPORTING SERVICE • U.S. DEPARTMENT OF AGRICULTURE • WASHINGTON, D.C.

CONTENTS

	<u>Page</u>
Comments.....	3
Sheep and lambs: Number on farms, value per head, total value, and classes, United States, January 1, 1966-70.....	5
Lamb crop, United States, 1965-69.....	5
Wool production and value, United States, 1965-69.....	5
All goats: Number on farms, value per head, and total value, Texas, January 1, 1966-70.	6
Mohair production and value, 7 States, 1965-69.....	6
All sheep and lambs: Number on farms and total value, by States, January 1, 1966-70....	7
Sheep and lambs: Number on farms, by classes, by States, January 1, 1966-70.....	8
Stock sheep and lambs: Value per head and total value, by States, January 1, 1966-70...	12
Sheep and lambs: Number on feed, selected States, January 1, 1966-70.....	13
Sheep and lambs on feed: Placements, number on feed, and marketings, specified dates, selected States, 1965-70.....	14
Sheep and lambs on feed: Number by weight groups, selected States, November 1, 1965-69.	15
Sheep and lambs on feed: Number by weight groups, selected States, January 1, 1966-70..	16
Sheep and lambs on feed: Number by weight groups, selected States, March 1, 1966-70....	17
New crop lambs: Number on farms, selected States, January 1, 1966-70.....	18
Lamb crop: Breeding ewes 1 year old and older January 1, and lambs saved as percentage of ewes 1 year old and older January 1, by States, 1965-69.....	19
Lamb crop: Number of lambs saved, by States, 1965-69.....	20
Wool: Number of sheep and lambs shorn and weight per fleece, by States, 1965-69.....	21
Wool: Shorn wool production, by States, 1965-69.....	22
Wool: Price per pound and value, by States, 1965-69.....	23
Mohair: Number of goats clipped, weight per clip, and production, selected States, 1965-69.....	24
Mohair: Price per pound and value, selected States, 1965-69.....	25
Early lamb crop: Number of early lambs, 3 States, March 1, 1965-69.....	25
Sheep farms: Number of sheep farms, by States, 1965-69.....	26

## SHEEP AND LAMBS, GOATS

Revised Estimates, 1965-70

This publication presents revised estimates of the Crop Reporting Board, Statistical Reporting Service, relating to:

- Number, value, and classes of sheep and lambs on farms January 1, 1966-70.
- Lamb crop, wool and mohair production 1965-69.
- Number and value of all goats, Texas, January 1, 1966-70.
- Number of sheep and lambs on feed for slaughter market January 1, 1966-70
- Number of sheep and lambs on feed, marketings and placements, seven selected States, November 1, 1965-69, January and March 1, 1966-70.
- Number of sheep farms 1965-70.

This report continues and combines the official series on January 1 inventory of sheep and lambs and goats, sheep and lambs on feed, and annual wool and mohair production previously shown in the following separate publications of USDA's Statistical Reporting Service:

Livestock and Poultry Inventory, January 1, Number, Value, and Classes, 1961-65, by States, Statistical Bulletin 389, February 1967. Calf Crop, Lamb Crop, Wool Production, Mohair Production, United States, by States, 1960-64, Statistical Bulletin 392, February 1967. Cattle and Calves and Sheep and Lambs on Feed, Selected States, 1959-65, Statistical Bulletin 387, January 1965.

The annual estimates of numbers on farms and ranches are based primarily on survey returns from sheep producers. The revised State and U. S. series are based on a thorough review of the original survey indications and estimates, taking into consideration the 1969 Census of Agriculture and other information such as year-to-year changes in numbers assessed for taxation. Consideration was also given to records relating to market receipts of sheep and lambs and estimates of commercial and farm slaughter. The inventory estimates relate to January 1 of each year.

In 1964, the U. S. Census of Agriculture was enumerated mostly during November and December, and farmers were asked to report inventories on the date of enumeration. In using Census data it was necessary to adjust from the average date of enumeration to January 1. In contrast to survey methods used for the 1964 and earlier Censuses, the 1969 Census of Agriculture was collected by mail with survey procedures modified by the level of the individual farm value of sales. The initial questionnaire mailing reached producers in early 1970 with the request to report inventories as of December 31, 1969. Several follow-up mailings were made to obtain as complete coverage as possible. The average date that census questionnaires were completed was during February. Therefore, different adjustments were necessary for the 1969 Census than for earlier census data.

The 1969 Census totals published for all sheep and lambs include "new crop lambs" or lambs born between October 1 and December 31, 1969. Since the inventory estimates published by the Statistical Reporting Service exclude "new crop" lambs, it was necessary to adjust for these lambs in order to make valid comparisons with census data. When revisions were made for the inventory numbers, corresponding adjustments were usually necessary in lamb crop, wool, or mohair estimates.

The estimates of average value per head are based on crop and livestock reporters' estimates of average price per head in their localities, about January 1, each year. These farm and ranch operators report the value per head by age and sex. Values per head, by classes for each State, are weighted together by the estimated number in each class. This weighted average is the basis for the estimated value per head. In the case of estimates for the United States, the total value is the sum of the State estimates; and value per head is derived by dividing the total value by the number of head for the United States.

Revised estimates by States of the number of sheep and lambs on feed January 1, 1966-70, for slaughter market are presented in this publication. Data showing number on feed on November 1, 1965-69, and March 1, 1966-70, are shown for seven States. Also included for these seven States are data for number on feed by weight groups, placements, and marketings. Estimates of sheep and lambs on feed pertain to animals being fattened for slaughter market on grain, other concentrates, or succulent pastures, and expected to produce a carcass that will grade Good or better.

The number of lambs saved is defined as the number of lambs docked or branded in the 13 Western sheep States (11 Western States, South Dakota, and Texas). In other States, the number of lambs saved is the number living on July 1 plus those sold before that date. The estimated lamb crop percentage is the number of lambs saved per 100 ewes 1 year old and older on farms and ranches at the beginning of the year.

Wool and mohair production estimates are based on survey returns from sheep producers and check data from Agricultural Stabilization and Conservation Service incentive payment programs. These estimates include shearing at commercial feeding yards. The 1969 Census of Agriculture did not collect data on the pounds of wool or mohair produced.

Table 1. Sheep and lambs: Number on farms, value per head, total value, and classes, United States, January 1, 1966-70

Year	All sheep & lambs		Sheep and lambs		Stock sheep & lambs						
	Number	Total value	Number	on feed	Farm value		Lambs		1 year and older		
					Per head	Total	Ewes	Wether and ram	Ewes	Rams	Wethers
	1,000 head	1,000 dollars	1,000 head		Dollars	dollars			1,000 head		
1966	24,734	490,686	3,278	21,456	19.70	422,404	3,010	760	16,850	675	161
1967	23,953	473,216	3,276	20,677	19.70	407,434	2,959	688	16,230	645	154
1968	22,223	427,216	3,115	19,108	19.10	365,783	2,546	569	15,290	587	118
1969	21,350	470,709	2,995	18,355	22.00	403,210	2,473	501	14,707	558	117
1970	20,423	512,737	2,990	17,433	24.80	432,505	2,422	475	13,923	522	91

Table 2. Lamb crop: United States, 1965-69

Year	Breeding ewes 1 year old and older on January 1	Lambs saved per 100 ewes 1 + on January 1 1/	Lambs saved 1/
	1,000 head	Percent	1,000 head
1965	17,502	93	16,312
1966	16,850	94	15,881
1967	16,230	93	15,017
1968	15,290	94	14,444
1969	14,707	93	13,723

1/ Lambs saved defined as lambs living July 1, or sold before July 1 in the Native States and lambs docked or branded in the Western sheep States.

Table 3. Wool production: United States, 1965-69 1/

Year	Shorn wool				Pulled wool			Total shorn and pulled wool production
	Sheep shorn 2/	Weight per fleece	Production	Price per pound 3/	Value	Weight per skin	Production	
	1,000 head	Pounds	1,000 pounds	Cents	1,000 dollars	Pounds	1,000 pounds	
1965	23,756	8.48	201,463	47.1	94,999	3.37	23,300	224,763
1966	22,923	8.51	195,053	52.1	101,204	3.43	24,100	219,153
1967	22,056	8.57	188,984	39.8	75,177	3.44	22,400	211,384
1968	20,759	8.55	177,396	40.5	71,778	3.43	20,500	197,896
1969	19,584	8.46	165,749	41.8	69,516	3.46	17,100	182,849

1/ Data not available for Hawaii.

2/ Includes shearing at commercial feeding yards.

3/ Computed by weighting State average prices for all wool sold during the year by sales of shorn wool.



Table 4. All goats: Number on farms, value per head, and total value, Texas, January 1, 1966-70

Year	Number 1,000 head	Value	
		Per head Dollars	Total 1,000 dollars
1966	4,222	6.80	28,710
1967	3,969	5.20	20,639
1968	3,572	4.90	17,503
1969	3,030	6.90	20,907
1970	2,572	7.40	19,033

Table 5. Mohair production and value, 7 States, 1965-69 1/

Year	Goats clipped 2/	Average clip per goat	Production	Price per pound 3/	Value
1965	4,803	6.7	32,420	65.5	21,251
1966	4,659	6.3	29,576	53.7	15,896
1967	4,113	6.6	27,127	40.9	11,100
1968	3,966	6.6	26,022	45.2	11,754
1969	3,174	6.6	20,810	65.1	13,549

1/ Includes Missouri, Texas, New Mexico, Arizona, Utah, Oregon and California.

2/ In States where goats are clipped twice a year, the number clipped is the sum of goats and kids clipped in the spring and kids clipped in the fall.

3/ The 7-State average price is computed by weighting State calendar year prices by production of mohair.

Table 6. All sheep and lambs: Number on farms and total value, by States, January 1, 1966-70

State	Number					Total value				
	1966	1967	1968	1969	1970	1966	1967	1968	1969	1970
	1,000 head					1,000 dollars				
Maine	20	19	18	17	16	274	281	263	267	280
N. H.	5	5.1	5.4	5.6	5.3	75	79	89	99	109
Vt.	8.3	7.6	7.2	6.7	6.7	128	118	118	117	131
Mass.	10	10	10	9.8	8.6	156	159	166	183	172
R. I.	2.2	2	1.9	2	1.8	34	31	31	37	35
Conn.	4.5	4.9	5.2	5.5	5.1	71	77	86	107	102
N. Y.	111	108	108	107	106	1,980	2,014	1,847	2,219	2,254
N. J.	10	9.2	8.8	9	9.5	182	174	160	178	204
Pa.	185	176	172	170	165	3,071	2,992	3,079	3,213	3,548
Ohio	785	778	767	744	728	14,662	14,846	13,933	14,760	15,719
Ind.	331	319	298	282	274	5,816	5,458	5,145	5,265	6,010
Ill.	482	474	421	410	386	8,527	8,240	7,295	7,728	8,120
Mich.	303	288	274	271	264	5,496	5,455	5,211	5,768	5,764
Wis.	190	192	189	182	167	3,313	3,036	2,922	3,695	3,773
Minn.	684	657	591	576	554	12,924	11,621	10,065	11,376	11,947
Iowa	1,155	1,030	973	942	869	21,885	18,093	16,555	19,217	20,316
Mo.	398	362	333	306	276	6,739	5,717	5,017	5,636	5,499
N. Dak.	482	478	450	428	420	9,358	8,584	7,462	8,957	9,590
S. Dak.	1,451	1,421	1,356	1,262	1,207	31,690	29,252	26,572	29,751	31,986
Nebr.	577	569	451	393	377	11,104	10,946	8,665	8,535	9,318
Kans.	578	468	402	386	378	10,421	7,924	6,503	8,792	9,019
Del.	2.7	2.7	2.2	2	1.8	44	46	38	35	34
Md.	20	19	19	20	21	338	338	359	404	431
Va.	223	216	214	206	202	4,460	4,450	4,387	4,470	4,444
W. Va.	191	178	176	176	174	3,152	3,133	3,274	3,643	3,654
N. C.	25	22	20	18	16	425	374	314	310	320
S. C.	4.4	2.9	2.1	1.7	1.6	70	45	33	28	30
Ga.	6.8	6.8	6	5.3	4.5	105	110	91	76	69
Fla.	7	6.4	6	5.6	5	86	81	77	68	65
Ky.	168	159	135	112	100	3,427	3,275	2,619	2,229	2,000
Tenn.	84	75	60	53	50	1,394	1,268	1,008	896	975
Ala.	10	8.7	7.5	6.7	6.1	134	113	91	83	95
Miss.	25	23	19	16	13	322	294	249	190	169
Ark.	12	11	9.5	8.4	8	154	151	128	142	144
La.	41	32	30	26	24	414	349	327	320	312
Okla.	160	148	139	136	138	2,536	2,290	2,044	2,573	3,173
Tex.	4,795	4,802	4,228	4,029	3,708	69,587	67,686	56,800	67,252	73,602
Mont.	1,387	1,351	1,250	1,178	1,113	31,152	31,438	27,732	29,680	32,087
Idaho	859	844	844	870	840	19,551	20,616	20,419	23,607	26,918
Wyo.	2,029	1,951	1,873	1,904	1,883	47,311	45,344	41,957	47,716	52,384
Colo.	1,560	1,514	1,384	1,357	1,303	35,592	36,328	32,451	35,211	38,302
N. Mex.	972	955	873	816	773	18,980	19,700	16,258	16,749	18,187
Ariz.	601	534	487	500	508	13,693	10,937	8,890	8,901	11,084
Utah	1,100	1,100	1,079	1,053	1,053	26,857	27,172	26,387	29,585	33,998
Nev.	261	256	247	231	227	6,149	6,259	5,918	6,237	7,086
Wash.	180	168	157	153	141	3,826	3,735	3,454	4,027	3,839
Oreg.	648	596	566	569	541	12,785	12,988	12,452	14,128	14,107
Calif.	1,567	1,570	1,521	1,356	1,317	39,626	38,934	37,530	35,504	40,589
48 States	24,711	23,929	22,196	21,323	20,396	490,076	472,551	426,471	469,964	511,994
Alaska	23	24	27	27	27	610	665	745	745	743
Hawaii										
U. S.	24,734	23,953	22,223	21,350	20,423	490,686	473,216	427,216	470,709	512,737

Table. 7. Sheep and lambs: Number on farms, by classes, by States, January 1, 1966-70

State	Sheep and lambs on feed					Total stock sheep				
	1966	1967	1968	1969	1970	1966	1967	1968	1969	1970
	1,000 head									
Maine						20	19	18	17	16
N. H.						5	5.1	5.4	5.6	5.3
Vt.						8.3	7.6	7.2	6.7	6.7
Mass.						10	10	10	9.8	8.6
R. I.						2.2	2	1.9	2	1.8
Conn.						4.5	4.9	5.2	5.5	5.1
N. Y.	12	13	15	14	14	99	95	93	93	92
N. J.						10	9.2	8.8	9	9.5
Pa.						185	176	172	170	165
Ohio	136	136	131	127	123	649	642	636	617	605
Ind.	40	45	35	35	34	291	274	263	247	240
Ill.	123	126	101	106	100	359	348	320	304	286
Mich.	68	70	67	69	64	235	218	207	202	200
Wis.	33	35	34	35	33	157	157	155	147	134
Minn.	144	144	150	144	131	540	513	441	432	423
Iowa	345	285	288	257	218	810	745	685	685	651
Mo.	55	50	53	51	51	343	312	280	255	225
N. Dak.	80	95	110	100	100	402	383	340	328	320
S. Dak.	249	243	260	188	165	1,202	1,178	1,096	1,074	1,042
Nebr.	294	300	210	171	162	283	269	241	222	215
Kans.	177	83	69	100	106	401	385	333	286	272
Del.						2.7	2.7	2.2	2	1.8
Md.						20	19	19	20	21
Va.						223	216	214	206	202
W. Va.						191	178	176	176	174
N. C.						25	22	20	18	16
S. C.						4.4	2.9	2.1	1.7	1.6
Ga.						6.8	6.8	6	5.3	4.6
Fla.						7	6.4	6	5.6	5
Ky.						168	159	135	112	100
Tenn.						84	75	60	53	50
Ala.						10	8.7	7.5	6.7	6.1
Miss.						25	23	19	16	13
Ark.						12	11	9.5	8.4	8
La.						41	32	30	26	24
Okla.	37	29	25	27	34	123	119	114	109	104
Tex.	119	220	242	242	300	4,676	4,582	3,986	3,787	3,408
Mont.	110	125	110	95	95	1,277	1,226	1,140	1,083	1,018
Idaho	98	125	125	165	153	761	719	719	705	687
Wyo.	120	129	124	138	170	1,909	1,822	1,749	1,766	1,713
Colo.	500	510	500	500	480	1,060	1,004	884	857	823
N. Mex.	52	68	50	41	43	920	887	823	775	730
Ariz.	130	106	73	72	84	471	428	414	428	424
Utah	62	60	60	65	75	1,038	1,040	1,019	988	978
Nev.	17	24	27	22	26	244	232	220	209	201
Wash.	23	25	23	23	16	157	143	134	130	125
Oreg.	66	72	68	86	81	582	524	498	483	460
Calif.	188	158	165	122	132	1,379	1,412	1,356	1,234	1,185
48 States	3,278	3,276	3,115	2,995	2,990	21,433	20,653	19,081	18,328	17,406
Alaska						23	24	27	27	27
Hawaii										
U. S.	3,278	3,276	3,115	2,995	2,990	21,456	20,677	19,108	18,355	17,433

Continued

Table 7. Sheep and lambs: Number on farms, by classes, by States, January 1, 1966-70 Continued

State	Stock sheep				
	Ewes 1 year old and older				
	1966	1967	1968	1969	1970
	1,000 head				
Maine	14	13	13	12	11
N. H.	3.5	3.6	3.8	4	3.8
Vt.	6	5.7	5.3	5	5
Mass.	7	7	7	7	6.1
R. I.	1.5	1.5	1.4	1.5	1.3
Conn.	3.3	3.5	3.8	4	3.8
N. Y.	80	75	74	75	74
N. J.	7	6.9	6.4	6.6	7
Pa.	130	128	127	124	122
Ohio	532	515	515	505	490
Ind.	230	212	210	197	188
Ill.	284	272	250	240	220
Mich.	189	176	168	166	164
Wis.	129	126	123	116	105
Minn.	447	420	365	358	347
Iowa	684	622	566	560	526
Mo.	291	262	234	213	188
N. Dak.	333	300	284	274	265
S. Dak.	983	968	910	874	848
Nebr.	242	230	206	190	184
Kans.	353	331	285	239	230
Del.	2	2	1.6	1.5	1.3
Md.	16	15	15	16	17
Va.	176	174	171	166	161
W. Va.	155	142	139	139	138
N. C.	19	16	15	14	12
S. C.	3	2	1.5	1.2	1.2
Ga.	4.7	4.7	4.2	3.8	3.2
Fla.	4.6	4.2	4	3.9	3.7
Ky.	137	129	112	94	84
Tenn.	70	61	48	43	41
Ala.	7	6.3	5.4	5	4.6
Miss.	17	15	13	11	9
Ark.	9	8	7.2	6.5	6.2
La.	27	22	20	18	17
Okla.	93	93	89	88	85
Texas	3,158	3,190	2,999	2,878	2,590
Mont.	1,006	936	852	826	774
Idaho	645	616	609	600	583
Wyo.	1,538	1,442	1,399	1,385	1,343
Colo.	906	852	762	740	703
N. Mex.	687	668	635	594	552
Ariz.	349	323	313	321	321
Utah	890	878	859	830	821
Nev.	200	191	181	170	163
Wash.	118	111	103	100	96
Oreg.	466	425	408	396	369
Calif.	1,188	1,216	1,155	1,074	1,024
48 States	16,841	16,220	15,279	14,696	13,912
Alaska	9	10	11	11	11
Hawaii					
U. S.	16,850	16,230	15,290	14,707	13,923

Continued

Table 7. Sheep and lambs: Number on farms, by classes, by States, January 1, 1966-70 Continued

State	Stock sheep									
	Ewe lambs					Wether and ram lambs				
	1966	1967	1968	1969	1970	1966	1967	1968	1969	1970
	1,000 head									
Maine	4	4	3	3	3	1	1	1	1	1
N. H.	.8	.9	1	1	.9	.2	.2	.2	.2	.2
Vt.	1.4	1.2	1.2	1.2	1.1	.3	.3	.3	.2	.3
Mass.	2	2	2	1.9	1.5					.4
R. I.	.4	.3	.3	.3	.3	.1	.1	.1	.1	.1
Conn.	.6	.8	.8	.9	.8	.2	.2	.2	.2	.2
N. Y.	12	14	13	12	12	3	3	3	3	3
N. J.	1	1.2	1.1	1.2	1.3	1	.6	.5	.4	.4
Pa.	26	25	25	24	23	11	9	9	9	11
Ohio	73	82	80	69	73	16	17	17	18	18
Ind.	36	38	33	31	35	13	13	9	7	7
Ill.	52	55	49	42	45	7	6	7	6	9
Mich.	31	28	26	26	25	7	8	7	5	6
Wis.	20	23	23	21	19	2	3	3	4	4
Minn.	74	75	59	59	58	2	2	2	2	4
Iowa	95	94	92	98	98	7	6	5	5	5
Mo.	31	30	29	26	23	10	10	9	8	7
N. Dak.	47	59	40	38	39	10	12	7	7	7
S. Dak.	165	156	139	155	151	13	14	11	11	14
Nebr.	25	24	22	20	19	6	6	5	4	4
Kans.	24	27	23	20	18	8	11	10	13	14
Del.	.5	.5	.4	.3	.3	.1	.1	.1	.1	.1
Md.	2	2	2	2	2	1	1	1	1	1
Va.	33	30	30	27	28	4	3	4	5	5
W. Va.	24	23	23	23	23	4	6	7	7	6
N. C.	3	3	3	2	2	1	1	1	1	1
S. C.	.7	.5	.3	.2	.1	.3	.1	.1	.1	.1
Ga.	.8	.8	.7	.6	.6	.4	.4	.3	.2	.2
Fla.	1.1	1	.9	.8	.6	.4	.4	.3	.3	.3
Ky.	18	18	14	8	8	5	5	3	4	3
Tenn.	7	7	6	6	5	2	2	2	2	2
Ala.	1	1	.9	.8	.7	1	.8	.7	.5	.4
Miss.	3	3	3	2	2	2	2	1	1	1
Ark.	1	1	.9	.8	.9	1	1	.7	.5	.4
La.	5	4	4	3	3	3	2	2	2	2
Okla.	20	17	16	13	12	4	4	4	3	2
Tex.	839	779	526	511	454	462	391	287	235	225
Mont.	213	230	230	208	202	15	18	24	21	14
Idaho	93	80	88	85	85	2	6	6	5	5
Wyo.	299	311	284	316	308	13	13	12	12	11
Colo.	100	111	85	78	81	21	12	10	12	15
N. Mex.	151	151	133	130	130	42	31	22	19	17
Ariz.	83	72	71	75	71	15	13	11	12	12
Utah	117	123	127	125	125	6	12	5	7	7
Nev.	35	33	31	32	31	2	2	3	2	2
Wash.	31	24	23	22	22	1	1	1	1	1
Oreg.	84	68	65	63	68	7	8	6	6	7
Calif.	121	122	112	85	107	25	28	45	34	17
48 States	3,007	2,956	2,543	2,470	2,419	758	686	566	498	473
Alaska	3	3	3	3	3	2	2	3	3	2
Hawaii										
U. S.	3,010	2,959	2,546	2,473	2,422	760	688	569	501	475

Continued

Table 7. Sheep and lambs: Number on farms, by classes, by States, January 1, 1966-70 Continued

State	Stock sheep									
	Rams 1 year old and older					Wethers 1 year old and older				
	1966	1967	1968	1969	1970	1966	1967	1968	1969	1970
	1,000 head									
Maine	1	1	1	1	1					
N. H.	.5	.4	.4	.4	.4					
Vt.	.6	.4	.4	.3	.3					
Mass.	1	1	1	.9	.6					
R. I.	.2	.1	.1	.1	.1					
Conn.	.4	.4	.4	.4	.3					
N. Y.	4	3	3	3	3					
N. J.	1	.5	.5	.5	.5			.3	.3	.3
Pa.	5	5	6	6	5	13	9	5	7	4
Ohio	18	18	18	19	18	10	10	6	6	6
Ind.	12	11	10	11	9			1	1	1
Ill.	15	14	13	14	11	1	1	1	2	1
Mich.	7	6	6	5	5	1				
Wis.	6	5	5	5	5			1	1	1
Minn.	16	15	14	12	13	1	1	1	1	1
Iowa	23	22	21	21	21	1	1	1	1	1
Mo.	10	9	7	7	6	1	1	1	1	1
N. Dak.	11	11	8	8	8	1	1	1	1	1
S. Dak.	39	38	34	32	28	2	2	2	2	1
Nebr.	10	9	8	7	7				1	1
Kans.	14	14	13	12	9	2	2	2	2	1
Del.	.1	.1	.1	.1	.1					
Md.	1	1	1	1	1					
Va.	9	8	8	7	7	1	1	1	1	1
W. Va.	7	6	6	6	6	1	1	1	1	1
N. C.	2	2	1	1	1					
S. C.	.4	.3	.2	.1	.1				.1	.1
Ga.	.9	.9	.8	.7	.6					
Fla.	.9	.8	.8	.6	.4					
Ky.	7	6	5	5	4	1	1	1	1	1
Tenn.	4	4	3	2	2	1	1	1	1	1
Ala.	1	.4	.3	.3	.3		.2	.2	.1	.1
Miss.	2	2	1	1	1	1	1	1	1	1
Ark.	1	1	.7	.6	.5					
La.	3	2	2	2	1	3	2	2	1	1
Okla.	4	4	4	5	5	2	1	1		
Tex.	133	133	115	106	102	84	89	59	57	37
Mont.	42	41	33	27	27	1	1	1	1	1
Idaho	19	16	15	14	13	2	1	1	1	1
Wyo.	58	55	53	52	50	1	1	1	1	1
Colo.	30	27	25	25	22	3	2	2	2	2
N. Mex.	34	32	29	28	27	6	5	4	4	4
Ariz.	20	18	17	18	18	4	2	2	2	2
Utah	24	26	27	25	24	1	1	1	1	1
Nev.	6	5	4	4	4	1	1	1	1	1
Wash.	6	6	6	6	5	1	1	1	1	1
Oreg.	23	22	18	17	15	2	1	1	1	1
Calif.	41	41	40	37	33	4	5	4	4	4
48 States	674	644	586	557	521	153	146	109	108	81
Alaska	1	1	1	1	1	8	8	9	9	10
Hawaii										
U. S.	675	645	587	558	522	161	154	118	117	91

Table 8. Stock sheep and lambs: Value per head and total value, by States, January 1, 1966-70

State	Value per head					Total value				
	1966	1967	1968	1969	1970	1966	1967	1968	1969	1970
	Dollars					1,000 dollars				
Maine	13.70	14.80	14.60	15.70	17.50	274	281	263	267	280
New Hampshire	15.00	15.50	16.50	17.70	20.50	75	79	89	99	109
Vermont	15.40	15.50	16.40	17.50	19.50	128	118	118	117	131
Massachusetts	15.60	15.90	16.60	18.70	20.00	156	159	166	183	172
Rhode Island	15.40	15.50	16.40	18.40	19.50	34	31	31	37	35
Connecticut	15.80	15.70	16.50	19.40	20.00	71	77	86	107	102
New York	17.70	18.60	16.80	20.70	21.00	1,752	1,767	1,562	1,925	1,932
New Jersey	18.20	18.90	18.20	19.80	21.50	182	174	160	178	204
Pennsylvania	16.60	17.00	17.90	18.90	21.50	3,071	2,992	3,079	3,213	3,548
Ohio	18.40	19.10	18.20	19.60	21.00	11,942	12,262	11,575	12,093	12,705
Indiana	17.10	16.80	16.90	18.20	21.50	4,976	4,603	4,445	4,495	5,160
Illinois	16.90	16.80	16.80	18.10	20.00	6,067	5,846	5,376	5,502	5,720
Michigan	17.60	18.60	18.70	20.70	20.50	4,136	4,055	3,871	4,181	4,100
Wisconsin	16.90	15.10	14.90	19.90	22.00	2,653	2,371	2,310	2,925	2,948
Minnesota	18.60	17.60	16.70	19.00	20.50	10,044	9,029	7,365	8,208	8,672
Iowa	18.50	17.40	16.60	19.80	22.50	14,985	12,963	11,371	13,563	14,648
Missouri	16.60	15.60	14.70	17.90	19.00	5,694	4,867	4,116	4,565	4,275
North Dakota	18.90	17.70	15.80	20.60	22.00	7,598	6,779	5,372	6,757	7,040
South Dakota	21.60	20.50	19.50	23.50	26.50	25,963	24,149	21,372	25,239	27,613
Nebraska	19.50	19.50	19.40	21.50	24.50	5,518	5,246	4,675	4,773	5,268
Kansas	17.60	16.70	15.80	22.70	24.00	7,058	6,430	5,261	6,492	6,528
Delaware	16.30	17.00	17.10	17.30	19.00	44	46	38	35	34
Maryland	16.90	17.80	18.90	20.20	20.50	338	338	359	404	431
Virginia	20.00	20.60	20.50	21.70	22.00	4,460	4,450	4,387	4,470	4,444
West Virginia	16.50	17.60	18.60	20.70	21.00	3,152	3,133	3,274	3,643	3,654
North Carolina	17.00	17.00	15.70	17.20	20.00	425	374	314	310	320
South Carolina	15.90	15.50	15.80	16.60	19.00	70	45	33	28	30
Georgia	15.40	16.20	15.20	14.40	15.00	105	110	91	76	69
Florida	12.30	12.70	12.90	12.10	13.00	86	81	77	68	65
Kentucky	20.40	20.60	19.40	19.90	20.00	3,427	3,275	2,619	2,229	2,000
Tennessee	16.60	16.90	16.80	16.90	19.50	1,394	1,268	1,008	896	975
Alabama	13.40	13.00	12.10	12.40	15.50	134	113	91	83	95
Mississippi	12.90	12.80	13.10	11.90	13.00	322	294	249	190	169
Arkansas	12.80	13.70	13.50	16.90	18.00	154	151	128	142	144
Louisiana	10.10	10.90	10.90	12.30	13.00	414	349	327	320	312
Oklahoma	15.20	15.10	14.20	18.90	22.50	1,870	1,797	1,619	2,060	2,340
Texas	14.50	14.10	13.40	16.80	19.00	67,802	64,606	53,412	63,622	64,752
Montana	22.50	23.40	22.30	25.30	29.00	28,732	28,688	25,422	27,400	29,522
Idaho	22.60	24.50	24.40	27.40	32.50	17,199	17,616	17,544	19,317	22,328
Wyoming	23.40	23.40	22.50	25.30	28.00	44,671	42,635	39,353	44,680	47,964
Colorado	23.20	24.50	23.70	26.50	30.50	24,592	24,598	20,951	22,711	25,102
New Mexico	19.50	20.60	18.60	20.50	23.50	17,940	18,272	15,308	15,888	17,155
Arizona	23.00	20.60	18.30	17.60	20.00	10,833	8,817	7,576	7,533	8,480
Utah	24.50	24.80	24.60	28.30	32.50	25,431	25,792	25,067	27,960	31,785
Nevada	23.60	24.60	24.20	27.00	31.50	5,758	5,707	5,324	5,643	6,332
Washington	21.00	22.10	22.00	26.20	27.00	3,297	3,160	2,948	3,406	3,375
Oregon	19.70	21.90	22.00	24.80	26.00	11,465	11,476	10,956	11,978	11,960
California	25.60	25.00	25.00	26.30	31.00	35,302	35,300	33,900	32,454	36,735
48 States	19.70	19.70	19.10	22.00	24.80	421,794	406,769	365,038	402,465	431,762
Alaska	26.50	27.70	27.60	27.60	27.50	610	665	745	745	743
Hawaii										
United States	19.70	19.70	19.10	22.00	24.80	422,404	407,434	365,783	403,210	432,505

Table 9. Sheep and lambs: Number on feed, selected States, January 1, 1966-70 1/

State and region	1966	1967	1968	1969	1970
	1,000 head				
New York	12	13	15	14	14
Ohio	136	136	131	127	123
Indiana	40	45	35	35	34
Illinois	123	126	101	106	100
Michigan	68	70	67	69	64
Wisconsin	33	35	34	35	33
Minnesota	144	144	150	144	131
Iowa	345	285	288	257	218
Missouri	55	50	53	51	51
North Dakota	80	95	110	100	100
South Dakota	249	243	260	188	165
Nebraska	294	300	210	171	162
Kansas	177	83	69	100	106
North Central	1,744	1,612	1,508	1,383	1,287
Oklahoma	37	29	25	27	34
Texas	119	220	242	242	300
Montana	110	125	110	95	95
Idaho	98	125	125	165	153
Wyoming	120	129	124	138	170
Colorado	500	510	500	500	480
New Mexico	52	68	50	41	43
Arizona	130	106	73	72	84
Utah	62	60	60	65	75
Nevada	17	24	27	22	26
Washington	23	25	23	23	16
Oregon	66	72	68	86	81
California	188	158	165	122	132
West	1,366	1,402	1,325	1,329	1,355
7 States 2/	1,872	1,799	1,734	1,580	1,563
26 States	3,278	3,276	3,115	2,995	2,990

1/ Sheep and lambs on feed are animals being fattened for slaughter market on grain, other concentrates, or succulent pastures and are expected to produce a carcass that will grade Good or better.

2/ Iowa, South Dakota, Nebraska, Kansas, Texas, Colorado, and California.



Table 10. Sheep and lambs on feed: Placements, number on feed, and marketings, specified dates, selected States, 1965-70

State	1965			1966					
	Placed on feed before Sept. 1	Placed during Sept. & Oct.	No. on feed Nov. 1	Placed during Nov. & Dec. 1/	Marketed during Nov.-Dec. 1/	No. on feed Jan. 1	Placed during Jan.-Feb. 2/	Marketed during Jan.-Feb. 2/	No. on feed Mar. 1
	1,000 head								
Iowa	66	249	315	206	176	345	85	200	230
S. Dakota	38	212	250	124	125	249	53	184	118
Nebraska	33	277	310	74	90	294	19	125	188
Kansas	15	152	167	45	35	177	5	75	107
Texas	26	112	138	81	100	119	81	28	172
Colorado	20	484	504	156	160	500	88	260	328
California	55	174	229	37	78	188	8	75	121
Total									
7 States	253	1,660	1,913	723	764	1,872	339	947	1,264
1966									
Iowa	68	200	268	142	125	285	58	190	153
S. Dakota	39	185	224	157	138	243	63	200	106
Nebraska	20	290	310	85	95	300	25	150	175
Kansas	4	100	104	26	47	83	14	51	46
Texas	18	156	174	165	119	220	98	128	190
Colorado	14	475	489	150	129	510	110	320	300
California	55	129	184	33	59	158	11	100	69
Total									
7 States	218	1,535	1,753	758	712	1,799	379	1,139	1,039
1967									
Iowa	53	215	268	140	120	288	75	201	162
S. Dakota	22	222	244	141	125	260	51	202	109
Nebraska	23	188	211	92	93	210	30	131	109
Kansas	5	70	75	28	34	69	3	22	50
Texas	43	211	254	128	140	242	133	125	250
Colorado	14	496	510	160	170	500	85	310	275
California	40	134	174	55	64	165	5	99	71
Total									
7 States	200	1,536	1,736	744	746	1,734	382	1,090	1,026
1968									
Iowa	64	166	230	142	115	257	59	178	138
S. Dakota	21	175	196	116	124	188	35	158	65
Nebraska	16	179	195	69	93	171	20	116	75
Kansas	5	97	102	13	15	100	2	45	57
Texas	37	183	220	143	121	242	89	136	195
Colorado		560	560	170	230	500	140	300	340
California	52	107	159	25	62	122	25	73	74
Total									
7 States	195	1,467	1,662	678	760	1,580	370	1,006	944
1969									
Iowa	57	185	242	95	119	218	55	155	118
S. Dakota	18	166	184	97	116	165	25	128	62
Nebraska	21	184	205	58	101	162	17	100	79
Kansas	7	103	110	20	24	106	12	52	66
Texas	35	174	209	183	92	300	89	140	249
Colorado	20	480	500	150	170	480	130	230	380
California	43	117	160	26	54	132	10	69	73
Total									
7 States	201	1,409	1,610	629	676	1,563	338	874	1,027

1/ Includes sheep and lambs placed on feed after November 1 and marketed before January 1.

2/ Includes sheep and lambs placed on feed after January 1 and marketed before March 1.

Table 11. Sheep and lambs on feed: Number by weight groups, selected States, November 1, 1965-69

State	1965				1966					
	Under 60 lb.	60-79 lb.	80-99 lb.	100 lb. and over	Under 60 lb.	60-79 lb.	80-99 lb.	100 lb. and over		
	1,000 head									
Iowa	12	159	129	15	11	112	133	12		
S. Dakota	10	101	104	35	7	84	112	21		
Nebraska	42	193	62	13	45	152	108	5		
Kansas	30	96	41	0	15	64	22	3		
Texas	21	72	43	2	16	110	47	1		
Colorado	31	278	187	8	26	276	162	25		
California	4	77	132	16	8	58	102	16		
Total 7 States	150	976	698	89	128	856	686	83		
	1967				1968					
	1,000 head									
Iowa	16	115	121	16	6	120	97	7		
S. Dakota	17	100	107	20	4	64	119	9		
Nebraska	13	106	84	8	14	79	92	10		
Kansas	13	35	25	2	8	73	21	0		
Texas	10	194	50	0	6	123	86	5		
Colorado	29	239	213	29	17	252	246	45		
California	1	75	86	12	1	58	92	8		
Total 7 States	99	864	686	87	56	769	753	84		
	1968				1969					
	1,000 head									
Iowa	25	101	62	35	7	31	77	73	51	10
S. Dakota	16	52	65	54	9	16	42	56	51	19
Nebraska	35	58	55	37	10	55	64	37	39	10
Kansas	40	41	19	2	0	43	42	18	6	1
Texas	50	79	68	18	5	70	67	51	18	3
Colorado	112	157	140	106	45	105	150	110	110	25
California	28	31	52	40	8	22	45	56	27	10
Total 7 States	306	519	461	292	84	342	487	401	302	78

Table 12. Sheep and Lambs on feed: Number by weight groups, selected States, January 1, 1966-70

State	1966				1967			
	Under 60 lb.	60-79 lb.	80-99 lb.	100 lb. and over	Under 60 lb.	60-79 lb.	80-99 lb.	100 lb. and over
	1,000 head							
Iowa	7	71	226	41	5	70	172	38
S. Dakota	4	40	149	56	5	47	156	35
Nebraska	6	80	177	31	3	79	200	18
Kansas	2	55	87	33	2	34	46	1
Texas	12	63	38	6	11	81	118	10
Colorado	5	55	350	90	8	89	332	81
California	3	22	127	36	1	12	138	7
Total 7 States	39	386	1,154	293	35	412	1,162	190

State	1968					1969						
	Under 60 lb.	60-79 lb.	80-89 lb.	80-99 lb.	90-99 lb.	100 lb. and over	Under 60 lb.	60-79 lb.	80-89 lb.	80-99 lbs.	90-99 lb.	100 lb. and over
	1,000 head											
Iowa	6	49	106	98	204	29	5	52	87	103	190	10
S. Dakota	4	23	92	84	176	57	2	31	54	73	127	28
Nebraska	8	51	52	70	122	29	3	32	55	55	110	26
Kansas	2	15	34	14	48	4	1	32	33	23	56	11
Texas	7	145	63	24	87	3	0	113	90	32	122	7
Colorado	5	45	165	200	365	85	20	75	135	180	315	90
California	1	26	82	46	128	10	1	20	38	52	90	11
Total 7 States	33	354	594	536	1,130	217	32	355	492	518	1,010	183

State	1969				1970					
	Under 70 lb.	70-79 lb.	80-89 lb.	90-99 lb.	100 lb. and over	Under 70 lb.	70-79 lb.	80-89 lb.	90-99 lb.	100 lb. and over
	1,000 head									
Iowa	13	44	87	103	10	13	22	74	81	28
S. Dakota	9	24	54	73	28	8	17	48	58	34
Nebraska	18	17	55	55	26	19	21	47	52	23
Kansas	9	24	33	23	11	10	26	27	32	11
Texas	25	88	90	32	7	28	113	110	34	15
Colorado	20	75	135	180	90	38	77	149	144	72
California	8	13	38	52	11	12	13	53	49	5
Total 7 States	102	285	492	518	183	128	289	508	450	188

Table 13. Sheep and lambs on feed: Number by weight groups, selected States, March 1, 1966-70

State	1966				1967					
	Under 60 lb.	60-79 lb.	80-99 lb.	100 lb. and over	Under 60 lb.	60-79 lb.	80-99 lb.	100 lb. and over		
1,000 head										
Iowa	9	24	142	55	6	19	93	35		
S. Dakota	3	12	66	37	2	10	62	32		
Nebraska	3	17	102	66	3	31	111	30		
Kansas	0	7	76	24	0	5	34	7		
Texas	7	41	110	14	9	70	98	13		
Colorado	3	10	148	167	4	15	212	69		
California	0	5	51	65	0	7	22	40		
Total 7 States	25	116	695	428	24	157	632	226		
State	1968				1969					
	Under 60 lb.	60-79 lb.	80-99 lb.	100 lb. and over	Under 60 lb.	60-79 lb.	80-99 lb.	100 lb. and over		
1,000 head										
Iowa	5	13	128	16	6	24	86	22		
S. Dakota	4	9	68	28	3	5	43	14		
Nebraska	1	15	74	19	1	8	52	14		
Kansas	1	17	27	5	0	4	43	10		
Texas	5	58	185	2	6	57	117	15		
Colorado	2	14	179	80	3	17	201	119		
California	0	3	22	46	0	2	39	33		
Total 7 States	18	129	683	196	19	117	581	227		
State	1969				1970					
	Under 70 lb.	70-79 lb.	80-89 lb.	90-99 lb.	100 lb. and over	Under 70 lb.	70-79 lb.	80-89 lb.	90-99 lb.	100 lb. and over
1,000 head										
Iowa	13	17	21	65	22	8	11	25	47	27
S. Dakota	4	4	14	29	14	4	4	11	22	21
Nebraska	3	6	13	39	14	2	6	14	43	14
Kansas	2	2	15	28	10	2	6	14	31	13
Texas	20	43	69	48	15	14	52	80	95	8
Colorado	10	10	41	160	119	1	19	61	155	144
California	1	1	20	19	33	1	7	8	28	29
Total 7 States	53	83	193	388	227	32	105	213	421	256

Table 14. New crop lambs: Number on farms, selected States, January 1, 1966-70 1/

State and region	1966	1967	1968	1969	1970
	1,000 head				
North Atlantic	19	16	15	16	16
Ohio	19	21	15	19	15
Indiana	18	23	23	14	9
Other East North Central	24	20	18	21	18
East North Central	61	64	56	54	42
Missouri	32	34	39	30	20
Nebraska	24	18	24	16	16
Kansas	230	210	185	160	125
Other West North Central	34	32	25	30	25
West North Central	320	294	273	236	186
Virginia	38	39	43	42	39
Other South Atlantic	18	16	19	15	14
South Atlantic	56	55	62	57	53
Kentucky	27	28	35	28	23
Tennessee	26	24	17	14	11
Oklahoma	40	37	36	34	35
Texas	379	351	270	500	320
Other South Central	16	12	12	11	11
South Central	488	452	370	587	400
Idaho	14	15	19	14	23
Arizona	105	86	91	94	91
California	582	584	657	689	541
Other Western	49	49	42	56	45
Western	750	734	809	853	700
48 States	1,694	1,615	1,585	1,803	1,397

1/ New crop lamb inventory includes all lambs born after September 30 the previous year that are on hand January 1. New crop lambs are not included in the estimates of all sheep and lambs on pages 7 - 11 of this publication.

Table 15. Lamb crop: Breeding ewes 1 year old and older January 1, and lambs saved as percentage of ewes 1 year old and older, January 1, by States, 1965-69

State	Breeding ewes 1 year old and older on					Lambs saved per 100 ewes 1+ on				
	January 1					January 1				
	1965	1966	1967	1968	1969	1965	1966	1967	1968	1969
	1,000 head					Percent				
Maine	17	14	13	13	12	106	107	108	100	100
New Hampshire	4	3.5	3.6	3.8	4	93	94	97	105	98
Vermont	6	5	5.7	5.3	5	105	95	102	98	98
Massachusetts	7	7	7	7	7	86	96	97	101	97
Rhode Island	1.5	1.5	1.5	1.4	1.5	100	100	87	93	93
Connecticut	3.8	3.3	3.5	3.8	4	95	100	100	100	100
New York	87	80	75	74	75	108	108	111	104	103
New Jersey	7	7	6.9	6.4	6.6	91	89	96	102	102
Pennsylvania	133	130	128	127	124	102	105	104	106	102
Ohio	538	532	515	515	505	99	98	101	99	98
Indiana	247	230	212	210	197	106	107	111	110	110
Illinois	293	284	272	250	240	107	106	108	109	106
Michigan	195	189	176	168	166	107	110	109	107	108
Wisconsin	130	129	126	123	116	115	108	115	115	112
Minnesota	466	447	420	365	358	113	110	113	113	109
Iowa	743	684	622	566	560	101	101	108	106	105
Missouri	303	291	262	234	213	96	103	103	105	104
North Dakota	354	333	300	284	274	105	104	102	108	106
South Dakota	1,007	983	968	910	874	103	104	103	106	103
Nebraska	242	242	230	206	190	100	102	104	102	104
Kansas	333	353	331	285	239	97	96	93	99	103
Delaware	2	2	2	1.6	1.5	110	110	100	100	107
Maryland	18	16	15	15	16	111	100	93	100	100
Virginia	180	176	174	171	166	119	120	117	116	113
West Virginia	163	155	142	139	139	112	110	112	112	112
North Carolina	20	19	16	15	14	105	100	106	107	100
South Carolina	3.3	3	2	1.5	1.2	82	80	80	80	83
Georgia	5.3	4.7	4.7	4.2	3.8	75	70	70	76	74
Florida	5.5	4.6	4.2	4	3.9	84	74	93	88	82
Kentucky	151	137	129	112	94	112	109	117	116	107
Tennessee	78	70	61	48	43	99	96	90	94	95
Alabama	8	7	6.3	5.4	5	94	83	86	93	90
Mississippi	18	17	15	13	11	78	88	80	88	82
Arkansas	11	9	8	7.2	6.5	100	82	84	93	95
Louisiana	30	27	22	20	18	73	63	68	65	67
Oklahoma	92	93	93	89	88	105	108	103	102	103
Texas	3,290	3,158	3,190	2,999	2,878	81	82	75	79	80
Montana	1,093	1,006	936	852	826	92	92	90	95	92
Idaho	665	645	616	609	600	113	112	115	113	112
Wyoming	1,602	1,538	1,442	1,399	1,385	81	87	82	86	84
Colorado	906	906	852	762	740	100	101	100	100	100
New Mexico	744	687	668	635	594	75	79	75	81	77
Arizona	366	349	323	313	321	83	83	77	79	79
Utah	876	890	878	859	830	85	86	90	92	92
Nevada	202	200	191	181	170	92	95	90	92	91
Washington	147	118	111	103	100	112	114	115	115	109
Oregon	512	466	425	408	396	98	101	102	101	95
California	1,188	1,188	1,216	1,155	1,074	91	91	91	91	90
48 States	17,493	16,841	16,220	15,279	14,696	93	94	93	94	93
Alaska	9	9	10	11	11	67	67	70	64	55
Hawaii										
United States	17,502	16,850	16,230	15,290	14,707	93	94	93	94	93

Table 16. Lamb crop: Number of lambs saved, by States, 1965-69

State	1965	1966	1967	1968	1969
	1,000 head				
Maine	18	15	14	13	12
New Hampshire	3.7	3.3	3.5	4	3.9
Vermont	6.3	5.7	5.8	5.2	4.9
Massachusetts	6	6.7	6.8	7.1	6.8
Rhode Island	1.5	1.5	1.3	1.3	1.4
Connecticut	3.6	3.3	3.5	3.8	4
New York	94	86	83	77	77
New Jersey	6.4	6.2	6.6	6.5	6.7
Pennsylvania	136	137	133	134	126
Ohio	535	521	520	512	494
Indiana	262	245	235	231	217
Illinois	313	302	294	272	254
Michigan	208	207	192	180	179
Wisconsin	149	139	145	142	130
Minnesota	527	490	474	411	392
Iowa	750	693	672	599	586
Missouri	291	299	269	245	222
North Dakota	370	346	305	308	290
South Dakota	1,040	1,026	997	965	900
Nebraska	243	248	239	210	197
Kansas	324	339	308	283	246
Delaware	2.2	2.2	2	1.6	1.6
Maryland	20	16	14	15	16
Virginia	215	211	203	199	187
West Virginia	183	170	159	156	156
North Carolina	21	19	17	16	14
South Carolina	2.7	2.4	1.6	1.2	1
Georgia	4	3.3	3.3	3.2	2.8
Florida	4.6	3.4	3.9	3.5	3.2
Kentucky	169	149	151	130	101
Tennessee	77	67	55	45	41
Alabama	7.5	5.8	5.4	5	4.5
Mississippi	14	15	12	11.4	9
Arkansas	11	7.4	6.7	6.7	6.2
Louisiana	22	17	15	13	12
Oklahoma	97	100	96	91	91
Texas	2,665	2,590	2,392	2,369	2,302
Montana	1,006	926	842	809	760
Idaho	751	725	706	688	672
Wyoming	1,298	1,338	1,182	1,203	1,163
Colorado	906	916	850	762	740
New Mexico	560	540	502	512	459
Arizona	303	291	247	248	254
Utah	745	765	792	790	764
Nevada	186	190	172	167	155
Washington	165	135	128	118	109
Oregon	502	470	434	412	376
California	1,081	1,081	1,111	1,051	967
48 States	16,306	15,875	15,010	14,437	13,717
Alaska	6	6	7	7	6
Hawaii					
United States	16,312	15,881	15,017	14,444	13,723

Table 17. Wool: Number of sheep and lambs shorn and weight per fleece, by States, 1965-69

State	Sheep and lambs shorn 1/					Weight per fleece 2/				
	1965	1966	1967	1968	1969	1965	1966	1967	1968	1969
	1,000 head					Pounds				
Maine	21	19	18	17	16	7.2	7.6	7.5	7.4	7.2
New Hampshire	5.4	4.9	4.8	5.2	5.4	7.0	7.1	7.1	7.1	7.0
Vermont	7.5	7.5	6.8	6.5	5.7	8.1	8.1	8.2	8.1	7.8
Massachusetts	9.4	9.5	9.5	9.3	9.3	7.4	7.4	7.3	7.0	6.9
Rhode Island	2.1	1.9	1.8	1.7	1.8	7.0	7.4	7.2	7.3	6.9
Connecticut	4.9	4.4	4.8	5.1	5.4	7.2	7.5	7.3	7.2	7.0
New York	100	92	90	91	90	8.1	8.1	8.1	8.0	7.7
New Jersey	9.6	9.5	8.6	8.4	8.8	7.6	7.7	7.4	7.8	7.9
Pennsylvania	174	170	162	158	156	7.6	7.5	7.5	7.4	7.4
Ohio	734	715	692	697	678	8.7	8.7	8.8	8.6	8.3
Indiana	297	281	273	262	247	7.8	7.9	8.0	8.0	7.8
Illinois	485	431	363	384	352	7.6	7.8	7.9	7.4	7.3
Michigan	278	265	264	262	251	8.7	8.5	8.3	8.3	8.0
Wisconsin	158	151	146	141	139	8.1	7.9	8.1	8.1	8.1
Minnesota	633	611	592	503	456	7.9	7.7	8.0	8.1	8.2
Iowa	1,051	935	855	832	778	7.9	7.8	8.1	8.1	8.1
Missouri	368	352	328	294	264	7.9	7.9	8.1	8.0	7.9
North Dakota	426	382	354	349	331	9.6	9.4	9.8	9.5	9.7
South Dakota	1,355	1,258	1,214	1,133	1,064	8.9	9.0	9.5	9.6	9.4
Nebraska	447	408	392	368	374	7.7	7.8	8.0	7.7	7.7
Kansas	424	434	394	373	352	8.3	8.5	8.4	8.5	8.4
Delaware	2.4	2.4	2.4	1.9	1.8	7.3	7.5	7.1	6.8	7.2
Maryland	20	18	17	17	18	7.2	7.0	7.1	6.9	7.1
Virginia	214	210	196	195	192	6.0	6.0	6.2	6.3	6.4
West Virginia	184	170	164	167	167	5.8	5.7	5.9	5.9	6.0
North Carolina	24	22	19	17	16	6.4	6.2	7.0	6.7	6.8
South Carolina	3.9	3.6	2.4	1.8	1.4	6.7	6.7	7.1	6.7	6.8
Georgia	6.8	6.1	5.5	5.4	4.9	6.1	6.2	6.3	6.7	6.8
Florida	6.5	5.6	5.1	5.2	4.8	5.6	5.2	6.5	6.1	5.7
Kentucky	157	146	135	115	95	7.4	7.3	7.2	7.3	7.2
Tennessee	83	73	60	50	45	5.6	5.8	5.8	5.8	5.9
Alabama	10	8.6	7	6.2	5.7	6.0	6.0	6.0	6.4	6.3
Mississippi	23	20	18	15	12	5.0	5.1	5.0	4.8	4.8
Arkansas	12	10	8.7	7.7	6.7	6.7	6.7	7.1	6.8	6.7
Louisiana	42	34	28	25	24	4.7	4.6	4.7	4.9	5.0
Oklahoma	117	126	121	113	109	8.3	8.2	8.4	8.4	8.1
Texas	5,169	5,031	4,993	4,419	4,029	8.0	7.7	7.4	7.5	7.4
Montana	1,292	1,213	1,134	1,063	984	9.6	9.7	9.9	10.1	9.7
Idaho	789	751	696	712	700	10.0	10.4	10.6	10.8	10.7
Wyoming	1,910	1,878	1,768	1,724	1,671	9.9	10.4	10.8	10.2	10.2
Colorado	1,198	1,359	1,296	1,182	1,158	9.2	8.8	9.2	8.8	8.9
New Mexico	922	924	884	806	750	9.4	9.5	9.6	9.1	9.3
Arizona	570	506	482	461	489	7.1	7.2	7.2	7.4	7.3
Utah	1,018	991	1,009	1,013	984	9.4	10.0	9.8	9.9	9.6
Nevada	219	226	212	209	188	9.5	9.9	9.8	10.0	9.9
Washington	206	171	164	152	145	9.2	9.2	9.2	9.1	8.8
Oregon	662	613	577	603	569	7.6	8.0	8.3	8.0	8.0
California	1,888	1,844	1,858	1,750	1,606	7.8	7.7	7.6	7.7	7.8
48 States	23,738	22,904	22,035	20,736	19,561	8.48	8.51	8.57	8.54	8.46
Alaska	18	19	21	23	23	11.6	11.3	11.7	11.5	11.7
Hawaii										
United States	23,756	22,923	22,056	20,759	19,584	8.48	8.51	8.57	8.55	8.46

1/ Includes shearing at commercial feeding yards.

2/ For Texas and California, the weight per fleece is the amount of wool shorn per sheep and lamb during the year.



Table 18. Wool: Shorn wool production, by States, 1965-69

State	1965	1966	1967	1968	1969
	1,000 pounds				
Maine	151	144	135	126	115
New Hampshire	38	35	34	37	38
Vermont	61	61	56	53	44
Massachusetts	70	70	69	65	64
Rhode Island	15	14	13	12	12
Connecticut	35	33	35	37	38
New York	807	744	725	728	693
New Jersey	73	73	64	66	70
Pennsylvania	1,322	1,275	1,215	1,169	1,154
Ohio	6,366	6,239	6,106	5,996	5,646
Indiana	2,330	2,208	2,176	2,095	1,921
Illinois	3,678	3,366	2,854	2,826	2,579
Michigan	2,422	2,249	2,197	2,170	2,020
Wisconsin	1,284	1,188	1,188	1,145	1,124
Minnesota	5,013	4,684	4,722	4,053	3,757
Iowa	8,293	7,316	6,927	6,703	6,273
Missouri	2,924	2,791	2,672	2,354	2,086
North Dakota	4,079	3,577	3,483	3,305	3,212
South Dakota	12,032	11,342	11,537	10,925	9,949
Nebraska	3,452	3,182	3,150	2,840	2,890
Kansas	3,525	3,708	3,322	3,182	2,944
Delaware	18	18	17	13	13
Maryland	144	126	121	117	128
Virginia	1,284	1,262	1,218	1,228	1,229
West Virginia	1,067	975	968	985	1,002
North Carolina	154	136	133	114	109
South Carolina	26	24	17	12	10
Georgia	41	38	35	36	33
Florida	36	29	33	32	27
Kentucky	1,162	1,066	972	840	684
Tennessee	465	423	348	290	266
Alabama	60	52	42	40	36
Mississippi	115	102	90	72	58
Arkansas	80	67	62	52	45
Louisiana	197	156	132	122	120
Oklahoma	967	1,033	1,017	949	884
Texas	41,109	38,777	36,998	33,363	29,717
Montana	12,462	11,792	11,277	10,725	9,567
Idaho	7,856	7,813	7,346	7,679	7,475
Wyoming	18,945	19,526	19,020	17,572	17,023
Colorado	11,001	12,018	11,954	10,455	10,255
New Mexico	8,669	8,754	8,462	7,374	6,986
Arizona	4,068	3,627	3,480	3,433	3,570
Utah	9,595	9,895	9,840	10,006	9,406
Nevada	2,075	2,241	2,082	2,090	1,861
Washington	1,894	1,567	1,517	1,383	1,277
Oregon	5,053	4,905	4,800	4,834	4,542
California	14,741	14,117	14,077	13,429	12,528
48 States	201,254	194,838	188,738	177,132	165,480
Alaska	209	215	246	264	269
Hawaii					
United States	201,463	195,053	188,984	177,396	165,749

Table 19. Wool: Price per pound and value, by States, 1965-69

State	Price per pound					Value 1/				
	1965	1966	1967	1968	1969	1965	1966	1967	1968	1969
	Cents					1,000 dollars				
Maine	57	65	49	46	46	86	94	66	58	53
New Hampshire	55	62	44	42	43	21	22	15	16	16
Vermont	54	61	46	42	42	33	37	26	22	18
Massachusetts	55	62	45	41	42	38	43	31	27	27
Rhode Island	55	64	45	41	42	8	9	6	5	5
Connecticut	54	61	45	40	41	19	20	16	15	16
New York	56	59	41	40	41	452	439	297	291	284
New Jersey	58	50	45	39	46	42	36	29	26	32
Pennsylvania	56	57	42	40	42	740	727	510	468	485
Ohio	50	52	39	35	37	3,183	3,244	2,381	2,099	2,089
Indiana	48	51	35	31	33	1,118	1,126	762	649	634
Illinois	47	50	34	32	34	1,729	1,683	970	904	877
Michigan	50	54	37	35	37	1,211	1,214	813	760	747
Wisconsin	51	49	34	34	35	655	582	404	389	393
Minnesota	51	54	37	33	35	2,557	2,529	1,747	1,337	1,315
Iowa	48	52	35	33	35	3,981	3,804	2,424	2,212	2,196
Missouri	49	51	34	33	34	1,433	1,423	908	777	709
North Dakota	50	53	38	36	38	2,040	1,896	1,324	1,190	1,221
South Dakota	49	56	42	41	42	5,896	6,352	4,846	4,479	4,179
Nebraska	45	48	33	33	35	1,553	1,527	1,040	937	1,012
Kansas	41	43	31	31	35	1,445	1,594	1,030	986	1,030
Delaware	60	53	45	37	41	11	10	8	5	5
Maryland	58	56	46	38	40	84	71	56	44	51
Virginia	65	65	49	41	44	835	820	597	503	541
West Virginia	62	60	48	40	42	662	585	465	394	421
North Carolina	60	60	42	36	40	92	82	56	41	44
South Carolina	55	51	39	40	39	14	12	7	5	4
Georgia	55	44	42	36	41	23	17	15	13	14
Florida	42	38	36	36	38	15	11	12	12	11
Kentucky	55	54	41	35	37	639	576	399	294	253
Tennessee	56	55	42	37	40	260	233	146	107	106
Alabama	53	50	39	35	39	32	26	16	14	14
Mississippi	54	51	38	32	36	62	52	34	23	21
Arkansas	45	46	33	32	33	36	31	20	17	15
Louisiana	51	48	36	31	35	100	75	48	38	42
Oklahoma	40	42	29	31	34	387	434	295	294	301
Texas	45	49	41	46	49	18,499	19,001	15,169	15,347	14,561
Montana	51	58	46	45	45	6,356	6,839	5,187	4,826	4,305
Idaho	50	57	40	40	42	3,928	4,453	2,938	3,072	3,140
Wyoming	46	52	40	43	43	8,715	10,154	7,608	7,556	7,320
Colorado	46	53	38	39	40	5,060	6,370	4,543	4,077	4,102
New Mexico	40	48	39	43	44	3,468	4,202	3,300	3,171	3,074
Arizona	37	42	34	35	36	1,505	1,523	1,183	1,202	1,285
Utah	45	52	41	42	43	4,318	5,145	4,034	4,203	4,045
Nevada	45	52	42	43	44	934	1,165	874	899	819
Washington	48	54	39	39	40	909	846	592	539	511
Oregon	52	56	40	38	40	2,628	2,747	1,920	1,837	1,817
California	48	51	42	41	42	7,076	7,200	5,912	5,506	5,262
48 States	47.1	51.9	39.8	40.5	42.0	94,888	101,081	75,079	71,686	69,422
Alaska	53	57	40	35	35	111	123	98	92	94
Hawaii										
United States	47.2	51.9	39.8	40.5	41.9	94,999	101,204	75,177	71,778	69,516

1/ Production multiplied by annual average price.

Table 20. Mohair: Number of goats clipped, weight per clip, and production, selected States, 1965-69

State	Goats clipped 1/					Weight per clip				
	1965	1966	1967	1968	1969	1965	1966	1967	1968	1969
	1,000 head					Pounds				
Missouri	31	28	25	23	20	4.1	4.5	4.8	4.7	4.6
Texas	4,612	4,477	3,928	3,784	3,000	6.8	6.4	6.7	6.7	6.7
New Mexico	56	52	61	61	55	4.5	4.5	4.2	4.1	3.9
Arizona	75	72	72	72	72	4.2	4.2	4.0	3.8	4.0
Utah	5	5	7	9	11	4.4	4.3	3.6	4.2	4.1
Oregon	15	15	11	10	10	4.4	4.6	4.4	4.0	3.8
California	9	10	9	7	6	6.0	5.5	6.0	6.0	5.5
Total	4,803	4,659	4,113	3,966	3,174	6.7	6.3	6.6	6.6	6.6
	Mohair production									
	1965	1966	1967	1968	1969					
	1,000 pounds									
Missouri	127	126	120	108	92					
Texas	31,584	28,770	26,335	25,272	20,100					
New Mexico	253	234	259	249	214					
Arizona	314	300	286	273	288					
Utah	22	22	25	38	45					
Oregon	66	69	48	40	38					
California	54	55	54	42	33					
Total	32,420	29,576	27,127	26,022	20,810					

1/ In States where goats are clipped twice a year, the number clipped is the sum of goats and kids clipped in the spring and kids clipped in the fall.

Table 21. Mohair: Price per pound and value, selected States, 1965-69

State	Price per pound					Value				
	1965	1966	1967	1968	1969	1965	1966	1967	1968	1969
	Cents					1,000 dollars				
Missouri	50	49	35.0	37.0	50.0	64	62	42	40	46
Texas	66	54	41.0	45.3	65.9	20,845	15,536	10,797	11,448	13,246
New Mexico	50	42	36.0	43.0	42.0	126	98	93	107	90
Arizona	44	42	42.0	43.0	41.0	138	126	120	117	118
Utah	44	44	44.0	43.0	43.0	10	10	11	16	19
Oregon	59	55	38.0	31.0	35.0	39	38	18	12	13
California	54	48	35.0	34.0	53.0	29	26	19	14	17
Total	65.5	53.7	40.9	45.2	65.1	21,251	15,896	11,100	11,754	13,549

Table 22. Early lamb crop: Number of early lambs, 3 States, March 1, 1965-69 1/

Year	Kansas	Texas	California	3-State total
	1,000 head			
1965	285	720	995	2,000
1966	292	777	995	2,064
1967	259	1,005	1,004	2,268
1968	241	1,019	950	2,210
1969	207	1,184	880	2,271

1/ In Kansas and Texas, early lambs are lambs living March 1 which were born between October 1 and March 1. In California, early lambs are lambs living March 1 which were born between September 1 and March 1.

Table 23. Sheep farms: Number of sheep farms, by States, 1965-69

State	1965	1966	1967	1968	1969
	Number				
Maine	1,100	950	840	740	620
New Hampshire	370	340	310	300	290
Vermont	420	400	380	360	330
Massachusetts	460	430	400	390	380
Rhode Island	120	110	90	80	70
Connecticut	330	320	310	300	290
New York	3,000	3,100	3,100	2,600	2,600
New Jersey	600	550	550	530	520
Pennsylvania	6,500	6,200	6,200	6,000	5,700
Ohio	21,000	20,000	19,500	19,000	18,500
Indiana	13,000	13,000	12,000	11,000	10,000
Illinois	17,500	16,500	16,000	15,500	15,100
Michigan	5,200	4,900	4,600	4,400	4,400
Wisconsin	6,500	6,200	6,000	5,700	5,200
Minnesota	16,000	15,500	15,000	13,500	12,000
Iowa	28,000	27,000	26,000	24,500	22,500
Missouri	10,500	9,500	9,000	8,500	8,000
North Dakota	5,400	5,000	4,800	4,500	3,900
South Dakota	10,800	10,200	9,800	9,300	8,900
Nebraska	6,000	5,500	5,300	5,000	4,600
Kansas	5,200	5,000	4,800	4,400	4,000
Delaware	100	100	100	100	90
Maryland	940	900	880	880	860
Virginia	5,600	5,200	4,900	4,900	4,700
West Virginia	5,800	5,500	5,300	5,200	5,200
North Carolina	1,500	1,400	1,300	1,200	1,000
South Carolina	180	160	150	140	130
Georgia	400	360	300	280	260
Florida	200	200	200	200	200
Kentucky	3,800	3,500	3,300	3,200	2,700
Tennessee	2,900	2,400	2,000	1,900	1,700
Alabama	480	430	390	350	320
Mississippi	800	700	610	500	500
Arkansas	620	520	470	430	350
Louisiana	2,000	1,800	1,600	1,500	1,400
Oklahoma	2,800	2,600	2,500	2,400	2,300
Texas	19,500	19,000	18,800	18,500	16,000
Montana	3,800	3,600	3,500	3,300	3,200
Idaho	3,400	3,400	3,300	3,000	2,800
Wyoming	3,000	2,800	2,700	2,700	2,600
Colorado	3,600	3,200	3,000	3,000	3,000
New Mexico	2,100	1,900	1,800	1,600	1,500
Arizona	360	350	340	340	340
Utah	3,400	3,200	3,100	3,100	3,100
Nevada	400	380	360	340	320
Washington	3,000	2,800	2,500	2,300	2,200
Oregon	6,400	5,900	5,400	5,000	4,700
California	6,500	6,000	5,700	5,200	5,200
48 States	241,580	229,000	219,480	208,160	194,570
Alaska	10	20	20	20	20
Hawaii					
United States	241,590	229,020	219,500	208,180	194,590

UNITED STATES DEPARTMENT OF AGRICULTURE  
WASHINGTON, D. C. 20250

OFFICIAL BUSINESS  
PENALTY FOR PRIVATE USE, \$300

POSTAGE AND FEES PAID  
U.S. DEPARTMENT OF  
AGRICULTURE



AGR 101

FIRST-CLASS MAIL

**END**