



**AgEcon** SEARCH  
RESEARCH IN AGRICULTURAL & APPLIED ECONOMICS

*The World's Largest Open Access Agricultural & Applied Economics Digital Library*

**This document is discoverable and free to researchers across the globe due to the work of AgEcon Search.**

**Help ensure our sustainability.**

Give to AgEcon Search

AgEcon Search

<http://ageconsearch.umn.edu>

[aesearch@umn.edu](mailto:aesearch@umn.edu)

*Papers downloaded from **AgEcon Search** may be used for non-commercial purposes and personal study only. No other use, including posting to another Internet site, is permitted without permission from the copyright owner (not AgEcon Search), or as allowed under the provisions of Fair Use, U.S. Copyright Act, Title 17 U.S.C.*

SB 501 (1972)

CHICKENS AND EGGS

USDA STATISTICAL BULLETINS

REVISED ESTIMATES, 1965-70.

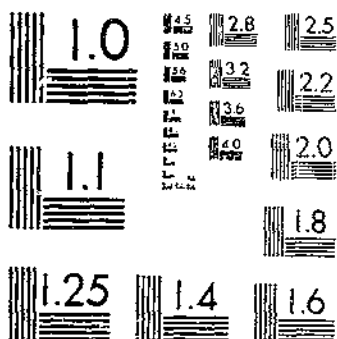
INVENTORY, CHICKEN AND

UPDATA

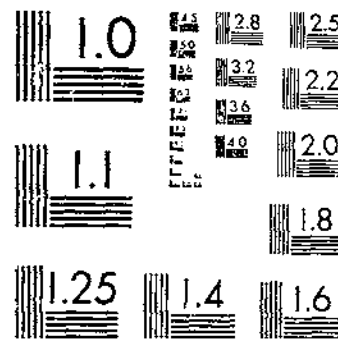
AND

1 OF 1

# START



MICROCOPY RESOLUTION TEST CHART  
NATIONAL BUREAU OF STANDARDS-1963-A



MICROCOPY RESOLUTION TEST CHART  
NATIONAL BUREAU OF STANDARDS 1963-A



70.5  
3-13 # 501



# chickens and eggs

REFERENCE  
DO NOT LOAN

REVISED ESTIMATES, 1965-70

- Inventory
- Chicken and egg production
- Cash receipts
- Gross income

STATISTICAL BULLETIN NO. 501    NOVEMBER 1972    CROP REPORTING BOARD  
STATISTICAL REPORTING SERVICE • U.S. DEPARTMENT OF AGRICULTURE • WASHINGTON, D.C.

# C O N T E N T S

	<u>Page</u>
Comments .. .. .	3 - 4
 <u>Tables:</u>	
1. All chickens: Number on farms, value per head, total value, and classes, United States, January 1, 1966-70 .....	4
2. Monthly layers, eggs per 100 layers and egg production, United States, 1965-69 .....	5
3. Chickens: Number on farms, by States, January 1, 1966-70 .....	6
4. Chickens: Average value per head and total value, by States, January 1, 1966-70 .....	7
5. Chickens: Number on farms, by classes, by States, January 1, 1966-70 .....	8 - 10
6. Chickens: Number on farms, by classes, by regions, October 1, 1965-69 .....	11
7. Chickens: Number on farms, by classes, by regions, December 1, 1964-69 .....	12
8. All chickens: Number on farms, by classes, average value per head and total value, by States, December 1, 1969 .....	13
9. Hens and pullets of laying age first of month, by regions, August 1965 to January 1970 .....	14
10. Pullets 3 months old and older not of laying age first of month, by regions, August 1965 to January 1970 .....	15
11. Potential layers first of month, by regions, August 1965 to January 1970 .....	16
12. Number of layers, eggs per 100 layers and egg production, by months, by States, 1965-69 .....	17 - 66

## CHICKENS AND EGGS

Revised Estimates, 1965-70

### Inventory, Chicken and egg production, Cash receipts, Gross income

This publication presents a record of the revised estimates of the Crop Reporting Board of the Statistical Reporting Service relating to:

- Inventory and Value of Chickens on Farms, 1966-70
- Monthly Layers, 1965-69
- Rate of Lay, and Egg Production, 1965-69

It continues and combines the official series on chickens and eggs previously shown in the following separate publications:

USDA Statistical Reporting Service, Livestock and Poultry Inventory, January 1, Number, Value and Classes by States, 1961-65; Statistical Bulletin No. 389, February 1967.

USDA Statistical Reporting Service, Chickens and Eggs by States and Geographic Regions, 1960-64; Statistical Bulletin No. 391, February 1967.

Estimates for the period were released currently in monthly and annual reports.

#### NUMBER, VALUE AND CLASSES

Annual estimates were based primarily on survey returns from poultry producers. Later these estimates were reviewed in relationship to chick hatchery production, chickens tested for pullorum-typhoid disease, and records relating to processing and inspection of poultry. For this publication all of the above indications plus an analysis of the 1969 U. S. Census of Agriculture were considered.

In 1964, the U. S. Census of Agriculture was enumerated mostly during November and December, and farmers were asked to report inventories on the date of enumeration. In using Census data it was necessary to adjust from the average date of enumeration to January 1. In contrast to survey methods used for the 1964 and earlier Censuses, the 1969 Census of Agriculture was collected by mail with survey procedures modified by the level of the individual farm value of sales. The initial questionnaire mailing reached producers in early 1970 with the request to report inventories as of December 31, 1969. Several followup mailings were made to obtain as complete coverage as possible. The average date that Census questionnaires were completed was during February. Therefore, different adjustments were necessary for the 1969 Census than for earlier Census data.

Estimates of average value per head are based on crop and livestock reporters' estimates of average price per head in their localities, about January 1, each year. These farm operators report the value per head by classes of poultry. Values per head, by classes for each State, are weighted together by the estimated number in each class. The weighted average so computed is the basis for the estimated value per head for the species.

In the estimates for the United States, the total value is the sum of the State estimates; and value per head is derived by dividing the total value by the number of head for the United States.

NUMBER OF LAYERS, RATE OF LAY AND EGG PRODUCTION

Current estimates of numbers and rate of lay are based primarily on survey returns from commercial egg producers and farmers who report for the first day of each month the number of layers on hand and the number of eggs produced "yesterday," that is, current daily egg production. The revised series by States and for the United States are based on a thorough review of the original estimates, taking into consideration data from the 1969 Census of Agriculture and other information relating to inventory numbers and rate of lay.

Number of Layers: The average number of layers on hand during the month, by States, is the mean of the estimated number on the first of that month and the first day of the succeeding month. The estimates of the total number of layers on the first of each month are made on the basis of the monthly reports of layers on hand. The number of layers on farms January 1 serves as the starting point for these monthly estimates.

Rate of Lay: The number of eggs laid during the month per 100 layers on hand is the mean of the estimated rate on the first of that month and the rate on the first of the succeeding month. By multiplying the estimated daily average by the number of days in the month, the number of eggs produced per 100 layers during the month is obtained. The annual rate of lay per layer is computed by dividing the total eggs produced during the year by average number of layers on hand during the year.

Total Egg Production: Monthly egg production is obtained by multiplying the average number of layers on hand during the month by the number of eggs produced per layer. An estimate of total egg production for any period of months, is obtained by adding the production of the months involved.

Pullets 3 Months Old and Older Not of Laying Age: Potential layers are hens and pullets of laying age plus pullets 3 months old and older not of laying age. These estimates are based on hatchery data and information from commercial egg producers and farmers who report the number of layers on hand the first day of each month and their inventory of pullets 3 months old and older not of laying age from August 1 through January 1. Estimates are only by regions and for the United States.

The numbers of chickens by classes and regions are estimated on October 1 and December 1. These estimates are based on the sample relationship of the various classes to layers on the first of the month.

Table 1. All chickens: Number on farms, value per head, total value, and classes, United States, January 1, 1966-70 1/

Year	All chickens			Hens and pullets of laying age			Pullets not of laying age		Other chickens
	Number	Per head	Total	Hens	Pullets	Total	3 mos. old and older	Under 3 mos. old	
	1,000 head	Dollars	1,000 dollars			1,000 head			
1966	: 392,251	1.20	471,316	142,433	165,633	308,066	37,531	39,686	6,968
1967	: 425,571	1.20	509,141	136,914	185,201	322,115	44,486	51,620	7,350
1968	: 420,500	1.14	481,182	138,429	186,915	325,344	44,235	43,979	6,942
1969	: 413,287	1.21	498,449	138,007	171,737	309,744	46,919	50,205	6,419
1970	: 424,295	1.28	544,787	137,826	179,691	317,517	48,990	51,144	6,644

1/ Excludes commercial broilers.



Table 2. Number of layers, eggs per 100 layers, and egg production, by months, United States, 1965-69

Item and year	January	February	March	April	May	June	July	August	September	October	November	December	Year <sup>1/</sup>
Thousands													
Layers during month													
1965	310,077	305,702	302,624	299,237	296,352	294,244	292,631	294,116	299,290	303,899	306,560	307,987	301,053
1966	306,304	303,688	301,595	298,673	295,403	292,929	292,512	296,581	305,117	313,045	318,540	321,593	303,832
1967	319,895	316,022	313,560	310,606	307,253	304,894	304,515	307,626	313,670	319,586	322,537	324,441	313,717
1968	322,508	318,513	316,289	312,718	307,547	303,277	291,415	301,891	304,748	308,471	310,305	310,302	308,999
1969	309,877	308,480	306,996	305,988	304,149	302,120	301,057	302,465	305,472	308,683	311,816	315,528	306,886
Number													
Eggs per 100 layers													Av. per hen <sup>2/</sup>
1965	1,815	1,684	1,912	1,896	1,973	1,874	1,873	1,811	1,712	1,755	1,705	1,776	181
1966	1,792	1,650	1,901	1,894	1,964	1,871	1,868	1,817	1,738	1,781	1,731	1,801	182
1967	1,832	1,696	1,931	1,908	1,971	1,883	1,904	1,858	1,764	1,805	1,748	1,811	184
1968	1,830	1,746	1,915	1,886	1,946	1,858	1,953	1,839	1,749	1,804	1,742	1,797	184
1969	1,807	1,680	1,918	1,885	1,962	1,868	1,887	1,853	1,768	1,819	1,755	1,814	183
Millions													
Eggs produced													
1965	5,629	5,148	5,786	5,673	5,848	5,514	5,480	5,326	5,125	5,332	5,227	5,470	5,463
1966	5,488	5,011	5,734	5,658	5,801	5,480	5,463	5,390	5,302	5,574	5,514	5,792	5,517
1967	5,859	5,360	6,055	5,927	6,055	5,742	5,798	5,717	5,534	5,769	5,637	5,875	5,777
1968	5,902	5,562	6,056	5,898	5,985	5,635	5,692	5,550	5,329	5,564	5,407	5,576	5,680
1969	5,599	5,181	5,887	5,767	5,967	5,645	5,682	5,605	5,401	5,616	5,473	5,725	5,629
Thousands													
Layers first day of month													
1965	312,945	307,211	304,283	301,060	297,414	295,286	293,201	292,057	296,168	302,411	305,216	307,910	
1966	304,766	304,539	302,828	300,356	296,988	293,809	292,063	292,955	300,199	310,026	316,051	321,031	
1967	322,115	317,658	314,260	313,156	308,335	306,154	303,629	305,394	309,846	317,483	321,677	323,383	
1968	325,344	319,781	317,210	315,231	309,987	305,099	301,445	301,370	302,327	307,151	309,772	310,827	
1969	309,744	309,961	306,934	307,042	304,918	303,364	300,864	295,229	303,693	307,240	310,106	313,523	
Number													
Eggs per 100 layers first day of month													
1965	57.8	59.3	61.0	62.3	64.0	63.4	61.6	59.2	57.6	56.5	56.7	57.0	
1966	57.8	58.0	59.9	62.7	63.6	63.2	61.5	59.0	58.3	57.3	57.5	58.0	
1967	58.2	60.0	61.2	63.4	63.9	63.2	62.3	60.5	59.4	58.2	58.2	58.2	
1968	58.6	59.5	61.0	62.6	63.2	62.4	61.6	60.3	58.4	58.1	58.2	58.0	
1969	57.9	58.5	61.4	62.3	63.3	63.0	61.4	60.3	59.2	58.6	58.7	58.3	

1/ Average number during year. 2/ Annual rate of lay per layer on hand (eggs produced during year divided by average number of layers during year).

Table 3. Chickens: Number on farms, by States, January 1, 1966-70 1/

State	1966	1967	1968	1969	1970
			1,000 head		
Maine	5,959	6,293	6,497	6,780	7,805
New Hampshire	2,249	2,340	2,176	1,993	1,819
Vermont	706	679	569	564	484
Massachusetts	3,107	3,222	2,964	3,023	3,077
Rhode Island	471	479	450	468	474
Connecticut	4,897	4,945	4,844	4,787	4,895
New York	13,263	14,219	14,032	13,747	13,765
New Jersey	7,297	7,155	6,032	5,372	4,885
Pennsylvania	18,857	19,299	17,748	17,578	17,540
Ohio	13,288	13,740	13,525	12,113	12,918
Indiana	14,613	16,170	17,283	17,019	17,356
Illinois	10,142	10,864	10,581	10,348	10,060
Michigan	8,284	9,006	8,443	8,043	8,088
Wisconsin	7,639	7,889	7,450	6,626	6,234
Minnesota	12,883	13,254	12,766	11,745	12,336
Iowa	18,043	17,160	14,774	12,886	13,682
Missouri	7,526	8,132	8,133	7,982	8,216
North Dakota	1,646	1,597	1,373	1,126	1,025
South Dakota	7,266	7,497	6,684	5,240	4,998
Nebraska	6,719	6,819	6,259	5,343	5,000
Kansas	5,247	5,393	5,173	4,880	4,500
Delaware	796	849	860	834	842
Maryland	1,952	1,913	2,009	1,989	2,133
Virginia	6,628	6,421	6,210	5,648	5,159
West Virginia	1,834	1,863	1,718	1,565	1,428
North Carolina	17,604	19,396	19,073	19,685	22,123
South Carolina	6,146	7,287	6,869	7,146	8,259
Georgia	28,533	34,335	34,215	36,969	39,483
Florida	11,240	13,582	14,430	17,333	17,312
Kentucky	3,943	3,984	3,984	3,687	3,650
Tennessee	6,077	6,403	6,329	6,292	6,483
Alabama	15,729	17,405	18,449	19,355	20,620
Mississippi	14,424	16,232	15,905	15,630	15,772
Arkansas	17,564	22,426	24,004	23,871	25,267
Louisiana	4,752	5,352	5,100	5,340	5,238
Oklahoma	3,090	3,112	2,983	2,954	3,119
Texas	17,767	20,415	19,298	17,445	17,096
Montana	1,034	1,126	1,117	1,157	1,117
Idaho	1,158	1,185	1,151	1,053	1,106
Wyoming	249	224	207	181	165
Colorado	1,417	1,491	1,672	1,709	1,676
New Mexico	858	899	934	963	1,262
Arizona	1,372	1,529	1,540	1,450	1,445
Utah	1,484	1,723	1,670	1,686	1,739
Nevada	55	51	42	34	26
Washington	6,320	6,735	6,949	6,394	6,402
Oregon	3,009	3,128	3,032	3,069	2,975
California	45,890	49,041	51,680	50,879	51,921
Alaska	47	51	37	30	30
Hawaii	1,177	1,261	1,277	1,276	1,290
United States	392,251	425,571	420,500	413,287	424,295

1/ Excludes commercial broilers.

Table 4. Chickens: Average value per head and total value, by States, January 1, 1966-70 1/

State	Average value per head					Total value				
	1966	1967	1968	1969	1970	1966	1967	1968	1969	1970
			Dollars					1,000 dollars		
Maine	1.60	1.70	1.70	1.70	1.70	9,534	10,698	11,045	11,526	13,269
New Hampshire	1.70	1.70	1.80	1.80	1.75	3,823	3,978	3,917	3,587	3,183
Vermont	1.70	1.75	1.70	1.85	1.85	1,200	1,188	967	1,043	895
Massachusetts	1.70	1.75	1.80	1.80	1.75	5,282	5,639	5,335	5,441	5,385
Rhode Island	1.70	1.80	1.80	1.80	1.85	801	862	810	842	877
Connecticut	1.75	1.85	1.85	1.90	1.85	8,570	9,148	8,961	9,095	9,056
New York	1.70	1.75	1.75	1.80	1.80	22,547	24,883	24,556	24,745	24,777
New Jersey	1.45	1.55	1.45	1.55	1.70	10,581	11,090	8,746	8,327	8,305
Pennsylvania	1.55	1.55	1.55	1.60	1.65	29,228	29,913	27,509	28,125	28,941
Ohio	1.30	2.30	1.25	1.25	1.40	17,274	17,862	16,906	15,141	18,085
Indiana	1.20	1.20	1.15	1.25	1.30	17,536	19,404	19,875	21,274	22,563
Illinois	1.05	1.10	1.05	1.10	1.25	10,649	11,950	11,110	11,383	12,575
Michigan	1.40	1.45	1.35	1.40	1.45	11,598	13,059	11,385	11,260	11,728
Wisconsin	1.20	1.25	1.20	1.30	1.35	9,167	9,861	8,940	8,614	8,416
Minnesota	1.15	1.20	1.10	1.30	1.30	14,815	15,905	14,043	15,269	16,037
Iowa	1.20	1.20	1.00	1.10	1.35	21,652	20,592	14,774	14,175	18,471
Missouri	.90	.89	.80	.88	1.05	6,773	7,237	6,506	7,024	8,627
North Dakota	.99	1.05	.88	.99	1.20	1,630	1,677	1,208	1,115	1,230
South Dakota	1.15	1.15	.80	.96	1.20	8,356	8,622	5,347	5,030	5,998
Nebraska	.96	1.00	.73	.86	1.05	6,450	6,819	4,569	4,595	5,250
Kansas	.92	.87	.84	.93	1.05	4,827	4,692	4,345	4,538	4,725
Delaware	1.25	1.30	1.30	1.40	1.40	995	1,104	1,118	1,168	1,179
Maryland	1.35	1.35	1.35	1.50	1.50	2,635	2,583	2,712	2,984	3,200
Virginia	1.20	1.20	1.15	1.20	1.25	7,954	7,705	7,142	6,778	6,449
West Virginia	1.05	1.10	1.15	1.15	1.20	1,926	2,049	1,976	1,800	1,714
North Carolina	1.10	1.10	.99	1.05	1.10	19,364	21,336	18,882	20,669	24,335
South Carolina	1.25	1.20	1.15	1.30	1.30	7,683	8,744	7,899	9,290	10,737
Georgia	1.15	1.10	1.10	1.15	1.15	32,813	37,769	37,637	42,514	45,405
Florida	1.25	1.20	1.15	1.20	1.25	14,050	16,298	16,595	20,800	21,640
Kentucky	.92	.90	.91	.93	1.05	3,628	3,586	3,625	3,429	3,833
Tennessee	.89	.85	.88	.94	1.20	5,409	5,443	5,570	5,914	7,780
Alabama	1.00	.94	.95	1.05	1.05	15,729	16,361	17,527	20,323	21,651
Mississippi	1.10	1.05	1.10	1.15	1.25	15,866	17,044	17,496	17,975	19,715
Arkansas	.99	.97	.91	.99	1.10	17,388	21,753	21,844	23,632	27,794
Louisiana	1.15	1.15	1.15	1.15	1.30	5,465	6,155	5,865	6,141	6,809
Oklahoma	.85	.93	.83	.97	1.00	2,627	2,894	2,476	2,865	3,119
Texas	.91	1.05	1.05	1.05	1.05	16,168	21,436	20,263	18,317	17,951
Montana	1.25	1.20	1.15	1.15	1.30	1,293	1,351	1,285	1,331	1,452
Idaho	1.10	1.10	1.05	1.05	1.15	1,274	1,304	1,209	1,106	1,272
Wyoming	1.35	1.25	1.25	1.30	1.35	336	280	259	235	223
Colorado	1.05	1.05	1.05	1.00	1.20	1,488	1,566	1,756	1,709	2,011
New Mexico	1.05	.99	1.05	.96	1.15	901	890	981	924	1,451
Arizona	1.20	1.10	1.20	1.05	1.30	1,646	1,682	1,848	1,523	1,879
Utah	1.05	1.10	1.20	1.05	1.20	1,558	1,895	2,004	1,770	2,087
Nevada	1.20	1.20	1.20	1.20	1.50	66	61	50	41	39
Washington	1.40	1.40	1.30	1.30	1.35	8,848	9,429	9,034	8,312	8,643
Oregon	1.30	1.30	1.25	1.20	1.35	3,912	4,066	3,790	3,683	4,016
California	1.20	1.15	1.10	1.15	1.30	55,068	56,397	56,848	58,511	67,497
Alaska	2.30	2.10	2.25	2.25	2.05	108	107	83	68	62
Hawaii	2.40	2.20	2.00	1.95	1.90	2,825	2,774	2,554	2,488	2,451
United States	1.20	1.20	1.14	1.21	1.28	471,316	509,141	431,182	498,449	544,787

1/ Excludes commercial broilers.

Table 5. Chickens: Number on farms by classes, by States, January 1, 1966-70

State	- Hens and pullets of laying age									
	Hens					Pullets				
	1966	1967	1968	1969	1970	1966	1967	1968	1969	1970
	1,000 head									
Maine	1,287	1,303	1,234	1,471	1,706	3,459	3,605	3,723	3,684	4,259
New Hampshire	427	465	403	446	468	1,331	1,328	1,282	1,154	942
Vermont	183	177	135	125	102	403	382	346	327	282
Massachusetts	874	935	830	816	916	1,613	1,627	1,578	1,510	1,433
Rhode Island	130	135	120	107	104	245	247	247	265	272
Connecticut	1,446	1,498	1,356	1,329	1,559	2,434	2,421	2,563	2,394	2,364
New York	5,871	5,636	5,523	5,413	5,359	4,987	5,656	5,995	5,529	5,474
New Jersey	3,922	3,123	2,413	2,460	2,872	2,459	2,811	2,809	2,240	1,256
Pennsylvania	7,544	6,488	5,969	6,152	6,209	7,672	8,728	8,791	8,262	8,349
Ohio	5,214	5,058	5,058	3,937	4,244	5,342	5,604	5,497	5,351	5,626
Indiana	4,654	4,282	4,230	4,476	4,547	6,746	7,802	8,496	7,995	8,049
Illinois	3,729	3,729	3,598	3,447	3,360	4,746	5,085	4,952	4,760	4,640
Michigan	3,531	3,602	3,602	3,274	3,300	3,405	3,611	3,395	3,233	3,195
Wisconsin	3,497	3,392	3,494	2,942	2,457	3,122	3,293	2,857	2,393	2,456
Minnesota	4,466	3,350	3,182	4,296	3,701	7,175	8,176	7,775	5,676	6,371
Iowa	5,305	5,045	5,008	4,510	4,515	11,258	10,525	8,071	6,346	6,667
Missouri	2,530	2,440	2,481	2,395	2,356	3,942	4,226	4,185	4,004	4,144
North Dakota	699	566	504	413	380	834	921	790	648	596
South Dakota	2,783	2,354	2,159	1,787	1,619	3,877	4,373	3,828	2,763	2,749
Nebraska	2,463	2,053	2,197	2,025	1,748	3,679	4,089	3,454	2,722	2,447
Kansas	1,975	1,896	2,011	1,805	1,350	2,633	2,758	2,445	2,245	2,380
Delaware	270	277	249	342	312	325	348	384	259	303
Maryland	644	670	708	696	710	912	820	907	895	913
Virginia	2,169	1,791	1,900	1,802	1,584	2,898	3,073	2,818	2,462	2,339
West Virginia	827	794	620	501	431	772	837	930	894	838
North Carolina	6,089	6,150	6,396	6,407	7,176	6,557	7,203	7,358	7,485	8,800
South Carolina	2,049	1,844	2,065	2,127	2,313	2,781	3,711	3,434	3,152	3,916
Georgia	9,878	9,285	8,727	11,237	9,754	10,391	13,822	16,229	13,964	17,263
Florida	3,226	3,516	3,446	5,238	6,443	4,974	5,832	6,837	5,662	5,656
Kentucky	1,665	1,582	1,482	1,180	1,063	1,715	1,764	1,964	1,921	1,759
Tennessee	2,692	2,555	2,595	2,479	2,418	2,334	2,672	2,737	2,605	2,800
Alabama	5,659	5,772	4,848	4,610	5,180	5,444	6,108	7,907	8,065	8,140
Mississippi	4,982	5,082	5,082	4,574	4,620	5,608	6,418	6,418	6,581	6,780
Arkansas	5,094	4,732	5,953	5,586	5,963	6,866	9,740	9,821	10,346	10,925
Louisiana	1,880	1,993	1,736	1,390	1,550	1,788	2,042	2,187	2,474	2,460
Oklahoma	1,141	1,199	1,145	993	924	1,453	1,395	1,375	1,401	1,486
Texas	5,443	5,389	6,676	6,142	4,607	7,569	8,924	8,353	6,783	8,447
Montana	402	379	423	441	458	539	562	537	548	504
Idaho	460	460	456	480	505	530	552	546	372	390
Wyoming	114	99	68	82	51	119	111	129	92	106
Colorado	496	455	477	352	369	656	766	878	998	955
New Mexico	360	295	161	200	353	374	417	587	541	604
Arizona	559	654	633	612	522	490	521	530	504	558
Utah	520	629	612	558	783	657	713	703	762	537
Nevada	25	23	21	19	13	20	19	16	12	10
Washington	2,584	2,636	2,553	2,286	1,985	1,866	1,948	2,260	2,286	2,587
Oregon	1,232	1,232	1,061	1,160	1,047	1,064	1,064	1,243	1,132	1,169
California	19,174	19,557	22,437	22,489	23,273	14,960	15,942	16,181	15,467	15,063
Alaska	6	19	12	17	20	40	28	24	12	8
Hawaii	263	318	380	381	527	569	581	543	561	424
United States	142,433	136,914	138,429	138,007	137,826	165,633	185,201	186,915	171,737	179,691

Continued

Table 5. Chickens: Number on farms, by classes, by States, January 1, 1966-70. Continued

State	Total hens and pullets of laying age					Pullets 3 months old and older not of laying age				
	1966	1967	1968	1969	1970	1966	1967	1968	1969	1970
	1,000 head									
Maine	4,746	4,908	4,957	5,155	5,965	583	580	715	778	895
New Hampshire	1,758	1,793	1,685	1,600	1,410	220	251	251	187	205
Vermont	586	559	481	452	384	48	49	41	66	54
Massachusetts	2,487	2,562	2,408	2,326	2,349	230	244	230	302	292
Rhode Island	375	382	367	372	376	40	41	40	41	43
Connecticut	3,880	3,919	3,919	3,723	3,923	447	456	450	571	449
New York	10,858	11,292	11,518	10,942	10,833	1,384	1,702	1,498	1,603	1,555
New Jersey	6,381	5,934	5,222	4,700	4,128	410	615	357	250	362
Pennsylvania	15,216	15,216	14,760	14,414	14,558	1,627	1,887	1,453	1,406	1,333
Ohio	10,556	10,662	10,555	9,288	9,870	1,237	1,319	1,323	1,191	1,292
Indiana	11,400	12,084	12,726	12,471	12,596	1,643	1,938	2,529	2,527	2,612
Illinois	8,475	8,814	8,550	8,207	8,000	654	804	793	786	825
Michigan	6,936	7,213	6,997	6,507	6,495	616	801	697	716	776
Wisconsin	6,619	6,685	6,351	5,335	4,913	389	506	481	592	611
Minnesota	11,641	11,526	10,957	9,972	10,072	426	673	809	705	1,015
Iowa	16,563	15,570	13,079	10,856	11,182	675	750	900	965	1,110
Missouri	6,472	6,666	6,666	6,399	6,500	488	660	702	722	764
North Dakota	1,533	1,487	1,294	1,061	976	52	57	40	33	23
South Dakota	6,660	6,727	5,987	4,550	4,368	254	335	381	283	355
Nebraska	6,142	6,142	5,651	4,747	4,195	224	249	234	190	400
Kansas	4,608	4,654	4,456	4,050	3,730	304	350	382	380	382
Delaware	595	625	633	601	615	86	95	93	100	93
Maryland	1,556	1,490	1,615	1,591	1,623	164	178	193	179	220
Virginia	5,067	4,864	4,718	4,264	3,923	680	650	620	587	531
West Virginia	1,599	1,631	1,550	1,395	1,269	113	116	65	82	80
North Carolina	12,646	13,353	13,754	13,892	15,976	2,208	2,340	2,223	2,423	2,665
South Carolina	4,830	5,555	5,499	5,279	6,229	678	814	684	807	943
Georgia	20,269	23,107	24,956	25,201	27,017	4,066	5,286	4,652	5,095	5,561
Florida	8,200	9,348	10,283	10,900	12,099	1,132	1,750	1,838	3,051	2,563
Kentucky	3,380	3,346	3,446	3,101	2,822	193	311	303	273	390
Tennessee	5,026	5,227	5,332	5,084	5,218	507	522	438	529	590
Alabama	11,103	11,880	12,755	12,675	13,320	1,968	2,165	2,338	2,707	3,175
Mississippi	10,590	11,500	11,500	11,155	11,400	1,632	1,831	2,014	2,115	2,030
Arkansas	11,960	14,472	15,774	15,932	16,888	2,409	3,168	3,492	3,539	3,594
Louisiana	3,668	4,035	3,923	3,864	4,010	492	546	526	856	599
Oklahoma	2,594	2,594	2,520	2,394	2,420	193	185	200	270	370
Texas	13,012	14,313	15,029	12,925	13,054	2,088	2,359	1,934	1,934	1,992
Montana	941	941	960	989	962	40	92	67	77	92
Idaho	990	1,012	1,002	852	895	75	74	60	84	114
Wyoming	233	210	197	174	157	8	6	5	3	3
Colorado	1,152	1,221	1,355	1,350	1,324	104	95	138	154	168
New Mexico	734	712	748	741	957	47	84	44	80	102
Arizona	1,049	1,175	1,163	1,116	1,080	147	151	155	130	146
Utah	1,177	1,342	1,315	1,320	1,320	154	162	170	140	190
Nevada	45	42	37	31	23	5	3	3	1	1
Washington	4,450	4,584	4,813	4,572	4,572	770	909	964	770	801
Oregon	2,296	2,296	2,304	2,292	2,216	272	354	346	273	348
California	34,134	35,499	38,618	37,956	38,336	5,177	5,695	6,202	6,207	6,116
Alaska	46	47	36	29	28		1			1
Hawaii	832	899	923	942	951	172	177	162	159	159
United States	308,066	322,115	325,344	309,744	317,517	37,531	44,486	44,235	46,919	48,990

Continued

Table 5. Chickens: Number on farms, by classes, by States, January 1, 1966-70 Continued

State	Pullets under 3 months old					Other chickens				
	1966	1967	1968	1969	1970	1966	1967	1968	1969	1970
	1,000 head									
Maine	517	598	715	750	825	113	107	110	97	120
New Hampshire	210	235	183	172	167	61	61	57	34	37
Vermont	52	51	31	35	35	20	20	16	11	11
Massachusetts	319	341	257	333	360	71	75	69	62	76
Rhode Island	47	47	34	46	46	9	9	9	9	9
Connecticut	510	510	416	436	458	60	60	59	57	65
New York	939	1,127	924	1,109	1,285	82	98	92	93	92
New Jersey	429	536	397	385	361	77	70	56	37	34
Pennsylvania	1,823	2,005	1,363	1,582	1,491	191	191	172	176	158
Ohio	1,390	1,649	1,553	1,553	1,679	105	110	94	81	77
Indiana	1,496	2,064	1,942	1,954	2,079	74	84	86	67	69
Illinois	896	1,129	1,132	1,252	1,134	117	117	106	103	101
Michigan	680	952	704	780	785	52	40	45	40	32
Wisconsin	531	600	522	605	623	100	98	96	94	87
Minnesota	628	867	850	951	1,113	188	188	150	117	136
Iowa	640	682	630	940	1,250	165	158	165	125	140
Missouri	390	651	643	739	830	176	155	122	122	122
North Dakota	28	26	16	14	11	33	27	23	18	15
South Dakota	218	320	214	354	225	134	115	102	53	50
Nebraska	233	303	276	350	346	120	125	98	56	59
Kansas	272	335	284	400	329	63	54	51	50	59
Delaware	78	83	95	108	109	37	46	39	25	25
Maryland	166	180	141	159	220	66	65	60	60	70
Virginia	782	802	775	712	617	99	105	97	85	88
West Virginia	52	53	55	48	49	70	63	48	40	30
North Carolina	2,012	2,817	2,254	2,570	2,698	738	886	842	800	784
South Carolina	558	837	611	984	1,012	80	81	75	76	75
Georgia	3,425	5,069	3,751	5,817	5,998	773	873	856	856	907
Florida	1,858	2,434	2,263	3,327	2,595	50	50	46	55	55
Kentucky	256	239	143	243	369	114	88	92	70	69
Tennessee	365	468	421	535	540	179	186	138	144	135
Alabama	2,127	2,765	2,737	3,347	3,443	531	595	619	626	682
Mississippi	1,819	2,510	2,008	2,008	2,008	383	391	383	352	334
Arkansas	2,724	4,164	3,959	3,637	3,946	471	622	779	763	839
Louisiana	470	625	514	515	500	122	146	137	105	129
Oklahoma	243	279	218	250	294	60	54	45	40	45
Texas	2,163	3,244	2,011	2,252	1,734	504	499	324	334	316
Montana	35	79	78	79	52	18	14	12	12	11
Idaho	63	69	69	100	82	30	30	20	17	15
Wyoming	2	2	1	2	2	6	6	4	2	3
Colorado	141	155	163	197	167	20	20	16	8	17
New Mexico	70	95	137	137	197	7	8	5	5	6
Arizona	168	195	210	192	204	8	8	12	12	15
Utah	121	185	155	211	219	32	34	30	15	10
Nevada	4	5	1	1	1	1	1	1	1	1
Washington	990	1,138	1,070	970	934	110	104	102	82	95
Oregon	363	399	300	430	336	78	79	82	74	75
California	6,212	7,517	6,563	6,462	7,207	367	330	297	254	262
Alaska		2				1	1	1	1	1
Hawaii	171	182	190	172	179	2	3	2	3	1
United States	39,686	51,620	43,979	50,205	51,144	6,968	7,350	6,942	6,419	6,644

Table 6. Chickens: Number on farms by classes, by regions, October 1, 1965-69

Year	North Atlantic	E. North Central	W. North Central	South Atlantic	South Central	Western	Alaska and Hawaii	United States
1,000 head								
<u>HENS ONE YEAR OLD OR OLDER</u>								
1965	28,040	23,645	30,981	27,575	32,185	27,124	262	169,812
1966	25,266	22,990	28,115	29,466	32,802	28,492	367	167,498
1967	22,433	23,327	25,897	28,363	33,244	28,718	356	162,338
1968	26,540	23,592	24,402	33,992	35,206	32,238	410	176,380
1969	25,273	20,425	21,446	32,406	35,391	31,251	379	166,571
<u>PULLETS OF LAYING AGE</u>								
1965	18,385	20,025	21,345	25,860	27,404	18,969	611	132,599
1966	20,265	20,406	21,161	29,229	31,457	19,472	538	142,528
1967	21,919	20,419	20,807	32,594	35,249	23,540	617	155,145
1968	16,709	19,651	16,123	27,638	30,733	19,345	572	130,771
1969	18,026	20,112	16,856	33,220	31,343	20,523	589	140,669
<u>TOTAL HENS AND PULLETS OF LAYING AGE</u>								
1965	46,425	43,670	52,326	53,435	59,589	46,093	873	302,411
1966	45,531	43,396	49,276	58,695	64,259	47,964	905	310,026
1967	44,352	43,746	46,704	60,957	68,493	52,258	973	317,483
1968	43,249	43,243	40,525	61,630	65,939	51,583	982	307,151
1969	43,299	40,537	38,302	65,626	66,734	51,774	968	307,240
<u>PULLETS 3 MONTHS OLD AND OLDER NOT OF LAYING AGE</u>								
1965	8,680	10,510	18,320	13,770	13,710	8,800	226	74,016
1966	9,850	11,890	19,290	16,920	17,660	9,660	183	85,453
1967	8,270	11,650	16,400	16,410	15,540	9,180	144	77,594
1968	7,530	9,750	11,100	15,260	15,540	8,530	234	67,944
1969	7,400	9,710	12,000	16,890	15,790	8,510	246	70,546
<u>PULLETS UNDER 3 MONTHS OLD</u>								
1965	6,740	6,780	3,550	10,340	11,330	9,090	188	48,018
1966	7,890	7,930	4,640	12,740	12,550	10,340	210	56,300
1967	6,490	8,590	5,000	11,980	11,790	10,310	187	54,347
1968	7,000	8,480	4,850	13,300	12,140	10,720	98	56,588
1969	7,050	8,800	5,960	14,200	12,700	10,700	100	59,510
<u>OTHER CHICKENS</u>								
1965	782	1,245	2,405	3,130	3,535	550	6	11,653
1966	816	1,155	2,105	3,450	3,735	469	5	11,735
1967	710	980	1,800	3,350	3,810	450	3	11,103
1968	595	860	1,600	3,120	3,390	395	15	9,975
1969	680	740	1,280	3,270	3,550	400	15	9,935
<u>TOTAL ALL CHICKENS</u>								
1965	62,627	62,205	76,601	80,675	88,164	64,533	1,293	436,098
1966	64,087	64,371	75,311	91,805	98,204	68,433	1,303	463,514
1967	59,822	64,966	69,904	92,697	99,633	72,198	1,307	460,527
1968	58,374	62,333	58,075	93,310	97,009	71,228	1,329	441,658
1969	58,429	59,787	57,542	99,986	98,774	71,384	1,329	447,231

Table 7. Chickens: Number on farms by classes, by regions, December 1, 1964-69

Year	North Atlantic	E. North Central	W. North Central	South Atlantic	South Central	Western	Alaska and Hawaii	United States
1,000 head								
<u>HENS ONE YEAR OLD OR OLDER</u>								
1964	19,547	20,186	21,402	24,119	29,467	23,531	269	138,521
1965	22,138	20,704	21,001	25,605	28,889	26,342	277	144,956
1966	19,882	20,031	17,874	24,673	28,398	26,134	328	137,320
1967	17,925	20,375	17,959	24,660	29,457	28,780	393	139,549
1968	18,456	17,988	17,787	28,614	27,268	29,465	409	139,987
1969	19,151	17,644	15,320	29,048	26,031	29,138	542	136,874
<u>PULLETS OF LAYING AGE</u>								
1964	27,896	25,930	37,488	27,854	29,616	23,334	619	172,737
1965	24,654	23,411	32,633	28,844	32,129	20,656	627	162,954
1966	26,708	25,449	34,689	35,306	38,898	22,065	592	183,707
1967	27,008	24,902	30,213	37,735	39,562	23,847	567	183,834
1968	25,253	24,755	23,557	34,089	39,696	22,912	588	170,850
1969	24,445	24,094	24,978	38,062	42,072	22,568	430	176,649
<u>TOTAL HENS AND PULLETS OF LAYING AGE</u>								
1964	47,443	46,116	58,890	51,973	59,083	46,865	888	311,258
1965	46,792	44,115	53,634	54,449	61,018	46,998	904	307,910
1966	46,590	45,480	52,563	59,979	67,296	48,199	922	321,029
1967	44,933	45,277	48,172	62,395	69,019	52,627	960	323,383
1968	43,709	42,743	41,344	62,703	66,964	52,377	997	310,837
1969	43,596	41,738	40,298	67,110	68,103	51,706	972	313,523
<u>PULLETS 3 MONTHS OLD AND OLDER NOT OF LAYING AGE</u>								
1964	5,630	5,540	4,960	10,290	9,050	8,280	206	43,956
1965	5,730	5,410	5,100	10,450	10,450	7,580	193	44,913
1966	6,320	6,080	5,100	12,080	11,750	7,870	198	49,398
1967	5,210	7,020	5,000	11,230	11,480	7,770	185	47,895
1968	5,030	6,120	4,410	13,030	12,913	7,770	200	49,473
1969	5,055	6,478	5,134	13,641	13,014	7,312	198	50,832
<u>PULLETS UNDER 3 MONTHS OLD</u>								
1964	4,560	4,720	2,150	9,350	9,600	8,960	196	39,536
1965	4,940	4,500	2,400	9,300	10,500	8,700	171	40,511
1966	5,470	6,050	3,130	12,700	13,650	9,880	184	51,064
1967	4,450	6,100	3,200	10,900	12,300	9,100	190	46,240
1968	5,050	6,130	3,800	13,850	12,750	9,480	172	51,232
1969	4,927	6,280	3,964	13,486	12,815	9,481	130	51,083
<u>OTHER CHICKENS</u>								
1964	715	485	880	1,920	2,340	720	3	7,063
1965	665	460	850	1,960	2,310	663	3	6,908
1966	675	455	820	2,170	2,460	630	4	7,214
1967	620	435	710	2,110	2,395	570	3	6,843
1968	570	400	550	2,050	2,375	480	4	6,429
1969	594	383	549	2,111	2,518	502	1	6,658
<u>TOTAL ALL CHICKENS</u>								
1964	58,348	56,861	66,880	73,533	80,073	64,825	1,293	401,813
1965	58,127	54,485	61,984	76,159	84,278	63,938	1,271	400,242
1966	59,055	58,065	61,613	86,929	95,156	66,579	1,308	428,705
1967	55,213	58,832	57,082	86,635	95,194	70,067	1,338	424,361
1968	54,359	55,393	50,104	91,633	95,002	70,107	1,373	417,971
1969	54,172	54,879	49,945	96,348	96,450	69,001	1,301	422,096



Table 8. All chickens: Number on farms, by classes, average value per head and total value, by States, December 1, 1969

State	All chickens			Hens and Pullets of laying age			Pullets not of laying age		Other chickens
	Number	Average	Total value	Hens	Pullets	Total	3 mo +	Under 3 mos.	
		value per head					laying age	mos.	
	1,000 head	Dollars	1,000 dollars			1,000 head			
Maine	7,805	1.70	13,269	1,706	4,259	5,965	895	825	120
N. H.	1,806	1.75	3,161	469	931	1,400	202	162	42
Vt.	499	1.85	923	105	291	396	56	36	11
Mass.	3,038	1.75	5,317	911	1,380	2,291	322	352	73
R. I.	442	1.85	818	97	254	351	40	42	9
Conn.	4,619	1.85	8,545	1,441	2,252	3,693	427	435	64
N. Y.	13,635	1.80	24,543	5,300	5,397	10,697	1,634	1,214	90
N. J.	4,885	1.70	8,305	2,872	1,256	4,128	362	361	34
Pa.	17,443	1.70	29,653	6,250	8,425	14,675	1,117	1,500	151
Ohio	12,901	1.40	18,061	4,280	5,431	9,711	1,451	1,657	82
Ind.	17,330	1.25	21,663	4,558	7,862	12,420	2,791	2,048	71
Ill.	10,300	1.25	12,875	3,080	5,098	8,178	845	1,164	113
Mich.	8,171	1.45	11,848	3,293	3,268	6,561	784	793	33
Wis.	6,177	1.35	8,339	2,433	2,435	4,868	607	618	84
Minn.	12,392	1.30	16,110	3,568	6,232	9,800	1,432	1,041	119
Iowa	13,777	1.35	18,599	4,409	6,554	10,963	1,413	1,273	128
Mo.	8,040	1.05	8,442	2,304	4,051	6,355	843	723	119
N. Dak.	1,017	1.20	1,220	374	586	960	31	11	15
S. Dak.	5,121	1.20	6,145	1,628	2,784	4,412	452	207	50
Nebr.	4,979	1.05	5,228	1,677	2,378	4,055	488	376	60
Kans.	4,619	1.05	4,850	1,360	2,393	3,753	475	333	58
Del.	842	1.40	1,179	311	300	611	92	109	30
Md.	2,144	1.50	3,216	710	914	1,624	220	220	80
Va.	5,367	1.25	6,709	1,776	2,303	4,079	558	642	88
W. Va.	1,442	1.20	1,730	437	845	1,282	81	49	30
N. C.	22,115	1.10	24,327	7,114	8,736	15,850	2,788	2,677	800
S. C.	8,234	1.25	10,293	2,251	3,811	6,062	1,110	979	83
Ga.	38,745	1.15	44,557	10,230	15,707	25,937	5,465	6,403	940
Fla.	17,459	1.25	21,824	6,219	5,446	11,665	3,327	2,407	60
Ky.	3,608	1.05	3,788	1,050	1,739	2,789	386	364	69
Tenn.	6,307	1.20	7,568	2,354	2,722	5,076	575	525	131
Ala.	21,000	1.05	22,050	5,200	8,180	13,380	3,320	3,615	685
Miss.	15,627	1.25	19,534	4,579	6,719	11,298	2,016	1,985	328
Ark.	24,592	1.10	27,051	5,730	10,508	16,238	3,750	3,794	810
La.	5,309	1.30	6,902	1,571	2,496	4,067	605	504	133
Okla.	3,120	1.00	3,120	940	1,470	2,410	370	294	46
Texas	16,887	1.05	17,731	4,607	8,238	12,845	1,992	1,734	316
Mont.	1,095	1.30	1,424	449	494	943	85	57	10
Idaho	1,095	1.15	1,259	496	390	886	113	81	15
Wyo.	167	1.35	225	53	106	159	3	2	3
Colo.	1,783	1.20	2,140	392	1,017	1,409	178	178	18
N. Mex.	1,246	1.15	1,433	349	594	943	99	198	6
Ariz.	1,464	1.30	1,903	529	566	1,095	148	206	13
Utah	1,751	1.20	2,101	789	543	1,332	190	219	10
Nev.	26	1.50	39	13	10	23	1	1	1
Wash.	6,505	1.35	8,782	2,017	2,620	4,637	832	941	95
Oreg.	2,947	1.35	3,978	1,037	1,159	2,196	346	333	72
Calif.	50,922	1.30	66,199	23,014	15,069	38,083	5,317	7,265	257
Alaska	30	2.05	62	20	8	28	1		1
Hawaii	1,271	1.90	2,415	522	422	944	197	130	
U. S.	422,096	1.28	541,453	136,874	176,649	313,523	50,832	51,083	6,658

Table 9: Hens and pullets of laying age first of the month, by regions, August 1965 to January 1970

Month and year	North Atlantic	East North Central	West North Central	South Atlantic	South Central	Western	Alaska and Hawaii	United States
1,000 head								
Aug. 1								
1965	45,211	42,241	50,298	50,998	57,607	44,837	865	292,057
1966	43,186	40,395	46,199	55,065	60,848	46,383	879	292,955
1967	42,381	42,593	45,067	58,010	66,257	50,141	945	305,394
1968	41,859	41,913	40,197	59,140	65,602	51,665	994	301,370
1969	42,516	34,307	37,326	63,529	64,979	51,622	950	295,229
Sept. 1								
1965	45,778	43,068	50,538	51,904	58,535	45,488	857	296,168
1966	44,416	41,647	46,756	56,873	62,605	47,009	893	300,199
1967	43,330	42,802	45,156	59,262	67,488	50,857	951	309,846
1968	42,819	42,555	40,064	59,337	65,424	51,114	1,014	302,327
1969	42,758	40,405	37,577	64,678	65,476	51,837	962	303,693
Oct. 1								
1965	46,425	43,670	52,326	53,435	59,589	46,093	873	302,411
1966	45,531	43,396	49,276	58,695	64,259	47,964	905	310,026
1967	44,352	43,746	46,704	60,957	68,493	52,258	973	317,483
1968	43,249	43,243	40,525	61,630	65,939	51,583	982	307,151
1969	43,299	40,537	38,302	65,626	66,734	51,774	968	307,240
Nov. 1								
1965	46,495	44,028	52,720	54,078	60,279	46,721	895	305,216
1966	46,067	44,852	51,033	59,168	66,167	47,846	918	316,051
1967	44,371	44,436	48,061	62,221	69,582	52,044	962	321,677
1968	43,520	43,055	41,286	61,907	67,181	51,837	986	309,772
1969	43,468	40,948	39,269	65,937	67,574	51,944	966	310,106
Dec. 1								
1965	46,792	44,115	53,634	54,449	61,018	46,998	904	307,910
1966	46,590	45,480	52,563	59,979	67,296	48,199	924	321,031
1967	44,933	45,277	48,172	62,395	69,019	52,627	960	323,383
1968	43,709	42,743	41,344	62,703	66,964	52,377	997	310,837
1969	43,596	41,738	40,298	67,110	68,103	51,706	972	313,523
Jan. 1								
1966	46,287	43,986	53,619	54,762	61,333	47,201	878	308,066
1967	46,565	45,458	52,772	59,973	67,367	49,034	946	322,115
1968	45,317	45,179	48,090	63,008	70,279	52,512	959	325,344
1969	43,684	41,808	41,635	63,123	67,130	51,393	971	309,744
1970	43,926	41,874	41,023	68,751	69,122	51,842	979	317,517

Table 10. Pullets 3 months old and older not of laying age first of month, by regions, August 1965 to January 1970

Month and year	North Atlantic	East North Central	West North Central	South Atlantic	South Central	Western	Alaska and Hawaii	United States
1,000 head								
Aug. 1								
1965	8,970	11,890	18,940	13,980	15,710	8,990	229	78,709
1966	10,400	12,220	20,080	15,900	18,780	9,900	249	87,529
1967	9,460	11,850	17,870	17,810	19,160	10,400	176	86,726
1968	7,170	10,070	12,150	15,300	16,860	9,500	250	71,300
1969	7,020	9,870	12,020	15,850	15,220	8,990	250	69,220
Sept. 1								
1965	9,680	12,540	21,600	14,980	15,420	8,880	242	83,342
1966	10,500	13,450	23,210	16,780	18,510	10,050	212	92,712
1967	9,370	13,390	21,020	17,810	17,630	10,250	178	89,648
1968	7,500	10,440	14,080	15,900	16,920	8,710	215	73,765
1969	7,300	10,070	13,640	17,630	15,960	9,100	300	74,000
Oct. 1								
1965	8,680	10,510	18,320	13,770	13,710	8,800	226	74,016
1966	9,850	11,890	19,290	16,920	17,660	9,660	183	85,453
1967	8,270	11,650	16,400	16,410	15,540	9,180	144	77,594
1968	7,530	9,750	11,100	15,260	15,540	8,530	234	67,944
1969	7,406	9,710	12,000	16,890	15,790	8,510	246	70,546
Nov. 1								
1965	5,860	7,300	10,020	11,910	12,030	8,240	200	56,460
1966	7,990	8,010	10,500	14,850	14,440	8,980	190	64,960
1967	6,870	7,610	9,100	13,240	12,420	8,530	20	57,790
1968	6,400	6,850	7,580	13,890	13,290	8,260	225	56,495
1969	6,500	6,950	8,600	14,590	14,200	7,640	200	58,630
Dec. 1								
1965	5,730	5,410	5,100	10,450	10,500	7,580	193	44,963
1966	6,320	6,080	5,100	12,080	11,750	7,870	198	49,398
1967	5,210	6,900	5,000	11,230	11,480	7,770	185	47,775
1968	5,030	6,120	4,410	13,030	12,600	7,770	200	49,160
1969	5,055	6,478	5,134	13,641	13,014	7,312	198	50,832
Jan. 1								
1966	4,989	4,539	2,423	9,127	9,482	6,799	172	37,531
1967	5,925	5,368	3,074	11,229	11,087	7,625	178	44,486
1968	5,035	5,823	3,448	10,363	11,245	8,154	162	44,230
1969	5,204	5,812	3,278	12,324	12,223	7,919	159	46,919
1970	5,188	6,116	4,049	12,656	12,740	8,081	160	48,990

Table 11. Potential layers first of month by regions,  
August 1965 to January 1970

Month and year	North Atlantic	East North Central	West North Central	South Atlantic	South Central	Western	Alaska and Hawaii	United States
1,000 head								
Aug. 1								
1965	54,181	54,131	69,238	64,978	73,317	53,827	1,094	370,766
1966	53,868	52,615	66,279	70,965	79,628	56,283	1,128	380,766
1967	51,841	54,443	62,927	75,820	85,417	60,541	1,121	392,120
1968	49,029	51,983	52,347	74,440	82,462	61,165	1,244	372,670
1969	49,536	44,177	49,346	79,379	80,199	60,612	1,200	364,449
Sept. 1								
1965	55,458	55,608	72,138	66,884	73,955	54,368	1,099	379,510
1966	54,916	55,097	69,966	73,653	81,115	57,059	1,105	392,911
1967	52,700	56,192	66,176	77,072	85,118	61,107	1,129	399,494
1968	50,319	52,995	54,144	75,237	82,344	59,824	1,229	376,092
1969	50,058	50,475	51,217	82,308	81,436	60,937	1,262	377,693
Oct. 1								
1965	55,105	54,180	70,646	67,205	73,299	54,893	1,099	376,427
1966	55,381	55,286	68,566	75,615	81,919	57,624	1,088	395,479
1967	52,622	55,396	63,104	77,367	84,033	61,438	1,117	395,077
1968	50,779	52,993	51,625	76,890	81,479	60,113	1,216	375,095
1969	50,699	50,247	50,302	82,516	82,524	60,284	1,214	377,786
Nov. 1								
1965	53,355	51,228	62,740	65,988	72,309	54,961	1,095	361,676
1966	54,057	52,862	61,533	74,018	80,607	56,826	1,108	381,011
1967	51,241	52,046	57,161	75,458	82,002	60,574	982	379,464
1968	49,920	49,905	48,866	75,797	81,321	60,097	1,211	367,117
1969	49,968	47,898	47,869	80,527	81,774	59,584	1,166	368,786
Dec. 1								
1965	52,522	49,525	58,734	64,899	71,460	54,578	1,097	352,823
1966	52,910	51,560	57,663	72,059	79,046	56,069	1,120	370,427
1967	50,143	52,297	53,172	73,625	80,499	60,397	1,145	371,278
1968	48,739	48,863	45,754	75,733	79,877	60,147	1,197	360,310
1969	48,651	48,216	45,432	80,751	81,117	59,018	1,170	364,355
Jan. 1								
1966	51,276	48,525	56,042	63,889	70,815	54,000	1,050	345,597
1967	52,490	50,826	55,846	71,202	78,454	56,659	1,124	366,601
1968	50,352	51,002	51,538	73,371	81,524	60,666	1,121	369,574
1969	48,888	47,620	44,913	75,447	79,353	59,312	1,130	356,563
1970	49,114	47,990	45,072	81,407	81,862	59,923	1,139	366,507

Table 12. Number of layers, eggs per 100 layers, and egg production, by States, 1965-69

Item and year	January	February	March	April	May	June	July	August	September	October	November	December	Year 1/ hen 2/
Maine													
Layers during month	Thousands												
1965	4,565	4,496	4,450	4,427	4,356	4,308	4,352	4,460	4,540	4,640	4,700	4,723	4,501
1966	4,723	4,653	4,513	4,398	4,309	4,284	4,390	4,521	4,633	4,722	4,823	4,894	4,572
1967	4,884	4,811	4,688	4,614	4,589	4,588	4,613	4,662	4,736	4,810	4,906	4,956	4,738
1968	4,957	4,982	4,932	4,833	4,736	4,615	4,635	4,727	4,750	4,817	4,952	5,088	4,835
1969	5,155	5,132	5,086	4,990	4,965	5,089	5,268	5,425	5,560	5,727	5,888	5,965	5,354
Eggs per 100 layers during month	Number												Av. per hen 2/
1965	1,968	1,750	1,968	1,905	1,938	1,875	1,938	1,906	1,800	1,854	1,850	1,953	227
1966	1,978	1,792	1,953	1,860	1,938	1,860	1,860	1,891	1,860	1,931	1,890	1,993	228
1967	1,990	1,792	2,021	1,965	1,984	1,884	1,916	1,897	1,854	1,907	1,815	1,891	229
1968	1,934	1,833	1,959	1,872	1,928	1,845	1,913	1,903	1,827	1,903	1,872	1,990	228
1969	2,003	1,792	1,959	1,878	1,944	1,911	1,959	1,891	1,785	1,851	1,851	1,910	227
Eggs produced	Millions												
1965	90	79	88	84	84	81	84	85	82	86	87	92	1,022
1966	93	83	88	82	84	80	82	85	86	91	91	98	1,043
1967	97	86	95	91	91	86	88	88	88	92	89	94	1,085
1968	96	91	97	90	91	85	89	90	87	92	93	101	1,102
1969	103	92	100	94	97	97	103	103	99	106	109	114	1,217
Layers first day of month	Thousands												
1965	4,563	4,567	4,425	4,474	4,380	4,332	4,284	4,420	4,500	4,580	4,700	4,700	
1966	4,746	4,700	4,605	4,420	4,375	4,243	4,325	4,454	4,587	4,678	4,766	4,880	
1967	4,908	4,859	4,762	4,614	4,614	4,563	4,613	4,613	4,710	4,762	4,857	4,954	
1968	4,957	4,957	5,007	4,857	4,808	4,664	4,566	4,730	4,800	4,820	4,990	5,150	
1969	5,155	5,155	5,109	5,063	4,916	5,014	5,164	5,371	5,478	5,642	5,811	5,965	
Eggs per 100 layers first day of month	Number												
1965	65.0	62.0	63.0	64.0	63.0	62.0	63.0	62.0	61.0	59.0	60.5	63.5	
1966	62.5	65.0	63.0	63.0	61.0	64.0	60.0	60.0	62.0	62.0	62.5	63.5	
1967	65.0	63.5	64.5	66.0	65.0	63.0	62.5	61.0	61.5	62.0	61.0	60.0	
1968	62.0	62.7	63.8	62.6	62.3	62.1	60.9	62.4	60.4	61.3	61.4	63.3	
1969	65.0	64.2	63.8	62.6	62.6	62.8	64.6	61.7	60.3	58.7	60.7	62.6	

See footnotes at end of table, page 66.

Continued

Table 12. Number of layers, eggs per 100 layers, and egg production, by States, 1965-69 *Continued*

Item and year	January	February	March	April	May	June	July	August	September	October	November	December	Year 1/
<b>New Hampshire</b>													
Layers during month	Thousands												
1965	1,706	1,645	1,601	1,592	1,582	1,548	1,540	1,548	1,540	1,592	1,678	1,732	1,609
1966	1,740	1,696	1,644	1,617	1,617	1,634	1,670	1,713	1,748	1,756	1,774	1,793	1,700
1967	1,784	1,740	1,694	1,685	1,658	1,622	1,585	1,584	1,646	1,691	1,718	1,710	1,676
1968	1,670	1,655	1,622	1,593	1,548	1,520	1,540	1,563	1,585	1,613	1,633	1,620	1,597
1969	1,600	1,600	1,575	1,542	1,534	1,511	1,481	1,459	1,436	1,414	1,400	1,405	1,496
Eggs per 100 layers during month	Number												Av. per hen 2/
1965	1,897	1,708	1,876	1,815	1,885	1,854	1,897	1,891	1,824	1,866	1,836	1,938	223
1966	1,984	1,820	2,000	1,875	1,906	1,860	1,891	1,876	1,845	1,938	1,890	1,953	229
1967	1,922	1,722	1,922	1,860	1,938	1,866	1,916	1,928	1,890	1,938	1,830	1,906	226
1968	1,934	1,792	1,882	1,818	1,910	1,848	1,907	1,888	1,812	1,891	1,851	1,922	225
1969	1,934	1,742	1,891	1,830	1,879	1,821	1,900	1,879	1,788	1,848	1,800	1,845	222
Eggs produced	Millions												
1965	32	28	30	29	30	29	29	29	28	30	31	34	359
1966	35	31	33	30	31	30	32	32	32	34	34	35	389
1967	34	30	33	31	32	30	30	31	31	33	31	33	379
1968	32	30	31	29	30	28	29	30	29	31	30	31	360
1969	31	28	30	28	29	28	28	27	26	26	25	26	332
Layers first day of month	Thousands												
1965	1,741	1,671	1,619	1,583	1,600	1,565	1,531	1,548	1,548	1,531	1,652	1,705	
1966	1,758	1,723	1,670	1,617	1,617	1,617	1,652	1,687	1,739	1,756	1,756	1,793	
1967	1,793	1,775	1,704	1,685	1,685	1,631	1,613	1,557	1,611	1,682	1,700	1,736	
1968	1,685	1,655	1,638	1,605	1,580	1,515	1,524	1,555	1,570	1,600	1,625	1,640	
1969	1,600	1,600	1,600	1,549	1,534	1,534	1,488	1,473	1,444	1,427	1,400	1,400	
Eggs per 100 layers first day of month	Number												
1965	60.5	62.0	60.0	61.0	60.0	61.5	62.0	60.5	61.5	60.0	60.5	62.0	
1966	63.0	65.0	65.0	64.0	61.0	62.0	62.0	60.0	61.0	62.0	63.0	63.0	
1967	63.0	61.0	62.0	62.0	62.0	63.0	61.5	62.0	62.5	63.5	61.5	60.5	
1968	62.5	62.3	61.3	60.0	61.2	62.0	61.1	61.8	59.9	60.9	61.0	62.3	
1969	61.7	63.1	61.4	60.5	61.5	59.7	61.7	60.9	60.2	58.9	60.3	59.7	

See footnotes at end of table, page 66.

Continued

Table 12. Number of layers, eggs per 100 layers, and egg production, by States 1965-69 Continued

Item and year	January	February	March	April	May	June	July	August	September	October	November	December	Year 1/	
<b>Vermont</b>														
<b>Layers during month:</b>	<b>Thousands</b>													
1965	615	604	594	594	594	594	590	590	596	608	611	595	599	
1966	583	583	574	560	560	566	570	570	571	573	576	569	571	
1967	545	526	530	527	510	494	479	478	485	491	495	489	504	
1968	475	461	448	439	432	425	425	429	433	439	448	452	442	
1969	452	450	438	419	402	395	398	402	400	396	396	390	412	
<b>Eggs per 100 layers: during month</b>	<b>Number</b>													<b>Av. per hen 2/</b>
1965	1,716	1,778	2,000	1,920	1,978	1,926	2,009	2,015	1,950	1,990	1,866	1,922	232	
1966	1,968	1,778	1,968	1,926	1,990	1,935	2,030	2,015	1,905	1,928	1,806	1,876	233	
1967	1,938	1,758	1,947	1,905	2,009	1,929	1,947	1,938	1,890	1,962	1,884	1,931	230	
1968	1,969	1,842	1,953	1,822	1,924	1,824	1,897	1,891	1,815	1,885	1,848	1,922	226	
1969	1,910	1,756	1,978	1,890	1,913	1,866	1,934	1,888	1,815	1,876	1,830	1,953	226	
<b>Eggs produced</b>	<b>Millions</b>													
1965	11.8	10.7	11.9	11.4	11.7	11.4	11.9	11.9	11.6	12.1	11.4	11.4	139	
1966	11.5	10.4	11.3	10.8	11.1	11.0	11.6	11.5	11.0	11.3	10.7	11.1	133	
1967	10.6	9.2	10.3	10.0	10.2	9.5	9.3	9.3	9.2	9.6	9.3	9.4	116	
1968	9.3	8.5	8.7	8.3	8.3	7.8	8.1	8.1	7.9	8.3	8.3	8.7	100	
1969	8.6	7.9	8.7	7.9	7.7	7.4	7.7	7.6	7.3	7.4	7.2	7.6	93	
<b>Layers first day of: month</b>	<b>Thousands</b>													
1965	617	613	594	594	594	594	594	587	593	599	618	604		
1966	586	580	586	563	557	563	570	570	569	572	573	578		
1967	559	531	520	540	513	507	481	476	480	489	493	497		
1968	481	469	453	442	436	427	423	427	431	434	443	452		
1969	452	452	447	429	408	395	395	400	404	396	390	396		
<b>Eggs per 100 layers: first day of month:</b>	<b>Number</b>													
1965	61.0	62.5	64.5	64.5	63.5	64.0	64.5	65.0	65.0	65.0	63.5	61.0		
1966	63.0	64.0	63.0	64.0	64.5	64.0	65.0	66.0	64.0	63.0	61.5	59.0		
1967	62.0	63.0	62.5	64.5	65.0	65.0	63.5	62.0	63.0	63.0	63.5	62.0		
1968	62.5	64.5	62.5	63.5	62.6	61.3	60.3	62.0	60.0	61.0	60.5	62.7		
1969	62.5	64.5	62.5	63.5	62.6	61.3	60.3	62.0	60.0	61.0	60.5	62.7		

See footnotes at end of table, page 66.

Continued

Table 12. Number of layers, eggs per 100 layers and egg production, by States, 1965-69 Continued

Item and year	January	February	March	April	May	June	July	August	September	October	November	December	Year 1/
<b>Massachusetts</b>													
Layers during month:	Thousands												
1965	2,638	2,562	2,466	2,412	2,372	2,426	2,506	2,560	2,601	2,601	2,583	2,526	2,521
1966	2,450	2,438	2,463	2,426	2,352	2,302	2,326	2,377	2,464	2,501	2,476	2,524	2,425
1967	2,511	2,460	2,434	2,382	2,357	2,331	2,330	2,395	2,447	2,460	2,460	2,434	2,417
1968	2,360	2,289	2,244	2,210	2,199	2,206	2,238	2,276	2,300	2,349	2,386	2,356	2,284
1969	2,344	2,362	2,362	2,352	2,340	2,334	2,364	2,404	2,424	2,413	2,340	2,320	2,363
Eggs per 100 layers: during month	Number												Av. per hen 2/
1965	1,891	1,722	1,906	1,875	1,928	1,860	1,876	1,804	1,740	1,814	1,746	1,829	219
1966	1,891	1,694	1,885	1,854	1,897	1,800	1,854	1,866	1,770	1,814	1,794	1,866	219
1967	1,885	1,702	1,866	1,806	1,866	1,836	1,891	1,835	1,776	1,876	1,806	1,885	220
1968	1,922	1,775	1,872	1,830	1,916	1,860	1,925	1,910	1,818	1,857	1,797	1,835	223
1969	1,823	1,666	1,879	1,848	1,913	1,857	1,903	1,872	1,806	1,888	1,854	1,897	222
20 Eggs produced	Millions												
1965	50	44	47	45	46	45	47	46	45	47	45	46	553
1966	46	41	46	45	45	41	43	44	44	45	44	47	531
1967	47	42	45	43	44	43	44	44	43	46	44	46	531
1968	45	41	42	40	42	41	43	43	42	44	43	43	509
1969	43	39	44	43	45	43	45	45	44	46	43	44	524
Layers first day of: month	Thousands												
1965	2,646	2,631	2,494	2,439	2,385	2,359	2,493	2,520	2,601	2,601	2,601	2,565	
1966	2,487	2,412	2,463	2,463	2,389	2,315	2,289	2,364	2,390	2,538	2,464	2,487	
1967	2,562	2,460	2,460	2,408	2,357	2,357	2,305	2,356	2,434	2,460	2,460	2,460	
1968	2,408	2,312	2,266	2,221	2,199	2,199	2,214	2,263	2,288	2,312	2,386	2,386	
1969	2,326	2,326	2,362	2,363	2,340	2,340	2,329	2,398	2,411	2,437	2,389	2,291	
Eggs per 100 layers: first day of month:	Number												
1965	60.0	62.0	61.0	62.0	63.0	61.5	62.5	58.5	58.0	58.0	59.0	57.5	
1966	60.5	61.5	59.5	62.0	61.5	61.0	59.0	60.5	60.0	58.0	59.0	60.5	
1967	60.0	61.5	60.0	60.5	60.0	60.5	62.0	60.0	58.5	60.0	61.0	59.5	
1968	62.0	62.0	60.3	60.5	61.5	62.0	62.0	62.2	60.9	60.2	59.6	60.2	
1969	58.3	59.3	59.7	61.6	61.7	61.7	62.1	60.7	60.2	60.1	61.7	61.8	

See footnotes at end of table, page 66.



Table 12: Number of layers, eggs per 100 layers and egg production, by States 1965-69 Continued

Item and year	January	February	March	April	May	June	July	August	September	October	November	December	Year 1/
Rhode Island													
Layers during month : Thousands													
1965	388	376	364	356	352	356	364	370	376	380	382	379	370
1966	370	364	364	358	351	351	358	368	374	376	380	383	366
1967	380	376	370	363	357	353	347	349	359	365	370	370	363
1968	362	354	346	340	338	338	343	350	354	359	363	368	351
1969	368	361	354	347	342	336	333	336	339	343	348	364	348
Eggs per 100 layers : Av. per													
during month : Number : hen 2/													
1965	1,876	1,702	1,891	1,845	1,897	1,800	1,798	1,773	1,716	1,767	1,725	1,823	216
1966	1,860	1,702	1,916	1,860	1,897	1,815	1,829	1,798	1,716	1,761	1,734	1,800	219
1967	1,860	1,702	1,891	1,815	1,860	1,800	1,844	1,823	1,764	1,823	1,740	1,814	218
1968	1,860	1,740	1,841	1,776	1,835	1,776	1,823	1,773	1,710	1,814	1,800	1,860	217
1969	1,817	1,635	1,848	1,782	1,820	1,752	1,783	1,773	1,704	1,776	1,746	1,789	213
Eggs produced : Millions													
1965	7.3	6.4	6.9	6.6	6.7	6.4	6.5	6.6	6.5	6.7	6.6	6.9	80
1966	6.9	6.2	7.0	6.7	6.7	6.4	6.5	6.6	6.4	6.6	6.6	7.0	80
1967	7.1	6.4	7.0	6.6	6.6	6.4	6.4	6.4	6.3	6.7	6.4	6.7	79
1968	7.0	6.2	6.4	6.0	6.2	6.0	6.3	6.2	6.1	6.5	6.5	6.8	76
1969	6.7	5.9	6.5	6.2	6.2	5.9	5.9	6.0	5.8	6.1	6.1	6.5	74
Layers first day : Thousands													
of month													
1965	392	384	368	360	352	352	360	368	372	380	380	383	
1966	375	364	364	364	353	349	353	364	372	376	376	384	
1967	382	378	374	367	359	355	351	343	355	363	367	374	
1968	367	356	352	341	338	338	338	348	352	355	363	363	
1969	372	364	357	350	343	340	331	334	337	341	344	351	
Eggs per 100 layers : Number													
first day of month													
1965	60.0	61.0	60.5	61.5	61.5	61.0	59.0	57.0	57.5	57.0	57.0	58.0	
1966	59.5	60.5	61.0	62.5	61.5	61.0	60.0	58.0	58.0	56.5	57.0	58.5	
1967	59.5	60.5	61.0	61.0	60.0	60.0	60.0	59.0	58.5	59.0	58.5	57.5	
1968	59.5	60.5	59.5	59.2	59.3	59.0	59.5	58.0	56.5	57.5	59.5	60.5	
1969	59.5	57.6	59.1	60.1	58.6	58.7	58.0	57.0	57.3	56.3	58.3	58.1	

1/ See footnotes at end of table, page 66.

Continued

Table 12. Number of layers, eggs per 100 layers and egg production, by States 1965-69 Continued

Item and year	January	February	March	April	May	June	July	August	September	October	November	December	Year 1/
Connecticut													
Layers during month	Thousands												
1965	3,802	3,668	3,570	3,472	3,454	3,532	3,610	3,688	3,744	3,782	3,879	3,918	3,677
1966	3,822	3,764	3,745	3,687	3,648	3,686	3,773	3,850	3,870	3,885	3,925	3,930	3,799
1967	3,939	3,919	3,860	3,762	3,645	3,547	3,468	3,529	3,668	3,748	3,808	3,883	3,731
1968	3,870	3,773	3,679	3,605	3,569	3,530	3,532	3,576	3,597	3,615	3,674	3,723	3,645
1969	3,733	3,736	3,668	3,568	3,522	3,521	3,583	3,633	3,620	3,622	3,662	3,808	3,640
Eggs per 100 layers during month	Number												Av. per hen 2/
1965	1,823	1,658	1,860	1,854	1,928	1,815	1,835	1,804	1,710	1,798	1,755	1,866	217
1966	1,897	1,674	1,860	1,824	1,891	1,815	1,835	1,829	1,815	1,876	1,770	1,835	219
1967	1,866	1,694	1,897	1,845	1,906	1,866	1,916	1,860	1,770	1,829	1,755	1,798	220
1968	1,814	1,723	1,860	1,815	1,876	1,812	1,854	1,826	1,749	1,801	1,767	1,876	217
1969	1,882	1,691	1,891	1,839	1,922	1,854	1,879	1,835	1,746	1,798	1,743	1,795	218
Eggs produced	Millions												
1965	69	61	66	64	67	64	66	67	64	68	68	73	797
1966	73	63	70	67	69	67	69	70	70	73	69	72	832
1967	74	66	73	69	69	66	66	66	65	69	67	70	820
1968	70	65	68	65	67	64	65	65	63	65	65	70	792
1969	70	63	69	66	68	65	67	67	63	65	64	68	795
Layers first day of month	Thousands												
1965	3,880	3,725	3,610	3,531	3,414	3,493	3,570	3,649	3,726	3,763	3,801	3,957	
1966	3,880	3,764	3,764	3,726	3,648	3,648	3,725	3,820	3,880	3,860	3,910	3,940	
1967	3,919	3,958	3,879	3,840	3,683	3,606	3,487	3,449	3,608	3,727	3,768	3,847	
1968	3,919	3,821	3,725	3,632	3,578	3,560	3,500	3,563	3,588	3,606	3,624	3,723	
1969	3,723	3,743	3,728	3,607	3,528	3,516	3,526	3,640	3,626	3,613	3,630	3,693	
Eggs per 100 layers first day of month	Number												
1965	58.0	59.5	59.0	61.0	62.5	62.0	59.0	59.5	57.0	57.0	59.0	58.0	
1966	62.5	60.0	59.5	60.5	61.0	61.0	60.0	58.5	59.5	61.5	59.5	58.5	
1967	60.0	60.5	60.5	62.0	61.0	62.0	62.5	61.0	59.0	59.0	59.0	58.0	
1968	58.0	59.0	59.7	60.2	60.7	60.2	60.5	59.1	58.6	58.0	58.2	59.5	
1969	61.5	59.9	61.0	61.1	61.5	62.5	61.2	60.1	58.4	58.0	58.1	58.1	

See footnotes at end of table, page 66.

Continued

Table 12. Number of layers, eggs per 100 layers and egg production, by States, 1965-69 Continued

Item and year	January	February	March	April	May	June	July	August	September	October	November	December	Year 1/
<b>New York</b>													
<b>Layers during month:</b>	<b>Thousands</b>												
1965	10,712	10,584	10,352	10,052	9,914	9,969	10,039	10,180	10,533	10,888	11,024	10,954	10,433
1966	10,826	10,702	10,482	10,241	10,158	10,198	10,259	10,500	10,868	11,149	11,316	11,335	10,670
1967	11,168	10,922	10,660	10,394	10,330	10,391	10,443	10,600	10,844	11,054	11,232	11,428	10,789
1968	11,430	11,285	11,142	10,915	10,740	10,654	10,601	10,654	10,788	10,896	10,840	10,850	10,900
1969	10,914	10,773	10,536	10,298	10,194	10,142	10,114	10,240	10,470	10,674	10,724	10,765	10,487
<b>Eggs per 100 layers:</b>	<b>Number</b>												
<b>during month</b>	<b>Number</b>												
1965	1,792	1,646	1,857	1,848	1,928	1,845	1,885	1,835	1,716	1,773	1,734	1,801	216
1966	1,786	1,604	1,829	1,818	1,891	1,833	1,885	1,841	1,743	1,804	1,758	1,807	216
1967	1,829	1,694	1,906	1,866	1,941	1,848	1,885	1,863	1,764	1,823	1,773	1,841	220
1968	1,851	1,763	1,928	1,884	1,900	1,815	1,900	1,872	1,758	1,817	1,782	1,835	221
1969	1,838	1,691	1,903	1,854	1,925	1,848	1,885	1,866	1,770	1,823	1,779	1,835	220
<b>Eggs produced</b>	<b>Millions</b>												
1965	192	174	192	186	191	184	189	187	181	193	191	197	2,257
1966	193	172	192	186	192	187	193	193	189	201	199	205	2,302
1967	204	185	203	194	200	192	197	197	191	202	199	210	2,374
1968	212	199	215	206	204	193	201	199	190	199	193	199	2,410
1969	201	182	201	191	196	187	191	191	185	195	191	198	2,309
<b>Layers first day of:</b>	<b>Thousands</b>												
<b>month</b>	<b>Thousands</b>												
1965	10,750	10,675	10,494	10,211	9,894	9,934	10,004	10,074	10,286	10,780	10,996	11,051	
1966	10,858	10,793	10,610	10,355	10,127	10,188	10,208	10,310	10,691	11,044	11,254	11,378	
1967	11,292	11,044	10,801	10,520	10,268	10,391	10,391	10,495	10,705	10,983	11,126	11,337	
1968	11,518	11,342	11,228	11,057	10,773	10,708	10,601	10,601	10,707	10,868	10,923	10,758	
1969	10,942	10,887	10,669	10,403	10,194	10,194	10,090	10,139	10,342	10,598	10,751	10,697	
<b>Eggs per 100 layers:</b>	<b>Number</b>												
<b>first day of month:</b>	<b>Number</b>												
1965	56.5	59.0	58.5	61.3	62.0	62.5	60.5	61.0	57.5	57.0	57.5	58.0	
1966	58.2	57.0	57.6	60.3	61.0	61.1	61.1	60.5	58.2	58.0	58.5	58.6	
1967	58.0	60.0	61.0	62.0	62.5	62.7	60.5	61.2	59.0	58.7	59.0	59.2	
1968	59.5	59.9	61.6	62.9	62.6	60.0	61.0	61.6	59.1	58.0	59.3	59.6	
1969	58.8	59.8	60.9	62.0	61.6	62.6	60.6	61.0	59.3	58.7	59.0	59.6	

See footnotes at end of table, page 66.

Continued

Table 12. Number of layers, eggs per 100 layers and egg production, by States, 1965-69 Continued

Item and year	January	February	March	April	May	June	July	August	September	October	November	December	Year 1/
<b>New Jersey</b>													
Layers during month:	Thousands												
1965	7,019	6,914	6,879	6,844	6,776	6,742	6,776	6,809	6,775	6,674	6,540	6,428	6,765
1966	6,286	6,159	6,066	5,975	5,945	5,886	5,768	5,738	5,852	5,936	5,934	5,934	5,957
1967	5,905	5,816	5,757	5,729	5,700	5,700	5,672	5,615	5,530	5,420	5,311	5,240	5,616
1968	5,170	5,067	4,991	4,917	4,794	4,627	4,600	4,692	4,739	4,810	4,832	4,754	4,833
1969	4,653	4,537	4,491	4,513	4,487	4,459	4,435	4,368	4,281	4,174	4,119	4,128	4,387
Eggs per 100 layers: during month	Number												Av. per hen 2/
1965	1,628	1,523	1,755	1,752	1,872	1,812	1,804	1,730	1,644	1,674	1,578	1,606	204
1966	1,575	1,473	1,693	1,680	1,792	1,734	1,776	1,705	1,626	1,711	1,620	1,612	200
1967	1,649	1,543	1,736	1,761	1,876	1,791	1,857	1,872	1,755	1,739	1,653	1,724	209
1968	1,736	1,537	1,733	1,749	1,804	1,725	1,727	1,674	1,635	1,646	1,539	1,640	202
1969	1,674	1,546	1,752	1,752	1,876	1,818	1,798	1,733	1,686	1,680	1,593	1,618	206
24 Eggs produced	Millions												
1965	114	105	121	120	127	122	122	118	111	112	103	103	1,378
1966	99	91	103	100	107	102	102	98	95	102	96	96	1,191
1967	97	90	100	101	107	102	105	105	97	94	88	90	1,176
1968	90	81	86	86	86	80	79	79	77	79	74	78	975
1969	78	70	79	79	84	81	80	76	72	70	66	67	902
Layers first day of: month	Thousands												
1965	7,090	6,948	6,879	6,879	6,810	6,742	6,742	6,809	6,809	6,741	6,606	6,474	
1966	6,381	6,190	6,128	6,005	5,945	5,945	5,826	5,709	5,766	5,939	5,934	5,934	
1967	5,934	5,875	5,757	5,757	5,700	5,700	5,700	5,643	5,586	5,474	5,365	5,257	
1968	5,222	5,118	5,016	4,966	4,867	4,721	4,532	4,668	4,715	4,762	4,857	4,807	
1969	4,700	4,606	4,468	4,513	4,513	4,460	4,457	4,412	4,324	4,237	4,110	4,128	
Eggs per 100 layers: first day of month:	Number												
1965	52.3	52.7	57.0	57.3	59.5	61.2	59.5	57.0	54.7	55.0	53.1	52.2	
1966	51.5	50.1	55.0	54.3	57.7	57.9	57.1	56.8	53.2	55.2	55.1	52.8	
1967	51.3	55.1	55.1	56.9	60.5	60.4	58.5	60.8	59.9	57.1	55.1	55.1	
1968	56.1	55.8	53.9	57.9	58.7	57.7	57.3	54.1	53.8	55.2	51.0	51.6	
1969	54.2	53.8	56.6	56.3	60.5	60.4	60.7	55.3	56.5	55.8	52.5	53.7	

See footnotes at end of table, page 66.

Continued

Table 12. Number of layers, eggs per 100 layers and egg production, by States, 1965-69 Continued

Item and year	January	February	March	April	May	June	July	August	September	October	November	December	Year 1/
<b>Pennsylvania</b>													
Layers during month	Thousands												
1965	16,122	15,978	15,834	15,691	15,464	15,392	15,352	15,290	15,396	15,296	15,247	15,284	15,529
1966	15,132	15,034	14,952	14,631	14,278	14,042	13,908	14,165	14,595	14,901	15,125	15,216	14,665
1967	14,970	14,646	14,446	14,266	14,148	13,756	13,437	13,645	14,126	14,324	14,353	14,616	14,228
1968	14,620	14,415	14,207	13,993	13,832	13,673	13,668	14,075	14,490	14,489	14,488	14,487	14,203
1969	14,436	14,457	14,392	14,234	14,212	14,175	14,209	14,371	14,500	14,623	14,656	14,617	14,407
Eggs per 100 layers during month	Number												
1965	1,848	1,694	1,910	1,896	1,972	1,863	1,882	1,835	1,740	1,755	1,680	1,761	218
1966	1,786	1,630	1,866	1,866	1,941	1,872	1,891	1,848	1,764	1,810	1,764	1,835	219
1967	1,848	1,680	1,882	1,872	1,950	1,896	1,953	1,903	1,788	1,829	1,782	1,866	222
1968	1,872	1,749	1,919	1,896	1,956	1,857	1,879	1,810	1,743	1,826	1,752	1,866	221
1969	1,916	1,730	1,959	1,938	1,996	1,923	1,938	1,882	1,800	1,838	1,749	1,866	225
Eggs produced	Millions												
1965	298	271	302	298	305	287	289	281	268	268	256	269	3,392
1966	270	245	279	273	277	263	263	262	257	270	267	279	3,205
1967	277	246	272	267	276	261	262	260	253	262	256	273	3,165
1968	274	252	273	265	271	254	257	255	253	265	254	270	3,143
1969	277	250	282	276	284	273	275	270	261	269	256	273	3,246
Layers first day of month	Thousands												
1965	16,187	16,058	15,897	15,770	15,612	15,315	15,468	15,236	15,343	15,450	15,141	15,353	
1966	15,216	15,049	15,019	14,884	14,378	14,177	13,908	13,908	14,422	14,768	15,034	15,216	
1967	15,216	14,723	14,568	14,325	14,207	14,088	13,425	13,449	13,841	14,412	14,235	14,471	
1968	14,760	14,480	14,350	14,063	13,922	13,741	13,604	13,731	14,418	14,562	14,416	14,560	
1969	14,414	14,457	14,457	14,327	14,141	14,282	14,068	14,349	14,392	14,608	14,637	14,675	
Eggs per 100 layers first day of month	Number												
1965	59.3	59.9	61.1	62.0	64.3	63.0	61.2	60.2	58.2	57.8	55.5	56.4	
1966	57.2	58.0	58.5	61.9	62.5	62.8	62.0	59.9	59.2	58.5	58.2	59.4	
1967	59.0	60.2	59.8	61.6	63.2	62.6	63.7	62.2	60.7	58.6	59.5	59.4	
1968	61.1	59.6	61.0	62.8	63.5	62.7	61.1	60.2	56.7	59.5	58.3	58.5	
1969	61.1	59.6	61.3	65.2	63.5	64.8	63.4	61.6	59.8	60.3	58.3	58.3	

See footnotes at end of table, page 66.

Continued

Table 12. Number of layers, eggs per 100 layers and egg production, by States, 1965-69 Continued

Item and year	January	February	March	April	May	June	July	August	September	October	November	December	Year 1/
Ohio													
Layers during month:	Thousands												
1965	11,478	11,356	11,254	11,046	10,710	10,418	10,355	10,458	10,626	10,753	10,725	10,594	10,814
1966	10,503	10,372	10,242	10,134	9,936	9,860	9,885	9,910	10,058	10,310	10,507	10,725	10,202
1967	10,662	10,668	10,554	10,554	10,501	10,448	10,396	10,344	10,344	10,396	10,447	10,501	10,485
1968	10,344	10,133	10,133	10,032	9,830	9,585	9,315	9,375	9,664	9,770	9,624	9,383	9,766
1969	9,497	9,706	9,862	10,017	10,017	10,064	9,786	9,682	9,559	9,451	9,593	9,791	9,752
Eggs per 100 layers:	Number												Av. per
during month													hen 2/
1965	1,860	1,686	1,916	1,908	1,984	1,872	1,859	1,795	1,713	1,773	1,734	1,835	219
1966	1,860	1,722	1,972	1,938	2,015	1,890	1,891	1,866	1,776	1,848	1,803	1,829	224
1967	1,829	1,708	1,944	1,935	2,024	1,950	1,984	1,906	1,904	1,860	1,800	1,835	226
1968	1,851	1,769	1,928	1,899	1,984	1,920	1,959	1,916	1,818	1,876	1,809	1,863	226
1969	1,869	1,708	1,938	1,905	1,993	1,923	1,953	1,919	1,818	1,876	1,809	1,866	226
Eggs produced	Millions												
1965	213	191	216	211	212	195	192	187	182	191	186	194	2,370
1966	195	179	202	196	200	186	187	185	179	191	189	196	2,285
1967	195	181	205	204	213	204	206	197	186	193	188	193	2,365
1968	191	179	195	191	195	184	182	180	176	183	174	175	2,205
1969	177	166	191	191	202	194	191	186	174	177	174	183	2,206
Layers first day of:	Thousands												
month													
1965	11,600	11,356	11,356	11,152	10,940	10,481	10,355	10,355	10,562	10,689	10,817	10,633	
1966	10,556	10,450	10,293	10,190	10,037	9,836	9,885	9,885	9,934	10,182	10,437	10,577	
1967	10,662	10,662	10,554	10,554	10,554	10,448	10,448	10,344	10,344	10,344	10,447	10,477	
1968	10,555	10,133	10,133	10,133	9,930	9,731	9,439	9,191	9,559	9,770	9,770	9,477	
1969	9,288	9,706	9,706	10,017	10,007	10,227	9,900	9,672	9,691	9,427	9,474	9,711	
Eggs per 100 layers:	Number												
first day of month:													
1965	60.8	59.3	61.2	62.4	64.7	63.4	61.4	58.4	57.1	57.1	57.4	58.0	
1966	60.1	60.0	63.0	64.2	65.0	65.0	61.0	61.0	59.4	59.0	60.3	59.9	
1967	58.0	60.0	62.0	63.4	65.6	65.0	65.0	63.0	60.0	59.5	60.5	59.5	
1968	59.0	60.4	61.7	62.6	64.0	64.0	63.9	64.0	61.1	60.0	61.0	59.5	
1969	60.6	59.9	62.1	62.9	64.0	64.6	63.6	62.4	61.4	59.8	61.2	59.4	

See footnotes at end of table, page 66.

Continued

Table 12. Number of layers, eggs per 100 layers, and egg production, by States, 1965-69 Continued

Item and year	January	February	March	April	May	June	July	August	September	October	November	December	Year 1/
Indiana													
Layers during month	Thousands												
1965	11,940	11,880	11,820	11,526	11,291	11,065	10,785	10,892	11,164	11,274	11,330	11,394	11,363
1966	11,343	11,235	11,117	10,984	10,748	10,468	10,321	10,594	11,174	11,590	11,842	12,018	11,120
1967	11,994	11,873	11,772	11,520	11,180	10,966	10,954	11,163	11,606	12,032	12,338	12,612	11,668
1968	12,835	12,905	12,931	12,957	12,918	12,827	12,736	12,800	12,928	13,057	13,057	12,731	12,890
1969	12,284	12,097	12,158	12,157	12,036	11,856	11,795	11,913	12,032	12,153	12,317	12,508	12,109
Eggs per 100 layers during month	Number												Av. per hen 2/
1965	1,854	1,669	1,916	1,935	1,978	1,848	1,857	1,792	1,713	1,773	1,734	1,835	217
1966	1,817	1,669	1,934	1,926	1,990	1,923	1,891	1,792	1,692	1,748	1,752	1,854	220
1967	1,860	1,688	1,910	1,920	1,984	1,860	1,876	1,814	1,680	1,711	1,719	1,823	218
1968	1,851	1,792	1,978	1,980	2,058	1,935	1,910	1,854	1,749	1,755	1,740	1,792	224
1969	1,758	1,652	1,913	1,902	1,990	1,890	1,885	1,807	1,692	1,748	1,722	1,817	218
Eggs produced	Millions												
1965	221	198	226	223	223	204	199	194	188	194	194	205	2,469
1966	206	188	215	212	214	201	195	190	189	203	207	223	2,443
1967	223	200	225	221	222	204	205	202	195	206	212	230	2,545
1968	238	231	256	257	266	248	243	237	226	229	227	228	2,886
1969	216	200	233	231	240	224	222	215	204	212	212	227	2,636
Layers first day of month	Thousands												
1965	12,000	11,880	11,980	11,761	11,291	11,291	10,839	10,731	11,053	11,274	11,274	11,387	
1966	11,400	11,286	11,184	11,050	10,917	10,579	10,357	10,285	10,902	11,447	11,733	11,956	
1967	12,084	11,903	11,843	11,701	11,328	11,021	10,911	10,998	11,328	11,883	12,180	12,497	
1968	12,726	12,943	12,866	12,995	12,918	12,918	12,736	12,736	12,863	12,992	13,122	12,991	
1969	12,471	12,097	12,097	12,218	12,096	11,975	11,736	11,853	11,972	12,092	12,213	12,420	
Eggs per 100 layers first day of month	Number												
1965	60.6	58.9	60.2	63.5	65.5	62.2	60.9	57.8	57.0	55.1	56.0	58.3	
1966	57.8	59.4	59.9	64.8	63.7	64.7	63.5	58.5	57.0	55.9	56.8	60.0	
1967	59.7	60.3	60.3	63.0	65.0	63.0	61.0	60.0	57.0	55.0	55.5	59.0	
1968	58.5	60.8	62.7	65.0	67.0	65.9	63.1	60.0	59.7	56.9	56.3	59.8	
1969	55.8	57.6	60.5	62.9	64.0	64.5	61.5	60.0	56.5	56.2	56.6	58.1	

27

See footnotes at end of table, page 66.

Continued

Table 12. Number of layers, eggs per 100 layers and egg production, by States, 1965-69 Continued

Item and year	January	February	March	April	May	June	July	August	September	October	November	December	Year 1/
<b>Illinois</b>													
Layers during month	Thousands												
1965	8,650	8,562	8,476	8,433	8,390	8,306	8,223	8,262	8,384	8,468	8,552	8,514	8,435
1966	8,432	8,390	8,474	8,302	8,045	7,964	7,805	7,804	8,118	8,648	8,921	8,858	8,313
1967	8,858	8,768	8,635	8,506	8,250	8,328	8,446	8,402	8,570	8,740	8,872	8,756	8,594
1968	8,433	8,452	8,560	8,429	8,283	8,162	8,011	7,979	8,180	8,215	8,171	8,230	8,259
1969	8,166	8,044	7,844	7,648	7,608	7,608	7,495	7,456	7,643	7,871	8,064	8,089	7,795
Eggs per 100 layers during month	Number												Av. per hen 2/
1965	1,758	1,641	1,897	1,914	1,987	1,890	1,879	1,792	1,680	1,711	1,668	1,761	216
1966	1,776	1,627	1,891	1,908	2,003	1,893	1,841	1,798	1,698	1,724	1,710	1,792	217
1967	1,804	1,669	1,934	1,944	2,027	1,926	1,928	1,891	1,800	1,820	1,755	1,841	223
1968	1,860	1,775	1,947	1,944	2,027	1,917	1,916	1,851	1,772	1,767	1,764	1,829	223
1969	1,826	1,694	1,913	1,881	1,950	1,872	1,922	1,882	1,758	1,804	1,770	1,838	221
Eggs produced	Millions												
1965	152	141	161	161	167	157	155	148	141	145	143	150	1,821
1966	150	137	160	158	161	151	144	140	138	149	153	159	1,800
1967	160	146	167	165	167	160	163	159	154	159	156	161	1,917
1968	157	150	167	164	168	156	153	148	141	145	144	151	1,844
1969	149	136	150	144	148	142	144	140	134	142	143	149	1,721
Layers first day of month	Thousands												
1965	8,737	8,562	8,562	8,391	8,475	8,306	8,306	8,140	8,384	8,384	8,552	8,552	
1966	8,475	8,390	8,390	8,558	8,045	8,045	7,884	7,726	7,881	8,354	8,939	8,903	
1967	8,814	8,902	8,635	8,635	8,376	8,125	8,531	8,360	8,444	8,697	8,784	8,961	
1968	8,550	8,315	8,588	8,533	8,325	8,241	8,082	7,939	8,019	8,340	8,090	8,252	
1969	8,207	8,125	7,963	7,725	7,570	7,646	7,570	7,419	7,493	7,793	7,949	8,178	
Eggs per 100 layers first day of month	Number												
1965	55.5	57.9	59.3	63.0	64.6	63.6	62.5	58.7	57.0	55.1	55.2	55.9	
1966	57.6	57.0	59.2	62.7	64.5	64.8	61.4	57.3	58.7	54.5	56.7	57.4	
1967	58.1	58.4	60.7	64.2	65.5	65.3	63.0	61.3	60.8	59.2	58.2	58.8	
1968	59.9	60.1	62.2	63.5	66.1	64.6	63.2	60.3	59.1	55.7	58.3	59.3	
1969	58.6	59.2	61.7	61.7	63.6	62.2	62.5	61.4	60.0	57.1	59.3	58.7	

See footnotes at end of table, page 66.

Continued



Table 12. Number of layers, eggs per 100 layers and egg production, by States, 1965-69 Continued

Item and year	January	February	March	April	May	June	July	August	September	October	November	December	Year 1/
<b>Michigan</b>													
Layers during month	Thousands												
1965	7,151	7,090	6,998	6,966	6,934	6,814	6,633	6,634	6,786	6,877	6,922	6,936	6,895
1966	6,877	6,818	6,702	6,619	6,718	6,734	6,750	6,902	7,110	7,304	7,406	7,324	6,939
1967	7,213	7,213	7,216	7,220	7,158	7,065	7,033	7,033	7,033	7,030	7,022	7,006	7,104
1968	6,927	6,850	6,843	6,795	6,781	6,763	6,712	6,746	6,779	6,745	6,694	6,592	6,769
1969	6,497	6,442	6,313	6,302	6,392	6,354	6,347	6,397	6,381	6,407	6,505	6,528	6,405
Eggs per 100 layers during month	Number												Av. per hen 2/
1965	1,872	1,722	1,950	1,902	1,968	1,905	1,916	1,876	1,794	1,829	1,785	1,876	224
1966	1,876	1,708	1,938	1,914	2,009	1,935	1,953	1,906	1,815	1,860	1,806	1,866	226
1967	1,860	1,708	1,953	1,914	1,978	1,932	1,981	1,953	1,884	1,913	1,836	1,916	228
1968	1,907	1,778	1,913	1,893	1,987	1,914	1,950	1,916	1,839	1,891	1,809	1,860	227
1969	1,885	1,739	1,953	1,902	1,965	1,917	1,975	1,953	1,884	1,928	1,857	1,894	229
Eggs produced	Millions												
1965	134	122	136	132	136	130	127	124	122	126	124	130	1,543
1966	129	116	130	127	135	130	132	132	129	136	134	137	1,567
1967	134	123	141	138	142	136	139	137	133	134	129	134	1,620
1968	132	122	131	129	135	129	131	129	125	128	121	123	1,535
1969	122	112	123	120	126	122	125	125	120	124	121	124	1,464
Layers first day of month	Thousands												
1965	7,151	7,151	7,029	6,966	6,966	6,903	6,724	6,542	6,725	6,846	6,908	6,936	
1966	6,936	6,818	6,818	6,586	6,652	6,785	6,683	6,817	6,987	7,232	7,377	7,436	
1967	7,213	7,213	7,213	7,220	7,220	7,097	7,033	7,033	7,033	7,033	7,028	7,015	
1968	6,997	6,857	6,843	6,843	6,747	6,814	6,712	6,712	6,779	6,779	6,711	6,677	
1969	6,507	6,487	6,396	6,230	6,373	6,411	6,296	6,397	6,397	6,365	6,448	6,561	
Eggs per 100 layers first day of month	Number												
1965	59.7	61.0	62.0	63.8	63.0	64.0	63.0	60.5	60.5	59.0	59.0	60.0	
1966	61.0	60.0	62.0	63.0	64.5	65.0	64.0	62.0	61.0	60.0	60.0	60.5	
1967	60.0	60.0	62.0	64.0	63.5	64.0	64.8	63.0	63.0	62.4	61.0	61.5	
1968	62.0	61.0	61.5	61.9	64.3	63.8	63.8	62.0	61.5	61.1	60.8	59.8	
1969	60.1	61.5	62.6	63.4	63.4	63.4	64.3	63.0	63.0	62.6	61.8	61.9	

29

See footnotes at end of table, page 66.

Continued

Table 12. Number of layers, eggs per 100 layers and egg production, by States, 1965-69 Continued

Item and year	January	February	March	April	May	June	July	August	September	October	November	December	Year 1/
<b>Wisconsin</b>													
Layers during month	Thousands												
1965	7,062	6,964	6,968	6,804	6,706	6,574	6,442	6,408	6,410	6,477	6,542	6,613	6,664
1966	6,619	6,572	6,494	6,342	6,188	5,985	5,749	5,812	6,062	6,274	6,467	6,646	6,269
1967	5,442	6,332	6,269	6,131	6,131	6,064	5,927	5,756	5,721	5,893	6,177	6,354	6,121
1968	6,214	5,960	5,841	5,812	5,681	5,528	5,406	5,335	5,349	5,362	5,354	5,341	5,599
1969	5,322	5,268	5,202	5,150	5,091	5,029	4,984	4,909	4,856	4,862	4,866	4,891	5,036
Eggs per 100 layers during month	Number												Av. per hen 2/
1965	1,916	1,722	1,922	1,890	1,953	1,890	1,891	1,823	1,716	1,755	1,734	1,835	221
1966	1,848	1,697	1,928	1,896	1,972	1,887	1,916	1,857	1,749	1,820	1,794	1,866	222
1967	1,885	1,708	1,922	1,920	1,996	1,932	1,975	1,922	1,815	1,860	1,800	1,897	226
1968	1,916	1,786	1,962	1,938	1,987	1,878	1,891	1,860	1,770	1,810	1,758	1,857	224
1969	1,906	1,742	1,972	1,950	2,015	1,920	1,950	1,906	1,782	1,804	1,764	1,866	226
30 Eggs produced	Millions												
1965	135	120	134	129	131	124	122	117	110	114	113	121	1,470
1966	122	112	125	120	122	113	110	108	106	114	116	124	1,392
1967	124	110	120	118	122	117	117	111	104	110	111	121	1,385
1968	119	106	115	113	113	104	102	99	95	97	94	99	1,256
1969	101	92	103	100	103	97	97	94	87	88	86	91	1,139
Layers first day of month	Thousands												
1965	7,195	6,929	6,999	6,936	6,672	6,739	6,409	6,473	6,344	6,477	6,477	6,607	
1966	6,619	6,619	6,526	6,461	6,222	6,154	5,816	5,682	5,943	6,181	6,366	6,608	
1967	6,685	6,478	6,407	6,131	6,131	6,131	5,996	5,858	5,653	5,789	5,997	6,357	
1968	6,351	6,078	5,841	5,841	5,782	5,580	5,477	5,335	5,335	5,362	5,362	5,346	
1969	5,335	5,308	5,228	5,176	5,124	5,057	5,001	4,966	4,852	4,860	4,864	4,868	
Eggs per 100 layers first day of month	Number												
1965	61.5	62.0	61.0	63.0	63.0	63.0	63.0	59.1	58.5	56.0	57.1	58.5	
1966	60.0	59.3	61.9	62.4	64.0	63.3	62.5	61.0	58.8	57.8	59.6	60.1	
1967	60.4	61.3	60.6	63.5	64.5	64.4	64.5	62.9	61.0	60.0	60.0	60.0	
1968	62.5	61.1	62.1	64.5	64.8	63.4	61.7	60.3	59.6	58.3	58.5	58.6	
1969	61.2	61.8	62.7	64.6	65.4	64.5	64.5	63.6	60.8	58.1	58.3	59.4	

See footnotes at end of table, page 66.

Continued

Table 12. Number of layers, eggs per 100 layers and egg production, by States, 1965-69 Continued

Item and year	January	February	March	April	May	June	July	August	September	October	November	December	Year 1/
<b>Minnesota</b>													
Layers during month	Thousands												
1965	12,990	12,624	12,404	11,990	11,588	11,300	11,066	11,010	11,148	11,306	11,402	11,572	11,700
1966	11,554	11,248	10,743	10,420	10,202	10,045	9,894	9,670	9,968	10,624	11,172	11,469	10,584
1967	11,452	11,242	11,034	10,862	10,592	10,283	10,122	10,116	10,383	10,920	11,180	11,056	10,770
1968	10,848	10,638	10,312	9,800	9,579	9,488	9,344	9,423	9,462	9,622	9,811	9,892	9,852
1969	9,799	9,682	9,624	9,386	9,050	9,005	8,872	8,798	8,938	9,190	9,595	9,936	9,329
Eggs per 100 layers during month	Number												Av. per hen 2/
1965	1,953	1,770	1,584	1,938	2,040	1,965	1,962	1,835	1,665	1,717	1,710	1,857	224
1966	1,934	1,764	1,990	1,941	2,000	1,932	1,959	1,885	1,710	1,736	1,758	1,897	226
1967	1,965	1,803	2,015	1,956	2,003	1,950	1,978	1,903	1,779	1,823	1,794	1,903	229
1968	1,959	1,885	2,046	1,971	2,027	1,950	1,996	1,931	1,782	1,786	1,761	1,922	230
1969	1,953	1,775	2,015	1,956	2,024	1,956	1,996	1,965	1,824	1,823	1,776	1,822	229
Eggs produced	Millions												
1965	254	223	246	232	236	222	217	202	186	194	195	215	2,622
1966	223	198	214	202	204	194	194	182	180	184	196	218	2,389
1967	225	203	222	212	212	201	200	193	185	199	201	210	2,463
1968	213	201	211	193	194	185	187	182	169	172	173	190	2,270
1969	191	172	195	184	183	176	177	173	163	168	170	187	2,139
Layers first day of month	Thousands												
1965	13,228	12,752	12,497	12,310	11,670	11,507	11,093	11,038	10,983	11,912	11,301	11,504	
1966	16,641	11,466	11,030	10,456	10,383	10,020	10,070	9,718	9,621	10,314	10,933	11,412	
1967	11,526	11,379	11,105	10,963	10,761	10,423	10,143	10,102	10,129	10,637	11,204	11,156	
1968	10,957	10,738	10,537	10,088	9,511	9,467	9,330	9,357	9,489	9,434	9,811	9,811	
1969	9,972	9,626	9,739	9,649	9,124	8,977	9,033	8,711	8,886	8,991	9,390	9,800	
Eggs per 100 layers first day of month	Number												
1965	63.7	62.2	64.2	63.9	65.3	66.2	64.8	61.8	56.5	54.5	56.2	57.8	
1966	62.0	62.8	63.2	65.3	64.1	64.9	63.8	62.5	59.2	54.8	57.1	60.1	
1967	62.2	64.6	64.2	65.7	64.6	64.6	65.3	62.4	60.3	58.3	59.3	60.2	
1968	62.7	63.6	66.5	65.6	65.8	65.1	64.8	63.9	60.7	58.2	57.1	60.3	
1969	63.8	62.3	64.6	65.4	65.1	65.5	64.8	64.0	62.9	58.7	59.0	59.5	

See footnotes at end of table, page 66.

Continued

Table 12. Number of layers, eggs per 100 layers and egg production, by States, 1965-69 Continued

Item and year	January	February	March	April	May	June	July	August	September	October	November	December	Year 1/
Iowa													
Layers during month	Thousands												
1965	18,471	18,148	17,695	17,251	16,821	16,400	15,950	15,588	15,819	16,129	16,331	16,548	16,763
1966	16,522	16,439	16,152	15,588	15,156	14,665	14,218	14,146	14,465	14,931	15,343	15,589	15,268
1967	15,376	14,954	14,579	14,287	13,965	13,340	12,699	12,505	12,630	12,915	13,107	13,109	13,622
1968	13,014	12,819	12,562	12,249	11,821	11,291	10,836	10,645	10,645	10,725	10,805	10,844	11,521
1969	10,802	10,801	10,909	11,018	10,963	10,635	10,314	10,261	10,467	10,727	10,898	11,073	10,739
Eggs per 100 layers during month	Number												Av. per hen 2/
1965	1,968	1,820	2,015	1,980	2,086	1,986	1,941	1,832	1,689	1,680	1,680	1,857	226
1966	1,903	1,761	2,034	2,016	2,089	1,962	1,916	1,841	1,701	1,711	1,755	1,953	226
1967	2,021	1,837	2,071	2,040	2,096	1,998	1,993	1,879	1,710	1,755	1,746	1,885	231
1968	1,953	1,868	2,065	2,034	2,052	1,941	1,965	1,910	1,770	1,736	1,680	1,779	228
1969	1,829	1,716	1,950	1,932	2,018	1,932	1,931	1,854	1,716	1,733	1,740	1,897	223
Eggs produced	Millions												
1965	364	330	357	342	351	326	310	286	267	271	274	307	3,785
1966	314	289	329	314	317	288	272	260	246	255	269	304	3,457
1967	311	275	302	291	293	267	253	235	216	227	229	247	3,146
1968	254	239	259	249	243	219	213	203	188	186	182	193	2,628
1969	198	185	213	213	221	205	199	190	180	186	190	210	2,390
Layers first day of month	Thousands												
1965	18,610	18,331	17,964	17,425	17,077	16,565	16,234	15,666	15,509	16,129	16,129	16,532	
1966	16,563	16,480	16,398	15,906	15,270	15,041	14,289	14,146	14,146	14,783	15,079	15,607	
1967	15,570	15,181	14,726	14,431	14,142	13,788	12,892	12,505	12,505	12,755	13,074	13,139	
1968	13,079	12,948	12,689	12,435	12,062	11,580	11,001	10,671	10,618	10,671	10,778	10,832	
1969	10,856	10,747	10,854	10,963	11,073	10,852	10,418	10,210	10,312	10,621	10,833	10,963	
Eggs per 100 layers first day of month	Number												
1965	62.0	65.0	65.0	65.0	67.0	67.6	64.7	60.4	57.8	54.8	53.7	58.2	
1966	61.6	61.2	64.6	66.5	67.8	66.9	63.8	59.8	59.0	54.4	56.0	61.0	
1967	64.9	65.6	65.6	68.1	67.8	67.4	65.7	62.9	58.2	55.9	57.2	59.1	
1968	62.5	63.4	65.3	68.0	67.7	64.6	64.8	62.1	61.0	56.9	55.2	56.7	
1969	58.1	60.0	62.6	63.2	65.5	64.7	64.2	60.4	59.1	55.4	56.4	59.7	

See footnotes at end of table, page 66.

Continued

Table 12. Number of layers, eggs per 100 layers and egg production, by States, 1965-69 Continued

Item and year	January	February	March	April	May	June	July	August	September	October	November	December	Year 1/
<b>Missouri</b>													
Layers during month	Thousands												
1965	6,695	6,698	6,701	6,558	6,510	6,509	6,314	6,268	6,464	6,612	6,564	6,470	6,530
1966	6,440	6,407	6,359	6,264	6,108	5,953	6,012	6,268	6,518	6,664	6,713	6,690	6,366
1967	6,666	6,700	6,700	6,600	6,468	6,306	6,210	6,288	6,476	6,621	6,654	6,660	6,529
1968	6,666	6,732	6,765	6,697	6,597	6,432	6,300	6,266	6,265	6,359	6,395	6,399	6,489
1969	6,399	6,463	6,527	6,495	6,428	6,298	6,140	6,109	6,170	6,231	6,309	6,428	6,333
Eggs per 100 layers during month	Number												Av. per hen 2/
1965	1,680	1,658	1,910	1,914	1,987	1,866	1,885	1,804	1,614	1,578	1,551	1,643	211
1966	1,699	1,635	1,947	1,929	1,987	1,896	1,866	1,742	1,566	1,575	1,587	1,680	210
1967	1,752	1,669	1,953	2,016	2,096	1,962	1,965	1,879	1,692	1,652	1,551	1,569	217
1968	1,562	1,578	1,863	1,866	1,934	1,878	1,857	1,702	1,560	1,628	1,575	1,544	206
1969	1,538	1,498	1,779	1,866	1,953	1,821	1,848	1,708	1,566	1,609	1,587	1,668	204
Eggs produced	Millions												
1965	112	111	128	126	129	121	119	113	104	104	102	106	1,375
1966	109	105	124	121	121	113	112	109	102	105	107	112	1,340
1967	117	112	131	133	136	124	122	118	110	109	103	104	1,419
1968	104	106	126	125	128	121	117	107	98	104	101	99	1,336
1969	98	97	116	121	126	115	113	104	97	100	100	107	1,294
Layers first day of month	Thousands												
1965	6,742	6,648	6,748	6,654	6,461	6,558	6,460	6,169	6,366	6,563	6,661	6,468	
1966	6,472	6,407	6,407	6,311	6,218	5,998	5,908	6,115	6,421	6,614	6,713	6,713	
1967	6,666	6,666	6,733	6,666	6,533	6,402	6,210	6,210	6,365	6,588	6,654	6,654	
1968	6,666	6,666	6,759	6,731	6,663	6,530	6,334	6,266	6,203	6,327	6,390	6,399	
1969	6,399	6,399	6,527	6,527	6,462	6,394	6,202	6,078	6,139	6,200	6,262	6,355	
Eggs per 100 layers first day of month	Number												
1965	51.8	56.6	61.7	61.5	66.1	62.1	62.2	59.4	56.9	50.7	51.1	52.3	
1966	53.7	55.8	61.0	64.6	64.0	64.2	62.3	58.0	54.3	50.1	51.5	54.3	
1967	54.0	59.0	60.3	65.8	68.6	66.5	64.4	62.4	58.9	54.0	52.6	50.8	
1968	50.4	50.4	58.4	61.8	62.7	62.2	66.0	56.8	53.0	51.0	54.0	51.0	
1969	48.5	50.6	56.4	58.4	66.0	60.0	61.4	57.9	52.3	52.0	51.8	54.0	

See footnotes at end of table, page 66.

Continued

Table 12. Number of layers, eggs per 100 layers and egg production, by States, 1965-69 Continued

Item and year	January	February	March	April	May	June	July	August	September	October	November	December	Year 1/
<b>North Dakota</b>													
Layers during month	Thousands												
1965	1,752	1,706	1,660	1,599	1,550	1,500	1,462	1,462	1,476	1,492	1,529	1,546	1,561
1966	1,526	1,503	1,480	1,458	1,430	1,386	1,351	1,344	1,371	1,433	1,498	1,507	1,441
1967	1,458	1,435	1,411	1,360	1,333	1,313	1,286	1,254	1,260	1,303	1,342	1,328	1,340
1968	1,275	1,230	1,193	1,170	1,135	1,101	1,063	1,036	1,047	1,057	1,068	1,070	1,120
1969	1,045	1,019	983	953	944	925	893	888	910	924	944	968	950
Eggs per 100 layers during month	Number												Av. per hen 2/
1965	1,581	1,523	1,736	1,830	2,003	1,905	1,876	1,767	1,515	1,426	1,425	1,581	201
1966	1,658	1,526	1,798	1,854	1,984	1,878	1,814	1,693	1,518	1,466	1,428	1,612	202
1967	1,721	1,568	1,783	1,860	1,993	1,854	1,798	1,690	1,515	1,482	1,389	1,488	201
1968	1,612	1,566	1,844	1,905	1,984	1,905	1,860	1,752	1,575	1,488	1,395	1,519	204
1969	1,581	1,470	1,736	1,830	1,984	1,890	1,891	1,783	1,605	1,566	1,455	1,566	203
Eggs produced	Millions												
1965	28	26	29	29	31	29	27	26	22	21	22	24	314
1966	25	23	27	27	28	26	25	23	21	21	21	24	291
1967	25	23	25	25	27	24	23	21	19	19	19	20	270
1968	21	19	22	22	23	21	20	18	16	16	15	16	229
1969	17	15	17	17	19	17	17	16	15	14	14	15	193
Layers first day of month	Thousands												
1965	1,782	1,721	1,690	1,629	1,569	1,530	1,469	1,454	1,469	1,484	1,499	1,559	
1966	1,533	1,518	1,488	1,473	1,444	1,415	1,358	1,344	1,344	1,398	1,468	1,527	
1967	1,487	1,428	1,442	1,380	1,339	1,326	1,299	1,273	1,235	1,284	1,322	1,361	
1968	1,294	1,255	1,205	1,181	1,158	1,112	1,090	1,036	1,036	1,057	1,057	1,078	
1969	1,061	1,029	1,008	958	948	939	911	875	901	919	928	960	
Eggs per 100 layers first day of month	Number												
1965	48.0	53.9	55.0	57.0	65.1	64.0	63.0	58.0	56.0	45.0	47.0	48.0	
1966	54.0	53.0	56.0	60.0	63.5	64.6	60.5	56.5	52.7	48.5	46.1	49.0	
1967	55.0	56.0	56.0	59.0	65.0	63.5	60.0	56.0	53.0	48.0	47.6	45.0	
1968	51.0	53.0	55.0	64.0	63.0	65.0	62.0	58.0	55.0	50.0	46.0	47.0	
1969	51.0	51.0	54.0	58.0	64.0	64.0	62.0	60.0	55.0	52.0	49.0	48.0	

34

See footnotes at end of table, page 66.

Continued

Table 12. Number of layers, eggs per 100 layers and egg production, by States, 1965-69 Continued

Item and year	January	February	March	April	May	June	July	August	September	October	November	December	Year 1/
<b>South Dakota</b>													
Layers during month	Thousands												
1965	6,908	6,739	6,534	6,260	6,030	5,870	5,859	5,962	6,066	6,206	6,426	6,614	6,290
1966	6,594	6,459	6,256	6,033	5,831	5,690	5,630	5,683	6,009	6,325	6,483	6,646	6,137
1967	6,619	6,496	6,356	6,146	5,982	5,814	5,697	5,703	5,783	5,838	5,891	5,959	6,024
1968	5,744	5,395	5,138	4,880	4,724	4,654	4,503	4,393	4,438	4,438	4,460	4,528	4,775
1969	4,460	4,329	4,244	4,168	4,098	3,935	3,810	3,829	3,944	4,098	4,284	4,390	4,132
Eggs per 100 layers during month	Number												Av. per hen 2/
1965	1,885	1,747	1,965	1,974	2,068	1,941	1,906	1,798	1,614	1,596	1,584	1,770	218
1966	1,872	1,714	1,962	1,974	2,049	1,932	1,903	1,817	1,659	1,668	1,683	1,885	221
1967	1,959	1,806	2,065	2,013	2,077	1,971	1,934	1,851	1,710	1,659	1,614	1,758	225
1968	1,832	1,769	1,956	1,965	2,031	1,896	1,876	1,814	1,671	1,646	1,587	1,696	218
1969	1,745	1,632	1,879	1,887	2,009	1,899	1,851	1,755	1,614	1,649	1,632	1,783	214
Eggs produced	Millions												
1965	130	118	128	124	125	114	112	107	98	99	102	117	1,374
1966	123	111	123	119	119	110	107	103	100	106	109	125	1,355
1967	130	117	131	124	124	115	110	106	99	97	95	105	1,353
1968	105	95	100	96	96	88	84	80	74	73	71	77	1,039
1969	78	71	80	79	82	75	71	67	64	68	70	78	883
Layers first day of month	Thousands												
1965	7,010	6,807	6,671	6,397	6,122	5,938	5,801	5,917	6,006	6,126	6,285	6,568	
1966	6,660	6,527	6,390	6,122	5,944	5,718	5,661	5,599	5,767	6,250	6,400	6,565	
1967	6,727	6,510	6,482	6,229	6,063	5,900	5,728	5,665	5,740	5,825	5,850	5,931	
1968	5,987	5,500	5,290	4,985	4,775	4,673	4,635	4,370	4,415	4,460	4,415	4,505	
1969	4,550	4,370	4,288	4,200	4,136	4,060	3,810	3,810	3,848	4,040	4,155	4,412	
Eggs per 100 layers first day of month	Number												
1965	59.3	62.4	62.3	64.6	67.0	66.4	63.0	60.0	55.9	51.8	51.2	54.5	
1966	59.7	61.0	61.3	65.3	66.2	66.0	62.7	60.2	57.0	53.5	54.0	58.1	
1967	63.4	62.9	66.1	67.1	67.0	66.9	64.4	60.4	59.0	55.5	52.0	55.5	
1968	57.9	60.2	61.7	64.5	66.4	64.5	61.9	59.1	57.8	53.5	52.7	53.0	
1969	56.4	56.2	60.3	60.8	65.0	64.6	61.9	57.5	55.7	51.8	54.5	54.3	

See footnotes at and of table, page 66.

Continued

Table 12. Number of layers, eggs per 100 layers and egg production, by States, 1965-69 Continued

Item and year	January	February	March	April	May	June	July	August	September	October	November	December	Year 1/
<b>Nebraska</b>													
Layers during month	Thousands												
1965	6,961	6,794	6,624	6,442	6,264	6,074	5,918	5,872	6,020	6,189	6,282	6,240	6,307
1966	6,074	5,974	5,890	5,773	5,620	5,364	5,158	5,143	5,350	5,765	6,061	6,136	5,692
1967	6,065	6,039	6,045	5,900	5,671	5,510	5,400	5,275	5,348	5,564	5,569	5,563	5,662
1968	5,583	5,452	5,280	5,108	4,854	4,577	4,558	4,535	4,542	4,689	4,652	4,658	4,874
1969	4,688	4,559	4,507	4,561	4,459	4,239	4,095	3,992	3,971	4,023	4,055	4,125	4,273
Eggs per 100 layers during month	Number												Av. per hen 2/
1965	1,823	1,725	1,941	1,935	2,040	1,920	1,885	1,755	1,524	1,513	1,548	1,680	213
1966	1,770	1,691	1,972	1,986	2,086	1,962	1,841	1,686	1,560	1,562	1,617	1,773	215
1967	1,851	1,747	2,009	2,004	2,052	1,917	1,854	1,761	1,638	1,606	1,554	1,730	218
1968	1,866	1,786	1,959	1,941	1,987	1,884	1,866	1,752	1,626	1,618	1,578	1,680	215
1969	1,686	1,562	1,851	1,884	1,978	1,899	1,860	1,720	1,605	1,637	1,629	1,739	211
Eggs produced	Millions												
1965	127	117	129	125	128	117	112	103	92	94	97	105	1,346
1966	108	101	116	115	116	105	95	87	83	90	98	109	1,223
1967	112	106	121	118	116	106	100	93	88	89	87	96	1,232
1968	104	97	103	99	96	86	85	79	74	76	73	78	1,050
1969	79	71	83	86	88	80	76	69	64	66	66	72	900
Layers first day of month	Thousands												
1965	7,060	6,862	6,725	6,523	6,360	6,169	5,978	5,858	5,887	6,152	6,226	6,338	
1966	6,142	6,007	5,941	5,840	5,706	5,535	5,192	5,125	5,161	5,538	5,992	6,130	
1967	6,142	5,988	6,090	5,999	5,801	5,540	5,479	5,320	5,230	5,465	5,662	5,475	
1968	5,651	5,515	5,388	5,172	5,043	4,665	4,488	4,627	4,442	4,642	4,735	4,569	
1969	4,747	4,628	4,489	4,525	4,597	4,321	4,257	4,032	3,951	3,991	4,055	4,055	
Egg per 100 layers first day of month	Number												
1965	56.5	61.0	62.3	62.9	66.1	65.6	62.4	59.3	53.9	47.8	49.9	53.4	
1966	55.0	59.2	61.7	65.5	67.0	66.4	64.3	54.5	54.2	49.9	51.0	56.8	
1967	57.6	61.8	63.0	66.6	67.0	65.3	62.5	57.1	56.6	52.6	51.0	52.7	
1968	58.9	61.4	62.3	64.0	65.4	62.8	62.8	57.5	55.5	53.0	51.5	53.8	
1969	54.5	54.2	57.5	61.9	63.8	63.9	62.7	57.2	53.8	53.2	52.4	56.2	

See footnotes at end of table, page 66.



Table 12. Number of layers, eggs per 100 layers and egg production, by States, 1965-69 Continued

Item and year	January	February	March	April	May	June	July	August	September	October	November	December	Year 1/
<b>Kansas</b>													
Layers during month	Thousands												
1965	4,740	4,650	4,559	4,438	4,348	4,317	4,256	4,257	4,439	4,590	4,642	4,636	4,489
1966	4,585	4,562	4,439	4,286	4,226	4,164	4,142	4,224	4,338	4,413	4,529	4,631	4,378
1967	4,584	4,548	4,594	4,536	4,344	4,179	4,064	3,972	4,051	4,222	4,376	4,456	4,327
1968	4,345	4,176	4,122	4,018	3,904	3,882	3,868	3,866	3,898	4,017	4,125	4,100	4,027
1969	4,000	3,890	3,755	3,680	3,660	3,605	3,590	3,575	3,540	3,593	3,700	3,742	3,694
Eggs per 100 layers during month	Numbers												Av. per hen 2/
1965	1,767	1,702	1,965	1,974	2,052	1,908	1,863	1,758	1,632	1,662	1,620	1,680	215
1966	1,655	1,585	1,962	1,998	2,058	1,947	1,897	1,823	1,752	1,767	1,710	1,761	219
1967	1,748	1,697	2,034	2,007	2,027	1,962	1,968	1,841	1,695	1,736	1,722	1,810	222
1968	1,838	1,784	1,978	1,974	2,027	1,890	1,841	1,792	1,731	1,745	1,659	1,742	219
1969	1,848	1,736	1,987	1,998	2,077	1,980	1,894	1,835	1,812	1,838	1,764	1,854	226
Eggs produced	Millions												
1965	84	79	90	88	89	82	79	75	72	76	75	78	967
1966	76	72	87	86	87	81	79	77	76	78	77	82	958
1967	80	77	93	91	88	82	80	73	69	73	75	81	962
1968	80	74	82	79	79	73	71	69	67	70	68	71	883
1969	74	68	75	74	76	71	68	66	64	66	65	69	836
Layers first day of month	Thousands												
1965	4,800	4,680	4,619	4,499	4,378	4,317	4,317	4,196	4,318	4,560	4,619	4,665	
1966	4,608	4,562	4,562	4,316	4,256	4,196	4,132	4,152	4,296	4,379	4,448	4,609	
1967	4,654	4,514	4,582	4,605	4,467	4,221	4,137	3,992	3,952	4,150	4,295	4,456	
1968	4,456	4,234	4,117	4,127	3,909	3,899	3,866	3,870	3,861	3,934	4,100	4,150	
1969	4,050	3,950	3,830	3,680	3,680	3,640	3,570	3,610	3,540	3,540	3,646	3,753	
Egg per 100 layers first day of month	Number												
1965	54.9	59.0	62.5	64.4	67.1	65.2	62.0	58.2	55.2	53.5	53.8	54.3	
1966	54.1	52.8	60.4	66.2	67.0	65.8	64.0	58.4	59.2	57.6	56.4	57.6	
1967	54.5	58.2	63.0	68.2	65.6	65.3	65.5	61.5	57.4	55.6	56.4	58.3	
1968	58.5	60.1	62.9	64.8	66.7	64.2	61.7	57.2	58.4	57.0	55.6	55.0	
1969	57.3	62.0	62.1	66.1	67.0	66.9	65.0	57.2	61.2	59.5	59.1	58.5	

See footnotes at end of table, page 66.

Continued

Table 12. Number of layers, eggs per 100 layers and egg production, by States, 1965-69 Continued

Item and year	January	February	March	April	May	June	July	August	September	October	November	December	Year 1/	
<b>Delaware</b>														
Layers during month	Thousands													
1965	656	660	654	638	622	614	619	632	642	636	610	595	632	
1966	603	614	616	610	606	612	622	630	636	648	658	642	625	
1967	632	636	628	616	599	584	582	588	595	605	616	626	609	
1968	633	626	618	615	612	603	593	592	592	578	590	607	605	
1969	601	602	600	604	606	600	604	622	628	620	615	613	610	
Eggs per 100 layers during month	Number													Av. per hen 2/
1965	1,748	1,562	1,804	1,842	1,910	1,791	1,776	1,717	1,662	1,711	1,677	1,736	209	
1966	1,711	1,568	1,817	1,824	1,900	1,842	1,841	1,792	1,704	1,717	1,629	1,680	210	
1967	1,742	1,635	1,882	1,857	1,910	1,827	1,854	1,829	1,728	1,767	1,734	1,782	215	
1968	1,770	1,668	1,854	1,827	1,851	1,764	1,782	1,742	1,656	1,711	1,674	1,748	210	
1969	1,720	1,579	1,860	1,860	1,928	1,848	1,851	1,779	1,656	1,680	1,680	1,755	211	
Eggs produced	Millions													
1965	11.5	10.3	11.8	11.8	11.9	11.0	11.0	10.9	10.7	10.9	10.2	10.3	132	
1966	10.3	9.6	11.2	11.1	11.5	11.3	11.5	11.3	10.8	11.1	10.7	10.8	131	
1967	11.0	10.4	11.8	11.4	11.4	10.7	10.8	10.8	10.3	10.7	10.7	11.2	131	
1968	11.2	10.4	11.5	11.2	11.3	10.6	10.6	10.3	9.8	9.9	9.9	10.6	127	
1969	10.3	9.5	11.2	11.2	11.7	11.1	11.2	11.1	10.4	10.4	10.3	10.8	129	
Layers first day of month	Thousands													
1965	647	664	655	652	625	619	610	628	636	647	626	595		
1966	595	611	617	614	606	605	620	624	635	638	657	658		
1967	625	639	633	624	608	590	579	584	591	599	611	620		
1968	633	633	620	615	615	608	598	588	595	588	568	613		
1969	601	601	602	598	610	602	599	609	634	622	619	611		
Eggs per 100 layers first day of month	Number													
1965	57.2	55.5	56.2	60.3	62.5	60.6	58.8	55.8	55.1	55.8	54.6	57.2		
1966	54.7	55.6	56.4	60.8	60.8	61.8	61.1	57.7	57.8	55.7	55.0	53.6		
1967	54.8	57.5	59.4	62.0	61.8	61.4	60.4	59.3	58.6	56.7	57.3	58.3		
1968	56.7	57.5	57.5	62.0	59.8	59.6	58.0	57.0	55.5	55.0	55.3	56.3		
1969	56.5	54.5	58.2	61.9	62.1	62.4	60.9	58.5	56.2	54.1	54.4	57.6		

See footnotes at end of table, page 66.

Table 12. Number of layers, eggs per 100 layers and egg production, by States, 1965-69 Continued

Item and year	January	February	March	April	May	June	July	August	September	October	November	December	Year 1/ 2/
Maryland													
Layers during month	Thousands												
1965	1,702	1,679	1,639	1,596	1,578	1,538	1,484	1,498	1,542	1,558	1,566	1,566	1,579
1966	1,532	1,509	1,509	1,500	1,483	1,456	1,437	1,463	1,514	1,532	1,514	1,498	1,496
1967	1,490	1,482	1,464	1,448	1,438	1,429	1,439	1,470	1,506	1,540	1,573	1,602	1,490
1968	1,599	1,579	1,570	1,576	1,589	1,575	1,567	1,591	1,604	1,605	1,605	1,596	1,588
1969	1,582	1,574	1,570	1,554	1,564	1,603	1,611	1,619	1,640	1,636	1,626	1,624	1,600
Eggs per 100 layers during month	Number												Av. per hen 2/
1965	1,680	1,602	1,891	1,866	1,897	1,800	1,814	1,798	1,683	1,655	1,584	1,674	210
1966	1,720	1,568	1,804	1,881	1,981	1,830	1,789	1,739	1,626	1,637	1,605	1,690	208
1967	1,782	1,722	1,984	1,935	1,953	1,830	1,844	1,823	1,710	1,705	1,650	1,767	217
1968	1,854	1,769	1,968	1,956	2,009	1,875	1,844	1,782	1,635	1,621	1,605	1,717	217
1969	1,798	1,674	1,854	1,860	1,944	1,848	1,851	1,792	1,680	1,708	1,662	1,730	214
Eggs produced	Millions												
1965	29	27	31	30	30	28	27	27	26	26	25	26	332
1966	26	24	27	28	29	27	26	25	25	25	24	25	311
1967	27	26	29	28	28	26	27	27	26	26	26	28	324
1968	30	28	31	31	32	30	29	28	26	26	26	27	344
1969	28	26	29	29	30	30	30	29	28	28	27	28	342
Layers first day of month	Thousands												
1965	1,710	1,695	1,663	1,615	1,578	1,578	1,499	1,468	1,527	1,558	1,558	1,575	
1966	1,556	1,509	1,509	1,509	1,491	1,475	1,437	1,437	1,489	1,540	1,523	1,505	
1967	1,490	1,490	1,474	1,453	1,442	1,433	1,425	1,453	1,488	1,524	1,557	1,589	
1968	1,615	1,583	1,575	1,564	1,587	1,591	1,559	1,575	1,607	1,601	1,609	1,601	
1969	1,591	1,573	1,574	1,567	1,541	1,587	1,619	1,603	1,635	1,644	1,627	1,624	
Eggs per 100 layers first day of month	Number												
1965	53.0	55.5	59.0	63.1	61.4	60.9	59.0	58.0	58.0	54.2	52.5	53.0	
1966	55.0	56.0	56.0	60.5	64.9	62.9	59.2	56.2	56.0	52.5	53.0	54.0	
1967	55.0	60.0	63.0	65.0	64.0	62.0	60.0	59.0	58.5	55.5	54.5	55.5	
1968	58.5	61.0	61.0	66.0	64.5	65.0	60.0	59.0	56.0	53.0	51.6	55.4	
1969	55.5	60.6	58.4	61.1	62.8	62.6	60.5	58.9	56.6	55.4	54.8	56.0	

See footnotes at end of table, page 66.

Continued

Table 12. Number of layers, eggs per 100 layers and egg production, by States, 1965-69 Continued

Item and year	January	February	March	April	May	June	July	August	September	October	November	December	Year 1/
Virginia													
Layers during month	Thousands												
1965	5,256	5,124	5,024	4,931	4,834	4,761	4,759	4,828	4,912	4,973	5,047	5,082	4,961
1966	4,991	4,866	4,793	4,722	4,604	4,557	4,602	4,672	4,789	4,909	4,932	4,886	4,777
1967	4,816	4,791	4,839	4,790	4,670	4,600	4,554	4,554	4,622	4,692	4,739	4,740	4,701
1968	4,671	4,601	4,578	4,464	4,262	4,175	4,154	4,133	4,234	4,292	4,312	4,320	4,350
1969	4,243	4,179	4,158	4,116	4,014	3,973	3,953	3,953	4,032	4,050	4,044	4,001	4,060
Eggs per 100 layers during month	Number												Av. per hen 2/
1965	1,798	1,646	1,872	1,872	1,934	1,842	1,860	1,801	1,725	1,767	1,695	1,773	216
1966	1,779	1,618	1,891	1,920	1,972	1,839	1,854	1,823	1,686	1,739	1,731	1,786	216
1967	1,835	1,688	1,897	1,878	1,934	1,869	1,879	1,817	1,728	1,798	1,749	1,773	218
1968	1,820	1,760	1,922	1,920	1,972	1,872	1,916	1,869	1,761	1,810	1,725	1,779	221
1969	1,817	1,700	1,950	1,905	1,956	1,845	1,885	1,885	1,758	1,814	1,782	1,801	221
Eggs produced	Millions												
1965	95	84	94	92	93	88	89	87	85	88	86	90	1,071
1966	89	79	91	91	91	84	85	85	81	85	85	87	1,033
1967	88	81	92	90	90	86	86	83	80	84	83	84	1,027
1968	85	81	88	86	84	78	80	77	75	78	74	77	963
1969	77	71	81	78	79	73	75	75	71	73	72	72	897
Layers first day of month	Thousands												
1965	5,334	5,178	5,070	4,978	4,884	4,783	4,738	4,780	4,875	4,948	4,997	5,097	
1966	5,067	4,915	4,817	4,769	4,674	4,534	4,579	4,625	4,718	4,860	4,957	4,907	
1967	4,864	4,767	4,815	4,863	4,717	4,623	4,577	4,531	4,576	4,668	4,715	4,762	
1968	4,718	4,624	4,578	4,578	4,349	4,175	4,175	4,133	4,133	4,335	4,248	4,375	
1969	4,264	4,221	4,137	4,178	4,054	3,973	3,973	3,933	3,972	4,091	4,009	4,079	
Eggs per 100 layers first day of month	Number												
1965	57.4	58.7	58.9	62.0	62.8	62.0	60.8	59.2	57.0	58.0	56.0	57.0	
1966	57.5	57.3	58.3	63.7	64.3	62.9	59.7	59.9	57.7	54.7	57.5	57.9	
1967	57.3	61.0	59.6	62.9	62.3	62.6	62.0	59.1	58.2	57.0	59.0	57.6	
1968	56.9	60.5	60.8	63.1	64.9	62.3	62.5	61.1	59.5	57.9	58.8	56.2	
1969	58.5	58.7	62.7	63.0	63.9	62.3	60.6	61.0	60.5	56.6	60.4	58.3	

See footnotes at end of table, page 66.

Table 12. Number of layers, eggs per 100 layers and egg production, by States, 1965-69 Continued

Item and year	January	February	March	April	May	June	July	August	September	October	November	December	Year 1/
<b>West Virginia</b>													
<b>Layers during month</b>	Thousands												
1965	1,632	1,601	1,570	1,540	1,478	1,432	1,432	1,463	1,509	1,571	1,602	1,600	1,536
1966	1,583	1,552	1,520	1,504	1,472	1,455	1,471	1,508	1,576	1,623	1,639	1,635	1,545
1967	1,600	1,569	1,554	1,538	1,506	1,466	1,437	1,436	1,481	1,512	1,550	1,565	1,518
1968	1,535	1,500	1,465	1,430	1,374	1,332	1,320	1,334	1,375	1,403	1,410	1,403	1,407
1969	1,388	1,380	1,352	1,297	1,232	1,182	1,190	1,225	1,240	1,237	1,258	1,276	1,271
<b>Eggs per 100 layers during month</b>	Number												Av. per hen 2/
1965	1,649	1,599	1,863	1,854	1,972	1,908	1,903	1,801	1,674	1,693	1,617	1,674	212
1966	1,717	1,602	1,903	1,902	1,934	1,857	1,829	1,711	1,623	1,717	1,683	1,779	213
1967	1,860	1,730	1,953	1,968	2,049	1,935	1,953	1,907	1,764	1,783	1,713	1,789	223
1968	1,814	1,728	1,885	1,890	1,978	1,908	1,860	1,705	1,620	1,708	1,635	1,668	214
1969	1,705	1,613	1,888	1,926	1,993	1,896	1,928	1,835	1,722	1,779	1,716	1,767	218
<b>Eggs produced</b>	Millions												
1965	27	26	29	29	29	27	27	26	25	27	26	27	325
1966	27	25	29	29	28	27	27	26	26	28	28	29	329
1967	30	27	30	30	31	28	28	27	26	27	27	28	339
1968	28	26	28	27	27	25	25	23	22	24	23	23	301
1969	24	22	26	25	25	22	23	22	21	22	22	23	277
<b>Layers first day of month</b>	Thousands												
1965	1,632	1,632	1,570	1,570	1,509	1,447	1,417	1,448	1,478	1,540	1,602	1,602	
1966	1,599	1,567	1,536	1,504	1,504	1,439	1,471	1,471	1,545	1,607	1,639	1,639	
1967	1,631	1,569	1,569	1,538	1,538	1,473	1,458	1,415	1,457	1,504	1,519	1,580	
1968	1,550	1,520	1,480	1,450	1,410	1,338	1,325	1,314	1,354	1,395	1,410	1,410	
1969	1,395	1,380	1,380	1,324	1,270	1,194	1,170	1,210	1,240	1,240	1,233	1,282	
<b>Eggs per 100 layers first day of month</b>	Number												
1965	51.8	54.5	59.7	60.5	63.1	64.1	63.1	59.6	56.6	55.0	54.3	53.5	
1966	54.6	56.3	58.1	64.7	62.0	62.7	61.1	56.9	53.4	54.8	56.0	56.2	
1967	58.5	61.5	62.2	63.8	67.3	64.9	64.0	62.0	61.0	56.5	58.5	55.6	
1968	57.0	60.0	59.2	62.4	63.6	63.9	63.4	56.7	53.2	54.8	55.4	53.6	
1969	53.5	56.5	58.6	63.2	65.1	63.5	63.0	61.5	56.8	57.9	56.8	57.5	

See footnotes at end of table, page 66.

Continued

Table 12. Number of layers, eggs per 100 layers and egg production, by States, 1965-69 Continued

Item and year	January	February	March	April	May	June	July	August	September	October	November	December	Year 1/
<b>North Carolina</b>													
Layers during month	Thousands												
1965	12,424	12,423	12,497	12,347	12,197	12,197	12,050	12,053	12,501	12,800	12,800	12,723	12,418
1966	12,570	12,569	12,568	12,492	12,342	12,192	12,338	12,635	13,003	13,221	13,287	13,353	12,714
1967	13,280	13,285	13,230	12,953	12,809	12,950	13,163	13,368	13,669	13,769	13,666	13,693	13,320
1968	13,685	13,794	14,025	14,070	14,034	14,030	13,914	13,750	13,671	13,690	13,678	13,744	13,840
1969	13,753	13,648	13,819	14,166	14,411	14,664	15,141	15,555	15,670	15,669	15,779	15,913	14,849
Eggs per 100 layers during month	Number												
1965	1,745	1,638	1,910	1,866	1,947	1,848	1,823	1,724	1,602	1,662	1,674	1,779	212
1966	1,779	1,624	1,897	1,890	1,922	1,818	1,786	1,745	1,698	1,755	1,704	1,773	214
1967	1,804	1,658	1,897	1,890	1,984	1,884	1,863	1,835	1,800	1,885	1,815	1,835	221
1968	1,935	1,754	1,906	1,872	1,934	1,842	1,854	1,814	1,752	1,841	1,776	1,755	219
1969	1,733	1,669	1,922	1,884	1,965	1,896	1,916	1,869	1,803	1,885	1,812	1,823	222
Eggs produced	Millions												
1965	217	203	239	230	237	225	220	208	200	213	214	226	2,632
1966	224	204	238	236	237	222	220	220	221	232	226	237	2,717
1967	240	220	251	245	254	244	245	245	246	260	248	251	2,949
1968	251	242	267	263	271	258	258	249	240	252	243	241	3,035
1969	238	228	266	267	283	278	290	291	283	295	286	290	3,295
Layers first day of month	Thousands												
1965	12,499	12,349	12,497	12,497	12,197	12,197	12,197	11,904	12,202	12,800	12,800	12,800	
1966	12,646	12,494	12,644	12,492	12,492	12,192	12,192	12,485	12,785	13,221	13,221	13,353	
1967	13,353	13,206	13,364	13,097	12,809	12,809	13,091	13,235	13,500	13,838	13,700	13,632	
1968	13,754	13,616	13,971	14,079	14,060	14,007	14,053	13,776	13,723	13,619	13,761	13,596	
1969	13,892	13,614	13,682	13,956	14,375	14,447	14,880	15,401	15,709	15,630	15,708	15,850	
Eggs per 100 layers first day of month	Number												
1965	56.8	55.8	61.2	61.9	62.5	63.2	60.1	57.5	53.6	53.3	53.8	57.7	
1966	57.1	57.7	58.3	64.1	62.0	62.0	59.1	56.0	56.6	56.6	56.6	57.0	
1967	57.5	59.0	59.5	62.8	63.3	64.7	61.0	59.2	59.2	60.7	61.0	60.0	
1968	58.4	60.0	61.0	62.0	62.9	62.0	60.7	59.0	58.0	58.8	60.0	58.3	
1969	54.5	57.3	61.8	62.2	63.3	63.6	62.7	60.9	59.7	60.5	61.0	59.7	

See footnotes at end of table, page 66.

Continued

Table 12. Number of layers, eggs per 100 layers and egg production, by States, 1965-69 Continued

Item and year	January	February	March	April	May	June	July	August	September	October	November	December	Year 1/
<b>South Carolina</b>													
<b>Layers during month</b>													
	Thousands												
1965	4,448	4,448	4,496	4,410	4,385	4,471	4,496	4,504	4,551	4,637	4,684	4,768	4,525
1966	4,806	4,782	4,806	4,758	4,662	4,696	4,837	4,969	5,144	5,282	5,425	5,555	4,977
1967	5,496	5,482	5,498	5,444	5,389	5,335	5,294	5,308	5,468	5,601	5,475	5,496	5,441
1968	5,421	5,343	5,316	5,237	5,106	5,028	5,104	5,231	5,388	5,439	5,438	5,386	5,286
1969	5,356	5,464	5,523	5,661	5,740	5,734	5,814	5,869	5,907	5,916	5,974	6,146	5,759
<b>Eggs per 100 layers: during month</b>													
	Number												Av. per hen 2/
1965	1,854	1,708	1,916	1,914	2,015	1,905	1,876	1,792	1,716	1,814	1,788	1,869	221
1966	1,876	1,708	1,922	1,920	2,015	1,884	1,910	1,891	1,794	1,872	1,800	1,844	224
1967	1,882	1,756	2,006	1,956	2,000	1,905	1,968	1,953	1,830	1,860	1,776	1,823	227
1968	1,869	1,749	1,947	1,968	2,034	1,950	1,950	1,820	1,749	1,860	1,752	1,786	224
1969	1,814	1,646	1,916	1,971	2,040	1,941	1,944	1,931	1,893	1,931	1,800	1,848	227
<b>Eggs produced</b>													
	Millions												
1965	82	76	86	84	88	85	84	81	78	84	84	89	1,001
1966	90	82	92	91	94	88	92	94	92	99	98	102	1,114
1967	103	96	110	106	108	102	104	104	100	104	97	100	1,234
1968	101	93	104	103	104	98	100	95	94	101	95	96	1,184
1969	97	90	106	112	117	111	113	113	112	114	108	114	1,307
<b>Layers first day of month</b>													
	Thousands												
1965	4,472	4,423	4,472	4,521	4,299	4,471	4,471	4,520	4,488	4,614	4,660	4,707	
1966	4,830	4,782	4,782	4,830	4,685	4,638	4,754	4,920	5,018	5,269	5,295	5,555	
1967	5,555	5,438	5,526	5,471	5,416	5,362	5,308	5,281	5,334	5,601	5,601	5,349	
1968	5,499	5,343	5,343	5,290	5,184	5,028	5,028	5,179	5,283	5,494	5,384	5,492	
1969	5,279	5,433	5,495	5,550	5,772	5,708	5,759	5,869	5,869	5,945	5,886	6,062	
<b>Eggs per 100 layers: first day of month:</b>													
	Number												
1965	58.5	61.1	61.0	62.5	65.0	65.0	62.0	59.0	56.5	58.0	59.0	60.1	
1966	60.5	60.5	61.5	62.6	65.5	64.4	61.3	62.0	60.0	59.7	61.0	59.0	
1967	60.0	61.4	64.0	65.4	65.0	64.0	63.0	64.0	62.0	60.0	60.0	58.5	
1968	60.4	60.2	60.4	65.2	65.9	65.4	64.5	61.3	56.1	60.5	59.5	57.3	
1969	58.0	59.0	58.5	65.1	66.3	65.3	64.0	61.3	63.2	62.9	61.6	58.3	

See See footnotes at end of table, page 66.

Continued

Table 12. Number of layers, eggs per 100 layers and egg production, by States, 1965-69 Continued

Item and year	January	February	March	April	May	June	July	August	September	October	November	December	Year 1/
<b>Georgia</b>													
Layers during month	Thousands												
1965	18,205	17,528	17,544	18,080	18,468	18,588	18,802	18,990	19,343	19,758	20,014	20,181	18,792
1966	20,066	19,844	19,864	20,460	20,892	20,849	20,995	21,479	22,250	22,759	23,012	23,107	21,298
1967	22,872	22,385	22,040	21,679	21,494	21,675	21,933	22,351	22,912	23,810	24,529	24,804	22,707
1968	24,598	23,906	23,454	22,688	21,879	21,820	22,173	22,610	23,370	24,022	24,485	25,036	23,337
1969	25,244	24,839	24,396	24,186	23,964	23,806	23,792	24,148	24,642	25,225	25,736	26,477	24,705
Eggs per 100 layers during month	Number												Av. per hen 2/
1965	1,779	1,663	1,882	1,884	1,968	1,872	1,879	1,814	1,704	1,739	1,656	1,699	215
1966	1,699	1,571	1,841	1,890	1,953	1,818	1,817	1,779	1,692	1,696	1,650	1,742	211
1967	1,798	1,669	1,919	1,926	1,959	1,878	1,910	1,835	1,743	1,786	1,740	1,823	220
1968	1,826	1,711	1,857	1,836	1,903	1,794	1,814	1,742	1,656	1,755	1,710	1,798	214
4 1969	1,829	1,714	1,950	1,890	1,953	1,818	1,832	1,844	1,758	1,795	1,749	1,838	220
Eggs produced	Millions												
1965	324	291	330	341	363	348	353	344	330	344	331	343	4,042
1966	341	312	366	387	408	379	381	382	376	386	380	403	4,501
1967	411	374	423	418	421	407	419	410	399	425	427	452	4,986
1968	449	409	436	417	416	391	402	394	387	422	419	450	4,992
1969	462	426	476	457	468	433	436	445	433	453	450	487	5,426
Layers first day of month	Thousands												
1965	18,768	17,642	17,413	17,674	18,487	18,450	18,727	18,877	19,104	19,582	19,934	20,093	
1966	20,269	19,864	19,824	19,903	21,018	20,766	20,932	21,058	21,900	22,601	22,917	23,107	
1967	23,107	22,636	22,134	21,945	21,413	21,574	21,776	22,090	22,612	23,212	24,407	24,651	
1968	24,956	24,240	23,572	23,335	22,040	21,718	21,921	22,425	22,796	23,945	24,100	24,870	
1969	25,201	25,287	24,391	24,400	23,973	23,955	23,656	23,928	24,369	24,914	25,536	25,937	
Eggs per 100 layers first day of month:	Number												
1965	55.9	59.0	59.8	61.6	63.9	63.1	61.7	59.5	57.5	56.2	56.0	54.5	
1966	55.2	54.4	57.8	61.0	65.0	61.0	60.2	57.1	57.8	55.1	54.3	55.6	
1967	56.7	59.3	60.0	63.8	64.6	61.9	63.2	59.9	58.4	57.8	57.4	58.7	
1968	58.8	59.0	58.9	60.9	61.6	61.1	58.4	58.6	53.9	56.5	56.6	57.4	
1969	58.6	59.5	62.9	62.9	63.2	62.8	58.3	59.9	59.1	58.0	57.8	58.8	

See footnotes at end of table, page 66.



Table 12. Number of layers, eggs per 100 layers and egg production, by States, 1965-69 Continued

Item and year	January	February	March	April	May	June	July	August	September	October	November	December	Year 1/
<b>Florida</b>													
Layers during month	Thousands												
1965	7,878	7,875	7,716	7,600	7,523	7,523	7,448	7,484	7,670	7,824	7,940	8,090	7,714
1966	8,282	8,406	8,448	8,448	8,364	8,362	8,445	8,614	8,871	8,959	9,107	9,302	8,634
1967	9,254	9,024	8,930	9,066	9,018	9,014	9,284	9,562	9,858	10,061	10,162	10,248	9,457
1968	10,232	10,282	10,280	10,328	10,324	9,964	9,955	9,998	10,250	10,740	10,786	10,823	10,330
1969	10,900	11,009	11,174	11,113	11,092	11,056	10,951	11,113	11,395	11,430	11,492	11,882	11,217
Eggs per 100 layers during month	Number												Av. per hen 2/
1965	1,934	1,775	2,027	1,998	2,015	1,911	1,953	1,941	1,860	1,916	1,848	1,885	230
1966	1,872	1,739	1,993	1,950	2,034	1,953	1,987	1,981	1,920	1,953	1,860	1,922	232
1967	1,968	1,820	2,030	1,980	2,040	1,944	2,000	2,000	1,860	1,876	1,845	1,922	233
1968	1,938	1,812	2,000	2,010	2,077	2,010	2,030	1,984	1,875	1,891	1,845	1,906	233
1969	1,876	1,722	1,953	1,902	1,978	1,896	1,919	1,903	1,800	1,857	1,815	1,820	224
Eggs produced	Millions												
1965	152	140	156	152	152	144	145	145	143	150	147	152	1,778
1966	155	146	168	165	170	163	168	171	170	175	169	179	1,999
1967	182	164	181	180	184	175	186	191	183	189	187	197	2,199
1968	198	186	206	208	214	200	202	198	192	203	199	206	2,412
1969	204	190	218	211	219	210	210	211	205	212	209	216	2,515
Layers first day of month	Thousands												
1965	7,762	7,995	7,755	7,677	7,523	7,523	7,523	7,373	7,594	7,746	7,901	7,980	
1966	8,200	8,364	8,448	8,448	8,448	8,279	8,445	8,445	8,783	8,959	8,959	9,255	
1967	9,348	9,161	8,886	8,975	9,156	8,881	9,147	9,421	9,704	10,011	10,111	10,212	
1968	10,283	10,180	10,384	10,176	10,481	10,167	9,760	10,150	9,846	10,653	10,827	10,746	
1969	10,900	10,900	11,118	11,229	10,997	11,187	10,925	10,976	11,250	11,540	11,319	11,665	
Eggs per 100 layers first day of month:	Number												
1965	62.4	63.4	65.4	66.6	65.0	63.7	63.0	62.6	62.0	61.8	61.6	60.8	
1966	60.5	60.2	64.0	64.6	65.3	65.8	64.4	63.8	64.0	64.0	62.0	62.0	
1967	62.0	65.0	65.0	66.0	66.0	65.5	64.0	65.0	64.0	60.0	61.0	62.0	
1968	62.0	63.0	62.0	67.0	67.0	67.0	67.0	64.0	64.0	61.0	61.0	62.0	
1968	61.0	60.0	63.0	63.0	63.7	63.9	62.5	61.3	61.5	58.4	61.4	59.5	

See footnotes at end of table, page 66.

Continued

Table 12. Number of layers, eggs per 100 layers and egg production, by States, 1965-69 Continued

Item and year	January	February	March	April	May	June	July	August	September	October	November	December	Year 1/
Kentucky													
Layers during month	Thousands												
1965	3,544	3,476	3,348	3,274	3,257	3,195	3,121	3,154	3,264	3,338	3,391	3,399	3,313
1966	3,326	3,244	3,200	3,135	3,033	2,968	2,903	2,941	3,132	3,291	3,367	3,365	3,159
1967	3,323	3,245	3,189	3,190	3,168	3,136	3,098	3,075	3,175	3,315	3,363	3,404	3,223
1968	3,395	3,298	3,209	3,149	3,150	3,136	3,033	3,000	3,075	3,111	3,138	3,133	3,152
1969	3,111	3,067	3,005	2,974	2,783	2,641	2,667	2,699	2,746	2,792	2,806	2,806	2,841
Eggs per 100 layers during month	Number												Av. per hen 2/
1965	1,463	1,459	1,810	1,872	1,965	1,830	1,792	1,711	1,584	1,547	1,404	1,421	199
1966	1,494	1,445	1,810	1,932	2,009	1,842	1,804	1,755	1,644	1,609	1,494	1,559	203
1967	1,662	1,604	1,894	1,920	1,978	1,884	1,897	1,829	1,704	1,730	1,638	1,662	213
1968	1,634	1,601	1,910	1,902	1,941	1,848	1,879	1,829	1,704	1,724	1,614	1,578	211
1969	1,587	1,571	1,888	1,902	1,984	1,854	1,857	1,845	1,731	1,686	1,536	1,531	210
Eggs produced	Millions												
1965	52	51	61	61	64	58	56	54	52	52	48	49	658
1966	50	47	58	61	61	55	52	52	51	53	50	52	642
1967	55	52	60	61	63	59	59	56	54	57	55	57	688
1968	55	53	61	60	61	58	57	55	52	54	51	49	666
1969	49	48	57	57	55	49	50	50	48	47	43	43	596
Layers first day of month	Thousands												
1965	3,558	3,530	3,421	3,274	3,274	3,240	3,149	3,092	3,216	3,311	3,364	3,418	
1966	3,380	3,272	3,216	3,184	3,085	2,980	2,956	2,850	3,032	3,232	3,350	3,383	
1967	3,346	3,299	3,190	3,187	3,193	3,142	3,129	3,066	3,084	3,266	3,364	3,361	
1968	3,446	3,343	3,253	3,165	3,133	3,167	3,104	2,961	3,038	3,111	3,111	3,164	
1969	3,101	3,120	3,014	2,996	2,951	2,615	2,667	2,667	2,731	2,761	2,822	2,789	
Eggs per 100 layers first day of month	Number												
1965	46.5	48.0	56.2	60.6	64.2	62.7	59.3	56.3	54.0	51.7	48.1	45.5	
1966	46.7	49.6	53.7	63.2	65.7	63.8	58.9	57.4	55.9	53.6	50.2	49.5	
1967	51.0	56.2	58.4	63.8	64.3	63.2	62.5	59.9	58.1	55.5	56.0	53.2	
1968	54.0	51.4	58.9	64.2	62.6	62.7	60.5	60.6	57.4	56.1	55.0	52.5	
1969	49.3	53.0	59.1	62.7	64.0	64.1	59.4	60.3	58.8	56.6	52.3	50.0	

See footnotes at end of table, page 66.

Continued

Table 12. Number of layers, egg per 100 layers and egg production, by States 1965-69 Continued

Item and year	January	February	March	April	May	June	July	August	September	October	November	December	Year 1/ Year 2/
Tennessee													
Layers during month	Thousands												
1965	5,233	5,175	5,100	5,025	4,952	4,843	4,828	4,850	4,885	4,920	4,960	5,013	4,982
1966	4,976	4,888	4,815	4,730	4,729	4,740	4,802	4,900	4,930	5,000	5,100	5,194	4,900
1967	5,188	5,188	5,265	5,278	5,251	5,186	5,160	5,250	5,350	5,460	5,490	5,396	5,289
1968	5,279	5,147	5,018	4,918	4,917	4,916	4,866	4,903	4,978	5,050	5,084	5,084	5,013
1969	4,957	4,734	4,660	4,590	4,429	4,427	4,402	4,398	4,596	4,779	4,955	5,147	4,673
Eggs per 100 layers during month	Number												Av. per hen 2/
1965	1,469	1,439	1,767	1,794	1,832	1,647	1,628	1,618	1,563	1,584	1,485	1,516	193
1966	1,500	1,473	1,848	1,887	1,900	1,755	1,745	1,655	1,560	1,578	1,479	1,504	198
1967	1,581	1,523	1,820	1,857	1,897	1,752	1,693	1,634	1,533	1,538	1,488	1,581	199
1968	1,671	1,665	1,916	1,911	1,885	1,710	1,717	1,665	1,587	1,628	1,548	1,593	205
1969	1,631	1,588	1,872	1,896	1,965	1,779	1,779	1,767	1,638	1,646	1,554	1,597	207
Eggs produced	Millions												
1965	77	74	90	90	91	80	79	78	76	78	74	76	963
1966	75	72	89	89	90	83	84	81	77	79	75	78	972
1967	82	79	96	98	100	91	87	86	82	84	82	85	1,052
1968	88	87	96	94	93	84	84	82	79	82	79	81	1,029
1969	81	75	87	87	87	79	78	78	75	79	77	82	965
Layers first day of month	Thousands												
1965	5,291	5,175	5,175	5,025	5,025	4,879	4,806	4,850	4,850	4,920	4,920	5,000	
1966	5,026	4,925	4,851	4,778	4,682	4,776	4,704	4,900	4,900	4,960	5,040	5,160	
1967	5,227	5,149	5,226	5,304	5,251	5,251	5,120	5,200	5,300	5,400	5,520	5,460	
1968	5,332	5,225	5,068	4,967	4,868	4,965	4,866	4,866	4,940	5,015	5,084	5,084	
1969	5,084	4,830	4,637	4,683	4,496	4,361	4,492	4,312	4,484	4,708	4,849	5,076	
Eggs per 100 layers first day of month	Number												
1965	47.0	47.8	55.1	58.8	60.7	57.5	52.3	52.7	51.7	52.5	49.7	49.3	
1966	48.5	48.2	57.0	62.1	63.6	58.9	58.0	54.6	52.2	51.7	50.0	48.5	
1967	48.5	53.4	55.4	61.9	61.8	60.5	56.2	52.9	52.5	49.6	49.6	49.6	
1968	52.4	55.3	59.4	64.1	63.3	58.3	55.7	55.0	52.3	53.5	51.5	51.6	
1969	51.1	54.0	59.4	61.3	65.0	61.8	56.7	58.0	56.0	53.2	53.0	50.5	

See footnotes at end of table, page 66.

Continued

Table 12. Number of layers, eggs per 100 layers and egg production, by States, 1965-69 Continued

Item and year	January	February	March	April	May	June	July	August	September	October	November	December	Year 1/
<b>Alabama</b>													
<b>Layers during month</b>	<b>Thousands</b>												
1965	10,510	10,180	10,088	10,097	10,142	10,116	10,192	10,370	10,552	10,768	10,982	11,097	10,425
1966	10,998	10,800	10,718	10,674	10,626	10,584	10,694	11,015	11,262	11,528	11,858	11,944	11,058
1967	11,696	11,454	11,397	11,283	11,392	11,558	11,799	12,249	12,586	12,868	12,867	12,762	11,993
1968	12,691	12,626	12,625	12,562	12,412	12,185	12,023	12,060	12,263	12,475	12,578	12,643	12,429
1969	12,845	13,015	12,968	13,015	13,035	12,793	12,638	12,733	12,915	13,118	13,300	13,350	12,977
<b>Eggs per 100 layers during month</b>	<b>Number</b>												<b>Av. per hen 2/</b>
1965	1,807	1,655	1,860	1,842	1,965	1,887	1,897	1,835	1,770	1,879	1,782	1,810	220
1966	1,804	1,635	1,885	1,866	1,919	1,818	1,829	1,776	1,719	1,823	1,734	1,786	216
1967	1,863	1,730	1,950	1,887	1,897	1,800	1,854	1,838	1,779	1,848	1,782	1,826	220
1968	1,823	1,734	1,897	1,857	1,897	1,797	1,829	1,804	1,743	1,814	1,758	1,798	217
1969	1,798	1,697	1,941	1,854	1,894	1,830	1,857	1,838	1,788	1,860	1,779	1,829	220
<b>Eggs produced</b>	<b>Millions</b>												
1965	190	168	188	186	199	191	193	190	187	202	196	201	2,291
1966	198	177	202	199	204	192	196	196	194	210	206	213	2,387
1967	218	198	222	213	216	208	219	225	224	238	229	233	2,643
1968	231	219	239	233	235	219	220	218	214	226	221	227	2,702
1969	231	221	252	241	247	234	235	234	231	244	237	244	2,851
<b>Layers first day of month</b>	<b>Thousands</b>												
1965	10,780	10,241	10,118	10,057	10,137	10,147	10,086	10,298	10,442	10,661	10,874	11,091	
1966	11,103	10,892	10,707	10,728	10,621	10,632	10,536	10,852	11,178	11,346	11,709	12,007	
1967	11,880	11,512	11,397	11,397	11,169	11,616	11,500	12,098	12,400	12,772	12,964	12,770	
1968	12,755	12,627	12,625	12,625	12,499	12,325	12,045	12,000	12,120	12,405	12,545	12,610	
1969	12,675	13,015	13,015	12,920	13,110	12,960	12,625	12,650	12,815	13,015	13,220	13,380	
<b>Eggs per 100 layers first day of month:</b>	<b>Number</b>												
1965	58.5	58.1	60.1	59.8	62.9	63.8	62.0	60.3	58.1	60.0	61.2	57.7	
1966	59.1	57.2	59.5	62.0	62.5	61.3	60.0	58.0	56.6	58.0	59.7	56.0	
1967	59.2	61.0	62.5	63.3	62.5	59.9	60.0	59.5	59.1	59.5	59.8	59.0	
1968	58.8	58.8	60.7	61.7	62.1	60.3	59.4	58.5	57.8	58.4	58.6	58.5	
1969	57.4	58.6	62.6	62.6	60.9	61.3	60.6	59.1	59.5	59.7	60.2	58.4	

See footnotes at end of table, page 66.

Table 12. Number of layers, eggs per 100 layers and egg production, by States, 1965-69 Continued

Item and year	January	February	March	April	May	June	July	August	September	October	November	December	Year 1/
<b>Mississippi</b>													
<b>Layers during month</b>													
	Thousands												
1965	9,584	9,622	9,700	9,777	9,856	9,934	10,014	10,170	10,336	10,440	10,544	10,594	10,048
1966	10,590	10,590	10,659	10,738	10,574	10,538	10,754	10,849	10,934	11,178	11,420	11,483	10,859
1967	11,409	11,259	11,302	11,234	11,150	11,107	11,242	11,574	11,583	11,455	11,380	11,437	11,344
1968	11,470	11,422	11,517	11,534	11,373	11,380	11,412	11,272	11,184	11,274	11,302	11,204	11,362
1969	11,183	11,206	11,211	11,172	11,171	11,171	11,092	11,097	11,169	11,231	11,276	11,349	11,194
<b>Eggs per 100 layers during month</b>													
	Number												Av. per hen 2/
1965	1,860	1,750	1,978	1,914	2,015	1,854	1,820	1,817	1,704	1,786	1,788	1,854	221
1966	1,882	1,700	1,863	1,806	1,928	1,812	1,755	1,724	1,713	1,829	1,764	1,770	215
1967	1,823	1,686	1,879	1,872	1,925	1,830	1,866	1,848	1,812	1,888	1,800	1,897	221
1968	1,959	1,844	1,975	1,923	1,962	1,875	1,944	1,928	1,824	1,844	1,758	1,817	227
1969	1,848	1,669	1,848	1,800	1,866	1,794	1,829	1,792	1,719	1,782	1,734	1,801	215
<b>Eggs produced</b>													
	Millions												
1965	178	168	192	187	199	184	182	185	176	186	189	196	2,222
1966	199	180	199	194	204	191	189	187	187	204	201	203	2,338
1967	208	190	212	210	215	203	210	214	210	216	205	217	2,510
1968	225	211	227	222	223	213	222	217	204	208	199	204	2,575
1969	207	187	207	201	208	200	203	199	192	200	196	204	2,404
<b>Layers first day of month</b>													
	Thousands												
1965	9,584	9,584	9,661	9,738	9,816	9,895	9,974	10,054	10,285	10,388	10,492	10,597	
1966	10,590	10,590	10,590	10,728	10,749	10,399	10,696	10,812	10,886	10,982	11,374	11,466	
1967	11,500	11,318	11,200	11,404	11,064	11,237	10,977	11,507	11,641	11,525	11,385	11,374	
1968	11,500	11,440	11,404	11,630	11,438	11,308	11,452	11,371	11,173	11,195	11,352	11,252	
1969	11,155	11,211	11,200	11,222	11,121	11,221	11,120	11,064	11,130	11,208	11,253	11,298	
<b>Eggs per 100 layers first day of month:</b>													
	Number												
1965	60.0	60.0	65.0	62.7	64.9	65.0	58.6	58.8	58.3	55.2	59.9	59.4	
1966	60.3	61.1	60.3	59.9	60.9	63.8	56.9	56.4	54.8	59.4	58.5	59.2	
1967	56.5	61.0	59.3	61.9	62.9	61.3	60.6	59.7	59.6	61.3	60.5	59.5	
1968	62.8	63.7	63.6	63.8	64.4	62.2	62.8	62.6	61.9	59.6	59.4	57.8	
1969	59.3	60.0	59.3	60.0	60.1	60.4	59.3	58.6	57.0	57.6	57.4	58.2	

See footnotes at end of table, page 66.

Continued

Table 12. Number of layers, eggs per 100 layers and egg production, by States, 1965-69 Continued

Item and year	January	February	March	April	May	June	July	August	September	October	November	December	Year 1/
<b>Arkansas</b>													
Layers during month	Thousands												
1965	10,758	10,706	10,804	11,084	11,228	11,120	10,848	10,740	11,048	11,382	11,600	11,812	11,094
1966	11,965	12,090	12,331	12,516	12,641	12,702	12,637	12,793	13,104	13,420	13,808	14,222	12,852
1967	14,458	14,563	14,682	14,682	14,462	14,241	14,312	14,519	14,780	15,204	15,262	15,398	14,714
1968	15,774	15,853	16,012	16,011	15,691	15,375	15,068	14,987	15,060	15,359	15,733	15,833	15,563
1969	16,105	16,201	16,211	16,493	16,451	16,009	15,759	15,727	16,011	16,312	16,289	16,563	16,178
Eggs per 100 layers during month	Number												Av. per hen 2/
1965	1,742	1,652	1,891	1,872	1,965	1,842	1,810	1,770	1,716	1,779	1,716	1,764	215
1966	1,761	1,616	1,872	1,881	1,953	1,896	1,894	1,832	1,794	1,860	1,758	1,783	219
1967	1,804	1,691	1,944	1,917	1,972	1,878	1,900	1,857	1,803	1,863	1,779	1,817	222
1968	1,804	1,728	1,903	1,881	1,941	1,836	1,872	1,829	1,725	1,823	1,776	1,814	219
1969	1,841	1,719	1,947	1,878	1,919	1,842	1,885	1,844	1,776	1,848	1,794	1,835	221
Eggs produced	Millions												
1965	187	177	204	207	221	205	196	190	190	202	199	208	2,386
1966	211	195	231	235	247	241	239	234	235	250	243	254	2,815
1967	261	246	285	281	285	267	272	270	266	283	272	280	3,268
1968	285	274	305	301	305	282	283	274	260	280	279	287	3,415
1969	296	278	316	310	316	295	297	290	284	301	292	304	3,579
Layers first day of month	Thousands												
1965	10,843	10,674	10,737	10,870	11,298	11,158	11,082	10,614	10,866	11,230	11,534	11,665	
1966	11,960	11,970	12,209	12,453	12,578	12,704	12,700	12,573	13,013	13,195	13,644	13,971	
1967	14,472	14,444	14,682	14,682	14,682	14,241	14,241	14,383	14,654	14,906	15,502	15,022	
1968	15,774	15,774	15,932	16,091	15,930	15,452	15,297	14,838	15,135	14,984	15,733	15,733	
1969	15,932	16,278	16,123	16,298	16,687	16,214	15,803	15,714	15,739	16,283	16,340	16,238	
Eggs per 100 layers first day of month	Number												
1965	55.4	57.0	61.1	60.9	64.0	62.9	60.0	56.9	57.3	57.2	57.5	57.0	
1966	56.8	57.7	58.7	62.2	63.2	62.9	63.5	58.7	59.5	60.2	59.9	59.3	
1967	57.2	59.2	61.6	63.7	64.0	63.1	62.0	60.5	59.2	61.0	59.2	59.3	
1968	57.8	58.7	60.6	62.2	63.2	62.2	60.2	60.7	57.4	57.6	60.1	58.4	
1969	58.6	60.2	62.7	62.8	62.5	61.3	61.6	60.1	58.9	59.5	59.8	59.7	

See footnotes at end of table, page 66.

Table 12. Number of layers, eggs per 100 layers and egg production, by States, 1965-69 Continued

Item and year	January	February	March	April	May	June	July	August	September	October	November	December	Year 1/ 2/
<b>Louisiana</b>													
<b>Layers during month</b>													
	Thousands												
1965	3,445	3,462	3,462	3,531	3,564	3,528	3,528	3,528	3,598	3,669	3,706	3,705	3,561
1966	3,704	3,760	3,778	3,740	3,628	3,590	3,643	3,698	3,828	3,980	4,059	4,057	3,789
1967	3,934	3,814	3,814	3,794	3,718	3,710	3,778	3,834	3,892	3,960	3,999	3,966	3,851
1968	3,846	3,820	3,814	3,744	3,694	3,672	3,691	3,674	3,750	3,892	3,902	3,869	3,781
1969	3,859	3,889	3,862	3,820	3,816	3,765	3,800	3,902	3,929	3,925	4,000	4,038	3,884
<b>Eggs per 100 layers during month</b>													
	Number												
1965	1,624	1,565	1,810	1,824	1,891	1,734	1,711	1,705	1,578	1,559	1,506	1,544	200
1966	1,519	1,450	1,792	1,824	1,885	1,794	1,736	1,665	1,590	1,584	1,536	1,612	199
1967	1,643	1,568	1,838	1,854	1,910	1,737	1,745	1,748	1,662	1,724	1,698	1,767	209
1968	1,779	1,723	1,934	1,920	1,981	1,851	1,848	1,810	1,701	1,736	1,650	1,717	216
1969	1,810	1,683	1,916	1,866	1,891	1,788	1,804	1,786	1,746	1,835	1,734	1,748	216
<b>Eggs produced</b>													
	Millions												
1965	56	54	63	64	67	61	60	60	57	57	56	57	712
1966	56	55	68	68	68	64	63	62	61	63	62	65	755
1967	65	60	70	70	71	64	66	67	65	68	68	70	804
1968	68	66	74	72	73	68	68	66	64	68	64	66	817
1969	70	65	74	71	72	67	69	70	69	72	69	71	839
<b>Layers first day of month</b>													
	Thousands												
1965	3,428	3,462	3,462	3,462	3,600	3,528	3,528	3,528	3,528	3,669	3,669	3,742	
1966	3,668	3,741	3,778	3,778	3,702	3,554	3,625	3,661	3,734	3,921	4,039	4,079	
1967	4,035	3,833	3,795	3,833	3,756	3,681	3,740	3,815	3,853	3,930	3,989	4,009	
1968	3,923	3,770	3,869	3,760	3,727	3,661	3,683	3,699	3,648	3,852	3,931	3,874	
1969	3,864	3,854	3,924	3,801	3,839	3,793	3,737	3,864	3,941	3,917	3,933	4,067	
<b>Eggs per 100 layers first day of month</b>													
	Number												
1965	49.9	54.8	57.0	59.7	62.0	60.0	55.5	55.0	55.1	50.0	50.6	49.8	
1966	49.9	48.1	55.4	60.2	61.3	60.2	59.3	52.7	54.7	51.3	50.9	51.6	
1967	52.3	53.7	58.2	60.4	63.2	60.0	55.8	56.8	56.1	54.8	56.4	56.7	
1968	57.4	57.3	61.4	63.5	64.5	63.3	60.1	59.1	57.8	55.6	56.5	53.6	
1969	57.2	59.6	60.6	62.9	61.4	60.6	58.7	57.8	57.5	58.9	59.6	56.0	

Table 12. Number of layers, eggs per 100 layers and egg production, by States, 1965-69 Continued

Item and year	January	February	March	April	May	June	July	August	September	October	November	December	Year 1/	
<b>Oklahoma</b>														
<b>Layers during month</b>	<b>Thousands</b>													
1965	2,774	2,683	2,672	2,653	2,560	2,464	2,444	2,501	2,493	2,500	2,580	2,607	2,578	
1966	2,562	2,546	2,498	2,450	2,416	2,350	2,334	2,369	2,428	2,526	2,612	2,610	2,475	
1967	2,575	2,491	2,439	2,462	2,499	2,504	2,467	2,460	2,485	2,522	2,573	2,559	2,503	
1968	2,495	2,470	2,421	2,383	2,359	2,288	2,219	2,142	2,234	2,394	2,394	2,382	2,348	
1969	2,358	2,311	2,311	2,334	2,369	2,416	2,404	2,391	2,390	2,378	2,400	2,410	2,373	
<b>Eggs per 100 layers during month</b>	<b>Number</b>													<b>Av. per hen 2/</b>
1965	1,652	1,596	1,823	1,827	1,903	1,758	1,674	1,569	1,536	1,621	1,566	1,569	201	
1966	1,566	1,495	1,863	1,956	1,953	1,794	1,724	1,640	1,620	1,631	1,536	1,556	203	
1967	1,621	1,646	1,953	1,920	1,972	1,854	1,838	1,810	1,626	1,587	1,542	1,590	209	
1968	1,618	1,618	1,888	1,884	1,950	1,842	1,804	1,717	1,590	1,581	1,602	1,693	208	
1969	1,659	1,590	1,863	1,884	1,993	1,878	1,798	1,677	1,655	1,730	1,626	1,671	210	
<b>Eggs produced</b>	<b>Millions</b>													
1965	46	43	49	48	49	43	41	39	38	41	40	41	518	
1966	40	38	47	48	47	42	40	39	39	41	40	41	502	
1967	42	41	48	47	49	46	45	45	40	40	40	41	524	
1968	40	40	46	45	46	42	40	37	36	38	38	40	488	
1969	39	37	43	44	47	45	43	40	40	41	39	40	498	
<b>Layers first day of month</b>	<b>Thousands</b>													
1965	2,823	2,724	2,642	2,703	2,603	2,517	2,411	2,476	2,526	2,460	2,541	2,620		
1966	2,594	2,529	2,562	2,434	2,466	2,367	2,334	2,334	2,404	2,452	2,599	2,625		
1967	2,594	2,555	2,427	2,450	2,474	2,523	2,485	2,448	2,472	2,497	2,547	2,598		
1968	2,520	2,470	2,470	2,371	2,395	2,323	2,253	2,185	2,098	2,370	2,418	2,370		
1969	2,394	2,322	2,299	2,322	2,345	2,392	2,440	2,367	2,414	2,366	2,390	2,410		
<b>Eggs per 100 layers first day of month:</b>	<b>Number</b>													
1965	50.5	56.1	57.9	59.6	62.2	60.5	56.8	51.2	50.1	52.3	52.3	52.2		
1966	49.0	52.0	54.9	65.3	65.0	60.9	58.8	52.3	53.5	54.5	50.7	51.6		
1967	48.7	55.8	61.8	64.3	63.6	63.6	59.9	58.7	58.1	50.3	52.1	50.7		
1968	51.9	52.4	59.1	62.7	62.9	62.8	60.0	56.3	54.5	51.5	50.5	56.2		
1969	52.5	54.4	59.1	61.1	64.4	64.2	61.0	55.0	53.2	57.8	53.8	54.6		

See footnotes at end of table, page 66.

Continued



Table 12. Number of layers, eggs per 100 layers and egg production, by States, 1965-69 Continued

Item and year	January	February	March	April	May	June	July	August	September	October	November	December	Year 1/
<b>Texas</b>													
Layers during month	Thousands												
1965	12,883	12,716	12,667	12,678	12,569	12,569	12,632	12,758	12,886	12,918	12,885	12,948	12,759
1966	12,784	12,438	12,454	12,715	12,796	12,751	12,806	13,162	13,814	14,292	14,508	14,459	13,248
1967	14,256	13,971	13,799	13,854	13,965	14,020	13,852	13,912	14,140	14,254	14,368	14,727	14,093
1968	14,728	14,536	14,717	14,642	14,276	13,940	13,751	13,477	13,140	13,007	12,942	12,901	13,838
1969	12,980	12,974	12,855	12,737	12,560	12,469	12,418	12,282	12,349	12,622	12,806	12,950	12,667
Eggs per 100 layers: during month	Number												Av. per hen 2/
1965	1,690	1,579	1,798	1,803	1,872	1,755	1,699	1,649	1,626	1,677	1,620	1,643	204
1966	1,634	1,540	1,835	1,833	1,910	1,875	1,810	1,680	1,620	1,655	1,611	1,680	207
1967	1,696	1,604	1,885	1,854	1,866	1,776	1,792	1,745	1,686	1,745	1,626	1,655	209
1968	1,699	1,641	1,829	1,824	1,891	1,812	1,848	1,795	1,716	1,755	1,656	1,705	212
1969	1,755	1,641	1,860	1,821	1,903	1,800	1,736	1,662	1,650	1,742	1,662	1,690	209
Eggs produced	Millions												
1965	218	201	228	229	235	221	215	210	210	217	209	213	2,606
1966	209	192	229	233	244	239	232	221	224	237	234	243	2,737
1967	242	224	260	257	261	249	248	243	238	249	234	244	2,949
1968	250	239	269	267	270	253	254	242	225	228	214	220	2,931
1969	228	213	239	232	239	224	216	204	204	220	213	219	2,651
Layers first day of month	Thousands												
1965	12,883	12,883	12,548	12,786	12,569	12,569	12,569	12,695	12,822	12,950	12,885	12,885	
1966	13,012	12,557	12,318	12,589	12,841	12,751	12,751	12,866	13,458	14,171	14,412	14,605	
1967	14,313	14,198	13,744	13,854	13,854	14,076	13,963	13,740	14,084	14,197	14,311	14,425	
1968	15,029	14,428	14,644	14,790	14,494	14,059	13,820	13,682	13,272	13,007	13,007	12,877	
1969	12,925	13,034	12,913	12,797	12,677	12,443	12,495	12,341	12,222	12,476	12,767	12,845	
Eggs per 100 layers: first day of month:	Number												
1965	53.2	55.8	57.0	59.1	61.1	59.6	57.4	52.2	54.2	54.1	54.0	54.0	
1966	52.1	53.3	56.6	61.9	60.3	63.0	62.0	54.8	53.7	54.2	52.6	54.8	
1967	53.6	55.8	58.8	62.8	60.7	59.8	58.5	57.1	55.5	56.8	55.8	52.5	
1968	54.2	55.4	57.9	60.1	61.5	60.5	60.3	58.9	56.9	57.4	55.8	54.6	
1969	54.9	57.7	59.6	60.4	61.0	61.7	58.3	53.8	53.1	56.7	55.8	55.1	

See footnotes at end of table, page 66.

Continued

Table 12. Number of layers, eggs per 100 layers and egg production, by States 1965-69 Continued

Item and year	January	February	March	April	May	June	July	August	September	October	November	December	Year 1/
Montana													
Layers during month	Thousands												
1965	943	927	894	854	822	790	774	798	846	894	924	936	867
1966	933	916	892	866	842	809	793	817	866	905	923	934	875
1967	941	927	890	859	842	821	816	849	895	930	943	952	889
1968	951	933	916	903	887	865	852	861	888	917	942	972	907
1969	965	926	912	912	907	899	901	912	921	930	939	953	923
Eggs per 100 layers during month	Number												Av. per hen 2/
1965	1,668	1,590	1,835	1,854	1,934	1,806	1,767	1,690	1,563	1,581	1,572	1,693	205
1966	1,742	1,635	1,922	1,926	1,972	1,863	1,857	1,761	1,635	1,674	1,668	1,764	214
1967	1,786	1,694	1,959	1,941	1,975	1,839	1,838	1,779	1,668	1,686	1,635	1,690	214
1968	1,727	1,720	1,922	1,863	1,956	1,902	1,876	1,820	1,707	1,686	1,617	1,705	214
1969	1,752	1,627	1,863	1,845	1,934	1,866	1,885	1,854	1,752	1,779	1,734	1,807	218
Eggs produced	Millions												
1965	15.7	14.7	16.4	15.8	15.9	14.3	13.7	13.5	13.2	14.1	14.5	15.8	178
1966	16.3	15.0	17.1	16.7	16.6	15.1	14.7	14.4	14.2	15.1	15.4	16.5	187
1967	16.8	15.7	17.4	16.7	16.6	15.1	14.9	15.1	14.9	15.7	15.4	16.1	190
1968	16.0	16.0	18.0	17.0	17.0	16.0	16.0	16.0	15.0	15.0	15.0	17.0	194
1969	17.0	15.0	17.0	17.0	18.0	17.0	17.0	17.0	16.0	17.0	16.0	17.0	201
Layers first day month	Thousands												
1965	951	935	919	870	838	806	774	774	822	870	918	931	
1966	941	925	908	875	858	825	793	793	841	891	918	927	
1967	941	941	913	867	850	833	808	824	873	916	943	943	
1968	960	942	924	907	899	875	855	849	872	904	929	955	
1969	989	940	912	912	912	902	895	907	916	925	934	943	
Eggs per 100 layers first day of month	Number												
1965	51.9	55.6	57.9	60.6	63.0	61.8	58.6	55.5	53.5	50.7	51.2	53.6	
1966	55.6	56.9	60.0	64.0	64.3	63.0	61.2	58.5	55.0	54.0	54.0	57.2	
1967	56.6	58.6	62.3	64.0	65.3	62.0	60.5	58.0	56.8	54.3	54.4	54.6	
1968	54.3	57.1	61.4	62.5	61.6	64.5	62.3	58.6	58.8	55.0	53.7	54.0	
1969	55.9	57.0	59.2	61.0	62.0	62.8	61.5	60.1	59.4	57.3	57.5	58.1	

54

See footnotes at end of table, page 66.

Continued

Table 12. Number of layers, eggs per 100 layers and egg production, by States 1965-69 Continued

Item and year	January	February	March	April	May	June	July	August	September	October	November	December	Year 1/
Idaho													
Layers during month	Thousands												
1965	1,026	1,014	998	983	968	953	948	956	968	980	988	990	981
1966	982	968	955	942	928	918	922	938	960	988	1,008	1,014	960
1967	1,012	1,007	992	972	952	938	938	957	986	1,010	1,020	1,011	983
1968	978	940	922	916	892	860	850	867	892	905	900	871	899
1969	848	844	834	816	798	784	784	800	828	856	878	890	830
Eggs per 100 layers during month	Number												Av. per hen 2/
1965	1,922	1,792	2,040	2,016	2,077	1,935	1,953	1,938	1,830	1,844	1,770	1,860	229
1966	1,906	1,778	2,030	1,965	2,015	1,935	1,968	1,947	1,866	1,916	1,836	1,885	231
1967	1,891	1,742	2,000	1,974	2,009	1,905	1,947	1,928	1,845	1,885	1,815	1,885	228
1968	1,919	1,824	2,000	1,956	1,990	1,920	1,978	1,959	1,854	1,876	1,812	1,860	232
1969	1,841	1,680	1,894	1,872	1,953	1,872	1,938	1,941	1,869	1,928	1,860	1,916	227
Eggs produced	Millions												
1965	20	18	20	20	20	18	19	19	18	18	17	18	225
1966	19	17	19	19	19	18	18	18	18	19	19	19	222
1967	19	18	20	19	19	18	18	18	18	19	19	19	224
1968	19	17	18	18	18	18	17	17	17	17	17	16	209
1969	16	14	16	15	16	15	15	16	15	17	16	17	188
Layers first day of month	Thousands												
1965	1,031	1,021	1,006	991	975	960	946	951	961	975	985	990	
1966	990	975	960	950	935	920	915	930	945	975	1,000	1,017	
1967	1,012	1,012	1,002	982	962	943	934	943	971	1,000	1,020	1,020	
1968	1,002	955	976	919	914	869	850	849	885	900	910	890	
1969	852	844	844	824	808	788	780	788	812	844	869	886	
Eggs per 100 layers first day of month	Number												
1965	61.0	63.0	65.0	66.5	68.0	66.0	63.0	63.0	62.0	60.0	59.0	59.0	
1966	61.0	62.0	65.0	66.0	65.0	65.0	64.0	63.0	62.5	62.0	61.5	61.0	
1967	60.5	61.5	63.0	66.0	65.5	64.0	63.0	62.5	62.0	61.0	60.5	60.5	
1968	61.0	62.8	63.0	66.0	64.5	64.0	63.9	63.8	62.6	61.0	60.0	60.7	
1969	59.2	59.6	60.5	61.7	63.1	62.9	62.0	63.0	62.1	62.5	62.0	62.0	

See footnotes at end of table, page 66.

Continued

Table 12. Number of layers, eggs per 100 layers and egg production, by States 1965-69 Continued

Item and year	January	February	March	April	May	June	July	August	September	October	November	December	Year 1/ 2/
<b>Wyoming</b>													
Layers during month	Thousands												
1965	252	244	238	232	226	216	209	210	216	223	230	234	228
1966	232	228	226	224	216	202	195	198	204	209	211	212	213
1967	207	202	198	196	194	190	186	187	192	195	198	198	195
1968	195	193	190	184	179	174	171	168	169	173	176	176	179
1969	173	170	168	165	162	159	156	155	157	159	160	158	162
Eggs per 100 layers during month	Number												Av. per hen 2/
1965	1,730	1,666	1,938	1,970	1,984	1,902	1,941	1,897	1,725	1,690	1,590	1,643	217
1966	1,699	1,602	1,906	1,920	1,968	1,869	1,834	1,752	1,620	1,690	1,680	1,720	213
1967	1,736	1,666	1,938	1,890	1,968	1,926	1,965	1,823	1,668	1,782	1,755	1,823	220
1968	1,857	1,711	1,891	1,875	1,938	1,860	1,845	1,829	1,680	1,597	1,470	1,519	212
1969	1,581	1,554	1,891	1,905	2,015	1,950	1,947	1,885	1,755	1,674	1,605	1,721	214
Eggs produced	Millions												
1965	4.4	4.1	4.6	4.6	4.5	4.1	4.1	4.0	3.7	3.8	3.7	3.8	494
1966	3.9	3.7	4.3	4.3	4.3	3.8	3.6	3.5	3.3	3.5	3.5	3.6	453
1967	3.6	3.4	3.8	3.7	3.8	3.7	3.7	3.4	3.2	3.5	3.5	3.6	429
1968	3.6	3.3	3.6	3.5	3.5	3.2	3.2	3.1	2.8	2.8	2.6	2.7	379
1969	2.7	2.6	3.2	3.1	3.3	3.1	3.0	2.9	2.8	2.7	2.6	2.7	347
Layers first day of month	Thousands												
1965	256	248	241	234	229	222	211	207	213	220	226	235	
1966	233	231	226	226	221	210	193	197	199	209	209	213	
1967	210	204	200	196	196	192	188	184	190	193	197	199	
1968	197	193	193	187	181	176	172	169	166	172	174	177	
1969	174	171	169	166	163	160	157	154	156	158	160	159	
Eggs per 100 layers first day of month	Number												
1965	53.6	58.0	61.0	64.0	64.0	64.0	62.8	62.5	60.0	55.0	54.0	52.0	
1966	54.0	55.5	59.0	64.0	64.0	63.0	61.6	58.0	55.0	53.0	56.0	56.0	
1967	55.0	57.0	62.0	63.0	63.0	64.0	64.4	62.5	55.2	56.0	59.0	58.0	
1968	59.7	60.0	58.0	64.0	61.0	64.0	60.0	59.0	59.0	53.0	50.0	48.0	
1969	50.0	52.0	59.0	63.0	64.0	66.0	64.0	61.5	60.0	57.0	51.0	56.0	

See footnotes at end of table, page 66.

Continued

Table 12. Number of layers, eggs per 100 layers and egg production, by States, 1965-69 Continued

Item and year	January	February	March	April	May	June	July	August	September	October	November	December	Year 1/
<b>Colorado</b>													
Layers during month	Thousands												
1965	1,172	1,148	1,130	1,100	1,098	1,092	1,070	1,082	1,101	1,138	1,160	1,158	1,121
1966	1,146	1,129	1,117	1,117	1,094	1,077	1,060	1,083	1,135	1,140	1,169	1,210	1,123
1967	1,246	1,270	1,282	1,288	1,307	1,301	1,282	1,319	1,356	1,350	1,301	1,313	1,301
1968	1,335	1,294	1,281	1,301	1,287	1,301	1,328	1,274	1,315	1,403	1,409	1,380	1,326
1969	1,310	1,276	1,256	1,276	1,269	1,235	1,249	1,242	1,269	1,323	1,380	1,367	1,288
Eggs per 100 layers during month	Number												Av. per hen 2/
1965	1,708	1,635	1,841	1,842	1,956	1,884	1,854	1,835	1,737	1,686	1,608	1,631	212
1966	1,606	1,512	1,814	1,815	1,903	1,872	1,928	1,848	1,710	1,711	1,626	1,655	208
1967	1,705	1,613	1,879	1,836	1,885	1,842	1,885	1,869	1,782	1,717	1,614	1,615	212
1968	1,581	1,569	1,755	1,746	1,817	1,710	1,795	1,879	1,752	1,714	1,629	1,655	205
1969	1,711	1,624	1,863	1,800	1,885	1,824	1,866	1,860	1,785	1,782	1,668	1,758	214
Eggs produced	Millions												
1965	20	19	21	20	21	21	20	20	19	19	19	19	238
1966	18	17	20	20	21	20	20	20	19	20	19	20	234
1967	21	20	24	24	25	24	24	25	24	23	21	21	276
1968	21	20	22	23	23	22	24	24	23	24	23	23	272
1969	22	21	23	23	24	23	23	23	23	24	23	24	276
Layers first day of month	Thousands												
1965	1,176	1,167	1,130	1,130	1,071	1,125	1,060	1,079	1,084	1,118	1,157	1,164	
1966	1,152	1,140	1,117	1,117	1,117	1,071	1,083	1,037	1,129	1,140	1,140	1,198	
1967	1,221	1,270	1,270	1,294	1,282	1,331	1,270	1,294	1,343	1,368	1,331	1,270	
1968	1,355	1,314	1,274	1,287	1,314	1,260	1,341	1,314	1,233	1,396	1,409	1,409	
1969	1,350	1,269	1,283	1,229	1,323	1,215	1,256	1,232	1,242	1,296	1,350	1,409	
Eggs per 100 layers first day of month	Number												
1965	52.4	57.8	59.1	59.7	63.2	63.0	62.5	57.2	61.1	54.7	54.0	53.1	
1966	52.1	51.6	56.4	60.6	60.4	62.3	62.6	61.8	57.4	56.6	53.8	54.6	
1967	54.3	55.7	59.5	61.6	60.9	60.7	62.1	59.5	61.1	57.6	53.1	54.4	
1968	49.8	52.2	55.9	57.3	59.2	58.0	56.0	59.8	61.4	55.3	55.3	53.2	
1969	53.7	56.6	59.3	60.9	59.0	62.6	60.0	61.3	58.8	60.2	54.8	56.3	

See footnotes at end of table, page 66.

Continued

Table 12. Number of layers, eggs per 100 layers and egg production, by States, 1965-69 Continued

Item and year	January	February	March	April	May	June	July	August	September	October	November	December	Year 1/ 2/
<b>New Mexico</b>													
Layers during month	Thousands												
1965	671	653	643	640	675	684	660	666	686	720	748	741	682
1966	734	726	692	668	684	687	678	712	745	743	728	716	709
1967	698	686	686	686	678	684	696	698	687	705	744	748	700
1968	732	724	742	727	682	691	713	694	722	738	744	758	722
1969	755	788	792	813	846	846	850	878	917	953	962	950	863
Eggs per 100 layers during month	Number												Av. per hen 2/
1965	1,662	1,627	1,872	1,884	1,947	1,842	1,872	1,854	1,776	1,752	1,614	1,615	213
1966	1,637	1,571	1,869	1,872	1,916	1,848	1,885	1,947	1,917	1,863	1,626	1,624	216
1967	1,686	1,574	1,841	1,848	1,953	1,839	1,786	1,770	1,674	1,612	1,533	1,683	207
1968	1,758	1,711	1,872	1,878	2,077	1,959	1,897	1,823	1,704	1,823	1,740	1,786	220
1969	1,903	1,770	2,049	1,950	1,944	1,968	2,003	1,829	1,776	1,817	1,671	1,863	225
Eggs produced	Millions												
1965	11.2	10.6	12.0	12.1	13.1	12.0	12.4	12.3	12.2	12.6	12.1	12.0	145
1966	12.0	11.4	12.9	12.5	13.1	12.7	12.8	13.9	14.3	13.8	11.8	11.6	153
1967	11.8	10.8	12.6	12.7	13.2	12.6	12.4	12.4	11.5	11.4	11.4	12.6	145
1968	12.9	12.4	13.9	13.7	14.2	13.5	13.5	12.7	12.3	13.5	12.9	13.5	159
1969	14.4	13.9	16.2	15.9	16.4	16.6	17.0	16.1	16.3	17.3	16.1	17.7	194
Layers first day of month	Thousands												
1965	692	650	656	630	649	701	666	653	679	693	748	748	
1966	734	735	716	669	666	702	672	684	740	750	736	720	
1967	712	683	689	683	688	668	701	692	705	669	741	747	
1968	748	717	731	752	702	661	721	705	682	762	713	775	
1969	741	769	808	775	851	840	852	848	908	926	980	943	
Eggs per 100 layers first day of month	Number												
1965	50.8	56.4	59.8	61.1	64.5	61.2	61.6	59.3	60.2	58.2	54.8	52.7	
1966	50.8	56.4	59.8	61.1	64.5	61.2	61.6	59.3	60.2	58.2	54.8	52.7	
1967	54.1	54.8	57.7	61.1	62.0	64.0	58.6	56.6	57.6	54.1	49.8	52.4	
1968	56.2	57.2	60.9	59.8	65.4	68.7	61.9	60.4	57.1	56.6	61.1	54.7	
1969	60.4	62.4	63.9	68.3	61.7	63.7	67.5	61.6	56.4	62.1	55.1	59.2	

See footnotes at end of table, page 66.

Continued

Table 12. Number of layers, eggs per 100 layers and egg production, by States, 1965-69 Continued

Item and year	January	February	March	April	May	June	July	August	September	October	November	December	Year 1/
<b>Arizona</b>													
Layers during month	Thousands												
1965	1,009	986	970	955	970	994	986	971	979	995	1,010	1,034	988
1966	1,036	1,010	999	1,005	989	973	976	972	980	995	1,027	1,050	1,001
1967	1,158	1,157	1,192	1,197	1,170	1,132	1,100	1,120	1,144	1,124	1,135	1,163	1,149
1968	1,183	1,168	1,138	1,123	1,083	1,103	1,113	1,076	1,111	1,118	1,134	1,152	1,125
1969	1,116	1,112	1,088	1,090	1,078	1,046	1,026	994	1,010	1,056	1,076	1,088	1,065
Eggs per 100 layers during month	Number												Av. per hen 2/
1965	1,779	1,644	1,879	1,866	1,928	1,788	1,736	1,668	1,599	1,674	1,665	1,720	211
1966	1,674	1,518	1,786	1,803	1,900	1,800	1,783	1,764	1,671	1,727	1,695	1,724	207
1967	1,739	1,585	1,798	1,824	1,891	1,794	1,814	1,792	1,695	1,761	1,734	1,773	211
1968	1,804	1,749	1,925	1,902	1,972	1,860	1,872	1,829	1,674	1,733	1,698	1,730	217
1969	1,761	1,633	1,928	1,878	1,934	1,836	1,804	1,717	1,617	1,711	1,704	1,817	213
Eggs produced	Millions												
1965	18	16	18	18	19	18	17	16	16	17	17	18	208
1966	17	15	18	18	19	18	17	17	16	17	17	18	207
1967	20	18	21	22	22	20	20	20	19	20	20	21	243
1968	21	20	22	21	21	21	21	20	19	19	19	20	244
1969	20	18	21	20	21	19	19	17	16	18	18	20	227
Layers first day of month	Thousands												
1965	1,032	986	986	955	955	986	1,002	971	971	987	1,003	1,018	
1966	1,049	1,022	998	999	1,011	966	980	972	972	987	1,003	1,050	
1967	1,175	1,140	1,174	1,209	1,185	1,155	1,109	1,092	1,147	1,141	1,107	1,163	
1968	1,163	1,203	1,133	1,144	1,102	1,064	1,142	1,084	1,068	1,154	1,081	1,187	
1969	1,116	1,116	1,084	1,091	1,089	1,066	1,027	1,024	965	1,056	1,056	1,095	
Eggs per 100 layers first day of month	Number												
1965	57.4	57.3	60.1	61.0	63.4	61.0	58.1	54.0	53.6	53.0	55.0	56.0	
1966	55.0	53.0	55.4	59.7	60.5	62.0	58.0	57.0	56.8	54.6	56.8	56.1	
1967	55.1	57.1	56.0	60.0	61.5	60.5	59.0	58.0	57.5	55.5	58.0	57.5	
1968	57.0	59.3	61.3	62.9	63.9	63.3	60.7	60.1	57.9	53.8	58.0	55.3	
1969	56.2	57.5	61.2	63.3	62.0	62.8	59.7	56.7	54.1	53.7	56.8	56.9	

See footnotes at end of table, page 66.

Continued

Table 12. Number of layers, eggs per 100 layers and egg production, by States, 1965-69 Continued

Item and year	January	February	March	April	May	June	July	August	September	October	November	December	Year 1/
<b>Utah</b>													
Layers during month	Thousands												
1965	1,123	1,092	1,070	1,051	1,032	1,014	1,002	1,012	1,052	1,089	1,133	1,172	1,070
1966	1,206	1,241	1,247	1,247	1,240	1,222	1,209	1,221	1,264	1,314	1,350	1,354	1,260
1967	1,368	1,370	1,319	1,280	1,260	1,240	1,240	1,255	1,265	1,275	1,290	1,308	1,289
1968	1,329	1,329	1,305	1,290	1,280	1,270	1,260	1,270	1,290	1,300	1,310	1,318	1,296
1969	1,312	1,295	1,290	1,300	1,310	1,320	1,330	1,335	1,335	1,335	1,334	1,326	1,319
Eggs per 100 layers during month	Number												
1965	1,835	1,708	1,934	1,926	2,027	1,953	1,975	1,906	1,770	1,848	1,788	1,817	225
1966	1,801	1,708	1,984	1,926	2,009	1,884	1,906	1,866	1,815	1,876	1,776	1,866	225
1967	1,876	1,702	1,879	1,812	1,894	1,872	1,910	1,860	1,734	1,720	1,725	1,767	217
1968	1,739	1,656	1,876	1,890	1,906	1,845	1,876	1,814	1,740	1,814	1,755	1,798	216
1969	1,848	1,663	1,854	1,866	1,913	1,824	1,879	1,879	1,785	1,767	1,710	1,804	218
<b>CO</b>													
Eggs produced	Millions												
1965	21	19	21	20	21	20	20	19	19	20	20	21	241
1966	22	21	25	24	25	23	23	23	23	25	24	25	283
1967	26	23	25	23	24	23	24	23	22	22	22	23	280
1968	23	22	24	24	24	23	24	23	22	24	23	24	280
1969	24	22	24	24	25	24	25	25	24	24	23	24	288
Layers first day of month	Thousands												
1965	1,143	1,103	1,081	1,059	1,043	1,022	1,007	997	1,027	1,078	1,100	1,166	
1966	1,177	1,235	1,247	1,247	1,247	1,234	1,209	1,209	1,233	1,295	1,334	1,365	
1967	1,342	1,393	1,348	1,290	1,270	1,250	1,230	1,250	1,260	1,270	1,280	1,300	
1968	1,315	1,343	1,315	1,295	1,285	1,275	1,265	1,255	1,285	1,295	1,305	1,315	
1969	1,320	1,305	1,285	1,295	1,305	1,315	1,325	1,335	1,335	1,335	1,335	1,332	
Eggs per 100 layers first day of month	Number												
1965	58.0	60.5	61.4	63.5	65.0	65.8	64.4	63.0	60.0	58.0	61.2	58.0	
1966	59.1	57.1	65.0	63.0	65.4	64.1	61.5	61.5	59.0	62.0	59.0	59.5	
1967	61.0	60.0	61.5	59.6	61.2	61.0	63.7	59.4	60.5	55.1	55.9	59.1	
1968	55.0	57.2	57.0	64.0	62.0	61.0	62.0	59.0	58.0	58.0	59.0	58.0	
1969	58.1	61.0	57.7	62.0	62.4	61.0	60.6	60.6	60.7	58.3	55.8	58.3	

See footnotes at end of table, page 66.



Table 12. Number of layers, eggs per 100 layers and egg production, by States, 1965-69 Continued

Item and year	January	February	March	April	May	June	July	August	September	October	November	December	Year 1/
<b>Nevada</b>													
<b>Layers during month</b>	Thousands												
1965	48	46	46	45	44	42	42	42	42	41	42	44	44
1966	44	43	43	42	42	40	40	40	40	42	42	42	42
1967	42	42	40	40	41	41	40	36	35	35	36	36	39
1968	36	36	36	35	35	33	31	30	30	31	31	31	33
1969	30	29	30	29	28	28	29	28	28	27	24	23	28
<b>Eggs per 100 layers during month</b>	Number												Av. per hen 2/
1965	1,364	1,383	1,807	1,902	1,947	1,812	1,817	1,727	1,527	1,472	1,344	1,311	195
1966	1,345	1,389	1,786	1,824	1,885	1,788	1,779	1,652	1,506	1,472	1,356	1,414	193
1967	1,330	1,221	1,513	1,584	1,668	1,590	1,534	1,519	1,536	1,544	1,374	1,308	174
1968	1,234	1,218	1,525	1,602	1,674	1,626	1,655	1,593	1,446	1,352	1,134	1,190	170
1969	1,299	1,271	1,600	1,722	1,876	1,842	1,879	1,711	1,512	1,426	1,173	1,228	186
<b>Eggs produced</b>	Millions												
1965	.7	.6	.8	.9	.9	.8	.8	.7	.6	.6	.6	.6	8.6
1966	.6	.6	.8	.8	.8	.7	.7	.7	.6	.6	.6	.6	8.1
1967	.6	.5	.6	.6	.7	.7	.6	.5	.5	.5	.5	.5	6.8
1968	.4	.4	.5	.6	.6	.5	.5	.5	.4	.4	.4	.4	5.6
1969	.4	.4	.5	.5	.5	.5	.5	.5	.4	.4	.3	.3	5.2
<b>Layers first day of month</b>	Thousands												
1965	48	47	46	46	44	43	42	42	42	41	41	43	
1966	45	43	43	43	42	41	40	40	40	41	42	42	
1967	42	43	41	39	41	41	41	38	35	35	35	36	
1968	37	36	36	35	35	34	32	30	30	30	31	31	
1969	31	28	29	30	28	28	28	29	27	28	25	23	
<b>Eggs per 100 layers first day of month</b>	Number												
1965	44.0	44.0	54.7	61.9	65.0	60.5	60.2	57.0	54.4	47.4	47.6	42.0	
1966	42.6	44.3	55.0	60.2	61.5	60.2	59.1	55.7	50.9	49.5	45.5	45.0	
1967	44.6	41.2	46.0	51.6	54.0	53.6	52.3	46.7	51.4	51.1	48.6	43.1	
1968	41.4	38.1	45.8	52.6	54.1	53.9	54.5	52.4	50.4	46.1	41.1	34.6	
1969	42.1	41.7	49.0	54.1	60.8	60.2	62.5	58.8	51.7	49.0	43.0	35.2	

See footnotes at end of table, page 66.

Continued

Table 12. Number of layers, eggs per 100 layers, and egg production, by States, 1965-69 Continued

Item and year	January	February	March	April	May	June	July	August	September	October	November	December	Year 1/
Washington													
Layers during month	Thousands												
1965	4,598	4,784	4,780	4,648	4,617	4,601	4,558	4,612	4,727	4,798	4,711	4,525	4,663
1966	4,450	4,475	4,450	4,375	4,360	4,350	4,315	4,325	4,390	4,465	4,530	4,572	4,421
1967	4,584	4,584	4,607	4,630	4,630	4,653	4,700	4,794	4,962	5,086	5,009	4,860	4,758
1968	4,821	4,805	4,756	4,730	4,714	4,690	4,690	4,666	4,628	4,612	4,614	4,597	4,694
1969	4,549	4,503	4,415	4,316	4,262	4,247	4,310	4,412	4,496	4,546	4,599	4,605	4,438
Eggs per 100 layers during month	Number												Av. per hen 2/
1965	1,879	1,781	1,965	1,926	2,046	1,985	2,012	1,919	1,815	1,872	1,764	1,820	228
1966	1,885	1,747	2,003	1,962	1,953	1,884	1,978	1,965	1,884	1,906	1,800	1,814	228
1967	1,885	1,792	2,027	1,986	2,003	1,878	1,919	1,941	1,902	1,968	1,848	1,872	230
1968	1,931	1,830	1,950	1,890	1,934	1,908	1,990	1,934	1,848	1,860	1,791	1,835	227
1969	1,814	1,711	1,947	1,890	1,987	1,950	2,006	1,972	1,860	1,894	1,836	1,900	228
Eggs produced	Millions												
1965	86	85	94	90	94	91	92	89	86	90	83	82	1,062
1966	84	78	89	86	85	82	85	85	83	85	82	83	1,007
1967	86	82	93	92	93	87	90	93	94	100	93	91	1,094
1968	93	88	93	89	91	89	93	90	86	86	83	84	1,065
1969	83	77	86	82	85	83	86	87	84	86	84	87	1,010
Layers first day of month	Thousands												
1965	4,495	4,700	4,867	4,692	4,603	4,631	4,571	4,544	4,680	4,774	4,822	4,600	
1966	4,450	4,450	4,500	4,400	4,350	4,370	4,330	4,300	4,350	4,430	4,500	4,561	
1967	4,584	4,584	4,584	4,630	4,630	4,630	4,676	4,723	4,865	5,060	5,111	4,907	
1968	4,813	4,829	4,781	4,730	4,730	4,699	4,682	4,697	4,635	4,620	4,605	4,622	
1969	4,572	4,526	4,480	4,350	4,281	4,244	4,250	4,369	4,456	4,531	4,560	4,637	
Eggs per 100 layers first day of month	Number												
1965	58.0	63.3	63.9	62.8	65.7	66.4	66.1	63.7	60.1	60.9	59.8	57.9	
1966	59.5	62.2	62.7	66.4	64.5	61.4	64.3	63.4	63.5	62.0	61.0	59.0	
1967	58.0	63.5	64.4	66.5	65.8	63.4	61.8	62.0	63.2	63.5	63.5	59.6	
1968	61.3	63.3	62.9	62.9	63.1	61.8	65.5	62.8	62.0	61.2	58.7	60.7	
1969	57.6	59.4	62.8	62.9	63.1	65.1	65.0	64.4	62.8	61.2	60.9	61.4	

See footnotes at end of table, page 66.

Table 12. Number of layers, eggs per 100 layers and egg production, by States, 1965-69 Continued

Item and year	January	February	March	April	May	June	July	August	September	October	November	December	Year 1/
<b>Oregon</b>													
<b>Layers during month</b>													
	Thousands												
1965	2,234	2,210	2,195	2,148	2,117	2,083	2,116	2,186	2,218	2,244	2,295	2,308	2,196
1966	2,279	2,262	2,250	2,239	2,204	2,192	2,248	2,282	2,282	2,316	2,326	2,300	2,265
1967	2,308	2,284	2,238	2,186	2,158	2,176	2,182	2,181	2,190	2,228	2,258	2,282	2,223
1968	2,304	2,327	2,327	2,315	2,384	2,418	2,393	2,357	2,367	2,389	2,341	2,305	2,352
1969	2,252	2,174	2,173	2,178	2,129	2,082	2,054	2,105	2,174	2,196	2,196	2,206	2,160
<b>Eggs per 100 layers during month</b>													
	Number												Av. per hen 2/
1965	1,857	1,758	1,984	1,962	2,058	1,974	1,972	1,866	1,764	1,835	1,800	1,860	227
1966	1,888	1,761	1,984	1,920	1,953	1,860	1,891	1,860	1,785	1,841	1,824	1,885	225
1967	1,913	1,786	1,990	1,986	2,074	1,947	1,953	1,928	1,857	1,885	1,764	1,854	229
1968	1,922	1,827	1,965	1,896	1,978	1,923	1,984	1,925	1,800	1,876	1,845	1,879	228
1969	1,817	1,652	1,882	1,923	2,096	2,031	2,049	1,993	1,902	1,903	1,806	1,848	229
<b>Eggs produced</b>													
	Millions												
1965	41	39	44	42	44	41	42	41	39	41	41	43	498
1966	43	40	45	43	43	41	43	42	41	43	42	43	509
1967	44	41	45	43	45	42	43	42	41	42	40	42	510
1968	44	43	46	44	47	46	47	45	43	45	43	43	536
1969	41	36	41	42	45	42	42	42	41	42	40	41	495
<b>Layers first day of month</b>													
	Thousands												
1965	2,289	2,179	2,242	2,148	2,148	2,086	2,080	2,153	2,218	2,218	2,271	2,319	
1966	2,296	2,262	2,262	2,239	2,239	2,170	2,213	2,282	2,282	2,282	2,350	2,303	
1967	2,296	2,319	2,249	2,227	2,146	2,170	2,182	2,182	2,180	2,199	2,256	2,259	
1968	2,304	2,304	2,350	2,303	2,326	2,442	2,393	2,393	2,321	2,413	2,364	2,317	
1969	2,292	2,212	2,135	2,210	2,145	2,113	2,050	2,058	2,152	2,196	2,196	2,196	
<b>Eggs per 100 layers first day of month</b>													
	Number												
1965	58.3	61.5	64.0	64.1	66.8	66.0	65.6	61.5	59.0	58.5	60.0	60.0	
1966	60.0	61.8	64.0	64.0	64.0	62.0	62.0	60.0	60.0	59.0	59.7	61.8	
1967	59.9	63.5	64.0	64.5	67.8	66.0	63.8	62.1	62.2	61.6	60.1	57.5	
1968	62.0	62.0	64.0	62.8	63.5	64.1	64.1	63.9	60.3	59.6	61.4	61.5	
1969	59.7	57.4	60.6	60.7	67.4	67.7	67.7	64.4	61.4	62.6	60.1	60.3	

See footnotes at end of table, page 66.

Table 12. Number of layers, eggs per 100 layers and egg production, by States, 1965-69 Continued

Item and year	January	February	March	April	May	June	July	August	September	October	November	December	Year 1/
<b>California</b>													
Layers during month	Thousands												
1965	32,808	32,314	31,991	31,671	31,670	31,986	32,306	32,628	32,955	33,284	33,617	33,959	32,599
1966	34,048	33,963	34,133	33,788	33,606	33,939	33,939	34,108	34,621	34,789	34,708	35,126	34,231
1967	35,499	35,322	35,496	35,668	35,666	35,844	36,382	37,104	37,848	38,215	38,403	38,701	36,679
1968	38,479	37,956	37,760	37,948	37,758	37,569	37,944	38,129	37,937	38,127	38,508	38,328	38,037
1969	38,526	38,607	38,499	38,491	38,293	38,676	38,868	38,868	38,674	38,479	38,281	38,210	38,539
Eggs per 100 layers during month	Number												Av. per hen 2/
1965	1,872	1,728	1,941	1,911	1,965	1,899	1,947	1,922	1,875	1,953	1,854	1,860	227
1966	1,844	1,666	1,876	1,875	1,953	1,872	1,913	1,910	1,860	1,928	1,842	1,851	224
1967	1,814	1,669	1,897	1,836	1,934	1,890	1,903	1,866	1,791	1,844	1,794	1,798	220
1968	1,773	1,702	1,841	1,776	1,854	1,818	1,885	1,860	1,812	1,916	1,836	1,835	219
1969	1,767	1,646	1,906	1,878	1,984	1,860	1,891	1,906	1,836	1,916	1,800	1,814	222
Eggs produced	Millions												
1965	614	558	621	605	622	607	629	627	618	650	623	632	7,406
1966	628	566	640	634	656	635	649	651	644	671	639	650	7,663
1967	644	590	673	655	690	677	692	692	678	705	689	696	8,081
1968	682	646	695	674	700	683	715	709	687	731	707	703	8,332
1969	681	635	734	723	760	719	735	741	710	737	689	693	8,557
Layers first day of month	Thousands												
1965	33,140	32,477	32,152	31,830	31,512	31,827	32,145	32,466	32,791	33,119	33,450	33,784	
1966	34,134	33,963	33,963	34,303	33,274	33,939	33,939	33,939	34,279	34,964	34,614	34,803	
1967	35,499	35,499	35,144	35,847	35,489	35,844	35,844	36,919	37,288	38,407	38,023	38,783	
1968	38,618	38,339	37,572	37,968	37,948	37,569	37,569	38,320	37,937	37,937	38,316	38,699	
1969	37,956	39,095	38,118	38,880	38,102	38,483	38,868	38,868	38,868	38,479	38,479	38,083	
Eggs per 100 layers first day of month	Number												
1965	59.0	61.7	61.7	63.6	63.8	63.0	63.6	62.0	62.0	63.0	63.0	60.5	
1966	59.5	59.5	59.5	61.5	63.5	62.5	62.2	61.2	62.0	62.0	62.4	60.4	
1967	59.0	58.0	61.3	61.0	61.5	63.2	62.8	60.0	60.4	59.0	60.0	59.5	
1968	56.5	57.9	59.5	59.3	59.1	60.5	60.7	60.9	59.2	61.5	62.1	60.3	
1969	58.1	55.9	61.7	61.3	64.0	64.0	60.0	62.0	61.0	61.5	62.0	58.0	

See footnotes at end of table, page 66.

Continued

Table 12. Number of layers, eggs per 100 layers and egg production, by States, 1965-69 Continued

Item and year	January	February	March	April	May	June	July	August	September	October	November	December	Year 1/
Alaska													
Layers during month	Thousands												
1965	32	36	38	40	42	42	42	40	43	48	48	46	41
1966	45	44	45	46	48	45	40	42	45	41	41	44	44
1967	48	47	46	45	44	46	42	38	38	34	34	36	42
1968	36	34	32	31	31	33	34	34	32	31	32	30	33
1969	30	30	28	28	28	27	26	26	29	29	28	28	28
Eggs per 100 layers during month	Number												Av. per hen 2/
1965	1,631	1,562	1,910	1,890	2,027	1,926	1,972	2,108	1,770	1,618	1,767	1,972	224
1966	2,077	1,926	2,071	1,938	2,018	1,968	1,981	1,903	1,878	2,027	1,932	1,916	232
1967	1,928	1,742	1,851	1,737	1,717	1,728	1,965	1,962	1,785	1,736	1,686	1,835	217
1968	1,922	1,754	1,779	1,794	1,876	1,866	1,984	1,972	1,944	1,872	1,812	1,879	227
1969	1,686	1,450	1,569	1,557	1,643	1,602	1,662	1,621	1,584	1,662	1,476	1,376	186
Eggs produced	Millions												
1965	.5	.6	.7	.8	.9	.8	.8	.8	.8	.8	.8	.9	9.2
1966	.9	.8	.9	.9	1.0	.9	.8	.8	.8	.8	.8	.8	10.2
1967	.9	.8	.9	.8	.8	.8	.8	.7	.7	.6	.6	.7	9.1
1968	.7	.6	.6	.6	.6	.6	.7	.7	.6	.6	.6	.6	7.5
1969	.5	.4	.4	.4	.5	.4	.4	.4	.5	.5	.4	.4	5.2
Layers first day of month	Thousands												
1965	30	34	37	39	42	42	42	41	38	48	49	47	
1966	46	44	45	45	48	47	43	38	46	44	38	44	
1967	47	48	46	47	43	46	46	38	39	36	33	36	
1968	36	35	32	32	30	32	34	34	33	30	32	31	
1969	29	30	30	27	28	27	27	24	29	29	29	28	
Eggs per 100 layers first day of month	Number												
1965	54.4	50.7	60.9	62.2	63.7	67.2	61.2	66.0	69.9	48.0	56.5	61.3	
1966	65.9	58.2	69.3	64.4	64.9	65.3	65.8	62.0	60.9	54.2	66.7	62.1	
1967	61.5	62.9	61.5	57.9	57.9	52.8	62.5	64.3	62.3	56.7	55.2	57.2	
1968	61.1	63.0	53.0	56.9	62.6	58.4	66.1	61.9	65.4	64.3	56.6	64.1	
1969	57.0	51.9	51.6	49.7	54.1	51.8	55.0	52.1	52.5	53.1	54.1	44.4	

See footnotes at end of table, page 66.

Continued

Table 12. Number of layers, eggs per 100 layers and egg production, by States, 1965-69 Continued

Item and year	January	February	March	April	May	June	July	August	September	October	November	December	Year 1/
Hawaii													
Layers during month	Thousands 1/												
1965	864	852	847	856	852	840	830	822	822	836	852	844	843
1966	830	813	818	846	856	846	838	844	854	870	880	890	849
1967	890	891	900	904	914	915	909	910	924	933	926	924	912
1968	935	948	954	972	988	973	959	970	966	953	955	954	961
1969	932	926	936	949	958	947	932	930	936	938	940	948	939
Eggs per 100 layers during month	Number												
1965	1,897	1,753	1,922	1,890	1,972	1,893	1,931	1,910	1,827	1,879	1,812	1,860	225
1966	1,860	1,708	1,928	1,878	1,947	1,848	1,882	1,891	1,818	1,810	1,707	1,829	221
1967	1,857	1,672	1,882	1,821	1,848	1,779	1,829	1,804	1,728	1,792	1,740	1,798	215
1968	1,786	1,676	1,817	1,770	1,835	1,767	1,798	1,795	1,752	1,810	1,728	1,773	212
1969	1,823	1,683	1,844	1,791	1,848	1,734	1,786	1,798	1,746	1,786	1,704	1,770	214
Eggs produced	Millions												
1965	16.4	14.9	16.3	16.2	16.8	15.9	16.0	15.7	15.0	15.7	15.4	15.7	190
1966	15.4	13.9	15.8	15.9	16.7	15.6	15.8	16.0	15.5	15.7	15.0	16.3	188
1967	16.5	14.9	16.9	16.5	16.9	16.3	16.6	16.4	16.0	16.7	16.1	16.6	196
1968	17	16	17	17	18	17	17	17	17	17	17	17	204
1969	17	16	17	17	18	16	17	17	16	17	16	17	201
Layers first day of month	Thousands												
1965	867	862	841	853	859	844	837	824	819	825	846	857	
1966	832	827	799	836	855	856	836	841	847	861	880	880	
1967	899	881	901	898	910	919	911	907	912	937	929	924	
1968	923	947	950	958	987	988	958	960	981	952	954	956	
1969	942	921	931	940	958	957	937	926	933	939	937	964	
Eggs per 100 layers first day of month	Number												
1965	59.0	63.5	61.6	62.4	63.5	63.6	62.6	62.0	61.2	60.6	60.5	60.2	
1966	59.9	60.1	61.9	62.6	62.5	63.0	60.3	61.1	61.0	60.3	56.5	57.3	
1967	60.6	59.4	60.2	61.2	60.2	59.1	59.5	58.6	57.9	57.2	58.3	57.8	
1968	58.1	57.0	58.5	58.8	59.3	59.2	58.6	57.4	58.4	58.4	58.4	56.8	
1969	57.5	60.1	60.1	58.9	60.5	58.6	57.1	58.0	58.0	58.5	56.6	56.9	

66

1/ Average number during year. 2/ Annual rate of lay per layer on hand (eggs produced during year divided by average number of layers during year).

**END**