



AgEcon SEARCH
RESEARCH IN AGRICULTURAL & APPLIED ECONOMICS

The World's Largest Open Access Agricultural & Applied Economics Digital Library

This document is discoverable and free to researchers across the globe due to the work of AgEcon Search.

Help ensure our sustainability.

Give to AgEcon Search

AgEcon Search
<http://ageconsearch.umn.edu>
aesearch@umn.edu

*Papers downloaded from **AgEcon Search** may be used for non-commercial purposes and personal study only. No other use, including posting to another Internet site, is permitted without permission from the copyright owner (not AgEcon Search), or as allowed under the provisions of Fair Use, U.S. Copyright Act, Title 17 U.S.C.*

SB 498 (1972)

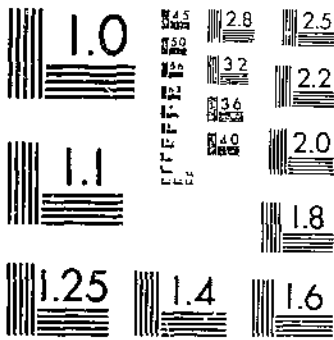
USDA STATISTICAL BULLETINS

UPDATA

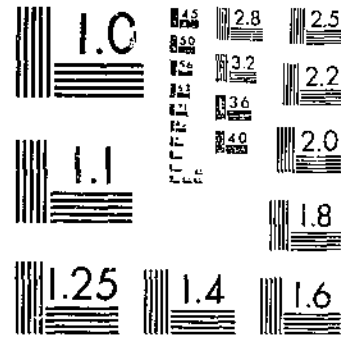
FIELD CROPS: ACREAGE, YIELD, PRODUCTION, 1964-69, REVISED ESTIMATES BY

1 OF 1

START



MICROCOPY RESOLUTION TEST CHART
NATIONAL BUREAU OF STANDARDS-1963-A



MICROCOPY RESOLUTION TEST CHART
NATIONAL BUREAU OF STANDARDS-1963-A

R
630.5
1153-13

Sci

#498



field crops

REFERENCE
DO NOT LOAN

REVISED ESTIMATES BY STATES, 1964-69

STATISTICS

NOV 18 1972

U.S. GOVERNMENT PRINTING OFFICE

- Acreage
- Yield
- Production

Statistical Bulletin No. 498

November 1972

CROP REPORTING BOARD

STATISTICAL REPORTING SERVICE • U.S. DEPARTMENT OF AGRICULTURE • WASHINGTON, D.C.

Contents

	Page		Page
Alaska and Hawaii	79	Oats	23
Barley	10	Peanuts	
Beans, Dry Edible		For Nuts	42
By Classes	46	Peas, Dry Edible	
By States	48	By Classes	49
Broomcorn	75	By States	50
Corn	17	Popcorn	74
Cotton	76	Rice	16
Cowpeas		Rye	13
For Peas	51	Sorghums	29
Flaxseed	41	Soybeans	
Hay		For Beans	44
All	52	Sugarbeets for Sugar	34
Clover and Timothy	58	Sugarcane	
Cowpea	69	For Sirup	33
Grain	63	For Sugar and Seed	32
Lespedeza	61	Tobacco	
Other	70	By Classes	36
Peanut-vine	68	By States	39
Soybean	69	Wheat	
Wild	66	All	4
Hops	73	By Classes	12
Maple Sirup	35	Durum	10
		Spring	11
		Winter	7

Estimates on field crops in earlier years are available in Statistical Bulletin No. 290 for 1954-58, No. 185 for 1949-53, and No. 108 for 1944-48. Separate commodity publications are available for Buckwheat, Rice, Rye, Flaxseed, Barley, Hay, and Popcorn, 1866-1953; Wheat, Oats, and Corn, 1866-1943; Sugarbeets, 1915-48; Soybeans, Velvetbeans, and Cowpeas, 1924-53; Dry Beans and Dry Peas, 1909-53; Hops, 1915-56; Broomcorn, 1915-48; and Cotton, 1866-1952 and 1944-58.

FIELD CROPS

Revised Estimates, by States, 1964-69 Acreage, Yield, Production

This publication includes revised estimates made by the USDA Crop Reporting Board for 1964-69. These revisions, by States, cover acreage planted, acreage harvested, yield, and production for most field crops produced in the United States. This report continues the official series of estimates for acreage, yield, and production. Estimates for earlier years are available in the statistical bulletins noted on the contents page in this bulletin.

Estimates during 1964-69 were published currently in annual and periodical Crop Reporting Board releases. Revisions were made only after a thorough review of the original estimates, taking into consideration data used currently and other data that have since become available, including the 1969 Census of Agriculture. Other check data considered included State farm census enumerations, Government farm program data, shipment records, and quantities processed. Some types of specific information given consideration in setting the final revised estimates include sugar production reported by sugar factories for sugar crops; quantities of tobacco marketed; quantities of cotton ginned as reported by the Bureau of the Census; quantities of peanuts marketed from inspections and marketing card records; and Hawaii coffee millers' receipts and shipment data.

In utilizing 1969 Census data, it was necessary to recognize differences between this survey and earlier censuses. In contrast to survey methods used for the previous censuses, the 1969 Census of Agriculture was collected by mail with survey procedures modified according to the level of individual farm value of sales. Initial questionnaires reached producers in early 1970 with the request to report 1969 crop acreage, yield, and production. Several follow up mailings were made to obtain as complete coverage as possible. The average date of completion for census questionnaires was during February 1970.

Using the revised 1969 level as a benchmark, estimates for intercensal years were revised to the extent indicated by survey and check data obtained each year in the usual procedure. Revisions for all commodities are limited to the period from 1964 through 1969.

Table 1. All wheat: Acres, yield, and production, 1964-69

State	1964			1965				
	Acres		Yield	Production	Acres		Yield	
	Planted	Harvested	per acre		Planted	Harvested	per acre	
	1,000 acres	Bushels	1,000 bushels	1,000 acres	Bushels	1,000 bushels		
N. Y.	217	203	37.5	7,612	200	185	37.0	6,845
N. J.	50	39	34.5	1,346	47	37	36.5	1,350
Pa.	484	464	32.0	14,848	431	408	35.0	14,280
Ohio	1,490	1,446	32.0	46,272	1,356	1,258	32.0	40,256
Ind.	1,457	1,393	34.0	47,362	1,224	1,114	32.5	36,205
Ill.	1,976	1,928	36.0	69,408	1,719	1,600	35.5	56,800
Mich.	973	966	40.0	38,640	876	802	33.0	26,466
Wisc.	63	61	33.7	2,058	56	39	32.3	1,261
Minn.	978	962	23.3	22,381	851	830	27.8	23,091
Iowa	106	100	27.8	2,780	82	40	21.0	840
Mo.	1,663	1,501	31.5	47,282	1,630	1,186	27.5	32,615
N. Dak.	6,539	6,356	23.8	151,073	6,989	6,841	26.0	177,915
S. Dak.	2,328	2,201	17.6	38,765	2,294	2,080	17.7	36,863
Nebr.	3,147	2,871	24.5	70,340	3,273	2,727	20.0	54,540
Kans.	10,535	9,490	22.0	208,780	11,272	10,059	23.5	236,386
Del.	23	21	32.0	672	21	20	33.0	660
Md.	148	136	30.0	4,080	135	124	34.0	4,216
Va.	206	187	29.0	5,423	173	153	30.0	4,590
W. Va.	23	19	27.0	513	22	18	32.0	576
N. C.	313	262	28.0	7,336	188	170	29.0	4,930
S. C.	91	85	27.0	2,295	68	64	27.0	1,728
Ga.	81	71	31.5	2,236	72	63	29.0	1,827
Fla.	50	36	24.0	864	35	23	25.0	575
Ky.	226	160	32.0	5,120	240	168	32.0	5,376
Tenn.	186	160	29.5	4,720	173	147	28.0	4,116
Ala.	75	64	25.0	1,600	68	55	24.5	1,348
Miss.	174	145	29.0	4,205	199	153	27.5	4,208
Ark.	479	445	31.0	13,795	393	356	26.0	9,256
La.	110	66	25.0	1,650	90	50	21.0	1,050
Okla.	4,882	4,201	23.0	96,623	5,321	4,747	28.0	132,916
Texas	4,184	3,245	20.0	64,900	4,435	3,472	22.0	76,384
Mont.	4,156	3,877	24.2	93,752	4,551	4,140	25.4	105,350
Idaho	1,225	1,091	39.6	43,163	1,201	1,085	44.2	47,973
Wyo.	250	221	21.8	4,820	290	206	12.8	2,628
Colo.	2,778	1,573	15.6	26,074	3,002	1,265	15.7	19,811
N. Mex.	312	146	19.0	2,774	296	201	24.5	4,924
Ariz.	38	33	48.0	1,584	28	26	45.0	1,170
Utah	234	212	24.6	5,219	241	229	29.4	6,734
Nev.	26	22	39.8	875	19	19	49.2	934
Wash.	2,211	2,121	39.5	83,841	2,545	2,316	39.2	90,828
Oreg.	840	791	34.6	27,385	942	806	35.2	28,399
Calif.	345	291	30.6	8,905	313	278	26.6	7,383
U. S.	55,672	49,762	25.8	1,283,371	57,361	49,560	26.5	1,315,603

Continued

Table 1. All wheat: Acres, yield, and production, 1964-69 Continued

State	1966			1967				
	Acres		Yield per acre	Acres		Yield per acre	Production	
	Planted	Harvested		Planted	Harvested			
	1,000 acres	Bushels	1,000 bushels	1,000 acres	Bushels	1,000 bushels		
N. Y.	181	168	42.0	7,056	249	232	39.0	9,048
N. J.	51	40	40.0	1,600	61	50	39.0	1,950
Pa.	414	400	36.0	14,400	505	480	36.0	17,280
Ohio	1,220	1,183	39.0	46,137	1,549	1,514	34.0	51,476
Ind.	1,065	1,014	44.0	44,616	1,267	1,237	37.0	45,769
Ill.	1,530	1,488	41.0	61,008	1,897	1,845	39.0	71,955
Mich.	771	762	40.0	30,480	1,133	1,120	36.0	40,320
Wisc.	39	36	35.0	1,261	62	58	37.2	2,160
Minn.	814	799	22.9	18,318	1,062	1,052	32.1	33,795
Iowa	47	45	33.0	1,485	65	60	27.5	1,650
Mo.	1,337	1,210	34.0	41,140	1,825	1,600	32.0	51,200
N. Dak.	6,739	6,572	23.4	153,926	8,216	8,007	22.6	181,248
S. Dak.	2,223	2,153	18.3	39,296	2,711	2,637	28.0	73,892
Nebr.	2,980	2,860	35.0	100,100	3,520	3,265	26.5	86,523
Kans.	11,047	10,260	19.5	200,070	13,146	11,081	20.0	221,620
Del.	21	20	35.0	700	29	28	42.0	1,176
Md.	134	124	36.0	4,464	161	149	39.0	5,831
Va.	163	145	31.0	4,495	225	205	35.0	7,175
W. Va.	21	17	31.0	527	24	20	37.0	740
N. C.	201	165	30.0	4,950	281	239	31.0	7,409
S. C.	62	58	28.5	1,653	120	112	26.5	2,968
Ga.	74	65	30.0	1,950	148	125	26.0	3,250
Fla.	33	23	28.0	644	50	40	24.0	960
Ky.	240	170	34.0	5,780	288	231	34.0	7,854
Tenn.	164	140	32.0	4,480	328	294	30.0	8,820
Ala.	71	59	28.0	1,652	130	112	24.0	2,688
Miss.	233	177	34.0	6,018	452	372	30.0	11,160
Ark.	417	367	32.0	11,744	705	661	28.5	18,838
La.	98	55	28.0	1,540	165	100	26.0	2,600
Okla.	5,268	4,700	21.0	98,700	6,480	5,217	17.0	88,689
Texas	4,258	3,229	22.5	72,652	5,578	3,326	16.0	53,216
Mont.	3,885	3,745	26.6	99,694	4,825	4,734	25.2	119,136
Idaho	1,089	994	38.5	38,278	1,378	1,280	44.1	56,440
Wyo.	270	239	20.8	4,965	346	305	27.7	8,444
Colo.	2,822	2,458	18.0	44,316	3,158	1,834	19.6	35,858
N. Mex.	305	147	32.0	4,704	372	141	28.0	3,948
Ariz.	26	23	40.0	920	55	50	49.0	2,450
Utah	235	223	26.6	5,940	279	270	30.5	8,239
Nev.	19	18	48.5	873	19	18	63.3	1,140
Wash.	2,437	2,235	40.0	89,344	2,938	2,858	39.9	113,948
Oreg.	806	757	33.8	25,558	1,063	1,030	31.6	32,575
Calif.	295	270	27.6	7,455	399	364	33.5	12,180
U. S.	54,105	49,613	26.3	1,304,889	67,264	58,353	25.8	1,507,598

Continued

Table 1. All wheat: Acres, yield, and production, 1964-69 Continued

State	1968				1969			
	Acres		Yield per acre	Production	Acres		Yield per acre	Production
	Planted	Harvested			Planted	Harvested		
	1,000 acres		Bushels	1,000 bushels	1,000 acres		Bushels	1,000 bushels
N. Y.	208	192	38.0	7,296	172	160	38.5	6,160
N. J.	56	43	35.0	1,505	46	32	37.0	1,184
Pa.	394	375	32.0	12,000	315	300	35.5	10,650
Ohio	1,239	1,196	37.5	44,850	1,053	1,017	38.0	38,646
Ind.	1,039	977	35.0	34,195	925	870	40.0	34,800
Ill.	1,461	1,384	37.0	51,208	1,330	1,273	38.0	48,374
Mich.	850	820	36.0	29,520	610	565	40.0	22,600
Wisc.	53	51	36.1	1,839	37	34	34.7	1,179
Minn.	1,077	1,031	32.9	33,953	866	853	30.0	25,605
Iowa	55	54	36.0	1,944	54	44	33.5	1,474
Mo.	1,350	1,200	33.0	39,600	1,090	950	31.0	29,450
N. Dak.	8,237	8,030	26.8	214,840	7,101	6,988	29.8	208,360
S. Dak.	2,513	2,407	27.3	65,600	2,138	1,921	22.2	42,601
Nebr.	3,240	3,070	32.0	98,240	2,910	2,650	31.5	83,475
Kans.	11,963	9,751	26.0	253,526	10,767	9,849	31.0	305,319
Del.	26	24	32.0	768	22	20	41.0	820
Md.	138	125	32.0	4,000	116	108	40.0	4,320
Va.	200	178	34.0	6,052	183	166	43.0	7,138
W. Va.	19	16	31.0	496	17	14	33.0	462
N. C.	247	220	39.0	8,580	227	198	42.0	8,316
S. C.	110	104	27.0	2,808	88	82	35.0	2,870
Ga.	134	109	28.0	3,052	98	76	35.0	2,660
Fla.	49	43	26.0	1,118	40	35	30.0	1,050
Ky.	265	201	30.0	6,030	236	169	34.0	5,746
Tenn.	321	273	28.0	7,644	212	175	33.0	5,775
Ala.	144	111	25.0	2,775	123	87	29.0	2,523
Miss.	398	335	25.0	8,375	107	87	27.0	2,349
Ark.	626	542	25.0	13,550	300	238	30.0	7,140
La.	165	96	22.0	2,112	55	26	23.5	611
Okla.	6,180	5,400	23.0	124,200	5,450	4,350	28.0	121,800
Texas	4,909	3,825	22.0	84,150	4,124	2,869	24.0	68,856
Mont.	4,722	4,550	27.7	125,869	3,920	3,750	26.6	99,754
Idaho	1,300	1,200	45.5	54,570	1,136	1,022	43.7	44,666
Wyo.	319	274	30.5	8,350	285	239	20.2	4,818
Colo.	2,920	1,878	20.0	37,560	2,684	1,962	21.5	42,201
N. Mex.	339	305	23.0	7,015	288	159	24.0	3,816
Ariz.	57	52	52.0	2,704	81	73	62.0	4,526
Utah	275	259	28.1	7,284	247	234	26.7	6,258
Nev.	16	13	48.5	631	14	12	63.8	765
Wash.	2,785	2,682	38.6	103,473	2,722	2,312	38.4	88,680
Oreg.	1,012	954	30.9	29,434	817	772	38.2	29,502
Calif.	449	415	33.5	13,919	444	405	38.0	15,380
U. S.	61,860	54,765	28.4	1,556,635	53,450	47,146	30.6	1,442,679

Table 2. Winter wheat: Acres, yield, and production, 1964-69

State	1964			1965			Yield per acre	Production
	Acres		Yield per acre	Acres		Yield per acre		
	Planted	Harvested		Planted	Harvested			
	1,000 acres	Bushels	1,000 bushels	1,000 acres	Bushels	1,000 bushels		
N. Y.	217	203	37.5	7,612	200	185	37.0	6,845
N. J.	50	39	34.5	1,346	47	37	36.5	1,350
Pa.	484	464	32.0	14,848	431	408	35.0	14,280
Ohio	1,490	1,446	32.0	46,272	1,356	1,258	32.0	40,256
Ind.	1,457	1,393	34.0	47,362	1,224	1,114	32.5	36,205
Ill.	1,976	1,928	36.0	69,408	1,719	1,600	35.5	56,800
Mich.	973	966	40.0	38,640	876	802	33.0	26,466
Wis.	45	44	35.0	1,540	42	26	32.0	832
Minn.	20	19	25.0	475	23	17	24.0	408
Iowa	102	96	28.0	2,688	82	40	21.0	840
Mo.	1,663	1,501	31.5	47,282	1,630	1,186	27.5	32,615
N. Dak.	75	59	21.0	1,239	64	34	20.0	680
S. Dak.	668	603	27.0	16,281	635	446	17.5	7,805
Nebr.	3,147	2,871	24.5	70,340	3,273	2,727	20.0	54,540
Kans.	10,535	9,490	22.0	208,780	11,272	10,059	23.5	236,386
Del.	23	21	32.0	672	21	20	33.0	660
Md.	148	136	30.0	4,080	135	124	34.0	4,216
Va.	206	187	29.0	5,423	173	153	30.0	4,590
W. Va.	23	19	27.0	513	22	18	32.0	576
N. C.	313	262	28.0	7,336	188	170	29.0	4,930
S. C.	91	85	27.0	2,295	68	64	27.0	1,728
Ga.	81	71	31.5	2,236	72	63	29.0	1,827
Fla.	50	36	24.0	864	35	23	25.0	575
Ky.	226	160	32.0	5,120	240	168	32.0	5,376
Tenn.	186	160	29.5	4,720	173	147	28.0	4,116
Ala.	75	64	25.0	1,600	68	55	24.5	1,348
Miss.	174	145	29.0	4,205	199	153	27.5	4,208
Ark.	479	445	31.0	13,795	393	356	26.0	9,256
La.	110	66	25.0	1,650	90	50	21.0	1,050
Okla.	4,882	4,201	23.0	96,623	5,321	4,747	28.0	132,916
Texas	4,184	3,245	20.0	64,900	4,435	3,472	22.0	76,384
Mont.	2,045	1,834	28.5	52,269	2,699	2,329	29.0	67,541
Idaho	627	699	41.0	28,659	926	818	42.0	34,356
Wyo.	227	200	22.0	4,400	261	180	12.0	2,160
Colo.	2,761	1,660	15.5	25,730	2,954	1,228	15.5	19,034
N. Mex.	312	146	19.0	2,774	296	201	24.5	4,924
Ariz.	38	33	48.0	1,584	28	26	45.0	1,170
Utah	195	175	22.0	3,850	201	191	26.5	5,062
Nev.	7	7	50.0	350	7	7	70.0	490
Wash.	1,954	1,881	41.0	77,121	2,188	1,975	41.5	81,962
Oreg.	775	731	35.0	25,585	767	636	36.5	23,214
Calif.	338	284	30.0	8,520	308	273	26.0	7,098
U. S.	43,632	38,075	26.8	1,020,987	45,142	37,586	27.1	1,017,075

Continued

Table 2. Winter wheat: Acres, yield, and production, 1964-69 Continued

State	1966				1967			
	Acres		Yield per acre	Production	Acres		Yield per acre	Production
	Planted	Harvested			Planted	Harvested		
	1,000 acres		Bushels	1,000 bushels	1,000 acres		Bushels	1,000 bushels
N. Y.	181	168	42.0	7,056	249	232	39.0	9,048
N. J.	51	40	40.0	1,600	61	50	39.0	1,950
Pa.	414	400	36.0	14,400	505	480	36.0	17,280
Ohio	1,220	1,183	39.0	46,137	1,549	1,514	34.0	51,476
Ind.	1,065	1,014	44.0	44,616	1,267	1,237	37.0	45,769
Ill.	1,530	1,488	41.0	61,008	1,897	1,845	39.0	71,955
Mich.	771	762	40.0	30,480	1,133	1,120	36.0	40,320
Wis.	24	22	39.5	869	45	42	40.0	1,680
Minn.	17	16	28.0	448	30	29	30.0	870
Iowa	47	45	33.0	1,485	65	60	27.5	1,650
Mo.	1,337	1,210	34.0	41,140	1,825	1,600	32.0	51,200
N. Dak.	25	24	25.0	600	75	65	30.0	1,950
S. Dak.	540	526	27.5	14,465	875	831	36.0	29,916
Nebr.	2,980	2,860	35.0	100,100	3,520	3,265	26.5	86,523
Kans.	11,047	10,260	19.5	200,070	13,146	11,081	20.0	221,620
Del.	21	20	35.0	700	29	28	42.0	1,176
Md.	134	124	36.0	4,464	161	149	39.0	5,811
Va.	163	145	31.0	4,495	225	205	35.0	7,175
W. Va.	21	17	31.0	527	24	20	37.0	740
N. C.	201	165	30.0	4,950	281	239	31.0	7,409
S. C.	62	58	28.5	1,653	120	112	26.5	2,968
Ga.	74	65	30.0	1,950	148	125	26.0	3,250
Fla.	33	23	28.0	644	50	40	24.0	960
Ky.	240	170	34.0	5,780	288	231	34.0	7,854
Tenn.	164	140	32.0	4,480	328	294	30.0	8,820
Ala.	71	59	28.0	1,652	130	112	24.0	2,688
Miss.	233	177	34.0	6,018	452	372	30.0	11,160
Ark.	417	367	32.0	11,744	705	661	28.5	18,838
La.	98	55	28.0	1,540	165	100	26.0	2,600
Okla.	5,268	4,700	21.0	98,700	6,480	5,217	17.0	88,689
Texas	4,258	3,229	22.5	72,652	5,578	3,326	16.0	53,216
Mont.	2,213	2,143	30.0	64,290	2,877	2,807	30.0	84,210
Idaho	880	794	37.0	29,378	1,091	1,000	43.0	43,000
Wyo.	243	221	21.0	4,641	318	281	28.0	7,868
Colo.	2,797	2,442	18.0	43,956	3,116	1,807	19.5	35,237
N. Mex.	305	147	32.0	4,704	372	141	28.0	3,948
Ariz.	26	23	40.0	920	55	50	49.0	2,450
Utah	205	195	24.0	4,680	246	238	28.5	6,783
Nev.	9	9	70.0	630	12	12	70.0	840
Wash.	2,319	2,133	40.5	86,386	2,763	2,688	41.0	110,208
Oreg.	752	712	34.0	24,208	1,000	975	32.0	31,200
Calif.	290	265	27.0	7,155	393	358	33.0	11,814
U. S.	42,746	38,616	27.4	1,057,371	53,649	45,039	26.5	1,194,119

Continued

Table 2. Winter wheat: Acres, yield, and production, 1964-69 Continued

State	1968				1969			
	Acres		Yield	Production	Acres		Yield	Production
	Planted	Harvested	per acre		Planted	Harvested	per acre	
	1,000 acres		Bushels	1,000 bushels	1,000 acres		Bushels	1,000 bushels
N. Y.	208	192	38.0	7,296	172	160	38.5	6,160
N. J.	56	43	35.0	1,505	46	32	37.0	1,184
Pa.	394	375	32.0	12,000	315	300	35.5	10,650
Ohio	1,239	1,196	37.5	44,850	1,053	1,017	38.0	38,646
Ind.	1,039	977	35.0	34,195	925	870	40.0	34,800
Ill.	1,461	1,384	37.0	51,208	1,330	1,273	38.0	48,374
Mich.	850	820	36.0	29,520	610	565	40.0	22,600
Wis.	37	36	39.0	1,404	26	24	36.0	864
Minn.	33	27	27.0	729	20	18	26.0	468
Iowa	55	54	36.0	1,944	54	44	33.5	1,474
Mo.	1,350	1,200	33.0	39,600	1,090	950	31.0	29,450
N. Dak.	102	82	27.0	2,214	101	88	25.0	2,200
S. Dak.	779	723	36.0	26,028	763	643	25.0	16,075
Nebr.	3,240	3,070	32.0	98,240	2,910	2,650	31.5	83,475
Kans.	11,963	9,751	26.0	253,526	10,767	9,849	31.0	305,319
Del.	26	24	32.0	768	22	20	41.0	820
Md.	138	125	32.0	4,000	116	108	40.0	4,320
Va.	200	178	34.0	6,052	183	166	43.0	7,138
W. Va.	19	16	31.0	496	17	14	33.0	462
N. C.	247	220	39.0	8,580	227	198	42.0	8,316
S. C.	110	104	27.0	2,808	88	82	35.0	2,870
Ga.	134	109	28.0	3,052	98	76	35.0	2,660
Fla.	49	43	26.0	1,118	40	35	30.0	1,050
Ky.	265	201	30.0	6,030	236	169	34.0	5,746
Tenn.	321	273	28.0	7,644	212	175	33.0	5,775
Ala.	144	111	25.0	2,775	123	87	29.0	2,523
Miss.	398	335	25.0	8,375	107	87	27.0	2,349
Ark.	626	542	25.0	13,550	300	238	30.0	7,140
La.	165	96	22.0	2,112	55	26	23.5	611
Okla.	6,180	5,400	23.0	124,200	5,450	4,350	28.0	121,800
Texas	4,909	3,825	22.0	84,150	4,124	2,869	24.0	68,856
Mont.	2,877	2,751	31.5	86,656	2,556	2,416	26.0	62,816
Idaho	1,080	990	46.0	45,540	950	842	43.0	36,206
Wyo.	296	256	31.0	7,936	266	224	20.0	4,480
Colo.	2,899	1,861	20.0	37,220	2,664	1,945	21.5	41,818
N. Mex.	339	305	23.0	7,015	288	159	24.0	3,816
Ariz.	57	52	52.0	2,704	81	73	62.0	4,526
Utah	244	231	26.5	6,122	222	210	25.0	5,250
Nev.	12	10	55.0	550	8	7	70.0	490
Wash.	2,704	2,607	39.0	101,673	2,511	2,112	40.0	84,480
Oreg.	980	926	31.0	28,706	774	732	38.5	28,182
Calif.	442	408	33.0	13,464	438	400	38.0	15,200
U. S.	48,667	41,929	29.0	1,217,555	42,338	36,303	31.2	1,131,439

Table 3. Durum wheat: Acres, yield, and production, 1964-69

State	1964				1965			
	Acres		Yield	Production	Acres		Yield	Production
	Planted	Harvested	per acre		Planted	Harvested	per acre	
	1,000 acres		Bushels	1,000 bushels	1,000 acres		Bushels	1,000 bushels
Minn.	107	106	29.0	3,074	96	93	31.0	2,883
N. Dak.	2,101	2,064	28.5	58,824	2,038	1,981	31.0	61,411
S. Dak.	121	112	15.0	1,680	105	103	22.0	2,266
Mont.	183	178	23.5	4,183	117	114	26.5	3,021
Calif.	7	7	55.0	385	5	5	57.0	285
U. S.	2,519	2,467	27.6	68,146	2,361	2,296	30.4	69,866
	1966				1967			
Minn.	58	56	27.0	1,512	64	63	35.0	2,205
N. Dak.	2,120	2,060	26.5	54,590	2,353	2,287	24.0	54,888
S. Dak.	145	142	18.0	2,556	160	158	28.0	4,424
Mont.	163	160	23.0	3,680	243	240	19.0	4,560
Calif.	5	5	60.0	300	6	6	61.0	366
U. S.	2,491	2,423	25.9	62,638	2,826	2,754	24.1	66,443
	1968				1969			
Minn.	95	92	34.0	3,128	88	87	31.0	2,697
N. Dak.	3,059	2,989	28.0	83,692	2,910	2,880	32.5	93,600
S. Dak.	175	168	28.0	4,704	227	218	22.0	4,796
Mont.	379	365	21.0	7,665	235	230	31.0	7,130
Calif.	7	7	65.0	455	6	5	36.0	180
U. S.	3,715	3,621	27.5	99,644	3,466	3,420	31.7	108,403

Table 4. Spring wheat other than durum: Acres, yield, and production, 1964-69

State 1/	1964				1965			
	Acres		Yield per acre	Production	Acres		Yield per acre	Production
	Planted	Harvested			Planted	Harvested		
	1,000 acres	Bushels	1,000 bushels	1,000 acres	Bushels	1,000 bushels		
Wis.	18	17	30.5	518	14	13	33.0	429
Minn.	851	837	22.5	18,932	732	720	27.5	19,800
Iowa	4	4	23.0	92				
N. Dak.	4,363	4,233	21.5	91,010	4,887	4,826	24.0	115,824
S. Dak.	1,539	1,486	14.0	20,804	1,554	1,531	17.5	26,792
Mont.	1,920	1,865	20.0	37,300	1,735	1,697	20.5	34,788
Idaho	398	392	37.0	14,504	275	267	51.0	13,617
Wyo.	23	21	20.0	420	29	26	18.0	468
Colo.	17	13	26.5	344	48	37	21.0	777
Utah	39	37	37.0	1,369	40	38	44.0	1,672
Nev.	19	15	35.0	525	12	12	37.0	444
Wash.	257	240	28.0	6,720	357	341	26.0	8,866
Oreg.	65	60	30.0	1,800	175	170	30.5	5,185
U. S.	9,521	9,220	21.1	194,238	9,858	9,678	23.6	228,662
	1966				1967			
Wis.	15	14	28.0	392	17	16	30.0	480
Minn.	739	727	22.5	16,358	968	960	32.0	30,720
Iowa								
N. Dak.	4,594	4,498	22.0	98,736	5,788	5,655	22.0	124,410
S. Dak.	1,538	1,485	15.0	22,275	1,676	1,648	24.0	39,552
Mont.	1,509	1,442	22.0	31,724	1,705	1,687	18.0	30,366
Idaho	209	200	44.5	8,900	287	280	48.0	13,440
Wyo.	27	18	18.0	324	28	24	24.0	576
Colo.	25	16	22.5	360	42	27	23.0	621
Utah	30	28	45.0	1,260	33	32	45.5	1,456
Nev.	10	9	27.0	243	7	6	50.0	300
Wash.	118	102	29.0	2,958	175	170	22.0	3,740
Oreg.	54	45	30.0	1,350	63	55	25.0	1,375
U. S.	8,868	8,574	21.6	184,880	10,789	10,560	23.4	247,036

1/ Estimates discontinued for Iowa after 1964.

Continued

Table 4. Spring wheat other than durum: Acres, yield, and production, 1964-69 Continued

State 1/	1968			1969				
	Acres		Yield per acre	Production	Acres		Yield per acre	Production
	Planted	Harvested			Planted	Harvested		
	1,000 acres	Bushels	1,000 bushels	1,000 acres	Bushels	1,000 bushels		
Wis.	16	15	29.0	435	11	10	31.5	315
Minn.	949	912	33.0	30,096	758	748	30.0	22,440
Iowa								
N. Dak.	5,076	4,959	26.0	128,934	4,090	4,020	28.0	112,560
S. Dak.	1,559	1,516	23.0	34,868	1,148	1,060	20.5	21,730
Mont.	1,466	1,434	22.0	31,548	1,129	1,104	27.0	29,808
Idaho	220	210	43.0	9,030	186	180	47.0	8,460
Wyo.	23	18	23.0	414	19	15	22.5	338
Colo.	21	17	20.0	340	20	17	22.5	383
Utah	31	28	41.5	1,162	25	24	42.0	1,008
Nev.	4	3	27.0	81	6	5	55.0	275
Wash.	81	75	24.0	1,800	211	200	21.0	4,200
Oreg.	32	28	26.0	728	43	40	33.0	1,320
U. S.	9,478	9,215	26.0	239,436	7,646	7,423	27.3	202,837

1/ Estimates discontinued for Iowa after 1964.

Table 5. Wheat: Production by classes, United States, 1964-69

Class	1964	1965	1966	1967	1968	1969
	1,000 bushels					
Winter:						
Hard Red	634,755	673,896	677,004	703,378	801,746	784,491
Soft Red	222,423	183,220	215,003	270,197	218,102	185,988
Spring:						
Hard Red	179,819	209,113	174,738	230,013	228,871	189,718
Durum	68,146	69,866	62,638	66,443	99,644	108,403
White:						
Winter and Spring	178,228	179,508	175,506	237,567	208,272	174,079
Total	1,283,371	1,315,603	1,304,889	1,507,598	1,556,635	1,442,679

Table 6. Rye: Acres, yield, and production, 1964-69

State	1964				1965			
	Acres		Yield per acre	Production	Acres		Yield per acre	Production
	Planted	Harvested			Planted	Harvested		
	1,000 acres	Bushels	1,000 bushels	1,000 acres	Bushels	1,000 bushels		
N. Y.	130	17	29.0	493	130	17	30.0	510
N. J.	93	11	23.5	258	97	12	24.0	288
Pa.	50	19	28.0	532	52	18	30.0	540
Ohio	116	17	25.5	434	116	18	26.5	477
Ind.	167	30	21.5	645	145	28	23.0	644
Ill.	175	35	21.0	735	154	32	23.0	736
Mich.	184	37	25.5	944	206	41	24.0	984
Wis.	53	22	18.5	407	62	21	18.0	378
Minn.	110	88	18.5	1,628	131	105	20.0	2,100
Iowa	26	6	20.5	123	20	4	21.0	84
Mo.	156	29	20.0	580	133	22	19.0	418
N. Dak.	557	491	21.0	10,311	529	476	25.5	12,138
S. Dak.	185	165	20.0	3,300	200	160	27.5	4,400
Nebr.	297	136	15.0	2,040	258	113	17.5	1,978
Kans.	362	130	15.5	2,015	221	60	16.5	990
Del.	46	11	20.5	226	52	9	22.5	202
Md.	100	19	21.5	408	100	17	23.0	391
Va.	254	26	22.0	572	264	22	22.0	484
N. C.	136	27	17.0	459	80	20	17.5	350
S. C.	89	32	17.5	560	110	23	21.0	483
Ga.	166	48	19.5	936	174	40	19.0	760
Ky.	91	8	19.0	152	94	9	23.0	207
Tenn.	61	7	16.0	112	60	6	17.0	102
Okla.	321	72	15.0	1,080	305	58	17.0	986
Tex.	170	32	17.0	544	204	29	14.0	406
Mont.	36	18	20.0	360	29	16	25.0	400
Idaho	22	9	20.5	184	20	12	19.0	228
Wyo.	31	12	15.0	180	32	14	20.0	280
Colo.	156	42	10.5	441	86	17	15.0	255
Wash.	130	83	18.0	1,454	78	35	17.0	595
Oreg.	82	17	19.0	323	95	19	27.0	513
U. S.	4,552	1,696	19.1	32,476	4,237	1,473	22.6	33,307

Continued

Table 6. Rye: Acres, yield, and production, 1964-69 Continued

State	1966				1967			
	Acres		Yield	Production	Acres		Yield	Production
	Planted	Harvested	per acre		Planted	Harvested	per acre	
	1,000 acres	Bushels	1,000 bushels	1,000 acres	Bushels	1,000 bushels		
N. Y.	134	13	32.0	416	130	11	29.0	319
N. J.	96	11	25.0	275	84	9	27.0	243
Pa.	56	19	29.0	551	69	18	31.0	558
Ohio	118	18	29.0	522	97	11	25.0	275
Ind.	122	26	25.0	650	104	19	24.0	456
Ill.	126	29	21.0	609	105	25	23.5	588
Mich.	206	41	24.0	984	222	38	24.0	912
Wis.	70	16	19.5	312	64	16	25.0	400
Minn.	83	67	20.0	1,340	97	81	25.0	2,025
Iowa	20	4	20.0	80	21	5	22.0	110
Mo.	136	24	21.0	504	120	17	20.0	340
N. Dak.	291	267	24.5	6,542	204	179	23.0	4,117
S. Dak.	208	176	24.5	4,312	241	215	29.0	6,235
Nebr.	263	145	21.0	3,045	184	88	15.0	1,320
Kans.	203	57	15.0	855	126	30	13.5	405
Del.	52	9	22.0	198	49	9	26.0	234
Md.	102	17	22.0	374	102	14	26.0	364
Va.	259	18	21.5	387	280	20	24.5	490
N. C.	98	21	19.0	399	120	18	20.0	360
S. C.	120	24	20.0	480	107	23	21.5	495
Ga.	179	43	22.5	968	240	67	18.5	1,240
Ky.	88	10	21.5	215	86	7	19.0	133
Tenn.	61	6	19.0	114	58	5	19.0	95
Okla.	293	55	14.5	798	237	43	13.0	559
Tex.	14	32	17.0	544	248	25	14.0	350
Mont.	16	6	21.0	126	12	5	19.0	95
Idaho	19	10	27.0	270	16	8	24.0	192
Wyo.	33	15	15.0	225	27	13	15.0	195
Colo.	121	34	14.5	493	63	12	17.0	204
Wash.	98	48	18.5	888	52	16	22.0	352
Oreg.	95	15	21.0	315	95	16	18.0	288
U. S.	3,980	1,276	21.8	27,791	3,660	1,063	22.5	23,949

Continued

Table 6. Rye: Acres, yield, and production, 1964-69 Continued

State	1968			1969				
	Acres		Yield	Acres		Yield		
	Planted	Harvested	per acre	Planted	Harvested	per acre		
	1,000 acres	Bushels	1,000 bushels	1,000 acres	Bushels	1,000 bushels		
N. Y.	129	12	27.0	324	134	13	30.0	390
N. J.	76	7	25.0	175	76	7	25.0	175
Pa.	48	12	30.0	360	40	11	32.0	352
Ohio	105	9	29.0	261	116	13	31.0	403
Ind.	82	17	24.5	417	103	21	25.0	525
Ill.	105	25	21.0	525	101	24	24.0	576
Mich.	189	34	26.0	884	195	40	28.0	1,120
Wis.	60	15	23.5	353	54	13	21.5	280
Minn.	84	72	26.5	1,908	94	84	27.0	2,268
Iowa	16	4	23.0	92	18	5	25.0	125
Mo.	96	15	20.0	300	101	16	23.0	368
N. Dak.	175	161	26.0	4,186	259	230	22.5	5,175
S. Dak.	219	191	28.0	5,348	296	264	27.0	7,128
Nebr.	160	88	15.0	1,320	230	135	19.0	2,565
Kans.	94	33	15.5	512	169	59	19.0	1,121
Del.	52	7	23.0	161	50	8	27.0	216
Md.	98	11	24.0	264	90	12	28.0	336
Va.	282	20	24.5	490	258	17	26.0	442
N. C.	106	18	21.0	378	106	16	20.0	320
S. C.	120	27	22.5	608	133	28	23.5	658
Ga.	283	74	21.0	1,554	325	72	24.5	1,764
Ky.	74	6	20.0	120	66	5	23.0	115
Tenn.	52	5	19.0	95	40	4	22.0	88
Okla.	204	40	17.0	680	249	49	20.0	980
Tex.	263	33	16.0	528	329	38	19.0	722
Mont.	14	5	18.0	90	21	8	21.0	168
Idaho	10	5	20.0	100	11	4	29.0	116
Wyo.	28	10	19.0	190	31	10	17.5	175
Colo.	82	16	16.0	256	134	38	15.0	570
Wash.	50	12	18.0	216	70	37	19.0	703
Oreg.	69	12	23.0	276	60	10	26.0	260
U. S.	3,425	996	23.1	22,971	3,959	1,291	23.4	30,204

Table 7. Rice: Acres, yield, and production, 1964-69

State	1964				1965			
	Acres		Yield per acre	Production	Acres		Yield per acre	Production
	Planted	Harvested			Planted	Harvested		
	Acres	Pounds	1,000 cwt.	Acres	Pounds	1,000 cwt.		
Missouri	4,800	4,600	4,300	198	4,800	4,700	4,500	212
Mississippi	50,000	49,000	3,800	1,862	51,000	50,000	3,700	1,850
Arkansas	434,000	430,000	4,300	18,490	438,000	434,000	4,300	18,662
Louisiana	515,000	513,000	3,300	16,929	517,000	515,000	3,550	18,282
Texas	464,000	462,000	4,150	19,173	464,000	462,000	4,600	21,252
California	329,000	327,000	5,050	16,514	329,000	327,000	4,900	16,023
United States	1,796,800	1,785,600	4,098	73,166	1,803,800	1,792,700	4,255	76,281
	1966				1967			
Missouri	5,300	5,200	4,400	229	5,200	5,100	4,600	235
Mississippi	56,000	55,000	4,300	2,365	56,000	55,000	4,300	2,365
Arkansas	482,000	477,000	4,300	20,511	482,000	477,000	4,550	21,704
Louisiana	567,000	565,000	3,700	20,905	567,000	565,000	3,900	22,035
Texas	508,000	505,000	4,200	21,210	510,000	508,000	5,000	25,400
California	362,000	360,000	5,500	19,800	362,000	360,000	4,900	17,640
United States	1,980,300	1,967,200	4,322	85,020	1,982,200	1,970,100	4,537	89,379
	1968				1969			
Missouri	6,600	6,400	4,500	288	5,600	5,400	4,600	248
Mississippi	68,000	67,000	4,400	2,948	61,000	60,000	4,450	2,670
Arkansas	578,000	572,000	4,300	24,596	520,000	515,000	4,750	24,463
Louisiana	681,000	679,000	3,850	26,142	613,000	611,000	3,500	21,385
Texas	599,000	597,000	4,550	27,164	550,000	548,000	3,950	21,646
California	434,000	432,000	5,325	23,004	391,000	389,000	5,525	21,492
United States	2,366,600	2,353,400	4,425	104,142	2,140,600	2,128,400	4,318	91,904

Table 8. Corn: Acres, yield, and production, 1964-69

State	1964								
	All corn		Grain			Silage		Forage	
	Acres		Acres harvested	Yield per acre	Production	Acres harvested	Yield per acre	Production	Acres harvested
	Planted	Harvested							
Maine	11	11				11	13.9	153	
N. H.	12	12				12	12.7	152	
Vt.	48	48	1	69.0	69	47	11.7	550	
Mass.	27	27	2	68.0	136	25	12.0	300	
R. I.	5	5				5	12.0	60	
Conn.	37	37	1	71.0	71	36	14.4	518	
N. Y.	665	659	139	64.0	12,096	455	11.0	5,005	15
N. J.	120	119	62	57.5	3,565	53	9.5	504	4
Pa.	1,201	1,192	820	65.0	53,300	358	11.0	3,938	14
Ohio	3,330	3,328	3,085	65.0	200,525	223	12.5	2,788	20
Ind.	4,636	4,627	4,435	72.0	319,320	163	13.7	2,233	29
Ill.	9,600	9,580	9,253	80.0	740,240	290	13.0	3,374	38
Mich.	1,951	1,939	1,543	60.0	92,580	364	10.7	3,895	32
Wis.	2,612	2,591	1,437	71.0	105,577	1,054	10.0	10,540	50
Minn.	5,781	5,743	4,458	58.0	258,564	1,220	8.6	10,492	65
Iowa	10,273	10,252	9,730	77.5	754,695	457	12.5	5,712	57
Mo.	3,270	3,237	2,912	53.0	154,336	263	9.0	2,367	62
N. Dak.	1,027	1,007	190	30.0	5,700	665	4.2	2,793	152
S. Dak.	3,732	3,694	2,594	31.0	80,414	953	5.2	4,956	147
Nebr.	4,165	4,118	3,793	54.0	204,822	284	9.5	2,698	41
Kans.	1,401	1,371	1,040	45.0	46,800	309	8.5	2,626	22
Del.	172	170	158	52.0	8,216	11	9.5	104	1
Md.	528	527	409	66.5	27,198	111	10.5	1,166	7
Va.	656	654	457	56.0	25,592	100	11.0	1,980	17
W. Va.	93	92	57	49.5	2,822	33	11.0	363	2
N. C.	1,523	1,515	1,357	59.0	80,063	114	12.5	1,425	44
S. C.	504	501	440	40.0	17,600	26	10.5	273	35
Ga.	1,737	1,723	1,487	39.0	57,993	41	10.5	430	195
Fla.	442	432	332	29.0	9,628	12	11.0	132	88
Ky.	1,146	1,130	1,039	56.0	58,184	84	12.5	1,050	15
Tenn.	968	962	852	49.0	41,748	80	12.0	960	30
Ala.	1,141	1,135	1,020	35.5	36,210	34	9.0	306	81
Miss.	686	677	627	38.0	23,826	32	11.0	352	18
Ark.	159	156	132	25.5	3,366	12	7.5	90	12
La.	229	225	200	31.0	6,200	10	10.0	100	15
Okla.	99	96	70	28.0	1,960	22	10.0	220	4
Texas	818	813	734	32.0	23,488	52	12.0	624	27
Mont.	66	63	4	59.0	236	39	11.0	429	20
Idaho	79	78	20	74.5	1,490	56	16.5	924	2
Wyo.	52	50	14	57.0	790	29	11.0	319	7
Wyo.	391	366	176	66.5	11,704	175	14.5	2,538	15
Colo.	36	34	14	39.0	546	17	15.5	264	3
N. Mex.	33	32	21	27.0	567	10	19.0	190	1
Ariz.	41	40	3	70.0	210	34	15.0	510	3
Utah	5	5				5	15.0	75	
Nev.	65	65	24	92.0	2,203	38	18.0	684	3
Wash.	37	36	12	63.0	816	22	15.5	341	2
Oreg.	197	197	107	52.0	8,774	86	18.0	1,548	4
Calif.									
U. S.	65,823	65,388	55,369	62.9	3,484,253	8,620	9.7	83,551	1,399

Continued

Table 3. Corn: Acres, yield and production 1964-69 Continued

State	1965								
	All corn		Grain		Silage		Forage		
	Acres		Acres harvested	Yield per acre	Production	Acres harvested	Yield per acre	Production	Acres harvested
	Planted	Harvested							
	1,000 acres	1,000 acres	Bushels	1,000 bushels	1,000 acres	Tons	1,000 tons	1,000 acres	
Maine	13	13							
N. H.	13	13			13	11.5	150		
Vt.	53	52	1	73.0	73	51	13.0	169	
Mass.	29	29	2	75.0	150	27	11.5	586	
R. I.	5	5				5	11.5	58	
Conn.	40	40	1	65.0	65	39	14.0	546	
N. Y.	701	692	205	61.0	12,505	470	12.0	5,640	17
N. J.	116	115	62	67.0	4,154	50	10.5	525	3
Pa.	1,225	1,216	820	68.0	55,760	387	11.0	4,257	9
Ohio	3,308	3,295	3,054	74.0	225,996	228	11.8	2,690	13
Ind.	4,867	4,858	4,701	94.0	441,894	140	14.5	2,030	17
Ill.	10,079	10,059	9,777	94.0	919,038	262	15.0	3,930	20
Mich.	1,945	1,920	1,481	61.0	90,341	404	9.0	3,636	35
Wis.	2,638	2,617	1,606	76.0	122,056	963	10.7	10,304	48
Minn.	5,626	5,513	4,280	61.0	261,080	1,171	9.0	10,539	62
Iowa	10,467	10,457	9,933	82.0	814,506	466	13.5	6,291	58
Mo.	3,237	3,140	2,941	75.0	220,575	163	11.5	1,874	36
N. Dak.	904	886	196	37.0	7,252	558	5.4	3,013	132
S. Dak.	3,433	3,398	2,361	39.0	92,079	886	5.8	5,139	151
Nebr.	3,873	3,830	3,565	70.0	249,550	222	11.0	2,442	43
Kans.	1,289	1,261	1,050	59.0	61,950	198	11.0	2,178	13
Del.	210	209	199	75.0	14,925	9	10.5	94	1
Md.	565	564	474	74.0	35,076	86	11.5	989	4
Va.	668	667	494	68.0	33,592	164	13.0	2,132	9
W. Va.	87	86	58	50.0	2,900	26	10.5	273	2
N. C.	1,477	1,470	1,316	70.0	92,120	121	13.0	1,573	33
S. C.	444	440	390	51.0	19,890	33	12.0	396	17
Ga.	1,650	1,637	1,413	49.0	69,237	48	10.0	480	176
Fla.	455	445	352	44.0	15,488	11	10.0	110	82
Ky.	1,157	1,149	1,049	69.0	72,381	87	13.5	1,174	13
Tenn.	900	895	792	56.0	44,352	81	13.5	1,094	22
Ala.	1,038	1,033	945	43.0	40,635	50	9.0	450	38
Miss.	563	555	508	38.0	19,304	30	12.5	375	17
Ark.	110	109	98	37.0	3,626	8	9.0	72	3
La.	213	209	182	35.0	6,370	14	9.0	126	13
Okla.	66	64	52	34.0	1,768	9	11.5	104	3
Tex.	654	650	587	33.0	19,371	41	14.0	574	22
Mont.	65	62	3	56.0	168	44	13.0	572	15
Idaho	82	80	20	75.0	1,500	58	16.0	928	2
Wyo.	51	50	14	50.0	700	27	11.0	297	9
Colo.	414	395	192	71.0	13,632	187	15.0	2,805	16
N. Mex.	35	34	15	39.0	585	17	15.0	255	2
Ariz.	33	33	20	28.0	560	11	18.0	198	2
Utah	41	40	3	75.0	225	34	15.0	510	3
Nev.	6	6				6	16.0	96	
Wash.	61	61	23	75.0	1,725	35	16.5	578	3
Oreg.	38	37	13	69.0	897	22	15.0	330	2
Calif.	227	227	144	89.0	12,816	79	19.0	1,501	4
U. S.	65,171	64,616	55,392	74.1	4,102,867	8,054	10.5	84,447	1,170

Table 8. Corn: Acres, yield and production 1964-69 Continued

State	1966								
	All corn		Grain			Silage		Forage	
	Acres		Acres harvested	Yield per acre	Production	Acres harvested	Yield per acre	Production	Acres harvested
	Planted	Harvested							
Maine	15	15				15	15.0	225	
N. H.	14	14				14	17.5	245	
Vt.	53	53	1	76.0	76	52	16.5	858	
Mass.	29	29	2	72.0	144	27	16.5	446	
R. I.	4	4				4	16.5	66	
Conn.	43	43	1	72.0	72	42	14.0	588	
N. Y.	705	699	217	75.0	16,275	470	12.5	5,875	12
N. J.	111	109	53	46.0	2,438	54	9.5	513	2
Pa.	1,225	1,216	672	49.0	32,928	530	8.0	4,240	14
Ohio	3,338	3,328	3,115	34.0	261,660	203	13.6	2,761	10
Ind.	5,256	5,247	5,077	80.0	406,160	147	13.5	1,984	23
Ill.	10,684	10,663	10,342	82.0	848,044	289	13.0	3,757	32
Mich.	1,780	1,770	1,390	68.0	94,520	355	10.5	3,728	25
Wis.	2,638	2,617	1,670	88.0	146,960	924	12.4	11,458	23
Minn.	5,313	5,292	4,494	76.0	341,544	773	12.3	9,508	25
Iowa	10,676	10,666	10,132	89.0	901,742	480	14.5	6,960	54
Mo.	3,108	3,077	2,844	64.0	182,016	186	10.0	1,860	47
N. Dak.	759	744	182	45.0	8,190	480	5.8	2,784	32
S. Dak.	3,399	3,364	2,550	44.5	113,475	746	7.2	5,371	68
Nebr.	4,415	4,366	4,100	80.0	328,000	246	13.0	3,198	20
Kans.	1,366	1,324	1,029	58.0	59,682	273	10.5	2,866	22
Del.	225	222	209	38.0	7,942	12	9.0	108	1
Md.	583	581	446	44.0	19,624	129	7.0	903	6
Va.	681	667	425	46.0	19,550	228	10.0	2,280	14
W. Va.	85	84	47	48.0	2,256	35	9.5	332	2
N. C.	1,536	1,514	1,341	45.0	60,345	133	10.0	1,330	40
S. C.	455	449	390	42.0	16,380	41	11.0	451	18
Ge.	1,646	1,621	1,427	43.0	61,361	56	12.0	672	138
Fla.	450	441	359	43.0	15,437	12	11.5	138	70
Ky.	1,229	1,218	1,102	59.0	65,018	100	12.0	1,200	16
Tenn.	918	913	768	52.0	39,936	126	12.5	1,575	19
Ala.	991	981	872	34.0	29,643	59	9.0	531	50
Miss.	513	502	447	36.0	16,092	41	10.0	410	14
Ark.	92	87	76	30.5	2,313	5	8.0	40	6
La.	180	175	151	45.0	6,795	17	11.0	187	7
Okla.	70	59	37	22.0	814	17	11.5	196	5
Texas	602	585	523	36.0	19,008	42	14.0	588	15
Mont.	68	66	5	64.0	320	49	15.0	735	12
Idaho	80	79	18	77.0	1,386	59	17.0	1,003	2
Wyo.	57	57	14	65.0	910	37	11.5	426	6
Colo.	451	431	223	80.0	17,840	193	15.5	2,992	15
N. Mex.	41	40	13	42.0	546	24	17.0	408	3
Ariz.	31	31	19	36.0	684	10	19.5	195	2
Utah	43	42	2	80.0	160	38	16.0	608	2
Nev.	7	7				7	17.5	122	
Wash.	60	60	21	92.0	1,932	36	19.0	684	3
Oreg.	38	36	11	74.0	814	23	18.5	426	2
Calif.	279	279	180	92.0	16,560	95	19.5	1,852	4
U. S.	66,347	65,867	57,002	73.1	4,167,608	7,934	11.3	89,683	931

Continued

Table 8. Corn: Acres, yield and production, 1964-69 Continued

State	1967								
	All corn		Grain			Silage		Forage	
	Acres		Acres harvested	Yield per acres	Production	Acres harvested	Yield per acre	Production	Acres harvested
	Planted	Harvested							
	1,000 acres	1,000 acres	Busheis	1,000 bushels	1,000 acres	Tons	1,000 tons	1,000 acres	
Maine	16	16							
N. H.	15	15				16	16.5	264	
Vt.	54	54				15	18.0	270	
Mass.	29	29				54	16.5	891	
R. I.	4	4				29	16.5	479	
Conn.	43	43				4	15.0	60	
N. Y.	754	748	291	87.0	25,317	43	18.5	796	
N. J.	113	112	72	88.0	6,336	446	15.5	6,913	11
Pa.	1,250	1,240	921	88.0	81,048	39	14.5	566	1
						313	15.5	4,852	6
Ohio	3,527	3,516	3,240	79.0	255,960				
Ind.	5,571	5,562	5,332	86.0	462,352	262	12.7	3,327	14
Ill.	11,087	11,065	10,788	104.0	1,121,952	156	13.0	2,028	24
Mich.	1,790	1,760	1,390	68.0	94,520	255	15.5	3,952	22
Wis.	2,770	2,746	1,703	83.0	141,349	343	10.5	3,602	27
Minn.	6,069	6,033	4,943	72.0	355,896	1,007	10.5	10,574	38
Iowa	12,171	11,733	11,145	88.5	986,332	1,059	9.0	9,531	31
Mo.	3,357	3,200	2,929	69.0	202,101	538	13.5	7,263	50
N. Dak.	713	697	133	42.0	5,586	203	11.0	2,233	68
S. Dak.	3,637	3,566	2,422	38.0	92,036	451	4.2	1,894	113
Nebr.	4,989	4,890	4,510	74.0	333,740	1,022	5.2	5,314	122
Kans.	1,366	1,324	1,060	68.0	72,080	349	11.0	3,839	31
						240	12.5	3,000	24
Del.	223	222	211	73.0	15,403	9	12.0	108	2
Md.	606	604	526	82.0	43,132	74	15.0	1,110	4
Va.	688	687	485	73.0	35,405	194	14.0	2,716	8
W. Va.	87	86	56	64.0	3,584	28	14.5	406	2
N. C.	1,551	1,544	1,381	76.0	104,956	127	13.5	1,714	36
S. C.	495	491	425	62.0	26,350	47	14.0	658	19
Ga.	1,794	1,783	1,613	58.0	93,554	54	14.5	783	116
Fla.	531	520	461	50.0	23,050	13	12.0	156	46
Ky.	1,296	1,279	1,168	80.0	93,440	96	15.5	1,488	15
Tenn.	900	886	783	59.0	46,197	87	13.5	1,175	16
Ala.	1,023	1,015	899	47.0	42,253	74	11.5	851	42
Miss.	467	462	420	42.0	17,640	32	13.0	416	10
Ark.	76	74	62	42.0	2,604	9	10.5	95	3
La.	168	165	148	50.0	7,400	11	11.0	121	6
Okla.	61	58	30	40.0	1,200	25	17.0	425	3
Texas	602	573	491	38.0	18,658	55	15.5	852	27
Mont.	70	69	7	68.0	476	50	16.0	800	12
Idaho	82	81	22	81.0	1,782	57	18.0	1,026	2
Wyo.	56	56	20	70.0	1,400	32	14.5	464	4
Colo.	510	483	270	82.0	22,140	203	16.5	3,350	10
N. Mex.	45	44	16	50.0	800	27	17.0	459	1
Ariz.	32	32	21	37.0	777	10	19.5	195	1
Utah	46	45	3	76.0	228	40	18.5	740	2
Nev.	6	6				6	17.0	102	
Wash.	54	54	18	92.0	1,656	34	18.0	612	2
Oreg.	36	34	9	78.0	702	23	18.5	426	2
Calif.	326	326	220	84.0	18,480	102	18.5	1,887	4
U. S.	71,156	70,034	60,694	80.1	4,860,372	8,363	11.3	94,783	977

Table 3. Corn: Acres, yield and production, 1964-69 Continued

State	1968								
	All corn		Grain			Silage		Forage	
	Acres		Yield per acre	Production	Acres harvested	Yield per acre	Production	Acres harvested	
	Planted	Harvested							Acres harvested
1,000 acres	1,000 acres	Bushels	1,000 bushels	1,000 acres	Tons	1,000 tons	1,000 acres		
Maine	19	19			19	14.5	276		
N. H.	15	15			15	16.5	248		
Vt.	59	59			59	14.5	856		
Mass.	29	29			29	15.0	435		
R. I.	4	4			4	13.5	54		
Conn.	45	45			45	17.0	765		
N. Y.	754	748	259	80.0	479	12.5	5,938	10	
N. J.	98	97	54	67.0	41	10.5	430	2	
Pa.	1,225	1,215	810	70.0	398	12.0	4,776	7	
Ohio	3,112	3,096	2,834	96.0	248,024	202	14.2	2,863	10
Ind.	4,925	4,895	4,736	88.0	416,763	135	15.0	2,025	24
Ill.	10,379	10,358	10,088	90.0	907,920	249	15.0	3,735	21
Mich.	1,655	1,630	1,250	78.0	97,500	360	11.5	4,140	20
Wisc.	2,715	2,693	1,754	95.0	166,630	916	11.8	10,809	23
Minn.	5,400	5,369	4,548	82.0	372,936	794	11.0	8,734	27
Iowa	10,346	10,325	9,775	93.0	909,075	515	14.5	7,468	35
Mo.	3,189	3,168	2,953	83.0	245,514	175	12.0	2,100	35
N. Dak.	627	620	132	49.0	6,468	401	5.5	2,205	87
S. Dak.	3,164	3,138	2,374	46.0	109,204	701	6.8	4,767	63
Nebr.	4,839	4,743	4,239	74.0	313,686	464	9.5	4,408	40
Kans.	1,448	1,417	1,134	78.0	88,452	271	12.5	3,388	12
Del.	192	191	177	49.0	8,673	12	11.0	132	2
Md.	570	568	484	66.0	31,944	80	12.0	960	4
Va.	662	660	444	71.0	31,524	207	13.0	2,691	9
W. Va.	82	81	47	59.0	2,773	33	12.0	396	1
N. C.	1,515	1,510	1,348	60.0	80,880	135	13.5	1,822	27
S. C.	485	478	430	48.0	20,640	31	13.5	419	17
Ga.	1,758	1,730	1,565	40.0	62,600	70	12.5	875	95
Fla.	457	446	396	42.0	16,632	14	13.0	182	36
Ky.	1,166	1,151	1,027	66.0	67,782	117	14.5	1,697	7
Tenn.	792	780	658	52.0	34,216	109	11.5	1,254	13
Ala.	831	815	711	36.0	25,596	62	9.5	589	42
Miss.	430	421	362	39.0	14,118	52	11.5	598	7
Ark.	59	58	51	41.0	2,091	4	9.5	38	3
La.	157	154	139	52.0	7,228	10	12.0	120	5
Okla.	88	85	61	62.0	3,782	23	13.5	311	1
Texas	602	590	501	52.0	26,052	77	15.0	1,155	12
Mont.	70	68	4	75.0	300	45	15.0	675	19
Idaho	83	82	24	82.0	1,968	56	18.0	1,008	2
Wyo.	61	58	22	75.0	1,650	29	12.5	363	7
Colo.	519	500	282	85.0	23,970	209	17.5	3,658	9
N. Mex.	48	47	20	55.0	1,100	24	15.5	372	3
Ariz.	29	28	17	32.0	544	10	19.5	195	1
Utah	46	45	3	70.0	210	41	17.0	697	1
Nev.	3	3				3	16.0	48	
Wash.	62	62	20	97.0	1,940	41	20.0	820	1
Oreg.	32	31	7	77.0	539	22	19.0	418	2
Calif.	280	280	185	95.0	17,575	91	18.5	1,684	4
U. S.	65,126	64,605	55,980	79.5	4,449,542	7,879	11.9	93,652	746

Table 8. Corn: Acres, yield and production, 1964-69 Continued

State	1969								
	All corn		Grain			Silage		Forage	
	Acres		Yield per acre	Production	Acres harvested	Yield per acre	Production	Acres harvested	
	Planted	Harvested							Acres harvested
	1,000 acres	1,000 acres	Bushels	1,000 bushels	1,000 acres	Tons	1,000 tons	1,000 acres	
Maine	23	23							
N. H.	16	16			23	16.5	380		
Vt.	68	68			16	18.0	288		
Mass.	31	31			68	15.5	1,054		
R. I.	4	4			31	17.5	543		
Conn.	46	46			4	16.5	66		
N. Y.	789	783	260	85.0	46	18.0	828		
N. J.	104	103	66	81.5	512	14.0	7,160	11	
Pa.	1,212	1,201	868	88.0	35	14.5	508	2	
					76,384	326	15.0	4,890	7
Ohio	3,043	3,013	2,773	87.0	241,251	231	14.5	3,350	9
Ind.	4,813	4,779	4,620	100.0	462,000	147	16.0	2,352	12
Ill.	10,081	9,900	9,698	102.0	989,196	262	14.5	3,799	20
Mich.	1,602	1,590	1,240	78.0	96,720	335	12.0	4,020	15
Wis.	2,715	2,666	1,736	88.0	152,763	901	11.2	10,091	29
Minn.	4,835	4,808	4,022	87.0	349,914	766	10.7	3,196	20
Iowa	10,449	10,119	9,549	99.0	945,351	540	15.0	8,100	30
Mo.	3,068	2,915	2,700	68.0	183,600	180	11.0	1,980	35
N. Dak.	527	520	130	57.0	7,410	325	5.4	1,755	65
S. Dak.	3,227	3,187	2,346	55.0	129,030	792	7.0	5,544	49
Nebr.	5,040	4,987	4,620	94.0	434,280	341	13.5	4,604	26
Kans.	1,515	1,470	1,208	79.0	95,432	252	13.5	3,402	10
Del.	192	190	180	78.0	14,040	8	14.0	112	2
Md.	581	578	487	81.0	39,447	98	14.0	1,232	3
Va.	653	647	444	77.0	34,188	198	15.0	2,970	5
W. Va.	82	81	49	71.0	3,479	30	15.0	450	2
N. C.	1,456	1,445	1,281	68.0	87,108	140	14.0	1,960	24
S. C.	494	482	423	50.0	21,150	43	11.5	495	16
Ga.	1,767	1,700	1,590	35.0	55,650	73	11.0	803	37
Fla.	380	369	327	39.0	12,753	15	12.0	180	27
Ky.	1,087	1,072	945	77.0	72,765	121	15.0	1,815	6
Tenn.	759	740	605	51.0	30,855	123	12.5	1,538	12
Ala.	785	758	654	33.0	21,582	54	10.0	540	50
Miss.	353	333	274	32.0	8,768	53	10.5	557	6
Ark.	62	57	43	36.0	1,548	10	9.5	95	4
La.	151	138	121	37.0	4,477	13	10.5	137	4
Okla.	105	102	62	52.0	3,224	37	14.0	518	3
Texas	779	733	597	44.0	26,268	114	14.5	1,653	22
Mont.	63	61	6	73.0	438	47	14.5	682	8
Idaho	93	92	28	85.0	2,300	62	18.5	1,147	2
Wyo.	66	65	22	72.5	1,595	37	13.5	500	6
Colo.	600	573	334	95.0	31,730	231	17.5	4,043	8
N. Mex.	51	49	21	56.0	1,176	26	15.5	403	2
Ariz.	32	31	20	27.0	540	10	20.0	200	1
Utah	54	53	6	85.0	510	46	17.5	805	1
Nev.	3	3				3	16.0	48	
Wash.	83	83	33	107.0	3,531	48	20.5	984	2
Oreg.	34	33	7	84.0	756	22	18.0	396	2
Calif.	286	286	177	92.0	16,284	107	18.5	1,980	2
U. S.	64,264	63,063	54,574	85.9	4,687,057	7,892	12.6	99,161	597

Table 9. Oats: Acres, yield, and production, 1964-69

State	1964			Production	1965			
	Acres		Yield per acre		Acres		Yield per acre	Production
	Planted	Harvested			Planted	Harvested		
	1,000 acres	Bushels	1,000 bushels	1,000 acres	Bushels	1,000 bushels		
Maine	52	42	53.0	2,226	53	43	51.0	2,193
Vt.	39	11	46.0	506	35	8	47.0	376
N. Y.	580	518	52.0	26,936	522	466	57.0	26,562
N. J.	21	14	38.5	539	19	12	38.0	456
Pa.	574	537	46.5	24,970	563	521	47.0	24,487
Ohio	716	652	55.0	35,860	673	606	56.0	33,936
Ind.	532	382	44.0	16,808	447	336	52.0	17,472
Ill.	1,583	1,116	51.0	56,916	1,266	889	58.0	51,562
Mich.	703	665	51.5	34,248	583	552	52.0	28,704
Wis.	2,082	2,011	51.5	103,566	2,020	1,910	61.0	116,510
Minn.	3,304	3,129	45.5	142,370	3,238	3,004	54.5	163,718
Iowa	3,189	2,324	48.5	112,714	2,934	1,999	52.5	104,948
Mo.	522	310	36.0	11,160	339	189	35.0	6,615
N. Dak.	2,147	2,019	42.0	84,798	2,168	2,059	51.5	106,038
S. Dak.	2,698	2,460	29.0	71,340	2,590	2,460	47.0	115,620
Nebr.	766	617	28.5	17,584	728	617	40.0	24,680
Kans.	405	316	29.0	9,164	259	205	32.0	6,560
Del.	6	4	39.0	156	5	3	40.0	120
Md.	40	33	40.0	1,320	37	30	47.0	1,410
Va.	112	55	42.0	2,310	108	57	46.0	2,622
W. Va.	36	19	40.0	760	31	17	39.0	663
N. C.	254	141	43.0	6,063	216	135	44.0	5,940
S. C.	284	139	39.0	5,421	224	114	40.0	4,560
Ga.	295	123	46.0	5,658	251	99	41.0	4,059
Fla.	33	10	36.0	360	28	11	38.0	418
Ky.	88	30	41.0	1,230	83	24	37.0	888
Tenn.	160	56	42.5	2,380	157	52	39.0	2,028
Ala.	201	42	40.5	1,701	179	40	35.0	1,400
Miss.	201	80	48.0	3,840	141	65	42.0	2,730
Ark.	117	76	57.0	4,332	108	69	50.0	3,450
La.	70	40	40.5	1,620	88	38	27.0	1,026
Okla.	432	230	28.5	6,555	390	220	34.0	7,480
Texas	1,899	752	29.0	21,808	1,994	797	25.0	19,925
Mont.	365	231	37.0	8,547	365	226	42.5	9,605
Idaho	102	88	55.5	4,884	113	101	52.0	5,252
Wyo.	106	85	35.0	2,975	136	106	42.0	4,452
Colo.	156	78	39.5	3,081	186	96	38.5	3,696
N. Mex.	30	5	43.0	215	32	6	37.0	222
Ariz.	21	4	55.0	220	22	4	45.0	180
Utah	28	20	49.0	980	32	23	56.0	1,288
Nev.	11	4	44.0	176	12	4	45.0	180
Wash.	102	61	50.0	3,050	103	65	54.0	3,510
Oreg.	191	131	45.5	5,960	195	135	47.0	6,345
Calif.	381	99	50.0	4,950	373	109	52.0	5,668
U. S.	25,634	19,759	43.1	852,257	24,046	18,522	50.2	929,554

Continued

Table 9. Oats: Acres, yield, and production, 1964-69 Continued

State 1/	1966				1967			
	Acres		Yield per acre	Production	Acres		Yield per acre	Production
	Planted	Harvested			Planted	Harvested		
	1,000 acres	Bushels	1,000 bushels	1,000 acres	Bushels	1,000 bushels		
Maine	40	32	59.0	1,888	37	30	48.0	1,440
Vt.	34	9	44.0	396	30	8	37.0	296
N. Y.	527	471	50.0	23,550	501	429	52.0	22,308
N. J.	16	11	44.0	484	15	10	43.0	430
Pa.	525	475	34.0	16,150	475	420	45.0	18,900
Ohio	707	642	52.0	33,384	551	494	51.0	25,194
Ind.	478	360	51.0	18,360	349	274	48.0	13,152
Ill.	1,203	907	60.0	54,420	945	751	58.0	43,848
Mich.	612	563	44.0	24,772	483	462	53.0	24,486
Wis.	2,020	1,910	53.0	101,230	1,838	1,757	61.0	107,177
Minn.	3,206	2,974	46.5	138,291	3,046	2,885	54.5	157,232
Iowa	2,817	1,979	54.0	106,866	2,535	1,860	54.5	101,370
Mo.	410	246	40.0	9,840	369	219	39.0	8,541
N. Dak.	2,146	1,956	41.0	80,196	2,017	1,800	37.0	66,600
S. Dak.	2,642	2,288	33.0	75,504	2,457	2,311	46.5	107,462
Nebr.	662	543	40.0	21,720	569	483	43.5	21,010
Kans.	280	215	28.0	6,020	218	161	36.0	5,796
Del.	5	3	49.0	147	4	3	44.0	132
Md.	32	27	42.0	1,134	32	25	48.0	1,200
Va.	108	53	51.0	2,703	108	53	51.0	2,703
W. Va.	29	15	35.0	525	32	15	41.0	615
N. C.	231	146	48.0	7,008	273	142	46.0	6,532
S. C.	208	103	39.0	4,017	186	93	36.0	3,348
Ga.	206	95	41.0	3,895	208	96	35.0	3,360
Fla.	27	11	40.0	440	26	11	37.0	407
Ky.	59	22	45.0	990	75	19	40.0	760
Tenn.	150	50	46.0	2,300	141	45	45.0	2,025
Ala.	137	36	39.0	1,404	143	33	36.0	1,188
Miss.	150	60	57.0	3,420	140	60	55.0	3,300
Ark.	130	91	69.0	6,279	99	73	61.0	4,453
La.	58	30	41.0	1,230	47	25	46.0	1,150
Okla.	360	200	34.0	6,800	270	135	31.5	4,252
Texas	1,635	630	28.0	17,640	1,357	315	21.0	6,615
Mont.	369	194	38.5	7,469	244	140	37.0	5,180
Idaho	80	65	46.5	3,022	73	62	48.0	2,976
Wyo.	122	67	36.0	2,412	109	85	46.0	3,910
Colo.	156	74	37.5	2,775	114	60	43.5	2,610
N. Mex.	29	5	42.0	210				
Ariz.	20	3	40.0	120				
Utah	30	19	52.0	988	28	19	63.0	1,197
Nev.	10	2	45.0	90	10	1	50.0	50
Wash.	102	65	55.0	3,575	61	37	45.0	1,665
Oreg.	174	115	45.0	5,175	155	94	40.0	3,760
Calif.	401	115	39.0	4,485	349	110	47.0	5,170
U. S.	23,343	17,877	44.9	803,324	20,719	16,110	49.3	793,800

1/ Estimates discontinued for New Mexico and Arizona after 1966.

Continued

Table 9. Oats: Acres, yield, and production, 1964-69 Continued

State	1968				1969			
	Acres		Yield per acre	Production	Acres		Yield per acre	Production
	Planted	Harvested			Planted	Harvested		
	1,000 acres	Bushels	1,000 bushels	1,000 acres	Bushels	1,000 bushels		
Maine	35	28	58.0	1,624	37	30	53.0	1,590
Vt.	24	6	42.0	252	18	5	41.0	205
N. Y.	461	420	60.0	25,200	400	353	59.0	20,827
N. J.	14	9	50.0	450	14	8	45.0	360
Pa.	475	450	56.0	25,200	414	376	51.0	19,176
Ohio	771	692	68.0	47,056	701	585	62.0	36,270
Ind.	475	359	64.0	22,976	418	320	59.5	19,040
Ill.	1,115	756	66.0	49,896	1,126	703	61.0	42,883
Mich.	590	560	60.0	33,600	480	465	58.0	26,970
Wis.	1,838	1,739	61.0	106,079	1,764	1,687	62.0	104,594
Minn.	3,655	3,289	60.0	197,340	3,496	3,318	57.5	190,785
Iowa	3,017	1,804	59.0	106,436	2,866	1,840	51.0	93,840
Mo.	351	243	45.0	10,935	207	136	39.0	5,304
N. Dak.	2,380	2,232	49.0	109,368	2,912	2,719	56.5	153,624
S. Dak.	2,580	2,357	45.0	106,065	2,657	2,357	46.5	109,601
Nebr.	632	464	27.5	12,760	695	561	43.5	24,404
Kans.	222	180	38.0	6,840	159	126	39.0	4,914
Del.	3	2	40.0	80	4	3	53.0	159
Md.	33	29	54.0	1,566	31	26	55.0	1,430
Va.	103	52	49.0	2,548	92	43	50.0	2,150
W. Va.	30	17	46.0	782	25	13	44.0	572
N. C.	265	131	49.0	6,419	231	120	55.0	6,600
S. C.	152	77	39.5	3,042	134	68	47.0	3,196
Ga.	190	80	42.0	3,360	157	66	53.0	3,498
Fla.	26	11	45.0	495	28	13	55.0	715
Ky.	58	22	42.0	924	60	21	49.0	1,029
Tenn.	148	43	45.0	1,935	148	43	48.5	2,086
Ala.	127	31	36.0	1,116	121	32	44.0	1,408
Miss.	136	45	55.0	2,475	129	40	48.0	1,920
Ark.	99	74	62.0	4,588	132	77	72.0	5,544
La.	50	20	44.0	880	33	17	45.5	774
Okla.	325	180	34.0	6,120	365	205	43.0	8,815
Texas	1,628	583	34.0	19,822	1,937	670	38.0	25,460
Mont.	332	206	40.0	8,240	562	356	49.5	17,622
Idaho	85	74	52.0	3,848	114	94	56.0	5,264
Wyo.	99	68	48.0	3,264	111	78	40.0	3,120
Colo.	135	71	38.0	2,698	171	93	42.0	3,906
N. Mex.								
Ariz.								
Utah	30	19	52.5	998	26	18	56.0	1,008
Nev.	10	2	40.0	80	10	4	41.0	164
Wash.	80	50	46.0	2,300	111	72	58.0	4,176
Oreg.	163	103	44.0	4,532	180	120	56.0	6,720
Calif.	400	130	50.0	6,500	280	90	46.0	4,140
U. S.	23,342	17,708	53.7	950,689	23,561	17,971	53.7	965,863

1/ Estimates discontinued for New Mexico and Arizona after 1966.

Table 10. Barley: Acres, yield, and production, 1964-69

State	1964				1965			
	Acres		Yield per acre	Production	Acres		Yield per acre	Production
	Planted	Harvested			Planted	Harvested		
	1,000 acres	Bushels	1,000 bushels	1,000 acres	Bushels	1,000 bushels		
N. Y.	14	13	44.0	572	15	13	44.0	572
N. J.	39	20	49.5	990	36	19	49.0	931
Pa.	140	136	48.0	6,528	148	144	51.0	7,344
Ohio	27	17	39.0	663	20	16	43.0	688
Ind.	20	16	36.0	576	18	15	38.0	570
Ill.	30	28	37.0	1,036	24	20	45.0	900
Mich.	29	28	45.0	1,260	25	23	39.0	897
Wis.	30	29	46.0	1,334	26	25	52.0	1,300
Minn.	596	578	34.0	19,652	601	590	44.0	25,960
Iowa	6	6	42.0	252	5	5	46.0	230
Mo.	63	53	34.0	1,802	50	29	32.0	928
N. Dak.	2,645	2,573	33.0	84,909	2,513	2,444	40.0	97,760
S. Dak.	239	224	25.0	5,600	222	213	38.0	8,094
Nebr.	95	78	21.0	1,638	51	37	30.0	1,110
Kans.	581	406	25.0	10,150	232	138	26.5	3,657
Del.	24	17	44.0	748	32	20	43.0	860
Md.	101	90	45.5	4,095	102	91	44.0	4,004
Va.	121	108	44.0	4,752	121	108	43.0	4,644
W. Va.	9	8	40.0	320	9	8	43.0	344
N. C.	78	72	40.0	2,880	69	63	38.0	2,394
S. C.	30	26	37.0	962	26	22	38.0	836
Ga.	29	23	40.0	920	26	22	30.0	660
Ky.	65	41	38.0	1,558	66	45	36.0	1,620
Tenn.	35	24	34.0	816	36	24	28.0	672
Ark.	8	6	29.5	177	6	3	35.0	105
Okla.	574	462	26.5	12,243	340	290	31.0	8,990
Tex.	360	200	22.0	4,400	248	142	19.0	2,698
Mont.	1,626	1,529	32.5	49,692	1,366	1,300	38.5	50,050
Idaho	490	480	43.0	20,640	514	499	49.0	24,451
Wyo.	122	107	37.0	3,959	137	125	43.0	5,375
Colo.	518	293	32.5	9,522	332	261	41.5	10,832
N. Mex.	20	15	48.0	720	24	16	48.0	768
Ariz.	174	144	69.0	9,936	179	153	69.0	10,557
Utah	128	123	48.0	5,904	147	142	57.0	8,094
Nev.	15	12	52.0	624	19	18	48.0	864
Wash.	562	511	43.0	21,973	337	312	47.5	14,820
Oreg.	462	393	40.5	15,916	439	369	46.0	16,974
Calif.	1,547	1,388	55.0	76,340	1,562	1,402	51.0	71,502
U. S.	11,652	10,277	37.6	386,059	10,123	9,166	42.9	393,055

Continued

Table 10. Barley: Acres, yield, and production, 1964-69 Continued

State	1966				1967			
	Acres		Yield per acre	Production	Acres		Yield per acre	Production
	Planted	Harvested			Planted	Harvested		
	1,000 acres	Bushels	1,000 bushels	1,000 acres	Bushels	1,000 bushels		
N. Y.	14	13	49.0	637	15	14	43.0	602
N. J.	39	21	59.0	1,239	38	18	56.0	1,008
Pa.	160	156	58.0	9,048	173	165	60.0	9,900
Ohio	20	15	43.0	645	15	11	46.0	506
Ind.	15	13	37.0	481	14	11	49.0	539
Ill.	23	19	45.0	855	19	19	46.0	874
Mich.	22	21	42.0	882	21	20	42.0	840
Wis.	28	27	51.0	1,377	43	42	50.0	2,100
Minn.	667	655	32.0	20,960	760	753	47.0	35,391
Iowa	4	4	45.0	180	5	5	44.0	220
Mo.	32	26	34.0	884	31	26	37.0	962
N. Dak.	2,990	2,884	31.0	89,404	2,790	2,690	32.0	86,080
S. Dak.	317	285	26.0	7,410	327	319	41.0	13,079
Nebr.	36	32	30.0	960	29	25	35.0	875
Kans.	220	182	25.0	4,550	119	80	27.0	2,160
Del.	26	17	44.0	748	28	21	51.0	1,071
Md.	103	89	44.0	3,916	110	92	53.0	4,876
Va.	123	110	51.0	5,610	127	112	51.0	5,712
W. Va.	11	10	45.0	450	12	11	47.0	517
N. C.	74	65	46.0	2,990	79	66	42.0	2,772
S. C.	26	22	39.5	869	26	22	30.0	660
Ga.	14	11	41.0	451	11	9	31.0	279
Ky.	58	45	41.0	1,845	47	36	42.0	1,512
Tenn.	27	20	32.0	640	23	15	31.0	465
Ark.	5	4	41.0	164	5	4	36.0	144
Okla.	460	400	29.0	11,600	255	190	25.0	4,750
Texas	211	125	22.0	2,750	175	75	18.0	1,350
Mont.	1,735	1,651	38.5	63,564	1,319	1,255	29.5	37,022
Idaho	571	545	43.0	23,435	542	529	49.0	25,921
Wyo.	123	98	35.0	3,430	111	96	47.0	4,512
Colo.	349	279	38.5	10,742	279	227	50.0	11,350
N. Mex.	26	14	54.0	756	30	16	51.0	816
Ariz.	131	110	67.0	7,370	187	160	75.0	12,000
Utah	154	146	50.0	7,300	142	137	61.0	8,357
Nev.	20	18	46.0	828	19	17	58.0	986
Wash.	413	390	49.0	19,110	235	226	42.0	9,492
Oreg.	452	410	41.0	16,810	298	266	32.5	8,645
Calif.	1,485	1,318	51.0	67,218	1,618	1,450	52.0	75,400
U. S.	11,184	10,250	38.3	392,108	10,077	9,230	40.5	373,745

Continued

Table 10. Barley: Acres, yield, and production, 1964-69 Continued

State	1968				1969			
	Acres		Yield per acre	Production	Acres		Yield per acre	Production
	Planted	Harvested			Planted	Harvested		
	1,000 acres	Bushels	1,000 bushels	1,000 acres	Bushels	1,000 bushels		
N. Y.	21	20	44.0	880	17	16	43.0	688
N. J.	42	22	49.0	1,078	42	19	55.0	1,045
Pa.	175	170	53.0	9,010	182	174	53.0	9,222
Ohio	19	16	48.0	768	20	16	47.0	752
Ind.	11	10	48.0	480	11	10	45.0	450
Ill.	22	20	46.0	920	13	12	43.0	516
Mich.	29	27	49.0	1,323	26	24	50.0	1,200
Wis.	55	54	53.0	2,862	27	26	52.0	1,352
Minn.	1,011	979	47.5	46,503	698	685	46.5	31,853
Iowa	6	6	49.0	294	5	5	43.0	215
Mo.	28	25	40.0	1,000	26	22	36.0	792
N. Dak.	2,721	2,650	40.5	107,325	2,229	2,172	42.0	91,224
S. Dak.	507	491	39.0	19,149	370	344	35.0	12,040
Nebr.	41	35	33.0	1,155	52	40	34.0	1,360
Kans.	125	100	37.0	3,700	200	170	37.0	6,290
Del.	28	22	42.0	924	30	21	52.0	1,092
Md.	110	94	45.0	4,230	112	95	55.0	5,225
Va.	133	115	46.0	5,290	128	112	51.5	5,768
W. Va.	12	10	40.0	400	10	9	48.0	432
N. C.	74	65	49.0	3,185	63	55	52.0	2,860
S. C.	22	19	36.5	694	18	15	48.0	720
Ga.	7	6	38.0	228	6	5	50.0	250
Ky.	47	37	41.0	1,517	50	39	50.0	1,950
Tenn.	22	17	31.0	527	25	17	44.0	748
Ark.	4	2	34.0	68	2	1	40.0	40
Okla.	345	310	39.0	12,090	580	525	36.0	18,900
Tex.	192	135	27.0	3,645	146	114	35.0	3,990
Mont.	1,200	1,155	37.0	42,735	1,680	1,617	42.0	67,914
Idaho	569	540	50.0	27,000	664	653	54.0	35,262
Wyo.	118	108	47.0	5,076	132	116	49.5	5,742
Colo.	280	240	46.0	11,040	326	277	44.5	12,327
N. Mex.	27	16	55.0	880	26	14	52.0	728
Ariz.	200	176	73.0	12,848	166	144	71.0	10,224
Utah	149	141	55.0	7,755	149	140	55.5	7,770
Nev.	18	15	60.0	900	21	20	58.0	1,160
Wash.	273	255	42.0	10,710	379	357	47.0	16,779
Oreg.	336	279	37.5	10,462	444	399	44.0	17,556
Calif.	1,507	1,350	50.0	67,500	1,216	1,077	47.0	50,619
U. S.	10,486	9,732	43.8	426,151	10,291	9,557	44.7	427,055

Table 11. Sorghums: Acres, yield, and production, 1964-69

State	1964										
	All sorghums			Grain			Silage			Forage	
	Acres	Acres	Yield	Pro-	Acres	Yield	Pro-	Acres	Yield	Pro-	
	Planted	Har-	har-	duction	har-	per	duction	har-	per	duction	
	: vested	: vested	: acre	: 1,000	: vested	: acre	: 1,000	: vested	: acre	: 1,000	
	1,000 acres	Bu.	bushels	acres	Tons	tons	acres	Tons	tons	tons	
Ind.	16	8	63.0	504	8	13.0	104				
Ill.	23	7	56.0	392	7	12.5	88	8	3.00	24	
Iowa	58	31	70.0	2,170	19	15.0	285	6	3.50	21	
Mo.	307	196	48.0	9,408	49	10.5	514	54	3.00	162	
N. Dak.	24	22			9	4.8	43	13	1.45	19	
S. Dak.	431	226	34.0	7,684	89	6.5	578	99	1.60	158	
Nebr.	2,341	1,975	46.0	90,850	142	10.0	1,420	140	2.00	280	
Kans.	4,306	3,031	32.5	98,508	477	8.7	4,150	628	1.80	1,130	
Va.	23	4	47.0	188	9	9.5	86	6	2.00	12	
N. C.	76	51	44.0	2,244	13	11.0	143	10	2.00	20	
S. C.	32	5	30.0	150	15	8.5	128	11	1.60	18	
Ga.	47	13	31.0	403	16	10.5	168	16	1.65	26	
Ky.	21	7	41.0	287	4	12.0	48	9	2.60	23	
Tenn.	32	11	45.0	495	8	10.5	84	10	2.10	21	
Ala.	44	7	27.0	189	20	10.0	200	14	1.70	24	
Miss.	62	7	38.0	266	34	12.0	408	19	2.20	42	
Ark.	71	17	32.0	544	19	9.5	180	32	2.40	77	
La.	21	2	27.5	55	8	11.0	88	11	1.50	16	
Okla.	1,061	562	25.0	14,050	55	8.0	440	368	1.20	442	
Texas	6,250	4,688	46.0	215,648	121	9.0	1,089	999	1.30	1,299	
Wyo.	5	4						4	.90	4	
Colo.	781	307	25.0	7,675	35	9.0	315	288	.70	202	
N. Mex.	285	184	50.0	9,200	14	12.0	168	48	1.40	67	
Ariz.	147	123	75.5	9,286	18	18.0	324	4	3.00	12	
Calif.	306	280	70.0	19,600	11	18.0	198	12	4.00	48	
U. S.	16,770	11,742	41.7	489,796	1,200	9.4	11,249	2,809	1.48	4,147	
	1965										
Ind.	18	8	70.0	560	10	13.5	135				
Ill.	25	8	59.0	472	4	12.5	50	12	3.00	36	
Iowa	71	44	71.0	3,124	19	13.5	256	7	3.50	24	
Mo.	338	223	60.0	13,380	41	13.0	533	65	3.00	195	
N. Dak.	24	22			5	4.8	24	17	1.70	29	
S. Dak.	638	402	29.0	11,658	96	6.7	643	123	1.50	184	
Nebr.	2,692	2,271	53.5	121,498	140	10.5	1,470	185	2.60	481	
Kans.	4,048	3,031	46.0	139,426	501	10.5	5,260	439	2.80	1,229	
Va.	17	7	42.0	294	5	10.0	50	2	2.00	4	
N. C.	67	41	45.0	1,845	13	13.0	169	11	1.60	18	
S. C.	28	5	30.0	150	13	8.5	110	9	1.60	14	
Ga.	46	15	34.0	510	12	10.0	120	17	1.75	30	
Ky.	21	7	40.0	280	4	11.5	46	9	2.00	18	
Tenn.	24	8	41.0	328	6	10.0	60	8	2.20	18	
Ala.	41	10	27.0	270	16	10.0	160	12	1.70	20	
Miss.	58	9	33.0	297	35	12.0	420	12	2.80	34	
Ark.	82	41	38.0	1,558	19	9.5	180	20	2.70	54	
La.	17	3	33.0	99	6	10.0	60	8	2.00	16	
Okla.	987	590	37.0	21,830	53	9.5	504	312	1.60	499	
Texas	6,125	5,251	56.0	294,056	112	9.0	1,008	619	1.40	867	
Wyo.	5	4						4	1.70	7	
Colo.	883	350	35.5	12,425	47	10.0	470	422	1.20	506	
N. Mex.	294	223	56.0	12,488	12	10.5	126	48	2.30	110	
Ariz.	187	166	75.0	12,450	14	19.0	266	4	3.50	14	
Calif.	343	316	75.0	23,700	12	17.0	204	11	4.00	44	
U. S.	17,079	13,029	51.6	672,698	1,195	10.3	12,324	2,376	1.87	4,451	

Continued

Table 11. Sorghums: Acres, yield, and production, 1964-69 Continued

State /	1966										
	All sorghums		Grain			Silage			Forage		
	Acres	Acres	Yield	Pro-	Acres	Yield	Pro-	Acres	Yield	Pro-	
	Planted	Har-vested	har-vested	per acre	duction	har-vested	per acre	duction	har-vested	per acre	duction
	1,000 acres		Bu.	1,000 bushels	1,000 acres	Tons	1,000 tons	1,000 acres	Tons	1,000 tons	
Ind.	20	20	10	55.0	550	10	11.0	110			
Ill.	21	20	6	52.0	312	5	11.5	58	9	3.50	32
Iowa	51	50	32	75.0	2,400	13	15.0	195	5	3.50	18
Mo.	321	313	210	56.0	11,760	29	11.0	319	74	3.00	222
N. Dak.	16	15				4	5.5	22	11	1.85	20
S. Dak.	523	509	302	40.0	12,080	100	7.6	760	107	2.20	235
Nebr.	2,423	2,362	2,089	68.0	142,052	136	14.0	1,904	137	3.00	411
Kans.	3,805	3,733	2,849	49.0	139,601	441	11.0	4,851	443	2.70	1,196
Va.	17	15	6	45.0	270	6	9.5	57	3	1.75	5
N. C.	64	62	40	36.0	1,440	9	10.5	94	13	1.70	22
S. C.	30	29	5	29.0	145	15	8.5	128	9	1.60	14
Ga.	45	44	12	38.0	456	12	11.5	138	20	1.80	36
Ky.	17	16	7	48.0	336	2	12.0	24	7	2.10	15
Tenn.	25	23	8	39.0	312	9	10.0	90	6	2.00	12
Ala.	41	38	7	30.0	210	18	10.0	180	13	1.75	23
Miss.	67	65	12	43.0	516	43	11.5	494	10	1.90	19
Ark.	97	94	52	42.0	2,184	19	11.0	209	23	2.50	58
La.	30	30	15	34.0	510	3	10.0	30	12	2.00	24
Okla.	938	898	507	40.0	20,280	50	9.5	475	341	1.60	546
Texas	6,370	6,221	5,566	56.0	311,696	96	8.5	816	559	1.60	894
Wyo.	4	4									
Colo.	503	475	248	38.0	9,424	35	11.0	385	192	1.50	288
N. Mex.	326	317	253	63.0	15,939	12	11.0	132	52	2.40	125
Ariz.	208	206	195	77.0	15,015	8	19.5	156	3	3.50	10
Calif.	410	407	382	72.0	27,504	14	16.0	224	11	4.00	44
U. S.	16,372	15,966	12,813	55.8	714,992	1,089	10.9	11,851	2,064	2.07	4,273
1967											
Ind.	18	18	10	65.0	650	8	11.0	88			
Ill.	21	20	12	55.0	660	4	12.0	48	4	3.00	12
Iowa	53	52	36	65.0	2,340	12	11.0	132	4	3.00	12
Mo.	350	326	248	58.0	14,384	29	9.0	261	49	3.00	147
N. Dak.	12	11				2	3.5	7	9	1.15	10
S. Dak.	549	524	317	24.0	7,608	83	5.0	415	124	1.70	211
Nebr.	2,544	2,456	2,193	56.5	123,904	133	10.0	1,330	130	2.50	325
Kans.	4,338	4,218	3,248	46.0	149,408	432	10.0	4,320	538	2.30	1,237
Va.	25	22	8	50.0	400	10	11.5	115	4	2.00	8
N. C.	72	71	46	50.0	2,300	16	12.0	192	9	1.80	16
S. C.	29	28	7	40.0	280	15	10.0	150	6	1.50	9
Ga.	47	45	18	37.0	666	13	12.5	163	13	1.80	25
Ky.	20	19	8	57.0	456	3	13.0	39	8	2.10	17
Tenn.	30	27	14	50.0	700	4	10.5	42	9	2.25	20
Ala.	42	39	8	35.0	280	21	11.0	231	10	1.80	18
Miss.	56	55	10	40.0	400	38	13.0	494	7	3.00	21
Ark.	87	84	47	43.0	2,021	20	11.0	220	17	3.10	53
La.	40	39	25	36.0	900	5	10.0	50	9	1.80	16
Okla.	1,097	1,042	679	38.0	25,802	50	9.0	450	313	1.35	423
Texas	7,771	7,590	6,735	51.0	343,485	78	9.0	702	777	1.40	1,086
Wyo.											
Colo.	615	555	335	36.0	12,060	30	10.0	300	190	1.10	209
N. Mex.	424	411	314	61.0	19,154	11	13.0	143	86	1.90	163
Ariz.	254	251	246	81.0	19,926	4	20.5	82	1	4.00	4
Calif.	451	448	424	65.0	27,560	15	17.5	262	9	4.00	36
U. S.	18,945	18,351	14,988	50.4	755,344	1,036	9.9	10,236	2,327	1.75	4,080

1/ Estimates discontinued for Wyoming after 1966.

Continued

Table 11. Sorghums: Acres, yield, and production, 1964-69 Continued

State	1968										
	All sorghums			Grain		Silage			Forage 2/		
	Acres	Har-	har-	Yield	Pro-	Acres	Yield	Pro-	Acres	Yield	Pro-
	Planted	vested	vested	per acre	duction	har-vested	per acre	duction	har-vested	per acre	duction
	1,000 acres		Bu.	1,000 bushels		Tons	1,000 tons		Tons	1,000 tons	
Ind.	18	18	10	66.0	660	8	12.0	96			
Ill.	24	23	15	60.0	900	4	12.0	48	4	3.00	12
Iowa	55	54	36	70.0	2,520	13	12.0	156	5	3.50	18
Mo.	298	290	216	66.0	14,256	29	13.0	377	45	3.50	158
N. Dak.	15	14				5	5.0	25	9	1.50	14
S. Dak.	456	445	244	34.0	8,296	76	7.7	585	125	2.50	313
Nebr.	1,980	1,935	1,700	58.0	98,600	102	10.5	1,071	133	3.00	399
Kans.	4,468	4,345	3,475	47.0	163,325	354	10.5	3,717	516	2.30	1,187
Va.	21	19	8	48.0	384	10	11.5	115	1	1.90	2
N. C.	70	69	45	52.0	2,340	13	10.5	136	11	2.20	24
S. C.	22	21	7	33.0	231	8	10.5	84	6	1.60	10
Ga.	42	40	20	28.0	560	13	11.0	143	7	1.70	12
Ky.	17	16	8	52.0	416	4	11.0	44	4	2.20	9
Tenn.	30	28	13	57.0	741	5	10.0	50	10	2.00	20
Ala.	39	36	10	28.0	280	16	9.5	152	10	1.85	19
Miss.	68	65	26	43.0	1,118	32	12.0	384	7	3.00	21
Ark.	88	86	50	41.0	2,050	12	11.0	132	24	2.75	66
La.	47	47	34	40.0	1,360	5	12.5	62	8	2.00	16
Okla.	976	938	650	40.0	26,000	35	9.5	333	253	1.50	380
Texas	7,538	7,362	6,196	55.0	340,780	113	12.0	1,356	1,053	2.00	2,106
Wyo.											
Colo.	583	540	312	36.0	11,232	24	11.0	264	204	1.00	204
N. Mex.	363	341	269	56.0	15,064	10	11.3	113	62	1.60	99
Ariz.	223	220	216	79.0	17,064	3	18.0	54	1	3.00	3
Calif.	352	350	330	70.0	23,100	14	18.0	252	6	4.00	24
U. S.	17,793	17,302	13,890	52.6	731,277	908	10.7	9,749	2,504	2.04	5,116
1969											
Ind.	16	15	8	69.0	552	7	14.0	98			
Ill.	23	22	14	61.0	854	4	12.5	50			
Iowa	51	50	33	78.0	2,574	11	16.0	176			
Mo.	271	264	214	62.0	13,268	23	11.5	265	27		
N. Dak.	14	13				5	6.0	30			
S. Dak.	401	392	210	42.0	8,820	74	7.5	555	108		
Nebr.	1,774	1,734	1,514	73.0	110,522	90	12.5	1,125	130		
Kans.	4,066	3,997	3,266	56.0	182,896	269	12.5	3,363	462		
Va.	23	22	11	51.0	561	8	12.5	100	3		
N. C.	72	71	49	53.0	2,597	16	13.0	208	6		
S. C.	26	25	11	39.0	429	12	11.0	132	2		
Ga.	45	43	23	39.0	897	14	12.5	175	6		
Ky.	16	15	8	55.0	440	4	12.0	48	3		
Tenn.	39	37	17	51.0	867	10	12.5	125	10		
Ala.	42	39	17	34.0	578	15	11.5	173	7		
Miss.	85	82	31	39.0	1,209	45	13.0	585	6		
Ark.	111	107	80	44.0	3,520	16	11.0	176	17		
La.	60	56	45	32.0	1,440	7	11.0	77	4		
Okla.	1,090	1,057	610	44.0	26,840	44	10.5	462	403		
Texas	7,538	7,362	6,196	50.0	309,800	70	10.0	700	1,096		
Wyo.											
Colo.	556	530	280	36.0	10,080	24	10.0	240	226		
N. Mex.	363	358	285	50.0	14,250	10	12.5	125	63		
Ariz.	187	184	175	75.0	13,125	8	18.0	144	1		
Calif.	362	360	340	70.0	23,800	12	19.0	228	8		
U. S.	17,231	16,835	13,437	54.3	729,919	798	11.7	9,360	2,600		

1/ Estimates discontinued for Wyoming after 1966. 2/ Estimates of forage yield and production discontinued after 1968.

Table 12. Sugarcane for sugar and seed: Acres, yield, and production, 1964-69

State	1964			1965			
	Acres	Yield	Production	Acres	Yield	Production	
	harvested	per acre		harvested	per acre		
	Acres	Tons	1,000 tons	Acres	Tons	1,000 tons	
For sugar	Fla.	219,800	29.3	6,439	185,400	29.7	5,505
	La.	325,300	22.7	7,383	288,300	22.7	6,542
	Haw.	110,800	94.7	10,495	109,600	98.0	10,738
	U. S.	655,900	37.1	24,317	583,300	39.1	22,785
For seed	Fla.	3,100	29.3	91	5,400	29.7	160
	La.	19,700	22.7	447	23,700	22.7	538
	Haw.	4,900	40.4	198	4,600	39.1	180
	U. S.	27,700	26.6	736	33,700	26.1	878
Sugar & seed	Fla.	222,900	29.3	6,530	190,800	29.7	5,665
	La.	345,000	22.7	7,830	312,000	22.7	7,080
	Haw.	115,700	92.4	10,693	114,200	95.6	10,918
	U. S.	683,600	36.6	25,053	617,000	38.4	23,663
		1966			1967		
For sugar	Fla.	190,700	31.8	6,057	190,600	34.3	6,542
	La.	288,500	22.7	6,563	293,800	27.6	8,111
	Haw.	111,000	98.8	10,970	111,800	98.8	11,046
	U. S.	590,200	40.0	23,590	596,200	43.1	25,699
For seed	Fla.	6,500	31.8	207	5,700	34.3	196
	La.	23,700	22.7	538	20,700	27.6	571
	Haw.	4,800	37.5	180	5,000	37.0	185
	U. S.	35,000	26.4	925	31,400	30.3	952
Sugar & seed	Fla.	197,200	31.8	6,264	196,300	34.3	6,738
	La.	312,200	22.7	7,101	314,500	27.6	8,682
	Haw.	115,800	96.3	11,150	116,800	96.2	11,231
	U. S.	625,200	39.2	24,515	627,600	42.5	26,651
		1968			1969		
For sugar	Fla.	181,400	29.6	5,368	153,600	33.8	5,199
	La.	282,400	26.1	7,377	236,000	24.1	5,676
	Haw.	113,500	99.4	11,280	113,200	95.8	10,839
	U. S.	577,300	41.6	24,025	502,800	43.2	21,714
For seed	Fla.	5,700	29.6	169	6,500	33.8	220
	La.	17,400	26.1	454	21,000	24.1	506
	Haw.	5,400	32.8	177	5,300	33.0	175
	U. S.	28,500	28.1	800	32,800	27.5	901
Sugar & seed	Fla.	187,100	29.6	5,537	160,100	33.8	5,419
	La.	299,800	26.1	7,831	257,000	24.1	6,182
	Haw.	118,900	96.4	11,457	118,500	92.9	11,014
	U. S.	605,800	41.0	24,825	535,600	42.2	22,615

Table 13. Sugarcane for sirup: Acres, yield, and production 1964-69

State	1964			1965		
	Acres harvested	Yield per acre	Production	Acres harvested	Yield per acre	Production
	1,000 acres	Gallons	1,000 gallons	1,000 acres	Gallons	1,000 gallons
Georgia	1,500	310	465	1,400	320	448
Alabama	1,300	165	214	1,200	175	210
Mississippi	1,500	140	210	1,500	180	270
Louisiana	4,000	525	2,100	4,200	475	1,995
United States	8,300	360	2,989	8,300	352	2,923
	1966			1967		
Georgia	1,300	230	299	1,000	260	260
Alabama	1,200	160	192	1,000	220	220
Mississippi	1,000	160	160	1,000	155	155
Louisiana	2,800	525	1,470	2,900	590	1,711
United States	6,300	337	2,121	5,900	398	2,346
	1968			1969		
Georgia	1,000	280	280			
Alabama	900	190	171			
Mississippi	1,000	150	150			
Louisiana	4,000	515	2,060			
United States	6,900	386	2,661			

DISCONTINUED

Table 14. Sugarbeets for sugar: Acres, yield, and production, 1964-69

State 1/	1964				1965			
	Acres		Yield per acre	Production	Acres		Yield per acre	Production
	Planted	Harvested			Planted	Harvested		
	Acres		Tons	Acres		Tons		
Ohio	35,100	30,100	13.3	401,000	32,400	30,100	20.2	607,100
Michigan	90,100	84,800	16.3	1,386,000	79,600	69,200	16.4	1,136,000
Minnesota	123,400	119,500	11.1	1,325,000	124,100	121,000	10.9	1,318,000
North Dakota	52,400	51,100	11.1	568,000	67,000	66,700	10.7	715,000
South Dakota	11,000	10,500	12.0	126,000				
Nebraska	89,600	86,200	16.3	1,407,000	71,900	66,500	14.0	928,000
Kansas	25,200	23,500	15.5	364,000	20,800	19,300	17.1	330,000
Texas	26,700	25,900	20.3	525,000	28,700	28,100	22.0	618,000
Montana	71,100	69,600	14.0	973,000	62,200	60,500	12.4	748,000
Idaho	183,300	174,700	16.1	2,817,000	159,700	156,700	18.0	2,818,000
Wyoming	66,100	64,000	13.5	864,000	55,000	53,300	12.4	662,000
Colorado	190,400	177,400	15.7	2,783,000	156,500	137,100	15.1	2,076,000
Arizona								
Utah	35,100	32,800	13.0	427,000	33,100	32,100	16.3	523,000
Washington	63,900	60,900	22.7	1,380,000	56,800	55,600	24.4	1,356,000
Oregon	20,700	20,300	22.4	454,000	19,000	18,800	24.1	454,000
California	364,700	353,500	21.0	7,439,000	318,800	309,700	20.7	6,402,000
Maine								
New York					20,400	16,000	5.9	95,000
New Jersey								
Pennsylvania								
Illinois	1,260	1,180	19.3	22,800	810	780	21.2	16,500
Iowa	4,220	3,960	12.0	47,600	2,810	2,740	11.5	31,500
Missouri								
New Mexico	2,500	2,460	16.6	40,800	2,600	2,560	22.3	57,100
Nevada	3,230	2,840	13.6	38,500	2,220	1,750	15.4	27,000
United States	1,460,010	1,395,240	16.8	23,388,700	1,314,440	1,248,530	16.8	20,918,100
	1966				1967			
Ohio	32,700	31,200	18.0	561,000	26,900	25,000	18.7	467,000
Michigan	79,200	76,200	15.4	1,172,000	79,300	72,000	17.4	1,256,000
Minnesota	124,700	123,000	12.6	1,554,000	129,800	126,700	11.2	1,422,000
North Dakota	67,500	66,700	12.4	829,000	79,000	78,300	10.8	848,000
South Dakota								
Nebraska	69,200	65,200	18.5	1,205,000	69,300	62,900	13.6	853,000
Kansas	21,900	20,900	16.5	344,000	25,000	23,100	18.1	417,000
Texas	29,600	28,200	21.0	592,000	32,400	29,800	22.2	663,000
Montana	61,400	58,700	17.1	1,005,000	59,500	57,100	17.6	1,007,000
Idaho	140,300	119,500	18.9	2,259,000	157,800	146,900	19.8	2,912,000
Wyoming	52,000	47,300	16.5	779,000	53,500	51,200	16.6	849,000
Colorado	150,700	140,500	16.6	2,335,000	135,800	127,600	16.5	2,105,000
Arizona					13,200	11,600	16.2	188,000
Utah	29,900	28,300	18.7	528,000	25,900	25,300	18.1	458,000
Washington	56,100	52,700	24.3	1,283,000	49,800	47,700	22.1	1,052,000
Oregon	19,500	18,100	22.2	402,000	20,200	19,500	25.0	488,000
California	289,100	269,700	19.8	5,332,000	219,700	200,800	19.8	3,983,000
Maine	3,390	3,290	5.3	17,300	9,550	8,010	9.5	75,900
New York	6,600	5,980	10.0	59,800	5,560	3,870	14.4	55,600
New Jersey								
Pennsylvania								
Illinois	520	500	18.4	9,200	400	340	18.5	6,300
Iowa	1,720	1,700	9.6	16,400	730	730	14.5	10,600
Missouri								
New Mexico	2,620	2,590	19.9	51,600	3,870	3,650	22.1	80,600
Nevada	1,460	860	9.2	7,900				
United States	1,240,110	1,161,120	17.5	20,342,200	1,197,210	1,122,100	17.1	19,197,000

See footnote on page 35.

Continued

Table 14. Sugarbeets for sugar: Acres, yield and production 1964-69 Continued

State 1/	1968			1969				
	Acres		Yield per acre	Production	Acres		Yield per acre	Production
	Planted	Harvested			Planted	Harvested		
	Acres		Tons	Acres		Tons		
Ohio	36,500	36,000	19.0	684,000	38,900	38,100	17.2	654,000
Michigan	91,200	90,000	19.0	1,708,000	93,500	92,600	16.2	1,504,000
Minnesota	163,700	161,400	13.5	2,177,000	165,600	164,300	14.3	2,352,000
North Dakota	88,300	87,200	12.9	1,125,000	95,700	95,100	14.0	1,331,000
South Dakota								
Nebraska	75,800	71,800	17.0	1,222,000	92,800	87,300	19.2	1,673,000
Kansas	41,200	39,100	15.3	597,000	49,000	40,400	17.2	696,000
Texas	40,000	37,900	21.7	824,000	49,700	37,500	19.1	718,000
Montana	67,500	65,700	15.7	1,034,000	68,900	67,500	17.9	1,206,000
Idaho	196,300	182,300	18.0	3,288,000	207,500	185,600	18.2	3,373,000
Wyoming	64,500	62,100	16.2	1,003,000	68,800	67,400	18.6	1,254,000
Colorado	179,200	168,200	15.5	2,611,000	204,000	180,700	17.8	3,224,000
Arizona	19,600	16,900	20.0	338,000	33,600	30,800	18.1	557,000
Utah	30,300	29,300	16.9	495,000	35,200	31,800	17.5	558,000
Washington	61,200	54,900	25.2	1,383,000	66,000	64,000	26.4	1,692,000
Oregon	22,300	22,000	23.8	523,000	25,600	23,800	23.7	565,000
California	263,700	254,200	23.9	6,081,000	320,000	305,000	19.8	6,046,000
Maine	25,500	22,300	5.0	111,500	12,500	10,800	6.4	69,400
New York	3,250	3,150	16.9	53,300	8,150	7,820	13.9	108,900
New Jersey					1,150	1,040	16.8	17,500
Pennsylvania					1,300	1,290	17.7	22,800
Illinois								
Iowa	1,600	1,520	12.5	19,000	1,890	1,730	11.4	19,800
Missouri					310	300	10.0	3,000
New Mexico	4,400	4,120	21.1	86,500	7,000	5,600	16.4	91,900
Nevada								
United States	1,476,050	1,410,090	18.0	25,363,300	1,647,100	1,540,480	18.0	27,736,300

1/ Estimates discontinued for South Dakota 1965; Illinois 1968; Nevada 1967. Estimates started New York 1965; Maine 1966; Arizona 1967; New Jersey, Pennsylvania, and Missouri 1969.

Table 15. Maple sirup: Production, 1964-69

State 1/	Sirup made					
	1964	1965	1966	1967	1968	1969
	1,000 gallons					
Maine	9	8	9	9	7	8
New Hampshire	61	49	59	45	38	44
Vermont	471	375	450	310	285	290
Massachusetts	47	37	40	28	24	29
New York	512	410	480	275	300	348
Pennsylvania	124	110	100	65	72	86
Ohio	115	108	60	69	68	84
Michigan	110	75	95	60	72	78
Wisconsin	78	75	155	100	100	65
Minnesota	5	5	12	8	7	
Maryland	14	14	16	10	10	
United States	1,546	1,266	1,476	979	983	1,032

1/ Estimates discontinued for Minnesota and Maryland after 1968.

Table 16. Tobacco by class and type: Acres, yield, and production, 1964-69

Class and type	1964			1965			
	Type No.	Acres harvested	Yield per acre	Production	Acres harvested	Yield per acre	Production
		Acres	Lb.	1,000 lb.	Acres	Lb.	1,000 lb.
CLASS 1, FLUE-CURED							
Virginia	: 11	63,000	2,165	136,395	55,800	1,815	101,277
North Carolina	: 11	164,000	2,175	356,700	147,000	1,730	254,310
Total Old and Middle Belts	: 11	227,000	2,172	493,095	202,800	1,753	355,587
Eastern North Carolina Belt	: 12	202,000	2,375	479,750	182,000	1,895	344,890
North Carolina	: 13	50,000	2,260	113,000	46,000	1,975	90,850
South Carolina	: 13	72,000	2,170	156,240	65,600	2,055	134,808
Total N. C. Border and S. C. Belt	: 13	122,000	2,207	269,240	111,600	2,022	225,658
Georgia	: 14	63,500	1,930	122,555	54,700	2,050	112,135
Florida	: 14	12,600	1,780	22,428	10,700	1,860	19,902
Alabama	: 14	470	1,565	736	500	1,595	798
Total Georgia-Florida Belt	: 14	76,570	1,903	145,719	65,900	2,016	132,835
Total All Flue-cured Types	: 11-14	627,570	2,211	1,387,804	562,300	1,883	1,058,970
CLASS 2, FIRE-CURED							
Virginia Belt	: 21	7,300	1,245	9,088	7,600	1,260	9,576
Kentucky	: 22	5,700	1,760	10,032	5,400	1,580	8,532
Tennessee	: 22	12,100	1,925	23,292	11,300	1,565	17,684
Total Eastern District	: 22	17,800	1,872	33,324	16,700	1,570	26,216
Kentucky	: 23	5,800	1,810	10,498	5,400	1,600	8,640
Tennessee	: 23	1,200	1,800	2,160	1,150	1,520	1,748
Total Western District	: 23	7,000	1,808	12,658	6,550	1,586	10,388
Total All Fire-cured Types	: 21-23	32,100	1,716	55,070	30,850	1,497	46,180
CLASS 3, AIR-CURED							
3A Light Air-cured							
Ohio	: 31	9,500	1,840	17,480	8,600	2,035	17,501
Indiana	: 31	7,400	1,940	14,356	6,700	2,215	14,840
Missouri	: 31	3,000	1,950	5,850	2,600	1,815	4,719
Virginia	: 31	10,900	2,275	24,798	10,000	2,260	22,600
West Virginia	: 31	2,600	1,745	4,537	2,300	1,790	4,117
North Carolina	: 31	9,700	2,165	21,000	8,900	2,030	18,067
Kentucky	: 31	203,000	2,025	411,075	183,000	2,160	395,280
Tennessee	: 31	60,500	1,995	120,698	55,000	1,985	109,175
Total Burley Belt	: 31	306,600	2,022	619,794	277,100	2,116	586,299
Southern Maryland Belt	: 32	39,000	1,085	42,315	33,500	1,150	38,525
Total All Light Air-cured Types	: 31-32	345,600	1,916	662,109	310,600	2,012	624,824
3B Dark Air-cured							
Kentucky	: 35	6,300	1,835	11,560	5,800	1,590	9,222
Tennessee	: 35	1,800	1,930	3,474	1,700	1,570	2,669
Total One Sucker Belt	: 35	8,100	1,856	15,034	7,500	1,585	11,891
Green River Belt (Ky.)	: 36	4,300	1,775	7,632	3,800	1,745	6,631
Virginia Sun-cured Belt	: 37	1,700	1,060	1,802	1,800	1,105	1,989
Total All Dark Air-cured Types	: 35-37	14,100	1,735	24,468	13,100	1,566	20,511
CLASS 4, CIGAR FILLER							
Pennsylvania Seedleaf	: 41	27,000	1,700	45,900	27,000	1,900	51,300
Ohio Miami Valley Types	: 42-44	3,700	1,555	5,754	3,700	1,465	5,420
Total Cigar Filler Types	: 41-44	30,700	1,683	51,654	30,700	1,848	56,720
CLASS 5, CIGAR BINDER							
Conn.-Conn. Valley Broadleaf	: 51	1,900	1,975	3,752	1,900	1,830	3,477
Mass.-Conn. Valley Havana Seed 1/	: 52	900	2,118	1,906	700	2,125	1,488
Total Connecticut Valley Binder	: 51-52	2,800	2,021	5,658	2,600	1,910	4,965
Southern Wisconsin	: 54	4,600	1,890	8,694	4,700	1,805	8,484
Northern Wisconsin	: 55	6,300	1,770	11,151	6,200	1,735	10,757
Total Wisconsin Binder	: 54-55	10,900	1,821	19,845	10,900	1,765	19,241
Total Cigar Binder Types	: 51-55	13,700	1,862	25,503	13,500	1,793	24,206
CLASS 6, CIGAR WRAPPER							
Massachusetts	: 61	2,300	1,590	3,657	2,500	1,560	3,900
Connecticut	: 61	6,100	1,610	9,821	6,800	1,570	10,676
Total Connecticut Valley Shade-grown	: 61	8,400	1,605	13,478	9,300	1,567	14,576
Georgia	: 62	1,300	1,415	1,840	1,500	1,340	2,010
Florida	: 62	4,100	1,415	5,802	4,800	1,315	6,312
Total Georgia-Florida Shade-grown 2/	: 62	5,400	1,415	7,642	6,300	1,321	8,322
Total Cigar Wrapper Types	: 61-62	13,800	1,530	21,120	15,600	1,468	22,898
Total All Cigar Types	: 41-62	58,200	1,689	98,277	59,800	1,736	103,824
Louisiana Perique	: 72	240	850	204	280	925	259
United States	: All	1,077,810	2,067	2,227,932	976,930	1,898	1,854,568

See footnotes on page 38.

Table 16. Tobacco by class and type: Acres, yield, and production, 1964-69 Continued

Class and type	1966				1967		
	Type	Acres	Yield	Production	Acres	Yield	Production
	No.	harvested	per acre		harvested	per acre	
		Acres	Lb.	1,000 lb.	Acres	Lb.	1,000 lb.
CLASS 1, FLUE-CURED							
Virginia	11	56,200	1,795	100,879	54,800	1,890	103,572
North Carolina	11	156,000	1,770	276,120	150,000	1,960	294,000
Total Old and Middle Belts	11	212,200	1,777	376,999	204,800	1,941	397,572
Eastern North Carolina Belt	12	201,000	1,960	393,960	192,000	2,135	409,920
North Carolina	13	50,500	1,800	90,900	53,400	2,155	115,077
South Carolina	13	69,000	1,845	127,305	75,500	2,195	165,722
Total N. C. Border and S. C. Belt	13	119,500	1,826	218,205	128,900	2,178	280,799
Georgia	14	61,000	1,580	96,380	71,200	2,085	148,452
Florida	14	12,700	1,680	21,336	12,800	1,985	25,408
Alabama	14	600	1,635	981	560	1,800	1,008
Total Georgia-Florida Belt	14	74,300	1,598	118,697	84,560	2,068	174,868
Total All Flue-cured Types	11-14	607,000	1,825	1,107,861	610,260	2,070	1,263,159
CLASS 2, FIRE-CURED							
Virginia Belt	21	6,000	1,255	7,530	5,400	1,290	6,966
Kentucky	22	5,200	1,870	9,724	4,500	1,610	7,245
Tennessee	22	10,200	1,970	20,094	8,700	1,815	15,790
Total Eastern District	22	15,400	1,936	29,818	13,200	1,745	23,035
Kentucky	23	4,600	1,890	8,694	3,500	1,570	5,495
Tennessee	23	950	1,790	1,700	600	1,535	921
Total Western District	23	5,550	1,873	10,394	4,100	1,565	6,416
Total All Fire-cured Types	21-23	26,950	1,772	47,742	22,700	1,604	36,417
CLASS 3, AIR-CURED							
3A Light Air-cured							
Ohio	31	7,400	2,275	16,835	7,400	2,355	17,427
Indiana	31	5,900	2,520	14,868	5,800	2,385	13,833
Missouri	31	2,200	2,395	5,269	2,100	2,215	4,652
Virginia	31	8,900	2,305	20,514	8,700	2,315	20,140
West Virginia	31	1,900	1,840	3,496	1,900	1,850	3,515
North Carolina	31	7,900	2,320	18,328	7,800	2,010	15,678
Kentucky	31	158,000	2,565	405,270	157,000	2,385	374,445
Tennessee	31	48,500	2,105	102,092	47,000	1,935	90,945
Total Burley Belt	31	240,700	2,437	586,672	237,700	2,274	540,635
Southern Maryland Belt	32	35,000	1,030	36,050	31,500	1,030	32,445
Total All Light Air-cured Types	31-32	275,700	2,259	622,722	269,200	2,129	573,080
3B Dark Air-cured							
Kentucky	35	5,600	1,955	10,948	5,000	1,570	7,850
Tennessee	35	1,600	2,050	3,280	1,500	1,735	2,602
Total One Sucker Belt	35	7,200	1,976	14,228	6,500	1,608	10,452
Green River Belt (Ky.)	36	3,500	2,010	7,035	3,000	1,675	5,025
Virginia Sun-cured Belt	37	1,400	1,065	1,491	1,200	1,090	1,308
Total All Dark Air-cured Types	35-37	12,100	1,880	22,754	10,700	1,569	16,785
CLASS 4, CIGAR FILLER							
Pennsylvania Seedleaf	41	21,000	1,725	36,225	21,000	1,825	38,325
Ohio Miami Valley Types	42-44	3,200	1,885	6,032	2,300	1,580	3,634
Total Cigar Filler Types	41-44	24,200	1,746	42,257	23,300	1,801	41,959
CLASS 5, CIGAR BINDER							
Conn.-Conn. Valley Broadleaf	51	1,300	2,075	2,698	1,100	1,785	1,964
Mass.-Conn. Valley Havana Seed	52	520	2,200	1,144	380	1,915	728
Total Connecticut Valley Binder	51-52	1,820	2,111	3,842	1,480	1,819	2,692
Southern Wisconsin	54	3,900	1,895	7,390	3,800	1,905	7,239
Northern Wisconsin	55	5,400	1,655	8,937	4,500	1,975	8,888
Total Wisconsin Binder	54-55	9,300	1,756	16,327	8,300	1,943	16,127
Total Cigar Binder Types	51-55	11,120	1,814	20,169	9,780	1,924	18,819
CLASS 6, CIGAR WRAPPER							
Massachusetts	61	2,300	1,540	3,542	2,200	1,135	2,497
Connecticut	61	6,500	1,560	10,140	6,300	1,120	7,056
Total Connecticut Valley Shade-grown	61	8,800	1,555	13,682	8,500	1,124	9,553
Georgia	62	1,500	1,250	1,875	1,200	1,535	1,842
Florida	62	4,300	1,270	5,461	3,900	1,585	6,182
Total Georgia-Florida Shade-grown 2/3	62	5,800	1,265	7,336	5,100	1,573	8,024
Total Cigar Wrapper Types	61-62	14,600	1,440	21,018	13,600	1,292	17,577
Total All Cigar Types	41-62	49,920	1,672	83,444	46,680	1,679	78,355
Louisiana Perique	72	220	475	104	230	500	115
United States	All	971,890	1,939	1,884,627	959,770	2,050	1,967,911

See footnotes on page 38.

Continued

Table 16. Tobacco by class and type: Acres, yield, and production, 1964-69 Continued

Class and type	1968				1969			
	Type	Acres	Yield	Production	Acres	Yield	Production	
	No.	harvested	per acre		harvested	per acre		
		Acres	Lb.	1,000 lb.	Acres	Lb.	1,000 lb.	
CLASS 1, FLUE-CURED								
Virginia	: 11	51,800	1,610	83,398	58,000	1,785	103,530	
North Carolina	: 11	135,000	1,670	225,450	146,000	1,765	257,690	
Total Old and Middle Belts	: 11	186,800	1,653	308,848	204,000	1,771	361,220	
Eastern North Carolina Belt	: 12	171,000	1,955	334,305	185,000	1,895	350,575	
North Carolina	: 13	44,500	1,995	88,778	47,500	1,840	87,400	
South Carolina	: 13	62,600	1,955	122,383	68,500	1,995	136,658	
Total N. C. Border and S. C. Belts	: 13	107,100	1,972	211,161	116,000	1,932	224,058	
Georgia	: 14	56,200	1,885	105,937	59,500	1,615	96,093	
Florida	: 14	11,400	1,790	20,406	11,800	1,700	20,060	
Alabama	: 14	520	1,700	884	530	1,510	800	
Total Georgia-Florida Belt	: 14	68,120	1,868	127,227	71,830	1,628	116,953	
Total All Flue-cured Types	:11-14	533,020	1,841	981,541	576,830	1,825	1,052,806	
CLASS 2, FIRE-CURED								
Virginia Belt	: 21	4,900	1,205	5,904	5,000	1,340	6,700	
Kentucky	: 22	4,700	1,770	8,319	5,000	1,695	8,475	
Tennessee	: 22	9,000	1,890	17,010	9,300	1,865	17,345	
Total Eastern District	: 22	13,700	1,849	25,329	14,300	1,806	25,820	
Kentucky	: 23	3,500	1,735	6,072	3,900	1,780	6,942	
Tennessee	: 23	690	1,735	1,197	760	1,725	1,311	
Total Western District	: 23	4,190	1,735	7,269	4,660	1,771	8,253	
Total All Fire-cured Types	:21-23	22,790	1,689	38,502	23,960	1,702	40,773	
CLASS 3, AIR-CURED								
3A Light Air-cured								
Ohio	: 31	7,400	2,075	15,355	7,400	2,580	19,092	
Indiana	: 31	5,800	2,285	13,253	5,900	2,500	14,750	
Missouri	: 31	2,200	2,470	5,434	2,150	2,420	5,203	
Virginia	: 31	8,800	2,520	22,176	8,900	2,590	23,051	
West Virginia	: 31	1,950	1,695	3,305	1,950	1,835	3,578	
North Carolina	: 31	7,900	2,385	18,842	7,900	2,570	20,303	
Kentucky	: 31	156,000	2,465	384,540	156,000	2,605	406,380	
Tennessee	: 31	47,500	2,115	100,462	47,500	2,085	99,038	
Total Burley Belt	: 31	237,550	2,372	563,367	237,700	2,488	591,395	
Southern Maryland Belt	: 32	29,000	1,100	31,900	26,500	1,060	28,090	
Total All Light Air-cured Types	:31-32	266,550	2,233	595,267	264,200	2,345	619,485	
3B Dark Air-cured								
Kentucky	: 35	5,200	1,850	9,620	5,500	1,850	10,175	
Tennessee	: 35	1,550	1,950	3,022	1,600	1,940	3,104	
Total One Sucker Belt	: 35	6,750	1,873	12,642	7,100	1,870	13,279	
Green River Belt (Ky.)	: 36	3,100	1,740	5,394	3,000	1,610	4,830	
Virginia Sun-cured Belt	: 37	1,100	1,095	1,204	1,100	1,225	1,348	
Total All Dark Air-cured Types	:35-37	10,950	1,757	19,240	11,200	1,737	19,457	
CLASS 4, CIGAR FILLER								
Pennsylvania Seedleaf	: 41	21,000	1,775	37,275	20,000	1,825	36,500	
Ohio Miami Valley Types	:42-44	2,050	1,670	3,424	1,700	1,650	2,805	
Total Cigar Filler Types	:41-44	23,050	1,766	40,699	21,700	1,811	39,305	
CLASS 5, CIGAR BINDER								
Conn.-Conn. Valley Broadleaf	: 51	1,200	1,765	2,118	1,200	1,405	1,686	
Mass.-Conn. Valley Havana Seed	: 52	360	1,950	702	400	1,520	608	
Total Connecticut Valley Binder	:51-52	1,560	1,808	2,820	1,600	1,434	2,294	
Southern Wisconsin	: 54	3,700	1,990	7,363	3,700	1,740	6,438	
Northern Wisconsin	: 55	4,000	1,670	6,680	3,700	1,815	6,716	
Total Wisconsin Binder	:54-55	7,700	1,824	14,043	7,400	1,778	13,154	
Total Cigar Binder Types	:51-55	9,260	1,821	16,863	9,000	1,716	15,448	
CLASS 6, CIGAR WRAPPER								
Massachusetts	: 61	2,300	1,230	2,829	1,900	1,340	2,546	
Connecticut	: 61	6,100	1,210	7,381	4,400	1,265	5,566	
Total Connecticut Valley Shade-grown	: 61	8,400	1,215	10,210	6,300	1,288	8,112	
Georgia	: 62	1,150	1,560	1,794	1,100	1,635	1,799	
Florida	: 62	3,900	1,555	6,064	3,850	1,550	5,968	
Total Georgia-Florida Shade-grown ^{2/}	: 62	5,050	1,556	7,858	4,950	1,569	7,767	
Total Cigar Wrapper Types	:61-62	13,450	1,343	18,068	11,250	1,411	15,879	
Total All Cigar Types	:41-62	45,760	1,653	75,630	41,950	1,684	70,632	
Louisiana Perique	: 72	210	800	168	180	660	119	
United States	: All	879,280	1,945	1,710,348	918,320	1,964	1,803,272	

1/ Massachusetts and Connecticut combined for 1964 only.

2/ Includes fire-cured wrapper.

Table 17. All Tobacco: Acres, yield, and production, 1964-69

State	1964			1965		
	Acres harvested	Yield per acre	Production	Acres harvested	Yield per acre	Production
			1,000 pounds			1,000 pounds
	Acres	Pounds		Acres	Pounds	
Massachusetts	3,100	1,727	5,353	3,200	1,684	5,388
Connecticut	8,100	1,702	13,783	8,700	1,627	14,153
Pennsylvania	27,000	1,700	45,900	27,000	1,900	51,300
Ohio	13,200	1,760	23,234	12,300	1,863	22,921
Indiana	7,400	1,940	14,356	6,700	2,215	14,840
Wisconsin	10,900	1,821	19,845	10,900	1,765	19,241
Missouri	3,000	1,950	5,850	2,600	1,815	4,719
Maryland	39,000	1,085	42,315	33,500	1,150	38,525
Virginia	82,900	2,076	172,083	75,200	1,801	135,442
West Virginia	2,600	1,745	4,537	2,300	1,790	4,117
North Carolina	425,700	2,280	970,450	383,900	1,845	708,117
South Carolina	72,000	2,170	156,240	65,600	2,055	134,808
Georgia	64,800	1,920	124,395	56,200	2,031	114,145
Florida	16,700	1,690	28,230	15,500	1,691	26,214
Kentucky	225,100	2,003	450,797	203,400	2,106	428,305
Tennessee	75,600	1,979	149,624	69,150	1,898	131,276
Alabama	470	1,565	736	500	1,595	798
Louisiana	240	850	204	280	925	259
United States	1,077,810	2,067	2,227,932	976,930	1,898	1,854,568
		1966			1967	
Massachusetts	2,820	1,662	4,686	2,580	1,250	3,225
Connecticut	7,800	1,646	12,838	7,400	1,219	9,020
Pennsylvania	21,000	1,725	36,225	21,000	1,825	38,325
Ohio	10,600	2,157	22,867	9,700	2,171	21,061
Indiana	5,900	2,520	14,868	5,800	2,385	13,833
Wisconsin	9,300	1,756	16,327	8,300	1,943	16,127
Missouri	2,200	2,395	5,269	2,100	2,215	4,652
Maryland	35,000	1,030	36,050	31,500	1,030	32,445
Virginia	72,500	1,799	130,414	70,100	1,883	131,986
West Virginia	1,900	1,840	3,496	1,900	1,850	3,515
North Carolina	415,400	1,876	779,308	403,200	2,070	834,675
South Carolina	69,000	1,845	127,305	75,500	2,195	165,722
Georgia	62,500	1,572	98,255	72,400	2,076	150,294
Florida	17,000	1,576	26,797	16,700	1,892	31,590
Kentucky	176,900	2,497	441,671	173,000	2,312	400,060
Tennessee	61,250	2,076	127,166	57,800	1,908	110,258
Alabama	600	1,635	981	560	1,800	1,008
Louisiana	220	475	104	230	500	115
United States	971,890	1,939	1,884,627	959,770	2,050	1,967,911

Continued

Table 17. All Tobacco: Acres, yield, and production, 1964-69 Continued

State	1968			1969		
	Acres harvested	Yield per acre	Production	Acres harvested	Yield per acre	Production
	Acres	Pounds	1,000 pounds	Acres	Pounds	1,000 pounds
Massachusetts	2,660	1,327	3,531	2,300	1,371	3,154
Connecticut	7,300	1,301	9,499	5,600	1,295	7,252
Pennsylvania	21,000	1,775	37,275	20,000	1,825	36,500
Ohio	9,450	1,987	18,779	9,100	2,406	21,897
Indiana	5,800	2,285	13,253	5,900	2,500	14,750
Wisconsin	7,700	1,824	14,043	7,400	1,778	13,154
Missouri	2,200	2,470	5,434	2,150	2,420	5,203
Maryland	29,000	1,100	31,900	26,500	1,060	28,090
Virginia	66,600	1,692	112,682	73,000	1,844	134,629
West Virginia	1,950	1,695	3,305	1,950	1,835	3,578
North Carolina	358,400	1,862	667,375	386,400	1,853	715,968
South Carolina	62,600	1,955	122,383	68,500	1,995	136,658
Georgia	57,350	1,878	107,731	60,600	1,615	97,892
Florida	15,300	1,730	26,470	15,650	1,663	26,028
Kentucky	172,500	2,400	413,945	173,400	2,519	436,802
Tennessee	58,740	2,072	121,691	59,160	2,042	120,798
Alabama	520	1,700	884	530	1,510	800
Louisiana	210	800	168	180	660	119
United States	879,280	1,945	1,710,348	918,320	1,964	1,803,272

Table 18. Flaxseed: Acres, yield, and production, 1964-69

State 1/	1964				1965			
	Acres		Yield per acre	Production	Acres		Yield per acre	Production
	Planted	Harvested			Planted	Harvested		
	1,000 acres	Bushels	1,000 bushels	1,000 acres	Bushels	1,000 bushels		
Wis.	3	3	16.0	48	3	3	15.0	45
Minn.	494	462	10.0	4,620	464	444	14.0	6,216
Iowa	4	4	18.0	72	10	10	20.0	200
N. Dak.	1,760	1,680	8.0	13,440	1,690	1,630	12.0	19,560
S. Dak.	560	542	8.5	4,607	577	569	14.0	7,966
Texas	115	107	11.5	1,230	98	94	10.0	940
Mont.	23	21	8.0	168	21	20	12.5	250
Calif.	6	6	36.0	216	5	5	45.0	225
U. S.	2,965	2,825	8.6	24,401	2,868	2,775	12.8	35,402
	1966				1967			
Wis.								
Minn.	422	404	9.5	3,838	300	291	13.0	3,783
Iowa	3	3	19.0	57	2	2	20.0	40
N. Dak.	1,521	1,467	9.0	13,203	1,202	1,144	8.2	9,381
S. Dak.	606	597	9.0	5,373	515	507	13.0	6,591
Texas	110	89	8.0	712	35	25	6.0	150
Mont.	15	14	10.5	147	6	5	8.0	40
Calif.	2	2	30.0	60	1	1	51.0	51
U. S.	2,679	2,576	9.1	23,390	2,061	1,975	10.1	20,036
	1968				1969			
Wis.								
Minn.	372	329	14.0	4,606	405	388	15.0	5,820
Iowa	2	2	19.0	38	1	1	19.0	19
N. Dak.	1,190	1,155	12.0	13,860	1,507	1,475	12.5	18,438
S. Dak.	545	542	14.0	7,588	629	625	14.5	9,063
Texas	58	55	13.5	742	102	100	13.0	1,300
Mont.	8	7	11.0	77	14	13	13.0	169
Calif.	2	2	36.0	72	3	3	40.0	120
U. S.	2,177	2,092	12.9	26,983	2,661	2,605	13.4	34,929

1/ Estimates discontinued for Wisconsin after 1965.

Table 19. Peanuts for nuts: Acres, yield, and production, 1964-69

State	1964				1965			
	Acres		Yield per acre	Production	Acres		Yield per acre	Production
	Planted	Harvested			Planted	Harvested		
	Acres		Pounds	1,000 pounds	Acres		Pounds	1,000 pounds
Va.	106,000	101,000	1,940	195,940	105,000	103,000	2,610	268,830
N. C.	175,000	170,000	1,935	328,950	174,000	169,000	2,310	390,390
Va.-Car. Area	281,000	271,000	1,937	524,890	279,000	272,000	2,424	659,220
S. C.	11,500	10,500	1,360	14,280	13,700	13,500	1,700	22,950
Ga.	503,000	480,000	1,670	801,600	508,000	485,000	1,810	877,850
Fla.	86,000	50,000	1,500	75,000	83,000	50,000	1,660	83,000
Ala.	200,000	192,000	1,270	243,840	202,000	194,000	1,330	258,020
Miss.	3,000	3,000	700	2,100	3,500	3,500	600	2,100
Southeast	803,500	735,500	1,546	1,136,820	810,200	746,000	1,667	1,243,920
Okla.	123,000	120,000	1,440	172,800	127,000	125,000	1,560	195,000
Texas	272,000	263,000	950	249,850	295,000	287,000	960	275,520
N. Mex.	7,800	7,700	1,920	14,784	8,300	8,300	1,920	15,936
Southwest	402,800	390,700	1,120	437,434	430,300	420,300	1,157	486,456
U. S.	1,487,300	1,397,200	1,502	2,099,144	1,519,500	1,438,300	1,661	2,389,596
	1966				1967			
Va.	104,000	103,000	2,490	256,470	103,000	102,000	2,505	255,510
N. C.	172,000	167,000	2,400	400,800	172,000	167,000	2,080	347,360
Va.-Car. Area	276,000	270,000	2,434	657,270	275,000	269,000	2,241	602,870
S. C.	13,300	13,000	1,800	23,400	13,200	13,000	1,880	24,440
Ga.	498,000	482,000	1,680	809,760	493,000	478,000	2,040	975,120
Fla.	80,000	49,000	1,475	72,275	79,000	49,000	1,610	78,890
Ala.	193,000	186,000	1,220	226,920	183,000	176,000	1,340	235,840
Miss.	2,500	2,500	600	1,500	2,500	2,500	650	1,625
Southeast	786,800	732,500	1,548	1,133,855	770,700	718,500	1,830	1,315,915
Okla.	124,000	122,000	1,675	204,350	125,000	123,000	1,700	209,100
Texas	295,000	288,000	1,400	403,200	295,000	285,000	1,170	333,450
N. Mex.	8,300	8,200	2,080	17,056	8,100	8,000	1,990	15,920
Southwest	427,300	418,200	1,494	624,606	428,100	416,000	1,342	558,470
U. S.	1,490,100	1,420,700	1,700	2,415,731	1,473,800	1,403,500	1,765	2,477,255
	1968				1969			
Va.	103,000	102,000	2,320	236,640	103,000	102,000	2,325	237,150
N. C.	170,000	167,000	2,075	346,525	170,000	167,000	2,055	343,185
Va.-Car. Area	273,000	269,000	2,168	583,165	273,000	269,000	2,157	580,335
S. C.	15,300	15,000	1,600	24,000	16,300	16,000	1,550	24,800
Ga.	513,000	497,000	1,880	934,360	518,000	502,000	1,885	946,270
Fla.	77,000	51,000	1,680	85,680	77,000	53,000	1,605	85,065
Ala.	186,000	181,000	1,360	246,160	192,000	187,000	1,525	285,175
Miss.	2,500	2,500	700	1,750	4,000	4,000	800	3,200
Southeast	793,800	746,500	1,731	1,291,950	807,300	762,000	1,764	1,344,510
Okla.	123,000	121,000	1,880	227,480	123,000	120,000	1,700	204,000
Texas	298,000	294,000	1,450	426,300	301,000	297,000	1,310	389,070
N. Mex.	8,100	7,900	2,240	17,696	7,800	7,700	2,270	17,479
Southwest	429,100	422,900	1,588	671,476	431,800	242,700	1,438	610,549
U. S.	1,495,900	1,438,400	1,770	2,546,591	1,512,100	1,455,700	1,742	2,535,394

Table 20. Soybeans: Acres, yield, and production, 1964-69

State 1/	1964				1965			
	Acres		Yield per acre	Production	Acres		Yield per acre	Production
	Planted	Harvested			Planted	Harvested		
	1,000 acres		Bushels	1,000 bushels	1,000 acres		Bushels	1,000 bushels
N. Y.	4	3	15.0	45	3	3	15.0	45
N. J.	43	38	14.0	532	40	37	23.5	870
Pa.	21	16	17.0	272	23	16	24.0	384
Ohio	1,846	1,825	22.5	41,062	2,066	2,044	24.5	50,078
Ind.	2,754	2,734	24.5	66,983	2,890	2,871	28.0	80,388
Ill.	5,815	5,734	25.0	143,350	6,076	6,021	29.5	177,620
Mich.	337	331	22.5	7,448	452	440	22.0	9,680
Wis.	139	133	16.5	2,194	168	160	19.0	3,040
Minn.	2,878	2,852	20.0	57,040	3,217	3,166	18.5	58,571
Iowa	4,267	4,254	28.5	121,239	4,864	4,850	26.0	126,100
Mo.	2,724	2,676	21.0	56,196	3,105	3,051	26.0	79,326
N. Dak.	195	192	14.5	2,784	214	211	19.0	4,009
S. Dak.	257	252	16.5	4,158	339	333	17.0	5,661
Nebr.	533	523	22.0	11,506	720	696	23.5	16,356
Kans.	656	642	18.0	11,556	886	873	21.0	18,333
Del.	167	158	12.0	1,896	142	139	25.0	3,475
Md.	235	225	15.0	3,375	207	202	27.0	5,454
Va.	372	335	20.0	6,700	364	345	20.5	7,072
W. Va. 1/	5							
N. C.	839	681	23.5	16,004	886	776	25.0	19,400
S. C.	725	677	21.5	14,556	839	806	21.0	16,926
Ga.	212	155	20.0	3,100	233	209	20.5	4,284
Fla.	70	68	25.0	1,700	80	78	26.0	2,028
Ky.	298	246	22.5	5,535	340	295	24.0	7,080
Tenn.	659	586	23.0	13,478	811	732	23.5	17,202
Ala.	236	207	22.0	4,554	257	228	22.0	5,016
Miss.	1,372	1,293	19.0	24,567	1,534	1,461	22.5	32,872
Ark.	3,348	3,318	20.0	66,360	3,582	3,550	21.5	76,325
La.	508	454	20.0	9,080	642	622	21.5	13,373
Okla.	136	122	16.5	2,013	157	152	16.5	2,508
Tex.	70	63	26.0	1,638	90	82	26.0	2,132
U. S.	31,721	30,793	22.8	700,921	35,227	34,449	24.5	845,608

1/ Estimates discontinued for West Virginia after 1964.

Continued

Table 20. Soybeans: Acres, yield, and production, 1964-69 Continued

State 1/	1966				1967			
	Acres		Yield per acre	Production	Acres		Yield per acre	Production
	Planted	Harvested			Planted	Harvested		
	1,000 acres		Bushels	1,000 bushels	1,000 acres		Bushels	1,000 bushels
N. Y.	3	3	20.0	60	4	4	23.0	92
N. J.	42	39	17.5	682	40	37	26.0	962
Pa.	22	18	19.0	342	25	22	27.0	594
Ohio	2,118	2,105	28.5	59,992	2,256	2,231	22.5	50,198
Ind.	2,832	2,814	26.0	73,164	2,917	2,898	24.5	71,001
Ill.	5,989	5,941	27.0	160,407	6,045	6,009	31.0	186,279
Mich.	488	480	22.5	10,800	522	509	20.0	10,180
Wis.	190	185	20.0	3,700	192	185	19.0	3,515
Minn.	3,374	3,356	24.0	80,544	3,644	3,591	19.5	70,024
Iowa	5,010	4,996	29.5	147,382	5,361	5,246	27.5	144,265
Mo.	3,384	3,356	25.0	83,900	3,519	3,423	22.0	75,306
N. Dak.	242	236	22.5	5,310	300	290	13.0	3,770
S. Dak.	349	346	20.0	6,920	377	370	16.5	6,105
Nebr.	749	745	29.5	21,978	801	782	22.5	17,595
Kans.	930	917	22.5	20,632	846	825	22.5	18,562
Del.	145	142	12.0	1,704	149	146	26.0	3,796
Md.	217	205	14.0	2,884	193	187	28.5	5,330
Va.	382	355	18.5	6,568	416	383	21.5	8,234
W. Va. 1/								
N. C.	1,045	923	25.0	23,075	1,264	1,117	24.5	27,366
S. C.	913	879	22.0	19,338	1,077	1,046	22.5	23,535
Ga.	324	301	23.0	6,923	540	500	25.0	12,500
Fla.	82	80	27.0	2,160	102	100	28.0	2,800
Ky.	350	310	25.0	7,750	420	388	28.0	10,864
Tenn.	933	871	24.5	21,340	1,185	1,115	25.0	27,875
Ala.	310	280	24.5	6,860	512	484	26.5	12,826
Miss.	1,900	1,797	23.5	42,230	2,290	2,200	23.0	50,600
Ark.	3,797	3,728	22.5	83,880	4,025	3,989	23.0	91,747
La.	890	871	25.0	21,775	1,353	1,306	23.0	30,038
Okla.	149	143	20.0	2,860	174	164	23.0	3,772
Tex.	135	123	27.0	3,321	270	258	26.0	6,708
U. S.	37,294	36,546	25.4	928,481	40,819	39,805	24.5	976,439

1/ Estimates discontinued for West Virginia after 1964.

Continued

Table 20. Soybeans: Acres, yield, and production, 1964-69 Continued

State 1/	1968				1969			
	Acres		Yield	Production	Acres		Yield	Production
	Planted	Harvested	per acre		Planted	Harvested	per acre	
	1,000 acres		Bushels	1,000 bushels	1,000 acres		Bushels	1,000 bushels
N. Y.	6	6	22.0	132	5	5	24.5	123
N. J.	48	45	24.0	1,080	53	50	28.5	1,425
Pa.	25	22	24.0	528	27	25	30.0	750
Ohio	2,340	2,325	30.5	70,913	2,510	2,475	29.5	73,013
Ind.	3,267	3,246	32.0	103,872	3,333	3,311	32.0	105,952
Ill.	6,717	6,663	31.5	209,884	6,846	6,730	34.0	228,820
Mich.	480	463	26.0	12,038	505	495	23.5	11,633
Wis.	165	161	24.0	3,864	180	174	21.5	3,741
Minn.	3,286	3,232	22.0	71,104	3,040	3,000	25.0	75,000
Iowa	5,576	5,561	32.0	177,952	5,632	5,450	32.5	177,125
Mo.	3,695	3,663	28.0	102,564	3,252	3,150	25.5	80,325
N. Dak.	219	215	15.5	3,332	202	200	17.0	3,400
S. Dak.	305	300	17.5	5,250	256	243	24.0	5,832
Nebr.	801	782	23.5	18,377	777	766	32.5	24,895
Kans.	973	957	25.0	23,925	866	852	23.0	19,596
Del.	159	156	19.0	2,964	159	156	29.0	4,524
Md.	214	209	25.0	5,225	215	210	31.0	6,510
Va.	399	372	19.0	7,068	383	361	26.0	9,386
W. Va. 1/:								
N. C.	1,163	972	17.5	17,010	1,000	885	26.0	23,010
S. C.	1,050	1,000	13.0	13,000	1,030	1,000	22.5	22,500
Ga.	460	410	16.0	6,560	440	400	25.5	10,200
Fla.	145	143	24.0	3,432	174	169	25.0	4,225
Ky.	470	445	26.5	11,793	485	450	28.0	12,600
Tenn.	1,220	1,150	21.0	24,150	1,200	1,125	24.0	27,000
Ala.	580	550	22.0	12,100	660	630	22.5	14,175
Miss.	2,320	2,250	25.0	56,250	2,608	2,535	20.0	50,700
Ark.	4,170	4,150	22.0	91,300	4,478	4,400	21.0	92,400
La.	1,475	1,436	27.0	38,772	1,696	1,608	20.5	32,964
Okla.	205	195	21.0	4,095	240	220	18.0	3,960
Tex.	332	312	27.0	8,424	282	262	28.0	7,336
U. S.	42,265	41,391	26.7	1,106,958	42,534	41,337	27.4	1,133,120

1/ Estimates discontinued for West Virginia after 1964.

Table 21. Dry edible beans: Production by commercial classes, clean basis 1964-69

State	Class	1964	1965	1966	1967	1968	1969
1,000 cwt.							
N. Y.	Pea	30	20				
	White Marrow	22	26				
	Red Kidney	800	562	877	673	503	618
	Black Turtle Soup	267	192	295	321	314	223
	Other	51	42	128	108	87	56
	Total	1,170	842	1,300	1,102	904	897
Mich.	Pea	6,771	5,460	7,289	4,801	5,589	7,169
	Pinto	100	63	68	69	118	160
	Red Kidney	573	466	432	263	300	455
	Cranberry	92	126	139	129	178	160
	Yellow Eye	26	32	56	42	49	20
	Other	39	28	42	42	30	100
	Total	7,601	6,175	8,026	5,346	6,264	8,064
Minn.	Great Northern	3	2	3	9	5	5
	Pinto	52	26	44	32	39	65
	Other	0	0	12	1	0	0
	Total	55	28	59	42	44	70
N. Dak.	Great Northern	9	9	5	2	5	7
	Pink	0	0	17	24	19	6
	Pinto	156	216	272	204	266	293
	Total	165	225	294	230	290	306
Nebr.	Great Northern	898	764	1,134	978	1,020	1,239
	Pinto	174	352	306	298	420	463
	Total	1,072	1,116	1,440	1,276	1,440	1,702
Kans.	Pea			1			
	Pink	0	0	1	6	0	0
	Pinto	77	110	148	143	170	170
	Great Northern				1		
	Small Red	0	0	3	4	0	0
	Small White			1	0	0	0
	Total	77	110	154	154	170	170
Mont.	Great Northern	15	12	14	6	6	8
	Pinto	181	205	238	138	156	127
	Total	196	217	252	144	162	135
Idaho	Great Northern	515	450	591	348	240	343
	Flat Small White	4	8	1	1	0	4
	Pinto	774	1,032	993	770	832	796
	Red Kidney	44	11	1	10	15	40
	Pink	25	85	141	250	440	348
	Small Red	176	185	328	165	161	252
	Other	4	5	4	21	32	19
	Total	1,542	1,776	2,059	1,565	1,720	1,802

Continued

Table 21. Dry edible beans: Production by commercial classes, clean basis 1964-69 Continued

State	Class	1964	1965	1966	1967	1968	1969
1,000 cwt.							
Wyo.	Great Northern	219	195	201	156	110	105
	Pinto	460	486	525	471	522	371
	Total	679	681	726	627	632	476
Colo.	Great Northern	4	0	1			
	Pinto	1,540	1,841	1,889	1,834	2,041	1,908
	Small Red	0	0	2	0	0	0
	Other	4	4	0	10	1	1
	Total	1,548	1,845	1,892	1,844	2,042	1,909
N. Mex.	Pinto	31	39	41	20	21	24
	Total	31	39	41	20	21	24
Utah	Pinto	36	50	62	68	66	80
	Total	36	50	62	68	66	80
Wash.	Flat Small White	35	42	23	19	21	37
	Pinto	85	103	87	16	76	54
	Pink	100	65	32	33	43	33
	Small Red	171	195	293	92	188	190
	Small White	0	0	24	9	19	23
	Other	16	5	3	2	3	5
	Total	407	410	462	171	350	342
Calif.	Small White	455	504	592	414	422	464
	Flat Small White	20	24	29	30	48	53
	Red Kidney	220	323	323	212	306	435
	Pink	228	260	259	175	180	113
	Small Red	12	17	10	5	5	11
	Cranberry	8	6	10	8	6	5
	Large Lima	678	755	597	774	814	770
	Baby Lima	275	211	340	280	589	430
	Black Eye	788	668	851	565	781	513
	Garbanzo	42	87	92	88	58	101
	Other	70	88	94	75	121	41
	Total	2,796	2,943	3,197	2,626	3,330	2,936
U. S.	Pea	6,801	5,480	7,290	4,801	5,589	7,169
	Great Northern	1,663	1,432	1,949	1,500	1,386	1,707
	Small White	455	504	617	423	441	487
	Flat Small White	59	74	53	50	69	94
	White Marrow	22	26				
	Pinto	3,666	4,523	4,673	4,063	4,727	4,511
	Red Kidney	1,637	1,362	1,633	1,158	1,124	1,548
	Pink	353	410	450	488	682	500
	Small Red	359	397	636	266	354	453
	Cranberry	100	132	149	137	184	165
	Yellow Eye	26	32	56	42	49	20
	Black Turtle Soup	267	192	295	321	314	223
	Large Lima	678	755	597	774	814	770
	Baby Lima	275	211	340	280	589	430
	Black Eye	788	668	851	565	781	513
	Garbanzo	42	87	92	88	58	101
	Other	184	172	283	259	274	222
	Total	17,375	16,457	19,964	15,215	17,435	18,913

Table 22. Dry Edible Beans: Acres, yield and production 1964-69 Continued

State	1968			1969				
	Acres		Yield	Production:	Acres		Yield	
	Planted	Harvested	per acre		clean	Planted	Harvested	per acre
	1,000 acres		Pounds	1,000 cwt.	1,000 acres		Pounds	1,000 cwt.
New York	94	80	1,130	904	80	73	1,150	897
Michigan	595	580	1,080	6,264	655	640	1,260	8,064
Minnesota	6	5	875	44	9	7	1,000	70
North Dakota	30	29	1,000	290	32	30	1,020	306
Nebraska	82	80	1,800	1,440	100	92	1,850	1,702
Kansas	19	17	1,000	170	25	20	850	170
Montana	9	9	1,800	162	9	9	1,500	135
Idaho	115	111	1,550	1,720	99	99	1,820	1,802
Wyoming	41	40	1,580	632	31	30	1,585	476
Colorado	228	222	920	2,042	235	222	860	1,909
New Mexico	5	4	525	21	5	4	600	24
Utah	13	13	510	66	16	16	500	80
Washington	22	20	1,750	350	19	18	1,900	342
California								
Large Lima	44	44	1,850	814	45	45	1,710	770
Baby Lima	29	29	2,030	589	26	26	1,655	430
Other	141	141	1,367	1,927	133	133	1,305	1,736
Total Calif.	214	214	1,556	3,330	204	204	1,439	2,936
United States	1,473	1,424	1,224	17,435	1,519	1,469	1,287	18,913

Table 23. Dry Edible Peas: Production by commercial classes, clean basis 1964-69

State 1/	Class	1964	1965	1966	1967	1968	1969
		1,000 cwt.					
Minn.	Canada	63	108	63	90	69	87
	Total	63	108	63	90	69	87
N. Dak.	Canada	58	84	56	39	39	36
	Total	58	84	56	39	39	36
Idaho	Alaska	1,259	903	909	835	980	1,304
	Canada	206	133	60	121	125	205
	Total	1,465	1,036	969	956	1,105	1,509
Wash.	Alaska	1,720	1,398	1,044	1,037	1,116	1,511
	Canada	630	286	318	393	359	527
	Total	2,350	1,684	1,362	1,430	1,475	2,038
Oreg.	Alaska	23	27	14	8	9	20
	Canada	73	92	68	40	30	46
	Total	96	119	82	48	39	66
U. S.	Alaska	3,002	2,328	1,967	1,880	2,105	2,835
	Canada	1,030	703	565	683	622	901
	Total	4,032	3,031	2,532	2,563	2,727	3,736

1/ Excludes both wrinkled seed peas and Austrian Winter Peas.

		Wrinkled seed peas					
Idaho		501	620	599	574	473	679
Wash.		305	364	522	426	458	652
Oreg.		42	61	68	60	65	110
Total		848	1,045	1,189	1,060	996	1,441

Table 24. Dry Edible Peas: Acres, yield, and production, 1964-69

State 1/	1964				1965			
	Acres		Yield	Production	Acres		Yield	Production
	Planted	Harvested	per acre	clean	Planted	Harvested	per acre	clean
	1,000 Acres		Pounds	1,000 cwt.	1,000 acres		Pounds	1,000 cwt.
Minnesota	12	7	900	63	11	8	1,350	108
North Dakota	9	6	970	58	7	6	1,400	84
Idaho	89	87	1,684	1,465	63	62	1,671	1,036
Colorado								
Washington	160	156	1,506	2,350	94	91	1,850	1,684
Oregon	12	9	1,050	96	7	7	1,600	119
U. S.	282	265	1,522	4,032	182	174	1,742	3,031
	1966				1967			
Minnesota	9	7	900	63	7	6	1,500	90
North Dakota	5	4	1,400	56	4	3	1,300	39
Idaho	68	67	1,446	969	69	67	1,427	956
Colorado								
Washington	95	91	1,497	1,362	100	96	1,496	1,430
Oregon	7	6	1,300	82	5	4	1,150	48
U. S.	184	175	1,447	2,532	185	176	1,456	2,563
	1968				1969			
Minnesota	8	6	1,150	69	8	6	1,450	87
North Dakota	5	3	1,300	39	4	3	1,200	36
Idaho	72	71	1,556	1,105	93	92	1,640	1,509
Colorado								
Washington	102	98	1,505	1,475	131	126	1,617	2,038
Oregon	4	3	1,150	39	6	5	1,200	66
U. S.	191	181	1,507	2,727	242	232	1,610	3,736

1/ Excludes both wrinkled seed peas and Austrian Winter Peas.

Table 25. Cowpeas for peas: Acres, yield, and production, 1964-67

State 1/	1964			1965		
	Acres harvested	Yield per acre	Production	Acres harvested	Yield per acre	Production
	1,000 acres	Bushels	1,000 bushels	1,000 acres	Bushels	1,000 bushels
N. C.	4	9.5	38	3	8.0	24
S. C.	12	6.5	78	8	8.0	64
Ga.	18	7.0	126	13	8.0	104
Fla.						
Tenn.	3	11.0	33	2	11.0	22
Ala.	6	9.5	57	6	10.5	63
Miss.	5	11.5	58	4	10.5	42
Ark.	3	8.0	24	3	9.0	27
La.	3	12.0	36	3	10.0	30
Okla.	9	8.0	72	12	8.5	102
Texas	26	10.0	260	43	8.5	366
U. S.	89	8.8	782	102	8.7	884
	1966			1967		
N. C.	2	7.5	15			
S. C.	7	7.0	49	7	7.0	49
Ga.	14	8.0	112	16	7.5	120
Fla.						
Tenn.	2	12.0	24			
Ala.	5	10.0	50	5	10.0	50
Miss.	4	11.0	44	4	15.0	60
Ark.	3	9.5	28			
La.	3	13.0	39			
Okla.	4	10.5	42	7	8.5	60
Texas	43	10.0	430	54	8.5	459
U. S.	87	9.6	833	93	8.6	798

1/ All cowpea estimates discontinued after 1967.

Table 26. Hay: Acres, yield, and production, 1964-69

State	1964								
	All hay			Alfalfa			All other hay		
	Acres	Yield	Produc-	Acres	Yield	Produc-	Acres	Yield	Produc-
	harvested	per acre	tion	harvested	per acre	tion	harvested	per acre	tion
1,000		1,000	1,000		1,000	1,000		1,000	
acres	Tons	tons	acres	Tons	tons	acres	Tons	tons	
Maine	403	1.24	499	17	1.75	30	386	1.22	469
New Hampshire	164	1.26	206	19	1.95	37	145	1.17	169
Vermont	647	1.59	1,026	138	2.10	290	509	1.45	736
Massachusetts	176	1.56	275	33	2.05	68	143	1.45	207
Rhode Island	17	1.47	25	3	1.95	6	14	1.36	19
Connecticut	148	1.59	236	36	2.20	79	112	1.40	157
New York	2,909	1.70	4,954	1,225	2.10	2,572	1,684	1.41	2,382
New Jersey	176	1.91	337	84	2.40	202	92	1.47	135
Pennsylvania	2,129	1.65	3,505	834	2.05	1,710	1,295	1.40	1,795
Ohio	1,907	1.88	3,592	932	2.30	2,144	975	1.49	1,448
Indiana	1,215	1.97	2,398	633	2.40	1,519	582	1.51	879
Illinois	1,896	2.28	4,321	1,128	2.75	3,102	768	1.59	1,219
Michigan	1,798	2.02	3,627	1,390	2.20	3,058	408	1.39	569
Wisconsin	3,945	2.20	8,675	2,931	2.40	7,034	1,014	1.62	1,641
Minnesota	3,526	1.94	6,851	2,383	2.25	5,362	1,143	1.30	1,489
Iowa	3,233	2.42	7,824	2,143	2.70	5,786	1,090	1.87	2,038
Missouri	3,090	1.62	5,020	738	2.65	1,956	2,352	1.30	3,064
North Dakota	3,466	1.18	4,088	1,251	1.50	1,876	2,215	1.00	2,212
South Dakota	4,717	1.00	4,708	2,155	1.30	2,802	2,562	.74	1,906
Nebraska	4,724	1.33	6,272	1,813	2.25	4,079	2,911	.75	2,193
Kansas	2,480	1.75	4,341	1,261	2.30	2,900	1,219	1.18	1,441
Delaware	38	1.55	59	6	2.65	16	32	1.34	43
Maryland	356	1.62	575	94	2.35	221	262	1.35	354
Virginia	1,075	1.25	1,347	199	1.85	368	876	1.12	979
West Virginia	617	1.24	765	123	1.75	215	494	1.11	550
North Carolina	613	1.27	776	31	2.00	62	582	1.23	714
South Carolina	288	1.43	412				288	1.43	412
Georgia	515	1.65	850	10	1.90	19	505	1.65	831
Florida	142	1.67	237				142	1.67	237
Kentucky	1,655	1.53	2,531	398	2.35	935	1,257	1.27	1,596
Tennessee	1,317	1.44	1,895	156	2.40	374	1,161	1.31	1,521
Alabama	594	1.41	839	12	1.90	23	582	1.40	816
Mississippi	705	1.50	1,057	12	2.15	26	693	1.49	1,031
Arkansas	723	1.22	881	46	2.80	129	677	1.11	752
Louisiana	457	1.60	732	18	1.75	32	439	1.59	700
Oklahoma	1,657	1.53	2,541	520	2.35	1,222	1,137	1.16	1,319
Texas	2,258	1.44	3,248	189	2.60	491	2,069	1.33	2,757
Montana	2,211	1.53	3,380	1,048	2.00	2,096	1,163	1.10	1,284
Idaho	1,352	2.59	3,496	1,059	2.90	3,071	293	1.45	425
Wyoming	1,180	1.37	1,613	486	1.95	948	694	.96	665
Colorado	1,476	1.78	2,631	765	2.40	1,836	711	1.12	795
New Mexico	239	3.26	779	180	3.95	711	59	1.15	68
Arizona	249	4.44	1,106	209	4.90	1,024	40	2.05	82
Utah	577	2.49	1,434	443	2.80	1,240	134	1.45	194
Nevada	458	1.79	821	150	3.30	495	308	1.06	326
Washington	907	2.40	2,175	518	2.90	1,502	389	1.73	673
Oregon	1,115	1.95	2,175	389	2.85	1,109	726	1.47	1,066
California	1,835	4.17	7,643	1,176	5.55	6,527	659	1.69	1,116
United States	67,375	1.76	118,778	29,384	2.43	71,304	37,991	1.25	47,474

Continued

Table 26. Hay: Acres, yield, and production, 1964-69 Continued

State	1965								
	All hay			Alfalfa			All other hay		
	Acres	Yield	Production	Acres	Yield	Production	Acres	Yield	Production
	harvested: 1,000 acres	per acre Tons	1,000 tons	harvested: 1,000 acres	per acre Tons	1,000 tons	harvested: 1,000 acres	per acre Tons	1,000 tons
Maine	367	1.16	424	18	1.80	32	349	1.12	392
New Hampshire	150	1.37	206	20	1.85	37	130	1.30	169
Vermont	615	1.43	878	138	1.70	235	477	1.35	643
Massachusetts	168	1.67	280	31	2.00	62	137	1.59	218
Rhode Island	16	1.56	25	3	2.05	6	13	1.46	19
Connecticut	141	1.50	211	36	2.00	72	105	1.32	139
New York	2,890	1.75	5,065	1,298	2.15	2,791	1,592	1.43	2,274
New Jersey	171	1.94	331	83	2.45	203	88	1.45	128
Pennsylvania	2,074	1.71	3,554	842	2.10	1,768	1,232	1.45	1,786
Ohio	1,853	1.86	3,440	960	2.20	2,112	893	1.49	1,328
Indiana	1,190	2.19	2,611	677	2.55	1,726	513	1.73	885
Illinois	1,744	2.44	4,260	1,064	2.90	3,086	680	1.73	1,174
Michigan	1,777	1.86	3,309	1,376	2.00	2,752	401	1.39	557
Wisconsin	4,040	2.20	8,877	2,872	2.35	6,749	1,168	1.82	2,128
Minnesota	3,569	2.26	8,051	2,454	2.60	6,380	1,115	1.50	1,671
Iowa	3,038	2.35	7,131	2,079	2.60	5,405	959	1.80	1,726
Missouri	3,122	1.79	5,578	790	2.95	2,330	2,332	1.39	3,248
North Dakota	3,623	1.30	4,724	1,326	1.65	2,188	2,297	1.10	2,536
South Dakota	4,746	1.14	5,401	2,241	1.50	3,362	2,505	.81	2,039
Nebraska	4,673	1.51	7,063	1,813	2.50	4,532	2,860	.88	2,531
Kansas	2,587	2.13	5,523	1,299	2.85	3,702	1,288	1.41	1,821
Delaware	35	1.80	63	6	2.85	17	29	1.59	46
Maryland	320	1.85	593	86	2.55	219	234	1.60	374
Virginia	1,047	1.48	1,554	155	2.25	349	892	1.35	1,205
West Virginia	611	1.20	736	113	1.70	192	498	1.09	544
North Carolina	557	1.30	723	19	2.10	40	538	1.27	683
South Carolina	257	1.84	474				257	1.84	474
Georgia	493	1.74	858	9	2.25	20	484	1.73	838
Florida	143	1.62	231				143	1.62	231
Kentucky	1,751	1.66	2,898	430	2.45	1,054	1,321	1.40	1,844
Tennessee	1,365	1.47	2,003	133	2.45	326	1,232	1.36	1,677
Alabama	563	1.50	842	10	2.05	21	553	1.48	821
Mississippi	640	1.58	1,010	10	2.10	21	630	1.57	989
Arkansas	785	1.54	1,210	55	2.85	157	730	1.44	1,053
Louisiana	410	1.70	699	20	2.30	46	390	1.67	653
Oklahoma	1,648	1.66	2,732	577	2.35	1,356	1,071	1.28	1,376
Texas	2,416	1.53	3,687	193	2.70	521	2,223	1.42	3,166
Montana	2,490	1.54	3,823	1,100	1.95	2,145	1,390	1.21	1,678
Idaho	1,352	2.55	3,448	1,070	2.85	3,050	282	1.41	398
Wyoming	1,164	1.37	1,595	437	2.10	918	727	.93	677
Colorado	1,570	1.93	3,025	765	2.55	1,951	805	1.33	1,074
New Mexico	271	2.99	811	189	3.75	709	82	1.24	102
Arizona	240	4.88	1,170	201	5.40	1,085	39	2.18	85
Utah	573	2.86	1,638	450	3.20	1,440	123	1.61	198
Nevada	465	1.81	843	150	3.30	495	315	1.10	348
Washington	907	2.60	2,359	534	3.20	1,709	373	1.74	650
Oregon	1,050	2.08	2,186	397	3.00	1,191	653	1.52	995
California	1,819	4.10	7,457	1,176	5.35	6,292	643	1.81	1,165
United States	67,496	1.86	125,610	29,705	2.52	74,854	37,791	1.34	50,756

Continued

Table 26. Hay: Acres, yield, and production, 1964-69 Continued

State	1966								
	All hay			Alfalfa			All other hay		
	Acres	Yield	Produc-	Acres	Yield	Produc-	Acres	Yield	Produc-
	:harvested:	:per acre:	:tion	:harvested:	:per acre:	:tion	:harvested:	:per acre:	:tion
: 1,000		: 1,000	: 1,000		: 1,000	: 1,000		: 1,000	
: acres	Tons	tons	acres	Tons	tons	acres	Tons	tons	
Maine	341	1.56	532	21	2.50	53	320	1.50	479
New Hampshire	140	1.66	233	21	2.30	48	119	1.55	185
Vermont	595	1.86	1,106	140	2.40	336	455	1.69	770
Massachusetts	160	2.01	321	33	2.50	83	127	1.87	238
Rhode Island	14	1.86	26	3	2.30	7	11	1.73	19
Connecticut	125	1.78	222	32	2.20	70	93	1.63	152
New York	2,914	2.00	5,820	1,324	2.35	3,111	1,590	1.70	2,709
New Jersey	169	2.00	338	80	2.45	196	89	1.60	142
Pennsylvania	2,073	1.65	3,426	808	1.90	1,535	1,265	1.50	1,891
Ohio	1,786	2.04	3,638	826	2.50	2,065	960	1.64	1,573
Indiana	1,092	2.20	2,400	630	2.55	1,606	462	1.72	794
Illinois	1,552	2.38	3,692	939	2.80	2,629	613	1.73	1,063
Michigan	1,650	2.08	3,437	1,315	2.25	2,959	335	1.43	478
Wisconsin	3,988	2.41	9,621	2,929	2.60	7,615	1,059	1.89	2,006
Minnesota	3,356	2.37	7,957	2,356	2.75	6,479	1,000	1.48	1,478
Iowa	2,980	2.66	7,929	2,079	2.90	6,029	901	2.11	1,900
Missouri	2,889	1.71	4,952	837	2.65	2,218	2,052	1.33	2,734
North Dakota	3,509	1.29	4,526	1,353	1.60	2,165	2,156	1.10	2,361
South Dakota	4,615	.99	4,574	2,241	1.25	2,801	2,374	.75	1,773
Nebraska	4,490	1.45	6,498	1,795	2.40	4,308	2,695	.81	2,190
Kansas	2,555	1.60	4,077	1,273	2.05	2,610	1,282	1.14	1,467
Delaware	32	1.81	58	6	2.65	16	26	1.62	42
Maryland	300	1.79	536	78	2.15	168	222	1.66	368
Virginia	994	1.36	1,351	113	1.90	215	881	1.29	1,136
West Virginia	595	1.01	601	88	1.45	128	507	.93	473
North Carolina	512	1.26	644	15	1.90	28	497	1.24	616
South Carolina	234	1.92	449				234	1.92	449
Georgia	464	1.89	878	8	2.35	19	456	1.88	859
Florida	153	1.58	241				153	1.58	241
Kentucky	1,680	1.64	2,753	383	2.20	843	1,297	1.47	1,910
Tennessee	1,156	1.54	1,778	110	2.50	275	1,046	1.44	1,503
Alabama	523	1.46	765	9	2.10	19	514	1.45	746
Mississippi	640	1.59	1,019	16	2.50	40	624	1.57	979
Arkansas	725	1.60	1,161	57	2.85	162	668	1.50	999
Louisiana	368	1.64	604	20	2.00	40	348	1.62	564
Oklahoma	1,602	1.58	2,537	565	2.30	1,300	1,037	1.19	1,237
Texas	2,221	1.61	3,585	185	2.70	500	2,036	1.52	3,085
Montana	2,303	1.43	3,297	1,045	1.85	1,933	1,258	1.08	1,364
Idaho	1,300	2.40	3,123	1,006	2.75	2,766	294	1.21	357
Wyoming	1,071	1.32	1,415	424	1.90	806	647	.94	609
Colorado	1,440	1.96	2,822	750	2.60	1,950	690	1.26	872
New Mexico	265	3.48	921	187	4.40	823	78	1.25	98
Arizona	240	4.70	1,127	200	5.20	1,040	40	2.18	87
Utah	547	2.66	1,454	437	2.95	1,289	110	1.50	165
Nevada	350	1.93	675	150	3.30	495	200	.90	180
Washington	931	2.63	2,444	529	3.30	1,746	402	1.74	698
Oregon	1,066	2.01	2,144	393	2.95	1,159	673	1.46	985
California	1,651	4.37	7,223	1,141	5.60	6,390	510	1.63	833
United States	64,356	1.88	120,930	28,950	2.52	73,073	35,406	1.35	47,857

Continued

Table 26. Hay: Acres, yield, and production, 1964-69 Continued

State	1967								
	All hay			Alfalfa			All other hay		
	Acres	Yield	Produc-	Acres	Yield	Produc-	Acres	Yield	Produc-
	harvested	per acre	tion	harvested	per acre	tion	harvested	per acre	tion
1,000		1,000	1,000		1,000	1,000		1,000	
acres	Tons	tons	acres	Tons	tons	acres	Tons	tons	
Maine	278	1.52	422	22	2.40	53	256	1.44	369
New Hampshire	125	1.86	232	22	2.55	56	103	1.71	176
Vermont	550	1.93	1,064	140	2.40	336	410	1.78	728
Massachusetts	147	1.96	288	31	2.40	74	116	1.84	214
Rhode Island	13	1.92	25	3	2.50	8	10	1.70	17
Connecticut	111	2.04	226	29	2.55	74	82	1.85	152
New York	2,572	2.19	5,620	1,157	2.60	3,008	1,415	1.85	2,612
New Jersey	160	2.39	383	73	3.00	219	87	1.89	164
Pennsylvania	2,049	1.97	4,035	768	2.45	1,882	1,281	1.70	2,153
Ohio	1,654	1.82	3,004	611	2.20	1,344	1,043	1.59	1,660
Indiana	958	1.97	1,890	485	2.25	1,091	473	1.69	799
Illinois	1,409	2.70	3,808	869	3.20	2,781	540	1.90	1,027
Michigan	1,520	2.08	3,157	1,230	2.20	2,706	290	1.56	451
Wisconsin	4,022	2.57	10,323	2,988	2.75	8,217	1,034	2.04	2,106
Minnesota	3,309	2.25	7,439	2,332	2.60	6,063	977	1.41	1,376
Iowa	2,808	2.60	7,295	1,960	2.85	5,586	848	2.02	1,709
Missouri	2,914	1.94	5,642	845	2.95	2,493	2,069	1.52	3,149
North Dakota	3,904	1.06	4,145	1,380	1.35	1,863	2,524	.90	2,282
South Dakota	4,488	1.09	4,913	2,196	1.40	3,074	2,292	.80	1,839
Nebraska	4,481	1.47	6,605	1,795	2.40	4,308	2,686	.86	2,297
Kansas	2,465	2.14	5,282	1,248	2.85	3,557	1,217	1.42	1,725
Delaware	29	2.00	58	6	2.90	17	23	1.78	41
Maryland	275	2.32	638	67	3.15	211	208	2.05	427
Virginia	1,016	1.51	1,532	82	2.20	180	934	1.45	1,352
West Virginia	604	1.51	912	72	2.00	144	532	1.44	768
North Carolina	476	1.31	623	10	2.10	21	466	1.29	602
South Carolina	227	2.00	455				227	2.00	455
Georgia	443	1.97	871	7	2.45	17	436	1.96	854
Florida	156	1.76	274				156	1.76	274
Kentucky	1,608	1.85	2,973	241	2.65	639	1,367	1.71	2,334
Tennessee	1,077	1.58	1,704	85	2.20	187	992	1.53	1,517
Alabama	499	1.66	826	8	2.10	17	491	1.65	809
Mississippi	610	1.70	1,037	15	2.40	36	595	1.68	1,001
Arkansas	739	1.87	1,384	71	3.50	249	668	1.70	1,135
Louisiana	360	2.10	756	20	2.60	52	340	2.07	704
Oklahoma	1,572	1.91	2,995	570	2.75	1,568	1,002	1.42	1,427
Texas	2,297	1.64	3,774	185	3.20	592	2,112	1.51	3,182
Montana	2,370	1.63	3,864	1,118	2.15	2,404	1,252	1.17	1,460
Idaho	1,323	2.81	3,714	1,046	3.15	3,295	277	1.51	419
Wyoming	1,164	1.58	1,842	437	2.35	1,027	727	1.12	815
Colorado	1,400	1.95	2,730	710	2.60	1,846	690	1.28	884
New Mexico	267	3.54	944	189	4.50	851	78	1.20	93
Arizona	233	4.82	1,122	196	5.30	1,039	37	2.24	83
Utah	561	2.99	1,677	441	3.35	1,477	120	1.67	200
Nevada	410	1.97	809	154	3.45	531	256	1.09	278
Washington	876	2.71	2,371	518	3.35	1,735	358	1.78	636
Oregon	1,079	2.11	2,276	401	2.90	1,163	678	1.64	1,113
California	1,695	4.23	7,175	1,164	5.30	6,169	531	1.89	1,006
United States	63,303	1.98	125,134	27,997	2.65	74,260	35,306	1.44	50,874

Continued

Table 26. Hay: Acres, yield, and production, 1964-69 Continued

State	1968								
	All hay			Alfalfa			All other hay		
	Acres harvested	Yield per acre	Production	Acres harvested	Yield per acre	Production	Acres harvested	Yield per acre	Production
	1,000 acres	Tons	1,000 tons	1,000 acres	Tons	1,000 tons	1,000 acres	Tons	1,000 tons
Maine	250	1.65	412	23	2.40	55	227	1.57	357
New Hampshire	110	1.79	197	22	2.30	51	88	1.66	146
Vermont	505	1.85	934	135	2.15	290	370	1.74	644
Massachusetts	134	2.01	269	31	2.35	73	103	1.90	196
Rhode Island	11	2.00	22	3	2.20	7	8	1.88	15
Connecticut	104	1.94	202	28	2.50	70	76	1.74	132
New York	2,379	2.16	5,131	1,019	2.50	2,548	1,360	1.90	2,583
New Jersey	140	2.31	323	64	2.90	186	76	1.80	137
Pennsylvania	1,970	2.07	4,085	737	2.55	1,879	1,233	1.79	2,206
Ohio	1,600	2.14	3,419	520	2.65	1,378	1,080	1.89	2,041
Indiana	927	2.25	2,082	427	2.80	1,196	500	1.77	886
Illinois	1,305	2.72	3,554	782	3.25	2,542	523	1.93	1,012
Michigan	1,450	2.26	3,279	1,180	2.40	2,832	270	1.66	447
Wisconsin	3,990	2.72	10,842	2,988	2.90	8,665	1,002	2.17	2,177
Minnesota	3,227	2.34	7,549	2,262	2.75	6,220	965	1.38	1,329
Iowa	2,560	2.78	7,106	1,800	3.05	5,490	760	2.13	1,616
Missouri	2,869	1.99	5,706	800	3.10	2,480	2,069	1.56	3,226
North Dakota	3,403	1.20	4,070	1,270	1.55	1,968	2,133	.99	2,102
South Dakota	4,425	1.16	5,127	2,174	1.50	3,261	2,251	.83	1,866
Nebraska	4,170	1.46	6,080	1,741	2.40	4,178	2,429	.78	1,902
Kansas	2,403	1.96	4,721	1,148	2.60	2,985	1,255	1.38	1,736
Delaware	27	2.00	54	6	3.00	18	21	1.71	36
Maryland	250	2.26	566	64	3.10	198	186	1.98	368
Virginia	1,052	1.77	1,862	84	2.50	210	968	1.71	1,652
West Virginia	602	1.51	912	76	1.95	148	526	1.45	764
North Carolina	447	1.35	605	9	2.30	21	438	1.33	584
South Carolina	226	1.96	443				226	1.96	443
Georgia	447	1.84	822	7	2.35	16	440	1.83	806
Florida	163	1.77	288				163	1.77	288
Kentucky	1,582	1.83	2,900	212	2.65	562	1,370	1.71	2,338
Tennessee	1,110	1.43	1,590	81	2.05	166	1,029	1.38	1,424
Alabama	510	1.55	791	7	1.95	14	503	1.54	777
Mississippi	600	1.87	1,124	14	2.10	29	586	1.87	1,095
Arkansas	735	1.86	1,369	75	3.05	229	660	1.73	1,140
Louisiana	360	1.99	718	20	2.60	52	340	1.96	666
Oklahoma	1,496	1.96	2,935	580	2.85	1,653	916	1.40	1,282
Texas	2,406	1.95	4,692	250	3.50	875	2,156	1.77	3,817
Montana	2,204	1.63	3,603	1,107	2.05	2,269	1,097	1.22	1,334
Idaho	1,272	2.65	3,370	994	3.00	2,982	278	1.40	388
Wyoming	1,114	1.40	1,560	445	2.05	912	669	.97	648
Colorado	1,480	1.95	2,885	740	2.60	1,924	740	1.30	961
New Mexico	264	3.78	997	191	4.70	898	73	1.35	99
Arizona	239	4.91	1,174	202	5.40	1,091	37	2.24	83
Utah	553	2.66	1,469	437	2.95	1,289	116	1.55	180
Nevada	356	1.86	662	159	2.95	469	197	.98	193
Washington	882	2.54	2,244	508	3.10	1,575	374	1.79	669
Oregon	966	2.11	2,039	390	2.85	1,112	576	1.61	927
California	1,647	4.53	7,460	1,152	5.70	6,566	495	1.81	894
United States	60,922	2.04	124,244	26,964	2.73	73,632	33,958	1.49	50,612

Continued

Table 26. Hay: Acres, yield, and production, 1964-69 Continued

State	1969								
	All hay			Alfalfa			All other hay		
	Acres	Yield	Produc-	Acres	Yield	Produc-	Acres	Yield	Produc-
	harvested	per acre	tion	harvested	per acre	tion	harvested	per acre	tion
1,000		1,000	1,000		1,000	1,000		1,000	
acres	Tons	tons	acres	Tons	tons	acres	Tons	tons	
Maine	232	1.61	373	21	2.30	48	211	1.54	325
New Hampshire	100	1.79	179	20	2.45	49	80	1.63	130
Vermont	470	1.94	912	124	2.35	291	346	1.79	621
Massachusetts	122	2.02	247	31	2.55	79	91	1.85	168
Rhode Island	10	2.00	20	3	2.40	7	7	1.86	13
Connecticut	90	2.07	186	26	2.65	69	64	1.83	117
New York	2,279	2.21	5,030	968	2.60	2,517	1,311	1.92	2,513
New Jersey	129	2.45	316	58	3.15	183	71	1.87	133
Pennsylvania	1,969	2.11	4,147	752	2.70	2,030	1,217	1.74	2,117
Ohio	1,415	2.05	2,902	450	2.50	1,125	965	1.84	1,777
Indiana	910	2.33	2,120	410	2.85	1,169	500	1.90	951
Illinois	1,243	2.58	3,337	766	3.20	2,451	477	1.86	886
Michigan	1,350	2.35	3,168	1,070	2.50	2,675	280	1.76	493
Wisconsin	3,957	2.85	11,295	2,958	3.05	9,022	999	2.28	2,273
Minnesota	3,100	2.56	7,948	2,170	2.95	6,402	930	1.66	1,546
Iowa	2,500	2.89	7,213	1,800	3.20	5,760	700	2.08	1,453
Missouri	2,900	1.97	5,700	850	2.85	2,423	2,050	1.60	3,277
North Dakota	3,282	1.31	4,310	1,270	1.70	2,159	2,012	1.07	2,151
South Dakota	4,312	1.28	5,524	2,219	1.65	3,661	2,093	.89	1,863
Nebraska	4,158	1.65	6,871	1,700	2.70	4,590	2,458	.93	2,281
Kansas	2,387	2.14	5,113	1,125	2.90	3,263	1,262	1.47	1,850
Delaware	26	2.19	57	6	3.40	20	20	1.85	37
Maryland	260	2.23	581	64	3.20	205	196	1.92	376
Virginia	990	1.70	1,679	90	2.50	225	900	1.62	1,454
West Virginia	596	1.49	890	75	2.10	158	521	1.40	732
North Carolina	400	1.49	595	11	2.40	26	389	1.46	569
South Carolina	226	1.97	445				226	1.97	445
Georgia	450	2.16	971	7	2.30	16	443	2.16	955
Florida	163	1.85	302				163	1.85	302
Kentucky	1,500	1.97	2,952	197	3.10	611	1,303	1.80	2,341
Tennessee	1,090	1.51	1,651	77	2.25	173	1,013	1.46	1,478
Alabama	521	1.68	876	6	2.00	12	515	1.68	864
Mississippi	590	1.69	1,000	14	1.90	27	576	1.69	973
Arkansas	685	1.69	1,159	69	2.75	190	616	1.57	969
Louisiana	355	1.82	647	15	1.85	28	340	1.82	619
Oklahoma	1,562	1.92	2,998	600	2.80	1,680	962	1.37	1,318
Texas	1,998	1.76	3,526	220	3.40	748	1,778	1.56	2,778
Montana	2,370	1.63	3,854	1,118	2.05	2,292	1,252	1.25	1,562
Idaho	1,300	2.87	3,729	1,044	3.20	3,341	256	1.52	388
Wyoming	1,090	1.43	1,560	449	2.00	898	641	1.03	662
Colorado	1,580	2.01	3,171	760	2.75	2,090	820	1.32	1,081
New Mexico	268	3.71	994	195	4.60	897	73	1.30	97
Arizona	224	4.89	1,096	188	5.40	1,015	36	2.25	81
Utah	549	2.85	1,564	428	3.20	1,370	121	1.60	194
Nevada	460	2.07	950	168	3.60	605	292	1.18	345
Washington	920	2.71	2,497	503	3.50	1,761	417	1.76	736
Oregon	1,015	2.26	2,295	410	3.20	1,312	605	1.62	983
California	1,613	4.39	7,076	1,129	5.50	6,210	484	1.79	866
United States	59,716	2.11	126,026	26,634	2.85	75,883	33,082	1.52	50,143

Table 27. Clover, timothy and mixtures of clover and grasses for hay:
Acres, yield, and production, 1964-69

State	1964			1965		
	Acres harvested	Yield per acre	Production	Acres harvested	Yield per acre	Production
	1,000 acres	Tons	1,000 tons	1,000 acres	Tons	1,000 tons
Maine	285	1.30	370	252	1.20	302
New Hampshire	102	1.25	128	92	1.40	129
Vermont	356	1.55	552	324	1.45	470
Massachusetts	111	1.50	166	110	1.65	182
Rhode Island	10	1.50	15	9	1.50	14
Connecticut	75	1.50	112	74	1.35	100
New York	1,318	1.45	1,911	1,265	1.45	1,834
New Jersey	66	1.50	99	62	1.45	90
Pennsylvania	1,170	1.40	1,638	1,100	1.45	1,595
Ohio	902	1.50	1,353	839	1.50	1,258
Indiana	476	1.55	738	419	1.75	733
Illinois	627	1.65	1,035	558	1.80	1,004
Michigan	365	1.40	511	361	1.40	505
Wisconsin	902	1.65	1,488	866	1.80	1,559
Minnesota	598	1.40	837	580	1.65	957
Iowa	969	1.90	1,841	795	1.80	1,431
Missouri	1,273	1.35	1,719	1,248	1.45	1,810
Nebraska	90	1.40	126	75	1.60	120
Kansas	77	1.50	116	79	1.80	142
Delaware	18	1.50	27	18	1.75	32
Maryland	205	1.40	287	180	1.65	297
Virginia	442	1.15	508	504	1.45	731
West Virginia	350	1.15	402	365	1.10	402
North Carolina	167	1.25	209	190	1.30	247
Kentucky	500	1.35	675	550	1.50	825
Tennessee	332	1.30	432	433	1.50	650
Alabama	39	1.20	47	42	1.25	53
Mississippi	110	1.50	165	116	1.60	186
Arkansas	95	1.15	109	114	1.40	160
Montana	284	1.45	412	287	1.60	459
Idaho	140	1.55	217	134	1.45	194
Wyoming	173	1.15	199	190	1.10	209
Colorado	210	1.40	294	206	1.65	340
New Mexico	15	1.25	19	17	1.45	25
Utah	47	1.65	78	46	1.75	81
Nevada	52	1.35	70	52	1.50	78
Washington	238	1.95	464	233	1.95	454
Oregon	251	1.80	452	238	1.80	428
U. S.	13,440	1.47	19,821	13,023	1.54	20,086

Continued

Table 27. Clover, timothy and mixtures of clover and grasses for hay:
Acres, yield, and production, 1964-69 Continued

State	1966			1967		
	Acres harvested	Yield per acre	Production	Acres harvested	Yield per acre	Production
	1,000 acres	Tons	1,000 tons	1,000 acres	Tons	1,000 tons
Maine	233	1.60	373	191	1.55	296
New Hampshire	83	1.70	141	76	1.80	137
Vermont	339	1.80	610	320	1.85	592
Massachusetts	103	2.00	206	95	1.90	181
Rhode Island	8	1.85	15	8	1.90	15
Connecticut	66	1.75	116	60	2.00	120
New York	1,265	1.75	2,214	1,153	1.90	2,191
New Jersey	63	1.65	104	63	1.85	117
Pennsylvania	1,133	1.50	1,700	1,156	1.70	1,965
Ohio	915	1.65	1,510	1,000	1.60	1,600
Indiana	377	1.75	660	377	1.70	641
Illinois	516	1.80	929	459	1.95	895
Michigan	290	1.40	406	255	1.55	395
Wisconsin	805	1.90	1,530	797	2.10	1,674
Minnesota	555	1.60	888	540	1.50	810
Iowa	787	2.15	1,692	735	2.05	1,507
Missouri	1,248	1.40	1,747	1,211	1.60	1,938
Nebraska	65	1.25	81	52	1.60	83
Kansas	77	1.65	127	68	1.60	109
Delaware	17	1.75	30	15	1.95	29
Maryland	185	1.70	315	183	2.10	384
Virginia	509	1.35	687	550	1.50	825
West Virginia	372	.95	353	402	1.50	603
North Carolina	175	1.30	228	180	1.40	252
Kentucky	627	1.60	1,003	721	1.85	1,334
Tennessee	426	1.55	660	452	1.65	746
Alabama	44	1.25	55	45	1.40	63
Mississippi	135	1.50	202	130	1.50	195
Arkansas	109	1.55	169	117	1.60	187
Montana	290	1.45	420	281	1.65	464
Idaho	125	1.30	162	120	1.55	186
Wyoming	148	1.30	192	175	1.35	236
Colorado	215	1.55	333	192	1.55	298
New Mexico	17	1.60	27	16	1.70	27
Utah	38	1.75	67	42	1.85	78
Nevada	50	.90	45	51	1.25	64
Washington	235	2.00	470	228	1.95	445
Oregon	238	1.80	428	243	1.85	450
U. S.	12,883	1.62	20,895	12,759	1.73	22,132

Continued

Table 27. Clover, timothy and mixtures of clover and grasses for hay:
Acres, yield, and production, 1964-69 Continued

State	1968			1969		
	Acres harvested	Yield per acre	Production	Acres harvested	Yield per acre	Production
	1,000 acres	Tons	1,000 tons	1,000 acres	Tons	1,000 tons
Maine	189	1.65	312	181	1.60	290
New Hampshire	71	1.75	124	67	1.70	114
Vermont	312	1.80	562	300	1.85	555
Massachusetts	86	2.00	172	76	1.95	148
Rhode Island	7	2.05	14	6	1.95	12
Connecticut	62	1.80	112	52	1.95	101
New York	1,040	2.00	2,080	1,049	2.00	2,098
New Jersey	54	1.85	100	51	1.95	99
Pennsylvania	1,098	1.80	1,976	1,087	1.75	1,902
Ohio	1,037	1.90	1,970	925	1.85	1,711
Indiana	403	1.85	746	399	1.95	778
Illinois	431	2.00	862	383	1.90	728
Michigan	245	1.65	404	261	1.75	457
Wisconsin	789	2.25	1,775	789	2.35	1,854
Minnesota	560	1.45	812	537	1.85	993
Iowa	640	2.15	1,376	590	2.15	1,269
Missouri	1,235	1.65	2,038	1,300	1.70	2,210
Nebraska	42	1.40	59	42	1.60	67
Kansas	67	1.65	111	64	2.00	128
Delaware	14	1.75	25	13	2.00	26
Maryland	165	2.00	330	170	1.95	332
Virginia	583	1.85	1,079	584	1.70	993
W. Virginia	398	1.50	597	390	1.50	585
North Carolina	182	1.40	255	161	1.50	242
Kentucky	808	1.80	1,454	800	1.90	1,520
Tennessee	530	1.50	795	580	1.55	899
Alabama	52	1.25	65	58	1.30	75
Mississippi	105	1.75	184	95	1.60	152
Arkansas	156	1.80	281	158	1.65	261
Montana	295	1.65	487	315	1.60	504
Idaho	132	1.40	185	125	1.55	194
Wyoming	159	1.20	191	152	1.30	198
Colorado	189	1.55	293	215	1.65	355
New Mexico	15	1.65	25	15	1.70	26
Utah	40	1.75	70	43	1.80	77
Nevada	50	1.20	60	47	1.60	75
Washington	228	2.00	456	233	2.00	466
Oregon	216	1.85	400	225	1.95	439
U. S.	12,685	1.80	22,837	12,538	1.83	22,933

Table 28. Lespedeza hay: Acres, yield, and production, 1964-69

State	1964			1965		
	Acres harvested	Yield per acre	Production	Acres harvested	Yield per acre	Production
	1,000 acres	Tons	1,000 tons	1,000 acres	Tons	1,000 tons
Ind.	39	1.25	49	34	1.20	41
Ill.	41	1.15	47	34	1.25	42
Mo.	438	1.20	526	504	1.30	655
Kans.	31	1.35	42	38	1.45	55
Del.	7	.80	6	5	1.10	6
Md.	24	1.05	25	15	1.20	18
Va.	105	1.00	105	76	1.05	80
W. Va.	7	1.00	7	7	1.05	7
N. C.	132	1.15	152	95	1.20	114
S. C.	54	1.15	62	39	1.30	51
Ga.	66	1.30	86	46	1.55	71
Ky.	508	1.20	610	488	1.30	634
Tenn.	499	1.30	649	474	1.25	593
Ala.	86	1.25	108	76	1.25	95
Miss.	126	1.55	195	103	1.45	149
Ark.	187	1.15	215	198	1.40	277
La.	30	1.70	51	24	1.65	40
Okla.	91	1.25	114	82	1.50	123
U. S.	2,471	1.23	3,049	2,338	1.30	3,051
	1966			1967		
Ind.	25	1.15	29	21	1.45	30
Ill.	21	1.15	24	20	1.40	28
Mo.	242	1.35	278	242	1.45	351
Kans.	26	1.25	32	28	1.65	46
Del.	4	1.25	5	4	1.50	6
Md.	8	1.00	8	10	1.40	14
Va.	63	1.00	63	60	1.25	75
W. Va.	6	.95	6	6	1.30	8
N. C.	84	1.05	88	67	1.15	77
S. C.	33	1.35	45	28	1.40	39
Ga.	38	1.30	49	33	1.50	50
Ky.	395	1.30	514	367	1.55	569
Tenn.	368	1.25	460	312	1.45	452
Ala.	70	1.25	88	54	1.40	76
Miss.	105	1.55	163	100	1.70	170
Ark.	160	1.40	224	146	1.75	256
La.	18	2.00	36	14	2.00	28
Okla.	64	1.25	80	78	1.60	125
U. S.	1,730	1.27	2,192	1,590	1.51	2,400

Continued

Table 28. Lespedeza hay: Acres, yield, and production, 1964-69 Continued

State	1968			1969		
	Acres harvested	Yield per acre	Production	Acres harvested	Yield per acre	Production
	1,000 acres	Tons	1,000 tons	1,000 acres	Tons	1,000 tons
Ind.	18	1.40	25	19	1.55	29
Ill.	19	1.35	26	25	1.35	34
Mo.	201	1.45	291	170	1.50	255
Kans.	22	1.65	36	22	1.55	34
Del.	3	1.50	5	3	1.60	5
Md.	7	1.50	11	12	1.60	19
Va.	57	1.35	77	43	1.30	56
W. Va.	6	1.15	7	6	1.10	7
N. C.	57	1.20	68	46	1.35	62
S. C.	25	1.40	35	23	1.50	35
Ga.	32	1.35	43	26	1.50	39
Ky.	297	1.55	460	231	1.60	370
Tenn.	288	1.15	331	240	1.25	300
Ala.	52	1.15	60	54	1.30	70
Miss.	75	1.50	113	70	1.55	109
Ark.	130	1.65	215	111	1.50	167
La.	10	1.60	16	7	1.40	10
Okla.	76	1.55	118	70	1.50	105
U. S.	1,375	1.41	1,937	1,178	1.45	1,706

Table 29. Grain hay: Acres, yield, and production, 1964-69 ^{1/}

State	1964			1965		
	Acres harvested	Yield per acre	Production	Acres harvested	Yield per acre	Production
	1,000 acres	Tons	1,000 tons	1,000 acres	Tons	1,000 tons
Maine	4	1.65	7	4	1.60	6
N. H.	3	1.65	5	3	1.80	5
Vt.	13	1.75	23	13	1.45	19
Mass.	3	1.55	5	3	1.75	5
Conn.	2	1.65	3	2	1.75	4
N. Y.	45	1.55	70	48	1.60	77
Wis.	25	1.40	35	43	1.80	77
Minn.	49	1.30	64	56	1.50	84
Iowa	58	1.65	96	84	1.85	155
Mo.	193	1.35	261	154	1.35	208
N. Dak.	135	1.25	169	132	1.45	191
S. Dak.	130	.95	124	90	1.20	108
Nebr.	124	1.00	124	92	1.20	110
Kans.	68	1.15	78	61	1.25	76
Va.	82	1.30	107	75	1.30	98
W. Va.	15	1.15	17	14	1.20	17
N. C.	75	1.30	98	62	1.40	87
S. C.	76	1.15	87	66	1.35	89
Ga.	48	1.40	67	51	1.35	69
Ky.	64	1.25	80	79	1.25	99
Tenn.	95	1.35	128	100	1.30	130
Ala.	42	1.35	57	39	1.15	45
Miss.	64	1.50	96	59	1.55	91
Ark.	44	1.30	57	39	1.20	47
La.	27	1.45	39	26	1.35	35
Okla.	123	1.05	129	116	1.10	128
Texas	319	1.10	351	271	1.05	285
Mont.	181	1.20	217	195	1.50	292
Idaho	28	1.55	43	23	1.50	34
Wyo.	44	1.05	46	42	1.05	44
Colo.	106	1.00	106	90	1.25	112
N. Mex.	14	1.25	18	17	1.40	24
Ariz.	30	2.05	62	28	2.25	63
Utah	15	1.40	21	14	1.90	27
Nev.	12	1.80	22	9	1.70	15
Wash.	74	1.40	104	62	1.45	90
Oreg.	114	1.40	160	110	1.45	160
Calif.	398	1.75	696	366	1.85	677
U. S.	2,942	1.32	3,872	2,738	1.42	3,883

^{1/} Includes oats cut and fed unthreshed.

Continued

Table 29. Grain hay: Acres, yield, and production, 1964-69 1/ Continued

State	1966			1967		
	Acres harvested	Yield per acre	Production	Acres harvested	Yield per acre	Production
	1,000 acres	Tons	1,000 tons	1,000 acres	Tons	1,000 tons
Maine	3	1.80	5	2	1.75	4
N. H.	2	1.70	3	2	1.90	4
Vt.	11	1.60	18	10	1.55	16
Mass.	3	1.80	5	2	1.90	4
Conn.	1	1.80	2	1	1.90	2
N. Y.	35	1.70	60	26	2.10	55
Wis.	42	1.50	63	27	1.60	43
Minn.	39	1.50	58	29	1.65	48
Iowa	54	1.80	97	65	1.85	120
Mo.	136	1.30	177	113	1.60	181
N. Dak.	150	1.20	180	159	.90	143
S. Dak.	235	.95	223	103	1.25	129
Nebr.	95	1.00	95	60	1.20	72
Kans.	95	1.10	104	50	1.35	68
Va.	78	1.35	105	75	1.50	112
W. Va.	16	1.10	18	14	1.35	19
N. C.	57	1.40	80	50	1.45	72
S. C.	51	1.45	74	47	1.40	66
Ga.	49	1.50	74	47	1.35	63
Ky.	79	1.50	119	81	1.65	134
Tenn.	84	1.65	139	80	1.40	112
Ala.	34	1.35	46	33	1.10	36
Miss.	77	1.20	92	73	1.50	110
Ark.	28	1.10	31	34	1.80	61
La.	24	1.60	38	24	1.75	42
Okla.	110	1.10	121	105	1.30	137
Texas	255	1.05	268	191	1.05	201
Mont.	255	1.20	306	138	1.15	159
Idaho	45	1.30	58	32	1.60	51
Wyo.	65	.85	55	55	1.30	72
Colo.	84	1.10	92	86	1.30	112
N. Mex.	17	1.40	24	18	1.25	23
Ariz.	28	2.15	60	26	2.30	60
Utah	13	1.80	23	12	1.80	22
Nev.	9	1.60	14	10	1.75	18
Wash.	84	1.35	113	45	1.45	65
Oreg.	112	1.30	146	107	1.45	155
Calif.	238	1.75	417	257	2.00	514
U. S.	2,793	1.29	3,603	2,289	1.44	3,305

1/ Includes oats cut and fed unthreshed.

Continued

Table 29. Grain hay: Acres, yield, and production, 1964-69 ^{1/} Continued

State	1968			1969		
	Acres harvested	Yield per acre	Production	Acres harvested	Yield per acre	Production
	1,000 acres	Tons	1,000 tons	1,000 acres	Tons	1,000 tons
Maine	3	1.80	5	3	1.55	5
N. H.	2	1.60	3	2	2.00	4
Vt.	8	1.45	12	6	1.60	10
Mass.	2	1.80	4	2	1.70	3
Conn.	1	1.80	2	1	1.65	2
N. Y.	23	1.85	43	20	2.00	40
Wis.	32	1.80	58	25	2.30	58
Minn.	30	1.60	48	30	2.00	60
Iowa	80	2.00	160	70	1.60	112
Mo.	115	1.50	172	80	1.40	112
N. Dak.	159	1.25	199	191	1.30	248
S. Dak.	175	1.10	192	210	1.10	231
Nebr.	124	.90	112	120	1.35	162
Kans.	40	1.25	50	80	1.40	112
Va.	68	1.70	116	55	1.60	88
W. Va.	12	1.40	17	11	1.40	15
N. C.	50	1.50	75	50	1.65	83
S. C.	45	1.45	65	41	1.50	62
Ga.	45	1.45	65	42	1.65	69
Ky.	65	1.60	104	52	1.70	88
Tenn.	83	1.50	125	83	1.50	125
Ala.	31	1.30	40	31	1.40	43
Miss.	72	1.35	97	78	1.65	129
Ark.	27	2.00	54	50	1.90	95
La.	24	1.60	38	23	1.50	35
Okla.	110	1.25	138	120	1.60	192
Texas	239	1.20	287	208	1.10	229
Mont.	153	1.25	191	270	1.35	365
Idaho	28	1.60	45	23	1.90	44
Wyo.	45	1.10	50	67	1.25	84
Colo.	106	1.40	148	140	1.30	182
N. Mex.	19	1.30	25	20	1.45	29
Ariz.	27	2.30	62	26	2.30	60
Utah	12	1.40	17	11	1.75	19
Nev.	14	1.45	20	8	2.10	17
Wash.	59	1.45	86	95	1.45	138
Oreg.	100	1.25	125	102	1.45	148
Calif.	252	1.90	479	247	1.80	445
U. S.	2,480	1.42	3,529	2,693	1.46	3,943

^{1/} Includes oats cut and fed unthreshed.

Table 30. Wild hay: Acres, yield, and production, 1964-69

State ^{1/}	1964			1965		
	Acres harvested	Yield per acre	Production	Acres harvested	Yield per acre	Production
	1,000 acres	Tons	1,000 tons	1,000 acres	Tons	1,000 tons
Wisconsin	33	1.25	41			
Minnesota	411	1.15	473	390	1.25	488
Missouri	173	1.15	199			
North Dakota	1,630	.95	1,548	1,565	1.00	1,565
South Dakota	2,112	.70	1,478	2,175	.75	1,631
Nebraska	2,560	.70	1,792	2,483	.80	1,986
Kansas	806	1.10	887	790	1.25	988
Arkansas	114	.85	97			
Oklahoma	479	1.10	527	455	1.25	569
Texas	200	1.15	230			
Montana	527	.95	501	648	1.05	680
Idaho	104	1.30	135	104	1.35	140
Wyoming	388	.90	349	384	.80	307
Colorado	289	1.00	289	332	1.10	365
New Mexico	18	.95	17	24	1.00	24
Utah	67	1.30	87	58	1.40	81
Nevada	241	.95	229	251	1.00	251
Washington	47	1.30	61	51	1.30	66
Oregon	289	1.15	332	250	1.25	313
California	96	1.20	115	97	1.50	146
United States	10,584	.89	9,387	10,057	.95	9,600
	1966			1967		
Wisconsin						
Minnesota	320	1.30	416	330	1.25	413
Missouri						
North Dakota	1,424	1.00	1,424	1,509	.85	1,283
South Dakota	1,849	.65	1,202	1,960	.75	1,470
Nebraska	2,384	.75	1,788	2,408	.80	1,926
Kansas	735	.95	698	757	1.30	984
Arkansas						
Oklahoma	441	1.05	463	406	1.40	568
Texas						
Montana	518	.95	492	585	1.05	614
Idaho	105	1.05	110	102	1.45	148
Wyoming	361	.80	289	397	1.00	397
Colorado	279	1.10	307	272	1.15	313
New Mexico	22	.85	19	22	.75	17
Utah	55	1.25	69	62	1.50	93
Nevada	138	.85	117	193	1.00	193
Washington	50	1.25	62	50	1.40	70
Oregon	262	1.15	301	275	1.50	413
California	92	1.20	110	94	1.40	132
United States	9,035	.87	7,867	9,422	.96	9,034

^{1/} Estimate discontinued in Wisconsin, Missouri, Arkansas and Texas after 1964 and included in "other hay".

Continued

Table 30. Wild hay: Acres, yield, and production, 1964-69 Continued

State 1/	1968			1969		
	Acres harvested	Yield per acre	Production	Acres harvested	Yield per acre	Production
	1,000 acres	Tons	1,000 tons	1,000 acres	Tons	1,000 tons
Wisconsin						
Minnesota	310	1.25	388	300	1.35	405
Missouri						
North Dakota	1,418	.95	1,347	1,276	1.00	1,276
South Dakota	1,842	.75	1,382	1,603	.80	1,282
Nebraska	2,100	.70	1,470	2,100	.80	1,680
Kansas	749	1.25	936	719	1.30	935
Arkansas						
Oklahoma	335	1.25	419	350	1.25	438
Texas						
Montana	480	1.05	504	520	1.05	546
Idaho	103	1.30	134	100	1.35	135
Wyoming	385	.85	327	362	.90	326
Colorado	270	1.05	284	280	1.15	322
New Mexico	20	1.15	23	19	.90	17
Utah	61	1.45	88	64	1.45	93
Nevada	131	.85	111	233	1.05	245
Washington	50	1.35	68	50	1.35	68
Oregon	220	1.50	330	246	1.35	332
California	90	1.30	117	92	1.50	138
United States	8,564	.93	7,928	8,314	.99	8,238

1/ Estimate discontinued in Wisconsin, Missouri, Arkansas and Texas after 1964 and included in "other hay".

Table 311. Peanut-vine hay: Acres, yield, and production, 1964-69

State 1/	1964			1965		
	Acres harvested	Yield per acre	Production	Acres harvested	Yield per acre	Production
	1,000 acres	Tons	1,000 tons	1,000 acres	Tons	1,000 tons
Va.	23	.80	18	29	.90	26
N. C.	52	.90	47	58	.95	55
S. C.	2	.80	2			
Ga.	73	.75	55	66	.85	56
Fla.	20	.85	17	20	.80	16
Ala.	76	.75	57	77	.70	54
Miss.	1	.90	1			
Okla.	60	.65	39	63	.65	41
Tex.	144	.50	72	137	.50	68
N. Mex.	1	.70	1			
U. S.	452	.68	309	450	.70	316
	1966			1967		
Va.	23	.90	21	20	.95	19
N. C.	60	1.05	63	54	.95	51
S. C.						
Ga.	52	.75	39	52	.80	42
Fla.	21	.80	17	21	.85	18
Ala.	73	.60	44	51	.65	33
Miss.						
Okla.	67	.60	40	48	.65	31
Tex.	111	.55	61	84	.50	42
N. Mex.						
U. S.	407	.70	285	330	.72	236
	1968			1969		
Va.	17	.95	16	17	.90	15
N. C.	40	1.10	44	32	1.00	32
S. C.						
Ga.	50	.81	41	53	.80	42
Fla.	21	.85	18	21	.85	18
Ala.	58	.65	38	52	.70	36
Miss.						
Okla.	45	.65	29	62	.70	43
Tex.	80	.50	40	100	.50	50
N. Mex.						
U. S.	311	.73	226	337	.70	236

1/ Estimate discontinued after 1964 in South Carolina, Mississippi and New Mexico and included in "other hay".

Table 32: Soybean hay: Acres, yield and production 1964

State 1/	1964		
	Acres	Yield per	Production
	harvested	acre	
	1,000 acres	Tons	1,000 tons
N. J.	1	1.20	1
Pa.	2	1.50	3
Ohio	6	1.25	8
Ind.	14	1.45	20
Ill.	23	1.25	29
Wis.	4	1.15	5
Mo.	26	1.35	35
Kans.	6	1.00	6
Del.	3	1.20	4
Md.	3	1.45	4
Va.	20	1.35	27
W. Va.	3	1.60	5
N. C.	90	1.40	126
S. C.	26	1.15	30
Ga.	13	1.35	18
Ky.	45	1.55	70
Tenn.	64	1.65	106
Ala.	26	1.25	32
Miss.	50	1.55	78
Ark.	17	1.25	21
La.	7	1.40	10
Okla.	10	1.10	11
Tex.	4	1.00	4
U. S.	463	1.41	653

Table 33. Cowpea hay: Acres, yield and production 1964

State 1/	1964		
	Acres	Yield per	Production
	harvested	acre	
	1,000 acres	Tons	1,000 tons
N. C.	4	1.00	4
S. C.	16	.90	14
Ga.	5	1.05	5
Tenn.	3	1.20	4
Ala.	2	.90	2
Miss.	3	1.20	4
Ark.	1	.90	1
Okla.	13	.90	12
Tex.	5	.90	4
U. S.	52	.96	50

1/ Estimates included in other hay after 1964.

Table 34. Other hay: Acres, yield and production, 1964-69

State	1964			1965		
	Acres	Yield	Production	Acres	Yield	Production
	harvested	per acre	1,000 tons	harvested	per acre	1,000 tons
Maine	97	.95	92	93	.90	84
New Hampshire	40	.90	36	35	1.00	35
Vermont	140	1.15	161	140	1.10	154
Massachusetts	29	1.25	36	24	1.30	31
Rhode Island	4	1.10	4	4	1.15	5
Connecticut	35	1.20	42	29	1.20	35
New York	321	1.25	401	279	1.30	363
New Jersey	25	1.40	35	26	1.45	38
Pennsylvania	123	1.25	154	132	1.45	191
Ohio	67	1.30	87	54	1.30	70
Indiana	53	1.35	72	60	1.85	111
Illinois	77	1.40	108	88	1.45	128
Michigan	43	1.35	58	40	1.30	52
Wisconsin	50	1.45	72	259	1.90	492
Minnesota	85	1.35	115	89	1.60	142
Iowa	63	1.60	101	80	1.75	140
Missouri	249	1.30	324	426	1.35	575
North Dakota	450	1.10	495	600	1.30	780
South Dakota	320	.95	304	240	1.25	300
Nebraska	137	1.10	151	210	1.50	315
Kansas	231	1.35	312	320	1.75	560
Delaware	4	1.40	6	6	1.40	8
Maryland	30	1.25	38	39	1.50	59
Virginia	204	1.05	214	208	1.30	270
West Virginia	119	1.00	119	112	1.05	118
North Carolina	62	1.25	78	133	1.35	180
South Carolina	114	1.90	217	152	2.20	334
Georgia	300	2.00	600	321	2.00	642
Florida	122	1.80	220	123	1.75	215
Kentucky	140	1.15	161	204	1.40	286
Tennessee	168	1.20	202	225	1.35	304
Alabama	311	1.65	513	319	1.80	574
Mississippi	339	1.45	492	352	1.60	563
Arkansas	219	1.15	252	379	1.50	569
Louisiana	375	1.60	600	340	1.70	578
Oklahoma	361	1.35	487	355	1.45	515
Texas	1,397	1.50	2,096	1,815	1.55	2,813
Montana	171	.90	154	260	.95	247
Idaho	21	1.45	30	21	1.45	30
Wyoming	89	.80	71	111	1.05	117
Colorado	106	1.00	106	177	1.45	257
New Mexico	11	1.15	13	24	1.20	29
Arizona	10	2.05	20	11	2.00	22
Utah	5	1.65	8	5	1.80	9
Nevada	3	1.60	5	3	1.50	4
Washington	30	1.45	44	27	1.50	40
Oregon	72	1.70	122	55	1.70	94
California	165	1.85	305	180	1.90	342
United States	7,587	1.36	10,333	9,185	1.50	13,820

Continued

Table 34. Other hay: Acres, yield and production, 1964-69 Continued

State	1966			1967		
	Acres	Yield	Production	Acres	Yield	Production
	harvested	per acre	:	harvested	per acre	:
	1,000 acres	Tons	1,000 tons	1,000 acres	Tons	1,000 tons
Maine	84	1.20	101	63	1.10	69
New Hampshire	34	1.20	41	25	1.40	35
Vermont	105	1.35	142	80	1.50	120
Massachusetts	21	1.30	27	19	1.55	29
Rhode Island	3	1.20	4	2	1.10	2
Connecticut	26	1.30	34	21	1.45	30
New York	290	1.50	435	236	1.55	366
New Jersey	26	1.45	38	24	1.95	47
Pennsylvania	132	1.45	191	125	1.50	188
Ohio	45	1.40	63	43	1.40	60
Indiana	60	1.75	105	75	1.70	128
Illinois	76	1.45	110	61	1.70	104
Michigan	45	1.60	72	35	1.60	56
Wisconsin	212	1.95	413	210	1.85	389
Minnesota	86	1.35	116	78	1.35	105
Iowa	60	1.85	111	48	1.70	82
Missouri	426	1.25	532	503	1.35	679
North Dakota	582	1.30	757	856	1.00	856
South Dakota	290	1.20	348	229	1.05	240
Nebraska	151	1.50	226	166	1.30	216
Kansas	349	1.45	506	314	1.65	518
Delaware	5	1.40	7	4	1.40	6
Maryland	29	1.55	45	15	1.95	29
Virginia	208	1.25	260	229	1.40	321
West Virginia	113	.85	96	110	1.25	138
North Carolina	121	1.30	157	115	1.30	150
South Carolina	150	2.20	330	152	2.30	350
Georgia	317	2.20	697	304	2.30	699
Florida	132	1.70	224	135	1.90	256
Kentucky	196	1.40	274	198	1.50	297
Tennessee	168	1.45	244	148	1.40	207
Alabama	293	1.75	513	308	1.95	601
Mississippi	307	1.70	522	292	1.80	526
Arkansas	371	1.55	575	371	1.70	631
Louisiana	306	1.60	490	302	2.10	634
Oklahoma	355	1.50	533	365	1.95	566
Texas	1,670	1.65	2,756	1,837	1.60	2,939
Montana	195	.75	146	248	.90	223
Idaho	19	1.40	27	23	1.50	34
Wyoming	73	1.00	73	100	1.10	110
Colorado	112	1.25	140	140	1.15	161
New Mexico	22	1.25	28	22	1.20	26
Arizona	12	2.25	27	11	2.10	23
Utah	4	1.50	6	4	1.80	7
Nevada	3	1.50	4	2	1.30	3
Washington	33	1.60	53	35	1.60	56
Oregon	61	1.80	110	53	1.80	95
California	180	1.70	306	180	2.00	360
United States	8,558	1.52	13,015	8,916	1.54	13,767

Continued

Table 34. Other hay: Acres, yield and production, 1964-69 Continued

State	1968			1969		
	Acres	Yield	Production	Acres	Yield	Production
	harvested	per acre	1,000 tons	harvested	per acre	1,000 tons
Maine	35	1.15	40	27	1.10	30
New Hampshire	15	1.25	19	11	1.10	12
Vermont	50	1.40	70	40	1.40	56
Massachusetts	15	1.30	20	13	1.30	17
Rhode Island	1	1.00	1	1	1.00	1
Connecticut	13	1.40	18	11	1.30	14
New York	297	1.55	460	242	1.55	375
New Jersey	22	1.70	37	20	1.70	34
Pennsylvania	135	1.70	230	130	1.65	215
Ohio	43	1.65	71	40	1.65	66
Indiana	79	1.45	115	82	1.75	144
Illinois	73	1.70	124	69	1.80	124
Michigan	25	1.70	43	19	1.90	36
Wisconsin	181	1.90	344	185	1.95	361
Minnesota	65	1.25	81	63	1.40	88
Iowa	40	2.00	80	40	1.80	72
Missouri	518	1.40	725	500	1.40	700
North Dakota	556	1.00	556	545	1.15	627
South Dakota	234	1.25	292	280	1.25	350
Nebraska	163	1.60	261	196	1.90	372
Kansas	377	1.60	603	377	1.70	641
Delaware	4	1.40	6	4	1.40	6
Maryland	14	1.90	27	14	1.80	25
Virginia	243	1.50	364	201	1.50	302
West Virginia	110	1.30	143	114	1.10	125
North Carolina	109	1.30	142	100	1.50	150
South Carolina	156	2.20	343	162	2.15	348
Georgia	313	2.10	657	322	2.50	805
Florida	142	1.90	270	142	2.00	284
Kentucky	200	1.60	320	220	1.65	363
Tennessee	128	1.35	173	110	1.40	154
Alabama	310	1.85	574	320	2.00	640
Mississippi	334	2.10	701	333	1.75	583
Arkansas	347	1.70	590	297	1.50	446
Louisiana	306	2.00	612	310	1.85	574
Oklahoma	350	1.65	578	360	1.50	540
Texas	1,837	1.90	3,490	1,470	1.70	2,499
Montana	169	.90	152	147	1.00	147
Idaho	15	1.60	24	8	1.90	15
Wyoming	80	1.00	80	60	.90	54
Colorado	175	1.35	236	185	1.20	222
New Mexico	19	1.35	26	19	1.30	25
Arizona	10	2.10	21	10	2.10	21
Utah	3	1.60	5	3	1.70	5
Nevada	2	1.25	2	4	1.90	8
Washington	37	1.60	59	39	1.65	64
Oregon	40	1.80	72	32	2.00	64
California	153	1.95	298	145	1.95	283
United States	8,543	1.66	14,155	8,022	1.63	13,087

Table 35. Hops: Acres, yield, and production, 1964-70

State	1964			1965		
	Acres harvested	Yield per acre	Production	Acres harvested	Yield per acre	Production
	Acres	Pounds	1,000 pounds	Acres	Pounds	1,000 pounds
Idaho	4,100	1,430	5,863	3,900	1,950	7,605
Wash.	20,700	1,600	34,983	21,100	1,710	36,081
Ore.	4,300	1,490	6,407	4,600	1,450	6,670
Calif.	3,500	1,750	6,125	3,100	1,840	5,704
U. S.	32,600	1,637	53,378	32,700	1,714	56,060
	1966			1967		
Idaho	4,000	1,810	7,240	3,600	1,810	6,516
Wash.	20,700	1,790	37,053	19,400	1,660	32,204
Oreg.	5,000	1,460	7,300	4,900	1,490	7,301
Calif.	2,500	1,590	3,975	1,900	1,830	3,477
U. S.	32,200	1,726	55,568	29,800	1,661	49,498
	1968			1969		
Idaho.	3,300	1,740	5,742	3,200	1,860	5,952
Wash.	19,100	1,510	28,841	18,100	1,560	28,236
Oreg.	4,500	1,480	6,660	4,200	1,250	5,250
Calif.	1,500	1,660	2,490	1,500	1,550	2,325
U. S.	28,400	1,540	43,733	27,000	1,547	41,763

Table 36. Popcorn: Acres, yield and production 1964-69

State	1964				1965			
	Acres		Yield per acre 1/	Production 1/ 1,000 pounds	Acres		Yield per acre 1/	Production 1/ 1,000 pounds
	Planted	Harvested			Planted	Harvested		
Ohio	15,000	14,500	2,300	33,350	21,500	20,000	2,800	56,000
Indiana	36,000	36,000	2,100	75,600	43,000	43,000	3,000	129,000
Illinois	20,500	20,000	2,500	50,000	22,500	22,000	2,650	58,300
Michigan	4,800	4,200	1,100	4,620	6,900	6,500	2,750	17,875
Iowa	39,000	38,000	2,420	91,960	48,000	46,000	2,400	110,400
Missouri	8,200	8,000	2,000	16,000	8,100	7,100	2,000	14,200
Nebraska	20,000	19,000	2,000	38,000	26,000	24,000	2,200	52,800
Kansas	2,700	2,000	1,400	2,800	5,600	4,700	2,200	10,340
Kentucky	18,900	18,500	1,600	29,600	22,300	22,000	2,200	48,400
Other States 2/	6,000	5,100	1,913	9,755	10,500	10,000	2,113	21,132
United States	171,100	165,300	2,128	351,685	214,400	205,300	2,525	518,447
	1966				1967			
Ohio	21,500	20,500	3,150	64,575	22,500	19,500	2,750	53,625
Indiana	43,000	41,000	2,500	102,500	41,000	37,000	2,700	99,900
Illinois	22,000	21,000	2,350	49,350	20,000	19,000	3,100	58,900
Michigan	5,800	5,300	2,150	11,395	3,900	2,000	1,400	2,800
Iowa	55,000	53,000	2,560	135,680	42,000	38,000	2,500	95,000
Missouri	7,100	6,200	1,900	11,780	8,100	6,600	2,400	15,840
Nebraska	27,000	26,000	2,600	67,600	18,000	15,000	2,700	40,500
Kansas	8,700	8,200	2,400	19,680	4,900	4,000	2,900	11,600
Kentucky	20,700	19,400	1,550	30,070	16,400	15,500	2,675	41,462
Other States 2/	7,300	6,500	1,256	8,163	5,700	5,250	2,917	15,315
United States	218,100	207,100	2,418	500,793	182,500	161,850	2,687	434,942
	1968				1969			
Ohio	23,500	22,000	2,800	61,600	21,000	20,000	2,900	58,000
Indiana	41,000	38,000	2,600	98,800	40,000	38,000	3,000	114,000
Illinois	20,000	19,000	2,550	48,450	23,000	22,000	2,950	64,900
Michigan	3,900	3,800	2,660	10,108	2,900	2,800	2,800	7,840
Iowa	49,000	47,000	2,500	117,500	49,000	47,000	3,050	143,350
Missouri	10,500	9,500	2,400	22,800	6,500	6,000	2,900	17,400
Nebraska	25,000	23,000	2,500	57,500	26,000	25,000	3,200	80,000
Kansas	5,200	5,000	2,700	13,500	7,300	6,300	3,800	23,940
Kentucky	14,500	13,400	1,950	26,130	13,200	12,600	2,375	29,925
Other States 2/	4,950	4,600	2,165	9,960	3,050	2,900	2,676	7,760
United States	197,550	185,300	2,517	466,348	191,950	182,600	2,996	547,115

1/ Of equivalent ear corn; 70 pounds to a bushel. 2/ Other States include Maryland, Tennessee, Alabama, Oklahoma, Texas, Colorado, 1964-65; Maryland, Tennessee, Alabama, Texas, Colorado, 1966-69.

Table 37. Broomcorn: Acres, yield and production 1964-69

State 1/	1964				1965			
	Acres		Yield per acre	Production	Acres		Yield per acre	Production
	Planted	Harvested			Planted	Harvested		
	Acres	Acres	Pounds	Tons	Acres	Acres	Pounds	Tons
Illinois	700	700	800	300	400	400	800	200
Kansas	1,800	1,400	280	200	1,800	1,700	400	300
Oklahoma	47,000	43,000	300	6,400	45,000	42,000	465	9,800
Texas	33,000	30,000	430	6,400	30,000	29,000	420	6,100
Colorado	73,000	58,000	160	4,600	78,000	62,000	300	9,300
New Mexico	32,000	26,000	225	2,900	34,000	33,000	370	6,100
United States	187,500	159,100	261	20,800	189,200	168,100	378	31,800
	1966				1967			
Illinois	300	300	700	100				
Kansas	1,500	1,400	290	200				
Oklahoma	40,000	34,000	345	5,900	36,000	31,000	355	5,500
Texas	21,000	20,000	380	3,800	22,000	16,000	250	2,000
Colorado	39,000	30,000	260	3,900	34,000	25,000	220	2,800
New Mexico	32,000	30,000	300	4,500	29,000	25,000	250	3,100
United States	133,800	115,700	318	18,400	121,000	97,000	276	13,400
	1968				1969			
Oklahoma	37,000	32,000	360	5,800	33,000	28,000	390	5,500
Texas	24,000	22,000	320	3,500	18,000	15,000	390	2,900
Colorado	35,000	28,000	220	3,100	39,000	31,000	260	4,000
New Mexico	28,000	26,000	305	4,000	29,000	26,000	290	3,800
United States	124,000	108,000	304	16,400	119,000	100,000	324	16,200

1/ Estimates discontinued for Illinois and Kansas in 1967.

Table 38. Cotton: Acres, yield, and production, 1964-69

State	1964			1965					
	Acres		Yield per acre	Production 480-lb. NWB	Acres		Yield per acre	Production 480-lb. NWB	
	Planted	Harvested			Planted	Harvested			
	1,000 acres		Pounds	1,000 bales	1,000 acres		Pounds	1,000 bales	
UPLAND:									
N. C.	395	381	470	373	387	368	287		220
S. C.	549	538	496	556	501	489	486		495
Ga.	646	632	467	615	593	577	467		561
Tenn.	512	502	640	669	507	499	611		635
Ala.	847	831	512	887	830	809	505		852
Mo.	354	347	564	408	341	334	559		389
Miss.	1,498	1,460	732	2,226	1,471	1,430	678		2,020
Ark.	1,275	1,242	605	1,565	1,250	1,205	572		1,437
La.	534	520	544	589	516	498	540		560
Okla.	614	575	239	287	585	555	319		369
Tex.	6,186	5,638	347	4,076	5,822	5,539	401		4,632
N. Mex.	171	161	697	234	166	158	667		219
Ariz.	333	328	1,085	742	312	307	1,157		740
Calif.	758	742	1,134	1,753	744	725	1,117		1,685
Va.	15.1	14.7	444	13.6	15.0	14.5	273		8.2
Fla.	25.4	24.0	325	16.3	23.1	19.0	353		14.0
Ill.	2.7	2.5	510	2.7	2.5	2.3	458		2.2
Ky.	6.5	6.3	592	7.8	6.4	6.2	619		8.0
Nev.	3.6	3.1	777	5.0	3.0	2.9	614		3.7
U. S. UPLAND	14,725.3	13,947.6	517	15,025.4	14,075.0	13,537.9	527		14,850.1
AMER-PIMA:									
Tex.	39.0	37.5	517	40.4	27.6	26.2	530		28.9
N. Mex.	22.5	21.8	507	23.0	15.7	15.2	408		12.9
Ariz.	48.0	47.0	562	55.0	33.5	33.5	657		45.1
Calif.	.8	.7	761	1.1	.5	.5	875		.9
U. S. AMER-PIMA	110.3	107.0	536	119.5	77.3	74.8	563		87.8
U. S. ALL COTTON	14,835.6	14,054.6	517	15,144.9	14,152.3	13,612.7	527		14,937.9

Continued

Table 38. Cotton: Acres, yield, and production, 1964-69 Continued

State	1966				1967				
	Acres		Yield	Production	Acres		Yield	Production	
	Planted	Harvested	per acre	480-lb. NWB	Planted	Harvested	per acre	480-lb. NWB	
	1,000 acres		Pounds	1,000 bales		1,000 acres		Pounds	1,000 bales
UPLAND:									
N. C.	244	155	290	94	191	75	277	43	
S. C.	355	305	442	281	307	190	449	178	
Ga.	403	380	398	315	335	267	408	227	
Tenn.	398	365	475	362	336	236	295	145	
Ala.	589	564	392	460	513	340	282	200	
Mo.	255	190	408	161	245	90	314	59	
Miss.	1,032	993	653	1,350	955	890	567	1,051	
Ark.	930	865	418	753	830	715	333	496	
La.	367	357	602	448	348	330	621	427	
Okla.	447	380	270	214	425	370	251	193	
Tex.	4,236	3,940	385	3,156	3,936	3,501	376	2,740	
N. Mex.	126	119	679	168	118	109	651	147	
Ariz.	221	218	1,053	478	219	210	928	418	
Calif.	631	618	952	1,225	595	588	848	1,038	
Va.	10.8	6.1	180	2.3	8.7	.6	138	.2	
Fla.	15.5	14.3	336	10.0	11.2	10.0	336	7.0	
Ill.	2.1	.5	354	.4	1.6	.2	245	.1	
Ky.	4.6	2.5	525	2.7	4.3	.9	322	.6	
Nev.	2.3	2.2	813	3.7	2.3	2.2	867	4.0	
U. S. UPLAND	10,269.3	9,474.6	480	9,484.1	9,381.1	7,930.9	446	7,373.9	
AMER-PIMA:									
Tex.	29.0	28.0	392	22.9	24.5	24.0	496	24.8	
N. Mex.	16.0	15.3	408	13.0	14.0	13.3	359	10.0	
Ariz.	34.5	34.2	507	36.1	29.5	28.7	574	34.3	
Calif.	.6	.5	628	.7	.5	.4	468	.4	
U. S. AMER-PIMA	80.1	78.0	447	72.7	68.5	66.4	502	69.5	
U. S. ALL COTTON	10,349.4	9,552.6	480	9,556.8	9,449.6	7,997.3	447	7,443.4	

Continued

Table 38. Cotton: Acres, yield, and production, 1964-69 Continued

State	1968			1969				
	Acres		Yield per acre	Production 480-lb. NWB	Acres		Yield per acre	Production 480-lb. NWB
	Planted	Harvested			Planted	Harvested		
	1,000 acres		Pounds	1,000 bales	1,000 acres		Pounds	1,000 bales
UPLAND:								
N. C.	200	189	310	122	184	166	287	99
S. C.	354	340	352	250	350	287	342	205
Ga.	410	395	322	265	410	385	351	282
Tenn.	394	360	432	324	420	400	505	421
Ala.	555	525	362	396	566	540	409	460
Mo.	318	190	495	196	312	292	533	325
Miss.	1,155	1,105	660	1,519	1,225	1,185	534	1,319
Ark.	1,045	980	502	1,025	1,090	1,055	518	1,137
La.	423	410	636	544	440	420	551	482
Okla.	421	380	333	264	500	465	286	279
Tex.	4,426	4,101	410	3,499	5,148	4,648	292	2,831
N. Mex.	147	138	571	164	147	132	529	145
Ariz.	270	269	1,230	688	277	277	1,033	595
Calif.	695	687	1,097	1,569	707	701	899	1,312
Va.	8.1	6.0	242	3.0	5.5	5.0	201	2.1
Fla.	13.4	11.0	431	9.9	13.6	9.7	464	9.4
Ill.	2.0	.3	347	.2	1.8	.4	460	.4
Ky.	5.5	3.6	574	4.3	5.7	5.4	516	5.8
Nev.	2.5	2.4	872	4.4	2.3	2.3	654	3.1
U. S. UPLAND	10,844.5	10,092.3	516	10,846.8	11,804.9	10,975.8	433	9,912.8
AMER-PIMA:								
Tex.	24.5	24.0	456	22.8	27.5	27.0	492	27.6
N. Mex.	14.0	13.3	411	11.4	16.0	14.5	404	12.2
Ariz.	29.5	29.3	721	44.0	33.6	33.4	533	37.1
Calif.	.4	.4	762	.7	.5	.4	498	.5
U. S. AMER-PIMA	68.4	67.0	565	78.9	77.6	75.3	493	77.4
U. S. ALL COTTON	10,912.9	10,159.3	516	10,925.7	11,882.5	11,051.1	434	9,990.2

Table 39. Crops - Alaska: Acres, yield, and production, 1964-69

Crop	Year	Acres harvested	Yield per acre	Production
		Acres		Bushels
Oats	1964	500	75.0	37,500
	1965	600	70.0	42,000
	1966	400	80.0	32,000
	1967	600	77.0	46,200
	1968	900	52.0	46,800
	1969	500	30.0	15,000
Barley	1964	1,900	39.0	74,100
	1965	1,600	42.0	67,200
	1966	1,600	45.0	72,000
	1967	1,800	42.0	75,600
	1968	1,900	30.0	57,000
	1969	1,200	25.0	30,000
All Silage	1964	5,600	5.21	29,200
	1965	4,300	5.05	21,700
	1966	3,900	4.69	18,300
	1967	3,800	5.13	19,500
	1968	3,500	5.26	18,400
	1969	3,000	3.40	10,200
All Hay	1964	8,300	1.30	10,800
	1965	6,900	1.28	8,800
	1966	8,200	1.38	11,300
	1967	8,700	1.51	13,100
	1968	7,900	1.25	9,900
	1969	8,100	.95	7,700

Table 40. Crops - Hawaii: Acres, yield, and production, 1964-69

Crop	Year	Acres	Yield per acre	Production
		Acres		1,000 pounds
Taro 1/	1964	470	19.7	9,275
	1965	440	21.5	9,480
	1966	400	22.5	8,990
	1967	400	20.4	8,155
	1968	420	21.8	9,140
	1969	420	20.5	8,605
Coffee 2/	1964	3,900	2.6	9,947
	1965	3,800	2.0	7,500
	1966	3,700	2.2	8,040
	1967	3,500	1.6	5,440
	1968	3,200	1.8	5,700
	1969	2,900	1.4	4,130

1/ Average acres grown during the year. 2/ Harvested acres.

UNITED STATES DEPARTMENT OF AGRICULTURE
WASHINGTON, D. C. 20250

OFFICIAL BUSINESS
PENALTY FOR PRIVATE USE, \$300

POSTAGE AND FEES PAID
U.S. DEPARTMENT OF
AGRICULTURE

FIRST CLASS
AGR 101



END