



AgEcon SEARCH
RESEARCH IN AGRICULTURAL & APPLIED ECONOMICS

The World's Largest Open Access Agricultural & Applied Economics Digital Library

This document is discoverable and free to researchers across the globe due to the work of AgEcon Search.

Help ensure our sustainability.

Give to AgEcon Search

AgEcon Search
<http://ageconsearch.umn.edu>
aesearch@umn.edu

*Papers downloaded from **AgEcon Search** may be used for non-commercial purposes and personal study only. No other use, including posting to another Internet site, is permitted without permission from the copyright owner (not AgEcon Search), or as allowed under the provisions of Fair Use, U.S. Copyright Act, Title 17 U.S.C.*

SB 497 (1972)

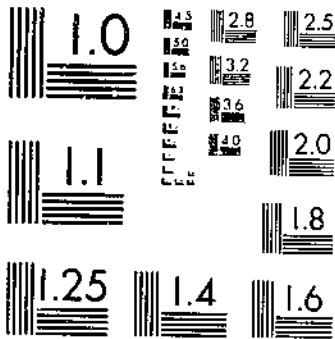
USDA STATISTICAL BULLETINS

UPDATA

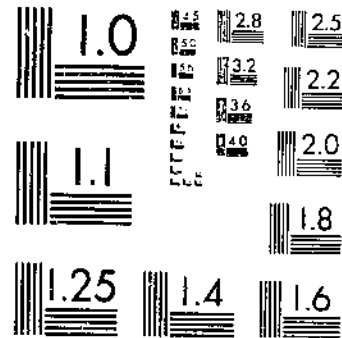
TURKEYS: REVISED ESTIMATES, 1965-70, INVENTORY AND VALUE, NUMBER RAISED

1 OF 1

START



MICROCOPY RESOLUTION TEST CHART
NATIONAL BUREAU OF STANDARDS-1963-A



MICROCOPY RESOLUTION TEST CHART
NATIONAL BUREAU OF STANDARDS-1963-A

71497

REFERENCE
DO NOT LOAN



turkeys

REVISED ESTIMATES, 1965-70

- INVENTORY AND VALUE
- NUMBER RAISED
- FARM PRODUCTION
- DISPOSITION
- GROSS INCOME

Statistical Bulletin No. 497

November 1972

CROP REPORTING BOARD

STATISTICAL REPORTING SERVICE • U.S. DEPARTMENT OF AGRICULTURE • WASHINGTON, D.C.

CONTENTS

	<u>Page</u>
Comments.....	3
Turkeys: Number on farms, value per head, total value and breed classification, United States, January 1, 1966-70.....	4
Turkeys: Number on hand, lost, raised, and number and pounds produced, United States, 1965-69.....	4
Turkeys: Sales, value of production, price per pound, gross income, and average live weight of turkeys sold, United States, 1965-69.....	4
Turkeys: Number of all turkeys and breeder hens on farms, by States, January 1, 1966-70.....	5
All Turkeys: Number on farms, by breed classification, by States, January 1, 1966-70.....	6
Turkey Breeder Hens: Number on farms, by breed classification, by States, January 1, 1966-70.....	7
All Turkeys: Average value per head and total value, by States, January 1, 1966-70	8
Turkeys: Number on farms, January 1, 1965-70 and number lost, 1965-69 by States.....	9
Turkeys: Numbers raised, by breeds, by States, 1965-69.....	10 - 11
Turkeys: Number and pounds produced, by States, 1965-69.....	12
Turkeys: Number and pounds sold, by States, 1965-69.....	13
Turkeys: Price per pound and value of production, by States, 1965-69.....	14
Turkeys: Gross income, by States, 1965-69.....	15
Turkeys: Average live weight per bird sold, by classes, by States, 1965-69.....	16 - 17
Turkeys: Percent death losses, by Regions, 1965-69.....	18

TURKEYS

Revised Estimates, 1965-70

Inventory and Value, Number Raised, Farm Production, Disposition, and Gross Income

This publication presents a record of revised estimates of the Crop Reporting Board of the Statistical Reporting Service relating to turkey inventories January 1, 1966-70, and production, disposition, and gross income from turkeys, 1965-69. It continues the official series on number on farms, breed classification, value per head, and total value of turkeys, as shown in "Live-stock and Poultry Inventory, January 1, Number, Value and Classes, 1961-65," Statistical Bulletin No. 389, February 1967; and the official series on production, disposition, and gross income from turkeys, as shown in "Turkeys, Farm Production, Disposition, Cash Receipts and Gross Income, 1960-64," Statistical Bulletin No. 396, March 1967. Estimates for the period have been released currently in annual reports and other publications.

NUMBER ON FARMS, VALUE, AND BREED CLASSIFICATIONS

Annual estimates are based on survey returns from turkey producers. Revised State and U. S. series are based on a thorough review of the original estimates, taking into consideration the 1969 Census of Agriculture enumeration of turkeys kept for breeders and turkey sales during 1969 and of other available data relating to production of turkeys. Consideration was given to poult hatchery production, turkeys tested for pullorum-typhoid disease, and other records pertaining to processing and inspection. Inventory estimates relate to January 1 each year.

The estimates of average value per head are based on producers' estimates of average price per head in their localities, about January 1 each year. These farm operators report the value per head by classes of poultry. Values per head, by classes, are weighted together by the estimated number in each class. The weighted average so computed is the basis for the estimated value per head.

In the estimates for the United States, the total value is the sum of the State estimates; and value per head is derived by dividing the total value by the number of head for the United States.

PRODUCTION, DISPOSITION, AND GROSS INCOME

Current estimates relate to annual estimates of turkey inventories and turkeys raised. When revisions are made for the inventory numbers, corresponding adjustments are usually necessary in other items, since production estimates take into account the difference in inventory numbers and weights at the beginning and the end of the year as well as pounds sold during the year.

On Hand January 1: Inventory numbers on hand January 1 are the official estimates of the Crop Reporting Board.

Death Loss of Turkeys on Farms: The estimates of the annual death loss of turkeys on farms are derived from losses as reported by turkey producers. These losses represent primarily losses during the year of breeders on farms January 1.

Turkeys Raised: These estimates are based primarily on hatchery records of placement of poults with allowance for death loss, adjusted where necessary in line with the census, market receipts, or assessors' enumerations.

Production: This estimate represents the net annual farm production of turkeys. It is computed from the number raised during the year, less the death loss of turkeys that were on hand at the beginning of the year.

Sales: The number of turkeys sold is the sum of the number on hand at the beginning of the year and the number raised, less death loss of number on hand at the beginning of the year and less the inventory number on hand at the end of the year. Consumption in households of producers is included in the sales estimates; this amounts to less than 1 percent for the United States.

The number of pounds sold is computed by applying an average live weight to the number of birds sold.

Continued on page 19

Table 1. Turkeys: Number on farms, value per head, total value, and breed classification, United States, Jan. 1, 1966-70

Year	All turkeys					Breeder hens		
	Number			Farm value		Heavy	Light	Total
	Heavy	Light	Total	Per head	Total			
1,000 head	1,000 head	1,000 head	Dollars	dollars	1,000 head	1,000 head	1,000 head	
1966	6,182	723	6,905	5.26	36,303	3,443	477	3,920
1967	7,057	754	7,811	5.13	40,095	3,649	493	4,142
1968	6,678	601	7,279	4.65	33,855	3,006	366	3,372
1969	6,113	424	6,537	4.96	32,417	2,914	311	3,225
1970	6,221	494	6,715	5.51	36,967	2,976	370	3,346

Table 2. Turkeys: Number on hand, lost and raised, and number and pounds produced, United States, 1965-69 1/

Year	On hand Jan. 1	Number lost 2/	Turkeys raised 3/			Produced 4/	
			Heavy breeds	Light breeds	All breeds	Number	Pounds
			1,000 head	1,000 head	1,000 head	1,000 head	1,000 pounds
1965	6,100	211	93,589	12,325	105,914	105,703	1,915,331
1966	6,905	253	100,976	15,562	116,538	116,285	2,123,484
1967	7,811	263	110,180	16,397	126,577	126,314	2,343,339
1968	7,279	197	93,276	13,433	106,709	106,512	2,014,589
1969	6,537	207	95,278	11,458	106,736	106,529	2,029,315

1/ Balance sheet estimate. Total of sales, losses, and on hand end of year equals total number raised and on hand beginning of year.

2/ Loss during the year of turkeys on hand January 1.

3/ Does not include young turkeys lost.

4/ Adjustments made for changes in inventory.

Table 3. Turkeys: Sales, value of production, price per pound, gross income, and average live weight of turkeys sold, United States, 1965-69

Year	Sales 1/		Price per pound	Value of production	Gross income	Average live weight of birds sold			
	Number	Pounds				Hens	Toms	Fryers	All
	1,000 head	1,000 pounds				Pounds	Pounds	Pounds	Pounds
1965	104,898	1,900,703	22.2	424,449	421,295	14.8	25.4	8.8	18.1
1966	115,379	2,106,970	23.1	489,596	485,750	14.9	25.2	8.9	18.3
1967	126,848	2,353,937	19.5	457,710	459,581	14.8	25.4	8.9	18.6
1968	107,254	2,027,934	20.5	413,921	416,738	15.3	25.8	9.0	18.9
1969	106,351	2,026,709	22.4	454,633	454,115	15.2	25.3	9.3	19.1

1/ Includes consumption in households of producers which is less than 1 percent of production for United States.

Table 4. Turkeys: Number of all turkeys and breeder hens on farms, by States, Jan. 1, 1966-70

State	All turkeys					Breeder hens				
	1966	1967	1968	1969	1970	1966	1967	1968	1969	1970
	1,000 head									
Maine	1	1	1	1	1					
New Hampshire	18	17	15	5.7	5.1	11	10	5	4.5	4.1
Vermont	1.6	1	1	1	.5	.5				
Massachusetts	29	23	19	15	13.5	12	9	7	6	3
Rhode Island	1.2	1	1	.7	.8	.2	.3	.3	.4	.5
Connecticut	16	13	11	4.1	5	5	2	2	1	
New York	26	23	31	36	36	13	13	12	11	13
New Jersey	8.5	37	17	13	12	5	6	5	4	5
Pennsylvania	134	161	153	181	173	34	39	32	36	31
Ohio	221	252	202	157	167	174	189	141	99	116
Indiana	65	60	71	50	28	35	32	29	24	15
Illinois	64	66	58	36	32	31	27	21	17	19
Michigan	119	124	143	126	102	83	98	8 ^a	97	78
Wisconsin	291	371	333	207	192	140	131	103	75	101
Minnesota	848	954	792	855	907	520	515	440	419	452
Iowa	320	280	218	191	150	200	163	135	127	126
Missouri	290	329	346	241	277	205	211	181	164	205
North Dakota	41	31	24	19	18	32	25	19	15	14
South Dakota	27	35	53	20	31	22	17	16	15	16
Nebraska	54	57	55	58	49	33	32	29	30	27
Kansas	56	55	39	28	27	36	36	23	14	13
Delaware	14	9	7	7	6					
Maryland	29	22	19	18	15	13	12	9	8	7
Virginia	207	250	244	220	278	134	155	102	89	106
West Virginia	56	72	91	77	70	22	25	22	20	18
North Carolina	509	669	986	721	677	210	220	210	235	245
South Carolina	114	139	200	266	241	60	75	78	76	70
Georgia	62	89	124	715	111	41	52	55	50	56
Florida	20	20			11	10	10			
Kentucky	58	54	9	20	8	48	36	7	15	6
Tennessee	19	19	15	11	10	14	14	11	8	7
Alabama	16	48	43	44	2	8	36	38	40	2
Mississippi	13	14	12	8	4	8	9	8	6	4
Arkansas	145	151	154	100	223	94	90	74	65	65
Louisiana	10	8	5	4	3	7	6	4	3	2
Oklahoma	75	80	58	29	36	50	60	34	26	30
Texas	635	734	744	973	1,092	336	423	373	449	478
Wyoming	2.3					1.1				
Colorado	48	66	65	69	75	29	41	37	37	48
New Mexico	1.7					1.5				
Arizona	15	17	18			13	11	14		
Utah	78	107	92	92	68	44	54	47	49	45
Washington	34	39	41	27	25	22	21	22	20	18
Oregon	288	294	223	217	218	244	245	184	181	172
California	1,818	2,001	1,524	1,246	1,308	915	987	740	673	720
Other States 1/	6.6	10.3	22.4	27	18.2	3.5	5.2	13.7	15.6	8.7
United States	6,905	7,811	7,279	6,537	6,715	3,920	4,142	3,372	3,225	3,346

1/ Montana and Idaho 1966; Montana, Idaho, Wyoming and New Mexico 1967; Montana, Idaho, Wyoming, New Mexico and Florida 1968; Montana, Idaho, Wyoming, New Mexico, Florida and Arizona, 1969 through 1970 combined to avoid disclosing individual operations.

Table 5. All turkeys: Number on farms, by breed classification, by States, Jan. 1, 1966-70

State	Heavy breeds					Light breeds				
	1966	1967	1968	1969	1970	1966	1967	1968	1969	1970
	1,000 head					1,000 head				
Maine	1	1	1	1	1					
New Hampshire	17	16	15	5.7	5.1	1	1			
Vermont	1.6	1	1	1	.5					
Massachusetts	29	22	17	12.5	11.4		1	2	2	2.1
Rhode Island	1.2	1	1	.7	.8					
Connecticut	16	12	10	4.1	5		1	1		
New York	25	23	27	32	24	1		4	4	12
New Jersey	6.6	33	14	10	11	1.9	4	3	3	1
Pennsylvania	113	137	126	157	161	21	24	27	24	12
Ohio	181	214	194	155	148	40	38	8	2	19
Indiana	51	49	68	48	26	14	11	3	2	2
Illinois	62	63	58	36	32	2	3			
Michigan	107	115	132	118	98	12	9	11	8	4
Wisconsin	250	360	330	200	185	41	11	3	7	7
Minnesota	683	723	589	694	715	165	231	203	161	192
Iowa	254	245	212	191	145	66	43	6		5
Missouri	240	309	330	238	268	50	20	16	3	9
North Dakota	41	31	24	19	18					
South Dakota 1/	12	23				15	12			
Nebraska	54	57	55	58	49					
Kansas	55	54	39	27	26	1	1		1	1
Delaware	8	5	3	3	2	6	4	4	4	4
Maryland	29	22	19	18	15					
Virginia	113	118	160	157	208	94	132	84	63	70
West Virginia	22	46	68	60	54	34	26	23	17	16
North Carolina	497	657	962	701	660	12	12	24	20	17
South Carolina	114	139	200	266	241					
Georgia	58	86	121	115	111	4	3	3		
Florida	8	8				12	12			
Kentucky	56	52	8	20	8	2	2	1		
Tennessee	19	19	15	11	10					
Alabama	15	47	43	43	1	1	1		1	1
Mississippi	13	12	10	7	3		2	2	1	1
Arkansas 1/	127	126				18	25			
Louisiana	10	8	5	4	3					
Oklahoma 1/	64	64				11	16			
Texas	631	698	708	972	1,077	4	36	36	1	15
Wyoming	23									
Colorado	48	66	65	69	75					
New Mexico	1.7									
Arizona	15	17	18							
Utah	75	106	92	92	68	3	1			
Washington	34	39	41	27	25					
Oregon 1/	205	229	185	167	179	83	65	38	50	39
California	1,811	1,994	1,509	1,224	1,285	7	7	15	22	23
Other States 2/	5.6	10.1	16.2	20.0	9.8	1.0	.2	6.2	7.0	8.4
United States	6,182	7,057	6,678	6,113	6,221	723	754	601	424	494

See footnotes on page 7.

Table 6. Turkey breeder hens: Number on farms, by breed classification, by States, Jan. 1, 1966-70

State	Heavy breeds					Light breeds				
	1966	1967	1968	1969	1970	1966	1967	1968	1969	1970
	1,000 head					1,000 head				
Maine										
New Hampshire	10	9	5	4.5	4.1	1	1			
Vermont	.5									
Massachusetts	12	8	6	5	2		1	1	1	1
Rhode Island	.2	.3	.3	.4	.5					
Connecticut	5	2	2	1						
New York	13	13	12	11	13					
New Jersey	4	5	5	4	5	1	1			
Pennsylvania	30	35	25	29	24	4	4	7	7	7
Ohio	144	162	140	98	100	30	27	1	1	16
Indiana	25	25	27	22	13	10	7	2	2	2
Illinois	30	26	21	17	19	1	1			
Michigan	76	91	82	91	76	7	7	7	6	2
Wisconsin	133	126	103	74	100	7	5		1	1
Minnesota	386	350	289	289	292	134	165	162	130	160
Iowa	186	152	132	127	121	14	11	3		5
Missouri	165	196	171	164	200	40	15	10		5
North Dakota	32	25	19	15	14					
South Dakota 1/	9	7				13	10			
Nebraska	33	32	29	30	27					
Kansas	35	35	23	13	12	1	1		1	1
Delaware										
Maryland	13	12	9	8	7					
Virginia	60	50	45	42	52	74	105	57	47	54
West Virginia	6	5	10	9	8	16	20	12	11	10
North Carolina	200	214	198	222	234	10	6	12	13	11
South Carolina	60	75	78	76	70					
Georgia	38	49	52	50	56	3	3	3		
Florida	5	5				5	5			
Kentucky	46	34	6	15	6	2	2	1		
Tennessee	14	14	11	8	7					
Alabama	7	35	38	39	1	1	1		1	1
Mississippi	8	8	7	5	3		1	1	1	1
Arkansas 1/	83	74				11	16			
Louisiana	7	6	4	3	2					
Oklahoma 1/	41	46				9	14			
Texas	332	420	370	448	467	4	3	3	1	11
Wyoming	1.1									
Colorado	29	41	37	37	48					
New Mexico	1.5									
Arizona	13	11	14							
Utah	44	54	47	49	45					
Washington	22	21	21	20	18					
Oregon 1/	172	190	150	135	135	72	55	34	46	37
California	909	981	726	653	699	6	6	14	20	21
Other States 2/	2.7	5.1	10.6	12.6	5.5	.8	.1	3.1	3.0	3.2
United States	3,443	3,649	3,006	2,914	2,976	477	493	366	311	370

1/ Heavy and light breeds not shown separately for South Dakota, Arkansas, Oklahoma and Oregon to avoid disclosing individual operations.

2/ Montana and Idaho, 1966; Montana, Idaho, Wyoming, and New Mexico, 1967; Montana, Idaho, Wyoming, New Mexico, and Florida, 1968; Montana, Idaho, Wyoming, New Mexico, Florida and Arizona, 1969 through 1970 combined to avoid disclosing individual operations.

Table 7. All turkeys: Average value per head and total value,
by States, Jan. 1, 1966-70

State	Average value per head					Total value				
	1966	1967	1968	1969	1970	1966	1967	1968	1969	1970
	Dollars					1,000 dollars				
Maine	5.50	6.50	6.00	6.50	7.00	6	6	6	7	7
New Hampshire	6.10	7.30	6.65	6.60	7.40	110	124	100	38	38
Vermont	6.10	7.00	6.50	6.50	6.70	10	7	7	7	3
Massachusetts	6.00	7.15	6.85	6.70	7.20	174	164	130	101	97
Rhode Island	6.00	7.10	6.80	6.85	7.30	7	7	7	5	6
Connecticut	6.10	7.10	6.75	6.75	7.10	98	92	74	28	36
New York	5.80	6.80	6.25	6.15	6.70	151	156	194	221	241
New Jersey	5.50	5.75	5.15	5.65	5.60	47	213	89	73	67
Pennsylvania	5.70	5.95	5.55	6.10	5.20	764	958	849	1,104	900
Ohio	5.50	6.45	5.75	5.95	6.00	1,216	1,625	1,162	934	1,002
Indiana	5.50	5.20	4.80	5.20	5.40	358	312	341	260	151
Illinois	5.10	5.30	4.50	4.80	5.40	326	350	261	173	173
Michigan	5.20	5.35	5.00	5.10	5.10	619	663	715	643	520
Wisconsin	5.40	5.20	4.80	5.45	5.70	1,571	1,929	1,598	1,128	1,094
Minnesota	5.30	5.30	4.60	4.80	5.00	4,494	5,056	3,643	4,104	4,535
Iowa	5.30	5.20	4.95	5.10	6.30	1,696	1,498	1,079	974	945
Missouri	5.00	5.05	4.75	4.75	4.85	1,450	1,661	1,644	1,145	1,343
North Dakota	5.10	5.40	4.75	5.40	6.60	209	167	114	103	119
South Dakota	4.90	4.45	4.10	4.50	4.60	132	156	217	90	143
Nebraska	5.00	4.70	4.40	4.90	5.50	270	286	242	284	270
Kansas	5.30	5.50	4.80	5.60	5.60	297	303	187	157	151
Delaware	5.20	5.70	5.30	5.50	5.50	73	51	37	39	33
Maryland	5.60	6.20	5.40	5.65	5.70	162	136	103	102	86
Virginia	4.50	4.80	4.10	4.45	4.60	932	1,200	1,000	979	1,279
West Virginia	4.85	4.90	4.45	4.50	4.70	272	353	405	347	329
North Carolina	4.30	4.60	4.10	4.30	4.60	2,189	3,077	4,043	3,100	3,114
South Carolina	4.75	4.75	4.65	4.55	5.30	542	660	930	1,210	1,277
Georgia	5.10	4.90	4.80	4.85	5.40	316	436	595	558	599
Florida	5.00	4.80				100	96			
Kentucky	4.95	5.60	4.55	4.90	5.10	287	302	41	98	41
Tennessee	4.15	4.45	4.00	4.40	4.70	79	85	60	48	47
Alabama	4.35	4.80	4.55	4.60	5.30	70	230	196	202	11
Mississippi	4.60	4.65	4.30	4.40	5.10	60	65	52	35	20
Arkansas	4.35	5.20	4.90	4.75	5.00	631	785	755	475	1,115
Louisiana	5.00	5.50	5.20	5.35	6.00	50	44	26	21	18
Oklahoma	4.65	5.00	4.70	4.90	5.80	349	400	273	142	209
Texas	5.00	4.60	4.45	4.70	5.50	3,175	3,376	3,311	4,573	6,006
Wyoming	5.40					12				
Colorado	5.30	6.20	5.30	5.75	5.60	254	409	344	397	420
New Mexico	5.10					9				
Arizona	5.20	5.80	5.45			78	99	98		
Utah	5.40	5.90	4.90	5.80	6.10	421	631	451	534	415
Washington	5.80	4.95	4.35	4.40	5.30	197	193	178	110	133
Oregon	5.70	5.40	4.95	5.45	6.30	1,642	1,588	1,104	1,183	1,373
California	5.70	5.05	4.65	5.25	6.50	10,363	10,105	7,087	6,542	8,502
Other States 1/	5.30	5.90	4.82	5.30	5.44	35	59	108	143	99
United States	5.26	5.13	4.65	4.96	5.51	36,303	40,095	33,855	32,417	36,967

1/ Montana and Idaho, 1966; Montana, Idaho, Wyoming and New Mexico, 1967; Montana, Idaho, Wyoming, New Mexico, and Florida, 1968; Montana, Idaho, Wyoming, New Mexico, Florida, and Arizona 1969 through 1970 combined to avoid disclosing individual operations.

Table 8. Turkeys: Number on farms January 1, 1965-70, and number lost, 1965-69, by States

State	Number on farms January 1						Number lost 1/				
	1965	1966	1967	1968	1969	1970	1965	1966	1967	1968	1969
	1,000 head						1,000 head				
Maine	1	1	1	1	1	1					
N. H.	16	18	17	15	5.7	5.1			1		
Vt.	1.7	1.6	1	1	1	.5					
Mass.	32	29	23	19	15	13.5			1		1
R. I.	1	1.2	1	1	.7	.8					
Conn.	16	16	13	11	4.1	5					
N. Y.	29	26	23	31	36	36	1		1	1	
N. J.	17	8.5	37	17	13	12		2			
Pa.	147	134	161	153	181	173	2	2	3	2	3
Ohio	238	221	252	202	157	167	19	12	19	11	8
Ind.	61	65	60	71	50	28	4	2	3	1	1
Ill.	61	64	66	58	36	32	2	2	2	1	1
Mich.	109	119	124	143	126	102	4	5	5	5	5
Wis.	230	291	371	333	207	192	6	8	8	6	4
Minn.	728	848	954	792	855	907	32	35	29	25	23
Iowa	309	320	288	218	191	150	12	11	13	8	8
Mo.	253	290	329	346	241	277	15	14	14	10	11
N. Dak.	58	41	31	24	19	18	2	2	1	1	1
S. Dak.	17	27	35	53	20	31	1	2	1	1	1
Nebr.	47	54	57	55	58	49	1	3	1	3	2
Kans.	57	56	55	39	28	27	2	2	2	1	1
Del.	12	14	9	7	7	6					
Md.	19	29	22	19	18	15	1	1	1	1	
Va.	192	207	250	244	220	278	8	8	12	5	6
W. Va.	52	56	72	91	77	70	1	1	1	1	1
N. C.	347	509	669	986	721	677	9	12	15	10	11
S. C.	117	114	139	200	266	241	3	3	7	3	3
Ga.	55	62	89	124	115	111	3	3	5	3	2
Fla.	20	20									
Ky.	50	58	54	9	20	8	3	4	2		1
Tenn.	19	19	19	15	11	10	1	1	1	1	
Ala.	25	16	48	43	44	2		1	2	2	1
Miss.	15	13	14	12	8	4			1		
Ark.	132	145	151	154	100	223	2	4	5	5	3
La.	12	10	8	5	4	3	1				
Okla.	69	75	80				3	3	3		
Texas	352	635	734	744	973	1,092	10	30	19	25	35
Wy.	2.2	2.3									
Colo.	39	48	66	65	69	75	1	1	1	1	3
N. Mex.	2.5	1.7									
Ariz.	12	15	17								
Utah	86	78	107	92	92	68	2	4	2	3	3
Wash.	30	34	39	41	27	25	2	2	1	1	1
Oreg.	241	288	294	223	217	218	11	11	14	16	12
Calif.	1,762	1,818	2,001	1,524	1,246	1,308	47	62	66	41	52
Other States 2/	7.8	6.6	30.3	98.4	56	54.2			1	3	3
U. S.	6,100	6,905	7,811	7,279	6,537	6,715	211	253	263	197	207

1/ Death loss during the year of turkeys on hand January 1, beginning of year.

2/ Montana and Idaho, 1965 and 1966; Montana, Idaho, Wyoming, New Mexico and Florida 1967; Montana, Idaho, Wyoming, New Mexico, Florida, Oklahoma and Arizona, 1968 through 1970 combined to avoid disclosing individual operations.

Table 9. Turkeys: Number raised, by breeds, by States, 1965-69 1/

State	Heavy breeds					Light breeds				
	1965	1966	1967	1968	1969	1965	1966	1967	1968	1969
	1,000 head					1,000 head				
Maine	48	37	30	37	12		2	3	3	2
New Hampshire	67	83	75	37	28	5	6	4	5	3
Vermont	28	33	20	24	10				1	1
Massachusetts	304	309	272	234	201	5	11	18	16	20
Rhode Island	19	19	14	14	12					
Connecticut	174	153	153	114	104	1	4	9	8	7
New York	348	352	331	298	358	26	26	48	46	54
New Jersey	476	592	477	334	104	14	18	11	15	7
Pennsylvania	1,485	1,648	1,763	1,342	1,678	265	265	241	269	250
Ohio	2,723	2,991	3,451	3,727	3,429	785	745	603	302	498
Indiana	3,763	3,911	3,794	3,111	3,515	241	289	529	227	107
Illinois	1,239	1,276	911	756	673	95	60	84	26	19
Michigan	1,126	1,108	1,087	1,031	950	74	89	80	78	70
Wisconsin	5,228	5,350	4,618	3,925	3,101	153	177	458	78	69
Minnesota	13,642	11,718	11,952	10,040	10,743	1,925	4,947	5,788	6,309	5,804
Iowa	7,683	6,895	7,091	5,673	5,730	456	328	480	240	48
Missouri	6,996	9,457	11,159	8,701	7,824	592	533	314	217	54
North Dakota	1,065	1,044	1,005	764	764	20	77	102	86	135
South Dakota	604	587	675	500	450	477	444	604	658	644
Nebraska	1,148	894	904	949	701	21	19	9	2	10
Kansas	655	562	597	388	357	37	48	3	7	3
Delaware	156	102	105	110	30	267	216	201	170	210
Maryland	250	179	157	151	150	16	48	21	24	10
Virginia	2,768	2,764	2,717	2,771	3,381	2,892	3,470	2,880	1,296	804
West Virginia	702	663	893	813	538	1,303	1,264	771	247	262
North Carolina	3,946	5,317	5,919	7,044	8,101	753	828	1,018	1,232	1,318
South Carolina	810	1,089	1,860	1,525	2,540	12				
Georgia	1,279	1,629	1,807	1,699	1,631	57	80	110	121	4
Florida	20	22				189	181			
Kentucky	993	569	221	115	80	1	19	22		
Tennessee	63	42	37	26	15	2				
Alabama	762	1,257	1,041	729	627	21	21	6	13	13
Mississippi	101	85	94	39	40	1	1	1	1	1
Arkansas	4,394	6,055	7,872	6,294	6,499	408	420	470	268	62
Louisiana	14	11	10	9	6	1	1			
Oklahoma	1,354	1,298				91	111			
Texas	5,144	6,323	7,894	7,105	6,963	137	104	196	125	62
Wyoming	4									
Colorado	2,010	2,287	2,561	2,279	2,484	36	12	83	24	3
New Mexico	10					1				
Arizona	108	93	81			1	1			
Utah	2,838	3,346	3,781	3,176	3,208	21	36	22	5	1
Washington	482	457	416	345	390	41	49	196	233	184
Oregon	1,335	1,435	1,687	1,636	1,489	210	317	301	301	307
California	15,027	16,697	18,652	13,802	14,768	640	275	459	551	226
Other States 2/	198	237	1,996	1,609	1,594	32	20	252	229	186
United States	93,589	100,976	110,180	93,276	95,278	12,325	15,562	16,397	13,433	11,458

See footnotes on page 11.

Table 9. Turkeys: Number raised, by breeds, by States, 1965-69 1/ Continued

State	All breeds				
	1965	1966	1967	1968	1969
			1,000 head		
Maine	48	39	33	40	14
New Hampshire	72	89	79	42	31
Vermont	28	33	20	25	11
Massachusetts	309	320	290	250	221
Rhode Island	19	19	14	14	12
Connecticut	175	157	162	122	111
New York	374	378	379	344	412
New Jersey	490	610	488	349	111
Pennsylvania	1,750	1,913	2,004	1,611	1,928
Ohio	3,508	3,736	4,054	4,029	3,927
Indiana	4,004	4,200	4,323	3,338	3,622
Illinois	1,334	1,336	995	782	692
Michigan	1,200	1,197	1,167	1,109	1,020
Wisconsin	5,381	5,527	5,076	4,003	3,170
Minnesota	15,567	16,665	17,740	16,349	16,547
Iowa	8,139	7,223	7,571	5,913	5,778
Missouri	7,588	9,990	11,473	8,918	7,878
North Dakota	1,085	1,121	1,107	850	899
South Dakota	1,081	1,031	1,279	1,158	1,094
Nebraska	1,169	913	913	951	711
Kansas	692	610	600	395	360
Delaware	423	318	306	280	240
Maryland	266	227	178	175	160
Virginia	5,660	6,234	5,597	4,067	4,185
West Virginia	2,005	1,927	1,664	1,060	800
North Carolina	4,699	6,145	6,937	8,276	9,419
South Carolina	822	1,089	1,860	1,525	2,540
Georgia	1,336	1,709	1,917	1,820	1,635
Florida	209	203			
Kentucky	994	588	243	115	80
Tennessee	65	42	37	26	15
Alabama	783	1,278	1,047	742	640
Mississippi	102	86	95	40	41
Arkansas	4,802	6,475	8,342	6,562	6,561
Louisiana	15	12	10	9	6
Oklahoma	1,445	1,409			
Texas	5,281	6,427	8,090	7,230	7,025
Wyoming	4				
Colorado	2,046	2,299	2,644	2,303	2,487
New Mexico	11				
Arizona	109	94	81		
Utah	2,859	3,382	3,803	3,181	3,209
Washington	523	506	612	578	574
Oregon	1,545	1,752	1,988	1,937	1,796
California	15,667	16,972	19,111	14,353	14,994
Other States 2/	230	257	2,248	1,838	1,780
United States	105,914	116,538	126,577	106,709	106,736

1/ Does not include young turkeys lost.

2/ Montana and Idaho 1965; Montana, Idaho, Wyoming, and New Mexico, 1966; Montana, Idaho, Wyoming, New Mexico, Florida and Oklahoma 1967; Montana, Idaho, Wyoming, New Mexico, Florida, Oklahoma and Arizona, 1968 through 1969 combined to avoid disclosing individual operations.

Table 10. Turkeys: Number and pounds produced, by States 1965-69 1/

State	Number produced					Pounds produced				
	1965	1966	1967	1968	1969	1965	1966	1967	1968	1969
	1,000 head					1,000 pounds				
Maine	48	39	33	40	14	950	764	614	752	262
New Hampshire	72	89	78	42	31	1,362	1,762	1,529	824	626
Vermont	28	33	20	25	11	540	658	392	490	220
Massachusetts	309	320	289	250	220	5,898	5,976	5,516	5,279	4,312
Rhode Island	19	19	14	14	12	363	359	274	259	228
Connecticut	175	157	162	122	111	3,552	3,188	3,207	2,401	2,143
New York	373	378	378	343	412	7,238	7,640	7,326	6,649	8,322
New Jersey	490	608	488	349	111	10,299	12,740	9,912	7,121	2,343
Pennsylvania	1,748	1,911	2,001	1,609	1,925	33,218	36,108	38,425	31,980	38,705
Ohio	3,489	3,724	4,035	4,018	3,919	63,503	68,140	79,166	80,450	74,842
Indiana	4,000	4,198	4,320	3,337	3,621	78,795	81,866	82,506	65,429	73,546
Illinois	1,332	1,334	993	781	691	27,568	26,812	19,664	15,711	14,170
Michigan	1,196	1,192	1,162	1,104	1,015	24,508	24,550	23,802	21,864	20,832
Wisconsin	5,375	5,519	5,068	3,997	3,166	88,278	93,399	89,673	71,471	58,889
Minnesota	15,535	16,630	17,711	16,324	16,524	250,462	263,093	284,677	261,373	272,776
Iowa	8,127	7,212	7,558	5,905	5,770	159,288	140,634	151,195	116,333	115,420
Missouri	7,573	9,976	11,459	8,908	7,867	145,283	197,377	224,535	178,580	159,545
North Dakota	1,083	1,119	1,106	849	898	19,951	20,039	20,360	16,056	16,525
South Dakota	1,080	1,029	1,278	1,157	1,093	14,906	15,835	19,152	16,317	15,843
Nebraska	1,168	910	912	948	709	23,578	18,285	19,158	19,899	14,916
Kansas	690	608	598	394	359	12,074	11,309	11,816	7,988	7,434
Delaware	423	318	306	280	240	6,140	4,626	4,338	4,284	3,525
Maryland	265	226	177	174	160	5,188	4,201	3,543	3,254	2,991
Virginia	5,652	6,226	5,585	4,062	4,179	71,236	82,218	77,631	65,857	72,930
West Virginia	2,004	1,926	1,663	1,059	799	25,256	25,627	23,940	18,689	13,201
North Carolina	4,690	6,133	6,922	8,266	9,408	84,501	109,279	117,490	154,627	168,377
South Carolina	819	1,086	1,853	1,522	2,537	16,544	21,083	35,626	30,294	49,459
Georgia	1,333	1,706	1,912	1,817	1,633	25,578	32,192	36,821	37,097	32,836
Florida	209	203				2,132	2,111			
Kentucky	991	584	241	115	79	20,574	11,872	4,943	2,287	1,674
Tennessee	64	41	36	25	15	1,248	783	716	493	304
Alabama	783	1,277	1,045	740	639	14,605	23,978	19,775	14,646	13,100
Mississippi	102	86	94	40	41	1,927	1,570	1,556	666	678
Arkansas	4,800	6,471	8,337	6,557	6,558	88,748	120,336	161,724	129,454	126,623
Louisiana	14	12	10	9	6	264	233	196	164	114
Oklahoma	1,442	1,406				27,383	26,421			
Texas	5,271	6,397	8,071	7,205	6,990	104,355	125,853	157,370	143,642	141,623
Wyoming	4					75				
Colorado	2,045	2,298	2,643	2,302	2,484	40,882	45,012	54,448	48,100	51,403
New Mexico	11					216				
Arizona	109	94	81			2,291	2,005	1,698		
Utah	2,857	3,378	3,801	3,178	3,206	61,438	74,258	87,086	71,505	68,965
Washington	521	504	611	577	573	10,211	9,878	10,636	10,069	10,196
Oregon	1,534	1,741	1,974	1,921	1,784	28,802	33,073	37,577	36,312	34,073
California	15,620	16,910	19,045	14,312	14,942	299,949	331,509	371,139	283,322	301,816
Other States 2/	230	257	2,244	1,835	1,777	4,174	4,832	42,187	32,601	33,528
United States	105,703	116,285	126,314	106,512	106,529	1,915,331	2,123,484	2,343,339	2,014,589	2,029,315

1/ Includes adjustments made for changes in inventory.

2/ Montana and Idaho 1965; Montana, Idaho, Wyoming, New Mexico, 1966; Montana, Idaho, Wyoming, New Mexico, Florida, and Oklahoma 1967; Montana, Idaho, Wyoming, New Mexico, Florida, Oklahoma, and Arizona 1968 through 1969 combined to avoid disclosing individual operations.

Table 11. Turkeys: Number and pounds sold, by States, 1965-69 1/

State	Number sold					Pounds sold				
	1965	1966	1967	1968	1969	1965	1966	1967	1968	1969
	1,000 head					1,000 pounds				
Maine	48	39	33	40	14	950	764	614	752	262
New Hampshire	70	90	80	51	32	1,323	1,782	1,568	1,005	638
Vermont	28	34	20	25	12	542	669	392	490	230
Massachusetts	313	326	293	254	221	5,978	6,096	5,596	5,359	4,334
Rhode Island	19	19	14	14	12	359	363	274	265	226
Connecticut	175	160	164	129	110	3,552	3,248	3,247	2,539	2,125
New York	376	381	370	338	412	7,294	7,696	7,178	6,557	8,322
New Jersey	498	579	508	353	112	10,468	12,170	10,312	7,201	2,363
Pennsylvania	1,761	1,884	2,009	1,581	1,933	33,459	35,608	38,573	31,462	38,853
Ohio	3,506	3,693	4,085	4,063	3,909	63,809	67,582	80,066	81,260	74,662
Indiana	3,996	4,203	4,309	3,358	3,643	78,721	81,958	82,302	65,817	73,953
Illinois	1,329	1,332	1,001	803	695	27,510	26,773	19,820	16,140	14,248
Michigan	1,186	1,187	1,143	1,121	1,039	24,313	24,452	23,432	22,196	21,300
Wisconsin	5,314	5,439	5,106	4,123	3,181	87,150	91,919	90,376	73,802	59,167
Minnesota	15,415	16,524	17,873	16,261	16,472	248,182	261,079	287,755	260,176	271,788
Iowa	8,116	7,244	7,628	5,932	5,811	159,074	141,258	152,560	116,860	116,220
Missouri	7,536	9,937	11,442	9,013	7,831	144,691	196,753	224,263	180,260	158,969
North Dakota	1,100	1,129	1,113	854	899	20,240	20,209	20,479	16,141	16,542
South Dakota	1,070	1,021	1,260	1,190	1,082	14,766	15,723	18,900	16,779	15,689
Nebraska	1,161	907	914	945	718	23,452	18,231	19,194	19,845	15,078
Kansas	691	609	614	405	360	12,092	11,327	12,096	8,181	7,452
Delaware	421	323	308	280	241	6,104	4,716	4,374	4,284	3,543
Maryland	255	233	180	175	163	4,998	4,334	3,600	3,273	3,048
Virginia	5,637	6,183	5,591	4,086	4,121	71,026	81,616	77,715	66,193	72,118
West Virginia	2,000	1,910	1,644	1,073	806	25,200	25,403	23,674	18,885	13,299
North Carolina	4,528	5,973	6,605	8,531	9,452	81,504	106,319	111,625	159,530	169,191
South Carolina	822	1,061	1,792	1,456	2,562	16,604	20,583	34,406	28,974	49,959
Georgia	1,326	1,679	1,877	1,826	1,637	25,459	31,733	36,226	37,250	32,904
Florida	209	203				2,132	2,111			
Kentucky	983	588	286	104	91	20,446	11,936	5,663	2,111	1,866
Tennessee	64	41	40	29	16	1,248	783	780	557	320
Alabama	792	1,245	1,050	739	681	14,731	23,530	19,845	14,632	13,688
Mississippi	104	85	96	44	45	1,955	1,556	1,584	722	734
Arkansas	4,787	6,465	8,334	6,611	6,435	88,560	120,249	161,680	130,237	124,839
Louisiana	16	14	13	10	7	296	265	244	180	130
Oklahoma	1,436	1,401				27,284	26,339			
Texas	4,988	6,298	8,061	6,976	6,871	99,261	124,071	157,190	139,520	139,481
Wyoming	4					73				
Colorado	2,036	2,280	2,644	2,298	2,478	40,720	44,688	54,466	48,028	51,295
New Mexico	12					230				
Arizona	106	92	80			2,237	1,969	1,680		
Utah	2,865	3,349	3,816	3,178	3,230	61,598	73,678	87,386	71,505	69,445
Washington	517	499	609	591	575	10,133	9,780	10,597	10,342	10,235
Oregon	1,487	1,735	2,045	1,927	1,783	27,956	32,965	38,855	36,420	34,055
California	15,564	16,727	19,522	14,590	14,880	298,829	327,849	380,679	288,882	300,576
Other States 2/	231	258	2,274	1,877	1,779	4,194	4,837	42,671	33,322	33,562
United States	104,898	115,379	126,846	107,254	106,351	1,900,703	2,106,970	2,353,937	2,027,934	2,026,709

1/ Includes consumption in households of producers which is a fraction of one percent of production in United States. 2/ Montana and Idaho 1965; Montana, Idaho, Wyoming, and New Mexico, 1966; Montana, Idaho, Wyoming, New Mexico, Florida and Oklahoma, 1967; Montana, Idaho, Wyoming, New Mexico, Florida, Oklahoma, and Arizona 1968 through 1969 combined to avoid disclosing individual operations.

Table 12. Turkeys: Price per pound and value of production, by States, 1965-69

State	Price per pound 1/					Value of production				
	1965	1966	1967	1968	1969	1965	1966	1967	1968	1969
	Cents					1,000 dollars				
Maine	30.0	31.3	30.2	30.5	34.0	285	239	185	229	89
N. H.	29.0	29.8	30.0	30.6	34.0	395	525	459	252	213
Vt.	30.0	30.6	30.0	30.5	34.0	162	201	118	149	75
Mass.	33.0	33.8	31.0	31.0	34.5	1,946	2,020	1,710	1,636	1,488
R. I.	33.0	33.9	31.1	31.0	34.5	120	122	85	80	79
Conn.	33.0	33.7	31.6	31.6	35.0	1,172	1,074	1,013	759	750
N. Y.	29.9	31.1	29.2	28.8	32.4	2,164	2,376	2,139	1,915	2,696
N. J.	31.3	32.4	30.5	33.0	35.0	3,223	4,128	3,023	2,350	820
Pa.	26.5	29.0	26.8	24.1	25.3	8,803	10,471	10,298	7,707	9,792
Ohio	22.3	23.4	19.9	21.6	23.3	14,161	15,945	15,754	17,377	17,438
Ind.	21.0	22.8	18.6	20.9	21.9	16,547	18,665	15,346	13,675	16,107
Ill.	22.2	23.9	19.4	21.3	25.7	6,120	6,408	3,815	3,346	3,642
Mich.	22.6	23.0	20.5	20.8	22.5	5,539	5,646	4,879	4,548	4,687
Wis.	22.0	23.1	18.9	20.1	22.6	19,421	21,575	16,948	14,366	13,309
Minn.	21.6	22.5	18.6	20.0	22.4	54,100	59,196	52,950	52,275	61,102
Iowa	21.7	22.8	18.2	18.8	22.3	34,565	32,065	27,517	21,871	25,739
Mo.	21.2	22.4	20.0	20.3	21.1	30,800	44,212	44,907	36,252	33,664
N. Dak.	21.1	21.9	19.4	20.2	23.6	4,210	4,389	3,950	3,243	3,900
S. Dak.	21.8	22.8	19.4	20.0	20.9	3,250	3,610	3,715	3,263	3,311
Nebr.	21.2	22.3	19.5	19.9	20.8	4,999	4,078	3,736	3,960	3,103
Kans.	21.2	22.3	18.8	20.6	21.4	2,560	2,522	2,221	1,646	1,591
Del.	24.1	25.2	20.1	21.4	22.1	1,480	1,166	872	917	779
Md.	22.2	23.6	19.5	21.3	22.1	1,152	991	691	693	661
Va.	22.5	23.0	19.7	20.3	22.7	16,028	18,910	15,293	13,369	16,555
W. Va.	21.7	22.7	20.3	19.9	21.9	5,481	5,817	4,860	3,719	2,891
N. C.	22.5	23.6	20.6	21.0	22.1	19,013	25,790	24,203	32,472	37,211
S. C.	22.9	23.9	21.3	21.3	23.1	3,789	5,089	7,588	6,453	11,425
Ga.	21.9	23.4	20.8	21.0	20.6	5,602	7,533	7,659	7,790	6,764
Fla.	24.6	24.7				524	521			
Ky.	21.1	22.9	19.7	20.9	22.9	4,341	2,719	974	478	383
Tenn.	21.9	22.9	19.2	21.6	22.5	273	179	137	106	68
Ala.	22.0	22.9	19.7	21.0	20.6	3,213	5,491	3,896	3,076	2,699
Miss.	23.9	23.2	20.4	21.0	23.5	461	364	317	140	159
Ark.	21.8	22.3	19.4	21.1	20.7	19,347	26,835	31,374	27,315	26,211
La.	23.4	22.5	19.8	20.8	25.0	62	52	39	34	29
Okla.	20.7	21.5				5,668	5,681			
Tex.	21.0	21.4	19.2	19.1	21.2	21,915	26,933	30,215	27,436	30,024
Wyo.	25.0					19				
Colo.	24.0	24.0	21.8	22.0	23.9	9,812	10,803	11,870	10,532	12,285
N. Mex.	21.3					46				
Ariz.	23.8	23.6	20.0			545	473	340		
Utah	21.0	22.8	19.0	20.5	21.9	12,902	16,931	16,546	14,659	15,103
Wash.	21.3	21.9	19.5	21.0	22.0	2,175	2,163	2,074	2,114	2,243
Oreg.	22.4	23.3	17.5	21.2	24.6	6,452	7,706	6,576	7,698	8,382
Calif.	22.9	23.2	18.6	20.3	23.0	68,688	76,910	69,032	57,514	69,418
Other States 2/	22.0	23.2	19.9	19.8	23.2	919	1,122	8,386	6,457	7,748
United States	22.2	23.1	19.5	20.5	22.4	424,449	489,596	457,710	413,921	454,633

1/ Weighted average of monthly prices per pound received by farmers.

2/ Montana and Idaho 1965; Montana, Idaho, Wyoming and New Mexico, 1966; Montana, Idaho, Wyoming, New Mexico, Florida and Oklahoma, 1967; Montana, Idaho, Wyoming, New Mexico, Florida, Oklahoma and Arizona 1968 through 1969 combined to avoid disclosing individual operations.

Table 13. Turkeys: Gross income, by States, 1965-69

State	Gross income				
	1965	1966	1967	1968	1969
	1,000 dollars				
Maine	285	239	185	229	89
New Hampshire	384	531	470	308	217
Vermont	163	205	118	149	78
Massachusetts	1,973	2,060	1,735	1,661	1,495
Rhode Island	118	123	85	82	78
Connecticut	1,172	1,095	1,026	802	744
New York	2,181	2,393	2,096	1,888	2,696
New Jersey	3,276	3,943	3,145	2,376	827
Pennsylvania	8,867	10,326	10,338	7,582	9,830
Ohio	14,229	15,814	15,933	17,552	17,396
Indiana	16,531	18,136	15,308	13,756	16,196
Illinois	6,107	6,399	3,845	3,438	3,662
Michigan	5,495	5,624	4,804	4,617	4,793
Wisconsin	19,173	21,233	17,081	14,834	13,372
Minnesota	53,607	58,743	53,522	52,035	60,881
Iowa	34,519	32,207	27,766	21,970	25,917
Missouri	30,674	44,073	44,853	36,593	33,542
North Dakota	4,271	4,426	3,973	3,260	3,904
South Dakota	3,219	3,585	3,667	3,356	3,279
Nebraska	4,972	4,066	3,743	3,949	3,136
Kansas	2,564	2,526	2,274	1,685	1,595
Delaware	1,471	1,188	879	917	783
Maryland	1,110	1,023	702	697	674
Virginia	15,981	18,772	15,310	13,437	16,371
West Virginia	5,468	5,766	4,806	3,758	2,912
North Carolina	18,338	25,091	22,995	33,501	37,391
South Carolina	3,802	4,919	7,328	6,171	11,541
Georgia	5,576	7,426	7,535	7,823	6,778
Florida	524	521			
Kentucky	4,314	2,733	1,116	441	427
Tennessee	273	179	150	120	72
Alabama	3,241	5,388	3,909	3,073	2,820
Mississippi	467	361	323	152	172
Arkansas	19,306	26,816	31,366	27,480	25,842
Louisiana	69	60	48	37	33
Oklahoma	5,648	5,663			
Texas	20,845	26,551	30,180	26,648	29,570
Wyoming	18				
Colorado	9,773	10,725	11,874	10,566	12,260
New Mexico	49				
Arizona	532	465	336		
Utah	12,936	16,799	16,603	14,659	15,208
Washington	2,158	2,142	2,066	2,172	2,252
Oregon	6,262	7,681	6,800	7,721	8,378
California	68,432	76,061	70,806	58,643	69,132
Other States 1/	922	1,123	8,482	6,600	7,772
United States	421,295	485,750	459,581	416,738	454,115

1/ Montana and Idaho 1965; Montana, Idaho, Wyoming and New Mexico, 1966; Montana, Idaho, Wyoming, New Mexico, Florida and Oklahoma, 1967; Montana, Idaho, Wyoming, New Mexico, Florida, Oklahoma and Arizona 1968 through 1969 combined to avoid disclosing individual operations.

Table 14. Turkeys: Average live weight per bird sold, by classes, by States, 1965-69

State	1965				1966			
	Hens	Toms	Fryers	All	Hens	Toms	Fryers	All
	P o u n d s							
Maine	15.5	24.5	8.5	19.8	15.4	24.3	8.5	19.6
New Hampshire	15.3	23.6	8.5	18.9	15.8	24.5	8.5	19.8
Vermont	15.5	24.5		19.3	16.0	24.5	8.5	19.9
Massachusetts	15.5	24.4	8.5	19.1	14.9	23.8	9.0	18.7
Rhode Island	15.6	24.5	8.5	19.1	15.0	24.0	8.5	18.9
Connecticut	16.5	24.9	8.0	20.3	16.4	24.8	8.5	20.3
New York	15.8	24.1	8.0	19.4	16.3	25.1	8.0	20.2
New Jersey	16.9	25.8	8.5	21.0	16.9	25.8	8.5	21.0
Pennsylvania	16.0	25.2	8.9	19.0	15.6	24.7	9.0	18.9
Ohio	15.1	24.7	9.2	18.2	15.2	25.0	9.6	18.3
Indiana	15.4	25.3	8.5	19.7	14.9	25.2	9.1	19.5
Illinois	16.3	26.0	8.5	20.7	15.8	25.7	9.5	20.1
Michigan	16.5	25.6	8.5	20.5	16.7	25.5	9.8	20.6
Wisconsin	14.9	24.8	9.5	16.4	15.5	24.9	9.2	16.9
Minnesota	14.4	24.3	8.8	16.1	14.5	23.9	9.1	15.8
Iowa	15.0	26.4	8.4	19.6	14.5	25.9	8.5	19.5
Missouri	14.9	26.2	8.2	19.2	14.9	26.3	8.8	19.8
North Dakota	14.0	24.4	9.0	18.4	13.9	23.8	9.5	17.9
South Dakota	14.7	24.0	9.0	13.8	14.7	23.2	9.5	15.4
Nebraska	15.5	26.0	8.5	20.2	15.5	25.4	7.7	20.1
Kansas	14.5	23.9	8.2	17.5	13.8	25.0	7.6	18.6
Delaware	13.7	21.6	9.5	14.5	13.9	20.9	9.3	14.6
Maryland	15.9	25.3	8.8	19.6	16.0	24.3	8.8	18.6
Virginia	14.5	22.9	8.7	12.6	14.7	22.7	8.8	13.2
West Virginia	14.8	21.7	9.0	12.6	15.1	21.7	9.0	13.3
North Carolina	14.7	24.9	8.5	18.0	15.2	24.4	8.8	17.8
South Carolina	15.0	26.4	8.5	20.2	15.0	25.0	8.5	19.4
Georgia	14.5	24.9	8.5	19.2	14.0	24.9	8.6	18.9
Florida	12.1	18.4	7.8	10.2	12.0	18.6	8.0	10.4
Kentucky	15.5	26.5	9.0	20.8	15.4	25.8	9.0	20.3
Tennessee	14.9	24.2	9.0	19.5	14.5	24.0	9.0	19.1
Alabama	14.4	23.3	8.5	18.6	14.4	23.8	8.5	18.9
Mississippi	14.4	23.3	8.5	18.8	14.0	23.1	8.5	18.3
Arkansas	14.3	23.5	8.4	18.5	14.4	23.6	8.4	18.6
Louisiana	14.0	22.3		18.5	13.6	25.3	8.0	18.9
Oklahoma	14.3	24.5	8.0	19.0	14.2	24.4	8.1	18.8
Texas	14.9	25.8	8.5	19.9	14.9	25.4	8.2	19.7
Wyoming	14.0	23.5		18.8				
Colorado	15.0	25.4	9.0	20.0	14.5	25.0	9.0	19.6
New Mexico	16.0	27.0		19.5				
Arizona	16.0	27.0	8.5	21.1	16.3	27.2	8.5	21.4
Utah	15.0	28.5	8.5	21.5	16.0	28.4	7.6	22.0
Washington	15.9	24.8	8.2	19.6	15.3	25.6	8.5	19.6
Oregon	14.6	24.7	8.4	18.8	14.9	25.3	7.4	19.0
California	14.5	26.4	8.3	19.2	15.0	26.4	8.2	19.6
Other States	15.1	24.5	8.3	18.1	15.2	24.1	5.6	18.8
United States	14.8	25.4	8.8	18.1	14.9	25.2	8.9	18.3

See footnotes on page 17.

Table 14. Turkeys: Average live weight per bird sold, by classes, by States, 1965-69 Continued

State	1967				1968				1969			
	Hens	Toms	Fryers	All	Hens	Toms	Fryers	All	Hens	Toms	Fryers	All
	P o u n d s											
Maine	14.4	22.8	9.0	18.6	14.9	23.0	9.5	18.8	14.7	22.7	9.5	18.7
New Hampshire	15.3	24.7	9.0	19.6	15.6	24.4	9.5	19.6	15.8	24.2	9.5	20.2
Vermont	16.0	24.0	9.0	19.6	15.8	23.8	9.5	19.6	16.0	24.0	9.5	20.0
Massachusetts	15.4	24.2	9.5	19.1	15.4	23.8	10.0	19.0	15.8	24.7	10.0	19.6
Rhode Island	15.5	24.6	9.0	19.6	15.0	24.0	9.5	18.5	15.0	23.0	9.5	19.0
Connecticut	15.8	24.7	9.0	19.8	15.8	24.1	9.5	19.7	15.8	23.1	9.5	19.3
New York	15.6	23.8	9.0	19.4	15.6	23.7	9.5	19.4	15.9	24.6	9.5	20.2
New Jersey	15.9	24.9	9.0	20.3	16.3	24.8	9.5	20.4	16.7	25.5	9.5	21.1
Pennsylvania	15.0	24.3	9.5	19.2	16.9	25.1	10.0	19.9	16.7	25.5	10.1	20.1
Ohio	15.7	25.4	9.2	19.6	15.4	25.9	9.5	20.0	15.9	25.3	9.2	19.1
Indiana	15.2	24.4	9.0	19.1	15.4	25.3	9.5	19.6	16.0	25.4	9.5	20.3
Illinois	15.9	25.7	9.5	19.8	16.4	25.8	9.5	20.1	15.4	25.8	9.5	20.5
Michigan	16.3	25.7	9.5	20.5	16.2	25.6	9.5	19.8	16.3	25.6	9.5	20.5
Wisconsin	15.4	24.4	9.3	17.7	15.0	24.4	9.3	17.9	15.0	24.4	9.3	18.6
Minnesota	14.7	24.8	9.2	16.1	14.7	25.3	9.2	16.0	14.7	25.5	9.4	16.5
Iowa	15.0	26.8	9.0	20.0	15.0	26.0	9.0	19.7	15.0	26.0	9.2	20.0
Missouri	14.4	35.4	8.5	19.6	15.4	25.4	8.5	20.0	15.0	26.0	8.5	20.3
North Dakota	14.3	24.1	8.5	18.4	14.9	24.9	8.5	18.9	15.0	25.9	10.7	18.4
South Dakota	14.4	23.7	9.0	15.0	14.1	23.3	9.0	14.1	14.2	23.3	10.1	14.5
Nebraska	15.5	26.5	9.0	21.0	15.5	27.0	9.0	21.0	15.5	27.0	9.0	21.0
Kansas	15.0	25.5	8.0	19.7	15.5	25.9	8.5	20.2	15.5	26.0	9.5	20.7
Delaware	15.0	22.5	8.5	14.2	14.4	21.1	9.0	15.3	13.7	19.2	9.7	14.7
Maryland	16.6	25.4	8.0	20.0	15.5	24.1	9.0	18.7	14.9	23.2	9.5	18.7
Virginia	14.6	22.2	8.4	13.9	15.3	23.7	9.1	16.2	14.9	23.8	9.2	17.5
West Virginia	15.6	22.4	9.0	14.4	16.4	24.9	9.0	17.6	15.9	23.8	9.0	16.5
North Carolina	14.0	24.4	9.0	16.9	16.0	25.9	9.0	18.7	14.9	23.9	9.1	17.9
South Carolina	14.5	25.0	9.0	19.2	15.0	26.0	9.0	19.9	15.0	24.5	9.0	19.5
Georgia	14.4	25.3	9.5	19.3	15.4	26.8	9.5	20.4	15.5	25.0	9.5	20.1
Florida												
Kentucky	15.7	24.9	9.0	19.8	16.0	25.0	9.0	20.3	16.0	25.0		20.5
Tennessee	15.5	24.0	9.0	19.5	15.5	24.0	9.0	19.2	15.4	24.0		20.0
Alabama	14.5	24.4	8.5	18.9	15.4	24.8	9.0	19.8	15.4	24.8		20.1
Mississippi	14.0	22.8	8.5	16.5	14.0	23.0	8.5	16.4	14.0	23.0	8.5	16.3
Arkansas	14.4	25.2	8.8	19.4	14.9	25.3	9.2	19.7	15.0	24.5	7.4	19.4
Louisiana	14.0	23.6		18.8	14.0	23.0		18.0	14.0	23.0	7.5	18.5
Oklahoma												
Texas	14.9	25.3	8.4	19.5	15.4	25.9	8.4	20.0	16.0	25.4	8.0	20.3
Wyoming												
Colorado	16.0	25.9	9.5	20.6	15.5	27.0	8.5	20.0	15.5	26.5	8.5	20.7
New Mexico												
Arizona	16.0	26.5	9.5	21.0								
Utah	16.0	30.0	8.5	22.9	16.0	31.0	9.0	23.5	16.0	27.0	9.0	21.5
Washington	14.5	24.5	7.0	17.4	14.5	23.9	7.5	17.5	14.8	23.0	7.0	17.8
Oregon	15.0	25.1	7.7	19.0	14.6	25.0	7.5	18.9	14.5	26.7	7.7	19.1
California	14.5	26.4	8.3	19.5	15.0	26.9	8.2	19.8	15.0	26.0	9.4	20.2
Other States ^{1/}	15.2	24.7	8.0	18.7	15.5	24.1	8.2	17.6	14.8	24.4	8.1	18.7
United States	14.8	25.4	8.9	18.6	15.3	25.8	9.0	18.9	15.2	25.3	9.3	19.1

^{1/} Montana and Idaho 1965; Montana, Idaho, Wyoming, and New Mexico, 1966; Montana, Idaho, Wyoming, New Mexico, Florida and Oklahoma 1967; Montana, Idaho, Wyoming, New Mexico, Florida, Oklahoma and Arizona 1968 through 1969 combined to avoid disclosing individual operations.

Table 15. Turkeys: Percent death loss, by regions, 1965-69

Region	Young turkeys lost as a percent of :					Breeding stock lost as a percent				
	total numbers bought and home hatched :					of breeders on hand January 1				
	1965	1966	1967	1968	1969	1965	1966	1967	1968	1969
	Percent					Percent				
North Atlantic	7	6	6	7	7	3	3	7	4	6
East North Central	8	11	10	8	8	7	6	7	6	6
West North Central	10	11	10	9	8	6	6	5	5	5
South Atlantic	8	9	10	11	11	5	5	7	4	4
South Central	8	10	10	10	9	4	7	4	6	6
West	10	10	11	9	10	5	6	6	5	7
United States	9.0	10.0	10.0	9.0	9.2	5.3	5.7	5.7	5.3	5.8

TURKEYS Continued

Prices: The average annual price per pound of turkey, live weight, is computed from monthly prices per pound received by farmers, weighted by the estimated pounds sold.

Value of Production: This estimate is computed by multiplying the pounds produced by the average price per pound.

Gross Income: Gross income from turkeys is computed by multiplying the yearly total pounds of turkeys sold by the estimated annual price per pound received by farmers. Gross income includes turkeys consumed in farm households where produced.

Average Weight per Turkey Sold: The average live weight of turkeys sold is estimated from the average weights of turkey hens, toms, and fryer-roasters sold during the year as reported by turkey producers and from average weight per bird reported by slaughter plants.

UNITED STATES DEPARTMENT OF AGRICULTURE
WASHINGTON, D. C. 20250

OFFICIAL BUSINESS
PENALTY FOR PRIVATE USE, \$300

POSTAGE AND FEES PAID
U.S. DEPARTMENT OF
AGRICULTURE



AGR 101

FIRST CLASS

END