



AgEcon SEARCH
RESEARCH IN AGRICULTURAL & APPLIED ECONOMICS

The World's Largest Open Access Agricultural & Applied Economics Digital Library

This document is discoverable and free to researchers across the globe due to the work of AgEcon Search.

Help ensure our sustainability.

Give to AgEcon Search

AgEcon Search

<http://ageconsearch.umn.edu>

aesearch@umn.edu

*Papers downloaded from **AgEcon Search** may be used for non-commercial purposes and personal study only. No other use, including posting to another Internet site, is permitted without permission from the copyright owner (not AgEcon Search), or as allowed under the provisions of Fair Use, U.S. Copyright Act, Title 17 U.S.C.*

SB 494 (1972)

USDA STATISTICAL BULLETINS

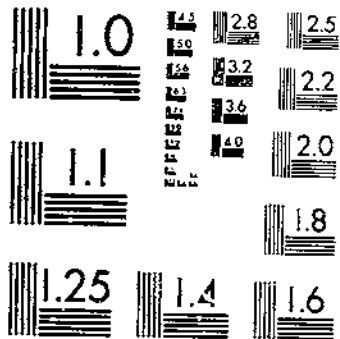
UPDATA

VEGETABLES FOR PROCESSING; REVISED ESTIMATES BY STATES, 1964-70;

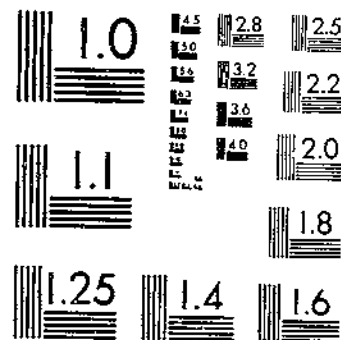
ACREAGE

1 OF 1

START



MICROCOPY RESOLUTION TEST CHART
NATIONAL BUREAU OF STANDARDS-1963-A



MICROCOPY RESOLUTION TEST CHART
NATIONAL BUREAU OF STANDARDS-1963-A

2.5
3-13
494

79



REFERENCE
DO NOT LOAN

vegetables for processing

REVISED ESTIMATES BY STATES, 1964-70

- ACREAGE

- PRODUCTION

- VALUE

1972
SEP 10 11 12

Statistical Bulletin No. 494

September 1972

CROP REPORTING BOARD

STATISTICAL REPORTING SERVICE • U.S. DEPARTMENT OF AGRICULTURE • WASHINGTON, D.C.

CONTENTS

	<u>Page</u>
Introduction	3
Summary Tables:	
By Commodities	4
By States	6
Acreage, Yield, Production and Value:	
Asparagus	13
Green Lima Beans	20
Snap Beans	22
Beets	26
Cabbage for Kraut	28
Sweet Corn	30
Cucumbers for Pickles	34
Green Peas	38
Spinach	42
Tomatoes	46
Stocks on Hand:	
Cucumbers for Pickles	49

VEGETABLES FOR PROCESSING

Revised Estimates by States, 1964-70

ACREAGE, PRODUCTION, VALUE

INTRODUCTION

This publication includes revised estimates of acreage, yield, production, price, value and utilization of vegetable crops grown for commercial processing in the United States during 1964-70. The estimating program for vegetables grown for commercial processing is confined to 10 principal crops: Asparagus, Green Lima Beans, Snap Beans, Beets, Cabbage for Kraut, Sweet Corn, Cucumbers for Pickles, Green Peas, Spinach, and Tomatoes.

Commercial processing, as related to estimates published in this bulletin, includes canning, freezing, pickling, and the manufacturing of kraut. Home canning and freezing and institutional processing are excluded, as is commercial dehydration. Production utilized for dehydration is included in estimates of commercial vegetables for fresh market.

Estimates for processing vegetable crops are based primarily on reports supplied each season by commercial processors throughout the country. Supplemental data from industry groups and cooperating State and Federal agencies are also utilized insofar as possible. Revised estimates also reflect trends indicated by the 1969, and earlier, Federal Censuses of Agriculture. No further revisions are anticipated.

Planted and harvested acreage includes (1) all acreage owned by processors and used in production of the crop, (2) acreage utilized by growers in producing a crop grown under contract to a processor, and (3) an equivalent acreage allowance for production purchased by processors on the open market. The term "production" refers to the quantity of raw product received and paid for at the rate(s) specified in contracts or purchase agreements. Open market purchases are included but culls and rejects in excess of any established tolerances are excluded. The "value per unit" and "value of production" for processing vegetable crops are equivalent returns at processing plant door and for fresh market crops, f.o.b. shipping point.

Data on processing vegetable crops for earlier years are in the following publications: "Vegetables for Commercial Processing," 1918-50, Statistical Bulletin No. 132, published June 1953; "Vegetables for Processing," 1949-55, Statistical Bulletin No. 210, published May 1957; "Vegetables for Processing," 1959-65, Statistical Bulletin No. 411, published August 1967.

Table 1. Principal vegetables for processing: Acres, production, and value, United States, 1964-70

Year and Crop	Acres		Production	Value
	Planted	Harvested		
1964	Acres		Tons	1,000 dollars
Asparagus 1/	107,630	107,630	126,150	30,031
Green lima beans	79,350	75,910	78,850	14,316
Snap beans	230,350	216,930	469,880	47,800
Beets	16,950	16,220	177,790	3,385
Cabbage for kraut	10,490	10,280	162,850	2,501
Sweet corn	369,900	353,040	1,480,700	30,185
Cucumbers for pickles	116,460	108,900	425,790	28,025
Green peas	437,020	417,410	484,050	46,896
Spinach	27,990	25,290	146,860	5,630
Tomatoes	276,110	273,350	4,583,310	140,810
Total	1,672,250	1,604,960	8,136,230	349,579
1965				
Asparagus 1/	95,430	95,430	112,000	32,151
Green lima beans	90,190	83,970	96,650	17,081
Snap beans	246,570	230,660	540,530	52,231
Beets	15,660	14,530	178,510	3,271
Cabbage for kraut	12,920	12,750	238,910	3,259
Sweet corn	430,650	376,690	1,613,600	36,159
Cucumbers for pickles	114,980	108,210	429,220	32,603
Green peas	462,540	441,630	603,310	60,199
Spinach	26,370	21,400	124,600	4,972
Tomatoes	261,150	257,520	4,411,340	163,936
Total	1,756,460	1,642,790	8,348,670	405,862
1966				
Asparagus 1/	98,810	98,810	123,600	40,859
Green lima beans	100,980	96,950	104,500	18,208
Snap beans	265,610	245,070	521,330	52,544
Beets	17,690	17,050	193,850	3,872
Cabbage for kraut	10,910	10,760	179,560	3,596
Sweet corn	469,800	445,650	1,962,400	44,637
Cucumbers for pickles	148,050	131,020	537,800	43,866
Green peas	476,090	434,080	510,100	53,329
Spinach	26,890	24,820	145,870	6,035
Tomatoes	305,750	299,830	4,662,270	166,402
Total	1,920,580	1,804,040	8,941,280	433,348
1967				
Asparagus 1/	94,300	94,300	109,900	36,459
Green lima beans	105,540	97,310	115,750	20,552
Snap beans	292,730	273,590	635,920	64,621
Beets	19,520	17,630	206,350	4,226
Cabbage for kraut	14,430	14,280	273,400	4,653
Sweet corn	510,750	470,550	2,101,900	52,541
Cucumbers for pickles	166,760	156,200	599,350	54,662
Green peas	487,200	458,220	590,750	64,296
Spinach	31,490	26,990	156,590	6,337
Tomatoes	332,930	327,060	5,189,550	222,061
Total	2,055,650	1,936,130	9,979,460	530,408

See footnotes on page 5.

Continued

Table 1. Principal vegetables for processing; Acres, production, and value, United States, 1964-70 Continued

Year and Crop	Acres		Production	Value
	Planted	Harvested		
1968	Acres		Tons	1,000 dollars
Asparagus 1/	91,400	91,400	115,500	40,619
Green lima beans	110,610	104,680	115,300	22,360
Snap beans	285,890	267,070	626,630	62,556
Beets	22,090	21,160	269,200	6,394
Cabbage for kraut	12,760	12,560	231,850	4,179
Sweet corn	553,660	519,160	2,479,300	63,405
Cucumbers for pickles	163,380	148,320	564,460	52,003
Green peas	499,940	452,090	582,600	62,370
Spinach	28,450	25,240	153,430	6,375
Tomatoes	374,160	370,550	6,967,600	280,429
Total	2,142,340	2,012,230	12,105,870	600,690
1969				
Asparagus 1/	87,410	87,210	101,850	36,899
Green lima beans	88,930	83,180	98,700	17,659
Snap beans	250,790	238,290	568,450	56,565
Beets	19,120	17,930	219,550	4,831
Cabbage for kraut	13,140	12,780	222,500	4,237
Sweet corn	465,400	448,700	2,109,350	52,983
Cucumbers for pickles	145,690	135,020	517,000	47,534
Green peas	441,290	404,150	524,400	55,699
Spinach	25,490	22,890	135,750	5,773
Tomatoes	272,000	266,590	4,901,650	170,270
Total	1,809,260	1,716,740	9,399,200	452,450
1970				
Asparagus 1/	79,190	79,190	90,550	33,817
Green lima beans	74,220	70,630	78,750	14,491
Snap beans	241,660	227,770	570,150	54,480
Beets	16,460	15,000	205,650	4,379
Cabbage for kraut	14,010	12,980	266,100	4,707
Sweet corn	428,900	412,650	1,879,050	44,886
Cucumbers for pickles	140,620	133,580	588,800	55,391
Green peas	407,160	383,860	476,250	51,888
Spinach	27,660	25,100	151,050	6,439
Tomatoes	248,600	245,090	5,058,950	171,857
Total	1,678,480	1,605,850	9,365,300	442,335

1/ Equivalent acreage harvested for processing.

Table 2. Principal vegetables for processing, by States:
Acres, production, and value, 1964-70

Year and State	Acres		Production	Value
	Planted	Harvested		
1964	Acres		Tons	1,000 dollars
Maine	14,300	14,080	24,880	1,769
New Hampshire	20	20	60	3
Vermont	130	130	250	25
Massachusetts	930	880	8,600	431
New York	95,910	92,040	384,490	16,946
New Jersey	57,950	56,950	310,400	16,468
Pennsylvania	33,600	32,380	169,050	6,651
North Atlantic	202,840	196,480	897,730	42,293
Ohio	27,750	27,330	372,880	10,666
Indiana	27,850	27,150	237,560	7,114
Illinois	107,250	104,390	402,880	15,269
Michigan	60,420	57,680	230,120	14,151
Wisconsin	290,250	275,320	669,550	28,069
Minnesota	150,210	143,700	399,200	12,535
Iowa	8,880	8,770	51,700	1,421
Missouri	460	460	1,290	57
South Dakota	400	400	1,400	28
Nebraska	50	30	30	3
North Central	673,520	645,230	2,366,610	89,313
Delaware	42,860	41,760	63,460	4,785
Maryland	68,150	65,050	216,350	9,178
Virginia	16,680	16,360	71,740	2,930
West Virginia	100	100	430	14
North Carolina	24,160	23,410	57,630	4,247
South Carolina	5,000	4,700	9,880	660
Georgia	5,200	4,500	5,000	459
Florida	21,750	19,700	96,040	4,081
South Atlantic	183,900	175,580	520,530	26,354
Kentucky	3,300	3,000	10,230	759
Tennessee	17,320	16,310	33,950	3,481
Alabama	6,100	5,550	7,810	541
Mississippi	5,200	5,200	9,620	570
Arkansas	12,890	12,190	30,190	1,842
Louisiana	530	460	1,390	68
Oklahoma	7,700	6,400	16,070	865
Texas	29,150	26,900	125,000	4,672
South Central	82,190	76,010	234,260	12,798
Montana	2,050	1,520	3,340	165
Idaho	27,580	26,030	93,270	3,426
Wyoming	1,150	1,050	2,260	87
Colorado	9,350	7,890	44,140	1,988
New Mexico	1,460	1,300	12,770	424
Arizona	250	250	750	60
Utah	11,130	10,380	53,020	1,928
Washington	127,630	124,230	297,620	20,755
Oregon	109,200	100,410	340,470	22,139
California	240,000	238,500	3,269,460	127,849
Western	529,800	511,660	4,117,100	178,821
United States	1,672,250	1,604,960	8,136,230	349,579

Continued

Table 2. Principal vegetables for processing, by States:
Acres, production, and value, 1964-70 Continued

Year and State	Acres		Production	Value
	Planted	Harvested		
1965	Acres		Tons	1,000 dollars
Maine	13,750	12,950	24,000	1,669
New Hampshire	20	20	150	8
Massachusetts	1,010	980	9,390	508
New York	96,150	90,900	413,610	16,861
New Jersey	59,250	58,250	413,250	22,563
Pennsylvania	35,900	35,020	188,600	7,530
North Atlantic	206,080	198,120	1,049,000	49,139
Ohio	32,280	31,710	564,780	17,182
Indiana	34,030	33,430	322,050	9,979
Illinois	120,330	111,130	394,990	17,104
Michigan	55,910	53,380	214,650	15,498
Wisconsin	319,550	276,710	790,170	35,319
Minnesota	171,980	156,570	437,650	16,350
Iowa	8,700	7,970	46,840	1,275
Missouri	1,050	1,020	2,960	210
South Dakota	660	600	1,930	50
Kansas	20	20	80	3
North Central	744,510	672,540	2,776,100	112,970
Delaware	44,020	43,120	89,900	7,233
Maryland	71,350	69,650	266,810	12,673
Virginia	16,810	16,510	86,580	3,628
West Virginia	100	100	400	14
North Carolina	25,370	24,870	71,580	5,279
South Carolina	5,400	5,000	11,720	700
Georgia	4,400	4,000	6,900	649
Florida	19,200	17,350	79,400	3,607
South Atlantic	186,650	180,600	613,290	33,783
Kentucky	6,100	6,000	16,760	1,228
Tennessee	18,090	17,700	38,400	3,652
Alabama	6,250	5,650	12,460	740
Mississippi	5,800	5,700	11,680	729
Arkansas	12,490	10,590	27,710	1,879
Louisiana	1,460	1,330	2,740	177
Oklahoma	6,300	4,950	14,800	914
Texas	26,350	24,150	116,350	4,342
South Central	82,840	76,070	240,900	13,661
Montana	2,050	1,650	3,750	175
Idaho	35,900	31,470	115,930	4,589
Wyoming	1,320	890	1,940	91
Colorado	7,510	5,770	21,670	1,309
New Mexico	1,450	1,100	6,900	326
Arizona	350	350	1,120	90
Utah	10,520	9,320	44,440	1,986
Washington	143,520	139,970	372,070	26,813
Oregon	116,410	110,890	406,090	25,880
California	217,350	214,050	2,695,470	135,050
Western	536,380	515,460	3,669,380	196,309
United States	1,756,460	1,642,790	8,348,670	405,862

Continued

Table 2. Principal vegetables for processing, by States:
Acres, production, and value, 1964-70 Continued

Year and State	Acres		Production	Value
	Planted	Harvested		
1966	Acres		Tons	1,000 dollars
Maine	12,800	12,500	22,850	1,785
New Hampshire	30	30	180	10
Massachusetts	990	940	10,250	572
New York	100,760	95,800	408,700	18,202
New Jersey	61,620	60,420	369,530	23,238
Pennsylvania	36,440	30,620	137,340	5,974
North Atlantic	212,640	200,310	948,850	49,781
Ohio	33,470	32,270	438,560	14,614
Indiana	34,800	33,800	230,140	7,891
Illinois	124,410	118,230	364,910	17,128
Michigan	59,360	55,870	221,890	18,123
Wisconsin	337,280	315,950	834,050	36,181
Minnesota	197,260	184,960	575,740	20,519
Iowa	8,850	8,280	49,200	1,327
Missouri	1,440	1,200	3,110	218
South Dakota	1,250	1,100	4,030	209
Kansas	20			
North Central	798,140	751,660	2,721,630	116,210
Delaware	43,750	41,650	58,740	5,883
Maryland	71,100	63,100	185,170	10,260
Virginia	19,100	18,570	69,030	3,854
West Virginia	100	100	300	14
North Carolina	37,600	28,270	63,900	5,367
South Carolina	6,850	6,100	16,900	1,235
Georgia	3,400	3,000	6,300	561
Florida	19,000	17,500	97,820	4,324
South Atlantic	200,900	178,290	498,160	31,498
Kentucky	5,100	4,550	9,850	847
Tennessee	16,840	16,190	29,790	3,019
Alabama	9,640	9,340	18,300	1,272
Mississippi	8,900	8,000	13,500	1,316
Arkansas	11,560	10,160	25,050	1,756
Louisiana	2,330	1,220	1,590	142
Oklahoma	9,000	7,800	18,740	1,173
Texas	36,500	31,100	123,690	6,374
South Central	99,670	88,360	240,510	15,899
Montana	1,500	1,200	1,600	157
Idaho	37,150	34,640	108,310	4,483
Wyoming	1,960	1,740	4,570	184
Colorado	7,490	6,590	36,860	2,023
New Mexico	1,300	800	6,350	274
Arizona	400	350	1,440	102
Utah	10,190	9,290	60,010	2,526
Washington	160,360	154,660	462,390	28,734
Oregon	120,260	110,630	449,080	26,517
California	268,420	265,520	3,401,520	154,960
Western	609,030	585,420	4,532,130	219,960
United States	1,920,580	1,804,040	8,941,280	433,340

Continued

Table 2. Principal vegetables for processing, by States:
Acres, production, and value, 1964-70 Continued

Year and State	Acres		Production	Value
	Planted	Harvested		
1967	Acres		Tons	1,000 dollars
Maine	13,450	12,100	20,500	1,819
New Hampshire	20	20	230	16
Massachusetts	1,030	930	10,830	713
New York	100,530	93,920	489,820	21,021
New Jersey	62,720	61,020	400,020	26,342
Pennsylvania	36,740	34,560	222,310	10,367
North Atlantic	214,490	202,550	1,143,710	60,278
Ohio	35,400	34,880	604,270	23,307
Indiana	35,630	34,730	349,400	14,124
Illinois	127,870	125,550	476,460	23,315
Michigan	71,130	65,680	251,030	22,553
Wisconsin	340,880	318,320	850,900	40,747
Minnesota	217,870	202,250	600,920	21,992
Iowa	10,000	9,280	54,630	1,852
Missouri	1,430	1,140	1,920	184
South Dakota	1,150	850	2,530	134
Nebraska	210	190	800	59
Kansas	140	140	1,600	54
North Central	841,710	793,010	3,194,460	148,321
Delaware	56,850	50,500	90,070	9,111
Maryland	70,330	63,030	223,210	11,575
Virginia	20,650	19,040	81,510	4,981
West Virginia	60	60	900	36
North Carolina	40,060	38,630	98,200	8,725
South Carolina	7,150	6,950	20,110	1,818
Georgia	3,000	2,900	6,580	585
Florida	24,200	23,300	132,800	6,578
South Atlantic	222,300	204,410	653,380	43,409
Kentucky	6,600	5,850	18,240	1,721
Tennessee	16,910	16,320	34,190	3,184
Alabama	11,950	11,450	24,790	1,680
Mississippi	9,400	8,900	24,600	2,277
Arkansas	14,730	13,710	36,490	3,015
Louisiana	1,860	1,530	4,080	388
Oklahoma	10,450	8,100	19,240	1,427
Texas	37,600	32,400	131,570	6,778
South Central	109,500	98,260	293,200	20,470
Montana	1,500	1,200	1,950	211
Idaho	39,490	36,520	133,040	5,554
Wyoming	1,780	1,780	8,370	173
Colorado	8,430	6,580	34,680	1,997
New Mexico	1,160	830	8,140	322
Arizona	450	450	2,560	227
Utah	10,060	9,300	62,110	2,518
Washington	181,740	170,550	495,060	34,378
Oregon	131,180	125,280	470,950	31,031
California	291,860	285,410	3,477,850	181,519
Western	667,650	637,900	4,694,710	257,930
United States	2,055,650	1,936,130	9,979,460	530,408

Table 2. Principal vegetables for processing, by States:
Acres, production, and value, 1964-70 Continued

Year and State	Acres		Production	Value
	Planted	Harvested		
1968	Acres		Tons	1,000 dollars
Maine	13,260	13,160	21,450	1,969
New Hampshire	20	20	210	13
Massachusetts	990	990	9,960	644
New York	97,900	93,090	464,920	20,175
New Jersey	63,820	63,070	401,220	25,307
Pennsylvania	44,100	40,850	244,500	11,110
North Atlantic	220,090	211,180	1,142,260	59,218
Ohio	39,950	39,020	684,670	25,670
Indiana	37,480	36,680	337,040	13,635
Illinois	132,240	125,760	454,780	22,618
Michigan	60,370	56,520	231,080	18,797
Wisconsin	366,970	337,610	1,022,940	46,599
Minnesota	218,050	197,850	702,300	24,194
Iowa	11,170	10,510	67,680	2,040
Missouri	1,510	1,360	3,210	296
North Dakota	50	40	140	12
South Dakota	1,800	1,700	6,420	288
Nebraska	650	600	2,440	222
Kansas	400	250	2,200	84
North Central	870,640	807,900	3,514,900	154,455
Delaware	50,850	49,450	75,120	7,281
Maryland	71,910	68,210	225,350	12,638
Virginia	17,270	16,570	93,110	4,557
West Virginia	180	160	960	41
North Carolina	38,210	36,750	85,550	8,391
South Carolina	9,350	8,950	23,580	2,064
Georgia	1,900	1,800	4,890	441
Florida	15,500	13,400	64,000	3,050
South Atlantic	205,170	195,290	572,560	38,463
Kentucky	7,200	6,500	13,540	1,290
Tennessee	17,710	16,490	30,710	2,907
Alabama	13,590	12,670	25,450	2,392
Mississippi	13,100	11,500	27,350	2,248
Arkansas	14,630	12,930	36,390	2,694
Louisiana	2,360	1,850	4,590	341
Oklahoma	6,960	5,900	15,740	997
Texas	33,200	30,800	144,210	7,662
South Central	108,750	98,640	297,980	20,531
Montana	1,600	1,500	2,400	262
Idaho	50,670	45,640	176,240	6,892
Wyoming	1,700	1,300	5,400	151
Colorado	9,800	8,540	47,700	3,165
New Mexico	1,700	1,120	13,120	466
Arizona	400	300	1,500	108
Utah	11,260	10,520	61,460	2,637
Washington	183,760	172,440	525,900	35,371
Oregon	140,360	124,740	546,150	32,175
California	336,440	333,120	5,198,300	246,796
Western	737,690	699,220	6,578,170	328,023
United States	2,142,340	2,012,230	12,105,870	600,690

Continued

Table 2. Principal vegetables for processing, by States:
Acres, production, and value, 1964-70 Continued

Year and State	Acres		Production	Value
	Planted	Harvested		
1969	Acres		Tons	1,000 dollars
Maine	10,900	9,500	12,250	1,174
New Hampshire	70	70	200	17
Massachusetts	1,100	1,100	9,650	583
New York	86,630	83,290	369,450	16,982
New Jersey	52,420	49,320	281,700	19,291
Pennsylvania	31,040	28,770	190,150	8,374
North Atlantic	182,160	172,050	863,400	46,421
Ohio	37,340	35,440	504,050	20,724
Indiana	32,310	31,010	320,500	12,775
Illinois	115,220	108,700	387,400	19,583
Michigan	57,670	55,510	199,800	18,246
Wisconsin	333,710	311,870	845,100	40,735
Minnesota	190,180	183,280	624,450	21,596
Iowa	9,700	8,660	46,700	1,350
Missouri	920	690	1,550	126
North Dakota	50	40	150	14
South Dakota	1,000	940	4,000	218
Nebraska	490	420	1,950	179
Kansas	440	130	500	37
North Central	779,030	736,690	2,936,150	135,583
Delaware	38,350	35,900	64,200	5,799
Maryland	58,040	54,940	173,900	9,304
Virginia	15,180	14,080	67,000	3,364
West Virginia	30	30	350	14
North Carolina	31,540	29,930	80,100	7,489
South Carolina	8,970	8,620	20,000	1,651
Georgia	1,900	1,800	4,600	415
Florida	12,500	11,900	50,750	2,409
South Atlantic	166,510	157,200	460,900	30,445
Kentucky	4,500	4,350	12,500	1,239
Tennessee	16,230	15,680	29,850	2,630
Alabama	10,190	8,980	17,600	1,138
Mississippi	14,700	12,500	27,600	2,419
Arkansas	15,150	14,030	30,800	2,202
Louisiana	1,720	1,340	3,000	218
Oklahoma	6,150	5,560	15,050	908
Texas	27,200	23,700	116,400	5,549
South Central	35,840	86,140	252,800	16,303
Montana	1,600	1,500	2,300	251
Idaho	45,050	42,780	174,600	6,315
Wyoming	1,600	1,220	4,600	126
Colorado	7,640	6,660	37,050	2,318
New Mexico	1,150	900	9,800	339
Arizona	450	430	2,200	158
Utah	8,380	7,980	55,100	2,203
Washington	157,360	150,730	463,500	32,767
Oregon	122,960	115,760	534,900	32,024
California	239,530	236,700	3,601,900	147,197
Western	585,720	564,660	4,885,950	223,698
United States	1,809,260	1,716,740	9,399,200	452,450

Table 2. Principal vegetables for processing, by States:
Acres, production, and value, 1964-70 Continued

Year and State	Acres		Production	Value
	Planted	Harvested		
1970	Acres		Tons	1,000 dollars
Maine	10,320	9,440	13,650	1,474
New Hampshire	10	10	150	12
Massachusetts	950	940	10,150	682
New York	85,220	80,490	384,800	16,850
New Jersey	45,910	45,210	343,150	21,579
Pennsylvania	27,550	26,520	202,550	8,888
North Atlantic	169,960	162,610	954,450	49,485
Ohio	37,260	36,440	630,850	26,149
Indiana	29,570	29,070	351,250	14,484
Illinois	109,810	104,000	314,900	16,652
Michigan	54,910	52,400	209,350	18,778
Wisconsin	326,520	308,580	881,300	43,390
Minnesota	184,830	178,610	600,350	19,966
Iowa	11,250	10,850	57,100	1,463
Missouri	840	770	1,450	134
North Dakota	50	40	100	11
South Dakota	880	690	2,300	128
Nebraska	450	410	1,050	111
Kansas	350	100	1,150	41
North Central	756,720	721,960	3,051,150	141,307
Delaware	36,800	35,700	79,800	6,928
Maryland	49,150	47,850	181,250	9,605
Virginia	13,840	13,340	59,300	3,052
West Virginia	40	40	400	17
North Carolina	30,490	30,390	78,750	7,136
South Carolina	10,880	10,580	28,950	2,262
Georgia	2,400	2,300	5,450	469
Florida	17,000	15,400	62,000	3,145
South Atlantic	160,600	155,600	495,900	32,614
Kentucky	4,310	4,180	22,050	2,486
Tennessee	15,880	15,150	34,400	3,147
Alabama	10,700	10,050	19,800	1,703
Mississippi	12,000	10,600	33,300	3,180
Arkansas	13,020	11,670	27,950	2,160
Louisiana	1,240	1,140	2,750	212
Oklahoma	7,400	6,500	17,400	1,023
Texas	22,400	19,100	100,350	5,111
South Atlantic	86,950	78,390	258,000	19,022
Montana	1,000	900	1,200	118
Idaho	42,870	38,520	161,300	5,971
Wyoming	2,060	2,060	4,700	198
Colorado	7,090	6,390	40,150	2,558
New Mexico	1,150	750	7,100	245
Arizona	460	370	2,200	198
Utah	9,000	8,300	45,900	1,981
Washington	117,160	113,490	305,100	25,469
Oregon	111,260	106,360	448,550	26,864
California	212,200	210,150	3,589,600	136,305
Western	504,230	487,290	4,605,800	199,907
United States	1,678,480	1,605,850	9,365,300	442,335

Table 3. Asparagus for fresh market and processing:
Acres, yield, production, and value, 1964-70

Year, season, and State	Acres		Yield	Production	Value	
	Planted	Harvested	per acre		Per cwt.	Total
	:	:	:		:	:
1964	Acres		Cwt.	1,000 cwt.	Dollars	1,000 dol.
Spring						
California	65,400	65,400	28	1,831	12.42	22,749
Late Spring						
Massachusetts	1,200	1,200	20	24	17.00	408
New Jersey	28,400	28,400	23	653	12.76	8,333
Illinois	10,100	10,100	17	172	11.51	1,979
Michigan	11,000	11,000	15	165	15.12	2,495
Maryland	3,400	3,400	16	54	14.24	769
Washington	14,700	14,700	30	441	12.50	5,513
Oregon	1,600	1,600	24	38	11.89	452
Other States 1/	8,930	8,930	16	145	14.50	2,103
Total or average	79,330	79,330	21	1,692	13.00	22,052
United States	144,730	144,730	24	3,523	12.70	44,801
	For Fresh Market			For Processing 2/		
	Value			Value		
	Production:			Production:		
	Per cwt.:	Total		Per ton:	Total	
	1,000 cwt.	Dollars 1,000 dol.		Tons	Dollars 1,000 dol.	
Spring						
California	585	14.50 8,482		62,300	229.00 14,267	
Late Spring						
Massachusetts	24	17.00 408				
New Jersey	243	14.30 3,475		20,500	237.00 4,858	
Illinois	19	18.00 342		7,650	214.00 1,637	
Michigan	14	17.00 238		7,550	299.00 2,257	
Maryland	6	15.40 92		2,400	282.00 677	
Washington	78	15.30 1,193		18,150	238.00 4,320	
Oregon	7	14.10 99		1,550	228.00 353	
Other States 1/	24	18.40 441		6,050	275.00 1,662	
Total or average	415	15.20 6,288		63,850	247.00 15,764	
United States	1,000	14.80 14,770		126,150	238.00 30,031	
Freezing				28,820	215.00 6,192	
Canning				97,330	245.00 23,839	

See footnotes on page 19.

Continued

Table 3. Asparagus for fresh market and processing:
Acres, yield, production, and value, 1964-70 Continued

Year, season, and State	Acres		Yield per acre	Production	Value																																																																																																																														
	Planted	Harvested			Per cwt.	Total																																																																																																																													
1965	Acres		Cwt.	1,000 cwt.	Dollars	1,000 dol.																																																																																																																													
Spring																																																																																																																																			
California	54,900	54,900	28	1,537	15.60	24,037																																																																																																																													
Late spring																																																																																																																																			
Massachusetts	1,100	1,100	20	22	17.40	383																																																																																																																													
New Jersey	25,000	25,000	24	600	14.70	8,833																																																																																																																													
Illinois	10,200	10,200	18	184	11.68	2,149																																																																																																																													
Michigan	11,200	11,200	17	190	16.35	3,107																																																																																																																													
Maryland	3,400	3,400	20	68	14.04	955																																																																																																																													
Washington	15,200	15,200	32	486	13.80	6,722																																																																																																																													
Oregon	1,300	1,300	31	40	12.98	519																																																																																																																													
Other States 1/	8,930	8,930	17	153	15.50	2,367																																																																																																																													
Total or average	76,330	76,330	23	1,743	14.40	25,035																																																																																																																													
United States	131,230	131,230	25	3,280	15.00	49,072																																																																																																																													
<table border="1" style="width:100%; border-collapse: collapse;"> <thead> <tr> <th colspan="3">For Fresh Market</th> <th colspan="3">For processing 2/</th> </tr> <tr> <th rowspan="2">Production</th> <th colspan="2">Value</th> <th rowspan="2">Production</th> <th colspan="2">Value</th> </tr> <tr> <th>Per cwt.</th> <th>Total</th> <th>Per ton</th> <th>Total</th> </tr> <tr> <th>1,000 cwt.</th> <th>Dollars</th> <th>1,000 dol.</th> <th>Tons</th> <th>Dollars</th> <th>1,000 dol.</th> </tr> </thead> <tbody> <tr> <td>Spring</td> <td colspan="5"></td> </tr> <tr> <td>California</td> <td>637</td> <td>16.40</td> <td>10,447</td> <td>*45,000</td> <td>302.00</td> <td>13,590</td> </tr> <tr> <td>Late Spring</td> <td colspan="5"></td> </tr> <tr> <td>Massachusetts</td> <td>22</td> <td>17.40</td> <td>383</td> <td></td> <td></td> <td></td> </tr> <tr> <td>New Jersey</td> <td>221</td> <td>15.10</td> <td>3,337</td> <td>18,950</td> <td>290.00</td> <td>5,496</td> </tr> <tr> <td>Illinois</td> <td>13</td> <td>18.60</td> <td>242</td> <td>8,550</td> <td>223.00</td> <td>1,907</td> </tr> <tr> <td>Michigan</td> <td>14</td> <td>18.30</td> <td>256</td> <td>8,800</td> <td>324.00</td> <td>2,851</td> </tr> <tr> <td>Maryland</td> <td>7</td> <td>14.40</td> <td>101</td> <td>3,050</td> <td>280.00</td> <td>854</td> </tr> <tr> <td>Washington</td> <td>96</td> <td>16.80</td> <td>1,613</td> <td>19,500</td> <td>262.00</td> <td>5,109</td> </tr> <tr> <td>Oregon</td> <td>5</td> <td>15.60</td> <td>78</td> <td>1,750</td> <td>252.00</td> <td>441</td> </tr> <tr> <td>Other States 1/</td> <td>25</td> <td>18.60</td> <td>464</td> <td>6,400</td> <td>297.00</td> <td>1,903</td> </tr> <tr> <td>Total or average</td> <td>403</td> <td>16.10</td> <td>6,474</td> <td>67,000</td> <td>277.00</td> <td>18,561</td> </tr> <tr> <td>United States</td> <td>1,040</td> <td>16.30</td> <td>16,921</td> <td>112,000</td> <td>287.00</td> <td>32,151</td> </tr> <tr> <td>Freezing</td> <td colspan="3"></td> <td>28,230</td> <td>265.00</td> <td>7,491</td> </tr> <tr> <td>Canning</td> <td colspan="3"></td> <td>83,770</td> <td>294.00</td> <td>24,660</td> </tr> </tbody> </table>							For Fresh Market			For processing 2/			Production	Value		Production	Value		Per cwt.	Total	Per ton	Total	1,000 cwt.	Dollars	1,000 dol.	Tons	Dollars	1,000 dol.	Spring						California	637	16.40	10,447	*45,000	302.00	13,590	Late Spring						Massachusetts	22	17.40	383				New Jersey	221	15.10	3,337	18,950	290.00	5,496	Illinois	13	18.60	242	8,550	223.00	1,907	Michigan	14	18.30	256	8,800	324.00	2,851	Maryland	7	14.40	101	3,050	280.00	854	Washington	96	16.80	1,613	19,500	262.00	5,109	Oregon	5	15.60	78	1,750	252.00	441	Other States 1/	25	18.60	464	6,400	297.00	1,903	Total or average	403	16.10	6,474	67,000	277.00	18,561	United States	1,040	16.30	16,921	112,000	287.00	32,151	Freezing				28,230	265.00	7,491	Canning				83,770	294.00	24,660
For Fresh Market			For processing 2/																																																																																																																																
Production	Value		Production	Value																																																																																																																															
	Per cwt.	Total		Per ton	Total																																																																																																																														
1,000 cwt.	Dollars	1,000 dol.	Tons	Dollars	1,000 dol.																																																																																																																														
Spring																																																																																																																																			
California	637	16.40	10,447	*45,000	302.00	13,590																																																																																																																													
Late Spring																																																																																																																																			
Massachusetts	22	17.40	383																																																																																																																																
New Jersey	221	15.10	3,337	18,950	290.00	5,496																																																																																																																													
Illinois	13	18.60	242	8,550	223.00	1,907																																																																																																																													
Michigan	14	18.30	256	8,800	324.00	2,851																																																																																																																													
Maryland	7	14.40	101	3,050	280.00	854																																																																																																																													
Washington	96	16.80	1,613	19,500	262.00	5,109																																																																																																																													
Oregon	5	15.60	78	1,750	252.00	441																																																																																																																													
Other States 1/	25	18.60	464	6,400	297.00	1,903																																																																																																																													
Total or average	403	16.10	6,474	67,000	277.00	18,561																																																																																																																													
United States	1,040	16.30	16,921	112,000	287.00	32,151																																																																																																																													
Freezing				28,230	265.00	7,491																																																																																																																													
Canning				83,770	294.00	24,660																																																																																																																													

See footnotes on page 19.

Continued

**Table 3. Asparagus for fresh market and processing:
Acres, yield, production, and value, 1964-70 Continued**

Year, season, and State	Acres		Yield per acre	Production	Value	
	Planted	Harvested			Per cwt.	Total
1966	Acres		Cwt.	1,000 cwt.	Dollars	1,000 dollars
Spring						
California	51,900	51,900	31	*1,609	18.60	29,896
Late Spring						
Massachusetts	900	900	20	18	20.60	371
New Jersey	24,000	24,000	25	600	17.60	10,537
Illinois	10,000	10,000	16	160	12.98	2,076
Michigan	11,400	11,400	15	171	16.70	2,852
Maryland	3,300	3,300	23	76	13.82	1,050
Washington	16,500	16,500	30	495	15.90	7,847
Oregon	1,300	1,300	24	31	15.00	465
Other States 1/	8,810	8,810	18	159	17.60	2,794
Total or Average	76,210	76,210	22	1,710	16.40	27,992
United States	128,110	128,110	26	3,319	17.40	57,888
	For fresh market			For processing 2/		
	Value			Value		
	Production: Per cwt.	Total	Production: Per ton	Total		
	1,000 cwt. Dollars	1,000 dollars	Tons	Dollars	1,000 dollars	
Spring						
California	461	20.40	9,404	*57,400	357.00	20,492
Late Spring						
Massachusetts	18	20.60	371			
New Jersey	199	19.70	3,920	20,050	330.00	6,617
Illinois	12	20.10	241	7,400	248.00	1,835
Michigan	14	21.50	301	7,850	325.00	2,551
Maryland	5	19.00	95	3,550	269.00	955
Washington	115	19.00	2,185	19,000	298.00	5,662
Oregon				1,550	300.00	465
Other States 1/	23	22.30	512	6,800	336.00	2,282
Total or Average	386	19.80	7,625	66,200	308.00	20,367
United States	847	20.10	17,029	123,600	331.00	40,859
Freezing				32,130	311.00	9,998
Canning				91,470	337.00	30,861

See footnotes on page 19.

Continued

Table 3. Asparagus for fresh market and processing:
Acres, yield, production, and value, 1964-70 Continued

Year, season and State	Acres		Yield	Production	Value	
	Planted	Harvested	per acre		Per cwt.	Total
1968	Acres		Cwt.	1,000 cwt.	Dollars	1,000 dol.
Spring						
California	46,700	46,700	32	1,494	19.20	28,627
Late spring						
Massachusetts	730	730	22	16	24.20	387
New Jersey	22,100	22,100	25	553	19.40	10,711
Illinois	8,800	8,800	18	158	15.80	2,497
Michigan	11,700	11,700	15	176	20.60	3,625
Maryland	3,400	3,400	20	68	18.90	1,283
Washington	17,100	17,100	31	530	17.30	9,170
Oregon	1,300	1,300	24	31	15.90	493
Other States 1/	9,530	9,530	18	176	18.80	3,315
Total or average	74,660	74,660	23	1,708	18.40	31,481
United States	121,360	121,360	26	3,202	18.80	60,108
	For Fresh Market			For processing 2/		
	Value			Value		
	Production			Production		
	Per cwt.	Total		Per ton	Total	
	1,000 cwt.	Dollars	1,000 dol.	Tons	Dollars	1,000 dol.
Spring						
California	598	21.50	12,857	44,800	352.00	15,770
Late spring						
Massachusetts	16	24.20	387			
New Jersey	148	22.70	3,360	20,250	363.00	7,351
Illinois	8	25.30	202	7,500	306.00	2,295
Michigan	15	20.50	308	8,050	412.00	3,317
Maryland	2	21.20	42	3,300	376.00	1,241
Washington	86	21.70	1,866	22,200	329.00	7,304
Oregon				1,550	318.00	493
Other States 1/	19	24.60	467	7,850	363.00	2,848
Total or average	294	22.60	6,632	70,700	351.00	24,849
United States	892	21.80	19,489	115,500	352.00	40,619
Freezing				34,230	335.00	11,469
Canning				81,270	359.00	29,150

See footnotes on page 19.

Continued

Table 3. Asparagus for fresh market and processing:
 Acres, yield, production, and value, 1964-70 Continued

Season and State	Acres		Yield per acre	Production: 1,000 cwt.	Value		
	Planted	Harvested			Per cwt.	Total	
	Acres		Cwt.		Dollars	1,000 dol.	
1969							
Spring							
California	44,700	44,700	29	1,296	20.40	26,414	
Late Spring							
Massachusetts	600	600	20	12	22.60	271	
New Jersey	20,000	17,500	23	* 403	19.20	7,742	
Illinois	9,000	9,000	16	144	17.60	2,531	
Michigan	12,000	12,000	17	204	21.00	4,284	
Maryland	3,900	3,900	16	62	19.00	1,177	
Washington	17,400	17,400	29	505	18.00	9,079	
Oregon	1,500	1,300	23	30	16.70	500	
Other States 1/	8,950	8,950	18	159	20.40	3,251	
Total or Average	73,350	70,650	22	1,519	19.00	28,835	
United States	118,050	115,350	24	2,815	19.60	55,249	
				For fresh market		For processing 2/	
		Value		Value			
	Production:	Per cwt.:	Total	Production:	Per ton	Total	
	1,000 cwt.	Dollars	1,000 dol.	Tons	Dollars	1,000 dol.	
Spring							
California	536	23.90	12,810	38,000	358.00	13,604	
Late Spring							
Massachusetts	12	22.60	271				
New Jersey	*102	22.20	2,264	15,050	364.00	5,478	
Illinois	11	26.40	290	6,650	337.00	2,241	
Michigan	14	21.00	294	9,500	420.00	3,990	
Maryland	1	21.40	21	3,050	379.00	1,156	
Washington	70	22.50	1,575	21,750	345.00	7,504	
Oregon				1,500	333.00	500	
Other States 1/	32	25.80	825	6,350	382.00	2,426	
Total or Average	242	22.90	5,540	63,850	365.00	23,295	
United States	778	23.60	18,350	101,850	362.00	36,899	
Freezing				23,250	362.00	8,408	
Canning				78,600	362.00	28,491	

See footnotes on page 19.

Continued

**Table 3. Asparagus for fresh market and processing:
Acres, yield, production, and value, 1964-70 Continued**

Year, season, and State	Acres		Yield	Value			
	Planted	Harvested	per acre	Production	Per cwt. : Total		
1970	Acres		Cwt.	1,000 cwt.	Dollars : 1,000 dol.		
Spring							
California	42,900	42,900	31	1,330	20.10 : 26,775		
Late Spring							
Massachusetts	550	550	23	13	24.30 : 316		
New Jersey	16,300	16,300	20	326	22.20 : 7,230		
Illinois	9,600	9,600	17	163	16.10 : 2,622		
Michigan	12,400	12,400	16	198	21.00 : 4,164		
Maryland	3,800	3,800	16	61	18.40 : 1,122		
Washington	17,700	17,700	29	513	18.80 : 9,634		
Oregon	1,200	1,200	21	25	17.40 : 435		
Other States 1/	7,810	7,810	16	126	20.10 : 2,538		
Total or Average	69,360	69,360	21	1,425	19.70 : 28,061		
United States	112,260	112,260	25	2,755	19.90 : 54,836		
				For fresh market	For processing 2/		
Production		Value		Production		Value	
: 1,000 cwt.		: Per cwt. : Total		: Production : Per ton : Total		: Dollars : 1,000 dol.	
: 1,000 cwt.		: Dollars : 1,000 dollars		: Tons		: Dollars : 1,000 dol.	
Spring							
California	679	21.60	14,666	32,550	372.00	12,109	
Late Spring							
Massachusetts	13	24.30	316				
New Jersey	126	22.70	2,860	10,000	437.00	4,370	
Illinois	10	28.70	289	7,650	305.00	2,333	
Michigan	16	24.80	397	9,100	414.00	3,767	
Maryland	2	24.00	48	2,950	364.00	1,074	
Washington	81	24.00	1,944	21,600	356.00	7,690	
Oregon				1,250	348.00	435	
Other States 1/	17	29.40	499	5,450	374.00	2,039	
Total or Average	265	24.00	6,353	58,000	374.00	21,708	
United States	944	22.30	21,019	90,550	373.00	33,817	
Freezing				25,650	354.00	9,072	
Canning				64,900	381.00	24,745	

* Excludes the following quantities not harvested or not marketed because of economic conditions: 1965, Spring, California, 120,000 cwt., (6,000 tons for processing); 1966, Spring, California, 91,000 cwt., (4,550 tons for processing); 1969, Late spring, New Jersey, 80,000 cwt.

1/ Fresh market: Pennsylvania, Ohio, and Iowa; Processing: Pennsylvania, Iowa, Delaware, Indiana, Minnesota, Missouri, Virginia, Tennessee, and Arkansas.

2/ Includes small quantities used for fresh market.

Table 4. Green lima beans for processing: Acres, yield, production, and value, 1964-70

Year and State	Acres		Yield per acre	Production	Value	
	Planted	Harvested			Per ton	Total
1964	Acres			Tons	Dollars	1,000 dollars
Wisconsin	4,900	4,200	.90	3,800	119.00	452
Delaware	17,200	16,900	.54	9,150	164.00	1,501
Maryland	3,700	3,600	.57	2,050	185.00	379
Washington	1,900	1,800	1.30	2,350	180.00	423
California	24,400	23,900	1.66	39,700	207.00	8,218
Other States 1/	27,250	25,510	.85	21,800	153.00	3,343
United States	79,350	75,910	1.04	78,850	182.00	14,316
Freezing	56,090	54,410	1.12	60,760	190.00	11,562
Baby limas	38,690	37,380	.87	32,690	172.00	5,635
Fordhooks 2/	17,400	17,030	1.65	28,070	211.00	5,927
Canning	23,260	21,500	.84	18,090	152.00	2,754
1965						
Wisconsin	6,900	4,800	.99	4,750	144.00	684
Delaware	19,400	18,900	.88	16,650	164.00	2,731
Maryland	3,500	3,200	.78	2,500	187.00	468
Washington	2,800	2,700	1.22	3,300	150.00	495
California	28,300	27,500	1.57	43,300	199.00	8,617
Other States 1/	29,290	26,870	.97	26,150	156.00	4,086
United States	90,190	83,970	1.15	96,650	177.00	17,081
Freezing	61,770	58,530	1.24	72,400	184.00	13,353
Baby limas	43,380	40,690	1.05	42,650	172.00	7,324
Fordhooks 2/	18,390	17,840	1.67	29,750	203.00	6,029
Canning	28,420	25,440	.95	24,250	154.00	3,728
1966						
Wisconsin	8,200	7,500	1.04	7,800	138.00	1,076
Delaware	20,500	19,500	.50	9,750	162.00	1,580
Maryland	3,000	2,900	.48	1,400	166.00	232
Washington	5,400	5,300	1.32	7,000	163.00	1,141
California	32,800	31,900	1.55	49,450	197.00	9,742
Other States 1/	31,080	29,850	.97	29,100	152.00	4,437
United States	100,980	96,950	1.08	104,500	174.00	18,208
Freezing	67,370	64,930	1.16	75,600	183.00	13,842
Baby limas	46,090	44,410	.94	41,850	174.00	7,302
Fordhooks 2/	21,280	20,520	1.64	33,750	194.00	6,540
Canning	33,610	32,020	.90	28,900	151.00	4,366
1967						
Wisconsin	8,500	7,600	1.00	7,600	165.00	1,254
Delaware	24,400	21,500	.87	18,600	172.00	3,199
Maryland	4,000	3,500	.78	2,750	137.00	377
Washington	6,800	6,600	1.32	8,700	169.00	1,470
California	32,000	30,500	1.70	51,850	194.00	10,059
Other States 1/	29,840	27,610	.95	26,250	160.00	4,193
United States	105,540	97,310	1.19	115,750	178.00	20,552
Freezing	65,610	60,940	1.32	80,200	183.00	14,710
Baby limas	42,560	38,940	1.07	41,650	172.00	7,148
Fordhooks 2/	23,050	22,000	1.75	38,550	196.00	7,562
Canning	39,930	36,370	.98	35,550	164.00	5,842

See footnotes on page 21.

20

Conti . . .

Table 4. Green lima beans for processing: Acres, yield, production, and value, 1964-70 Continued

Year and State	Acres		Yield per acre	Production	Value	
	Planted	Harvested			Per ton	Total
1968	Acres			Tons	Dollars	1,000 dollars
Wisconsin	9,400	8,300	1.05	8,700	162.00	1,409
Delaware	22,400	21,800	.54	11,750	171.00	2,009
Maryland	4,100	3,900	.61	2,400	174.00	418
Washington	7,600	6,500	1.01	6,550	173.00	1,133
California	34,300	33,400	1.75	58,450	223.00	13,034
Other States ^{1/}	32,810	30,780	.89	27,450	159.00	4,357
United States	110,610	104,680	1.10	115,300	194.00	22,360
Freezing	72,260	68,630	1.21	83,300	205.00	17,058
Baby limas	47,140	44,260	.96	42,300	188.00	7,934
Fordhooks ^{2/}	25,120	24,370	1.68	41,000	223.00	9,124
Canning	38,350	36,050	.89	32,000	166.00	5,302
1969						
Wisconsin	9,200	8,300	1.01	8,400	156.00	1,310
Delaware	14,300	13,400	.83	11,100	144.00	1,598
Maryland	3,400	3,300	.85	2,800	147.00	412
Washington	7,300	6,800	1.54	10,450	165.00	1,724
California	26,200	25,500	1.57	40,050	211.00	8,451
Other States ^{1/}	28,530	25,880	1.00	25,900	161.00	4,164
United States	88,930	83,180	1.19	98,700	179.00	17,659
Freezing	57,380	53,940	1.30	70,050	192.00	13,433
Baby limas	39,380	36,690	1.11	40,850	175.00	7,168
Fordhooks ^{2/}	18,000	17,250	1.69	29,200	215.00	6,265
Canning	31,550	29,240	.98	28,650	148.00	4,226
1970						
Wisconsin	6,900	6,600	.97	6,400	160.00	1,024
Delaware	15,700	15,500	.74	11,450	173.00	1,981
Maryland	1,700	1,600	.78	1,250	140.00	175
Washington	4,000	3,700	1.49	5,500	164.00	902
California	21,700	20,300	1.55	31,450	214.00	6,730
Other States ^{1/}	24,220	22,930	.99	22,700	162.00	3,679
United States	74,220	70,630	1.11	78,750	184.00	14,491
Freezing	46,950	44,480	1.24	55,300	195.00	10,808
Baby limas	35,370	33,060	1.07	35,450	186.00	6,589
Fordhooks ^{2/}	11,580	11,420	1.74	19,850	213.00	4,219
Canning	27,270	26,150	.90	23,450	157.00	3,683

^{1/} New York, New Jersey, Pennsylvania, Ohio, Illinois, Michigan, Minnesota, Missouri (1964-69), Georgia (1964-66), Tennessee, Virginia (1969 only), Alabama (1966-70), Arkansas, Idaho, Colorado (1966 only), Utah (1964-68) and Oregon.

^{2/} Includes Emeralds.

Table 5. Snap beans for processing: Acres, yield, production, and value, 1964-70

Year and State	Acres		Yield per acre	Production	Value	
	Planted	Harvested			Per ton	Total
1964	Acres		Tons	Dollars	1,000 dollars	
New York	53,300	50,700	1.80	91,300	93.90	8,573
Pennsylvania	9,600	9,200	1.40	12,900	98.00	1,264
Delaware	7,800	7,400	.90	6,700	88.30	592
Maryland	13,700	12,700	1.20	15,200	98.00	1,490
Virginia	2,200	2,000	1.10	2,200	102.00	224
North Carolina	2,900	2,800	1.90	5,300	122.00	647
South Carolina	1,100	1,000	1.30	1,300	100.00	130
Michigan	9,700	9,500	1.50	14,200	75.70	1,075
Wisconsin	39,400	36,000	1.70	61,200	74.60	4,566
Tennessee	12,700	12,000	2.00	24,000	118.00	2,832
Oklahoma	2,800	2,400	1.20	2,900	91.20	264
Texas	7,400	7,000	2.00	14,000	90.40	1,266
Colorado	2,300	2,200	2.40	5,300	85.30	452
Washington	2,300	2,300	5.50	12,600	116.00	1,462
Oregon	19,300	19,200	5.80	111,400	117.00	13,034
California	5,200	5,200	5.10	26,500	134.00	3,551
Other States 1/	38,650	35,330	1.78	62,880	101.00	6,378
United States	230,350	216,930	2.17	469,880	102.00	47,800
Freezing	57,130	53,630	2.30	123,470	110.00	13,634
East 2/	37,470	34,670	1.72	59,660	106.00	6,314
Central 3/	8,170	7,570	1.79	13,570	104.00	1,412
West 4/	11,490	11,390	4.41	50,240	118.00	5,908
Canning	173,220	163,300	2.12	346,410	98.60	34,166
East 2/	74,190	70,090	1.56	109,310	94.70	10,350
Central 3/	79,620	73,980	1.70	126,000	83.90	10,572
West 4/	19,410	19,230	5.78	111,100	119.00	13,244
1965	Acres		Tons	Dollars	1,000 dollars	
New York	53,700	50,100	1.80	90,200	87.40	7,883
Pennsylvania	10,400	10,000	1.70	17,000	93.10	1,583
Delaware	7,000	6,700	1.40	9,400	88.80	835
Maryland	15,500	15,100	1.80	27,200	102.00	2,774
Virginia	1,900	1,700	1.30	2,200	101.00	222
North Carolina	3,000	2,900	2.30	6,700	107.00	717
South Carolina	700	600	1.20	720	109.00	78
Michigan	12,600	12,000	1.60	19,200	81.40	1,563
Wisconsin	41,600	36,300	2.30	83,500	73.30	6,121
Tennessee	12,800	12,800	2.00	25,600	112.00	2,867
Oklahoma	2,100	2,100	2.40	5,000	85.00	425
Texas	6,400	5,700	2.00	11,400	84.60	964
Colorado	2,600	2,300	2.40	5,500	82.70	455
Washington	2,600	2,600	5.20	13,500	118.00	1,593
Oregon	22,100	21,900	5.60	122,600	109.00	13,363
California	7,700	7,700	2.50	19,200	131.00	2,515
Other States 1/	43,870	40,160	2.03	81,610	101.00	8,273
United States	246,570	230,660	2.34	540,530	96.60	52,231
Freezing	53,640	51,860	2.24	115,940	106.00	12,284
East 2/	32,180	30,780	1.79	55,020	108.00	5,954
Central 3/	7,730	7,350	1.98	14,520	95.90	1,392
West 4/	13,730	13,730	3.38	46,400	106.00	4,938
Canning	192,930	178,800	2.37	424,590	94.10	39,947
East 2/	80,680	75,750	1.79	135,940	91.30	12,409
Central 3/	88,910	80,380	2.07	166,210	81.90	13,614
West 4/	23,340	22,670	5.40	122,440	114.00	13,924

See footnotes on page 25.

Continued

Table 5. Snap beans for processing: Acres, yield, production, and value, 1964-70 Continued

Year and State	Acres		Yield per acre	Production	Value	
	Planted	Harvested			Per Ton	Total
1966	Acres		Tons	Dollars	1,000 dollars	
New York	57,800	54,300	1.70	92,300	92.80	8,565
Pennsylvania	7,800	5,700	1.30	7,400	85.80	635
Delaware	6,600	6,100	.90	5,500	96.90	533
Maryland	15,400	13,100	1.20	15,700	106.00	1,664
Virginia	2,900	2,600	1.30	3,400	103.00	350
North Carolina	2,900	2,400	1.40	3,400	101.00	343
South Carolina	950	800	1.50	1,200	118.00	142
Michigan	12,500	11,400	1.70	19,400	85.60	1,661
Wisconsin	45,600	43,300	2.00	86,600	84.20	7,292
Tennessee	11,300	10,900	1.80	19,600	120.00	2,352
Oklahoma	3,700	3,500	1.20	4,200	99.00	416
Texas	7,700	6,600	1.80	11,900	95.00	1,130
Colorado	2,700	2,400	2.70	6,500	81.60	530
Washington	3,000	3,000	5.00	15,000	109.00	1,635
Oregon	25,000	24,700	5.30	130,900	112.00	14,661
California	11,600	11,600	2.10	24,400	129.00	3,148
Other States 1/	48,160	42,670	1.73	73,930	101.00	7,487
United States	265,610	245,070	2.13	521,330	101.00	52,544
Freezing	66,620	62,360	2.08	129,570	110.00	14,198
East 2/	35,360	32,670	1.53	50,030	107.00	5,352
Central 3/	12,600	11,030	1.76	19,420	110.00	2,131
West 4/	18,660	18,660	3.22	60,120	112.00	6,715
Canning	198,990	182,710	2.14	391,760	97.90	38,346
East 2/	77,880	69,170	1.57	108,490	92.60	10,049
Central 3/	95,270	88,470	1.80	159,020	88.90	14,141
West 4/	25,840	25,070	4.96	124,250	114.00	14,156
1967						
New York	57,500	52,600	2.00	105,200	92.00	9,678
Pennsylvania	9,900	8,800	2.10	18,500	97.70	1,807
Delaware	11,500	9,300	1.70	15,800	95.20	1,504
Maryland	13,200	11,900	1.70	20,200	99.20	2,004
Virginia	4,400	3,400	1.40	4,800	138.00	662
North Carolina	4,200	4,000	1.70	6,800	110.00	748
South Carolina	650	650	2.60	1,700	105.00	178
Illinois	10,800	10,300	2.00	20,600	99.40	2,048
Michigan	15,700	14,900	1.50	22,400	92.40	2,070
Wisconsin	45,000	43,000	2.10	90,300	81.00	7,314
Tennessee	12,000	11,600	1.80	20,900	120.00	2,508
Arkansas	6,300	6,200	2.10	13,000	102.00	1,326
Oklahoma	4,400	4,100	1.80	7,400	105.00	777
Texas	6,500	5,500	1.90	10,400	95.40	992
Colorado	2,400	2,300	2.50	5,800	84.20	488
Washington	5,000	4,700	3.30	15,500	122.00	1,891
Oregon	29,800	29,600	5.00	148,000	113.00	16,724
California	13,500	13,500	2.10	28,400	122.00	3,465
Other States 1/	39,980	37,240	2.15	80,220	105.00	8,437
United States	292,730	273,590	2.32	635,920	102.00	64,621
Freezing	71,530	65,550	2.29	149,960	111.00	16,616
East 2/	38,540	33,640	1.94	65,420	112.00	7,331
Central 3/	11,640	10,660	1.66	17,730	111.00	1,962
West 4/	21,350	21,250	3.14	66,810	110.00	7,323
Canning	221,200	208,040	2.34	485,960	98.80	48,005
East 2/	84,190	77,190	1.95	150,720	92.50	13,946
Central 3/	105,140	99,680	1.98	197,530	91.10	17,996
West 4/	31,870	31,170	4.42	137,710	117.00	16,063

See footnotes on page 25.

Continued

Table 5. Snap beans for processing: Acres, yield, production, and value, 1964-70 Continued

Year and State	Acres		Yield per acre	Production	Value	
	Planted	Harvested			Per ton	Total
1968	Acres		Tons	Dollars	1,000 dollars	
New York	57,500	53,500	1.80	96,300	91.80	8,840
Pennsylvania	10,200	9,800	1.80	17,600	92.40	1,626
Delaware	10,100	9,700	1.40	13,600	89.50	1,217
Maryland	13,600	13,000	1.70	22,100	97.60	2,157
Virginia	3,200	3,000	2.10	6,300	105.00	662
North Carolina	3,600	3,300	1.80	5,900	102.00	602
South Carolina	1,000	800	1.90	1,500	109.00	164
Illinois	11,200	11,000	1.80	19,800	104.00	2,059
Michigan	11,900	10,600	2.10	22,300	89.30	1,991
Wisconsin	44,800	41,200	2.20	90,600	81.20	7,357
Tennessee	11,900	11,300	1.70	19,200	111.00	2,131
Arkansas	6,200	6,000	2.40	14,400	95.40	1,374
Oklahoma	2,300	2,100	2.00	4,200	98.10	412
Texas	7,300	7,000	2.40	16,800	108.00	1,814
Colorado	2,700	2,300	2.50	5,800	87.70	509
Washington	5,500	4,900	3.60	17,600	106.00	1,866
Oregon	30,600	29,000	5.30	153,700	108.00	16,600
California	13,900	13,900	2.10	29,200	133.00	3,884
Other States 1/ United States	38,390 285,890	34,670 267,070	2.01 2.35	69,730 626,630	105.00 99.80	7,291 62,556
Freezing	63,250	59,940	2.37	141,990	103.00	14,578
East 2/	31,440	29,270	1.80	52,750	101.00	5,325
Central 3/	8,210	7,370	2.11	15,540	107.00	1,670
West 4/	23,600	23,300	3.16	73,700	103.00	7,583
Canning	222,640	207,130	2.34	484,640	99.00	47,978
East 2/	85,700	80,170	1.76	141,160	93.60	13,211
Central 3/	104,340	97,460	2.09	203,680	91.80	18,694
West 4/	32,600	29,500	4.74	139,800	115.00	16,073
1969						
New York	50,300	48,500	2.00	97,000	89.50	8,682
Pennsylvania	6,700	6,200	2.00	12,400	99.30	1,231
Delaware	10,200	9,100	1.60	14,550	95.50	1,390
Maryland	9,500	8,700	1.60	13,900	92.20	1,282
Virginia	2,300	2,100	1.60	3,350	98.60	330
North Carolina	1,900	1,400	2.60	3,650	87.20	318
South Carolina	550	400	1.90	750	81.50	61
Illinois	10,100	9,400	2.50	23,500	98.40	2,312
Michigan	11,700	11,200	1.70	19,050	90.50	1,724
Wisconsin	46,700	45,400	2.10	95,350	85.70	8,171
Tennessee	10,700	10,500	1.70	17,850	110.00	1,964
Arkansas	7,600	7,200	1.70	12,250	91.30	1,118
Oklahoma	2,100	2,000	1.90	3,800	82.80	315
Texas	6,100	5,100	1.80	9,200	99.40	914
Colorado	2,200	2,100	2.50	5,250	81.90	430
Washington	3,400	3,300	3.50	11,550	112.00	1,294
Oregon	29,400	28,700	5.00	143,500	110.00	15,785
California	10,600	10,600	2.50	26,500	142.00	3,763
Other States 1/ United States	28,740 250,790	26,390 238,290	2.09 2.39	55,050 568,450	99.60 99.50	5,481 56,565
Freezing	50,460	47,250	2.43	114,600	102.00	11,710
East 2/	25,720	23,060	1.84	42,450	102.00	4,346
Central 3/	5,990	5,490	1.98	10,850	97.60	1,059
West 4/	18,750	18,700	3.28	61,300	103.00	6,305
Canning	200,330	191,040	2.38	453,850	98.80	44,855
East 2/	70,280	66,490	1.94	128,800	91.10	11,730
Central 3/	99,700	95,350	2.00	190,300	90.40	17,200
West 4/	30,350	29,200	4.61	134,750	118.00	15,925

See footnotes on page 25.

Continued

Table 5. Snap beans for processing: Acres, yield, production, and value, 1964-70 Continued

Year and State	Acres		Yield per acre	Production	Value	
	Planted	Harvested			Per ton	Total
1970	Acres		Tons	Dollars	1,000 dollars	
New York	52,500	49,200	2.09	102,850	89.60	9,215
Pennsylvania	6,100	5,800	2.00	11,600	101.00	1,172
Delaware	6,700	6,200	2.46	15,250	95.00	1,449
Maryland	9,000	8,400	2.22	18,650	96.00	1,790
Virginia	2,300	1,900	2.10	4,000	106.00	424
North Carolina	1,900	1,900	2.00	3,800	90.30	343
South Carolina	400	400	2.38	950	81.20	77
Illinois	9,500	9,000	1.87	16,850	95.93	1,616
Michigan	10,500	10,100	1.98	20,000	94.70	1,894
Wisconsin	46,400	44,100	2.26	99,650	79.70	7,942
Tennessee	11,400	10,900	2.19	23,850	107.00	2,552
Arkansas	6,000	5,500	2.03	11,150	101.00	1,126
Oklahoma	2,400	2,000	1.70	3,400	89.20	303
Texas	5,700	4,300	1.86	8,000	96.40	771
Colorado	1,800	1,700	2.70	4,600	92.70	426
Washington	3,100	2,900	3.76	10,900	99.40	1,083
Oregon	28,100	27,700	4.77	132,150	104.00	13,744
California	7,100	7,100	2.34	16,600	116.00	1,926
Other States 1/ United States	30,760 241,660	28,670 227,770	2.30 2.50	65,900 570,150	101.00 95.60	6,627 54,480
Freezing	52,150	49,830	2.66	132,450	101.00	13,423
East 2/	26,200	24,650	2.08	51,150	106.00	5,406
Central 3/	6,250	5,680	2.04	11,600	92.60	1,074
West 4/	19,700	19,500	3.57	69,700	99.60	6,943
Canning	189,510	177,940	2.46	437,700	93.80	41,057
East 2/	69,360	64,620	2.17	140,100	91.20	12,779
Central 3/	96,050	89,920	2.14	192,150	88.50	17,006
West 4/	24,100	23,400	4.51	105,450	107.00	11,272

1/ Maine, New Hampshire (1969 only); Massachusetts (1964-68, and 1970); Vermont (1964 only); New Jersey, Ohio, Indiana, Illinois (1964-66); Minnesota, Missouri (1965-70); Nebraska (1964 only); Georgia (1965-70); Florida, Kentucky, Alabama, Mississippi (1966 and 1968-69); Arkansas (1964-66); Louisiana (1964-67); Idaho and Utah.

2/ Maine, New Hampshire, Vermont, Massachusetts, New York, New Jersey, Pennsylvania, Delaware, Maryland, Virginia, North Carolina, South Carolina, Georgia, and Florida.

3/ Ohio, Indiana, Illinois, Michigan, Wisconsin, Minnesota, Missouri, Kentucky, Tennessee, Alabama, Mississippi, Arkansas, Louisiana, Oklahoma and Texas.

4/ Idaho, Colorado, Utah, Washington, Oregon, and California.

Table 6. Beets for canning: Acres, yield, production, and value, 1964-70

Year and State	Acres		Yield per acre	Production	Value	
	Planted	Harvested			Per ton	Total
	Acres		Tons		Dollars	1,000 dollars
1964						
New York	4,900	4,900	12.50	61,200	18.90	1,157
Wisconsin	5,800	5,500	9.60	52,800	17.80	940
Oregon	1,500	1,400	17.50	24,500	20.60	505
Other States <u>1/</u>	4,750	4,420	8.89	39,290	19.90	783
United States	16,950	16,220	10.96	177,790	19.00	3,385
1965						
New York	5,000	4,900	13.30	65,200	17.70	1,154
Wisconsin	5,700	5,000	12.10	60,500	17.60	1,065
Oregon	1,200	1,200	18.00	21,600	20.00	432
Other States <u>1/</u>	3,760	3,430	9.10	31,210	19.90	620
United States	15,660	14,530	12.29	178,510	18.30	3,271
1966						
New York	5,000	5,000	15.00	75,000	19.30	1,448
Wisconsin	6,600	6,300	8.50	53,600	20.40	1,093
Oregon	1,500	1,500	18.20	27,300	19.40	530
Other States <u>1/</u>	4,590	4,250	8.93	37,950	21.10	801
United States	17,690	17,050	11.37	193,850	20.00	3,872
1967						
New York	5,100	4,600	17.00	78,200	19.20	1,501
Wisconsin	7,300	6,400	9.00	57,600	21.40	1,233
Oregon	2,000	2,000	15.40	30,800	20.80	641
Other States <u>1/</u>	5,120	4,630	8.59	39,750	21.40	851
United States	19,520	17,630	11.70	206,350	20.50	4,226

See footnote on page 27.

Continued

Table 6. Beets for canning: Acres, yield, production, and value, 1964-70 Continued

Year and State	Acres		Yield per acre	Production	Value	
	Planted	Harvested			Per ton	Total
	Acres			Tons	Dollars	1,000 dollars
1968						
New York	5,200	5,100	17.50	89,200	21.40	1,909
Wisconsin	8,200	7,700	12.00	92,400	21.80	2,014
Texas	4,500	4,400	6.10	26,800	26.80	718
Oregon	2,400	2,300	18.50	42,600	30.40	1,295
Other States 1/	1,790	1,660	10.96	18,200	25.20	458
United States	22,090	21,160	12.72	269,200	23.80	6,394
1969						
New York	4,700	4,700	14.75	69,350	20.00	1,387
Wisconsin	6,900	6,600	11.00	72,600	20.30	1,474
Texas	2,900	2,700	6.85	18,500	26.40	488
Oregon	2,400	2,400	17.80	42,700	25.50	1,089
Other States 1/	2,220	1,530	10.72	16,400	24.00	393
United States	19,120	17,930	12.24	219,550	22.00	4,831
1970						
New York	4,400	3,900	19.86	77,450	17.70	1,371
Wisconsin	6,600	5,800	10.43	60,500	21.50	1,301
Texas	2,000	1,900	8.37	15,900	25.20	401
Oregon	2,100	2,100	17.07	35,850	26.00	932
Other States 1/	1,360	1,300	12.27	15,950	23.40	374
United States	16,460	15,000	13.71	205,650	21.30	4,379

1/ New Jersey, Pennsylvania (1964 only), Ohio, Indiana (1964-only), Illinois, Michigan, Minnesota, Virginia (1964, 1969 and 1970), North Carolina (1964-66), Texas (1964-67), Colorado, Utah (1964-65, and 1967-68), Washington, and California.

Table 7. Cabbage for kraut: Acres, yield, production, and value, 1964-70

Year and State	Acres		Yield per acre	Production	Value	
	Planted	Harvested			Per ton	Total
	Acres			Tons	Dollars	1,000 dol.
1964						
New York	3,400	3,400	17.80	60,500	16.80	1,016
Ohio	1,100	1,100	15.10	16,600	12.00	199
Wisconsin	3,200	3,100	14.40	44,600	15.00	669
Other States 1/	2,790	2,680	15.35	41,150	15.00	617
United States	10,490	10,280	15.84	162,850	15.40	2,501
Contract 2/	7,400	7,190	15.90	114,350	13.60	1,552
Open Market	3,090	3,090	15.70	48,500	19.60	949
1965						
New York	4,200	4,200	21.00	88,200	12.50	1,103
Ohio	1,400	1,400	18.70	26,200	13.10	343
Wisconsin	3,900	3,800	18.00	68,400	13.50	923
Other States 1/	3,420	3,350	16.75	56,110	15.90	890
United States	12,920	12,750	18.74	238,910	13.60	3,259
Contract 2/	9,000	8,830	18.97	167,480	14.20	2,376
Open Market	3,920	3,920	18.22	71,430	12.40	883
1966						
New York	3,600	3,600	20.20	72,700	24.20	1,759
Ohio	1,100	1,100	17.90	19,700	13.00	256
Wisconsin	3,300	3,200	14.60	46,700	18.00	841
Other States 1/	2,910	2,860	14.15	40,460	18.30	740
United States	10,910	10,760	16.69	179,560	20.00	3,596
Contract 2/	8,480	8,330	16.46	137,140	16.40	2,246
Open Market	2,430	2,430	17.46	42,420	31.80	1,350
1967						
New York	4,400	4,400	24.50	107,800	15.60	1,682
Ohio	1,600	1,600	20.00	32,000	16.20	518
Wisconsin	4,400	4,300	16.30	70,100	16.60	1,164
Other States 1/	4,030	3,980	15.95	63,500	20.30	1,289
United States	14,430	14,280	19.15	273,400	17.00	4,653
Contract 2/	11,540	11,390	19.19	218,560	17.80	3,898
Open Market	2,890	2,890	18.98	54,840	13.80	755

See footnotes on page 29.

Continued

Table 7. Cabbage for kraut: Acres, yield, production, and value, 1964-70 Continued

Year and State	Acres		Yield per acre	Production	Value	
	Planted	Harvested			Per ton	Total
	Acres			Tons	Dollars	1,000 dollars
1968						
New York	4,000	4,000	23.00	92,000	17.20	1,582
Ohio	1,400	1,400	16.10	22,550	16.20	365
Wisconsin	3,900	3,800	17.00	64,600	18.20	1,176
Other States 1/	3,460	3,360	15.68	52,700	20.00	1,056
United States	12,760	12,560	18.46	231,850	18.00	4,179
Contract 2/	11,070	10,870	18.44	200,430	18.00	3,617
Open Market	1,690	1,690	18.59	31,420	17.90	562
1969						
New York	4,200	4,100	18.80	77,100	20.30	1,565
Ohio	1,400	1,300	18.40	23,900	16.60	397
Wisconsin	4,000	3,900	16.70	65,150	18.00	1,173
Other States 1/	3,540	3,480	16.19	56,350	19.60	1,102
United States	13,140	12,780	17.41	222,500	19.00	4,237
Contract 2/	10,890	10,530	17.81	187,500	18.00	3,381
Open Market	2,250	2,250	15.56	35,000	24.50	856
1970						
New York	4,100	3,600	26.00	93,600	16.60	1,554
Ohio	1,700	1,500	21.20	31,800	18.10	576
Wisconsin	4,400	4,200	18.36	77,100	17.40	1,342
Other States 1/	3,810	3,680	17.28	63,600	19.40	1,235
United States	14,010	12,980	20.50	266,100	17.70	4,707
Contract 2/	12,160	11,130	20.81	231,650	18.00	4,180
Open Market	1,850	1,850	18.62	34,450	15.30	527

1/ Pennsylvania, Indiana, Illinois (1965-66), Michigan, Minnesota (1964-only), Missouri (1964-65), Virginia, North Carolina, Tennessee, Texas, Idaho, Colorado, Washington and Oregon.

2/ Contract production includes tonnage contracted, tonnage from contracted acres and tonnage grown by packers on own or leased land.

Table 8. Sweet corn for processing:
Acres, yield, production, and value, 1964-70

Year and State	Acres		Yield per acre	Production	Value	
	Planted	Harvested			Per ton	Total
1964	Acres		Tons	Dollars	1,000 dollars	
Pennsylvania	8,700	8,000	2.97	23,800	21.00	500
Delaware	3,700	3,500	3.05	10,700	23.40	250
Maryland	27,100	25,700	2.75	70,700	22.30	1,577
Illinois	45,900	45,600	4.44	202,500	20.00	4,050
Wisconsin	96,300	90,300	3.75	338,600	19.20	6,501
Minnesota	88,000	83,100	4.04	335,700	18.60	6,244
Iowa	6,000	5,900	4.04	23,800	18.80	447
Idaho	11,900	11,500	6.02	69,200	20.50	1,419
Washington	25,000	23,500	5.58	131,100	20.10	2,635
Oregon	25,100	24,800	5.79	143,600	25.00	3,590
Other States 1/ United States	32,200 369,900	31,140 353,040	4.21 4.19	131,000 1,480,700	22.70 20.40	2,972 30,185
Freezing	85,090	81,410	4.62	375,920	22.10	8,298
East 2/	18,990	18,060	3.47	62,720	23.00	1,440
Central 3/	27,500	25,950	4.15	107,600	19.60	2,110
West 4/	38,600	37,400	5.50	205,600	23.10	4,748
Canning	284,810	271,630	4.07	1,104,780	19.80	21,887
East 2/	37,360	35,390	3.38	119,780	23.50	2,816
Central 3/	218,700	208,850	3.96	827,100	19.10	15,768
West 4/	28,750	27,390	5.76	157,900	20.90	3,303
1965						
Pennsylvania	9,500	9,200	2.58	23,700	21.80	517
Delaware	3,300	3,200	3.38	10,800	23.90	258
Maryland	29,200	28,500	3.22	91,800	23.10	2,121
Illinois	54,200	48,500	4.23	205,200	23.60	4,843
Wisconsin	114,600	88,000	4.19	368,700	20.70	7,632
Minnesota	103,800	91,500	3.86	353,200	21.70	7,664
Iowa	5,900	5,200	4.13	21,500	16.50	355
Idaho	16,400	13,400	6.31	84,600	22.60	1,912
Washington	31,500	30,400	5.20	158,100	24.80	3,921
Oregon	30,500	28,800	5.82	167,600	24.10	4,039
Other States 1/ United States	31,750 430,650	29,990 376,690	4.28 4.28	128,400 1,613,600	22.60 22.40	2,897 36,159
Freezing	107,600	99,360	4.35	432,590	24.20	10,456
East 2/	20,340	19,800	3.26	64,490	23.90	1,539
Central 3/	38,560	33,010	3.68	121,400	23.00	2,795
West 4/	48,700	46,550	5.30	246,700	24.80	6,122
Canning	323,050	277,330	4.26	1,181,010	21.80	25,703
East 2/	37,910	36,450	3.44	125,410	24.10	3,019
Central 3/	250,490	210,680	4.14	871,600	21.20	18,511
West 4/	34,650	30,200	6.09	184,000	22.70	4,173

See footnotes on page 33.

Continued

Table 8. Sweet corn for processing:
Acres, yield, production, and value, 1964-70 Continued

Year and State	Acres		Yield per acre	Production	Value	
	Planted	Harvested			Per ton	Total
1966	Acres		Tons	Dollars	1,000 dollars	
Pennsylvania	9,700	6,900	1.77	12,200	26.10	318
Delaware	3,900	3,500	2.18	7,600	23.80	181
Maryland	28,100	23,000	1.93	44,400	23.60	1,048
Illinois	58,200	56,000	3.85	215,600	24.50	5,282
Wisconsin	120,200	115,900	3.95	457,800	19.70	9,019
Minnesota	116,600	110,900	4.45	493,500	22.00	10,857
Iowa	6,200	5,700	4.61	26,300	18.20	479
Idaho	16,100	15,400	5.16	79,500	23.90	1,900
Washington	42,000	42,000	6.13	257,500	26.50	6,824
Oregon	34,500	33,400	6.74	225,100	24.90	5,605
Other States 1/ United States	34,300 469,800	32,950 445,650	4.34 4.40	142,900 1,962,400	21.90 22.70	3,124 44,637
Freezing	129,190	121,850	4.93	600,980	24.80	14,920
East 2/	23,160	20,000	3.28	65,560	24.30	1,596
Central 3/	46,330	43,000	4.05	174,020	22.80	3,966
West 4/	59,700	58,850	6.14	361,400	25.90	9,358
Canning	340,610	323,800	4.20	1,361,420	21.80	29,717
East 2/	36,340	30,800	2.75	84,840	22.20	1,881
Central 3/	266,070	256,050	4.12	1,054,180	21.20	22,352
West 4/	38,200	36,950	6.02	222,400	24.70	5,484
1967						
Pennsylvania	9,700	9,300	3.72	34,600	26.50	917
Delaware	4,800	3,900	3.58	14,000	25.60	358
Maryland	28,900	24,700	3.65	90,200	22.50	2,030
Illinois	59,600	59,200	4.49	265,800	27.10	7,203
Wisconsin	124,100	114,000	3.76	428,600	22.00	9,429
Minnesota	133,000	121,400	4.20	509,900	22.00	11,218
Iowa	6,900	6,600	3.95	26,100	23.20	606
Idaho	18,600	17,000	5.58	94,900	25.20	2,391
Washington	55,000	47,900	5.66	271,100	31.70	8,594
Oregon	37,000	34,800	6.24	217,200	29.40	6,386
Other States 1/ United States	33,150 510,750	31,750 470,550	4.71 4.47	149,500 2,101,900	22.80 25.00	3,409 52,541
Freezing	129,280	117,980	4.97	586,280	28.50	16,708
East 2/	21,880	19,730	4.26	84,020	26.30	2,209
Central 3/	38,650	35,250	3.94	139,060	24.20	3,362
West 4/	68,750	63,000	5.77	363,200	30.70	11,137
Canning	381,470	352,570	4.30	1,515,620	23.60	35,833
East 2/	38,370	34,320	4.61	137,580	21.90	3,016
Central 3/	295,750	276,450	4.09	1,130,740	23.00	25,967
West 4/	47,350	41,800	5.92	247,300	27.70	6,850

See footnotes on page 33.

Continued

Table 8. Sweet corn for processing:
Acres, yield, production, and value, 1964-70 Continued

Year and State	Acres		Yield per acre	Production	Value	
	Planted	Harvested			Per ton	Total
1968	Acres		Tons	Dollars	1,000 dollars	
Pennsylvania	13,700	12,400	2.65	32,900	27.50	905
Delaware	4,500	4,200	2.71	11,400	24.20	276
Maryland	28,200	26,400	2.65	70,000	24.40	1,708
Illinois	63,100	61,700	4.29	264,700	26.20	6,935
Wisconsin	138,000	127,200	4.35	553,300	23.00	12,726
Minnesota	134,900	125,300	4.85	607,700	22.00	13,369
Iowa	8,400	7,900	5.34	42,200	22.10	933
Idaho	26,300	24,000	5.69	136,600	26.40	3,606
Washington	56,000	52,500	5.92	310,800	32.10	9,977
Oregon	43,400	41,600	7.00	291,200	29.90	8,707
Other States 1/ United States	37,160 553,660	35,960 519,160	4.41 4.78	158,500 2,479,300	26.90 25.60	4,263 63,405
Freezing	136,950	126,210	5.44	686,720	28.70	19,680
East 2/	24,750	23,460	3.68	86,310	27.50	2,377
Central 3/	38,800	33,750	4.81	162,210	25.20	4,092
West 4/	73,400	69,000	6.35	438,200	30.10	13,211
Canning	416,710	392,950	4.56	1,792,580	24.40	43,725
East 2/	39,310	37,200	3.13	116,490	26.80	3,119
Central 3/	319,000	301,050	4.48	1,349,190	22.90	30,854
West 4/	58,400	54,700	5.98	326,900	29.80	9,752
1969	Acres		Tons	Dollars	1,000 dollars	
Pennsylvania	7,800	7,500	3.25	24,400	27.50	671
Delaware	3,300	3,000	3.90	11,700	24.70	289
Maryland	24,000	22,200	3.21	71,250	23.90	1,703
Illinois	51,000	50,200	4.58	229,900	26.80	6,161
Wisconsin	123,700	118,700	3.57	423,750	23.70	10,043
Minnesota	115,400	113,300	4.77	540,450	21.80	11,782
Iowa	7,600	6,900	4.29	29,600	21.80	645
Idaho	24,000	23,200	6.04	140,150	24.70	3,462
Washington	42,300	40,600	6.62	268,750	30.10	8,089
Oregon	35,100	33,800	7.79	263,300	28.40	7,478
Other States 1/ United States	31,200 465,400	29,300 448,700	3.62 4.70	106,100 2,109,350	25.10 25.10	2,660 52,983
Freezing	118,050	114,100	5.67	647,100	27.80	18,017
East 2/	19,650	18,850	3.25	61,200	26.70	1,634
Central 3/	38,400	37,300	4.41	164,400	24.60	4,052
West 4/	60,000	57,950	7.27	421,500	29.30	12,331
Canning	347,350	334,600	4.37	1,462,250	23.90	34,966
East 2/	30,650	28,350	3.22	91,250	25.00	2,284
Central 3/	270,900	262,600	4.19	1,101,100	23.20	25,505
West 4/	45,800	43,650	6.18	269,900	26.60	7,177

See footnotes on page 33.

Continued

Table 8. Sweet corn for processing:
Acres, yield, production, and value, 1964-70 Continued

Year and State	Acres		Yield per acre	Production Tons	Value	
	Planted	Harvested			Per ton Dollars	Total 1,000 dollars
1970	Acres			Tons	Dollars	1,000 dollars
Pennsylvania	7,300	7,100	3.56	25,300	25.50	645
Delaware	3,000	2,900	3.95	11,450	23.80	273
Maryland	20,000	19,700	3.37	66,400	24.30	1,614
Illinois	47,900	45,300	3.85	174,400	27.00	4,709
Wisconsin	123,400	117,600	3.82	449,250	23.70	10,647
Minnesota	109,400	105,900	4.85	513,600	20.20	10,375
Iowa	9,800	9,400	4.79	45,050	20.80	937
Idaho	21,100	20,400	6.02	122,800	25.90	3,181
Washington	27,300	26,100	5.60	146,150	27.10	3,961
Oregon	30,200	29,500	7.08	208,850	27.50	5,743
Other States 1/ United States	29,500 428,900	28,750 412,650	4.03 4.55	115,800 1,879,050	24.20 23.90	2,801 44,886
Freezing	94,090	90,240	5.23	472,350	25.80	12,170
East 2/	17,000	16,800	4.07	68,450	24.10	1,652
Central 3/	33,600	31,800	4.48	142,400	22.40	3,186
West 4/	43,490	41,640	6.28	261,500	28.00	7,332
Canning	334,810	322,410	4.36	1,406,700	23.30	32,716
East 2/	27,300	26,700	3.37	90,100	24.20	2,182
Central 3/	267,900	257,050	4.20	1,079,700	22.60	24,425
West 4/	39,610	38,660	6.13	236,900	25.80	6,109

1/ Maine (1964-68), New York, Ohio, Indiana, Michigan. 1964-66), South Dakota, Texas, Montana (1964-65), Wyoming, and Utah.

2/ Maine, New York, Pennsylvania, Delaware, Maryland, and Virginia.

3/ Ohio, Indiana, Illinois, Michigan, Wisconsin, Minnesota, Iowa, South Dakota, and Texas.

4/ Montana, Idaho, Wyoming, Utah, Washington and Oregon.

Table 9. Cucumbers for pickles: Acres, yield, production, value per ton, and total value, 1964-70

Year, region, and State	Acres		Yield per acre	Production	Value	
	Planted	Harvested			Per ton	Total
1964	Acres			Tons	Dollars	1,000 dollars
Northern						
Ohio	2,300	2,100	5.15	10,820	73.60	796
Indiana	850	750	6.10	4,580	62.20	285
Michigan	25,500	23,700	5.05	119,680	66.60	7,971
Wisconsin	16,300	15,400	2.25	34,650	74.00	2,564
Other States ^{1/}	7,240	6,540	5.65	36,980	59.60	2,204
Total Northern	52,190	48,490	4.26	206,710	66.90	13,820
Southern						
Del. & Md.	4,100	3,800	5.38	20,440	50.88	1,040
Virginia	2,600	2,600	3.10	8,060	76.60	617
North Carolina	20,700	20,100	2.50	50,250	70.00	3,518
Texas	5,700	4,700	5.15	24,200	51.40	1,244
Other States ^{2/}	22,120	20,970	2.02	42,350	67.30	2,873
Total Southern	55,220	52,170	2.70	145,300	64.00	9,292
Western						
Colorado	2,300	1,700	7.90	13,430	56.40	757
Washington	1,400	1,300	4.55	5,920	72.60	430
California	3,900	3,900	11.90	46,410	68.50	3,179
Other States ^{3/}	1,450	1,340	5.99	8,020	68.20	547
Total Western	9,050	8,240	8.95	73,780	66.60	4,913
United States	116,460	108,900	3.91	425,790	65.80	28,025
1965						
Northern						
Ohio	2,700	2,400	5.30	12,720	75.60	962
Indiana	1,200	1,200	5.50	6,600	69.00	455
Michigan	17,800	16,500	4.92	*81,200	93.40	7,584
Wisconsin	15,100	13,800	3.15	43,470	84.80	3,686
Other States ^{1/}	8,050	7,380	5.16	38,060	68.20	2,596
Total Northern	44,850	41,280	4.41	182,050	83.90	15,283
Southern						
Del. & Md.	4,200	4,100	6.46	26,470	54.33	1,438
Virginia	2,900	2,900	3.50	10,150	84.60	859
North Carolina	21,700	21,300	2.81	59,850	73.60	4,405
Texas	6,100	5,600	3.08	17,250	65.60	1,132
Other States ^{2/}	25,800	24,400	2.26	55,210	67.90	3,750
Total Southern	60,700	58,300	2.90	168,930	68.60	11,584
Western						
Colorado	1,200	800	7.00	5,600	61.80	346
Washington	1,600	1,600	8.70	13,920	68.60	955
California	3,800	3,700	11.60	42,920	76.70	3,292
Other States ^{3/}	2,830	2,530	6.25	15,800	72.30	1,143
Total Western	9,430	8,630	9.07	78,240	73.30	5,736
United States	114,980	108,210	3.97	429,220	76.00	32,603

See footnotes on page 37.

Continued

Table 9. Cucumbers for pickles: Acres, yield, production, value per ton, and total value, 1964-70 Continued

Year, region, and State	Acres		Yield per acre	Production	Value	
	Planted	Harvested			Per ton	Total
1966	Acres			Tons	Dollars	1,000 dollars
Northern						
Ohio	3,000	2,900	5.73	16,620	81.60	1,356
Indiana	1,600	1,500	4.63	6,940	68.50	475
Michigan	20,900	19,600	6.23	122,110	91.40	11,161
Wisconsin	15,400	15,000	3.34	50,100	78.70	3,943
Other States 1/	10,680	9,610	6.37	61,170	76.50	4,681
Total Northern	51,580	48,610	5.29	256,940	84.10	21,616
Southern						
Del. & Md.	4,500	4,300	6.48	27,850	62.70	1,747
Virginia	4,200	4,100	2.93	12,010	106.00	1,273
North Carolina	34,000	25,200	2.24	56,450	86.30	4,872
Texas	13,300	11,800	2.85	33,630	87.50	2,943
Other States 2/	29,900	27,050	2.12	57,320	82.10	4,707
Total Southern	85,900	72,450	2.58	187,260	83.00	15,542
Western						
Colorado	1,600	1,500	8.63	12,940	63.60	823
Washington	1,500	1,500	7.53	11,300	60.30	681
California	4,700	4,600	11.20	51,520	79.30	4,086
Other States 3/	2,770	2,360	7.56	17,840	62.70	1,118
Total Western	10,570	9,960	9.40	93,600	71.70	6,708
United States	148,050	131,020	4.10	537,800	81.60	43,866
1967						
Northern						
Ohio	3,800	3,700	6.08	22,500	107.00	2,408
Indiana	2,300	2,200	4.34	9,550	86.40	825
Michigan	29,600	26,600	4.45	118,370	111.00	13,139
Wisconsin	17,900	17,200	2.21	38,000	98.50	3,743
Other States 1/	11,110	9,890	5.81	57,480	82.40	4,738
Total Northern	64,710	59,590	4.13	245,900	101.00	24,853
Southern						
Del. & Md.	4,600	4,350	5.67	24,670	67.30	1,660
Virginia	4,000	3,900	3.35	13,070	94.40	1,234
North Carolina	35,100	33,900	2.46	83,400	92.70	7,731
Texas	12,500	11,500	3.18	36,570	85.00	3,108
Other States 2/	33,100	31,450	2.74	86,080	88.20	7,589
Total Southern	89,300	85,100	2.86	243,790	87.50	21,322
Western						
Colorado	2,700	2,100	6.68	14,030	68.90	967
Washington	1,700	1,700	7.80	13,260	62.40	827
California	5,600	5,200	11.50	59,800	84.40	5,047
Other States 3/	2,750	2,510	8.99	22,570	72.90	1,646
Total Western	12,750	11,510	9.53	109,660	77.40	8,487
United States	166,760	156,200	3.84	599,350	91.20	54,662

See footnotes on page 37.

Continued

Table 9. Cucumbers for pickles: Acres, yield, production, value per ton, and total value, 1964-70 Continued

Year, region, and State	Acres		Yield per acre	Production	Value	
	Planted	Harvested			Per ton	Total
1968	Acres			Tons	Dollars	1,000 dollars
Northern						
Ohio	4,300	4,000	6.83	27,320	104.00	2,841
Indiana	3,100	2,900	4.60	13,340	81.70	1,090
Michigan	22,900	21,200	4.37	92,640	99.40	9,208
Wisconsin	21,800	18,700	2.89	54,040	114.00	6,161
Other States ^{1/}	11,230	9,510	4.91	46,720	82.80	3,869
Total Northern	63,330	56,310	4.16	234,060	99.00	23,169
Southern						
Del. & Md.	3,750	3,450	6.17	21,270	67.80	1,443
Virginia	2,600	2,600	4.54	11,800	73.40	866
North Carolina	33,900	32,800	2.30	75,440	101.00	7,619
Texas	7,700	6,600	4.82	31,810	77.60	2,468
Other States ^{2/}	37,490	33,530	2.38	79,870	86.70	6,926
Total Southern	85,440	78,980	2.79	229,190	87.80	19,322
Western						
Colorado	3,900	3,300	6.09	20,100	86.00	1,729
Washington	1,700	1,600	7.50	12,000	77.20	926
California	6,000	5,700	10.70	61,000	91.70	5,594
Other States ^{3/}	3,010	2,430	7.04	17,110	73.80	1,263
Total Western	14,610	13,030	8.46	110,210	86.30	9,512
United States	163,380	148,320	3.81	564,460	92.10	52,003
1969						
Northern						
Ohio	5,000	4,800	6.94	33,300	117.00	3,896
Indiana	2,600	2,400	5.98	14,350	93.60	1,343
Michigan	23,100	22,200	4.08	90,600	103.00	9,332
Wisconsin	16,200	14,900	2.83	42,150	106.00	4,468
Other States ^{1/}	7,220	6,630	6.33	42,000	73.30	3,080
Total Northern	54,120	50,930	4.37	222,400	98.50	22,119
Southern						
Del. & Md.	4,050	3,900	6.21	24,200	65.20	1,579
Virginia	3,200	3,200	3.53	11,300	70.10	792
North Carolina	29,100	28,000	2.57	71,950	97.50	7,015
Texas	6,700	5,500	4.18	23,000	75.20	1,730
Other States ^{2/}	36,920	32,460	2.28	74,050	86.30	6,392
Total Southern	79,970	73,060	2.80	204,500	85.60	17,508
Western						
Colorado	2,500	2,200	6.52	14,350	82.60	1,185
Washington	1,600	1,600	6.66	10,650	92.00	980
California	5,400	5,200	9.40	48,900	91.80	4,489
Other States ^{3/}	2,100	2,030	7.98	16,200	77.30	1,253
Total Western	11,600	11,030	8.17	90,100	87.80	7,907
United States	145,690	135,020	3.83	517,000	91.90	47,534

See footnotes on page 37.

Continued

Table 9. Cucumbers for pickles: Acres, yield, production, value per ton, and total value, 1964-70 Continued

Year, region, and State	Acres		Yield per acre	Production	Value	
	Planted	Harvested			Per ton	Total
1970	Acres			Tons	Dollars	1,000 dollars
Northern						
Ohio	6,400	6,200	7.42	46,000	99.60	4,582
Indiana	2,700	2,600	6.30	16,400	108.00	1,771
Michigan	24,700	23,200	4.48	103,950	99.60	10,353
Wisconsin	12,000	11,500	4.26	49,000	121.00	5,929
Other States ^{1/}	6,900	6,440	6.41	41,250	79.70	3,286
Total Northern	52,700	49,940	5.14	256,600	101.00	25,921
Southern						
Del. & Md.	3,400	3,200	7.89	25,250	63.50	1,603
Virginia	2,800	2,800	2.96	8,300	63.60	528
North Carolina	27,800	27,700	2.50	69,250	94.90	6,572
Texas	4,800	4,300	5.20	22,350	86.60	1,936
Other States ^{2/}	37,980	35,100	2.94	103,050	94.90	9,780
Total Southern	76,780	73,100	3.12	228,200	89.50	20,419
Western						
Colorado	2,600	2,300	8.43	19,400	76.80	1,490
Washington	1,600	1,500	9.13	13,700	94.00	1,288
California	5,200	5,100	10.60	54,050	86.30	4,665
Other States ^{3/}	1,740	1,640	10.30	16,850	95.40	1,608
Total Western	11,140	10,540	9.87	104,000	87.00	9,051
United States	140,620	133,580	4.41	588,800	94.10	55,391

* Excludes the following quantity not marketed: 1965, Michigan 13,630 tons.

^{1/} Maine (1964-65), New Hampshire, Massachusetts, New York, New Jersey, Pennsylvania, Illinois, Minnesota, Iowa, Missouri, North Dakota (1968-70), South Dakota (1966-70), Nebraska (1967-70), Kansas (1969 only).

^{2/} South Carolina, Georgia, Florida, Kentucky, Tennessee (1969-70), Alabama, Mississippi, Arkansas, Louisiana, Oklahoma.

^{3/} Idaho, New Mexico, Arizona, Utah (1964-69), Oregon.

Table 10. Green peas for processing: Acres, yield, production, value per ton, and total value, 1964-70

Year, region, and State	Acres		Yield per acre	Production	Value	
	Planted	Harvested			Per ton	Total
1964	Acres			Tons	Dollars	1,000 dollars
Eastern						
Delaware	8,800	8,600	.83	7,150	114.00	815
Maryland	8,400	8,200	.86	7,050	118.00	832
Other States 1/	28,170	27,700	1.28	35,350	104.00	3,678
Total Eastern	45,370	44,500	1.11	49,550	107.00	5,325
Central						
Wisconsin	124,000	120,500	1.09	131,350	93.70	12,307
Minnesota	54,600	53,600	.99	53,050	99.00	5,252
Other States 2/	39,500	38,000	1.43	54,150	84.50	4,574
Total Central	218,100	212,100	1.12	238,550	92.80	22,133
Western						
Idaho	12,700	11,600	1.23	14,270	87.60	1,250
Washington	82,600	89,900	1.32	106,800	103.00	11,000
Oregon	60,800	52,600	.93	48,900	85.50	4,181
California	11,000	10,200	1.79	18,250	125.00	2,281
Other States 3/	6,450	5,510	1.40	7,730	93.90	726
Total Western	173,550	160,810	1.22	195,950	99.20	19,438
United States	437,020	417,410	1.16	484,050	96.90	46,896
Freezing						
East	157,840	150,840	1.24	187,600	100.00	18,775
Central	25,540	25,190	1.15	28,850	106.00	3,058
West	17,850	17,450	1.10	19,200	97.30	1,868
West	114,450	108,200	1.29	139,550	99.20	13,849
Canning						
East	279,180	266,570	1.11	296,450	94.90	28,121
Central	19,830	19,310	1.07	20,700	110.00	2,267
Central	200,250	194,650	1.13	219,350	92.40	20,265
West	59,100	52,610	1.07	56,400	99.10	5,589
1965						
Eastern						
Delaware	7,900	7,900	1.17	9,250	116.00	1,073
Maryland	8,600	8,500	1.57	13,350	123.00	1,642
Other States 1/	26,040	25,040	1.40	35,100	106.00	3,721
Total Eastern	42,540	41,440	1.39	57,700	112.00	6,436
Central						
Wisconsin	131,400	124,700	1.27	158,350	95.60	15,138
Minnesota	59,000	56,900	1.24	70,550	104.00	7,337
Other States 2/	44,500	43,000	1.28	54,850	103.00	5,662
Total Central	234,900	224,600	1.26	283,750	99.20	28,137
Western						
Idaho	15,200	14,000	1.16	16,240	88.30	1,434
Washington	90,600	88,300	1.59	140,400	101.00	14,180
Oregon	60,000	56,400	1.38	77,850	88.00	6,851
California	13,300	11,700	1.63	19,050	124.00	2,362
Other States 3/	6,000	5,190	1.60	8,320	96.00	799
Total Western	185,100	175,590	1.49	261,860	97.90	25,626
United States	462,540	441,630	1.37	603,310	99.80	60,199
Freezing						
East	168,730	159,770	1.47	234,620	99.50	23,354
Central	23,580	22,670	1.31	29,800	108.00	3,224
Central	21,450	20,550	1.15	23,550	110.00	2,590
West	123,700	116,550	1.56	181,270	97.00	17,540
Canning						
East	293,810	281,860	1.31	368,690	99.90	36,845
East	18,960	18,770	1.49	27,900	115.00	3,212
Central	213,450	204,050	1.28	260,200	98.20	25,547
West	61,400	59,040	1.37	80,590	100.00	8,086

See footnotes on page 41.

Continued

Table 10. Green peas for processing: Acres, yield, production, value per ton, and total value, 1964-70 Continued

Year, region, and State	Acres		Yield per acre	Production	Value	
	Planted	Harvested			Per ton	Total
1966	Acres			Tons	Dollars	1,000 dollars
Eastern						
Delaware	6,600	6,500	1.71	11,100	122.00	1,354
Maryland	8,800	8,600	1.61	13,850	120.00	1,662
Other States 1/	25,850	24,690	1.32	32,600	111.00	3,609
Total Eastern	41,250	39,790	1.45	57,550	115.00	6,625
Central						
Wisconsin	137,600	124,400	1.03	128,150	100.00	12,815
Minnesota	72,300	66,300	.99	65,650	123.00	8,075
Other States 2/	43,480	39,930	1.20	48,050	114.00	5,469
Total Central	253,380	230,630	1.05	241,850	109.00	26,359
Western						
Idaho	15,800	14,200	.90	12,800	99.90	1,279
Washington	93,200	87,600	1.48	129,650	94.30	12,226
Oregon	56,000	47,800	.95	45,400	95.70	4,345
California	11,000	9,500	1.73	16,450	113.00	1,859
Other States 3/	5,460	4,560	1.40	6,400	99.40	636
Total Western	181,460	163,660	1.29	210,700	96.60	20,345
United States	476,090	434,080	1.18	510,100	105.00	53,329
Freezing	162,910	149,730	1.33	198,450	98.50	19,546
East	21,630	20,780	1.40	29,100	111.00	3,231
Central	26,200	23,400	1.02	23,850	119.00	2,831
West	115,080	105,550	1.38	145,500	92.70	13,484
Canning	313,180	284,350	1.10	311,650	108.00	33,783
East	19,620	19,010	1.50	28,450	119.00	3,394
Central	227,180	207,230	1.05	218,000	108.00	23,528
West	66,380	58,110	1.12	65,200	105.00	6,861
1967						
Eastern						
Delaware	9,600	9,400	1.36	12,800	126.00	1,613
Maryland	8,700	7,800	1.57	12,250	103.00	1,262
Other States 1/	27,040	25,410	1.40	35,600	115.00	4,078
Total Eastern	45,340	42,610	1.42	60,650	115.00	6,953
Central						
Wisconsin	133,300	125,500	1.24	155,600	106.00	16,494
Minnesota	76,000	72,800	1.08	78,600	119.00	9,353
Other States 2/	43,500	40,650	1.42	57,700	116.00	6,673
Total Central	252,800	238,950	1.22	291,900	111.00	32,520
Western						
Idaho	15,400	14,700	1.21	17,800	104.00	1,851
Washington	96,400	93,000	1.57	146,000	103.00	15,038
Oregon	59,100	55,600	.93	51,700	106.00	5,480
California	13,000	9,200	1.72	15,800	110.00	1,738
Other States 3/	5,160	4,160	1.66	6,900	104.00	716
Total Western	189,060	176,660	1.35	238,200	104.00	24,823
United States	487,200	458,220	1.29	590,750	109.00	64,296
Freezing	172,200	159,830	1.42	227,350	105.00	23,864
East	24,580	23,120	1.38	32,000	118.00	3,772
Central	22,300	20,800	1.17	24,250	118.00	2,863
West	125,320	115,910	1.48	171,100	101.00	17,229
Canning	315,000	298,390	1.22	363,400	111.00	40,432
East	20,760	19,490	1.47	28,650	111.00	3,181
Central	230,500	218,150	1.23	267,650	111.00	29,657
West	63,740	60,750	1.10	67,100	113.00	7,594

See footnotes on page 41.

Continued

Table 10. Green peas for processing: Acres, yield, production, value per ton, and total value, 1964-70 Continued

Year, region, and State	Acres		Yield per acre	Production	Value	
	Planted	Harvested			Per ton	Total
1968	Acres			Tons	Dollars	1,000 dollars
Eastern						
Delaware	7,300	7,300	1.61	11,750	102.00	1,199
Maryland	11,300	10,500	1.50	15,750	125.00	1,969
Other States 1/	30,810	29,010	1.53	44,400	109.00	4,840
Total Eastern	49,410	46,810	1.54	71,900	111.00	8,008
Central						
Wisconsin	140,500	130,400	1.20	156,500	100.00	15,650
Minnesota	74,300	65,000	1.24	80,600	115.00	9,269
Other States 2/	42,030	38,080	1.64	62,350	113.00	7,037
Total Central	256,830	233,480	1.28	299,450	107.00	31,956
Western						
Idaho	18,700	16,500	1.15	19,000	93.90	1,784
Washington	95,900	90,100	1.42	127,950	104.00	13,307
Oregon	60,400	48,400	.75	36,300	108.00	3,920
California	13,400	11,900	1.66	19,750	127.00	2,508
Other States 3/	5,300	4,900	1.68	8,250	108.00	887
Total Western	193,700	171,800	1.23	211,250	106.00	22,406
United States	499,940	452,090	1.29	582,600	107.00	62,370
Freezing						
East	185,570	165,720	1.38	228,500	104.00	23,657
Central	26,270	25,130	1.47	36,850	112.00	4,112
West	27,000	23,700	1.34	31,650	116.00	3,686
West	132,300	116,890	1.37	160,000	99.10	15,859
Canning						
East	314,370	286,370	1.24	354,100	109.00	38,713
Central	23,140	21,680	1.62	35,050	111.00	3,896
Central	229,830	209,780	1.28	267,800	106.00	28,270
West	61,400	54,910	.93	51,250	128.00	6,547
1969						
Eastern						
Delaware	5,700	5,600	1.30	7,300	106.00	774
Maryland	8,800	8,700	1.53	13,300	114.00	1,516
Other States 1/	25,630	22,720	1.40	31,800	107.00	3,413
Total Eastern	40,130	37,020	1.42	52,400	109.00	5,703
Central						
Wisconsin	126,700	113,800	1.18	134,300	104.00	13,967
Minnesota	67,400	63,200	1.10	69,500	118.00	8,201
Other States 2/	38,660	33,610	1.39	46,750	116.00	5,435
Total Central	232,760	210,610	1.19	250,550	110.00	27,603
Western						
Idaho	16,300	15,100	1.05	15,850	90.90	1,441
Washington	85,600	81,700	1.55	126,650	101.00	12,792
Oregon	52,300	47,300	1.23	58,200	101.00	5,878
California	9,100	7,900	1.77	14,000	114.00	1,596
Other States 3/	5,100	4,520	1.49	6,750	102.00	686
Total Western	168,400	156,520	1.41	221,450	101.00	22,393
United States	441,290	404,150	1.30	524,400	106.00	55,699
Freezing						
East	161,020	148,780	1.40	207,950	104.00	21,687
East	22,680	20,850	1.35	28,100	112.00	3,141
Central	24,200	21,700	1.16	25,200	123.00	3,092
West	114,140	106,230	1.46	154,650	99.90	15,454
Canning						
East	280,270	255,370	1.24	316,450	107.00	34,012
East	17,450	16,170	1.50	24,300	105.00	2,562
Central	208,560	188,910	1.19	225,350	109.00	24,511
West	54,260	50,290	1.33	66,800	104.00	6,939

See footnotes on page 41.

Continued

Table 10. Green peas for processing: Acres, yield, production, value per ton, and total value, 1964-70 Continued

Year, region, and State	Acres		Yield per acre	Production	Value	
	Planted	Harvested			Per ton	Total
1970	Acres			Tons	Dollars	1,000 dollars
Eastern						
Delaware	5,900	5,800	1.86	10,800	109.00	1,177
Maryland	7,200	7,100	1.42	10,100	109.00	1,101
Other States 1/	23,010	21,910	1.52	33,400	116.00	3,866
Total Eastern	36,110	34,810	1.56	54,300	113.00	6,144
Central						
Wisconsin	126,500	118,600	1.16	137,600	110.00	15,136
Minnesota	68,200	66,200	1.08	71,500	110.00	7,865
Other States 2/	34,490	31,990	1.23	39,450	117.00	4,620
Total Central	229,190	216,790	1.15	248,550	111.00	27,621
Western						
Idaho	17,200	13,700	1.09	14,950	91.90	1,374
Washington	64,900	63,300	1.51	95,600	107.00	10,229
Oregon	47,500	43,700	.97	42,400	99.90	4,236
California	7,200	6,900	1.91	13,200	119.00	1,571
Other States 3/	5,060	4,660	1.56	7,250	98.30	713
Total Western	141,860	132,260	1.31	173,400	105.00	18,123
United States	407,160	383,860	1.24	476,250	109.00	51,888
Freezing	141,750	131,610	1.34	176,350	109.00	19,182
East	22,450	21,360	1.51	32,300	118.00	3,796
Central	22,550	21,950	1.08	23,650	116.00	2,737
West	96,750	88,300	1.36	120,400	105.00	12,649
Canning	265,410	252,250	1.19	299,900	109.00	32,706
East	13,660	13,450	1.64	22,000	107.00	2,348
Central	206,640	194,840	1.15	224,900	111.00	24,884
West	45,110	43,960	1.21	53,000	103.00	5,474

1/ Maine, New York, New Jersey, Pennsylvania, Virginia and North Carolina.

2/ Ohio, Indiana, Illinois, Michigan, Iowa, and Tennessee (1967-70).

3/ Montana, Wyoming, Colorado, and Utah.

Table 11. Spinach for processing: Acres, yield, production and value 1964-70

Year, season, and State	Acres		Yield per acre	Production	Value	
	Planted	Harvested			Per ton	Total
1964	Acres			Tons	Dollars	1,000 dollars
Winter						
Florida	2,800	2,600	5.00	13,000	41.00	533
California	7,700	7,500	9.30	69,800	31.90	2,227
Total or Average	10,500	10,100	8.20	82,800	33.30	2,760
Spring						
Arkansas	1,700	1,600	4.00	6,400	47.20	302
Oklahoma	3,100	2,500	3.30	8,200	47.20	387
Other States 1/	7,320	6,810	4.17	28,420	41.00	1,165
Total or Average	12,120	10,910	3.94	43,020	43.10	1,854
Fall						
Arkansas	950	650	5.40	3,500	44.00	154
Oklahoma	1,100	800	3.70	3,000	40.60	122
Other States 2/	3,320	2,830	5.14	14,540	50.90	740
Total or Average	5,370	4,280	4.92	21,040	48.30	1,016
United States	27,990	25,290	5.81	146,860	38.30	5,630
Freezing						
Winter	4,900	4,700	8.37	39,340	33.00	1,299
Spring	4,640	4,190	3.64	15,250	47.28	721
Fall	3,170	2,700	5.12	13,820	52.70	729
Canning						
Winter	5,600	5,400	8.05	43,460	33.60	1,461
Spring	7,480	6,720	4.13	27,770	40.80	1,133
Fall	2,200	1,580	4.57	7,220	39.80	287
1965						
Winter						
Florida	2,700	1,700	4.60	7,800	40.70	317
California	6,900	6,100	8.60	52,500	33.60	1,764
Total or Average	9,600	7,800	7.73	60,300	34.50	2,081
Spring						
Arkansas	1,800	700	3.10	2,200	44.50	98
Oklahoma	1,600	900	2.80	2,500	44.40	111
Other States 1/	7,330	6,780	4.97	*33,720	41.90	1,412
Total or Average	10,730	8,380	4.58	38,420	42.20	1,621
Fall						
Arkansas	850	850	4.90	4,200	50.70	213
Oklahoma	1,800	1,200	4.60	5,500	49.00	270
Other States 2/	3,390	3,170	5.10	16,180	48.60	787
Total or Average	6,040	5,220	4.96	25,880	49.10	1,270
United States	26,370	21,400	5.82	124,600	39.90	4,972
Freezing						
Winter	5,050	4,200	7.46	31,320	34.50	1,081
Spring	5,460	4,580	4.22	19,310	43.90	848
Fall	3,110	2,880	5.23	15,050	50.20	755
Canning						
Winter	4,550	3,600	8.05	28,980	34.50	1,000
Spring	5,270	3,800	5.03	19,110	40.50	773
Fall	2,930	2,340	4.63	10,830	47.60	515

See footnotes on page 45.

Continued

Table 11. Spinach for processing: Acres, yield, production and value 1964-70
Continued

Year, season, and State	Acres		Yield per acre	Production	Value	
	Planted	Harvested			Per ton	Total
1966	Acres		Tons	Dollars	1,000 dollars	
Winter						
Florida	2,700	2,500	5.10	12,800	42.10	539
California	7,900	7,500	8.20	61,500	36.00	2,214
Total or Average	10,600	10,000	7.43	74,300	37.10	2,753
Spring						
Arkansas	1,200	900	4.10	3,700	49.70	184
Oklahoma	1,900	1,700	4.00	6,800	48.10	327
Other States 1/	7,090	6,630	5.52	36,630	44.20	1,619
Total or Average	10,190	9,230	5.11	47,130	45.20	2,130
Fall						
Arkansas	1,100	1,100	5.20	5,700	51.20	292
Oklahoma	2,100	1,600	3.50	5,600	48.00	269
Other States 2/	2,900	2,890	4.55	13,140	45.00	591
Total or Average	6,100	5,590	4.37	24,440	47.10	1,152
United States	26,890	24,820	5.88	145,870	41.40	6,035
Freezing						
Winter	5,730	5,500	7.41	40,780	37.00	1,507
Spring	4,870	4,380	4.84	21,190	46.50	986
Fall	3,150	3,040	4.26	12,950	48.00	622
Canning						
Winter	4,870	4,500	7.45	33,520	37.20	1,246
Spring	5,320	4,850	5.35	25,940	44.10	1,144
Fall	2,950	2,550	4.51	11,490	46.10	530
1967						
Winter						
Florida	2,400	2,200	5.70	12,500	43.30	541
California	9,300	8,700	9.30	80,900	35.80	2,896
Total or Average	11,700	10,900	8.57	93,400	36.80	3,437
Spring						
Arkansas	1,200	900	3.30	3,000	51.30	154
Oklahoma	3,200	1,800	2.20	4,000	50.00	200
Other States 1/	8,080	7,520	4.22	31,700	41.50	1,314
Total or Average	12,480	10,220	3.79	38,700	43.10	1,668
Fall						
Arkansas	2,000	1,400	3.20	4,500	50.70	228
Oklahoma	2,200	1,600	3.20	5,100	50.00	255
Other States 2/	3,110	2,870	5.19	14,890	50.30	749
Total or Average	7,310	5,870	4.17	24,490	50.30	1,232
United States	31,490	26,990	5.80	156,590	40.50	6,337
Freezing						
Winter	6,920	6,370	8.12	51,720	37.00	1,915
Spring	6,450	5,570	3.61	20,100	43.50	874
Fall	3,170	2,800	4.88	13,660	52.50	717
Canning						
Winter	4,780	4,530	9.20	41,680	36.50	1,522
Spring	6,030	4,650	4.00	18,600	42.70	794
Fall	4,140	3,070	3.53	10,830	47.60	515

See footnotes on page 45.

Continued

Table 11. Spinach for processing: Acres, yield, production and value 1964-70 Continued

Year, season, and State	Acres		Yield per acre	Production	Value	
	Planted	Harvested			Per ton	Total
1968	Acres		Tons	Dollars	1,000 dollars	
Winter						
Florida	2,100	1,900	4.90	9,300	42.00	391
California	9,300	8,700	9.00	78,300	36.60	2,866
Total or Average	11,400	10,600	8.26	87,600	37.20	3,257
Spring						
Arkansas	2,200	1,400	3.60	5,000	51.40	257
Oklahoma	2,600	2,100	2.70	5,700	50.00	285
Other States 1/	6,020	5,800	5.39	31,280	43.90	1,373
Total or Average	10,820	9,300	4.51	41,980	45.60	1,915
Fall						
Arkansas	2,100	1,700	3.60	6,100	51.60	315
Oklahoma	1,500	1,200	3.20	3,800	48.90	186
Other States 2/	2,630	2,440	5.72	13,950	50.30	702
Total or Average	6,230	5,340	4.47	23,850	50.40	1,203
United States	28,450	25,240	6.08	153,430	41.50	6,375
Freezing						
Winter	6,400	6,000	8.30	49,800	35.90	1,790
Spring	4,670	4,120	5.38	22,180	43.90	973
Fall	2,940	2,670	5.28	14,110	52.90	747
Canning						
Winter	5,000	4,600	8.22	37,800	38.80	1,467
Spring	6,150	5,180	3.82	19,800	47.60	942
Fall	3,290	2,670	3.65	9,740	46.80	456
1969						
Winter						
Florida	1,300	1,300	6.78	8,800	40.60	357
California	7,500	6,800	8.20	55,750	37.00	2,063
Total or Average	8,800	8,100	7.97	64,550	37.50	2,420
Spring						
Arkansas	1,700	1,600	3.90	6,250	50.90	318
Oklahoma	1,600	1,500	3.60	5,400	50.00	270
Other States 1/	6,320	5,500	6.03	33,150	44.20	1,464
Total or Average	9,620	8,600	5.21	44,800	45.80	2,052
Fall						
Arkansas	2,100	1,900	3.34	6,350	50.40	320
Oklahoma	1,800	1,500	3.00	4,500	50.90	229
Other States 2/	3,170	2,790	5.57	15,550	48.40	752
Total or Average	7,070	6,190	4.26	26,400	49.30	1,301
United States	25,490	22,890	5.93	135,750	42.50	5,773
Freezing						
Winter	4,250	3,850	7.84	30,200	36.90	1,115
Spring	3,800	3,130	4.49	14,050	47.90	673
Fall	3,140	2,750	5.04	13,850	51.00	707
Canning						
Winter	4,550	4,250	8.08	34,350	38.00	1,305
Spring	5,820	5,470	5.62	30,750	44.80	1,379
Fall	3,930	3,440	3.65	12,550	47.30	594

See footnotes on page 45.

Continued

Table 11. Spinach for processing: Acres, yield, production and value 1964-70 Continued

Year, season, and State	Acres		Yield per acre	Production	Value	
	Planted	Harvested			Per ton	Total
1970	Acres			Tons	Dollars 1,000 dollars	
Winter						
Florida	1,900	1,500	3.80	5,700	45.50	259
California	8,000	7,800	9.30	72,550	37.80	2,742
Total or Av.	9,900	9,300	8.41	78,250	38.40	3,001
Spring						
Arkansas	2,000	2,000	3.85	7,700	52.00	400
Oklahoma	3,000	2,800	3.75	10,500	50.80	533
Other States 1/	6,790	6,070	6.11	37,100	44.40	1,649
Total or Av.	11,790	10,870	5.09	55,300	46.70	2,582
Fall						
Arkansas	1,800	1,200	2.46	2,950	50.50	149
Oklahoma	1,600	1,300	2.30	3,000	50.00	150
Other States 2/	2,570	2,430	4.75	11,550	48.20	557
Total or Av.	5,970	4,930	3.55	17,500	48.90	856
United States	27,660	25,100	6.02	151,050	42.60	6,439
Freezing						
Winter	5,460	5,220	8.81	46,000	37.40	1,720
Spring	4,660	4,160	4.95	20,600	47.20	937
Fall	2,870	2,510	3.98	10,000	52.00	520
Canning						
Winter	4,440	4,080	7.90	32,250	39.70	1,281
Spring	7,130	6,710	5.17	34,700	46.40	1,609
Fall	3,100	2,420	3.10	7,500	44.80	336

* Excludes some quantities not marketed: 1965, Spring, Other States, 600 tons.

1/ New York, New Jersey, Pennsylvania, Michigan, Wisconsin, Delaware, (1964-67) Maryland, Virginia, Tennessee, Texas, Idaho, and Washington.

2/ New York, (1964, 1967, and 1969), New Jersey, Pennsylvania, (1964 only), Maryland, Virginia, Tennessee, Washington and California.

Table 12. Tomatoes for processing: Acres, yield, production, and value, 1964-70

Year and State	Acres		Yield per Acre	Production	Value	
	Planted	Harvested			Per ton	Total
1964	Acres		Tons	Dollars	1,000 dollars	
New York	7,800	7,700	10.60	81,600	31.90	2,603
New Jersey	16,400	16,400	15.00	246,000	30.80	7,577
Pennsylvania	9,200	9,100	13.10	119,200	32.30	3,850
Ohio	21,400	21,300	15.80	336,500	27.80	9,355
Indiana	17,100	16,600	12.30	204,200	28.80	5,881
Illinois	7,700	7,700	17.00	130,900	32.90	4,307
Michigan	6,300	5,800	12.00	69,600	27.80	1,935
Delaware	1,400	1,400	17.00	23,800	31.90	759
Maryland	7,300	7,200	13.80	99,400	32.20	3,201
Virginia	9,400	9,300	6.10	56,700	30.00	1,701
Florida	8,000	8,000	8.50	67,700	24.80	1,680
Texas	8,200	7,600	5.00	38,000	25.90	984
Colorado	2,800	2,400	9.20	22,100	27.00	597
New Mexico	1,300	1,200	10.00	12,000	32.20	386
Utah	2,800	2,700	10.60	28,600	24.50	701
California	143,000	143,000	21.00	3,003,000	31.30	93,994
Other States 1/	6,010	5,950	7.40	44,010	29.50	1,299
United States	276,110	273,350	16.77	4,583,310	30.70	140,810
1965						
New York	8,200	8,000	11.20	89,600	33.70	3,020
New Jersey	18,800	18,700	18.70	349,700	34.50	12,065
Pennsylvania	9,500	9,500	13.80	131,100	32.30	4,235
Ohio	25,400	25,200	20.52	*517,100	30.10	15,565
Indiana	19,600	19,100	14.21	*271,400	29.60	8,033
Illinois	8,000	8,000	15.12	*120,950	35.00	4,233
Michigan	6,000	5,700	14.20	80,900	30.40	2,459
Delaware	1,900	1,900	18.90	35,900	32.80	1,178
Maryland	7,100	7,000	15.00	105,000	33.30	3,496
Virginia	9,100	9,000	7.40	66,600	31.70	2,111
Florida	6,600	6,600	8.40	55,450	26.60	1,475
Texas	7,300	6,500	7.20	46,800	25.50	1,193
Colorado	1,800	1,000	6.00	6,000	42.70	256
New Mexico	350	300	11.00	3,300	32.90	109
Utah	2,700	2,300	7.00	16,100	24.50	394
California	122,800	122,800	20.10	2,468,300	41.60	102,681
Other States 1/	6,000	5,920	7.96	47,140	30.40	1,433
United States	261,150	257,520	17.13	4,411,340	37.20	163,936
1966						
New York	7,100	6,900	9.00	62,100	37.50	2,329
New Jersey	21,800	21,700	13.80	299,500	38.20	11,441
Pennsylvania	11,900	11,600	9.00	104,400	37.80	3,946
Ohio	26,600	25,500	15.45	394,000	32.20	12,687
Indiana	18,700	18,300	10.40	190,300	32.70	6,223
Illinois	7,000	6,800	11.60	78,900	38.10	3,006
Michigan	5,200	4,900	11.20	54,900	34.00	1,867
Delaware	1,600	1,500	11.60	17,400	39.90	694
Maryland	8,100	8,000	10.00	80,000	38.10	3,048
Virginia	8,800	8,700	5.40	47,000	36.20	1,701
Florida	8,100	8,100	8.70	70,500	30.30	2,136
Texas	7,900	5,800	5.50	31,900	30.80	983
Colorado	1,700	1,400	9.90	13,900	35.30	491
New Mexico	650	500	10.00	5,000	34.00	170
Utah	2,200	2,000	16.60	33,200	31.70	1,052
California	162,500	162,500	19.30	3,136,200	36.10	113,217
Other States 1/	5,900	5,630	7.65	43,070	32.80	1,411
United States	305,750	299,830	15.55	4,662,270	35.70	166,402

Table 12. Tomatoes for processing: Acres, yield, production and value, 1964-70 Continued

State	Acres		Yield per acre	Production	Value	
	Planted	Harvested			Per ton	Total
	Acres			Tons	Dollars	1,000 dollars
1967						
New York	6,800	6,700	13.50	90,400	43.00	3,887
New Jersey	21,300	21,100	15.30	322,800	41.90	13,525
Pennsylvania	10,600	10,300	15.00	154,500	41.30	6,381
Ohio	27,300	26,900	20.12	541,250	37.00	20,026
Indiana	20,100	19,600	15.20	297,900	39.10	11,648
Illinois	6,300	6,300	19.00	119,700	39.70	4,752
Michigan	6,300	6,300	12.90	81,300	38.10	3,098
Delaware	1,700	1,600	12.80	20,500	41.40	849
Maryland	7,200	7,000	10.40	72,800	45.20	3,291
Virginia	8,800	8,700	6.40	55,700	43.40	2,417
Florida	10,400	10,400	9.30	96,700	35.90	3,472
Texas	9,500	6,400	6.30	40,300	38.00	1,531
Colorado	1,600	1,100	9.60	10,600	34.60	367
New Mexico	700	600	12.00	7,200	34.00	245
Utah	2,300	2,200	15.60	34,300	33.40	1,146
California	186,700	186,700	17.10	3,192,600	44.00	143,348
Other States 1/	5,330	5,160	9.88	51,000	40.70	2,078
United States	332,930	327,060	15.87	5,189,550	42.80	222,061
1968						
New York	7,100	7,000	12.10	84,700	41.50	3,515
New Jersey	19,800	19,700	16.70	2/329,000	3/37.60	12,370
Pennsylvania	10,400	10,000	17.70	177,000	39.20	6,938
Ohio	30,900	30,600	20.43	2/625,150	3/35.30	22,068
Indiana	20,600	20,300	14.10	2/286,200	3/38.60	11,047
Illinois	5,800	5,500	17.10	94,000	40.70	3,826
Michigan	6,400	6,200	14.10	87,400	37.10	3,243
Delaware	1,500	1,500	12.70	19,000	42.00	798
Maryland	7,400	7,300	12.60	92,000	41.10	3,781
Virginia	7,500	7,000	9.00	63,000	35.60	2,243
Florida	4,900	4,900	8.80	43,100	31.30	1,349
Texas	9,500	9,000	5.80	52,200	39.00	2,036
Colorado	1,400	1,300	11.90	15,500	39.60	614
New Mexico	1,100	900	14.00	12,600	34.00	428
Utah	2,600	2,500	13.20	33,000	58.20	1,261
California	231,300	231,300	21.20	2/4,903,600	3/41.40	203,009
Other States 1/	5,960	5,550	9.04	50,150	37.90	1,903
United States	374,160	370,550	18.80	2/6,967,600	3/40.20	280,429
1969						
New York	5,100	5,000	13.20	66,000	41.20	2,719
New Jersey	15,700	15,400	14.40	221,750	40.20	8,914
Pennsylvania	9,500	9,300	15.00	139,500	38.20	5,329
Ohio	28,000	26,400	16.64	439,300	36.60	16,078
Indiana	18,100	17,500	15.10	264,250	37.60	9,936
Illinois	4,900	4,900	15.80	77,400	39.40	3,050
Michigan	5,200	4,900	11.90	58,300	36.80	2,145
Delaware	1,100	1,100	12.20	13,400	39.30	527
Maryland	4,800	4,600	10.40	47,850	37.10	1,775
Virginia	5,800	5,500	7.70	42,350	34.00	1,440
Florida	4,600	4,600	6.80	31,300	30.50	955
Texas	6,600	6,000	7.10	42,600	34.40	1,465
Colorado	1,200	1,000	12.40	12,400	36.20	449
New Mexico	1,000	800	12.00	9,600	34.00	326
Utah	1,900	1,800	18.00	32,400	33.00	1,069
California	154,000	154,000	21.90	3,372,600	33.50	112,982
Other States 1/	4,500	3,700	8.09	30,650	36.20	1,111
United States	272,000	266,500	18.39	4,901,650	34.70	170,270

See footnotes on page 48.

Continued

Table 12. Tomatoes for processing: Acres, yield, production, and value, 1964-70 Continued

Year and State	Acres		Yield per acre	Production	Value	
	Planted	Harvested			Per ton	Total
1970	Acres		Tons	Dollars	1,000 dollars	
New York	3,100	3,000	13.10	39,300	43.60	1,713
New Jersey	14,600	14,500	19.31	280,000	41.60	11,648
Pennsylvania	7,800	7,600	19.87	151,000	38.50	5,814
Ohio	26,700	26,500	20.59	545,650	37.70	20,571
Indiana	15,400	15,000	19.68	295,200	38.70	11,424
Illinois	4,500	4,500	15.98	71,900	39.90	2,869
Michigan	3,400	3,300	16.71	55,150	36.90	2,035
Delaware	1,600	1,500	16.50	24,750	42.00	1,040
Maryland	4,500	4,400	13.60	59,850	40.00	2,394
Virginia	5,600	5,500	6.42	35,300	37.50	1,324
Florida	6,700	6,700	6.49	43,500	33.90	1,475
Texas	5,400	4,500	6.71	30,200	33.00	997
Colorado	1,300	1,100	11.10	12,200	25.20	429
New Mexico	1,100	700	10.00	7,000	34.00	238
Utah	1,700	1,600	12.80	20,500	34.00	697
California	141,300	141,300	23.80	3,362,950	31.60	106,269
Other States 1/	3,900	3,390	7.23	24,500	37.60	920
United States	248,600	245,090	20.64	5,058,950	34.00	171,857

* Excludes the following quantities not marketed: Ohio, 27,100 tons; Indiana, 43,700 tons; and Illinois, 19,800 tons.

1/ Wisconsin, Iowa, Missouri (1964-68), Kansas, West Virginia, North Carolina, South Carolina, Kentucky, Tennessee (1964-66), Alabama, Arkansas, Louisiana, Oklahoma, and Washington.

2/ Includes some quantities not delivered because of economic conditions.

3/ Average price derived.

Table 13. Cucumbers for pickles: Stocks in tanks, barrels and fresh pack, on October 1, 1964-70

Area and year	From crop of current year			From previous crop		Total
	Salt	Dill	Fresh pack	Salt and dill 1/	Fresh pack	Salt, dill and fresh pack
Tons						
United States						
1964	246,020	14,460	96,200	74,090	3,460	434,230
1965	243,750	15,140	113,270	66,390	3,100	441,650
1966	327,630	15,010	105,650	35,940	1,470	485,700
1967	369,690	18,470	126,200	51,810	6,230	572,400
1968	336,140	18,530	127,650	103,730	5,400	591,450
1969	312,120	14,680	119,640	94,920	7,140	548,500
1970	325,580	20,620	134,130	77,950	4,770	563,050
Tons						
	Combined stocks from current year crop		Combined stocks from previous year crop			Total stocks
Tons						
Northern 2/						
1964	208,660		45,370			254,030
1965	195,010		36,440			231,450
1966	259,110		21,640			280,750
1967	258,210		33,690			291,900
1968	242,120		62,480			304,600
1969	229,320		55,980			285,300
1970	247,560		58,940			306,500
Tons						
Southern 3/						
1964	89,530		19,460			108,990
1965	113,140		21,110			134,250
1966	115,660		9,640			125,300
1967	164,350		17,100			181,450
1968	140,840		36,610			177,450
1969	134,440		26,410			160,850
1970	138,850		12,150			151,000
Tons						
Western 4/						
1964	58,490		12,720			71,210
1965	64,010		11,940			75,950
1966	73,520		6,130			79,650
1967	91,800		7,250			99,050
1968	99,360		10,040			109,400
1969	82,680		19,670			102,350
1970	93,920		11,630			105,550

1/ Not published separately to avoid disclosure of individual operations.

2/ Includes Maine, New Hampshire, Massachusetts, New York, New Jersey, Pennsylvania, Ohio, Indiana, Illinois, Michigan, Minnesota, Wisconsin, Iowa, Missouri, North Dakota, South Dakota, Nebraska and Kansas.

3/ Includes Delaware and Maryland, Virginia, North Carolina, South Carolina, Georgia, Florida, Kentucky, Tennessee, Alabama, Mississippi, Arkansas, Louisiana, Oklahoma and Texas.

4/ Includes Idaho, Colorado, New Mexico, Arizona, Utah, Washington, Oregon and California.

UNITED STATES DEPARTMENT OF AGRICULTURE
WASHINGTON, D. C. 20250

OFFICIAL BUSINESS
PENALTY FOR PRIVATE USE, \$300

POSTAGE AND FEES PAID
U.S. DEPARTMENT OF
AGRICULTURE



AGR 101

FIRST CLASS

END