



AgEcon SEARCH
RESEARCH IN AGRICULTURAL & APPLIED ECONOMICS

The World's Largest Open Access Agricultural & Applied Economics Digital Library

This document is discoverable and free to researchers across the globe due to the work of AgEcon Search.

Help ensure our sustainability.

Give to AgEcon Search

AgEcon Search

<http://ageconsearch.umn.edu>

aesearch@umn.edu

*Papers downloaded from **AgEcon Search** may be used for non-commercial purposes and personal study only. No other use, including posting to another Internet site, is permitted without permission from the copyright owner (not AgEcon Search), or as allowed under the provisions of Fair Use, U.S. Copyright Act, Title 17 U.S.C.*

SB 492 (1972)

HOUSING CONDITIONS
IN AREAS SERVED BY THE FARMERS HOME
BIRD, R., PERCIVAL, J. B.

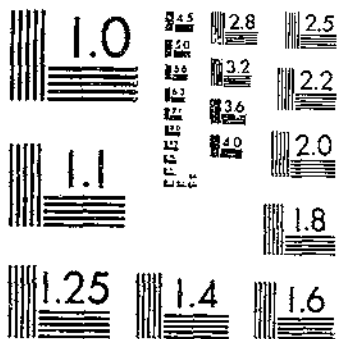
USDA STATISTICAL BULLETINS

HOUSING CONDITIONS IN AREAS SERVED BY THE FARMERS HOME

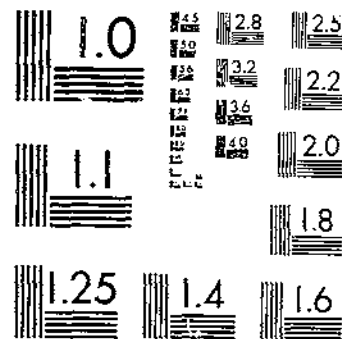
1970, BY STATES
1 OF 1

UPDATA

START



MICROCOPY RESOLUTION TEST CHART
NATIONAL BUREAU OF STANDARDS-1963-A



MICROCOPY RESOLUTION TEST CHART
NATIONAL BUREAU OF STANDARDS-1963-A

R
63015
u 53-10
#492

Sci

*Forward
1108-430*

REFERENCE
DO NOT LOAN

HOUSING CONDITIONS IN AREAS SERVED BY FARMERS HOME ADMINISTRATION HOUSING PROGRAMS, 1970, BY STATES

DEPOSITORY

OCT 13 1972

Los Angeles Public Library

ECONOMIC RESEARCH SERVICE
U.S. DEPARTMENT OF AGRICULTURE

ABSTRACT

In the past decade, housing in areas served by the Farmers Home Administration improved about as much as in more urbanized areas, as shown by analyses of selected housing data from the 1970 census. Nonetheless, FHA areas contained a high percentage of the Nation's inadequate housing. FHA areas contained only 32 percent of the Nation's occupied units in 1970. Included in that 32 percent, however, were 68 percent of the Nation's occupied units which lacked complete plumbing and 38 percent of the Nation's crowded units. Of those units which lacked complete plumbing or were crowded, or both, 48 percent were in FHA areas. Of black housing which lacked complete plumbing, 68 percent was in FHA areas.

KEYWORDS: Housing, homeownership, Negro, rural housing, rural communities, United States, Farmers Home Administration, Census.

CONTENTS

	<u>Page</u>
HIGHLIGHTS.....	ii
INTRODUCTION.....	1
HOUSING CHARACTERISTICS, 1970.....	2
Tenure.....	2
Incomplete Plumbing.....	3
Crowding.....	3
Incomplete Plumbing and Crowding, Combined.....	4
Frequency of Housing Deficiencies.....	4
HOUSING OCCUPIED BY THE BLACK POPULATION, 1970.....	4
Incomplete Plumbing.....	5
Crowding.....	5
Incomplete Plumbing and Crowding, Combined.....	5
Frequency of Housing Deficiencies.....	6

HIGHLIGHTS

Areas eligible for Farmers Home Administration (FHA) housing programs contained 68 percent of the occupied units that lacked complete plumbing in the United States in 1970. But only 32 percent of the occupied units in the United States were located in these rural areas.

Fifty-seven percent of the units lacking complete plumbing in FHA areas were owned and 43 percent were rented.

Of the 2.6 million units lacking complete plumbing in FHA areas in 1970, 2.3 million were located in open country and small towns of less than 2,500 population and 0.3 million were located in nonurbanized places with a population from 2,500 to 10,000.

Of all units lacking complete plumbing in FHA areas in 1970, 65 percent were located in the South, 30 percent in the North, and 5 percent in the West.

Housing in FHA areas was slightly more crowded than in the more urbanized areas in 1970; 9.6 percent of the units had more than one person per room compared with 7.6 percent in the more urbanized areas. There were about 2 million crowded units in FHA areas.

When units with incomplete plumbing are combined with overcrowded units, there were 4 million located in FHA areas and 4.2 million in more urbanized areas in 1970. Of these units in FHA areas, 57 percent were located in the South, 34 percent in the North, and 9 percent in the West.

Of the occupied housing in FHA areas in 1970, 13 percent lacked complete plumbing, 10 percent were crowded (over one person per room), and 19 percent were crowded and/or lacked complete plumbing.

About 20 percent of the housing occupied by the black population in the United States in 1970 was located in FHA areas. But these rural areas contained 68 percent of the black housing units that lacked complete plumbing, 29 percent that were crowded, and 42 percent that were either crowded and/or lacked complete plumbing.

In 1970, blacks occupied 28 percent of the units in FHA areas that lacked complete plumbing, 18 percent of the units that were crowded, and 21 percent of the units that lacked complete plumbing and/or were crowded. They occupied about 6 percent of all units in FHA areas.

HOUSING CONDITIONS IN AREAS SERVED
BY FARMERS HOME ADMINISTRATION
HOUSING PROGRAMS, 1970,
BY STATES

Ronald Bird and Julia B. Perciful
Economic Development Division
Economic Research Service

INTRODUCTION

Providing all citizens with a decent home and suitable living environment has long been a goal of our society. Various Federal and State programs have been implemented to help accomplish this objective. The Farmers Home Administration (FHA) of the U.S. Department of Agriculture has the major responsibility for administering Federal housing programs directed towards improving housing conditions in rural areas. This agency's major function has been the provision of adequate rural housing credit. Data on the current status of housing in the areas served by FHA is needed to help evaluate the nature and scope of the problems and to aid in the design of more effective programs.

The authority of FHA to make housing loans to farmers and to rural residents is contained in Title V of the Housing Act of 1949 as amended. This act authorized the Secretary of Agriculture to make and insure loans to owners of farms, to owners of other real estate in rural areas, and to elderly persons who are or will be owners of land in rural areas for the purpose of purchase, construction, improvement, alteration, and repair of dwellings, related facilities, and farm buildings. Recently, this role has been expanded to include an interest subsidy loan program.

The 1949 act defines "rural" or "rural areas" as being open country, or any place, town, village, or city which is not part of or associated with an urban area and which has a population not in excess of 2,500 inhabitants, or which has a population in excess of 2,500 but not in excess of 10,000 if it is rural in character.

In 1970, a Census of Housing was completed and reports are now being released. These reports do not present summary data for the specific areas that FHA services; it is therefore the intent of this study to bring together various selected housing statistics from the 1970 Census of Housing for areas served by the Farmers Home Administration and for the remainder of the United States. This breakdown permits an easy comparison of housing conditions between the two areas and may help in identifying some of the unique housing problems associated with rural areas.

In the 1970 Census of Housing, data are presented separately for rural areas and for various city sizes. Rural areas are defined as those places located outside urbanized areas and having a population of less than 2,500, thus, the definition varies somewhat from that of the FHA. Census reports contain

housing statistics for 4,134 places of 2,500 to 10,000 population, of which 2,989 were located outside urbanized areas. Housing statistics for the latter places were added to those for the census "rural" areas in order, roughly, to equate the two concepts of "rural" for the purposes of this study.

Although in the past decade, Congress has expanded the areas served by the FHA to include larger communities located outside urbanized areas, suggestions have been made regarding further expansion of FHA areas to include cities up to 50,000 population outside urbanized areas. For this reason, housing statistics for cities of 10,000 to 50,000 population located outside urbanized areas are included in the appendix tables.

This report presents only a summary of a few of the more relevant housing data which will be available when census data are more fully processed. Rather than wait until all of this information is available, these statistics are presented to show current conditions of housing in FHA areas.

HOUSING CHARACTERISTICS, 1970

FHA areas contained 32 percent of the occupied housing in the United States. The number of occupied units in the areas served by FHA increased from 18.8 million in 1960 to 20.4 million in 1970. Of these 20.4 million occupied units, 15.9 million were in rural areas and 4.5 million were in places of 2,500 to 10,000 population (table 1).

By State, the percentage of occupied housing in FHA areas varied from 12.5 percent in California to 84.1 percent in Vermont. The State having the largest number of units in FHA areas was Pennsylvania, with Rhode Island having the smallest.

Of the nine census divisions of the country, the West North Central States had the largest percentage of their housing units in FHA areas, while the Pacific Coast States had the smallest percentage. By regional groupings of States, the North contained 47.5 percent of the occupied units located in FHA areas, the South, 40.5 percent, and the West, 12.0 percent.^{1/}

Tenure

In 1970, owner occupancy was far more common in FHA areas (74 percent) than in more urbanized areas (58 percent) (table 2). This represented an increase from 1960 when the percentages were 70 and 52 respectively.

By regions, ownership in FHA areas was highest in the East North Central States (79 percent) and lowest in the Pacific Coast States (67 percent) in 1970.

^{1/} Census regions and divisions are as follows: The Northern Region includes the Northeast, Middle Atlantic, East North Central, and West North Central divisions of States; the Southern Region includes the South Atlantic, East South Central, and West South Central States; and the Western Region includes the Mountain and Pacific States.

The State having the highest percentage of owner-occupied housing in FHA areas was Michigan (82 percent), while Hawaii had the lowest (50 percent).

Incomplete Plumbing

In 1970, there were 3.8 million occupied units lacking complete plumbing in the United States; FHA areas had 2.6 million of the units or about 68 percent of the total.^{2/} In comparison, in 1960, these areas had 65 percent of the units that lacked complete plumbing.

Of all units lacking complete plumbing in FHA areas in 1970, 29.4 percent were located in the North, 65.3 percent were in the South, and 5.3 percent were in the West.

In FHA areas, North Carolina had the largest number of units lacking complete plumbing and Rhode Island the fewest.

Fifty-seven percent of the units lacking complete plumbing in FHA areas were owned and 43 percent were rented.

The number of units lacking complete plumbing in FHA areas in 1960 represented about 90 percent of the units that were substandard that year. Substandard units are defined as those units that lack complete plumbing and/or are dilapidated. As the census did not obtain data on the structural condition of housing in 1970, the number of dilapidated units with complete plumbing will have to be estimated. Based upon findings in the 1950 and 1960 censuses when structural questions were asked, it is assumed that answers to the plumbing questions in 1970 will identify most of the substandard units in FHA areas that year.

Crowding

Persons per room are commonly used as a measure of the adequacy of space in a housing unit. In this report, units which house more than one person per room were considered crowded. This ratio does not take into consideration the size and type of room nor the age, sex, and relationship of the occupants.

In 1970, 5.2 million housing units in the United States had more than one person per room (table 4). This amounted to about 8 percent of the occupied units. During the past 10 years, the number of crowded units decreased about 15 percent while the number of occupied units increased about 20 percent. As a result, the percentage of crowded units in the United States decreased from 12 percent in 1960 to 8 percent in 1970.

Housing in FHA areas was slightly more crowded than in the more urbanized areas in 1970. FHA areas contained 38 percent of the crowded units in the United States. In FHA areas, 9.6 percent of the units had more than one person per room compared with 7.6 percent in the more urbanized areas. Although crowding commonly is considered to be an urban problem rather than a rural problem, there

^{2/} Lacking complete plumbing means all units which do not have hot and cold piped water inside the structure as well as a flush toilet and a bathtub or shower inside the structure for the exclusive use of the occupants of the unit.

were more crowded units in FHA areas in the South than in the more urbanized areas in the South. In the North and the West, the opposite was true.

The State having the largest number of crowded units in FHA areas was Texas and that with the smallest number was Rhode Island. Alaska had the largest ratio of total number of crowded units to total number of occupied units in FHA areas, and Connecticut had the smallest.

Incomplete Plumbing and Crowding Combined

Housing that either lacks complete plumbing or is crowded probably does not meet the needs of a household. In 1970, about 8 percent of these inadequate units were deficient from the standpoint of both plumbing and space. More than three-fourths of these units were in FHA areas. To avoid double counting of inadequate units, units lacking plumbing and/or crowded units were consolidated.

In 1970, there were 8.2 million units that lacked complete plumbing and/or were crowded in the United States. Four million of these units (48.2 percent of the total) were in FHA areas, and 4.2 million units (51.8 percent of the total) were in more urbanized areas (table 5).

Of States having housing with one or both of these deficiencies, Vermont had the largest percentage of its inadequate housing located in FHA areas, and New Jersey had the smallest percentage. The State having the largest number of units with one or both of these inadequacies was North Carolina (248,137), and the State having the smallest number was Rhode Island (4,163 units).

Frequency of Housing Deficiencies

Of the occupied housing in FHA areas in 1970, 13 percent lacked complete plumbing, 10 percent were crowded (over 1 person per room), and 19 percent were crowded and/or lacked complete plumbing.

An array of States by the frequency of these three housing deficiencies was different for each deficiency. Based on percentage of units lacking complete plumbing, Kentucky had the largest percentage (31.0 percent) and Connecticut the smallest percentage (2.5 percent). For those units which were crowded (over 1 person per room), Alaska had the highest proportion (23.3 percent) and Connecticut had the lowest (5.3 percent). Lacking complete plumbing and/or crowding were more prevalent in Mississippi (37.3 percent) and least prevalent in Connecticut (7.6 percent) (table 6).

The East South Central States had the largest percentages of housing lacking complete plumbing and the Pacific States had the smallest percentages. Crowding was most common in the Mountain States. Lacking complete plumbing and/or crowding were most prevalent in the East South Central States and least prevalent in the Middle Atlantic States.

HOUSING OCCUPIED BY THE BLACK POPULATION, 1970

The inferior status of housing occupied by the black population has been pointed out by past census data. In 1970, this situation still prevailed. Even though blacks occupied only 9.7 percent of the housing units, they resided in

27.6 percent of the units that lacked plumbing, 23.6 percent of the units that were crowded, and 20.8 percent of the units that were crowded and/or lacked plumbing.

FHA areas contained 20 percent of the housing occupied by the black population in the United States.

Most housing occupied by the black population in FHA areas was owned (55.3 percent) whereas most of the black-occupied housing in more urbanized areas was rented (62.0 percent) (table 7).

Ninety-two percent of the housing occupied by blacks in FHA areas was located in the South in 1970, while only 40 percent of the black housing in more urbanized areas was located in the South.

Incomplete Plumbing

FHA areas contained 68 percent of housing occupied by the black population that lacked complete plumbing in the United States.

Fifty-six percent of the black-occupied housing in FHA areas lacked complete plumbing in 1970 compared with 10 percent for the whites. Of this 56 percent, 84.6 percent (600,130 units) were in census rural areas and 15.4 percent (109,581 units) were in places of 2,500 to 10,000 persons.

Alabama had the highest percentage of black housing which lacked complete plumbing (70 percent), while Hawaii had the lowest (1 percent) (table 8). The New England States had the smallest percentage of black-occupied housing lacking complete plumbing, and the East South Central States had the largest percentage.

Crowding

Blacks occupied 24 percent of the crowded units in the United States, and 29 percent of these units were in FHA areas. Crowding for the black population in FHA areas was most common in the East South Central States and least common in the New England States.

In FHA areas, crowding was far less prevalent for the black population (29 percent of the total occupied) than was the lack of complete plumbing (56 percent of the total).

Incomplete Plumbing and Crowding Combined

FHA areas contained 42 percent of the housing occupied by the black population that lacked complete plumbing and/or were crowded in the United States.

In FHA areas, about 66 percent of the housing units occupied by blacks lacked complete plumbing and/or were crowded compared with about 16 percent for the whites.

In FHA areas, 96 percent of the units occupied by blacks that lacked plumbing and/or were crowded were in the 16 Southern States. The largest number of

these inadequate units was found in North Carolina, but the largest percentage of the total was found in Alabama.

Frequency of Housing Deficiencies

Of the black-occupied units in FHA areas, 56 percent lacked complete plumbing, 29 percent were crowded, and 66 percent lacked plumbing and/or were crowded.

Of housing having either one or both of these deficiencies and located in FHA areas, the East South Central States had the largest proportion (nearly 75 percent) and the New England States the smallest proportion (about 16 percent). Based on these two measures, Alabama had the worst housing and Vermont the best housing.

Table 1.--Distribution of occupied housing units between areas served by Farmers Home Administration and more urbanized areas, by States, 1970 ^{1/}

State and division	Total		PHA areas ^{2/}		More urbanized areas ^{3/}	
	Number	Percent	Number	Percent	Number	Percent
Maine.....	302,923	100.0	201,279	66.4	101,644	33.6
N.H.....	225,378	100.0	121,039	53.7	104,339	46.3
Vt.....	132,098	100.0	111,031	84.1	21,067	15.9
Mass.....	1,759,692	100.0	323,340	18.4	1,436,352	81.6
R.I.....	291,965	100.0	36,695	12.6	255,270	87.4
Conn.....	933,269	100.0	231,100	24.8	702,169	75.2
N.E.....	3,645,325	100.0	1,024,484	28.1	2,620,841	71.9
N.Y.....	5,913,861	100.0	953,823	16.1	4,960,038	83.9
N.J.....	2,218,182	100.0	292,437	13.2	1,925,745	86.8
Pa.....	3,705,410	100.0	1,272,429	34.3	2,432,981	65.7
M.A.....	11,837,453	100.0	2,518,689	21.3	9,318,764	78.7
Ohio.....	3,289,432	100.0	921,172	28.0	2,368,260	72.0
Ind.....	1,609,494	100.0	684,381	42.5	925,113	57.5
Ill.....	3,502,138	100.0	796,747	22.8	2,705,391	77.2
Mich.....	2,653,059	100.0	822,254	31.0	1,830,805	69.0
Wis.....	1,328,804	100.0	554,349	41.7	774,455	58.3
E.N.C.....	12,382,927	100.0	3,778,903	30.5	8,604,024	69.5
Minn.....	1,153,946	100.0	467,328	40.5	686,618	59.5
Iowa.....	896,311	100.0	508,432	56.7	387,879	43.3
Mo.....	1,520,567	100.0	588,077	38.7	932,490	61.3
N.Dak.....	181,613	100.0	113,765	62.6	67,848	37.4
S.Dak.....	200,807	100.0	134,973	67.2	65,834	32.8
Nebr.....	473,721	100.0	232,061	49.0	241,660	51.0
Kans.....	727,364	100.0	320,267	44.0	407,097	56.0
W.N.C.....	5,154,329	100.0	2,364,903	45.9	2,789,426	54.1
Del.....	164,804	100.0	54,492	33.1	110,312	66.9
Md.....	1,175,073	100.0	303,317	25.8	871,756	74.2
D.C.....	262,538	100.0	---	---	262,538	---
Va.....	1,390,636	100.0	570,928	41.1	819,708	58.9
W.Va.....	547,214	100.0	363,687	66.5	183,527	33.5
N.C.....	1,509,564	100.0	945,097	62.6	564,467	37.4
S.C.....	734,373	100.0	466,504	63.5	267,869	36.5
Ge.....	1,369,225	100.0	651,897	47.6	717,328	52.4
Fla.....	2,284,786	100.0	642,579	28.1	1,642,207	71.9
S.A.....	9,438,213	100.0	3,998,501	42.4	5,439,712	57.6
Ky.....	983,665	100.0	539,812	54.9	443,853	45.1
Tenn.....	1,213,187	100.0	597,925	49.3	615,262	50.7
Ala.....	1,034,113	100.0	522,163	50.5	511,950	49.5
Miss.....	636,724	100.0	410,432	64.5	226,292	35.5
E.S.C.....	3,867,689	100.0	2,070,332	53.5	1,797,357	46.5

See footnotes at end of table.

--Continued

Table 1.--Distribution of occupied housing units between areas served by Farmers Home Administration and more urbanized areas, by States, 1970 1/--Continued

State and division	Total		FHA areas 2/		More urbanized areas 3/	
	Number	Percent	Number	Percent	Number	Percent
Ark.....	615,424	100.0	380,063	61.8	235,361	38.2
La.....	1,052,038	100.0	439,451	41.8	612,587	58.2
Okla.....	850,803	100.0	380,150	44.7	470,653	55.3
Tex.....	3,433,996	100.0	1,008,535	29.4	2,425,461	70.6
W.S.C.....	5,952,261	100.0	2,208,199	37.1	3,744,062	62.9
Mont.....	217,304	100.0	133,651	61.5	83,653	38.5
Idaho.....	218,960	100.0	130,731	59.7	88,229	40.3
Wyo.....	104,600	100.0	63,397	60.6	41,203	39.4
Colo.....	690,928	100.0	189,469	27.4	501,459	72.6
N.Mex.....	289,389	100.0	115,408	39.9	173,981	60.1
Ariz.....	539,157	100.0	142,298	26.4	396,859	73.6
Utah.....	297,934	100.0	75,488	25.3	222,446	74.7
Nev.....	160,052	100.0	39,032	24.4	121,013	75.6
Mountain....	2,518,324	100.0	889,481	35.3	1,628,843	64.7
Wash.....	1,105,587	100.0	356,810	32.3	748,777	67.7
Oreg.....	691,631	100.0	278,376	40.2	413,255	59.8
Calif.....	6,573,861	100.0	821,350	12.5	5,752,511	87.5
Alaska.....	79,059	100.0	53,381	67.5	25,678	32.5
Hawaii.....	203,088	100.0	50,916	25.1	152,172	74.9
Pacific.....	8,653,226	100.0	1,560,833	18.0	7,092,393	82.0
United States..	63,449,747	100.0	20,414,325	32.2	43,035,422	67.8

1/ Source: 1970 Census of Housing.

2/ Includes rural areas and 2,989 cities located outside urbanized areas with populations from 2,500 to 10,000.

3/ Includes all areas outside of areas designated in footnote 2/.

Table 2.--Number of occupied housing units in areas served by Farmers Home Administration and more urbanized areas, and percentages owned and rented, by States, 1970 ^{1/}

State and division	FHA areas 2/			More urbanized areas 3/		
	Total Number	Owned Percent	Rented Percent	Total Number	Owned Percent	Rented Percent
Maine.....	201,279	77.9	22.1	101,644	54.5	45.5
N.H.....	121,039	76.8	23.2	104,339	58.3	41.7
Vt.....	111,031	72.4	27.6	21,067	51.9	48.1
Mass.....	323,340	77.6	22.4	1,436,352	53.0	47.0
R.I.....	36,695	73.2	26.8	255,270	55.6	44.4
Conn.....	231,100	77.7	22.3	702,169	57.5	42.5
N.E.....	1,024,484	76.9	23.1	2,620,841	54.7	45.3
N.Y.....	953,823	77.9	22.1	4,960,038	41.4	58.6
N.J.....	292,437	77.8	22.2	1,925,745	58.3	41.7
Pa.....	1,272,429	77.0	23.0	2,432,981	64.5	35.5
M.A.....	2,518,689	77.4	22.6	9,318,764	50.9	49.1
Ohio.....	921,172	78.5	21.5	2,368,260	63.5	36.5
Ind.....	684,381	79.1	20.9	925,113	66.1	33.9
Ill.....	796,747	74.7	25.3	2,705,391	54.9	45.1
Mich.....	822,254	82.1	17.9	1,830,805	71.0	29.0
Wis.....	554,349	79.3	20.7	774,455	61.8	39.2
E.N.C.....	3,778,903	78.7	21.3	8,604,024	62.5	37.5
Minn.....	467,328	80.6	19.4	686,618	65.2	34.8
Iowa.....	508,432	74.2	25.8	387,879	68.5	31.5
Mo.....	588,077	76.4	23.6	932,490	61.5	48.7
N.Dak.....	113,765	76.5	23.5	67,848	54.7	45.3
S.Dak.....	134,973	72.6	27.4	65,834	63.4	37.6
Nebr.....	232,061	71.5	28.5	241,660	61.5	38.5
Kans.....	320,267	74.8	25.2	407,097	64.6	35.4
W.N.C.....	2,364,903	75.8	24.2	2,789,426	63.7	36.3
Del.....	54,492	70.0	30.0	110,312	67.1	32.9
Md.....	303,317	72.7	27.3	871,756	53.9	46.1
D.C.....	---	---	---	262,538	28.2	71.8
Vas.....	570,928	72.1	27.9	819,708	55.0	45.0
W.Va.....	363,687	72.3	27.7	183,527	62.0	38.0
N.C.....	945,097	71.2	28.8	564,467	55.7	44.3
S.C.....	466,504	69.8	30.2	267,869	59.7	40.3
Ga.....	651,897	68.8	31.2	717,328	54.1	45.9
Fla.....	642,579	76.1	33.9	1,642,207	65.6	34.4
S.A.....	3,998,501	71.8	28.2	5,439,712	57.4	32.6
Ky.....	539,812	71.3	28.7	443,853	61.6	38.4
Tenn.....	597,925	74.0	26.0	615,262	59.6	40.4
Ala.....	522,163	71.1	28.9	511,950	62.1	37.9
Miss.....	410,432	69.2	30.8	226,292	60.9	39.1
E.S.C.....	2,070,332	71.6	28.4	1,797,357	61.0	39.0

See footnotes at end of table.

--Continued

Table 2.--Number of occupied housing units in areas served by Farmers Home Administration and more urbanized areas, and percentages owned and rented, by States, 1970 ^{1/}--Continued

State and division	FHA areas ^{2/}			More urbanized areas ^{3/}		
	Total	Owned	Rented	Total	Owned	Rented
	Number	Percent	Percent	Number	Percent	Percent
Ark.....	380,063	69.9	30.1	235,361	61.5	39.5
La.....	439,451	71.7	29.3	612,587	56.9	33.1
Okla.....	380,150	72.9	27.1	470,653	66.2	33.8
Tex.....	1,008,535	72.5	27.5	2,425,461	61.5	38.5
W.S.C.....	2,208,199	72.0	28.0	3,744,062	61.3	38.7
Mont.....	133,651	71.3	28.7	83,653	56.8	33.2
Idaho.....	130,731	72.9	27.1	88,229	66.1	33.9
Wyo.....	63,397	68.6	31.4	41,203	63.0	37.0
Colo.....	189,469	70.6	29.4	501,459	60.7	39.3
N.Mex.....	115,408	68.5	31.5	173,981	65.0	35.0
Ariz.....	142,298	63.8	36.2	396,859	65.8	34.2
Utah.....	75,488	78.0	22.0	222,446	66.4	33.6
Nev.....	39,039	64.5	35.5	121,013	56.6	33.4
Mountain....	889,481	69.9	30.1	1,628,843	63.0	37.0
Wash.....	356,810	74.1	25.9	748,777	63.3	36.7
Oreg.....	278,376	72.8	27.2	413,255	61.5	38.5
Calif.....	821,350	64.3	35.7	5,752,511	53.6	46.4
Alaska.....	53,381	55.1	44.9	25,678	40.2	59.8
Hawaii.....	50,916	49.9	50.1	152,172	45.9	54.1
Pacific.....	1,560,833	67.3	22.7	7,092,393	54.9	45.1
United States..	20,414,325	74.1	25.9	43,035,422	57.5	42.5

^{1/} Source: 1970 Census of Housing.

^{2/} Includes rural areas and 2,989 cities located outside urbanized areas with populations from 2,500 to 10,000 persons.

^{3/} Includes all areas outside of areas designated in footnote ^{2/}.

Table 3.—Distribution of occupied units that lacked complete plumbing between areas served by Farmers Home Administration and more urbanized areas, by States, 1970 ^{1/}

State and division	Total		FHA areas 2/		More urbanized areas 3/	
	Number	Percent	Number	Percent	Number	Percent
Maine.....	37,163	100.0	30,857	83.0	6,306	17.0
N.H.....	12,068	100.0	8,465	70.1	3,603	29.9
Vt.....	7,818	100.0	7,124	91.1	694	8.9
Mass.....	57,781	100.0	10,335	17.9	47,446	82.1
R.I.....	8,169	100.0	1,814	22.2	6,355	77.8
Conn.....	23,116	100.0	5,831	25.2	17,285	74.8
N.E.....	146,115	100.0	64,426	44.1	81,689	55.9
N.Y.....	165,755	100.0	45,235	27.3	120,520	72.7
N.J.....	51,932	100.0	9,372	18.0	42,560	82.0
Pa.....	161,963	100.0	94,004	58.0	67,959	42.0
M.A.....	379,650	100.0	148,611	39.1	231,039	60.9
Ohio.....	148,672	100.0	89,701	60.3	58,971	39.7
Ind.....	87,859	100.0	57,545	65.5	30,314	34.5
Ill.....	141,997	100.0	60,806	42.8	81,191	57.2
Mich.....	84,434	100.0	48,702	57.7	35,732	42.3
Wis.....	72,849	100.0	47,202	64.8	25,647	35.2
E.N.C.....	535,811	100.0	303,956	56.7	231,855	43.3
Minn.....	75,141	100.0	51,491	68.5	23,650	31.5
Iowa.....	54,252	100.0	36,579	67.4	17,673	32.6
Mo.....	117,381	100.0	85,752	73.1	31,629	26.9
N.Dak.....	18,327	100.0	15,307	83.5	3,020	16.5
S.Dak.....	20,103	100.0	17,471	86.9	2,632	13.1
Nebr.....	21,067	100.0	14,300	67.9	6,767	32.1
Kans.....	30,250	100.0	21,035	69.5	9,215	30.5
W.N.C.....	336,521	100.0	241,935	71.9	94,586	28.1
Del.....	7,441	100.0	6,164	82.8	1,277	17.2
Md... ..	47,390	100.0	34,589	73.0	12,801	27.0
D.C.....	5,601	100.0	---	---	5,601	---
Va.....	168,312	100.0	146,805	87.2	21,507	12.8
W.Va.....	88,906	100.0	83,098	93.5	5,808	6.5
N.C.....	215,971	100.0	190,954	88.4	25,017	11.6
S.C.....	127,643	100.0	107,674	84.4	19,969	15.6
Ga.....	167,316	100.0	134,568	80.4	32,748	19.6
Fla.....	110,416	100.0	57,768	52.3	52,648	47.7
S.A.....	938,996	100.0	761,620	81.1	177,376	18.9
Ky.....	185,907	100.0	169,480	91.2	16,427	8.8
Tenn.....	163,335	100.0	140,654	86.1	22,681	13.9
Ala.....	162,302	100.0	134,089	82.6	28,213	17.4
Miss.....	144,334	100.0	125,053	86.6	19,281	13.4
E.S.C.....	655,878	100.0	569,276	86.8	86,602	13.2

See footnotes at end of table.

--Continued

Table 3.---Distribution of occupied units that lacked complete plumbing between areas served by Farmers Home Administration and more urbanized areas, by States, 1970 1/--Continued

State and division	Total		FHA areas <u>2/</u>		:More urbanized areas <u>3/</u>	
	Number	Percent	Number	Percent	Number	Percent
Ark.....	102,449	100.0	86,732	84.7	15,717	15.3
La.....	110,678	100.0	83,562	75.5	27,116	24.5
Okla.....	49,954	100.0	39,317	78.7	10,637	21.3
Tex.....	221,475	100.0	140,313	63.4	81,162	36.6
W.S.C.....	484,556	100.0	349,924	72.2	134,632	27.8
Mont.....	14,327	100.0	10,362	72.3	3,965	27.7
Idaho.....	8,389	100.0	6,397	76.3	1,992	23.7
Wyo.....	4,406	100.0	3,480	79.0	926	21.0
Colo.....	25,076	100.0	12,409	49.5	12,667	50.5
N.Mex.....	25,675	100.0	22,104	86.1	3,571	13.9
Ariz.....	25,268	100.0	17,089	67.6	8,179	32.4
Utah.....	5,402	100.0	3,103	48.5	3,299	51.5
Nev.....	4,395	100.0	2,098	47.7	2,297	52.3
Mountain....	113,938	100.0	77,042	67.6	36,896	32.4
Wash.....	28,666	100.0	11,003	38.4	17,663	61.6
Oreg.....	20,739	100.0	10,034	48.4	10,705	51.6
Calif.....	110,356	100.0	21,751	19.7	88,605	80.3
Alaska.....	10,901	100.0	10,330	94.8	571	5.2
Hawaii.....	10,690	100.0	6,106	57.1	4,584	42.9
Pacific.....	181,352	100.0	59,224	32.7	122,128	67.3
United States..	3,772,817	100.0	2,576,014	68.3	1,196,803	31.7

1/ Source: 1970 Census of Housing.

2/ Includes rural areas and 2,989 cities located outside urbanized areas with populations from 2,500 to 10,000 persons.

3/ Includes all areas outside of areas designated in footnote 2/.

Table 4.--Distribution of occupied housing units that were crowded (more than one person per room) between areas served by Farmers Home Administration and more urbanized areas, by States, 1970 1/

State and division	Total		FHA areas 2/		More urbanized areas 3/	
	Number	Percent	Number	Percent	Number	Percent
Maine.....	22,833	100.0	16,240	71.1	6,593	28.9
N.H.....	14,826	100.0	8,063	54.4	6,763	45.6
Vt.....	8,647	100.0	7,401	85.6	1,246	14.4
Mass.....	104,706	100.0	19,049	18.2	85,657	81.8
R.I.....	17,604	100.0	2,553	14.5	15,051	85.5
Conn.....	58,048	100.0	12,143	20.9	45,905	79.1
N.E.....	226,664	100.0	65,449	28.9	161,215	71.1
N.Y.....	447,602	100.0	55,067	12.3	392,535	87.7
N.J.....	136,436	100.0	15,912	11.7	120,524	88.3
Pa.....	203,203	100.0	78,479	38.6	124,724	61.4
M.A.....	787,241	100.0	149,458	19.0	637,783	81.0
Ohio.....	215,805	100.0	67,793	31.4	148,012	68.6
Ind.....	129,318	100.0	53,886	41.7	75,432	58.3
Ill.....	273,536	100.0	55,413	20.3	218,123	79.7
Mich.....	202,116	100.0	66,571	32.9	135,545	67.1
Wis.....	95,423	100.0	43,029	45.1	52,394	54.9
E.N.C.....	916,198	100.0	286,692	31.3	629,506	68.7
Minn.....	84,979	100.0	41,144	48.4	43,835	51.6
Iowa.....	52,582	100.0	30,136	57.3	22,446	42.7
Mo.....	124,181	100.0	50,839	40.9	73,342	59.1
N.Dak.....	16,549	100.0	10,924	66.0	5,625	34.0
S.Dak.....	18,042	100.0	13,295	73.7	4,747	26.3
Nebr.....	29,307	100.0	13,519	46.1	15,788	53.9
Kans.....	43,153	100.0	18,953	43.9	24,200	56.1
W.N.C.....	368,793	100.0	178,810	48.5	189,983	51.5
Del.....	9,277	100.0	4,089	44.1	5,188	55.9
Md.....	77,384	100.0	23,576	30.5	53,808	69.5
D.C.....	32,160	100.0	---	---	32,160	---
Va.....	110,869	100.0	70,856	63.9	40,013	36.1
W.Va.....	49,829	100.0	40,097	80.5	9,732	19.
N.C.....	153,718	100.0	107,149	69.7	46,569	30.3
S.C.....	90,623	100.0	65,722	72.5	24,901	27.5
Ga.....	148,737	100.0	83,583	56.2	65,154	43.8
Fla.....	204,871	100.0	63,472	31.0	141,399	69.0
S.A.....	877,468	100.0	458,544	52.3	418,924	47.7
Ky.....	104,292	100.0	66,052	63.3	38,240	36.7
Tenn.....	117,441	100.0	64,343	54.8	53,098	45.2
Ala.....	114,680	100.0	67,437	58.8	47,243	41.2
Miss.....	96,344	100.0	68,317	70.9	28,027	29.1
E.S.C.....	432,757	100.0	266,149	61.5	166,608	38.5

See footnotes at end of table.

--Continued

Table 4.--Distribution of occupied housing units that were crowded (more than one person per room) between areas served by Farmers Home Administration and more urbanized areas, by States, 1970 1/--Continued

State and division	Total		FHA areas <u>2</u> /		More urbanized areas <u>3</u> /	
	Number	Percent	Number	Percent	Number	Percent
Ark.....	65,747	100.0	46,096	70.1	19,651	29.9
La.....	152,440	100.0	75,145	49.3	77,295	50.7
Okla.....	61,924	100.0	33,276	53.7	28,648	46.3
Tex.....	387,530	100.0	124,581	32.1	262,949	67.9
W.S.C.....	667,641	100.0	279,098	41.8	388,543	58.2
Mont.....	20,777	100.0	15,020	72.3	5,757	27.7
Idaho.....	20,249	100.0	14,687	72.5	5,562	27.5
Wyo.....	9,169	100.0	6,732	73.4	2,437	26.6
Colo.....	47,971	100.0	18,804	39.2	29,167	60.8
N.Mex.....	45,171	100.0	26,664	59.0	18,507	41.0
Ariz.....	68,220	100.0	29,773	43.6	38,447	56.4
Utah.....	31,601	100.0	10,346	32.7	21,255	67.3
Nev.....	14,131	100.0	4,250	30.1	9,881	69.9
Mountain....	257,289	100.0	126,276	49.1	131,013	50.9
Wash.....	60,290	100.0	23,692	39.3	32,384	60.7
Oreg.....	38,629	100.0	22,238	57.6	16,391	42.4
Calif.....	521,952	100.0	75,322	14.4	446,630	85.6
Alaska.....	15,490	100.0	12,456	80.4	3,034	19.6
Hawaii.....	40,462	100.0	11,629	28.7	28,833	71.3
Pacific.....	676,823	100.0	149,551	22.1	527,272	77.9
United States..	5,210,874	100.0	1,960,027	37.6	3,250,847	62.4

1/ Source: 1970 Census of Housing.

2/ Includes rural areas and 2,989 cities located outside urbanized areas with populations from 2,500 to 10,000 persons.

3/ Includes all areas outside of areas designated in footnote 2/.

Table 5.--Distribution of occupied housing lacking complete plumbing and/or crowded between areas served by Farmers Home Administration and more urbanized areas, by States, 1970 ^{1/}

State and division	Total		FHA areas 2/		More urbanized areas 3/	
	Number	Percent	Number	Percent	Number	Percent
Maine.....	54,445	100.0	42,082	77.3	12,363	22.7
N.H.....	25,531	100.0	15,378	60.2	10,153	39.8
Vt.....	15,384	100.0	13,497	87.7	1,887	12.3
Mass.....	159,041	100.0	28,582	18.0	130,459	82.0
R.I.....	25,174	100.0	4,163	16.5	21,011	83.5
Conn.....	79,471	100.0	17,502	22.0	61,969	78.0
N.E.....	359,046	100.0	121,204	33.8	237,842	66.2
N.Y.....	595,423	100.0	94,708	15.9	500,715	84.1
N.J.....	183,020	100.0	24,797	13.5	158,223	86.5
Pa.....	349,192	100.0	160,697	46.0	188,495	54.0
M.A.....	1,127,635	100.0	280,202	24.8	847,433	75.2
Ohio.....	345,512	100.0	145,672	42.2	199,840	57.8
Ind.....	204,641	100.0	102,316	50.0	102,325	50.0
Ill.....	401,131	100.0	110,339	27.5	290,792	72.5
Mich.....	277,001	100.0	108,089	39.0	168,912	61.0
Wis.....	161,923	100.0	85,192	52.6	76,731	47.4
E.N.C.....	1,390,208	100.0	551,608	39.7	838,600	60.3
Minn.....	153,277	100.0	86,930	56.7	66,347	43.3
Iowa.....	103,029	100.0	61,201	59.4	41,828	40.6
Mo.....	224,368	100.0	123,048	54.8	101,320	45.2
N.Dak.....	32,628	100.0	24,144	74.0	8,484	26.0
S.Dak.....	34,617	100.0	27,395	79.1	7,222	20.9
Nebr.....	48,802	100.0	26,670	54.6	22,132	45.4
Kans.....	71,026	100.0	38,268	53.9	32,758	46.1
W.N.C.....	667,747	100.0	387,656	58.1	280,091	41.9
Del.....	15,330	100.0	8,972	58.5	6,358	41.5
Md.....	116,223	100.0	50,896	43.8	65,327	56.2
D.C.....	36,854	100.0	---	---	36,854	---
Va.....	240,585	100.0	182,287	75.8	58,298	24.2
W.Va.....	119,814	100.0	104,923	87.6	14,891	12.4
N.C.....	314,565	100.0	248,137	78.9	66,428	21.1
S.C.....	179,546	100.0	140,029	78.0	39,517	22.0
Ga.....	267,813	100.0	177,584	66.3	90,229	33.7
Fla.....	290,570	100.0	106,365	36.6	184,205	63.4
S.A.....	1,581,300	100.0	1,019,193	64.4	562,107	35.6
Ky.....	249,599	100.0	197,478	79.1	52,121	20.9
Tenn.....	244,723	100.0	173,007	70.7	71,716	29.3
Ala.....	232,089	100.0	163,939	70.6	68,150	29.4
Miss.....	194,867	100.0	153,157	78.6	41,710	21.4
E.S.C.....	921,278	100.0	687,581	74.6	233,697	25.4

See footnotes at end of table.

--Continued

Table 5.--Distribution of occupied housing lacking complete plumbing and/or crowded between areas served by Farmers Home Administration and more urbanized areas, by States, 1970 1--Continued

State and division	Total		FHA areas <u>2</u> /		More urbanized areas <u>3</u> /	
	Number	Percent	Number	Percent	Number	Percent
Ark.....	144,479	100.0	112,268	77.7	32,211	22.3
La.....	229,797	100.0	132,538	57.7	97,259	42.3
Okla.....	102,792	100.0	64,976	63.2	37,816	36.8
Tex.....	545,067	100.0	233,983	42.9	311,084	57.1
W.S.C.....	1,022,135	100.0	543,765	53.2	478,370	46.8
Mont.....	32,805	100.0	23,248	70.9	9,557	29.1
Idaho.....	27,293	100.0	19,863	72.8	7,430	27.2
Wyo.....	12,853	100.0	9,546	74.3	3,307	25.7
Colo.....	69,202	100.0	28,368	41.0	40,834	59.0
N.Mex.....	58,372	100.0	37,298	63.9	21,074	36.1
Ariz.....	81,284	100.0	36,413	44.8	44,871	55.2
Utah.....	36,650	100.0	12,334	33.7	24,316	66.3
Nev.....	17,870	100.0	5,879	32.9	11,991	67.1
Mountain.....	336,329	100.0	172,949	51.4	163,380	48.6
Wash.....	86,115	100.0	36,863	42.8	49,252	57.2
Oreg.....	57,215	100.0	30,619	53.5	26,596	46.5
Calif.....	619,088	100.0	103,892	16.8	515,196	83.2
Alaska.....	20,546	100.0	17,031	82.9	3,515	17.1
Hawaii.....	48,542	100.0	16,118	33.2	32,424	66.8
Pacific.....	831,506	100.0	204,523	24.6	626,983	75.4
United States..	8,237,184	100.0	3,968,681	48.2	4,268,503	51.8

1/ Source: 1970 Census of Housing.

2/ Includes rural areas and 2,989 cities located outside urbanized areas with populations from 2,500 to 10,000 persons.

3/ Includes all areas outside of areas designated in footnote 2/.

Table 6.--Proportion of occupied units that lack complete plumbing, that are crowded, and that lack complete plumbing and/or crowded in areas served by Farmers Home Administration, by States, 1970 ^{1/}

State and division	Occupied units	Lack complete plumbing 2/	Crowded 3/	Lack complete plumbing and/or crowded
	Number	Percent		
Maine.....	201,279	15.33	8.07	20.91
N.H.....	121,039	6.99	6.66	12.70
Vt.....	111,031	6.42	6.67	12.16
Mass.....	323,340	3.20	5.89	8.84
R.I.....	36,695	4.94	6.96	11.34
Conn.....	231,100	2.52	5.25	7.57
N.E.....	1,024,484	6.29	6.39	11.83
:				
N.Y.....	953,823	4.74	5.77	9.93
N.J.....	292,437	3.20	5.44	8.48
Pa.....	1,272,429	7.39	6.17	12.63
M.A.....	2,518,689	5.90	5.93	11.12
:				
Ohio.....	921,172	9.74	7.36	15.81
Ind.....	684,381	8.41	7.87	14.95
Ill.....	796,747	7.63	6.95	13.85
Mich.....	822,254	5.92	8.10	13.15
Wis.....	554,349	8.51	7.76	15.37
E.N.C.....	3,778,903	8.04	7.59	14.60
:				
Minn.....	467,328	11.02	8.80	18.60
Iowa.....	508,432	7.19	5.93	12.04
Mo.....	588,077	14.58	8.64	20.92
N.Dak.....	113,765	13.46	9.60	21.22
S.Dak.....	134,973	12.94	9.85	20.30
Nebr.....	232,061	6.16	5.83	11.49
Kans.....	320,267	6.57	5.92	11.95
W.N.C.....	2,364,903	10.23	7.56	16.39
:				
Del.....	54,492	11.31	7.50	16.46
Md.....	303,317	11.40	7.77	16.78
D.C.....	---	---	---	---
Va.....	570,928	25.71	12.41	31.93
W.Va.....	363,687	22.85	11.03	28.85
N.C.....	945,097	20.20	11.34	26.26
S.C.....	466,504	23.08	14.09	30.02
Ga.....	651,897	20.64	12.82	27.24
Fla.....	642,579	8.99	9.88	16.55
S.A.....	3,998,501	19.05	11.47	25.49
:				
Ky.....	539,812	31.40	12.24	36.58
Tenn.....	597,925	23.52	10.76	28.93
Ala.....	522,163	25.68	12.91	31.40
Miss.....	410,432	30.47	16.65	37.32
E.S.C.....	2,070,322	27.50	12.86	33.21
:				

See footnotes at end of table.

--Continued

Table 6.--Proportion of occupied units that lack complete plumbing, that are crowded, and that lack complete plumbing and/or crowded in areas served by Farmers Home Administration, by States, 1970 1/--Continued

State and division	Occupied units	Lack complete plumbing <u>2</u> /	Crowded <u>3</u> /	Lack complete plumbing and/or crowded
	Numbers	Percent		
Ark.....	380,063	22.79	12.13	29.54
La.....	439,451	19.02	17.10	30.16
Okla.....	380,150	10.34	8.75	17.09
Tex.....	1,008,535	13.91	12.35	23.20
W.S.C.....	2,208,199	15.85	12.64	24.63
Mont.....	133,651	7.75	11.24	17.39
Idaho.....	130,731	4.89	11.23	15.19
Wyo.....	63,397	5.49	10.62	15.06
Colo.....	189,469	6.55	9.92	14.97
N.Mex.....	115,408	19.15	23.10	32.32
Ariz.....	142,298	12.01	20.92	25.59
Utah.....	75,488	4.11	13.71	16.34
Nev.....	39,039	5.37	10.89	15.06
Mountain....	889,481	8.66	14.20	19.44
Wash.....	356,810	3.08	6.64	10.33
Oreg.....	278,376	3.60	7.99	11.00
Calif.....	821,350	2.65	9.17	12.65
Alaska.....	53,381	19.35	23.33	31.90
Hawaii.....	50,916	11.99	22.84	31.66
Pacific.....	1,560,833	3.79	9.58	13.10
United States..	20,414,325	12.62	9.60	19.44

1/ Includes rural areas and 2,989 communities from 2,500 to 10,000 population that are located outside urbanized areas. Source: 1970 Census of Housing.

2/ Units that lack either hot or cold running water or a flush toilet or a bathroom or shower for exclusive use of occupants.

3/ Include units that have more than one person per room.

Table 7.--Number of housing units occupied by black population in areas served by Farmers Home Administration and more urbanized areas, and percentages owned and rented, by States, 1970

State and division	FHA areas 1/			More urbanized areas 2/		
	Total Number	Owned Percent	Rented Percent	Total Number	Owned Percent	Rented Percent
Maine.....	362	31.2	68.8	284	30.3	69.7
N.H.....	163	62.0	38.0	431	20.9	79.1
Vt.....	147	44.2	56.8	56	23.2	76.8
Mass.....	2,254	65.1	34.9	49,241	22.9	78.1
R.I.....	304	35.5	64.5	6,598	24.2	75.8
Conn.....	1,649	62.7	37.3	48,459	21.5	70.5
N.E.....	4,878	59.2	40.8	105,069	22.4	77.6
N.Y.....	10,617	49.1	50.9	645,273	19.2	80.8
N.J.....	12,919	60.7	39.3	202,883	31.8	68.2
Pa.....	9,992	60.5	39.5	287,817	45.6	44.4
M.A.....	33,528	57.0	43.0	1,135,973	28.2	71.8
Ohio.....	9,100	71.2	28.8	273,355	43.7	56.3
Ind.....	2,106	71.8	28.2	94,745	50.5	49.5
Ill.....	6,511	59.7	40.3	390,047	28.5	71.5
Mich.....	9,412	67.5	33.5	268,013	52.9	47.1
Wis.....	437	59.3	40.7	32,426	33.8	66.2
E.N.C.....	27,566	67.1	52.9	1,058,586	40.7	59.3
Minn.....	197	62.9	37.1	10,168	41.4	58.6
Iowa.....	383	62.7	37.3	8,528	55.1	44.9
Mo.....	10,425	53.7	46.3	126,062	42.4	57.6
N.Dak.....	65	36.9	63.1	446	24.7	75.3
S.Dak.....	219	14.6	85.4	123	38.2	61.8
Nebr.....	117	51.3	49.7	10,934	48.3	51.7
Kans.....	2,378	63.4	46.6	27,676	53.3	46.7
W.N.C.....	13,784	55.0	45.0	183,937	44.9	55.1
Del.....	7,073	51.0	49.0	13,497	49.3	50.7
Md.....	30,492	58.5	41.5	151,833	33.6	66.4
D.C.....	---	---	---	164,040	27.3	71.7
Va.....	88,377	63.6	36.4	130,652	43.4	56.6
W.Va.....	10,061	65.0	35.0	9,688	52.2	47.8
N.C.....	153,680	53.0	47.0	123,557	36.2	63.8
S.C.....	125,786	55.2	44.8	59,228	38.2	61.8
Ga.....	122,624	45.2	54.8	179,526	38.6	61.4
Fla.....	71,774	56.5	43.5	204,743	46.0	54.4
S.A.....	609,867	54.3	45.7	1,036,764	38.1	61.9
Ky.....	18,328	59.4	40.6	47,473	43.9	56.1
Tenn.....	40,201	51.7	48.3	123,710	41.1	58.9
Ala.....	97,145	53.9	46.1	132,380	47.8	52.2
Miss.....	129,115	50.7	49.3	67,514	46.0	54.0
E.S.C.....	284,789	52.5	47.5	370,712	44.7	55.3

See footnotes at end of table.

--Continued

Table 7.--Number of housing units occupied by black population in areas served by Farmers Home Administration and more urbanized areas, and percentages owned and rented, by States, 1970--Continued

State and division	FHA areas 1/			More urbanized areas 2/		
	Total Number	Owned Percent	Rented Percent	Total Number	Owned Percent	Rented Percent
Ark.....	53,400	54.1	45.9	40,029	51.3	48.7
La.....	108,801	56.4	43.6	167,779	41.0	59.0
Okla.....	13,514	68.9	31.1	36,061	56.1	43.9
Tex.....	89,992	67.2	32.8	298,554	49.7	50.3
W.S.C.....	265,707	60.2	39.8	542,423	47.6	52.4
Mont.....	92	51.1	48.9	414	18.4	81.6
Idaho.....	178	14.6	85.4	314	37.3	62.7
Wyo.....	157	33.8	66.2	536	39.0	61.0
Colo.....	465	48.4	51.6	18,315	47.1	52.9
N.Mex.....	895	35.3	64.7	4,280	48.7	51.3
Ariz.....	2,310	34.6	65.4	12,193	52.0	48.0
Utah.....	117	18.8	81.2	1,563	45.7	54.3
Nev.....	331	42.9	57.1	7,061	38.5	61.5
Mountain....	4,545	35.9	64.1	44,676	46.7	52.3
Wash.....	944	45.2	54.8	19,956	49.2	50.8
Oreg.....	379	40.1	59.9	7,222	45.7	54.3
Calif.....	11,246	46.1	53.9	413,989	38.9	61.1
Alaska.....	943	19.1	80.9	1,159	30.2	69.8
Hawaii.....	261	17.6	82.4	1,357	10.2	89.8
Pacific.....	13,773	43.4	56.6	443,683	39.4	60.6
United States..	1,258,438	55.3	44.7	4,921,823	38.0	62.0

1/ Includes rural areas and 2,989 communities from 2,500 to 10,000 population that are located outside urbanized areas. Source: 1970 Census of Housing.

2/ Includes all areas outside of areas designated in footnote 1/.

Table 8.--Proportion of black-occupied units that lack complete plumbing, that are crowded, and that lack complete plumbing and/or crowded in areas served by Farmers Home Administration, by States, 1970 ^{1/}

State and division	Occupied units Number	Lack complete plumbing ^{2/}	Crowded ^{3/}	Lack complete plumbing and/or crowded
		Percent		
Maine.....	362	7.46	11.60	18.78
N.H.....	163	7.36	8.59	13.50
Vt.....	147	6.12	4.76	10.20
Mass.....	2,254	5.37	11.10	14.69
R.I.....	304	11.51	14.47	22.37
Conn.....	1,649	4.06	12.80	16.07
N.E.....	4,878	5.56	11.64	15.76
N.Y.....	10,617	13.00	17.45	27.03
N.J.....	12,919	15.65	17.47	29.11
Pa.....	9,992	19.67	14.95	30.53
N.A.....	33,528	16.00	16.71	28.88
Ohio.....	9,100	23.68	13.79	32.98
Ind.....	2,106	22.27	13.01	31.72
Ill.....	6,511	34.22	17.02	45.19
Mich.....	9,412	13.46	16.35	27.01
Wis.....	437	9.84	12.13	20.37
E.N.C.....	27,566	22.35	15.34	33.53
Minn.....	197	15.74	6.09	20.81
Iowa.....	383	12.79	10.44	22.45
Mo.....	10,425	49.29	23.82	59.53
K.Dak.....	65	18.46	10.77	26.15
S.Dak.....	219	5.48	23.29	28.31
Nebr.....	117	21.37	11.97	29.91
Kans.....	2,378	15.94	12.45	26.66
W.N.C.....	13,784	40.97	21.06	51.37
Del.....	7,073	47.21	24.57	57.71
Md.....	30,492	47.03	24.46	57.07
D.C.....	---	---	---	---
Va.....	88,377	61.83	26.59	68.04
W.Va.....	10,061	41.71	19.24	50.66
N.C.....	153,680	59.80	29.57	68.09
S.C.....	125,786	60.74	30.83	69.33
Ga.....	122,624	63.14	33.35	72.11
Fla.....	71,774	45.89	28.24	60.09
S.A.....	663,867	58.24	29.52	67.25
Ky.....	38,328	50.82	21.81	59.50
Tenn.....	40,201	57.11	29.67	66.10
Ala.....	97,145	69.87	34.58	78.64
Miss.....	129,115	68.94	34.50	76.94
E.S.C.....	264,789	66.42	32.94	74.87

See footnotes at end of table.

--Continued

Table 8.--Proportion of black-occupied units that lack complete plumbing, that are crowded, and that lack complete plumbing and/or crowded in areas served by Farmers Home Administration, by States, 1970 1---Continued

State and division	Occupied units	Lack complete plumbing <u>2</u>	Crowded <u>3</u>	Lack complete plumbing and/or crowded
	Number		Percent	
Ark.....	53,400	63.95	27.72	71.64
La.....	108,801	53.25	31.20	65.09
Okla.....	13,514	42.04	18.11	51.28
Tex.....	89,992	53.57	22.49	62.90
W.S.C.....	265,707	54.94	26.89	64.96
Mont.....	92	18.48	16.30	33.70
Idaho.....	178	7.30	15.17	22.47
Wyo.....	157	7.64	20.38	27.39
Colo.....	465	9.68	10.32	18.28
N.Mex.....	895	13.97	20.45	31.06
Ariz.....	2,310	23.25	26.36	43.64
Utah.....	117	6.84	11.11	16.24
Nev.....	331	7.25	17.52	23.26
Mountain....	4,545	17.18	21.67	34.79
Wash.....	944	10.70	13.67	23.41
Oreg.....	379	12.40	17.41	26.91
Calif.....	11,246	8.66	19.23	26.12
Alaska.....	943	3.82	18.56	21.74
Hawaii.....	261	1.15	22.99	23.75
Pacific.....	13,772	8.42	18.83	25.61
United States..	1,258,438	56.40	28.78	65.78

1/ Includes rural areas and 2,989 communities from 2,500 to 10,000 population that are located outside urbanized areas. Source: 1970 Census of Housing.

2/ Units that lack either hot or cold running water or a flush toilet or a bathroom or shower for exclusive use of occupants.

3/ Include units that have more than one person per room.

Appendix table 1.--Distribution of occupied units in rural areas, in places of 2,500 to 10,000 persons outside urbanized areas, in Farmers Home areas, in places of 10,000 to 50,000 persons outside urbanized areas, and in urbanized areas, by States, 1970 ^{1/}

State and division	Rural areas ^{2/}	2,500 to 10,000 persons ^{3/}	Farmers Home areas ^{4/}	10,000 to 50,000 persons ^{5/}	Urbanized areas ^{6/}
-----Housing units-----					
Maine.....	145,848	55,431	201,279	45,263	56,381
N.H.....	96,500	24,539	121,039	50,065	54,274
Vt.....	87,520	23,517	111,031	21,067	---
Mass.....	251,176	72,164	323,340	73,329	1,363,023
R.I.....	31,650	5,045	36,695	17,830	237,440
Conn.....	195,956	35,144	231,100	39,819	662,359
N.E.....	808,650	215,834	1,024,484	247,364	2,373,477
N.Y.....	754,104	199,719	953,823	220,518	4,739,520
N.J.....	234,959	57,478	292,437	25,995	1,899,550
Pa.....	989,740	282,689	1,272,429	211,688	2,221,293
M.A.....	1,978,803	539,886	2,518,689	458,201	8,860,563
Ohio.....	753,029	168,143	921,172	273,282	2,094,978
Ind.....	543,733	140,648	684,381	177,279	747,834
Ill.....	573,381	223,366	796,747	219,770	2,485,621
Mich.....	664,569	157,685	822,254	118,108	1,712,697
Wis.....	426,756	127,593	554,349	136,616	637,839
E.N.C.....	2,961,468	817,435	3,778,903	925,055	7,678,969
Minn.....	369,693	97,635	467,328	95,630	590,988
Iowa.....	373,794	134,638	508,432	121,956	265,923
Mo.....	451,961	136,116	588,077	95,950	836,540
N.Dak.....	101,748	12,017	113,765	51,026	16,822
S.Dak.....	110,005	24,968	134,973	42,342	23,492
Nebr.....	181,908	50,153	232,061	58,632	183,028
Kans.....	245,456	74,811	320,267	154,853	252,244
W.N.C.....	1,834,565	530,338	2,364,903	620,389	2,169,037
Del.....	46,879	7,615	54,492	5,057	105,255
Md.....	255,245	48,072	303,317	77,338	794,418
D.C.....	---	---	---	---	262,538
Va.....	491,106	79,822	570,928	86,093	733,615
W.Va.....	317,633	46,054	363,687	68,218	115,309
N.C.....	815,320	129,777	945,097	197,174	367,293
S.C.....	373,684	92,820	466,504	84,154	183,715
Ga.....	522,051	129,846	651,897	137,420	579,908
Fla.....	421,254	221,325	642,579	227,975	1,414,232
S.A.....	3,243,172	755,329	3,998,501	883,429	4,556,283
Ky.....	456,517	83,295	539,812	91,285	352,568
Tenn.....	488,828	109,097	597,925	150,390	464,872
Ala.....	416,015	106,148	522,163	118,433	393,517
Miss.....	339,768	70,664	410,432	132,983	93,309
E.S.C.....	1,701,128	369,204	2,070,332	493,091	1,304,266

See footnotes at end of table.

--Continued

Appendix table 1.--Distribution of occupied units in rural areas, in places of 2,500 to 10,000 persons outside urbanized areas, in Farmers Home areas, in places of 10,000 to 50,000 persons outside urbanized areas, and in urbanized areas, by States, 1970 ^{1/}--Continued

State and division	Rural areas ^{2/}	2,500 to 10,000 persons ^{3/}	Farmers Home areas ^{4/}	10,000 to 50,000 persons ^{5/}	Urbanized areas ^{6/}
Housing units					
Ark.....	299,258	80,805	380,063	110,345	125,016
La.....	337,564	101,887	439,451	96,880	515,707
Okla.....	267,433	112,717	380,150	128,707	341,946
Tex.....	701,576	306,959	1,008,535	314,525	2,110,936
W.S.C.....	1,605,831	602,368	2,208,199	650,457	3,093,605
Mont.....	97,047	36,604	133,651	38,740	44,913
Idaho.....	96,336	34,395	130,731	60,293	27,936
Wyo.....	39,974	23,423	63,397	41,203	---
Colo.....	142,639	46,830	189,469	51,789	449,670
N.Mex.....	79,910	35,498	115,408	84,565	89,416
Ariz.....	101,236	41,062	142,298	31,134	365,725
Utah.....	55,668	19,820	75,488	13,961	208,485
Nev.....	29,636	9,403	39,039	9,515	111,498
Mountain....	642,446	247,035	889,481	331,200	1,297,643
Wash.....	285,090	71,720	356,810	127,096	621,681
Oreg.....	212,220	66,156	278,376	75,069	338,186
Calif.....	542,227	279,123	821,350	354,315	5,398,196
Alaska.....	38,390	14,991	53,381	25,678	---
Hawaii.....	33,076	17,840	50,916	29,989	122,183
Pacific.....	1,111,003	449,830	1,560,833	612,147	6,480,246
United States:	15,887,066	4,527,259	20,414,325	5,221,333	37,814,089

^{1/} Source, 1970 Census of Housing.

^{2/} Places located outside urbanized areas and having a population of less than 2,500.

^{3/} Includes 2,989 communities located outside urbanized areas.

^{4/} Includes rural areas and 2,989 communities located outside urbanized areas.

^{5/} Includes 951 cities located outside urbanized areas.

^{6/} An urbanized area consists of a central city of 50,000 population or more and smaller adjacent cities and surrounding closely settled territory. Defined in detail on page XII, 1970 Census of Population, PC (1)-A1.

Appendix table 2.--Distribution of occupied units lacking complete plumbing in rural areas, places of 2,500 to 10,000 persons outside urbanized areas, in Farmers Home areas, in places of 10,000 to 50,000 persons located outside urbanized areas, and in urbanized areas by States, 1970 1/

State and division	Rural areas 2/	2,500 to 10,000 persons 3/	Farmers Home areas 4/	10,000 to 50,000 persons 5/	Urbanized areas 6/
-----Housing units-----					
Maine.....	26,370	4,487	30,857	3,040	3,266
N.H.....	7,355	1,110	8,465	1,768	1,835
Vt.....	6,278	846	7,124	694	---
Mass.....	8,177	2,158	10,335	2,899	44,547
R.I.....	1,634	180	1,814	280	6,075
Conn.....	4,775	1,056	5,831	1,469	15,816
N.E.....	54,589	9,837	64,426	10,150	71,539
N.Y.....	39,836	5,399	45,235	7,540	112,980
N.J.....	8,177	1,195	9,372	773	41,787
Pa.....	83,053	10,951	94,004	7,519	60,440
M.A.....	131,066	17,545	148,611	15,832	215,207
Ohio.....	83,509	6,192	89,701	9,550	49,421
Ind.....	50,041	7,504	57,545	7,542	22,772
Ill.....	50,953	9,653	60,806	8,972	72,219
Mich.....	43,269	5,433	48,702	3,227	32,505
Wis.....	41,967	5,235	47,202	5,189	20,458
E.N.C.....	269,739	34,217	303,956	34,480	197,375
Minn.....	45,939	5,552	51,491	4,448	19,202
Iowa.....	30,729	5,850	36,579	6,642	11,031
Mo.....	76,971	8,781	85,752	4,657	26,972
N.Dak.....	14,647	660	15,307	1,855	1,155
S.Dak.....	16,161	1,310	17,471	1,669	963
Nebr.....	13,023	1,277	14,300	1,748	5,019
Kans.....	19,223	1,812	21,035	4,217	4,998
W.N.C.....	216,693	25,242	241,935	25,236	69,350
Del.....	5,486	678	6,164	142	1,135
Md.....	32,747	1,842	34,589	2,484	10,317
D.C.....	---	---	---	---	5,601
Va.....	139,501	7,304	146,805	4,389	17,118
W.Va.....	80,635	2,463	83,098	2,386	3,422
N.C.....	175,695	15,259	190,954	14,680	10,337
S.C.....	93,710	13,964	107,674	9,882	10,087
Ga.....	115,478	19,090	134,568	15,167	17,581
Fla.....	43,305	14,463	57,768	12,254	40,394
S.A.....	686,557	75,063	761,620	61,384	115,992
Ky.....	161,566	7,914	169,480	6,029	10,398
Tenn.....	131,358	9,296	140,654	8,891	13,790
Ala.....	120,874	13,215	134,089	9,947	18,266
Miss.....	113,487	11,566	125,053	16,731	2,550
E.S.C.....	527,285	41,991	569,276	41,598	45,004

See footnotes at end of table.

--Continued

Appendix table 2.--Distribution of occupied units lacking complete plumbing in rural areas, places of 2,500 to 10,000 persons outside urbanized areas, in Farmers Home areas, in places of 10,000 to 50,000 persons located outside urbanized areas, and in urbanized areas by States, 1970 1/--Continued

State and division	Rural areas <u>2</u> /	2,500 to 10,000 persons <u>3</u> /	Farmers Home areas <u>4</u> /	10,000 to 50,000 persons <u>5</u> /	Urbanized areas <u>6</u> /
-----Housing units-----					
Ark.....	77,167	9,565	86,732	9,655	6,062
La.....	72,296	11,266	83,562	8,719	18,397
Okla.....	34,891	4,426	39,317	4,257	6,380
Tex.....	112,647	27,666	140,313	18,832	62,330
W.S.C.....	297,001	52,923	349,924	41,463	93,169
Mont.....	9,110	1,252	10,362	2,199	1,766
Idaho.....	5,413	984	6,397	1,452	540
Wyo.....	3,009	471	3,480	926	---
Colo.....	10,641	1,768	12,409	1,255	11,412
N.Mex.....	19,812	2,292	22,104	1,617	1,954
Ariz.....	15,140	1,949	17,089	973	7,206
Utah.....	2,835	268	3,103	144	3,155
Nev.....	1,781	317	2,098	72	2,225
Mountain....	67,741	9,301	77,042	8,638	28,258
Wash.....	9,815	1,188	11,003	3,233	14,430
Oreg.....	8,680	1,354	10,034	1,726	8,979
Calif.....	17,474	4,277	21,751	4,774	83,831
Alaska.....	9,886	444	10,330	571	---
Hawaii.....	4,938	1,168	6,106	537	4,047
Pacific.....	50,793	8,431	59,224	10,841	111,287
United States..	2,301,464	274,550	2,576,014	249,622	947,181

1/ Source, 1970 Census of Housing. Units lacking complete plumbing are those units which do not have hot and cold piped water inside the structure as well as a flush toilet and a bathtub or shower inside the structure for the exclusive use of the occupants of the unit.

2/ to 6/ See appendix table 1.

Appendix table 3.--Distribution of occupied units that were crowded (more than one person per room) in rural areas, places of 2,500 to 10,000 persons outside urbanized areas in Farmers Home areas, in places of 10,000 to 50,000 persons outside urbanized areas, and in urbanized areas by States, 1970 ^{1/}

State and division	Rural areas ^{2/}	2,500 to 10,000 persons ^{3/}	Farmers Home Areas ^{4/}	10,000 to 50,000 persons ^{5/}	Urbanized areas ^{6/}
Housing units					
Maine.....	12,520	3,720	16,240	3,073	3,520
N.H.....	6,776	1,287	8,063	2,952	3,811
Vt.....	6,068	1,333	7,401	1,246	---
Mass.....	15,152	3,897	19,049	4,251	81,406
R.I.....	2,563	290	2,553	1,017	14,034
Conn.....	10,160	2,043	12,143	2,352	43,553
N.E.....	52,879	12,570	65,449	14,891	146,324
N.Y.....	46,210	8,857	55,067	9,458	393,077
N.J.....	13,157	2,755	15,912	1,751	118,773
Pa.....	66,675	11,804	78,479	9,494	115,230
N.A.....	126,042	23,416	149,458	20,703	617,080
Ohio.....	59,422	8,371	67,793	14,566	133,446
Ind.....	44,402	9,484	53,886	11,955	63,477
Ill.....	42,199	13,214	55,413	13,819	204,304
Mich.....	57,470	9,101	66,571	6,788	128,757
Wis.....	36,569	6,460	43,029	7,931	44,463
E.N.C.....	240,062	46,630	286,692	55,059	574,447
Minn.....	34,844	6,300	41,144	6,034	37,801
Iowa.....	21,730	8,406	30,136	6,452	15,994
Mo.....	42,014	8,825	50,839	5,790	67,552
N.Dak.....	9,982	942	10,924	4,566	1,059
S.Dak.....	11,082	2,212	13,295	3,144	1,693
Nebr.....	11,058	2,481	13,519	3,446	12,342
Kans.....	15,237	3,716	18,953	8,648	15,552
W.N.C.....	148,927	32,863	178,810	38,080	151,903
Del.....	3,862	227	4,089	215	4,973
Md.....	20,870	2,706	23,576	4,352	49,456
D.C.....	---	---	---	---	32,160
Va.....	56,516	14,340	70,856	5,143	34,870
W.Va.....	37,488	2,609	40,097	3,433	6,297
N.C.....	93,051	12,098	107,149	17,686	28,883
S.C.....	54,569	10,753	65,722	9,034	15,867
Ga.....	68,451	25,132	83,583	14,592	50,562
Fla.....	44,695	18,577	63,472	17,553	123,846
S.A.....	382,162	76,482	458,544	70,010	346,914
Ky.....	59,852	6,200	66,052	6,698	31,542
Tenn.....	55,540	7,803	64,243	10,615	42,483
Ala.....	57,411	10,026	67,437	10,659	36,604
Miss.....	59,491	6,846	66,317	17,300	10,619
S.S.C.....	232,274	33,873	266,149	41,300	121,108

See footnotes at end of table.

--Continued

Appendix table 3.--Distribution of occupied units that were crowded (more than one person per room) in rural areas, places of 2,500 to 10,000 persons outside urbanized areas in Farmers Home areas, in places of 10,000 to 50,000 persons outside urbanized areas, and in urbanized areas by States, 1970 1/--Continued

State and division	Rural areas <u>2</u> /	2,500 to 10,000 persons <u>3</u> /	Farmers Home areas <u>4</u> /	10,000 to 50,000 persons <u>5</u> /	Urbanized areas <u>6</u> /
-----Housing units-----					
Ark.....	38,874	7,222	46,096	9,652	9,999
La.....	59,916	15,229	75,145	13,130	64,165
Okla.....	26,437	6,839	33,276	7,326	21,322
Tex.....	88,092	36,489	124,581	35,718	338,812
W.S.C.....	213,319	65,779	279,098	65,826	322,717
Mont.....	11,990	3,030	15,020	2,453	3,304
Idaho.....	11,579	3,108	14,687	4,104	1,458
Wyo.....	4,714	2,018	6,732	2,437	---
Colo.....	14,658	4,146	18,804	2,770	26,397
N.Mex.....	21,170	5,494	26,664	9,546	8,961
Ariz.....	22,685	7,088	29,773	4,227	34,220
Utah.....	8,315	2,031	10,346	1,205	20,050
Nev.....	3,459	791	4,250	1,129	8,752
Mountain.....	98,570	27,706	126,276	27,871	103,142
Wash.....	23,417	4,489	23,692	5,940	26,444
Oreg.....	18,326	3,912	22,238	3,442	12,949
Calif.....	60,425	14,897	75,322	26,716	419,914
Alaska.....	10,373	2,083	12,456	3,034	---
Hawaii.....	7,135	4,494	11,629	5,260	23,573
Pacific.....	119,676	29,875	149,551	44,392	482,880
United States..	1,610,851	349,176	1,960,027	384,132	2,866,715

1/ to 6/ See appendix table 1.

Appendix table 4.--Distribution of occupied units that lacked complete plumbing and/or were crowded (more than one person per room) in rural areas, places of 2,500 to 10,000 persons outside urbanized areas in Farmers Home areas, in places of 10,000 to 50,000 persons outside urbanized areas, and in urbanized areas, by States, 1970 1/

State and division	Rural areas <u>2/</u>	2,500 to 10,000 persons <u>3/</u>	Farmers Home areas <u>4/</u>	10,000 to 50,000 persons <u>5/</u>	Urbanized areas <u>6/</u>
-----Housing units-----					
Maine.....	34,435	7,647	42,082	5,819	6,544
N.H.....	13,072	2,306	15,378	4,595	5,558
Vt.....	11,384	2,113	13,497	1,887	---
Mass.....	22,650	5,932	28,582	7,000	123,459
R.I.....	3,712	451	4,163	1,284	19,727
Conn.....	14,482	3,020	17,502	3,710	58,259
N.E.....	99,735	21,469	121,204	24,295	213,547
:					
N.Y.....	80,867	13,841	94,708	16,612	484,103
N.J.....	20,253	4,544	24,797	2,434	155,789
Pa.....	138,905	21,792	160,697	16,546	171,949
M.A.....	240,025	40,177	280,202	35,592	811,841
:					
Ohio.....	130,098	15,574	145,672	23,270	176,570
Ind.....	86,195	16,121	102,316	18,688	83,637
Ill.....	86,945	23,394	110,339	22,079	268,713
Mich.....	93,964	14,125	108,089	9,779	159,133
Wis.....	73,761	11,431	85,192	12,869	63,862
E.N.C.....	470,963	80,645	551,608	86,685	751,915
:					
Minn.....	75,347	11,583	86,930	10,246	56,101
Iowa.....	50,087	11,114	61,201	12,640	29,188
Mo.....	106,654	16,394	123,048	9,934	91,386
N.Dak.....	22,595	1,549	24,144	6,320	2,164
S.Dak.....	24,103	3,292	27,395	4,705	2,517
Nebr.....	22,914	3,756	26,670	5,098	17,034
Kans.....	32,867	5,401	38,268	12,538	20,220
W.N.C.....	334,567	53,089	387,656	61,481	218,610
:					
Del.....	7,874	1,098	8,972	345	6,013
Md.....	46,638	4,258	50,896	6,570	58,757
D.C.....	---	---	---	---	36,854
Va.....	164,544	17,743	182,287	8,757	49,541
W.Va.....	100,233	4,690	104,923	5,565	9,326
N.C.....	224,445	23,692	248,137	29,108	37,320
S.C.....	119,411	20,618	140,029	16,137	23,380
Ga.....	148,924	28,660	177,584	25,656	64,573
Fla.....	76,738	29,627	106,365	27,360	156,845
S.A.....	888,807	130,386	1,019,193	119,498	442,609
:					
Ky.....	184,851	12,627	197,478	11,696	40,425
Tenn.....	156,881	16,126	173,007	17,828	53,888
Ala.....	144,324	19,615	163,939	17,831	50,319
Miss.....	136,251	16,906	153,157	29,080	12,630
E.S.C.....	622,307	65,274	687,581	76,435	157,262
:					

See footnotes at end of table.

--Continued

Appendix table 4.--Distribution of occupied units that lacked complete plumbing and/or were crowded (more than one person per room) in rural areas, places of 2,500 to 10,000 persons outside urbanized areas in Farmers Home areas, in places of 10,000 to 50,000 persons outside urbanized areas, and in urbanized areas, by States, 1970 1/--Continued

State and division	Rural areas <u>2/</u>	2,500 to 10,000 persons <u>3/</u>	Farmers Home areas <u>4/</u>	10,000 to 50,000 persons <u>5/</u>	Urbanized areas <u>6/</u>
-----Housing units-----					
Ark.....	97,654	14,614	112,268	17,330	14,881
La.....	109,313	23,225	132,538	19,320	77,939
Okla.....	53,884	11,092	64,976	10,826	26,990
Tex.....	170,086	63,897	233,983	48,851	262,233
W.S.C.....	430,937	112,828	543,765	96,327	382,043
Mont.....	19,032	4,216	23,248	4,562	4,995
Idaho.....	15,872	3,991	19,863	5,461	1,969
Wyo.....	7,091	2,455	9,546	3,307	---
Colo.....	22,746	5,622	28,368	3,902	36,932
N.Mex.....	30,378	6,920	37,298	10,774	10,300
Ariz.....	28,109	8,304	36,413	4,961	39,910
Utah.....	10,084	2,250	12,334	1,340	22,976
Nev.....	4,820	1,059	5,879	1,193	10,798
Mountain.....	138,132	34,817	172,949	35,500	127,880
Wash.....	31,296	5,567	36,863	9,019	40,233
Oreg.....	25,449	5,170	30,619	5,095	21,501
Calif.....	73,546	30,346	103,892	31,007	484,189
Alaska.....	14,580	2,451	17,031	3,515	---
Hawaii.....	11,191	4,927	16,118	5,653	26,771
Pacific.....	156,062	48,461	204,523	54,289	572,694
United States..	3,381,535	587,146	3,968,681	590,102	3,678,401

1/ to 6/ See appendix table 2.

UNITED STATES DEPARTMENT OF AGRICULTURE
WASHINGTON, D. C. 20250

OFFICIAL BUSINESS
PENALTY FOR PRIVATE USE, \$300

POSTAGE AND FEES PAID
U.S. DEPARTMENT OF
AGRICULTURE

FIRST CLASS
AGR 101



END