



AgEcon SEARCH
RESEARCH IN AGRICULTURAL & APPLIED ECONOMICS

The World's Largest Open Access Agricultural & Applied Economics Digital Library

This document is discoverable and free to researchers across the globe due to the work of AgEcon Search.

Help ensure our sustainability.

Give to AgEcon Search

AgEcon Search
<http://ageconsearch.umn.edu>
aesearch@umn.edu

*Papers downloaded from **AgEcon Search** may be used for non-commercial purposes and personal study only. No other use, including posting to another Internet site, is permitted without permission from the copyright owner (not AgEcon Search), or as allowed under the provisions of Fair Use, U.S. Copyright Act, Title 17 U.S.C.*

SB 483 (1972)

USDA STATISTICAL BULLETINS

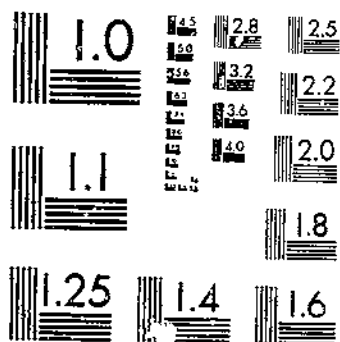
UPDATA

DOMESTIC SHIPMENTS OF U.S. COTTON, 1970-71 SEASON

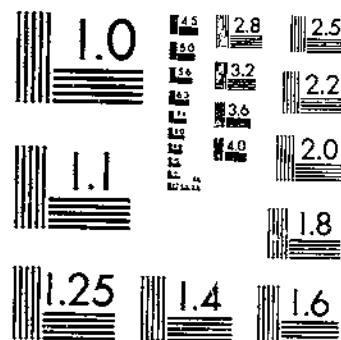
GHETTI, J. L.; LOONEY, Z. M.; HOLDER, S. H., JR.

1 OF 1

START



MICROCOPY RESOLUTION TEST CHART
NATIONAL BUREAU OF STANDARDS-1963-A



MICROCOPY RESOLUTION TEST CHART
NATIONAL BUREAU OF STANDARDS-1963-A

4636.5
953-13

5

DOMESTIC SHIPMENTS OF U.S. COTTON, 1970-71 Season

REFERENCE
DO NOT LOAN

APR 19 1972

Los Angeles - Library



ABSTRACT

A survey was made of Government-approved warehouses to determine flow of cotton during the 1970-71 season. Data were summarized to show major destinations by region, State, and mode of transportation. Of the nearly 11 million bales of cotton shipped during this season, nearly one-half went to the Southeastern mill area. U.S. ports were the next most important destination, with about 29 percent. Intrastate flows--mainly in the Southeastern mill area--accounted for about 12 percent of total shipments. Nearly 36 percent of all bales were shipped by truck and the remainder by rail. Truck shipments predominated in the Southeastern and Western regions. The most significant change in mode of transportation between 1961-62 and 1970-71 occurred in the Western Region, where truck shipments increased from about one-fifth to slightly over one-half.

Keywords: Cotton, Flow, Transportation, Distribution.

PREFACE

This report supersedes a similar type of survey made on cotton shipments--The Traffic Pattern of American Raw Cotton Shipments, Season 1961-62, Marketing Research Report 705, published by the Economic Research Service, U.S. Department of Agriculture, in April 1965. The current report is part of a continuing effort to maintain current cotton marketing statistics. Operators of all Government-approved warehouses in the Cotton Belt were surveyed by mail. About 84 percent of them completed schedules and the authors gratefully acknowledge their cooperation.

TABLES

Page

Table 1.--Southeastern Region: Shipments of cotton from warehouses, by destination and mode of transportation, 1970-71 season.....	2
Table 2.--South Central Region: Shipments of cotton from warehouses, by destination and mode of transportation, 1970-71 season.....	3
Table 3.--Southwestern Region: Shipments of cotton from warehouses, by destination and mode of transportation, 1970-71 season.....	4
Table 4.--Western Region: Shipments of cotton from warehouses, by destination and mode of transportation, 1970-71 season.....	5
Table 5.--Alabama: Shipments of cotton from warehouses, by destination and mode of transportation, 1970-71 season.....	6
Table 6.--Georgia: Shipments of cotton from warehouses, by destination and mode of transportation, 1970-71 season.....	7
Table 7.--North Carolina: Shipments of cotton from warehouses, by destination and mode of transportation, 1970-71 season.....	8
Table 8.--South Carolina: Shipments of cotton from warehouses, by destination and mode of transportation, 1970-71 season.....	9
Table 9.--Arkansas: Shipments of cotton from warehouses, by destination and mode of transportation, 1970-71 season.....	10
Table 10.--Louisiana: Shipments of cotton from warehouses, by destination and mode of transportation, 1970-71 season.....	11
Table 11.--Mississippi: Shipments of cotton from warehouses, by destination and mode of transportation, 1970-71 season.....	12
Table 12.--Missouri: Shipments of cotton from warehouses, by destination and mode of transportation, 1970-71 season.....	13
Table 13.--Tennessee: Shipments of cotton from warehouses, by destination and mode of transportation, 1970-71 season.....	14
Table 14.--Oklahoma: Shipments of cotton from warehouses, by destination and mode of transportation, 1970-71 season.....	15
Table 15.--Texas: Shipments of cotton from warehouses, by destination and mode of transportation, 1970-71 season.....	16
Table 16.--Arizona: Shipments of cotton from warehouses, by destination and mode of transportation, 1970-71 season.....	17
Table 17.--California: Shipments of cotton from warehouses, by destination and mode of transportation, 1970-71 season.....	18
Table 18.--New Mexico: Shipments of cotton from warehouses, by destination and mode of transportation, 1970-71 season.....	19
Table 19.--Shipments of cotton from producing States and regions, and U.S. total, by mode of transportation, 1970-71 season.....	20
Table 20.--Total cotton flow: Percentages producing States and regions contributed to total movements, by origin and mode of transportation, 1970-71 season.....	21
Table 21.--Primary flow of cotton from producing States and regions, and U.S. total, 1970-71 season.....	22

FIGURES

	<u>Page</u>
Figure 1.--Cotton shipments from Southeastern Region.....	23
Figure 2.--Cotton shipments from South Central Region.....	24
Figure 3.--Cotton shipments from Southwestern Region.....	25
Figure 4.--Cotton shipments from Western Region.....	26

DOMESTIC SHIPMENTS OF U.S. COTTON, 1970-71 SEASON

by

Joseph L. Ghetty, Zolon M. Looney, and Shelby H. Holder, Jr.,
Agricultural Economists, Marketing Economics Division

During the 1970-71 season, motor trucks transported nearly 36 percent of the 10.8 million bales of cotton shipped by warehouses whose operators supplied data for this report. The remaining 64 percent were carried by the Nation's railroads. Comparable figures from the earlier study superseded by this report show that 27 percent of all shipments in 1961-62 were made by motor vehicles and 73 percent by rail lines. Truck shipments were predominant in only two regions, the Southeast and West where 64.8 and 53.3 percent, respectively, of all shipments went by truck. The most significant change in transportation between 1961-62 and 1970-71 occurred in the West; the share carried by trucks increased from 19.6 to 53.3 percent. (See figures at end of tables.)

From a survey of Government-approved warehouses throughout the Cotton Belt, data on origins, destinations, number of bales, and mode of transportation were obtained for the 1970-71 season. The resulting tables show: (1) the major destinations to which cotton was shipped from various producing States, (2) the relative importance of rail and truck shipments, and (3) the shifts that have occurred during the past 10 years in the type of carrier used to transport cotton from warehouses. However, the total amount of shipments may not coincide exactly with production data for a State or region because a few approved warehouses did not respond. Moreover, some cotton from prior years entered the distribution channels, and some cotton moved directly from gin to mill. Finally, total shipment data included a substantial volume of reshipments.

In the Southeastern Region, intrastate shipments ranged from 35.9 percent of total shipments in Alabama to 88.6 percent in North Carolina. Interstate shipments went mainly to the Carolinas. Truck shipments within the Southeastern Region increased from 55 percent in 1961-62 to nearly 65 percent in 1970-71.

About 75 percent of total shipments from the South Central Region went to the Southeastern mill area during 1970-71, compared with about 70 percent in 1961-62. The proportion shipped by truck increased from 20.9 percent in the earlier period to 38.4 percent in 1970-71.

Of the 3.7 million bales originating in the Southwestern Region, 32 percent was shipped to the Southeastern mill area; 49.9 percent to Texas ports; and 12.4 percent to interior concentration points. The remainder went to points in other parts of the United States and Canada. Shipments by rail increased from 77.5 percent in 1961-62 to 86.3 percent in 1970-71.

Nearly 51 percent of all shipments from the Western Region moved to California ports in 1970-71, compared with 35.4 percent in 1961-62. As a result, shipments to the Southeastern mill area declined from 45.1 percent in 1961-62 to 38.4 percent in 1970-71, and those to Texas ports declined from 6.3 percent to 1.9 percent over the same period.

Table 1.--Southeastern Region: Shipments of cotton from warehouses, by destination and mode of transportation, 1970-71 season

Destination	Rail	Truck	Rail and truck	
	Bales	Bales	Bales	Percent
Southeastern mill area interstate shipments (excludes ports):				
Alabama.....	137,895	93,661	231,556	18.6
Georgia.....	56,558	64,110	120,668	9.7
North Carolina.....	2,847	17,655	20,502	1.6
South Carolina.....	36,427	71,830	108,257	8.7
Total.....	233,727	247,256	480,983	38.6
Southeastern mill area intrastate shipments (excludes ports):				
Alabama.....	49,997	94,432	144,429	11.6
Georgia.....	18,682	178,641	197,323	15.9
North Carolina.....	34,588	147,173	181,761	14.6
South Carolina.....	87,863	102,197	190,060	15.3
Virginia.....	--	1,200	1,200	.1
Total.....	191,130	523,643	714,773	57.5
Total mill area.....	424,857	770,899	1,195,756	96.1
New England, Eastern, and Midwestern States.....	573	--	573	4/
Interior concentration points 1/..	2/3,877	3/10,672	14,549	1.2
Canada.....	220	--	220	4/
Ports:				
Atlantic coast.....	885	200	1,085	.1
Central gulf.....	--	368	368	4/
Mobile, Ala., Pensacola and Panama City, Fla.	567	222	789	.1
Other 5/.....	7,379	23,630	31,009	2.5
Total shipments.....	438,358	805,991	1,244,349	100.0
	Percent	Percent	Percent	
Distribution.....	35.2	64.8	100.0	

1/ Nonconsuming establishments from which cotton is reshipped to final destinations.

2/ Mississippi, 266; Tennessee, 3,397; Texas, 214.

3/ Florida, 1,146; Louisiana, 2,581; Mississippi, 2,748; Missouri, 399; Tennessee, 3,795; Texas, 3.

4/ Less than 0.05 percent.

5/ Minor destinations and destinations designated as "other" by shipping warehouse.

Table 2.--South Central Region: Shipments of cotton from warehouses, by destination and mode of transportation, 1970-71 season

Destination	Rail	Truck	Rail and truck	
	<u>Bales</u>	<u>Bales</u>	<u>Bales</u>	<u>Percent</u>
Southeastern mill area:				
Alabama.....	161,656	140,859	302,515	7.5
Georgia.....	158,025	257,472	415,497	10.3
North Carolina.....	636,224	441,076	1,077,300	26.7
South Carolina.....	831,188	329,530	1,160,718	28.7
Virginia.....	46,327	19,925	66,252	1.6
Total mill area.....	1,833,420	1,188,862	3,022,282	74.8
New England, Eastern, and Mid- western States.....	26,465	313	26,778	.7
Interior concentration points <u>1/</u> ...	2/347,596	3/165,378	512,974	12.7
Canada.....	119,919	12,009	131,928	3.3
Ports:				
Atlantic coast.....	680	--	680	4/
Central gulf.....	130,539	148,381	278,920	6.9
Mobile, Ala.; Pensacola and Panama City, Fla.	1,393	4,585	5,978	.1
Western gulf.....	--	3,374	3,374	.1
Other <u>5/</u>	25,192	29,366	54,558	1.4
Total shipments.....	2,485,204	1,552,268	4,037,472	100.0
	<u>Percent</u>	<u>Percent</u>	<u>Percent</u>	
Distribution.....	61.6	38.4	100.0	

1/ Nonconsuming points from which cotton is reshipped to final destinations.

2/ Arkansas, 57,004; California, 604; Louisiana, 41,004; Mississippi, 52,128; Missouri, 5,314; Tennessee, 179,663; Texas, 11,879.

3/ Arkansas, 32,943; Louisiana, 36,777; Mississippi, 28,465; Missouri, 250; Tennessee, 43,674; Texas, 23,269.

4/ Less than 0.05 percent.

5/ Minor destinations and destinations designated as "other" by shipping warehouse.

Table 3.--Southwestern Region: Shipments of cotton from warehouses, by destination and mode of transportation, 1970-71 season

Destination	Rail	Truck	Rail and truck	
	Bales	Bales	Bales	Percent
Southeastern mill area:				
Alabama.....	381,171	8,413	389,584	10.6
Georgia.....	341,583	17,973	359,556	9.8
North Carolina.....	146,952	3,045	149,997	4.1
South Carolina.....	261,964	2,822	264,786	7.2
Virginia.....	9,215	388	9,603	.3
Total mill area.....	1,140,885	32,641	1,173,526	32.0
New England, Eastern, and Mid- western States.....	27,216	107	27,323	.7
Interior concentration points <u>1/</u> ...	2/336,312	3/117,474	453,786	12.4
Canada.....	118,957	710	119,667	3.3
Ports:				
Atlantic coast.....	21,367	2,434	23,801	.6
Central gulf.....	31,750	4,078	35,828	1.0
Western gulf.....	1,475,963	320,495	1,796,458	49.0
Pacific coast.....	5,208	18,889	24,097	.7
Other <u>4/</u>	5,992	3,297	9,289	.3
Total shipments.....	3,163,650	500,125	3,663,775	100.0
	Percent	Percent	Percent	
Distribution.....	86.3	13.7	100.0	

1/ Nonconsuming points from which cotton is reshipped to final destinations.

2/ Arkansas, 629; California, 354; Louisiana, 4,200; Mississippi, 4,805; Missouri, 1,430; Tennessee, 38,160; Texas, 286,734.

3/ Arkansas, 1,396; California, 78; Louisiana, 710; Mississippi, 182; Missouri, 80; Tennessee, 1,536; Texas, 113,492.

4/ Minor destinations and destinations designated as "other" by shipping warehouse.

Table 4.--Western Region: Shipments of cotton from warehouses, by destination and mode of transportation, 1970-71 season

Destination	Rail	Truck	Rail and truck	
	<u>Bales</u>	<u>Bales</u>	<u>Bales</u>	<u>Percent</u>
Southeastern mill area:				
Alabama.....	47,769	519	48,288	2.5
Georgia.....	79,327	8,933	88,260	4.6
North Carolina.....	314,750	14,441	329,191	17.3
South Carolina.....	237,468	8,801	246,269	13.0
Virginia.....	17,377	1,115	18,492	1.0
Total mill area.....	696,691	33,809	730,500	38.4
New England, Eastern, and Midwestern States.....	3,868	--	3,868	.2
Interior concentration points <u>1/</u> ...	<u>2/</u> 57,046	<u>3/</u> 28,335	85,381	4.5
Canada.....	5,208	--	5,208	.3
Ports:				
Central gulf.....	988	--	988	.1
Pacific coast.....	22,497	937,867	960,364	50.6
Western gulf.....	26,842	9,531	36,373	1.9
Other <u>4/</u>	73,546	3,109	76,655	4.0
Total shipments.....	886,686	1,012,651	1,899,337	100.0
	<u>Percent</u>	<u>Percent</u>	<u>Percent</u>	
Distribution.....	46.7	53.3	100.0	

1/ Nonconsuming points from which cotton is reshipped to final destinations.

2/ California, 2,282; Louisiana, 227; Mississippi, 659; Tennessee, 30,020; Texas, 23,858.

3/ California, 1,275; Tennessee, 4,364; Texas, 22,696.

4/ Minor destinations and destinations designated as "other" by shipping warehouse.

Table 5.--Alabama: Shipments of cotton from warehouses, by destination and mode of transportation, 1970-71 season

Destination	Rail	Truck	Rail and truck	
	<u>Bales</u>	<u>Bales</u>	<u>Bales</u>	<u>Percent</u>
Southeastern mill area:				
Georgia.....	29,987	65,121	95,108	23.6
North Carolina.....	85,171	8,762	93,933	23.3
South Carolina.....	22,508	19,731	42,239	10.5
Virginia.....	229	47	276	.1
Total mill area.....	137,895	93,661	231,556	57.5
New England, Eastern, and Midwestern States.....	--	--	--	--
Interior concentration points <u>1/</u> ..	2/651	3/5,300	5,951	1.5
Alabama (excluding ports).....	49,997	94,432	144,429	35.9
Canada.....	--	--	--	--
Ports:				
Atlantic coast.....	--	--	--	--
Central gulf.....	--	159	159	4/
Mobile, Ala., Pensacola and Panama City, Fla.	367	222	589	.1
Other <u>5/</u>	5,815	14,182	19,997	5.0
Total shipments.....	194,725	207,956	402,681	100.0
	<u>Percent</u>	<u>Percent</u>	<u>Percent</u>	
Distribution.....	48.4	51.6	100.0	

1/ Nonconsuming points within the Cotton Belt from which cotton is reshipped to final destinations.

2/ Includes shipments to Tennessee, 437; and Texas, 214.

3/ Includes shipments to Louisiana, 902; Mississippi, 2,371; Missouri, 399; and Tennessee, 1,628.

4/ Less than 0.05 percent.

5/ Minor destinations and destinations designated as "other" by shipping warehouse.

Table 6.--Georgia: Shipments of cotton from warehouses, by destination and mode of transportation, 1970-71 season

Destination	Rail	Truck	Rail and truck	
	<u>Bales</u>	<u>Bales</u>	<u>Bales</u>	<u>Percent</u>
Southeastern mill area:				
Alabama.....	22,913	26,449	49,362	14.9
Florida.....	--	1,146	1,146	.3
North Carolina.....	10,420	11,605	22,025	6.6
South Carolina.....	22,672	24,994	47,666	14.4
Virginia.....	553	1,062	1,615	.5
Total mill area.....	56,558	65,256	121,814	36.7
New England, Eastern, and Mid- western States.....	573	--	573	.2
Interior concentration points <u>1/</u> ...	<u>2/</u> 566	<u>3/</u> 2,993	3,559	1.1
Georgia (excluding ports).....	18,682	178,641	197,323	59.4
Ports:				
Atlantic coast.....	--	--	--	--
Central gulf.....	--	--	--	--
Mobile, Ala.; Pensacola and Panama City, Fla.	200	--	200	.1
Other <u>4/</u>	1,564	6,943	8,507	2.5
Total shipments.....	78,143	253,833	331,976	100.0
	<u>Percent</u>	<u>Percent</u>	<u>Percent</u>	
Distribution.....	23.5	76.5	100.0	

1/ Nonconsuming establishments from which cotton is reshipped to final destinations.

2/ Includes shipments to Mississippi, 266; and Tennessee, 300.

3/ Includes shipments to Louisiana, 1,679; Mississippi, 242; Tennessee, 1,069; and Texas, 3.

4/ Minor destinations and destinations designated as "other" by shipping warehouse.

Table 7.--North Carolina: Shipments of cotton from warehouses, by destination and mode of transportation, 1970-71 season

Destination	Rail	Truck	Rail and truck	
	Bales	Bales	Bales	Percent
Southeastern mill area:				
Alabama.....	--	548	548	0.2
Georgia.....	312	3,713	4,025	2.0
South Carolina.....	2,216	10,654	12,870	6.3
Virginia.....	319	2,740	3,059	1.5
Total mill area.....	2,847	17,655	20,502	10.0
New England, Eastern, and Mid- western States.....	--	--	--	--
Interior concentration points <u>1/</u> ...	<u>2/54</u>	<u>3/27</u>	81	<u>4/</u>
North Carolina (excluding ports)...	34,588	147,173	181,761	88.6
Canada.....	--	--	--	--
Atlantic coast ports.....	200	200	400	.2
Other <u>5/</u>	--	2,356	2,356	1.2
Total shipments.....	37,689	167,411	205,100	100.0
	Percent	Percent	Percent	
Distribution.....	18.4	81.6	100.0	

1/ Nonconsuming establishments from which cotton is reshipped to final destinations.

2/ Includes shipments to Tennessee, 54.

3/ Includes shipments to Tennessee, 27.

4/ Less than 0.05 percent.

5/ Minor destinations and destinations designated as "other" by shipping warehouse.

Table 8.--South Carolina: Shipments of cotton from warehouses, by destination and mode of transportation, 1970-71 season

Destination	Rail	Truck	Rail and truck	
	<u>Bales</u>	<u>Bales</u>	<u>Bales</u>	<u>Percent</u>
Southeastern mill area:				
Alabama.....	1,251	2,126	3,377	1.1
Georgia.....	5,488	10,331	15,819	5.2
North Carolina.....	29,450	55,228	84,678	27.9
Virginia.....	238	4,145	4,383	1.5
Total mill area.....	36,427	71,830	108,257	35.7
New England, Eastern, and Mid-western States.....	--	--	--	--
Interior concentration points <u>1/</u> ..	2/2,606	3/1,206	3,812	1.3
South Carolina (excluding ports)...	87,863	102,197	190,060	62.6
Canada.....	220	--	220	.1
Atlantic coast ports.....	685	--	685	.2
Other <u>4/</u>	--	358	358	.1
Total shipments.....	127,801	175,591	303,392	100.0
	<u>Percent</u>	<u>Percent</u>	<u>Percent</u>	
Distribution.....	42.1	57.9	100.0	

1/ Nonconsuming establishments from which cotton is reshipped to final destinations.

2/ Includes shipments to Tennessee, 2,606.

3/ Includes shipments to Mississippi, 135; and Tennessee, 1,071.

4/ Minor destinations and destinations designated as "other" by shipping warehouse.

Table 9.--Arkansas: Shipments of cotton from warehouses, by destination and mode of transportation, 1970-71 season

Destination	Rail	Truck	Rail and truck	
	Bales	Bales	Bales	Percent
Southeastern mill area:				
Alabama.....	24,749	27,993	52,742	4.3
Georgia.....	48,048	55,918	103,966	8.6
North Carolina.....	251,566	160,510	412,076	34.0
South Carolina.....	248,438	119,207	367,645	30.3
Virginia.....	9,456	5,989	15,445	1.3
Total mill area.....	582,257	369,617	951,874	78.5
New England, Eastern, and Midwestern States.....	3,588	--	3,588	.3
Interior concentration points <u>1/</u> ...	2/67,280	3/19,138	86,418	7.1
Arkansas.....	51,588	21,881	73,469	6.1
Canada.....	29,494	9,327	38,821	3.2
Ports:				
Central gulf.....	24,754	23,287	48,041	3.9
Mobile, Ala., Pensacola and Panama City, Fla.	--	--	--	--
Western gulf.....	--	908	908	.1
Other <u>4/</u>	6,464	3,874	10,338	.8
Total shipments.....	765,425	448,032	1,213,457	100.0
	Percent	Percent	Percent	
Distribution.....	63.1	36.9	100.0	

1/ Nonconsuming establishments from which cotton is reshipped to final destinations.

2/ Includes shipments to Louisiana, 7,329; Mississippi, 421; Missouri, 787; Tennessee, 55,404; and Texas, 3,339.

3/ Includes shipments to Louisiana, 3,068; Mississippi, 1,148; Missouri, 10; and Tennessee, 11,878; and Texas, 3,034.

4/ Minor destinations and destinations designated as "other" by shipping warehouse.

Table 10.--Louisiana: Shipments of cotton from warehouses, by destination and mode of transportation, 1970-71 season

Destination	Rail	Truck	Rail and truck	
	Bales	Bales	Bales	Percent
Southeastern mill area:				
Alabama.....	15,618	13,599	29,217	5.2
Georgia.....	23,159	24,997	28,156	8.5
North Carolina.....	52,139	39,882	92,021	16.3
South Carolina.....	132,097	25,003	157,100	27.9
Virginia.....	12,189	3,298	15,487	2.7
Total mill area.....	235,202	106,779	341,981	60.6
New England, Eastern, and Mid-				
western States.....	4,239	--	4,239	.8
Interior concentration points <u>1/</u> ...	<u>2/</u> 45,914	<u>3/</u> 14,176	60,090	10.7
Louisiana (excluding ports).....	27,682	6,062	33,744	6.0
Canada.....	33,474	--	33,474	5.9
Ports:				
Central gulf.....	50,950	37,859	88,809	15.8
Mobile, Ala., Pensacola and	--	--	--	--
Panama City, Fla.	--	--	--	--
Western gulf.....	--	--	--	--
Other <u>4/</u>	--	1,071	1,071	.2
Total shipments.....	397,461	165,947	563,408	100.0
	Percent	Percent	Percent	
Distribution.....	70.5	29.5	100.0	

1/ Nonconsuming establishments from which cotton is reshipped to final destinations.

2/ Includes shipments to Arkansas, 1,998; Mississippi, 9,678; Tennessee, 25,941; and Texas, 8,297.

3/ Includes shipments to Arkansas, 2,273; Mississippi, 1,073; Tennessee, 3,288; and Texas, 7,542.

4/ Minor destinations and destinations designated as "other" by shipping warehouse.

Table 11.--Mississippi: Shipments of cotton from warehouses, by destination and mode of transportation, 1970-71 season

Destination	Rail	Truck	Rail and truck	
	<u>Bales</u>	<u>Bales</u>	<u>Bales</u>	<u>Percent</u>
Southeastern mill area:				
Alabama.....	54,231	69,775	124,006	8.7
Georgia.....	49,782	135,287	185,069	13.0
North Carolina.....	150,928	149,455	300,383	21.2
South Carolina.....	271,537	146,451	417,988	29.5
Virginia.....	14,068	5,865	19,933	1.4
Total mill area.....	540,546	506,833	1,047,379	73.8
New England, Eastern, and Midwestern States.....	11,948	--	11,948	.8
Interior concentration points <u>1/</u> ...	2/81,618	3/49,315	130,933	9.2
Mississippi (excluding ports).....	40,022	22,590	62,612	4.4
Canada.....	32,986	2,682	35,668	2.5
Ports:				
Central gulf.....	33,753	68,199	101,952	7.2
Mobile, Ala., Pensacola and Panama City, Fla.	393	4,520	4,913	.4
Western gulf.....	--	2,466	2,466	.2
Other <u>4/</u>	4,605	16,904	21,509	1.5
Total shipments.....	745,871	673,509	1,419,380	100.0
	<u>Percent</u>	<u>Percent</u>	<u>Percent</u>	
Distribution.....	52.5	47.5	100.0	

1/ Nonconsuming establishments from which cotton is reshipped to final destinations.

2/ Includes shipments to Arkansas, 915; California, 604; Louisiana, 5,280; Tennessee, 74,676; and Texas, 143.

3/ Includes shipments to Arkansas, 7,387; Louisiana, 26,694; Missouri, 152; Tennessee, 10,810; and Texas, 4,272.

4/ Minor destinations and destinations designated as "other" by shipping warehouse.

Table 12.--Missouri: Shipments of cotton from warehouses, by destination and mode of transportation, 1970-71 season

Destination	Rail	Truck	Rail and truck	
	<u>Bales</u>	<u>Bales</u>	<u>Bales</u>	<u>Percent</u>
Southeastern mill area:				
Alabama.....	7,597	3,660	11,259	5.5
Georgia.....	7,685	9,568	17,253	8.4
North Carolina.....	48,757	23,915	72,672	35.3
South Carolina.....	49,753	11,562	61,315	29.8
Virginia.....	311	1,284	1,595	.8
Total mill area.....	114,103	49,989	164,092	79.8
New England, Eastern, and Mid- western States.....	651	--	651	.3
Interior concentration points <u>1/</u> ...	<u>2/</u> 18,362	<u>3/</u> 2,690	21,052	10.2
Missouri.....	4,527	42	4,569	2.2
Canada.....	7,680	--	7,680	3.7
Ports:				
Central gulf.....	3,313	2,113	5,426	2.6
Mobile, Ala., Pensacola and Panama City, Fla.	--	--	--	--
Western gulf.....	--	--	--	--
Other <u>4/</u>	1,797	771	2,568	1.2
Total shipments.....	150,433	55,605	206,038	100.0
	<u>Percent</u>	<u>Percent</u>	<u>Percent</u>	
Distribution.....	73.0	27.0	100.0	

1/ Nonconsuming establishments from which cotton is reshipped to final destinations.

2/ Includes shipments to Arkansas, 2,503; Louisiana, 713; and Tennessee, 15,146.

3/ Includes shipments to Arkansas, 279; Louisiana, 953; Mississippi, 23; Tennessee, 621; and Texas, 814.

4/ Minor destinations and destinations designated as "other" by shipping warehouse.

Table 13.--Tennessee: Shipments of cotton from warehouses, by destination and mode of transportation, 1970-71 season

Destination	Rail	Truck	Rail and truck	
	<u>Bales</u>	<u>Bales</u>	<u>Bales</u>	<u>Percent</u>
Southeastern mill area:				
Alabama.....	59,461	25,832	85,293	13.4
Georgia.....	29,351	31,702	61,053	9.6
North Carolina.....	132,834	67,314	200,148	31.5
South Carolina.....	129,363	27,307	156,670	24.7
Virginia.....	10,303	3,489	13,792	2.2
Total mill area.....	361,312	155,644	516,956	81.4
New England, Eastern, and Mid- western States.....	6,039	313	6,352	1.0
Interior concentration points <u>1/</u> ...	<u>2/</u> 2,107	<u>3/</u> 12,407	14,514	2.3
Tennessee.....	8,496	17,077	25,573	4.0
Canada.....	16,285	--	16,285	2.6
Ports:				
Central gulf.....	17,769	16,923	34,692	5.5
Mobile, Ala., Pensacola and Panama City, Fla.	1,000	65	1,065	.1
Western gulf.....	--	--	--	--
Other <u>4/</u>	13,006	6,746	19,752	3.1
Total shipments.....	426,014	209,175	635,189	100.0
	<u>Percent</u>	<u>Percent</u>	<u>Percent</u>	
Distribution.....	67.1	32.9	100.0	

1/ Nonconsuming establishments from which cotton is reshipped to final destinations.

2/ Includes shipments to Mississippi, 2,007; and Texas, 100.

3/ Includes shipments to Arkansas, 1,123; Mississippi, 3,631; Missouri, 46; and Texas, 7,607.

4/ Minor destinations and destinations designated as "other" by shipping warehouse.

Table 14.--Oklahoma: Shipments of cotton from warehouses, by destination and mode of transportation, 1970-71 season

Destination	Rail	Truck	Rail and truck	
	<u>Bales</u>	<u>Bales</u>	<u>Bales</u>	<u>Percent</u>
Southeastern mill area:				
Alabama.....	20,430	1,275	21,705	11.0
Georgia.....	33,092	6,942	40,034	20.3
North Carolina.....	10,018	424	10,442	5.3
South Carolina.....	16,008	252	16,260	8.3
Virginia.....	--	--	--	--
Total mill area.....	79,548	8,893	88,441	44.9
New England, Eastern, and Mid-				
western States.....	3,329	--	3,329	1.7
Interior concentration points <u>1/</u> ...	<u>2/</u> 8,410	<u>3/</u> 271	8,681	4.4
Canada.....	1,134	--	1,134	.6
Ports:				
Central gulf.....	--	--	--	--
Western gulf.....	88,098	6,378	94,476	47.9
Other <u>4/</u>	384	639	1,023	.5
Total shipments.....	180,903	16,181	197,084	100.0
	<u>Percent</u>	<u>Percent</u>	<u>Percent</u>	
Distribution.....	91.8	8.2	100.0	

1/ Nonconsuming establishments from which cotton is reshipped to final destinations.

2/ Includes shipments to Mississippi, 152; Tennessee, 2,245; and Texas, 6,013.

3/ Includes shipments to Tennessee, 1; and Texas, 270.

4/ Minor destinations and destinations designated as "other" by shipping warehouse.

Table 15.--Texas: Shipments of cotton from warehouses, by destination and mode of transportation, 1970-71 season

Destination	Rail	Truck	Rail and truck	
	<u>Bales</u>	<u>Bales</u>	<u>Bales</u>	<u>Percent</u>
Southeastern mill area:				
Alabama.....	360,741	7,138	367,879	10.6
Georgia.....	308,491	11,031	319,522	9.2
North Carolina.....	136,934	2,621	139,555	4.0
South Carolina.....	245,956	2,570	248,526	7.2
Virginia.....	9,215	388	9,603	.3
Total mill area.....	1,061,337	23,748	1,085,085	31.3
New England, Eastern, and Mid- western States.....	23,887	107	23,994	.7
Interior concentration points ^{1/} ...	2/47,181	3/3,981	51,162	1.5
Texas (excluding ports).....	280,721	113,222	393,943	11.4
Canada.....	117,823	710	118,533	3.4
Ports:				
Atlantic coast.....	21,367	2,434	23,801	.7
Pacific coast.....	5,208	18,889	24,097	.7
Central gulf.....	31,750	4,078	35,828	1.0
Western gulf.....	1,387,865	314,117	1,701,982	49.1
Other ^{4/}	5,608	2,658	8,266	.2
Total shipments.....	2,982,747	483,944	3,466,691	100.0
	<u>Percent</u>	<u>Percent</u>	<u>Percent</u>	
Distribution.....	86.0	14.0	100.0	

^{1/} Nonconsuming establishments from which cotton is reshipped to final destinations.

^{2/} Includes shipments to Arkansas, 629; California, 354; Louisiana, 4,200; Mississippi, 4,653; Missouri, 1,430; and Tennessee, 35,915.

^{3/} Includes shipments to Arkansas, 1,396; California, 78; Louisiana, 710; Mississippi, 182; Missouri, 80; and Tennessee, 1,535.

^{4/} Minor destinations and destinations designated as "other" by shipping warehouse.

Table 16.--Arizona: Shipments of cotton from warehouses, by destination and mode of transportation, 1970-71 season

Destination	Rail	Truck	Rail and truck	
	<u>Bales</u>	<u>Bales</u>	<u>Bales</u>	<u>Percent</u>
Southeastern mill area:				
Alabama.....	2,604	32	2,636	0.5
Georgia.....	23,642	3,810	27,452	4.5
North Carolina.....	26,183	1,727	27,910	4.6
South Carolina.....	17,841	1,009	18,850	3.1
Virginia.....	5,248	915	6,163	1.0
Total mill area.....	75,518	7,493	83,011	13.7
New England, Eastern, and Mid- western States.....	--	--	--	--
Interior concentration points <u>1/</u> ..	<u>2/13,875</u>	<u>3/9,807</u>	23,682	3.9
Canada.....	--	--	--	--
Ports:				
Central gulf.....	--	--	--	--
Pacific coast.....	19,797	437,727	457,524	75.2
Western gulf.....	23,730	470	24,200	4.0
Other <u>4/</u>	17,447	2,289	19,736	3.2
Total shipments.....	150,367	457,786	608,153	100.0
	<u>Percent</u>	<u>Percent</u>	<u>Percent</u>	
Distribution.....	24.7	75.3	100.0	

1/ Nonconsuming establishments from which cotton is reshipped to final destinations.

2/ Includes shipments to California, 1,231; Tennessee, 6,332; and Texas, 6,312.

3/ Includes shipments to California, 264; Tennessee, 53; and Texas, 9,490.

4/ Minor destinations and destinations designated as "other" by shipping warehouse.

Table 17.--California: Shipments of cotton from warehouses, by destination and mode of transportation, 1970-71 season

Destination	Rail	Truck	Rail and truck	
	<u>Bales</u>	<u>Bales</u>	<u>Bales</u>	<u>Percent</u>
Southeastern mill area:				
Alabama.....	41,130	445	41,575	3.5
Georgia.....	44,911	4,677	49,588	4.2
North Carolina.....	274,033	12,668	286,701	24.4
South Carolina.....	179,452	7,693	187,145	15.9
Virginia.....	11,829	200	12,029	1.0
Total mill area.....	551,355	25,683	577,038	49.0
New England, Eastern, and Mid- western States.....	1,868	--	1,868	.2
Interior concentration points <u>1/</u> ...	<u>2/</u> 34,686	<u>3/</u> 11,663	46,349	4.0
California (excluding ports).....	1,051	975	2,026	.2
Canada.....	5,007	--	5,007	.4
Ports:				
Central gulf.....	--	--	--	--
Pacific coast.....	750	487,939	488,689	41.5
Western gulf.....	--	--	--	--
Other <u>4/</u>	55,131	165	55,296	4.7
Total shipments.....	649,848	526,425	1,176,273	100.0
	<u>Percent</u>	<u>Percent</u>	<u>Percent</u>	
Distribution.....	55.2	44.8	100.0	

1/ Nonconsuming establishments from which cotton is reshipped to final destinations.

2/ Includes shipments to Louisiana, 27; Tennessee, 22,093; and Texas, 12,366.

3/ Includes shipments to Tennessee, 4,246; and Texas, 7,417.

4/ Minor destinations and destinations designated as "other" by shipping warehouse.

Table 18.--New Mexico: Shipments of cotton from warehouses, by destination and mode of transportation, 1970-71 season

Destination	Rail	Truck	Rail and truck	
	<u>Bales</u>	<u>Bales</u>	<u>Bales</u>	<u>Percent</u>
Southeastern mill area:				
Alabama.....	4,035	42	4,077	3.5
Georgia.....	10,774	446	11,220	9.8
North Carolina.....	14,534	46	14,580	12.7
South Carolina.....	40,175	99	40,274	35.0
Virginia.....	300	--	300	.3
Total mill area.....	69,818	633	70,451	61.3
New England, Eastern, and Mid-western States.....	2,000	--	2,000	1.7
Interior concentration points <u>1/</u> ...	<u>2/7,434</u>	<u>3/5,890</u>	13,324	11.6
Canada.....	201	--	201	.2
Ports:				
Central gulf.....	988	--	988	.9
Pacific coast.....	1,950	12,201	14,151	12.3
Western gulf.....	3,112	9,061	12,173	10.6
Other <u>4/</u>	968	655	1,623	1.4
Total shipments.....	86,471	28,440	114,911	100.0
	<u>Percent</u>	<u>Percent</u>	<u>Percent</u>	
Distribution.....	75.3	24.7	100.0	

1/ Nonconsuming establishments from which cotton is reshipped to final destinations.

2/ Includes shipments to Mississippi, 659; Tennessee, 1,595; and Texas, 5,180.

3/ Includes shipments to California, 36; Tennessee, 65; and Texas, 5,789.

4/ Minor destinations and destinations designated as "other" by shipping warehouse.

Table 19.--Shipments of cotton from producing States and regions, and U.S. total, by mode of transportation, 1970-71 season

Origin	Total bales	Bales shipped by--		Percentage shipped by--	
		Rail	Truck	Rail	Truck
	<u>Bales</u>	<u>Bales</u>	<u>Bales</u>	<u>Percent</u>	<u>Percent</u>
Southeastern Region:					
Alabama.....	402,681	194,725	207,956	48.4	51.6
Georgia.....	331,976	78,143	253,833	23.5	76.5
North Carolina.....	205,100	37,689	167,411	18.4	81.6
South Carolina.....	303,392	127,801	175,591	42.1	57.9
Virginia.....	1,200	--	1,200	--	100.0
Total.....	1,244,349	438,358	805,991	35.2	64.8
South Central Region:					
Arkansas.....	1,213,457	765,425	448,032	63.1	36.9
Louisiana.....	563,408	397,461	165,947	70.5	29.5
Mississippi.....	1,419,380	745,871	673,509	52.5	47.5
Missouri.....	206,038	150,433	55,605	73.0	27.0
Tennessee.....	635,189	426,014	209,175	67.1	32.9
Total.....	4,037,472	2,485,204	1,551,818	61.6	38.4
Southwestern Region:					
Oklahoma.....	197,084	180,903	16,181	91.8	8.2
Texas.....	3,466,691	2,982,747	483,944	86.0	14.0
Total.....	3,663,775	3,163,650	500,125	86.3	13.7
Western Region:					
Arizona.....	608,153	150,367	457,786	24.7	75.3
California.....	1,176,273	649,848	526,425	55.2	44.8
New Mexico.....	114,911	86,471	28,440	75.3	24.7
Total.....	1,899,337	886,686	1,012,651	46.7	53.3
U.S. total.....	10,844,933	6,973,898	3,871,035	64.3	35.7

Table 20.--Total cotton flow: Percentages producing States and regions contributed to total movements, by origin and mode of transportation, 1970-71 season

Origin	Rail	Truck
	<u>Percent</u>	
Southeastern Region:		
Alabama.....	2.8	5.4
Georgia.....	1.1	6.6
North Carolina.....	.5	4.3
South Carolina.....	1.8	4.5
Virginia.....	--	<u>1/</u>
South Central Region:		
Arkansas.....	11.0	11.6
Louisiana.....	5.7	4.3
Mississippi.....	10.7	17.4
Missouri.....	2.2	1.4
Tennessee.....	6.1	5.4
Southwestern Region:		
Oklahoma.....	2.6	.4
Texas.....	42.8	12.6
Western Region:		
Arizona.....	2.2	11.8
California.....	9.3	13.6
New Mexico.....	1.2	.7
Total.....	100.0	100.0

1/ Less than 0.05 percent.

Table 21.--Primary flow of cotton from producing States and regions, and U.S. total, 1970-71 season

Origin	Intrastate (excluding ports)	Interior concentration points 1/	South- eastern mill area	Ports	New England, Eastern, and Midwestern States	Canada	Other 2/	Total for each origin
	Bales Pct.	Bales Pct.	Bales Pct.	Bales Pct.	Bales Pct.	Bales Pct.	Bales Pct.	Bales Pct.
Southeastern Region:								
Alabama.....	144,429 35.9	5,951 1.5	231,556 57.5	748 0.1	-- --	-- --	19,997 5.0	402,681 100.0
Georgia.....	197,323 59.4	3,559 1.1	121,814 36.7	200 .1	573 .2	-- --	8,177 2.5	331,976 100.0
North Carolina.....	181,761 88.6	81 3/	20,502 10.0	400 .2	-- --	-- --	2,300 1.2	205,100 100.0
South Carolina.....	190,060 62.6	3,812 1.3	108,257 35.7	685 .2	-- --	220 .1	358 .1	303,392 100.0
Virginia.....	1,200 100.0	-- --	-- --	-- --	-- --	-- --	-- --	1,200 100.0
Total.....	714,773 57.4	13,403 1.1	482,129 38.7	2,033 .2	573 .1	220 --	31,218 2.5	1,244,349 100.0
South Central Region:								
Alabama.....	73,469 6.1	86,418 7.1	951,874 78.4	48,949 4.0	3,588 .3	38,821 3.2	10,338 .9	1,213,457 100.0
Louisiana.....	33,744 6.0	60,090 10.7	341,981 60.7	88,809 15.8	4,239 .7	33,474 5.9	1,071 .2	563,408 100.0
Mississippi.....	62,612 4.4	130,933 9.2	1,047,379 73.8	109,331 7.7	11,948 .9	35,668 2.5	21,509 1.5	1,419,380 100.0
Missouri.....	4,569 2.2	21,052 10.2	164,092 79.7	5,426 2.6	651 .3	7,680 3.8	2,568 1.2	206,038 100.0
Tennessee.....	25,573 4.0	14,514 2.3	516,956 81.4	35,757 5.6	6,352 1.0	16,285 2.6	19,752 3.1	635,189 100.0
Total.....	199,967 4.9	313,007 7.7	3,022,282 74.9	288,272 7.1	26,778 .7	131,928 3.3	55,238 1.4	4,037,472 100.0
Southwestern Region:								
Oklahoma.....	-- --	8,681 4.4	88,441 44.9	94,476 47.9	3,329 1.7	1,134 .6	1,023 .5	197,084 100.0
Texas.....	393,943 11.4	51,162 1.5	1,085,085 31.3	1,785,708 51.5	23,994 .7	118,533 3.4	8,266 .2	3,466,691 100.0
Total.....	393,943 10.8	59,843 1.6	1,173,526 32.0	1,880,184 51.3	27,323 .7	119,667 3.3	9,289 .3	3,663,775 100.0
Western Region:								
Arizona.....	-- --	23,682 3.9	83,011 13.7	481,724 79.2	-- --	-- --	19,736 3.2	608,153 100.0
California.....	2,026 .2	46,349 3.9	577,038 49.1	488,689 41.5	1,868 .2	5,007 .4	55,296 4.7	1,176,273 100.0
New Mexico.....	-- --	13,324 11.6	70,451 61.3	27,312 23.8	2,000 1.7	201 .2	1,623 1.4	114,911 100.0
Total.....	2,026 .1	83,355 4.4	730,500 38.5	997,725 52.5	3,868 .2	5,208 .3	76,655 4.0	1,899,337 100.0
U.S. total.....	1,310,709 12.1	469,608 4.3	5,408,437 49.9	3,168,214 29.2	58,542 .5	257,023 2.4	172,400 1.6	10,844,933 100.0

1/ Nonconsuming establishments from which cotton is reshipped to final destinations.

2/ Minor destinations and destinations designated as "other" by shipping warehouse.

3/ Less than 0.05 percent.

ALABAMA

% BY TRUCK
% OF STATE TOTAL % BY RAIL

35.9 65.4
34.6 Intrastate

23.6 68.5
31.5 Georgia

33.9 83.5
16.5 Carolinas
& Virginia

0.2 37.7
62.3 Ports

6.4 75
25 Other

GEORGIA

59.4 90.5
9.5 Intrastate

14.9 53.6
46.4 Alabama

21.5 52.8
47.2 Carolinas
& Virginia

0.1 100 Ports

4.1 80.4
19.6 Other

COTTON SHIPMENTS FROM SOUTHEASTERN REGION

SOUTH CAROLINA

% BY TRUCK 1,244,349 BALS
% BY RAIL % OF STATE TOTAL

Intrastate 53.8
46.2 62.6

Alabama
& Georgia 64.9
35.1 6.3

Carolinas
& Virginia 66.7
33.3 29.4

Other 30.9
69.1 1.7

NORTH CAROLINA

Intrastate 81
19 88.6

Alabama
& Georgia 93.2
6.8 2.2

Carolinas
& Virginia 84.1
15.9 7.8

Ports 50
50 0.2

Other 97.8
2.2 1.2

*Virginia's total
1,260 Bales
was all Intrastate
was not shown.

As reported by
Government approved
warehouses in
Alabama, Georgia,
North Carolina,
South Carolina,
and Virginia,
1970-71 season.



2,681 BALES



303,392 BALS

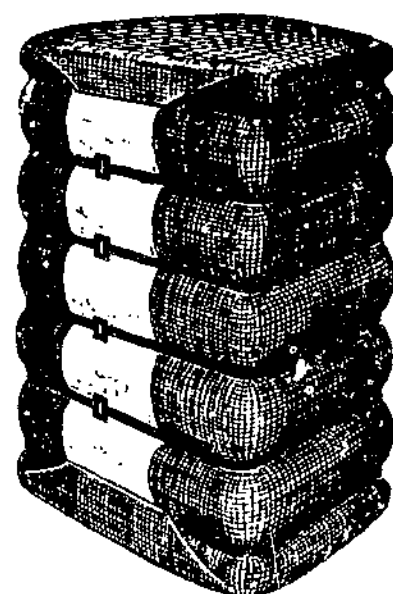
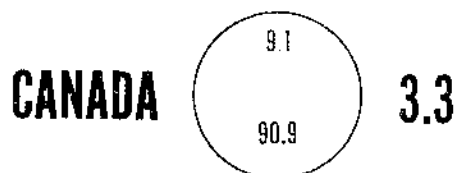
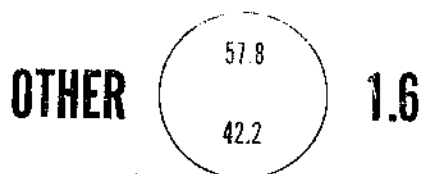
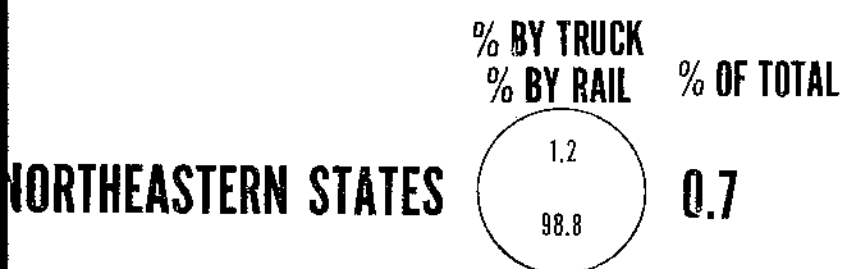


31,976 BALES



205,100 BALS

COTTON SHIPMENTS FROM SOUTH CENTRAL REGION

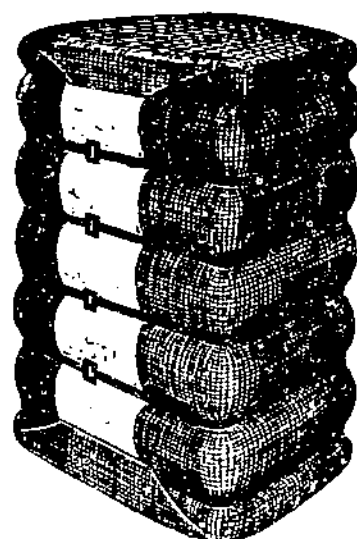


4,037,472 BALES

As reported by Government-approved warehouses in Arkansas, Louisiana, Mississippi, Missouri, and Tennessee, 1970-71 season.

COTTON SHIPMENTS FROM SOUTHWESTERN REGION

	% BY TRUCK % BY RAIL	% OF TOTAL
OTHER	35.5 64.5	0.3
NORTHEASTERN STATES	0.4 99.6	0.7
OTHER PORTS	30.3 69.7	2.3
CANADA	0.1 99.9	3.3
CAROLINAS & VIRGINIA	1.5 98.5	11.6
INTERIOR CONCENTRATION POINTS	25.9 74.1	12.4
ALABAMA & GEORGIA	3.6 96.4	20.4
TEXAS PORTS	17.9 82.1	49.0



3,663,775 BALES

As reported by Government-approved warehouses in Oklahoma and Texas, 1970-71 season.

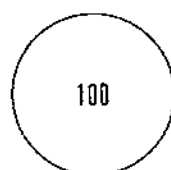
COTTON SHIPMENTS FROM WESTERN REGION

% BY TRUCK

% BY RAIL

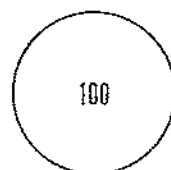
% OF TOTAL

NORTHEASTERN STATES



0.2

CANADA



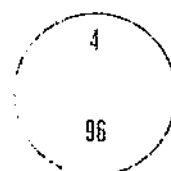
0.3

TEXAS PORTS



1.9

OTHER



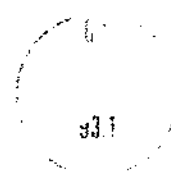
4.1

INTERIOR
CONCENTRATION POINTS



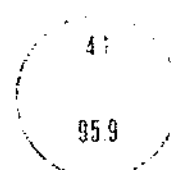
4.5

ALABAMA & GEORGIA



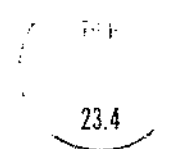
7.2

CAROLINAS & VIRGINIA

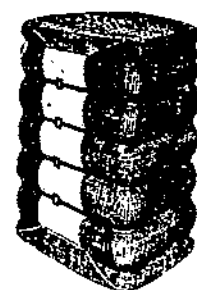


31.2

CALIFORNIA PORTS



50.6



1,899,337 BALES

As reported by Government-approved warehouses in Arizona, California, and New Mexico, 1970-71 season

RELATED REPORTS

- (1) Bennett, Charles A., and Wright, J. W. The Compression of Cotton and Related Problems. Agr. Mktg. Serv. and Bur. Agr. Chem. and Engin., U.S. Dept. Agr., Nov. 1940.
- (2) Davis, Dan R. The Traffic Pattern of Ginned Cotton, Cottonseed, and Cottonseed Products Transported in Texas by Railway, Highway, and Waterway for 1952-53. Texas Transportation Institute, Bul. 4, Dec. 1956. (Out of print; may be consulted in libraries.)
- (3) McLure, J. H., and Wright, J. W. The Distribution of American Raw Cotton, Season 1932-33. Bur. Agr. Econ., U.S. Dept. Agr., Jan. 1937. (Out of print; may be consulted in libraries.)
- (4) Railroad Committee for the Study of Transportation. Raw Cotton and Cotton Linters. Assoc. Amer. Railroads, 1944.

UNITED STATES DEPARTMENT OF AGRICULTURE
WASHINGTON, D. C. 20250

OFFICIAL BUSINESS
PENALTY FOR PRIVATE USE, \$300

POSTAGE AND FEES PAID
U.S. DEPARTMENT OF
AGRICULTURE



END