



AgEcon SEARCH
RESEARCH IN AGRICULTURAL & APPLIED ECONOMICS

The World's Largest Open Access Agricultural & Applied Economics Digital Library

This document is discoverable and free to researchers across the globe due to the work of AgEcon Search.

Help ensure our sustainability.

Give to AgEcon Search

AgEcon Search
<http://ageconsearch.umn.edu>
aesearch@umn.edu

*Papers downloaded from **AgEcon Search** may be used for non-commercial purposes and personal study only. No other use, including posting to another Internet site, is permitted without permission from the copyright owner (not AgEcon Search), or as allowed under the provisions of Fair Use, U.S. Copyright Act, Title 17 U.S.C.*

SB 479 (1972)

USDA STATISTICAL BULLETINS

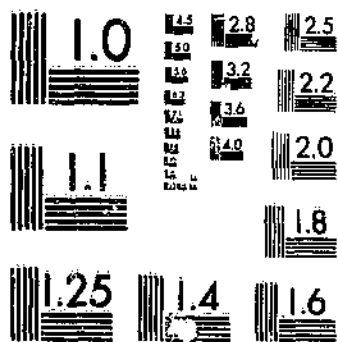
UPDATA

STATISTICAL SUMMARY OF CHARGES FOR BINNING COTTON . . . 1955-6 THROUGH 1970-1

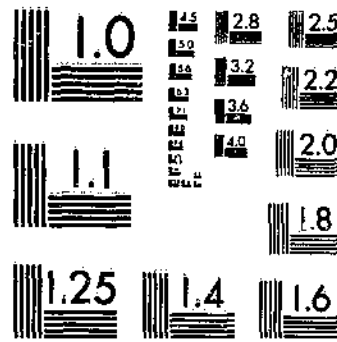
GHETTI, J. L., LODNEY, Z. M.

1 OF 1

START



MICROCOPY RESOLUTION TEST CHART
NATIONAL BUREAU OF STANDARDS-1963-A



MICROCOPY RESOLUTION TEST CHART
NATIONAL BUREAU OF STANDARDS-1963-A

© UPDATA 1981

R 620.5
US3-13

STATISTICAL BULLETIN NO. 479

DEPOSITORY

APR 5 1972

Los Angeles Public Library

REFERENCE
DO NOT LOAN

**Statistical Summary of
Charges for Ginning Cotton and
Selected Services, and
Related Information,
Seasons 1955-56
Through 1970-71**

U.S. DEPARTMENT OF AGRICULTURE • ECONOMIC RESEARCH SERVICE

© UPDATA 1981

ABSTRACT

Charges for ginning cotton and related services for seasons 1955-56 to 1970-71 are presented in tabular form. In this 16-year period, charges for ginning and wrapping a bale of cotton increased from \$12.75 to \$19.40, while those for bagging and ties rose from \$3.69 to \$6.04 a bale. The method of harvest partly accounts for increases in total ginning charges. Hand-picking, once predominant, declined from 54 percent in 1955-56 to only 2 percent in 1970-71, while mechanical harvesting reached an all-time high of 98 percent in 1970-71, necessitating more cleaning at the gin. Nearly all gins now have one or two stages of drying equipment and lint cleaners, with a few having as many as four.

Key Words: Cotton, Ginning, Harvesting, Production, Storage, Charges, Bagging and Ties, Cleaners, Driers.

PREFACE

This report summarizes annual data from the 1955-56 season to 1970-71, published jointly by the Economic Research Service and Consumer and Marketing Service, U.S. Department of Agriculture (USDA), or their predecessor agencies. Summaries for the period 1928-29 through 1954-55 were published in 1937, 1942, 1947, and 1956. Prior to 1953-54, the Cotton Branch of the former Production and Marketing Administration, USDA, collected and reported information.

The authors gratefully acknowledge the cooperation of ginners throughout the Cotton Belt in making information available and the efforts of field personnel of the Cotton Division, Consumer and Marketing Service, in selecting representative ginners and in collecting data.

Washington, D. C. 20250

February 1972

LIST OF TABLES

<u>Number</u>		<u>Page</u>
1	Average charge per 500-pound bale of upland cotton, by region, seasons 1955-56 through 1970-71	3
2	Percentage of upland cotton harvested by various methods, United States, seasons 1955-56 through 1970-71	3
3	Cotton production, number of active gins, and average volume per gin, United States, seasons 1910-11 through 1970-71	4
4	Amount of saw-ginned upland cotton in running bales, by State and region, seasons 1955-56 through 1970-71	5
5	Proportionate use of four methods of assessing ginning charges, by State and region, season 1966-67	6
6	Estimated average charge per bale for ginning upland cotton, by State and region, seasons 1955-56 through 1970-71	7
7	Average charges for ginning upland cotton, farm value of cottonseed and cotton lint, and percentage of farm values represented by ginning charges, United States, seasons 1955-56 through 1970-71	8
8	Bagging and ties: Average charge, when assessed separately, per 500-pound bale of upland cotton, by region, seasons 1955-56 through 1970-71	8
9	Sixteen-year average charge for ginning and bagging and ties, and percentage of total ginning charge represented by bagging and ties charges, by State and region, seasons 1955-56 through 1970-71	9
10	American Pima cotton: Production and average charge per bale for ginning and wrapping, United States, seasons 1955-56 through 1970-71	10
11	Hand-picked cotton: Average pounds of seed cotton required per 500-pound bale of upland cotton, by State, seasons 1955-56 through 1970-71	11
12	Hand-snapped cotton: Average pounds of seed cotton required per 500-pound bale of upland cotton, by State, seasons 1955-56 through 1970-71	12
13	Machine-picked cotton: Average pounds of seed cotton required per 500-pound bale of upland cotton, by State, seasons 1955-56 through 1970-71	13

<u>Number</u>		<u>page</u>
14	Machine-stripped and -scrapped cotton: Average pounds of seed cotton required per 500-pound bale of upland cotton, United States, seasons 1955-56 through 1970-71	14
15	Driers: Number of active gins and stages of driers, by State and region, 1957, 1963, and 1969	15
16	Proportion of gins with specified equipment, by region, seasons 1955-56, 1961-62, and 1969-70	16
17	Lint cleaners: Number of active gins and stages of lint cleaning, by State and region, 1960, 1963, and 1969	17
18	Mechanical samplers: Number of gins and number and percentage of gins with mechanical samplers, United States, 1959-69	18
19	Proportion of cotton purchased by ginners, by State and region, seasons 1955-56 through 1970-71	19
20	Proportion of total cotton production marketed by growers through Government loans and by sale to ginners, United States, seasons 1955-56 through 1970-71	20
21	Proportion of cottonseed purchased by ginners from growers according to specified methods of determining cottonseed weight, by State and region, seasons 1944-45, 1954-55, and 1966-67	21
22	Receiving, storing, and compressing: Average charge per 500-pound bale of upland cotton, United States, seasons 1955-56 through 1970-71	22

STATISTICAL SUMMARY OF
CHARGES FOR GINNING COTTON AND SELECTED
SERVICES, AND RELATED INFORMATION,
SEASONS 1955-56 THROUGH 1970-71

by

Joseph L. Ghatti and Zolon M. Looney
Agricultural Economists
Marketing Economics Division
Economic Research Service

Ginning in the United States represents a significant cost to cotton farmers--averaging \$205 million a year since the 1955-56 season. Average charges per 500-pound bale for ginning increased progressively from \$12.75 in 1955-56 to \$19.40 in 1970-71, with the West displaying the biggest jump from \$13.66 in 1955-56 to \$22.43 in 1970-71. Average charges per 500-pound bale for bagging and ties also rose in this 16-year period from \$3.69 to \$6.04, with the Southwest showing the largest increase from \$3.75 to \$6.55.

Significant trends in ginning or affecting ginning for the period 1955-56 to 1970-71, in addition to increased costs per bale both for ginning and bagging and ties, are: (1) Proportion of cotton harvested mechanically jumped from 23 to 98 percent while that of hand-picked cotton dropped to only 2 percent; (2) total cotton production declined, somewhat sporadically, from 14.7 to 10.1 million bales; (3) number of active gins dropped from 6,929 to 3,754, but the percentage with specified equipment such as bur extractors, stick machines, and mechanical samplers increased; (4) drying and cleaning equipment to process mechanically harvested cotton increased tremendously--nearly all gins now have one or two stages of drying equipment and one or two stages of lint cleaners, and some have three or four; (5) cotton purchased by ginners increased sporadically from 19.0 to 30.0 percent of the crop. The increase in auxiliary equipment has raised the charges for ginning by requiring more investment, energy, labor, and repairs.

Production of American Pima cotton climbed steadily from 41,460 bales in 1955-56 to 161,211 bales in 1963-64, but decreased to 57,131 in 1970-71. The cost of ginning this cotton increased from \$21.27 per 500-pound bale to \$30.61 during this 16-year period.

The average number of pounds of hand-picked, hand-snapped, and machine-picked seed cotton required per 500-pound bale of upland cotton has not varied much from 1955-56 to 1970-71. Hand-picked cotton required 1,381 pounds in 1955-56, reached a high of 1,430 in 1957-58, and dropped to 1,373 in 1970-71. The amount of hand-snapped cotton required averaged 1,934 pounds in 1955-56, rose to 2,322 in 1967-68, and decreased to 1,986 in 1970-71. Machine-picked

cotton required 1,489 pounds in 1955-56 and 1,472 in 1970-71; its high point was an average of 1,568 pounds in 1969-70.

Automatic sampling of ginned lint during ginning has also become a reality, despite its lack of widespread adoption by the industry. Gins with mechanical samplers numbered 116 in 1959 and 203 in 1966, but decreased to only 139 in 1969.

Per bale charges for receiving, storing, and compressing cotton at warehouses increased substantially from 1955-56 to 1970-71. Charges for receiving rose from \$0.70 to \$1.00; storage per month from \$0.43 to \$0.65; compression to standard density from \$1.20 to \$2.26; and compression to high density from \$1.46 to \$2.54.

Table 1.--Average charge per 500-pound bale of upland cotton, by region, seasons 1955-56 through 1970-71

Season	Southeast	South Central	Southwest	West
----- Dollars -----				
1955-56.....	9.55	12.84	14.08	13.66
1956-57.....	10.68	13.84	14.42	14.26
1957-58.....	11.20	14.42	15.53	15.03
1958-59.....	11.11	14.69	15.41	15.41
1959-60.....	11.62	14.99	15.91	15.95
1960-61.....	12.29	15.16	16.27	16.40
1961-62.....	13.11	16.24	18.08	17.88
1962-63.....	13.23	16.44	18.36	18.42
1963-64.....	13.40	16.07	18.19	18.75
1964-65.....	13.58	16.13	18.10	18.22
1965-66.....	13.96	16.37	18.86	18.89
1966-67.....	14.16	17.27	19.72	19.83
1967-68.....	14.15	17.07	19.46	20.99
1968-69.....	15.40	17.32	19.36	20.93
1969-70.....	15.11	18.02	20.02	21.96
1970-71.....	16.14	18.52	19.97	22.43

Table 2.--Percentage of upland cotton harvested by various methods, United States, seasons 1955-56 through 1970-71

Season	Cotton harvested as--				
	Hand-picked	Hand-snapped	Machine-picked	Machine-stripped	Machine-scraped
----- Percent -----					
1955-56..:	54	23	17	6	0
1956-57..:	53	20	20	7	0
1957-58..:	44	24	19	13	0
1958-59..:	44	22	21	13	0
1959-60..:	39	18	31	12	0
1960-61..:	33	16	36	15	0
1961-62..:	27	14	39	19	1
1962-63..:	20	10	48	20	2
1963-64..:	21	7	51	20	1
1964-65..:	16	6	58	19	1
1965-66..:	11	4	60	24	1
1966-67..:	8	3	61	27	1
1967-68..:	5	1	67	26	1
1968-69..:	3	1	68	27	1
1969-70..:	3	1	71	24	1
1970-71..:	2	0	71	26	1

Table 3.--Cotton production, number of active gins, and average volume per gin, United States, seasons 1910-11 through 1970-71

Season	Cotton production 1/	Active gins	Average volume per gin	Season	Cotton production 1/	Active gins	Average volume per gin
	Bales	Number	Bales		Bales	Number	Bales
1910-11.....	11,608,616	26,234	443	:: 1941-42.....	10,741,589	11,148	964
1911-12.....	15,692,701	26,349	596	:: 1942-43.....	12,819,506	10,775	1,190
1912-13.....	13,703,421	25,279	542	:: 1943-44.....	11,428,747	10,090	1,133
1913-14.....	14,156,486	24,749	572	:: 1944-45.....	12,230,053	9,470	1,291
1914-15.....	16,134,930	24,547	657	:: 1945-46.....	9,016,067	8,632	1,044
1915-16.....	11,191,820	23,162	483	:: 1946-47.....	8,639,595	8,257	1,046
1916-17.....	11,449,930	21,624	530	:: 1947-48.....	11,856,743	8,272	1,433
1917-18.....	11,302,375	20,351	555	:: 1948-49.....	14,868,269	8,249	1,802
1918-19.....	12,040,532	19,259	625	:: 1949-50.....	16,127,949	8,097	1,992
1919-20.....	11,420,763	18,815	607	:: 1950-51.....	10,014,335	7,572	1,323
1920-21.....	13,439,603	18,440	729	:: 1951-52.....	15,148,272	7,650	1,979
1921-22.....	7,953,641	16,192	491	:: 1952-53.....	15,139,472	7,367	2,056
1922-23.....	9,762,069	15,420	633	:: 1953-54.....	16,464,804	7,141	2,306
1923-24.....	10,139,671	15,298	663	:: 1954-55.....	13,697,276	7,070	1,937
1924-25.....	13,627,936	15,478	880	:: 1955-56.....	14,720,581	6,929	2,124
1925-26.....	16,103,679	15,482	1,040	:: 1956-57.....	13,309,827	6,662	1,998
1926-27.....	17,977,374	15,753	1,141	:: 1957-58.....	10,963,680	6,349	1,727
1927-28.....	12,956,043	14,863	872	:: 1958-59.....	11,512,005	5,798	1,986
1928-29.....	14,477,874	14,974	967	:: 1959-60.....	14,557,569	5,630	2,586
1929-30.....	14,824,861	14,868	997	:: 1960-61.....	14,272,040	5,395	2,645
1930-31.....	13,931,597	14,508	960	:: 1961-62.....	14,317,954	5,224	2,741
1931-32.....	17,095,594	14,151	1,208	:: 1962-63.....	14,866,559	5,132	2,897
1932-33.....	13,001,508	13,570	958	:: 1963-64.....	15,333,723	5,058	3,032
1933-34.....	13,047,262	13,543	963	:: 1964-65.....	15,181,554	4,989	3,043
1934-35.....	9,636,559	12,663	761	:: 1965-66.....	14,972,573	4,870	3,074
1935-36.....	10,638,391	12,812	830	:: 1966-67.....	9,574,965	4,608	2,078
1936-37.....	12,398,882	12,625	982	:: 1967-68.....	7,458,400	4,203	1,775
1937-38.....	18,945,028	12,838	1,476	:: 1968-69.....	10,948,470	4,218	2,598
1938-39.....	11,944,340	12,279	973	:: 1969-70.....	10,014,761	3,943	2,540
1939-40.....	11,815,759	11,885	994	:: 1970-71.....	2/10,058,125	3,754	2,674
1940-41.....	12,564,988	11,650	1,079	::			

1/ 500-pound gross-weight bales, including American Pima and some roller-ginned upland cotton. 2/ Running bales.

Source: Compiled from reports of the Bureau of the Census. The figures for the number of gins differ slightly from those contained in tables 15, 17, and 18 because of the use of different sources.

Table 4.--Amount of saw-ginned upland cotton in running bales, by State and region, seasons 1955-56 through 1970-71

State and region	Season															Average	
	1955-56	1956-57	1957-58	1958-59	1959-60	1960-61	1961-62	1962-63	1963-64	1964-65	1965-66	1966-67	1967-68	1968-69	1969-70		1970-71
	----- Thousand bales -----																
Alabama.....	1,038	746	527	442	714	756	620	696	874	887	1,326	461	198	402	466	515	637
Florida.....	15	9	7	6	9	11	10	12	15	14	12	8	7	10	8	8	10
Georgia.....	694	579	390	349	521	508	512	535	604	617	562	317	229	268	277	287	435
North Carolina.....	360	366	236	261	336	245	290	284	362	388	236	101	48	130	106	162	244
South Carolina.....	566	522	347	302	421	418	414	456	464	565	505	288	184	264	211	216	384
Virginia.....	11	11	7	8	11	9	8	6	9	11	6	2	-	-	-	-	6
Southeast.....	2,684	2,233	1,514	1,368	2,012	1,947	1,854	1,989	2,328	2,482	2,167	1,177	666	1,074	1,068	1,188	1,734
Arkansas.....	1,651	1,399	963	697	1,534	1,345	1,459	1,456	1,501	1,584	1,445	764	503	1,033	1,141	1,047	1,220
Louisiana.....	572	570	346	293	487	496	475	540	675	588	559	449	430	545	482	521	502
Mississippi.....	1,996	1,577	1,070	953	1,552	1,530	1,609	1,686	2,104	2,223	2,011	1,351	1,061	1,517	1,315	1,621	1,574
Missouri.....	420	447	182	285	514	480	385	472	460	419	393	165	60	197	326	223	339
Tennessee.....	613	527	403	411	642	571	550	548	644	666	627	363	145	323	417	386	490
South Central.....	5,252	4,520	2,964	2,639	4,729	4,422	4,478	4,702	5,384	5,480	5,035	3,092	2,199	3,615	3,681	3,798	4,125
Oklahoma.....	448	260	259	308	379	454	366	305	325	278	358	211	189	260	271	187	275
Texas.....	3,957	3,537	3,574	4,209	4,371	4,318	4,771	4,694	4,336	4,014	4,597	3,111	2,676	3,446	2,756	3,102	3,842
Southwest.....	4,405	3,797	3,833	4,517	4,750	4,772	5,137	4,999	4,661	4,292	4,955	3,322	2,865	3,706	3,027	3,289	4,117
Arizona.....	724	796	703	697	689	818	796	876	754	736	733	475	417	685	592	468	685
California.....	1,221	1,466	1,556	1,624	1,947	1,963	1,709	1,935	1,733	1,786	1,717	1,242	1,056	1,594	1,334	1,176	1,491
New Mexico.....	248	279	214	267	295	262	270	236	223	219	205	155	134	158	139	115	214
West.....	2,193	2,541	2,473	2,588	2,931	3,043	2,775	3,047	2,710	2,741	2,655	1,872	1,607	2,437	2,065	1,759	2,389
United States.....	14,534	13,101	10,789	11,344	14,422	14,197	14,254	14,750	15,096	15,006	14,882	9,468	7,339	10,833	9,841	10,034	12,493

Note: Area totals may not add to totals for United States because American Pima, roller-ginned upland, and Illinois and Kentucky production are sometimes included in U.S. totals but excluded from State and area totals.

Table 5.--Proportionate use of four methods of assessing ginning charges, by State and region, season 1966-67

State and region	Method of assessing ginning charge			
	Per bale	Per cwt. lint	Per cwt. seed cotton	Seed cotton toll
	----- Percent -----			
Alabama.....	81.3	8.5	9.8	0.4
Florida.....	31.1	68.0	--	.9
Georgia.....	12.2	87.7	--	.1
North Carolina.....	--	70.3	28.8	.9
South Carolina.....	1.0	95.6	3.4	--
Virginia.....	69.8	--	10.1	20.1
Southeast.....	35.7	56.8	7.2	.3
Arkansas.....	1.8	3.2	95.0	<u>1/</u>
Louisiana.....	--	72.2	27.7	.1
Mississippi.....	8.2	14.7	77.0	.1
Missouri.....	3.2	--	96.6	.2
Tennessee.....	58.2	--	40.9	.9
Illinois.....	--	--	100.0	--
Kentucky.....	94.9	--	5.1	--
South Central.....	11.1	17.7	71.1	.1
Oklahoma.....	--	--	99.9	.1
Texas.....	--	4.2	95.7	.1
Southwest.....	--	4.0	95.9	.1
Arizona.....	--	--	100.0	--
California.....	--	--	100.0	--
New Mexico.....	--	--	100.0	--
Nevada.....	--	--	100.0	--
West.....	--	--	100.0	--
United States.....	8.1	14.2	77.6	.1

1/ Less than 0.05 percent.

Table 6.--Estimated average charge per bale for ginning upland cotton, by State and region, seasons 1955-56 through 1970-71

State and region	Season																Average charge
	1955-56	1956-57	1957-58	1958-59	1959-60	1960-61	1961-62	1962-63	1963-64	1964-65	1965-66	1966-67	1967-68	1968-69	1969-70	1970-71	
	----- Dollars -----																
Alabama.....	9.08	9.94	10.73	10.27	11.43	11.79	12.24	12.44	12.72	12.77	13.26	13.55	13.36	14.32	14.72	15.69	12.13
Florida.....	11.32	11.66	12.35	11.66	13.94	13.23	14.24	13.44	15.86	14.48	14.04	14.40	14.31	14.34	14.59	14.62	13.71
Georgia.....	9.71	10.89	11.28	11.05	11.23	12.61	13.37	13.28	13.50	13.63	13.79	14.08	13.65	14.26	14.09	14.95	12.61
North Carolina.....	10.48	11.48	11.65	12.19	12.51	12.45	13.54	13.57	13.73	14.46	15.02	14.99	15.08	17.77	16.85	17.92	13.38
South Carolina.....	9.60	10.95	11.52	11.50	11.73	12.78	13.78	14.17	14.25	14.18	14.84	14.95	15.37	17.07	16.40	17.51	13.36
Virginia.....	9.22	9.21	8.96	10.22	9.15	9.58	12.00	11.99	12.21	12.38	12.44	13.25	1/	1/	1/	1/	10.60
Southeast.....	9.55	10.68	11.20	11.11	11.62	12.29	13.11	13.23	13.40	13.56	13.96	14.16	14.15	15.40	15.11	16.14	13.05
Arkansas.....	14.08	15.16	15.85	16.14	15.71	16.26	17.67	17.71	17.20	17.62	17.88	18.31	18.00	18.49	19.23	19.42	17.03
Louisiana.....	12.77	13.66	13.76	14.60	15.08	15.31	15.89	16.31	16.01	16.63	16.53	17.29	17.48	17.17	17.49	17.72	15.88
Mississippi.....	11.30	12.26	13.09	13.15	13.73	13.42	14.47	14.69	14.76	14.50	15.19	15.91	16.08	16.07	16.96	17.39	14.52
Missouri.....	17.05	17.65	18.55	18.22	17.81	18.52	19.87	19.77	19.52	19.40	18.82	20.70	20.48	20.73	19.47	22.33	19.02
Tennessee.....	11.86	12.04	13.26	13.44	13.96	14.30	15.42	15.71	15.28	15.50	15.00	18.59	18.42	17.62	17.51	19.70	15.09
South Central.....	12.84	13.84	14.42	14.69	14.99	15.16	16.24	16.44	16.07	16.13	16.37	17.27	17.07	17.32	18.02	18.52	15.86
Oklahoma.....	14.61	15.63	16.65	15.49	15.52	17.26	19.87	19.79	19.20	20.10	19.13	20.70	19.25	19.39	19.49	19.40	19.84
Texas.....	14.02	14.33	15.45	15.40	15.94	16.17	17.94	18.27	18.11	17.96	18.84	19.65	19.48	19.36	20.07	20.00	17.43
Southwest.....	14.08	14.42	15.53	15.41	15.91	16.27	18.08	18.36	18.19	18.10	18.86	19.72	19.46	19.36	20.02	19.97	17.59
Arizona.....	13.68	14.81	14.60	14.84	16.88	17.08	18.23	18.38	19.48	18.76	18.79	20.78	20.64	20.08	21.82	22.16	17.91
California.....	13.84	14.29	15.36	15.92	15.91	16.30	17.84	18.56	18.58	19.05	18.82	19.41	21.36	21.44	22.31	22.78	18.99
New Mexico.....	12.71	12.54	13.99	13.80	14.01	14.97	17.06	17.36	17.65	17.78	19.84	20.27	19.21	19.41	19.24	20.01	16.30
West.....	13.66	14.26	15.03	15.41	15.95	16.40	17.88	18.42	18.75	18.22	18.89	19.83	20.99	20.93	21.96	22.43	18.44
United States.....	12.75	13.56	14.51	14.75	15.02	15.42	16.83	17.08	16.80	16.78	17.30	18.25	18.60	18.64	19.15	19.40	16.36

1/ Data unavailable.

Table 7.--Average charges for ginning upland cotton, farm value of cottonseed and cotton lint, and Percentage of farm values represented by ginning charges, United States, seasons 1955-56 through 1970-71

Season	Per 500-pound gross-weight bale				Ginning charges as percentage of cottonseed value	Ginning charges as percentage of seed and lint value
	Charges for ginning services	Farm value of 1/--				
		Cotton-seed	Cotton lint	Combined cotton-seed and lint		
		----- Dollars -----			----- Percent -----	
1955-56.....	12.75	18.29	161.35	179.64	69.7	7.1
1956-57.....	13.56	21.70	158.15	179.85	62.5	7.5
1957-58.....	14.51	21.47	147.30	168.77	67.6	8.6
1958-59.....	14.75	18.26	165.45	183.71	80.8	8.0
1959-60.....	15.02	15.94	157.80	173.74	94.2	8.6
1960-61.....	15.42	17.52	150.40	167.92	88.0	9.2
1961-62.....	16.83	21.32	164.00	185.32	78.9	9.1
1962-63.....	17.08	19.76	158.70	178.46	86.4	9.6
1963-64.....	16.80	20.49	160.10	180.59	82.0	9.3
1964-65.....	16.78	19.32	148.10	167.42	86.8	10.0
1965-66.....	17.30	19.00	140.15	159.15	91.0	10.9
1966-67.....	18.25	27.26	103.50	130.76	67.0	14.0
1967-68.....	18.60	23.79	126.95	150.74	78.2	12.3
1968-69.....	18.64	21.42	110.10	131.52	87.0	14.2
1969-70.....	19.15	17.18	106.00	123.18	111.5	15.6
1970-71.....	19.40	2/	2/	2/	2/	2/

1/ Data from reports of the Bureau of the Census and USDA.

2/ Data unavailable.

Table 8.--Bagging and ties: Average charge, when assessed separately, per 500-pound bale of upland cotton, by region, seasons 1955-56 through 1970-71

Season	Average charge for bagging and ties in the					
	Southeast	South Central	Southwest	West	United States	
		----- Dollars -----				
1955-56.....	3.10	3.86	3.75	3.51	3.69	
1956-57.....	3.44	4.23	4.11	3.37	4.02	
1957-58.....	3.49	4.30	4.16	3.47	4.13	
1958-59.....	3.55	4.41	4.24	1/4.05	4.20	
1959-60.....	3.51	4.48	4.31	1/4.05	4.29	
1960-61.....	3.69	4.50	4.33	1/4.07	4.31	
1961-62.....	4.07	5.21	5.24	1/4.93	5.11	
1962-63.....	4.18	5.00	5.08	2/5.10	4.94	
1963-64.....	3.97	5.01	5.15	1/4.99	5.02	
1964-65.....	3.99	5.14	5.31	1/5.10	5.09	
1965-66.....	4.22	5.28	5.93	3/	5.55	
1966-67.....	5.54	5.40	5.91	1/6.08	5.48	
1967-68.....	4.26	5.60	5.92	1/5.42	5.69	
1968-69.....	4.58	5.53	6.05	1/6.21	5.58	
1969-70.....	4.63	5.44	6.19	1/6.21	5.77	
1970-71.....	4.71	5.75	6.55	4/3.50	6.04	

1/ New Mexico only.

2/ Arizona and New Mexico only.

3/ Data unavailable.

4/ California and New Mexico only.

Table 9.--Sixteen-year average charge for ginning and bagging and ties, and percentage of total ginning charge represented by bagging and ties charges, by State and region, seasons 1955-56 through 1970-71

State and region	Average charge per bale for--		Bagging and ties
	Ginning	Bagging and ties	charges as percent- age of total ginning charge
	----- Dollars -----		----- Percent -----
Alabama.....	12.13	3.94	32.5
Florida.....	13.71	4.04	29.5
Georgia.....	12.61	3.74	29.7
North Carolina...	13.38	3.96	29.6
South Carolina...	13.36	3.94	29.5
Virginia.....	10.60	1/	1/
Southeast.....	13.05	3.89	29.8
Arkansas.....	17.03	4.82	28.3
Louisiana.....	15.88	4.80	30.2
Mississippi.....	14.52	4.98	34.3
Missouri.....	19.02	5.27	27.7
Tennessee.....	15.09	4.73	31.4
South Central...	15.86	4.90	30.9
Oklahoma.....	19.84	5.00	25.2
Texas.....	17.43	5.11	29.3
Southwest.....	17.59	5.10	29.0
Arizona.....	17.91	1/	1/
California.....	18.99	1/	1/
New Mexico.....	16.30	4.72	29.0
West.....	18.40	4.72	29.0
United States....	16.36	4.80	29.3

1/ Insufficient data.

Table 10.--American Pima cotton: 1/ Production and average charge per bale for ginning and wrapping, United States, seasons 1955-56 through 1970-71

Season	Bales ginned	Average charge per 500-pound bale
	- - - - Number - - - -	- - - - Dollars - - - -
1955-56.....	41,460	21.27
1956-57.....	49,053	23.68
1957-58.....	78,000	25.64
1958-59.....	82,000	25.21
1959-60.....	69,094	25.62
1960-61.....	65,961	26.28
1961-62.....	61,143	28.76
1962-63.....	109,784	28.72
1963-64.....	161,211	27.06
1964-65.....	116,683	26.30
1965-66.....	85,584	28.55
1966-67.....	71,154	27.09
1967-68.....	68,322	28.13
1968-69.....	78,182	29.23
1969-70.....	76,838	33.35
1970-71.....	57,131	30.61

1/ Name changed from "American-Egyptian," effective July 1, 1970.

Table 11.--Hand-picked cotton: Average pounds of seed cotton required per 500-pound bale of upland cotton, by State, seasons 1955-56 through 1970-71

State	Season															
	1955-56	1956-57	1957-58	1958-59	1959-60	1960-61	1961-62	1962-63	1963-64	1964-65	1965-66	1966-67	1967-68	1968-69	1969-70	1970-71
	Pounds															
Alabama.....	1/	1/	1/	1/	1/	1/	1/	1/	1/	1/	1/	1,378	1,399	1,391	1,348	1/
Georgia.....	1/	1/	1/	1/	1/	1/	1/	1/	1/	1/	1/	1/	1/	1/	1/	1/
North Carolina.....	1/	1/	1/	1/	1/	1/	1/	1/	1/	1/	1/	1,326	1,344	1,322	1,371	1,239
South Carolina.....	1/	1/	1/	1/	1/	1/	1/	1/	1/	1/	1/	1,392	1/	1/	1,487	1/
Arkansas.....	1,403	1,387	1,449	1,466	1,425	1,454	1,430	1,515	1,414	1,407	1,412	1,475	1,448	1,412	1,411	1,384
Louisiana.....	1/	1/	1/	1/	1/	1/	1/	1/	1/	1/	1/	1,420	1,372	1,305	1,379	1,425
Mississippi.....	1,360	1,321	1,382	1,373	1,377	1,374	1,342	1,330	1,349	1,335	1,372	1,353	1,332	1,314	1,354	1,281
Missouri.....	1,496	1,417	1,518	1,514	1,400	1,470	1,433	1,358	1,457	1,402	1,503	1,574	1,504	1,439	1,480	1,397
Tennessee.....	1,457	1,290	1,429	1,454	1,390	1,391	1,410	1,426	1,367	1,417	1,408	1,464	1,419	1,354	1,386	1,390
Oklahoma.....	1,412	1,439	1,506	1,426	1,379	1,396	1,434	1,486	1,482	2/	--	2/	1,452	--	1,460	--
Texas.....	1,428	1,395	1,452	1,452	1,435	1,436	1,481	1,455	1,453	1,466	1,468	1,502	1,425	1,470	1,461	1,440
Arizona.....	1,452	1,399	1,460	1,459	1,525	1,597	1,481	1,529	1,494	1,498	1,480	1,598	1,531	1,730	1,460	--
California.....	1,449	1,360	1,400	1,370	1,348	1,450	1,366	1,362	1,373	1,378	1,417	1,357	1,496	1,514	1,496	1,513
New Mexico.....	1,357	1,340	1,430	1,383	1,366	1,395	1,419	1,418	1,438	1,430	1,439	1,452	1,386	1,386	1,435	1,336
United States.....	1,381	1,361	1,430	1,428	1,406	1,417	1,405	1,405	1,388	1,383	1,391	1,404	1,370	1,360	1,419	1,373

1/ Seed cotton customarily not weighed during these years.
 2/ Insignificant proportion harvested by this method.

Table 12.--Hand-snapped cotton: Average pounds of seed cotton required per 500-pound bale of upland cotton, by State, seasons 1955-56 through 1970-71

State	Season															
	1955-56	1956-57	1957-58	1958-59	1959-60	1960-61	1961-62	1962-63	1963-64	1964-65	1965-66	1966-67	1967-68	1968-69	1969-70	1970-71
	----- Pound/ -----															
Arizona.....	2,406	2,186	2,155	2,206	2,565	1,976	2,277	<u>1/</u>	<u>1/</u>	<u>1/</u>	<u>1/</u>	2,715	<u>1/</u>	<u>1/</u>	<u>1/</u>	<u>1/</u>
Arkansas.....	1,989	1,939	1,982	2,212	1,953	2,022	2,176	1,895	2,168	2,166	2,012	2,173	2,108	2,028	1,959	1,972
California.....	2,528	2,395	2,600	2,292	2,624	3,027	<u>1/</u>	<u>1/</u>	2,400	<u>1/</u>	<u>1/</u>	<u>1/</u>	2,359	<u>1/</u>	<u>1/</u>	<u>1/</u>
Mississippi.....	1,887	1,771	1,762	<u>2/</u>	<u>2/</u>	1,599	1,824	<u>1/</u>	<u>1/</u>	1,804	<u>1/</u>	<u>1/</u>	1,510	<u>1/</u>	<u>1/</u>	<u>1/</u>
Missouri.....	2,155	2,334	2,224	2,378	2,144	2,223	2,371	2,144	2,366	2,432	2,107	2,251	2,345	2,245	2,312	1,978
New Mexico.....	2,134	1,847	2,016	1,921	1,997	2,129	2,364	2,292	2,128	1,935	2,110	2,198	2,043	2,031	2,380	2,138
Oklahoma.....	1,832	1,942	2,017	1,872	1,947	1,946	2,067	2,036	1,905	1,951	1,916	1,969	2,056	2,088	1,977	1,961
Tennessee.....	2,083	2,063	1,995	2,261	1,892	2,013	2,034	<u>1/</u>	<u>1/</u>	2,150	1,898	2,127	2,158	2,025	1,834	1,854
Texas.....	1,906	1,891	1,994	1,878	1,932	1,921	2,008	2,006	1,931	2,023	1,967	1,970	2,492	1,923	2,007	2,000
United States.....	1,934	1,921	1,989	1,906	1,957	1,934	2,049	2,006	1,952	2,049	1,930	2,009	2,322	1,956	1,998	1,986

1/ Insignificant proportion harvested by this method.
2/ Insufficient data.

Table 13.--Machine-picked cotton: Average pounds of seed cotton required per 500-pound bale of upland cotton, by State, seasons 1955-56 through 1970-71

State	Season															
	1955-56	1956-57	1957-58	1958-59	1959-60	1960-61	1961-62	1962-63	1963-64	1964-65	1965-66	1966-67	1967-68	1968-69	1969-70	1970-71
	----- Pounds -----															
Alabama.....	1/	1/	1/	1/	1/	1/	1/	1/	1/	1/	1/	1,379	1,478	1,481	1,402	1,499
Georgia.....	1/	1/	1/	1/	1/	1/	1/	1/	1/	1/	1/	1/	1/	1/	1/	1/
North Carolina.....	1/	1/	1/	1/	1/	1/	1/	1/	1/	1/	1/	1,417	1,428	1,381	1,377	1,333
South Carolina.....	1/	1/	1/	1/	1/	1/	1/	1/	1/	1/	1/	1,419	1/	1/	1,529	1/
Arkansas.....	1,476	1,457	1,505	1,549	1,469	1,492	1,496	1,534	1,485	1,486	1,483	1,502	1,495	1,481	1,474	1,419
Louisiana.....	1/	1/	1/	1/	1/	1/	1/	1/	1/	1/	1/	1,514	1,509	1,336	1,434	1,418
Mississippi.....	1,444	1,445	1,477	1,399	1,448	1,360	1,381	1,447	1,437	1,389	1,453	1,396	1,432	1,354	1,460	1,382
Missouri.....	1,594	1,475	1,575	1,585	1,491	1,513	1,542	1,612	1,498	1,541	1,483	1,601	1,557	1,546	1,528	1,473
Tennessee.....	1,601	1,443	1,510	1,410	1,446	1,442	1,473	1,484	1,459	1,477	1,446	1,518	1,612	1,504	1,437	1,434
Oklahoma.....	2/	1,942	2/	2/	1,508	1,453	1,476	1,512	1,490	1,469	1,525	1,477	1,465	1,567	1,497	1,475
Texas.....	1,489	1,418	1,510	1,512	1,515	1,522	1,542	1,549	1,521	1,507	1,554	1,544	1,604	1,528	1,519	1,497
Arizona.....	1,461	1,515	1,450	1,490	1,522	1,578	1,480	1,507	1,552	1,514	1,505	1,519	1,478	1,483	1,533	1,582
California.....	1,526	1,450	1,505	1,480	1,451	1,446	1,477	1,467	1,451	1,506	1,483	1,454	1,595	1,593	1,592	1,631
New Mexico.....	1,446	1,400	1,478	1,413	1,442	1,469	1,561	1,496	1,557	1,500	1,567	1,523	1,501	1,545	1,560	1,478
United States.....	1,489	1,460	1,492	1,484	1,470	1,472	1,494	1,534	1,476	1,472	1,476	1,471	1,528	1,478	1,568	1,472

1/ Seed cotton not customarily weighed during these years.
 2/ Insignificant proportion harvested by this method.

Table 14.--Machine-stripped and -scrapped cotton: Average pounds of seed cotton required per 500-pound bale of upland cotton, United States, seasons 1955-56 through 1970-71

Season	Weight of seed cotton required	
	Machine-stripped	Machine-scrapped
	Pounds	
1955-56.....	2,284	--
1956-57.....	2,134	--
1957-58.....	2,261	--
1958-59.....	2,075	--
1959-60.....	2,067	--
1960-61.....	2,091	--
1961-62.....	2,209	2,636
1962-63.....	2,214	2,555
1963-64.....	2,214	2,389
1964-65.....	2,159	2,473
1965-66.....	2,135	2,420
1966-67.....	2,338	2,167
1967-68.....	2,294	2,513
1968-69.....	2,173	2,440
1969-70.....	2,269	2,294
1970-71.....	2,169	2,041

Table 15.--Driers: Number of active gins and stages of driers, by State and region, 1957, 1963, and 1969

State and region	Total gins			Number of gins having--											
				One-stage drying			Two-stage drying			Three-stage drying			Four-or more stage drying		
	1957	1963	1969	1957	1963	1969	1957	1963	1969	1957	1963	1969	1957	1963	1969
	----- Number -----														
Alabama.....	647	396	307	351	231	131	90	127	165	4	14	4	--	--	--
Florida.....	7	7	5	5	5	3	2	2	2	--	--	--	--	--	--
Georgia.....	487	318	230	252	143	86	95	117	128	3	335	15	--	--	--
North Carolina....	379	253	142	217	163	81	55	59	52	4	4	3	1	--	--
South Carolina....	450	297	220	263	163	109	81	106	107	8	7	4	1	--	--
Virginia.....	20	13	8	2	2	4	3	3	--	--	--	--	--	--	--
Southeast.....	1,970	1,284	912	1,090	707	414	326	414	454	19	60	26	2	--	--
Arkansas.....	670	546	457	298	197	112	263	296	318	36	41	25	2	--	--
Louisiana.....	333	229	183	120	57	33	165	144	139	16	22	10	--	--	1
Mississippi.....	914	653	556	426	275	172	306	331	369	33	31	8	1	--	--
Missouri.....	164	157	115	42	23	11	112	129	100	9	4	4	--	--	--
Tennessee.....	333	281	228	139	76	51	119	145	138	19	54	36	--	--	--
South Central....	2,414	1/1,871	2/1,541	1,025	628	379	965	1,045	1,064	113	152	83	3	--	--
Oklahoma.....	249	167	139	197	105	70	20	58	66	--	2	3	--	--	--
Texas.....	1,727	1,458	1,272	1,109	630	391	449	659	771	35	149	99	1	--	9
Southwest.....	1,976	1,625	1,411	1,306	735	461	469	717	837	35	151	102	1	--	9
Arizona.....	125	152	131	51	57	39	68	83	76	5	12	15	--	--	1
California.....	258	317	277	17	14	8	147	193	208	90	110	62	4	--	--
New Mexico.....	66	77	64	51	32	29	11	26	28	--	17	5	--	--	1
West.....	449	3/547	3/473	119	103	76	226	302	312	95	139	82	4	--	2
United States.....	4/6,836	5,327	4,337	4/3,540	4/2,173	4/1,330	4/1,986	4/2,478	4/2,667	4/262	4/502	4/293	4/10	--	4/12

1/ Includes two plants in Illinois and three in Kentucky.
 2/ Includes two plants in Illinois and Kentucky.
 3/ Includes one plant in Nevada.
 4/ Does not include plants in Illinois, Kentucky, and Nevada.

Source: Adapted from various statistical reports of the Cotton Division, Consumer and Marketing Service, USDA.

Table 16.--Proportion of gins with specified equipment, by region, seasons 1955-56, 1961-62, and 1969-70

Region	Bur extractors			Stick machines		
	1956-57	1961-62	1969-70	1956-57	1961-62	1969-70
	----- Percent -----					
Southeast.....	22.7	26.0	34.5	2.4	20.4	54.1
South Central.....	43.9	50.4	44.4	8.2	24.6	45.6
Southwest.....	86.2	89.6	90.4	8.5	30.7	60.0
West.....	86.2	75.8	57.5	15.8	15.8	47.4
United States.....	52.8	59.0	58.5	7.1	24.6	52.2

Table 17.--Lint cleaners: Number of active gins and stages of lint cleaning, by State and region, 1960, 1963, and 1969

State and region	Total gins			Number of gins having--											
				One-stage lint cleaning			Two-stage lint cleaning			Three-stage lint cleaning			Four-stage lint cleaning		
	1960	1963	1969	1960	1963	1969	1960	1963	1969	1960	1963	1969	1960	1963	1969
	----- Number -----														
Alabama.....	514	396	307	228	153	52	127	183	187	10	35	60	--	--	1
Florida.....	6	7	5	3	3	1	2	3	3	--	--	1	--	--	--
Georgia.....	344	318	230	193	126	63	70	125	132	2	28	30	--	--	--
North Carolina....	294	253	142	145	139	68	25	46	51	1	2	11	--	--	--
South Carolina....	345	297	220	143	114	66	96	109	108	2	23	40	--	--	2
Virginia.....	14	13	8	1	1	2	--	--	2	--	--	--	--	--	--
Southeast.....	1,517	1,284	912	713	536	252	320	466	483	15	88	142	--	--	3
Arkansas.....	577	546	457	305	180	100	210	273	272	13	74	79	--	--	5
Louisiana.....	245	229	183	91	53	27	120	128	110	15	39	44	--	--	2
Mississippi.....	719	653	556	372	224	125	229	357	363	8	37	61	--	--	--
Missouri.....	154	157	115	41	19	8	100	102	62	11	35	44	--	--	--
Tennessee.....	295	281	228	150	74	23	102	166	138	19	35	63	--	--	3
South Central...	1/1,995	1/1,871	2/1,541	959	550	283	761	1,026	945	66	220	291	--	--	10
Oklahoma.....	195	167	139	94	84	60	60	76	78	4	3	--	--	--	--
Texas.....	1,551	1,458	1,272	630	433	328	683	796	765	100	179	158	--	--	6
Southwest.....	1,746	1,625	1,411	724	517	388	743	872	843	104	182	158	--	--	6
Arizona.....	150	152	131	41	12	8	86	97	81	17	43	34	--	--	8
California.....	315	317	277	26	12	1	245	218	178	43	87	93	--	--	6
New Mexico.....	73	77	64	12	13	7	44	41	39	13	20	17	--	1	--
West.....	3/539	3/547	3/473	79	37	16	375	356	298	73	150	144	--	1	14
United States.....	5,797	5,327	4,337	4/2,475	4/1,640	4/939	4/2,199	4/2,720	4/2,569	4/258	4/640	4/735	--	4/1	4/33

- 1/ Includes plants in Illinois and Kentucky.
- 2/ Includes plants in Illinois and Kentucky.
- 3/ Includes plant in Nevada.
- 4/ Does not include plants in Illinois, Kentucky, and Nevada.

Source: Adapted from various statistical reports of the Cotton Division, Consumer and Marketing Service, USDA.

© UPDATA 1981

17

Table 18.--Mechanical samplers: Number of gins and number and percentage of gins with mechanical samplers, United States, 1959-69

Year ^{1/}	Gins	Gins with mechanical samplers	Percentage of gins with mechanical samplers
	<u>Number</u>	<u>Number</u>	<u>Percent</u>
1959.....	6,368	116	1.8
1960.....	5,797	170	2.9
1961.....	5,619	195	3.5
1962.....	<u>2/</u>	<u>2/</u>	<u>2/</u>
1963.....	5,327	187	3.5
1964.....	5,264	159	3.0
1965.....	5,205	195	3.8
1966.....	5,013	203	4.1
1967.....	4,730	195	4.1
1968.....	4,448	164	3.7
1969.....	4,337	139	3.2

^{1/} Data reported for July of each year.

^{2/} Data unavailable.

Source: Adapted from various statistical reports of the Cotton Division, Consumer and Marketing Service, USDA.

Table 19.--Proportion of cotton purchased by ginner, by State and region, seasons 1955-56 through 1970-71

State and region	Season															
	1955-56	1956-57	1957-58	1958-59	1959-60	1960-61	1961-62	1962-63	1963-64	1964-65	1965-66	1966-67	1967-68	1968-69	1969-70	1970-71
	----- Percent -----															
Alabama.....	34.0	39.0	28.0	16.0	1/	3.0	36.0	28.0	19.0	31.0	40.0	32.0	36.0	37.0	42.0	48.0
Florida.....	96.0	99.0	34.0	37.0	2/0	10.0	50.0	45.0	25.0	65.0	53.0	16.0	80.0	34.0	58.0	78.0
Georgia.....	31.0	32.0	39.0	14.0	1/	3.0	21.0	13.0	4.0	7.0	12.0	11.0	27.0	16.0	17.0	42.0
North Carolina.....	47.0	59.0	34.0	27.0	9/0	6.0	38.0	42.0	16.0	25.0	23.0	66.0	52.0	40.0	27.0	56.0
South Carolina.....	45.0	47.0	41.0	37.0	1/	11.0	34.0	48.0	29.0	34.0	56.0	65.0	71.0	64.0	66.0	78.0
Virginia.....	65.0	61.0	58.0	56.0	66.0	52.0	88.0	89.0	58.0	27.0	47.0	60.0	2/	2/	2/	2/
Southeast.....	39.3	44.1	34.2	26.5	19.8	6.9	33.9	31.3	22.5	29.8	42.4	49.6	51.9	48.1	46.3	56.2
Arkansas.....	18.0	26.0	29.0	16.0	1/	8.0	29.0	27.0	16.0	29.0	25.0	32.0	17.0	22.0	13.0	18.0
Louisiana.....	22.0	22.0	13.0	19.0	1/	4.0	19.0	20.0	15.0	9.0	16.0	22.0	13.0	26.0	16.0	9.0
Mississippi.....	3.0	3.0	4.0	3.0	1/	1/	2.0	1.0	1.0	3.0	2.0	3.0	6.0	2.0	2.0	1.0
Missouri.....	56.0	83.0	76.0	43.0	1/	60.0	86.0	74.0	32.0	69.0	86.0	94.0	96.0	92.0	88.0	94.0
Tennessee.....	61.0	69.0	78.0	36.0	3.0	14.0	66.0	63.0	45.0	75.0	81.0	90.0	87.0	89.0	80.0	87.0
South Central.....	40.4	53.7	56.0	29.0	3.0	39.0	54.9	46.8	15.1	52.2	62.1	62.5	49.0	60.6	64.0	67.4
Oklahoma.....	19.0	23.0	19.0	6.0	1/	16.0	47.0	45.0	22.0	23.0	54.0	34.0	39.0	27.0	78.0	40.0
Texas.....	13.0	17.0	18.0	9.0	1/	12.0	24.0	21.0	12.0	13.0	16.0	18.0	29.0	35.0	47.0	50.0
Southwest.....	13.8	17.5	18.4	8.9	1/	12.5	27.0	23.9	13.5	14.1	23.9	19.8	33.9	34.6	51.3	49.5
Arizona.....	--	--	1.0	1.0	--	1/	--	--	--	--	--	3.0	--	--	1/	1/
California.....	--	--	6.0	1.0	--	1/	--	--	--	--	--	--	3.0	1/	1/	1/
New Mexico.....	1.0	--	2.0	--	1/	1.0	1/	7.0	1.0	1/	1.0	1/	1/	1/	9.0	4.0
West.....	1.0	--	5.5	1.0	1/	1.0	1/	7.0	1.0	1/	1.0	3.0	3.0	1/	9.0	4.0
United States.....	19.0	22.0	20.0	11.0	1.0	8.0	22.0	20.0	12.0	17.0	20.0	21.0	22.0	24.0	29.0	30.0

1/ Less than 0.05 percent.
 2/ Data unavailable.

Table 20.--Proportion of total cotton production marketed by growers through Government loans and by sale to ginners, United States, seasons 1955-56 through 1970-71

Season	Proportion of production		Proportion of "free cotton" purchased by ginners	Proportion of total production purchased by ginners
	Placed in Government loan	Remaining as "free cotton"		
----- Percent -----				
1955-56.....	49.9	50.1	37.9	19.0
1956-57.....	36.9	63.1	34.9	22.0
1957-58.....	33.4	66.6	30.0	20.0
1958-59.....	59.7	40.3	27.3	11.0
1959-60.....	62.0	38.0	2.6	1.0
1960-61.....	58.6	41.4	19.3	8.0
1961-62.....	33.9	66.1	33.3	22.0
1962-63.....	46.2	53.8	37.2	20.0
1963-64.....	52.5	47.5	25.3	12.0
1964-65.....	48.5	51.5	33.0	17.0
1965-66.....	46.7	53.3	37.5	20.0
1966-67.....	32.6	67.4	31.2	21.0
1967-68.....	20.1	79.9	27.5	22.0
1968-69.....	40.7	59.3	40.5	24.0
1969-70.....	<u>1/36.6</u>	63.4	45.7	29.0
1970-71.....	<u>2/</u>	<u>2/</u>	<u>2/</u>	30.0

1/ Preliminary.

2/ Data unavailable.

Table 21.--Proportion of cottonseed purchased by ginners from growers according to specified methods of determining cottonseed weight, by State and region, seasons 1944-45, 1954-55, and 1966-67

State and region	Methods of determining cottonseed weights in specified seasons																	
	Seed scales			Seed cotton weight minus bale weight			Seed cotton weight minus bale weight minus trash dockage			Estimated as percentage of cotton weight			Bale weight multiplied by seed-lint ratio			Other methods ^{1/}		
	1944	1954	1966	1944	1954	1966	1944	1954	1966	1944	1954	1966	1944	1954	1966	1944	1954	1966
	Percent																	
Alabama.....	8	61	99	84	34	1	4	5	--	--	--	3	--	--	1	--	--	
Georgia.....	--	79	100	94	18	--	6	3	--	--	--	--	--	--	--	--	--	
North Carolina.....	--	78	100	100	20	--	--	1	--	--	1	--	--	--	--	--	--	
South Carolina.....	62	96	100	20	4	--	16	--	--	--	--	1	--	--	1	--	--	
Southeast ^{2/}	18	77	99	73	20	1	7	3	--	--	<u>3/</u>	--	1	--	--	1	--	
Arkansas.....	7	14	28	35	5	4	48	61	59	1	2	--	6	16	9	3	2	
Louisiana.....	40	90	95	57	3	5	1	7	--	--	--	--	3	<u>3/</u>	--	2	--	
Mississippi.....	2	28	69	53	58	14	42	6	3	--	--	--	3	8	14	--	--	
Missouri.....	--	--	3	--	--	19	94	84	78	--	--	--	6	11	--	--	5	
Tennessee.....	--	2	17	11	16	8	89	73	54	--	<u>3/</u>	--	--	5	--	--	4	
South Central ^{4/}	8	25	53	39	24	10	48	39	26	<u>3/</u>	1	--	4	9	8	1	2	
Oklahoma.....	51	94	86	1	--	--	--	--	--	48	6	7	--	--	7	--	--	
Texas.....	66	80	88	1	<u>3/</u>	--	7	8	--	21	9	1	5	3	10	<u>3/</u>	<u>3/</u>	
Southwest.....	63	81	87	1	<u>3/</u>	--	6	7	--	26	9	2	4	3	10	<u>3/</u>	<u>3/</u>	
Arizona.....	--	--	64	--	--	--	65	99	--	--	--	--	35	1	32	--	--	
California.....	--	--	83	--	--	--	85	17	--	--	--	--	15	83	17	--	--	
New Mexico.....	--	17	40	--	--	--	91	73	10	--	--	--	9	10	10	--	--	
West.....	--	2	75	--	--	--	81	45	1	--	--	--	19	53	20	--	--	
United States.....	25	45	75	37	11	3	26	25	9	7	3	1	4	15	10	1	1	

21

^{1/} Includes various minor methods of estimation, most of which were derived from bale weights; also includes, in a few instances, cottonseed purchased in the form of seed cotton.
^{2/} Includes Florida and Virginia.
^{3/} Less than 0.5 percent.
^{4/} Includes Illinois and Kentucky.

Table 22.--Receiving, storing, and compressing: Average charge per 500-pound bale of upland cotton, United States, seasons 1955-56 through 1970-71

Season	Average charge per bale for--			
	Receiving	Storage per month	Compressing to--	
			Standard density	High density
----- Dollars -----				
1955-56.....	0.70	0.43	1.20	1.46
1956-57.....	.75	.43	1.31	1.55
1957-58.....	.80	.47	1.42	1.64
1958-59.....	.81	.49	1.43	1.65
1959-60.....	.75	.50	1.39	1.66
1960-61.....	.77	.51	1.43	1.72
1961-62.....	.80	.52	1.48	1.77
1962-63.....	.74	.52	1.48	1.79
1963-64.....	.74	.51	1.58	1.84
1964-65.....	.74	.52	1.56	1.89
1965-66.....	.75	.52	1.56	1.84
1966-67.....	.78	.53	1.70	1.96
1967-68.....	.83	.54	1.87	2.12
1968-69.....	.90	.58	2.01	2.28
1969-70.....	.97	.63	2.08	2.37
1970-71.....	1.00	.65	2.26	2.54

1/ Average charges as shown on warehouse tariffs. For storing under Government price-support programs, warehousemen are paid lower rates.

PRECEDING REPORTS 1/

Fortenberry, A. J.

1956. Charges for Ginning Cotton, Seasons 1947-48 to 1954-55. U.S. Dept. Agr., Agr. Mktg. Serv., MR-120, June.

Roberts, Arthur L., and Fortenberry, A. J.

1947. Charges for Ginning Cotton, 1941-42 to 1946-47. U.S. Dept. Agr., Prod. and Mktg. Admin., Sept.

Wright, John W., and Soxman, R. C.

1942. Charges for Ginning Cotton, 1936-37 to 1940-41. U.S. Dept. Agr., Agr. Mktg. Serv., Jan.

_____ and Lanhan, W. B.

1937. Rates for Ginning and Wrapping American Cotton and Related Data, Seasons 1928-29 to 1935-36. U.S. Dept. Agr., Bur. Agr. Econ., Jan.

1/ These reports are now out of print, but may be available at some libraries.

UNITED STATES DEPARTMENT OF AGRICULTURE
WASHINGTON, D.C. 20250
OFFICIAL BUSINESS
PENALTY FOR PRIVATE USE, \$300

POSTAGE AND FEES PAID
U.S. DEPARTMENT OF
AGRICULTURE



7524 1/4

END