



**AgEcon** SEARCH  
RESEARCH IN AGRICULTURAL & APPLIED ECONOMICS

*The World's Largest Open Access Agricultural & Applied Economics Digital Library*

**This document is discoverable and free to researchers across the globe due to the work of AgEcon Search.**

**Help ensure our sustainability.**

Give to AgEcon Search

AgEcon Search  
<http://ageconsearch.umn.edu>  
[aesearch@umn.edu](mailto:aesearch@umn.edu)

*Papers downloaded from **AgEcon Search** may be used for non-commercial purposes and personal study only. No other use, including posting to another Internet site, is permitted without permission from the copyright owner (not AgEcon Search), or as allowed under the provisions of Fair Use, U.S. Copyright Act, Title 17 U.S.C.*

SB 473 (1971)

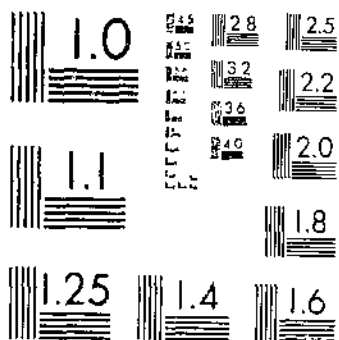
USDA STATISTICAL BULLETINS

UPDATA

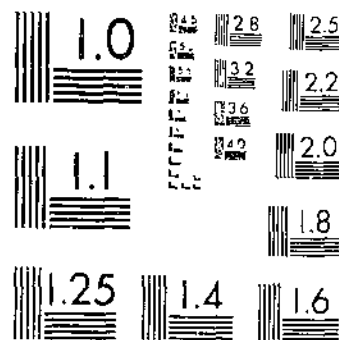
TREE NUTS, BY STATES, 1909-65, REVISED ESTIMATES, PRODUCTION, VALUE, USE

1 OF 1

# START



MICROCOPY RESOLUTION TEST CHART  
NATIONAL BUREAU OF STANDARDS-1963-A



MICROCOPY RESOLUTION TEST CHART  
NATIONAL BUREAU OF STANDARDS-1963-A

**Area 12018**

Los Angeles Public Library

**BY STATES, 1909-65  
REVISED ESTIMATES**

- Production
- Value
- Use

**REFERENCE  
DO NOT LOAN**

R630:5 U53-13 no. 473-479

**STATISTICAL SERVICE • U.S. DEPARTMENT OF AGRICULTURE • WASHINGTON, D.C.**  
Publication No. 473

	<b>Comments</b> .....	1
1	<b>Edible Tree Nuts</b> .....	2
2	<b>Almonds</b> .....	3
3, 4	<b>Filberts</b> .....	4
5	<b>Macadamia Nuts</b> .....	10
6, 7	<b>Pecans</b> .....	11
8	<b>Walnuts</b> .....	50
9	<b>Economic Abandonment</b> .....	53
10	<b>Tung Nuts</b> .....	54

Washington, D. C. 20250

June 1971

For sale by the Superintendent of Documents, U. S. Government Printing Office, Washington, D. C. 20402

## TREE NUTS

By States, 1909-65, Revised Estimates  
Production, Value, and Use

This report brings together estimates for production, utilization, season average price, and value of almonds, filberts, macadamia nuts, pecans, English or Persian walnuts, and tung nuts grown in the United States. The tables give data, so far as it is available, for 1909 through 1965. Production statistics are also given for recent years, including 1968-69. These estimates are for in-shell nuts, except for tung nuts, which are air-dried in the husk. Production estimates are the quantity sold or utilized. Additional quantities not harvested for economic reasons are shown in a separate table.

Except where otherwise noted, season average prices are estimated average returns to growers for all methods of sales. Prices are applied to production to compute value of production and to the quantity sold to compute value of sales. The U. S. season average value is obtained by dividing the U. S. value of sales by the total U. S. quantity sold. Value estimates are for the marketing or crop year and are not to be confused with cash receipts from these crops for a calendar year.

Commercial production of almonds, filberts, and walnuts is limited to the Pacific Coast States. Commercial production of macadamia nuts is limited to Hawaii. Tung nuts are grown along the Gulf Coast.

Almond production is limited almost entirely to California. Plantings have been heavy in recent years. Most of the country's filberts are produced in Oregon; the rest are produced in Washington. English walnuts are produced in both California and Oregon, with most of the production in California.

Pecans are native to America, and in earlier years, most of the production was from native and seedling trees. In recent years, more than one-half the production has been of improved varieties. Pecan growing is limited to the Southeastern, South Central, and Southwest States. Georgia leads in production of improved varieties, while Texas and Oklahoma lead in production of native and seedling pecans.

Tung nuts are grown near the Gulf of Mexico in Louisiana, Mississippi, Alabama, Georgia, and Florida. In recent years, production in Georgia became so small that production estimates were discontinued. These nuts are inedible and are grown for the production of tung oil, used mainly in paints and varnishes.

Table 1. Edible tree nuts 1/: Production, farm disposition, and value, United States, 1919-65

Season	Production 2/	Farm disposition		Value of --	
		Home use	Sold	Production	Sales
		Tons		1,000 dollars	
1919	72,685	5,038	67,647	33,601	30,992
1920	34,138	2,605	31,533	14,011	12,639
1921	53,628	5,052	48,576	19,802	17,601
1922	44,078	3,058	41,020	16,216	14,614
1923	66,965	5,469	61,496	24,837	22,003
1924	51,649	4,845	46,804	22,625	19,860
1925	70,282	5,528	64,754	30,697	27,759
1926	80,130	6,382	73,748	27,555	24,856
1927	82,412	5,026	77,386	28,612	26,209
1928	75,875	6,850	69,025	27,732	25,065
1929	74,970		69,655	24,122	21,939
1930	72,668	5,555	67,113	23,754	21,670
1931	93,652	6,380	87,272	17,242	15,978
1932	97,707	5,753	91,954	15,266	14,216
1933	87,376	6,310	81,066	16,674	15,444
1934	88,396	5,812	82,584	18,474	16,989
1935	133,582	6,800	126,782	23,961	22,693
1936	88,494	5,785	82,709	22,210	20,753
1937	143,165	6,665	136,500	26,894	25,656
1938	113,302	6,390	106,912	24,497	23,186
1939	143,620	6,330	137,290	26,763	25,471
1940	130,452	6,592	123,860	28,322	26,886
1941	146,140	6,827	139,313	38,601	36,934
1942	132,607	6,086	126,521	46,505	44,428
1943	157,551	7,110	150,441	79,519	76,047
1944	181,230	7,176	174,054	89,928	86,510
1945	178,722	6,968	171,754	95,691	92,133
1946	165,977	5,312	160,665	91,870	88,474
1947	169,141	6,580	162,561	73,849	70,745
1948	201,582	7,455	194,127	68,265	66,178
1949	204,875	6,230	198,645	71,263	68,981
1950	170,383	6,201	164,182	83,361	80,904
1951	205,343	6,925	198,418	86,733	83,927
1952	207,970	6,255	201,715	87,241	84,546
1953	210,170	7,015	203,155	79,415	77,016
1954	174,535	5,260	169,275	77,668	75,002
1955	197,212	4,840	192,372	127,165	124,020
1956	221,154	6,000	215,154	112,731	110,350
1957	187,874	5,195	182,679	84,990	82,429
1958	203,631	6,390	197,241	100,688	97,282
1959	229,406	3/5,650	223,756	120,221	116,769
1960	229,789	6,525	223,264	129,270	125,318
1961	274,316	6,795	267,611	119,731	117,193
1962	175,927	3,966	171,961	99,554	97,042
1963	340,966	8,354	332,612	146,970	143,778
1964	266,818	5,586	261,232	133,841	131,181
1965	290,759	7,313	283,446	129,742	126,987

1/ Almonds, pecans and walnuts, 1919-69; includes filberts beginning 1927, and includes macadamia nuts beginning 1946. For almonds, 1909-18, see table 2, page 5.

2/ Additional quantities not harvested for economic reasons on page 55.

3/ Not available prior to 1959 for macadamia nuts.

Table 2. Almonds: Production, farm disposition, season average price to growers, and value, California, 1909-65

Season	Production	Farm disposition		Price per ton 1/	Value of - -	
		Home use	Sold		Production	Sales
	Tons			Dollars	1,000 dollars	
1909	1,700	200	1,500			
1910	3,300	200	3,100			
1911	1,700	200	1,500			
1912	3,000	200	2,800			
1913	1,300	200	1,100			
1914	2,300	200	2,100			
1915	3,500	200	3,300			
1916	3,400	200	3,200			
1917	4,000	300	3,700			
1918	5,100	300	4,800			
1919	7,900	300	7,600	440.00	3,476	3,344
1920	6,000	300	5,700	360.00	2,160	2,052
1921	6,200	300	5,900	320.00	1,984	1,888
1922	9,000	300	8,700	290.00	2,610	2,523
1923	11,000	200	10,800	260.00	2,860	2,808
1924	8,000	200	7,800	300.00	2,400	2,340
1925	7,500	200	7,300	400.00	3,000	2,920
1926	16,000	200	15,800	300.00	4,800	4,740
1927	12,000	200	11,800	320.00	3,840	3,776
1928	14,000	200	13,800	340.00	4,760	4,692
1929	4,700	200	4,500	480.00	2,256	2,160
1930	13,500	200	13,300	200.00	2,700	2,660
1931	14,800	200	14,600	176.00	2,605	2,570
1932	14,000	200	13,800	165.00	2,310	2,277
1933	12,900	200	12,700	186.00	2,399	2,362
1934	12,000	200	11,800	180.00	2,160	2,124
1935	12,700	200	12,500	280.00	3,556	3,500
1936	10,700	200	10,500	402.00	4,301	4,221
1937	24,600	200	24,400	275.00	6,765	6,710
1938	18,400	200	18,200	258.00	4,747	4,696
1939	28,700	200	28,500	209.00	5,998	5,956
1940	15,000	200	14,800	324.00	4,860	4,795
1941	9,500	200	9,300	704.00	6,688	6,547
1942	31,500	200	31,300	442.00	13,923	13,835
1943	20,500	200	20,300	732.00	15,006	14,860
1944	31,700	200	31,500	744.00	23,585	23,436
1945	32,000	200	31,800	720.00	23,040	22,896
1946	47,200	200	47,000	486.00	22,939	22,842
1947	35,700	200	35,500	558.00	19,921	19,809
1948	36,500	200	36,300	422.00	15,403	15,319
1949	43,300	200	43,100	330.00	14,289	14,223
1950	37,700	200	37,500	546.00	20,584	20,475
1951	42,700	200	42,500	472.00	20,154	20,060
1952	36,400	200	36,200	464.00	16,890	16,797
1953	38,600	200	38,400	476.00	18,374	18,278
1954	43,200	200	43,000	498.00	21,514	21,414
1955	38,300	200	38,100	861.00	32,976	32,804
1956	58,600	200	58,400	804.00	47,114	46,954
1957	37,500	200	37,300	505.00	18,938	18,836
1958	19,800	200	19,600	772.00	15,286	15,131
1959	82,800	200	82,600	466.00	38,585	38,492
1960	53,000	200	52,800	526.00	27,878	27,773
1961	66,400	200	66,200	561.00	37,250	37,138
1962	48,000	180	47,820	654.00	31,392	31,274
1963	59,700	150	59,550	591.00	35,283	35,194
1964	75,400	300	75,100	630.00	47,502	47,313
1965	72,900	300	72,600	617.00	44,979	44,794

1/ Equivalent returns for bulk nuts at first delivery point, beginning with 1949. Prior years are all methods of sales.



Table 3. Filberts: Production, farm disposition, season average price to growers, and value, Washington, Oregon and United States, 1927-65

State and season	Production 1/	Farm disposition		Price per ton 2/	Value of --	
		Home use	Sold		Production	Sales
Washington	Tons			Dollars		1,000 dollars
1931	40	10	30	260.00	10	8
1932	90	10	80	210.00	19	17
1933	140	10	130	280.00	39	36
1934	210	10	200	210.00	44	42
1935	140	15	125	285.00	40	36
1936	250	20	230	270.00	68	62
1937	340	30	310	230.00	78	71
1938	380	40	340	250.00	95	85
1939	590	40	550	262.00	155	144
1940	510	50	460	300.00	153	138
1941	850	50	800	340.00	289	272
1942	670	60	610	380.00	255	232
1943	830	60	770	490.00	407	377
1944	920	70	850	540.00	497	459
1945	820	80	740	558.00	458	413
1946	1,150	80	1,070	408.00	460	437
1947	1,100	100	1,000	264.00	290	264
1948	960	120	840	250.00	240	210
1949	990	100	890	210.00	208	187
1950	440	100	340	354.00	156	120
1951	600	95	505	357.00	214	180
1952	790	95	695	330.00	261	229
1953	600	90	510	345.00	207	176
1954	620	90	530	322.00	200	171
1955	310	75	235	422.00	131	99
1956	140	30	110	513.00	72	56
1957	610	80	530	303.00	185	161
1958	440	90	350	380.00	167	133
1959	600	75	525	378.00	227	198
1960	550	65	485	422.00	232	205
1961	660	85	575	382.00	252	220
1962	480	60	420	442.00	212	186
1963	360	75	285	470.00	169	134
1964	290	70	220	442.00	128	97
1965	440	80	360	452.00	199	163

See footnotes on page 6.

Continued

Table 3. Filberts: Production, farm disposition, season average price to growers, and value, Washington, Oregon and United States, 1927-65 Continued

State and season	Production : 1/	Farm disposition :		Price : per : ton : 2/	Value of —	
		Home : use :	Sold :		Production :	Sales
	Tons			Dollars	1,000 dollars	
<u>Oregon</u>						
1927	60	10	50	320.00	19	16
1928	200	20	180	380.00	76	68
1929	200	20	180	300.00	60	54
1930	300	20	280	340.00	102	95
1931	380	30	350	250.00	95	88
1932	400	30	370	200.00	80	74
1933	930	50	880	300.00	279	264
1934	1,000	50	950	200.00	200	190
1935	1,100	70	1,030	260.00	286	268
1936	1,850	80	1,770	270.00	500	478
1937	2,230	90	2,140	215.00	479	460
1938	2,060	100	1,960	220.00	453	431
1939	3,300	120	3,180	220.00	726	700
1940	2,700	110	2,590	240.00	648	622
1941	4,900	130	4,770	300.00	1,470	1,431
1942	3,500	130	3,370	346.00	1,211	1,166
1943	6,100	210	5,890	500.00	3,050	2,945
1944	5,500	150	5,350	540.00	2,970	2,889
1945	4,500	170	4,330	550.00	2,475	2,382
1946	7,300	200	7,100	380.00	2,774	2,698
1947	7,700	230	7,470	250.00	1,925	1,868
1948	5,100	240	4,860	260.00	1,326	1,264
1949	9,600	250	9,350	220.00	2,112	2,057
1950	5,350	240	5,110	350.00	1,872	1,788
1951	5,850	250	5,600	350.00	2,048	1,960
1952	10,780	280	10,500	296.00	3,191	3,108
1953	4,200	200	4,000	344.00	1,445	1,376
1954	7,850	250	7,600	320.00	2,512	2,432
1955	7,400	250	7,150	420.00	3,108	3,003
1956	2,900	100	2,800	510.00	1,479	1,428
1957	11,700	200	11,500	300.00	3,510	3,450
1958	7,100	150	6,950	380.00	2,698	2,641
1959	9,500	180	9,320	376.00	3,572	3,504
1960	8,400	150	8,250	420.00	3,528	3,465
1961	11,100	160	10,940	380.00	4,218	4,157
1962	7,300	120	7,180	440.00	3,212	3,159
1963	6,600	100	6,500	470.00	3,102	3,055
1964	7,800	100	7,700	440.00	3,432	3,388
1965	7,300	100	7,200	450.00	3,285	3,240

See footnotes on page 6.

Continued

Table 3. Filberts: Production, farm disposition, season average price to growers, and value, Washington, Oregon and United States, 1927-65 Continued

State and season	Production : 1/	Farm disposition		Price : per : ton : 2/	Value of - -	
		Home use	Sold		Production	Sales
		Tons		Dollars	1,000 dollars	
United States						
1927	60	10	50	320.00	19	16
1928	200	20	180	380.00	76	68
1929	200	20	180	300.00	60	54
1930	300	20	280	340.00	102	95
1931	420	40	380	250.00	105	96
1932	490	40	450	202.00	99	91
1933	1,070	60	1,010	297.00	318	300
1934	1,210	60	1,150	202.00	244	232
1935	1,240	85	1,155	263.00	326	304
1936	2,100	100	2,000	270.00	568	540
1937	2,570	120	2,450	217.00	557	531
1938	2,440	140	2,300	225.00	548	516
1939	3,890	160	3,730	226.00	881	844
1940	3,210	160	3,050	250.00	801	760
1941	5,750	180	5,570	306.00	1,759	1,703
1942	4,170	190	3,980	352.00	1,466	1,398
1943	6,930	270	6,660	499.00	3,457	3,322
1944	6,420	220	6,200	540.00	3,467	3,348
1945	5,320	250	5,070	551.00	2,933	2,795
1946	8,450	280	8,170	384.00	3,243	3,135
1947	8,800	330	8,470	252.00	2,215	2,132
1948	6,060	360	5,700	259.00	1,566	1,474
1949	10,590	350	10,240	219.00	2,320	2,244
1950	5,790	340	5,450	350.00	2,028	1,908
1951	6,450	345	6,105	351.00	2,262	2,140
1952	11,570	375	11,195	298.00	3,452	3,337
1953	4,800	290	4,510	344.00	1,652	1,552
1954	8,470	340	8,130	320.00	2,712	2,603
1955	7,710	325	7,385	420.00	3,239	3,102
1956	3,040	130	2,910	510.00	1,551	1,484
1957	12,310	280	12,030	300.00	3,695	3,611
1958	7,540	240	7,300	380.00	2,865	2,774
1959	10,100	255	9,845	376.00	3,799	3,702
1960	8,950	215	8,735	420.00	3,760	3,670
1961	11,760	245	11,515	380.00	4,470	4,377
1962	7,780	180	7,600	440.00	3,424	3,345
1963	6,760	175	6,785	470.00	3,271	3,189
1964	8,090	170	7,920	440.00	3,560	3,485
1965	7,740	180	7,560	450.00	3,484	3,403

1/ Additional quantities not harvested for economic reasons on page 53.

2/ Equivalent returns for bulk nuts at first delivery point, beginning with 1949. Prior years are all methods of sales.

Table 4. Filberts: Utilization of sales (unshelled basis) and production of shelled meats, Washington, Oregon and United States, 1939-65

State and season	Total sales	Merchantable unshelled grades		Culls and blows		Orchard run shelled	Local sales	Total shelled	Shelled meats produced
		Sold in shell	Shelled	Shelled	Not used				
				Tons			Pounds		
Washington									
1944	850	590	10	20	40	30	160	60	45,000
1945	740	540		20	50	10	120	30	22,000
1946	1,070	700	80	10	40	40	200	130	102,000
1947	1,000	420	210	20	30	150	170	380	308,000
1948	840	530	20	40	20	50	180	110	77,000
1949	890	440	280	30	40	50	50	360	274,000
1950	340	255		20	10	30	25	50	37,000
1951	505	415		30	10	20	30	50	35,000
1952	695	405	150	100	15		25	250	195,000
1953	510	370	10	15	30	5	80	30	19,000
1954	530	424	31	25	21	5	24	61	45,000
1955	235	186	4	16	3	16	10	36	22,600
1956	110	94		2	6	3	5	5	3,300
1957	530	354	104	18		4	50	126	97,100
1958	350	267	25	8			50	33	26,300
1959	525	330	66	25		24	80	115	90,800
1960	485	331	6	4	4	65	75	75	59,330
1961	575	266	131	18	11	59	90	208	163,900
1962	420	244	31	11	7	56	71	98	77,000
1963	285	175	3	4	5	32	66	39	29,200
1964	220	113	3	2	4	2	36	7	5,474
1965	360	186	11	2	5	56	100	69	57,566

Continued

Table 4. Filberts: Utilization of sales (unshelled basis) and production of shelled meats, Washington, Oregon and United States, 1939-65 Continued

State and season	Total sales	Merchantable unshelled grades		Culls and blows		Orchard run shelled	Local sales	Total shelled	Shelled meats produced
		Sold in shell	Shelled	Shelled	Not used				
Oregon									
Tons									
Pounds									
1939 1/	3,180	3,130	105	15	170	25	125	145	105,700
1940 1/	2,590	2,490	60	10	145	65	90	135	98,800
1941 1/	4,770	4,520	20	30	265	270	135	320	240,000
1942 1/	3,370	2,875		65	120	510	130	575	414,500
1943 1/	5,890	5,070		120	180	1,020	170	1,140	773,900
1944	5,350	4,400	50	90	155	490	165	630	468,000
1945	4,330	3,540	10	90	280	240	170	340	245,000
1946	7,100	5,490	650	60	370	350	180	1,060	830,000
1947	7,470	3,800	1,800	180	240	1,280	170	3,260	2,637,000
1948	4,860	3,790	90	310	135	355	180	755	527,000
1949	9,350	5,110	2,780	370	410	480	200	3,630	2,771,000
1950	5,110	4,010	10	310	130	470	180	790	582,000
1951	5,600	4,720	20	320	130	210	200	550	391,000
1952	10,500	6,600	2,330	1,050	170	100	250	3,480	2,478,000
1953	4,000	3,100	45	250	245	210	150	505	339,000
1954	7,600	5,600	800	380	250	370	200	1,550	1,159,000
1955	7,150	5,435	175	395	145	750	250	1,320	885,000
1956	2,800	2/2,412		143	86	59	100	202	101,000
1957	11,500	7,210	2,430	660	225	675	300	3,765	2,915,000
1958	6,950	4,780	1,130	290	300	200	250	1,620	1,277,800
1959	9,320	5,500	1,180	690	140	1,560	250	3,430	2,703,500
1960	8,250	5,060	1,190	300	150	1,330	220	2,820	2,248,600
1961	10,940	5,200	2,870	390	210	2,030	240	5,290	4,158,000
1962	7,180	4,000	900	290	180	1,630	180	2,820	2,180,000
1963	6,500	4,500	180	240	130	1,300	150	1,720	1,220,000
1964	7,700	5,700	380	290	110	1,070	150	1,740	1,310,000
1965	7,200	4,600	990	280	200	990	140	2,260	1,805,000

See footnotes on page 9.

Continued

Table 4. Filberts: Utilization of sales (unshelled basis) and production of shelled meats, Washington, Oregon and United States, 1939-65 Continued

State and season	Total sales	Merchantable unshelled: grades		Culls and blows		Orchard-run shelled	Local sales	Total shelled	Shelled meats produced
		Sold in shell	Shelled	Shelled	Not used				
								Tons	Pounds
United States:									
1944	6,200	4,990	60	110	195	520	325	690	513,000
1945	5,070	4,080	10	110	330	250	290	370	267,000
1946	8,170	6,190	730	70	410	390	380	1,190	932,000
1947	8,470	4,220	2,010	200	270	1,430	340	3,610	2,945,000
1948	5,700	4,320	110	350	155	405	360	865	604,000
1949	10,240	5,550	3,060	400	450	530	250	3,990	3,045,000
1950	5,450	4,265	10	330	140	500	205	840	619,000
1951	6,105	5,135	20	350	140	230	230	600	426,000
1952	11,195	7,005	2,480	1,150	185	100	275	3,730	2,943,000
1953	4,510	3,470	55	265	275	215	230	535	358,000
1954	8,130	6,024	831	405	271	375	224	1,611	1,204,000
1955	7,385	5,621	179	411	148	766	260	1,356	907,600
1956	2,910	2,506		145	92	62	105	207	104,300
1957	12,030	7,564	2,534	678	225	679	350	3,891	3,012,100
1958	7,300	5,047	1,155	298	300	200	300	1,653	1,304,100
1959	9,845	5,830	1,246	715	140	1,584	330	3,545	2,794,300
1960	8,735	5,391	1,196	304	154	1,395	295	2,895	2,307,930
1961	11,515	5,466	3,001	408	221	2,089	330	5,498	4,321,900
1962	7,600	4,244	931	301	187	1,686	251	2,918	2,257,000
1963	6,785	4,675	183	244	135	1,332	216	1,759	1,249,200
1964	7,920	5,813	383	292	114	1,072	246	1,747	1,315,474
1965	7,560	4,786	1,001	282	205	1,046	240	2,329	1,862,566

1/ Includes the following quantities of Washington State filberts, which are not included in production and disposition: (tons) 1939, 390; 1940, 270; 1941, 470; 1942, 330; and 1943, 670.

2/ Includes some quantities shelled.

Table 5. Macadamia nuts: Production, farm disposition, season average price to growers, and value, Hawaii, 1946-65

Season	Production 1/	Farm disposition		Price per pound 2/	Value of - -	
		Home use	Sold		Production	Sales
		1,000 pounds		Cents	1,000 dollars	
1946	630	3/	630	15.2	96	96
1947	680	3/	680	16.9	115	115
1948	700	3/	700	17.0	119	119
1949	680	3/	680	16.9	115	115
1950	755	3/	755	17.0	128	128
1951	850	3/	850	16.9	144	144
1952	965	3/	965	17.1	165	165
1953	970	3/	970	17.0	165	165
1954	930	3/	930	17.1	159	159
1955	903	3/	903	17.9	162	162
1956	1,027	3/	1,027	18.4	189	189
1957	1,329	3/	1,329	18.7	248	248
1958	1,832	3/	1,832	18.5	339	339
1959	2,112	10	2,102	18.2	384	382
1960	2,579	10	2,569	18.4	474	472
1961	3,761	10	3,751	18.5	695	693
1962	5,194	12	5,182	18.4	956	954
1963	6,011	8	6,003	17.7	1,062	1,061
1964	7,655	16	7,639	15.6	1,192	1,190
1965	8,538	16	8,522	19.4	1,654	1,651

1/ Additional quantities not harvested for economic reasons on page 53.

2/ Price per pound is derived from value of sales and the quantity sold.

3/ Not available.

Table 6. Pecans: Production, farm disposition, season average price to growers, and value, by States and United States, 1919-65

State, variety, and season	Production	Farm disposition		Price per pound 1/	Value of --	
		Home use	Sold		Production	Sales
North Carolina	1,000 pounds			Cents	1,000 dollars	
Improved varieties:						
1919	120					
1920	66					
1921	80					
1922	140			52.0	73	
1923	260			48.0	125	
1924	310			42.0	130	
1925	190			45.0	86	
1926	450			44.0	198	
1927	380			40.0	152	
1928	430			36.0	155	
1929	420			34.0	143	
1930	460			33.0	152	
1931	760			20.0	152	
1932	610			17.0	104	
1933	920			19.0	175	
1934	1,200			20.0	240	
1935	1,520			19.1	289	
1936	2,070			19.2	397	
1937	2,430	630	1,800	16.0	389	288
1938	2,700	670	2,030	14.0	378	284
1939	1,280	480	800	16.0	205	128
1940	2,340	680	1,660	15.0	351	249
1941	3,340	750	2,590	16.0	534	414
1942	2,110	650	1,460	19.0	401	277
1943	2,750	700	2,050	30.0	825	615
1944	1,960	565	1,395	32.4	635	452
1945	2,741	700	2,041	30.8	844	629
1946	1,150	480	670	40.6	467	272
1947	1,630	530	1,100	33.0	538	363
1948	2,210	650	1,560	22.0	486	343
1949	2,255	660	1,595	25.0	564	399
1950	1,492	550	942	31.0	463	292
1951	2,190	660	1,530	25.0	548	382
1952	2,340	670	1,670	25.0	585	418
1953	3,175	625	2,550	21.0	667	536
1954	860	460	400	30.0	258	120
1955	300	200	100	44.0	132	44
1956	2,200	600	1,600	20.0	440	320
1957	650	420	230	35.0	228	80
1958	2,700	500	2,200	27.0	729	594
1959	1,050	325	725	32.0	336	232
1960	2,420	300	2,120	34.0	823	721
1961	1,300	280	1,020	22.0	286	224
1962	1,400	350	1,050	34.0	476	357
1963	3,500	550	2,950	20.0	700	590
1964	1,500	300	1,200	25.5	382	306
1965	2,800	400	2,400	21.0	588	504

See footnotes on page 48.

Continued



Table 6. Pecans: Production, farm disposition, season average price to growers, and value, by States and United States, 1919-65 Continued

State, variety, and season	Production	Farm disposition		Price per pound	Value of --	
		Home use	Sold		Production	Sales
North Carolina	1,000 pounds			Cents		1,000 dollars
Native and seedling pecans:						
1919	120					
1920	64					
1921	70					
1922	120			24.0	29	
1923	220			32.0	70	
1924	250			27.0	68	
1925	140			30.0	42	
1926	330			25.0	82	
1927	280			27.0	76	
1928	260			22.0	57	
1929	240					
1930	230			20.0	48	
1931	290			18.0	41	
1932	220			14.0	41	
1933	290			11.0	24	
1934	340			12.5	36	
1935	340			16.0	54	
1936	370			15.1	51	
1937	300	130	170	14.5	54	
1938	300	130	170	12.0	36	20
				10.3	31	18
1939	220	120	100	12.0	26	12
1940	285	120	165	11.0	31	13
1941	330	120	210	13.0	43	27
1942	290	130	160	14.0	41	22
1943	370	120	250	22.0	81	55
1944	215	110	105	24.5	53	26
1945	339	126	213	24.2	82	52
1946	100	60	40	31.8	32	13
1947	242	120	122	26.0	63	32
1948	218	110	108	16.0	35	17
1949	250	120	130	19.0	48	25
1950	148	100	48	23.0	34	11
1951	245	120	125	19.0	47	24
1952	206	110	96	20.0	41	19
1953	605	155	450	15.0	91	68
1954	140	90	50	22.0	31	11
1955	50	40	10	33.0	16	3
1956	300	100	200	16.0	48	32
1957	250	55	195	25.0	62	49
1958	400	100	300	21.0	84	63
1959	200	75	125	26.0	52	32
1960	680	100	580	25.0	170	145
1961	200	70	130	16.0	32	21
1962	500	150	350	25.0	125	88
1963	900	250	650	15.5	140	101
1964	400	150	250	19.5	78	49
1965	700	100	600	15.0	105	90

See footnotes on page 48.

Continued

Table 6. Pecans: Production, farm disposition, season average price to growers, and value, by States and United States, 1919-65 Continued

State, variety, and season	Production	Farm disposition		Price per pound 1/	Value of --	
		Home use	Sold		Production	Sales
North Carolina	1,000 pounds			Cents	1,000 dollars	
All pecans:						
1919	240	170	70	35.0	84	24
1920	130	97	33	38.0	49	13
1921	150	109	41	32.0	48	13
1922	260	185	75	39.2	102	29
1923	480	331	149	40.6	195	60
1924	560	379	181	35.4	198	64
1925	330	237	93	38.8	128	36
1926	780	510	270	35.9	280	97
1927	660	451	209	34.5	228	72
1928	690	461	229	30.7	212	70
1929	660	450	210	28.9	191	61
1930	690	460	230	28.0	193	64
1931	1,050	550	500	18.4	193	92
1932	830	500	330	15.4	128	51
1933	1,210	570	640	17.4	211	111
1934	1,540	600	940	19.1	294	180
1935	1,860	650	1,210	18.3	340	221
1936	2,440	750	1,690	18.5	451	313
1937	2,730	760	1,970	15.6	425	308
1938	3,000	800	2,200	13.6	409	302
1939	1,500	600	900	15.4	231	140
1940	2,625	800	1,825	14.6	382	267
1941	3,670	870	2,800	15.7	577	441
1942	2,400	780	1,620	18.4	442	299
1943	3,120	820	2,300	29.0	906	670
1944	2,175	675	1,500	31.9	688	478
1945	3,080	826	2,254	30.2	926	681
1946	1,250	540	710	40.1	499	285
1947	1,872	650	1,222	32.3	601	395
1948	2,428	760	1,668	21.6	521	360
1949	2,505	780	1,725	24.6	612	424
1950	1,640	650	990	30.6	497	303
1951	2,435	780	1,655	24.5	595	406
1952	2,546	780	1,766	24.7	626	437
1953	3,780	780	3,000	20.1	758	604
1954	1,000	550	450	29.1	289	131
1955	350	240	110	42.7	148	47
1956	2,500	700	1,800	19.6	488	352
1957	900	475	425	30.4	290	129
1958	3,100	600	2,500	26.3	813	657
1959	1,250	400	850	31.1	388	264
1960	3,100	400	2,700	32.1	993	866
1961	1,500	350	1,150	21.3	318	245
1962	1,900	500	1,400	31.8	601	445
1963	4,400	800	3,600	19.2	840	691
1964	1,900	450	1,450	24.5	460	355
1965	3,500	500	3,000	19.8	693	594

See footnotes on page 48.

Continued

Table 6. Pecans: Production, farm disposition, season average price to growers, and value, by States and United States, 1919-58. Continued

State, variety, and season	Production	Farm disposition		Price per pound 1/	Value of --	
		Home use	Sold		Production	Sales
South Carolina		1,000 pounds		Cents	1,000 dollars	
Improved varieties:						
1919	330					
1920	120					
1921	470					
1922	220			45.0	99	
1923	430			45.0	194	
1924	500			41.0	205	
1925	370			45.0	166	
1926	900			28.0	251	
1927	550			35.0	192	
1928	550			23.0	182	
1929	452			35.0	158	
1930	729			28.0	204	
1931	788			17.0	134	
1932	697			14.0	98	
1933	1,053			15.0	153	
1934	1,850			17.5	185	
1935	1,153			15.5	190	
1936	2,178			15.7	354	
1937	1,705	290	1,415	14.5	247	205
1938	1,750	300	1,450	13.5	236	196
1939	2,007	290	1,717	15.0	301	258
1940	1,946	276	1,670	14.0	272	234
1941	2,185	102	1,883	13.7	299	258
1942	2,083	283	1,800	19.0	396	342
1943	2,311	311	2,000	28.0	647	560
1944	1,746	250	1,500	31.0	541	465
1945	2,500	300	2,200	10.5	762	671
1946	1,390	260	1,130	41.0	570	463
1947	2,695	400	2,295	27.0	728	620
1948	2,960	400	2,560	15.0	444	384
1949	2,350	370	1,980	21.5	595	426
1950	2,550	360	2,190	21.5	805	690
1951	3,580	180	3,300	25.0	920	825
1952	3,050	380	2,670	25.0	762	668
1953	5,580	180	5,200	13.8	1,049	978
1954	2,300	290	2,010	31.0	713	623
1955	200	80	120	46.0	92	55
1956	7,000	800	7,100	19.5	1,540	1,324
1957	910	200	710	31.5	287	224
1958	7,400	700	6,700	10.0	2,220	2,010
1959	3,700	110	3,590	31.0	1,147	989
1960	3,400	100	2,840	12.0	1,088	909
1961	5,800	900	5,900	17.0	1,190	1,032
1962	370	80	290	25.0	133	105
1963	9,550	100	9,700	29.0	1,978	1,784
1964	1,000	150	1,340	27.0	405	362
1965	9,000	720	4,280	25.0	1,025	877

See footnotes on page 48.

Continued

Table 5. Pecans: Production, farm disposition, season average price to growers, and value, by State and United States, 1919-65. Continued

State, variety, and season	Production	Farm disposition		Price per pound 1/	Value of --	
		Home use	Sold		Production	Sales
South Carolina		1,000 pounds		Cents	1,000 dollars	
Native and seedling pecans:						
1919	270					
1920	100					
1921	330					
1922	140			22.0	31	
1923	250			25.0	62	
1924	270			25.0	68	
1925	180			30.0	54	
1926	400			21.0	84	
1927	200			23.0	46	
1928	180			17.0	31	
1929	128			20.0	26	
1930	171			18.0	31	
1931	162			11.0	18	
1932	123			9.5	12	
1933	171			10.0	17	
1934	172			12.2	21	
1935	157			11.5	18	
1936	297			11.3	34	
1937	224	30	255	10.0	32	26
1938	281	50	231	9.0	26	21
1939	411	70	341	10.0	41	34
1940	398	78	320	9.7	39	31
1941	327	40	279	9.7	32	27
1942	311	51	260	13.0	40	32
1943	345	55	280	21.0	72	59
1944	383	58	330	21.8	83	72
1945	380	70	310	22.5	86	70
1946	245	50	185	29.5	72	55
1947	435	80	355	18.0	78	64
1948	483	80	403	10.0	42	40
1949	390	50	330	15.0	54	44
1950	450	70	380	24.5	110	90
1951	550	70	580	18.5	120	107
1952	550	70	480	18.5	102	89
1953	1,100	100	1,000	15.7	151	137
1954	400	50	340	25.0	92	73
1955	100	20	80	35.0	35	28
1956	1,500	100	1,400	15.0	225	210
1957	150	30	110	22.0	42	31
1958	1,600	100	1,500	22.0	352	330
1959	900	70	830	26.0	234	216
1960	900	70	810	27.0	243	219
1961	1,200	100	1,100	14.0	158	154
1962	125	20	105	25.0	32	27
1963	1,850	250	1,500	16.5	305	254
1964	300	40	260	19.5	58	51
1965	1,000	180	820	14.0	140	115

See footnotes on page 48.

Continued

Table 6. Pecans: Production, farm disposition, season average price to growers, and value, by States and United States, 1919-65 Continued

State, variety, and season	Production	Farm disposition		Price per pound 1/	Value of --	
		Home use	Sold		Production	Sales
South Carolina						
All pecans:		1,000 pounds		Cents	1,000 dollars	
1919	600	348	252	42.0	252	106
1920	220	150	70	31.0	68	22
1921	800	390	410	29.0	232	119
1922	360	227	133	36.1	130	48
1923	680	378	302	37.6	256	114
1924	770	390	380	35.5	273	135
1925	550	330	220	40.0	220	88
1926	1,300	400	900	25.8	335	232
1927	750	390	360	31.7	238	114
1928	730	404	326	29.2	213	95
1929	580	300	280	31.7	184	89
1930	900	300	600	26.1	235	157
1931	950	300	650	16.0	152	104
1932	820	300	520	13.4	110	70
1933	1,224	300	924	14.3	175	132
1934	1,232	300	932	16.8	207	157
1935	1,310	300	1,010	15.9	208	161
1936	2,475	350	2,125	16.1	398	342
1937	2,030	350	1,680	13.7	279	231
1938	2,035	350	1,685	12.9	262	217
1939	2,418	360	2,058	14.1	342	292
1940	2,344	354	1,990	13.3	311	265
1941	2,512	350	2,162	13.2	331	285
1942	2,394	344	2,050	18.2	436	374
1943	2,656	376	2,280	27.1	719	619
1944	2,129	299	1,830	29.3	624	537
1945	2,880	370	2,510	29.5	848	741
1946	1,635	320	1,315	39.4	642	518
1947	3,130	480	2,650	25.8	806	684
1948	3,445	480	2,965	14.3	492	424
1949	2,740	430	2,310	20.3	569	480
1950	3,000	430	2,570	30.5	913	783
1951	4,330	450	3,880	24.0	1,040	932
1952	3,600	450	3,150	24.0	864	757
1953	6,680	400	6,280	18.0	1,200	1,115
1954	2,700	250	2,450	29.3	805	701
1955	300	100	200	41.5	127	83
1956	9,400	900	8,500	18.8	1,765	1,594
1957	1,100	250	850	30.0	329	255
1958	9,000	800	8,200	23.5	2,572	2,340
1959	4,600	800	4,000	30.0	1,381	1,205
1960	4,200	1,000	3,500	30.9	1,331	1,128
1961	8,000	1,000	7,000	16.9	1,358	1,186
1962	500	100	400	33.0	155	132
1963	11,500	1,200	10,300	19.9	2,283	2,048
1964	1,800	200	1,600	25.8	463	413
1965	6,000	700	5,100	19.5	1,165	992

See footnotes on page 48.

Continued

Table 6. Pecans: Production, farm disposition, season average price to growers, and value, by States and United States, 1919-65 *Continued*

State, variety, and season	Production	Farm disposition		Price per pound	Value of...	
		Home use	Sold		Production	Sales
		1,000 pounds		Cents	1,000 dollars	
<b>Georgia</b>						
Improved varieties:						
1919	: 2,100					
1920	: 1,050					
1921	: 3,100					
1922	: 1,070			45.0	483	
1923	: 5,000			43.0	2,149	
1924	: 2,900			45.0	1,304	
1925	: 5,200			37.0	1,927	
1926	: 7,900			31.0	2,445	
1927	: 4,400			34.0	1,498	
1928	: 7,400			28.0	2,071	
1929	: 3,200			31.0	992	
1930	: 4,536			30.0	1,363	
1931	: 8,607			12.0	1,031	
1932	: 4,128			13.0	535	
1933	: 9,495			12.0	1,141	
1934	: 9,960			13.8	1,373	
1935	: 11,827			10.7	1,263	
1936	: 16,898			14.0	2,359	
1937	: 16,925	1,800	15,125	10.1	1,709	1,528
1938	: 18,348	1,800	16,548	11.1	2,037	1,837
1939	: 18,337	1,800	16,537	12.0	2,200	1,984
1940	: 20,296	1,800	18,496	12.2	2,476	2,257
1941	: 22,549	1,800	20,749	12.1	2,728	2,511
1942	: 22,300	1,800	20,500	18.8	4,192	3,854
1943	: 25,620	1,800	23,820	29.8	7,635	7,098
1944	: 28,140	1,940	26,200	27.5	7,738	7,205
1945	: 30,954	1,950	29,004	29.1	9,008	8,440
1946	: 13,000	900	12,100	42.5	5,525	5,142
1947	: 23,444	2,050	21,394	28.5	6,682	6,097
1948	: 34,452	2,100	32,352	13.5	4,651	4,368
1949	: 14,620	900	13,720	21.5	3,143	2,950
1950	: 35,000	2,000	33,000	31.5	11,025	10,395
1951	: 42,300	2,000	40,300	21.5	9,094	8,664
1952	: 41,000	2,000	39,000	25.0	10,250	9,750
1953	: 46,500	2,050	44,450	17.5	8,138	7,779
1954	: 16,400	900	15,500	32.0	5,248	4,960
1955	: 8,000	200	7,800	42.0	3,360	3,276
1956	: 51,000	1,500	49,500	18.0	9,180	8,910
1957	: 4,700	600	4,100	32.0	1,504	1,312
1958	: 37,700	1,800	35,900	30.0	11,310	10,770
1959	: 35,400	2,000	33,400	34.0	12,036	11,356
1960	: 29,500	2,000	27,500	33.5	9,882	9,212
1961	: 69,200	2,300	66,900	19.0	13,148	12,711
1962	: 13,900	700	13,200	37.0	5,143	4,884
1963	: 105,500	3,000	102,500	17.5	18,462	17,938
1964	: 12,800	700	12,100	28.0	3,584	3,388
1965	: 51,000	2,500	48,500	19.0	9,690	9,215

See footnote on page 48.

Continued

Table 6. Production, farm disposition, season average price to growers, and value, by States and United States, 1919-65 Continued

State, variety, and season	Production	Farm disposition		Price per pound 1/	Value of --	
		Home use	Sales		Production	Sales
Georgia		1,000 pounds		Cents		1,000 dollars
Native and seedling pecans:						
1919	1,100					
1920	500					
1921	1,400					
1922	430			18.0	77	
1923	1,600			22.0	325	
1924	700			22.0	154	
1925	1,200			25.0	300	
1926	1,500			15.0	225	
1927	600			17.0	102	
1928	1,000			13.0	130	
1929	800			15.0	120	
1930	1,064			14.0	149	
1931	1,889			6.0	113	
1932	1,032			6.2	64	
1933	1,945			6.0	117	
1934	2,040			8.6	175	
1935	2,253			5.8	131	
1936	2,982			8.9	265	
1937	2,755	450	2,305	7.1	196	164
1938	2,742	450	2,292	8.1	222	186
1939	3,493	450	3,043	8.0	279	243
1940	3,304	450	2,854	7.5	248	214
1941	3,671	450	3,221	7.9	290	254
1942	4,200	450	3,750	14.8	622	555
1943	4,880	450	4,430	21.2	1,035	939
1944	5,360	480	4,880	18.4	985	898
1945	5,896	550	5,346	21.6	1,274	1,155
1946	3,000	300	2,700	31.2	936	842
1947	3,816	450	3,366	20.5	782	690
1948	5,148	400	4,748	9.0	463	427
1949	2,380	300	2,080	16.5	393	343
1950	6,000	500	5,500	25.5	1,530	1,402
1951	9,200	500	8,700	15.5	1,426	1,348
1952	9,500	500	9,000	18.5	1,758	1,665
1953	10,100	550	9,550	14.0	1,414	1,337
1954	3,600	300	3,300	25.0	900	825
1955	2,000	100	1,900	32.0	640	608
1956	9,000	500	8,500	15.0	1,350	1,275
1957	2,800	300	2,500	23.5	658	588
1958	8,300	800	7,500	24.0	1,992	1,800
1959	8,100	500	7,600	29.5	2,390	2,242
1960	8,200	600	7,600	29.0	2,378	2,204
1961	15,400	800	14,600	15.0	2,310	2,190
1962	5,100	300	4,800	30.5	1,556	1,464
1963	18,500	1,000	17,500	15.0	2,775	2,625
1964	4,700	300	4,400	21.0	987	924
1965	10,000	500	9,500	14.5	1,450	1,378

See footnotes on page 48.

Continued

Table 6. Pecans: Production, farm disposition, season average price to growers, and value, by States and United States, 1919-65 Continued

State, variety, and season	Production	Farm disposition		Price per pound	Value of --	
		Home use	Sold		Production	Sales
Georgia		1,000 pounds		Cents	1,000 dollars	
All pecans:						
1919	3,200	1,496	1,704	38.0	1,216	648
1920	1,550	880	670	35.0	542	234
1921	4,500	1,896	2,604	30.0	1,350	781
1922	1,500	876	624	37.3	560	233
1923	6,600	2,220	4,380	37.9	2,501	1,660
1924	3,600	1,680	1,920	40.5	1,458	778
1925	6,400	2,239	4,161	34.8	2,227	1,448
1926	9,400	2,250	7,150	28.4	2,670	2,031
1927	5,000	1,984	3,016	32.0	1,600	965
1928	8,400	2,250	6,150	26.2	2,201	1,611
1929	4,000	2,000	2,000	27.8	1,112	556
1930	5,600	2,000	3,600	27.0	1,512	972
1931	10,496	2,200	8,296	10.9	1,144	904
1932	5,160	2,000	3,160	11.6	599	367
1933	11,440	2,200	9,240	11.0	1,258	1,016
1934	12,000	2,200	9,800	12.9	1,548	1,264
1935	14,080	2,200	11,880	9.9	1,394	1,176
1936	19,880	2,250	17,630	13.2	2,624	2,327
1937	19,680	2,250	17,430	9.7	1,905	1,692
1938	21,090	2,250	18,840	10.7	2,259	2,023
1939	21,830	2,250	19,580	11.4	2,479	2,227
1940	23,600	2,250	21,350	11.5	2,724	2,471
1941	26,220	2,250	23,970	11.5	3,018	2,765
1942	26,500	2,250	24,250	18.2	4,114	4,409
1943	30,500	2,250	28,250	28.4	8,670	8,037
1944	33,500	2,420	31,080	26.1	8,724	8,103
1945	36,850	2,500	34,350	27.9	10,282	9,595
1946	16,000	1,200	14,800	40.4	6,461	5,984
1947	27,260	2,500	24,760	27.4	7,464	6,787
1948	39,600	2,500	37,100	12.9	5,114	4,795
1949	17,000	1,200	15,800	20.8	2,536	3,293
1950	41,000	2,500	38,500	30.6	12,555	11,797
1951	51,500	2,500	49,000	20.4	10,520	10,012
1952	50,500	2,500	48,000	23.8	12,008	11,415
1953	56,600	2,600	54,000	16.9	9,552	9,116
1954	20,000	1,200	18,800	10.8	6,148	5,785
1955	10,000	300	9,700	40.0	4,000	3,884
1956	60,000	2,000	58,000	17.6	10,530	10,185
1957	7,500	900	6,600	28.8	2,162	1,900
1958	46,000	2,600	43,400	29.0	12,302	12,570
1959	43,500	2,500	41,000	33.2	14,426	13,590
1960	37,700	2,500	35,200	32.5	12,260	11,416
1961	84,600	3,100	81,500	18.3	15,458	14,901
1962	19,000	1,000	18,000	35.3	6,699	6,348
1963	124,000	4,000	120,000	17.1	21,237	20,563
1964	17,500	1,000	16,500	26.1	4,571	4,312
1965	61,000	3,000	58,000	18.3	11,140	10,593

See footnotes on page 48.

Continued



Table 6. Pecans: Production, farm disposition, season average price to growers, and value, by States and United States, 1919-65 Continued

State, variety, and season	Production	Farm disposition		Price per pound 1/	Value of --	
		Home use	Sold		Production	Sales
Florida	1,000 pounds			Cents	1,000 dollars	
Improved varieties:						
1919	600					
1920	230					
1921	650					
1922	490			48.0	235	
1923	930			39.0	362	
1924	780			43.0	334	
1925	1,200			37.0	444	
1926	1,030			30.0	309	
1927	800			33.0	263	
1928	1,500			31.0	464	
1929	750			33.0	248	
1930	840			29.0	244	
1931	1,667			14.0	232	
1932	541			14.0	76	
1933	1,024			12.0	122	
1934	887			15.0	133	
1935	1,253			12.0	150	
1936	1,610			13.6	220	
1937	1,463	340	1,123	8.8	129	99
1938	2,038	340	1,698	10.0	204	170
1939	1,944	340	1,604	9.5	185	152
1940	2,103	340	1,763	11.2	236	197
1941	2,616	340	2,276	12.0	314	273
1942	2,700	340	2,360	18.0	486	425
1943	2,579	340	2,239	26.0	671	582
1944	2,856	370	2,486	25.5	728	634
1945	2,209	320	1,889	26.5	585	501
1946	2,340	320	2,020	36.0	842	727
1947	1,590	280	1,310	24.4	388	320
1948	2,520	320	2,200	12.5	315	275
1949	1,790	290	1,500	19.5	349	292
1950	2,350	310	2,040	29.0	682	592
1951	3,440	310	3,130	20.0	688	626
1952	2,800	310	2,490	22.5	630	560
1953	4,000	300	3,700	16.0	640	592
1954	1,500	275	1,225	34.0	510	416
1955	6,400	300	6,100	42.0	2,688	2,562
1956	2,200	300	1,900	18.0	396	342
1957	1,300	250	1,050	30.0	390	315
1958	1,600	270	1,330	28.0	448	372
1959	2,500	300	2,200	31.0	775	682
1960	900	250	650	35.0	315	228
1961	3,100	250	2,850	20.0	620	570
1962	2,000	250	1,750	34.0	680	595
1963	4,400	400	4,000	18.0	792	720
1964	1,350	250	1,100	26.5	358	292
1965	1,250	325	925	20.5	256	190

See footnotes on page 48.

Continued

Table 6. Pecans: Production, farm disposition, season average price to growers, and value, by States and United States, 1919-65 Continued

State, variety, and season	Production	Farm disposition		Price per pound 1/	Value of --	
		Home use	Sold		Production	Sales
	1,000 pounds			Cents	1,000 dollars	
<b>Florida</b>						
Native and seedling pecans:						
1919	600					
1920	210					
1921	550					
1922	390			19.0	74	
1923	670			18.0	121	
1924	520			22.0	114	
1925	716			22.0	158	
1926	486			14.0	68	
1927	344			17.0	58	
1928	500			16.0	80	
1929	250			17.0	42	
1930	310			17.0	53	
1931	681			8.0	54	
1932	243			8.0	19	
1933	505			7.0	35	
1934	478			9.6	46	
1935	736			6.7	49	
1936	1,030			8.6	89	
1937	1,017	260	757	5.5	56	42
1938	1,537	260	1,277	6.8	105	87
1939	1,528	260	1,268	7.0	107	89
1940	1,461	260	1,201	7.2	105	86
1941	2,056	260	1,796	7.8	160	140
1942	1,900	260	1,640	14.0	266	230
1943	1,945	260	1,685	20.0	389	337
1944	2,244	280	1,964	18.5	415	363
1945	1,735	250	1,485	20.5	356	304
1946	1,760	250	1,510	20.5	519	445
1947	1,060	190	870	20.0	212	174
1948	2,060	280	1,780	9.3	192	166
1949	1,340	230	1,110	15.7	210	174
1950	1,800	240	1,560	25.5	459	398
1951	1,840	240	1,600	15.0	276	240
1952	1,500	240	1,260	18.0	270	227
1953	3,300	300	3,000	13.0	429	390
1954	1,060	175	885	25.0	265	221
1955	4,500	300	4,200	32.0	1,440	1,344
1956	1,800	300	1,500	16.0	288	240
1957	1,100	230	870	22.0	242	191
1958	800	230	570	22.0	176	125
1959	2,000	250	1,750	27.0	540	472
1960	900	250	650	27.0	243	176
1961	1,700	250	1,450	16.0	272	232
1962	1,600	200	1,400	29.0	464	406
1963	2,400	250	2,150	16.5	396	355
1964	1,350	150	1,200	20.5	277	246
1965	850	175	675	16.1	137	109

See footnotes on page 48.

Continued

Table 6. Pecans: Production, farm disposition, season average price to growers, and value, by States and United States, 1919-65 Continued

State, variety, and season	Production	Farm disposition		Price per pound	Value of --	
		Home use	Sold		Production	Sales
Florida	1,000 pounds			1/	1,000 dollars	
All pecans:				Cents		
1919	1,200	504	696	31.0	372	216
1920	440	234	206	32.0	141	66
1921	1,200	508	692	26.0	312	180
1922	880	392	488	35.1	309	171
1923	1,600	590	1,010	30.2	483	305
1924	1,300	542	758	34.5	448	262
1925	1,916	640	1,267	31.4	602	398
1926	1,516	555	961	24.0	377	230
1927	1,144	493	651	28.1	321	183
1928	2,000	668	1,332	27.2	544	362
1929	1,000	500	500	29.0	290	145
1930	1,150	520	630	25.8	297	163
1931	2,348	650	1,698	12.2	286	207
1932	784	400	384	12.1	95	46
1933	1,529	550	979	10.3	157	101
1934	1,365	550	815	13.1	179	107
1935	1,989	600	1,389	10.0	199	139
1936	2,640	600	2,040	11.7	307	239
1937	2,480	600	1,880	7.5	185	141
1938	3,575	600	2,975	8.6	300	257
1939	3,472	600	2,872	8.4	292	241
1940	3,564	600	2,964	9.6	341	283
1941	4,672	600	4,072	10.1	474	413
1942	4,600	600	4,000	16.3	752	655
1943	4,524	600	3,924	23.4	1,060	919
1944	5,100	650	4,450	22.4	1,143	997
1945	3,944	570	3,374	23.9	941	805
1946	4,100	570	3,530	33.2	1,361	1,172
1947	2,650	470	2,180	22.7	600	494
1948	4,580	600	3,980	11.1	507	441
1949	3,130	520	2,610	17.9	559	466
1950	4,150	550	3,600	27.5	1,141	990
1951	5,280	550	4,730	18.3	964	866
1952	4,300	550	3,750	21.0	900	787
1953	7,300	600	6,700	14.7	1,069	982
1954	2,560	450	2,110	30.2	775	637
1955	10,900	600	10,300	37.9	4,128	3,906
1956	4,000	600	3,400	17.1	684	582
1957	2,400	480	1,920	26.4	632	506
1958	2,400	500	1,900	26.2	624	497
1959	4,500	550	3,950	29.2	1,315	1,154
1960	1,800	500	1,300	31.1	558	404
1961	4,800	500	4,300	18.7	892	802
1962	3,600	450	3,150	31.8	1,144	1,001
1963	6,800	650	6,150	17.5	1,188	1,075
1964	2,700	400	2,300	23.4	635	538
1965	2,100	500	1,600	18.7	393	299

See footnotes on page 48.

Continued

Table 6. Pecans: Production, farm disposition, season average price to growers, and value, by States and United States, 1919-65 Continued

State, variety, and season	Production	Farm disposition		Price per pound 1/	Value of --	
		Home use	Sold		Production	Sales
Alabama	1,000 pounds			Cents	1,000 dollars	
Improved varieties:						
1919	840					
1920	370					
1921	1,150					
1922	900			40.0	360	
1923	1,700			43.0	732	
1924	1,180			44.0	520	
1925	1,600			40.0	640	
1926	2,320			34.0	788	
1927	980			37.0	364	
1928	2,780			30.0	834	
1929	1,340			30.0	402	
1930	2,600			25.0	650	
1931	3,428			14.0	481	
1932	1,706			13.0	221	
1933	3,365			15.0	506	
1934	2,821			15.0	425	
1935	4,320			12.5	540	
1936	4,606			13.3	615	
1937	6,118	850	5,268	9.1	557	479
1938	4,247	760	3,487	11.4	484	398
1939	7,600	900	6,700	10.9	828	730
1940	4,558	800	3,758	12.0	547	451
1941	10,553	1,100	9,453	11.5	1,214	1,087
1942	8,064	1,100	6,964	17.5	1,411	1,219
1943	9,655	1,100	8,555	27.0	2,607	2,310
1944	10,458	1,000	9,458	27.4	2,865	2,591
1945	9,680	980	8,700	28.7	2,778	2,497
1946	6,642	742	5,900	38.4	2,551	2,266
1947	6,175	750	5,425	29.4	1,815	1,595
1948	16,800	1,200	15,600	14.4	2,419	2,246
1949	11,500	900	10,600	20.0	2,300	2,120
1950	9,800	700	9,100	30.5	2,989	2,776
1951	21,300	1,100	20,200	20.0	4,260	4,040
1952	11,700	650	11,050	24.5	2,866	2,707
1953	24,000	1,000	23,000	16.0	3,840	3,680
1954	6,500	600	5,900	34.0	2,210	2,006
1955	6,800	600	6,200	43.0	2,924	2,666
1956	24,500	700	23,800	18.5	4,532	4,403
1957	3,300	300	3,000	30.0	990	900
1958	32,000	750	31,250	27.5	8,800	8,594
1959	12,200	380	11,820	31.5	3,843	3,723
1960	13,300	500	12,800	34.0	4,522	4,352
1961	42,300	700	41,600	19.0	8,037	7,904
1962	4,600	250	4,350	36.5	1,679	1,588
1963	52,100	1,100	51,000	17.0	8,857	8,670
1964	10,200	700	9,500	27.0	2,754	2,565
1965	24,500	700	23,800	19.0	4,655	4,522

See footnotes on page 48.

Continued

Table 6. Pecans: Production, farm disposition, season average price to growers, and value, by States and United States, 1919-65 Continued

State, variety, and season	Production	Farm disposition		Price per pound	Value of ---	
		Home use	Sold		Production	Sales
Alabama	1,000 pounds			Cents	1,000 dollars	
Native and seedling pecans:						
1919	560					
1920	230					
1921	650					
1922	450			17.0	76	
1923	800			22.0	176	
1924	506			24.0	121	
1925	600			25.0	150	
1926	780			19.0	148	
1927	280			20.0	56	
1928	720			13.0	94	
1929	280			16.0	45	
1930	532			12.0	64	
1931	702			8.0	56	
1932	374			6.5	24	
1933	739			7.0	52	
1934	662			9.5	63	
1935	1,080			7.0	76	
1936	1,224			8.3	102	
1937	1,726	350	1,376	5.9	102	81
1938	1,129	340	789	7.3	82	58
1939	2,262	350	1,912	7.5	170	143
1940	1,140	200	940	8.0	91	75
1941	2,317	400	1,917	8.6	199	165
1942	2,016	400	1,616	13.5	272	218
1943	2,567	400	2,167	20.5	526	444
1944	2,142	328	1,814	20.0	428	363
1945	2,420	325	2,095	20.4	494	427
1946	2,098	298	1,800	29.8	625	536
1947	1,265	250	1,015	22.0	278	223
1948	3,450	400	3,050	9.2	317	281
1949	2,525	300	2,225	15.4	389	343
1950	1,900	200	1,700	25.5	484	434
1951	4,700	350	4,350	15.0	705	652
1952	2,700	250	2,450	18.5	500	453
1953	6,000	400	5,600	13.0	780	728
1954	1,500	200	1,300	25.5	382	332
1955	1,200	200	1,000	34.0	408	340
1956	6,000	300	5,700	16.0	960	912
1957	700	100	600	22.0	154	132
1958	4,000	150	3,850	25.0	1,000	962
1959	3,000	120	2,880	28.0	840	806
1960	4,000	200	3,800	28.5	1,140	1,083
1961	8,100	300	7,800	15.5	1,256	1,209
1962	2,600	150	2,450	31.0	806	760
1963	9,200	200	9,000	16.0	1,472	1,440
1964	2,500	200	2,300	20.0	500	460
1965	5,000	400	4,600	15.0	750	690

See footnotes on page 48.

Continued

Table 6. Pecans: Production, farm disposition, season average price to growers, and value, by States and United States, 1919-65 Continued

State, variety, and season	Production	Farm disposition		Price per pound 1/	Value of --	
		Home use	Sold		Production	Sales
Alabama	1,000 pounds			Cents	1,000 dollars	
All pecans:						
1919	1,400	734	666	32.0	448	213
1920	600	345	255	29.0	174	74
1921	1,800	905	895	28.0	504	251
1922	1,350	706	644	32.3	436	208
1923	2,500	1,128	1,372	36.3	908	498
1924	1,686	865	821	38.0	641	312
1925	2,200	1,037	1,163	35.9	790	418
1926	3,100	1,100	2,000	30.2	936	604
1927	1,260	675	585	33.3	420	195
1928	3,500	1,100	2,400	26.5	928	636
1929	1,620	800	820	27.6	447	226
1930	3,132	1,100	2,032	22.8	714	463
1931	4,130	1,100	3,030	13.0	537	394
1932	2,080	1,000	1,080	11.8	245	127
1933	4,104	1,100	3,004	13.6	558	409
1934	3,483	1,100	2,383	14.0	488	334
1935	5,400	1,100	4,300	11.4	616	490
1936	5,830	1,150	4,680	12.3	717	576
1937	7,844	1,200	6,644	8.4	659	560
1938	5,376	1,100	4,276	10.5	566	456
1939	9,862	1,250	8,612	10.1	998	873
1940	5,698	1,000	4,698	11.2	638	526
1941	12,870	1,500	11,370	11.0	1,413	1,252
1942	10,080	1,500	8,580	16.7	1,683	1,437
1943	12,222	1,500	10,722	25.6	3,133	2,754
1944	12,600	1,328	11,272	26.2	3,293	2,954
1945	12,100	1,305	10,795	27.1	3,272	2,924
1946	8,740	1,040	7,700	36.4	3,176	2,802
1947	7,440	1,000	6,440	28.2	2,093	1,818
1948	20,250	1,600	18,650	13.5	2,736	2,527
1949	14,025	1,200	12,825	19.2	2,689	2,463
1950	11,700	900	10,800	29.7	3,473	3,210
1951	26,000	1,450	24,550	19.1	4,965	4,692
1952	14,400	900	13,500	23.4	3,366	3,160
1953	30,000	1,400	28,600	15.4	4,620	4,408
1954	8,000	800	7,200	32.5	2,592	2,338
1955	8,000	800	7,200	41.8	3,332	3,006
1956	30,500	1,000	29,500	18.0	5,492	5,315
1957	4,000	400	3,600	28.7	1,144	1,032
1958	36,000	900	35,100	27.2	9,800	9,556
1959	15,200	500	14,700	30.8	4,683	4,529
1960	17,300	700	16,600	32.7	5,662	5,435
1961	50,400	1,000	49,400	18.4	9,293	9,113
1962	7,200	400	6,800	34.5	2,485	2,348
1963	61,300	1,300	60,000	16.8	10,329	10,110
1964	12,700	900	11,800	25.6	3,254	3,025
1965	29,500	1,100	28,400	18.4	5,405	5,212

See footnotes on page 48.

Continued

Table 6. Pecans: Production, farm disposition, season average price to growers, and value, by States and United States, 1919-65 Continued

State, variety, and season	Production	Farm disposition		Price per pound 1/	Value of --	
		Home use	Sold		Production	Sales
Mississippi	1,000 pounds			Cents	1,000 dollars	
Improved varieties:						
1919	1,070					
1920	315					
1921	1,160					
1922	480			47.0	225	
1923	1,100			45.0	496	
1924	900			44.0	397	
1925	2,400			39.0	934	
1926	2,650			37.0	977	
1927	1,570			38.0	596	
1928	3,250			30.0	975	
1929	1,310			32.0	419	
1930	2,420			27.0	651	
1931	3,240			14.0	455	
1932	1,400			14.5	203	
1933	3,056			12.5	382	
1934	1,380			19.0	263	
1935	3,638			13.9	507	
1936	2,394			15.0	358	
1937	5,208	950	4,258	10.5	547	447
1938	2,586	800	1,786	12.0	310	214
1939	4,305	850	3,455	10.3	443	356
1940	1,672	700	972	15.1	252	147
1941	3,927	850	3,077	11.5	452	354
1942	3,500	850	2,650	17.8	623	472
1943	4,900	900	4,000	24.1	1,181	964
1944	4,980	900	4,080	25.5	1,270	1,040
1945	3,000	800	2,200	26.0	780	572
1946	1,920	550	1,370	36.5	701	500
1947	1,305	400	905	32.0	418	290
1948	5,000	1,000	4,000	16.7	835	668
1949	5,500	1,000	4,500	20.0	1,100	900
1950	1,706	762	944	32.0	546	302
1951	7,000	1,100	5,900	20.0	1,400	1,180
1952	2,800	540	2,260	24.0	672	542
1953	7,050	1,000	6,050	16.5	1,163	998
1954	2,400	500	1,900	31.0	744	589
1955	4,500	720	3,780	38.0	1,710	1,436
1956	6,100	900	5,200	19.0	1,159	988
1957	3,400	720	2,680	29.5	1,003	791
1958	7,800	800	7,000	25.5	1,989	1,785
1959	2,200	500	1,700	36.0	792	612
1960	8,500	800	7,700	32.5	2,762	2,502
1961	10,700	900	9,800	18.5	1,980	1,813
1962	3,100	500	2,600	38.0	1,178	988
1963	15,700	800	14,900	18.0	2,826	2,682
1964	7,100	900	6,200	25.0	1,775	1,550
1965	8,500	1,000	7,500	18.5	1,572	1,388

See footnotes on page 48.

Continued

Table 6. Pecans: Production, farm disposition, season average price to growers, and value, by States and United States, 1919-65 Continued

State, variety, and season	Production	Farm disposition		Price per pound 1/	Value of --	
		Home use	Sold		Production	Sales
Mississippi	1,000 pounds			Cents	1,000 dollars	
Native and seedling pecans:						
1919	1,530					
1920	400					
1921	1,540					
1922	620			23.0	143	
1923	1,300			25.0	325	
1924	1,032			25.0	258	
1925	2,694			23.0	620	
1926	2,850			18.0	513	
1927	1,630			19.0	310	
1928	3,250			14.0	455	
1929	1,210			17.0	206	
1930	2,960			12.0	355	
1931	2,760			7.0	193	
1932	934			7.5	70	
1933	2,401			7.5	180	
1934	1,084			13.0	141	
1935	2,858			7.5	214	
1936	1,806			8.8	159	
1937	3,771	450	3,321	5.6	211	186
1938	2,202	400	1,802	7.5	165	135
1939	3,579	400	3,179	6.8	243	216
1940	1,424	200	1,224	9.6	137	118
1941	2,963	400	2,563	7.7	228	197
1942	2,800	400	2,400	14.5	406	348
1943	4,100	500	3,600	17.2	705	619
1944	4,020	500	3,520	16.5	663	581
1945	4,250	500	3,750	19.5	829	731
1946	2,430	300	2,130	28.0	680	596
1947	1,595	300	1,295	19.0	303	246
1948	5,000	500	4,500	9.4	470	423
1949	4,500	400	4,100	15.0	675	615
1950	1,994	350	1,644	25.0	498	411
1951	6,600	400	6,200	15.0	990	930
1952	3,200	300	2,900	18.5	592	536
1953	10,000	500	9,500	14.0	1,400	1,330
1954	2,600	300	2,300	23.0	598	529
1955	5,500	180	5,320	29.0	1,595	1,543
1956	6,000	200	5,800	16.5	990	957
1957	4,300	180	4,120	21.5	924	886
1958	7,200	200	7,000	25.5	1,836	1,785
1959	3,200	300	2,900	32.0	1,024	928
1960	9,300	300	9,000	28.0	2,604	2,520
1961	15,200	400	14,800	15.0	2,280	2,220
1962	3,300	300	3,000	30.0	990	900
1963	14,700	800	13,900	16.0	2,352	2,224
1964	12,200	600	11,600	21.0	2,562	2,436
1965	9,000	500	8,500	14.5	1,305	1,232

See footnotes on page 48.

Continued



Table 6. Pecans: Production, farm disposition, season average price to growers, and value, by States and United States, 1919-65 Continued

State, variety, and season	Production	Farm disposition		Price per pound	Value of --	
		Home use	Sold		Production	Sales
Mississippi	1,000 pounds			Cents	1,000 dollars	
All pecans:						
1919	2,600	856	1,744	28.0	728	488
1920	715	351	364	35.0	250	127
1921	2,700	864	1,836	28.0	756	514
1922	1,100	513	587	33.5	368	197
1923	2,400	836	1,564	34.2	821	535
1924	1,932	714	1,218	33.9	655	413
1925	5,094	1,277	3,817	30.5	1,554	1,164
1926	5,500	1,299	4,201	27.1	1,490	1,138
1927	3,200	1,012	2,188	28.3	906	619
1928	6,500	1,307	5,193	22.0	1,430	1,142
1929	2,520	900	1,620	24.8	625	402
1930	5,380	1,300	4,080	18.7	1,006	763
1931	6,000	1,300	4,700	10.8	648	508
1932	2,334	900	1,434	11.7	273	168
1933	5,457	1,300	4,157	10.3	562	428
1934	2,464	900	1,564	16.4	404	256
1935	6,496	1,300	5,196	11.1	721	577
1936	4,200	1,200	3,000	12.3	517	369
1937	8,979	1,400	7,579	8.4	758	633
1938	4,788	1,200	3,588	9.9	475	349
1939	7,884	1,250	6,634	8.7	686	572
1940	3,096	900	2,196	12.6	389	265
1941	6,890	1,250	5,640	9.9	680	551
1942	6,300	1,250	5,050	16.4	1,029	820
1943	9,000	1,400	7,600	21.3	1,886	1,583
1944	9,000	1,400	7,600	21.3	1,933	1,621
1945	7,250	1,300	5,950	21.9	1,609	1,303
1946	4,350	850	3,500	31.3	1,381	1,096
1947	2,900	700	2,200	24.4	721	536
1948	10,000	1,500	8,500	12.8	1,305	1,091
1949	10,000	1,400	8,600	17.6	1,775	1,515
1950	3,700	1,112	2,588	27.6	1,044	713
1951	13,600	1,500	12,100	17.4	2,390	2,110
1952	6,000	840	5,160	20.9	1,264	1,078
1953	17,050	1,500	15,550	15.0	2,563	2,328
1954	5,000	800	4,200	26.6	1,342	1,118
1955	10,000	900	9,100	32.7	3,305	2,979
1956	12,100	1,100	11,000	17.7	2,349	1,945
1957	7,700	900	6,800	24.7	1,927	1,677
1958	15,000	1,000	14,000	25.5	3,825	3,570
1959	5,400	800	4,600	33.5	1,816	1,540
1960	17,800	1,100	16,700	30.1	5,366	5,022
1961	25,900	1,300	24,600	16.4	4,260	4,033
1962	6,400	800	5,600	33.7	2,168	1,888
1963	30,400	1,600	28,800	17.0	5,178	4,906
1964	19,300	1,500	17,800	22.4	4,337	3,986
1965	17,500	1,500	16,000	16.4	2,877	2,620

See footnotes on page 48.

Continued

Table 6. Pecans: Production, farm disposition, season average price to growers, and value, by States and United States, 1919-65 Continued

State, variety, and season	Production	Farm disposition		Price per pound	Value of --	
		Home use	Sold		Production	Sales
Arkansas	1,000 pounds			Cents	1,000 dollars	
Improved varieties:						
1919	75					
1920	15					
1921	85					
1922	10			45.0	4	
1923	105			37.0	39	
1924	90			40.0	36	
1925	125			34.0	42	
1926	220			35.0	77	
1927	180			35.0	63	
1928	180			32.0	58	
1929	150			35.0	52	
1930	210			30.0	63	
1931	350			15.0	53	
1932	210			14.0	29	
1933	340			14.5	49	
1934	220			18.0	40	
1935	430			14.5	62	
1936	210			18.0	38	
1937	527	200	327	13.0	60	43
1938	291	180	111	15.0	44	17
1939	668	200	468	15.9	106	74
1940	435	200	235	15.0	65	35
1941	682	200	482	18.0	123	87
1942	900	200	700	24.5	220	172
1943	1,200	250	950	31.0	377	294
1944	504	200	304	35.0	176	106
1945	882	200	682	33.0	291	225
1946	250	170	130	46.0	115	60
1947	654	200	454	25.0	164	114
1948	1,090	200	890	15.5	169	139
1949	650	150	500	22.0	143	110
1950	400	150	250	32.0	128	80
1951	800	150	650	23.0	184	150
1952	850	150	700	24.0	204	168
1953	1,600	200	1,400	17.5	280	245
1954	700	125	575	31.0	217	178
1955	1,800	200	1,600	39.0	702	624
1956	850	150	700	22.5	191	158
1957	1,500	275	1,225	28.0	420	343
1958	800	150	650	31.5	252	205
1959	800	150	650	39.0	304	247
1960	2,100	250	1,850	33.5	704	620
1961	1,000	200	800	22.0	220	176
1962	1,100	150	950	40.0	440	380
1963	3,200	250	2,950	21.0	672	620
1964	1,200	200	1,000	28.0	336	280
1965	3,200	275	2,925	20.0	640	585

See footnotes on page 48.

Continued

Table 6. Pecans: Production, farm disposition, season average price to growers, and value, by States and United States, 1919-65 Continued

State, variety, and season	Production	Farm disposition		Price per pound 1/	Value of--	
		Home use	Sold		Production	Sales
	1,000 pounds			Cents	1,000 dollars	
<b>Arkansas</b>						
Native and seedling pecans:						
1919	3,565					
1920	545					
1921	2,815					
1922	380					
1923	2,865			18.0	68	
1924	2,110			16.0	457	
1925	2,995			29.0	613	
1926	4,630			18.0	538	
1927	3,070			15.0	604	
1928	2,820			15.0	460	
				14.0	395	
1929	2,100			12.0	252	
1930	2,790			12.0	336	
1931	4,400			6.0	265	
1932	2,590			6.5	167	
1933	3,860			6.5	249	
1934	2,380			9.0	215	
1935	4,370			6.0	264	
1936	2,030			9.5	193	
1937	4,738	450	4,288	5.0	237	214
1938	1,949	400	1,549	7.0	136	108
1939	2,875	400	2,475	7.7	221	191
1940	2,467	400	2,067	8.0	197	165
1941	3,578	400	3,178	4.5	340	302
1942	2,590	400	2,190	13.0	325	273
1943	3,400	400	3,000	20.0	680	600
1944	3,696	450	3,246	22.0	813	714
1945	4,018	450	3,568	21.0	844	749
1946	950	280	670	34.0	323	228
1947	3,196	450	2,746	18.0	575	494
1948	4,650	450	4,200	9.5	442	399
1949	4,250	450	3,800	18.0	765	684
1950	2,050	400	1,650	25.0	532	412
1951	4,550	450	4,100	18.0	819	738
1952	2,050	400	1,650	20.0	410	330
1953	9,050	450	8,600	15.0	1,358	1,290
1954	1,850	375	1,475	23.0	426	339
1955	6,150	450	5,700	30.0	1,845	1,710
1956	2,950	450	2,500	19.5	575	488
1957	8,000	600	7,400	22.0	1,760	1,628
1958	1,550	400	1,150	29.5	457	339
1959	3,800	450	3,350	34.5	1,311	1,156
1960	8,400	500	7,900	39.5	2,562	2,410
1961	5,100	425	4,675	17.5	892	818
1962	2,100	350	1,750	33.0	693	578
1963	7,800	500	7,300	19.5	1,521	1,424
1964	4,700	425	4,275	21.5	1,010	919
1965	6,900	575	6,325	16.0	1,104	1,012

See footnotes on page 48.

Continued

Table 6. Pecans: Production, farm disposition, season average price to growers, and value, by States and United States, 1919-65 Continued

State, variety, and season	Production	Farm disposition		Price per pound 1/	Value of --	
		Home use	Sold		Production	Sales
Arkansas	1,000 pounds			Cents	1,000 dollars	
All pecans:						
1919	3,640	495	3,145	20.0	728	629
1920	560	160	400	23.0	129	92
1921	2,900	570	2,330	16.0	464	373
1922	390	138	252	18.5	72	47
1923	2,970	660	2,310	16.7	496	386
1924	2,200	600	1,600	29.5	649	472
1925	3,120	660	2,460	18.6	580	458
1926	4,850	750	4,100	15.9	771	652
1927	3,250	660	2,590	16.1	523	417
1928	3,000	660	2,340	15.1	453	353
1929	2,250	580	1,670	13.5	304	225
1930	3,000	600	2,400	13.3	399	319
1931	4,750	700	4,050	6.7	318	271
1932	2,800	600	2,200	7.0	196	154
1933	4,200	650	3,550	7.1	298	252
1934	2,600	600	2,000	9.8	255	196
1935	4,800	650	4,150	6.8	326	282
1936	2,240	580	1,660	10.3	231	171
1937	5,265	650	4,615	5.8	306	257
1938	2,240	580	1,660	8.0	180	125
1939	3,543	600	2,943	9.2	327	265
1940	2,902	600	2,302	9.0	262	200
1941	4,260	600	3,660	10.9	463	389
1942	3,400	600	2,800	16.0	545	445
1943	4,600	650	3,950	22.9	1,052	894
1944	4,200	650	3,550	23.1	989	820
1945	4,900	650	4,250	22.9	1,135	974
1946	1,200	400	800	36.0	438	288
1947	3,850	650	3,200	19.0	739	608
1948	5,740	650	5,090	10.6	611	537
1949	4,900	600	4,300	18.5	908	794
1950	2,450	550	1,900	25.9	640	492
1951	5,350	600	4,750	18.7	1,003	888
1952	2,900	550	2,350	21.2	614	498
1953	10,650	650	10,000	15.4	1,638	1,535
1954	2,550	500	2,050	25.2	643	517
1955	7,950	650	7,300	32.0	2,547	2,334
1956	3,800	600	3,200	20.2	766	646
1957	9,500	875	8,625	22.9	2,180	1,971
1958	2,350	550	1,800	30.2	709	544
1959	4,600	600	4,000	35.1	1,615	1,403
1960	10,500	750	9,750	31.1	3,266	3,030
1961	6,100	625	5,475	18.2	1,112	994
1962	3,200	500	2,700	35.5	1,133	958
1963	11,000	750	10,250	19.9	2,193	2,044
1964	5,900	625	5,275	22.7	1,346	1,199
1965	10,100	850	9,250	17.3	1,744	1,597

See footnotes on page 48.

Continued

Table 6. Pecans: Production, farm disposition, season average price to growers, and value, by States and United States, 1919-65 Continued

State, variety, and season	Production	Farm disposition		Price per pound	Value of --	
		Home use	Sold		Production	Sales
Louisiana		1,000 pounds		Cents		1,000 dollars
Improved varieties:						
1919	: 750					
1920	: 100					
1921	: 920					
1922	: 100			40.0	40	
1923	: 720			37.0	266	
1924	: 310			42.0	130	
1925	: 1,020			32.0	326	
1926	: 1,110			32.0	355	
1927	: 440			38.0	167	
1928	: 1,070			27.0	289	
1929	: 532			31.0	165	
1930	: 1,595			24.0	383	
1931	: 1,802			16.0	288	
1932	: 1,356			13.0	176	
1933	: 2,326			10.5	244	
1934	: 960			17.0	163	
1935	: 1,934			13.8	267	
1936	: 1,722			16.3	281	
1937	: 3,326	450	2,876	12.0	399	345
1938	: 2,140	350	1,790	13.0	278	233
1939	: 2,153	300	1,853	13.9	299	258
1940	: 3,074	400	2,674	13.2	406	353
1941	: 1,400	300	1,100	15.6	218	172
1942	: 1,900	300	1,600	19.8	376	317
1943	: 2,640	400	2,240	26.0	686	582
1944	: 3,744	430	3,314	25.7	962	852
1945	: 1,500	420	1,080	26.2	498	388
1946	: 2,300	420	1,880	35.1	807	660
1947	: 1,500	350	1,150	35.5	532	408
1948	: 4,700	350	4,350	18.0	846	783
1949	: 3,950	350	3,600	21.0	830	756
1950	: 1,900	300	1,600	32.0	608	512
1951	: 3,450	350	3,100	24.0	828	744
1952	: 3,200	300	2,900	25.0	800	725
1953	: 6,000	350	5,650	18.0	1,080	1,017
1954	: 3,750	250	3,500	31.0	1,162	1,085
1955	: 2,000	200	1,800	35.0	700	630
1956	: 3,600	300	3,300	19.0	684	624
1957	: 2,200	300	1,900	28.5	627	542
1958	: 4,800	400	4,400	28.0	1,344	1,232
1959	: 2,000	300	1,700	35.0	700	595
1960	: 4,500	400	4,100	33.0	1,485	1,353
1961	: 3,500	300	3,200	20.5	718	656
1962	: 3,000	300	2,700	39.0	1,170	1,053
1963	: 9,500	400	9,100	21.0	1,995	1,911
1964	: 5,000	300	4,700	25.0	1,250	1,175
1965	: 4,300	300	4,000	20.5	882	820

See footnotes on page 48.

Continued

Table 6. Pecans: Production, farm disposition, season average price to growers, and value, by States and United States, 1919-65 Continued

State, variety, and season	Production	Farm disposition		Price per pound 1/	Value of --	
		Home use	Sold		Production	Sales
Louisiana		1,000 pounds		Cents	1,000 dollars	
Native and seedling pecans:						
1919	4,250					
1920	600					
1921	4,680					
1922	500			18.0	90	
1923	3,530			15.0	529	
1924	1,440			23.0	330	
1925	4,510			17.0	769	
1926	4,890			14.0	683	
1927	1,810			16.0	290	
1928	4,430			10.7	475	
1929	2,128			15.0	319	
1930	6,378			12.0	765	
1931	6,390			7.5	482	
1932	4,808			7.0	336	
1933	8,249			6.0	496	
1934	3,212			11.0	354	
1935	6,858			7.3	498	
1936	5,454			10.9	594	
1937	7,762	650	7,112	6.5	505	462
1938	4,548	550	3,998	7.8	355	312
1939	5,023	500	4,523	7.7	387	348
1940	5,710	600	5,110	7.8	445	399
1941	4,200	500	3,700	8.2	344	303
1942	4,500	500	4,000	13.5	608	540
1943	9,360	600	8,760	18.5	1,732	1,621
1944	10,656	720	9,936	16.2	1,726	1,610
1945	7,700	600	7,100	20.0	1,540	1,420
1946	7,150	600	6,550	29.4	2,102	1,926
1947	4,000	500	3,500	21.0	840	735
1948	14,300	650	13,650	10.5	1,502	1,433
1949	13,050	650	12,400	16.0	2,088	1,984
1950	7,200	600	6,600	25.0	1,800	1,650
1951	12,250	650	11,600	18.0	2,205	2,088
1952	10,300	600	9,700	18.5	1,906	1,794
1953	18,000	650	17,350	15.0	2,700	2,602
1954	6,750	500	6,250	23.0	1,552	1,438
1955	23,000	700	22,300	29.0	6,670	6,467
1956	10,400	500	9,900	18.0	1,872	1,782
1957	14,900	500	14,400	21.5	3,204	3,096
1958	8,700	600	8,100	27.0	2,349	2,187
1959	18,000	700	17,300	32.0	5,760	5,536
1960	10,500	600	9,900	29.0	3,045	2,871
1961	32,500	700	31,800	16.5	5,362	5,247
1962	1,500	200	1,300	31.0	465	403
1963	39,500	1,100	38,400	18.5	7,308	7,104
1964	28,000	700	27,300	19.0	5,320	5,187
1965	6,600	400	6,200	14.7	970	911

See footnotes on page 48.

Continued

Table 6. Pecans: Production, farm disposition, season average price to growers, and value, by States and United States, 1919-65 Continued

State, variety, and season	Production	Farm disposition		Price per pound	Value of --	
		Home use	Sold		Production	Sales
	1,000 pounds			Cents	1,000 dollars	
<u>Louisiana</u>						
All pecans:						
1919	5,000	1,000	4,000	29.0	1,450	1,160
1920	700	348	352	31.0	217	109
1921	5,600	1,000	4,600	21.0	1,176	966
1922	600	336	264	21.7	130	57
1923	4,250	900	3,350	18.7	795	626
1924	1,750	845	905	26.3	460	238
1925	5,530	1,000	4,530	19.2	1,055	897
1926	6,000	1,000	5,000	17.3	1,038	865
1927	2,250	872	1,378	20.3	457	280
1928	5,500	1,000	4,500	13.9	764	626
1929	2,660	800	1,860	18.2	484	330
1930	7,973	1,000	6,973	14.4	1,148	1,004
1931	8,192	1,000	7,192	9.4	770	676
1932	6,164	900	5,264	8.3	512	437
1933	10,575	1,100	9,475	7.1	716	603
1934	4,172	800	3,372	12.4	517	418
1935	8,792	900	7,892	8.7	765	687
1936	7,176	900	6,276	12.2	875	766
1937	11,088	1,100	9,988	8.2	904	807
1938	6,688	900	5,788	9.5	633	545
1939	7,176	800	6,376	9.6	686	606
1940	8,784	1,000	7,784	9.7	851	752
1941	5,600	800	4,800	10.0	562	475
1942	6,400	800	5,600	15.4	984	857
1943	12,000	1,000	11,000	20.2	2,418	2,203
1944	14,400	1,150	13,250	18.6	2,688	2,462
1945	9,600	1,020	8,580	21.1	2,038	1,808
1946	9,450	1,020	8,430	30.7	2,909	2,586
1947	5,500	850	4,650	24.6	1,372	1,143
1948	19,000	1,000	18,000	12.3	2,348	2,216
1949	17,000	1,000	16,000	17.1	2,918	2,740
1950	9,100	900	8,200	26.4	2,408	2,162
1951	15,700	1,000	14,700	19.3	3,033	2,832
1952	13,500	900	12,600	20.0	2,706	2,519
1953	24,000	1,000	23,000	15.7	3,780	3,619
1954	10,500	750	9,750	25.9	2,714	2,523
1955	25,000	900	24,100	29.4	7,370	7,097
1956	14,000	800	13,200	18.2	2,556	2,409
1957	17,100	800	16,300	22.3	3,631	3,638
1958	13,500	1,000	12,500	27.4	3,693	3,419
1959	20,000	1,000	19,000	32.3	6,460	6,131
1960	15,000	1,000	14,000	30.2	4,530	4,224
1961	36,000	1,000	35,000	16.9	6,080	5,903
1962	4,500	500	4,000	36.4	1,635	1,456
1963	49,000	1,500	47,500	19.0	9,303	9,015
1964	33,000	1,000	32,000	19.9	6,570	6,362
1965	10,900	700	10,200	17.0	1,852	1,731

See footnotes on page 48.

Continued

Table 6. Pecans: Production, farm disposition, season average price to growers, and value, by States and United States, 1919-65 Continued

State, variety, and season	Production	Farm disposition		Price per pound 1/	Value of --	
		Home use	Sold		Production	Sales
Oklahoma	1,000 pounds			Cents	1,000 dollars	
Improved varieties:						
1919	45					
1920	10					
1921	25					
1922	10			40.0	4	
1923	65			42.0	27	
1924	55			40.0	22	
1925	75			35.0	26	
1926	100			30.0	30	
1927	45			35.0	16	
1928	40			35.0	14	
1929	80			39.0	31	
1930	75			30.5	23	
1931	135			19.0	26	
1932	345			13.0	45	
1933	260			13.5	35	
1934	370			21.0	78	
1935	1,120			8.3	93	
1936	90			17.8	16	
1937	920	300	620	13.6	125	84
1938	252	100	152	15.2	38	23
1939	760	150	610	14.1	107	86
1940	1,960	250	1,710	13.3	261	227
1941	1,224	250	974	15.2	186	148
1942	300	100	200	23.6	71	47
1943	1,550	150	1,400	30.3	470	424
1944	1,400	150	1,250	29.5	413	369
1945	1,500	120	1,380	31.8	477	439
1946	1,100	75	1,025	42.2	464	433
1947	3,100	200	2,900	31.0	961	899
1948	1,000	75	925	25.0	250	231
1949	2,040	200	1,840	27.0	551	497
1950	630	100	530	38.0	239	201
1951	1,500	100	1,400	29.0	435	406
1952	340	40	300	30.0	102	90
1953	1,600	100	1,500	24.1	386	362
1954	1,500	100	1,400	34.0	510	476
1955	3,300	300	3,000	38.5	1,270	1,155
1956	600	50	550	31.0	186	170
1957	2,200	200	2,000	30.5	671	610
1958	1,600	100	1,500	36.5	584	548
1959	500	50	450	44.0	220	198
1960	3,000	100	2,900	36.5	1,095	1,058
1961	700	80	620	29.0	203	180
1962	800	100	700	43.0	344	301
1963	1,000	100	900	30.0	300	270
1964	2,000	100	1,900	30.0	600	570
1965	3,000	100	2,900	25.0	750	725

See footnotes on page 48.

Continued



Table 6. Pecans: Production, farm disposition, season average price to growers, and value, by States and United States, 1919-65 Continued

State, variety, and season	Production	Farm disposition		Price per pound 1/	Value of --	
		Home use	Sold		Production	Sales
Oklahoma	1,000 pounds			Cents	1,000 dollars	
Native and seedling pecans:						
1919	14,955					
1920	2,990					
1921	8,975					
1922	1,990			17.0	338	
1923	15,935			11.0	1,749	
1924	10,945			16.0	1,749	
1925	14,625			15.0	2,194	
1926	19,600			10.0	1,960	
1927	8,855			13.0	1,150	
1928	8,360			11.0	918	
1929	15,920			10.2	1,617	
1930	14,925			9.1	1,357	
1931	13,365			5.0	662	
1932	22,655			3.5	783	
1933	10,240			5.4	553	
1934	11,130			11.6	1,290	
1935	26,880			4.0	1,083	
1936	1,910			8.8	168	
1937	17,480	500	16,980	5.1	891	866
1938	1,848	400	1,448	6.6	122	96
1939	18,240	450	17,790	7.9	1,441	1,405
1940	26,040	500	25,540	6.6	1,719	1,686
1941	29,376	500	28,876	8.5	2,497	2,454
1942	3,700	500	3,200	15.9	588	509
1943	24,450	450	24,000	18.9	4,621	4,536
1944	12,600	450	12,150	15.8	1,991	1,920
1945	24,500	400	24,100	20.0	4,900	4,820
1946	5,900	100	5,800	28.7	1,693	1,665
1947	40,900	400	40,500	17.5	7,158	7,088
1948	13,000	325	12,675	10.5	1,365	1,331
1949	21,960	400	21,560	18.0	3,953	3,881
1950	6,370	200	6,170	26.0	1,656	1,604
1951	23,500	500	23,000	18.0	4,230	4,140
1952	2,660	110	2,550	18.5	492	472
1953	26,000	500	25,500	15.0	3,900	3,825
1954	13,000	400	12,600	26.5	3,445	3,339
1955	29,700	700	29,000	29.5	8,762	8,555
1956	6,500	350	6,150	18.5	1,202	1,138
1957	28,500	600	27,900	21.5	6,128	5,998
1958	13,900	400	13,500	27.5	3,822	3,712
1959	8,500	450	8,050	31.0	2,635	2,496
1960	38,000	1,700	36,300	29.0	11,020	10,527
1961	10,900	720	10,180	17.0	1,853	1,731
1962	6,800	400	6,400	32.0	2,176	2,048
1963	15,000	900	14,100	18.5	2,775	2,608
1964	35,000	1,000	34,000	20.5	7,175	6,970
1965	40,000	1,400	38,600	16.0	6,400	6,176

See footnotes on page 48.

Continued

Table 6. Pecans: Production, farm disposition, season average price to growers, and value, by States and United States, 1919-65 Continued

State, variety, and season	Production	Farm disposition		Price per pound 1/	Value of --	
		Home use	Sold		Production	Sales
Oklahoma	1,000 pounds			Cents	1,000 dollars	
All pecans:						
1919	15,000	852	14,148	16.0	2,400	2,264
1920	3,000	594	2,406	17.0	510	409
1921	9,000	600	8,400	12.0	1,080	1,008
1922	2,000	648	1,352	17.1	342	231
1923	16,000	800	15,200	11.1	1,776	1,687
1924	11,000	800	10,200	16.1	1,771	1,642
1925	14,700	800	13,900	15.1	2,220	2,099
1926	19,700	800	18,900	10.1	1,990	1,909
1927	8,900	800	8,100	13.1	1,166	1,061
1928	8,400	700	7,700	11.1	932	855
1929	16,000	800	15,200	10.3	1,648	1,566
1930	15,000	800	14,200	9.2	1,380	1,306
1931	13,500	800	12,700	5.1	688	648
1932	23,000	800	22,200	3.6	828	799
1933	10,500	800	9,700	5.6	588	543
1934	11,500	800	10,700	11.9	1,368	1,273
1935	28,000	800	27,200	4.2	1,176	1,142
1936	2,000	500	1,500	9.2	184	138
1937	18,400	800	17,600	5.5	1,016	950
1938	2,100	500	1,600	7.6	160	119
1939	19,000	600	18,400	8.1	1,548	1,491
1940	28,000	750	27,250	7.1	1,980	1,913
1941	30,600	750	29,850	8.8	2,683	2,602
1942	4,000	600	3,400	16.5	659	556
1943	26,000	600	25,400	19.6	5,091	4,960
1944	14,000	600	13,400	17.1	2,404	2,289
1945	26,000	520	25,480	20.6	5,377	5,259
1946	7,000	175	6,825	30.7	2,157	2,098
1947	44,000	600	43,400	18.4	8,119	7,987
1948	14,000	400	13,600	11.5	1,615	1,562
1949	24,000	600	23,400	18.7	4,504	4,378
1950	7,000	300	6,700	26.9	1,895	1,805
1951	25,000	600	24,400	18.6	4,665	4,546
1952	3,000	150	2,850	19.7	594	562
1953	27,600	600	27,000	15.5	4,286	4,187
1954	14,500	500	14,000	27.2	3,955	3,815
1955	33,000	1,000	32,000	30.3	10,032	9,710
1956	7,100	400	6,700	19.5	1,388	1,308
1957	30,700	800	29,900	22.1	6,799	6,608
1958	15,500	500	15,000	28.4	4,406	4,260
1959	9,000	500	8,500	31.7	2,855	2,694
1960	41,000	1,800	39,200	29.6	12,115	11,585
1961	11,600	800	10,800	17.7	2,056	1,911
1962	7,600	500	7,100	33.1	2,520	2,349
1963	16,000	1,000	15,000	19.2	3,075	2,878
1964	37,000	1,100	35,900	21.0	7,775	7,540
1965	43,000	1,500	41,500	16.6	7,150	6,901

See footnotes on page 48.

Continued

Table 6. Pecans: Production, farm disposition, season average price to growers, and value, by States and United States, 1919-65 Continued

State, variety, and season	Production	Farm disposition		Price per pound 1/	Value of ---	
		Home use	Sold		Production	Sales
Texas		1,000 pounds		Cents	1,000 dollars	
Improved varieties:						
1919	250					
1920	20					
1921	120					
1922	20			41.0	8	
1923	200			40.0	80	
1924	120			45.0	54	
1925	130			34.0	44	
1926	340			30.0	252	
1927	190			35.0	66	
1928	300			35.0	280	
1929	590			32.0	189	
1930	400			27.0	108	
1931	1,190			17.0	202	
1932	800			13.0	104	
1933	1,080			15.0	162	
1934	600			20.0	120	
1935	2,250			13.0	293	
1936	470			18.4	86	
1937	1,350	400	950	14.3	193	136
1938	920	400	520	15.4	142	80
1939	1,843	400	1,443	16.0	295	231
1940	3,690	600	3,090	14.0	517	433
1941	2,873	500	2,373	16.7	480	396
1942	1,500	250	1,250	26.0	390	325
1943	3,900	600	3,300	29.8	1,162	983
1944	5,400	650	4,750	30.7	1,658	1,458
1945	3,870	575	3,295	32.0	1,238	1,054
1946	3,400	450	2,950	41.0	1,394	1,210
1947	3,100	500	2,600	35.0	1,085	910
1948	6,800	600	6,200	21.0	1,428	1,302
1949	4,060	530	3,530	27.0	1,096	953
1950	5,070	500	4,570	36.5	1,851	1,668
1951	1,100	300	800	34.5	380	276
1952	8,000	500	7,500	28.5	2,280	2,138
1953	4,200	300	3,900	25.5	1,071	994
1954	4,100	300	3,800	34.0	1,394	1,292
1955	5,700	200	5,500	42.0	2,394	2,310
1956	4,400	300	4,100	30.0	1,320	1,230
1957	8,600	400	8,200	32.0	2,752	2,624
1958	5,000	300	4,700	35.0	1,750	1,645
1959	4,800	300	4,500	40.0	1,920	1,800
1960	4,600	400	4,200	35.0	1,610	1,470
1961	3,600	300	3,300	28.0	1,008	924
1962	2,100	200	1,900	42.0	882	798
1963	10,000	500	9,500	30.0	3,000	2,850
1964	5,500	500	5,000	32.0	1,760	1,600
1965	14,000	600	13,400	24.0	3,360	3,216

See footnotes on page 48.

Continued

Table 6. Pecans: Production, farm disposition, season average price to growers, and value, by States and United States, 1919-65 Continued

State, variety, and season	Production	Farm disposition		Price per pound 1/	Value of --	
		Home use	Sold		Production	Sales
Texas	1,000 pounds			Cents	1,000 dollars	
Native and seedling pecans:						
1919	34,750					
1920	1,980					
1921	18,880					
1922	1,980			20.0	396	
1923	19,800			14.0	2,780	
1924	12,380			17.0	2,108	
1925	11,870			17.0	2,020	
1926	41,060			11.0	4,525	
1927	9,410			16.0	1,508	
1928	28,700			11.7	3,348	
1929	20,410			11.0	2,247	
1930	13,100			11.0	1,444	
1931	33,810			5.3	1,793	
1932	22,000			4.0	876	
1933	25,920			5.8	1,512	
1934	14,400			11.0	1,590	
1935	47,750			4.7	2,257	
1936	9,930			9.6	954	
1937	25,650	1,600	24,050	6.1	1,565	1,467
1938	22,080	1,600	20,480	7.0	1,546	1,434
1939	17,157	1,400	15,757	8.0	1,373	1,261
1940	37,310	1,800	35,510	6.6	2,462	2,344
1941	19,227	1,500	17,727	8.5	1,634	1,507
1942	8,800	750	8,050	15.5	1,364	1,248
1943	22,100	1,600	20,500	18.3	4,044	3,752
1944	39,600	1,750	37,850	16.6	6,574	6,283
1945	28,380	1,350	27,030	19.5	5,534	5,271
1946	19,100	1,300	17,800	28.0	5,348	4,984
1947	17,900	1,900	16,000	19.0	3,401	3,040
1948	50,200	1,800	48,400	10.0	5,020	4,840
1949	24,940	1,270	23,670	17.0	4,240	4,024
1950	33,930	1,300	32,630	26.0	8,822	8,484
1951	4,600	1,200	3,400	20.0	920	680
1952	39,200	1,400	37,800	19.0	7,448	7,182
1953	23,800	1,600	22,200	15.5	3,689	3,441
1954	19,900	1,500	18,400	25.5	5,074	4,692
1955	32,300	1,300	31,000	29.5	9,528	9,145
1956	23,100	1,500	21,600	18.5	4,274	3,996
1957	46,700	1,500	45,200	21.5	10,040	9,718
1958	21,000	1,500	19,500	27.0	5,670	5,265
1959	27,200	1,200	26,000	31.0	8,432	8,060
1960	26,400	1,100	25,300	28.0	7,392	7,084
1961	16,400	1,100	15,300	17.0	2,788	2,601
1962	11,900	1,000	10,900	31.0	3,689	3,379
1963	46,000	1,500	44,500	19.0	8,740	8,455
1964	33,500	1,200	32,300	21.0	7,035	6,783
1965	48,000	1,400	46,600	15.9	7,632	7,409

See footnotes on page 48.

Continued

Table 6. Pecans: Production, farm disposition, season average price to growers, and value, by States and United States, 1919-65 Continued

State, variety, and season	Production	Farm disposition		Price per pound 1/	Value of --	
		Home use	Sold		Production	Sales
Texas		1,000 pounds		Cents		1,000 dollars
All pecans:						
1919	35,000	2,304	32,696	16.0	5,600	5,231
1920	2,000	816	1,184	25.0	500	296
1921	19,000	2,000	17,000	13.0	2,470	2,210
1922	2,000	770	1,230	20.2	404	248
1923	20,000	2,000	18,000	14.3	2,860	2,574
1924	12,500	1,750	10,750	17.3	2,162	1,860
1925	12,000	1,750	10,250	17.2	2,064	1,763
1926	41,900	2,800	39,100	11.4	4,777	4,457
1927	9,600	1,400	8,200	16.4	1,574	1,345
1928	29,500	3,710	25,790	12.3	3,628	3,172
1929	21,000	2,000	19,000	11.6	2,436	2,204
1930	13,500	1,700	11,800	11.5	1,552	1,357
1931	35,000	2,300	32,700	5.7	1,995	1,864
1932	22,800	2,000	20,800	4.3	980	894
1933	27,000	2,200	24,800	6.2	1,674	1,538
1934	15,000	1,700	13,300	11.4	1,710	1,516
1935	50,000	2,800	47,200	5.1	2,550	2,407
1936	10,400	1,400	9,000	10.0	1,040	900
1937	27,000	2,000	25,000	6.5	1,758	1,603
1938	23,000	2,000	21,000	7.3	1,688	1,514
1939	19,000	1,800	17,200	8.8	1,668	1,492
1940	41,000	2,400	38,600	7.3	2,979	2,777
1941	22,100	2,000	20,100	9.6	2,114	1,903
1942	10,300	1,000	9,300	17.0	1,754	1,573
1943	26,000	2,200	23,800	20.0	5,206	4,735
1944	45,000	2,400	42,600	18.2	8,232	7,741
1945	32,250	1,925	30,325	20.9	6,772	6,325
1946	22,500	1,750	20,750	29.9	6,742	6,194
1947	21,000	2,400	18,600	21.2	4,486	3,950
1948	57,000	2,400	54,600	11.2	6,448	6,142
1949	29,000	1,800	27,200	18.3	5,336	4,977
1950	39,000	1,800	37,200	27.3	10,673	10,152
1951	5,700	1,500	4,200	22.8	1,300	956
1952	47,200	1,900	45,300	20.6	9,728	9,320
1953	28,000	1,900	26,100	17.0	4,760	4,435
1954	24,000	1,800	22,200	27.0	6,468	5,984
1955	38,000	1,500	36,500	31.4	11,922	11,455
1956	27,500	1,800	25,700	20.3	5,594	5,226
1957	55,300	1,900	53,400	23.1	12,792	12,342
1958	26,000	1,800	24,200	28.6	7,420	6,910
1959	32,000	1,500	30,500	32.3	10,352	9,860
1960	31,000	1,500	29,500	29.0	9,002	8,554
1961	20,000	1,400	18,600	19.0	3,796	3,525
1962	14,000	1,200	12,800	32.6	4,571	4,177
1963	56,000	2,000	54,000	20.9	11,740	11,305
1964	39,000	1,700	37,300	22.5	8,795	8,383
1965	62,000	2,000	60,000	17.7	10,992	10,625

See footnotes on page 48.

Continued

Table 6. Pecans: Production, farm disposition, season average price to growers, and value, by States and United States, 1919-65 Continued

State, variety, and season	Production	Farm disposition		Price per pound 1/	Value of --	
		Home use	Sold		Production	Sales
Missouri	1,000 pounds			Cents	1,000 dollars	
Improved varieties:						
1919	10					
1920	2					
1921	4					
1922	3			40.0	3	
1923	4			40.0	2	
1924	5			40.0	2	
1925	6			35.0	2	
1926	15			32.0	5	
1927	5			48.0	2	
1928	5			35.0	2	
1929	15			30.0	4	
1930	10			20.0	2	
1931	35			15.0	5	
1932	20			12.0	2	
1933	22			13.0	7	
1934	10			20.0	2	
1935	15			11.0	2	
1936	6			15.0	1	
1937	34	10	24	9.5	7	2
1938	10	6	4	12.0	1	2/
1939	40	10	30	12.0	5	4
1940	37	10	27	16.0	6	4
1941	76	16	60	14.0	11	8
1942	16	8	8	20.0	3	2
1943	42	15	27	33.0	14	9
1944	20	10	10	35.0	7	4
1945	48	20	28	34.0	16	10
Native and seedling pecans:						
1919	990					
1920	248					
1921	346					
1922	742			17.0	126	
1923	346			17.0	59	
1924	495			25.0	124	
1925	594			18.0	107	
1926	1,485			16.0	238	
1927	395			20.0	79	
1928	295			16.0	47	
1929	885			13.0	115	
1930	590			12.0	71	
1931	1,765			9.0	141	
1932	1,230			6.0	74	
1933	1,328			7.0	93	
1934	540			12.5	68	
1935	1,235			8.0	99	
1936	374			9.0	30	
1937	974	90	884	5.0	49	44
1938	197	44	153	6.5	13	10
1939	835	65	770	8.0	67	62
1940	738	65	673	6.4	62	57
1941	1,424	92	1,332	9.0	128	120
1942	484	44	440	13.0	63	57
1943	1,078	90	988	21.0	226	207
1944	605	55	550	21.5	130	118
1945	1,452	120	1,332	20.7	301	276

See footnotes on page 48.

Continued

Table 6. Pecans: Production, farm disposition, season average price to growers, and value, by States and United States, 1919-65 Continued

State, variety, and season	Production	Farm disposition		Price per pound	Value of --	
		Home use	Sold		Production	Sales
Missouri	1,000 pounds			Cents	1,000 dollars	
All pecans:						
1919	1,000	130	870	17.0	170	148
1920	250	50	200	18.0	45	36
1921	350	70	280	15.0	52	42
1922	750	110	640	17.2	129	110
1923	350	70	280	17.4	61	49
1924	500	100	400	25.2	126	101
1925	600	100	500	18.2	109	91
1926	1,500	180	1,320	16.2	243	214
1927	400	90	310	20.2	81	63
1928	300	80	220	16.3	49	36
1929	900	100	800	13.2	119	106
1930	600	75	525	12.2	73	64
1931	1,800	200	1,600	8.1	146	130
1932	1,250	150	1,100	6.1	76	67
1933	1,350	150	1,200	7.1	96	85
1934	550	75	475	12.7	70	60
1935	1,250	150	1,100	8.1	101	89
1936	380	50	330	8.2	31	27
1937	1,008	100	908	5.2	52	46
1938	207	50	157	6.8	14	10
1939	875	75	800	8.2	72	66
1940	775	75	700	8.7	68	61
1941	1,500	108	1,392	9.3	139	128
1942	500	52	448	13.2	66	59
1943	1,120	105	1,015	21.4	240	216
1944	625	65	560	21.9	137	122
1945	1,500	140	1,360	21.1	317	286

See footnotes on page 48.

Continued

Table 6. Pecans: Production, farm disposition, season average price to growers, and value, by States and United States, 1919-65 Continued

State, variety, and season	Production	Farm disposition		Price per pound	Value of --	
		Home use	Sold		Production	Sales
<b>Illinois</b>						
Improved varieties:						
1935	4			9.2	2/	
1936	3			12.0	2/	
1937	20	8	12	11.6	2	1
1938	9	6	3	15.0	1	2/
1939	7	5	2	16.0	1	2/
1940	15	5	10	16.0	2	2
1941	27	10	17	14.5	4	2
1942	10	5	5	20.0	2	1
1943	26	5	21	26.8	7	6
1944	10	5	5	32.0	3	2
1945	21	5	16	31.0	7	5
Native and seedling pecans:						
1919	230					
1920	210					
1921	155					
1922	165			17.0	28	
1923	200			17.0	34	
1924	200			18.0	36	
1925	23			17.0	4	
1926	315			17.0	54	
1927	90			14.0	13	
1928	30			15.0	4	
1929	150			15.0	22	
1930	210			14.0	29	
1931	247			8.0	20	
1932	212			7.0	15	
1933	223			7.5	17	
1934	266			10.0	27	
1935	504			5.4	27	
1936	123			7.0	9	
1937	663	72	594	5.8	39	34
1938	215	64	151	6.5	14	10
1939	473	70	423	9.0	44	38
1940	481	70	411	8.0	43	37
1941	860	86	774	9.0	77	70
1942	490	70	420	16.0	78	67
1943	1,274	75	1,199	21.2	270	254
1944	480	70	410	21.4	103	88
1945	1,020	105	924	21.0	215	194

See footnotes on page 48.

Continued



Table 6. Pecans: Production, farm disposition, season average price to growers, and value, by States and United States, 1919-65 Continued

State, variety, and season	Production:	Farm disposition		Price per pound 1/	Value of --	
		Home use	Sold		Production	Sales
Florida		1,000 pounds		Cents	1,000 dollars	
All pecans:						
1919	230	88	142	21.0	48	30
1920	210	35	125	19.0	40	24
1921	155	71	84	16.0	25	13
1922	165	76	89	17.0	28	15
1923	200	86	114	17.0	34	19
1924	200	84	116	18.0	36	21
1925	23	16	7	17.0	4	1
1926	315	80	235	17.0	54	40
1927	90	46	44	14.0	13	6
1928	30	20	10	15.0	4	2
1929	150	60	90	15.0	22	14
1930	210	75	135	14.0	29	19
1931	247	80	167	8.0	20	13
1932	212	75	137	7.0	15	10
1933	223	80	143	7.5	17	11
1934	266	80	186	10.0	27	19
1935	508	80	428	5.4	27	23
1936	126	40	86	7.1	9	6
1937	686	30	606	6.0	41	35
1938	224	70	154	6.7	15	10
1939	500	75	425	9.0	45	38
1940	496	75	421	9.1	45	39
1941	887	96	791	9.1	81	72
1942	500	75	425	16.0	80	68
1943	1,300	80	1,220	21.3	277	260
1944	490	75	415	21.6	106	90
1945	1,050	110	940	21.2	223	199

See footnote on page 48.

Continued

Table 6. Pecans: Production, farm disposition, season average price to growers, and value, by States and United States, 1919-65 Continued

State, variety, and season	Production	Farm disposition		Price per pound 1/	Value of --	
		Home use	Sold		Production	Sales
	1,000 pounds			Cents	1,000 dollars	
New Mexico						
Improved varieties:						
1949	1,390	30	1,360	25.0	348	340
1950	1,890	30	1,860	35.0	662	651
1951	1,840	30	1,810	30.0	552	543
1952	3,490	40	3,450	25.0	872	862
1953	2,510	40	2,470	25.0	628	618
1954	3,790	40	3,750	35.0	1,326	1,312
1955	3,800	40	3,760	40.0	1,520	1,504
1956	3,500	40	3,460	25.0	875	865
1957	5,400	50	5,350	32.0	1,728	1,712
1958	4,500	50	4,450	35.0	1,575	1,558
1959	5,450	50	5,400	37.0	2,016	1,998
1960	8,000	50	7,950	38.0	3,040	3,021
1961	4,650	35	4,615	25.0	1,162	1,154
1962	7,400	50	7,350	45.0	3,330	3,308
1963	6,000	50	5,950	30.0	1,800	1,785
1964	7,800	40	7,760	28.0	2,184	2,173
1965	5,500	40	5,460	28.0	1,540	1,529

See footnotes on page 48.

Continued

Table 6. Pecans: Production, farm disposition, season average price to growers, and value, by States and United States, 1919-65 Continued

State, variety, and season	Production	Farm disposition		Price per pound	Value of --	
		Home use	Sold		Production	Sales
United States	1,000 pounds			Cents	1,000 dollars	
Improved varieties: 3/						
1919	6,190					
1920	2,298					
1921	7,764					
1922	3,448			44.5	1,534	
1923	10,514			42.5	4,472	
1924	7,150			43.8	3,134	
1925	12,316			37.6	4,637	
1926	17,535			32.4	5,687	
1927	9,540			35.4	3,379	
1928	18,005			29.6	5,324	
1929	8,839			31.7	2,803	
1930	13,875			27.7	3,843	
1931	22,002			13.9	3,059	
1932	11,813			13.5	1,593	
1933	22,941			13.0	2,977	
1934	19,468			15.5	3,023	
1935	29,464			12.4	3,656	
1936	32,257			14.7	4,735	
1937	40,026	6,228	33,798	10.8	4,369	3,657
1938	35,291	5,712	29,579	11.7	4,153	3,452
1939	40,944	5,725	35,219	12.1	4,975	4,261
1940	42,126	6,061	36,065	12.7	5,391	4,589
1941	51,452	6,418	45,034	12.7	6,563	5,710
1942	45,383	5,886	39,497	18.9	3,571	7,453
1943	57,173	6,571	50,602	28.5	16,277	14,427
1944	61,218	6,466	54,752	27.7	16,996	15,178
1945	59,305	6,390	52,915	29.2	17,284	15,431
1946	33,492	4,317	29,175	40.2	13,436	11,733
1947	45,193	5,660	39,533	29.4	13,311	11,616
1948	77,532	6,895	70,637	15.2	11,843	10,738
1949	50,105	5,380	44,725	21.8	10,929	9,743
1950	62,788	5,762	57,026	31.8	19,996	18,159
1951	88,600	6,480	82,120	21.7	19,289	17,836
1952	79,570	5,580	73,990	25.2	20,023	18,628
1953	106,215	6,345	99,870	17.8	18,942	17,799
1954	43,800	3,840	39,960	32.7	14,292	13,057
1955	42,800	3,040	39,760	40.9	17,492	16,262
1956	106,850	5,640	101,210	19.2	20,503	19,397
1957	34,160	3,715	30,445	31.0	10,600	9,453
1958	105,900	5,820	100,080	29.3	31,001	29,313
1959	70,600	4,865	65,735	34.1	24,089	22,432
1960	80,220	5,610	74,610	34.1	27,326	25,446
1961	146,850	6,245	140,605	19.4	28,572	27,344
1962	39,775	2,930	36,845	39.0	15,455	14,357
1963	220,550	8,100	212,450	18.7	41,382	39,820
1964	55,950	4,150	51,800	27.5	15,388	14,261
1965	123,050	6,960	116,090	29.3	24,958	23,571

See footnotes on page 48.

Continued

Table 6. Pecans: Production, farm disposition, season average price to growers, and value, by States and United States, 1919-65 Continued

State, variety, and season	Production	Farm disposition		Price per pound 1/	Value of --	
		Home use	Sold		Production	Sales
United States	1,000 pounds			Cents	1,000 dollars	
Native and seedling pecans: 4/						
1919	62,920					
1920	8,077					
1921	40,391					
1922	7,907			18.7	1,476	
1923	47,516			14.1	6,714	
1924	30,848			18.6	5,743	
1925	40,147			17.3	6,956	
1926	78,326			11.8	9,274	
1927	26,964			15.4	4,148	
1928	50,545			11.9	6,034	
1929	44,501			11.4	5,059	
1930	43,260			10.8	4,695	
1931	66,461			5.8	3,838	
1932	56,421			4.4	2,464	
1933	55,871			6.0	3,357	
1934	36,704			11.0	4,044	
1935	95,021			5.0	4,767	
1936	27,530			9.6	2,651	
1937	67,164	5,062	62,102	5.8	3,919	3,606
1938	39,032	4,688	34,344	7.2	2,817	2,475
1939	56,116	4,535	51,581	7.8	4,399	4,042
1940	80,758	4,743	76,015	6.9	5,579	5,230
1941	70,329	4,756	65,573	8.5	5,972	5,566
1942	31,991	3,965	28,026	14.6	4,673	4,099
1943	75,869	5,010	70,859	18.9	14,381	13,423
1944	82,001	5,246	76,755	17.0	13,965	13,036
1945	82,099	4,846	77,253	20.0	16,456	15,469
1946	42,733	3,548	39,185	28.8	12,330	11,290
1947	74,409	4,640	69,769	18.3	13,690	12,786
1948	98,511	4,995	93,516	10.0	9,854	9,357
1949	75,585	4,180	71,405	17.0	12,825	12,127
1950	61,842	3,960	57,882	25.7	15,905	14,899
1951	68,135	4,480	63,655	17.2	11,738	10,947
1952	71,866	3,980	67,886	18.8	13,519	12,767
1953	107,955	5,205	102,750	14.7	15,912	15,148
1954	50,800	3,900	46,900	25.2	12,765	11,804
1955	104,500	3,990	100,510	29.6	30,939	29,743
1956	67,550	4,300	63,250	17.4	11,784	11,030
1957	107,440	4,115	103,325	21.6	23,214	22,317
1958	67,450	4,480	62,970	26.3	17,738	16,568
1959	74,900	4,115	70,785	31.0	23,218	21,944
1960	107,280	5,440	101,840	28.7	30,797	29,239
1961	106,700	4,865	101,835	16.1	17,213	16,423
1962	35,525	3,070	32,455	31.0	10,996	10,053
1963	155,850	6,750	149,100	17.8	27,784	26,600
1964	122,650	4,765	117,885	20.4	25,002	24,025
1965	128,050	5,630	122,420	15.6	19,993	19,122

See footnotes on page 48.

Continued

Table 6. Pecans: Production, farm disposition, season average price to growers, and value, by States and United States, 1919-65 Continued

State, variety, and season	Production	Farm disposition		Price	Value of --	
		Home use	Sold	per pound	Production	Sales
United States				1/		
All pecans: 3/4/		1,000 pounds		Cents	1,000 dollars	
1919	69,110	8,977	60,133	19.5	13,496	11,157
1920	10,375	4,110	6,265	25.7	2,665	1,502
1921	48,155	8,983	39,172	17.6	8,469	6,470
1922	11,355	4,977	6,378	26.5	3,010	1,594
1923	58,030	9,999	48,031	19.3	11,186	8,513
1924	37,998	8,749	29,249	23.4	8,877	6,298
1925	52,463	10,095	42,368	22.1	11,593	8,861
1926	95,861	11,724	84,137	15.6	14,961	12,478
1927	36,504	8,873	27,631	20.6	7,527	5,320
1928	68,550	12,360	56,190	16.6	11,358	8,960
1929	53,340	9,290	44,050	14.7	7,862	5,933
1930	57,135	9,930	47,205	14.9	8,538	6,651
1931	88,463	11,180	77,283	7.8	6,897	5,811
1932	68,234	9,625	58,609	6.0	4,057	3,190
1933	78,812	11,000	67,812	8.0	6,334	5,289
1934	56,172	9,705	46,467	12.6	7,067	5,780
1935	124,485	11,530	112,955	6.8	8,423	7,394
1936	59,787	9,770	50,017	12.4	7,386	6,174
1937	107,190	11,290	95,900	7.7	8,288	7,263
1938	74,323	10,400	63,923	9.4	6,970	5,927
1939	97,060	10,260	86,800	9.7	9,374	8,303
1940	122,884	10,804	112,080	8.9	10,970	9,819
1941	121,781	11,174	110,607	10.3	12,535	11,276
1942	77,374	9,851	67,523	17.1	13,244	11,552
1943	133,042	11,581	121,461	23.0	30,658	27,850
1944	143,219	11,712	131,507	21.5	30,961	28,214
1945	141,404	11,236	130,168	23.8	33,740	30,900
1946	76,225	7,865	68,360	33.7	25,766	23,023
1947	119,602	10,300	109,302	22.3	27,001	24,402
1948	176,043	11,890	164,153	12.2	21,697	20,095
1949	125,690	9,560	116,130	18.8	23,754	21,870
1950	124,630	9,722	114,908	28.8	35,901	33,058
1951	156,735	10,960	145,775	19.7	31,027	28,783
1952	151,436	9,560	141,876	22.1	33,542	31,395
1953	214,170	11,550	202,620	16.3	34,854	32,947
1954	94,600	7,740	86,860	28.6	27,057	24,861
1955	147,300	7,030	140,270	32.8	48,431	46,005
1956	174,400	9,940	164,460	18.5	32,287	30,427
1957	141,600	7,830	133,770	23.7	33,814	31,770
1958	173,350	10,300	163,050	28.1	48,739	45,881
1959	145,500	8,980	136,520	32.5	47,307	44,376
1960	187,500	11,050	176,450	31.0	58,123	54,685
1961	253,550	11,110	242,440	18.1	45,785	43,767
1962	75,300	6,000	69,300	35.2	26,451	24,410
1963	376,400	14,850	361,550	18.4	69,166	66,420
1964	178,600	8,915	169,685	22.6	40,390	38,286
1965	251,100	12,590	238,510	17.9	44,951	42,693

1/ December 1 price, 1919-36; season average price, 1937-65. Prior to 1937 value for "all pecans" computed from "all pecan" price and improved and seedling values computed from their respective prices and rounded to add to "all pecans" value. 1937-65 prices for "all pecans" computed by weighting prices for improved and seedling pecans by quantities sold. 2/ Negligible.

3/ Includes Missouri, 1919-45; Illinois, 1935-45; and New Mexico, 1949-65, for improved varieties.

4/ Includes Illinois and Missouri, 1919-45, for native and seedling varieties.

Table 7. Pecans: Quantity shelled commercially and quantity marketed in the shell, 11 principal producing States, 1948-65 1/

Season	Quantity shelled commercially	Quantity marketed in shell	Total sales
		1,000 pounds	
1948	134,500	29,653	164,153
1949	100,350	15,780	116,130
1950	93,740	21,168	114,908
1951	114,790	30,785	145,775
1952	118,420	23,456	141,876
1953	170,450	32,170	202,620
1954	74,220	12,640	86,860
1955	121,400	18,870	140,270
1956	140,800	23,660	164,460
1957	117,000	16,770	133,770
1958	135,025	28,025	163,050
1959	115,849	20,671	136,520
1960	147,005	29,445	176,450
1961	196,670	45,770	242,440
1962	54,650	14,650	69,300
1963	306,920	54,630	361,550
1964	147,380	22,305	169,685
1965	197,900	40,520	238,510

1/ Data not available prior to 1948.

Table 8. Walnuts: Production, farm disposition, season average price, value, and utilization of sales (unshelled basis), and production of shelled meats, by States and United States, 1909-65

State and season	Production: 1/	Farm disposition:		Price: per ton 2/	Value of --		Utilization of sales:			Shelled meats produced 3/
		Home use	Sold		Production	Sales	Sold in shell 3/	Shelled 3/	3/	
		Tons		Dollars	1,000 dollars		Tons		1,000 pounds	
Oregon										
1919	230	50	180	560.00	129	101				
1920	250	50	200	425.00	106	85				
1921	350	60	290	425.00	149	123				
1922	400	70	330	390.00	156	129				
1923	450	70	380	425.00	191	162				
1924	450	70	380	480.00	216	182				
1925	550	80	470	480.00	264	226				
1926	900	120	780	500.00	450	390				
1927	1,100	130	970	360.00	396	349				
1928	1,500	200	1,300	440.00	660	572				
1929	1,400	200	1,200	360.00	504	432				
1930	900	120	780	400.00	360	312				
1931	2,600	250	2,350	275.00	715	646				
1932	3,200	300	2,900	240.00	768	696				
1933	1,300	150	1,150	280.00	364	322				
1934	3,100	300	2,800	250.00	775	700				
1935	4,100	350	3,750	230.00	943	862				
1936	1,600	200	1,400	255.00	408	357				
1937	2,600	300	2,300	200.00	520	460				
1938	6,300	450	5,850	215.00	1,354	1,258				
1939	5,100	440	4,660	170.00	867	792	2,220	2,440	1,786	
1940	4,400	430	3,970	200.00	880	794	2,230	1,690	1,099	
1941	7,000	460	6,540	240.00	1,630	1,570	2,770	3,770	2,887	
1942	3,150	370	2,780	286.00	901	795	1,830	950	634	
1943	5,100	450	4,650	420.00	2,142	1,953	2,685	1,965	1,250	
1944	6,500	500	6,000	450.00	2,925	2,700	4,290	1,710	1,200	
1945	6,700	500	6,200	460.00	3,082	2,852	4,510	1,690	1,125	
1946	8,900	500	8,400	440.00	3,916	3,696	4,620	3,780	2,392	
1947	5,500	500	5,000	310.00	1,705	1,550	2,875	2,125	1,368	
1948	8,650	550	8,100	240.00	2,076	1,944	3,400	4,700	2,698	
1949	7,600	500	7,100	220.00	1,672	1,562	3,950	3,150	1,993	
1950	6,200	400	5,800	320.00	1,984	1,856	2,850	2,950	2,034	
1951	9,100	500	8,600	340.00	3,094	2,924	4,800	3,800	2,558	
1952	8,200	500	7,700	360.00	2,952	2,772	4,200	3,500	2,514	
1953	4,400	350	4,050	370.00	1,628	1,498	2,290	1,760	1,230	
1954	8,100	450	7,650	260.00	2,106	1,989	2,000	5,650	3,632	
1955	5,100	400	4,700	470.00	2,397	2,209	1,020	3,680	2,454	
1956	2,800	300	2,500	390.00	1,092	975	1,410	1,090	714	
1957	5,300	400	4,900	400.00	2,120	1,960	2,250	2,650	1,900	
1958	6,500	400	6,100	380.00	2,470	2,318	3,100	3,000	2,100	
1959	4,200	300	3,900	450.00	1,890	1,755	2,260	1,640	1,160	
1960	2,500	180	2,320	570.00	1,425	1,322	1,470	850	580	
1961	6,300	300	6,000	410.00	2,583	2,460	3,630	2,370	1,627	
1962	2,900	200	2,700	420.00	1,218	1,134	970	1,730	1,140	
1963	3,800	200	3,600	450.00	1,710	1,620	1,300	2,300	1,610	
1964	4,100	250	3,850	430.00	1,763	1,656	1,270	2,580	1,800	
1965	1,300	130	1,170	420.00	546	491	670	500	350	

See footnotes on page 52.

Continued

Table 8. Walnuts: Production, farm disposition, season average price, value, and utilization of sales (unshelled basis), and production of shelled meats, by States and United States, 1909-65 Continued

State and season	Production: 1/	Farm disposition:		Price per ton: 2/	Value of --		Utilization of sales:		Shelled meats produced: 3/
		Home use	Sold		Production	Sales	Sold in shell: 3/	Shelled: 3/	
California		Tons		Dollars	1,000 dollars	Tons		1,000 pounds	
1909	9,800	200	9,600						
1910	10,000	200	9,800						
1911	12,800	200	12,600						
1912	13,000	200	12,800						
1913	21,400	200	12,200						
1914	9,600	200	9,400						
1915	15,200	200	15,000						
1916	15,300	200	15,100						
1917	17,000	200	16,800						
1918	22,000	200	21,800						
1919	30,000	200	29,800	550.00	16,500	16,390			
1920	22,700	200	22,500	400.00	9,080	9,000			
1921	23,000	200	22,800	400.00	9,200	9,120			
1922	29,000	200	28,800	360.00	10,440	10,368			
1923	26,500	200	26,300	400.00	10,600	10,520			
1924	24,200	200	24,000	460.00	11,132	11,040			
1925	36,000	200	35,800	440.00	15,840	15,752			
1926	15,300	200	15,100	480.00	7,344	7,248			
1927	51,000	250	50,750	330.00	16,830	16,748			
1928	25,900	250	25,650	420.00	10,878	10,773			
1929	42,000	250	41,750	320.00	13,440	13,360			
1930	29,400	250	29,150	410.00	12,054	11,952			
1931	31,600	300	31,300	219.00	6,920	6,855			
1932	45,900	400	45,500	175.00	8,032	7,962			
1933	32,700	400	32,300	222.00	7,259	7,171			
1934	44,000	400	43,600	187.00	8,228	8,153			
1935	53,300	400	52,900	201.00	10,713	10,633			
1936	44,200	400	43,800	216.00	9,547	9,461			
1937	59,800	400	59,400	180.00	10,764	10,692			
1938	49,000	400	48,600	222.00	10,878	10,789			
1939	57,400	400	57,000	168.00	9,643	9,576	29,190	18,240	
1940	46,400	400	46,000	233.00	10,811	10,718	28,590	17,410	
1941	63,000	400	62,600	253.00	15,939	15,838	31,080	31,520	
1942	55,100	400	54,700	308.00	16,971	16,848	38,070	16,630	
1943	58,500	400	58,100	483.00	28,256	28,062	38,760	19,340	
1944	65,000	400	64,600	446.00	28,990	28,812	39,650	24,950	
1945	64,000	400	63,600	514.00	32,896	32,690	43,930	19,670	
1946	63,000	400	62,600	570.00	35,910	35,682	42,710	19,890	
1947	59,000	400	58,600	388.00	22,892	22,737	34,720	23,880	
1948	62,000	400	61,600	442.00	27,404	27,227	41,330	20,270	
1949	80,200	400	79,800	363.00	29,113	28,967	55,650	24,150	
1950	58,000	400	57,600	392.00	22,736	22,579	35,580	22,020	
1951	68,300	400	67,900	440.00	30,052	29,876	43,300	24,600	
1952	75,600	400	75,200	400.00	30,240	30,080	42,920	32,280	
1953	54,800	400	54,400	415.00	22,742	22,576	31,500	22,900	
1954	67,000	400	66,600	360.00	24,120	23,976	39,800	26,800	
1955	72,000	400	71,600	555.00	39,960	39,738	36,310	35,290	
1956	69,000	400	68,600	442.00	30,498	30,321	37,260	31,340	
1957	61,300	400	60,900	427.00	26,175	26,004	28,140	32,760	
1958	82,200	400	81,800	377.00	30,989	30,839	32,820	48,980	
1959	58,500	400	58,100	483.00	28,256	28,062	28,100	30,000	
1960	70,300	400	69,900	535.00	37,610	37,396	28,900	41,000	
1961	61,200	400	60,800	473.00	28,948	28,758	24,600	36,200	
1962	77,000	400	76,600	469.00	36,113	35,925	29,400	47,200	
1963	79,300	400	78,900	460.00	36,478	36,294	27,800	51,100	
1964	86,100	400	85,700	458.00	39,434	39,251	28,700	57,000	
1965	79,000	400	78,600	432.00	34,128	33,955	29,900	48,700	

See footnotes on page 52.

Continued



Table 8. Walnuts: Production, farm disposition, season average price, value, and utilization of sales (unshelled basis), and production of shelled meats, by States and United States, 1909-65 -Continued

State and season	Production: 1/	Farm disposition:		Price per ton 2/	Value of --		Utilization of sales		Shelled meats produced 3/
		Home use	Sold		Production	Sales	Sold in shell 3/	Shelled 3/	
United States:		Tons		Dollars	1,000 dollars		Tons	1,000 pounds	
1919	30,230	250	29,980	550.00	16,629	16,491			
1920	22,950	250	22,700	400.00	9,186	9,085			
1921	23,350	260	23,090	400.00	9,349	9,243			
1922	29,400	270	29,130	360.00	10,596	10,497			
1923	26,950	270	26,680	400.00	10,791	10,682			
1924	24,650	270	24,380	460.00	11,348	11,222			
1925	36,550	280	36,270	441.00	16,104	15,978			
1926	16,200	320	15,880	483.00	7,794	7,638			
1927	52,100	380	51,720	331.00	17,226	17,097			
1928	27,400	450	26,950	421.00	11,538	11,345			
1929	43,400	450	42,950	321.00	13,944	13,792			
1930	30,300	370	29,930	410.00	12,414	12,264			
1931	34,200	550	33,650	223.00	7,635	7,501			
1932	49,100	700	48,400	179.00	8,800	8,658			
1933	34,000	550	33,450	224.00	7,623	7,493			
1934	47,100	700	46,400	191.00	9,003	8,853			
1935	57,400	750	56,650	203.00	11,656	11,495			
1936	45,800	600	45,200	217.00	9,955	9,818			
1937	62,400	700	61,700	181.00	11,284	11,152			
1938	55,300	850	54,450	221.00	12,232	12,047			
1939	62,500	840	61,660	168.00	10,510	10,368	31,410	30,250	20,026
1940	50,800	830	49,970	230.00	11,691	11,512	30,870	19,100	13,719
1941	70,000	860	69,140	252.00	17,619	17,408	33,850	35,290	26,857
1942	58,250	770	57,480	307.00	17,872	17,643	39,900	17,580	11,814
1943	63,600	850	62,750	478.00	30,398	30,015	41,445	21,305	14,270
1944	71,500	900	70,600	446.00	31,915	31,512	43,940	26,660	17,070
1945	70,700	900	69,800	599.00	35,978	35,542	48,440	21,360	15,695
1946	71,900	900	71,000	555.00	39,826	39,378	47,330	23,670	16,892
1947	64,500	900	63,600	382.00	24,597	24,287	37,595	26,005	18,958
1948	70,650	950	69,700	419.00	29,480	29,171	44,730	24,970	16,138
1949	87,800	900	86,900	351.00	30,785	30,529	59,600	27,300	20,983
1950	64,200	800	63,400	385.00	24,720	24,435	38,430	24,970	18,104
1951	77,400	900	76,500	429.00	33,146	32,800	48,100	28,400	20,648
1952	83,800	900	82,900	396.00	33,192	32,852	47,120	35,780	26,114
1953	59,200	750	58,450	412.00	24,370	24,074	33,790	24,660	17,400
1954	75,100	850	74,250	350.00	26,226	25,965	41,800	32,450	22,112
1955	77,100	800	76,300	550.00	42,357	41,947	37,330	38,970	29,885
1956	71,800	700	71,100	440.00	31,590	31,296	38,670	32,430	24,591
1957	66,600	800	65,800	425.00	28,295	27,964	30,390	35,410	27,174
1958	88,700	800	87,900	377.00	33,459	33,157	35,920	51,980	38,377
1959	62,700	700	62,000	481.00	30,146	29,817	30,360	31,640	23,140
1960	72,800	580	72,220	536.00	39,035	38,718	30,370	41,850	32,810
1961	67,500	700	66,800	467.00	31,531	31,218	28,230	38,570	27,687
1962	79,900	600	79,300	467.00	37,331	37,059	30,370	48,930	37,710
1963	83,100	600	82,500	460.00	38,188	37,914	29,100	51,400	38,923
1964	90,200	650	89,550	457.00	41,197	40,907	29,970	59,580	45,331
1965	80,300	530	79,770	432.00	34,674	34,446	30,570	49,200	38,385

1/ Additional quantities not harvested for economic reasons on page 53.

2/ Equivalent returns for bulk nuts at first delivery point.

3/ Not available prior to 1939.

Table 9. Tree nuts: Economic abandonment

Year	Unharvested production						
	Filberts			Macadamia nuts	Walnuts		
	Oregon	Washington	U. S.	Hawaii	Oregon	California	U. S.
	Tons		1,000 pounds		Tons		
1942	100		100		450	1/2,500	2,950
1943	100		100		200		200
1944	100		100		300		300
1945					200		200
1946							
1947					100		100
1948	200	120	320		450		450
1949	100	110	210		300		300
1950	650	130	780		100		100
1951	250	40	290				
1952	220		220				
1953	100		100				
1954	150		150		300		300
1955					300		300
1956				10			
1957	200		200	14			
1958				4			
1959				2			
1960				30			
1961				10			
1962							
1963				4			
1964				217			
1965				111			

1/ Not harvested on account of labor shortage.

Table 10. Tung nuts: Production, season average price, and value, by States and United States, 1930-65

State and season	Production	Price per ton	Value of production	State and season	Production	Price per ton	Value of production
	1/	1/ 2/	2/		1/	1/ 2/	2/
	Tons	Dollars	1,000 dollars		Tons	Dollars	1,000 dollars
<u>Florida</u>				<u>Georgia</u>			
1939	550			1939	15		
1940	4,700			1940	1,200		
1941	2,250			1941	650		
1942	3,700			1942	950		
1943	700			1943	200		
1944	7,000	100.00	700	1944	800		
1945	3,400	98.00	323	1945	1,100		
1946	15,000	96.00	1,440	1946	1,800		
1947	11,000	68.00	748	1947	300		
1948	17,500	46.00	805	1948	800		
1949	16,200	60.00	972	1949	2,000		
1950	8,200	120.00	984	1950	400		
1951	12,200	112.00	1,366	1951	240		
1952	31,000	84.00	2,604	1952	300		
1953	28,400	65.00	1,846	1953	600		
1954	21,600	61.00	1,318	1954	250		
1955	6,200	64.00	397	1955	3/		
1956	16,500	58.00	957	1956	60		
1957	16,000	60.00	960	1957	100		
1958	35,000	58.00	2,030	1958	400		
1959	29,000	54.00	1,566	1959	200	54.00	11
1960	2,300	65.50	151	1960	3/		
1961	30,900	80.00	2,472	1961	140	80.00	11
1962	5,800	121.00	702	1962	3/		
1963	20,900	66.00	1,379	1963	3/		
1964	20,400	64.00	1,306	1964	3/		
1965	25,300	60.00	1,518	1965	3/		

See footnotes on page 56.

Continued.

Table 10. Tung nuts: Production, season average price, and value, by States and United States, 1937-65 Continued

State and season	Production 1/	Price per ton 1/ 2/	Value of production 1,000 dollars 2/	State and season	Production 1/	Price per ton 1/ 2/	Value of production 1,000 dollars 2/
<u>Alabama</u>				<u>Mississippi</u>			
1939	20			1937	425		
1940	200			1940	3,700		
1941	350			1941	3,700		
1942	500			1942	7,200		
1943	100			1943	1,940		
1944	700	97.30	146	1944	10,637	104.00	1,106
1945	1,140	98.10	220	1945	15,690	98.00	1,538
1946	1,600	96.50	328	1946	23,800	102.00	2,428
1947	800	65.70	112	1947	25,000	64.00	1,600
1948	900	46.00	78	1948	25,300	51.00	1,290
1949	1,900	63.00	184	1949	43,600	65.00	2,834
1950	1,000	120.00	168	1950	20,800	111.00	2,309
1951	820	105.00	111	1951	32,900	105.00	3,454
1952	2,800	83.00	257	1952	67,800	79.00	5,356
1953	1,300	69.00	131	1953	68,000	68.00	4,624
1954	2,800	60.00	183	1954	21,500	58.00	1,247
1955	37			1955	37		
1956	1,100	58.00	67	1956	66,800	52.00	3,474
1957	750	57.00	88	1957	52,100	51.00	2,657
1958	3,800	56.00	235	1958	24,800	52.00	1,280
1959	2,700	54.00	146	1959	60,700	52.00	3,156
1960	400	63.00	25	1960	29,000	62.00	1,798
1961	2,200	81.50	179	1961	62,200	70.00	4,354
1962	500	120.00	60	1962	13,000	125.00	1,625
1963	2,200	67.00	147	1963	38,100	65.00	2,476
1964	1,800	62.00	112	1964	70,500	61.00	4,290
1965	1,100	69.00	66	1965	67,400	63.00	4,246

See footnotes on page 56.

Continued

Table 10. Tung nuts: Production, season average price, and value, by States and United States, 1939-65 Continued

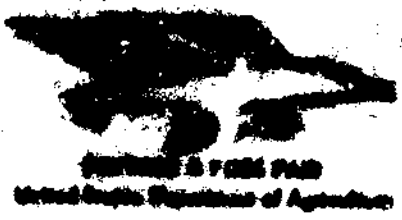
State and season	Production 1/	Price per ton 1/ 2/	Value of production 1,000 dollars	State and season	Production 1/	Price per ton 1/	Value of production 1,000 dollars
<u>Louisiana</u>				<u>United States</u>			
1939	150			1939	1,160	42.20	49
1940	1,200			1940	11,000	60.00	660
1941	1,800			1941	8,750	88.30	773
1942	4,000			1942	16,350	91.80	1,501
1943	3,260			1943	6,200	99.00	614
1944	7,550	103.00	778	1944	26,680	102.00	2,730
1945	10,750	101.00	1,086	1945	37,080	98.00	3,667
1946	15,200	90.00	1,368	1946	57,400	96.00	5,564
1947	15,500	64.00	992	1947	53,200	64.00	3,452
1948	14,000	50.00	700	1948	58,500	49.10	2,873
1949	25,200	64.00	1,613	1949	97,000	63.70	5,603
1950	6,100	94.00	573	1950	36,500	111.00	4,034
1951	2,300	97.00	281	1951	49,060	106.00	5,212
1952	30,200	77.00	2,325	1952	132,100	79.80	10,542
1953	21,700	65.00	1,410	1953	120,000	66.80	8,011
1954	4,900	58.00	284	1954	51,050	59.40	3,032
1955	3/			1955	6,200	64.00	397
1956	13,000	54.00	1,026	1956	103,460	53.40	5,524
1957	13,700	48.00	658	1957	82,650	52.30	4,323
1958	22,700	50.00	1,135	1958	146,700	53.20	7,810
1959	18,000	51.00	918	1959	110,600	52.40	5,777
1960	10,000	63.00	687	1960	42,600	62.50	2,661
1961	16,100	92.00	1,481	1961	111,540	87.30	9,741
1962	3,500	114.00	399	1962	22,800	122.00	2,786
1963	12,300	66.00	812	1963	73,500	65.50	4,814
1964	21,600	62.00	1,339	1964	123,300	61.70	7,607
1965	500	58.00	29	1965	33,300	60.50	2,016

1/ Production and price in terms of air-dried nuts in the husk.

2/ To avoid the possibility of disclosing individual mill operations, the prices and value for Georgia have been combined with Alabama, 1944-58. Price and value by States not available prior to 1944.

3/ Negligible.

3  
DEPARTMENT OF AGRICULTURE  
GENERAL INVESTIGATIVE DIVISION  
WASHINGTON, D. C. 20250



INTERNAL SECURITY

PROPERTY FOR PRIVATE USE, \$300

**END**