



**AgEcon** SEARCH  
RESEARCH IN AGRICULTURAL & APPLIED ECONOMICS

*The World's Largest Open Access Agricultural & Applied Economics Digital Library*

**This document is discoverable and free to researchers across the globe due to the work of AgEcon Search.**

**Help ensure our sustainability.**

Give to AgEcon Search

AgEcon Search

<http://ageconsearch.umn.edu>

[aesearch@umn.edu](mailto:aesearch@umn.edu)

*Papers downloaded from **AgEcon Search** may be used for non-commercial purposes and personal study only. No other use, including posting to another Internet site, is permitted without permission from the copyright owner (not AgEcon Search), or as allowed under the provisions of Fair Use, U.S. Copyright Act, Title 17 U.S.C.*

SB 471 (1971)

USDA STATISTICAL BULLETINS

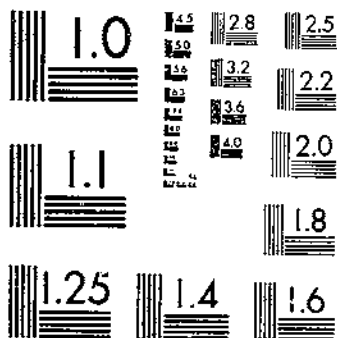
UPDATA

COTTON AND COTTONSEED: PLANTED AND HARVESTED ACRES

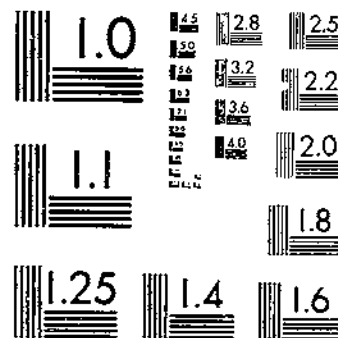
BY STATES 1953-69

1 OF 1

# START



MICROCOPY RESOLUTION TEST CHART  
NATIONAL BUREAU OF STANDARDS-1963-A



MICROCOPY RESOLUTION TEST CHART  
NATIONAL BUREAU OF STANDARDS-1963-A

R630.5  
U53-13  
#471



# Cotton and Cottonseed

DEPOSITORY

AUG 4 1971

Los Angeles Public Library

- Planted and Harvested Acres
- Yield Per Acre
- Production
- Disposition
- Price
- Value
- By States 1953-69

REFERENCE  
DO NOT LOAN

Statistical Bulletin No: 471

CROP REPORTING BOARD

STATISTICAL REPORTING SERVICE • U.S. DEPARTMENT OF AGRICULTURE • WASHINGTON, D.C.

# CONTENTS

	<u>Page</u>
<u>CHARTS:</u>	
1. Price and value of cotton and cottonseed production .....	2
2. Acreage, yield, and production of cotton in the United States .....	3
3. Cotton acreage harvested, United States, 1964 .....	4
<u>TABLES:</u>	
1. All cotton: Acreage, yield, production, season average price, and value, United States, 1953-69 .....	5
2. Upland cotton: Acreage, yield, production, season average price, and value, by States, 1953-69 .....	6
3. Texas .....	11
4. New Mexico .....	12
5. Arizona .....	13
6. California .....	14
7. Cottonseed: Production, farm disposition, season average price, and value, United States and by States, 1953-69 .....	15
8. Cottonseed: Production and value, by States, 1953-69 .....	21

## COTTON AND COTTONSEED

### Acreage, Yield, Production, Disposition, Price, and Value, by States, 1953-69

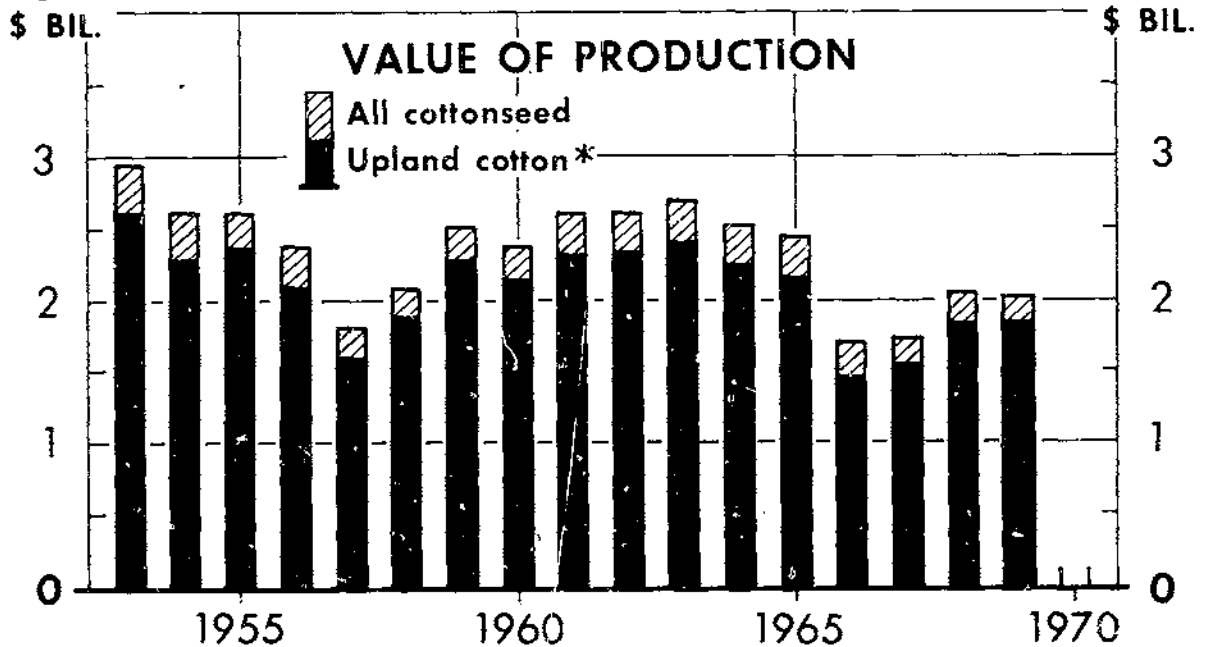
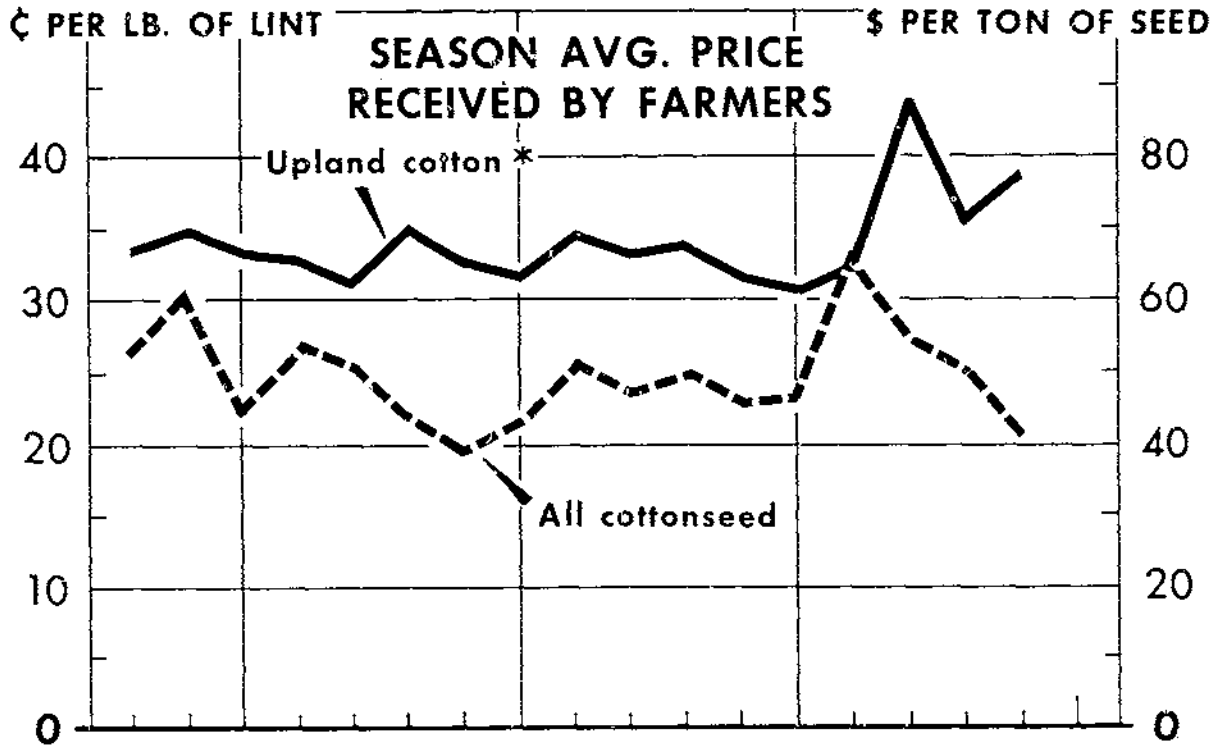
For all cotton, Upland cotton, and American-Pima cotton, this publication presents estimates of acreage planted and harvested, yield per planted and harvested acre, production, price, and value of lint and cottonseed, by States and for the United States, for 1953-69. For cottonseed, data on farm disposition are also given.

American-Pima cotton was called American-Egyptian cotton prior to July 1, 1970. The name was changed in Rules and Regulations for Cotton published in the Federal Register, Volume 34, Number 122, June 26, 1969.

Cotton production is shown in 480-pound net weight bales, replacing the former production unit of 500-pound gross weight bales. Beginning with the 1971 season, payments were made in terms of the 480-pound net weight bales. This resulted in no change in value of production, but because of the smaller number of bales, price per pound increased slightly. Beginning with 1964, the Upland cotton value of production includes price support payments. In earlier years, there were no price support payments on lint cotton. Price support payments for American-Pima cotton began with the 1968 crop year and are included in value of production figures.

Cotton acreage, yield, production, disposition, price, and value, by States for 1866-1952 are available in Statistical Bulletin No. 164.

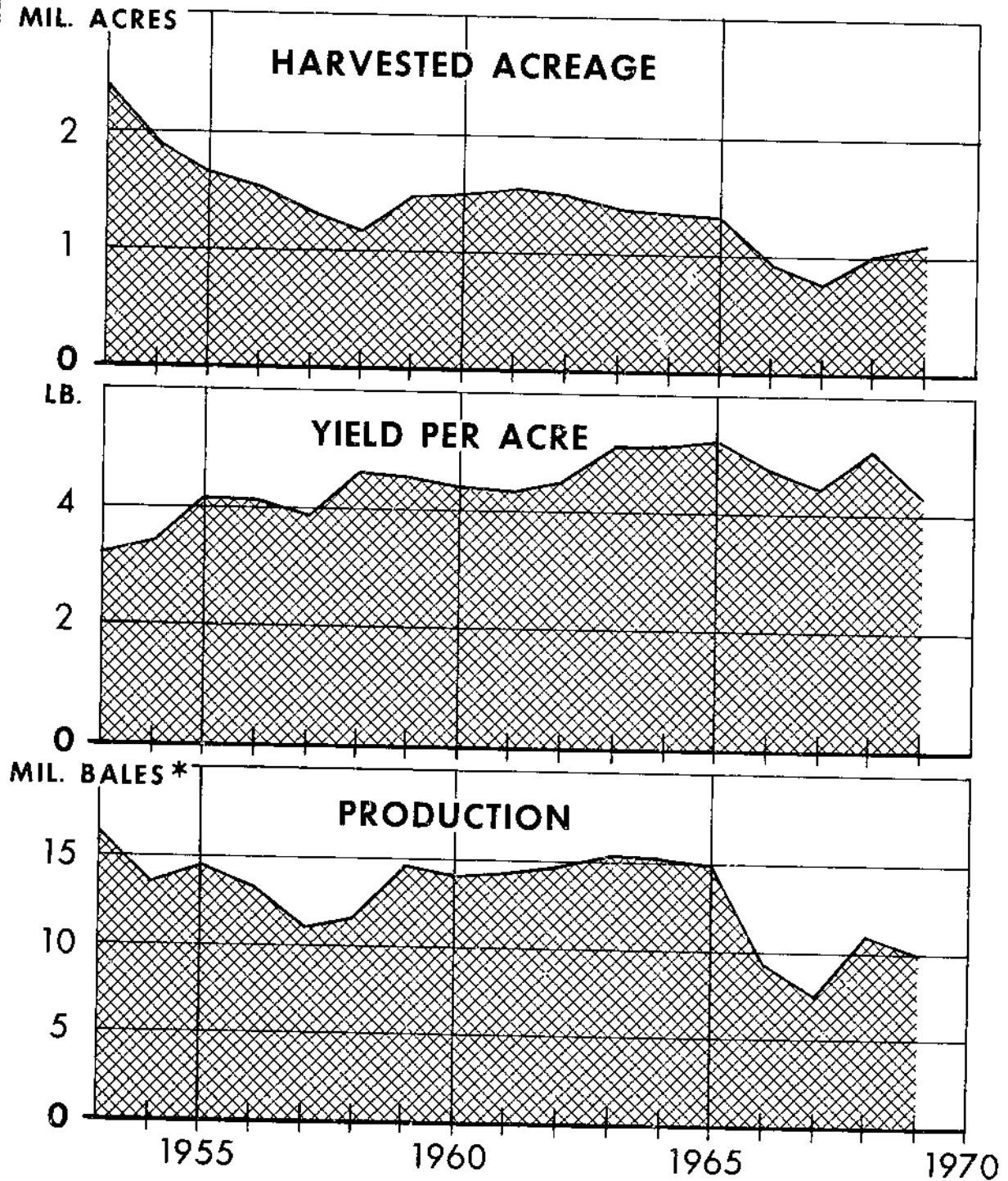
# PRICE AND VALUE OF COTTON AND COTTONSEED PRODUCTION



\* INCLUDES VALUE OF GOVERNMENT PAYMENTS.

# UPLAND COTTON IN THE UNITED STATES

Acreeage, Yield, and Production



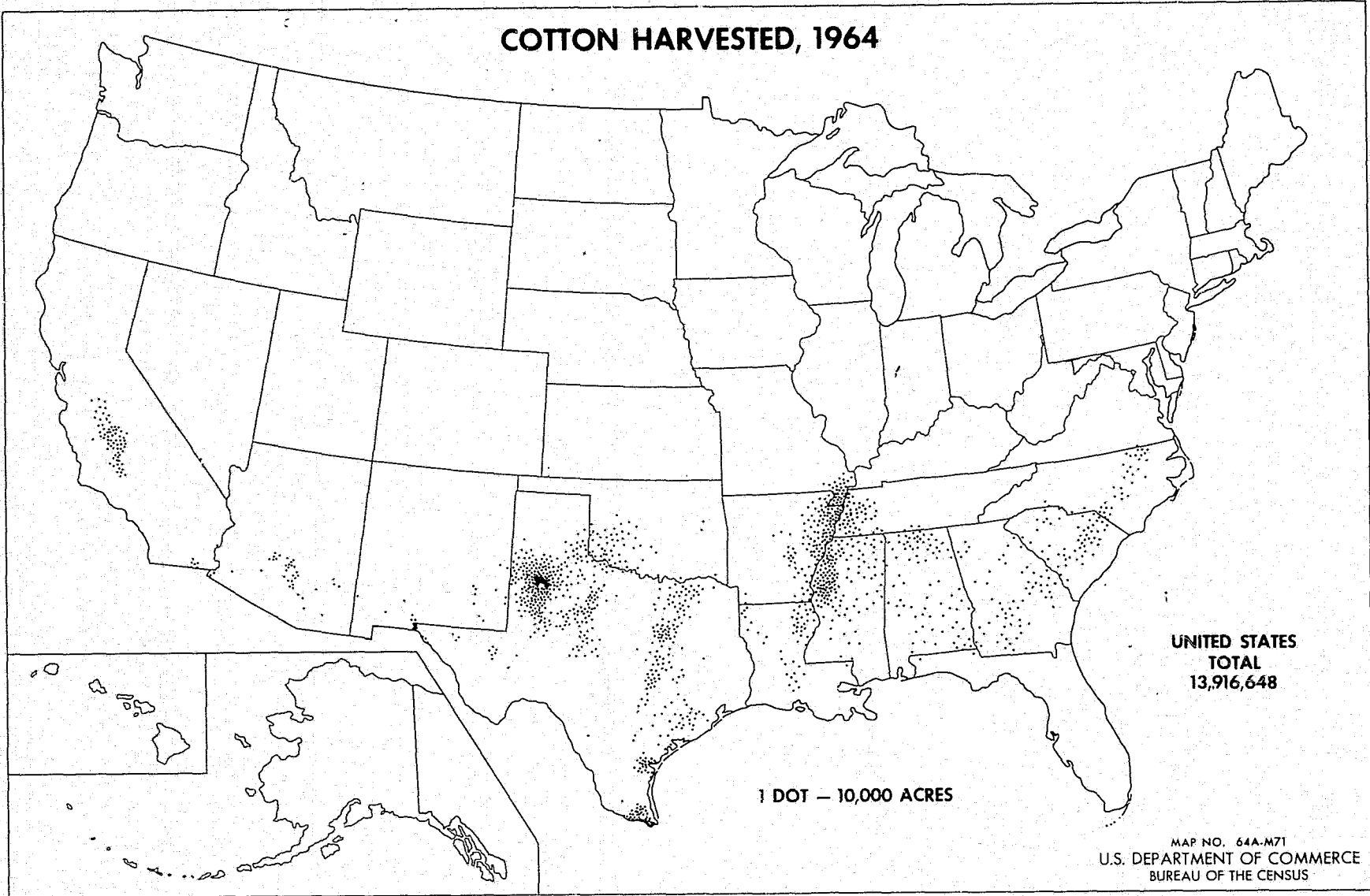
\* 480 LBS. NET WEIGHT.

U.S. DEPARTMENT OF AGRICULTURE

NEG. SRS 255-71 (5) STATISTICAL REPORTING SERVICE



# COTTON HARVESTED, 1964



**UNITED STATES  
TOTAL  
13,916,648**

**1 DOT - 10,000 ACRES**

MAP NO. 64A-M71  
U.S. DEPARTMENT OF COMMERCE  
BUREAU OF THE CENSUS

Table 1. Cotton: Acreage, yield, production, season average price, and value, United States, 1953-69

Crop year	Acres		Yield per acre		Production	Price	Value
	Planted	Harvested	Planted	Harvested	480-pound	per	of
					net weight	pound 1/	production 1/
	1,000 acres		Pounds		1,000 bales	Cents	1,000 dollars
<u>United States - All</u>							
1953	26,872	24,341	294	324	16,438	33.64	2,654,683
1954	20,052	19,251	327	341	13,673	35.06	2,301,356
1955	17,991	16,928	392	417	14,698	33.72	2,379,029
1956	17,077	15,615	374	409	13,290	33.12	2,112,624
1957	14,310	13,558	367	388	10,948	30.92	1,625,119
1958	12,379	11,849	446	466	11,495	34.66	1,912,311
1959	15,833	15,117	440	461	14,527	33.04	2,304,263
1960	16,080	15,309	425	446	14,237	31.52	2,154,164
1961	16,588	15,634	413	438	14,283	34.30	2,356,309
1962	16,293	15,569	437	457	14,827	33.37	2,370,480
1963	14,843	14,212	495	517	15,294	33.64	2,469,647
1964	14,835	14,055	490	517	15,144	31.61	2,297,780
1965	14,152	13,615	507	527	14,951	30.34	2,175,411
1966	10,349	9,552	443	480	9,555	32.42	1,486,819
1967	9,448	7,997	378	447	7,443	43.82	1,565,529
1968	10,912	10,160	481	516	10,925	35.36	1,854,098
1969	11,881.9	11,057.6	404	434	9,990	38.69	1,855,096
<u>United States - Upland</u>							
1953	26,777.7	24,148.9	294	324	16,373.1	33.48	2,631,557
1954	20,015.2	19,216.8	327	341	13,631.1	34.97	2,288,211
1955	17,947.3	16,886.9	392	417	14,654.7	33.66	2,367,956
1956	17,033.3	15,573.7	373	408	13,240.2	32.99	2,096,905
1957	14,225.5	13,477.2	367	387	10,866.8	30.73	1,602,814
1958	12,299.4	11,772.8	445	465	11,410.9	34.52	1,890,718
1959	15,765.1	15,051.1	440	461	14,456.6	32.94	2,285,918
1960	16,017.3	15,248.8	425	446	14,170.3	31.41	2,136,415
1961	16,526.1	15,574.6	413	438	14,220.3	34.26	2,338,243
1962	16,196.7	15,475.4	436	456	14,715.1	33.15	2,341,433
1963	14,699.2	14,072.2	494	516	15,129.7	33.44	2,428,286
1964	14,724.7	13,948.0	490	517	15,024.8	31.47	2,269,587
1965	14,074.7	13,540.2	506	526	14,863.6	30.23	2,155,147
1966	10,268.9	9,474.0	443	480	9,483.8	32.29	1,469,858
1967	9,379.5	7,930.6	377	446	7,373.9	43.78	1,549,539
1968	10,843.6	10,093.0	480	516	10,847.1	35.26	1,835,426
1969	11,804.3	10,982.3	403	433	9,912.8	38.61	1,836,749
<u>United States - Amer.-Pima</u>							
1953	94.3	92.1	332	340	65.3	73.8	23,126
1954	36.8	34.2	547	589	42.0	65.3	13,145
1955	43.7	41.1	470	500	42.8	53.9	11,073
1956	43.7	41.3	551	583	50.2	65.3	15,719
1957	84.5	80.8	464	485	81.6	56.9	22,305
1958	79.6	76.2	502	525	83.4	54.0	21,593
1959	67.9	65.9	497	513	70.3	54.3	18,345
1960	62.7	60.2	514	535	67.1	55.1	17,749
1961	61.9	59.4	483	503	62.3	60.4	18,066
1962	96.3	93.6	560	576	112.3	53.9	29,047
1963	143.8	139.8	547	562	163.8	52.6	41,361
1964	110.3	107.0	520	536	119.5	49.1	28,193
1965	77.3	74.8	545	563	87.8	48.1	20,264
1966	80.1	78.0	435	447	71.7	48.7	16,961
1967	68.5	66.4	487	502	69.5	47.9	15,990
1968	68.4	67.0	554	565	78.9	49.3	18,672
1969	77.6	75.3	479	493	77.4	49.4	18,347

See footnotes on page 14.

Table 2. Upland cotton: Acreage, yield, production, season average price, and value, by States, 1953-69

Crop year	Acres		Yield per acre		Production	Price	Value
	Planted	Harvested	Planted	Harvested	480-pound net weight bales	per pound 1/	of production 1/
	1,000 acres		Pounds		1,000 bales	Cents	1,000 dollars
<u>North Carolina</u>							
1953	786	775	274	278	448	34.50	74,206
1954	565	545	308	319	363	36.31	63,203
1955	500	480	336	350	350	33.51	56,320
1956	462	440	373	391	359	32.25	55,520
1957	355	344	311	321	230	31.64	34,921
1958	271	263	452	466	255	36.60	44,869
1959	400	390	385	395	321	31.50	48,529
1960	410	390	270	284	231	33.27	36,892
1961	418	396	319	337	278	35.64	47,535
1962	417	402	315	327	274	34.82	45,777
1963	390	375	431	449	350	34.65	58,272
1964	395	381	453	470	373	32.02	57,303
1965	387	368	273	287	220	34.14	36,015
1966	244	155	184	290	94	45.92	20,612
1967	191	75	109	277	43	80.83	16,805
1968	200	189	293	310	122	41.52	24,351
1969	184	166	259	287	99	46.41	22,074
<u>South Carolina</u>							
1953	1,185	1,175	279	281	688	34.49	113,909
1954	839	830	285	288	498	36.84	88,132
1955	750	730	365	375	571	34.67	94,966
1956	700	682	351	360	512	33.72	82,876
1957	507	500	325	329	343	32.67	53,794
1958	357	352	400	406	298	36.96	52,819
1959	578	565	345	353	416	33.19	66,226
1960	568	550	349	360	412	33.95	67,220
1961	600	585	329	337	411	35.57	70,119
1962	590	575	364	373	447	34.89	74,917
1963	550	536	395	405	452	34.74	75,453
1964	549	538	486	496	556	31.72	84,699
1965	501	489	474	486	495	32.97	78,302
1966	355	305	379	442	281	35.13	47,323
1967	307	190	278	449	178	53.81	45,935
1968	354	340	338	352	250	43.28	51,844
1969	350	287	281	342	205	50.89	49,977
<u>Georgia</u>							
1953	1,400	1,375	257	262	751	34.49	124,333
1954	1,044	1,025	281	286	611	36.13	105,957
1955	915	895	367	376	700	35.43	119,130
1956	862	830	322	334	578	34.00	94,304
1957	581	570	327	333	395	32.02	60,790
1958	388	381	435	443	351	37.54	63,308
1959	678	655	368	381	520	34.38	85,907
1960	675	653	359	371	504	33.15	80,256
1961	718	693	342	354	511	34.73	85,174
1962	710	692	360	369	533	34.22	87,479
1963	653	639	443	453	603	33.91	98,117
1964	646	632	457	467	615	30.99	91,562
1965	593	577	454	467	561	31.35	84,454
1966	403	380	376	398	315	33.37	50,526
1967	335	267	326	408	227	46.68	50,905
1968	410	395	310	322	265	42.22	53,621
1969	410	385	330	351	282	44.79	60,566

See footnotes on page 14.

Table 2. Upland cotton: Acreage, yield, production, season average price, and value, by States, 1953-69 Continued

Crop year	Acres		Yield per acre		Production	Price	Value
	Planted	Harvested	Planted	Harvested	480-pound net weight bales	per pound 1/	of production 1/
	1,000 acres		Pounds		1,000 bales	Cents	1,000 dollars
<u>Tennessee</u>							
1953	987	950	341	354	700	34.83	117,102
1954	660	648	398	405	547	36.22	95,065
1955	585	570	510	523	621	35.07	104,618
1956	561	543	472	488	552	34.58	91,557
1957	505	465	393	427	414	33.11	65,743
1958	416	400	482	501	418	36.99	74,194
1959	525	510	602	620	658	35.27	111,468
1960	525	512	531	545	581	32.80	91,512
1961	557	538	476	493	553	35.71	94,732
1962	553	538	480	494	553	34.24	90,940
1963	515	504	608	621	652	34.87	109,113
1964	512	502	627	640	669	32.83	105,408
1965	507	499	601	611	635	32.27	98,392
1966	398	365	436	475	362	35.11	60,930
1967	336	236	207	295	145	66.87	46,492
1968	394	360	395	432	324	41.56	64,707
1969	420	400	481	505	421	37.55	75,902
<u>Alabama</u>							
1953	1,649	1,620	280	285	963	34.95	161,447
1954	1,186	1,170	294	298	727	36.16	126,279
1955	1,065	1,050	471	478	1,045	35.52	178,247
1956	1,005	972	358	370	750	34.07	122,615
1957	747	735	340	346	530	31.14	79,168
1958	540	530	390	398	439	37.09	78,217
1959	855	835	403	412	717	34.70	119,469
1960	878	860	413	421	755	33.23	120,456
1961	942	905	314	327	616	35.35	104,472
1962	917	900	364	371	695	34.32	114,509
1963	848	832	501	511	885	34.26	145,510
1964	847	831	503	512	887	32.18	137,030
1965	830	809	493	505	852	32.14	131,455
1966	589	564	375	392	460	33.96	75,004
1967	513	340	187	282	200	62.88	60,398
1968	555	525	342	362	396	43.08	81,880
1969	566	545	390	405	460	41.34	91,266
<u>Missouri</u>							
1953	620	555	346	386	447	33.88	72,667
1954	460	450	468	478	448	35.16	75,633
1955	400	390	489	502	408	34.33	67,170
1956	375	366	572	586	446	32.38	69,385
1957	378	305	227	281	178	31.81	27,249
1958	307	295	429	446	274	36.17	47,620
1959	410	400	592	607	506	33.58	81,533
1960	423	412	534	548	470	32.06	72,362
1961	398	384	453	469	375	35.13	63,270
1962	392	383	568	582	464	33.70	75,087
1963	352	343	614	630	450	34.21	73,970
1964	354	347	553	564	408	32.05	62,688
1965	341	334	547	559	389	30.80	57,480
1966	255	190	304	408	161	40.69	31,528
1967	245	90	115	314	59	87.93	24,851
1968	318	190	296	495	196	45.06	42,414
1969	312	292	499	533	325	35.62	55,484

See footnotes on page 14.

Table 2. Upland cotton: Acreage, yield, production, season average price, and value, by States, 1953-69 Continued

Crop year	Acres		Yield per acre		Production	Price	Value
	Planted	Harvested	Planted	Harvested	480-pound net weight bales	per pound 1/	of production 1/
	1,000 acres		Pounds		1,000 bales	Cents	1,000 dollars
<u>Mississippi</u>							
1953	2,670	2,490	382	410	2,124	35.30	360,013
1954	2,010	1,960	374	384	1,567	36.01	270,868
1955	1,755	1,700	552	570	2,018	35.11	340,175
1956	1,655	1,595	466	483	1,606	34.29	264,374
1957	1,400	1,335	370	388	1,079	29.61	153,311
1958	1,185	1,125	388	409	959	35.74	164,440
1959	1,535	1,475	489	509	1,564	34.68	260,407
1960	1,580	1,520	467	486	1,538	32.38	239,000
1961	1,665	1,580	467	493	1,621	35.39	275,447
1962	1,635	1,585	497	512	1,692	34.65	281,393
1963	1,485	1,438	686	709	2,124	34.73	353,989
1964	1,498	1,460	713	732	2,226	32.26	344,651
1965	1,471	1,430	659	678	2,020	31.23	302,832
1966	1,032	993	628	653	1,350	32.39	209,907
1967	955	890	528	567	1,051	45.68	230,458
1968	1,155	1,105	631	660	1,519	35.51	258,834
1969	1,225	1,185	517	534	1,319	40.02	253,356
<u>Arkansas</u>							
1953	2,259	2,070	328	358	1,544	34.15	252,987
1954	1,730	1,700	374	380	1,347	35.06	226,697
1955	1,500	1,460	531	545	1,658	34.26	272,715
1956	1,415	1,365	483	500	1,422	33.60	229,387
1957	1,200	1,130	391	416	979	32.54	152,844
1958	1,075	1,015	412	436	922	36.29	160,644
1959	1,345	1,305	549	566	1,539	34.30	253,445
1960	1,370	1,320	468	485	1,335	32.29	206,846
1961	1,415	1,360	492	512	1,452	35.50	247,401
1962	1,403	1,355	494	512	1,445	33.24	230,570
1963	1,269	1,230	564	582	1,491	34.26	245,158
1964	1,275	1,242	589	605	1,565	31.93	239,910
1965	1,250	1,205	552	572	1,437	30.63	211,328
1966	930	865	389	418	753	36.19	130,834
1967	830	715	287	333	496	56.12	133,489
1968	1,045	980	471	502	1,025	37.33	183,716
1969	1,090	1,055	501	518	1,137	35.90	195,979
<u>Louisiana</u>							
1953	1,020	950	379	407	805	34.51	133,437
1954	703	688	391	399	572	35.30	96,944
1955	630	615	443	454	582	34.08	95,169
1956	588	562	474	496	581	33.36	93,068
1957	466	440	358	380	348	31.97	53,382
1958	379	364	376	392	297	33.41	47,609
1959	520	495	453	476	491	34.36	80,946
1960	525	510	457	470	500	32.48	77,919
1961	595	535	386	429	478	34.92	80,138
1962	581	565	451	464	546	34.11	89,417
1963	535	519	609	628	679	34.04	110,915
1964	534	520	529	544	589	31.72	89,675
1965	516	498	521	540	560	30.96	83,270
1966	367	357	585	602	448	31.62	67,942
1967	348	330	589	621	427	41.75	85,546
1968	423	410	617	636	544	33.75	88,059
1969	440	420	526	551	482	37.92	87,682

See footnotes on page 14.

Table 2. Upland cotton: Acreage, yield, production, season average price, and value, by States, 1953-69 Continued

Crop year	Acres		Yield per acre		Production	Price	Value
	Planted	Harvested	Planted	Harvested	480-pound net weight bales	per pound 1/	of production 1/
	1,000 acres		Pounds		1,000 bales	Cents	1,000 dollars
<u>Oklahoma</u>							
1953	1,144	1,020	183	205	436	30.88	64,652
1954	989	930	142	151	292	32.55	45,674
1955	825	790	269	281	462	30.40	67,408
1956	814	715	153	175	260	29.67	37,019
1957	578	540	219	234	263	23.72	29,977
1958	430	410	348	365	312	32.76	49,074
1959	660	625	276	292	380	29.13	53,159
1960	655	630	335	348	457	28.75	63,087
1961	705	645	250	274	368	32.12	56,669
1962	675	612	220	243	310	30.37	45,200
1963	620	590	259	273	335	31.24	50,261
1964	614	575	224	239	287	28.64	39,401
1965	585	555	303	319	369	28.52	50,487
1966	447	380	229	270	214	31.05	31,841
1967	425	370	218	251	193	38.49	35,695
1968	421	380	301	333	264	32.87	41,611
1969	500	465	267	288	279	35.44	47,380
<u>Virginia</u>							
1953	31	30	282	291	18.2	33.83	2,954
1954	19.5	17.1	250	285	10.2	34.89	1,701
1955	17.5	16.5	313	332	11.4	34.07	1,869
1956	16.0	15.3	365	381	12.1	31.86	1,858
1957	13.0	12.5	316	329	8.6	31.58	1,298
1958	10.7	10.2	417	438	9.3	34.30	1,531
1959	16.5	16.0	366	378	12.6	30.36	1,835
1960	16.0	15.5	311	321	10.4	31.40	1,563
1961	15.2	13.4	320	363	10.1	34.70	1,688
1962	15.5	14.8	237	248	7.7	34.50	1,268
1963	14.3	14.0	392	400	11.7	34.32	1,922
1964	15.1	14.7	432	444	13.6	32.76	2,139
1965	15.0	14.5	264	273	20.8	35.07	1,388
1966	10.8	6.1	101	180	2.3	2/58.39	640
1967	8.7	0.6	10	138	0.2	27548.19	455
1968	8.1	6.0	179	242	3.0	48.41	702
1969	5.5	5.0	183	201	2.1	52.49	527
<u>Florida</u>							
1953	73	71	177	182	26.9	33.79	4,359
1954	37.2	36.2	323	332	25.0	35.60	4,275
1955	35.0	33.5	339	354	24.7	35.32	4,185
1956	35.0	30.0	185	215	13.5	34.05	2,200
1957	21.5	20.4	225	237	10.1	33.64	1,629
1958	15.0	14.4	292	304	9.1	35.03	1,534
1959	27.5	26.5	235	244	13.5	33.02	2,133
1960	25.9	24.5	309	327	16.7	32.28	2,583
1961	24.8	23.5	265	279	13.7	33.33	2,188
1962	21.5	20.6	356	371	15.9	33.96	2,597
1963	25.1	23.8	364	384	19.0	33.23	3,037
1964	25.4	24.0	307	325	16.3	32.73	2,554
1965	23.1	22.0	291	305	14.0	32.99	2,215
1966	15.5	14.3	310	336	10.0	33.28	1,600
1967	11.2	10.0	300	336	7.0	42.27	1,422
1968	13.4	12.5	354	379	9.9	40.12	1,902
1969	13.6	12.5	331	360	9.4	40.24	1,810

See footnotes on page 14.

Table 2. Upland cotton: Acreage, yield, production, season average price, and value, by States, 1953-69 Continued

Crop year	Acres		Yield per acre		Production : 480-pound net weight bales	Price : per pound 1/	Value : of production 1/
	Planted	Harvested	Planted	Harvested			
	1,000 acres		Pounds		1,000 bales	Cents	1,000 dollars
<u>Illinois</u>							
1953	2.4	2.3	342	357	1.7	33.29	273
1954	3.2	3.0	417	444	2.8	33.31	444
1955	3.0	2.7	285	317	1.8	33.18	284
1956	3.0	2.9	442	457	2.8	32.28	428
1957	2.7	2.0	188	254	1.1	31.76	161
1958	1.8	1.6	185	208	0.7	33.33	111
1959	2.6	2.1	290	359	1.6	33.16	250
1960	2.2	2.0	320	352	1.5	31.96	225
1961	1.7	1.5	186	211	0.7	30.91	93
1962	2.1	2.0	476	500	2.1	33.63	336
1963	2.4	2.1	410	469	2.1	34.01	335
1964	2.7	2.5	472	510	2.7	32.03	408
1965	2.5	2.3	422	458	2.2	30.74	324
1966	2.1	0.5	84	354	0.4	2/75.14	133
1967	1.6	0.2	31	245	0.1	27255.10	125
1968	2.0	0.3	52	347	0.2	2/129.81	135
1969	1.8	0.4	102	460	0.4	2/92.93	171
<u>Kentucky</u>							
1953	10.9	10.1	445	480	10.1	34.48	1,671
1954	9.9	9.6	570	588	11.8	36.53	2,062
1955	8.1	7.8	603	626	10.2	34.60	1,690
1956	7.5	7.2	649	676	10.1	33.84	1,648
1957	6.8	6.0	398	451	5.6	32.74	887
1958	5.5	5.2	439	465	5.0	36.57	884
1959	8.4	7.9	593	631	10.4	33.19	1,654
1960	8.5	8.0	532	565	9.4	31.91	1,443
1961	7.2	6.4	341	384	5.1	34.08	837
1962	7.1	6.5	504	551	7.5	34.28	1,227
1963	6.5	6.2	656	683	8.9	34.86	1,487
1964	6.5	6.3	574	592	7.8	32.40	1,208
1965	6.4	6.2	599	619	8.0	31.37	1,203
1966	4.6	2.5	285	525	2.7	43.79	575
1967	4.3	0.9	67	322	0.6	2/144.83	420
1968	5.5	3.6	376	574	4.3	42.48	878
1969	5.7	5.4	489	516	5.8	37.80	1,054
<u>Nevada</u>							
1953	2.3	2.3	321	325	1.6	32.49	243
1954	2.0	1.8	505	561	2.1	34.75	351
1955	2.3	2.2	411	430	2.0	34.57	327
1956	2.3	2.0	482	554	2.3	34.08	378
1957	2.3	2.2	623	652	3.0	35.08	503
1958	3.2	2.8	687	785	4.6	35.59	782
1959	3.6	3.4	801	848	6.0	36.96	1,066
1960	3.6	3.5	904	929	6.8	33.11	1,077
1961	3.6	3.5	815	838	6.1	36.57	1,073
1962	3.6	3.5	859	883	6.4	36.25	1,121
1963	3.4	3.3	816	841	5.8	35.47	984
1964	3.6	3.1	669	777	5.0	36.99	891
1965	3.0	2.9	594	614	3.7	31.65	564
1966	2.3	2.2	778	813	3.7	35.89	642
1967	2.3	2.2	830	867	4.0	52.73	1,006
1968	2.5	2.4	837	872	4.4	36.45	763
1969	2.3	2.3	654	654	3.1	47.11	709

See footnotes on page 14.

Table 3. Cotton: Acreage, yield, production, season average price, and value, by States, 1953-69

Crop year	Acres		Yield per acre		Production	Price	Value
	Planted	Harvested	Planted	Harvested	480-pound net weight bales	per pound 1/	of production 1/
	1,000 acres		Pounds		1,000 bales	Cents	1,000 dollars
<u>Texas - All</u>							
1953	10,650	8,900	195	233	4,317	31.82	659,220
1954	8,250	7,730	229	245	3,942	33.73	638,157
1955	7,670	6,900	253	281	4,040	31.55	611,791
1956	7,240	6,200	240	280	3,615	31.50	546,517
1957	6,260	5,905	278	295	3,631	27.84	485,346
1958	5,675	5,395	364	383	4,309	32.49	671,943
1959	6,775	6,350	313	334	4,413	30.73	650,822
1960	6,800	6,325	306	329	4,340	29.39	612,224
1961	7,080	6,560	324	350	4,777	32.65	748,688
1962	6,920	6,500	327	348	4,716	31.66	716,699
1963	6,225	5,850	340	362	4,409	31.48	666,169
1964	6,225	5,675	317	348	4,116	29.32	579,180
1965	5,850	5,565	382	402	4,661	27.90	524,174
1966	4,265	3,968	358	385	3,179	27.99	427,034
1967	3,960	3,525	335	376	2,765	35.43	470,152
1968	4,450	4,125	380	410	3,522	32.73	553,428
1969	5,175	4,675	265	294	2,859	38.98	534,927
<u>Texas - Upland</u>							
1953	10,618.6	8,870.0	194	232	4,296.1	31.60	651,715
1954	8,236.8	7,718.5	229	244	3,930.5	33.63	634,467
1955	7,653.9	6,885.0	252	281	4,025.2	31.47	608,067
1956	7,223.8	6,185.0	239	279	3,598.0	31.34	541,300
1957	6,229.3	5,876.2	278	294	3,605.1	27.63	478,092
1958	5,646.9	5,368.8	364	383	4,278.5	32.34	664,125
1959	6,750.5	6,326.6	312	333	4,385.4	30.57	643,585
1960	6,777.1	6,303.5	306	329	4,317.0	29.25	606,111
1961	7,057.4	6,539.0	323	349	4,754.1	32.52	742,173
1962	6,885.6	6,467.0	326	347	4,679.1	31.48	707,154
1963	6,174.6	5,801.5	339	360	4,355.3	31.22	652,720
1964	6,186.0	5,637.5	316	347	4,075.6	29.11	569,505
1965	5,822.4	5,538.8	382	401	4,632.3	27.77	617,383
1966	4,236.0	3,940.0	358	385	3,156.1	27.83	421,637
1967	3,935.5	3,501.0	334	376	2,739.7	35.31	464,407
1968	4,425.5	4,101.0	380	410	3,499.4	32.62	547,969
1969	5,147.5	4,648.0	264	292	2,831.3	38.88	528,367
<u>Texas - Armer.-Pima</u>							
1953	31.4	30.0	314	329	20.5	76.1	7,505
1954	13.2	11.5	410	471	11.3	68.1	3,690
1955	16.1	15.0	428	459	14.3	54.1	3,724
1956	16.2	15.0	491	530	16.6	65.6	5,217
1957	30.7	28.8	412	439	26.3	57.4	7,254
1958	28.1	26.2	519	557	30.4	53.6	7,818
1959	24.5	23.4	536	561	27.4	55.1	7,237
1960	22.9	21.5	486	518	23.2	54.9	6,113
1961	22.6	21.0	479	515	22.5	60.2	6,515
1962	34.4	33.0	517	539	37.0	53.7	9,545
1963	50.4	48.5	513	533	53.9	52.0	13,449
1964	39.0	37.5	497	517	40.4	49.9	9,675
1965	27.6	26.2	503	530	28.9	48.9	6,791
1966	29.0	28.0	378	392	22.9	49.2	5,397
1967	24.5	24.0	486	456	24.8	48.3	5,745
1968	24.5	24.0	447	456	22.8	49.8	5,459
1969	27.5	27.0	483	492	27.6	49.4	6,560

See footnotes on page 14.



Table 4. Cotton: Acreage, yield, production, season average price, and value, by States, 1953-69

Crop year	Acres		Yield per acre		Production	Price	Value
	Planted	Harvested	Planted	Harvested	480-pound net weight bales	per pound 1/	of production 1/
	1,000 acres		Pounds		1,000 bales	Cents	1,000 dollars
<u>New Mexico - All</u>							
1953	333	315	470	497	326	36.90	57,783
1954	215	204	705	743	316	36.96	56,025
1955	195	185	653	688	265	34.49	43,926
1956	190	181	759	757	300	34.82	50,208
1957	192	183	590	619	236	33.06	37,428
1958	184	176	785	820	301	36.37	52,499
1959	206	198	751	782	322	36.28	56,152
1960	216	201	645	693	290	34.10	47,513
1961	208	197	689	728	299	36.71	52,648
1962	212	201	605	638	267	34.19	43,838
1963	204	190	635	682	270	36.11	46,805
1964	193	183	639	674	257	36.13	44,580
1965	182	173	612	644	232	33.17	36,971
1966	142	134	612	648	180	37.52	32,594
1967	132	122	572	619	157	45.73	34,530
1968	161	151	522	557	175	38.01	31,968
1969	163	146	463	517	157	43.72	32,982
<u>New Mexico - Upland</u>							
1953	312.5	294.9	483	511	314.2	35.36	53,315
1954	208.1	197.3	714	753	309.4	36.31	53,921
1955	187.1	177.4	665	702	259.4	34.03	42,371
1956	181.8	173.2	775	813	293.5	34.13	48,093
1957	174.8	166.1	613	645	223.2	31.66	33,921
1958	168.0	160.5	819	857	286.6	35.49	40,314
1959	192.0	180.5	776	808	310.3	35.49	52,865
1960	203.4	190.3	655	705	277.4	33.08	44,051
1961	195.5	184.7	705	746	287.3	35.73	49,277
1962	192.5	181.7	621	658	247.2	32.73	37,150
1963	174.8	161.3	656	711	238.9	33.77	38,731
1964	170.5	161.2	659	677	234.0	34.76	37,943
1965	166.3	157.8	633	667	217.3	32.23	33,229
1966	126.0	118.7	640	677	168.7	36.56	29,481
1967	118.0	108.7	599	651	147.3	45.53	32,204
1968	147.0	137.7	535	571	163.8	37.22	29,265
1969	147.0	131.5	473	523	145.0	43.21	30,070
<u>New Mexico - Amer.-Pima</u>							
1953	20.5	20.1	283	289	12.1	77.0	4,468
1954	6.9	6.7	444	457	6.4	68.7	2,104
1955	7.9	7.6	362	376	6.9	54.4	1,555
1956	8.2	7.8	401	422	6.9	64.3	2,115
1957	17.2	16.7	354	360	12.7	57.6	3,507
1958	16.0	15.5	425	430	14.2	54.2	3,685
1959	14.0	13.6	416	428	12.1	56.5	3,287
1960	12.6	12.2	491	507	12.3	56.0	3,462
1961	12.5	12.1	441	455	11.5	61.2	3,371
1962	19.5	19.1	440	450	17.9	54.6	4,698
1963	29.2	28.7	511	520	31.1	54.1	8,074
1964	22.5	21.8	491	507	23.0	50.1	5,537
1965	15.7	15.2	395	408	12.9	40.1	3,042
1966	16.0	15.3	390	403	12.0	40.7	3,113
1967	14.0	13.3	341	359	10.0	48.7	2,326
1968	14.0	13.3	391	411	11.4	49.4	2,703
1969	16.0	14.5	366	404	12.2	49.7	2,912

See footnotes on page 14.

Table 5. Cotton: Acreage, yield, production, season average price, and value, by States, 1953-69

Crop year	Acres		Yield per acre		Production : 400-pound : net weight : bales	Price : per : pound 1/	Value : of : production 1/
	Planted	Harvested	Planted	Harvested			
	1,000 acres		Pounds		1,000 bales	Cents	1,000 dollars
Arizona - All							
1953	695	690	737	743	1,007	34.73	177,937
1954	431	420	1,013	1,039	909	35.79	156,212
1955	370	355	942	981	726	34.36	119,717
1956	373	358	1,064	1,108	827	23.53	133,255
1957	367	352	995	1,037	761	35.14	128,288
1958	386	377	909	931	731	36.19	127,047
1959	389	383	880	893	713	34.79	119,032
1960	434	426	936	953	846	32.64	132,553
1961	400	392	990	1,010	825	35.26	137,641
1962	412	405	1,093	1,112	938	34.02	153,212
1963	396	387	1,014	1,037	836	34.54	138,665
1964	381	375	1,004	1,020	797	31.15	119,115
1965	345	340	1,092	1,108	785	31.06	117,053
1966	255	252	968	979	514	32.60	90,426
1967	248	245	876	887	453	44.37	96,372
1968	299	298	1,176	1,180	732	33.93	119,267
1969	311	310	976	979	632	36.36	110,325
Arizona - Upland							
1953	653.1	648.5	761	766	1,034.9	33.59	166,874
1954	414.5	404.2	1,025	1,051	985.2	35.95	148,927
1955	350.6	336.8	963	1,003	703.5	33.75	113,980
1956	354.0	339.3	1,085	1,130	800.1	32.53	124,041
1957	331.0	317.5	1,042	1,086	713.4	33.89	116,860
1958	351.0	343.0	947	970	692.8	35.20	117,050
1959	360.0	354.5	910	924	682.2	32.99	111,293
1960	407.2	399.8	961	979	815.3	31.80	124,451
1961	373.6	366.1	1,024	1,045	797.1	34.38	131,549
1962	379.3	364.1	1,143	1,162	881.6	32.75	138,576
1963	332.8	325.3	1,095	1,120	758.9	32.71	119,156
1964	333.0	328.0	1,069	1,085	741.6	29.89	106,395
1965	311.5	307.1	1,140	1,157	740.0	30.07	106,877
1966	220.5	217.8	1,040	1,053	477.9	31.43	72,107
1967	218.5	216.3	919	928	418.3	44.11	98,566
1968	263.5	268.7	1,226	1,230	688.4	32.96	108,920
1969	277.4	276.6	1,030	1,033	595.1	35.55	101,556
Arizona - Amer.-Pima							
1953	41.9	41.5	371	375	32.4	71.1	11,063
1954	16.5	15.8	701	732	24.1	63.0	7,285
1955	19.4	18.2	551	587	22.3	53.7	5,737
1956	19.0	18.2	669	699	26.5	65.4	8,314
1957	36.0	34.5	563	587	42.2	56.4	11,428
1958	35.0	34.0	527	542	38.4	54.2	9,977
1959	29.0	28.5	505	514	39.5	52.8	7,739
1960	26.8	26.2	551	563	30.7	54.9	8,102
1961	26.4	25.9	508	518	28.0	60.3	8,092
1962	41.7	40.9	652	665	56.7	53.8	14,636
1963	63.2	61.7	588	602	77.4	52.5	19,509
1964	48.0	47.0	550	562	55.0	48.2	12,720
1965	33.5	32.9	646	657	45.1	47.4	10,251
1966	34.5	34.2	502	507	36.1	48.0	8,319
1967	29.5	28.7	558	574	34.3	47.5	7,826
1968	29.5	27.3	716	721	44.0	49.0	19,347
1969	33.6	33.4	530	533	37.1	49.3	8,769

See footnotes on page 14.

Table 6. Cotton: Acreage, yield, production, season average price, and value, by States, 1953-69

Crop year	Acres		Yield per acre		Production	Price	Value
	Planted	Harvested	Planted	Harvested	480-pound net weight bales	per pound 1/	of production 1/
	1,000 acres		Pounds		1,000 bales	Cents	1,000 dollars
<u>California - All</u>							
1953	1,354	1,340	625	632	1,764	32.54	275,488
1954	898	883	792	806	1,482	34.81	247,677
1955	765	745	754	774	1,202	34.55	199,322
1956	773	749	895	924	1,442	34.10	236,027
1957	728	711	1,011	1,035	1,533	35.11	258,400
1958	750	732	1,024	1,049	1,600	35.58	273,186
1959	898	875	1,028	1,055	1,923	33.61	310,230
1960	965	946	962	981	1,933	32.27	299,433
1961	834	816	969	990	1,683	35.21	284,491
1962	826	809	1,108	1,132	1,907	34.40	314,893
1963	749	710	1,096	1,124	1,710	35.28	289,485
1964	759	743	1,109	1,133	1,754	35.08	295,378
1965	744	725	1,088	1,116	1,686	31.81	257,499
1966	632	618	931	952	1,225	36.85	216,728
1967	595	588	837	847	1,038	46.25	230,453
1968	695	687	1,084	1,097	1,569	33.72	254,018
1969	710	705	887	893	1,312	36.98	232,925
<u>California - Upland</u>							
1953	1,353.5	1,339.5	625	632	1,763.4	32.54	275,398
1954	897.8	882.8	792	806	1,482.1	34.81	247,611
1955	764.7	744.7	754	774	1,201.5	34.55	199,265
1956	772.7	748.7	896	924	1,441.8	34.09	235,954
1957	727.4	710.4	1,011	1,036	1,532.7	35.11	258,284
1958	749.5	731.5	1,024	1,049	1,599.3	35.57	273,093
1959	897.6	874.6	1,028	1,055	1,922.6	33.61	310,148
1960	964.6	945.7	962	981	1,932.8	32.27	299,361
1961	833.6	815.6	969	991	1,683.1	35.20	284,403
1962	825.3	808.4	1,109	1,132	1,906.6	34.39	314,715
1963	748.0	729.1	1,096	1,125	1,708.1	35.27	289,156
1964	758.2	742.3	1,110	1,134	1,753.2	35.07	295,117
1965	743.5	724.5	1,088	1,117	1,685.3	31.81	257,319
1966	631.4	617.5	931	952	1,224.7	36.85	216,596
1967	594.5	587.5	838	848	1,037.7	46.25	230,360
1968	694.6	686.6	1,084	1,097	1,568.7	33.71	253,855
1969	709.5	704.6	887	894	1,311.6	36.98	232,819
<u>California - Amer.-Pima</u>							
1953	0.5	0.5	246	246	0.3	73.4	90
1954	0.2	0.2	505	505	0.2	65.3	66
1955	0.3	0.3	366	393	0.2	53.7	57
1956	0.3	0.3	373	431	0.2	65.4	73
1957	0.6	0.6	327	343	0.4	56.4	116
1958	0.5	0.5	317	342	0.4	54.2	93
1959	0.4	0.4	390	433	0.3	52.8	82
1960	0.4	0.3	357	400	0.3	54.9	72
1961	0.4	0.4	348	384	0.3	60.3	88
1962	0.7	0.6	502	534	0.7	53.8	178
1963	1.0	0.9	714	753	1.4	48.5	329
1964	0.8	0.7	711	761	1.1	48.4	261
1965	0.5	0.5	808	875	0.9	42.9	180
1966	0.6	0.5	523	628	0.7	42.0	132
1967	0.5	0.4	412	468	0.4	45.0	93
1968	0.4	0.4	762	762	0.7	47.5	163
1969	0.5	0.4	448	498	0.5	47.3	106

1/ Beginning with 1964 for Upland cotton and 1968 for American-Pima, includes price support payments, but does not include payments for acreage, conservation practices, and other Government agricultural programs. 2/ Price per pound in States with nominal cotton production appear unreasonable because a large proportion of the value of production consists of price support payments.

Table 7. Cottonseed: Production, farm disposition, season average price, and value, United States and by States, 1953-69

Crop year	Production	Farm disposition		Used for planting following crop	Price per ton	Value of - -	
		Sales	Other 1/			Production	Sales
		1,000 tons		Dollars		1,000 dollars	
<u>United States</u>							
1953	6,748	6,330	418	346.3	52.70	355,252	333,350
1954	5,709	5,229	480	263.3	60.30	344,175	315,192
1955	6,043	5,556	487	266.1	44.60	269,262	247,601
1956	5,407	4,980	427	221.5	53.40	288,864	266,152
1957	4,609	4,274	335	188.2	51.10	235,367	218,368
1958	4,798	4,382	416	243.5	43.80	210,262	191,892
1959	5,991	5,505	486	238.4	38.80	232,115	213,512
1960	5,886	5,402	484	280.9	42.60	249,977	230,078
1961	5,973	5,622	356	253.6	51.10	305,310	287,377
1962	5,137	5,203	336	231.5	47.90	293,845	277,804
1963	6,102	5,851	341	234.0	50.70	314,219	296,808
1964	6,237	5,929	308	221.7	47.10	293,838	279,330
1965	6,037	5,836	251	153.1	46.70	284,412	272,713
1966	3,960	3,743	217	149.1	65.90	261,008	246,622
1967	3,210	3,017	193	157.9	55.20	177,406	166,664
1968	4,640	4,441	199	155.9	50.50	234,492	224,464
1969	4,068	3,863	205	157.8	41.10	167,254	158,727
<u>North Carolina</u>							
1953	135	165	20	11.1	50.00	3,416	8,398
1954	155	135	20	8.6	61.70	2,564	8,330
1955	146	125	21	8.5	39.10	2,709	4,888
1956	147	130	17	6.5	42.00	6,306	5,577
1957	93	85	11	4.0	48.30	4,637	4,106
1958	106	75	11	7.2	46.60	4,940	4,427
1959	134	120	14	8.2	32.00	4,409	3,948
1960	96	85	11	7.0	38.60	3,706	3,281
1961	117	103	12	6.7	46.40	5,429	4,872
1962	113	105	8	5.7	46.70	5,277	4,704
1963	140	130	10	7.3	48.30	6,762	6,279
1964	149	140	9	6.8	43.70	6,511	6,118
1965	80	82	7	3.8	44.00	3,216	3,608
1966	39	35	4	3.0	64.60	2,519	2,261
1967	19	17	2	2.0	51.60	980	877
1968	51	43	3	2.6	49.30	2,514	2,366
1969	41	38	3	2.4	40.70	1,669	1,547
<u>South Carolina</u>							
1953	287	260	27	16.7	50.30	14,436	13,078
1954	215	190	25	12.7	61.20	13,158	11,628
1955	240	215	25	12.5	41.30	9,912	8,880
1956	209	195	14	9.1	43.60	9,112	8,502
1957	141	130	11	6.4	50.20	7,078	6,526
1958	124	110	14	10.4	48.10	5,964	5,291
1959	177	160	17	11.4	33.80	5,983	5,408
1960	169	150	19	10.5	36.40	6,152	5,460
1961	171	155	16	10.6	46.40	7,934	7,192
1962	183	170	13	9.6	46.80	8,564	7,956
1963	183	170	13	9.6	48.10	8,802	8,177
1964	223	211	12	8.8	42.40	9,455	8,946
1965	200	190	10	5.1	44.60	8,920	8,474
1966	117	108	9	4.8	63.90	7,476	6,901
1967	77	70	7	3.7	52.60	4,050	3,682
1968	105	97	8	3.8	50.00	5,250	4,850
1969	85	79	6	3.7	40.40	3,434	3,192

See footnotes at end of table.

Table 7. Cottonseed: Production, farm disposition, season average price, and value, United States and by States, 1953-69 Continued

Crop year	Production	Farm disposition		Used for planting following crop	Price per ton	Value of - -	
		Sales	Other 1/			Production	Sales
		1,000 tons			Dollars	1,000 dollars	
<u>Georgia</u>							
1953	307	285	22	18.2	50.30	15,442	14,336
1954	255	235	20	14.5	57.20	14,586	13,442
1955	286	260	26	13.7	45.10	12,899	11,726
1956	235	220	15	9.2	45.20	10,622	9,944
1957	167	155	12	6.2	50.20	8,383	7,781
1958	144	130	14	10.8	49.60	7,142	6,448
1959	217	195	22	13.5	36.80	7,086	7,176
1960	208	185	23	15.1	36.00	7,488	6,660
1961	213	200	13	11.7	45.30	9,649	9,060
1962	220	205	15	11.8	45.30	9,966	9,286
1963	246	230	16	12.0	46.80	11,513	10,764
1964	247	233	14	11.0	44.30	10,942	10,322
1965	227	216	11	6.0	44.90	10,192	9,668
1966	130	123	7	4.7	65.20	8,476	8,020
1967	98	92	6	4.7	51.60	5,057	4,747
1968	111	105	6	4.7	49.90	5,539	5,240
1969	107	101	6	4.7	39.20	4,194	3,959
<u>Tennessee</u>							
1953	279	260	19	18.1	51.90	14,480	13,494
1954	223	205	18	7.8	58.70	13,090	12,034
1955	250	235	15	10.6	42.10	10,525	9,894
1956	211	195	16	9.4	46.90	9,396	9,146
1957	176	165	11	7.9	48.10	8,466	7,936
1958	178	165	13	10.0	45.30	8,063	7,474
1959	269	250	19	9.2	38.10	10,249	9,525
1960	238	220	18	11.1	41.70	9,925	9,174
1961	231	215	16	8.8	49.10	11,342	10,556
1962	228	216	12	8.2	46.50	10,602	10,044
1963	263	250	13	7.7	51.00	13,413	12,750
1964	272	261	11	7.9	48.30	13,138	12,606
1965	255	244	11	6.0	46.00	11,730	11,224
1966	150	141	9	6.0	67.10	10,065	9,461
1967	63	57	6	5.3	55.10	3,471	3,141
1968	137	131	6	5.2	49.80	6,823	6,524
1969	166	160	6	5.2	40.10	6,657	6,416
<u>Alabama</u>							
1953	377	350	27	23.6	50.60	19,076	17,710
1954	297	270	27	15.9	57.40	17,048	15,498
1955	413	380	33	16.5	44.80	18,502	17,024
1956	300	280	20	12.3	45.50	13,650	12,740
1957	215	200	15	8.9	46.30	9,954	9,260
1958	180	160	20	14.1	44.80	8,064	7,168
1959	291	265	26	14.5	35.40	10,301	9,381
1960	305	280	25	16.5	35.40	10,797	9,912
1961	254	235	19	14.2	45.40	11,532	10,669
1962	278	260	18	14.0	44.70	12,427	11,622
1963	354	335	19	13.6	46.90	16,603	15,712
1964	358	341	17	12.9	43.80	15,680	14,936
1965	342	326	16	9.1	43.90	15,014	14,311
1966	190	178	12	8.0	62.40	11,856	11,107
1967	86	78	8	7.8	51.60	4,438	4,025
1968	166	156	10	7.9	48.00	7,968	7,488
1969	181	171	10	7.8	40.20	7,276	6,874

See footnotes at end of table.

Table 7. Cottonseed: Production, farm disposition, season average price, and value, United States and by States, 1953-69 Continued

Crop year	Production	Farm disposition		Used for planting following crop	Price per ton	Value of --	
		Sales	Other 1/			Production	Sales
		1,000 tons			Dollars	1,000 dollars	
				<u>Missouri</u>			
1953	190	175	15	13.6	49.70	9,443	8,698
1954	197	180	17	7.9	55.40	10,914	9,972
1955	174	160	14	8.8	40.70	7,082	6,512
1956	189	172	17	7.7	46.00	8,694	7,912
1957	78	69	9	6.9	46.50	3,627	3,208
1958	118	110	8	9.2	41.90	4,944	4,609
1959	211	195	16	8.5	34.60	7,301	6,747
1960	201	185	16	8.4	39.50	7,940	7,308
1961	160	150	10	6.9	48.20	7,712	7,230
1962	191	180	11	6.0	44.90	8,576	8,082
1963	184	173	11	6.5	49.10	9,034	8,494
1964	167	159	8	6.1	46.00	7,682	7,314
1965	160	152	8	4.7	44.90	7,184	6,825
1966	68	62	6	6.6	62.40	4,243	3,869
1967	26	23	3	5.2	53.00	1,378	1,219
1968	84	79	5	5.2	48.80	4,099	3,855
1969	132	126	6	5.3	38.30	5,056	4,826
				<u>Mississippi</u>			
1953	876	820	56	50.0	53.80	47,129	44,116
1954	654	580	74	34.0	62.10	40,613	36,018
1955	821	750	71	38.6	45.30	37,191	33,975
1956	656	600	56	32.5	51.70	33,915	31,020
1957	460	400	60	27.3	50.30	23,138	20,120
1958	409	350	59	35.3	47.70	19,509	16,695
1959	639	550	89	31.6	39.10	24,985	21,505
1960	620	540	80	35.0	41.80	25,916	22,572
1961	671	595	76	28.6	50.50	33,886	30,048
1962	691	640	51	25.2	49.90	34,481	31,936
1963	853	790	63	27.0	54.50	46,488	43,055
1964	909	860	49	26.5	49.40	44,905	42,484
1965	826	785	41	16.0	48.90	40,391	38,386
1966	568	528	40	13.8	69.80	39,646	36,854
1967	460	420	40	16.2	58.30	26,818	24,486
1968	645	608	37	14.7	51.90	33,476	31,555
1969	530	491	39	15.4	43.20	22,896	21,211
				<u>Arkansas</u>			
1953	620	575	45	43.0	51.70	32,054	29,728
1954	565	495	70	28.1	60.00	33,900	29,700
1955	678	625	53	30.9	43.10	29,222	26,938
1956	581	530	51	25.7	50.30	29,224	26,659
1957	418	380	38	22.6	50.60	21,151	19,228
1958	393	360	33	28.2	45.00	17,685	16,200
1959	629	590	39	24.0	38.00	23,902	22,420
1960	562	520	42	28.3	41.10	23,098	21,372
1961	606	575	31	23.1	51.40	31,148	29,555
1962	596	565	31	22.8	47.00	28,012	26,555
1963	607	575	32	23.0	50.30	30,532	28,922
1964	648	620	28	23.1	47.10	30,521	29,202
1965	592	565	27	17.2	47.00	27,824	26,555
1966	315	295	20	15.4	65.60	20,664	19,352
1967	216	199	17	17.2	55.60	12,010	11,064
1968	435	418	17	15.8	50.00	21,750	20,900
1969	462	444	18	17.0	42.10	19,450	18,692

See footnotes at end of table.

Table 7. Cottonseed: Production, farm disposition, season average price, and value, United States and by States, 1953-69 Continued

Crop year	Production	Farm disposition		Used for	Price per ton	Value of --	
		Sales	Other 1/	planting following crop		Production	Sales
		1,000 tons			Dollars	1,000 dollars	
<u>Louisiana</u>							
1953	332	315	17	15.7	52.80	17,530	16,632
1954	236	220	16	10.3	59.30	13,925	13,046
1955	238	225	13	11.1	42.90	10,210	9,652
1956	238	225	13	8.8	51.30	12,209	11,542
1957	148	140	8	7.0	47.70	7,060	6,678
1958	127	115	12	9.6	40.40	5,131	4,646
1959	205	190	15	8.7	38.20	7,831	7,258
1960	209	190	19	10.4	39.70	8,297	7,543
1961	200	190	10	8.1	50.20	10,040	9,538
1962	228	215	13	7.5	46.00	10,488	9,890
1963	275	263	12	8.5	50.50	13,888	13,282
1964	240	230	10	7.7	45.00	10,800	10,350
1965	228	218	10	4.8	45.80	10,442	9,984
1966	185	177	8	4.4	68.60	12,691	12,142
1967	182	175	7	5.3	55.00	10,010	9,625
1968	229	222	7	4.6	50.60	11,587	11,233
1969	195	188	7	5.1	41.40	8,073	7,783
<u>Oklahoma</u>							
1953	175	155	20	14.6	51.20	8,960	7,936
1954	122	105	17	10.2	58.00	7,076	6,090
1955	188	165	23	9.2	44.40	8,347	7,326
1956	108	95	13	6.6	55.80	6,026	5,301
1957	114	105	9	4.7	49.70	5,666	5,218
1958	129	120	9	7.3	41.40	5,341	4,968
1959	152	135	17	5.9	37.60	5,715	5,076
1960	135	165	20	8.8	40.80	7,548	6,732
1961	153	140	13	13.5	50.80	7,772	7,112
1962	127	115	12	10.8	46.90	5,956	5,394
1963	134	122	12	8.9	52.80	7,075	6,442
1964	118	106	12	8.8	47.90	5,652	5,077
1965	151	142	9	5.4	46.00	6,946	6,532
1966	90	82	8	4.9	65.50	5,895	5,371
1967	84	77	7	5.3	56.80	4,771	4,374
1968	112	105	7	5.5	49.10	5,499	5,156
1969	113	104	9	5.7	45.30	5,119	4,711
<u>Texas</u>							
1953	1,777	1,690	107	100.8	53.40	95,960	90,246
1954	1,647	1,520	127	87.2	62.10	102,279	94,392
1955	1,687	1,540	147	84.8	45.90	77,433	70,686
1956	1,477	1,365	132	73.9	57.40	85,928	78,351
1957	1,550	1,450	100	65.3	51.80	80,290	75,110
1958	1,816	1,650	166	77.9	42.40	76,978	69,960
1959	1,859	1,700	159	74.8	38.20	71,014	64,940
1960	1,821	1,655	166	106.2	41.30	75,207	68,352
1961	2,039	1,940	99	96.9	51.30	104,601	99,522
1962	2,013	1,905	108	87.2	47.70	96,020	90,868
1963	1,811	1,715	96	87.2	52.60	95,259	90,209
1964	1,745	1,644	101	79.0	47.30	82,538	77,761
1965	1,900	1,825	75	59.7	46.90	89,110	85,592
1966	1,325	1,255	70	61.4	67.40	89,305	84,587
1967	1,190	1,121	69	68.2	55.80	66,402	62,552
1968	1,490	1,420	70	69.9	50.50	75,245	71,710
1969	1,190	1,118	72	67.7	41.80	49,742	46,732

See footnotes at end of table.

Table 7. Cottonseed: Production, farm disposition, season average price, and value, United States and by States, 1953-69 Continued

Crop year	Production	Farm disposition		Used for : planting : following : crop	Price : per : ton	Value of --	
		Sales	Other 1/			Production	Sales
		1,000 tons			Dollars	1,000 dollars	
				<u>New Mexico</u>			
1953	137	129	8	2.1	57.60	7,891	7,430
1954	127	119	8	1.9	62.60	7,950	7,449
1955	107	101	6	1.9	49.70	5,318	5,020
1956	120	113	7	1.9	66.80	8,016	7,548
1957	99	94	5	1.7	56.60	5,603	5,320
1958	127	121	6	2.0	45.30	5,753	5,481
1959	131	125	6	2.5	42.80	5,607	5,350
1960	119	110	9	2.6	44.10	5,248	4,851
1961	124	119	5	2.6	54.60	6,770	6,497
1962	111	107	4	2.6	50.30	5,503	5,382
1963	112	108	4	3.2	56.10	6,283	6,059
1964	107	102	5	2.7	50.40	5,393	5,141
1965	95	92	3	2.1	49.60	4,712	4,563
1966	75	72	3	1.8	70.50	5,288	5,076
1967	68	65	3	2.5	59.60	4,053	3,874
1968	74	71	3	2.2	52.90	3,915	3,756
1969	64	61	3	2.1	45.50	2,912	2,776
				<u>Arizona</u>			
1953	442	430	12	4.3	54.20	23,956	23,306
1954	375	360	15	5.0	59.00	22,125	21,240
1955	299	290	9	4.3	44.30	13,246	12,847
1956	334	315	19	4.2	58.20	19,439	18,333
1957	322	310	12	4.4	53.90	17,356	16,709
1958	309	295	14	4.5	43.00	13,287	12,685
1959	300	288	12	5.4	41.60	12,480	11,981
1960	351	340	11	6.0	50.20	17,620	17,068
1961	342	335	7	6.6	54.70	18,707	18,324
1962	391	380	11	6.3	48.80	19,081	18,544
1963	342	332	10	5.4	47.30	16,177	15,704
1964	331	322	9	4.7	47.50	15,722	15,295
1965	324	319	5	3.1	47.30	15,325	15,082
1966	210	205	5	3.1	58.70	12,327	12,034
1967	194	189	5	2.8	53.00	10,282	10,017
1968	307	302	5	3.1	52.50	16,118	15,855
1969	253	248	5	2.7	39.80	10,069	9,870
				<u>California</u>			
1953	721	700	21	13.4	53.10	38,285	37,170
1954	619	595	24	18.3	59.20	36,645	35,224
1955	495	465	30	13.9	46.10	22,820	21,436
1956	565	530	35	13.1	62.10	35,086	32,913
1957	613	580	33	13.5	52.80	32,366	30,624
1958	626	590	36	16.2	43.00	26,918	25,370
1959	759	725	34	19.3	44.40	33,700	32,190
1960	783	760	23	13.3	51.50	40,324	39,140
1961	682	655	27	14.5	55.90	38,124	36,614
1962	753	725	28	13.1	50.60	38,102	36,685
1963	669	640	29	13.3	47.10	31,510	30,144
1964	705	683	22	14.9	48.40	34,122	33,057
1965	683	666	17	9.5	47.00	32,101	31,302
1966	490	475	15	10.7	61.40	30,086	29,165
1967	442	429	13	10.4	53.00	23,426	22,737
1968	685	671	14	10.3	50.00	34,250	33,550
1969	540	526	14	10.4	37.70	20,358	19,830

See footnotes at end of table.



Table 7. Cottonseed: Production, farm disposition, season average price, and value, United States and by States, 1953-69 Continued

Crop year	Production	Farm disposition		Used for planting following crop	Price per ton	Value of --	
		Sales	Other 1/			Production	Sales
		1,000 tons		Dollars		1,000 dollars	
				Other States 2/			
1953	23	21	2	1.1	51.30	1,194	1,072
1954	22	20	2	0.9	56.70	1,232	1,129
1955	21	20	1	0.8	40.90	846	797
1956	17	15	2	0.6	44.60	741	664
1957	12	11	1	0.5	50.40	592	544
1958	12	11	1	0.8	44.30	523	470
1959	18	17	1	0.9	36.30	652	607
1960	19	17	2	0.8	38.40	711	653
1961	15	13	2	0.8	44.60	664	588
1962	16	15	1	0.7	43.70	710	656
1963	19	18	1	0.8	45.50	880	815
1964	18	17	1	0.8	42.90	777	721
1965	15	14	1	0.6	41.60	605	570
1966	8	7	1	0.5	60.30	471	422
1967	5	5		0.4	50.30	260	244
1968	9	8	1	0.4	49.10	459	426
1969	9	8	1	0.4	39.80	349	308

1/ Includes seed for planting, some sales between farms, shrinkage, losses and other uses.

2/ Includes Virginia, Florida, Illinois, Kentucky and Nevada. Data for these States are shown separately in the following table. Production data for these States are rounded for inclusion in United States totals.

Table 8. Cottonseed: Production and value, by States, 1953-69

Crop year	Production	Price per ton	Value of production	Crop year	Production	Price per ton	Value of production
	1,000 tons	Dollars	1,000 dollars		1,000 tons	Dollars	1,000 dollars
<u>Virginia</u>				<u>Kentucky</u>			
1953	7	49.10	344	1953	4.0	48.40	194
1954	4.1	60.00	246	1954	4.8	53.70	258
1955	4.6	40.90	188	1955	4.1	38.00	156
1956	5.0	44.40	222	1956	4.1	43.00	176
1957	3.6	49.00	176	1957	2.3	42.80	98
1958	3.8	44.10	168	1958	2.1	40.50	85
1959	5.1	33.10	169	1959	4.2	32.80	138
1960	4.3	35.50	153	1960	3.8	35.20	134
1961	4.2	43.80	184	1961	2.1	43.70	92
1962	3.1	46.00	143	1962	3.0	44.80	134
1963	4.8	48.50	233	1963	3.6	48.30	174
1964	5.4	43.90	237	1964	3.1	44.60	138
1965	3.3	38.00	125	1965	3.2	45.00	144
1966	0.9	55.00	50	1966	1.1	62.50	69
1967	0.1	51.50	4	1967	0.3	55.00	14
1968	1.3	50.00	64	1968	1.8	50.00	91
1969	0.9	38.00	33	1969	2.4	40.00	96
<u>Florida</u>				<u>Nevada</u>			
1953	11	53.80	592	1953	0.6	53.10	32
1954	10.8	57.20	618	1954	0.9	59.20	53
1955	10.5	41.70	438	1955	0.8	46.10	37
1956	5.6	42.70	239	1956	0.9	62.10	56
1957	4.3	55.30	238	1957	1.2	52.80	63
1958	3.8	47.60	181	1958	1.8	43.00	77
1959	5.7	38.40	219	1959	2.4	44.40	107
1960	7.0	36.00	252	1960	2.9	51.50	149
1961	5.8	42.50	246	1961	2.5	51.00	128
1962	6.7	39.50	265	1962	2.5	51.00	128
1963	7.8	41.70	325	1963	2.3	47.00	108
1964	6.5	40.30	262	1964	2.0	45.00	90
1965	5.7	40.00	228	1965	1.5	47.00	70
1966	4.1	63.00	258	1966	1.5	55.00	82
1967	4.0	50.00	150	1967	1.8	50.00	90
1968	4.2	47.00	196	1968	2.0	52.00	106
1969	3.9	40.00	156	1969	1.4	40.00	57
<u>Illinois</u>							
1953	0.7	46.40	32				
1954	1.1	51.70	57				
1955	0.7	38.20	27				
1956	1.1	43.60	48				
1957	0.4	43.60	17				
1958	0.3	39.40	12				
1959	0.6	32.20	19				
1960	0.6	38.00	23				
1961	0.3	47.00	14				
1962	0.9	44.70	40				
1963	0.8	49.40	40				
1964	1.1	45.00	50				
1965	0.9	42.00	38				
1966	0.2	60.00	12				
1967	1/	53.00	2				
1968	0.1	46.00	4				
1969	0.2	40.00	6				

1/ Less than 50 tons.

UNITED STATES DEPARTMENT OF AGRICULTURE  
STATISTICAL REPORTING SERVICE  
WASHINGTON, D. C. 20250

OFFICIAL BUSINESS

PENALTY FOR PRIVATE USE, \$300

POSTAGE & FEES PAID  
United States Department of Agriculture



**END**