



AgEcon SEARCH
RESEARCH IN AGRICULTURAL & APPLIED ECONOMICS

The World's Largest Open Access Agricultural & Applied Economics Digital Library

This document is discoverable and free to researchers across the globe due to the work of AgEcon Search.

Help ensure our sustainability.

Give to AgEcon Search

AgEcon Search
<http://ageconsearch.umn.edu>
aesearch@umn.edu

*Papers downloaded from **AgEcon Search** may be used for non-commercial purposes and personal study only. No other use, including posting to another Internet site, is permitted without permission from the copyright owner (not AgEcon Search), or as allowed under the provisions of Fair Use, U.S. Copyright Act, Title 17 U.S.C.*

SB 443 (1969)

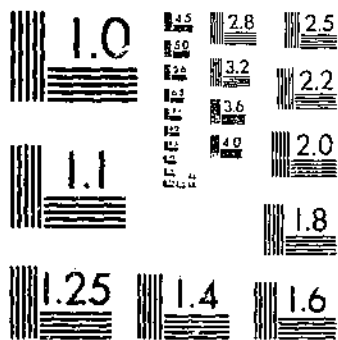
FRESH FRUIT AND VEGETABLE PRICES, 1968.

USDA STATISTICAL BULLETINS

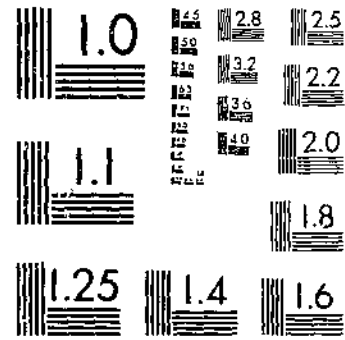
UPDATA.

1 OF 1

START



MICROCOPY RESOLUTION TEST CHART
NATIONAL BUREAU OF STANDARDS-1963-A



MICROCOPY RESOLUTION TEST CHART
NATIONAL BUREAU OF STANDARDS-1963-A

R
630.5
453-13



#443

FRESH FRUIT and VEGETABLE PRICES • 1968

REFERENCE
DO NOT LOAN



DEPOSITORY

SEP 19 1969

Los Angeles Public Library

WHOLESALE
CHICAGO AND
NEW YORK CITY

AUCTION
CHICAGO AND
NEW YORK CITY

F.O.B.
LEADING
SHIPPING POINTS

STATISTICAL BULLETIN NO. 443
JULY 1969

UNITED STATES DEPARTMENT OF AGRICULTURE
Consumer and Marketing Service
Fruit and Vegetable Division
Washington, D. C.

P R E F A C E

Prices listed in this report represent sales in wholesale lots of certain fresh fruits and vegetables at New York City, Chicago and at important shipping points where market news field stations were located during 1968. The report also includes monthly average auction prices for important fresh fruits compiled by the Economic Research Service from information contained in the New York Daily Fruit Reporter and Chicago Daily Fruit and Vegetable Reporter.

Wholesale prices for private sales at New York City and Chicago are simple averages of representative prices for each Tuesday. In arriving at the Tuesday prices, local market reporters consider estimated volume of sales at different price levels, quality, condition, and other factors. These wholesale prices in most cases represent private sales in less than carlot quantities. Generally they represent sales made by the first seller on the wholesale market. In a few instances, prices representing sales in carlots or sales at auction are reported, but these are indicated in the body of the report. Prices are for stock of generally good merchantable quality and condition, unless otherwise stated. Grades are shown where quoted by grade.

Prices reported for important shipping points or areas are simple averages of the mid-points of the daily range throughout the year as reported by local market news offices. They refer to sales in straight or mixed carloads or truckloads, unless otherwise noted. An average shipping point price for a month generally is shown only when there were quotations for six or more days during that month.

"Sales f.o.b." refer to transactions in which the buyer assumes responsibility for the commodity at shipping point. "Delivered sales, shipping point basis", refer to transactions in which the seller assumes responsibility for delivery to the market. Prices for the latter group of transactions are adjusted to a shipping point basis by making appropriate deductions for transportation and protective services.

The report includes a table of estimated value per carlot of fresh fruits and vegetables for 1967 and 1968 by months, at New York City and Chicago (Table 4). These estimates are intended to indicate a comparative trend rather than an absolute value per car. They do not include prices for produce sold in other sections of the country, nor do they include commodities sold on these markets but not included in this price summary.

Major changes were made in 1960 and 1966 in the loadings per carlot in connection with the transportation reports, compiled for fruits and vegetables to reflect current loading practices. These higher loading factors were used in computing the estimated value per carlot and are reflected in higher values per carlot.

Estimated value per carlot is computed by multiplying the monthly prices at New York City and Chicago for various commodities shown in this report by the number of packages per carlot for respective commodities. These computed carlot values are then weighted by the monthly unloads adjusted to carlot equivalents.

The indices of wholesale value per carlot (Table 5) were computed from the wholesale value information described in the preceding paragraphs.

- - - - -

Prepared by Market News Branch,
Fruit and Vegetable Division
Consumer and Marketing Service

CONTENTS

Page	Page
Introduction	2
Table 1. --Wholesale prices of specified fruits and vegetables at New York City and Chicago, each month by market, origin and description, 1968	4
<u>Berries</u>	
Blackberries	4
Blueberries	4
Cranberries	4
Raspberries	4
Strawberries	4
<u>Citrus Fruits</u>	
Grapefruit	4
Limes	4
Oranges	4
Tangelos	4
Tangerines	4
<u>Other Fruits</u>	
Apples	5
Avocados	5
Peaches	5
Prunes, Fresh	6
<u>Miscellaneous Melons</u>	
Cantaloups	6
Honeydew Melons	6
Watermelons	6
<u>Vegetables</u>	
Asparagus	7
Beans, Lima	7
Beans, Snap	7
Beets	7
Broccoli	7
Brussels Sprouts	7
Cabbage	7
Carrots	8
Cauliflower	8
Celery	8
Corn, Sweet	8
Cucumbers	8
Eggplant	9
Endive-Chicory	9
Escarole	9
Kale	9
Lettuce	9
Mushrooms	9
Onions, Dry	9
Peas, Green	10
Peppers, Green	10
Potatoes	10
Radishes	10
Rhubarb	11
Spinach	11
Sweetpotatoes	11
Tomatoes	11
Table 2. --Auction prices of specified citrus and deciduous fruits in New York City and Chicago, each month, by market, origin and description, 1968	12
<u>Citrus Fruits</u>	
Grapefruit	12
Lemons	12
Oranges	12
Tangelos	12
Tangerines	12
<u>Deciduous Fruits</u>	
Apples	12
Apricots	12
Cherries	13
Grapes	13
Nectarines	13
Peaches	13
Pears	14
Plums	14
Prunes, Fresh	14
Table 3. --Average prices of specified fruits and vegetables at leading shipping points, each month, by description of sale, 1968..	15
<u>Berries</u>	
Blueberries	15
Raspberries	15
Strawberries	15
<u>Citrus Fruits</u>	
Grapefruit	16
Lemons	16
Oranges	16
Tangerines	17
<u>Other Fruits</u>	
Apples	17
Apricots	18
Cherries	18
Grapes	19
Nectarines	19
Peaches	19
Pears	21
Plums	21
Prunes, Fresh	21
<u>Melons</u>	
Cantaloups	22
Honeydews	22
Miscellaneous Melons	22
Watermelons	22
<u>Vegetables</u>	
Asparagus	23
Beans, Lima	23
Beans, Snap	23
Broccoli	24
Cabbage	24
Carrots	24
Cauliflower	25
Celery	25
Corn, Sweet	25
Cucumbers	25
Eggplant	26
Escarole	26
Lettuce	26
Onions, Dry	26
Peppers, Green	28
Potatoes	28
Spinach	30
Sweetpotatoes	30
Tomatoes	31
Table 4. --Computed wholesale values per carlot of domestic fresh fruits and vegetables, New York City and Chicago, by months, 1967-68	33
Table 5. --Index of wholesale value of fresh fruits and vegetables at New York City and Chicago, by months, 1949-1968	34

#####

Table 1. --Wholesale prices of specified fruits and vegetables at New York City and Chicago, each month by market, origin, and description, 1968 1/

BERRIES

Market, Origin and description	Jan.	Feb.	Mar.	Apr.	May	June	July	Aug.	Sept.	Oct.	Nov.	Dec.
- Dollars per Unit -												
<u>Blackberries</u>												
New York:												
N.J., Per pint.....	-	-	-	-	-	.40	.33	.36	-	-	-	-
<u>Blueberries</u>												
New York:												
Cultivated, per pint-												
N.C.,	-	-	-	-	.50	.30	.29	-	-	-	-	-
N.J.,	-	-	-	-	-	.29	.28	.33	.48	-	-	-
Chicago:												
Cultivated, per pint-												
Ill.,	-	-	-	-	-	.37	.34	-	-	-	-	-
Mich.,	-	-	-	-	-	-	.34	.27	.36	-	-	-
N.C.,	-	-	-	-	-	.35	-	-	-	-	-	-
N.J.,	-	-	-	-	-	.36	.33	-	-	-	-	-
<u>Cranberries</u>												
New York:												
24-1-1b. film bags, carton-												
Mass., Early varieties	-	-	-	-	-	-	-	-	5.75	6.06	6.50	-
Hoves	-	-	-	-	-	-	-	-	-	-	6.67	7.50
Chicago:												
24-1-1b. film bags, carton-												
Mass., Early varieties	-	-	-	-	-	-	-	-	-	-	6.25	-
Hoves	-	-	-	-	-	-	-	-	-	-	7.25	7.50#
Wis., Searles	-	-	-	-	-	-	-	-	-	5.55	6.50	-
<u>Raspberries</u>												
New York:												
Calif., Reds, 1/2-pint	-	-	-	-	.70	.52	.60#	.62	.49	.52	.60	-
<u>Strawberries</u>												
New York:												
Various varieties, per pint-												
Calif.,	-	.60	.53	.38	.40	.37	.43	.39	.50	.57	.70	.75
Fla.,34	.39	.39	.27	-	-	-	-	-	-	-	-
Mexico,36	.39	-	-	-	-	-	-	-	-	-	.38
Chicago:												
Various varieties, per pint-												
Calif.,	-	-	.49	.34	.36	.30	.39	.29	.36	.49	.67#	-
LA.,	-	-	-	.24#	.26#	-	-	-	-	-	-	-
Mexico,34	.35	.38	.26fq	-	-	-	-	-	-	.42	.32

CITRUS-FRUITS 2/

Limes

New York:												
10-lb. flat-												
Fla., Persian, various sizes	1.56	2.35	3.12	6.15	2.02	1.25	2.20	1.12	1.11	1.42	1.69	2.20
Chicago:												
10-lb. flat-												
Fla., Persian, various sizes	1.88	2.88	3.04	5.92#	2.24	1.56	1.95	1.41	1.26	1.66	2.01	1.93

Grapefruit

Chicago:												
Various varieties												
4/5-bushel crates & cartons-												
Fla., Indian River Dist.,	3.90	4.00	4.32	4.59	4.62	4.50#	-	-	-	6.75	4.19	3.56
Interior Dist.,	3.00	3.04	2.92	3.13	3.02	2.15fq	-	-	-	5.00	3.55	3.12

Oranges

Chicago:												
Various varieties												
4/5-bushel crates & cartons-												
Fla.,	3.55	3.44	3.28	3.29	3.31	3.58	3.84	-	-	5.00	3.22	2.98

Tangelos

Chicago:												
4/5-bushel crates & cartons-												
Fla.,	4.55	-	-	-	-	-	-	-	-	4.95	4.25	3.50

Tangerines

Chicago:												
4/5-bushel crates & cartons-												
Fla.,	6.07	-	-	-	-	-	-	-	-	-	5.84	4.90
Mexico,	-	-	-	-	-	-	-	-	-	-	5.17	3.95

1/ Prices shown are simple average of representative prices for Tuesday of each week during the month.

2/ For Auction prices see Table 2.

N- Offerings light.

fq - Fair quality.

Table 1. --Continued

OTHER FRUITS

Market, Origin and description	Jan.	Feb.	Mar.	Apr.	May	June	July	Aug.	Sept.	Oct.	Nov.	Dec.
- Dollars per Unit -												
<u>Apples 2/</u>												
<u>New York:</u>												
<u>U.S.No.1, or better, 2 1/2-in.up,</u>												
<u>unless stated-</u>												
<u>Eastern box & 1-1/8-bushel carton-</u>												
<u>N.Y.Hudson Valley-</u>												
Cortland	2.50	2.50	-	-	-	-	-	-	3.50	-	-	-
Golden Delicious	3.44	3.50	3.12	-	-	-	-	-	4.88	4.44	4.18	-
Red Delicious	3.69	-	-	-	-	-	-	-	3.62	5.25	5.12	-
<u>Carton cell pack, 100-120s,</u>												
<u>unless stated-</u>												
N.Y., Hudson Valley, McIntosh	4.12	4.12	3.94	-	-	-	-	-	4.67	4.90	4.50	4.25
New England, McIntosh, USFancy	4.88	4.71	-	-	-	-	-	-	5.25#	5.05	5.38	5.10
<u>Carton cell pack, USFancy, 100-120s,</u>												
<u>C.A.Storage-</u>												
N.Y., Hudson Valley, McIntosh	-	4.88	4.88	5.29	5.95	6.25	7.50W	-	-	-	-	-
New England, McIntosh	-	5.67	5.88	6.05	6.38	6.75	-	-	-	-	-	-
<u>Chicago:</u>												
<u>Cartons, USFancy, film bags, 2 1/2-in.up,</u>												
<u>10-4-lb.</u>												
Mich., Jonathan	3.77	3.62	-	-	-	-	-	-	-	3.75	-	-
McIntosh	3.51	3.60	-	-	-	-	-	-	-	-	-	-
Red Delicious	4.22	4.15	-	-	-	-	-	-	-	-	-	-
<u>Cartons, USFancy, film bags, 2 1/2-in.up,</u>												
<u>12-3-lb.</u>												
Mich., Jonathan	-	-	-	-	-	-	-	-	3.75	3.87	4.24	4.35
McIntosh	-	-	-	-	-	-	-	-	-	3.89	4.21	4.30
Red Delicious	-	-	-	-	-	-	-	-	-	5.08	5.02	5.23
<u>Cartons, USFancy, film bags, 2 1/2-in.up,</u>												
<u>12-3-lb. - C.A.Storage</u>												
Mich., Jonathan	-	4.98	4.62	4.82	-	-	-	-	-	-	-	-
McIntosh	-	4.20	4.36	4.28	-	-	-	-	-	-	-	-
Red Delicious	-	-	5.55	5.08	-	-	-	-	-	-	-	-
<u>Avocados</u>												
<u>New York:</u>												
<u>Various varieties, flats-</u>												
<u>(approx. 13-lbs.)</u>												
Calif.,	4.59	4.99	5.31	5.41	5.75	5.38	5.30	5.42	-	-	-	2.75
Fla.,	2.96	4.00	-	-	-	-	4.95	5.04	5.04	3.60	2.50	2.34
<u>Chicago:</u>												
<u>Various varieties, flats-</u>												
<u>(approx. 13-lbs.)</u>												
Calif.,	4.92	4.84	5.48	5.43	5.78	5.50	5.30	4.70	7.62#	5.50	3.46	3.28
Fla.,	2.32	2.00	-	-	-	-	4.80	4.45	5.19	4.40	2.11	1.89
<u>Peaches 2/</u>												
<u>New York:</u>												
<u>U.S.No.1, or better</u>												
<u>2-in.up., unless stated-</u>												
<u>3/4-bushel crate or carton-</u>												
<u>Ga., Coronet</u>												
Keystone	-	-	-	-	-	5.25	4.00	-	-	-	-	-
Southland	-	-	-	-	-	-	3.75	-	-	-	-	-
N.C., Cardinal	-	-	-	-	-	5.12	-	-	-	-	-	-
Coronet	-	-	-	-	-	-	3.12	-	-	-	-	-
Dixired	-	-	-	-	-	5.25	-	-	-	-	-	-
Redhaven	-	-	-	-	-	-	3.62	-	-	-	-	-
Sunhigh	-	-	-	-	-	-	2.50	-	-	-	-	-
Triogen	-	-	-	-	-	-	2.25	-	-	-	-	-
<u>N.J., No grade mark-</u>												
Redhaven	-	-	-	-	-	-	2.00	3.12	-	-	-	-
Rio Oso Gem	-	-	-	-	-	-	-	-	4.38	-	-	-
Sunhigh	-	-	-	-	-	-	-	3.34	-	-	-	-
Pa., Redhaven	-	-	-	-	-	-	-	2.75	-	-	-	-
Sunhigh	-	-	-	-	-	-	-	3.50	-	-	-	-
<u>S.C., Coronet</u>												
Dixired	-	-	-	-	-	5.50	4.00	-	-	-	-	-
Keystone	-	-	-	-	-	4.82	-	-	-	-	-	-
Loring	-	-	-	-	-	-	3.58	-	-	-	-	-
Redhaven	-	-	-	-	-	-	2.88	-	-	-	-	-
Southland	-	-	-	-	-	-	3.95	-	-	-	-	-
Triogen	-	-	-	-	-	-	3.25	-	-	-	-	-
Triogen	-	-	-	-	-	-	2.25	-	-	-	-	-

2/ For Auction prices see Table 2.

- Offerings light.

Table 1 --Continued

OTHER FRUITS--CONTINUED

Market, Origin and description	Jan.	Feb.	Mar.	Apr.	May	June	July	Aug.	Sept.	Oct.	Nov.	Dec.
- Dollars per Unit -												
<u>Peaches 2/--Continued</u>												
Chicago:												
U.S.No.1, or better												
2-in.up., unless stated-												
3/4-bushel crate or carton-												
Ga., Cardinal	-	-	-	-	-	5.12	-	-	-	-	-	-
Coronet	-	-	-	-	-	5.30	-	-	-	-	-	-
Keystone	-	-	-	-	-	5.35	4.05	-	-	-	-	-
Southland	-	-	-	-	-	-	3.85	-	-	-	-	-
Ill., Redhaven	-	-	-	-	-	-	2.82	-	-	-	-	-
Mich., Sunhaven	-	-	-	-	-	-	3.85	-	-	-	-	-
S.C., Cardinal	-	-	-	-	-	5.00	-	-	-	-	-	-
Coronet	-	-	-	-	-	5.35	4.50	-	-	-	-	-
Dixired	-	-	-	-	-	5.00	-	-	-	-	-	-
Keystone	-	-	-	-	-	-	3.75	-	-	-	-	-
Redhaven	-	-	-	-	-	-	4.12	-	-	-	-	-
Southland	-	-	-	-	-	-	3.75	-	-	-	-	-
Sunhigh	-	-	-	-	-	-	3.50	-	-	-	-	-
<u>Prunes, Fresh 2/</u>												
New York:												
1/2-bushel basket & carton-												
Northwest, Early Italian type	-	-	-	-	-	-	-	4.25	-	-	-	-
Italian type	-	-	-	-	-	-	-	4.25	4.56	-	-	-
Chicago:												
1/2-bushel basket & carton-												
Northwest, Early Italian type	-	-	-	-	-	-	-	4.07	-	-	-	-
Italian type	-	-	-	-	-	-	-	-	5.05	-	-	-
<u>MELONS</u>												
<u>Cantaloups</u>												
New York:												
Jumbo crate - 36s-												
Ariz.,	-	-	-	-	-	8.84	8.88	-	-	-	-	-
Calif.,	-	-	-	-	17.00	9.25	8.50	8.38	7.19	10.90	9.62	7.00
Mexico,	-	-	17.75	16.30	18.50	11.00	-	-	-	-	-	-
Chicago:												
Jumbo crate - 36s-												
Ariz.,	-	-	-	-	-	9.25	8.08	-	-	-	-	-
Calif.,	-	-	-	-	15.25	9.06	7.93	8.00	6.06	10.25	8.75	6.25
Texas,	-	-	-	-	13.00	8.50	-	-	-	-	-	-
Mexico,	-	-	13.75	15.84	13.50	8.50	-	-	-	-	-	-
<u>Honeydews</u>												
New York:												
Standard flat crate, 9-12s,												
unless stated-												
Calif.,	-	-	-	-	-	-	4.87	4.75	4.50	5.23	5.75	-
Texas,	-	-	-	-	-	6.62	5.50	-	-	-	-	-
cartons, approximate,												
2/3-flat crate, 5-8s	-	-	-	-	-	4.08	2.68	2.40	-	-	-	-
Mexico,	-	-	-	6.00	7.46	7.50	-	-	-	-	-	-
Chicago:												
Standard flat crate, 9-12s,												
unless stated-												
Calif.,	-	-	-	-	-	-	4.46	5.17	4.60	5.20	5.15	5.25
Texas,	-	-	-	-	-	7.00	4.00	-	-	-	-	-
cartons, 5-8s	-	-	-	-	-	2.85	2.18	2.12	-	-	-	-
Mexico,	-	-	-	-	7.00#	-	-	-	-	-	-	-
<u>Watermelons</u>												
New York:												
Per Pound-												
Various states, Charleston Gray,												
20-25-lb.Av.	-	-	-	.0850	.0650	.0450	.0420	.0372	.0375	-	-	-
25-32-lb.Av.	-	-	-	-	-	.0362	.0420	.0381	.0475	-	-	-
Mexico, Peacock, flat cartons1150	.1075	.1062	.1167	.0900	-	-	-	-	-	-	.1150
Chicago:												
Per Pound-												
Mo., Charleston Gray, 25-30-lb.Av..	-	-	-	-	-	-	.0400f	.0325	-	-	-	-
Texas, Charleston Gray, 20-25-lb.Av.,	-	-	-	-	-	-	.0310	-	-	-	-	-
25-30-lb.Av..	-	-	-	-	-	.0375	.0350	-	-	-	-	-
Stripes, 25-40-lb.Av.	-	-	-	-	-	-	.0367	.0331	.0350	-	-	-
Mexico, Peacock, 12-15-lb.Av.	-	.1100	.0919	.1005	.0725	-	-	-	-	-	-	.1100f

2/ For Auction prices see Table 2.

#- Offerings light.

f - Few.

Table 1. --Continued

VEGETABLES

Market, Origin and description	Jan.	Feb.	Mar.	Apr.	May	June	July	Aug.	Sept.	Oct.	Nov.	Dec.
- Dollars per Unit -												
<u>Asparagus</u>												
New York:												
Pyramid crate-												
Calif., Loose, large	-	15.67	11.88	7.69	-	-	-	-	-	-	-	-
N.J., Bunched, large	-	-	-	8.12	8.62	6.67	7.00	-	-	-	-	-
Chicago:												
Pyramid crate-												
Calif., Loose, large	-	13.50	11.00	9.00	9.50	-	-	-	-	-	-	-
Ill., Crate, 12-1-lb. bchs.,	-	-	-	4.00	3.97	3.00	4.25#	-	-	-	-	-
<u>Beans, Lima</u>												
New York:												
Bushel hamper-												
Various Eastern States	-	-	-	-	-	5.75	6.50	5.08	4.50	4.00	3.50fq	-
Chicago:												
12-quart basket-												
Mich.,	-	-	-	-	-	-	-	1.75	2.54	-	-	-
<u>Beans, Snap Green</u>												
New York:												
Bushel basket, hamper or crate-												
Pia., Harvester	6.05	8.12	8.94	5.00	5.75	-	-	-	-	6.25	9.56	7.35
N.J., Harvester	-	-	-	-	-	3.35	5.06	3.75	3.62	4.80	-	-
Pa., Harvester	-	-	-	-	-	3.62	5.75	-	5.25	4.90	-	-
Chicago:												
Bushel basket, hamper or crate-												
Pia., Harvester	5.62	6.75	7.75	5.42	6.08	-	-	-	-	-	9.78#	6.75
Ill., Contender	-	-	-	-	-	4.00	4.62	-	-	-	-	-
Various Green varieties	-	-	-	-	-	-	3.58	3.75	4.25	3.67	-	-
La., Harvester	-	-	-	-	4.25	4.25	-	-	-	4.55	7.25#	-
Mich., Various Green varieties	-	-	-	-	-	-	3.75	3.75	4.75	-	-	-
<u>Beets</u>												
New York:												
Bunched-												
N.J., Cantaloup crate, 15-18s	-	-	-	-	-	1.50	1.60	1.33	1.60	1.55	1.58	-
Texas, 1-3/4-bushel crate, 3-dozen	-	4.67	4.12	4.44	-	-	-	-	-	-	-	4.50
Chicago:												
Bunched-												
Ill., Crates, 18-bchs.	-	-	-	-	-	1.75#	1.62	1.70	2.24	1.95	2.05	-
Texas, Crates, 18-bchs.	-	-	-	-	-	-	-	-	-	-	4.00	2.88
Crates, 24s	3.35	3.50	3.50	3.19	3.00	-	-	-	-	-	-	3.18
<u>Broccoli</u>												
New York:												
14-bunches-												
Calif., 1/2-crate	4.17	3.44	3.57	3.37	3.79	3.50	3.77	4.00	4.25	3.80	3.79	4.15
Texas, 1-2/5-bushel crate	-	3.25	3.00	-	-	-	-	-	-	-	-	-
Chicago:												
14-bunches-												
Calif., 1/2-crate	4.01	3.35	3.19	3.26	3.62	3.21	3.50	3.50	3.74	3.65	3.49	3.74
<u>Brussel Sprouts</u>												
New York:												
Calif., Repacks locally, 10-oz.cup .	.28	.26	-	-	-	-	-	-	.28	.26	.24	.27
N.Y.L.I., 10-oz.cup19	-	-	-	-	-	-	-	.23	.21	.18	.20
Chicago:												
Calif., 25-lb. drums	5.55	4.94	4.75	-	-	-	-	-	5.58	5.88	5.38	5.08
<u>Cabbage</u>												
New York:												
Danish type-												
N.Y., 50-lb. sack	1.84	1.72	2.04	2.50W	-	-	-	-	1.38fq	1.85	2.48	-
Domestic Round type-												
1-3/4-bushel crate, unless stated-												
Pia.,	3.22	3.00	3.01	2.72	3.25	-	-	-	-	-	-	4.42
N.C.,	-	-	-	-	2.67	1.68	-	-	-	-	3.12	-
N.J., Various used crates,												
approximate 50-lbs.,	-	-	-	-	3.00W	1.66	1.51	1.31	1.92	1.62	2.15	2.50
S.C.,	-	-	-	-	3.12	1.50	-	-	-	-	-	-

#-Offerings light.

fq-Fair quality.

Table 1. --Continued

VEGETABLES--CONTINUED

Market, Origin and description	Jan.	Feb.	Mar.	Apr.	May	June	July	Aug.	Sept.	Oct.	Nov.	Dec.
- Dollars per Unit -												
<u>Cabbage--Continued</u>												
<u>Chicago:</u>												
<u>Danish type--</u>												
Wis., 50-lb. sack	2.52	2.18	2.52	2.88	-	-	-	-	-	-	2.22	2.95
<u>Domestic Round type--</u>												
1-3/4-bushel crate, unless stated-												
Ill., Various used crates,												
approximate 50-lbs.	-	-	-	-	-	2.80	1.79	2.36	3.21	2.70	3.12	-
Texas,	3.38	2.98	3.01	2.96	3.32	-	-	-	-	-	3.78	3.64
<u>Carrots</u>												
<u>New York:</u>												
<u>Topped, washed, 48-1-lb. film bags--</u>												
Calif., Crate	10.10	8.11	6.00	3.99	3.94	4.82	4.53	4.15	5.00	4.82	5.47	5.43
Mesh, master container	-	-	-	-	3.65	4.52	4.09	3.51	3.95	3.75	4.38	4.62
Texas, Mesh, master container	8.73	7.08	4.78	3.16	3.40	3.50	-	-	-	-	-	4.12
Canada, Film, master container	9.00	-	-	-	-	-	-	2.64	2.78	2.59	2.81	2.90
<u>Chicago:</u>												
<u>Topped, washed, 48-1-lb. film bags--</u>												
Calif., Crate	-	7.84	6.50	-	-	4.45	4.72	4.52	4.54	4.64	5.38	5.48
Mesh, master container	-	-	-	-	3.88	4.09	4.31	3.98	3.88	4.34	5.25	4.84
Texas, Mesh, master container	8.56	7.06	5.01	3.15	3.30	3.11	-	-	-	3.50	3.75	3.80
<u>Cauliflower</u>												
<u>New York:</u>												
Calif., Cartons, film wrapped, 12s..	4.97	4.72	4.62	4.94	5.17	4.08	4.85	4.06	3.84	3.50	4.32	4.75
N.Y., (Catskill Sec.) Cartons, 12s ..	-	-	-	-	-	-	3.75	2.84	3.44	2.95	-	-
N.Y.L.I., Long Island type crate, 12s ..	-	-	-	-	-	-	-	-	3.00	2.83	3.45	3.00
Texas, Cartons, film wrapped, 12s ..	4.62	-	-	-	-	-	-	-	-	-	-	-
<u>Chicago:</u>												
Calif., Cartons, film wrapped, 12s..	4.32	4.16	3.75	4.36	4.45	3.40	4.04	3.24	3.85	3.65	3.62	3.82
Mich., Long Island type crate, 12s..	-	-	-	-	-	-	-	-	-	2.35	-	-
Open Cantaloup crate, 12s....	-	-	-	-	-	-	-	-	-	2.65	2.60	-
Texas, Long Island type crate, 12s..	4.25	-	-	-	-	-	-	-	-	-	-	-
<u>Calary</u>												
<u>New York:</u>												
<u>Pascal type - Crates--</u>												
Calif., 2-3-dozen	6.05	5.59	4.06	5.62	6.00	7.50	4.95	4.25	4.18	3.91	4.81	5.15
Fla., 2-4-dozen	5.03	4.56	3.39	4.18	4.56	6.00	-	-	-	-	-	4.75
N.Y.Org.Co., 2-3-dozen	-	-	-	-	-	-	2.58	2.29	2.75	2.58	3.40	-
<u>Chicago:</u>												
<u>Pascal type - Crates--</u>												
Calif., 2-3-dozen	5.70	5.41	4.01	4.94	5.42	6.84	4.26	3.56	3.98	3.85	4.52	4.52
Fla., 2-4-dozen	5.03	4.58	3.35	4.55	4.58	4.50	-	-	-	-	3.50W	3.00
Mich., 2-4-dozen	-	-	-	-	-	-	3.92	2.71	2.85	2.75	-	-
<u>Corn, Sweet</u>												
<u>New York:</u>												
<u>Yellow--</u>												
Fla., 5-dozen, crate	4.54	5.71	5.31	4.52	4.05	3.58	3.75	-	-	4.62	4.31	4.50
N.Y., Crates, approximate,												
4 1/2-5-dozen	-	-	-	-	-	-	-	2.12	2.64	1.88	-	-
<u>Chicago:</u>												
<u>Yellow, 5-dozen, crate--</u>												
Fla.,	4.52	5.50	5.08	4.17	4.25	3.30	3.75	-	-	4.68	4.12	4.25
Ill.,	-	-	-	-	-	-	2.42	1.50	2.75	-	-	-
<u>Cucumbers</u>												
<u>New York:</u>												
<u>Bushel basket & 1-1/9-bushel crate--</u>												
Fla.,	9.94	11.50	15.00	10.00	5.62	4.25	-	-	-	3.95	12.25	18.75
N.C.,	-	-	-	-	-	2.50	3.75	-	-	-	-	-
N.Y.L.I.,	-	-	-	-	-	-	3.60	4.25	2.78	-	-	-
S.C.,	-	-	-	-	5.50	3.88	-	-	-	2.94	9.50	-
British West Indies,	11.50	12.00	13.50	-	-	-	-	-	-	-	-	-
Mexico,	14.50	11.25	13.58	13.00	-	-	-	-	-	-	-	-
<u>Chicago:</u>												
<u>Bushel basket & 1-1/9-bushel crate--</u>												
Fla.,	8.12	-	-	7.62	6.06	3.62	-	-	-	4.17	10.84W	19.84W
Ill.,	-	-	-	-	-	-	5.15	2.60	3.31	2.97	-	-
Mexico,	8.75	9.00	10.50	-	-	-	-	-	-	-	-	14.50

#-Offerings light.

Table 1. --Continued

VEGETABLES--CONTINUED

Market, Origin and description	Jan.	Feb.	Mar.	Apr.	May	June	July	Aug.	Sept.	Oct.	Nov.	Dec.
- Dollars per Unit -												
<u>Eggplant</u>												
<u>New York:</u>												
<u>Bushel basket-</u>												
Fla.,	6.10	5.56	7.12	6.00	4.03	7.31	5.42	-	-	4.75	6.25	6.25
N.J.,	-	-	-	-	-	-	5.12	3.40	3.94	3.62	2.75	-
<u>Chicago:</u>												
<u>Bushel basket-</u>												
Fla.,	6.31	5.62	7.75	7.40	4.00	8.08	5.17	-	-	4.75	5.08	6.72
Ill.,	-	-	-	-	-	-	5.56	3.75	2.56	3.25	-	-
<u>Endive-Chicory</u>												
<u>New York:</u>												
<u>1-1/9-bushel crate-</u>												
Fla.,	4.38	4.25	3.10	2.32	3.62	2.50	-	-	-	-	3.70	4.55
N.J.,	-	-	-	-	-	1.75	1.56	1.50	1.94	1.67	2.75	-
<u>Escarole</u>												
<u>New York:</u>												
<u>1-1/9-bushel crate-</u>												
Fla.,	4.04	4.06	3.31	2.28	3.35	3.25	-	-	-	-	3.40	4.65
N.J.,	-	-	-	-	-	1.72	1.53	1.50	1.94	1.67	2.75	-
<u>Kale</u>												
<u>New York:</u>												
N.J., Various used crates	-	-	-	-	1.38	1.50	1.26	1.30	1.62	1.62	1.12	-
Va., 1-3/5-bushel crate, bunched ..	-	-	-	-	-	2.25	2.21	-	-	2.25	2.25	2.50
<u>Lettuce</u>												
<u>New York:</u>												
<u>Iceberg type - 24 heads, carton-</u>												
Ariz.,	5.55	2.50	3.62	3.76	3.20	-	-	-	-	3.88	4.62	4.60
Calif.,	5.55	2.50	3.62	3.76	3.42	4.00	4.05	4.16	4.06	4.90	4.00	4.60
<u>Big Boston type -</u>												
<u>24 heads, Eastern Boston crate-</u>												
Fla.,	3.75	3.62	2.25	3.34	3.25	-	-	-	-	-	4.19	3.58
N.J.,	-	-	-	-	1.38	1.67	2.34	2.50	3.12	2.40	3.71	-
<u>Romaine type - 1-1/9-bushel crate-</u>												
Fla.,	3.38	2.94	2.19	2.13	1.88	-	-	-	-	-	3.84	2.50
N.J.,	-	-	-	-	1.26	1.04	1.52	1.72	2.00	1.38	2.12	-
<u>Chicago:</u>												
<u>Iceberg type - 24 heads, carton-</u>												
Ariz.,	6.28	2.12	3.62	3.17	-	3.75#	-	-	-	3.85#	4.02	3.95
Calif.,	5.14	2.34	3.31	3.15	2.94	3.16	3.57	3.52	3.41	3.92	2.75	4.26
<u>Mushrooms</u>												
<u>New York:</u>												
<u>Extra Fancy and Special-</u>												
Pa., 1-quart basket	1.65	1.64	1.66	1.78	1.86	1.92	2.00	2.13	1.92	1.75	1.82	1.76
<u>Chicago:</u>												
Ill., 1-pound carton73	.72	.72	.72	.72	.72	.72	.72	.72	.72	.72	.72
<u>Onions, Dry</u>												
<u>New York:</u>												
<u>50-lb. sack-</u>												
Calif., Yellow, medium	-	-	-	-	-	3.00	3.56	2.84	-	-	-	-
Yellow, large	-	-	-	-	-	3.25	3.25	3.91	3.38	-	-	-
Ida-Ore., Yellow Spanish, large ...	4.31	5.00	7.30	-	-	-	-	-	3.50	2.87	2.84	2.76
N.Y. West Sec., Yellow Globe, medium ..	2.76	3.04	4.22	4.84	-	-	-	2.44	2.20	2.28	2.28	2.25
Yellow Globe, large ..	3.08	3.60	5.81	6.25	-	-	-	3.15	2.80	2.25	2.28	2.30
Texas, Yellow Granex, medium	-	-	-	4.92	3.54	2.67	3.12	-	-	-	-	-
Yellow Granex, large	-	-	-	5.38	3.22	2.60	2.62	-	-	-	-	-
<u>Chicago:</u>												
<u>50-lb. sack-</u>												
Calif., Yellow, medium	-	-	-	-	-	2.72	3.30	2.42	2.38	-	-	-
Yellow, large	-	-	-	-	-	2.91	2.94	3.70	3.05	-	-	-
Idaho, Yellow Spanish, large	3.97	4.72	7.15	8.00#	-	-	-	-	2.85	2.57	2.54	2.48
Midwestern, Yellow Globe, medium ..	2.53	2.81	4.34	4.12	-	-	2.68	2.34	2.19	2.12	2.10	2.05
Texas, Yellow Granex, medium	-	-	-	4.98	3.34	-	-	-	-	-	-	-
Yellow Granex, large	-	-	-	6.21	3.14	-	-	-	-	-	-	-

#-Offerings light.

fc-Fair condition.

fq-Fair quality.

Table 1. --Continued

VEGETABLES--CONTINUED

Market, Origin and description	Jan.	Feb.	Mar.	Apr.	May	June	July	Aug.	Sept.	Oct.	Nov.	Dec.
- Dollars per Unit -												
<u>Peas, Green</u>												
New York:												
Bushel basket												
Calif.,	-	-	-	5.44	7.25	7.25	-	7.00	6.50	-	8.00	7.25
Colo.,	-	-	-	-	-	-	6.00	6.75	-	-	-	-
Mexico,	7.31	4.72	6.25	6.00	-	-	-	-	-	-	-	7.50
Chicago:												
Bushel basket												
Calif.,	-	-	-	6.00	5.94	6.67	-	5.50	7.38	-	8.00	8.00
Colo.,	-	-	-	-	-	-	7.12	-	-	-	-	-
Mexico,	7.12	-	-	6.00	-	-	-	-	-	-	-	-
<u>Peppers, Green</u>												
New York:												
Calif. Wonder type - bushel basket												
Calif., large	-	-	-	-	-	-	-	-	-	5.50	5.38	-
Fla., large	5.35	4.69	6.44	9.67	7.56	4.50	-	-	-	-	6.12	5.34
N.J., large	-	-	-	-	-	-	3.75	3.67	4.00	4.88	-	-
Chicago:												
Calif. Wonder type - bushel basket												
Calif., large	-	-	-	-	-	-	-	-	4.00	4.41	5.12	-
Fla., large	5.57	5.38	7.12	9.25	7.00	5.08	-	-	-	-	4.75	4.80
Ill., large	-	-	-	-	-	-	4.70	3.25	3.35	-	-	-
Texas, large	-	-	-	-	5.75	5.25	-	-	-	-	4.75	4.23
<u>Potatoes</u>												
New York:												
U.S. No. 1, Size A, 50-lb. sack-												
washed, unions stated-												
Calif., Long White	-	-	-	-	3.48	3.32	3.06	2.58	-	-	-	-
Fla., Round Reds, Size A	-	3.15	2.86	3.56	4.02	2.50fq	-	-	-	-	-	-
Size B	-	3.15	2.84	3.61	4.50	-	-	-	-	-	-	-
Sebagoes, Size A	-	-	-	-	3.20	3.00	-	-	-	-	-	-
Idaho, Russet Burbank 3/	2.67	2.52	2.49	2.86	3.70	4.18	4.00	-	-	3.10	3.32	3.26
Maine, Katahdin type, unwashed 3/ ..	1.34	1.20	1.19	1.34	1.64	2.02	2.14	-	-	-	1.59	1.55
N.Y.L.I., Various Round Whites,												
washed & unwashed mostly washed..	1.24	1.12	.99	.90	1.25fc	1.25fc	-	1.30	1.49	1.51	1.58	1.53
Wash., Norgold	-	-	-	-	-	-	-	2.71	2.47	-	-	-
Russet Burbank	-	-	-	-	-	-	-	2.88	2.84	2.88	3.00#	-
Chicago:												
Street Sales-												
U.S. No. 1, Size A, 100-lb. sack-												
Washed-												
Calif., Long White	-	-	-	-	6.20	5.24	5.59	4.00	-	-	-	-
Idaho, Russet Burbank	4.62	4.38	4.38	4.62	6.25	7.50	-	-	4.55	5.35	6.00	5.83
Minn., Round Reds	-	-	-	-	-	-	-	3.32	3.20	3.04	-	-
Minn.-N.Dak(Red Riv.Vly)Round Reds..	3.01	2.76	2.86	3.04	5.08	-	-	-	-	3.08	3.05	2.93
Texas, Round Reds	-	-	-	-	-	-	4.62	4.00	-	-	-	-
Wis., Round Reds	-	-	-	-	-	-	-	3.18	2.92	2.80	-	-
Russet Burbank	3.24	3.00	3.25	3.30	4.12#	-	-	-	-	3.87	4.25	4.15
U.S. No. 1, Size A, 50-lb. sack-												
Washed-												
Fla., Round Reds, Size A	-	3.10	2.79	3.34	3.55	-	-	-	-	-	-	-
Round Reds, Size B	-	3.10	2.82	3.41	3.77	-	-	-	-	-	-	-
<u>Radishes</u>												
New York:												
Baskets-												
Fla., Reds, 30s, 6-oz. film bags,												
Topped	2.03	1.32	1.28	1.18	1.72	-	-	-	-	2.00	1.91	1.55
N.J., Per Bunch	-	-	-	-	.0582	.0534	.0552	.0642	.0586	.0556	.0656	-
Chicago:												
Baskets-												
Fla., Reds, 30s, 6-oz. film bags,												
Topped	1.86	1.50	1.24	1.12	2.03	1.68	-	-	-	1.38	1.97	1.95
Ind., Reds, 30s, 8-oz. film bags,												
Topped	-	-	-	-	-	1.83	3.50	1.44	1.60	1.91	-	-
Ohio, Reds, 30s, 6-oz. film bags,												
Topped	-	-	-	-	-	1.56	2.70	1.25	1.12	1.12	1.80	-

3/2-inch minimum.
 #Offerings light.
 fc-Fair condition.
 fq-Fair quality.

Table 1. --Continued

VEGETABLES--CONTINUED

Market, Origin and description	Jan.	Feb.	Mar.	Apr.	May	June	July	Aug.	Sept.	Oct.	Nov.	Dec.
- Dollars per Unit -												
<u>Rhubarb</u>												
New York:												
5-pound carton-												
Mich., Extra fancy, Special long ..	1.42	1.25	1.08	1.72	-	-	-	-	-	-	-	-
N.J., Per Bunch	-	-	-	-	.0972	.1094	.0799	-	-	-	-	-
<u>Spinach</u>												
New York:												
Savoy type - Bushel basket & crate-												
Colo., clipped	-	-	-	-	-	-	3.25	4.00	-	-	-	-
N.J.,	-	-	-	1.67	1.38	1.50	2.20	1.75	2.62#	1.42fc	1.50#	-
Texas,	3.35	2.35	2.46	2.18fq	-	-	-	-	-	-	-	3.50
Chicago:												
Bushel basket-												
Ill., Flat type	-	-	-	2.25	2.05	2.10	3.00	-	-	1.75	2.18	2.35
Semi-flat type	-	-	-	-	-	-	-	-	4.50	2.01	1.75	-
Mich., Flat type	-	-	-	-	-	-	3.34	2.50fq	5.00	-	-	-
Texas, Flat type	-	-	-	-	-	-	-	-	-	-	-	3.75
Savoy type	3.10	2.94	2.35	-	-	-	-	-	-	-	-	2.35
<u>Sweetpotatoes</u>												
New York:												
Bushel basket or 50-lb. carton-												
N.C., Porto Rico type	5.30	5.36	6.01	7.00	8.06	10.00#	-	3.88	4.30	4.56	5.34	5.46
N.J., Orange Jersey type	4.50	4.75	5.28#	5.45	5.81	6.50#	-	-	-	-	4.12	4.25
Chicago:												
50-lb. crate-												
La., Porto Rico type, cured	5.61	5.84	6.27	7.06#	8.42#	-	-	-	-	-	5.90	5.69
uncured	-	-	-	-	-	-	7.38	4.69	4.68	4.74	4.99	5.25f
<u>Tomatoes</u>												
New York:												
Street Sales-												
Fla., 20-lb. 2-layer carton, vine												
ripe, Extra large & large	5.75	6.25	6.19	8.40	7.25	4.00	-	-	-	-	-	6.88 ^{b/}
N.J., 12-quart basket, vine ripe,												
medium	-	-	-	-	-	-	2.50	-	-	-	-	-
large	-	-	-	-	-	-	-	2.50	2.25	1.50fc	-	-
Ohio, 8-lb. basket, greenhouse,												
US#1, medium	-	-	-	3.95	2.89	3.06	2.95	-	-	-	3.50	3.58
Chicago:												
Green, Ripes and Turning-												
Calif., 2-layer lug, 5x6 & 1gr. ...	-	-	-	-	-	-	-	-	3.90	4.08	5.64	5.25
Fla., 40-lb. carton, 6x6 & 1gr. 5/ ..	-	-	10.00	11.50	8.00	6.38	-	-	-	-	11.00	9.00
8-lb. flat carton, vine ripe,												
large	1.75	2.50	-	-	-	-	-	-	-	-	-	-
20-lb. 2-layer carton, vine												
ripe, Extra large & large	4.25	5.94	5.84	7.25	4.92	4.80	-	-	-	-	-	6.22 ^{b/}
Ill., 8-quart basket, vine ripe,												
medium-large	-	-	-	-	-	-	2.08	2.25fq	1.00#	-	-	-
Mich., 10-lb. basket, vine ripe,												
medium-large	-	-	-	-	-	-	-	1.94	1.48	1.58#	-	-
Midwestern, 8-lb. carton, greenhouse,												
medium-large	2.35	-	3.42	3.60	2.88	2.45	2.30	-	-	2.25	2.98	3.30

b/6x6 & 1gr.

5/85% or more US#1, quality.

f-Offerings light.

fc-Fair condition.

fq-Fair quality.

f-Few.

Table 2.--Auction prices of specified citrus and deciduous fruits in New York City and Chicago, each month, by market, origin, and description, 1968. Weighted averages, all grades and sizes 1/

CITRUS FRUITS

Market, Origin and description	Jan.	Feb.	Mar.	Apr.	May	June	July	Aug.	Sept.	Oct.	Nov.	Dec.
- Dollars per Unit -												
<u>Grapefruit</u>												
<u>New York:</u>												
<u>Various varieties--</u>												
Calif., 1/2-box, carton	-	-	-	-	2.96	2.32	3.92	3.54	4.97	6.91	-	-
Fla., 4/5-bu. box or carton,												
Rail & Truck 2/.....	3.20	3.19	3.16	3.57	3.87	3.25	2.85	2.76	4.52	6.07	3.65	3.03
<u>Chicago:</u>												
<u>Various varieties--</u>												
Calif., 1/2-box, carton	-	-	-	3.41	2.21	2.43	3.39	3.01	3.40	-	-	-
<u>Lemons</u>												
<u>New York:</u>												
Calif., 1/2-box, carton	5.32	4.80	5.27	5.00	4.55	4.68	4.56	4.56	4.63	4.00	3.41	5.60
<u>Chicago:</u>												
Calif., 1/2-box, carton	4.78	4.35	6.01	5.05	4.91	4.90	4.10	4.87	4.90	4.88	3.62	5.41
<u>Oranges</u>												
<u>New York:</u>												
Calif., Navel, 1/2-box, carton	5.58	5.23	4.55	5.60	6.74	-	-	-	-	-	3.94	3.93
Valencia, 1/2-box, carton ..	-	-	2.88	4.95	4.34	4.45	4.96	5.28	5.53	6.19	4.09	-
Fla., Various varieties,												
4/5-bu. box or carton,												
Rail & Truck 2/.....	3.29	3.35	3.21	3.20	3.44	3.38	3.91	4.60	5.20	4.52	3.42	2.77
Temple, 4/5-bu. box or												
carton, Rail & Truck 2/.....	3.23	3.38	3.75	3.83	3.78	2.51	-	-	-	-	-	-
<u>Chicago:</u>												
Calif., Navel, 1/2-box, carton	4.61	4.31	4.18	4.91	3.75	-	-	-	-	-	3.95	3.72
Valencia, 1/2-box, carton ..	-	-	3.10	4.70	3.77	3.86	4.14	4.85	4.96	5.01	5.43	-
<u>Tangelos</u>												
<u>New York:</u>												
Fla., 4/5-bu. box or carton,												
Rail & Truck 2/.....	4.02	3.89	4.13	4.02	-	-	-	-	-	4.22	3.13	3.03
<u>Tangerines</u>												
<u>New York:</u>												
Fla., 4/5-bu. box or carton,												
Rail & Truck 2/.....	4.72	4.80	6.25	4.66	4.32	-	-	-	-	7.55	5.82	3.83

DECIDUOUS FRUITS

<u>Apples</u>												
<u>New York:</u>												
<u>Boxes, all grades and sizes--</u>												
Wash., Delicious 3/.....	6.50	6.57	7.12	7.34	7.83	8.08	7.94	7.34	7.80	7.55	7.84	7.66
Golden Delicious	5.04	5.80	5.59	6.62	7.37	8.84	8.54	7.17	5.97	5.84	6.22	5.92
Red Delicious	6.86	6.88	7.21	7.26	7.06	8.01	7.89	-	8.14	7.90	7.90	7.78
Winesap	-	-	6.23	3.91	-	8.25	7.15	6.54	2.83	-	-	-
<u>Chicago:</u>												
<u>Boxes, all grades and sizes--</u>												
Wash., Delicious 3/.....	6.31	6.75	6.16	6.08	6.73	6.37	7.93	5.34	6.72	7.23	7.03	7.00
Golden Delicious	7.07	5.96	6.23	5.55	6.46	-	4.00	-	-	5.74	7.21	8.26
Winesap	-	5.06	5.98	5.53	4.27	6.16	5.78	6.49	2.84	-	-	-
<u>Apricots</u>												
<u>New York:</u>												
<u>Per lug--</u>												
Calif., Perfection	-	-	-	-	-	5.61	-	-	-	-	-	-
Royal	-	-	-	-	7.84	5.48	-	-	-	-	-	-
Tilton	-	-	-	-	-	7.85	7.92	-	-	-	-	-
<u>Chicago:</u>												
<u>Per lug--</u>												
Calif., Royal	-	-	-	-	6.41	5.51	-	-	-	-	-	-
Tilton	-	-	-	-	-	7.56	7.36	-	-	-	-	-

1/Compiled by Economic and Statistical Analysis Division, ERS.

2/Weighted averages for combined rail and truck receipts compiled by Market News Branch, Fruit and Vegetable Division, CARS, from information supplied by Economic and Statistical Analysis Division, ERS.

3/Includes Red Strains.

Table 2. --Continued

DECIDUOUS FRUITS--CONTINUED

Market, Origin and description	Jan.	Feb.	Mar.	Apr.	May	June	July	Aug.	Sept.	Oct.	Nov.	Dec.
- Dollars per Unit -												
<u>Cherries</u>												
New York:												
Calif. lug (20-lb. lug, loose)-												
Calif., Bing	-	-	-	-	9.91	8.38	-	-	-	-	-	-
Tartarian	-	-	-	-	8.17	-	-	-	-	-	-	-
Oreg., Bing	-	-	-	-	-	9.53	7.94	-	-	-	-	-
Lambert	-	-	-	-	7.68	-	-	-	-	-	-	-
Wash., Bing	-	-	-	-	-	9.30	8.47	8.06	-	-	-	-
Lambert	-	-	-	-	-	-	8.10	8.12	-	-	-	-
Chicago:												
Calif. lug (20-lb. lug, loose)-												
Calif., Bing	-	-	-	-	7.63	7.10	-	-	-	-	-	-
Lambert	-	-	-	-	-	7.25	-	-	-	-	-	-
Wash., Lambert	-	-	-	-	-	-	8.15	-	-	-	-	-
<u>Grapes</u>												
New York:												
Table Stock, Per lug-												
Calif., Calmeria	-	-	-	-	-	-	-	-	-	5.46	6.04	5.82
Cardinal	-	-	-	-	-	-	4.35	3.58	-	-	-	-
Emperor	3.88	7.80	-	-	-	-	-	-	4.56	4.17	2.98	4.00
Perlette	-	-	-	-	9.86	6.48	5.84	-	-	-	-	-
Ribier	3.86	4.52	-	-	-	-	-	5.25	4.45	4.69	4.40	5.56
Thompson Seedless	-	-	-	-	-	-	6.99	4.05	3.42	4.26	-	-
Chicago:												
Table Stock, Per lug-												
Calif., Calmeria	-	-	-	-	-	-	-	-	-	4.29	3.27	5.52
Cardinal	-	-	-	-	-	6.23	5.48	3.65	-	-	-	-
Emperor	-	-	-	-	-	-	-	-	3.41	3.78	3.28	4.13
Perlette	-	-	-	-	8.69	7.23	8.75	-	-	-	-	-
Ribier	-	-	-	-	-	-	5.86	4.71	4.25	4.65	5.67	5.62
Thompson Seedless	-	-	-	-	-	7.76	6.07	3.92	4.25	5.69	-	-
<u>Nectarines</u>												
New York:												
2-layer lug - cup pack-												
Calif., Early SunGrand	-	-	-	-	-	5.04	4.25	-	-	-	-	-
SunGrand	-	-	-	-	-	5.80	4.01	-	-	-	-	-
Late LeGrand	-	-	-	-	-	-	-	2.92	-	-	-	-
LeGrand	-	-	-	-	-	-	3.77	2.74	-	-	-	-
Sunrise	-	-	-	-	-	4.17	-	-	-	-	-	-
Chicago:												
2-layer lug - cup pack-												
Calif., Early SunGrand	-	-	-	-	-	5.05	3.89	-	-	-	-	-
SunGrand	-	-	-	-	-	5.19	3.81	-	-	-	-	-
Late LeGrand	-	-	-	-	-	-	-	2.97	-	-	-	-
LeGrand	-	-	-	-	-	-	4.09	2.95	-	-	-	-
Sunrise	-	-	-	-	-	3.90	-	-	-	-	-	-
<u>Peaches</u>												
New York:												
2-layer lug - cup pack-												
Calif., Cardinal	-	-	-	-	8.72	2.96	-	-	-	-	-	-
Hale	-	-	-	-	-	-	-	-	1.51	-	-	-
Merrill Gem	-	-	-	-	-	3.77	-	-	-	-	-	-
Redhaven	-	-	-	-	-	4.44	2.94	-	-	-	-	-
Rio Oso Gem	-	-	-	-	-	-	-	2.17	-	-	-	-
Springtime	-	-	-	-	5.55	-	-	-	-	-	-	-
Suncrest	-	-	-	-	-	-	2.12	-	-	-	-	-
Chicago:												
2-layer lug - cup pack-												
Calif., Cardinal	-	-	-	-	8.55	3.68	-	-	-	-	-	-
Coronet	-	-	-	-	-	4.54	-	-	-	-	-	-
Dixirod	-	-	-	-	-	3.88	-	-	-	-	-	-
Gold Dust	-	-	-	-	8.50	2.42	-	-	-	-	-	-
Hale	-	-	-	-	-	-	3.21	3.30	3.15	-	-	-
Merrill Gem	-	-	-	-	-	4.01	-	-	-	-	-	-
Merrill Gemfree	-	-	-	-	-	4.78	-	-	-	-	-	-
Redhaven	-	-	-	-	-	3.57	2.15	-	-	-	-	-
Rio Oso Gem	-	-	-	-	-	-	-	3.13	-	-	-	-
Royal May	-	-	-	-	6.35	3.59	-	-	-	-	-	-
Springtime	-	-	-	-	5.29	-	-	-	-	-	-	-
Suncrest	-	-	-	-	-	-	3.12	-	-	-	-	-

Table 2. --Continued

DECIDUOUS FRUITS--CONTINUED

Market, Origin and description	Jan.	Feb.	Mar.	Apr.	May	June	July	Aug.	Sept.	Oct.	Nov.	Dec.
- Dollars per Unit -												
<u>Pears</u>												
New York:												
All Grades, Per Box-												
Calif., Bartlett	-	-	-	-	-	-	6.64	7.40	7.56	8.82	-	-
Bosc	-	-	-	-	-	-	-	-	8.01	9.93	7.30	-
Comice	-	-	-	-	-	-	-	-	-	7.73	7.94	9.41
D'Anjou	-	-	-	-	-	-	-	-	5.97	-	-	-
Winter Nellis	-	-	-	-	-	-	-	-	-	4.10	3.96	5.16
Oreg., Bartlett	-	-	-	-	-	-	-	-	7.57	8.80	7.13	6.06
Bosc	6.75	7.90	8.40	10.78	12.23	-	-	-	-	7.63	8.27	8.25
Comice	6.38	5.05	5.51	-	-	-	-	-	-	-	7.69	7.72
D'Anjou	5.92	6.13	6.63	6.29	5.91	-	-	-	-	7.02	7.04	7.28
Wash., Bartlett	-	-	-	-	-	-	-	-	5.85	6.48	5.47	-
Bosc	4.28	4.48	-	-	-	-	-	-	-	7.18	5.56	5.49
Comice	-	-	-	-	-	-	-	-	-	-	6.16	7.83
D'Anjou	5.91	5.93	6.04	7.46	-	-	-	-	6.99	6.49	5.75	7.36
Chicago:												
All Grades, Per Box-												
Calif., Bartlett	-	-	-	-	-	-	7.38	7.31	7.49	7.50	-	-
Oreg., Bosc	7.30	-	-	-	-	-	-	-	-	-	-	-
D'Anjou	5.89	-	5.93	7.66	-	-	-	-	-	6.65	6.86	6.96
Wash., Bartlett	-	-	-	-	-	-	-	6.52	5.26	7.37	-	-
Bosc	5.60	-	-	-	-	-	-	-	-	-	-	-
D'Anjou	5.05	5.50	-	-	-	-	-	-	-	-	6.42	6.65
<u>Plums</u>												
New York:												
Per Crate-												
Calif., Beauty	-	-	-	-	8.67	5.22	-	-	-	-	-	-
Eldorado	-	-	-	-	-	6.47	5.16	6.33	-	-	-	-
Laroda	-	-	-	-	-	-	5.38	6.31	-	-	-	-
Late Santa Rosa	-	-	-	-	-	7.54	5.25	5.25	4.96	-	-	-
President	-	-	-	-	-	-	-	6.35	7.24	-	-	-
Santa Rosa	-	-	-	-	9.41	5.66	5.21	5.35	-	-	-	-
Chicago:												
Per Crate-												
Calif., Beauty	-	-	-	-	7.49	4.47	-	-	-	-	-	-
Eldorado	-	-	-	-	-	5.98	5.64	-	-	-	-	-
Laroda	-	-	-	-	-	-	5.47	5.57	-	-	-	-
Late Santa Rosa	-	-	-	-	-	-	5.44	5.20	-	-	-	-
President	-	-	-	-	-	-	-	6.14	6.95	-	-	-
Santa Rosa	-	-	-	-	-	5.66	5.34	-	-	-	-	-
<u>Prunes, Fresh</u>												
New York:												
1/2-Bushel basket-												
Northwest, Italian type	-	-	-	-	-	-	-	3.39	4.31	-	-	-
Chicago:												
1/2-Bushel basket-												
Northwest, Italian type	-	-	-	-	-	-	-	3.36	3.52	-	-	-

Table 3. ---Average prices of specified fruits and vegetables at leading shipping points, each month by description of sale, 1968.

(Prices in this table are simple averages of the mid-points of the daily range and are only for months during which market news stations were in operation in the specified districts. All sales f.o.b. shipping point, unless otherwise stated.)

BERRIES

Shipping point and description of sale	Jan.	Feb.	Mar.	Apr.	May	June	July	Aug.	Sept.	Oct.	Nov.	Dec.
- Dollars per Unit -												
<u>Blueberries</u>												
<u>Michigan:</u>												
<u>Benton Harbor</u>												
Cash market growers' sales												
Cultivated, film wrapped-												
Various varieties, 12-pint flat	-	-	-	-	-	-	3.58	3.06	3.60	-	-	-
<u>New Jersey:</u>												
<u>New Jersey Points</u>												
Sales f.o.b. shipping point and delivered sales shipping point basis												
Cultivated, film wrapped-												
Various varieties, 12-pint flat	-	-	-	-	-	3.91	3.30	3.33	-	-	-	-
<u>Hammonton Area - Auction sales</u>												
Cultivated, film wrapped-												
Various varieties, 12-pint flat	-	-	-	-	-	3.69	3.45	3.44	-	-	-	-
<u>Raspberries</u>												
<u>Michigan:</u>												
<u>Benton Harbor</u>												
Cash market growers' sales												
12-pint flat-												
Black	-	-	-	-	-	-	5.40	-	-	-	-	-
Red	-	-	-	-	-	-	5.36	-	-	-	-	-
<u>New Jersey:</u>												
<u>New Jersey Points</u>												
<u>Hammonton Area - Auction sales</u>												
Various varieties, 12-pint flat	-	-	-	-	-	6.49	6.48	-	-	-	-	-
<u>Strawberries</u>												
<u>Arkansas:</u>												
<u>Auction sales-</u>												
<u>Said Knob Area</u>												
16-quart crate - U.S. Combination-												
Blakemore	-	-	-	-	5.16	-	-	-	-	-	-	-
Tennessee Beauty	-	-	-	-	5.27	-	-	-	-	-	-	-
<u>Marshall Area</u>												
16-quart crate - U.S. Combination-												
Tennessee Beauty	-	-	-	-	5.71	-	-	-	-	-	-	-
<u>California:</u>												
<u>Central-(Coastal Points)</u>												
Extra services extra-												
Various varieties, 12-pint tray	-	-	-	2.71	2.98	2.60	2.81	-	-	-	-	-
<u>Southern-(Orange County-Oxnard Dist.)</u>												
Precooling & Palletting extra-												
Various varieties, 12-pint tray	-	-	4.45	2.62	2.94	2.86	-	-	-	-	-	-
<u>Florida:</u>												
12-pint flat-												
Various varieties, per pint31	.34	.32	.23	-	-	-	-	-	-	-	-
<u>Delaware:</u>												
<u>Laurel Area - Auction sales</u>												
16-quart crate-												
Various varieties	-	-	-	-	6.20	-	-	-	-	-	-	-
<u>Maryland:</u>												
<u>Eastern Shore</u>												
<u>Salisbury Area - Auction sales</u>												
Various varieties, 16-quart crate ..	-	-	-	-	5.88	-	-	-	-	-	-	-
<u>Michigan:</u>												
<u>Benton Harbor</u>												
Cash market growers' sales												
Various varieties, 16-quart crate ..	-	-	-	-	-	6.16	-	-	-	-	-	-
<u>Alpena District - Auction sales</u>												
Various varieties, 16-quart crate ..	-	-	-	-	-	-	8.03	-	-	-	-	-

Table 3. --Continued

BERRIES--CONTINUED

Shipping point and description of sale	Jan.	Feb.	Mar.	Apr.	May	June	July	Aug.	Sept.	Oct.	Nov.	Dec.
- Dollars per Unit -												
New Jersey:												
Strawberries--Continued												
South New Jersey Points												
Hammonton Area - Auction sales												
Various varieties, 16-quart crate...	-	-	-	-	-	6.58	-	-	-	-	-	-
Vineland Area - Auction sales												
Various varieties, 16-quart crate...	-	-	-	-	8.95	7.53	-	-	-	-	-	-
Virginia:												
Eastern Shore - Auction sales												
Exmore Area - 16-quart crate												
Various varieties,												
mostly Dixieland	-	-	-	-	6.36	-	-	-	-	-	-	-
Mexico:												
FOB South Texas Pts.--(Ports of Entry)												
Duty and crossing charges paid-												
Palletizing 10¢ extra-												
Soiano variety, 12-pint flat.....	2.88	3.56	3.55	2.81	-	-	-	-	-	-	3.66	3.03

CITRUS-FRUIT

Grapefruit

Texas:												
Lower Rio Grande Valley												
Carton - U.S. Combination - Ruby Reds												
88s	2.37	2.48	2.69	2.75	-	-	-	-	4.71 ^{1/2}	2.58 ^{1/2}	1.80 ^{1/2}	
40s	2.24	2.33	2.62	2.75	-	-	-	-	4.89 ^{1/2}	2.81 ^{1/2}	2.03 ^{1/2}	
32s	2.22	2.30	2.62	2.75	-	-	-	-	5.02 ^{1/2}	3.14 ^{1/2}	3.11 ^{1/2}	
32s	2.21	2.24	2.62	2.75	-	-	-	-	5.02 ^{1/2}	3.35 ^{1/2}	3.28 ^{1/2}	
27s & 1gr.	2.16	2.20	2.25	2.25	-	-	-	-	-	-	3.34 ^{1/2}	
5-lb. film bags36	.36	.38	.39	-	-	-	-	-	.43 ^{1/2}	.32 ^{1/2}	

Lemons

California:												
Southern & Central Districts												
Sales f.o.b. shipping point and delivered sales shipping point basis												
Carton - Shippers First Grade												
140-165s	5.50	5.36	5.21	4.99	4.56	4.28	4.39	4.56	4.61	4.94	4.08	4.36
Choice												
140-165s	3.62	3.52	3.50	3.62	3.62	3.58	3.75	3.75	3.75	3.80	3.03	3.35

Oranges

California:												
Southern & Central Districts												
Sales f.o.b. shipping point and delivered sales shipping point basis												
Carton - Shippers First Grade												
Naval-												
88-113s	5.22	5.37	5.41	5.62	-	-	-	-	-	-	3.94	3.12
138-163s	4.16	4.44	4.49	4.75	-	-	-	-	-	-	2.96	2.38
Choice												
88-113s	3.74	3.72	3.53	3.38	-	-	-	-	-	-	3.05	2.40
138-163s	3.30	3.50	2.24	3.08	-	-	-	-	-	-	2.48	2.00
Carton - Shippers First Grade												
Valencia-												
88-113s	-	-	-	4.35	4.39	4.34	4.88	5.08	5.12	5.42	5.50	-
138-163s	-	-	-	4.60	4.27	4.47	4.86	4.62	4.62	4.62	4.62	-
Choice												
88-113s	-	-	-	3.32	3.12	2.66	3.68	4.00	3.76	4.04	4.12	-
138-163s	-	-	-	3.62	3.13	2.70	3.34	3.38	3.38	3.38	3.38	-

Texas:												
Lower Rio Grande Valley												
Carton - U.S. Combination												
Various varieties including												
Marro, Hamlin, & Jaffa												
125s & 1gr.	2.30	-	-	-	-	-	-	-	-	2.95	2.33	1.90
5-lb. film bags28	-	-	-	-	-	-	-	-	.35	.29	.26
Valencia-												
125s & 1gr.	2.53	2.43	2.34	2.25	-	-	-	-	-	-	-	-
5-lb. film bags33	.32	.32	.32	-	-	-	-	-	-	-	-
Naval-												
125s & 1gr.	2.66	-	-	-	-	-	-	-	-	3.22	2.73	2.51

1/U.S.No. 1.

Table 3. --Continued

CITRUS FRUITS--CONTINUED

Shipping point and description of sale	Jan.	Feb.	Mar.	Apr.	May	June	July	Aug.	Sept.	Oct.	Nov.	Dec.
- Dollars per Unit -												
<u>Oranges--Continued</u>												
<u>Mexico:</u>												
<u>FOB South Texas Points-</u>												
<u>(Ports of Entry)</u>												
<u>Duty and crossing charges paid-</u>												
<u>U.S.No.1, quality, Half Crate,</u>												
<u>Various varieties including</u>												
<u>Hawlin, Pine, Parsonbrown &</u>												
<u>Mediterranean Sweets-</u>												
125s & 1gr.	2.50	-	-	-	-	-	-	-	-	3.16	2.66	2.13
5-lb. film bag34	-	-	-	-	-	-	-	-	.39	.36	-
<u>Valencia-</u>												
125s & 1gr.	2.80	2.92	2.79	2.80	-	-	-	-	-	-	-	-
5-lb. film bag36	-	-	-	-	-	-	-	-	-	-	-
<u>Navel-</u>												
125s & 1gr.	-	-	-	-	-	-	-	-	-	3.85	3.65	-
<u>Tangerines</u>												
<u>Mexico:</u>												
<u>FOB South Texas Points-</u>												
<u>(Ports of Entry)</u>												
<u>Duty and crossing charges paid-</u>												
<u>Half Crate-</u>												
Various varieties, 150-176s	-	-	-	-	-	-	-	-	-	5.28	4.14	3.52
<u>OTHER FRUITS</u>												
<u>Apples</u>												
<u>Michigan:</u>												
<u>West Michigan Points</u>												
<u>Carton tray pack-</u>												
<u>U.S.Fancy, 125s & 1gr.</u>												
Jonathan	-	-	-	-	-	-	-	-	-	4.10	4.25	-
McIntosh	-	-	-	-	-	-	-	-	-	4.12	4.38	-
Red Delicious	4.82	-	-	-	-	-	-	-	5.79	5.46	5.62	5.64
<u>U.S.Fancy, 2 1/2"up-</u>												
<u>12-3-lb.film, master container-</u>												
Jonathan	-	-	-	-	-	-	-	-	3.58	3.50	3.62	3.68
McIntosh	-	-	-	-	-	-	-	-	3.52	3.50	3.64	3.68
Red Delicious	-	-	-	-	-	-	-	-	4.50	4.46	4.60	4.68
<u>C.A.Storage-</u>												
<u>U.S.Fancy, 2 1/2"up-</u>												
<u>12-3-lb.film, master container-</u>												
Jonathan	4.00	4.00	4.17	-	-	-	-	-	-	-	-	-
McIntosh	3.89	3.82	3.95	-	-	-	-	-	-	-	-	-
Red Delicious	5.00	5.00	5.09	-	-	-	-	-	-	-	-	-
<u>New York:</u>												
<u>Western & Central New York Points</u>												
<u>Sales f.o.b. shipping point and</u>												
<u>delivered sales shipping point basis</u>												
<u>Carton tray pack, U.S.Fancy,</u>												
<u>125s & 1gr.-</u>												
Red Delicious	5.28	5.75	-	-	-	-	-	-	-	6.00	5.88	5.95
<u>U.S.Fancy, 2 1/2"up-</u>												
<u>12-3-lb.film, master container-</u>												
McIntosh	3.34	3.54	-	-	-	-	-	-	-	3.61	3.72	3.68
Red Delicious	3.88	3.99	-	-	-	-	-	-	-	4.48	4.47	4.57
<u>C.A.Storage-</u>												
<u>Carton tray pack, U.S.Fancy,</u>												
<u>125s & 1gr.-</u>												
Red Delicious	-	6.50	6.58	6.61	6.62	-	-	-	-	-	-	-
<u>U.S.Fancy, 2 1/2"up</u>												
<u>12-3-lb.film, master container-</u>												
McIntosh	-	4.00	4.05	4.24	4.36	-	-	-	-	-	-	-
Red Delicious	-	5.00	5.04	5.31	5.50	-	-	-	-	-	-	-
<u>North Carolina:</u>												
<u>Western North Carolina Points</u>												
<u>Cartons-10-3-lb.film bags, 2 1/2"min.</u>												
Various cooking varieties	-	-	-	-	-	-	3.65	3.34	-	-	-	-

Table 3. --Continued

OTHER FRUITS--CONTINUED

Shipping point and description of sale	Jan.	Feb.	Mar.	Apr.	May	June	July	Aug.	Sept.	Oct.	Nov.	Dec.
- Dollars per Unit -												
<u>Apples--Continued</u>												
<u>North Carolina: - Continued</u>												
<u>Carton tray pack-</u>												
<u>Combination U.S. Extra Fancy & U.S. Fancy, 125s & lgr.-</u>												
Red Delicious	-	-	-	-	-	-	-	-	5.18	4.69	-	-
Red Rome	-	-	-	-	-	-	-	-	4.50	4.38	-	-
Red Stayman	-	-	-	-	-	-	-	-	4.50	4.48	-	-
<u>Carton tray pack-</u>												
<u>U.S. Fancy, 125s & lgr.-</u>												
Golden Delicious	-	-	-	-	-	-	-	5.68	5.35	5.00	-	-
Red Delicious	-	-	-	-	-	-	-	6.36	4.92	-	-	-
Red Stayman	-	-	-	-	-	-	-	-	4.29	4.19	-	-
<u>Cartons, film bags, 2 1/2" min.-10-4-lb.</u>												
Golden Delicious	-	-	-	-	-	-	-	4.10	3.56	3.62	-	-
Red Delicious	-	-	-	-	-	-	-	4.75	3.97	3.69	-	-
Red Stayman	-	-	-	-	-	-	-	-	3.50	3.50	-	-
<u>Washington:</u>												
<u>Yakima Valley</u>												
<u>Carton tray pack - Extra Fancy, 125s & lgr., mostly 125s & lgr.-</u>												
Golden Delicious	5.40	5.32	5.22	5.43	5.80	-	-	-	7.08	6.66	6.47	5.86
Red Delicious	5.62	5.60	5.44	5.82	5.78	6.02	-	-	6.99	6.48	6.62	6.57
Winesap	5.33	5.44	5.64	5.76	6.20	6.56	6.62	-	-	5.91	6.02	6.04
<u>C.A. Storage-</u>												
Golden Delicious	-	-	6.64	6.62	7.14	-	-	-	-	-	-	-
Red Delicious	-	-	6.42	6.65	7.20	7.58	7.62	-	-	-	-	-
Winesap	-	-	-	-	-	-	7.17	-	-	-	-	-
<u>West Virginia:</u>												
<u>Appalachian Dist.-(W.Va.-Va.-Md.-Pa.)</u>												
<u>Carton tray pack-</u>												
<u>Combination U.S. Extra Fancy and U.S. Fancy, 125s & lgr.-</u>												
Red Delicious	5.36	-	-	-	-	-	-	-	5.94	5.84	6.45	6.50
Red Rome	4.00	4.02	-	-	-	-	-	-	-	5.10	4.88	4.75
Red Stayman	-	-	-	-	-	-	-	-	-	4.84	4.93	4.86
<u>4-lb. film bags, master container-</u>												
<u>U.S. Fancy, 2 1/2" up-</u>												
Red Delicious45	.45	-	-	-	-	-	-	-	.44	.46	.47
Red Rome35	.35	-	-	-	-	-	-	-	.39	.40	.40
Red Stayman	-	-	-	-	-	-	-	-	-	.39	.40	.40
<u>3-lb. film bags, master container-</u>												
<u>U.S. Fancy, 2 1/2" up-</u>												
Red Delicious37	.37	-	-	-	-	-	-	.37	.36	.39	.39
Red Rome28	.30	-	-	-	-	-	-	-	.34	.34	.34
Red Stayman	-	-	-	-	-	-	-	-	-	.33	.34	.34
<u>C.A. Storage-</u>												
<u>Carton tray pack-</u>												
<u>Combination U.S. Extra Fancy and U.S. Fancy, 125s & lgr.-</u>												
Red Rome	-	5.12	5.47	-	-	-	-	-	-	-	-	-
Red Stayman	-	5.25	-	-	-	-	-	-	-	-	-	-
<u>3-lb. film bags, master container-</u>												
<u>U.S. Fancy, 2 1/2" up-</u>												
Red Delicious	-	.46	.46	-	-	-	-	-	-	-	-	-
Red Rome	-	-	.38	-	-	-	-	-	-	-	-	-
Red Stayman	-	.38	.38	-	-	-	-	-	-	-	-	-
<u>Apricots</u>												
<u>Washington:</u>												
<u>Yakima Valley</u>												
<u>Wash. No. 1 - 1-5/8-in. & larger-</u>												
Noorparke, 12-lb. carton, loose ...	-	-	-	-	-	-	1.85	-	-	-	-	-
28-lb. lug, loose	-	-	-	-	-	-	3.48	-	-	-	-	-
<u>Cherries</u>												
<u>Washington:</u>												
<u>Yakima Valley</u>												
<u>U.S. No. 1 -</u>												
Bings, 20-lb. lug, loose, 12 row & larger	-	-	-	-	-	9.15	7.61	-	-	-	-	-

Table 3. --Continued

OTHER FRUITS--CONTINUED

Shipping point and description of Sale	Jan.	Feb.	Mar.	Apr.	May	June	July	Aug.	Sept.	Oct.	Nov.	Dec.
- Dollars per Unit -												
<u>Grapes</u>												
<u>California:</u>												
<u>Coachella Valley</u>												
Precooling 10¢ extra,												
Palleting 5¢ extra-												
22-lb. lug - U.S.No. 1												
Cardinal	-	-	-	-	6.54	5.78	-	-	-	-	-	-
Perlette	-	-	-	-	6.67	5.29	-	-	-	-	-	-
Thompson Seedless	-	-	-	-	-	5.90	-	-	-	-	-	-
<u>Fresno-Central San Joaquin Valley</u>												
26-lb. lug												
Emperor	4.09	-	-	-	-	-	-	-	-	2.78	2.73	2.67
Red Malaga	-	-	-	-	-	-	-	2.96	-	-	-	-
Ribier	2.54	-	-	-	-	-	-	3.52	2.84	3.09	3.50	3.76
Thompson Seedless	-	-	-	-	-	-	-	2.83	2.90	3.58	-	-
<u>Kern County Points</u>												
26-lb. lug												
Cardinal	-	-	-	-	-	-	4.53	-	-	-	-	-
Emperor	4.66	4.75	-	-	-	-	-	-	-	3.23	2.98	2.89
Red Malaga	-	-	-	-	-	-	-	3.56	-	-	-	-
Ribier	3.31	-	-	-	-	-	5.21	3.73	3.08	3.24	3.52	3.74
Thompson Seedless	-	-	-	-	-	-	4.51	3.26	3.18	3.41	-	-
<u>Lodi District</u>												
Precooling 10¢ extra-												
26-lb. lug - U.S.No. 1												
Tokay	-	-	-	-	-	-	-	-	2.25	2.39	-	-
<u>Michigan:</u>												
<u>Benton Harbor</u>												
Cash market growers' sales-												
Fancy table, crates & cartons-												
Concord, 8.2-quart	-	-	-	-	-	-	-	-	3.69	3.61	-	-
<u>Nectarines</u>												
<u>California:</u>												
<u>Fresno-Central San Joaquin Valley</u>												
2-layer lug, cup pack-												
Early SunGrand, 80-88s	-	-	-	-	-	4.54	3.42	-	-	-	-	-
Regular SunGrand, 80-88s	-	-	-	-	-	-	3.32	-	-	-	-	-
Regular LeGrand, 88s & 1gr.	-	-	-	-	-	-	2.91	-	-	-	-	-
Late LeGrand, 88s & 1gr.	-	-	-	-	-	-	-	2.39	-	-	-	-
Sunrise, 80-88s	-	-	-	-	-	3.78	-	-	-	-	-	-
<u>Peaches</u>												
<u>Arkansas:</u>												
<u>3/4-bushel crate-</u>												
Hydrocooling included-												
U.S.No.1, 2-in.up.-unless stated-												
<u>Clarksville Area</u>												
Dixired	-	-	-	-	-	4.40	-	-	-	-	-	-
Ranger	-	-	-	-	-	-	3.15	-	-	-	-	-
Red Elberta	-	-	-	-	-	-	3.14	-	-	-	-	-
Redhaven	-	-	-	-	-	-	3.49	-	-	-	-	-
Southland, 2-1/4 in.up.	-	-	-	-	-	-	3.50	-	-	-	-	-
<u>Crowley-Ridge Area</u>												
Dixired	-	-	-	-	-	4.48	-	-	-	-	-	-
Redskin	-	-	-	-	-	-	3.12	-	-	-	-	-
Triogen	-	-	-	-	-	-	3.23	-	-	-	-	-
<u>California:</u>												
<u>Fresno-Central San Joaquin Valley</u>												
2-layer lug, cup pack, 72s & 1gr.												
Blazing Gold	-	-	-	-	-	3.25	-	-	-	-	-	-
Coronet	-	-	-	-	-	3.12	-	-	-	-	-	-
Fay Elberta	-	-	-	-	-	-	2.60	2.52	-	-	-	-
Fortyniner	-	-	-	-	-	-	2.62	-	-	-	-	-
J. H. Hales	-	-	-	-	-	-	2.42	-	-	-	-	-
Merrill Fiesta	-	-	-	-	-	-	-	-	3.04	-	-	-
Merrill Gemfree	-	-	-	-	-	3.25	-	-	-	-	-	-
Merrill Pageant	-	-	-	-	-	-	-	-	3.04	-	-	-
Red Globe	-	-	-	-	-	2.58	1.90	-	-	-	-	-
Redhaven	-	-	-	-	-	2.95	-	-	-	-	-	-
Red Top	-	-	-	-	-	2.99	2.39	-	-	-	-	-
Rio Oro Gen	-	-	-	-	-	-	-	2.81	-	-	-	-
Springtime	-	-	-	-	5.52	-	-	-	-	-	-	-
Suncrast	-	-	-	-	-	-	2.36	-	-	-	-	-

Table 3. --Continued

OTHER FRUITS--CONTINUED

Shipping point and description of sale	Jan.	Feb.	Mar.	Apr.	May	June	July	Aug.	Sept.	Oct.	Nov.	Dec.
- Dollars per Unit -												
<u>Peaches--Continued</u>												
<u>California: - Continued</u>												
<u>Fresno-Central San Joaquin Valley</u>												
<u>Peach box-</u>												
Early Elberta, wrapped, 65s & 1gr...	-	-	-	-	-	-	1.50	-	-	-	-	-
Elberta, wrapped, 72s & 1gr.	-	-	-	-	-	-	1.90	-	-	-	-	-
Redhaven, wrapped, 70s & 1gr.	-	-	-	-	-	1.85	-	-	-	-	-	-
<u>Colorado:</u>												
<u>Pallasde</u>												
<u>3/4-bushel crate-Hydrocooling extra-</u>												
<u>U.S.No. 1 -</u>												
Early Elberta, 2-1/4-in. min.	-	-	-	-	-	-	-	4.00	-	-	-	-
Box, 2-layer, wrapped,	-	-	-	-	-	-	-	-	-	-	-	-
panpack, 72s & 1gr.	-	-	-	-	-	-	-	2.25	-	-	-	-
Elberta, 2-1/4-in. min.	-	-	-	-	-	-	-	-	3.50	-	-	-
Box, 2-layer, wrapped,	-	-	-	-	-	-	-	-	-	-	-	-
panpack, 72s & 1gr.	-	-	-	-	-	-	-	-	2.00	-	-	-
<u>Georgia:</u>												
<u>Macon & Georgia Points</u>												
<u>Precooling extra-</u>												
<u>U.S.Extra No. 1, 2-in. up.-</u>												
<u>3/4-bushel crates or cartons-</u>												
Coronet	-	-	-	-	-	4.00	-	-	-	-	-	-
Dixired	-	-	-	-	-	4.00	-	-	-	-	-	-
Keystone	-	-	-	-	-	4.00	3.04	-	-	-	-	-
Loring	-	-	-	-	-	-	2.42	-	-	-	-	-
Maygold	-	-	-	-	-	4.14	-	-	-	-	-	-
Red Globe	-	-	-	-	-	-	2.81	-	-	-	-	-
Southland	-	-	-	-	-	-	2.86	-	-	-	-	-
Sunhigh	-	-	-	-	-	-	2.62	-	-	-	-	-
<u>Michigan:</u>												
<u>West Michigan Points</u>												
<u>Including hydrocooling-</u>												
<u>U.S.No. 1, 2-in.up.-</u>												
<u>3/4-bushel crate-</u>												
Richhaven	-	-	-	-	-	-	-	4.52	-	-	-	-
Redhaven	-	-	-	-	-	-	-	3.90	-	-	-	-
Redskin	-	-	-	-	-	-	-	-	5.00	-	-	-
<u>New Jersey:</u>												
<u>South & Central N.J., Points</u>												
<u>Sales f.o.b. shipping point and</u>												
<u>delivered sales shipping point basis</u>												
<u>Hydrocooled, including</u>												
<u>U.S.No.1, 2-in.up.</u>												
<u>3/4-bushel crate-</u>												
Blakes	-	-	-	-	-	-	-	4.17	-	-	-	-
Redcrest	-	-	-	-	-	-	-	3.80	-	-	-	-
Redhaven	-	-	-	-	-	-	-	3.61	-	-	-	-
Summerqueen	-	-	-	-	-	-	-	3.81	-	-	-	-
Sunhigh	-	-	-	-	-	-	-	3.80	-	-	-	-
<u>North Carolina:</u>												
<u>Southern Pines - Sandhill District</u>												
<u>Precooling extra-</u>												
<u>U.S.Extra No. 1, 2-in.up.-</u>												
<u>3/4-bushel crate-</u>												
Coronet	-	-	-	-	-	4.00	-	-	-	-	-	-
Keystone	-	-	-	-	-	-	3.18	-	-	-	-	-
Redhaven	-	-	-	-	-	-	3.18	-	-	-	-	-
Southland	-	-	-	-	-	-	3.14	-	-	-	-	-
Washington	-	-	-	-	-	-	3.02	-	-	-	-	-
<u>South Carolina:</u>												
<u>Spartanburg(South Carolina Points)</u>												
<u>Precooling extra-</u>												
<u>U.S.Extra No. 1, 2-in.up.-</u>												
<u>3/4-bushel crate or carton-</u>												
Blakes	-	-	-	-	-	-	2.52	-	-	-	-	-
Cardinal	-	-	-	-	-	4.00	-	-	-	-	-	-
Coronet	-	-	-	-	-	4.00	-	-	-	-	-	-
Dixired	-	-	-	-	-	3.84	-	-	-	-	-	-
Keystone	-	-	-	-	-	-	3.01	-	-	-	-	-
Loring	-	-	-	-	-	-	2.44	-	-	-	-	-
Redhaven	-	-	-	-	-	4.00	-	-	-	-	-	-
Richhaven	-	-	-	-	-	-	2.36	-	-	-	-	-
Southland	-	-	-	-	-	-	2.37	-	-	-	-	-
Sunhigh	-	-	-	-	-	-	2.64	-	-	-	-	-

Table 3. --Continued

OTHER FRUITS--CONTINUED

Shipping point and description of sale	Jan.	Feb.	Mar.	Apr.	May	June	July	Aug.	Sept.	Oct.	Nov.	Dec.
- Dollars per Unit -												
<u>Peaches--Continued</u>												
<u>Washington:</u>												
<u>Yakima Valley</u>												
<u>Truck & L.C.L. sales-</u>												
<u>2-layer lug, tray pack, Wash.No. 1-</u>												
Early Elberta, 64s & lgr.	-	-	-	-	-	-	-	3.40	-	-	-	-
Pch.box, wrapped,												
72s & lgr.	-	-	-	-	-	-	-	2.18	-	-	-	-
Hales, 64s & lgr.	-	-	-	-	-	-	-	3.54	-	-	-	-
Pch.box, wrapped, 72s & lgr.	-	-	-	-	-	-	-	2.25	-	-	-	-
Yakima Hales, 70s & lgr.	-	-	-	-	-	-	-	3.91	-	-	-	-
Pch. box, wrapped,												
72s & lgr.	-	-	-	-	-	-	-	2.08	-	-	-	-
Redhaven, 72s & lgr.	-	-	-	-	-	-	2.92	3.02	-	-	-	-
Pch.box, wrapped,												
72s & lgr.	-	-	-	-	-	-	1.85	-	-	-	-	-
<u>West Virginia:</u>												
<u>Appalachian Dist.-(W.Va.-Va.-Md.-Pa.)</u>												
<u>Hydrocooling included-</u>												
<u>U.S.Extra No. 1, 2-in.up.-</u>												
<u>3/4-bushel crate or carton-</u>												
Blakes	-	-	-	-	-	-	-	3.89	-	-	-	-
Elberta	-	-	-	-	-	-	-	3.16	-	-	-	-
Redhaven	-	-	-	-	-	-	-	3.33	-	-	-	-
Sunhigh	-	-	-	-	-	-	-	3.70	-	-	-	-
Triogen	-	-	-	-	-	-	-	3.42	-	-	-	-
<u>Pears</u>												
<u>Washington:</u>												
<u>Yakima Valley</u>												
<u>Boxes, wrapped, film lined-</u>												
<u>U.S.No.1, various sizes-</u>												
Bartlett	-	-	-	-	-	-	-	5.40	5.48	5.74	-	-
Bosc	5.82	-	-	-	-	-	-	-	-	-	-	-
D'Anjou	5.00	5.35	-	-	-	-	-	-	-	5.58	5.99	6.09
<u>Plums</u>												
<u>California:</u>												
<u>Fresno-Central San Joaquin Valley</u>												
<u>U.S.No. 1, 4-basket, crate-</u>												
<u>3x4x5s, unless stated-</u>												
Beauty, 4x5s	-	-	-	-	5.71	-	-	-	-	-	-	-
Burrosa	-	-	-	-	5.08	-	-	-	-	-	-	-
Eldorado	-	-	-	-	-	4.38	3.54	-	-	-	-	-
Laroda	-	-	-	-	-	-	4.11	-	-	-	-	-
Late Santa Rosa, 4x5s	-	-	-	-	-	-	4.08	4.00	-	-	-	-
President, 4x5s	-	-	-	-	-	-	-	4.50	-	-	-	-
Santa Rosa, 4x5s	-	-	-	-	-	4.39	-	-	-	-	-	-
<u>Prunes, Fresh</u>												
<u>Idaho:</u>												
<u>Western Idaho & Malheur Co., Oregon</u>												
<u>U.S.No.1, 1-1/8-in. min.-</u>												
Early Italian type, 1/2-bu.bkt.,												
ring faced	-	-	-	-	-	-	-	2.89	-	-	-	-
30-lb. carton,												
loose	-	-	-	-	-	-	-	2.64	-	-	-	-
<u>Washington:</u>												
<u>Yakima Valley</u>												
<u>Wash. No. 1, 1-1/8-in. min.-</u>												
Early Italian type, 1/2-bu.bkt.,												
faced	-	-	-	-	-	-	-	3.04	-	-	-	-
30-lb. carton, loose ..	-	-	-	-	-	-	-	2.79	-	-	-	-
Italian type, 1/2-bu.bkt., faced ..	-	-	-	-	-	-	-	3.12	-	-	-	-
30-lb. carton, loose ..	-	-	-	-	-	-	-	2.81	-	-	-	-
<u>Milton-Freewater Section</u>												
<u>U.S.No. 1</u>												
Early Italian type, 1/2-bu.bkt.,												
faced	-	-	-	-	-	-	-	2.97	-	-	-	-
30-lb. carton, loose ..	-	-	-	-	-	-	-	2.72	-	-	-	-

Table 3. --Continued

MELONS

Shipping point and description of sale	Jan.	Feb.	Mar.	Apr.	May	June	July	Aug.	Sept.	Oct.	Nov.	Dec.
- Dollars per Unit -												
<u>Cantaloups</u>												
<u>Arizona:</u>												
Jumbo crate, 36s-												
Parker District	-	-	-	-	-	6.61	-	-	-	-	-	-
Yuma District	-	-	-	-	-	6.48	-	-	-	-	-	-
<u>California:</u>												
Jumbo crate, 36s-												
Blythe District-(Palo Verde Valley)	-	-	-	-	-	6.50	-	-	-	-	-	-
El Centro-(Imperial Valley)	-	-	-	-	10.46	6.44	-	-	-	-	-	-
West Side District	-	-	-	-	-	-	5.04	5.17	4.28	-	-	-
Wheeler Ridge Section	-	-	-	-	-	-	5.06	-	-	-	-	-
<u>Delaware:</u>												
Laurel Area - Auction sales-												
Loose, each	-	-	-	-	-	-	.16	.16	.10	-	-	-
<u>Michigan:</u>												
Benton Harbor												
Cash market growers' sales-												
Open bushel basket, U.S.No. 1												
Burpee Hybrids	-	-	-	-	-	-	-	3.29	3.01	-	-	-
<u>Texas:</u>												
Jumbo crate, 36s-												
Hersford-Pecos District	-	-	-	-	-	-	5.67	5.75	-	-	-	-
Lower Rio Grande Valley	-	-	-	-	-	5.62	-	-	-	-	-	-
<u>Mexico:</u>												
FOB Nogales, Arizona-(Port of Entry)												
Duty and crossing charges paid-												
Jumbo crate, 36s	-	-	-	-	13.71	-	-	-	-	-	-	-
FOB South Texas Pts.,-(Port of Entry)												
Duty and crossing charges paid-												
Jumbo crate, 36s	-	-	-	12.69	14.15	-	-	-	-	-	-	-
<u>Honeydews</u>												
<u>California:</u>												
Fresno-Central San Joaquin Valley												
Standard crate, 9-12s	-	-	-	-	-	-	3.11	3.17	3.12	-	-	-
<u>Miscellaneous Melons</u>												
<u>California:</u>												
Fresno-Central San Joaquin Valley												
Jumbo flat crate, all sizes-												
Casabe	-	-	-	-	-	-	3.75	3.75	-	-	-	-
Cranshaw	-	-	-	-	-	-	4.99	4.79	-	-	-	-
Persian	-	-	-	-	-	-	4.00	3.75	-	-	-	-
<u>Watermelons</u>												
<u>Alabama:</u>												
Southeast Alabama Points												
Sales f.o.b. shipping point and												
delivered sales shipping point basis												
Mostly Charleston Gray - Per Cwt.-												
24-lb.Av. & smaller	-	-	-	-	-	1.39	1.58	-	-	-	-	-
25-lb.Av. & larger	-	-	-	-	-	1.39	1.60	-	-	-	-	-
<u>Arizona:</u>												
Phoenix-Central Arizona Points												
Peacock, 16-20-lb.Av., Per Ton	-	-	-	-	-	68.12	53.75	-	-	-	-	-
<u>California:</u>												
Blythe-(Palo Verde Valley)												
Peacock, 16-20-lb.Av., Per Ton	-	-	-	-	-	70.56	-	-	-	-	-	-
El Centro-(Imperial Valley)												
Peacock, 16-20-lb.Av., Per Ton	-	-	-	-	-	68.00	-	-	-	-	-	-
<u>Kern District</u>												
Peacock, 16-20-lb.Av., Per Ton	-	-	-	-	-	52.38	-	-	-	-	-	-
<u>Delaware:</u>												
Laurel Area - Auction sales-												
Charleston Gray - Per Melon-												
20-25-lb.	-	-	-	-	-	-	.64	.53	.58	-	-	-
<u>Florida:</u>												
Florida Points												
Sales f.o.b. shipping point and												
delivered sales shipping point basis												
Mostly Charleston Gray - Per Cwt.-												
24-lb.Av. & smaller	-	-	-	4.80	3.23	1.65	1.62	-	-	-	-	-
25-lb.Av. & larger	-	-	-	3.73	1.72	1.62	-	-	-	-	-	-

Table 3. -- Continued

MELONS--CONTINUED

Shipping point and description of sale	Jan.	Feb.	Mar.	Apr.	May	June	July	Aug.	Sept.	Oct.	Nov.	Dec.
- Dollars per Unit -												
<u>Watermelons--Continued</u>												
<u>Georgia:</u>												
<u>Southern & Central Georgia Points</u>												
<u>Sales f.o.b. shipping point and delivered sales shipping point basis</u>												
<u>Mostly Charleston Gray - Per Cwt.-</u>												
24-lb. Av., & smaller	-	-	-	-	-	1.49	1.58	-	-	-	-	-
25-lb. Av., & larger	-	-	-	-	-	1.51	1.60	-	-	-	-	-
<u>Indiana:</u>												
<u>Southwest</u>												
<u>Charleston Gray - Per Cwt.-</u>												
20-35-lb., mostly 24-30-lb.	-	-	-	-	-	-	1.77	-	-	-	-	-
<u>Maryland:</u>												
<u>Salisbury Area - Auction sales-</u>												
<u>Charleston Gray - Per Melon-</u>												
20-25-lb.	-	-	-	-	-	-	.48	-	-	-	-	-
<u>South Carolina:</u>												
<u>Allendale & Nearby Points</u>												
<u>Sales f.o.b. shipping point and delivered sales shipping point basis</u>												
<u>Charleston Gray - Per Cwt.-</u>												
All sizes	-	-	-	-	-	1.31	-	-	-	-	-	-
<u>Texas:</u>												
<u>Texas Points</u>												
<u>Sales f.o.b. shipping point and delivered sales shipping point basis</u>												
<u>Mostly Charleston Gray - Per Cwt.-</u>												
16-24-lb. Av.,	-	-	-	-	-	2.11	1.52	1.14	-	-	-	-
24-lb. Av., & larger	-	-	-	-	-	2.06	1.49	1.16	-	-	-	-
<u>Mexico:</u>												
<u>FOB Nogales, Arizona-(Port of Entry)</u>												
<u>Duty and crossing charges paid-</u>												
<u>Cartons, 4-6s, approx. 10-16-lb. Av.-</u>												
<u>Per Pound-</u>												
Peacock	-	-	-	-	.0722	-	-	-	-	-	-	-
<u>FOB South Texas Pts.-(Port of Entry)</u>												
<u>Duty and crossing charges paid-</u>												
<u>Cartons, 4-6s, approx. 10-16-lb. Av.-</u>												
<u>Per Pound-</u>												
Peacock	-	-	-	.0866	-	-	-	-	-	-	-	-

VEGETABLES

Asparagus

<u>California:</u>												
<u>El Centro-(Imperial Valley)</u>												
<u>Green, Pyramid crate-</u>												
Loose, large	-	-	10.31	-	-	-	-	-	-	-	-	-
standard	-	-	9.51	-	-	-	-	-	-	-	-	-
<u>Delta District</u>												
<u>Green, Pyramid crate, loose, 9'cut-</u>												
Large,	-	-	8.05	6.25	-	-	-	-	-	-	-	-
<u>New Jersey:</u>												
<u>Swedesboro Area - Auction sales-</u>												
<u>Pyramid crate, 12-bchs.-</u>												
Large,	-	-	-	7.93	7.86	6.32	-	-	-	-	-	-

Beans, Lima

<u>Florida:</u>												
<u>Sales to local buyers-</u>												
Limas, bushel hamper	3.52	5.98	5.85	6.21	6.35 ^{2/}	-	-	-	-	-	-	-

Beans, Snap

<u>Florida:</u>												
<u>Dade County Points</u>												
<u>Foles, bushel hamper</u>												
4.02	5.18	5.34	3.80	3.21	-	-	-	-	-	5.09	5.20	
<u>Lake Okechobee Section</u>												
<u>Harvester, bushel hamper or crate..</u>												
-	-	-	3.58	3.84	-	-	-	-	-	7.60	5.16	
<u>Pompano Beach Section</u>												
<u>Sales to local buyers</u>												
<u>Harvester, bushel hamper or crate..</u>												
4.38	6.20	6.28	3.65	4.08	-	-	-	-	-	7.51	5.65 ^{3/}	

^{2/} Auction sales.^{3/} Round Green Type.

Table 3. --Continued

VEGETABLES--CONTINUED

Shipping point and description of sale	Jan.	Feb.	Mar.	Apr.	May	June	July	Aug.	Sept.	Oct.	Nov.	Dec.
- Dollars per Unit -												
<u>Beans, Snap--Continued</u>												
<u>New Jersey:</u>												
<u>Cedarville Area - Auction sales-</u>												
Harvester, bushel hamper	-	-	-	-	-	2.31	4.78	-	-	-	-	-
<u>Broccoli</u>												
<u>California:</u>												
<u>Salinas-Watsonville District</u>												
Crates, 14-bchs.	-	-	-	-	-	-	-	-	2.86	2.61	2.56	2.74
<u>Oceans-Santa Maria-Guadalupe Dist.</u>												
Crates, 14-bchs.	2.55	2.42	2.34	2.32	2.44	-	-	-	-	2.48	2.44	2.62
<u>Cabbage</u>												
<u>California:</u>												
<u>El Centro-(Imperial Valley)</u>												
Domestic Round type, carton 24s ...	2.13	1.53	-	-	-	-	-	-	-	-	-	-
<u>Orland District</u>												
Domestic Round type, carton 24-30s.	2.17	1.52	1.80	1.84	2.59	-	-	-	-	-	-	-
<u>Florida:</u>												
<u>Domestic Round type</u>												
<u>Hastings</u>												
1-3/4-bu. crate	2.10	1.86	1.87	1.58	-	-	-	-	-	-	-	3.12
<u>Lake Okechobee Section</u>												
1-3/4-bushel crate	2.08	1.89	1.88	1.66	2.28	-	-	-	-	-	-	3.16
<u>Sanford-Oviedo-Zellwood Section</u>												
1-3/4-bushel crate	2.15	1.84	1.94	1.68	2.16	-	-	-	-	-	-	-
<u>New Jersey:</u>												
<u>New Jersey Points</u>												
<u>Sales f.o.b. shipping point and</u>												
<u>delivered sales shipping point basis</u>												
<u>Domestic Round type</u>												
Various used crates,												
(approximate 50-lbs.)	-	-	-	-	-	1.47	1.48	-	-	1.84	-	-
<u>Danish type</u>												
Various used crates,												
(approximate 50-lbs.)	-	-	-	-	-	-	-	-	-	1.83	-	-
<u>New York:</u>												
<u>Western & Central New York Points</u>												
<u>Sales f.o.b. shipping point and</u>												
<u>delivered sales shipping point basis</u>												
<u>50-lb. sack</u>												
Danish type, medium	1.37	1.30	1.60	1.81	-	-	-	-	-	1.33	1.52	2.09
<u>Texas:</u>												
<u>Hereford-Hi Plains-Panhandle Dist.</u>												
<u>Domestic Round type</u>												
50-lb. sack	-	-	-	-	-	-	1.32	1.34	2.44	-	-	-
<u>Lower Rio Grande Valley</u>												
<u>Domestic Round type</u>												
1-3/4-bushel crate	2.54	2.03	2.02	1.88	-	-	-	-	-	-	-	2.62
50-lb. sack	2.16	1.64	1.63	1.50	-	-	-	-	-	-	-	2.19
<u>Carrots</u>												
<u>Arizona:</u>												
<u>Phoenix-Central Arizona Points</u>												
<u>Topped, washed</u>												
48-1-lb. film bag, mesh,												
master container	7.61	5.84	3.86	-	2.62	2.78	-	-	-	-	-	-
<u>California:</u>												
<u>Topped, washed</u>												
<u>Coachella Valley</u>												
48-1-lb. film bag, crate	-	-	-	-	-	-	-	-	-	-	-	3.50
<u>El Centro-(Imperial Valley)</u>												
48-1-lb. film bag, mesh,												
master container	-	-	-	2.60	2.62	-	-	-	-	-	-	-
<u>Salinas-King City District</u>												
48-1-lb. film bag, crate	-	-	-	-	-	3.18	3.14	3.02	2.98	3.10	3.53	3.50
<u>Michigan:</u>												
<u>Michigan Points</u>												
<u>Topped, washed</u>												
48-1-lb. film bag, mesh,												
master container	-	-	-	-	-	-	3.50	2.68	2.60	2.30	2.69	-

Table 3. --Continued

VEGETABLES--CONTINUED

Shipping point and description of sale	Jan.	Feb.	Mar.	Apr.	May	June	July	Aug.	Sept.	Oct.	Nov.	Dec.
- Dollars per Unit -												
<u>Carrots--Continued</u>												
<u>Texas:</u>												
<u>Topped, washed</u>												
<u>Hereford-Hi Plains-Panhandle Dist.</u>												
48-1-lb. film bag, mesh, master container	-	-	-	-	-	-	2.98	2.46	2.38	2.38	-	-
<u>Lower Rio Grande Valley</u>												
48-1-lb. film bag, mesh, master container	7.21	5.96	3.35	2.48	2.70	-	-	-	-	-	-	2.89
<u>Cauliflower</u>												
<u>California:</u>												
<u>Irvington-Alvarado-Centerville Dist.</u>												
Flats & 2-layer cartons, film wrapped, 12s	3.72	3.30	3.28	-	-	-	-	-	-	-	3.34	3.47
<u>Salinas-Watsonville District</u>												
Flats & 2-layer cartons, film wrapped, 12s	3.04	-	2.74	-	-	-	-	-	-	-	2.96	3.02
<u>Oceans-Santa Maria-Guadalupe Dist.</u>												
Flat crates, film wrapped, 12s	-	3.14	3.00	3.25	2.75	-	-	-	-	-	-	-
<u>New York:</u>												
<u>Long Island - Auction sales-</u>												
<u>Long Island crate, 12s-</u>												
Riverhead	-	-	-	-	-	-	-	-	2.68	2.85	3.46	2.64
<u>Celery</u>												
<u>California:</u>												
<u>Pascal type - 15-1/2-inch crate-</u>												
<u>Southern California District</u>												
2-3-dozen	3.34	3.14	2.34	3.20	3.20	4.16	-	-	-	-	2.58	2.75
<u>Salinas-Watsonville District</u>												
2-3-dozen	-	-	-	-	-	3.70	2.18	1.82	1.85	2.04	2.39	2.18
<u>Florida:</u>												
<u>Lake Okeechobee Section</u>												
<u>Pascal type, 16-inch crate</u>												
2-10-dozen	3.24	3.08	2.72	3.12	3.23	-	-	-	-	-	2.70	2.03
<u>Michigan:</u>												
<u>West Michigan Points</u>												
<u>Pascal type, 16-inch crate</u>												
2-3-dozen	-	-	-	-	-	-	3.00	2.08	2.29	2.38	-	-
<u>New York:</u>												
<u>Western & Central New York Points</u>												
<u>Sales f.o.b. shipping point and delivered sales shipping point basis</u>												
<u>Pascal type, 16-inch crate</u>												
2-6-dozen	-	-	-	-	-	-	-	-	2.12	2.14	3.17	-
<u>Corn, Sweet</u>												
<u>Florida:</u>												
<u>U.S. Fancy - Yellow, 5-dozen crate</u>												
Lake Okeechobee Section	3.24	4.24	3.86	2.82	2.58	-	-	-	-	2.93	2.96	3.24
<u>New Jersey:</u>												
<u>New Jersey Points</u>												
<u>Sales f.o.b. shipping point and delivered sales shipping point basis</u>												
<u>Hydrocooled, U.S. Fancy</u>												
Yellow, 5 1/2-dozen crate	-	-	-	-	-	-	2.52	-	-	-	-	-
<u>Texas:</u>												
<u>Lower Rio Grande Valley</u>												
Yellow, clipped, 5-5 1/2-dozen crate ...	-	-	-	-	2.71	-	-	-	-	-	-	-
Yellow, clipped, 5-5 1/2-dozen, mesh & film bags	-	-	-	-	2.54	-	-	-	-	-	-	-
<u>Cucumbers</u>												
<u>Florida:</u>												
<u>Bushel basket & 1-1/9-bushel crate</u>												
<u>Waxed</u>												
<u>Central & North Florida Points</u>	-	-	-	-	3.60	-	-	-	-	-	-	-
<u>Ft. Myers-Immokalee Section</u>	-	-	13.23	7.83	4.50	-	-	-	-	4.48	10.62	17.14
<u>Pompano Beach Section & Nrbby. Points</u>	-	9.38	13.75	9.66	-	-	-	-	-	-	12.67	-
<u>Imports packed locally</u>	9.84	10.16	12.75	10.21	-	-	-	-	-	-	-	17.86

Table 3. --Continued

VEGETABLES--CONTINUED

Shipping point and description of sale	Jan.	Feb.	Mar.	Apr.	May	June	July	Aug.	Sept.	Oct.	Nov.	Dec.
- Dollars per Unit -												
<u>Cucumbers--Continued</u>												
<u>Michigan:</u>												
<u>West Michigan Points</u>												
<u>U.S.No. 1</u>												
1-1/9-bushel crate	-	-	-	-	-	-	-	3.52	3.90	-	-	-
<u>Cash market growers' sales</u>												
<u>U.S.No.1 - Bushel basket</u>												
Slicers	-	-	-	-	-	-	5.41	3.12	3.44	-	-	-
<u>New Jersey:</u>												
<u>New Jersey Points</u>												
<u>Sales f.o.b. shipping point and</u>												
<u>delivered sales shipping point basis</u>												
<u>Washed, waxed</u>												
Bushel basket & 1-1/9-bushel crate.	-	-	-	-	-	-	4.46	-	-	-	-	-
<u>Mexico:</u>												
<u>FOB Nogales, Arizona--(Port of Entry)</u>												
<u>Duty and crossing charges paid-</u>												
1-1/9-bushel crate, waxed	8.67	8.60	10.65	9.44	-	-	-	-	-	-	-	15.12
<u>Eggplant</u>												
<u>Florida:</u>												
<u>Plant City - Auction sales</u>												
Bushel hamper	-	-	-	-	4.56	4.94	-	-	-	-	-	-
<u>Pompano Beach Section</u>												
<u>Sales to local buyers</u>												
<u>Wrapped</u>												
Bushel basket & 1-1/9-bushel crate.	4.36	4.47	6.22	5.91	3.04	-	-	-	-	-	5.20	4.85
<u>New Jersey:</u>												
<u>Vineland Area - Auction sales</u>												
<u>High Bush type</u>												
Bushel basket	-	-	-	-	-	-	5.22	3.02	-	-	-	-
<u>Escarole</u>												
<u>Florida:</u>												
<u>Lake Okeechobee Section</u>												
1-1/9-bushel crate	3.18	3.12	1.92	1.06	2.00	-	-	-	-	-	2.22	3.08
<u>Lettuce</u>												
<u>Arizona:</u>												
<u>Iceberg type, Standard carton, 24s-</u>												
Phoenix-Central Arizona Points	-	-	2.30	1.90	-	-	-	-	-	-	2.42	2.38
Willcox-Eastern Arizona Points	-	-	-	-	1.36	-	-	-	-	2.73	-	-
<u>California:</u>												
<u>Iceberg type, Standard carton, 24s-</u>												
El Centro--(Imperial Valley)	3.15	1.18	1.28	-	-	-	-	-	-	-	-	2.68
Salinas-Watsonville-King City Dist.	-	-	-	1.49	1.57	2.05	1.78	2.02	2.52	1.88	-	-
<u>New Jersey:</u>												
<u>South N.J. Points</u>												
<u>Sales f.o.b. shipping point and</u>												
<u>delivered sales shipping point basis</u>												
<u>Iceberg type, Eastern iceberg</u>												
<u>crates & cartons, 24s</u>												
Bushel basket	-	-	-	-	-	1.93	-	-	-	2.90	-	-
<u>New Mexico:</u>												
<u>Las Cruces-Hatch District</u>												
Iceberg type, standard carton, 24s.	-	-	-	-	1.63	-	-	-	-	2.38	1.85	-
<u>Texas:</u>												
<u>Hersford-Hi Plains-Panhandle Dist.</u>												
Iceberg type, standard carton, 24s.	-	-	-	-	-	-	-	-	3.40	2.12	-	-
<u>Lower Rio Grande Valley</u>												
Iceberg type, standard carton, 24s.	-	-	-	-	-	-	-	-	-	-	-	2.41
<u>Onions, Dry</u>												
<u>Arizona:</u>												
<u>Phoenix-Central Arizona Points</u>												
<u>U.S.No.1, 50-lb. sack</u>												
Yellow Granex, medium	-	-	-	-	1.84	1.24	-	-	-	-	-	-
Yellow Granex, large	-	-	-	-	1.82	1.24	-	-	-	-	-	-
<u>California:</u>												
<u>Kern Dist.-Bakersfield</u>												
<u>50-lb. sack</u>												
Yellow Grano, medium	-	-	-	-	2.07	1.45	-	-	-	-	-	-
Yellow Grano, large	-	-	-	-	1.85	1.67	-	-	-	-	-	-
Yellow Globe, medium	-	-	-	-	-	-	1.70	1.52	-	-	-	-
Yellow Globe, large	-	-	-	-	-	-	1.94	2.27	-	-	-	-

Table 3. --Continued

VEGETABLES--CONTINUED

Shipping point and description of sale	Jan.	Feb.	Mar.	Apr.	May	June	July	Aug.	Sept.	Oct.	Nov.	Dec.
- Dollars per Unit -												
Onions, Dry--Continued												
California: - Continued												
Stockton District												
U.S.No.1, 50-lb. sack												
Stockton Yellow Globe, medium	-	-	-	-	-	1.43	1.75	-	-	-	-	-
Stockton Yellow Globe, large	-	-	-	-	-	1.74	1.86	-	-	-	-	-
Colorado:												
North & East Colorado Points												
Sales f.o.b. shipping point and delivered sales shipping point basis												
U.S.No.1, 50-lb. sack												
Spanish type, large	-	-	-	-	-	-	-	1.74	1.73	1.76	1.70	
Idaho-Oregon:												
Western Idaho-Melheur County Oregon												
Sales f.o.b. shipping point and delivered sales shipping point basis												
U.S.No.1, 50-lb. sack												
Yellow Spanish, 2-3-inch.	2.08	2.65	-	-	-	-	-	1.09	1.21	1.22	1.10	
Yellow Spanish, 3-in.& 1gr.	2.96	3.90	6.21	-	-	-	-	1.58	1.50	1.48	1.37	
Michigan:												
Michigan Points												
U.S.No.1, 50-lb. sack												
Yellow Globe, 70% 2-in.& 1gr.	2.31	2.54	4.10	-	-	-	-	1.76	1.68	1.65	1.58	
New Jersey:												
New Jersey Points												
Sales f.o.b. shipping point and delivered sales shipping point basis												
50-lb. sack												
Yellow Globe, medium	-	-	-	-	-	2.18	-	-	-	-	-	-
New Mexico:												
Las Cruces-Hatch District												
50-lb. sack												
Yellow Grano, medium	-	-	-	-	-	1.55	-	-	-	-	-	-
Yellow Grano, large	-	-	-	-	-	1.92	-	-	-	-	-	-
Yellow Granex, medium	-	-	-	-	-	1.45	-	-	-	-	-	-
Yellow Granex, large	-	-	-	-	-	1.35	-	-	-	-	-	-
Whites, medium	-	-	-	-	-	2.94	-	-	-	-	-	-
Whites, large	-	-	-	-	-	4.00	-	-	-	-	-	-
New York:												
Western & Central New York Points												
Sales f.o.b. shipping point and delivered sales shipping point basis												
U.S.No.1, 50-lb. sack												
Yellow Globe, 60-70% 2-in.& 1gr. ..	2.52	2.78	4.15	4.56	-	-	-	-	1.88	1.83	1.80	
Texas:												
Hereford-Hi Plains-Panhandle Dist.												
50-lb. sack												
Yellow Grano, medium	-	-	-	-	-	2.07	-	-	-	-	-	-
Yellow Grano, large	-	-	-	-	-	2.26	-	-	-	-	-	-
Yellow Spanish, medium	-	-	-	-	-	-	1.58	1.51	-	-	-	-
Yellow Spanish, large	-	-	-	-	-	-	2.64	2.06	-	-	-	-
Whites, medium	-	-	-	-	-	3.33	2.60	2.41	-	-	-	-
Whites, large	-	-	-	-	-	3.92	3.23	2.54	-	-	-	-
Lower Rio Grande Valley												
U.S.No.1, 50-lb. sack												
Yellow Grano, medium	-	-	-	3.79	2.28	-	-	-	-	-	-	-
Yellow Grano, large	-	-	-	5.39	2.68	-	-	-	-	-	-	-
Yellow Granex, medium	-	-	-	4.44	2.29	-	-	-	-	-	-	-
Yellow Granex, large	-	-	-	5.36	2.26	-	-	-	-	-	-	-
Whites, medium	-	-	-	4.36	3.46	-	-	-	-	-	-	-
Whites, large	-	-	-	5.68	4.01	-	-	-	-	-	-	-
Winter Garden-Eagle Pass District												
Yellow Grano, medium	-	-	-	-	2.03	-	-	-	-	-	-	-
Yellow Grano, large	-	-	-	-	2.15	-	-	-	-	-	-	-
Yellow Granex, medium	-	-	-	-	1.99	-	-	-	-	-	-	-
Yellow Granex, large	-	-	-	-	1.88	-	-	-	-	-	-	-
Whites, medium	-	-	-	-	3.56	-	-	-	-	-	-	-
Whites, large	-	-	-	-	3.94	-	-	-	-	-	-	-
Mexico:												
FOB South Texas Pts.-(Port of Entry)												
Duty and crossing charges paid-												
50-lb. sack, U.S.No.1, quality												
Whites, medium	4.25	4.72	5.71	5.00	-	-	-	-	-	-	-	3.41
Whites, large	4.61	4.81	6.15	6.42	-	-	-	-	-	-	-	3.41

Table 3. --Continued

VEGETABLES--CONTINUED

Shipping point and description of sale	Jan.	Feb.	Mar.	Apr.	May	June	July	Aug.	Sept.	Oct.	Nov.	Dec.
- Dollars per Unit -												
<u>Peppers, Green</u>												
<u>California:</u>												
<u>Fresno District</u>												
<u>Calif. Wonder type</u>												
Approximate 30-lb. cartons, large ..	-	-	-	-	-	-	4.18	-	-	-	-	-
<u>Salinas-Gilroy, Hollister, San Jose, King City Districts</u>												
<u>Calif. Wonder type</u>												
Approximate 30-lb. carton	-	-	-	-	-	-	-	3.03	3.16	3.62	-	-
<u>Florida:</u>												
<u>Plant City - Auction sales</u>												
<u>Bushel hamper</u>												
Calif. Wonder type, large	-	-	-	-	5.25	3.56	-	-	-	-	-	-
<u>Pompano Beach Section</u>												
<u>Sales to local buyers</u>												
<u>Bushel basket & 1-1/9-bushel crate</u>												
Calif. Wonder type, large	3.98	3.96	6.28	9.24	-	-	-	-	-	-	4.94	4.24
<u>Central & North Florida Points</u>												
<u>Bushel basket & 1-1/9-bushel crate</u>												
Calif. Wonder type, large	-	-	-	-	5.35	-	-	-	-	-	-	-
<u>New Jersey:</u>												
<u>Auction sales</u>												
<u>Calif. Wonder type, bushel basket</u>												
Swedesboro Area	-	-	-	-	-	-	4.35	2.31	3.46	-	-	-
Vineland Area	-	-	-	-	-	-	5.48	2.72	-	-	-	-
<u>Texas:</u>												
<u>Hereford-Hi Plains-Panhandle Dist.</u>												
<u>Cartons & Bushel crates,</u>												
<u>Approximate 30-lbs.</u>												
Calif. Wonder type, large	-	-	-	-	-	-	-	-	3.08	-	-	-
<u>Lower Rio Grande Valley</u>												
<u>Cartons, approximate 30-lbs.</u>												
Calif. Wonder type, med-lge	-	-	-	-	-	-	-	-	-	-	3.43	3.55
<u>Mexico:</u>												
<u>FOB Nogales, Arizona-(Port of Entry)</u>												
<u>Duty and crossing charges paid-</u>												
<u>Bushel carton & 1-1/9-bushel crate</u>												
Calif. Wonder type, large	5.59	4.41	7.66	9.10	-	-	-	-	-	-	-	5.00
<u>Potatoes</u>												
<u>Alabama:</u>												
<u>Foley & Southern Alabama Points</u>												
<u>Sales f.o.b. shipping point and delivered sales shipping point basis</u>												
<u>100-lb. sack, washed, U.S. No. 1, Size A</u>												
Round Reds	-	-	-	-	-	3.25	-	-	-	-	-	-
Round Whites	-	-	-	-	-	3.74	-	-	-	-	-	-
<u>Arizona:</u>												
<u>Phoenix-Central Arizona Points</u>												
<u>100-lb. sack, washed, U.S. No. 1, Size A</u>												
Norgold	-	-	-	-	-	4.40	-	-	-	-	-	-
Round Reds	-	-	-	-	4.43	3.64	-	-	-	-	-	-
<u>California:</u>												
<u>Kern District-Bakersfield</u>												
<u>Sales f.o.b. shipping point and delivered sales shipping point basis</u>												
<u>100-lb. sack, washed, U.S. No. 1, Size A</u>												
Long Whites	-	-	-	3.57	3.81	3.28	3.78	-	-	-	-	-
Norgold	-	-	-	-	-	4.08	4.38	-	-	-	-	-
Round Reds	-	-	-	-	4.62	3.50	-	-	-	-	-	-
<u>Chino-Perris & Nearby Points</u>												
<u>100-lb. sack, washed, U.S. No. 1, Size A</u>												
Long Whites	-	-	-	-	-	-	3.14	2.16	-	-	-	-
<u>Delta District-Stockton</u>												
<u>Sales f.o.b. shipping point and delivered sales shipping point basis</u>												
<u>100-lb. sack, washed, U.S. No. 1, Size A</u>												
Long Whites	-	-	-	-	-	-	2.83	2.59	2.62	-	-	-

Table 3. --Continued

VEGETABLES--CONTINUED

Shipping point and description of sale	Jan.	Feb.	Mar.	Apr.	May	June	July	Aug.	Sept.	Oct.	Nov.	Dec.
- Dollars per Unit -												
Potatoes--Continued												
Colorado:												
Sales f.o.b. shipping point and delivered sales shipping point basis												
100-lb.sack,washed,U.S.No.1, Size A												
North & East Colorado Points												
Morgold, 2-in. or 4-oz.min.	-	-	-	-	-	-	-	2.53	2.55	2.55	-	-
Round Reds, 2-in. & up	-	-	-	-	-	-	-	2.48	2.44	2.38	-	-
San Luis Valley												
Red McClures, 2-1/8-in. & up	1.88	1.82	2.07	3.08	3.86	-	-	-	-	2.50 ^{h/}	2.28 ^{h/}	2.30 ^{h/}
Russet Burbank, 2-in. or 4-oz.min.	2.75	2.65	2.89	3.82	4.38	-	-	-	-	3.36	3.21	3.33
Delaware:												
Dover & Nearby Points												
Sales f.o.b. shipping point and delivered sales shipping point basis												
50-lb.sack,unwashed, U.S.No.1, Size A												
Round Whites	-	-	-	-	-	-	2.49	1.96	2.38	-	-	-
Florida:												
Dade County Section												
50-lb.sack,washed												
Round Reds, U.S.No.1, Size A	-	-	1.86	2.55	-	-	-	-	-	-	-	-
U.S.No.1, Size B	-	-	1.87	2.56	-	-	-	-	-	-	-	-
Hastings Section												
Sales f.o.b. shipping point and delivered sales shipping point basis												
To Processors - 100-lb.sack												
Sebagoes, washed & unwashed mostly washed, 1-7/8-in. min., 85% or better U.S.No. 1, quality	-	-	-	4.46	3.32	2.50	-	-	-	-	-	-
Table Stock - 50-lb.sack,washed												
Sebagoes, U.S.No.1, Size A	-	-	-	-	1.96	1.60	-	-	-	-	-	-
Idaho:												
Sales f.o.b. shipping point and delivered sales shipping point basis												
100-lb.sack,washed,U.S.No.1, Size A												
Upper Valley-Twin Falls-Burley Dist.												
Russet Burbank, 2-in. or 4-oz.min.	2.68	2.50	2.50	3.71	4.85	-	-	-	-	3.83	4.08	4.06
10-oz.min.	3.68	2.91	3.06	4.36	5.79	-	-	-	-	4.08	4.30	4.86
U.S.No.2, 6-oz.min 1.48	1.42	1.56	2.48	2.88	-	-	-	-	-	2.34	2.30	2.26
Western Idaho & Malheur Co., Oregon												
Morgold, 2-in. or 4-oz.min.	-	-	-	-	-	-	-	2.69	2.67	-	-	-
Russet Burbank, 2-in. or 4-oz.min.	-	-	-	-	-	-	-	-	3.31	-	-	-
Maine:												
Aroostook County Points												
Sales f.o.b. shipping point and delivered sales shipping point basis												
50-lb.sack,unwashed, U.S.No.1, 2-in.min.												
Various varieties mostly Katahdin type66	.55	.54	.76	1.07	-	-	-	-	-	.98	.93
Maryland-Virginia:												
Eastern Shore Points												
Sales f.o.b. shipping point and delivered sales shipping point basis												
100-lb.sack,washed & unwashed, U.S.No.1, Size A												
Round Whites, various varieties ...	-	-	-	-	-	3.32	2.52	1.55	-	-	-	-
Michigan:												
Delivered sales shipping point basis												
50-lb.sack,washed,U.S.No.1,Size A												
Way County District												
Onaways	-	-	-	-	-	-	1.50	.95	-	-	-	-
Montcalm-Kent Counties & Lower Michigan Points												
Round Whites95	.90	.82	-	-	-	-	-	1.04	1.02	1.18	1.17
New Jersey:												
South & Central New Jersey Points												
Sales f.o.b. shipping point and delivered sales shipping point basis												
50-lb.sack,unwashed U.S.No. 1, Size A												
Round Whites90	-	-	-	-	-	-	1.99 ^{5/}	2.25 ^{5/}	2.30 ^{5/}	1.18	-

4/2-inch & up.
5/100 & 50-lb.CWT.,washed.

Table 3. --Continued

VEGETABLES--CONTINUED

Shipping point and description of sale	Jan.	Feb.	Mar.	Apr.	May	June	July	Aug.	Sept.	Oct.	Nov.	Dec.
- Dollars per Unit -												
<u>Potatoes--Continued</u>												
<u>New York:</u>												
<u>Riverhead & Mrby. Long Island Points</u>												
<u>Delivered sales shipping point basis</u>												
<u>50-lb.sack, U.S.No.1, Size A</u>												
Round Whites, 2-in.min., washed & unwashed mostly washed95	.80	.75	-	-	-	-	1.16	1.90	1.30	1.34	1.23
Russet Burbank, 2-in.or 4-oz.min., washed ...	1.36	1.25	1.12	-	-	-	-	1.76	1.88	1.95	1.95	
<u>Western & Central New York Points</u>												
<u>Sales f.o.b. shipping point and</u>												
<u>delivered sales shipping point basis</u>												
<u>50-lb.sack, washed, U.S.No.1, Size A</u>												
Round White varieties mostly Katahdin	1.09	1.04	1.00	1.32	1.49	-	-	-	1.32	1.25	1.33	1.23
<u>North Carolina:</u>												
<u>Elizabeth City & Eastern</u>												
<u>North Carolina Points</u>												
<u>Sales f.o.b. shipping point and</u>												
<u>delivered sales shipping point basis</u>												
<u>100-lb.sack, washed & unwashed</u>												
<u>U.S.No.1, Size A</u>												
Round Reds	-	-	-	-	-	-	3.77	-	-	-	-	-
Round Whites	-	-	-	-	-	3.16	2.77	-	-	-	-	-
<u>Oregon-California:</u>												
<u>Klamath Basin Area</u>												
<u>Sales f.o.b. shipping point and</u>												
<u>delivered sales shipping point basis</u>												
<u>100-lb.sack, U.S.No.1, Size A</u>												
Russet Burbank, 2-in.or 4-oz.min., washed	2.71	2.66	2.62	-	-	-	-	-	3.62	3.88	3.87	
unwashed	2.31	2.20	2.00	2.11	-	-	-	-	-	3.43	3.28	
<u>Pennsylvania:</u>												
<u>East Pennsylvania Points</u>												
<u>Sales f.o.b. shipping point and</u>												
<u>delivered sales shipping point basis</u>												
<u>50-lb.sack, unwashed, U.S.No.1, Size A</u>												
Mostly Katahdin90	.78	.76	-	-	-	-	-	-	1.25	1.19	
<u>Texas:</u>												
<u>Hereford-Hi Plains-Panhandle Dist.</u>												
<u>100-lb.sack, washed, U.S.No.1, Size A</u>												
Norgold	-	-	-	-	-	-	4.47	2.53	-	-	-	-
Round Reds	-	-	-	-	-	-	3.32	2.51	-	-	-	-
<u>Washington:</u>												
<u>Yakima Valley - Columbia Basin Area</u>												
<u>100-lb.sack, washed, U.S.No.1, Size A</u>												
Norgold, 2-in.or 4-oz.min.,	-	-	-	-	-	-	3.52	2.24	2.50	2.96	-	-
Russet Burbank, 2-in.or 4-oz.min., ..	2.42	2.38	-	-	-	-	-	-	2.93	3.26	3.71	3.75
<u>Wisconsin:</u>												
<u>Central & North Central Wis., Points</u>												
<u>Sales f.o.b. shipping point and</u>												
<u>delivered sales shipping point basis</u>												
<u>100-lb.sack, washed, U.S.No.1, Size A</u>												
Early Gem	-	-	-	-	-	-	2.16	2.12	-	-	-	-
Round Reds	1.92	1.61	1.66	-	-	-	2.26	2.06	1.95	2.02	1.98	
Round Whites	1.80	1.61	1.49	1.49	-	-	1.89	1.83	1.88	2.05	2.05	
Russet Burbank	2.35	2.25	2.15	2.15	-	-	-	-	2.91	3.23	3.26	
<u>Spinach</u>												
<u>Texas:</u>												
<u>Winter Garden District</u>												
Savoy type, bushel basket	1.79	1.51	-	-	-	-	-	-	-	-	-	1.68
<u>Sweetpotatoes</u>												
<u>California: - Semi-weekly</u>												
<u>Atwater-Livingston District-Stockton</u>												
<u>40-lb.carton</u>												
Yellow Jersey	5.81	6.10	6.43	6.65	-	-	-	6.90	6.33	6.26	6.66	
Porto Rico type	5.45	5.58	5.85	5.85	-	-	-	5.30	5.02	4.65	4.64	

Table 3. --Continued

VEGETABLES--CONTINUED

Shipping point and description of sale	Jan.	Feb.	Mar.	Apr.	May	June	July	Aug.	Sept.	Oct.	Nov.	Dec.
- Dollars per Unit -												
<u>Sweetpotatoes--Continued</u>												
<u>Louisiana:</u>												
<u>Southwest Louisiana Points</u>												
<u>Porto Rico type, 50-lb. crate</u>												
U.S.No. 1, cured	4.79	5.03	5.70	6.00	-	-	-	-	-	-	5.00	4.92
U.S.No. 1, uncured	-	-	-	-	-	-	4.99	3.88	3.71	3.86	4.20	-
U.S.No. 2, cured	3.38	3.38	3.71	4.00	-	-	-	-	-	-	3.60	3.62
U.S.No. 2, uncured	-	-	-	-	-	-	3.30	2.66	2.52	2.58	3.01	-
<u>New Jersey: - Semi-weekly</u>												
<u>South & Central New Jersey Points</u>												
<u>Sales f.o.b. shipping point and delivered sales shipping point basis</u>												
<u>Bushel basket & 50-lb. carton</u>												
<u>Washed, waxed & cured</u>												
<u>Yellow Jersey type</u>	-	-	-	-	-	-	-	-	-	-	-	4.75
<u>North Carolina:</u>												
<u>Eastern North Carolina Points</u>												
<u>50-lb. crate, carton, and bushel basket, washed, waxed</u>												
<u>U.S.No. 1</u>												
<u>Porto Rico type, uncured</u>	4.46/	4.61/	5.18/	-	-	-	-	-	3.44	3.79	4.02	-
<u>cured</u>	4.46/	4.61/	5.18/	-	-	-	-	-	-	-	4.88	4.88
<u>Virginia: - Semi-weekly</u>												
<u>Eastern Shore Points</u>												
<u>Sales f.o.b. shipping point and delivered sales shipping point basis</u>												
<u>Bushel basket, crate & cartons</u>												
<u>Washed</u>												
<u>Newsgold, uncured</u>	3.59/	-	-	-	-	-	-	-	2.94	3.14	-	-
<u>cured</u>	3.59/	-	-	-	-	-	-	-	-	-	4.00	3.98
<u>Tomatoes</u>												
<u>California:</u>												
<u>Fresno-Central San Joaquin Valley</u>												
<u>Cutler-Orosi District</u>												
<u>Pinks, 2-layer flats,</u>												
<u>5x6 & 1gr.</u>	-	-	-	-	-	3.97	3.31	-	-	-	-	-
<u>Merced District</u>												
<u>85% or more U.S.No.1, quality</u>												
<u>Green, unwrapped, waxed, 40-lb. carton</u>												
<u>6x6 & 1gr.</u>	-	-	-	-	-	-	4.86	-	-	-	-	-
<u>6x7</u>	-	-	-	-	-	-	3.75	-	-	-	-	-
<u>El Centro-(Imperial Valley)</u>												
<u>85% or more U.S.No.1, quality</u>												
<u>Green, unwrapped, Loose, 40-lb. carton</u>												
<u>6x6 & 1gr.</u>	-	-	-	-	-	6.84	-	-	-	-	-	-
<u>6x7</u>	-	-	-	-	-	5.00	-	-	-	-	-	-
<u>Pinks, 2-layer flats,</u>												
<u>5x6 & 1gr.</u>	-	-	-	-	-	3.74	-	-	-	-	-	-
<u>Gonzales-King City Dist.-Salinas</u>												
<u>85% or more U.S.No.1, quality</u>												
<u>Approx. 40-lb. cartons & crates</u>												
<u>Green, unwrapped</u>												
<u>5x6 & 1gr.</u>	-	-	-	-	-	3.52	3.17	4.20	4.08	-	-	-
<u>6x6</u>	-	-	-	-	-	3.04	2.66	3.40	3.50	-	-	-
<u>6x7</u>	-	-	-	-	-	2.61	2.12	2.36	2.41	-	-	-
<u>Chula Vista-Oceanside District</u>												
<u>Pinks, 2-layer flats,</u>												
<u>5x6 & 1gr.</u>	-	-	-	-	-	-	-	-	3.60	5.66	5.70	-
<u>Oxnard District</u>												
<u>Pinks, 2-layer flats,</u>												
<u>5x6 & 1gr.</u>	-	-	-	-	-	-	2.92	3.24	3.12	4.92	-	-
<u>6x6</u>	-	-	-	-	-	-	2.82	-	-	-	-	-
<u>N. San Joaquin Valley-Stockton</u>												
<u>85% or more U.S.No.1, quality</u>												
<u>Green, unwrapped, Loose,</u>												
<u>40-lb. cartons & crates</u>												
<u>5x6 & 1gr.</u>	-	-	-	-	-	-	-	5.16	5.76	-	-	-
<u>6x6</u>	-	-	-	-	-	-	-	4.44	4.82	-	-	-
<u>6x7</u>	-	-	-	-	-	-	-	3.06	3.69	-	-	-
<u>Pinks, 2-layer flats</u>												
<u>5x6 & 1gr.</u>	-	-	-	-	-	-	-	3.19	3.16	-	-	-

6/Semi-weekly.

Table 3. --Continued

VEGETABLES--CONTINUED

Shipping point and description of sale	Jan.	Feb.	Mar.	Apr.	May	June	July	Aug.	Sept.	Oct.	Nov.	Dec.
- Dollars per Unit -												
Tomatoes--Continued												
Florida:												
Dade County Points												
85% or more U.S.No.1, quality												
Green, unwrapped, 40-lb. carton												
6x6 & 1gr.	8.30	8.87	7.95	-	-	-	-	-	-	-	-	7.84
6x7	5.43	6.31	5.91	-	-	-	-	-	-	-	-	4.91
Ft. Myers-Immokalee-Ft. Pierce Section												
85% or more U.S.No.1, quality												
Green, unwrapped, 40-lb. carton												
6x6 & 1gr.	-	-	-	-	6.54	-	-	-	-	-	8.81 ^{7/}	8.00 ^{7/}
6x7	-	-	-	-	4.75	-	-	-	-	-	7.46 ^{7/}	5.00 ^{7/}
Florida West Coast Section												
85% or more U.S.No.1, quality												
Green, unwrapped, 40-lb. carton												
6x6 & 1gr.	-	-	-	-	4.62	-	-	-	-	-	-	8.00
6x7	-	-	-	-	3.73	-	-	-	-	-	-	5.11
Pompano Beach Section & So. Fla. Pts.												
Vine ripe, Stake grown, wrapped												8/
20-lb., 2-layer carton, large	4.85	5.33	5.02	7.31	-	-	-	-	-	-	-	5.58 ^{8/}
medium-large	3.78	4.38	4.02	5.55	-	-	-	-	-	-	-	4.62 ^{8/}
New Jersey:												
Swadenboro Area - Auction sales												
Green & turning												
1/2-bushel, medium	-	-	-	-	-	-	3.02	1.59	1.64	-	-	-
large	-	-	-	-	-	-	5.08	2.38	2.97	-	-	-
New York:												
Western & Central New York Points												
Sales f.o.b. shipping point and delivered sales shipping point basis												
85% or better U.S.No.1, quality												
Green, waxed, 40-lb. carton												
6x6 & 1gr.	-	-	-	-	-	-	-	4.36	-	-	-	-
North Carolina:												
Western North Carolina Points												
20-lb. carton - Vine ripe												
6x6 & 1gr.	-	-	-	-	-	-	3.86	2.77	3.86	-	-	-
6x7	-	-	-	-	-	-	2.98	2.23	2.98	-	-	-
Ohio:												
Cleveland-Northern Ohio Districts												
Greenhouse grown, U.S.No.1												
8-lb. basket, medium	-	-	3.77	3.44	2.70	2.54	2.37	-	-	2.54	3.18	3.09
Pennsylvania:												
East Pennsylvania Points												
Sales f.o.b. shipping point and delivered sales shipping point basis												
75% or better U.S.No.1, quality												
Green, 40-lb. carton												
Southeast Area												
6x6 & 1gr.	-	-	-	-	-	-	3.75	-	-	-	-	-
Mexico:												
FOR Nogales, Arizona-(Port of Entry)												
Duty and crossing charges paid												
Vine ripe - 2-layer flats												
6x6 & 1gr.	4.56	4.18	4.02	5.55	3.43	3.20	-	-	-	-	-	4.52
7/70-85% U.S.No. 1, quality.												
8/80% or better U.S.No. 1, quality, 6x6 & 1gr.												
9/80% or better U.S.No. 1, quality, 6x7.												

Table 2.--Computed wholesale values 1/par carlot of domestic fruits and vegetables, New York City and Chicago, by months, 1967 and 1968
(Values are based on stock of good merchantable quality and condition)

Year, Market and commodity	Jan.	Feb.	Mar.	Apr.	May	June	July	Aug.	Sept.	Oct.	Nov.	Dec.	Year
- Dollars per Unit -													
1967 - New York City													
Fruits	3125	3477	3308	3250	3120	3891	4406	4192	4284	3647	3790	3983	3749
Vegetables	3011	2760	2805	2894	3038	3169	3172	2303	2358	2182	2846	2873	2786
Fruits and Vegetables	3054	3043	2993	3020	3069	3515	3742	3181	3144	2734	3179	3246	3173
1967 - Chicago													
Fruits	3069	3106	3108	3036	3112	3749	3656	3909	3745	3956	3879	4274	3538
Vegetables	2782	2521	2814	3132	3026	3311	3278	2263	2169	2349	2673	2624	2764
Fruits and Vegetables	2878	2725	2914	3104	3053	3549	3406	2808	2653	2776	2941	3029	3008
1968 - New York City													
Fruits	3731	3825	3889	4268	4613	4261	3855	3842	4237	5059	4318	4187	4150
Vegetables	3510	3149	3533	3924	4027	3186	2783	2383	2507	2608	3406	3692	3255
Fruits and Vegetables	3590	3386	3657	4033	4228	3679	3335	3038	3270	3497	3747	3887	3610
1968 - Chicago													
Fruits	3861	3851	4078	4540	4380	3975	3575	3421	4055	4853	4171	4165	3987
Vegetables	2983	2646	3051	3226	3428	3019	3072	2489	2473	2606	3091	3073	2937
Fruits and Vegetables	3217	2990	3333	3575	3715	3436	3278	2843	2991	3140	3360	3375	3275

1/The monthly carlot values in this table were computed from representative average prices including both private sales and auction transactions, and average quantities per carload of each leading fruit and vegetable. For each commodity this average monthly carlot value was weighted by domestic carload, boat and available truck unloads in obtaining a monthly average carlot value for all commodities. Estimates of farmers' market truck receipts were not available for Chicago. Estimated values for the year were obtained by weighting the monthly figures shown in the table by the monthly unloads.

Fruits include: Apples, blueberries, cantaloups, cherries, cranberries, grapefruit, grapes, honeydew melons, lemons, oranges, peaches, pears, plums and fresh prunes, strawberries and watermelons.

Vegetables include: Asparagus, beets, snap beans, broccoli, cabbage, carrots, cauliflower, celery, corn, cucumbers, eggplant, escarole, lettuce, mushrooms, onions, peas, peppers, potatoes, radishes, spinach, sweetpotatoes, and tomatoes.

The ratio of the volume used each month to total domestic unloads varied generally from 85 to 95 percent. Some of the minor commodities were not used in the computations. Their inclusion would make little difference in the average value per car.

Table 5.--Index of wholesale value of fresh fruits and vegetables at New York City and Chicago, by months, 1949-68 1/

Corresponding month 1957-59 = 100

Market, commodity and year	Jan.	Feb.	Mar.	Apr.	May	June	July	Aug.	Sept.	Oct.	Nov.	Dec.	Year
NEW YORK													
Fruits													
1949	90	95	96	97	85	84	78	70	63	84	82	81	81
1950	92	98	98	88	88	89	79	83	75	91	94	87	87
1951	87	98	88	77	71	76	78	90	85	94	90	88	84
1952	88	89	95	97	74	93	99	90	88	106	104	101	94
1953	103	106	105	101	84	89	92	92	87	99	109	97	95
1954	92	95	94	89	86	91	94	94	95	105	106	94	96
1955	93	96	89	101	94	110	101	91	78	91	98	93	95
1956	89	97	98	88	89	110	99	101	95	116	119	114	103
1957	111	108	94	96	93	111	120	107	95	102	98	96	105
1958	94	97	106	110	115	98	86	94	103	105	107	100	99
1959	95	95	100	94	92	91	95	99	103	93	95	104	96
1960	118	121	111	123	113	107	109	110	129	126	133	133	117
1961	144	136	140	128	98	99	117	124	134	118	119	148	122
1962	135	133	147	124	96	104	109	120	115	123	122	138	118
1963	155	154	162	144	102	108	134	124	111	124	132	142	128
1964	145	147	152	145	102	133	135	122	125	137	139	144	133
1965	149	148	142	122	98	120	113	120	120	122	125	130	123
1966	137	150	150	139	121	133	157	167	168	148	141	146	147
1967	135	151	139	127	104	135	173	178	157	140	147	167	146
1968	162	166	163	167	153	148	151	163	155	194	168	176	162
Vegetables													
1949	97	98	98	95	95	93	88	87	88	77	97	84	91
1950	80	77	74	86	84	87	78	66	67	75	86	87	79
1951	89	93	80	92	89	108	75	76	81	91	123	129	94
1952	114	103	106	124	106	113	127	109	103	100	118	118	112
1953	118	100	109	110	90	129	88	91	72	77	91	90	98
1954	87	84	80	85	93	85	92	86	82	82	163	93	87
1955	92	94	96	98	92	76	73	104	100	96	107	94	93
1956	109	94	100	95	111	137	118	92	84	98	108	102	105
1957	95	94	89	96	100	111	115	118	99	100	98	104	102
1958	109	109	118	110	106	97	92	85	80	90	97	91	98
1959	96	97	93	95	94	92	94	97	121	110	105	105	100
1960	128	124	123	131	131	117	113	114	112	114	123	113	122
1961	117	114	113	110	113	126	124	119	120	117	118	103	117
1962	121	127	137	119	133	129	125	122	118	108	115	122	124
1963	129	127	120	110	108	134	134	116	111	120	129	133	122
1964	131	135	131	117	127	162	158	149	131	142	157	136	140
1965	141	150	157	163	180	167	154	128	127	128	141	127	150
1966	159	178	164	158	151	179	196	196	174	164	175	166	172
1967	167	155	149	149	158	195	211	170	168	145	173	159	167
1968	195	177	188	201	209	196	185	176	178	173	207	204	195
Fruits and Vegetables													
1949	95	98	98	96	92	86	82	77	74	82	92	84	87
1950	86	86	83	87	85	86	78	75	69	85	91	88	83
1951	89	97	84	87	83	90	77	86	85	96	109	113	90
1952	104	98	103	113	95	101	111	97	94	105	113	111	104
1953	112	103	108	107	89	106	90	91	81	91	102	92	97
1954	89	89	85	86	91	90	94	94	91	98	138	93	92
1955	96	95	95	98	93	89	89	96	89	97	104	94	94
1956	102	96	99	92	104	122	107	97	89	110	115	106	104
1957	101	98	91	96	99	110	117	111	96	103	98	101	103
1958	104	105	114	110	106	97	89	91	92	95	102	94	99
1959	95	96	95	95	95	93	95	99	112	102	100	106	99
1960	125	124	119	129	125	112	111	112	120	118	127	123	120
1961	127	122	123	117	110	113	121	123	132	119	118	121	120
1962	128	130	142	122	121	116	117	123	116	115	119	130	122
1963	141	139	134	121	110	121	135	122	113	118	129	138	126
1964	138	142	140	126	120	145	144	133	129	139	149	139	137
1965	146	152	153	150	148	141	129	124	123	123	133	129	138
1966	152	168	160	153	143	155	175	172	157	160	159	162	159
1967	156	156	148	143	139	163	188	175	162	143	162	162	159
1968	183	174	181	191	192	170	167	167	168	183	191	195	181

See footnote at end of table.

Table 5. --Continued

Market, commodity and year	Jan.	Feb.	Mar.	Apr.	May	June	July	Aug.	Sept.	Oct.	Nov.	Dec.	Year
CHICAGO													
Fruits													
1949	90	91	95	93	86	63	63	63	65	76	74	79	73
1950	88	99	90	88	78	65	72	86	85	85	86	86	80
1951	84	96	90	76	67	58	63	85	88	86	91	92	77
1952	98	99	93	85	81	72	73	79	87	98	97	98	84
1953	99	101	107	102	83	64	73	81	93	96	109	99	87
1954	97	89	95	94	76	56	80	89	101	103	103	95	86
1955	111	96	100	97	101	104	96	104	93	95	99	99	99
1956	95	99	96	97	101	101	97	109	96	105	108	107	102
1957	112	104	105	100	97	104	114	102	93	96	93	96	102
1958	92	95	100	103	102	103	87	95	99	104	101	97	97
1959	96	101	96	98	101	93	99	103	108	100	105	107	101
1960	119	125	124	120	104	87	88	95	112	127	137	134	107
1961	134	135	133	128	92	81	94	98	108	113	119	127	106
1962	130	133	135	112	90	78	79	100	113	118	126	130	103
1963	146	149	149	138	92	78	104	101	112	120	133	136	112
1964	135	141	142	137	87	91	93	103	118	128	128	134	112
1965	138	135	128	115	81	84	85	106	126	119	120	136	108
1966	123	138	129	125	106	102	120	140	140	144	130	130	125
1967	127	129	121	106	90	103	118	152	137	144	149	163	123
1968	159	160	159	159	127	109	116	133	148	176	160	159	139
Vegetables													
1949	101	109	94	92	91	82	81	90	90	74	85	82	89
1950	87	82	74	86	84	81	87	84	69	72	79	87	81
1951	85	93	82	88	91	98	89	86	93	89	116	120	94
1952	117	108	106	107	110	118	127	119	103	107	111	106	111
1953	105	102	90	89	89	99	92	91	85	77	86	76	91
1954	83	71	83	90	90	96	100	82	76	90	90	81	87
1955	88	88	86	104	96	87	76	79	91	84	81	87	88
1956	97	101	103	104	103	126	135	105	84	93	98	96	105
1957	94	95	89	97	99	106	113	115	100	100	103	116	102
1958	112	112	120	112	108	91	94	82	84	89	93	87	98
1959	94	93	91	91	93	104	93	103	116	111	104	97	99
1960	135	119	119	127	115	115	129	129	123	117	114	114	122
1961	114	111	110	113	111	116	114	111	109	113	112	107	113
1962	123	135	143	133	134	125	121	114	118	118	114	119	126
1963	117	110	111	107	102	122	136	125	108	115	121	127	117
1964	133	126	121	116	118	138	131	134	129	144	147	147	132
1965	153	156	146	171	188	166	150	136	140	145	132	129	153
1966	161	168	147	160	147	154	197	197	168	173	170	151	165
1967	166	151	152	165	154	183	205	166	158	158	158	145	165
1968	178	159	165	170	174	167	192	182	180	175	182	170	175
Fruits and Vegetables													
1949	99	103	94	92	89	73	73	75	76	73	82	81	82
1950	89	89	79	87	82	73	78	81	76	80	80	84	81
1951	84	95	85	84	83	77	75	85	91	88	108	109	87
1952	111	104	102	100	101	94	97	96	96	104	107	103	100
1953	103	102	93	94	88	81	83	88	90	86	96	85	90
1954	88	81	88	92	87	76	91	88	89	103	96	86	88
1955	93	92	92	101	100	95	87	97	93	93	89	92	94
1956	97	102	101	103	105	116	115	108	92	100	103	99	105
1957	99	97	93	98	100	104	114	107	96	100	100	109	102
1958	105	106	114	109	103	96	90	90	92	96	96	90	98
1959	95	96	94	94	97	100	96	103	112	104	104	101	100
1960	130	121	121	125	109	98	106	110	117	118	120	121	115
1961	119	118	117	118	106	99	102	105	109	112	115	113	110
1962	125	134	141	127	120	101	98	106	116	116	120	125	117
1963	128	121	121	112	100	100	117	110	110	116	125	130	114
1964	135	133	127	121	108	114	110	116	122	136	141	145	124
1965	149	150	142	154	148	123	114	116	129	133	130	134	134
1966	149	158	142	150	133	127	154	162	152	160	157	145	148
1967	154	146	143	146	132	144	154	150	143	149	153	150	147
1968	172	160	164	169	161	140	148	152	161	169	175	167	160

1/THE INDEX OF WHOLESALE VALUES presented in this table were computed from prices representing private and auction sales weighted according to the unloads of each fruit and vegetable for that month. Index numbers for the year were obtained by weighting the monthly data by the unloads for the respective months.

The following fruits and vegetables are included: Apples, blueberries, cantaloups, cherries, cranberries, grapefruit, grapes, honeydew melons, lemons, oranges, peaches, pears, plums and prunes, strawberries, watermelons, asparagus, snap beans, beets, broccoli, cabbage, carrots, cauliflower, celery, yellow corn, cucumbers, eggplant, escarole, lettuce, mushrooms, onions, peas, peppers, potatoes, radishes, spinach, sweetpotatoes and tomatoes.

U. S. DEPARTMENT OF AGRICULTURE
Consumer and Marketing Service
Washington, D. C. 20250

Official Business



POSTAGE & FEES PAID
United States Department of Agriculture

END