



AgEcon SEARCH
RESEARCH IN AGRICULTURAL & APPLIED ECONOMICS

The World's Largest Open Access Agricultural & Applied Economics Digital Library

This document is discoverable and free to researchers across the globe due to the work of AgEcon Search.

Help ensure our sustainability.

Give to AgEcon Search

AgEcon Search
<http://ageconsearch.umn.edu>
aesearch@umn.edu

*Papers downloaded from **AgEcon Search** may be used for non-commercial purposes and personal study only. No other use, including posting to another Internet site, is permitted without permission from the copyright owner (not AgEcon Search), or as allowed under the provisions of Fair Use, U.S. Copyright Act, Title 17 U.S.C.*

SB 435 (1969)

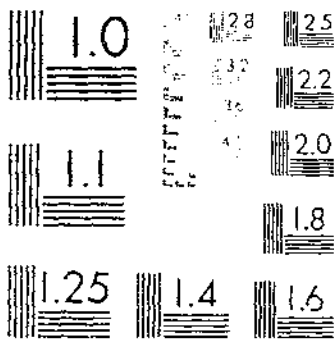
ANNUAL REPORT ON TOBACCO STATISTICS, 1968.

USDA STATISTICAL BULLETINS

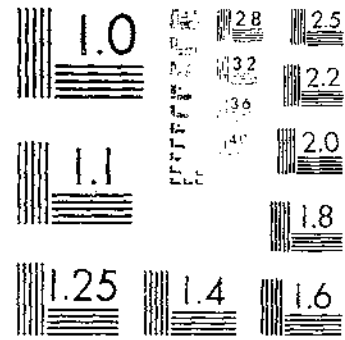
UPDATA

1 OF 1

START



MERCURY RESOLUTION TEST CHART
NATIONAL BUREAU OF STANDARDS-1963-A



MERCURY RESOLUTION TEST CHART
NATIONAL BUREAU OF STANDARDS-1963-A

N 630.6 103-73

#435
1968

Statistical Bulletin No. 435



ANNUAL REPORT ON TOBACCO STATISTICS 1968

LIBRARY

MAY 27 1969

Los Angeles Public Library



U. S. DEPARTMENT OF AGRICULTURE
CONSUMER AND MARKETING SERVICE
WASHINGTON, D.C. APRIL 1969

BRIEF CLASSIFICATION OF LEAF TOBACCO

(Covering classes and types)

CLASS 1, FLUE-CURED TYPES

- Type 11: Old Belt flue-cured; produced principally in the Piedmont sections of Virginia and North Carolina.
- Type 12: Eastern North Carolina flue-cured; produced principally in the coastal sections of North Carolina, north of the South River.
- Type 13: South Carolina flue-cured; produced principally in the coastal sections of South Carolina and the southeastern counties of North Carolina, south of the South River.
- Type 14: Georgia and Florida flue-cured; produced principally in southern Georgia and northern Florida.

CLASS 2, FIRE-CURED TYPES

- Type 21: Virginia fire-cured; produced in the Piedmont and mountain sections of Virginia.
- Type 22: Tennessee-Kentucky fire-cured, eastern district, Clarksville, Springfield, and Hopkinsville; produced principally in a section east of the Tennessee River, in southern Kentucky and northern Tennessee.
- Type 23: Kentucky-Tennessee fire-cured, western district, Mayfield, and Murray; produced principally in a section between the Tennessee, Ohio, and Mississippi rivers in western Kentucky and northwestern Tennessee.

CLASS 3, AIR-CURED TYPES

LIGHT AIR-CURED (CLASS 3a)

- Type 31: Burley; produced principally in Kentucky, Tennessee, Ohio, Indiana, West Virginia, Virginia, North Carolina, and Missouri.
- Type 32: Southern Maryland; produced principally in five counties of southern Maryland--Prince Georges, Anne Arundel, Calvert, Charles, and St. Marys.

DARK AIR-CURED (CLASS 3b)

- Type 35: One Sucker, produced in north-central Tennessee and south-central Kentucky.
- Type 36: Green River; produced in the northern part of Kentucky in the territory adjacent to Owensboro and Henderson.
- Type 37: Virginia sun-cured; produced principally in central Virginia, north of the James River.

CLASS 4, CIGAR-FILLER TYPES

- Type 41: Pennsylvania Seedleaf; produced principally in Lancaster County, Pa., and the adjoining counties.
- Type 42-44: Ohio filler; produced principally in the Miami Valley section of Ohio and extending into Indiana.
- Type 46: Puerto Rican sun-grown, including primed (Deshojado) and stalk-cut (Mata); produced on the Island of Puerto Rico.

CLASS 5, CIGAR-BINDER TYPES

- Type 51: Connecticut Broadleaf; produced in the Connecticut Valley sections of Connecticut and Massachusetts.
- Type 52: Connecticut Havana Seed; produced in the Connecticut and Housatonic Valley sections of Connecticut and Massachusetts.
- Type 53: New York and Pennsylvania Havana Seed; produced in the Big Flats and Ononcaga sections of New York, and extending into Pennsylvania.
- Type 54: Southern Wisconsin; produced in Wisconsin, south and east of the Wisconsin River.
- Type 55: Northern Wisconsin; produced in Wisconsin, north and west of the Wisconsin River, and in eastern Minnesota.

CLASS 6, CIGAR-WRAPPER TYPES

- Type 61: Connecticut Shade; produced in the Connecticut Valley sections of Connecticut and Massachusetts.
- Type 62: Georgia and Florida Shade; produced in southwestern Georgia and north-central Florida.

MISCELLANEOUS TYPES OF DOMESTIC TOBACCO

- Type 72: Louisiana Perique.
- Type 73: All domestic types of tobacco not otherwise classified.

FOREIGN TYPES

- Type 81: Cuba.
- Type 82: Indonesia.
- Type 83: Philippine Islands.
- Type 84: Brazil.
- Type 85: Colombia.
- Type 86: Dominican Republic.
- Type 87: Paraguay.
- Type 88: Mexico.
- Type 89: All foreign-grown cigar-leaf.
- Type 90: Foreign-grown cigarette and smoking tobacco (Turkish and other).

This is the thirty-third in a series of annual reports on tobacco statistics prepared by the Tobacco Division of the Consumer and Marketing Service and authorized and requested by Congress in 1935 under the Tobacco Stocks and Standards Act. Data covering longer periods may be found in the report for 1947.

For sale by the Superintendent of Documents, U. S. Government Printing Office
Washington, D. C. 20402

CONTENTS

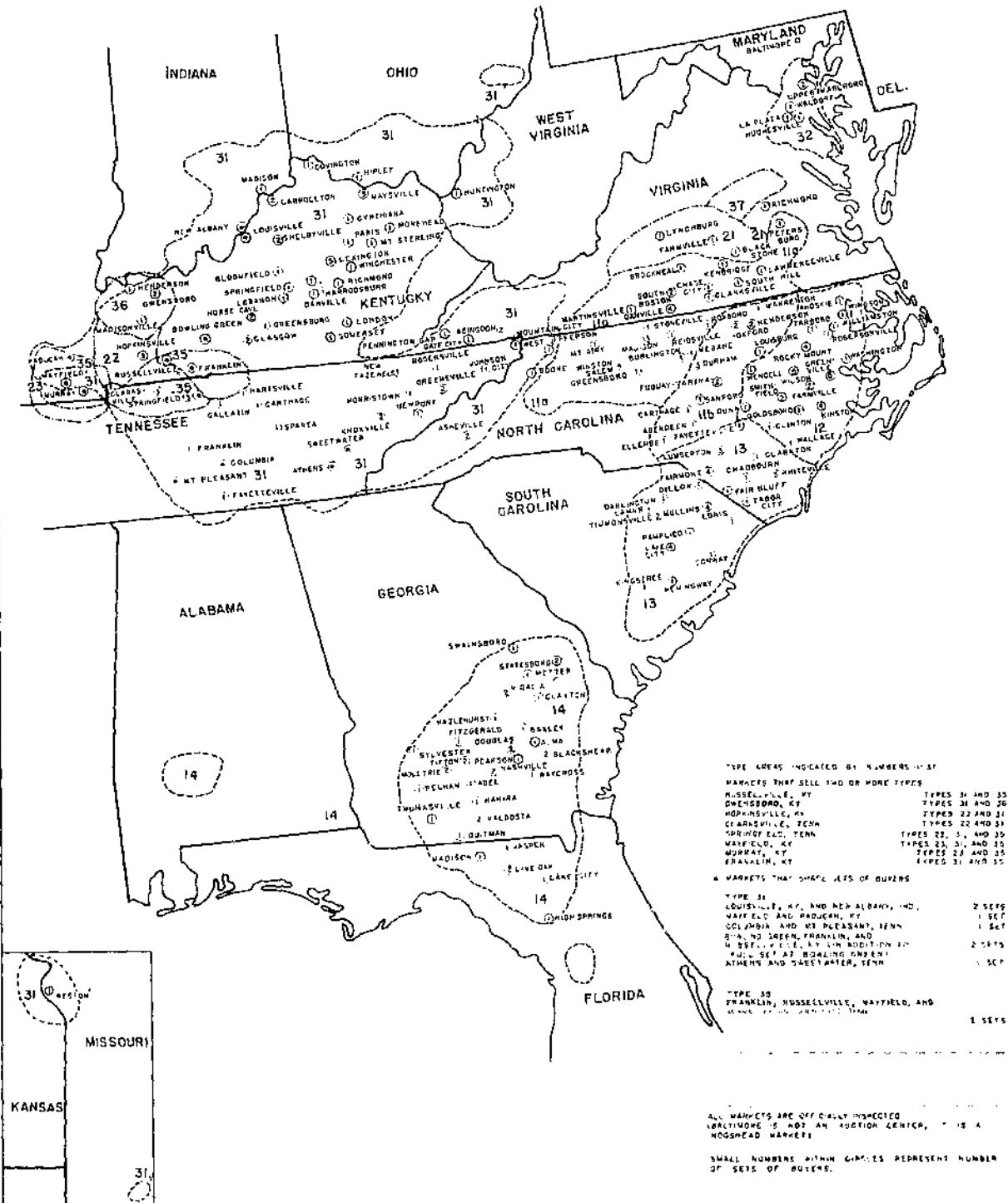
	Page
Maps.....	5
Resume for 1968.....	8
LEAF PRODUCTION, DISAPPEARANCE, PRICE, AND CROP VALUE:	
Table 1.--Acreage, yield per acre, production, stocks, supply, total disappearance, exports, domestic use, average price per pound to growers, and crop value of different types of tobacco in the United States and Puerto Rico, by crop years.....	10
Table 2.--Cash receipts from tobacco compared with total cash receipts from all farm commodities, selected States and United States, by calendar years.....	17
Table 3.--Acreage, yield per acre, production, price per pound, and crop value of tobacco in the United States, by States.....	18
AUCTION MARKETS AND RELATED DATA:	
Table 4.--Sales and average prices of tobacco sold at auction in the United States; loan receipts, number of markets, number of warehouses, and sets of buyers.....	20
Table 5.--Marketing quota referendums, by kinds of tobacco.....	21
Table 6.--Number of allotments and acreages allotted, by States and kinds of tobacco for which marketing quotas were in effect.....	22
Table 7.--Applicable loan level per pound of tobacco, by class or type of tobacco.....	24
Table 8.--Roghead dimensions and weights, by class or type of tobacco.....	24
STOCKS OF LEAF TOBACCO:	
Table 9.--Factors for adjusting stocks reported by dealers and manufacturers to a farm-sales-weight equivalent, by types of tobacco.....	25
Table 10.--Stocks of leaf tobacco, by types, on a farm-sales-weight equivalent basis, owned by dealers and manufacturers in the United States and Puerto Rico, by quarters.....	26
Table 11.--Stocks of foreign-grown cigar leaf, and cigarette and smoking tobacco, by types, on a farm-sales-weight equivalent basis, owned by dealers and manufacturers in the United States, by quarters.....	31
Table 12.--Total stocks of leaf tobacco, as reported and on a farm-sales-weight equivalent basis, for domestic types and unstemmed basis for foreign-grown tobacco, owned by dealers and manufacturers in the United States and Puerto Rico, by quarters.....	31
MANUFACTURED PRODUCTS, TAX RATES, CONSUMPTION, AND REVENUE DERIVED:	
Table 13.--Estimated utilization of flue-cured, burley, and Maryland tobaccos in cigarettes and other products.....	32
Table 14.--Estimated leaf used by domestic manufacturers in cigarettes, by types of tobacco.....	32
Table 15.--Estimated leaf used per 1,000 cigarettes by domestic manufacturers, by types of tobacco.....	32
Table 16.--Cigars, cigarettes, chewing tobacco, smoking tobacco, and snuff manufactured and removed tax-paid and tax-free, in the United States, by calendar years.....	33
Table 17.--Large cigars removed tax-paid for domestic consumption, by calendar years.....	34
Table 18.--Rates of Federal tax on tobacco products in the United States.....	35
Table 19.--Receipts from Federal taxes on tobacco products in the United States, by type of product, fiscal years.....	35
Table 20.--Estimated total expenditures for tobacco products, by type of product, calendar years.....	35
Table 21.--Wholesale cigarette price revisions, 1940 to date.....	36
Table 22.--Tobacco products: Consumption per capita, 18 years and over, in the United States, by calendar years.....	36

STATE TAX RATES AND RECEIPTS FROM STATE TAXES	Page
Table 23.--Receipts from State taxes on tobacco products in the United States.....	37
Table 24.--State tax rates on cigarettes and other tobacco products in the United States.....	38
EXPORTS AND IMPORTS:	
Table 25.--United States exports of tobacco to principal importing countries, by types, crop years.....	40
Table 26.--Exports of unmanufactured tobacco from the United States, quantity and value, by types, calendar years.....	43
Table 27.--Exports of unmanufactured tobacco from the United States, to principal importing countries, calendar years.....	43
Table 28.--United States exports of cigarettes, by countries, calendar years.....	44
Table 29.--United States exports of tobacco products, calendar years.....	45
Table 30.--United States imports of tobacco products, calendar years.....	45
Table 31.--United States imports of unmanufactured tobacco for consumption, by countries, calendar years...	46
Table 32.--United States imports of unmanufactured tobacco for consumption, quantity and value, fiscal years.....	47
Table 33.--Tariff rates on different kinds of tobacco and tobacco products imported into the United States, under the Tariff Act of 1930 and subsequent Trade Agreements.....	48
Table 34.--Receipts from import duties on tobacco and tobacco products in the United States, fiscal years..	49
Table 35.--Import duties on tobacco in selected foreign countries importing from the United States.....	49
Table 36.--Import duties on unmanufactured tobacco, members of the European Common Market.....	52
FOREIGN:	
Table 37.--Acreage and production of tobacco in specified countries.....	53
Table 38.--Production of flue-cured tobacco in specified countries.....	54
Table 39.--Production of burley tobacco in specified countries.....	54
INDEX.....	55

TOBACCO

AUCTION MARKETS AND PRODUCING AREAS

(CIGAR LEAF PRODUCING AREAS NOT SHOWN)



TYPE AREAS INDICATED BY NUMBERS 1-37
 MARKETS THAT SELL TWO OR MORE TYPES

MUSSELLVILLE, KY	TYPES 34 AND 35
DUNSMORE, KY	TYPES 31 AND 36
HOPKINSVILLE, KY	TYPES 22 AND 31
CERAMUSVILLE, TENN	TYPES 22 AND 31
SPRINGFIELD, TENN	TYPES 22, 31, AND 35
WAYFELD, KY	TYPES 23, 31, AND 35
MURKAT, KY	TYPES 24 AND 35
FRANKLIN, KY	TYPES 31 AND 35

* MARKETS THAT SELL LOTS OF BUYERS

TYPE 31	LOUISVILLE, KY, AND NEW ALBANY, IND.	2 SETS
	WAYFELD AND PADUCAH, KY	1 SET
	COLUMBIA AND MT PLEASANT, TENN	1 SET
	AND GREEN FRANKLIN, AND	2 SETS
	ALL SETS OF BOALING GREEN, ATHENS AND SWEETWATER, TENN	1 SET

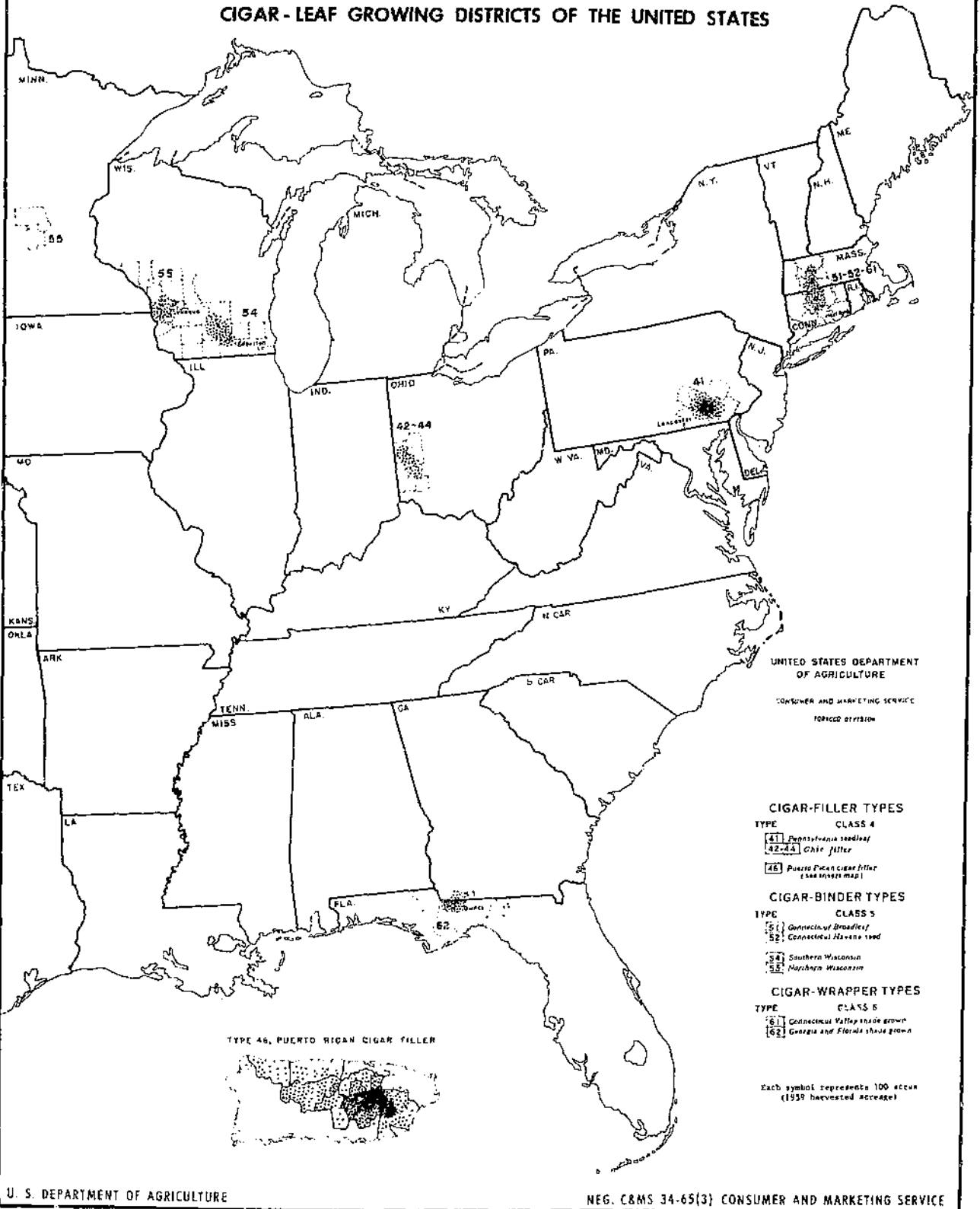
TYPE 35
 FRANKLIN, MUSSELLVILLE, WAYFELD, AND
 WAYFELD, KY, AND PADUCAH, KY

ALL MARKETS ARE OFFICALLY INSPECTED
 (ARTICLE 5 IS NOT AN AUCTION CENTER, * IS A
 HOGHEAD MARKET)

SMALL NUMBERS WITHIN CIRCLES REPRESENT NUMBER
 OF SETS OF BUYERS.

TOBACCO

CIGAR-LEAF GROWING DISTRICTS OF THE UNITED STATES



UNITED STATES DEPARTMENT OF AGRICULTURE
CONSUMER AND MARKETING SERVICE
TOBACCO DIVISION

CIGAR-FILLER TYPES

- | | |
|-------|---|
| TYPE | CLASS 4 |
| 41 | Pennsylvania seedleaf |
| 42-44 | Ohio filler |
| 46 | Puerto Rican cigar filler (see inset map) |

CIGAR-BINDER TYPES

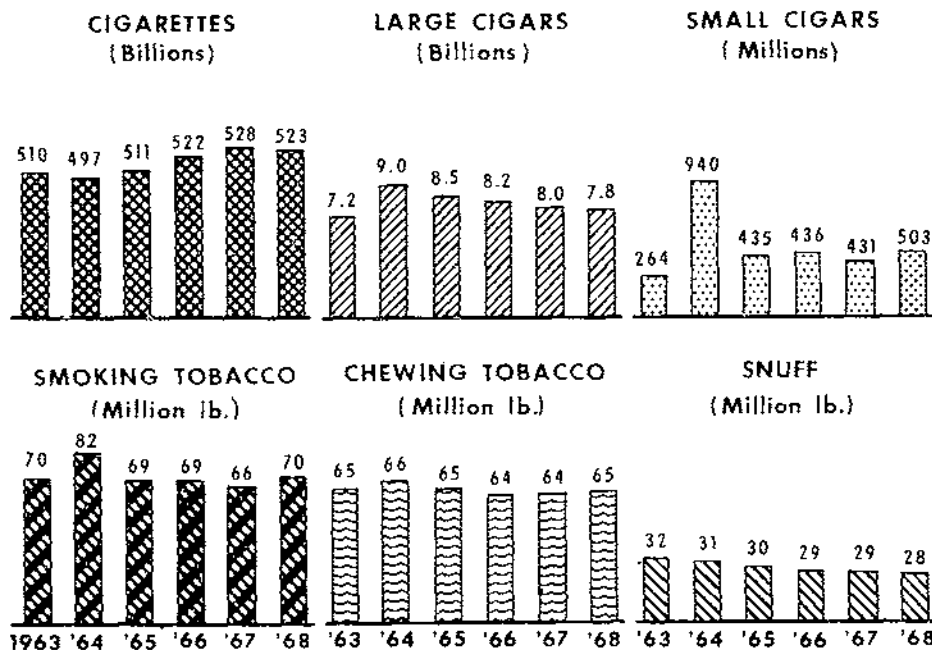
- | | |
|------|-------------------------|
| TYPE | CLASS 5 |
| 51 | Connecticut Broadleaf |
| 52 | Connecticut Havana seed |
| 54 | Southern Wisconsin |
| 55 | Northern Wisconsin |

CIGAR-WRAPPER TYPES

- | | |
|------|---------------------------------|
| TYPE | CLASS 5 |
| 61 | Connecticut Valley shade grown |
| 62 | Georgia and Florida shade grown |

Each symbol represents 100 acres (1959 harvested acreage)

DOMESTIC CONSUMPTION OF TOBACCO

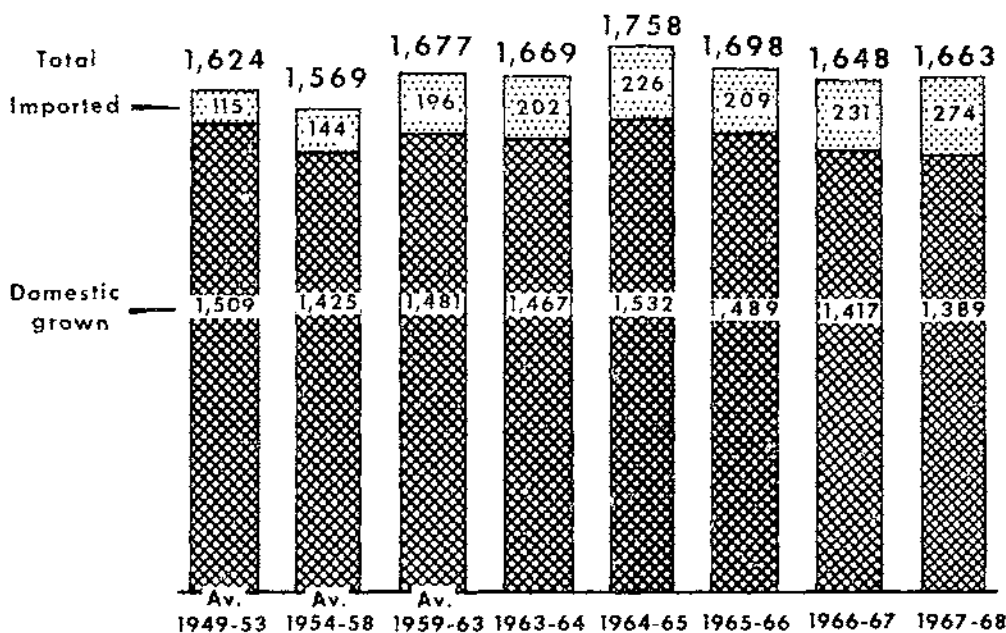


U.S. DEPARTMENT OF AGRICULTURE

NEG. C & MS 244-69 (4) CONSUMER AND MARKETING SERVICE

LEAF TOBACCO DISAPPEARANCE IN U. S.

MILLION LB.*



U.S. DEPARTMENT OF AGRICULTURE

* FARM-SALES WEIGHT.

NEG. C & MS 245-69 (4) CONSUMER AND MARKETING SERVICE

BRIEF RESUME OF U.S. TOBACCO FOR 1968

PRODUCTION

The United States and Puerto Rico tobacco harvest in 1968 totaled 1,733 million pounds compared with 1,965 million in 1967. A much smaller crop of flue-cured was responsible for the decline. The national average yield per acre (including Puerto Rico) was 1,946 pounds per acre compared with 2,032 pounds in 1967.

1967-68 AUCTION MARKETING SEASON

Table A shows sales and average prices for the 1967 and 1968 crops for those types sold at auction. The Maryland markets opened on April 8, 1969 for sale of the 1968 crop.

Record prices were paid for burley and fire and dark air-cured types. Loan receipts for flue-cured were considerably below the level of last year and were extremely low in dark types.

The flue-cured crop was 253,600 million pounds below 1967 as a result of a lower average yield per acre and smaller acreage.

The lower acreage in flue-cured was mostly because of reduced effective quotas resulting from net over-marketing of the 1967 crop under the acreage-poundage program.

The general quality of the 1968 burley crop was considered very good and growers received a record price of \$73.66 per hundred--\$1.88 above last season. The crop was some 16 million pounds larger than in 1967 due to a higher average yield per acre.

The 1968 crops of fire and dark air-cured sold for record season prices in all types. The increases ranged from \$4.74 per hundred pounds for type 36 to a high of \$8.02 per hundred for type 37.

Loan receipts declined sharply from the previous year for all the dark types and were less than one percent in type 23.

The total production of dark-fired and air-cured was slightly larger than the low level of 1967 with only type 21 selling less volume than last year.

TABLE A.--Net sales and receipts under Government loan program, 1968 and 1967 crops

Type	1968 crop ^{1/}					1967 crop				
	Net sales	Value	Average price	Deliveries (green weight)	Percentage of net auction sales	Net sales	Value	Average price	Deliveries (green weight)	Percentage of net auction sales
	1,000 lb.	1,000 dol.	Cents	1,000 lb.	Percent	1,000 lb.	1,000 dol.	Cents	1,000 lb.	Percent
11 (a)	192,062	124,452	64.80	36,030	18.8	248,087	153,396	61.83	84,497	34.1
11 (b)	164,501	68,416	64.18	26,949	25.3	145,328	91,276	62.81	49,672	34.2
12	287,010	194,193	67.66	24,333	8.5	346,320	224,637	64.86	79,780	23.0
13	235,974	171,151	66.86	29,466	11.5	300,851	195,583	65.01	57,173	19.0
14	153,996	105,287	68.37	12,001	7.8	206,897	135,656	65.57	10,956	5.3
11-14	995,645	663,499	66.64	128,779	12.9	1,247,482	800,547	64.17	282,077	22.6
21	6,044	2,836	46.92	154	2.5	6,989	2,859	40.90	658	9.4
22	25,426	13,093	51.49	402	1.9	23,190	10,863	46.85	760	3.9
23	6,907	3,451	49.97	3	.04	6,057	2,645	43.68	63	1.0
21-23	38,377	19,380	50.50	559	1.7	35,236	16,367	45.17	1,481	4.5
31	561,000	413,289	73.67	56,192	10.0	537,073	385,537	71.78	64,158	11.9
32 ^{2/}				^{3/}		34,229	21,282	62.18	^{3/}	
35	12,552	6,208	49.46	334	2.7	10,339	4,400	42.31	924	9.2
36	5,596	2,387	42.66	317	5.7	5,040	1,911	37.92	475	9.4
37 ^{4/}	1,198	637	53.20	1	1	1,291	583	45.18	25	2.0
35-37	19,345	9,232	47.72	652	3.4	16,730	6,894	41.21	1,424	8.7

^{1/} 1968 crop figures subject to revision.

^{2/} 1968 crop figures not available at time of publication.

^{3/} Price support not in effect because growers disapproved quotas.

^{4/} Includes type 37 sold on type 21 markets.

Source: Compiled from records of the Tobacco Division, C&MS.

CARRYOVER STOCKS OF U.S. TOBACCO

Tobacco dealers and manufacturers report inventories of leaf tobacco quarterly, with the stocks segregated according to U.S. types. Stocks on hand as of the quarterly reporting date used as the beginning of the marketing year are referred to as carryover stocks. The carryover date is July 1 for flue-cured and cigar wrapper and October 1 for all other types.

Carryover stocks of U.S. and Puerto Rican tobacco totaled 4,109 million pounds, a drop of 71 million pounds from last year's level. Stocks of most of the domestic types were lower except for flue-cured.

Loan holdings, as shown in table B, totaled 1,151 million pounds and were 109 million pounds above the level of 1967. Manufacturers' holdings continued to decline.

TABLE B.--Total carryover stocks, types 11-62 1954-68

Marketing year	Carryover stocks (farm-sales-weight)				Total
	Domestic manufacturers	Under loan	Other		
	Million pounds				
1954.....	2,755.8	617.4	343.7	3,716.9	
1955.....	2,744.6	867.3	424.1	4,036.0	
1956.....	2,839.2	947.9	382.2	4,169.3	
1957.....	2,959.9	1,026.9	422.3	4,409.1	
1958.....	2,735.4	999.7	420.3	4,155.4	
1959.....	2,638.5	955.8	367.5	3,961.8	
1960.....	2,709.6	725.0	398.0	3,832.6	
1961.....	2,690.6	665.5	390.5	3,746.6	
1962.....	2,882.8	488.1	384.3	3,755.2	
1963.....	2,910.3	678.4	484.4	4,073.1	
1964.....	2,868.1	1,051.5	453.6	4,373.2	
1965.....	2,791.6	1,315.9	450.4	4,557.9	
1966.....	2,789.9	1,177.2	436.9	4,404.0	
1967.....	2,681.9	1,043.5	454.4	4,179.8	
1968.....	2,563.3	1,152.6	393.1	4,109.0	

DOMESTIC LEAF USAGE

Indicated consumption of domestic-grown tobacco, at 1,389 million pounds, was down 29 million pounds. The usage of imported tobacco rose to a record high of 274 million pounds (farm-sales-weight), 43 million pounds above the previous year.

The amount of leaf used in cigarette manufacture is estimated in tables 13, 14, and 15 on page 32. The use of domestic types in cigarettes remained about the same as during the previous year, but the use of imported tobaccos increased.

Usage of imported cigarette leaf was up 29 million pounds and imported cigar leaf increased by 14 million.

TOBACCO PRODUCTS

Taxable removals of cigarettes for calendar year 1968 totaled 523 billion, a decline of 5 billion from the record level of 1967. An increase in tax free removals, however, more than offset this decrease, and total cigarette production was slightly higher. Filter tips accounted for 75 percent of total sales. The 100 millimeter brands (included in filter-tips) accounted for 13 percent of all sales. The wholesale price was increased for regular length cigarettes in November 1968 (page 36). Per capita consumption of cigarettes in 1968 was 4,168 per person 18 years and older--a 2 percent decrease from 1967 and 4 percent below the record level of 4,345 in 1963.

Removals of large cigars for the year were 7.8 billion, a decline of 2.5 percent from 1967.

Consumption of domestically manufactured smoking tobacco for 1968 totaled 64 million pounds compared to 63 million in 1967. In addition, 5.5 million pounds of manufactured tobacco was imported, compared with 3.7 million in 1967. Overall sales of chewing tobacco were up 1.5 percent to 65 million pounds, but snuff fell to a new low of 28 million pounds.

TABLE C.--Percentage of large cigars removed tax-paid, by price classes, and total removals, 1963-68

Class	Calendar year					
	1963	1964	1965	1966	1967	1968
	Percent					
A(2-1/2c and less)	.3	1.8	1.6	1.5	1.5	1.6
B(2.6c to 4.0c)	5.3	6.3	7.0	7.0	7.5	4.9
C(4.1c to 6.0c)	39.8	42.2	41.7	42.3	41.5	43.0
D(6.1c to 8.0c)	12.7	11.5	10.2	9.7	10.2	13.1
E(8.1c to 15.0c)	35.9	35.9	33.9	33.6	32.8	30.6
F(15.1c to 20.0c)	3.5	3.2	3.4	3.6	4.0	4.3
G(Over 20c)	2.5	2.1	2.2	2.3	2.5	2.5
	Millions					
Total removals...	7,169	8,959	8,514	8,175	7,972	7,827

Consumers spent an estimated 9,940 million dollars for tobacco products in 1968. This was 492 million more than in 1967. Expenditures were divided as follows: Cigarettes, 8,910 million (up 478); Cigars, 710 million (up 1); and other tobacco products, 320 million (up 13).

LEAF TOBACCO EXPORTS

Exports totaled 665 million pounds (farm-sales-weight) during 1968--24 million pounds above 1967. Flue-cured exports at 556 million pounds increased 5 percent. Burley shipments at 53.6 million were down slightly as was Maryland at 14.4 million pounds. Fire-cured exports were down 1.6 million while cigar tobaccos were generally higher. The United Kingdom was again the major outlet with 24 percent of the total. West Germany was second with 15 percent and Japan third with 8 percent.

TABLE 1.--Acreage, yield per acre, production, stocks, supply, total disappearance, exports, domestic use, average price per pound to growers, and crop value of different types of tobacco in the United States and Puerto Rico, by crop years, averages, 1949-53 to 1954-58, annual, 1959-1968 1/

(Farm-sales-weight basis)

TYPES 11-62, TOTAL U.S. AND PUERTO RICO

Crop year	Acreage	Yield per acre	Production	Stocks	Supply	Disappearance			Average price per pound to growers	Crop value
						Total	Exports	Domestic		
			1,000 pounds	1,000 pounds	1,000 pounds	1,000 pounds	1,000 pounds	1,000 pounds	Cents	1,000 dollars
1949-53	1,718,500	1,256	2,158,507	3,310,210	5,468,717	2,039,898	530,704	1,509,195	49.9	1,077,429
1954-58	1,375,200	1,477	2,031,111	4,097,355	6,128,466	1,982,129	556,680	1,425,449	54.1	1,099,495
1959	1,178,950	1,548	1,824,440	3,961,824	5,786,264	1,953,620	503,842	1,449,778	57.9	1,056,875
1960	1,169,710	1,685	1,971,355	3,832,644	5,803,999	2,057,377	566,616	1,490,761	60.5	1,192,843
1961	1,201,010	1,742	2,091,773	3,746,622	5,838,395	3,083,218	590,154	1,493,064	63.4	1,326,044
1962	1,252,230	1,877	2,350,130	3,755,177	6,105,307	2,832,239	529,975	1,502,264	58.6	1,377,171
1963	1,205,420	1,971	2,375,559	4,073,068	6,448,627	2,075,444	608,661	1,466,783	57.4	1,364,939
1964	1,108,170	2,044	2,265,628	4,373,183	6,638,811	2,080,931	548,413	1,532,518	58.8	1,332,899
1965	993,650	1,882	1,870,483	4,557,880	6,428,363	2,026,645	537,345	1,489,300	64.8	1,211,733
1966	982,670	1,932	1,898,753	4,401,718	6,300,471	2,120,650	703,347	1,417,303	66.2	1,256,584
1967 2/	967,140	2,032	1,965,423	4,179,821	6,145,244	2,036,243	647,608	1,388,635	67.1	1,319,180
1968 2/	890,450	1,946	1,733,164	4,109,001	5,842,165					

TYPES 11-14, TOTAL FLUE-CURED

1949-53	1,027,400	1,257	1,292,406	1,632,589	2,924,995	1,217,020	443,331	773,689	51.5	666,625
1954-58	842,060	1,509	1,255,205	2,209,885	3,465,090	1,196,159	466,206	729,953	54.1	675,201
1959	693,350	1,559	1,080,719	2,210,373	3,291,092	1,185,022	419,213	765,809	58.3	629,796
1960	691,760	1,808	1,250,635	2,106,070	3,356,705	1,266,559	474,630	791,929	60.4	755,943
1961	698,470	1,801	1,257,891	2,090,146	3,348,037	1,266,975	485,452	781,523	64.3	808,203
1962	729,800	1,930	1,408,448	2,081,062	3,489,510	1,207,940	430,940	777,000	60.1	846,123
1963	694,470	1,975	1,371,462	2,281,570	3,653,032	1,266,654	498,368	768,286	58.0	795,270
1964	627,570	2,211	1,387,804	2,386,378	3,774,182	1,218,829	444,063	774,766	58.5	811,806
1965	562,300	1,883	1,058,970	2,555,353	3,614,323	1,175,488	423,116	752,372	64.6	684,354
1966	607,000	1,825	1,107,861	2,438,835	3,546,696	1,274,172	587,116	687,056	66.9	741,578
1967 2/	610,260	2,048	1,250,000	2,272,524	3,522,524	1,220,989	533,261	687,728	64.9	810,818
1968 2/	537,520	1,854	996,400	2,301,535	3,297,935					

TYPES 21-23, TOTAL FIRE-CURED

1949-53	51,660	1,149	59,417	152,652	212,069	64,204	30,603	33,601	34.5	20,373
1954-58	42,980	1,364	58,354	137,520	195,874	60,801	29,387	31,414	37.3	21,714
1959	35,200	1,508	53,088	121,782	174,870	51,493	24,016	27,477	38.2	20,262
1960	33,200	1,369	45,444	123,377	168,821	55,079	27,211	27,868	42.5	19,326
1961	35,400	1,499	53,064	113,742	166,806	57,601	34,898	22,703	40.0	21,214
1962	36,100	1,500	54,155	109,205	163,360	49,906	24,758	25,148	38.7	20,963
1963	34,300	1,630	55,923	113,454	169,377	51,088	28,312	22,776	36.8	20,573
1964	32,100	1,716	55,076	118,289	173,359	53,021	27,289	25,732	41.4	22,777
1965	30,850	1,497	46,180	120,338	166,518	53,822	32,858	20,964	42.9	19,795
1966	26,950	1,772	47,742	112,696	160,438	54,313	31,003	23,310	42.1	20,078
1967 2/	22,700	1,604	36,417	106,125	142,542	52,001	33,785	18,216	45.2	16,448
1968 2/	22,570	1,713	38,657	90,541	129,198					

TYPE 21, VIRGINIA FIRE-CURED

1949-53	10,040	1,195	11,989	25,188	37,177	11,251	5,125	6,126	36.0	4,324
1954-58	8,260	1,221	9,966	25,189	35,155	10,705	5,297	5,408	36.2	3,593
1959	7,600	1,320	10,032	22,537	32,569	10,393	5,396	4,997	37.6	3,772
1960	7,300	1,220	8,906	22,176	31,082	10,144	6,183	3,961	39.4	3,509
1961	7,500	1,300	9,750	20,938	30,688	10,835	5,347	5,488	38.8	3,783
1962	7,600	1,255	9,538	19,853	29,391	9,155	5,102	4,053	38.8	3,701
1963	6,600	940	6,204	20,236	26,440	9,654	6,550	3,104	35.5	2,202
1964	7,300	1,245	9,088	16,786	25,874	10,286	6,310	3,976	43.1	3,917
1965	7,600	1,260	9,576	15,588	25,164	8,271	5,298	2,973	39.9	3,821
1966	6,000	1,255	7,530	16,893	24,423	9,584	7,339	2,245	41.2	3,102
1967 2/	5,400	1,290	6,966	14,839	21,805	10,070	6,677	3,393	40.9	2,849
1968 2/	4,900	1,275	6,248	11,735	17,983					

See footnotes at end of table.

TABLE 1.--Acreage, yield per acre, production, stocks, supply, total disappearance, exports, domestic use, average price per pound to growers, and crop value of different types of tobacco in the United States and Puerto Rico, by crop years, averages, 1949-53 to 1954-58, annual, 1959-1968 1/2--Continued

(Farm-sales-weight basis)

TYPES 22-23, TOTAL KENTUCKY AND TENNESSEE FIRE-CURED

Crop year	Acreage	Yield per acre	Production	Stocks	Supply	Disappearance			Average price per pound to growers	Crop value
						Total	Exports	Domestic		
			1,000 pounds	1,000 pounds	1,000 pounds	1,000 pounds	1,000 pounds	1,000 pounds	Cents	1,000 dollars
1949-53	41,620	1,138	47,428	127,465	174,893	52,953	25,478	27,475	34.1	16,049
1954-58	34,720	1,397	48,388	112,331	160,719	50,096	24,090	26,006	37.5	18,121
1959	27,600	1,560	43,056	99,245	142,301	41,100	18,620	22,480	38.3	16,490
1960	25,900	1,411	36,538	101,201	137,739	44,935	21,028	23,907	43.3	15,817
1961	27,900	1,552	43,314	92,804	136,118	46,766	29,551	17,215	40.2	17,431
1962	28,500	1,566	44,617	89,352	133,969	40,751	19,656	21,095	38.7	17,262
1963	27,700	1,795	49,719	93,218	142,937	41,434	21,762	19,672	36.9	18,371
1964	24,800	1,854	45,982	101,503	147,485	42,735	20,979	21,756	41.0	18,860
1965	23,250	1,574	36,604	104,750	141,354	45,551	27,559	17,992	43.6	15,974
1966	20,950	1,919	40,212	95,803	136,015	44,729	23,664	21,065	42.2	16,976
1967 2/	17,300	1,702	29,451	91,286	120,737	41,931	27,108	14,823	46.2	13,599
1968 2/	17,670	1,834	32,409	78,806	111,215					

TYPE 22, KENTUCKY AND TENNESSEE FIRE-CURED (EASTERN DISTRICT)

1949-53	29,780	1,188	35,427	93,540	128,967	36,459			35.5	12,506
1954-58	25,040	1,455	36,306	89,269	125,575	37,236			38.8	14,090
1959	20,200	1,591	32,143	81,631	113,774	31,369			39.0	12,535
1960	19,000	1,426	27,094	82,405	109,499	35,489			43.9	11,903
1961	20,300	1,582	32,123	74,010	106,133	33,975			40.7	13,075
1962	20,500	1,573	32,245	72,158	104,403	30,989			39.7	12,790
1963	19,800	1,828	36,196	73,414	109,610	29,895			37.6	13,614
1964	17,800	1,872	33,324	79,715	113,039	31,093			42.0	14,009
1965	16,700	1,570	26,216	81,946	108,162	33,843			44.7	11,724
1966	15,400	1,936	29,818	74,319	104,137	32,707			42.9	12,798
1967 2/	13,200	1,745	23,035	71,430	94,465	31,240			46.9	10,796
1968 2/	13,600	1,849	25,150	63,225	88,375					

TYPE 23, KENTUCKY AND TENNESSEE FIRE-CURED (WESTERN DISTRICT)

1949-53	11,820	1,017	11,981	33,731	45,712	16,415			29.9	3,528
1954-58	9,680	1,240	12,082	23,062	35,144	12,860			33.9	4,031
1959	7,400	1,475	10,913	17,614	28,527	9,731			36.2	3,955
1960	6,900	1,369	9,444	18,796	28,240	9,446			41.4	3,914
1961	7,600	1,473	11,191	18,794	29,985	12,791			38.9	4,356
1962	8,000	1,547	12,372	17,194	29,566	9,762			36.1	4,472
1963	7,900	1,712	13,523	19,804	33,327	11,539			35.2	4,757
1964	7,000	1,808	12,658	21,788	34,446	11,642			38.3	4,851
1965	6,550	1,586	10,388	22,804	33,192	11,708			40.9	4,250
1966	5,550	1,873	10,394	21,484	31,878	12,022			40.2	4,178
1967 2/	4,100	1,565	6,416	19,856	26,272	10,691			43.7	2,803
1968 2/	4,070	1,784	7,259	15,581	22,840					

TYPE 31, BURLEY

1949-53	439,000	1,316	578,439	1,036,095	1,614,534	533,663	33,190	500,473	49.6	287,531
1954-58	329,000	1,579	519,524	1,282,516	1,802,516	514,314	31,764	482,550	59.7	306,369
1959	301,000	1,669	502,306	1,224,251	1,726,557	535,128	36,347	498,781	60.6	304,402
1960	255,700	1,639	484,713	1,191,429	1,676,142	548,805	41,327	507,478	64.3	311,500
1961	318,900	1,820	580,335	1,127,337	1,707,672	570,253	45,171	525,082	66.5	386,094
1962	338,600	1,993	674,854	1,137,419	1,812,273	584,377	53,461	530,916	58.6	395,448
1963	338,500	2,231	755,146	1,227,896	1,983,042	570,874	57,424	513,450	59.2	446,706
1964	306,600	2,022	619,794	1,412,168	2,031,962	616,252	55,654	560,598	60.3	373,759
1965	277,100	2,116	586,299	1,415,710	2,002,009	606,665	57,128	549,537	67.0	392,717
1966	240,700	2,437	586,672	1,395,344	1,982,016	600,477	56,388	544,089	66.9	392,459
1967 2/	237,700	2,274	540,635	1,381,539	1,922,174	598,069	53,376	544,693	71.8	388,167
1968 2/	237,450	2,345	556,932	1,324,105	1,881,037					

See footnotes at end of table.

TABLE 1.--Acreage, yield per acre, production, stocks, supply, total disappearance, exports, domestic use, average price per pound to growers, and crop value of different types of tobacco in the United States and Puerto Rico, by crop years, averages, 1949-53 to 1954-58, annual, 1959-1968 1/2--Continued

(Farm-sales-weight basis)

TYPE 32, MARYLAND

Crop year	Acreage	Yield per acre	Production	Stocks	Supply	Disappearance			Average price per pound to growers	Crop value
						Total	Exports	Domestic		
	Acres	Pounds	1,000 pounds	1,000 pounds	1,000 pounds	1,000 pounds	1,000 pounds	1,000 pounds	Cents	1,000 dollars
1949-53	49,600	823	40,721	64,666	105,387	36,185	7,649	28,536	48.9	19,911
1954-58	42,300	868	36,274	79,488	115,762	37,202	12,382	24,820	50.0	17,848
1959	40,000	780	31,200	72,034	103,234	32,325	11,935	20,390	61.6	19,219
1960	37,500	925	34,688	70,909	105,597	35,567	12,014	23,553	63.8	22,131
1961	40,000	970	38,800	70,030	108,830	32,651	11,909	20,742	62.0	24,065
1962	41,000	990	40,590	76,179	116,769	30,724	11,179	19,545	55.8	22,649
1963	34,500	1,000	34,500	86,045	120,545	30,986	12,479	18,507	43.2	14,904
1964	39,000	1,085	42,315	89,559	131,874	32,942	9,577	23,365	62.0	26,235
1965	33,500	1,150	38,525	98,932	137,457	37,716	10,972	26,744	65.5	25,234
1966	35,000	1,030	36,050	99,741	135,791	40,209	16,479	23,730	48.6	17,520
1967 2/	31,500	1,030	32,445	95,582	128,027	36,046	15,733	20,313	63.0	20,440
1968 2/	30,000	1,100	33,000	91,981	124,981					

TYPES 35-37, TOTAL DARK AIR-CURED

1949-53	27,880	1,127	31,381	76,422	107,803	31,121	7,999	23,122	28.9	9,140
1954-58	20,780	1,338	27,915	80,589	108,504	29,371	8,384	20,987	34.7	9,563
1959	15,300	1,407	21,531	68,550	90,081	23,908	5,790	18,118	34.5	7,433
1960	14,800	1,353	20,031	66,173	86,204	24,003	5,034	18,969	37.5	7,503
1961	15,600	1,460	22,779	62,201	84,980	24,638	4,934	19,704	38.0	8,661
1962	16,100	1,540	24,788	60,342	85,130	21,843	3,302	18,541	36.3	8,995
1963	15,300	1,654	25,301	63,287	88,588	23,241	3,480	19,761	33.2	8,412
1964	14,100	1,735	24,468	65,347	89,815	23,608	4,355	19,253	37.3	9,133
1965	13,100	1,566	20,511	66,207	86,718	21,768	3,921	17,847	37.2	7,638
1966	12,100	1,880	22,754	64,950	87,704	23,048	4,741	18,307	37.6	8,560
1967 2/	10,700	1,569	16,785	64,656	81,441	19,330	3,318	16,012	41.2	6,913
1968 2/	10,950	1,770	19,377	62,111	81,488					

TYPES 35-36, TOTAL KENTUCKY AND TENNESSEE DARK AIR-CURED

1949-53	24,320	1,144	27,766	72,413	100,179	27,535	7,409	20,126	28.4	7,957
1954-58	17,660	1,403	24,977	75,923	100,900	26,676	7,813	18,863	34.9	8,612
1959	13,200	1,466	19,347	63,604	82,951	22,001	5,506	16,495	34.5	6,682
1960	13,000	1,403	18,240	60,950	79,190	22,025	4,709	17,316	37.4	6,824
1961	13,500	1,525	20,585	57,165	77,750	22,512	4,653	17,859	37.8	7,788
1962	13,900	1,619	22,500	55,238	77,738	19,548	3,034	16,514	36.2	8,139
1963	13,800	1,751	24,161	58,190	82,351	21,169	3,136	18,033	33.3	8,054
1964	12,400	1,828	22,666	61,182	83,848	21,960	4,023	17,937	37.0	8,391
1965	11,300	1,639	18,522	61,888	80,410	19,768	3,642	16,126	37.0	6,858
1966	10,700	1,987	21,263	60,642	81,905	21,406	4,354	17,052	37.3	7,929
1967 2/	9,500	1,629	15,477	60,499	75,976	17,788	2,966	14,822	40.8	6,322
1968 2/	9,850	1,847	18,195	58,188	76,383					

TYPE 35, ONE SUCKER

1949-53	15,760	1,172	18,427	41,176	59,603	17,055	5,091	11,964	28.9	5,361
1954-58	11,580	1,438	16,717	48,384	65,101	17,295	5,846	11,449	35.8	5,935
1959	9,000	1,559	14,034	42,794	56,828	15,781	4,342	11,439	34.7	4,876
1960	8,700	1,405	12,220	41,047	53,267	15,383	3,972	11,411	38.4	4,693
1961	9,000	1,512	13,610	37,884	51,494	16,248	3,628	12,620	39.1	5,326
1962	9,200	1,623	14,933	35,246	50,179	12,833	2,399	10,434	36.7	5,483
1963	9,200	1,771	16,295	37,346	53,641	14,306	2,263	12,043	33.0	5,380
1964	8,100	1,856	15,034	39,335	54,369	14,775	2,808	11,967	37.8	5,682
1965	7,500	1,585	11,891	39,594	51,485	13,538	2,910	10,628	37.5	4,464
1966	7,200	1,976	14,228	37,947	52,175	14,823	3,310	11,513	37.8	5,375
1967 2/	6,500	1,608	10,452	37,352	47,804	11,370	2,387	8,983	42.3	4,418
1968 2/	6,750	1,823	12,305	36,434	48,739					

See footnotes at end of table.

TABLE 1.--Acreage, yield per acre, production, stocks, supply, total disappearance, exports, domestic use, average price per pound to growers, and crop value of different types of tobacco in the United States and Puerto Rico, by crop years, averages, 1949-53 to 1954-58, annual, 1959-1968 1/--Continued

(Farm-sales-weight basis)

TYPE 36, GREEN RIVER

Crop year	Acreage	Yield per acre	Production	Stocks	Supply	Disappearance			Average price per pound to growers	Crop value
						Total	Exports	Domestic		
	Acres	Pounds	1,000 pounds	1,000 pounds	1,000 pounds	1,000 pounds	1,000 pounds	1,000 pounds	Cents	1,000 dollars
1949-53	8,560	1,092	9,339	31,236	40,575	10,480	2,319	8,161	27.6	2,596
1954-58	6,080	1,331	8,260	27,539	35,797	9,381	1,967	7,414	33.0	2,677
1959	4,200	1,265	5,313	20,810	26,123	6,220	1,164	5,056	34.0	1,806
1960	4,300	1,400	6,020	19,903	25,923	6,642	737	5,905	35.4	2,131
1961	4,500	1,550	6,975	19,281	26,256	6,264	1,025	5,239	35.3	2,462
1962	4,700	1,610	7,567	19,992	27,559	6,715	635	6,080	35.1	2,656
1963	4,600	1,710	7,866	20,844	28,710	6,863	873	5,990	34.0	2,674
1964	4,300	1,775	7,632	21,847	29,479	7,185	1,215	5,970	35.5	2,709
1965	3,800	1,745	6,631	22,294	28,925	6,230	732	5,498	36.1	2,394
1966	3,500	2,010	7,035	22,695	29,730	6,583	1,044	5,539	36.3	2,554
1967 2/	3,000	1,675	5,025	23,147	28,172	6,418	579	5,839	37.9	1,904
1968 2/	3,100	1,900	5,890	21,754	27,644					

TYPE 37, VIRGINIA SUN-CURED

1949-53	3,560	1,022	3,615	4,009	7,624	3,586	590	2,996	32.7	1,183
1954-58	3,120	1,043	2,938	4,666	7,604	2,695	571	2,124	32.8	950
1959	2,100	1,040	2,184	4,946	7,130	1,907	284	1,623	34.4	751
1960	1,800	995	1,791	5,223	7,014	1,978	325	1,653	37.9	679
1961	2,100	1,045	2,194	5,036	7,230	2,126	281	1,845	39.8	873
1962	2,200	1,040	2,288	5,104	7,392	2,295	268	2,027	37.4	856
1963	1,500	760	1,140	5,097	6,237	2,072	345	1,727	31.4	358
1964	1,700	1,060	1,802	4,165	5,967	1,648	332	1,316	41.2	742
1965	1,800	1,105	1,989	4,319	6,308	2,000	279	1,721	39.2	780
1966	1,400	1,065	1,491	4,308	5,799	1,642	386	1,256	42.3	631
1967 2/	1,200	1,090	1,308	4,157	5,465	1,542	352	1,190	45.2	591
1968 2/	1,100	1,075	1,182	3,923	5,105					

TYPES 41-62, TOTAL CONTINENTAL CIGAR TOBACCO (INCLUDES PUERTO RICAN) 3/

1949-53	122,900	1,270	156,143	347,786	503,929	157,705	7,932	149,773	47.3	73,849
1954-58	98,100	1,364	133,839	306,881	440,720	144,282	8,557	135,725	51.4	68,801
1959	94,100	1,441	135,596	264,834	400,430	125,744	6,541	119,203	55.9	75,763
1960	96,570	1,404	135,844	274,686	410,530	127,364	6,400	120,964	56.3	76,440
1961	92,640	1,499	138,904	283,166	422,070	131,100	7,790	123,310	56.0	77,816
1962	90,630	1,625	147,295	290,970	438,265	127,449	6,335	131,114	56.3	82,993
1963	88,350	1,508	133,227	300,816	434,043	132,601	8,595	124,006	59.4	79,074
1964	89,000	1,530	136,177	301,442	437,619	136,279	7,476	128,803	65.5	89,189
1965	76,800	1,562	119,998	301,340	421,338	131,186	9,351	121,835	68.3	81,995
1966	60,920	1,603	97,674	290,152	387,826	128,431	7,620	120,811	78.2	76,389
1967 2/	54,280	1,642	89,141	259,395	348,536	109,808	8,135	101,673	85.7	76,394
1968 2/	51,960	1,709	88,798	238,728	327,526					

TYPES 41-46, TOTAL CIGAR FILLER

1949-53	74,900	1,161	86,960	196,313	283,273	88,160	1,132	87,028	25.7	22,347
1954-58	63,460	1,274	80,869	182,285	263,154	83,917	580	83,337	26.1	21,147
1959	61,200	1,446	86,478	163,792	252,270	81,326	569	80,757	31.2	27,617
1960	63,800	1,361	86,800	170,944	257,744	81,998	214	81,784	29.8	25,886
1961	62,600	1,467	91,834	175,746	267,580	82,921	146	82,775	30.4	27,914
1962	62,700	1,644	103,055	184,659	287,714	89,490	252	89,238	28.8	29,730
1963	61,900	1,463	90,586	198,224	288,810	80,117	685	79,432	28.5	25,773
1964	61,500	1,456	89,554	208,693	298,247	89,223	545	88,678	31.3	28,034
1965	47,700	1,528	72,894	209,024	281,918	86,142	1,784	84,358	26.0	18,923
1966	35,200	1,608	56,595	195,776	252,371	84,093	1,495	82,598	26.7	15,090
1967 2/	30,900	1,707	52,745	168,278	221,023	65,067	645	64,422	29.1	15,357
1968 2/	29,250	1,768	51,795	155,956	207,751					

See footnotes at end of table.

TABLE 1.--Acreage, yield per acre, production, stocks, supply, total disappearance, exports, domestic use, average price per pound to growers, and crop value of different types of tobacco in the United States and Puerto Rico, by crop years, averages, 1949-53 to 1954-58, annual, 1959-1968 1/2--Continued

(Farm-sales-weight basis)

Crop year	Acreage	Yield per acre	Production	Stocks	Supply	Disappearance			Average price per pound to growers	Crop value
						Total	Exports	Domestic		
						1,000 pounds	1,000 pounds	1,000 pounds		
TYPE 51, CONNECTICUT VALLEY BROADLEAF										
	Acres	Pounds	1,000 pounds	1,000 pounds	1,000 pounds	1,000 pounds	1,000 pounds	1,000 pounds	Cents	1,000 dollars
1949-53	9,100	1,638	14,889	28,961	43,850	13,845	874	12,971	52.9	7,871
1954-58	4,960	1,722	8,332	28,752	37,084	10,677	627	10,050	52.9	4,380
1959	2,800	1,620	4,536	20,041	24,577	4,177	226	3,951	45.0	2,041
1960	2,100	1,730	3,633	20,400	24,033	4,655	303	4,352	44.0	1,599
1961	1,700	1,800	3,060	19,378	22,438	3,595	148	3,447	43.3	1,325
1962	1,500	1,920	2,880	18,843	21,723	6,231	162	6,069	53.5	1,541
1963	1,800	2,050	3,690	15,492	19,182	4,611	256	4,355	51.0	1,882
1964	1,900	1,975	3,752	14,571	18,323	3,644	1,035	1,701	50.0	1,876
1965	1,900	1,830	3,477	14,679	18,156	4,247	2,136	2,111	46.5	1,617
1966	1,300	2,075	2,698	13,909	16,607	4,761	1,648	3,113	52.0	1,403
1967 1/2	1,100	1,785	1,964	11,846	13,810	5,348	2,170	3,178	55.0	1,080
1968 1/2	1,200	1,900	2,280	8,462	10,742					
TYPE 52, CONNECTICUT VALLEY HAVANA SEED										
1949-53	7,200	1,748	12,557	24,741	37,298	11,660	1,640	10,020	45.6	5,661
1954-58	3,480	1,955	6,534	21,065	27,599	8,489	1,088	7,401	43.1	2,700
1959	1,700	1,865	3,170	14,526	17,696	4,873	714	4,159	41.2	1,305
1960	1,650	1,947	3,213	12,823	16,036	4,199	1,798	2,401	42.5	1,366
1961	1,240	1,932	2,396	11,837	14,233	3,279	1,091	2,188	40.6	973
1962	1,130	2,140	2,418	10,954	13,372	3,277	735	2,542	42.5	1,028
1963	1,050	2,168	2,276	10,095	12,371	4,101	1,301	2,800	41.6	947
1964	900	2,118	1,906	8,270	10,176	3,585	120	3,165	43.8	835
1965	700	2,125	1,488	6,591	8,079	2,667	--	2,667	44.5	662
1966	520	2,200	1,144	5,412	6,556	2,013	--	2,013	49.5	566
1967 1/2	380	1,915	728	4,543	5,271	2,520	--	2,520	53.0	386
1968 1/2	360	2,000	720	2,751	3,471					
TYPE 54, SOUTHERN WISCONSIN										
1949-53	7,040	1,474	10,344	37,623	47,967	12,207	320	11,887	23.1	2,396
1954-58	4,660	1,612	7,503	25,171	32,674	9,421	361	9,060	27.8	2,115
1959	5,800	1,595	9,251	20,906	30,157	7,957	300	7,657	29.3	2,711
1960	5,700	1,510	8,607	22,200	30,807	7,473	200	7,273	28.0	2,410
1961	5,400	1,670	9,018	23,334	32,352	9,010	100	8,910	28.7	2,588
1962	4,900	1,770	8,673	23,342	32,015	7,721	50	7,671	29.3	2,541
1963	4,600	1,800	8,280	24,294	32,574	9,654	6	9,648	30.0	2,484
1964	4,600	1,890	8,694	22,920	31,614	8,942	--	8,942	32.2	2,799
1965	4,700	1,805	8,484	22,672	31,156	8,733	--	8,733	29.7	2,520
1966	3,900	1,895	7,390	22,423	29,813	9,112	--	9,112	34.3	2,535
1967 1/2	3,800	1,905	7,239	20,701	27,940	8,071	--	8,071	34.4	2,490
1968 1/2	3,700	1,950	7,215	19,869	27,084					
TYPE 55, NORTHERN WISCONSIN										
1949-53	10,600	1,444	15,358	38,972	54,330	16,036	193	15,843	30.2	4,601
1954-58	8,480	1,795	13,666	30,538	44,204	14,977	1,039	13,938	31.4	4,275
1959	8,600	1,350	11,610	25,260	36,870	12,444	885	11,559	37.1	4,307
1960	8,900	1,380	12,282	24,426	36,708	11,265	444	10,821	30.6	3,758
1961	8,300	1,620	13,446	25,443	38,889	11,068	415	10,653	29.6	3,980
1962	7,200	1,520	10,944	27,821	38,765	11,187	220	10,967	29.1	3,185
1963	6,100	1,590	9,699	27,578	37,277	12,438	22	12,416	31.6	3,065
1964	6,300	1,770	11,151	24,839	35,990	9,173	564	8,609	35.8	3,992
1965	6,200	1,735	10,757	26,817	37,574	9,410	315	9,095	28.9	3,109
1966	5,400	1,635	8,829	28,164	36,993	7,663	251	7,412	32.4	2,861
1967 1/2	4,500	1,975	8,888	29,330	38,218	9,311	385	8,926	34.1	3,031
1968 1/2	4,000	1,950	7,800	28,907	36,707					

See footnotes at end of table.

TABLE 1.--Acreage, yield per acre, production, stocks, supply, total disappearance, exports, domestic use, average price per pound to growers, and crop value of different types of tobacco in the United States and Puerto Rico, by crop years, averages, 1949-53 to 1954-58, annual, 1959-1968 1/--Continued

(Farm-sales-weight basis)

Crop year	TYPES 61-62, TOTAL CIGAR WRAPPER									
	Acreage	Yield per acre	Production	Stocks	Supply	Disappearance			Average price per pound to growers	Crop value
						Total	Exports	Domestic		
	Acres	Pounds	1,000 pounds	1,000 pounds	1,000 pounds	1,000 pounds	1,000 pounds	1,000 pounds	Cents	1,000 dollars
1949-53	13,660	1,133	15,443	19,299	34,742	15,126	3,773	11,353	199.6	30,840
1954-58	13,040	1,298	16,936	18,468	35,404	16,510	4,863	11,647	202.0	34,183
1959	14,000	1,325	18,551	20,309	38,860	14,967	3,847	11,120	204.0	37,782
1960	14,600	1,460	21,309	23,893	45,202	17,774	3,441	14,333	194.4	41,421
1961	13,400	1,429	19,150	27,428	46,578	21,227	5,890	15,337	214.0	41,036
1962	13,200	1,464	19,325	25,351	44,676	19,543	4,916	14,627	233.0	44,968
1963	12,900	1,449	18,696	25,133	43,829	21,680	6,325	15,355	240.0	44,923
1964	13,800	1,530	21,120	22,149	43,269	21,712	4,304	17,408	244.6	51,653
1965	15,600	1,468	22,898	21,557	44,455	19,987	5,116	14,871	241.0	55,164
1966	14,600	1,440	21,018	24,468	45,486	20,789	4,226	16,563	257.0	53,934
1967 2/	13,600	1,292	17,577	24,697	42,274	19,491	4,935	14,556	308.0	54,050
1968 2/	13,450	1,412	18,988	22,783	41,771					

TYPE 61, CONNECTICUT VALLEY SHADE-GROWN

1949-53	8,620	1,108	9,512	12,517	22,029	9,650			206.0	19,589
1954-58	7,960	1,283	10,202	11,510	21,712	9,889			212.0	21,592
1959	8,200	1,307	10,717	12,970	23,687	7,498	2,485	5,013	210.0	22,506
1960	8,400	1,425	11,970	16,189	28,159	11,229	2,470	8,759	190.0	22,743
1961	7,700	1,342	10,336	16,930	27,266	12,068	3,300	8,768	235.0	24,289
1962	7,900	1,505	11,891	15,198	27,089	11,043	2,798	8,245	250.0	29,728
1963	7,800	1,538	11,995	16,046	28,040	14,108	4,071	10,037	260.0	31,184
1964	8,400	1,605	13,475	13,932	27,410	13,152	3,092	10,060	250.0	33,694
1965	9,300	1,567	14,576	14,258	28,834	12,551	3,262	9,289	250.0	36,440
1966	8,800	1,555	13,682	16,283	29,965	13,953	3,483	10,470	295.0	40,362
1967 2/	8,500	1,124	9,553	16,012	25,565	12,844	3,287	9,557	360.0	34,391
1968 2/	8,400	1,325	11,130	12,721	23,851					

TYPE 62, GEORGIA-FLORIDA SHADE-GROWN

1949-53	5,040	1,172	5,931	6,782	12,713	5,476			190.0	11,251
1954-58	5,080	1,327	6,733	6,958	13,691	6,621			187.0	12,591
1959	5,800	1,351	7,834	7,339	15,173	7,469	1,362	6,107	195.0	15,276
1960	6,200	1,506	9,339	7,704	17,043	6,545	971	5,574	200.0	18,678
1961	5,700	1,546	8,814	10,498	19,312	9,159	2,590	6,569	190.0	16,747
1962	5,300	1,403	7,434	10,153	17,587	8,500	2,118	6,382	205.0	15,240
1963	5,100	1,314	6,702	9,087	15,789	7,572	2,254	5,318	205.0	13,739
1964	5,400	1,415	7,642	8,217	15,859	8,560	1,211	7,349	235.0	17,959
1965	6,300	1,321	8,322	7,299	15,621	7,436	1,854	5,582	225.0	18,724
1966	5,800	1,265	7,336	8,185	15,521	6,836	743	6,093	185.0	13,572
1967 2/	5,100	1,573	8,024	8,685	16,709	6,647	1,648	4,999	245.0	19,659
1968 2/	5,050	1,556	7,858	10,062	17,920					

1/ This table is on a crop-year basis for 12 months beginning as follows: types 11-14 and 61-62, July 1; all other types, October 1. Disappearance for any crop year is the sum of the stocks at the beginning of the year plus the current crop minus stocks remaining at the end of the crop year. Exports are on a farm-sales-weight basis. Domestic disappearance is total disappearance minus exports, and includes leaf used by manufacturers in the United States, losses or wastage, and differences which may result from errors in estimates and conversions of weights.

2/ Preliminary.

3/ Producers' sales substituted for production.

4/ Puerto Rican type 46 production is that which is planted in the fall of the crop year shown and harvested the following spring.

Production and price statistics (except Puerto Rican) compiled from reports of the Agricultural Estimates Division, SRS (Puerto Rican from reports of the Bureau of Agricultural Economics of Puerto Rico); stocks from reports of the Tobacco Division, C&MS; and exports from reports of the Bureau of the Census, U. S. Department of Commerce.

TABLE 2.--Cash receipts from tobacco compared with total cash receipts from all farm commodities, by States, average 1961-65, annual 1966-68

(Calendar year basis)

State	Average 1961-65			1966			1967 ^{1/}			1968 ^{1/}		
	Cash receipts		Tobacco	Cash receipts		Tobacco	Cash receipts		Tobacco	Cash receipts		Tobacco
	as per-	centage	of	as per-	centage	of	as per-	centage	of	as per-	centage	of
Total	Total	Total	Total	Total	Total	Total	Total	Total	Total	Total	Total	Total
	Mil.	Mil.	Pct.	Mil.	Mil.	Pct.	Mil.	Mil.	Pct.	Mil.	Mil.	Pct.
	dol.	dol.		dol.	dol.		dol.	dol.		dol.	dol.	
North Carolina	1,167	537	46.0	1,246	519	41.6	1,280	535	41.8	1,196	452	37.8
Kentucky	667	276	41.4	725	240	33.1	821	343	41.7	772	286	37.0
South Carolina	392	99	25.3	392	88	22.4	425	107	25.1	376	81	21.5
Virginia	491	92	18.7	505	81	16.1	512	83	16.2	510	75	14.7
Tennessee	567	88	15.5	601	77	12.8	601	83	13.8	619	78	12.6
Georgia	855	83	9.7	1,000	72	7.1	1,033	101	9.7	1,026	77	7.5
Connecticut	147	23	15.6	167	29	17.5	160	30	19.0	160	28	17.5
Maryland	296	22	7.4	331	25	7.6	328	17	5.3	344	21	6.1
Florida	924	27	2.9	1,022	26	2.5	1,062	32	3.0	1,218	29	2.4
Pennsylvania	803	13	1.6	901	12	1.3	888	10	1.1	910	11	1.2
Massachusetts	158	8	5.1	167	11	6.3	156	11	6.8	159	10	6.3
Wisconsin	1,163	6	.5	1,412	6	.4	1,420	5	.3	1,469	6	0.4
Ohio	1,069	13	1.2	1,278	12	.9	1,234	16	1.3	1,238	14	1.1
Indiana	1,235	9	.7	1,414	8	.5	1,392	12	.9	1,372	10	0.7
West Virginia	101	3	3.0	103	2	2.0	94	3	3.2	99	2	2.5
Missouri	1,170	3	.3	1,330	3	.2	1,342	3	.2	1,374	3	0.2
Total:												
Tobacco States ^{2/}	12,250	1,303	10.6	13,770	1,211	8.8	13,937	1,392	10.0	14,113	1,182	8.4
All States ^{3/}	37,085	1,303	3.5	43,180	1,211	2.8	42,788	1,392	3.2	44,065	1,182	2.7

^{1/} Subject to revision.

^{2/} Includes relatively small receipts from tobacco for a few States not shown separately.

^{3/} Includes Alaska and Hawaii.

Detail may not add to total because of rounding.

Compiled from reports and records of the Economic and Statistical Analysis Division, ERS.

TABLE 3.--Acreage, yield per acre, production, price per pound, and crop value of tobacco in the United States, by States and by years 1959-68

TOTAL, IN THE UNITED STATES						INDIANA TOTAL, TYPE 31					
Year	Acreage	Yield per acre	Production 1,000 lb.	Price per pound Cents	Crop value 1,000 dol.	Year	Acreage	Yield per acre	Production 1,000 lb.	Price per pound Cents	Crop value 1,000 dol.
1959	1,152,780	1,558	1,796,415	58.3	1,048,043	1959	6,900	1,750	12,075	61.5	7,426
1960	1,141,530	1,703	1,944,175	60.9	1,183,802	1960	7,000	1,565	10,955	60.8	6,661
1961	1,174,390	1,755	2,061,392	63.8	1,314,961	1961	7,600	1,900	14,440	65.6	9,473
1962	1,224,080	1,891	2,314,782	58.9	1,363,822	1962	7,900	2,120	16,748	54.5	9,128
1963	1,175,720	1,994	2,343,799	57.7	1,352,053	1963	8,100	2,205	17,860	54.6	9,752
1964	1,077,810	2,067	2,227,932	59.2	1,317,943	1964	7,400	1,940	14,356	58.7	8,427
1965	976,900	1,898	1,854,568	65.1	1,206,649	1965	6,700	2,215	14,840	64.5	9,572
1966	977,200	1,933	1,888,497	66.4	1,253,505	1966	5,900	2,520	14,868	64.6	9,605
1967 1/2	959,800	2,050	1,967,911	66.9	1,315,694	1967 1/2	5,800	2,385	13,833	70.0	9,683
1968 1/2	884,500	1,940	1,715,573	69.7	1,195,014	1968 1/2	5,800	2,500	14,500	73.0	10,585

ALABAMA TOTAL, TYPE 14						KENTUCKY, ALL TYPES					
1959	2/ 450	1,250	562	55.9	314	1959	222,300	1,604	356,505	59.0	210,412
1960	2/ 460	1,530	704	53.8	379	1960	219,500	1,600	351,279	61.9	217,542
1961	2/ 470	1,535	721	59.3	428	1961	235,100	1,767	415,349	64.3	266,999
1962	500	1,720	860	51.0	439	1962	248,900	1,983	493,515	56.4	278,310
1963	470	1,670	785	52.1	409	1963	248,400	2,268	563,384	58.0	326,540
1964	470	1,565	736	54.5	401	1964	225,100	2,003	450,797	58.5	263,823
1965	500	1,595	798	62.0	495	1965	203,400	2,106	428,305	64.5	276,301
1966	600	1,635	981	67.5	662	1966	176,900	2,497	441,671	64.3	284,026
1967 1/2	560	1,800	1,008	65.5	660	1967 1/2	173,000	2,312	400,060	70.1	280,406
1968 1/2	520	1,725	897	58.5	525	1968 1/2	172,300	2,389	411,620	71.9	296,056

CONNECTICUT, ALL TYPES						LOUISIANA TOTAL, TYPE 72					
1959	9,400	1,408	13,236	147.0	19,454	1959	2/ 130	575	75	73.0	55
1960	8,750	1,514	13,244	143.0	18,879	1960	2/ 320	1,000	320	73.0	234
1961	7,840	1,457	11,422	176.0	20,091	1961	2/ 380	840	319	71.0	226
1962	7,530	1,574	11,854	193.0	22,926	1962	2/ 350	720	252	71.0	179
1963	7,900	1,667	13,004	191.0	25,139	1963	2/ 300	800	240	71.0	170
1964	8,100	1,702	13,783	192.0	26,525	1964	2/ 240	850	204	73.0	149
1965	8,700	1,677	14,153	200.0	28,307	1965	2/ 280	925	259	74.0	192
1966	7,900	1,646	12,838	244.0	31,316	1966	2/ 220	475	104	73.0	76
1967 1/2	7,400	1,219	9,020	294.0	26,482	1967 1/2	2/ 230	500	115	75.0	86
1968 1/2	7,300	1,419	10,362	294.0	30,463	1968 1/2	2/ 250	650	212	78.0	165

FLORIDA, ALL TYPES						MARYLAND TOTAL, TYPE 32					
1959	18,500	1,379	25,508	92.2	33,525	1959	40,000	780	31,200	61.6	19,219
1960	18,700	1,570	29,361	92.9	37,290	1960	37,500	925	34,688	63.8	22,131
1961	18,500	1,775	32,830	87.9	28,862	1961	40,000	970	38,800	62.0	24,056
1962	18,800	1,843	34,648	80.5	27,894	1962	41,000	990	40,590	55.8	22,649
1963	17,900	1,731	30,978	81.6	25,276	1963	34,500	1,000	34,500	43.2	14,904
1964	16,700	1,490	28,230	94.9	26,800	1964	39,000	1,085	42,315	62.0	26,235
1965	15,500	1,691	26,214	105.0	27,536	1965	33,500	1,150	38,525	55.5	25,234
1966	17,000	1,576	26,797	94.0	25,188	1966	35,000	1,020	35,700	49.0	17,493
1967 1/2	16,700	1,892	31,590	103.0	32,652	1967 1/2	31,500	1,030	32,445	63.0	20,440
1968 1/2	15,300	1,775	27,154	108.0	29,409	1968 1/2	30,000	1,100	33,000	--	20,790

GEORGIA, ALL TYPES						MASSACHUSETTS, ALL TYPES					
1959	70,200	1,518	106,596	60.3	64,281	1959	3,300	1,572	5,187	123.0	6,398
1960	71,300	1,839	131,139	59.0	77,335	1960	3,400	1,639	5,572	123.0	6,829
1961	71,700	1,924	137,949	60.8	83,858	1961	2,800	1,561	4,370	149.0	6,496
1962	75,300	1,965	147,944	58.8	86,984	1962	3,000	1,768	5,335	176.0	9,371
1963	71,700	2,013	144,316	59.6	85,988	1963	2,850	1,721	4,956	179.0	8,874
1964	64,800	1,920	124,395	62.1	77,244	1964	3,100	1,727	5,353	185.0	9,880
1965	56,200	2,031	114,145	69.3	79,092	1965	3,200	1,684	5,388	193.2	10,412
1966	62,500	1,572	98,255	72.7	71,417	1966	2,820	1,662	4,686	235.1	11,015
1967 1/2	72,400	2,076	150,294	67.2	101,007	1967 1/2	2,580	1,250	3,225	291.0	9,375
1968 1/2	57,350	1,878	107,731	71.3	76,856	1968 1/2	2,660	1,417	3,768	302.0	11,391

See footnotes at end of table.

TABLE 4.--Sales and average prices of tobacco sold at auction in the United States; loan receipts, number of markets, number of warehouses, and sets of buyers, crops of 1964-68

Type and year	Producer sales	Average price	Loan receipts	Markets	Warehouses	Buyers
	1,000 lb.	Dollars	1,000 lb.	Number	Number	Sets
Flue-cured						
Types 11-14						
1964.....	1,378,892	58.52	285,582	93	430	144
1965.....	1,058,318	64.65	71,493	93	416	144
1966.....	1,106,320	66.90	74,574	93	401	144
1967.....	1,247,462	64.17	282,077	93	416	144
1968.....	995,645	66.64	128,779	93	434	144
Virginia Fire-cured						
Type 21						
1964.....	9,091	43.09	268	3	7	4
1965.....	9,564	39.86	1,046	3	7	3
1966.....	7,549	41.24	621	3	7	3
1967.....	6,989	40.90	658	3	7	3
1968.....	6,044	46.92	154	3	7	3
Eastern District Fire-cured						
Type 22						
1964.....	33,359	42.01	4,612	3	23	6
1965.....	26,267	44.68	1,789	3	21	6
1966.....	30,100	42.93	5,427	3	21	6
1967.....	23,190	46.85	760	3	20	6
1968.....	25,426	51.49	402	3	20	6
Western District Fire-cured						
Type 23						
1964.....	12,070	38.32	2,602	2	7	2
1965.....	10,179	40.96	506	2	7	2
1966.....	10,086	40.16	902	2	7	2
1967.....	6,057	43.68	63	2	7	2
1968.....	6,907	49.97	3	2	7	2
Burley						
Type 31						
1964.....	617,950	60.31	110,431	61	421	71
1965.....	585,971	66.99	42,228	61	421	71
1966.....	584,722	66.90	62,534	61	416	71
1967.....	537,073	71.78	64,168	61	410	71
1968.....	561,000	73.67	56,192	61	398	71
Maryland						
Type 32						
1964.....	44,865	61.05	4,156	4	13	5
1965.....	38,838	65.25	2,686	4	13	5
1966.....	34,632	49.03	--	4	13	5
1967.....	33,010	62.67	--	4	13	5
1968.....				4	13	5
One Sucker						
Type 35						
1964.....	14,804	37.84	1,531	5	27	2
1965.....	11,844	37.57	1,443	5	27	2
1966.....	14,239	37.77	2,344	5	27	2
1967.....	10,399	42.31	924	5	27	2
1968.....	12,552	49.46	334	5	25	2
Green River						
Type 36						
1964.....	7,659	35.50	2,129	3	16	2
1965.....	6,634	36.05	1,734	3	15	2
1966.....	7,073	36.30	2,329	3	15	2
1967.....	5,040	37.92	475	3	15	2
1968.....	5,596	42.66	317	3	15	2
Virginia Sun-cured						
Type 37						
1964.....	1,789	41.15	16	1	1	1
1965.....	1,992	39.22	75	1	1	1
1966.....	1,479	42.34	26	1	1	1
1967.....	1,291	45.18	25	1	1	1
1968.....	1,198	53.20	1	1	1	1

TABLE 5.--Marketing quota referendums, for crops covered since 1940, by kinds of tobacco ^{1/}

Kind of tobacco and date of referendum	Crops covered	Percentage of votes cast--			Kind of tobacco and date of referendum	Crops covered	Percentage of votes cast--		
		for 3 years	for 1 year	against quotas			for 3 years	for 1 year	against quotas
Flue-cured (11-14):					Fire-cured (21-24):³--Cont.				
July 20, 1940	: 1941, 1942, and 1943	: 86.1	: 1.8	: 12.1	Feb. 24, 1961	: 1961, 1962, and 1963	: 98.0	: --	: 2.0
July 24, 1943	: 1944, 1945, and 1946	: 87.6	: 3.1	: 9.3	Feb. 28, 1964	: 1964, 1965, and 1966	: 94.7	: --	: 5.3
July 12, 1946	: 1947, 1948, and 1949	: 97.1	: 1.2	: 1.7	Feb. 13 thru 17, 1967	: 1967, 1968, and 1969	: 93.5	: --	: 6.5
July 23, 1949	: 1950, 1951, and 1952	: 97.7	: .9	: 1.4					
July 19, 1952	: 1953, 1954, and 1955	: 97.8	: 1.0	: 1.2	Dark air-cured (35-36):³				
July 23, 1955	: 1956, 1957, and 1958	: 95.5	: 1.8	: 2.7	Nov. 23, 1940	: 1941, 1942, and 1943	: 84.2	: 2.2	: 13.6
Dec. 15, 1958	: 1959, 1960, and 1961	: 95.4	: --	: 4.6	Nov. 20, 1945	: 1946, 1947, and 1948	: 96.1	: 1.5	: 2.4
Dec. 12, 1961	: 1962, 1963, and 1964	: 98.1	: --	: 1.9	Nov. 27, 1948	: 1949, 1950, and 1951	: 96.1	: 1.5	: 2.4
Dec. 15, 1964	: 1965, 1966, and 1967	: 96.5	: --	: 3.5	Dec. 7, 1951	: 1952, 1953, and 1954	: 97.4	: 1.5	: 1.1
May 4, 1965 ⁴	: 1965, 1966, and 1967	: 73.6	: --	: 26.4	Dec. 14, 1954	: 1955, 1956, and 1957	: 95.9	: 1.2	: 2.9
July 18, 1967	: 1968, 1969, and 1970	: 96.5	: --	: 3.5	Feb. 18, 1958	: 1958, 1959, and 1960	: 96.6	: --	: 3.4
					Feb. 24, 1961	: 1961, 1962, and 1963	: 98.7	: --	: 1.3
					Feb. 28, 1964	: 1964, 1965, and 1966	: 97.8	: --	: 2.2
Burley (31):					Feb. 13 thru 17, 1967	: 1967, 1968, and 1969	: 93.1	: --	: 6.9
Nov. 21, 1940	: 1941, 1942, and 1943	: 76.5	: 3.1	: 20.4					
Oct. 23, 1943	: 1944, 1945, and 1946	: 92.8	: 2.1	: 5.1	Virginia sun-cured (37):				
Oct. 25, 1946	: 1947, 1948, and 1949	: 95.9	: 1.7	: 2.4	Dec. 15, 1949	: 1950, 1951, and 1952	: 85.1	: 6.4	: 8.5
Nov. 26, 1949	: 1950, 1951, and 1952	: 92.3	: 3.5	: 4.2	Nov. 22, 1952	: 1953, 1954, and 1955	: 97.1	: 2.0	: 0.9
Nov. 22, 1952	: 1953, 1954, and 1955	: 97.0	: 1.3	: 1.7	Dec. 29, 1955	: 1956, 1957, and 1958	: 98.0	: --	: 2.0
Apr. 28, 1955 ²	: 1955	: --	: 96.0	: 4.0	Feb. 24, 1959	: 1959, 1960, and 1961	: 97.9	: --	: 2.1
Dec. 29, 1955	: 1956, 1957, and 1958	: 95.3	: --	: 4.7	Feb. 20, 1962	: 1962, 1963, and 1964	: 98.5	: --	: 1.5
Feb. 24, 1959	: 1959, 1960, and 1961	: 98.7	: --	: 1.3	Feb. 25, 1965	: 1965, 1966, and 1967	: 97.5	: --	: 2.5
Feb. 20, 1962	: 1962, 1963, and 1964	: 99.2	: --	: .8	Feb. 26 thru Mar. 1, 1968	: 1968, 1969, and 1970	: 93.4	: --	: 6.6
Feb. 25, 1965	: 1965, 1966, and 1967	: 99.0	: --	: 1.0					
Mar. 10, 1966 ⁴	: 1966, 1967, and 1968	: 57.0	: --	: 43.0	Cigar Filler (41):				
Feb. 27 thru Mar. 3, 1967 ⁴	: 1967, 1968, and 1969	: 58.8	: --	: 41.2	Dec. 20, 1950	: 1951, 1952, and 1953	: 11.8	: 9.8	: 78.4
Feb. 26 thru Mar. 1, 1968	: 1968, 1969, and 1970	: 97.0	: --	: 3.0	Dec. 7, 1951	: 1952, 1953, and 1954	: 21.4	: 12.1	: 66.5
					Oct. 29, 1952	: 1953, 1954, and 1955	: 26.3	: 12.1	: 61.6
Maryland (32):					Oct. 29, 1953	: 1954, 1955, and 1956	: 17.4	: 7.0	: 75.6
Dec. 20, 1950	: 1951, 1952, and 1953	: 18.1	: 19.1	: 62.8	Dec. 17, 1954	: 1955, 1956, and 1957	: 8.4	: 3.8	: 87.8
Dec. 7, 1951	: 1952, 1953, and 1954	: 15.5	: 13.1	: 71.4	Dec. 29, 1955	: 1956, 1957, and 1958	: 11.3	: --	: 88.7
Oct. 29, 1952	: 1953, 1954, and 1955	: 64.5	: 9.6	: 25.9	Feb. 24, 1959	: 1959, 1960, and 1961	: 7.9	: --	: 92.1
Oct. 29, 1953	: 1954, 1955, and 1956	: 51.3	: 12.8	: 35.9	Feb. 20, 1962	: 1962, 1963, and 1964	: 13.8	: --	: 86.2
Dec. 17, 1954	: 1955, 1956, and 1957	: 43.7	: 7.4	: 48.9	Feb. 18, 1965	: 1965, 1966, and 1967	: 11.8	: --	: 88.2
Dec. 29, 1955	: 1956, 1957, and 1958	: 81.0	: --	: 19.0	Feb. 19 thru 23, 1968	: 1968, 1969, and 1970	: 19.1	: --	: 80.9
Feb. 24, 1959	: 1959, 1960, and 1961	: 64.2	: --	: 35.8					
Feb. 2, 1960	: 1960, 1961, and 1962	: 77.8	: --	: 22.2	Cigar filler and binder (42-44 and 53-55):				
Feb. 14, 1963	: 1963, 1964, and 1965	: 83.8	: --	: 16.2	Feb. 13, 1957	: 1957, 1958, and 1959	: 94.1	: --	: 5.9
Feb. 25, 1966	: 1966, 1967, and 1968	: 41.5	: --	: 58.5	Feb. 11, 1960	: 1960, 1961, and 1962	: 95.4	: --	: 4.6
Feb. 20 thru 24, 1967	: 1967, 1968, and 1969	: 61.0	: --	: 39.0	Feb. 26, 1963	: 1963, 1964, and 1965	: 89.6	: --	: 10.4
Feb. 19 thru 23, 1968	: 1968, 1969, and 1970	: 56.2	: --	: 43.8	Feb. 10, 1966	: 1966, 1967, and 1968	: 91.3	: --	: 8.7
					Feb. 24 thru 27, 1969	: 1969, 1970, and 1971	: 84.6	: --	: 15.4
Fire-cured (21-24):³					Cigar binder (51-52):				
Nov. 23, 1940	: 1941, 1942, and 1943	: 86.3	: 2.1	: 11.6	Feb. 13, 1957	: 1957, 1958, and 1959	: 98.0	: --	: 2.0
Oct. 20, 1945	: 1946, 1947, and 1948	: 90.8	: 2.8	: 6.4	Feb. 11, 1960	: 1960, 1961, and 1962	: 89.7	: --	: 10.3
Nov. 27, 1948	: 1949, 1950, and 1951	: 94.7	: 2.5	: 2.8	Feb. 26, 1963	: 1963, 1964, and 1965	: 96.0	: --	: 4.0
Dec. 7, 1951	: 1952, 1953, and 1954	: 96.5	: 1.8	: 1.7	Feb. 10, 1966	: 1966, 1967, and 1968	: 96.6	: --	: 3.4
Dec. 14, 1954	: 1955, 1956, and 1957	: 95.6	: 1.8	: 2.6	Feb. 24 thru 27, 1969	: 1969, 1970, and 1971	: 92.0	: --	: 8.0
Feb. 18, 1958	: 1958, 1959, and 1960	: 96.0	: --	: 4.0					

¹ A two-thirds majority of farmers voting is required to place marketing quotas in effect. Legislation approved in August 1955 required that voting be for a 3-year period only. For record of crops covered for the years 1938, 1939, and 1940, see previous editions of this publication. ² Redetermined quotas for Burley for the 1955 crop. ³ Fire-cured (21-24) and dark air-cured (35-36): Referendums for both kind combined for the crops of 1938 and 1939; quotas for the 1943 crop terminated August 14, 1943; and quotas were not in effect for the crops of 1944 and 1945. ⁴ Special referendum on acreage-poundage program.

TABLE 6.--Number of allotments and acreages allotted, by States and kinds of tobacco for which marketing quotas were in effect, 1963-68

Kind of Tobacco and State	1963		1964		1965		1966		1967		1968	
	Allotments	Acreage allotted	Allotments	Acreage allotted	Allotments	Acreage allotted	Allotments	Acreage allotted	Allotments	Acreage allotted	Allotments	Acreage allotted
Flue-cured (11-14)	Number	Acres	Number	Acres	Number	Acres	Number	Acres	Number	Acres	Number	Acres
Alabama.....	255	504	253	712	259	593	256	591	258	589	268	594
Florida.....	6,881	15,091	6,922	11,600	6,806	12,924	6,855	12,932	6,971	12,922	6,991	12,952
Georgia.....	25,901	72,058	25,889	64,930	25,262	61,737	25,400	61,752	25,674	61,858	25,737	61,886
North Carolina.....	119,665	467,453	117,102	421,045	115,358	400,080	114,283	400,065	115,145	400,505	115,169	400,808
South Carolina.....	25,591	42,297	25,252	74,132	23,702	70,455	23,569	70,554	24,552	70,506	24,491	70,541
Virginia.....	22,905	71,996	22,657	64,931	22,081	60,459	22,050	60,877	21,875	60,937	21,722	61,005
Total.....	201,201	708,591	198,075	638,250	192,662	606,648	192,413	606,665	194,475	607,316	194,378	607,786
Burley (31):												
Alabama.....	39	33	41	30	35	27	42	23	30	22	28	22
Arkansas.....	79	59	79	54	73	49	63	39	63	39	61	36
Georgia.....	215	99	216	91	209	83	179	69	178	69	177	66
Illinois.....	12	5	12	5	6	3	6	3	5	2	5	2
Indiana.....	1,074	4,729	9,683	7,906	9,483	7,172	9,399	6,325	9,345	6,324	9,323	6,326
Kansas.....	53	101	53	45	49	75	49	65	44	61	45	62
Kentucky.....	143,449	226,265	142,855	204,256	141,404	184,792	140,202	159,438	138,441	159,492	136,337	159,553
Missouri.....	1,660	1,551	1,651	3,193	1,580	2,867	1,515	2,440	1,497	2,433	1,490	2,427
North Carolina.....	15,211	11,574	14,156	10,586	13,124	9,775	17,868	8,322	17,779	8,811	17,541	8,833
Ohio.....	20,884	11,193	10,798	10,110	10,535	9,140	10,372	7,979	10,230	7,963	10,068	7,954
Pennsylvania.....	2	2	2	2	2	1	2	2	1	2	1	2
South Carolina.....	9	5	9	4	10	4	6	3	5	2	5	2
Tennessee.....	93,152	71,562	93,081	65,063	92,344	59,528	91,423	53,062	89,518	53,029	88,823	53,032
Texas.....	2	(1)	2	(1)	2	1	--	--	--	--	--	--
Virginia.....	17,380	12,496	17,381	13,370	17,045	10,402	16,976	9,278	16,547	9,276	16,491	9,271
West Virginia.....	4,617	3,235	4,614	2,961	4,515	2,682	4,445	2,400	4,402	2,380	4,355	2,375
Total.....	299,843	348,910	298,633	315,698	295,416	286,601	292,537	249,944	266,086	249,926	284,752	249,966
Maryland (32):												
Delaware.....	1	(1)	1	(1)	1	(1)	(2)	(2)	(2)	(2)	1	0
Maryland.....	6,689	48,194	6,667	47,376	6,205	39,380	(2)	(2)	(2)	(2)	5,659	33,981
Virginia.....	92	26	92	22	68	16	(2)	(2)	(2)	(2)	32	30
Total.....	6,782	48,220	6,760	47,298	6,274	39,396	(2)	(2)	(2)	(2)	5,692	33,991
Fire-cured (21-23):												
Illinois.....	1	(1)	1	(1)	0	0	--	--	--	--	--	--
Kentucky.....	9,124	15,473	9,107	13,977	8,851	12,456	8,747	12,430	8,599	12,516	8,525	12,486
Tennessee.....	8,754	17,371	8,795	15,617	8,654	14,033	8,479	14,015	8,440	14,136	8,423	14,239
Virginia.....	7,284	9,037	7,281	9,145	6,811	9,244	6,630	9,354	6,577	9,381	6,463	9,392
Total.....	25,163	41,881	25,184	38,639	24,316	35,733	23,856	35,794	23,596	36,033	23,411	36,117

Kind of tobacco and State	1963		1964		1965		1966		1967		1968	
	Allotments	Acreage allotted	Allotments	Acreage allotted	Allotments	Acreage allotted	Allotments	Acreage allotted	Allotments	Acreage allotted	Allotments	Acreage allotted
	Number	Acres	Number	Acres	Number	Acres	Number	Acres	Number	Acres	Number	Acres
Dark air-cured (35-36):												
Indiana.....	117	41	116	35	92	30	80	29	75	28	71	27
Kentucky.....	19,334	13,447	19,491	12,057	18,797	10,824	18,498	10,830	18,165	10,805	17,949	10,767
Tennessee.....	4,785	2,274	4,818	2,040	4,702	1,833	4,667	1,835	4,618	1,834	4,585	1,832
Total.....	24,236	15,761	24,425	14,132	23,591	12,687	23,245	12,694	22,858	12,668	22,605	12,626
Va. sun-cured (37):												
Virginia.....	2,286	3,757	2,282	3,472	1,952	3,224	1,579	2,990	1,506	2,824	1,426	2,662
Cigar filler and binder (42-44 and 53-55):												
Illinois.....	3	5	3	4	2	3	2	3	1	2	1	2
Indiana.....	2	1	2	1	2	1	2	1	2	1	2	1
Iowa.....	1	7	1	7	1	7	1	7	1	7	1	7
Minnesota.....	120	183	121	169	79	152	69	147	65	134	67	128
New York.....	71	50	71	35	13	19	12	17	12	15	11	13
Ohio.....	1,589	4,622	1,586	4,585	1,455	4,707	1,416	4,776	1,402	4,740	1,392	4,614
Pennsylvania.....	121	193	122	176	51	162	47	160	45	146	45	138
Wisconsin.....	6,443	15,637	6,185	15,347	5,659	15,212	5,367	15,072	5,248	14,660	4,946	14,422
Total.....	8,350	20,698	8,091	20,324	7,262	20,263	6,916	20,184	6,776	19,705	6,465	19,325
Cigar binder (51-52):												
Connecticut.....	1,312	5,300	1,294	4,492	1,214	3,834	572	3,221	542	3,203	521	3,178
Massachusetts.....	961	2,684	946	2,189	899	1,714	315	1,201	284	1,117	269	1,075
New Hampshire.....	0	0	0	0	0	0	--	--	--	--	--	--
New York.....	1	(1)	1	(1)	0	0	--	--	--	--	--	--
Vermont.....	1	4	1	3	1	2	1	2	--	--	--	--
Total.....	2,275	7,989	2,242	6,684	2,114	5,550	888	4,425	826	4,320	790	4,253
Grand total.....	570,156	1,195,707	565,692	1,084,489	553,587	1,010,103	541,434	932,701	538,123	932,793	533,327	932,736

1 Less than 0.5 acres.
 2 Quotas disapproved by growers.
 Detail of acreage may not add to totals because of rounding.

Compiled from records of ASCS.

TABLE 7.--Applicable loan level per pound of tobacco, as of beginning of marketing year, by class or type of tobacco, 1959-69

Beginning marketing year ¹	Flue-cured types 11-14	Burley type 31	Maryland type 32	Fire-cured type 21	Fire-cured types 22-23	Dark air-cured types 35-36	Vt. sun-cured type 37	Cigar filler type 41	Puerto Rican filler, type 46	Cigar filler binder, types 42-44 and 53-55	Cigar binder types 51-52
	Loan Level	Loan Level	Loan Level	Loan Level	Loan Level	Loan Level	Loan Level	Loan Level	Loan Level	Loan Level	Loan Level
	Cents	Cents	Cents	Cents	Cents	Cents	Cents	Cents	Cents	Cents	Cents
1959....	55.5	57.2	(2)	38.8	38.8	34.5	34.5	(2)	29.7	24.6	39.6
1960....	55.5	57.2	50.8	38.8	38.8	34.5	34.5	(2)	29.7	28.6	39.6
1961....	55.5	57.2	50.8	38.8	38.8	34.5	34.5	(2)	29.7	28.6	39.6
1962....	56.1	57.8	51.3	39.2	39.2	34.8	34.8	(2)	30.0	28.9	40.0
1963....	56.6	58.3	51.8	39.6	39.6	35.2	35.2	(2)	30.3	29.2	40.4
1964....	57.2	58.9	52.3	40.0	40.0	35.5	35.5	(2)	30.6	29.5	40.8
1965....	57.7	59.5	52.8	40.4	40.4	35.9	35.9	(2)	30.9	29.7	41.2
1966....	58.3	60.6	53.3	41.1	41.1	36.6	36.6	(2)	31.5	30.3	42.0
1967....	59.9	61.8	(2)	41.9	41.9	37.3	37.3	(2)	32.1	30.9	42.8
1968....	61.6	63.5	(2)	43.1	43.1	38.3	38.3	(2)	33.0	31.7	44.0
1969....	63.1	65.7	(2)	44.6	44.6	39.7	39.7	(2)	34.2	32.9	45.5
1970....											
1971....											
1972....											
1973....											

Legislation approved February 20, 1960, provided that price supports for the 1960 crop be the same as for 1959; and that for subsequent crops they be adjusted according to the percentage change between (1) the 1959 parity index and (2) the average of the parity indexes for the 3 calendar years just preceding the year for which the supports are being determined.

- 1 The marketing year begins as of July 1 for flue-cured and cigar wrapper, and as of October 1 for all other types.
- 2 Announced "no support." Growers disapproved quotas.

Compiled from records of ASCS.

TABLE 8.--Hogshead dimensions and weights, by class or type of tobacco

Class or type of tobacco	Diameter	Length	Average weight	
			Net Pounds	Tare Pounds
Flue-cured.....	48	48	950	135
Burley.....	48	54	960	145
Maryland.....	47	52	750	140
Virginia fire-cured.....	48	54	1,350	150
Kentucky and Tennessee fire-cured.....	48	58	1,425	180
Dark air-cured.....	48	54	1,250	175

Note: These figures are weights and dimensions of hogsheads that are usually purchased by the trade in "knocked down" form and are assembled as used. Some manufacturers use the so-called patented or collapsible hogsheads, usually 47 by 54, the tare weight of which is 115 pounds, or a case measuring 30 x 30 x 40" with a tare weight of 90-100 lbs.

TABLE 9.--Factors for adjusting stocks reported by dealers and manufacturers to a farm-sales-weight equivalent, by types of tobacco

AUCTION MARKET AREAS (Types 11-37) ^{1/}

Type name	Type number	Factors to multiply by to convert -				
		Stemmed stocks to -		Unstemmed stocks to -		
		Unstemmed equivalent	Farm-sales weight equivalent	Farm-sales-weight equivalent		
				From packed weight ^{1/}		
Flue-cured.....	11-14	1.295	1.450	1.12		
Virginia fire-cured.....	21	1.299	1.598	1.23		
Tenn. and Ky. (fire-cured).....	22-23	1.324	2/ 1.471	1.04		
Burley.....	31	1.345	1.506	1.12		
Southern Maryland.....	32	1.373	1.400	1.02		
One-Sucker.....	35	1.413	1.554	1.10		
Green River.....	36	1.389	1.570	1.13		
Virginia sun-cured.....	37	1.326	1.538	1.16		
Miscellaneous domestic.....	72-73	1.333	1.493	1.12		
DOMESTIC-GROWN CIGAR LEAF (Types 41-62)						
			^{1/}	Sweated weight ^{2/}	Marked weight ^{2/}	Farm-sales weight ^{2/}
Pennsylvania Seedleaf.....	41	1.444	1.718	1.19	1.05	1.00
Ohio.....	42-44	1.454	1.730	1.19	1.05	1.00
Puerto Rican.....	46	1.314	1.551	1.18	1.16	1.00
Connecticut Broadleaf.....	51	1.375	1.622	1.18	1.04	1.00
Connecticut Havana Seed.....	52	1.386	1.635	1.18	1.04	1.00
Southern Wisconsin.....	54	1.383	1.687	1.22	1.04	1.00
Northern Wisconsin.....	55	1.404	1.713	1.22	1.06	1.00
Connecticut Shade.....	61	1.245	1.419	1.14	1.10	1.00
Cal. and Fla. Shade.....	62	1.235	1.408	1.14	1.10	1.00
IMPORTED LEAF (Types 81-90)						
Cigar leaf.....	81-88	1.400	1.624		1.16	
Cigarette and smoking tobacco.....	90	1.333	1.466		1.10	

^{1/} Types 11-37 are reported on the basis of packed weight.

^{2/} Farm-sales-weight equivalent based on unstemmed sweated weight factor.

^{3/} The instructions for reporting unstemmed cigar-leaf of the domestic types require that dealers and manufacturers indicate the weight basis on which the tobacco is reported, namely, farm-sales weight, marked weight, or sweated weight. The stocks are converted to the farm-sales-weight equivalent on the basis of average factors reflecting the percentage reported each quarter in each of these three categories.

TABLE 10.--Stocks of leaf tobacco, by types, on a farm-sales-weight equivalent basis, owned by dealers and manufacturers in the United States and Puerto Rico, by quarters, 1964-68

Quarter and year	TYPES 11-14--FLUE-CURED			TYPE 21--VIRGINIA FIRE-CURED			TYPE 22--TENNESSEE AND KENTUCKY FIRE-CURED		
	Held by trade	Under loan	Total farm-sales-weight equivalent	Held by trade	Under loan	Total farm-sales-weight equivalent	Held by trade	Under loan	Total farm-sales-weight equivalent
Jan. 1:	1,000 lb.	1,000 lb.	1,000 lb.	1,000 lb.	1,000 lb.	1,000 lb.	1,000 lb.	1,000 lb.	1,000 lb.
1964.....	2,130,451:	699,317:	2,879,768:	15,493:	4,631:	20,123:	44,321:	20,879:	65,200:
1965.....	2,071,139:	970,485:	3,041,674:	14,956:	4,312:	19,268:	45,228:	25,782:	71,010:
1966.....	2,017,884:	924,112:	2,941,996:	14,352:	3,604:	17,956:	49,211:	19,882:	69,093:
1967.....	2,017,439:	802,145:	2,819,584:	13,310:	2,941:	16,251:	50,101:	16,793:	66,894:
1968.....	1,928,015:	915,619:	2,843,634:	11,877:	2,691:	14,568:	43,956:	18,990:	62,946:
1969.....
1970.....
Apr. 1:
1964.....	1,952,452:	696,923:	2,649,375:	16,294:	4,294:	20,588:	65,319:	28,209:	93,528:
1965.....	1,869,366:	953,638:	2,823,004:	17,174:	4,306:	21,480:	66,409:	27,569:	93,978:
1966.....	1,812,690:	866,833:	2,679,523:	16,688:	4,362:	21,050:	66,616:	21,431:	88,047:
1967.....	1,837,188:	737,159:	2,574,347:	14,591:	3,270:	17,861:	63,150:	21,027:	84,177:
1968.....	1,768,982:	819,352:	2,588,334:	13,360:	3,129:	16,489:	62,861:	17,913:	80,774:
1969.....
1970.....
July 1:
1964.....	1,639,470:	696,908:	2,386,378:	15,182:	4,261:	19,443:	60,443:	27,950:	88,393:
1965.....	1,636,814:	918,539:	2,555,353:	15,627:	3,406:	19,033:	63,991:	26,188:	90,179:
1966.....	1,602,431:	836,404:	2,438,835:	15,192:	3,937:	19,129:	62,391:	19,673:	82,064:
1967.....	1,587,150:	685,374:	2,272,524:	13,791:	2,734:	16,525:	57,235:	20,893:	78,128:
1968.....	1,528,180:	773,355:	2,301,535:	11,556:	2,906:	14,462:	55,195:	16,683:	71,878:
1969.....
1970.....
Oct. 1:
1964.....	1,909,574:	818,820:	2,728,394:	12,535:	4,251:	16,786:	52,790:	26,925:	79,715:
1965.....	1,966,741:	931,449:	2,898,190:	12,241:	3,347:	15,588:	60,250:	21,696:	81,946:
1966.....	1,949,915:	786,498:	2,736,413:	13,373:	3,520:	16,893:	56,580:	17,739:	74,319:
1967.....	1,888,205:	732,754:	2,620,959:	12,149:	2,690:	14,839:	51,646:	19,784:	71,430:
1968.....	1,802,106:	825,796:	2,627,902:	8,917:	2,818:	11,735:	47,800:	15,425:	63,225:
1969.....
1970.....
	TYPE 23--KENTUCKY AND TENNESSEE FIRE-CURED			TYPE 21-23--TOTAL FIRE-CURED			TYPE 31--BURLEY		
Jan. 1:
1964.....	8,723:	9,226:	17,949:	68,536:	34,736:	103,272:	1,320,794:	199,267:	1,520,061:
1965.....	8,242:	10,558:	18,800:	68,426:	40,652:	109,078:	1,362,861:	317,400:	1,680,261:
1966.....	9,167:	9,167:	18,334:	72,770:	32,653:	105,383:	1,389,153:	287,162:	1,676,315:
1967.....	11,384:	8,233:	19,617:	74,295:	27,967:	102,262:	1,295,071:	274,968:	1,570,039:
1968.....	10,304:	7,154:	17,458:	66,137:	28,835:	94,972:	1,347,893:	317,875:	1,665,768:
1969.....
1970.....
Apr. 1:
1964.....	14,343:	10,963:	25,308:	95,958:	43,766:	139,424:	1,405,350:	293,542:	1,698,892:
1965.....	13,784:	11,709:	25,493:	97,367:	43,584:	140,951:	1,384,659:	325,285:	1,709,944:
1966.....	17,218:	9,218:	26,436:	100,522:	35,011:	135,533:	1,408,730:	285,998:	1,694,728:
1967.....	16,992:	8,954:	25,946:	94,713:	33,251:	127,984:	1,372,997:	303,791:	1,676,788:
1968.....	15,213:	6,271:	21,484:	91,434:	27,313:	118,747:	1,297,273:	328,528:	1,625,801:
1969.....
1970.....
July 1:
1964.....	12,780:	11,237:	24,001:	88,405:	43,432:	131,837:	1,279,086:	290,948:	1,570,034:
1965.....	13,339:	11,200:	24,539:	92,957:	40,794:	133,751:	1,261,367:	322,993:	1,584,360:
1966.....	15,552:	8,497:	24,049:	93,135:	32,107:	125,242:	1,292,028:	270,862:	1,562,890:
1967.....	14,755:	8,130:	22,875:	85,781:	31,747:	117,528:	1,245,384:	280,761:	1,526,145:
1968.....	12,413:	6,261:	18,674:	79,163:	25,850:	105,013:	1,173,605:	326,477:	1,480,082:
1969.....
1970.....
Oct. 1:
1964.....	10,848:	10,940:	21,788:	76,173:	42,116:	118,289:	1,146,798:	265,370:	1,412,168:
1965.....	12,232:	10,572:	22,804:	84,723:	35,615:	120,338:	1,099,292:	316,418:	1,415,710:
1966.....	13,236:	8,248:	21,484:	83,189:	29,507:	112,696:	1,133,452:	261,892:	1,395,344:
1967.....	12,330:	7,520:	19,856:	76,131:	29,994:	106,125:	1,104,829:	276,710:	1,381,539:
1968.....	9,527:	6,054:	15,581:	66,254:	24,297:	90,551:	1,001,387:	321,718:	1,323,105:
1969.....
1970.....

TABLE 10.--Stocks of leaf tobacco, by types, on a farm-sales-weight equivalent basis, owned by dealers and manufacturers in the United States and Puerto Rico, by quarters, 1964-68--Continued

Quarter and year	TYPE 32--SOUTHERN MARYLAND			TYPE 35--ONE SUCKER			TYPE 36--GREEN RIVER		
	Held by trade	Under loan	Total farm-sales-weight equivalent	Held by trade	Under loan	Total farm-sales-weight equivalent	Held by trade	Under loan	Total farm-sales-weight equivalent
Jan. 1:	1,000 lb.	1,000 lb.	1,000 lb.	1,000 lb.	1,000 lb.	1,000 lb.	1,000 lb.	1,000 lb.	1,000 lb.
1964.....	67,813	8,809	76,622	26,440	10,956	37,396	13,048	8,537	21,585
1965.....	65,799	16,191	81,990	27,006	13,639	40,645	14,320	7,136	21,456
1966.....	69,960	20,186	90,146	27,046	12,641	39,687	15,769	7,473	23,242
1967.....	68,170	21,513	89,683	26,620	11,681	38,301	14,562	8,687	23,249
1968.....	68,195	18,081	86,276	25,858	12,518	38,376	13,966	9,112	23,078
1969.....									
1970.....									
Apr. 1:									
1964.....	62,828	7,564	70,392	30,979	15,512	46,491	15,728	9,570	25,298
1965.....	58,814	16,052	74,866	30,755	14,638	45,393	18,761	8,179	26,940
1966.....	61,458	20,016	81,474	30,869	13,484	44,353	16,715	8,522	25,237
1967.....	61,033	21,182	82,215	30,815	13,448	44,263	16,529	9,769	26,298
1968.....	61,422	17,138	78,560	31,819	9,962	41,781	15,288	9,228	24,516
1969.....									
1970.....									
July 1:									
1964.....	76,826	13,563	90,389	28,871	14,219	43,090	15,525	8,178	23,703
1965.....	84,332	19,121	103,653	28,554	14,074	42,628	16,551	7,644	24,195
1966.....	85,907	22,299	108,206	30,209	12,119	42,328	15,678	8,075	23,753
1967.....	83,764	20,199	103,963	28,160	12,241	40,401	15,036	9,293	24,329
1968.....	86,252	12,883	97,135	29,691	9,383	39,074	14,484	8,545	23,029
1969.....									
1970.....									
Oct. 1:									
1964.....	72,941	16,618	89,559	25,214	14,121	39,335	14,579	7,268	21,847
1965.....	78,715	20,217	98,932	25,868	13,726	39,594	14,689	7,605	22,294
1966.....	77,211	22,530	99,741	26,274	11,673	37,947	14,730	7,965	22,695
1967.....	77,021	18,561	95,582	25,304	12,048	37,352	13,861	9,286	23,147
1968.....	82,658	9,323	91,981	27,707	8,727	36,434	13,391	8,363	21,754
1969.....									
1970.....									
	TYPE 37--VIRGINIA SUN-CURED			TYPES 35-37--TOTAL DARK AIR-CURED			TYPE 41--PENNSYLVANIA SEEDLEAF		
Jan. 1:									
1964.....	4,264	--	4,264	44,752	19,493	64,245	117,654	--	117,654
1965.....	4,461	--	4,461	45,787	20,775	66,562	125,611	--	125,611
1966.....	4,613	--	4,613	47,428	20,114	67,542	112,423	--	112,423
1967.....	4,614	--	4,614	45,796	20,368	66,164	112,276	--	112,276
1968.....	4,461	--	4,461	44,285	21,630	65,915	100,298	--	100,298
1969.....									
1970.....									
Apr. 1:									
1964.....	4,998	--	4,998	51,705	25,082	76,787	151,266	--	151,266
1965.....	5,235	--	5,235	54,751	22,817	77,568	152,366	--	152,366
1966.....	5,243	37	5,280	52,827	22,041	74,870	142,760	--	142,760
1967.....	5,004	--	5,004	52,348	23,217	75,565	138,280	--	138,280
1968.....	4,771	--	4,771	51,878	19,190	71,068	129,836	--	129,836
1969.....									
1970.....									
July 1:									
1964.....	4,543	--	4,543	48,939	22,397	71,336	153,507	--	153,507
1965.....	4,750	--	4,750	49,855	21,718	71,573	143,369	--	143,369
1966.....	4,817	37	4,854	50,704	20,231	70,935	137,122	--	137,122
1967.....	4,657	--	4,657	47,853	21,534	69,387	123,246	--	123,246
1968.....	4,385	--	4,385	48,560	17,928	66,488	120,025	--	120,025
1969.....									
1970.....									
Oct. 1:									
1964.....	4,165	--	4,165	43,958	21,389	65,347	138,138	--	138,138
1965.....	4,319	--	4,319	44,876	21,331	66,207	129,420	--	129,420
1966.....	4,371	37	4,308	45,275	19,675	64,950	127,747	--	127,747
1967.....	4,120	37	4,157	43,285	21,371	64,656	112,291	--	112,291
1968.....	3,923	--	3,923	45,021	17,090	62,111	108,696	--	108,696
1969.....									
1970.....									

TABLE 10.--Stocks of leaf tobacco, by types, on a farm-sales-weight equivalent basis, owned by dealers and manufacturers, in the United States and Puerto Rico, by quarters, 1964-68--Continued

Quarter and year	TYPES 42-44--OHIO			TYPES 41-44--TOTAL, CONTINENTAL-GROWN FILLER			TYPE 46--PUERTO RICAN--CONTINENTAL UNITED STATES		
	Held by trade	Under loan	Total farm-sales-weight equivalent	Held by trade	Under loan	Total farm-sales-weight equivalent	Held by trade	Under loan	Total farm-sales-weight equivalent
Jan. 1:	1,000 lb.	1,000 lb.	1,000 lb.	1,000 lb.	1,000 lb.	1,000 lb.	1,000 lb.	1,000 lb.	1,000 lb.
1964.....	18,675	87	18,762	136,329	87	136,416	14,702	--	14,702
1965.....	16,469	315	16,784	142,080	315	142,395	17,385	--	17,385
1966.....	15,380	--	15,380	127,803	--	127,803	17,291	--	17,291
1967.....	15,385	164	15,549	127,661	164	127,825	14,571	--	14,571
1968.....	14,037	140	14,177	114,335	140	114,475	15,196	--	15,196
1969.....									
1970.....									
Apr. 1:									
1964.....	22,965	608	23,573	174,331	608	174,939	13,604	--	13,604
1965.....	20,840	79	20,919	173,206	79	173,285	17,565	--	17,565
1966.....	19,077	167	19,244	161,837	167	162,004	16,202	--	16,202
1967.....	18,114	87	18,201	156,394	87	156,481	12,956	--	12,956
1968.....	15,052	270	15,322	144,888	270	145,158	13,592	--	13,592
1969.....									
1970.....									
July 1:									
1964.....	20,735	631	21,375	174,251	631	174,882	12,833	--	12,833
1965.....	18,527	--	18,527	161,896	--	161,896	16,724	--	16,724
1966.....	17,559	164	17,723	155,681	164	155,845	15,488	--	15,488
1967.....	17,651	161	17,812	140,897	161	141,058	11,320	--	11,320
1968.....	14,088	388	14,476	134,113	388	134,501	12,142	--	12,142
1969.....									
1970.....									
Oct. 1:									
1964.....	18,532	631	19,163	136,670	631	137,301	17,034	--	17,034
1965.....	16,970	--	16,970	146,390	--	146,390	16,793	--	16,793
1966.....	16,081	164	16,245	143,428	164	143,592	15,091	--	15,091
1967.....	15,359	161	15,520	127,650	161	127,811	9,822	--	9,822
1968.....	12,910	--	12,910	121,606	--	121,606	10,026	--	10,026
1969.....									
1970.....									
	TYPES 46--PUERTO RICAN--PUERTO RICO			TYPE 46--PUERTO RICAN--CONTINENTAL UNITED STATES AND PUERTO RICO			TYPES 41-44--TOTAL CIGAR FILLER		
Jan. 1:									
1964.....	29,134	--	29,134	43,836	--	43,836	180,165	87	180,252
1965.....	27,884	--	27,884	45,269	--	45,269	187,349	315	187,664
1966.....	39,100	--	39,100	56,391	--	56,391	184,194	--	184,194
1967.....	31,939	1,722	33,681	46,330	1,722	48,052	174,191	1,886	176,077
1968.....	30,385	1,563	31,948	37,851	1,563	39,414	159,916	1,703	161,619
1969.....									
1970.....									
Apr. 1:									
1964.....	37,415	--	37,415	51,019	--	51,019	225,200	608	225,808
1965.....	40,158	--	40,158	57,553	--	57,553	230,959	79	231,038
1966.....	43,091	--	43,091	59,293	--	59,293	221,130	167	221,297
1967.....	35,552	1,905	37,457	48,508	1,905	50,413	206,794	--	206,794
1968.....	21,371	1,596	22,967	34,363	1,596	35,959	179,801	1,466	181,267
1969.....									
1970.....									
July 1:									
1964.....	45,881	--	45,881	58,214	--	58,214	232,965	631	233,596
1965.....	51,758	--	51,758	70,582	--	70,582	232,378	--	232,378
1966.....	44,072	--	44,072	59,660	--	59,660	214,251	164	214,415
1967.....	30,324	8,996	39,320	41,644	8,996	50,640	182,541	9,157	191,698
1968.....	23,889	2,562	26,451	36,031	2,562	38,593	170,144	2,970	173,094
1969.....									
1970.....									
Oct. 1:									
1964.....	34,358	--	34,358	51,492	--	51,492	208,062	631	208,693
1965.....	45,861	--	45,861	62,635	--	62,635	209,024	--	209,024
1966.....	36,693	--	36,693	51,784	--	51,784	195,612	164	195,776
1967.....	29,164	1,481	30,645	38,986	1,481	40,467	166,736	1,642	168,378
1968.....	24,424	--	24,424	34,350	--	34,350	155,956	--	155,956
1969.....									
1970.....									

TABLE 10.—Stocks of leaf tobacco, by types, on a farm-sales-weight equivalent basis, owned by dealers and manufacturers in the United States and Puerto Rico, by quarters, 1964-69—Continued

Quarter and year	TYPE 51—CONNECTICUT BROADLEAF			TYPE 52—CONNECTICUT HAVANA SEED			TYPE 54—SOUTHERN WISCONSIN		
	Held by trade	Under loan	Total farm-sales-weight equivalent	Held by trade	Under loan	Total farm-sales-weight equivalent	Held by trade	Under loan	Total farm-sales-weight equivalent
Apr. 1:	1,000 lb.	1,000 lb.	1,000 lb.	1,000 lb.	1,000 lb.	1,000 lb.	1,000 lb.	1,000 lb.	1,000 lb.
1964.....	11,680	7,988	14,668	4,833	7,907	10,881	17,293	2,813	22,074
1965.....	13,720	737	13,782	4,823	4,302	9,125	21,341	225	21,366
1966.....	14,115	—	14,666	4,317	4,041	7,356	20,066	—	20,066
1967.....	17,065	1,484	13,791	6,263	2,250	6,011	19,801	573	20,176
1968.....	8,000	969	7,119	3,827	2,230	6,888	17,331	07	18,469
1969.....	—	—	—	—	—	—	—	—	—
July 1:	—	—	—	—	—	—	—	—	—
Apr. 1:	—	—	—	—	—	—	—	—	—
1964.....	18,439	2,678	18,907	4,479	6,450	9,399	27,274	1,961	28,704
1965.....	16,840	774	18,084	4,443	2,341	7,780	28,074	173	28,299
1966.....	14,693	1,194	18,797	4,937	2,439	6,171	26,775	645	26,390
1967.....	11,975	1,700	14,443	4,134	2,438	4,277	24,888	617	25,500
1968.....	10,791	—	11,794	2,440	1,889	4,279	22,714	—	23,175
1969.....	—	—	—	—	—	—	—	—	—
July 1:	—	—	—	—	—	—	—	—	—
1964.....	14,293	708	14,703	3,855	2,347	9,002	23,874	1,341	24,865
1965.....	14,293	708	14,703	4,078	2,939	6,311	27,468	225	28,693
1966.....	13,625	4,113	14,738	4,493	2,427	5,885	24,430	773	25,103
1967.....	12,687	4,317	13,974	5,623	2,208	6,829	22,284	713	22,976
1968.....	4,775	734	7,506	2,917	993	2,939	21,661	245	21,803
1969.....	—	—	—	—	—	—	—	—	—
July 1:	—	—	—	—	—	—	—	—	—
Oct. 1:	—	—	—	—	—	—	—	—	—
1964.....	14,303	708	14,737	4,216	4,074	8,270	21,879	1,341	22,920
1965.....	14,293	708	14,739	4,806	2,215	6,311	22,447	225	22,672
1966.....	14,290	4,191	14,699	4,907	2,315	6,311	21,850	774	22,424
1967.....	10,774	4,317	12,599	4,456	2,190	6,343	19,888	714	20,701
1968.....	7,924	—	7,924	4,775	944	3,771	19,625	245	19,869
1969.....	—	—	—	—	—	—	—	—	—
TYPE 51—NORTHERN WISCONSIN				TYPE 52—TOTAL CIGAR BINDER					
Apr. 1:	—	—	—	—	—	—	—	—	—
1964.....	14,843	4,774	26,634	44,434	1,600	54,224	—	—	—
1965.....	22,927	1,400	24,838	62,276	6,301	68,281	—	—	—
1966.....	24,675	2,224	24,930	67,113	3,942	66,984	—	—	—
1967.....	24,315	3,539	27,429	60,297	7,437	67,734	—	—	—
1968.....	24,175	2,914	29,089	44,639	4,624	61,774	—	—	—
1969.....	—	—	—	—	—	—	—	—	—
July 1:	—	—	—	—	—	—	—	—	—
Apr. 1:	—	—	—	—	—	—	—	—	—
1964.....	22,727	2,418	24,471	8,497	17,487	82,479	—	—	—
1965.....	27,474	4,687	31,211	24,243	7,027	89,790	—	—	—
1966.....	29,334	3,411	32,449	23,454	8,293	41,607	—	—	—
1967.....	26,714	2,900	31,344	6,487	10,014	27,641	—	—	—
1968.....	26,197	2,918	34,079	41,649	11,691	73,777	—	—	—
1969.....	—	—	—	—	—	—	—	—	—
July 1:	—	—	—	—	—	—	—	—	—
1964.....	23,179	4,027	28,046	6,148	21,678	77,124	—	—	—
1965.....	26,678	347	27,181	21,177	4,149	78,376	—	—	—
1966.....	26,844	4,191	31,347	17,983	7,473	74,788	—	—	—
1967.....	24,663	6,047	31,733	12,166	10,475	72,494	—	—	—
1968.....	23,411	8,246	31,477	7,741	10,007	67,298	—	—	—
1969.....	—	—	—	—	—	—	—	—	—
Oct. 1:	—	—	—	—	—	—	—	—	—
1964.....	22,090	2,779	24,639	6,178	8,477	64,607	—	—	—
1965.....	24,481	2,830	29,481	66,777	4,074	87,759	—	—	—
1966.....	24,969	4,197	28,414	67,100	2,774	64,908	—	—	—
1967.....	24,448	3,741	29,439	64,227	9,374	66,429	—	—	—
1968.....	23,808	2,990	28,300	3,148	4,843	64,549	—	—	—
1969.....	—	—	—	—	—	—	—	—	—

TABLE 10.--Stocks of leaf tobacco, by types, on a farm-sales-weight equivalent basis, owned by dealers and manufacturers in the United States and Puerto Rico, by quarters, 1964-68--Continued

Quarter and year	TYPE 61--CONNECTICUT SHADE-GROWN			TYPE 62--GEORGIA AND FLORIDA SHADE GROWN			TYPES 61-62--TOTAL CIGAR WRAPPER		
	Held by trade	Under loan	Total farm-sales-weight equivalent	Held by trade	Under loan	Total farm-sales-weight equivalent	Held by trade	Under loan	Total farm-sales-weight equivalent
Jan. 1:	1,000 lb.	1,000 lb.	1,000 lb.	1,000 lb.	1,000 lb.	1,000 lb.	1,000 lb.	1,000 lb.	1,000 lb.
1964	19,235	--	19,235	10,907	--	10,907	30,142	--	30,142
1965	18,830	--	18,830	10,158	--	10,158	28,988	--	28,988
1966	19,555	--	19,555	10,943	--	10,943	30,498	--	30,498
1967	20,690	--	20,690	10,116	--	10,116	30,806	--	30,806
1968	19,897	--	19,897	11,651	--	11,651	31,548	--	31,548
1970									
Apr. 1:									
1964	18,302	--	18,302	9,537	--	9,537	27,839	--	27,839
1965	17,114	--	17,114	8,208	--	8,208	25,322	--	25,322
1966	18,825	--	18,825	10,323	--	10,323	29,148	--	29,148
1967	17,955	--	17,955	9,873	--	9,873	27,828	--	27,828
1968	15,862	--	15,862	11,125	--	11,125	26,987	--	26,987
1970									
Jul. 1:									
1964	13,942	--	13,942	8,217	--	8,217	22,159	--	22,159
1965	14,258	--	14,258	7,299	--	7,299	21,557	--	21,557
1966	16,283	--	16,283	8,187	--	8,187	24,470	--	24,470
1967	16,912	--	16,912	8,685	--	8,685	25,597	--	25,597
1968	12,771	--	12,771	10,062	--	10,062	22,833	--	22,833
1970									
Oct. 1:									
1964	17,893	--	17,893	9,073	--	9,073	26,966	--	26,966
1965	19,236	--	19,236	10,075	--	10,075	29,311	--	29,311
1966	19,431	--	19,431	10,476	--	10,476	30,907	--	30,907
1967	18,642	--	18,642	10,897	--	10,897	29,539	--	29,539
1968	16,26	--	16,26	11,688	--	11,688	26,9	--	26,9
1970									
	TYPE 73	PERIQUE		TYPE 74--OTHER MISCELLANEOUS DOMESTIC		TYPE 75--TOTAL MISCELLANEOUS DOMESTIC			
Jan. 1:									
1964	79	--	79	3,687	--	3,687	4,766	--	4,766
1965	130	--	130	3,493	--	3,493	4,623	--	4,623
1966	608	--	608	4,497	--	4,497	5,105	--	5,105
1967	174	--	174	4,704	--	4,704	4,878	--	4,878
1968	577	--	577	2,090	--	2,090	2,667	--	2,667
1970									
Apr. 1:									
1964			85	3,171	--	3,171	4,026	--	4,026
1965			87	3,796	--	3,796	4,883	--	4,883
1966	179	--	1,027	4,331	--	4,331	5,358	--	5,358
1967			81	4,035	--	4,035	4,906	--	4,906
1968			54	3,039	--	3,039	3,813	--	3,813
1970									
Jul. 1:									
1964			75	3,170	--	3,170	3,877	--	3,877
1965			77	3,164	--	3,164	3,966	--	3,966
1966	263	--	863	4,666	--	4,666	5,529	--	5,529
1967	821	--	419	4,438	--	4,438	5,279	--	5,279
1968	96	--	06	3,4	--	3,4	6,153	--	6,153
1970									
Oct. 1:									
1964	24	--	93	2,876	--	2,876	3,499	--	3,499
1965	147	--	297	3,558	--	3,558	4,3	--	4,3
1966	828	--	1,75	4,227	--	4,227	5,166	--	5,166
1967	187	--	275	4,001	--	4,001	4,746	--	4,746
1968	636	--	636	3,841	--	3,841	4,7	--	4,7
1970									

1 Type 73 is defined as all domestic types of tobacco not otherwise classified, but the bulk of the stocks reported in this type consist of cuttings, clippings, and trimmings. This is the result, in most instances, of the inability of reporters to designate cuttings, clippings, and trimmings in the "S" group of the types to which they properly belong.

2 Prior to January 1, 1963, includes also types 3IV and 70 (both low nicotine) and 77 (domestic aromatic).

Compiled from quarterly Tobacco Stocks Reports, Tobacco Division, CMS.

TABLE 11.--Stocks of foreign-grown cigar leaf, and cigarette and smoking tobacco, by types, on a farm-sales-weight equivalent basis, owned by dealers and manufacturers in the United States, by quarters, 1964-68.

Quarter and year	Cigar leaf types										
	81 Cuba	82 Indonesia	83 Philippines	84 Brazil	85 Colombia	86 Dominican Republic	87 Paraguay	88 Mexico 1/	89 Other 1/	81-89 Total	Cigarette leaf type 90
Jan. 1:	1,000 lb.	1,000 lb.	1,000 lb.	1,000 lb.	1,000 lb.	1,000 lb.	1,000 lb.	1,000 lb.	1,000 lb.	1,000 lb.	1,000 lb.
1964	21,882	3,090	16,655	5,540	9,687	10,665	2,951		3,242	73,712	281,887
1965	14,465	7,129	28,037	11,995	17,726	23,460	3,485		7,581	113,878	284,584
1966	9,212	6,916	47,586	15,587	15,745	15,786	4,784		10,852	126,470	389,255
1967	5,382	5,113	38,384	12,803	11,073	9,757	2,412		11,300	96,224	328,516
1968	3,213	4,572	28,239	4,446	9,301	9,454	2,740		11,481	77,497	403,337
1969											
1970											
Apr. 1:											
1964	19,601	2,662	17,691	7,061	11,033	12,813	2,558		3,930	77,349	302,114
1965	12,936	7,038	36,560	16,573	18,461	22,972	4,138		7,737	126,415	304,385
1966	7,844	6,629	47,370	15,284	15,883	15,031	4,305		10,601	122,747	352,963
1967	4,835	5,606	33,606	12,851	9,702	11,266	1,700		11,499	91,065	392,043
1968	2,892	4,993	26,692	10,145	8,883	16,810	2,266		10,434	83,122	459,445
1969											
1970											
July 1:											
1964	17,340	3,447	16,708	9,615	20,297	15,334	2,809		4,921	90,471	286,330
1965	11,941	8,419	41,713	17,157	19,700	20,186	4,141		8,737	131,996	316,298
1966	6,779	5,989	45,281	14,033	13,826	12,286	4,118		11,414	113,726	365,028
1967	4,168	4,991	31,321	12,547	13,889	11,510	2,014		11,270	91,710	404,522
1968	2,547	3,702	26,931	10,200	11,388	19,387	1,926		11,787	97,867	451,833
1969											
1970											
Oct. 1:											
1964	15,716	5,664	18,255	11,812	17,909	16,957	3,165		7,068	96,546	250,935
1965	10,533	7,667	42,660	16,281	17,137	18,166	4,065		11,328	127,837	282,660
1966	5,933	5,586	42,486	13,180	12,198	11,589	3,286		12,271	106,549	324,582
1967	3,632	5,037	30,068	10,622	10,963	10,155	2,297		12,097	84,871	372,149
1968	2,199	3,766	25,637	9,331	12,138	14,418	2,250		13,444	90,418	402,742
1969											
1970											

1/ Separate reporting of Mexican stocks was not required until October 1968. In previous quarters Mexican leaf was included as other foreign-grown cigar leaf. Other foreign-grown leaf is now Type 89.

TABLE 12.--Total stocks of leaf tobacco, as reported and on a farm-sales-weight equivalent basis, owned by dealers and manufacturers in the United States and Puerto Rico, by quarters, 1964-68.

Quarter and year	TYPES 11-90							
	Unstemmed reported	Stemmed reported	Farm-sales-weight equivalent	Quarter and year	Unstemmed reported	Stemmed reported	Farm-sales-weight equivalent	
Jan. 1:	1,000 lb.	1,000 lb.	1,000 lb.	1,000 lb.	1,000 lb.	1,000 lb.	1,000 lb.	
1964	1,928,823	2,158,977	5,288,432	1964	1,896,476	1,954,799	4,963,509	
1965	2,254,500	2,150,636	5,666,073	1965	2,132,426	1,936,285	5,230,581	
1966	1,158,384	2,172,732	5,587,076	1966	2,011,365	1,954,238	5,104,622	
1967	1,999,819	2,131,744	5,352,967	1967	1,890,976	1,893,602	4,879,947	
1968	2,191,251	2,073,947	5,485,801	1968	1,982,606	1,806,898	4,837,809	
1969								
1970								
Apr. 1:				Oct. 1:				
1964	1,987,565	2,159,135	5,354,565	1964	1,999,108	1,949,272	4,971,146	
1965	2,215,454	2,135,341	5,597,132	1965	2,163,543	1,989,896	5,323,303	
1966	2,086,198	2,150,504	5,478,868	1966	2,009,831	1,982,752	5,142,276	
1967	1,993,954	2,126,976	5,339,196	1967	1,902,622	1,963,983	4,994,854	
1968	2,114,465	2,016,211	5,311,654	1968	2,025,872	1,829,089	4,937,477	
1969								
1970								

Compiled from quarterly Tobacco Stocks Reports, Tobacco Division, C&MS.

TABLE 13.--Estimated utilization of flue-cured, burley, and Maryland tobacco in cigarettes and other products, averages 1939-58, annual 1956-57 to 1967-68 (July-June basis)

Year beginning July	(Farm-sales-weight)								
	Flue-cured			Burley 1/			Maryland 1/		
	Ciga- rettes	Other 2/ products	Total domestic	Ciga- rettes	Other 2/ products	Total domestic	Ciga- rettes	Other 2/ products	Total domestic
Mil. lb.	Mil. lb.	Mil. lb.	Mil. lb.	Mil. lb.	Mil. lb.	Mil. lb.	Mil. lb.	Mil. lb.	Mil. lb.
1939-43	645	67	512	243	125	368	23	3	26
1944-48	637	50	687	381	96	477	24	3	27
1949-53	731	42	773	424	77	501	24	4	28
1954-58	692	38	730	421	62	483	19	5	25
1956	669	35	704	424	58	482	17	4	21
1957	698	39	737	419	59	478	18	7	25
1958	698	38	736	424	59	483	18	6	24
1959	728	38	766	441	58	499	15	5	20
1960	743	39	792	450	58	508	18	6	24
1961	743	39	782	467	58	525	15	6	21
1962	738	39	777	474	57	531	13	6	19
1963	725	43	768	452	61	513	12	6	18
1964	733	42	775	496	65	561	16	7	23
1965	712	40	752	489	61	550	20	7	27
1966	647	40	687	484	60	544	17	7	24
1967	665	42	687	484	61	544	13	7	20

1 Marketing year domestic disappearance substituted for burley and Maryland. 2/ Smoking and chewing tobacco and cigars; includes also exports of partially processed and shredded tobacco, classified as "bulk smoking".

TABLE 14.--Estimated leaf used by domestic manufacturers in cigarettes, by types of tobacco, averages 1939-58, annual 1956-57 to 1967-68 (July-June basis)

Year beginning July	(Farm-sales-weight)										
	Flue-cured		Burley 1/		Maryland 1/		Oriental		Total leaf used	Production of cigarettes	
	Quantity : of total	Percent	Quantity : of total	Percent	Quantity : of total	Percent	Quantity : of total	Percent			
Mil. lb.	Pct.	Mil. lb.	Pct.	Mil. lb.	Pct.	Mil. lb.	Pct.	Mil. lb.	Billions		
1939-43	645	58.7	243	31.8	23	3.0	54	7.0	765	246.1	
1944-48	637	57.6	381	74.5	24	2.2	63	5.7	1,105	360.6	
1949-53	731	58.0	424	33.6	24	1.9	82	6.5	1,261	412.6	
1954-58	692	56.1	421	34.1	19	1.5	102	8.3	1,234	437.4	
1956	669	55.4	424	35.1	17	1.4	98	8.1	1,208	433.9	
1957	698	56.3	419	33.8	18	1.4	105	8.5	1,240	449.1	
1958	698	55.3	424	33.6	18	1.4	122	9.7	1,262	479.5	
1959	728	55.5	441	33.4	15	1.1	129	9.8	1,313	506.1	
1960	743	55.5	450	33.2	18	1.3	136	10.0	1,357	518.0	
1961	743	56.4	467	34.2	15	1.1	141	10.3	1,366	529.9	
1962	738	56.0	474	34.7	13	1.0	141	10.3	1,366	563.7	
1963	725	54.7	443	34.1	12	0.9	137	10.3	1,327	536.0	
1964	733	52.7	496	35.4	14	1.2	146	10.5	1,391	562.4	
1965	712	51.0	489	35.7	20	1.4	150	11.0	1,371	562.7	
1966	647	49.4	484	36.9	17	1.4	161	12.3	1,308	572.8	
1967	665	48.4	484	36.3	13	1.0	190	14.3	1,332	570.7	

1 Flue- and Maryland marketing year substituted

TABLE 15.--Estimated leaf used per 1000 cigarettes by domestic manufacturers, by types of tobacco, averages 1939-58, annual 1967-57 to 1967-68 (July-June basis)

Year beginning July	(Farm-sales-weight)						Cigarettes per pound of leaf
	Domestic types				Imported	Total	
	Flue-cured	Burley	Maryland	Total domestic	Oriental		
Pounds	Pounds	Pounds	Pounds	Pounds	Pounds	Number	
1939-43	1.82	1.00	.09	2.91	.22	3.13	319
1944-48	1.74	1.06	.07	2.89	.17	3.06	327
1949-53	1.77	1.03	.06	2.86	.20	3.06	327
1954-58	1.58	.96	.05	2.59	.23	2.82	355
1956	1.54	.98	.04	2.56	.22	2.78	360
1957	1.55	.94	.04	2.53	.23	2.76	362
1958	1.66	.88	.04	2.58	.25	2.63	380
1959	1.44	.87	.03	2.34	.25	2.59	386
1960	1.40	.87	.03	2.36	.26	2.62	382
1961	1.40	.88	.03	2.31	.27	2.58	388
1962	1.36	.87	.02	2.25	.26	2.51	398
1963	1.36	.84	.02	2.27	.26	2.48	404
1964	1.30	.88	.03	2.21	.26	2.47	404
1965	1.27	.87	.03	2.17	.27	2.44	410
1966	1.13	.84	.03	2.00	.28	2.28	438
1967	1.13	.85	.02	2.00	.33	2.33	428

Source for tables on this page: estimates of Tobacco Division, C&MS.

TABLE 16.--Cigars, cigarettes, chewing tobacco, and snuff manufactured and removed tax-paid and tax-free, in the United States, by calendar years, averages 1944-58, annual 1959-68

Year	MANUFACTURED														Total chewing, and snuff tobacco 2/
	Cigars				Cigarettes		Chewing tobacco 2/				Total chewing	Smoking tobacco 2/	Snuff 2/		
	Domestic factories	Bonded ware- houses	Total	Small	Large	Small 1/	Plug	Twist	Fine-cut	Scrap					
Millions	Millions	Millions	Millions	Millions	Millions	Mil. lb.	Mil. lb.	Mil. lb.	Mil. lb.	Mil. lb.	Mil. lb.	Mil. lb.	Mil. lb.		
1944-48 average.....	5,444.8	120.7	5,565.5	96.5	22.4	352,459.0	53.2	6.0	3.8	46.2	109.2	125.4	41.0	275.6	
1949-53 average.....	5,637.2	179.6	5,816.8	69.4	.9	410,867.3	39.8	5.0	2.8	38.8	86.5	100.1	39.7	226.2	
1954-58 average.....	5,898.2	230.7	6,128.9	80.5	.4	430,159.6	33.5	4.3	2.9	35.0	75.7	76.3	37.3	189.4	
1959.....	6,608.4	249.0	6,857.4	530.1	.2	489,864.8	28.5	3.6	3.0	33.0	68.1	73.2	34.3	175.7	
1960.....	6,768.1	223.3	6,991.4	148.7	.1	506,944.2	26.4	3.4	3.1	32.0	64.9	73.8	34.6	173.3	
1961.....	6,454.5	187.8	6,642.3	158.2	(3)	528,332.4	26.0	3.3	3.2	32.7	65.2	74.2	33.8	173.2	
1962.....	6,597.7	85.5	6,683.2	164.0	(3)	535,495.7	26.0	2.9	3.3	32.5	64.7	70.9	33.2	168.8	
1963.....	6,652.7	63.1	6,715.8	281.5	(3)	550,558.3	24.9	2.9	3.3	34.0	65.1	70.4	31.8	167.5	
1964.....	8,727.9	9.1	8,737.0	973.9	(3)	539,907.8	25.9	2.8	3.5	34.0	66.2	82.4	31.4	180.1	
1965.....	7,899.5	--	7,899.5	440.7	.1	556,806.1	24.7	2.9	3.7	33.9	65.1	71.8	29.7	166.6	
1966.....	7,165.3	--	7,165.3	445.3	(3)	567,264.5	24.3	2.7	3.9	34.3	65.2	67.3	29.5	162.0	
1967.....	6,858.9	--	6,858.9	433.9	.3	576,182.6	23.7	2.6	4.1	34.0	64.4	64.8	29.3	158.5	
1968 4/.....	7,184.0	--	7,184.0	523.3	.8	579,492.9	22.9	2.6	4.3	35.7	65.4	66.3	27.1	158.8	
REMOVED TAX-PAID															
1959.....	6,469.7	247.0	6,716.7	481.6	.2	453,680.8	28.1	2.8	3.0	32.8	66.7	71.2	33.6	171.7	
1960.....	6,510.9	216.9	6,727.8	141.9	.1	470,135.5	26.0	2.8	3.1	31.9	63.8	71.3	34.7	169.8	
1961.....	6,371.8	186.4	6,558.2	146.1	(3)	488,119.2	25.8	2.8	3.2	32.6	64.4	71.4	33.7	169.5	
1962.....	6,355.1	86.9	6,442.0	155.8	(3)	494,462.9	25.3	2.6	3.3	32.6	63.8	68.3	33.1	165.2	
1963.....	6,564.9	57.3	6,622.2	264.2	(3)	509,588.0	24.7	2.6	3.3	33.9	64.5	68.1	31.9	164.5	
1964.....	8,106.1	16.3	8,122.4	939.7	(3)	497,446.9	25.4	2.6	3.5	34.0	65.5	79.0	31.3	175.8	
1965.....	7,577.9	--	7,577.9	434.7	(3)	511,464.4	24.0	2.5	3.7	33.7	63.9	67.3	29.5	160.6	
1966.....	7,075.5	--	7,075.5	435.7	(3)	522,533.1	24.1	2.5	3.9	33.6	64.2	65.3	29.5	159.0	
1967.....	6,846.4	--	6,846.4	430.7	.2	527,800.3	23.4	2.4	4.1	34.3	64.3	62.7	28.9	155.9	
1968 4/.....	6,758.9	--	6,758.9	503.5	.7	523,007.1	23.0	2.4	4.3	35.7	65.4	64.1	27.7	157.1	
REMOVED TAX-FREE															
1959.....	102.6	--	102.6	23.9	(3)	35,828.3	.4	.8	--	(3)	1.2	1.9	(3)	3.2	
1960.....	105.1	--	105.1	16.8	(3)	36,997.7	.3	.5	--	.1	.9	2.3	(3)	3.2	
1961.....	117.6	--	117.6	6.8	--	39,549.7	.3	.5	--	(3)	.8	2.5	(3)	3.3	
1962.....	126.0	--	126.0	7.1	--	41,069.9	.3	.3	--	.1	.7	2.6	(3)	3.3	
1963.....	142.6	--	142.6	8.2	--	41,088.5	.2	.3	--	(3)	.5	2.2	(3)	2.8	
1964.....	193.1	--	193.1	34.1	--	42,644.6	.3	.3	--	(3)	.6	3.4	(3)	4.0	
1965.....	180.2	--	180.2	23.1	(3)	44,235.5	.3	.3	--	(3)	.6	3.0	(3)	3.6	
1966.....	193.1	--	193.1	16.9	--	46,111.4	.2	.3	(3)	.1	.6	1.5	(3)	2.1	
1967.....	196.6	--	196.6	10.1	(4)	48,970.4	.4	.1	(3)	.1	.6	2.0	(3)	2.7	
1968 4/.....	168.7	--	168.7	7.3	(4)	53,844.5	.3	.1	(3)	.1	.5	1.9	(3)	2.4	

1/ "King-size" cigarettes included in this category.

2/ Federal excise tax removed from these products January 1, 1966. Data now collected by Consumer and Marketing Service, USDA.

Totals are not exactly comparable to previous Internal Revenue Service figures.

3/ Less than 50,000.

4/ Subject to revision.

Detail may not add to total because of rounding.

Compiled from reports of the Internal Revenue Service and Tobacco Division, C&MS, U. S. Department of Agriculture.

UPDATA 1981

TABLE 17.--Large cigars removed tax-paid for domestic consumption, by calendar years 1960-68

Classification and year	Class A	Class B	Class C	Class D	Class E	Class F	Class G	Total
Domestic manufacture: 1/	Thousands	Thousands	Thousands	Thousands	Thousands	Thousands	Thousands	Thousands
1960.....	17,132	315,075	2,627,878	1,151,030	2,140,926	181,573	77,280	6,510,894
1961.....	20,495	332,854	2,586,509	1,028,875	2,159,102	165,860	78,096	6,371,791
1962.....	20,679	344,613	2,543,518	958,068	2,233,774	135,224	119,230	6,355,106
1963.....	24,839	375,449	2,724,119	898,545	2,259,906	146,290	135,804	6,564,952
1964.....	165,515	559,060	3,581,907	1,025,203	2,446,592	163,619	164,196	8,106,093
1965.....	137,652	594,183	3,367,123	870,872	2,256,311	181,004	170,723	7,577,869
1966.....	121,738	569,220	3,111,248	793,538	2,110,398	198,011	171,334	7,075,486
1967.....	120,798	600,803	2,963,057	811,009	1,948,092	225,432	177,187	6,846,377
1968 4/.....	125,885	380,419	3,044,688	1,088,442	1,769,450	254,741	175,268	6,758,893
Bonded warehouses: 1/								
1960.....	--	57	8,667	9,352	56,155	59,539	83,086	216,856
1961.....	--	60	7,804	7,273	40,505	48,318	82,475	186,435
1962.....	--	87	1,549	1,708	17,416	20,424	45,691	86,875
1963.....	--	92	--	--	13,310	11,121	32,802	57,325
1964.....	--	14	--	--	4,404	3,980	7,873	16,271
1965.....	--	--	--	--	--	--	--	--
1966.....	--	--	--	--	--	--	--	--
1967.....	--	--	--	--	--	--	--	--
1968 4/.....	--	--	--	--	--	--	--	--
Imported: Cuba:								
1960.....	--	--	--	--	417	332	21,287	22,026
1961.....	--	--	2	--	460	346	11,872	12,680
1962.....	--	--	--	--	(3)	1	3	4
1963.....	--	--	--	--	--	--	6	6
1964.....	--	--	--	--	--	--	--	--
1965.....	--	--	--	--	--	--	--	--
1966.....	--	--	--	--	--	--	--	--
1967.....	--	--	--	--	--	--	--	--
1968.....	--	--	--	--	--	--	--	--
Imported: Other countries:								
1960.....	26	14	3,849	725	1,967	242	538	7,361
1961.....	10	26	4,774	571	3,680	463	3,093	12,617
1962.....	121	52	10,521	961	4,682	554	5,339	22,231
1963.....	1	5	10,544	635	4,682	613	4,908	21,389
1964.....	102	95	11,813	696	7,354	821	6,893	27,774
1965.....	4	11	7,188	454	6,860	795	7,889	23,201
1966.....	(3)	3	6,815	680	7,413	1,127	7,991	24,029
1967.....	1	1	7,288	753	6,486	842	10,658	26,028
1968 4/.....	20	308	6,778	835	11,265	2,094	10,799	32,098
Puerto Rican manufacture: 2/								
1960.....	--	440	60,196	186	136,589	80	54	197,545
1961.....	--	592	98,146	626	188,599	62,654	3,195	353,812
1962.....	--	154	105,587	1,050	254,600	114,673	6,581	482,644
1963.....	(3)	259	170,154	13,536	295,913	91,168	4,561	525,592
1964.....	(3)	240	189,318	2,980	491,726	119,345	5,454	809,063
1965.....	--	28	177,994	817	621,659	104,959	7,354	912,811
1966.....	--	536	342,901	2,902	627,754	94,045	6,779	1,074,917
1967.....	--	348	334,400	3,783	662,859	89,892	8,017	1,099,300
1968 4/.....	--	672	316,470	18,176	61,527	77,498	6,565	1,035,908
Total:								
1960.....	17,158	315,586	2,700,590	1,161,293	2,336,054	241,756	182,245	6,954,682
1961.....	20,505	333,532	2,697,235	1,037,345	2,392,346	277,641	178,731	6,937,335
1962.....	20,800	344,905	2,661,175	961,789	2,510,472	270,876	176,843	6,946,860
1963.....	24,840	375,806	2,854,817	912,716	2,573,812	249,192	178,080	7,169,264
1964.....	165,617	559,409	3,783,038	1,028,879	2,950,076	287,765	184,416	8,959,202
1965.....	137,656	594,222	3,552,305	872,143	2,884,830	286,758	185,966	8,513,881
1966.....	121,738	569,759	3,460,964	797,120	2,745,565	293,183	186,104	8,174,432
1967.....	120,799	601,151	3,304,745	815,545	2,617,437	316,165	195,862	7,971,705
1968 4/.....	125,905	381,399	3,367,937	1,027,454	2,397,241	334,332	192,631	7,826,899

1/ Tax-paid removals from domestic factories and bonded warehouses.

2/ Quantities represented by collections.

3/ Less than 500.

4/ Subject to revision.

TABLE 18.--Rates of Federal tax on tobacco products in the United States

Product	Rate of tax
Cigars weighing more than 3 pounds per 1,000, if manufactured or imported to retail at -	1,000 dol.
(A) Not more than 2-1/2 cents each	2.50
(B) More than 2-1/2 and not more than 4 cents each	3.00
(C) More than 4 and not more than 6 cents each	4.00
(D) More than 6 and not more than 8 cents each	7.00
(E) More than 8 and not more than 15 cents each	10.00
(F) More than 15 and not more than 20 cents each	15.00
(G) More than 20 cents each	20.00
Weighing not more than 3 pounds per 1,000	.75
Cigarettes weighing more than 3 pounds per 1,000	1/ 8.40
Weighing not more than 3 pounds per 1,000	4.00
Cigarette papers (in books or sets of more than 25)	2/ .005
Cigarette tubes	2/ .01

1/ Except that if more than 6-1/2 inches in length, they shall be taxable at the rate prescribed for cigarettes weighing not more than 3 pounds per 1,000, counting each 2-3/4 inches, or fraction thereof, of the length of each as one cigarette (Revenue Act of May 10, 1934).

2/ Rate for each 50 or fraction thereof; except that if papers or tubes measure more than 6-1/2 inches in length they shall be taxable at the rate prescribed, counting each 2-3/4 inches, or fraction thereof, of the length of each as one paper or tube (Revenue Act of May 10, 1934).

TABLE 19.--Receipts from Federal taxes on tobacco products in the United States, by type of product, fiscal years, 1963-64--1967-68 1/

Product	Federal tax receipts for year (July-June basis)				
	1963-64	1964-65	1965-66	1966-67	1967-68
	1,000 dol.	1,000 dol.	1,000 dol.	1,000 dol.	1,000 dol.
Cigars (large)	2/ 55,660	2/ 60,593	2/ 57,333	2/ 55,433	2/ 54,594
Cigars (small)	649	330	328	303	342
Cigarettes (large)	3/	3/	3/	1	5
Cigarettes (small)	1,976,674	2,069,695	2,006,498	2,023,090	2,296,154
Chewing, smoking tobacco, and snuff	17,444	16,716	8,684	4/	4/
Cigarette papers and tubes	745	654	634	639	614
Tobacco materials--Violations	3/	1	1	1	9
Imported tobacco products, cigarette papers and tubes, and tobacco materials (Customs)	5/ 1,373	5/ 605	5/ 477	5/ 401	5/ 550
Miscellaneous tax collections				1	8
Total	2,052,545	2,148,194	2,073,956	2,079,869	2,122,277

1/ For rates of tax on tobacco products, see table 74. 2/ Includes prepayment as follows: Cigars (large)--1963-64 \$1,468; 1964-65, \$45,890; 1965-66, \$20,504; 1966-67, \$19,262; and 1967-68, \$22,114; Cigarettes (small)--1967-68, \$1,428. 3/ Less than \$500. 4/ Tax repeated effective January 1, 1966 (Public Law 89-44). 5/ Collected by Customs beginning October 1, 1961. Prior to October 1, 1961, Customs collections were included in the applicable classes of tobacco tax.

Detail may not add to total because of rounding. Compiled from reports of the Internal Revenue Service.

TABLE 20.--Estimated total expenditures for tobacco products, by type of product, calendar years, 1946-68 1/

Year	Cigars				Cigarettes				Chewing and smoking			
	(large and small)	(large and small)	(large and small)	(large and small)	(large and small)	(large and small)	(large and small)	(large and small)	(large and small)	(large and small)	(large and small)	(large and small)
	Mil. dol.	Mil. dol.	Mil. dol.	Mil. dol.	Mil. dol.	Mil. dol.	Mil. dol.	Mil. dol.	Mil. dol.	Mil. dol.	Mil. dol.	Mil. dol.
1946	542	2,656	280	3,478	584	5,341	257	6,182				
1947	547	3,044	278	3,869	629	5,854	281	6,764				
1948	548	3,307	288	4,143	649	6,244	294	7,187				
1949	520	3,437	289	4,246	631	6,538	303	7,472				
1950	514	3,586	292	4,392	634	6,675	299	7,608				
1951	526	3,876	283	4,685	649	7,055	300	8,004				
1952	545	4,246	282	5,073	765	7,024	324	8,113				
1953	560	4,436	268	5,264	734	7,609	308	8,651				
1954	552	4,292	260	5,104	721	7,997	306	9,000				
1955	550	4,409	258	5,217	709	8,432	307	9,448				
1956	556	4,681	244	5,481	710	8,910	320	9,940				
1957	562	5,072	243	5,877								

1/ Compiled from the Tobacco Situation, Economic Research Service.

TABLE 21.--Wholesale cigarette price revisions, 1940 to date 1/

Approximate date of change	Net price per 1,000				Net price per 1,000 excluding Federal excise tax			
	Standard	King size	Filter tips	100 millimeter	Standard	King size	Filter tips	millimeter
	Dollars	Dollars	Dollars	Dollars	Dollars	Dollars	Dollars	Dollars
July 1, 1940.....	5.88	--	--	--	2.63	--	--	--
November 1, 1942..	6.13	--	--	--	2.63	--	--	--
April 25, 1946....	6.38	--	--	--	2.88	--	--	--
October 7, 1946...	6.64	--	--	--	3.14	--	--	--
July 22, 1948.....	7.00	--	--	--	3.50	--	--	--
July 29, 1950.....	7.20	7.24	--	--	3.70	3.74	--	--
November 1, 1951..	7.71	7.75	--	--	3.71	3.75	--	--
February 26, 1953.	8.10	8.19-8.40	--	--	4.10	4.19-4.40	--	--
March 1953.....	--	--	9.00	--	--	--	5.00	--
April 15, 1955....	--	8.55	--	--	--	4.55	--	--
June 17, 1957.....	8.45	8.89	--	--	4.45	4.89	--	--
April and May 1963	8.80	9.00	--	--	4.80	5.00	--	--
March 1966.....	9.00	9.20	9.20	--	5.00	5.20	5.20	--
June 1967.....	9.25	9.45	9.45	9.95	5.25	5.45	5.45	5.95
November 1968....	9.45	9.45	9.45	9.95	5.45	5.45	5.45	5.95

1/ Includes leading brands. A 2% discount is made for cash payment.

TABLE 22.--Consumption per capita of tobacco products in the United States (including overseas forces) for specified periods 1/

Year	Per capita 18 years and over			Per male 18 years and over			Per person 18 years and over	
	Cigarettes 2/	All tobacco products 2/	Large cigars and cigarillos 2/	Smoking tobacco 3/	Chewing tobacco 3/	Snuff 2/		
	Number	Pounds	Number	Pounds	Pounds	Pounds		Pounds
Average 1925-29.....	1,285	3.56	9.68	177.4	4.10	4.15	5.03	0.52
Average 1930-34.....	1,389	3.82	8.80	125.2	2.96	4.40	3.15	.46
Average 1935-39.....	1,779	4.81	9.22	120.9	2.89	4.39	2.48	.42
Average 1940-44.....	2,558	6.97	10.88	118.9	2.87	3.67	2.34	.43
Average 1945-49.....	3,459	9.38	12.46	113.7	2.74	2.35	2.01	.41
Average 1950-54.....	3,695	9.98	12.61	112.4	2.63	1.78	1.58	.36
Average 1955-59.....	3,806	9.39	11.71	115.8	2.48	1.34	1.30	.32
1960.....	4,171	9.64	11.82	124.7	2.42	1.30	1.13	.30
1961.....	4,266	9.84	12.00	122.9	2.43	1.30	1.13	.29
1962.....	4,245	9.69	11.80	121.9	2.40	1.24	1.10	.28
1963.....	4,345	9.70	11.78	124.6	2.39	1.22	1.11	.27
1964.....	4,194	9.21	11.53	154.3	2.69	1.42	1.11	.26
1965.....	4,258	9.37	11.51	143.8	2.57	1.19	1.07	.24
1966.....	4,287	9.08	11.12	136.1	2.41	1.13	1.05	.23
1967.....	4,280	8.85	10.79	130.7	2.28	1.08	1.04	.23
1968 1/.....	4,186	8.65	10.53	126.4	2.15	1.11	1.05	.21

1/ Includes Alaska and Hawaii for all years.

2/ Unstemmed processing-weight equivalent.

3/ Finished-product weight.

4/ Preliminary.

Compiled from the Tobacco Situation, Economic Research Service.

TABLE 23.--Receipts from State taxes on tobacco products in the United States, by States, fiscal years, 1963-64--1967-68 1/

State	Receipts for year (July-June base)				
	1963-64	1964-65	1965-66	1966-67	1967-68 2/
	1,000 dollars	1,000 dollars	1,000 dollars	1,000 dollars	1,000 dollars
Alabama 3/	19,599	20,194	23,287	23,144	30,226
Alaska	2,102	2,244	2,621	3,665	7,522
Arizona	4,121	4,281	12,098	12,441	14,518
Arkansas	10,720	11,904	14,537	15,045	15,311
California	71,368	74,515	74,309	75,505	209,719
Colorado	122	7,629	11,401	11,475	11,735
Connecticut	22,049	24,103	31,827	32,392	32,536
Delaware	3,929	3,992	5,367	5,478	5,834
Florida	19,023	17,470	18,673	19,716	30,884
Georgia	27,210	35,443	36,220	37,615	37,576
Hawaii	2,356	2,609	3,719	4,669	4,973
Idaho	4,274	4,382	4,340	4,535	4,606
Illinois	55,449	59,128	98,396	102,993	124,819
Indiana	23,284	26,967	37,081	37,650	38,538
Iowa	14,491	15,309	23,648	24,128	29,390
Kansas	10,796	14,503	17,496	17,544	17,532
Kentucky	9,273	9,590	10,050	10,460	10,739
Louisiana	30,000	31,142	32,358	32,911	32,870
Maine	7,854	8,011	10,460	10,428	12,424
Maryland	22,894	23,652	24,257	25,047	25,578
Massachusetts	42,557	48,607	59,012	66,495	68,342
Michigan	70,265	73,979	76,587	77,940	79,812
Minnesota	29,142	30,882	31,314	32,693	32,526
Mississippi	15,550	17,680	18,160	18,638	18,792
Missouri	21,690	22,821	23,996	24,369	23,247
Montana	6,059	6,321	6,162	6,262	6,172
Nebraska	8,855	9,402	11,909	12,196	11,923
Nevada	4,602	4,348	5,444	5,366	5,665
New Hampshire	4,985	5,626	8,199	9,249	12,418
New Jersey	68,858	71,851	77,434	97,067	99,575
New Mexico	7,031	7,509	7,614	7,475	7,710
New York 3/	122,983	127,012	216,252	218,453	226,318
North Carolina	--	--	--	--	--
North Dakota	4,476	4,624	5,149	4,930	4,879
Ohio	64,279	66,181	67,403	68,145	88,653
Oklahoma	21,015	21,559	24,548	24,446	24,562
Oregon	--	--	--	12,087	9,454
Pennsylvania	102,157	106,782	109,976	112,808	152,645
Rhode Island	7,297	9,431	9,674	9,967	9,925
South Carolina	12,441	12,863	13,266	13,695	13,732
South Dakota	4,227	4,022	5,446	5,250	5,211
Tennessee	27,214	28,556	29,272	30,565	33,265
Texas 3/	97,447	110,366	130,847	133,411	135,831
Utah	4,777	5,169	5,166	5,101	5,136
Vermont	4,114	4,137	5,246	5,248	5,183
Virginia	15,144	15,938	15,795	13,225	13,204
Washington	21,315	22,818	29,444	33,832	35,602
West Virginia	11,121	11,446	11,494	13,518	14,847
Wisconsin	33,336	34,997	42,679	44,000	45,532
Wyoming	1,694	1,765	1,687	1,692	3,123
Total State	1,195,545	1,283,600	1,541,320	1,614,851	1,886,014
Total State and local governments	1,280,000	1,386,000	1,646,320	1,726,269	4/
District of Columbia	3,529	3,743	4,455	5,110	5,111
Number of States using tax	48	48	48	49	49

1/ Does not include locally imposed and collected tax receipts, or locally imposed tax amounts collected by the State and returned to local governments. Totals for several of the States include related license taxes.

2/ Preliminary.

3/ Fiscal year for Alabama ends on September 30, for Texas on August 31, and for New York on March 31.

4/ Not available.

Compiled from reports of the Bureau of the Census, U.S. Department of Commerce; data for the District of Columbia from the Office of the Collector of Taxes.

TABLE 24.--State tax rates on cigarettes and other tobacco products in the United States, as of January 1, 1969

CIGARETTES

State	Rate of tax per standard package of 20 ¹ / ₂	Date of present rate	Year tax enacted	State	Rate of tax per standard package of 20 ¹ / ₂	Date of present rate	Year tax enacted
	Cents				Cents		
Alabama	10	1967	1927	Nebraska	8	1965	1947
Alaska	8	1961	--	Nevada	7	1961	1947
Arizona	10	1968	1933	New Hampshire	7	1967	1939
Arkansas	8	1965	1924	New Jersey	14	1968	1948
California	10	1967	1959	New Mexico	12	1968	1943
Colorado	5	1965	1964	New York	12	1968	1939
Connecticut	8	1965	1935	North Carolina	--	--	--
Delaware	7	1965	1949	North Dakota	8	1965	1925
Florida	15	1968	1943	Ohio	7	1967	1931
Georgia	8	1964	1923	Oklahoma	13	1968	1933
Hawaii	8	1965	--	Oregon	4	1966	1966
Idaho	7	1963	1945	Pennsylvania	13	1967	1935
Illinois	9	1967	1941	Rhode Island	13	1968	1939
Indiana	6	1965	1947	South Carolina	5	1959	1923
Iowa	10	1967	1921	South Dakota	8	1965	1923
Kansas	8	1965	1927	Tennessee	8	1967	1925
Kentucky	2.5	1960	1936	Texas	11	1965	1931
Louisiana	8	1948	1926	Utah	8	1963	1923
Maine	10	1967	1941	Vermont	10	1965	1937
Maryland	6	1961	1958	Virginia	2.5	1966	1960
Massachusetts	10	1966	1939	Washington	11	1965	1935
Michigan	7	1962	1947	West Virginia	7	1968	1947
Minnesota	8	1963	1947	Wisconsin	10	1965	1939
Mississippi	9	1964	1930	Wyoming	8	1967	1951
Missouri	6	1961	1956	District of Columbia	3	1966	1949
Montana	8	1957	1947				

OTHER TOBACCO PRODUCTS

State	Product and rate of tax
Alabama	Cigars, retailing for-- (a) 3-1/3 cents each or less, \$1.50 per thousand. (b) More than 3-1/3 and not more than 5 cents each, \$3 per thousand. (c) More than 5 and not more than 8 cents each, \$6.50 per thousand. (d) More than 8 and not more than 10 cents each, \$7.50 per thousand. (e) More than 10 and not more than 20 cents each, \$15 per thousand. (f) More than 20 cents each, \$20.25 per thousand. Small cigars, 7 cents per each 10 or fraction thereof. Smoking tobacco: Rate of tax ranging from 2 cents per 1-1/8 ounces or less to 3 cents per ounce for over 4 ounces. Chewing tobacco: 3/4 cents per ounce or fraction thereof. Snuff: Rate of tax ranging from 1/2 cent per 5/8 ounces or less to 1 cent per ounce for over 6 ounces.
Arizona	Cigars, retailing for-- (a) 5 cents each or less, 1 cent for each 3 cigars. (b) More than 5 cents, 1 cent each. Small cigars, 7 cents for each 20 or fraction thereof. Smoking and chewing tobacco and snuff: 1 cent per ounce or major fraction thereof. Plug tobacco: 1/4 cent per ounce or fraction thereof.
Connecticut	Small cigars, 4 mills each.
Georgia	Cigars retailing for-- (a) 3-1/3 cents each or less, \$1.50 per thousand. (b) More than 3-1/3 and not more than 5 cents each, \$3 per thousand. (c) More than 5 and not more than 8 cents each, \$4 per thousand. (d) More than 8 and not more than 10 cents each, \$7.50 per thousand. (e) More than 10 and not more than 20 cents each, \$15 per thousand. (f) More than 20 cents each, \$20 per thousand. Small cigars, 3 mills each.
Hawaii	All other products: 40 percent of wholesale price.
Iowa	All other products: 10 percent of wholesale price.
Louisiana	Cigars, retailing for-- (a) 5 cents each or less, \$3.20 per thousand. (b) More than 5 and not more than 8 cents each, \$4.80 per thousand. (c) More than 8 and not more than 15 cents each, \$8 per thousand. (d) More than 15 and not more than 20 cents each, \$32 per thousand. (e) More than 20 cents each, \$40 per thousand. Small cigars, \$1.20 per thousand. Smoking tobacco, (next page).

See footnotes at end of table.

TABLE 24.--State tax rates on cigarettes and other tobacco products in the United States, as of January 1, 1969--Continued

Other tobacco products--Continued

State	Product and rate of tax
Louisiana - Continued	: Smoking tobacco, retailing for-- : (a) Not more than 5 cents per package, 1 cent. : (b) More than 5 and not more than 10 cents per package, 2 cents. : (c) More than 10 and not more than 13 cents per package, 3 cents. : (d) More than 13 and not more than 15 cents per package, 4 cents. : (e) More than 15 cents per package, 4 cents plus 1-1/3 cents for each 5 cents or fraction thereof of selling price in excess of 15 cents.
Minnesota	: All other products: 10 percent of wholesale price.
Mississippi	: Cigars, cheroots, and stogies, retailing for-- : (a) 3-1/3 cents each or less, \$1.80 per thousand : (b) More than 3-1/3 and not more than 5 cents each, \$3.60 per thousand. : (c) More than 5 and not more than 8 cents each, \$5.40 per thousand. : (d) More than 8 and not more than 10 cents each, \$9 per thousand. : (e) More than 10 and not more than 20 cents each, \$18 per thousand. : (f) More than 20 cents each, \$25.20 per thousand. : Smoking tobacco: 1-1/8 cents for each 5 cents or fraction thereof of retail price. : Snuff and chewing tobacco: 9/16 cent for each 5 cents or fraction thereof of retail price.
New Hampshire	: All other products: 30 percent of retail selling price.
North Dakota	: All other products: 11 percent of wholesale price.
Oklahoma	: Cigars, cheroots, stogies, etc., : Weighing more than three pounds per thousand, \$30 per thousand. : Small cigars, 6.5 mills each. : Smoking tobacco: 40 percent of wholesale price. : Chewing tobacco: 30 percent of wholesale price.
Rhode Island	: All other products: 25 percent of wholesale price.
South Carolina	: Cigars, cheroots, stogies, etc., retailing for-- : (a) 5 cents each or less, \$1 per thousand. : (b) More than 5 cents each, \$10 per thousand. : Small cigars, 1 cent for each 10 or fraction thereof. : Smoking tobacco: 30 percent of wholesale price. : Snuff and chewing tobacco: 5 percent of wholesale price.
Tennessee	: Cigars, cheroots, stogies, etc., retailing for-- : (a) 3-1/3 cents each or less, \$1 per thousand. : (b) More than 3-1/3 and not more than 5 cents each, \$2 per thousand. : (c) More than 5 and not more than 9 cents each, \$3 per thousand. : (d) More than 9 and not more than 10 cents each, \$5 per thousand. : (e) More than 10 and not more than 20 cents each, \$10.50 per thousand. : (f) More than 20 cents each, \$13.50 per thousand. : Small cigars, 1 cent for each 10 or fraction thereof. : Manufactured tobacco and snuff: 6 percent of wholesale cost price.
Texas	: Small cigars, 1 cent for each 10 or fraction thereof. : Cigars weighing more than three pounds per thousand-- : (a) Retailing for not more than 3-1/3 cents each, \$7.50 per thousand. : (b) Retailing for over 3-1/3 cents each, with a factory list price of less than \$170 per thousand and containing no sheet wrapper, binder, or filler, \$12 per thousand. : (c) Retailing for over 3-1/3 cents each, with a factory list price of \$170 per thousand or more and containing no sheet wrapper, binder, or filler, \$15 per thousand. : (d) Retailing for over 3-1/3 cents each and containing any sheet wrapper, binder, or filler, \$15 per thousand.
Utah	: All other products: 25 percent of wholesale price.
Vermont	: All other products: 20 percent of wholesale price.
Washington	: All other products: 30 percent of wholesale price.

1/ Some States impose varying tax rates for cigarettes of other quantities, sizes, weights, etc. Some cities also levy taxes on cigarettes.

2/ Hawaii: 40 percent of wholesale price. New Hampshire: 30 percent of retail selling price. Tax per pack approximated.

Compiled from Reports of Proceedings of the Annual Meetings of the National Tobacco Tax Association and brought to date from Tax Administrators News, monthly publication of the Federation of Tax Administrators.

TABLE 25.--United States exports of tobacco to principal importing countries, by types, crop years, annual 1962-63--1967-68

Importing country	FLUE-CURED, TYPES 11-14					
	Exports for crop year (declared weight) 1/					
	1962-63	1963-64	1964-65	1965-66	1966-67	1967-68 2/
	1,000 lb.	1,000 lb.	1,000 lb.	1,000 lb.	1,000 lb.	1,000 lb.
Canada	405	493	1,083	1,323	1,334	1,301
Mexico	1,774	1,080	781	433	79	75
Jamaica	577	1,293	1,184	1,262	1,490	1,559
Chile	996	717	1,067	1,918	2,219	378
Uruguay	2,066	1,939	1,308	310	1,296	657
Sueden	7,325	10,209	8,088	7,474	10,033	8,425
Norway	5,623	3,535	3,288	3,647	6,865	7,164
Finland	5,784	6,266	3,891	2,814	4,629	3,493
Denmark	10,253	11,028	11,347	7,940	14,128	11,875
United Kingdom	99,875	132,470	112,556	79,607	119,096	120,885
Ireland (Eire)	23,072	14,623	10,030	6,924	16,259	10,708
Netherlands	20,825	26,070	19,306	23,149	22,025	27,145
Belgium and Luxembourg	11,750	14,594	11,868	11,229	16,451	14,166
France	1,992	1,177	1,794	1,378	2,809	2,962
Germany, West	61,995	75,847	69,019	65,612	106,289	67,488
Germany, East	10	665	640	486	2,110	670
Austria	2,335	3,294	3,153	679	3,717	3,497
Switzerland	3,232	3,758	4,602	5,283	8,169	9,167
Spain	1,078	1,906	2,132	1,657	4,197	3,040
Portugal	2,411	2,531	1,735	1,399	1,713	1,870
Italy	11,938	2,010	4,760	1,502	1,791	4,055
India	2,377	1,434	570	0	1,518	395
Pakistan	2,191	909	1,144	654	477	3,887
Thailand	7,512	7,575	10,812	12,240	17,808	17,659
Vietnam, South	3,395	5,692	6,358	8,270	12,795	9,883
Malaysia	3,549	3,888	6,589	6,500	4,609	6,418
Singapore	1,809	826	1,183	1,183	2,338	2,536
Philippines	0	19	951	765	5,416	5,645
Hong Kong	5,247	6,161	7,455	4,376	4,317	4,545
Taiwan (Formosa)	3,268	2,153	4,487	3,422	4,650	12,113
Japan	22,216	33,088	27,038	42,037	40,504	34,993
Australia	16,841	16,897	14,183	14,377	17,277	10,075
New Zealand	4,562	2,837	2,850	3,640	4,862	4,348
United Arab Republic (Egypt)	10,450	12,116	4,868	14,266	3,412	716
Congo (Kinshasa)	996	1,269	1,939	4,222	3,314	826
Other countries	10,692	12,484	8,684	7,507	11,573	12,746
Total	370,421	422,853	372,743	349,485	481,569	427,365

BURLEY, TYPE 31

Mexico	3,498	3,946	3,918	2,277	627	0
Sweden	4,409	5,179	3,345	4,535	3,392	4,039
Norway	702	638	582	766	1,114	1,004
Denmark	1,298	1,494	1,871	2,150	2,867	3,587
United Kingdom	300	125	224	228	123	107
Netherlands	3,022	2,142	2,193	1,637	2,954	2,085
Belgium and Luxembourg	943	1,273	1,263	2,129	966	2,210
France	703	386	507	928	524	620
Germany, West	10,669	9,164	9,868	10,852	12,133	10,139
Austria	1,778	842	736	435	590	782
Switzerland	658	821	1,270	1,715	2,595	2,219
Finland	1,028	2,078	1,157	1,040	1,651	937
Portugal	3,797	3,889	1,686	1,582	1,963	3,316
Italy	5,872	3,395	6,748	518	3,013	657
Philippines, Republic of	0	0	172	1,195	991	1,714
Australia	503	528	686	1,367	955	850
United Arab Republic (Egypt)	2,840	5,263	2,917	4,589	0	0
Other countries	4,997	7,428	7,925	9,737	10,368	8,937
Total	46,517	49,091	47,068	47,680	46,826	43,202

DARK VIRGINIA, TYPES 21 and 37

Sweden	318	644	409	434	890	377
Norway	1,556	2,246	1,411	1,677	2,299	2,888
United Kingdom	1,216	982	1,366	364	548	623
Netherlands	3	16	67	27	45	139
Germany, West	397	710	513	456	703	882
Austria	0	153	398	648	303	34
Switzerland	79	324	188	283	318	187
Other countries	777	531	1,159	845	1,174	584
Total	4,366	5,606	5,511	4,534	6,280	5,714

See footnotes at end of table.

TABLE 25.--United States exports of tobacco to principal importing countries, by types, crop years, annual 1962-63--1967-68--Continued

KENTUCKY AND TENNESSEE FIRE-CURED, TYPES 22 AND 23						
Importing country	Exports for crop year (declared weight) 1/					
	1962-63	1963-64	1964-65	1965-66	1966-67	1967-68 2/
	1,000 lb.	1,000 lb.	1,000 lb.	1,000 lb.	1,000 lb.	1,000 lb.
Sweden.....	803	1,062	585	996	1,380	1,319
Denmark.....	331	450	294	433	345	288
United Kingdom.....	123	98	74	69	68	35
Ireland (Eire).....	331	185	232	233	104	132
Netherlands.....	4,137	6,029	5,680	10,153	9,526	12,349
Belgium and Luxembourg.....	1,273	1,102	1,167	1,661	1,841	1,389
France.....	3,494	3,721	3,013	3,052	1,902	1,498
Germany, West.....	346	497	476	386	255	658
Switzerland.....	1,610	1,630	882	1,414	1,323	1,868
Italy.....	319	775	819	376	862	234
Indonesia, Republic of.....	263	210	154	94	132	138
Congo (Kinshasa).....	1,143	540	1,849	2,167	922	1,431
Other countries.....	1,687	1,942	2,168	2,242	1,176	2,004
Total.....	16,176	18,241	17,393	23,276	19,836	21,343
MARYLAND, TYPE 32						
Netherlands.....	863	754	704	492	104	149
Belgium and Luxembourg.....	582	1,254	827	973	1,117	1,394
France.....	403	584	287	240	0	0
Germany, West.....	219	867	643	1,309	1,631	2,290
Switzerland.....	6,674	6,296	5,836	5,761	9,837	9,343
Spain.....	62	382	350	536	714	386
Portugal.....	1,133	1,094	37	441	1,571	1,095
Other countries.....	792	745	507	777	841	442
Total.....	10,728	11,976	9,191	10,529	15,815	15,099
ONE SUCKER, TYPE 35						
Trinidad and Tobago.....	22	22	28	15	5	0
United Kingdom.....	0	24	48	1	0	0
Belgium and Luxembourg.....	336	275	133	374	336	555
Vietnam, South.....	0	0	211	5	172	0
New Guinea.....	0	0	9	26	44	7
Other countries.....	58	114	357	338	665	199
Total.....	416	435	786	759	1,222	761
GREEN RIVER, TYPE 36						
United Kingdom.....	236	210	243	200	199	164
Belgium and Luxembourg.....	0	65	16	4	5	32
Congo (Kinshasa).....	251	113	365	94	41	78
Other countries.....	42	340	389	313	626	209
Total.....	530	728	1,013	611	871	483
CIGAR FILLER, TYPES 41-46						
Canada.....	150	113	212	445	438	281
France.....	16	248	58	417	178	254
United Kingdom.....	0	0	7	124	55	0
Vietnam, South.....	0	228	100	545	619	0
Other countries.....	59	23	110	62	45	41
Total.....	225	612	487	1,593	1,335	576
CIGAR BINDER, TYPES 51-55						
Canada.....	3	4	11	177	40	34
Denmark.....	0	35	68	49	2	26
Netherlands.....	26	2	0	49	161	270
Belgium and Luxembourg.....	105	44	18	21	24	1
Germany, West.....	271	360	410	734	271	520
Germany, East.....	175	0	366	86	270	0
Spain.....	0	682	1,212	902	716	1,224
Canary Islands.....	313	73	134	74	129	141
Other countries.....	149	215	127	97	82	65
Total.....	1,042	1,415	2,346	2,189	1,695	2,281

See footnotes at end of table.

TABLE 25.--United States exports of tobacco to principal importing countries, by types, crop years, annual 1962-63--1967-68--Continued

Importing country	CIGAR WRAPPER, TYPES 61-62					
	Exports for crop year (declared weight) 1/					
	1962-63	1963-64	1964-65	1965-66	1966-67	1967-68 2/
	1,000 lb.	1,000 lb.	1,000 lb.	1,000 lb.	1,000 lb.	1,000 lb.
Canada.....	385	754	901	878	605	608
Brazil.....	6	5	5	6	26	4
Netherlands.....	109	184	99	140	43	67
Belgium and Luxembourg.....	32	120	42	34	32	33
Germany, West.....	2,206	2,442	1,147	1,615	1,199	1,700
Germany, East.....	616	707	353	702	537	173
Canary Islands.....	403	419	332	321	278	524
Other countries.....	632	1,016	963	872	1,053	1,297
Total.....	4,389	5,647	3,842	4,568	3,773	4,405

TOTAL CIGAR LEAF, TYPES 41-62						
Canada.....	538	871	1,124	1,500	1,083	860
Brazil.....	6	5	5	6	26	4
Sweden.....	90	113	79	3	3	0
Denmark.....	14	47	124	49	2	26
Netherlands.....	135	186	138	198	206	337
Belgium and Luxembourg.....	137	179	60	57	57	34
France.....	16	254	87	438	207	264
Germany, West.....	2,477	2,802	1,556	2,350	1,471	2,220
Germany, East.....	790	707	720	788	807	173
Spain.....	0	846	1,277	909	724	1,224
Vietnam, South.....	43	231	100	545	619	154
Canary Islands.....	720	502	466	395	444	604
Other countries.....	690	931	939	1,112	1,155	1,239
Total.....	5,656	7,674	6,675	8,350	6,804	7,139

PERIQUE, TYPE 72						
Norway.....	16	33	31	35	41	28
United Kingdom.....	70	43	74	65	17	40
Australia.....	41	67	47	39	38	30
Other countries.....	37	61	230	224	156	87
Total.....	164	204	382	363	252	185

BLACK PAT						
West Indies 2/.....	128	72	108	109	101	98
Netherland Antilles.....	24	32	20	32	19	25
Canary Islands and Spanish Africa, n.e.s.....	178	136	151	10	352	308
Cameroon.....	223	230	238	355	191	442
Ghana.....	1,107	751	515	533	685	82
Nigeria.....	1,600	1,585	2,025	2,041	1,418	528
Other countries.....	524	724	776	1,018	1,082	1,565
Total.....	3,854	3,540	3,833	4,098	3,848	3,048

STEMS, TRIMMINGS, AND SCRAP						
Sweden.....	670	2,662	3,420	412	4,033	4,044
Denmark.....	1,749	1,198	911	2,648	2,743	3,527
United Kingdom.....	7,871	9,741	7,243	14,655	27,472	31,808
Netherlands.....	654	794	1,376	1,282	1,241	1,213
Germany, West.....	59	71	728	2,094	1,095	3,646
Canary Islands and Spanish Africa n.e.s.....	24	316	49	21	17	23
Other countries.....	1,407	1,666	4,548	7,723	7,664	12,097
Total.....	12,434	16,448	18,275	28,835	44,265	56,358

1/ Based on July-June crop year for flue-cured and cigar wrapper, and October-September crop year for all other types

2/ Subject to revision.

3/ Includes Bahamas, Jamaica, Leeward and Windward Islands, Barbados, and Trinidad and Tobago.

Foreign Agricultural Service Compiled from publications of the Bureau of the Census, U. S. Department of Commerce

TABLE 26.--Exports of unmanufactured tobacco from the United States, quantity and value, by types, calendar years, annual 1963-68

Type	Quantity (declared weight)					
	1963	1964	1965	1966	1967	1968 ^{1/}
	1,000 lb.	1,000 lb.	1,000 lb.	1,000 lb.	1,000 lb.	1,000 lb.
Flue-cured, types 11-14.....	403,437	395,586	350,942	422,624	427,435	443,538
Burley, type 31.....	44,497	53,011	45,295	45,705	45,266	42,793
Southern Maryland, type 32.....	10,744	12,320	10,116	10,612	15,073	13,786
Virginia dark, types 21 and 37.....	5,243	4,560	6,128	6,340	4,615	5,002
Kentucky and Tennessee fire-cured, types 22 and 23.....	14,172	20,849	21,620	17,021	21,659	20,529
One sucker, type 35.....	473	642	904	563	1,029	1,042
Green River, type 36.....	582	1,211	623	479	858	518
Cigar leaf.....	5,828	7,426	7,173	8,254	6,446	7,324
Black fat.....	4,210	3,658	3,935	3,696	4,109	2,548
Perique.....	192	192	424	447	163	206
Stems, trimmings, and scrap.....	16,106	15,029	20,914	35,621	44,908	61,516
Total declared weight.....	505,484	514,484	468,074	551,162	571,561	598,800
Total farm-gate-weight.....	570,755	588,535	528,083	624,657	641,311	664,921
	Value					
	1,000 dol.	1,000 dol.	1,000 dol.	1,000 dol.	1,000 dol.	1,000 dol.
Flue-cured, types 11-14.....	331,171	325,370	298,725	390,129	403,669	426,579
Burley, type 31.....	35,383	42,289	34,315	39,272	39,090	40,871
Southern Maryland, type 32.....	7,984	9,631	7,930	8,494	12,275	11,582
Virginia dark, types 21 and 37.....	3,415	3,074	4,300	4,111	2,949	3,243
Kentucky and Tennessee fire-cured, types 22 and 23.....	7,571	10,546	11,354	9,067	11,559	11,362
One sucker, type 35.....	237	304	413	242	428	463
Green River, type 36.....	299	604	385	288	503	311
Cigar leaf.....	11,256	13,983	16,708	17,083	13,446	14,307
Black fat.....	3,715	3,195	3,457	3,183	3,374	2,043
Perique.....	708	197	386	384	151	202
Stems, trimmings, and scrap.....	1,866	3,691	4,713	9,269	11,385	12,432
Total.....	403,105	412,884	382,687	481,522	498,259	524,398

^{1/} Subject to revision. Detail may not add to total because of rounding.
Foreign Agricultural Service. Compiled from publications of the Bureau of the Census, U. S. Department of Commerce.

TABLE 27.--Exports of unmanufactured tobacco from the United States, to principal importing countries, calendar years, annual 1963-68

Country of destination	Total quantity (declared weight)					
	1963	1964	1965	1966	1967	1968 ^{1/}
	1,000 lb.	1,000 lb.	1,000 lb.	1,000 lb.	1,000 lb.	1,000 lb.
Sweden.....	10,969	20,771	5,927	22,758	19,337	16,915
Norway.....	7,321	7,248	5,959	9,347	8,441	9,652
Denmark.....	13,839	12,795	15,143	17,883	16,377	19,217
United Kingdom.....	139,034	125,169	92,854	129,868	137,550	146,998
Ireland (Eire).....	14,501	11,176	10,640	13,469	14,260	15,025
Netherlands.....	20,673	33,060	37,163	28,774	40,531	44,034
Belgium and Luxembourg.....	16,310	17,461	18,844	17,462	17,483	20,129
France.....	5,600	7,170	5,782	8,631	6,282	6,876
Germany, West.....	85,333	85,455	80,873	98,730	114,274	88,635
Austria.....	3,556	4,305	4,198	5,302	3,494	3,475
Switzerland.....	11,512	15,043	12,597	16,871	21,380	24,829
Portugal.....	5,877	7,958	3,724	3,822	5,523	4,645
Italy.....	11,981	9,464	8,414	3,682	7,063	5,016
India.....	1,494	570	0	356	1,174	408
Pakistan.....	2,317	828	1,901	477	2,000	1,990
Thailand (Siam).....	9,115	11,058	11,847	17,747	23,170	28,959
Philippines, Republic of.....	24	861	817	4,497	4,929	7,932
Hong Kong.....	7,961	8,134	7,514	4,667	5,888	5,624
Japan.....	28,721	34,899	36,611	42,118	27,039	48,742
Australia.....	18,086	14,164	19,667	16,484	13,323	19,712
New Zealand.....	2,902	3,851	2,991	5,285	3,782	5,938
Other countries.....	79,258	83,547	86,608	82,932	78,258	74,433
Total.....	505,484	514,484	468,074	551,162	571,561	598,800

^{1/} Subject to revision. Detail may not add to totals because of rounding.
Foreign Agricultural Service. Compiled from publications of the Bureau of the Census, U. S. Department of Commerce

TABLE 28.--United States exports of cigarettes, by countries, calendar years 1963-68

Country	Exports for year					
	1963	1964	1965	1966	1967	1968 1/
	Millions	Millions	Millions	Millions	Millions	Millions
Canada	236.0	243.3	311.4	259.6	329.4	315.7
Mexico	111.9	101.5	111.3	190.0	295.4	419.6
Panama, Republic of, and Canal Zone	553.4	852.6	651.4	624.2	759.3	1,033.3
Bermuda	98.6	107.8	98.4	103.8	108.7	117.0
Bahamas	149.5	180.7	197.1	209.3	230.4	255.9
Netherlands Antilles	1,120.1	1,135.0	1,291.7	1,286.2	1,472.2	1,412.1
Ecuador	451.6	569.2	712.4	625.6	561.7	374.1
Peru	761.1	597.5	503.1	365.1	101.1	2.3
Paraguay	204.1	683.5	966.5	1,269.7	1,423.2	1,671.5
Cruzstov	628.5	369.2	205.0	189.3	95.4	160.6
Argentina	94.0	101.8	112.5	163.8	39.3	92.3
Iceland	202.7	231.6	214.6	243.5	294.8	263.2
Sweden	696.6	706.7	445.5	372.3	278.3	257.9
Norway	243.1	241.5	219.0	264.8	238.3	217.8
Denmark	474.4	512.7	398.9	477.7	520.0	369.2
Finland	107.5	137.6	152.1	180.6	210.0	211.9
United Kingdom	284.0	347.2	783.6	329.1	353.2	415.0
Netherlands	484.7	417.2	503.3	606.5	476.5	593.7
Belgium and Luxembourg	1,045.3	720.1	511.2	398.9	593.9	993.4
France	1,340.8	1,319.3	1,034.6	968.7	719.7	479.5
Germany, West	532.7	542.6	522.8	653.4	720.5	724.2
Austria	117.2	112.6	99.7	77.1	66.4	45.2
Switzerland	530.5	342.7	483.0	538.5	538.3	1,171.4
Poland	125.4	97.9	133.1	100.0	131.9	136.1
Spain	888.8	2,252.4	1,823.6	1,944.1	1,704.3	1,924.0
Portugal	48.8	76.1	160.4	275.9	332.8	90.3
Gibraltar	934.6	778.3	200.8	83.9	62.6	36.5
Italy	719.8	708.7	643.9	622.4	714.7	693.9
Yugoslavia	191.2	134.1	189.0	338.0	348.2	434.6
Greece	81.1	117.3	175.2	148.3	173.8	157.1
Lebanon	532.8	550.2	630.4	498.4	639.9	647.3
Israel	202.2	242.2	246.3	171.6	182.3	308.1
Kuwait	1,187.4	1,425.0	1,123.3	1,177.7	1,090.1	1,371.0
Arabia Peninsula States	89.1	123.3	250.6	271.4	145.5	157.4
State of Bahrain	172.5	187.5	90.8	97.1	96.9	97.2
Afghanistan	43.4	35.2	28.5	54.9	47.0	49.1
Malaya, Malaysia, and Singapore	1,666.5	1,117.6	1,268.4	792.9	764.0	786.5
Philippines	27.3	37.6	61.7	136.3	224.5	308.8
Hong Kong	2,109.4	2,561.0	2,648.1	2,362.4	2,450.4	2,667.8
Japan	498.9	529.3	295.1	404.2	501.8	402.5
Nansei and Nanpo Islands	74.9	38.1	47.0	55.0	86.1	77.4
Australia	579.6	533.7	468.6	451.6	524.1	447.8
French Pacific Islands	36.7	40.8	59.6	50.1	56.9	73.9
Territory Pacific Islands	(2)	72.1	71.7	66.6	86.8	75.7
Morocco	617.6	289.9	291.1	381.1	556.7	351.2
Libya	105.3	135.4	138.7	196.0	200.0	248.0
United Arab Republic (Egypt region)	59.5	102.1	98.2	103.4	98.2	114.7
Canary Islands and Spanish Africa	532.4	605.7	532.7	592.3	589.9	483.5
Liberia	767.4	320.0	219.2	271.7	201.1	241.2
Republic of South Africa	58.5	79.9	80.8	69.3	67.8	95.9
Other countries	1,185.1	1,159.9	1,084.3	1,337.8	1,146.8	2,336.6
Total	23,614.7	25,166.2	23,050.2	23,452.1	23,651.1	26,460.9
Declared value, 1,000 dollars	106,543	114,595	105,297	110,482	116,207	134,220

1/ Subject to revision.

2/ If any, included in other.

Foreign Agricultural Service compiled from publications of the Bureau of the Census, U. S. Department of Commerce.

TABLE 29.--United States exports of tobacco products, calendar years, annual 1964-68

Product	Exports for year					
	1963	1964	1965	1966	1967	1968 1/
	Millions	Millions	Millions	Millions	Millions	Millions
Cigarettes.....	23,615	25,144	23,050	23,458	23,651	26,461
Cigars and cheroots.....	73,443	64,338	55,249	73,204	76,241	66,207
Chewing tobacco and snuff.....	461	412	389	515	318	210
Smoking tobacco:						
In packages.....	877	1,419	953	929	1,324	1,838
In bulk.....	9,848	12,328	13,580	14,884	15,946	21,516
Declared value.....	1,000 dol. 119,625	1,000 dol. 131,621	1,000 dol. 122,936	1,000 dol. 129,815	1,000 dol. 137,035	1,000 dol. 161,624

1/ Subject to revision.

Foreign Agricultural Service. Compiled from publications of the Bureau of the Census, U. S. Department of Commerce.

TABLE 30.--United States imports of tobacco products for consumption, by countries, calendar years, 1963-68

Product and country from which imported	Imports for year					
	1963	1964	1965	1966	1967	1968 1/
	1,000 pcs.	1,000 pcs.	1,000 pcs.	1,000 pcs.	1,000 pcs.	1,000 pcs.
Cigarettes:						
United Kingdom.....	4,134	4,344	4,478	4,029	7,235	12,011
Other countries.....	5,635	5,764	4,031	4,291	4,835	5,745
Total.....	9,769	10,108	8,509	8,320	12,070	17,756
Cigars and cheroots:						
Philippines, Republic of.....	573	239	161	182	165	181
Other countries.....	130	174	192	215	266	398
Total.....	653	413	353	397	431	579
All other products: 2/						
United Kingdom.....	195	285	262	267	273	360
Netherlands.....	1,464	2,348	1,904	2,556	2,764	4,083
Other countries.....	243	362	328	446	630	1,072
Total.....	1,903	2,995	2,494	3,269	3,667	5,515
Declared value.....	1,000 dol. 3,610	1,000 dol. 5,487	1,000 dol. 5,247	1,000 dol. 6,573	1,000 dol. 7,379	1,000 dol. 10,621

1/ Subject to revision.

2/ Practically all smoking tobacco, but includes all other manufactured tobacco products not specifically provided for.

Foreign Agricultural Service. Compiled from publications of the Bureau of the Census, U. S. Department of Commerce.

TABLE 31.--United States imports of unmanufactured tobacco for consumption, by countries, calendar years, annual 1963-1968

Kind of tobacco and country from which imported	Imports for year (calendar year basis) declared weight					
	1963	1964	1965	1966	1967	1968
	1,000 lb.	1,000 lb.	1,000 lb.	1,000 lb.	1,000 lb.	1,000 lb.
Cigarette leaf:						
Flue-cured and burley 2/.....	579	431	268	969	1,622	2,037
Other cigarette leaf:						
Cyprus.....	647	752	792	694	721	454
Italy.....	1,728	1,583	1,361	460	385	57
Yugoslavia.....	9,580	10,219	12,862	11,412	13,160	16,029
Greece.....	28,827	30,935	36,039	36,580	37,599	41,376
Turkey.....	84,476	72,267	83,590	84,292	92,763	98,097
Syria.....	372	351	203	250	356	383
Lebanon.....	2,112	1,758	1,712	2,071	2,350	2,953
Rhodesia, Zambia, and Malawi.....	608	429	964	854	1,396	1,016
Other countries.....	59	58	379	458	2,342	2,279
Total.....	128,409	118,352	137,902	137,071	151,072	162,644
Scrap:						
Greece.....	39	0	3/	20	61	1,617
Turkey.....	1,058	972	1,314	1,548	3,348	6,599
Syria.....	30	33	10	0	0	0
Total.....	1,127	1,005	1,324	1,568	3,409	8,216
Total cigarette leaf.....	130,115	119,788	139,494	139,599	156,103	172,897
Cigar leaf:						
Cigar wrapper:						
Cameroon.....	35	40	75	88	61	270
Indonesia.....	4	10	10	8	19	56
Honduras.....	3	47	61	126	94	123
Ecuador.....	0	1	16	33	76	124
Brazil.....	0	3/	6	2	22	18
Mexico.....	1	9	14	28	45	23
Other countries.....	230	171	65	38	207	196
Total.....	273	228	247	323	524	808
Cigar filler:						
Unstemmed:						
Cuba.....	1,313	1,474	559	211	346	72
Indonesia.....	19	229	68	159	1	11
Philippines, Republic of.....	16	3/	28	136	77	150
Dominican Republic.....	200	418	787	370	713	238
Colombia.....	227	279	86	547	467	640
Brazil.....	66	313	153	326	214	479
Paraguay.....	57	89	320	162	25	149
Mexico.....	429	576	589	742	201	304
Other countries.....	54	143	283	380	1,026	972
Total.....	2,401	3,521	2,473	3,033	3,070	3,015
Stemmed:						
Cuba.....	973	505	176	163	132	174
Indonesia.....	9	6	0	0	28	52
Philippines, Republic of.....	886	354	4	5	79	0
Dominican Republic.....	136	303	417	344	516	609
Colombia.....	11	44	52	77	76	40
Brazil.....	489	523	439	322	335	275
Mexico.....	135	273	375	595	595	598
Other countries.....	231	336	404	438	422	787
Total.....	2,870	2,364	1,867	1,944	2,183	2,535
Scrap:						
Cuba.....	3,251	2,306	1,636	1,367	655	229
Indonesia.....	1,016	2,133	1,281	923	1,131	1,290
Philippines, Republic of.....	12,906	14,091	14,078	17,089	16,731	19,069
Dominican Republic.....	5,230	9,309	7,586	3,287	4,181	6,125
Colombia.....	5,270	8,000	5,451	3,870	3,218	3,793
Brazil.....	1,931	1,768	3,575	3,470	3,076	4,147
Paraguay.....	413	636	935	1,415	1,768	1,089
Mexico.....	30	262	879	1,196	1,058	1,329
Other countries 4/.....	1,817	1,396	2,224	1,427	3,001	3,526
Total.....	31,864	41,901	37,625	34,044	34,819	40,617

See footnotes at end of table.

TABLE 31.--United States imports of unmanufactured tobacco for consumption, by countries, calendar years, annual 1963-1968--Continued

Kind of tobacco and country from which imported	Imports for year (calendar year basis) declared weight					
	1963	1964	1965	1966	1967	1968 1/
	1,000 lb.	1,000 lb.	1,000 lb.	1,000 lb.	1,000 lb.	1,000 lb.
Total cigar leaf:						
Cuba.....	5,777	4,371	2,402	1,742	1,133	475
Indonesia.....	1,048	2,378	1,359	1,090	1,179	1,409
Philippines, Republic of.....	13,808	14,445	14,110	17,230	17,012	20,423
Dominican Republic.....	5,566	10,030	8,390	4,001	5,414	7,057
Colombia.....	5,508	8,323	5,589	4,493	3,761	4,524
Brazil.....	2,486	4,604	4,173	4,120	3,646	5,029
Paraguay.....	470	725	1,312	1,577	1,793	1,238
Mexico.....	594	1,120	1,837	2,561	1,899	3,508
	2,151	1,998	3,040	2,530	4,759	3,323
Total.....	37,408	47,994	42,212	39,344	40,596	46,985
Total imports 2/ (declared weight).....	167,522	167,782	181,706	178,945	196,700	219,872
Total imports 3/ (farm-sales weight).....	205,239	210,465	223,523	218,690	239,096	257,881
	Value (Calendar year basis)					
	1,000 dol.	1,000 dol.	1,000 dol.	1,000 dol.	1,000 dol.	1,000 dol.
Cigarette leaf.....	77,699	82,752	105,291	106,461	107,557	115,240
Cigar leaf:						
Cigar wrapper.....	1,283	1,163	1,629	1,540	1,836	3,432
Cigar filler:						
Unstemmed.....	2,146	2,559	1,787	1,949	2,466	2,101
Stemmed.....	3,200	2,799	2,414	2,482	2,639	3,395
Scrap.....	14,637	20,444	18,861	14,389	14,245	17,433
Total cigar leaf.....	21,266	26,956	24,491	20,360	21,186	26,361
Total imports.....	98,965	109,717	129,782	126,821	128,743	141,601

TABLE 32.--United States imports of unmanufactured tobacco for consumption, fiscal years, annual 1962-63--1967-68

Kind of tobacco	1962-63	1963-64	1964-65	1965-66	1966-67	1967-68
	1,000 lb.	1,000 lb.	1,000 lb.	1,000 lb.	1,000 lb.	1,000 lb.
Cigarette leaf.....	128,011	124,966	133,134	135,937	146,435	172,570
Cigar leaf:						
Cigar wrapper.....	364	226	228	295	485	524
Cigar filler:						
Unstemmed.....	3,958	2,624	3,184	2,695	2,880	3,383
Stemmed.....	3,326	1,964	2,184	1,897	2,103	2,335
Scrap.....	25,922	35,829	44,137	32,634	32,786	39,594
Total cigar leaf.....	33,570	40,643	49,733	37,521	38,254	45,766
Total imports 1/ (declared weight).....	161,581	165,609	182,867	173,456	184,689	218,336
Total imports 2/ (farm-sales weight).....	193,324	202,145	225,630	209,077	231,243	273,975
	Value (July--June basis)					
	1,000 dol.	1,000 dol.	1,000 dol.	1,000 dol.	1,000 dol.	1,000 dol.
Cigarette leaf.....	74,996	79,654	97,448	104,693	106,533	117,115
Cigar leaf:						
Cigar wrapper.....	1,693	1,119	1,733	1,583	1,720	2,424
Cigar filler:						
Unstemmed.....	3,326	2,115	3,440	1,801	2,060	2,472
Stemmed.....	4,086	2,521	4,081	2,421	2,541	3,009
Scrap.....	11,195	17,609	21,984	15,127	14,317	16,641
Total cigar leaf.....	20,300	23,363	31,237	20,931	20,638	24,546
Total imports 3/.....	95,296	103,017	128,685	125,624	127,171	141,661

1/ Subject to revision. 2/ Mostly Mexico. 3/ Less than 500 pounds. 4/ Does not include imports in this classification from Turkey, Syria, and Greece. 5/ Does not include stems.

Foreign Agricultural Service. Compiled from publications of the Bureau of the Census, U. S. Department of Commerce.

TABLE 33.--Tariff rates on selective items of tobacco and tobacco products imported into the United States under the Tariff Act of 1930 and subsequent Trade Agreements 1/

Kinds of tobacco imported	TSUS item Number	Rate per pound entered on and after Jan. 1, 2/ 3/				
		Rate per lb. : Tariff Act : of 1930 :	1969	1970	1971	1972
		Dollars	Dollars	Dollars	Dollars	Dollars
Leaf tobacco, from two or more countries, (when mixed or packed together):						
Not stemmed.....	170.01	2.275	2.275			
Stemmed.....	170.05	2.925	2.925			
Wrapper tobacco (whether or not mixed or packed with filler tobacco):						
Not stemmed.....	170.10	2.275	.909			
Stemmed.....	170.15	2.925	1.548			
Filler tobacco (whether or not mixed or packed with wrapper tobacco):						
When mixed or packed with over 35% of wrapper tobacco:						
Not stemmed.....	170.20	2.275	.909			
If product of Philippines: 4/						
Within tariff-rate quota.....	170.22		Free			
Other.....	170.23		.819			
Stemmed.....	170.25	2.925	1.548			
If product of Philippines: 4/						
Within tariff-rate quota.....	170.26		Free			
Other.....	170.27		1.548			
When not mixed or packed with wrapper tobacco, or when mixed or packed with 35% or less of wrapper tobacco:						
Cigarette leaf:						
Not stemmed:						
Leaf, oriental or Turkish type, not over 8.5 inches in length.....	170.28	.35	.12	.12	.115	.115
Five-cured and burley.....	170.32	.35	.1275			
If product of Philippines: 4/						
Within tariff-rate quota.....	170.33		Free			
Other.....	170.34		.1275			
Stemmed.....	170.35	.50	.48	.47	.46	.45
If product of Philippines: 4/						
Within tariff-rate quota.....	170.36		Free			
Other.....	170.37		.48	.47	.46	.45
Other, including cigar leaf:						
Not stemmed:						
Not stemmed.....	170.40	.35	.161			
If product of Philippines: 4/						
Within tariff-rate quota.....	170.42		Free			
Other.....	170.43		.126			
Stemmed.....	170.45	.50	.23			
If product of Philippines: 4/						
Within tariff-rate quota.....	170.47		Free			
Other.....	170.48		.18			
Tobacco Stems:						
Not cut, ground, or pulverized.....	170.50	Free	Free			
Cut, ground, or pulverized.....	170.55	.55	.55			
Scrap tobacco						
.....	170.60	.35	.161			
If product of Philippines: 4/						
Within tariff-rate quota.....	170.62		Free			
Other.....	170.63		.126			
Cigarettes						
.....	170.65	4.50 lb. + 25% ad val.	1.06 lb. + 5% ad val.			
Cigars and Cheroots:						
Cigars each valued 15 cents or over.....	170.66	4.50 lb. + 25% ad val.	1.52 lb. + 8% ad val.	1.33 lb. + 7% ad val.	1.14 lb. + 6% ad val.	.95 lb. + 5% ad val.
If product of Philippines: 4/						
Within tariff-rate quota.....	170.68		Free			
Other.....	170.69		1.27 lb. + 8.5% ad val.			
Other cigars.....	170.72	4.50 lb. + 25% ad val.	1.91 lb. + 10.5% ad val.			
If product of Philippines: 4/						
Within tariff-rate quota.....	170.74		Free			
Other.....	170.75		1.27 lb. + 8.5% ad val.			
Snuff and snuff flour.....	170.78	.55	.17	.15	.13	.11
Tobacco mfgd. or not mfgd., not specially provided for.....	170.80	.55	.175			

1/ Consult official tariff schedules for a complete listing of rates. 2/ Staged rates as the result of the Kennedy round, other items unchanged. 3/ Section 5 of the Trade Agreement Extension Act of 1951 requires imports from most Communist Countries to enter at the 1930 rates. 4/ The Philippine Trade Agreement Revision Act of 1955 eliminated the absolute quotas of 200 million cigars and 6-1/2 million pounds of scrap and filler tobacco. Specified amounts are admitted duty free each year, through 1973, with the excess entering at regular or preferential rates. The duty free quotas for 1969-1970 are 2.6 million pounds of scrap and filler and 80 million cigars. For 1971-73 they are 1.3 million pounds and 40 million cigars.

Foreign Agricultural Service, Compiled from U. S. Tariff Commission, U. S. Department of Commerce.

TABLE 34.--Receipts from import duties on tobacco and tobacco products in the United States, fiscal years, 1957-58--1967-68 1/

Year (July-June basis)	Receipts from--			Total receipts	Drawback	Net receipts
	Leaf tobacco (Paragraph 601)	Scrap, etc. (Paragraph 603)	Tobacco products (Paragraphs 604 and 605)			
	Dollars	Dollars	Dollars	Dollars	Dollars	Dollars
1957-58	15,403,335	1,765,744	964,766	18,133,845	688,840	17,445,005
1958-59	17,060,032	2,453,789	1,010,181	20,524,002	781,804	19,742,198
1959-60	17,283,894	2,645,925	821,985	20,751,804	719,350	20,032,454
1960-61	17,998,873	2,399,644	740,254	21,138,771	564,682	20,574,089
1961-62	18,336,953	2,842,136	834,975	22,014,064	689,993	21,324,071
1962-63	17,416,798	2,631,432	423,203	20,471,433	864,485	19,606,948
1963-64	16,549,893	4,477,791	951,149	21,978,833	1,145,972	20,832,861
1964-65	19,000,469	5,888,738	995,530	25,884,737	762,640	25,122,097
1965-66	18,301,655	4,856,361	1,108,360	24,266,376	844,659	23,421,717
1966-67	19,681,494	4,558,104	1,250,186	25,489,784	851,616	24,638,168
1967-68	22,492,474	6,777,305	1,733,729	31,003,508	866,779	30,116,729

TABLE 35.--Import duties on tobacco in selected foreign countries importing from the United States, as of December 1968

UNITED KINGDOM		
Description	Full rate of duty in--	
	Foreign unit	Approximate U S currency per pound 1/
Tobacco, unmanufactured:		
Containing 10 lb. or more of moisture in every 100 lb. weight thereof--		Dollars
Unstripped	£ 4 11s. 8-1/2d. per lb.	11.005
Stripped	£ 4 11s. 8-1/2d. per lb.	11.005
Containing less than 10 lb. of moisture in every 100 lb. weight thereof--		
Unstripped	£ 4 12s. 8-1/2d. per lb.	11.125
Stripped	£ 4 12s. 8-1/2d. per lb.	11.125
IRELAND (EIRE)		
Tobacco, unmanufactured:		
Containing 10 lb. or more of moisture in every 100 lb. weight thereof--		
Unstripped or unstemmed	£ 4 4s. 9d. per lb.	10.17
Stripped or stemmed	£ 4 4s. 9.5d. per lb.	10.175
Containing less than 10 lb. of moisture in every 100 lb. weight thereof--		
Unstripped or unstemmed	£ 4 14s. 2d. per lb.	10.30
Stripped or stemmed	£ 4 14s. 2.5d. per lb.	11.305
SWEDEN, NORWAY, AND DENMARK		
Unmanufactured tobacco	Free	--
AUSTRIA 2/		
Unmanufactured tobacco, unstemmed	15 schillings per kilo	0.26
SWITZERLAND		
Tobacco, unmanufactured:		
With guaranty as to use--		
For the manufacture of cigars:		
Kentucky--Dark Virginia--Bright Virginia	30 francs per 100 kilos	0.03
For the manufacture of pipe tobacco	300 francs per 100 kilos	0.31
For the manufacture of cigarettes and cigarette tobacco	945 francs per 100 kilos	1.01
For the manufacture of roll and chewing tobacco, and snuff	140 francs per 100 kilos	0.17

See footnotes at end of table.

TABLE 37.--Import duties on tobacco in selected foreign countries importing from the United States as of December 1968--Continued

FINLAND		
Description	Full rate of duty in--	
	Foreign unit	Approximate U. S. currency per pound ^{1/}
Unmanufactured tobacco.....	0.45 Finmarks per kilo	<u>Dollars</u> 0.05
SPAIN ^{2/}		
Unmanufactured tobacco.....	Free	--
PORTUGAL		
Leaf tobacco.....	51.35 paper escudos per kilo	0.81
INDIA		
Unmanufactured tobacco.....	24.5 Rupees per lb.	3.26
THAILAND (SIAM) ^{2/}		
Unmanufactured tobacco.....	25.0 Baht per kilo (or 37% ad valorem, whichever is higher)	0.57 or ad valorem rate
PHILIPPINES, REPUBLIC OF ^{3/}		
Leaf tobacco:		
Unstemmed:		
1. Wrapper.....	10.00 Pesos per kilo (legal weight)	1.16
2. Other.....	8.00 Pesos per kilo (legal weight) plus 100% ad valorem	0.93 plus 100% ad valorem
Stemmed:		
1. Wrapper.....	12.00 Pesos per kilo (legal weight)	1.39
2. Other.....	10.00 Pesos per kilo (legal weight) plus 100% ad valorem	1.17 plus 100% ad valorem
HONG KONG		
Tobacco, unmanufactured:		
Containing 10 percent or more of moisture by weight--		
Unstripped.....	6.00 H. K. dollars per lb.	1.04
Stripped.....	6.15 H. K. dollars per lb.	1.07
JAPAN ^{2/}		
Unmanufactured tobacco.....	Free	
AUSTRALIA ^{4/}		
Unmanufactured tobacco:		
Imported or use with Australian leaf in manufacturing smoking tobacco and cigarettes within the mixing regulations ^{5/} :		
1. Smoking tobacco (not fine-cut).....	0.50 Australian dollars per lb.	0.56
2. Cigarettes (including fine-cut smoking).....	0.71 Australian dollars per lb.	0.80
Imported for use in manufacturing smoking tobacco and cigarettes without regard to the mixing regulations:		
1. Smoking tobacco (not fine-cut).....	0.65 Australian dollars per lb.	0.73
2. Cigarettes (including fine-cut smoking).....	0.86 Australian dollars per lb.	0.96
Imported for use in manufacturing cigars, snuff, and other tobacco products	0.25 Australian dollars per lb.	0.28

See footnotes at end of table.

TABLE 35.--Import duties on tobacco in selected foreign countries importing from the United States as of December 1968--Continued

NEW ZEALAND ^{4/}		
Description	Full rate of duty in--	
	Foreign unit	Approximate U. S. currency per pound ^{1/}
Tobacco, unmanufactured, entered to be manufactured in New Zealand in any bonded tobacco factory licensed under the Tobacco Act, 1908, for manufacturing purposes only:		
Into tobacco, cigarettes, or snuff.....	0.33 New Zealand dollar per lb.	0.37
Into cigars.....	Free	Free
UNITED ARAB REPUBLIC (EGYPT)		
Tobacco in leaves.....	6.1 Egyptian pounds	6.36
FORMER BRITISH WEST AFRICA		
Tobacco, unmanufactured:		
Gambia.....	£ 0 2s. 9d. per lb.	0.38
Ghana (gained independence March 6, 1957).....	1.59 Cedis per lb.	1.57
Nigeria (gained independence October 1, 1960):		
For cigarette manufacture.....	£ 0 15s. 3d. per lb.	2.13
For other uses.....	£ 1 0s. 0d. per lb.	2.80
Sierra Leone (gained independence April 31, 1961).....	0.40 leones per lb.	0.48

^{1/} Conversions made at current official exchange rates. In addition to the rates of duty shown, certain of the countries impose surtaxes in the form of percentages of the duty, ad valorem, bill of entry tax, port dues, and varying additional duties.

^{2/} Government monopoly.

^{3/} Under Republic Act 698, as amended by Republic Act 1194, the importation of leaf tobacco (excepting cigar wrapper tobacco for cigars or chewing tobacco) is limited to the amount which, added to total Philippine production, will be sufficient to assure the output of a quantity of manufactured products not less than the output of the previous fiscal year. The rates shown are the full rate. The United States is currently paying 90% of the full rate.

^{4/} Australia converted to the decimal system as of February 14, 1966; New Zealand as of July 10, 1967.

^{5/} In order to qualify for this rate a manufacturer must purchase and hold stocks of Australian tobacco sufficient to assure that the amount is adequate to meet the specified mixing percentages for production of Australian products for the entire year.

TABLE 36.--Import duties on unmanufactured tobacco, European Economic Community, as of January 1969

Country	Unmanufactured tobacco ^{1/} from non-member countries ^{2/}								
	Base period		Rates Nov. 1, 1962			Rates Jan. 1, 1967			
	Duty Jan. 1, 1957		Approx. rate			Approx. rate			
	Equivalent	Equivalent	Equivalent	Minimum	Maximum	Equivalent	Minimum	Maximum	
	on ad	in U. S.	on ad	charge	charge	on ad	charge	charge	
	valorem	dollars	valorem	per lb.	per lb.	valorem	per lb.	per lb.	
	basis	per lb.	basis	per lb.	per lb.	basis	per lb.	per lb.	
	Percent	Dollars	Percent	Dollars	Dollars	Percent	Dollars	Dollars	
Belgium-Luxembourg	10	0.038	16	0.066	0.083	20	0.097	0.119	
Netherlands	10	0.038	16	0.066	0.083	20	0.097	0.119	
West Germany	29	0.194	28.6	0.182	0.195	28.4	0.161	0.187	
France	0	0	9	0.0394	0.57	16.8	0.08	0.10	
Italy	0	0	9	0.0394	0.57	16.8	0.08	0.10	
	Rates Jan. 1, 1968 ^{3/}		Rates July 1, 1968 ^{4/}			Ultimate Rate ^{5/}			
	Percent	Dollars	Dollars	Percent	Dollars	Dollars	Percent	Dollars	Dollars
Belgium-Luxembourg	28	0.132	0.172	26	0.13	0.163	23	0.127	0.15
Netherlands	28	0.132	0.172	26	0.13	0.163	23	0.127	0.15
West Germany	28	0.132	0.172	26	0.13	0.163	23	0.127	0.15
France	28	0.132	0.172	26	0.13	0.163	23	0.127	0.15
Italy	28	0.132	0.172	26	0.13	0.163	23	0.127	0.15

1/ Unmanufactured, stemmed, or unstemmed tobacco valued at less than \$1.27 per lb., (cigarette tobacco or ordinary tobacco). The EEC established a separate tariff rate for tobacco valued at \$1.27 and over per pound. U. S. cigar wrapper tobacco falls in this category. The rate set for this new tariff item is 13 percent ad valorem with a maximum charge of 31.8 cents per pound.

2/ Effective January 1, 1968 the internal rate between member countries was reduced to zero.

3/ EEC countries raised external duties to 24 percent on January 1, 1968 pursuant to EEC-Greece Association Agreement.

4/ The ultimate uniform common external rate which was agreed upon in the "Kennedy Round" negotiations. The scheduled reductions or alignments to reach the ultimate rate are as follows:

- 40 percent of the reduction--July 1, 1968
- 20 percent of the reduction--January 1, 1970
- 20 percent of the reduction--January 1, 1971
- 20 percent of the reduction--January 1, 1972

Note:

Greece became an associate member in November 1962 and Turkey in December 1964. Tobacco from these countries moves in the EEC at the same duty as that of full members except that Turkey has an allotment of 17,015 metric tons. Tobacco above this quota is subject to the external duty.

TABLE 37 --Acreage and production of tobacco in specified countries, calendar years, average 1960-64, annual 1965-68

Continent and country	Acreage harvested					Production (farm-sales-weight basis)				
	Average	1965	1966	1967 ^{1/}	1968 ^{1/}	Average	1965	1966	1967 ^{1/}	1968 ^{1/}
	1960-64					1960-64				
	1,000 acres	1,000 acres	1,000 acres	1,000 acres	1,000 acres	1,000 lb.	1,000 lb.	1,000 lb.	1,000 lb.	1,000 lb.
North America:										
Canada	121	99	130	141	134	196,295	168,880	234,182	213,096	219,250
Mexico	91	59	63	58	58	96,364	95,239	92,152	98,766	98,766
United States	1,159	977	974	961	899	2,178,400	1,854,568	1,886,819	1,972,147	1,720,004
Cuba	113	--	--	--	--	87,000	--	--	--	--
Dominican Republic	63	47	49	47	31	61,729	31,175	44,092	41,887	25,000
South America:										
Argentina	109	118	118	139	120	106,262	115,742	98,564	138,890	130,733
Brazil	481	422	398	405	412	336,211	428,693	298,748	323,635	330,500
Colombia	45	63	67	57	56	76,950	88,603	97,554	93,696	91,490
Paraguay	28	36	22	27	32	30,731	39,683	19,290	29,762	31,967
Europe:										
Belgium	3	2	2	1	1	6,074	4,850	4,189	3,430	3,500
France	55	53	51	50	49	92,090	91,520	106,504	107,565	105,270
Germany, West	11	9	8	9	9	22,158	18,917	20,807	18,755	18,180
Greece	301	319	310	313	284	218,741	276,139	216,703	253,803	229,378
Italy	117	137	134	133	120	125,595	161,932	163,022	191,657	153,325
Spain	45	48	31	43	42	63,492	69,657	42,694	66,506	61,729
Bulgaria	276	299	290	252	--	211,393	271,800	292,114	255,735	--
Yugoslavia	108	151	156	145	148	119,269	118,167	119,269	119,710	119,048
Africa:										
Algeria	38	50	53	53	53	15,421	27,500	30,000	29,500	30,000
Rhodesia	219	219	207	165	116	226,233	240,417	249,437	206,500	137,500
Zambia	22	27	22	15	18	18,894	20,532	16,875	11,070	14,799
Malawi	131	169	148	106	91	35,492	50,308	41,047	35,725	37,014
Republic of South Africa	86	83	68	89	100	60,985	60,500	48,800	64,500	72,000
Asia:										
Iran	52	73	64	49	39	26,137	55,402	44,379	49,077	38,911
Iraq	33	37	38	45	45	20,639	24,825	25,050	29,378	30,000
Lebanon	12	16	17	17	17	9,795	14,770	13,889	14,330	14,330
Syria	28	40	40	51	52	15,055	26,409	19,621	25,500	26,000
Turkey	487	548	704	734	743	278,771	292,509	361,989	402,763	355,084
Burma	118	119	118	140	140	88,212	93,600	75,264	93,184	93,000
China--Mainland	1,603	--	--	--	--	1,399,820	--	--	--	--
Taiwan	20	20	19	21	22	38,439	35,937	33,188	39,099	41,500
India	1,016	974	919	1,029	979	736,399	761,910	656,309	771,610	738,541
Pakistan	209	224	253	290	310	212,912	242,000	302,848	392,004	451,200
Vietnam, South	22	21	18	20	20	16,709	16,700	15,212	17,000	17,000
Cambodia	25	44	43	43	44	13,257	23,148	23,148	23,150	24,000
Laos	9	13	15	15	15	4,069	6,000	6,000	6,600	6,600
Indonesia	439	422	451	486	559	159,569	169,750	194,000	209,400	242,500
Japan	166	213	215	213	205	333,382	424,205	435,347	462,696	450,000
South Korea	56	84	106	98	98	76,291	123,574	158,590	143,299	143,000
Philippines	243	212	224	213	241	152,708	143,850	152,669	142,197	165,345
Thailand	129	194	141	138	150	64,750	78,601	81,598	81,759	89,660
Oceania:										
Australia	27	26	23	23	23	26,856	25,136	25,895	26,771	23,400
New Zealand	5	6	5	5	5	8,302	9,881	6,823	5,516	6,000
Estimated world total 2/	9,294	9,701	9,759	10,031	9,863	8,909,876	9,620,345	9,635,506	10,367,637	9,926,813

^{1/} Preliminary. ^{2/} Total includes data for countries not listed.

Foreign Agricultural Service. Official estimates of foreign countries, reports from U.S. Foreign Service officers, results of office research, and other information.

TABLE 38.--Production of flue-cured tobacco in specified countries, calendar years, annual 1963-1968 1/

Continent and country	1963	1964	1965	1966	1967 1/	1968 1/
	1,000 lb.	1,000 lb.	1,000 lb.	1,000 lb.	1,000 lb.	1,000 lb.
North America:						
Canada.....	186,648	143,197	159,185	223,756	204,267	212,000
Mexico.....	5,999	14,412	11,905	9,921	10,582	12,787
United States.....	1,371,462	1,387,804	1,058,970	1,107,861	1,263,159	991,309
South America:						
Argentina.....	15,212	19,114	24,345	31,085	34,833	32,800
Brazil.....	158,747	103,030	197,382	99,306	131,923	132,752
Venezuela.....	12,000	12,000	12,800	14,000	14,600	14,635
Europe:						
Germany, West.....	1,710	1,557	1,097	1,475	1,579	1,820
Italy.....	22,740	25,435	21,537	23,640	25,280	19,932
Asia:						
India.....	185,920	252,206	209,000	172,400	199,957	192,021
Pakistan.....	26,000	26,950	28,000	44,000	70,000	80,760
Indonesia.....	45,874	19,840	39,680	44,090	47,500	55,000
Japan.....	193,035	297,233	253,959	272,592	290,696	278,000
South Korea.....	50,510	89,614	96,274	119,059	97,002	97,000
Taiwan.....	36,941	49,315	35,537	32,788	38,599	41,000
Thailand.....	23,192	23,111	30,553	31,593	36,028	43,919
Africa:						
Rhodesia, Zambia, and Malawi.....	198,426	327,030	250,023	261,470	214,141	151,910
Republic of South Africa.....	30,700	32,303	31,800	23,800	26,000	32,000
Oceania:						
Australia.....	27,148	34,342	25,111	25,870	26,746	23,375
New Zealand.....	8,586	8,990	9,514	6,695	5,416	5,800
Estimated world total 2/.....	3,375,901	3,782,053	3,469,449	3,531,472	3,859,120	3,536,849

1/ Preliminary.

2/ Total includes data for countries not listed.

Foreign Agricultural Service. Official estimates of foreign countries, reports from U. S. Foreign Service officers, results of office research, and other information.

TABLE 39.--Production of burley tobacco in specified countries, calendar years, annual 1963-68 1/

Continent and country	1963	1964	1965	1966	1967	1968
	1,000 lb.	1,000 lb.	1,000 lb.	1,000 lb.	1,000 lb.	1,000 lb.
North America:						
Canada.....	8,008	5,317	3,982	5,492	4,690	2,750
United States.....	755,146	619,794	586,299	586,672	540,635	559,040
Mexico.....	16,018	13,227	13,228	15,432	22,046	20,371
South America:						
Brazil.....	4,918	4,918	7,520	6,239	6,349	16,336
Venezuela.....	5,430	5,043	5,525	6,877	7,000	7,000
Europe:						
Germany, West.....	10,821	9,381	8,989	10,028	7,627	7,220
Greece.....	3,638	7,937	9,418	13,184	21,398	19,041
Italy.....	32,818	35,403	33,757	33,151	46,788	36,798
Spain.....	35,417	33,228	43,735	19,059	43,126	40,785
Asia:						
India.....	2,240	4,000	5,000	5,000	6,000	6,000
Japan.....	23,649	28,411	30,805	28,356	30,000	30,000
South Korea.....	3,596	11,599	18,510	29,447	34,061	34,000
Africa:						
Morocco.....	1,102	3,704	4,427	2,685	3,131	5,732
Madagascar Republic.....	300	800	1,102	1,084	3,968	4,050
Malawi.....	4,487	4,699	5,766	5,335	5,874	6,673
Rhodesia.....	1,167	2,528	6,025	4,322	5,000	4,000
Estimated world total 2/.....	934,605	822,208	808,314	798,835	815,507	825,907

1/ Preliminary.

2/ Total includes data for countries not listed.

Foreign Agricultural Service. Official estimates of foreign countries, reports from U. S. Foreign Service officers, results of office research, and other information.

INDEX

	Page		Page
Acresage:			
by class or type.....	15 - 16	Prices:	
foreign, total by countries.....	53	by class or type.....	10 - 16
U.S., by States.....	18 - 19	by markets.....	20
Allotments:		by States.....	18 - 19
number and sereage.....	22 - 23	loan level.....	24
Buyers, sets of, by types.....	20	cigarettes, wholesale.....	36
Consumption, per capita, of products.....	36	Production:	
Crop value, U.S.:		foreign, burley by countries.....	54
by class or type.....	10 - 16	foreign, flue-cured by countries.....	54
by States.....	18 - 19	U.S. and Puerto Rico, by class or type.....	10 - 16
Disappearance, crop year:		U.S., by States.....	18 - 19
domestic, by class or type.....	10 - 16	Products:	
total, by class or type.....	10 - 16	total expenditures for.....	35
Expenditures, total, for products.....	35	per capita consumption of.....	36
Exports:		quantity manufactured.....	33
cigarettes, by countries.....	44	leaf used.....	32
export weight, by types and countries, crop year.....	40 - 42	Receipts:	
farm-sales-weight by class or type.....	10 - 16	cash, compared with all farm commodities.....	17
quantity and value, by types.....	43	from Federal taxes.....	35
products.....	45	from import duties, leaf and products.....	49
Hogshead dimensions and weights.....	8	from State taxes.....	37
Import duties, foreign countries.....	49 - 52	Referendums:	
Imports:		marketing quotas.....	21
leaf by countries.....	46 - 47	Removals:	
products, by countries.....	45	all products, tax paid.....	33
value of leaf.....	47	all products, tax free.....	33
Leaf used:		cigars, by classes.....	34
in cigarettes and other products, by types of tobacco.....	32	Sales, producers', by types.....	20
per 1,000 cigarettes.....	32	Shrinkage of leaf after handling, sweating, and drying.....	25
Loan levels.....	24	Stocks:	
Manufacture:		farm-sales-weight, quarterly.....	26 - 30
products made.....	33	farm-sales-weight basis, by class or type, crop year.....	10 - 16
Markets:		foreign-grown, farm-sales-weight equivalent basis.....	30
buyers, sets of.....	20	total, all types, quarterly.....	30
hogshead dimensions and weights.....	8	Supply, crop year, by class or type.....	10 - 16
prices.....	20	Tariff:	
sales, producers'.....	20	foreign rates, selected countries.....	49 - 52
warehouses, number of.....	20	U.S. rates.....	48
Per capita consumption of products.....	36	U.S. receipts from.....	49
		Tax rates:	
		Federal.....	35
		State.....	38 - 39
		Warehouses, by types.....	36 - 40
		Yield per acre:	
		by class or types.....	10 - 16
		by States.....	18 - 19

U.S. DEPARTMENT OF AGRICULTURE
Consumer and Marketing Service
Washington, D.C. 20250

Official Business



POSTAGE & FEES PAID
United States Department of Agriculture

END