



AgEcon SEARCH
RESEARCH IN AGRICULTURAL & APPLIED ECONOMICS

The World's Largest Open Access Agricultural & Applied Economics Digital Library

This document is discoverable and free to researchers across the globe due to the work of AgEcon Search.

Help ensure our sustainability.

Give to AgEcon Search

AgEcon Search

<http://ageconsearch.umn.edu>

aesearch@umn.edu

*Papers downloaded from **AgEcon Search** may be used for non-commercial purposes and personal study only. No other use, including posting to another Internet site, is permitted without permission from the copyright owner (not AgEcon Search), or as allowed under the provisions of Fair Use, U.S. Copyright Act, Title 17 U.S.C.*

SB 419 (1968)

USDA STATISTICAL BULLETINS

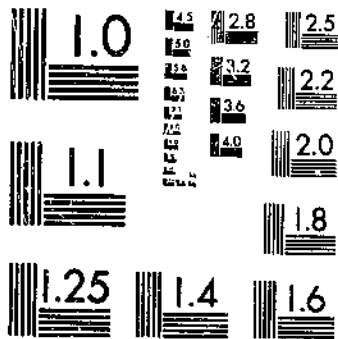
UPDATA

FARM MACHINERY AND EQUIPMENT: NUMBER AND VALUE OF 1935-39 TO 1966.

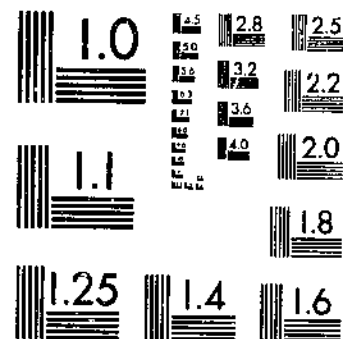
STRICKLER, P. E., SMITH, H. Y.

1 OF 1

START



MICROCOPY RESOLUTION TEST CHART
NATIONAL BUREAU OF STANDARDS-1963-A



MICROCOPY RESOLUTION TEST CHART
NATIONAL BUREAU OF STANDARDS-1963-A

R 630.5
453-13
419

Statistical Bulletin No. 419

FARM MACHINERY AND EQUIPMENT

REFERENCE
DO NOT LOAN

DEPOSITORY

APR 22 1968

Los Angeles Public Library

Number and Value of Shipments
for Domestic Use, 1935-39 to 1966

ECONOMIC RESEARCH SERVICE

U.S. DEPARTMENT OF AGRICULTURE

PREFACE

There has been a substantial increase in shipments of farm machinery for domestic use in most years since 1935-39. With an increase in number has come an increase in size, total value, and value per unit of these machines. Numerous requests are received by the U.S. Department of Agriculture for specific information on shipments and value of shipments of farm machinery and equipment, including spraying and dusting equipment and special machines for preparing crops for market or for use on the farm.

Data summarized in this report are published annually by the Industry Division, Bureau of the Census; however, no time series or unit value is known to be available in summary form.

CONTENTS

	<u>Page</u>
Introduction -----	1
Description of tables -----	1
Guide to tables -----	2

For sale by the Superintendent of Documents, U.S. Government Printing Office, Washington, D.C. 20402.

Washington, D. C.

March 1968

FARM MACHINERY AND EQUIPMENT
Number and Value of Shipments for Domestic Use
1935-39 to 1966

By

Paul E. Strickler, Agricultural Economist
Helen V. Smith, Statistical Assistant
Farm Production Economics Division
Economic Research Service

INTRODUCTION

Statistics in this report were compiled from data published in Current Industrial Report, Series M35A and M35S, Industry Division, Bureau of the Census, based on reports of all known manufacturers of farm machinery and equipment, including those who make equipment as a secondary product. These reports have been issued annually since 1920, except for 1932, 1933, and 1934. The tables in this publication give 5-year averages from 1935 to 1960, and annual amounts and averages from 1960 to 1966. All data are for the 48 conterminous States.

Beginning in 1947, data on shipments relate to the number of items shipped by manufacturers from production plants and intended for domestic use. Prior to 1947, these data were reported as number of items sold by the production plants. However, this difference does not significantly affect comparability of the statistics on an industry basis.

Value of shipments is dollar value of items shipped during the year, regardless of when they were manufactured. Value per unit shipped is value of shipments divided by number of units.

DESCRIPTION OF TABLES

Tables 1 through 9 present statistics for the number of units shipped for domestic use, by nine major classes of farm machinery and equipment. Tables 10 through 18 show dollar value of shipments. Tables 19 through 27 show value per unit of shipments.

All tables were compiled from published data. Dashes indicate the absence of data or lack of comparable data.

Statistics on tractors do not include tractors for industrial use. Wheel tractors (except garden tractors) were not reported for farm use in 1941 or 1942; most of them were used for this purpose, however. The increasing value per wheel tractor reflects the increasing size of these tractors as well as some increase in wholesale prices. In recent years, wheel tractors shipped for farm use have generally been somewhat larger and of higher value than those for nonfarm use. Imports of wheel tractors for all uses were reported throughout the series. Garden tractors (including motortillers) were reported for the entire series, with components shown for 1955 to date. Value of tracklaying tractors for farm use was not reported prior to 1945. All detailed data for tractors are published in Current Industrial Report, Series M35S, Tractors, Bureau of the Census, U.S. Department of Commerce.

GUIDE TO TABLES

Page

Manufacturers' shipments for domestic use, United States,
5-year averages, 1935-59, and annual, 1960-66:

Tractors -----	3
Plows, harrows, listers, and stalk cutters -----	4
Planting, seeding, and fertilizing machinery -----	5
Cultivators -----	6
Sprayers and dusters -----	6
Harvesting machines -----	7
Haying machinery -----	8
Machines for preparing crops for market or for farm use -----	9
Farm elevators, barn and barnyard equipment, and farm dairy equipment -----	10

Value of shipments for domestic use, United States, 5-year averages,
1935-59, and annual, 1960-66:

Tractors -----	11
Plows, harrows, listers, and stalk cutters -----	12
Planting, seeding, and fertilizing machinery -----	13
Cultivators -----	14
Sprayers and dusters -----	14
Harvesting machines -----	15
Haying machinery -----	16
Machines for preparing crops for market or for farm use -----	17
Farm elevators, barn and barayard equipment, and farm dairy equipment -----	18

Value per unit of manufacturers' shipments for domestic use,
United States, 5-year averages, 1935-59, and annual, 1960-66:

Tractors -----	19
Plows, harrows, listers, and stalk cutters -----	20
Planting, seeding, and fertilizing machinery -----	21
Cultivators -----	22
Sprayers and dusters -----	22
Harvesting machines -----	23
Haying machinery -----	24
Machines for preparing crops for market or for farm use -----	25
Farm elevators, barn and barnyard equipment, and farm dairy equipment -----	26

Table 1.--Tractors: Manufacturers' shipments for domestic use, United States, 5-year averages, 1935-59, and annual, 1960-66

Tractors	Average					1960	1961	1962	1963	1964	1965	1966
	1935-39	1940-44	1945-49	1950-54	1955-59							
	Thous.	Thous.	Thous.	Thous.	Thous.							
Wheel (except garden), all uses <u>1/</u> -----	185.6	204.7	326.1	360.1	224.7	137.2	153.2	169.4	177.2	169.8	211.9	238.4
Farm use <u>1/</u> -----	---	---	313.2	351.9	200.2	116.2	130.8	146.3	148.5	142.2	175.6	197.2
Imports, all uses----	1.5	<u>2/</u>	8.3	8.4	8.9	8.5	6.9	7.6	8.8	8.8	5.9	11.1
Tracklaying, all uses--	16.0	21.5	26.4	30.6	30.7	14.5	12.4	13.1	14.8	16.2	17.0	19.6
With integral shovel units-----	---	---	---	---	---	8.3	5.1	5.6	7.1	7.3	8.2	7.9
Farm use-----	9.0	6.0	9.8	10.7	5.3	2.3	2.7	2.0	1.9	1.9	1.6	---
Garden, excluding motortillers-----	---	---	---	---	67.4	91.3	111.3	144.8	105.8	182.3	203.2	---
Riding-----	---	---	---	---	14.3	44.7	65.6	83.7	75.8	120.0	---	250.8
Walking-----	---	---	---	---	53.1	46.6	45.7	61.1	30.0	62.3	---	---
Motortillers-----	---	---	---	---	150.0	312.4	260.2	257.4	226.4	217.8	211.9	---
Garden, including motortillers <u>3/</u> -----	7.5	12.3	116.0	181.6	217.4	403.7	371.5	402.2	332.2	400.1	415.1	521.1

1/ Does not include imports.

2/ Less than 0.05.

3/ Motortillers not reported prior to 1955.

Table 2.--Plows, harrows, listers, and stalk cutters: Manufacturers' shipments for domestic use, United States, 5-year averages, 1935-59, and annual, 1960-66

Type of farm equipment	Average					1960	1961	1962	1963	1964	1965	1966
	1935-39	1940-44	1945-49	1950-54	1955-59							
	Thous.	Thous.	Thous.	Thous.	Thous.	Thous.	Thous.	Thous.	Thous.	Thous.	Thous.	Thous.
Plows:												
Moldboard, tractor-drawn or mounted----	102.5	128.2	209.0	217.4	113.4	83.9	78.9	78.4	82.9	91.4	78.8	102.5
Disc, drawn or mounted-----	5.8	10.6	32.9	32.5	10.8	4.4	3.9	2.6	1.2	1.8	1.2	.7
One-way disc plows or tillers-----	9.5	11.5	20.4	12.9	5.0	4.9	3.1	2.8	3.7	2.4	1.1	---
Harrows:												
Disc, all types-----	91.1	102.5	218.4	225.3	110.1	93.6	84.5	89.7	101.2	101.6	93.0	89.6
Spike-tooth sections--	172.2	171.3	320.0	278.0	146.1	106.6	81.4	101.1	113.1	114.0	121.2	---
Spring-tooth sections:	106.1	84.2	129.6	123.2	73.7	75.5	64.2	61.1	59.8	72.5	64.6	53.3
Tine-tooth sections--	---	---	---	---	---	18.8	19.4	12.3	14.6	17.2	18.1	15.1
Listers:												
With or without planting attachments, drawn or mounted-----	30.1	32.6	53.1	31.1	14.8	11.4	7.5	9.0	12.6	15.0	14.6	---
Stalk shredders and cutters or rotary mowers (power take-off): ^{1/}												
Flail type without spout-----	---	---	21.6	27.2	44.2	2.6	3.2	4.9	7.3	8.8	9.3	12.1
Horizontal-blade type:												
66-inch cutter width and under---	---	---	---	---	---	^{2/} 41.3	37.8	48.7	50.6	51.1	49.7	58.0
Over 66 inches up to 100 inches-----	---	---	---	---	---	---	5.5	6.4	11.0	11.7	12.3	12.7
Over 100 inches-----	---	---	---	---	---	---	.9	1.0	1.7	1.9	2.3	---

^{1/} 1945-49, stalk cutters only; 1950-59, stalk cutters and shredders.

^{2/} No width specified.

Table 3.--Planting, seeding, and fertilizing machinery: Manufacturers' shipments for domestic use, United States, 5-year averages, 1935-59, and annual, 1960-66

Type of farm equipment	Average					1960	1961	1962	1963	1964	1965	1966
	1935-39	1940-44	1945-49	1950-54	1955-59							
	Thous.	Thous.	Thous.	Thous.	Thous.	Thous.	Thous.	Thous.	Thous.	Thous.	Thous.	Thous.
Corn planters:												
Drawn, 2-, 4-, 6-row and larger-----	56.9	41.0	49.2	67.9	39.0	} 36.4	23.1	21.6	23.3	40.5	33.7	46.4
Mounted-----	---	---	18.4	18.1	13.4		6.2	5.9	5.9	---	---	---
Corn and cotton planters, mounted:												
1- and 2-row-----	56.7	39.2	32.3	29.9	19.4	15.0	14.2	12.0	11.9	13.3	11.5	11.6
4- and 6-row and larger-----	---	---	---	---	2.9	3.2	2.8	2.7	3.3	3.0	---	---
Lister planting attachment units-----	---	---	---	---	---	3.5	---	---	2.6	} 2.8	---	---
Potato planters, drawn or mounted-----	3.4	3.4	3.5	---	---	---	---	---	---		---	---
Grain drills, including legume planters:												
Fertilizer-----	40.2	34.3	17.9	23.7	14.3	5.3	6.0	5.1	5.2	4.9	3.7	---
Plain: Press and other-----	---	---	26.7	25.6	11.1	13.8	9.3	7.3	---	---	---	---
Fertilizer distributors, drawn or mounted:												
Dry, including lime spreaders-----	---	---	---	---	31.8	25.6	29.5	35.9	35.3	38.7	34.8	34.4
Liquid-----	---	---	---	---	---	1.6	1.9	4.6	4.8	5.1	5.0	---
Anhydrous ammonia-----	---	---	---	---	4.7	3.5	3.3	---	---	---	---	---
Manure spreaders:												
2-wheel power drive-----	---	---	---	---	15.2	15.5	26.2	30.9	31.4	21.8	23.4	---
2-wheel ground drive-----	---	---	---	---	34.7	24.2	10.2	9.1	6.6	3.9	2.9	---
Open and closed tank type-----	---	---	---	---	---	---	---	---	---	4.1	5.1	---
Loaders (farm type), manure and general utility (except beet and sugarcane loaders), front and rear mounted-----	---	---	50.3	60.9	40.3	34.0	32.5	45.2	34.8	27.6	30.8	32.4
Row crop unit planters for attaching to tool bars-----	---	---	---	---	---	19.7	20.8	18.7	21.1	32.6	17.9	---

© UPDATA 1981

51

Table 4.--Cultivators: Manufacturers' shipments for domestic use, United States, 5-year averages, 1935-59, and annual, 1960-66

Type of farm equipment	Average					1960	1961	1962	1963	1964	1965	1966
	1935-39	1940-44	1945-49	1950-54	1955-59							
	Thous.	Thous.	Thous.	Thous.	Thous.	Thous.	Thous.	Thous.	Thous.	Thous.	Thous.	Thous.
Corn and cotton type cultivators, mounted 1-, 2-, 4-, 6-row and larger-----	---	139.1	213.1	183.6	97.9	58.1	49.8	49.2	54.9	55.9	38.2	39.5
Beet, bean, and vegetable cultivators, drawn or mounted-----	3.3	3.3	6.9	3.4	4.3	2.7	1.4	1.7	1.7	1.5	---	.8
Rotary hoe cultivator sections, drawn or mounted-----	2.8	6.0	29.6	78.0	91.1	75.0	71.3	65.1	65.2	72.4	65.4	86.0
Field cultivators:												
Drawn-----	7.4	10.3	35.1	25.0	10.4	14.7	10.1	11.0	12.3	16.4	22.0	24.1
Mounted-----	---	---	---	---	---	---	2.3	1.6	2.2	3.2	---	---

Table 5.--Sprayers and dusters: Manufacturers' shipments for domestic use, United States, 5-year averages, 1935-59, and annual, 1960-66

Type of farm equipment	Average					1960	1961	1962	1963	1964	1965	1966
	1935-39	1940-44	1945-49	1950-54	1955-59							
	Thous.	Thous.	Thous.	Thous.	Thous.	Thous.	Thous.	Thous.	Thous.	Thous.	Thous.	Thous.
Power sprayers (except aircraft sprayers and dusters)-----	7.7	5.5	45.1	69.1	80.0	64.9	49.2	53.6	64.8	64.5	47.3	60.1
Spray pumps, power driven-----	---	---	5.6	23.4	23.0	26.7	19.2	18.6	29.2	28.8	---	---
Dusters:												
Tractor power take-off-----	---	4.2	7.7	15.9	6.6	2.9	2.6	2.7	2.6	3.3	---	---
Engine driven and traction-----	---	2.3	5.8	6.9	3.2	.3	1.4	1.6	.8	.4	---	---

Table 6.--Harvesting machines: Manufacturers' shipments for domestic use, United States, 5-year averages, 1935-59, and annual, 1960-66

Type of farm equipment	Average					1960	1961	1962	1963	1964	1965	1966
	1935-39	1940-44	1945-49	1950-54	1955-59							
	Thous.	Thous.	Thous.	Thous.	Thous.	Thous.	Thous.	Thous.	Thous.	Thous.	Thous.	Thous.
Combines (harvester-threshers):												
Pull type, all sizes-	28.0	42.7	60.7	63.3	26.0	6.8	4.8	4.0	2.9	2.9	2.0	2.4
Self-propelled (basic unit)-----	---	---	1/5.5	1/12.2	1/18.0	1/18.3	1/15.9	15.2	22.1	25.9	27.9	26.3
All combines-----	28.0	42.7	66.2	75.5	44.0	25.1	20.7	19.2	25.0	28.8	29.9	28.7
Grain heads-----	---	---	---	---	---	---	---	16.8	21.8	25.7	27.4	34.4
Corn heads-----	---	---	---	---	---	10.2	7.5	8.1	12.6	16.9	19.0	25.2
Cornpickers, 1- and 2-row, drawn or mounted-----	---	16.0	59.0	63.6	35.7	25.0	21.2	22.1	20.3	15.9	12.0	12.2
Picker-shellers, drawn, mounted, or self-propelled-----	---	---	---	---	---	.8	1.0	---	---	---	---	---
Field shelling attachments for cornpickers, including conversion packages-----	---	---	---	---	---	---	1.3	1.5	2.1	---	---	---
Potato diggers-----	3.6	3.7	4.2	1.0	1.1	1.0	.7	.5	---	.2	---	---
Potato harvesters-----	---	---	---	.3	.5	.7	1.2	.6	.5	.6	---	1.6
Beet harvesters, 1-, 2-, and 3-row-----	---	---	1.3	1.5	1.3	.6	1.0	1.0	1.7	2.2	.6	.5
Peanut diggers, shakers, and windrowers-----	---	---	2.1	---	1.5	1.3	1.0	2.1	2.2	2.4	---	3.5
Peanut combines-----	---	---	---	---	---	1.4	1.8	1.9	1.9	2.5	---	---
Field forage harvesters:												
Self-propelled-----	---	---	---	---	---	---	---	---	.6	.6	---	.9
Shear bar type:												
Basic unit, engine drive and power take-off-----	---	---	---	21.3	17.2	9.7	11.2	13.7	13.0	13.1	14.8	17.6
Flail type-----	---	---	---	---	---	12.6	9.8	7.3	5.7	7.8	10.4	7.3
Cottonpickers, 1- and 2-row-----	---	---	---	---	---	6.3	5.9	4.6	4.7	3.7	4.3	.7
Cotton strippers-----	---	---	---	---	---	4.6	4.5	4.2	3.7	2.6	2.0	1.5

1/ With head.

Table 7.--Haying machinery: Manufacturers' shipments for domestic use, United States, 5-year averages, 1935-59, and annual, 1960-66

Type of farm equipment	Average					1960	1961	1962	1963	1964	1965	1966
	1935-39	1940-44	1945-49	1950-54	1955-59							
	Thous.	Thous.	Thous.	Thous.	Thous.							
Mowers (cutter-bar type):												
Drawn-----	---	53.9	41.5	19.1	10.9	10.0	5.9	8.1	10.0	9.4	7.5	} 17.4
Semi-mounted-----	---	53.8	134.0	143.5	46.0	9.7	9.5	15.5	11.2	8.6	6.7	
Mounted:												
Rear-----	---	---	---	---	---	34.4	22.1	22.7	26.8	28.1	26.8	22.6
Side-----	---	---	---	---	---	---	11.7	8.7	7.1	6.9	8.1	6.9
Rakes:												
Side delivery (ground-driven)-----	1/20.8	28.3	64.0	83.7	44.5	38.2	22.1	23.9	21.8	26.0	26.0	24.3
Side delivery (finger-wheel type) and power take-off--	---	---	---	---	---	---	3.4	3.1	11.3	11.8	10.6	3.9
Pick-up hay balers:												
Wire-----	3.6	6.7	12.3	14.6	6.3	4.5	3.9	5.0	4.5	6.3	7.5	6.8
Twine-----	---	---	27.4	49.3	56.2	36.3	34.0	28.3	35.7	36.5	40.1	36.1
Hay bale loaders (field type)-----	---	---	---	5.1	4.4	5.7	3.3	5.6	2.5	2.2	---	---
Bale throwing attachments for hay balers--	---	---	---	---	---	---	---	---	7.8	5.5	7.0	---
Hay conditioners:												
Crimpers-----	---	---	---	---	---	---	10.8	11.1	8.3	6.0	6.3	6.3
Crushers-----	---	---	---	---	---	---	16.6	10.6	7.7	5.3	6.2	4.2
Hay crusher or hay conditioner attachments-----	---	---	---	---	---	---	1.3	1.6	1.5	2.2	3.5	---
Windrowers or swathers, drawn or self-propelled-----	---	---	4.8	10.6	3.9	2.8	2.8	3.7	5.3	7.2	8.3	6.7

1/ Includes combination side delivery rakes and tedders through 1960.

Table 8.--Machines for preparing crops for market or for farm use: Manufacturers' shipments for domestic use, United States, 5-year averages, 1935-59, and annual, 1960-66

Type of farm equipment	Average					1960	1961	1962	1963	1964	1965	1966
	1935-39	1940-44	1945-49	1950-54	1955-59							
	Thous.	Thous.	Thous.	Thous.	Thous.	Thous.	Thous.	Thous.	Thous.	Thous.	Thous.	Thous.
Corn shellers (power)--	5.0	7.4	19.4	8.8	5.1	2.6	2.5	1.6	1.6	0.9	0.5	0.3
Feed grinders and crushers (farm size), hammer, burr, combination roughage, and roller mills-----	---	55.5	66.8	29.2	16.8	12.7	11.1	11.5	13.1	10.3	7.4	8.6
Combination grinder-mixers-----	---	---	---	---	---	7.5	5.6	10.6	15.0	11.3	16.2	19.9
Tobacco curers-----	---	---	18.7	22.8	10.2	8.0	9.9	10.7	16.9	16.4	---	---
Driers (grain, hay, and seed):												
Heated air crop-----	---	---	---	---	4.1	4.5	2.3	1.8	4.8	4.6	7.7	14.4
Crop drying fans-----	---	---	---	---	4.1	3.8	7.4	5.5	3.4	3.6	2.7	2.4

Table 9.--Farm elevators, barn and barnyard equipment, and farm dairy equipment: Manufacturers' shipments for domestic use, United States, 5-year averages, 1935-59, and annual, 1960-66

Type of farm equipment	Average					1960	1961	1962	1963	1964	1965	1966
	1935-39	1940-44	1945-49	1950-54	1955-59							
	Thous.	Thous.	Thous.	Thous.	Thous.							
Farm elevators, portable-----	---	9.3	50.2	---	208.1	162.5	140.5	145.7	137.7	143.6	125.0	145.0
Barn cleaners-----	---	---	---	4.6	9.2	9.7	10.4	9.5	8.4	6.2	7.5	8.1
Silo unloaders, tower and horizontal-----	---	---	---	---	4.6	7.6	15.2	14.5	14.8	14.0	14.4	20.0
Electric-powered bunk feeders-----	---	---	---	---	<u>1</u> /4.5	1.5	8.7	12.5	8.2	5.8	11.2	12.8
Wagons, power unloading:												
Grain type-----	---	---	---	---	---	6.2	12.4	12.6	12.2	9.5	---	8.5
Forage type-----	---	---	---	---	---	9.5	16.7	19.6	22.2	23.2	20.9	21.2
Milking machines:												
Pumping outfits (stationary and portable)-----	---	---	---	---	25.2	24.8	31.8	24.1	25.3	24.0	---	---
Pipeline milker units-----	---	---	---	---	16.0	23.7	28.7	17.7	---	---	---	---

1/ Mechanical bunk feeders prior to 1960.

Table 10.--Tractors: Value of shipments for domestic use, United States, 5-year averages, 1935-59, and annual, 1960-66

Tractors	Average					1960	1961	1962	1963	1964	1965	1966
	1935-39	1940-44	1945-49	1950-54	1955-59							
	Mil. dol.	Mil. dol.	Mil. dol.	Mil. dol.	Mil. dol.	Mil. dol.	Mil. dol.	Mil. dol.	Mil. dol.	Mil. dol.	Mil. dol.	Mil. dol.
Wheel (except garden), all uses <u>1/</u> -----	118.3	112.0	280.9	473.8	414.1	307.8	379.7	462.3	517.9	556.9	716.6	878.9
Farm use <u>2/</u> -----	<u>2/</u>	<u>2/</u>	265.2	444.8	372.1	271.5	337.2	412.6	452.4	489.8	621.9	766.1
Tracklaying, all uses--	33.5	115.6	122.3	180.2	170.1	144.8	139.5	164.2	199.1	237.1	261.6	318.7
With integral shovel units-----	---	---	---	---	---	72.3	56.2	65.0	83.0	86.7	103.8	97.3
Farm use-----	<u>2/</u>	<u>2/</u>	24.4	37.7	30.0	19.2	21.7	21.9	25.5	25.1	21.4	---
Garden, excluding motortillers-----	---	---	---	---	12.2	19.0	30.0	40.7	33.4	58.2	73.9	---
Riding-----	---	---	---	---	3.9	12.4	22.8	30.3	29.2	49.7	---	105.9
Walking-----	---	---	---	---	8.3	7.4	7.2	10.4	5.0	10.4	---	---
Motortillers-----	---	---	---	---	13.7	24.9	21.4	21.6	18.7	18.4	20.5	---
Garden, including motortillers <u>3/</u> -----	1.2	1.7	20.7	24.1	25.9	43.9	51.5	62.3	52.1	76.6	94.4	136.6

1/ Value of imports not included.
 2/ Farm use not reported separately.
 3/ Motortillers not reported prior to 1955.

11

Table 11.--Plows, harrows, listers, and stalk cutters: Value of shipments for domestic use, United States, 5-year averages, 1935-59, and annual, 1960-66

Type of farm equipment	Average					1960	1961	1962	1963	1964	1965	1966
	1935-39	1940-44	1945-49	1950-54	1955-59							
	Mil. dol.	Mil. dol.	Mil. dol.	Mil. dol.	Mil. dol.	Mil. dol.	Mil. dol.	Mil. dol.	Mil. dol.	Mil. dol.	Mil. dol.	Mil. dol.
Plows:												
Moldboard, tractor-drawn or mounted----	8.7	10.7	19.5	30.3	25.3	24.9	25.2	27.1	31.2	39.1	32.8	55.3
Disc, drawn or mounted-----	1.1	1.6	4.8	5.5	2.8	1.6	2.1	1.6	1.2	1.4	1.0	.2
One-way disc plows or tillers-----	2.0	1.9	5.7	4.0	2.4	2.8	1.9	1.7	2.0	1.4	.4	---
Harrows:												
Disc, all types-----	7.3	9.1	27.2	38.2	33.2	35.9	35.5	39.3	44.4	53.4	51.4	60.5
Spike-tooth sections-	1.5	1.4	4.5	5.1	3.4	2.8	2.2	2.8	3.4	3.5	3.9	---
Spring-tooth sections:	1.7	1.0	2.4	3.0	2.6	2.8	2.6	2.6	2.8	3.4	3.3	3.1
Tine-tooth sections--	---	---	---	---	---	.6	.6	.4	.5	.6	.6	.5
Listers:												
With or without planting attachments, drawn or mounted-----	.5	.9	1.8	1.8	1.6	2.7	2.8	3.2	2.3	3.2	2.4	---
Stalk shredders and cutters or rotary mowers (power take-off): ^{1/}												
Flail type without spout-----	---	---	2.4	6.0	13.1	1.1	1.6	1.7	3.1	3.6	4.2	6.6
Horizontal-blade type:												
66-inch cutter width and under---	---	---	---	---	---	^{2/} 11.8	13.6	13.6	14.0	14.3	13.6	16.4
Over 66 inches up to 100 inches-----	---	---	---	---	---	---	2.8	2.7	4.3	4.9	6.4	6.9
Over 100 inches-----	---	---	---	---	---	---	1.0	1.0	1.7	1.9	2.7	---

^{1/} 1945-49, stalk cutters only; 1950-59, stalk cutters and shredders.

^{2/} No width specified.

Table 12.--Planting, seeding, and fertilizing machinery: Value of shipments for domestic use, United States, 5-year averages, 1935-59, and annual, 1960-66

Type of farm equipment	Average					1960	1961	1962	1963	1964	1965	1966
	1935-39	1940-44	1945-49	1950-54	1955-59							
	Mil. dol.	Mil. dol.	Mil. dol.	Mil. dol.	Mil. dol.	Mil. dol.	Mil. dol.	Mil. dol.	Mil. dol.	Mil. dol.	Mil. dol.	Mil. dol.
Corn planters:												
Drawn, 2-, 4-, 6-row and larger-----	2.4	2.3	4.7	10.6	8.8	} 9.9	7.4	7.0	8.6	16.4	16.2	22.8
Mounted-----	---	---	1.7	2.2	1.6		.6	.6	.6	---	---	---
Corn and cotton planters, mounted:												
1- and 2-row-----	1.4	.9	2.3	3.5	1.8	1.8	1.7	1.3	1.3	1.6	1.3	1.5
4- and 6-row and larger-----	---	---	---	---	.8	1.3	1.1	1.1	1.5	1.8	---	---
Lister planting attachment units-----	---	---	---	---	---	.8	---	---	.3	} .6	---	---
Potato planters, drawn or mounted-----	.4	.5	.9	---	---	---	---	---	---		---	---
Grain drills, including legume planters:												
Fertilizer-----	5.3	4.0	4.8	7.0	5.6	2.5	2.4	2.5	2.8	3.0	2.1	---
Plain: Press and other-----	---	---	6.5	8.3	4.2	6.9	5.0	3.8	---	---	---	---
Fertilizer distributors, drawn or mounted:												
Dry, including lime spreaders-----	---	---	---	---	4.7	4.9	6.3	6.9	8.9	12.0	11.5	12.4
Liquid-----	---	---	---	---	---	.6	.7	3.4	3.4	3.4	3.3	---
Anhydrous ammonia-----	---	---	---	---	1.5	2.0	2.3	---	---	---	---	---
Manure spreaders:												
2-wheel power drive--	---	---	---	---	6.6	7.4	13.8	16.5	16.4	12.1	13.2	---
2-wheel ground drive--	---	---	---	---	11.0	9.6	3.8	3.3	2.4	1.5	1.2	---
Open and closed tank type-----	---	---	---	---	---	---	---	---	---	3.1	7.1	---
Loaders (farm type), manure and general utility (except beet and sugarcane loaders), front and rear mounted-----	---	---	9.1	15.0	11.9	11.3	11.0	15.7	13.8	11.4	13.9	14.2
Row crop unit planters for attaching to tool bars-----	---	---	---	---	---	1.5	1.9	1.6	2.3	3.7	2.8	---

© UPPDATA 1981

Table 13.--Cultivators: Value of shipments for domestic use, United States, 5-year averages, 1935-59, and annual, 1960-66

Type of farm equipment	Average					1960	1961	1962	1963	1964	1965	1966
	1935-39	1940-44	1945-49	1950-54	1955-59							
	Mil. dol.	Mil. dol.	Mil. dol.	Mil. dol.	Mil. dol.	Mil. dol.	Mil. dol.	Mil. dol.	Mil. dol.	Mil. dol.	Mil. dol.	Mil. dol.
Corn and cotton type cultivators, mounted 1-, 2-, 4-, 6-row and larger-----	---	9.5	20.7	26.4	15.8	15.9	14.4	14.7	18.9	21.5	19.3	21.0
Beet, bean, and vegetable cultivators, drawn or mounted-----	0.2	.2	.5	.3	.3	.3	.2	.3	.3	.4	---	.3
Rotary hoe cultivator sections, drawn or mounted-----	.1	.4	2.2	5.3	6.4	5.7	6.5	7.0	7.0	7.9	7.1	8.9
Field cultivators:												
Drawn-----	1.1	1.1	3.5	3.2	2.0	2.8	2.3	2.7	3.1	5.0	7.6	9.0
Mounted-----	---	---	---	---	---	---	.4	.4	.8	1.4	---	---

14

Table 14.--Sprayers and dusters: Value of shipments for domestic use, United States, 5-year averages, 1935-59, and annual, 1960-66

Type of farm equipment	Average					1960	1961	1962	1963	1964	1965	1966
	1935-39	1940-44	1945-49	1950-54	1955-59							
	Mil. dol.	Mil. dol.	Mil. dol.	Mil. dol.	Mil. dol.	Mil. dol.	Mil. dol.	Mil. dol.	Mil. dol.	Mil. dol.	Mil. dol.	Mil. dol.
Power sprayers (except aircraft sprayers and dusters)-----	1.6	2.0	13.1	13.6	18.5	19.8	18.8	19.0	22.4	24.0	15.8	23.6
Spray pumps, power driven-----	---	---	.8	1.0	1.2	1.2	1.1	1.3	1.5	1.7	---	---
Dusters:												
Tractor power take-off-----	---	.8	1.3	1.9	.8	.4	.4	.5	.5	.4	---	---
Engine driven and traction-----	---	<u>1/</u>	.8	.3	.2	.1	.3	.3	.1	.1	---	---

1/ Less than 0.05.

Table 15.--Harvesting machines: Value of shipments for domestic use, United States, 5-year averages, 1935-59, and annual, 1960-66

Type of farm equipment	Average					1960	1961	1962	1963	1964	1965	1966
	1935-39	1940-44	1945-49	1950-54	1955-59							
	Mil. dol.	Mil. dol.	Mil. dol.	Mil. dol.	Mil. dol.	Mil. dol.	Mil. dol.	Mil. dol.	Mil. dol.	Mil. dol.	Mil. dol.	Mil. dol.
Combines (harvester-threshers):												
Pull type, all sizes-	19.9	24.6	55.3	66.5	30.1	10.2	7.2	6.5	6.2	7.6	5.7	8.0
Self-propelled (basic unit)-----	---	---	<u>1/13.2</u>	<u>1/41.5</u>	<u>1/70.6</u>	<u>1/80.9</u>	<u>1/71.7</u>	61.4	91.7	125.1	142.3	149.0
All combines-----	19.9	24.6	68.5	108.0	100.7	91.1	78.9	67.9	97.9	132.7	148.0	157.0
Grain heads-----	---	---	---	---	---	---	---	11.2	13.0	13.6	15.0	21.2
Corn heads-----	---	---	---	---	---	10.7	8.3	9.9	15.2	21.4	27.5	44.4
Cornpickers, 1- and 2-row, drawn or mounted-----	---	6.8	34.6	52.3	38.9	34.6	31.3	34.3	30.8	23.3	19.5	19.5
Picker-shellors, drawn, mounted, or self-propelled-----	---	---	---	---	---	1.3	1.5	---	---	---	---	---
Field shelling attachments for cornpickers, including conversion packages-----	---	---	---	---	---	---	.7	.8	1.2	---	---	---
Potato diggers-----	.4	.7	1.3	---	---	.6	.5	.3	---	.1	---	---
Potato harvesters-----	---	---	---	.6	1.7	3.4	6.2	3.6	2.9	4.0	---	10.1
Beet harvesters, 1-, 2-, and 3-row-----	---	---	1.5	2.7	2.2	1.6	2.5	2.5	5.1	7.0	2.0	1.7
Peanut diggers, shakers, and windrowers-----	---	---	---	---	.4	.5	.8	.9	1.0	1.1	---	1.6
Peanut combines-----	---	---	---	---	---	5.1	4.9	5.2	5.8	7.5	---	---
Field forage harvesters:												
Self-propelled-----	---	---	---	---	---	---	---	---	2.6	2.9	---	5.3
Shear bar type:												
Basic unit, engine drive and power take-off-----	---	---	---	17.6	15.2	10.9	12.7	15.0	14.8	15.9	19.3	24.4
Flail type-----	---	---	---	---	---	9.9	8.1	6.2	5.0	6.6	8.7	7.4
Cottonpickers, 1- and 2-row-----	---	---	---	---	9.8	50.7	46.7	38.2	39.4	34.0	40.0	8.5
Cotton strippers-----	---	---	---	---	6.3	4.3	4.7	4.6	4.5	3.8	3.6	2.2

1/ With head.

UPDATA 1981

15

Table 16.--Haying machinery: Value of shipments for domestic use, United States, 5-year averages, 1935-59, and annual, 1960-66

Type of farm equipment	Average					1960	1961	1962	1963	1964	1965	1966
	1935-39	1940-44	1945-49	1950-54	1955-59							
	Mil. dol.	Mil. dol.	Mil. dol.	Mil. dol.	Mil. dol.	Mil. dol.	Mil. dol.	Mil. dol.	Mil. dol.	Mil. dol.	Mil. dol.	Mil. dol.
Mowers (cutter-bar type):												
Drawn-----	---	3.7	5.0	3.9	2.9	3.1	1.7	2.5	3.3	3.2	2.7	} 6.0
Semi-mounted-----	---	4.7	16.0	22.8	8.9	2.6	2.4	4.3	3.3	2.8	2.3	
Mounted:												
Rear-----	---	---	---	---	---	7.4	4.7	4.9	6.3	6.8	6.5	7.7
Side-----	---	---	---	---	---	---	3.4	2.4	2.0	2.2	2.7	2.4
Rakes:												
Side delivery (ground-driven)-----	<u>1/1.7</u>	2.7	10.2	17.7	12.5	12.9	8.1	8.9	8.4	10.0	10.3	9.9
Side delivery (finger-wheel type) and power take-off-----	---	---	---	---	---	---	.9	.8	2.0	3.9	3.9	1.1
Pick-up hay balers:												
Wire-----	1.4	4.5	12.1	23.1	11.4	9.1	7.2	9.2	8.8	12.6	14.6	13.0
Twine-----	---	---	34.5	52.4	66.5	44.9	43.4	36.9	44.6	45.0	49.4	49.3
Hay bale loaders (field type)-----	---	---	---	1.1	1.0	1.7	.6	1.6	.5	.5	---	---
Bale throwing attachments for hay balers-----	---	---	---	---	---	---	---	---	2.6	1.8	2.3	---
Hay conditioners:												
Crimpers-----	---	---	---	---	---	---	5.3	5.4	3.9	3.0	3.1	3.5
Crushers-----	---	---	---	---	---	---	9.4	6.2	4.4	3.0	3.5	2.6
Hay crusher or hay conditioner attachments-----	---	---	---	---	---	---	.7	.9	.8	1.1	1.8	---
Windrowers or swathers, drawn or self-propelled-----	---	---	1.7	4.1	4.2	4.9	5.4	7.6	11.8	16.9	21.0	17.0

1/ Includes combination side delivery rakes and tedders through 1960.

Table 17.--Machines for preparing crops for market or for farm use: Value of shipments for domestic use, United States, 5-year averages, 1935-59, and annual, 1960-66

Type of farm equipment	Average					1960	1961	1962	1963	1964	1965	1966
	1935-39	1940-44	1945-49	1950-54	1955-59							
	Mil. dol.	Mil. dol.	Mil. dol.	Mil. dol.	Mil. dol.	Mil. dol.	Mil. dol.	Mil. dol.	Mil. dol.	Mil. dol.	Mil. dol.	Mil. dol.
Corn shellers (power)--	0.8	1.0	2.7	2.5	2.9	2.1	2.0	1.2	1.6	0.6	0.8	0.5
Feed grinders and crushers (farm size), hammer, burr, combination roughage, and roller mills-----	---	5.8	8.3	4.7	4.4	4.3	4.9	4.5	5.0	4.1	2.9	3.8
Combination grinder-mixers-----	---	---	---	---	---	---	7.4	13.3	18.9	14.0	18.9	25.9
Tobacco curers-----	---	---	1.9	2.2	1.1	1.2	2.3	2.7	3.4	2.9	---	---
Driers (grain, hay, and seed):												
Heated air crop-----	---	---	---	---	6.8	4.6	6.5	3.8	6.4	7.4	12.4	24.5
Crop drying fans-----	---	---	---	---	.6	1.1	1.6	1.1	1.5	1.5	1.1	1.4

17

Table 18.--Farm elevators, barn and barnyard equipment, and farm dairy equipment: Value of manufacturers' shipments for domestic use, United States, 5-year averages, 1935-59, and annual, 1960-66

Type of farm equipment	Average					1960	1961	1962	1963	1964	1965	1966
	1935-39	1940-44	1945-49	1950-54	1955-59							
	Mil. dol.	Mil. dol.	Mil. dol.	Mil. dol.	Mil. dol.	Mil. dol.	Mil. dol.	Mil. dol.	Mil. dol.	Mil. dol.	Mil. dol.	Mil. dol.
Farm elevators, portable-----	---	1.8	6.9	---	24.6	19.0	19.4	21.1	16.5	20.1	18.1	20.0
Barn cleaners-----	---	---	---	4.1	8.5	9.6	10.6	9.6	7.8	5.5	7.6	8.7
Silo unloaders, tower and horizontal-----	---	---	---	---	4.0	7.1	11.0	12.6	13.6	13.0	13.6	18.5
Electric-powered bunk feeders-----	---	---	---	---	<u>1</u> /5	.7	2.6	3.5	3.6	2.9	4.2	4.9
Wagons, power unloading:												
Grain type-----	---	---	---	---	---	3.0	3.0	3.5	3.1	2.5	---	2.8
Forage type-----	---	---	---	---	---	6.4	10.2	13.0	16.0	17.8	18.4	19.3
Milking machines:												
Pumping outfits (stationary and portable)-----	---	---	---	---	2.5	2.8	3.7	2.9	3.0	3.5	---	---
Pipeline milker units-----	---	---	---	---	3.8	6.8	8.1	8.4	---	---	---	---

1/ Mechanical bunk feeders prior to 1960.

Table 19.--Tractors: Value per unit, manufacturers' shipments for domestic use, United States, 5-year averages, 1935-59, and annual, 1960-66

Tractors	Average					1960	1961	1962	1963	1964	1965	1966
	1935-39	1940-44	1945-49	1950-54	1955-59							
	Dol.	Dol.	Dol.	Dol.	Dol.	Dol.	Dol.	Dol.	Dol.	Dol.	Dol.	Dol.
Wheel (except garden), all uses <u>1</u> /-----	637	547	861	1,316	1,843	2,243	2,478	2,729	2,923	3,280	3,382	3,687
Farm use <u>1</u> /-----	---	---	847	1,264	1,859	2,336	2,578	2,820	3,046	3,444	3,542	3,885
Tracklaying, all uses--	2,094	5,377	4,633	5,889	5,541	9,986	11,250	12,534	13,453	14,636	15,388	16,260
With integral shovel units-----	---	---	---	---	---	8,708	11,114	11,536	11,686	11,877	12,658	12,316
Farm use-----	---	---	2,490	3,523	5,660	8,348	8,037	10,950	13,421	13,210	13,375	---
Garden, excluding motortillers-----	---	---	---	---	181	208	270	281	316	319	364	---
Riding-----	---	---	---	---	273	277	348	362	385	414	---	422
Walking-----	---	---	---	---	156	159	158	170	167	167	---	---
Motortillers-----	---	---	---	---	91	80	82	84	83	84	97	---
Garden, including motortillers <u>2</u> /-----	160	138	178	133	119	109	139	155	157	191	227	262

1/ Does not include imports.
 2/ Motortillers not reported prior to 1955.

19

Table 20.--Plows, harrows, listers, and stalk cutters: Value per unit, manufacturers' shipments for domestic use, United States, 5-year averages, 1935-59, and annual, 1960-66

Type of farm equipment	Average					1960	1961	1962	1963	1964	1965	1966
	1935-39	1940-44	1945-49	1950-54	1955-59							
	Dol.	Dol.	Dol.	Dol.	Dol.							
Plows:												
Moldboard, tractor-drawn or mounted-----	85	83	93	139	223	297	319	346	376	428	416	540
Disc, drawn or mounted-----	190	151	146	169	259	364	538	615	667	778	833	286
One-way disc plows or tillers-----	211	165	279	310	480	571	613	607	541	583	364	---
Harrows:												
Disc, all types-----	80	89	125	170	302	384	420	438	439	501	553	675
Spike-tooth sections-	9	8	14	18	23	26	27	28	30	31	32	---
Spring-tooth sections-	16	12	19	24	35	37	40	43	47	47	51	58
Tine-tooth sections--	---	---	---	---	---	32	31	33	34	35	33	33
Listers:												
With or without planting attachments, drawn or mounted-----	17	28	34	58	108	237	373	356	183	213	164	---
Stalk shredders and cutters or rotary mowers (power take-off): 1/												
Flail type without spout-----	---	---	111	221	296	423	500	347	425	409	452	545
Horizontal-blade type:												
66-inch cutter width and under-----	---	---	---	---	---	<u>2/286</u>	359	279	277	280	269	283
Over 66 inches up to 100 inches-----	---	---	---	---	---	---	509	422	391	419	539	543
Over 100 inches-----	---	---	---	---	---	---	1,111	1,000	1,000	1,000	1,038	---

1/ 1945-49, stalk cutters only; 1950-59, stalk cutters and shredders.
 2/ No width specified.

20

Table 21.--Planting, seeding, and fertilizing machinery: Value per unit, manufacturers' shipments for domestic use, United States, 5-year averages, 1935-59, and annual, 1960-66

Type of farm equipment	Average					1960	1961	1962	1963	1964	1965	1966
	1935-39	1940-44	1945-49	1950-54	1955-59							
	Dol.	Dol.	Dol.	Dol.	Dol.	Dol.	Dol.	Dol.	Dol.	Dol.	Dol.	Dol.
Corn planters:												
Drawn, 2-, 4-, 6-row and larger-----	42	56	96	156	226	} 272	320	324	369	405	481	491
Mounted-----	---	---	92	122	119		97	102	102	---	---	---
Corn and cotton planters, mounted:												
1- and 2-row-----	25	23	71	117	93	120	120	108	109	120	113	---
4- and 6-row and larger-----	---	---	---	---	275	406	393	407	455	600	---	---
Lister planting attachment units-----	---	---	---	---	---	229	---	---	115	214	---	---
Potato planters, drawn or mounted-----	118	147	257	---	---	---	---	---	---	---	---	---
Grain drills, including legume planters:												
Fertilizer-----	132	117	268	295	392	472	400	490	538	612	568	---
Plain: Press and other-----	---	---	243	324	378	500	538	521	---	---	---	---
Fertilizer distributors, drawn or mounted:												
Dry, including lime spreaders-----	---	---	---	---	148	191	214	192	252	310	330	360
Liquid-----	---	---	---	---	---	375	368	739	708	667	660	---
Anhydrous ammonia-----	---	---	---	---	319	571	697	---	---	---	---	---
Manure spreaders:												
2-wheel power drive-----	---	---	---	---	434	477	527	534	522	555	564	---
2-wheel ground drive-----	---	---	---	---	317	397	373	363	364	385	414	---
Open and closed tank type-----	---	---	---	---	---	---	---	---	---	756	1,392	---
Loaders (farm type), manure and general utility (except beet and sugarcane loaders), front and rear mounted-----	---	---	181	246	295	332	338	347	396	413	451	438
Row crop unit planters for attaching to tool bars-----	---	---	---	---	---	76	91	86	100	113	156	---

Table 22.--Cultivators: Value per unit, manufacturers' shipments for domestic use, United States, 5-year averages, 1935-59, and annual, 1960-66

Type of farm equipment	Average					1960	1961	1962	1963	1964	1965	1966
	1935-39	1940-44	1945-49	1950-54	1955-59							
	Dol.	Dol.	Dol.	Dol.	Dol.	Dol.	Dol.	Dol.	Dol.	Dol.	Dol.	Dol.
Corn and cotton type cultivators, mounted 1-, 2-, 4-, 6-row and larger-----	---	68	97	144	161	274	289	299	344	385	505	532
Beet, bean, and vegetable cultivators, drawn or mounted-----	61	61	72	88	70	111	143	176	176	267	---	375
Rotary hoe cultivator sections, drawn or mounted-----	36	67	74	68	70	76	91	108	107	109	108	103
Field cultivators:												
Drawn-----	149	107	100	128	192	190	228	245	252	305	345	373
Mounted-----	---	---	---	---	---	---	174	250	364	438	---	---

22

Table 23.--Sprayers and dusters: Value per unit of manufacturers' shipments for domestic use, United States, 5-year averages, 1935-59, and annual, 1960-66

Type of farm equipment	Average					1960	1961	1962	1963	1964	1965	1966
	1935-39	1940-44	1945-49	1950-54	1955-59							
	Dol.	Dol.	Dol.	Dol.	Dol.	Dol.	Dol.	Dol.	Dol.	Dol.	Dol.	Dol.
Power sprayers (except aircraft sprayers and dusters)-----	208	364	290	197	231	305	382	354	346	372	334	393
Spray pumps, power driven-----	---	---	143	43	52	45	57	70	51	59	---	---
Dusters:												
Tractor power take-off-----	---	190	169	120	121	139	154	185	192	121	---	---
Engine driven and traction-----	---	---	138	43	62	333	214	188	125	250	---	---

Table 24.--Harvesting machines: Value per unit, manufacturers' shipments for domestic use, United States, 5-year averages, 1935-59, and annual, 1960-66

Type of farm equipment	Average					1960	1961	1962	1963	1964	1965	1966
	1935-39	1940-44	1945-49	1950-54	1955-59							
	Dol.	Dol.	Dol.	Dol.	Dol.							
Combines (harvester-threshers):												
Pull type, all sizes:	711	576	911	1,050	1,158	1,500	1,500	1,625	2,138	2,621	2,850	3,333
Self-propelled (basic unit)-----	---	---	<u>1/2,400</u>	<u>1/3,402</u>	<u>1/3,922</u>	<u>1/4,421</u>	<u>1/4,509</u>	4,039	4,149	4,830	5,100	5,665
All combines-----	711	576	1,035	1,430	2,289	3,629	3,812	3,536	3,916	4,608	4,950	5,470
Grain heads-----	---	---	---	---	---	---	---	667	596	529	547	616
Corn heads-----	---	---	---	---	---	1,049	1,107	1,222	1,206	1,266	1,447	1,762
Cornpickers, 1- and 2-row, drawn or mounted-----	---	425	586	822	1,090	1,384	1,476	1,552	1,517	1,465	1,625	1,598
Picker-shellers, drawn, mounted, or self-propelled-----	---	---	---	---	---	1,625	1,500	---	---	---	---	---
Field shelling attachments for cornpickers, including conversion packages-----	---	---	---	---	---	---	538	533	571	---	---	---
Potato diggers-----	111	194	310	---	---	600	714	600	---	500	---	---
Potato harvesters-----	---	---	---	2,000	3,400	4,857	5,167	6,000	5,800	6,667	---	6,312
Beet harvesters, 1-, 2-, and 3-row-----	---	---	1,154	1,800	1,692	2,667	2,500	2,500	3,000	3,182	3,333	3,400
Peanut diggers, shakers, and windrowers-----	---	---	---	---	267	385	800	429	455	458	---	457
Peanut combines-----	---	---	---	---	---	3,643	2,722	2,737	3,053	3,000	---	---
Field forage harvesters:												
Self-propelled-----	---	---	---	---	---	---	---	---	4,333	4,833	---	5,889
Shear bar type:												
Basic unit, engine drive and power take-off-----	---	---	---	826	884	1,124	1,134	1,095	1,138	1,214	1,304	1,386
Flail type-----	---	---	---	---	---	786	827	849	877	846	837	1,014
Cottonpickers, 1- and 2-row-----	---	---	---	---	4,667	8,084	7,915	8,304	8,383	9,189	9,302	12,313
Cotton strippers-----	---	---	---	---	1,800	935	1,044	1,095	1,216	1,462	1,800	1,467

1/ With head.

UPDATA 1981

Table 25.--Haying machinery: Value per unit, manufacturers' shipments for domestic use, United States, 5-year averages, 1935-59, and annual, 1960-66

Type of farm equipment	Average					1960	1961	1962	1963	1964	1965	1966
	1935-39	1940-44	1945-49	1950-54	1955-59							
	Dol.	Dol.	Dol.	Dol.	Dol.	Dol.	Dol.	Dol.	Dol.	Dol.	Dol.	Dol.
Mowers (cutter-bar type):												
Drawn-----	---	69	120	204	266	310	288	309	330	340	360	} 345
Semi-mounted-----	---	88	119	159	193	268	253	277	295	326	343	
Mounted:												
Rear-----	---	---	---	---	---	215	213	216	235	242	242	341
Side-----	---	---	---	---	---	---	291	276	282	319	333	348
Rakes:												
Side delivery (ground-driven)-----	<u>1/82</u>	95	159	211	281	338	367	372	385	385	396	407
Side delivery (finger-wheel type) and power take-off--	---	---	---	---	---	---	265	258	177	330	368	282
Pick-up hay balers:												
Wire-----	389	672	984	1,582	1,810	2,022	1,846	1,840	1,956	2,000	1,947	1,912
Twine-----	---	---	1,259	1,063	1,183	1,237	1,276	1,304	1,249	2,233	1,232	1,366
Hay bale loaders (field type)-----	---	---	---	216	227	298	182	286	200	227	---	---
Bale throwing attachments for hay balers--	---	---	---	---	---	---	---	---	333	327	328	---
Hay conditioners:												
Crimpers-----	---	---	---	---	---	---	491	486	470	500	492	555
Crushers-----	---	---	---	---	---	---	566	585	571	566	565	619
Hay crusher or hay conditioner attachments-----	---	---	---	---	---	---	538	562	533	500	514	---
Windrowers or swathers, drawn or self-propelled-----	---	---	354	387	1,077	1,750	1,928	2,054	2,226	2,347	2,530	2,537

1/ Includes combination side delivery rakes and tedders through 1960.

Table 26.--Machines for preparing crops for market or for farm use: Value per unit, manufacturers' shipments for domestic use, United States, 5-year averages, 1935-59, and annual, 1960-66

Type of farm equipment	Average					1960	1961	1962	1963	1964	1965	1966
	1935-39	1940-44	1945-49	1950-54	1955-59							
	Dol.	Dol.	Dol.	Dol.	Dol.							
Corn shellers (power)--	160	135	139	284	569	808	800	750	1,000	667	1,600	1,667
Feed grinders and crushers (farm size), hammer, burr, combination roughage, and roller mills-----	---	104	124	161	262	338	441	391	382	398	392	442
Combination grinder-mixers-----	---	---	---	---	---	---	1,321	1,255	1,260	1,239	1,270	1,302
Tobacco curers-----	---	---	102	96	108	150	232	252	201	177	190	---
Driers (grain, hay, and seed):												
Heated air crop-----	---	---	---	---	1,659	1,022	2,826	2,111	1,333	1,609	1,778	1,701
Crop drying fans-----	---	---	---	---	146	289	216	200	441	417	419	583

Table 27.--Farm elevators, barn and barnyard equipment, and farm dairy equipment: Value per unit, manufacturers' shipments for domestic use, United States, 5-year averages, 1935-59, and annual, 1960-66

Type of farm equipment	Average					1960	1961	1962	1963	1964	1965	1966
	1935-39	1940-44	1945-49	1950-54	1955-59							
	Dol.	Dol.	Dol.	Dol.	Dol.							
Farm elevators, portable-----	---	194	137	---	118	117	138	145	120	140	145	138
Barn cleaners-----	---	---	---	891	924	990	1,019	1,011	929	887	1,013	1,074
Silo unloaders, tower and horizontal-----	---	---	---	---	870	934	724	869	919	928	944	925
Electric-powered bunk feeders-----	---	---	---	---	<u>1/111</u>	467	299	280	439	500	375	333
Wagons, power unloading:												
Grain type-----	---	---	---	---	---	484	242	278	254	263	---	329
Forage type-----	---	---	---	---	---	674	611	663	721	767	880	910
Milking machines:												
Pumping outfits (stationary and portable)-----	---	---	---	---	99	113	116	120	119	146	---	---
Pipeline milker units-----	---	---	---	---	238	287	282	475	---	---	---	---

1/ Mechanical bunk feeders prior to 1960.

26

END