



AgEcon SEARCH
RESEARCH IN AGRICULTURAL & APPLIED ECONOMICS

The World's Largest Open Access Agricultural & Applied Economics Digital Library

This document is discoverable and free to researchers across the globe due to the work of AgEcon Search.

Help ensure our sustainability.

Give to AgEcon Search

AgEcon Search

<http://ageconsearch.umn.edu>

aesearch@umn.edu

*Papers downloaded from **AgEcon Search** may be used for non-commercial purposes and personal study only. No other use, including posting to another Internet site, is permitted without permission from the copyright owner (not AgEcon Search), or as allowed under the provisions of Fair Use, U.S. Copyright Act, Title 17 U.S.C.*

SB 413 (1967)

USDA STATISTICAL BULLETINS

UPDATA

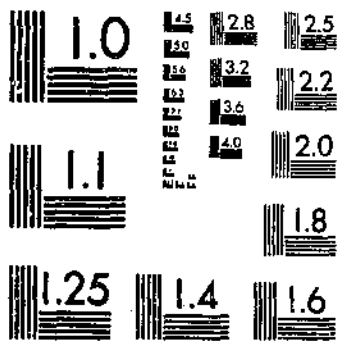
SUGARBEETS: ACREAGE, YIELD

UNITED STATES 1909-1964

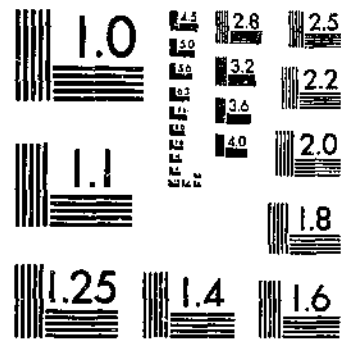
BY STATES 1924-1964

1 OF 1

START



MICROCOPY RESOLUTION TEST CHART
NATIONAL BUREAU OF STANDARDS-1963-A



MICROCOPY RESOLUTION TEST CHART
NATIONAL BUREAU OF STANDARDS-1963-A

R
630.5
453-13
413

REFERENCE
DO NOT LOAN

SUGARBEETS

- ACREAGE
- YIELD
- PRODUCTION
- PRICE
- VALUE
- Related Data

United States 1909-1964 By States 1924-1964

Statistical Bulletin No. 413
U.S. Department of Agriculture
STATISTICAL REPORTING SERVICE
CROP REPORTING BOARD • WASHINGTON, D.C.

October 1967

CONTENTS

	<u>Page</u>		
Charts - Acreage, yield, production, price, value, 1909-64, United States	4		
Map - Harvested acres, 1964, United States	5		
 Tables:			
Acreage, yield, production, price, value, and sugar production, 1909-23, United States	5		
Acreage, yield, production, price, value, and Sugar Act payments, 1924-64, United States	6		
Production of sugar, pulp, and molasses, 1924-64, United States	7		
 Acreage, yield, production, price, value, and Sugar Act payments, by States, 1924-64:			
<u>State</u>	<u>Page</u>	<u>State</u>	
Arizona	29	Nevada	29
California	23	New Mexico	28
Colorado	19	North Dakota	12
Idaho	17	Ohio	8
Illinois	25	Oregon	22
Indiana	24	South Dakota	13
Iowa	26	Texas	27
Kansas	15	Utah	20
Michigan	9	Washington	21
Minnesota	11	Wisconsin	10
Montana	16	Wyoming	18
Nebraska	14		
 Harvested acreage, tonnage of beets worked by factories, and sugar production, 1888-1908, United States			
			29
 Abandonment and deficiency payments to producers, by States, 1937-64			
			30
 Support payments per ton, by States, 1943-45			
			31

SUGARBEETS

Acreage, Yield, Production, Price, Value, Related Data
United States, 1909-1964; By States, 1924-1964

This publication presents historical statistics on sugarbeet acreage, yield, production, price, and value, and on production of sugar and other beet products. These estimates of the Crop Reporting Board are based on reports from beet growers and processors, and on data furnished by the Agricultural Stabilization and Conservation Service of the Department of Agriculture and by the Bureau of the Census, Department of Commerce.

The series for the United States covers the period 1909-64, while the State series begins in 1924. The data collected prior to 1924 were by States where sugarbeets were processed rather than by States where beets were grown; hence, comparable statistics by States are not available for the period 1909-23. Production of sugar--both raw value and refined basis--and of beet pulp and molasses are shown only for the United States.

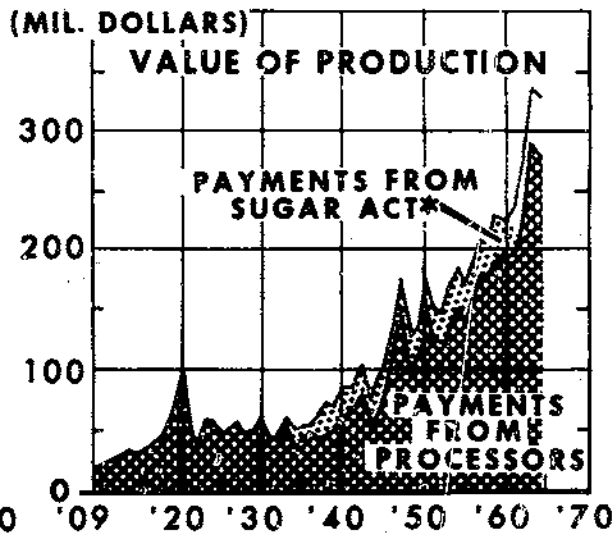
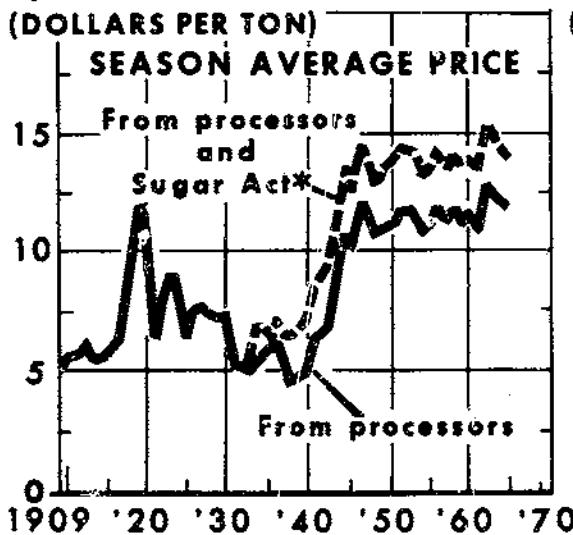
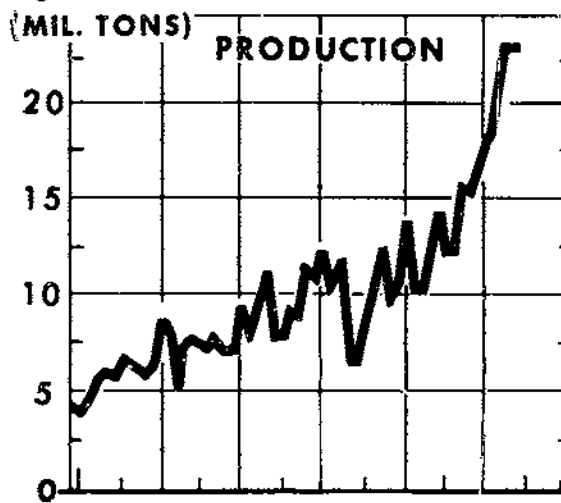
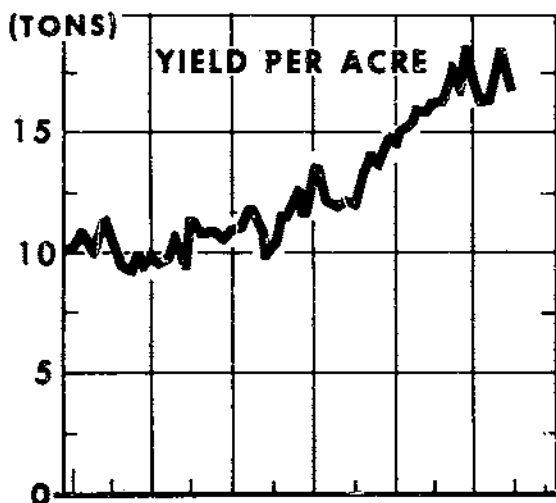
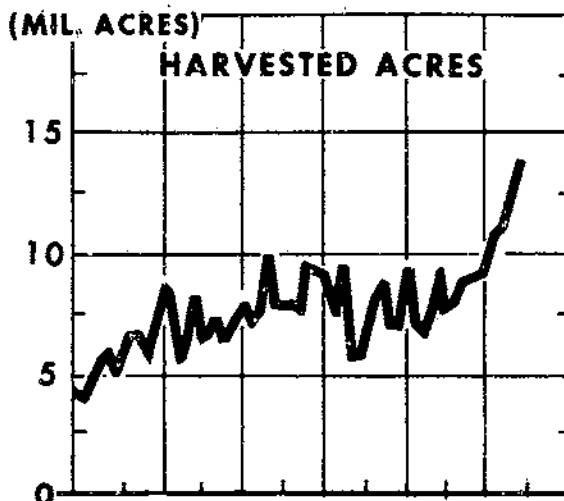
These statistics relate to the calendar year in which the beets were intended for harvest--including those beets in California which were planted in the fall preceding the crop year, for harvest in the spring.

Sugarbeets were grown successfully in the United States for 20 years before the start of the statistical series of the Department of Agriculture in 1909. Although not a part of the official series, harvested acres and production of sugarbeets and beet sugar are shown for the period 1888-1908, as compiled from various sources.

In tables 2 and 4, the data on average price per ton received by growers and value of production relate to payments made directly to growers by sugar companies. They also include payments made under the price support program of the U. S. Department of Agriculture for the 1943-45 and 1947 crops. Sugar Act payments to growers shown in these tables include the processing tax refund for 1933 and parity payments for 1934 and 1935, pursuant to the Jones-Costigan Act of 1934, and the 1937-64 payments for beets marketed, pursuant to the Sugar Acts of 1937 and 1948. These payments represent gross payments for beets marketed before deducting local administrative expenses which were charged in the years 1934-44. Abandonment and deficiency payments are not included in the payments in these tables but are shown separately in table 6. Value of Sugar Act payments was based on data supplied by ASCS.

The price per ton, or value of production, excluding Sugar Act payments, can be combined with the price per ton, or value, of Sugar Act payments if the combined figure is desired. The value of abandonment and deficiency payments can be added to the combined value of production and Sugar Act payments, if total income from sugarbeet operations is desired.

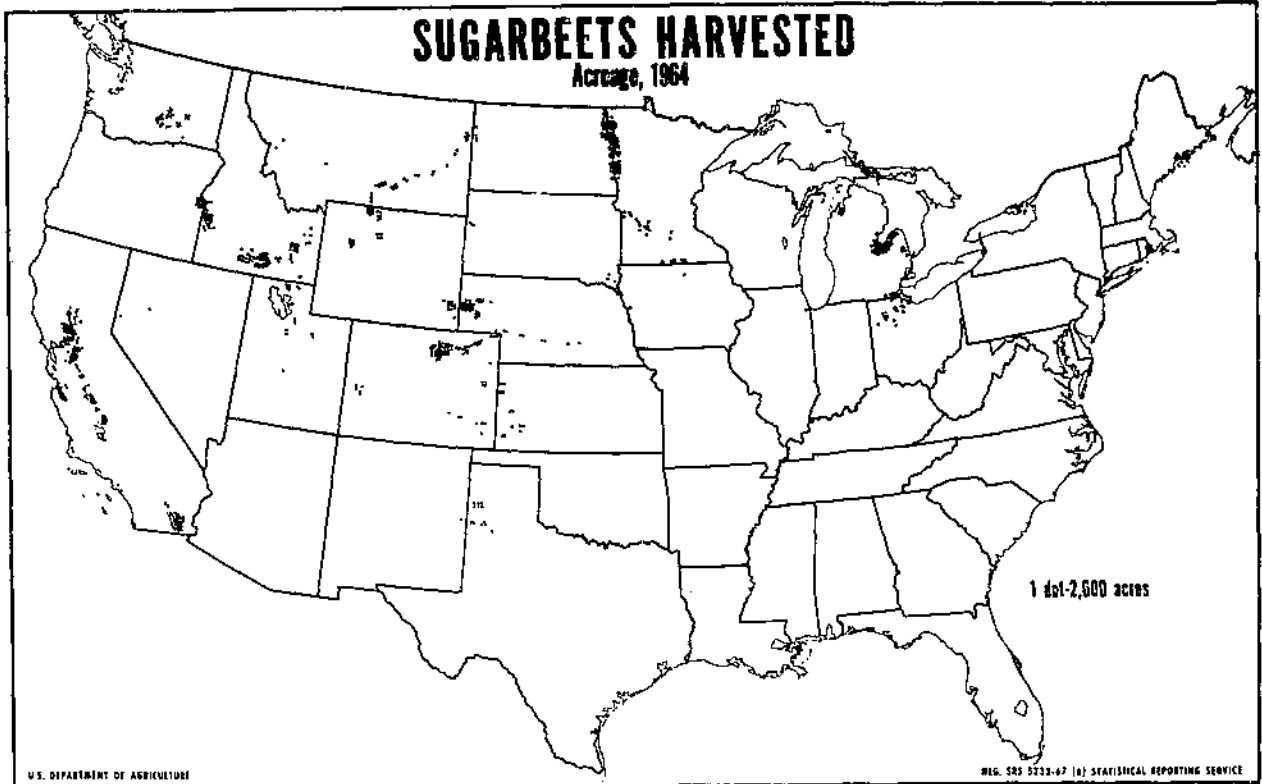
SUGARBEETS IN THE UNITED STATES



*EXCLUDES ABANDONMENT AND DEFICIENCY PAYMENTS.

SUGARBEETS HARVESTED

Acreage, 1964



U.S. DEPARTMENT OF AGRICULTURE

REG. 525 5232-67 (6) STATISTICAL REPORTING SERVICE

Table 1.--Sugarbeets: Acreage, yield, production, price, value, and sugar production, 1909-23 1/

UNITED STATES

Crop year	Acreage		Yield	Production	Price per ton	Value of production	Sugar production		
	Planted	Harvested	per harvested acre				Raw value		Refined basis
	1,000 acres	1,000 acres	Tons	1,000 tons	Dollars	1,000 dollars	1,000 tons	Per ton of beets	
1909 ...	---	420	10.1	4,240	5.06	21,442	548	258	512
1910 ...	---	398	10.4	4,138	5.45	22,544	546	264	510
1911 ...	---	474	10.7	5,062	5.50	27,841	642	254	600
1912 ...	---	555	10.2	5,648	5.82	32,871	742	263	693
1913 ...	635	580	10.1	5,886	5.69	33,491	784	266	733
1914 ...	515	483	11.6	5,585	5.45	30,438	773	277	722
1915 ...	664	611	10.7	6,511	5.67	36,950	935	287	874
1916 ...	768	665	9.4	6,228	6.12	38,139	878	282	821
1917 ...	807	665	9.0	5,980	7.39	44,192	819	274	765
1918 ...	690	594	10.0	5,949	10.00	59,494	814	274	761
1919 ...	890	692	9.3	6,421	11.74	75,420	777	242	726
1920 ...	978	872	9.8	8,538	11.63	99,324	1,165	273	1,089
1921 ...	882	815	9.5	7,782	6.35	49,392	1,091	280	1,020
1922 ...	605	530	9.8	5,183	7.91	41,017	722	279	675
1923 ...	732	657	10.7	7,006	8.99	62,965	943	269	881

1/ Includes for most years a small unknown quantity of beets grown in Canada for Michigan factories.

Table 2.--Sugarbeets: Acreage, yield, production, price, value, and Sugar Act payments, 1924-64

UNITED STATES

Crop year	Acreage		Yield	Production	Price	Value	Sugar Act payments	
	Planted	Harvested	per harvested acre		per ton	of production	Per ton	Total
	1,000 acres	1,000 acres	Tons	1,000 tons	Dollars	1,000 dollars	Dollars	1,000 dollars
1924	936.0	816.0	9.2	7,508	7.95	59,689	---	---
1925	781.0	648.0	11.4	7,381	6.39	47,137	---	---
1926	746.0	677.0	10.7	7,223	7.61	54,964	---	---
1927	756.0	721.0	10.8	7,753	7.67	59,455	---	---
1928	698.0	644.0	11.0	7,101	7.11	50,477	---	---
1929	772.0	688.0	10.6	7,315	7.08	51,804	---	---
1930	821.0	776.0	11.9	9,199	7.14	65,698	---	---
1931	760.0	713.0	11.1	7,903	5.94	46,948	---	---
1932	812.0	764.0	11.9	9,070	5.26	47,705	---	---
1933	1,036.0	983.0	11.2	11,030	5.13	56,599	1/23	1/ 2,533
1934	945.0	770.0	9.8	7,519	5.16	38,776	2/1.75	2/13,160
1935	809.0	763.0	10.4	7,908	5.76	45,565	2/1.13	2/ 8,935
1936	855.0	776.0	11.6	9,028	6.05	54,636	3/	3/
1937	813.0	753.0	11.6	8,759	5.26	46,101	1.87	16,386
1938	985.0	925.0	12.4	11,497	4.65	53,478	1.86	21,412
1939	993.0	918.0	11.7	10,781	4.76	51,342	1.93	20,802
1940	971.0	912.0	13.4	12,194	5.11	62,287	1.86	22,659
1941	796.0	755.0	13.7	10,342	6.43	66,522	1.85	19,155
1942	1,048.0	954.0	12.2	11,685	6.84	79,905	2.41	28,110
1943	619.0	550.0	11.9	6,547	8.81	57,674	2.53	16,597
1944	633.0	555.0	12.1	6,718	10.59	71,156	2.61	17,530
1945	775.0	713.0	12.1	8,616	10.16	87,539	2.50	21,519
1946	905.0	802.0	13.2	10,582	11.14	117,840	2.43	25,665
1947	968.0	879.0	14.2	12,503	11.84	148,080	2.44	30,472
1948	800.0	694.0	13.6	9,424	10.57	99,639	2.41	22,722
1949	768.0	687.0	14.8	10,196	10.82	110,369	2.47	25,141
1950	1,014.0	925.0	14.6	13,535	11.18	151,290	2.41	32,557
1951	757.8	690.6	15.2	10,482	11.69	122,483	2.40	25,136
1952	719.2	665.4	15.3	10,169	11.99	121,970	2.35	23,938
1953	794.0	745.0	16.2	12,084	11.62	140,364	2.34	28,324
1954	963.9	875.9	16.1	14,082	10.80	152,151	2.31	32,514
1955	798.0	740.4	16.5	12,231	11.16	136,502	2.31	28,250
1956	830.6	784.6	16.6	12,995	11.94	155,109	2.34	30,471
1957	916.0	878.0	17.7	15,505	11.22	173,986	2.29	35,506
1958	934.8	890.7	17.0	15,150	11.74	177,807	2.31	35,045
1959	954.6	905.4	18.8	17,015	11.24	191,186	2.30	39,107
1960	976.1	957.2	17.2	16,421	11.58	190,109	2.31	38,001
1961	1,128.8	1,076.8	16.4	17,704	11.16	197,347	2.26	40,019
1962	1,181.9	1,102.7	16.5	18,250	12.78	233,194	2.25	40,991
1963	1,285.0	1,234.9	18.9	23,328	12.22	285,011	2.20	51,340
1964	1,459.0	1,395.2	16.8	23,389	11.79	275,660	2.20	51,491

1/ Processing tax refund, pursuant to Jones-Costigan Act.
 2/ Parity Payments, pursuant to the Jones-Costigan Act.
 3/ No sugarbeet program in effect.

Table 3.--Sugarbeets: Production of sugar, pulp, and molasses, 1924-64

UNITED STATES

Crop year	Sugar production			Pulp Production			Molasses production
	Raw value		Refined basis	Molasses	Dried	Wet	
	Total	Per ton of beets					
1,000 tons	Pounds	1,000 tons	1,000 tons	1,000 tons	1,000 tons	1,000 gallons	
1924	1,166	311	1,090	---	---	---	---
1925	977	265	913	---	---	---	---
1926	960	266	897	74	78	---	---
1927	1,170	302	1,093	89	76	---	---
1928	1,135	320	1,061	64	75	---	---
1929	1,009	298	1,018	111	48	---	---
1930	1,293	281	1,208	150	60	1,458	---
1931	1,237	313	1,156	99	75	1,112	---
1932	1,452	320	1,357	116	134	1,340	---
1933	1,757	319	1,642	141	134	1,715	---
1934	1,241	330	1,160	130	92	1,198	---
1935	1,268	321	1,185	125	74	1,454	---
1936	1,395	309	1,304	157	73	1,543	---
1937	1,373	314	1,283	166	51	1,600	---
1938	1,791	312	1,674	219	105	1,858	---
1939	1,756	326	1,641	175	98	1,711	---
1940	1,881	309	1,758	182	110	1,676	25,920
1941	1,592	308	1,488	176	172	1,257	22,712
1942	1,730	296	1,617	149	134	1,390	25,862
1943	1,000	305	935	92	62	1,009	24,040
1944	1,048	312	979	72	99	923	35,937
1945	1,274	296	1,191	121	95	1,142	40,943
1946	1,522	288	1,422	153	127	1,446	43,708
1947	1,839	294	1,719	203	91	1,834	34,265
1948	1,370	291	1,280	199	76	1,385	38,038
1949	1,563	307	1,461	204	96	1,389	40,852
1950	2,009	297	1,878	293	113	1,777	61,333
1951	1,549	296	1,448	231	88	1,764	45,578
1952	1,505	296	1,407	253	67	1,593	38,583
1953	1,816	301	1,697	324	100	1,641	47,628
1954	2,043	290	1,909	355	139	1,823	52,351
1955	1,739	284	1,625	354	108	1,368	52,061
1956	1,966	303	1,837	428	106	1,378	51,955
1957	2,188	282	2,045	480	138	1,538	63,121
1958	2,200	290	2,056	484	158	1,372	67,324
1959	2,340	275	2,187	591	148	1,482	76,920
1960	2,450	298	2,290	613	152	1,298	79,079
1961	2,404	272	2,247	712	131	1,276	98,211
1962	2,586	283	2,417	676	316	1,141	96,643
1963	3,096	265	2,893	1,004	183	1,560	124,602
1964	3,288	281	3,073	1,114	160	1,769	132,093

Table 4.--Sugarbeets: Acreage, yield, production, price, value, and Sugar Act payments, by States, 1924-64

OHIO

Crop year	Acreage		Yield per harvested acre	Production	Price per ton	Value of production	Sugar Act payments	
	Planted	Harvested					Per ton	Total
	Acres	Acres	Tons	1,000 tons	Dollars	1,000 dollars	Dollars	1,000 dollars
1924	62,000	50,000	7.5	377.0	9.45	3,562	---	---
1925	55,000	43,000	9.9	427.0	6.90	2,945	---	---
1926	37,000	35,000	9.7	340.0	7.01	2,383	---	---
1927	38,000	37,000	8.8	325.0	6.99	2,272	---	---
1928	41,000	38,000	7.0	266.0	7.13	1,897	---	---
1929	25,000	20,000	8.7	174.0	7.55	1,314	---	---
1930	33,000	31,000	9.2	286.0	7.76	2,220	---	---
1931	9,800	9,500	11.0	104.5	6.00	627	---	---
1932	27,000	26,000	10.0	259.0	5.34	1,384	---	---
1933	49,000	42,000	7.8	328.0	5.71	1,873	1/.03	1/10
1934	55,000	39,000	8.0	312.0	5.52	1,722	2/1.75	2/546
1935	52,000	50,000	7.0	349.0	5.29	1,846	2/1.13	2/394
1936	34,000	29,000	9.2	259.0	6.37	1,650	3/	3/
1937	29,000	25,000	5.8	144.0	6.15	886	1.69	243
1938	53,000	51,000	7.2	366.0	5.84	2,137	1.86	681
1939	51,000	47,000	7.7	363.0	5.95	2,160	1.81	657
1940	45,000	41,000	9.1	375.0	6.96	2,619	1.95	731
1941	41,000	38,000	11.0	419.0	7.55	3,163	1.75	733
1942	51,000	48,000	12.4	595.0	6.81	4,052	2.15	1,279
1943	21,000	12,000	6.0	72.0	10.00	720	2.62	189
1944	17,000	13,000	8.7	113.0	12.00	1,356	2.69	304
1945	24,000	21,000	9.9	208.0	11.70	2,434	2.56	532
1946	29,000	26,000	8.8	229.0	13.80	3,160	2.78	636
1947	26,000	21,000	7.2	151.0	13.00	1,963	2.24	338
1948	14,000	13,000	12.4	161.0	12.30	1,980	2.51	404
1949	31,000	24,000	10.5	252.0	11.40	2,873	2.40	605
1950	30,000	22,000	12.6	277.0	11.50	3,186	2.31	641
1951	14,400	12,700	10.0	127.0	12.50	1,588	2.42	307
1952	13,700	11,800	11.1	131.0	12.70	1,664	2.44	320
1953	15,800	13,800	12.9	178.0	12.20	2,172	2.42	431
1954	18,000	15,200	16.2	247.0	8.90	2,198	2.39	590
1955	19,400	18,000	15.5	279.0	9.60	2,678	2.32	647
1956	18,800	16,300	12.2	199.0	12.60	2,507	2.26	449
1957	22,800	21,900	13.2	289.0	10.20	2,948	2.27	656
1958	23,000	21,900	14.1	309.0	10.80	3,337	2.24	692
1959	23,000	21,700	16.3	354.0	8.20	2,903	2.22	785
1960	23,200	22,400	14.6	328.0	11.50	3,772	2.13	700
1961	24,900	21,600	14.2	307.0	9.60	2,947	2.16	663
1962	28,700	25,000	16.6	416.0	11.50	4,784	2.22	925
1963	31,000	29,100	13.1	381.0	15.40	5,867	2.57	980
1964	35,100	30,100	13.3	401.0	11.40	4,571	2.32	931

See footnotes at end of table.

Table 4.--Sugarbeets: Acreage, yield, production, price, value, and Sugar Act payments, by States, 1924-64--Continued

MICHIGAN

Crop year	Acreage		Yield	Production	Price per ton	Value of production	Sugar Act payments	
	Planted	Harvested	Per harvested acre				Per ton	Total
	Acres	Acres	Tons	1,000 tons	Dollars	1,000 dollars	Dollars	1,000 dollars
1924	154,000	134,000	7.2	966	8.88	8,574	---	---
1925	120,000	99,000	9.8	969	7.05	6,833	---	---
1926	110,000	100,000	7.9	793	7.00	5,552	---	---
1927	109,000	99,000	7.1	698	7.16	4,996	---	---
1928	87,000	71,000	6.4	452	7.22	3,263	---	---
1929	54,000	52,000	5.8	300	7.94	2,381	---	---
1930	85,000	74,000	6.9	513	8.08	4,143	---	---
1931	62,000	58,000	10.0	581	6.33	3,675	---	---
1932	129,000	122,000	10.0	1,215	5.73	6,959	---	---
1933	167,000	154,000	7.8	1,203	5.81	6,989	1/.10	1/120
1934	142,000	117,000	8.5	999	5.92	5,914	2/1.75	2/1,748
1935	127,000	114,000	6.0	686	6.29	4,315	2/1.13	2/775
1936	109,000	98,000	8.8	867	6.45	5,592	3/	3/
1937	86,000	76,000	7.2	549	6.17	3,387	1.79	983
1938	128,000	122,000	8.2	1,005	6.08	6,110	2.00	2,010
1939	125,000	120,000	8.6	1,033	5.59	5,774	1.82	1,880
1940	123,000	112,000	9.1	1,022	6.34	6,479	1.82	1,860
1941	100,000	94,000	10.8	1,016	7.43	7,549	1.77	1,798
1942	138,000	112,000	9.8	1,098	7.49	8,224	2.35	2,580
1943	59,000	48,000	6.2	298	10.20	3,040	2.61	778
1944	69,000	59,000	8.8	520	12.10	6,292	2.64	1,373
1945	92,000	78,000	8.0	627	11.10	6,960	2.48	1,557
1946	106,000	95,000	8.6	814	13.80	11,233	2.79	2,270
1947	84,000	66,000	6.8	446	13.40	5,976	2.38	1,063
1948	63,000	52,000	8.8	457	13.50	6,170	2.67	1,220
1949	96,000	77,000	9.6	743	11.60	8,619	2.48	1,846
1950	121,000	98,000	10.4	1,020	11.70	11,934	2.38	2,423
1951	65,500	53,400	11.3	605	12.40	7,502	2.36	1,429
1952	55,400	49,300	10.7	527	13.30	7,009	2.50	1,317
1953	55,700	48,300	11.8	570	12.70	7,239	2.49	1,418
1954	76,600	64,100	12.0	771	9.90	7,633	2.43	1,875
1955	63,500	60,100	14.7	885	11.10	9,824	2.38	2,109
1956	69,900	63,400	11.0	696	13.00	9,048	2.31	1,627
1957	74,500	70,000	13.0	907	11.00	9,977	2.35	2,128
1958	77,300	71,400	15.6	1,112	11.10	12,343	2.31	2,565
1959	78,200	74,100	17.5	1,299	8.70	11,301	2.29	2,977
1960	69,400	67,900	13.9	943	11.70	11,033	2.19	2,068
1961	76,600	72,200	16.3	1,178	9.70	11,427	2.20	2,594
1962	75,300	66,200	16.3	1,081	12.10	13,080	2.20	2,376
1963	82,600	78,100	15.0	1,175	13.00	15,275	2.20	2,590
1964	90,100	84,800	16.3	1,386	10.50	14,553	2.18	3,020

See footnotes at end of table.

Table 4.--Sugarbeets: Acreage, yield, production, price, value, and Sugar Act payments, by States, 1924-64--Continued

WISCONSIN

Crop year	Acreage		Yield	Production	Price per ton	Value of production	Sugar Act payments	
	Planted	Harvested	per harvested acre				Per ton	Total
	Acres	Acres	Tons	1,000 tons	Dollars	1,000 dollars	Dollars	1,000 dollars
1924	27,000	21,000	7.0	147.0	7.27	1,068	---	---
1925	18,000	15,000	11.2	168.0	7.25	1,218	---	---
1926	18,000	17,000	9.3	158.0	7.22	1,141	---	---
1927	14,000	11,000	8.2	90.0	7.03	633	---	---
1928	8,900	8,000	9.2	74.0	7.34	543	---	---
1929	11,000	8,000	7.0	56.0	7.29	408	---	---
1930	13,100	12,300	8.3	102.0	7.51	766	---	---
1931	10,500	9,700	9.7	94.0	5.84	549	---	---
1932	12,900	12,300	8.6	105.4	5.24	552	---	---
1933	19,400	17,900	8.4	150.8	5.67	855	1/.19	1/29
1934	22,400	19,100	8.7	165.8	4.86	806	2/1.75	2/290
1935	18,700	18,000	6.3	113.1	4.75	537	2/1.13	2/128
1936	11,600	10,500	9.4	98.9	5.09	503	3/	3/
1937	10,100	9,000	8.4	75.3	5.25	395	1.88	142
1938	16,300	14,400	11.3	162.9	4.70	766	1.83	298
1939	18,500	17,600	8.9	156.1	5.06	790	1.91	298
1940	21,900	20,500	10.4	213.3	4.92	1,049	1.81	386
1941	15,800	15,200	13.5	204.9	5.51	1,129	1.66	340
1942	19,300	17,000	9.4	160.0	5.90	944	2.26	362
1943	12,500	11,300	7.8	88.1	9.04	796	2.69	237
1944	14,300	11,500	9.8	113.1	9.43	1,067	2.40	271
1945	16,700	14,900	10.6	158.6	8.70	1,380	2.36	374
1946	15,000	13,400	9.3	125.0	11.70	1,462	2.73	341
1947	19,100	17,300	9.2	159.6	10.60	1,692	2.38	380
1948	8,300	7,000	8.6	60.0	9.90	594	2.51	151
1949	10,500	8,800	10.2	89.9	10.00	899	2.55	229
1950	18,100	15,800	10.1	160.0	9.40	1,504	2.44	391
1951	10,100	5,200	12.5	65.0	8.30	540	2.29	149
1952	8,400	7,600	8.7	66.0	10.80	713	2.44	161
1953	9,800	8,900	9.4	84.0	9.90	832	2.46	207
1954	13,900	11,100	12.2	135.0	7.10	958	2.41	326
1955	6,500	6,100	9.3	57.0	8.70	496	2.35	134
1956	6,900	6,400	10.2	65.0	9.70	630	2.32	151
1957	8,400	7,900	9.9	78.0	9.20	718	2.31	180
1958	9,200	8,900	13.1	117.0	9.00	1,053	2.29	268
1959	8,600	6,500	13.7	89.0	7.00	623	2.30	205
1960	6,200	5,900	9.3	55.0	8.40	462	2.21	122
1961	7,100	5,700	11.4	65.0	7.60	494	2.17	141
1962								

ESTIMATES DISCONTINUED

See footnotes at end of table.

Table 4.--Sugarbeets: Acreage, yield, production, price, value, and Sugar Act payments, by States, 1924-64--Continued

MINNESOTA

Crop year	Acreage		Yield	Production	Price per ton	Value of production	Sugar Act payments	
	Planted	Harvested	per harvested acre				Per ton	Total
	Acres	Acres	Tons	1,000 tons	Dollars	1,000 dollars	Dollars	1,000 dollars
1924	28,000	27,300	8.6	235.0	7.01	1,647	---	---
1925	22,600	20,400	9.8	200.3	5.59	1,120	---	---
1926	21,500	20,000	9.1	182.0	6.02	1,095	---	---
1927	20,000	18,200	8.3	151.7	6.09	924	---	---
1928	20,600	20,500	9.6	197.2	6.38	1,258	---	---
1929	38,100	35,000	7.8	272.0	7.00	1,904	---	---
1930	45,800	43,000	8.8	377.2	7.00	2,641	---	---
1931	36,300	35,500	8.9	315.6	5.99	1,891	---	---
1932	33,600	33,200	10.0	331.0	5.08	1,682	---	---
1933	37,500	37,400	9.3	347.9	5.02	1,746	1/.19	1/66
1934	37,300	34,300	6.1	208.4	4.75	990	2/1.75	2/365
1935	38,300	36,000	7.5	271.0	5.03	1,363	2/1.13	2/306
1936	33,900	31,000	6.5	202.5	5.42	1,098	3/	3/
1937	27,600	26,300	10.0	262.7	5.06	1,329	1.84	483
1938	37,600	35,500	10.0	355.3	4.51	1,602	1.88	668
1939	38,400	37,000	9.4	346.0	4.04	1,398	1.57	543
1940	38,300	37,800	9.5	360.8	4.91	1,772	1.79	646
1941	29,700	27,500	10.6	291.6	5.86	1,709	1.67	487
1942	36,200	35,000	11.2	392.7	6.29	2,470	2.20	864
1943	28,200	23,800	8.8	208.6	8.87	1,850	2.62	547
1944	27,500	25,000	10.7	267.1	10.40	2,778	2.61	697
1945	35,100	33,000	9.5	314.7	9.71	3,056	2.44	768
1946	41,000	37,000	10.8	399.6	11.00	4,396	2.58	1,000
1947	41,300	37,600	8.7	327.0	11.00	3,597	2.31	754
1948	40,600	36,000	10.7	386.6	11.10	4,291	2.61	1,016
1949	48,700	44,700	10.2	457.4	11.50	5,260	2.63	1,201
1950	63,600	57,600	8.8	505.8	11.00	5,564	2.39	1,207
1951	59,900	54,500	11.2	608.0	11.30	6,870	2.39	1,454
1952	62,100	56,800	9.3	529.0	12.80	6,771	2.46	1,299
1953	68,700	63,800	10.5	670.0	11.40	7,638	2.45	1,644
1954	76,000	73,100	11.2	819.0	10.40	8,518	2.44	2,000
1955	65,800	64,400	12.0	771.0	11.10	8,558	2.43	1,875
1956	67,100	64,600	12.0	772.0	12.20	9,418	2.40	1,850
1957	75,100	66,200	12.7	840.0	10.30	8,652	2.40	2,016
1958	73,400	72,900	12.1	883.0	11.60	10,243	2.35	2,078
1959	75,300	70,900	12.4	880.0	10.00	8,800	2.37	2,088
1960	81,200	80,800	12.6	1,018.0	11.00	11,198	2.32	2,365
1961	98,400	97,200	12.9	1,258.0	10.00	12,580	2.30	2,894
1962	115,500	106,900	9.8	1,045.0	12.30	12,854	2.26	2,364
1963	120,500	118,100	13.2	1,555.0	12.30	19,126	2.27	3,527
1964	122,400	119,500	11.1	1,325.0	10.60	14,045	2.24	2,970

See footnotes at end of table.

Table 4.--Sugarbeets: Acreage, yield, production, price, value, and Sugar Act payments, by States, 1924-64--Continued

NORTH DAKOTA

Crop year	Acreage		Yield	Production	Price per ton	Value of production	Sugar Act payments	
	Planted	Harvested	per harvested acre				Per ton	Total
	Acres	Acres	Tons	1,000 tons	Dollars	1,000 dollars	Dollars	1,000 dollars
1924	2,900	2,600	9.4	24.5	7.92	194	---	---
1925	5,200	4,600	9.3	42.9	5.52	237	---	---
1926	4,800	4,600	7.6	35.0	6.34	222	---	---
1927	9,000	7,500	6.8	51.3	6.16	316	---	---
1928	5,800	5,300	8.7	46.2	6.32	292	---	---
1929	11,300	7,500	5.9	44.2	6.99	309	---	---
1930	12,600	8,300	8.8	72.8	6.99	509	---	---
1931	12,500	10,800	8.8	94.5	5.99	566	---	---
1932	13,300	11,900	10.3	122.2	5.32	650	---	---
1933	14,700	14,100	9.3	130.5	5.35	698	1/ .19	1/ 25
1934	13,000	12,800	4.9	62.1	5.27	327	2/1.75	2/109
1935	12,900	12,700	9.4	119.7	5.98	716	2/1.13	2/135
1936	14,500	10,100	7.8	79.1	5.87	464	3/	3/
1937	12,400	12,200	11.1	135.0	5.16	697	1.91	258
1938	14,100	13,800	10.0	138.2	4.76	658	2.01	278
1939	13,300	12,600	10.6	133.0	4.35	579	1.79	238
1940	14,400	14,100	13.2	185.5	5.00	928	1.87	347
1941	11,600	11,000	12.2	134.7	6.25	842	1.78	240
1942	14,500	14,000	12.8	179.2	6.59	1,181	2.35	421
1943	12,300	11,200	10.0	111.9	9.02	1,009	2.68	300
1944	13,700	13,000	12.0	155.5	10.50	1,633	2.64	411
1945	17,600	17,200	9.8	168.9	9.70	1,638	2.45	414
1946	16,000	15,100	11.3	171.1	10.90	1,865	2.48	424
1947	17,900	16,800	9.7	162.9	11.30	1,841	2.36	385
1948	22,000	19,200	10.2	195.9	10.90	2,135	2.62	513
1949	25,200	23,500	10.4	245.4	11.40	2,798	2.62	642
1950	30,700	27,500	8.4	230.8	11.00	2,539	2.38	550
1951	32,400	29,700	11.0	328.0	11.30	3,706	2.41	790
1952	31,100	25,600	9.4	241.0	12.60	3,037	2.47	595
1953	36,400	34,800	9.5	330.0	11.30	3,729	2.45	807
1954	38,200	37,100	11.3	418.0	10.60	4,431	2.44	1,020
1955	34,700	34,000	11.7	398.0	11.30	4,497	2.43	969
1956	35,100	34,700	11.4	397.0	12.20	4,818	2.41	958
1957	39,100	37,100	12.9	477.0	10.40	4,961	2.42	1,156
1958	38,500	37,600	12.3	464.0	11.90	5,522	2.39	1,111
1959	39,400	33,800	12.6	425.0	10.20	4,335	2.41	1,024
1960	42,600	42,400	13.3	564.0	11.30	6,373	2.37	1,334
1961	47,800	46,900	12.6	592.0	10.10	5,979	2.37	1,405
1962	56,100	53,900	10.4	560.0	12.40	6,944	2.35	1,318
1963	51,200	50,500	13.8	696.0	12.70	8,839	2.34	1,626
1964	52,400	51,100	11.1	568.0	10.60	6,021	2.32	1,318

See footnotes at end of table.

Table 4.--Sugarbeets: Acreage, yield, production, price, value, and Sugar Act payments, by States, 1924-64--Continued

SOUTH DAKOTA

Crop year	Acreage		Yield	Production	Price per ton	Value of production	Sugar Act payments	
	Planted	Harvested	per harvested acre				Per ton	Total
	Acres	Acres	Tons	1,000 tons	Dollars	1,000 dollars	Dollars	1,000 dollars
1924	2,300	2,100	7.9	16.6	7.53	125	---	---
1925	2,100	2,000	16.4	32.8	5.98	196	---	---
1926	3,300	3,300	12.0	39.6	7.78	308	---	---
1927	9,200	8,700	9.5	82.3	7.01	577	---	---
1928	10,600	10,300	12.0	123.5	7.00	864	---	---
1929	12,100	11,900	10.3	122.0	7.00	854	---	---
1930	12,000	10,000	12.6	126.0	7.00	882	---	---
1931	9,200	8,000	9.6	76.5	6.00	459	---	---
1932	8,100	7,800	11.8	92.2	5.40	498	---	---
1933	12,800	11,000	9.2	101.4	5.22	529	1/ .19	1/ 19
1934	13,100	9,900	8.5	84.3	5.22	440	2/1.75	2/148
1935	11,500	11,400	9.9	112.6	6.03	679	2/1.13	2/127
1936	10,000	5,500	8.2	45.1	6.42	290	3/	3/
1937	6,600	5,000	10.9	54.4	5.05	275	1.80	98
1938	9,900	8,900	12.7	113.2	4.62	523	1.90	215
1939	10,100	7,500	8.4	63.1	4.76	300	2.00	126
1940	8,400	7,800	12.1	94.2	5.34	503	1.83	172
1941	7,800	7,400	11.2	82.7	6.69	553	1.83	151
1942	8,300	7,700	10.4	80.1	6.22	498	2.22	178
1943	6,500	4,800	8.1	38.9	9.00	350	2.60	101
1944	6,100	5,400	7.4	39.9	10.40	415	2.56	102
1945	7,300	6,900	8.3	57.0	10.90	621	2.68	153
1946	8,100	6,900	11.0	75.7	11.20	848	2.44	185
1947	6,600	6,000	9.5	56.8	11.60	659	2.41	137
1948	4,400	3,700	10.7	39.6	10.20	404	2.10	83
1949	4,300	3,900	12.2	47.6	11.30	538	2.41	115
1950	5,200	4,500	10.2	45.8	12.30	563	2.49	114
1951	3,800	3,400	12.4	42.0	11.80	496	2.30	97
1952	3,600	3,400	13.8	47.0	11.60	545	2.40	113
1953	5,100	4,700	8.3	39.0	11.70	456	2.32	90
1954	6,600	6,000	12.5	75.0	11.10	832	2.31	173
1955	5,300	5,100	12.5	64.0	12.30	787	2.28	146
1956	5,500	5,000	13.0	65.0	13.40	871	2.30	150
1957	5,300	5,000	12.6	63.0	12.10	762	2.34	147
1958	5,900	5,600	13.0	73.0	12.70	927	2.32	169
1959	6,300	6,000	13.7	82.0	11.80	968	2.35	193
1960	6,800	6,200	12.1	75.0	12.80	960	2.36	177
1961	10,400	9,200	10.2	94.0	12.20	1,147	2.39	225
1962	11,700	10,200	11.5	117.0	12.70	1,486	2.38	278
1963	12,800	12,400	14.9	185.0	10.30	1,906	2.34	433
1964	11,000	10,500	12.0	126.0	11.90	1,499	2.21	278

See footnotes at end of table.

Table 4.--Sugarbeets: Acreage, yield, production, price, value, and Sugar Act payments, by States, 1924-64--Continued

NEBRASKA

Crop year	Acreage		Yield	Production	Price per ton	Value of production	Sugar Act payments	
	Planted	Harvested	per harvested acre				Per ton	Total
	Acres	Acres	Tons	1,000 tons	Dollars	1,000 dollars	Dollars	1,000 dollars
1924	65,000	64,000	11.8	756	7.53	5,696	---	---
1925	61,000	60,000	15.6	933	5.97	5,574	---	---
1926	81,000	79,000	11.7	923	7.88	7,274	---	---
1927	83,000	82,000	12.6	1,036	7.95	8,241	---	---
1928	88,000	86,000	11.9	1,021	6.98	7,127	---	---
1929	93,000	92,000	11.5	1,054	6.96	7,332	---	---
1930	82,000	81,000	14.0	1,136	6.95	7,893	---	---
1931	69,000	65,000	13.7	891	5.46	4,868	---	---
1932	68,000	66,000	13.3	877	4.58	4,021	---	---
1933	90,000	88,000	12.1	1,067	4.50	4,802	1/.28	1/299
1934	79,000	60,000	9.2	549	4.60	2,525	2/1.75	2/961
1935	52,000	51,000	12.3	625	5.91	3,694	2/1.13	2/706
1936	75,000	68,000	11.5	782	5.78	4,520	3/	3/
1937	65,000	63,000	14.0	882	4.88	4,304	1.81	1,596
1938	80,000	77,000	14.4	1,111	4.07	4,522	1.74	1,933
1939	80,000	69,000	11.4	790	4.42	3,492	1.87	1,477
1940	75,000	70,000	13.3	933	4.67	4,357	1.69	1,577
1941	63,000	60,000	15.4	927	6.16	5,710	1.79	1,659
1942	86,000	80,000	11.6	930	6.04	5,617	2.20	2,046
1943	52,000	49,000	11.6	568	8.36	4,748	2.47	1,403
1944	53,000	46,000	10.7	490	10.20	4,998	2.55	1,250
1945	62,000	58,000	10.9	632	9.20	5,814	2.32	1,464
1946	69,000	60,000	13.8	825	10.30	8,498	2.28	1,883
1947	82,000	71,000	11.3	805	11.40	9,177	2.39	1,925
1948	50,000	42,000	11.8	496	9.20	4,563	2.18	1,082
1949	39,000	38,000	14.7	558	10.50	5,859	2.37	1,321
1950	62,000	59,000	13.8	812	11.80	9,582	2.56	2,081
1951	59,200	55,000	12.4	683	11.70	7,991	2.47	1,685
1952	59,900	57,900	15.6	904	10.60	9,582	2.11	1,905
1953	55,200	51,700	15.3	789	11.80	9,310	2.03	1,600
1954	67,500	60,100	13.1	786	10.70	8,410	2.26	1,773
1955	56,500	46,300	14.4	665	11.30	7,514	2.26	1,505
1956	58,900	56,100	15.1	848	12.90	10,939	2.54	2,150
1957	61,900	59,800	15.0	895	11.80	10,561	2.39	2,143
1958	64,800	61,100	14.8	902	12.40	11,185	2.45	2,210
1959	66,000	63,900	17.3	1,107	12.20	13,505	2.42	2,678
1960	69,300	68,700	17.8	1,226	12.90	15,815	2.60	3,186
1961	83,300	77,700	14.9	1,155	12.40	14,322	2.40	2,767
1962	87,100	72,700	12.9	940	13.10	12,314	2.29	2,156
1963	85,800	83,100	19.2	1,594	12.40	19,766	2.18	3,469
1964	89,600	86,200	16.3	1,407	12.90	18,150	2.35	3,306

See footnotes at end of table.

Table 4.--Sugarbeets: Acreage, yield, production, price, value, and Sugar Act payments, by States, 1924-64--Continued

KANSAS

Crop year	Acreage		Yield	Production	Price per ton	Value of production	Sugar Act payments	
	Planted	Harvested	per harvested acre				Per ton	Total
	Acres	Acres	Tons	1,000 tons	Dollars	1,000 dollars	Dollars	1,000 dollars
1924 ...	8,600	7,200	8.0	57.5	7.23	416	---	---
1925 ...	9,500	8,400	8.1	68.0	5.50	374	---	---
1926 ...	6,000	5,800	8.0	46.3	6.00	278	---	---
1927 ...	6,200	5,300	7.9	41.8	6.00	251	---	---
1928 ...	6,900	6,200	8.9	54.9	6.00	329	---	---
1929 ...	7,000	6,500	7.7	50.2	6.00	301	---	---
1930 ...	6,000	5,300	9.6	51.0	6.00	306	---	---
1931 ...	9,000	7,800	8.7	68.0	6.00	408	---	---
1932 ...	10,900	9,900	8.2	81.3	5.50	447	---	---
1933 ...	15,200	15,200	6.7	102.5	5.00	512	1/1.19	1/ 19
1934 ...	14,400	10,300	5.8	59.4	5.00	297	2/1.75	2/ 104
1935 ...	9,900	8,300	5.0	41.2	5.01	206	2/1.13	2/47
1936 ...	8,900	7,200	8.4	60.8	5.00	304	3/	3/
1937 ...	8,000	6,600	8.0	52.7	5.14	271	1.91	101
1938 ...	9,900	8,600	9.9	85.5	5.50	470	1.74	149
1939 ...	10,200	6,900	7.7	53.2	5.00	266	1.75	93
1940 ...	10,500	10,200	12.8	130.6	5.00	653	1.55	202
1941 ...	8,300	8,000	11.9	95.2	5.74	546	1.61	153
1942 ...	8,700	8,000	10.2	81.8	5.95	487	2.04	167
1943 ...	5,800	4,600	8.0	36.8	8.59	316	2.37	87
1944 ...	5,100	4,400	11.2	49.2	10.10	497	2.37	117
1945 ...	5,600	5,100	10.3	52.6	10.40	547	2.44	128
1946 ...	8,000	7,000	10.4	72.9	10.80	787	2.14	156
1947 ...	9,000	8,300	11.6	95.9	11.40	1,093	2.29	220
1948 ...	6,200	4,900	9.6	47.0	8.90	418	2.04	96
1949 ...	5,500	5,000	9.9	49.5	10.00	495	2.23	110
1950 ...	9,700	8,400	9.7	81.6	9.80	800	2.12	173
1951 ...	8,000	5,100	7.3	37.0	9.80	363	2.04	75
1952 ...	5,200	4,700	10.6	50.0	11.10	555	2.17	106
1953 ...	5,600	4,900	6.1	30.0	11.10	333	2.13	64
1954 ...	6,800	6,100	10.2	62.0	10.20	632	2.13	132
1955 ...	6,900	6,500	14.8	96.0	10.70	1,027	2.06	198
1956 ...	7,300	7,100	14.9	106.0	11.20	1,187	2.12	225
1957 ...	9,100	8,900	15.7	140.0	10.10	1,414	1.98	277
1958 ...	8,600	8,100	15.2	123.0	11.20	1,378	2.13	262
1959 ...	8,700	8,400	16.9	142.0	11.00	1,562	2.16	307
1960 ...	9,200	9,000	17.1	154.0	11.30	1,740	2.27	349
1961 ...	10,800	10,300	15.7	162.0	11.20	1,814	2.23	361
1962 ...	14,800	14,000	17.3	242.0	12.20	2,952	2.14	517
1963 ...	20,200	19,000	15.9	303.0	11.30	3,424	1.93	585
1964 ...	25,200	23,500	15.5	364.0	12.00	4,368	2.23	812

See footnotes at end of table.

Table 4.--Sugarbeets: Acreage, yield, production, price, value, and Sugar Act payments, by States, 1924-64--Continued

MONTANA

Crop year	Acreage		Yield	Production	Price per ton	Value of production	Sugar Act payments	
	Planted	Harvested	per harvested acre				Per ton	Total
	Acres	Acres	Tons	1,000 tons	Dollars	1,000 dollars	Dollars	1,000 dollars
1924	38,000	33,000	10.3	341	8.18	2,789	---	---
1925	35,000	30,000	10.3	309	6.34	1,960	---	---
1926	36,000	32,000	10.9	348	8.09	2,814	---	---
1927	32,000	32,000	11.4	364	8.23	2,996	---	---
1928	35,000	28,000	9.2	258	7.35	1,897	---	---
1929	41,000	38,000	10.2	386	7.29	2,815	---	---
1930	47,000	45,000	12.7	572	7.33	4,191	---	---
1931	59,000	54,000	11.4	617	6.01	3,706	---	---
1932	58,000	54,000	13.7	739	5.39	3,983	---	---
1933	71,000	68,000	12.3	838	5.46	4,575	1/ .27	1/226
1934	68,000	64,000	12.3	786	5.21	4,095	2/1.75	2/1,376
1935	53,000	51,000	11.2	570	6.36	3,625	2/1.13	2/644
1936	71,000	60,000	10.9	654	6.30	4,120	3/	3/
1937	76,000	70,000	12.2	852	5.27	4,490	1.95	1,661
1938	81,000	78,000	12.7	987	4.57	4,511	1.93	1,905
1939	77,000	74,000	12.1	894	4.82	4,309	2.08	1,860
1940	86,000	83,000	14.0	1,166	4.95	5,772	1.88	2,192
1941	66,000	64,000	12.4	793	6.77	5,359	1.94	1,538
1942	80,000	75,000	12.2	915	7.30	6,680	2.70	2,470
1943	60,000	57,000	10.2	581	9.25	5,374	2.75	1,598
1944	71,000	64,000	10.7	682	10.60	7,229	2.68	1,828
1945	87,000	82,000	10.6	871	10.30	8,971	2.61	2,276
1946	82,000	73,000	12.2	891	10.90	9,712	2.45	2,183
1947	82,000	77,000	11.7	899	12.30	11,058	2.56	2,299
1948	66,000	55,000	12.2	671	10.30	6,911	2.58	1,730
1949	65,000	59,000	11.8	697	10.50	7,318	2.54	1,768
1950	66,000	62,000	12.0	744	11.50	8,556	2.53	1,879
1951	48,800	44,900	12.0	537	12.00	6,444	2.51	1,347
1952	39,000	37,300	13.8	515	12.00	6,180	2.47	1,274
1953	45,300	43,600	13.4	586	11.90	6,973	2.43	1,426
1954	55,500	54,100	12.6	683	11.40	7,786	2.46	1,681
1955	50,800	50,000	14.3	724	12.30	8,905	2.44	1,767
1956	52,200	51,100	14.8	754	12.70	9,576	2.47	1,859
1957	57,900	56,800	15.7	891	11.40	10,157	2.50	2,227
1958	57,400	55,900	15.0	839	12.20	10,236	2.47	2,073
1959	57,700	52,600	15.7	827	11.90	9,841	2.47	2,042
1960	61,600	60,500	13.9	841	12.50	10,512	2.47	2,077
1961	68,200	60,600	14.7	893	11.50	10,270	2.48	2,212
1962	65,200	63,400	13.2	838	13.50	11,313	2.47	2,067
1963	66,700	65,700	17.8	1,170	12.20	14,274	2.35	2,753
1964	71,100	69,600	14.0	973	12.90	12,552	2.40	2,332

See footnotes at end of table.

Table 4.--Sugarbeets: Acreage, yield, production, price, value, and Sugar Act payments, by States, 1924-64--Continued

IBAND

Crop year	Acreage		Yield	Production	Price per ton	Value of production	Sugar Act payments	
	Planted	Harvested	per harvested acre				Per ton	Total
	Acres	Acres	Tons	1,000 tons	Dollars	1,000 dollars	Dollars	1,000 dollars
1924	66,000	40,000	6.8	270	7.20	1,945	---	---
1925	39,000	36,000	12.7	456	6.24	2,846	---	---
1926	25,000	18,000	6.0	108	6.89	744	---	---
1927	32,000	29,000	13.1	381	7.49	2,854	---	---
1928	30,000	27,000	11.0	297	7.44	2,210	---	---
1929	53,000	48,000	10.2	492	7.17	3,530	---	---
1930	50,000	44,000	10.1	446	7.40	3,302	---	---
1931	38,000	33,000	9.1	301	6.03	1,816	---	---
1932	54,000	53,000	13.4	709	5.10	3,618	---	---
1933	79,000	75,000	11.2	837	5.16	4,319	1/.40	1/335
1934	58,000	34,000	8.6	294	4.69	1,379	2/1.75	2/514
1935	54,000	51,000	11.0	562	5.26	2,956	2/1.13	2/635
1936	54,000	52,000	11.9	619	6.06	3,751	3/	3/
1937	53,000	51,000	12.1	615	5.19	3,192	1.95	1,199
1938	76,000	71,000	15.8	1,122	4.43	4,970	1.83	2,053
1939	77,000	73,000	13.5	985	4.21	4,147	1.96	1,931
1940	75,000	71,000	16.1	1,141	5.07	5,785	1.89	2,156
1941	62,000	60,000	13.7	823	6.57	5,407	1.97	1,621
1942	82,000	78,000	13.8	1,076	7.04	7,575	2.61	2,808
1943	49,000	42,000	15.5	651	8.14	5,299	2.46	1,601
1944	50,000	43,000	14.4	618	10.30	6,365	2.62	1,619
1945	58,000	53,000	15.3	809	9.90	8,009	2.53	2,049
1946	92,000	76,000	16.8	1,274	11.50	14,651	2.45	3,117
1947	116,000	102,000	17.3	1,761	11.90	20,956	2.52	4,444
1948	92,000	80,000	15.4	1,233	10.30	12,700	2.51	3,090
1949	67,000	60,000	17.8	1,067	10.20	10,883	2.46	2,621
1950	97,000	87,000	17.3	1,508	10.80	16,286	2.43	3,670
1951	71,000	66,000	18.6	1,227	11.40	13,988	2.43	3,983
1952	63,400	56,500	18.6	1,052	12.00	12,624	2.41	2,536
1953	82,500	75,200	19.4	1,459	11.30	16,487	2.39	3,484
1954	93,400	89,100	17.6	1,569	11.40	17,887	2.40	3,761
1955	79,600	76,600	18.7	1,433	11.30	16,193	2.40	3,438
1956	81,300	74,700	20.8	1,551	11.40	17,681	2.39	3,708
1957	90,900	88,000	20.2	1,777	11.40	20,258	2.39	4,254
1958	90,000	87,000	21.9	1,902	11.60	22,063	2.40	4,563
1959	92,000	87,600	21.5	1,886	11.70	22,066	2.41	4,540
1960	97,600	94,900	18.3	1,740	11.40	19,836	2.41	4,191
1961	125,100	117,900	19.3	2,272	11.30	25,674	2.40	5,448
1962	131,000	127,100	19.1	2,423	13.20	31,984	2.37	5,751
1963	149,700	145,600	22.1	3,212	11.80	37,902	2.36	7,587
1964	183,300	174,700	16.1	2,817	12.50	35,212	2.32	6,549

See footnotes at end of table.

Table 4.--Sugarbeets: Acreage, yield, production, price, value, and Sugar Act payments, by States, 1924-64--Continued

WYOMING

Crop year	Acreage		Yield	Production	Price	Value	Sugar Act payments	
	Planted	Harvested	per harvested acre		per ton	of production	Per ton	Total
	Acres	Acres	Tons	1,000 tons	Dollars	1,000 dollars	Dollars	1,000 dollars
1924	24,000	23,000	10.4	239	8.10	1,935	---	---
1925	30,000	29,000	12.6	364	6.19	2,253	---	---
1926	40,000	36,000	10.8	388	7.07	2,743	---	---
1927	39,000	37,000	11.6	431	7.66	3,303	---	---
1928	46,000	44,000	10.5	462	7.20	3,326	---	---
1929	54,000	47,000	10.4	487	7.18	3,495	---	---
1930	47,000	46,000	14.0	646	7.19	4,644	---	---
1931	52,000	49,000	11.3	552	5.71	3,153	---	---
1932	42,000	40,000	12.6	506	4.97	2,515	---	---
1933	55,000	52,000	11.4	593	5.26	3,119	1/.19	1/113
1934	52,000	42,000	10.3	434	4.99	2,166	2/1.75	2/760
1935	42,000	40,000	13.1	525	6.18	3,244	2/1.13	2/593
1936	53,000	44,000	11.0	486	5.98	2,906	3/	3/
1937	49,000	47,000	13.0	612	4.91	3,005	1.87	1,144
1938	56,000	53,000	12.9	684	4.35	2,975	1.89	1,293
1939	55,000	49,000	11.0	539	4.70	2,533	2.03	1,094
1940	49,000	47,000	14.2	667	4.63	3,088	1.81	1,207
1941	40,000	39,000	13.6	530	6.56	3,477	1.90	1,007
1942	49,000	43,000	10.5	451	6.47	2,918	2.37	1,069
1943	26,000	25,000	10.8	270	8.69	2,346	2.61	705
1944	31,000	28,000	11.0	307	10.30	3,162	2.65	814
1945	37,000	35,000	9.8	343	10.10	3,464	2.59	889
1946	40,000	36,000	11.7	420	10.90	4,578	2.46	1,034
1947	39,000	36,000	12.7	457	12.00	5,484	2.55	1,164
1948	34,000	27,000	11.5	310	9.60	2,976	2.48	768
1949	30,000	28,000	14.5	406	10.40	4,222	2.46	997
1950	38,000	36,000	12.6	454	11.40	5,176	2.55	1,156
1951	32,400	31,200	14.0	438	11.80	5,168	2.47	1,083
1952	34,900	34,000	13.8	468	11.20	5,242	2.36	1,104
1953	35,600	33,900	14.9	504	11.30	5,695	2.43	1,227
1954	39,600	36,300	13.1	475	11.10	5,272	2.43	1,152
1955	34,500	30,300	13.9	421	11.40	4,799	2.45	1,032
1956	34,900	33,700	14.0	472	12.60	5,947	2.55	1,205
1957	37,800	36,900	15.1	559	11.60	6,484	2.48	1,389
1958	38,600	37,600	15.9	596	12.10	7,212	2.50	1,491
1959	40,400	38,000	16.2	616	11.80	7,269	2.45	1,511
1960	42,500	41,500	15.3	635	12.20	7,747	2.52	1,601
1961	53,700	51,600	13.7	706	11.70	8,260	2.42	1,708
1962	51,600	48,700	12.6	612	13.60	8,323	2.42	1,483
1963	58,700	57,600	17.4	1,000	12.40	12,400	2.31	2,308
1964	66,100	64,000	13.5	864	12.60	10,886	2.37	2,045

See footnotes at end of table.

Table 4.--Sugarbeets: Acreage, yield, production, price, value, and Sugar Act payments, by States, 1924-64--Continued

COLORADO

Crop year	Acreage		Yield per harvested acres	Production	Price per ton	Value of production	Sugar Act payments	
	Planted	Harvested					Per ton	Total
	Acres	Acres	Tons	1,000 tons	Dollars	1,000 dollars	Dollars	1,000 dollars
1924	236,000	221,000	11.3	2,507	7.59	19,032	---	---
1925	181,000	130,000	12.6	1,640	5.98	9,815	---	---
1926	213,000	211,000	13.8	2,912	7.92	23,050	---	---
1927	219,000	218,000	12.7	2,774	7.85	21,758	---	---
1928	183,000	179,000	13.4	2,394	6.97	16,687	---	---
1929	246,000	210,000	12.4	2,612	6.93	18,106	---	---
1930	244,000	242,000	13.7	3,312	6.91	22,873	---	---
1931	232,000	224,000	11.3	2,532	5.44	13,786	---	---
1932	177,000	156,000	11.4	1,777	4.62	8,209	---	---
1933	219,000	209,000	12.6	2,628	4.62	12,141	1/2.26	1/683
1934	203,000	169,000	9.3	1,566	5.04	7,893	2/1.75	2/2,740
1935	147,000	140,000	13.0	1,826	5.81	10,609	2/1.13	2/2,063
1936	182,000	171,000	13.1	2,234	5.70	12,734	3/	3/
1937	169,000	160,000	12.4	1,992	4.80	9,562	1.79	3,566
1938	141,000	137,000	14.6	2,001	4.17	8,344	1.77	3,542
1939	167,000	145,000	10.6	1,543	4.64	7,160	1.93	2,978
1940	152,000	140,000	14.9	2,092	4.99	10,439	1.79	3,745
1941	135,000	132,000	14.8	1,949	6.20	12,084	1.81	3,528
1942	195,000	180,000	12.1	2,178	6.46	14,070	2.33	5,075
1943	139,000	133,000	12.2	1,623	8.42	13,666	2.48	4,025
1944	136,000	117,000	12.2	1,427	10.70	15,269	2.68	3,824
1945	162,000	152,000	12.1	1,835	9.90	18,166	2.48	4,556
1946	173,000	153,000	12.5	1,920	10.10	19,392	2.24	4,307
1947	176,000	168,000	15.2	2,548	11.50	29,302	2.41	6,145
1948	123,000	103,000	13.4	1,376	9.80	13,485	2.27	3,120
1949	126,000	117,000	16.1	1,878	10.90	20,470	2.51	4,716
1950	154,000	146,000	15.0	2,183	12.00	26,196	2.59	5,662
1951	132,400	124,300	15.3	1,906	11.90	22,681	2.46	4,684
1952	117,800	112,900	17.2	1,941	11.90	23,098	2.39	4,638
1953	121,300	115,500	16.9	1,956	11.70	22,885	2.44	4,774
1954	151,400	115,100	14.4	1,654	10.60	17,532	2.25	3,719
1955	123,200	102,000	15.9	1,621	11.30	18,317	2.27	3,681
1956	131,300	120,700	15.7	1,893	12.30	23,284	2.47	4,672
1957	139,900	135,600	17.7	2,399	11.90	28,548	2.40	5,762
1958	146,100	142,100	16.7	2,372	12.30	29,176	2.44	5,799
1959	148,600	143,200	17.0	2,437	11.90	29,000	2.37	5,764
1960	157,100	155,100	17.8	2,761	12.40	34,236	2.52	6,953
1961	174,000	167,000	14.7	2,449	12.10	29,633	2.37	5,806
1962	181,400	170,700	16.0	2,724	13.70	37,319	2.42	6,603
1963	183,800	170,800	18.2	3,103	12.30	38,167	2.23	6,917
1964	190,400	177,400	15.7	2,783	12.40	34,509	2.36	6,557

See footnotes at end of table.

Table 4.--Sugarbeets: Acreage, yield, production, price, value, and Sugar Act payments, by States, 1924-64--Continued

UTAH

Crop year	Acreage		Yield	Production	Price per ton	Value of production	Sugar Act payments	
	Planted	Harvested	per harvested acre				Per ton	Total
	Acres	Acres	Tons	1,000 tons	Dollars	1,000 dollars	Dollars	1,000 dollars
1924	95,000	80,000	7.0	564	6.92	3,903	---	---
1925	71,000	69,000	15.4	1,064	6.03	6,416	---	---
1926	74,000	51,000	8.1	415	6.97	2,894	---	---
1927	60,000	55,000	12.3	677	7.03	4,761	---	---
1928	57,000	51,000	12.5	637	7.03	4,478	---	---
1929	48,000	45,000	12.6	565	7.05	3,986	---	---
1930	49,000	44,000	12.6	553	7.01	3,874	---	---
1931	54,000	49,000	10.3	505	5.82	2,940	---	---
1932	58,000	56,000	15.1	846	4.77	4,032	---	---
1933	76,000	74,000	12.3	912	4.80	4,378	1/.36	1/328
1934	54,000	32,000	7.8	250	4.40	1,100	2/1.75	2/438
1935	44,000	41,000	12.3	506	5.08	2,570	2/1.13	2/572
1936	37,000	36,000	13.9	500	5.82	2,910	3/	3/
1937	51,000	46,000	12.4	570	4.94	2,816	1.82	1,037
1938	54,000	52,000	15.7	814	4.43	3,606	1.79	1,457
1939	55,000	53,000	12.9	683	4.14	2,828	1.90	1,298
1940	51,000	48,000	10.5	504	5.08	2,560	1.89	953
1941	42,000	40,000	14.4	575	6.25	3,594	1.88	1,081
1942	48,000	45,000	12.4	556	7.01	3,898	2.56	1,423
1943	34,000	32,000	15.6	499	8.01	3,997	2.40	1,198
1944	33,000	31,000	12.8	396	10.10	4,000	2.60	1,030
1945	35,000	32,000	13.6	436	9.60	4,186	2.43	1,061
1946	45,000	41,000	13.9	568	10.70	6,078	2.26	1,282
1947	47,000	45,000	16.4	740	11.60	8,584	2.42	1,789
1948	40,000	35,000	12.2	427	10.30	4,398	2.42	1,032
1949	29,000	28,000	16.6	466	10.40	4,846	2.38	1,108
1950	40,000	38,000	14.1	535	11.30	6,046	2.36	1,265
1951	27,600	25,600	15.7	403	11.80	4,755	2.38	960
1952	23,400	20,400	12.7	260	12.20	3,172	2.38	618
1953	28,400	26,800	16.2	435	11.50	5,002	2.35	1,081
1954	35,800	33,100	16.2	535	11.20	5,992	2.38	1,275
1955	30,200	29,000	15.1	437	11.40	4,982	2.39	1,043
1956	28,200	26,900	17.2	462	12.00	5,544	2.38	1,099
1957	30,800	29,100	16.2	470	11.90	5,593	2.40	1,127
1958	34,200	31,500	13.6	429	12.00	5,148	2.38	1,081
1959	32,800	31,200	18.3	572	12.00	6,864	2.38	1,363
1960	32,900	31,600	17.0	536	11.50	6,164	2.38	1,277
1961	25,400	22,700	14.2	323	11.80	3,811	2.38	769
1962	24,600	24,000	18.1	434	13.90	6,033	2.37	1,028
1963	26,200	24,900	18.4	457	11.60	5,301	2.37	1,085
1964	35,100	32,800	13.0	427	12.50	5,338	2.32	989

See footnotes at end of table.

Table 4.--Sugarbeets: Acreage, yield, production, price, value, and Sugar Act payments, by States, 1924-64--Continued

WASHINGTON

Crop year	Acreage		Yield	Production	Price per ton	Value of production	Sugar Act payments	
	Planted	Harvested	per harvested acre				Per ton	Total
	Acres	Acres	Tons	1,000 tons	Dollars	1,000 dollars	Dollars	1,000 dollars
1924	2,600	1,300	6.5	8.4	7.02	59	---	---
1925	3,100	2,600	8.0	20.7	5.99	124	---	---
1926	1,800	1,500	8.9	13.4	6.49	87	---	---
1927	2,500	2,200	10.0	21.9	7.03	154	---	---
1928	2,500	2,200	8.8	19.3	7.00	135	---	---
1929	2,300	2,000	8.6	17.1	7.02	120	---	---
1930	1,800	1,600	11.4	18.2	6.98	127	---	---
1931	2,400	2,000	13.3	26.6	6.02	160	---	---
1932	5,100	3,700	10.6	39.1	5.40	211	---	---
1933	3,300	3,100	11.1	34.3	4.62	158	1/.19	1/7
1934	2,100	1,900	11.9	22.6	5.06	115	2/1.75	2/40
1935	4,700	3,900	10.0	39.0	5.09	199	2/1.13	2/44
1936	3,000	2,600	14.9	38.7	6.15	238	3/	3/
1937	8,700	7,600	14.5	110.3	5.15	568	1.83	202
1938	17,200	15,400	14.0	215.0	4.56	980	1.80	387
1939	13,700	13,300	16.5	220.0	4.57	1,005	1.72	378
1940	15,500	14,700	16.2	238.3	4.99	1,189	1.78	424
1941	12,000	11,800	18.4	217.1	6.48	1,407	1.89	410
1942	14,300	13,000	20.9	271.3	6.72	1,823	2.43	659
1943	11,000	10,200	21.2	216.2	8.09	1,749	2.40	519
1944	14,500	11,900	14.8	176.0	9.76	1,718	2.42	426
1945	13,700	12,300	19.7	242.4	10.00	2,424	2.48	602
1946	16,000	15,000	21.1	315.9	10.70	3,380	2.40	757
1947	19,400	17,700	21.3	377.0	11.40	4,298	2.29	865
1948	14,600	13,300	18.6	247.0	11.10	2,742	2.40	594
1949	15,200	13,600	21.4	290.9	10.90	3,171	2.37	690
1950	21,400	20,400	23.5	480.0	10.80	5,184	2.35	1,127
1951	20,500	19,100	23.2	443.0	11.60	5,139	2.31	1,023
1952	22,600	21,100	21.6	456.0	12.20	5,563	2.29	1,044
1953	32,400	31,200	23.2	723.0	11.40	8,242	2.27	1,641
1954	35,500	34,200	22.3	761.0	11.20	8,523	2.29	1,741
1955	30,800	27,700	20.0	553.0	11.30	6,249	2.30	1,274
1956	30,900	30,500	23.2	707.0	11.50	8,130	2.29	1,618
1957	34,400	34,200	24.7	846.0	11.20	9,475	2.29	1,934
1958	34,900	34,400	23.6	813.0	11.60	9,431	2.30	1,867
1959	36,000	34,100	22.4	763.0	11.70	8,927	2.30	1,754
1960	37,900	37,500	20.9	782.0	11.30	8,837	2.29	1,788
1961	55,200	54,500	23.7	1,290.0	11.40	14,706	2.27	2,930
1962	56,300	55,500	24.9	1,381.0	12.30	16,986	2.26	3,126
1963	60,000	59,400	26.1	1,548.0	11.70	18,112	2.23	3,445
1964	63,900	60,900	22.7	1,380.0	11.90	16,422	2.21	3,051

See footnotes at end of table.

Table 4.--Sugarbeets: Acreage, yield, production, price, value, and Sugar Act payments, by States, 1924-64--Continued

OREGON

Crop year	Acreage		Yield	Production	Price	Value	Sugar Act payments	
	Planted	Harvested	per harvested acre		per ton	of production	Per ton	Total
	Acres	Acres	Tons	1,000 tons	Dollars	1,000 dollars	Dollars	1,000 dollars
1925	400	300	4.7	1.4	7.86	11	---	---
1926	---	---	---	---	---	---	---	---
1927	1,000	500	3.2	1.6	8.12	13	---	---
1928	---	---	---	---	---	---	---	---
1929	---	---	---	---	---	---	---	---
1930	---	---	---	---	---	---	---	---
1931	---	---	---	---	---	---	---	---
1932	---	---	---	---	---	---	---	---
1933	---	---	---	---	---	---	---	---
1934	---	---	---	---	---	---	---	---
1935	---	---	---	---	---	---	---	---
1936	700	500	13.0	6.5	6.20	40	3/	3/
1937	5,800	5,200	11.6	60.3	5.25	317	1.81	109
1938	9,800	8,200	15.3	125.3	4.40	551	1.81	227
1939	7,200	6,900	14.6	101.0	4.07	411	1.89	191
1940	9,000	8,700	13.3	116.0	4.65	539	1.77	205
1941	6,800	6,600	16.8	110.7	6.42	711	1.91	211
1942	13,000	11,500	17.5	200.7	7.01	1,407	2.57	516
1943	9,200	8,500	18.8	159.7	7.95	1,270	2.41	385
1944	13,900	12,700	14.6	185.0	10.10	1,868	2.59	479
1945	16,300	15,600	16.3	253.8	9.90	2,513	2.53	642
1946	22,600	19,300	17.0	328.9	11.70	3,848	2.45	805
1947	28,400	24,700	21.2	524.7	11.80	6,191	2.49	1,304
1948	26,500	23,400	17.1	399.9	10.30	4,119	2.49	994
1949	17,900	15,600	21.9	340.9	10.10	3,443	2.44	831
1950	23,000	20,800	19.9	414.2	10.60	4,388	2.41	999
1951	17,700	15,600	21.0	328.0	11.00	3,608	2.40	786
1952	14,400	13,200	22.9	302.0	11.60	3,503	2.37	716
1953	17,600	16,800	23.0	387.0	10.90	4,218	2.34	907
1954	18,600	17,900	21.7	389.0	11.20	4,357	2.34	910
1955	17,700	16,800	22.7	381.0	11.00	4,191	2.33	889
1956	17,800	17,300	24.7	428.0	11.00	4,708	2.31	989
1957	19,400	19,200	24.1	462.0	10.80	4,990	2.31	1,068
1958	19,400	19,200	27.1	521.0	11.20	5,835	2.30	1,198
1959	19,900	19,300	26.1	504.0	11.10	5,594	2.30	1,161
1960	20,900	20,300	23.2	470.0	10.90	5,123	2.30	1,081
1961	21,200	20,600	23.2	478.0	11.10	5,306	2.29	1,093
1962	20,200	19,600	26.4	518.0	12.20	6,320	2.26	1,169
1963	19,800	19,300	27.6	532.0	11.00	5,852	2.23	1,188
1964	20,700	20,300	22.4	454.0	11.90	5,403	2.19	993

See footnote at end of table.

Table 4.--Sugarbeets: Acreage, yield, production, price, value, and Sugar Act payments, by States, 1924-64--Continued

CALIFORNIA

Crop year	Acreage		Yield	Production	Price per ton	Value of production	Sugar Act payments	
	Planted	Harvested	per harvested acre				Per ton	Total
	Acres	Acres	Tons	1,000 tons	Dollars	1,000 dollars	Dollars	1,000 dollars
1924 ...	93,000	81,000	9.7	786	9.10	7,150	---	---
1925 ...	104,000	76,000	6.4	488	8.21	4,005	---	---
1926 ...	53,000	46,000	8.0	369	9.24	3,411	---	---
1927 ...	60,000	59,000	8.1	476	9.28	4,418	---	---
1928 ...	54,000	49,000	13.0	638	8.03	5,121	---	---
1929 ...	54,000	46,000	11.8	545	7.28	3,966	---	---
1930 ...	68,000	65,000	11.8	768	7.46	5,731	---	---
1931 ...	95,000	89,000	11.9	1,060	7.40	7,847	---	---
1932 ...	106,000	104,000	12.4	1,288	6.62	8,528	---	---
1933 ...	111,000	108,000	15.0	1,613	5.67	9,174	1/1.14	1/227
1934 ...	113,000	110,000	14.7	1,617	5.22	8,441	2/1.75	2/2,830
1935 ...	122,000	116,000	12.4	1,443	5.81	8,384	2/1.13	2/1,631
1936 ...	144,000	139,000	14.2	1,975	6.48	12,798	3/	3/
1937 ...	143,000	132,000	12.9	1,706	5.93	10,117	2.00	3,432
1938 ...	178,000	157,000	12.8	2,012	4.86	9,778	1.97	3,964
1939 ...	174,000	167,000	16.2	2,707	4.93	13,346	2.02	5,468
1940 ...	178,000	169,000	16.6	2,805	4.87	13,660	1.99	5,532
1941 ...	139,000	126,000	16.1	2,030	6.06	12,302	1.95	3,958
1942 ...	183,000	169,000	13.8	2,334	7.21	16,828	2.48	5,788
1943 ...	86,000	72,000	15.2	1,093	9.92	10,843	2.60	2,842
1944 ...	75,000	68,000	17.1	1,161	10.60	12,307	2.53	2,937
1945 ...	101,000	93,000	16.8	1,565	10.80	16,902	2.52	3,939
1946 ...	135,000	122,000	17.1	2,081	11.10	23,099	2.45	5,101
1947 ...	164,000	156,000	18.6	2,897	12.10	35,054	2.43	7,035
1948 ...	187,000	172,000	16.4	2,817	10.90	30,705	2.35	6,614
1949 ...	150,000	134,000	18.8	2,519	11.00	27,709	2.43	6,129
1950 ...	219,000	209,000	18.8	3,927	10.70	42,019	2.26	8,872
1951 ...	147,900	139,600	18.9	2,643	11.70	30,923	2.32	6,144
1952 ...	160,100	149,100	17.7	2,636	12.20	32,159	2.31	6,082
1953 ...	174,300	167,300	19.7	3,289	11.70	38,481	2.27	7,452
1954 ...	224,900	218,500	21.2	4,632	10.90	50,489	2.21	10,223
1955 ...	167,600	162,700	20.7	3,365	10.90	36,678	2.19	7,357
1956 ...	178,700	170,800	20.5	3,500	11.40	39,900	2.16	7,572
1957 ...	202,300	195,500	22.1	4,316	11.00	47,476	2.05	8,820
1958 ...	207,200	189,700	19.0	3,595	11.60	41,702	2.07	7,457
1959 ...	215,200	208,300	23.7	4,928	11.50	56,672	2.13	10,480
1960 ...	211,500	206,600	20.3	4,198	10.80	45,338	2.03	8,527
1961 ...	241,200	235,700	18.6	4,388	11.00	48,268	2.01	8,799
1962 ...	254,900	238,600	20.2	4,825	12.30	59,348	2.00	9,637
1963 ...	305,800	292,000	21.5	6,278	12.30	77,219	2.00	12,541
1964 ...	364,700	353,500	21.0	7,439	11.30	84,061	1.98	14,761

See footnotes at end of table.

Table 4.--Sugarbeets: Acreage, yield, production, price, value, and Sugar Act payments, by States, 1924-64--Continued

INDIANA

Crop year	Acreage		Yield	Production	Price	Value	Sugar Act payments	
	Planted	Harvested	per harvested acre		per ton	of production	Per ton	Total
	Acres	Acres	Tons	1,000 tons	Dollars	1,000 dollars	Dollars	1,000 dollars
1924	9,800	8,700	6.3	54.5	8.40	458	---	---
1925	8,000	7,600	8.7	66.3	6.82	452	---	---
1926	6,000	4,500	7.5	33.6	6.99	235	---	---
1927	8,300	7,700	7.4	56.8	7.01	398	---	---
1928	7,000	6,200	5.5	34.2	7.02	240	---	---
1929	3,400	3,000	7.5	22.5	7.51	169	---	---
1930	6,300	5,900	10.9	64.2	7.76	498	---	---
1931	---	---	---	---	---	---	---	---
1932	1,000	650	11.7	7.6	5.39	41	---	---
1933	6,300	4,800	8.3	40.0	6.13	245	1/1.19	1/ 8
1934	8,100	5,900	7.8	45.9	5.82	267	2/1.75	2/ 80
1935	8,600	8,500	6.4	54.6	5.99	327	2/1.13	2/ 62
1936	5,900	5,600	9.1	51.1	6.98	357	3/	3/
1937	7,500	6,400	6.0	38.4	6.36	244	1.75	67
1938	11,600	11,200	6.8	76.0	5.74	436	1.85	141
1939	9,500	8,900	7.6	68.0	5.68	386	1.73	118
1940	9,200	8,400	7.5	63.1	7.31	461	2.04	129
1941	8,400	7,900	8.9	70.2	7.68	539	1.76	124
1942	10,400	10,000	10.8	107.6	6.74	725	2.16	232
1943	4,300	3,100	4.3	13.4	9.92	133	2.61	35
1944	300	200	8.5	1.7	12.00	20	2.71	5
1945	300	200	14.0	2.8	11.60	32	2.51	7
1946	500	400	12.0	4.8	13.20	63	2.78	13
1947	700	600	8.2	4.9	13.00	64	2.38	12
1948	500	400	11.5	4.6	12.00	55	2.49	11
1949	900	800	10.2	8.2	11.20	92	2.42	20
1950	1,000	700	11.1	7.8	11.00	86	2.29	18
1951	240	190	9.5	1.8	12.00	22	2.37	4
1952	220	150	10.0	1.5	12.60	19	2.43	4
1953	200	150	12.0	1.8	12.50	22	2.41	4
1954	60	60	15.0	.9	9.00	8	2.39	2
1955	30	30	20.0	.6	8.70	5	2.35	1
1956	40	30	13.3	.4	10.40	4	2.31	1
1957	20	20	20.0	.4	9.20	4	2.31	1
1958	10	10	30.0	.3	8.80	3	2.29	1
1959	30	30	20.0	.6	7.00	4	2.30	1
1960	ESTIMATES DISCONTINUED							

See footnotes at end of table.

Table 4.--Sugarbeets: Acreage, yield, production, price, value, and Sugar Act payments, by States, 1924-64--Continued

ILLINOIS

Crop year	Acreage		Yield	Production	Price	Value	Sugar Act payments	
	Planted	Harvested	per harvested acre		per ton	of production	Per ton	Total
	Acres	Acres	Tons	1,000 tons	Dollars	1,000 dollars	Dollars	1,000 dollars
1924 ...	5,300	4,300	8.1	34.8	7.27	253	---	---
1925 ...	2,900	2,600	10.1	26.2	7.02	184	---	---
1926 ...	2,900	1,200	7.9	9.5	7.05	67	---	---
1927 ...	1,800	1,700	7.5	12.8	7.03	90	---	---
1928 ...	1,700	1,500	8.5	12.7	7.40	94	---	---
1929 ...	1,800	1,100	8.5	9.3	7.31	68	---	---
1930 ...	2,000	1,900	9.8	18.6	7.69	143	---	---
1931 ...	1,300	1,200	11.3	13.6	5.59	76	---	---
1932 ...	1,500	1,100	10.5	11.5	5.65	65	---	---
1933 ...	1,500	1,500	7.9	11.8	6.09	72	1/1.19	1/2
1934 ...	1,900	1,200	7.2	8.7	5.27	46	2/1.75	2/15
1935 ...	2,800	2,700	6.8	18.3	5.16	94	2/1.13	2/21
1936 ...	2,100	1,900	11.7	22.2	5.81	129	3/	3/
1937 ...	2,200	2,000	9.6	19.2	5.71	110	1.88	36
1938 ...	4,700	4,500	11.0	49.3	4.82	238	1.77	87
1939 ...	2,800	2,400	10.4	25.0	5.06	126	1.75	44
1940 ...	2,100	2,000	12.2	24.5	6.10	149	1.85	45
1941 ...	2,100	1,900	15.4	29.2	6.52	190	1.61	47
1942 ...	3,000	2,600	13.4	34.8	6.58	229	2.19	76
1943 ...	1,000	800	10.5	8.4	10.00	84	2.60	22
1944 ...	1,200	900	10.0	9.0	11.60	104	2.59	23
1945 ...	1,900	1,800	14.6	26.3	11.20	295	2.52	66
1946 ...	2,700	2,600	13.5	35.1	13.20	463	2.73	96
1947 ...	3,900	3,500	12.9	45.2	12.50	565	2.30	104
1948 ...	2,400	2,200	14.4	31.6	12.00	379	2.52	80
1949 ...	2,800	2,700	14.1	38.2	10.70	409	2.46	94
1950 ...	3,100	2,700	13.0	35.1	11.50	404	2.32	81
1951 ...	1,660	1,430	17.7	25.3	11.90	301	2.31	58
1952 ...	1,470	1,360	13.2	17.9	12.90	231	2.42	43
1953 ...	1,460	1,390	16.5	22.9	12.30	22	2.40	55
1954 ...	2,060	1,850	19.7	36.5	9.10	332	2.36	86
1955 ...	1,720	1,600	22.2	35.5	8.70	309	2.34	83
1956 ...	1,750	1,670	17.2	28.7	9.70	278	2.32	67
1957 ...	1,920	1,700	15.5	26.4	9.20	243	2.31	61
1958 ...	1,880	1,760	22.3	39.2	8.80	345	2.29	90
1959 ...	2,060	1,790	22.8	40.8	7.00	286	2.30	94
1960 ...	1,630	1,570	18.9	29.6	8.40	249	2.21	65
1961 ...	1,550	1,470	23.5	34.6	7.60	263	2.17	75
1962 ...	1,000	1,000	18.9	18.9	11.70	221	2.18	41
1963 ...	1,100	1,020	18.6	19.0	11.80	224	2.17	41
1964 ...	1,260	1,180	19.3	22.8	9.30	212	2.14	49

See footnotes at end of table.

Table 4.--Sugarbeets: Acreage, yield, production, price, value, and Sugar Act payments, by States, 1924-64--Continued

IOWA

Crop year	Acreage		Yield	Production	Price per ton	Value of production	Sugar Act payments	
	Planted	Harvested	per harvested acre				Per ton	Total
	Acrea	Acrea	Tons	1,000 tons	Dollars	1,000 dollars	Dollars	1,000 dollars
1924	14,500	14,100	8.3	117.6	7.11	836	---	---
1925	13,200	12,500	8.4	104.4	5.50	574	---	---
1926	11,700	10,200	9.9	100.6	6.00	604	---	---
1927	8,600	8,400	8.7	73.4	6.10	448	---	---
1928	11,800	10,000	10.8	108.0	6.26	676	---	---
1929	16,500	14,700	7.1	104.0	7.00	728	---	---
1930	15,600	15,100	8.8	133.0	6.98	929	---	---
1931	7,200	6,900	9.8	67.3	6.00	404	---	---
1932	6,300	6,200	10.0	61.7	4.88	301	---	---
1933	7,500	7,400	11.2	82.8	4.78	396	1/.19	1/16
1934	8,300	7,400	7.3	54.1	4.63	250	2/1.75	2/95
1935	8,500	7,500	6.2	46.4	4.30	200	2/1.13	2/52
1936	5,300	5,100	9.2	46.9	4.93	231	3/	3/
1937	3,100	2,700	10.6	28.7	4.75	136	1.70	49
1938	6,300	5,900	11.5	67.7	4.00	271	1.64	111
1939	6,000	5,800	9.8	57.0	4.00	228	1.56	89
1940	6,100	6,000	9.6	57.6	4.62	266	1.69	97
1941	5,000	4,300	9.6	41.3	5.50	227	1.57	65
1942	7,300	4,700	8.4	39.6	6.25	248	2.17	86
1943	1,700	1,400	6.3	8.8	8.42	74	2.48	22
1944	1,000	800	6.8	5.4	10.40	56	2.62	14
1945	1,900	1,600	7.3	11.7	9.80	115	2.47	29
1946	2,300	1,900	9.8	18.6	11.00	205	2.52	47
1947	2,600	2,100	7.9	16.6	11.30	188	2.36	39
1948	800	700	12.6	8.8	10.50	92	2.52	22
1949	1,100	1,000	10.0	10.0	11.50	115	2.63	26
1950	2,500	2,300	10.3	23.7	11.30	268	2.43	38
1951	1,220	960	9.8	9.4	11.20	105	2.32	22
1952	880	870	12.1	10.5	12.90	135	2.41	25
1953	750	650	12.2	7.9	11.70	92	2.42	19
1954	1,480	950	7.9	7.5	10.00	75	2.42	18
1955	890	880	11.7	10.3	10.40	107	2.35	24
1956	1,320	1,170	10.9	12.8	11.80	151	2.30	29
1957	1,380	1,350	10.4	14.1	10.50	148	2.28	32
1958	1,240	1,080	10.8	11.7	10.70	125	2.23	26
1959	1,340	1,180	14.4	17.0	9.60	163	2.21	38
1960	1,430	1,420	12.7	18.1	10.20	185	2.16	39
1961	1,600	1,600	14.4	23.0	10.20	235	2.13	49
1962	3,590	2,440	12.5	30.5	12.70	387	2.19	67
1963	4,960	4,720	12.5	58.9	10.80	636	2.29	134
1964	4,220	3,960	12.0	47.6	11.10	528	2.10	100

See footnotes at end of table.

Table 4.--Sugarbeets: Acreage, yield, production, price, value, and Sugar Act payments, by States, 1924-64--Continued

TEXAS

Crop year	Acreage		Yield	Production	Price per ton	Value of production	Sugar Act payments	
	Planted	Harvested	per harvested acre				Per ton	Total
	Acres	Acres	Tons	1,000 tons	Dollars	1,000 dollars	Dollars	1,000 dollars
1939	100	100	10.0	1.0	4.99	5	---	---
1940	200	200	9.0	1.8	5.30	10	---	---
1941	200	100	10.0	1.0	4.84	5	1.39	1
1942	600	160	11.2	1.8	6.82	12	2.37	4
1943	80	30	8.0	.24	8.54	2	2.53	1
1944	300	100	11.0	1.1	10.80	12	2.51	3
1945	500	300	3.0	.9	10.30	9	2.61	2
1946	1,300	1,000	10.7	10.7	9.70	104	2.22	24
1947	3,100	2,400	11.8	28.4	11.90	338	2.48	70
1948	4,700	4,200	13.1	55.0	9.50	522	1.96	108
1949	1,900	1,500	14.6	21.9	11.00	241	2.17	48
1950	4,600	3,900	12.3	48.1	10.80	519	1.86	89
1951	1,490	1,360	11.8	16.1	11.00	177	1.97	32
1952	900	760	13.2	10.3	11.90	123	2.50	26
1953	1,490	1,220	16.3	19.9	12.20	243	2.33	46
1954	1,360	1,350	15.0	20.2	11.10	224	2.20	44
1955	1,580	1,560	19.9	31.1	11.10	345	2.23	69
1956	1,640	1,620	19.2	31.1	12.20	379	2.38	74
1957	1,860	1,820	23.2	42.3	11.60	491	2.33	99
1958	1,820	1,800	17.9	32.2	11.10	357	2.05	66
1959	1,770	1,770	16.3	28.8	11.10	320	2.15	62
1960	1,760	1,730	18.8	32.6	11.30	368	1.99	65
1961	2,140	2,140	16.1	34.5	11.20	386	2.18	75
1962	2,280	2,280	17.5	39.8	12.10	482	2.04	81
1963	2,360	2,330	18.7	43.6	11.80	514	2.09	92
1964	26,700	25,900	20.3	525.0	12.20	6,405	2.38	1,248

See footnotes at end of table.

Table 4.--Sugarbeets: Acreage, yield, production, price, value, and Sugar Act payments, by States, 1924-64--Continued

NEW MEXICO

Crop year	Acreage		Yield	Production	Price per ton	Value of production	Sugar Act payments	
	Planted	Harvested	per harvested acre				Per ton	Total
	Acres	Acres	Tons	1,000 tons	Dollars	1,000 dollars	Dollars	1,000 dollars
1924	2,000	1,400	4.4	6.1	7.70	47	---	---
1925	---	---	---	---	---	---	---	---
1926	1,000	900	10.0	9.0	6.89	62	---	---
1927	1,400	700	5.7	4.0	6.25	25	---	---
1928	1,200	800	7.5	6.0	6.67	40	---	---
1929	500	300	9.0	2.7	6.67	18	---	---
1930	800	600	6.7	4.0	6.50	26	---	---
1931	800	600	5.7	3.4	5.00	17	---	---
1932	300	250	8.0	2.0	4.50	9	---	---
1933	800	600	6.7	4.0	4.40	18	1/ .19	1/ 1
1934	400	200	3.5	.7	4.20	3	2/ 1.75	2/ 1
1935	60	20	6.5	.13	5.40	1	2/ 1.13	2/ 4/
1936	100	30	6.7	.2	5.39	1	3/	3/
1937	---	---	---	---	---	---	---	---
1938	40	30	10.0	.3	4.31	1	1.97	1
1939	400	400	6.0	2.4	4.77	11	1.97	5
1940	400	400	3.8	1.5	5.54	8	1.89	3
1941	300	300	4.7	1.4	6.60	9	1.91	3
1942	400	300	8.0	2.4	7.95	19	2.87	7
1943	400	300	3.3	1.0	8.50	8	2.48	2
1944	100	100	10.0	1.0	10.50	10	2.74	3
1945	100	100	3.0	.3	10.50	3	2.60	1
1946	100	---	---	---	---	---	---	---
1947	---	---	---	---	---	---	---	---
1948	---	---	---	---	---	---	---	---
1949	400	400	6.5	2.6	10.40	27	2.44	6
1950	2,000	1,400	8.0	11.2	11.40	128	2.37	27
1951	1,490	1,300	6.1	7.9	11.60	92	2.35	19
1952	620	570	5.6	3.2	11.90	38	2.52	8
1953	440	370	7.3	2.7	12.20	33	2.49	7
1954	650	550	10.2	5.6	11.00	62	2.33	13
1955	790	710	5.2	3.7	11.00	41	2.42	9
1956	590	540	7.8	4.2	11.40	48	2.52	11
1957	700	610	12.3	7.5	10.10	76	2.28	17
1958	770	720	12.9	9.3	11.10	103	2.26	21
1959	800	640	12.7	8.1	11.10	90	2.49	20
1960	840	650	11.1	7.2	11.30	81	2.41	17
1961	210	210	10.5	2.2	11.20	25	2.42	5
1962	230	210	8.1	1.7	12.10	21	2.33	4
1963	---	---	---	---	---	---	---	---
1964	2,500	2,460	16.6	40.8	12.20	498	2.39	98

See footnotes at end of table.

Table 4.--Sugarbeets: Acreage, yield, production, price, value, and Sugar Act payments, by States, 1924-64--Continued

ARIZONA

Crop year	Acreage		Yield	Production	Price per ton	Value of production	Sugar Act payments	
	Planted	Harvested	per harvested acre				Per ton	Total
	Acres	Acres	Tons	1,000 tons	Dollars	1,000 dollars	Dollars	1,000 dollars
1940	200	200	9.0	1.8	5.82	10	---	---
1949	600	500	15.0	7.5	11.00	82	2.45	18
1950	2,100	2,000	15.4	30.9	11.70	362	2.39	74
1951	100	100	19.0	1.9	12.60	24	2.65	5
1952	60	60	10.0	.6	12.30	7	2.73	2

NEVADA

1927	2,000	1,100	3.1	3.4	7.94	27	---	---
1938	600	600	10.5	6.3	4.65	29	1.84	12
1939	1,800	1,600	11.4	18.2	4.81	88	1.99	36
1940	800	---	---	---	---	---	---	---
1946	400	400	4.2	1.7	10.50	18	2.43	4
1956	480	240	13.3	3.2	11.10	36	2.29	7
1957	500	390	12.3	4.8	10.40	50	2.45	12
1958	550	410	18.0	7.4	11.20	83	2.34	17
1959	460	440	18.9	8.3	11.20	93	2.38	20
1960	580	550	14.4	7.9	10.10	80	2.38	19
1961	---	---	---	---	---	---	---	---
1962	500	320	11.2	3.6	11.90	43	2.25	8
1963	1,760	1,220	14.0	17.1	12.10	207	2.05	35
1964	3,230	2,840	13.6	38.5	11.10	427	2.19	84

1/ Processing tax refund, pursuant to Jones-Costigan Act. 2/ Parity payments, pursuant to the Jones-Costigan Act. 3/ No sugarbeet program in effect. 4/ Less than \$500.

Table 5.--Sugarbeets: Harvested acreage, tonnage of beets worked by factories, and sugar production, 1888-1908 1/

UNITED STATES

Crop year	Acreage harvested	Beets worked by factories (sliced)	Sugar production refined basis	Crop year	Acreage harvested	Beets worked by factories (sliced)	Sugar production refined basis
1888	---	---	2	1899	135	833	82
1889	---	---	2	1900	132	846	86
1890	---	---	4	1901	175	1,686	185
1891	7	73	6	1902	216	1,896	218
1892	13	129	14	1903	243	2,076	241
1893	20	196	23	1904	198	2,072	242
1894	20	---	23	1905	307	2,666	313
1895	23	---	33	1906	376	4,236	484
1896	57	---	42	1907	371	3,768	464
1897	41	390	45	1908	365	3,415	426
1898	37	364	36				

1/ Compiled from the following sources: 1888-90 and 1894-96, Willett and Gray; 1891-93, Reports of Commissioner of Internal Revenue; 1897 and 1901-08, annual reports of Department of Agriculture on Progress of Beet-Sugar Industry in United States; 1898-1900, Willett and Gray for acreage only and Senate Document No. 21, 61st Congress for beets worked and sugar produced.

Table 6.--Sugarbeets: Abandonment and deficiency payments to producers,
by States, 1937-64 1/

(1,000 dollars)

State	1937	1938	1939	1940	1941	1942	1943	1944	1945
Ohio	89	35	40	22	14	30	126	39	31
Indiana	18	13	9	6	4	8	26	1	2/
Illinois	2	7	7	1	1	5	4	5	1
Michigan	145	58	63	91	35	259	237	93	217
Wisconsin	10	13	14	19	4	65	44	35	29
Minnesota	7	9	19	9	13	13	58	30	27
Iowa	2	4	4	1	6	19	6	3	3
North Dakota	1	2	7	2/	5	4	13	9	32
South Dakota	7	5	22	5	3	12	15	22	10
Nebraska	31	27	110	65	21	230	75	161	145
Kansas	6	6	18	3	3	11	15	4	5
Texas	---	---	0	0	2/	2/	0	0	2
Montana	51	50	32	39	34	84	110	173	147
Idaho	4	8	35	33	30	114	48	61	44
Wyoming	11	18	61	28	23	175	33	49	91
Colorado	139	31	344	144	30	449	188	244	258
New Mexico	2/	2/	2/	0	2/	2/	2	2/	1
Arizona 3/	---	---	---	0	---	---	---	---	---
Utah	42	7	29	142	8	42	16	41	43
Nevada	---	1	1	5	2/	---	---	---	---
Washington	8	13	1	4	2/	1	0	108	21
Oregon	9	2/	8	23	0	0	0	21	19
California 3/	282	423	110	153	197	518	238	107	164
United States	864	730	934	793	431	2,039	1,254	1,206	1,290

State	1946	1947	1948	1949	1950	1951	1952	1953	1954
Ohio	39	113	10	52	57	25	17	17	23
Indiana	1	1	1	1	3	1	1	2/	2/
Illinois	1	5	2	2	7	2	4	1	2
Michigan	87	304	74	119	152	82	49	57	87
Wisconsin	17	33	20	13	22	37	13	10	18
Minnesota	24	72	45	33	102	42	76	48	23
Iowa	3	4	1	1	1	3	0	---	6
North Dakota	16	39	27	20	79	24	55	30	5
South Dakota	10	8	9	3	5	4	1	16	5
Nebraska	74	160	129	17	34	90	26	39	132
Kansas	13	6	15	6	17	37	4	26	5
Texas	2/	2	0	3	17	4	1	---	2/
Montana	145	95	102	72	42	53	12	21	37
Idaho	85	79	106	54	116	57	60	70	88
Wyoming	58	32	60	8	25	10	24	13	57
Colorado	440	90	287	74	105	114	47	42	687
New Mexico	2/	---	---	2/	2	2	1	1	2/
Arizona	---	---	---	3	1	0	2/	---	---
Utah	82	14	113	10	49	20	59	14	31
Nevada	1	---	---	---	---	---	---	---	---
Washington	18	24	25	23	11	21	26	20	57
Oregon	13	20	30	16	26	44	9	11	20
California	217	168	405	191	270	142	231	96	80
United States	1,344	1,269	1,461	721	1,143	814	716	532	1,363

See footnotes at end of table.

Table 6.--Sugarbeets: Abandonment and deficiency payments to producers, by States, 1937-64 1/-- Continued

(1,000 dollars)

State	1955	1956	1957	1958	1959	1960	1961	1962	1963	1964
Ohio	13	36	17	26	5	20	49	34	15	65
Indiana	---	2/	---	---	2/	---	---	---	2/	1
Illinois	1	2	7	1	2	2	1	2	2	2
Michigan	10	9 1/2	46	33	18	58	36	84	61	47
Wisconsin	10	8	8	2	17	17	10	---	---	---
Minnesota	14	19	70	6	34	17	17	416	23	91
Iowa	2/	1	1	1	1	2/	2/	6	5	5
North Dakota	5	4	10	8	45	1	13	100	6	50
South Dakota	2	5	3	4	2/	8	30	21	1	17
Nebraska	131	25	31	51	4	6	93	367	72	64
Kansas	1	2/	1	3	1	2/	16	8	47	33
Texas	---	---	---	2	6	5	4	5	10	2
Montana	8	3	1	21	47	32	93	58	4	79
Idaho	40	67	23	17	11	118	124	117	29	558
Wyoming	70	30	9	5	9	31	69	126	14	84
Colorado	317	158	33	106	63	16	269	229	289	321
New Mexico	2	1	---	2/	---	2	2/	1	---	2
Arizona	---	---	---	---	---	---	---	---	---	---
Utah	27	19	21	84	7	21	83	6	7	132
Nevada	---	---	---	1	2/	2	---	---	3	3
Washington	110	2	5	3	23	68	15	3	2/	107
Oregon	12	1	5	1	4	16	22	12	4	40
California 3/	116	169	253	571	90	432	1,000	556	310	290
United States	889	644	544	946	387	872	1,944	2,151	902	1,993

1/ Payments from 1937-47 made under authority of Sugar Act of 1937, as amended. The 1948 and subsequent crop payments made under Sugar Act of 1948. Compiled from records of Agricultural Stabilization and Conservation.

2/ Less than \$500. 3/ Relates to year in which beets were harvested.

Table 7.--Sugarbeets: Support payments per ton, by States, 1943-45 1/

State	1943	1944	1945	State	1943	1944	1945
	Dollars	Dollars	Dollars		Dollars	Dollars	Dollars
Ohio	1.85	3.16	2.65	Idaho	1.28	2.93	2.12
Indiana	1.76	3.31	3.10	Wyoming	1.17	2.73	1.91
Illinois	1.48	2.94	2.45	Colorado	1.28	2.82	1.90
Michigan	1.62	3.05	2.55	New Mexico	1.27	2.83	2.01
Wisconsin	1.47	2.70	2.40	Arizona	---	---	---
Minnesota	1.33	2.86	2.24	Utah	1.28	2.81	2.09
Iowa	1.08	2.79	2.33	Nevada	---	---	---
North Dakota	1.32	2.90	2.13	Washington	1.85	2.94	2.16
South Dakota	1.17	2.98	2.14	Oregon	1.31	2.74	2.12
Nebraska	1.25	2.80	1.79	California	1.50	2.99	2.23
Kansas	1.75	3.09	2.45	United States 2/	1.36	2.88	2.11
Texas	1.22	2.98	2.01				
Montana	1.37	2.91	2.06				

1/ Payment made under price support program of the United States Department of Agriculture compiled from records of Agricultural Stabilization and Conservation Service.

2/ Support payment for 1947 crop for the United States \$1.30. Not available by States.

UNITED STATES DEPARTMENT OF AGRICULTURE
STATISTICAL REPORTING SERVICE
WASHINGTON, D. C. 20250

POSTAGE AND FEES PAID
U. S. DEPARTMENT OF AGRICULTURE

OFFICIAL BUSINESS

• U.S. GOVERNMENT PRINTING OFFICE: 1967 301-752 (215-63)

END