



AgEcon SEARCH
RESEARCH IN AGRICULTURAL & APPLIED ECONOMICS

The World's Largest Open Access Agricultural & Applied Economics Digital Library

This document is discoverable and free to researchers across the globe due to the work of AgEcon Search.

Help ensure our sustainability.

Give to AgEcon Search

AgEcon Search
<http://ageconsearch.umn.edu>
aesearch@umn.edu

*Papers downloaded from **AgEcon Search** may be used for non-commercial purposes and personal study only. No other use, including posting to another Internet site, is permitted without permission from the copyright owner (not AgEcon Search), or as allowed under the provisions of Fair Use, U.S. Copyright Act, Title 17 U.S.C.*

SB 411 (1967)

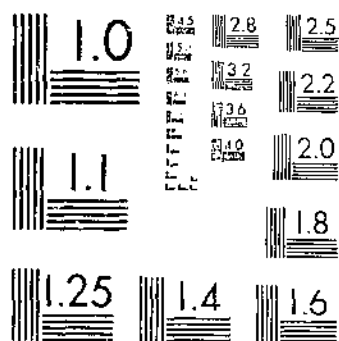
USDA STATISTICAL BULLETINS

UPDATA

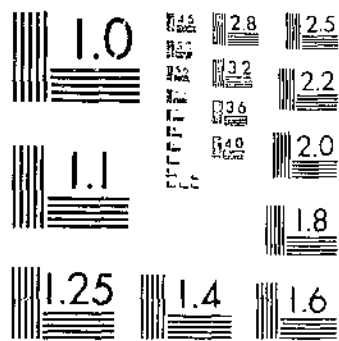
VEGETABLES FOR PROCESSING, ACREAGE, PRODUCTION, VALUE, BY STATES, 1956-65

1 OF 1

START



MICROCOPY RESOLUTION TEST CHART
NATIONAL BUREAU OF STANDARDS-1963-A



MICROCOPY RESOLUTION TEST CHART
NATIONAL BUREAU OF STANDARDS-1963-A

VEGETABLES **for Processing**

- **Acreage**
- **Production**
- **Value**

By States, 1959-65

Revised Estimates

Statistical Bulletin No. 411

UNITED STATES DEPARTMENT OF AGRICULTURE
Statistical Reporting Service **Crop Reporting Board**
Washington, D. C. **August 1967**

CONTENTS

<u>TITLE</u>	<u>PAGE</u>
INTRODUCTION	3
SUMMARY TABLES:	
BY COMMODITIES	4
BY STATES	6
ACREAGE, YIELD, PRODUCTION AND VALUE:	
ASPARAGUS	13
GREEN LIMA BEANS	20
SNAP BEANS	22
BEETS	26
CABBAGE FOR SAUERKRAUT	28
SWEET CORN	30
CUCUMBERS FOR PICKLES	33
GREEN PEAS	37
SPINACH	41
TOMATOES	45
PLANTED ACRES BY TYPE:	
SNAP BEANS	48
SWEET CORN	50
GREEN PEAS	52
STOCKS ON HAND:	
CUCUMBERS FOR PICKLES	54
APPENDIX	
COMMENTS	55
TOTAL PRODUCTION OF VEGETABLES AND MELONS, UNITED STATES, 1959-65	56

VEGETABLES FOR PROCESSING

3

ACREAGE, PRODUCTION, AND VALUE,
BY STATES, 1959-65
REVISED ESTIMATES

INTRODUCTION

THE CROP REPORTING BOARD PRESENTS IN THIS PUBLICATION REVISED OFFICIAL ESTIMATES OF ACREAGE, YIELD, PRODUCTION, PRICE, VALUE, AND UTILIZATION OF VEGETABLE CROPS GROWN FOR COMMERCIAL PROCESSING IN THE UNITED STATES DURING THE YEARS 1959-65. ESTIMATES FOR THE PERIOD GIVEN SUPERSEDE THOSE PUBLISHED IN ALL EARLIER REPORTS BY THE CROP REPORTING BOARD AND CONTINUE THE OFFICIAL REVISED SERIES GIVEN IN U. S. DEPARTMENT OF AGRICULTURE STATISTICAL BULLETIN NO. 132, ISSUED IN JUNE 1953, STATISTICAL BULLETIN NO. 210, ISSUED IN MAY 1957, AND STATISTICAL BULLETIN NO. 299, ISSUED IN DECEMBER 1961.

COMMERCIAL PROCESSING, AS RELATED TO ESTIMATES PUBLISHED IN THIS BULLETIN, INCLUDES CANNING, FREEZING, AND PICKLING, PLUS THE MANUFACTURING OF SAUERKRAUT, BY FIRMS ORGANIZED TO PROCESS AGRICULTURAL PRODUCTS AND TO SELL THEIR OUTPUT FOR PUBLIC CONSUMPTION. HOME CANNING AND FREEZING AND INSTITUTIONAL PROCESSING ARE EXCLUDED, AS IS COMMERCIAL DEHYDRATION. PRODUCTION UTILIZED FOR DEHYDRATION IS INCLUDED IN ESTIMATES OF COMMERCIAL VEGETABLES FOR FRESH MARKET.

THE ESTIMATING PROGRAM FOR VEGETABLES GROWN FOR COMMERCIAL PROCESSING IS CONFINED TO 10 PRINCIPAL CROPS: ASPARAGUS, GREEN LIMA BEANS, SNAP BEANS, BEETS, CABBAGE FOR SAUERKRAUT, SWEET CORN, CUCUMBERS FOR PICKLES, GREEN PEAS, SPINACH, AND TOMATOES. THESE CROPS ARE GROWN PRIMARILY UNDER SOME KIND OF CONTRACTUAL ARRANGEMENT BETWEEN GROWER AND PROCESSOR AND HAVE TRADITIONALLY BEEN THE "STAPLES" OF PROCESSED VEGETABLES. IN RECENT YEARS, INCREASING AMOUNTS OF BROCCOLI, CARROTS, CAULIFLOWER, CELERY, GARLIC, ONIONS, ARTICHOKEs, AND BRUSSELS SPROUTS HAVE BEEN PROCESSED. QUANTITIES OF THESE CROPS USED FOR PROCESSING, HOWEVER, ARE PURCHASED MOSTLY ON THE OPEN MARKET AND CONSEQUENTLY ARE INCLUDED IN THE CROP REPORTING BOARD'S TOTAL CROP ESTIMATES, WHICH ARE PUBLISHED IN BULLETINS ON FRESH MARKET VEGETABLES.

INITIAL ESTIMATES FOR THE PROCESSING VEGETABLES COVERED IN THIS PUBLICATION WERE BASED PRIMARILY ON REPORTS SUPPLIED CURRENTLY EACH SEASON BY COMMERCIAL PROCESSORS THROUGHOUT THE COUNTRY. INSOFAR AS POSSIBLE, SUPPLEMENTAL DATA FROM THE INDUSTRY GROUPS AND COOPERATING STATE AND FEDERAL AGENCIES WERE ALSO USED. ESTIMATES FOR THE 7-YEAR PERIOD, 1959-65, AS PUBLISHED IN THIS BULLETIN, HAVE BEEN REAPPRAISED IN LIGHT OF FINDINGS OF THE AGRICULTURAL CENSUS OF 1964. FEW REVISIONS WERE FOUND TO BE NECESSARY AND ALL ARE INCLUDED HEREIN. NO FURTHER REVISION IS ANTICIPATED.

PLANTED AND HARVESTED ACREAGE AS GIVEN FOR A SPECIFIC CROP INCLUDES (1) ALL ACREAGE OWNED BY PROCESSORS AND USED IN PRODUCTION OF THE CROP, (2) ACREAGE UTILIZED BY PRIVATE GROWERS IN PRODUCING A CROP GROWN UNDER CONTRACT TO A PROCESSOR, AND (3) AN EQUIVALENT ACREAGE ALLOWANCE FOR PRODUCTION PURCHASED BY PROCESSORS ON THE OPEN MARKET. THE TERM "PRODUCTION" REFERS TO THE TOTAL QUANTITY OF RAW PRODUCT RECEIVED, EXCLUDING CULLS AND REJECTS IN EXCESS OF ANY ESTABLISHED TOLERANCES. OPEN MARKET PURCHASES, AS WELL AS CONTRACT PRODUCTION AND PRODUCTION FROM PROCESSOR-OWNED ACREAGE, ARE INCLUDED. THE "VALUE PER UNIT" AND "VALUE OF PRODUCTION" FOR 1964 AND 1965 ARE THE EQUIVALENT RETURNS FOR ALL VARIETIES AND GRADES AT THE PROCESSING PLANT DOOR. PRIOR TO 1964, THE "VALUE PER UNIT" AND "VALUE OF PRODUCTION" WERE BASED ON THE EQUIVALENT RETURNS AT THE FIRST RECEIVING POINT.

A NATIONAL PRODUCTION SUMMARY FOR 1959-65 FOR ALL FRESH AND PROCESSED VEGETABLES IS GIVEN IN THE APPENDIX OF THIS PUBLICATION.

TABLE 1. PRINCIPAL VEGETABLES FOR PROCESSING BY COMMODITIES
ACRES, PRODUCTION AND VALUE, UNITED STATES 1959-65

1959

CROP	ACRES		PRODUCTION	VALUE
	PLANTED	HARVESTED		
	ACRES	ACRES	TONS	1,000 DOLLARS
ASPARAGUS	112,600	112,600	179,220	23,708
GREEN LIMA BEANS	89,110	78,510	82,640	11,018
SNAP BEANS	172,200	162,270	365,860	38,982
BEETS	14,460	14,190	146,700	2,707
CABBAGE FOR SAUERKRAUT	11,140	10,870	149,280	2,272
SWEET CORN	450,200	418,650	1,582,170	30,249
CUCUMBERS FOR PICKLES	107,060	98,960	329,820	16,772
GREEN PEAS	361,420	346,730	473,200	41,501
SPINACH	38,900	32,330	147,820	5,531
TOMATOES	300,330	296,930	3,539,020	86,574
TOTAL	1,653,430	1,572,040	6,935,740	259,404

1960

ASPARAGUS	112,660	112,660	126,600	27,695
GREEN LIMA BEANS	95,200	91,810	103,150	14,794
SNAP BEANS	179,470	173,680	406,970	44,080
BEETS	15,420	14,780	145,860	2,806
CABBAGE FOR SAUERKRAUT	14,300	14,200	220,460	3,419
SWEET CORN	430,700	411,890	1,390,960	26,768
CUCUMBERS FOR PICKLES	97,110	90,230	336,060	18,258
GREEN PEAS	360,770	345,990	445,390	38,311
SPINACH	36,660	32,510	142,860	5,127
TOMATOES	282,000	279,950	4,253,770	105,903
TOTAL	1,625,190	1,567,700	7,373,080	287,161

1961

ASPARAGUS	108,350	108,350	129,700	31,314
GREEN LIMA BEANS	104,310	100,070	115,710	16,768
SNAP BEANS	197,120	189,260	478,550	50,224
BEETS	17,727	17,240	182,560	3,390
CABBAGE FOR SAUERKRAUT	13,180	13,090	215,700	2,747
SWEET CORN	468,620	450,520	1,726,270	33,545
CUCUMBERS FOR PICKLES	111,160	103,100	408,930	22,804
GREEN PEAS	423,550	401,480	510,510	43,984
SPINACH	34,250	30,500	144,480	5,147
TOMATOES	307,450	304,550	4,257,900	126,252
TOTAL	1,785,717	1,718,160	8,170,310	336,175

1962

ASPARAGUS	109,520	109,520	133,900	33,350
GREEN LIMA BEANS	96,480	92,030	108,430	16,379
SNAP BEANS	189,770	182,610	450,790	45,895
BEETS	18,460	17,120	208,840	3,905
CABBAGE FOR SAUERKRAUT	12,330	12,130	211,270	2,800
SWEET CORN	465,400	442,800	1,799,250	36,144
CUCUMBERS FOR PICKLES	105,440	98,960	401,520	21,439
GREEN PEAS	435,820	407,090	526,640	44,700
SPINACH	28,950	24,620	122,160	4,502
TOMATOES	330,100	327,900	5,393,900	153,278
TOTAL	1,792,270	1,714,780	9,356,700	362,392

TABLE 1. PRINCIPAL VEGETABLES FOR PROCESSING BY COMMODITIES
ACRES, PRODUCTION AND VALUE, UNITED STATES 1959-65--CONTINUED

1963

CROP	ACRES		PRODUCTION	VALUE
	PLANTED	HARVESTED		
	ACRES	ACRES	TONS	1,000 DOLLARS
ASPARAGUS	109,020	109,020	135,950	35,703
GREEN LIMA BEANS	74,540	71,650	84,850	12,588
SNAP BEANS	205,430	194,040	474,430	47,291
BEETS	19,310	18,700	211,410	3,638
CABBAGE FOR SAUERKRAUT	11,680	11,530	197,260	2,572
SWEET CORN	406,750	392,320	1,679,140	33,530
CUCUMBERS FOR PICKLES	116,230	107,720	466,680	25,834
GREEN PEAS	438,590	422,170	516,560	44,092
SPINACH	29,870	27,210	155,790	5,827
TOMATOES	252,570	250,460	4,099,690	109,640
TOTAL	1,663,990	1,604,820	8,021,760	320,724

1964

ASPARAGUS	107,630	107,630	126,150	30,031
GREEN LIMA BEANS	79,350	75,910	78,810	14,310
SNAP BEANS	230,350	216,930	409,880	47,800
BEETS	16,950	16,220	177,790	3,385
CABBAGE FOR SAUERKRAUT	10,490	10,280	162,850	2,501
SWEET CORN	369,900	353,040	1,480,700	30,185
CUCUMBERS FOR PICKLES	116,460	108,900	425,790	28,025
GREEN PEAS	437,020	417,410	482,700	46,767
SPINACH	27,990	25,290	146,860	5,630
TOMATOES	276,110	273,350	4,583,310	140,810
TOTAL	1,672,250	1,604,960	8,134,840	349,444

1965

ASPARAGUS	97,930	97,930	119,200	32,500
GREEN LIMA BEANS	90,190	83,970	96,450	17,048
SNAP BEANS	246,570	230,660	540,680	52,244
BEETS	15,660	14,530	178,510	3,271
CABBAGE FOR SAUERKRAUT	12,920	12,750	238,910	3,258
SWEET CORN	490,650	376,690	1,613,600	36,159
CUCUMBERS FOR PICKLES	114,380	107,610	441,560	32,517
GREEN PEAS	462,540	441,630	601,510	60,062
SPINACH	26,370	21,400	125,200	4,972
TOMATOES	260,990	257,560	4,501,140	163,913
TOTAL	1,758,200	1,644,730	8,457,160	405,944

TABLE 2. PRINCIPAL VEGETABLES FOR PROCESSING
ACRES, PRODUCTION AND VALUE, BY STATES 1959-65

1959

STATE	ACRES		PRODUCTION	VALUE
	PLANTED	HARVESTED		
	ACRES	ACRES	TONS	1,000 DOLLARS
MAINE	10,980	10,780	27,980	1,386
NEW HAMPSHIRE	690	630	3,230	93
VERMONT	370	300	1,010	43
MASSACHUSETTS	800	750	5,570	267
CONNECTICUT	50	40	140	5
NEW YORK	97,660	93,370	372,520	15,855
NEW JERSEY	59,020	56,690	240,040	13,560
PENNSYLVANIA	38,490	37,040	196,160	7,190
NORTH ATLANTIC	209,060	200,500	846,650	38,399
OHIO	33,630	32,670	335,400	9,114
INDIANA	50,950	49,100	329,010	8,585
ILLINOIS	110,340	107,570	382,130	13,804
MICHIGAN	58,640	55,570	229,610	10,699
WISCONSIN	255,320	239,190	687,250	22,849
MINNESOTA	148,850	136,330	388,360	10,510
IOWA	15,020	14,220	61,700	1,693
MISSOURI	1,490	1,370	5,710	167
SOUTH DAKOTA	440	290	760	11
NEBRASKA	220	210	40	10
NORTH CENTRAL	674,900	636,530	2,419,970	77,436
DELAWARE	43,240	40,630	67,960	4,632
MARYLAND	75,700	71,500	208,050	7,917
VIRGINIA	21,400	21,200	55,360	2,236
WEST VIRGINIA	300	300	1,200	36
NORTH CAROLINA	18,000	17,000	34,860	2,024
SOUTH CAROLINA	3,700	3,400	6,260	302
GEORGIA	6,600	6,100	8,740	686
FLORIDA	17,100	16,950	51,690	2,458
SOUTH ATLANTIC	186,040	177,080	434,220	20,291
KENTUCKY	3,300	3,100	6,070	325
TENNESSEE	15,820	14,740	30,960	2,445
ALABAMA	2,940	2,000	4,920	187
MISSISSIPPI	6,600	6,480	11,540	584
ARKANSAS	16,380	15,580	35,550	2,068
LOUISIANA	2,800	2,800	4,320	145
OKLAHOMA	15,300	10,080	27,750	1,679
TEXAS	38,250	34,600	117,890	3,889
SOUTH CENTRAL	101,390	89,880	239,040	11,322
MONTANA	500	500	3,500	60
IDAHO	27,230	25,710	98,660	3,461
WYOMING	1,630	950	2,960	64
COLORADO	10,890	10,090	58,090	2,092
NEW MEXICO	1,800	1,400	15,000	400
ARIZONA	200	200	1,400	73
UTAH	15,350	14,570	68,890	2,330
WASHINGTON	104,380	100,050	275,950	15,459
OREGON	93,200	88,170	275,040	19,871
CALIFORNIA	228,240	226,410	2,236,120	68,103
WESTERN	483,040	468,050	2,905,860	111,956
UNITED STATES	1,652,430	1,572,040	6,935,740	259,404

TABLE 2. PRINCIPAL VEGETABLES FOR PROCESSING
ACRES, PRODUCTION AND VALUE, BY STATES 1959-65--CONTINUED

1960

STATE	ACRES		PRODUCTION TONS	VALUE 1,000 DOLLARS
	PLANTED ACRES	HARVESTED ACRES		
MAINE	12,080	11,940	28,770	1,642
NEW HAMPSHIRE	510	500	2,660	84
VERMONT	150	140	290	30
MASSACHUSETTS	690	690	5,210	285
CONNECTICUT	30	30	140	7
NEW YORK	94,400	91,300	412,750	16,696
NEW JERSEY	62,840	60,760	339,690	18,457
PENNSYLVANIA	36,540	36,030	211,610	7,942
NORTH ATLANTIC	207,240	201,390	1,002,120	45,143
OHIO	31,940	31,640	437,420	11,962
INDIANA	48,900	46,200	338,560	9,627
ILLINOIS	115,110	113,700	409,020	14,709
MICHIGAN	57,860	54,520	228,050	11,440
WISCONSIN	233,320	223,390	557,510	19,619
MINNESOTA	147,240	139,380	334,990	9,791
IOWA	8,730	8,420	49,970	1,351
MISSOURI	870	820	3,860	137
SOUTH DAKOTA	300	300	950	15
NEBRASKA	320	320	50	12
NORTH CENTRAL	649,590	618,690	2,360,380	78,663
DELAWARE	43,100	41,700	81,560	5,760
MARYLAND	66,400	64,600	245,220	9,737
VIRGINIA	17,580	17,070	62,440	2,664
WEST VIRGINIA	450	450	1,810	51
NORTH CAROLINA	17,720	16,720	37,990	1,796
SOUTH CAROLINA	4,500	4,500	8,280	394
GEORGIA	6,800	6,400	8,040	677
FLORIDA	21,000	20,500	72,810	4,417
SOUTH ATLANTIC	177,550	171,940	518,150	25,496
KENTUCKY	2,800	2,800	8,660	324
TENNESSEE	16,400	15,430	33,800	2,957
ALABAMA	2,940	2,710	7,410	359
MISSISSIPPI	4,250	4,150	6,230	378
ARKANSAS	16,350	16,020	34,200	2,387
LOUISIANA	440	340	330	27
OKLAHOMA	13,300	11,250	24,630	1,610
TEXAS	32,900	32,400	172,940	5,169
SOUTH CENTRAL	89,380	85,100	236,200	13,211
MONTANA	1,260	1,150	3,240	90
IDAHO	32,390	30,080	82,470	3,136
WYOMING	880	850	3,040	105
COLORADO	8,980	8,210	49,960	1,791
NEW MEXICO	1,100	750	9,300	256
ARIZONA	200	200	1,040	54
UTAH	12,770	11,080	72,040	2,235
WASHINGTON	115,250	112,390	254,570	16,804
OREGON	94,990	93,920	271,410	18,219
CALIFORNIA	233,550	231,950	2,509,160	81,868
WESTERN	501,430	490,580	3,256,230	124,648
UNITED STATES	1,625,190	1,567,700	7,373,090	287,161

TABLE 2. PRINCIPAL VEGETABLES FOR PROCESSING
ACRES, PRODUCTION AND VALUE, BY STATES 1959-65--CONTINUED

1961

STATE	ACRES		PRODUCTION TONS	VALUE 1,000 DOLLARS
	PLANTED	HARVESTED		
	ACRES	ACRES		
MAINE				
NEW HAMPSHIRE	12,550	12,140	30,690	1,580
VERMONT	500	500	2,880	102
MASSACHUSETTS	100	100	210	21
NEW YDRK	850	850	7,360	367
NEW JERSEY	102,320	96,470	448,600	18,030
PENNSYLVANIA	64,100	63,300	387,340	19,962
	35,440	34,530	220,580	8,305
NORTH ATLANTIC	215,860	207,890	1,097,660	48,367
OHIO	33,030	32,620	433,640	11,641
INDIANA	48,150	47,550	354,220	10,069
ILLINOIS	116,140	114,030	442,420	15,250
MICHIGAN	66,150	62,740	264,070	13,674
WISCONSIN	275,440	264,800	727,930	25,120
MINNESOTA	168,300	162,900	463,440	12,589
IOWA	9,150	8,950	55,120	1,455
MISSOURI	660	660	3,240	121
SOUTH DAKOTA	700	700	2,200	34
NORTH CENTRAL	717,720	694,950	2,746,280	90,253
DELAWARE	45,520	44,770	87,120	6,161
MARYLAND	71,150	68,550	261,330	10,200
VIRGINIA	17,630	17,080	74,150	2,884
WEST VIRGINIA	350	350	2,020	56
NORTH CAROLINA	19,120	17,120	75,490	1,841
SOUTH CAROLINA	5,200	4,900	10,000	482
GEORGIA	5,000	4,800	6,810	614
FLORIDA	23,000	22,200	97,450	4,826
SOUTH ATLANTIC	186,970	179,770	574,370	27,064
KENTUCKY	2,550	2,550	8,340	380
TENNESSEF	16,650	15,280	35,360	3,037
ALABAMA	6,000	5,400	11,450	545
MISSISSIPPI	5,880	5,870	11,750	690
ARKANSAS	17,180	16,630	41,510	2,559
LOUISIANA	660	530	280	18
OKLAHOMA	12,050	10,200	24,150	1,410
TEXAS	33,900	33,000	133,660	5,184
SOUTH CENTRAL	94,870	89,460	266,570	13,823
MONTANA	1,450	1,350	4,210	101
IDAHO	37,130	34,820	89,080	3,800
WYOMING	950	910	2,240	74
COLORADO	10,130	8,450	44,950	1,739
NEW MEXICO	1,000	900	9,900	262
ARIZONA	250	230	1,260	78
UTAH	11,480	10,760	78,480	2,451
WASHINGTON	126,140	121,660	300,780	19,512
OREGON	121,700	110,550	335,990	22,595
CALIFORNIA	260,067	256,460	2,618,690	106,056
WESTERN	570,297	546,090	3,485,500	156,668
UNITED STATES	1,785,717	1,718,160	8,170,310	336,175

TABLE 2. PRINCIPAL VEGETABLES FOR PROCESSING
ACRES, PRODUCTION AND VALUE, BY STATES 1959-65--CONTINUED

1967

STATE	ACRES		PRODUCTION	VALUE
	PLANTED	HARVESTED		
	ACRES	ACRES	TONS	1,000 DOLLARS
MAINE	12,200	11,800	27,200	1,457
NEW HAMPSHIRE	440	440	2,980	81
VERMONT	100	100	200	19
MASSACHUSETTS	1,010	950	9,310	497
NEW YORK	99,430	96,600	494,160	18,830
NEW JERSEY	60,150	59,850	445,150	21,640
PENNSYLVANIA	35,540	34,490	213,430	7,814
NORTH ATLANTIC	208,870	204,230	1,192,430	50,338
OHIO	32,710	32,500	500,150	13,966
INDIANA	45,860	45,360	422,450	11,923
ILLINOIS	118,250	115,650	486,960	16,795
MICHIGAN	61,670	59,210	260,540	13,082
WISCONSIN	294,650	279,630	763,670	26,647
MINNESOTA	167,900	156,090	439,200	12,518
IOWA	9,610	9,380	59,210	1,534
MISSOURI	750	750	2,680	87
SOUTH DAKOTA	850	700	2,400	36
NORTH CENTRAL	732,250	699,270	2,936,290	96,588
DELAWARE	44,280	43,580	89,140	6,306
MARYLAND	71,150	69,700	258,450	10,058
VIRGINIA	16,540	16,480	84,180	3,158
WEST VIRGINIA	100	100	500	16
NORTH CAROLINA	21,090	20,260	54,860	2,998
SOUTH CAROLINA	5,600	5,100	12,560	604
GEORGIA	6,800	6,000	8,000	863
FLORIDA	13,300	12,000	59,100	2,364
SOUTH ATLANTIC	178,860	173,220	566,810	26,367
KENTUCKY	2,450	2,450	9,890	473
TENNESSEE	15,660	14,700	31,660	2,605
ALABAMA	5,100	4,650	9,790	464
MISSISSIPPI	4,950	4,900	10,830	590
ARKANSAS	15,070	13,830	32,340	1,958
LOUISIANA	580	580	270	28
OKLAHOMA	10,350	8,500	18,820	1,074
TEXAS	24,750	22,450	92,310	3,387
SOUTH CENTRAL	78,910	72,060	205,910	10,669
MONTANA	2,050	1,500	4,210	130
IDAHO	35,470	33,420	107,680	4,203
WYOMING	1,160	860	1,370	79
COLORADO	10,930	8,970	59,340	2,033
NEW MEXICO	1,500	1,400	18,900	520
ARIZONA	250	250	1,190	90
UTAH	13,230	12,070	92,710	3,102
WASHINGTON	127,440	119,580	310,150	20,411
OREGON	117,880	108,080	367,490	23,965
CALIFORNIA	283,470	279,870	3,492,310	123,897
WESTERN	593,380	566,000	4,455,260	178,430
UNITED STATES	1,792,270	1,714,780	9,356,700	362,392

TABLE 2. PRINCIPAL VEGETABLES FOR PROCESSING

10

ACRES, PRODUCTION AND VALUE, BY STATES 1959-65--CONTINUED

1963

STATE	ACRES		PRODUCTION TONS	VALUE 1,000 DOLLARS
	PLANTED ACRES	HARVESTED ACRES		
MAINE	12,900	12,400	27,220	1,622
NEW HAMPSHIRE	380	380	1,980	49
VERMONT	110	110	200	20
MASSACHUSETTS	870	870	8,790	422
NEW YORK	96,790	90,260	411,690	15,588
NEW JERSEY	51,750	51,000	315,760	17,201
PENNSYLVANIA	30,250	28,470	152,320	5,934
NORTH ATLANTIC	193,050	183,490	917,960	40,836
OHIO	23,930	23,830	370,760	10,425
INDIANA	34,350	33,850	351,710	9,206
ILLINOIS	115,400	112,170	447,280	16,145
MICHIGAN	64,340	61,910	263,140	13,788
WISCONSIN	288,040	279,330	747,740	26,856
MINNESOTA	161,750	154,400	445,720	12,493
IOWA	9,580	8,970	57,540	1,417
MISSOURI	420	420	1,800	57
SOUTH DAKOTA	450	420	1,500	25
NORTH CENTRAL	698,260	675,300	2,687,190	90,412
DELAWARE	42,570	40,770	74,810	5,524
MARYLAND	70,350	67,850	218,680	9,310
VIRGINIA	15,450	14,700	59,520	2,531
WEST VIRGINIA	100	100	450	15
NORTH CAROLINA	24,120	23,070	67,150	3,291
SOUTH CAROLINA	5,700	5,200	10,460	535
GEORGIA	5,100	4,300	6,430	668
FLORIDA	18,300	16,700	87,000	3,867
SOUTH ATLANTIC	181,690	172,690	514,500	25,741
KENTUCKY	2,650	2,600	9,960	508
TENNESSEE	16,760	16,300	37,200	3,194
ALABAMA	5,200	4,500	10,330	476
MISSISSIPPI	5,500	4,000	9,000	506
ARKANSAS	14,670	13,470	32,270	1,849
LOUISIANA	1,240	910	1,680	91
OKLAHOMA	8,550	7,000	17,820	956
TEXAS	26,950	26,250	128,180	4,609
SOUTH CENTRAL	81,520	75,030	246,440	12,189
MONTANA	2,250	1,850	5,600	176
IDAHO	28,410	26,840	101,670	3,933
WYOMING	1,250	1,180	3,070	122
COLORADO	10,240	8,310	50,330	2,187
NEW MEXICO	1,300	1,100	12,900	413
ARIZONA	200	200	580	42
UTAH	11,170	10,670	71,170	2,426
WASHINGTON	124,160	122,320	320,320	20,198
OREGON	106,540	103,840	354,190	24,852
CALIFORNIA	223,950	222,000	2,726,840	97,197
WESTERN	509,470	498,310	3,655,670	151,546
UNITED STATES	1,663,990	1,604,820	8,021,760	320,724

TABLE 2. PRINCIPAL VEGETABLES FOR PROCESSING
ACRES, PRODUCTION AND VALUE, BY STATES 1959-65 --CONTINUED

1964

STATE	ACRES		PRODUCTION	VALUE
	PLANTED	HARVESTED		
	ACRES	ACRES	TONS	1,000 DOLLARS
MAINE	14,300	14,080	24,840	1,766
NEW HAMPSHIRE	20	20	60	3
VERMONT	130	130	250	25
MASSACHUSETTS	930	880	8,600	431
NEW YORK	95,910	92,040	384,430	16,940
NEW JERSEY	57,950	56,950	310,430	16,473
PENNSYLVANIA	33,600	32,380	169,060	6,653
NORTH ATLANTIC	202,840	196,480	697,670	42,291
OHIO	27,750	27,330	372,910	10,670
INDIANA	27,850	27,150	237,560	7,114
ILLINOIS	107,250	104,390	402,710	15,254
MICHIGAN	60,420	57,680	230,100	14,149
WISCONSIN	290,250	275,320	668,920	28,010
MINNESOTA	150,210	143,700	399,210	12,536
IOWA	8,880	8,770	51,700	1,421
MISSOURI	460	460	1,310	60
SOUTH DAKOTA	400	400	1,400	28
NEBRASKA	50	30	30	3
NORTH CENTRAL	673,520	645,230	2,365,850	89,245
DELAWARE	42,860	41,760	63,390	4,775
MARYLAND	68,150	65,050	216,350	9,178
VIRGINIA	16,680	16,360	71,750	2,932
WEST VIRGINIA	100	100	430	14
NORTH CAROLINA	24,160	23,410	57,610	4,245
SOUTH CAROLINA	5,000	4,700	9,880	660
GEORGIA	5,200	4,500	5,000	459
FLORIDA	21,750	19,700	96,040	4,081
SOUTH ATLANTIC	183,900	175,580	520,450	26,344
KENTUCKY	3,300	3,000	10,230	759
TENNESSEE	17,320	16,310	33,960	3,483
ALABAMA	6,100	5,550	7,810	541
MISSISSIPPI	5,200	5,200	9,620	570
ARKANSAS	12,890	12,190	30,200	1,843
LOUISIANA	530	460	1,390	68
OKLAHOMA	7,700	6,400	16,070	865
TEXAS	29,150	26,900	125,000	4,672
SOUTH CENTRAL	82,190	76,010	234,280	12,801
MONTANA	2,050	1,620	3,340	165
IDAHO	27,580	26,030	93,240	3,421
WYOMING	1,150	1,050	2,260	87
COLORADO	9,350	7,890	44,140	1,988
NEW MEXICO	1,460	1,300	12,770	424
ARIZONA	250	250	750	60
UTAH	11,130	10,380	53,030	1,931
WASHINGTON	127,630	124,230	297,190	20,710
OREGON	109,200	100,410	340,480	22,139
CALIFORNIA	240,090	238,500	3,269,390	127,838
WESTERN	529,800	511,660	4,116,590	178,763
UNITED STATES	1,672,250	1,604,960	8,134,840	349,444

TABLE 2. PRINCIPAL VEGETABLES FOR PROCESSING
ACRES, PRODUCTION AND VALUE, BY STATES 1959-65--CONTINUED

1965

STATE	ACRES		PRODUCTION	VALUE
	PLANTED	HARVESTED		
	ACRES	ACRES	TONS	1,000 DOLLARS
MAINE	13,750	12,950	24,000	1,669
NEW HAMPSHIRE	20	20	150	8
MASSACHUSETTS	1,010	980	9,390	508
NEW YORK	96,150	90,900	412,580	16,858
NEW JERSEY	61,750	60,750	414,840	22,856
PENNSYLVANIA	35,900	35,020	188,530	7,520
NORTH ATLANTIC	208,580	200,620	1,050,490	49,419
OHIO	32,280	31,910	591,980	17,185
INDIANA	34,030	33,430	365,840	9,981
ILLINOIS	120,330	111,130	414,630	17,084
MICHIGAN	55,910	53,380	228,310	15,501
WISCONSIN	319,550	276,710	790,170	35,318
MINNESOTA	171,980	156,570	437,360	16,320
IOWA	8,700	7,970	46,840	1,275
MISSOURI	1,050	1,020	2,940	206
SOUTH DAKOTA	660	600	1,930	50
KANSAS	20	20	80	3
NORTH CENTRAL	744,510	672,740	2,880,080	112,923
DELAWARE	44,020	43,120	89,870	7,228
MARYLAND	71,350	69,650	266,780	12,668
VIRGINIA	16,810	16,510	86,580	3,678
WEST VIRGINIA	100	100	400	14
NORTH CAROLINA	25,370	24,870	71,590	5,281
SOUTH CAROLINA	4,800	4,400	10,380	609
GEORGIA	4,400	4,000	6,970	652
FLORIDA	19,200	17,350	79,500	3,619
SOUTH ATLANTIC	186,050	180,000	612,020	33,699
KENTUCKY	6,100	6,000	16,760	1,228
TENNESSEE	18,090	17,700	38,390	3,651
ALABAMA	6,090	5,490	11,460	710
MISSISSIPPI	5,800	5,700	11,680	729
ARKANSAS	12,490	10,590	27,710	1,878
LOUISIANA	1,460	1,330	2,740	177
OKLAHOMA	6,300	4,950	14,800	914
TEXAS	26,350	24,150	116,350	4,342
SOUTH CENTRAL	82,680	75,910	239,890	13,629
MONTANA	2,050	1,650	3,730	174
IDAH0	35,900	31,470	115,850	4,581
WYOMING	1,320	890	1,950	92
COLORADO	7,510	5,770	21,670	1,309
NEW MEXICO	1,450	1,100	6,900	326
ARIZONA	350	350	1,120	90
UTAH	10,520	9,320	44,400	1,981
WASHINGTON	143,520	139,970	371,620	26,768
OREGON	116,410	110,890	405,790	25,853
CALIFORNIA	217,350	214,050	2,701,650	138,100
WESTERN	536,380	515,460	3,674,680	196,274
UNITED STATES	1,758,200	1,644,730	8,457,160	405,944

TABLE 3. ASPARAGUS FOR FRESH MARKET AND PROCESSING
ACRES, YIELD, PRODUCTION AND VALUE 1959-65

1959

SEASON AND STATE	ACRES		YIELD PER ACRE	PRODUCTION	VALUE	
	PLANTED	HARVESTED			PER CWT	TOTAL
	ACRES	ACRES	CWT	1,000 CWT	DOLLARS	1,000 DOLLARS
SPRING CALIFORNIA	77,800	77,800	24	1,867	11.25	21,005
LATE SPRING						
MASSACHUSETTS	1,400	1,400	22	31	15.80	490
NEW JERSEY	31,500	31,500	25	788	11.21	8,833
ILLINOIS	10,200	10,200	16	163	10.37	1,690
MICHIGAN	11,200	11,200	15	168	11.06	1,858
DELAWARE	2,800	2,800	20	56	10.50	588
MARYLAND	3,300	3,300	20	66	11.39	752
WASHINGTON	15,800	15,800	23	363	10.38	3,767
OREGON	1,300	1,300	16	21	10.86	228
OTHER STATES 1/	5,850	5,850	18	104	14.09	1,471
TOTAL OR AVERAGE	83,350	83,350	21	1,760	11.18	19,677
UNITED STATES	161,150	161,150	23	3,627	11.22	40,682

SEASON AND STATE	FOR FRESH MARKET			FOR PROCESSING		
	PRODUCTION	VALUE		PRODUCTION	VALUE	
		PER CWT	TOTAL		PER TON	TOTAL
	1,000 CWT	DOLLARS	1,000 DOLLARS	TONS	DOLLARS	1,000 DOLLARS
SPRING CALIFORNIA	667	14.40	9,605	60,000	190.00	11,400
LATE SPRING						
MASSACHUSETTS	31	15.80	490	---	---	---
NEW JERSEY	336	12.50	4,200	22,600	205.00	4,633
ILLINOIS	32	12.70	406	6,550	196.00	1,284
MICHIGAN	20	13.00	260	7,400	216.00	1,598
DELAWARE	---	---	---	2,800	210.00	588
MARYLAND	9	12.30	111	2,850	225.00	641
WASHINGTON	103	10.70	1,102	13,000	205.00	2,665
OREGON	8	12.40	99	650	199.00	129
OTHER STATES 1/	37	18.95	701	3,370	228.49	770
TOTAL OR AVERAGE	576	12.79	7,369	59,220	207.84	12,308
UNITED STATES	1,243	13.66	16,974	119,220	198.86	23,708

SEE FOOTNOTES ON PAGE 19.

TABLE 3. ASPARAGUS FOR FRESH MARKET AND PROCESSING
ACRES, YIELD, PRODUCTION AND VALUE 1959-65--CONTINUED

1960						
SEASON AND STATE	ACRES		YIELD PER ACRE	PRODUCTION	VALUE	
	PLANTED	HARVESTED			PER CWT	TOTAL
	ACRES	ACRES	CWT	1,000 CWT	DOLLARS	1,000 DOLLARS
SPRING CALIFORNIA	73,500	73,500	26	1,911	11.72	22,402
LATE SPRING						
MASSACHUSETTS	1,400	1,400	21	29	15.10	438
NEW JERSEY	30,700	30,700	26	798	11.82	9,436
ILLINOIS	10,700	10,700	16	171	11.29	1,931
MICHIGAN	11,000	11,000	17	187	12.68	2,371
DELAWARE	2,800	2,800	19	53	11.20	594
MARYLAND	3,300	3,300	19	63	11.62	732
WASHINGTON	16,100	16,100	26	419	11.40	4,777
OREGON	1,600	1,600	19	30	11.33	340
OTHER STATES 1/	5,860	5,860	17	101	14.29	1,443
TOTAL OR AVERAGE	83,460	83,460	22	1,851	11.92	22,062
UNITED STATES	156,960	156,960	24	3,762	11.82	44,464

SEASON AND STATE	FOR FRESH MARKET			FOR PROCESSING		
	PRODUCTION	VALUE		PRODUCTION	VALUE	
		PER CWT	TOTAL		PER TON	TOTAL
	1,000 CWT	DOLLARS	1,000 DOLLARS	TONS	DOLLARS	1,000 DOLLARS
SPRING CALIFORNIA	631	14.00	8,834	64,000	212.00	13,568
LATE SPRING						
MASSACHUSETTS	29	15.10	438	---	---	---
NEW JERSEY	358	12.90	4,618	22,000	219.00	4,818
ILLINOIS	39	15.50	604	6,600	201.00	1,327
MICHIGAN	17	14.50	246	8,500	250.00	2,125
DELAWARE	---	---	---	2,650	224.00	594
MARYLAND	7	12.20	85	2,800	231.00	647
WASHINGTON	99	11.40	1,129	16,000	228.00	3,648
OREGON	10	12.40	124	1,000	216.00	216
OTHER STATES 1/	40	17.28	691	3,050	246.56	752
TOTAL OR AVERAGE	599	13.25	7,935	62,600	225.67	14,127
UNITED STATES	1,230	13.63	16,769	126,600	218.76	27,695

SEE FOOTNOTES ON PAGE 19.

TABLE 3. ASPARAGUS FOR FRESH MARKET AND PROCESSING
ACRES, YIELD, PRODUCTION AND VALUE 1959-65--CONTINUED

1961

SEASON AND STATE	ACRES		YIELD PER ACRE	PRODUCTION	VALUE	
	PLANTED	HARVESTED			PER CWT	TOTAL
	ACRES	ACRES	CWT	1,000 CWT	DOLLARS	1,000 DOLLARS
SPRING CALIFORNIA	66,000	66,000	30	1,980	13.16	26,064
LATE SPRING						
MASSACHUSETTS	1,400	1,400	21	29	15.50	450
NEW JERSEY	29,800	29,800	23	685	12.88	8,824
ILLINOIS	10,800	10,800	15	162	11.57	1,874
MICHIGAN	10,800	10,800	15	162	14.06	2,278
DELAWARE	2,700	2,700	19	51	12.16	620
MARYLAND	3,300	3,300	19	63	11.98	755
WASHINGTON	15,400	15,400	28	431	12.29	5,299
OREGON	1,900	1,900	21	40	11.72	469
OTHER STATES ^{1/}	5,550	5,550	16	89	14.78	1,315
TOTAL OR AVERAGE	81,650	81,650	21	1,712	12.78	21,884
UNITED STATES	147,650	147,650	25	3,692	12.99	47,948

SEASON AND STATE	FOR FRESH MARKET			FOR PROCESSING		
	PRODUCTION	VALUE		PRODUCTION	VALUE	
		PER CWT	TOTAL		PER TON	TOTAL
	1,000 CWT	DOLLARS	1,000 DOLLARS	TONS	DOLLARS	1,000 DOLLARS
SPRING CALIFORNIA	604	15.70	9,483	68,800	241.00	16,581
LATE SPRING						
MASSACHUSETTS	29	15.50	450	---	---	---
NEW JERSEY	269	14.40	3,874	20,800	238.00	4,950
ILLINOIS	32	15.50	496	6,500	212.00	1,378
MICHIGAN	11	17.00	187	7,550	277.00	2,091
DELAWARE	---	---	---	2,550	243.00	620
MARYLAND	6	13.60	82	2,850	236.00	673
WASHINGTON	106	12.90	1,367	16,250	242.00	3,932
OREGON	12	12.50	150	1,400	228.00	319
OTHER STATES ^{1/}	29	18.79	545	3,000	256.67	770
TOTAL OR AVERAGE	494	14.48	7,151	60,900	241.92	14,733
UNITED STATES	1,098	15.15	16,634	129,700	241.43	31,314

SEE FOOTNOTES ON PAGE 19.

TABLE 3. ASPARAGUS FOR FRESH MARKET AND PROCESSING
ACRES, YIELD, PRODUCTION AND VALUE 1959-65--CONTINUED

SEASON AND STATE	ACRES		YIELD PER ACRE	PRODUCTION	VALUE	
	PLANTED	HARVESTED			PER CWT	TOTAL
	ACRES	ACRES	CWT	1,000 CWT	DOLLARS	1,000 DOLLARS
SPRING CALIFORNIA	66,600	66,600	30	1,998	13.78	27,531
LATE SPRING						
MASSACHUSETTS	1,300	1,300	18	23	17.20	396
NEW JERSEY	28,600	28,600	23	658	12.80	8,423
ILLINOIS	10,200	10,200	16	163	11.50	1,875
MICHIGAN	10,800	10,800	15	162	14.19	2,299
DELAWARE	2,700	2,700	20	54	12.50	675
MARYLAND	3,300	3,300	19	63	12.98	818
WASHINGTON	15,300	15,300	31	474	12.87	6,102
OREGON	1,400	1,400	27	38	12.37	470
OTHER STATES 1/	5,770	5,770	15	88	14.11	1,242
TOTAL OR AVERAGE	79,370	79,370	22	1,723	12.94	22,300
UNITED STATES	145,970	145,970	25	3,721	13.39	49,831

SEASON AND STATE	FOR FRESH MARKET			FOR PROCESSING		
	PRODUCTION	VALUE		PRODUCTION	VALUE	
		PER CWT	TOTAL		PER TON	TOTAL
	1,000 CWT	DOLLARS	1,000 DOLLARS	TONS	DOLLARS	1,000 DOLLARS
SPRING CALIFORNIA	578	16.80	9,710	71,000	251.00	17,821
LATE SPRING						
MASSACHUSETTS	23	17.20	396	---	---	---
NEW JERSEY	251	14.10	3,539	20,350	240.00	4,884
ILLINOIS	29	18.00	522	6,700	202.00	1,353
MICHIGAN	14	16.20	227	7,400	280.00	2,072
DELAWARE	---	---	---	2,700	250.00	675
MARYLAND	4	15.00	60	2,950	257.00	758
WASHINGTON	106	13.30	1,410	18,400	255.00	4,692
OREGON	10	15.50	155	1,400	225.00	315
OTHER STATES 1/	28	16.50	462	3,000	260.00	780
TOTAL OR AVERAGE	465	14.56	6,771	62,900	246.88	15,529
UNITED STATES	1,043	15.80	16,481	133,900	249.07	33,350

SEE FOOTNOTES ON PAGE 19.

TABLE 3. ASPARAGUS FOR FRESH MARKET AND PROCESSING
ACRES, YIELD, PRODUCTION AND VALUE 1959-65--CONTINUED

1963

SEASON AND STATE	ACRES		YIELD PER ACRE	PRODUCTION	VALUE	
	PLANTED	HARVESTED			PER CWT	TOTAL
	ACRES	ACRES	CWT	1,000 CWT.	DOLLARS	1,000 DOLLARS
SPRING CALIFORNIA	65,900	65,900	31	2,043	14.46	29,535
LATE SPRING MASSACHUSETTS	1,300	1,300	19	25	17.80	445
NEW JERSEY	28,500	28,500	25	712	13.70	9,756
ILLINOIS	10,200	10,200	17	173	11.49	1,988
MICHIGAN	11,000	11,000	13	143	15.29	2,187
DELAWARE	3,100	3,100	18	56	12.70	711
MARYLAND	3,200	3,200	21	67	12.81	858
WASHINGTON	14,900	14,900	28	417	12.94	5,394
OREGON	1,400	1,400	25	35	13.80	483
OTHER STATES ^{1/}	5,670	5,670	15	85	15.08	1,282
TOTAL OR AVERAGE	79,270	79,270	22	1,713	13.49	23,104
UNITED STATES	145,170	145,170	26	3,756	14.01	52,639

SEASON AND STATE	FOR FRESH MARKET			FOR PROCESSING		
	PRODUCTION	VALUE		PRODUCTION	VALUE	
		PER CWT	TOTAL		PER TON	TOTAL
	1,000 CWT	DOLLARS	1,000 DOLLARS	TONS	DOLLARS	1,000 DOLLARS
SPRING CALIFORNIA	614	16.80	10,315	71,450	269.00	19,220
LATE SPRING MASSACHUSETTS	25	17.80	445	---	---	---
NEW JERSEY	264	15.40	4,066	22,400	254.00	5,690
ILLINOIS	20	18.30	366	7,650	212.00	1,622
MICHIGAN	12	16.80	202	6,550	303.00	1,985
DELAWARE	---	---	---	2,800	254.00	711
MARYLAND	4	14.60	58	3,150	254.00	800
WASHINGTON	66	13.40	884	17,550	257.00	4,510
OREGON	7	17.00	119	1,400	260.00	364
OTHER STATES ^{1/}	25	19.24	481	3,000	267.00	801
TOTAL OR AVERAGE	423	15.65	6,621	64,500	255.55	16,483
UNITED STATES	1,034	16.33	16,936	135,950	262.62	35,703
FOR CANNING ^{2/}	---	---	---	105,150	269.34	28,321
FOR FREEZING ^{2/}	---	---	---	30,800	239.68	7,382

SEE FOOTNOTES ON PAGE 19.

TABLE 3. ASPARAGUS FOR FRESH MARKET AND PROCESSING
ACRES, YIELD, PRODUCTION AND VALUE 1959-65--CONTINUED

1964

SEASON AND STATE	ACRES		YIELD PER ACRE	PRODUCTION	VALUE	
	PLANTED	HARVESTED			PER CWT.	TOTAL
	ACRES	ACRES	CWT	1,000 CWT	DOLLARS	1,000 DOLLARS
SPRING CALIFORNIA	65,400	65,400	28	1,831	12.42	22,749
LATE SPRING						
MASSACHUSETTS	1,200	1,200	20	24	17.00	408
NEW JERSEY	28,400	28,400	23	653	12.76	8,333
ILLINOIS	10,100	10,100	17	172	11.51	1,979
MICHIGAN	11,000	11,000	15	165	15.12	2,495
DELAWARE	3,300	3,300	16	53	13.09	694
MARYLAND	3,400	3,400	16	54	14.24	769
WASHINGTON	14,700	14,700	30	441	12.50	5,513
OREGON	1,600	1,600	24	38	11.89	452
OTHER STATES ^{1/}	5,630	5,630	16	92	15.32	1,409
TOTAL OR AVERAGE	79,330	79,330	21	1,692	13.03	22,052
UNITED STATES	144,730	144,730	24	3,523	12.72	44,801

SEASON AND STATE	FOR FRESH MARKET			FOR PROCESSING		
	PRODUCTION	VALUE		PRODUCTION	VALUE	
		PER CWT	TOTAL		PER TON	TOTAL
	1,000 CWT.	DOLLARS	1,000 DOLLARS	TONS	DOLLARS	1,000 DOLLARS
SPRING CALIFORNIA	585	14.50	8,482	62,300	229.00	14,267
LATE SPRING						
MASSACHUSETTS	24	17.00	408	---	---	---
NEW JERSEY	243	14.30	3,475	20,500	237.00	4,858
ILLINOIS	19	18.00	342	7,650	214.00	1,637
MICHIGAN	14	17.00	238	7,550	299.00	2,257
DELAWARE	---	---	---	2,650	262.00	694
MARYLAND	6	15.40	92	2,400	282.00	677
WASHINGTON	78	15.30	1,193	18,150	238.00	4,320
OREGON	7	14.10	99	1,550	228.00	353
OTHER STATES ^{1/}	24	18.38	441	3,400	284.71	968
TOTAL OR AVERAGE	415	15.15	6,288	63,850	246.89	15,764
UNITED STATES	1,000	14.77	14,770	126,150	238.06	30,031
FOR CANNING ^{2/}	---	---	---	97,330	244.93	23,839
FOR FREEZING ^{2/}	---	---	---	28,820	214.85	6,192

SEE FOOTNOTES ON PAGE 19.

TABLE 3. ASPARAGUS FOR FRESH MARKET AND PROCESSING
ACRES, YIELD, PRODUCTION AND VALUE 1959-65--CONTINUED

1965

SEASON AND STATE	ACRES		YIELD PER ACRE	PRODUCTION	VALUE	
	PLANTED	HARVESTED			PER CWT	TOTAL
	ACRES	ACRES	CWT	1,000 CWT	DOLLARS	1,000 DOLLARS
SPRING CALIFORNIA	54,900	54,900	30	1,647*	15.63	23,869
LATE SPRING						
MASSACHUSETTS	1,200	1,200	20	24	17.40	418
NEW JERSEY	26,900	26,900	23	619	14.71	9,107
ILLINOIS	10,200	10,200	18	184	11.68	2,149
MICHIGAN	11,200	11,200	17	190	16.35	3,107
DELAWARE	3,500	3,500	17	60	14.70	882
MARYLAND	3,400	3,400	20	68	14.04	955
WASHINGTON	15,200	15,200	32	486	13.83	6,722
OREGON	1,300	1,300	31	40	12.98	519
OTHER STATES ^{1/}	5,430	5,430	17	93	15.97	1,485
TOTAL OR AVERAGE	78,330	78,330	23	1,764	14.37	25,344
UNITED STATES	133,230	133,230	26	3,411	14.95	49,213

SEASON AND STATE	FOR FRESH MARKET			FOR PROCESSING		
	PRODUCTION	VALUE		PRODUCTION	VALUE	
		PER CWT.	TOTAL		PER TON	TOTAL
	1,000 CWT	DOLLARS	1,000 DOLLARS	TONS	DOLLARS	1,000 DOLLARS
SPRING CALIFORNIA	624	16.40	10,234	51,150*	302.00	13,635
LATE SPRING						
MASSACHUSETTS	24	17.40	418	---	---	---
NEW JERSEY	219	15.10	3,307	20,000	290.00	5,800
ILLINOIS	13	18.60	242	8,550	223.00	1,907
MICHIGAN	14	18.30	256	8,800	324.00	2,851
DELAWARE	---	---	---	3,000	294.00	882
MARYLAND	7	14.40	101	3,050	280.00	854
WASHINGTON	96	16.80	1,613	19,500	262.00	5,109
OREGON	5	15.60	78	1,750	252.00	441
OTHER STATES ^{1/}	25	18.56	464	3,400	300.29	1,021
TOTAL OR AVERAGE	403	16.08	6,479	68,050	277.22	18,865
UNITED STATES	1,027	16.27	16,713	119,200	287.10	32,500
FOR CANNING ^{2/}	---	---	---	89,170	294.36	24,997
FOR FREEZING ^{2/}	---	---	---	30,030	265.31	7,503

* INCLUDES SOME QUANTITIES NOT MARKETED AND EXCLUDED IN COMPUTING VALUE; SPRING, CALIFORNIA, 120,000 CWT., (6,000 TONS) FOR PROCESSING IN 1965.

^{1/} FRESH MARKET; PENNSYLVANIA, OHIO AND IOWA; PROCESSING; NEW YORK, INDIANA, MINNESOTA, IOWA, MISSOURI, VIRGINIA, TENNESSEE, ARKANSAS, AND NEBRASKA (1959-60).

^{2/} NOT SHOWN BY STATES TO AVOID DISCLOSURE OF INDIVIDUAL OPERATORS. DATA NOT AVAILABLE PRIOR TO 1963.

TABLE 4. GREEN LIMA BEANS FOR PROCESSING

ACRES, YIELD, PRODUCTION AND VALUE 1959-65

1959

STATE	ACRES		YIELD PER ACRE	PRODUCTION	VALUE	
	PLANTED	HARVESTED			PER TON	TOTAL
	ACRES	ACRES	LBS	TONS	DOLLARS	1,000 DOLLARS
MICHIGAN	1,600	1,300	2,100	1,360	96.90	132
WISCONSIN	4,500	4,300	2,140	4,600	96.20	443
DELAWARE	18,800	17,000	1,220	10,370	130.20	1,350
MARYLAND	2,600	2,400	1,140	1,370	120.00	164
WASHINGTON	1,300	860	2,180	870	148.10	129
CALIFORNIA	22,700	22,100	3,410	37,680	144.00	5,426
OTHER STATES <u>1/</u>	33,610	30,610	1,724	26,390	127.85	3,374
UNITED STATES	85,110	78,510	2,105	82,640	133.33	11,018
CANNING <u>2/</u>	31,680	28,810	1,708	24,610	114.34	2,814
FREEZING <u>2/</u>	53,430	49,700	2,335	58,030	141.38	8,204
BABY	36,450	33,670	1,894	31,880	136.83	4,362
FORDHOOK	16,980	16,030	3,263	26,150	146.92	3,842

1960

MICHIGAN	1,800	1,800	1,510	1,360	91.90	125
WISCONSIN	5,700	5,500	2,030	5,580	101.60	567
DELAWARE	20,300	19,600	1,560	15,290	145.00	2,217
MARYLAND	3,100	3,000	1,470	2,200	123.60	272
WASHINGTON	1,200	1,100	2,510	1,380	147.80	204
CALIFORNIA	28,900	28,100	3,320	46,650	152.70	7,123
OTHER STATES <u>1/</u>	34,200	32,710	1,876	30,690	139.65	4,286
UNITED STATES	95,200	91,810	2,247	103,150	143.42	14,794
CANNING <u>2/</u>	31,830	31,380	1,840	28,870	125.63	3,627
FREEZING <u>2/</u>	63,370	60,430	2,458	74,280	150.34	11,167
BABY	44,000	41,200	1,981	40,810	142.39	5,811
FORDHOOK	19,370	19,230	3,481	33,470	160.02	5,356

1961

MICHIGAN	2,700	2,400	1,960	2,350	103.00	242
WISCONSIN	5,600	5,300	2,510	6,650	113.00	751
DELAWARE	21,800	21,500	1,330	14,300	151.00	2,159
MARYLAND	3,200	3,100	1,340	2,080	125.00	260
WASHINGTON	2,500	2,300	2,350	2,700	153.00	413
CALIFORNIA	33,900	32,400	3,290	53,300	159.00	8,475
OTHER STATES <u>1/</u>	34,610	33,070	2,076	34,330	130.15	4,468
UNITED STATES	104,310	100,070	2,313	115,710	144.91	16,768
CANNING <u>2/</u>	35,340	34,190	1,891	32,320	123.17	3,981
FREEZING <u>2/</u>	68,970	65,880	2,532	83,390	153.34	12,787
BABY	47,640	45,620	2,131	48,600	144.67	7,031
FORDHOOK	21,330	20,260	3,434	34,790	165.45	5,756

1962

MICHIGAN	2,700	2,400	1,780	2,140	108.00	231
WISCONSIN	6,100	5,700	2,240	6,380	109.00	695
DELAWARE	19,000	18,900	1,620	15,300	158.00	2,417
MARYLAND	3,100	3,100	1,460	2,260	119.00	269
WASHINGTON	2,500	2,400	2,280	2,740	152.00	416
CALIFORNIA	29,800	29,000	3,330	48,300	163.00	7,873
OTHER STATES <u>1/</u>	33,280	30,530	2,051	31,310	143.02	4,478
UNITED STATES	96,480	92,030	2,356	108,430	151.06	16,379
CANNING <u>2/</u>	33,310	30,930	1,957	30,270	133.56	4,043
FREEZING <u>2/</u>	61,170	61,100	2,558	78,160	157.83	12,336
BABY	43,010	41,490	2,106	43,680	149.20	6,517
FORDHOOK	20,160	19,610	3,517	34,480	168.76	5,819

TABLE 4. GREEN LIMA BEANS FOR PROCESSING
ACRES, YIELD, PRODUCTION AND VALUE 1959-65--CONTINUED

1963

STATE	ACRES		YIELD PER ACRE	PRODUCTION	VALUE	
	PLANTED	HARVESTED			PER TON	TOTAL
	ACRES	ACRES	LBS	TONS	DOLLARS	1,000 DOLLARS
MICHIGAN	1,800	1,700	2,260	1,920	104.00	200
WISCONSIN	4,600	4,500	2,270	5,110	111.00	567
DELAWARE	16,600	15,900	1,500	11,920	144.00	1,716
MARYLAND	3,200	3,200	1,320	2,110	124.00	262
WASHINGTON	1,100	1,100	2,850	1,570	144.00	226
CALIFORNIA	22,500	22,000	3,430	37,700	164.00	6,183
OTHER STATES ^{1/}	24,740	23,250	2,109	24,520	140.05	3,434
UNITED STATES	74,540	71,650	2,368	84,850	148.36	12,588
CANNING ^{2/}	24,780	23,940	2,032	24,320	132.98	3,234
FREEZING ^{2/}	49,760	47,710	2,537	60,530	154.53	9,354
BABY	32,260	30,960	2,118	32,780	143.17	4,693
FORDHOOK	17,500	16,750	3,313	27,750	167.96	4,661

1964

MICHIGAN	1,500	1,500	1,470	1,100	101.00	111
WISCONSIN	4,900	4,200	1,800	3,780	119.00	450
DELAWARE	17,200	16,900	1,080	9,130	164.00	1,497
MARYLAND	3,700	3,600	1,140	2,050	185.00	379
WASHINGTON	1,900	1,800	2,600	2,340	180.00	421
CALIFORNIA	24,400	23,900	3,320	39,670	207.00	8,212
OTHER STATES ^{1/}	25,750	24,010	1,728	20,740	156.22	3,240
UNITED STATES	79,350	75,910	2,076	78,810	181.58	14,310
CANNING ^{2/}	23,230	21,470	1,685	18,110	152.57	2,763
FREEZING ^{2/}	23,260	21,500	2,231	60,700	190.23	11,547
BABY	38,690	37,380	1,750	32,710	172.42	5,640
FORDHOOK	17,400	17,030	3,287	27,990	211.04	5,907

1965

MICHIGAN	1,800	1,700	1,850	1,570	102.00	160
WISCONSIN	6,900	4,800	1,970	4,730	144.00	681
DELAWARE	19,400	18,900	1,760	16,630	164.00	2,727
MARYLAND	3,500	3,200	1,550	2,480	187.00	464
WASHINGTON	2,800	2,700	2,440	3,290	150.00	494
CALIFORNIA	28,300	27,500	3,150	43,310	199.00	8,619
OTHER STATES ^{1/}	27,490	25,170	1,942	24,440	159.70	3,903
UNITED STATES	90,190	83,970	2,297	96,450	176.75	17,048
CANNING ^{2/}	28,370	25,390	1,902	24,140	153.56	3,707
FREEZING ^{2/}	61,820	58,580	2,469	72,310	184.50	13,341
BABY	43,430	40,740	2,090	42,570	171.81	7,314
FORDHOOK	18,390	17,840	3,334	29,740	202.66	6,027

^{1/} NEW YORK, NEW JERSEY, PENNSYLVANIA, OHIO, INDIANA (1959-62), ILLINOIS, MINNESOTA, MISSOURI (1963-65); VIRGINIA (1959-62); GEORGIA (1960-65); TENNESSEE, ALABAMA (1962 ONLY); ARKANSAS, IDAHO, COLORADO (1961 ONLY); UTAH AND OREGON.

^{2/} NOT SHOWN BY STATES TO AVOID DISCLOSURE OF INDIVIDUAL OPERATIONS.

TABLE 5. SNAP BEANS FOR PROCESSING
ACRES, YIELD, PRODUCTION AND VALUE 1959-65

1959						
STATE	ACRES		YIELD PER ACRE	PRODUCTION	VALUE	
	PLANTED	HARVESTED			PER TON	TOTAL
	ACRES	ACRES	TONS	TONS	DOLLARS	1,000 DOLLARS
MAINE	2,100	2,000	1.8	3,600	101.60	366
NEW YORK	40,700	39,700	1.7	67,500	101.20	6,831
PENNSYLVANIA	5,800	5,800	1.5	8,700	103.20	898
MICHIGAN	7,500	7,400	1.8	13,300	89.00	1,184
WISCONSIN	25,400	23,100	1.6	37,000	85.90	3,178
DELAWARE	5,900	5,700	1.1	6,300	91.70	578
MARYLAND	11,700	10,300	1.3	13,400	95.30	1,277
VIRGINIA	2,500	2,500	1.1	2,800	103.00	288
NORTH CAROLINA	2,500	2,500	2.0	5,000	114.20	571
SOUTH CAROLINA	1,100	1,100	1.0	1,100	107.00	118
FLORIDA	8,900	8,900	1.4	12,100	123.20	1,491
TENNESSEE	7,400	7,200	2.2	15,800	110.00	1,738
OKLAHOMA	5,500	5,000	2.1	10,500	87.20	916
TEXAS	10,000	7,500	1.4	10,500	85.00	892
COLORADO	1,800	1,700	3.0	5,100	87.40	446
WASHINGTON	1,600	1,600	5.8	9,300	124.00	1,153
OREGON	11,300	11,100	7.5	83,200	124.30	10,342
CALIFORNIA	3,800	3,800	7.1	27,000	124.70	3,367
OTHER STATES <u>1/</u>	16,700	15,370	2.2	33,660	99.47	3,348
UNITED STATES	172,200	162,270	2.3	365,860	106.55	38,982
CANNING <u>2/</u>	133,450	125,360	2.2	276,920	101.99	28,242
FREEZING <u>2/</u>	38,750	36,910	2.4	88,940	120.76	10,740

1960						
STATE	PLANTED	HARVESTED	YIELD PER ACRE	PRODUCTION	PER TON	TOTAL
	ACRES	ACRES	TONS	TONS	DOLLARS	1,000 DOLLARS
MAINE	1,900	1,900	2.1	4,000	101.00	404
NEW YORK	41,000	40,000	1.7	68,000	99.90	6,793
PENNSYLVANIA	8,200	8,200	1.6	13,100	105.30	1,379
MICHIGAN	8,300	8,200	1.5	12,300	83.40	1,026
WISCONSIN	22,600	20,800	1.8	37,440	72.30	2,707
DELAWARE	6,200	5,800	1.3	7,500	84.30	632
MARYLAND	9,700	9,300	2.1	19,500	103.00	2,008
VIRGINIA	2,200	2,100	2.0	4,200	116.20	488
NORTH CAROLINA	2,300	2,300	1.5	3,400	96.50	328
SOUTH CAROLINA	1,200	1,200	1.0	1,200	100.00	120
FLORIDA	13,400	13,100	1.9	24,950	123.70	3,086
TENNESSEE	8,300	8,200	2.2	18,000	118.00	2,124
OKLAHOMA	5,300	5,000	2.0	10,000	94.20	942
TEXAS	11,000	11,000	1.8	19,800	90.30	1,788
COLORADO	1,800	1,700	2.7	4,600	87.50	402
WASHINGTON	1,700	1,600	5.2	8,300	128.60	1,067
OREGON	12,000	11,700	7.1	83,100	125.00	10,388
CALIFORNIA	3,600	3,600	8.5	30,600	125.80	3,849
OTHER STATES <u>1/</u>	18,770	17,980	2.1	36,980	123.01	4,549
UNITED STATES	179,470	173,680	2.3	406,970	108.31	44,080
CANNING <u>2/</u>	134,540	130,030	2.3	298,280	102.16	30,473
FREEZING <u>2/</u>	44,930	43,650	2.5	108,690	125.19	13,607

SEE FOOTNOTE ON PAGE 25.

TABLE 5. SNAP BEANS FOR PROCESSING
ACRES, YIELD, PRODUCTION AND VALUE 1959-65--CONTINUED

1961						
STATE	ACRES		YIELD PER ACRE	PRODUCTION	VALUE	
	PLANTED	HARVESTED			PER TON	TOTAL
	ACRES	ACRES	TONS	TONS	DOLLARS	1,000 DOLLARS
MAINE	1,800	1,800	2.0	3,600	103.00	371
NEW YORK	46,900	44,400	1.8	79,900	99.20	7,926
PENNSYLVANIA	5,800	5,600	1.8	10,100	105.00	1,060
MICHIGAN	10,400	10,100	1.6	16,200	80.30	1,301
WISCONSIN	27,500	26,200	1.8	47,200	69.90	3,299
DELAWARE	6,000	5,900	1.3	7,700	85.50	658
MARYLAND	11,400	10,900	1.9	20,700	94.00	1,946
VIRGINIA	2,500	2,200	1.6	3,500	113.00	396
NORTH CAROLINA	2,600	2,600	1.8	4,700	90.00	423
SOUTH CAROLINA	1,100	1,100	1.1	1,200	115.00	138
FLORIDA	14,000	13,400	2.0	27,150	113.70	3,087
TENNESSEE	9,600	9,000	2.2	19,800	118.00	2,336
OKLAHOMA	4,200	4,000	1.6	6,400	100.00	640
TEXAS	8,300	8,000	2.1	16,800	98.50	1,655
COLORADO	2,200	2,000	3.0	6,000	84.30	506
WASHINGTON	1,800	1,800	6.1	11,000	126.00	1,386
OREGON	16,400	16,300	7.2	117,400	116.00	13,618
CALIFORNIA	4,600	4,600	8.0	36,800	130.00	4,784
OTHER STATES ^{1/}	20,020	19,360	2.2	42,400	110.71	4,694
UNITED STATES	197,120	189,260	2.5	478,550	104.95	50,224
CANNING ^{2/}	146,760	141,990	2.5	358,650	101.08	36,254
FREEZING ^{2/}	50,360	47,270	2.5	119,900	116.51	13,970
1962						
MAINE	1,400	1,300	2.2	2,900	95.30	276
NEW YORK	45,300	44,000	1.9	83,600	96.60	8,076
PENNSYLVANIA	7,600	7,300	1.6	11,700	97.70	1,143
MICHIGAN	9,400	9,200	1.6	14,700	81.20	1,194
WISCONSIN	30,200	27,900	2.0	55,800	62.70	3,499
DELAWARE	6,600	6,600	1.3	8,600	83.60	719
MARYLAND	11,800	11,400	1.7	19,400	99.10	1,923
VIRGINIA	1,900	1,900	1.8	3,400	104.00	354
NORTH CAROLINA	2,700	2,700	2.0	5,400	100.00	540
SOUTH CAROLINA	900	900	1.1	1,000	115.00	115
FLORIDA	6,600	5,500	1.7	9,600	108.60	1,043
TENNESSEE	9,700	9,700	2.0	19,400	108.00	2,095
OKLAHOMA	3,300	3,200	1.6	5,100	90.90	464
TEXAS	5,600	5,300	1.7	9,000	97.70	879
COLORADO	2,200	2,000	2.4	4,800	91.20	438
WASHINGTON	2,200	2,100	5.3	11,100	114.00	1,265
OREGON	16,400	16,300	6.9	112,500	119.00	13,388
CALIFORNIA	4,700	4,700	6.5	30,600	134.00	4,110
OTHER STATES ^{1/}	21,270	20,610	2.0	42,190	103.67	4,374
UNITED STATES	189,770	182,610	2.5	450,790	101.81	45,895
CANNING ^{2/}	146,210	139,760	2.4	338,440	97.63	33,043
FREEZING ^{2/}	43,560	42,850	2.6	112,350	114.39	12,852

SEE FOOTNOTE ON PAGE 25.

TABLE 5. SNAP BEANS FOR PROCESSING
ACRES, YIELD, PRODUCTION AND VALUE 1959-65--CONTINUED

STATE	ACRES		YIELD PER ACRE	PRODUCTION	VALUE	
	PLANTED	HARVESTED			PER TON	TOTAL
	ACRES	ACRES	TONS	TONS	DOLLARS	1,000 DOLLARS
MAINE	1,600	1,500	2.4	3,600	90.30	325
NEW YORK	46,500	43,100	1.8	77,600	92.10	7,147
PENNSYLVANIA	7,300	6,500	1.6	10,400	93.80	976
MICHIGAN	10,500	10,200	1.7	17,300	74.00	1,280
WISCONSIN	34,700	34,000	1.8	61,200	66.80	4,088
DELAWARE	7,000	6,700	1.1	7,400	72.80	539
MARYLAND	13,200	12,700	1.3	16,500	93.30	1,539
VIRGINIA	2,000	1,700	1.3	2,200	109.00	240
NORTH CAROLINA	2,500	2,400	2.3	5,500	110.00	605
SOUTH CAROLINA	1,000	1,000	1.2	1,200	107.00	128
FLORIDA	9,400	8,000	2.1	16,500	120.00	1,980
TENNESSEE	11,300	11,100	2.0	22,200	108.00	2,398
OKLAHOMA	1,900	1,800	1.2	2,200	107.00	235
TEXAS	6,200	6,200	2.1	12,400	89.60	1,111
COLORADO	2,200	2,000	2.5	5,000	75.80	379
WASHINGTON	2,600	2,600	5.5	14,300	124.00	1,773
OREGON	18,100	17,300	7.3	126,300	115.00	14,524
CALIFORNIA	4,800	4,800	6.0	28,800	133.00	3,830
OTHER STATES <u>1/</u>	22,630	20,440	2.1	43,830	95.69	4,194
UNITED STATES	205,430	194,040	2.4	474,430	99.68	47,291
CANNING <u>2/</u>	154,520	146,120	2.4	349,440	97.30	34,000
FREEZING <u>2/</u>	50,910	47,920	2.6	124,990	106.34	13,291

1964						
STATE	ACRES		YIELD PER ACRE	PRODUCTION	VALUE	
	PLANTED	HARVESTED			PER TON	TOTAL
	ACRES	ACRES	TONS	TONS	DOLLARS	1,000 DOLLARS
MAINE	1,600	1,600	2.1	3,400	95.90	326
NEW YORK	53,300	50,700	1.8	91,300	93.90	8,573
PENNSYLVANIA	9,600	9,200	1.4	12,900	98.00	1,264
MICHIGAN	9,700	9,500	1.5	14,200	75.70	1,075
WISCONSIN	39,400	36,000	1.7	61,200	74.60	4,566
DELAWARE	7,800	7,400	.9	6,700	88.30	592
MARYLAND	13,700	12,700	1.2	15,200	98.00	1,490
VIRGINIA	2,200	2,000	1.1	2,200	102.00	224
NORTH CAROLINA	2,900	2,800	1.9	5,300	122.00	647
SOUTH CAROLINA	1,100	1,000	1.3	1,300	100.00	130
FLORIDA	10,200	8,500	1.7	14,500	124.00	1,798
TENNESSEE	12,700	12,000	2.0	24,000	118.00	2,832
OKLAHOMA	2,800	2,400	1.2	2,900	91.20	264
TEXAS	7,400	7,000	2.0	14,000	90.40	1,266
COLORADO	2,300	2,200	2.4	5,300	85.30	452
WASHINGTON	2,300	2,300	5.5	12,600	116.00	1,462
OREGON	19,300	19,200	5.8	111,400	117.00	13,034
CALIFORNIA	5,200	5,200	5.1	26,500	134.00	3,551
OTHER STATES <u>1/</u>	26,850	25,230	1.8	44,980	94.58	4,254
UNITED STATES	230,350	216,930	2.2	469,880	101.73	47,800
CANNING <u>2/</u>	173,220	163,300	2.1	346,410	98.63	34,166
FREEZING <u>2/</u>	57,130	53,630	2.3	123,470	110.42	13,634

SEE FOOTNOTE ON PAGE 25.

TABLE 5. SNAP BEANS FOR PROCESSING
ACRES, YIELD, PRODUCTION AND VALUE 1959-65--CONTINUED

STATE	ACRES		YIELD PER ACRE	PRODUCTION	VALUE	
	PLANTED	HARVESTED			PER TON	TOTAL
	ACRES	ACRES	TONS	TONS	DOLLARS	1,000 DOLLARS
MAINE	1,600	1,500	2.1	3,200	88.00	282
NEW YORK	53,700	50,100	1.8	90,200	87.40	7,883
PENNSYLVANIA	10,400	10,000	1.7	17,000	93.10	1,583
MICHIGAN	12,600	12,000	1.6	19,200	81.40	1,563
WISCONSIN	41,600	36,300	2.3	83,500	73.30	6,121
DELAWARE	7,000	6,700	1.4	9,400	88.80	835
MARYLAND	15,500	15,100	1.8	27,200	102.00	2,774
VIRGINIA	1,900	1,700	1.3	2,200	101.00	222
NORTH CAROLINA	3,000	2,900	2.3	6,700	107.00	717
SOUTH CAROLINA	700	600	1.2	720	109.00	78
FLORIDA	9,100	8,300	1.8	15,100	115.00	1,732
TENNESSEE	12,800	12,800	2.0	25,600	112.00	2,867
OKLAHOMA	2,100	2,100	2.4	5,000	85.00	425
TEXAS	6,400	5,700	2.0	11,400	84.60	964
COLORADO	2,600	2,300	2.4	5,500	82.70	455
WASHINGTON	2,600	2,600	5.2	13,500	118.00	1,593
OREGON	22,100	21,900	5.6	122,600	109.00	13,363
CALIFORNIA	7,700	7,700	2.5	19,200	131.00	2,515
OTHER STATES ^{1/}	33,170	30,360	2.1	63,460	98.83	6,272
UNITED STATES	246,570	230,660	2.3	540,680	96.63	52,244
CANNING ^{2/}	192,930	178,800	2.4	424,730	94.08	39,958
FREEZING ^{2/}	53,640	51,860	2.2	115,950	105.96	12,286

^{1/} VERMONT (1959-64); MASSACHUSETTS (1960-65); NEW JERSEY, OHIO, INDIANA (1961-65); ILLINOIS, MINNESOTA, MISSOURI (1959-62 AND 1965); NEBRASKA (1964 ONLY); GEORGIA (1959-61 AND 1965); KENTUCKY, ALABAMA, MISSISSIPPI (1959-62); ARKANSAS, LOUISIANA, IDAHO, WYOMING, AND UTAH.

^{2/} NOT SHOWN BY STATES TO AVOID DISCLOSURE OF INDIVIDUAL ESTIMATES.

TABLE 6. BEETS FOR CANNING
ACRES, YIELD, PRODUCTION AND VALUE 1959-65

1959

STATE	ACRES		YIELD PER ACRE	PRODUCTION	VALUE	
	PLANTED	HARVESTED			PER TON	TOTAL
	ACRES	ACRES	TONS	TONS	DOLLARS	1,000 DOLLARS
NEW YORK	4,100	4,000	12.9	51,600	17.60	908
MICHIGAN	500	500	10.8	5,400	16.30	88
WISCONSIN	4,500	4,400	10.6	46,600	14.80	690
OREGON	1,300	1,300	15.7	20,400	26.80	547
OTHER STATES <u>1/</u>	4,060	3,990	5.7	22,700	20.88	474
UNITED STATES	14,460	14,190	10.3	146,700	18.45	2,707

1960

NEW YORK	4,500	4,400	10.9	48,000	20.00	960
MICHIGAN	480	480	9.5	4,600	18.30	84
WISCONSIN	5,000	4,600	8.5	39,100	17.00	665
OREGON	1,500	1,400	14.5	20,300	24.00	487
OTHER STATES <u>1/</u>	3,940	3,900	8.7	33,860	18.02	610
UNITED STATES	15,420	14,780	9.9	145,860	19.24	2,806

1961

NEW YORK	5,300	5,300	11.8	62,500	20.40	1,275
MICHIGAN	580	580	10.1	5,900	16.90	100
WISCONSIN	5,800	5,500	10.0	55,000	16.00	880
OREGON	1,800	1,700	14.4	24,500	20.40	500
OTHER STATES <u>1/</u>	4,240	4,160	8.3	34,660	18.32	635
UNITED STATES	17,720	17,240	10.6	182,560	18.57	3,390

1962

NEW YORK	5,100	5,100	15.7	80,100	19.60	1,570
MICHIGAN	700	650	11.0	7,200	17.60	127
WISCONSIN	6,700	6,600	9.8	64,700	16.40	1,061
OREGON	1,700	1,600	19.7	31,500	19.80	624
OTHER STATES <u>1/</u>	4,260	3,170	8.0	25,340	20.64	523
UNITED STATES	18,460	17,120	12.2	208,840	18.70	3,905

SEE FOOTNOTE ON PAGE 27.

TABLE 6. BEETS FOR CANNING
ACRES, YIELD, PRODUCTION AND VALUE 1959-65

STATE	ACRES		YIELD PER ACRE	PRODUCTION	VALUE	
	PLANTED	HARVESTED			PER TON	TOTAL
	ACRES	ACRES	TONS	TONS	DOLLARS	1,000 DOLLARS
1963						
NEW YORK	4,800	4,800	14.2	68,200	17.60	1,200
MICHIGAN	800	750	8.0	6,000	16.40	98
WISCONSIN	6,700	6,600	9.9	65,300	16.60	1,084
OREGON	1,800	1,800	18.2	32,800	19.20	630
OTHER STATES ^{1/}	5,210	4,750	8.2	39,110	16.01	626
UNITED STATES	19,310	18,700	11.3	211,410	17.21	3,638
1964						
NEW YORK	4,900	4,900	12.5	61,200	18.90	1,157
MICHIGAN	550	500	7.3	3,600	21.00	76
WISCONSIN	5,800	5,500	9.6	52,800	17.80	940
OREGON	1,500	1,400	17.5	24,500	20.60	505
OTHER STATES ^{1/}	4,200	3,920	9.1	35,690	19.81	707
UNITED STATES	16,950	16,220	11.0	177,790	19.04	3,385
1965						
NEW YORK	5,000	4,900	13.3	65,200	17.70	1,154
MICHIGAN	440	360	9.7	3,500	22.40	78
WISCONSIN	5,700	5,000	12.1	60,500	17.60	1,065
OREGON	1,200	1,200	18.0	21,600	20.00	432
OTHER STATES ^{1/}	3,320	3,070	9.0	27,710	19.56	542
UNITED STATES	15,660	14,530	12.3	178,510	18.32	3,271

^{1/} NEW JERSEY, PENNSYLVANIA (1959-64); OHIO, INDIANA (1962-64); ILLINOIS (1959-64); MINNESOTA, DELAWARE (1959 ONLY); NORTH CAROLINA (1962-65); TEXAS, WYOMING (1962 ONLY); COLORADO, UTAH, WASHINGTON, AND CALIFORNIA.

TABLE 7. CABBAGE FOR SAUERKRAUT
ACRES, YIELD, PRODUCTION AND VALUE 1959-65

1959

STATE	ACRES		YIELD PER ACRE	PRODUCTION	VALUE	
	PLANTED	HARVESTED			PER TON	TOTAL
	ACRES	ACRES	TONS	TONS	DOLLARS	1,000 DOLLARS
NEW YORK	3,600	3,600	13.9	50,000	17.20	860
OHIO	750	700	15.1	10,600	12.00	127
WISCONSIN	3,000	2,900	13.4	38,900	13.00	506
OTHER STATES <u>1/</u>	3,790	3,670	13.6	49,780	15.65	779
UNITED STATES	11,140	10,870	13.7	149,280	15.22	2,272

1960

NEW YORK	4,700	4,700	17.9	84,100	17.00	1,430
OHIO	1,700	1,700	14.8	25,200	12.60	318
WISCONSIN	4,100	4,100	14.5	59,400	15.00	891
OTHER STATES <u>1/</u>	3,800	3,700	14.0	51,760	15.07	780
UNITED STATES	14,300	14,200	15.5	220,460	15.51	3,419

1961

NEW YORK	4,200	4,200	17.8	74,800	12.00	898
OHIO	1,500	1,500	15.1	22,600	12.10	273
WISCONSIN	3,700	3,700	17.0	62,900	12.30	774
OTHER STATES <u>1/</u>	3,780	3,690	15.0	55,400	14.48	802
UNITED STATES	13,180	13,090	16.5	215,700	12.74	2,747

1962

NEW YORK	4,500	4,500	18.8	84,600	12.70	1,074
OHIO	1,400	1,400	15.1	21,100	12.10	255
WISCONSIN	3,400	3,300	17.2	56,800	13.20	750
OTHER STATES <u>1/</u>	3,030	2,930	16.6	48,770	14.78	721
UNITED STATES	12,330	12,130	17.4	211,270	13.25	2,800

SEE FOOTNOTE ON PAGE 29.

TABLE 7. CABBAGE FOR SAUERKRAUT
ACRES, YIELD, PRODUCTION AND VALUE 1959-65 --CONTINUED

1963						
STATE	ACRES		YIELD PER ACRE	PRODUCTION	VALUE	
	PLANTED	HARVESTED			PER TON	TOTAL
	ACRES	ACRES	TONS	TDNS	DOLLARS	1,000 DOLLARS
NEW YORK	4,100	4,100	18.3	75,000	12.90	968
OHIO	950	950	13.7	13,000	12.10	157
WISCONSIN	3,700	3,600	16.4	59,000	11.90	702
OTHER STATES ^{1/}	2,930	2,880	17.5	50,260	14.62	745
UNITED STATES	11,680	11,530	17.1	197,260	13.04	2,572
1964						
NEW YORK	3,400	3,400	17.8	60,500	16.80	1,016
OHIO	1,100	1,100	15.1	16,600	12.00	199
WISCONSIN	3,200	3,100	14.4	44,600	15.00	669
OTHER STATES ^{1/}	2,790	2,680	15.4	41,150	14.99	617
UNITED STATES	10,490	10,280	15.8	162,850	15.36	2,501
1965						
NEW YORK	4,200	4,200	21.0	88,200	12.50	1,102
OHIO	1,400	1,400	18.7	26,200	13.10	343
WISCONSIN	3,900	3,800	18.0	68,400	13.50	923
OTHER STATES ^{1/}	3,420	3,350	16.7	56,110	15.86	890
UNITED STATES	12,920	12,750	18.7	238,910	13.64	3,258

^{1/} NEW JERSEY (1959 ONLY); PENNSYLVANIA, INDIANA, ILLINOIS (1959-60 AND 1965); MICHIGAN, MINNESOTA (1964 ONLY); MISSOURI (1961-65); VIRGINIA, NORTH CAROLINA, TENNESSEE, TEXAS, IDAHO, COLORADO, UTAH (1959-61); WASHINGTON AND OREGON.

TABLE 8. SWEET CORN FOR PROCESSING
ACRES, YIELD, PRODUCTION AND VALUE 1959-65

1959

STATE	ACRES		YIELD PER ACRE	PRODUCTION	VALUE	
	PLANTED	HARVESTED			PER TON	TOTAL
	ACRES	ACRES	TONS	TONS	DOLLARS	1,000 DOLLARS
MAINE	4,000	3,900	4.30	16,800	23.80	400
NEW YORK	22,400	21,100	3.01	63,500	20.90	1,327
PENNSYLVANIA	8,800	8,700	2.60	22,600	22.90	518
ILLINOIS	63,400	61,100	3.44	210,200	20.30	4,267
WISCONSIN	114,000	102,600	3.91	401,200	17.30	6,941
MINNESOTA	96,400	86,800	3.83	332,400	16.70	5,551
IOWA	9,600	9,000	3.78	34,000	17.70	602
DELAWARE	5,700	5,400	3.40	18,400	20.40	375
MARYLAND	34,800	32,800	2.84	93,200	20.20	1,883
IDAHO	12,800	12,400	5.92	73,400	19.20	1,409
WASHINGTON	17,700	16,800	4.82	81,000	21.50	1,742
OREGON	17,900	17,700	5.29	93,600	27.20	2,546
OTHER STATES 1/	42,700	40,350	3.52	141,870	18.95	2,688
UNITED STATES	450,200	418,650	3.78	1,582,170	19.12	30,249
CANNING 2/	382,070	355,010	3.78	1,340,380	18.59	24,824
FREEZING 2/	68,130	63,640	3.80	241,790	22.44	5,425

1960

MAINE	3,000	3,000	4.72	14,200	23.90	339
NEW YORK	20,400	19,900	3.53	70,200	22.30	1,565
PENNSYLVANIA	9,100	8,900	3.30	29,400	22.90	673
ILLINOIS	63,900	62,600	3.46	216,600	19.70	4,267
WISCONSIN	104,000	95,600	2.75	262,900	17.10	4,496
MINNESOTA	95,200	91,300	3.02	275,700	16.50	4,549
IOWA	5,500	5,200	3.35	17,400	16.40	285
DELAWARE	5,000	4,900	3.40	16,700	19.00	317
MARYLAND	30,800	30,200	3.30	99,700	19.90	1,984
IDAHO	12,500	12,300	5.02	61,700	21.20	1,308
WASHINGTON	22,700	22,200	4.76	105,700	21.40	2,262
OREGON	21,900	21,500	4.95	106,400	23.90	2,543
OTHER STATES 1/	36,700	34,290	3.34	114,360	19.06	2,180
UNITED STATES	430,700	411,890	3.38	1,390,960	19.24	26,768
CANNING 2/	352,310	335,750	3.31	1,109,770	18.61	20,649
FREEZING 2/	78,390	76,140	3.69	281,190	21.75	6,119

1961

MAINE	3,100	3,100	5.60	17,400	23.70	412
NEW YORK	21,900	20,800	3.95	82,200	22.60	1,858
PENNSYLVANIA	10,300	9,800	3.29	32,200	22.90	737
ILLINOIS	63,200	61,400	4.01	246,200	20.40	5,022
WISCONSIN	113,400	107,400	3.49	374,800	17.60	6,596
MINNESOTA	106,200	103,700	3.76	389,900	17.10	6,667
IOWA	6,300	6,100	4.08	24,900	17.10	426
DELAWARE	5,400	5,300	3.36	17,800	19.50	347
MARYLAND	32,500	31,200	3.17	98,900	19.80	1,958
IDAHO	12,900	12,300	4.86	59,800	20.40	1,220
WASHINGTON	27,900	26,900	4.88	131,300	22.40	2,941
OREGON	29,200	26,700	4.62	123,400	23.90	2,949
OTHER STATES 1/	36,320	35,820	3.56	127,470	18.92	2,412
UNITED STATES	468,620	450,520	3.83	1,726,270	19.43	33,545
CANNING 2/	379,320	365,720	3.75	1,373,080	18.82	25,843
FREEZING 2/	89,300	84,800	4.16	353,190	21.81	7,702

SEE FOOTNOTE ON PAGE 32.

TABLE B. SWEET CORN FOR PROCESSING
ACRES, YIELD, PRODUCTION AND VALUE 1959-65--CONTINUED

1962						
STATE	ACRES		YIELD PER ACRE	PRODUCTION	VALUE	
	PLANTED	HARVESTED			PER TON	TOTAL
	ACRES	ACRES	TONS	TONS	DOLLARS	1,000 DOLLARS
MAINE	2,700	2,600	5.80	15,100	24.30	367
NEW YORK	22,600	21,700	4.80	104,200	21.80	2,272
PENNSYLVANIA	8,700	8,300	2.78	23,100	22.50	520
ILLINOIS	62,000	61,000	4.27	260,500	21.10	5,497
WISCONSIN	118,500	109,400	3.67	401,500	18.20	7,307
MINNESOTA	104,400	98,200	3.73	366,300	17.70	6,484
IOWA	6,400	6,200	4.19	26,000	16.90	439
DELAWARE	5,400	5,000	3.14	15,700	19.90	312
MARYLAND	31,100	30,600	3.00	91,800	20.40	1,873
IDAHO	14,200	13,600	5.71	77,700	20.40	1,585
WASHINGTON	26,300	25,600	5.09	130,300	22.80	2,971
OREGON	27,200	26,800	5.56	149,000	25.70	3,829
OTHER STATES <u>1/</u>	35,900	33,800	4.08	138,050	19.47	2,688
UNITED STATES	465,400	442,800	4.06	1,799,250	20.09	36,144
CANNING <u>2/</u>	378,100	357,900	4.01	1,435,240	19.36	27,785
FREEZING <u>2/</u>	87,300	84,900	4.29	364,010	22.96	8,359
1963						
MAINE	2,100	2,000	5.70	11,400	22.40	255
NEW YORK	18,800	17,200	4.91	84,500	22.10	1,867
PENNSYLVANIA	7,600	6,900	3.10	21,400	22.90	490
ILLINOIS	55,400	54,400	4.40	239,400	20.60	4,932
WISCONSIN	101,000	98,500	3.86	380,200	18.70	7,110
MINNESOTA	96,600	93,600	4.07	381,000	17.90	6,820
IOWA	6,300	5,700	5.30	30,200	17.40	525
DELAWARE	4,400	3,900	2.87	11,200	20.80	233
MARYLAND	28,900	27,500	2.84	78,100	19.60	1,531
IDAHO	12,100	11,700	6.40	74,900	20.00	1,498
WASHINGTON	24,400	23,600	5.94	140,200	22.20	3,112
OREGON	23,900	23,000	5.21	119,800	26.40	3,163
OTHER STATES <u>1/</u>	25,250	24,320	4.39	106,840	18.75	2,003
UNITED STATES	406,750	392,320	4.28	1,679,140	19.97	33,539
CANNING <u>2/</u>	323,040	312,500	4.23	1,323,330	19.19	25,395
FREEZING <u>2/</u>	83,710	79,820	4.46	355,810	22.89	8,144
1964						
MAINE	1,300	1,200	5.80	7,000	22.90	160
NEW YORK	14,800	14,300	4.72	67,500	25.00	1,688
PENNSYLVANIA	8,700	8,000	2.97	23,800	21.00	500
ILLINOIS	45,900	45,600	4.44	202,500	20.00	4,050
WISCONSIN	96,300	90,300	3.75	338,600	19.20	6,501
MINNESOTA	88,000	83,100	4.04	335,700	18.60	6,244
IOWA	6,000	5,900	4.04	23,800	18.80	447
DELAWARE	3,700	3,500	3.05	10,700	23.40	250
MARYLAND	27,100	25,700	2.75	70,700	22.30	1,577
IDAHO	11,900	11,500	6.02	69,200	20.50	1,419
WASHINGTON	25,000	23,500	5.58	131,100	20.10	2,635
OREGON	25,100	24,800	5.79	143,600	25.00	3,590
OTHER STATES <u>1/</u>	16,100	15,640	3.61	56,500	19.89	1,124
UNITED STATES	369,900	353,040	4.19	1,480,700	20.39	30,185
CANNING <u>2/</u>	284,810	271,630	4.07	1,104,780	19.81	21,887
FREEZING <u>2/</u>	85,090	81,410	4.62	375,920	22.07	8,298

SEE FOOTNOTE ON PAGE 32.

TABLE 8. SWEET CORN FOR PROCESSING
ACRES, YIELD, PRODUCTION AND VALUE 1959-65--CONTINUED

1965

STATE	ACRES		YIELD PER ACRE	PRODUCTION	VALUE	
	PLANTED	HARVESTED			PER TON	TOTAL
	ACRES	ACRES	TONS	TONS	DOLLARS	1,000 DOLLARS
MAINE	1,300	1,300	5.15	6,700	21.50	144
NEW YORK	14,000	13,100	4.05	53,100	26.60	1,412
PENNSYLVANIA	9,500	9,200	2.58	23,700	21.80	517
ILLINOIS	54,200	48,500	4.23	205,200	23.60	4,843
WISCONSIN	114,600	88,000	4.19	368,700	20.70	7,632
MINNESOTA	103,800	91,500	3.86	353,200	21.70	7,664
IOWA	5,900	5,200	4.13	21,500	16.50	355
DELAWARE	3,300	3,200	3.38	10,800	23.90	258
MARYLAND	29,200	28,500	3.22	91,800	23.10	2,121
IDAHO	16,400	13,400	6.31	84,600	22.60	1,912
WASHINGTON	31,500	30,400	5.20	158,100	24.80	3,921
OREGON	30,500	28,800	5.82	167,600	24.10	4,039
OTHER STATES ^{1/}	16,450	15,590	4.40	68,600	19.55	1,341
UNITED STATES	430,650	376,690	4.28	1,613,600	22.41	36,159
CANNING ^{2/}	323,050	277,330	4.26	1,181,010	21.76	25,703
FREEZING ^{2/}	107,600	99,360	4.35	432,590	24.17	10,456

^{1/} NEW HAMPSHIRE (1959-63); VERMONT (1959 ONLY); NEW JERSEY (1959-63); OHIO, INDIANA, MICHIGAN, SOUTH DAKOTA, VIRGINIA, WEST VIRGINIA (1960-61); TENNESSEE (1959-63); ARKANSAS (1959-63); LOUISIANA (1959 ONLY); OKLAHOMA (1959-63); TEXAS, MONTANA, WYOMING, COLORADO (1959-63); UTAH AND CALIFORNIA (1959-62).

^{2/} NOT SHOWN BY STATES TO AVOID DISCLOSURE OF INDIVIDUAL OPERATIONS.

TABLE 9. CUCUMBERS FOR PICKLES, ACRES, YIELD, PRODUCTION,
VALUE PER TON, AND TOTAL VALUE, 1959-65

1959

REGION AND STATE	ACRES		YIELD PER ACRE	PRODUCTION	VALUE	
	PLANTED	HARVESTED			PER TON	TOTAL
	ACRES	ACRES	TONS	TONS	DOLLARS	1,000 DOLLARS
NORTHERN						
OHIO	1,400	1,300	4.35	5,660	70.80	401
INDIANA	1,200	1,200	4.46	5,350	37.50	201
MICHIGAN	25,000	22,700	4.61	104,650	47.90	5,013
WISCONSIN	16,000	15,400	2.88	44,350	50.00	2,218
OTHER STATES ^{1/}	5,960	5,380	3.92	21,070	54.53	1,149
TOTAL NORTHERN	49,560	45,980	3.94	181,080	49.60	8,982
SOUTHERN						
DEL. & MD.	3,600	3,600	4.44	15,970	50.41	805
VIRGINIA	3,200	3,100	1.56	4,840	66.70	323
NORTH CAROLINA	15,400	14,400	1.99	28,660	50.00	1,433
TEXAS	6,000	5,000	2.81	14,050	43.80	615
OTHER STATES ^{2/}	22,900	20,850	1.68	35,110	56.34	1,978
TOTAL SOUTHERN	51,100	46,950	2.10	98,630	52.25	5,154
WESTERN						
COLORADO	1,700	1,500	8.76	13,140	41.70	548
WASHINGTON	950	950	4.18	3,970	62.50	248
CALIFORNIA	3,100	3,000	9.96	29,880	56.20	1,679
OTHER STATES ^{3/}	650	580	5.38	3,120	51.60	161
TOTAL WESTERN	6,400	6,030	8.31	50,110	52.60	2,636
UNITED STATES	107,060	98,960	3.33	329,820	50.85	16,772

1960

NORTHERN						
OHIO	1,100	1,000	4.65	4,650	72.90	339
INDIANA	900	900	5.52	4,970	43.80	218
MICHIGAN	23,500	20,600	4.82	99,290	52.10	5,173
WISCONSIN	14,200	13,600	3.05	41,480	54.20	2,248
OTHER STATES ^{1/}	5,640	5,290	4.44	23,480	57.88	1,359
TOTAL NORTHERN	45,340	41,390	4.20	173,870	53.70	9,337
SOUTHERN						
DEL. & MD.	3,000	3,000	5.27	15,800	50.44	797
VIRGINIA	2,600	2,300	2.64	6,070	52.10	316
NORTH CAROLINA	15,300	14,300	2.30	32,890	43.80	1,441
TEXAS	4,200	3,700	5.47	20,240	56.20	1,137
OTHER STATES ^{2/}	20,140	19,340	1.78	34,430	63.17	2,175
TOTAL SOUTHERN	45,240	42,640	2.57	109,430	53.60	5,866
WESTERN						
COLORADO	1,400	1,200	7.20	8,640	47.90	414
WASHINGTON	1,100	1,100	5.76	6,340	58.30	370
CALIFORNIA	3,200	3,100	10.80	33,480	60.40	2,022
OTHER STATES ^{3/}	830	800	5.38	4,300	57.91	749
TOTAL WESTERN	6,530	6,200	8.51	52,760	57.90	3,055
UNITED STATES	97,110	90,230	3.72	336,060	54.33	18,258

SEE FOOTNOTES ON PAGE 36.

TABLE 9. CUCUMBERS FOR PICKLES, ACRES, YIELD, PRODUCTION,
VALUE PER TON, AND TOTAL VALUE 1959-65--CONTINUED

1961

REGION AND STATE	ACRES		YIELD PER ACRE	PRODUCTION	VALUE	
	PLANTED	HARVESTED			PER TON	TOTAL
	ACRES	ACRES	TONS	TONS	DOLLARS	1,000 DOLLARS
NORTHERN						
OHIO	1,200	1,100	5.90	6,490	72.80	472
INDIANA	1,100	1,000	5.87	5,870	39.60	232
MICHIGAN	26,500	24,400	5.23	127,610	54.20	6,916
WISCONSIN	16,200	15,200	3.26	49,550	54.20	2,686
OTHER STATES 1/	6,730	6,620	3.89	25,750	58.99	1,519
TOTAL NORTHERN	51,730	48,320	4.46	215,270	54.93	11,825
SOUTHERN						
DEL. & MD.	3,550	3,400	4.55	15,460	51.68	799
VIRGINIA	2,300	2,100	2.16	4,540	45.80	208
NORTH CAROLINA	16,400	14,400	2.02	29,090	47.80	1,391
TEXAS	5,200	4,800	5.19	24,910	52.00	1,295
OTHER STATES 2/	22,730	21,400	2.00	42,890	58.59	2,513
TOTAL SOUTHERN	50,180	46,100	2.54	116,890	53.09	6,206
WESTERN						
COLORADO	2,100	1,700	5.60	9,520	47.90	456
WASHINGTON	1,500	1,500	7.68	11,520	60.40	696
CALIFORNIA	4,400	4,300	11.16	47,990	64.60	3,100
OTHER STATES 3/	1,250	1,180	6.56	7,740	67.31	521
TOTAL WESTERN	9,250	8,680	8.84	76,770	62.17	4,773
UNITED STATES	111,160	103,100	3.97	408,930	55.77	22,804

1962

NORTHERN						
OHIO	1,400	1,300	4.90	6,370	66.80	426
INDIANA	900	900	6.20	5,580	47.20	263
MICHIGAN	23,800	22,100	5.30	117,130	51.20	5,997
WISCONSIN	14,600	13,700	2.50	34,250	56.40	1,932
OTHER STATES 1/	5,740	5,360	4.82	25,820	55.38	1,430
TOTAL NORTHERN	46,440	43,360	4.36	189,150	53.12	10,048
SOUTHERN						
DEL. & MD.	3,750	3,450	6.24	21,520	44.61	960
VIRGINIA	2,700	2,700	2.90	7,830	50.80	398
NORTH CAROLINA	19,000	17,200	2.75	47,300	50.80	2,403
TEXAS	5,200	4,800	3.95	18,960	48.40	918
OTHER STATES 2/	20,230	19,030	2.45	46,590	57.91	2,670
TOTAL SOUTHERN	49,880	47,180	3.01	142,200	51.68	7,349
WESTERN						
COLORADO	2,200	1,600	5.60	8,960	48.00	430
WASHINGTON	1,600	1,600	5.75	9,200	57.60	530
CALIFORNIA	4,200	4,100	11.10	45,510	59.20	2,694
OTHER STATES 3/	1,120	1,120	5.80	6,500	59.69	388
TOTAL WESTERN	9,120	8,420	8.33	70,170	57.60	4,042
UNITED STATES	105,440	98,960	4.06	401,520	53.39	21,439

SEE FOOTNOTES ON PAGE 36.

TABLE 9. CUCUMBERS FOR PICKLES, ACRES, YIELD, PRODUCTION,
VALUE PER TON, AND TOTAL VALUE 1959-65--CONTINUED

1963

REGION AND STATE	ACRES		YIELD PER ACRE	PRODUCTION	VALUE	
	PLANTED	HARVESTED			PER TON	TOTAL
	ACRES	ACRES	TONS	TONS	DOLLARS	1,000 DOLLARS
NORTHERN						
OHIO	1,900	1,900	5.40	10,260	72.20	741
INDIANA	1,000	1,000	6.30	6,300	43.00	271
MICHIGAN	26,000	24,900	5.60	139,440	52.60	7,335
WISCONSIN	15,800	14,400	3.30	47,520	59.20	2,813
OTHER STATES 1/	6,510	5,980	5.34	31,920	59.84	1,910
TOTAL NORTHERN	51,210	48,180	4.89	235,440	55.51	13,070
SOUTHERN						
DEL. & MD.	4,200	4,000	5.98	23,900	48.12	1,150
VIRGINIA	3,200	2,800	1.80	5,040	62.60	316
NORTH CAROLINA	21,000	20,100	2.40	48,240	53.50	2,581
TEXAS	6,000	5,800	5.48	31,780	49.30	1,567
OTHER STATES 2/	21,750	18,680	2.35	43,990	58.54	2,575
TOTAL SOUTHERN	56,150	51,380	2.98	152,950	53.54	8,189
WESTERN						
COLORADO	2,400	1,900	9.25	17,580	51.20	900
WASHINGTON	1,600	1,500	7.05	10,580	59.40	628
CALIFORNIA	3,800	3,700	11.70	43,290	60.40	2,615
OTHER STATES 3/	1,070	1,060	6.45	6,840	63.16	432
TOTAL WESTERN	8,870	8,160	9.58	78,290	58.44	4,575
UNITED STATES	116,230	107,720	4.33	466,680	55.36	25,834

1964

NORTHERN						
OHIO	2,300	2,100	5.15	10,820	73.60	796
INDIANA	850	750	6.10	4,580	62.20	285
MICHIGAN	25,500	23,700	5.05	119,680	66.60	7,971
WISCONSIN	16,300	15,400	2.25	34,650	74.00	2,564
OTHER STATES 1/	7,240	6,540	5.65	36,980	59.60	2,204
TOTAL NORTHERN	52,190	48,490	4.26	206,710	66.86	13,820
SOUTHERN						
DEL. & MD.	4,100	3,800	5.38	20,440	50.88	1,040
VIRGINIA	2,600	2,600	3.10	8,060	76.60	617
NORTH CAROLINA	20,700	20,100	2.50	50,250	70.00	3,518
TEXAS	5,700	4,700	5.15	24,200	51.40	1,244
OTHER STATES 2/	22,120	20,970	2.02	42,350	67.84	2,873
TOTAL SOUTHERN	55,220	52,170	2.79	145,300	63.95	9,292
WESTERN						
COLORADO	2,300	1,700	7.90	13,430	56.40	757
WASHINGTON	1,400	1,300	4.55	5,920	72.60	430
CALIFORNIA	3,900	3,900	11.90	46,410	68.50	3,179
OTHER STATES 3/	1,450	1,340	5.99	8,020	68.20	547
TOTAL WESTERN	9,050	8,240	8.95	73,780	66.59	4,913
UNITED STATES	116,460	108,900	3.91	425,790	65.82	28,025

SEE FOOTNOTES ON PAGE 36.

TABLE 9. CUCUMBERS FOR PICKLES, ACRES, YIELD, PRODUCTION,
VALUE PER TON AND TOTAL VALUE 1959-65--CONTINUED

1965

REGION AND STATE	ACRES		YIELD PER ACRES	PRODUCTION	VALUE	
	PLANTED	HARVESTED			PER TON	TOTAL
	ACRES	ACRES	TONS	TONS	DOLLARS	1,000 DOLLARS
NORTHERN						
OHIO	2,700	2,400	5.30	12,720	75.60	962
INDIANA	1,200	1,200	5.50	6,600	69.00	455
MICHIGAN	17,800	16,500	5.75	94,880*	93.40	7,589
WISCONSIN	15,100	13,800	3.15	43,470	84.80	3,686
OTHER STATES ^{1/}	8,050	7,380	5.16	38,060	68.21	2,596
TOTAL NORTHERN	44,850	41,280	4.74	195,730	83.95	15,288
SOUTHERN						
DEL. & MD.	4,200	4,100	6.46	26,470	54.33	1,438
VIRGINIA	2,900	2,900	3.50	10,150	84.60	859
NORTH CAROLINA	21,700	21,300	2.81	59,850	73.60	4,405
TEXAS	6,100	5,600	3.08	17,250	65.60	1,132
OTHER STATES ^{2/}	25,200	23,800	2.26	53,870	67.92	3,659
TOTAL SOUTHERN	60,100	57,700	2.90	167,590	68.58	11,493
WESTERN						
COLORADO	1,200	800	7.00	5,600	61.80	346
WASHINGTON	1,600	1,600	8.70	13,920	68.60	955
CALIFORNIA	3,800	3,700	11.60	42,920	76.70	3,292
OTHER STATES ^{3/}	2,830	2,530	6.25	15,800	72.34	1,143
TOTAL WESTERN	9,430	8,630	9.07	78,240	73.31	5,736
UNITED STATES	114,380	107,610	4.10	441,560	75.99	32,517

^{1/} MAINE (1959-61 AND 1963-65); NEW HAMPSHIRE, MASSACHUSETTS, CONNECTICUT (1959-60); NEW YORK, NEW JERSEY, PENNSYLVANIA (1959-60 AND 1963-65); ILLINOIS, MINNESOTA, IOWA, MISSOURI, AND SOUTH DAKOTA (1965 ONLY).

^{2/} SOUTH CAROLINA, GEORGIA, FLORIDA, KENTUCKY, ALABAMA, MISSISSIPPI, ARKANSAS, LOUISIANA, AND OKLAHOMA.

^{3/} IDAHO (1962-65); NEW MEXICO (1964-65); ARIZONA, UTAH, AND OREGON.

* INCLUDES MICHIGAN, 13,630 TONS NOT MARKETED AND EXCLUDED IN COMPUTING VALUE.

TABLE 10. GREEN PEAS FOR PROCESSING, ACRES, YIELD, PRODUCTION,
VALUE PER TON, AND TOTAL VALUE, 1959-65

REGION AND STATE	ACRES		YIELD PER ACRE	PRODUCTION	VALUE	
	PLANTED	HARVESTED			PER TON	TOTAL
	ACRES	ACRES	LBS	TONS	DOLLARS	1,000 DOLLARS
1959						
EASTERN						
NEW YORK	11,900	11,100	2,820	15,650	100.90	1,579
DELAWARE	6,900	6,700	2,690	9,010	116.70	1,051
MARYLAND	7,300	7,100	2,800	9,940	91.30	908
OTHER STATES ^{1/}	14,690	14,400	2,814	20,260	108.54	2,199
TOTAL EASTERN	40,790	39,300	2,792	54,860	104.56	5,737
CENTRAL						
WISCONSIN	87,000	85,600	2,500	107,000	80.90	8,656
MINNESOTA	44,100	42,100	2,230	46,940	89.10	4,182
OTHER STATES ^{2/}	33,350	33,000	3,061	50,510	99.72	5,037
TOTAL CENTRAL	164,450	160,700	2,544	204,450	87.43	17,875
WESTERN						
IDAHO	10,900	9,800	2,610	12,790	80.80	1,033
WASHINGTON	69,000	66,100	3,250	107,410	84.30	9,055
OREGON	60,400	55,900	2,510	70,150	85.70	6,012
CALIFORNIA	7,900	7,300	3,230	11,790	77.50	914
OTHER STATES ^{3/}	7,990	7,630	3,080	11,750	82.13	965
TOTAL WESTERN	156,190	146,730	2,915	213,890	84.06	17,979
UNITED STATES	361,430	346,730	2,730	473,200	87.89	41,591
FOR FREEZING ^{4/}	127,640	119,530	2,853	170,490	90.15	15,369
FOR CANNING ^{4/}	233,790	227,200	2,665	302,710	86.62	26,222
1960						
EASTERN						
NEW YORK	10,800	10,500	3,020	15,860	101.30	1,607
DELAWARE	6,200	6,100	2,840	8,660	111.50	966
MARYLAND	6,500	6,400	3,150	10,080	89.50	902
OTHER STATES ^{1/}	16,400	16,000	2,556	20,450	101.37	2,073
TOTAL EASTERN	39,900	39,000	2,823	55,050	100.78	5,548
CENTRAL						
WISCONSIN	82,000	78,500	2,700	106,000	74.40	7,886
MINNESOTA	44,100	40,500	2,540	51,440	86.00	4,424
OTHER STATES ^{2/}	33,870	33,670	3,151	53,040	92.23	4,892
TOTAL CENTRAL	159,970	152,670	2,757	210,480	81.73	17,202
WESTERN						
IDAHO	15,500	13,500	1,750	11,800	77.40	913
WASHINGTON	73,500	71,300	2,710	96,600	92.00	8,887
OREGON	57,400	57,200	1,800	51,480	82.40	4,242
CALIFORNIA	7,500	7,000	3,860	13,510	71.40	965
OTHER STATES ^{3/}	7,000	5,320	2,432	6,470	85.63	554
TOTAL WESTERN	160,900	154,320	2,331	179,860	86.52	15,561
UNITED STATES	360,770	345,990	2,575	445,390	86.02	38,311
FOR FREEZING ^{4/}	135,810	131,970	2,464	162,610	83.96	13,652
FOR CANNING ^{4/}	224,960	214,020	2,643	282,780	87.20	24,659

SEE FOOTNOTES ON PAGE 40.

TABLE 10. GREEN PEAS FOR PROCESSING, ACRES, YIELD, PRODUCTION,
VALUE PER TON, AND TOTAL VALUE 1959-65--CONTINUED

1961						
REGION AND STATE	ACRES		YIELD PER ACRE	PRODUCTION	VALUE	
	PLANTED	HARVESTED			PER TON	TOTAL
	ACRES	ACRES	LBS	TONS	DOLLARS	1,000 DOLLARS
EASTERN						
NEW YORK	11,100	9,900	3,310	16,380	96.40	1,579
DELAWARE	7,000	6,800	3,350	11,390	110.00	1,253
MARYLAND	7,600	7,300	3,350	12,230	88.00	1,076
OTHER STATES <u>1/</u>	15,700	15,250	2,846	21,700	105.99	2,300
TOTAL EASTERN	41,400	39,250	3,144	61,700	100.62	6,208
CENTRAL						
WISCONSIN	102,600	100,900	2,520	127,130	78.70	10,005
MINNESOTA	53,300	50,900	2,470	62,860	83.90	5,274
OTHER STATES <u>2/</u>	37,450	36,930	3,072	56,720	87.91	4,986
TOTAL CENTRAL	193,350	188,730	2,614	246,710	82.14	20,265
WESTERN						
IDAHO	19,300	17,800	1,740	15,500	85.20	1,321
WASHINGTON	77,900	74,700	2,780	103,830	92.40	9,594
OREGON	70,900	62,500	1,770	55,310	81.20	4,491
CALIFORNIA	14,500	12,900	3,210	20,700	74.60	1,544
OTHER STATES <u>3/</u>	6,200	5,600	2,414	6,760	82.99	561
TOTAL WESTERN	188,800	173,500	2,330	202,100	86.65	17,511
UNITED STATES	423,550	401,480	2,543	510,510	86.16	43,984
FOR FREEZING <u>4/</u>	167,590	152,760	2,601	198,680	87.03	17,291
FOR CANNING <u>4/</u>	255,960	248,720	2,507	311,830	85.60	26,693
1962						
EASTERN						
NEW YORK	10,500	10,400	2,770	14,400	102.00	1,469
DELAWARE	7,900	7,700	2,050	7,890	110.00	868
MARYLAND	7,700	7,600	2,300	8,740	89.10	779
OTHER STATES <u>1/</u>	16,290	15,960	2,494	19,900	104.32	2,076
TOTAL EASTERN	42,390	41,660	2,445	50,930	101.94	5,192
CENTRAL						
WISCONSIN	114,400	112,300	2,450	137,570	81.40	11,198
MINNESOTA	55,000	50,100	2,540	63,630	80.30	5,109
OTHER STATES <u>2/</u>	38,980	38,580	2,818	54,360	86.81	4,719
TOTAL CENTRAL	208,380	200,980	2,543	255,560	82.27	21,026
WESTERN						
IDAHO	16,300	14,900	2,120	15,790	85.50	1,350
WASHINGTON	80,400	73,500	3,220	118,340	85.30	10,094
OREGON	69,900	60,700	2,080	63,130	84.10	5,309
CALIFORNIA	11,600	9,700	3,010	14,600	70.30	1,026
OTHER STATES <u>3/</u>	6,850	5,650	2,935	8,290	84.80	703
TOTAL WESTERN	185,050	164,450	2,677	220,150	83.95	18,482
UNITED STATES	435,820	407,090	2,587	526,640	84.88	44,700
FOR FREEZING <u>4/</u>	162,230	143,480	2,748	197,130	86.43	17,037
FOR CANNING <u>4/</u>	273,590	263,610	2,500	329,510	83.95	27,663

SEE FOOTNOTES ON PAGE 40.

TABLE 10. GREEN PEAS FOR PROCESSING, ACRES, YIELD, PRODUCTION,
VALUE PER TON, AND TOTAL VALUE, 1959-65--CONTINUED

1963						
REGION AND STATE	ACRES		YIELD PER ACRE	PRODUCTION	VALUE	
	PLANTED	HARVESTED			PER TON	TOTAL
	ACRES	ACRES	LBS	TONS	DOLLARS	1,000 DOLLARS
EASTERN						
NEW YORK	11,200	10,900	2,190	11,940	99.70	1,190
DELAWARE	8,800	8,500	3,110	13,220	102.00	1,348
MARYLAND	8,600	8,200	3,210	13,160	91.50	1,204
OTHER STATES ^{1/}	17,700	17,010	2,847	24,210	99.22	2,402
TOTAL EASTERN	46,300	44,610	2,803	62,530	98.26	6,144
CENTRAL						
WISCONSIN	121,100	117,300	2,140	125,510	82.60	10,367
MINNESOTA	57,200	53,400	1,950	52,060	86.90	4,524
OTHER STATES ^{2/}	44,790	42,690	2,902	61,950	79.71	4,938
TOTAL CENTRAL	223,090	213,390	2,245	239,520	82.79	19,829
WESTERN						
IDAHO	12,400	11,300	2,670	15,090	86.00	1,298
WASHINGTON	79,800	78,900	2,880	113,620	83.10	9,442
OREGON	60,600	59,600	2,160	64,370	89.00	5,729
CALIFORNIA	10,200	9,200	3,130	14,400	74.60	1,074
OTHER STATES ^{3/}	6,200	5,170	2,720	7,030	81.93	576
TOTAL WESTERN	169,200	164,170	2,613	214,510	84.47	18,119
UNITED STATES	438,590	422,170	2,447	516,560	85.36	44,092
FOR FREEZING ^{4/}	152,630	145,650	2,635	191,880	85.41	16,389
FOR CANNING ^{4/}	285,960	276,520	2,348	324,680	85.32	27,703
1964						
EASTERN						
NEW YORK	9,200	9,000	2,810	12,640	100.00	1,264
DELAWARE	8,800	8,600	1,650	7,100	114.00	809
MARYLAND	8,400	8,200	1,720	7,050	118.00	832
OTHER STATES ^{1/}	18,970	18,700	2,418	22,610	106.41	2,406
TOTAL EASTERN	45,370	44,500	2,220	49,400	107.51	5,311
CENTRAL						
WISCONSIN	124,000	120,500	2,170	130,740	93.70	12,250
MINNESOTA	54,600	53,600	1,980	53,060	99.00	5,253
OTHER STATES ^{2/}	39,500	38,000	2,842	54,000	84.48	4,562
TOTAL CENTRAL	218,100	212,100	2,242	237,800	92.79	22,065
WESTERN						
IDAHO	12,700	11,600	2,460	14,270	87.60	1,250
WASHINGTON	82,600	80,900	2,630	106,380	103.00	10,957
OREGON	60,800	52,600	1,860	48,920	85.50	4,183
CALIFORNIA	11,000	10,200	3,570	18,210	125.00	2,276
OTHER STATES ^{3/}	6,450	5,510	2,802	7,720	93.91	725
TOTAL WESTERN	173,550	160,810	2,431	195,500	99.19	19,371
UNITED STATES	437,020	417,410	2,313	482,700	96.89	46,767
FOR FREEZING ^{4/}	157,840	150,840	2,486	187,500	100.19	18,785
FOR CANNING ^{4/}	279,180	266,570	2,215	295,200	94.79	27,982

SEE FOOTNOTES ON PAGE 40.

TABLE 10. GREEN PEAS FOR PROCESSING, ACRES, YIELD, PRODUCTION,
VALUE PER TON, AND TOTAL VALUE, 1959-65--CONTINUED

1965						
REGION AND STATE	ACRES		YIELD PER ACRE	PRODUCTION	VALUE	
	PLANTED	HARVESTED			PER TON	TOTAL
	ACRES	ACRES	LBS	TONS	DOLLARS	1,000 DOLLARS
EASTERN						
NEW YORK	7,800	7,600	2,990	11,360	106.00	1,204
DELAWARE	7,900	7,900	2,340	9,240	116.00	1,072
MARYLAND	8,600	8,500	3,140	13,340	123.00	1,641
OTHER STATES ^{1/}	18,240	17,440	2,712	23,650	106.00	2,507
TOTAL EASTERN	42,540	41,440	2,779	57,590	111.55	6,424
CENTRAL						
WISCONSIN	131,400	124,700	2,540	158,370	95.60	15,140
MINNESOTA	59,000	56,900	2,470	70,270	104.00	7,308
OTHER STATES ^{2/}	44,500	43,000	2,541	54,640	103.22	5,640
TOTAL CENTRAL	234,900	224,600	2,523	283,280	99.15	28,088
WESTERN						
IDAHO	15,200	14,000	2,310	16,170	88.30	1,428
WASHINGTON	90,600	88,300	3,170	139,960	101.00	14,136
OREGON	60,000	56,400	2,750	77,550	88.00	6,824
CALIFORNIA	13,300	11,700	3,260	19,070	124.00	2,365
OTHER STATES ^{3/}	6,000	5,190	3,195	8,290	96.14	797
TOTAL WESTERN	185,100	175,590	2,973	261,040	97.88	25,550
UNITED STATES	462,540	441,630	2,726	601,910	99.79	60,062
FOR FREEZING ^{4/}	168,730	159,770	2,926	233,740	99.53	23,265
FOR CANNING ^{4/}	293,810	281,860	2,612	368,170	99.95	36,797

^{1/} MAINE, NEW JERSEY, PENNSYLVANIA, VIRGINIA, AND NORTH CAROLINA (1962-65).

^{2/} OHIO, INDIANA, ILLINOIS, MICHIGAN, IOWA, TENNESSEE (1959-63); ALABAMA (1961 ONLY); AND ARKANSAS (1959-60 AND 1962-63).

^{3/} MONTANA (1960-65); WYOMING, COLORADO, AND UTAH.

^{4/} NOT SHOWN BY STATES TO AVOID DISCLOSURE OF INDIVIDUAL OPERATIONS.

TABLE 11. SPINACH FOR PROCESSING
ACRES, YIELD, PRODUCTION AND VALUE 1959-65

1959

SEASON AND STATE	ACRES		YIELD PER ACRE	PRODUCTION	VALUE	
	PLANTED	HARVESTED			PER TON	TOTAL
	ACRES	ACRES	TONS	TONS	DOLLARS	1,000 DOLLARS
WINTER						
FLORIDA	1,100	1,000	4.4	4,400	30.00	132
CALIFORNIA	9,600	9,100	7.1	64,600	24.60	1,589
TOTAL OR AVERAGE	10,700	10,100	6.8	69,000	24.94	1,721
SPRING						
ARKANSAS	3,800	3,800	2.3	8,700	49.40	430
OKLAHOMA	5,200	4,200	3.0	12,600	48.60	612
OTHER STATES ^{1/}	10,140	9,170	4.4	40,400	47.92	1,936
TOTAL OR AVERAGE	19,140	17,170	3.6	61,700	48.27	2,978
FALL						
ARKANSAS	1,000	500	1.8	900	45.60	41
OKLAHOMA	3,100	400	1.5	600	50.00	30
WASHINGTON	600	580	7.7	4,500	29.80	134
OTHER STATES ^{2/}	4,360	3,580	3.1	11,120	56.38	627
TOTAL OR AVERAGE	9,060	5,060	3.4	17,120	48.60	832
UNITED STATES	38,900	32,330	4.6	147,820	37.42	5,531

1960

WINTER						
FLORIDA	1,000	900	6.0	5,400	35.20	190
CALIFORNIA	9,200	9,000	7.0	63,000	23.50	1,480
TOTAL OR AVERAGE	10,200	9,900	6.9	68,400	24.42	1,670
SPRING						
ARKANSAS	2,700	2,700	2.0	5,400	49.10	265
OKLAHOMA	3,800	3,000	2.6	7,800	49.50	386
OTHER STATES ^{1/}	11,640	10,330	4.0	41,000	43.54	1,785
TOTAL OR AVERAGE	18,140	16,030	3.4	54,200	44.94	2,436
FALL						
ARKANSAS	1,100	1,100	2.1	2,300	52.20	120
OKLAHOMA	2,600	1,700	2.1	3,600	49.60	179
WASHINGTON	640	630	8.3	5,200	29.30	152
OTHER STATES ^{2/}	3,980	3,150	3.2	10,160	56.10	570
TOTAL OR AVERAGE	8,320	6,580	3.2	21,260	48.02	1,021
UNITED STATES	36,660	32,510	4.4	143,860	35.64	5,127

SEE FOOTNOTES ON PAGE 44.

TABLE 11. SPINACH FOR PROCESSING
ACRES, YIELD, PRODUCTION AND VALUE 1959-65--CONTINUED

1961

SEASON AND STATE	ACRES		YIELD PER ACRE	PRODUCTION	VALUE	
	PLANTED	HARVESTED			PER TON	TOTAL
	ACRES	ACRES	TONS	TONS	DOLLARS	1,000 DOLLARS
WINTER						
FLORIDA	1,100	900	5.8	5,200	33.50	174
CALIFORNIA	8,600	8,200	7.9	64,800	24.50	1,588
TOTAL OR AVERAGE	9,700	9,100	7.7	70,000	25.17	1,762
SPRING						
ARKANSAS	3,700	3,700	2.2	8,100	48.10	390
OKLAHOMA	3,500	3,000	3.1	9,300	48.00	446
OTHER STATES ^{1/}	9,260	8,610	4.2	35,990	44.54	1,603
TOTAL OR AVERAGE	16,460	15,310	3.5	53,390	45.68	2,439
FALL						
ARKANSAS	1,700	1,500	2.1	3,200	50.30	161
OKLAHOMA	2,800	1,700	2.5	4,200	44.50	187
WASHINGTON	750	700	8.1	5,700	29.00	165
OTHER STATES ^{2/}	2,840	2,190	3.6	7,990	54.19	433
TOTAL OR AVERAGE	8,090	6,090	3.5	21,090	44.86	946
UNITED STATES	34,250	30,500	4.7	144,480	35.62	5,147
CANNING ^{3/}	20,620	18,230	4.4	80,920	34.80	2,820
FREEZING ^{3/}	13,630	12,270	5.2	63,560	36.60	2,327

1962

WINTER						
FLORIDA	1,000	800	5.2	4,200	32.60	137
CALIFORNIA	7,700	7,100	8.3	58,900	23.80	1,402
TOTAL OR AVERAGE	8,700	7,900	8.0	63,100	24.39	1,539
SPRING						
ARKANSAS	1,300	1,300	2.5	3,200	49.60	159
OKLAHOMA	3,500	2,800	2.5	7,000	48.00	336
OTHER STATES ^{1/}	7,380	6,290	4.0	25,250	50.34	1,271
TOTAL OR AVERAGE	12,180	10,390	3.4	35,450	49.82	1,766
FALL						
ARKANSAS	2,200	1,700	2.0	3,400	51.20	174
OKLAHOMA	2,100	1,300	2.8	3,600	49.70	179
WASHINGTON	650	600	7.7	4,600	30.20	139
OTHER STATES ^{2/}	3,120	2,730	4.4	12,010	58.70	705
TOTAL OR AVERAGE	8,070	6,330	3.7	23,610	50.70	1,197
UNITED STATES	28,950	24,620	5.0	122,160	36.85	4,502
CANNING ^{3/}	16,810	14,010	4.7	65,620	32.83	2,154
FREEZING ^{3/}	12,140	10,610	5.3	56,540	41.53	2,348

SEE FOOTNOTES ON PAGE 44.

TABLE 11. SPINACH FOR PROCESSING
ACRES, YIELD, PRODUCTION AND VALUE 1959-65--CONTINUED

1963

SEASON AND STATE	ACRES		YIELD PER ACRE	PRODUCTION	VALUE	
	PLANTED	HARVESTED			PER TON	TOTAL
	ACRES	ACRES	TONS	TONS	DOLLARS	1,000 DOLLARS
WINTER						
FLORIDA	2,100	2,000	6.8	13,600	31.90	434
CALIFORNIA	7,200	6,900	9.2	63,500	24.90	1,581
TOTAL OR AVERAGE	9,300	8,900	8.7	77,100	26.13	2,015
SPRING						
ARKANSAS	2,500	2,500	2.0	5,000	49.80	249
OKLAHOMA	3,900	3,100	2.9	9,000	48.70	438
OTHER STATES ^{1/}	7,510	6,850	5.4	37,010	45.56	1,686
TOTAL OR AVERAGE	13,910	12,450	4.1	51,010	46.52	2,373
FALL						
ARKANSAS	900	900	5.0	4,500	51.00	230
OKLAHOMA	1,800	1,200	3.2	3,800	49.00	186
WASHINGTON	650	650	8.6	5,600	28.80	161
OTHER STATES ^{2/}	3,310	3,110	4.4	13,780	62.55	862
TOTAL OR AVERAGE	6,660	5,860	4.7	27,680	51.99	1,439
UNITED STATES	29,870	27,210	5.7	155,790	37.40	5,827
CANNING	17,770	16,120	5.3	84,940	36.57	3,106
FREEZING	12,100	11,090	6.4	70,850	38.41	2,721

1964

WINTER						
FLORIDA	2,800	2,600	5.0	13,000	41.00	533
CALIFORNIA	7,700	7,500	9.3	69,800	31.90	2,227
TOTAL OR AVERAGE	10,500	10,100	8.2	82,800	33.33	2,760
SPRING						
ARKANSAS	1,700	1,600	4.0	6,400	47.20	302
OKLAHOMA	3,100	2,500	3.3	8,200	47.20	387
OTHER STATES ^{1/}	7,320	6,810	4.2	28,420	40.99	1,165
TOTAL OR AVERAGE	12,120	10,910	3.9	43,020	43.10	1,854
FALL						
ARKANSAS	950	650	5.4	3,500	44.00	154
OKLAHOMA	1,100	800	3.7	3,000	40.60	122
WASHINGTON	700	700	8.6	6,000	30.00	180
OTHER STATES ^{2/}	2,620	2,130	4.0	8,540	65.57	560
TOTAL OR AVERAGE	5,370	4,280	4.9	21,040	48.29	1,016
UNITED STATES	27,990	25,290	5.8	146,860	36.34	5,630
CANNING	15,280	13,700	5.7	78,450	36.72	2,881
FREEZING	12,710	11,590	5.9	68,410	40.18	2,749

SEE FOOTNOTES ON PAGE 44.

TABLE 11. SPINACH FOR PROCESSING
ACRES, YIELD, PRODUCTION AND VALUE 1959-65--CONTINUED

1965

SEASON AND STATE	ACRES		YIELD PER ACRE	PRODUCTION	VALUE	
	PLANTED	HARVESTED			PER TON	TOTAL
	ACRES	ACRES	TONS	TONS	DOLLARS	1,000 DOLLARS
WINTER						
FLORIDA	2,700	1,700	4.6	7,800	40.70	317
CALIFORNIA	6,900	6,100	8.6	52,500	33.60	1,764
TOTAL OR AVERAGE	9,600	7,800	7.7	60,300	34.51	2,081
SPRING						
ARKANSAS	1,800	700	3.1	2,200	44.50	98
OKLAHOMA	1,600	900	2.8	2,500	44.40	111
OTHER STATES ^{1/}	7,330	6,780	5.1	34,320*	41.87	1,412
TOTAL OR AVERAGE	10,730	8,830	4.7	39,020	42.19	1,621
FALL						
ARKANSAS	850	850	4.9	4,200	50.70	213
OKLAHOMA	1,800	1,200	4.6	5,500	49.00	270
WASHINGTON	550	550	9.1	5,000	30.60	153
OTHER STATES ^{2/}	2,840	2,620	4.3	11,180	56.71	634
TOTAL OR AVERAGE	6,040	5,220	5.0	25,880	49.07	1,270
UNITED STATES	26,370	21,400	5.9	125,200	39.90	4,972
CANNING ^{3/}	12,750	9,740	6.0	58,920	38.83	2,288
FREEZING ^{3/}	13,620	11,660	5.7	66,280	40.49	2,684

* INCLUDES SOME QUANTITIES NOT MARKETED AND EXCLUDED IN COMPUTING VALUE; SPRING, OTHER STATES, 600 TONS IN 1965.

^{1/} NEW YORK, NEW JERSEY; PENNSYLVANIA (1959-61 AND 1963-65); MICHIGAN, WISCONSIN; DELAWARE (1960-62 AND 1964-65); MARYLAND, VIRGINIA, TENNESSEE, MISSISSIPPI (1959-62); LOUISIANA (1963-64); TEXAS AND WASHINGTON.

^{2/} NEW YORK (1959-64); NEW JERSEY, PENNSYLVANIA (1964 ONLY); DELAWARE (1961-63); MARYLAND, VIRGINIA (1959-63 AND 1965); TENNESSEE AND CALIFORNIA.

^{3/} NOT SHOWN BY STATES TO AVOID DISCLOSURE OF INDIVIDUAL OPERATIONS.

TABLE 12. TOMATOES FOR PROCESSING
ACRES, YIELD, PRODUCTION AND VALUE 1959-65

STATE	ACRES		YIELD PER ACRE	PRODUCTION	VALUE	
	PLANTED	HARVESTED			PER TON	TOTAL
	ACRES	ACRES	TONS	TONS	DOLLARS	1,000 DOLLARS
1959						
NEW YORK	11,100	10,900	10.1	110,100	33.50	3,688
NEW JERSEY	14,200	14,000	12.6	176,400	31.20	5,504
PENNSYLVANIA	15,000	15,000	10.0	150,000	30.00	4,500
OHIO	22,800	22,300	13.3	296,600	27.00	8,008
INDIANA	26,600	26,100	10.2	266,200	26.20	6,974
ILLINOIS	9,600	9,400	12.2	114,700	28.80	3,303
MICHIGAN	7,600	7,500	11.0	82,500	26.40	2,178
DELAWARE	2,000	1,900	9.0	17,100	29.80	510
MARYLAND	11,000	10,600	6.6	70,000	29.80	2,086
VIRGINIA	11,500	11,500	3.4	39,100	27.70	1,083
SOUTH CAROLINA	1,100	1,100	3.6	3,960	32.10	127
FLORIDA	6,500	6,500	5.3	34,400	23.30	802
TEXAS	14,000	14,000	3.8	53,200	21.00	1,117
COLORADO	3,600	3,400	8.7	29,600	23.70	702
NEW MEXICO	1,800	1,400	10.7	15,000	28.00	420
UTAH	4,100	3,800	8.7	33,100	21.40	708
CALIFORNIA	129,700	129,700	15.4	1,997,400	21.80	43,543
OTHER STATES 1/	8,130	7,830	6.3	49,670	26.60	1,321
UNITED STATES	300,330	296,930	11.9	3,539,030	24.46	86,574
1960						
NEW YORK	9,500	9,100	12.5	113,800	33.00	3,755
NEW JERSEY	17,400	17,200	15.8	271,800	31.90	8,670
PENNSYLVANIA	12,000	12,000	12.8	153,600	31.60	4,854
OHIO	22,100	21,900	17.7	387,600	27.80	10,775
INDIANA	26,900	26,300	10.8	284,000	28.60	8,122
ILLINOIS	8,700	8,700	14.9	129,600	30.30	3,927
MICHIGAN	7,200	7,100	12.2	86,600	27.10	2,347
DELAWARE	1,800	1,700	16.0	27,200	31.00	843
MARYLAND	9,000	8,600	11.0	94,600	31.50	2,980
VIRGINIA	9,000	9,000	4.8	43,200	30.80	1,331
SOUTH CAROLINA	1,300	1,300	3.2	4,200	32.50	136
FLORIDA	5,500	5,500	7.4	40,900	25.40	1,037
TEXAS	7,700	7,700	3.9	30,000	28.90	867
COLORADO	2,700	2,400	11.3	27,100	24.40	661
NEW MEXICO	1,100	750	12.4	9,300	27.50	256
UTAH	3,300	3,200	14.5	46,400	24.20	1,123
CALIFORNIA	130,000	130,000	17.3	2,249,000	23.40	52,627
OTHER STATES 1/	7,700	7,500	7.3	54,870	29.01	1,592
UNITED STATES	282,900	279,950	14.5	4,053,770	26.12	105,903
1961						
NEW YORK	9,200	9,100	13.3	121,000	32.40	3,920
NEW JERSEY	18,700	18,600	17.0	316,200	32.20	10,182
PENNSYLVANIA	12,700	12,600	12.9	162,500	32.90	5,346
OHIO	22,600	22,400	17.1	383,000	26.90	10,303
INDIANA	26,000	25,600	11.4	291,800	27.90	8,141
ILLINOIS	9,500	9,400	13.9	130,700	29.60	3,869
MICHIGAN	7,200	6,700	12.5	83,800	26.20	2,196
DELAWARE	1,700	1,700	17.8	30,300	31.80	964
MARYLAND	9,200	9,100	12.0	109,200	31.60	3,451
VIRGINIA	9,500	9,500	6.0	57,000	30.10	1,716
SOUTH CAROLINA	1,300	1,300	4.0	5,200	31.50	164
FLORIDA	7,100	7,100	8.9	63,100	22.80	1,436
TEXAS	10,900	10,900	3.8	41,400	23.20	960
COLORADO	3,000	2,200	8.5	18,700	25.00	468
NEW MEXICO	1,000	900	11.0	9,900	26.50	262
UTAH	3,900	3,700	15.2	56,200	24.00	1,349
CALIFORNIA	146,800	146,800	15.8	2,319,000	30.10	69,802
OTHER STATES 1/	7,150	6,950	8.5	58,900	29.25	1,723
UNITED STATES	307,450	304,550	14.0	4,257,900	29.65	126,252

TABLE 12. TOMATOES FOR PROCESSING
ACRES, YIELD, PRODUCTION AND VALUE 1959-65--CONTINUED

1962

STATE	ACRES		YIELD PER ACRE	PRODUCTION	VALUE	
	PLANTED	HARVESTED			PER TON	TOTAL
	ACRES	ACRES	TONS	TONS	DOLLARS	1,000 DOLLARS
NEW YORK	8,600	8,400	13.7	115,100	32.60	3,752
NEW JERSEY	18,300	18,300	20.5	375,200	31.90	11,969
PENNSYLVANIA	13,600	13,400	12.2	163,500	31.30	5,118
OHIO	22,000	21,900	20.5	449,000	28.10	12,617
INDIANA	25,500	25,100	13.6	341,400	28.60	9,764
ILLINOIS	9,200	9,100	17.8	162,000	31.90	5,168
MICHIGAN	6,800	6,800	13.8	93,800	28.30	2,655
DELAWARE	1,900	1,900	18.6	35,300	31.70	1,119
MARYLAND	9,500	9,400	11.8	110,900	30.60	3,394
VIRGINIA	9,000	9,000	7.5	67,500	30.30	2,045
SOUTH CAROLINA	1,600	1,300	3.5	4,600	33.60	155
FLORIDA	5,100	5,100	8.5	43,500	24.50	1,064
TEXAS	6,100	6,100	5.9	36,000	24.80	893
COLORADO	3,500	3,100	11.6	36,000	25.40	914
NEW MEXICO	1,500	1,400	13.5	18,900	27.50	520
UTAH	4,600	4,500	15.1	68,000	25.40	1,727
CALIFORNIA	177,200	177,200	18.2	3,218,000	27.60	88,817
OTHER STATES 1/	6,100	5,900	9.4	55,200	28.75	1,587
UNITED STATES	330,100	327,900	16.4	5,393,900	28.42	153,278

1963

NEW YORK	7,700	7,500	10.8	81,000	30.40	2,462
NEW JERSEY	15,100	15,000	17.0	259,000	31.10	7,930
PENNSYLVANIA	9,000	9,000	11.5	103,500	32.50	3,364
OHIO	18,000	17,900	18.9	338,300	27.20	9,202
INDIANA	17,700	17,500	16.0	280,000	26.30	7,364
ILLINOIS	7,500	7,400	17.6	130,200	31.00	4,036
MICHIGAN	5,400	5,300	13.9	73,700	27.60	2,034
DELAWARE	1,900	1,900	12.8	24,300	31.60	768
MARYLAND	7,700	7,700	10.3	79,300	32.70	2,593
VIRGINIA	7,400	7,400	6.5	48,100	34.40	1,655
SOUTH CAROLINA	1,100	1,000	3.5	3,500	32.30	113
FLORIDA	6,100	6,100	9.1	55,400	24.50	1,355
TEXAS	6,200	6,200	5.0	31,000	21.10	654
COLORADO	2,800	2,100	12.9	27,100	24.10	653
NEW MEXICO	1,300	1,100	11.7	12,900	32.00	413
UTAH	3,000	3,000	15.1	45,300	24.50	1,110
CALIFORNIA	129,000	129,000	19.1	2,463,900	25.40	62,583
OTHER STATES 1/	5,670	5,360	8.8	47,190	28.63	1,351
UNITED STATES	252,570	250,460	16.4	4,099,690	26.74	109,640

1964

NEW YORK	7,800	7,700	10.6	81,600	31.90	2,603
NEW JERSEY	16,400	16,400	15.0	246,000	30.80	7,577
PENNSYLVANIA	9,200	9,100	13.1	119,200	32.30	3,850
OHIO	21,400	21,300	15.8	336,500	27.80	9,355
INDIANA	17,100	16,600	12.3	204,200	28.80	5,881
ILLINOIS	7,700	7,700	17.0	130,900	32.90	4,307
MICHIGAN	6,300	5,800	12.0	69,600	27.80	1,935
DELAWARE	1,400	1,400	17.0	23,800	31.90	759
MARYLAND	7,300	7,200	13.8	99,400	32.20	3,201
VIRGINIA	9,400	9,300	6.1	56,700	30.00	1,701
SOUTH CAROLINA	900	900	3.0	2,700	32.00	86
FLORIDA	8,000	8,000	8.5	67,700	24.80	1,680
TEXAS	8,200	7,600	5.0	38,000	25.90	984
COLORADO	2,800	2,400	9.2	22,100	27.00	597
NEW MEXICO	1,300	1,200	10.9	12,000	32.20	386
UTAH	2,800	2,700	10.6	28,600	24.50	701
CALIFORNIA	143,000	143,000	21.0	3,003,000	31.30	93,994
OTHER STATES 1/	5,110	5,050	8.2	41,310	29.36	1,213
UNITED STATES	276,110	273,350	16.8	4,583,310	30.72	140,810

SEE PREVIOUS PAGE 47.

TABLE 12. TOMATOES FOR PROCESSING
ACRES, YIELD, PRODUCTION AND VALUE 1959-65--CONTINUED

1965

STATE	ACRES		YIELD PER ACRE	PRODUCTION	VALUE	
	PLANTED	HARVESTED			PER TON	TOTAL
	ACRES	ACRES	TONS	TONS	DOLLARS	1,000 DOLLARS
NEW YORK	8,200	8,000	11.2	89,600	33.70	3,020
NEW JERSEY	18,800	18,700	18.7	349,700	34.50	12,065
PENNSYLVANIA	9,500	9,500	13.8	131,100	32.30	4,235
OHIO	25,400	25,200	21.6	544,300*	30.10	15,568
INDIANA	19,600	19,100	16.5	315,200*	29.60	8,036
ILLINOIS	8,000	8,000	17.6	140,800*	35.00	4,235
MICHIGAN	6,000	5,700	14.2	80,900	30.40	2,459
DELAWARE	1,900	1,900	18.9	35,900	32.80	1,178
MARYLAND	7,100	7,000	15.0	105,000	33.30	3,496
VIRGINIA	9,100	9,000	7.4	66,600	31.70	2,111
SOUTH CAROLINA	1,000	1,000	3.5	3,500	32.00	112
FLORIDA	6,600	6,600	8.4	55,400	26.60	1,474
TEXAS	7,300	6,500	7.2	46,800	25.50	1,193
COLORADO	1,800	1,000	6.0	6,000	42.70	256
NEW MEXICO	350	300	11.0	3,300	32.90	109
UTAH	2,700	2,300	7.0	16,100	24.50	394
CALIFORNIA	122,800	122,800	20.1	2,468,300	41.60	102,681
OTHER STATES ^{1/}	4,840	4,760	9.0	42,640	30.28	1,291
UNITED STATES	260,990	257,360	17.5	4,501,140	37.16	163,913

* INCLUDES THE FOLLOWING QUANTITIES NOT MARKETED AND EXCLUDED IN COMPUTING VALUE, OHIO, 27,100 TONS; INDIANA, 43,700 TONS; AND ILLINOIS, 19,800 TONS IN 1965.

^{1/} WISCONSIN, IOWA (1959-62); MISSOURI, KANSAS (1965 ONLY); WEST VIRGINIA, NORTH CAROLINA (1963-64); KENTUCKY, TENNESSEE, ALABAMA, ARKANSAS, LOUISIANA (1963-65); OKLAHOMA AND WASHINGTON.

TABLE 13. SNAP BEANS FOR PROCESSING: PLANTED ACREAGE BY POD COLOR,
BY AREA 1/, AND UTILIZATION 1959-65

AREA AND UTILIZATION	1959			1960		
	GREEN	WAX	TOTAL	GREEN	WAX	TOTAL
	ACRES	ACRES	ACRES	ACRES	ACRES	ACRES
NORTH ATLANTIC	41,320	12,450	53,770	43,080	14,660	57,740
SOUTH ATLANTIC	31,100	1,600	32,700	34,270	1,430	35,700
EASTERN 2/	72,420	14,050	86,470	77,350	16,090	93,440
CENTRAL	57,720	8,340	66,060	58,790	7,200	65,990
WESTERN	18,730	940	19,670	18,770	1,270	20,040
UNITED STATES	148,870	23,330	172,200	154,910	24,560	179,470
FOR FREEZING	36,210	2,540	38,750	41,030	3,900	44,930
FOR CANNING	112,660	20,790	133,450	113,880	20,660	134,540

AREA AND UTILIZATION	1961			1962		
	GREEN	WAX	TOTAL	GREEN	WAX	TOTAL
	ACRES	ACRES	ACRES	ACRES	ACRES	ACRES
NORTH ATLANTIC	49,290	12,110	61,400	48,170	11,840	60,010
SOUTH ATLANTIC	36,620	1,380	38,000	28,890	1,610	30,500
EASTERN 2/	85,910	13,490	99,400	77,060	13,450	90,510
CENTRAL	62,430	9,040	71,470	62,130	9,980	72,110
WESTERN	25,210	1,040	26,250	26,240	910	27,150
UNITED STATES	173,550	23,570	197,120	165,430	24,340	189,770
FOR FREEZING	47,680	2,680	50,360	40,480	3,080	43,560
FOR CANNING	125,870	20,890	146,760	124,950	21,260	146,210

SEE FOOTNOTES ON PAGE 49.

TABLE 13. SNAP BEANS FOR PROCESSING, PLANTED ACREAGE BY POD COLOR,
BY AREA 1/, AND UTILIZATION 1959-65--CONTINUED

AREA AND UTILIZATION	1963			1964		
	GREEN	WAX	TOTAL	GREEN	WAX	TOTAL
	ACRES	ACRES	ACRES	ACRES	ACRES	ACRES
NORTH ATLANTIC	50,870	10,960	61,830	60,880	12,880	73,760
SOUTH ATLANTIC	33,910	1,190	35,100	36,220	1,680	37,900
EASTERN <u>2/</u>	84,780	12,150	96,930	97,100	14,560	111,660
CENTRAL	70,380	8,720	79,100	78,120	9,670	87,790
WESTERN	28,140	1,260	29,400	29,950	950	30,900
UNITED STATES	183,300	22,130	205,430	205,170	25,180	230,350
FOR FREEZING	49,020	1,890	50,910	54,590	2,540	57,130
FOR CANNING	134,280	20,240	154,520	150,580	22,640	173,220

AREA AND UTILIZATION	1965		
	GREEN	WAX	TOTAL
	ACRES	ACRES	ACRES
NORTH ATLANTIC	60,660	14,400	75,060
SOUTH ATLANTIC	35,640	2,160	37,800
EASTERN <u>2/</u>	96,300	16,560	112,860
CENTRAL	84,520	12,120	96,640
WESTERN	35,790	1,280	37,070
UNITED STATES	216,610	29,960	246,570
FOR FREEZING	50,950	2,690	53,640
FOR CANNING	165,660	27,270	192,930

- 1/ NORTH ATLANTIC: MAINE, VERMONT, MASSACHUSETTS, NEW YORK, NEW JERSEY, PENNSYLVANIA;
SOUTH ATLANTIC: DELAWARE, MARYLAND, VIRGINIA, NORTH CAROLINA, SOUTH CAROLINA,
GEORGIA, FLORIDA;
CENTRAL : OHIO, INDIANA, ILLINOIS, MICHIGAN, WISCONSIN, MINNESOTA, MISSOURI,
NEBRASKA, KENTUCKY, TENNESSEE, ALABAMA, MISSISSIPPI, ARKANSAS,
LOUISIANA, OKLAHOMA, TEXAS;
WESTERN : IDAHO, WYOMING, COLORADO, UTAH, WASHINGTON, OREGON, CALIFORNIA.
- 2/ NORTH ATLANTIC AND SOUTH ATLANTIC.

TABLE 14. SWEET CORN FOR PROCESSING, PLANTED ACREAGE BY VARIETIES,
BY AREA 1/, AND UTILIZATION, 1959-65

AREA AND UTILIZATION	1959			1960		
	WHITE	YELLOW	TOTAL	WHITE	YELLOW	TOTAL
	ACRES	ACRES	ACRES	ACRES	ACRES	ACRES
NORTH ATLANTIC	2,640	35,470	38,110	1,840	33,300	35,140
SOUTH ATLANTIC	5,690	35,410	41,100	4,950	31,950	36,900
EASTERN 2/	8,330	70,880	79,210	6,790	65,250	72,040
CENTRAL	28,110	287,130	315,240	27,010	267,540	294,550
WESTERN	770	55,020	55,750	1,180	62,930	64,110
UNITED STATES	37,170	413,030	450,200	34,980	395,720	430,700
FOR FREEZING	560	67,570	68,130	500	77,890	78,390
FOR CANNING	36,610	345,460	382,070	34,480	317,830	352,310

AREA AND UTILIZATION	1961			1962		
	WHITE	YELLOW	TOTAL	WHITE	YELLOW	TOTAL
	ACRES	ACRES	ACRES	ACRES	ACRES	ACRES
NORTH ATLANTIC	2,200	35,700	37,900	2,780	33,720	36,500
SOUTH ATLANTIC	4,120	34,630	38,750	3,800	33,250	37,050
EASTERN 2/	6,320	70,330	76,650	6,580	66,970	73,550
CENTRAL	23,100	292,770	315,870	21,890	295,910	317,800
WESTERN	210	75,890	76,100	250	73,800	74,050
UNITED STATES	29,630	438,990	468,620	28,720	436,680	465,400
FOR FREEZING	600	88,700	89,300	2,080	85,220	87,300
FOR CANNING	29,030	350,290	379,320	26,640	351,460	378,100

SEE FOOTNOTES ON PAGE 51.

TABLE 14. SWEET CORN FOR PROCESSING: PLANTED ACREAGE BY VARIETIES,
BY AREA 1/, AND UTILIZATION, 1959-65--CONTINUED

AREA AND UTILIZATION	1963			1964		
	WHITE	YELLOW	TOTAL	WHITE	YELLOW	TOTAL
	ACRES	ACRES	ACRES	ACRES	ACRES	ACRES
NORTH ATLANTIC	2,090	27,560	29,650	1,600	23,200	24,800
SOUTH ATLANTIC	5,010	28,890	33,900	4,950	26,600	31,550
EASTERN <u>2</u> /	7,100	56,450	63,550	6,550	49,800	56,350
CENTRAL	14,670	261,930	276,600	14,390	231,810	246,200
WESTERN	220	66,380	66,600	880	66,470	67,350
UNITED STATES	21,990	384,760	406,750	21,820	348,080	369,900
FOR FREEZING	1,380	82,330	83,710	1,830	83,260	85,090
FOR CANNING	20,610	302,430	323,040	19,990	264,820	284,810

AREA AND UTILIZATION	1965		
	WHITE	YELLOW	TOTAL
	ACRES	ACRES	ACRES
NORTH ATLANTIC	1,900	22,900	24,800
SOUTH ATLANTIC	5,820	27,630	33,450
EASTERN <u>2</u> /	7,720	50,530	58,250
CENTRAL	20,480	268,570	289,050
WESTERN	610	82,740	83,350
UNITED STATES	28,810	401,840	430,650
FOR FREEZING	2,870	104,730	107,600
FOR CANNING	25,940	297,110	323,050

1/ NORTH ATLANTIC: MAINE, NEW HAMPSHIRE (1959-63), VERMONT (1959), NEW YORK, NEW JERSEY (1959-63), PENNSYLVANIA.

SOUTH ATLANTIC: DELAWARE, MARYLAND, VIRGINIA, AND WEST VIRGINIA (1960-61).

CENTRAL : OHIO, INDIANA, ILLINOIS, MICHIGAN, WISCONSIN, MINNESOTA, IOWA, SOUTH DAKOTA, TENNESSEE (1959-63), ARKANSAS (1959-63), LOUISIANA (1959), OKLAHOMA (1959-63), AND TEXAS.

WESTERN : MONTANA, IDAHO, WYOMING, COLORADO (1959-63), UTAH, WASHINGTON, OREGON, CALIFORNIA (1959-62).

2/ NORTH ATLANTIC AND SOUTH ATLANTIC.

TABLE 15. GREEN PEAS FOR PROCESSING; PLANTED ACREAGE BY VARIETIES,
BY AREA, AND UTILIZATION, 1959-65

AREA AND UTILIZATION	1959				1960			
	SMOOTH ROUND	WRINKLED		TOTAL	SMOOTH ROUND	WRINKLED		TOTAL
		SEMI-SWEET	SWEET			SEMI-SWEET	SWEET	
	ACRES	ACRES	ACRES	ACRES	ACRES	ACRES	ACRES	ACRES
EASTERN <u>1</u> /	6,070	2,760	31,960	40,790	5,010	1,100	33,790	39,900
CENTRAL <u>2</u> /	48,420	21,720	94,310	164,450	43,580	20,610	95,780	159,970
WESTERN <u>3</u> /	17,860	780	137,550	156,190	15,960	1,960	142,980	160,900
UNITED STATES	72,350	25,260	263,820	361,430	64,550	23,670	272,550	360,770
FOR FREEZING	9,100	370	118,170	127,640	8,360	100	127,350	135,810
FOR CANNING	63,250	24,890	145,650	233,790	56,190	23,570	145,200	224,960

AREA AND UTILIZATION	1961				1962			
	SMOOTH ROUND	WRINKLED		TOTAL	SMOOTH ROUND	WRINKLED		TOTAL
		SEMI-SWEET	SWEET			SEMI-SWEET	SWEET	
	ACRES	ACRES	ACRES	ACRES	ACRES	ACRES	ACRES	ACRES
EASTERN <u>1</u> /	5,090	1,970	34,340	41,400	4,500	1,830	36,060	42,390
CENTRAL <u>2</u> /	50,800	25,770	116,780	193,350	51,610	32,640	124,130	208,380
WESTERN <u>3</u> /	25,760	1,250	161,790	188,800	20,180	400	164,470	185,050
UNITED STATES	81,650	28,990	312,910	423,550	76,290	34,870	324,660	435,820
FOR FREEZING	15,580	—	152,010	167,590	9,880	90	152,260	162,230
FOR CANNING	66,070	28,990	160,900	255,960	66,410	34,780	172,400	273,590

SEE FOOTNOTE ON PAGE 53.

TABLE 15. GREEN PEAS FOR PROCESSING; PLANTED ACREAGE BY VARIETIES,
BY AREA, AND UTILIZATION, 1959-65--CONTINUED

AREA AND UTILIZATION	1963				1964			
	SMOOTH ROUND	WRINKLED		TOTAL	SMOOTH ROUND	WRINKLED		TOTAL
		SEMI-SWEET	SWEET			SEMI-SWEET	SWEET	
	ACRES	ACRES	ACRES	ACRES	ACRES	ACRES	ACRES	ACRES
EASTERN <u>1/</u>	3,780	1,940	40,580	46,300	5,270	1,700	38,400	45,370
CENTRAL <u>2/</u>	60,010	33,050	130,030	223,090	59,620	37,950	120,530	218,100
WESTERN <u>3/</u>	19,930	470	148,800	169,200	13,250	830	159,470	173,550
UNITED STATES	83,720	35,460	319,410	438,590	78,140	40,480	318,400	437,020
FOR FREEZING	7,800	---	144,830	152,630	9,350	300	148,190	157,840
FOR CANNING	75,920	35,460	174,580	285,960	68,790	40,180	170,210	279,180

AREA AND UTILIZATION	1965			
	SMOOTH ROUND	WRINKLED		TOTAL
		SEMI-SWEET	SWEET	
	ACRES	ACRES	ACRES	ACRES
EASTERN <u>1/</u>	3,710	2,800	36,030	42,540
CENTRAL <u>2/</u>	58,270	38,290	138,340	234,900
WESTERN <u>3/</u>	25,730	930	158,440	185,100
UNITED STATES	87,710	42,020	332,810	462,540
FOR FREEZING	11,550	300	156,880	168,730
FOR CANNING	76,160	41,720	175,930	293,810

1/ MAINE, NEW YORK, NEW JERSEY, PENNSYLVANIA, DELAWARE, MARYLAND, VIRGINIA, AND NORTH CAROLINA (1962-65).

2/ OHIO, INDIANA, ILLINOIS, MICHIGAN, WISCONSIN, MINNESOTA, IOWA, TENNESSEE (1959-63); ALABAMA (1961 ONLY); AND ARKANSAS (1959-60 AND 1962-63).

3/ MONTANA (1960-65); IDAHO, WYOMING, COLORADO, UTAH, WASHINGTON, OREGON, AND CALIFORNIA.

TABLE 16. CUCUMBERS FOR PICKLES: OCTOBER 1 STOCKS IN
TANKS AND BARRELS, 1959-65

YEAR	FROM CROP OF CURRENT YEAR			CARRYOVER FROM PREVIOUS CROP		TOTAL	
	SALT	DILL	FRESH PACK	SALT AND DILL	FRESH PACK	SALT AND DILL ONLY	SALT, DILL AND FRESH PACK
	TONS	TONS	TONS	TONS	TONS	TONS	TONS
1959	208,720	8,330	1/	77,450	1/	294,500	1/
1960	198,970	10,520	1/	69,350	1/	278,840	1/
1961	234,330	12,250	1/	53,650	1/	300,230	1/
1962	240,680	15,400	82,400	56,350	2,130	312,430	396,960
1963	284,960	20,230	92,860	50,820	2,110	356,010	450,980
1964	246,020	14,460	96,200	74,090	3,460	334,570	434,230
1965	250,750	15,580	116,530	68,300	3,190	334,630	454,350

1/ NOT AVAILABLE PRIOR TO 1963.

APPENDIX

TABLE 17 SUMMARIZES REVISED ESTIMATES OF TOTAL VEGETABLE PRODUCTION FOR FRESH MARKET AND PROCESSING AND ALSO MELON PRODUCTION IN THE UNITED STATES, INCLUDING HAWAII AND ALASKA, FOR THE YEARS 1959-65. A SERIES BEGINNING WITH ESTIMATES FOR 1919 IS GIVEN IN U. S. DEPARTMENT OF AGRICULTURE STATISTICAL BULLETIN NO. 210, ISSUED IN MAY 1957, AND STATISTICAL BULLETIN NO. 299, ISSUED IN DECEMBER 1961. DATA FOR THE YEARS INCLUDED IN THIS PUBLICATION SUPERSEDE ESTIMATES GIVEN IN PRIOR SERIES.

ESTIMATES FOR INDIVIDUAL VEGETABLE CROPS GROWN FOR PROCESSING AS SHOWN IN THIS TABLE CORRESPOND TO THE U. S. TOTALS GIVEN IN THE TABLES OF PRODUCTION BY STATES IN THE BODY OF THIS PUBLICATION. A DISCUSSION OF THESE ESTIMATES WILL BE FOUND IN THE INTRODUCTION TO THIS BULLETIN. ESTIMATES OF FRESH MARKET VEGETABLES AND MELONS, AS SUMMARIZED HERE, INCLUDE PRODUCTION IN ALL MAJOR PRODUCING STATES, PLUS PRODUCTION IN MINOR STATES. AS A RESULT, THE NATIONAL TOTAL SHOWN EXCEEDS THE SUM FOR MAJOR PRODUCING STATES AS LISTED IN DETAILED REPORTS OF PRODUCTION BY SEASONAL GROUPS ISSUED BY THE CROP REPORTING BOARD. PRODUCTION ESTIMATES OF FRESH MARKET VEGETABLES ARE CONSIDERED TO INCLUDE VEGETABLES GROWN FOR SALE TO CONSUMERS IN AN UNPRESERVED STATE; HOWEVER, FOR SOME VEGETABLES, NOTABLY BROCCOLI, CARROTS, CAULIFLOWER, CELERY, GARLIC, ONIONS, ARTICHOKEs, AND BRUSSELS SPROUTS, QUANTITIES OF THE PRODUCTION UTILIZED FOR PROCESSING ARE INCLUDED IN FRESH MARKET PRODUCTION ESTIMATES, AS ARE ANY CROP PORTIONS USED FOR DEHYDRATION.

AN ESTIMATE OF NATIONWIDE PRODUCTION OF MINOR VEGETABLE CROPS IS GIVEN HERE. THIS TOTAL INCLUDES ANNUAL PRODUCTION OF CROPS WHICH ARE NOT INCLUDED IN THE REGULAR PROGRAM OF REPORTS. REPRESENTED IN THIS GROUP ARE CHINESE CABBAGE, SWISS CHARD, COLLARDS, DAIKON, DANDELION GREENS, MUSTARD GREENS, TURNIP GREENS, HORSERADISH, KOHLRABI, OKRA, GREEN ONIONS, PARSLEY, PARSNIPS, FIELD PEAS, PUMPKINS, RADISHES, RHUBARB, RUTABAGAS, SQUASH, TURNIPS, WATERCRESS, AND 20 OTHER MINOR CROPS.

ESTIMATES FOR INDIVIDUAL VEGETABLE CROPS GROWN FOR FRESH MARKET, AS SHOWN IN THIS TABLE, CORRESPOND TO THE U. S. TOTALS GIVEN IN U. S. DEPARTMENT OF AGRICULTURE STATISTICAL BULLETIN NO. 412. A DISCUSSION OF THESE ESTIMATES WILL BE FOUND IN THE INTRODUCTION TO THAT BULLETIN.

TABLE 17. TOTAL COMMERCIAL PRODUCTION OF VEGETABLES AND MELONS,
UNITED STATES, 1959-65 1/

CROP	1959	1960	1961	1962	1963	1964	1965
	1,000 CWT	1,000 CWT	1,000 CWT	1,000 CWT	1,000 CWT	1,000 CWT	1,000 CWT
FRESH MARKET VEGETABLES							
ARTICHOKES	376	418	510	440	480	566	644
ASPARAGUS	1,310	1,290	1,158	1,091	1,085	1,042	1,057
LIMA BEANS	588	652	594	602	584	541	528
SNAP BEANS	4,440	4,659	4,629	4,268	4,251	4,152	4,059
BEETS	1,215	1,195	1,179	1,024	948	899	846
BROCCOLI	2,109	2,442	2,432	2,119	2,508	2,368	2,256
BRUSSELS SPROUTS	691	722	717	668	693	741	772
CABBAGE	18,573	20,475	19,350	19,205	19,420	19,154	18,868
CARROTS	15,863	18,645	16,137	17,233	18,355	16,658	18,248
CAULIFLOWER	2,379	3,065	2,691	2,715	2,711	2,615	2,633
CELERY	15,810	15,354	15,207	14,289	14,462	14,222	14,347
SWEET CORN	15,458	15,146	15,504	15,489	15,547	14,974	15,448
CUCUMBERS	4,391	4,741	5,070	4,587	5,195	5,310	5,240
EGGPLANT	688	684	790	762	748	746	791
ESCAROLE	1,268	1,315	1,310	1,275	1,372	1,326	1,327
GARLIC	296	475	304	300	426	522	566
KALE	294	275	300	260	230	235	234
LETTUCE	36,695	40,111	39,534	39,044	40,985	40,878	42,612
ONIONS	25,762	26,597	23,720	25,899	25,876	26,049	28,190
GREEN PEAS	507	434	474	509	443	465	400
GREEN PEPPERS	3,879	4,193	4,619	4,315	4,705	4,458	4,619
SHALLOTS	72	53	34	24	29	25	28
SPINACH	1,702	1,698	1,430	1,291	1,294	1,237	1,232
TOMATOES	20,880	20,281	22,221	21,997	21,292	21,804	21,825
OTHER VEGETABLES	25,120	29,500	29,800	27,500	26,200	25,953	25,300
TOTAL	200,366	214,420	209,714	206,906	209,839	206,940	212,071
MELONS							
CANTALOUPS	13,386	13,082	13,265	13,693	13,759	12,881	12,359
HONEYDEW MELONS	1,266	1,394	1,337	1,252	1,309	1,322	1,506
WATERMELONS	27,999	32,252	30,013	29,761	31,912	28,376	30,391
TOTAL	42,651	46,728	44,615	44,706	46,980	42,579	44,256
TOTAL FRESH MARKET VEGETABLES AND MELONS	243,017	261,148	254,329	251,612	256,819	249,519	256,327
PROCESSING VEGETABLES	TONS	TONS	TONS	TONS	TONS	TONS	TONS
ASPARAGUS	119,220	126,600	129,700	133,900	135,950	126,150	119,200
GREEN LIMA BEANS	82,640	103,150	115,710	108,430	84,850	78,810	96,450
SNAP BEANS	365,860	406,970	478,550	450,790	474,430	469,880	540,680
BEETS	146,700	145,860	182,560	208,840	211,410	177,790	178,510
CABBAGE FOR KRAUT	149,280	220,460	215,700	211,270	197,260	162,850	238,910
SWEET CORN	1,582,170	1,390,960	1,726,270	1,799,250	1,679,140	1,480,700	1,613,600
CUCUMBERS							
FOR PICKLES	329,820	336,060	408,930	401,520	466,680	425,790	441,560
GREEN PEAS	473,200	445,390	510,510	526,640	516,560	482,700	601,910
SPINACH	147,820	143,860	144,480	122,160	155,790	146,860	125,200
TOMATOES	3,539,030	4,053,770	4,257,900	5,393,900	4,099,690	4,583,310	4,501,140
TOTAL PROCESSING VEGETABLES	6,935,740	7,373,080	8,170,310	9,356,700	8,021,760	8,134,840	8,457,160
TOTAL VEGETABLES AND MELONS	19,086,590	20,430,480	20,886,760	21,937,300	20,862,710	20,610,790	21,273,510

1/ ESTIMATES INCLUDE PRODUCTION IN MINOR STATES IN ADDITION TO STATES COVERED IN THE REGULAR PROGRAM OF SEASONAL ESTIMATES.

UNITED STATES DEPARTMENT OF AGRICULTURE
STATISTICAL REPORTING SERVICE
WASHINGTON, D. C. 20250

POSTAGE AND FEES PAID
U. S. DEPARTMENT OF AGRICULTURE

OFFICIAL BUSINESS

END